

Data Path : Z:\HPCHEM1\BNA_G\DATA\BG080416\
 Data File : BG023477.D
 Acq On : 5 Aug 2016 7:46
 Operator : UM/SJ
 Sample : SSTDCCC020EC
 Misc :
 ALS Vial : 2 Sample Multiplier: 1

Instrument :
 BNA_G
 ClientSampleId :
 SSTD02009

Quant Time: Aug 05 09:02:41 2016
 Quant Method : Z:\HPCHEM1\BNA_G\METHODS\SOM02.2-EPA-BG080416.M
 Quant Title : SVOA CALIBRATION
 QLast Update : Thu Aug 04 17:27:34 2016
 Response via : Initial Calibration

Internal Standards	R.T.	QIon	Response	Conc	Units	Dev(Min)
1) 1,4-Dichlorobenzene-d4	8.12	152	118104	20.00	ng/ul	-0.02
18) Naphthalene-d8	10.95	136	553276	20.00	ng/ul	-0.03
35) Acenaphthene-d10	14.78	164	402864	20.00	ng/ul	-0.03
61) Phenanthrene-d10	17.54	188	994571	20.00	ng/ul	-0.03
75) Chrysene-d12	21.86	240	977288	20.00	ng/ul	-0.04
83) Perylene-d12	25.24	264	957208	20.00	ng/ul	-0.07

System Monitoring Compounds

3) 1,4-Dioxane-d8	3.49	96	20450	7.36	ng/uL	-0.02
5) Phenol-d5	7.27	99	246684	20.73	ng/ul	-0.02
7) Bis-(2-Chloroethyl)ether-d	7.43	67	166323	21.82	ng/ul	-0.02
9) 2-Chlorophenol-d4	7.64	132	168880	20.81	ng/ul	-0.03
13) 4-Methylphenol-d8	8.83	113	197014	21.21	ng/ul	-0.02
19) Nitrobenzene-d5	9.29	128	91360	20.95	ng/ul	-0.03
22) 2-Nitrophenol-d4	10.02	143	106048	21.17	ng/ul	-0.03
26) 2,4-Dichlorophenol-d3	10.57	165	200825	21.26	ng/ul	-0.03
29) 4-Chloroaniline-d4	11.09	131	255899	23.09	ng/ul	-0.03
43) Dimethylphthalate-d6	14.18	166	688540	20.87	ng/ul	-0.03
46) Acenaphthylene-d8	14.47	160	798744	21.52	ng/ul	-0.03
51) 4-Nitrophenol-d4	14.99	143	113564	20.17	ng/ul	-0.02
57) Fluorene-d10	15.77	176	613624	20.13	ng/ul	-0.03
62) 4,6-Dinitro-2-methylphenol	15.90	200	134831	21.13	ng/ul	-0.02
70) Anthracene-d10	17.64	188	954674	21.31	ng/ul	-0.03
76) Pyrene-d10	19.93	212	1069788	21.63	ng/ul	-0.03
87) Benzo(a)pyrene-d12	25.00	264	914733	21.11	ng/ul	-0.07

Target Compounds

Target Compounds	R.T.	QIon	Response	Conc	Units	Qvalue
2) 1,4-Dioxane	3.53	88	24956	8.56	ng/uL#	96
4) Benzaldehyde	7.25	77	168306	23.21	ng/ul#	82
6) Phenol	7.30	94	258230	20.84	ng/ul#	72
8) Bis(2-Chloroethyl)ether	7.53	93	193011	21.46	ng/ul	90
10) 2-Chlorophenol	7.68	128	175603	21.24	ng/ul#	88
11) 2-Methylphenol	8.56	108	192133	20.59	ng/ul	92
12) 2,2'-oxybis(1-Chloropropan	8.65	45	274562	22.31	ng/ul	97
14) Acetophenone	8.95	105	329657	22.13	ng/ul#	81
15) N-Nitroso-di-n-propylamine	8.92	70	192283	21.45	ng/ul#	86
16) 4-Methylphenol	8.89	108	221264	21.16	ng/ul	95
17) Hexachloroethane	9.21	117	73770	20.68	ng/ul#	82
20) Nitrobenzene	9.33	77	266823	20.87	ng/ul#	84
21) Isophorone	9.86	82	517044	21.99	ng/ul	94
23) 2-Nitrophenol	10.05	139	117344	21.70	ng/ul#	61
24) 2,4-Dimethylphenol	10.11	107	249886	21.06	ng/ul	91
25) Bis(2-Chloroethoxy)methane	10.34	93	290910	21.45	ng/ul#	96
27) 2,4-Dichlorophenol	10.59	162	197854	20.77	ng/ul	94
28) Naphthalene	11.00	128	599842	21.35	ng/ul	98
30) 4-Chloroaniline	11.11	127	246252	22.38	ng/ul	97
31) Hexachlorobutadiene	11.28	225	135626	21.37	ng/ul	96
33) 4-Chloro-3-methylphenol	12.23	107	253464	20.67	ng/ul#	82
34) 2-Methylnaphthalene	12.60	142	490052	21.52	ng/ul	89
36) 1,2,4,5-Tetrachlorobenzene	12.97	216	270280	21.85	ng/ul	97

Data Path : Z:\HPCHEM1\BNA_G\DATA\BG080416\
 Data File : BG023477.D
 Acq On : 5 Aug 2016 7:46
 Operator : UM/SJ
 Sample : SSTDCCC020EC
 Misc :
 ALS Vial : 2 Sample Multiplier: 1

Instrument :
 BNA_G
 ClientSampleId :
 SSTD02009

Quant Time: Aug 05 09:02:41 2016
 Quant Method : Z:\HPCHEM1\BNA_G\METHODS\SOM02.2-EPA-BG080416.M
 Quant Title : SVOA CALIBRATION
 QLast Update : Thu Aug 04 17:27:34 2016
 Response via : Initial Calibration

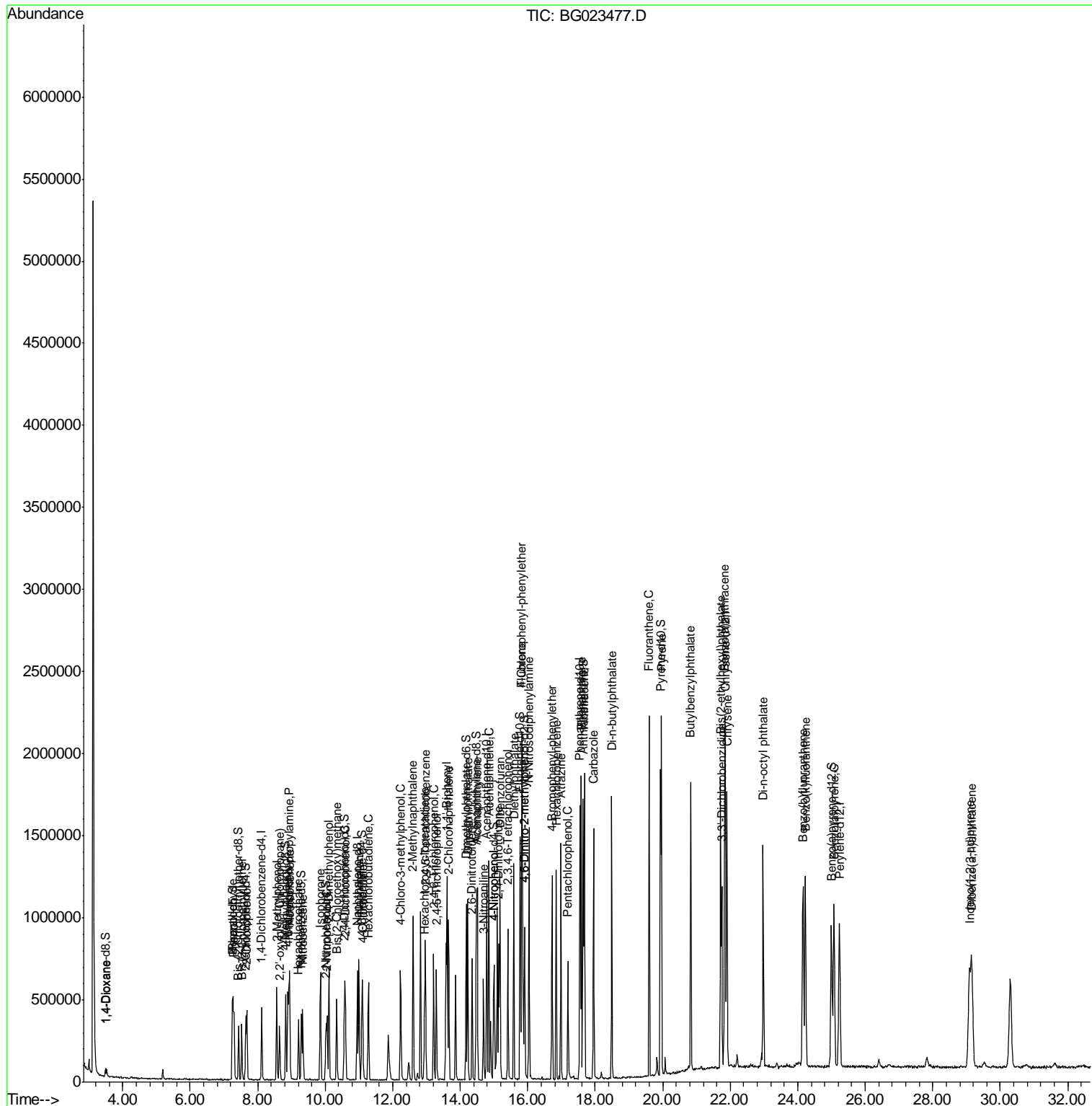
Internal Standards	R.T.	QIon	Response	Conc	Units	Dev(Min)
37) Hexachlorocyclopentadiene	12.95	237	145113	21.21	ng/ul	99
38) 2,4,6-Trichlorophenol	13.21	196	177399	20.71	ng/ul	97
39) 2,4,5-Trichlorophenol	13.29	196	193062	21.02	ng/ul	94
40) 1,1'-Biphenyl	13.61	154	638463	21.57	ng/ul	97
41) 2-Chloronaphthalene	13.66	162	491787	21.36	ng/ul	97
44) Dimethylphthalate	14.22	163	680434	20.83	ng/ul	100
45) 2,6-Dinitrotoluene	14.35	165	146931	20.75	ng/ul#	85
47) Acenaphthylene	14.50	152	833875	21.48	ng/ul	99
48) 3-Nitroaniline	14.69	138	141581	21.27	ng/ul#	64
49) Acenaphthene	14.85	153	548305	20.73	ng/ul	93
52) 4-Nitrophenol	15.00	109	111505	19.77	ng/ul#	74
53) Dibenzofuran	15.18	168	816997	20.84	ng/ul#	86
54) 2,4-Dinitrotoluene	15.14	165	223724	20.85	ng/ul#	77
55) 2,3,4,6-Tetrachlorophenol	15.41	232	192564	20.41	ng/ul	97
56) Diethylphthalate	15.59	149	707913	20.74	ng/ul	96
58) Fluorene	15.83	166	673376	20.62	ng/ul	95
59) 4-Chlorophenyl-phenylether	15.82	204	335844	20.45	ng/ul	100
63) 4,6-Dinitro-2-methylphenol	15.91	198	145676	21.75	ng/ul#	85
64) N-Nitrosodiphenylamine	16.04	169	614157	22.10	ng/ul	94
65) 4-Bromophenyl-phenylether	16.72	248	242480	21.26	ng/ul	97
66) Hexachlorobenzene	16.84	284	256697	21.13	ng/ul	98
67) Atrazine	16.98	200	253607	22.09	ng/ul	92
68) Pentachlorophenol	17.19	266	135163	20.16	ng/ul	88
69) Phenanthrene	17.58	178	1127471	21.89	ng/ul	98
71) Anthracene	17.68	178	1145896	21.80	ng/ul	98
72) Carbazole	17.95	167	1014555	23.96	ng/ul	98
73) Di-n-butylphthalate	18.49	149	1191726	22.47	ng/ul#	96
74) Fluoranthene	19.60	202	1306188	24.77	ng/ul#	94
77) Pyrene	19.96	202	1323819	21.91	ng/ul#	94
78) Butylbenzylphthalate	20.84	149	520553	22.46	ng/ul#	89
79) 3,3'-Dichlorobenzidine	21.75	252	398751	23.16	ng/ul#	97
80) Benzo(a)anthracene	21.84	228	1203318	21.86	ng/ul	99
81) Bis(2-ethylhexyl)phthalate	21.71	149	707456	22.96	ng/ul#	96
82) Chrysene	21.91	228	1093087	21.84	ng/ul	96
84) Di-n-octyl phthalate	22.98	149	1170642	24.21	ng/ul	100
85) Benzo(b)fluoranthene	24.16	252	1190631	21.87	ng/ul#	95
86) Benzo(k)fluoranthene	24.23	252	1122554	20.94	ng/ul#	91
88) Benzo(a)pyrene	25.07	252	1114316	21.20	ng/ul#	93
89) Indeno(1,2,3-cd)pyrene	29.08	276	1292650	20.93	ng/ul#	89
90) Dibenzo(a,h)anthracene	29.15	278	1102919	20.94	ng/ul#	92

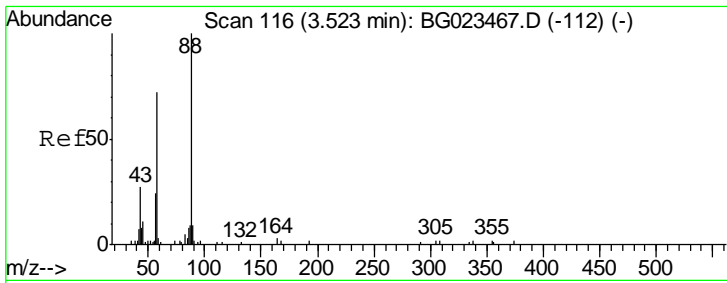
(#) = qualifier out of range (m) = manual integration (+) = signals summed

Data Path : Z:\HPCHEM1\BNA_G\DATA\BG080416\
 Data File : BG023477.D
 Acq On : 5 Aug 2016 7:46
 Operator : UM/SJ
 Sample : SSTDCCC020EC
 Misc :
 ALS Vial : 2 Sample Multiplier: 1

Instrument :
 BNA_G
 Client Sampled :
 SSTD02009

Quant Time: Aug 05 09:02:41 2016
 Quant Method : Z:\HPCHEM1\BNA_G\METHODS\SOM02.2-EPA-BG080416.M
 Quant Title : SVOA CALIBRATION
 QLast Update : Thu Aug 04 17:27:34 2016
 Response via : Initial Calibration

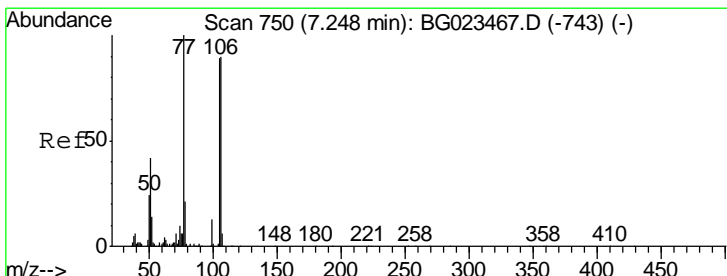
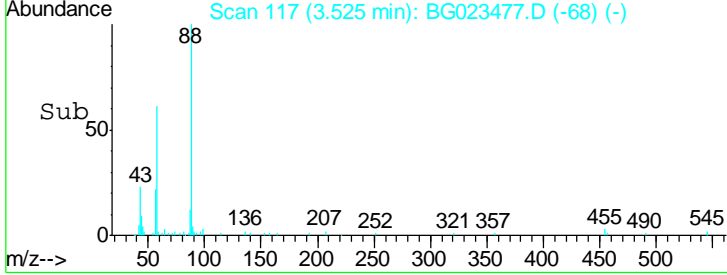
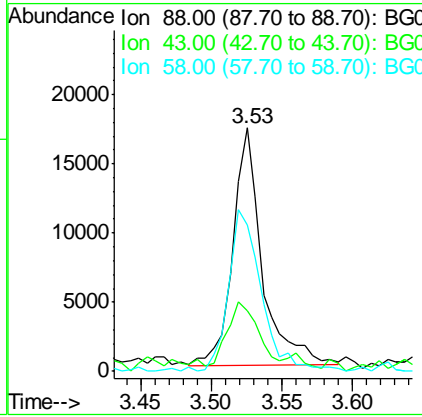
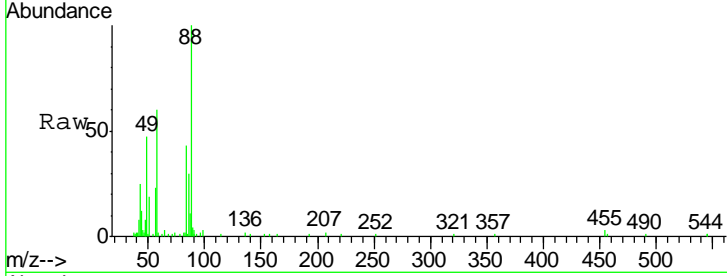




#2
 1,4-Dioxane
 Concen: 8.56 ng/uL
 RT: 3.53 min Scan# 117
 Delta R.T. -0.01 min
 Lab File: BG023477.D
 Acq: 5 Aug 2016 7:46

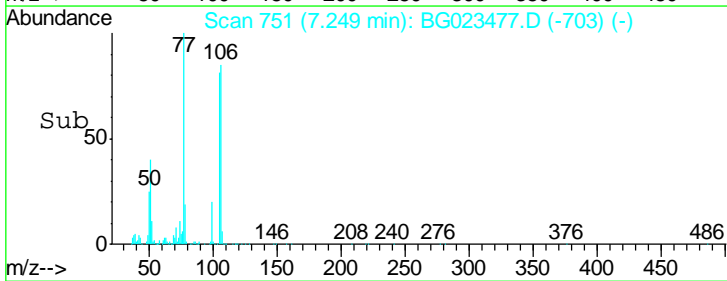
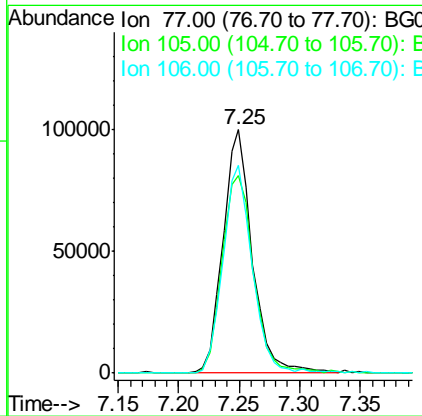
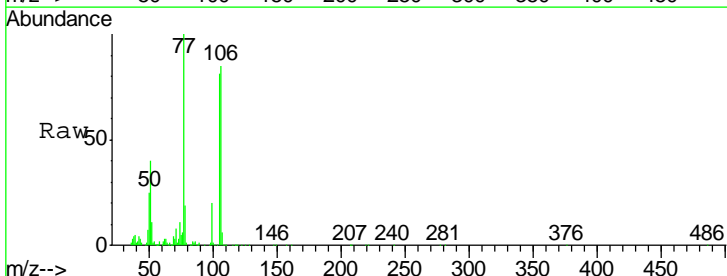
Instrument :
 BNA_G
ClientSampled :
 SSTD02009

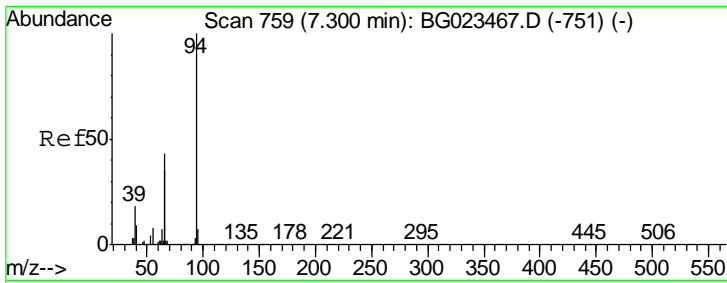
Tgt Ion	Resp	Lower	Upper
88	24956		
43	25.0	16.6	24.8#
58	60.2	47.2	70.8



#4
 Benzaldehyde
 Concen: 23.21 ng/ul
 RT: 7.25 min Scan# 751
 Delta R.T. -0.02 min
 Lab File: BG023477.D
 Acq: 5 Aug 2016 7:46

Tgt Ion	Resp	Lower	Upper
77	168306		
105	80.9	83.8	125.8#
106	85.4	77.9	116.9

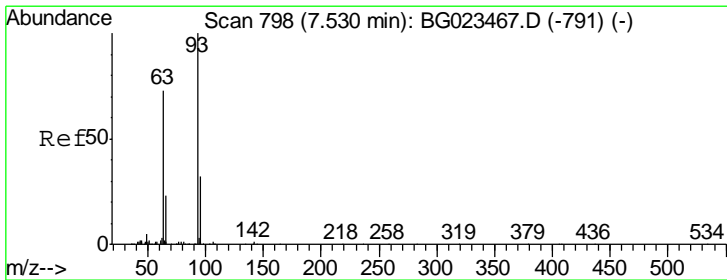
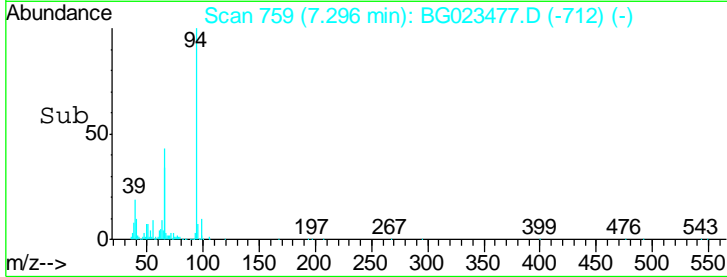
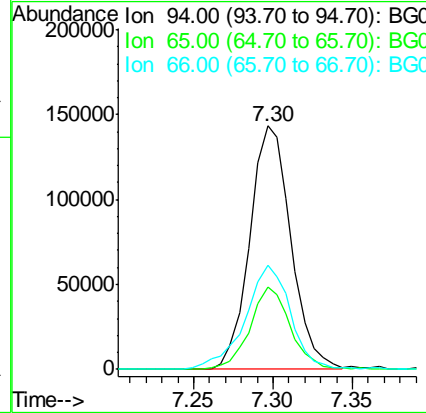
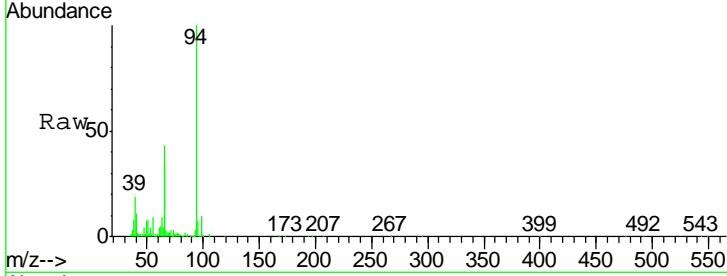




#6
 Phenol
 Concen: 20.84 ng/ul
 RT: 7.30 min Scan# 759
 Delta R.T. -0.02 min
 Lab File: BG023477.D
 Acq: 5 Aug 2016 7:46

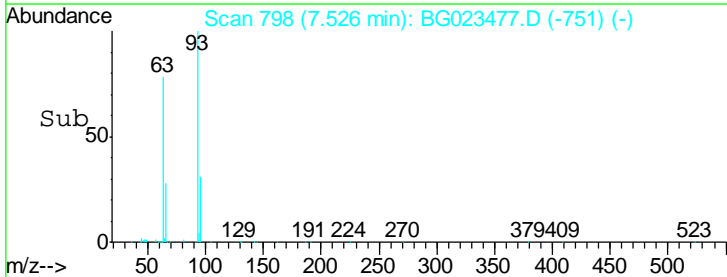
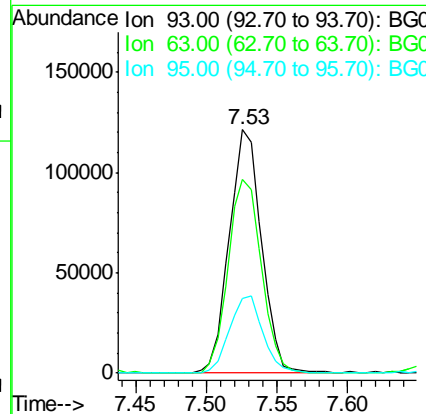
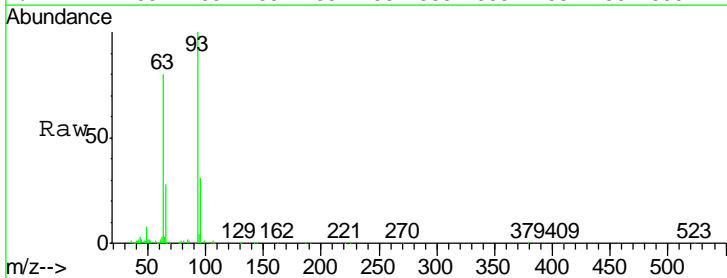
Instrument :
 BNA_G
 ClientSampled :
 SSTD02009

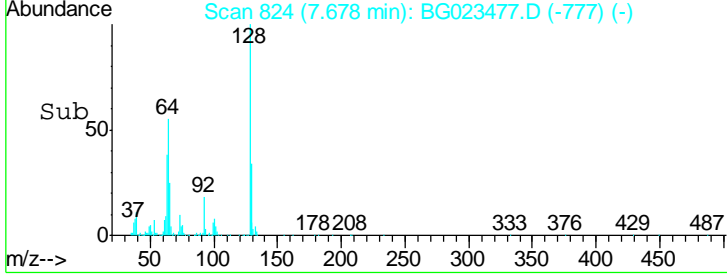
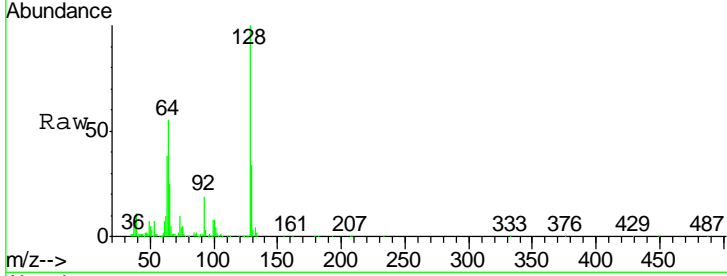
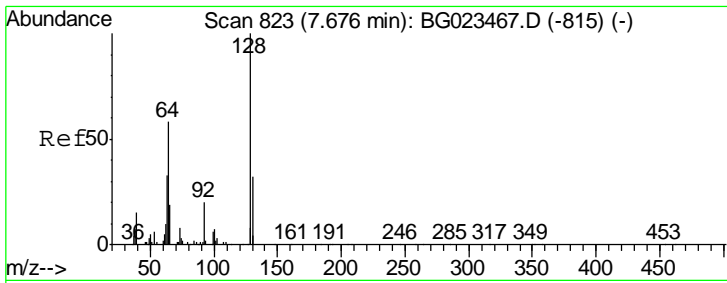
Tgt Ion	Resp	Lower	Upper
94	100		
65	33.9	16.8	25.2#
66	42.7	22.6	33.8#



#8
 Bis(2-Chloroethyl)ether
 Concen: 21.46 ng/ul
 RT: 7.53 min Scan# 798
 Delta R.T. -0.02 min
 Lab File: BG023477.D
 Acq: 5 Aug 2016 7:46

Tgt Ion	Resp	Lower	Upper
93	100		
63	79.8	56.0	84.0
95	30.8	27.7	41.5

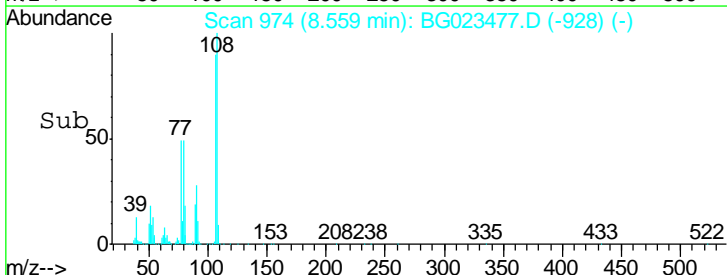
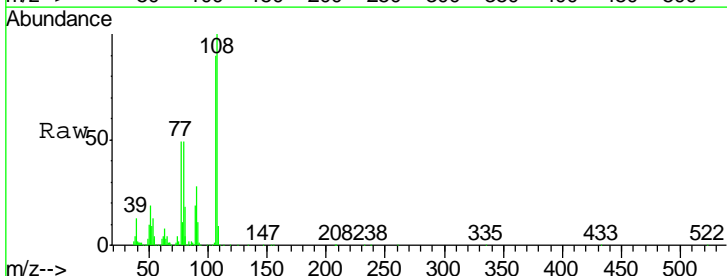
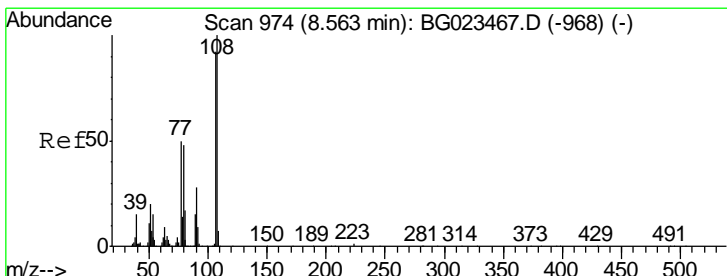
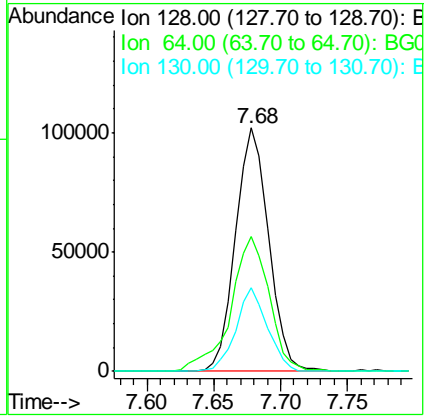




#10
 2-Chlorophenol
 Concen: 21.24 ng/ul
 RT: 7.68 min Scan# 824
 Delta R.T. -0.02 min
 Lab File: BG023477.D
 Acq: 5 Aug 2016 7:46

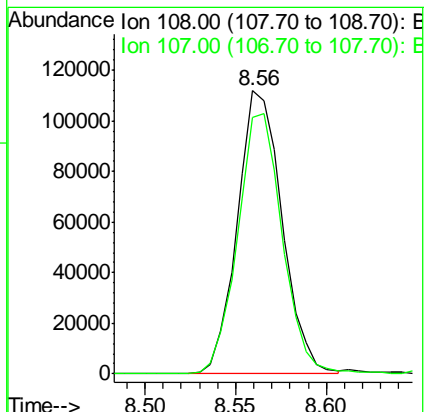
Instrument :
 BNA_G
 ClientSampled :
 SSTD02009

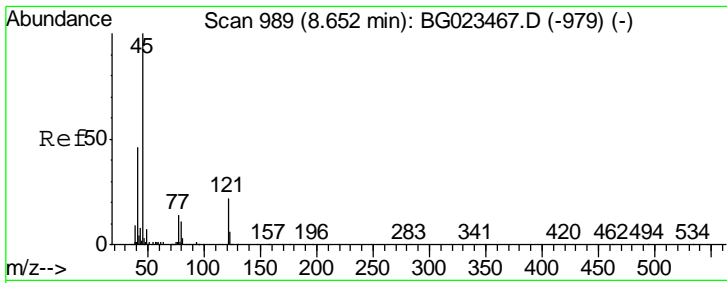
Tgt Ion	Resp	Lower	Upper
128	175603		
64	55.4	34.2	51.4#
130	34.3	27.0	40.4



#11
 2-Methylphenol
 Concen: 20.59 ng/ul
 RT: 8.56 min Scan# 974
 Delta R.T. -0.03 min
 Lab File: BG023477.D
 Acq: 5 Aug 2016 7:46

Tgt Ion	Resp	Lower	Upper
108	192133		
107	90.5	78.6	117.8

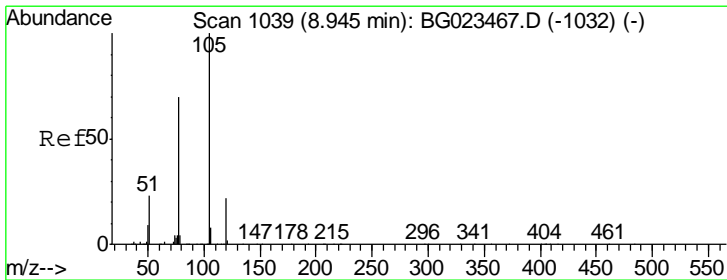
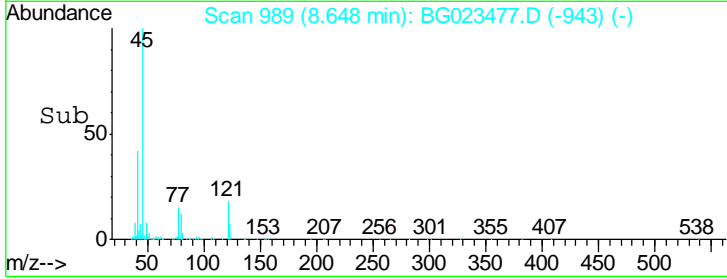
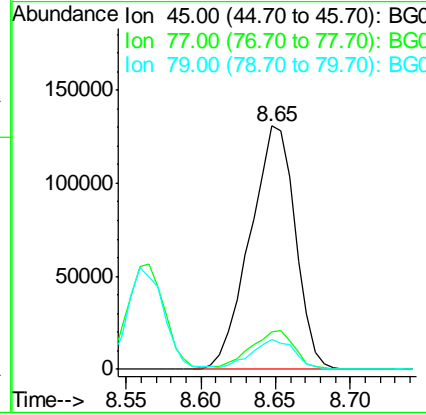
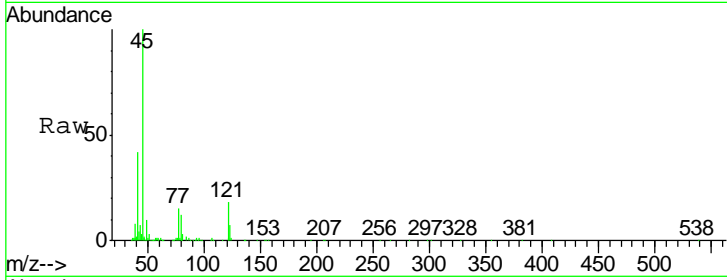




#12
 2,2'-oxybis(1-Chloropropane)
 Concen: 22.31 ng/ul
 RT: 8.65 min Scan# 989
 Delta R.T. -0.03 min
 Lab File: BG023477.D
 Acq: 5 Aug 2016 7:46

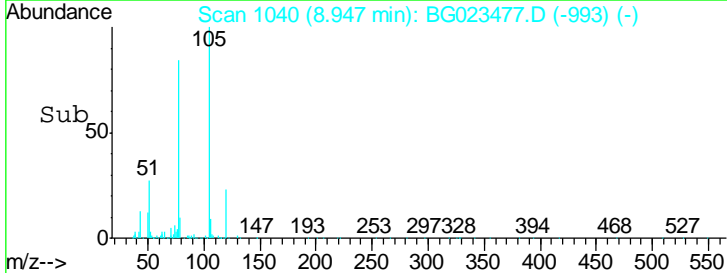
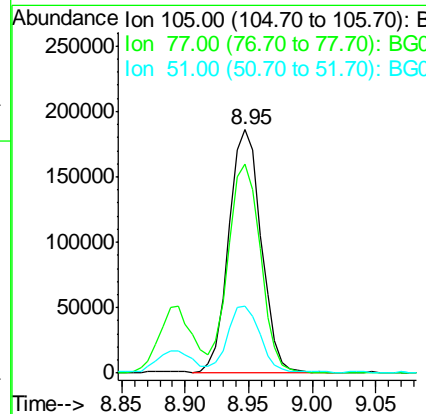
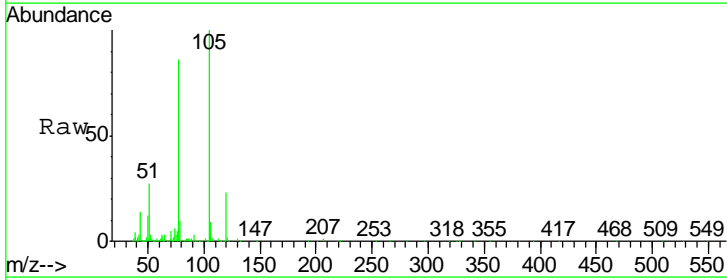
Instrument :
 BNA_G
 ClientSampled :
 SST02009

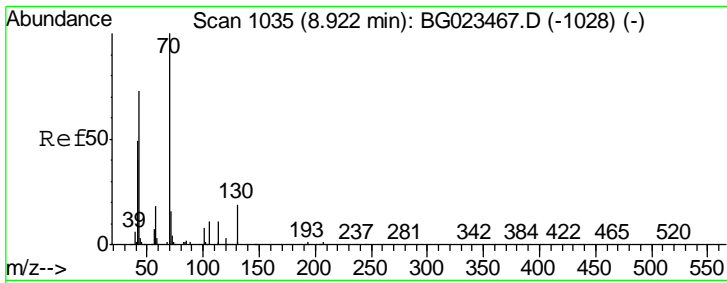
Tgt Ion	Resp	Lower	Upper
45	100		
77	15.2	13.4	20.2
79	12.1	10.2	15.4



#14
 Acetophenone
 Concen: 22.13 ng/ul
 RT: 8.95 min Scan# 1040
 Delta R.T. -0.02 min
 Lab File: BG023477.D
 Acq: 5 Aug 2016 7:46

Tgt Ion	Resp	Lower	Upper
105	100		
77	85.8	56.1	84.1#
51	27.5	14.6	22.0#

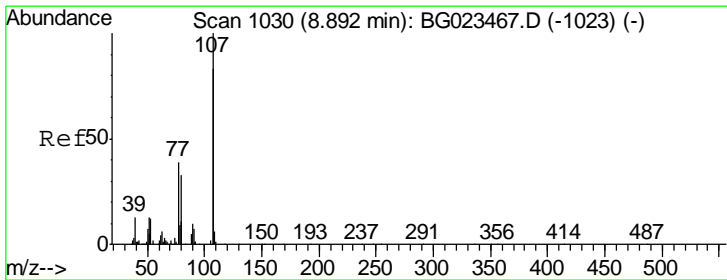
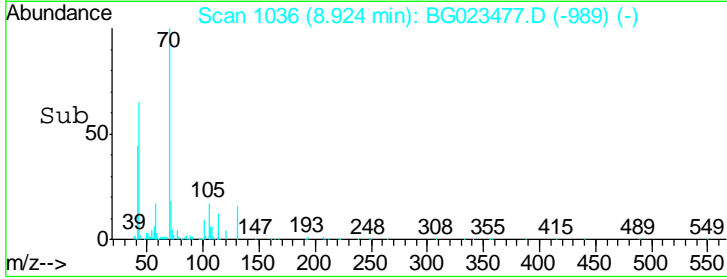
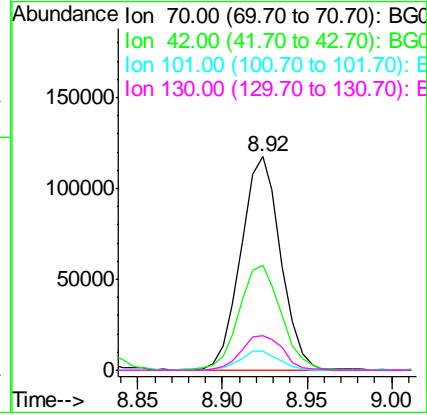
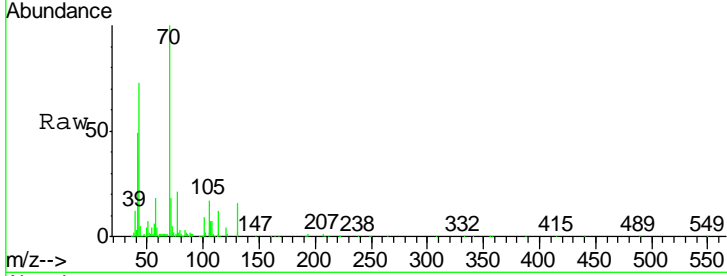




#15
 N-Nitroso-di-n-propylamine
 Concen: 21.45 ng/ul
 RT: 8.92 min Scan# 1036
 Delta R.T. -0.02 min
 Lab File: BG023477.D
 Acq: 5 Aug 2016 7:46

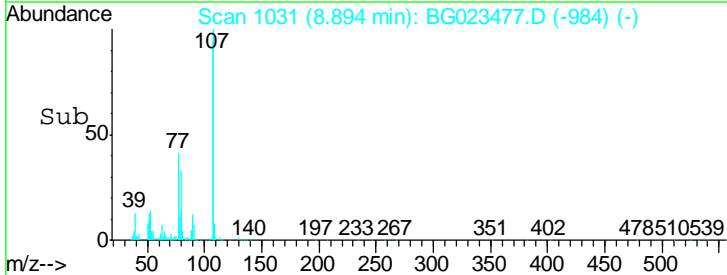
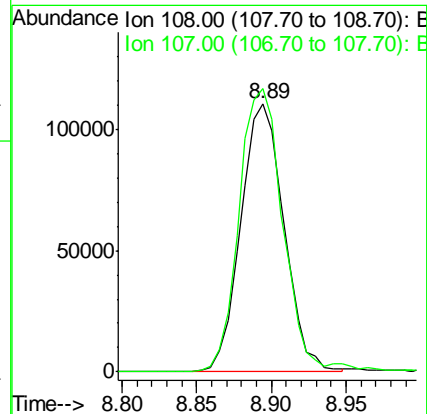
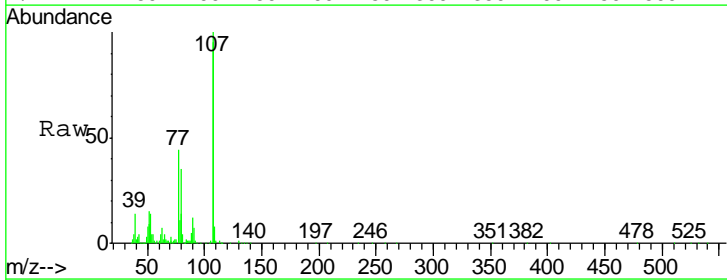
Instrument :
 BNA_G
ClientSampled :
 SSTD02009

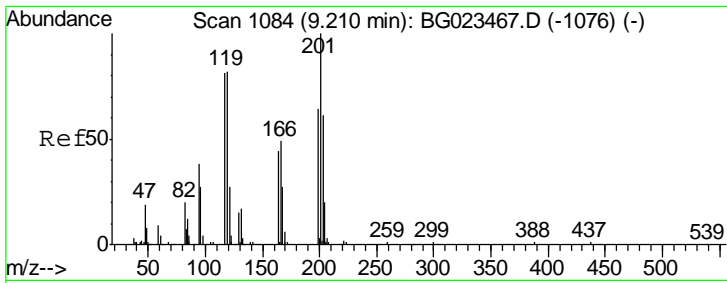
Tgt Ion	Resp	Lower	Upper
70	192283		
42	49.3	31.4	47.2#
101	9.2	8.6	13.0
130	16.1	19.0	28.4#



#16
 4-Methylphenol
 Concen: 21.16 ng/ul
 RT: 8.89 min Scan# 1031
 Delta R.T. -0.02 min
 Lab File: BG023477.D
 Acq: 5 Aug 2016 7:46

Tgt Ion	Resp	Lower	Upper
108	221264		
107	105.6	88.3	132.5

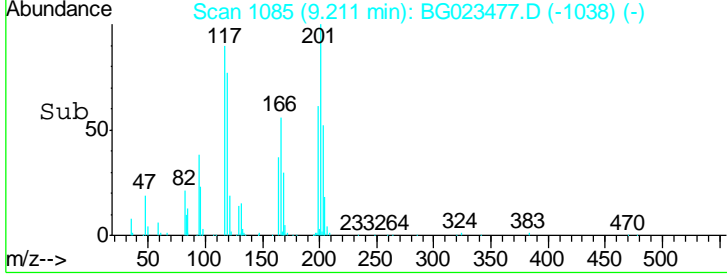
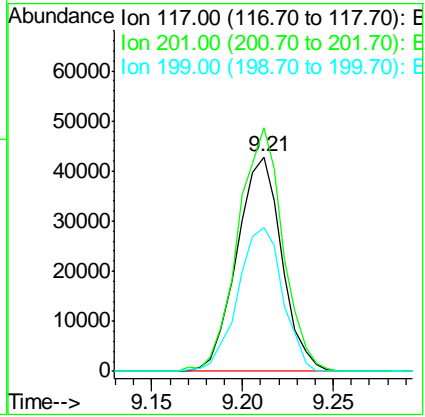
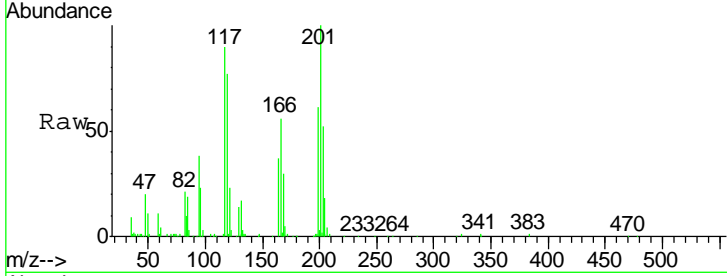




#17
 Hexachloroethane
 Concen: 20.68 ng/ul
 RT: 9.21 min Scan# 1085
 Delta R.T. -0.02 min
 Lab File: BG023477.D
 Acq: 5 Aug 2016 7:46

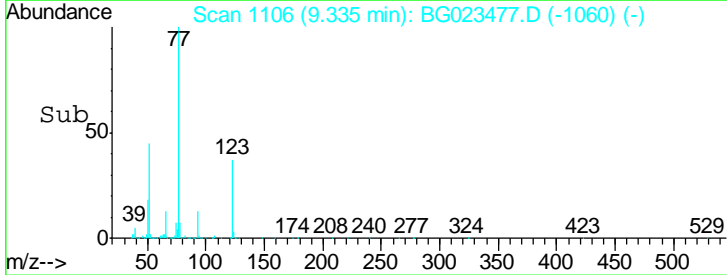
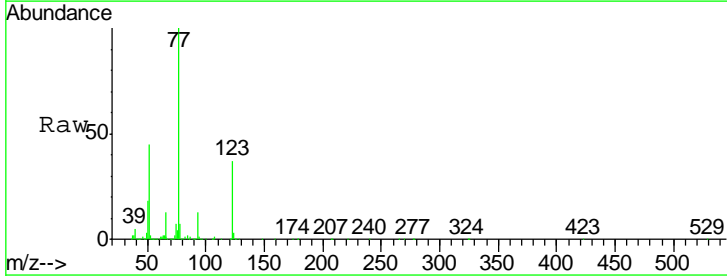
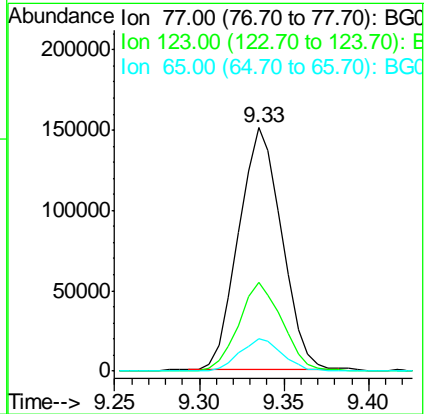
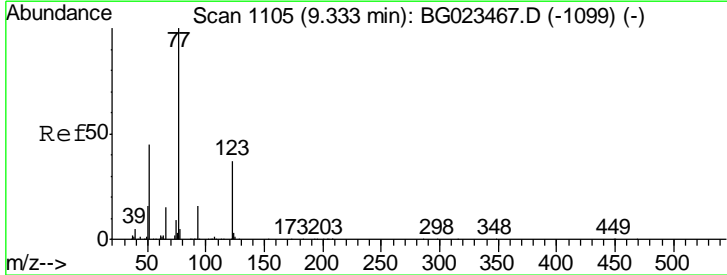
Instrument :
 BNA_G
ClientSampled :
 SST02009

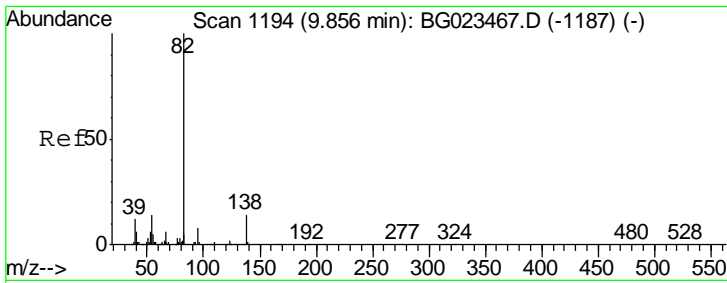
Tgt Ion	Resp	Lower	Upper
117	100		
201	113.6	76.8	115.2
199	67.3	43.5	65.3#



#20
 Nitrobenzene
 Concen: 20.87 ng/ul
 RT: 9.33 min Scan# 1106
 Delta R.T. -0.03 min
 Lab File: BG023477.D
 Acq: 5 Aug 2016 7:46

Tgt Ion	Resp	Lower	Upper
77	100		
123	36.5	39.5	59.3#
65	13.3	9.0	13.4

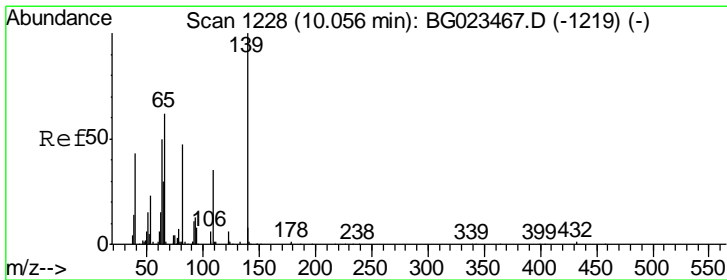
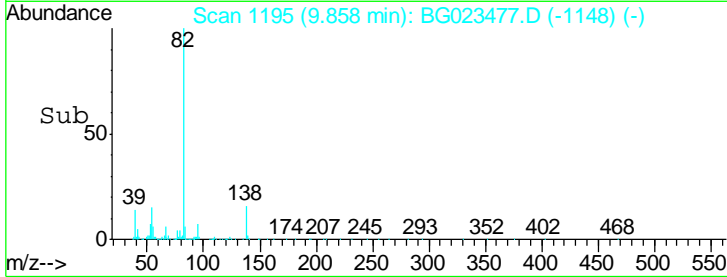
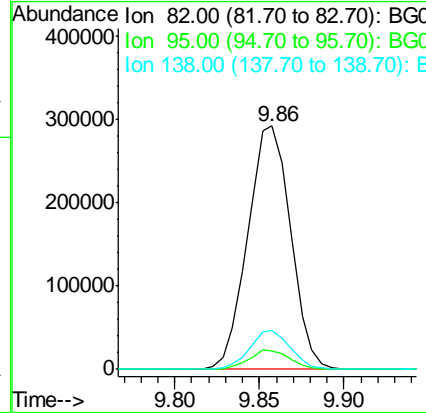
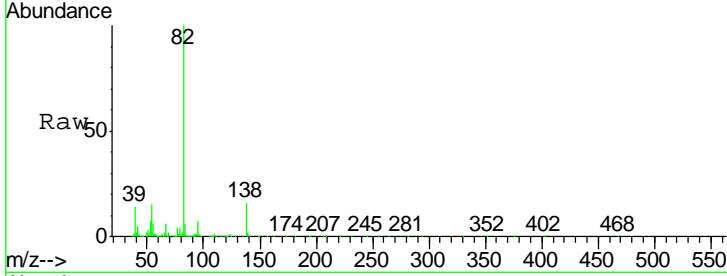




#21
 Isophorone
 Concen: 21.99 ng/ul
 RT: 9.86 min Scan# 1195
 Delta R.T. -0.02 min
 Lab File: BG023477.D
 Acq: 5 Aug 2016 7:46

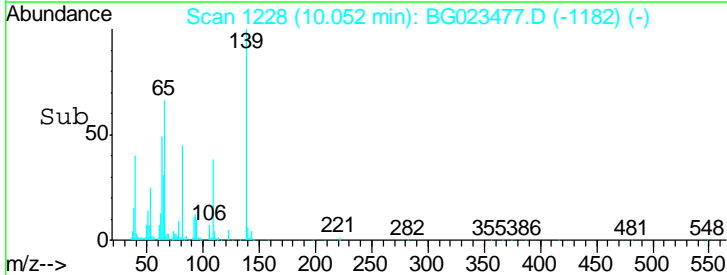
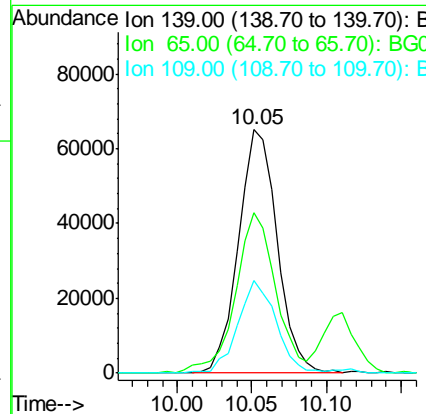
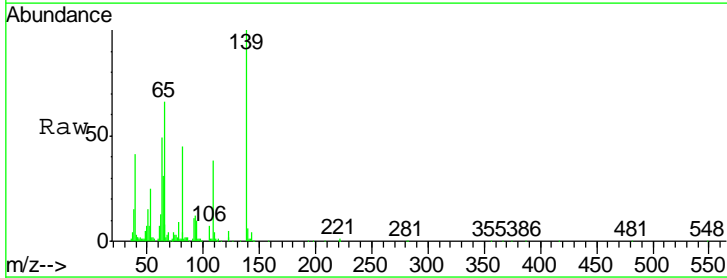
Instrument :
 BNA_G
 ClientSampled :
 SSTD02009

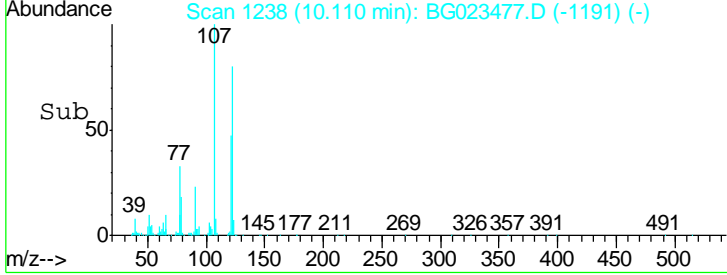
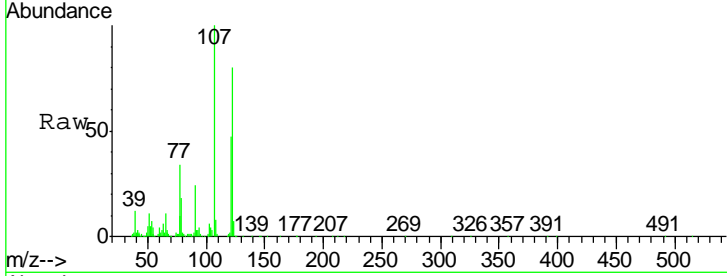
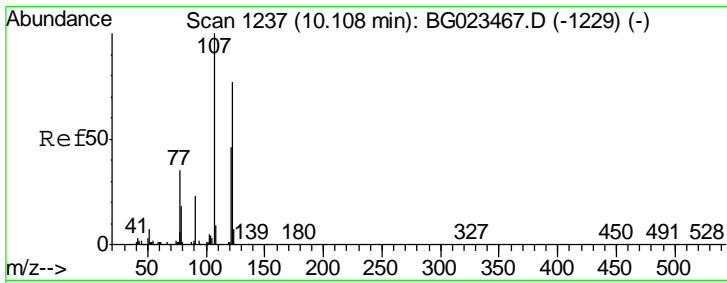
Tgt Ion	Resp	Lower	Upper
82	517044		
95	7.5	5.1	7.7
138	15.8	15.0	22.6



#23
 2-Nitrophenol
 Concen: 21.70 ng/ul
 RT: 10.05 min Scan# 1228
 Delta R.T. -0.03 min
 Lab File: BG023477.D
 Acq: 5 Aug 2016 7:46

Tgt Ion	Resp	Lower	Upper
139	117344		
65	65.7	31.8	47.8#
109	37.8	17.1	25.7#

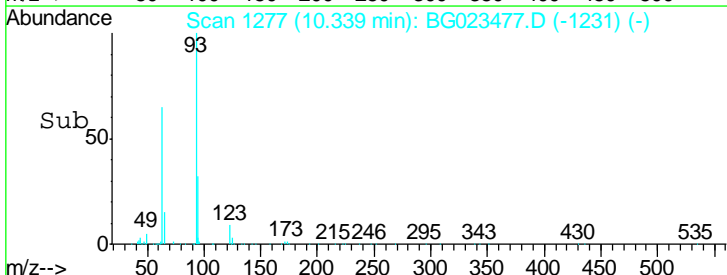
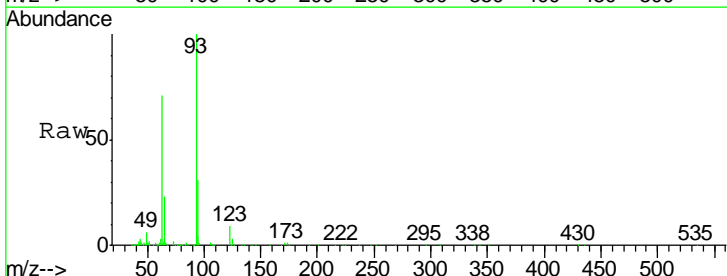
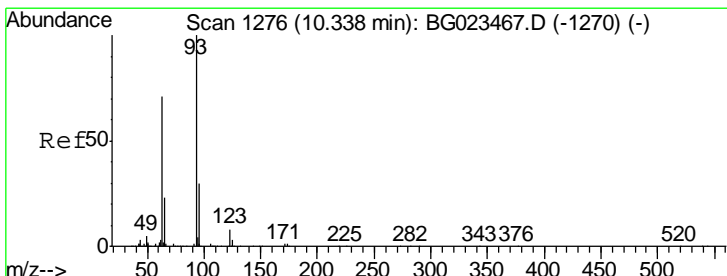
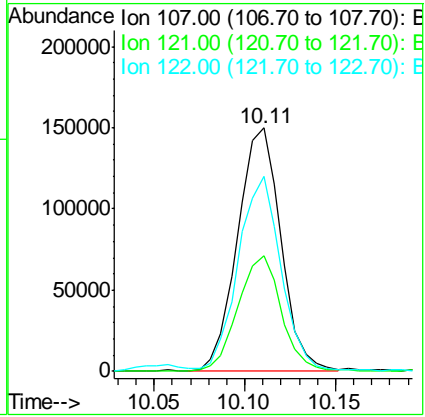




#24
 2,4-Dimethylphenol
 Concen: 21.06 ng/ul
 RT: 10.11 min Scan# 1238
 Delta R.T. -0.02 min
 Lab File: BG023477.D
 Acq: 5 Aug 2016 7:46

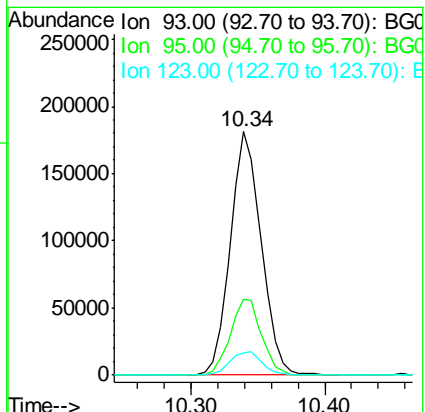
Instrument :
 BNA_G
 ClientSampleId :
 SSTD02009

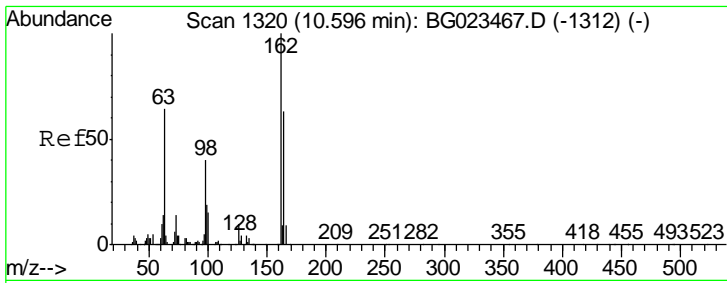
Tgt Ion	Resp	Lower	Upper
107	249886		
121	47.3	43.7	65.5
122	80.3	70.3	105.5



#25
 Bis(2-Chloroethoxy)methane
 Concen: 21.45 ng/ul
 RT: 10.34 min Scan# 1277
 Delta R.T. -0.03 min
 Lab File: BG023477.D
 Acq: 5 Aug 2016 7:46

Tgt Ion	Resp	Lower	Upper
93	290910		
95	31.2	26.0	39.0
123	9.3	10.1	15.1#

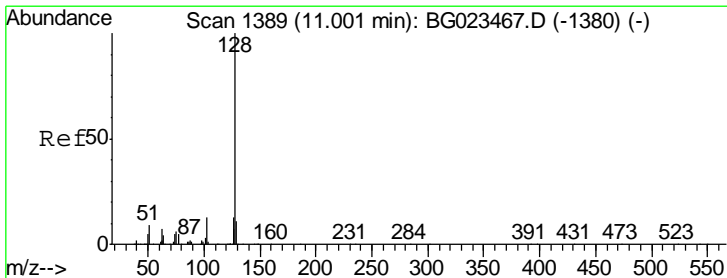
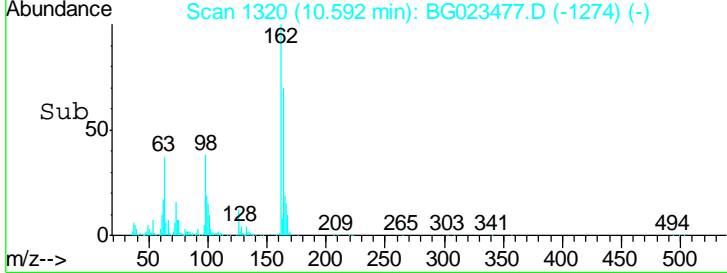
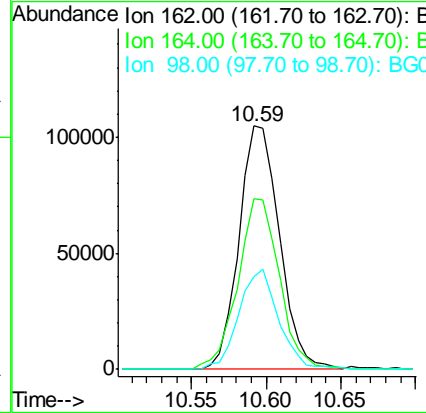
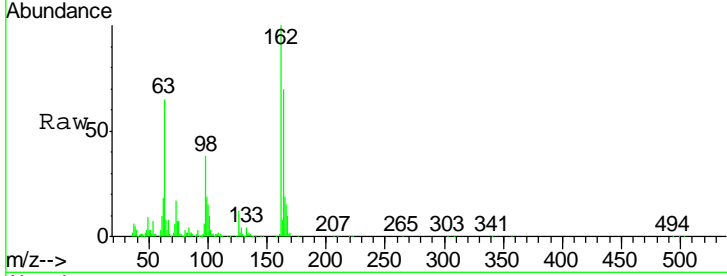




#27
 2,4-Dichlorophenol
 Concen: 20.77 ng/ul
 RT: 10.59 min Scan# 1320
 Delta R.T. -0.03 min
 Lab File: BG023477.D
 Acq: 5 Aug 2016 7:46

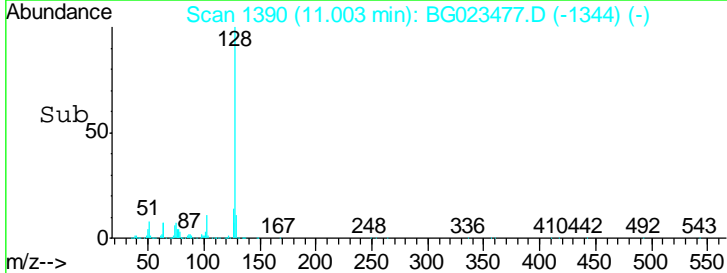
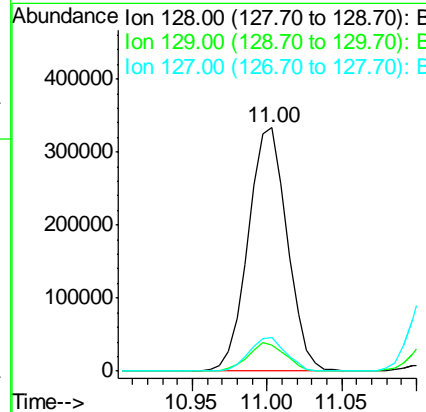
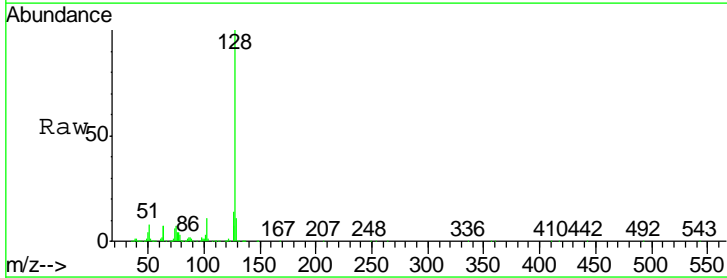
Instrument :
 BNA_G
 ClientSampled :
 SSTD02009

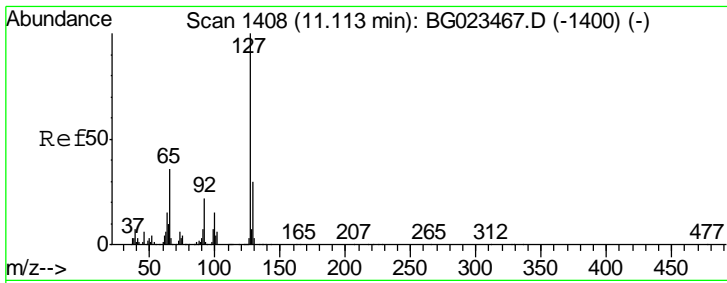
Tgt Ion	Resp	Lower	Upper
162	197854		
164	70.2	51.6	77.4
98	38.1	28.3	42.5



#28
 Naphthalene
 Concen: 21.35 ng/ul
 RT: 11.00 min Scan# 1390
 Delta R.T. -0.03 min
 Lab File: BG023477.D
 Acq: 5 Aug 2016 7:46

Tgt Ion	Resp	Lower	Upper
128	599842		
129	10.6	9.4	14.2
127	13.8	11.2	16.8

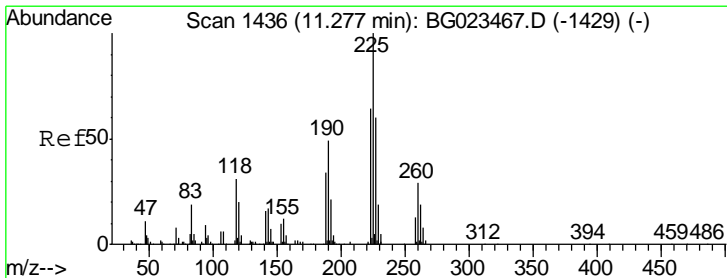
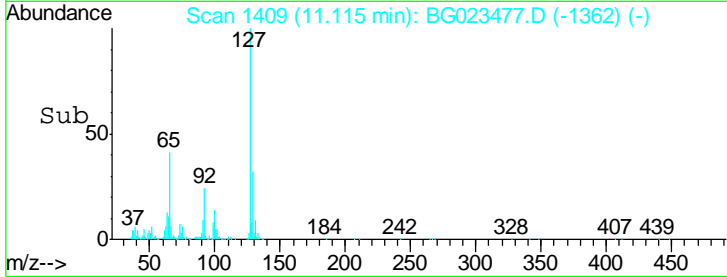
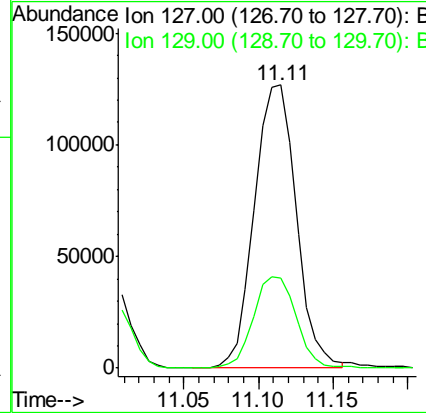
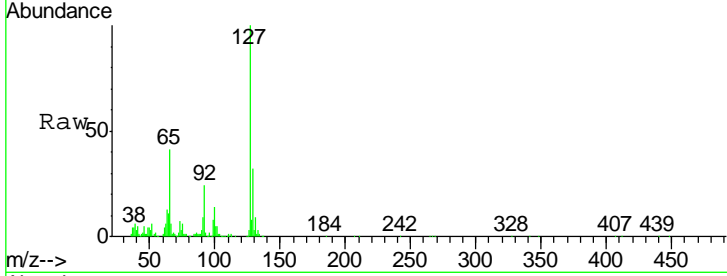




#30
 4-Chloroaniline
 Concen: 22.38 ng/ul
 RT: 11.11 min Scan# 1409
 Delta R.T. -0.02 min
 Lab File: BG023477.D
 Acq: 5 Aug 2016 7:46

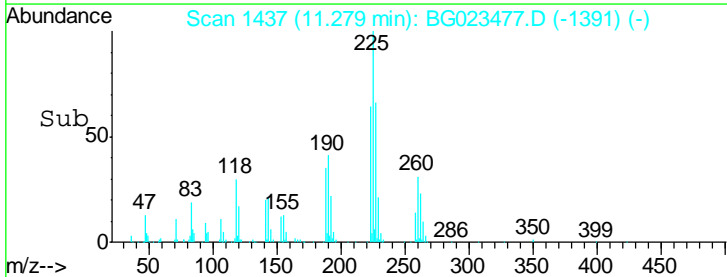
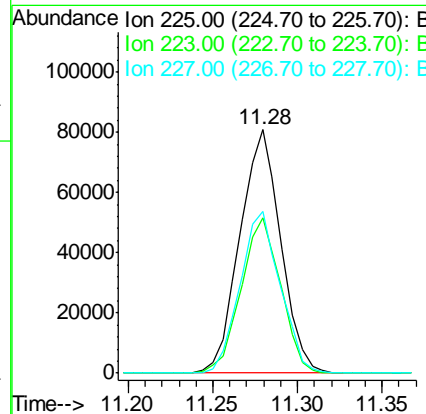
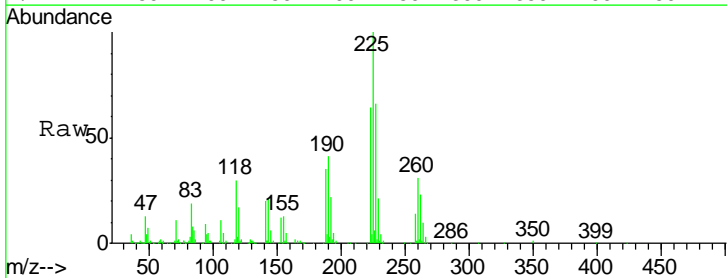
Instrument :
 BNA_G
 ClientSampleID :
 SSTD02009

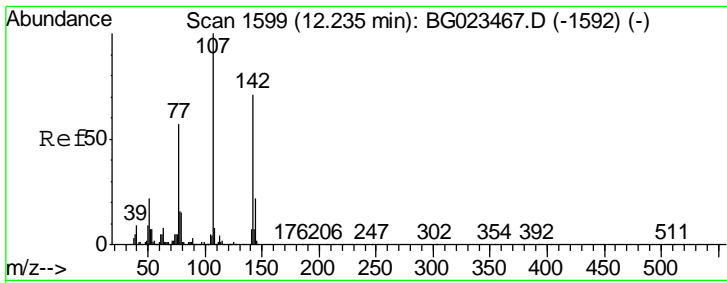
Tgt Ion:127 Resp: 246252
 Ion Ratio Lower Upper
 127 100
 129 31.7 26.9 40.3



#31
 Hexachlorobutadiene
 Concen: 21.37 ng/ul
 RT: 11.28 min Scan# 1437
 Delta R.T. -0.03 min
 Lab File: BG023477.D
 Acq: 5 Aug 2016 7:46

Tgt Ion:225 Resp: 135626
 Ion Ratio Lower Upper
 225 100
 223 63.9 54.7 82.1
 227 66.5 52.2 78.4

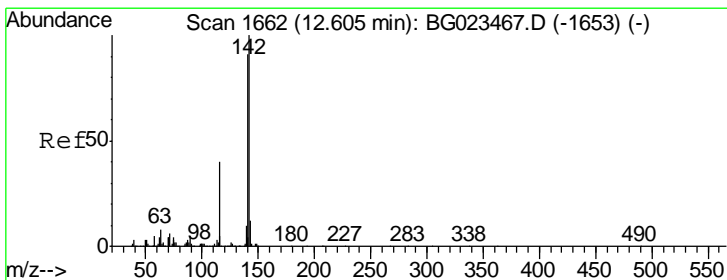
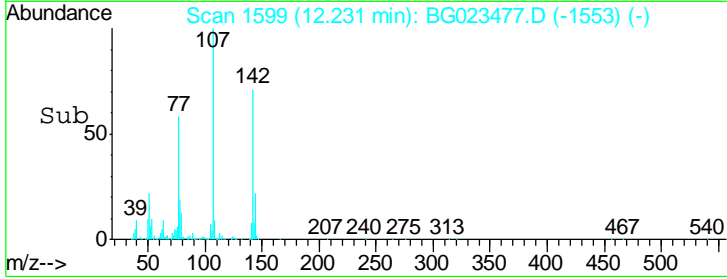
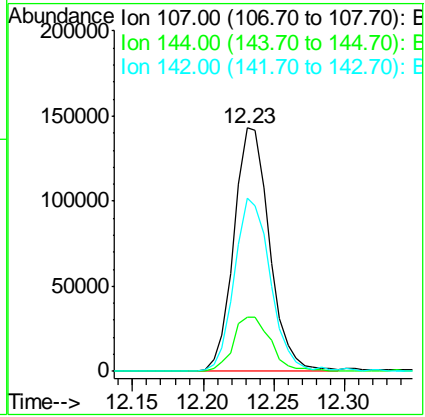
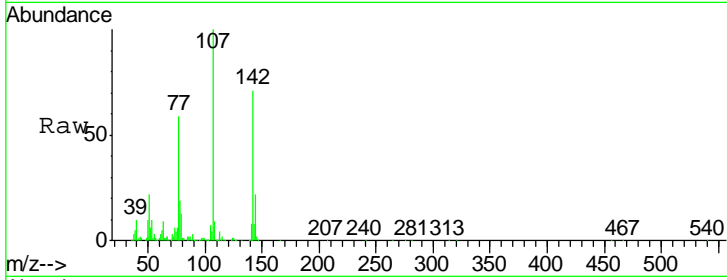




#33
 4-Chloro-3-methylphenol
 Concen: 20.67 ng/ul
 RT: 12.23 min Scan# 1599
 Delta R.T. -0.03 min
 Lab File: BG023477.D
 Acq: 5 Aug 2016 7:46

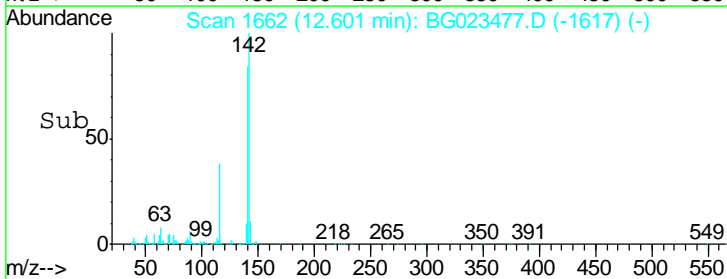
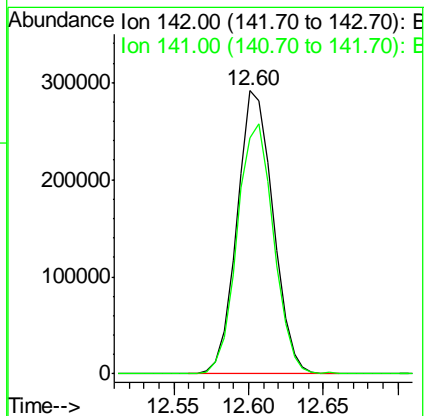
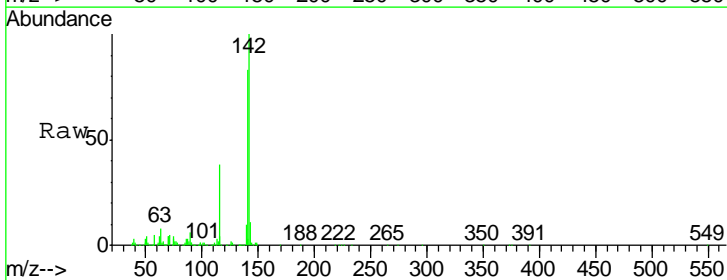
Instrument :
 BNA_G
ClientSampled :
 SSTD02009

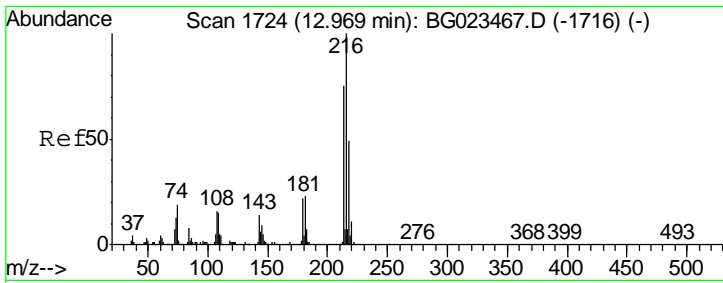
Tgt Ion	Resp	Lower	Upper
107	100		
144	22.5	22.7	34.1#
142	71.0	71.6	107.4#



#34
 2-Methylnaphthalene
 Concen: 21.52 ng/ul
 RT: 12.60 min Scan# 1662
 Delta R.T. -0.03 min
 Lab File: BG023477.D
 Acq: 5 Aug 2016 7:46

Tgt Ion	Resp	Lower	Upper
142	100		
141	83.4	75.2	112.8

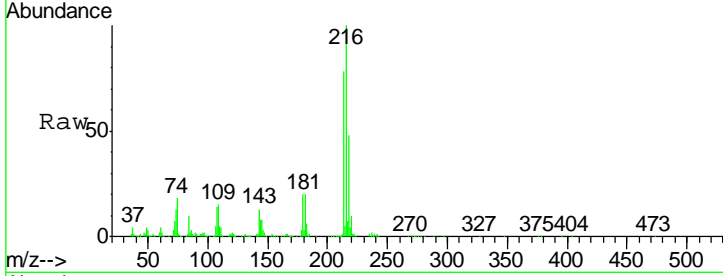




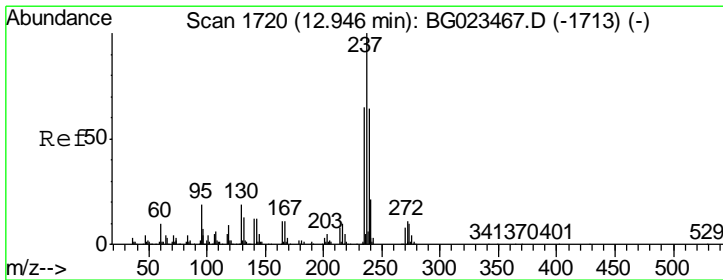
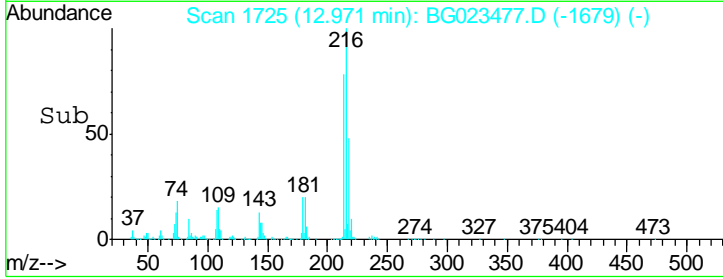
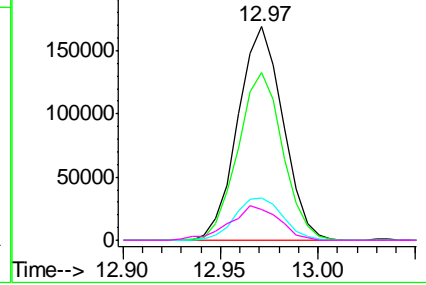
#36
 1,2,4,5-Tetrachlorobenzene
 Concen: 21.85 ng/ul
 RT: 12.97 min Scan# 1725
 Delta R.T. -0.03 min
 Lab File: BG023477.D
 Acq: 5 Aug 2016 7:46

Instrument :
 BNA_G
 ClientSampled :
 SSTD02009

Tgt Ion	Resp	Lower	Upper
216	270280		
214	78.4	61.7	92.5
179	19.9	17.0	25.4
108	14.4	14.2	21.2

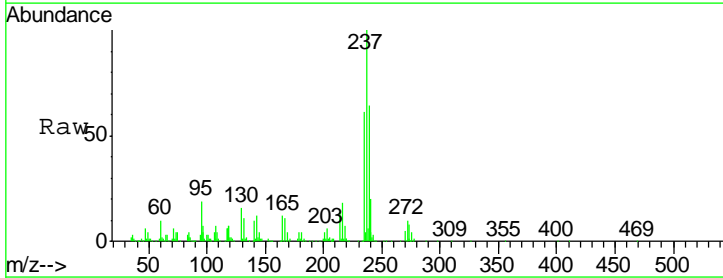


Abundance Ion 216.00 (215.70 to 216.70): E
 Ion 214.00 (213.70 to 214.70): E
 Ion 179.00 (178.70 to 179.70): E
 Ion 108.00 (107.70 to 108.70): E

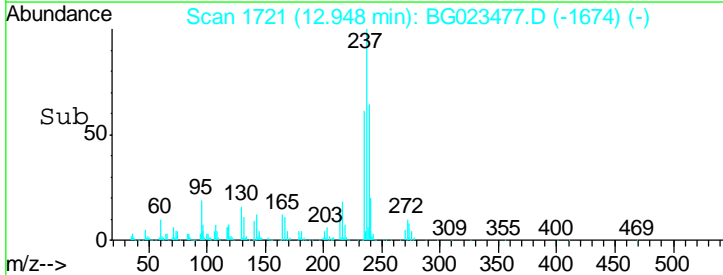
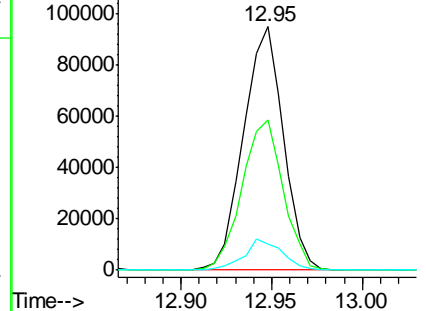


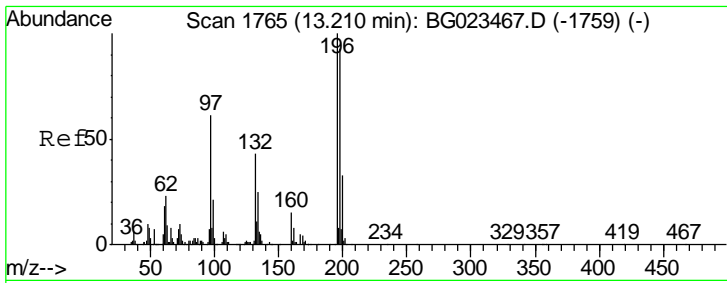
#37
 Hexachlorocyclopentadiene
 Concen: 21.21 ng/ul
 RT: 12.95 min Scan# 1721
 Delta R.T. -0.02 min
 Lab File: BG023477.D
 Acq: 5 Aug 2016 7:46

Tgt Ion	Resp	Lower	Upper
237	145113		
235	61.5	49.6	74.4
272	10.5	9.3	13.9



Abundance Ion 237.00 (236.70 to 237.70): E
 Ion 235.00 (234.70 to 235.70): E
 Ion 272.00 (271.70 to 272.70): E

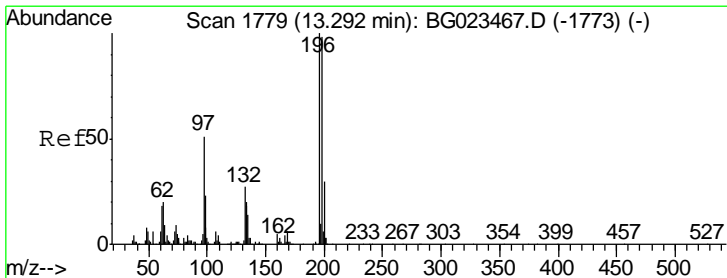
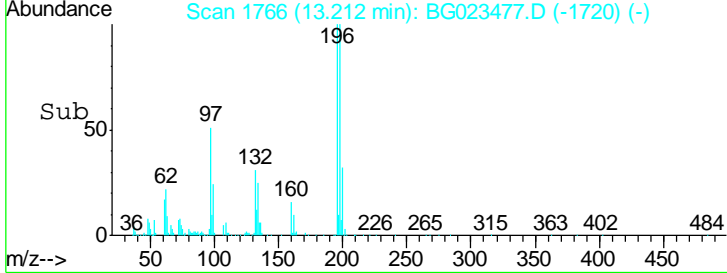
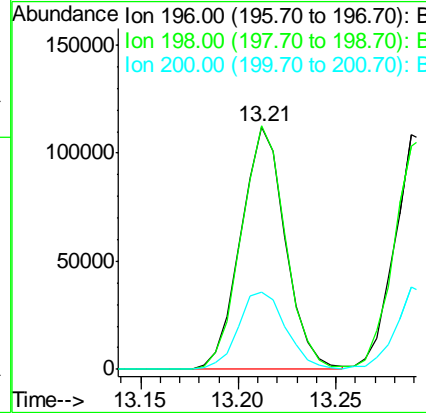
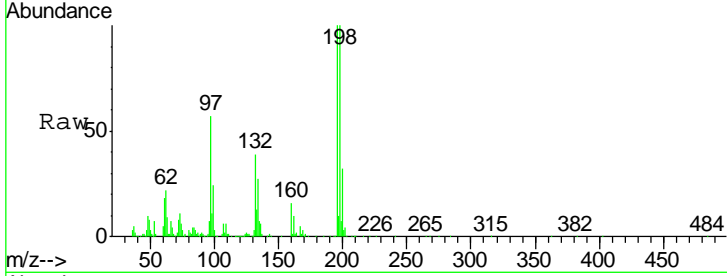




#38
 2,4,6-Trichlorophenol
 Concen: 20.71 ng/ul
 RT: 13.21 min Scan# 1766
 Delta R.T. -0.03 min
 Lab File: BG023477.D
 Acq: 5 Aug 2016 7:46

Instrument :
 BNA_G
 ClientSampleId :
 SSTD02009

Tgt Ion	Resp	Lower	Upper
196	177399		
196	100		
198	100.4	77.4	116.0
200	32.0	26.6	39.8



#39
 2,4,5-Trichlorophenol
 Concen: 21.02 ng/ul
 RT: 13.29 min Scan# 1779
 Delta R.T. -0.03 min
 Lab File: BG023477.D
 Acq: 5 Aug 2016 7:46

Tgt Ion	Resp	Lower	Upper
196	193062		
196	100		
198	95.1	79.8	119.8
200	35.0	24.0	36.0

