

Data Path : Z:\HPCHEM1\BNA G\DATA\BG080516\
 Data File : BG023494.D
 Acq On : 5 Aug 2016 19:08
 Operator : UM/SJ
 Sample : H4209-12
 Misc :
 ALS Vial : 36 Sample Multiplier: 1

Instrument :
 BNA_G
 ClientSampleId :

Quant Time: Aug 06 01:14:09 2016
 Quant Method : Z:\HPCHEM1\BNA G\METHODS\SOM02.2-EPA-BG080416.M
 Quant Title : SVOA CALIBRATION
 QLast Update : Mon Aug 30 04:23:18 2004
 Response via : Initial Calibration

Internal Standards	R.T.	QIon	Response	Conc	Units	Dev(Min)
1) 1,4-Dichlorobenzene-d4	8.12	152	123987	20.00	ng/ul	0.00
18) Naphthalene-d8	10.95	136	594801	20.00	ng/ul	0.00
35) Acenaphthene-d10	14.78	164	446236	20.00	ng/ul	0.00
61) Phenanthrene-d10	17.54	188	1100439	20.00	ng/ul	0.00
75) Chrysene-d12	21.86	240	1112208	20.00	ng/ul	0.00
83) Perylene-d12	25.24	264	1084791	20.00	ng/ul	0.00

System Monitoring Compounds

3) 1,4-Dioxane-d8	3.49	96	6050	2.07	ng/uL	0.00
5) Phenol-d5	7.27	99	252383	20.21	ng/ul	0.00
7) Bis-(2-Chloroethyl)ether-d	7.43	67	176509	22.06	ng/ul	0.00
9) 2-Chlorophenol-d4	7.65	132	175883	20.64	ng/ul	0.00
13) 4-Methylphenol-d8	8.83	113	201517	20.67	ng/ul	0.00
19) Nitrobenzene-d5	9.49	128	346	0.07	ng/ul	0.20
22) 2-Nitrophenol-d4	10.02	143	108090	20.07	ng/ul	0.00
26) 2,4-Dichlorophenol-d3	10.57	165	194896	19.19	ng/ul	0.00
29) 4-Chloroaniline-d4	11.09	131	277819	23.31	ng/ul	0.00
43) Dimethylphthalate-d6	14.18	166	756259	20.70	ng/ul	0.00
46) Acenaphthylene-d8	14.48	160	841131	20.46	ng/ul	0.00
51) 4-Nitrophenol-d4	15.00	143	92861	14.89	ng/ul	0.00
57) Fluorene-d10	15.78	176	686414	20.33	ng/ul	0.00
62) 4,6-Dinitro-2-methylphenol	15.90	200	109017	15.44	ng/ul	0.00
70) Anthracene-d10	17.64	188	1045723	21.09	ng/ul	0.00
76) Pyrene-d10	19.93	212	1217353	21.62	ng/ul	0.00
87) Benzo(a)pyrene-d12	25.00	264	1053401	21.45	ng/ul	0.00

Target Compounds

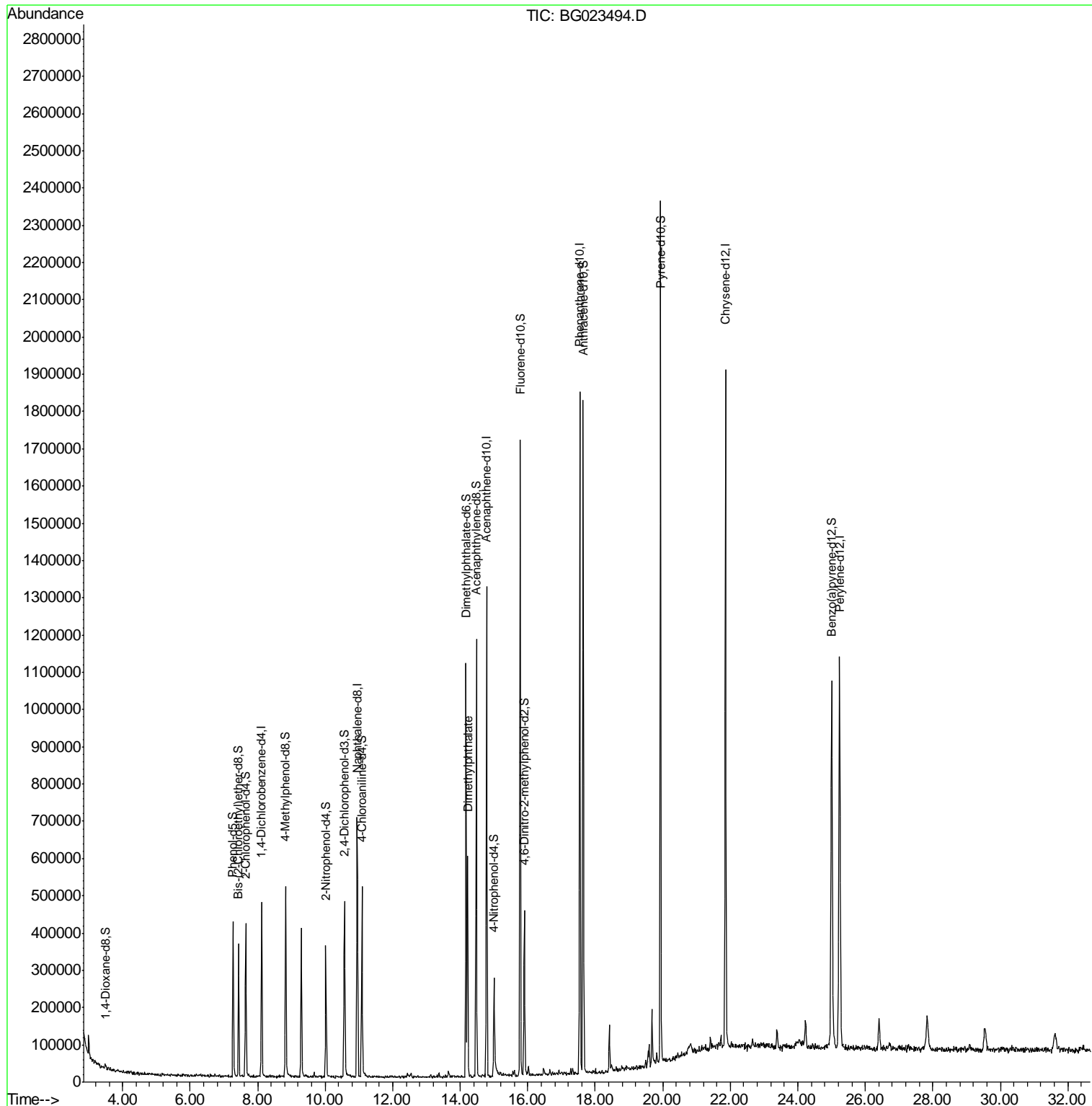
Target Compounds	R.T.	QIon	Response	Conc	Units	Ovalue
44) Dimethylphthalate	14.22	163	385118	10.64	ng/ul	98

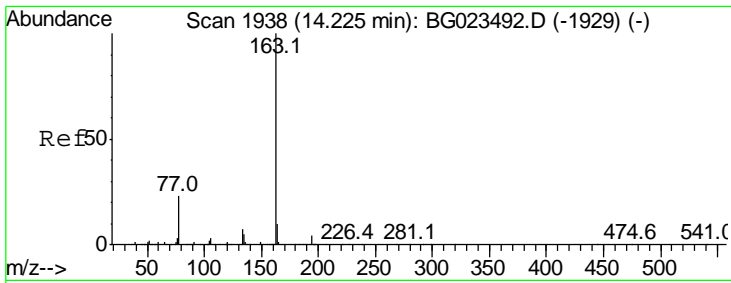
(#) = qualifier out of range (m) = manual integration (+) = signals summed

Data Path : Z:\HPCHEM1\BNA G\DATA\BG080516\
 Data File : BG023494.D
 Acq On : 5 Aug 2016 19:08
 Operator : UM/SJ
 Sample : H4209-12
 Misc :
 ALS Vial : 36 Sample Multiplier: 1

Instrument :
 BNA_G
 ClientSampleId :

Quant Time: Aug 06 01:14:09 2016
 Quant Method : Z:\HPCHEM1\BNA G\METHODS\SOM02.2-EPA-BG080416.M
 Quant Title : SVOA CALIBRATION
 QLast Update : Mon Aug 30 04:23:18 2004
 Response via : Initial Calibration





#44
 Dimethylphthalate
 Concen: 10.64 ng/ul
 RT: 14.22 min Scan# 1938
 Delta R.T. -0.00 min
 Lab File: BG023494.D
 Acq: 5 Aug 2016 19:08

Instrument :
 BNA_G
 ClientSampled :

Tot Ion: 163 Resp: 385118

Ion	Ratio	Lower	Upper
163	100		
194	5.0	3.4	5.2
164	10.1	8.8	13.2

