

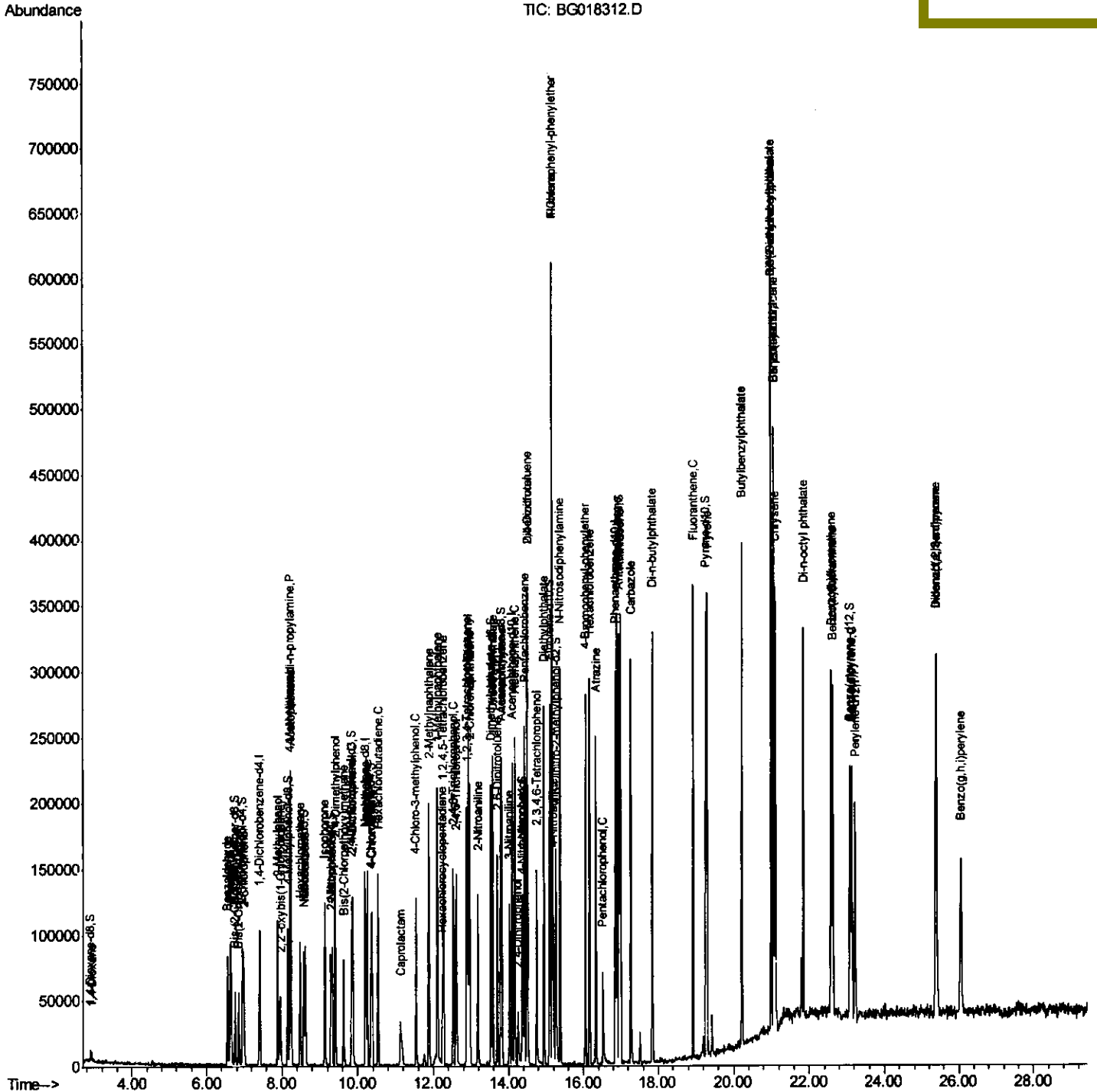
Data Path : Z:\HPCHEM1\BNA_G\DATA\BG080715\
Data File : BG018312.D
Acq On : 7 Aug 2015 16:41
Operator : UM/TP
Sample : SSTDCCC020
Misc :
ALS Vial : 4 Sample Multiplier: 1

Instrument :
BNA_G
Lab Sample ID :
SSTD02071

Quant Time: Aug 08 00:05:55 2015
Quant Method : Z:\HPCHEM1\BNA_G\METHODS\SOM02.2-EPA-BG080515.M
Quant Title : SVOA CALIBRATION
QLast Update : Fri Aug 07 23:39:35 2015
Response via : Initial Calibration

Manual Integrations
APPROVED

apatel
8/10/2015 9:29:45 AM



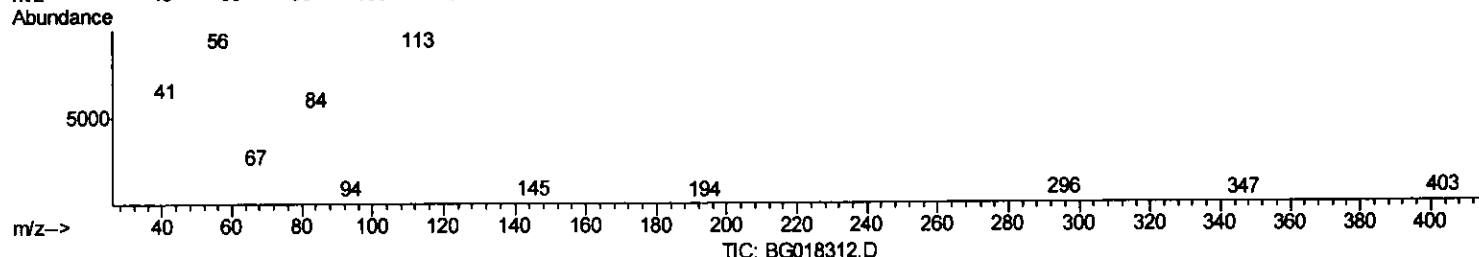
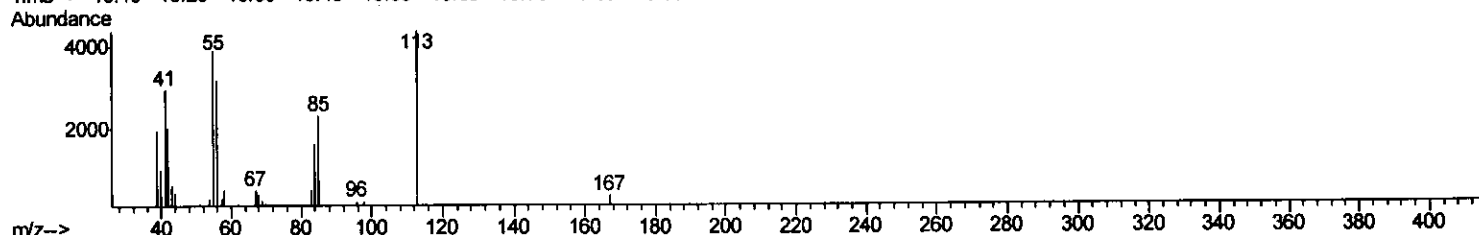
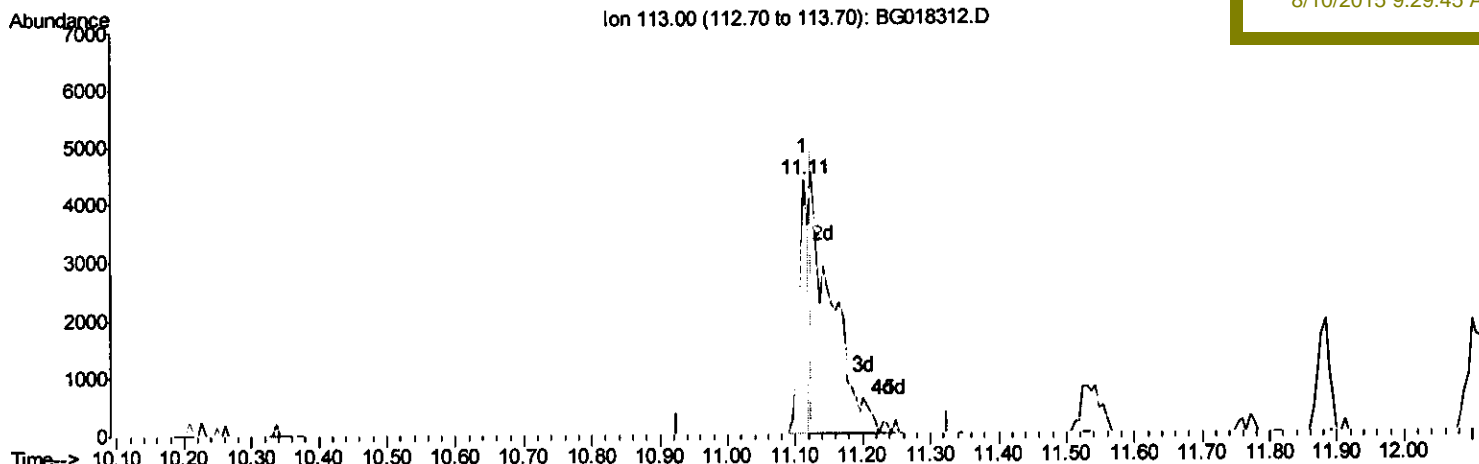
Quantitation Report (Qedit)

Data Path : Z:\HPCHEM1\BNA_G\DATA\BG080715\
 Data File : BG018312.D
 Acq On : 7 Aug 2015 16:41
 Operator : UM/TP
 Sample : SSTDCCC020
 Misc :
 ALS Vial : 4 Sample Multiplier: 1

Instrument :
 BNA_G
 LabSampleID :
 SSTD02071

Quant Time: Aug 07 23:43:32 2015
 Quant Method : Z:\HPCHEM1\BNA_G\METHODS\SOM02.2-EPA-BG080515.M
 Quant Title : SVOA CALIBRATION
 QLast Update : Fri Aug 07 23:39:35 2015
 Response via : Initial Calibration

Manual Integrations
APPROVED
 apatel
 8/10/2015 9:29:45 AM



(32) Caprolactam
 11.113min (-0.012) 5.77ng/ul
 response 4112

Ion	Exp%	Act%
113.00	100	100
55.00	71.40	89.33#
56.00	78.00	73.04
0.00	0.00	0.00

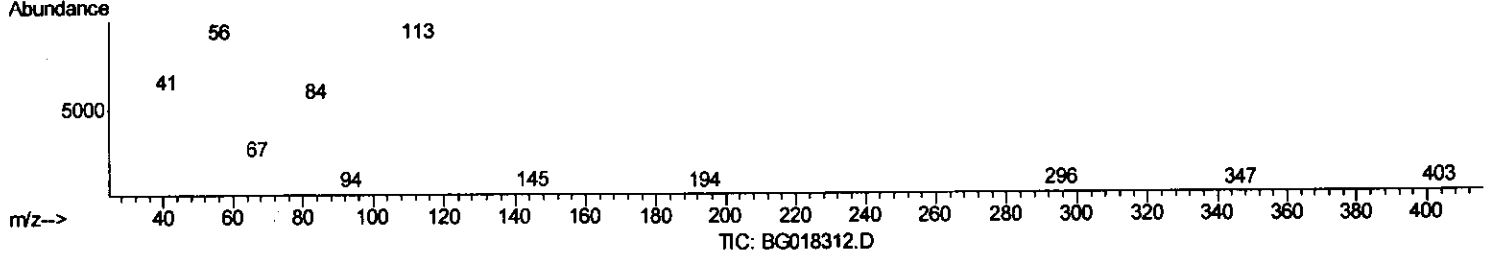
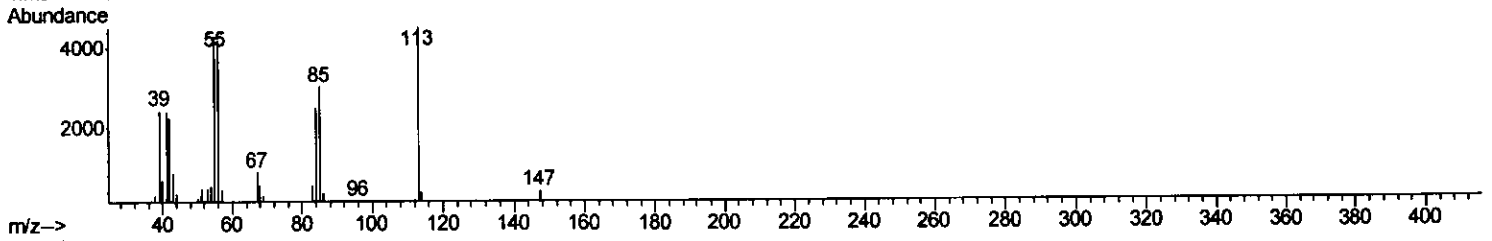
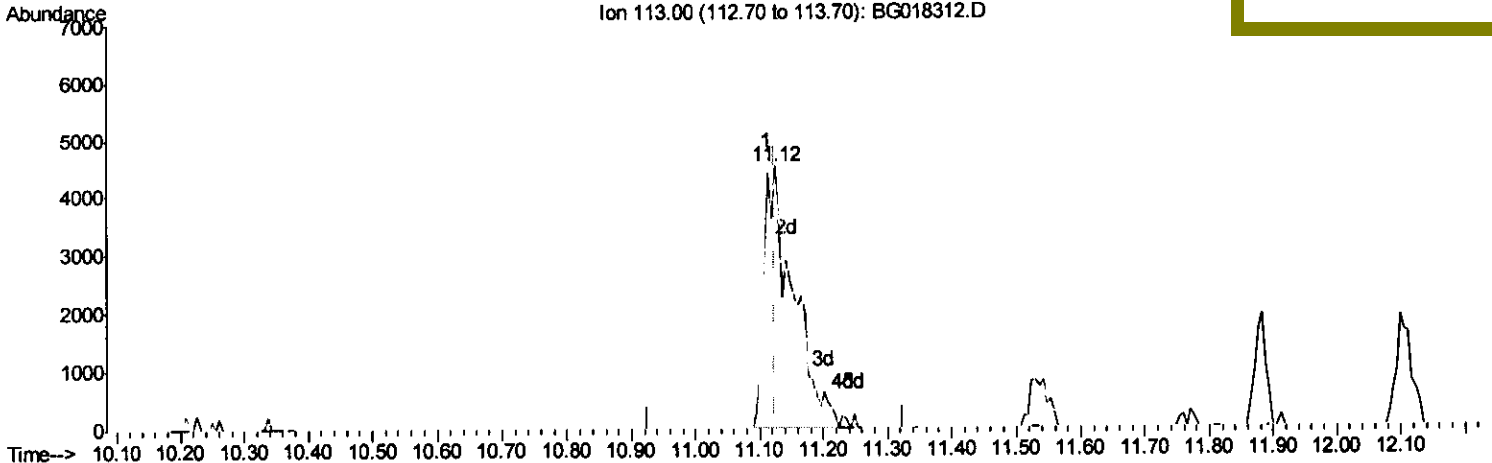
Quantitation Report (Qedit)

Data Path : Z:\HPCHEM1\BNA_G\DATA\BG080715\
 Data File : BG018312.D
 Acq On : 7 Aug 2015 16:41
 Operator : UM/TP
 Sample : SSTDCCC020
 Misc :
 ALS Vial : 4 Sample Multiplier: 1

Instrument :
 BNA_G
 LabSampleId :
 SSTD02071

Quant Time: Aug 07 23:43:32 2015
 Quant Method : Z:\HPCHEM1\BNA_G\METHODS\SOM02.2-EPA-BG080515.M
 Quant Title : SVOA CALIBRATION
 QLast Update : Fri Aug 07 23:39:35 2015
 Response via : Initial Calibration

Manual Integrations
 APPROVED
 apatel
 8/10/2015 9:29:45 AM



(32) Caprolactam

11.124min (-0.000) 19.90ng/ul m

T.P
 8/8/15

response 14174

Ion	Exp%	Act%
113.00	100	100
55.00	71.40	95.24#
56.00	78.00	92.45
0.00	0.00	0.00

Quantitation Report (Qedit)

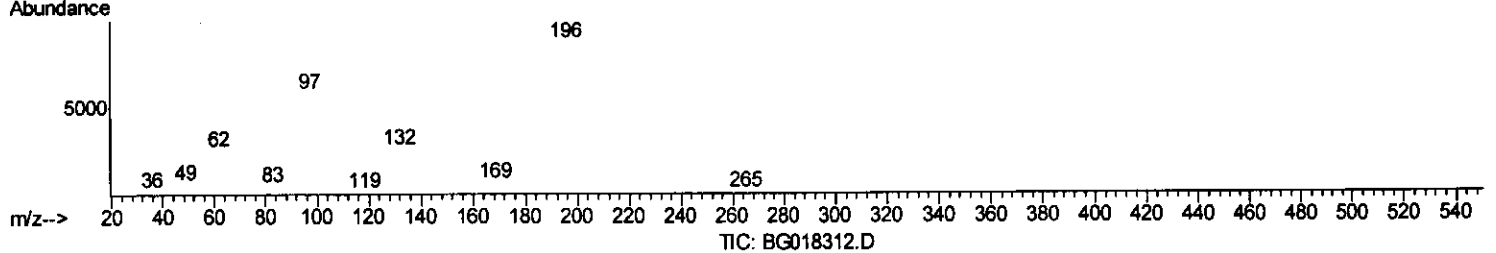
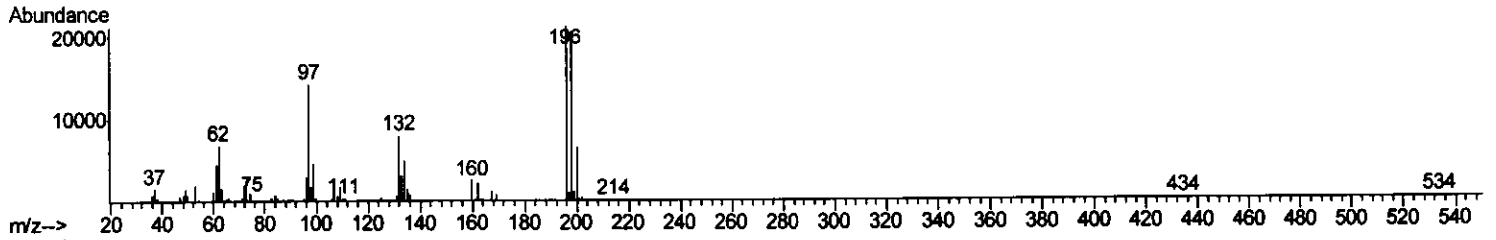
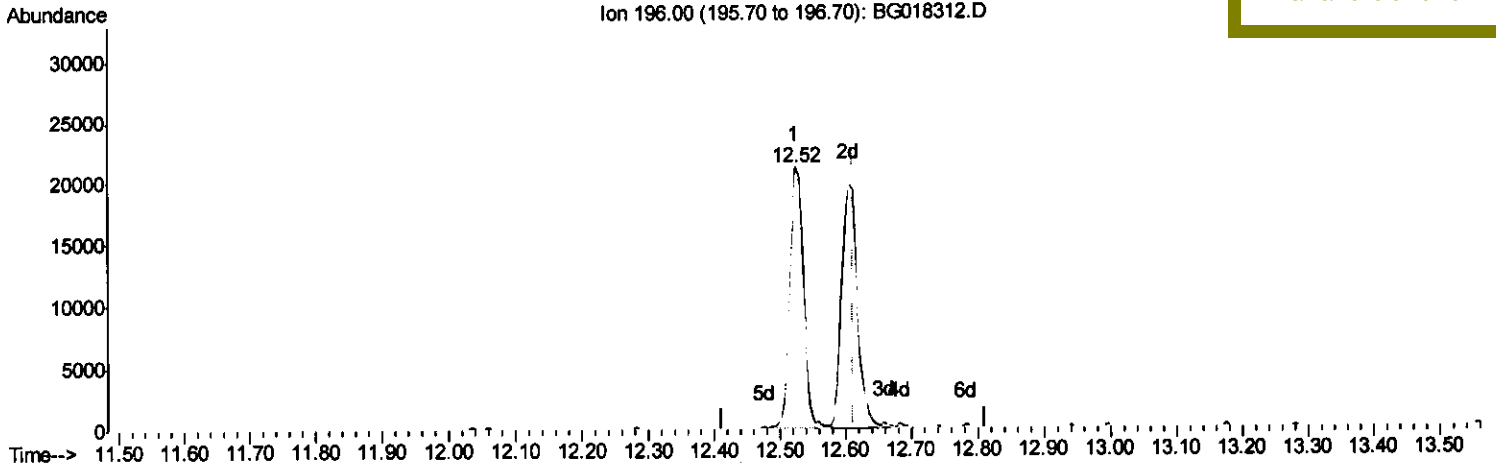
Data Path : Z:\HPCHEM1\BNA_G\DATA\BG080715\
 Data File : BG018312.D
 Acq On : 7 Aug 2015 16:41
 Operator : UM/TP
 Sample : SSTDCCC020
 Misc :
 ALS Vial : 4 Sample Multiplier: 1

Instrument :
 BNA_G
 LabSampleId :
 SSTD02071

Quant Time: Aug 07 23:43:32 2015
 Quant Method : Z:\HPCHEM1\BNA_G\METHODS\SOM02.2-EPA-BG080515.M
 Quant Title : SVOA CALIBRATION
 QLast Update : Fri Aug 07 23:39:35 2015
 Response via : Initial Calibration

Manual Integrations
 APPROVED

apatel
 8/10/2015 9:29:45 AM



(40) 2,4,5-Trichlorophenol
 12.523min (-0.088) 21.44ng/ul
 response 31429

Ion	Exp%	Act%
196.00	100	100
198.00	89.80	97.43
200.00	28.20	30.79
0.00	0.00	0.00

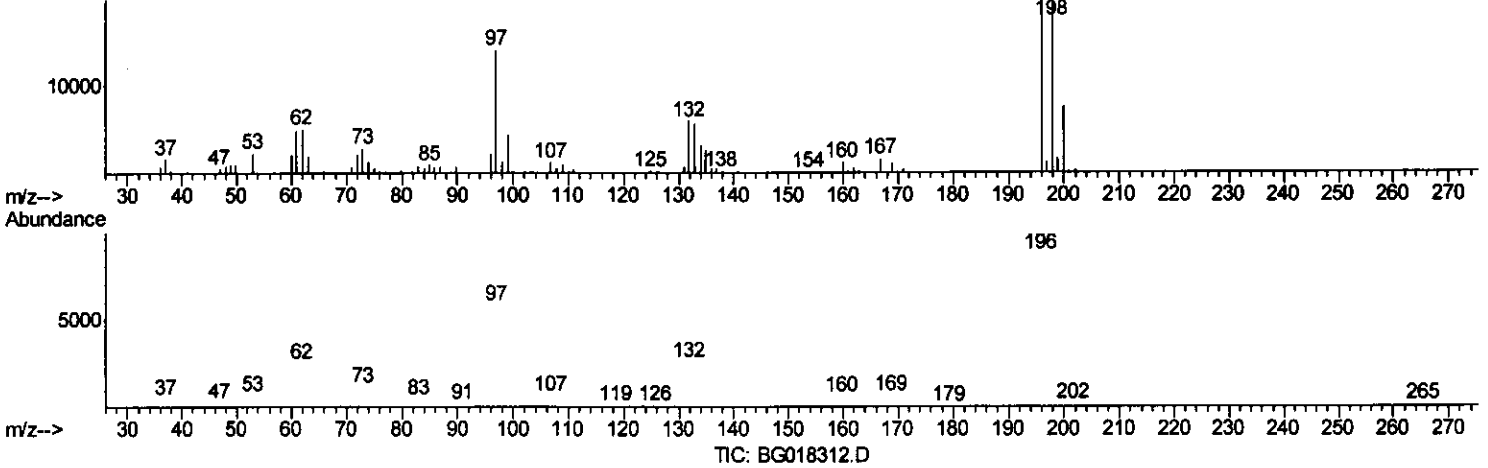
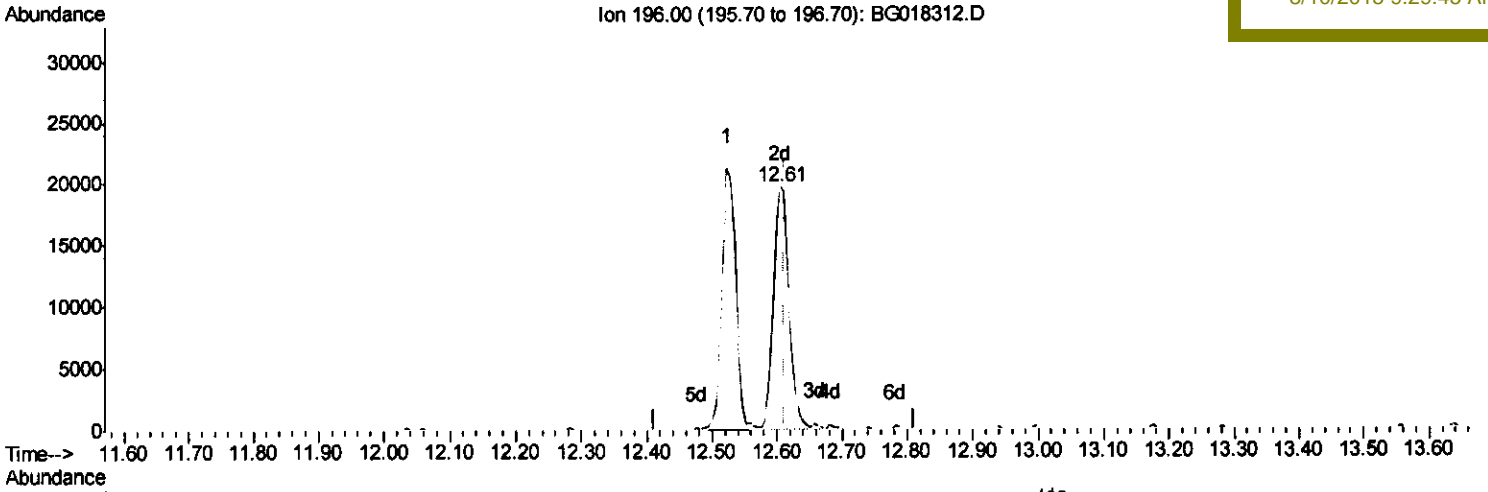
Quantitation Report (Qedit)

Data Path : Z:\HPCHEM1\BNA_G\DATA\BG080715\
 Data File : BG018312.D
 Acq On : 7 Aug 2015 16:41
 Operator : UM/TP
 Sample : SSTDCCC020
 Misc :
 ALS Vial : 4 Sample Multiplier: 1

Instrument :
 BNA_G
 LabSampleId :
 SSTD02071

Quant Time: Aug 07 23:43:32 2015
 Quant Method : Z:\HPCHEM1\BNA_G\METHODS\SOM02.2-EPA-BG080515.M
 Quant Title : SVOA CALIBRATION
 QLast Update : Fri Aug 07 23:39:35 2015
 Response via : Initial Calibration

Manual Integrations
APPROVED
 apatel
 8/10/2015 9:29:45 AM



(40) 2,4,5-Trichlorophenol

12.605min (-0.006) 22.74ng/ul m

response 33341

T.P
8/8/15

Ion	Exp%	Act%
196.00	100	100
198.00	89.80	100.41
200.00	28.20	38.04#
0.00	0.00	0.00

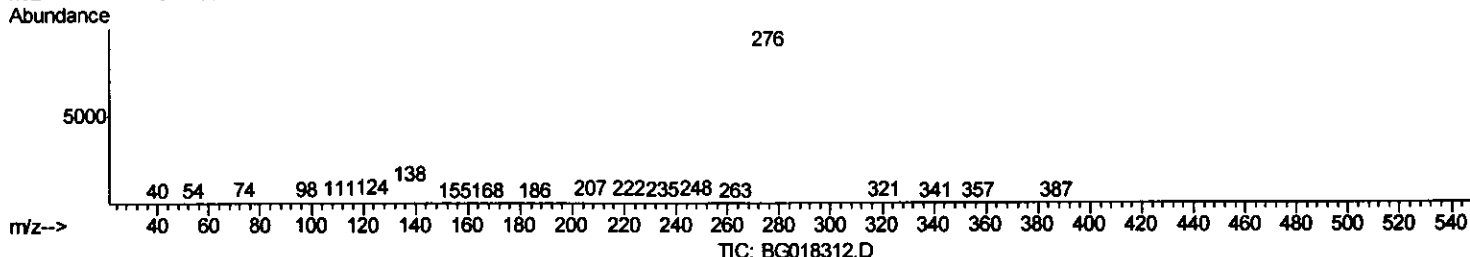
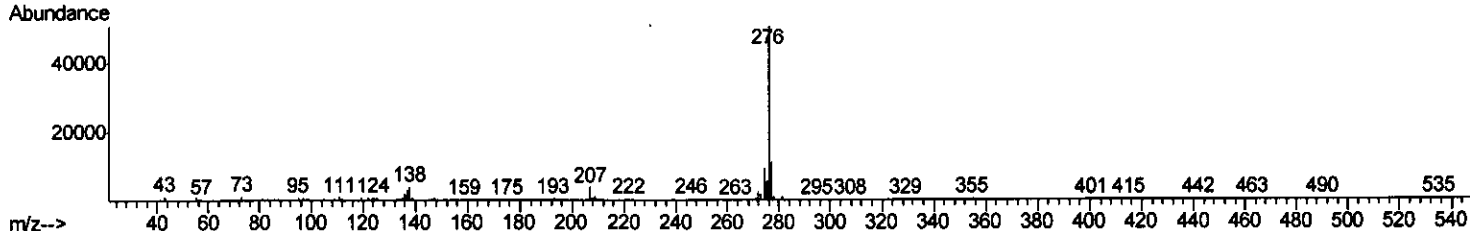
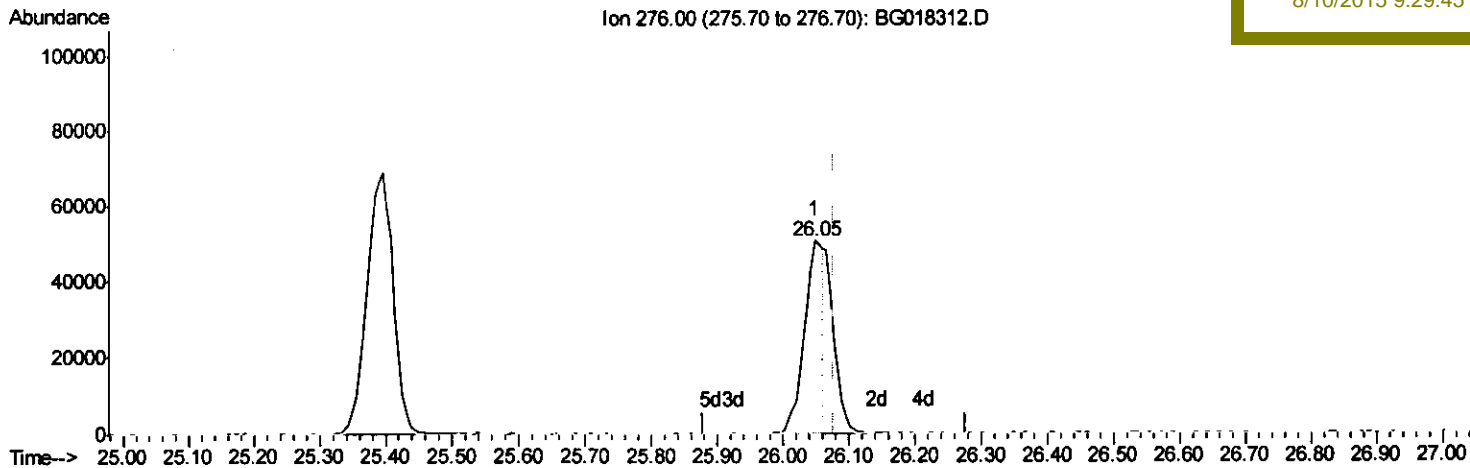
Quantitation Report (Qedit)

Data Path : Z:\HPCHEM1\BNA_G\DATA\BG080715\
 Data File : BG018312.D
 Acq On : 7 Aug 2015 16:41
 Operator : UM/TP
 Sample : SSTDCCC020
 Misc :
 ALS Vial : 4 Sample Multiplier: 1

Instrument :
 BNA_G
 LabSampleId :
 SSTD02071

Quant Time: Aug 07 23:43:32 2015
 Quant Method : Z:\HPCHEM1\BNA_G\METHODS\SOM02.2-EPA-BG080515.M
 Quant Title : SVOA CALIBRATION
 QLast Update : Fri Aug 07 23:39:35 2015
 Response via : Initial Calibration

Manual Integrations
 APPROVED
 apatel
 8/10/2015 9:29:45 AM



(94) Benzo(g,h,i)perylene

26.048min (-0.030) 16.33ng/ul

response 99987

Ion	Exp%	Act%
276.00	100	100
138.00	7.50	9.67#
277.00	26.40	21.84
0.00	0.00	0.00

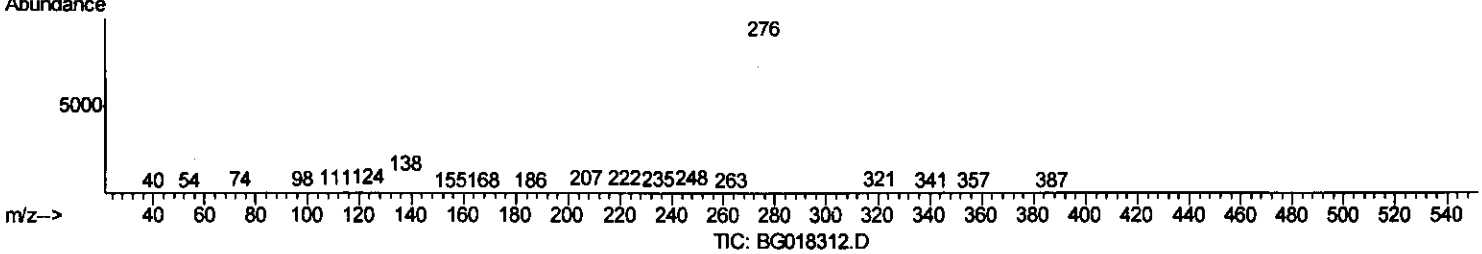
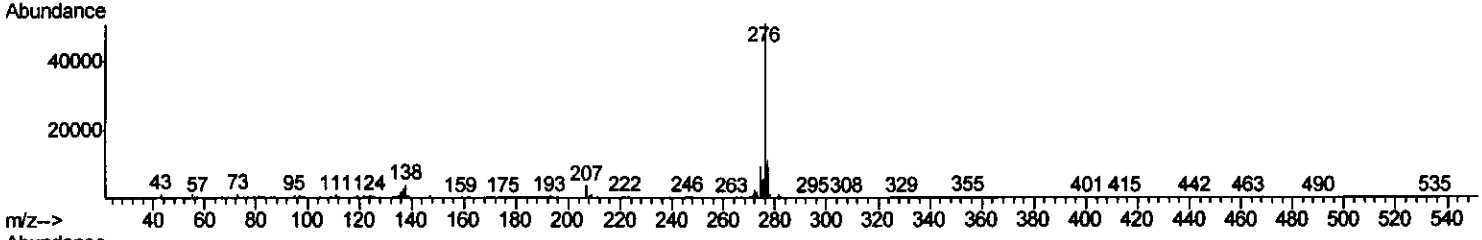
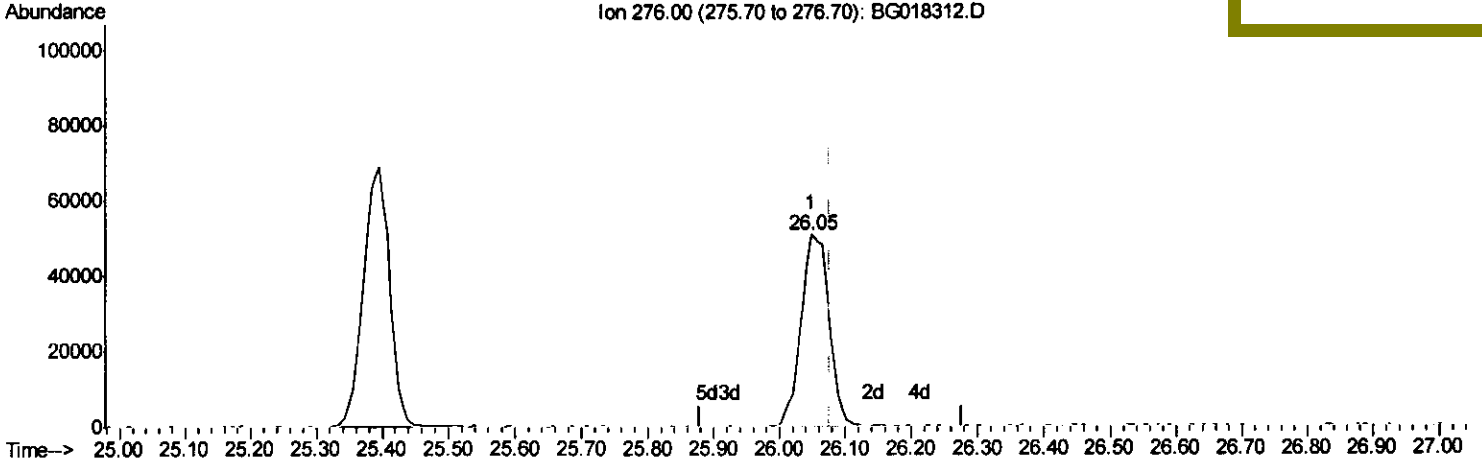
Quantitation Report (Qedit)

Data Path : Z:\HPCHEM1\BNA_G\DATA\BG080715\
Data File : BG018312.D
Acq On : 7 Aug 2015 16:41
Operator : UM/TP
Sample : SSTDCCC020
Misc :
ALS Vial : 4 Sample Multiplier: 1

Instrument :
BNA_G
LabSampleId :
SSTD02071

Quant Time: Aug 07 23:43:32 2015
Quant Method : Z:\HPCHEM1\BNA_G\METHODS\SOM02.2-EPA-BG080515.M
Quant Title : SVOA CALIBRATION
QLast Update : Fri Aug 07 23:39:35 2015
Response via : Initial Calibration

Manual Integrations
APPROVED
apatel
8/10/2015 9:29:45 AM



(94) Benzo(g,h,i)perylene

26.048min (-0.030) 24.46ng/ul m

response 149827

T.P
8/8/15

Ion	Exp%	Act%
276.00	100	100
138.00	7.50	8.11
277.00	26.40	21.84
0.00	0.00	0.00

Data Path : Z:\HPCHEM1\BNA_G\DATA\BG080715\
 Data File : BG018312.D
 Acq On : 7 Aug 2015 16:41
 Operator : UM/TP
 Sample : SSTDCCC020
 Misc :
 ALS Vial : 4 Sample Multiplier: 1

Instrument :
 BNA_G
 LabSampleId :
 SSTD02071

Quant Time: Aug 08 00:05:55 2015
 Quant Method : Z:\HPCHEM1\BNA_G\METHODS\SOM02.2-EPA-BG080515.M
 Quant Title : SVOA CALIBRATION
 QLast Update : Fri Aug 07 23:39:35 2015
 Response via : Initial Calibration

Manual Integrations
 APPROVED
 apatel
 8/10/2015 9:29:45 AM

Internal Standards	R.T.	QIon	Response	Conc	Units	Dev(Min)
1) 1,4-Dichlorobenzene-d4	7.42	152	22183	20.00	ng/ul	0.00
18) Naphthalene-d8	10.20	136	100494	20.00	ng/ul	0.00
36) Acenaphthene-d10	14.10	164	71349	20.00	ng/ul	0.00
62) Phenanthrene-d10	16.86	188	166963	20.00	ng/ul	0.00
78) Chrysene-d12	21.07	240	154719	20.00	ng/ul	0.00
86) Perylene-d12	23.23	264	113922	20.00	ng/ul	-0.01

System Monitoring Compounds	R.T.	QIon	Response	Conc	Units	Dev(Min)
3) 1,4-Dioxane-d8	2.88	96	2855	11.10	ng/uL	0.00
5) Phenol-d5	6.62	99	39017	22.36	ng/ul	0.00
7) Bis-(2-Chloroethyl)ether-d	6.76	67	21057	24.98	ng/ul	0.00
9) 2-Chlorophenol-d4	6.95	132	30655	21.11	ng/ul	0.00
13) 4-Methylphenol-d8	8.16	113	30882	20.97	ng/ul	0.00
19) Nitrobenzene-d5	8.57	128	16689	21.45	ng/ul	0.00
22) 2-Nitrophenol-d4	9.30	143	18756	20.84	ng/ul	0.00
26) 2,4-Dichlorophenol-d3	9.84	165	34677	20.96	ng/ul	0.00
29) 4-Chloroaniline-d4	10.35	131	44342	22.38	ng/ul	0.00
44) Dimethylphthalate-d6	13.52	166	121735	22.06	ng/ul	0.00
47) Acenaphthylene-d8	13.79	160	143648	22.96	ng/ul	0.00
52) 4-Nitrophenol-d4	14.36	143	13420	14.74	ng/ul	0.00
58) Fluorene-d10	15.11	176	108875	21.96	ng/ul	0.00
63) 4,6-Dinitro-2-methylphenol	15.25	200	23687	20.49	ng/ul	0.00
71) Anthracene-d10	16.96	188	165376	22.52	ng/ul	0.00
79) Pyrene-d10	19.27	212	151187	17.46	ng/ul	0.00
90) Benzo(a)pyrene-d12	23.09	264	129644	21.87	ng/ul	-0.01

Target Compounds	R.T.	QIon	Response	Conc	Units	Qvalue
2) 1,4-Dioxane	2.92	88	2746	9.67	ng/uL#	72
4) Benzaldehyde	6.56	77	24152	27.09	ng/ul	93
6) Phenol	6.65	94	39686	22.89	ng/ul	92
8) Bis(2-Chloroethyl)ether	6.85	93	28249	22.26	ng/ul	94
10) 2-Chlorophenol	6.99	128	29152	20.81	ng/ul	95
11) 2-Methylphenol	7.89	108	28771	20.32	ng/ul	93
12) 2,2'-oxybis(1-Chloropropan	7.96	45	24144	24.82	ng/ul	96
14) Acetophenone	8.24	105	51991	21.96	ng/ul	89
15) N-Nitroso-di-n-propylamine	8.23	70	29574	23.64	ng/ul#	90
16) 4-Methylphenol	8.22	108	31838	20.07	ng/ul	93
17) Hexachloroethane	8.47	117	14604	22.01	ng/ul	89
20) Nitrobenzene	8.62	77	42820	24.46	ng/ul	92
21) Isophorone	9.13	82	78349	22.35	ng/ul	95
23) 2-Nitrophenol	9.33	139	19774	20.55	ng/ul#	84
24) 2,4-Dimethylphenol	9.41	107	47794	23.61	ng/ul	93
25) Bis(2-Chloroethoxy)methane	9.63	93	39849	22.17	ng/ul	99
27) 2,4-Dichlorophenol	9.87	162	32506	21.25	ng/ul	90
28) Naphthalene	10.25	128	101395	21.46	ng/ul	98
30) 4-Chloroaniline	10.38	127	40738	20.50	ng/ul	93
31) Hexachlorobutadiene	10.53	225	28160	24.41	ng/ul#	86
32) Caprolactam	11.12	113	14174m	19.90	ng/ul	
33) 4-Chloro-3-methylphenol	11.54	107	40798	21.00	ng/ul	94
34) 2-Methylnaphthalene	11.88	142	78692	20.75	ng/ul	99

T.P
 8/8/15

Data Path : Z:\HPCHEM1\BNA_G\DATA\BG080715\
 Data File : BG018312.D
 Acq On : 7 Aug 2015 16:41
 Operator : UM/TP
 Sample : SSTDCCC020
 Misc :
 ALS Vial : 4 Sample Multiplier: 1

Instrument :
 BNA_G
 LabSampleId :
 SSTD02071

Quant Time: Aug 08 00:05:55 2015
 Quant Method : Z:\HPCHEM1\BNA_G\METHODS\SOM02.2-EPA-BG080515.M
 Quant Title : SVOA CALIBRATION
 QLast Update : Fri Aug 07 23:39:35 2015
 Response via : Initial Calibration

Manual Integrations
 APPROVED

apatel
 8/10/2015 9:29:45 AM

Internal Standards	R.T.	QIon	Response	Conc	Units	Dev(Min)
35) 1-Methylnaphthalene	12.11	142	78465	21.42	ng/ul	100
37) 1,2,4,5-Tetrachlorobenzene	12.26	216	47381	22.71	ng/ul	95
38) Hexachlorocyclopentadiene	12.23	237	13101	13.94	ng/ul	98
39) 2,4,6-Trichlorophenol	12.52	196	31429	22.96	ng/ul	96
40) 2,4,5-Trichlorophenol	12.61	196	33341m	22.74	ng/ul	
41) 1,1'-Biphenyl	12.92	154	112322	22.85	ng/ul	99
42) 2-Chloronaphthalene	12.96	162	90109	23.36	ng/ul	95
43) 2-Nitroaniline	13.18	65	31273	24.16	ng/ul#	82
45) Dimethylphthalate	13.57	163	121224	22.02	ng/ul	97
46) 2,6-Dinitrotoluene	13.69	165	26553	20.95	ng/ul#	80
48) Acenaphthylene	13.82	152	141743	22.00	ng/ul	96
49) 3-Nitroaniline	14.02	138	23900	21.58	ng/ul#	88
50) Acenaphthene	14.17	153	91873	22.03	ng/ul	99
51) 2,4-Dinitrophenol	14.26	184	9604	14.22	ng/ul	91
53) 4-Nitrophenol	14.38	109	20522	20.08	ng/ul	91
54) Dibenzofuran	14.50	168	135711	22.11	ng/ul	97
55) 2,4-Dinitrotoluene	14.50	165	36704	19.93	ng/ul#	76
56) 2,3,4,6-Tetrachlorophenol	14.75	232	27573	20.55	ng/ul#	88
57) Diethylphthalate	14.95	149	130678	22.38	ng/ul	99
59) Fluorene	15.16	166	117825	21.86	ng/ul	95
60) 4-Chlorophenyl-phenylether	15.16	204	67146	23.07	ng/ul	99
61) 4-Nitroaniline	15.20	138	23665	19.59	ng/ul#	73
64) 4,6-Dinitro-2-methylphenol	15.27	198	24113	20.84	ng/ul	94
65) N-Nitrosodiphenylamine	15.38	169	100267	22.84	ng/ul	98
66) 4-Bromophenyl-phenylether	16.06	248	44620	23.55	ng/ul	98
67) Hexachlorobenzene	16.17	284	53109	23.96	ng/ul	95
68) Atrazine	16.34	200	43319	21.69	ng/ul	98
69) Pentachlorophenol	16.53	266	12501	14.68	ng/ul#	86
70) Phenanthrene	16.91	178	188501	22.37	ng/ul	100
72) Anthracene	16.99	178	188518	22.42	ng/ul	100
73) 1,2,3,4-Tetrachlorobenzene	12.89	216	49873	25.08	ng/uL	95
74) Pentachlorobenzene	14.43	250	54527	24.53	ng/uL	87
75) Carbazole	17.28	167	156512	22.06	ng/ul	99
76) Di-n-butylphthalate	17.85	149	210292	21.13	ng/ul	98
77) Fluoranthene	18.94	202	197936	21.18	ng/ul	98
80) Pyrene	19.30	202	189738	17.64	ng/ul	100
81) Butylbenzylphthalate	20.22	149	85548	20.51	ng/ul	95
82) 3,3'-Dichlorobenzidine	21.00	252	73934	22.07	ng/ul	86
83) Benzo(a)anthracene	21.06	228	180655	22.12	ng/ul	96
84) Bis(2-ethylhexyl)phthalate	21.00	149	115058	22.91	ng/ul	95
85) Chrysene	21.11	228	158349	21.58	ng/ul	96
87) Di-n-octyl phthalate	21.85	149	156517	20.85	ng/ul	100
88) Benzo(b)fluoranthene	22.58	252	168642	24.14	ng/ul	98
89) Benzo(k)fluoranthene	22.63	252	153789	22.95	ng/ul	97
91) Benzo(a)pyrene	23.13	252	136276	22.34	ng/ul	99
92) Indeno(1,2,3-cd)pyrene	25.40	276	189374	25.09	ng/ul	93
93) Dibenzo(a,h)anthracene	25.40	278	159364	24.07	ng/ul	98
94) Benzo(g,h,i)perylene	26.05	276	149827m	24.46	ng/ul	

T.P
 8/8/15

T.P
 8/8/15

Data Path : Z:\HPCHEM1\BNA_G\DATA\BG080715\
 Data File : BG018312.D
 Acq On : 7 Aug 2015 16:41
 Operator : UM/TP
 Sample : SSTDCCC020
 Misc :
 ALS Vial : 4 Sample Multiplier: 1

Instrument :
 BNA_G
 LabSampleId :
 SSTD02071

Quant Time: Aug 08 00:05:55 2015
 Quant Method : Z:\HPCHEM1\BNA_G\METHODS\SOM02.2-EPA-BG080515.M
 Quant Title : SVOA CALIBRATION
 QLast Update : Fri Aug 07 23:39:35 2015
 Response via : Initial Calibration

Manual Integrations
 APPROVED

apatel
 8/10/2015 9:29:45 AM

Internal Standards	R.T.	QIon	Response	Conc	Units	Dev(Min)

(#) = qualifier out of range (m) = manual integration (+) = signals summed						