

Data Path : Z:\HPCHEM1\BNA_G\DATA\BG080816\
 Data File : BG023545.D
 Acq On : 8 Aug 2016 22:13
 Operator : UM/SJ
 Sample : H4338-14MSD
 Misc :
 ALS Vial : 15 Sample Multiplier: 1

Instrument :
 BNA_G
 ClientSampled :
 A4V21MSD

Manual Integrations
 APPROVED

sohil
 8/9/2016 6:20:17 PM

Quant Time: Aug 09 05:37:38 2016
 Quant Method : Z:\HPCHEM1\BNA_G\METHODS\SOM02.2-EPA-BG080416.M
 Quant Title : SVOA CALIBRATION
 QLast Update : Tue Aug 09 02:15:40 2016
 Response via : Initial Calibration

Internal Standards	R.T.	QIon	Response	Conc	Units	Dev(Min)
1) 1,4-Dichlorobenzene-d4	8.12	152	142520	20.00	ng/ul	0.00
18) Naphthalene-d8	10.95	136	646724	20.00	ng/ul	0.00
35) Acenaphthene-d10	14.78	164	477545	20.00	ng/ul	0.00
61) Phenanthrene-d10	17.54	188	1152613	20.00	ng/ul	0.00
75) Chrysene-d12	21.85	240	1144111	20.00	ng/ul	0.00
83) Perylene-d12	25.23	264	1141629	20.00	ng/ul	0.00

System Monitoring Compounds

3) 1,4-Dioxane-d8	3.49	96	2046m	0.61	ng/uL	0.00
5) Phenol-d5	7.27	99	109303	7.61	ng/ul	0.00
7) Bis-(2-Chloroethyl)ether-d	7.43	67	299861m	32.60	ng/ul	0.00
9) 2-Chlorophenol-d4	7.64	132	252969	25.83	ng/ul	0.00
13) 4-Methylphenol-d8	8.83	113	197209	17.59	ng/ul	0.00
19) Nitrobenzene-d5	9.29	128	175306m	34.39	ng/ul	0.00
22) 2-Nitrophenol-d4	10.02	143	200432	34.23	ng/ul	0.00
26) 2,4-Dichlorophenol-d3	10.57	165	334509	30.29	ng/ul	0.00
29) 4-Chloroaniline-d4	11.09	131	45516	3.51	ng/ul	0.00
43) Dimethylphthalate-d6	14.17	166	1308146	33.46	ng/ul	0.00
46) Acenaphthylene-d8	14.47	160	1447613	32.90	ng/ul	0.00
51) 4-Nitrophenol-d4	14.99	143	55401	8.30	ng/ul	0.00
57) Fluorene-d10	15.78	176	1186058	32.83	ng/ul	0.00
62) 4,6-Dinitro-2-methylphenol	15.89	200	257999	34.89	ng/ul	0.00
70) Anthracene-d10	17.64	188	1803154	34.72	ng/ul	0.00
76) Pyrene-d10	19.93	212	1958671	33.82	ng/ul	0.00
87) Benzo(a)pyrene-d12	24.99	264	1801433	34.86	ng/ul	0.00

Target Compounds

Target Compounds	R.T.	QIon	Response	Conc	Units	Qvalue
6) Phenol	7.30	94	118538	7.93	ng/ul#	79
10) 2-Chlorophenol	7.68	128	259791	26.04	ng/ul#	81
14) Acetophenone	8.94	105	39563	2.20	ng/ul#	87
15) N-Nitroso-di-n-propylamine	8.92	70	347229	32.11	ng/ul#	85
33) 4-Chloro-3-methylphenol	12.23	107	409735	28.59	ng/ul#	87
49) Acenaphthene	14.84	153	1013530	32.32	ng/ul	95
52) 4-Nitrophenol	15.01	109	52416m	7.84	ng/ul	
54) 2,4-Dinitrotoluene	15.14	165	430757	33.87	ng/ul#	72
68) Pentachlorophenol	17.19	266	288261	37.10	ng/ul	93
77) Pyrene	19.96	202	2270765	32.11	ng/ul	99

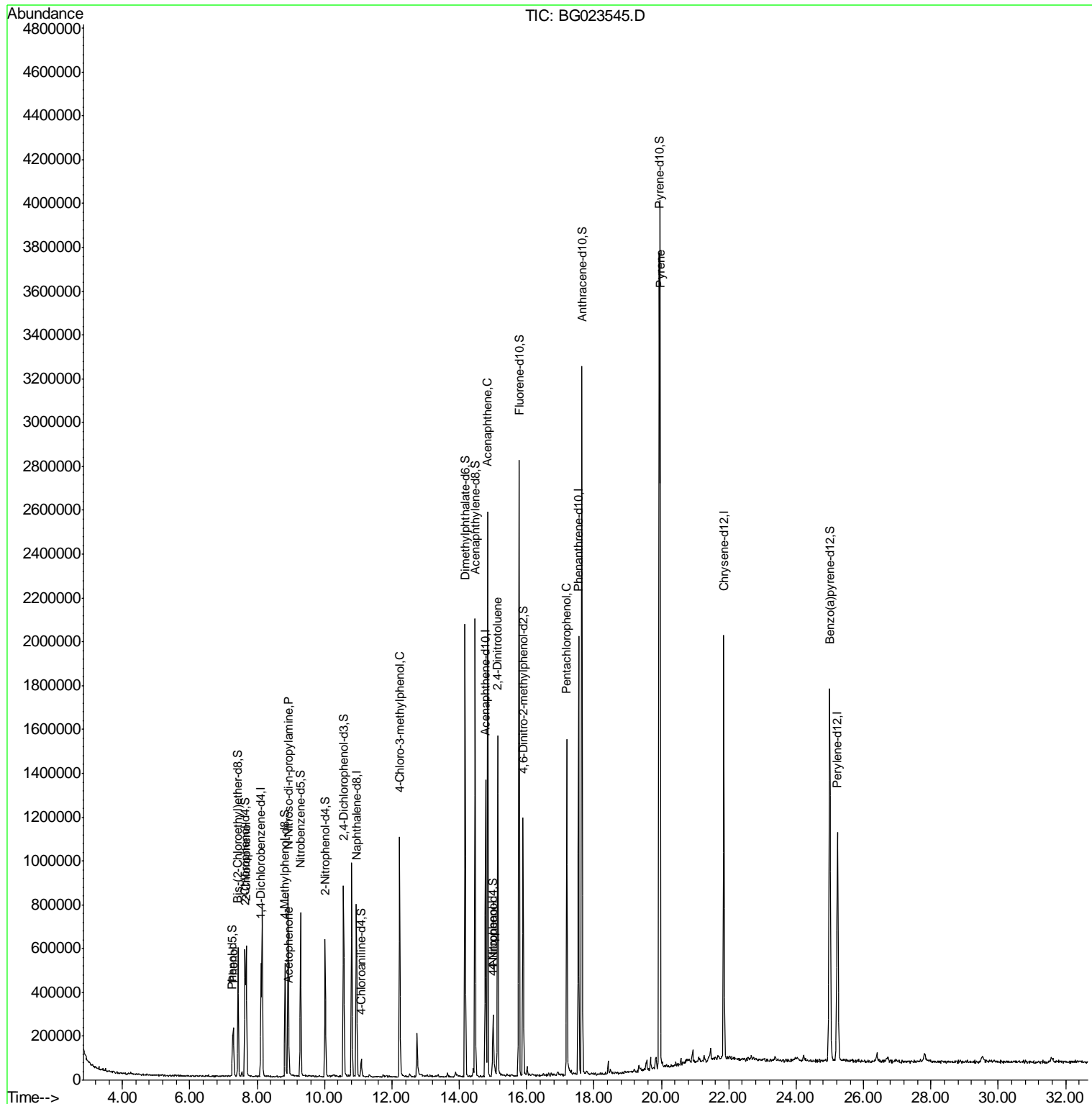
(#) = qualifier out of range (m) = manual integration (+) = signals summed

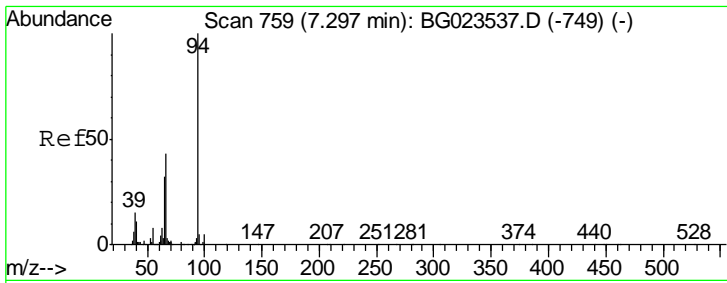
Data Path : Z:\HPCHEM1\BNA_G\DATA\BG080816\
 Data File : BG023545.D
 Acq On : 8 Aug 2016 22:13
 Operator : UM/SJ
 Sample : H4338-14MSD
 Misc :
 ALS Vial : 15 Sample Multiplier: 1

Instrument :
 BNA_G
 Client Sampled :
 A4V21MSD

Manual Integrations
 APPROVED
 sohil
 8/9/2016 6:20:17 PM

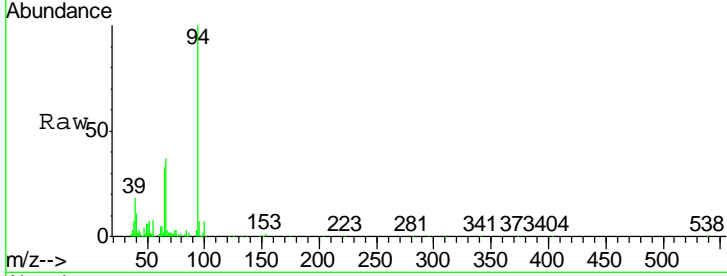
Quant Time: Aug 09 05:37:38 2016
 Quant Method : Z:\HPCHEM1\BNA_G\METHODS\SOM02.2-EPA-BG080416.M
 Quant Title : SVOA CALIBRATION
 QLast Update : Tue Aug 09 02:15:40 2016
 Response via : Initial Calibration





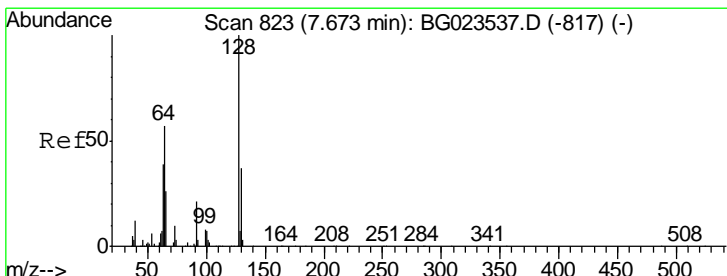
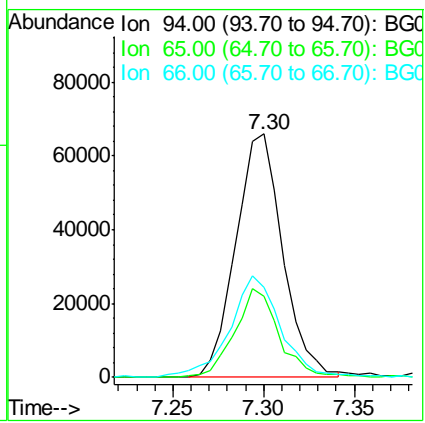
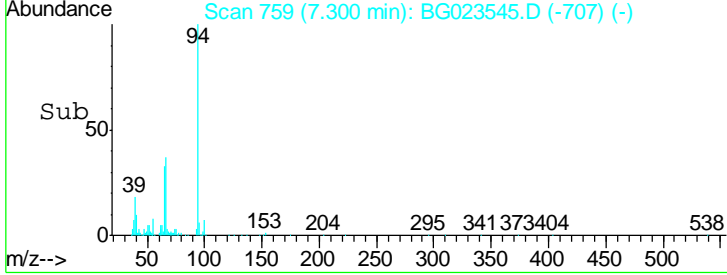
#6
 Phenol
 Concen: 7.93 ng/ul
 RT: 7.30 min Scan# 759
 Delta R.T. 0.00 min
 Lab File: BG023545.D
 Acq: 8 Aug 2016 22:13

Instrument :
 BNA_G
Client Sampled :
 A4V21MSD

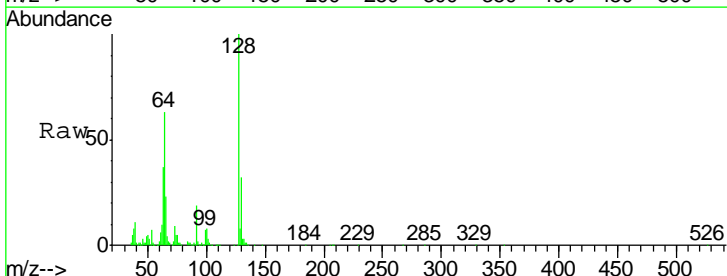


Tgt Ion	Resp	Lower	Upper
94	118538		
65	33.2	16.8	25.2#
66	37.0	22.6	33.8#

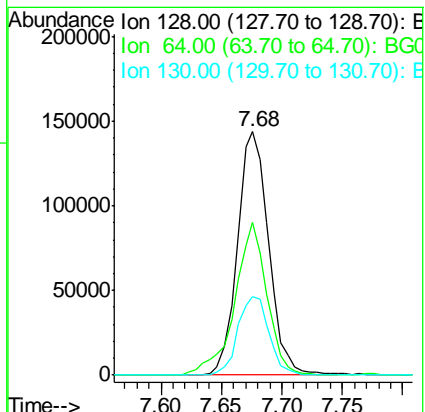
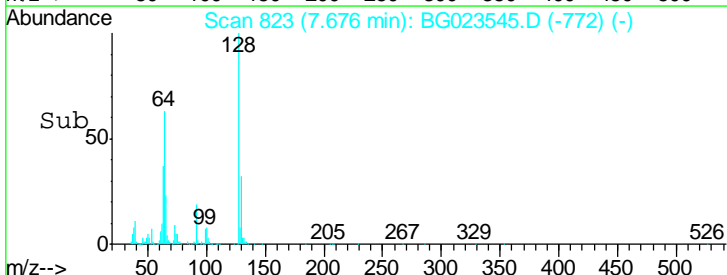
Manual Integrations
APPROVED
 sohil
 8/9/2016 6:20:17 PM

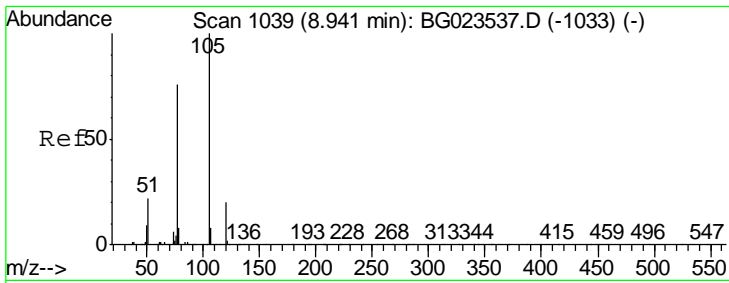


#10
 2-Chlorophenol
 Concen: 26.04 ng/ul
 RT: 7.68 min Scan# 823
 Delta R.T. -0.00 min
 Lab File: BG023545.D
 Acq: 8 Aug 2016 22:13



Tgt Ion	Resp	Lower	Upper
128	259791		
64	62.7	34.2	51.4#
130	32.0	27.0	40.4





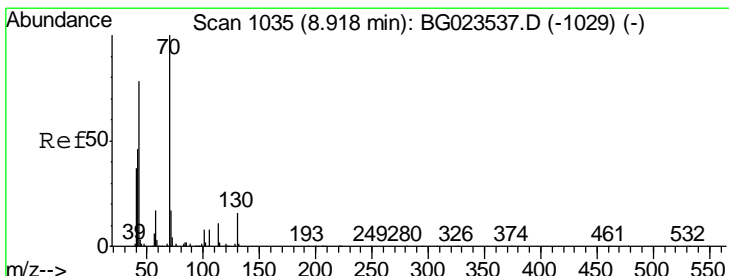
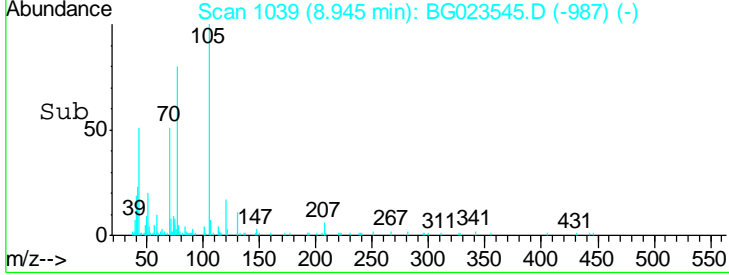
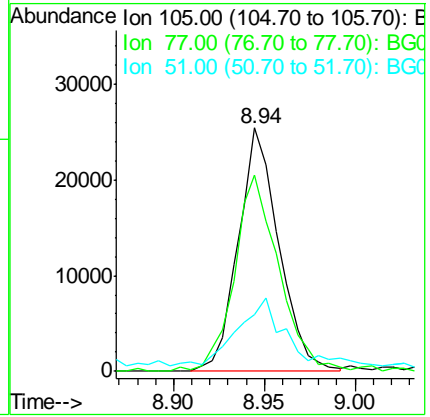
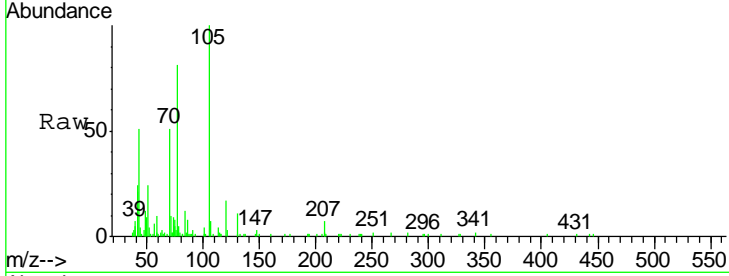
#14
 Acetophenone
 Concen: 2.20 ng/ul
 RT: 8.94 min Scan# 1039
 Delta R.T. 0.00 min
 Lab File: BG023545.D
 Acq: 8 Aug 2016 22:13

Instrument :
 BNA_G
 ClientSampled :
 A4V21MSD

Tgt Ion	Ion	Ratio	Lower	Upper
105	105	100		
77	80.9	56.1	84.1	
51	23.5	14.6	22.0	#

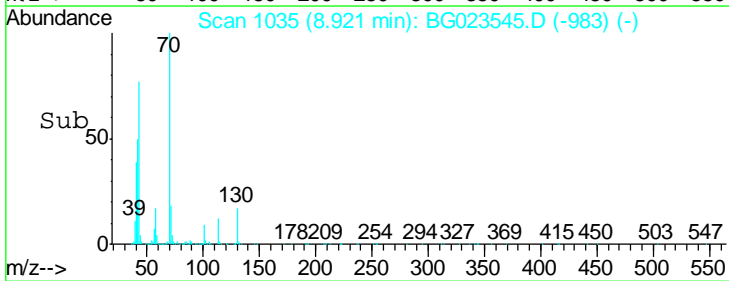
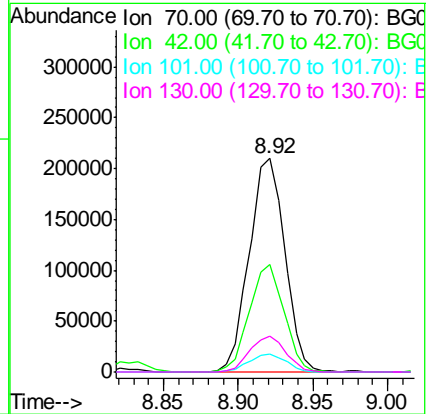
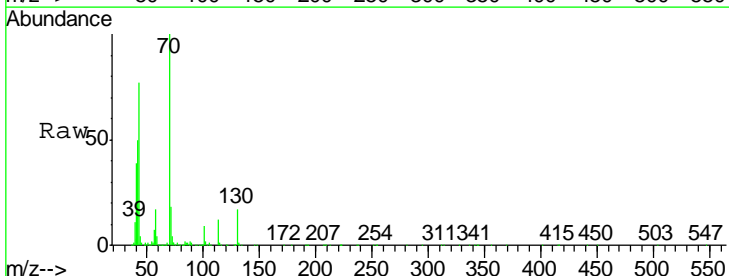
Manual Integrations
 APPROVED

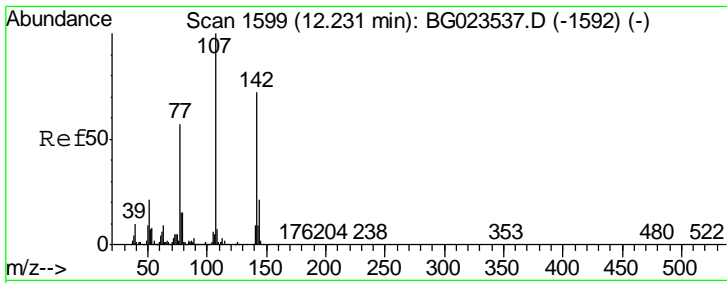
sohil
 8/9/2016 6:20:17 PM



#15
 N-Nitroso-di-n-propylamine
 Concen: 32.11 ng/ul
 RT: 8.92 min Scan# 1035
 Delta R.T. 0.00 min
 Lab File: BG023545.D
 Acq: 8 Aug 2016 22:13

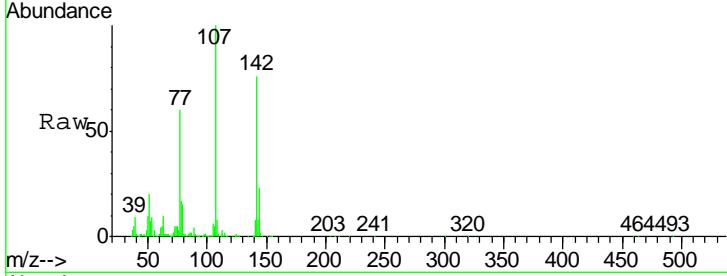
Tgt Ion	Ion	Ratio	Lower	Upper
70	70	100		
42	50.3	31.4	47.2	#
101	8.7	8.6	13.0	
130	16.7	19.0	28.4	#





#33
 4-Chloro-3-methylphenol
 Concen: 28.59 ng/ul
 RT: 12.23 min Scan# 1598
 Delta R.T. -0.00 min
 Lab File: BG023545.D
 Acq: 8 Aug 2016 22:13

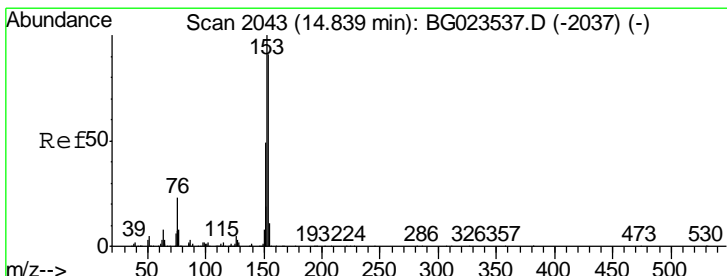
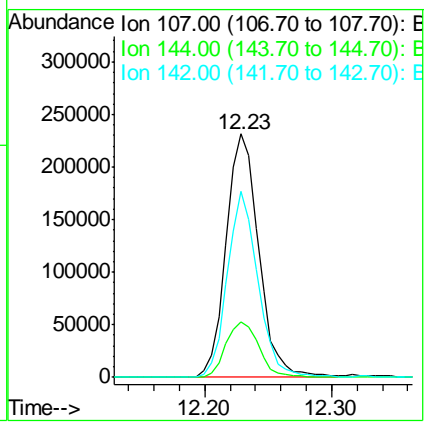
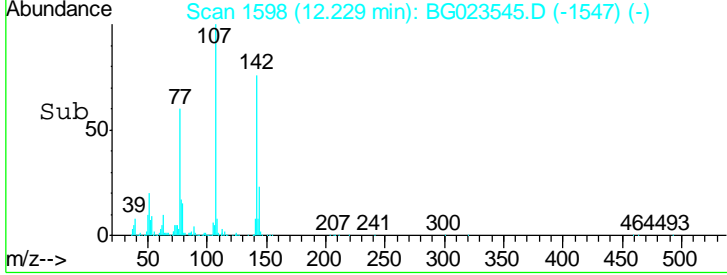
Instrument :
 BNA_G
ClientSampled :
 A4V21MSD



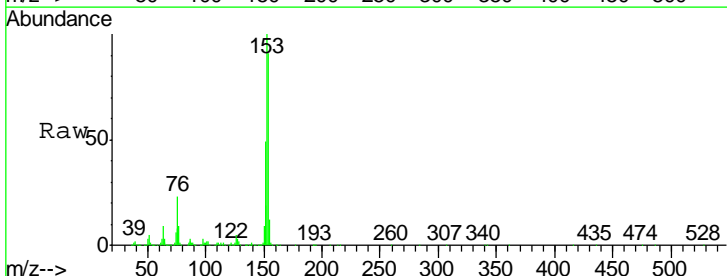
Tgt Ion: 107 Resp: 409735

Ion	Ratio	Lower	Upper
107	100		
144	22.6	22.7	34.1#
142	76.4	71.6	107.4

Manual Integrations
APPROVED
 sohil
 8/9/2016 6:20:17 PM

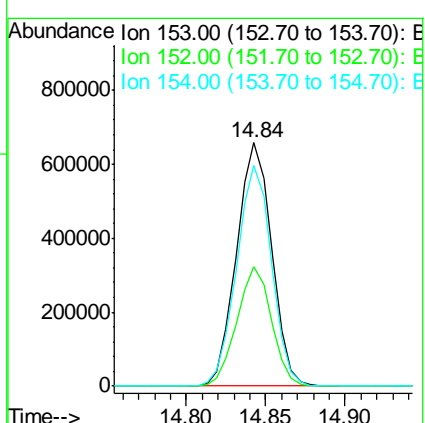
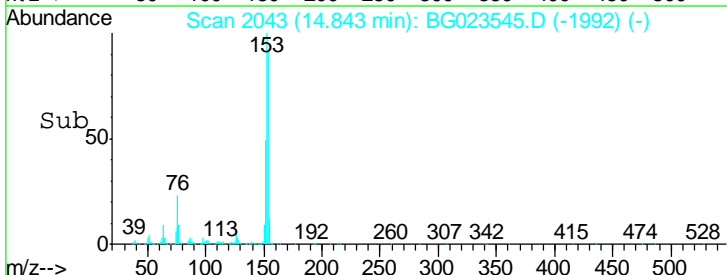


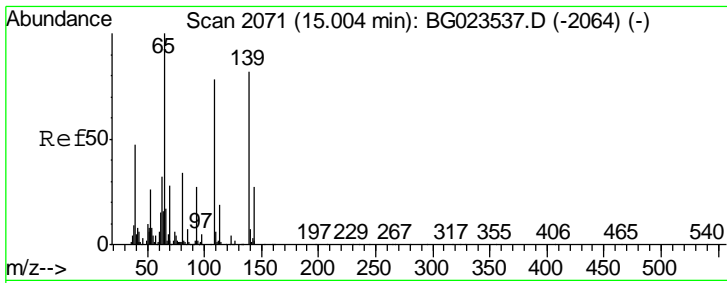
#49
 Acenaphthene
 Concen: 32.32 ng/ul
 RT: 14.84 min Scan# 2043
 Delta R.T. -0.00 min
 Lab File: BG023545.D
 Acq: 8 Aug 2016 22:13



Tgt Ion: 153 Resp: 1013530

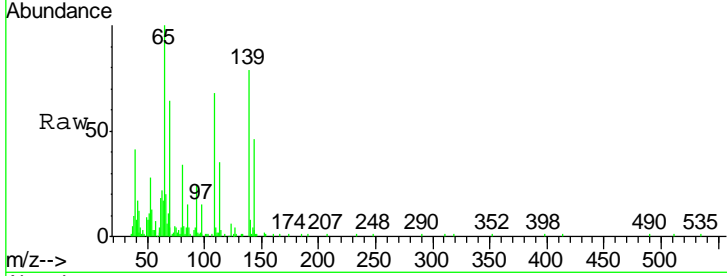
Ion	Ratio	Lower	Upper
153	100		
152	49.3	37.3	55.9
154	90.6	68.2	102.2





#52
 4-Nitrophenol
 Concen: 7.84 ng/ul m
 RT: 15.01 min Scan# 2071
 Delta R.T. 0.01 min
 Lab File: BG023545.D
 Acq: 8 Aug 2016 22:13

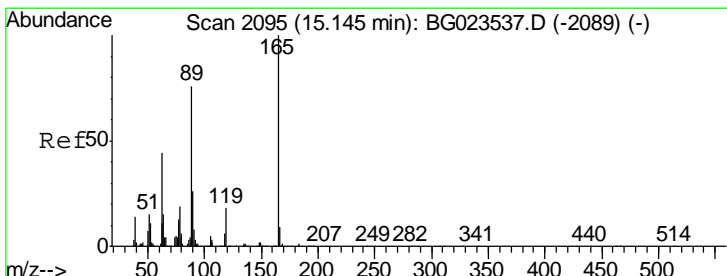
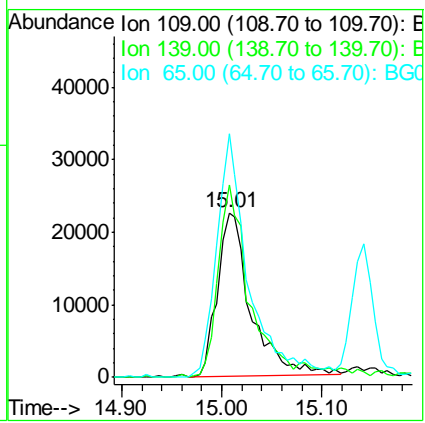
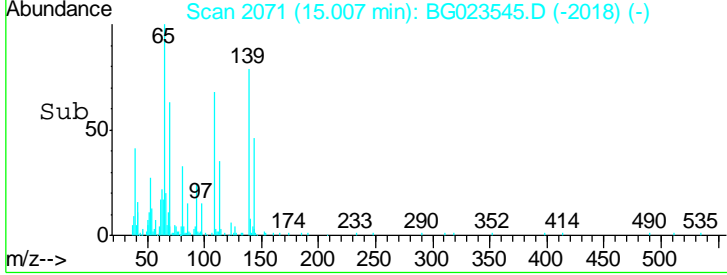
Instrument :
 BNA_G
Client Sampled :
 A4V21MSD



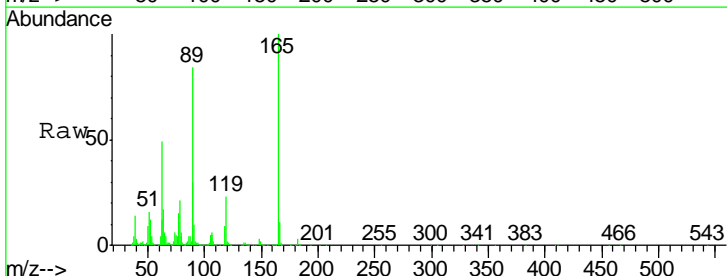
Tgt Ion: 109 Resp: 52416

Ion	Ratio	Lower	Upper
109	100		
139	117.4	136.1	204.1#
65	148.1	106.0	159.0

Manual Integrations
APPROVED
 sohil
 8/9/2016 6:20:17 PM

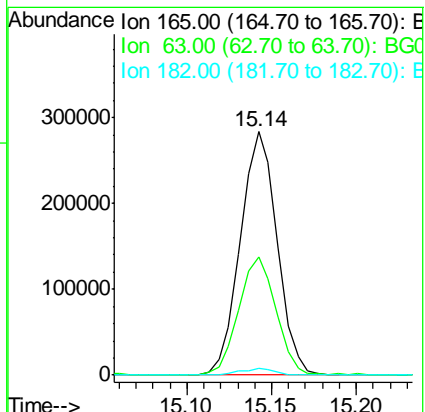
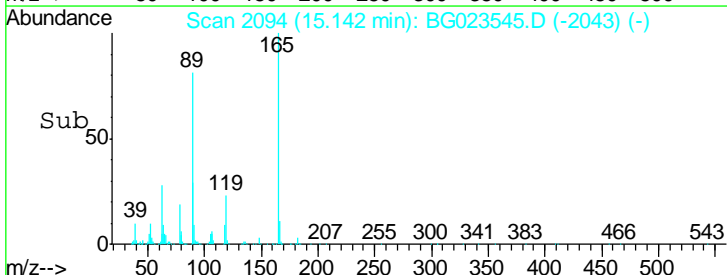


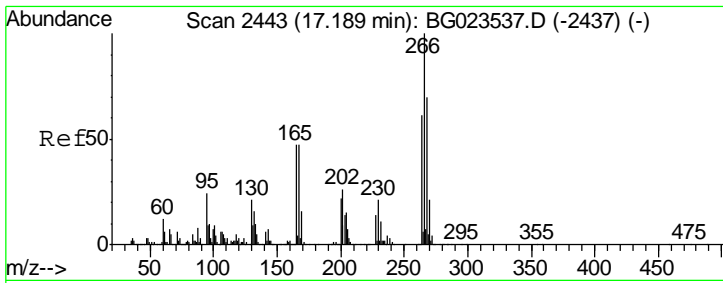
#54
 2,4-Dinitrotoluene
 Concen: 33.87 ng/ul
 RT: 15.14 min Scan# 2094
 Delta R.T. -0.00 min
 Lab File: BG023545.D
 Acq: 8 Aug 2016 22:13



Tgt Ion: 165 Resp: 430757

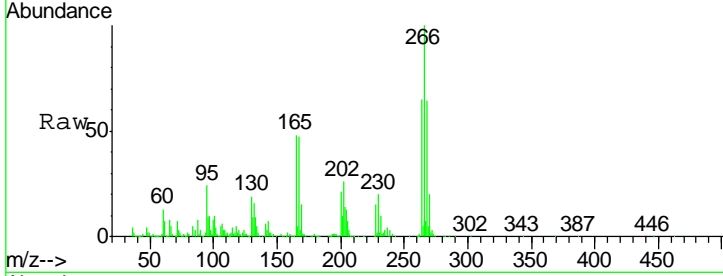
Ion	Ratio	Lower	Upper
165	100		
63	48.7	25.7	38.5#
182	2.6	2.1	3.1





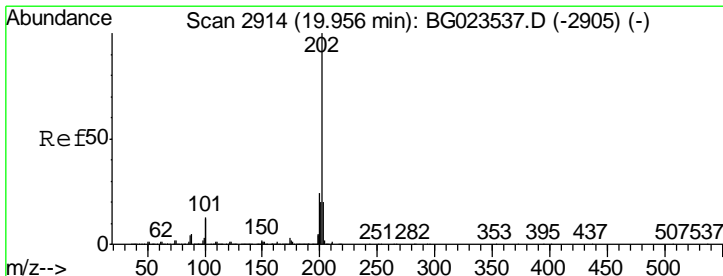
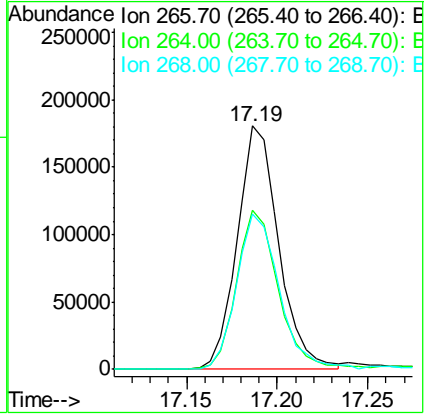
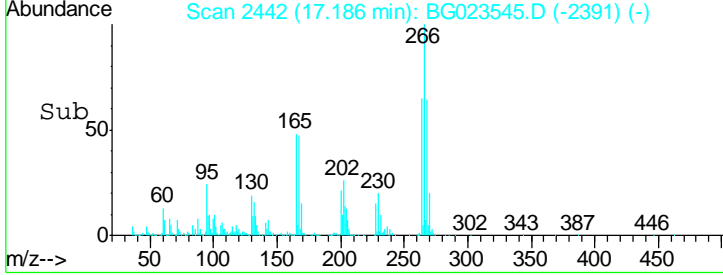
#68
 Pentachlorophenol
 Concen: 37.10 ng/ul
 RT: 17.19 min Scan# 2442
 Delta R.T. -0.00 min
 Lab File: BG023545.D
 Acq: 8 Aug 2016 22:13

Instrument :
 BNA_G
ClientSampled :
 A4V21MSD

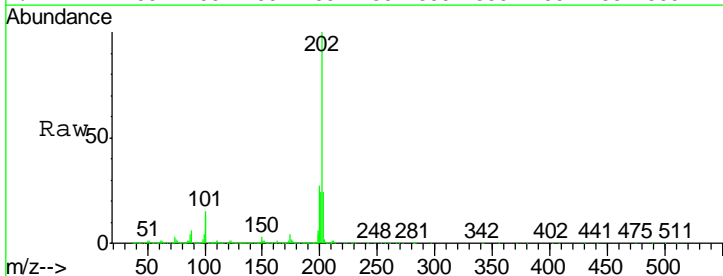


Tgt Ion	Resp	Lower	Upper
266	100		
264	65.3	54.7	82.1
268	63.6	57.8	86.8

Manual Integrations
APPROVED
 sohil
 8/9/2016 6:20:17 PM



#77
 Pyrene
 Concen: 32.11 ng/ul
 RT: 19.96 min Scan# 2914
 Delta R.T. -0.00 min
 Lab File: BG023545.D
 Acq: 8 Aug 2016 22:13



Tgt Ion	Resp	Lower	Upper
202	100		
101	14.8	12.5	18.7
100	12.8	10.2	15.4

