

Data Path : Z:\HPCHEM1\BNA G\DATA\BG080915\
 Data File : BG018352.D
 Acq On : 10 Aug 2015 5:53
 Operator : UM/TP
 Sample : G3136-20
 Misc :
 ALS Vial : 26 Sample Multiplier: 1

Instrument :
 BNA_G
 ClientSampleId :
 C02K2

Integration Parameters: LSCINT.P

Integrator: RTE
 Smoothing : OFF Filtering: 5
 Sampling : 1 Min Area: 0.1 % of largest Peak
 Start Thrs: 0.2 Max Peaks: 100
 Stop Thrs : 0 Peak Location: TOP

If leading or trailing edge < 100 prefer < Baseline drop else tangent >
 Peak separation: 5

Method : Z:\HPCHEM1\BNA G\METHODS\SOM02.2-EPA-BG080915.M
 Title : SVOA CALIBRATION

Signal : TIC

peak #	R.T. min	first scan	max scan	last scan	PK TY	peak height	corr. area	corr. % max.	% of total
1	3.219	61	65	71	rBV	35285	50370	0.89%	0.073%
2	3.871	171	176	182	rBV	26078	38116	0.67%	0.055%
3	4.042	201	205	211	rBV	44262	60332	1.07%	0.088%
4	4.277	239	245	249	rVB5	13491	25263	0.45%	0.037%
5	5.593	464	469	475	rVB	17584	28312	0.50%	0.041%
6	5.716	483	490	492	rBV3	23006	33163	0.59%	0.048%
7	6.092	546	554	560	rVB	27043	52348	0.93%	0.076%
8	7.068	714	720	726	rVB6	26475	54722	0.97%	0.080%
9	7.168	733	737	740	rBV2	16057	24849	0.44%	0.036%
10	7.232	741	748	756	rVV2	167297	322441	5.71%	0.469%
11	7.303	758	760	768	rVB7	18307	26642	0.47%	0.039%
12	7.397	771	776	784	rVB	132902	222055	3.93%	0.323%
13	7.561	798	804	807	rBV3	32623	55725	0.99%	0.081%
14	7.608	807	812	818	rVB	156895	254168	4.50%	0.369%
15	7.726	823	832	838	rVV2	36227	73010	1.29%	0.106%
16	8.078	884	892	905	rVV	623967	1095313	19.39%	1.592%
17	8.196	908	912	921	rBV9	17226	40695	0.72%	0.059%
18	8.572	971	976	979	rBV6	13607	24014	0.43%	0.035%
19	8.625	980	985	989	rVV3	32621	54771	0.97%	0.080%
20	8.719	995	1001	1005	rBV2	39175	75617	1.34%	0.110%
21	8.772	1005	1010	1018	rVB4	84033	153623	2.72%	0.223%
22	8.889	1025	1030	1038	rVB3	22275	44959	0.80%	0.065%
23	9.083	1058	1063	1070	rVB3	30818	54505	0.97%	0.079%
24	9.183	1074	1080	1083	rVV2	42784	72828	1.29%	0.106%
25	9.230	1083	1088	1097	rVV	169919	328224	5.81%	0.477%
26	9.306	1097	1101	1106	rVV2	32093	56484	1.00%	0.082%
27	9.665	1156	1162	1165	rBV5	17541	28532	0.51%	0.041%
28	9.712	1165	1170	1174	rVV3	26945	46834	0.83%	0.068%
29	9.765	1175	1179	1185	rVV2	34537	67077	1.19%	0.098%
30	9.958	1204	1212	1218	rBV2	145598	284863	5.04%	0.414%
31	10.082	1226	1233	1237	rBV7	24569	56705	1.00%	0.082%
32	10.229	1253	1258	1262	rBV4	23448	40430	0.72%	0.059%
33	10.282	1262	1267	1274	rVV7	46592	112842	2.00%	0.164%
34	10.352	1274	1279	1284	rVB6	21229	43997	0.78%	0.064%

Data Path : Z:\HPCHEM1\BNA G\DATA\BG080915\
 Data File : BG018352.D
 Acq On : 10 Aug 2015 5:53
 Operator : UM/TP
 Sample : G3136-20
 Misc :
 ALS Vial : 26 Sample Multiplier: 1

Instrument :
 BNA_G
 ClientSampleId :
 C02K2

Integration Parameters: LSCINT.P

Integrator: RTE
 Smoothing : OFF Filtering: 5
 Sampling : 1 Min Area: 0.1 % of largest Peak
 Start Thrs: 0.2 Max Peaks: 100
 Stop Thrs : 0 Peak Location: TOP

If leading or trailing edge < 100 prefer < Baseline drop else tangent >
 Peak separation: 5

Method : Z:\HPCHEM1\BNA G\METHODS\SOM02.2-EPA-BG080915.M
 Title : SVOA CALIBRATION

35	10.499	1294	1304	1314	rVB	177256	374143	6.62%	0.544%
36	10.587	1314	1319	1322	rBV3	19325	36014	0.64%	0.052%
37	10.746	1339	1346	1353	rBV3	57808	120630	2.14%	0.175%
38	10.881	1358	1369	1376	rBV	909298	1831233	32.42%	2.662%
39	11.010	1386	1391	1394	rBV2	54520	102141	1.81%	0.148%
40	11.045	1394	1397	1401	rVB	72403	97264	1.72%	0.141%
41	11.104	1401	1407	1411	rBV8	24404	46666	0.83%	0.068%
42	11.380	1449	1454	1460	rVB7	31237	48812	0.86%	0.071%
43	11.445	1460	1465	1471	rBV10	13654	31936	0.57%	0.046%
44	11.586	1487	1489	1495	rVB6	31331	56841	1.01%	0.083%
45	11.651	1496	1500	1505	rVB6	29013	53066	0.94%	0.077%
46	11.715	1507	1511	1519	rBV9	36056	63965	1.13%	0.093%
47	11.797	1521	1525	1533	rVB8	54857	113653	2.01%	0.165%
48	11.903	1538	1543	1547	rBV	126396	197953	3.50%	0.288%
49	11.938	1547	1549	1553	rVB5	26826	28187	0.50%	0.041%
50	12.074	1568	1572	1578	rBV8	22071	48275	0.85%	0.070%
51	12.162	1584	1587	1592	rBV6	35965	53120	0.94%	0.077%
52	12.291	1606	1609	1615	rBV3	44949	63212	1.12%	0.092%
53	12.526	1640	1649	1655	rVB4	94953	266339	4.72%	0.387%
54	12.614	1661	1664	1669	rBV6	29091	47894	0.85%	0.070%
55	12.749	1682	1687	1695	rVB5	59567	123736	2.19%	0.180%
56	12.920	1713	1716	1721	rBV4	37916	53477	0.95%	0.078%
57	13.061	1737	1740	1744	rBV6	47686	71773	1.27%	0.104%
58	13.243	1766	1771	1776	rVB	264242	379647	6.72%	0.552%
59	13.307	1777	1782	1786	rVV5	77530	140445	2.49%	0.204%
60	13.496	1810	1814	1815	rBV4	107567	136088	2.41%	0.198%
61	13.519	1816	1818	1827	rVB4	137882	272336	4.82%	0.396%
62	14.095	1912	1916	1919	rBV	376442	534074	9.46%	0.776%
63	14.136	1919	1923	1927	rVV2	287723	574470	10.17%	0.835%
64	14.183	1927	1931	1935	rVB	504382	663920	11.75%	0.965%
65	14.224	1935	1938	1939	rBV3	74457	79253	1.40%	0.115%
66	14.389	1962	1966	1971	rVB	461054	650886	11.52%	0.946%
67	14.535	1987	1991	1996	rVB2	384595	566137	10.02%	0.823%
68	14.594	1997	2001	2008	rBV4	194953	388460	6.88%	0.565%
69	14.700	2010	2019	2025	rVB2	1359576	2555702	45.25%	3.715%
70	15.094	2083	2086	2090	rVB2	172581	229734	4.07%	0.334%
71	15.217	2103	2107	2112	rBV3	236025	372232	6.59%	0.541%

Data Path : Z:\HPCHEM1\BNA G\DATA\BG080915\
 Data File : BG018352.D
 Acq On : 10 Aug 2015 5:53
 Operator : UM/TP
 Sample : G3136-20
 Misc :
 ALS Vial : 26 Sample Multiplier: 1

Instrument :
 BNA_G
 ClientSampleId :
 C02K2

Integration Parameters: LSCINT.P

Integrator: RTE
 Smoothing : OFF
 Sampling : 1
 Start Thrs: 0.2
 Stop Thrs : 0

Filtering: 5
 Min Area: 0.1 % of largest Peak
 Max Peaks: 100
 Peak Location: TOP

If leading or trailing edge < 100 prefer < Baseline drop else tangent >
 Peak separation: 5

Method : Z:\HPCHEM1\BNA G\METHODS\SOM02.2-EPA-BG080915.M
 Title : SVOA CALIBRATION

72	15.493	2150	2154	2158	rBV3	191972	297042	5.26%	0.432%
73	15.546	2160	2163	2166	rVB	186892	221270	3.92%	0.322%
74	15.687	2183	2187	2191	rVB	516164	712062	12.61%	1.035%
75	15.951	2227	2232	2237	rVB	627807	898736	15.91%	1.306%
76	16.433	2306	2314	2319	rBV	1364267	2302810	40.77%	3.347%
77	17.197	2441	2444	2448	rVB2	267727	305154	5.40%	0.444%
78	17.250	2449	2453	2460	rVB	879921	1302090	23.05%	1.893%
79	17.444	2481	2486	2490	rBV2	1487007	2297825	40.68%	3.340%
80	17.485	2490	2493	2498	rVB	576456	754295	13.36%	1.096%
81	17.538	2499	2502	2506	rBV	356210	477016	8.45%	0.693%
82	18.025	2582	2585	2593	rVB4	521748	1126431	19.94%	1.637%
83	18.507	2663	2667	2672	rVB	2654082	3664392	64.88%	5.327%
84	18.572	2673	2678	2682	rVV	1993106	2722291	48.20%	3.957%
85	18.613	2682	2685	2691	rVB2	815038	1141730	20.21%	1.660%
86	18.789	2711	2715	2720	rBV	925248	1230975	21.79%	1.789%
87	19.324	2801	2806	2808	rBV	1839371	2563403	45.39%	3.726%
88	19.353	2808	2811	2819	rVB3	2316971	3622420	64.14%	5.266%
89	19.488	2830	2834	2838	rBV	1002978	1416504	25.08%	2.059%
90	19.541	2838	2843	2850	rVV2	3993942	5648015	100.00%	8.210%
91	19.629	2853	2858	2864	rVV	2497822	3681203	65.18%	5.351%
92	19.694	2865	2869	2873	rVB	1552629	1931492	34.20%	2.808%
93	19.823	2887	2891	2893	rBV2	799626	1218042	21.57%	1.771%
94	19.888	2899	2902	2906	rVB2	556576	658050	11.65%	0.957%
95	20.070	2929	2933	2939	rVB	2863283	4105660	72.69%	5.968%
96	20.335	2973	2978	2982	rBV3	1580121	2404570	42.57%	3.495%
97	20.382	2983	2986	2990	rVB	1308298	1585666	28.07%	2.305%
98	20.611	3021	3025	3029	rVB	1351645	1603267	28.39%	2.331%
99	20.664	3031	3034	3037	rBV2	718577	826773	14.64%	1.202%
100	21.610	3191	3195	3203	rVB	1897161	2596214	45.97%	3.774%

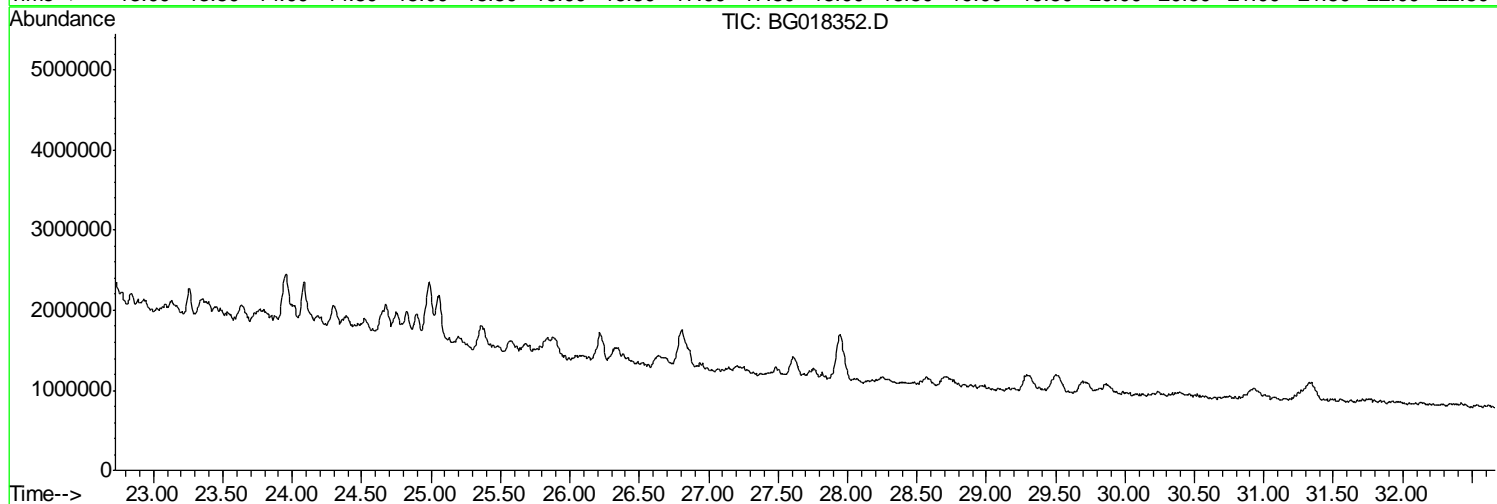
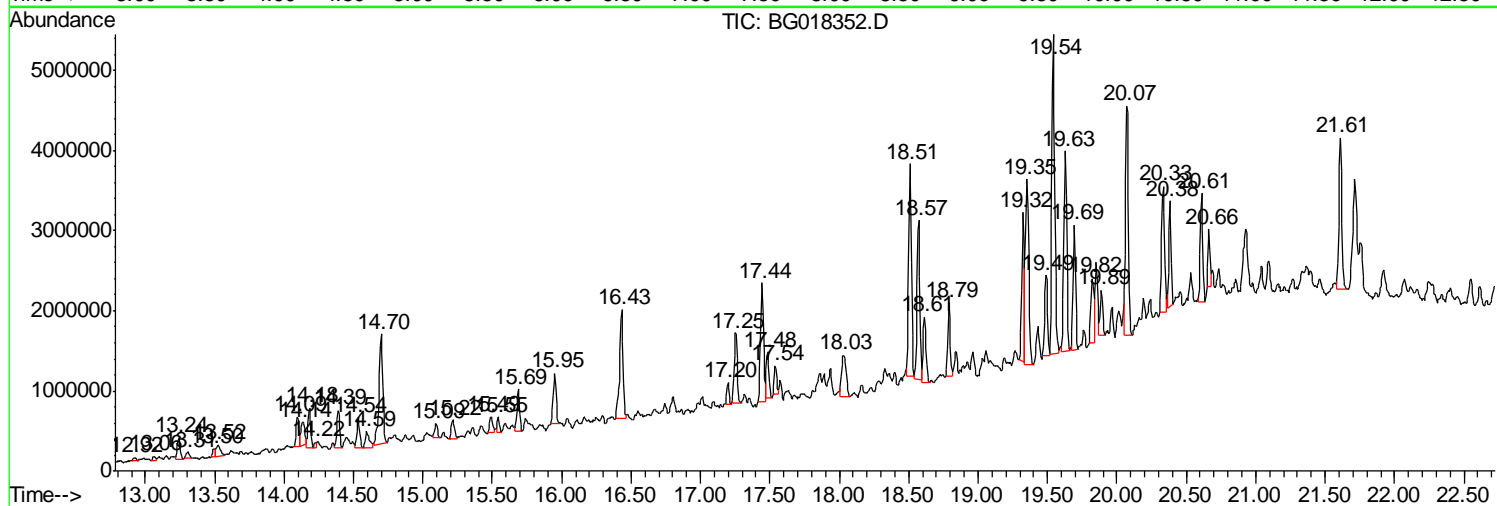
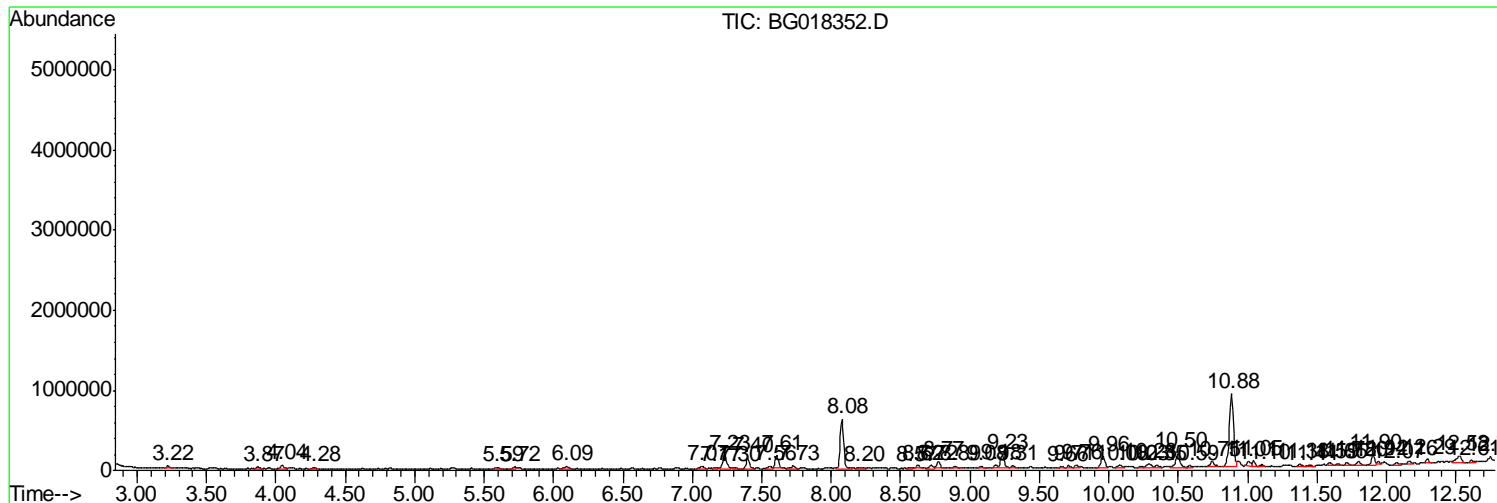
Sum of corrected areas: 68792941

Data Path : Z:\HPCHEM1\BNA G\DATA\BG080915\
 Data File : BG018352.D
 Acq On : 10 Aug 2015 5:53
 Operator : UM/TP
 Sample : G3136-20
 Misc :
 ALS Vial : 26 Sample Multiplier: 1

Instrument :
 BNA_G
 ClientSampleId :
 C02K2

Quant Method : Z:\HPCHEM1\BNA G\METHODS\SOM02.2-EPA-BG080915.M
 Quant Title : SVOA CALIBRATION

TIC Library : C:\DATABASE\NIST02.L
 TIC Integration Parameters: LSCINT.P



Data Path : Z:\HPCHEM1\BNA G\DATA\BG080915\
 Data File : BG018352.D
 Acq On : 10 Aug 2015 5:53
 Operator : UM/TP
 Sample : G3136-20
 Misc :
 ALS Vial : 26 Sample Multiplier: 1

Instrument :
 BNA_G
 ClientSampled :
 C02K2

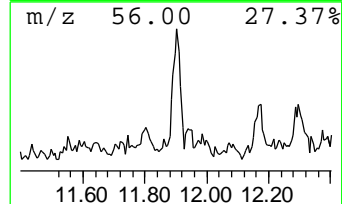
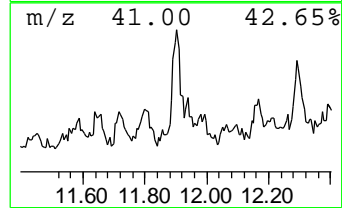
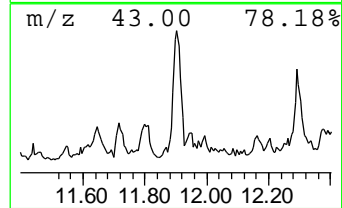
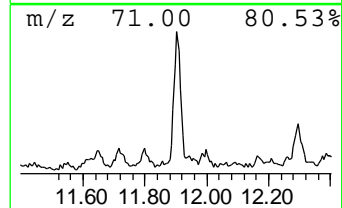
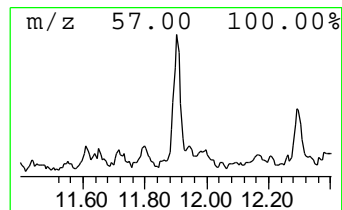
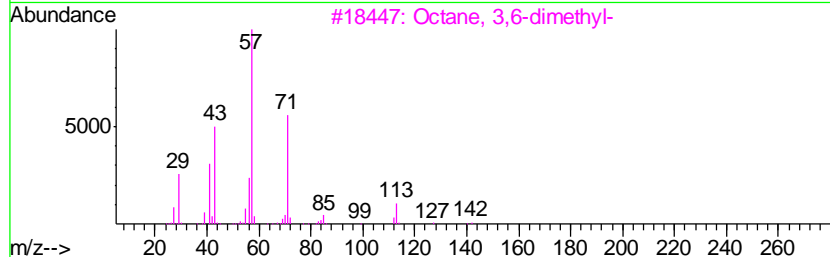
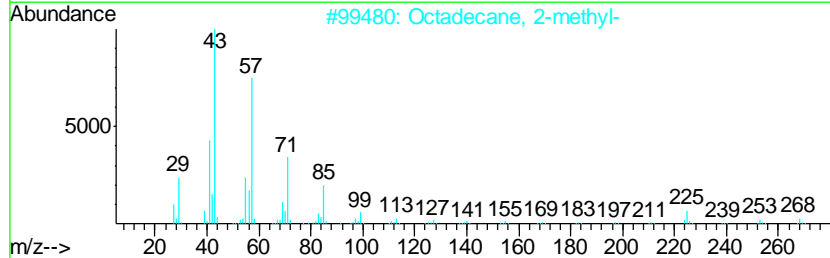
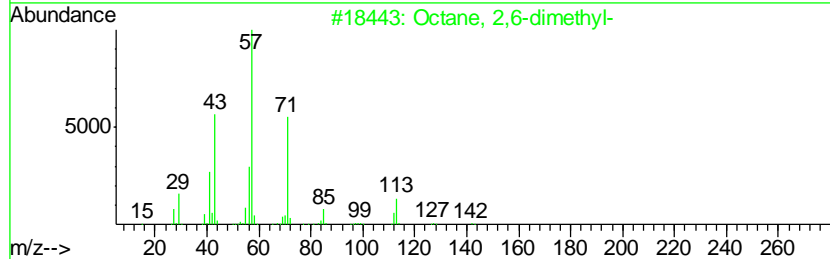
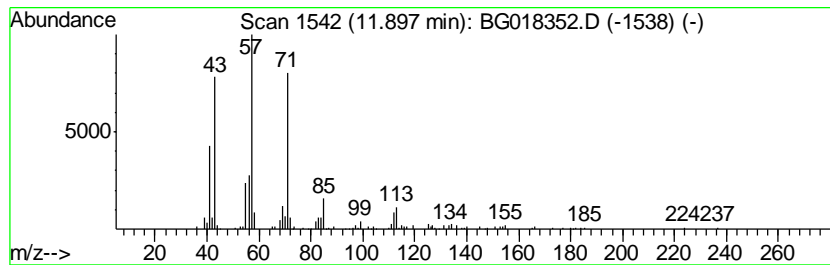
Quant Method : Z:\HPCHEM1\BNA G\METHODS\SOM02.2-EPA-BG080915.M
 Quant Title : SVOA CALIBRATION

TIC Library : C:\DATABASE\NIST02.L
 TIC Integration Parameters: LSCINT.P

 Peak Number 1 (DEL) Alkane: Straight-Chai... Concentration Rank 25

R.T.	EstConc	Area	Relative to ISTD	R.T.
11.90	2.16 ng/ul	197953	Naphthalene-d8	10.88

Hit#	of	Tentative ID	MW	MolForm	CAS#	Qual
1	5	Octane, 2,6-dimethyl-	142	C10H22	002051-30-1	86
2		Octadecane, 2-methyl-	268	C19H40	001560-88-9	72
3		Octane, 3,6-dimethyl-	142	C10H22	015869-94-0	72
4		Hexadecane, 7,9-dimethyl-	254	C18H38	021164-95-4	64
5		Octane, 2,3,7-trimethyl-	156	C11H24	062016-34-6	64



Data Path : Z:\HPCHEM1\BNA G\DATA\BG080915\
 Data File : BG018352.D
 Acq On : 10 Aug 2015 5:53
 Operator : UM/TP
 Sample : G3136-20
 Misc :
 ALS Vial : 26 Sample Multiplier: 1

Instrument :
 BNA_G
 ClientSampled :
 C02K2

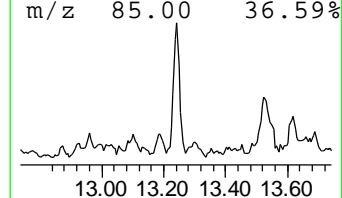
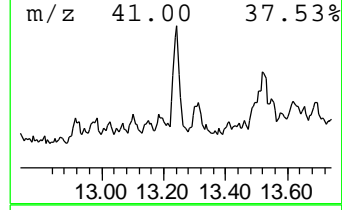
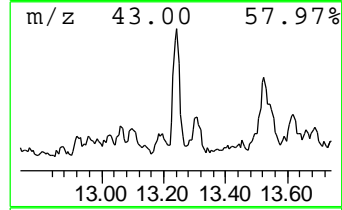
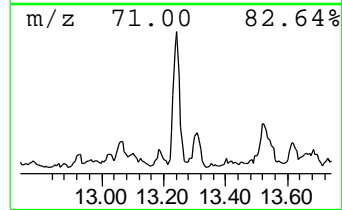
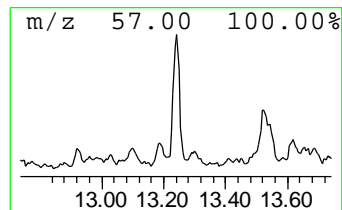
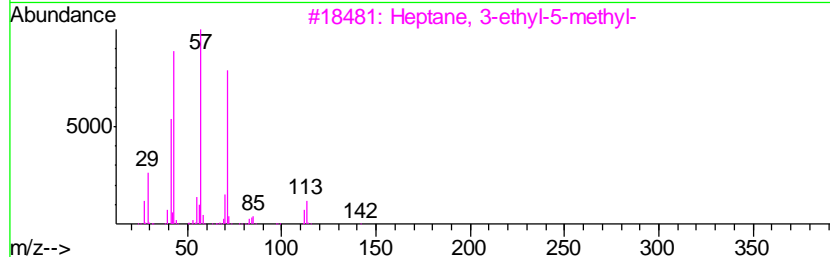
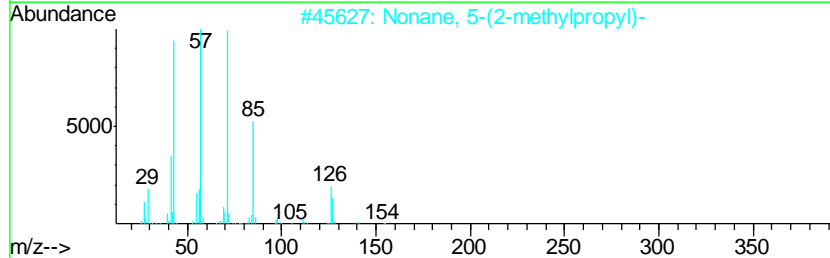
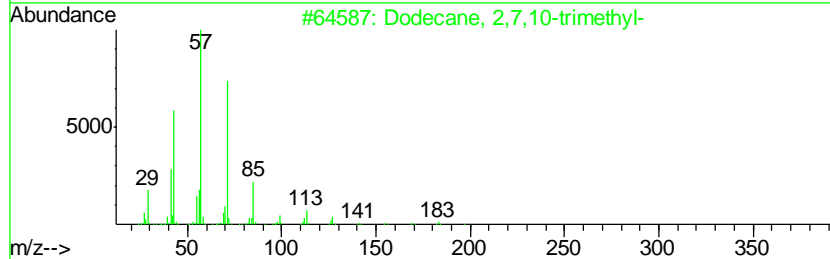
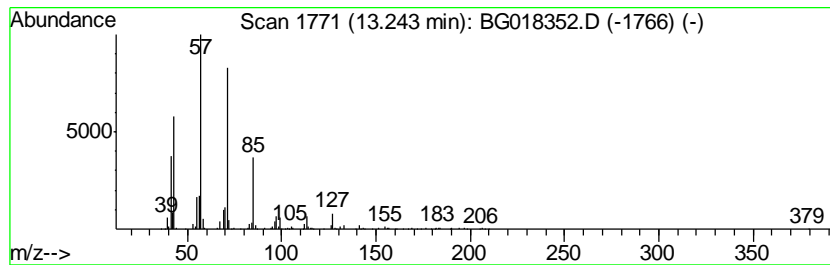
Quant Method : Z:\HPCHEM1\BNA G\METHODS\SOM02.2-EPA-BG080915.M
 Quant Title : SVOA CALIBRATION

TIC Library : C:\DATABASE\NIST02.L
 TIC Integration Parameters: LSCINT.P

 Peak Number 2 (DEL) Alkane: Straight-Chai... Concentration Rank 21

R.T.	EstConc	Area	Relative to ISTD	R.T.
13.24	2.97 ng/ul	379647	Acenaphthene-d10	14.70

Hit#	of	Tentative ID	MW	MolForm	CAS#	Qual
1	5	Dodecane, 2,7,10-trimethyl-	212	C15H32	074645-98-0	72
2		Nonane, 5-(2-methylpropyl)-	184	C13H28	062185-53-9	59
3		Heptane, 3-ethyl-5-methyl-	142	C10H22	052896-90-9	53
4		3-Hexanone, 4-ethyl-	128	C8H16O	006137-12-8	53
5		Uracil, 3-methyl-1-(tetrahydrofu...	196	C9H12N2O3	1000151-99-4	47



Data Path : Z:\HPCHEM1\BNA G\DATA\BG080915\
 Data File : BG018352.D
 Acq On : 10 Aug 2015 5:53
 Operator : UM/TP
 Sample : G3136-20
 Misc :
 ALS Vial : 26 Sample Multiplier: 1

Instrument :
 BNA_G
 ClientSampleID :
 C02K2

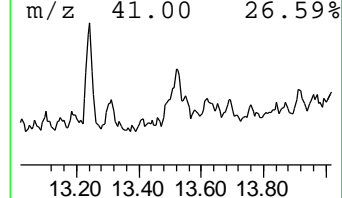
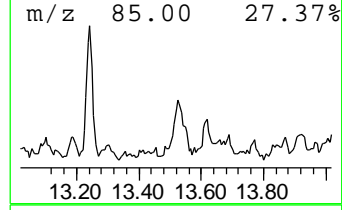
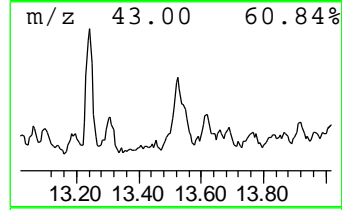
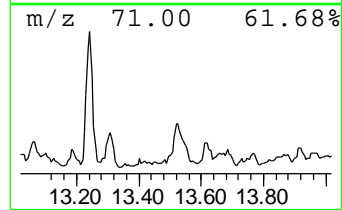
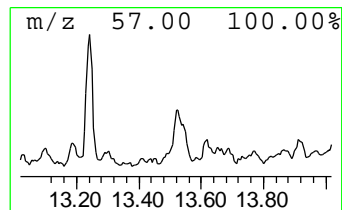
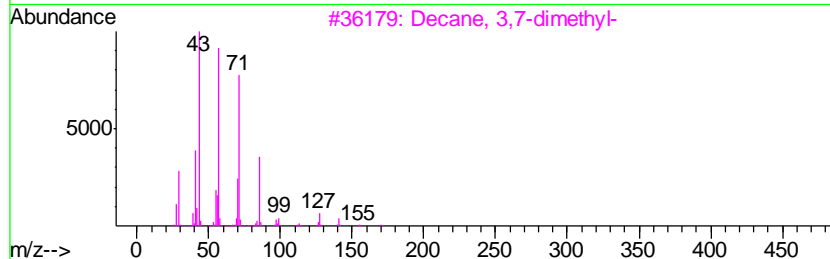
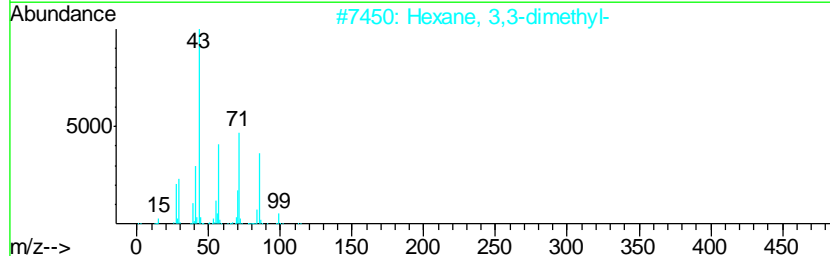
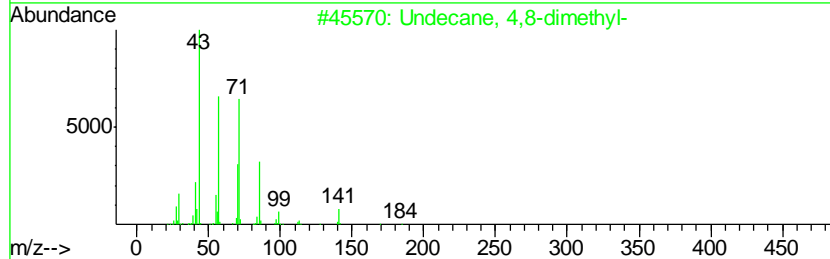
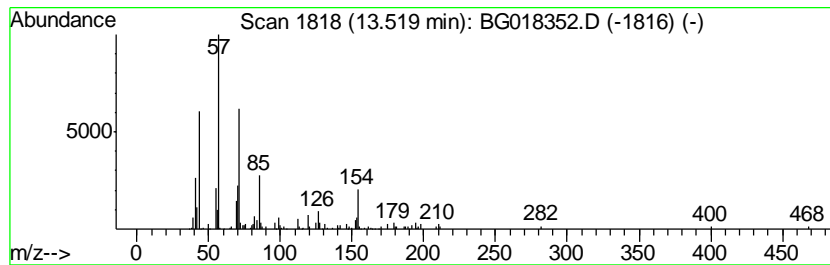
Quant Method : Z:\HPCHEM1\BNA G\METHODS\SOM02.2-EPA-BG080915.M
 Quant Title : SVOA CALIBRATION

TIC Library : C:\DATABASE\NIST02.L
 TIC Integration Parameters: LSCINT.P

 Peak Number 3 (DEL) Alkane: Straight-Chai... Concentration Rank 26

R.T.	EstConc	Area	Relative to ISTD	R.T.
13.52	2.13 ng/ul	272336	Acenaphthene-d10	14.70

Hit#	of	Tentative ID	MW	MolForm	CAS#	Qual
1	5	Undecane, 4,8-dimethyl-	184	C13H28	017301-33-6	50
2		Hexane, 3,3-dimethyl-	114	C8H18	000563-16-6	50
3		Decane, 3,7-dimethyl-	170	C12H26	017312-54-8	50
4		Decane, 2,3,8-trimethyl-	184	C13H28	062238-14-6	50
5		Nonane, 5-butyl-	184	C13H28	017312-63-9	43



Data Path : Z:\HPCHEM1\BNA G\DATA\BG080915\
 Data File : BG018352.D
 Acq On : 10 Aug 2015 5:53
 Operator : UM/TP
 Sample : G3136-20
 Misc :
 ALS Vial : 26 Sample Multiplier: 1

Instrument :
 BNA_G
 ClientSampled :
 C02K2

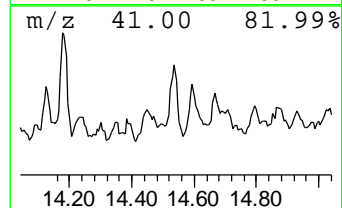
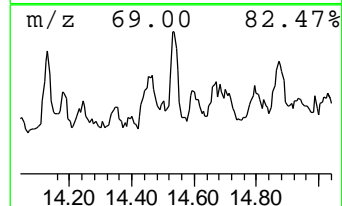
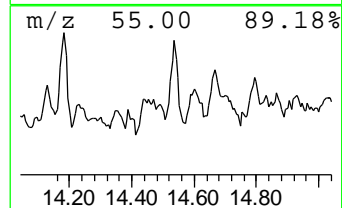
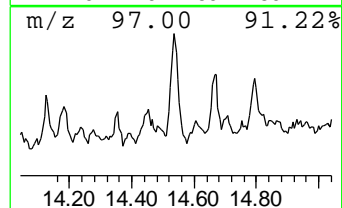
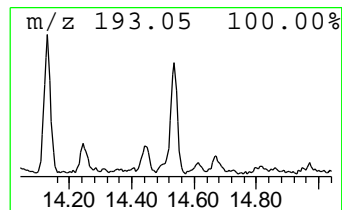
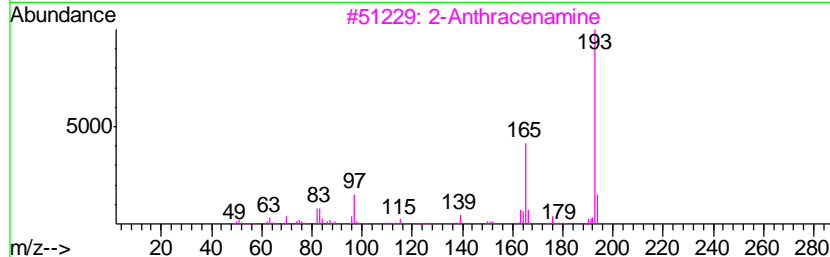
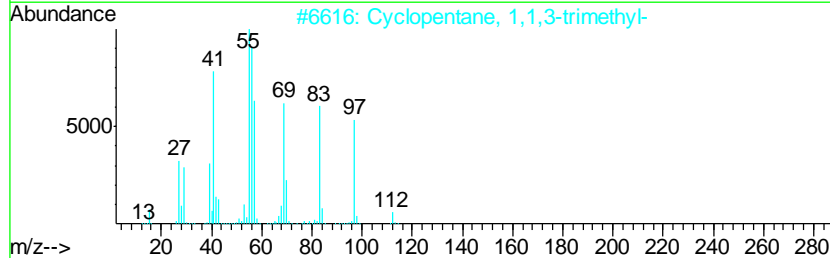
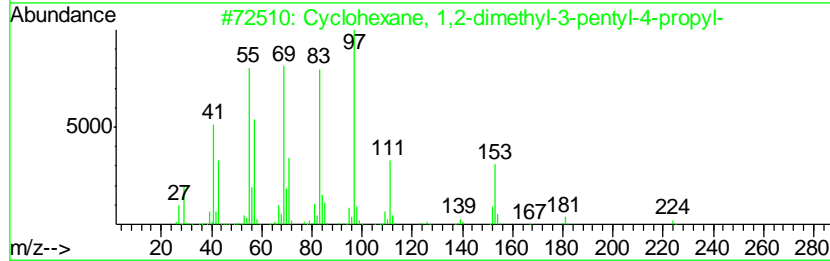
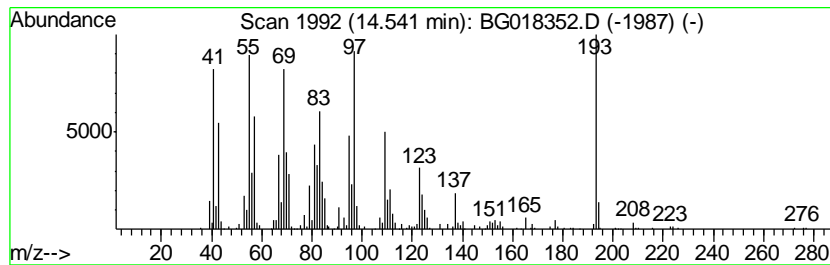
Quant Method : Z:\HPCHEM1\BNA G\METHODS\SOM02.2-EPA-BG080915.M
 Quant Title : SVOA CALIBRATION

TIC Library : C:\DATABASE\NIST02.L
 TIC Integration Parameters: LSCINT.P

 Peak Number 4 unknown-01 Concentration Rank 19

R.T.	EstConc	Area	Relative to ISTD	R.T.
14.54	4.43 ng/ul	566137	Acenaphthene-d10	14.70

Hit#	of	Tentative ID	MW	MolForm	CAS#	Qual
1	5	Cyclohexane, 1,2-dimethyl-3-pent...	224	C16H32	062376-17-4	45
2		Cyclopentane, 1,1,3-trimethyl-	112	C8H16	004516-69-2	30
3		2-Anthracenamine	193	C14H11N	000613-13-8	30
4		3,5,9-Undecatrien-2-one, 6,10-di...	192	C13H20O	003548-78-5	25
5		Cyclopentane, 1,1,3-trimethyl-	112	C8H16	004516-69-2	25



Data Path : Z:\HPCHEM1\BNA G\DATA\BG080915\
 Data File : BG018352.D
 Acq On : 10 Aug 2015 5:53
 Operator : UM/TP
 Sample : G3136-20
 Misc :
 ALS Vial : 26 Sample Multiplier: 1

Instrument :
 BNA_G
 ClientSampleID :
 C02K2

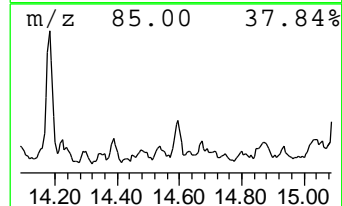
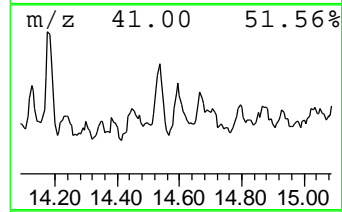
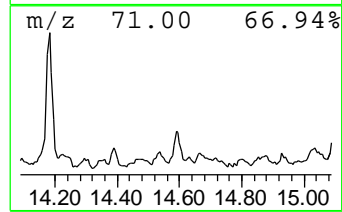
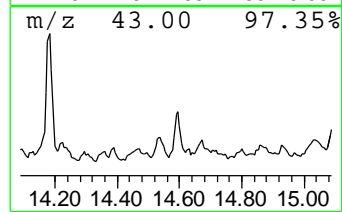
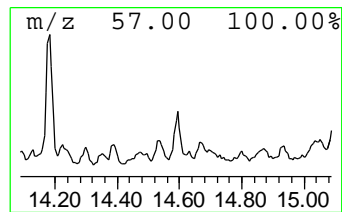
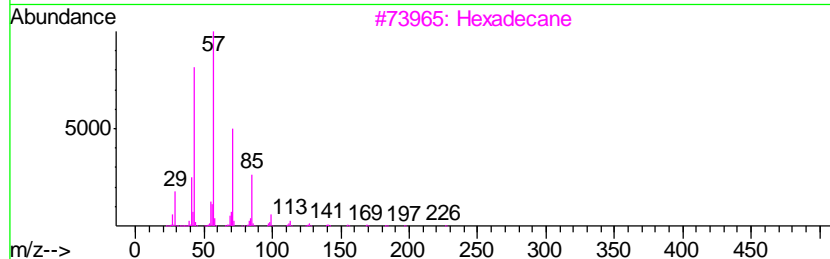
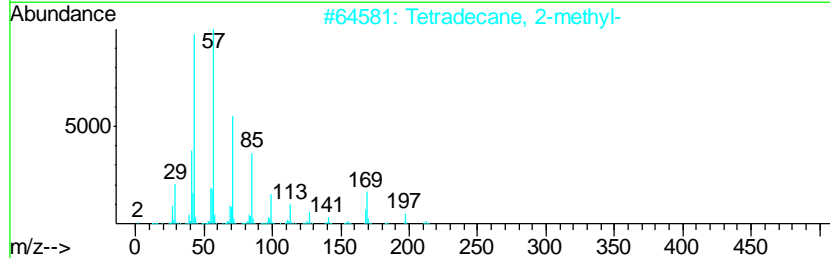
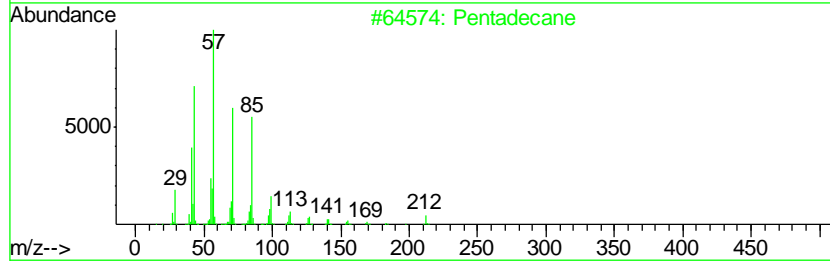
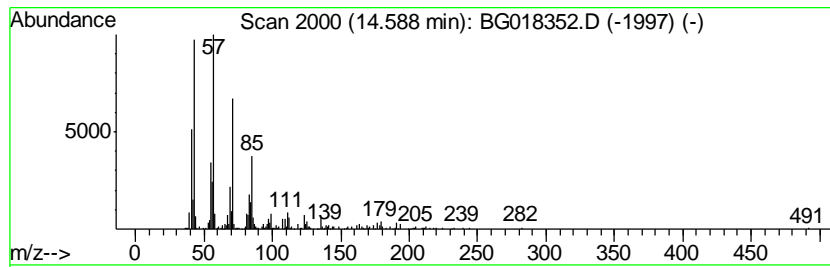
Quant Method : Z:\HPCHEM1\BNA G\METHODS\SOM02.2-EPA-BG080915.M
 Quant Title : SVOA CALIBRATION

TIC Library : C:\DATABASE\NIST02.L
 TIC Integration Parameters: LSCINT.P

 Peak Number 5 (DEL) Alkane: Straight-Chai... Concentration Rank 20

R.T.	EstConc	Area	Relative to ISTD	R.T.
14.59	3.04 ng/ul	388460	Acenaphthene-d10	14.70

Hit#	of	Tentative ID	MW	MolForm	CAS#	Qual
1	5	Pentadecane	212	C15H32	000629-62-9	76
2		Tetradecane, 2-methyl-	212	C15H32	001560-95-8	58
3		Hexadecane	226	C16H34	000544-76-3	58
4		Nonane, 5-butyl-	184	C13H28	017312-63-9	52
5		Tetradecane	198	C14H30	000629-59-4	50



Data Path : Z:\HPCHEM1\BNA G\DATA\BG080915\
 Data File : BG018352.D
 Acq On : 10 Aug 2015 5:53
 Operator : UM/TP
 Sample : G3136-20
 Misc :
 ALS Vial : 26 Sample Multiplier: 1

Instrument :
 BNA_G
 ClientSampled :
 C02K2

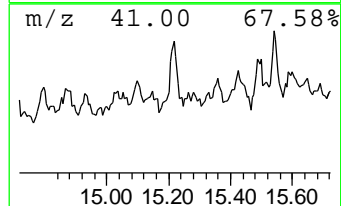
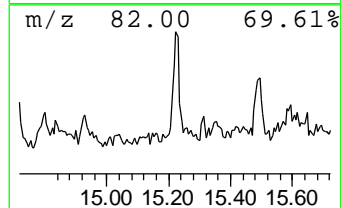
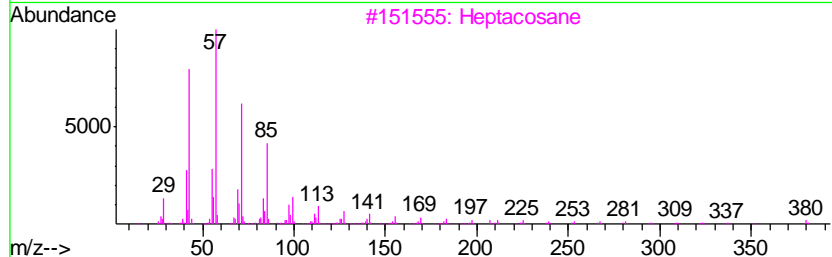
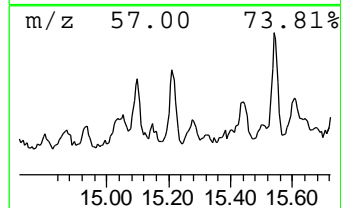
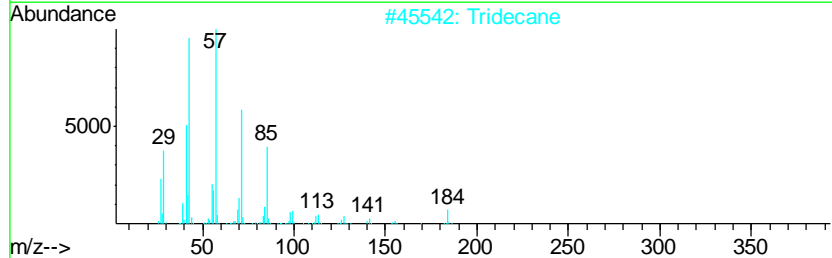
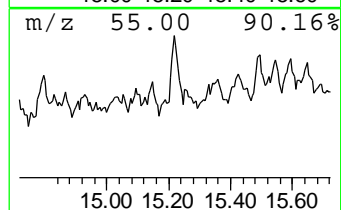
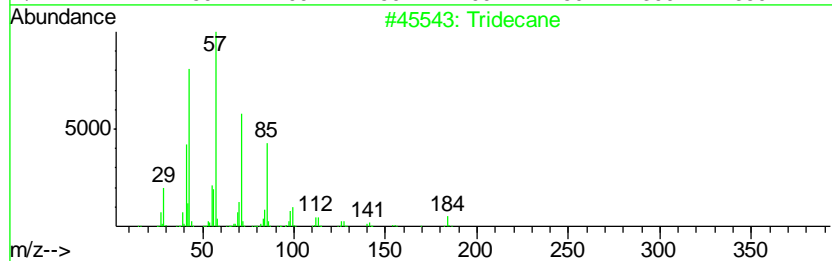
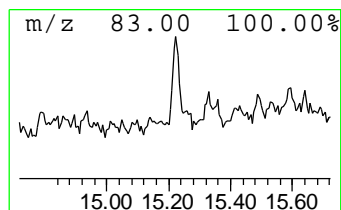
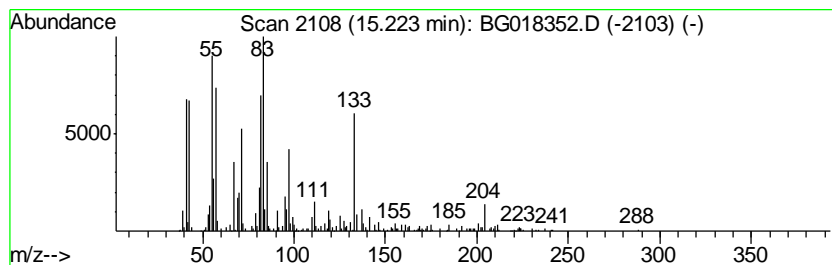
Quant Method : Z:\HPCHEM1\BNA G\METHODS\SOM02.2-EPA-BG080915.M
 Quant Title : SVOA CALIBRATION

TIC Library : C:\DATABASE\NIST02.L
 TIC Integration Parameters: LSCINT.P

 Peak Number 6 (DEL) Alkane: Straight-Chai... Concentration Rank 22

R.T.	EstConc	Area	Relative to ISTD	R.T.
15.22	2.91 ng/ul	372232	Acenaphthene-d10	14.70

Hit#	of	Tentative ID	MW	MolForm	CAS#	Qual
1	5	Tridecane	184	C13H28	000629-50-5	50
2		Tridecane	184	C13H28	000629-50-5	50
3		Heptacosane	380	C27H56	000593-49-7	49
4		Tetratetracontane	619	C44H90	007098-22-8	49
5		Tritetracontane	605	C43H88	007098-21-7	47



Data Path : Z:\HPCHEM1\BNA G\DATA\BG080915\
 Data File : BG018352.D
 Acq On : 10 Aug 2015 5:53
 Operator : UM/TP
 Sample : G3136-20
 Misc :
 ALS Vial : 26 Sample Multiplier: 1

Instrument :
 BNA_G
 ClientSampleID :
 C02K2

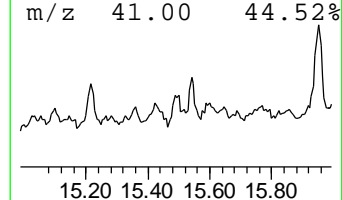
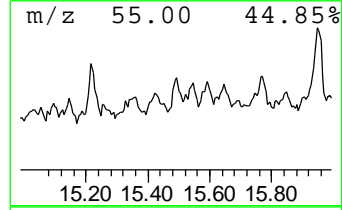
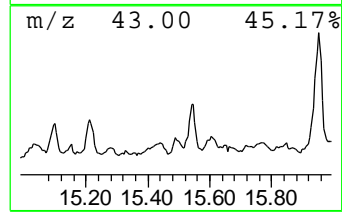
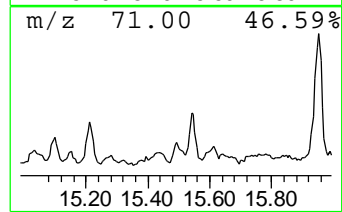
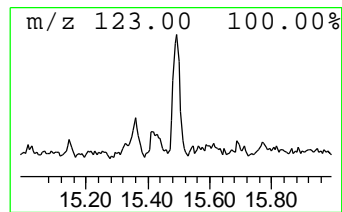
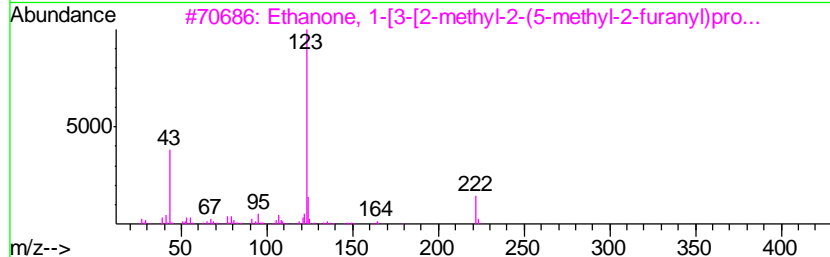
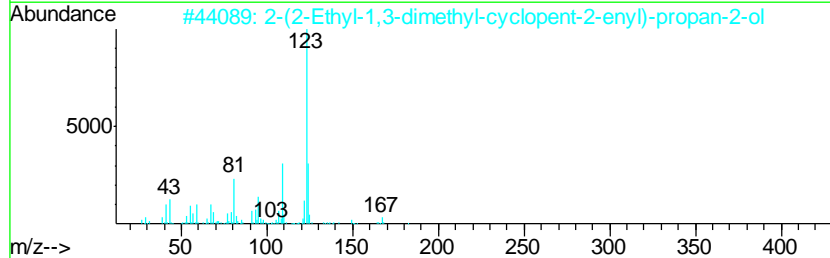
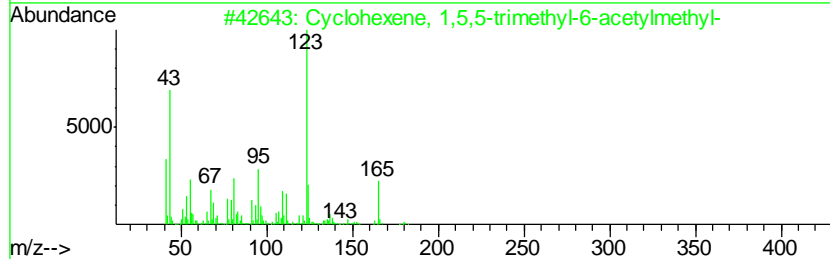
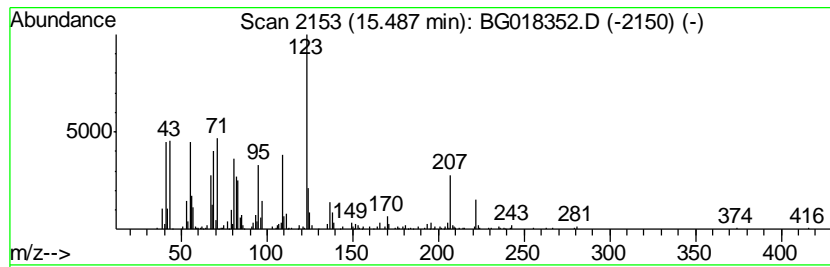
Quant Method : Z:\HPCHEM1\BNA G\METHODS\SOM02.2-EPA-BG080915.M
 Quant Title : SVOA CALIBRATION

TIC Library : C:\DATABASE\NIST02.L
 TIC Integration Parameters: LSCINT.P

 Peak Number 7 unknown-02 Concentration Rank 24

R.T.	EstConc	Area	Relative to ISTD	R.T.
15.49	2.32 ng/ul	297042	Acenaphthene-d10	14.70

Hit#	of	Tentative ID	MW	MolForm	CAS#	Qual
1	5	Cyclohexene, 1,5,5-trimethyl-6-a...	180	C12H20O	211563-96-1	43
2		2-(2-Ethyl-1,3-dimethyl-cyclopent...	182	C12H22O	1000186-82-4	43
3		Ethanone, 1-[3-[2-methyl-2-(5-me...	222	C13H18O3	080114-28-9	38
4		3-Fluorobenzoic acid, 2-tridecyl...	322	C20H31FO2	1000280-60-2	38
5		3-Fluorobenzoic acid, 3-methylbu...	208	C12H13FO2	154559-38-3	38



Data Path : Z:\HPCHEM1\BNA G\DATA\BG080915\
 Data File : BG018352.D
 Acq On : 10 Aug 2015 5:53
 Operator : UM/TP
 Sample : G3136-20
 Misc :
 ALS Vial : 26 Sample Multiplier: 1

Instrument :
 BNA_G
 ClientSampled :
 C02K2

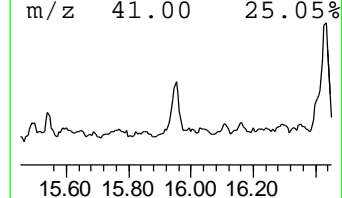
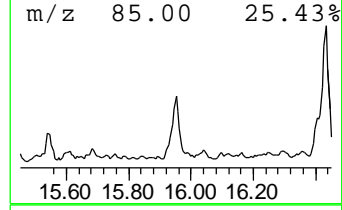
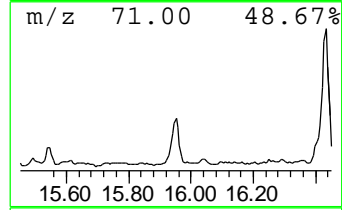
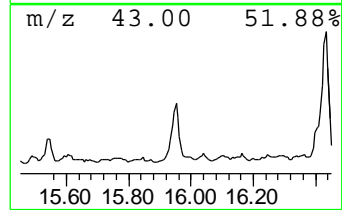
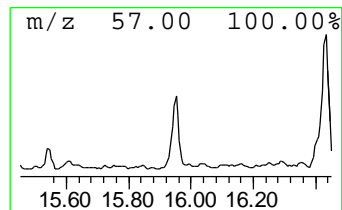
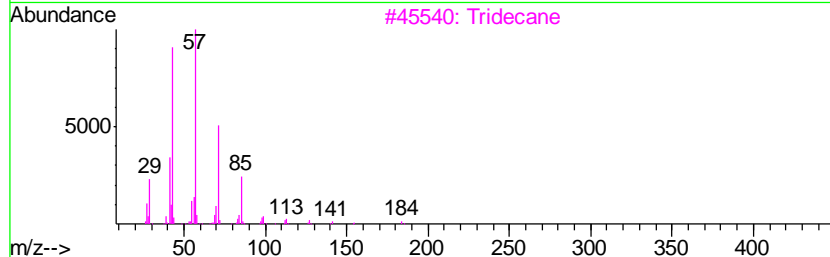
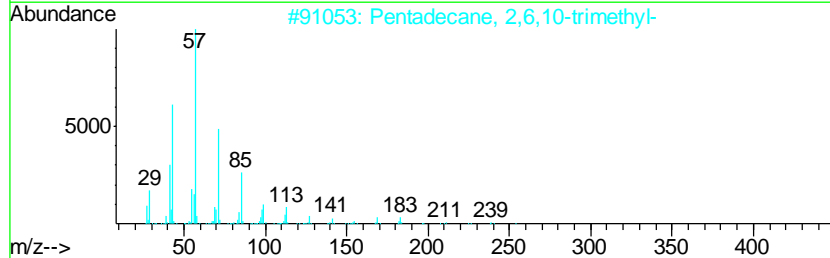
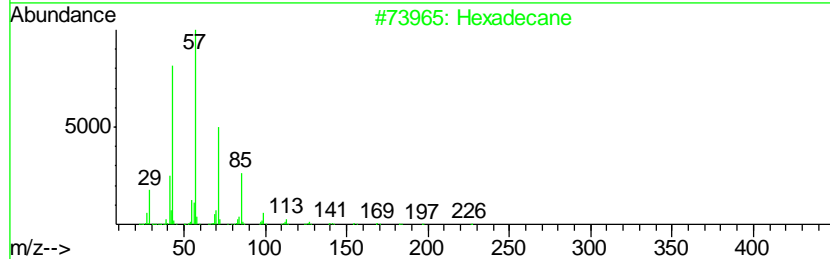
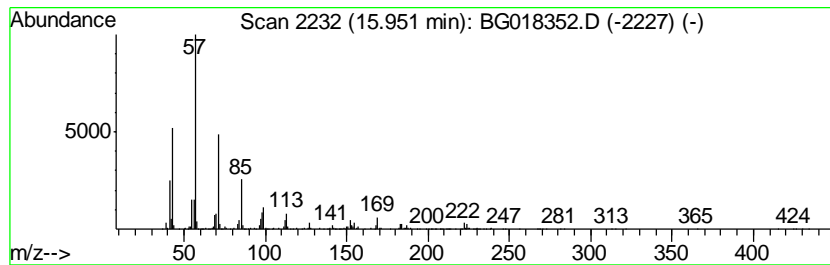
Quant Method : Z:\HPCHEM1\BNA G\METHODS\SOM02.2-EPA-BG080915.M
 Quant Title : SVOA CALIBRATION

TIC Library : C:\DATABASE\NIST02.L
 TIC Integration Parameters: LSCINT.P

 Peak Number 8 (DEL) Alkane: Straight-Chai... Concentration Rank 17

R.T.	EstConc	Area	Relative to ISTD	R.T.
15.95	7.03 ng/ul	898736	Acenaphthene-d10	14.70

Hit#	of	Tentative ID	MW	MolForm	CAS#	Qual
1	5	Hexadecane	226	C16H34	000544-76-3	81
2		Pentadecane, 2,6,10-trimethyl-	254	C18H38	003892-00-0	72
3		Tridecane	184	C13H28	000629-50-5	64
4		Tridecane	184	C13H28	000629-50-5	64
5		Decane, 1-bromo-2-methyl-	234	C11H23Br	127839-47-8	64



Data Path : Z:\HPCHEM1\BNA G\DATA\BG080915\
 Data File : BG018352.D
 Acq On : 10 Aug 2015 5:53
 Operator : UM/TP
 Sample : G3136-20
 Misc :
 ALS Vial : 26 Sample Multiplier: 1

Instrument :
 BNA_G
 ClientSampled :
 C02K2

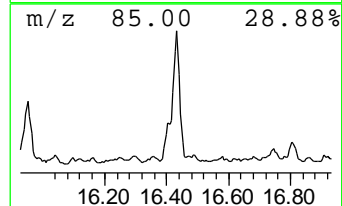
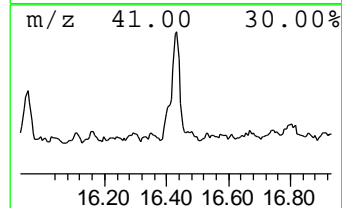
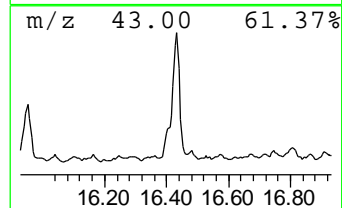
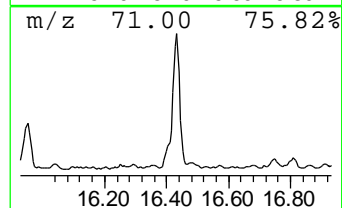
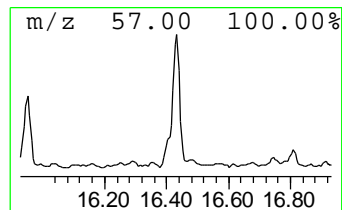
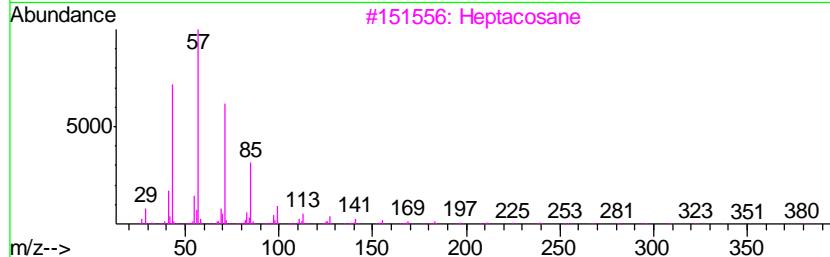
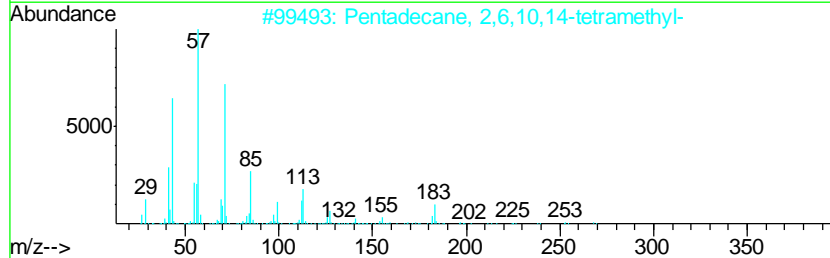
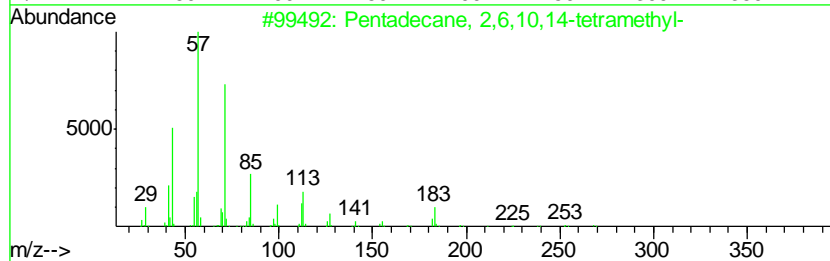
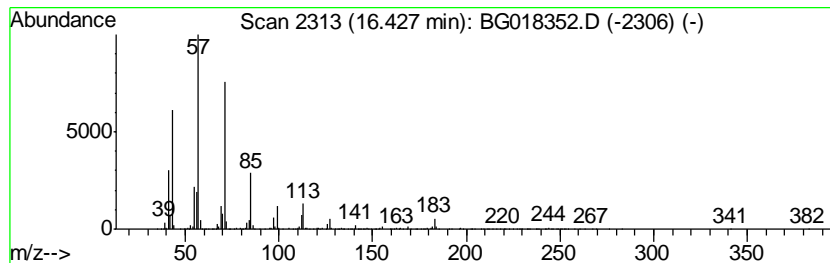
Quant Method : Z:\HPCHEM1\BNA G\METHODS\SOM02.2-EPA-BG080915.M
 Quant Title : SVOA CALIBRATION

TIC Library : C:\DATABASE\NIST02.L
 TIC Integration Parameters: LSCINT.P

 Peak Number 9 (DEL) Alkane: Straight-Chai... Concentration Rank 8

R.T.	EstConc	Area	Relative to ISTD	R.T.
16.43	20.04 ng/ul	2302810	Phenanthrene-d10	17.44

Hit#	of	Tentative ID	MW	MolForm	CAS#	Qual
1	5	Pentadecane, 2,6,10,14-tetramethyl-	268	C19H40	001921-70-6	90
2		Pentadecane, 2,6,10,14-tetramethyl-	268	C19H40	001921-70-6	90
3		Heptacosane	380	C27H56	000593-49-7	86
4		Tridecane, 5-propyl-	226	C16H34	055045-11-9	83
5		Octadecane, 2,6-dimethyl-	282	C20H42	075163-97-2	83



Data Path : Z:\HPCHEM1\BNA G\DATA\BG080915\
 Data File : BG018352.D
 Acq On : 10 Aug 2015 5:53
 Operator : UM/TP
 Sample : G3136-20
 Misc :
 ALS Vial : 26 Sample Multiplier: 1

Instrument :
 BNA_G
 ClientSampleID :
 C02K2

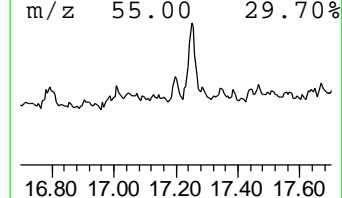
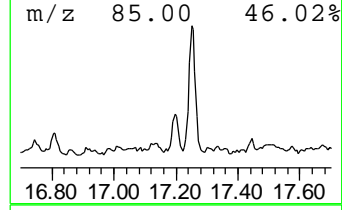
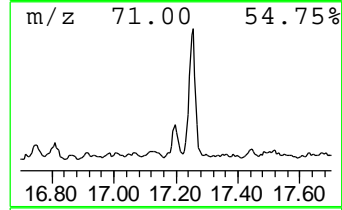
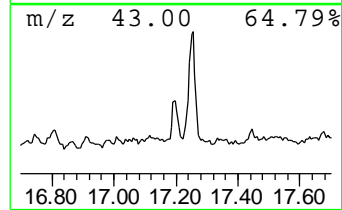
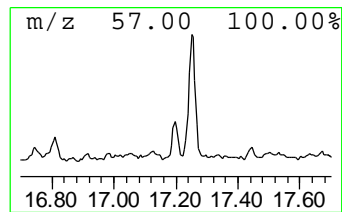
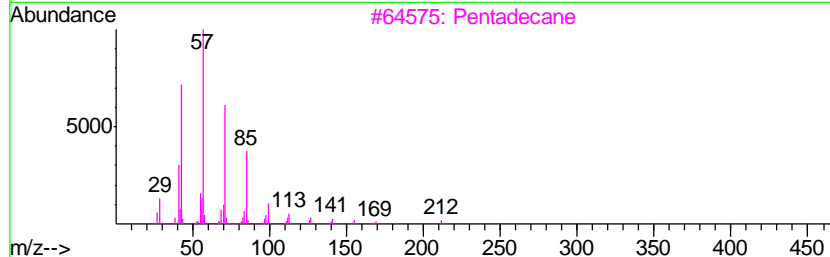
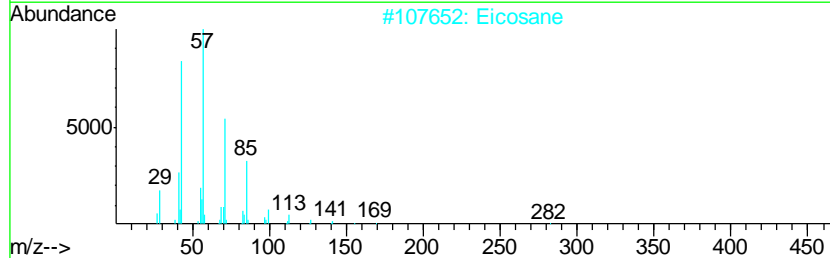
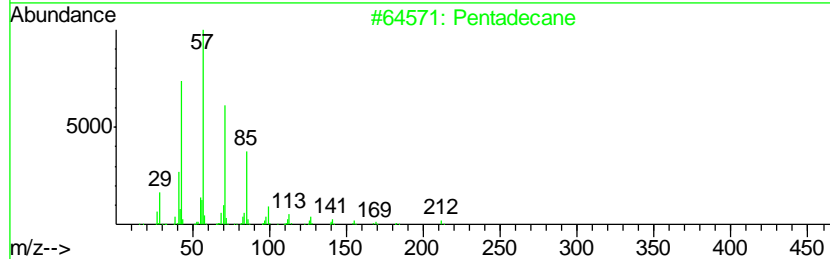
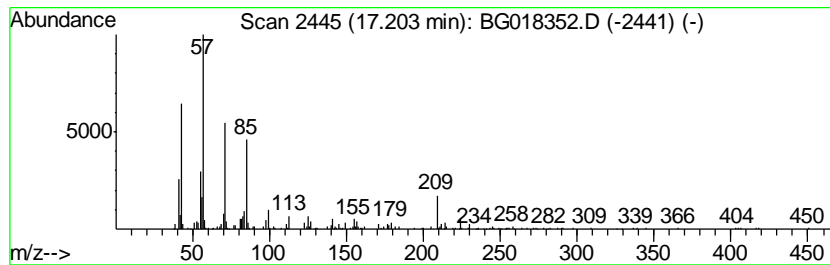
Quant Method : Z:\HPCHEM1\BNA G\METHODS\SOM02.2-EPA-BG080915.M
 Quant Title : SVOA CALIBRATION

TIC Library : C:\DATABASE\NIST02.L
 TIC Integration Parameters: LSCINT.P

 Peak Number 10 (DEL) Alkane: Straight-Chai... Concentration Rank 23

R.T.	EstConc	Area	Relative to ISTD	R.T.
17.20	2.66 ng/ul	305154	Phenanthrene-d10	17.44

Hit#	of	Tentative ID	MW	MolForm	CAS#	Qual
1	5	Pentadecane	212	C15H32	000629-62-9	95
2		Eicosane	282	C20H42	000112-95-8	95
3		Pentadecane	212	C15H32	000629-62-9	94
4		Heptadecane	240	C17H36	000629-78-7	93
5		Nonadecane	268	C19H40	000629-92-5	83



Data Path : Z:\HPCHEM1\BNA G\DATA\BG080915\
 Data File : BG018352.D
 Acq On : 10 Aug 2015 5:53
 Operator : UM/TP
 Sample : G3136-20
 Misc :
 ALS Vial : 26 Sample Multiplier: 1

Instrument :
 BNA_G
 ClientSampleID :
 C02K2

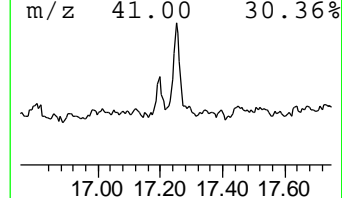
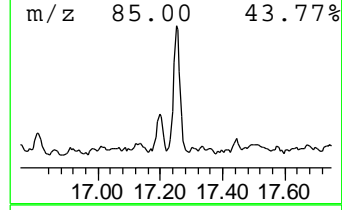
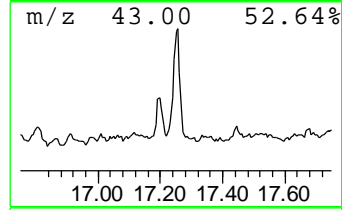
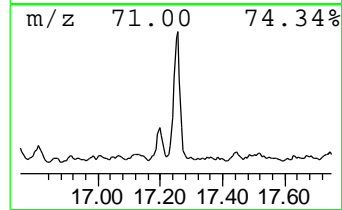
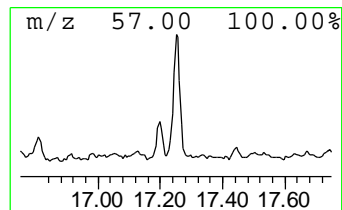
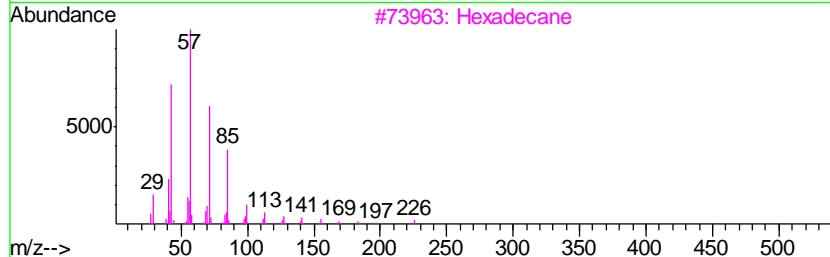
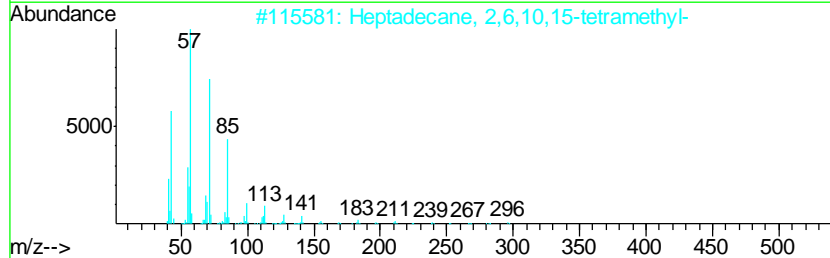
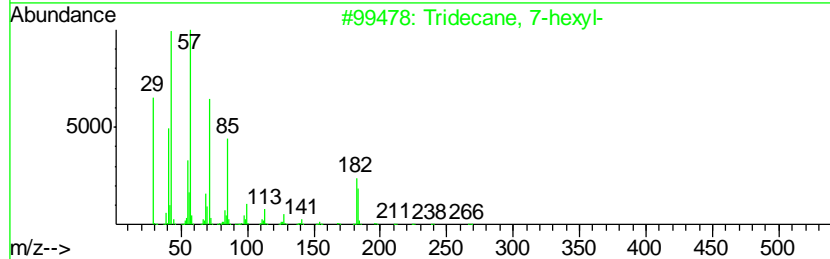
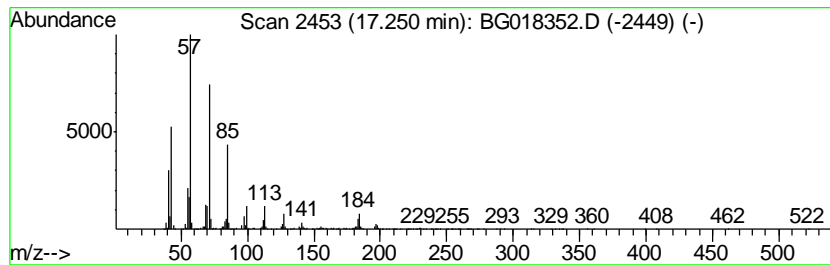
Quant Method : Z:\HPCHEM1\BNA G\METHODS\SOM02.2-EPA-BG080915.M
 Quant Title : SVOA CALIBRATION

TIC Library : C:\DATABASE\NIST02.L
 TIC Integration Parameters: LSCINT.P

 Peak Number 11 (DEL) Alkane: Straight-Chai... Concentration Rank 13

R.T.	EstConc	Area	Relative to ISTD	R.T.
17.25	11.33 ng/ul	1302090	Phenanthrene-d10	17.44

Hit#	of	Tentative ID	MW	MolForm	CAS#	Qual
1	5	Tridecane, 7-hexyl-	268	C19H40	007225-66-3	93
2		Heptadecane, 2,6,10,15-tetramethyl-	296	C21H44	054833-48-6	87
3		Hexadecane	226	C16H34	000544-76-3	87
4		Tridecane	184	C13H28	000629-50-5	87
5		Tridecane, 6-propyl-	226	C16H34	055045-10-8	87



Data Path : Z:\HPCHEM1\BNA G\DATA\BG080915\
 Data File : BG018352.D
 Acq On : 10 Aug 2015 5:53
 Operator : UM/TP
 Sample : G3136-20
 Misc :
 ALS Vial : 26 Sample Multiplier: 1

Instrument :
 BNA_G
 ClientSampled :
 C02K2

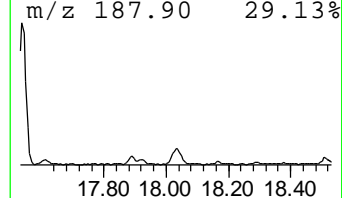
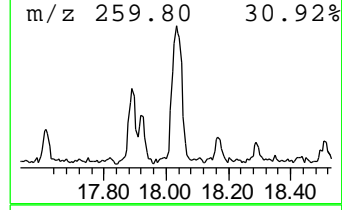
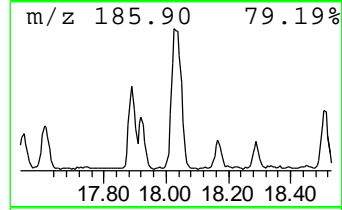
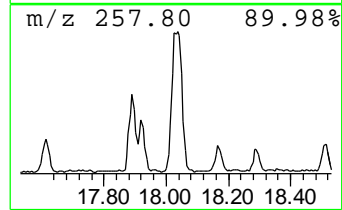
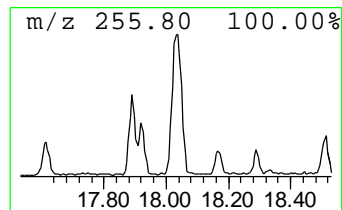
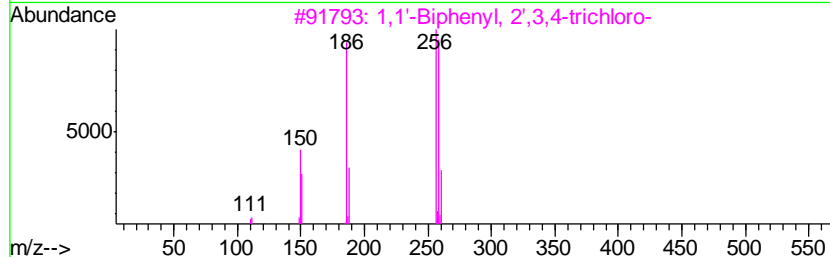
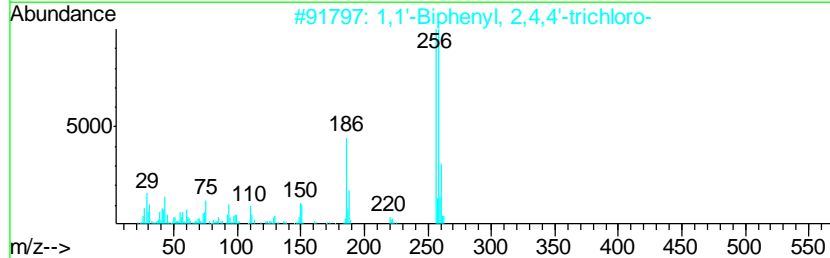
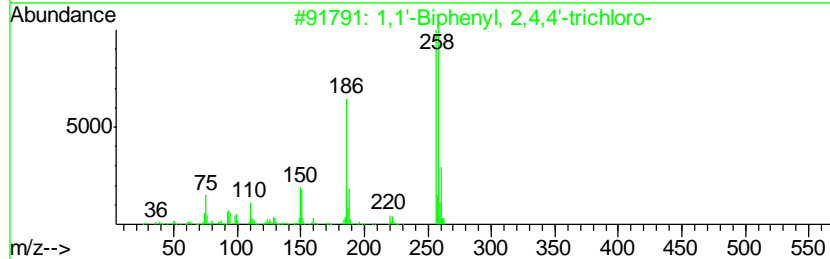
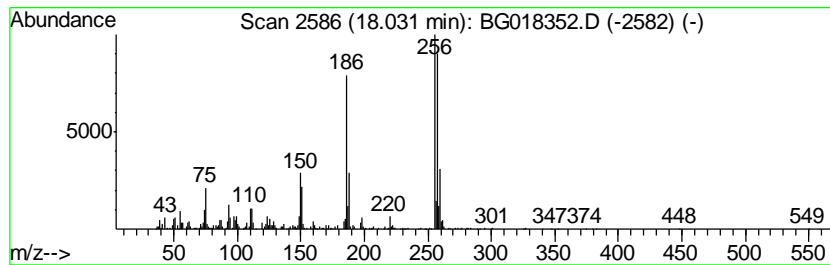
Quant Method : Z:\HPCHEM1\BNA G\METHODS\SOM02.2-EPA-BG080915.M
 Quant Title : SVOA CALIBRATION

TIC Library : C:\DATABASE\NIST02.L
 TIC Integration Parameters: LSCINT.P

 Peak Number 12 1,1'-Biphenyl, 2,4,4'-trich... Concentration Rank 16

R.T.	EstConc	Area	Relative to ISTD	R.T.
18.03	9.80 ng/ul	1126430	Phenanthrene-d10	17.44

Hit#	of	Tentative ID	MW	MolForm	CAS#	Qual
1	5	1,1'-Biphenyl, 2,4,4'-trichloro-	256	C12H7Cl3	007012-37-5	98
2		1,1'-Biphenyl, 2,4,4'-trichloro-	256	C12H7Cl3	007012-37-5	96
3		1,1'-Biphenyl, 2',3,4-trichloro-	256	C12H7Cl3	038444-86-9	96
4		1,1'-Biphenyl, 2,4',5-trichloro-	256	C12H7Cl3	016606-02-3	96
5		1,1'-Biphenyl, 2,4,4'-trichloro-	256	C12H7Cl3	007012-37-5	96



Data Path : Z:\HPCHEM1\BNA G\DATA\BG080915\
 Data File : BG018352.D
 Acq On : 10 Aug 2015 5:53
 Operator : UM/TP
 Sample : G3136-20
 Misc :
 ALS Vial : 26 Sample Multiplier: 1

Instrument :
 BNA_G
 ClientSampled :
 C02K2

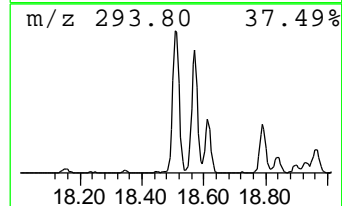
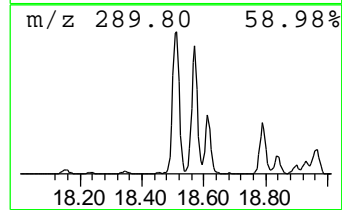
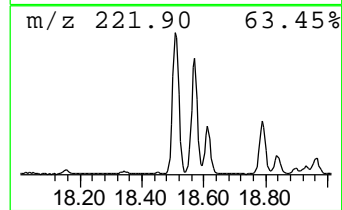
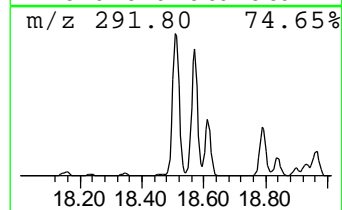
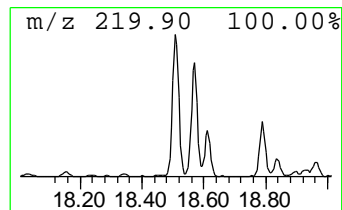
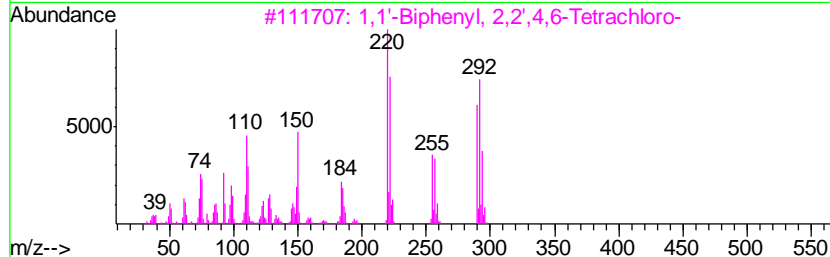
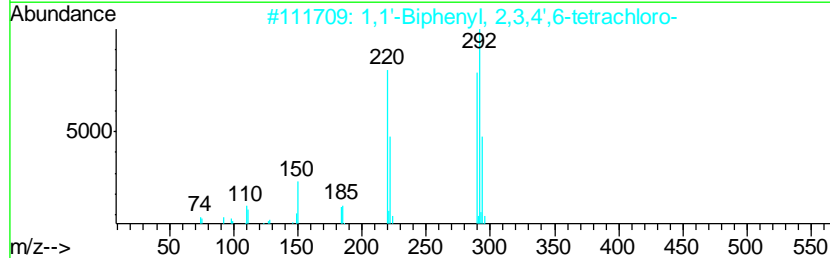
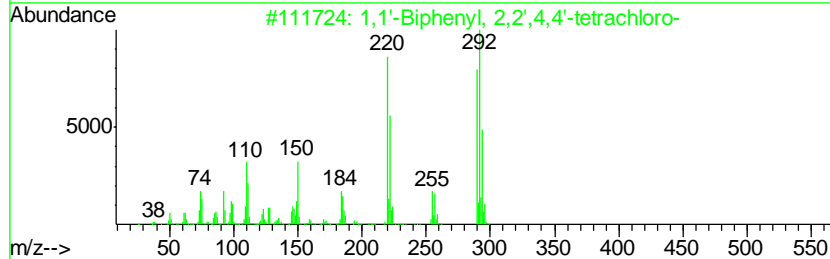
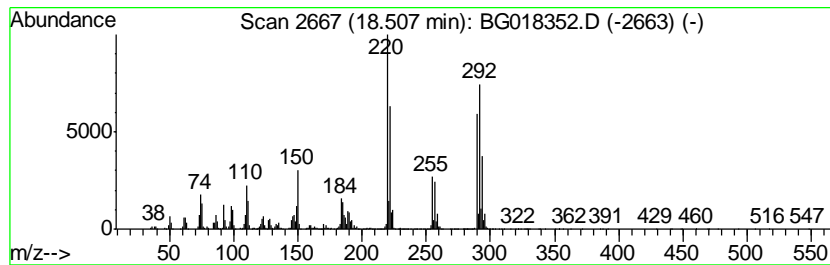
Quant Method : Z:\HPCHEM1\BNA G\METHODS\SOM02.2-EPA-BG080915.M
 Quant Title : SVOA CALIBRATION

TIC Library : C:\DATABASE\NIST02.L
 TIC Integration Parameters: LSCINT.P

 Peak Number 13 1,1'-Biphenyl, 2,2',4,4'-te... Concentration Rank 2

R.T.	EstConc	Area	Relative to ISTD	R.T.
18.51	31.89 ng/ul	3664390	Phenanthrene-d10	17.44

Hit#	of	Tentative ID	MW	MolForm	CAS#	Qual
1	5	1,1'-Biphenyl, 2,2',4,4'-tetrach...	290	C12H6Cl4	002437-79-8	99
2		1,1'-Biphenyl, 2,3,4',6-tetrachl...	290	C12H6Cl4	052663-58-8	99
3		1,1'-Biphenyl, 2,2',4,6-Tetrachl...	290	C12H6Cl4	062796-65-0	99
4		1,1'-Biphenyl, 2,3,3',5'-tetrach...	290	C12H6Cl4	041464-49-7	99
5		1,1'-Biphenyl, 2,2',4,5'-tetrach...	290	C12H6Cl4	041464-40-8	99



Data Path : Z:\HPCHEM1\BNA G\DATA\BG080915\
 Data File : BG018352.D
 Acq On : 10 Aug 2015 5:53
 Operator : UM/TP
 Sample : G3136-20
 Misc :
 ALS Vial : 26 Sample Multiplier: 1

Instrument :
 BNA_G
 ClientSampled :
 C02K2

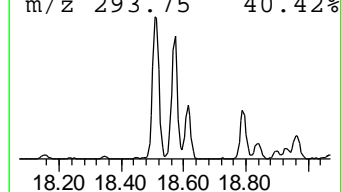
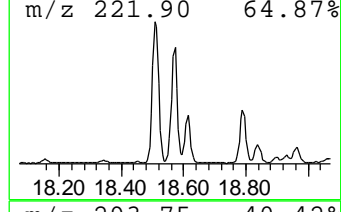
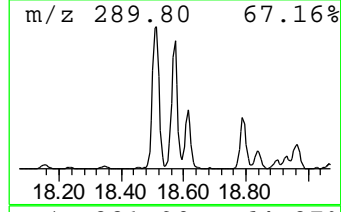
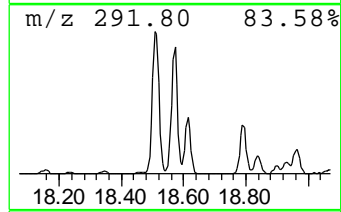
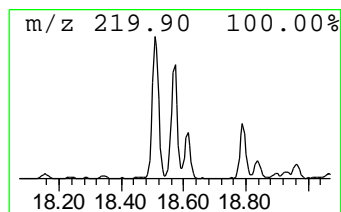
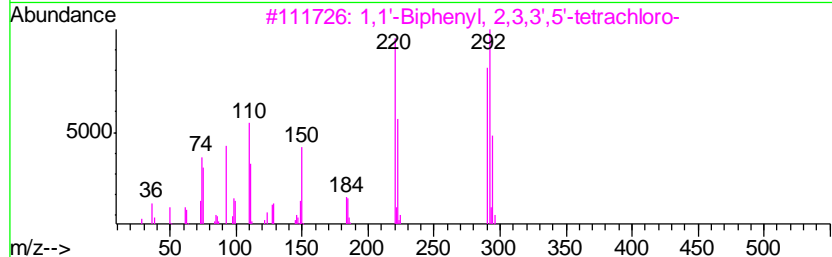
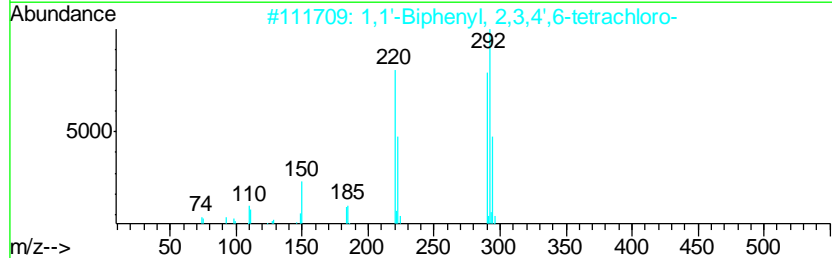
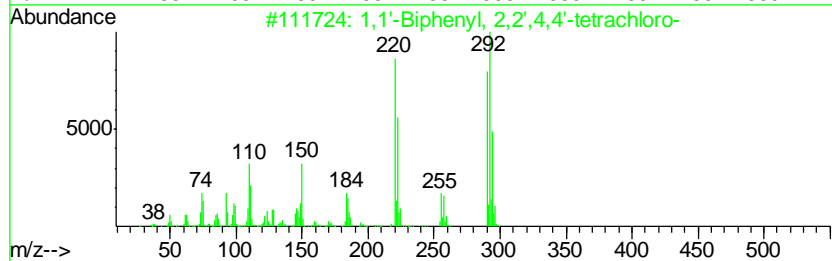
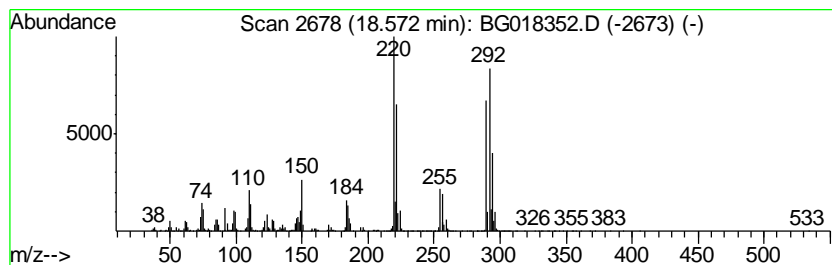
Quant Method : Z:\HPCHEM1\BNA G\METHODS\SOM02.2-EPA-BG080915.M
 Quant Title : SVOA CALIBRATION

TIC Library : C:\DATABASE\NIST02.L
 TIC Integration Parameters: LSCINT.P

 Peak Number 14 1,1'-Biphenyl, 2,3,4',6-tet... Concentration Rank 6

R.T.	EstConc	Area	Relative to ISTD	R.T.
18.57	23.69 ng/ul	2722290	Phenanthrene-d10	17.44

Hit#	of	Tentative ID	MW	MolForm	CAS#	Qual
1	5	1,1'-Biphenyl, 2,2',4,4'-tetrach...	290	C12H6Cl4	002437-79-8	99
2		1,1'-Biphenyl, 2,3,4',6-tetrachl...	290	C12H6Cl4	052663-58-8	99
3		1,1'-Biphenyl, 2,3,3',5'-tetrach...	290	C12H6Cl4	041464-49-7	99
4		1,1'-Biphenyl, 2,2',4,5'-tetrach...	290	C12H6Cl4	041464-40-8	99
5		1,1'-Biphenyl, 2,2',6,6'-tetrach...	290	C12H6Cl4	015968-05-5	98



Data Path : Z:\HPCHEM1\BNA G\DATA\BG080915\
 Data File : BG018352.D
 Acq On : 10 Aug 2015 5:53
 Operator : UM/TP
 Sample : G3136-20
 Misc :
 ALS Vial : 26 Sample Multiplier: 1

Instrument :
 BNA_G
 ClientSampleId :
 C02K2

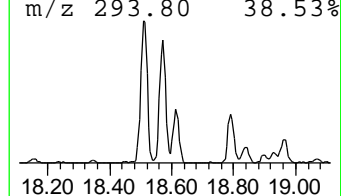
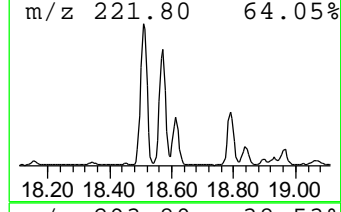
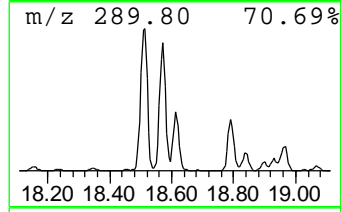
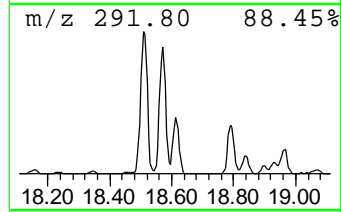
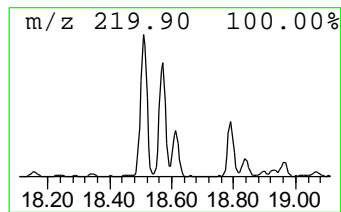
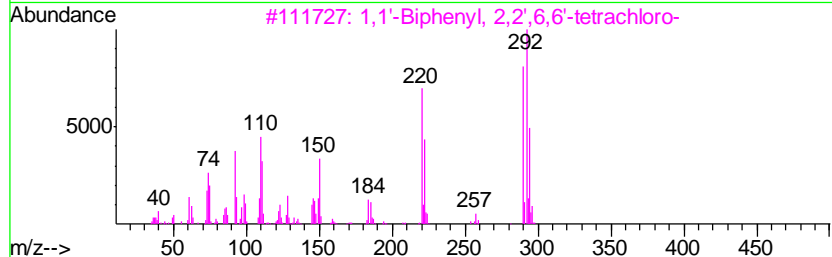
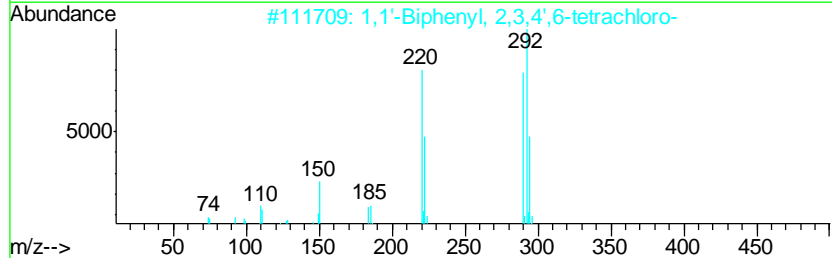
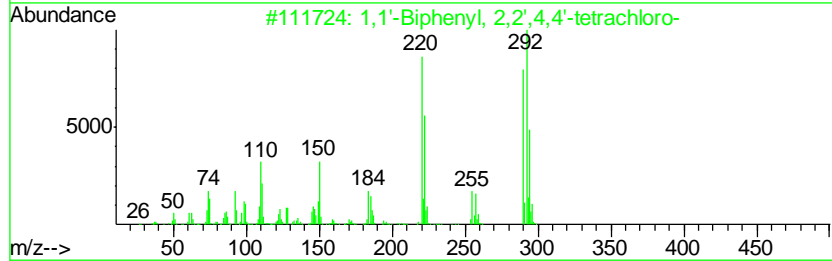
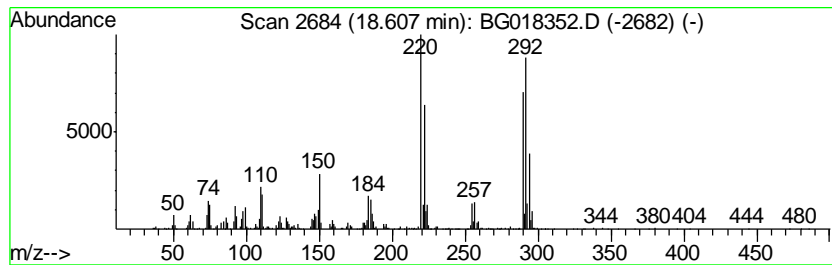
Quant Method : Z:\HPCHEM1\BNA G\METHODS\SOM02.2-EPA-BG080915.M
 Quant Title : SVOA CALIBRATION

TIC Library : C:\DATABASE\NIST02.L
 TIC Integration Parameters: LSCINT.P

 Peak Number 15 1,1'-Biphenyl, 2,3',5,5'-te... Concentration Rank 15

R.T.	EstConc	Area	Relative to ISTD	R.T.
18.61	9.94 ng/ul	1141730	Phenanthrene-d10	17.44

Hit#	of	Tentative ID	MW	MolForm	CAS#	Qual
1	5	1,1'-Biphenyl, 2,2',4,4'-tetrach...	290	C12H6Cl4	002437-79-8	99
2		1,1'-Biphenyl, 2,3,4',6-tetrachl...	290	C12H6Cl4	052663-58-8	99
3		1,1'-Biphenyl, 2,2',6,6'-tetrach...	290	C12H6Cl4	015968-05-5	99
4		1,1'-Biphenyl, 2,3',5,5'-tetrach...	290	C12H6Cl4	041464-42-0	98
5		1,1'-Biphenyl, 3,3',4,4'-tetrach...	290	C12H6Cl4	032598-13-3	96



Data Path : Z:\HPCHEM1\BNA G\DATA\BG080915\
 Data File : BG018352.D
 Acq On : 10 Aug 2015 5:53
 Operator : UM/TP
 Sample : G3136-20
 Misc :
 ALS Vial : 26 Sample Multiplier: 1

Instrument :
 BNA_G
 ClientSampled :
 C02K2

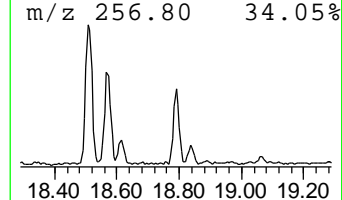
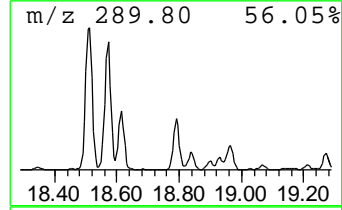
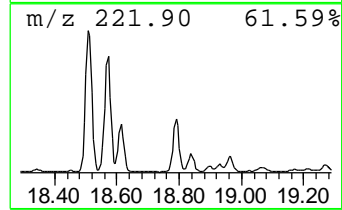
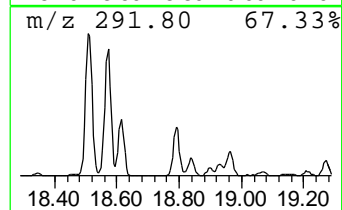
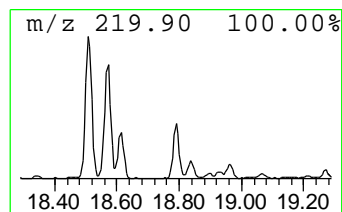
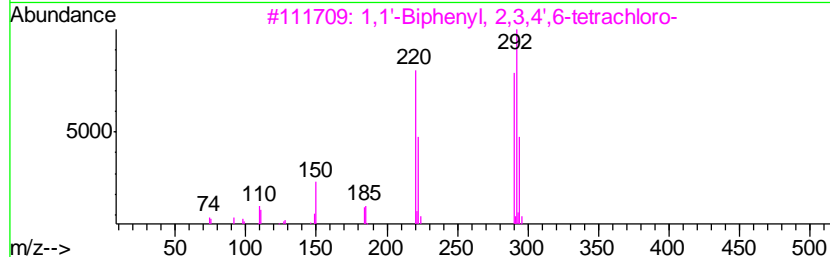
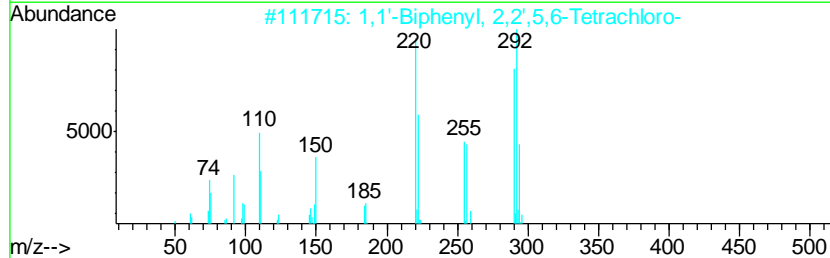
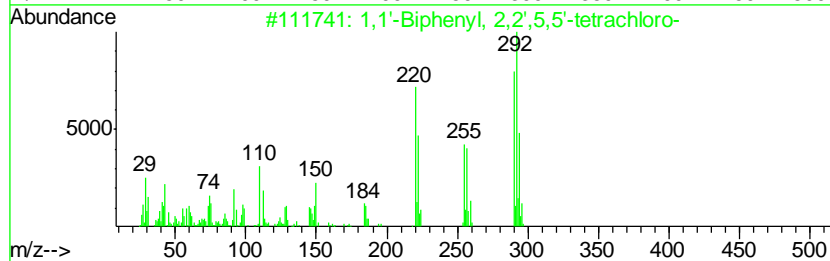
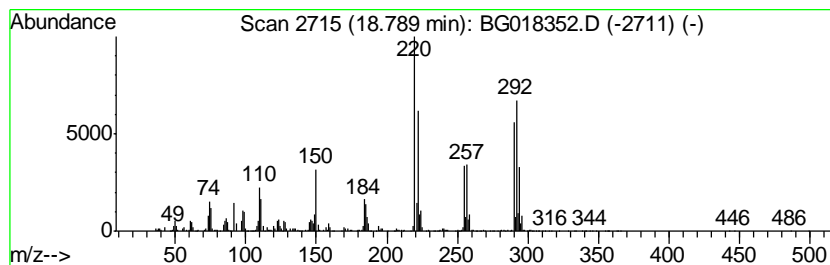
Quant Method : Z:\HPCHEM1\BNA G\METHODS\SOM02.2-EPA-BG080915.M
 Quant Title : SVOA CALIBRATION

TIC Library : C:\DATABASE\NIST02.L
 TIC Integration Parameters: LSCINT.P

 Peak Number 16 1,1'-Biphenyl, 2,2',5,6-Tet... Concentration Rank 14

R.T.	EstConc	Area	Relative to ISTD	R.T.
18.79	10.71 ng/ul	1230980	Phenanthrene-d10	17.44

Hit#	of	Tentative ID	MW	MolForm	CAS#	Qual
1	5	1,1'-Biphenyl, 2,2',5,5'-tetrach...	290	C12H6Cl4	035693-99-3	99
2		1,1'-Biphenyl, 2,2',5,6-Tetrachl...	290	C12H6Cl4	041464-41-9	99
3		1,1'-Biphenyl, 2,3,4',6-tetrachl...	290	C12H6Cl4	052663-58-8	99
4		1,1'-Biphenyl, 2,2',4,4'-tetrach...	290	C12H6Cl4	002437-79-8	99
5		1,1'-Biphenyl, 2,2',5,6-Tetrachl...	290	C12H6Cl4	041464-41-9	99



Data Path : Z:\HPCHEM1\BNA G\DATA\BG080915\
 Data File : BG018352.D
 Acq On : 10 Aug 2015 5:53
 Operator : UM/TP
 Sample : G3136-20
 Misc :
 ALS Vial : 26 Sample Multiplier: 1

Instrument :
 BNA_G
 ClientSampled :
 C02K2

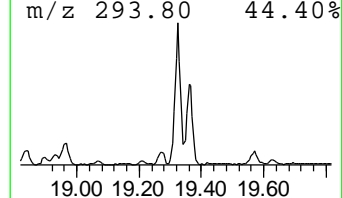
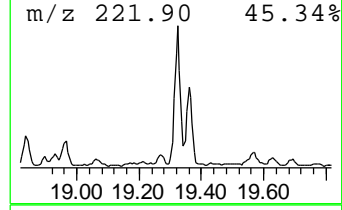
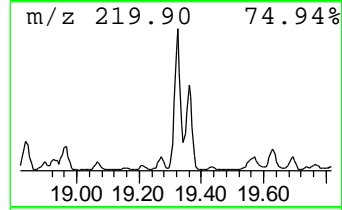
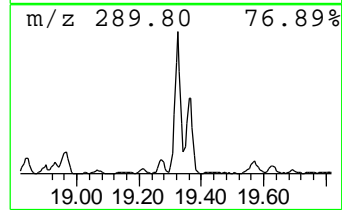
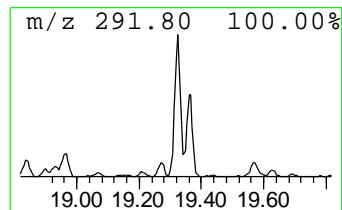
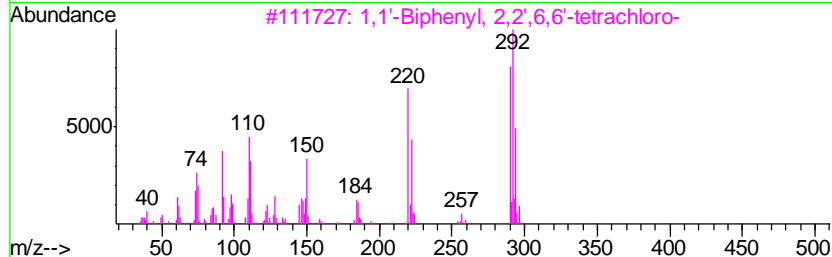
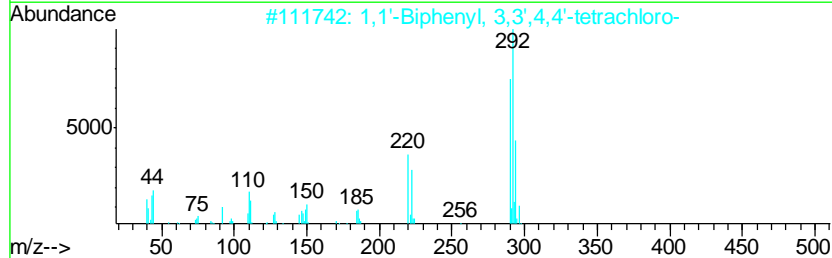
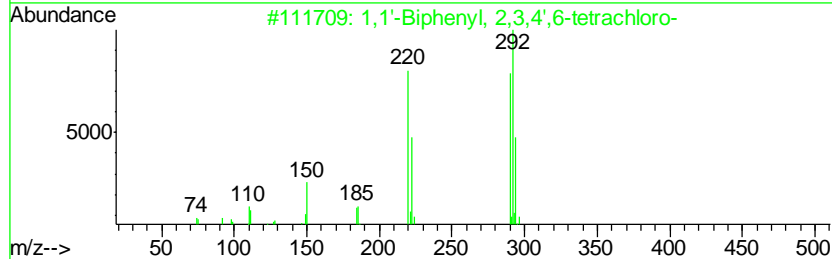
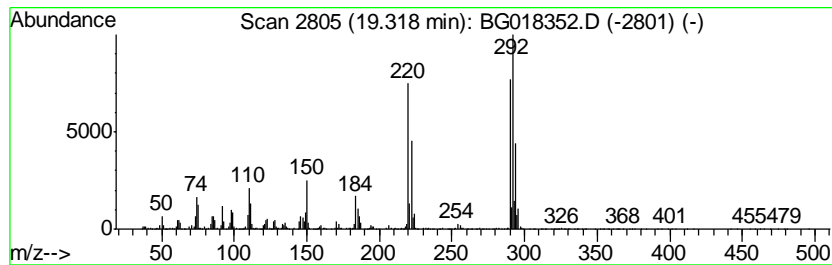
Quant Method : Z:\HPCHEM1\BNA G\METHODS\SOM02.2-EPA-BG080915.M
 Quant Title : SVOA CALIBRATION

TIC Library : C:\DATABASE\NIST02.L
 TIC Integration Parameters: LSCINT.P

 Peak Number 17 1,1'-Biphenyl, 2,2',3,4-tet... Concentration Rank 7

R.T.	EstConc	Area	Relative to ISTD	R.T.
19.32	22.31 ng/ul	2563400	Phenanthrene-d10	17.44

Hit#	of	Tentative ID	MW	MolForm	CAS#	Qual
1	5	1,1'-Biphenyl, 2,3,4',6-tetrachl...	290	C12H6Cl4	052663-58-8	99
2		1,1'-Biphenyl, 3,3',4,4'-tetrach...	290	C12H6Cl4	032598-13-3	99
3		1,1'-Biphenyl, 2,2',6,6'-tetrach...	290	C12H6Cl4	015968-05-5	99
4		1,1'-Biphenyl, 2,3,3',5'-tetrach...	290	C12H6Cl4	041464-49-7	99
5		1,1'-Biphenyl, 2,2',3,4-tetrachl...	290	C12H6Cl4	052663-59-9	98



Data Path : Z:\HPCHEM1\BNA G\DATA\BG080915\
 Data File : BG018352.D
 Acq On : 10 Aug 2015 5:53
 Operator : UM/TP
 Sample : G3136-20
 Misc :
 ALS Vial : 26 Sample Multiplier: 1

Instrument :
 BNA_G
 ClientSampled :
 C02K2

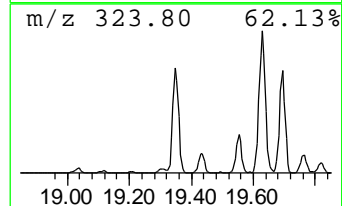
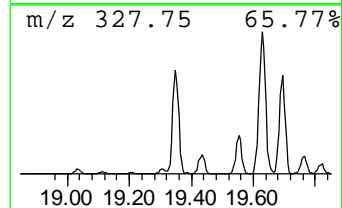
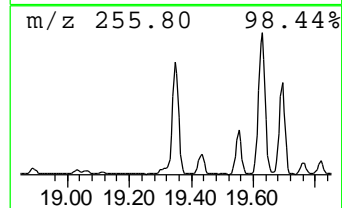
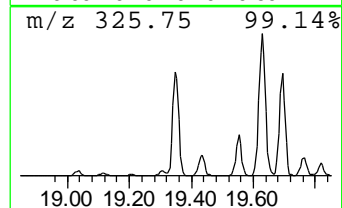
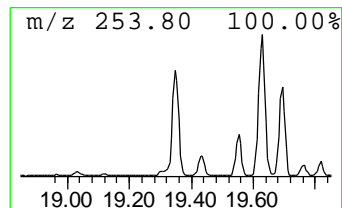
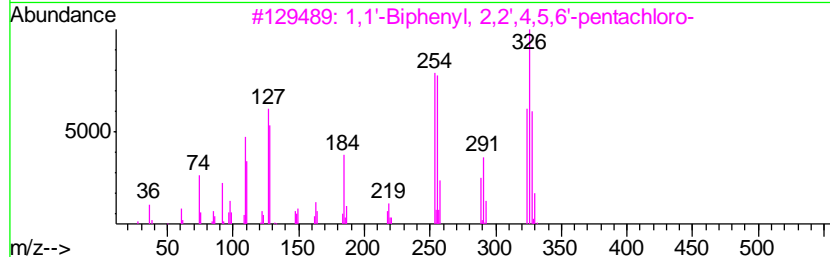
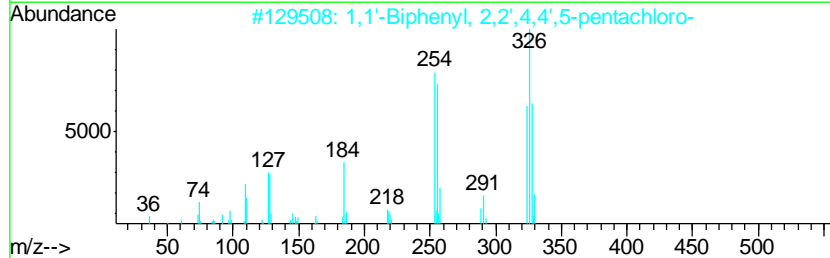
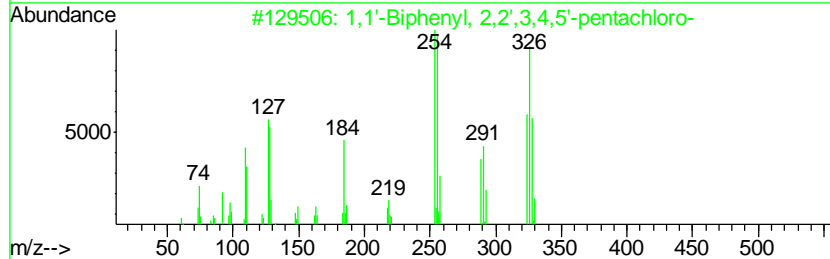
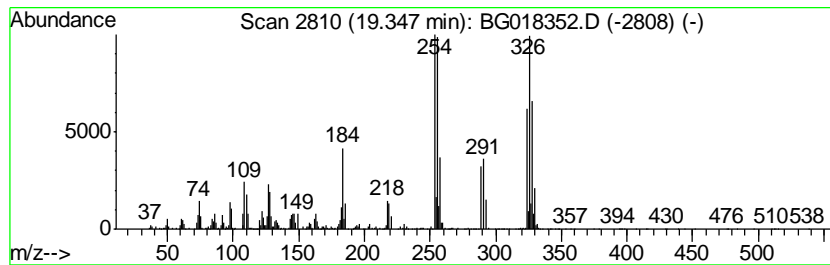
Quant Method : Z:\HPCHEM1\BNA G\METHODS\SOM02.2-EPA-BG080915.M
 Quant Title : SVOA CALIBRATION

TIC Library : C:\DATABASE\NIST02.L
 TIC Integration Parameters: LSCINT.P

 Peak Number 18 1,1'-Biphenyl, 2,2',3,4,5'-... Concentration Rank 4

R.T.	EstConc	Area	Relative to ISTD	R.T.
19.35	31.53 ng/ul	3622420	Phenanthrene-d10	17.44

Hit#	of	Tentative ID	MW	MolForm	CAS#	Qual
1	5	1,1'-Biphenyl, 2,2',3,4,5'-penta...	324	C12H5Cl5	038380-02-8	96
2		1,1'-Biphenyl, 2,2',4,4',5-penta...	324	C12H5Cl5	038380-01-7	96
3		1,1'-Biphenyl, 2,2',4,5,6'-penta...	324	C12H5Cl5	068194-06-9	95
4		1,1'-Biphenyl, 2,2',4,4',6-Penta...	324	C12H5Cl5	039485-83-1	94
5		1,1'-Biphenyl, 2,2',3,4,6-Pentac...	324	C12H5Cl5	055215-17-3	94



Data Path : Z:\HPCHEM1\BNA G\DATA\BG080915\
 Data File : BG018352.D
 Acq On : 10 Aug 2015 5:53
 Operator : UM/TP
 Sample : G3136-20
 Misc :
 ALS Vial : 26 Sample Multiplier: 1

Instrument :
 BNA_G
 ClientSampleID :
 C02K2

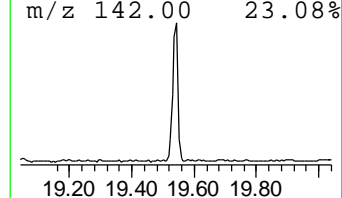
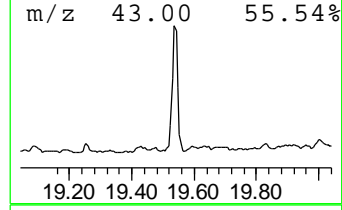
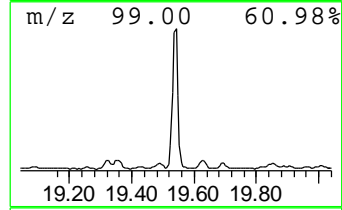
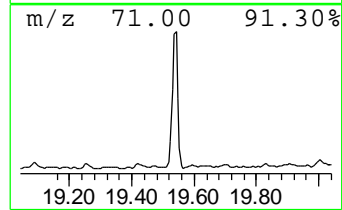
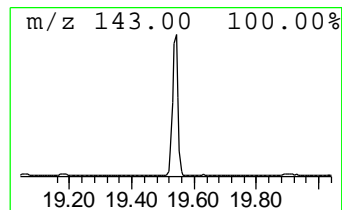
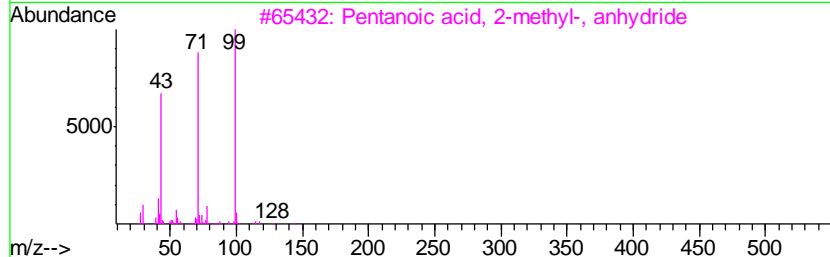
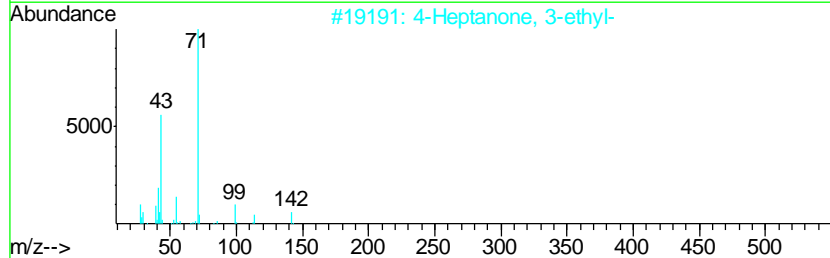
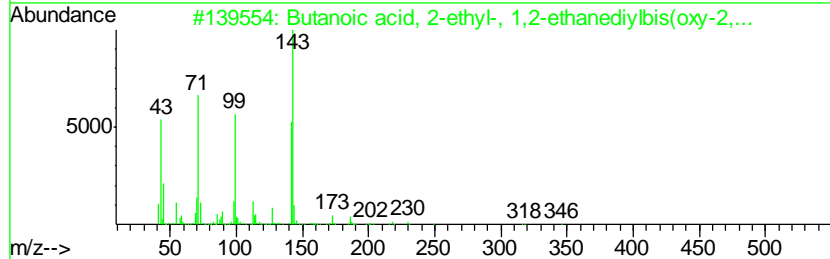
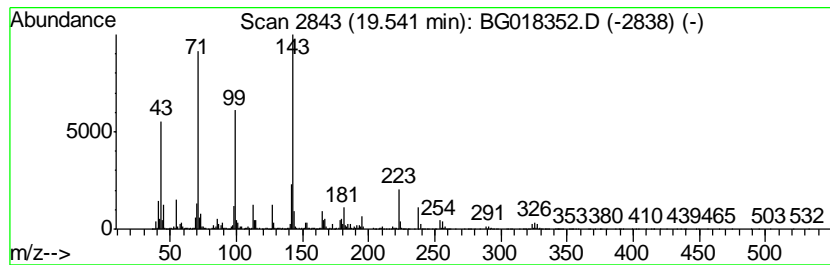
Quant Method : Z:\HPCHEM1\BNA G\METHODS\SOM02.2-EPA-BG080915.M
 Quant Title : SVOA CALIBRATION

TIC Library : C:\DATABASE\NIST02.L
 TIC Integration Parameters: LSCINT.P

 Peak Number 19 Butanoic acid, 2-ethyl-, 1,... Concentration Rank 1

R.T.	EstConc	Area	Relative to ISTD	R.T.
19.54	49.16 ng/ul	5648020	Phenanthrene-d10	17.44

Hit#	of	Tentative ID	MW	MolForm	CAS#	Qual
1	5	Butanoic acid, 2-ethyl-, 1,2-eth...	346	C18H34O6	000095-08-9	55
2		4-Heptanone, 3-ethyl-	142	C9H18O	001528-25-2	27
3		Pentanoic acid, 2-methyl-, anhyd...	214	C12H22O3	063169-61-9	27
4		Ethyl 3-ethoxycrylate	144	C7H12O3	001001-26-9	27
5		Quinoline, 4-methyl-	143	C10H9N	000491-35-0	25



Data Path : Z:\HPCHEM1\BNA G\DATA\BG080915\
 Data File : BG018352.D
 Acq On : 10 Aug 2015 5:53
 Operator : UM/TP
 Sample : G3136-20
 Misc :
 ALS Vial : 26 Sample Multiplier: 1

Instrument :
 BNA_G
 ClientSampled :
 C02K2

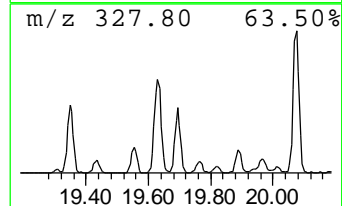
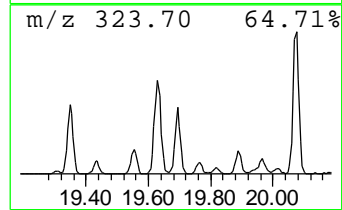
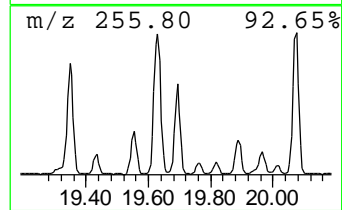
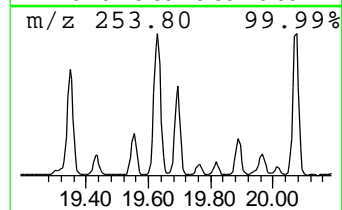
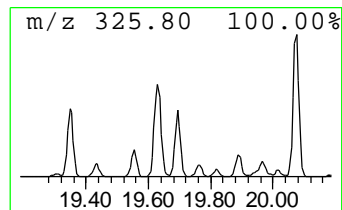
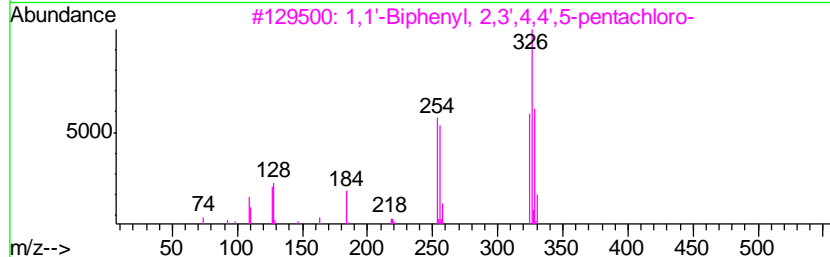
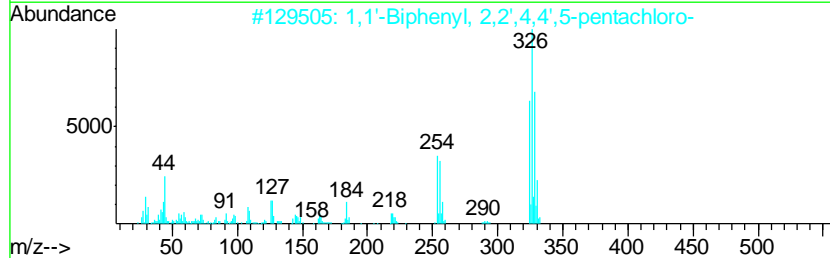
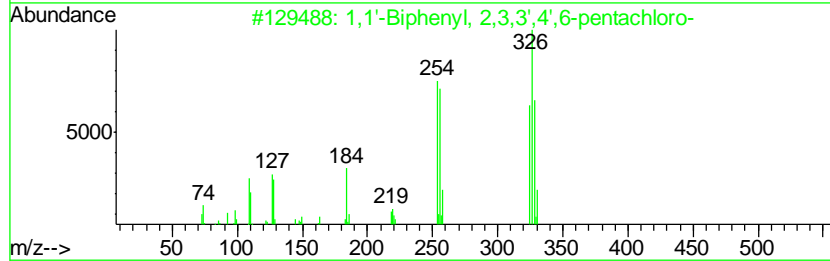
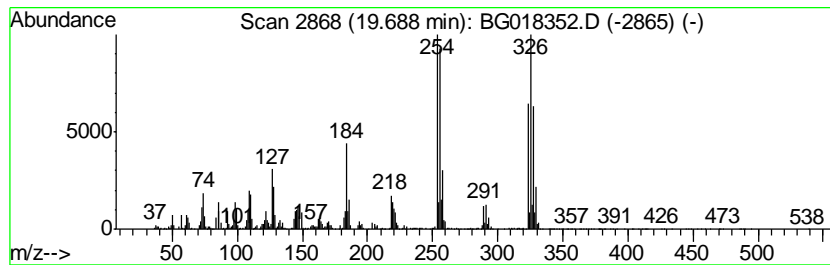
Quant Method : Z:\HPCHEM1\BNA G\METHODS\SOM02.2-EPA-BG080915.M
 Quant Title : SVOA CALIBRATION

TIC Library : C:\DATABASE\NIST02.L
 TIC Integration Parameters: LSCINT.P

 Peak Number 21 1,1'-Biphenyl, 2,2',4,4',5-... Concentration Rank 10

R.T.	EstConc	Area	Relative to ISTD	R.T.
19.69	14.88 ng/ul	1931490	Chrysene-d12	21.72

Hit#	of	Tentative ID	MW	MolForm	CAS#	Qual
1	5	1,1'-Biphenyl, 2,3,3',4',6-penta...	324	C12H5Cl5	038380-03-9	99
2		1,1'-Biphenyl, 2,2',4,4',5-penta...	324	C12H5Cl5	038380-01-7	99
3		1,1'-Biphenyl, 2,3',4,4',5-penta...	324	C12H5Cl5	031508-00-6	96
4		1,1'-Biphenyl, 2,3,4',5,6-Pentac...	324	C12H5Cl5	068194-11-6	96
5		1,1'-Biphenyl, 2,3,3',4,4'-penta...	324	C12H5Cl5	032598-14-4	96



Data Path : Z:\HPCHEM1\BNA G\DATA\BG080915\
 Data File : BG018352.D
 Acq On : 10 Aug 2015 5:53
 Operator : UM/TP
 Sample : G3136-20
 Misc :
 ALS Vial : 26 Sample Multiplier: 1

Instrument :
 BNA_G
 ClientSampled :
 C02K2

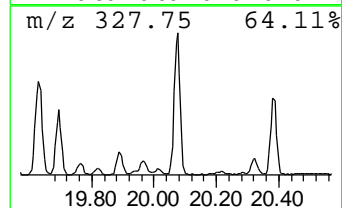
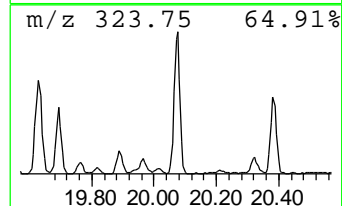
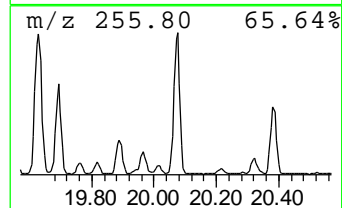
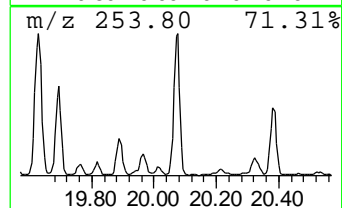
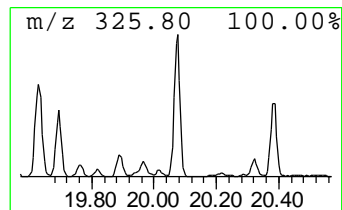
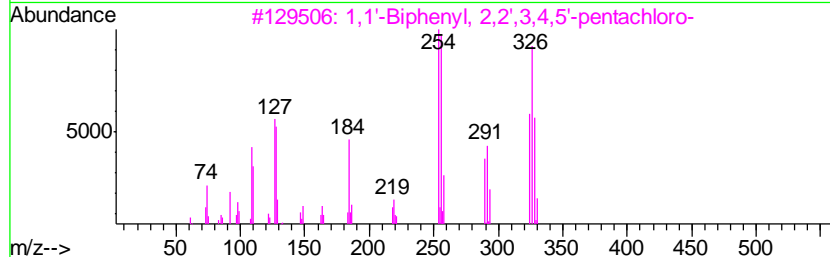
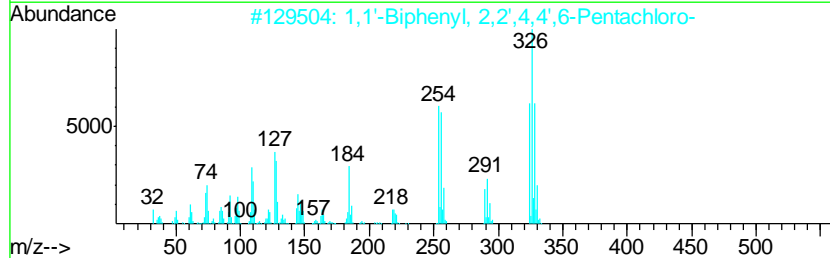
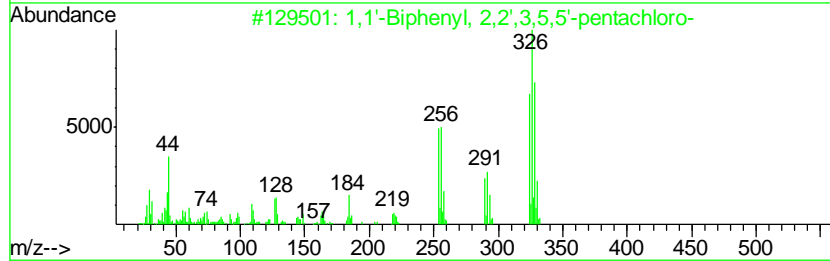
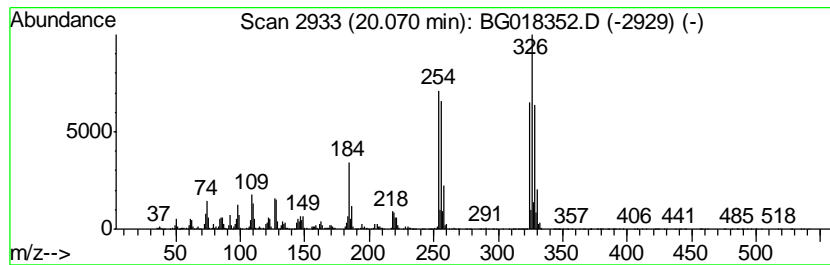
Quant Method : Z:\HPCHEM1\BNA G\METHODS\SOM02.2-EPA-BG080915.M
 Quant Title : SVOA CALIBRATION

TIC Library : C:\DATABASE\NIST02.L
 TIC Integration Parameters: LSCINT.P

 Peak Number 22 1,1'-Biphenyl, 2,2',4,4',6-... Concentration Rank 3

R.T.	EstConc	Area	Relative to ISTD	R.T.
20.07	31.63 ng/ul	4105660	Chrysene-d12	21.72

Hit#	of	Tentative ID	MW	MolForm	CAS#	Qual
1	5	1,1'-Biphenyl, 2,2',3,5,5'-penta...	324	C12H5Cl5	052663-61-3	98
2		1,1'-Biphenyl, 2,2',4,4',6-Penta...	324	C12H5Cl5	039485-83-1	96
3		1,1'-Biphenyl, 2,2',3,4,5'-penta...	324	C12H5Cl5	038380-02-8	96
4		1,1'-Biphenyl, 2,3,3',4,6-Pentac...	324	C12H5Cl5	074472-35-8	95
5		1,1'-Biphenyl, 2,2',3',4,5-Penta...	324	C12H5Cl5	041464-51-1	95



Data Path : Z:\HPCHEM1\BNA G\DATA\BG080915\
 Data File : BG018352.D
 Acq On : 10 Aug 2015 5:53
 Operator : UM/TP
 Sample : G3136-20
 Misc :
 ALS Vial : 26 Sample Multiplier: 1

Instrument :
 BNA_G
 ClientSampled :
 C02K2

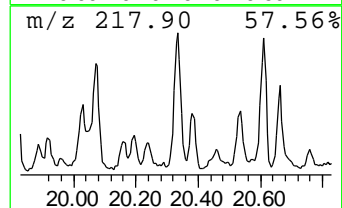
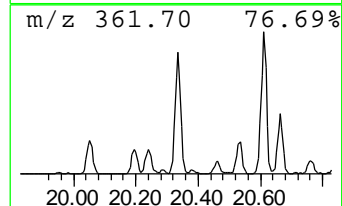
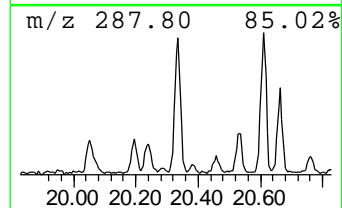
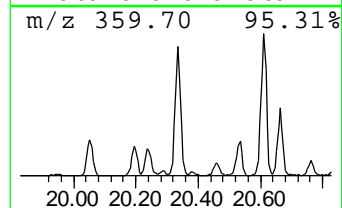
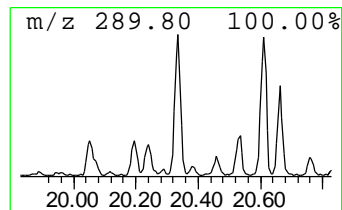
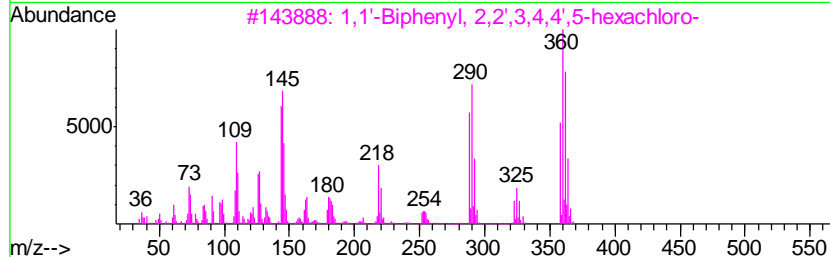
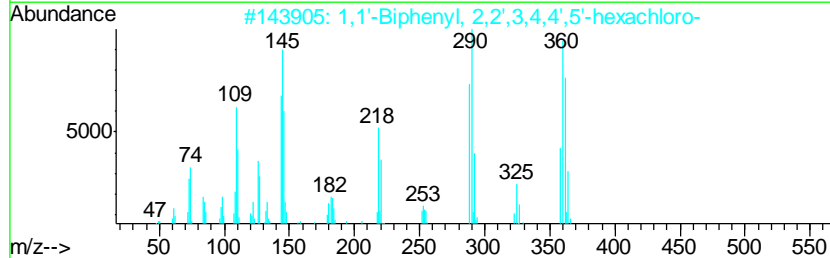
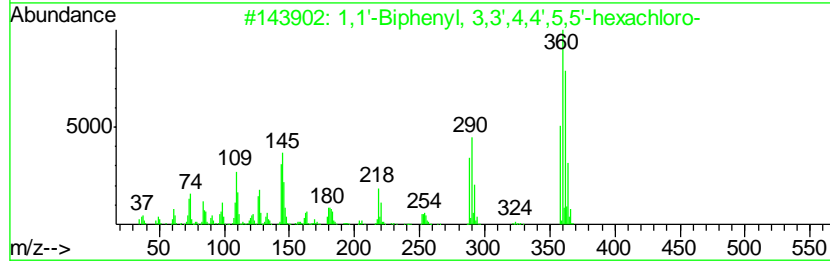
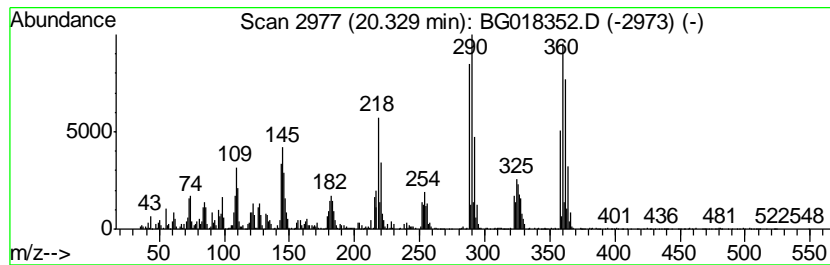
Quant Method : Z:\HPCHEM1\BNA G\METHODS\SOM02.2-EPA-BG080915.M
 Quant Title : SVOA CALIBRATION

TIC Library : C:\DATABASE\NIST02.L
 TIC Integration Parameters: LSCINT.P

 Peak Number 23 1,1'-Biphenyl, 3,3',4,4',5,... Concentration Rank 9

R.T.	EstConc	Area	Relative to ISTD	R.T.
20.33	18.52 ng/ul	2404570	Chrysene-d12	21.72

Hit#	of	Tentative ID	MW	MolForm	CAS#	Qual
1	5	1,1'-Biphenyl, 3,3',4,4',5,5'-he...	358	C12H4Cl6	032774-16-6	99
2		1,1'-Biphenyl, 2,2',3,4,4',5'-he...	358	C12H4Cl6	035065-28-2	99
3		1,1'-Biphenyl, 2,2',3,4,4',5-hex...	358	C12H4Cl6	035694-06-5	99
4		1,1'-Biphenyl, 2,2',3,4,4',6-Hex...	358	C12H4Cl6	056030-56-9	99
5		1,1'-Biphenyl, 2,2',3,3',4,4'-he...	358	C12H4Cl6	038380-07-3	98



Data Path : Z:\HPCHEM1\BNA G\DATA\BG080915\
 Data File : BG018352.D
 Acq On : 10 Aug 2015 5:53
 Operator : UM/TP
 Sample : G3136-20
 Misc :
 ALS Vial : 26 Sample Multiplier: 1

Instrument :
 BNA_G
 ClientSampled :
 C02K2

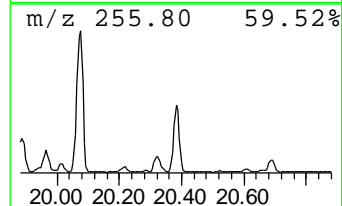
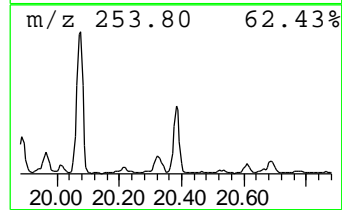
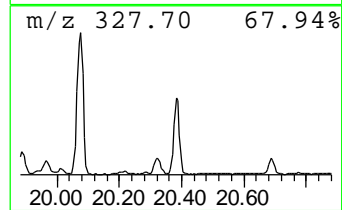
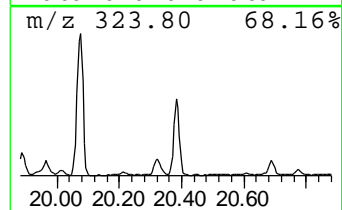
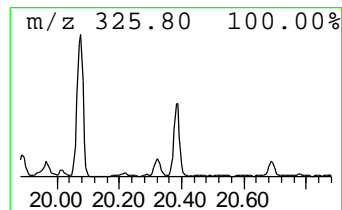
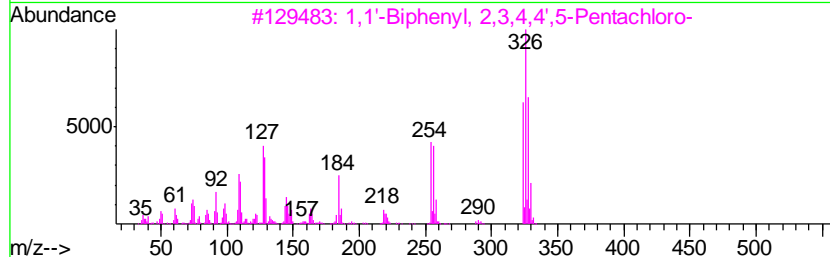
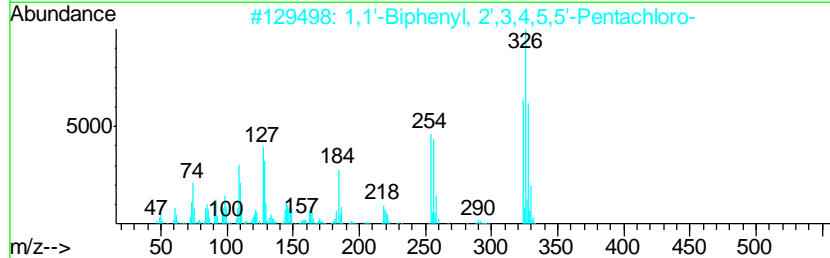
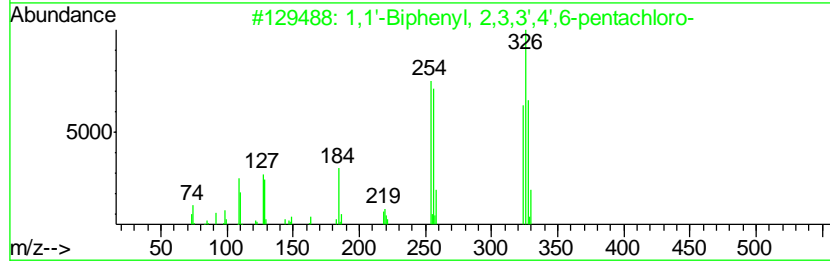
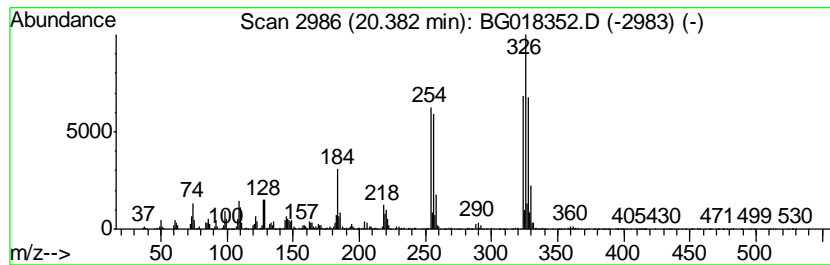
Quant Method : Z:\HPCHEM1\BNA G\METHODS\SOM02.2-EPA-BG080915.M
 Quant Title : SVOA CALIBRATION

TIC Library : C:\DATABASE\NIST02.L
 TIC Integration Parameters: LSCINT.P

 Peak Number 24 1,1'-Biphenyl, 2,3,3',4',6-... Concentration Rank 12

R.T.	EstConc	Area	Relative to ISTD	R.T.
20.38	12.22 ng/ul	1585670	Chrysene-d12	21.72

Hit#	of	Tentative ID	MW	MolForm	CAS#	Qual
1	5	1,1'-Biphenyl, 2,3,3',4',6-penta...	324	C12H5Cl5	038380-03-9	99
2		1,1'-Biphenyl, 2',3,4,5,5'-Penta...	324	C12H5Cl5	070424-70-3	99
3		1,1'-Biphenyl, 2,3,4,4',5-Pentac...	324	C12H5Cl5	074472-37-0	96
4		1,1'-Biphenyl, 2,2',3,5,5'-penta...	324	C12H5Cl5	052663-61-3	96
5		1,1'-Biphenyl, 2,3,3',4,6-Pentac...	324	C12H5Cl5	074472-35-8	96



Data Path : Z:\HPCHEM1\BNA G\DATA\BG080915\
 Data File : BG018352.D
 Acq On : 10 Aug 2015 5:53
 Operator : UM/TP
 Sample : G3136-20
 Misc :
 ALS Vial : 26 Sample Multiplier: 1

Instrument :
 BNA_G
 ClientSampled :
 C02K2

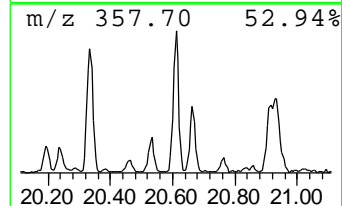
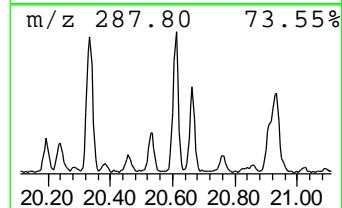
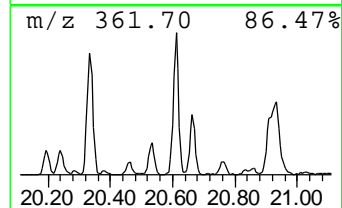
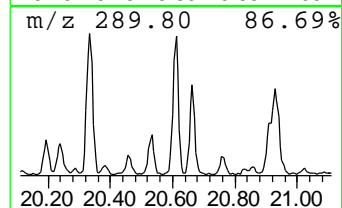
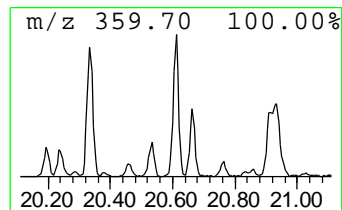
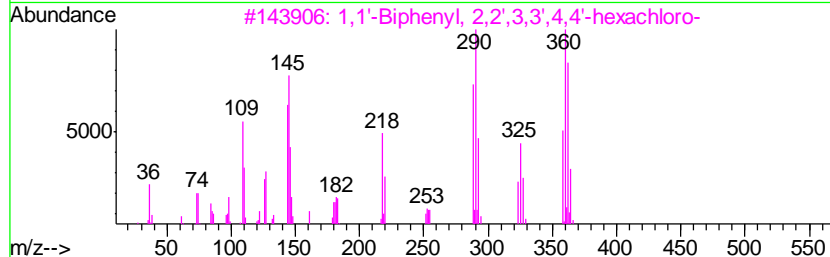
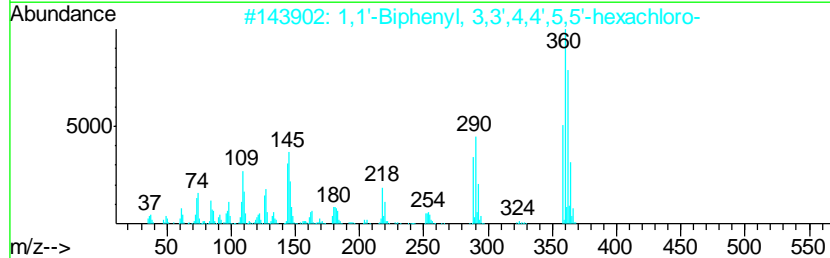
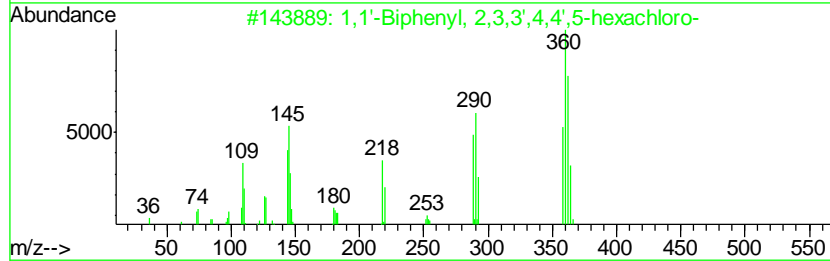
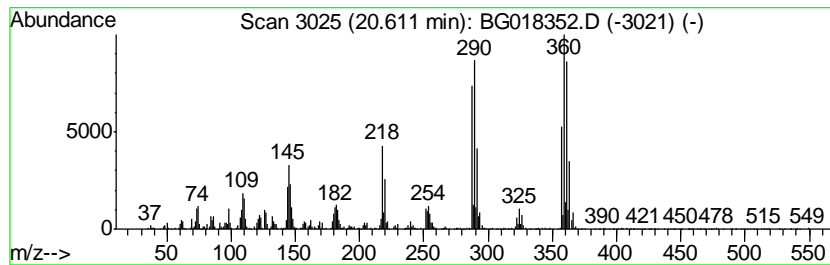
Quant Method : Z:\HPCHEM1\BNA G\METHODS\SOM02.2-EPA-BG080915.M
 Quant Title : SVOA CALIBRATION

TIC Library : C:\DATABASE\NIST02.L
 TIC Integration Parameters: LSCINT.P

 Peak Number 25 1,1'-Biphenyl, 2,3,3',4,4',... Concentration Rank 11

R.T.	EstConc	Area	Relative to ISTD	R.T.
20.61	12.35 ng/ul	1603270	Chrysene-d12	21.72

Hit#	of	Tentative ID	MW	MolForm	CAS#	Qual
1	5	1,1'-Biphenyl, 2,3,3',4,4',5-hex...	358	C12H4Cl6	038380-08-4	99
2		1,1'-Biphenyl, 3,3',4,4',5,5'-he...	358	C12H4Cl6	032774-16-6	97
3		1,1'-Biphenyl, 2,2',3,3',4,4'-he...	358	C12H4Cl6	038380-07-3	97
4		1,1'-Biphenyl, 2,3',4,4',5,5'-he...	358	C12H4Cl6	052663-72-6	96
5		1,1'-Biphenyl, 2,2',3,3',5,6'-he...	358	C12H4Cl6	052744-13-5	96



Data Path : Z:\HPCHEM1\BNA G\DATA\BG080915\
 Data File : BG018352.D
 Acq On : 10 Aug 2015 5:53
 Operator : UM/TP
 Sample : G3136-20
 Misc :
 ALS Vial : 26 Sample Multiplier: 1

Instrument :
 BNA_G
 ClientSampled :
 C02K2

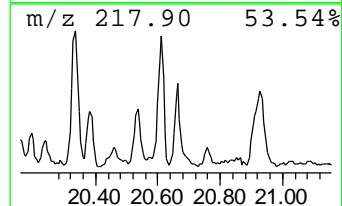
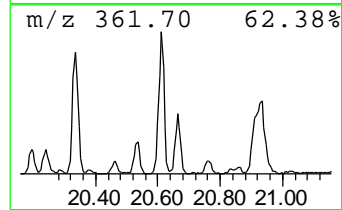
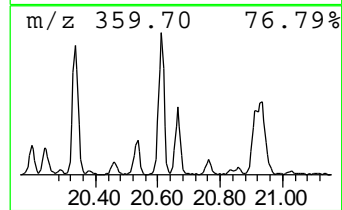
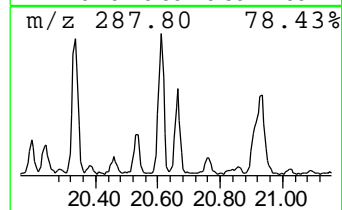
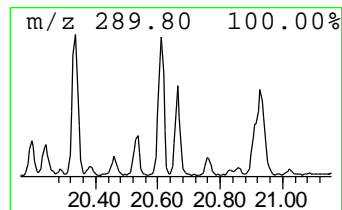
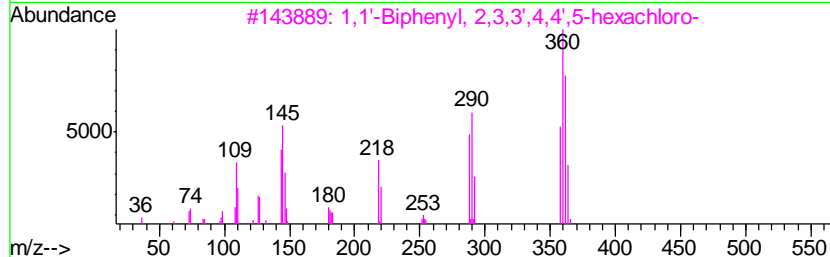
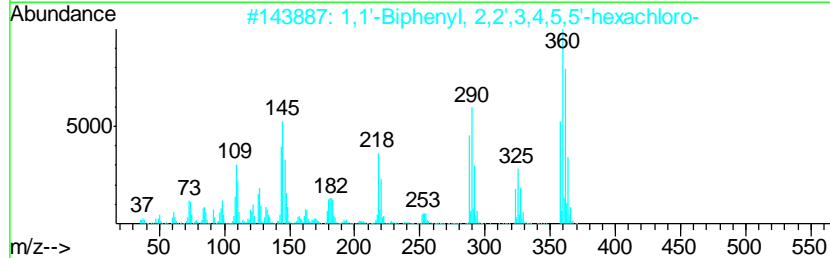
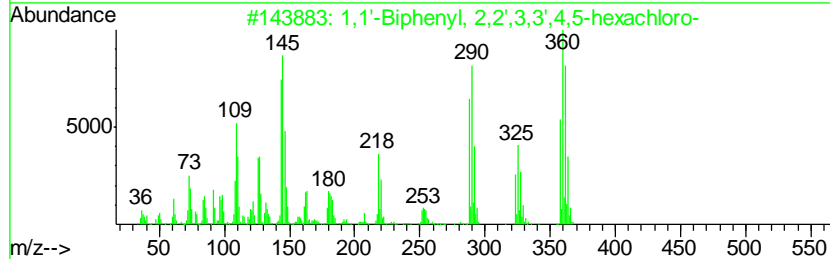
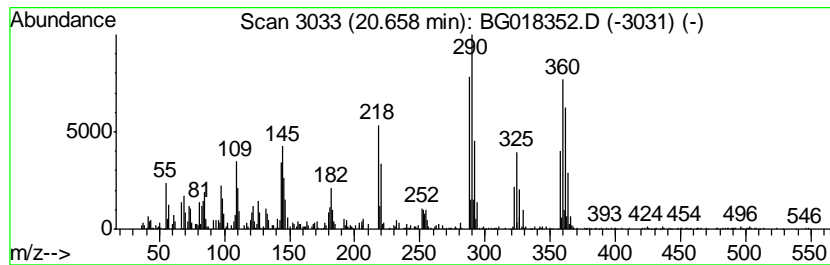
Quant Method : Z:\HPCHEM1\BNA G\METHODS\SOM02.2-EPA-BG080915.M
 Quant Title : SVOA CALIBRATION

TIC Library : C:\DATABASE\NIST02.L
 TIC Integration Parameters: LSCINT.P

 Peak Number 26 1,1'-Biphenyl, 2,2',3,3',4,... Concentration Rank 18

R.T.	EstConc	Area	Relative to ISTD	R.T.
20.66	6.37 ng/ul	826773	Chrysene-d12	21.72

Hit#	of	Tentative ID	MW	MolForm	CAS#	Qual
1	5	1,1'-Biphenyl, 2,2',3,3',4,5-hex...	358	C12H4Cl6	055215-18-4	99
2		1,1'-Biphenyl, 2,2',3,4,5,5'-hex...	358	C12H4Cl6	052712-04-6	97
3		1,1'-Biphenyl, 2,3,3',4,4',5-hex...	358	C12H4Cl6	038380-08-4	97
4		1,1'-Biphenyl, 2,2',3,4,5,6'-Hex...	358	C12H4Cl6	068194-15-0	96
5		1,1'-Biphenyl, 2,2',3,4,4',6-Hex...	358	C12H4Cl6	056030-56-9	96



Data Path : Z:\HPCHEM1\BNA_G\DATA\BG080915\
 Data File : BG018352.D
 Acq On : 10 Aug 2015 5:53
 Operator : UM/TP
 Sample : G3136-20
 Misc :
 ALS Vial : 26 Sample Multiplier: 1

Instrument :
 BNA_G
 ClientSampleId :
 C02K2

Quant Method : Z:\HPCHEM1\BNA_G\METHODS\SOM02.2-EPA-BG080915.M
 Quant Title : SVOA CALIBRATION

TIC Library : C:\DATABASE\NIST02.L
 TIC Integration Parameters: LSCINT.P

TIC Top Hit name	RT	EstConc	Units	Response	--Internal Standard--			
					#	RT	Resp	Conc
(DEL) Alkane: Str...	11.90	2.2	ng/ul	197953	2	10.88	1831230	20.0
(DEL) Alkane: Str...	13.24	3.0	ng/ul	379647	3	14.70	2555700	20.0
(DEL) Alkane: Str...	13.52	2.1	ng/ul	272336	3	14.70	2555700	20.0
unknown-01	14.54	4.4	ng/ul	566137	3	14.70	2555700	20.0
(DEL) Alkane: Str...	14.59	3.0	ng/ul	388460	3	14.70	2555700	20.0
(DEL) Alkane: Str...	15.22	2.9	ng/ul	372232	3	14.70	2555700	20.0
unknown-02	15.49	2.3	ng/ul	297042	3	14.70	2555700	20.0
(DEL) Alkane: Str...	15.95	7.0	ng/ul	898736	3	14.70	2555700	20.0
(DEL) Alkane: Str...	16.43	20.0	ng/ul	2302810	4	17.44	2297830	20.0
(DEL) Alkane: Str...	17.20	2.7	ng/ul	305154	4	17.44	2297830	20.0
(DEL) Alkane: Str...	17.25	11.3	ng/ul	1302090	4	17.44	2297830	20.0
1,1'-Biphenyl, 2,...	18.03	9.8	ng/ul	1126430	4	17.44	2297830	20.0
1,1'-Biphenyl, 2,...	18.51	31.9	ng/ul	3664390	4	17.44	2297830	20.0
1,1'-Biphenyl, 2,...	18.57	23.7	ng/ul	2722290	4	17.44	2297830	20.0
1,1'-Biphenyl, 2,...	18.61	9.9	ng/ul	1141730	4	17.44	2297830	20.0
1,1'-Biphenyl, 2,...	18.79	10.7	ng/ul	1230980	4	17.44	2297830	20.0
1,1'-Biphenyl, 2,...	19.32	22.3	ng/ul	2563400	4	17.44	2297830	20.0
1,1'-Biphenyl, 2,...	19.35	31.5	ng/ul	3622420	4	17.44	2297830	20.0
Butanoic acid, 2-...	19.54	49.2	ng/ul	5648020	4	17.44	2297830	20.0
1,1'-Biphenyl, 2,...	19.69	14.9	ng/ul	1931490	5	21.72	2596210	20.0
1,1'-Biphenyl, 2,...	20.07	31.6	ng/ul	4105660	5	21.72	2596210	20.0
1,1'-Biphenyl, 3,...	20.33	18.5	ng/ul	2404570	5	21.72	2596210	20.0
1,1'-Biphenyl, 2,...	20.38	12.2	ng/ul	1585670	5	21.72	2596210	20.0
1,1'-Biphenyl, 2,...	20.61	12.4	ng/ul	1603270	5	21.72	2596210	20.0
1,1'-Biphenyl, 2,...	20.66	6.4	ng/ul	826773	5	21.72	2596210	20.0