

Data Path : Z:\HPCHEM1\BNA\_G\DATA\BG081016\  
 Data File : BG023592.D  
 Acq On : 10 Aug 2016 15:01  
 Operator : UM/SJ  
 Sample : H4360-01  
 Misc :  
 ALS Vial : 5 Sample Multiplier: 1

Instrument :  
 BNA\_G  
 ClientSampleId :  
 PR001-SS001-0002-01

## Integration Parameters: LSCINT.P

Integrator: RTE  
 Smoothing : OFF Filtering: 5  
 Sampling : 1 Min Area: 0.1 % of largest Peak  
 Start Thrs: 0.2 Max Peaks: 100  
 Stop Thrs : 0 Peak Location: TOP

If leading or trailing edge < 100 prefer < Baseline drop else tangent >  
 Peak separation: 5

Method : Z:\HPCHEM1\BNA\_G\METHODS\SOM02.2-EPA-BG080416.M  
 Title : SVOA CALIBRATION

Signal : TIC

| peak # | R.T. min | first scan | max scan | last scan | PK TY | peak height | corr. area | corr. % max. | % of total |
|--------|----------|------------|----------|-----------|-------|-------------|------------|--------------|------------|
| 1      | 4.463    | 273        | 276      | 279       | rBV3  | 23116       | 23853      | 0.63%        | 0.045%     |
| 2      | 4.886    | 344        | 348      | 358       | rBV6  | 13906       | 25232      | 0.66%        | 0.047%     |
| 3      | 5.579    | 464        | 466      | 470       | rVB4  | 7892        | 8564       | 0.22%        | 0.016%     |
| 4      | 6.542    | 627        | 630      | 634       | rBV5  | 5260        | 9564       | 0.25%        | 0.018%     |
| 5      | 7.271    | 747        | 754      | 763       | rBV   | 424825      | 741231     | 19.47%       | 1.390%     |
| 6      | 7.429    | 776        | 781      | 788       | rVB   | 348210      | 556062     | 14.61%       | 1.043%     |
| 7      | 7.647    | 811        | 818      | 828       | rBV   | 384465      | 711146     | 18.68%       | 1.334%     |
| 8      | 7.946    | 865        | 869      | 872       | rVB4  | 5229        | 8205       | 0.22%        | 0.015%     |
| 9      | 8.117    | 891        | 898      | 907       | rBV2  | 551566      | 945743     | 24.85%       | 1.774%     |
| 10     | 8.275    | 921        | 925      | 929       | rVB4  | 6828        | 12412      | 0.33%        | 0.023%     |
| 11     | 8.828    | 1013       | 1019     | 1029      | rBV   | 510160      | 934177     | 24.54%       | 1.752%     |
| 12     | 9.292    | 1089       | 1098     | 1107      | rBV   | 416278      | 765475     | 20.11%       | 1.436%     |
| 13     | 9.403    | 1110       | 1117     | 1124      | rBV5  | 37104       | 82970      | 2.18%        | 0.156%     |
| 14     | 10.020   | 1215       | 1222     | 1231      | rBV   | 347173      | 655920     | 17.23%       | 1.230%     |
| 15     | 10.572   | 1309       | 1316     | 1327      | rBV   | 521396      | 1040639    | 27.34%       | 1.952%     |
| 16     | 10.954   | 1373       | 1381     | 1388      | rBV   | 814246      | 1504386    | 39.52%       | 2.822%     |
| 17     | 11.089   | 1396       | 1404     | 1417      | rBV   | 454938      | 905215     | 23.78%       | 1.698%     |
| 18     | 12.434   | 1627       | 1633     | 1634      | rBV5  | 8856        | 14671      | 0.39%        | 0.028%     |
| 19     | 12.534   | 1646       | 1650     | 1657      | rVB7  | 10758       | 21209      | 0.56%        | 0.040%     |
| 20     | 12.611   | 1659       | 1663     | 1669      | rBV3  | 18915       | 31792      | 0.84%        | 0.060%     |
| 21     | 12.828   | 1693       | 1700     | 1706      | rBV4  | 37619       | 72904      | 1.92%        | 0.137%     |
| 22     | 13.086   | 1740       | 1744     | 1747      | rBV4  | 6280        | 9587       | 0.25%        | 0.018%     |
| 23     | 13.128   | 1747       | 1751     | 1758      | rVB5  | 12732       | 22329      | 0.59%        | 0.042%     |
| 24     | 13.374   | 1789       | 1793     | 1800      | rVB3  | 28448       | 42560      | 1.12%        | 0.080%     |
| 25     | 13.439   | 1800       | 1804     | 1807      | rBV5  | 8766        | 13627      | 0.36%        | 0.026%     |
| 26     | 13.656   | 1837       | 1841     | 1849      | rVB6  | 17558       | 30067      | 0.79%        | 0.056%     |
| 27     | 13.815   | 1863       | 1868     | 1869      | rBV5  | 9088        | 11565      | 0.30%        | 0.022%     |
| 28     | 13.956   | 1884       | 1892     | 1899      | rVB6  | 41142       | 108115     | 2.84%        | 0.203%     |
| 29     | 14.109   | 1910       | 1918     | 1922      | rBV3  | 79246       | 155009     | 4.07%        | 0.291%     |
| 30     | 14.179   | 1922       | 1930     | 1934      | rVV   | 1169899     | 1810129    | 47.56%       | 3.396%     |
| 31     | 14.226   | 1934       | 1938     | 1945      | rVB   | 994739      | 1379096    | 36.23%       | 2.587%     |
| 32     | 14.338   | 1952       | 1957     | 1962      | rBV2  | 39552       | 73583      | 1.93%        | 0.138%     |
| 33     | 14.479   | 1973       | 1981     | 1993      | rBV   | 1263110     | 2100652    | 55.19%       | 3.941%     |
| 34     | 14.655   | 2008       | 2011     | 2015      | rVB3  | 28184       | 27307      | 0.72%        | 0.051%     |

Data Path : Z:\HPCHEM1\BNA\_G\DATA\BG081016\  
 Data File : BG023592.D  
 Acq On : 10 Aug 2016 15:01  
 Operator : UM/SJ  
 Sample : H4360-01  
 Misc :  
 ALS Vial : 5 Sample Multiplier: 1

Instrument :  
 BNA\_G  
 ClientSampleId :  
 PR001-SS001-0002-01

## Integration Parameters: LSCINT.P

Integrator: RTE  
 Smoothing : OFF  
 Sampling : 1  
 Start Thrs: 0.2  
 Stop Thrs : 0

Filtering: 5  
 Min Area: 0.1 % of largest Peak  
 Max Peaks: 100  
 Peak Location: TOP

If leading or trailing edge < 100 prefer < Baseline drop else tangent >  
 Peak separation: 5

Method : Z:\HPCHEM1\BNA\_G\METHODS\SOM02.2-EPA-BG080416.M  
 Title : SVOA CALIBRATION

|    |        |      |      |      |       |         |         |        |        |
|----|--------|------|------|------|-------|---------|---------|--------|--------|
| 35 | 14.784 | 2022 | 2033 | 2042 | rBV2  | 1424539 | 2378486 | 62.49% | 4.462% |
| 36 | 14.861 | 2042 | 2046 | 2050 | rVB7  | 18271   | 33096   | 0.87%  | 0.062% |
| 37 | 14.913 | 2052 | 2055 | 2061 | rVB6  | 13787   | 21562   | 0.57%  | 0.040% |
| 38 | 15.002 | 2061 | 2070 | 2084 | rBV   | 384594  | 873144  | 22.94% | 1.638% |
| 39 | 15.178 | 2097 | 2100 | 2108 | rVB3  | 69650   | 115498  | 3.03%  | 0.217% |
| 40 | 15.254 | 2108 | 2113 | 2122 | rVB   | 74129   | 116008  | 3.05%  | 0.218% |
| 41 | 15.401 | 2132 | 2138 | 2142 | rBV2  | 58088   | 111703  | 2.93%  | 0.210% |
| 42 | 15.454 | 2143 | 2147 | 2151 | rVB2  | 47543   | 73331   | 1.93%  | 0.138% |
| 43 | 15.565 | 2160 | 2166 | 2170 | rBV4  | 61391   | 138379  | 3.64%  | 0.260% |
| 44 | 15.607 | 2170 | 2173 | 2179 | rVB2  | 87666   | 120779  | 3.17%  | 0.227% |
| 45 | 15.665 | 2179 | 2183 | 2186 | rBV5  | 18810   | 28220   | 0.74%  | 0.053% |
| 46 | 15.718 | 2186 | 2192 | 2193 | rBV6  | 11468   | 18307   | 0.48%  | 0.034% |
| 47 | 15.783 | 2193 | 2203 | 2209 | rBV   | 1803316 | 2782046 | 73.09% | 5.219% |
| 48 | 15.906 | 2218 | 2224 | 2232 | rBV   | 529350  | 804774  | 21.14% | 1.510% |
| 49 | 16.118 | 2256 | 2260 | 2261 | rBV4  | 21796   | 30877   | 0.81%  | 0.058% |
| 50 | 16.235 | 2278 | 2280 | 2284 | rVV5  | 12207   | 12408   | 0.33%  | 0.023% |
| 51 | 16.282 | 2284 | 2288 | 2295 | rVB10 | 33232   | 55676   | 1.46%  | 0.104% |
| 52 | 16.476 | 2317 | 2321 | 2323 | rBV2  | 87944   | 122085  | 3.21%  | 0.229% |
| 53 | 16.840 | 2377 | 2383 | 2388 | rBV5  | 59203   | 138755  | 3.65%  | 0.260% |
| 54 | 16.893 | 2389 | 2392 | 2396 | rVB2  | 55774   | 76158   | 2.00%  | 0.143% |
| 55 | 16.993 | 2407 | 2409 | 2414 | rVB3  | 56324   | 68383   | 1.80%  | 0.128% |
| 56 | 17.069 | 2416 | 2422 | 2428 | rBV3  | 35123   | 90409   | 2.38%  | 0.170% |
| 57 | 17.204 | 2440 | 2445 | 2451 | rBV7  | 39998   | 74149   | 1.95%  | 0.139% |
| 58 | 17.269 | 2452 | 2456 | 2462 | rVV4  | 90437   | 137575  | 3.61%  | 0.258% |
| 59 | 17.328 | 2462 | 2466 | 2468 | rVV4  | 35961   | 50163   | 1.32%  | 0.094% |
| 60 | 17.363 | 2469 | 2472 | 2481 | rVB2  | 80799   | 130973  | 3.44%  | 0.246% |
| 61 | 17.551 | 2497 | 2504 | 2508 | rBV2  | 2009307 | 3107703 | 81.65% | 5.830% |
| 62 | 17.592 | 2508 | 2511 | 2515 | rVV   | 651631  | 919138  | 24.15% | 1.724% |
| 63 | 17.651 | 2515 | 2521 | 2530 | rVV   | 1920646 | 2999868 | 78.81% | 5.627% |
| 64 | 17.739 | 2532 | 2536 | 2541 | rVB5  | 53234   | 104340  | 2.74%  | 0.196% |
| 65 | 17.786 | 2541 | 2544 | 2545 | rBV3  | 21832   | 24233   | 0.64%  | 0.045% |
| 66 | 18.015 | 2580 | 2583 | 2588 | rVB5  | 63129   | 86119   | 2.26%  | 0.162% |
| 67 | 18.068 | 2588 | 2592 | 2595 | rVV3  | 38286   | 48635   | 1.28%  | 0.091% |
| 68 | 18.133 | 2599 | 2603 | 2610 | rVB2  | 148129  | 232104  | 6.10%  | 0.435% |
| 69 | 18.279 | 2623 | 2628 | 2635 | rVB2  | 100340  | 201853  | 5.30%  | 0.379% |
| 70 | 18.356 | 2637 | 2641 | 2645 | rVV5  | 31414   | 51236   | 1.35%  | 0.096% |
| 71 | 18.426 | 2648 | 2653 | 2657 | rVV2  | 595316  | 957557  | 25.16% | 1.796% |

Data Path : Z:\HPCHEM1\BNA\_G\DATA\BG081016\  
 Data File : BG023592.D  
 Acq On : 10 Aug 2016 15:01  
 Operator : UM/SJ  
 Sample : H4360-01  
 Misc :  
 ALS Vial : 5 Sample Multiplier: 1

Instrument :  
 BNA\_G  
 ClientSampleId :  
 PR001-SS001-0002-01

## Integration Parameters: LSCINT.P

Integrator: RTE  
 Smoothing : OFF  
 Sampling : 1  
 Start Thrs: 0.2  
 Stop Thrs : 0

Filtering: 5  
 Min Area: 0.1 % of largest Peak  
 Max Peaks: 100  
 Peak Location: TOP

If leading or trailing edge < 100 prefer < Baseline drop else tangent >  
 Peak separation: 5

Method : Z:\HPCHEM1\BNA\_G\METHODS\SOM02.2-EPA-BG080416.M  
 Title : SVOA CALIBRATION

|     |        |      |      |      |      |         |         |         |        |
|-----|--------|------|------|------|------|---------|---------|---------|--------|
| 72  | 18.473 | 2657 | 2661 | 2668 | rVV  | 527665  | 846672  | 22.24%  | 1.588% |
| 73  | 18.561 | 2672 | 2676 | 2680 | rVV3 | 56817   | 95503   | 2.51%   | 0.179% |
| 74  | 18.614 | 2680 | 2685 | 2690 | rVV2 | 373955  | 717053  | 18.84%  | 1.345% |
| 75  | 18.655 | 2690 | 2692 | 2699 | rVB  | 322035  | 424300  | 11.15%  | 0.796% |
| 76  | 18.708 | 2699 | 2701 | 2703 | rBV2 | 31233   | 30854   | 0.81%   | 0.058% |
| 77  | 18.779 | 2709 | 2713 | 2717 | rBV7 | 28124   | 53502   | 1.41%   | 0.100% |
| 78  | 18.820 | 2717 | 2720 | 2726 | rVB3 | 56083   | 100601  | 2.64%   | 0.189% |
| 79  | 18.920 | 2733 | 2737 | 2741 | rBV2 | 166660  | 256902  | 6.75%   | 0.482% |
| 80  | 19.043 | 2756 | 2758 | 2762 | rBV5 | 41789   | 70712   | 1.86%   | 0.133% |
| 81  | 19.166 | 2776 | 2779 | 2783 | rVB  | 135273  | 165214  | 4.34%   | 0.310% |
| 82  | 19.219 | 2784 | 2788 | 2791 | rBV  | 223061  | 276417  | 7.26%   | 0.519% |
| 83  | 19.255 | 2791 | 2794 | 2799 | rVB2 | 172303  | 225580  | 5.93%   | 0.423% |
| 84  | 19.337 | 2803 | 2808 | 2813 | rBV  | 528169  | 835931  | 21.96%  | 1.568% |
| 85  | 19.390 | 2813 | 2817 | 2821 | rBV4 | 184329  | 331152  | 8.70%   | 0.621% |
| 86  | 19.478 | 2827 | 2832 | 2838 | rBV4 | 157736  | 366537  | 9.63%   | 0.688% |
| 87  | 19.601 | 2849 | 2853 | 2859 | rVB  | 617535  | 902352  | 23.71%  | 1.693% |
| 88  | 19.660 | 2861 | 2863 | 2866 | rVV3 | 81549   | 106719  | 2.80%   | 0.200% |
| 89  | 19.695 | 2866 | 2869 | 2875 | rVB4 | 144756  | 216465  | 5.69%   | 0.406% |
| 90  | 19.754 | 2877 | 2879 | 2884 | rVV3 | 51298   | 49728   | 1.31%   | 0.093% |
| 91  | 19.942 | 2905 | 2911 | 2914 | rBV  | 2275284 | 3649886 | 95.89%  | 6.847% |
| 92  | 20.036 | 2923 | 2927 | 2932 | rVB  | 224269  | 348324  | 9.15%   | 0.653% |
| 93  | 20.194 | 2951 | 2954 | 2960 | rVB4 | 102333  | 174824  | 4.59%   | 0.328% |
| 94  | 20.453 | 2990 | 2998 | 3006 | rVB  | 212818  | 576533  | 15.15%  | 1.082% |
| 95  | 20.617 | 3022 | 3026 | 3030 | rVB  | 259261  | 325721  | 8.56%   | 0.611% |
| 96  | 20.758 | 3046 | 3050 | 3054 | rBV  | 274308  | 365301  | 9.60%   | 0.685% |
| 97  | 20.805 | 3055 | 3058 | 3061 | rVB2 | 155309  | 203242  | 5.34%   | 0.381% |
| 98  | 21.869 | 3231 | 3239 | 3244 | rBV2 | 2054026 | 3806344 | 100.00% | 7.140% |
| 99  | 25.029 | 3769 | 3777 | 3785 | rBV2 | 951603  | 2496872 | 65.60%  | 4.684% |
| 100 | 25.264 | 3808 | 3817 | 3829 | rVB2 | 1070881 | 3098641 | 81.41%  | 5.813% |

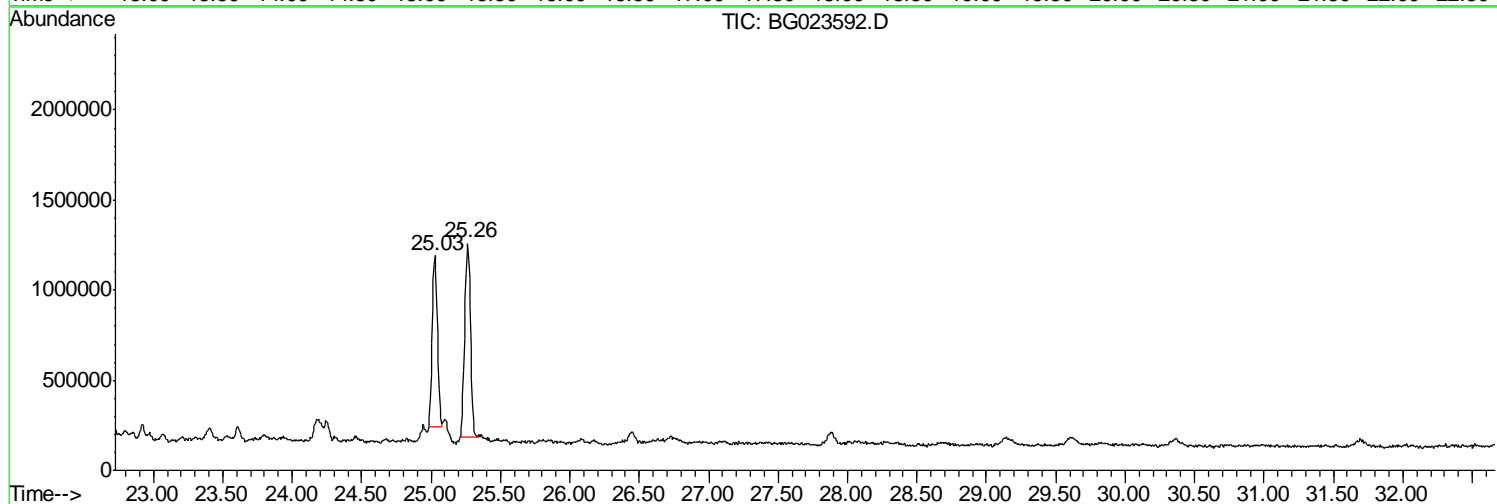
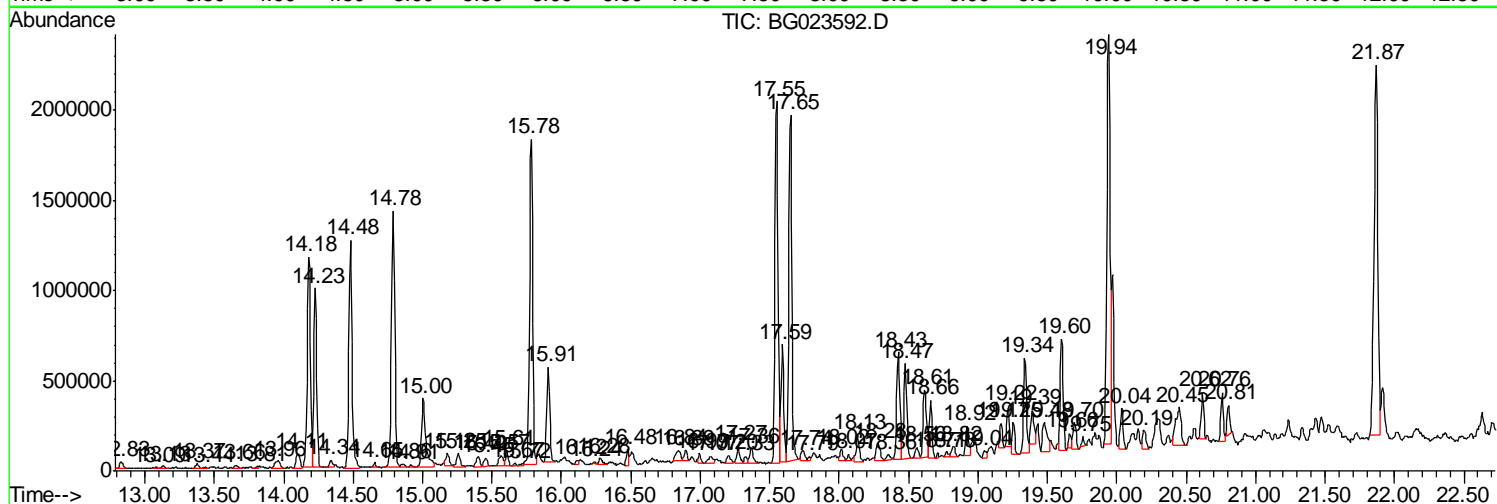
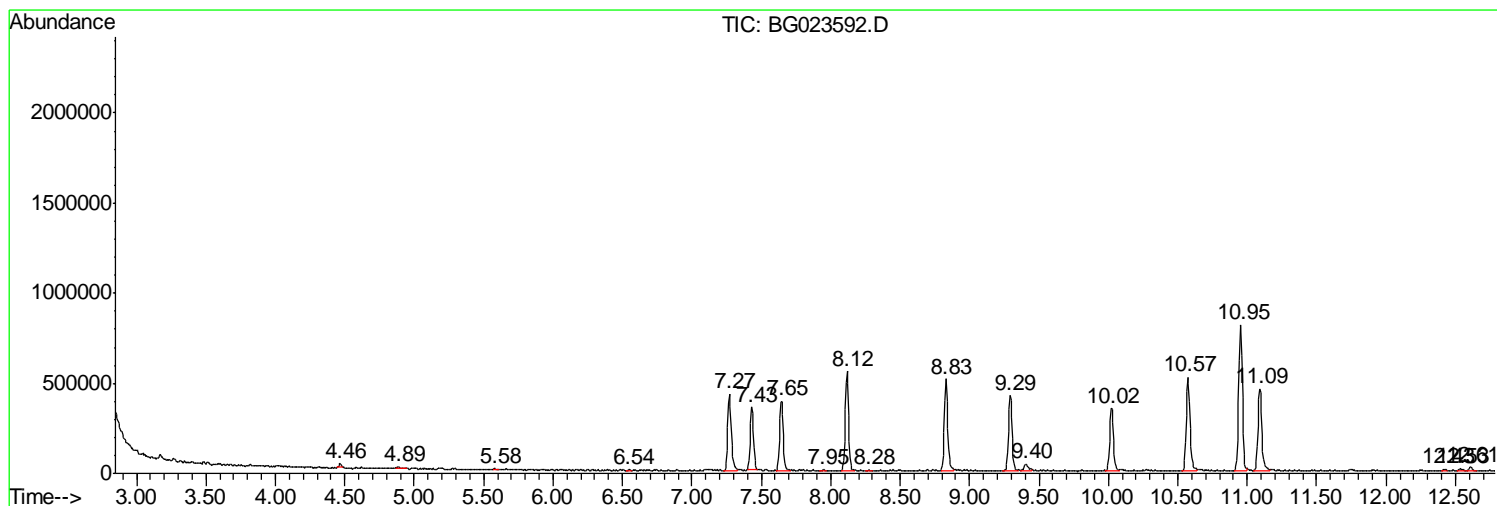
Sum of corrected areas: 53308608

Data Path : Z:\HPCHEM1\BNA\_G\DATA\BG081016\  
 Data File : BG023592.D  
 Acq On : 10 Aug 2016 15:01  
 Operator : UM/SJ  
 Sample : H4360-01  
 Misc :  
 ALS Vial : 5 Sample Multiplier: 1

**Instrument :**  
 BNA\_G  
**ClientSampleId :**  
 PR001-SS001-0002-01

Quant Method : Z:\HPCHEM1\BNA\_G\METHODS\SOM02.2-EPA-BG080416.M  
 Quant Title : SVOA CALIBRATION

TIC Library : C:\DATABASE\NIST11.L  
 TIC Integration Parameters: LSCINT.P



Data Path : Z:\HPCHEM1\BNA\_G\DATA\BG081016\  
 Data File : BG023592.D  
 Acq On : 10 Aug 2016 15:01  
 Operator : UM/SJ  
 Sample : H4360-01  
 Misc :  
 ALS Vial : 5 Sample Multiplier: 1

Instrument :  
 BNA\_G  
 ClientSampleId :  
 PR001-SS001-0002-01

Quant Method : Z:\HPCHEM1\BNA\_G\METHODS\SOM02.2-EPA-BG080416.M  
 Quant Title : SVOA CALIBRATION

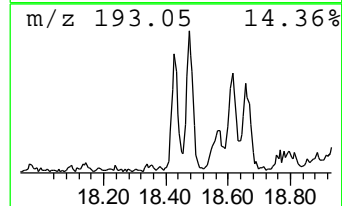
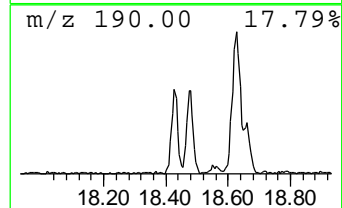
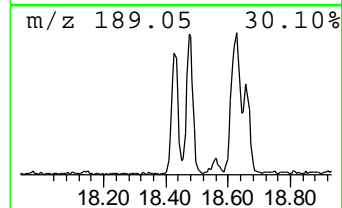
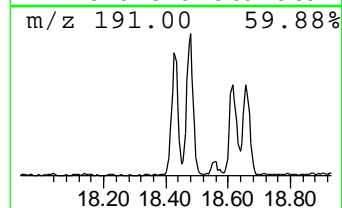
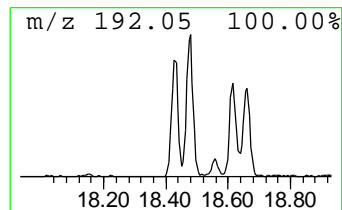
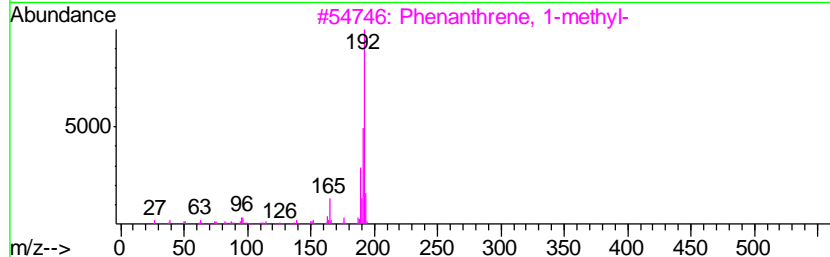
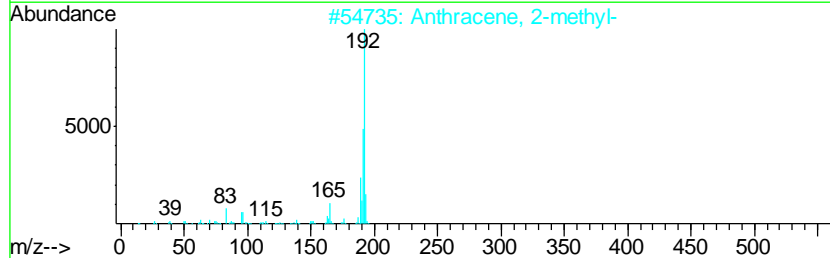
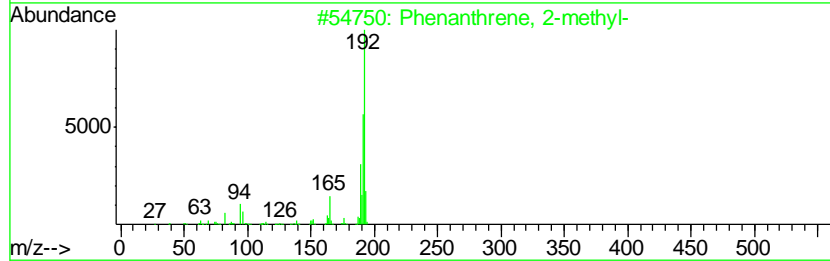
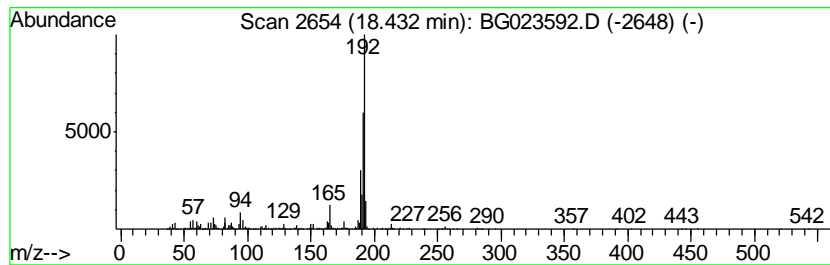
TIC Library : C:\DATABASE\NIST11.L  
 TIC Integration Parameters: LSCINT.P

\*\*\*\*\*  
 Peak Number 1 Phenanthrene, 2-methyl- Concentration Rank 1

| R.T.  | EstConc    | Area   | Relative to ISTD | R.T.  |
|-------|------------|--------|------------------|-------|
| 18.43 | 6.16 ng/ul | 957557 | Phenanthrene-d10 | 17.55 |

| Hit# | of | Tentative ID                          | MW  | MolForm | CAS#        | Qual |
|------|----|---------------------------------------|-----|---------|-------------|------|
| 1    | 5  | Phenanthrene, 2-methyl-               | 192 | C15H12  | 002531-84-2 | 97   |
| 2    |    | Anthracene, 2-methyl-                 | 192 | C15H12  | 000613-12-7 | 96   |
| 3    |    | Phenanthrene, 1-methyl-               | 192 | C15H12  | 000832-69-9 | 96   |
| 4    |    | Phenanthrene, 2-methyl-               | 192 | C15H12  | 002531-84-2 | 95   |
| 5    |    | 1H-Cyclopropa[1]phenanthrene, 1a, ... | 192 | C15H12  | 000949-41-7 | 95   |



Data Path : Z:\HPCHEM1\BNA\_G\DATA\BG081016\  
 Data File : BG023592.D  
 Acq On : 10 Aug 2016 15:01  
 Operator : UM/SJ  
 Sample : H4360-01  
 Misc :  
 ALS Vial : 5 Sample Multiplier: 1

Instrument :  
 BNA\_G  
 ClientSampleId :  
 PR001-SS001-0002-01

Quant Method : Z:\HPCHEM1\BNA\_G\METHODS\SOM02.2-EPA-BG080416.M  
 Quant Title : SVOA CALIBRATION

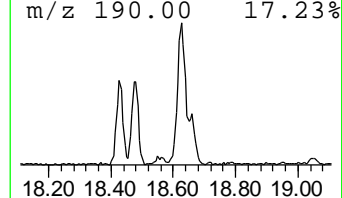
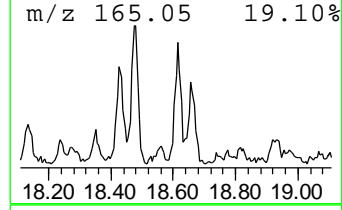
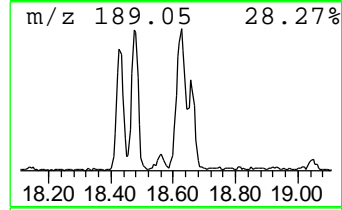
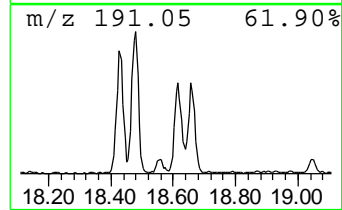
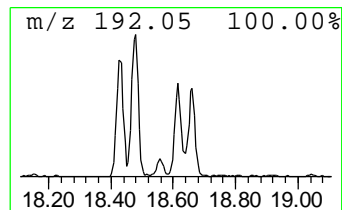
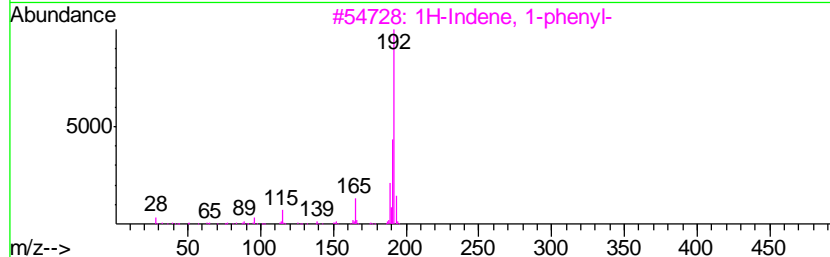
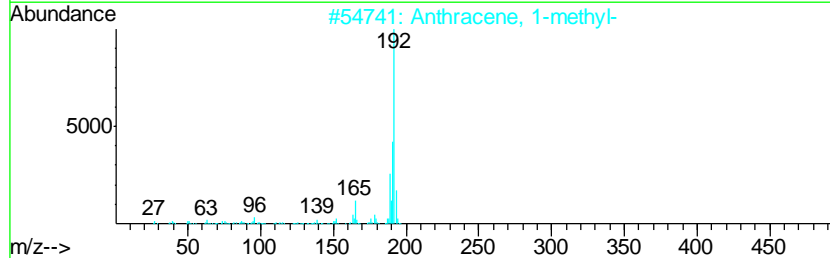
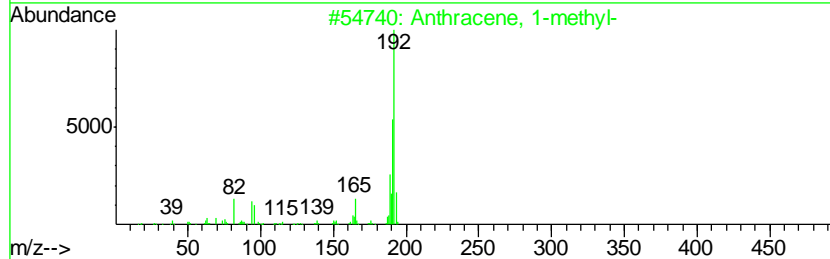
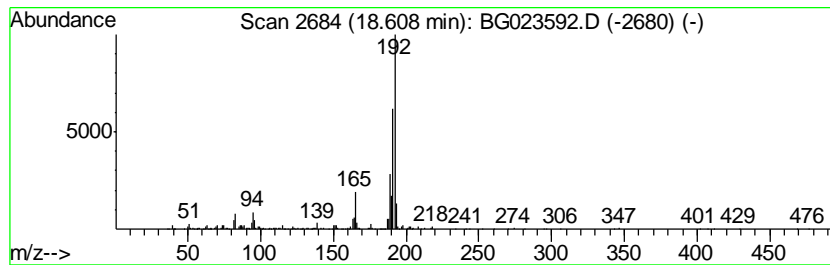
TIC Library : C:\DATABASE\NIST11.L  
 TIC Integration Parameters: LSCINT.P

\*\*\*\*\*  
 Peak Number 3 Anthracene, 1-methyl- Concentration Rank 4

| R.T.  | EstConc    | Area   | Relative to ISTD | R.T.  |
|-------|------------|--------|------------------|-------|
| 18.61 | 4.61 ng/ul | 717053 | Phenanthrene-d10 | 17.55 |

| Hit# | of | Tentative ID          | MW  | MolForm | CAS#        | Qual |
|------|----|-----------------------|-----|---------|-------------|------|
| 1    | 5  | Anthracene, 1-methyl- | 192 | C15H12  | 000610-48-0 | 89   |
| 2    |    | Anthracene, 1-methyl- | 192 | C15H12  | 000610-48-0 | 81   |
| 3    |    | 1H-Indene, 1-phenyl-  | 192 | C15H12  | 001961-96-2 | 76   |
| 4    |    | 1H-Indene, 2-phenyl-  | 192 | C15H12  | 004505-48-0 | 76   |
| 5    |    | Anthracene, 1-methyl- | 192 | C15H12  | 000610-48-0 | 74   |



Data Path : Z:\HPCHEM1\BNA\_G\DATA\BG081016\  
 Data File : BG023592.D  
 Acq On : 10 Aug 2016 15:01  
 Operator : UM/SJ  
 Sample : H4360-01  
 Misc :  
 ALS Vial : 5 Sample Multiplier: 1

Instrument :  
 BNA\_G  
 ClientSampleID :  
 PR001-SS001-0002-01

Quant Method : Z:\HPCHEM1\BNA\_G\METHODS\SOM02.2-EPA-BG080416.M  
 Quant Title : SVOA CALIBRATION

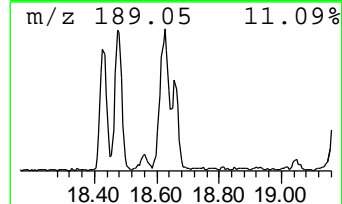
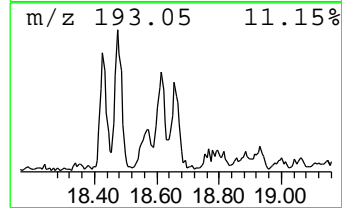
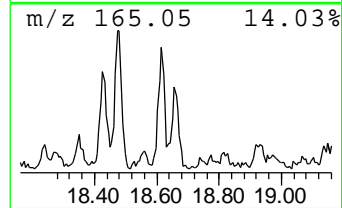
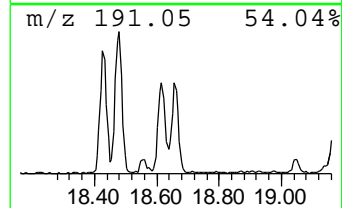
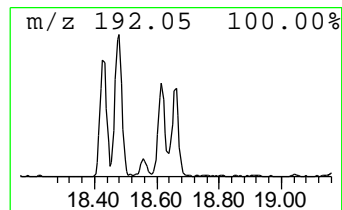
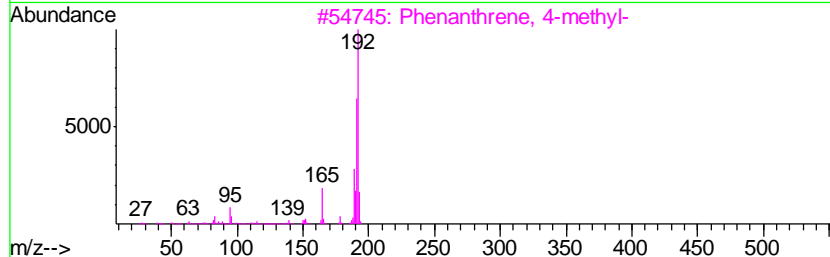
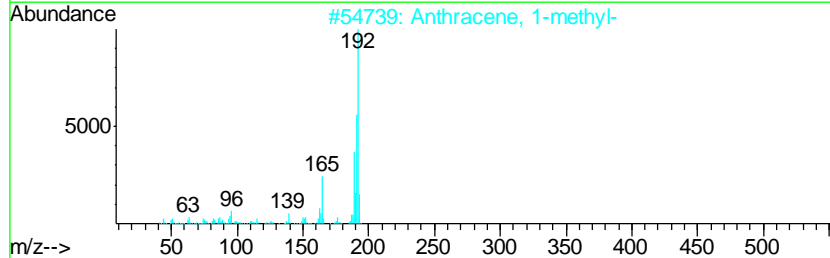
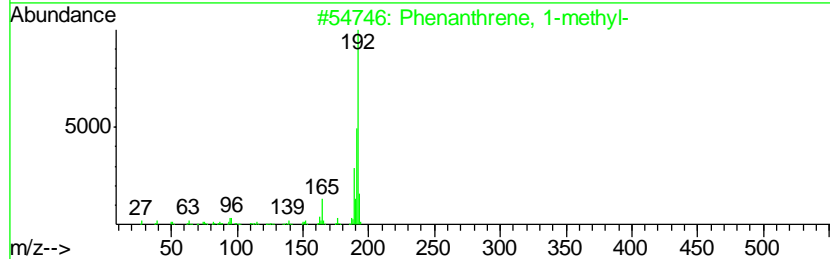
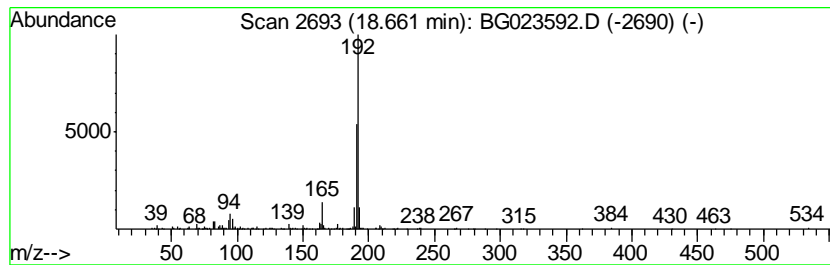
TIC Library : C:\DATABASE\NIST11.L  
 TIC Integration Parameters: LSCINT.P

\*\*\*\*\*  
 Peak Number 4 Phenanthrene, 1-methyl- Concentration Rank 6

| R.T.  | EstConc    | Area   | Relative to ISTD | R.T.  |
|-------|------------|--------|------------------|-------|
| 18.66 | 2.73 ng/ul | 424300 | Phenanthrene-d10 | 17.55 |

| Hit# | of | Tentative ID            | MW  | MolForm | CAS#        | Qual |
|------|----|-------------------------|-----|---------|-------------|------|
| 1    | 5  | Phenanthrene, 1-methyl- | 192 | C15H12  | 000832-69-9 | 81   |
| 2    |    | Anthracene, 1-methyl-   | 192 | C15H12  | 000610-48-0 | 81   |
| 3    |    | Phenanthrene, 4-methyl- | 192 | C15H12  | 000832-64-4 | 81   |
| 4    |    | Phenanthrene, 2-methyl- | 192 | C15H12  | 002531-84-2 | 80   |
| 5    |    | Anthracene, 1-methyl-   | 192 | C15H12  | 000610-48-0 | 80   |



Data Path : Z:\HPCHEM1\BNA\_G\DATA\BG081016\  
 Data File : BG023592.D  
 Acq On : 10 Aug 2016 15:01  
 Operator : UM/SJ  
 Sample : H4360-01  
 Misc :  
 ALS Vial : 5 Sample Multiplier: 1

Instrument :  
 BNA\_G  
 ClientSampleID :  
 PR001-SS001-0002-01

Quant Method : Z:\HPCHEM1\BNA\_G\METHODS\SOM02.2-EPA-BG080416.M  
 Quant Title : SVOA CALIBRATION

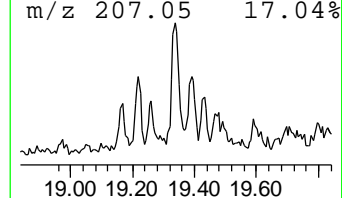
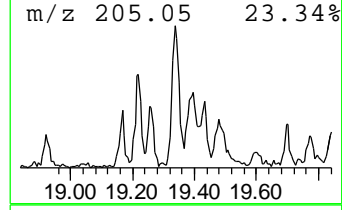
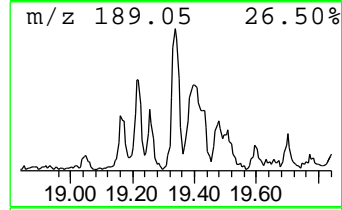
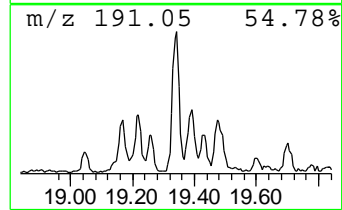
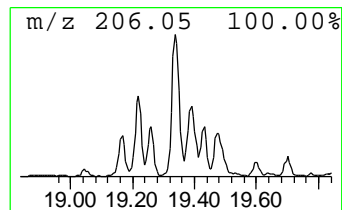
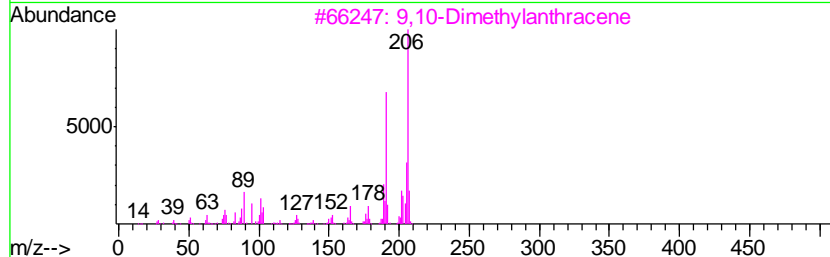
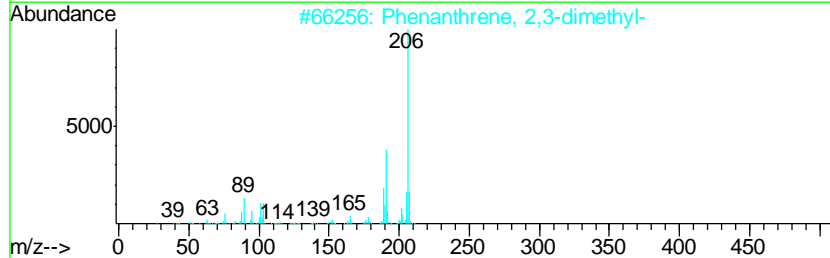
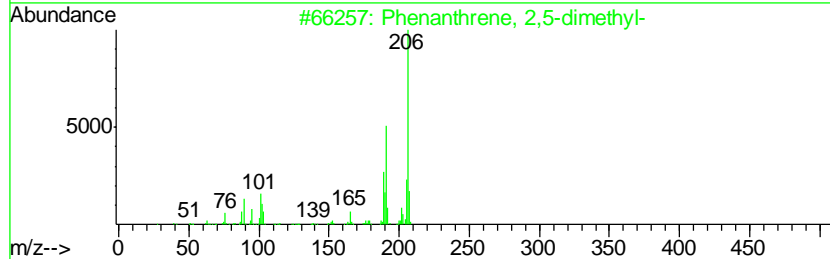
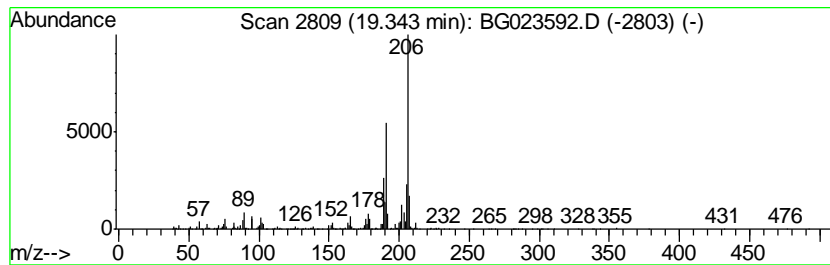
TIC Library : C:\DATABASE\NIST11.L  
 TIC Integration Parameters: LSCINT.P

\*\*\*\*\*  
 Peak Number 5 Phenanthrene, 2,5-dimethyl- Concentration Rank 3

| R.T.  | EstConc    | Area   | Relative to ISTD | R.T.  |
|-------|------------|--------|------------------|-------|
| 19.34 | 5.38 ng/ul | 835931 | Phenanthrene-d10 | 17.55 |

| Hit# | of | Tentative ID                | MW  | MolForm | CAS#        | Qual |
|------|----|-----------------------------|-----|---------|-------------|------|
| 1    | 5  | Phenanthrene, 2,5-dimethyl- | 206 | C16H14  | 003674-66-6 | 94   |
| 2    |    | Phenanthrene, 2,3-dimethyl- | 206 | C16H14  | 003674-65-5 | 94   |
| 3    |    | 9,10-Dimethylantracene      | 206 | C16H14  | 000781-43-1 | 93   |
| 4    |    | 9,10-Dimethylantracene      | 206 | C16H14  | 000781-43-1 | 91   |
| 5    |    | 9,10-Dimethylantracene      | 206 | C16H14  | 000781-43-1 | 87   |





Data Path : Z:\HPCHEM1\BNA\_G\DATA\BG081016\  
 Data File : BG023592.D  
 Acq On : 10 Aug 2016 15:01  
 Operator : UM/SJ  
 Sample : H4360-01  
 Misc :  
 ALS Vial : 5 Sample Multiplier: 1

Instrument :  
 BNA\_G  
 ClientSampleID :  
 PR001-SS001-0002-01

Quant Method : Z:\HPCHEM1\BNA\_G\METHODS\SOM02.2-EPA-BG080416.M  
 Quant Title : SVOA CALIBRATION

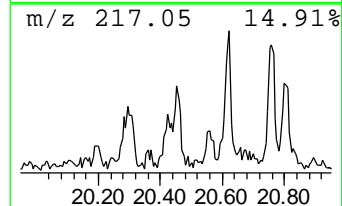
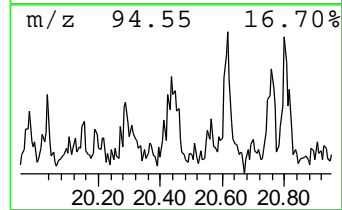
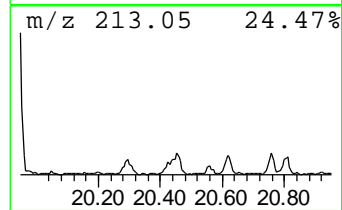
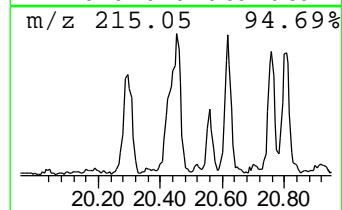
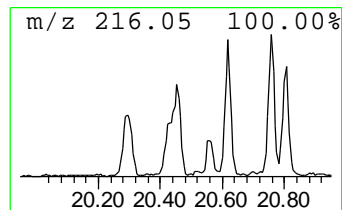
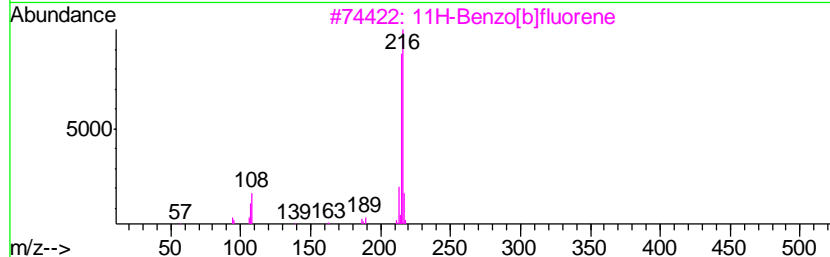
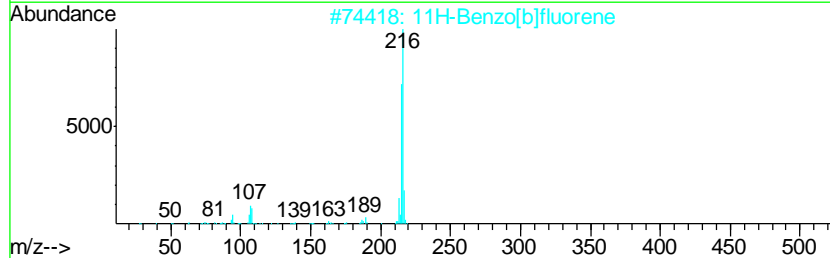
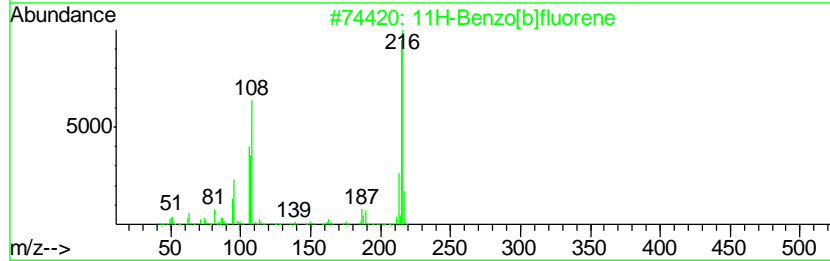
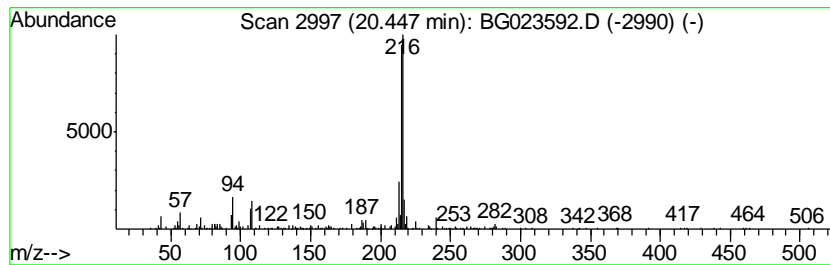
TIC Library : C:\DATABASE\NIST11.L  
 TIC Integration Parameters: LSCINT.P

\*\*\*\*\*  
 Peak Number 8 11H-Benzo[b]fluorene Concentration Rank 5

| R.T.  | EstConc    | Area   | Relative to ISTD | R.T.  |
|-------|------------|--------|------------------|-------|
| 20.45 | 3.03 ng/ul | 576533 | Chrysene-d12     | 21.87 |

| Hit# | of | Tentative ID         | MW  | MolForm | CAS#        | Qual |
|------|----|----------------------|-----|---------|-------------|------|
| 1    | 5  | 11H-Benzo[b]fluorene | 216 | C17H12  | 000243-17-4 | 91   |
| 2    |    | 11H-Benzo[b]fluorene | 216 | C17H12  | 000243-17-4 | 90   |
| 3    |    | 11H-Benzo[b]fluorene | 216 | C17H12  | 000243-17-4 | 87   |
| 4    |    | Pyrene, 1-methyl-    | 216 | C17H12  | 002381-21-7 | 86   |
| 5    |    | 11H-Benzo[a]fluorene | 216 | C17H12  | 000238-84-6 | 83   |



Data Path : Z:\HPCHEM1\BNA\_G\DATA\BG081016\  
Data File : BG023592.D  
Acq On : 10 Aug 2016 15:01  
Operator : UM/SJ  
Sample : H4360-01  
Misc :  
ALS Vial : 5 Sample Multiplier: 1

Instrument :  
BNA\_G  
ClientSampleId :  
PR001-SS001-0002-01

Quant Method : Z:\HPCHEM1\BNA\_G\METHODS\SOM02.2-EPA-BG080416.M  
Quant Title : SVOA CALIBRATION

TIC Library : C:\DATABASE\NIST11.L  
TIC Integration Parameters: LSCINT.P

| TIC Top Hit name     | RT    | EstConc | Units | Response | --Internal Standard-- |       |         |      |
|----------------------|-------|---------|-------|----------|-----------------------|-------|---------|------|
|                      |       |         |       |          | #                     | RT    | Resp    | Conc |
| Phenanthrene, 2-m... | 18.43 | 6.2     | ng/ul | 957557   | 4                     | 17.55 | 3107700 | 20.0 |
| Anthracene, 1-met... | 18.61 | 4.6     | ng/ul | 717053   | 4                     | 17.55 | 3107700 | 20.0 |
| Phenanthrene, 1-m... | 18.66 | 2.7     | ng/ul | 424300   | 4                     | 17.55 | 3107700 | 20.0 |
| Phenanthrene, 2,5... | 19.34 | 5.4     | ng/ul | 835931   | 4                     | 17.55 | 3107700 | 20.0 |
| 11H-Benzo[b]fluorene | 20.45 | 3.0     | ng/ul | 576533   | 5                     | 21.87 | 3806340 | 20.0 |