

Data Path : Z:\HPCHEM1\BNA G\DATA\BG081017\
 Data File : BG028281.D
 Acq On : 11 Aug 2017 5:54
 Operator : SJ/JU
 Sample : I4529-01
 Misc :
 ALS Vial : 26 Sample Multiplier: 1

Instrument :
 BNA_G
 ClientSampleId :
 C0AD3

Quant Time: Aug 11 08:41:14 2017
 Quant Method : Z:\HPCHEM1\BNA G\METHODS\SOM-EPA-BG080217.M
 Quant Title : SVOA CALIBRATION
 QLast Update : Fri Aug 11 04:08:50 2017
 Response via : Initial Calibration

Internal Standards	R.T.	QIon	Response	Conc	Units	Dev(Min)
1) 1,4-Dichlorobenzene-d4	8.35	152	50377	20.00	ng/ul	0.00
18) Naphthalene-d8	11.17	136	221228	20.00	ng/ul	0.00
35) Acenaphthene-d10	14.96	164	156948	20.00	ng/ul	0.00
61) Phenanthrene-d10	17.81	188	919950	20.00	ng/ul	0.10
75) Chrysene-d12	22.03	240	403644	20.00	ng/ul	0.00
83) Perylene-d12	25.54	264	391875	20.00	ng/ul	0.00

System Monitoring Compounds

3) 1,4-Dioxane-d8	3.84	96	8445	7.81	ng/uL	0.00
5) Phenol-d5	7.50	99	206327	37.29	ng/ul	0.00
7) Bis-(2-Chloroethyl)ether-d	7.67	67	141151	40.28	ng/ul	0.00
9) 2-Chlorophenol-d4	7.89	132	150042	42.99	ng/ul	0.00
13) 4-Methylphenol-d8	9.05	113	156174	33.77	ng/ul	0.00
19) Nitrobenzene-d5	9.52	128	84070	48.60	ng/ul	0.00
22) 2-Nitrophenol-d4	10.25	143	97610	51.46	ng/ul	0.00
26) 2,4-Dichlorophenol-d3	10.79	165	181329	46.21	ng/ul	0.00
29) 4-Chloroaniline-d4	11.30	131	140782	32.23	ng/ul	0.00
43) Dimethylphthalate-d6	14.35	166	657857	47.13	ng/ul	0.00
46) Acenaphthylene-d8	14.66	160	711630	45.22	ng/ul	0.00
51) 4-Nitrophenol-d4	15.15	143	97544	43.95	ng/ul	0.00
57) Fluorene-d10	15.95	176	533740	42.62	ng/ul	0.00
62) 4,6-Dinitro-2-methylphenol	16.06	200	124837	20.89	ng/ul	0.00
70) Anthracene-d10	17.81	188	919276	20.84	ng/ul	0.00
76) Pyrene-d10	20.08	212	1053436	50.89	ng/ul	0.00
87) Benzo(a)pyrene-d12	25.30	264	993445	54.15	ng/ul	0.00

Target Compounds

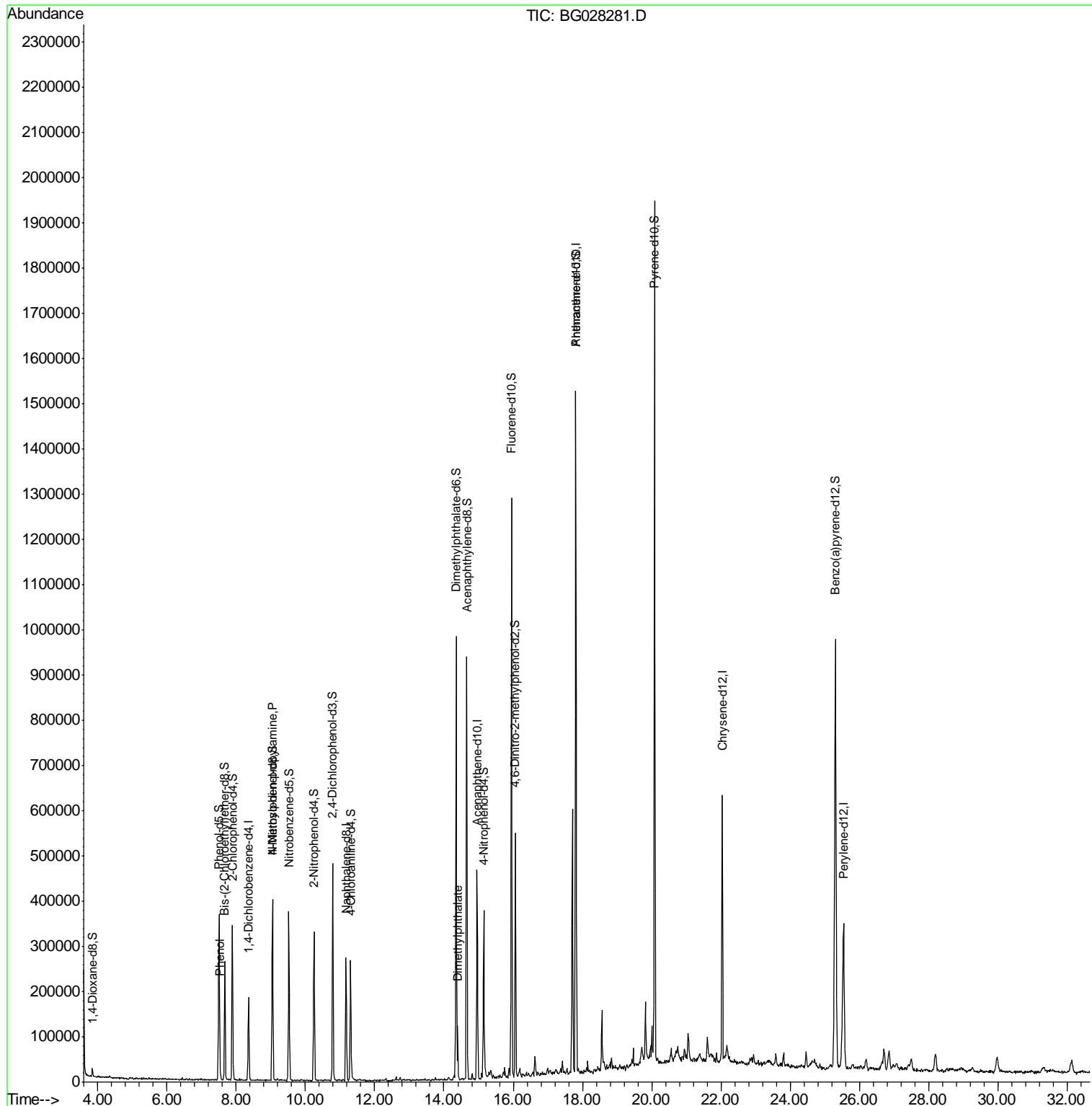
					Ovalue	
6) Phenol	7.53	94	10692	1.945	ng/ul#	77
15) N-Nitroso-di-n-propylamine	9.05	70	4089	1.091	ng/ul#	1
44) Dimethylphthalate	14.39	163	72001	5.602	ng/ul#	96

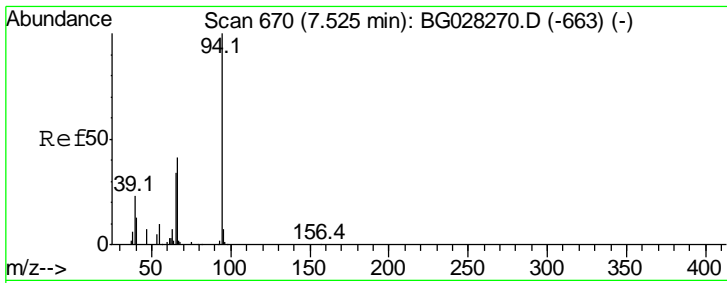
(#) = qualifier out of range (m) = manual integration (+) = signals summed

Data Path : Z:\HPCHEM1\BNA G\DATA\BG081017\
 Data File : BG028281.D
 Acq On : 11 Aug 2017 5:54
 Operator : SJ/JU
 Sample : I4529-01
 Misc :
 ALS Vial : 26 Sample Multiplier: 1

Instrument :
 BNA_G
 ClientSampleId :
 C0AD3

Quant Time: Aug 11 08:41:14 2017
 Quant Method : Z:\HPCHEM1\BNA G\METHODS\SOM-EPA-BG080217.M
 Quant Title : SVOA CALIBRATION
 QLast Update : Fri Aug 11 04:08:50 2017
 Response via : Initial Calibration

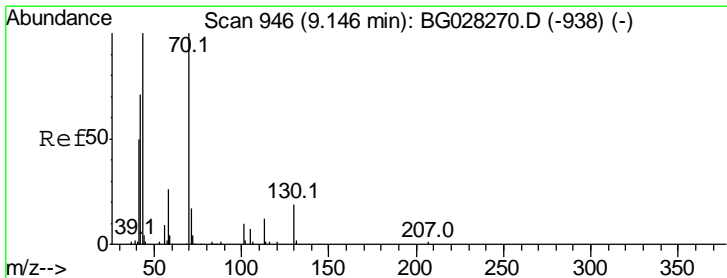
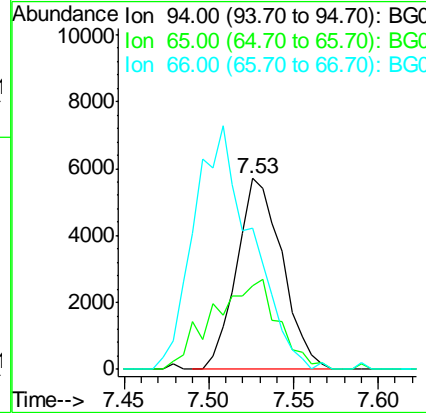
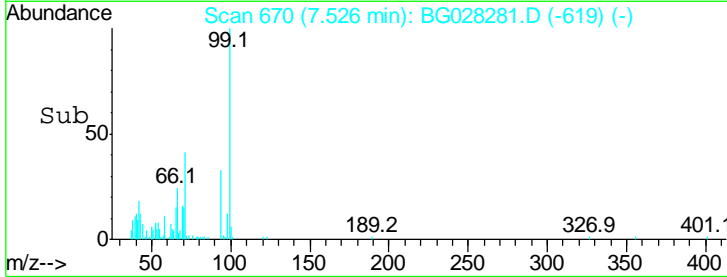
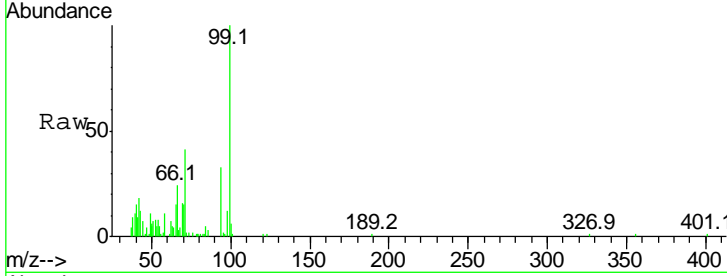




#6
 Phenol
 Concen: 1.945 ng/ul
 RT: 7.53 min Scan# 670
 Delta R.T. 0.00 min
 Lab File: BG028281.D
 Acq: 11 Aug 2017 5:54

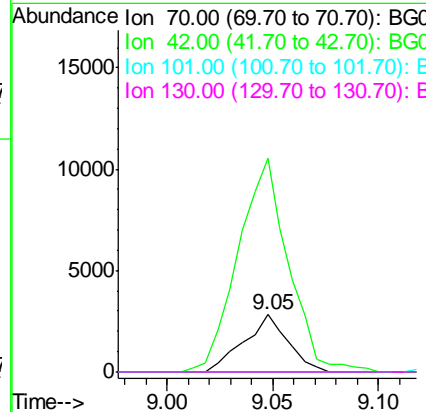
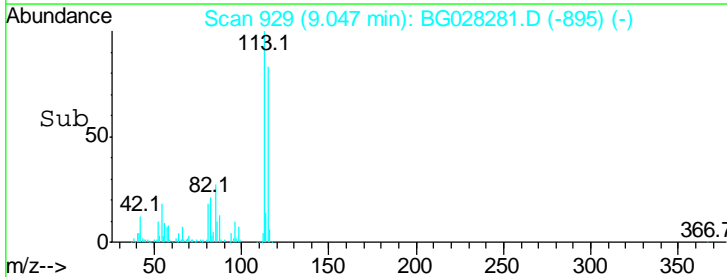
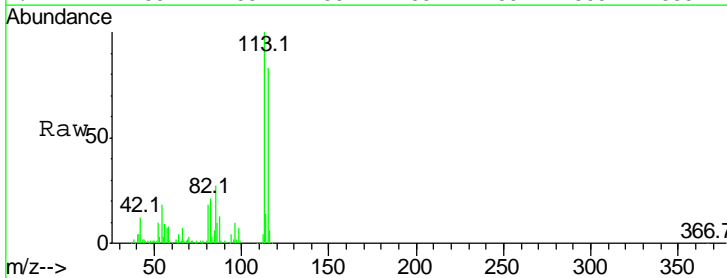
Instrument :
 BNA_G
 ClientSampled :
 C0AD3

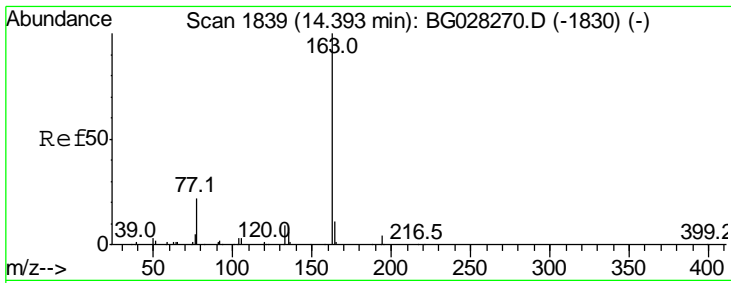
Tgt Ion	Resp	Lower	Upper
94	10692		
65	44.1	26.8	40.2#
66	74.1	44.4	66.6#



#15
 N-Nitroso-di-n-propylamine
 Concen: 1.091 ng/ul
 RT: 9.05 min Scan# 929
 Delta R.T. -0.10 min
 Lab File: BG028281.D
 Acq: 11 Aug 2017 5:54

Tgt Ion	Resp	Lower	Upper
70	4089		
42	374.0	59.0	88.6#
101	0.0	6.6	9.8#
130	0.0	15.6	23.4#





#44
 Dimethylphthalate
 Concen: 5.602 ng/ul
 RT: 14.39 min Scan# 1839
 Delta R.T. 0.00 min
 Lab File: BG028281.D
 Acq: 11 Aug 2017 5:54

Instrument :
 BNA_G
 ClientSampleID :
 C0AD3

Tot Ion:163 Resp: 72001

Ion	Ratio	Lower	Upper
163	100		
194	3.1	3.4	5.0#
164	9.5	9.0	13.4

