

Data Path : Z:\HPCHEM1\BNA G\DATA\BG081017\
 Data File : BG028263.D
 Acq On : 10 Aug 2017 18:04
 Operator : SJ/JU
 Sample : I4630-08
 Misc :
 ALS Vial : 9 Sample Multiplier: 1

Instrument :
 BNA_G
ClientSampleId :
 C0AA4

Manual Integrations
APPROVED
 Sohil
 8/14/2017 4:02:12 PM

Quant Time: Aug 11 02:04:27 2017
 Quant Method : Z:\HPCHEM1\BNA G\METHODS\SOM-EPA-BG080217.M
 Quant Title : SVOA CALIBRATION
 QLast Update : Fri Aug 11 01:09:14 2017
 Response via : Initial Calibration

Internal Standards	R.T.	QIon	Response	Conc	Units	Dev(Min)
1) 1,4-Dichlorobenzene-d4	8.35	152	38852	20.00	ng/ul	0.00
18) Naphthalene-d8	11.17	136	168913	20.00	ng/ul	0.00
35) Acenaphthene-d10	14.96	164	118890	20.00	ng/ul	0.00
61) Phenanthrene-d10	17.71	188	288037m	20.00	ng/ul	0.00
75) Chrysene-d12	22.03	240	323152	20.00	ng/ul	0.00
83) Perylene-d12	25.53	264	307432	20.00	ng/ul	0.00

System Monitoring Compounds

3) 1,4-Dioxane-d8	3.85	96	5306	6.36	ng/uL	0.00
5) Phenol-d5	7.50	99	34266	8.03	ng/ul	0.00
7) Bis-(2-Chloroethyl)ether-d	7.67	67	79644	29.47	ng/ul	0.00
9) 2-Chlorophenol-d4	7.89	132	75727	28.13	ng/ul	0.00
13) 4-Methylphenol-d8	9.05	113	59820	16.77	ng/ul	0.00
19) Nitrobenzene-d5	9.52	128	47337	35.84	ng/ul	0.00
22) 2-Nitrophenol-d4	10.25	143	53269	36.78	ng/ul	0.00
26) 2,4-Dichlorophenol-d3	10.79	165	96956	32.36	ng/ul	0.00
29) 4-Chloroaniline-d4	11.28	131	28414	8.52	ng/ul	-0.02
43) Dimethylphthalate-d6	14.35	166	354654	33.54	ng/ul	0.00
46) Acenaphthylene-d8	14.65	160	389651	32.68	ng/ul	0.00
51) 4-Nitrophenol-d4	15.16	143	16254	9.67	ng/ul	0.02
57) Fluorene-d10	15.95	176	302634	31.90	ng/ul	0.00
62) 4,6-Dinitro-2-methylphenol	16.06	200	69850	37.33	ng/ul	0.00
70) Anthracene-d10	17.81	188	516820	37.42	ng/ul	0.00
76) Pyrene-d10	20.08	212	593325	35.80	ng/ul	0.00
87) Benzo(a)pyrene-d12	25.30	264	534201	37.12	ng/ul	0.00

Target Compounds

				Ovalue	
28) Naphthalene	11.22	128	15188	1.815	ng/ul# 73

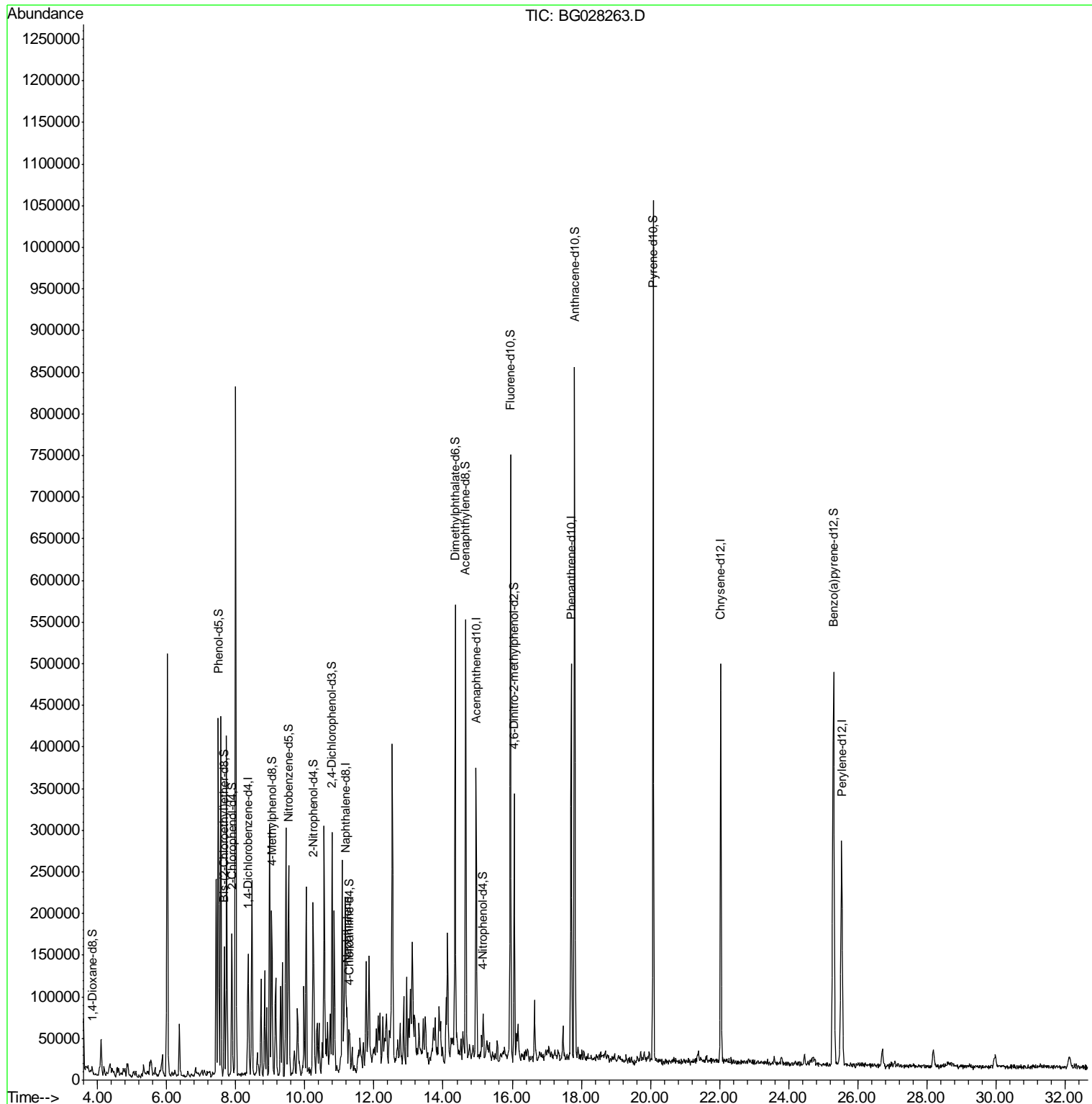
(#) = qualifier out of range (m) = manual integration (+) = signals summed

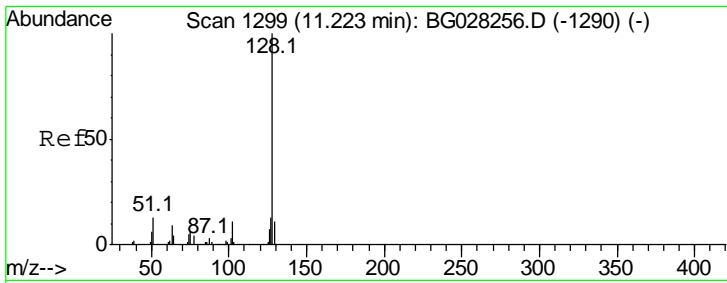
Data Path : Z:\HPCHEM1\BNA G\DATA\BG081017\
 Data File : BG028263.D
 Acq On : 10 Aug 2017 18:04
 Operator : SJ/JU
 Sample : I4630-08
 Misc :
 ALS Vial : 9 Sample Multiplier: 1

Instrument :
 BNA_G
 ClientSampled :
 C0AA4

Manual Integrations
APPROVED
 Sohil
 8/14/2017 4:02:12 PM

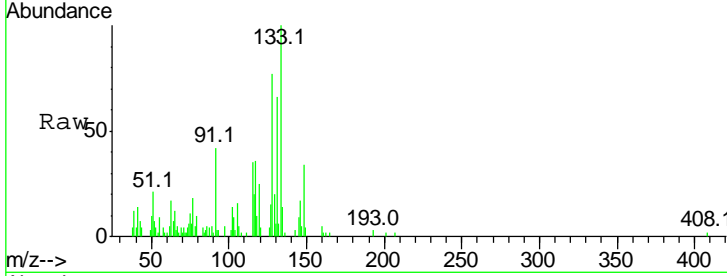
Quant Time: Aug 11 02:04:27 2017
 Quant Method : Z:\HPCHEM1\BNA G\METHODS\SOM-EPA-BG080217.M
 Quant Title : SVOA CALIBRATION
 QLast Update : Fri Aug 11 01:09:14 2017
 Response via : Initial Calibration





#28
 Naphthalene
 Concen: 1.815 ng/ul
 RT: 11.22 min Scan# 1299
 Delta R.T. -0.00 min
 Lab File: BG028263.D
 Acq: 10 Aug 2017 18:04

Instrument :
 BNA_G
ClientSampled :
 C0AA4



Tot Ion: 128 Resp: 15188

Ion	Ratio	Lower	Upper
128	100		
129	26.0	9.4	14.2#
127	19.8	10.3	15.5#

Manual Integrations
APPROVED
 Sohil
 8/14/2017 4:02:12 PM

