

Data Path : Z:\svoasrv\HPCHEM1\BNA_G\Data\BG081021\
 Data File : BG049764.D
 Acq On : 10 Aug 2021 19:51
 Operator : CG/JU
 Sample : M3182-17
 Misc :
 ALS Vial : 10 Sample Multiplier: 1

Instrument :
 BNA_G
 ClientSampleID :
 C00D5

Integration Parameters: LSCINT.P
 Integrator: RTE
 Smoothing : OFF Filtering: 5
 Sampling : 1 Min Area: 0.1 % of largest Peak
 Start Thrs: 0.2 Max Peaks: 100
 Stop Thrs : 0 Peak Location: TOP

If leading or trailing edge < 100 prefer < Baseline drop else tangent >
 Peak separation: 5

Method : Z:\SVOASRV\HPCHEM1\BNA_G\METHODS\SFAM-EPA-BG080421.M
 Title : SVOA CALIBRATION

Signal : TIC: BG049764.D\data.ms

peak #	R.T. min	first scan	max scan	last scan	PK TY	peak height	corr. area	corr. % max.	% of total
1	3.143	13	18	35	rVB	247730	423520	74.97%	5.246%
2	3.848	135	138	148	rBV2	23584	41731	7.39%	0.517%
3	3.953	152	156	163	rVB3	15464	25771	4.56%	0.319%
4	4.024	163	168	170	rBV3	2375	4260	0.75%	0.053%
5	4.177	189	194	200	rBV	15461	20985	3.71%	0.260%
6	4.741	286	290	294	rVB6	2334	3582	0.63%	0.044%
7	5.210	366	370	373	rBV5	3996	4190	0.74%	0.052%
8	5.516	420	422	426	rVB2	4957	5538	0.98%	0.069%
9	5.651	440	445	454	rVB2	25083	51065	9.04%	0.633%
10	6.027	503	509	514	rBV3	19075	28455	5.04%	0.352%
11	6.098	518	521	526	rVB2	1772	3185	0.56%	0.039%
12	6.280	547	552	555	rBV4	3074	4499	0.80%	0.056%
13	6.573	599	602	606	rVB2	2261	3132	0.55%	0.039%
14	7.014	671	677	680	rBV5	4556	7726	1.37%	0.096%
15	7.114	689	694	699	rVB3	8359	10847	1.92%	0.134%
16	7.196	699	708	714	rBV2	67891	132167	23.40%	1.637%
17	7.355	729	735	742	rBV	47762	79246	14.03%	0.982%
18	7.566	765	771	779	rVB	70137	123832	21.92%	1.534%
19	7.648	779	785	788	rBV4	14516	25977	4.60%	0.322%
20	7.854	814	820	821	rBV2	1966	3285	0.58%	0.041%
21	8.036	841	851	857	rBV	106182	193082	34.18%	2.392%
22	8.154	866	871	875	rBV4	4304	8451	1.50%	0.105%
23	8.312	897	898	904	rVB4	2869	3660	0.65%	0.045%
24	8.682	956	961	966	rBV6	6984	14084	2.49%	0.174%
25	8.747	967	972	979	rBV2	33597	61015	10.80%	0.756%
26	9.205	1043	1050	1056	rBV2	73981	136867	24.23%	1.695%
27	9.358	1069	1076	1077	rBV3	2942	3424	0.61%	0.042%
28	9.681	1127	1131	1136	rVB4	3978	6323	1.12%	0.078%
29	9.746	1136	1142	1144	rBV2	2318	4396	0.78%	0.054%
30	9.934	1165	1174	1185	rVB3	69678	138996	24.61%	1.722%
31	10.186	1213	1217	1218	rBV3	2301	2808	0.50%	0.035%
32	10.262	1223	1230	1236	rBV5	6461	16893	2.99%	0.209%
33	10.480	1260	1267	1275	rVB2	91430	161949	28.67%	2.006%
34	10.615	1284	1290	1302	rBV2	29319	59788	10.58%	0.741%
35	10.738	1308	1311	1314	rBV3	1747	2520	0.45%	0.031%
36	10.815	1319	1324	1326	rVV2	30260	45766	8.10%	0.567%

Data Path : Z:\svoasrv\HPCHEM1\BNA_G\Data\BG081021\
 Data File : BG049764.D
 Acq On : 10 Aug 2021 19:51
 Operator : CG/JU
 Sample : M3182-17
 Misc :
 ALS Vial : 10 Sample Multiplier: 1

Instrument :
 BNA_G
 ClientSampleId :
 C00D5

Integration Parameters: LSCINT.P
 Integrator: RTE
 Smoothing : OFF Filtering: 5
 Sampling : 1 Min Area: 0.1 % of largest Peak
 Start Thrs: 0.2 Max Peaks: 100
 Stop Thrs : 0 Peak Location: TOP

If leading or trailing edge < 100 prefer < Baseline drop else tangent >
 Peak separation: 5

Method : Z:\SVOASRV\HPCHEM1\BNA_G\METHODS\SFAM-EPA-BG080421.M
 Title : SVOA CALIBRATION

37	10.856	1326	1331	1336	rVV	152509	282901	50.08%	3.504%
38	10.909	1336	1340	1346	rVV	53461	91876	16.26%	1.138%
39	10.997	1348	1355	1363	rVB3	62171	121479	21.51%	1.505%
40	11.655	1465	1467	1470	rBV4	2695	3437	0.61%	0.043%
41	11.866	1499	1503	1507	rVV3	14702	23525	4.16%	0.291%
42	11.954	1517	1518	1522	rVB3	2770	2661	0.47%	0.033%
43	12.260	1565	1570	1577	rBV3	38637	58319	10.32%	0.722%
44	12.407	1588	1595	1598	rBV3	3731	7109	1.26%	0.088%
45	12.448	1600	1602	1604	rVV2	2852	2536	0.45%	0.031%
46	12.512	1604	1613	1621	rVB	72360	120382	21.31%	1.491%
47	12.653	1635	1637	1640	rBV3	2841	2871	0.51%	0.036%
48	12.730	1645	1650	1656	rVB	31561	53083	9.40%	0.658%
49	12.806	1659	1663	1665	rBV3	3405	2764	0.49%	0.034%
50	12.888	1674	1677	1681	rBV4	3052	4148	0.73%	0.051%
51	12.941	1683	1686	1687	rBV3	2757	2662	0.47%	0.033%
52	13.070	1704	1708	1713	rVB4	4419	7391	1.31%	0.092%
53	13.499	1774	1781	1791	rBV3	53259	110057	19.48%	1.363%
54	13.846	1833	1840	1841	rBV2	24538	31560	5.59%	0.391%
55	13.963	1856	1860	1861	rBV2	4976	5149	0.91%	0.064%
56	14.010	1862	1868	1873	rVV2	34087	65545	11.60%	0.812%
57	14.087	1873	1881	1888	rVV	181682	314437	55.66%	3.895%
58	14.157	1889	1893	1897	rVB3	15295	19589	3.47%	0.243%
59	14.198	1897	1900	1904	rBV3	4835	5768	1.02%	0.071%
60	14.245	1904	1908	1911	rBV3	13260	19556	3.46%	0.242%
61	14.316	1918	1920	1923	rBV3	2441	3624	0.64%	0.045%
62	14.380	1925	1931	1943	rVB	196979	319662	56.59%	3.960%
63	14.568	1959	1963	1972	rVB	59583	78417	13.88%	0.971%
64	14.686	1972	1983	1989	rBV	245697	436150	77.21%	5.403%
65	14.897	2013	2019	2026	rBV	75805	137491	24.34%	1.703%
66	15.085	2046	2051	2056	rVB3	35117	58286	10.32%	0.722%
67	15.156	2060	2063	2074	rVV4	17248	32952	5.83%	0.408%
68	15.256	2078	2080	2083	rVB3	4616	5143	0.91%	0.064%
69	15.303	2083	2088	2092	rBV3	13659	23585	4.18%	0.292%
70	15.356	2093	2097	2102	rVB	15148	21459	3.80%	0.266%
71	15.479	2112	2118	2121	rBV5	11562	24450	4.33%	0.303%
72	15.520	2121	2125	2130	rVB	62710	83910	14.85%	1.039%
73	15.679	2147	2152	2158	rVB	244719	371852	65.83%	4.606%
74	15.802	2169	2173	2180	rVB2	91820	125509	22.22%	1.555%
75	16.025	2206	2211	2217	rVB2	24321	45865	8.12%	0.568%
76	16.384	2268	2272	2280	rBV	66459	107386	19.01%	1.330%

Data Path : Z:\svoasrv\HPCHEM1\BNA_G\Data\BG081021\
 Data File : BG049764.D
 Acq On : 10 Aug 2021 19:51
 Operator : CG/JU
 Sample : M3182-17
 Misc :
 ALS Vial : 10 Sample Multiplier: 1

Instrument :
 BNA_G
 ClientSampleId :
 C00D5

Integration Parameters: LSCINT.P
 Integrator: RTE
 Smoothing : OFF Filtering: 5
 Sampling : 1 Min Area: 0.1 % of largest Peak
 Start Thrs: 0.2 Max Peaks: 100
 Stop Thrs : 0 Peak Location: TOP

If leading or trailing edge < 100 prefer < Baseline drop else tangent >
 Peak separation: 5

Method : Z:\SVOASRV\HPCHEM1\BNA_G\METHODS\SFAM-EPA-BG080421.M
 Title : SVOA CALIBRATION

77	16.536	2296	2298	2302	rBV4	3565	5049	0.89%	0.063%
78	16.789	2338	2341	2347	rVB6	9758	14280	2.53%	0.177%
79	16.842	2348	2350	2352	rBV3	4121	4018	0.71%	0.050%
80	16.889	2355	2358	2365	rVB4	14770	19193	3.40%	0.238%
81	16.965	2365	2371	2374	rBV4	27359	45394	8.04%	0.562%
82	17.094	2388	2393	2398	rBV5	37681	64746	11.46%	0.802%
83	17.177	2401	2407	2411	rVB2	78330	114160	20.21%	1.414%
84	17.259	2419	2421	2429	rVB3	14784	19305	3.42%	0.239%
85	17.441	2445	2452	2456	rBV	288172	460695	81.56%	5.707%
86	17.482	2456	2459	2464	rVV	143427	197856	35.03%	2.451%
87	17.541	2464	2469	2478	rVB	224585	364213	64.48%	4.512%
88	17.752	2501	2505	2513	rVB2	40271	70266	12.44%	0.870%
89	17.917	2529	2533	2537	rVB	62713	76825	13.60%	0.952%
90	18.023	2548	2551	2560	rVB4	22783	39614	7.01%	0.491%
91	18.316	2597	2601	2605	rBV2	56947	82325	14.57%	1.020%
92	18.363	2605	2609	2614	rVB	94620	144010	25.49%	1.784%
93	18.504	2629	2633	2637	rBV3	47552	81901	14.50%	1.015%
94	18.610	2647	2651	2657	rBV2	58510	87607	15.51%	1.085%
95	18.663	2658	2660	2663	rBV3	14590	13539	2.40%	0.168%
96	18.810	2681	2685	2690	rBV2	65624	95929	16.98%	1.188%
97	19.233	2752	2757	2762	rBV3	91994	136956	24.24%	1.697%
98	19.491	2796	2801	2808	rVB2	147649	227205	40.22%	2.814%
99	19.550	2808	2811	2814	rBV2	31061	45144	7.99%	0.559%
100	19.826	2852	2858	2862	rBV	333360	564886	100.00%	6.998%

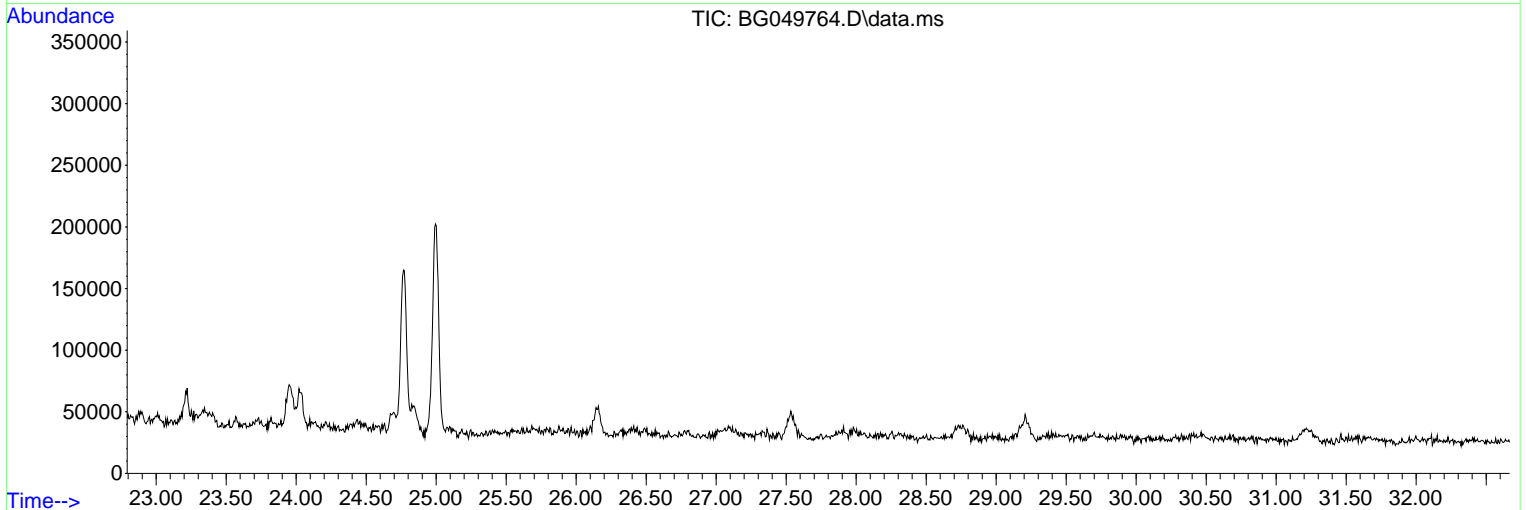
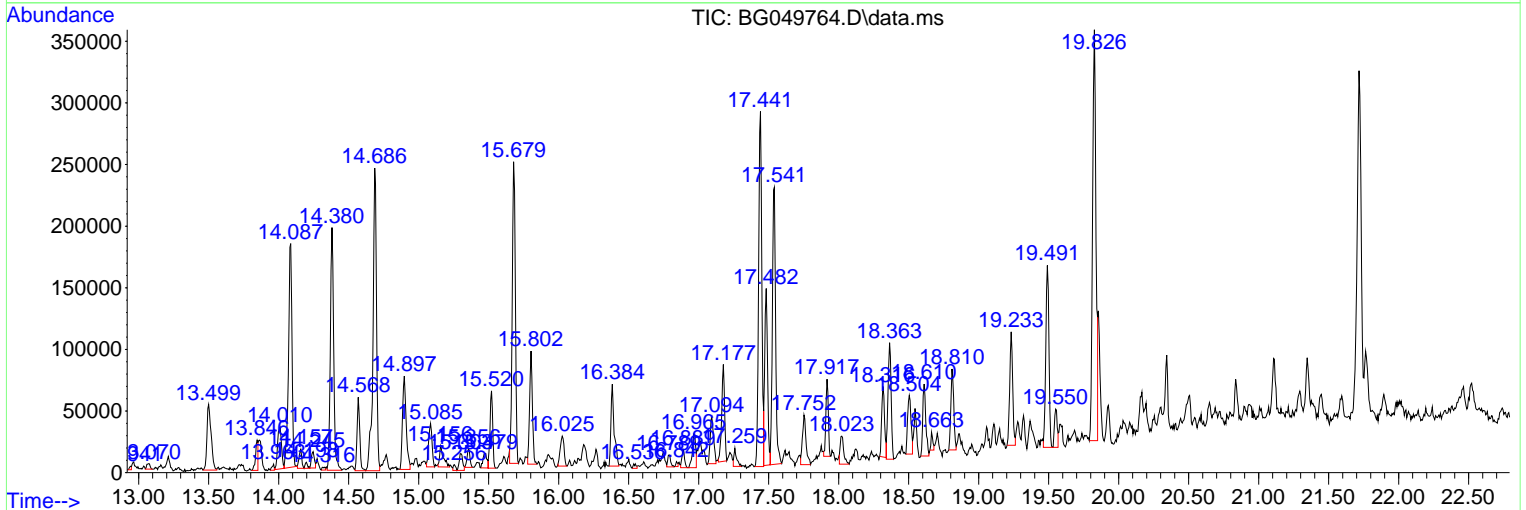
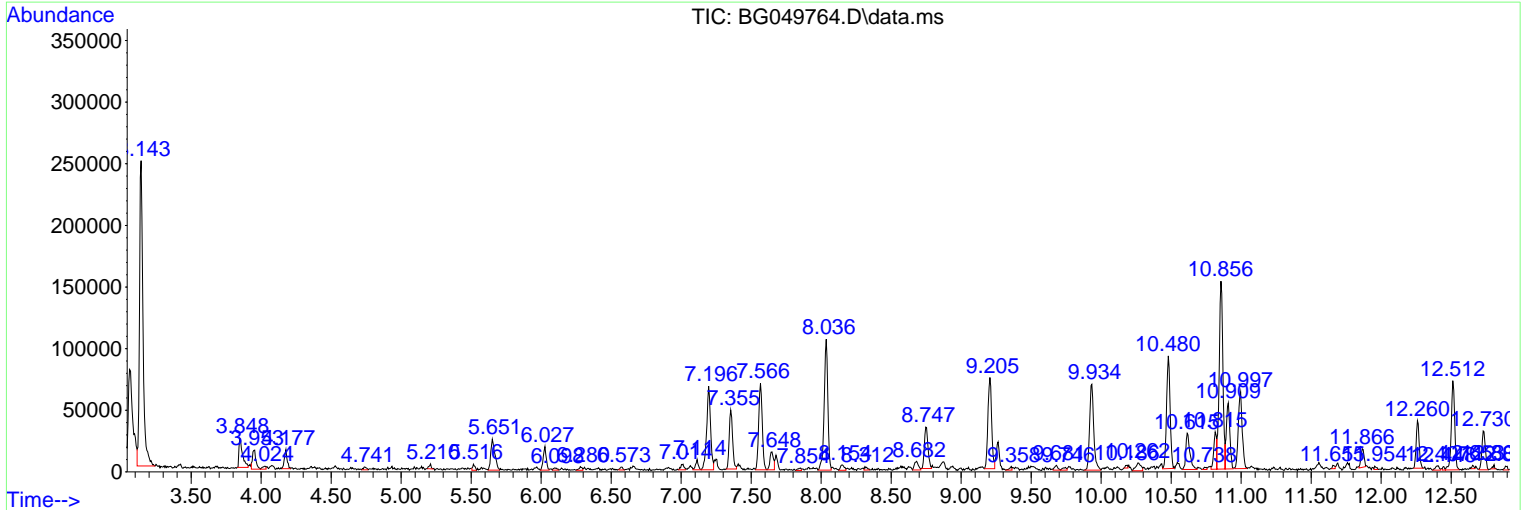
Sum of corrected areas: 8072677

Data Path : Z:\svoasrv\HPCHEM1\BNA_G\Data\BG081021\
 Data File : BG049764.D
 Acq On : 10 Aug 2021 19:51
 Operator : CG/JU
 Sample : M3182-17
 Misc :
 ALS Vial : 10 Sample Multiplier: 1

Instrument :
 BNA_G
Client Sampled :
 C00D5

Quant Method : Z:\SVOASRV\HPCHEM1\BNA_G\METHODS\SFAM-EPA-BG080421.M
 Quant Title : SVOA CALIBRATION

TIC Library : C:\DATABASE\NIST20.L
 TIC Integration Parameters: LSCINT.P



Data Path : Z:\svoasrv\HPCHEM1\BNA_G\Data\BG081021\
 Data File : BG049764.D
 Acq On : 10 Aug 2021 19:51
 Operator : CG/JU
 Sample : M3182-17
 Misc :
 ALS Vial : 10 Sample Multiplier: 1

Instrument :
 BNA_G
 ClientSampleID :
 C00D5

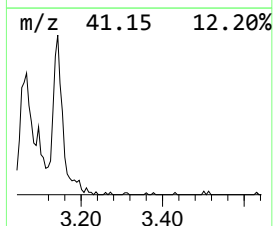
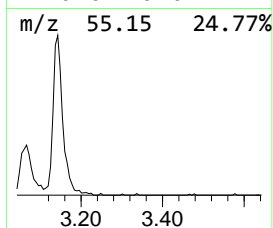
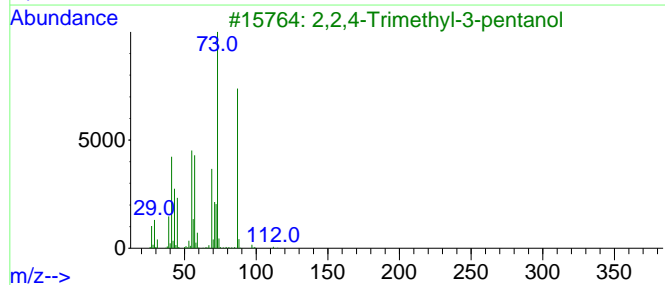
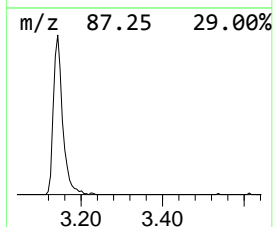
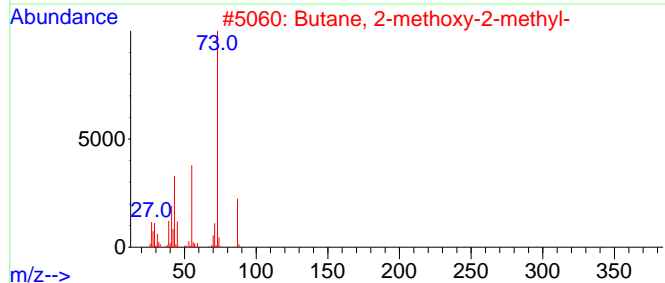
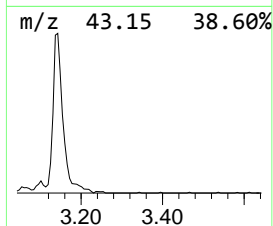
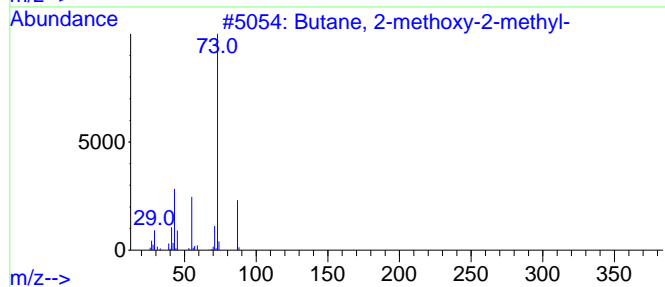
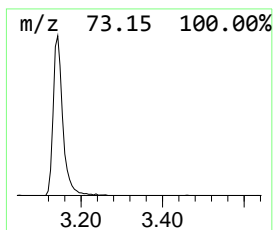
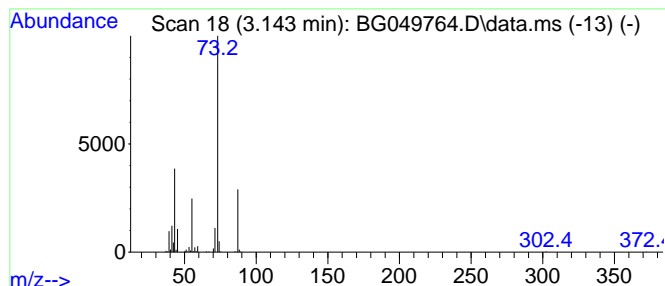
Quant Method : Z:\SVOASRV\HPCHEM1\BNA_G\METHODS\SFAM-EPA-BG080421.M
 Quant Title : SVOA CALIBRATION

TIC Library : C:\DATABASE\NIST20.L
 TIC Integration Parameters: LSCINT.P

 Peak Number 1 Butane, 2-methoxy-2-methyl- Concentration Rank 1

R.T.	EstConc	Area	Relative to ISTD	R.T.
3.143	43.87 ng/ul	423520	1,4-Dichlorobenzene-d4	8.036

Hit#	of	5	Tentative ID	MW	MolForm	CAS#	Qual
1			Butane, 2-methoxy-2-methyl-	102	C6H14O	000994-05-8	78
2			Butane, 2-methoxy-2-methyl-	102	C6H14O	000994-05-8	50
3			2,2,4-Trimethyl-3-pentanol	130	C8H18O	005162-48-1	39
4			Silane, tetramethyl-	88	C4H12Si	000075-76-3	17
5			Pentane, 3-methoxy-	102	C6H14O	036839-67-5	12



Data Path : Z:\svoasrv\HPCHEM1\BNA_G\Data\BG081021\
 Data File : BG049764.D
 Acq On : 10 Aug 2021 19:51
 Operator : CG/JU
 Sample : M3182-17
 Misc :
 ALS Vial : 10 Sample Multiplier: 1

Instrument :
 BNA_G
 ClientSampleId :
 C00D5

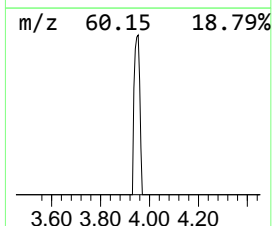
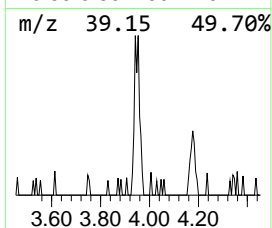
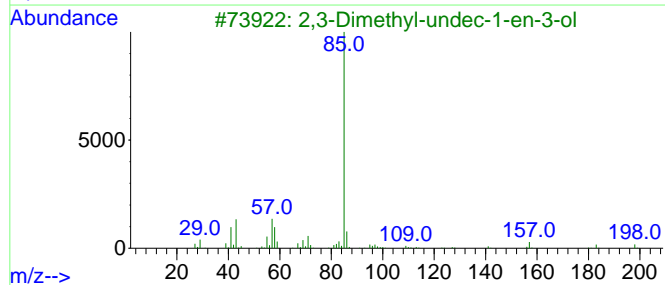
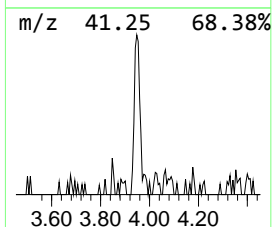
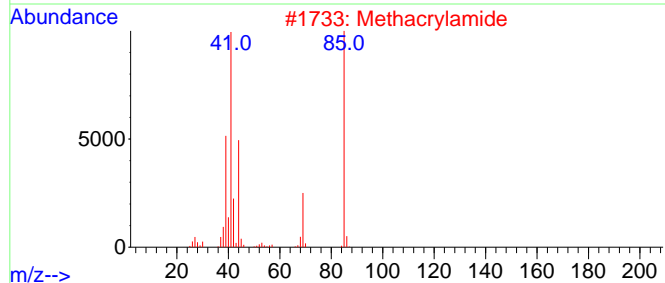
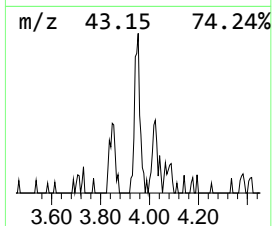
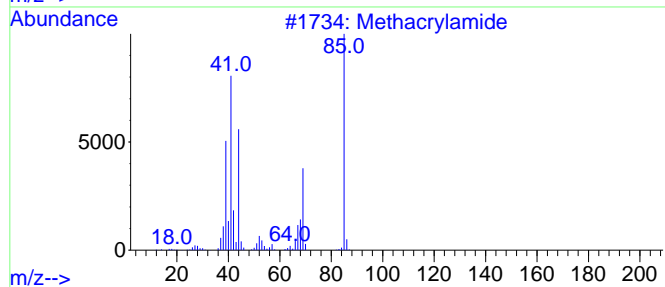
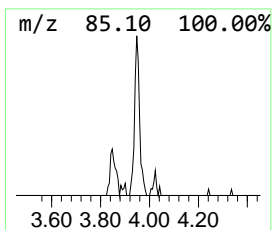
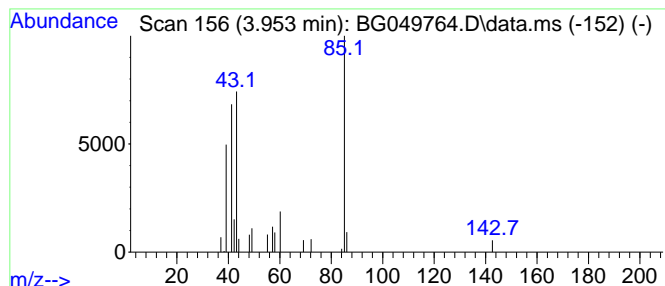
Quant Method : Z:\SVOASRV\HPCHEM1\BNA_G\METHODS\SFAM-EPA-BG080421.M
 Quant Title : SVOA CALIBRATION

TIC Library : C:\DATABASE\NIST20.L
 TIC Integration Parameters: LSCINT.P

 Peak Number 2 Methacrylamide Concentration Rank 21

R.T.	EstConc	Area	Relative to ISTD	R.T.
3.953	2.67 ng/ul	25771	1,4-Dichlorobenzene-d4	8.036

Hit#	of	5	Tentative ID	MW	MolForm	CAS#	Qual
1			Methacrylamide	85	C4H7NO	000079-39-0	53
2			Methacrylamide	85	C4H7NO	000079-39-0	42
3			2,3-Dimethyl-undec-1-en-3-ol	198	C13H26O	1000192-40-0	38
4			2-Hydroxy-5,5-dimethyl-hex-2-en-...	142	C8H14O2	1000144-68-4	37
5			Sulfurous acid, isohexyl pentyl ...	236	C11H24O3S	1000309-14-0	37



Data Path : Z:\svoasrv\HPCHEM1\BNA_G\Data\BG081021\
 Data File : BG049764.D
 Acq On : 10 Aug 2021 19:51
 Operator : CG/JU
 Sample : M3182-17
 Misc :
 ALS Vial : 10 Sample Multiplier: 1

Instrument :
 BNA_G
 ClientSampleID :
 C00D5

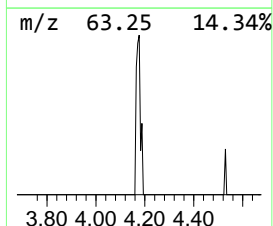
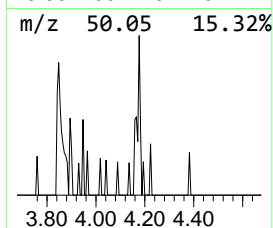
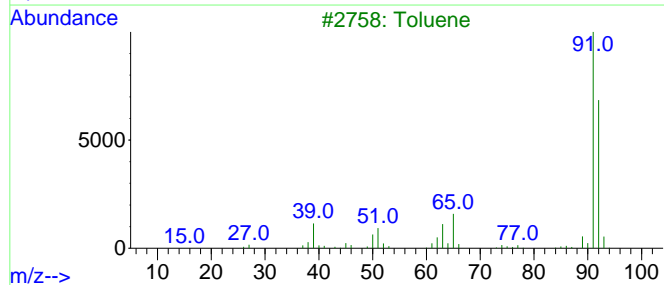
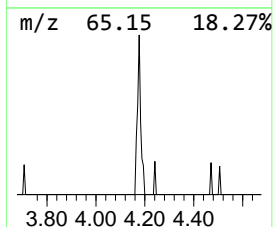
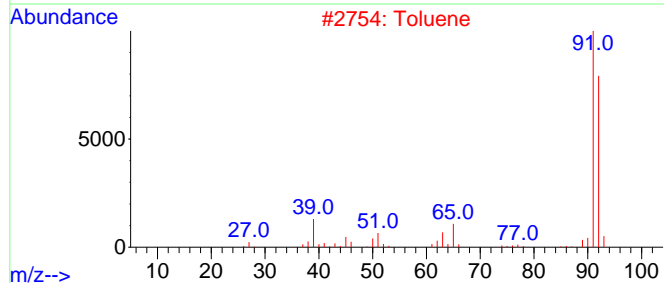
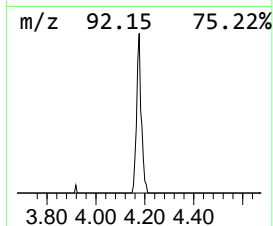
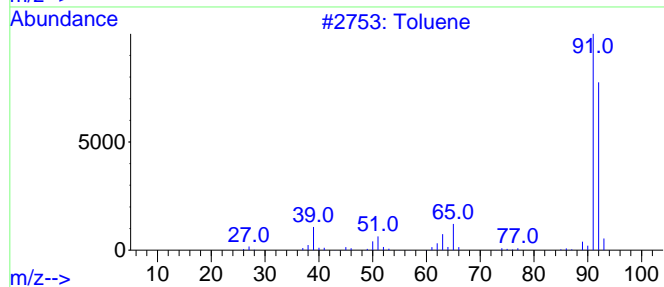
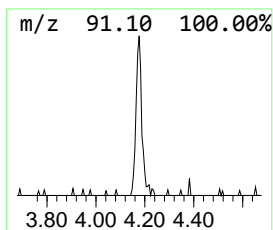
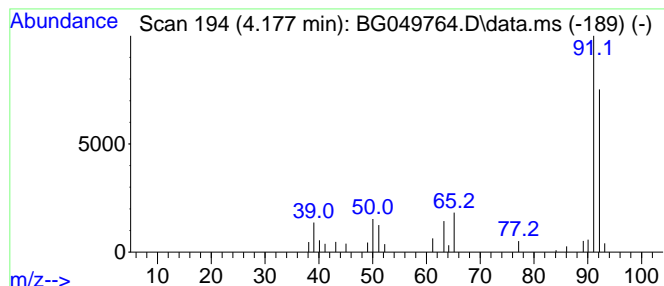
Quant Method : Z:\SVOASRV\HPCHEM1\BNA_G\METHODS\SFAM-EPA-BG080421.M
 Quant Title : SVOA CALIBRATION

TIC Library : C:\DATABASE\NIST20.L
 TIC Integration Parameters: LSCINT.P

 Peak Number 3 Toluene Concentration Rank 22

R.T.	EstConc	Area	Relative to ISTD	R.T.
4.177	2.17 ng/ul	20985	1,4-Dichlorobenzene-d4	8.036

Hit#	of	5	Tentative ID	MW	MolForm	CAS#	Qual
1			Toluene	92	C7H8	000108-88-3	90
2			Toluene	92	C7H8	000108-88-3	87
3			Toluene	92	C7H8	000108-88-3	86
4			Toluene	92	C7H8	000108-88-3	86
5			Toluene	92	C7H8	000108-88-3	86



Data Path : Z:\svoasrv\HPCHEM1\BNA_G\Data\BG081021\
 Data File : BG049764.D
 Acq On : 10 Aug 2021 19:51
 Operator : CG/JU
 Sample : M3182-17
 Misc :
 ALS Vial : 10 Sample Multiplier: 1

Instrument :
 BNA_G
 ClientSampleID :
 C00D5

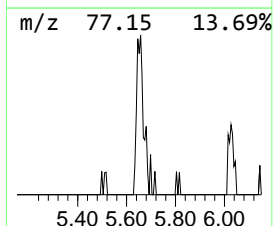
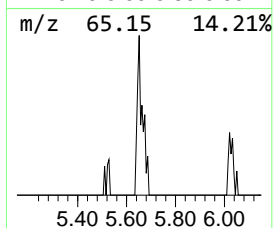
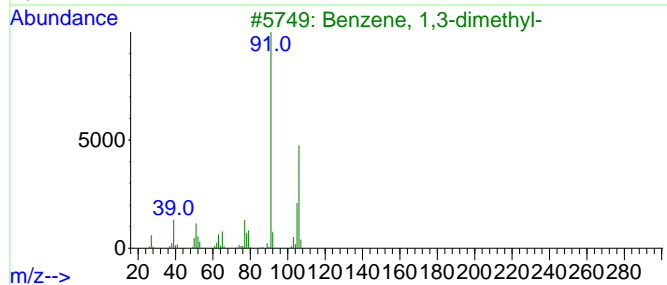
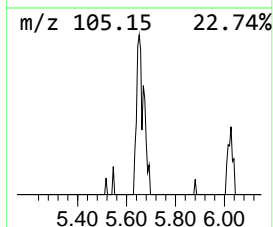
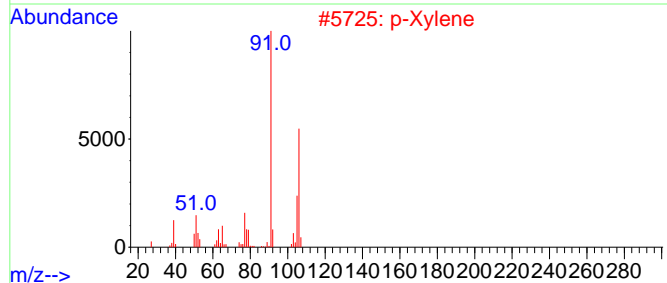
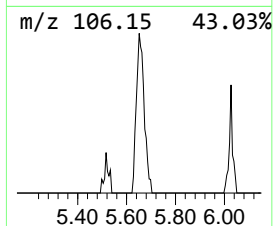
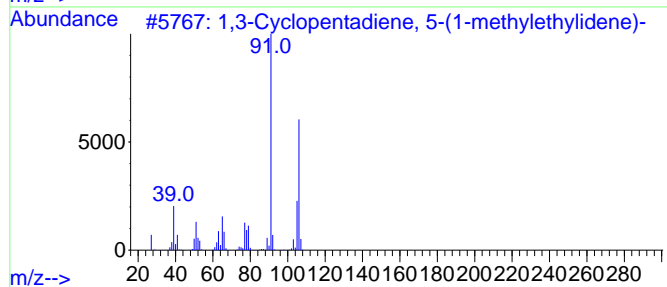
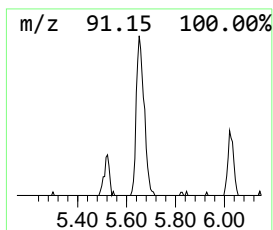
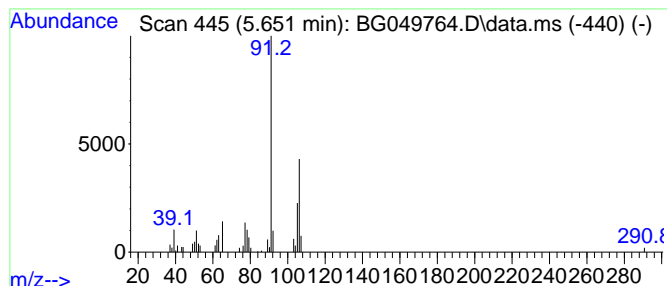
Quant Method : Z:\SVOASRV\HPCHEM1\BNA_G\METHODS\SFAM-EPA-BG080421.M
 Quant Title : SVOA CALIBRATION

TIC Library : C:\DATABASE\NIST20.L
 TIC Integration Parameters: LSCINT.P

 Peak Number 4 1,3-Cyclopentadiene, 5-(1-m... Concentration Rank 4

R.T.	EstConc	Area	Relative to ISTD	R.T.
5.651	5.29 ng/ul	51065	1,4-Dichlorobenzene-d4	8.036

Hit#	of 5	Tentative ID	MW	MolForm	CAS#	Qual
1		1,3-Cyclopentadiene, 5-(1-methyl...	106	C8H10	002175-91-9	90
2		p-Xylene	106	C8H10	000106-42-3	90
3		Benzene, 1,3-dimethyl-	106	C8H10	000108-38-3	90
4		o-Xylene	106	C8H10	000095-47-6	90
5		p-Xylene	106	C8H10	000106-42-3	90



Data Path : Z:\svoasrv\HPCHEM1\BNA_G\Data\BG081021\
 Data File : BG049764.D
 Acq On : 10 Aug 2021 19:51
 Operator : CG/JU
 Sample : M3182-17
 Misc :
 ALS Vial : 10 Sample Multiplier: 1

Instrument :
 BNA_G
 ClientSampleId :
 C00D5

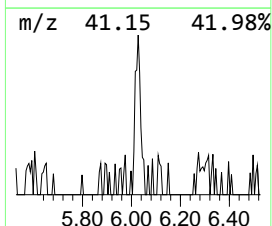
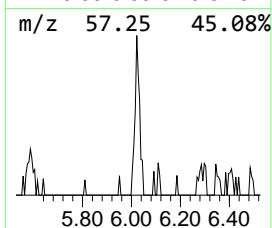
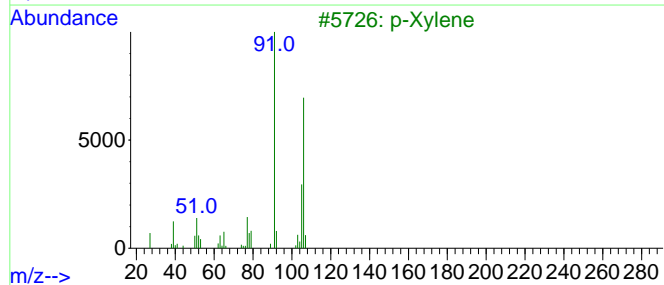
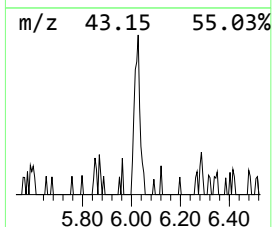
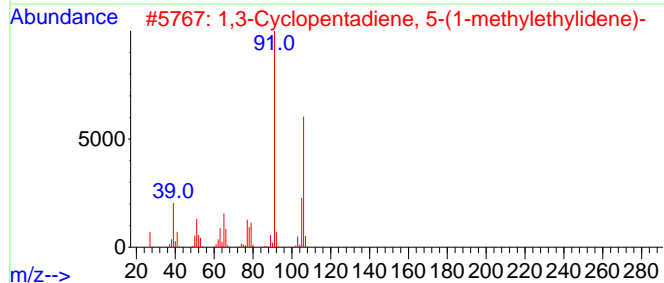
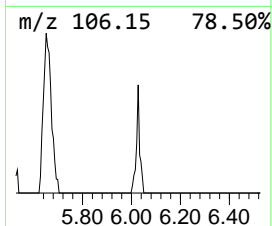
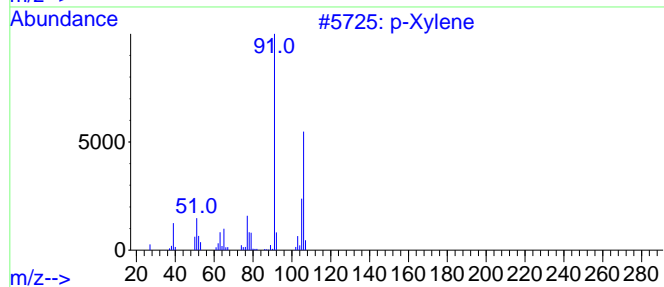
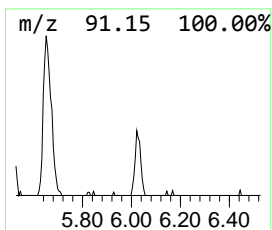
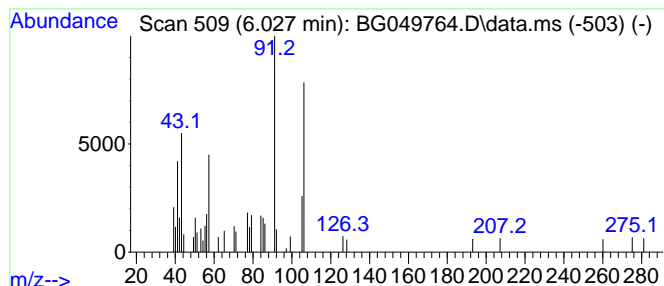
Quant Method : Z:\SVOASRV\HPCHEM1\BNA_G\METHODS\SFAM-EPA-BG080421.M
 Quant Title : SVOA CALIBRATION

TIC Library : C:\DATABASE\NIST20.L
 TIC Integration Parameters: LSCINT.P

 Peak Number 5 p-Xylene Concentration Rank 18

R.T.	EstConc	Area	Relative to ISTD	R.T.
6.027	2.95 ng/ul	28455	1,4-Dichlorobenzene-d4	8.036

Hit#	of	5	Tentative ID	MW	MolForm	CAS#	Qual
1			p-Xylene	106	C8H10	000106-42-3	64
2			1,3-Cyclopentadiene, 5-(1-methyl...	106	C8H10	002175-91-9	64
3			p-Xylene	106	C8H10	000106-42-3	59
4			p-Xylene	106	C8H10	000106-42-3	59
5			o-Xylene	106	C8H10	000095-47-6	59



Data Path : Z:\svoasrv\HPCHEM1\BNA_G\Data\BG081021\
 Data File : BG049764.D
 Acq On : 10 Aug 2021 19:51
 Operator : CG/JU
 Sample : M3182-17
 Misc :
 ALS Vial : 10 Sample Multiplier: 1

Instrument :
 BNA_G
 ClientSampled :
 C00D5

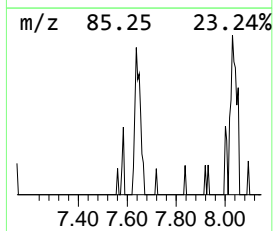
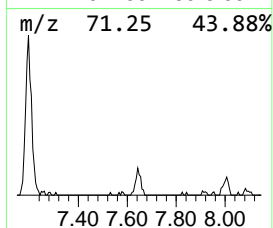
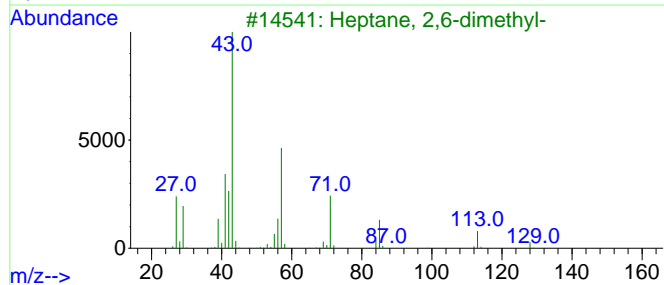
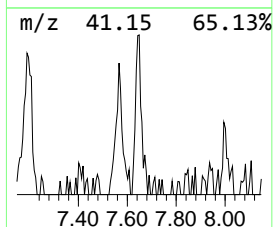
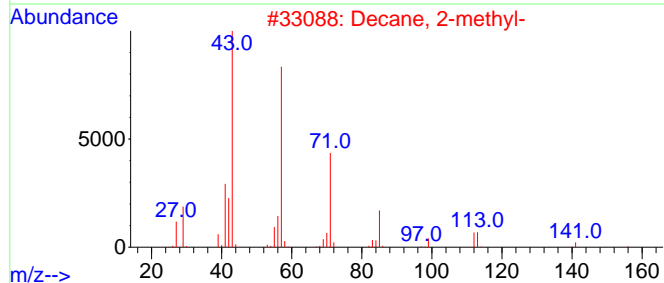
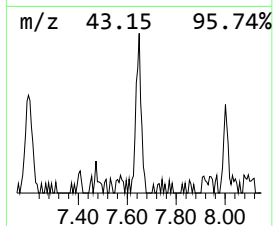
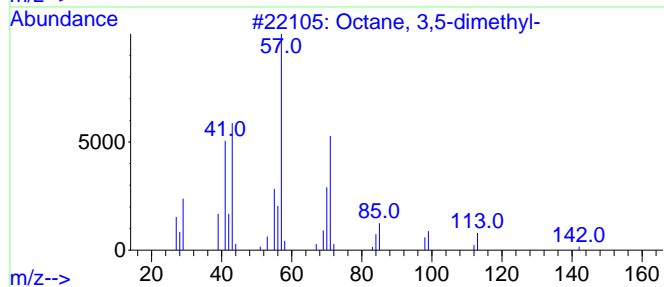
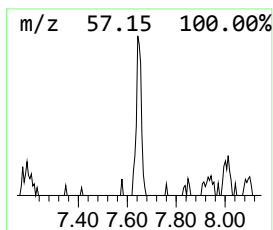
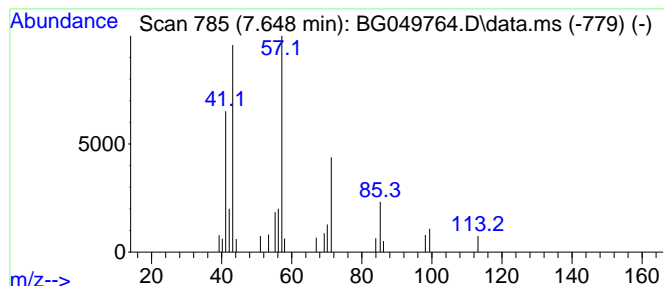
Quant Method : Z:\SVOASRV\HPCHEM1\BNA_G\METHODS\SFAM-EPA-BG080421.M
 Quant Title : SVOA CALIBRATION

TIC Library : C:\DATABASE\NIST20.L
 TIC Integration Parameters: LSCINT.P

 Peak Number 6 (DEL) Alkane: Straight-Chai... Concentration Rank 20

R.T.	EstConc	Area	Relative to ISTD	R.T.
7.648	2.69 ng/ul	25977	1,4-Dichlorobenzene-d4	8.036

Hit#	of 5	Tentative ID	MW	MolForm	CAS#	Qual
1		Octane, 3,5-dimethyl-	142	C10H22	015869-93-9	78
2		Decane, 2-methyl-	156	C11H24	006975-98-0	72
3		Heptane, 2,6-dimethyl-	128	C9H20	001072-05-5	64
4		Undecane	156	C11H24	001120-21-4	64
5		Decane, 2-methyl-	156	C11H24	006975-98-0	59



Data Path : Z:\svoasrv\HPCHEM1\BNA_G\Data\BG081021\
 Data File : BG049764.D
 Acq On : 10 Aug 2021 19:51
 Operator : CG/JU
 Sample : M3182-17
 Misc :
 ALS Vial : 10 Sample Multiplier: 1

Instrument :
 BNA_G
 ClientSampleId :
 C00D5

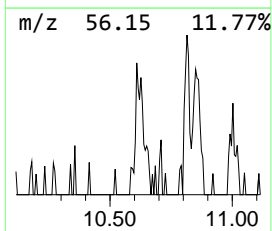
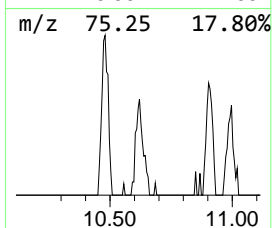
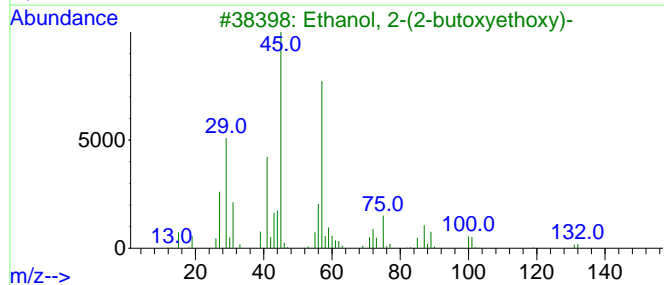
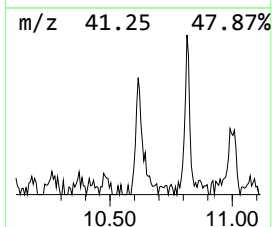
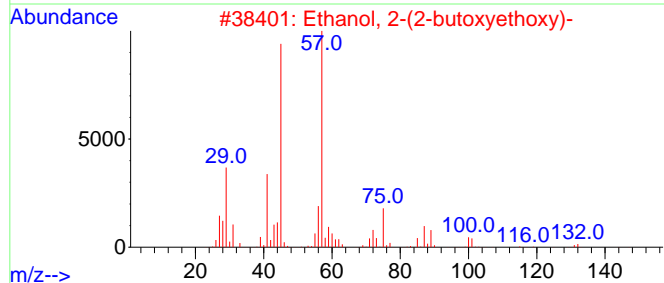
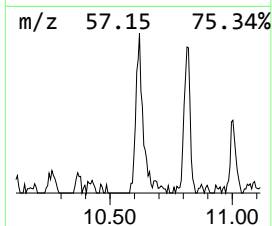
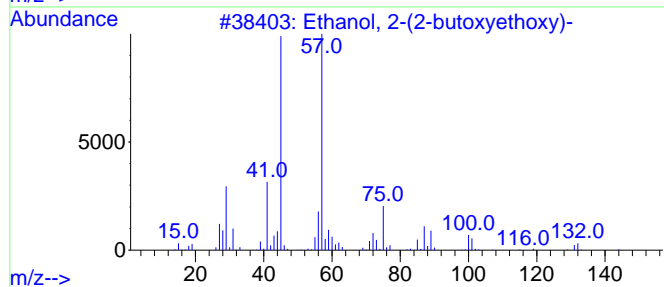
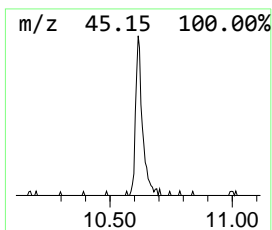
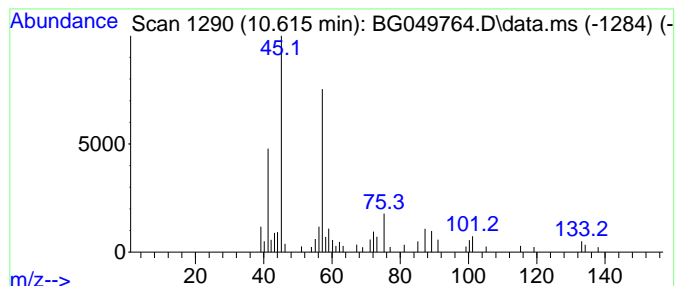
Quant Method : Z:\SVOASRV\HPCHEM1\BNA_G\METHODS\SFAM-EPA-BG080421.M
 Quant Title : SVOA CALIBRATION

TIC Library : C:\DATABASE\NIST20.L
 TIC Integration Parameters: LSCINT.P

 Peak Number 7 Ethanol, 2-(2-butoxyethoxy)- Concentration Rank 7

R.T.	EstConc	Area	Relative to ISTD	R.T.
10.615	4.23 ng/ul	59788	Naphthalene-d8	10.856

Hit#	of	5	Tentative ID	MW	MolForm	CAS#	Qual
1			Ethanol, 2-(2-butoxyethoxy)-	162	C8H18O3	000112-34-5	86
2			Ethanol, 2-(2-butoxyethoxy)-	162	C8H18O3	000112-34-5	78
3			Ethanol, 2-(2-butoxyethoxy)-	162	C8H18O3	000112-34-5	64
4			Ethanol, 2-(2-butoxyethoxy)-	162	C8H18O3	000112-34-5	64
5			Ethanol, 2-[2-(2-methylpropoxy)e...	162	C8H18O3	018912-80-6	64



Data Path : Z:\svoasrv\HPCHEM1\BNA_G\Data\BG081021\
 Data File : BG049764.D
 Acq On : 10 Aug 2021 19:51
 Operator : CG/JU
 Sample : M3182-17
 Misc :
 ALS Vial : 10 Sample Multiplier: 1

Instrument :
 BNA_G
 ClientSampled :
 C00D5

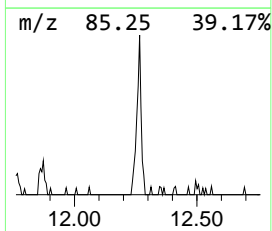
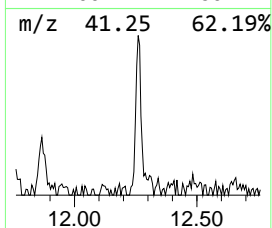
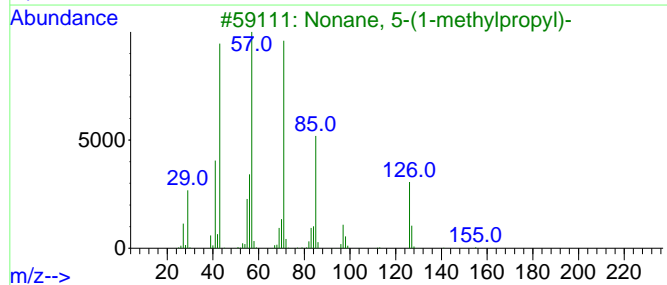
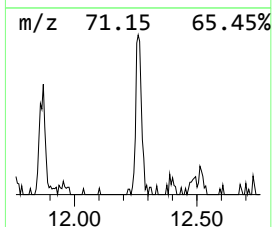
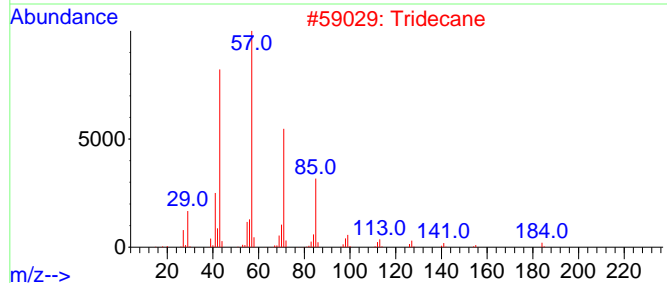
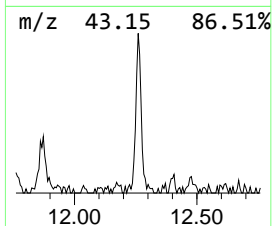
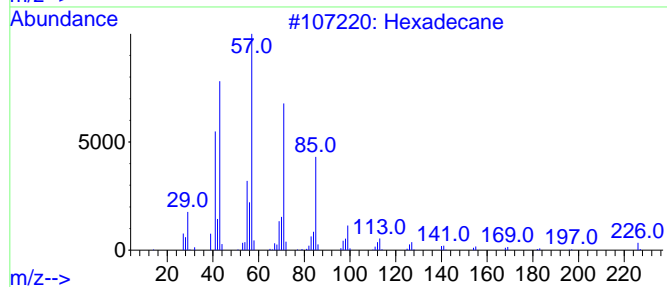
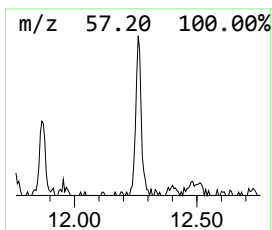
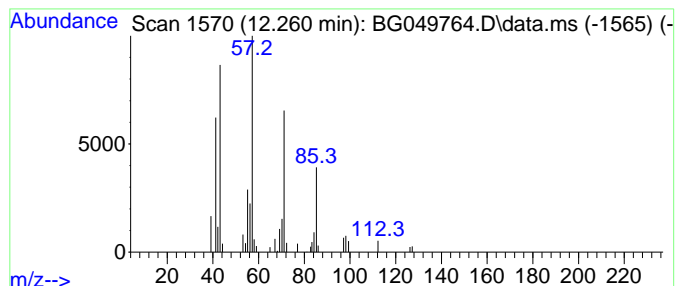
Quant Method : Z:\SVOASRV\HPCHEM1\BNA_G\METHODS\SFAM-EPA-BG080421.M
 Quant Title : SVOA CALIBRATION

TIC Library : C:\DATABASE\NIST20.L
 TIC Integration Parameters: LSCINT.P

 Peak Number 8 (DEL) Alkane: Straight-Chai... Concentration Rank 9

R.T.	EstConc	Area	Relative to ISTD	R.T.
12.260	4.12 ng/ul	58319	Naphthalene-d8	10.856

Hit#	of 5	Tentative ID	MW	MolForm	CAS#	Qual
1		Hexadecane	226	C16H34	000544-76-3	90
2		Tridecane	184	C13H28	000629-50-5	72
3		Nonane, 5-(1-methylpropyl)-	184	C13H28	062185-54-0	72
4		Undecane, 2,4-dimethyl-	184	C13H28	017312-80-0	72
5		Decane, 2,9-dimethyl-	170	C12H26	001002-17-1	64



Data Path : Z:\svoasrv\HPCHEM1\BNA_G\Data\BG081021\
 Data File : BG049764.D
 Acq On : 10 Aug 2021 19:51
 Operator : CG/JU
 Sample : M3182-17
 Misc :
 ALS Vial : 10 Sample Multiplier: 1

Instrument :
 BNA_G
 ClientSampleId :
 C00D5

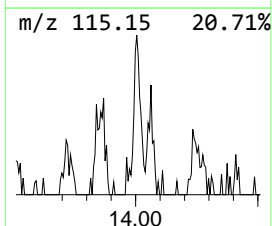
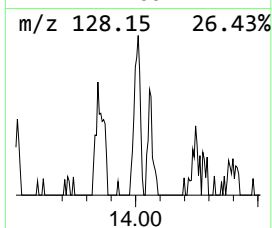
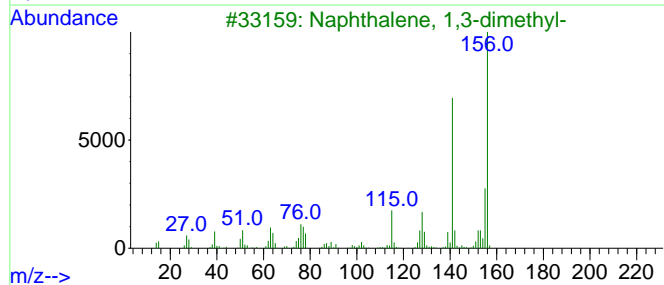
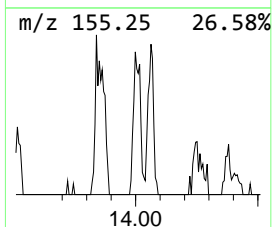
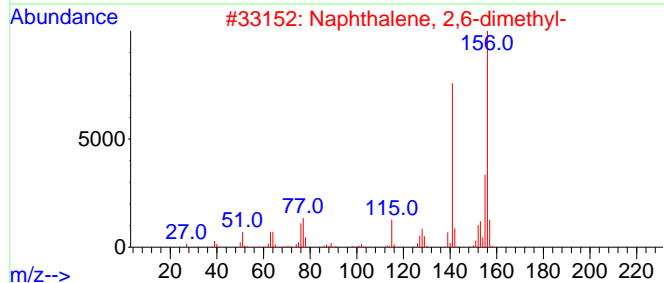
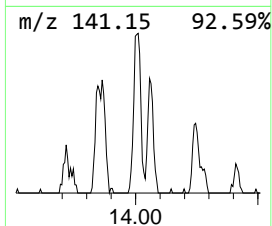
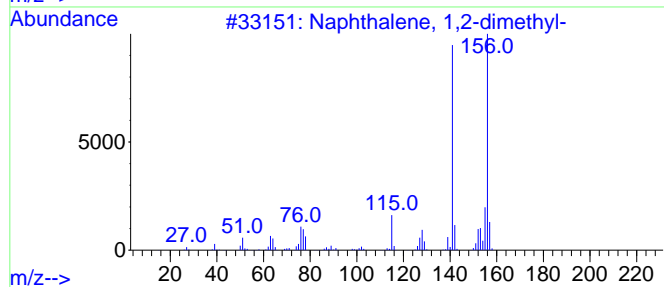
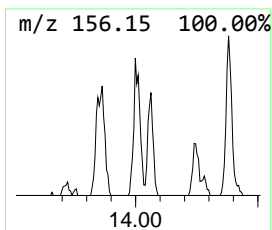
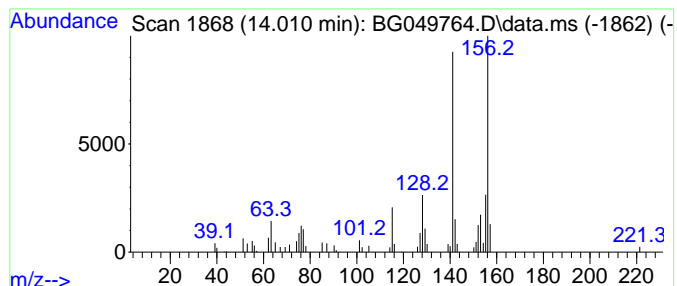
Quant Method : Z:\SVOASRV\HPCHEM1\BNA_G\METHODS\SFAM-EPA-BG080421.M
 Quant Title : SVOA CALIBRATION

TIC Library : C:\DATABASE\NIST20.L
 TIC Integration Parameters: LSCINT.P

 Peak Number 9 Naphthalene, 1,2-dimethyl- Concentration Rank 17

R.T.	EstConc	Area	Relative to ISTD	R.T.
14.010	3.01 ng/ul	65545	Acenaphthene-d10	14.686

Hit#	of	5	Tentative ID	MW	MolForm	CAS#	Qual
1			Naphthalene, 1,2-dimethyl-	156	C12H12	000573-98-8	93
2			Naphthalene, 2,6-dimethyl-	156	C12H12	000581-42-0	93
3			Naphthalene, 1,3-dimethyl-	156	C12H12	000575-41-7	93
4			Naphthalene, 1,4-dimethyl-	156	C12H12	000571-58-4	93
5			Naphthalene, 1,3-dimethyl-	156	C12H12	000575-41-7	93



Data Path : Z:\svoasrv\HPCHEM1\BNA_G\Data\BG081021\
 Data File : BG049764.D
 Acq On : 10 Aug 2021 19:51
 Operator : CG/JU
 Sample : M3182-17
 Misc :
 ALS Vial : 10 Sample Multiplier: 1

Instrument :
 BNA_G
 ClientSampleId :
 C00D5

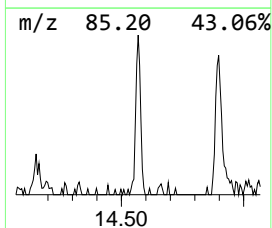
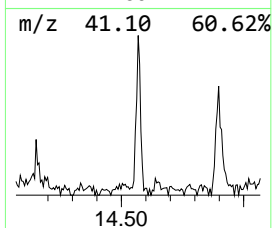
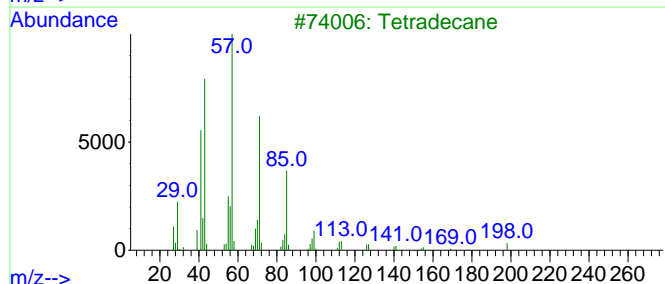
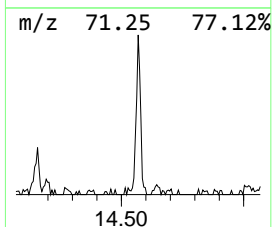
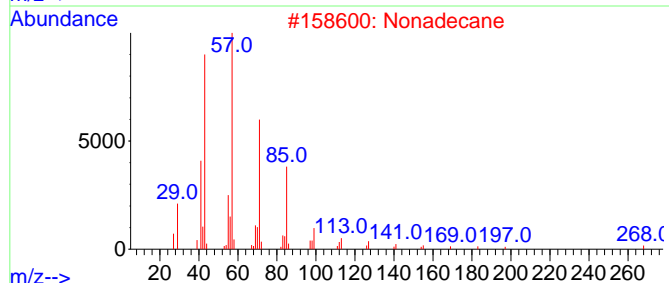
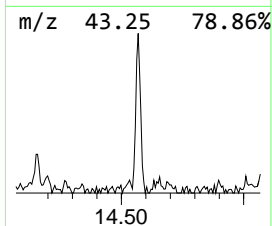
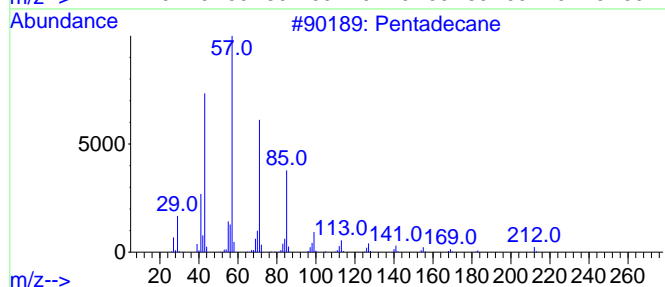
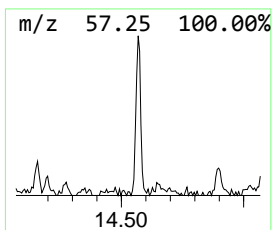
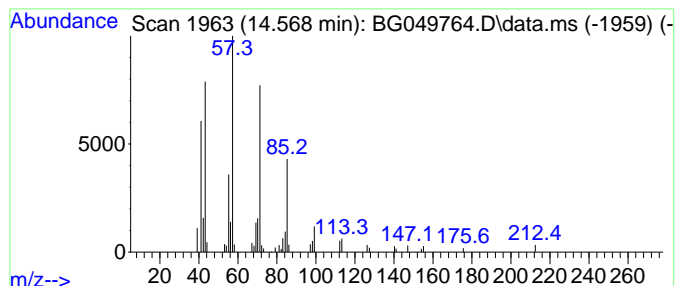
Quant Method : Z:\SVOASRV\HPCHEM1\BNA_G\METHODS\SFAM-EPA-BG080421.M
 Quant Title : SVOA CALIBRATION

TIC Library : C:\DATABASE\NIST20.L
 TIC Integration Parameters: LSCINT.P

 Peak Number 10 (DEL) Alkane: Straight-Chai... Concentration Rank 12

R.T.	EstConc	Area	Relative to ISTD	R.T.
14.568	3.60 ng/ul	78417	Acenaphthene-d10	14.686

Hit#	of 5	Tentative ID	MW	MolForm	CAS#	Qual
1		Pentadecane	212	C15H32	000629-62-9	94
2		Nonadecane	268	C19H40	000629-92-5	91
3		Tetradecane	198	C14H30	000629-59-4	90
4		Tetradecane	198	C14H30	000629-59-4	90
5		Nonadecane, 9-methyl-	282	C20H42	013287-24-6	90



Data Path : Z:\svoasrv\HPCHEM1\BNA_G\Data\BG081021\
 Data File : BG049764.D
 Acq On : 10 Aug 2021 19:51
 Operator : CG/JU
 Sample : M3182-17
 Misc :
 ALS Vial : 10 Sample Multiplier: 1

Instrument :
 BNA_G
 ClientSampleId :
 C00D5

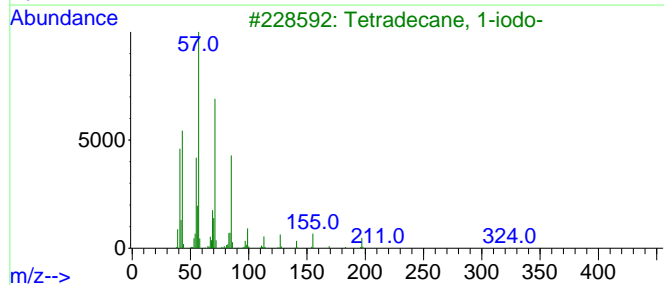
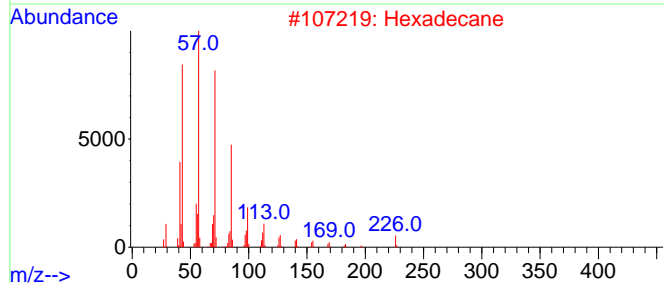
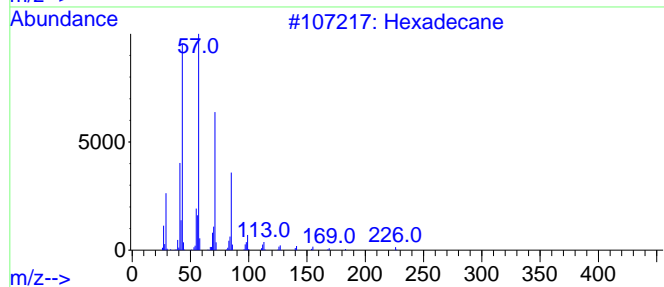
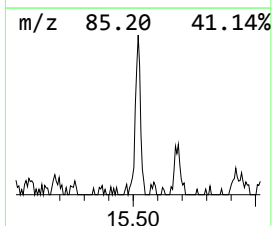
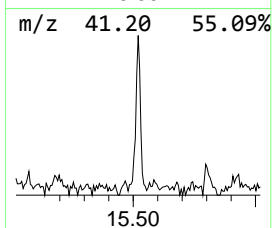
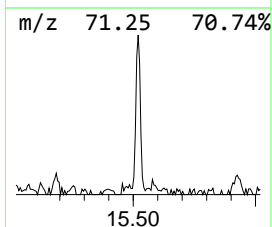
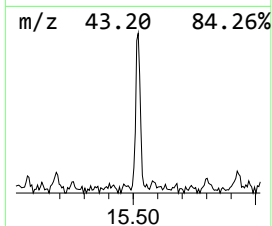
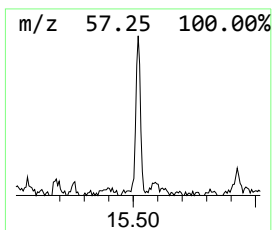
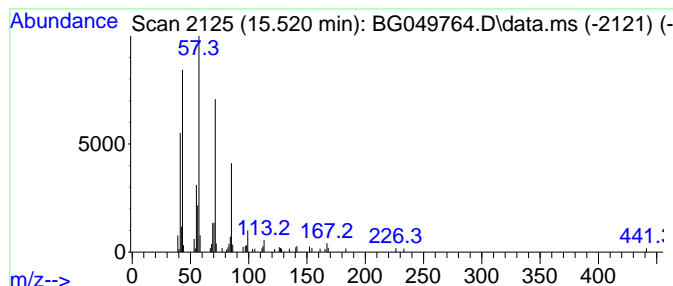
Quant Method : Z:\SVOASRV\HPCHEM1\BNA_G\METHODS\SFAM-EPA-BG080421.M
 Quant Title : SVOA CALIBRATION

TIC Library : C:\DATABASE\NIST20.L
 TIC Integration Parameters: LSCINT.P

 Peak Number 11 (DEL) Alkane: Straight-Chai... Concentration Rank 10

R.T.	EstConc	Area	Relative to ISTD	R.T.
15.520	3.85 ng/ul	83910	Acenaphthene-d10	14.686

Hit# of 5	Tentative ID	MW	MolForm	CAS#	Qual
1	Hexadecane	226	C16H34	000544-76-3	96
2	Hexadecane	226	C16H34	000544-76-3	91
3	Tetradecane, 1-iodo-	324	C14H29I	019218-94-1	86
4	Dodecane, 1-iodo-	296	C12H25I	004292-19-7	83
5	Hexadecane	226	C16H34	000544-76-3	81



Data Path : Z:\svoasrv\HPCHEM1\BNA_G\Data\BG081021\
 Data File : BG049764.D
 Acq On : 10 Aug 2021 19:51
 Operator : CG/JU
 Sample : M3182-17
 Misc :
 ALS Vial : 10 Sample Multiplier: 1

Instrument :
 BNA_G
 ClientSampleId :
 C00D5

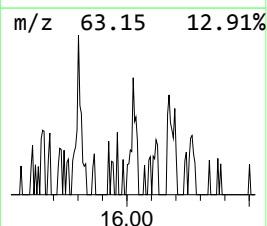
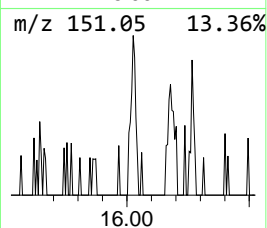
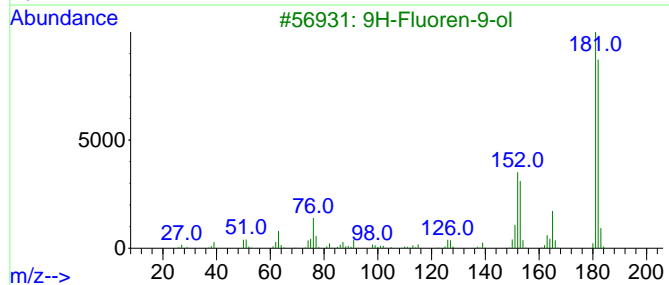
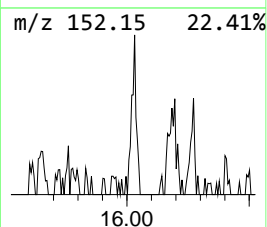
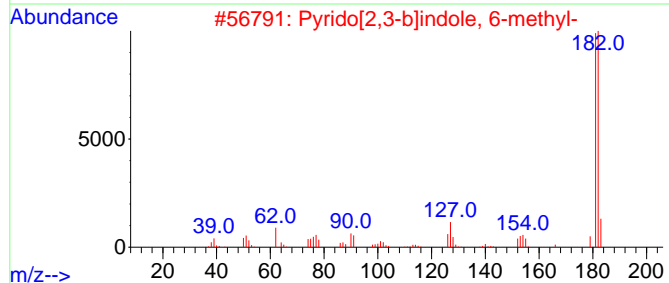
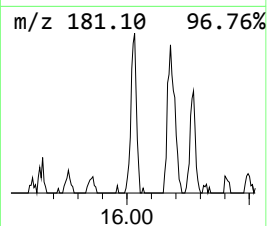
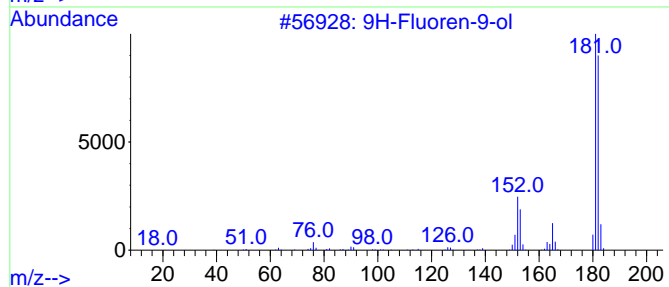
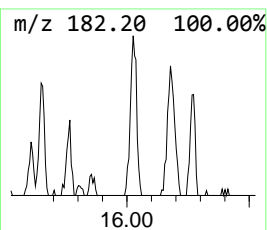
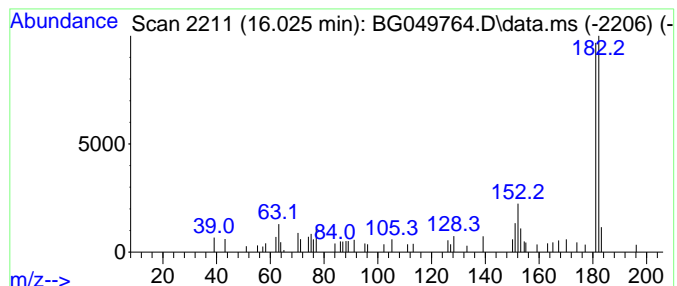
Quant Method : Z:\SVOASRV\HPCHEM1\BNA_G\METHODS\SFAM-EPA-BG080421.M
 Quant Title : SVOA CALIBRATION

TIC Library : C:\DATABASE\NIST20.L
 TIC Integration Parameters: LSCINT.P

 Peak Number 12 9H-Fluoren-9-ol Concentration Rank 23

R.T.	EstConc	Area	Relative to ISTD	R.T.
16.025	2.10 ng/ul	45865	Acenaphthene-d10	14.686

Hit#	of 5	Tentative ID	MW	MolForm	CAS#	Qual
1		9H-Fluoren-9-ol	182	C13H10O	001689-64-1	83
2		Pyrido[2,3-b]indole, 6-methyl-	182	C12H10N2	108349-67-3	76
3		9H-Fluoren-9-ol	182	C13H10O	001689-64-1	68
4		[1,1'-Biphenyl]-4-carboxaldehyde	182	C13H10O	003218-36-8	68
5		Pyridine, 4,4'-(1,2-ethenediyl)bis-	182	C12H10N2	001135-32-6	64



Data Path : Z:\svoasrv\HPCHEM1\BNA_G\Data\BG081021\
 Data File : BG049764.D
 Acq On : 10 Aug 2021 19:51
 Operator : CG/JU
 Sample : M3182-17
 Misc :
 ALS Vial : 10 Sample Multiplier: 1

Instrument :
 BNA_G
 ClientSampled :
 C00D5

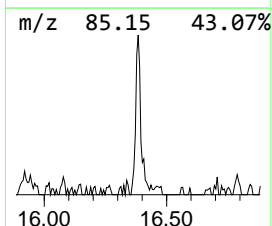
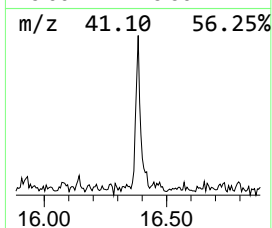
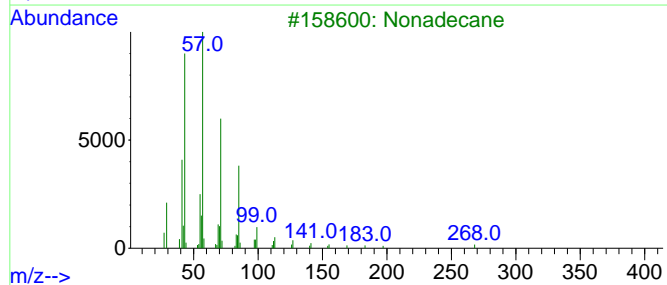
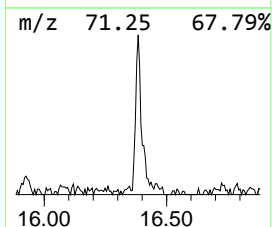
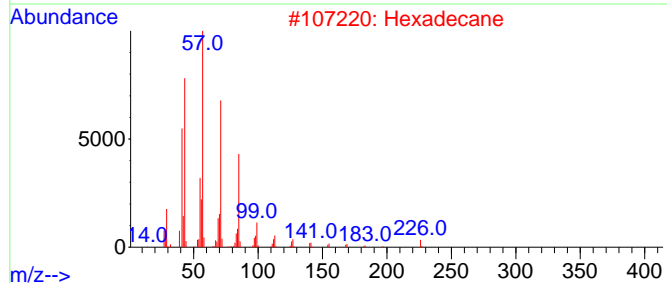
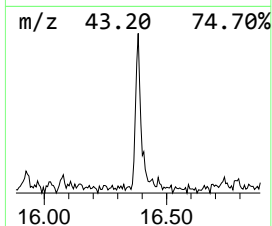
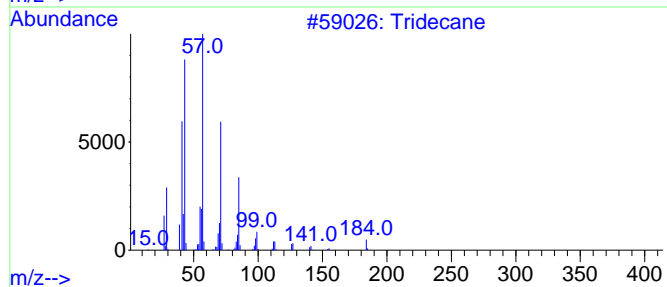
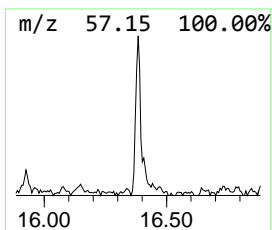
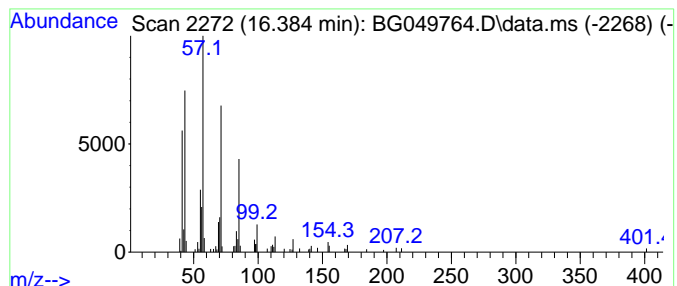
Quant Method : Z:\SVOASRV\HPCHEM1\BNA_G\METHODS\SFAM-EPA-BG080421.M
 Quant Title : SVOA CALIBRATION

TIC Library : C:\DATABASE\NIST20.L
 TIC Integration Parameters: LSCINT.P

 Peak Number 13 (DEL) Alkane: Straight-Chai... Concentration Rank 6

R.T.	EstConc	Area	Relative to ISTD	R.T.
16.384	4.66 ng/ul	107386	Phenanthrene-d10	17.441

Hit#	of 5	Tentative ID	MW	MolForm	CAS#	Qual
1		Tridecane	184	C13H28	000629-50-5	91
2		Hexadecane	226	C16H34	000544-76-3	87
3		Nonadecane	268	C19H40	000629-92-5	86
4		Octadecane, 2-methyl-	268	C19H40	001560-88-9	86
5		Tridecane	184	C13H28	000629-50-5	86



Data Path : Z:\svoasrv\HPCHEM1\BNA_G\Data\BG081021\
 Data File : BG049764.D
 Acq On : 10 Aug 2021 19:51
 Operator : CG/JU
 Sample : M3182-17
 Misc :
 ALS Vial : 10 Sample Multiplier: 1

Instrument :
 BNA_G
 ClientSampleId :
 C00D5

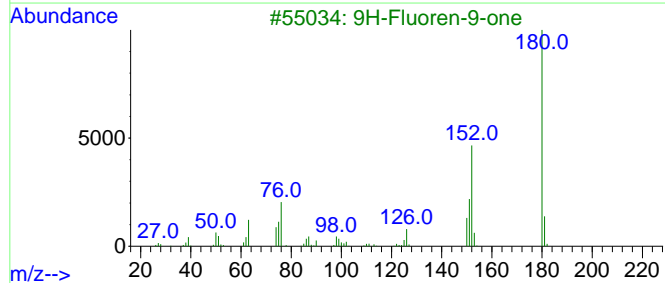
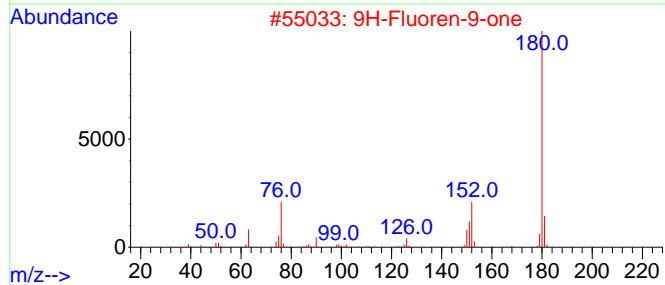
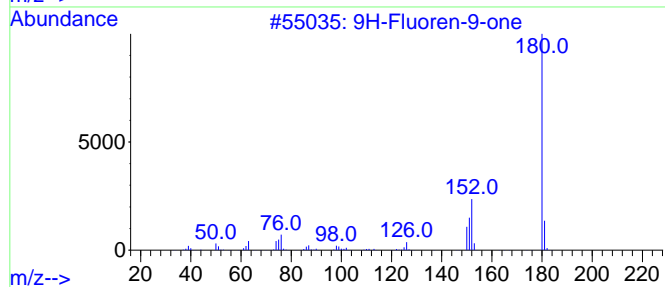
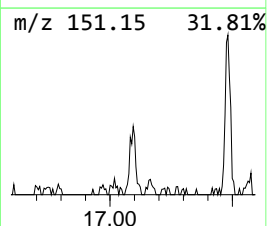
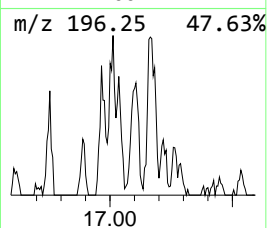
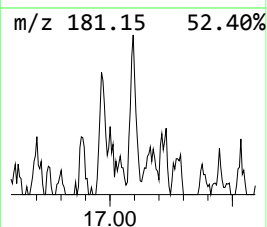
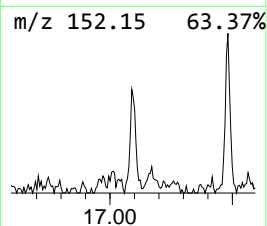
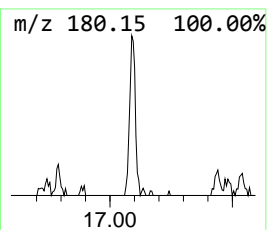
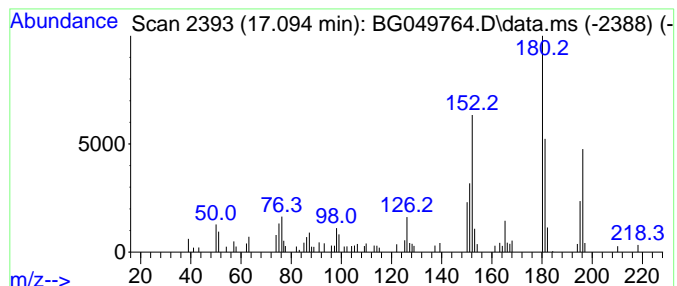
Quant Method : Z:\SVOASRV\HPCHEM1\BNA_G\METHODS\SFAM-EPA-BG080421.M
 Quant Title : SVOA CALIBRATION

TIC Library : C:\DATABASE\NIST20.L
 TIC Integration Parameters: LSCINT.P

 Peak Number 14 9H-Fluoren-9-one Concentration Rank 19

R.T.	EstConc	Area	Relative to ISTD	R.T.
17.094	2.81 ng/ul	64746	Phenanthrene-d10	17.441

Hit#	of	5	Tentative ID	MW	MolForm	CAS#	Qual
1			9H-Fluoren-9-one	180	C13H8O	000486-25-9	91
2			9H-Fluoren-9-one	180	C13H8O	000486-25-9	60
3			9H-Fluoren-9-one	180	C13H8O	000486-25-9	60
4			9H-Fluoren-9-one	180	C13H8O	000486-25-9	53
5			9,10-Phenanthredione	208	C14H8O2	000084-11-7	47



Data Path : Z:\svoasrv\HPCHEM1\BNA_G\Data\BG081021\
 Data File : BG049764.D
 Acq On : 10 Aug 2021 19:51
 Operator : CG/JU
 Sample : M3182-17
 Misc :
 ALS Vial : 10 Sample Multiplier: 1

Instrument :
 BNA_G
 ClientSampleId :
 C00D5

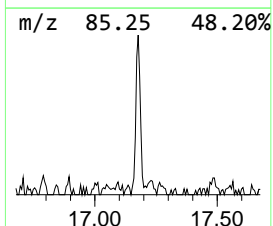
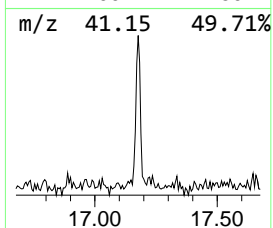
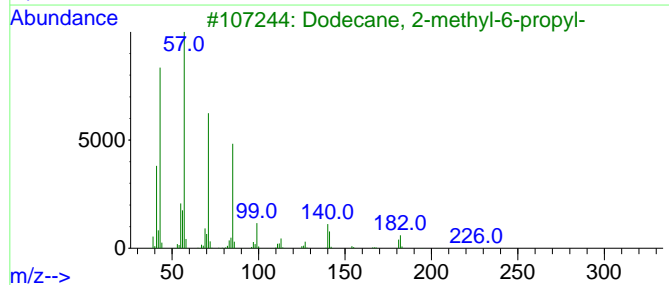
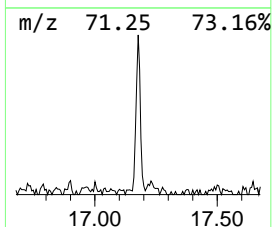
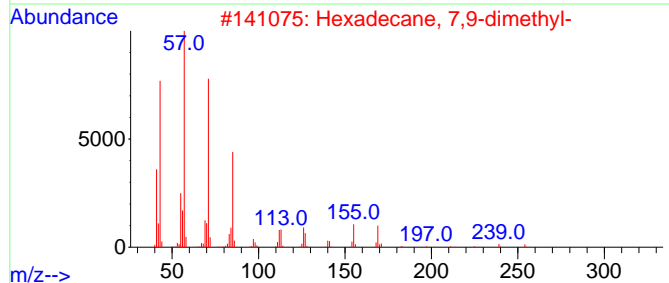
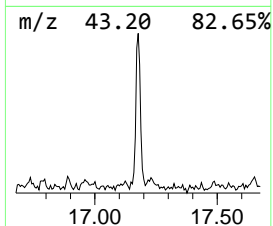
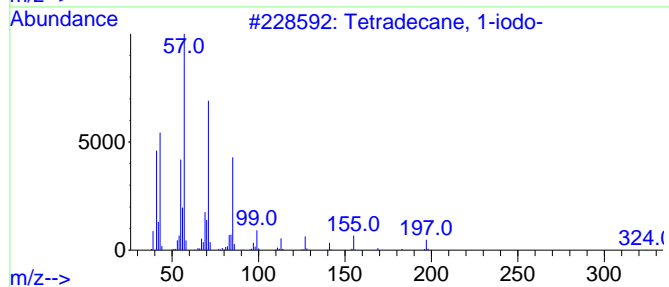
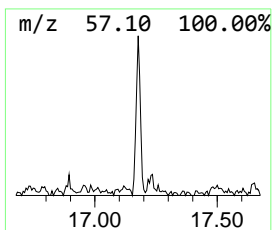
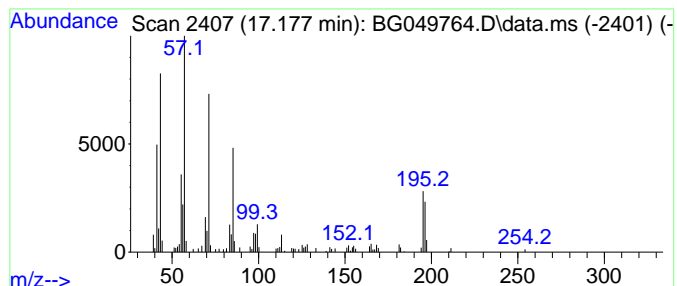
Quant Method : Z:\SVOASRV\HPCHEM1\BNA_G\METHODS\SFAM-EPA-BG080421.M
 Quant Title : SVOA CALIBRATION

TIC Library : C:\DATABASE\NIST20.L
 TIC Integration Parameters: LSCINT.P

 Peak Number 15 Tetradecane, 1-iodo- Concentration Rank 5

R.T.	EstConc	Area	Relative to ISTD	R.T.
17.177	4.96 ng/ul	114160	Phenanthrene-d10	17.441

Hit#	of 5	Tentative ID	MW	MolForm	CAS#	Qual
1		Tetradecane, 1-iodo-	324	C14H29I	019218-94-1	74
2		Hexadecane, 7,9-dimethyl-	254	C18H38	021164-95-4	70
3		Dodecane, 2-methyl-6-propyl-	226	C16H34	055045-08-4	64
4		Nonane, 4,5-dimethyl-	156	C11H24	017302-23-7	64
5		Decane, 2-methyl-	156	C11H24	006975-98-0	64



Data Path : Z:\svoasrv\HPCHEM1\BNA_G\Data\BG081021\
 Data File : BG049764.D
 Acq On : 10 Aug 2021 19:51
 Operator : CG/JU
 Sample : M3182-17
 Misc :
 ALS Vial : 10 Sample Multiplier: 1

Instrument :
 BNA_G
 ClientSampled :
 C00D5

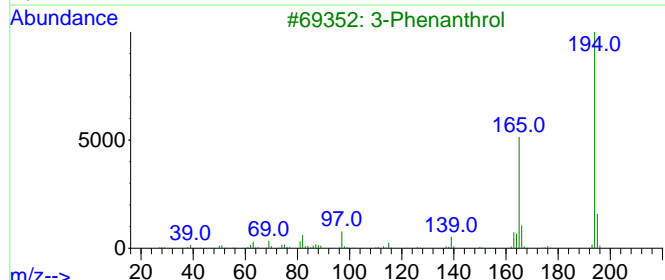
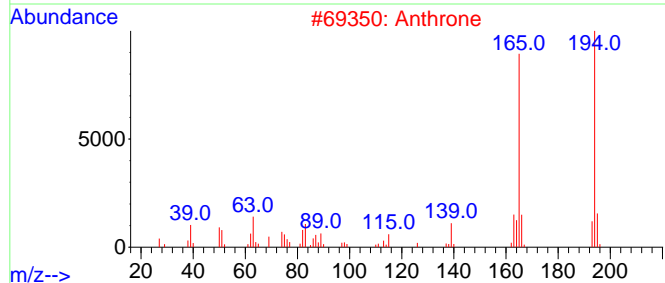
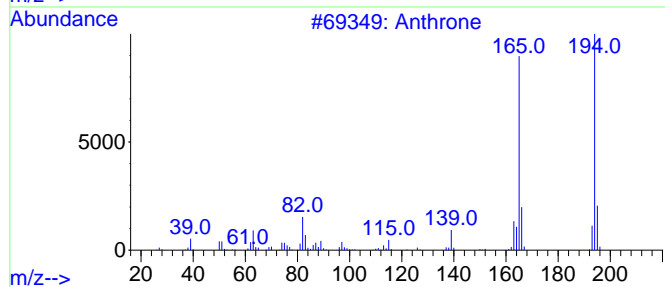
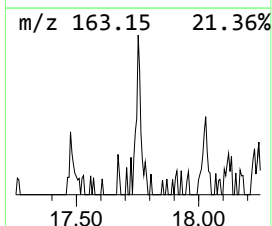
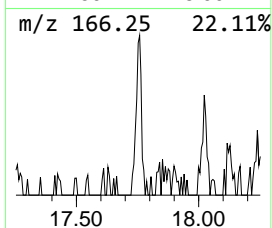
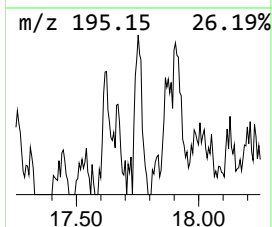
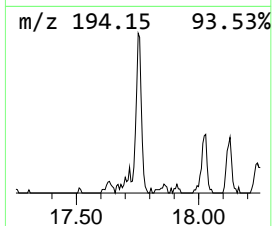
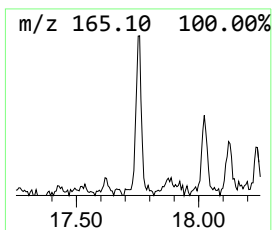
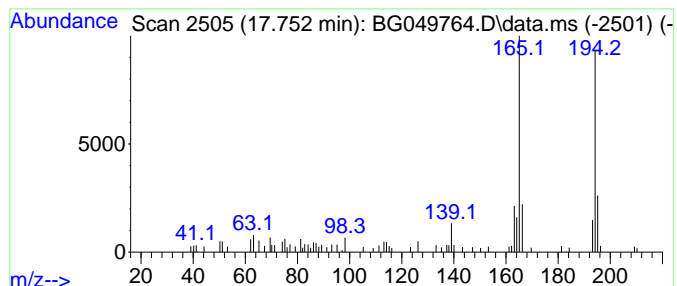
Quant Method : Z:\SVOASRV\HPCHEM1\BNA_G\METHODS\SFAM-EPA-BG080421.M
 Quant Title : SVOA CALIBRATION

TIC Library : C:\DATABASE\NIST20.L
 TIC Integration Parameters: LSCINT.P

 Peak Number 16 Anthrone Concentration Rank 16

R.T.	EstConc	Area	Relative to ISTD	R.T.
17.752	3.05 ng/ul	70266	Phenanthrene-d10	17.441

Hit#	of 5	Tentative ID	MW	MolForm	CAS#	Qual
1		Anthrone	194	C14H10O	000090-44-8	91
2		Anthrone	194	C14H10O	000090-44-8	91
3		3-Phenanthrol	194	C14H10O	000605-87-8	90
4		9H-Fluoren-9-one, hydrazone	194	C13H10N2	013629-22-6	86
5		9H-Fluoren-9-one, hydrazone	194	C13H10N2	013629-22-6	86



Data Path : Z:\svoasrv\HPCHEM1\BNA_G\Data\BG081021\
 Data File : BG049764.D
 Acq On : 10 Aug 2021 19:51
 Operator : CG/JU
 Sample : M3182-17
 Misc :
 ALS Vial : 10 Sample Multiplier: 1

Instrument :
 BNA_G
 ClientSampleID :
 C00D5

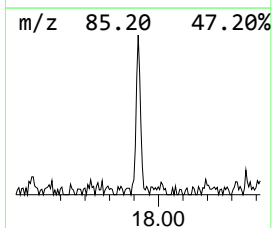
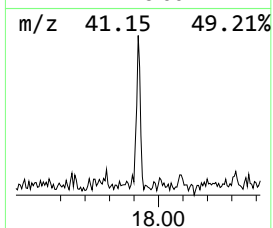
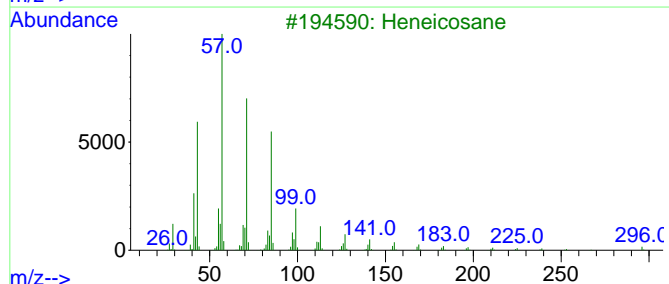
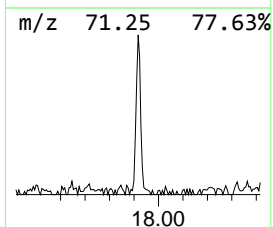
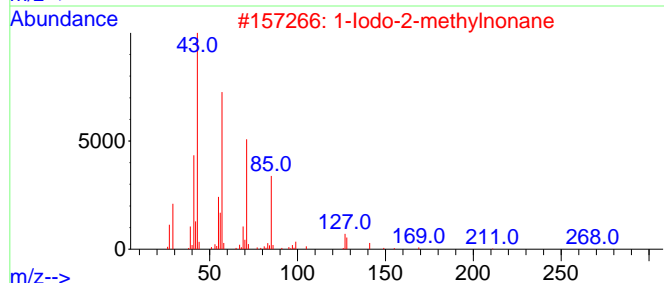
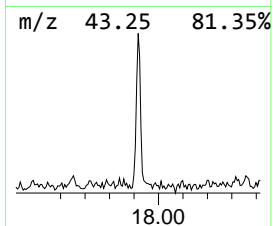
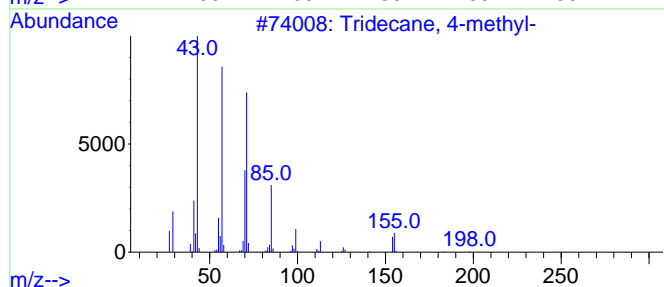
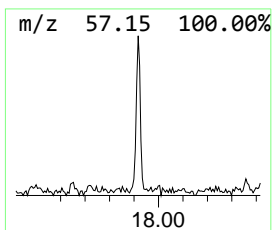
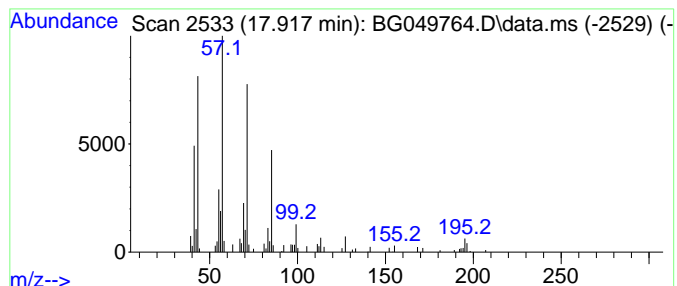
Quant Method : Z:\SVOASRV\HPCHEM1\BNA_G\METHODS\SFAM-EPA-BG080421.M
 Quant Title : SVOA CALIBRATION

TIC Library : C:\DATABASE\NIST20.L
 TIC Integration Parameters: LSCINT.P

 Peak Number 17 (DEL) Alkane: Straight-Chai... Concentration Rank 15

R.T.	EstConc	Area	Relative to ISTD	R.T.
17.917	3.34 ng/ul	76825	Phenanthrene-d10	17.441

Hit#	of 5	Tentative ID	MW	MolForm	CAS#	Qual
1		Tridecane, 4-methyl-	198	C14H30	026730-12-1	87
2		1-Iodo-2-methylnonane	268	C10H21I	1000101-47-9	80
3		Heneicosane	296	C21H44	000629-94-7	78
4		2-Bromo dodecane	248	C12H25Br	013187-99-0	72
5		Sulfurous acid, butyl nonyl ester	264	C13H28O3S	1000309-17-6	72



Data Path : Z:\svoasrv\HPCHEM1\BNA_G\Data\BG081021\
 Data File : BG049764.D
 Acq On : 10 Aug 2021 19:51
 Operator : CG/JU
 Sample : M3182-17
 Misc :
 ALS Vial : 10 Sample Multiplier: 1

Instrument :
 BNA_G
 ClientSampleId :
 C00D5

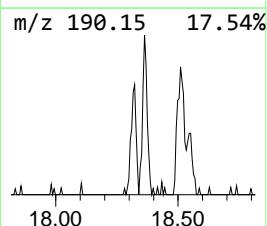
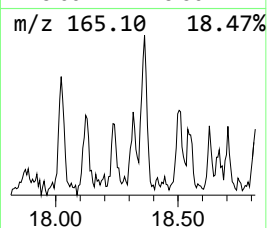
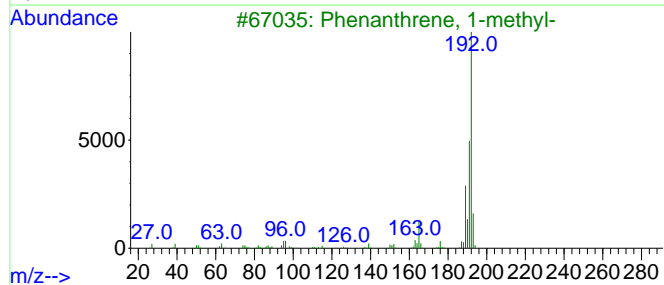
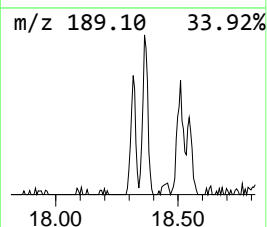
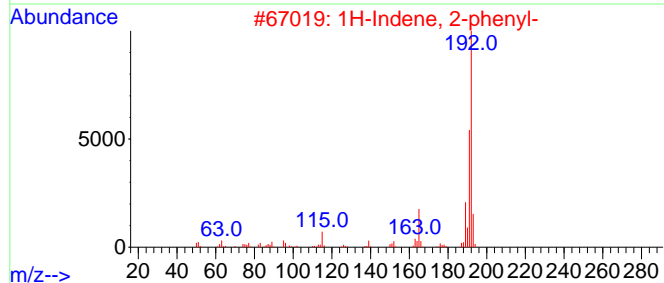
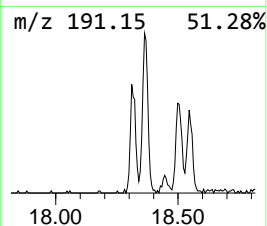
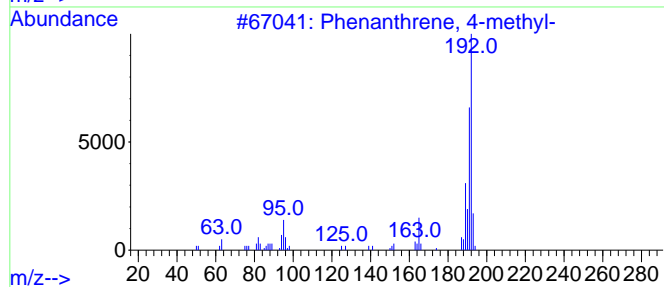
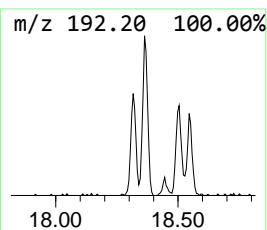
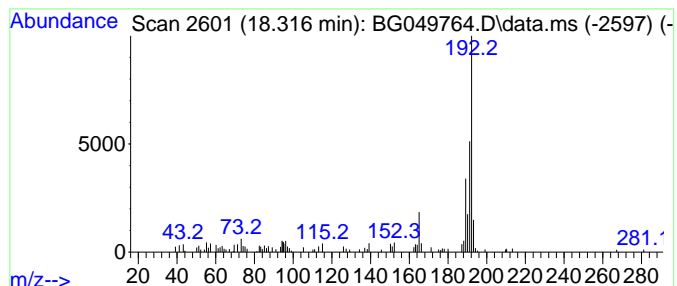
Quant Method : Z:\SVOASRV\HPCHEM1\BNA_G\METHODS\SFAM-EPA-BG080421.M
 Quant Title : SVOA CALIBRATION

TIC Library : C:\DATABASE\NIST20.L
 TIC Integration Parameters: LSCINT.P

 Peak Number 18 Phenanthrene, 4-methyl- Concentration Rank 13

R.T.	EstConc	Area	Relative to ISTD	R.T.
18.316	3.57 ng/ul	82325	Phenanthrene-d10	17.441

Hit#	of 5	Tentative ID	MW	MolForm	CAS#	Qual
1		Phenanthrene, 4-methyl-	192	C15H12	000832-64-4	95
2		1H-Indene, 2-phenyl-	192	C15H12	004505-48-0	94
3		Phenanthrene, 1-methyl-	192	C15H12	000832-69-9	93
4		1H-Cyclopropa[1]phenanthrene,1a,...	192	C15H12	000949-41-7	93
5		Phenanthrene, 4-methyl-	192	C15H12	000832-64-4	90



Data Path : Z:\svoasrv\HPCHEM1\BNA_G\Data\BG081021\
 Data File : BG049764.D
 Acq On : 10 Aug 2021 19:51
 Operator : CG/JU
 Sample : M3182-17
 Misc :
 ALS Vial : 10 Sample Multiplier: 1

Instrument :
 BNA_G
 ClientSampled :
 C00D5

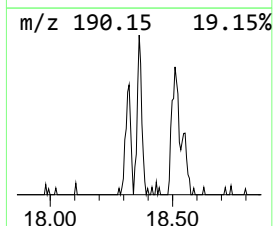
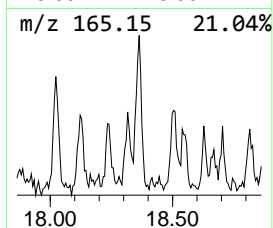
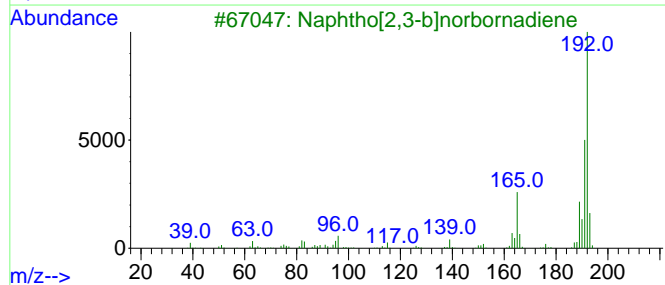
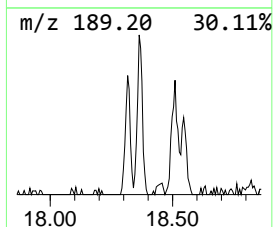
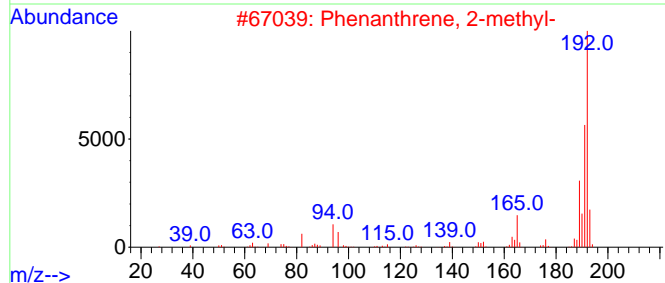
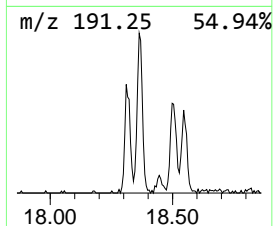
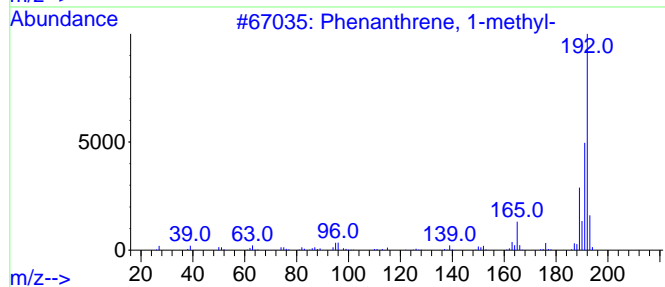
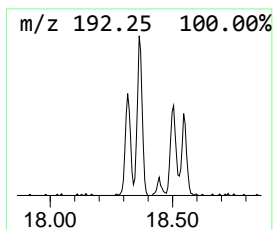
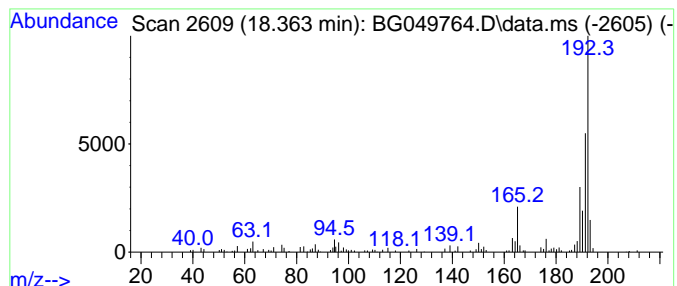
Quant Method : Z:\SVOASRV\HPCHEM1\BNA_G\METHODS\SFAM-EPA-BG080421.M
 Quant Title : SVOA CALIBRATION

TIC Library : C:\DATABASE\NIST20.L
 TIC Integration Parameters: LSCINT.P

 Peak Number 19 Phenanthrene, 1-methyl- Concentration Rank 2

R.T.	EstConc	Area	Relative to ISTD	R.T.
18.363	6.25 ng/ul	144010	Phenanthrene-d10	17.441

Hit#	of 5	Tentative ID	MW	MolForm	CAS#	Qual
1		Phenanthrene, 1-methyl-	192	C15H12	000832-69-9	93
2		Phenanthrene, 2-methyl-	192	C15H12	002531-84-2	93
3		Naphtho[2,3-b]norbornadiene	192	C15H12	107426-38-0	91
4		Phenanthrene, 1-methyl-	192	C15H12	000832-69-9	90
5		1a,9b-Dihydro-1H-cyclopropa[a]an...	192	C15H12	006109-24-6	90



Data Path : Z:\svoasrv\HPCHEM1\BNA_G\Data\BG081021\
 Data File : BG049764.D
 Acq On : 10 Aug 2021 19:51
 Operator : CG/JU
 Sample : M3182-17
 Misc :
 ALS Vial : 10 Sample Multiplier: 1

Instrument :
 BNA_G
 ClientSampled :
 C00D5

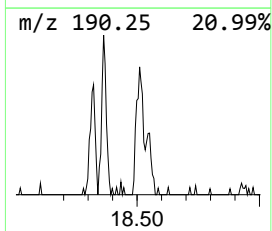
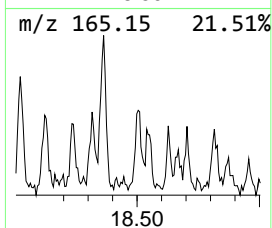
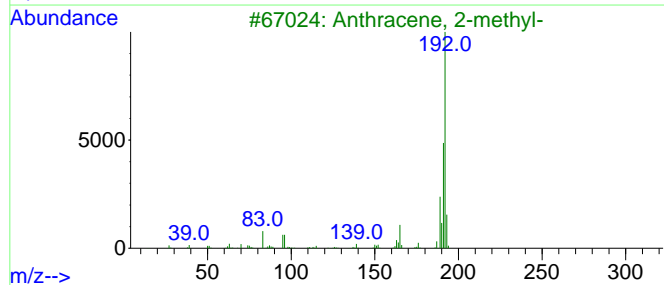
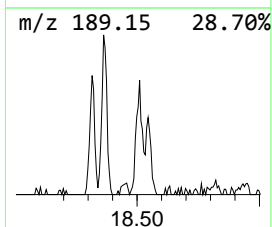
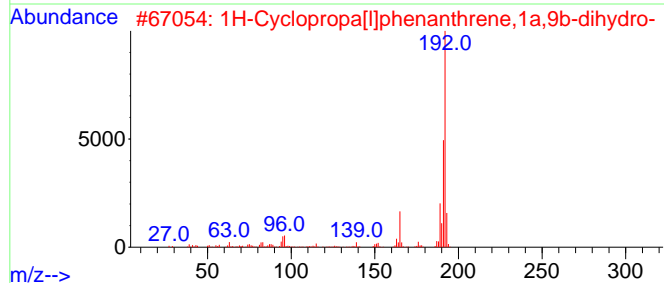
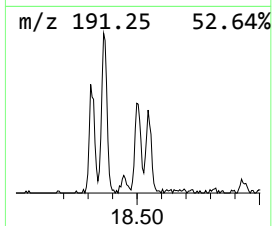
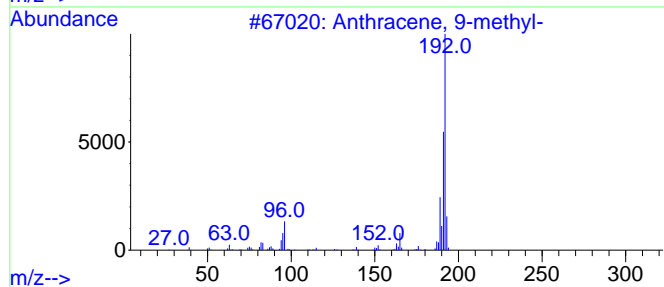
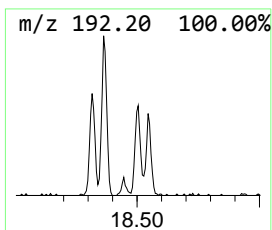
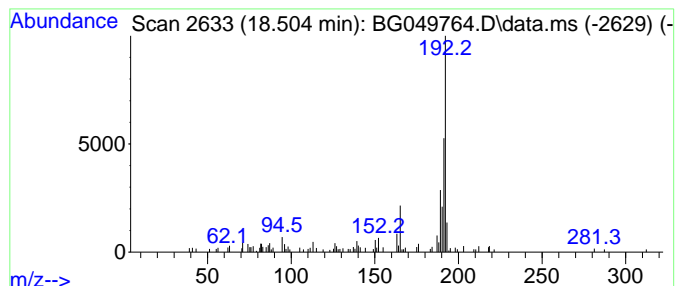
Quant Method : Z:\SVOASRV\HPCHEM1\BNA_G\METHODS\SFAM-EPA-BG080421.M
 Quant Title : SVOA CALIBRATION

TIC Library : C:\DATABASE\NIST20.L
 TIC Integration Parameters: LSCINT.P

 Peak Number 20 Anthracene, 9-methyl- Concentration Rank 14

R.T.	EstConc	Area	Relative to ISTD	R.T.
18.504	3.56 ng/ul	81901	Phenanthrene-d10	17.441

Hit#	of 5	Tentative ID	MW	MolForm	CAS#	Qual
1		Anthracene, 9-methyl-	192	C15H12	000779-02-2	90
2		1H-Cyclopropa[1]phenanthrene,1a,...	192	C15H12	000949-41-7	81
3		Anthracene, 2-methyl-	192	C15H12	000613-12-7	81
4		Phenanthrene, 1-methyl-	192	C15H12	000832-69-9	76
5		1H-Indene, 2-phenyl-	192	C15H12	004505-48-0	74



Data Path : Z:\svoasrv\HPCHEM1\BNA_G\Data\BG081021\
 Data File : BG049764.D
 Acq On : 10 Aug 2021 19:51
 Operator : CG/JU
 Sample : M3182-17
 Misc :
 ALS Vial : 10 Sample Multiplier: 1

Instrument :
 BNA_G
 ClientSampleID :
 C00D5

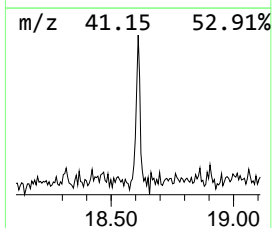
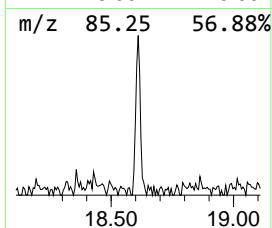
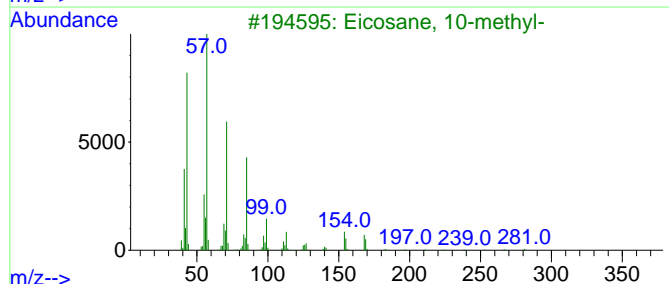
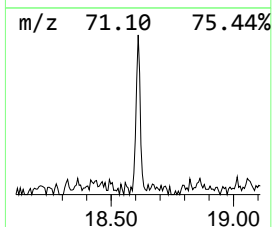
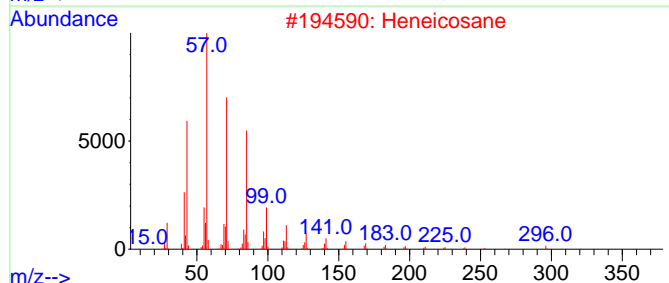
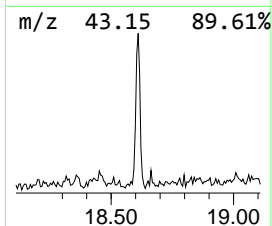
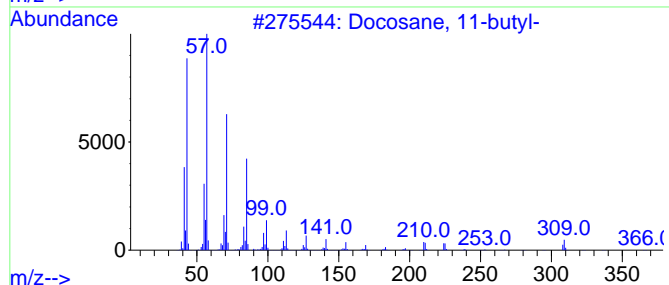
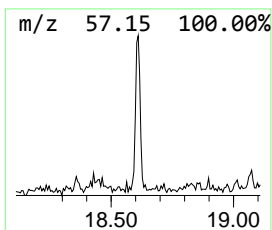
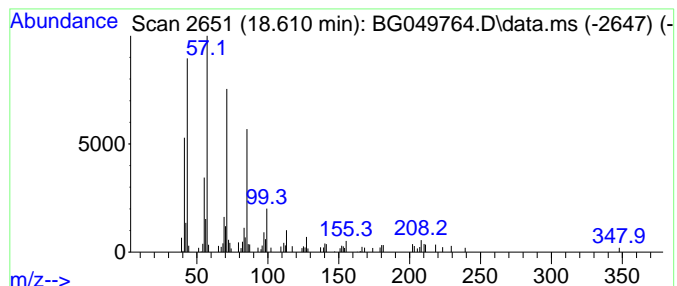
Quant Method : Z:\SVOASRV\HPCHEM1\BNA_G\METHODS\SFAM-EPA-BG080421.M
 Quant Title : SVOA CALIBRATION

TIC Library : C:\DATABASE\NIST20.L
 TIC Integration Parameters: LSCINT.P

 Peak Number 21 (DEL) Alkane: Straight-Chai... Concentration Rank 11

R.T.	EstConc	Area	Relative to ISTD	R.T.
18.610	3.80 ng/ul	87607	Phenanthrene-d10	17.441

Hit#	of 5	Tentative ID	MW	MolForm	CAS#	Qual
1		Docosane, 11-butyl-	366	C26H54	013475-76-8	90
2		Heneicosane	296	C21H44	000629-94-7	90
3		Eicosane, 10-methyl-	296	C21H44	054833-23-7	87
4		2-Bromo dodecane	248	C12H25Br	013187-99-0	87
5		Tridecano1, 2-ethyl-2-methyl-	242	C16H34O	1010115-66-1	86



Data Path : Z:\svoasrv\HPCHEM1\BNA_G\Data\BG081021\
 Data File : BG049764.D
 Acq On : 10 Aug 2021 19:51
 Operator : CG/JU
 Sample : M3182-17
 Misc :
 ALS Vial : 10 Sample Multiplier: 1

Instrument :
 BNA_G
 ClientSampleId :
 C00D5

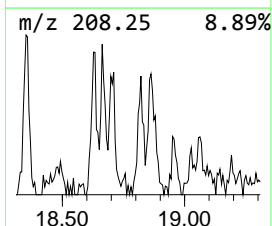
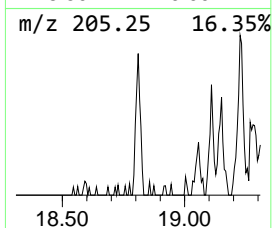
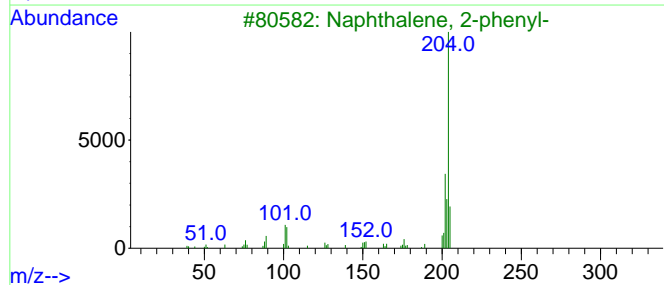
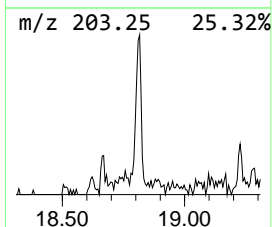
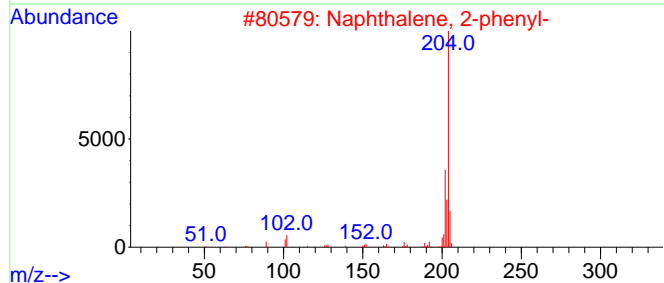
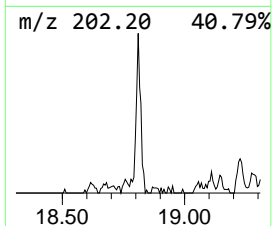
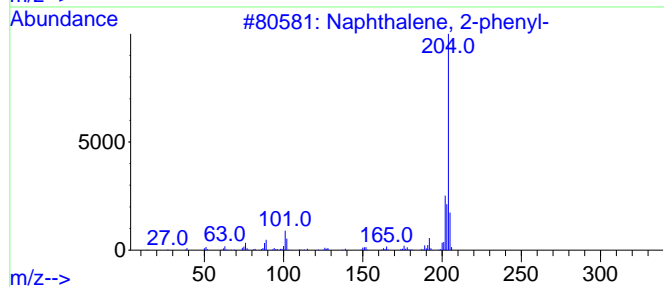
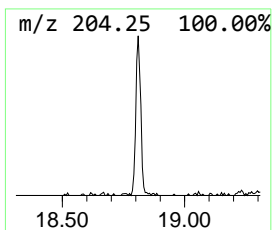
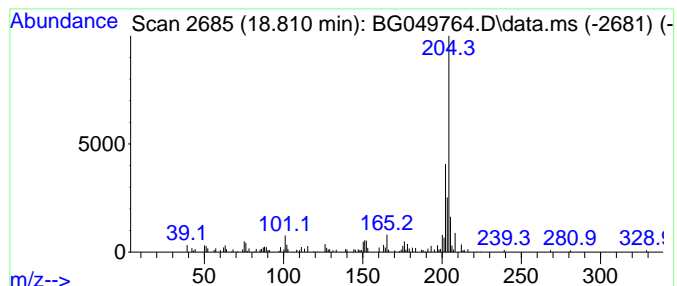
Quant Method : Z:\SVOASRV\HPCHEM1\BNA_G\METHODS\SFAM-EPA-BG080421.M
 Quant Title : SVOA CALIBRATION

TIC Library : C:\DATABASE\NIST20.L
 TIC Integration Parameters: LSCINT.P

 Peak Number 22 Naphthalene, 2-phenyl- Concentration Rank 8

R.T.	EstConc	Area	Relative to ISTD	R.T.
18.810	4.16 ng/ul	95929	Phenanthrene-d10	17.441

Hit#	of 5	Tentative ID	MW	MolForm	CAS#	Qual
1		Naphthalene, 2-phenyl-	204	C16H12	000612-94-2	83
2		Naphthalene, 2-phenyl-	204	C16H12	000612-94-2	64
3		Naphthalene, 2-phenyl-	204	C16H12	000612-94-2	64
4		Tricyclo[8.2.2.2(4,7)]hexadeca-2...	204	C16H12	006572-60-7	58
5		[1,1'-Biphenyl]-4,4'-dicarbonitrile	204	C14H8N2	001591-30-6	53



Data Path : Z:\svoasrv\HPCHEM1\BNA_G\Data\BG081021\
 Data File : BG049764.D
 Acq On : 10 Aug 2021 19:51
 Operator : CG/JU
 Sample : M3182-17
 Misc :
 ALS Vial : 10 Sample Multiplier: 1

Instrument :
 BNA_G
 ClientSampleID :
 C00D5

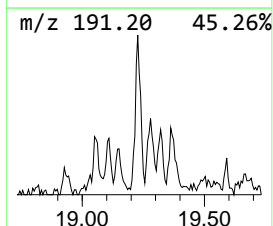
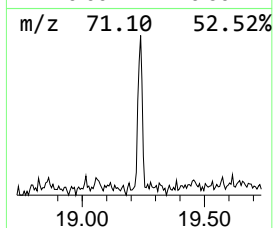
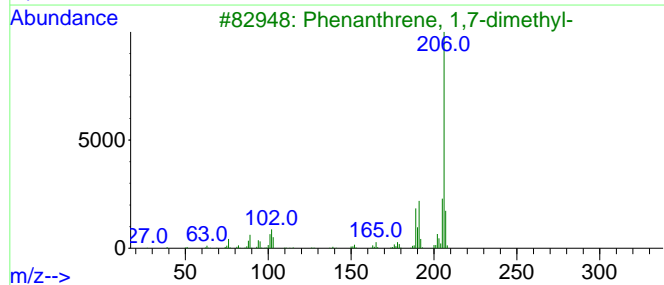
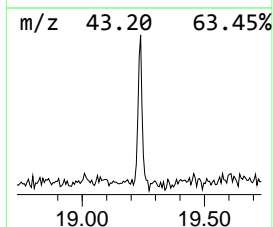
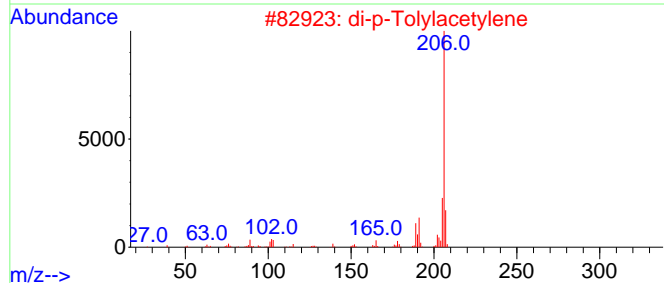
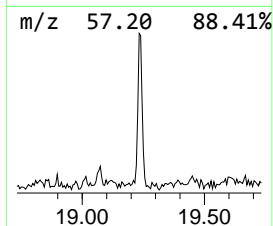
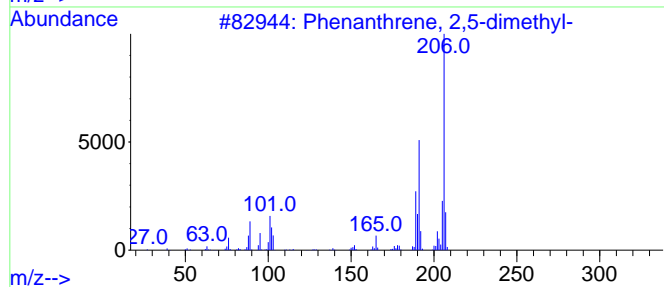
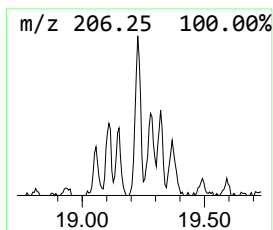
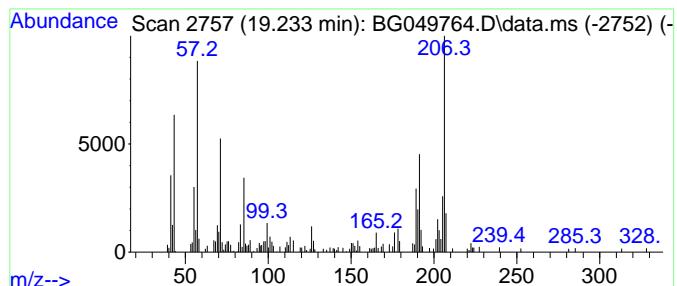
Quant Method : Z:\SVOASRV\HPCHEM1\BNA_G\METHODS\SFAM-EPA-BG080421.M
 Quant Title : SVOA CALIBRATION

TIC Library : C:\DATABASE\NIST20.L
 TIC Integration Parameters: LSCINT.P

 Peak Number 23 Phenanthrene, 2,5-dimethyl- Concentration Rank 3

R.T.	EstConc	Area	Relative to ISTD	R.T.
19.233	5.95 ng/ul	136956	Phenanthrene-d10	17.441

Hit#	of 5	Tentative ID	MW	MolForm	CAS#	Qual
1		Phenanthrene, 2,5-dimethyl-	206	C16H14	003674-66-6	94
2		di-p-Tolylacetylene	206	C16H14	002789-88-0	93
3		Phenanthrene, 1,7-dimethyl-	206	C16H14	000483-87-4	89
4		9,10-Dimethylantracene	206	C16H14	000781-43-1	83
5		9,10-Dimethylantracene	206	C16H14	000781-43-1	83



Data Path : Z:\svoasrv\HPCHEM1\BNA_G\Data\BG081021\
 Data File : BG049764.D
 Acq On : 10 Aug 2021 19:51
 Operator : CG/JU
 Sample : M3182-17
 Misc :
 ALS Vial : 10 Sample Multiplier: 1

Instrument :
 BNA_G
 ClientSampleId :
 C00D5

Quant Method : Z:\SVOASRV\HPCHEM1\BNA_G\METHODS\SFAM-EPA-BG080421.M
 Quant Title : SVOA CALIBRATION

TIC Library : C:\DATABASE\NIST0.L
 TIC Integration Parameters: LSCINT.P

TIC Top Hit name	RT	EstConc	Units	Response	--Internal Standard--			
					#	RT	Resp	Conc
Butane, 2-metho...	3.143	43.9	ng/ul	423520	1	8.036	193082	20.0
Methacrylamide	3.953	2.7	ng/ul	25771	1	8.036	193082	20.0
Toluene	4.177	2.2	ng/ul	20985	1	8.036	193082	20.0
1,3-Cyclopentad...	5.651	5.3	ng/ul	51065	1	8.036	193082	20.0
p-Xylene	6.027	3.0	ng/ul	28455	1	8.036	193082	20.0
(DEL) Alkane: S...	7.648	2.7	ng/ul	25977	1	8.036	193082	20.0
Ethanol, 2-(2-b...	10.615	4.2	ng/ul	59788	2	10.856	282901	20.0
(DEL) Alkane: S...	12.260	4.1	ng/ul	58319	2	10.856	282901	20.0
Naphthalene, 1,...	14.010	3.0	ng/ul	65545	3	14.686	436150	20.0
(DEL) Alkane: S...	14.568	3.6	ng/ul	78417	3	14.686	436150	20.0
(DEL) Alkane: S...	15.520	3.9	ng/ul	83910	3	14.686	436150	20.0
9H-Fluoren-9-ol	16.025	2.1	ng/ul	45865	3	14.686	436150	20.0
(DEL) Alkane: S...	16.384	4.7	ng/ul	107386	4	17.441	460695	20.0
9H-Fluoren-9-one	17.094	2.8	ng/ul	64746	4	17.441	460695	20.0
Tetradecane, 1-...	17.177	5.0	ng/ul	114160	4	17.441	460695	20.0
Anthrone	17.752	3.0	ng/ul	70266	4	17.441	460695	20.0
(DEL) Alkane: S...	17.917	3.3	ng/ul	76825	4	17.441	460695	20.0
Phenanthrene, 4...	18.316	3.6	ng/ul	82325	4	17.441	460695	20.0
Phenanthrene, 1...	18.363	6.3	ng/ul	144010	4	17.441	460695	20.0
Anthracene, 9-m...	18.504	3.6	ng/ul	81901	4	17.441	460695	20.0
(DEL) Alkane: S...	18.610	3.8	ng/ul	87607	4	17.441	460695	20.0
Naphthalene, 2-...	18.810	4.2	ng/ul	95929	4	17.441	460695	20.0
Phenanthrene, 2...	19.233	6.0	ng/ul	136956	4	17.441	460695	20.0