

Data Path : Z:\HPCHEM1\BNA G\DATA\BG081115\
 Data File : BG018381.D
 Acq On : 11 Aug 2015 14:52
 Operator : UM/MA
 Sample : G3109-16DL 5X
 Misc :
 ALS Vial : 5 Sample Multiplier: 1

Instrument :
 BNA_G
 ClientSampled :
 C01W6DL

Integration Parameters: LSCINT.P

Integrator: RTE
 Smoothing : OFF
 Sampling : 1
 Start Thrs: 0.2
 Stop Thrs : 0

Filtering: 5
 Min Area: 0.1 % of largest Peak
 Max Peaks: 100
 Peak Location: TOP

If leading or trailing edge < 100 prefer < Baseline drop else tangent >
 Peak separation: 5

Method : Z:\HPCHEM1\BNA G\METHODS\SOM02.2-EPA-BG080915.M
 Title : SVOA CALIBRATION

Signal : TIC

peak #	R.T. min	first scan	max scan	last scan	PK TY	peak height	corr. area	corr. % max.	% of total
1	3.250	68	70	74	rBV5	5364	7689	0.19%	0.068%
2	3.866	172	175	178	rVB5	5781	6095	0.15%	0.054%
3	3.996	193	197	199	rBV5	5683	5178	0.13%	0.046%
4	4.336	252	255	258	rBV5	4094	5641	0.14%	0.050%
5	5.241	404	409	412	rVB7	4566	6970	0.17%	0.061%
6	5.470	445	448	451	rVB5	5680	5562	0.14%	0.049%
7	5.500	451	453	456	rBV4	5088	5416	0.13%	0.048%
8	5.559	456	463	465	rVB6	7476	14264	0.35%	0.126%
9	5.682	480	484	487	rBV6	5866	10595	0.26%	0.093%
10	6.892	686	690	693	rBV6	4505	5715	0.14%	0.050%
11	7.022	707	712	713	rBV5	6186	9589	0.24%	0.085%
12	7.198	736	742	750	rVB2	32895	66784	1.65%	0.589%
13	7.362	764	770	778	rBV2	29182	58063	1.43%	0.512%
14	7.433	778	782	786	rVV6	4848	6895	0.17%	0.061%
15	7.574	800	806	815	rVB2	34537	62156	1.53%	0.548%
16	7.691	820	826	831	rVB8	8339	16852	0.42%	0.149%
17	7.780	836	841	842	rBV5	6765	6582	0.16%	0.058%
18	8.044	878	886	894	rBV	354675	623885	15.39%	5.499%
19	8.132	894	901	902	rVB7	4657	8661	0.21%	0.076%
20	8.161	902	906	908	rBV5	6754	6534	0.16%	0.058%
21	8.279	922	926	927	rBV3	5286	5750	0.14%	0.051%
22	8.743	999	1005	1012	rVB	38118	65789	1.62%	0.580%
23	9.049	1054	1057	1060	rVB3	7032	7349	0.18%	0.065%
24	9.149	1069	1074	1077	rBV6	7991	13824	0.34%	0.122%
25	9.195	1077	1082	1088	rVV	31570	59983	1.48%	0.529%
26	9.278	1091	1096	1100	rVB8	8748	14200	0.35%	0.125%
27	9.495	1128	1133	1137	rBV6	12600	22792	0.56%	0.201%
28	9.683	1160	1165	1168	rBV7	5172	6160	0.15%	0.054%
29	9.736	1168	1174	1178	rVB8	6966	11597	0.29%	0.102%
30	9.924	1202	1206	1212	rVB7	26518	50157	1.24%	0.442%
31	10.036	1219	1225	1227	rBV7	5209	6746	0.17%	0.059%
32	10.465	1293	1298	1305	rBV2	46170	83036	2.05%	0.732%
33	10.629	1322	1326	1329	rBV6	4062	6274	0.15%	0.055%
34	10.852	1354	1364	1371	rBV	539037	997129	24.60%	8.789%

Data Path : Z:\HPCHEM1\BNA G\DATA\BG081115\
 Data File : BG018381.D
 Acq On : 11 Aug 2015 14:52
 Operator : UM/MA
 Sample : G3109-16DL 5X
 Misc :
 ALS Vial : 5 Sample Multiplier: 1

Instrument :
 BNA_G
 ClientSampleId :
 C01W6DL

Integration Parameters: LSCINT.P

Integrator: RTE
 Smoothing : OFF
 Sampling : 1
 Start Thrs: 0.2
 Stop Thrs : 0

Filtering: 5
 Min Area: 0.1 % of largest Peak
 Max Peaks: 100
 Peak Location: TOP

If leading or trailing edge < 100 prefer < Baseline drop else tangent >
 Peak separation: 5

Method : Z:\HPCHEM1\BNA G\METHODS\SOM02.2-EPA-BG080915.M
 Title : SVOA CALIBRATION

35	10.988	1381	1387	1394	rVB10	11819	32974	0.81%	0.291%
36	11.046	1394	1397	1398	rBV3	8002	6805	0.17%	0.060%
37	11.234	1425	1429	1430	rBV3	7168	7843	0.19%	0.069%
38	11.557	1480	1484	1486	rBV4	5843	8041	0.20%	0.071%
39	11.875	1534	1538	1541	rBV6	7969	10726	0.26%	0.095%
40	11.969	1551	1554	1557	rVB5	6632	8676	0.21%	0.076%
41	12.039	1563	1566	1568	rBV4	7370	9968	0.25%	0.088%
42	12.133	1578	1582	1584	rBV5	3812	5889	0.15%	0.052%
43	12.174	1587	1589	1593	rVV4	5216	6347	0.16%	0.056%
44	12.257	1600	1603	1607	rBV6	7961	12021	0.30%	0.106%
45	12.503	1640	1645	1653	rVB5	17293	27005	0.67%	0.238%
46	12.668	1671	1673	1677	rVB5	5323	5696	0.14%	0.050%
47	12.809	1694	1697	1698	rBV3	4713	5206	0.13%	0.046%
48	13.044	1733	1737	1740	rVB6	7706	9225	0.23%	0.081%
49	13.109	1745	1748	1749	rBV3	6164	5949	0.15%	0.052%
50	13.197	1759	1763	1764	rBV4	7535	9673	0.24%	0.085%
51	13.261	1769	1774	1780	rVV8	31958	59696	1.47%	0.526%
52	13.385	1794	1795	1799	rBV3	6690	7040	0.17%	0.062%
53	13.461	1806	1808	1811	rBV4	7203	8733	0.22%	0.077%
54	13.508	1811	1816	1821	rVB9	20035	39969	0.99%	0.352%
55	13.596	1829	1831	1837	rVB7	6855	8888	0.22%	0.078%
56	13.696	1846	1848	1850	rVB3	6244	5540	0.14%	0.049%
57	13.943	1888	1890	1893	rBV4	7023	8120	0.20%	0.072%
58	14.066	1906	1911	1914	rBV2	88131	122625	3.02%	1.081%
59	14.113	1915	1919	1924	rVB2	40905	64081	1.58%	0.565%
60	14.213	1935	1936	1939	rBV3	9230	6925	0.17%	0.061%
61	14.319	1952	1954	1956	rBV3	8830	8343	0.21%	0.074%
62	14.360	1957	1961	1967	rVV	98713	147235	3.63%	1.298%
63	14.507	1983	1986	1990	rVB6	27549	36162	0.89%	0.319%
64	14.566	1993	1996	1998	rBV3	17364	23197	0.57%	0.204%
65	14.671	2007	2014	2021	rBV2	912351	1454445	35.88%	12.819%
66	14.854	2041	2045	2048	rBV5	37293	57641	1.42%	0.508%
67	15.659	2177	2182	2188	rBV2	144582	215150	5.31%	1.896%
68	17.415	2476	2481	2485	rBV2	988814	1458120	35.97%	12.852%
69	17.509	2495	2497	2500	rVB	124890	125880	3.11%	1.109%
70	18.479	2659	2662	2667	rBV2	250108	282611	6.97%	2.491%
71	19.519	2836	2839	2847	rVB2	545678	689446	17.01%	6.077%

Data Path : Z:\HPCHEM1\BNA G\DATA\BG081115\
Data File : BG018381.D
Acq On : 11 Aug 2015 14:52
Operator : UM/MA
Sample : G3109-16DL 5X
Misc :
ALS Vial : 5 Sample Multiplier: 1

Instrument :
BNA_G
ClientSampleId :
C01W6DL

Integration Parameters: LSCINT.P
Integrator: RTE
Smoothing : OFF Filtering: 5
Sampling : 1 Min Area: 0.1 % of largest Peak
Start Thrs: 0.2 Max Peaks: 100
Stop Thrs : 0 Peak Location: TOP

If leading or trailing edge < 100 prefer < Baseline drop else tangent >
Peak separation: 5

Method : Z:\HPCHEM1\BNA_G\METHODS\SOM02.2-EPA-BG080915.M
Title : SVOA CALIBRATION

72	21.575	3185	3189	3200	rVB	2601482	4053968	100.00%	35.731%
----	--------	------	------	------	-----	---------	---------	---------	---------

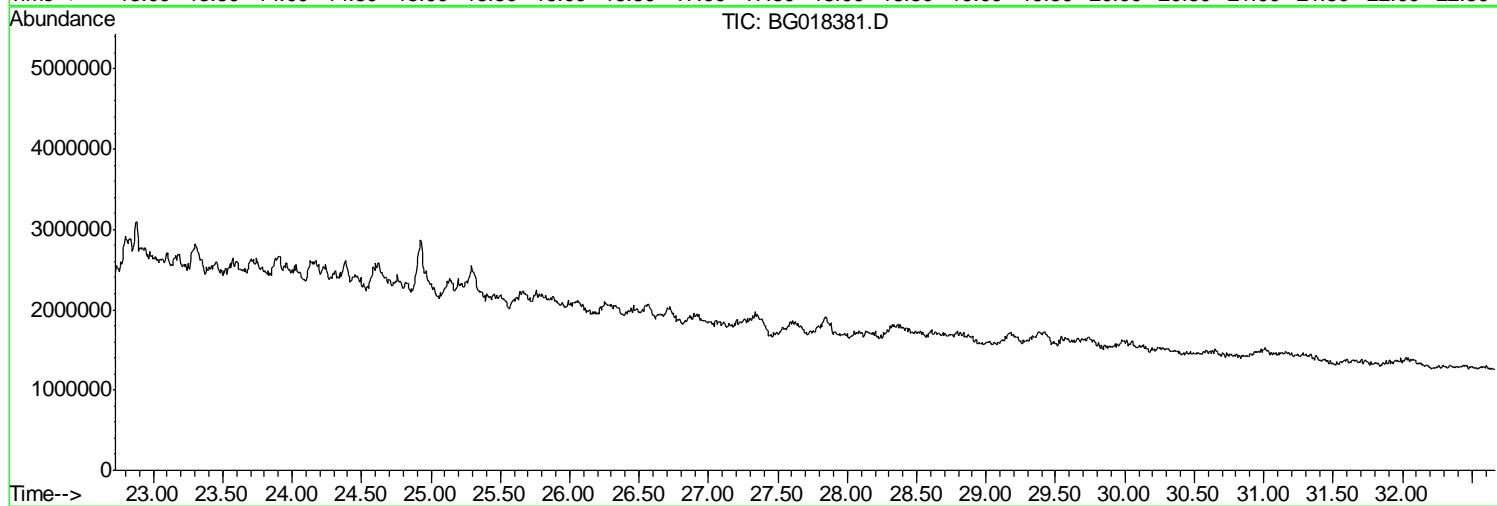
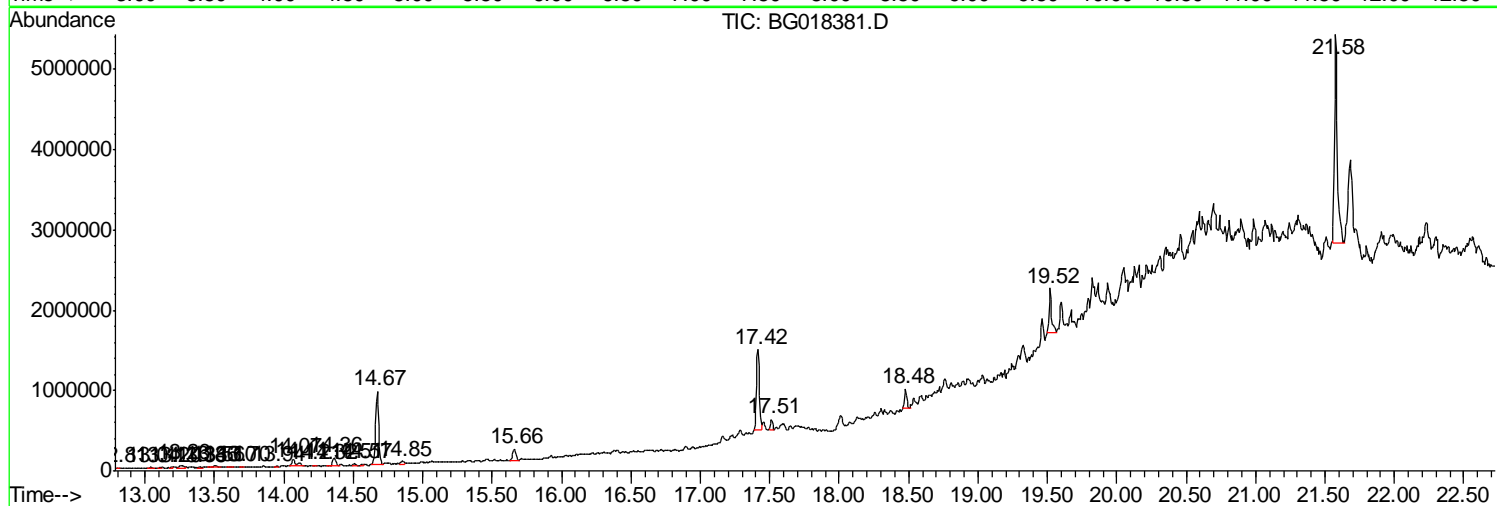
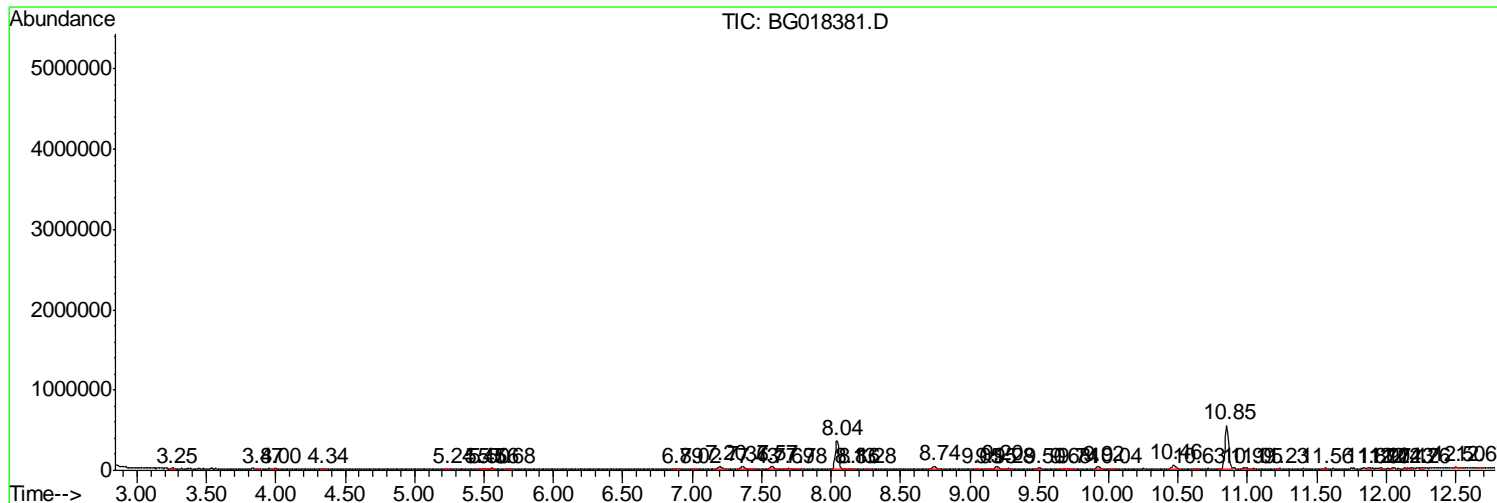
Sum of corrected areas: 11345771

Data Path : Z:\HPCHEM1\BNA G\DATA\BG081115\
 Data File : BG018381.D
 Acq On : 11 Aug 2015 14:52
 Operator : UM/MA
 Sample : G3109-16DL 5X
 Misc :
 ALS Vial : 5 Sample Multiplier: 1

Instrument :
 BNA_G
 ClientSampleId :
 C01W6DL

Quant Method : Z:\HPCHEM1\BNA G\METHODS\SOM02.2-EPA-BG080915.M
 Quant Title : SVOA CALIBRATION

TIC Library : C:\DATABASE\NIST02.L
 TIC Integration Parameters: LSCINT.P



Data Path : Z:\HPCHEM1\BNA G\DATA\BG081115\
 Data File : BG018381.D
 Acq On : 11 Aug 2015 14:52
 Operator : UM/MA
 Sample : G3109-16DL 5X
 Misc :
 ALS Vial : 5 Sample Multiplier: 1

Instrument :
 BNA_G
 ClientSampled :
 C01W6DL

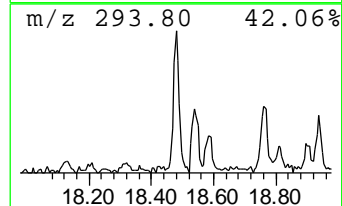
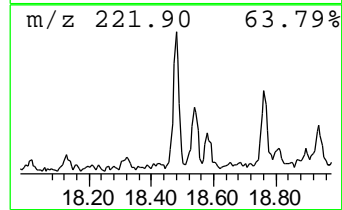
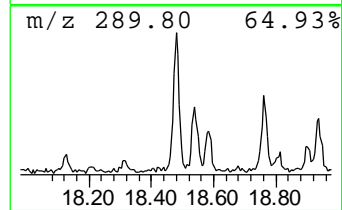
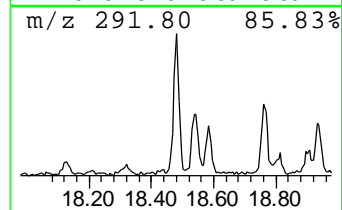
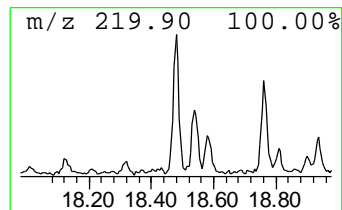
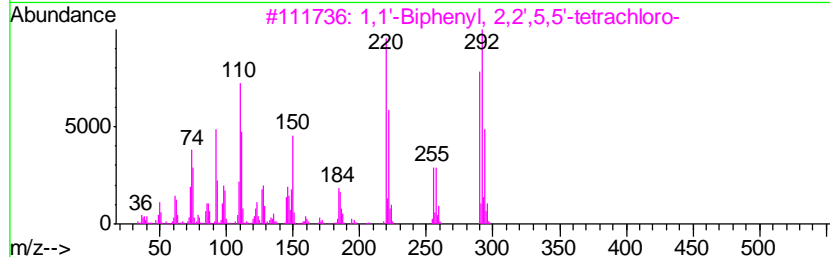
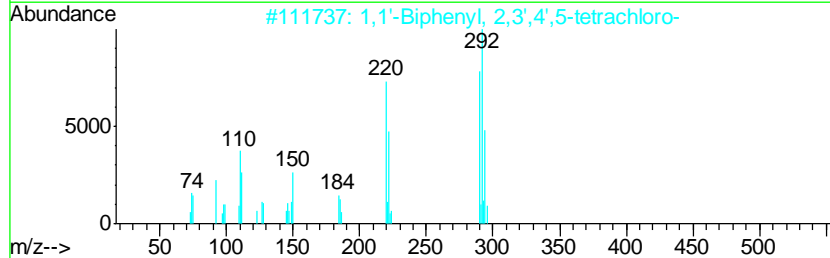
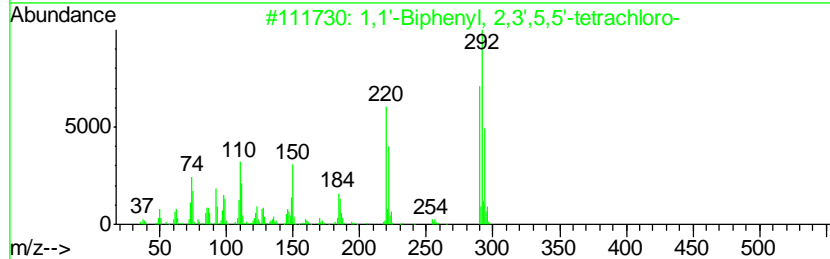
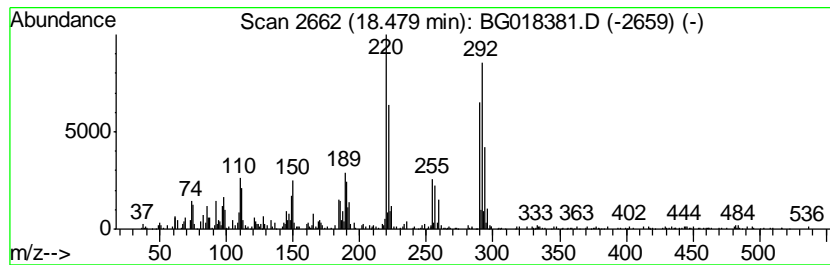
Quant Method : Z:\HPCHEM1\BNA G\METHODS\SOM02.2-EPA-BG080915.M
 Quant Title : SVOA CALIBRATION

TIC Library : C:\DATABASE\NIST02.L
 TIC Integration Parameters: LSCINT.P

 Peak Number 1 1,1'-Biphenyl, 2,3',5,5'-te... Concentration Rank 2

R.T.	EstConc	Area	Relative to ISTD	R.T.
18.48	3.88 ng/ul	282611	Phenanthrene-d10	17.42

Hit#	of	Tentative ID	MW	MolForm	CAS#	Qual
1	5	1,1'-Biphenyl, 2,3',5,5'-tetrach...	290	C12H6Cl4	041464-42-0	94
2		1,1'-Biphenyl, 2,3',4',5-tetrach...	290	C12H6Cl4	032598-11-1	94
3		1,1'-Biphenyl, 2,2',5,5'-tetrach...	290	C12H6Cl4	035693-99-3	94
4		1,1'-Biphenyl, 2,2',3,3'-tetrach...	290	C12H6Cl4	038444-93-8	94
5		1,1'-Biphenyl, 3,3',4,4'-tetrach...	290	C12H6Cl4	032598-13-3	93



Data Path : Z:\HPCHEM1\BNA G\DATA\BG081115\
 Data File : BG018381.D
 Acq On : 11 Aug 2015 14:52
 Operator : UM/MA
 Sample : G3109-16DL 5X
 Misc :
 ALS Vial : 5 Sample Multiplier: 1

Instrument :
 BNA_G
 ClientSampled :
 C01W6DL

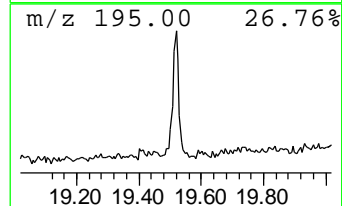
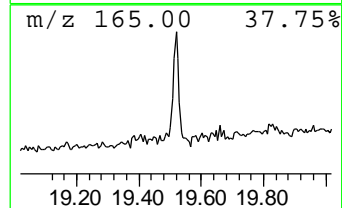
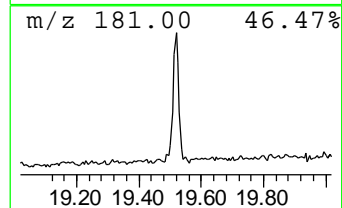
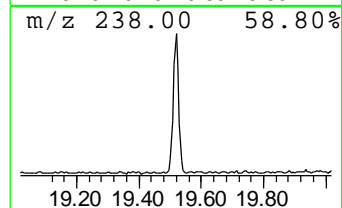
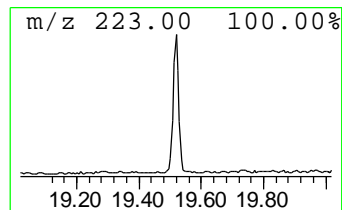
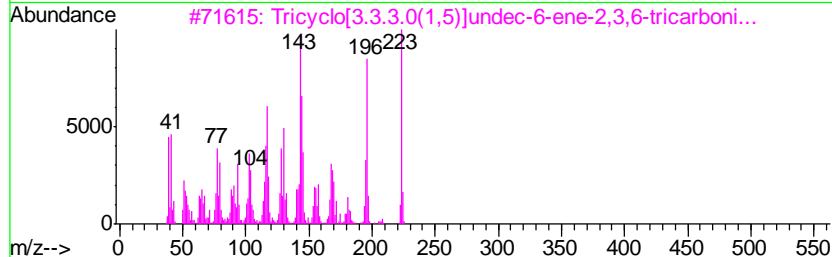
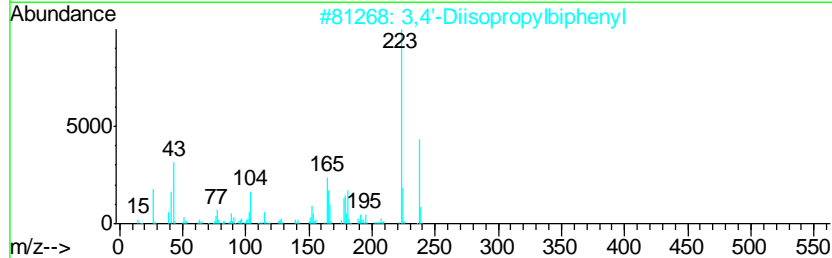
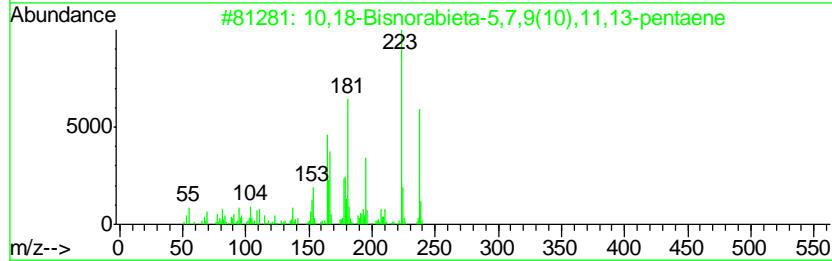
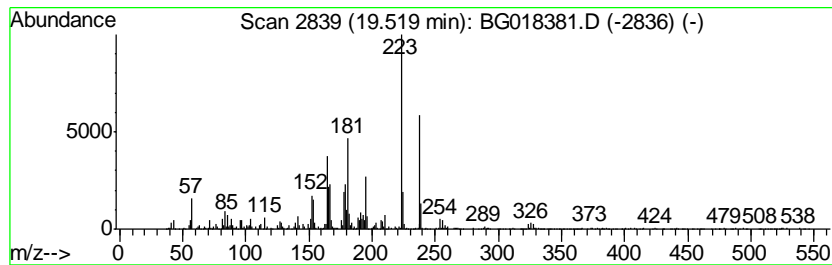
Quant Method : Z:\HPCHEM1\BNA G\METHODS\SOM02.2-EPA-BG080915.M
 Quant Title : SVOA CALIBRATION

TIC Library : C:\DATABASE\NIST02.L
 TIC Integration Parameters: LSCINT.P

 Peak Number 2 10,18-Bisnorabieta-5,7,9(10)... Concentration Rank 1

R.T.	EstConc	Area	Relative to ISTD	R.T.
19.52	9.46 ng/ul	689446	Phenanthrene-d10	17.42

Hit#	of	Tentative ID	MW	MolForm	CAS#	Qual
1	5	10,18-Bisnorabieta-5,7,9(10),11,...	238	C18H22	006566-19-4	99
2		3,4'-Diisopropylbiphenyl	238	C18H22	061434-46-6	76
3		Tricyclo[3.3.3.0(1,5)]undec-6-en...	223	C14H13N3	118894-71-6	60
4		Anthracene, 9,10-dimethoxy-	238	C16H14O2	002395-97-3	50
5		9,10-Anthracenedione, 2-amino-	223	C14H9NO2	000117-79-3	50



Data Path : Z:\HPCHEM1\BNA_G\DATA\BG081115\
Data File : BG018381.D
Acq On : 11 Aug 2015 14:52
Operator : UM/MA
Sample : G3109-16DL 5X
Misc :
ALS Vial : 5 Sample Multiplier: 1

Instrument :
BNA_G
ClientSampleId :
C01W6DL

Quant Method : Z:\HPCHEM1\BNA_G\METHODS\SOM02.2-EPA-BG080915.M
Quant Title : SVOA CALIBRATION

TIC Library : C:\DATABASE\NIST02.L
TIC Integration Parameters: LSCINT.P

TIC Top Hit name	RT	EstConc	Units	Response	--Internal Standard--			
					#	RT	Resp	Conc
1,1'-Biphenyl, 2,...	18.48	3.9	ng/ul	282611	4	17.42	1458120	20.0
10,18-Bisnorabiet...	19.52	9.5	ng/ul	689446	4	17.42	1458120	20.0