

Data Path : Z:\HPCHEM1\BNA\_G\DATA\BG081116\  
 Data File : BG023644.D  
 Acq On : 12 Aug 2016 5:06  
 Operator : UM/SJ  
 Sample : H4360-22 5X  
 Misc :  
 ALS Vial : 24 Sample Multiplier: 1

Instrument :  
 BNA\_G  
 ClientSampleId :  
 PR001-SS004-1218-01

Quant Time: Aug 12 06:45:44 2016  
 Quant Method : Z:\HPCHEM1\BNA\_G\METHODS\SOM02.2-EPA-BG080416.M  
 Quant Title : SVOA CALIBRATION  
 QLast Update : Fri Aug 12 04:34:52 2016  
 Response via : Initial Calibration

Internal Standards	R.T.	QIon	Response	Conc	Units	Dev(Min)
1) 1,4-Dichlorobenzene-d4	8.11	152	178809	20.00	ng/ul	-0.02
18) Naphthalene-d8	10.95	136	744748	20.00	ng/ul	-0.02
35) Acenaphthene-d10	14.79	164	506707	20.00	ng/ul	0.00
61) Phenanthrene-d10	17.55	188	1110653	20.00	ng/ul	-0.01
75) Chrysene-d12	21.88	240	1117798	20.00	ng/ul	0.00
83) Perylene-d12	25.29	264	1143477	20.00	ng/ul	0.00

## System Monitoring Compounds

3) 1,4-Dioxane-d8	3.49	96	1228	0.29	ng/uL	0.00
5) Phenol-d5	7.27	99	41716	2.32	ng/ul	-0.02
7) Bis-(2-Chloroethyl)ether-d	7.43	67	41091	3.56	ng/ul	-0.02
9) 2-Chlorophenol-d4	7.64	132	40996	3.34	ng/ul	-0.02
13) 4-Methylphenol-d8	8.83	113	32872	2.34	ng/ul	-0.01
19) Nitrobenzene-d5	9.29	128	22820	3.89	ng/ul	-0.02
22) 2-Nitrophenol-d4	10.02	143	28772	4.27	ng/ul	-0.01
26) 2,4-Dichlorophenol-d3	10.58	165	46741	3.68	ng/ul	0.00
29) 4-Chloroaniline-d4	11.09	131	37311	2.50	ng/ul	-0.01
43) Dimethylphthalate-d6	14.18	166	178990	4.31	ng/ul	-0.01
46) Acenaphthylene-d8	14.48	160	211529	4.53	ng/ul	-0.01
51) 4-Nitrophenol-d4	14.99	143	245	0.03	ng/ul	-0.02
57) Fluorene-d10	15.78	176	169158	4.41	ng/ul	-0.01
62) 4,6-Dinitro-2-methylphenol	15.92	200	12058	1.69	ng/ul	0.00
70) Anthracene-d10	17.65	188	235235	4.70	ng/ul	-0.01
76) Pyrene-d10	19.94	212	243881	4.31	ng/ul	0.00
87) Benzo(a)pyrene-d12	25.04	264	219129	4.23	ng/ul	0.00

## Target Compounds

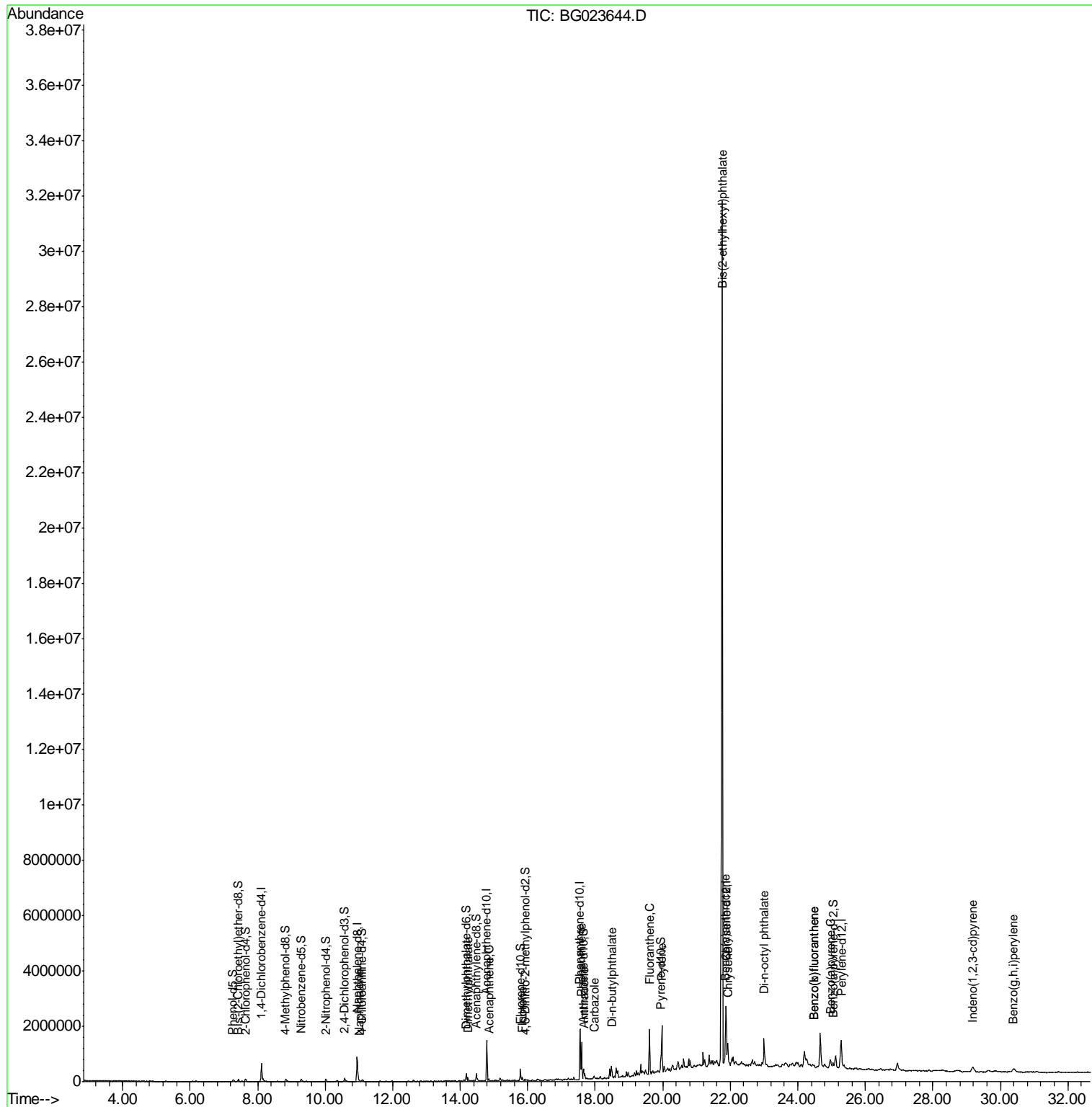
Target Compounds	R.T.	QIon	Response	Conc	Units	Qvalue
28) Naphthalene	11.00	128	44412	1.17	ng/ul	97
44) Dimethylphthalate	14.23	163	92316	2.25	ng/ul	98
49) Acenaphthene	14.85	153	38464	1.16	ng/ul	94
58) Fluorene	15.84	166	57123	1.39	ng/ul#	79
69) Phenanthrene	17.59	178	833766	14.50	ng/ul	99
71) Anthracene	17.68	178	165765	2.82	ng/ul	95
72) Carbazole	17.96	167	64693	1.37	ng/ul	96
73) Di-n-butylphthalate	18.50	149	105487	1.78	ng/ul	97
74) Fluoranthene	19.61	202	990588	16.82	ng/ul#	93
77) Pyrene	19.97	202	1071367	15.50	ng/ul#	93
80) Benzo(a)anthracene	21.86	228	535345	8.50	ng/ul	95
81) Bis(2-ethylhexyl)phthalate	21.76	149	7925954	224.90	ng/ul#	2
82) Chrysene	21.93	228	568370	9.93	ng/ul#	95
84) Di-n-octyl phthalate	23.01	149	905551	15.68	ng/ul	100
85) Benzo(b)fluoranthene	24.47	252	70642	1.09	ng/ul	97
86) Benzo(k)fluoranthene	24.47	252	96375	1.51	ng/ul	94
88) Benzo(a)pyrene	24.96	252	328583	5.23	ng/ul	97
89) Indeno(1,2,3-cd)pyrene	29.18	276	293627	3.98	ng/ul#	87
91) Benzo(g,h,i)perylene	30.38	276	102106	1.67	ng/ul#	84

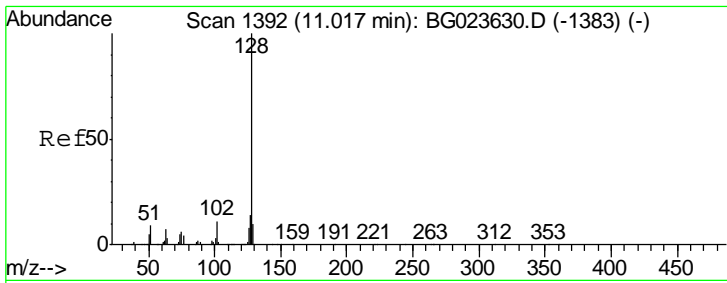
(#) = qualifier out of range (m) = manual integration (+) = signals summed

Data Path : Z:\HPCHEM1\BNA\_G\DATA\BG081116\  
 Data File : BG023644.D  
 Acq On : 12 Aug 2016 5:06  
 Operator : UM/SJ  
 Sample : H4360-22 5X  
 Misc :  
 ALS Vial : 24 Sample Multiplier: 1

Instrument :  
 BNA\_G  
 Client Sampled :  
 PR001-SS004-1218-01

Quant Time: Aug 12 06:45:44 2016  
 Quant Method : Z:\HPCHEM1\BNA\_G\METHODS\SOM02.2-EPA-BG080416.M  
 Quant Title : SVOA CALIBRATION  
 QLast Update : Fri Aug 12 04:34:52 2016  
 Response via : Initial Calibration

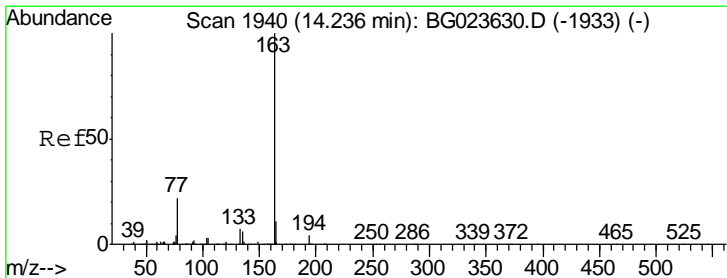
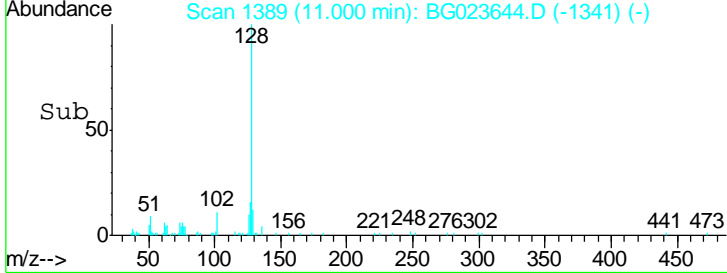
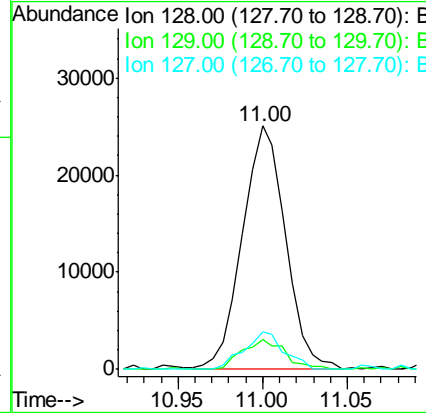
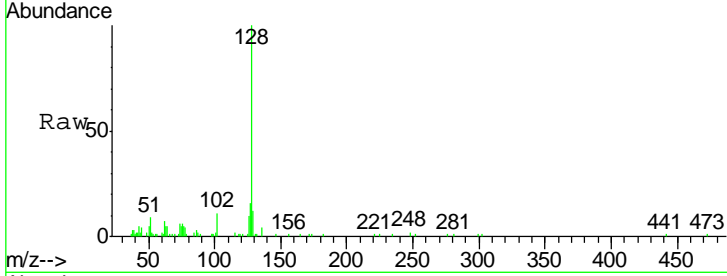




#28  
 Naphthalene  
 Concen: 1.17 ng/ul  
 RT: 11.00 min Scan# 1389  
 Delta R.T. -0.02 min  
 Lab File: BG023644.D  
 Acq: 12 Aug 2016 5:06

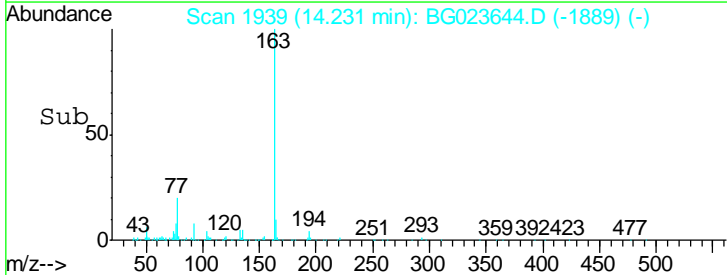
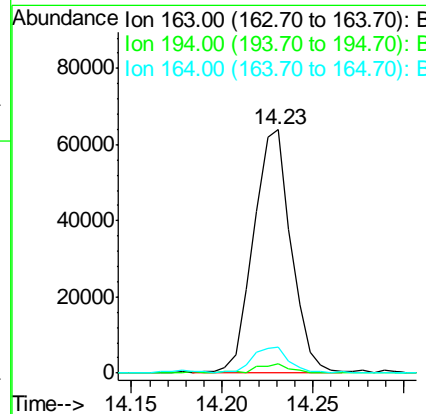
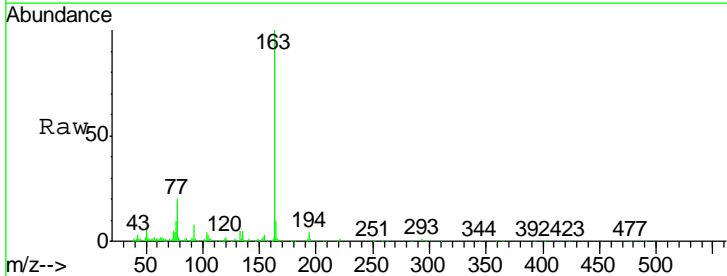
Instrument :  
 BNA\_G  
 ClientSampled :  
 PR001-SS004-1218-01

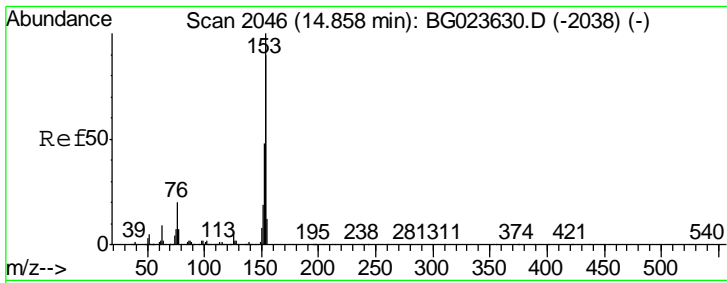
Tgt Ion	Resp	Lower	Upper
128	44412		
129	12.2	9.4	14.2
127	15.6	11.2	16.8



#44  
 Dimethylphthalate  
 Concen: 2.25 ng/ul  
 RT: 14.23 min Scan# 1939  
 Delta R.T. -0.01 min  
 Lab File: BG023644.D  
 Acq: 12 Aug 2016 5:06

Tgt Ion	Resp	Lower	Upper
163	92316		
194	3.6	3.4	5.2
164	10.5	8.8	13.2

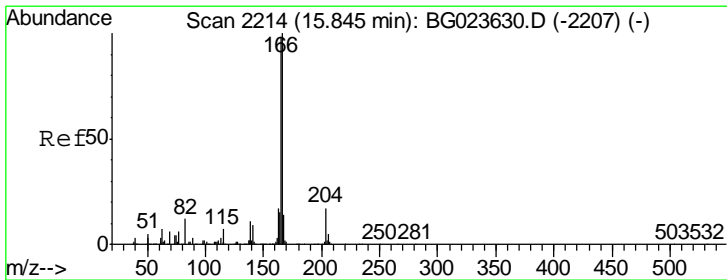
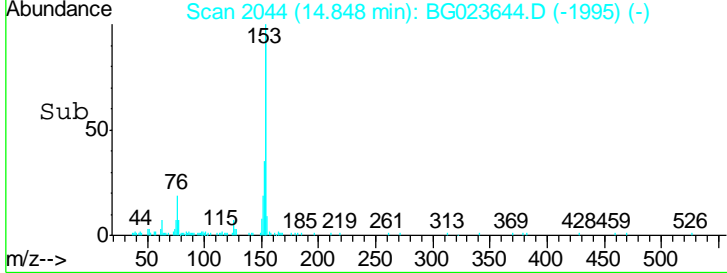
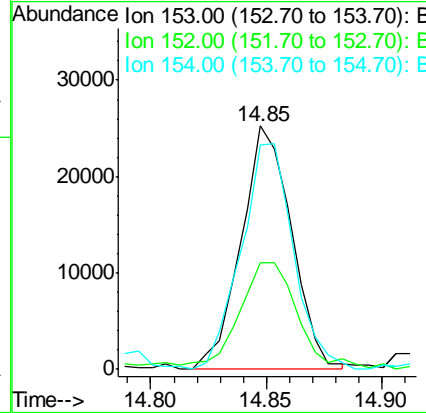
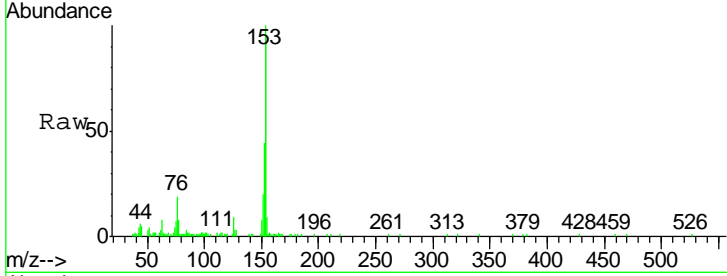




#49  
 Acenaphthene  
 Concen: 1.16 ng/ul  
 RT: 14.85 min Scan# 2044  
 Delta R.T. -0.01 min  
 Lab File: BG023644.D  
 Acq: 12 Aug 2016 5:06

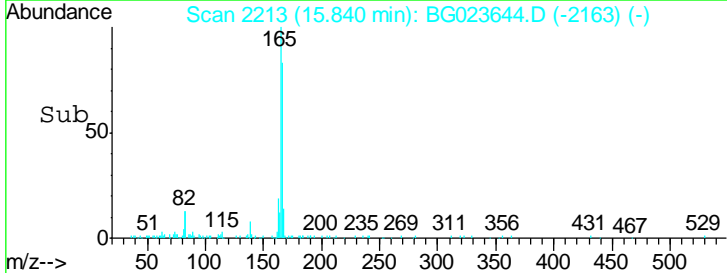
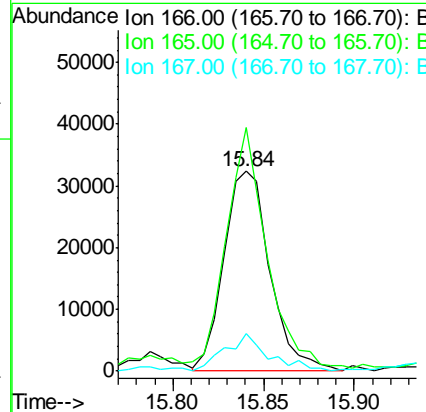
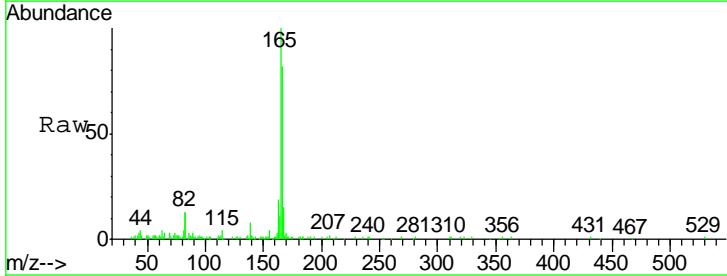
Instrument : BNA\_G  
 ClientSampleId : PR001-SS004-1218-01

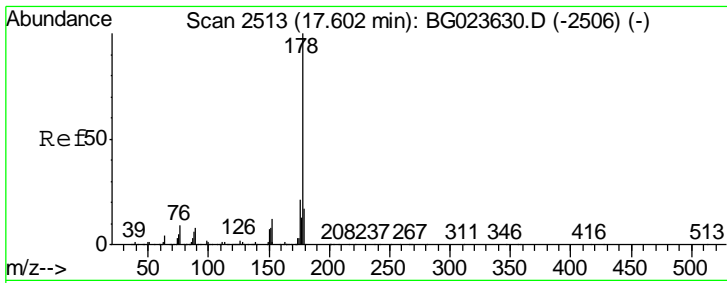
Tgt Ion	Resp	Lower	Upper
153	38464		
152	43.9	37.3	55.9
154	92.1	68.2	102.2



#58  
 Fluorene  
 Concen: 1.39 ng/ul  
 RT: 15.84 min Scan# 2213  
 Delta R.T. -0.00 min  
 Lab File: BG023644.D  
 Acq: 12 Aug 2016 5:06

Tgt Ion	Resp	Lower	Upper
166	57123		
165	121.8	80.3	120.5#
167	18.6	10.3	15.5#

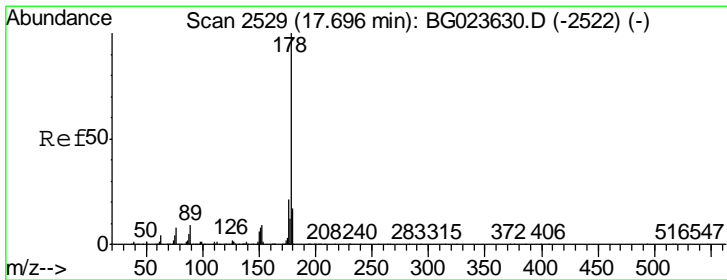
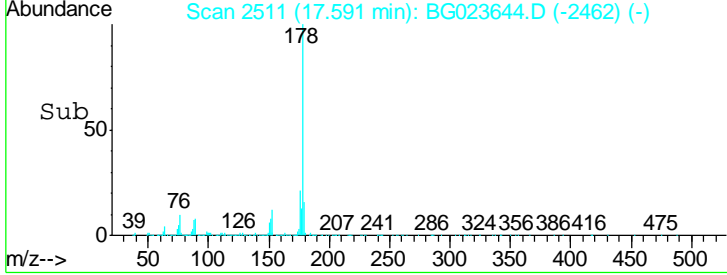
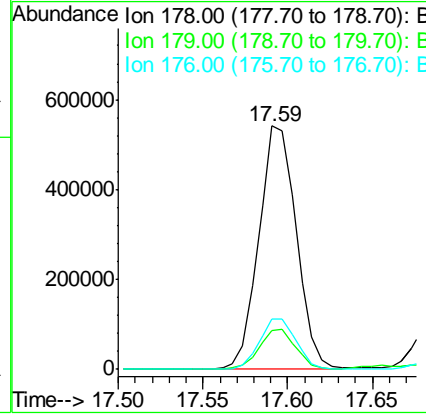
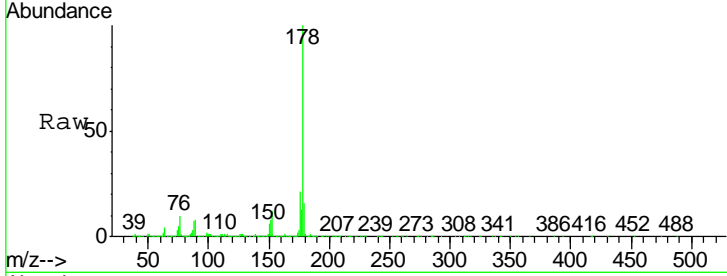




#69  
 Phenanthrene  
 Concen: 14.50 ng/ul  
 RT: 17.59 min Scan# 2511  
 Delta R.T. -0.01 min  
 Lab File: BG023644.D  
 Acq: 12 Aug 2016 5:06

Instrument :  
 BNA\_G  
 ClientSampled :  
 PR001-SS004-1218-01

Tgt Ion	Resp	Lower	Upper
178	100		
179	16.2	12.9	19.3
176	20.7	15.8	23.8



#71  
 Anthracene  
 Concen: 2.82 ng/ul  
 RT: 17.68 min Scan# 2527  
 Delta R.T. -0.01 min  
 Lab File: BG023644.D  
 Acq: 12 Aug 2016 5:06

Tgt Ion	Resp	Lower	Upper
178	100		
179	16.2	12.3	18.5
176	16.6	16.3	24.5

