

Data Path : Z:\HPCHEM1\BNA_G\DATA\BG081116\
 Data File : BG023638.D
 Acq On : 12 Aug 2016 1:20
 Operator : UM/SJ
 Sample : H4360-21 2X
 Misc :
 ALS Vial : 18 Sample Multiplier: 1

Instrument :
 BNA_G
 ClientSampleId :
 PR001-SS004-0612-01

Integration Parameters: LSCINT.P

Integrator: RTE
 Smoothing : OFF Filtering: 5
 Sampling : 1 Min Area: 0.1 % of largest Peak
 Start Thrs: 0.2 Max Peaks: 100
 Stop Thrs : 0 Peak Location: TOP

If leading or trailing edge < 100 prefer < Baseline drop else tangent >
 Peak separation: 5

Method : Z:\HPCHEM1\BNA_G\METHODS\SOM02.2-EPA-BG080416.M
 Title : SVOA CALIBRATION

Signal : TIC

| peak # | R.T. min | first scan | max scan | last scan | PK TY | peak height | corr. area | corr. % max. | % of total |
|--------|----------|------------|----------|-----------|-------|-------------|------------|--------------|------------|
| 1 | 7.274 | 748 | 755 | 766 | rBV2 | 100336 | 206847 | 0.75% | 0.246% |
| 2 | 7.426 | 774 | 781 | 789 | rBV | 193898 | 325435 | 1.18% | 0.387% |
| 3 | 7.638 | 812 | 817 | 824 | rBV2 | 165272 | 285447 | 1.03% | 0.339% |
| 4 | 8.108 | 887 | 897 | 904 | rBV | 618227 | 1108264 | 4.01% | 1.318% |
| 5 | 8.155 | 904 | 905 | 912 | rVB2 | 26883 | 35742 | 0.13% | 0.043% |
| 6 | 8.825 | 1014 | 1019 | 1032 | rVB2 | 94104 | 182328 | 0.66% | 0.217% |
| 7 | 9.289 | 1090 | 1098 | 1108 | rBV | 244264 | 440546 | 1.59% | 0.524% |
| 8 | 10.017 | 1214 | 1222 | 1231 | rBV2 | 207144 | 407601 | 1.48% | 0.485% |
| 9 | 10.346 | 1272 | 1278 | 1285 | rBV6 | 28113 | 51495 | 0.19% | 0.061% |
| 10 | 10.575 | 1310 | 1317 | 1325 | rBV2 | 231541 | 465730 | 1.69% | 0.554% |
| 11 | 10.945 | 1371 | 1380 | 1387 | rBV | 929489 | 1677402 | 6.07% | 1.995% |
| 12 | 10.998 | 1387 | 1389 | 1395 | rVB2 | 26617 | 42264 | 0.15% | 0.050% |
| 13 | 11.086 | 1395 | 1404 | 1415 | rBV3 | 127114 | 271904 | 0.98% | 0.323% |
| 14 | 12.614 | 1659 | 1664 | 1669 | rVB3 | 23135 | 37047 | 0.13% | 0.044% |
| 15 | 12.825 | 1694 | 1700 | 1704 | rBV2 | 31801 | 49852 | 0.18% | 0.059% |
| 16 | 13.953 | 1885 | 1892 | 1901 | rVB9 | 23557 | 70577 | 0.26% | 0.084% |
| 17 | 14.100 | 1913 | 1917 | 1922 | rVB2 | 47497 | 79846 | 0.29% | 0.095% |
| 18 | 14.176 | 1922 | 1930 | 1935 | rBV | 591927 | 941950 | 3.41% | 1.120% |
| 19 | 14.229 | 1935 | 1939 | 1945 | rVB | 246936 | 365695 | 1.32% | 0.435% |
| 20 | 14.482 | 1975 | 1982 | 1998 | rVB | 650224 | 1186495 | 4.29% | 1.411% |
| 21 | 14.787 | 2022 | 2034 | 2041 | rBV2 | 1484844 | 2504031 | 9.06% | 2.978% |
| 22 | 14.852 | 2041 | 2045 | 2051 | rVV | 92517 | 147319 | 0.53% | 0.175% |
| 23 | 15.016 | 2062 | 2073 | 2078 | rBV6 | 66947 | 166758 | 0.60% | 0.198% |
| 24 | 15.057 | 2078 | 2080 | 2084 | rVV4 | 41911 | 68017 | 0.25% | 0.081% |
| 25 | 15.087 | 2084 | 2085 | 2091 | rVV6 | 25501 | 39145 | 0.14% | 0.047% |
| 26 | 15.181 | 2094 | 2101 | 2109 | rVV2 | 83871 | 182956 | 0.66% | 0.218% |
| 27 | 15.257 | 2109 | 2114 | 2119 | rVB2 | 48176 | 79949 | 0.29% | 0.095% |
| 28 | 15.404 | 2133 | 2139 | 2143 | rBV4 | 37013 | 73160 | 0.26% | 0.087% |
| 29 | 15.451 | 2143 | 2147 | 2155 | rVB | 34542 | 46470 | 0.17% | 0.055% |
| 30 | 15.557 | 2160 | 2165 | 2166 | rBV5 | 31327 | 42908 | 0.16% | 0.051% |
| 31 | 15.604 | 2170 | 2173 | 2178 | rVB5 | 56089 | 78213 | 0.28% | 0.093% |
| 32 | 15.662 | 2178 | 2183 | 2188 | rBV5 | 21236 | 38498 | 0.14% | 0.046% |
| 33 | 15.780 | 2197 | 2203 | 2208 | rBV | 899484 | 1334715 | 4.83% | 1.587% |
| 34 | 15.839 | 2208 | 2213 | 2220 | rVB3 | 108655 | 191870 | 0.69% | 0.228% |

Data Path : Z:\HPCHEM1\BNA_G\DATA\BG081116\
 Data File : BG023638.D
 Acq On : 12 Aug 2016 1:20
 Operator : UM/SJ
 Sample : H4360-21 2X
 Misc :
 ALS Vial : 18 Sample Multiplier: 1

Instrument :
 BNA_G
 ClientSampleId :
 PR001-SS004-0612-01

Integration Parameters: LSCINT.P

Integrator: RTE
 Smoothing : OFF
 Sampling : 1
 Start Thrs: 0.2
 Stop Thrs : 0

Filtering: 5
 Min Area: 0.1 % of largest Peak
 Max Peaks: 100
 Peak Location: TOP

If leading or trailing edge < 100 prefer < Baseline drop else tangent >
 Peak separation: 5

Method : Z:\HPCHEM1\BNA_G\METHODS\SOM02.2-EPA-BG080416.M
 Title : SVOA CALIBRATION

| | | | | | | | | | |
|----|--------|------|------|------|------|---------|---------|--------|--------|
| 35 | 15.915 | 2220 | 2226 | 2231 | rBV | 151004 | 260814 | 0.94% | 0.310% |
| 36 | 16.003 | 2238 | 2241 | 2246 | rVB7 | 22851 | 38261 | 0.14% | 0.045% |
| 37 | 16.126 | 2257 | 2262 | 2267 | rVB4 | 36524 | 69447 | 0.25% | 0.083% |
| 38 | 16.279 | 2284 | 2288 | 2296 | rVB3 | 46631 | 91204 | 0.33% | 0.108% |
| 39 | 16.473 | 2318 | 2321 | 2324 | rBV4 | 48276 | 72164 | 0.26% | 0.086% |
| 40 | 16.643 | 2345 | 2350 | 2355 | rBV7 | 26433 | 49978 | 0.18% | 0.059% |
| 41 | 16.849 | 2375 | 2385 | 2389 | rBV4 | 60446 | 155346 | 0.56% | 0.185% |
| 42 | 16.902 | 2389 | 2394 | 2398 | rVB3 | 33883 | 61058 | 0.22% | 0.073% |
| 43 | 16.996 | 2406 | 2410 | 2415 | rVB5 | 39567 | 70226 | 0.25% | 0.084% |
| 44 | 17.078 | 2417 | 2424 | 2427 | rBV7 | 44029 | 94815 | 0.34% | 0.113% |
| 45 | 17.207 | 2441 | 2446 | 2452 | rVB3 | 73740 | 137427 | 0.50% | 0.163% |
| 46 | 17.272 | 2454 | 2457 | 2463 | rBV6 | 56729 | 83709 | 0.30% | 0.100% |
| 47 | 17.372 | 2469 | 2474 | 2478 | rVB | 93979 | 148527 | 0.54% | 0.177% |
| 48 | 17.554 | 2498 | 2505 | 2508 | rBV | 1913659 | 2971749 | 10.75% | 3.534% |
| 49 | 17.595 | 2508 | 2512 | 2517 | rVV | 1464381 | 2219003 | 8.03% | 2.639% |
| 50 | 17.648 | 2517 | 2521 | 2525 | rVV2 | 892075 | 1420403 | 5.14% | 1.689% |
| 51 | 17.683 | 2525 | 2527 | 2532 | rVB | 216488 | 277477 | 1.00% | 0.330% |
| 52 | 17.854 | 2555 | 2556 | 2562 | rVB6 | 30826 | 51090 | 0.18% | 0.061% |
| 53 | 17.965 | 2570 | 2575 | 2580 | rVB | 77981 | 136627 | 0.49% | 0.162% |
| 54 | 18.071 | 2589 | 2593 | 2597 | rBV2 | 51860 | 78204 | 0.28% | 0.093% |
| 55 | 18.136 | 2600 | 2604 | 2611 | rVB2 | 115333 | 197788 | 0.72% | 0.235% |
| 56 | 18.282 | 2624 | 2629 | 2636 | rVB2 | 75654 | 136958 | 0.50% | 0.163% |
| 57 | 18.353 | 2638 | 2641 | 2647 | rVV7 | 36678 | 56623 | 0.20% | 0.067% |
| 58 | 18.429 | 2649 | 2654 | 2659 | rVV | 452629 | 747726 | 2.71% | 0.889% |
| 59 | 18.482 | 2659 | 2663 | 2670 | rVB2 | 499554 | 802152 | 2.90% | 0.954% |
| 60 | 18.558 | 2673 | 2676 | 2681 | rBV | 90234 | 138451 | 0.50% | 0.165% |
| 61 | 18.623 | 2681 | 2687 | 2691 | rVV2 | 416976 | 852931 | 3.09% | 1.014% |
| 62 | 18.664 | 2691 | 2694 | 2699 | rVB | 320388 | 428926 | 1.55% | 0.510% |
| 63 | 18.829 | 2719 | 2722 | 2725 | rVB3 | 61310 | 73259 | 0.27% | 0.087% |
| 64 | 18.923 | 2734 | 2738 | 2742 | rBV2 | 214418 | 317482 | 1.15% | 0.378% |
| 65 | 18.976 | 2742 | 2747 | 2753 | rVB2 | 204693 | 342919 | 1.24% | 0.408% |
| 66 | 19.146 | 2772 | 2776 | 2777 | rBV3 | 62072 | 80025 | 0.29% | 0.095% |
| 67 | 19.169 | 2777 | 2780 | 2785 | rVV | 146866 | 208898 | 0.76% | 0.248% |
| 68 | 19.222 | 2785 | 2789 | 2792 | rVV | 214218 | 268449 | 0.97% | 0.319% |
| 69 | 19.263 | 2792 | 2796 | 2802 | rVB | 136156 | 168962 | 0.61% | 0.201% |
| 70 | 19.346 | 2804 | 2810 | 2814 | rBV | 456050 | 747824 | 2.71% | 0.889% |
| 71 | 19.393 | 2814 | 2818 | 2823 | rVV3 | 153470 | 316712 | 1.15% | 0.377% |

Data Path : Z:\HPCHEM1\BNA_G\DATA\BG081116\
 Data File : BG023638.D
 Acq On : 12 Aug 2016 1:20
 Operator : UM/SJ
 Sample : H4360-21 2X
 Misc :
 ALS Vial : 18 Sample Multiplier: 1

Instrument :
 BNA_G
 ClientSampleId :
 PR001-SS004-0612-01

Integration Parameters: LSCINT.P

Integrator: RTE
 Smoothing : OFF
 Sampling : 1
 Start Thrs: 0.2
 Stop Thrs : 0

Filtering: 5
 Min Area: 0.1 % of largest Peak
 Max Peaks: 100
 Peak Location: TOP

If leading or trailing edge < 100 prefer < Baseline drop else tangent >
 Peak separation: 5

Method : Z:\HPCHEM1\BNA_G\METHODS\SOM02.2-EPA-BG080416.M
 Title : SVOA CALIBRATION

| | | | | | | | | | |
|-----|--------|------|------|------|------|----------|----------|---------|---------|
| 72 | 19.434 | 2823 | 2825 | 2829 | rVB2 | 130542 | 136705 | 0.49% | 0.163% |
| 73 | 19.481 | 2829 | 2833 | 2839 | rBV5 | 182159 | 397074 | 1.44% | 0.472% |
| 74 | 19.610 | 2849 | 2855 | 2861 | rBV | 1970089 | 2793011 | 10.11% | 3.321% |
| 75 | 19.663 | 2861 | 2864 | 2867 | rBV3 | 91662 | 125733 | 0.45% | 0.150% |
| 76 | 19.698 | 2867 | 2870 | 2876 | rVB5 | 139974 | 215887 | 0.78% | 0.257% |
| 77 | 19.757 | 2877 | 2880 | 2884 | rBV2 | 87865 | 125772 | 0.46% | 0.150% |
| 78 | 19.945 | 2906 | 2912 | 2914 | rBV2 | 1264803 | 1952774 | 7.07% | 2.322% |
| 79 | 19.974 | 2914 | 2917 | 2924 | rVV | 2058637 | 2907774 | 10.52% | 3.458% |
| 80 | 20.039 | 2924 | 2928 | 2934 | rVB2 | 242580 | 365493 | 1.32% | 0.435% |
| 81 | 20.203 | 2953 | 2956 | 2963 | rVB3 | 112413 | 205337 | 0.74% | 0.244% |
| 82 | 20.297 | 2966 | 2972 | 2973 | rBV3 | 197194 | 339782 | 1.23% | 0.404% |
| 83 | 20.456 | 2990 | 2999 | 3006 | rVB2 | 341418 | 883889 | 3.20% | 1.051% |
| 84 | 20.562 | 3014 | 3017 | 3021 | rBV2 | 141600 | 192332 | 0.70% | 0.229% |
| 85 | 20.620 | 3024 | 3027 | 3031 | rVB | 359092 | 474263 | 1.72% | 0.564% |
| 86 | 20.767 | 3047 | 3052 | 3055 | rBV | 333426 | 481600 | 1.74% | 0.573% |
| 87 | 20.808 | 3055 | 3059 | 3068 | rVB2 | 291016 | 500743 | 1.81% | 0.595% |
| 88 | 21.196 | 3121 | 3125 | 3130 | rBV | 861960 | 1173141 | 4.25% | 1.395% |
| 89 | 21.243 | 3130 | 3133 | 3140 | rVB | 258972 | 418138 | 1.51% | 0.497% |
| 90 | 21.378 | 3153 | 3156 | 3158 | rBV3 | 89284 | 91099 | 0.33% | 0.108% |
| 91 | 21.478 | 3170 | 3173 | 3178 | rVB2 | 181706 | 249664 | 0.90% | 0.297% |
| 92 | 21.578 | 3186 | 3190 | 3206 | rVB3 | 302044 | 904125 | 3.27% | 1.075% |
| 93 | 21.742 | 3210 | 3218 | 3224 | rVV | 17158096 | 27633908 | 100.00% | 32.861% |
| 94 | 21.877 | 3232 | 3241 | 3246 | rBV2 | 2086660 | 4978858 | 18.02% | 5.921% |
| 95 | 21.924 | 3246 | 3249 | 3262 | rVB | 859040 | 1569995 | 5.68% | 1.867% |
| 96 | 24.192 | 3629 | 3635 | 3643 | rBV3 | 539954 | 1665419 | 6.03% | 1.980% |
| 97 | 24.967 | 3763 | 3767 | 3773 | rVB2 | 218227 | 444054 | 1.61% | 0.528% |
| 98 | 25.050 | 3776 | 3781 | 3787 | rVV3 | 410241 | 1009133 | 3.65% | 1.200% |
| 99 | 25.120 | 3788 | 3793 | 3804 | rVB | 463718 | 1226721 | 4.44% | 1.459% |
| 100 | 25.285 | 3812 | 3821 | 3831 | rBV | 1039023 | 3031720 | 10.97% | 3.605% |

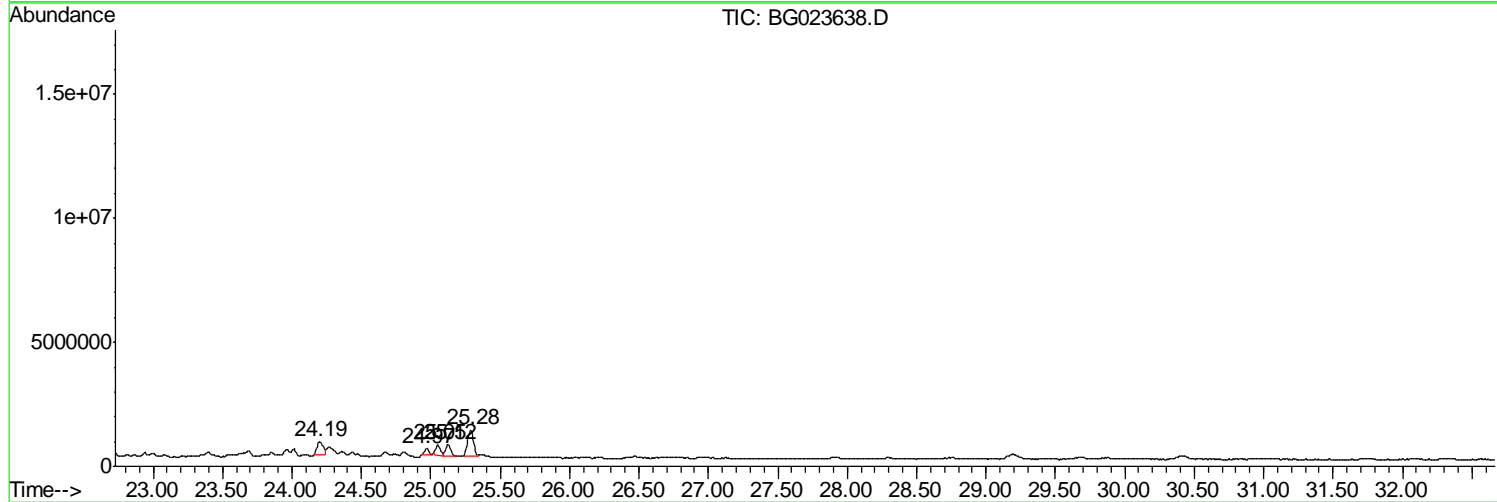
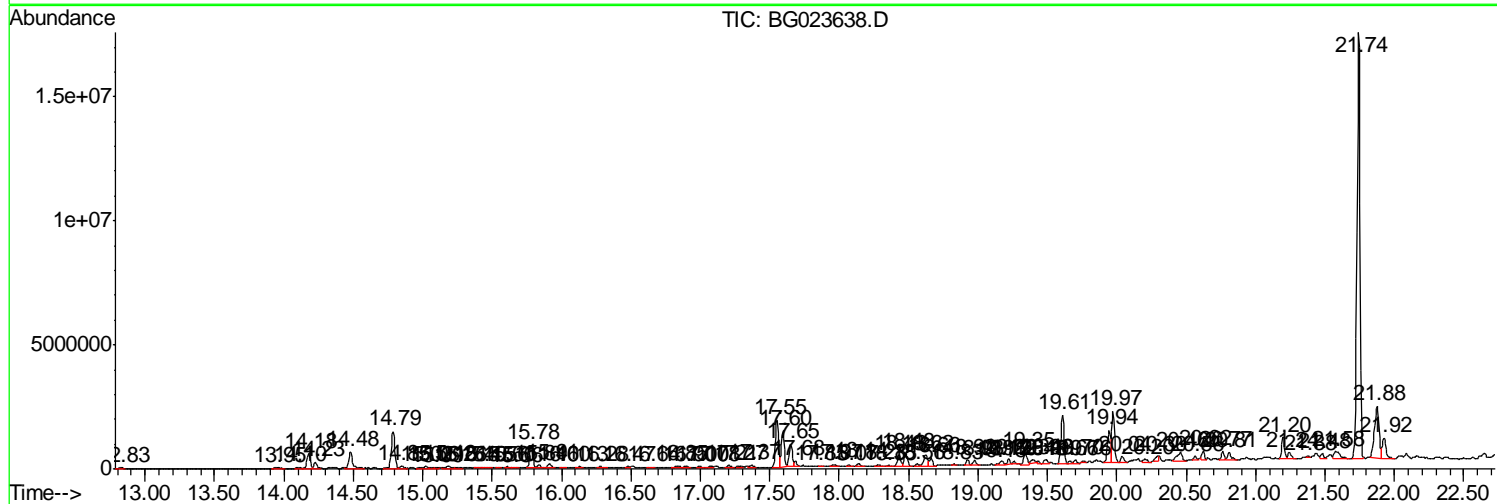
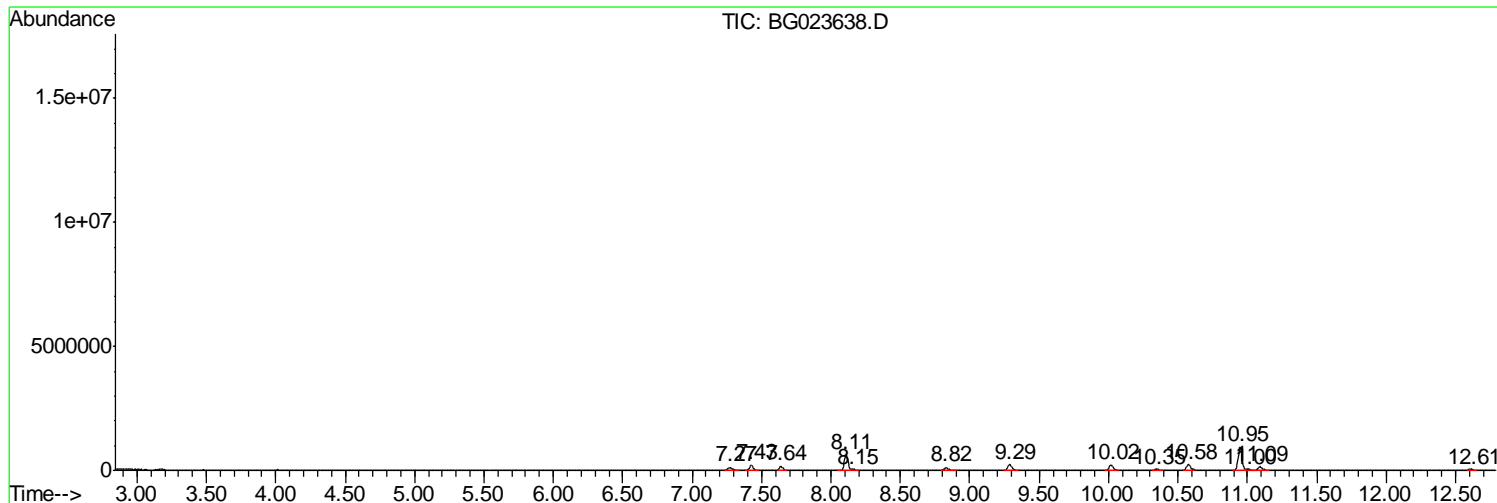
Sum of corrected areas: 84094234

Data Path : Z:\HPCHEM1\BNA_G\DATA\BG081116\
 Data File : BG023638.D
 Acq On : 12 Aug 2016 1:20
 Operator : UM/SJ
 Sample : H4360-21 2X
 Misc :
 ALS Vial : 18 Sample Multiplier: 1

Instrument :
 BNA_G
ClientSampled :
 PR001-SS004-0612-01

Quant Method : Z:\HPCHEM1\BNA_G\METHODS\SOM02.2-EPA-BG080416.M
 Quant Title : SVOA CALIBRATION

TIC Library : C:\DATABASE\NIST11.L
 TIC Integration Parameters: LSCINT.P



Data Path : Z:\HPCHEM1\BNA_G\DATA\BG081116\
 Data File : BG023638.D
 Acq On : 12 Aug 2016 1:20
 Operator : UM/SJ
 Sample : H4360-21 2X
 Misc :
 ALS Vial : 18 Sample Multiplier: 1

Instrument :
 BNA_G
 ClientSampleID :
 PR001-SS004-0612-01

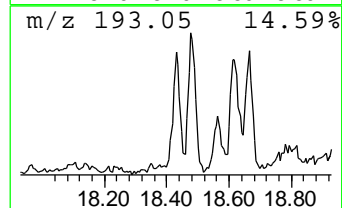
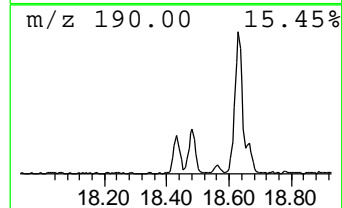
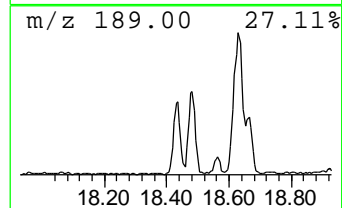
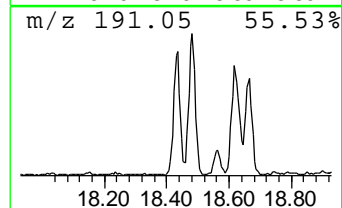
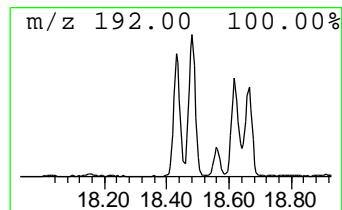
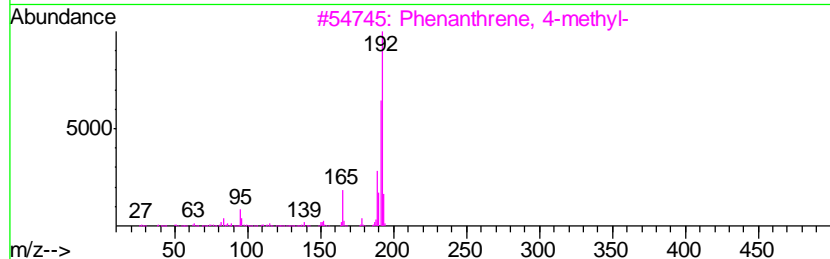
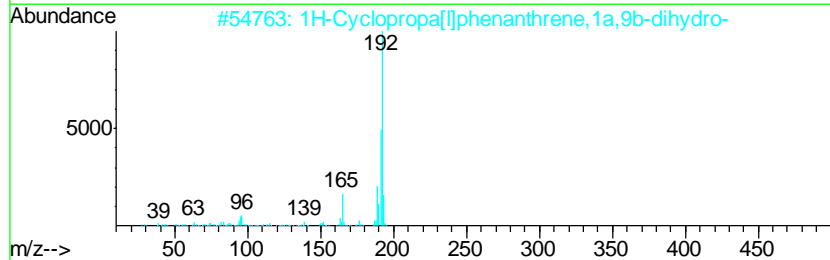
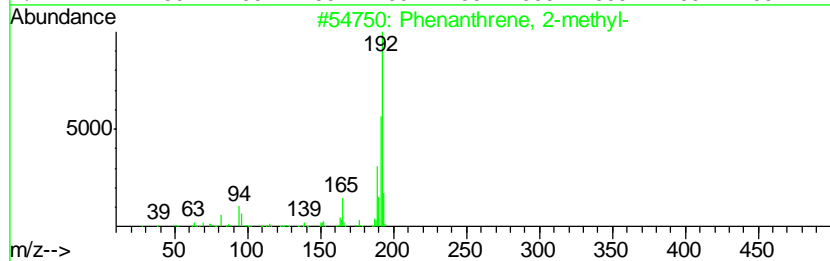
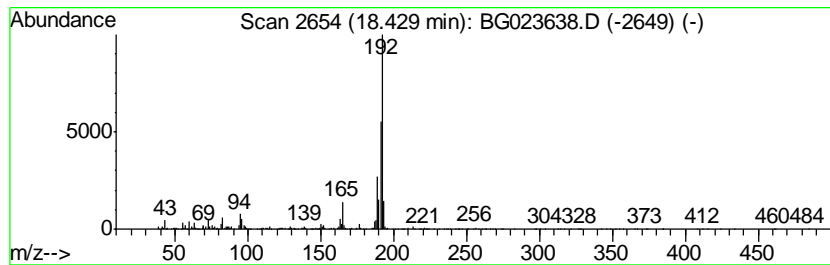
Quant Method : Z:\HPCHEM1\BNA_G\METHODS\SOM02.2-EPA-BG080416.M
 Quant Title : SVOA CALIBRATION

TIC Library : C:\DATABASE\NIST11.L
 TIC Integration Parameters: LSCINT.P

 Peak Number 1 Phenanthrene, 2-methyl- Concentration Rank 4

| R.T. | EstConc | Area | Relative to ISTD | R.T. |
|-------|------------|--------|------------------|-------|
| 18.43 | 5.03 ng/ul | 747726 | Phenanthrene-d10 | 17.55 |

| Hit# | of | Tentative ID | MW | MolForm | CAS# | Qual |
|------|----|-------------------------------------|-----|---------|-------------|------|
| 1 | 5 | Phenanthrene, 2-methyl- | 192 | C15H12 | 002531-84-2 | 98 |
| 2 | | 1H-Cyclopropa[1]phenanthrene,1a,... | 192 | C15H12 | 000949-41-7 | 96 |
| 3 | | Phenanthrene, 4-methyl- | 192 | C15H12 | 000832-64-4 | 95 |
| 4 | | Anthracene, 2-methyl- | 192 | C15H12 | 000613-12-7 | 95 |
| 5 | | Phenanthrene, 2-methyl- | 192 | C15H12 | 002531-84-2 | 94 |



Data Path : Z:\HPCHEM1\BNA_G\DATA\BG081116\
 Data File : BG023638.D
 Acq On : 12 Aug 2016 1:20
 Operator : UM/SJ
 Sample : H4360-21 2X
 Misc :
 ALS Vial : 18 Sample Multiplier: 1

Instrument :
 BNA_G
 ClientSampleID :
 PR001-SS004-0612-01

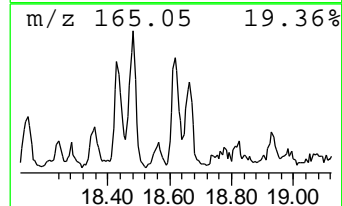
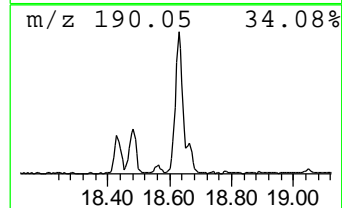
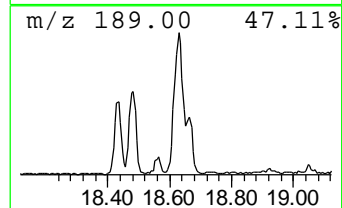
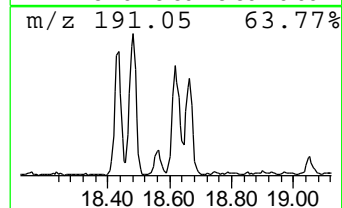
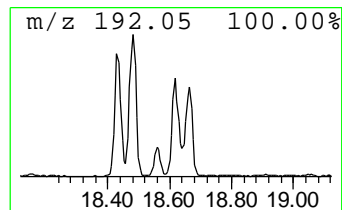
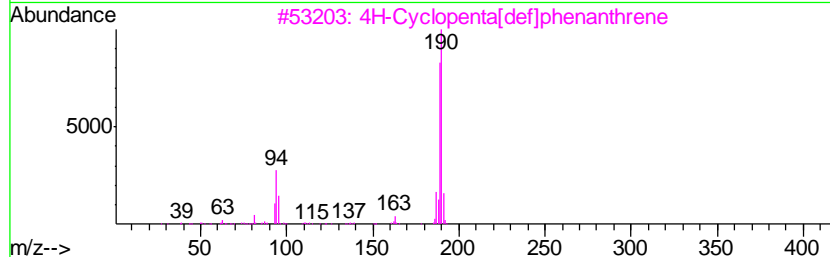
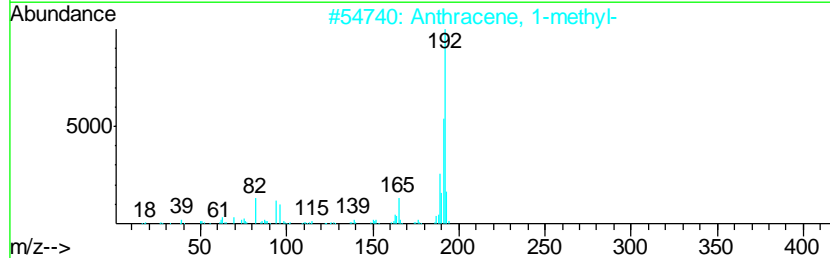
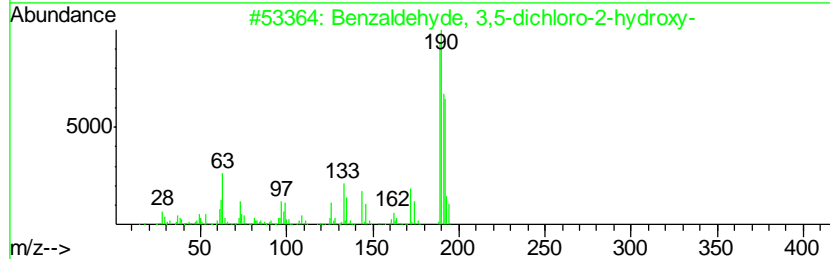
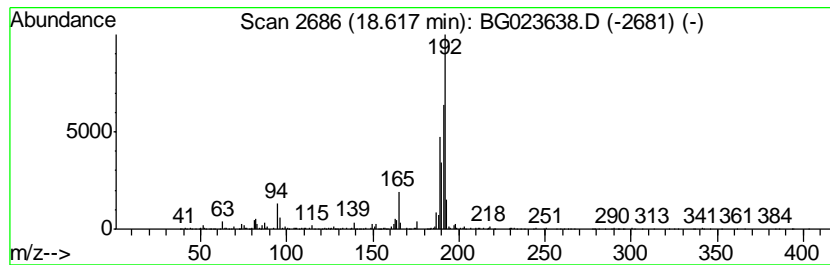
Quant Method : Z:\HPCHEM1\BNA_G\METHODS\SOM02.2-EPA-BG080416.M
 Quant Title : SVOA CALIBRATION

TIC Library : C:\DATABASE\NIST11.L
 TIC Integration Parameters: LSCINT.P

 Peak Number 3 Benzaldehyde, 3,5-dichloro-... Concentration Rank 1

| R.T. | EstConc | Area | Relative to ISTD | R.T. |
|-------|------------|--------|------------------|-------|
| 18.62 | 5.74 ng/ul | 852931 | Phenanthrene-d10 | 17.55 |

| Hit# | of | Tentative ID | MW | MolForm | CAS# | Qual |
|------|----|-------------------------------------|-----|-----------|-------------|------|
| 1 | 5 | Benzaldehyde, 3,5-dichloro-2-hyd... | 190 | C7H4Cl2O2 | 000090-60-8 | 58 |
| 2 | | Anthracene, 1-methyl- | 192 | C15H12 | 000610-48-0 | 50 |
| 3 | | 4H-Cyclopenta[def]phenanthrene | 190 | C15H10 | 000203-64-5 | 49 |
| 4 | | 8,9-Dihydrocyclopenta[def]phenan... | 192 | C15H12 | 027410-55-5 | 47 |
| 5 | | Anthracene, 9-methyl- | 192 | C15H12 | 000779-02-2 | 46 |



Data Path : Z:\HPCHEM1\BNA_G\DATA\BG081116\
 Data File : BG023638.D
 Acq On : 12 Aug 2016 1:20
 Operator : UM/SJ
 Sample : H4360-21 2X
 Misc :
 ALS Vial : 18 Sample Multiplier: 1

Instrument :
 BNA_G
 ClientSampleId :
 PR001-SS004-0612-01

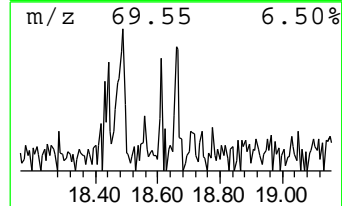
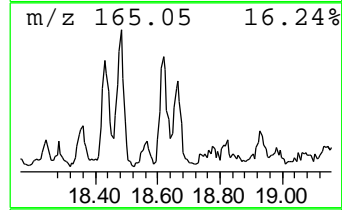
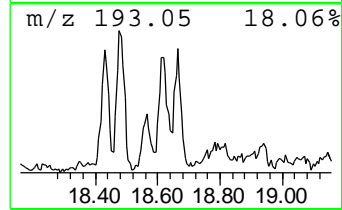
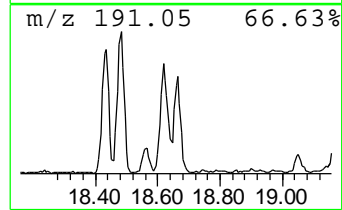
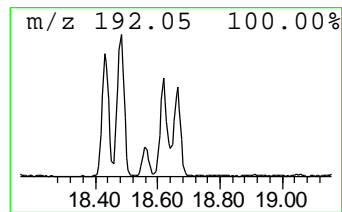
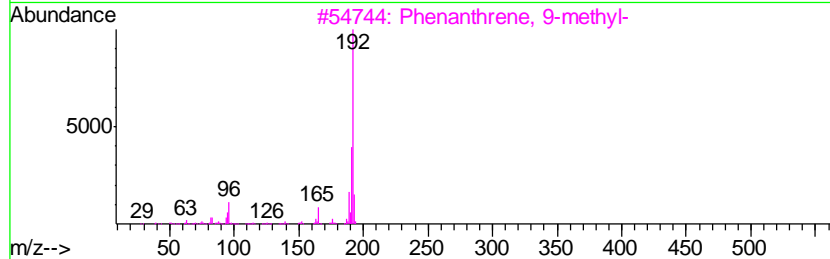
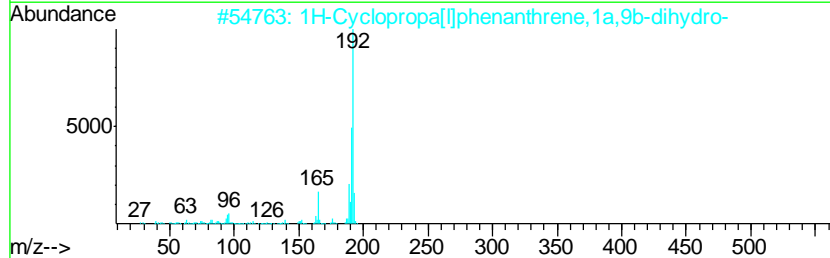
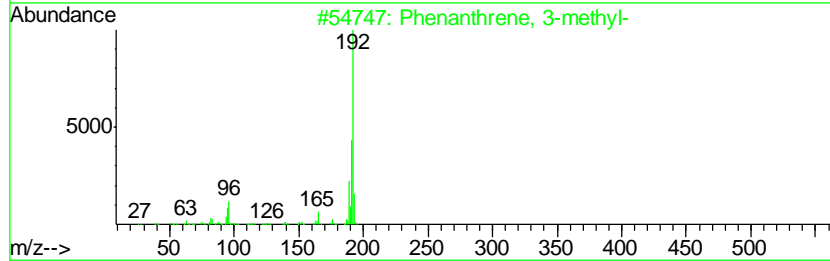
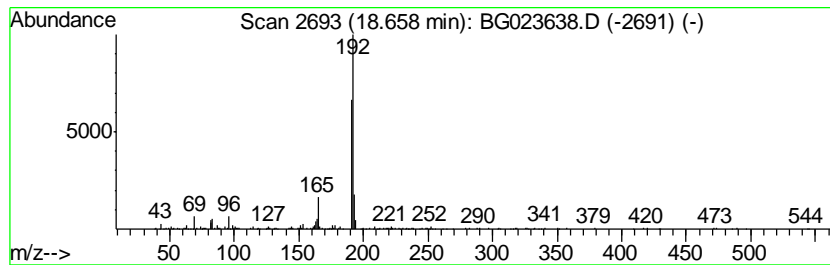
Quant Method : Z:\HPCHEM1\BNA_G\METHODS\SOM02.2-EPA-BG080416.M
 Quant Title : SVOA CALIBRATION

TIC Library : C:\DATABASE\NIST11.L
 TIC Integration Parameters: LSCINT.P

 Peak Number 4 Phenanthrene, 3-methyl- Concentration Rank 9

| R.T. | EstConc | Area | Relative to ISTD | R.T. |
|-------|------------|--------|------------------|-------|
| 18.66 | 2.89 ng/ul | 428926 | Phenanthrene-d10 | 17.55 |

| Hit# | of | Tentative ID | MW | MolForm | CAS# | Qual |
|------|----|-------------------------------------|-----|---------|-------------|------|
| 1 | 5 | Phenanthrene, 3-methyl- | 192 | C15H12 | 000832-71-3 | 90 |
| 2 | | 1H-Cyclopropa[1]phenanthrene,1a,... | 192 | C15H12 | 000949-41-7 | 87 |
| 3 | | Phenanthrene, 9-methyl- | 192 | C15H12 | 000883-20-5 | 87 |
| 4 | | Phenanthrene, 4-methyl- | 192 | C15H12 | 000832-64-4 | 87 |
| 5 | | Anthracene, 1-methyl- | 192 | C15H12 | 000610-48-0 | 87 |



Data Path : Z:\HPCHEM1\BNA_G\DATA\BG081116\
 Data File : BG023638.D
 Acq On : 12 Aug 2016 1:20
 Operator : UM/SJ
 Sample : H4360-21 2X
 Misc :
 ALS Vial : 18 Sample Multiplier: 1

Instrument :
 BNA_G
 ClientSampleID :
 PR001-SS004-0612-01

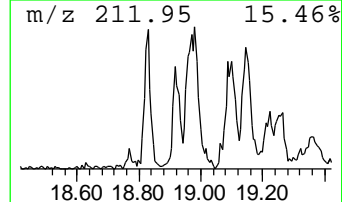
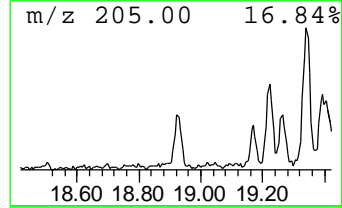
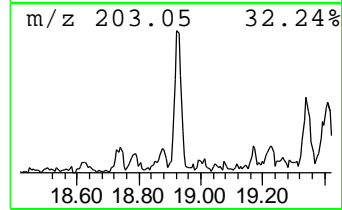
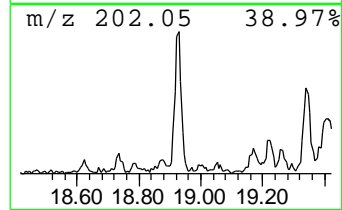
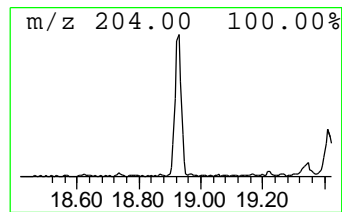
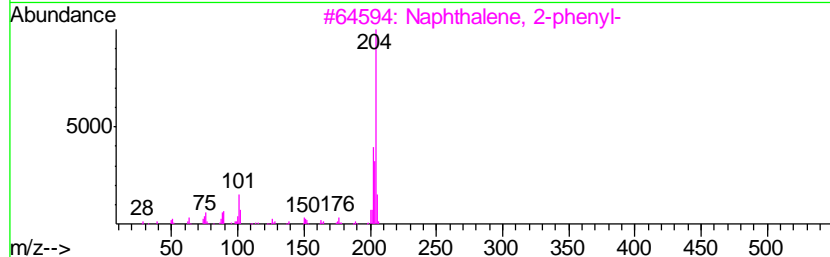
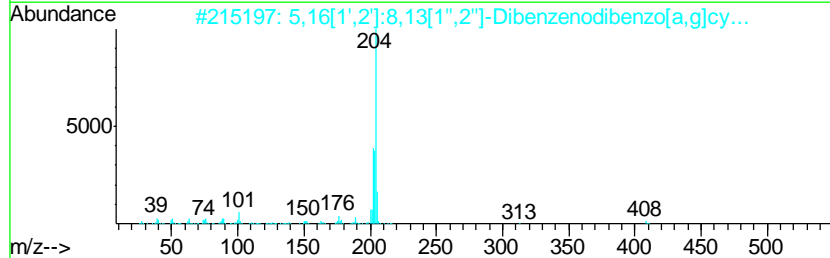
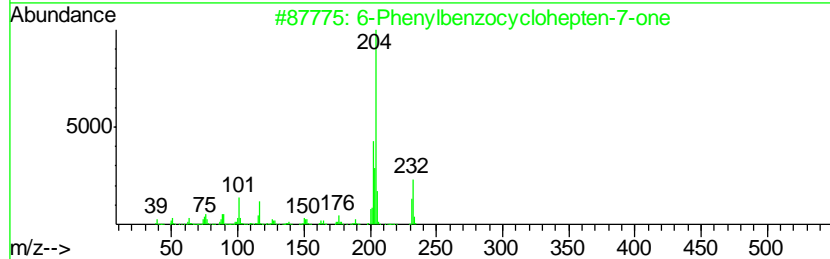
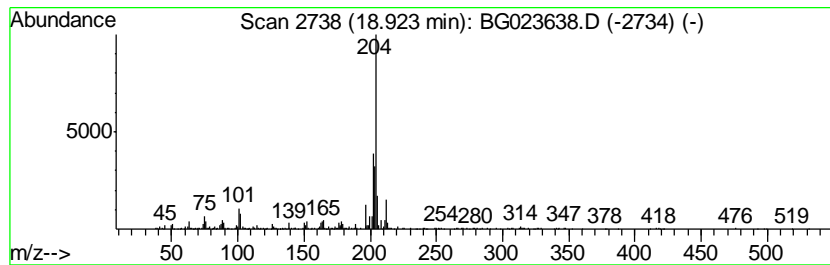
Quant Method : Z:\HPCHEM1\BNA_G\METHODS\SOM02.2-EPA-BG080416.M
 Quant Title : SVOA CALIBRATION

TIC Library : C:\DATABASE\NIST11.L
 TIC Integration Parameters: LSCINT.P

 Peak Number 5 6-Phenylbenzocyclohepten-7-one Concentration Rank 12

| R.T. | EstConc | Area | Relative to ISTD | R.T. |
|-------|------------|--------|------------------|-------|
| 18.92 | 2.14 ng/ul | 317482 | Phenanthrene-d10 | 17.55 |

| Hit# | of | Tentative ID | MW | MolForm | CAS# | Qual |
|------|----|-------------------------------------|-----|---------|-------------|------|
| 1 | 5 | 6-Phenylbenzocyclohepten-7-one | 232 | C17H12O | 093327-56-1 | 72 |
| 2 | | 5,16[1',2']:8,13[1'',2'']-Dibenz... | 408 | C32H24 | 005672-97-9 | 72 |
| 3 | | Naphthalene, 2-phenyl- | 204 | C16H12 | 000612-94-2 | 60 |
| 4 | | Naphthalene, 2-phenyl- | 204 | C16H12 | 000612-94-2 | 60 |
| 5 | | Tricyclo[8.2.2.2(4,7)]hexadeca-2... | 204 | C16H12 | 006572-60-7 | 60 |



Data Path : Z:\HPCHEM1\BNA_G\DATA\BG081116\
 Data File : BG023638.D
 Acq On : 12 Aug 2016 1:20
 Operator : UM/SJ
 Sample : H4360-21 2X
 Misc :
 ALS Vial : 18 Sample Multiplier: 1

Instrument :
 BNA_G
 ClientSampleID :
 PR001-SS004-0612-01

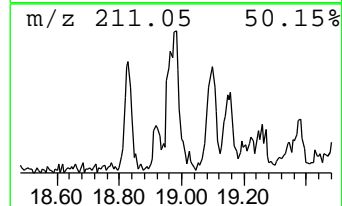
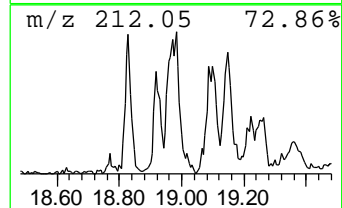
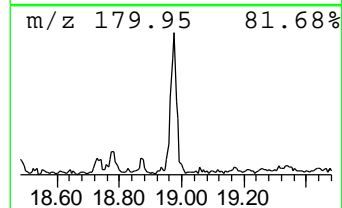
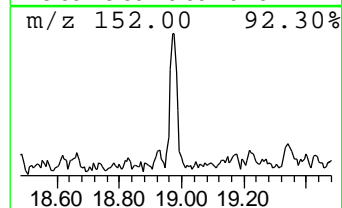
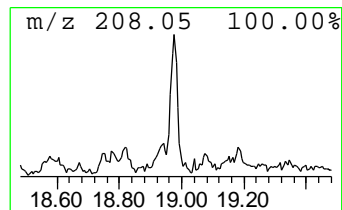
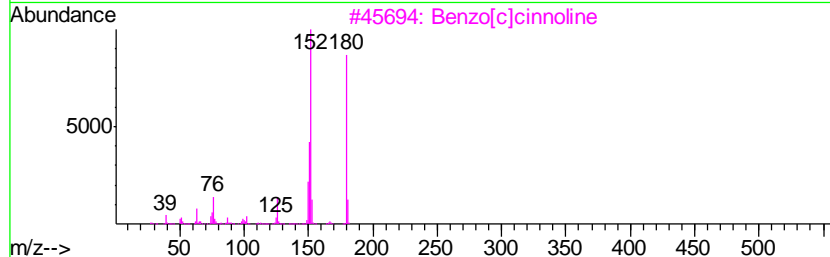
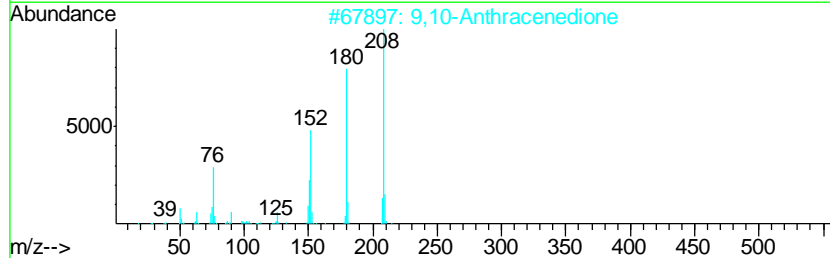
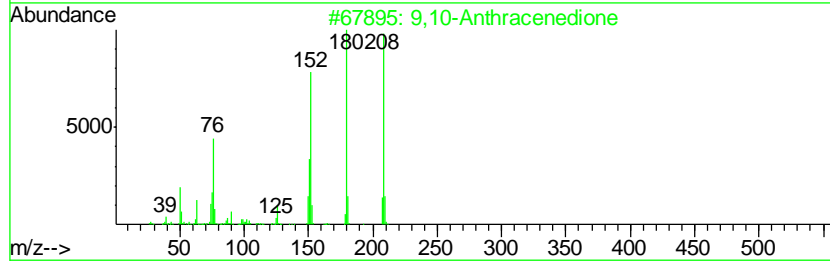
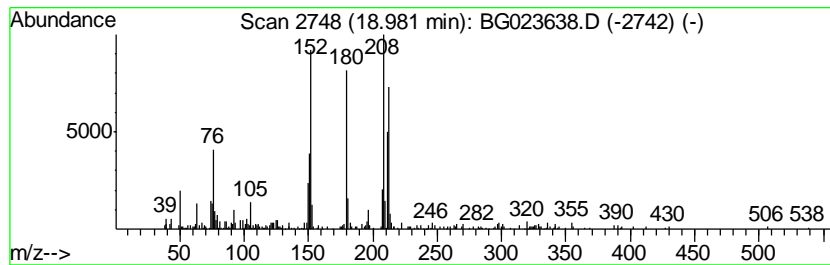
Quant Method : Z:\HPCHEM1\BNA_G\METHODS\SOM02.2-EPA-BG080416.M
 Quant Title : SVOA CALIBRATION

TIC Library : C:\DATABASE\NIST11.L
 TIC Integration Parameters: LSCINT.P

 Peak Number 6 9,10-Anthracenedione Concentration Rank 11

| R.T. | EstConc | Area | Relative to ISTD | R.T. |
|-------|------------|--------|------------------|-------|
| 18.98 | 2.31 ng/ul | 342919 | Phenanthrene-d10 | 17.55 |

| Hit# | of | Tentative ID | MW | MolForm | CAS# | Qual |
|------|----|----------------------|-----|---------|-------------|------|
| 1 | 5 | 9,10-Anthracenedione | 208 | C14H8O2 | 000084-65-1 | 96 |
| 2 | | 9,10-Anthracenedione | 208 | C14H8O2 | 000084-65-1 | 95 |
| 3 | | Benzo[c]cinnoline | 180 | C12H8N2 | 000230-17-1 | 90 |
| 4 | | 9,10-Anthracenedione | 208 | C14H8O2 | 000084-65-1 | 87 |
| 5 | | Benzo[h]cinnoline | 180 | C12H8N2 | 000230-31-9 | 78 |



Data Path : Z:\HPCHEM1\BNA_G\DATA\BG081116\
 Data File : BG023638.D
 Acq On : 12 Aug 2016 1:20
 Operator : UM/SJ
 Sample : H4360-21 2X
 Misc :
 ALS Vial : 18 Sample Multiplier: 1

Instrument :
 BNA_G
 ClientSampleId :
 PR001-SS004-0612-01

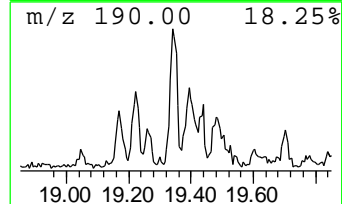
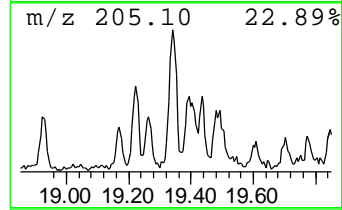
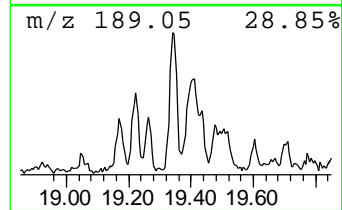
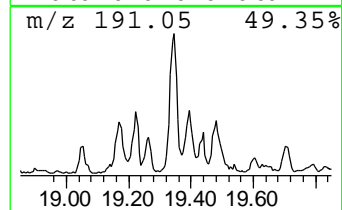
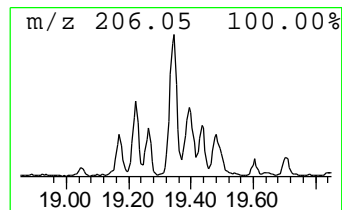
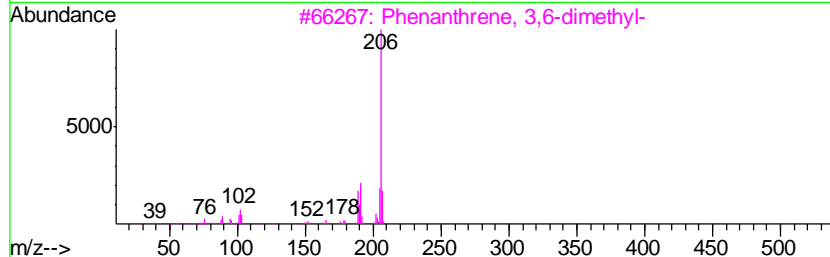
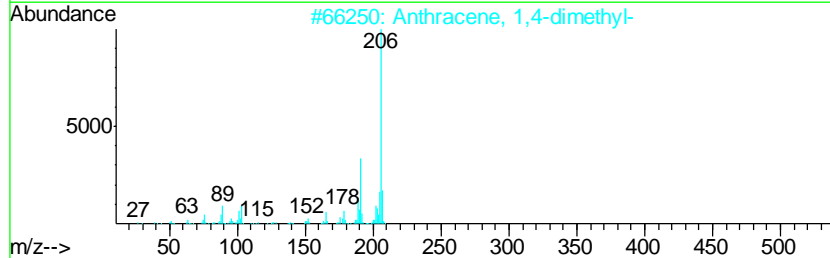
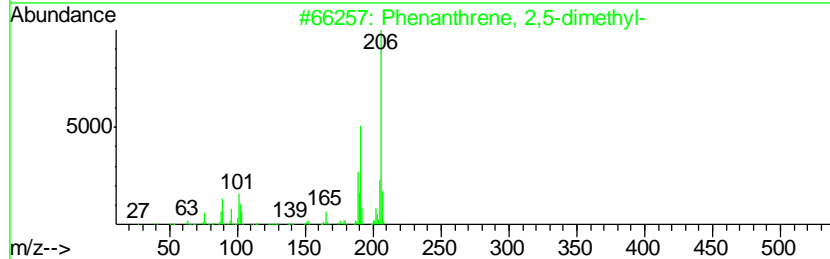
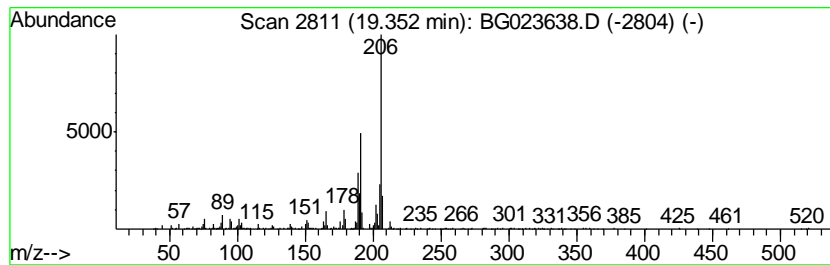
Quant Method : Z:\HPCHEM1\BNA_G\METHODS\SOM02.2-EPA-BG080416.M
 Quant Title : SVOA CALIBRATION

TIC Library : C:\DATABASE\NIST11.L
 TIC Integration Parameters: LSCINT.P

 Peak Number 7 Phenanthrene, 2,5-dimethyl- Concentration Rank 3

| R.T. | EstConc | Area | Relative to ISTD | R.T. |
|-------|------------|--------|------------------|-------|
| 19.35 | 5.03 ng/ul | 747824 | Phenanthrene-d10 | 17.55 |

| Hit# | of | Tentative ID | MW | MolForm | CAS# | Qual |
|------|----|-----------------------------|-----|---------|-------------|------|
| 1 | 5 | Phenanthrene, 2,5-dimethyl- | 206 | C16H14 | 003674-66-6 | 93 |
| 2 | | Anthracene, 1,4-dimethyl- | 206 | C16H14 | 000781-92-0 | 89 |
| 3 | | Phenanthrene, 3,6-dimethyl- | 206 | C16H14 | 001576-67-6 | 87 |
| 4 | | Phenanthrene, 2,3-dimethyl- | 206 | C16H14 | 003674-65-5 | 87 |
| 5 | | 9,10-Dimethylanthracene | 206 | C16H14 | 000781-43-1 | 83 |



Data Path : Z:\HPCHEM1\BNA_G\DATA\BG081116\
 Data File : BG023638.D
 Acq On : 12 Aug 2016 1:20
 Operator : UM/SJ
 Sample : H4360-21 2X
 Misc :
 ALS Vial : 18 Sample Multiplier: 1

Instrument :
 BNA_G
 ClientSampleId :
 PR001-SS004-0612-01

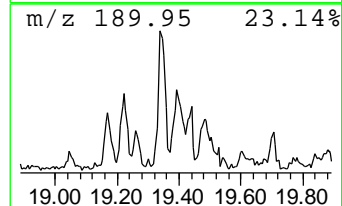
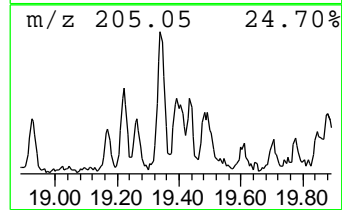
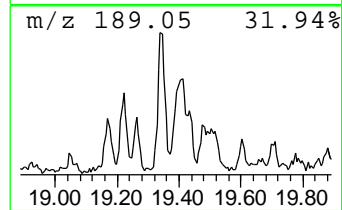
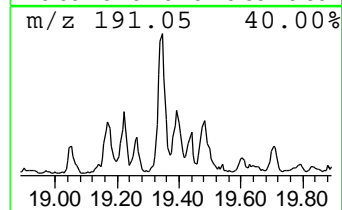
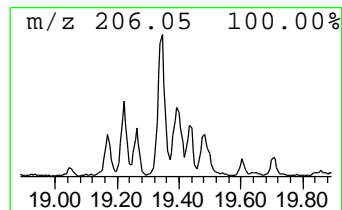
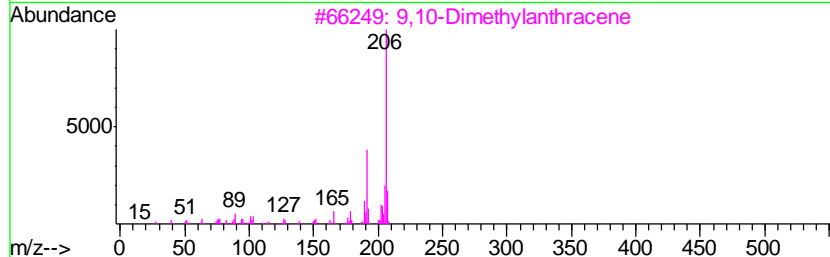
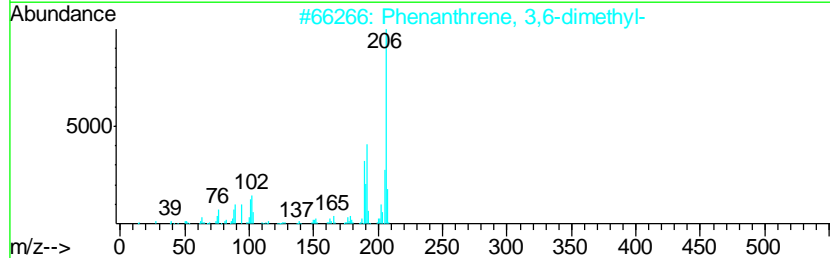
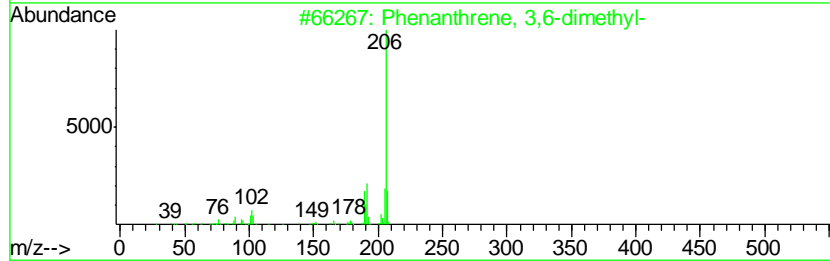
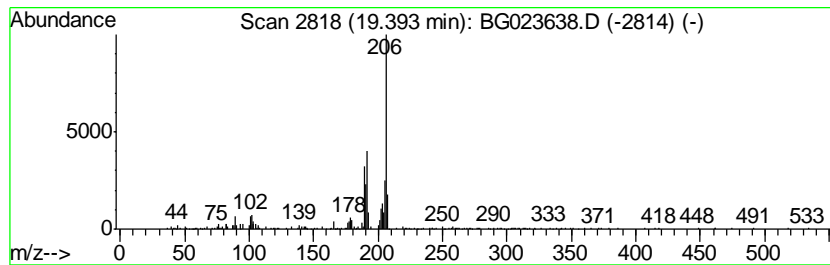
Quant Method : Z:\HPCHEM1\BNA_G\METHODS\SOM02.2-EPA-BG080416.M
 Quant Title : SVOA CALIBRATION

TIC Library : C:\DATABASE\NIST11.L
 TIC Integration Parameters: LSCINT.P

 Peak Number 8 Phenanthrene, 3,6-dimethyl- Concentration Rank 13

| R.T. | EstConc | Area | Relative to ISTD | R.T. |
|-------|------------|--------|------------------|-------|
| 19.39 | 2.13 ng/ul | 316712 | Phenanthrene-d10 | 17.55 |

| Hit# | of | Tentative ID | MW | MolForm | CAS# | Qual |
|------|----|-----------------------------|-----|---------|-------------|------|
| 1 | 5 | Phenanthrene, 3,6-dimethyl- | 206 | C16H14 | 001576-67-6 | 94 |
| 2 | | Phenanthrene, 3,6-dimethyl- | 206 | C16H14 | 001576-67-6 | 93 |
| 3 | | 9,10-Dimethylanthracene | 206 | C16H14 | 000781-43-1 | 90 |
| 4 | | Phenanthrene, 1,7-dimethyl- | 206 | C16H14 | 000483-87-4 | 90 |
| 5 | | di-p-Tolylacetylene | 206 | C16H14 | 002789-88-0 | 87 |



Data Path : Z:\HPCHEM1\BNA_G\DATA\BG081116\
 Data File : BG023638.D
 Acq On : 12 Aug 2016 1:20
 Operator : UM/SJ
 Sample : H4360-21 2X
 Misc :
 ALS Vial : 18 Sample Multiplier: 1

Instrument :
 BNA_G
 ClientSampleId :
 PR001-SS004-0612-01

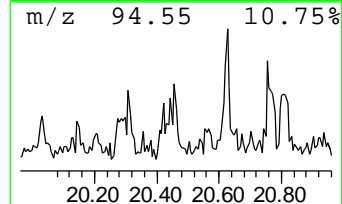
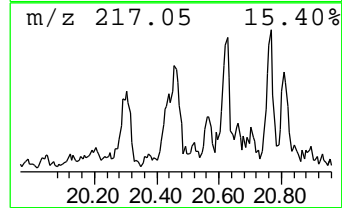
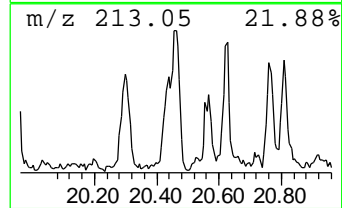
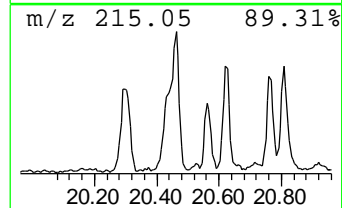
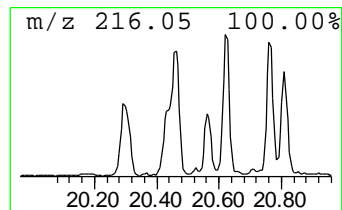
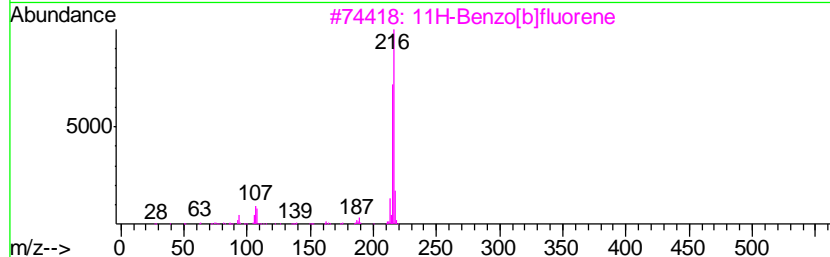
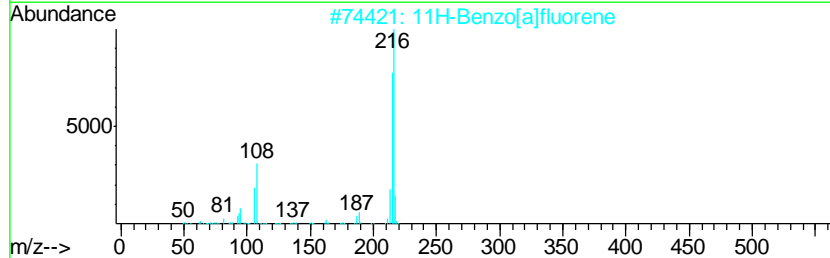
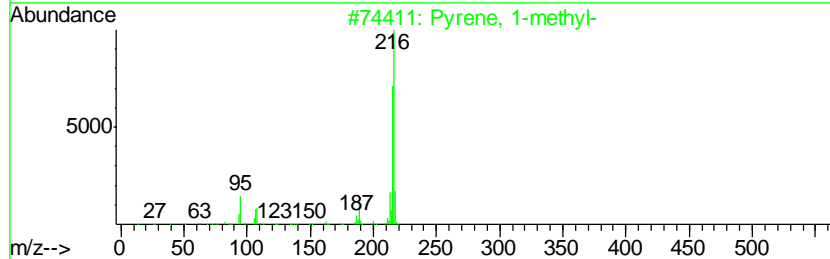
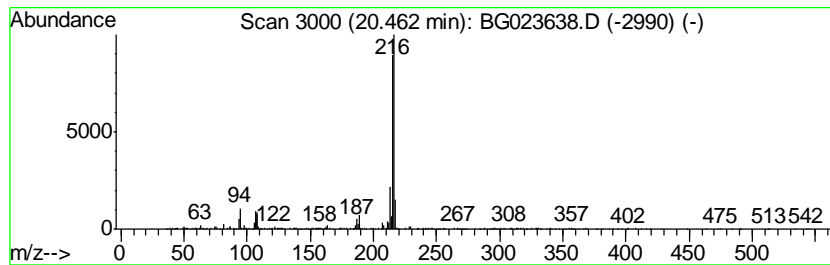
Quant Method : Z:\HPCHEM1\BNA_G\METHODS\SOM02.2-EPA-BG080416.M
 Quant Title : SVOA CALIBRATION

TIC Library : C:\DATABASE\NIST11.L
 TIC Integration Parameters: LSCINT.P

 Peak Number 10 Pyrene, 1-methyl- Concentration Rank 7

| R.T. | EstConc | Area | Relative to ISTD | R.T. |
|-------|------------|--------|------------------|-------|
| 20.46 | 3.55 ng/ul | 883889 | Chrysene-d12 | 21.88 |

| Hit# | of | Tentative ID | MW | MolForm | CAS# | Qual |
|------|----|-------------------------|-----|---------|-------------|------|
| 1 | 5 | Pyrene, 1-methyl- | 216 | C17H12 | 002381-21-7 | 94 |
| 2 | | 11H-Benzo[a]fluorene | 216 | C17H12 | 000238-84-6 | 93 |
| 3 | | 11H-Benzo[b]fluorene | 216 | C17H12 | 000243-17-4 | 91 |
| 4 | | 11H-Benzo[b]fluorene | 216 | C17H12 | 000243-17-4 | 91 |
| 5 | | Fluoranthene, 2-methyl- | 216 | C17H12 | 033543-31-6 | 91 |



Data Path : Z:\HPCHEM1\BNA_G\DATA\BG081116\
 Data File : BG023638.D
 Acq On : 12 Aug 2016 1:20
 Operator : UM/SJ
 Sample : H4360-21 2X
 Misc :
 ALS Vial : 18 Sample Multiplier: 1

Instrument :
 BNA_G
 ClientSampled :
 PR001-SS004-0612-01

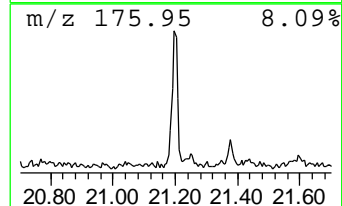
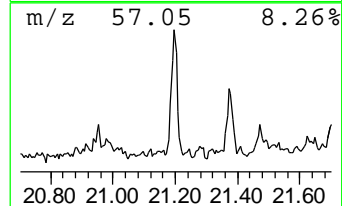
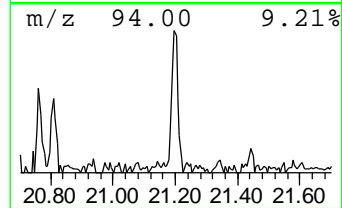
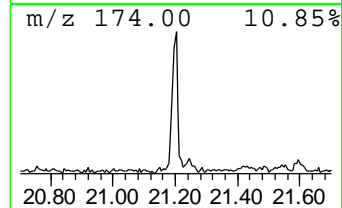
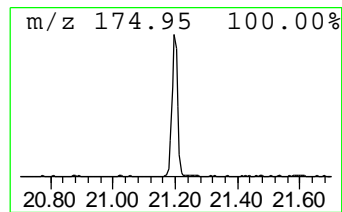
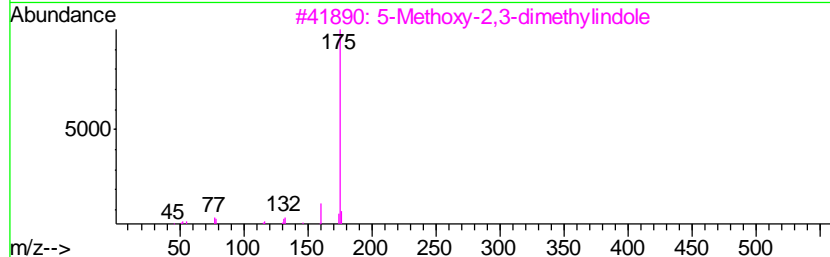
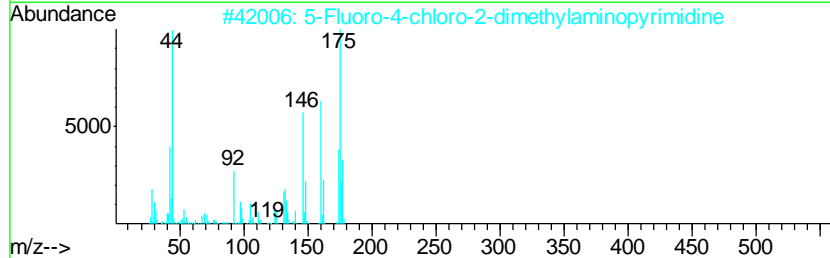
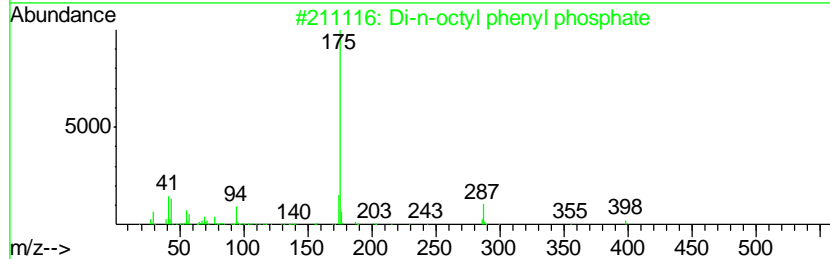
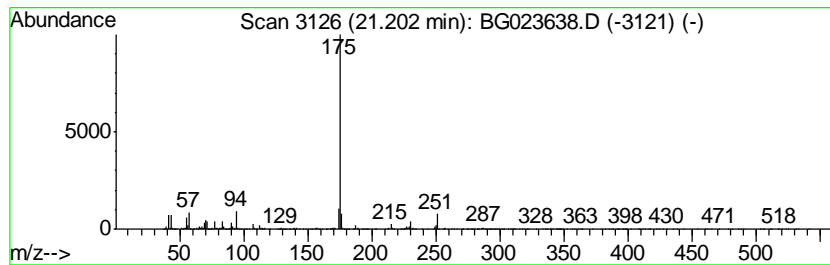
Quant Method : Z:\HPCHEM1\BNA_G\METHODS\SOM02.2-EPA-BG080416.M
 Quant Title : SVOA CALIBRATION

TIC Library : C:\DATABASE\NIST11.L
 TIC Integration Parameters: LSCINT.P

 Peak Number 12 unknown-01 Concentration Rank 5

| R.T. | EstConc | Area | Relative to ISTD | R.T. |
|-------|------------|---------|------------------|-------|
| 21.20 | 4.71 ng/ul | 1173140 | Chrysene-d12 | 21.88 |

| Hit# | of | Tentative ID | MW | MolForm | CAS# | Qual |
|------|----|-------------------------------------|-----|-----------|--------------|------|
| 1 | 5 | Di-n-octyl phenyl phosphate | 398 | C22H39O4P | 1000342-70-9 | 25 |
| 2 | | 5-Fluoro-4-chloro-2-dimethylamin... | 175 | C6H7ClFN3 | 1000070-49-0 | 9 |
| 3 | | 5-Methoxy-2,3-dimethylindole | 175 | C11H13NO | 000828-94-4 | 9 |
| 4 | | 4H-Pyrazolo[3,4-b]pyran-5-carbon... | 252 | C14H12N4O | 081000-11-5 | 9 |
| 5 | | 3-Hydroxy-4-phenyl-5-butyl-1,2,4... | 217 | C12H15N3O | 066921-14-0 | 9 |



Data Path : Z:\HPCHEM1\BNA_G\DATA\BG081116\
 Data File : BG023638.D
 Acq On : 12 Aug 2016 1:20
 Operator : UM/SJ
 Sample : H4360-21 2X
 Misc :
 ALS Vial : 18 Sample Multiplier: 1

Instrument :
 BNA_G
 ClientSampleID :
 PR001-SS004-0612-01

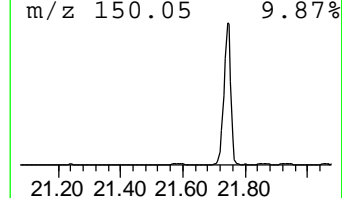
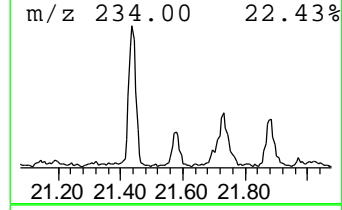
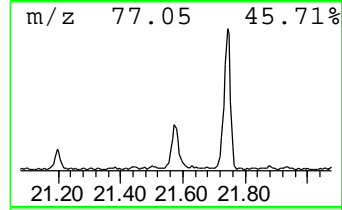
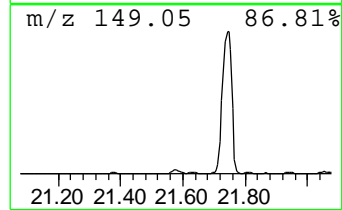
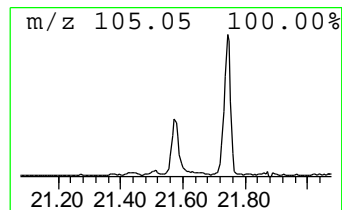
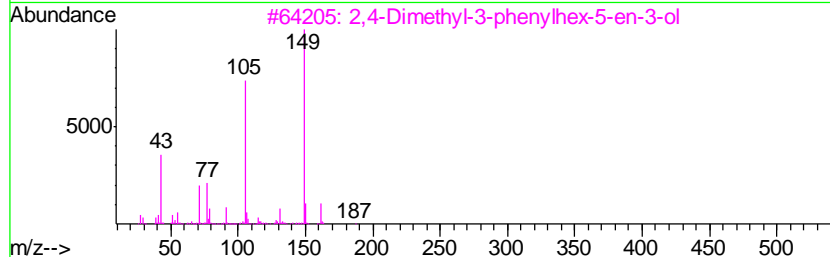
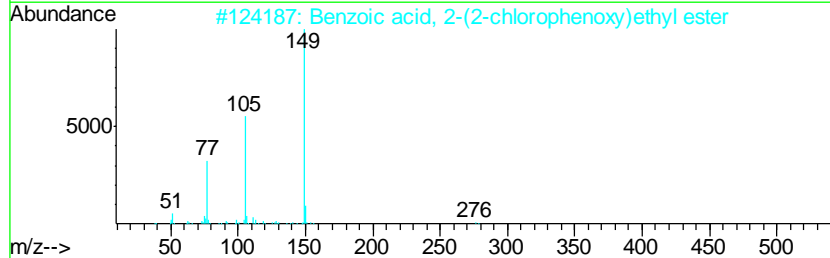
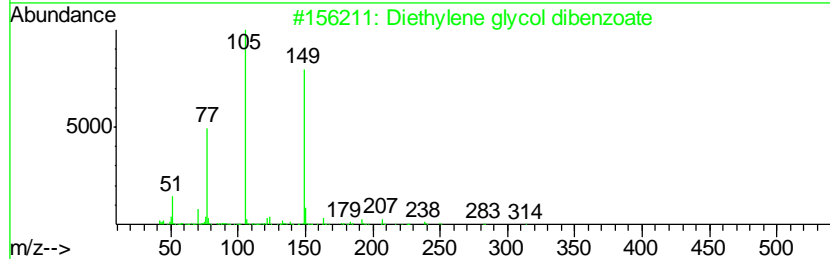
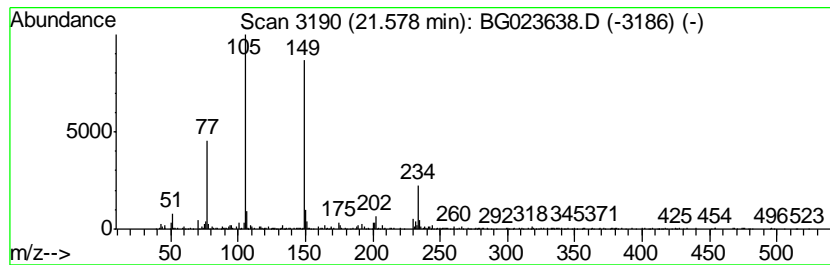
Quant Method : Z:\HPCHEM1\BNA_G\METHODS\SOM02.2-EPA-BG080416.M
 Quant Title : SVOA CALIBRATION

TIC Library : C:\DATABASE\NIST11.L
 TIC Integration Parameters: LSCINT.P

 Peak Number 13 Diethylene glycol dibenzoate Concentration Rank 6

| R.T. | EstConc | Area | Relative to ISTD | R.T. |
|-------|------------|--------|------------------|-------|
| 21.58 | 3.63 ng/ul | 904125 | Chrysene-d12 | 21.88 |

| Hit# | of | Tentative ID | MW | MolForm | CAS# | Qual |
|------|----|--|-----|------------|--------------|------|
| 1 | 5 | Diethylene glycol dibenzoate | 314 | C18H18O5 | 000120-55-8 | 53 |
| 2 | | Benzoic acid, 2-(2-chlorophenoxy)ethyl ester | 276 | C15H13ClO3 | 1000368-25-9 | 49 |
| 3 | | 2,4-Dimethyl-3-phenylhex-5-en-3-ol | 204 | C14H20O | 342625-00-7 | 43 |
| 4 | | m-Tolyl isothiocyanate | 149 | C8H7NS | 000621-30-7 | 38 |
| 5 | | Phthalic acid, hex-2-yn-4-yl nonanoate | 372 | C23H32O4 | 1000315-19-5 | 38 |



Data Path : Z:\HPCHEM1\BNA_G\DATA\BG081116\
 Data File : BG023638.D
 Acq On : 12 Aug 2016 1:20
 Operator : UM/SJ
 Sample : H4360-21 2X
 Misc :
 ALS Vial : 18 Sample Multiplier: 1

Instrument :
 BNA_G
ClientSampleId :
 PR001-SS004-0612-01

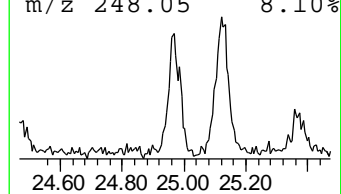
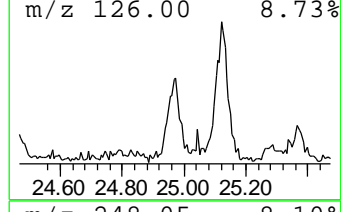
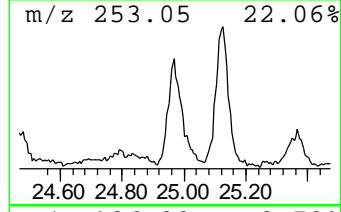
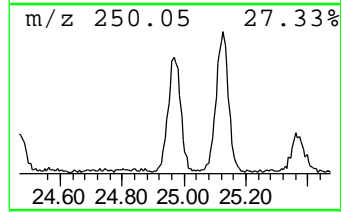
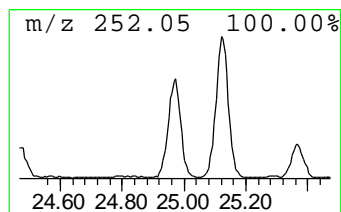
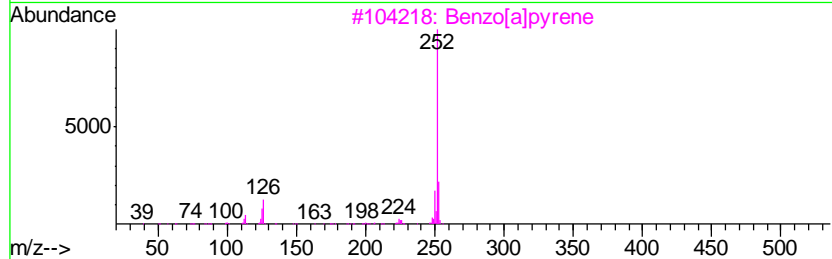
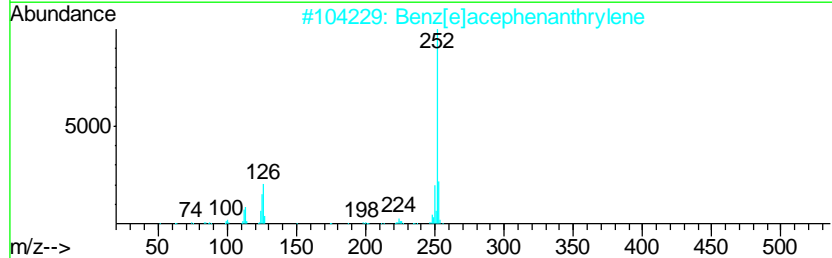
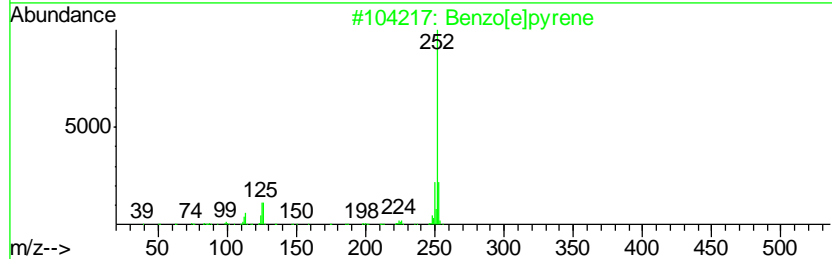
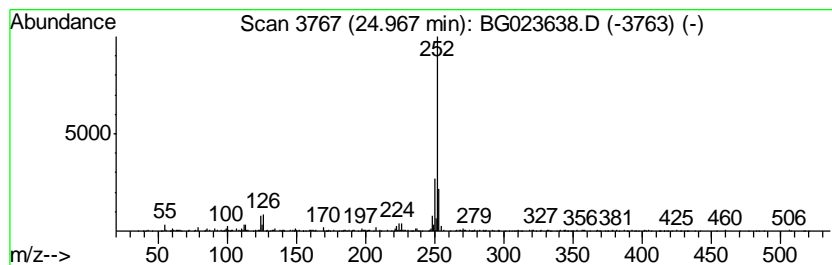
Quant Method : Z:\HPCHEM1\BNA_G\METHODS\SOM02.2-EPA-BG080416.M
 Quant Title : SVOA CALIBRATION

TIC Library : C:\DATABASE\NIST11.L
 TIC Integration Parameters: LSCINT.P

 Peak Number 14 Benzo[e]pyrene Concentration Rank 8

| R.T. | EstConc | Area | Relative to ISTD | R.T. |
|-------|------------|--------|------------------|-------|
| 24.97 | 2.93 ng/ul | 444054 | Perylene-d12 | 25.29 |

| Hit# | of | Tentative ID | MW | MolForm | CAS# | Qual |
|------|----|--------------------------|-----|---------|-------------|------|
| 1 | 5 | Benzo[e]pyrene | 252 | C20H12 | 000192-97-2 | 81 |
| 2 | | Benz[e]acephenanthrylene | 252 | C20H12 | 000205-99-2 | 81 |
| 3 | | Benzo[a]pyrene | 252 | C20H12 | 000050-32-8 | 81 |
| 4 | | Benzo[k]fluoranthene | 252 | C20H12 | 000207-08-9 | 76 |
| 5 | | Perylene | 252 | C20H12 | 000198-55-0 | 76 |



Data Path : Z:\HPCHEM1\BNA_G\DATA\BG081116\
 Data File : BG023638.D
 Acq On : 12 Aug 2016 1:20
 Operator : UM/SJ
 Sample : H4360-21 2X
 Misc :
 ALS Vial : 18 Sample Multiplier: 1

Instrument :
 BNA_G
 ClientSampleId :
 PR001-SS004-0612-01

Quant Method : Z:\HPCHEM1\BNA_G\METHODS\SOM02.2-EPA-BG080416.M
 Quant Title : SVOA CALIBRATION

TIC Library : C:\DATABASE\NIST11.L
 TIC Integration Parameters: LSCINT.P

| TIC Top Hit name | RT | EstConc | Units | Response | --Internal Standard-- | | | |
|----------------------|-------|---------|-------|----------|-----------------------|-------|---------|------|
| | | | | | # | RT | Resp | Conc |
| Phenanthrene, 2-m... | 18.43 | 5.0 | ng/ul | 747726 | 4 | 17.55 | 2971750 | 20.0 |
| Benzaldehyde, 3,5... | 18.62 | 5.7 | ng/ul | 852931 | 4 | 17.55 | 2971750 | 20.0 |
| Phenanthrene, 3-m... | 18.66 | 2.9 | ng/ul | 428926 | 4 | 17.55 | 2971750 | 20.0 |
| 6-Phenylbenzocycl... | 18.92 | 2.1 | ng/ul | 317482 | 4 | 17.55 | 2971750 | 20.0 |
| 9,10-Anthracenedione | 18.98 | 2.3 | ng/ul | 342919 | 4 | 17.55 | 2971750 | 20.0 |
| Phenanthrene, 2,5... | 19.35 | 5.0 | ng/ul | 747824 | 4 | 17.55 | 2971750 | 20.0 |
| Phenanthrene, 3,6... | 19.39 | 2.1 | ng/ul | 316712 | 4 | 17.55 | 2971750 | 20.0 |
| Pyrene, 1-methyl- | 20.46 | 3.5 | ng/ul | 883889 | 5 | 21.88 | 4978860 | 20.0 |
| unknown-01 | 21.20 | 4.7 | ng/ul | 1173140 | 5 | 21.88 | 4978860 | 20.0 |
| Diethylene glycol... | 21.58 | 3.6 | ng/ul | 904125 | 5 | 21.88 | 4978860 | 20.0 |
| Benzo[e]pyrene | 24.97 | 2.9 | ng/ul | 444054 | 6 | 25.29 | 3031720 | 20.0 |