

Data Path : Z:\HPCHEM1\BNA_G\DATA\BG081116\
 Data File : BG023639.D
 Acq On : 12 Aug 2016 1:58
 Operator : UM/SJ
 Sample : H4360-07 5X
 Misc :
 ALS Vial : 19 Sample Multiplier: 1

Instrument :
 BNA_G
 ClientSampleId :
 PR001-SS002-1218-01

Integration Parameters: LSCINT.P

Integrator: RTE
 Smoothing : OFF Filtering: 5
 Sampling : 1 Min Area: 0.1 % of largest Peak
 Start Thrs: 0.2 Max Peaks: 100
 Stop Thrs : 0 Peak Location: TOP

If leading or trailing edge < 100 prefer < Baseline drop else tangent >
 Peak separation: 5

Method : Z:\HPCHEM1\BNA_G\METHODS\SOM02.2-EPA-BG080416.M
 Title : SVOA CALIBRATION

Signal : TIC

| peak # | R.T. min | first scan | max scan | last scan | PK TY | peak height | corr. area | corr. % max. | % of total |
|--------|----------|------------|----------|-----------|-------|-------------|------------|--------------|------------|
| 1 | 3.137 | 46 | 51 | 65 | rVB | 110788 | 231572 | 4.70% | 0.456% |
| 2 | 4.012 | 198 | 200 | 205 | rVB5 | 12533 | 13497 | 0.27% | 0.027% |
| 3 | 4.359 | 257 | 259 | 261 | rBV3 | 6153 | 6997 | 0.14% | 0.014% |
| 4 | 4.429 | 269 | 271 | 273 | rBV2 | 9482 | 9022 | 0.18% | 0.018% |
| 5 | 5.099 | 383 | 385 | 389 | rBV5 | 4975 | 6943 | 0.14% | 0.014% |
| 6 | 5.287 | 410 | 417 | 421 | rVV7 | 6922 | 14826 | 0.30% | 0.029% |
| 7 | 5.322 | 421 | 423 | 428 | rVB5 | 6732 | 9875 | 0.20% | 0.019% |
| 8 | 6.673 | 648 | 653 | 654 | rBV4 | 8416 | 9826 | 0.20% | 0.019% |
| 9 | 6.773 | 666 | 670 | 672 | rBV3 | 5873 | 6912 | 0.14% | 0.014% |
| 10 | 6.832 | 677 | 680 | 683 | rBV5 | 6236 | 6591 | 0.13% | 0.013% |
| 11 | 6.955 | 699 | 701 | 705 | rVB4 | 4737 | 6348 | 0.13% | 0.013% |
| 12 | 7.125 | 725 | 730 | 731 | rBV5 | 5045 | 6504 | 0.13% | 0.013% |
| 13 | 7.272 | 748 | 755 | 766 | rBV2 | 83549 | 173465 | 3.52% | 0.342% |
| 14 | 7.431 | 775 | 782 | 787 | rBV | 66363 | 114779 | 2.33% | 0.226% |
| 15 | 7.637 | 811 | 817 | 824 | rBV2 | 87727 | 159547 | 3.24% | 0.314% |
| 16 | 7.766 | 837 | 839 | 844 | rVB6 | 8145 | 11157 | 0.23% | 0.022% |
| 17 | 8.112 | 890 | 898 | 907 | rBV | 578392 | 1013484 | 20.58% | 1.996% |
| 18 | 8.236 | 916 | 919 | 923 | rVB6 | 4115 | 6431 | 0.13% | 0.013% |
| 19 | 8.835 | 1014 | 1021 | 1029 | rBV | 97383 | 193860 | 3.94% | 0.382% |
| 20 | 9.287 | 1092 | 1098 | 1107 | rBV | 89528 | 177173 | 3.60% | 0.349% |
| 21 | 9.411 | 1115 | 1119 | 1122 | rBV6 | 9647 | 12716 | 0.26% | 0.025% |
| 22 | 10.022 | 1215 | 1223 | 1232 | rBV2 | 79226 | 151441 | 3.07% | 0.298% |
| 23 | 10.274 | 1261 | 1266 | 1269 | rBV4 | 5761 | 13152 | 0.27% | 0.026% |
| 24 | 10.580 | 1312 | 1318 | 1333 | rVB3 | 100731 | 239446 | 4.86% | 0.472% |
| 25 | 10.950 | 1372 | 1381 | 1387 | rBV | 859776 | 1595177 | 32.38% | 3.142% |
| 26 | 11.091 | 1400 | 1405 | 1415 | rBV5 | 31432 | 76329 | 1.55% | 0.150% |
| 27 | 11.173 | 1417 | 1419 | 1422 | rVB4 | 8872 | 8978 | 0.18% | 0.018% |
| 28 | 11.584 | 1483 | 1489 | 1491 | rBV5 | 6237 | 9493 | 0.19% | 0.019% |
| 29 | 11.696 | 1505 | 1508 | 1511 | rBV5 | 4938 | 6950 | 0.14% | 0.014% |
| 30 | 11.837 | 1530 | 1532 | 1535 | rVB4 | 6240 | 7655 | 0.16% | 0.015% |
| 31 | 11.866 | 1535 | 1537 | 1540 | rBV4 | 8858 | 8130 | 0.17% | 0.016% |
| 32 | 12.348 | 1614 | 1619 | 1623 | rBV6 | 9494 | 16364 | 0.33% | 0.032% |
| 33 | 12.612 | 1658 | 1664 | 1669 | rVB2 | 43030 | 77137 | 1.57% | 0.152% |
| 34 | 12.830 | 1695 | 1701 | 1708 | rVB3 | 37596 | 70611 | 1.43% | 0.139% |

Data Path : Z:\HPCHEM1\BNA_G\DATA\BG081116\
 Data File : BG023639.D
 Acq On : 12 Aug 2016 1:58
 Operator : UM/SJ
 Sample : H4360-07 5X
 Misc :
 ALS Vial : 19 Sample Multiplier: 1

Instrument :
 BNA_G
 ClientSampleId :
 PR001-SS002-1218-01

Integration Parameters: LSCINT.P

Integrator: RTE
 Smoothing : OFF
 Sampling : 1
 Start Thrs: 0.2
 Stop Thrs : 0

Filtering: 5
 Min Area: 0.1 % of largest Peak
 Max Peaks: 100
 Peak Location: TOP

If leading or trailing edge < 100 prefer < Baseline drop else tangent >
 Peak separation: 5

Method : Z:\HPCHEM1\BNA_G\METHODS\SOM02.2-EPA-BG080416.M
 Title : SVOA CALIBRATION

| | | | | | | | | | |
|----|--------|------|------|------|------|---------|---------|--------|--------|
| 35 | 12.965 | 1720 | 1724 | 1728 | rVB7 | 4725 | 6848 | 0.14% | 0.013% |
| 36 | 13.117 | 1749 | 1750 | 1753 | rBV3 | 8031 | 6382 | 0.13% | 0.013% |
| 37 | 13.288 | 1777 | 1779 | 1782 | rVB4 | 7046 | 7420 | 0.15% | 0.015% |
| 38 | 13.364 | 1790 | 1792 | 1796 | rVB5 | 5357 | 7299 | 0.15% | 0.014% |
| 39 | 13.534 | 1818 | 1821 | 1824 | rBV5 | 4708 | 6481 | 0.13% | 0.013% |
| 40 | 13.576 | 1824 | 1828 | 1833 | rBV5 | 16063 | 30950 | 0.63% | 0.061% |
| 41 | 13.611 | 1833 | 1834 | 1838 | rVB4 | 11588 | 11027 | 0.22% | 0.022% |
| 42 | 13.758 | 1857 | 1859 | 1861 | rVB3 | 9791 | 6654 | 0.14% | 0.013% |
| 43 | 13.816 | 1864 | 1869 | 1872 | rBV7 | 7980 | 16722 | 0.34% | 0.033% |
| 44 | 13.952 | 1884 | 1892 | 1898 | rBV6 | 44010 | 115941 | 2.35% | 0.228% |
| 45 | 14.016 | 1901 | 1903 | 1905 | rBV3 | 9133 | 6941 | 0.14% | 0.014% |
| 46 | 14.104 | 1912 | 1918 | 1922 | rBV | 91992 | 158913 | 3.23% | 0.313% |
| 47 | 14.181 | 1923 | 1931 | 1935 | rVV | 235787 | 434936 | 8.83% | 0.857% |
| 48 | 14.228 | 1935 | 1939 | 1945 | rVB | 176997 | 279039 | 5.66% | 0.550% |
| 49 | 14.339 | 1954 | 1958 | 1961 | rBV2 | 43228 | 53755 | 1.09% | 0.106% |
| 50 | 14.480 | 1976 | 1982 | 1985 | rBV | 261178 | 457572 | 9.29% | 0.901% |
| 51 | 14.651 | 2008 | 2011 | 2017 | rBV3 | 27977 | 39062 | 0.79% | 0.077% |
| 52 | 14.786 | 2025 | 2034 | 2042 | rBV2 | 1417428 | 2308628 | 46.87% | 4.548% |
| 53 | 14.856 | 2042 | 2046 | 2051 | rVB7 | 34339 | 57948 | 1.18% | 0.114% |
| 54 | 15.021 | 2063 | 2074 | 2081 | rBV7 | 66636 | 214437 | 4.35% | 0.422% |
| 55 | 15.179 | 2094 | 2101 | 2108 | rVV3 | 88254 | 158472 | 3.22% | 0.312% |
| 56 | 15.256 | 2110 | 2114 | 2119 | rVB | 98840 | 139635 | 2.83% | 0.275% |
| 57 | 15.403 | 2132 | 2139 | 2144 | rBV4 | 81665 | 172635 | 3.50% | 0.340% |
| 58 | 15.455 | 2144 | 2148 | 2152 | rVB2 | 62979 | 93136 | 1.89% | 0.183% |
| 59 | 15.549 | 2160 | 2164 | 2165 | rBV4 | 51140 | 56706 | 1.15% | 0.112% |
| 60 | 15.608 | 2171 | 2174 | 2178 | rVB | 92973 | 120157 | 2.44% | 0.237% |
| 61 | 15.661 | 2178 | 2183 | 2188 | rBV3 | 47610 | 84637 | 1.72% | 0.167% |
| 62 | 15.778 | 2199 | 2203 | 2208 | rVB | 335222 | 493177 | 10.01% | 0.972% |
| 63 | 15.837 | 2208 | 2213 | 2222 | rVB3 | 110948 | 230342 | 4.68% | 0.454% |
| 64 | 15.908 | 2222 | 2225 | 2232 | rBV6 | 51059 | 114453 | 2.32% | 0.225% |
| 65 | 16.278 | 2285 | 2288 | 2290 | rBV3 | 48313 | 55637 | 1.13% | 0.110% |
| 66 | 16.478 | 2318 | 2322 | 2323 | rBV | 77093 | 89087 | 1.81% | 0.175% |
| 67 | 16.842 | 2377 | 2384 | 2389 | rBV4 | 123939 | 292070 | 5.93% | 0.575% |
| 68 | 16.895 | 2390 | 2393 | 2398 | rVB3 | 103126 | 153967 | 3.13% | 0.303% |
| 69 | 16.994 | 2407 | 2410 | 2417 | rVB2 | 71078 | 106490 | 2.16% | 0.210% |
| 70 | 17.200 | 2443 | 2445 | 2452 | rVB3 | 91894 | 132561 | 2.69% | 0.261% |
| 71 | 17.276 | 2453 | 2458 | 2463 | rVB4 | 96764 | 165437 | 3.36% | 0.326% |

Data Path : Z:\HPCHEM1\BNA_G\DATA\BG081116\
 Data File : BG023639.D
 Acq On : 12 Aug 2016 1:58
 Operator : UM/SJ
 Sample : H4360-07 5X
 Misc :
 ALS Vial : 19 Sample Multiplier: 1

Instrument :
 BNA_G
 ClientSampleId :
 PR001-SS002-1218-01

Integration Parameters: LSCINT.P

Integrator: RTE
 Smoothing : OFF
 Sampling : 1
 Start Thrs: 0.2
 Stop Thrs : 0

Filtering: 5
 Min Area: 0.1 % of largest Peak
 Max Peaks: 100
 Peak Location: TOP

If leading or trailing edge < 100 prefer < Baseline drop else tangent >
 Peak separation: 5

Method : Z:\HPCHEM1\BNA_G\METHODS\SOM02.2-EPA-BG080416.M
 Title : SVOA CALIBRATION

| | | | | | | | | | |
|-----|--------|------|------|------|------|---------|---------|---------|--------|
| 72 | 17.365 | 2470 | 2473 | 2480 | rVB | 158057 | 246403 | 5.00% | 0.485% |
| 73 | 17.547 | 2499 | 2504 | 2508 | rBV | 1701177 | 2717297 | 55.17% | 5.353% |
| 74 | 17.594 | 2508 | 2512 | 2517 | rVB | 1492724 | 2174208 | 44.14% | 4.283% |
| 75 | 17.647 | 2517 | 2521 | 2525 | rBV | 323463 | 444913 | 9.03% | 0.876% |
| 76 | 18.134 | 2600 | 2604 | 2611 | rVB2 | 295365 | 474784 | 9.64% | 0.935% |
| 77 | 18.281 | 2625 | 2629 | 2635 | rVB | 181580 | 350663 | 7.12% | 0.691% |
| 78 | 18.428 | 2649 | 2654 | 2658 | rBV | 902063 | 1384271 | 28.10% | 2.727% |
| 79 | 18.481 | 2658 | 2663 | 2669 | rVB | 1090164 | 1735659 | 35.24% | 3.419% |
| 80 | 18.557 | 2673 | 2676 | 2681 | rBV3 | 140669 | 223633 | 4.54% | 0.441% |
| 81 | 18.616 | 2681 | 2686 | 2691 | rVV3 | 881216 | 1675344 | 34.01% | 3.300% |
| 82 | 18.663 | 2691 | 2694 | 2699 | rVB | 670309 | 918766 | 18.65% | 1.810% |
| 83 | 18.921 | 2734 | 2738 | 2742 | rBV | 411547 | 591897 | 12.02% | 1.166% |
| 84 | 19.168 | 2777 | 2780 | 2784 | rVB | 309527 | 377850 | 7.67% | 0.744% |
| 85 | 19.221 | 2785 | 2789 | 2792 | rBV | 507097 | 648082 | 13.16% | 1.277% |
| 86 | 19.256 | 2792 | 2795 | 2803 | rVB2 | 372521 | 549543 | 11.16% | 1.083% |
| 87 | 19.344 | 2805 | 2810 | 2814 | rBV | 1170407 | 1875275 | 38.07% | 3.694% |
| 88 | 19.397 | 2814 | 2819 | 2822 | rBV3 | 377511 | 684019 | 13.89% | 1.347% |
| 89 | 19.479 | 2829 | 2833 | 2839 | rBV3 | 395257 | 902311 | 18.32% | 1.777% |
| 90 | 19.609 | 2850 | 2855 | 2860 | rVB | 1994477 | 2819266 | 57.24% | 5.554% |
| 91 | 19.661 | 2861 | 2864 | 2868 | rBV | 231539 | 292104 | 5.93% | 0.575% |
| 92 | 19.943 | 2908 | 2912 | 2913 | rBV2 | 520864 | 664121 | 13.48% | 1.308% |
| 93 | 19.973 | 2913 | 2917 | 2924 | rVB | 2732195 | 4194405 | 85.15% | 8.263% |
| 94 | 20.037 | 2924 | 2928 | 2934 | rVB | 611453 | 914870 | 18.57% | 1.802% |
| 95 | 20.625 | 3024 | 3028 | 3031 | rVB | 711896 | 913425 | 18.54% | 1.799% |
| 96 | 20.760 | 3048 | 3051 | 3055 | rBV | 697661 | 941048 | 19.10% | 1.854% |
| 97 | 20.807 | 3056 | 3059 | 3071 | rVB2 | 591517 | 1195895 | 24.28% | 2.356% |
| 98 | 21.876 | 3233 | 3241 | 3246 | rBV2 | 2032075 | 4925758 | 100.00% | 9.703% |
| 99 | 21.923 | 3246 | 3249 | 3262 | rVB | 1155167 | 1958313 | 39.76% | 3.858% |
| 100 | 25.277 | 3815 | 3820 | 3829 | rVB2 | 975381 | 2611919 | 53.03% | 5.145% |

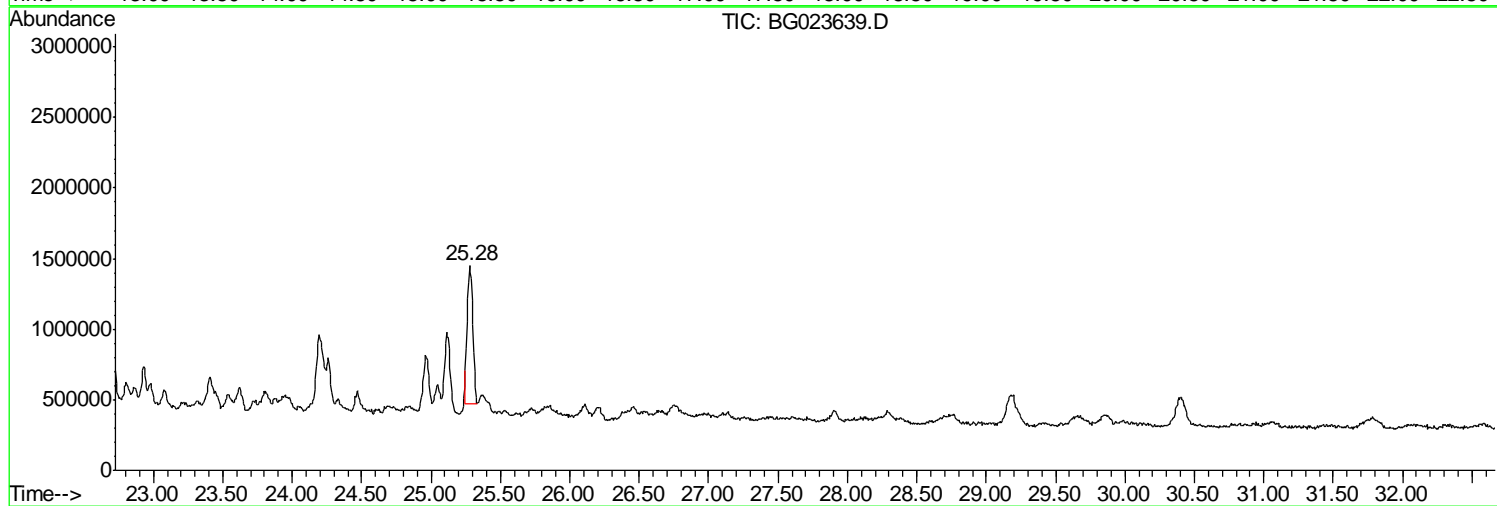
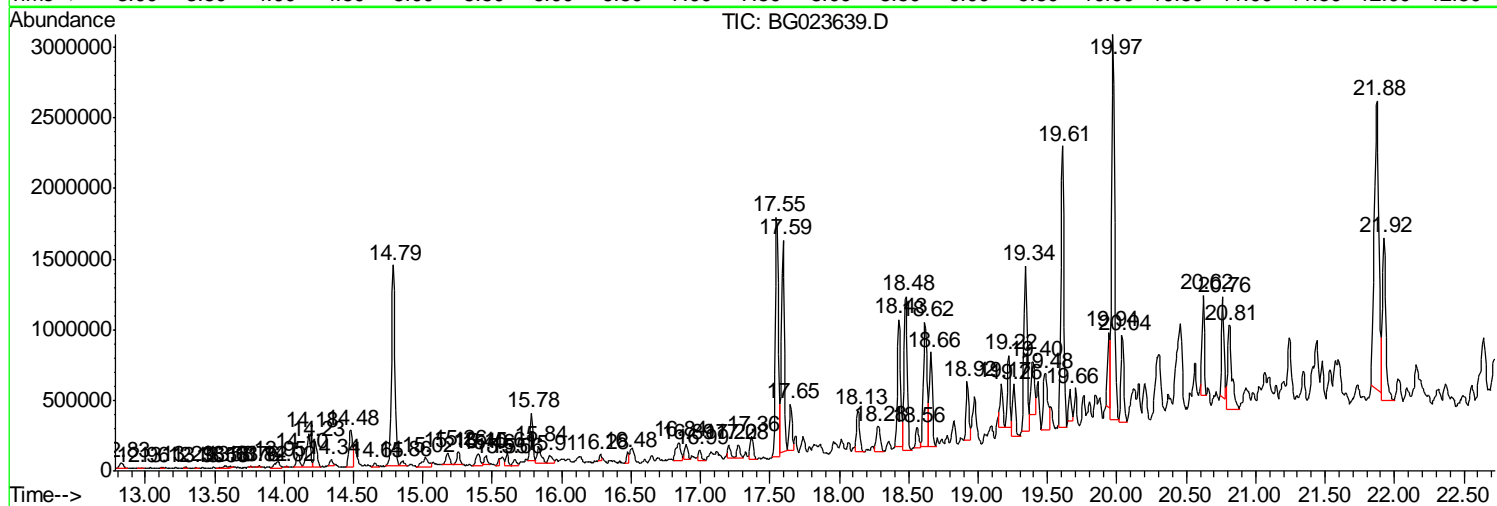
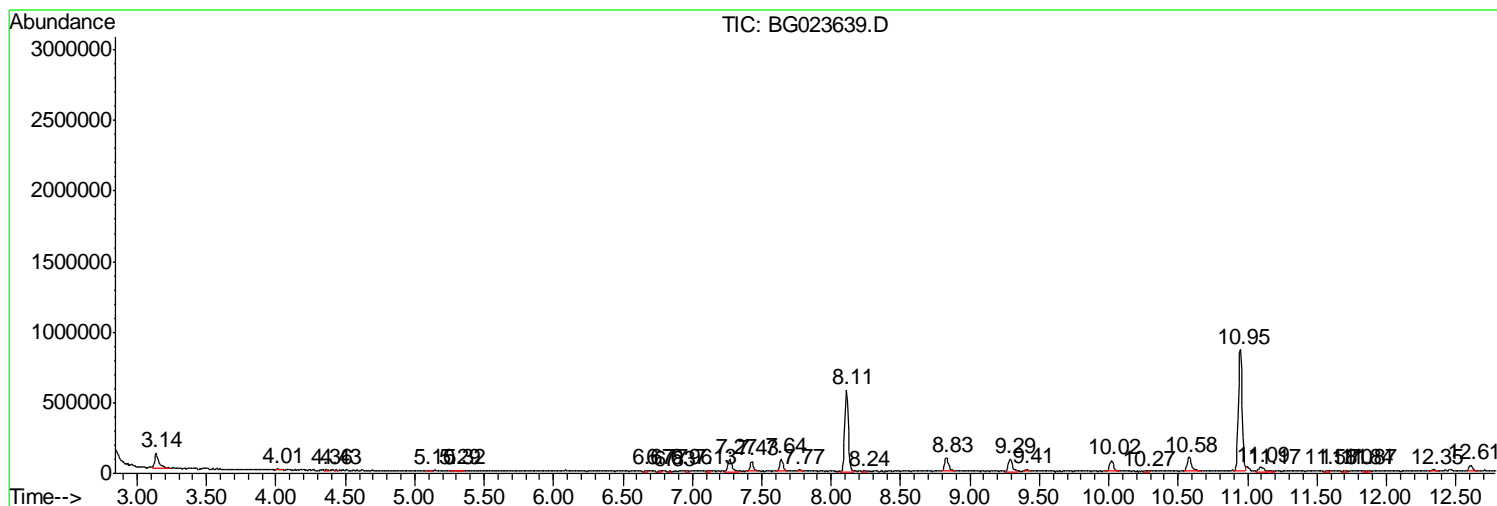
Sum of corrected areas: 50763984

Data Path : Z:\HPCHEM1\BNA_G\DATA\BG081116\
 Data File : BG023639.D
 Acq On : 12 Aug 2016 1:58
 Operator : UM/SJ
 Sample : H4360-07 5X
 Misc :
 ALS Vial : 19 Sample Multiplier: 1

Instrument :
 BNA_G
ClientSampled :
 PR001-SS002-1218-01

Quant Method : Z:\HPCHEM1\BNA_G\METHODS\SOM02.2-EPA-BG080416.M
 Quant Title : SVOA CALIBRATION

TIC Library : C:\DATABASE\NIST11.L
 TIC Integration Parameters: LSCINT.P



Data Path : Z:\HPCHEM1\BNA_G\DATA\BG081116\
 Data File : BG023639.D
 Acq On : 12 Aug 2016 1:58
 Operator : UM/SJ
 Sample : H4360-07 5X
 Misc :
 ALS Vial : 19 Sample Multiplier: 1

Instrument :
 BNA_G
 ClientSampled :
 PR001-SS002-1218-01

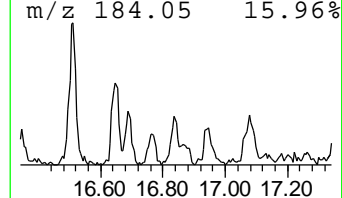
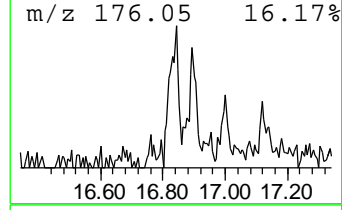
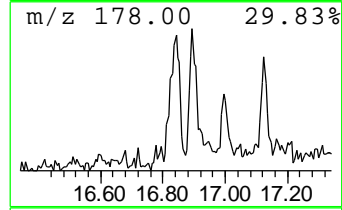
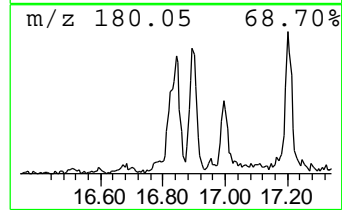
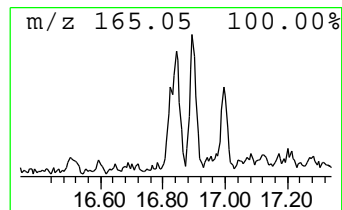
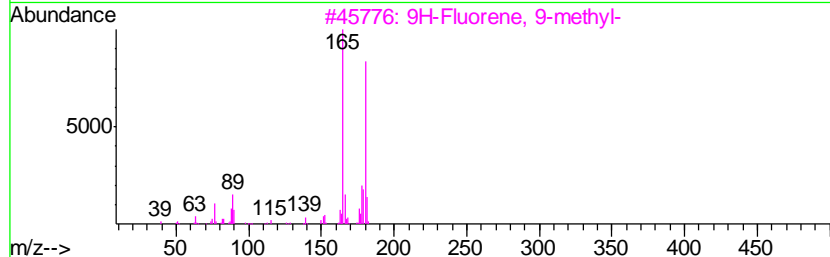
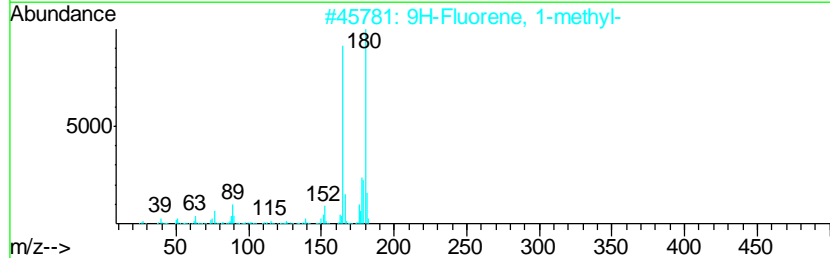
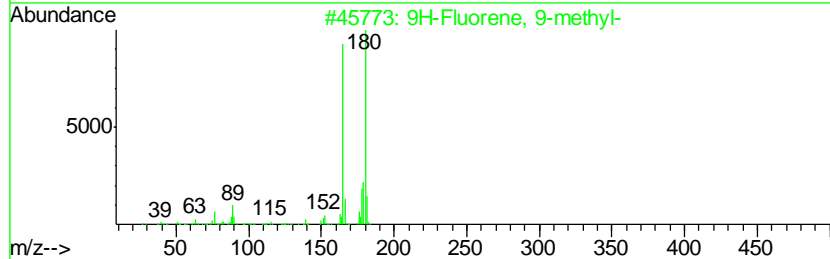
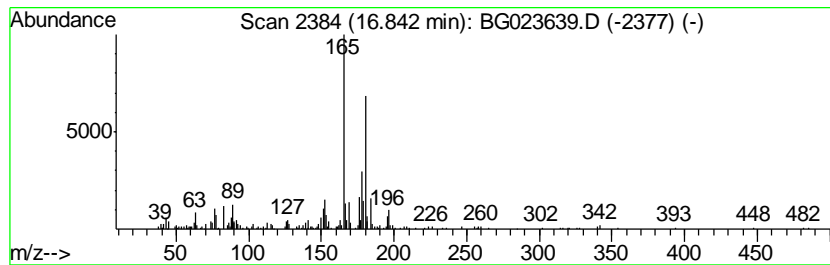
Quant Method : Z:\HPCHEM1\BNA_G\METHODS\SOM02.2-EPA-BG080416.M
 Quant Title : SVOA CALIBRATION

TIC Library : C:\DATABASE\NIST11.L
 TIC Integration Parameters: LSCINT.P

 Peak Number 2 9H-Fluorene, 9-methyl- Concentration Rank 20

| R.T. | EstConc | Area | Relative to ISTD | R.T. |
|-------|------------|--------|------------------|-------|
| 16.84 | 2.15 ng/ul | 292070 | Phenanthrene-d10 | 17.55 |

| Hit# | of | Tentative ID | MW | MolForm | CAS# | Qual |
|------|----|-------------------------|-----|---------|-------------|------|
| 1 | 5 | 9H-Fluorene, 9-methyl- | 180 | C14H12 | 002523-37-7 | 62 |
| 2 | | 9H-Fluorene, 1-methyl- | 180 | C14H12 | 001730-37-6 | 62 |
| 3 | | 9H-Fluorene, 9-methyl- | 180 | C14H12 | 002523-37-7 | 62 |
| 4 | | 9H-Fluorene, 3-methyl- | 180 | C14H12 | 002523-39-9 | 62 |
| 5 | | Ethylene, 1,1-diphenyl- | 180 | C14H12 | 000530-48-3 | 58 |



Data Path : Z:\HPCHEM1\BNA_G\DATA\BG081116\
 Data File : BG023639.D
 Acq On : 12 Aug 2016 1:58
 Operator : UM/SJ
 Sample : H4360-07 5X
 Misc :
 ALS Vial : 19 Sample Multiplier: 1

Instrument :
 BNA_G
 ClientSampleID :
 PR001-SS002-1218-01

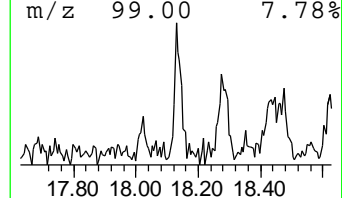
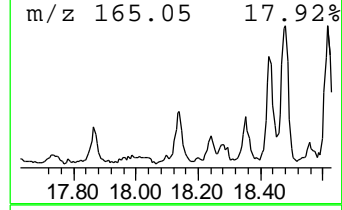
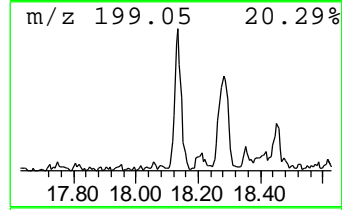
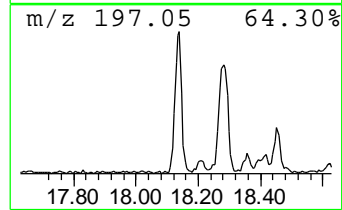
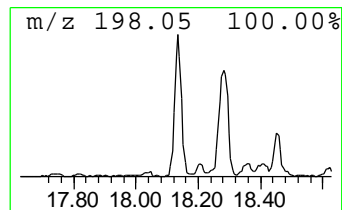
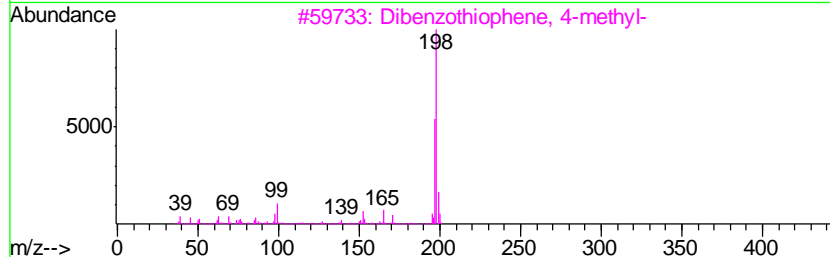
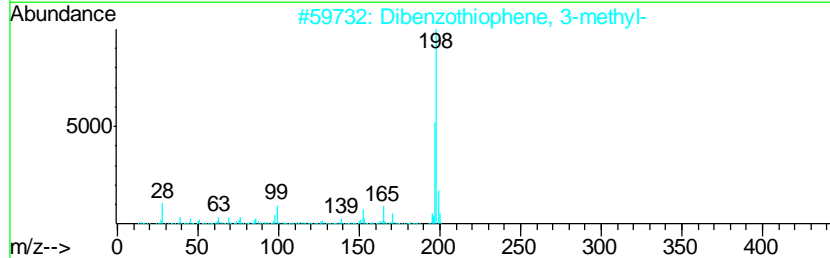
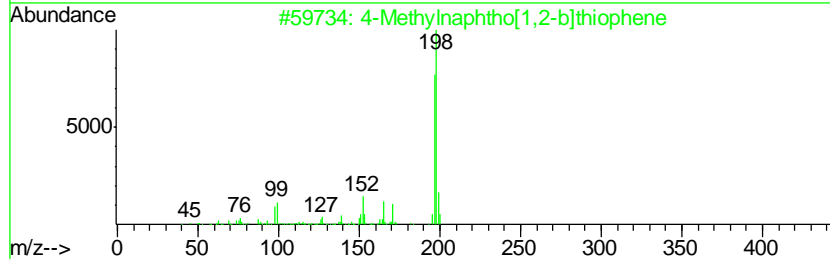
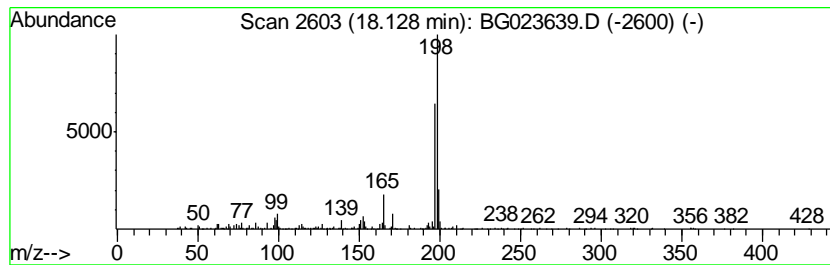
Quant Method : Z:\HPCHEM1\BNA_G\METHODS\SOM02.2-EPA-BG080416.M
 Quant Title : SVOA CALIBRATION

TIC Library : C:\DATABASE\NIST11.L
 TIC Integration Parameters: LSCINT.P

 Peak Number 3 4-Methylnaphtho[1,2-b]thiop... Concentration Rank 16

| R.T. | EstConc | Area | Relative to ISTD | R.T. |
|-------|------------|--------|------------------|-------|
| 18.13 | 3.49 ng/ul | 474784 | Phenanthrene-d10 | 17.55 |

| Hit# | of | Tentative ID | MW | MolForm | CAS# | Qual |
|------|----|-------------------------------------|-----|---------|-------------|------|
| 1 | 5 | 4-Methylnaphtho[1,2-b]thiophene | 198 | C13H10S | 067388-11-8 | 74 |
| 2 | | Dibenzothiophene, 3-methyl- | 198 | C13H10S | 016587-52-3 | 74 |
| 3 | | Dibenzothiophene, 4-methyl- | 198 | C13H10S | 007372-88-5 | 72 |
| 4 | | Benzene, 1-fluoro-3-(2-phenyleth... | 198 | C14H11F | 003041-81-4 | 64 |
| 5 | | Benzene, 1,1'-(1-fluoro-1,2-ethe... | 198 | C14H11F | 000671-19-2 | 64 |



Data Path : Z:\HPCHEM1\BNA_G\DATA\BG081116\
 Data File : BG023639.D
 Acq On : 12 Aug 2016 1:58
 Operator : UM/SJ
 Sample : H4360-07 5X
 Misc :
 ALS Vial : 19 Sample Multiplier: 1

Instrument :
 BNA_G
 ClientSampled :
 PR001-SS002-1218-01

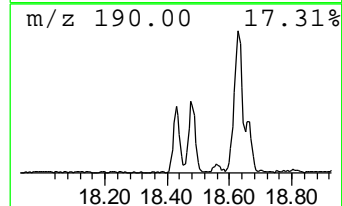
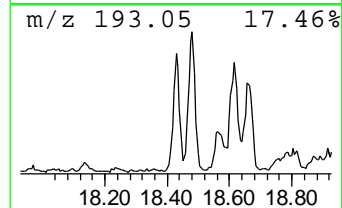
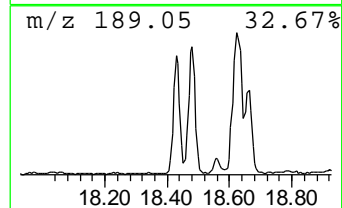
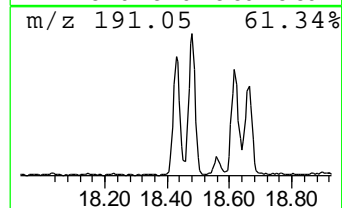
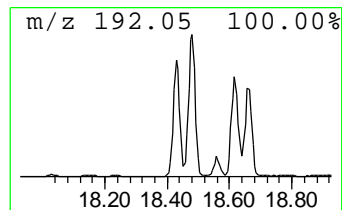
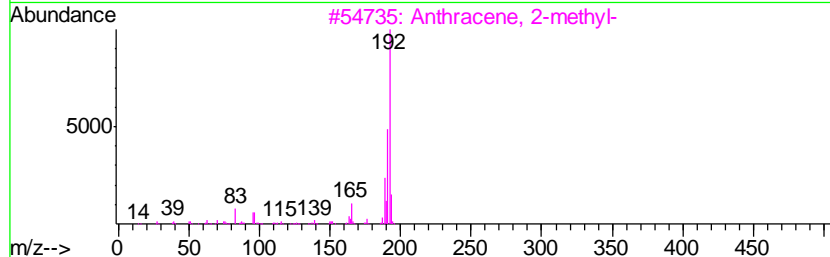
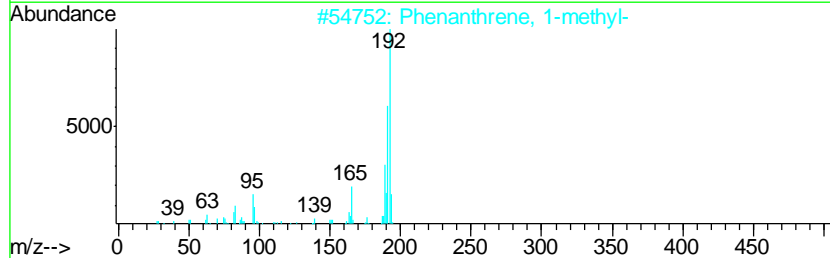
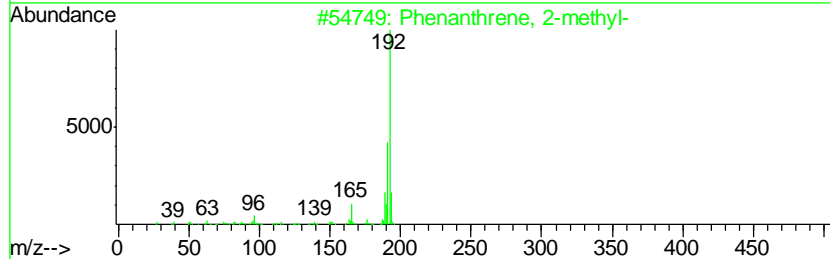
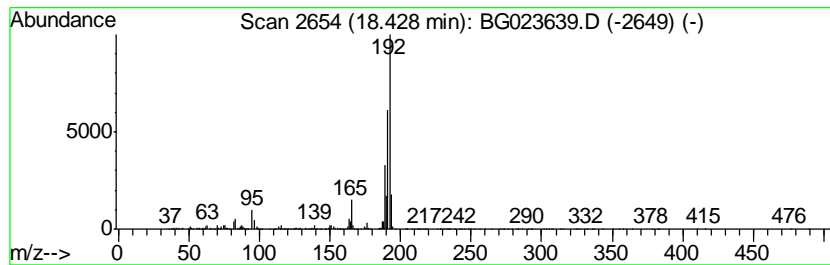
Quant Method : Z:\HPCHEM1\BNA_G\METHODS\SOM02.2-EPA-BG080416.M
 Quant Title : SVOA CALIBRATION

TIC Library : C:\DATABASE\NIST11.L
 TIC Integration Parameters: LSCINT.P

 Peak Number 5 Phenanthrene, 2-methyl- Concentration Rank 4

| R.T. | EstConc | Area | Relative to ISTD | R.T. |
|-------|-------------|---------|------------------|-------|
| 18.43 | 10.19 ng/ul | 1384270 | Phenanthrene-d10 | 17.55 |

| Hit# | of | Tentative ID | MW | MolForm | CAS# | Qual |
|------|----|---------------------------------------|-----|---------|-------------|------|
| 1 | 5 | Phenanthrene, 2-methyl- | 192 | C15H12 | 002531-84-2 | 96 |
| 2 | | Phenanthrene, 1-methyl- | 192 | C15H12 | 000832-69-9 | 95 |
| 3 | | Anthracene, 2-methyl- | 192 | C15H12 | 000613-12-7 | 94 |
| 4 | | 1H-Cyclopropa[1]phenanthrene, 1a, ... | 192 | C15H12 | 000949-41-7 | 94 |
| 5 | | Phenanthrene, 2-methyl- | 192 | C15H12 | 002531-84-2 | 93 |



Data Path : Z:\HPCHEM1\BNA_G\DATA\BG081116\
 Data File : BG023639.D
 Acq On : 12 Aug 2016 1:58
 Operator : UM/SJ
 Sample : H4360-07 5X
 Misc :
 ALS Vial : 19 Sample Multiplier: 1

Instrument :
 BNA_G
 ClientSampleID :
 PR001-SS002-1218-01

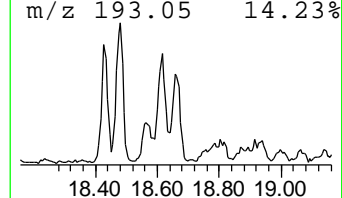
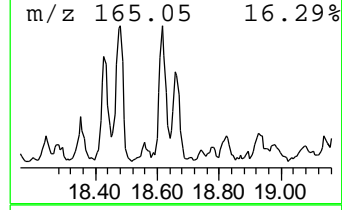
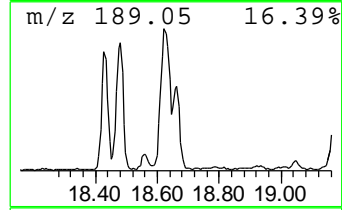
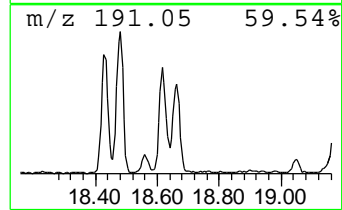
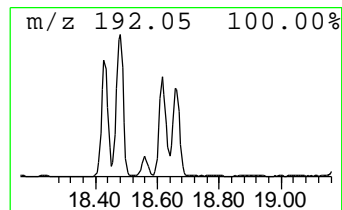
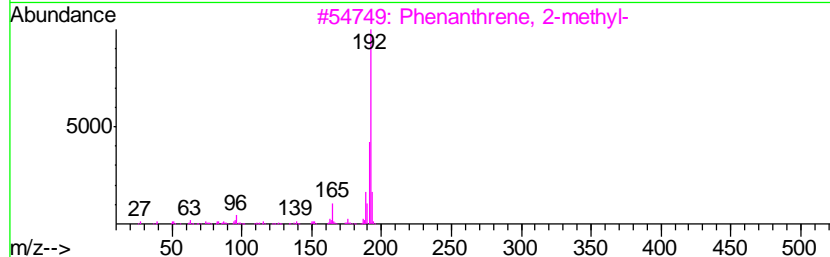
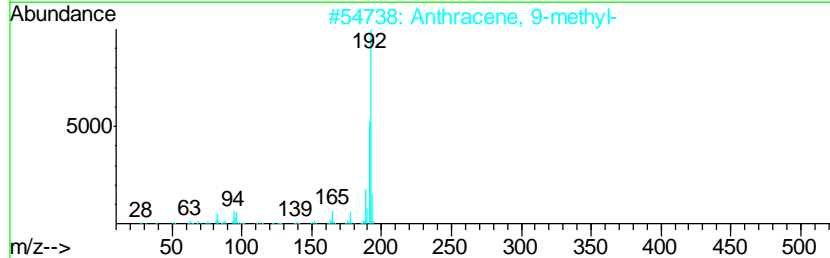
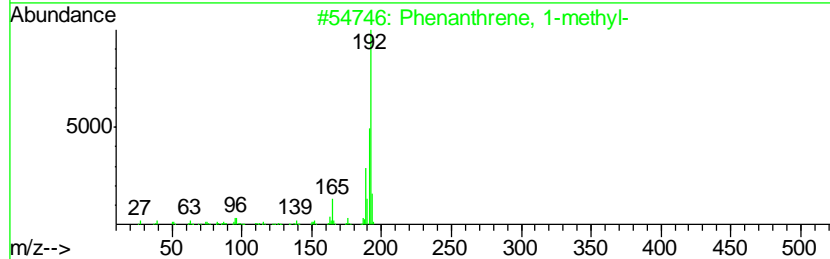
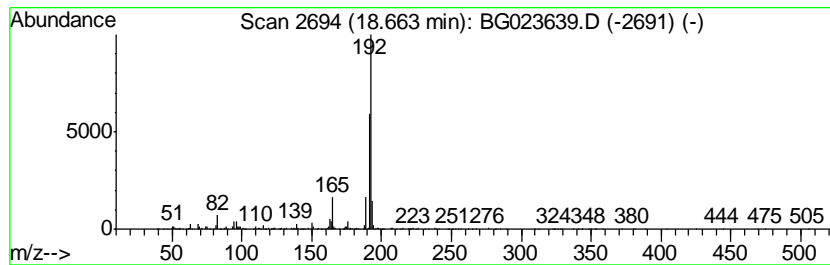
Quant Method : Z:\HPCHEM1\BNA_G\METHODS\SOM02.2-EPA-BG080416.M
 Quant Title : SVOA CALIBRATION

TIC Library : C:\DATABASE\NIST11.L
 TIC Integration Parameters: LSCINT.P

 Peak Number 8 Phenanthrene, 1-methyl- Concentration Rank 5

| R.T. | EstConc | Area | Relative to ISTD | R.T. |
|-------|------------|--------|------------------|-------|
| 18.66 | 6.76 ng/ul | 918766 | Phenanthrene-d10 | 17.55 |

| Hit# | of | Tentative ID | MW | MolForm | CAS# | Qual |
|------|----|-------------------------|-----|---------|-------------|------|
| 1 | 5 | Phenanthrene, 1-methyl- | 192 | C15H12 | 000832-69-9 | 93 |
| 2 | | Anthracene, 9-methyl- | 192 | C15H12 | 000779-02-2 | 91 |
| 3 | | Phenanthrene, 2-methyl- | 192 | C15H12 | 002531-84-2 | 91 |
| 4 | | Anthracene, 2-methyl- | 192 | C15H12 | 000613-12-7 | 91 |
| 5 | | Anthracene, 1-methyl- | 192 | C15H12 | 000610-48-0 | 90 |



Data Path : Z:\HPCHEM1\BNA_G\DATA\BG081116\
 Data File : BG023639.D
 Acq On : 12 Aug 2016 1:58
 Operator : UM/SJ
 Sample : H4360-07 5X
 Misc :
 ALS Vial : 19 Sample Multiplier: 1

Instrument :
 BNA_G
 ClientSampleId :
 PR001-SS002-1218-01

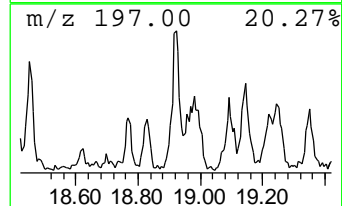
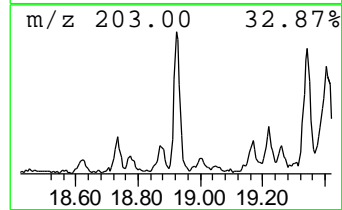
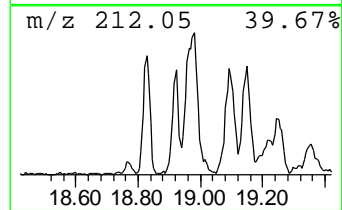
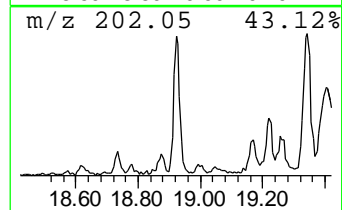
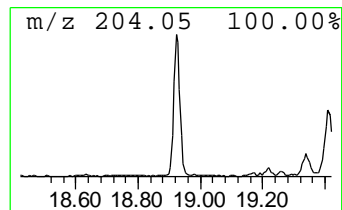
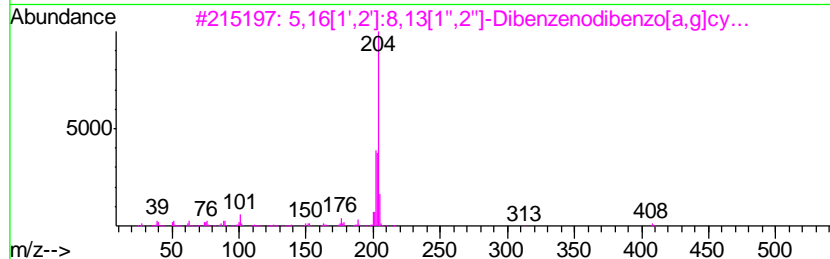
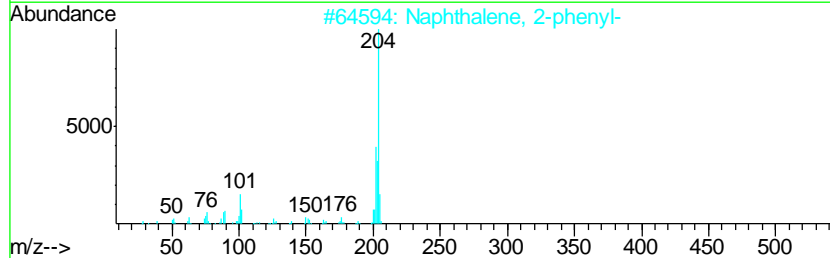
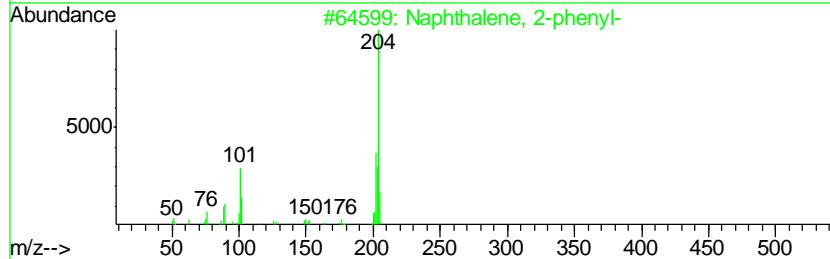
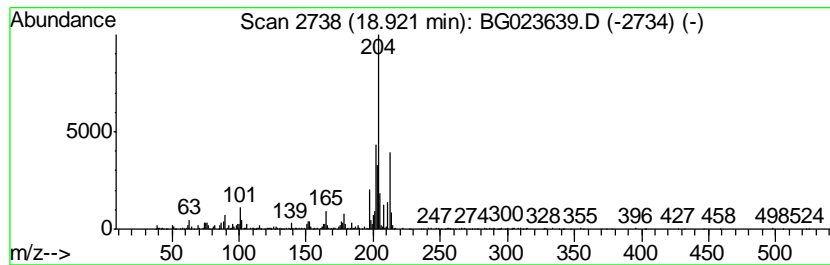
Quant Method : Z:\HPCHEM1\BNA_G\METHODS\SOM02.2-EPA-BG080416.M
 Quant Title : SVOA CALIBRATION

TIC Library : C:\DATABASE\NIST11.L
 TIC Integration Parameters: LSCINT.P

 Peak Number 9 unknown-01 Concentration Rank 11

| R.T. | EstConc | Area | Relative to ISTD | R.T. |
|-------|------------|--------|------------------|-------|
| 18.92 | 4.36 ng/ul | 591897 | Phenanthrene-d10 | 17.55 |

| Hit# | of | Tentative ID | MW | MolForm | CAS# | Qual |
|------|----|-------------------------------------|-----|---------|-------------|------|
| 1 | 5 | Naphthalene, 2-phenyl- | 204 | C16H12 | 000612-94-2 | 46 |
| 2 | | Naphthalene, 2-phenyl- | 204 | C16H12 | 000612-94-2 | 46 |
| 3 | | 5,16[1',2']:8,13[1'',2'']-Dibenz... | 408 | C32H24 | 005672-97-9 | 43 |
| 4 | | Acephenanthrylene, 4,5-dihydro- | 204 | C16H12 | 006232-48-0 | 42 |
| 5 | | Naphthalene, 2-phenyl- | 204 | C16H12 | 000612-94-2 | 41 |



Data Path : Z:\HPCHEM1\BNA_G\DATA\BG081116\
 Data File : BG023639.D
 Acq On : 12 Aug 2016 1:58
 Operator : UM/SJ
 Sample : H4360-07 5X
 Misc :
 ALS Vial : 19 Sample Multiplier: 1

Instrument :
 BNA_G
 ClientSampleID :
 PR001-SS002-1218-01

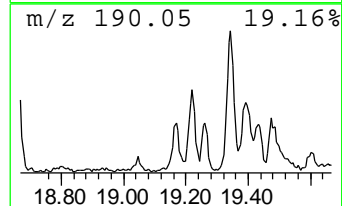
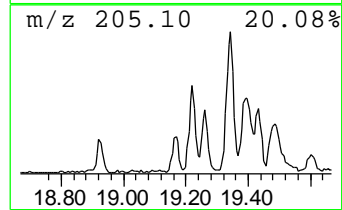
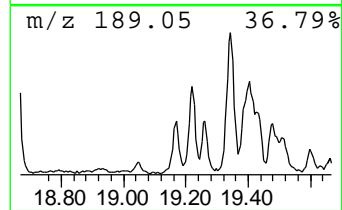
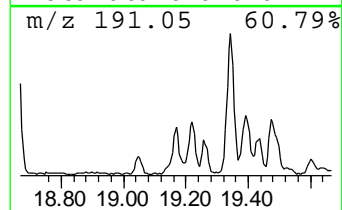
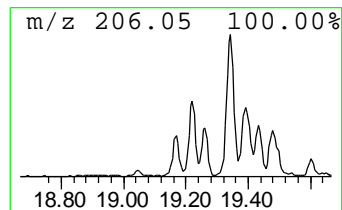
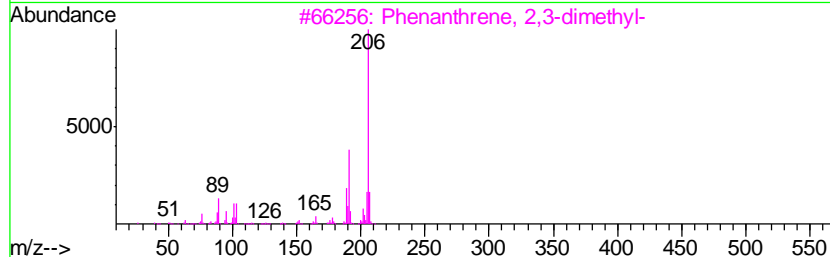
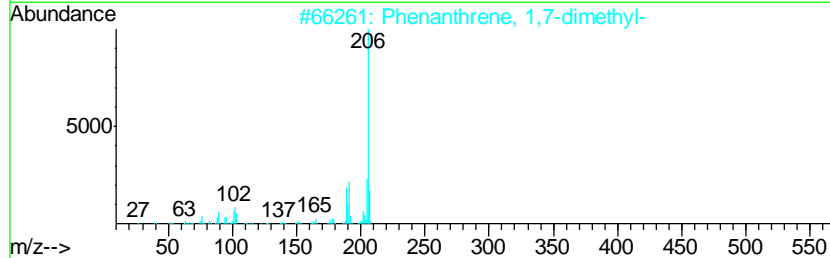
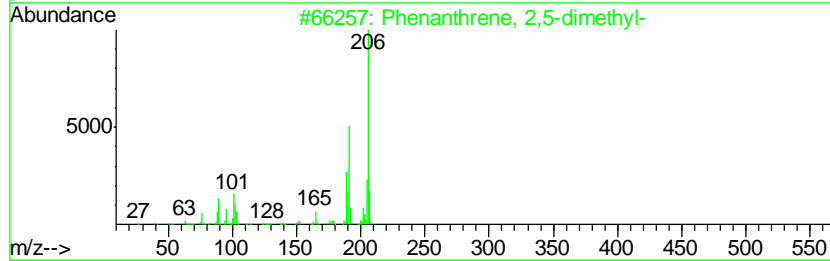
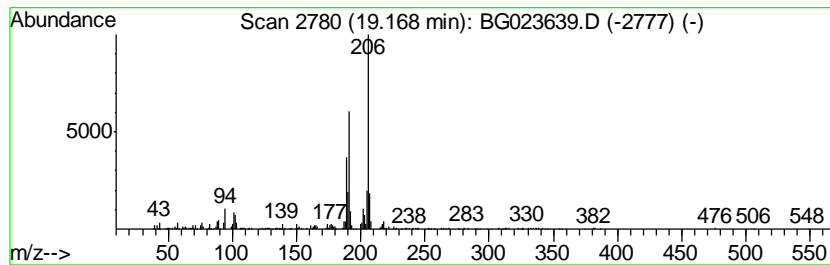
Quant Method : Z:\HPCHEM1\BNA_G\METHODS\SOM02.2-EPA-BG080416.M
 Quant Title : SVOA CALIBRATION

TIC Library : C:\DATABASE\NIST11.L
 TIC Integration Parameters: LSCINT.P

 Peak Number 10 Phenanthrene, 2,5-dimethyl- Concentration Rank 17

| R.T. | EstConc | Area | Relative to ISTD | R.T. |
|-------|------------|--------|------------------|-------|
| 19.17 | 2.78 ng/ul | 377850 | Phenanthrene-d10 | 17.55 |

| Hit# | of | Tentative ID | MW | MolForm | CAS# | Qual |
|------|----|-----------------------------|-----|---------|-------------|------|
| 1 | 5 | Phenanthrene, 2,5-dimethyl- | 206 | C16H14 | 003674-66-6 | 93 |
| 2 | | Phenanthrene, 1,7-dimethyl- | 206 | C16H14 | 000483-87-4 | 93 |
| 3 | | Phenanthrene, 2,3-dimethyl- | 206 | C16H14 | 003674-65-5 | 90 |
| 4 | | Phenanthrene, 3,6-dimethyl- | 206 | C16H14 | 001576-67-6 | 87 |
| 5 | | Phenanthrene, 2,7-dimethyl- | 206 | C16H14 | 001576-69-8 | 81 |



Data Path : Z:\HPCHEM1\BNA_G\DATA\BG081116\
 Data File : BG023639.D
 Acq On : 12 Aug 2016 1:58
 Operator : UM/SJ
 Sample : H4360-07 5X
 Misc :
 ALS Vial : 19 Sample Multiplier: 1

Instrument :
 BNA_G
 ClientSampleID :
 PR001-SS002-1218-01

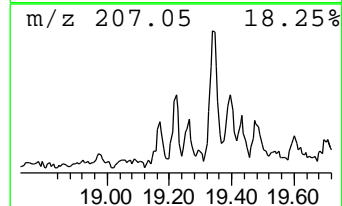
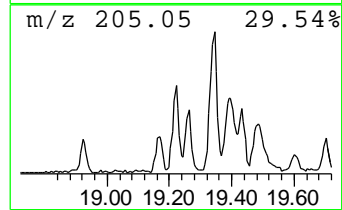
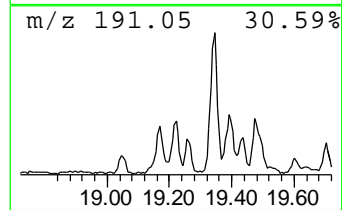
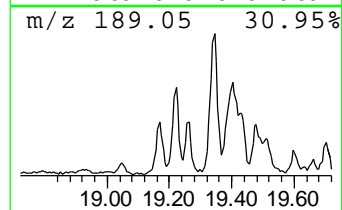
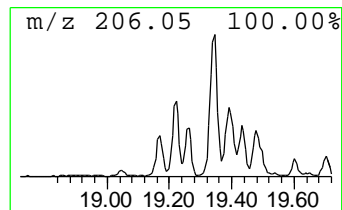
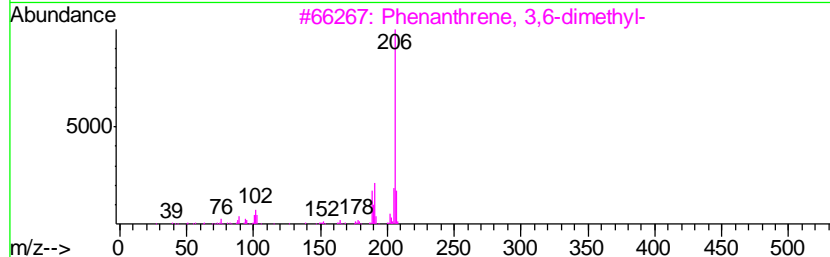
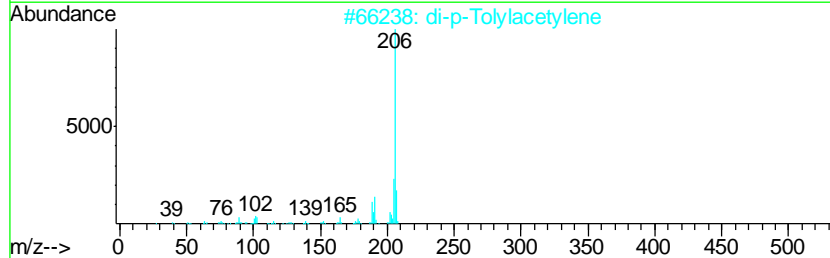
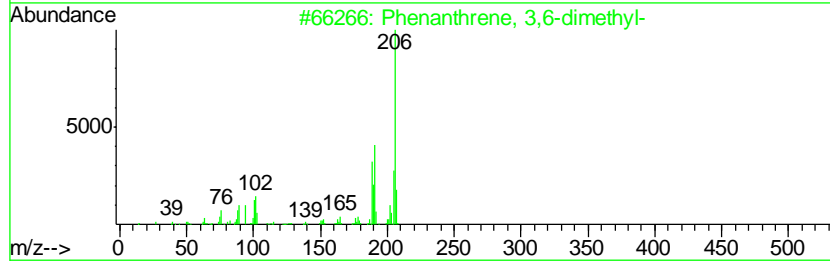
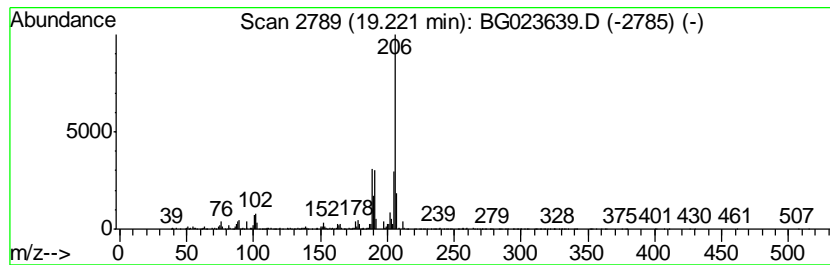
Quant Method : Z:\HPCHEM1\BNA_G\METHODS\SOM02.2-EPA-BG080416.M
 Quant Title : SVOA CALIBRATION

TIC Library : C:\DATABASE\NIST11.L
 TIC Integration Parameters: LSCINT.P

 Peak Number 11 Phenanthrene, 3,6-dimethyl- Concentration Rank 9

| R.T. | EstConc | Area | Relative to ISTD | R.T. |
|-------|------------|--------|------------------|-------|
| 19.22 | 4.77 ng/ul | 648082 | Phenanthrene-d10 | 17.55 |

| Hit# | of | Tentative ID | MW | MolForm | CAS# | Qual |
|------|----|-----------------------------|-----|---------|-------------|------|
| 1 | 5 | Phenanthrene, 3,6-dimethyl- | 206 | C16H14 | 001576-67-6 | 97 |
| 2 | | di-p-Tolylacetylene | 206 | C16H14 | 002789-88-0 | 94 |
| 3 | | Phenanthrene, 3,6-dimethyl- | 206 | C16H14 | 001576-67-6 | 91 |
| 4 | | Phenanthrene, 1,7-dimethyl- | 206 | C16H14 | 000483-87-4 | 91 |
| 5 | | Phenanthrene, 2,7-dimethyl- | 206 | C16H14 | 001576-69-8 | 91 |



Data Path : Z:\HPCHEM1\BNA_G\DATA\BG081116\
 Data File : BG023639.D
 Acq On : 12 Aug 2016 1:58
 Operator : UM/SJ
 Sample : H4360-07 5X
 Misc :
 ALS Vial : 19 Sample Multiplier: 1

Instrument :
 BNA_G
 ClientSampled :
 PR001-SS002-1218-01

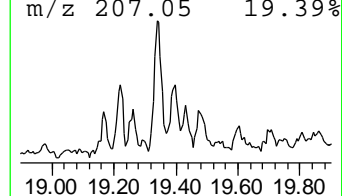
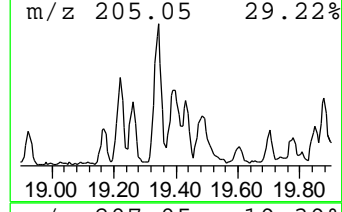
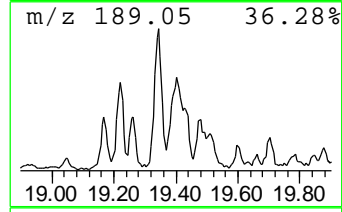
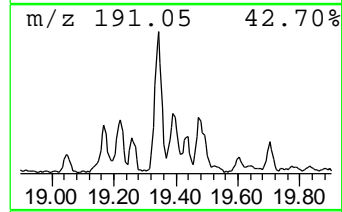
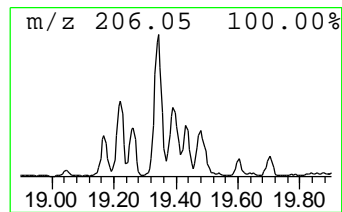
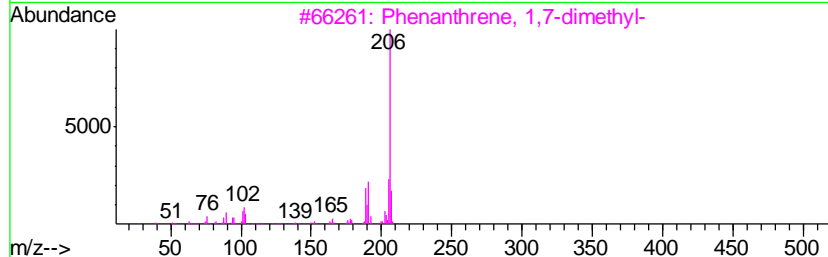
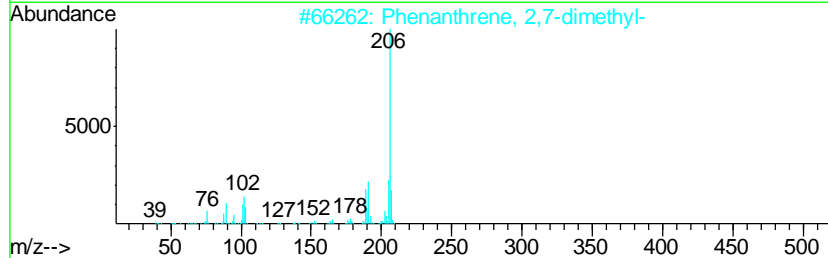
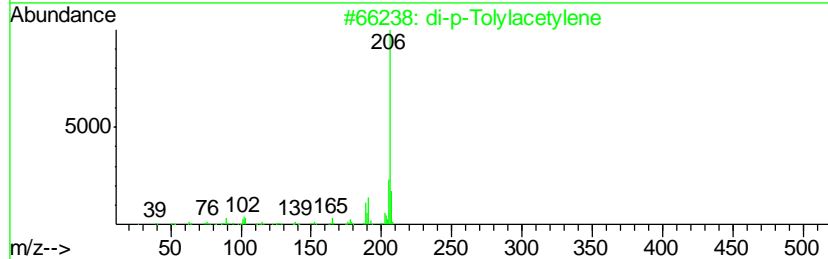
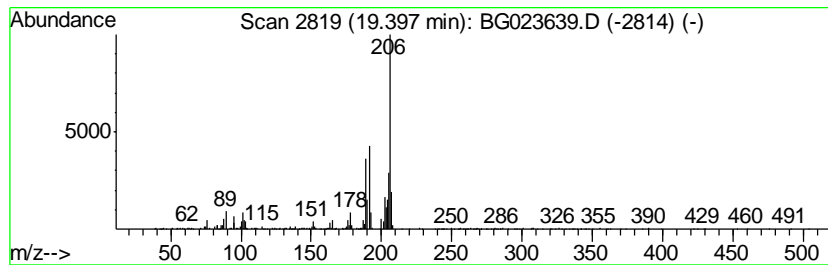
Quant Method : Z:\HPCHEM1\BNA_G\METHODS\SOM02.2-EPA-BG080416.M
 Quant Title : SVOA CALIBRATION

TIC Library : C:\DATABASE\NIST11.L
 TIC Integration Parameters: LSCINT.P

 Peak Number 14 di-p-Tolylacetylene Concentration Rank 7

| R.T. | EstConc | Area | Relative to ISTD | R.T. |
|-------|------------|--------|------------------|-------|
| 19.40 | 5.03 ng/ul | 684019 | Phenanthrene-d10 | 17.55 |

| Hit# | of | Tentative ID | MW | MolForm | CAS# | Qual |
|------|----|-----------------------------|-----|---------|-------------|------|
| 1 | 5 | di-p-Tolylacetylene | 206 | C16H14 | 002789-88-0 | 94 |
| 2 | | Phenanthrene, 2,7-dimethyl- | 206 | C16H14 | 001576-69-8 | 93 |
| 3 | | Phenanthrene, 1,7-dimethyl- | 206 | C16H14 | 000483-87-4 | 93 |
| 4 | | Phenanthrene, 2,5-dimethyl- | 206 | C16H14 | 003674-66-6 | 91 |
| 5 | | 9,10-Dimethylanthracene | 206 | C16H14 | 000781-43-1 | 91 |



Data Path : Z:\HPCHEM1\BNA_G\DATA\BG081116\
 Data File : BG023639.D
 Acq On : 12 Aug 2016 1:58
 Operator : UM/SJ
 Sample : H4360-07 5X
 Misc :
 ALS Vial : 19 Sample Multiplier: 1

Instrument :
 BNA_G
 ClientSampleID :
 PR001-SS002-1218-01

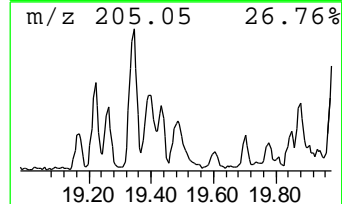
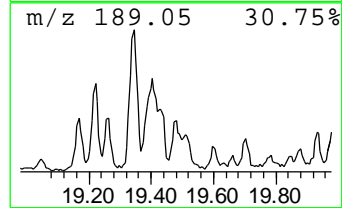
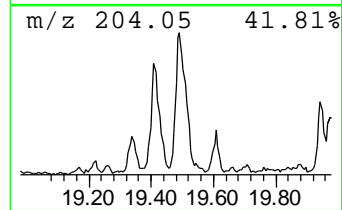
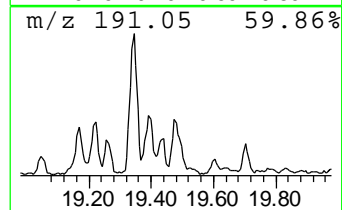
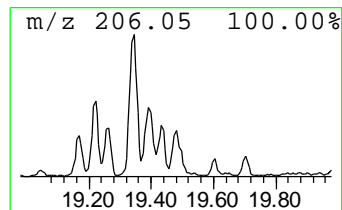
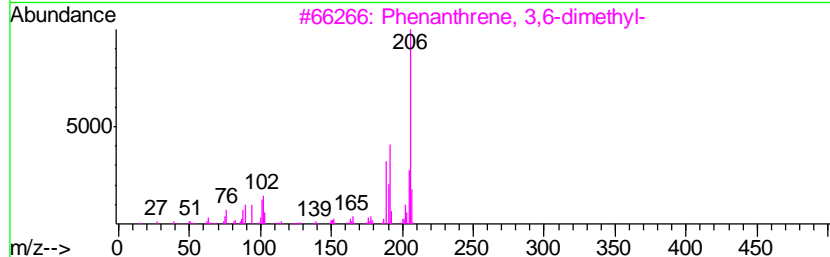
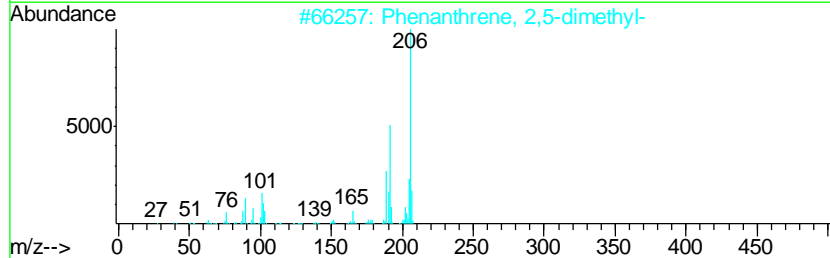
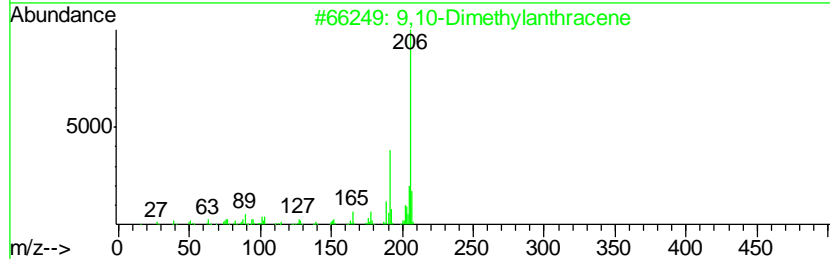
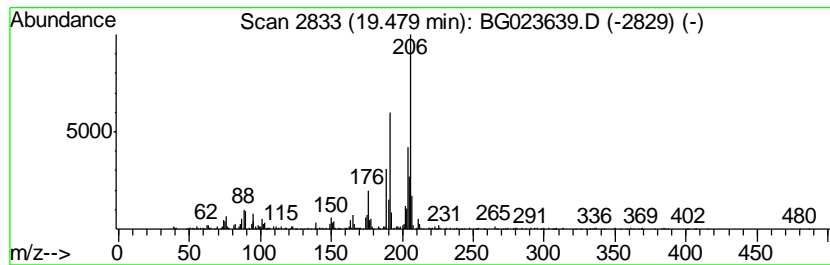
Quant Method : Z:\HPCHEM1\BNA_G\METHODS\SOM02.2-EPA-BG080416.M
 Quant Title : SVOA CALIBRATION

TIC Library : C:\DATABASE\NIST11.L
 TIC Integration Parameters: LSCINT.P

 Peak Number 15 9,10-Dimethylantracene Concentration Rank 6

| R.T. | EstConc | Area | Relative to ISTD | R.T. |
|-------|------------|--------|------------------|-------|
| 19.48 | 6.64 ng/ul | 902311 | Phenanthrene-d10 | 17.55 |

| Hit# | of | Tentative ID | MW | MolForm | CAS# | Qual |
|------|----|-----------------------------------|-----|---------|-------------|------|
| 1 | 5 | 9,10-Dimethylantracene | 206 | C16H14 | 000781-43-1 | 90 |
| 2 | | Phenanthrene, 2,5-dimethyl- | 206 | C16H14 | 003674-66-6 | 86 |
| 3 | | Phenanthrene, 3,6-dimethyl- | 206 | C16H14 | 001576-67-6 | 83 |
| 4 | | 1,3-Diphenyl-3-methylcyclopropene | 206 | C16H14 | 086544-79-8 | 64 |
| 5 | | Phenanthrene, 4,5-dimethyl- | 206 | C16H14 | 003674-69-9 | 64 |



Data Path : Z:\HPCHEM1\BNA_G\DATA\BG081116\
 Data File : BG023639.D
 Acq On : 12 Aug 2016 1:58
 Operator : UM/SJ
 Sample : H4360-07 5X
 Misc :
 ALS Vial : 19 Sample Multiplier: 1

Instrument :
 BNA_G
 ClientSampled :
 PR001-SS002-1218-01

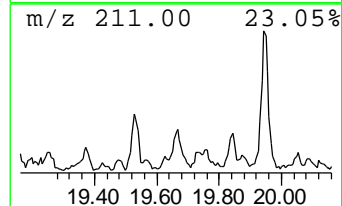
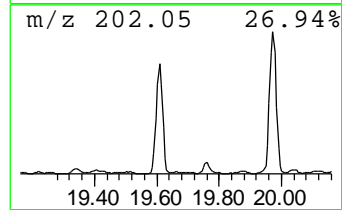
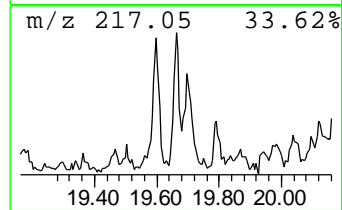
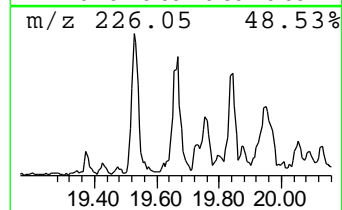
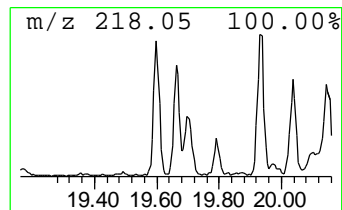
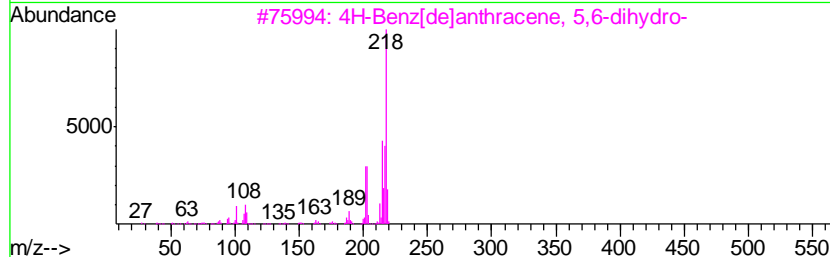
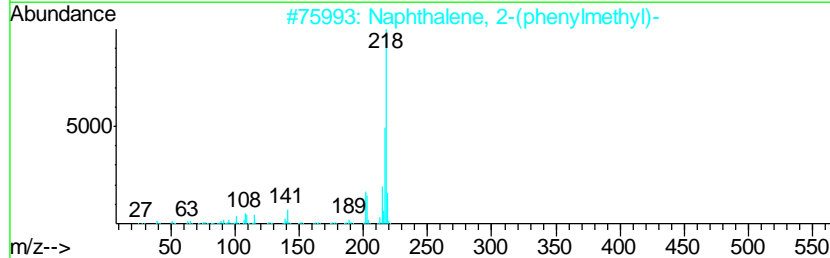
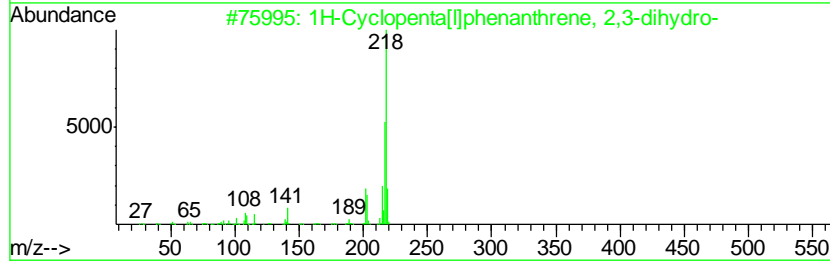
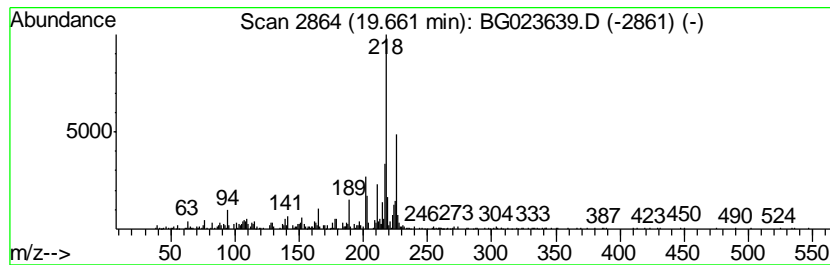
Quant Method : Z:\HPCHEM1\BNA_G\METHODS\SOM02.2-EPA-BG080416.M
 Quant Title : SVOA CALIBRATION

TIC Library : C:\DATABASE\NIST11.L
 TIC Integration Parameters: LSCINT.P

 Peak Number 16 1H-Cyclopenta[1]phenanthren... Concentration Rank 19

| R.T. | EstConc | Area | Relative to ISTD | R.T. |
|-------|------------|--------|------------------|-------|
| 19.66 | 2.15 ng/ul | 292104 | Phenanthrene-d10 | 17.55 |

| Hit# | of | Tentative ID | MW | MolForm | CAS# | Qual |
|------|----|-------------------------------------|-----|-----------|--------------|------|
| 1 | 5 | 1H-Cyclopenta[1]phenanthrene, 2,... | 218 | C17H14 | 000723-98-8 | 50 |
| 2 | | Naphthalene, 2-(phenylmethyl)- | 218 | C17H14 | 000613-59-2 | 49 |
| 3 | | 4H-Benz[de]anthracene, 5,6-dihydro- | 218 | C17H14 | 004389-09-7 | 49 |
| 4 | | 6-Methyl-8-phenylbenzocyclohepte... | 246 | C18H14O | 1000211-20-7 | 47 |
| 5 | | Tricyclo[7.3.0.0(3,8)]dodec-1(9)... | 226 | C14H14N2O | 1000160-53-8 | 38 |



Data Path : Z:\HPCHEM1\BNA_G\DATA\BG081116\
 Data File : BG023639.D
 Acq On : 12 Aug 2016 1:58
 Operator : UM/SJ
 Sample : H4360-07 5X
 Misc :
 ALS Vial : 19 Sample Multiplier: 1

Instrument :
 BNA_G
 ClientSampleId :
 PR001-SS002-1218-01

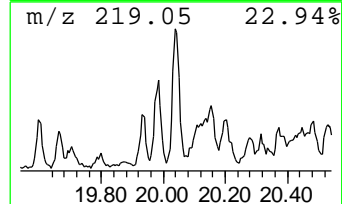
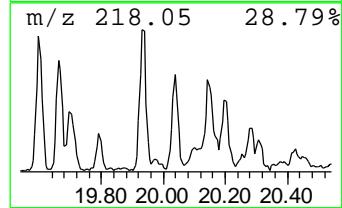
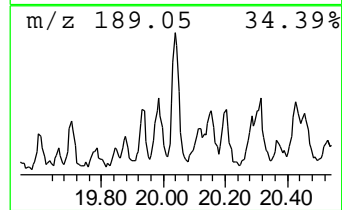
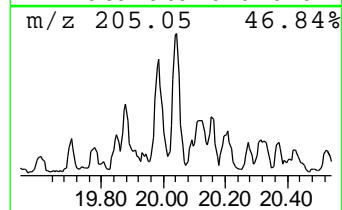
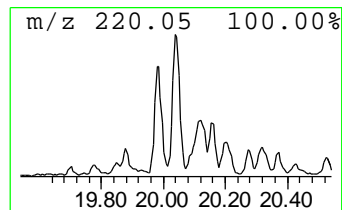
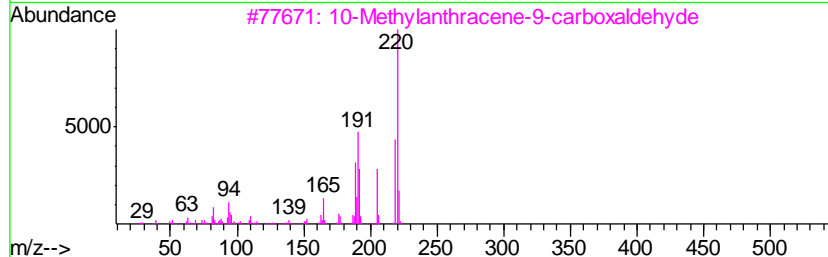
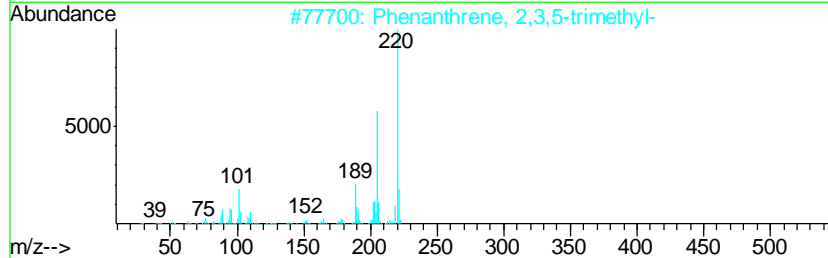
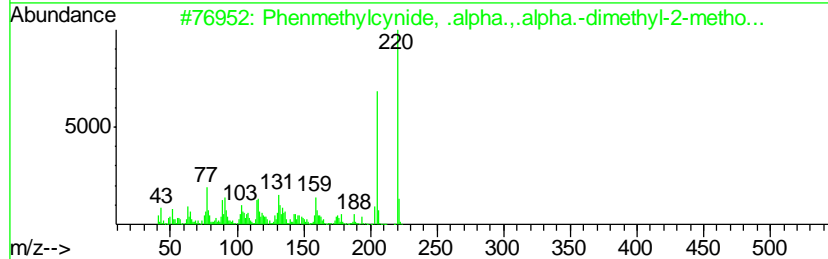
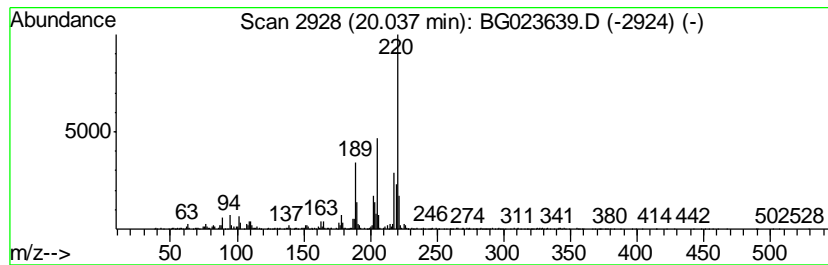
Quant Method : Z:\HPCHEM1\BNA_G\METHODS\SOM02.2-EPA-BG080416.M
 Quant Title : SVOA CALIBRATION

TIC Library : C:\DATABASE\NIST11.L
 TIC Integration Parameters: LSCINT.P

 Peak Number 17 Phenmethylcynide, .alpha.,.... Concentration Rank 14

| R.T. | EstConc | Area | Relative to ISTD | R.T. |
|-------|------------|--------|------------------|-------|
| 20.04 | 3.71 ng/ul | 914870 | Chrysene-d12 | 21.88 |

| Hit# | of | Tentative ID | MW | MolForm | CAS# | Qual |
|------|----|-------------------------------------|-----|------------|--------------|------|
| 1 | 5 | Phenmethylcynide, .alpha.,.alpha... | 220 | C11H12N2O3 | 1000128-94-6 | 62 |
| 2 | | Phenanthrene, 2,3,5-trimethyl- | 220 | C17H16 | 003674-73-5 | 62 |
| 3 | | 10-Methylanthracene-9-carboxalde... | 220 | C16H12O | 007072-00-6 | 52 |
| 4 | | Noscapine | 413 | C22H23NO7 | 000128-62-1 | 50 |
| 5 | | 7-Nitro-6-methoxy-2,3-dimethylin... | 220 | C11H12N2O3 | 068289-71-4 | 50 |



Data Path : Z:\HPCHEM1\BNA_G\DATA\BG081116\
 Data File : BG023639.D
 Acq On : 12 Aug 2016 1:58
 Operator : UM/SJ
 Sample : H4360-07 5X
 Misc :
 ALS Vial : 19 Sample Multiplier: 1

Instrument :
 BNA_G
 ClientSampleID :
 PR001-SS002-1218-01

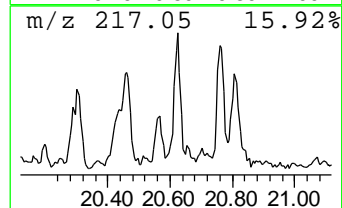
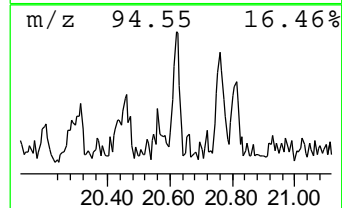
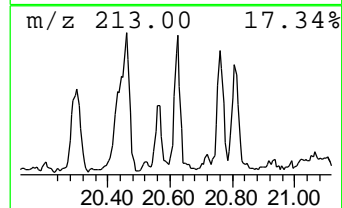
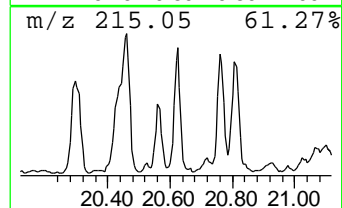
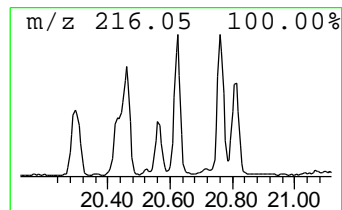
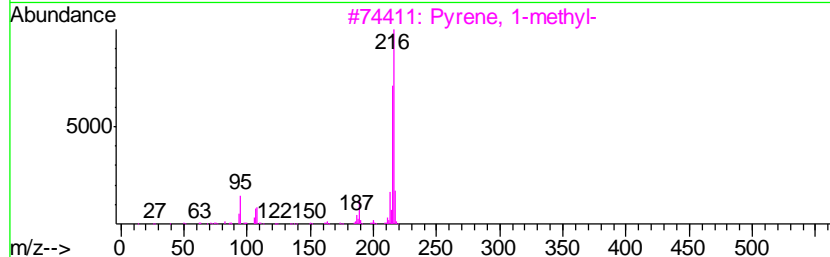
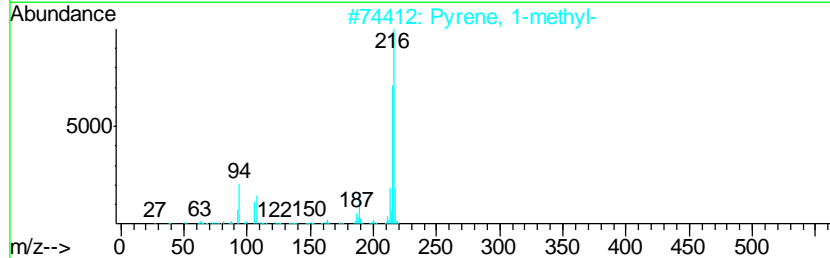
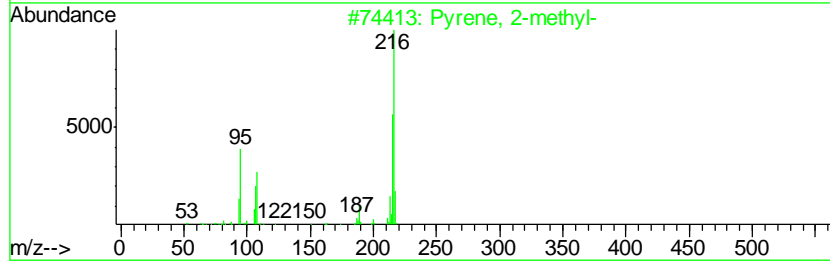
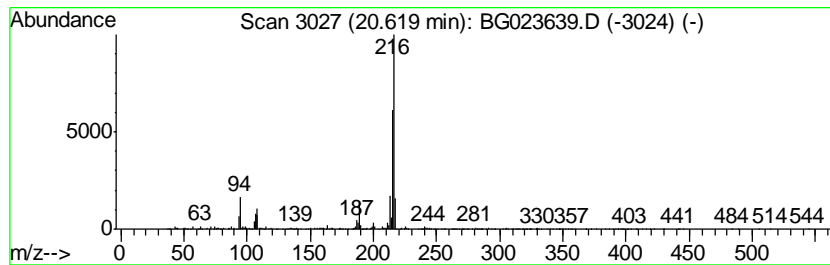
Quant Method : Z:\HPCHEM1\BNA_G\METHODS\SOM02.2-EPA-BG080416.M
 Quant Title : SVOA CALIBRATION

TIC Library : C:\DATABASE\NIST11.L
 TIC Integration Parameters: LSCINT.P

 Peak Number 18 Pyrene, 2-methyl- Concentration Rank 15

| R.T. | EstConc | Area | Relative to ISTD | R.T. |
|-------|------------|--------|------------------|-------|
| 20.62 | 3.71 ng/ul | 913425 | Chrysene-d12 | 21.88 |

| Hit# | of | Tentative ID | MW | MolForm | CAS# | Qual |
|------|----|-------------------|-----|---------|-------------|------|
| 1 | 5 | Pyrene, 2-methyl- | 216 | C17H12 | 003442-78-2 | 97 |
| 2 | | Pyrene, 1-methyl- | 216 | C17H12 | 002381-21-7 | 94 |
| 3 | | Pyrene, 1-methyl- | 216 | C17H12 | 002381-21-7 | 93 |
| 4 | | Pyrene, 1-methyl- | 216 | C17H12 | 002381-21-7 | 91 |
| 5 | | Pyrene, 1-methyl- | 216 | C17H12 | 002381-21-7 | 90 |



Data Path : Z:\HPCHEM1\BNA_G\DATA\BG081116\
 Data File : BG023639.D
 Acq On : 12 Aug 2016 1:58
 Operator : UM/SJ
 Sample : H4360-07 5X
 Misc :
 ALS Vial : 19 Sample Multiplier: 1

Instrument :
 BNA_G
 ClientSampleId :
 PR001-SS002-1218-01

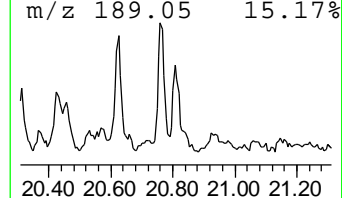
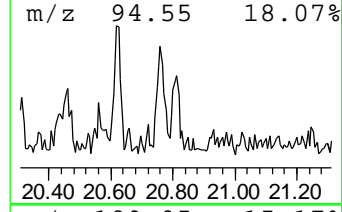
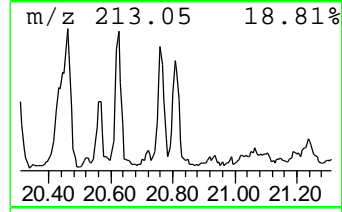
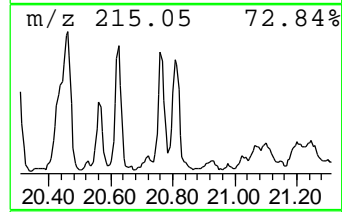
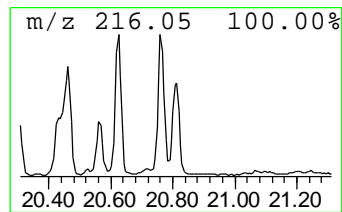
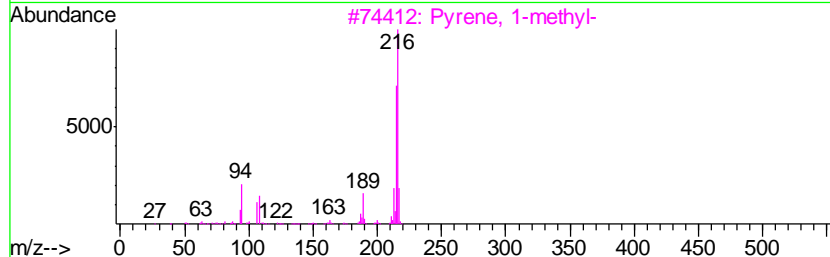
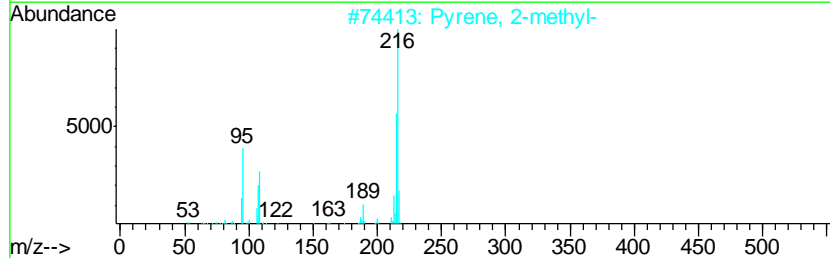
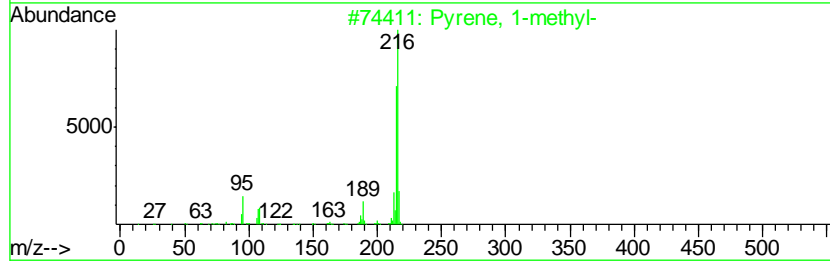
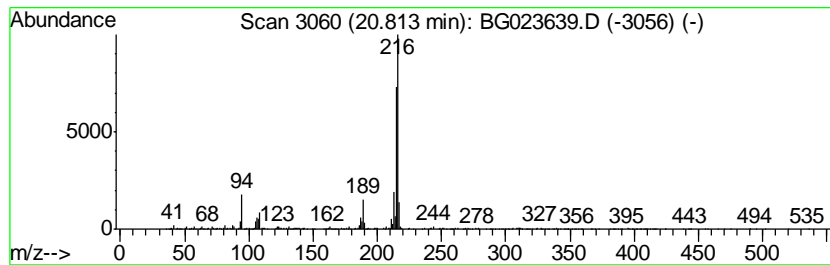
Quant Method : Z:\HPCHEM1\BNA_G\METHODS\SOM02.2-EPA-BG080416.M
 Quant Title : SVOA CALIBRATION

TIC Library : C:\DATABASE\NIST11.L
 TIC Integration Parameters: LSCINT.P

 Peak Number 20 Pyrene, 1-methyl- Concentration Rank 8

| R.T. | EstConc | Area | Relative to ISTD | R.T. |
|-------|------------|---------|------------------|-------|
| 20.81 | 4.86 ng/ul | 1195900 | Chrysene-d12 | 21.88 |

| Hit# | of | Tentative ID | MW | MolForm | CAS# | Qual |
|------|----|-------------------------|-----|---------|-------------|------|
| 1 | 5 | Pyrene, 1-methyl- | 216 | C17H12 | 002381-21-7 | 95 |
| 2 | | Pyrene, 2-methyl- | 216 | C17H12 | 003442-78-2 | 94 |
| 3 | | Pyrene, 1-methyl- | 216 | C17H12 | 002381-21-7 | 91 |
| 4 | | Pyrene, 1-methyl- | 216 | C17H12 | 002381-21-7 | 91 |
| 5 | | Fluoranthene, 2-methyl- | 216 | C17H12 | 033543-31-6 | 90 |



Data Path : Z:\HPCHEM1\BNA_G\DATA\BG081116\
 Data File : BG023639.D
 Acq On : 12 Aug 2016 1:58
 Operator : UM/SJ
 Sample : H4360-07 5X
 Misc :
 ALS Vial : 19 Sample Multiplier: 1

Instrument :
 BNA_G
 ClientSampleId :
 PR001-SS002-1218-01

Quant Method : Z:\HPCHEM1\BNA_G\METHODS\SOM02.2-EPA-BG080416.M
 Quant Title : SVOA CALIBRATION

TIC Library : C:\DATABASE\NIST11.L
 TIC Integration Parameters: LSCINT.P

| TIC Top Hit name | RT | EstConc | Units | Response | --Internal Standard-- | | | |
|-----------------------|-------|---------|-------|----------|-----------------------|-------|---------|------|
| | | | | | # | RT | Resp | Conc |
| 9H-Fluorene, 9-me... | 16.84 | 2.1 | ng/ul | 292070 | 4 | 17.55 | 2717300 | 20.0 |
| 4-Methylnaphtho[1... | 18.13 | 3.5 | ng/ul | 474784 | 4 | 17.55 | 2717300 | 20.0 |
| Phenanthrene, 2-m... | 18.43 | 10.2 | ng/ul | 1384270 | 4 | 17.55 | 2717300 | 20.0 |
| Phenanthrene, 1-m... | 18.66 | 6.8 | ng/ul | 918766 | 4 | 17.55 | 2717300 | 20.0 |
| unknown-01 | 18.92 | 4.4 | ng/ul | 591897 | 4 | 17.55 | 2717300 | 20.0 |
| Phenanthrene, 2,5... | 19.17 | 2.8 | ng/ul | 377850 | 4 | 17.55 | 2717300 | 20.0 |
| Phenanthrene, 3,6... | 19.22 | 4.8 | ng/ul | 648082 | 4 | 17.55 | 2717300 | 20.0 |
| di-p-Tolylacetylene | 19.40 | 5.0 | ng/ul | 684019 | 4 | 17.55 | 2717300 | 20.0 |
| 9,10-Dimethylanth... | 19.48 | 6.6 | ng/ul | 902311 | 4 | 17.55 | 2717300 | 20.0 |
| 1H-Cyclopenta[ll]p... | 19.66 | 2.1 | ng/ul | 292104 | 4 | 17.55 | 2717300 | 20.0 |
| Phenmethylcynide,... | 20.04 | 3.7 | ng/ul | 914870 | 5 | 21.88 | 4925760 | 20.0 |
| Pyrene, 2-methyl- | 20.62 | 3.7 | ng/ul | 913425 | 5 | 21.88 | 4925760 | 20.0 |
| Pyrene, 1-methyl- | 20.81 | 4.9 | ng/ul | 1195900 | 5 | 21.88 | 4925760 | 20.0 |