

Data Path : Z:\HPCHEM1\BNA\_G\DATA\BG081216\  
 Data File : BG023653.D  
 Acq On : 12 Aug 2016 13:03  
 Operator : UM/SJ  
 Sample : H4360-10 5X  
 Misc :  
 ALS Vial : 8 Sample Multiplier: 1

Instrument :  
 BNA\_G  
 ClientSampleId :  
 PR001-SS003-0002-01

Quant Time: Aug 13 01:32:55 2016  
 Quant Method : Z:\HPCHEM1\BNA\_G\METHODS\SOM02.2-EPA-BG080416.M  
 Quant Title : SVOA CALIBRATION  
 QLast Update : Sat Aug 13 01:31:24 2016  
 Response via : Initial Calibration

Internal Standards	R.T.	QIon	Response	Conc	Units	Dev(Min)
1) 1,4-Dichlorobenzene-d4	8.12	152	114494	20.00	ng/ul	0.00
18) Naphthalene-d8	10.95	136	635075	20.00	ng/ul	0.00
35) Acenaphthene-d10	14.79	164	480651	20.00	ng/ul	0.00
61) Phenanthrene-d10	17.55	188	1153201	20.00	ng/ul	0.00
75) Chrysene-d12	21.88	240	913192	20.00	ng/ul	0.00
83) Perylene-d12	25.29	264	929855	20.00	ng/ul	0.00

## System Monitoring Compounds

3) 1,4-Dioxane-d8	3.48	96	383	0.14	ng/uL	0.00
5) Phenol-d5	7.27	99	41534	3.60	ng/ul	0.00
7) Bis-(2-Chloroethyl)ether-d	7.43	67	23330	3.16	ng/ul	0.00
9) 2-Chlorophenol-d4	7.65	132	35445	4.50	ng/ul	0.01
13) 4-Methylphenol-d8	8.83	113	31812	3.53	ng/ul	0.01
19) Nitrobenzene-d5	9.29	128	13826	2.76	ng/ul	0.00
22) 2-Nitrophenol-d4	10.03	143	24764	4.31	ng/ul	0.01
26) 2,4-Dichlorophenol-d3	10.59	165	50087	4.62	ng/ul	0.02
29) 4-Chloroaniline-d4	11.10	131	649	0.05	ng/ul	0.01
43) Dimethylphthalate-d6	14.18	166	127073	3.23	ng/ul	0.00
46) Acenaphthylene-d8	14.48	160	154833	3.50	ng/ul	0.00
51) 4-Nitrophenol-d4	15.00	143	115	0.02	ng/ul	0.00
57) Fluorene-d10	15.78	176	131564	3.62	ng/ul	0.00
62) 4,6-Dinitro-2-methylphenol	15.91	200	196	0.03	ng/ul	0.00
70) Anthracene-d10	17.65	188	195179	3.76	ng/ul	0.00
76) Pyrene-d10	19.94	212	183282	3.97	ng/ul	0.00
87) Benzo(a)pyrene-d12	25.05	264	150966	3.59	ng/ul	0.00

## Target Compounds

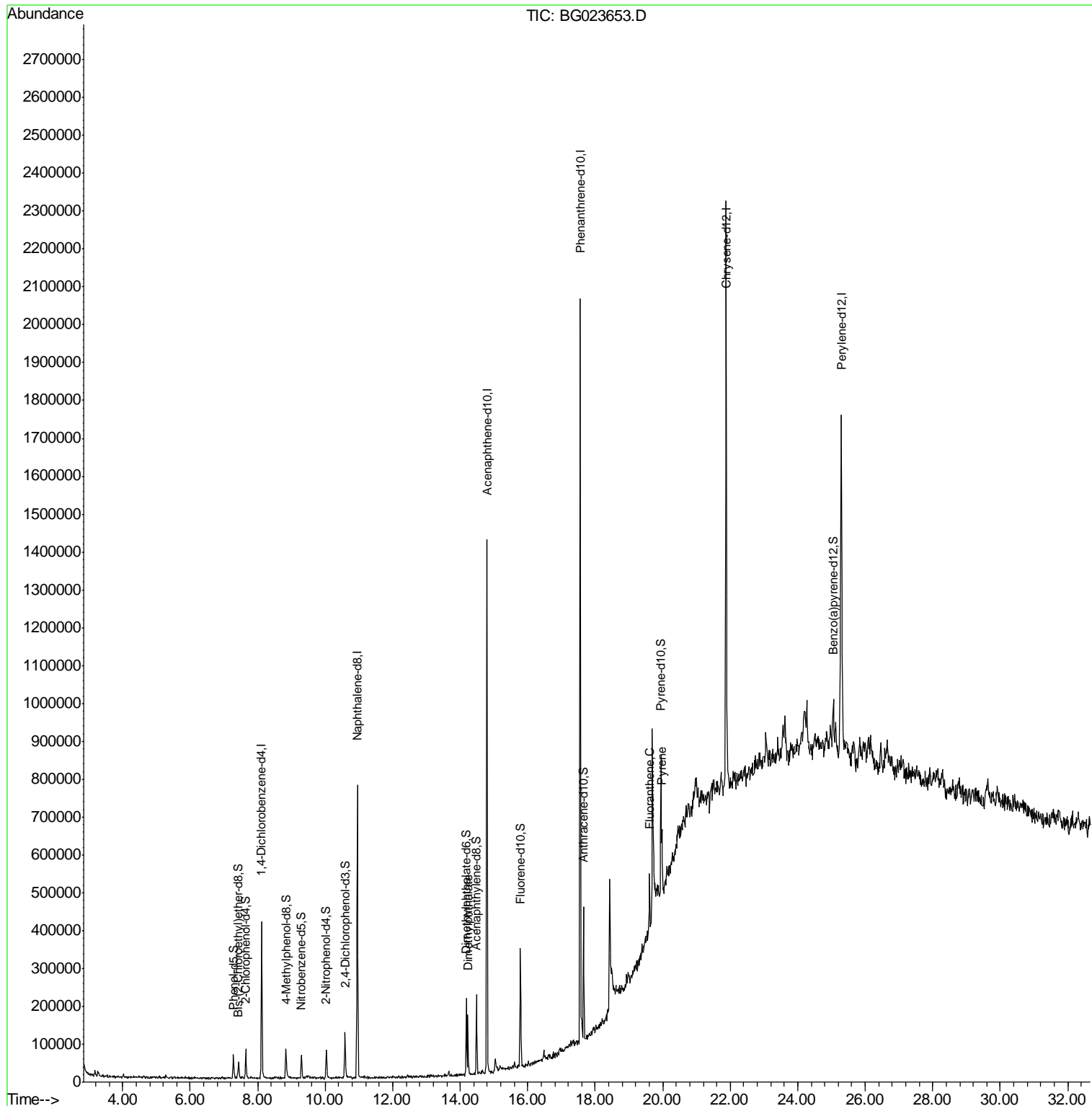
					Qvalue
44) Dimethylphthalate	14.23	163	104523	2.68 ng/ul#	98
74) Fluoranthene	19.61	202	94621	1.55 ng/ul#	90
77) Pyrene	19.97	202	87453	1.55 ng/ul	97

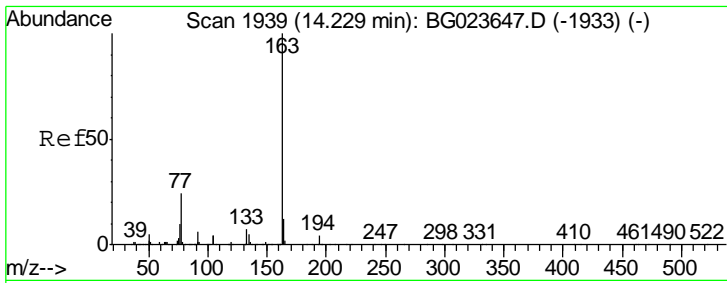
(#) = qualifier out of range (m) = manual integration (+) = signals summed

Data Path : Z:\HPCHEM1\BNA\_G\DATA\BG081216\  
 Data File : BG023653.D  
 Acq On : 12 Aug 2016 13:03  
 Operator : UM/SJ  
 Sample : H4360-10 5X  
 Misc :  
 ALS Vial : 8 Sample Multiplier: 1

**Instrument :**  
 BNA\_G  
**ClientSampleId :**  
 PR001-SS003-0002-01

Quant Time: Aug 13 01:32:55 2016  
 Quant Method : Z:\HPCHEM1\BNA\_G\METHODS\SOM02.2-EPA-BG080416.M  
 Quant Title : SVOA CALIBRATION  
 QLast Update : Sat Aug 13 01:31:24 2016  
 Response via : Initial Calibration

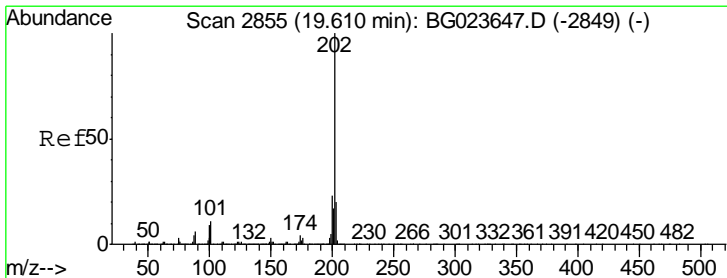
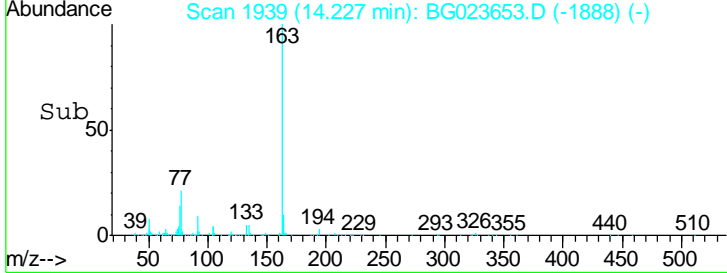
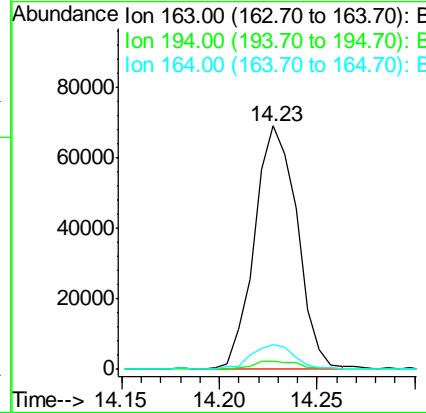
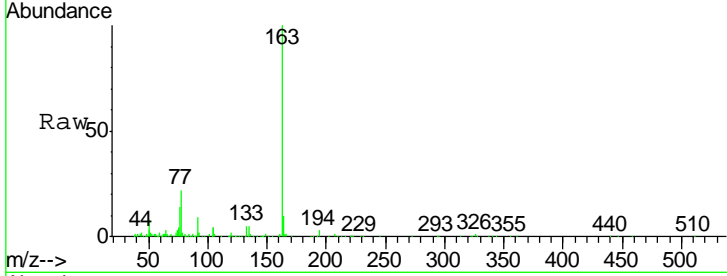




#44  
 Dimethylphthalate  
 Concen: 2.68 ng/ul  
 RT: 14.23 min Scan# 1939  
 Delta R.T. -0.00 min  
 Lab File: BG023653.D  
 Acq: 12 Aug 2016 13:03

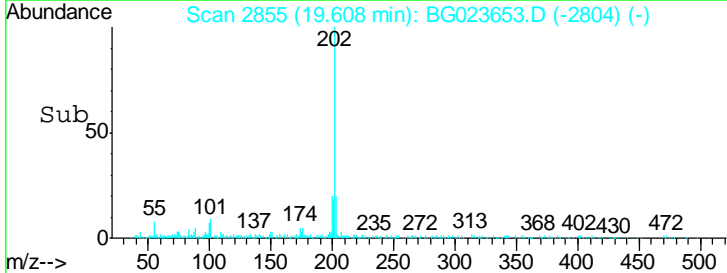
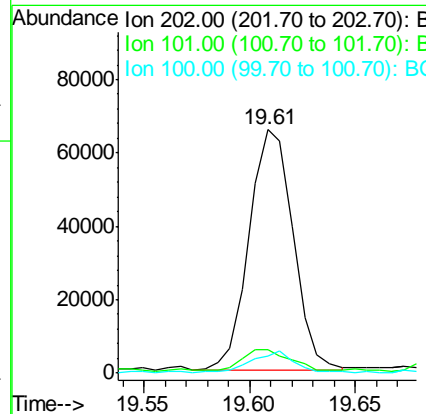
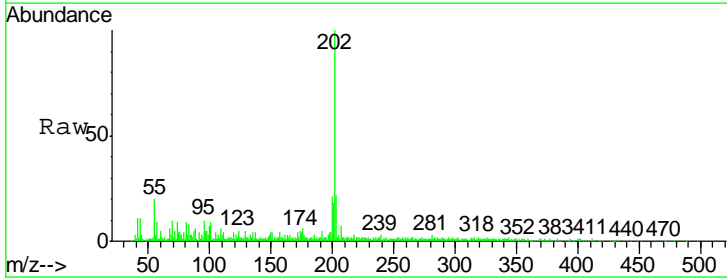
Instrument :  
 BNA\_G  
 ClientSampleId :  
 PR001-SS003-0002-01

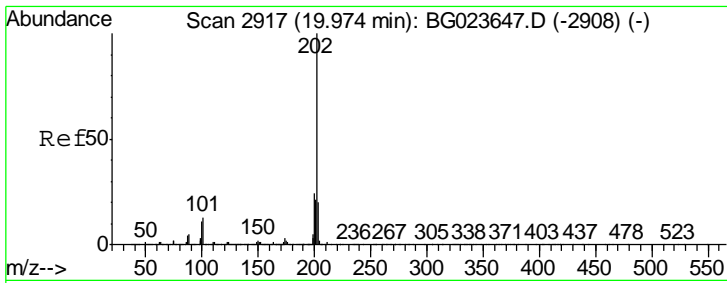
Tgt Ion	Resp	Lower	Upper
163	104523		
194	3.4	3.4	5.2#
164	10.1	8.8	13.2



#74  
 Fluoranthene  
 Concen: 1.55 ng/ul  
 RT: 19.61 min Scan# 2855  
 Delta R.T. -0.00 min  
 Lab File: BG023653.D  
 Acq: 12 Aug 2016 13:03

Tgt Ion	Resp	Lower	Upper
202	94621		
101	9.4	10.6	16.0#
100	6.9	8.7	13.1#





#77  
 Pyrene  
 Concen: 1.55 ng/ul  
 RT: 19.97 min Scan# 2917  
 Delta R.T. -0.00 min  
 Lab File: BG023653.D  
 Acq: 12 Aug 2016 13:03

Instrument :  
 BNA\_G  
 ClientSampleId :  
 PR001-SS003-0002-01

Tgt Ion: 202 Resp: 87453

Ion	Ratio	Lower	Upper
202	100		
101	14.0	12.5	18.7
100	12.3	10.2	15.4

