

Data Path : Z:\HPCHEM1\BNA_G\DATA\BG081216\
 Data File : BG023667.D
 Acq On : 12 Aug 2016 22:13
 Operator : UM/SJ
 Sample : H4385-21MS
 Misc :
 ALS Vial : 21 Sample Multiplier: 1

Instrument :
 BNA_G
 ClientSampleId :
 P003-SS001-1218-01MS

Manual Integrations
 APPROVED

sohil
 8/15/2016 6:50:00 PM

Quant Time: Aug 13 04:47:09 2016
 Quant Method : Z:\HPCHEM1\BNA_G\METHODS\SOM02.2-EPA-BG080416.M
 Quant Title : SVOA CALIBRATION
 QLast Update : Sat Aug 13 03:19:50 2016
 Response via : Initial Calibration

Internal Standards	R.T.	QIon	Response	Conc	Units	Dev(Min)
1) 1,4-Dichlorobenzene-d4	8.11	152	139674	20.00	ng/ul	-0.02
18) Naphthalene-d8	10.95	136	652865	20.00	ng/ul	-0.02
35) Acenaphthene-d10	14.79	164	448798	20.00	ng/ul	-0.02
61) Phenanthrene-d10	17.55	188	974942	20.00	ng/ul	-0.01
75) Chrysene-d12	21.88	240	978461	20.00	ng/ul	-0.02
83) Perylene-d12	25.29	264	997565	20.00	ng/ul	-0.04

System Monitoring Compounds

3) 1,4-Dioxane-d8	3.49	96	9654	2.94	ng/uL	0.00
5) Phenol-d5	7.27	99	281632	20.02	ng/ul	-0.02
7) Bis-(2-Chloroethyl)ether-d	7.43	67	181537	20.14	ng/ul	-0.02
9) 2-Chlorophenol-d4	7.64	132	199131	20.75	ng/ul	-0.02
13) 4-Methylphenol-d8	8.83	113	223556	20.35	ng/ul	-0.02
19) Nitrobenzene-d5	9.30	128	112946	21.95	ng/ul	-0.01
22) 2-Nitrophenol-d4	10.02	143	135182	22.87	ng/ul	-0.02
26) 2,4-Dichlorophenol-d3	10.57	165	244112	21.90	ng/ul	-0.02
29) 4-Chloroaniline-d4	11.09	131	272262	20.82	ng/ul	-0.02
43) Dimethylphthalate-d6	14.18	166	836928	22.78	ng/ul	-0.01
46) Acenaphthylene-d8	14.48	160	979950	23.70	ng/ul	-0.01
51) 4-Nitrophenol-d4	15.01	143	144602	23.05	ng/ul	-0.02
57) Fluorene-d10	15.79	176	759521	22.37	ng/ul	-0.01
62) 4,6-Dinitro-2-methylphenol	15.92	200	140573	22.47	ng/ul	-0.02
70) Anthracene-d10	17.65	188	1103801	25.13	ng/ul	-0.01
76) Pyrene-d10	19.95	212	1182601	23.88	ng/ul	-0.02
87) Benzo(a)pyrene-d12	25.04	264	1150889	25.49	ng/ul	-0.05

Target Compounds

Target Compounds	R.T.	QIon	Response	Conc	Units	Qvalue
6) Phenol	7.30	94	298222	20.35	ng/ul#	71
10) 2-Chlorophenol	7.67	128	202776	20.74	ng/ul#	85
15) N-Nitroso-di-n-propylamine	8.92	70	223723	21.11	ng/ul#	86
33) 4-Chloro-3-methylphenol	12.24	107	337082	23.30	ng/ul	84
44) Dimethylphthalate	14.23	163	456649	12.55	ng/ul	100
47) Acenaphthylene	14.51	152	104112	2.41	ng/ul	97
49) Acenaphthene	14.85	153	711746	24.15	ng/ul	96
52) 4-Nitrophenol	15.02	109	124223m	19.77	ng/ul	
54) 2,4-Dinitrotoluene	15.16	165	279526	23.39	ng/ul#	74
58) Fluorene	15.84	166	44818	1.23	ng/ul#	90
68) Pentachlorophenol	17.21	266	150622	22.92	ng/ul	93
69) Phenanthrene	17.60	178	723279	14.32	ng/ul	99
71) Anthracene	17.69	178	147194	2.86	ng/ul	95
74) Fluoranthene	19.61	202	1449810	28.05	ng/ul	94
77) Pyrene	19.98	202	2677019	44.26	ng/ul	99
80) Benzo(a)anthracene	21.86	228	918865	16.68	ng/ul#	95
82) Chrysene	21.93	228	933385	18.63	ng/ul#	94
85) Benzo(b)fluoranthene	24.20	252	1008382	17.77	ng/ul#	94
86) Benzo(k)fluoranthene	24.26	252	341860m	6.12	ng/ul	
88) Benzo(a)pyrene	25.13	252	850416m	15.52	ng/ul	
89) Indeno(1,2,3-cd)pyrene	29.19	276	499244	7.76	ng/ul#	87
91) Benzo(g,h,i)perylene	30.41	276	478857	8.97	ng/ul#	87

Data Path : Z:\HPCHEM1\BNA_G\DATA\BG081216\
 Data File : BG023667.D
 Acq On : 12 Aug 2016 22:13
 Operator : UM/SJ
 Sample : H4385-21MS
 Misc :
 ALS Vial : 21 Sample Multiplier: 1

Instrument :
 BNA_G
ClientSampleId :
 P003-SS001-1218-01MS

Manual Integrations
APPROVED
 sohil
 8/15/2016 6:50:00 PM

Quant Time: Aug 13 04:47:09 2016
 Quant Method : Z:\HPCHEM1\BNA_G\METHODS\SOM02.2-EPA-BG080416.M
 Quant Title : SVOA CALIBRATION
 QLast Update : Sat Aug 13 03:19:50 2016
 Response via : Initial Calibration

Internal Standards R.T. QIon Response Conc Units Dev(Min)

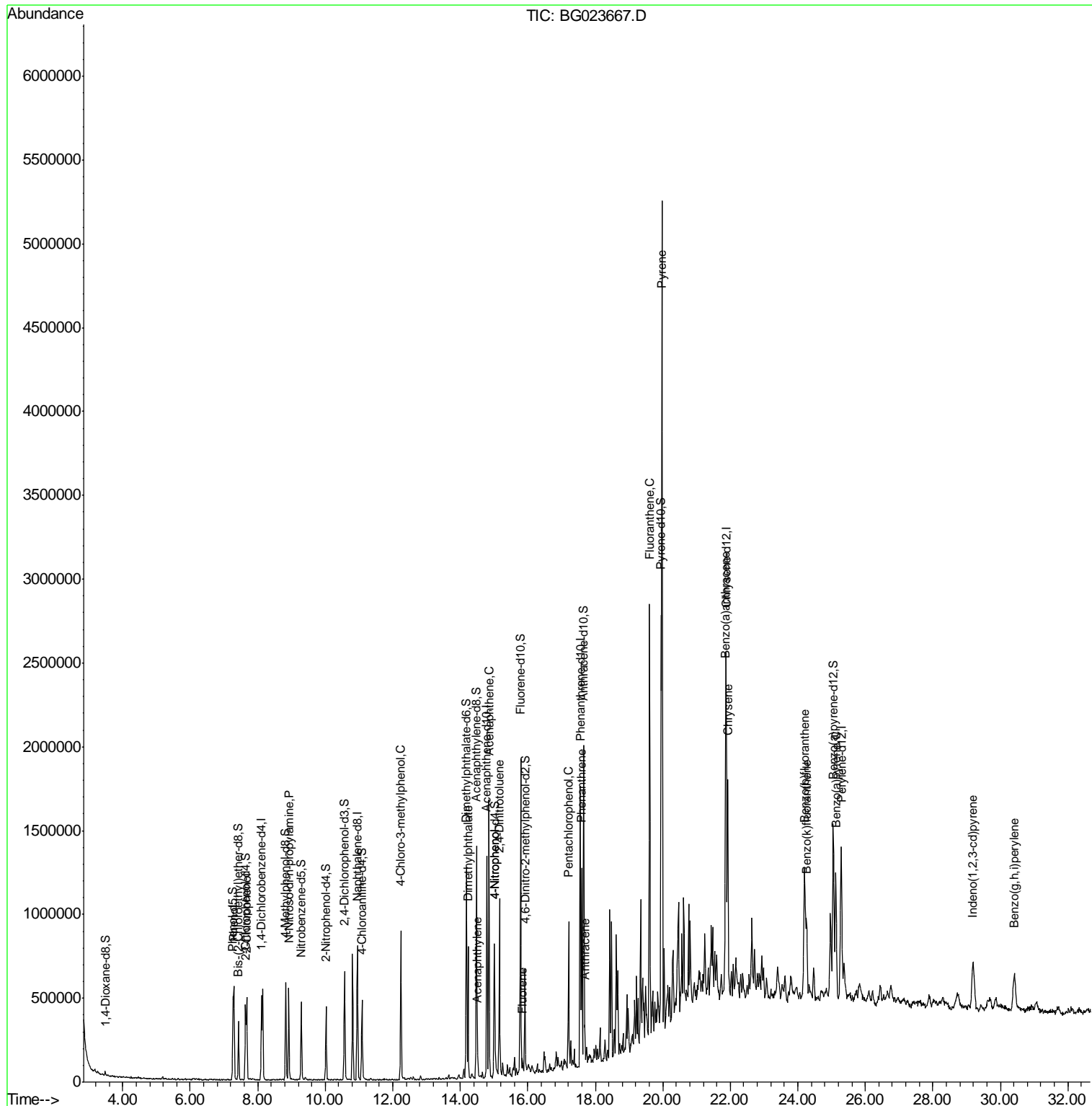
(#) = qualifier out of range (m) = manual integration (+) = signals summed

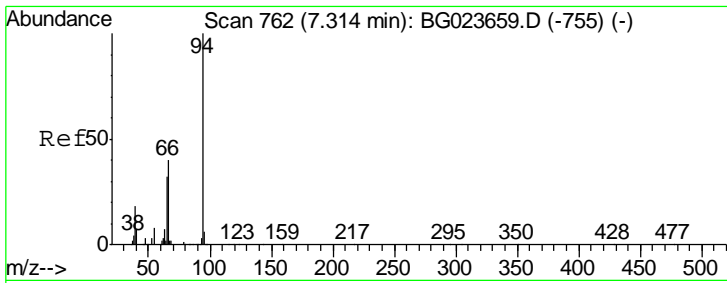
Data Path : Z:\HPCHEM1\BNA_G\DATA\BG081216\
 Data File : BG023667.D
 Acq On : 12 Aug 2016 22:13
 Operator : UM/SJ
 Sample : H4385-21MS
 Misc :
 ALS Vial : 21 Sample Multiplier: 1

Instrument :
 BNA_G
 Client Sampled :
 P003-SS001-1218-01MS

Manual Integrations
APPROVED
 sohil
 8/15/2016 6:50:00 PM

Quant Time: Aug 13 04:47:09 2016
 Quant Method : Z:\HPCHEM1\BNA_G\METHODS\SOM02.2-EPA-BG080416.M
 Quant Title : SVOA CALIBRATION
 QLast Update : Sat Aug 13 03:19:50 2016
 Response via : Initial Calibration





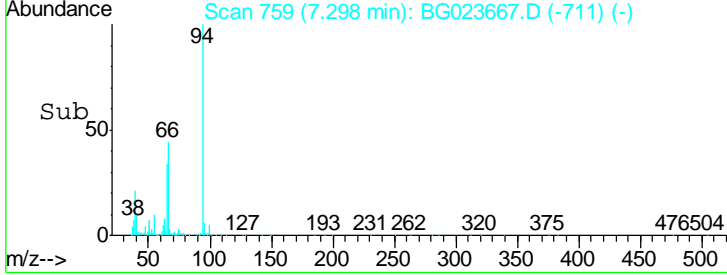
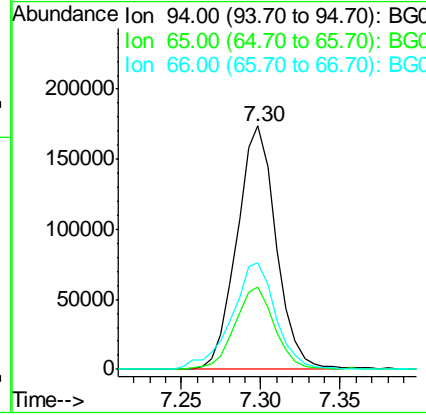
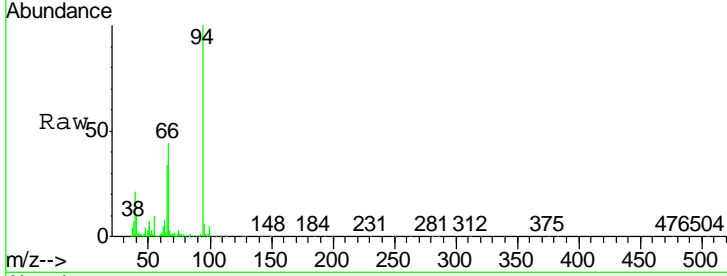
#6
 Phenol
 Concen: 20.35 ng/ul
 RT: 7.30 min Scan# 759
 Delta R.T. -0.02 min
 Lab File: BG023667.D
 Acq: 12 Aug 2016 22:13

Instrument :
 BNA_G
ClientSampled :
 P003-SS001-1218-01MS

Tgt Ion	Resp	Lower	Upper
94	100		
65	34.0	16.8	25.2#
66	44.0	22.6	33.8#

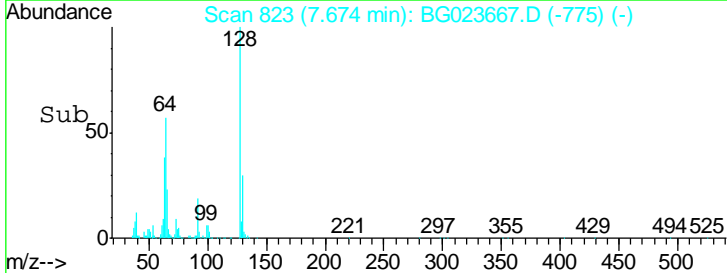
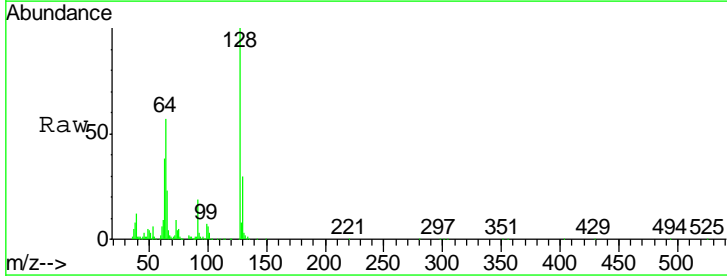
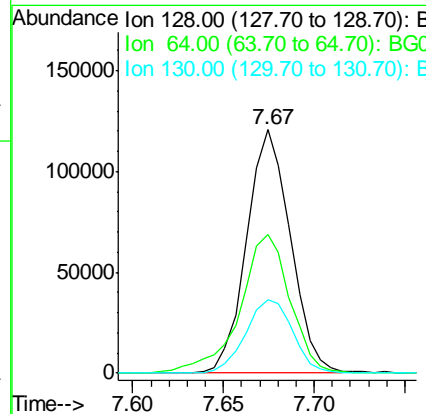
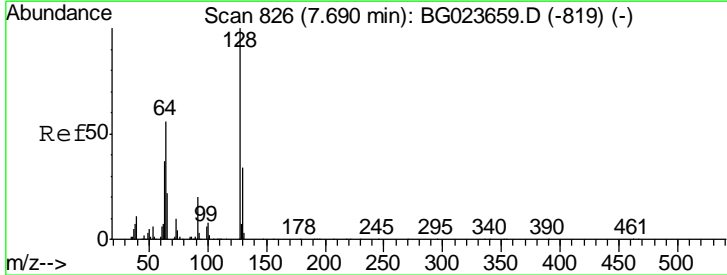
Manual Integrations
APPROVED

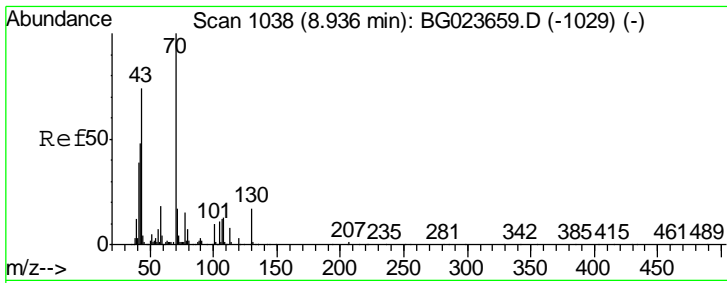
sohil
 8/15/2016 6:50:00 PM



#10
 2-Chlorophenol
 Concen: 20.74 ng/ul
 RT: 7.67 min Scan# 823
 Delta R.T. -0.02 min
 Lab File: BG023667.D
 Acq: 12 Aug 2016 22:13

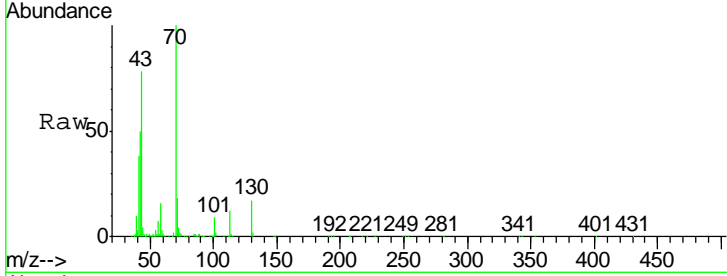
Tgt Ion	Resp	Lower	Upper
128	100		
64	56.8	34.2	51.4#
130	30.0	27.0	40.4





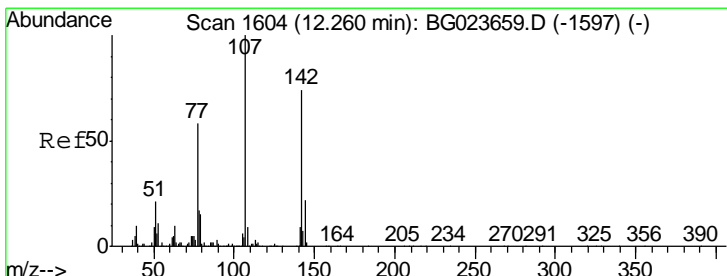
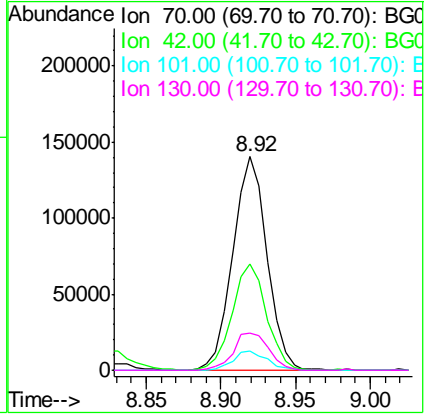
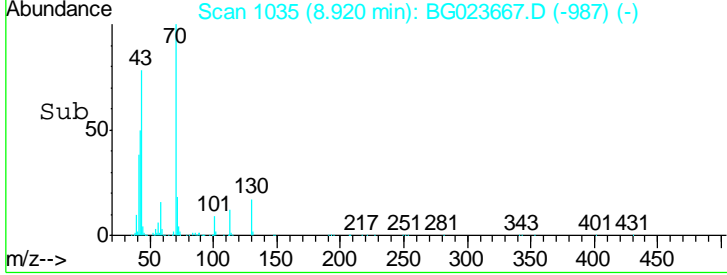
#15
 N-Nitroso-di-n-propylamine
 Concen: 21.11 ng/ul
 RT: 8.92 min Scan# 1035
 Delta R.T. -0.02 min
 Lab File: BG023667.D
 Acq: 12 Aug 2016 22:13

Instrument :
 BNA_G
ClientSampled :
 P003-SS001-1218-01MS

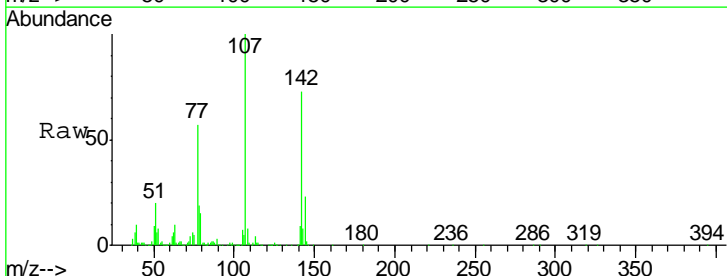


Tgt Ion	Resp	Lower	Upper
70	100		
42	50.0	31.4	47.2#
101	9.3	8.6	13.0
130	17.2	19.0	28.4#

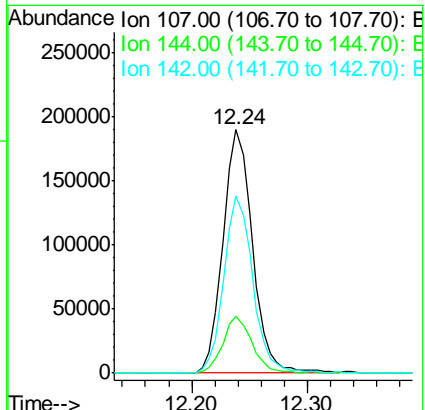
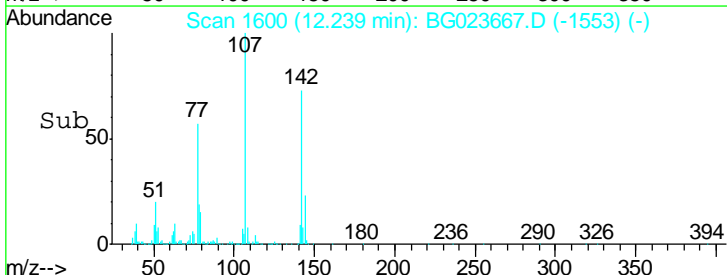
Manual Integrations
APPROVED
 sohil
 8/15/2016 6:50:00 PM

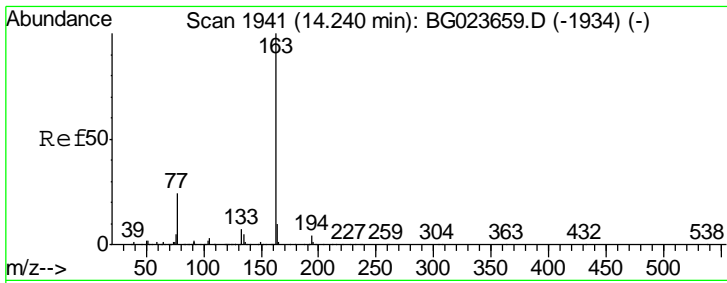


#33
 4-Chloro-3-methylphenol
 Concen: 23.30 ng/ul
 RT: 12.24 min Scan# 1600
 Delta R.T. -0.02 min
 Lab File: BG023667.D
 Acq: 12 Aug 2016 22:13



Tgt Ion	Resp	Lower	Upper
107	100		
144	23.4	22.7	34.1
142	72.8	71.6	107.4





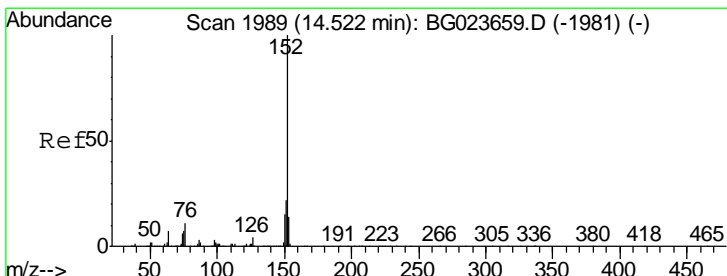
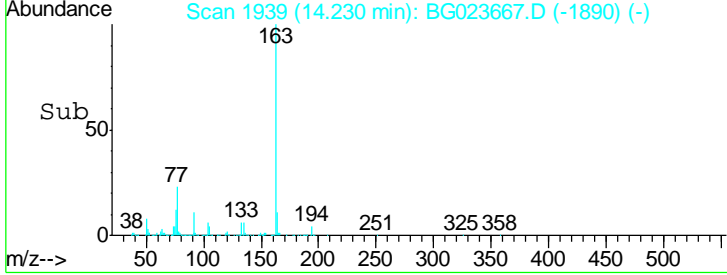
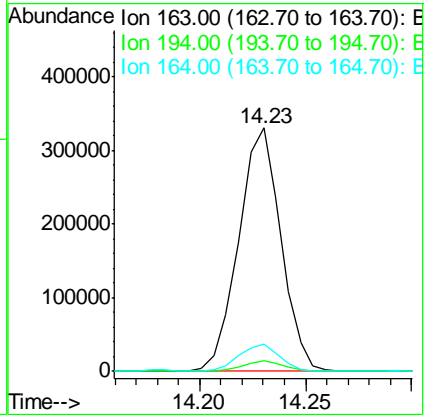
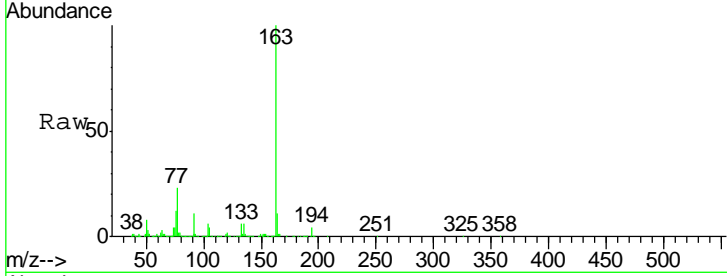
#44
 Dimethylphthalate
 Concen: 12.55 ng/ul
 RT: 14.23 min Scan# 1939
 Delta R.T. -0.01 min
 Lab File: BG023667.D
 Acq: 12 Aug 2016 22:13

Instrument :
 BNA_G
 ClientSampled :
 P003-SS001-1218-01MS

Tgt Ion	Resp	Lower	Upper
163	100		
194	4.3	3.4	5.2
164	11.0	8.8	13.2

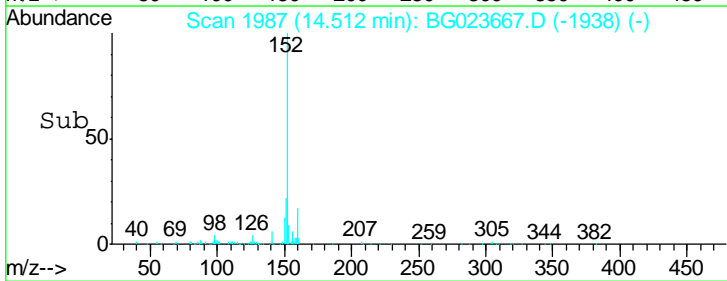
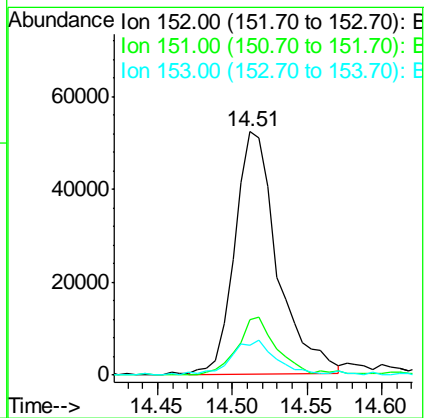
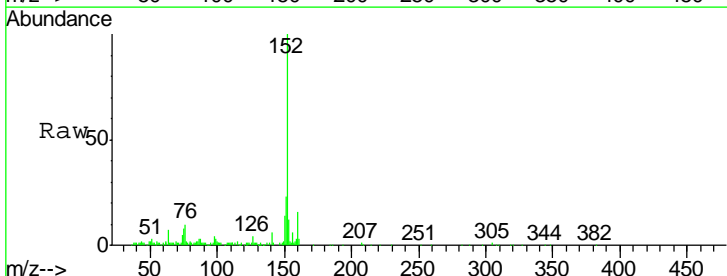
Manual Integrations
 APPROVED

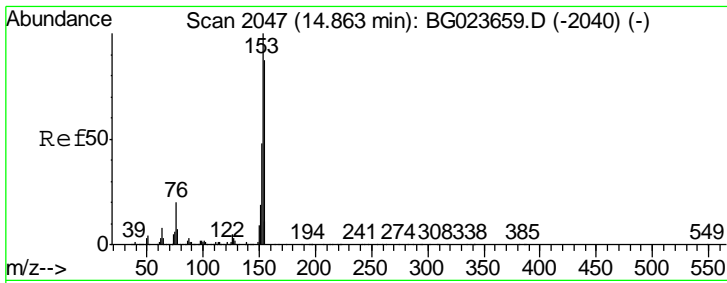
sohil
 8/15/2016 6:50:00 PM



#47
 Acenaphthylene
 Concen: 2.41 ng/ul
 RT: 14.51 min Scan# 1987
 Delta R.T. -0.01 min
 Lab File: BG023667.D
 Acq: 12 Aug 2016 22:13

Tgt Ion	Resp	Lower	Upper
152	100		
151	22.8	17.5	26.3
153	12.0	11.1	16.7



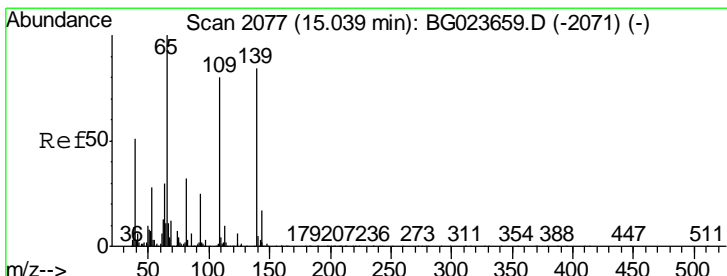
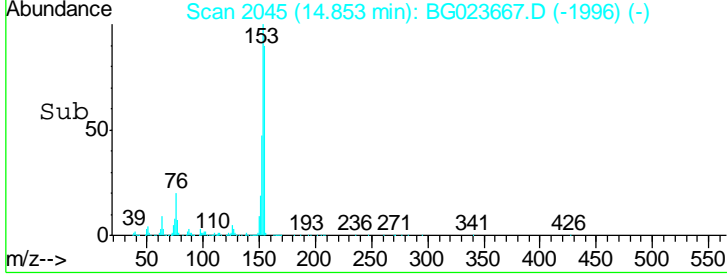
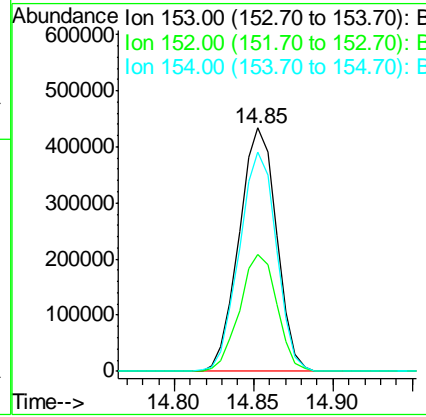
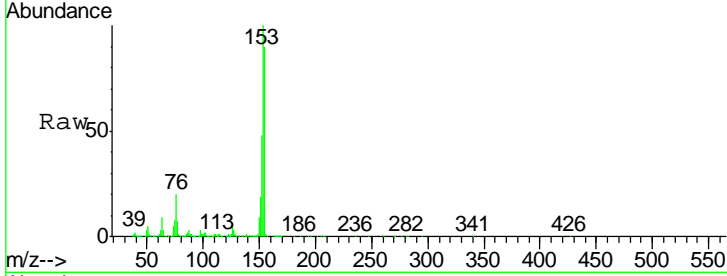


#49
 Acenaphthene
 Concen: 24.15 ng/ul
 RT: 14.85 min Scan# 2045
 Delta R.T. -0.01 min
 Lab File: BG023667.D
 Acq: 12 Aug 2016 22:13

Instrument :
 BNA_G
 ClientSampleId :
 P003-SS001-1218-01MS

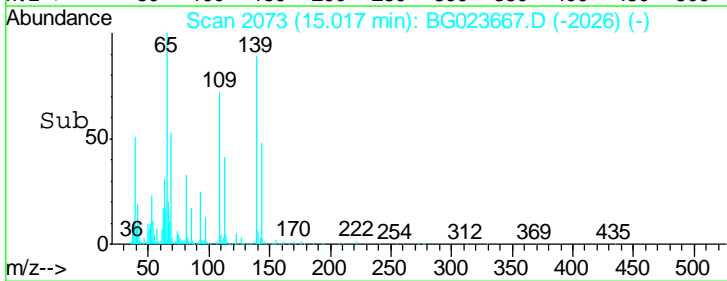
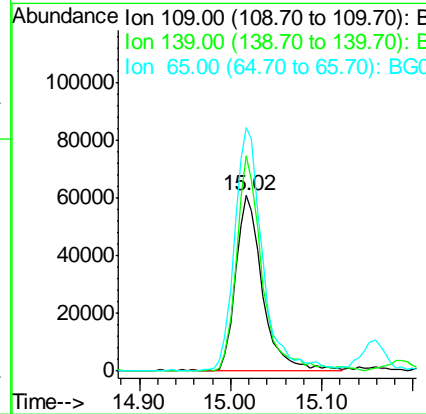
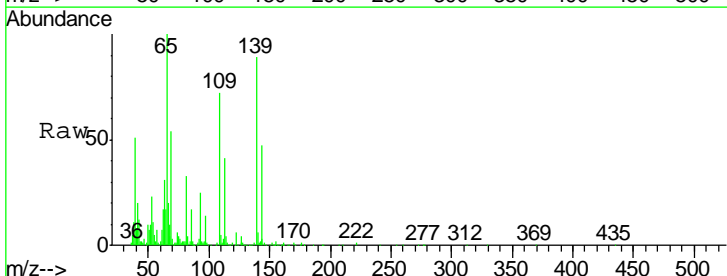
Tgt Ion	Resp	Lower	Upper
153	100		
152	48.1	37.3	55.9
154	89.9	68.2	102.2

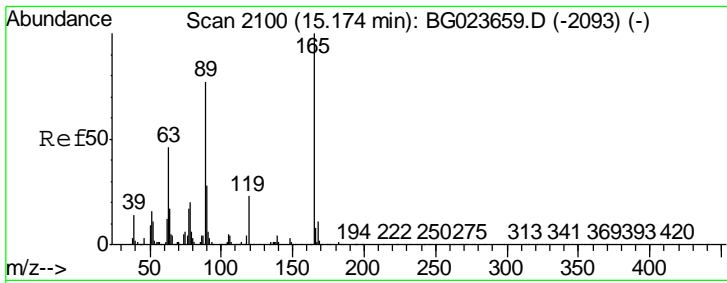
Manual Integrations
APPROVED
 sohil
 8/15/2016 6:50:00 PM



#52
 4-Nitrophenol
 Concen: 19.77 ng/ul m
 RT: 15.02 min Scan# 2073
 Delta R.T. -0.02 min
 Lab File: BG023667.D
 Acq: 12 Aug 2016 22:13

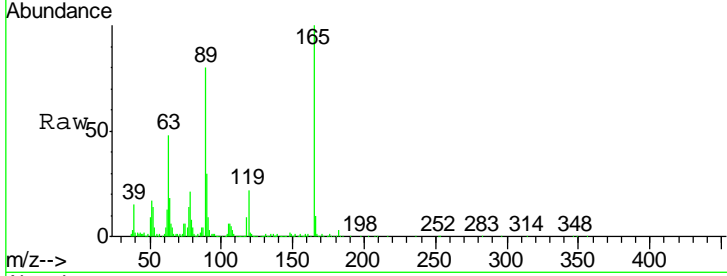
Tgt Ion	Resp	Lower	Upper
109	100		
139	123.3	136.1	204.1#
65	139.0	106.0	159.0





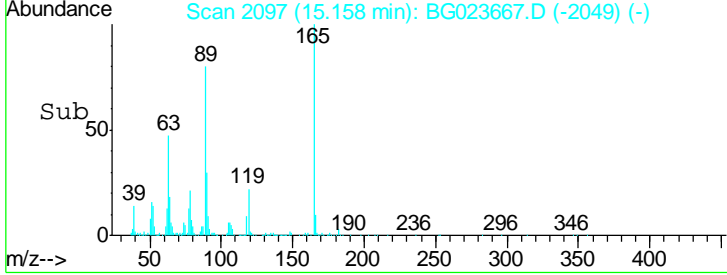
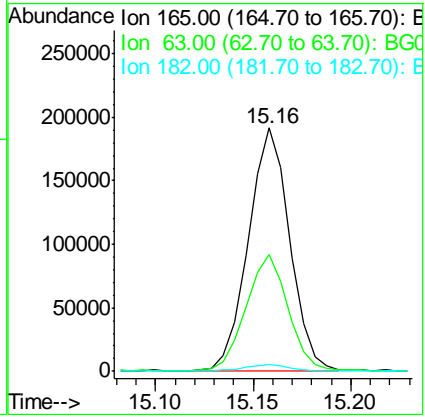
#54
 2,4-Dinitrotoluene
 Concen: 23.39 ng/ul
 RT: 15.16 min Scan# 2097
 Delta R.T. -0.02 min
 Lab File: BG023667.D
 Acq: 12 Aug 2016 22:13

Instrument :
 BNA_G
ClientSampled :
 P003-SS001-1218-01MS



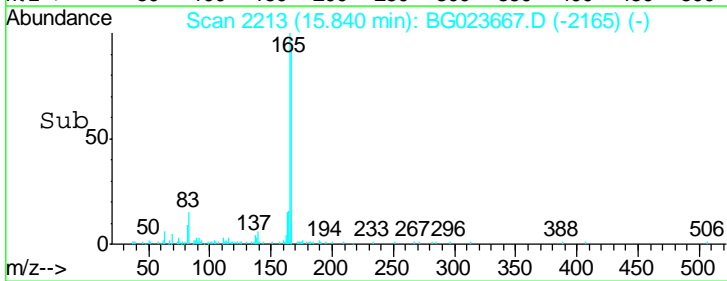
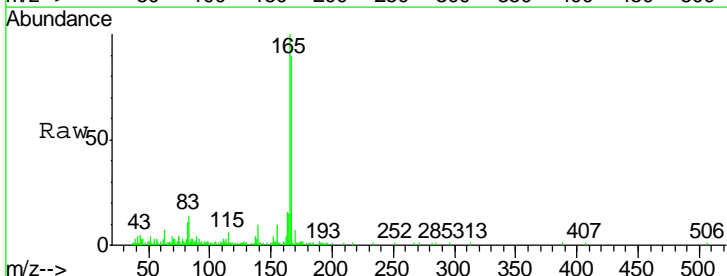
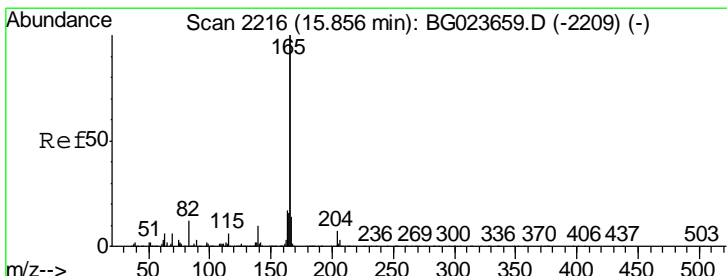
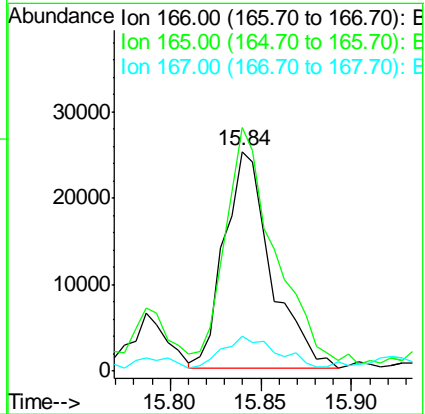
Tgt Ion	Resp	Lower	Upper
165	100		
63	47.9	25.7	38.5#
182	2.9	2.1	3.1

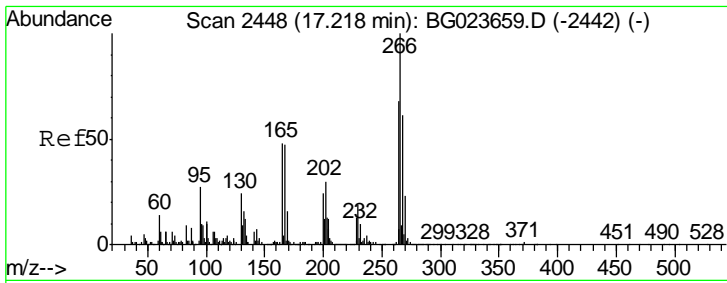
Manual Integrations
APPROVED
 sohil
 8/15/2016 6:50:00 PM



#58
 Fluorene
 Concen: 1.23 ng/ul
 RT: 15.84 min Scan# 2213
 Delta R.T. -0.02 min
 Lab File: BG023667.D
 Acq: 12 Aug 2016 22:13

Tgt Ion	Resp	Lower	Upper
166	100		
165	110.9	80.3	120.5
167	16.2	10.3	15.5#





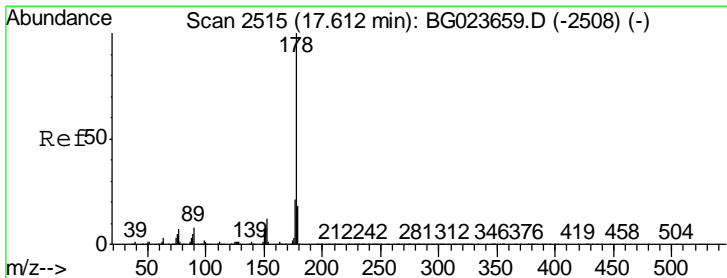
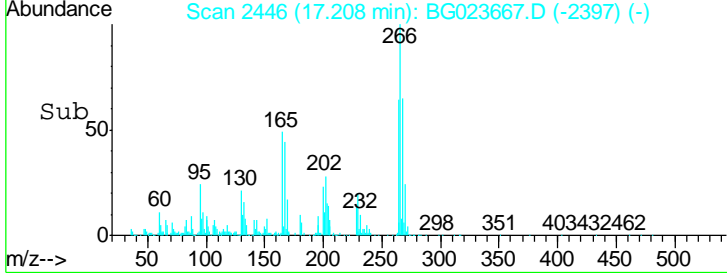
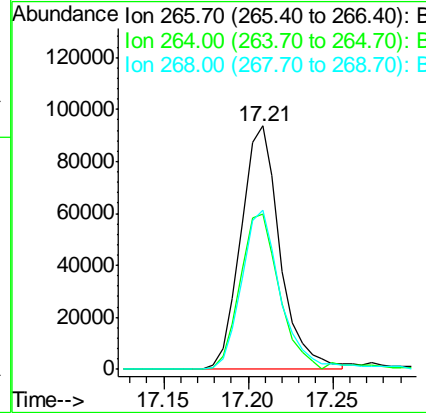
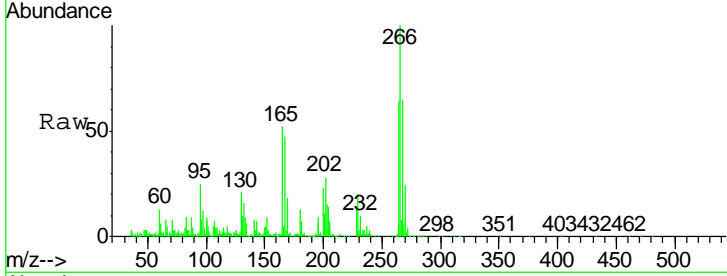
#68
 Pentachlorophenol
 Concen: 22.92 ng/ul
 RT: 17.21 min Scan# 2446
 Delta R.T. -0.01 min
 Lab File: BG023667.D
 Acq: 12 Aug 2016 22:13

Instrument :
 BNA_G
ClientSampled :
 P003-SS001-1218-01MS

Tgt Ion	Resp	Lower	Upper
266	150622		
264	63.9	54.7	82.1
268	65.2	57.8	86.8

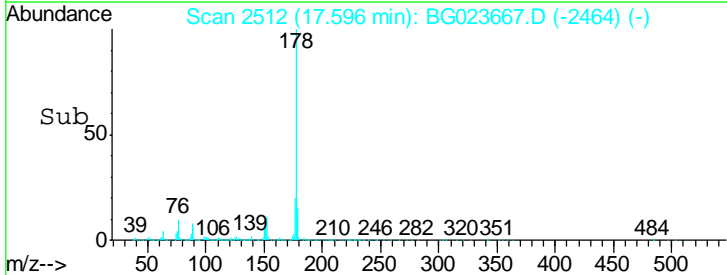
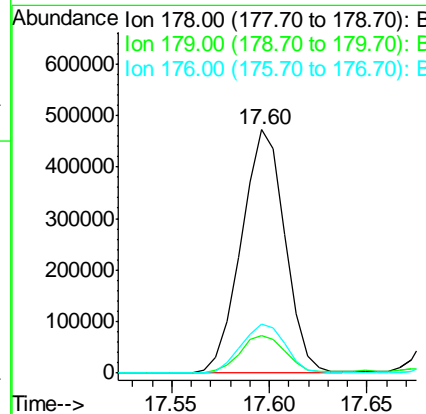
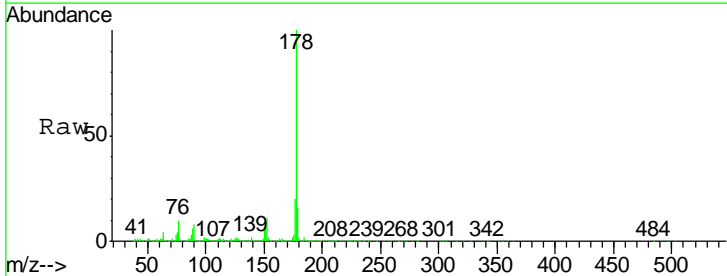
Manual Integrations
APPROVED

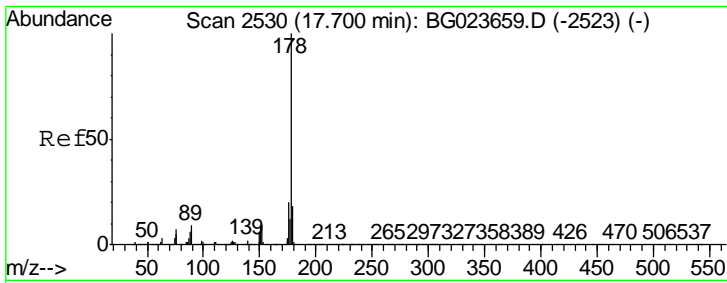
sohil
 8/15/2016 6:50:00 PM



#69
 Phenanthrene
 Concen: 14.32 ng/ul
 RT: 17.60 min Scan# 2512
 Delta R.T. -0.02 min
 Lab File: BG023667.D
 Acq: 12 Aug 2016 22:13

Tgt Ion	Resp	Lower	Upper
178	723279		
179	15.6	12.9	19.3
176	20.4	15.8	23.8



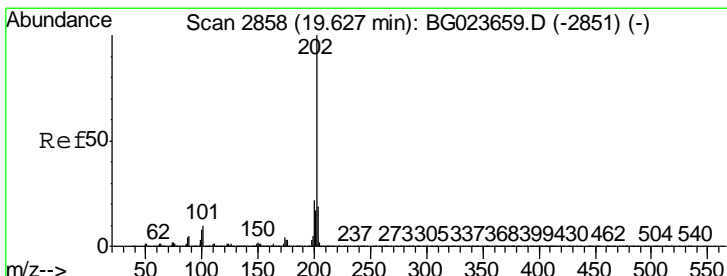
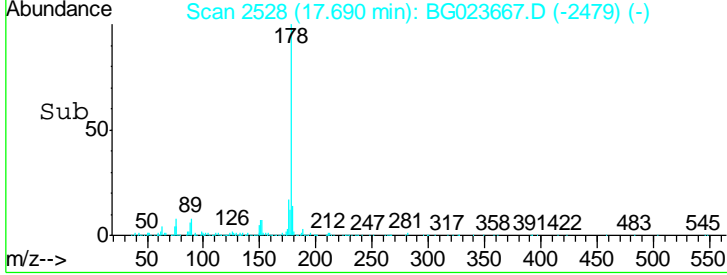
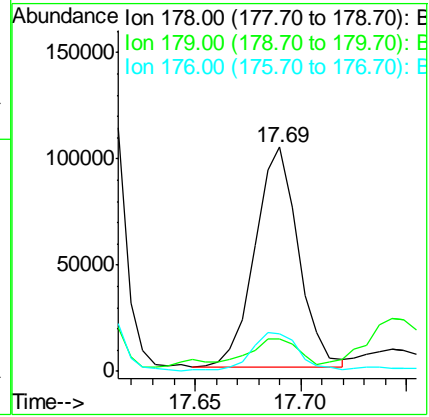
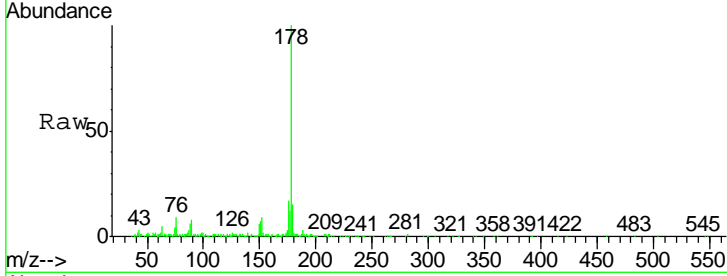


#71
 Anthracene
 Concen: 2.86 ng/ul
 RT: 17.69 min Scan# 2528
 Delta R.T. -0.01 min
 Lab File: BG023667.D
 Acq: 12 Aug 2016 22:13

Instrument : BNA_G
 Client Sampled : P003-SS001-1218-01MS

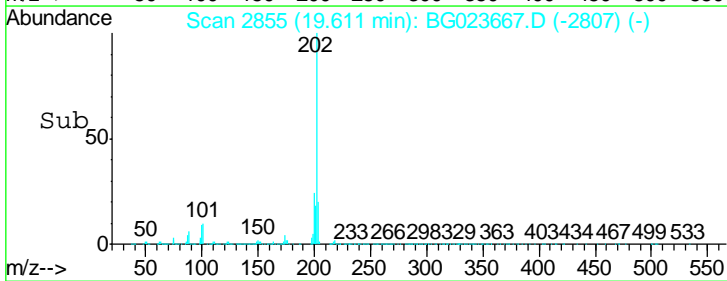
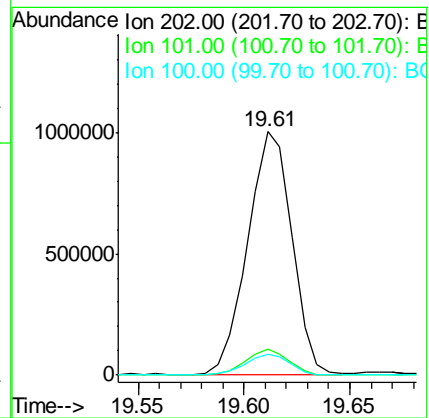
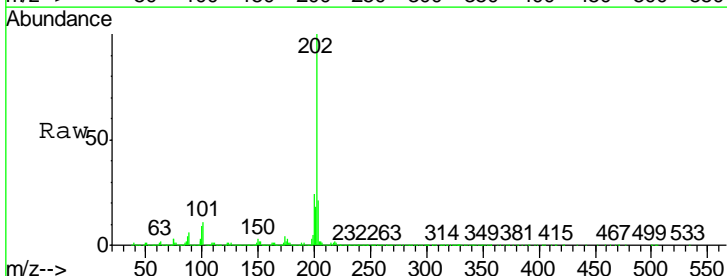
Tgt Ion	Resp	Lower	Upper
178	147194		
179	14.7	12.3	18.5
176	16.7	16.3	24.5

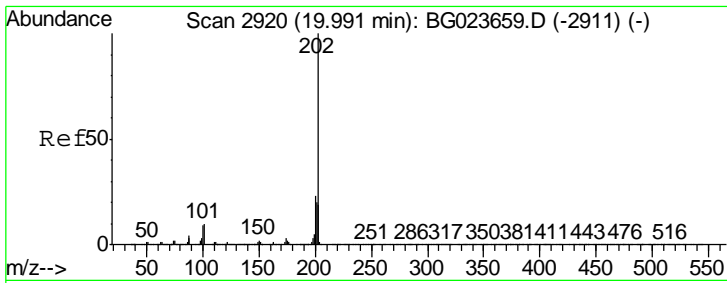
Manual Integrations
APPROVED
 sohil
 8/15/2016 6:50:00 PM



#74
 Fluoranthene
 Concen: 28.05 ng/ul
 RT: 19.61 min Scan# 2855
 Delta R.T. -0.02 min
 Lab File: BG023667.D
 Acq: 12 Aug 2016 22:13

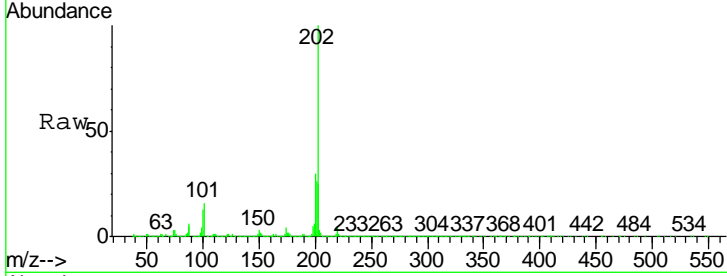
Tgt Ion	Resp	Lower	Upper
202	1449810		
101	10.8	10.6	16.0
100	8.8	8.7	13.1





#77
 Pyrene
 Concen: 44.26 ng/ul
 RT: 19.98 min Scan# 2918
 Delta R.T. -0.01 min
 Lab File: BG023667.D
 Acq: 12 Aug 2016 22:13

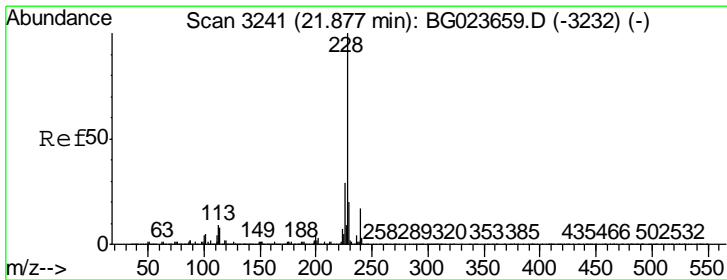
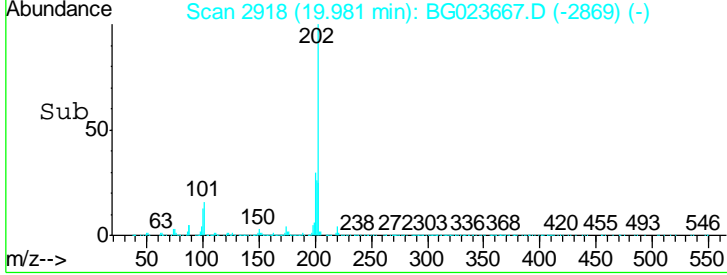
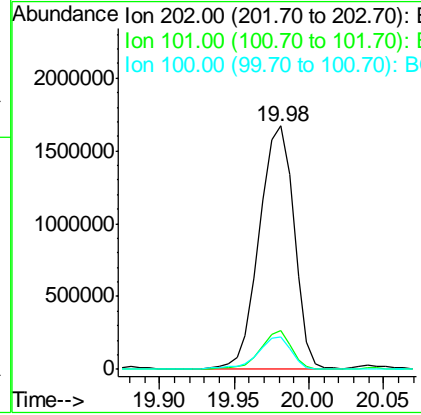
Instrument : BNA_G
 Client Sampled : P003-SS001-1218-01MS



Tgt Ion: 202 Resp: 2677019

Ion	Ratio	Lower	Upper
202	100		
101	15.7	12.5	18.7
100	13.2	10.2	15.4

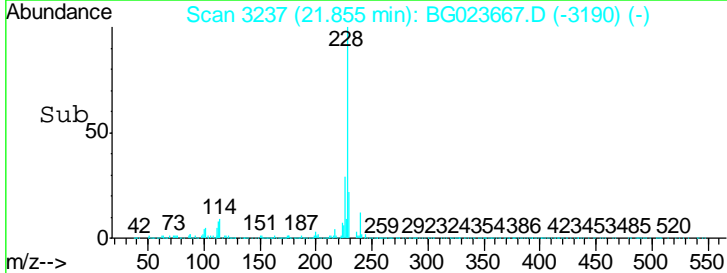
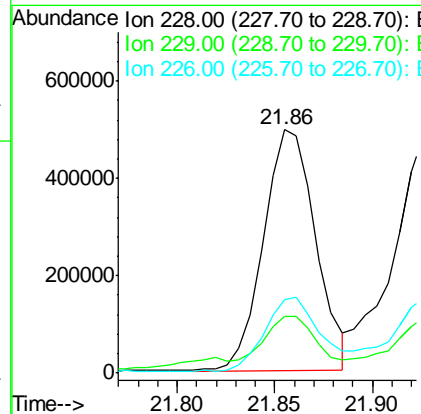
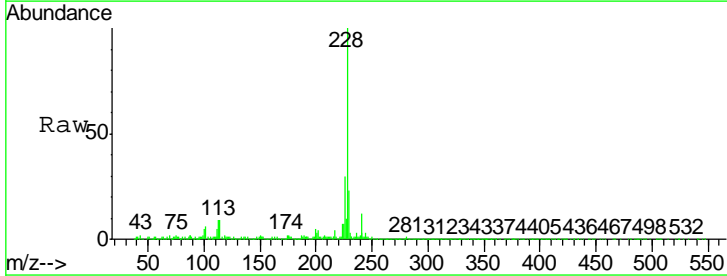
Manual Integrations APPROVED
 sohil
 8/15/2016 6:50:00 PM

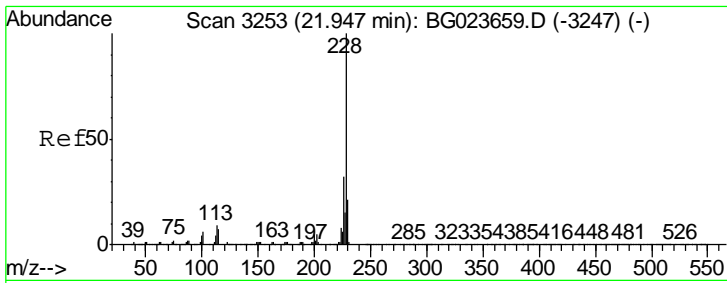


#80
 Benzo(a)anthracene
 Concen: 16.68 ng/ul
 RT: 21.86 min Scan# 3237
 Delta R.T. -0.02 min
 Lab File: BG023667.D
 Acq: 12 Aug 2016 22:13

Tgt Ion: 228 Resp: 918865

Ion	Ratio	Lower	Upper
228	100		
229	23.2	15.4	23.2#
226	30.0	22.8	34.2





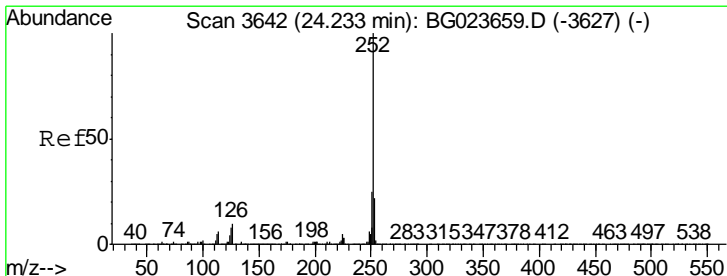
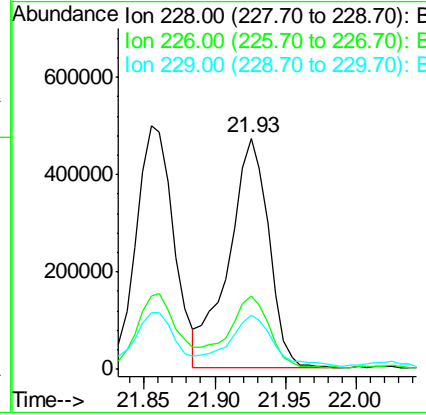
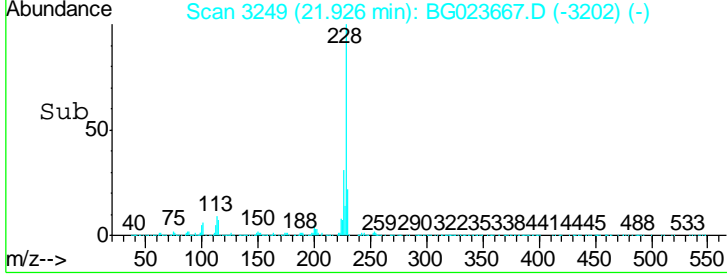
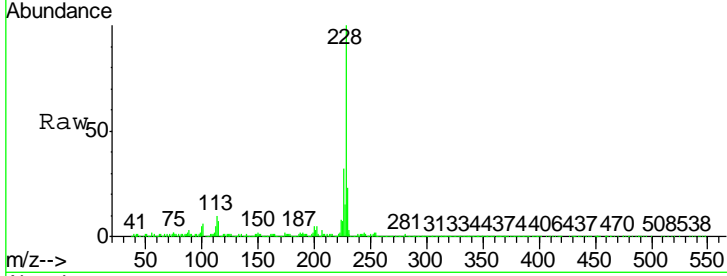
#82
 Chrysene
 Concen: 18.63 ng/ul
 RT: 21.93 min Scan# 3249
 Delta R.T. -0.02 min
 Lab File: BG023667.D
 Acq: 12 Aug 2016 22:13

Instrument :
 BNA_G
 ClientSampled :
 P003-SS001-1218-01MS

Tgt Ion	Resp	Lower	Upper
228	100		
226	31.8	24.2	36.4
229	23.3	15.0	22.6#

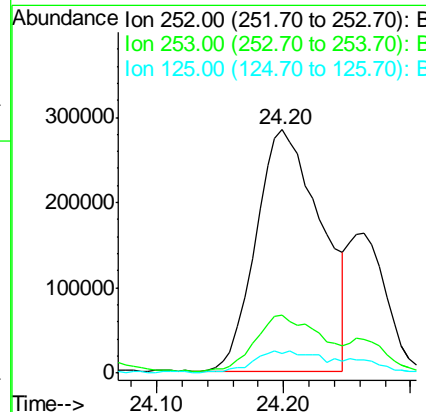
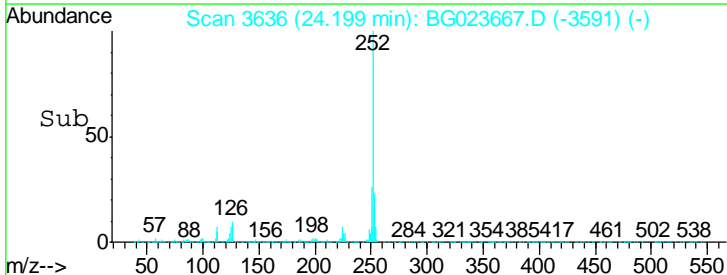
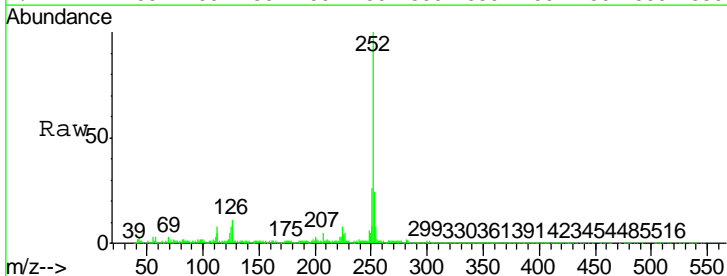
Manual Integrations
 APPROVED

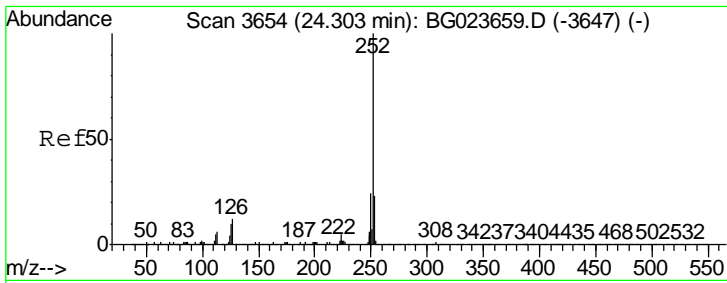
sohil
 8/15/2016 6:50:00 PM



#85
 Benzo(b)fluoranthene
 Concen: 17.77 ng/ul
 RT: 24.20 min Scan# 3636
 Delta R.T. -0.03 min
 Lab File: BG023667.D
 Acq: 12 Aug 2016 22:13

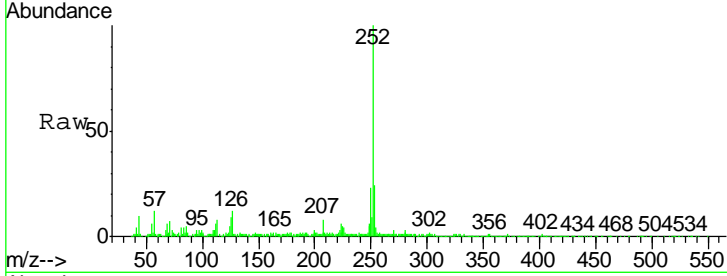
Tgt Ion	Resp	Lower	Upper
252	100		
253	23.6	18.2	27.2
125	8.3	10.8	16.2#





#86
 Benzo(k)fluoranthene
 Concen: 6.12 ng/ul m
 RT: 24.26 min Scan# 3647
 Delta R.T. -0.04 min
 Lab File: BG023667.D
 Acq: 12 Aug 2016 22:13

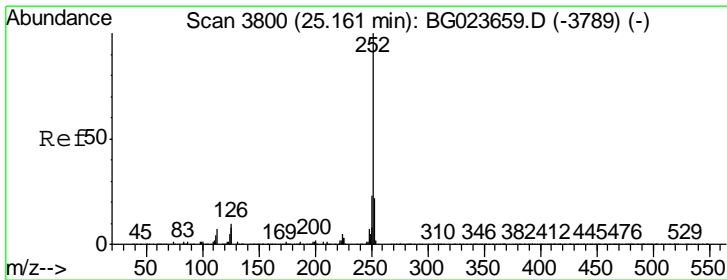
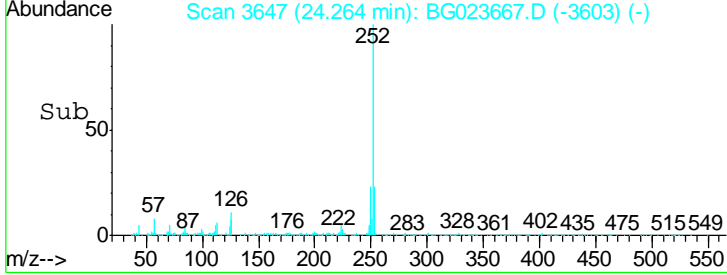
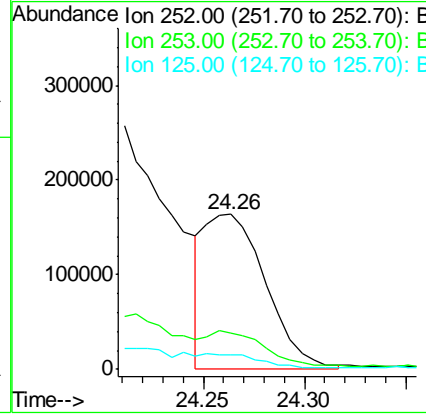
Instrument :
 BNA_G
ClientSampled :
 P003-SS001-1218-01MS



Tgt Ion	Ratio	Lower	Upper
252	100		
253	23.7	15.8	23.6#
125	9.1	10.6	16.0#

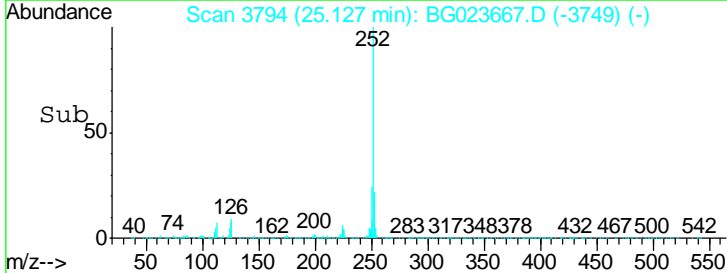
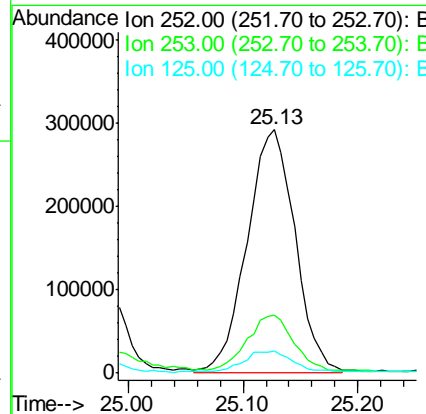
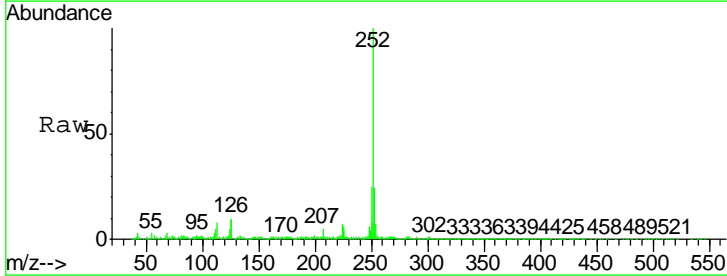
Manual Integrations
APPROVED

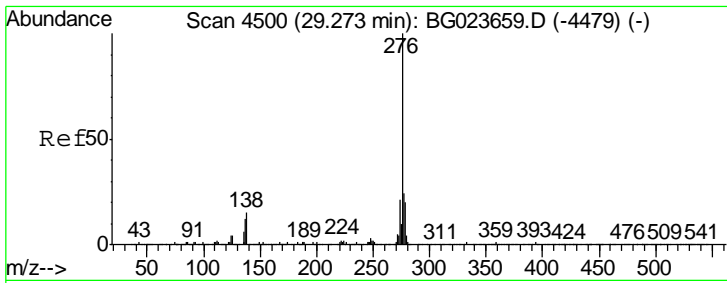
sohil
 8/15/2016 6:50:00 PM



#88
 Benzo(a)pyrene
 Concen: 15.52 ng/ul m
 RT: 25.13 min Scan# 3794
 Delta R.T. -0.03 min
 Lab File: BG023667.D
 Acq: 12 Aug 2016 22:13

Tgt Ion	Ratio	Lower	Upper
252	100		
253	24.0	19.0	28.4
125	9.2	12.0	18.0#



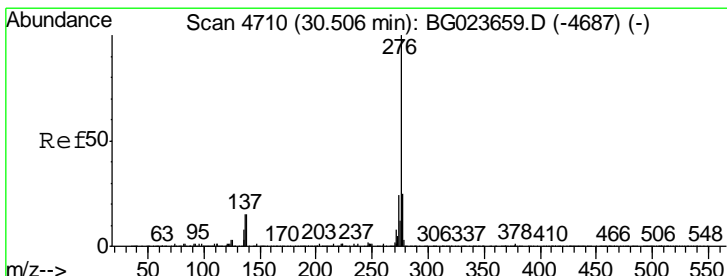
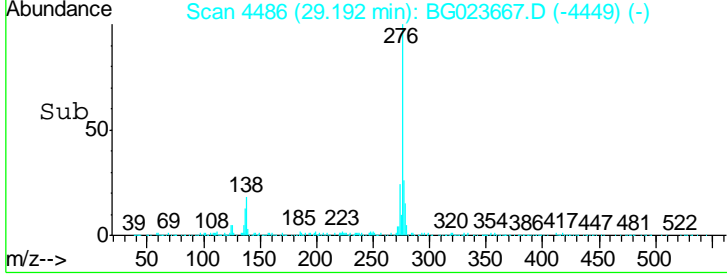
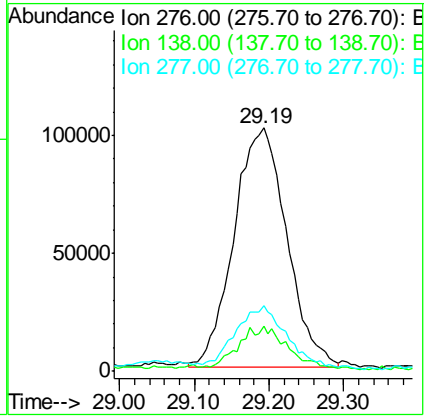
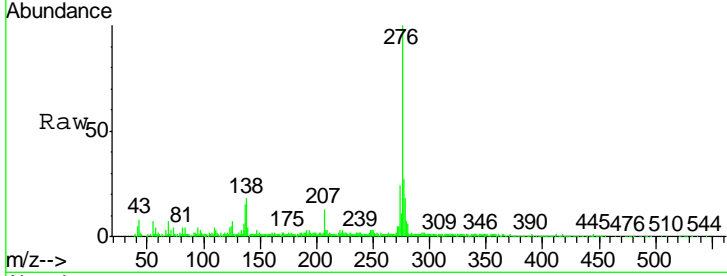


#89
 Indeno(1,2,3-cd)pyrene
 Concen: 7.76 ng/ul
 RT: 29.19 min Scan# 4486
 Delta R.T. -0.08 min
 Lab File: BG023667.D
 Acq: 12 Aug 2016 22:13

Instrument :
 BNA_G
 ClientSampled :
 P003-SS001-1218-01MS

Tgt Ion	Resp	Lower	Upper
276	499244		
138	18.5	20.8	31.2#
277	27.0	17.6	26.4#

Manual Integrations
APPROVED
 sohil
 8/15/2016 6:50:00 PM



#91
 Benzo(g,h,i)perylene
 Concen: 8.97 ng/ul
 RT: 30.41 min Scan# 4694
 Delta R.T. -0.09 min
 Lab File: BG023667.D
 Acq: 12 Aug 2016 22:13

Tgt Ion	Resp	Lower	Upper
276	478857		
138	17.9	22.1	33.1#
277	23.6	17.0	25.4

