

Data Path : Z:\HPCHEM1\BNA_G\DATA\BG081315\
 Data File : BG018427.D
 Acq On : 13 Aug 2015 17:22
 Operator : UM/MA
 Sample : G3136-02DL 5X
 Misc :
 ALS Vial : 3 Sample Multiplier: 1

Instrument :
 BNA_G
 ClientSampled :
 C02J7DL

Integration Parameters: LSCINT.P

Integrator: RTE
 Smoothing : OFF
 Sampling : 1
 Start Thrs: 0.2
 Stop Thrs : 0

Filtering: 5
 Min Area: 0.1 % of largest Peak
 Max Peaks: 100
 Peak Location: TOP

If leading or trailing edge < 100 prefer < Baseline drop else tangent >
 Peak separation: 5

Method : Z:\HPCHEM1\BNA_G\METHODS\SOM02.2-EPA-BG080915.M
 Title : SVOA CALIBRATION

Signal : TIC: BG018430.D

peak #	R.T. min	first scan	max scan	last scan	PK TY	peak height	corr. area	corr. % max.	% of total
1	5.332	417	424	433	rVB	1094732	1771223	14.92%	1.079%
2	5.526	451	457	466	rVB	140890	217865	1.83%	0.133%
3	5.655	473	479	488	rBV	307626	607850	5.12%	0.370%
4	6.031	535	543	549	rBV	77773	127088	1.07%	0.077%
5	6.995	701	707	714	rBV	61618	109292	0.92%	0.067%
6	7.106	720	726	731	rVB	157548	231814	1.95%	0.141%
7	7.171	731	737	744	rBV2	121107	200919	1.69%	0.122%
8	7.241	744	749	756	rVB	108293	172705	1.45%	0.105%
9	7.406	773	777	786	rBV	59183	95768	0.81%	0.058%
10	7.664	811	821	830	rVB	271450	493427	4.16%	0.300%
11	7.911	855	863	870	rBV	450760	768961	6.48%	0.468%
12	8.017	874	881	884	rVV	545721	1025145	8.63%	0.624%
13	8.052	884	887	897	rVV	1051873	1701413	14.33%	1.036%
14	8.134	897	901	910	rVB2	67073	119318	1.00%	0.073%
15	8.493	951	962	965	rBV5	32040	88541	0.75%	0.054%
16	8.657	985	990	996	rBV2	58613	110801	0.93%	0.067%
17	8.716	996	1000	1006	rVB3	58749	97089	0.82%	0.059%
18	9.121	1060	1069	1074	rBV4	60708	124557	1.05%	0.076%
19	9.251	1084	1091	1096	rVB	93666	155515	1.31%	0.095%
20	9.903	1195	1202	1207	rBV4	48043	91309	0.77%	0.056%
21	10.238	1251	1259	1264	rBV7	48099	126562	1.07%	0.077%
22	10.291	1264	1268	1275	rVB4	52294	103912	0.88%	0.063%
23	10.443	1289	1294	1302	rVB4	76392	153593	1.29%	0.094%
24	10.684	1331	1335	1341	rVB2	82724	136195	1.15%	0.083%
25	10.825	1349	1359	1364	rBV	813882	1559625	13.13%	0.950%
26	10.872	1364	1367	1376	rVV	106309	192103	1.62%	0.117%
27	11.243	1426	1430	1436	rVB3	56057	100232	0.84%	0.061%
28	11.384	1447	1454	1460	rVB3	58747	106586	0.90%	0.065%
29	12.476	1635	1640	1646	rVB2	75628	141657	1.19%	0.086%
30	12.694	1671	1677	1682	rBV2	65599	106799	0.90%	0.065%
31	13.475	1806	1810	1817	rVB3	89890	143670	1.21%	0.087%
32	13.969	1883	1894	1899	rVV5	107720	290350	2.45%	0.177%
33	14.045	1899	1907	1910	rVV2	116898	260142	2.19%	0.158%
34	14.075	1910	1912	1918	rVV3	94243	182822	1.54%	0.111%

Data Path : Z:\HPCHEM1\BNA_G\DATA\BG081315\
 Data File : BG018427.D
 Acq On : 13 Aug 2015 17:22
 Operator : UM/MA
 Sample : G3136-02DL 5X
 Misc :
 ALS Vial : 3 Sample Multiplier: 1

Instrument :
 BNA_G
 ClientSampleId :
 C02J7DL

Integration Parameters: LSCINT.P

Integrator: RTE
 Smoothing : OFF
 Sampling : 1
 Start Thrs: 0.2
 Stop Thrs : 0

Filtering: 5
 Min Area: 0.1 % of largest Peak
 Max Peaks: 100
 Peak Location: TOP

If leading or trailing edge < 100 prefer < Baseline drop else tangent >
 Peak separation: 5

Method : Z:\HPCHEM1\BNA_G\METHODS\SOM02.2-EPA-BG080915.M
 Title : SVOA CALIBRATION

35	14.133	1918	1922	1926	rVB	91511	124796	1.05%	0.076%
36	14.186	1926	1931	1937	rBV8	63432	156404	1.32%	0.095%
37	14.339	1953	1957	1960	rVV	137855	192530	1.62%	0.117%
38	14.380	1960	1964	1972	rVB	693742	1035121	8.72%	0.630%
39	14.480	1977	1981	1987	rVB3	137518	233167	1.96%	0.142%
40	14.550	1987	1993	2000	rBV5	120829	269404	2.27%	0.164%
41	14.644	2000	2009	2017	rBV4	1273812	2668074	22.47%	1.625%
42	14.709	2017	2020	2028	rVB	96345	138267	1.16%	0.084%
43	15.038	2072	2076	2083	rVB	123107	190339	1.60%	0.116%
44	15.167	2094	2098	2103	rBV4	83998	125470	1.06%	0.076%
45	15.308	2119	2122	2127	rVB4	85646	128633	1.08%	0.078%
46	15.443	2140	2145	2150	rBV7	141341	246492	2.08%	0.150%
47	15.637	2174	2178	2182	rVB	175506	240152	2.02%	0.146%
48	15.690	2182	2187	2191	rBV3	156989	248759	2.09%	0.151%
49	15.896	2217	2222	2228	rVB2	814848	1175113	9.90%	0.716%
50	16.378	2298	2304	2309	rVB2	336196	636480	5.36%	0.388%
51	16.501	2320	2325	2332	rVB	822083	1170217	9.86%	0.713%
52	16.619	2340	2345	2350	rVB	1278614	1807247	15.22%	1.101%
53	16.918	2391	2396	2400	rBV	433373	687228	5.79%	0.418%
54	16.959	2400	2403	2412	rVB4	284421	451337	3.80%	0.275%
55	17.206	2441	2445	2450	rBV	265578	376824	3.17%	0.229%
56	17.271	2451	2456	2459	rVV2	2520724	3641410	30.67%	2.217%
57	17.306	2459	2462	2467	rVB	1196403	1508344	12.70%	0.918%
58	17.388	2469	2476	2480	rBV2	1548585	2837244	23.89%	1.728%
59	17.429	2480	2483	2489	rVB	834190	1272443	10.72%	0.775%
60	17.488	2490	2493	2496	rVV2	150608	220129	1.85%	0.134%
61	17.523	2496	2499	2501	rVV	176480	236766	1.99%	0.144%
62	17.565	2501	2506	2513	rVB	1880460	2859937	24.09%	1.742%
63	17.841	2548	2553	2557	rBV	3569321	5825417	49.06%	3.547%
64	17.876	2557	2559	2566	rVB	2364171	2683512	22.60%	1.634%
65	17.993	2572	2579	2585	rVB	3251023	7161436	60.31%	4.361%
66	18.111	2593	2599	2606	rBV2	3046953	4971387	41.87%	3.027%
67	18.187	2607	2612	2616	rBV	1333649	1783062	15.02%	1.086%
68	18.240	2616	2621	2625	rBV	794206	1207430	10.17%	0.735%
69	18.405	2644	2649	2653	rBV2	823194	1325165	11.16%	0.807%
70	18.463	2653	2659	2664	rVV	8031671	11874152	100.00%	7.231%
71	18.528	2664	2670	2673	rVV	7462659	10609689	89.35%	6.461%

Data Path : Z:\HPCHEM1\BNA_G\DATA\BG081315\
 Data File : BG018427.D
 Acq On : 13 Aug 2015 17:22
 Operator : UM/MA
 Sample : G3136-02DL 5X
 Misc :
 ALS Vial : 3 Sample Multiplier: 1

Instrument :
 BNA_G
 ClientSampleId :
 C02J7DL

Integration Parameters: LSCINT.P

Integrator: RTE
 Smoothing : OFF
 Sampling : 1
 Start Thrs: 0.2
 Stop Thrs : 0

Filtering: 5
 Min Area: 0.1 % of largest Peak
 Max Peaks: 100
 Peak Location: TOP

If leading or trailing edge < 100 prefer < Baseline drop else tangent >
 Peak separation: 5

Method : Z:\HPCHEM1\BNA_G\METHODS\SOM02.2-EPA-BG080915.M
 Title : SVOA CALIBRATION

72	18.569	2673	2677	2682	rVB	4604157	5966735	50.25%	3.633%
73	18.746	2702	2707	2711	rBV	2706495	3874569	32.63%	2.359%
74	18.793	2711	2715	2719	rVB	1576034	2054732	17.30%	1.251%
75	18.845	2720	2724	2726	rBV4	406495	579427	4.88%	0.353%
76	18.881	2726	2730	2734	rBV	2032611	2629358	22.14%	1.601%
77	18.981	2744	2747	2750	rBV2	359126	556479	4.69%	0.339%
78	19.022	2750	2754	2759	rVB5	458924	1016866	8.56%	0.619%
79	19.163	2774	2778	2783	rVB4	442036	645278	5.43%	0.393%
80	19.221	2784	2788	2791	rBV2	476553	654301	5.51%	0.398%
81	19.274	2792	2797	2799	rVV	1696254	2669653	22.48%	1.626%
82	19.310	2799	2803	2810	rVB3	4414221	7438356	62.64%	4.530%
83	19.386	2811	2816	2820	rBV3	1756035	2447800	20.61%	1.491%
84	19.439	2821	2825	2830	rBV	1219546	1714344	14.44%	1.044%
85	19.503	2831	2836	2842	rBV4	2543549	3820497	32.17%	2.326%
86	19.580	2844	2849	2855	rVB	4824674	7033445	59.23%	4.283%
87	19.644	2856	2860	2866	rVB	2978093	3798336	31.99%	2.313%
88	19.715	2869	2872	2876	rVB2	568149	668784	5.63%	0.407%
89	19.774	2878	2882	2885	rBV4	1039463	1782153	15.01%	1.085%
90	19.803	2885	2887	2890	rVV	1030867	1334757	11.24%	0.813%
91	19.838	2890	2893	2897	rVB	993155	1300058	10.95%	0.792%
92	19.915	2904	2906	2909	rVB2	534883	580142	4.89%	0.353%
93	20.026	2918	2925	2931	rVB	5634780	7958460	67.02%	4.846%
94	20.144	2943	2945	2949	rBV	571109	639532	5.39%	0.389%
95	20.285	2964	2969	2973	rBV4	2806554	4074360	34.31%	2.481%
96	20.338	2974	2978	2982	rVB	2779463	3434553	28.92%	2.091%
97	20.485	3001	3003	3010	rVB4	653264	884404	7.45%	0.539%
98	20.561	3012	3016	3020	rVB	2564677	3195151	26.91%	1.946%
99	20.614	3022	3025	3029	rBV2	1291555	1876286	15.80%	1.143%
100	21.554	3181	3185	3194	rVB	3586197	5356683	45.11%	3.262%

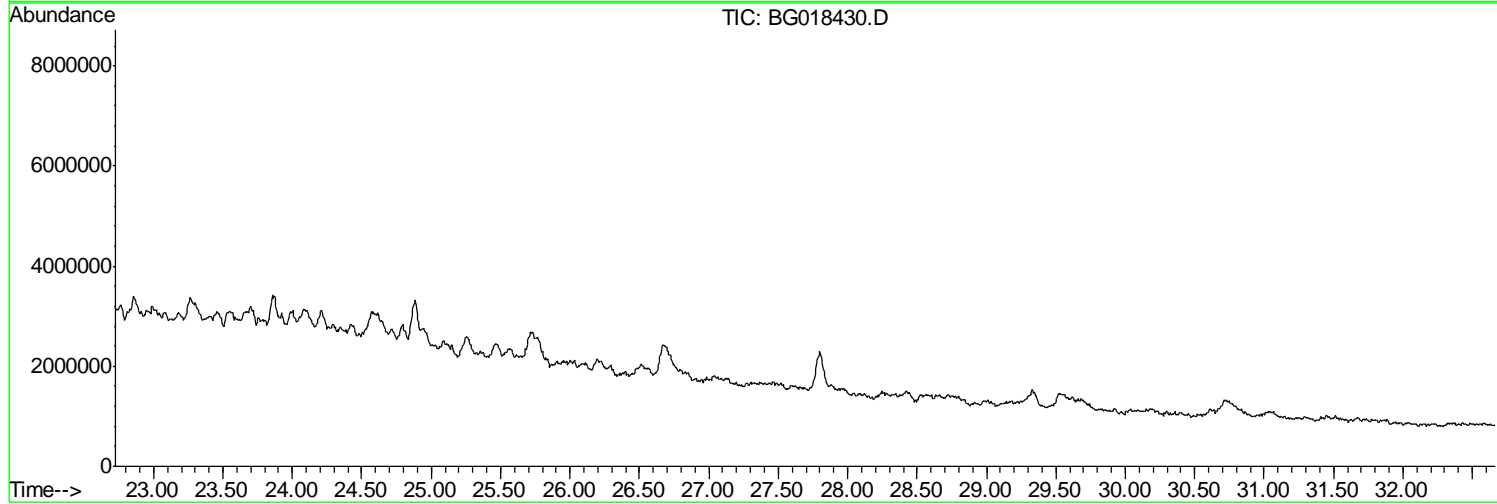
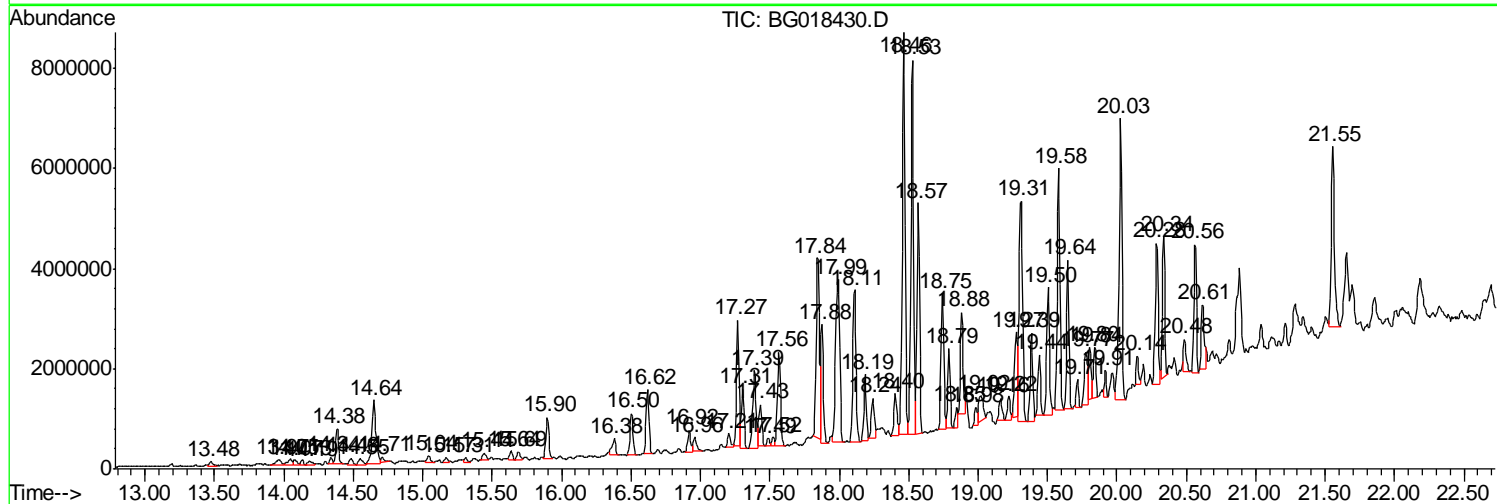
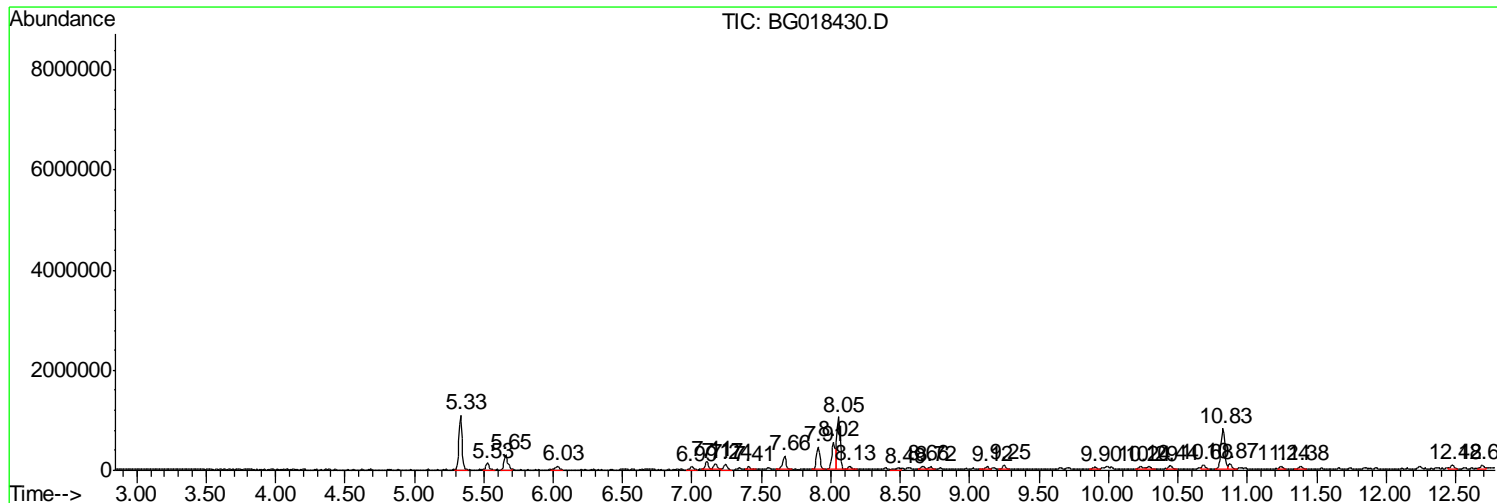
Sum of corrected areas: 164219924

Data Path : Z:\HPCHEM1\BNA_G\DATA\BG081315\
 Data File : BG018427.D
 Acq On : 13 Aug 2015 17:22
 Operator : UM/MA
 Sample : G3136-02DL 5X
 Misc :
 ALS Vial : 3 Sample Multiplier: 1

Instrument :
 BNA_G
Client Sampled :
 C02J7DL

Quant Method : Z:\HPCHEM1\BNA_G\METHODS\SOM02.2-EPA-BG080915.M
 Quant Title : SVOA CALIBRATION

TIC Library : C:\DATABASE\NIST02.L
 TIC Integration Parameters: LSCINT.P



Data Path : Z:\HPCHEM1\BNA_G\DATA\BG081315\
 Data File : BG018427.D
 Acq On : 13 Aug 2015 17:22
 Operator : UM/MA
 Sample : G3136-02DL 5X
 Misc :
 ALS Vial : 3 Sample Multiplier: 1

Instrument :
 BNA_G
 ClientSampleID :
 C02J7DL

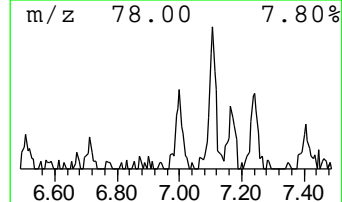
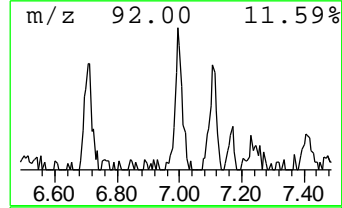
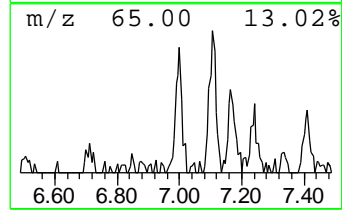
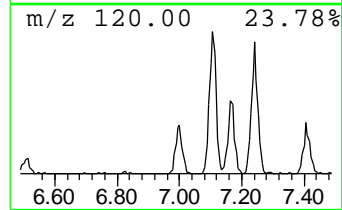
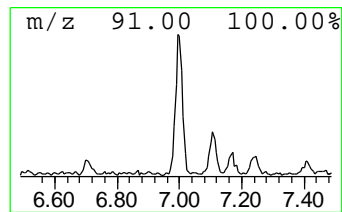
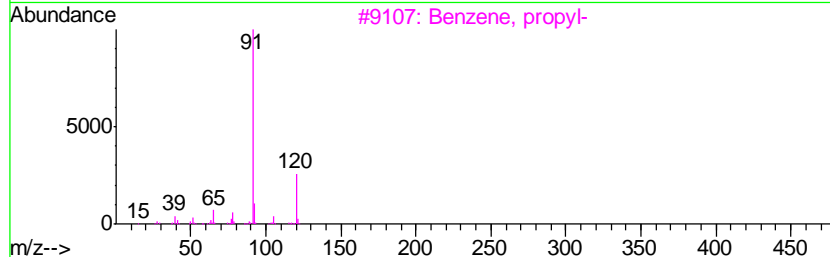
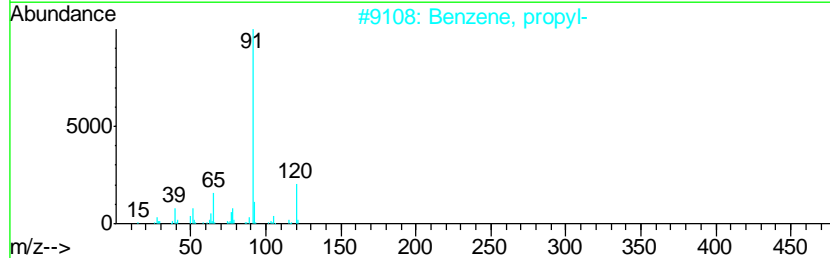
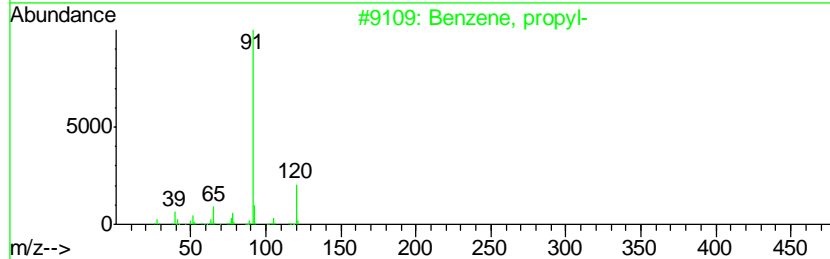
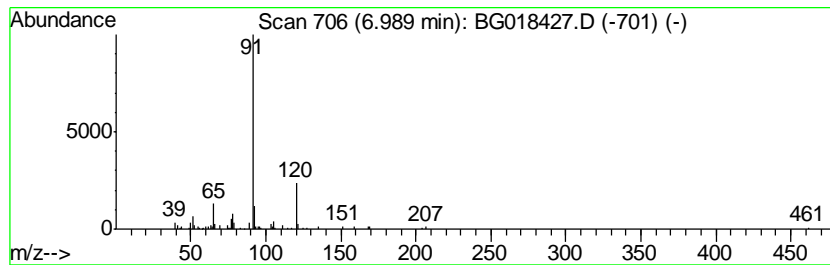
Quant Method : Z:\HPCHEM1\BNA_G\METHODS\SOM02.2-EPA-BG080915.M
 Quant Title : SVOA CALIBRATION

TIC Library : C:\DATABASE\NIST02.L
 TIC Integration Parameters: LSCINT.P

 Peak Number 5 Benzene, propyl- Concentration Rank 56

R.T.	EstConc	Area	Relative to ISTD	R.T.
6.99	2.13 ng/ul	109292	1,4-Dichlorobenzene-d4	8.02

Hit#	of	Tentative ID	MW	MolForm	CAS#	Qual
1	5	Benzene, propyl-	120	C9H12	000103-65-1	81
2		Benzene, propyl-	120	C9H12	000103-65-1	74
3		Benzene, propyl-	120	C9H12	000103-65-1	74
4		Ethanol, 2-[(phenylmethyl)amino]-	151	C9H13NO	000104-63-2	72
5		Ethanol, 2-[(phenylmethyl)amino]-	151	C9H13NO	000104-63-2	64



Data Path : Z:\HPCHEM1\BNA_G\DATA\BG081315\
 Data File : BG018427.D
 Acq On : 13 Aug 2015 17:22
 Operator : UM/MA
 Sample : G3136-02DL 5X
 Misc :
 ALS Vial : 3 Sample Multiplier: 1

Instrument :
 BNA_G
 ClientSampled :
 C02J7DL

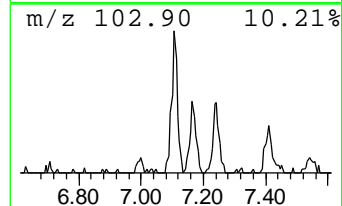
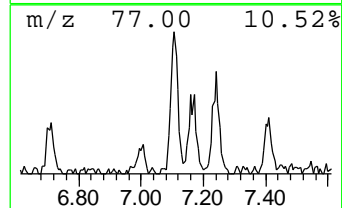
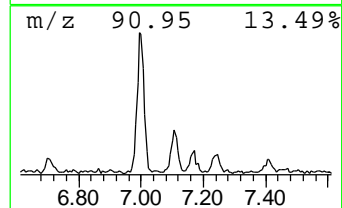
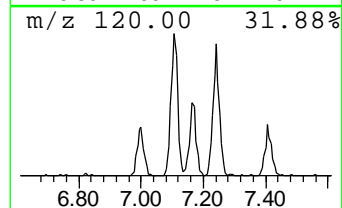
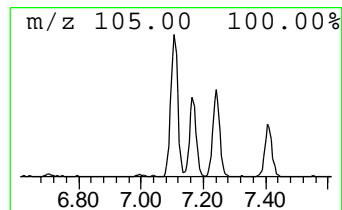
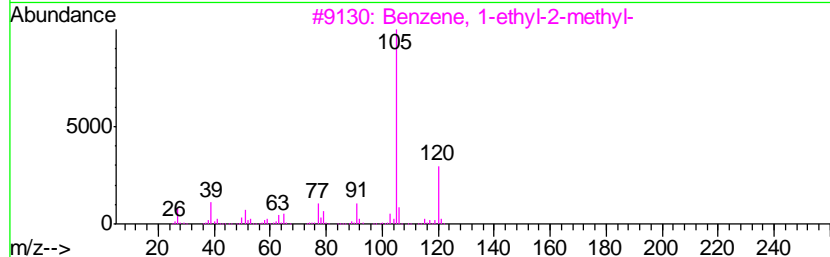
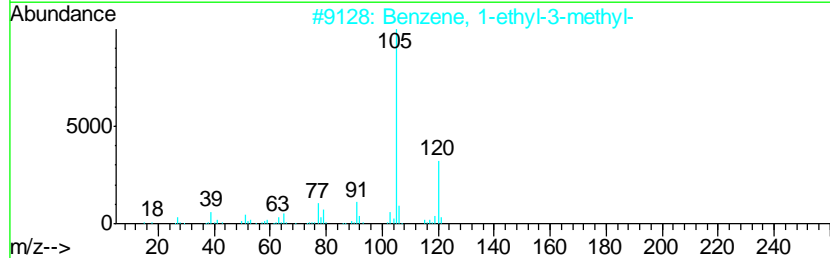
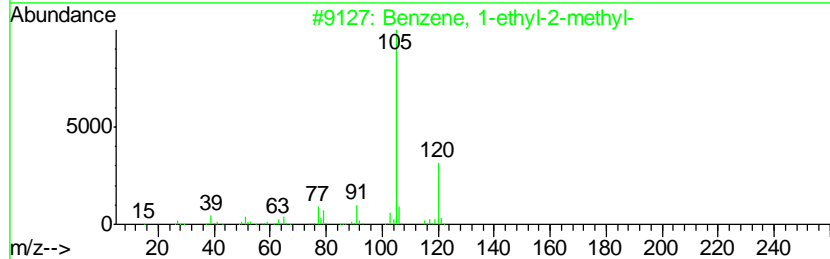
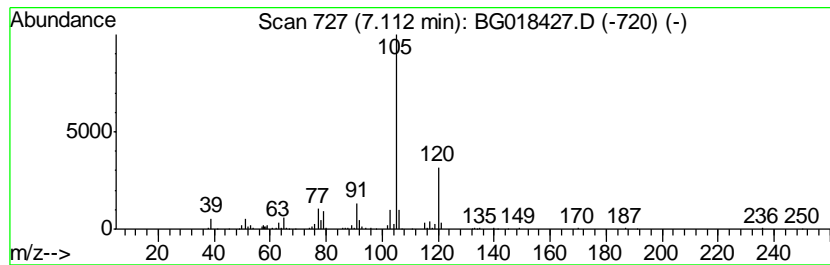
Quant Method : Z:\HPCHEM1\BNA_G\METHODS\SOM02.2-EPA-BG080915.M
 Quant Title : SVOA CALIBRATION

TIC Library : C:\DATABASE\NIST02.L
 TIC Integration Parameters: LSCINT.P

 Peak Number 6 Benzene, 1-ethyl-2-methyl- Concentration Rank 38

R.T.	EstConc	Area	Relative to ISTD	R.T.
7.11	4.52 ng/ul	231814	1,4-Dichlorobenzene-d4	8.02

Hit#	of	Tentative ID	MW	MolForm	CAS#	Qual
1	5	Benzene, 1-ethyl-2-methyl-	120	C9H12	000611-14-3	95
2		Benzene, 1-ethyl-3-methyl-	120	C9H12	000620-14-4	94
3		Benzene, 1-ethyl-2-methyl-	120	C9H12	000611-14-3	93
4		Benzene, 1,3,5-trimethyl-	120	C9H12	000108-67-8	91
5		Benzene, 1,2,3-trimethyl-	120	C9H12	000526-73-8	91



Data Path : Z:\HPCHEM1\BNA_G\DATA\BG081315\
 Data File : BG018427.D
 Acq On : 13 Aug 2015 17:22
 Operator : UM/MA
 Sample : G3136-02DL 5X
 Misc :
 ALS Vial : 3 Sample Multiplier: 1

Instrument :
 BNA_G
 ClientSampleID :
 C02J7DL

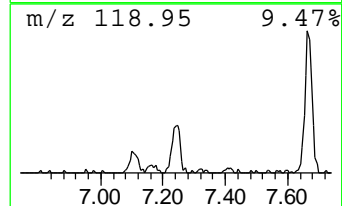
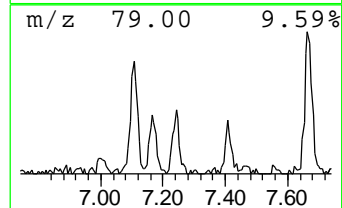
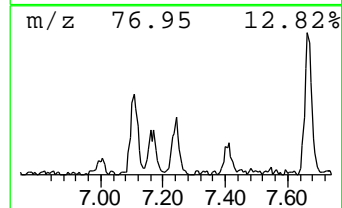
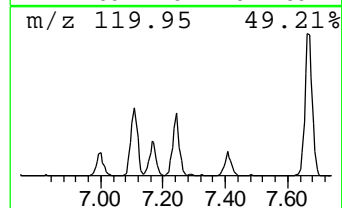
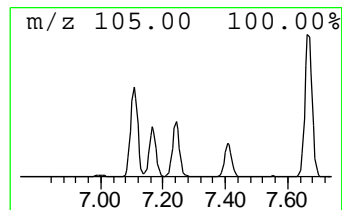
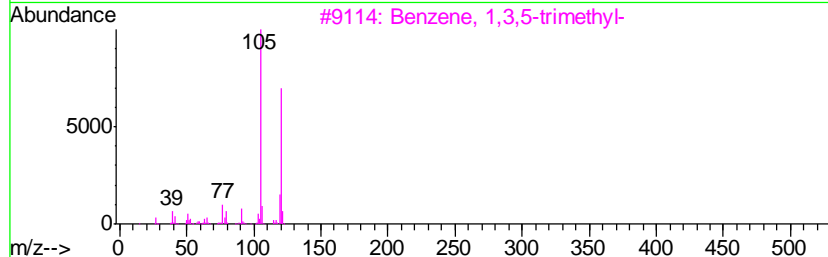
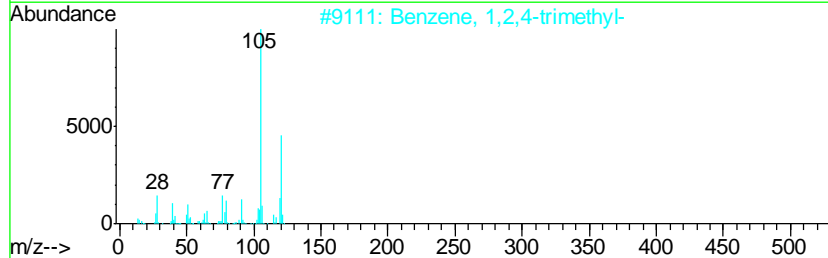
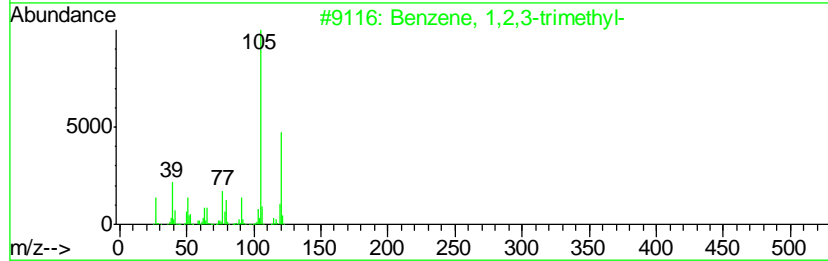
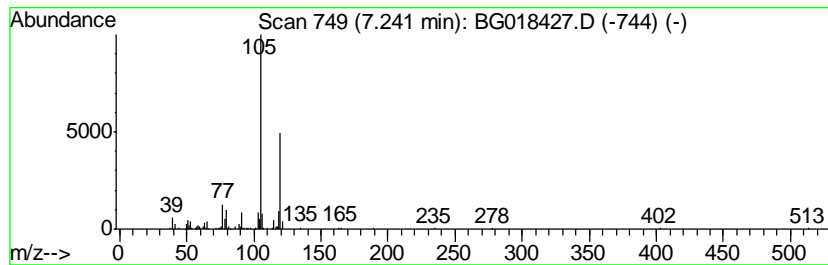
Quant Method : Z:\HPCHEM1\BNA_G\METHODS\SOM02.2-EPA-BG080915.M
 Quant Title : SVOA CALIBRATION

TIC Library : C:\DATABASE\NIST02.L
 TIC Integration Parameters: LSCINT.P

 Peak Number 7 Benzene, 1,2,3-trimethyl- Concentration Rank 43

R.T.	EstConc	Area	Relative to ISTD	R.T.
7.24	3.37 ng/ul	172705	1,4-Dichlorobenzene-d4	8.02

Hit#	of	Tentative ID	MW	MolForm	CAS#	Qual
1	5	Benzene, 1,2,3-trimethyl-	120	C9H12	000526-73-8	91
2		Benzene, 1,2,4-trimethyl-	120	C9H12	000095-63-6	91
3		Benzene, 1,3,5-trimethyl-	120	C9H12	000108-67-8	90
4		Benzene, 1,2,3-trimethyl-	120	C9H12	000526-73-8	90
5		Benzene, 1-ethyl-3-methyl-	120	C9H12	000620-14-4	87



Data Path : Z:\HPCHEM1\BNA_G\DATA\BG081315\
 Data File : BG018427.D
 Acq On : 13 Aug 2015 17:22
 Operator : UM/MA
 Sample : G3136-02DL 5X
 Misc :
 ALS Vial : 3 Sample Multiplier: 1

Instrument :
 BNA_G
 ClientSampleID :
 C02J7DL

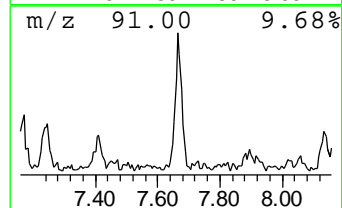
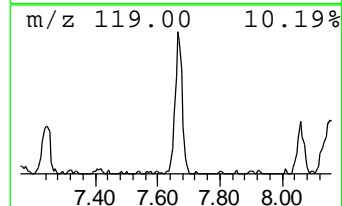
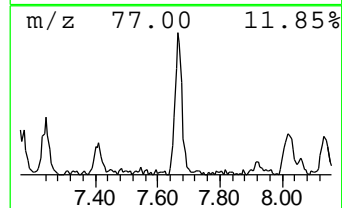
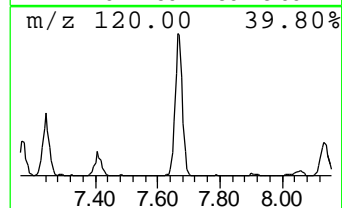
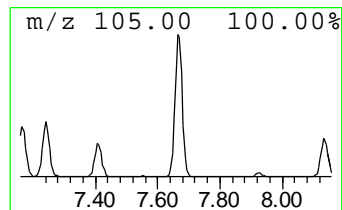
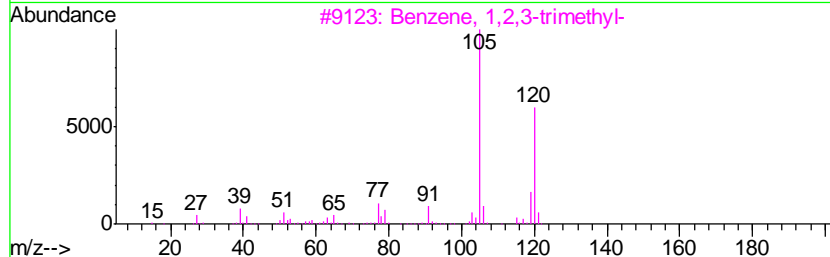
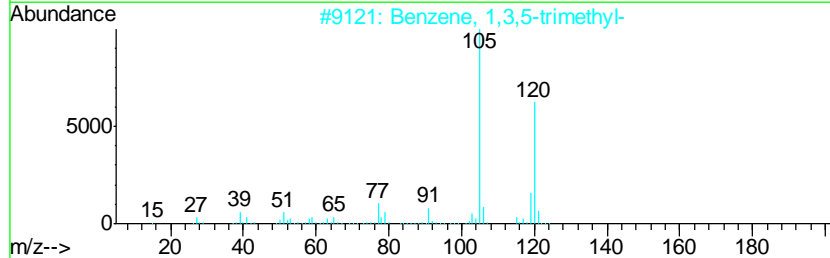
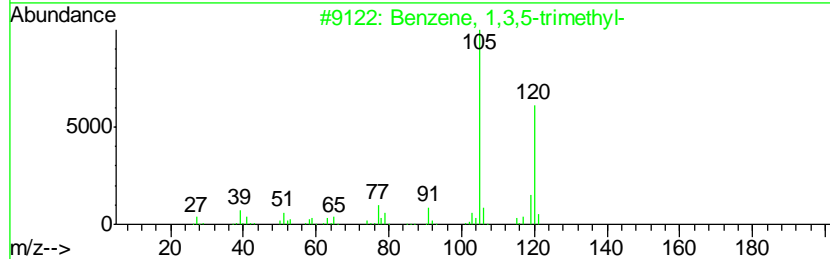
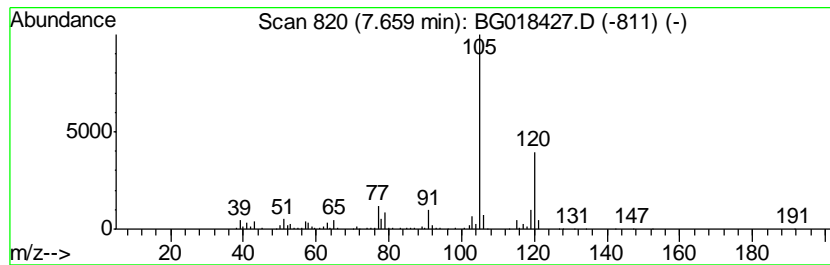
Quant Method : Z:\HPCHEM1\BNA_G\METHODS\SOM02.2-EPA-BG080915.M
 Quant Title : SVOA CALIBRATION

TIC Library : C:\DATABASE\NIST02.L
 TIC Integration Parameters: LSCINT.P

 Peak Number 8 Benzene, 1,3,5-trimethyl- Concentration Rank 28

R.T.	EstConc	Area	Relative to ISTD	R.T.
7.66	9.63 ng/ul	493427	1,4-Dichlorobenzene-d4	8.02

Hit#	of	Tentative ID	MW	MolForm	CAS#	Qual
1	5	Benzene, 1,3,5-trimethyl-	120	C9H12	000108-67-8	95
2		Benzene, 1,3,5-trimethyl-	120	C9H12	000108-67-8	94
3		Benzene, 1,2,3-trimethyl-	120	C9H12	000526-73-8	93
4		Benzene, 1,2,4-trimethyl-	120	C9H12	000095-63-6	91
5		Benzene, 1,3,5-trimethyl-	120	C9H12	000108-67-8	91



Data Path : Z:\HPCHEM1\BNA_G\DATA\BG081315\
 Data File : BG018427.D
 Acq On : 13 Aug 2015 17:22
 Operator : UM/MA
 Sample : G3136-02DL 5X
 Misc :
 ALS Vial : 3 Sample Multiplier: 1

Instrument :
 BNA_G
 ClientSampleID :
 C02J7DL

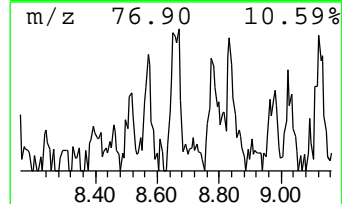
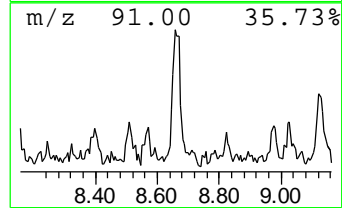
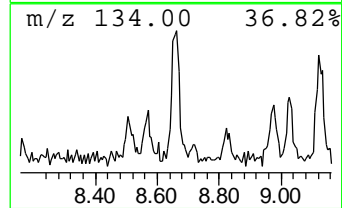
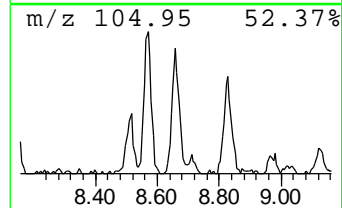
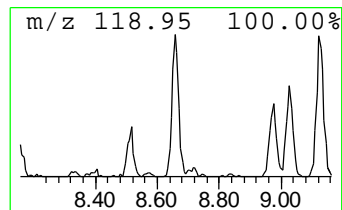
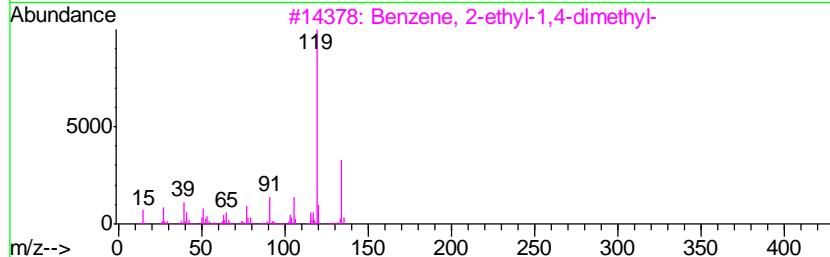
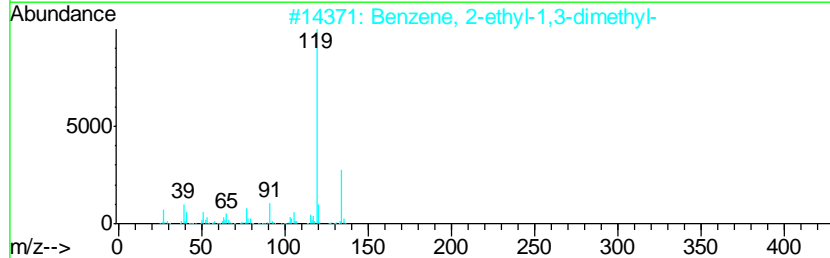
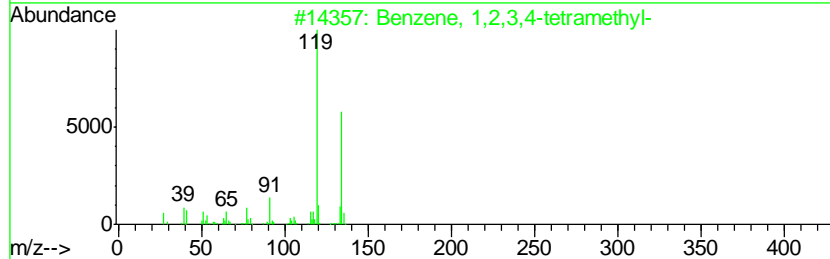
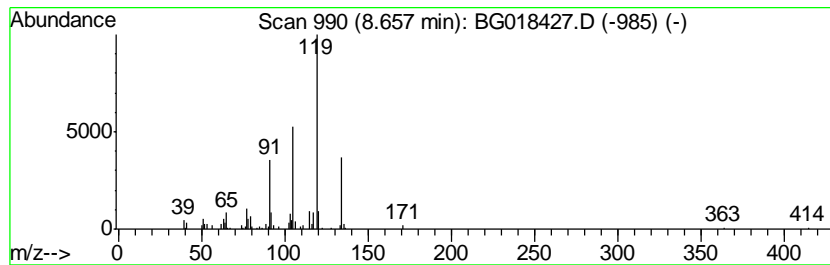
Quant Method : Z:\HPCHEM1\BNA_G\METHODS\SOM02.2-EPA-BG080915.M
 Quant Title : SVOA CALIBRATION

TIC Library : C:\DATABASE\NIST02.L
 TIC Integration Parameters: LSCINT.P

 Peak Number 11 Benzene, 1,2,3,4-tetramethyl- Concentration Rank 55

R.T.	EstConc	Area	Relative to ISTD	R.T.
8.66	2.16 ng/ul	110801	1,4-Dichlorobenzene-d4	8.02

Hit#	of	Tentative ID	MW	MolForm	CAS#	Qual
1	5	Benzene, 1,2,3,4-tetramethyl-	134	C10H14	000488-23-3	91
2		Benzene, 2-ethyl-1,3-dimethyl-	134	C10H14	002870-04-4	91
3		Benzene, 2-ethyl-1,4-dimethyl-	134	C10H14	001758-88-9	91
4		Benzene, 1-ethyl-2,3-dimethyl-	134	C10H14	000933-98-2	91
5		Benzene, 1-ethyl-2,3-dimethyl-	134	C10H14	000933-98-2	91



Data Path : Z:\HPCHEM1\BNA_G\DATA\BG081315\
 Data File : BG018427.D
 Acq On : 13 Aug 2015 17:22
 Operator : UM/MA
 Sample : G3136-02DL 5X
 Misc :
 ALS Vial : 3 Sample Multiplier: 1

Instrument :
 BNA_G
 ClientSampled :
 C02J7DL

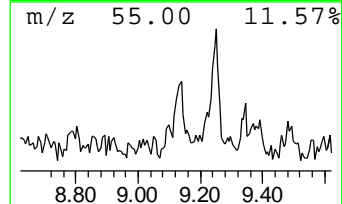
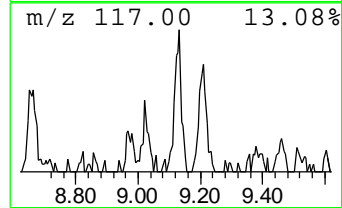
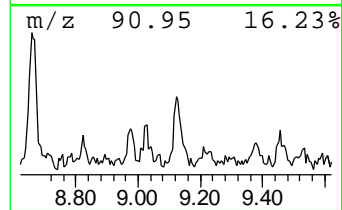
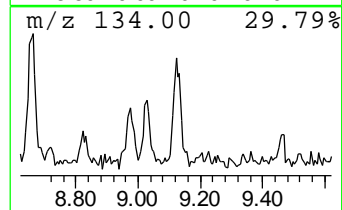
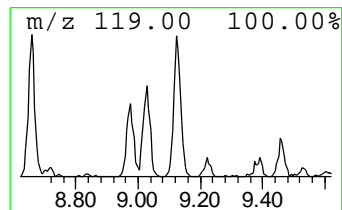
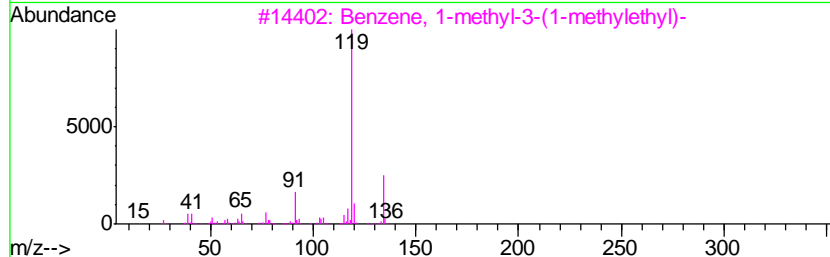
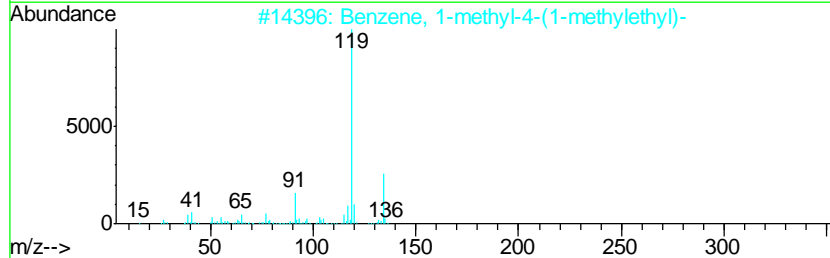
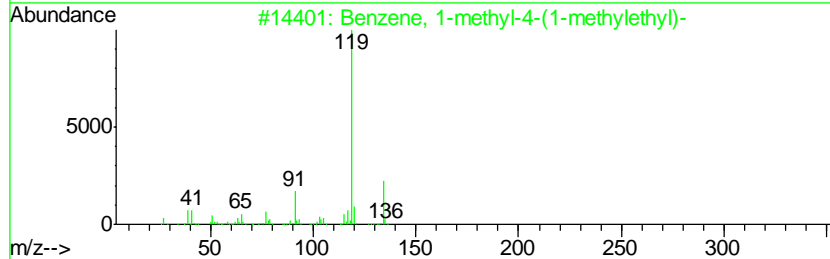
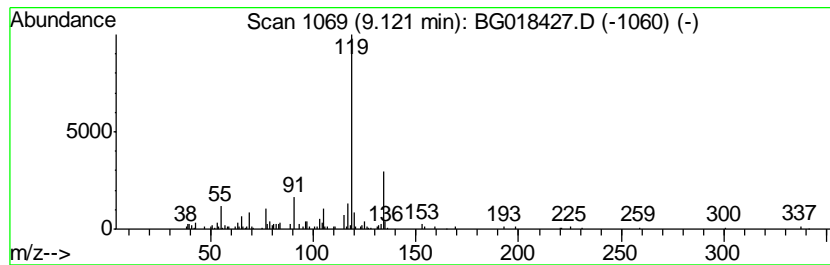
Quant Method : Z:\HPCHEM1\BNA_G\METHODS\SOM02.2-EPA-BG080915.M
 Quant Title : SVOA CALIBRATION

TIC Library : C:\DATABASE\NIST02.L
 TIC Integration Parameters: LSCINT.P

 Peak Number 12 Benzene, 1-methyl-4-(1-meth... Concentration Rank 50

R.T.	EstConc	Area	Relative to ISTD	R.T.
9.12	2.43 ng/ul	124557	1,4-Dichlorobenzene-d4	8.02

Hit#	of	Tentative ID	MW	MolForm	CAS#	Qual
1	5	Benzene, 1-methyl-4-(1-methyleth...	134	C10H14	000099-87-6	94
2		Benzene, 1-methyl-4-(1-methyleth...	134	C10H14	000099-87-6	93
3		Benzene, 1-methyl-3-(1-methyleth...	134	C10H14	000535-77-3	93
4		Benzene, 1-methyl-3-(1-methyleth...	134	C10H14	000535-77-3	93
5		Benzene, 1-ethyl-2,3-dimethyl-	134	C10H14	000933-98-2	90



Data Path : Z:\HPCHEM1\BNA_G\DATA\BG081315\
 Data File : BG018427.D
 Acq On : 13 Aug 2015 17:22
 Operator : UM/MA
 Sample : G3136-02DL 5X
 Misc :
 ALS Vial : 3 Sample Multiplier: 1

Instrument :
 BNA_G
 ClientSampleID :
 C02J7DL

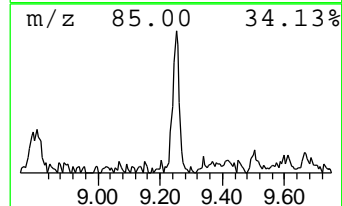
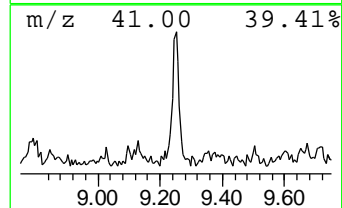
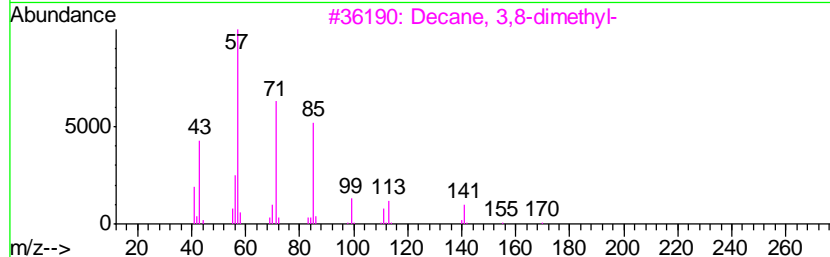
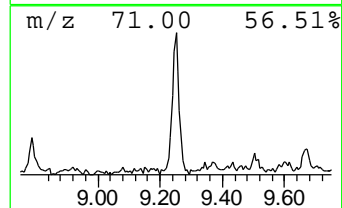
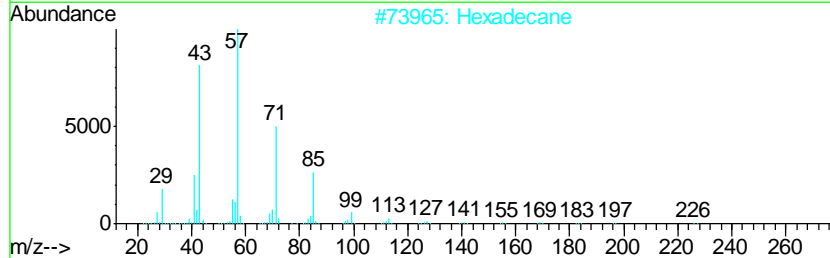
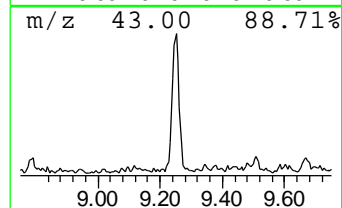
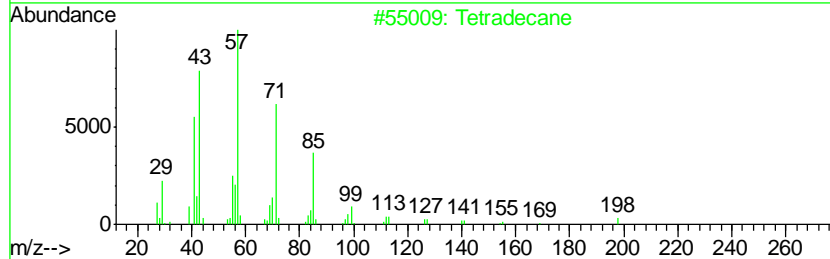
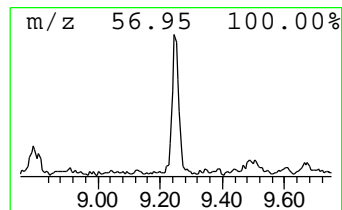
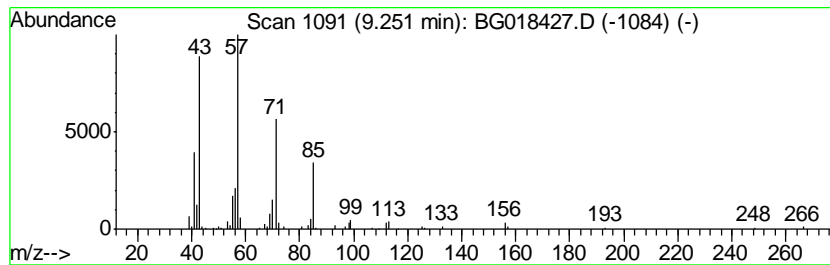
Quant Method : Z:\HPCHEM1\BNA_G\METHODS\SOM02.2-EPA-BG080915.M
 Quant Title : SVOA CALIBRATION

TIC Library : C:\DATABASE\NIST02.L
 TIC Integration Parameters: LSCINT.P

 Peak Number 13 (DEL) Alkane: Straight-Chai... Concentration Rank 46

R.T.	EstConc	Area	Relative to ISTD	R.T.
9.25	3.03 ng/ul	155515	1,4-Dichlorobenzene-d4	8.02

Hit#	of	Tentative ID	MW	MolForm	CAS#	Qual
1	5	Tetradecane	198	C14H30	000629-59-4	83
2		Hexadecane	226	C16H34	000544-76-3	72
3		Decane, 3,8-dimethyl-	170	C12H26	017312-55-9	72
4		Tridecane	184	C13H28	000629-50-5	64
5		Undecane, 5-methyl-	170	C12H26	001632-70-8	64



Data Path : Z:\HPCHEM1\BNA_G\DATA\BG081315\
 Data File : BG018427.D
 Acq On : 13 Aug 2015 17:22
 Operator : UM/MA
 Sample : G3136-02DL 5X
 Misc :
 ALS Vial : 3 Sample Multiplier: 1

Instrument :
 BNA_G
 ClientSampled :
 C02J7DL

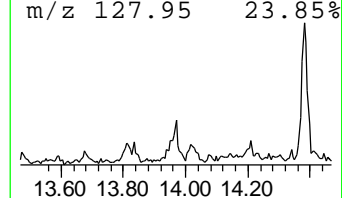
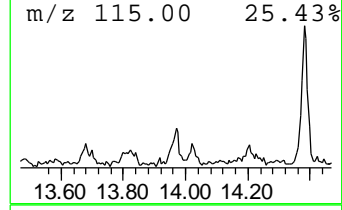
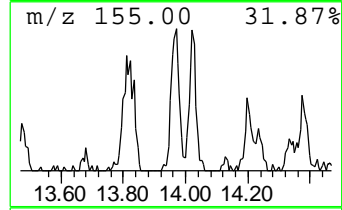
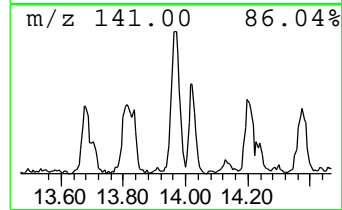
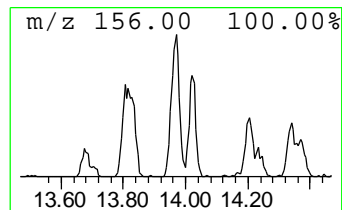
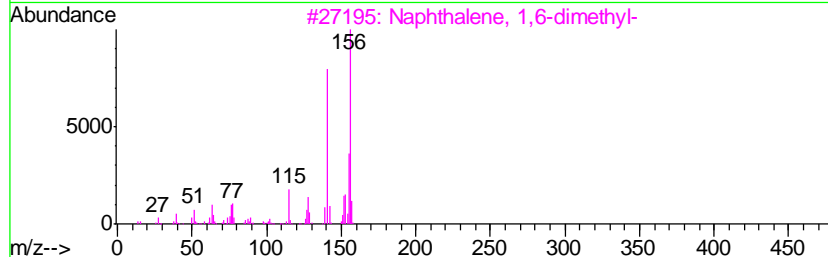
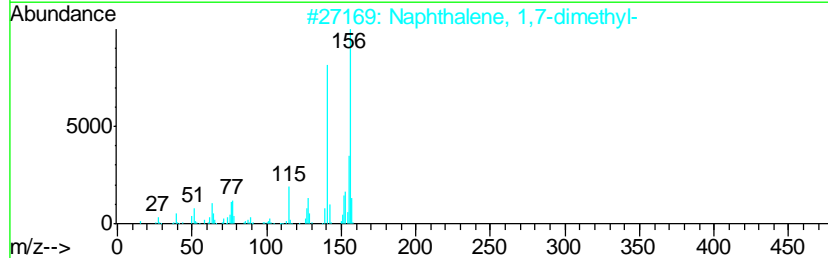
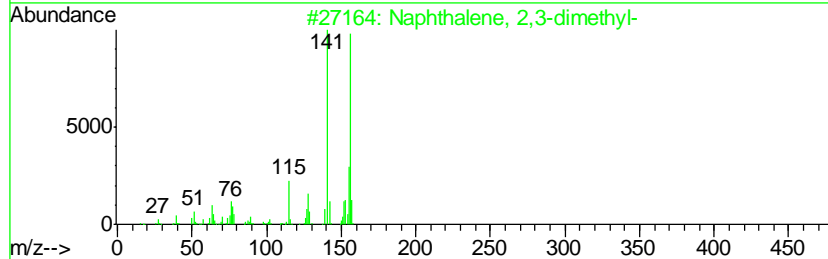
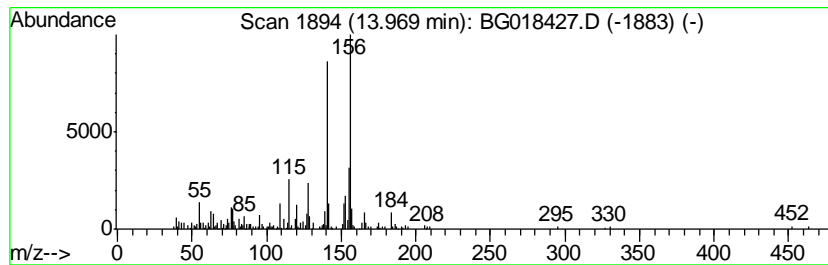
Quant Method : Z:\HPCHEM1\BNA_G\METHODS\SOM02.2-EPA-BG080915.M
 Quant Title : SVOA CALIBRATION

TIC Library : C:\DATABASE\NIST02.L
 TIC Integration Parameters: LSCINT.P

 Peak Number 14 Naphthalene, 2,3-dimethyl- Concentration Rank 53

R.T.	EstConc	Area	Relative to ISTD	R.T.
13.97	2.18 ng/ul	290350	Acenaphthene-d10	14.64

Hit#	of	Tentative ID	MW	MolForm	CAS#	Qual
1	5	Naphthalene, 2,3-dimethyl-	156	C12H12	000581-40-8	96
2		Naphthalene, 1,7-dimethyl-	156	C12H12	000575-37-1	96
3		Naphthalene, 1,6-dimethyl-	156	C12H12	000575-43-9	96
4		Naphthalene, 1,5-dimethyl-	156	C12H12	000571-61-9	96
5		Naphthalene, 1,7-dimethyl-	156	C12H12	000575-37-1	94



Data Path : Z:\HPCHEM1\BNA_G\DATA\BG081315\
 Data File : BG018427.D
 Acq On : 13 Aug 2015 17:22
 Operator : UM/MA
 Sample : G3136-02DL 5X
 Misc :
 ALS Vial : 3 Sample Multiplier: 1

Instrument :
 BNA_G
 ClientSampleID :
 C02J7DL

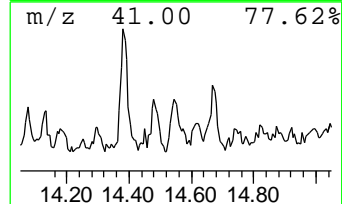
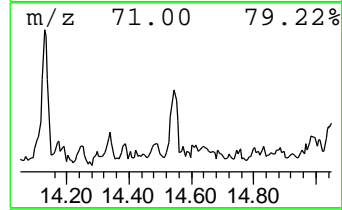
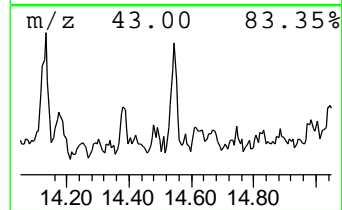
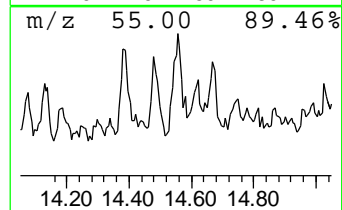
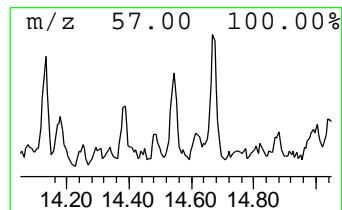
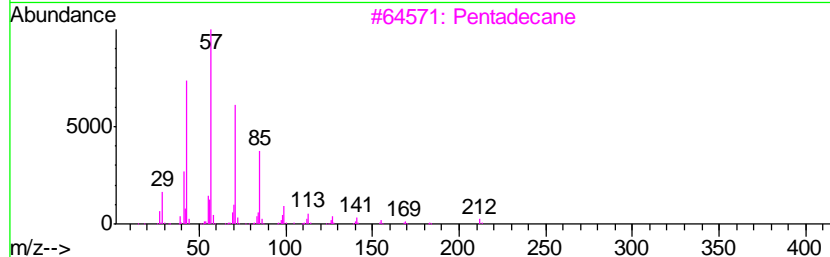
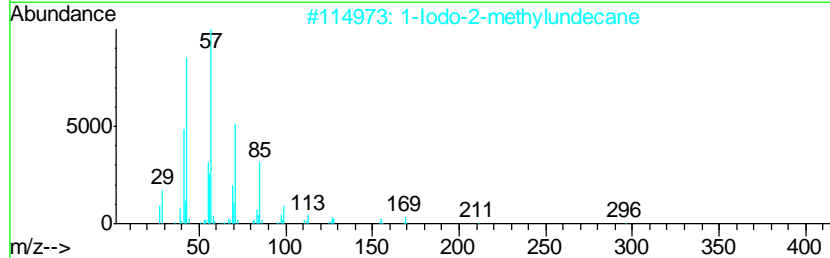
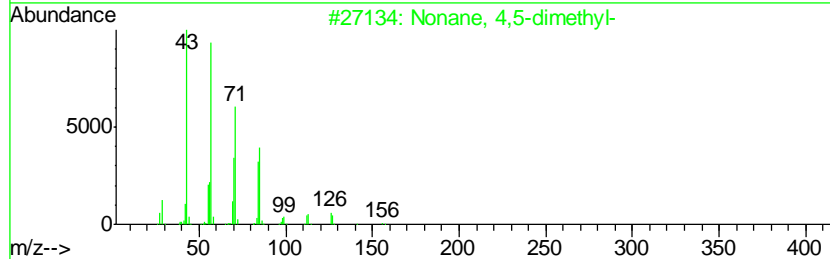
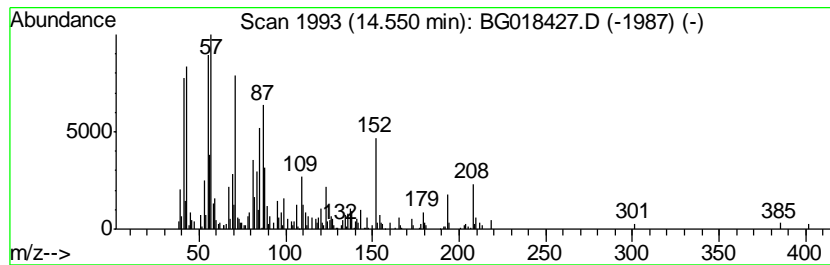
Quant Method : Z:\HPCHEM1\BNA_G\METHODS\SOM02.2-EPA-BG080915.M
 Quant Title : SVOA CALIBRATION

TIC Library : C:\DATABASE\NIST02.L
 TIC Integration Parameters: LSCINT.P

 Peak Number 15 (DEL) Alkane: Straight-Chai... Concentration Rank 57

R.T.	EstConc	Area	Relative to ISTD	R.T.
14.55	2.02 ng/ul	269404	Acenaphthene-d10	14.64

Hit#	of	Tentative ID	MW	MolForm	CAS#	Qual
1	5	Nonane, 4,5-dimethyl-	156	C11H24	017302-23-7	43
2		1-Iodo-2-methylundecane	296	C12H25I	073105-67-6	43
3		Pentadecane	212	C15H32	000629-62-9	42
4		Pentadecane	212	C15H32	000629-62-9	42
5		Pentadecane	212	C15H32	000629-62-9	42



Data Path : Z:\HPCHEM1\BNA_G\DATA\BG081315\
 Data File : BG018427.D
 Acq On : 13 Aug 2015 17:22
 Operator : UM/MA
 Sample : G3136-02DL 5X
 Misc :
 ALS Vial : 3 Sample Multiplier: 1

Instrument :
 BNA_G
 ClientSampled :
 C02J7DL

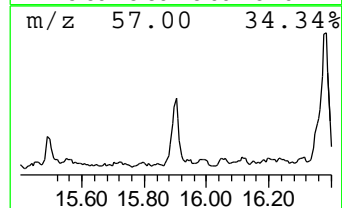
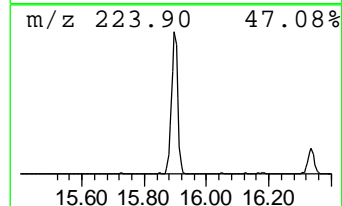
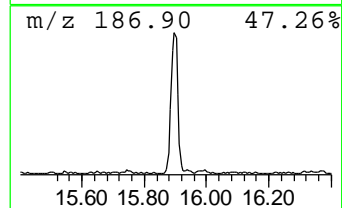
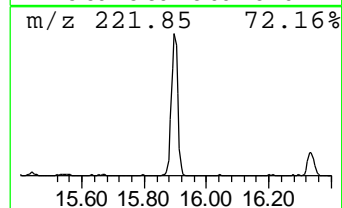
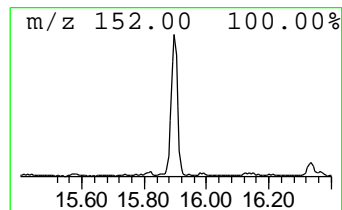
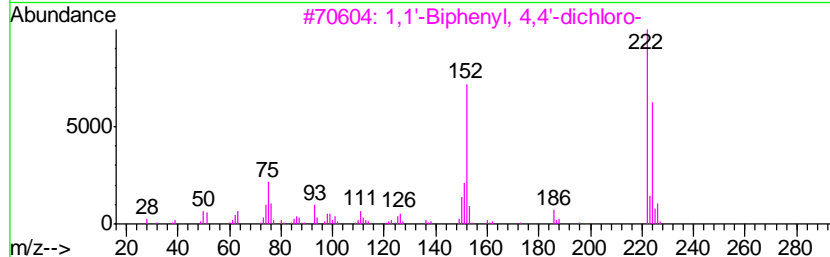
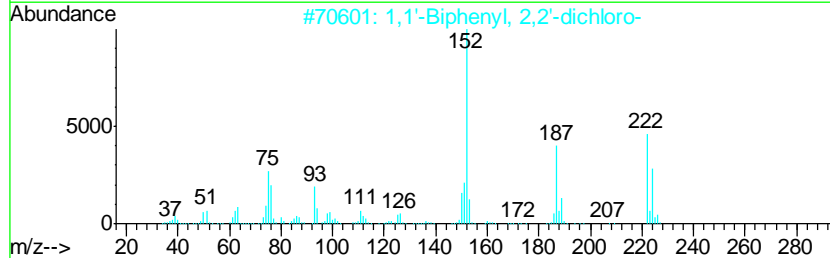
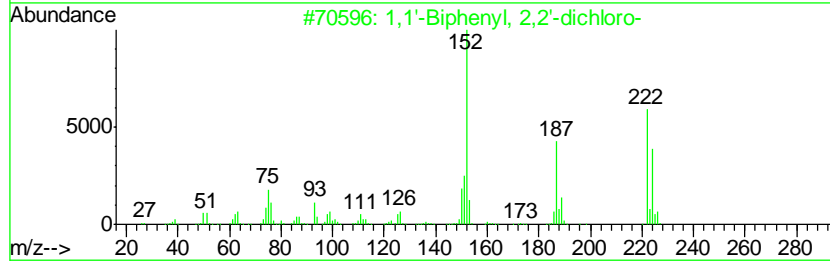
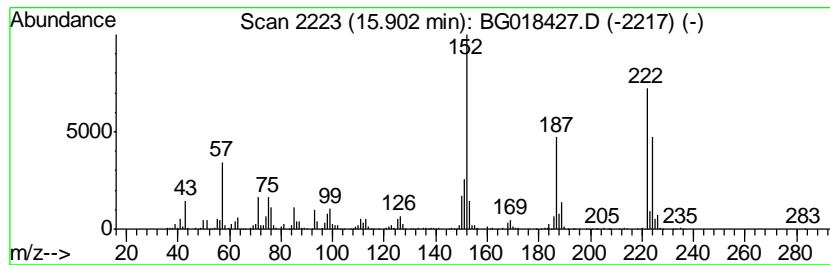
Quant Method : Z:\HPCHEM1\BNA_G\METHODS\SOM02.2-EPA-BG080915.M
 Quant Title : SVOA CALIBRATION

TIC Library : C:\DATABASE\NIST02.L
 TIC Integration Parameters: LSCINT.P

 Peak Number 16 1,1'-Biphenyl, 2,2'-dichloro- Concentration Rank 30

R.T.	EstConc	Area	Relative to ISTD	R.T.
15.90	8.81 ng/ul	1175110	Acenaphthene-d10	14.64

Hit#	of	Tentative ID	MW	MolForm	CAS#	Qual
1	5	1,1'-Biphenyl, 2,2'-dichloro-	222	C12H8Cl2	013029-08-8	99
2		1,1'-Biphenyl, 2,2'-dichloro-	222	C12H8Cl2	013029-08-8	97
3		1,1'-Biphenyl, 4,4'-dichloro-	222	C12H8Cl2	002050-68-2	95
4		1,1'-Biphenyl, 2,4-dichloro-	222	C12H8Cl2	033284-50-3	94
5		1,1'-Biphenyl, 3,4-dichloro-	222	C12H8Cl2	002974-92-7	93



Data Path : Z:\HPCHEM1\BNA_G\DATA\BG081315\
 Data File : BG018427.D
 Acq On : 13 Aug 2015 17:22
 Operator : UM/MA
 Sample : G3136-02DL 5X
 Misc :
 ALS Vial : 3 Sample Multiplier: 1

Instrument :
 BNA_G
 ClientSampleID :
 C02J7DL

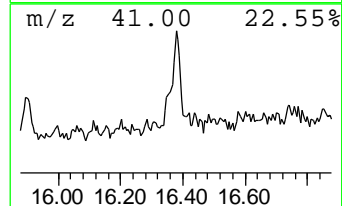
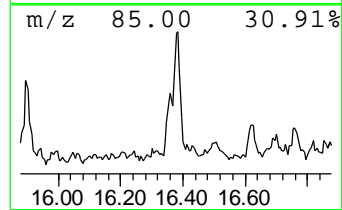
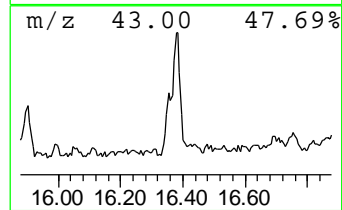
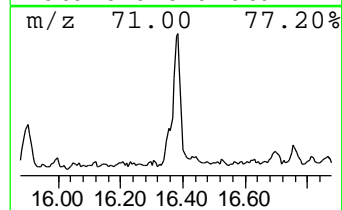
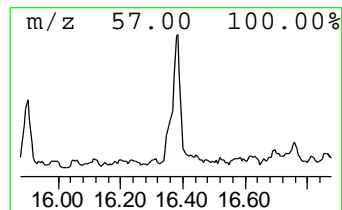
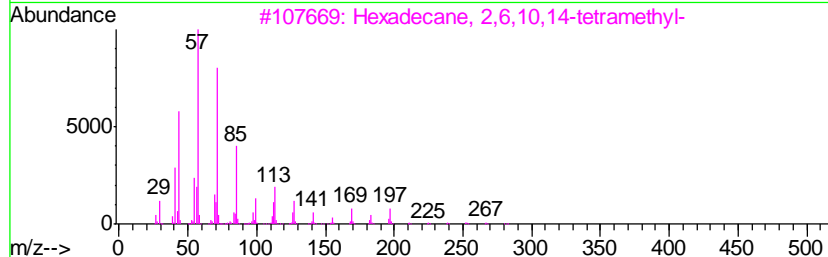
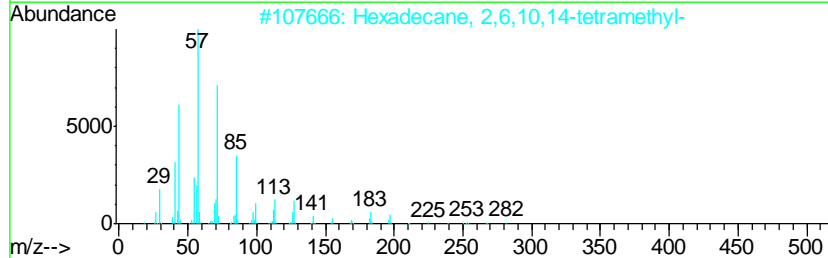
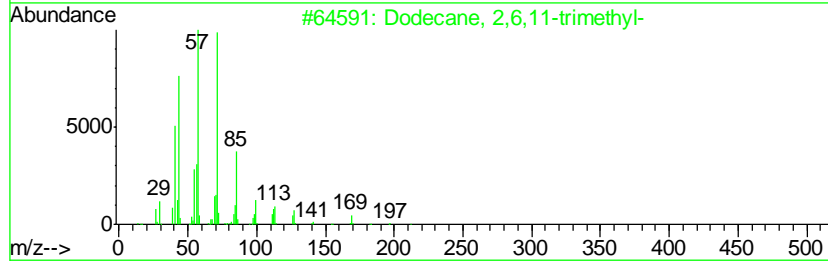
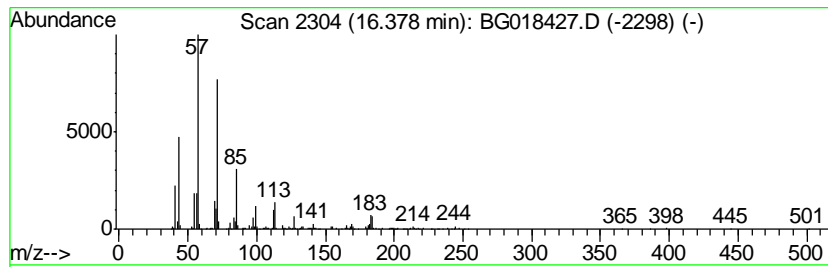
Quant Method : Z:\HPCHEM1\BNA_G\METHODS\SOM02.2-EPA-BG080915.M
 Quant Title : SVOA CALIBRATION

TIC Library : C:\DATABASE\NIST02.L
 TIC Integration Parameters: LSCINT.P

 Peak Number 17 (DEL) Alkane: Straight-Chai... Concentration Rank 39

R.T.	EstConc	Area	Relative to ISTD	R.T.
16.38	4.49 ng/ul	636480	Phenanthrene-d10	17.39

Hit#	of	Tentative ID	MW	MolForm	CAS#	Qual
1	5	Dodecane, 2,6,11-trimethyl-	212	C15H32	031295-56-4	87
2		Hexadecane, 2,6,10,14-tetramethyl-	282	C20H42	000638-36-8	86
3		Hexadecane, 2,6,10,14-tetramethyl-	282	C20H42	000638-36-8	78
4		Hexadecane, 2,6,10,14-tetramethyl-	282	C20H42	000638-36-8	78
5		Hexadecane, 2,6,11,15-tetramethyl-	282	C20H42	000504-44-9	72



Data Path : Z:\HPCHEM1\BNA_G\DATA\BG081315\
 Data File : BG018427.D
 Acq On : 13 Aug 2015 17:22
 Operator : UM/MA
 Sample : G3136-02DL 5X
 Misc :
 ALS Vial : 3 Sample Multiplier: 1

Instrument :
 BNA_G
 ClientSampleID :
 C02J7DL

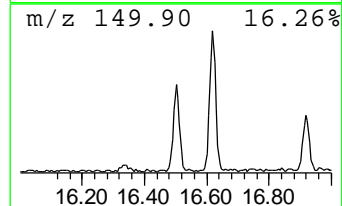
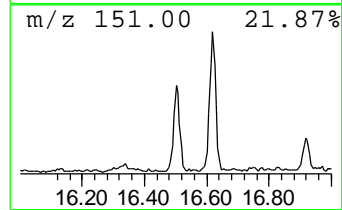
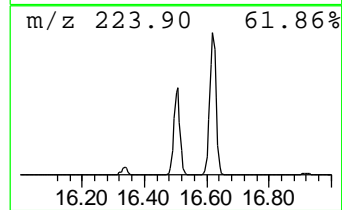
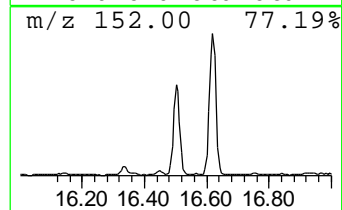
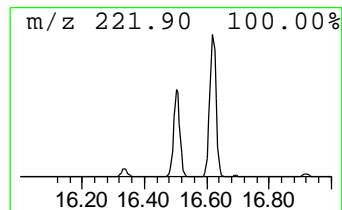
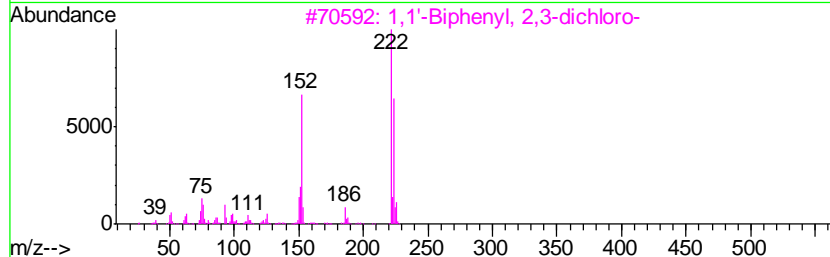
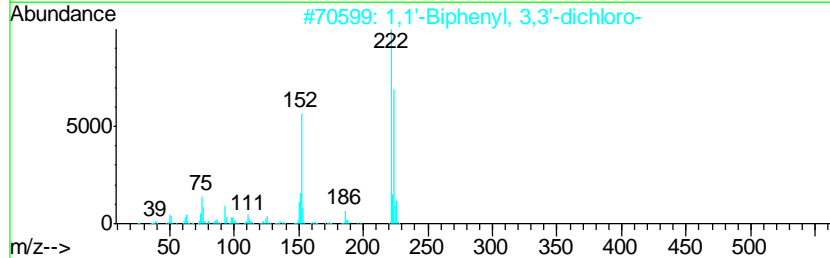
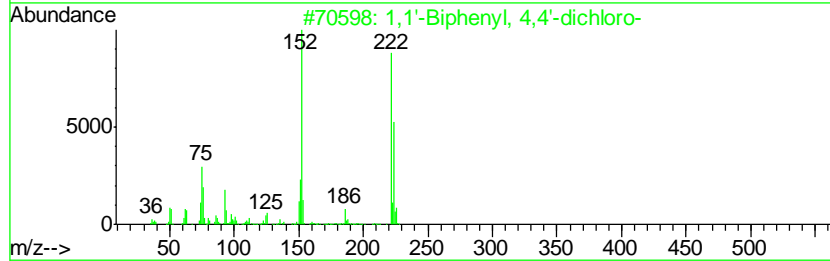
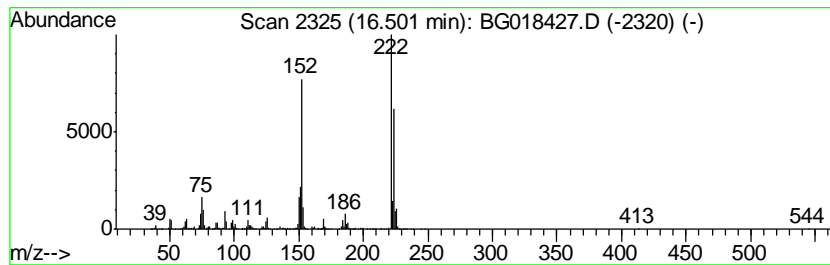
Quant Method : Z:\HPCHEM1\BNA_G\METHODS\SOM02.2-EPA-BG080915.M
 Quant Title : SVOA CALIBRATION

TIC Library : C:\DATABASE\NIST02.L
 TIC Integration Parameters: LSCINT.P

 Peak Number 18 1,1'-Biphenyl, 4,4'-dichloro- Concentration Rank 32

R.T.	EstConc	Area	Relative to ISTD	R.T.
16.50	8.25 ng/ul	1170220	Phenanthrene-d10	17.39

Hit#	of	Tentative ID	MW	MolForm	CAS#	Qual
1	5	1,1'-Biphenyl, 4,4'-dichloro-	222	C12H8Cl2	002050-68-2	98
2		1,1'-Biphenyl, 3,3'-dichloro-	222	C12H8Cl2	002050-67-1	98
3		1,1'-Biphenyl, 2,3-dichloro-	222	C12H8Cl2	016605-91-7	97
4		1,1'-Biphenyl, 2,4-dichloro-	222	C12H8Cl2	033284-50-3	96
5		1,1'-Biphenyl, 4,4'-dichloro-	222	C12H8Cl2	002050-68-2	95



Data Path : Z:\HPCHEM1\BNA_G\DATA\BG081315\
 Data File : BG018427.D
 Acq On : 13 Aug 2015 17:22
 Operator : UM/MA
 Sample : G3136-02DL 5X
 Misc :
 ALS Vial : 3 Sample Multiplier: 1

Instrument :
 BNA_G
 ClientSampled :
 C02J7DL

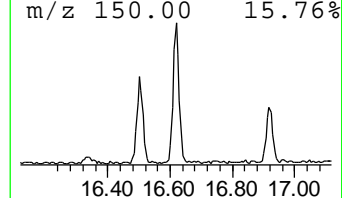
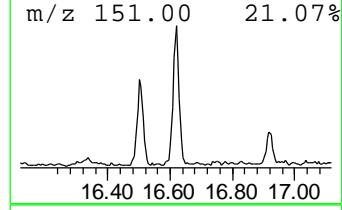
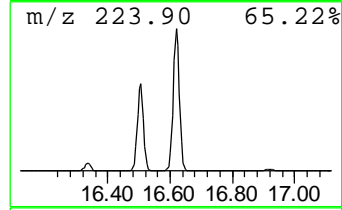
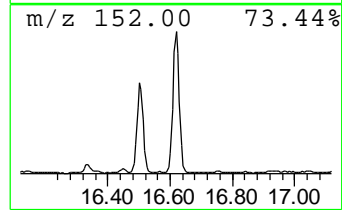
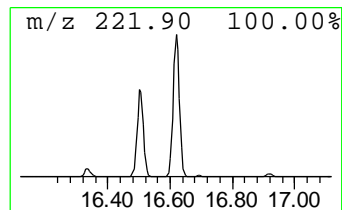
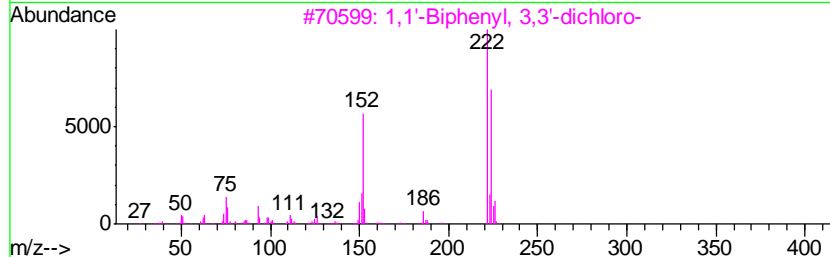
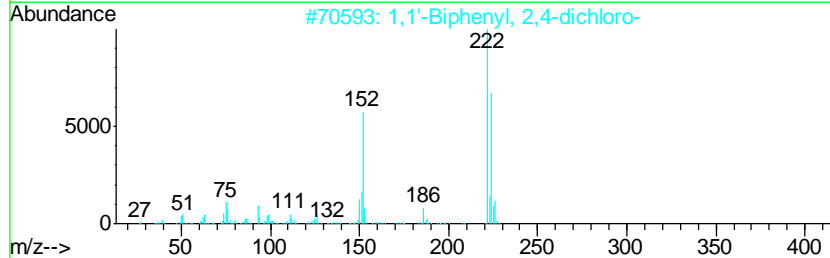
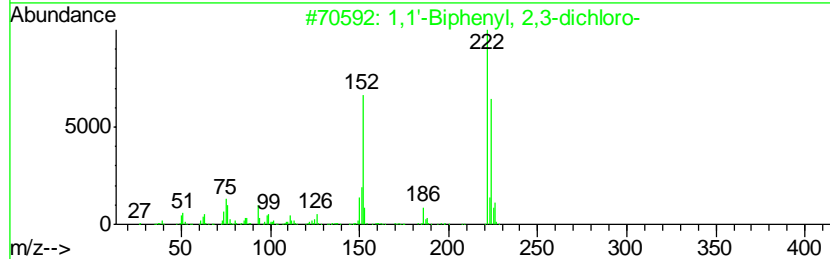
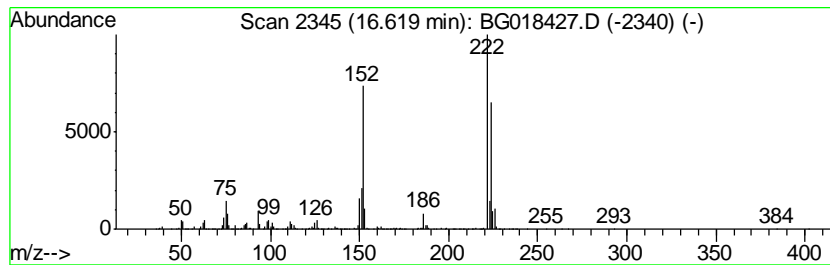
Quant Method : Z:\HPCHEM1\BNA_G\METHODS\SOM02.2-EPA-BG080915.M
 Quant Title : SVOA CALIBRATION

TIC Library : C:\DATABASE\NIST02.L
 TIC Integration Parameters: LSCINT.P

 Peak Number 19 1,1'-Biphenyl, 2,3-dichloro- Concentration Rank 23

R.T.	EstConc	Area	Relative to ISTD	R.T.
16.62	12.74 ng/ul	1807250	Phenanthrene-d10	17.39

Hit#	of	Tentative ID	MW	MolForm	CAS#	Qual
1	5	1,1'-Biphenyl, 2,3-dichloro-	222	C12H8Cl2	016605-91-7	99
2		1,1'-Biphenyl, 2,4-dichloro-	222	C12H8Cl2	033284-50-3	98
3		1,1'-Biphenyl, 3,3'-dichloro-	222	C12H8Cl2	002050-67-1	98
4		1,1'-Biphenyl, 4,4'-dichloro-	222	C12H8Cl2	002050-68-2	97
5		1,1'-Biphenyl, 4,4'-dichloro-	222	C12H8Cl2	002050-68-2	96



Data Path : Z:\HPCHEM1\BNA_G\DATA\BG081315\
 Data File : BG018427.D
 Acq On : 13 Aug 2015 17:22
 Operator : UM/MA
 Sample : G3136-02DL 5X
 Misc :
 ALS Vial : 3 Sample Multiplier: 1

Instrument :
 BNA_G
 ClientSampleID :
 C02J7DL

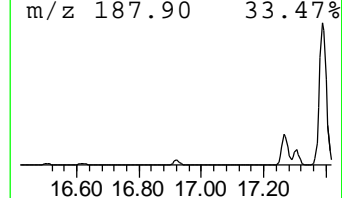
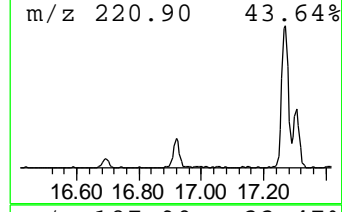
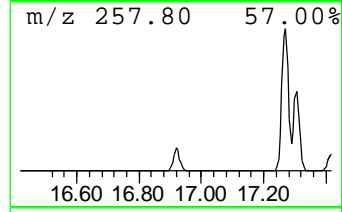
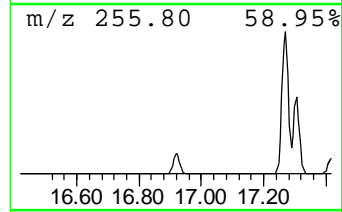
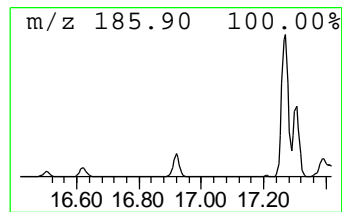
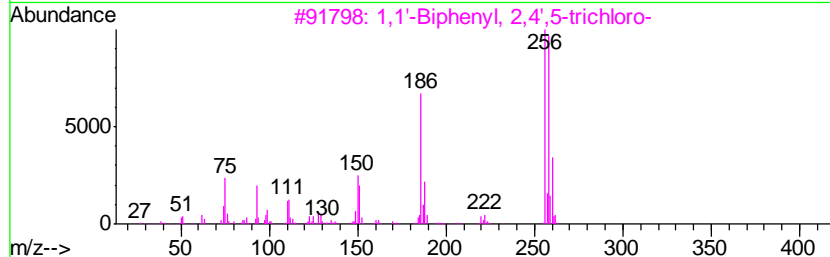
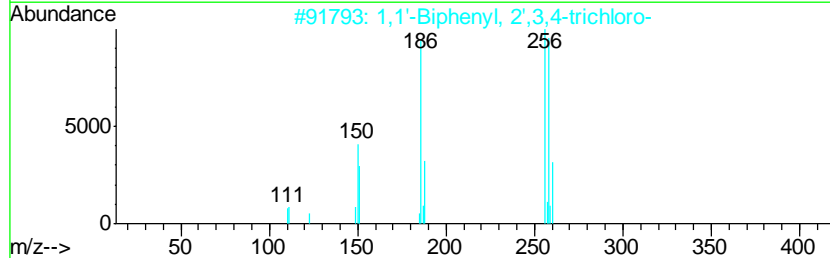
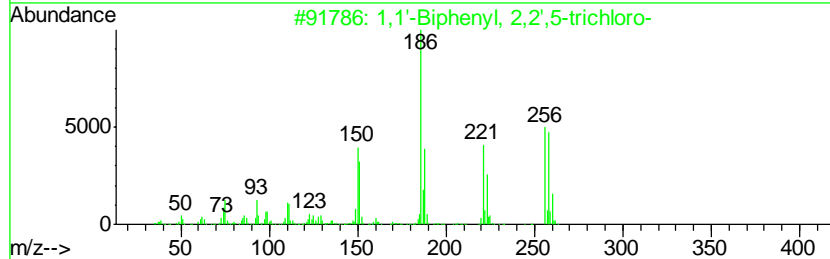
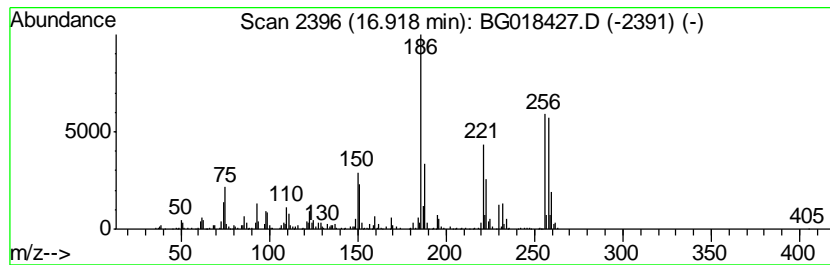
Quant Method : Z:\HPCHEM1\BNA_G\METHODS\SOM02.2-EPA-BG080915.M
 Quant Title : SVOA CALIBRATION

TIC Library : C:\DATABASE\NIST02.L
 TIC Integration Parameters: LSCINT.P

 Peak Number 20 1,1'-Biphenyl, 2,2',5-trich... Concentration Rank 35

R.T.	EstConc	Area	Relative to ISTD	R.T.
16.92	4.84 ng/ul	687228	Phenanthrene-d10	17.39

Hit#	of	Tentative ID	MW	MolForm	CAS#	Qual
1	5	1,1'-Biphenyl, 2,2',5-trichloro-	256	C12H7Cl3	037680-65-2	98
2		1,1'-Biphenyl, 2',3,4-trichloro-	256	C12H7Cl3	038444-86-9	90
3		1,1'-Biphenyl, 2,4',5-trichloro-	256	C12H7Cl3	016606-02-3	86
4		1,1'-Biphenyl, 2,3,3'-trichloro-	256	C12H7Cl3	038444-84-7	86
5		1,1'-Biphenyl, 2,3,4-trichloro-	256	C12H7Cl3	055702-46-0	86



Data Path : Z:\HPCHEM1\BNA_G\DATA\BG081315\
 Data File : BG018427.D
 Acq On : 13 Aug 2015 17:22
 Operator : UM/MA
 Sample : G3136-02DL 5X
 Misc :
 ALS Vial : 3 Sample Multiplier: 1

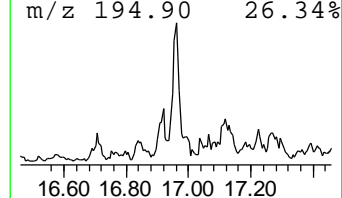
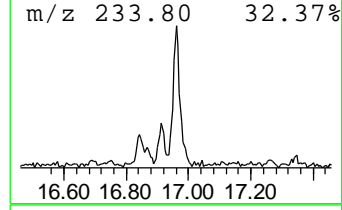
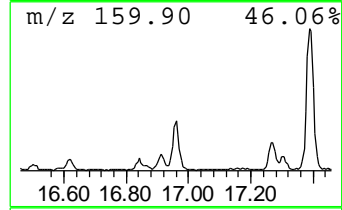
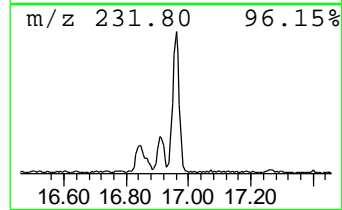
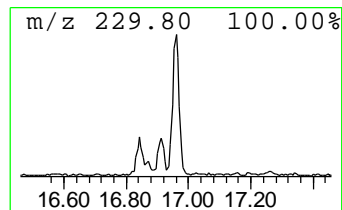
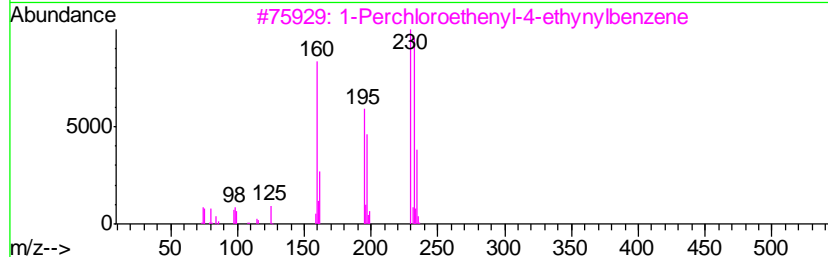
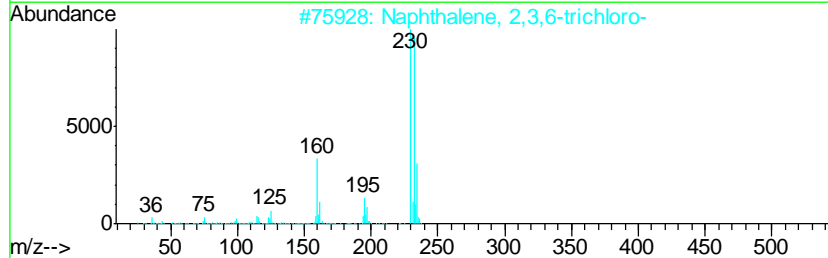
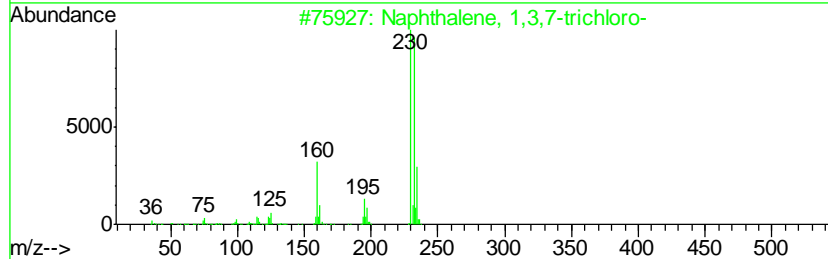
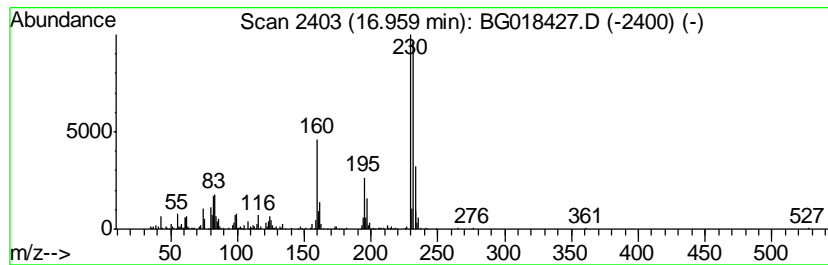
Instrument :
 BNA_G
 ClientSampleID :
 C02J7DL

Quant Method : Z:\HPCHEM1\BNA_G\METHODS\SOM02.2-EPA-BG080915.M
 Quant Title : SVOA CALIBRATION

TIC Library : C:\DATABASE\NIST02.L
 TIC Integration Parameters: LSCINT.P

 Peak Number 21 Naphthalene, 1,3,7-trichloro- Concentration Rank 45

R.T.	EstConc	Area	Relative to ISTD	R.T.		
16.96	3.18 ng/ul	451337	Phenanthrene-d10	17.39		
Hit# of	5	Tentative ID	MW	MolForm	CAS#	Qual
1		Naphthalene, 1,3,7-trichloro-	230	C10H5Cl3	055720-37-1	97
2		Naphthalene, 2,3,6-trichloro-	230	C10H5Cl3	055720-40-6	96
3		1-Perchloroethenyl-4-ethynylbenzene	230	C10H5Cl3	1000283-76-9	64
4		Toluene, 2-bromo-3,5-dimethoxy-	230	C9H11BrO2	013321-73-8	50
5		1,3-Benzodioxole-5-methanol, 6-b...	230	C8H7BrO3	006642-34-8	47



Data Path : Z:\HPCHEM1\BNA_G\DATA\BG081315\
 Data File : BG018427.D
 Acq On : 13 Aug 2015 17:22
 Operator : UM/MA
 Sample : G3136-02DL 5X
 Misc :
 ALS Vial : 3 Sample Multiplier: 1

Instrument :
 BNA_G
 ClientSampleID :
 C02J7DL

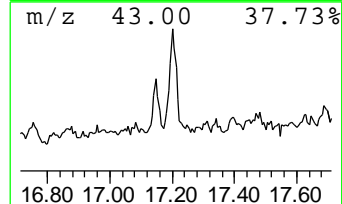
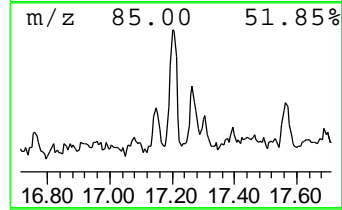
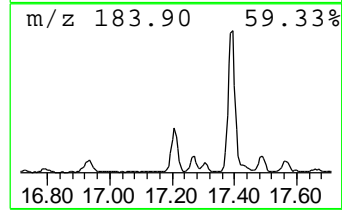
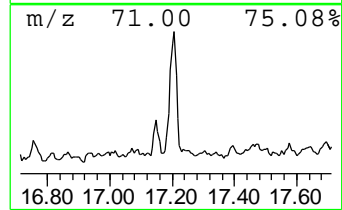
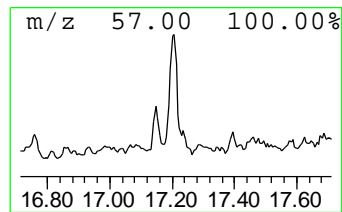
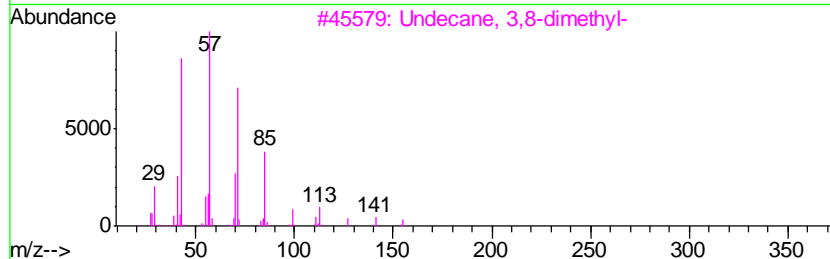
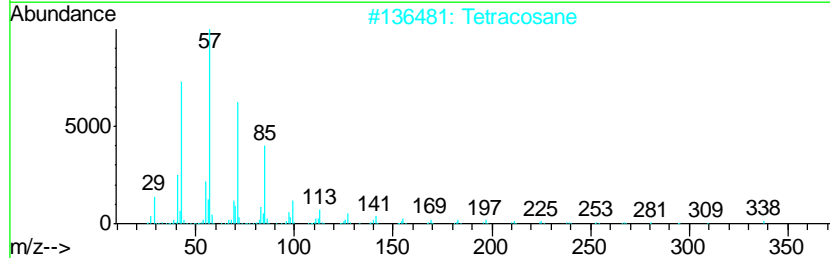
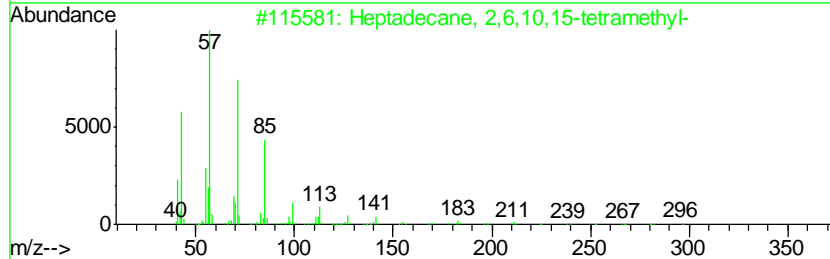
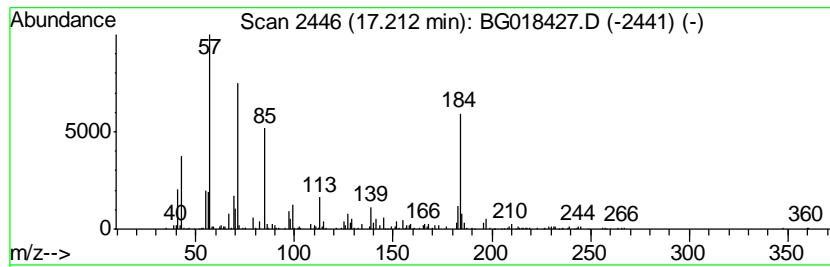
Quant Method : Z:\HPCHEM1\BNA_G\METHODS\SOM02.2-EPA-BG080915.M
 Quant Title : SVOA CALIBRATION

TIC Library : C:\DATABASE\NIST02.L
 TIC Integration Parameters: LSCINT.P

 Peak Number 22 (DEL) Alkane: Straight-Chai... Concentration Rank 47

R.T.	EstConc	Area	Relative to ISTD	R.T.
17.21	2.66 ng/ul	376824	Phenanthrene-d10	17.39

Hit#	of	Tentative ID	MW	MolForm	CAS#	Qual
1	5	Heptadecane, 2,6,10,15-tetramethyl-	296	C21H44	054833-48-6	70
2		Tetracosane	338	C24H50	000646-31-1	62
3		Undecane, 3,8-dimethyl-	184	C13H28	017301-30-3	53
4		Pentadecane, 2,6,10,14-tetramethyl-	268	C19H40	001921-70-6	52
5		Tridecane, 7-methyl-	198	C14H30	026730-14-3	50



Data Path : Z:\HPCHEM1\BNA_G\DATA\BG081315\
 Data File : BG018427.D
 Acq On : 13 Aug 2015 17:22
 Operator : UM/MA
 Sample : G3136-02DL 5X
 Misc :
 ALS Vial : 3 Sample Multiplier: 1

Instrument :
 BNA_G
 ClientSampleID :
 C02J7DL

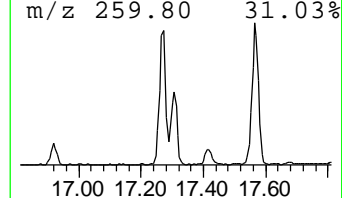
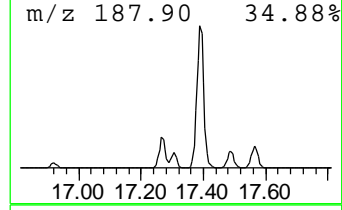
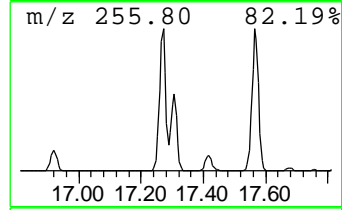
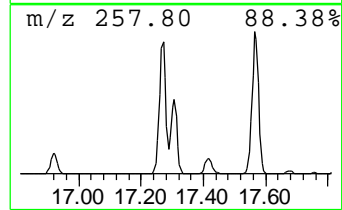
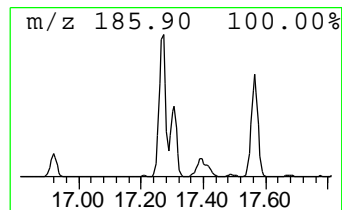
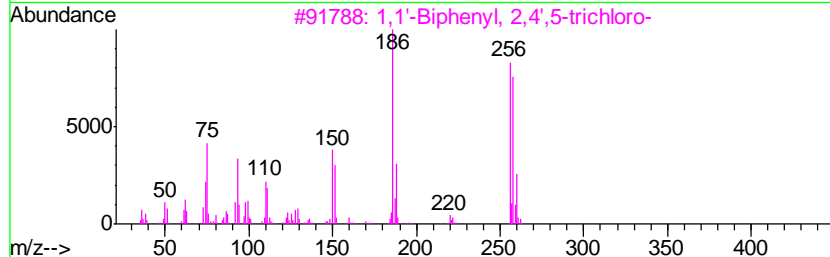
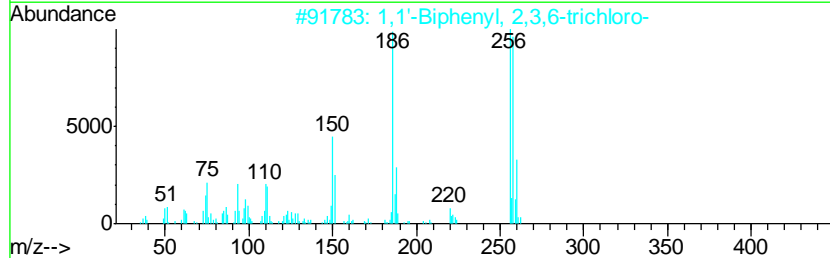
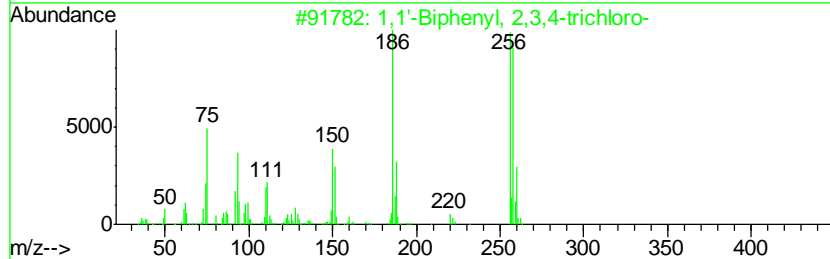
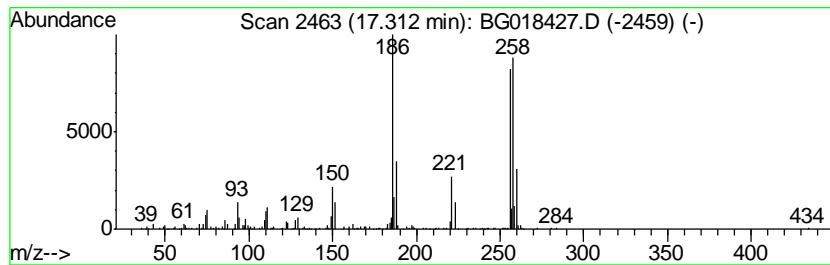
Quant Method : Z:\HPCHEM1\BNA_G\METHODS\SOM02.2-EPA-BG080915.M
 Quant Title : SVOA CALIBRATION

TIC Library : C:\DATABASE\NIST02.L
 TIC Integration Parameters: LSCINT.P

 Peak Number 24 1,1'-Biphenyl, 2,3,4-trichl... Concentration Rank 27

R.T.	EstConc	Area	Relative to ISTD	R.T.
17.31	10.63 ng/ul	1508340	Phenanthrene-d10	17.39

Hit#	of	Tentative ID	MW	MolForm	CAS#	Qual
1	5	1,1'-Biphenyl, 2,3,4-trichloro-	256	C12H7Cl3	055702-46-0	97
2		1,1'-Biphenyl, 2,3,6-trichloro-	256	C12H7Cl3	055702-45-9	96
3		1,1'-Biphenyl, 2,4',5-trichloro-	256	C12H7Cl3	016606-02-3	96
4		1,1'-Biphenyl, 2,4,5-trichloro-	256	C12H7Cl3	015862-07-4	96
5		1,1'-Biphenyl, 2',3,4-trichloro-	256	C12H7Cl3	038444-86-9	96



Data Path : Z:\HPCHEM1\BNA_G\DATA\BG081315\
 Data File : BG018427.D
 Acq On : 13 Aug 2015 17:22
 Operator : UM/MA
 Sample : G3136-02DL 5X
 Misc :
 ALS Vial : 3 Sample Multiplier: 1

Instrument :
 BNA_G
 ClientSampleID :
 C02J7DL

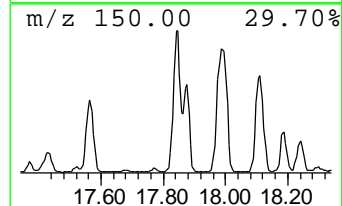
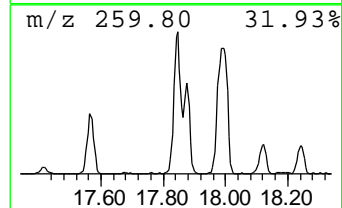
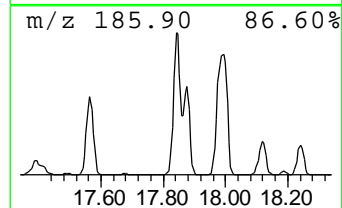
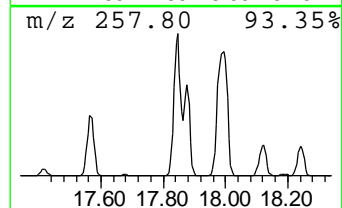
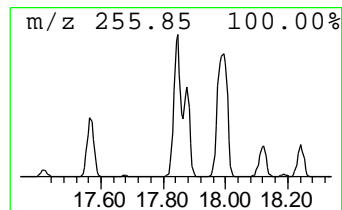
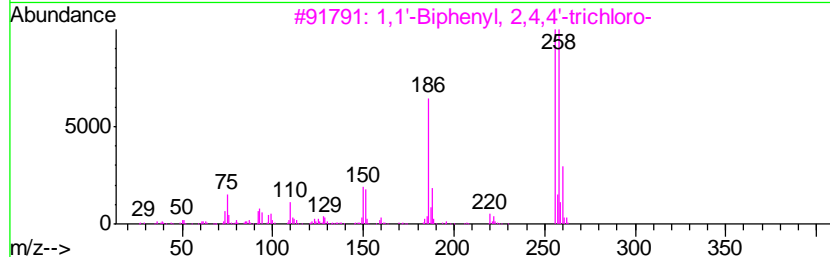
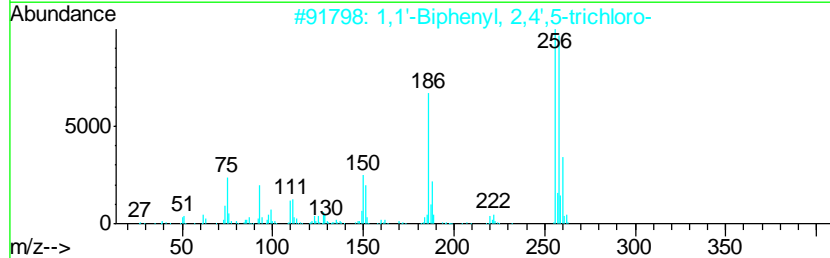
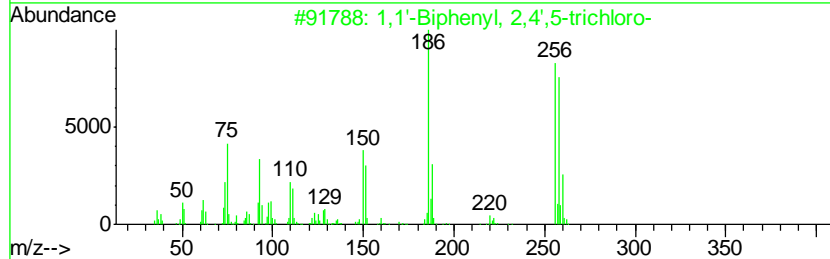
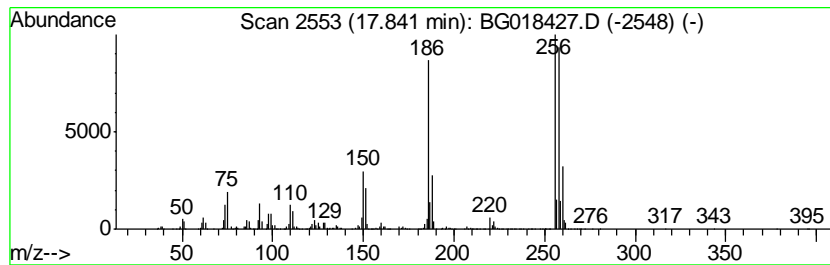
Quant Method : Z:\HPCHEM1\BNA_G\METHODS\SOM02.2-EPA-BG080915.M
 Quant Title : SVOA CALIBRATION

TIC Library : C:\DATABASE\NIST02.L
 TIC Integration Parameters: LSCINT.P

 Peak Number 25 1,1'-Biphenyl, 2,4',5-trich... Concentration Rank 6

R.T.	EstConc	Area	Relative to ISTD	R.T.
17.84	41.06 ng/ul	5825420	Phenanthrene-d10	17.39

Hit#	of	Tentative ID	MW	MolForm	CAS#	Qual
1	5	1,1'-Biphenyl, 2,4',5-trichloro-	256	C12H7Cl3	016606-02-3	99
2		1,1'-Biphenyl, 2,4',5-trichloro-	256	C12H7Cl3	016606-02-3	99
3		1,1'-Biphenyl, 2,4,4'-trichloro-	256	C12H7Cl3	007012-37-5	99
4		1,1'-Biphenyl, 2,3,4'-Trichloro-	256	C12H7Cl3	038444-85-8	99
5		1,1'-Biphenyl, 2,4,5-trichloro-	256	C12H7Cl3	015862-07-4	99



Data Path : Z:\HPCHEM1\BNA_G\DATA\BG081315\
 Data File : BG018427.D
 Acq On : 13 Aug 2015 17:22
 Operator : UM/MA
 Sample : G3136-02DL 5X
 Misc :
 ALS Vial : 3 Sample Multiplier: 1

Instrument :
 BNA_G
 ClientSampleID :
 C02J7DL

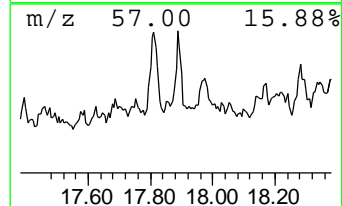
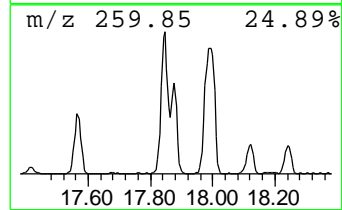
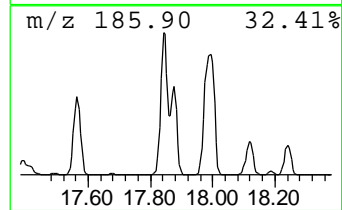
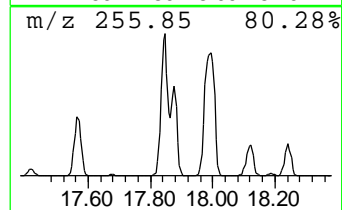
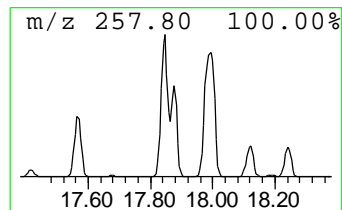
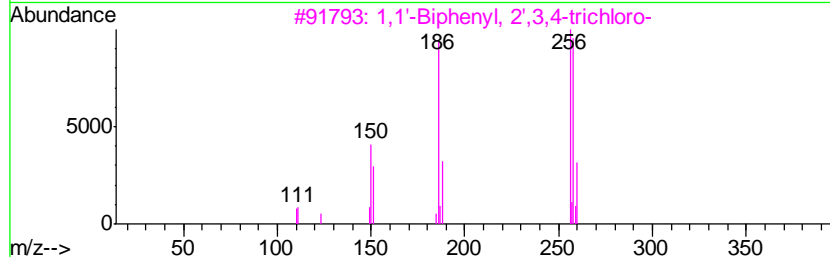
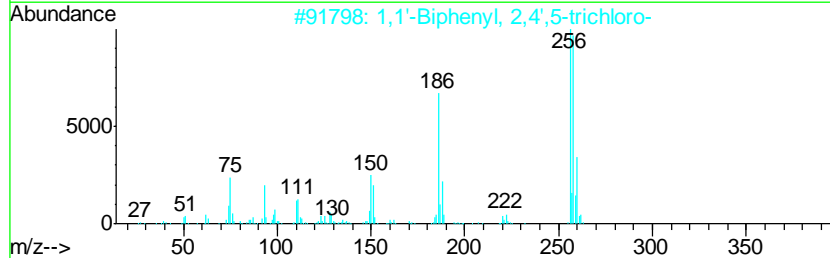
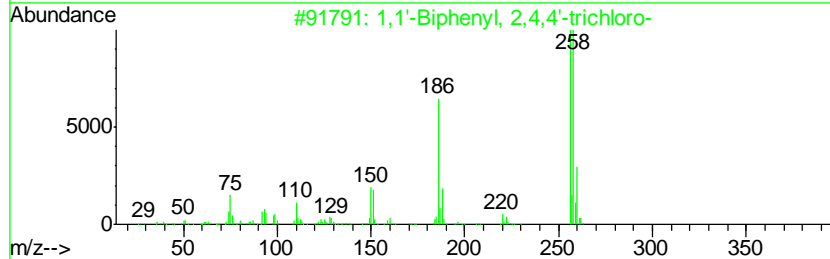
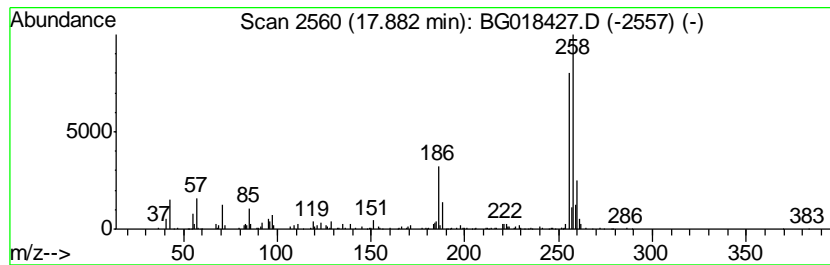
Quant Method : Z:\HPCHEM1\BNA_G\METHODS\SOM02.2-EPA-BG080915.M
 Quant Title : SVOA CALIBRATION

TIC Library : C:\DATABASE\NIST02.L
 TIC Integration Parameters: LSCINT.P

 Peak Number 26 1,1'-Biphenyl, 2,4,4'-trich... Concentration Rank 14

R.T.	EstConc	Area	Relative to ISTD	R.T.
17.88	18.92 ng/ul	2683510	Phenanthrene-d10	17.39

Hit#	of	Tentative ID	MW	MolForm	CAS#	Qual
1	5	1,1'-Biphenyl, 2,4,4'-trichloro-	256	C12H7Cl3	007012-37-5	98
2		1,1'-Biphenyl, 2,4',5-trichloro-	256	C12H7Cl3	016606-02-3	98
3		1,1'-Biphenyl, 2',3,4-trichloro-	256	C12H7Cl3	038444-86-9	98
4		1,1'-Biphenyl, 2,4,4'-trichloro-	256	C12H7Cl3	007012-37-5	97
5		1,1'-Biphenyl, 2,3,6-trichloro-	256	C12H7Cl3	055702-45-9	97



Data Path : Z:\HPCHEM1\BNA_G\DATA\BG081315\
 Data File : BG018427.D
 Acq On : 13 Aug 2015 17:22
 Operator : UM/MA
 Sample : G3136-02DL 5X
 Misc :
 ALS Vial : 3 Sample Multiplier: 1

Instrument :
 BNA_G
 ClientSampled :
 C02J7DL

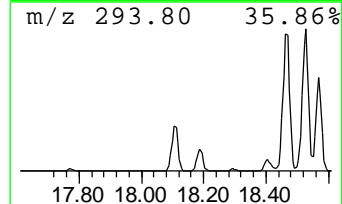
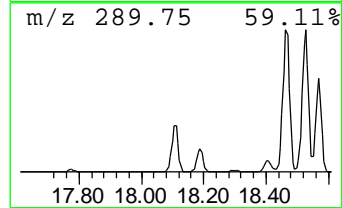
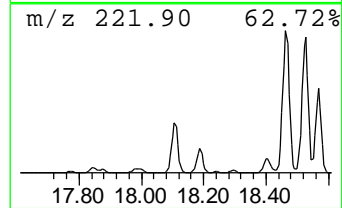
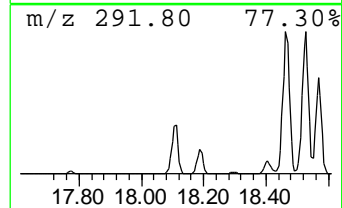
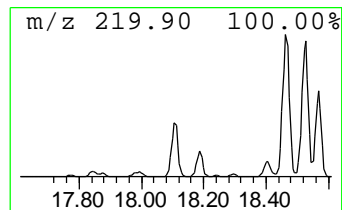
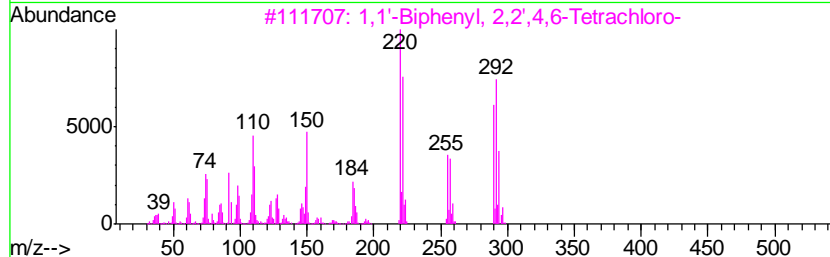
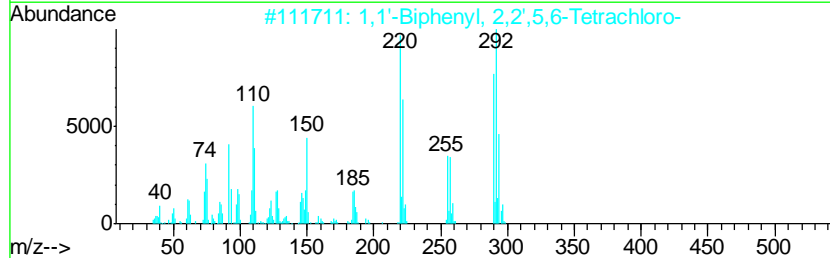
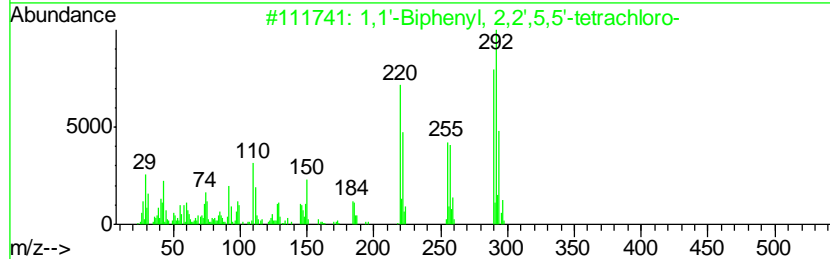
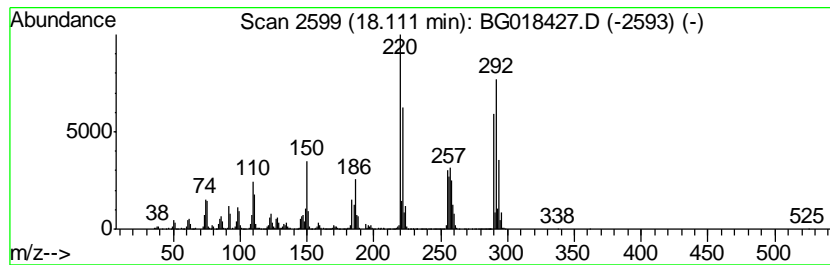
Quant Method : Z:\HPCHEM1\BNA_G\METHODS\SOM02.2-EPA-BG080915.M
 Quant Title : SVOA CALIBRATION

TIC Library : C:\DATABASE\NIST02.L
 TIC Integration Parameters: LSCINT.P

 Peak Number 28 1,1'-Biphenyl, 2,2',5,5'-te... Concentration Rank 7

R.T.	EstConc	Area	Relative to ISTD	R.T.
18.11	35.04 ng/ul	4971390	Phenanthrene-d10	17.39

Hit#	of	Tentative ID	MW	MolForm	CAS#	Qual
1	5	1,1'-Biphenyl, 2,2',5,5'-tetrach...	290	C12H6Cl4	035693-99-3	99
2		1,1'-Biphenyl, 2,2',5,6-Tetrachl...	290	C12H6Cl4	041464-41-9	99
3		1,1'-Biphenyl, 2,2',4,6-Tetrachl...	290	C12H6Cl4	062796-65-0	99
4		1,1'-Biphenyl, 2,2',6,6'-tetrach...	290	C12H6Cl4	015968-05-5	99
5		1,1'-Biphenyl, 2,2',4,4'-tetrach...	290	C12H6Cl4	002437-79-8	99



Data Path : Z:\HPCHEM1\BNA_G\DATA\BG081315\
 Data File : BG018427.D
 Acq On : 13 Aug 2015 17:22
 Operator : UM/MA
 Sample : G3136-02DL 5X
 Misc :
 ALS Vial : 3 Sample Multiplier: 1

Instrument :
 BNA_G
 ClientSampled :
 C02J7DL

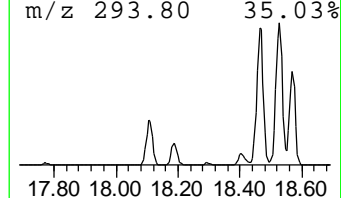
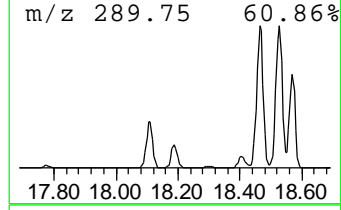
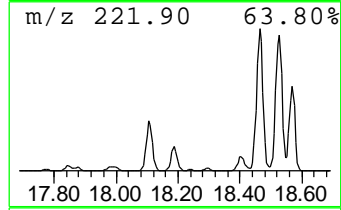
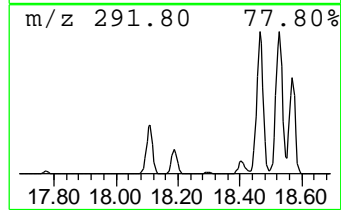
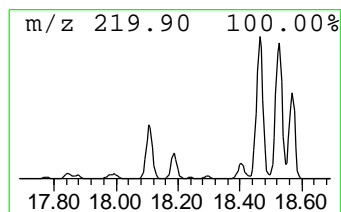
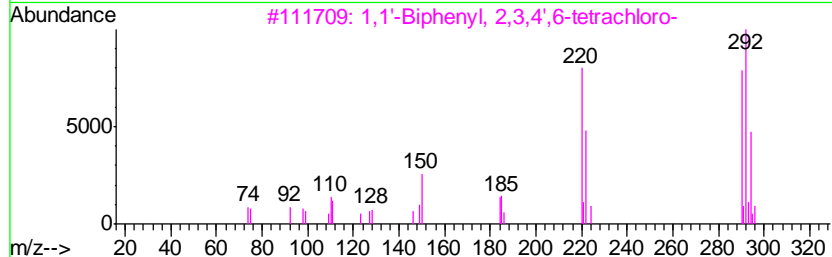
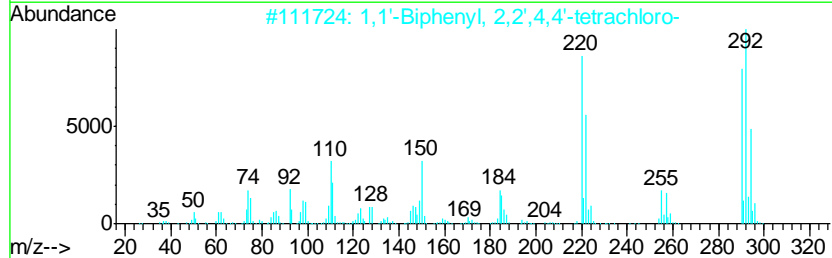
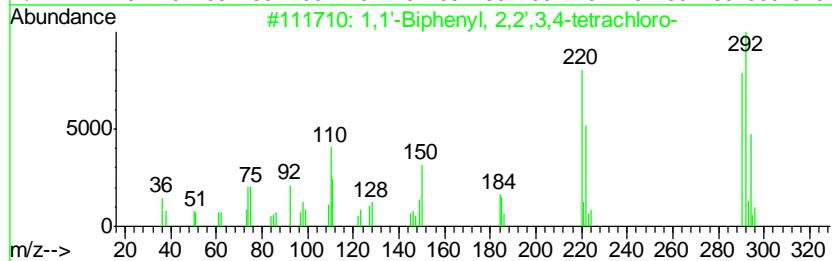
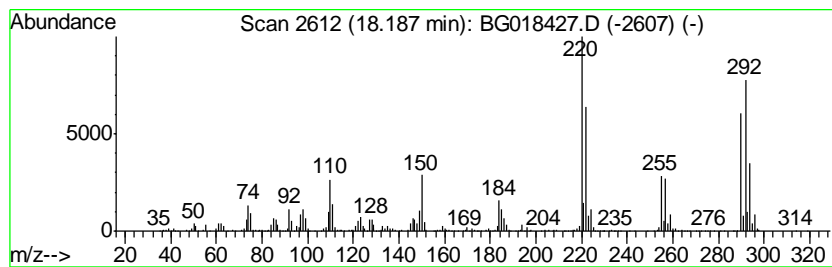
Quant Method : Z:\HPCHEM1\BNA_G\METHODS\SOM02.2-EPA-BG080915.M
 Quant Title : SVOA CALIBRATION

TIC Library : C:\DATABASE\NIST02.L
 TIC Integration Parameters: LSCINT.P

 Peak Number 29 1,1'-Biphenyl, 2,2',3,4-tet... Concentration Rank 24

R.T.	EstConc	Area	Relative to ISTD	R.T.
18.19	12.57 ng/ul	1783060	Phenanthrene-d10	17.39

Hit#	of	Tentative ID	MW	MolForm	CAS#	Qual
1	5	1,1'-Biphenyl, 2,2',3,4-tetrachl...	290	C12H6Cl4	052663-59-9	99
2		1,1'-Biphenyl, 2,2',4,4'-tetrach...	290	C12H6Cl4	002437-79-8	99
3		1,1'-Biphenyl, 2,3,4',6-tetrachl...	290	C12H6Cl4	052663-58-8	99
4		1,1'-Biphenyl, 2,3',4',6-tetrach...	290	C12H6Cl4	041464-46-4	99
5		1,1'-Biphenyl, 2,2',4,5'-tetrach...	290	C12H6Cl4	041464-40-8	99



Data Path : Z:\HPCHEM1\BNA_G\DATA\BG081315\
 Data File : BG018427.D
 Acq On : 13 Aug 2015 17:22
 Operator : UM/MA
 Sample : G3136-02DL 5X
 Misc :
 ALS Vial : 3 Sample Multiplier: 1

Instrument :
 BNA_G
 ClientSampled :
 C02J7DL

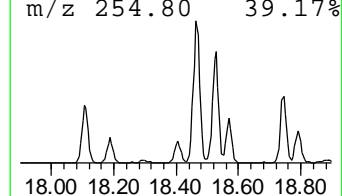
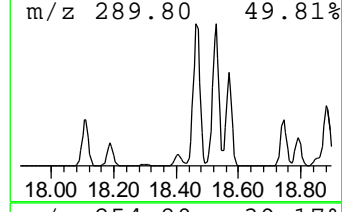
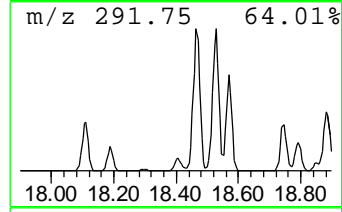
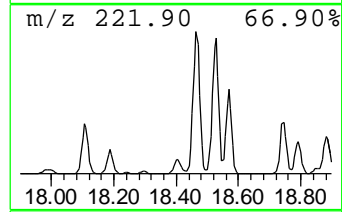
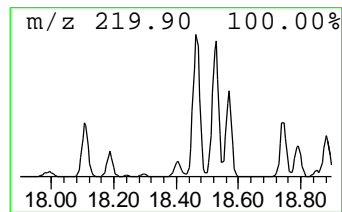
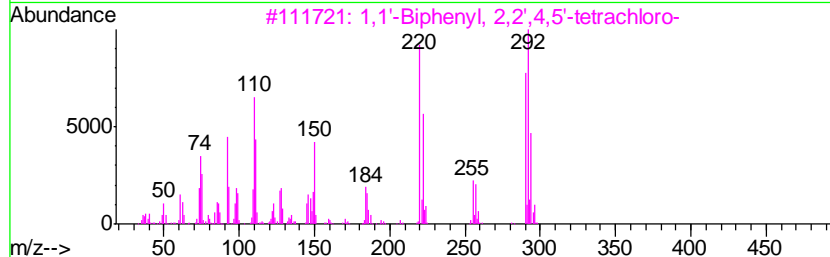
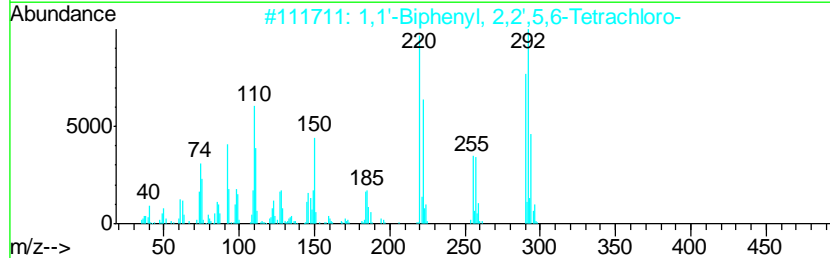
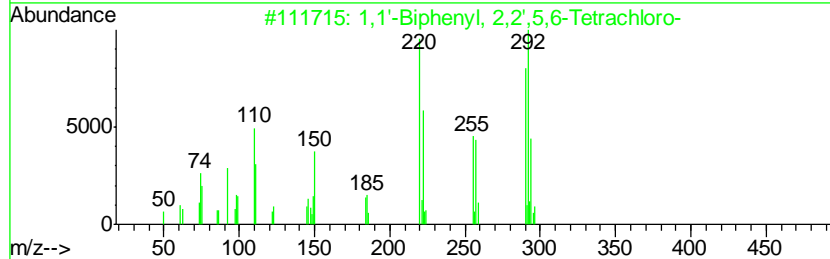
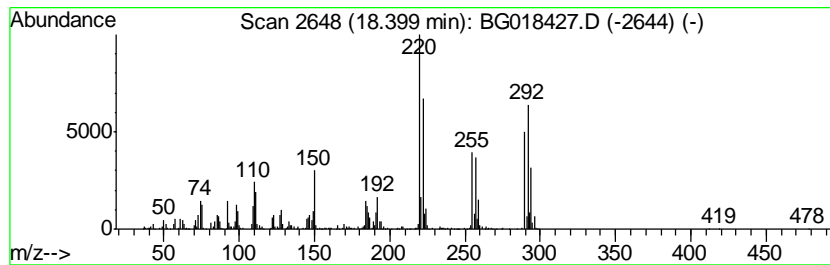
Quant Method : Z:\HPCHEM1\BNA_G\METHODS\SOM02.2-EPA-BG080915.M
 Quant Title : SVOA CALIBRATION

TIC Library : C:\DATABASE\NIST02.L
 TIC Integration Parameters: LSCINT.P

 Peak Number 31 1,1'-Biphenyl, 2,2',5,6-Tet... Concentration Rank 29

R.T.	EstConc	Area	Relative to ISTD	R.T.
18.40	9.34 ng/ul	1325170	Phenanthrene-d10	17.39

Hit#	of	Tentative ID	MW	MolForm	CAS#	Qual
1	5	1,1'-Biphenyl, 2,2',5,6-Tetrachl...	290	C12H6Cl4	041464-41-9	99
2		1,1'-Biphenyl, 2,2',5,6-Tetrachl...	290	C12H6Cl4	041464-41-9	99
3		1,1'-Biphenyl, 2,2',4,5'-tetrach...	290	C12H6Cl4	041464-40-8	98
4		1,1'-Biphenyl, 2,2',5,5'-tetrach...	290	C12H6Cl4	035693-99-3	98
5		1,1'-Biphenyl, 2,2',4,4'-tetrach...	290	C12H6Cl4	002437-79-8	98



Data Path : Z:\HPCHEM1\BNA_G\DATA\BG081315\
 Data File : BG018427.D
 Acq On : 13 Aug 2015 17:22
 Operator : UM/MA
 Sample : G3136-02DL 5X
 Misc :
 ALS Vial : 3 Sample Multiplier: 1

Instrument :
 BNA_G
 ClientSampled :
 C02J7DL

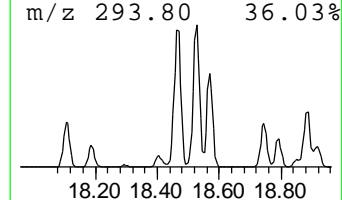
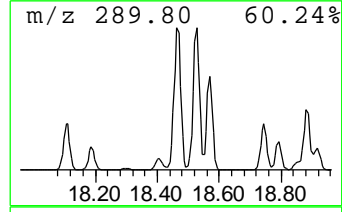
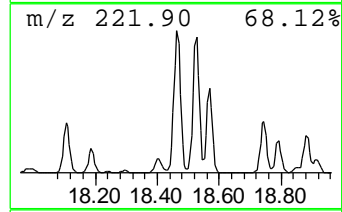
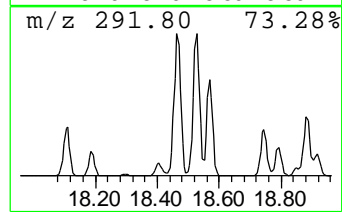
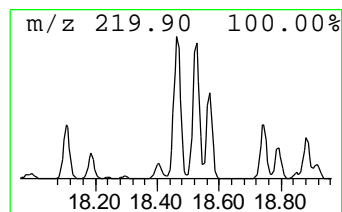
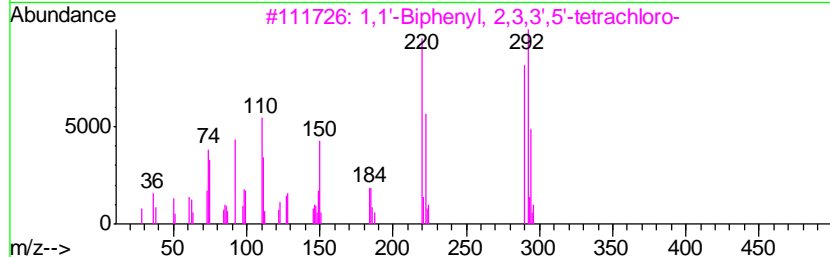
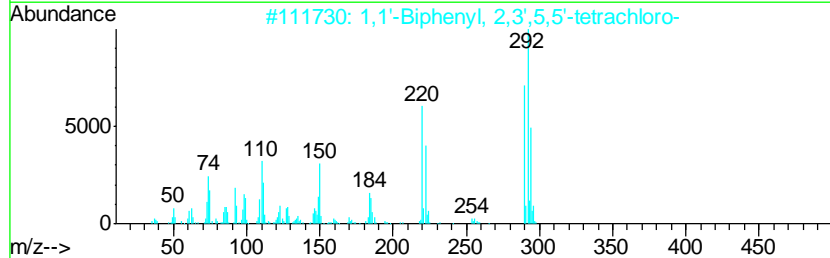
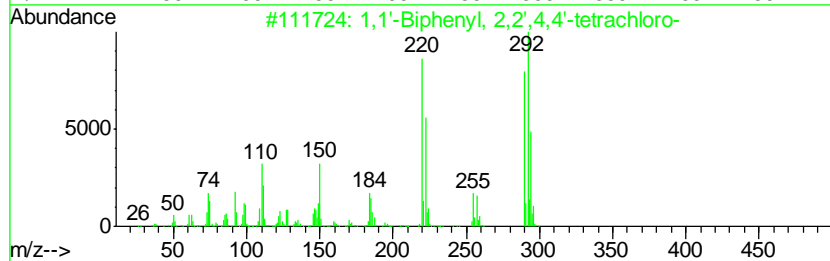
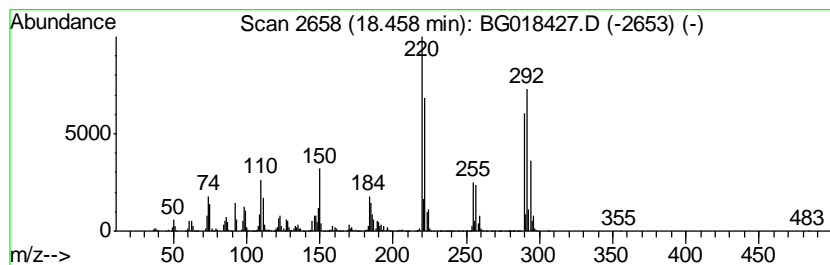
Quant Method : Z:\HPCHEM1\BNA_G\METHODS\SOM02.2-EPA-BG080915.M
 Quant Title : SVOA CALIBRATION

TIC Library : C:\DATABASE\NIST02.L
 TIC Integration Parameters: LSCINT.P

 Peak Number 32 1,1'-Biphenyl, 2,2',4,4'-te... Concentration Rank 1

R.T.	EstConc	Area	Relative to ISTD	R.T.
18.46	83.70 ng/ul	11874200	Phenanthrene-d10	17.39

Hit#	of	Tentative ID	MW	MolForm	CAS#	Qual
1	5	1,1'-Biphenyl, 2,2',4,4'-tetrach...	290	C12H6Cl4	002437-79-8	99
2		1,1'-Biphenyl, 2,3',5,5'-tetrach...	290	C12H6Cl4	041464-42-0	99
3		1,1'-Biphenyl, 2,3,3',5'-tetrach...	290	C12H6Cl4	041464-49-7	99
4		1,1'-Biphenyl, 2,2',4,6-Tetrachl...	290	C12H6Cl4	062796-65-0	99
5		1,1'-Biphenyl, 2,2',5,6-Tetrachl...	290	C12H6Cl4	041464-41-9	99



Data Path : Z:\HPCHEM1\BNA_G\DATA\BG081315\
 Data File : BG018427.D
 Acq On : 13 Aug 2015 17:22
 Operator : UM/MA
 Sample : G3136-02DL 5X
 Misc :
 ALS Vial : 3 Sample Multiplier: 1

Instrument :
 BNA_G
 ClientSampleId :
 C02J7DL

Quant Method : Z:\HPCHEM1\BNA_G\METHODS\SOM02.2-EPA-BG080915.M
 Quant Title : SVOA CALIBRATION

TIC Library : C:\DATABASE\NIST02.L
 TIC Integration Parameters: LSCINT.P

TIC Top Hit name	RT	EstConc	Units	Response	--Internal Standard--			
					#	RT	Resp	Conc
Benzene, propyl-	6.99	2.1	ng/ul	109292	1	8.02	1025150	20.0
Benzene, 1-ethyl-...	7.11	4.5	ng/ul	231814	1	8.02	1025150	20.0
Benzene, 1,2,3-tr...	7.24	3.4	ng/ul	172705	1	8.02	1025150	20.0
Benzene, 1,3,5-tr...	7.66	9.6	ng/ul	493427	1	8.02	1025150	20.0
Benzene, 1,2,3,4-...	8.66	2.2	ng/ul	110801	1	8.02	1025150	20.0
Benzene, 1-methyl...	9.12	2.4	ng/ul	124557	1	8.02	1025150	20.0
(DEL) Alkane: Str...	9.25	3.0	ng/ul	155515	1	8.02	1025150	20.0
Naphthalene, 2,3-...	13.97	2.2	ng/ul	290350	3	14.64	2668070	20.0
(DEL) Alkane: Str...	14.55	2.0	ng/ul	269404	3	14.64	2668070	20.0
1,1'-Biphenyl, 2,...	15.90	8.8	ng/ul	1175110	3	14.64	2668070	20.0
(DEL) Alkane: Str...	16.38	4.5	ng/ul	636480	4	17.39	2837240	20.0
1,1'-Biphenyl, 4,...	16.50	8.3	ng/ul	1170220	4	17.39	2837240	20.0
1,1'-Biphenyl, 2,...	16.62	12.7	ng/ul	1807250	4	17.39	2837240	20.0
1,1'-Biphenyl, 2,...	16.92	4.8	ng/ul	687228	4	17.39	2837240	20.0
Naphthalene, 1,3,...	16.96	3.2	ng/ul	451337	4	17.39	2837240	20.0
(DEL) Alkane: Str...	17.21	2.7	ng/ul	376824	4	17.39	2837240	20.0
1,1'-Biphenyl, 2,...	17.31	10.6	ng/ul	1508340	4	17.39	2837240	20.0
1,1'-Biphenyl, 2,...	17.84	41.1	ng/ul	5825420	4	17.39	2837240	20.0
1,1'-Biphenyl, 2,...	17.88	18.9	ng/ul	2683510	4	17.39	2837240	20.0
1,1'-Biphenyl, 2,...	18.11	35.0	ng/ul	4971390	4	17.39	2837240	20.0
1,1'-Biphenyl, 2,...	18.19	12.6	ng/ul	1783060	4	17.39	2837240	20.0
1,1'-Biphenyl, 2,...	18.40	9.3	ng/ul	1325170	4	17.39	2837240	20.0
1,1'-Biphenyl, 2,...	18.46	83.7	ng/ul	11874200	4	17.39	2837240	20.0