

Data Path : Z:\SVOASRV\HPCHEM1\BNA G\DATA\BG081420\
 Data File : BG046284.D
 Acq On : 14 Aug 2020 20:42
 Operator : CG/JU
 Sample : L3659-01
 Misc :
 ALS Vial : 11 Sample Multiplier: 1

Instrument :
 BNA_G
 ClientSampleId :
 SP1-1

Quant Time: Aug 17 01:40:12 2020
 Quant Method : Z:\SVOASRV\HPCHEM1\BNA G\METHODS\8270-BG073020.M
 Quant Title : ASP BNA STANDARDS FOR 5 POINT CALIBRATION
 QLast Update : Thu Jul 30 18:43:49 2020
 Response via : Initial Calibration

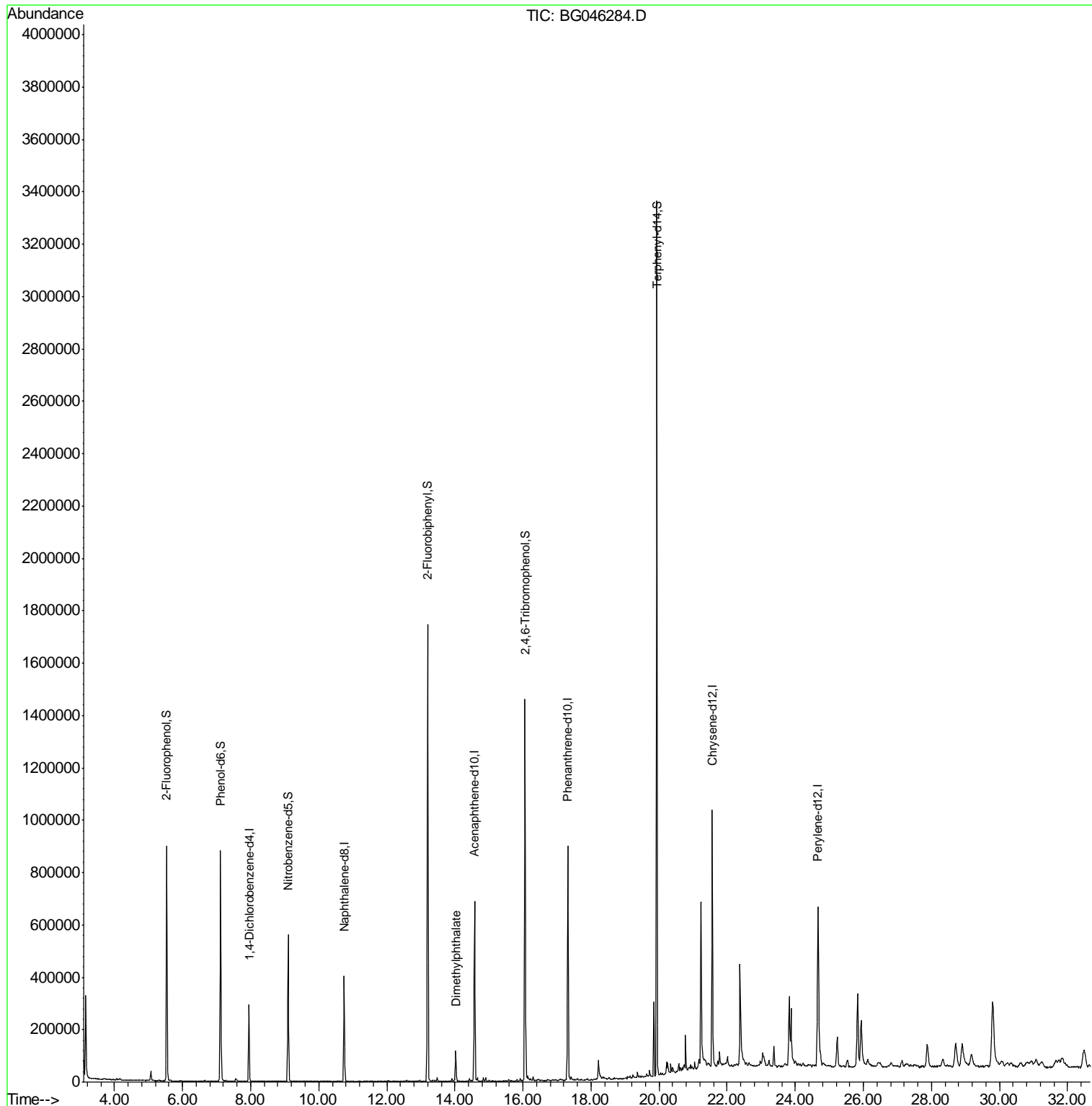
Internal Standards	R.T.	QIon	Response	Conc	Units	Dev(Min)
1) 1,4-Dichlorobenzene-d4	7.95	152	88051	20.00	ng	0.00
21) Naphthalene-d8	10.74	136	359433	20.00	ng	0.00
39) Acenaphthene-d10	14.58	164	248538	20.00	ng	0.00
64) Phenanthrene-d10	17.32	188	596343	20.00	ng	0.00
76) Chrysene-d12	21.56	240	611930	20.00	ng	-0.01
86) Perylene-d12	24.67	264	635950	20.00	ng	0.00
System Monitoring Compounds						
5) 2-Fluorophenol	5.53	112	407536	80.46	ng	0.00
7) Phenol-d6	7.11	99	542368	78.57	ng	0.00
23) Nitrobenzene-d5	9.10	82	357085	53.79	ng	0.00
42) 2,4,6-Tribromophenol	16.06	330	337972	88.53	ng	0.00
45) 2-Fluorobiphenyl	13.20	172	940518	54.97	ng	0.00
79) Terphenyl-d14	19.93	244	1519015	50.56	ng	0.00
Target Compounds						Qvalue
50) Dimethylphthalate	14.02	163	89332	4.683	ng	97

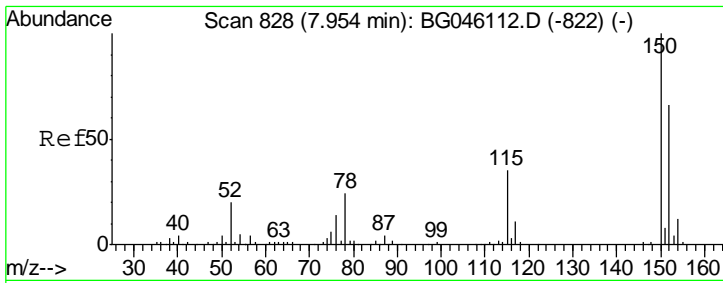
(#) = qualifier out of range (m) = manual integration (+) = signals summed

Data Path : Z:\SVOASRV\HPCHEM1\BNA G\DATA\BG081420\
 Data File : BG046284.D
 Acq On : 14 Aug 2020 20:42
 Operator : CG/JU
 Sample : L3659-01
 Misc :
 ALS Vial : 11 Sample Multiplier: 1

Instrument :
 BNA_G
 ClientSampleId :
 SP1-1

Quant Time: Aug 17 01:40:12 2020
 Quant Method : Z:\SVOASRV\HPCHEM1\BNA G\METHODS\8270-BG073020.M
 Quant Title : ASP BNA STANDARDS FOR 5 POINT CALIBRATION
 QLast Update : Thu Jul 30 18:43:49 2020
 Response via : Initial Calibration

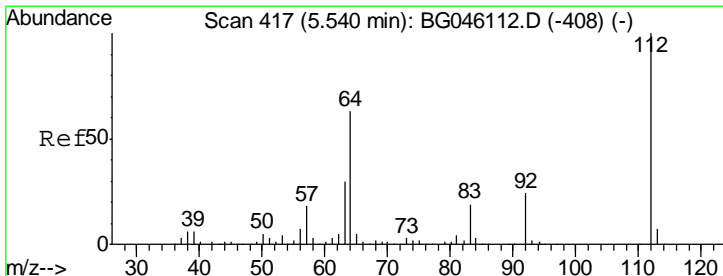
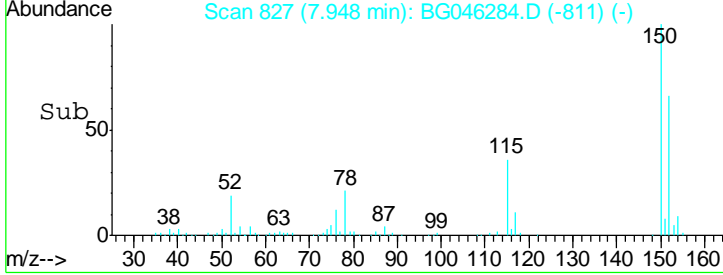
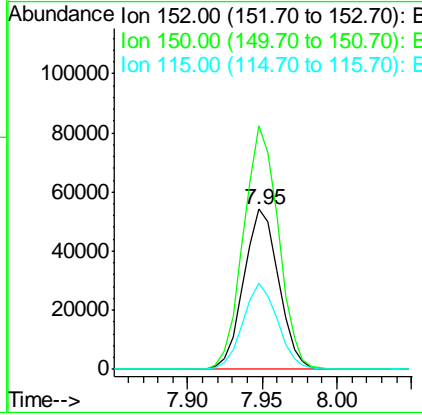
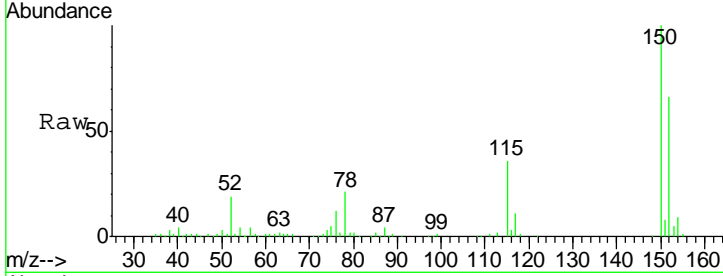




#1
 1,4-Dichlorobenzene-d4
 Concen: 20.000 ng
 RT: 7.95 min Scan# 827
 Delta R.T. -0.01 min
 Lab File: BG046284.D
 Acq: 14 Aug 2020 20:42

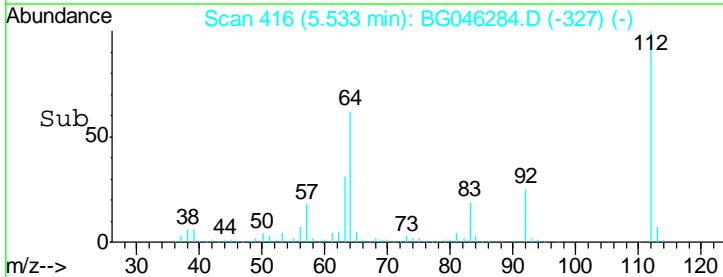
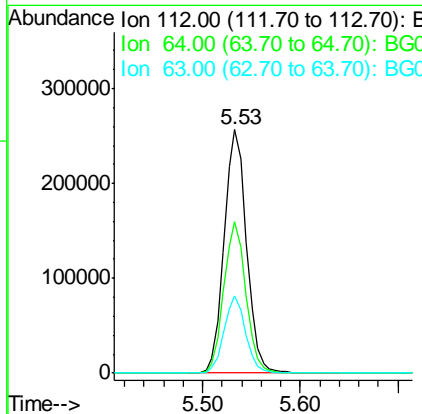
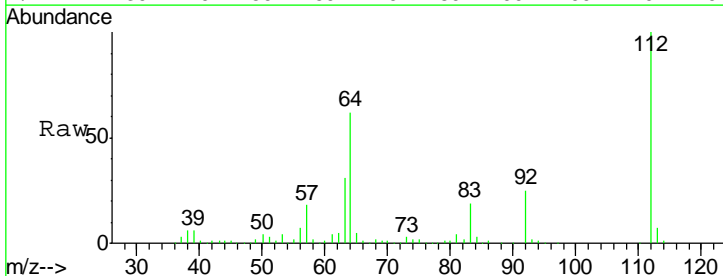
Instrument :
 BNA_G
 ClientSampleID :
 SP1-1

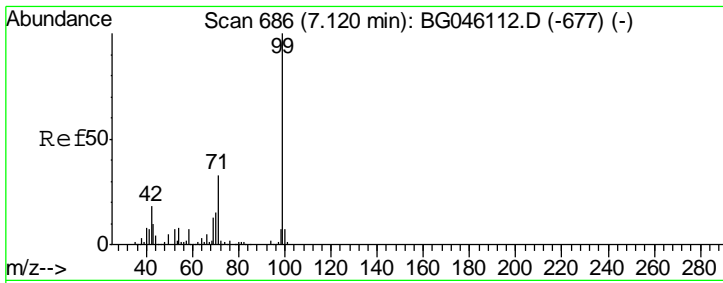
Tgt Ion	Resp	Lower	Upper
152	100		
150	151.9	122.1	183.1
115	54.1	43.2	64.8



#5
 2-Fluorophenol
 Concen: 80.459 ng
 RT: 5.53 min Scan# 416
 Delta R.T. -0.01 min
 Lab File: BG046284.D
 Acq: 14 Aug 2020 20:42

Tgt Ion	Resp	Lower	Upper
112	100		
64	62.1	50.2	75.2
63	31.5	24.2	36.4

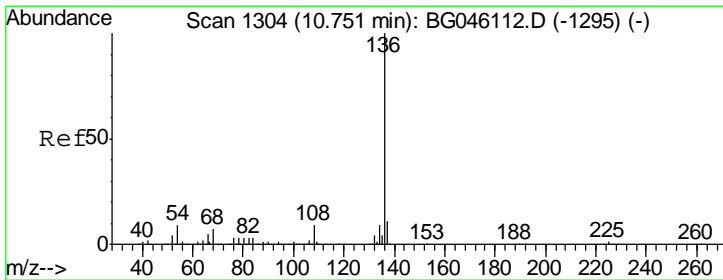
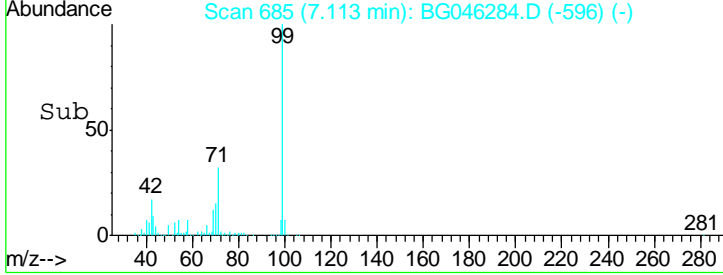
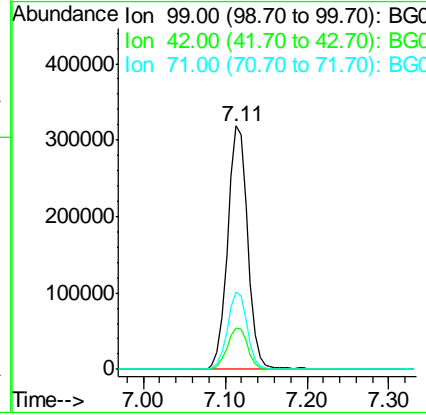
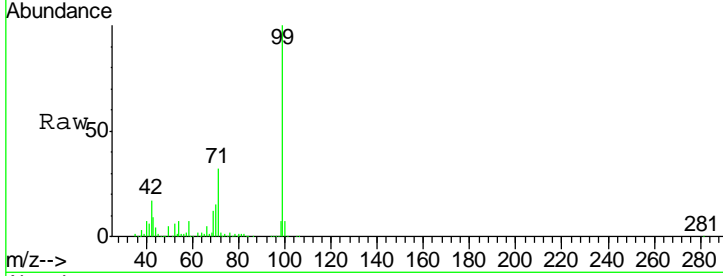




#7
 Phenol-d6
 Concen: 78.569 ng
 RT: 7.11 min Scan# 685
 Delta R.T. -0.01 min
 Lab File: BG046284.D
 Acq: 14 Aug 2020 20:42

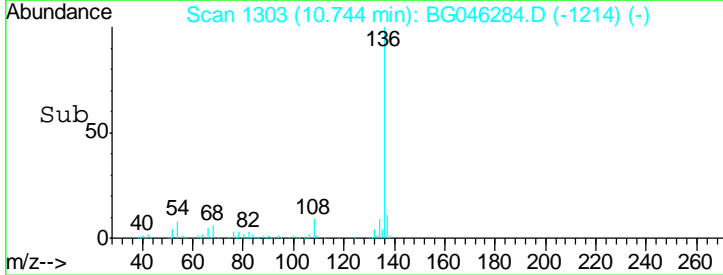
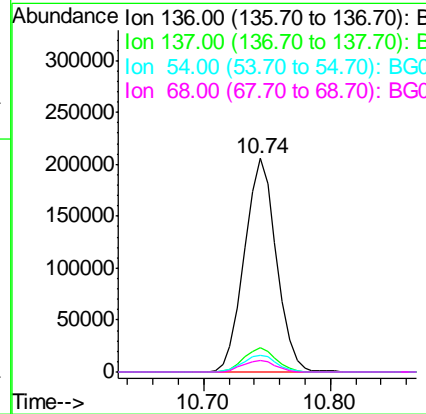
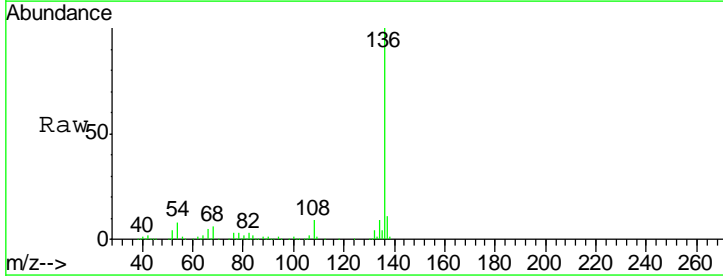
Instrument :
 BNA_G
 ClientSampled :
 SP1-1

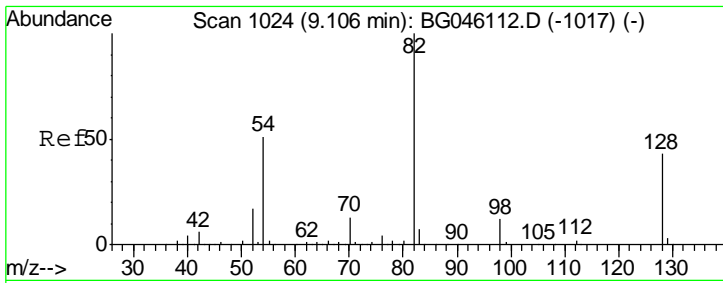
Tgt Ion	Resp	Lower	Upper
99	542368		
42	17.2	14.7	22.1
71	31.9	26.5	39.7



#21
 Naphthalene-d8
 Concen: 20.000 ng
 RT: 10.74 min Scan# 1303
 Delta R.T. -0.01 min
 Lab File: BG046284.D
 Acq: 14 Aug 2020 20:42

Tgt Ion	Resp	Lower	Upper
136	359433		
137	11.5	8.8	13.2
54	8.0	7.0	10.4
68	5.7	5.3	7.9

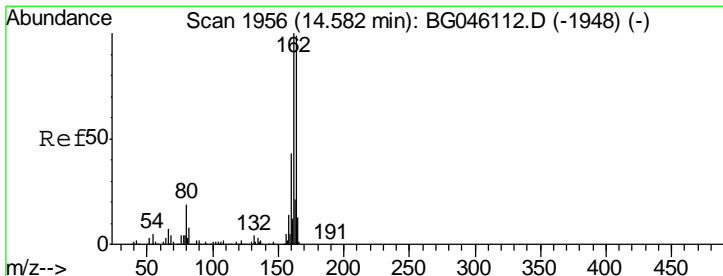
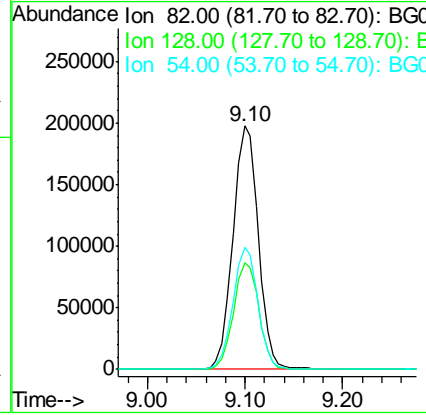
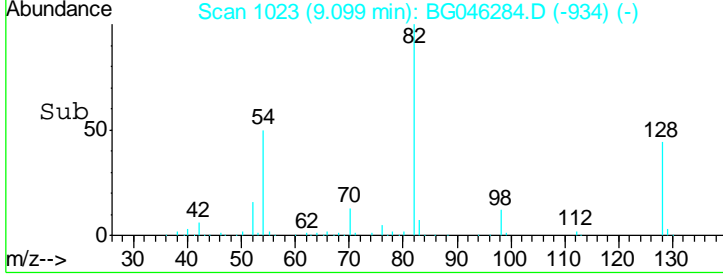
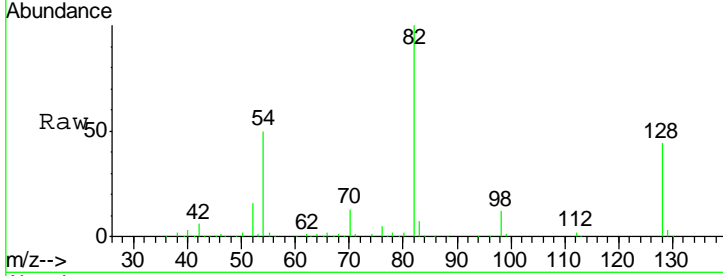




#23
 Nitrobenzene-d5
 Concen: 53.789 ng
 RT: 9.10 min Scan# 1023
 Delta R.T. -0.01 min
 Lab File: BG046284.D
 Acq: 14 Aug 2020 20:42

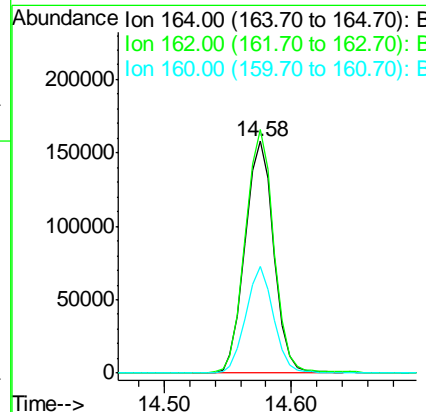
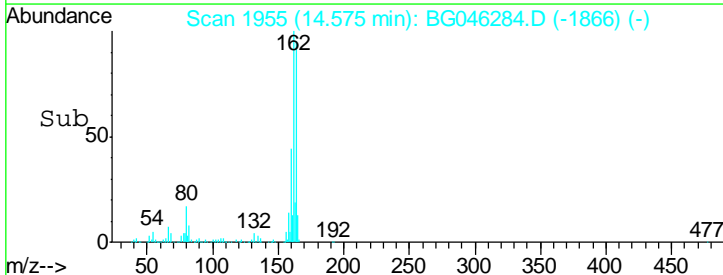
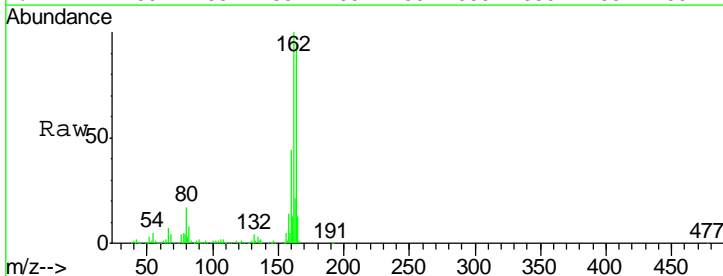
Instrument :
 BNA_G
 ClientSampled :
 SP1-1

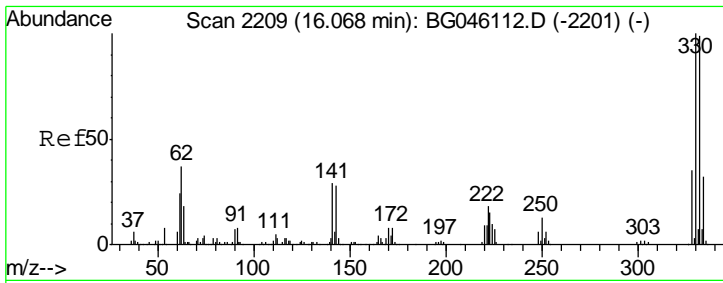
Tgt Ion	Resp	Lower	Upper
82	357085		
128	43.7	34.4	51.6
54	50.2	40.8	61.2



#39
 Acenaphthene-d10
 Concen: 20.000 ng
 RT: 14.58 min Scan# 1955
 Delta R.T. -0.01 min
 Lab File: BG046284.D
 Acq: 14 Aug 2020 20:42

Tgt Ion	Resp	Lower	Upper
164	248538		
162	105.0	80.6	121.0
160	46.0	34.9	52.3

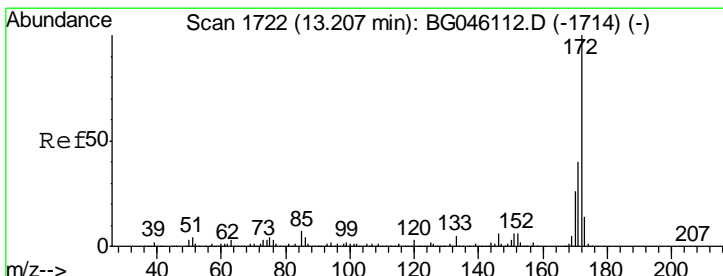
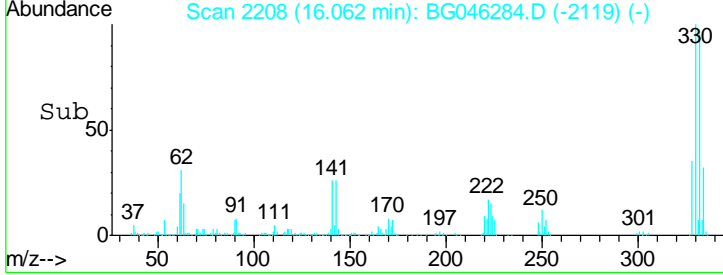
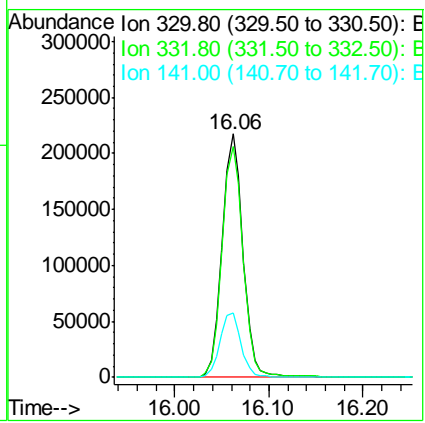
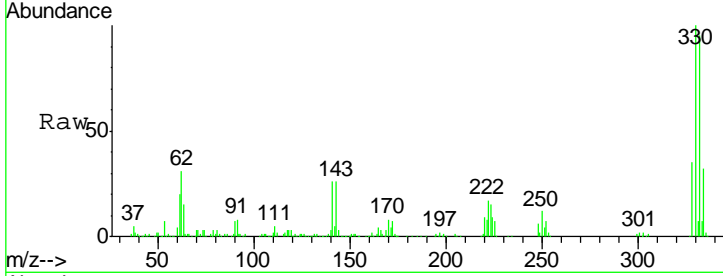




#42
 2,4,6-Tribromophenol
 Concen: 88.532 ng
 RT: 16.06 min Scan# 2208
 Delta R.T. -0.01 min
 Lab File: BG046284.D
 Acq: 14 Aug 2020 20:42

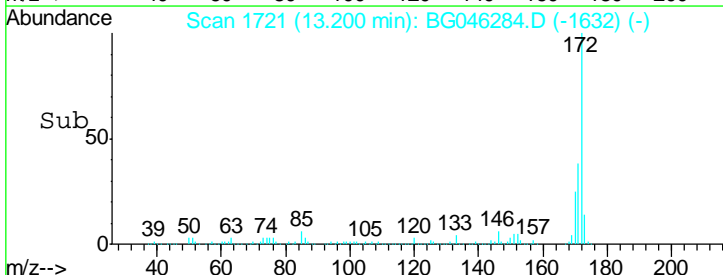
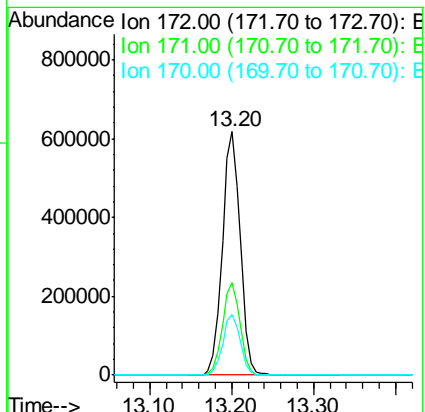
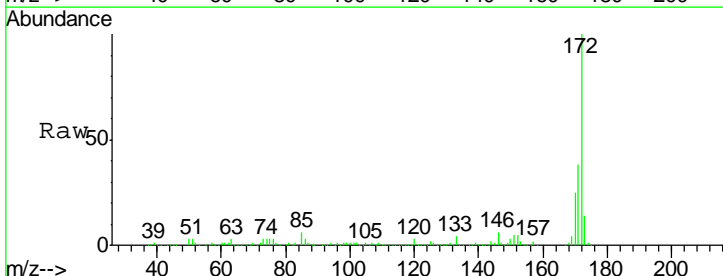
Instrument :
 BNA_G
 ClientSampled :
 SP1-1

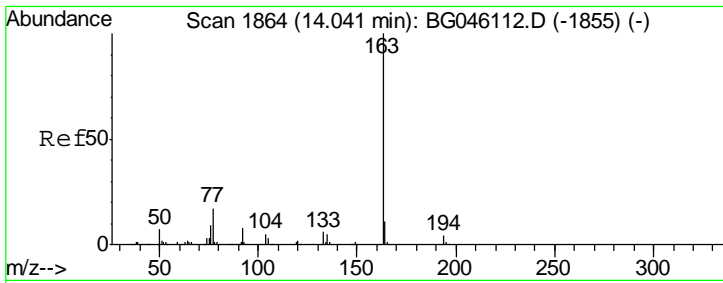
Tgt Ion	Resp	Lower	Upper
330	100		
332	96.6	77.4	116.2
141	26.9	23.4	35.0



#45
 2-Fluorobiphenyl
 Concen: 54.970 ng
 RT: 13.20 min Scan# 1721
 Delta R.T. -0.01 min
 Lab File: BG046284.D
 Acq: 14 Aug 2020 20:42

Tgt Ion	Resp	Lower	Upper
172	100		
171	38.0	31.7	47.5
170	24.8	20.9	31.3

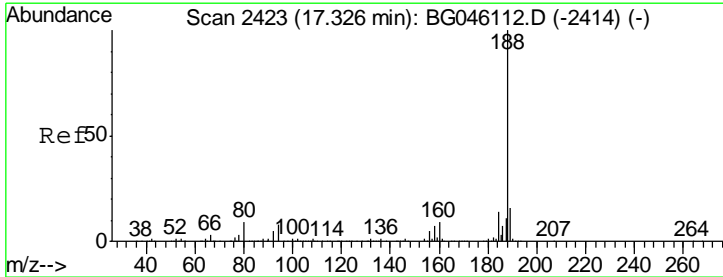
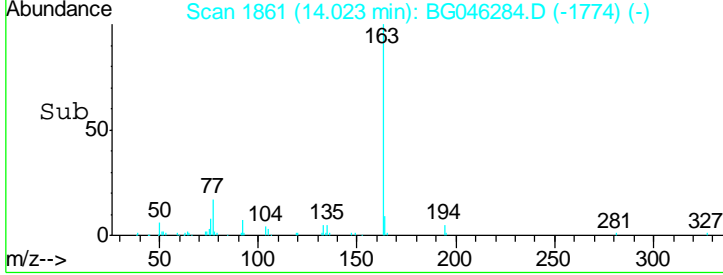
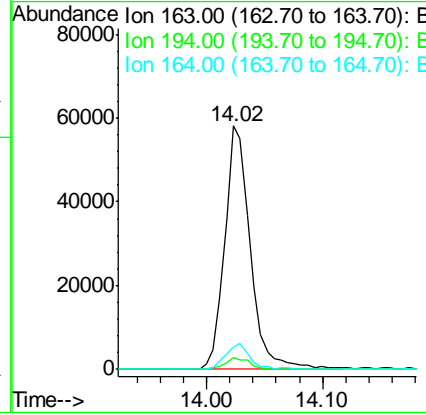
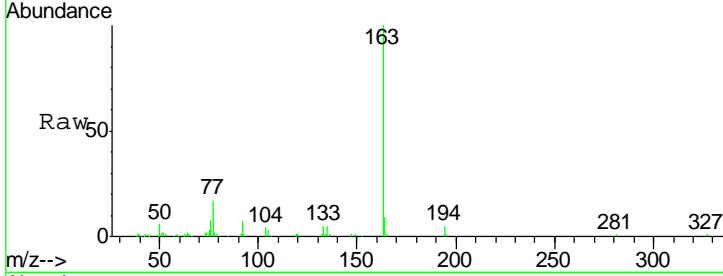




#50
 Dimethylphthalate
 Concen: 4.683 ng
 RT: 14.02 min Scan# 1861
 Delta R.T. -0.02 min
 Lab File: BG046284.D
 Acq: 14 Aug 2020 20:42

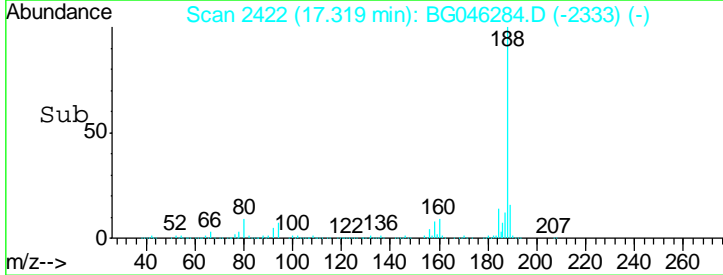
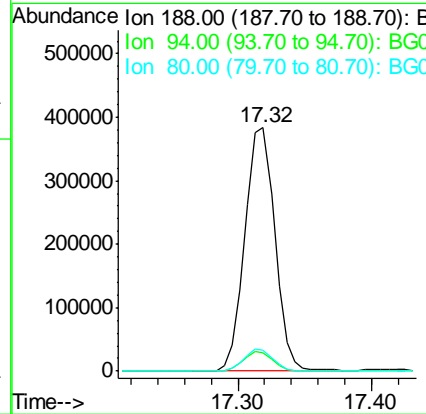
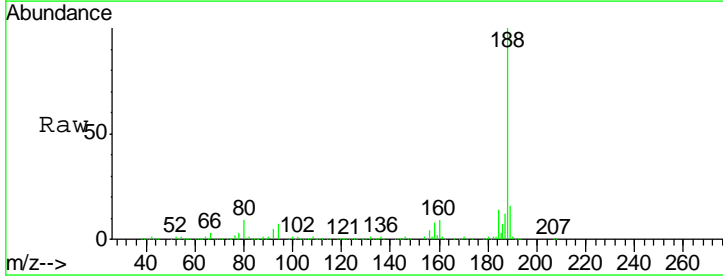
Instrument :
 BNA_G
 ClientSampled :
 SP1-1

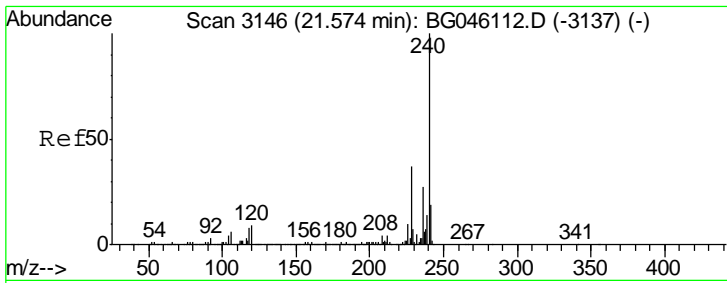
Tgt Ion	Resp	Lower	Upper
163	100		
194	4.7	3.5	5.3
164	9.3	8.8	13.2



#64
 Phenanthrene-d10
 Concen: 20.000 ng
 RT: 17.32 min Scan# 2422
 Delta R.T. -0.01 min
 Lab File: BG046284.D
 Acq: 14 Aug 2020 20:42

Tgt Ion	Resp	Lower	Upper
188	100		
94	7.3	6.4	9.6
80	8.7	7.4	11.0

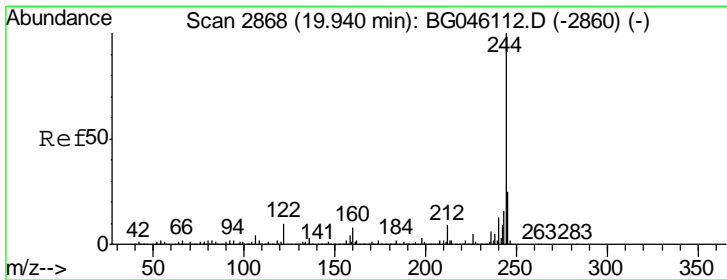
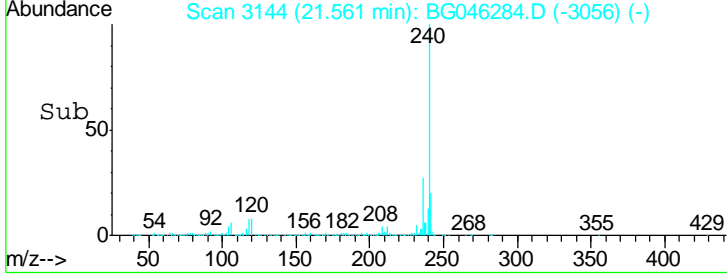
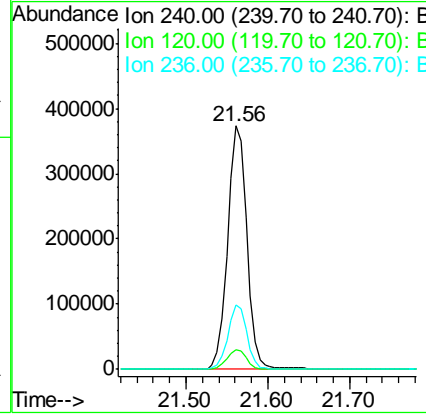
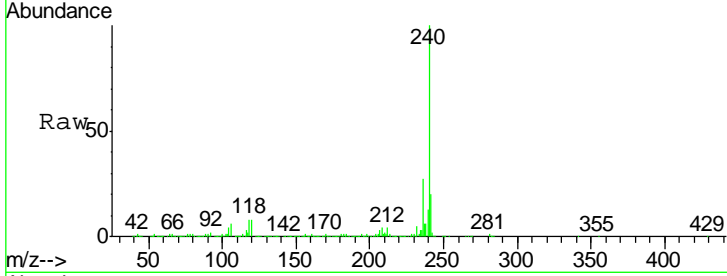




#76
 Chrysene-d12
 Concen: 20.000 ng
 RT: 21.56 min Scan# 3144
 Delta R.T. -0.01 min
 Lab File: BG046284.D
 Acq: 14 Aug 2020 20:42

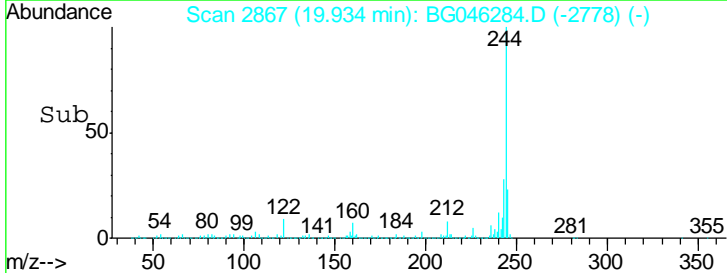
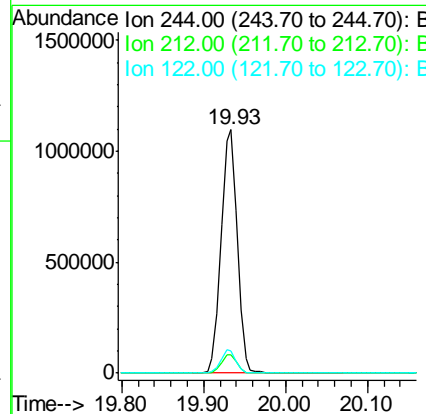
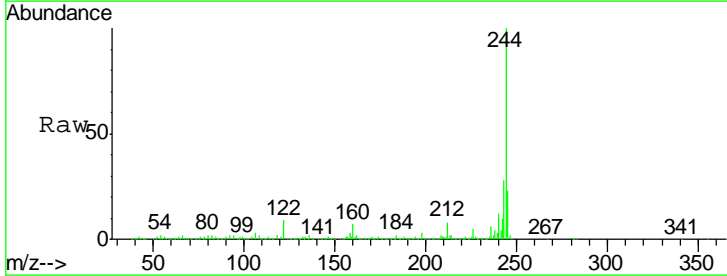
Instrument :
 BNA_G
 ClientSampled :
 SP1-1

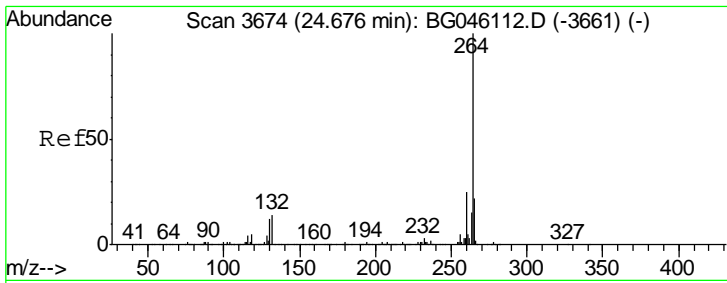
Tgt Ion	Resp	Lower	Upper
240	611930		
120	8.3	7.1	10.7
236	26.6	21.7	32.5



#79
 Terphenyl-d14
 Concen: 50.556 ng
 RT: 19.93 min Scan# 2867
 Delta R.T. -0.01 min
 Lab File: BG046284.D
 Acq: 14 Aug 2020 20:42

Tgt Ion	Resp	Lower	Upper
244	1519015		
212	7.8	7.2	10.8
122	9.1	8.3	12.5





#86
 Perylene-d12
 Concen: 20.000 ng
 RT: 24.67 min Scan# 3673
 Delta R.T. -0.01 min
 Lab File: BG046284.D
 Acq: 14 Aug 2020 20:42

Instrument :
 BNA_G
 ClientSampled :
 SP1-1

Tot Ion: 264 Resp: 635950

Ion	Ratio	Lower	Upper
264	100		
260	24.4	19.7	29.5
265	22.2	17.6	26.4

