

Data Path : Z:\HPCHEM1\BNA\_G\DATA\BG081516\  
 Data File : BG023728.D  
 Acq On : 15 Aug 2016 19:43  
 Operator : UM/SJ  
 Sample : H4422-05  
 Misc :  
 ALS Vial : 12 Sample Multiplier: 1

Instrument :  
 BNA\_G  
 ClientSampleID :  
 AW-1

Quant Time: Aug 16 01:08:09 2016  
 Quant Method : Z:\HPCHEM1\BNA\_G\Methods\8270-BG080116.M  
 Quant Title : ASP BNA STANDARDS FOR 5 POINT CALIBRATION  
 QLast Update : Mon Aug 01 19:22:14 2016  
 Response via : Initial Calibration

| Internal Standards        | R.T.  | QIon | Response | Conc  | Units | Dev(Min) |
|---------------------------|-------|------|----------|-------|-------|----------|
| 1) 1,4-Dichlorobenzene-d4 | 8.11  | 152  | 138451   | 20.00 | ng    | -0.01    |
| 21) Naphthalene-d8        | 10.95 | 136  | 643766   | 20.00 | ng    | 0.00     |
| 38) Acenaphthene-d10      | 14.80 | 164  | 437191   | 20.00 | ng    | 0.01     |
| 63) Phenanthrene-d10      | 17.57 | 188  | 692208   | 20.00 | ng    | 0.02     |
| 75) Chrysene-d12          | 21.90 | 240  | 687957   | 20.00 | ng    | 0.04     |
| 86) Perylene-d12          | 25.32 | 264  | 682194   | 20.00 | ng    | 0.08     |

## System Monitoring Compounds

|                          |       |     |         |       |    |       |
|--------------------------|-------|-----|---------|-------|----|-------|
| 5) 2-Fluorophenol        | 5.65  | 112 | 438162  | 53.27 | ng | -0.01 |
| 7) Phenol-d6             | 7.29  | 99  | 456155  | 35.61 | ng | 0.01  |
| 23) Nitrobenzene-d5      | 9.29  | 82  | 1028333 | 79.41 | ng | 0.00  |
| 41) 2,4,6-Tribromophenol | 16.30 | 330 | 590609  | 92.36 | ng | 0.02  |
| 44) 2-Fluorobiphenyl     | 13.41 | 172 | 2073084 | 79.98 | ng | 0.02  |
| 78) Terphenyl-d14        | 20.18 | 244 | 1596404 | 69.02 | ng | 0.02  |

## Target Compounds

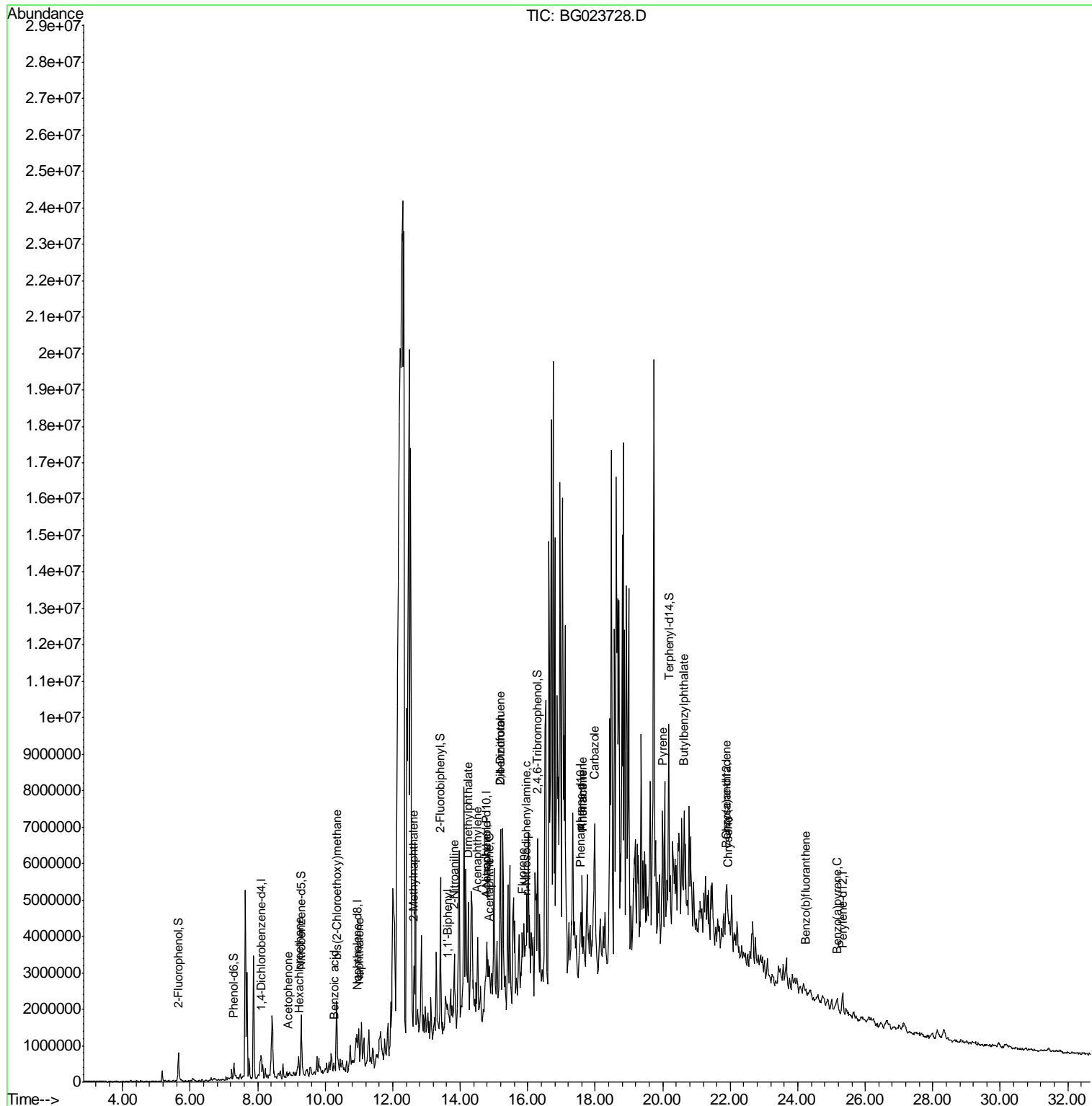
| Target Compounds               | R.T.  | QIon | Response | Conc      | Units | Qvalue |
|--------------------------------|-------|------|----------|-----------|-------|--------|
| 9) Benzaldehyde                | 7.24  | 77   | 11138    | Below Cal | #     | 1      |
| 18) Hexachloroethane           | 9.23  | 117  | 53790    | 12.90     | ng    | 1      |
| 22) Acetophenone               | 8.92  | 105  | 61239    | 3.47      | ng    | 58     |
| 28) bis(2-Chloroethoxy)methane | 10.35 | 93   | 41165    | 2.54      | ng    | 1      |
| 31) Naphthalene                | 10.99 | 128  | 349712   | 10.67     | ng    | 93     |
| 32) Benzoic acid               | 10.27 | 122  | 2898     | 6.71      | ng    | 1      |
| 37) 2-Methylnaphthalene        | 12.62 | 142  | 954460   | 38.30     | ng    | 93     |
| 45) 1,1'-Biphenyl              | 13.62 | 154  | 132944   | 3.98      | ng    | 97     |
| 47) 2-Nitroaniline             | 13.83 | 65   | 30325    | 2.82      | ng    | 54     |
| 48) Acenaphthylene             | 14.51 | 152  | 98255    | 2.40      | ng    | 1      |
| 49) Dimethylphthalate          | 14.24 | 163  | 293900   | 8.76      | ng    | 96     |
| 51) Acenaphthene               | 14.86 | 154  | 224464   | 8.67      | ng    | 83     |
| 54) Dibenzofuran               | 15.19 | 168  | 127452   | 3.39      | ng    | 1      |
| 55) 4-Nitrophenol              | 14.78 | 139  | 23305    | 3.31      | ng    | 94     |
| 56) 2,4-Dinitrotoluene         | 15.19 | 165  | 91368    | 8.20      | ng    | 51     |
| 57) Fluorene                   | 15.85 | 166  | 309049   | 9.42      | ng    | 96     |
| 65) n-Nitrosodiphenylamine     | 15.95 | 169  | 323514   | 15.93     | ng    | 88     |
| 70) Phenanthrene               | 17.61 | 178  | 1302941  | 37.10     | ng    | 95     |
| 71) Anthracene                 | 17.61 | 178  | 1302941  | 36.88     | ng    | 95     |
| 72) Carbazole                  | 17.98 | 167  | 72022    | 2.32      | ng    | 4      |
| 73) Di-n-butylphthalate        | 18.51 | 149  | 83378    | Below Cal | #     | 59     |
| 74) Fluoranthene               | 19.62 | 202  | 172305   | Below Cal | #     | 56     |
| 77) Pyrene                     | 19.99 | 202  | 994173   | 20.77     | ng    | 72     |
| 79) Butylbenzylphthalate       | 20.63 | 149  | 99600    | 6.01      | ng    | 90     |
| 80) Benzo(a)anthracene         | 21.87 | 228  | 429093   | 11.30     | ng    | 51     |
| 82) Chrysene                   | 21.94 | 228  | 827666   | 22.91     | ng    | 69     |
| 87) Benzo(b)fluoranthene       | 24.23 | 252  | 150882   | 3.93      | ng    | 59     |
| 89) Benzo(a)pyrene             | 25.16 | 252  | 223586   | 6.12      | ng    | 66     |

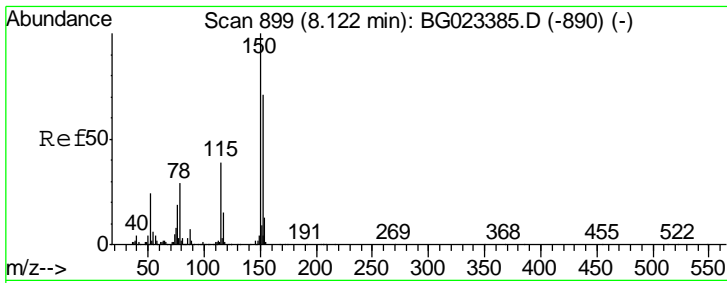
(#) = qualifier out of range (m) = manual integration (+) = signals summed

Data Path : Z:\HPCHEM1\BNA\_G\DATA\BG081516\  
 Data File : BG023728.D  
 Acq On : 15 Aug 2016 19:43  
 Operator : UM/SJ  
 Sample : H4422-05  
 Misc :  
 ALS Vial : 12 Sample Multiplier: 1

Instrument :  
 BNA\_G  
 Client Sampled :  
 AW-1

Quant Time: Aug 16 01:08:09 2016  
 Quant Method : Z:\HPCHEM1\BNA\_G\Methods\8270-BG080116.M  
 Quant Title : ASP BNA STANDARDS FOR 5 POINT CALIBRATION  
 QLast Update : Mon Aug 01 19:22:14 2016  
 Response via : Initial Calibration

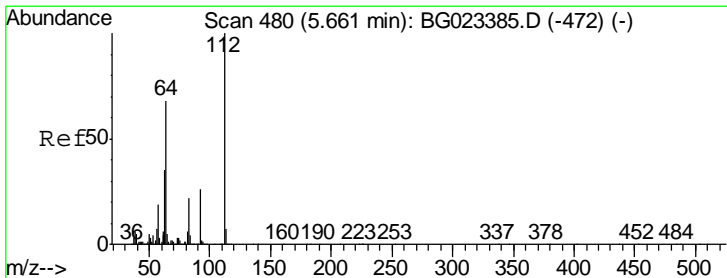
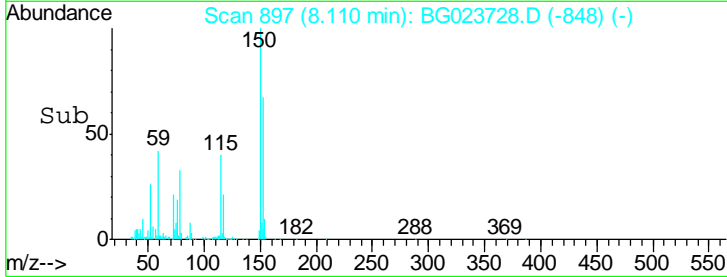
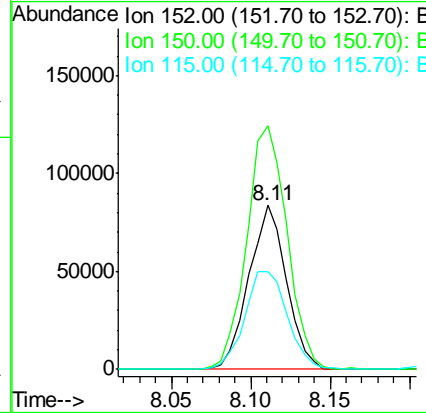
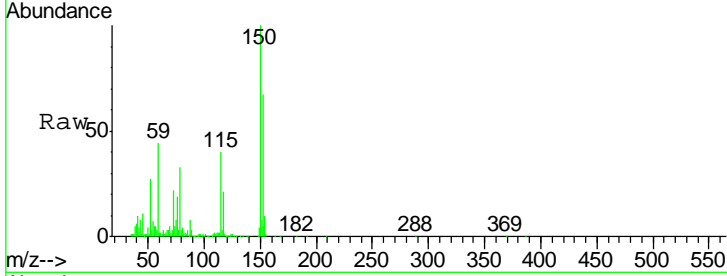




#1  
 1,4-Dichlorobenzene-d4  
 Concen: 20.00 ng  
 RT: 8.11 min Scan# 897  
 Delta R.T. -0.01 min  
 Lab File: BG023728.D  
 Acq: 15 Aug 2016 19:43

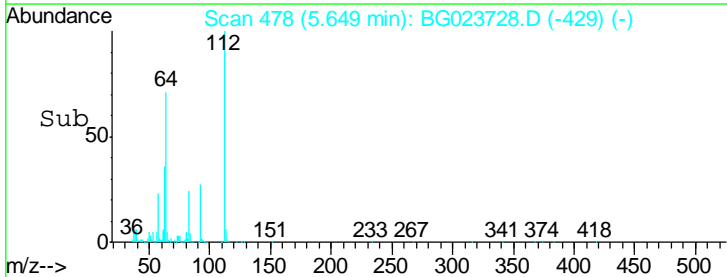
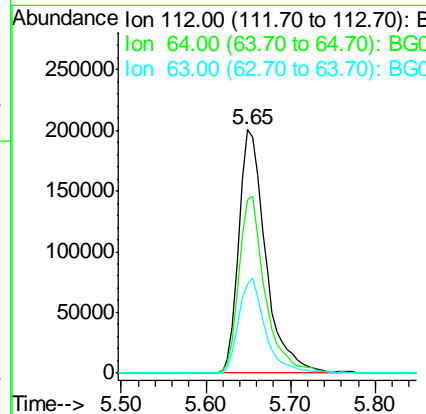
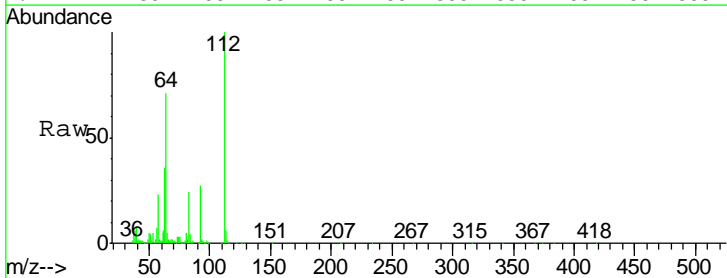
Instrument :  
 BNA\_G  
 ClientSampled :  
 AW-1

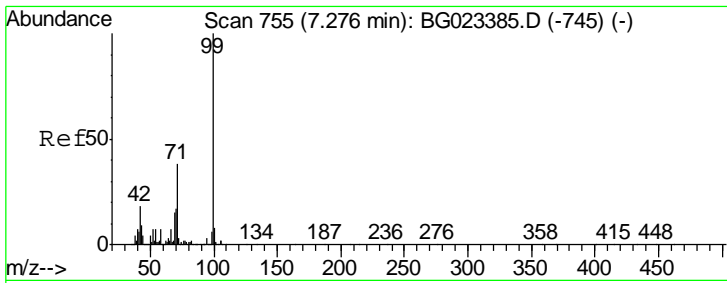
| Tgt Ion | Resp   | Lower | Upper |
|---------|--------|-------|-------|
| 152     | 138451 |       |       |
| 150     | 148.4  | 144.7 | 217.1 |
| 115     | 59.5   | 64.0  | 96.0# |



#5  
 2-Fluorophenol  
 Concen: 53.27 ng  
 RT: 5.65 min Scan# 478  
 Delta R.T. -0.01 min  
 Lab File: BG023728.D  
 Acq: 15 Aug 2016 19:43

| Tgt Ion | Resp   | Lower | Upper |
|---------|--------|-------|-------|
| 112     | 438162 |       |       |
| 112     | 100    |       |       |
| 64      | 71.1   | 59.0  | 88.4  |
| 63      | 36.5   | 37.8  | 56.8# |

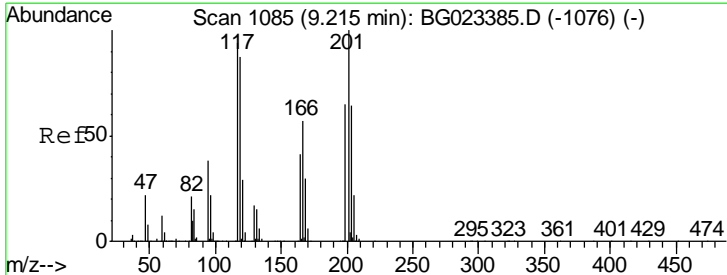
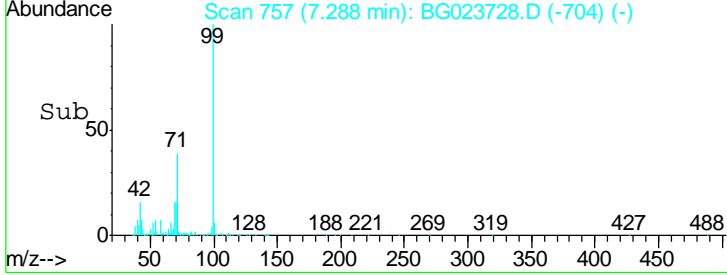
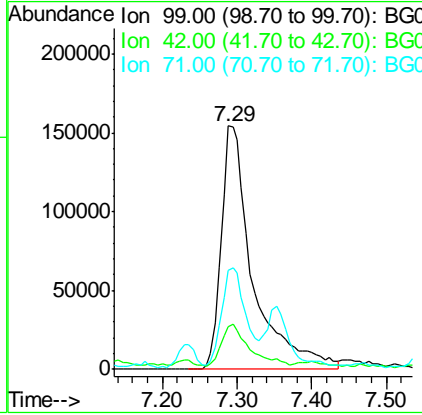
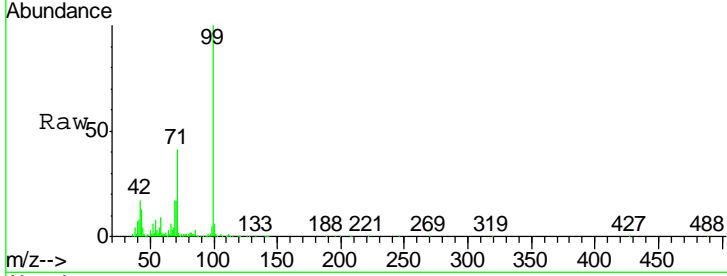




#7  
 Phenol-d6  
 Concen: 35.61 ng  
 RT: 7.29 min Scan# 757  
 Delta R.T. 0.01 min  
 Lab File: BG023728.D  
 Acq: 15 Aug 2016 19:43

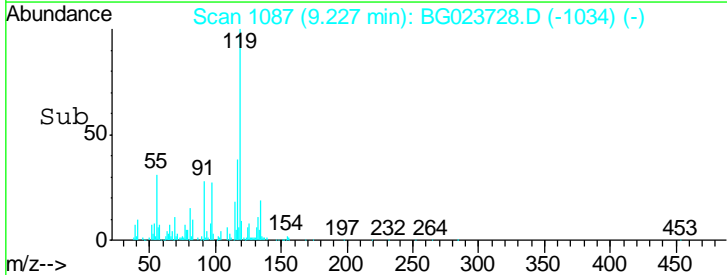
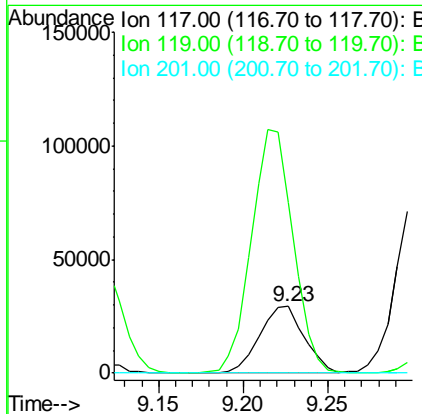
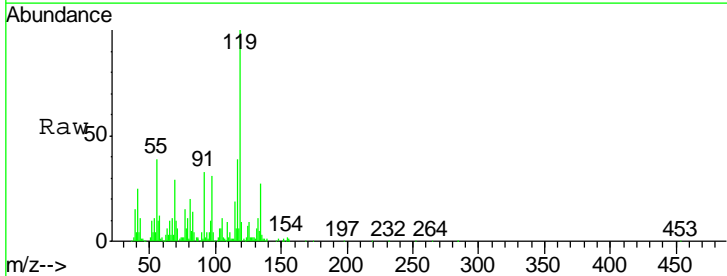
Instrument :  
 BNA\_G  
 ClientSampled :  
 AW-1

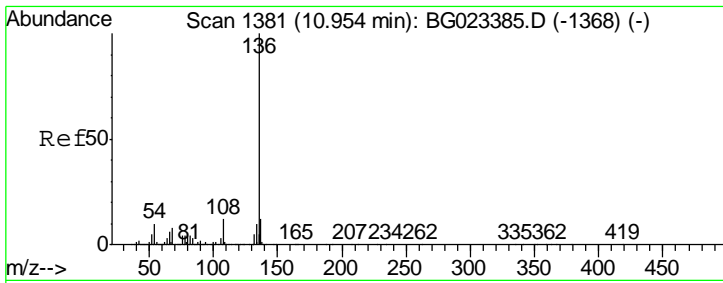
| Tgt Ion | Resp   | Lower | Upper |
|---------|--------|-------|-------|
| 99      | 456155 |       |       |
| 42      | 17.4   | 17.8  | 26.6# |
| 71      | 40.6   | 41.5  | 62.3# |



#18  
 Hexachloroethane  
 Concen: 12.90 ng  
 RT: 9.23 min Scan# 1087  
 Delta R.T. 0.01 min  
 Lab File: BG023728.D  
 Acq: 15 Aug 2016 19:43

| Tgt Ion | Resp  | Lower | Upper  |
|---------|-------|-------|--------|
| 117     | 53790 |       |        |
| 119     | 256.4 | 73.7  | 110.5# |
| 201     | 0.0   | 88.7  | 133.1# |

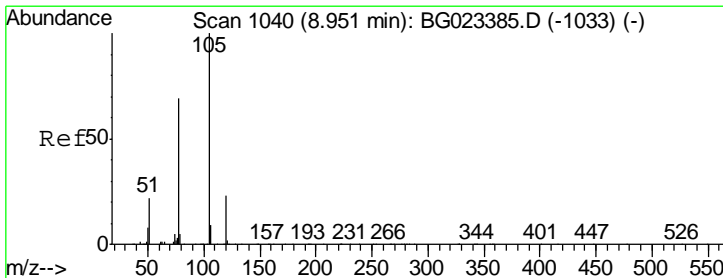
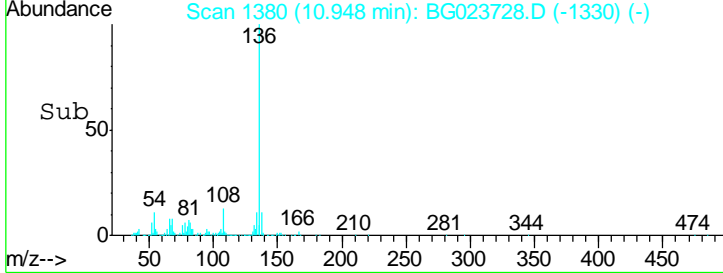
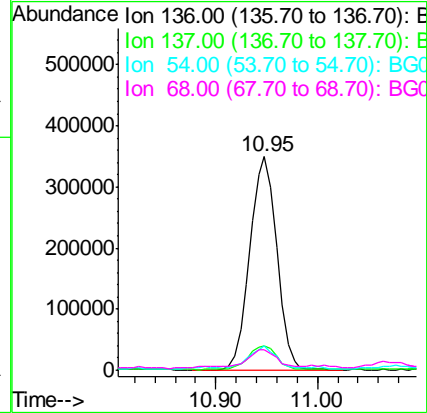
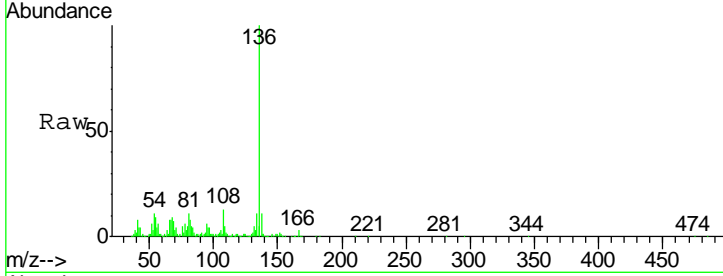




#21  
 Naphthalene-d8  
 Concen: 20.00 ng  
 RT: 10.95 min Scan# 1380  
 Delta R.T. -0.01 min  
 Lab File: BG023728.D  
 Acq: 15 Aug 2016 19:43

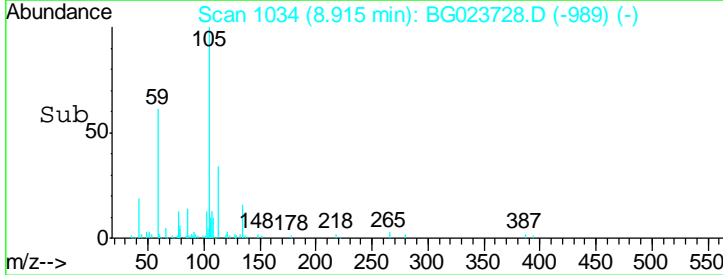
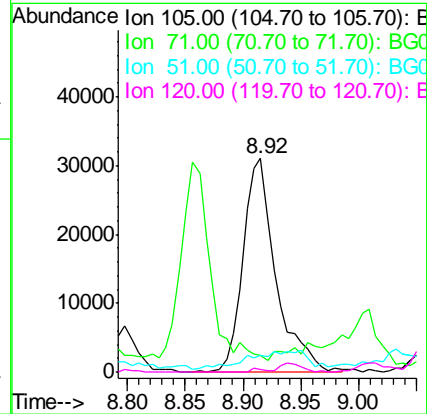
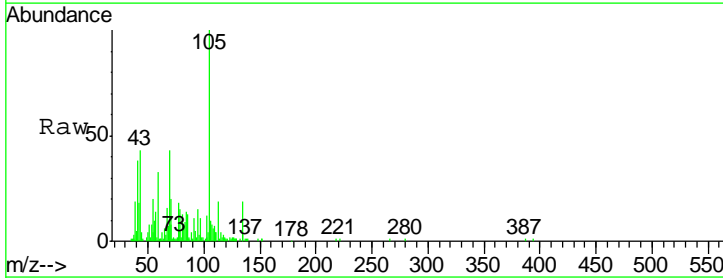
Instrument :  
 BNA\_G  
 ClientSampled :  
 AW-1

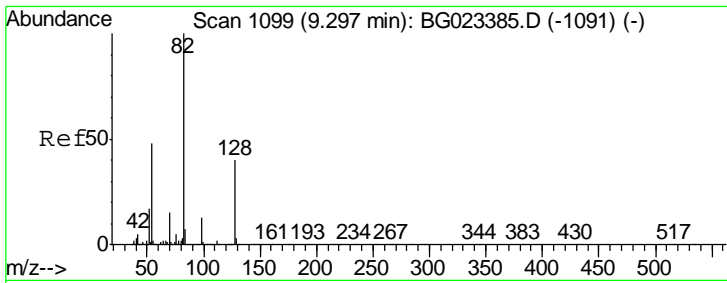
| Tgt Ion | Resp | Lower | Upper |
|---------|------|-------|-------|
| 136     | 100  |       |       |
| 137     | 11.3 | 9.6   | 14.4  |
| 54      | 11.2 | 7.3   | 10.9# |
| 68      | 9.4  | 5.3   | 7.9#  |



#22  
 Acetophenone  
 Concen: 3.47 ng  
 RT: 8.92 min Scan# 1034  
 Delta R.T. -0.04 min  
 Lab File: BG023728.D  
 Acq: 15 Aug 2016 19:43

| Tgt Ion | Resp | Lower | Upper |
|---------|------|-------|-------|
| 105     | 100  |       |       |
| 71      | 7.7  | 2.6   | 3.8#  |
| 51      | 7.5  | 27.1  | 40.7# |
| 120     | 1.1  | 15.1  | 22.7# |

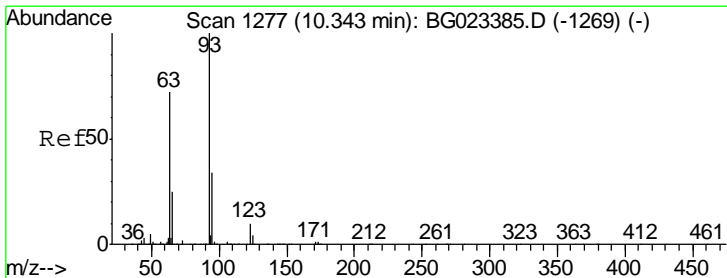
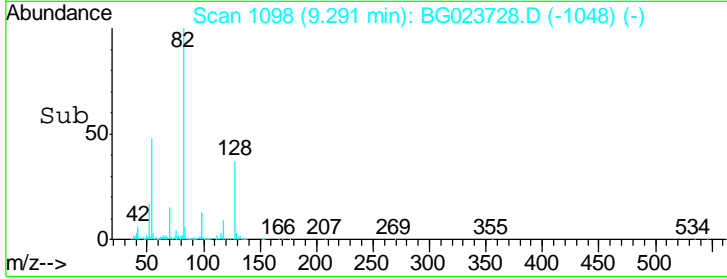
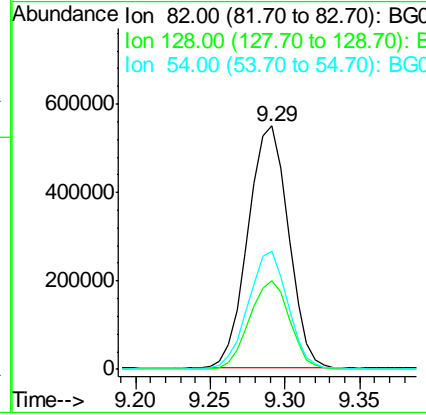
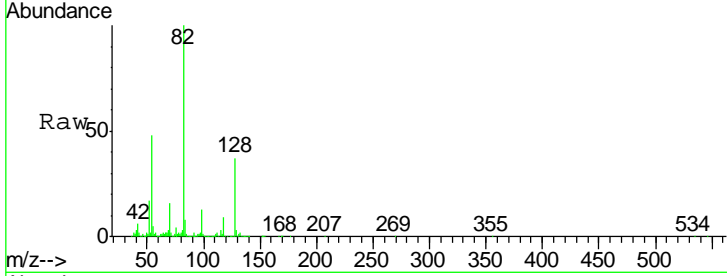




#23  
 Nitrobenzene-d5  
 Concen: 79.41 ng  
 RT: 9.29 min Scan# 1098  
 Delta R.T. -0.01 min  
 Lab File: BG023728.D  
 Acq: 15 Aug 2016 19:43

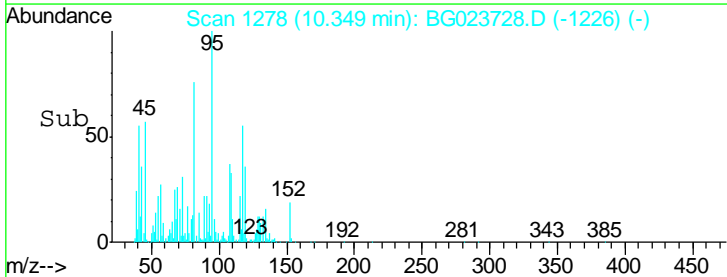
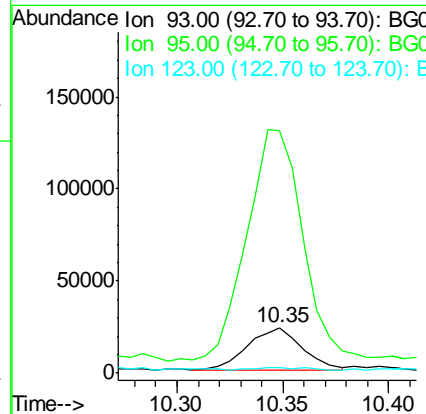
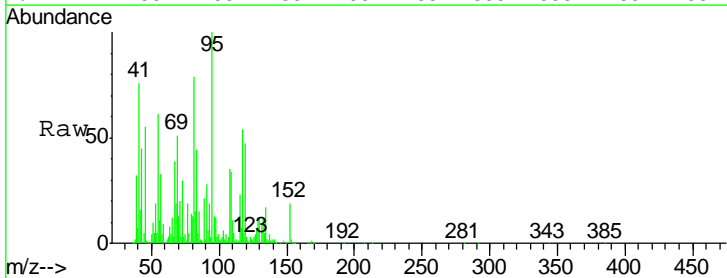
Instrument :  
 BNA\_G  
 ClientSampled :  
 AW-1

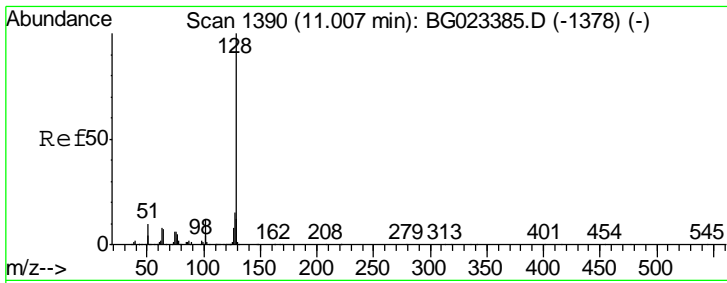
| Tgt Ion | Resp    | Lower | Upper |
|---------|---------|-------|-------|
| 82      | 1028333 |       |       |
| 128     | 36.5    | 24.4  | 36.6  |
| 54      | 48.3    | 41.4  | 62.0  |



#28  
 bis(2-Chloroethoxy)methane  
 Concen: 2.54 ng  
 RT: 10.35 min Scan# 1278  
 Delta R.T. 0.01 min  
 Lab File: BG023728.D  
 Acq: 15 Aug 2016 19:43

| Tgt Ion | Resp  | Lower | Upper |
|---------|-------|-------|-------|
| 93      | 41165 |       |       |
| 95      | 532.5 | 25.4  | 38.2# |
| 123     | 13.5  | 8.2   | 12.2# |

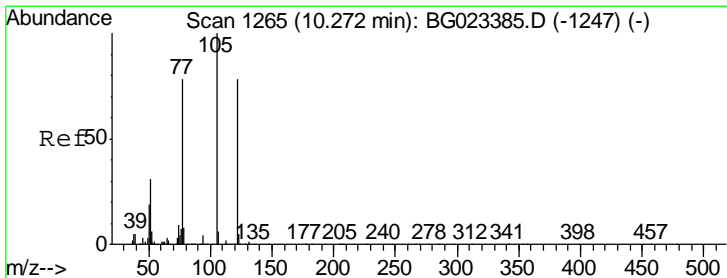
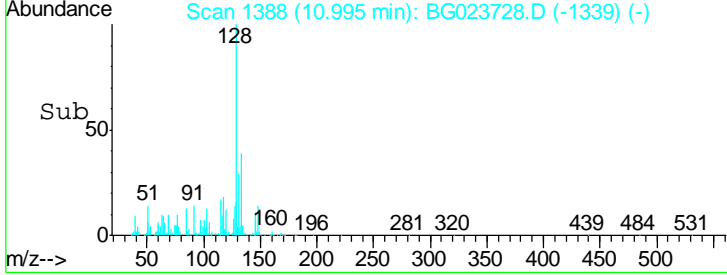
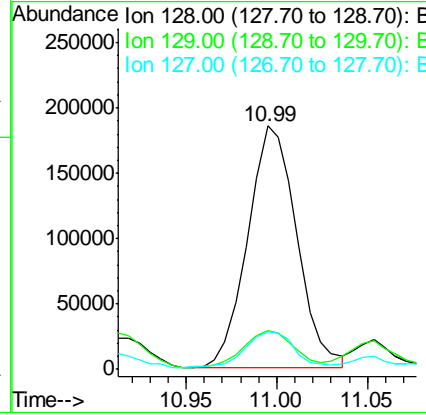
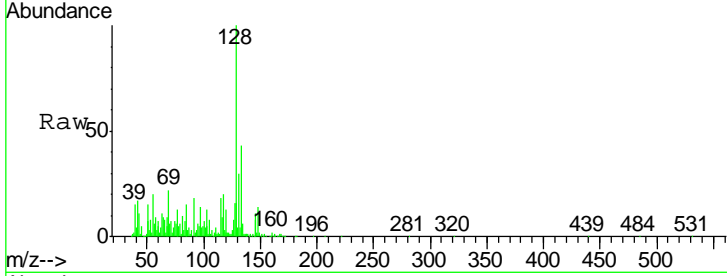




#31  
 Naphthalene  
 Concen: 10.67 ng  
 RT: 10.99 min Scan# 1388  
 Delta R.T. -0.01 min  
 Lab File: BG023728.D  
 Acq: 15 Aug 2016 19:43

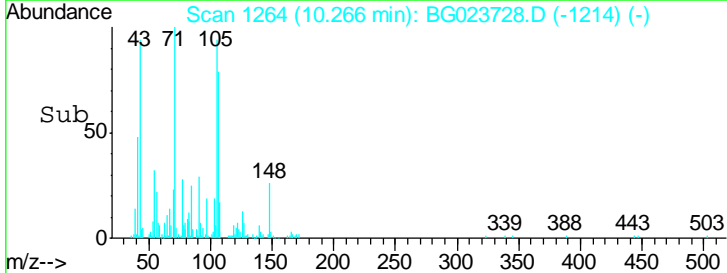
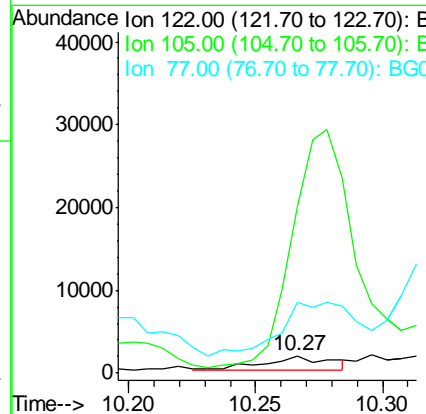
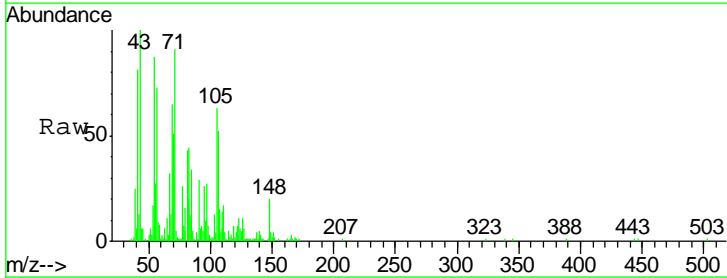
Instrument :  
 BNA\_G  
 ClientSampled :  
 AW-1

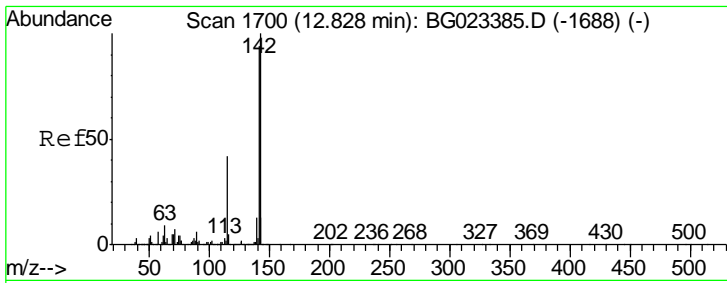
| Tgt Ion | Resp | Lower | Upper |
|---------|------|-------|-------|
| 128     | 100  |       |       |
| 129     | 15.9 | 9.4   | 14.0# |
| 127     | 15.6 | 11.3  | 16.9  |



#32  
 Benzoic acid  
 Concen: 6.71 ng  
 RT: 10.27 min Scan# 1264  
 Delta R.T. -0.01 min  
 Lab File: BG023728.D  
 Acq: 15 Aug 2016 19:43

| Tgt Ion | Resp  | Lower | Upper  |
|---------|-------|-------|--------|
| 122     | 100   |       |        |
| 105     | 944.4 | 117.2 | 157.2# |
| 77      | 397.4 | 109.2 | 149.2# |

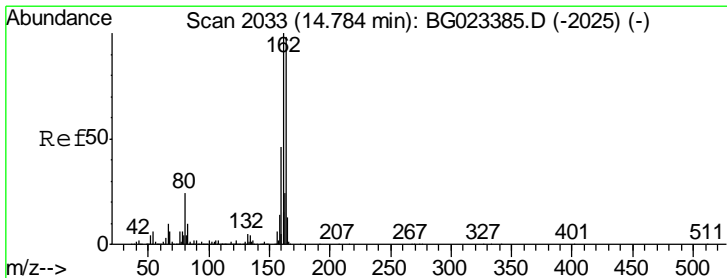
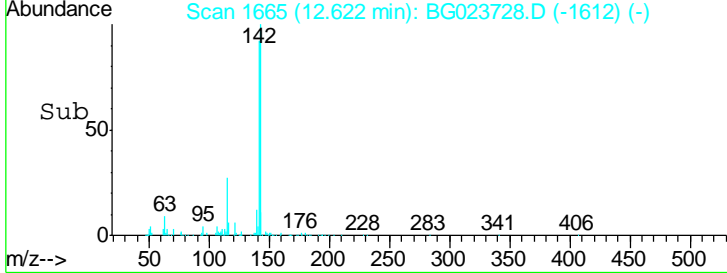
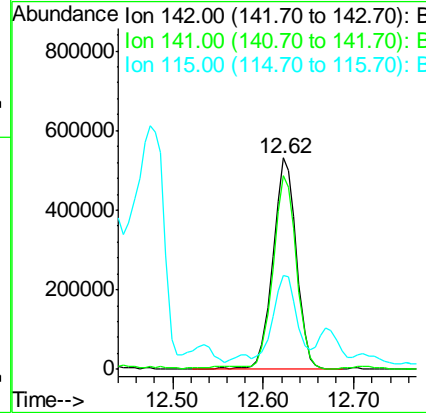
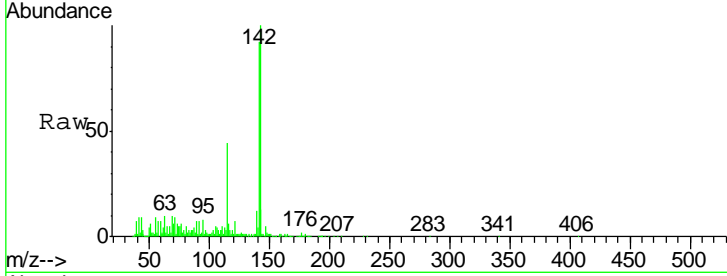




#37  
 2-Methylnaphthalene  
 Concen: 38.30 ng  
 RT: 12.62 min Scan# 1665  
 Delta R.T. 0.01 min  
 Lab File: BG023728.D  
 Acq: 15 Aug 2016 19:43

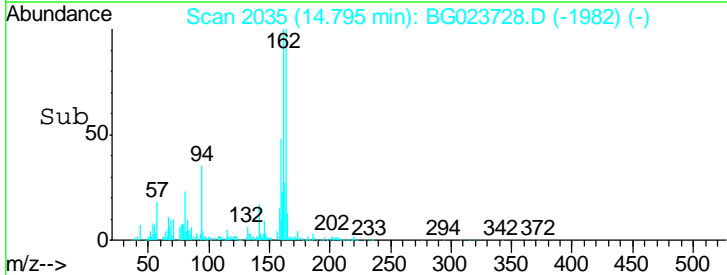
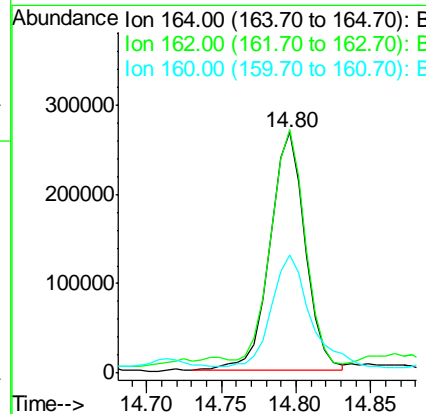
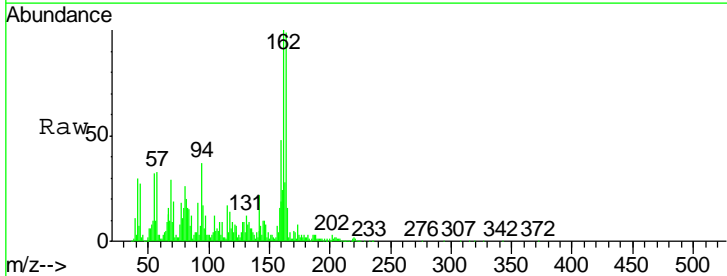
Instrument :  
 BNA\_G  
 ClientSampled :  
 AW-1

| Tgt Ion | Resp | Lower | Upper |
|---------|------|-------|-------|
| 142     | 100  |       |       |
| 141     | 91.8 | 70.2  | 105.2 |
| 115     | 44.5 | 41.7  | 62.5  |

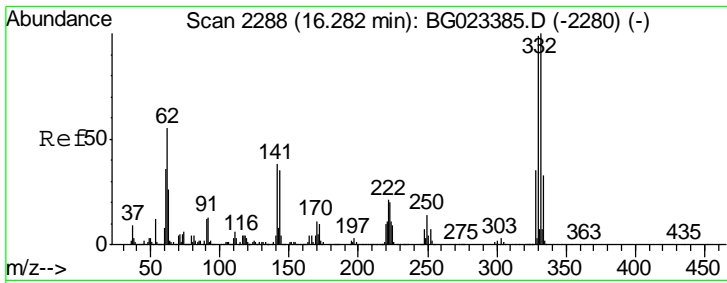


#38  
 Acenaphthene-d10  
 Concen: 20.00 ng  
 RT: 14.80 min Scan# 2035  
 Delta R.T. 0.01 min  
 Lab File: BG023728.D  
 Acq: 15 Aug 2016 19:43

| Tgt Ion | Resp  | Lower | Upper |
|---------|-------|-------|-------|
| 164     | 100   |       |       |
| 162     | 101.2 | 87.7  | 131.5 |
| 160     | 48.9  | 37.2  | 55.8  |



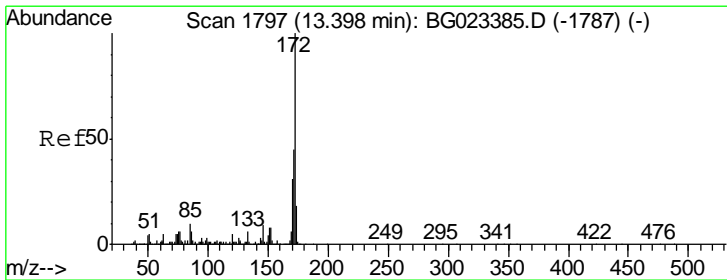
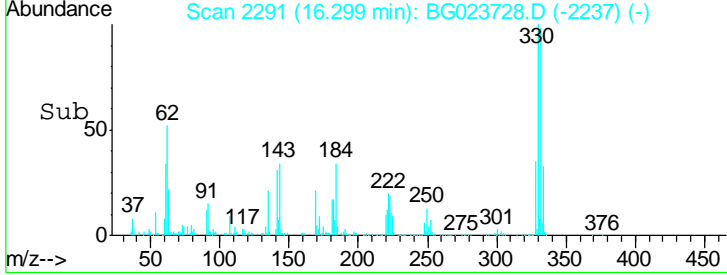
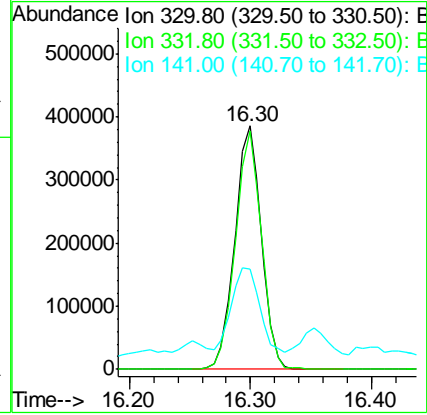
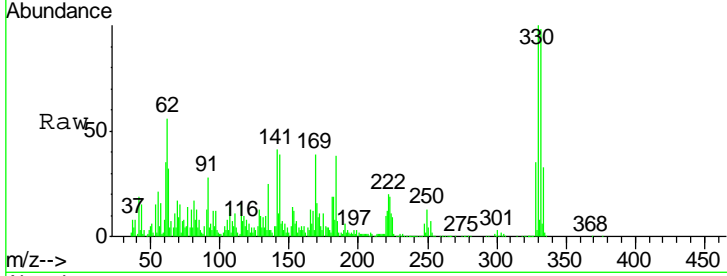




#41  
 2,4,6-Tribromophenol  
 Concen: 92.36 ng  
 RT: 16.30 min Scan# 2291  
 Delta R.T. 0.02 min  
 Lab File: BG023728.D  
 Acq: 15 Aug 2016 19:43

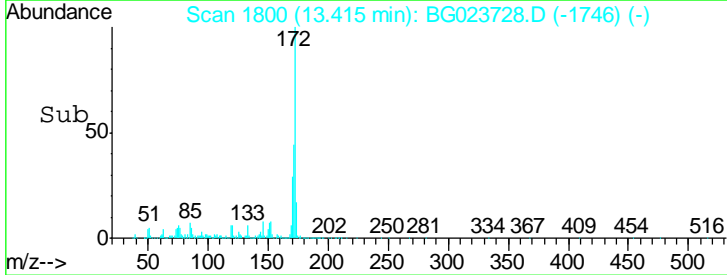
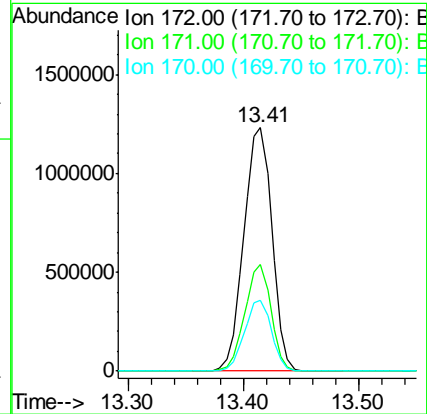
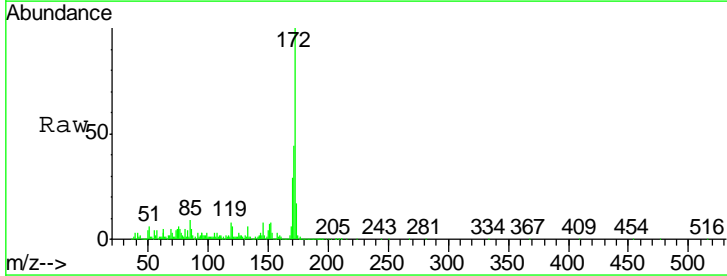
Instrument :  
 BNA\_G  
 ClientSampled :  
 AW-1

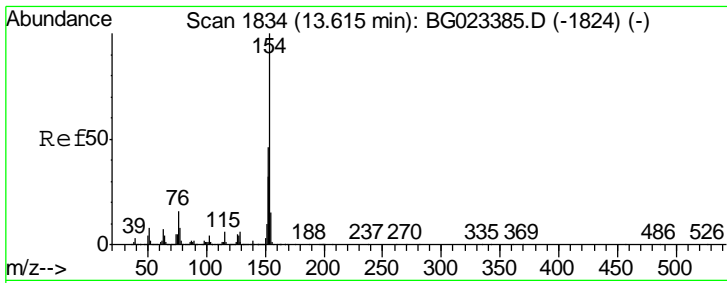
| Tgt Ion | Resp | Lower | Upper |
|---------|------|-------|-------|
| 330     | 100  |       |       |
| 332     | 96.2 | 77.4  | 116.2 |
| 141     | 37.8 | 31.7  | 47.5  |



#44  
 2-Fluorobiphenyl  
 Concen: 79.98 ng  
 RT: 13.41 min Scan# 1800  
 Delta R.T. 0.02 min  
 Lab File: BG023728.D  
 Acq: 15 Aug 2016 19:43

| Tgt Ion | Resp | Lower | Upper |
|---------|------|-------|-------|
| 172     | 100  |       |       |
| 171     | 43.8 | 31.6  | 47.4  |
| 170     | 29.1 | 21.3  | 31.9  |

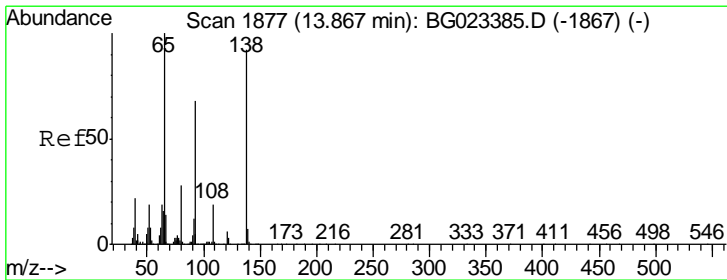
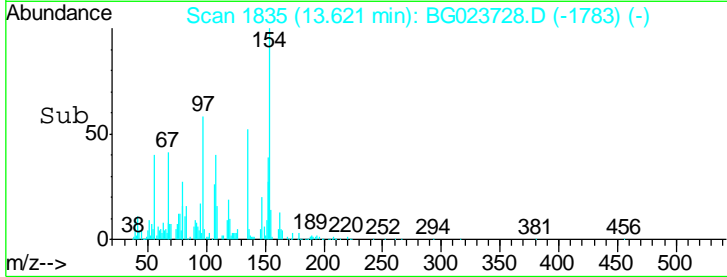
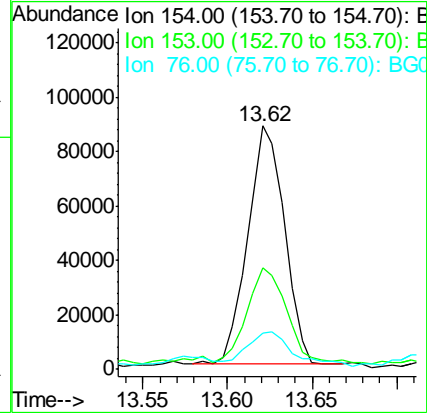
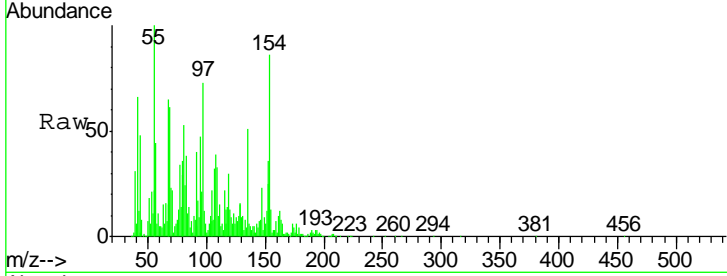




#45  
 1,1'-Biphenyl  
 Concen: 3.98 ng  
 RT: 13.62 min Scan# 1835  
 Delta R.T. 0.01 min  
 Lab File: BG023728.D  
 Acq: 15 Aug 2016 19:43

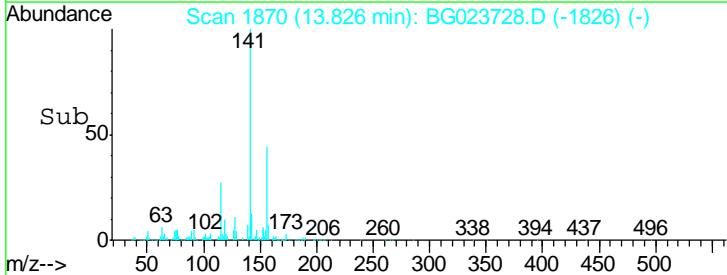
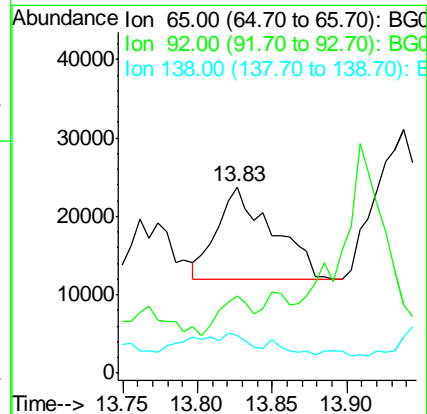
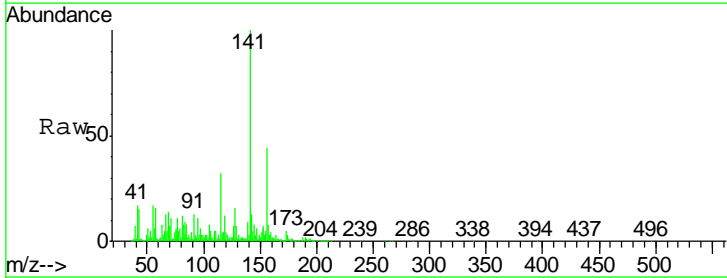
Instrument :  
 BNA\_G  
 ClientSampled :  
 AW-1

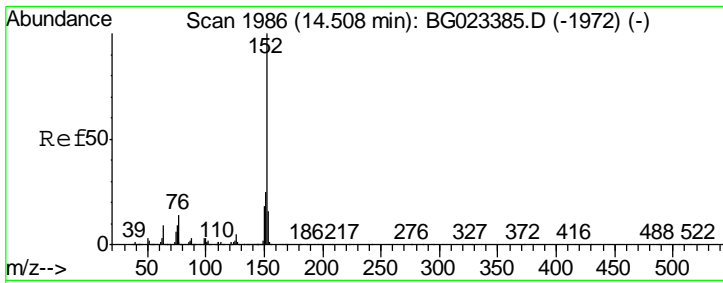
| Tgt Ion | Resp   | Lower | Upper |
|---------|--------|-------|-------|
| 154     | 132944 |       |       |
| 153     | 41.6   | 20.2  | 60.2  |
| 76      | 14.7   | 0.0   | 32.9  |



#47  
 2-Nitroaniline  
 Concen: 2.82 ng  
 RT: 13.83 min Scan# 1870  
 Delta R.T. -0.04 min  
 Lab File: BG023728.D  
 Acq: 15 Aug 2016 19:43

| Tgt Ion | Resp  | Lower | Upper |
|---------|-------|-------|-------|
| 65      | 30325 |       |       |
| 92      | 41.6  | 49.4  | 74.0# |
| 138     | 20.1  | 58.0  | 87.0# |

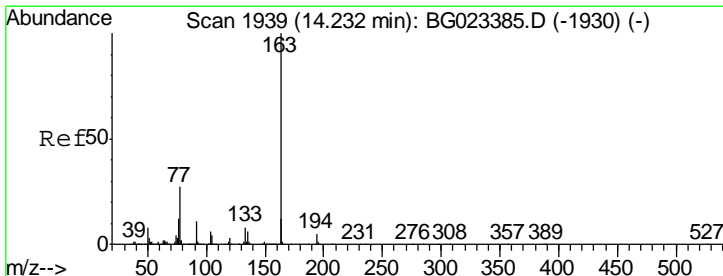
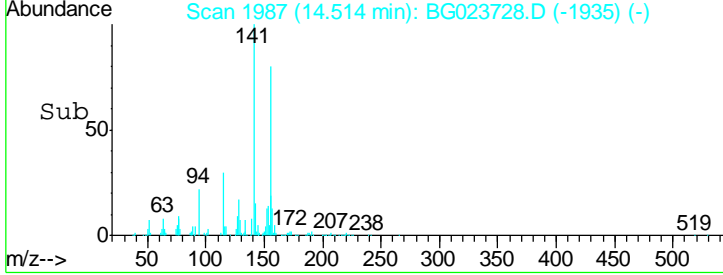
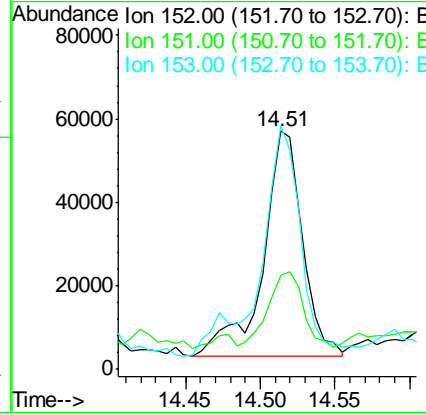
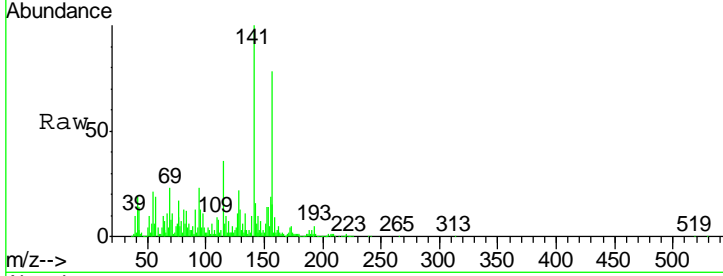




#48  
 Acenaphthylene  
 Concen: 2.40 ng  
 RT: 14.51 min Scan# 1987  
 Delta R.T. 0.01 min  
 Lab File: BG023728.D  
 Acq: 15 Aug 2016 19:43

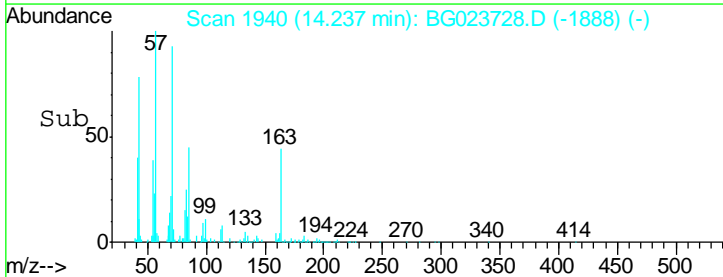
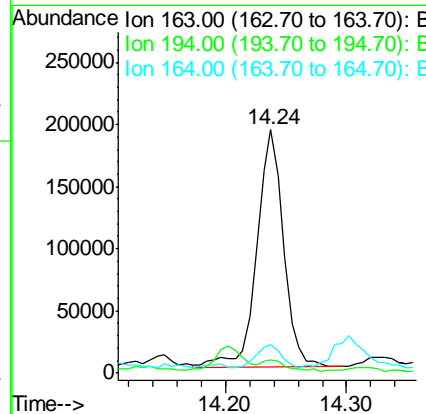
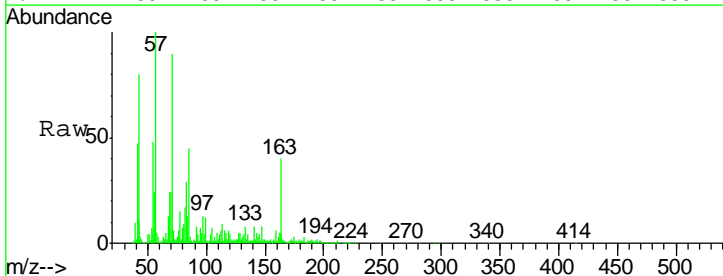
Instrument :  
 BNA\_G  
 ClientSampled :  
 AW-1

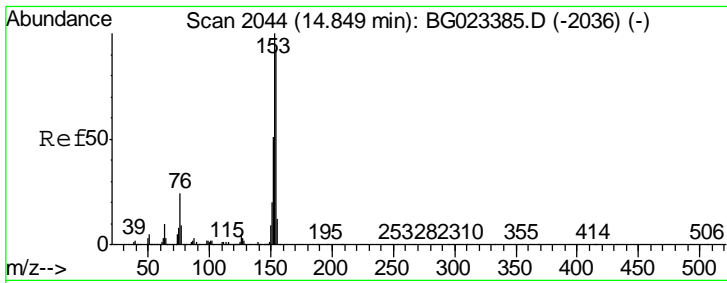
| Tgt Ion | Resp  | Lower | Upper |
|---------|-------|-------|-------|
| 152     | 98255 |       |       |
| 151     | 39.6  | 17.6  | 26.4# |
| 153     | 102.1 | 11.4  | 17.2# |



#49  
 Dimethylphthalate  
 Concen: 8.76 ng  
 RT: 14.24 min Scan# 1940  
 Delta R.T. 0.01 min  
 Lab File: BG023728.D  
 Acq: 15 Aug 2016 19:43

| Tgt Ion | Resp   | Lower | Upper |
|---------|--------|-------|-------|
| 163     | 293900 |       |       |
| 164     | 11.7   | 8.1   | 12.1  |
| 194     | 5.2    | 3.6   | 5.4   |

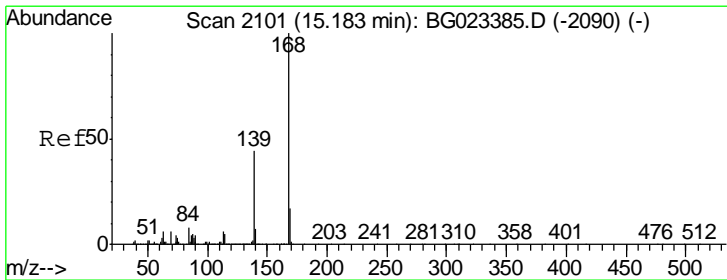
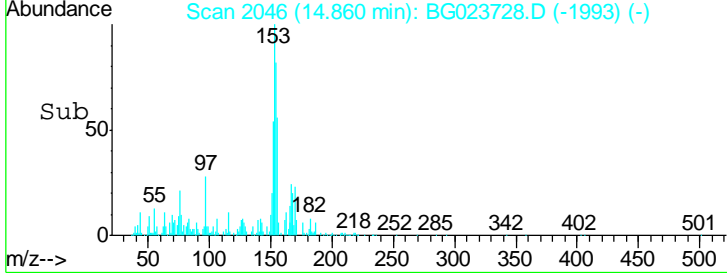
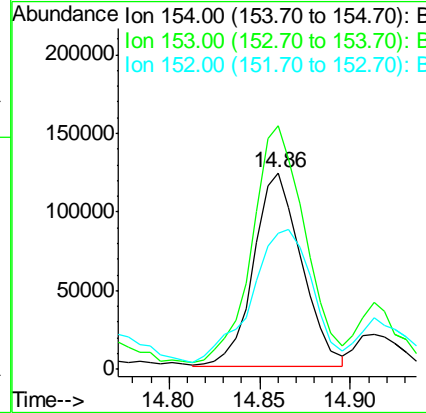
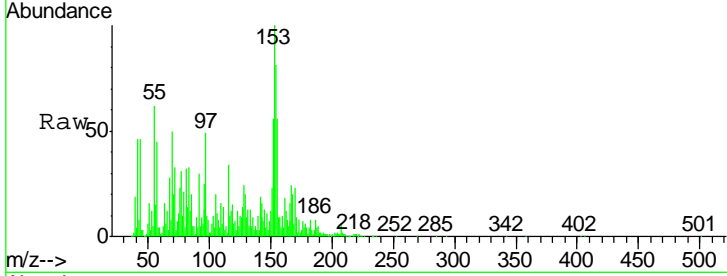




#51  
 Acenaphthene  
 Concen: 8.67 ng  
 RT: 14.86 min Scan# 2046  
 Delta R.T. 0.01 min  
 Lab File: BG023728.D  
 Acq: 15 Aug 2016 19:43

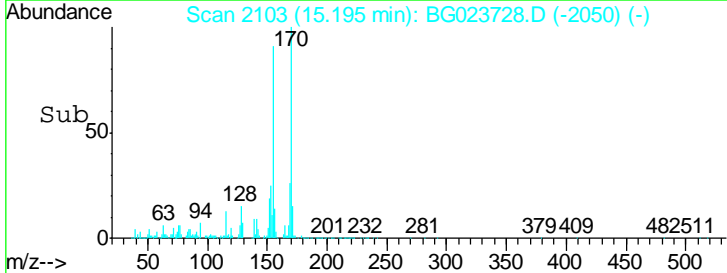
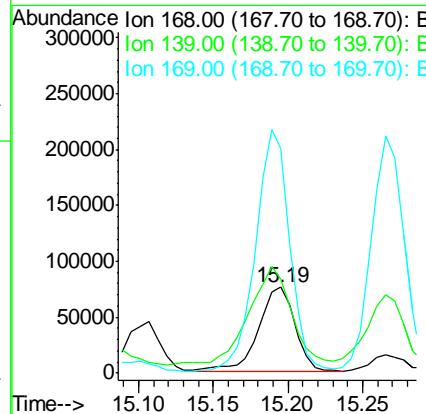
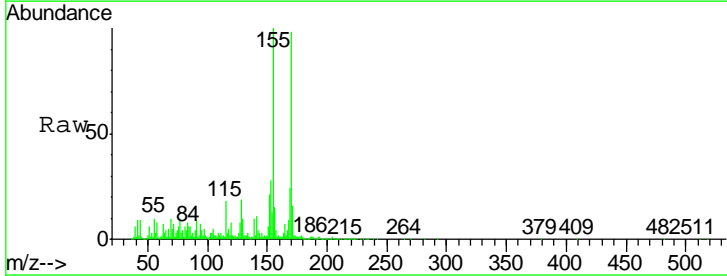
Instrument :  
 BNA\_G  
 ClientSampled :  
 AW-1

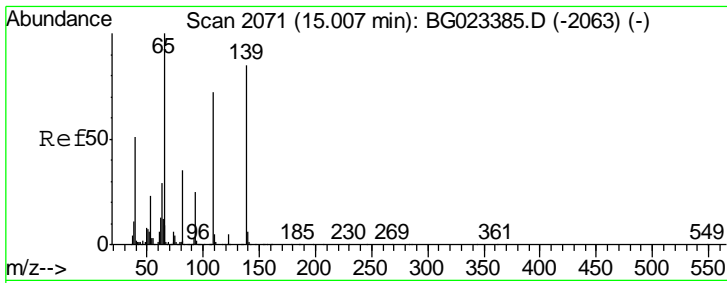
| Tgt Ion | Resp  | Lower | Upper |
|---------|-------|-------|-------|
| 154     | 100   |       |       |
| 153     | 124.0 | 87.5  | 131.3 |
| 152     | 69.6  | 42.7  | 64.1# |



#54  
 Dibenzofuran  
 Concen: 3.39 ng  
 RT: 15.19 min Scan# 2103  
 Delta R.T. 0.01 min  
 Lab File: BG023728.D  
 Acq: 15 Aug 2016 19:43

| Tgt Ion | Resp  | Lower | Upper |
|---------|-------|-------|-------|
| 168     | 100   |       |       |
| 139     | 109.4 | 36.4  | 54.6# |
| 169     | 261.6 | 11.9  | 17.9# |

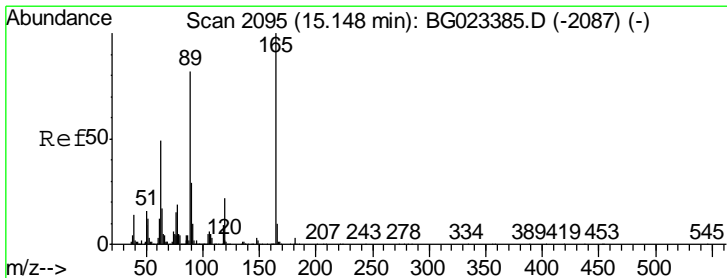
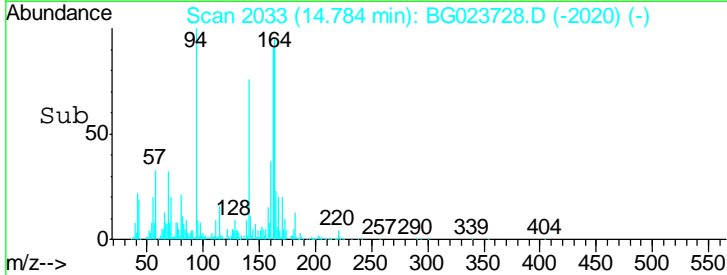
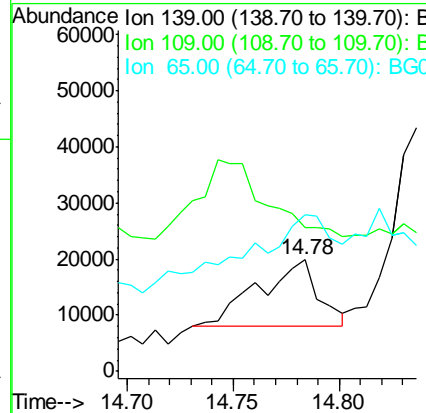
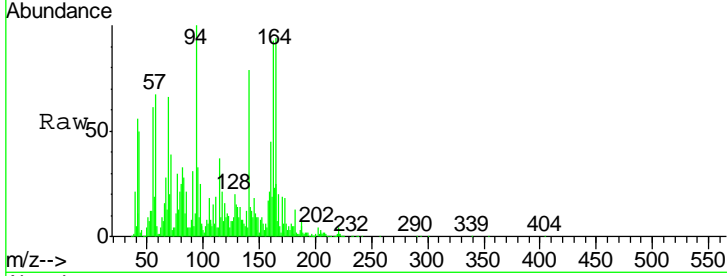




#55  
 4-Nitrophenol  
 Concen: 3.31 ng  
 RT: 14.78 min Scan# 2033  
 Delta R.T. -0.22 min  
 Lab File: BG023728.D  
 Acq: 15 Aug 2016 19:43

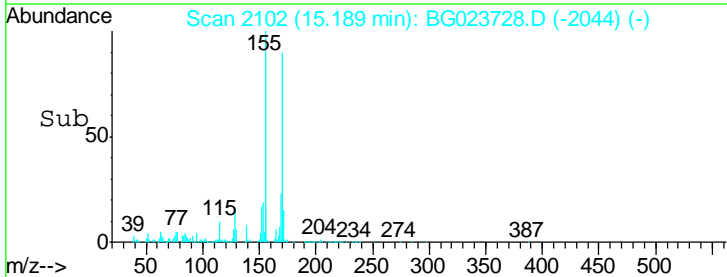
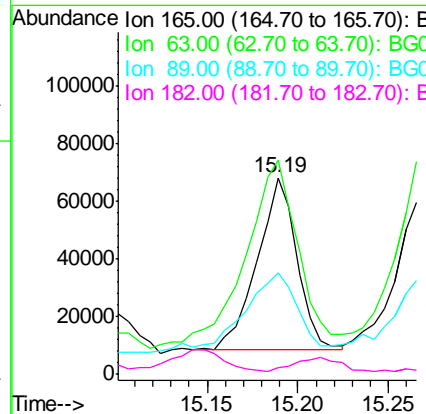
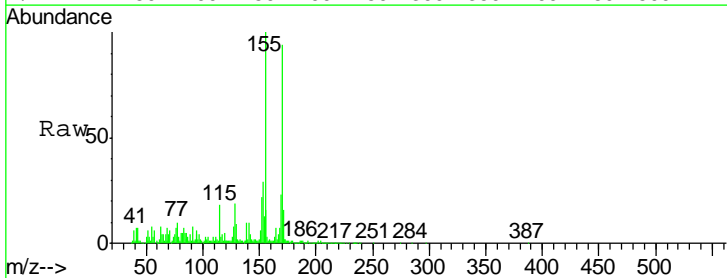
Instrument :  
 BNA\_G  
 ClientSampled :  
 AW-1

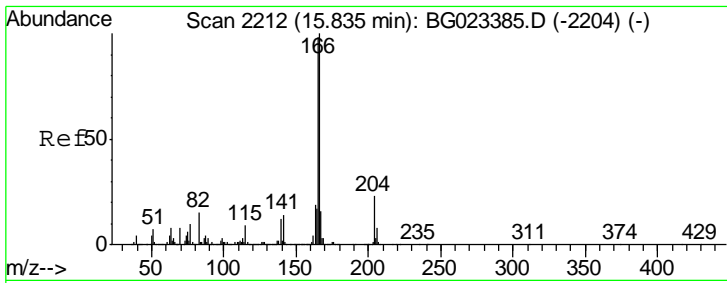
Tgt Ion:139 Resp: 23305  
 Ion Ratio Lower Upper  
 139 100  
 109 128.3 103.0 143.0  
 65 140.5 112.7 152.7



#56  
 2,4-Dinitrotoluene  
 Concen: 8.20 ng  
 RT: 15.19 min Scan# 2102  
 Delta R.T. 0.04 min  
 Lab File: BG023728.D  
 Acq: 15 Aug 2016 19:43

Tgt Ion:165 Resp: 91368  
 Ion Ratio Lower Upper  
 165 100  
 63 108.9 45.8 68.6#  
 89 51.7 68.6 102.8#  
 182 3.2 2.0 3.0#

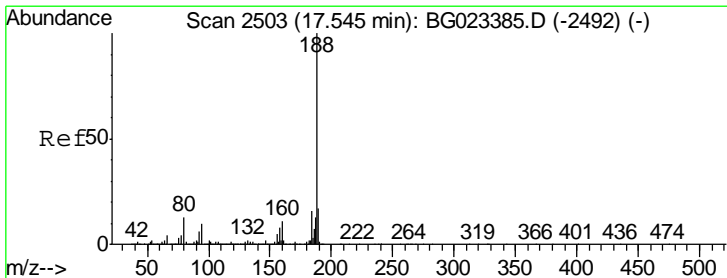
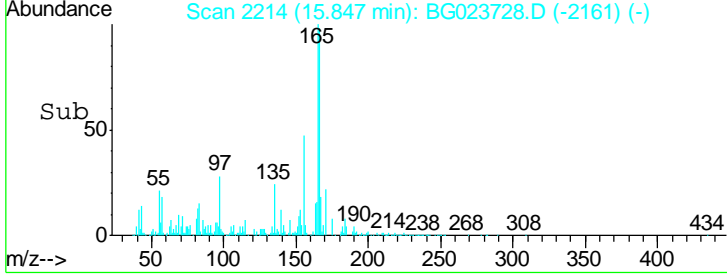
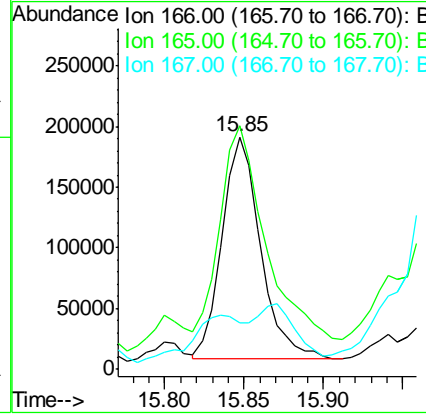
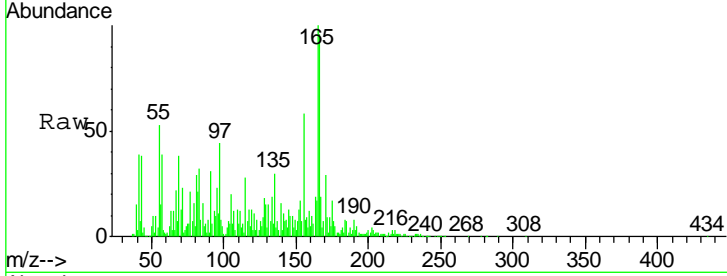




#57  
 Fluorene  
 Concen: 9.42 ng  
 RT: 15.85 min Scan# 2214  
 Delta R.T. 0.01 min  
 Lab File: BG023728.D  
 Acq: 15 Aug 2016 19:43

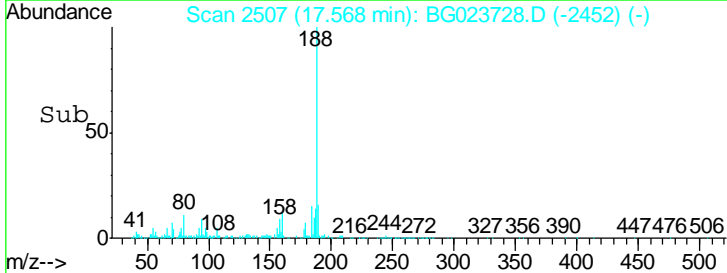
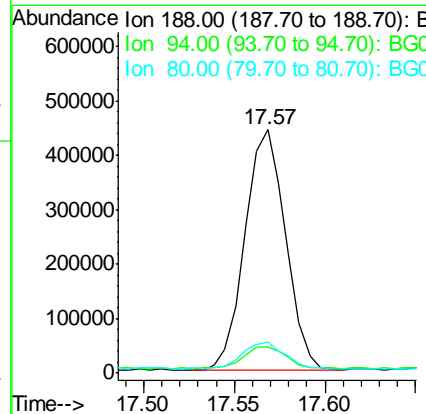
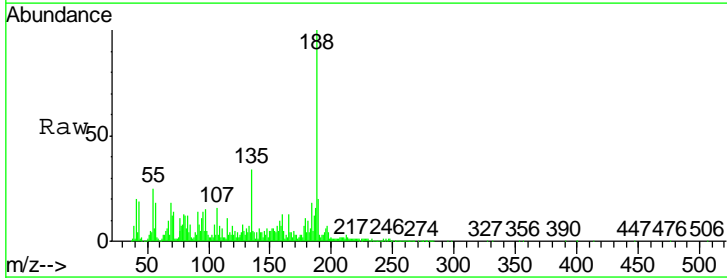
Instrument :  
 BNA\_G  
 ClientSampled :  
 AW-1

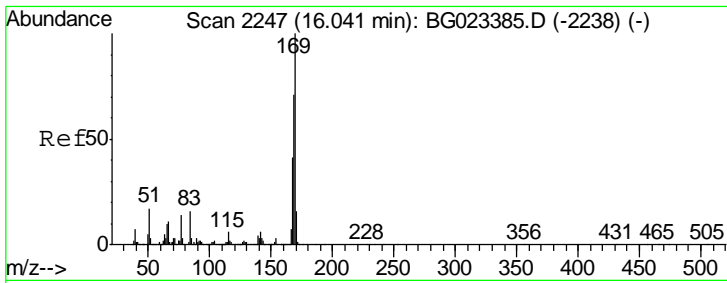
| Tgt Ion | Resp  | Lower | Upper |
|---------|-------|-------|-------|
| 166     | 100   |       |       |
| 165     | 104.6 | 81.0  | 121.6 |
| 167     | 19.9  | 12.0  | 18.0# |



#63  
 Phenanthrene-d10  
 Concen: 20.00 ng  
 RT: 17.57 min Scan# 2507  
 Delta R.T. 0.02 min  
 Lab File: BG023728.D  
 Acq: 15 Aug 2016 19:43

| Tgt Ion | Resp | Lower | Upper |
|---------|------|-------|-------|
| 188     | 100  |       |       |
| 94      | 10.6 | 5.2   | 7.8#  |
| 80      | 12.7 | 7.2   | 10.8# |

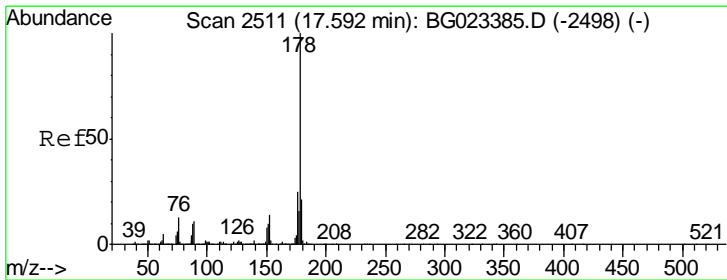
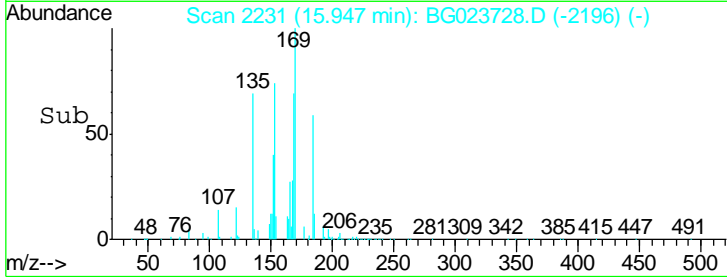
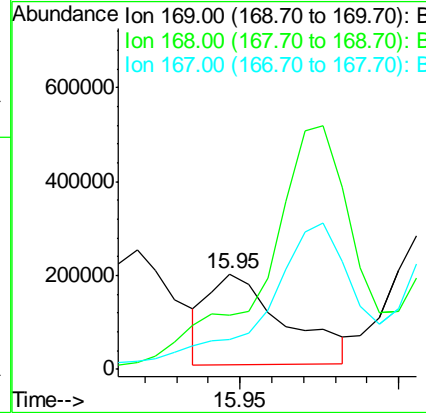
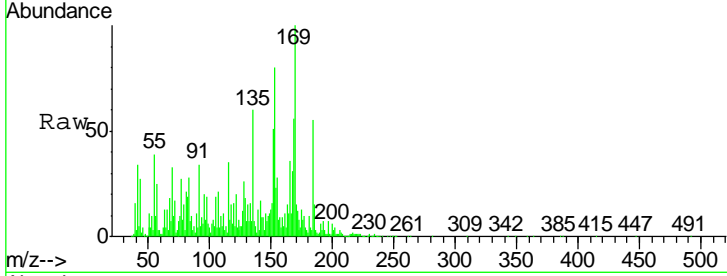




#65  
 n-Nitrosodiphenylamine  
 Concen: 15.93 ng  
 RT: 15.95 min Scan# 2231  
 Delta R.T. -0.09 min  
 Lab File: BG023728.D  
 Acq: 15 Aug 2016 19:43

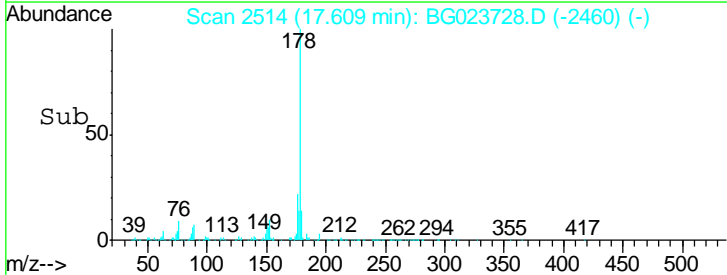
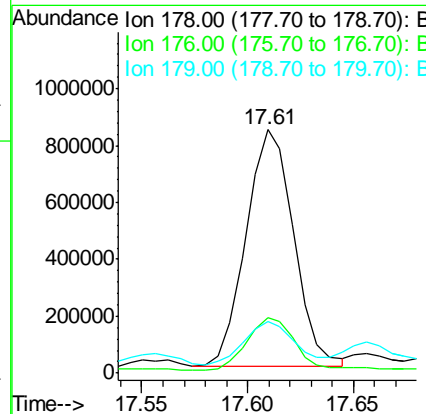
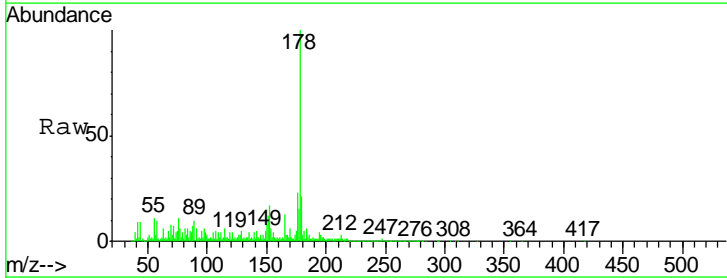
Instrument :  
 BNA\_G  
 ClientSampled :  
 AW-1

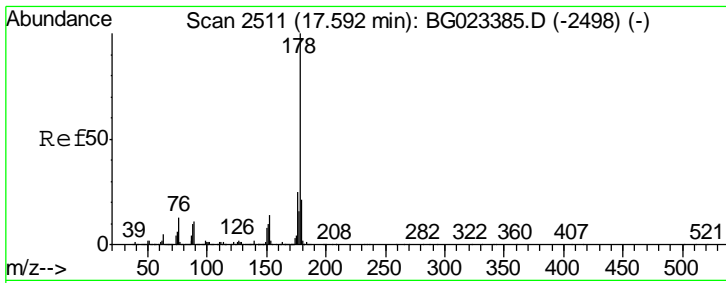
| Tgt Ion | Resp   | Lower | Upper |
|---------|--------|-------|-------|
| 169     | 323514 |       |       |
| 168     | 56.2   | 55.0  | 82.4  |
| 167     | 31.0   | 27.4  | 41.0  |



#70  
 Phenanthrene  
 Concen: 37.10 ng  
 RT: 17.61 min Scan# 2514  
 Delta R.T. 0.02 min  
 Lab File: BG023728.D  
 Acq: 15 Aug 2016 19:43

| Tgt Ion | Resp    | Lower | Upper |
|---------|---------|-------|-------|
| 178     | 1302941 |       |       |
| 176     | 22.6    | 16.8  | 25.2  |
| 179     | 20.9    | 14.3  | 21.5  |



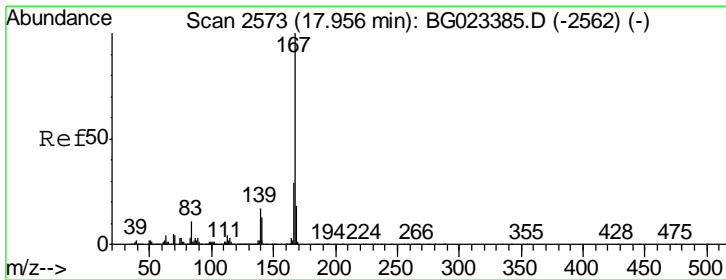
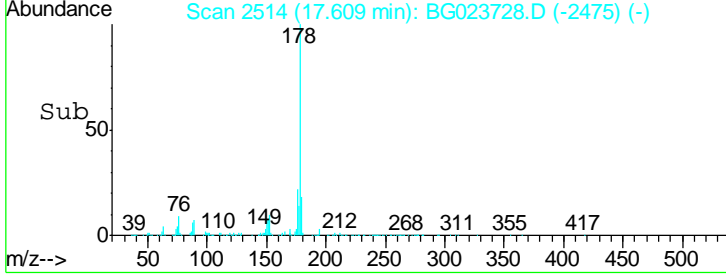
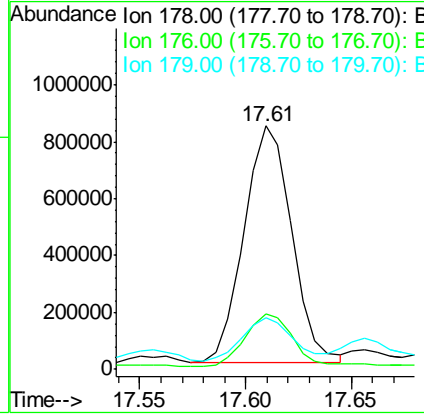
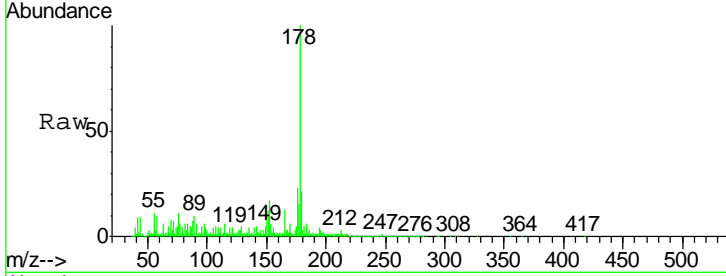


#71  
 Anthracene  
 Concen: 36.88 ng  
 RT: 17.61 min Scan# 2514  
 Delta R.T. -0.07 min  
 Lab File: BG023728.D  
 Acq: 15 Aug 2016 19:43

Instrument :  
 BNA\_G  
 ClientSampled :  
 AW-1

Tgt Ion:178 Resp: 1302941

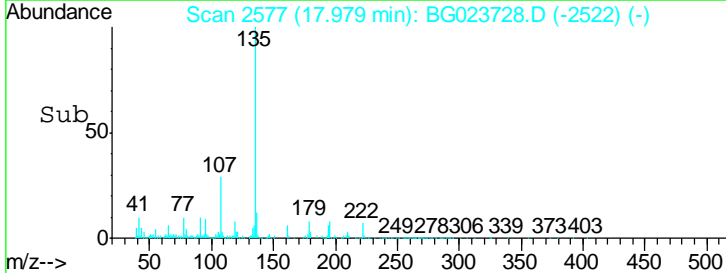
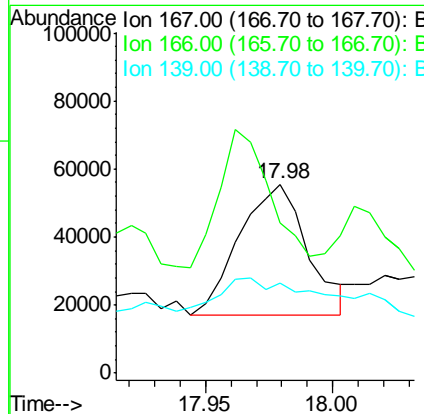
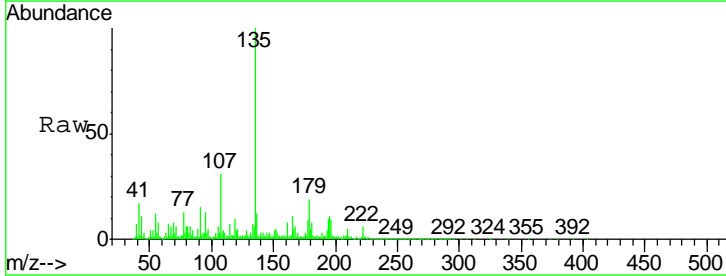
| Ion | Ratio | Lower | Upper |
|-----|-------|-------|-------|
| 178 | 100   |       |       |
| 176 | 22.6  | 17.3  | 25.9  |
| 179 | 20.9  | 14.0  | 21.0  |



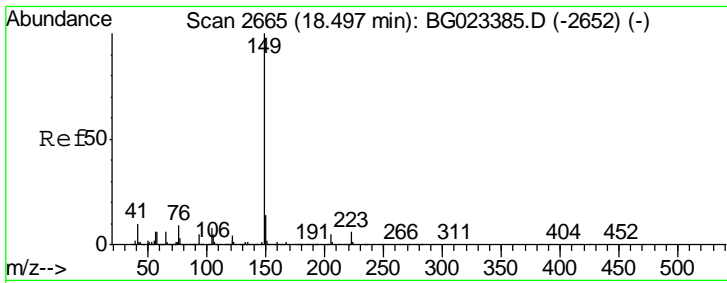
#72  
 Carbazole  
 Concen: 2.32 ng  
 RT: 17.98 min Scan# 2577  
 Delta R.T. 0.02 min  
 Lab File: BG023728.D  
 Acq: 15 Aug 2016 19:43

Tgt Ion:167 Resp: 72022

| Ion | Ratio | Lower | Upper |
|-----|-------|-------|-------|
| 167 | 100   |       |       |
| 166 | 79.7  | 20.7  | 31.1# |
| 139 | 47.4  | 11.9  | 17.9# |



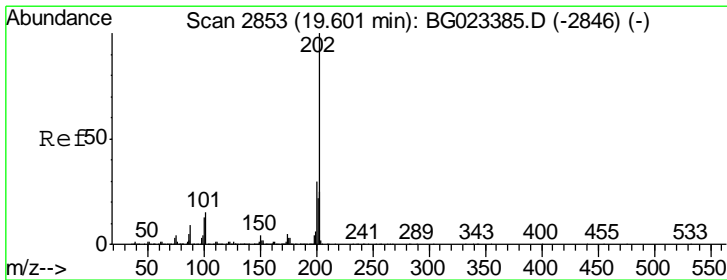
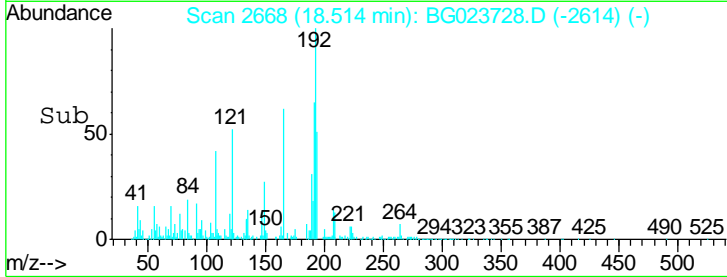
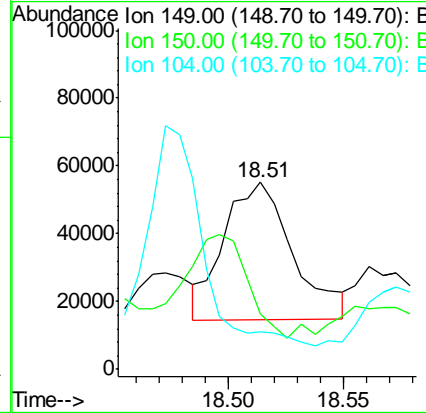
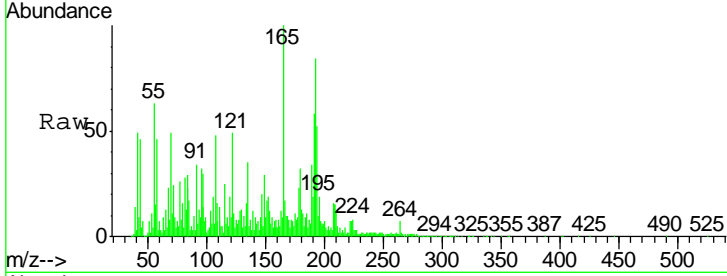




#73  
 Di-n-butylphthalate  
 Concen: Below Cal  
 RT: 18.51 min Scan# 2668  
 Delta R.T. 0.02 min  
 Lab File: BG023728.D  
 Acq: 15 Aug 2016 19:43

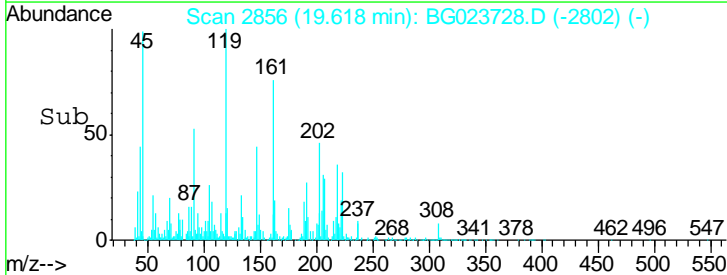
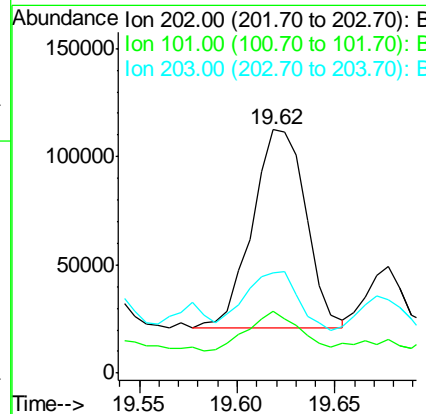
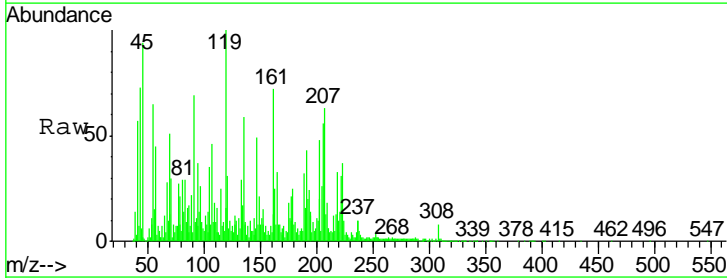
Instrument :  
 BNA\_G  
 ClientSampled :  
 AW-1

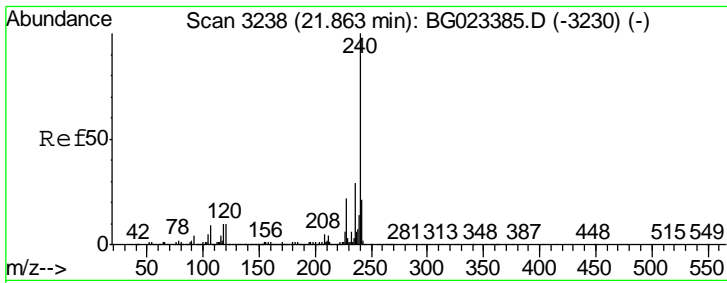
| Tgt Ion | Resp | Lower | Upper |
|---------|------|-------|-------|
| 149     | 100  |       |       |
| 150     | 29.8 | 9.1   | 13.7# |
| 104     | 20.2 | 6.9   | 10.3# |



#74  
 Fluoranthene  
 Concen: Below Cal  
 RT: 19.62 min Scan# 2856  
 Delta R.T. 0.02 min  
 Lab File: BG023728.D  
 Acq: 15 Aug 2016 19:43

| Tgt Ion | Resp | Lower | Upper |
|---------|------|-------|-------|
| 202     | 100  |       |       |
| 101     | 25.2 | 0.0   | 27.4  |
| 203     | 41.4 | 1.7   | 41.7  |

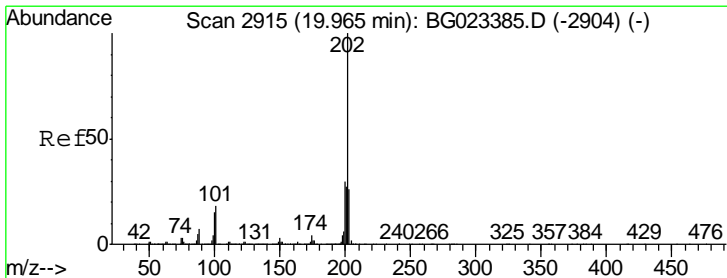
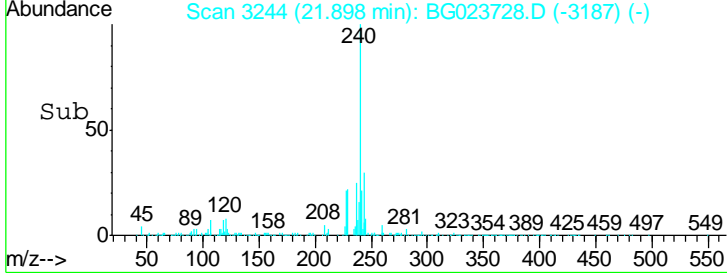
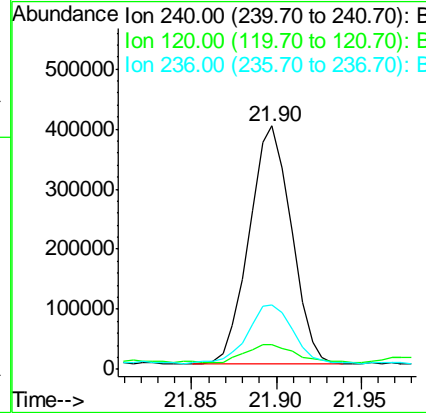
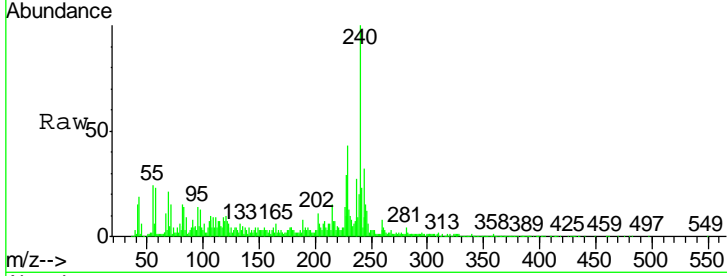




#75  
 Chrysene-d12  
 Concen: 20.00 ng  
 RT: 21.90 min Scan# 3244  
 Delta R.T. 0.04 min  
 Lab File: BG023728.D  
 Acq: 15 Aug 2016 19:43

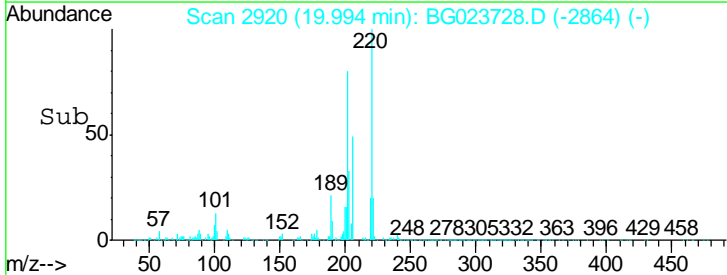
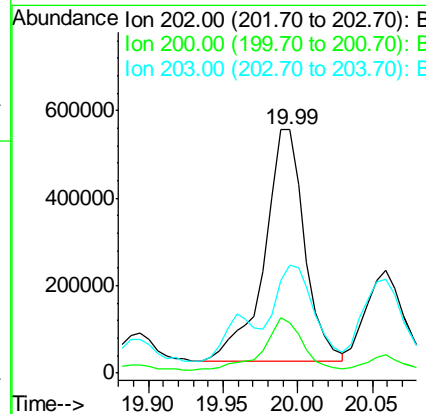
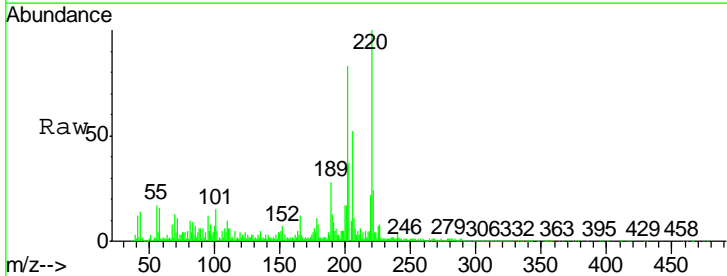
Instrument :  
 BNA\_G  
 ClientSampled :  
 AW-1

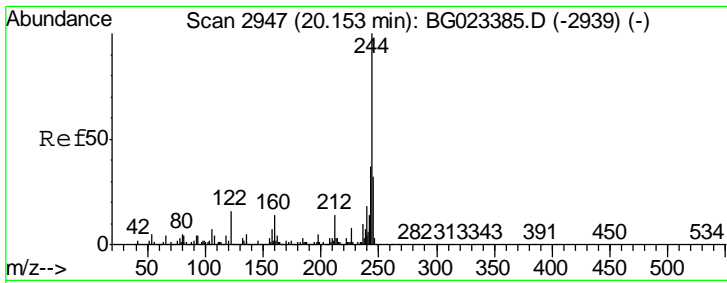
| Tgt Ion | Resp | Lower | Upper |
|---------|------|-------|-------|
| 240     | 100  |       |       |
| 120     | 10.1 | 4.1   | 6.1#  |
| 236     | 26.7 | 21.1  | 31.7  |



#77  
 Pyrene  
 Concen: 20.77 ng  
 RT: 19.99 min Scan# 2920  
 Delta R.T. 0.03 min  
 Lab File: BG023728.D  
 Acq: 15 Aug 2016 19:43

| Tgt Ion | Resp | Lower | Upper |
|---------|------|-------|-------|
| 202     | 100  |       |       |
| 200     | 20.5 | 21.2  | 31.8# |
| 203     | 44.2 | 16.8  | 25.2# |

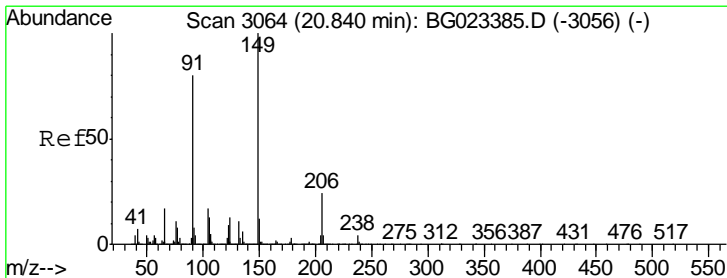
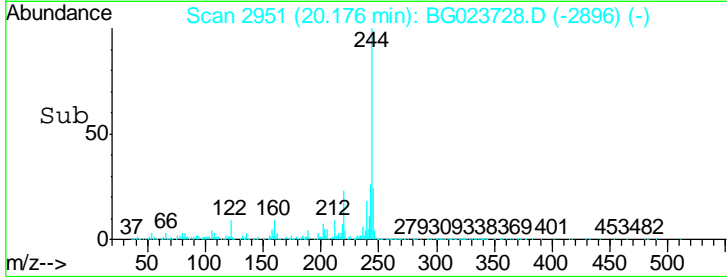
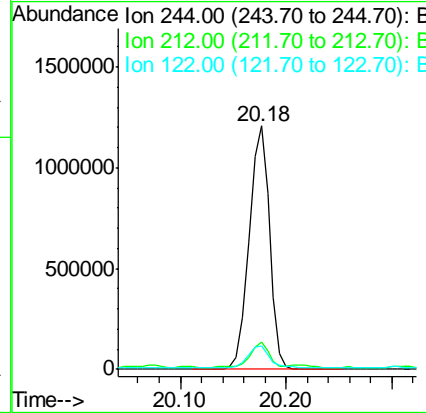
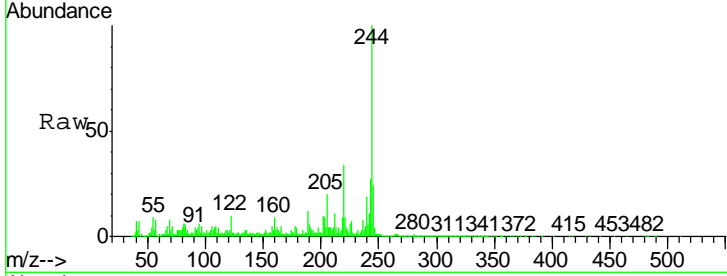




#78  
 Terphenyl-d14  
 Concen: 69.02 ng  
 RT: 20.18 min Scan# 2951  
 Delta R.T. 0.02 min  
 Lab File: BG023728.D  
 Acq: 15 Aug 2016 19:43

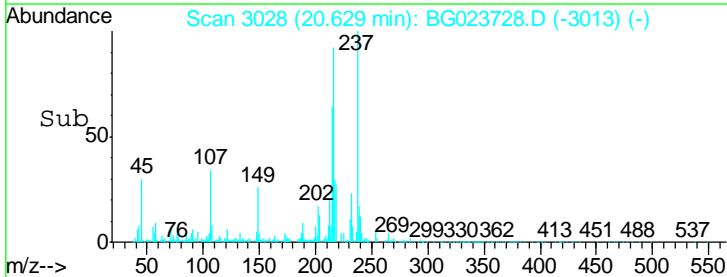
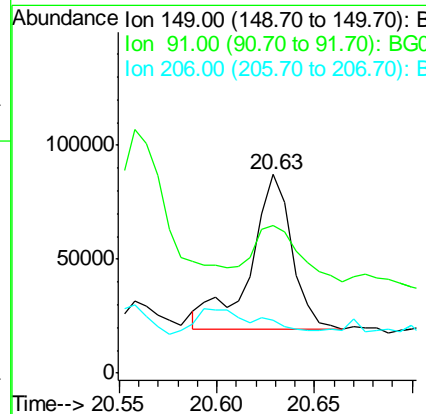
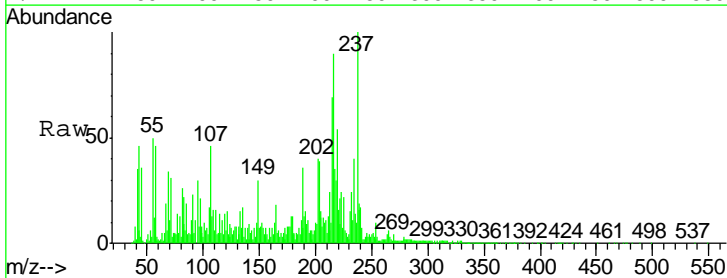
Instrument :  
 BNA\_G  
 ClientSampled :  
 AW-1

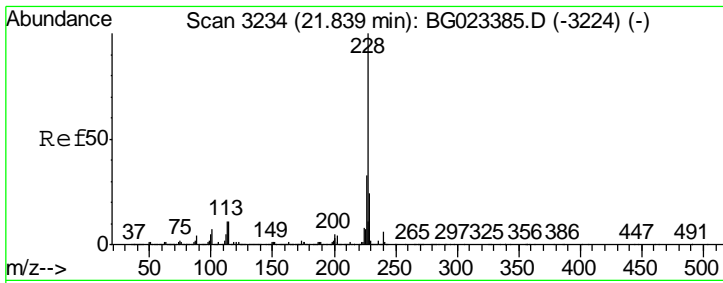
| Tgt Ion | Ratio | Lower | Upper |
|---------|-------|-------|-------|
| 244     | 100   |       |       |
| 212     | 11.0  | 10.8  | 16.2  |
| 122     | 9.5   | 8.0   | 12.0  |



#79  
 Butylbenzylphthalate  
 Concen: 6.01 ng  
 RT: 20.63 min Scan# 3028  
 Delta R.T. -0.21 min  
 Lab File: BG023728.D  
 Acq: 15 Aug 2016 19:43

| Tgt Ion | Ratio | Lower | Upper |
|---------|-------|-------|-------|
| 149     | 100   |       |       |
| 91      | 74.4  | 68.1  | 102.1 |
| 206     | 26.5  | 19.8  | 29.6  |

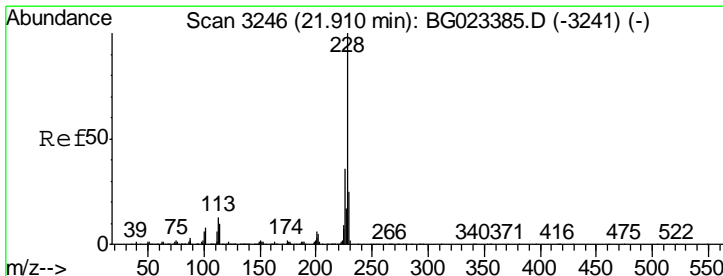
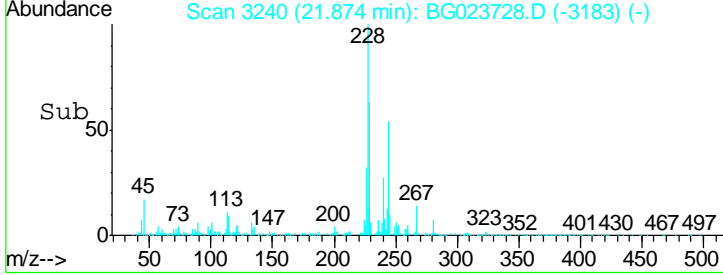
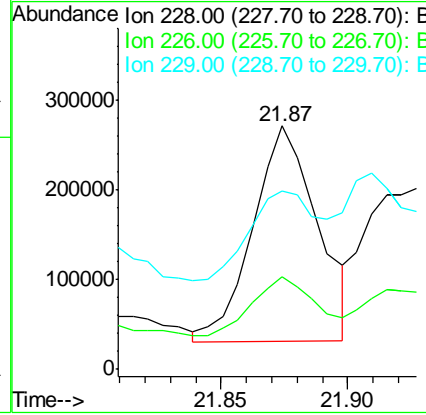
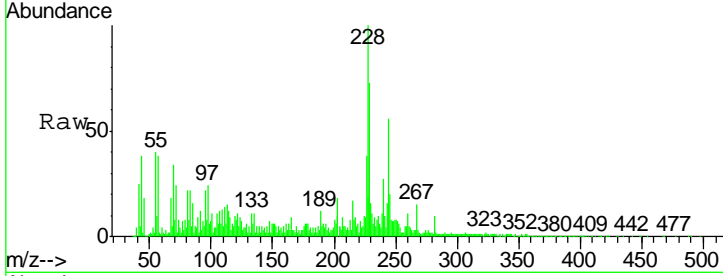




#80  
 Benzo(a)anthracene  
 Concen: 11.30 ng  
 RT: 21.87 min Scan# 3240  
 Delta R.T. 0.04 min  
 Lab File: BG023728.D  
 Acq: 15 Aug 2016 19:43

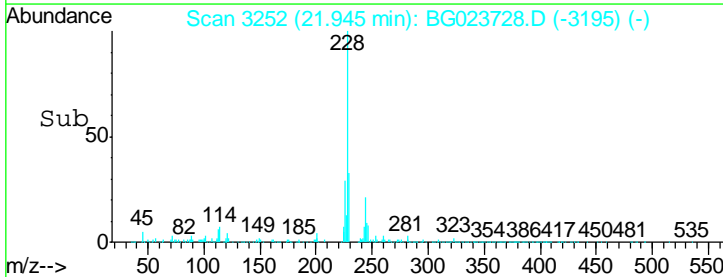
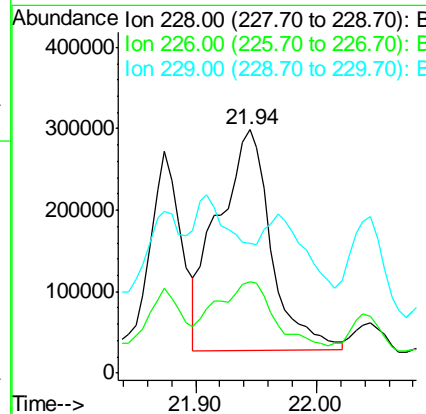
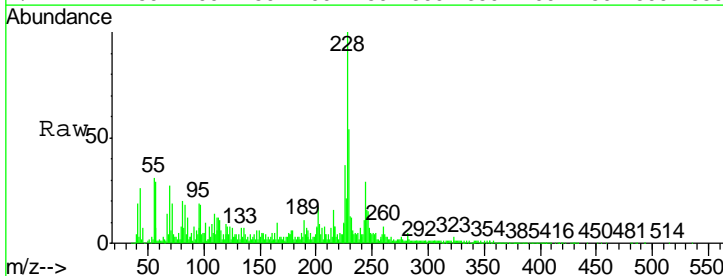
Instrument :  
 BNA\_G  
 ClientSampled :  
 AW-1

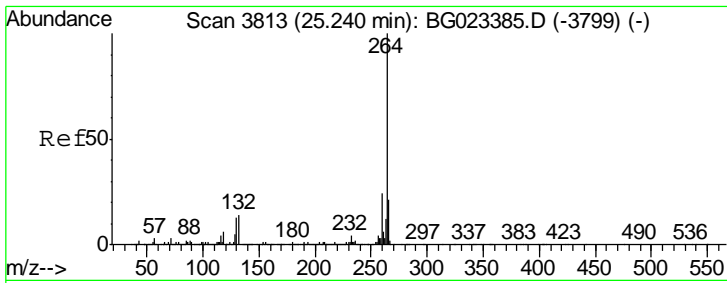
| Tgt Ion | Resp | Lower | Upper |
|---------|------|-------|-------|
| 228     | 100  |       |       |
| 226     | 38.1 | 25.3  | 37.9# |
| 229     | 73.2 | 19.9  | 29.9# |



#82  
 Chrysene  
 Concen: 22.91 ng  
 RT: 21.94 min Scan# 3252  
 Delta R.T. 0.04 min  
 Lab File: BG023728.D  
 Acq: 15 Aug 2016 19:43

| Tgt Ion | Resp | Lower | Upper |
|---------|------|-------|-------|
| 228     | 100  |       |       |
| 226     | 37.5 | 26.7  | 40.1  |
| 229     | 53.5 | 17.4  | 26.2# |

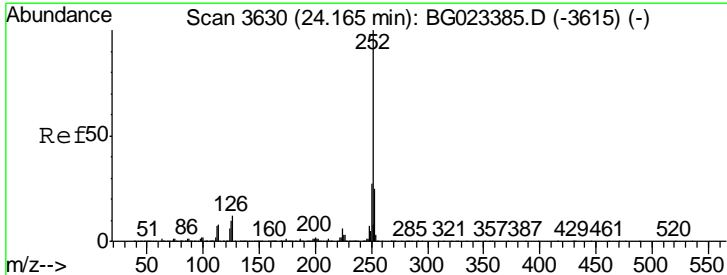
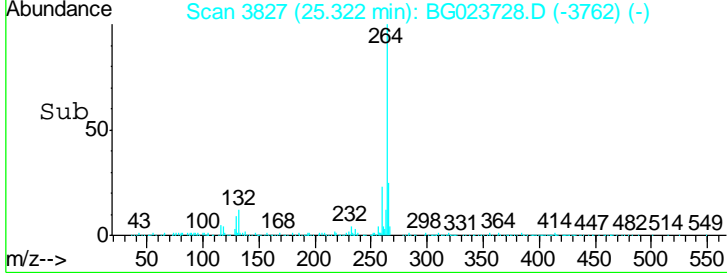
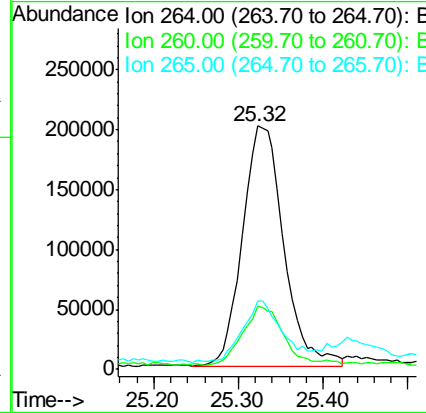
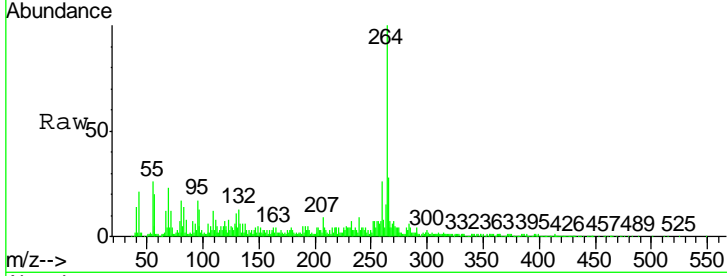




#86  
 Perylene-d12  
 Concen: 20.00 ng  
 RT: 25.32 min Scan# 3827  
 Delta R.T. 0.08 min  
 Lab File: BG023728.D  
 Acq: 15 Aug 2016 19:43

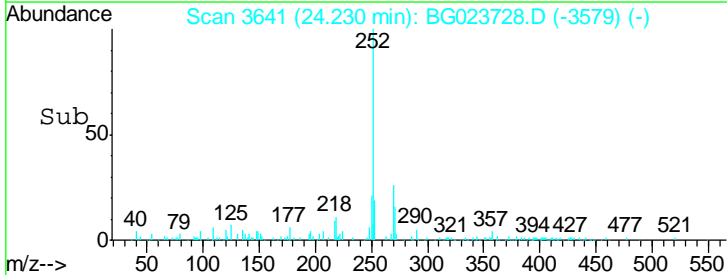
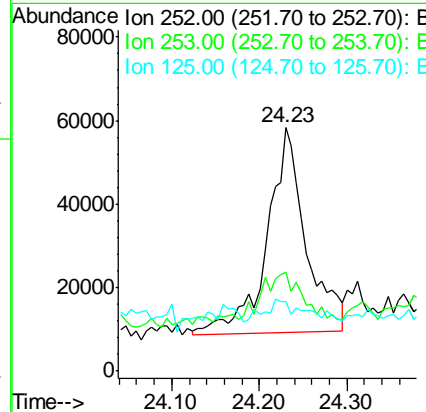
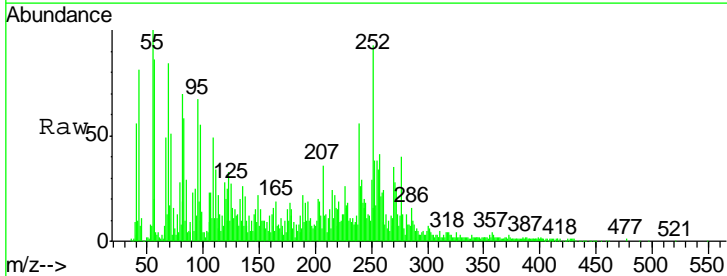
Instrument :  
 BNA\_G  
 ClientSampled :  
 AW-1

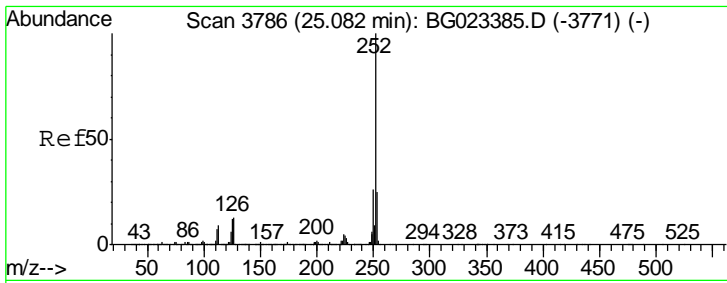
| Tgt Ion | Resp | Lower | Upper |
|---------|------|-------|-------|
| 264     | 100  |       |       |
| 260     | 25.8 | 18.4  | 27.6  |
| 265     | 28.1 | 18.9  | 28.3  |



#87  
 Benzo(b)fluoranthene  
 Concen: 3.93 ng  
 RT: 24.23 min Scan# 3641  
 Delta R.T. 0.06 min  
 Lab File: BG023728.D  
 Acq: 15 Aug 2016 19:43

| Tgt Ion | Resp | Lower | Upper |
|---------|------|-------|-------|
| 252     | 100  |       |       |
| 253     | 40.8 | 18.9  | 28.3# |
| 125     | 28.6 | 3.9   | 5.9#  |





#89

Benzo(a)pyrene

Concen: 6.12 ng

RT: 25.16 min Scan# 3800

Delta R.T. 0.08 min

Lab File: BG023728.D

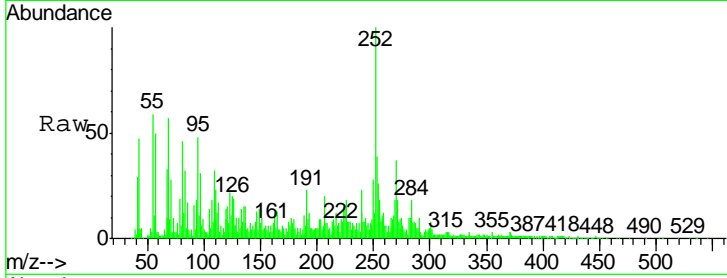
Acq: 15 Aug 2016 19:43

Instrument :

BNA\_G

ClientSampleId :

AW-1



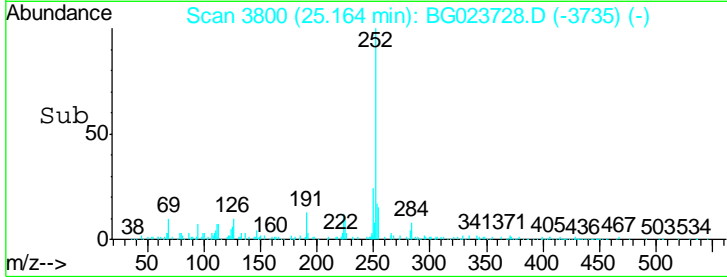
Tgt Ion: 252 Resp: 223586

Ion Ratio Lower Upper

252 100

253 38.6 18.7 28.1#

125 20.3 3.9 5.9#



Abundance Ion 252.00 (251.70 to 252.70): E

Ion 253.00 (252.70 to 253.70): E

Ion 125.00 (124.70 to 125.70): E

