

Data Path : Z:\svoasrv\HPCHEM1\BNA_G\Data\BG081524\
 Data File : BG062441.D
 Acq On : 16 Aug 2024 12:48
 Operator : MA/JU
 Sample : P3264-05RE
 Misc :
 ALS Vial : 7 Sample Multiplier: 1

Instrument :
 BNA_G
 ClientSampleId :
 A4DK9RE

Integration Parameters: LSCINT.P

Integrator: RTE
 Smoothing : OFF Filtering: 5
 Sampling : 1 Min Area: 0.1 % of largest Peak
 Start Thrs: 0.2 Max Peaks: 100
 Stop Thrs : 0 Peak Location: TOP

If leading or trailing edge < 100 prefer < Baseline drop else tangent >
 Peak separation: 5

Method : Z:\svoasrv\HPCHEM1\BNA_G\Methods\SFAM-EPA-BG081424.MA.M
 Title : SVOA CALIBRATION

Signal : TIC: BG062441.D\data.ms

peak #	R.T. min	first scan	max scan	last scan	PK TY	peak height	corr. area	corr. % max.	% of total
1	3.418	19	22	30	rVB6	10960	16196	0.17%	0.011%
2	6.326	512	517	528	rVB4	7571	17880	0.19%	0.012%
3	7.142	644	656	668	rBV2	671428	1425132	14.84%	0.939%
4	7.283	673	680	689	rBV	131262	228350	2.38%	0.150%
5	7.383	689	697	708	rVV	1003195	1638391	17.06%	1.080%
6	7.489	708	715	717	rVV	179590	285341	2.97%	0.188%
7	7.518	717	720	733	rVB	239501	420371	4.38%	0.277%
8	7.847	768	776	786	rBV	1185515	2002672	20.86%	1.320%
9	7.959	786	795	796	rVV	202717	287467	2.99%	0.189%
10	7.994	796	801	812	rVB	911338	1565490	16.30%	1.032%
11	8.658	906	914	923	rBV2	217429	377858	3.94%	0.249%
12	8.764	923	932	940	rBV	775868	1292848	13.47%	0.852%
13	9.110	983	991	994	rBV	174688	319404	3.33%	0.210%
14	9.151	994	998	1006	rVB	277766	465020	4.84%	0.306%
15	9.674	1078	1087	1093	rBV4	11360	20025	0.21%	0.013%
16	9.862	1105	1119	1130	rBV2	587664	1267345	13.20%	0.835%
17	10.162	1161	1170	1178	rBV	1160262	1940085	20.21%	1.279%
18	10.397	1198	1210	1222	rVB2	1259940	2564891	26.71%	1.690%
19	10.755	1262	1271	1274	rBV	285980	523524	5.45%	0.345%
20	10.808	1274	1280	1287	rVV	2300837	4063518	42.32%	2.678%
21	10.878	1287	1292	1303	rVB	181427	320431	3.34%	0.211%
22	11.489	1389	1396	1402	rBV	44298	82937	0.86%	0.055%
23	12.024	1478	1487	1501	rBV	1726872	2872528	29.92%	1.893%
24	12.817	1617	1622	1627	rBV	21068	32844	0.34%	0.022%
25	13.011	1647	1655	1661	rVV	1638678	2657074	27.67%	1.751%
26	13.081	1661	1667	1681	rVV	1684814	2776028	28.91%	1.829%
27	13.487	1732	1736	1743	rVB3	16223	29265	0.30%	0.019%
28	13.634	1756	1761	1768	rVB	18908	29739	0.31%	0.020%
29	13.986	1814	1821	1828	rBV	496045	733554	7.64%	0.483%
30	14.151	1841	1849	1855	rBV	1359632	2080972	21.67%	1.371%
31	14.227	1858	1862	1864	rVV4	12130	19523	0.20%	0.013%
32	14.303	1864	1875	1885	rVB2	2973167	5521818	57.51%	3.639%
33	14.579	1915	1922	1927	rBV	506341	784720	8.17%	0.517%
34	14.644	1927	1933	1940	rVV	2803126	4308884	44.88%	2.840%
35	14.703	1940	1943	1948	rVB2	30877	47224	0.49%	0.031%
36	14.797	1948	1959	1973	rBV3	1862307	3956555	41.21%	2.607%

Data Path : Z:\svoasrv\HPCHEM1\BNA_G\Data\BG081524\
 Data File : BG062441.D
 Acq On : 16 Aug 2024 12:48
 Operator : MA/JU
 Sample : P3264-05RE
 Misc :
 ALS Vial : 7 Sample Multiplier: 1

Instrument :
 BNA_G
 ClientSampleId :
 A4DK9RE

Integration Parameters: LSCINT.P

Integrator: RTE
 Smoothing : OFF Filtering: 5
 Sampling : 1 Min Area: 0.1 % of largest Peak
 Start Thrs: 0.2 Max Peaks: 100
 Stop Thrs : 0 Peak Location: TOP

If leading or trailing edge < 100 prefer < Baseline drop else tangent >
 Peak separation: 5

Method : Z:\svoasrv\HPCHEM1\BNA_G\Methods\SFAM-EPA-BG081424.MA.M
 Title : SVOA CALIBRATION

37	14.979	1983	1990	1997	rVB	1995639	3024851	31.50%	1.993%
38	15.196	2021	2027	2034	rVB3	27984	44890	0.47%	0.030%
39	15.408	2053	2063	2071	rBV	3012814	4476828	46.63%	2.950%
40	15.572	2084	2091	2094	rBV	741438	1152196	12.00%	0.759%
41	15.625	2094	2100	2106	rVV2	5118731	7790839	81.14%	5.134%
42	15.678	2106	2109	2116	rVV	221670	302946	3.16%	0.200%
43	15.878	2138	2143	2148	rVB	35278	52714	0.55%	0.035%
44	16.118	2178	2184	2186	rBV4	18730	28488	0.30%	0.019%
45	16.160	2187	2191	2197	rVV4	21375	37740	0.39%	0.025%
46	16.289	2208	2213	2218	rBV3	32328	59747	0.62%	0.039%
47	16.483	2240	2246	2250	rBV	33075	45021	0.47%	0.030%
48	16.718	2282	2286	2290	rVV5	9397	13178	0.14%	0.009%
49	16.870	2308	2312	2318	rVB5	8575	15256	0.16%	0.010%
50	16.970	2320	2329	2337	rVV	2212644	3401953	35.43%	2.242%
51	17.041	2339	2341	2345	rVV5	19382	29733	0.31%	0.020%
52	17.105	2345	2352	2362	rVB5	39042	97933	1.02%	0.065%
53	17.264	2375	2379	2381	rBV4	9971	13969	0.15%	0.009%
54	17.317	2383	2388	2394	rVV	601666	894099	9.31%	0.589%
55	17.423	2399	2406	2407	rBV	753914	1125344	11.72%	0.742%
56	17.458	2407	2412	2426	rVB	4139363	6657323	69.34%	4.387%
57	17.599	2430	2436	2443	rBV3	12812	26902	0.28%	0.018%
58	17.716	2449	2456	2463	rBV2	33123	68092	0.71%	0.045%
59	17.822	2471	2474	2478	rBV4	10198	14970	0.16%	0.010%
60	17.863	2478	2481	2483	rVV4	14083	17674	0.18%	0.012%
61	17.922	2487	2491	2497	rVV4	50403	84678	0.88%	0.056%
62	17.992	2499	2503	2509	rVB	130166	159685	1.66%	0.105%
63	18.216	2536	2541	2547	rBV	230529	331378	3.45%	0.218%
64	18.286	2547	2553	2560	rVB	1899688	2494309	25.98%	1.644%
65	18.374	2565	2568	2573	rVB5	15691	22647	0.24%	0.015%
66	18.515	2582	2592	2594	rBV4	17358	38026	0.40%	0.025%
67	18.574	2598	2602	2605	rBV3	36388	54962	0.57%	0.036%
68	18.674	2615	2619	2623	rBV2	41121	63158	0.66%	0.042%
69	18.727	2623	2628	2636	rVB	371713	550800	5.74%	0.363%
70	18.968	2665	2669	2674	rVB2	19495	25339	0.26%	0.017%
71	19.103	2683	2692	2694	rBV10	22749	53578	0.56%	0.035%
72	19.161	2695	2702	2706	rVV2	143025	223885	2.33%	0.148%
73	19.267	2716	2720	2722	rBV3	15616	22999	0.24%	0.015%
74	19.296	2722	2725	2730	rVV2	50998	86126	0.90%	0.057%
75	19.373	2730	2738	2751	rVB	4108307	6259876	65.20%	4.125%
76	19.484	2753	2757	2765	rBV2	122079	189218	1.97%	0.125%

Data Path : Z:\svoasrv\HPCHEM1\BNA_G\Data\BG081524\
 Data File : BG062441.D
 Acq On : 16 Aug 2024 12:48
 Operator : MA/JU
 Sample : P3264-05RE
 Misc :
 ALS Vial : 7 Sample Multiplier: 1

Instrument :
 BNA_G
 ClientSampleId :
 A4DK9RE

Integration Parameters: LSCINT.P

Integrator: RTE
 Smoothing : OFF Filtering: 5
 Sampling : 1 Min Area: 0.1 % of largest Peak
 Start Thrs: 0.2 Max Peaks: 100
 Stop Thrs : 0 Peak Location: TOP

If leading or trailing edge < 100 prefer < Baseline drop else tangent >
 Peak separation: 5

Method : Z:\svoasrv\HPCHEM1\BNA_G\Methods\SFAM-EPA-BG081424.MA.M
 Title : SVOA CALIBRATION

77	19.608	2774	2778	2786	rBV	114605	213734	2.23%	0.141%
78	19.737	2788	2800	2807	rVV2	5080895	9601452	100.00%	6.328%
79	19.802	2808	2811	2820	rVB5	32698	56473	0.59%	0.037%
80	19.996	2841	2844	2848	rBV7	14653	22289	0.23%	0.015%
81	20.219	2878	2882	2884	rBV4	22767	35035	0.36%	0.023%
82	20.313	2895	2898	2903	rVB7	15727	24132	0.25%	0.016%
83	20.389	2907	2911	2917	rBV	62337	74870	0.78%	0.049%
84	20.630	2945	2952	2956	rBV	5172127	6455060	67.23%	4.254%
85	20.677	2957	2960	2962	rBV4	19262	24210	0.25%	0.016%
86	21.229	3050	3054	3065	rVB	229719	376586	3.92%	0.248%
87	21.388	3078	3081	3085	rVB	108414	124028	1.29%	0.082%
88	21.470	3089	3095	3101	rVB	4929385	6851673	71.36%	4.515%
89	21.546	3101	3108	3114	rBV2	2915063	5876680	61.21%	3.873%
90	21.617	3114	3120	3131	rVB	5275370	9550298	99.47%	6.294%
91	22.369	3244	3248	3261	rVB4	66902	179047	1.86%	0.118%
92	22.557	3275	3280	3288	rVB2	93168	159382	1.66%	0.105%
93	23.749	3472	3483	3490	rBV	1873992	4504812	46.92%	2.969%
94	24.442	3591	3601	3606	rBV	563632	1539265	16.03%	1.014%
95	24.507	3606	3612	3626	rVB	796073	2157354	22.47%	1.422%
96	24.654	3628	3637	3645	rBV	381721	1044144	10.87%	0.688%
97	25.799	3827	3832	3840	rVB4	63983	172505	1.80%	0.114%
98	25.917	3843	3852	3869	rVB6	95098	355279	3.70%	0.234%
99	28.190	4214	4239	4270	rBV2	1440515	8801907	91.67%	5.801%
100	29.289	4402	4426	4444	rBV2	1233668	6508180	67.78%	4.289%

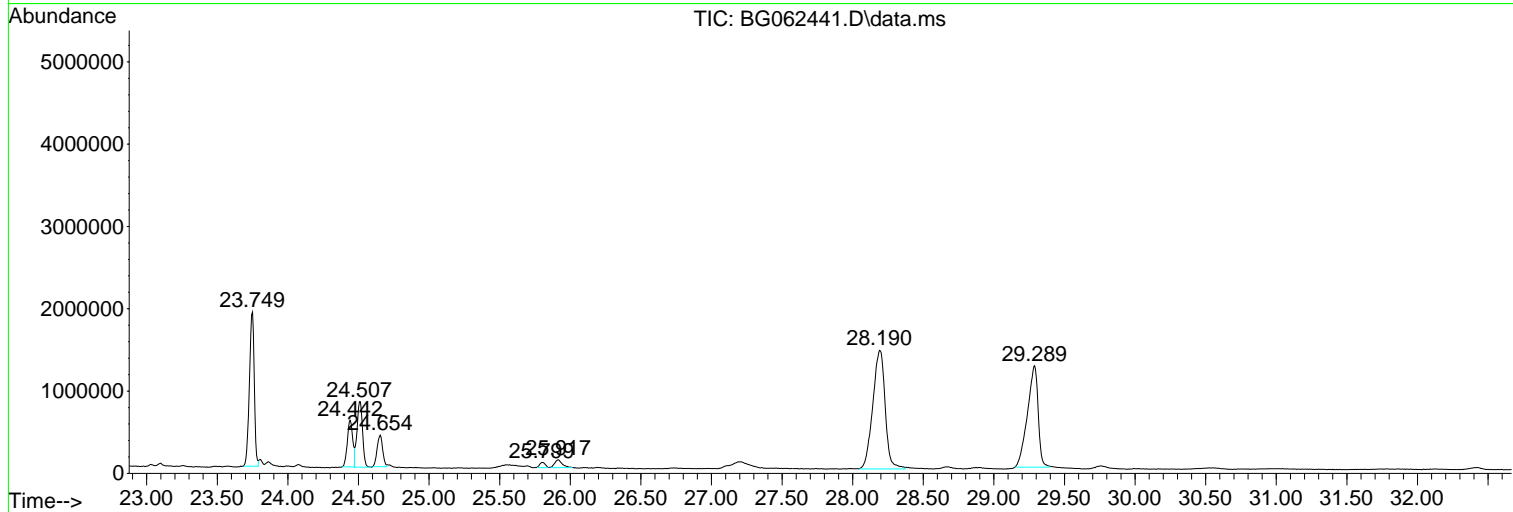
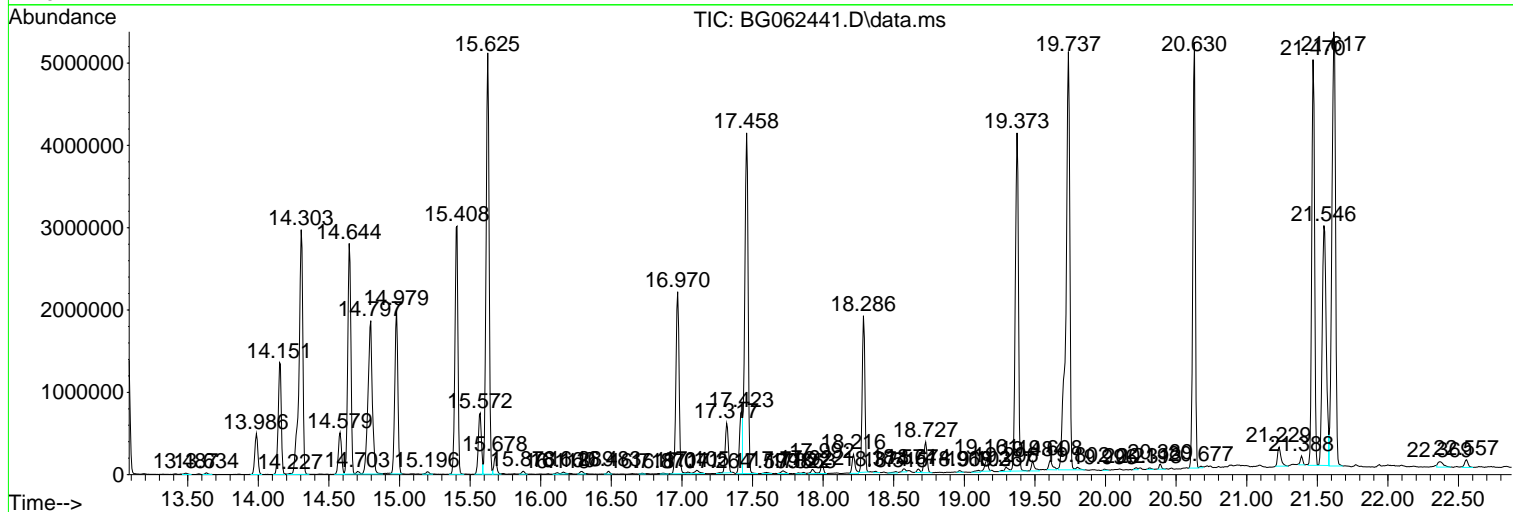
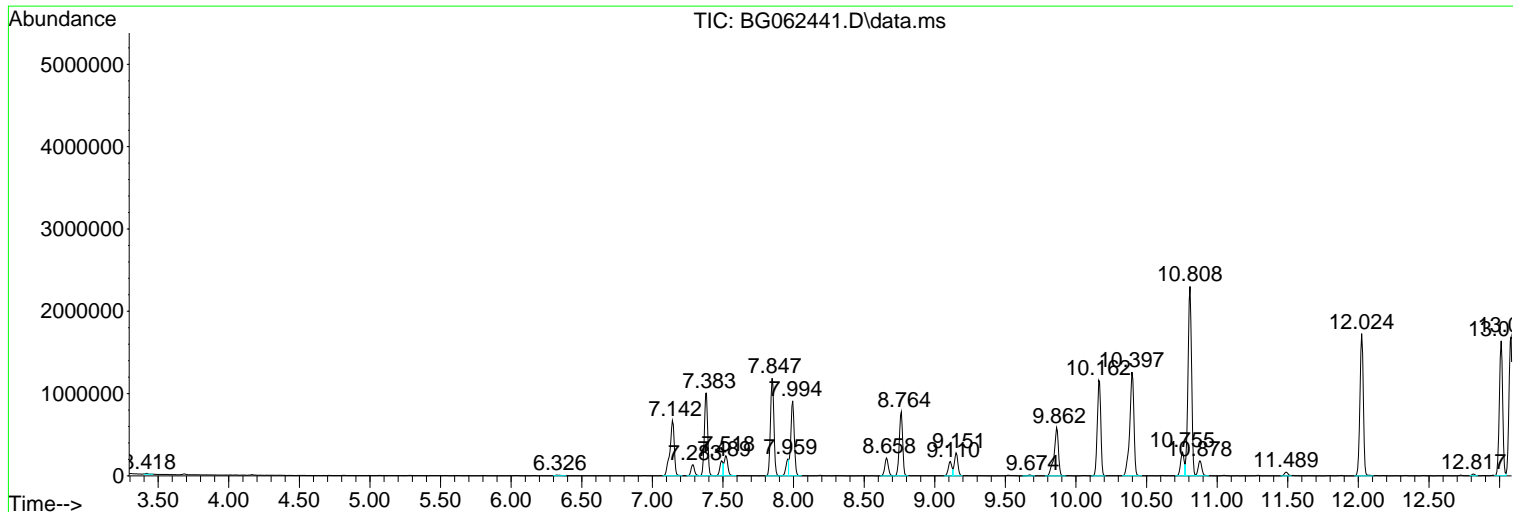
Sum of corrected areas: 151737649

Data Path : Z:\svoasrv\HPCHEM1\BNA_G\Data\BG081524\
 Data File : BG062441.D
 Acq On : 16 Aug 2024 12:48
 Operator : MA/JU
 Sample : P3264-05RE
 Misc :
 ALS Vial : 7 Sample Multiplier: 1

Instrument :
 BNA_G
ClientSampleId :
 A4DK9RE

Quant Method : Z:\svoasrv\HPCHEM1\BNA_G\Methods\SFAM-EPA-BG081424.MA.M
 Quant Title : SVOA CALIBRATION

TIC Library : C:\DATABASE\NIST20.L
 TIC Integration Parameters: LSCINT.P



Data Path : Z:\svoasrv\HPCHEM1\BNA_G\Data\BG081524\
 Data File : BG062441.D
 Acq On : 16 Aug 2024 12:48
 Operator : MA/JU
 Sample : P3264-05RE
 Misc :
 ALS Vial : 7 Sample Multiplier: 1

Instrument :
 BNA_G
 ClientSampleId :
 A4DK9RE

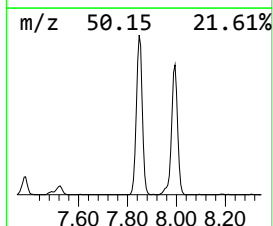
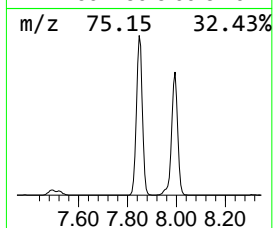
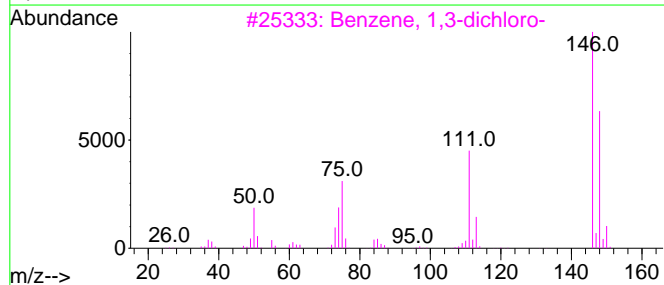
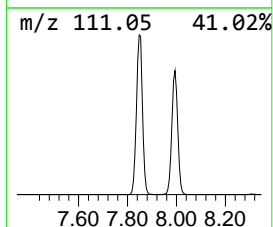
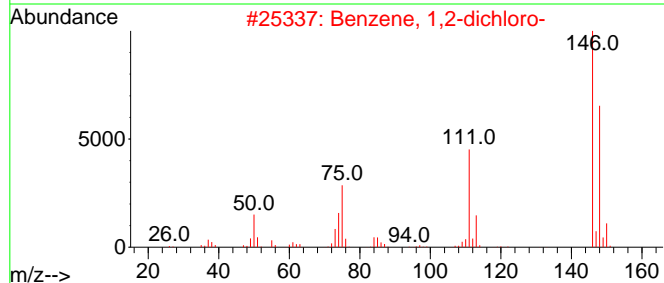
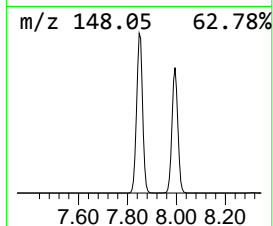
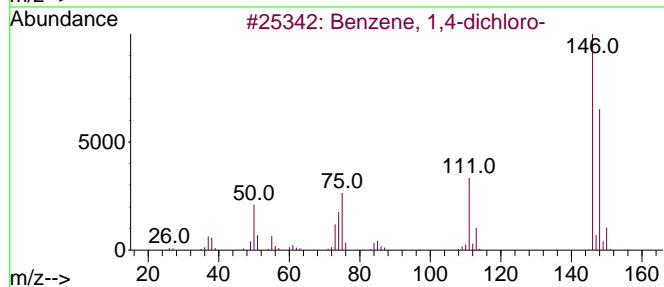
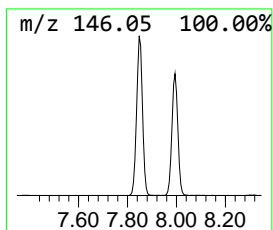
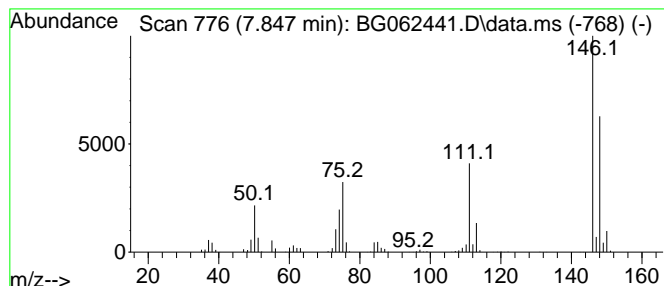
Quant Method : Z:\svoasrv\HPCHEM1\BNA_G\Methods\SFAM-EPA-BG081424.MA.M
 Quant Title : SVOA CALIBRATION

TIC Library : C:\DATABASE\NIST20.L
 TIC Integration Parameters: LSCINT.P

 Peak Number 1 Benzene, 1,4-dichloro- Concentration Rank 1

R.T.	EstConc	Area	Relative to ISTD	R.T.
7.847	139.33 ng/ul	2002670	1,4-Dichlorobenzene-d4	7.959

Hit#	of 5	Tentative ID	MW	MolForm	CAS#	Qual
1		Benzene, 1,4-dichloro-	146	C6H4Cl2	000106-46-7	98
2		Benzene, 1,2-dichloro-	146	C6H4Cl2	000095-50-1	98
3		Benzene, 1,3-dichloro-	146	C6H4Cl2	000541-73-1	98
4		Benzene, 1,3-dichloro-	146	C6H4Cl2	000541-73-1	97
5		Benzene, 1,4-dichloro-	146	C6H4Cl2	000106-46-7	97



Data Path : Z:\svoasrv\HPCHEM1\BNA_G\Data\BG081524\
 Data File : BG062441.D
 Acq On : 16 Aug 2024 12:48
 Operator : MA/JU
 Sample : P3264-05RE
 Misc :
 ALS Vial : 7 Sample Multiplier: 1

Instrument :
 BNA_G
 ClientSampleId :
 A4DK9RE

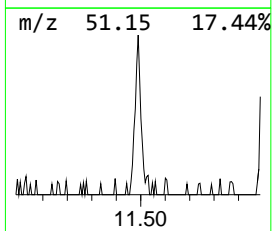
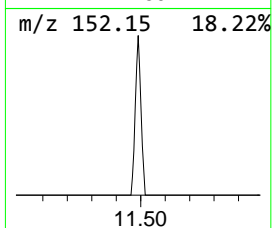
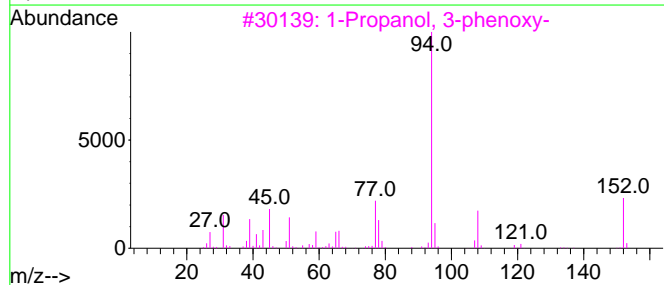
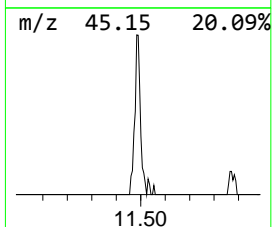
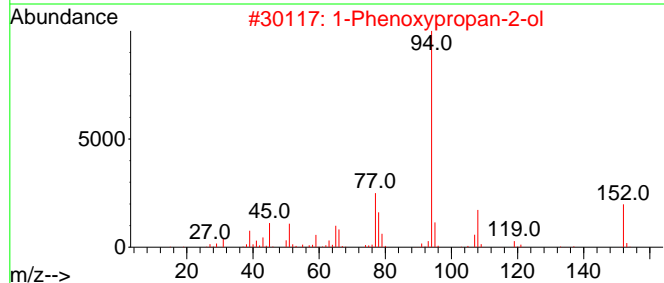
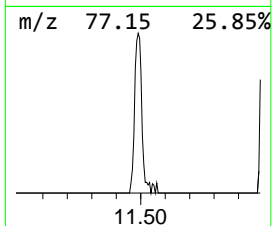
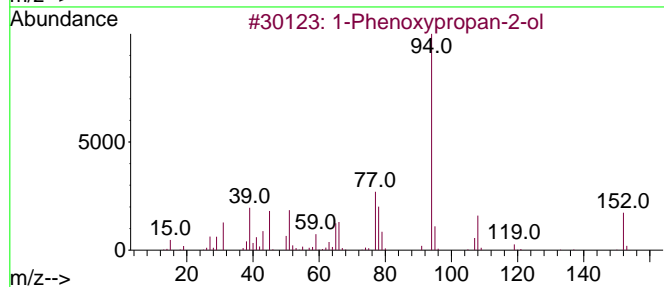
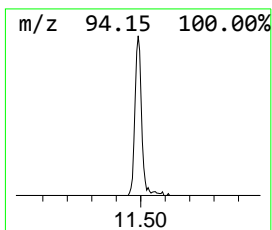
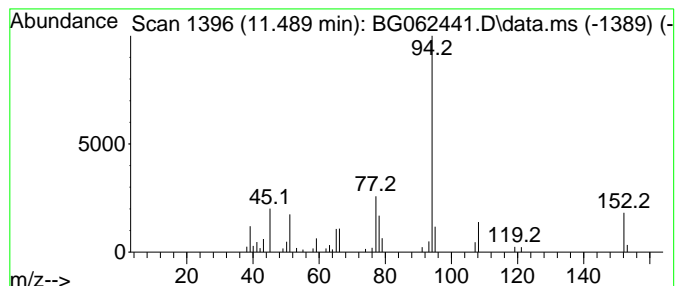
Quant Method : Z:\svoasrv\HPCHEM1\BNA_G\Methods\SFAM-EPA-BG081424.MA.M
 Quant Title : SVOA CALIBRATION

TIC Library : C:\DATABASE\NIST20.L
 TIC Integration Parameters: LSCINT.P

 Peak Number 2 1-Phenoxypropan-2-ol Concentration Rank 8

R.T.	EstConc	Area	Relative to ISTD	R.T.
11.489	3.17 ng/ul	82937	Naphthalene-d8	10.755

Hit#	of 5	Tentative ID	MW	MolForm	CAS#	Qual
1		1-Phenoxypropan-2-ol	152	C9H12O2	000770-35-4	96
2		1-Phenoxypropan-2-ol	152	C9H12O2	000770-35-4	94
3		1-Propanol, 3-phenoxy-	152	C9H12O2	006180-61-6	91
4		1-Phenoxypropan-2-ol	152	C9H12O2	000770-35-4	90
5		1-Phenoxypropan-2-ol	152	C9H12O2	000770-35-4	81



Data Path : Z:\svoasrv\HPCHEM1\BNA_G\Data\BG081524\
 Data File : BG062441.D
 Acq On : 16 Aug 2024 12:48
 Operator : MA/JU
 Sample : P3264-05RE
 Misc :
 ALS Vial : 7 Sample Multiplier: 1

Instrument :
 BNA_G
 ClientSampleId :
 A4DK9RE

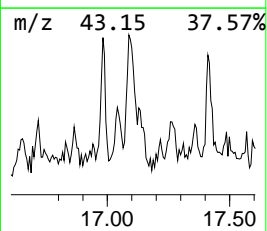
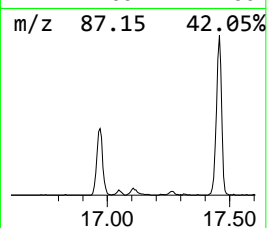
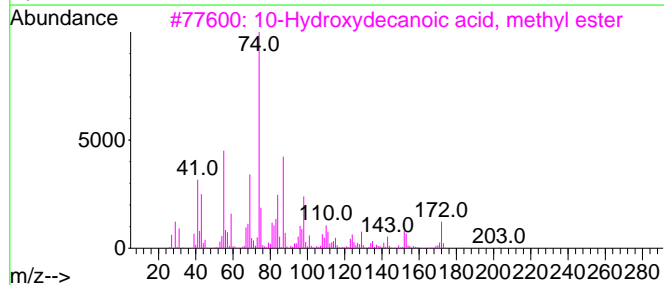
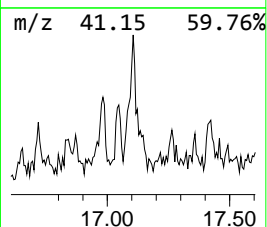
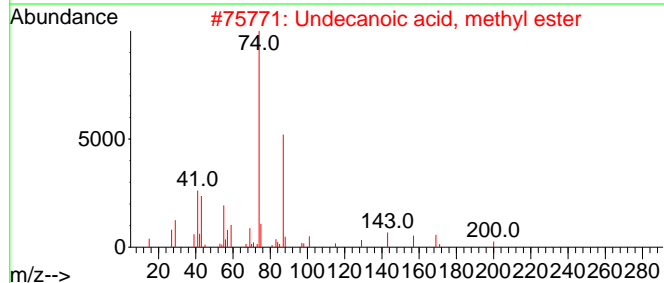
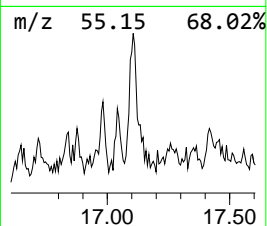
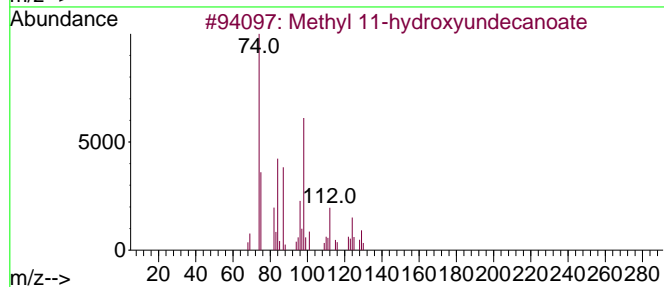
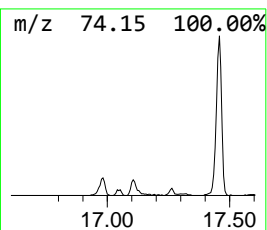
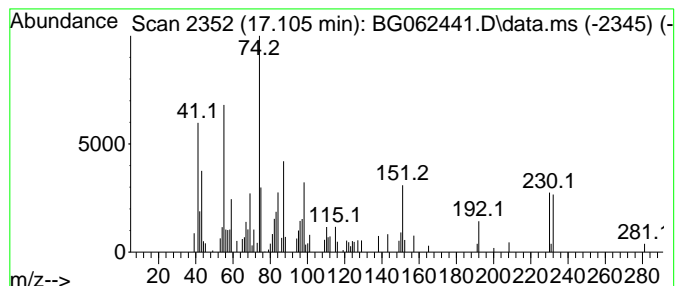
Quant Method : Z:\svoasrv\HPCHEM1\BNA_G\Methods\SFAM-EPA-BG081424.MA.M
 Quant Title : SVOA CALIBRATION

TIC Library : C:\DATABASE\NIST20.L
 TIC Integration Parameters: LSCINT.P

 Peak Number 3 unknown-01 Concentration Rank 9

R.T.	EstConc	Area	Relative to ISTD	R.T.
17.105	2.19 ng/ul	97933	Phenanthrene-d10	17.317

Hit#	of	5	Tentative ID	MW	MolForm	CAS#	Qual
1			Methyl 11-hydroxyundecanoate	216	C12H24O3	1000427-32-2	47
2			Undecanoic acid, methyl ester	200	C12H24O2	001731-86-8	43
3			10-Hydroxydecanoic acid, methyl ...	202	C11H22O3	002640-94-0	43
4			7-Methyloctanoic acid, methyl ester	172	C10H20O2	005129-53-3	43
5			Methyl 8-methyl-decanoate	200	C12H24O2	1010336-49-1	43



Data Path : Z:\svoasrv\HPCHEM1\BNA_G\Data\BG081524\
 Data File : BG062441.D
 Acq On : 16 Aug 2024 12:48
 Operator : MA/JU
 Sample : P3264-05RE
 Misc :
 ALS Vial : 7 Sample Multiplier: 1

Instrument :
 BNA_G
 ClientSampleId :
 A4DK9RE

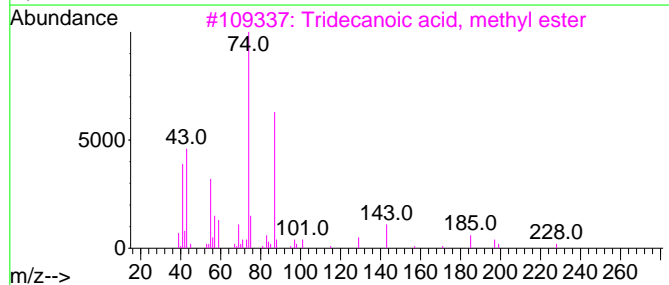
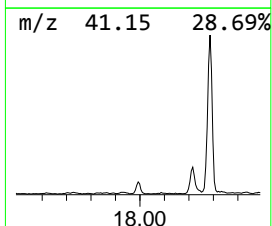
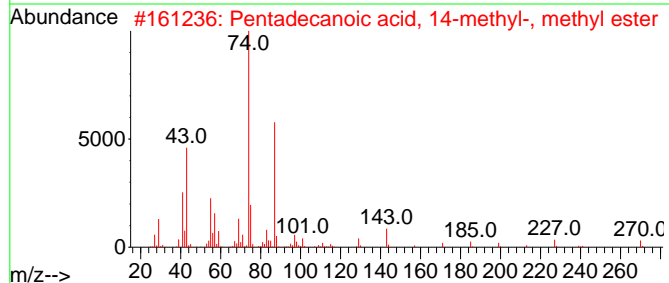
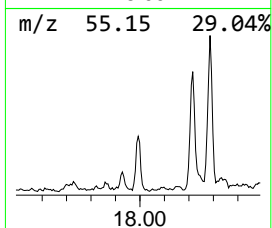
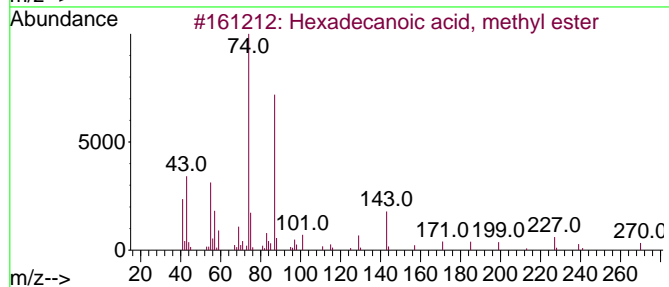
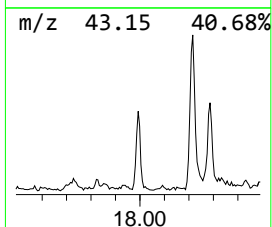
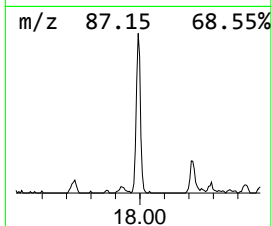
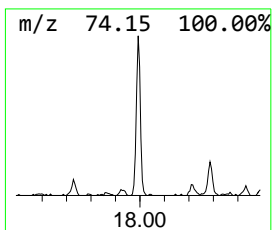
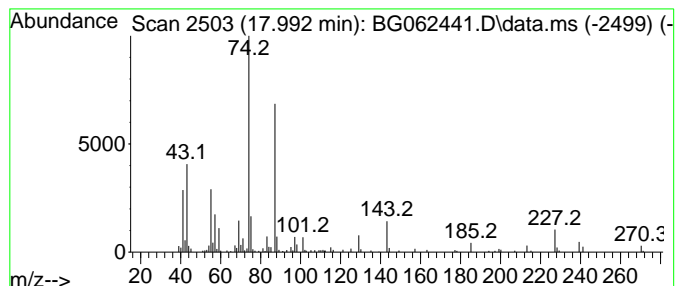
Quant Method : Z:\svoasrv\HPCHEM1\BNA_G\Methods\SFAM-EPA-BG081424.MA.M
 Quant Title : SVOA CALIBRATION

TIC Library : C:\DATABASE\NIST20.L
 TIC Integration Parameters: LSCINT.P

 Peak Number 4 Hexadecanoic acid, methyl e... Concentration Rank 6

R.T.	EstConc	Area	Relative to ISTD	R.T.
17.992	3.57 ng/ul	159685	Phenanthrene-d10	17.317

Hit#	of	5	Tentative ID	MW	MolForm	CAS#	Qual
1			Hexadecanoic acid, methyl ester	270	C17H34O2	000112-39-0	93
2			Pentadecanoic acid, 14-methyl-, ...	270	C17H34O2	005129-60-2	93
3			Tridecanoic acid, methyl ester	228	C14H28O2	001731-88-0	90
4			Hexadecanoic acid, methyl ester	270	C17H34O2	000112-39-0	90
5			Hexadecanoic acid, methyl ester	270	C17H34O2	000112-39-0	90



Data Path : Z:\svoasrv\HPCHEM1\BNA_G\Data\BG081524\
 Data File : BG062441.D
 Acq On : 16 Aug 2024 12:48
 Operator : MA/JU
 Sample : P3264-05RE
 Misc :
 ALS Vial : 7 Sample Multiplier: 1

Instrument :
 BNA_G
 ClientSampleId :
 A4DK9RE

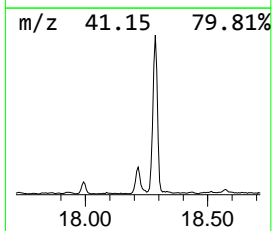
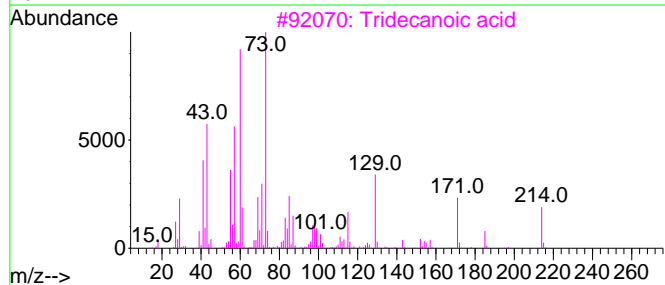
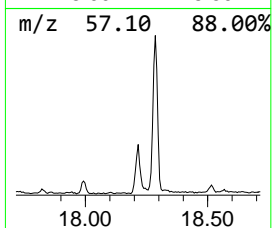
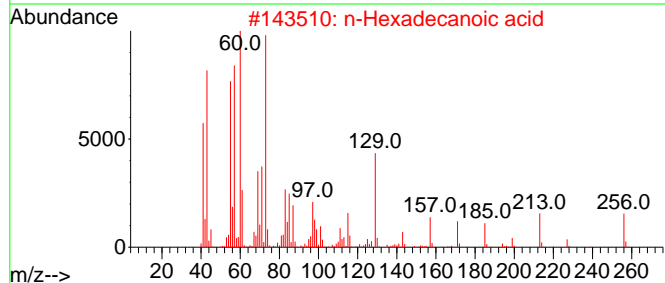
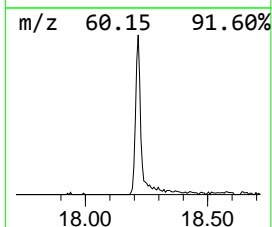
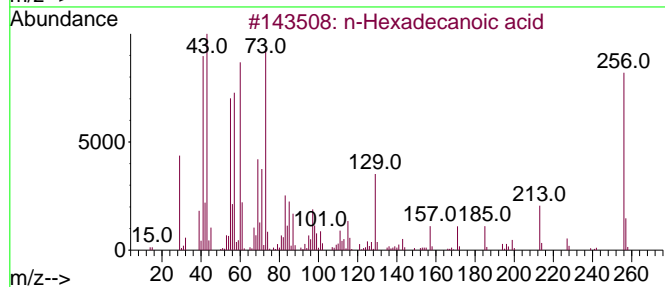
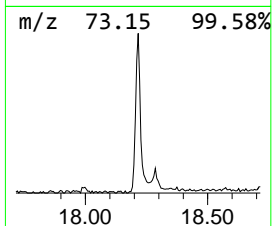
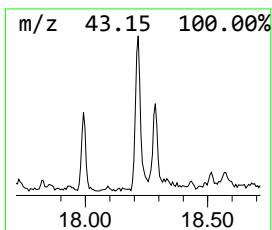
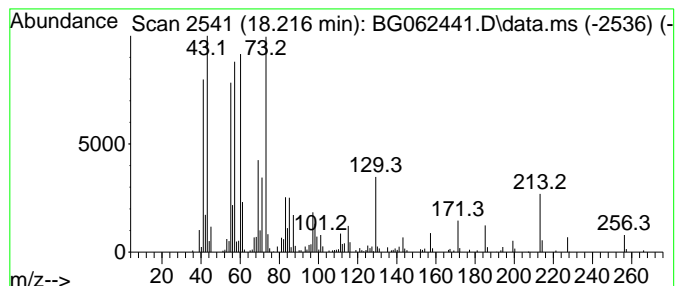
Quant Method : Z:\svoasrv\HPCHEM1\BNA_G\Methods\SFAM-EPA-BG081424.MA.M
 Quant Title : SVOA CALIBRATION

TIC Library : C:\DATABASE\NIST20.L
 TIC Integration Parameters: LSCINT.P

 Peak Number 5 n-Hexadecanoic acid Concentration Rank 3

R.T.	EstConc	Area	Relative to ISTD	R.T.
18.216	7.41 ng/ul	331378	Phenanthrene-d10	17.317

Hit#	of 5	Tentative ID	MW	MolForm	CAS#	Qual
1		n-Hexadecanoic acid	256	C16H32O2	000057-10-3	98
2		n-Hexadecanoic acid	256	C16H32O2	000057-10-3	91
3		Tridecanoic acid	214	C13H26O2	000638-53-9	90
4		n-Hexadecanoic acid	256	C16H32O2	000057-10-3	87
5		Pentadecanoic acid	242	C15H30O2	001002-84-2	81



Data Path : Z:\svoasrv\HPCHEM1\BNA_G\Data\BG081524\
 Data File : BG062441.D
 Acq On : 16 Aug 2024 12:48
 Operator : MA/JU
 Sample : P3264-05RE
 Misc :
 ALS Vial : 7 Sample Multiplier: 1

Instrument :
 BNA_G
 ClientSampleId :
 A4DK9RE

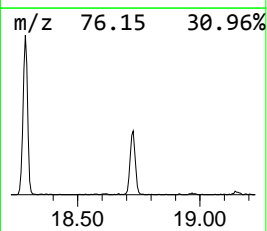
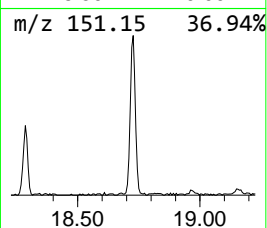
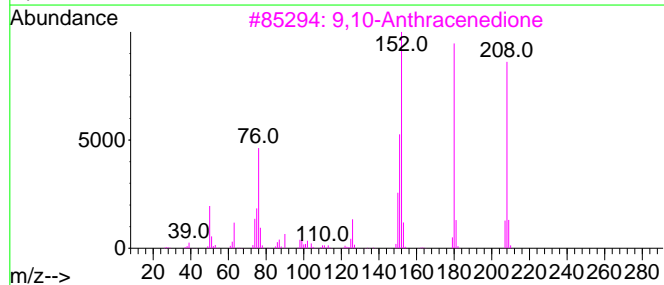
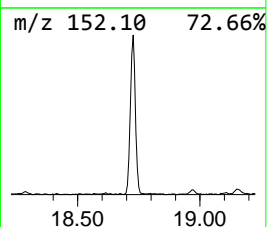
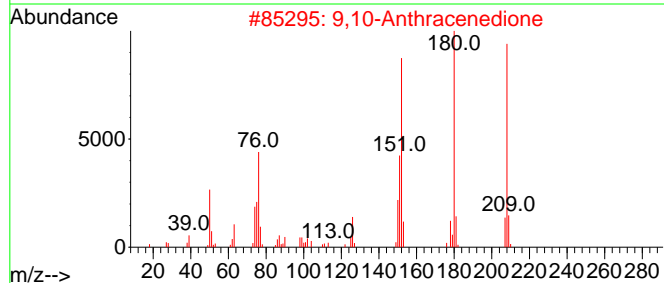
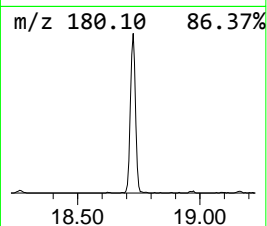
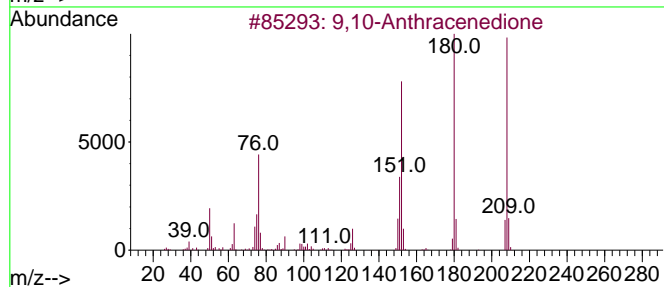
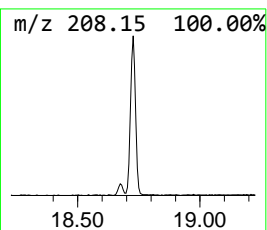
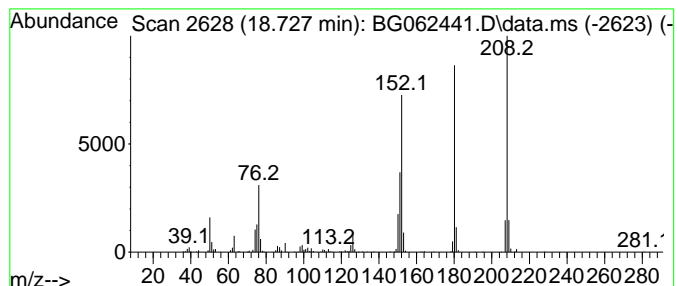
Quant Method : Z:\svoasrv\HPCHEM1\BNA_G\Methods\SFAM-EPA-BG081424.MA.M
 Quant Title : SVOA CALIBRATION

TIC Library : C:\DATABASE\NIST20.L
 TIC Integration Parameters: LSCINT.P

 Peak Number 6 9,10-Anthracenedione Concentration Rank 2

R.T.	EstConc	Area	Relative to ISTD	R.T.
18.727	12.32 ng/ul	550800	Phenanthrene-d10	17.317

Hit#	of 5	Tentative ID	MW	MolForm	CAS#	Qual
1		9,10-Anthracenedione	208	C14H8O2	000084-65-1	98
2		9,10-Anthracenedione	208	C14H8O2	000084-65-1	98
3		9,10-Anthracenedione	208	C14H8O2	000084-65-1	98
4		9,10-Anthracenedione	208	C14H8O2	000084-65-1	95
5		Benzo[c]cinnoline	180	C12H8N2	000230-17-1	78



Data Path : Z:\svoasrv\HPCHEM1\BNA_G\Data\BG081524\
 Data File : BG062441.D
 Acq On : 16 Aug 2024 12:48
 Operator : MA/JU
 Sample : P3264-05RE
 Misc :
 ALS Vial : 7 Sample Multiplier: 1

Instrument :
 BNA_G
 ClientSampleId :
 A4DK9RE

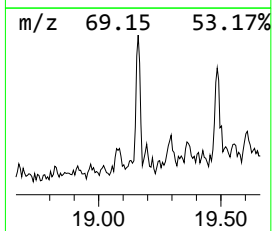
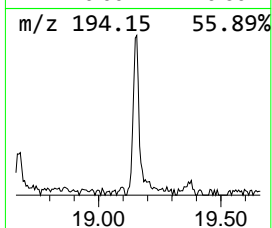
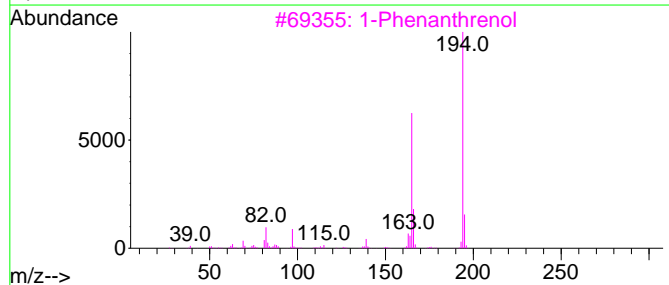
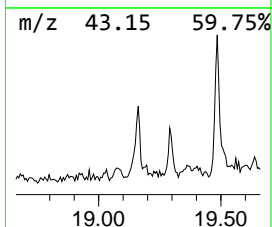
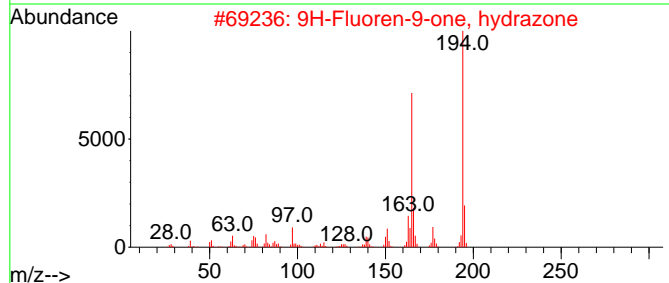
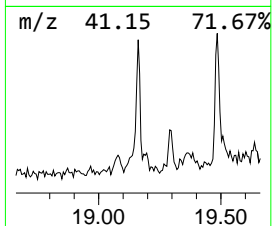
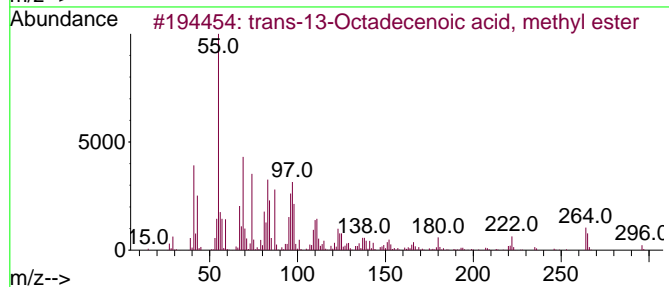
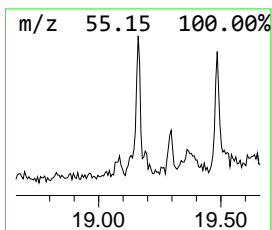
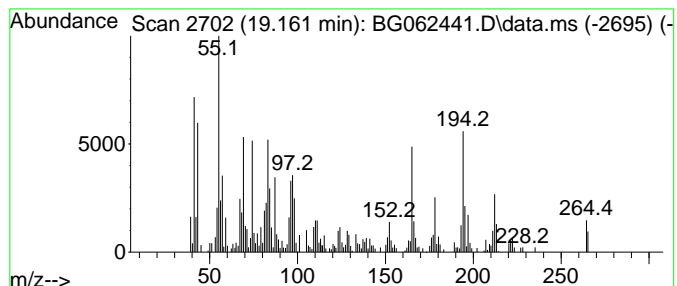
Quant Method : Z:\svoasrv\HPCHEM1\BNA_G\Methods\SFAM-EPA-BG081424.MA.M
 Quant Title : SVOA CALIBRATION

TIC Library : C:\DATABASE\NIST20.L
 TIC Integration Parameters: LSCINT.P

 Peak Number 7 trans-13-Octadecenoic acid,... Concentration Rank 5

R.T.	EstConc	Area	Relative to ISTD	R.T.
19.161	5.01 ng/ul	223885	Phenanthrene-d10	17.317

Hit#	of 5	Tentative ID	MW	MolForm	CAS#	Qual
1		trans-13-Octadecenoic acid, meth...	296	C19H36O2	1000333-61-3	72
2		9H-Fluoren-9-one, hydrazone	194	C13H10N2	013629-22-6	41
3		1-Phenanthrenol	194	C14H10O	002433-56-9	41
4		15-Octadecenoic acid, methyl ester	296	C19H36O2	004764-72-1	38
5		10-Octadecenoic acid, methyl ester	296	C19H36O2	013481-95-3	38



Data Path : Z:\svoasrv\HPCHEM1\BNA_G\Data\BG081524\
 Data File : BG062441.D
 Acq On : 16 Aug 2024 12:48
 Operator : MA/JU
 Sample : P3264-05RE
 Misc :
 ALS Vial : 7 Sample Multiplier: 1

Instrument :
 BNA_G
 ClientSampleId :
 A4DK9RE

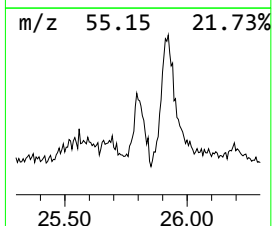
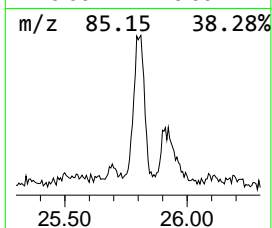
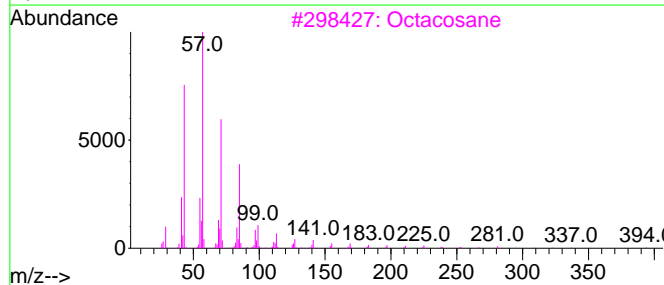
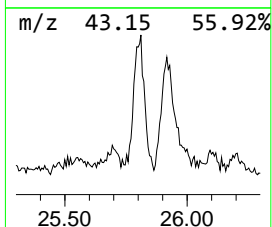
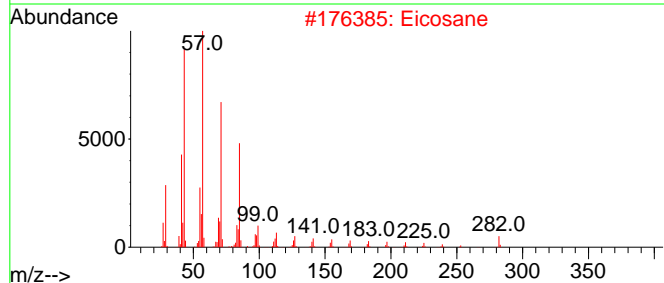
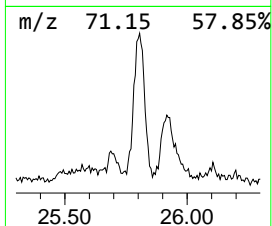
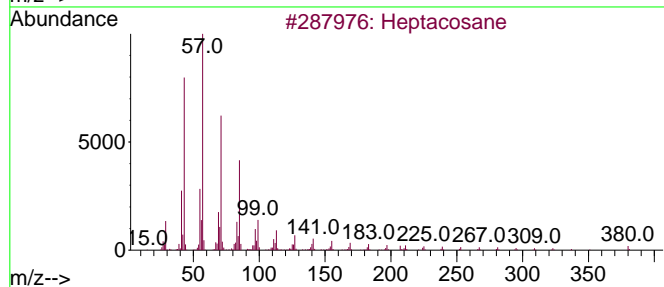
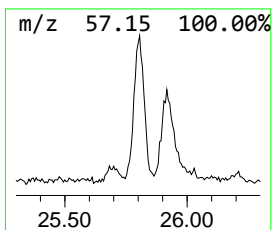
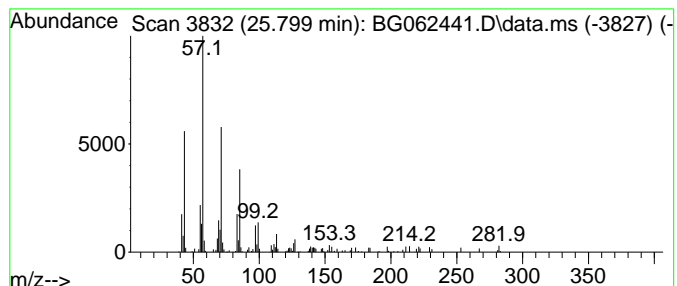
Quant Method : Z:\svoasrv\HPCHEM1\BNA_G\Methods\SFAM-EPA-BG081424.MA.M
 Quant Title : SVOA CALIBRATION

TIC Library : C:\DATABASE\NIST20.L
 TIC Integration Parameters: LSCINT.P

 Peak Number 8 (DEL) Alkane: Straight-Chai... Concentration Rank 7

R.T.	EstConc	Area	Relative to ISTD	R.T.
25.799	3.30 ng/ul	172505	Perylene-d12	24.654

Hit#	of 5	Tentative ID	MW	MolForm	CAS#	Qual
1		Heptacosane	380	C27H56	000593-49-7	90
2		Eicosane	282	C20H42	000112-95-8	90
3		Octacosane	394	C28H58	000630-02-4	87
4		Eicosane	282	C20H42	000112-95-8	87
5		Tetratetracontane	619	C44H90	007098-22-8	87



Data Path : Z:\svoasrv\HPCHEM1\BNA_G\Data\BG081524\
 Data File : BG062441.D
 Acq On : 16 Aug 2024 12:48
 Operator : MA/JU
 Sample : P3264-05RE
 Misc :
 ALS Vial : 7 Sample Multiplier: 1

Instrument :
 BNA_G
 ClientSampleId :
 A4DK9RE

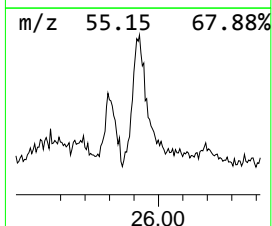
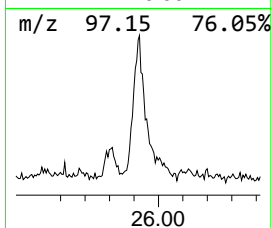
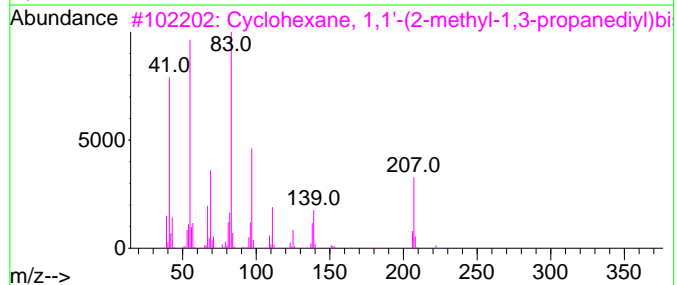
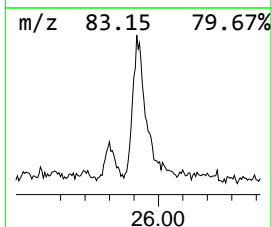
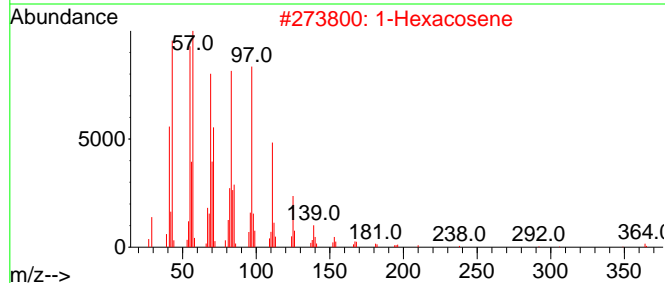
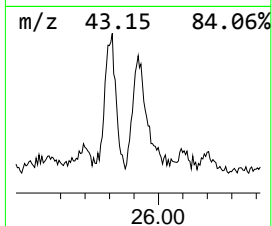
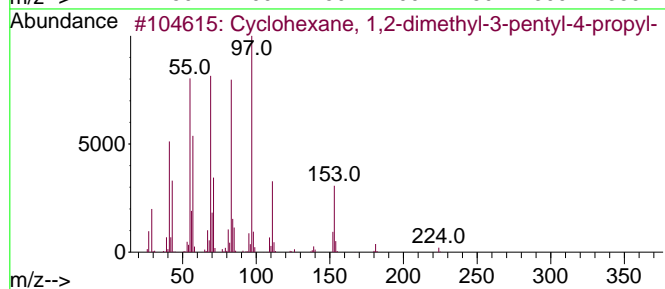
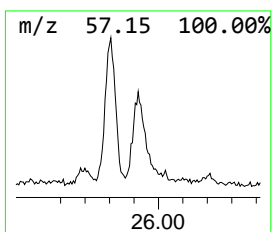
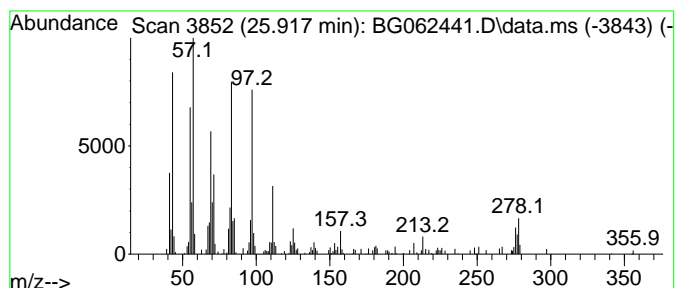
Quant Method : Z:\svoasrv\HPCHEM1\BNA_G\Methods\SFAM-EPA-BG081424.MA.M
 Quant Title : SVOA CALIBRATION

TIC Library : C:\DATABASE\NIST20.L
 TIC Integration Parameters: LSCINT.P

 Peak Number 9 (DEL) Alkane: Cyclic25.917 Concentration Rank 4

R.T.	EstConc	Area	Relative to ISTD	R.T.
25.917	6.81 ng/ul	355279	Perylene-d12	24.654

Hit#	of 5	Tentative ID	MW	MolForm	CAS#	Qual
1		Cyclohexane, 1,2-dimethyl-3-pent...	224	C16H32	062376-17-4	89
2		1-Hexacosene	364	C26H52	018835-33-1	46
3		Cyclohexane, 1,1'-(2-methyl-1,3-...	222	C16H30	002883-08-1	45
4		1-Heneicosanol	312	C21H44O	015594-90-8	41
5		n-Tetracosanol-1	354	C24H50O	000506-51-4	38



Data Path : Z:\svoasrv\HPCHEM1\BNA_G\Data\BG081524\
 Data File : BG062441.D
 Acq On : 16 Aug 2024 12:48
 Operator : MA/JU
 Sample : P3264-05RE
 Misc :
 ALS Vial : 7 Sample Multiplier: 1

Instrument :
 BNA_G
 ClientSampleId :
 A4DK9RE

Quant Method : Z:\svoasrv\HPCHEM1\BNA_G\Methods\SFAM-EPA-BG081424.MA.M
 Quant Title : SVOA CALIBRATION

TIC Library : C:\DATABASE\NIST20.L
 TIC Integration Parameters: LSCINT.P

TIC Top Hit name	RT	EstConc	Units	Response	--Internal Standard--			
					#	RT	Resp	Conc
Benzene, 1,4-di...	7.847	139.3	ng/ul	2002670	1	7.959	287467	20.0
1-Phenoxypropan...	11.489	3.2	ng/ul	82937	2	10.755	523524	20.0
unknown-01	17.105	2.2	ng/ul	97933	4	17.317	894099	20.0
Hexadecanoic ac...	17.992	3.6	ng/ul	159685	4	17.317	894099	20.0
n-Hexadecanoic ...	18.216	7.4	ng/ul	331378	4	17.317	894099	20.0
9,10-Anthracene...	18.727	12.3	ng/ul	550800	4	17.317	894099	20.0
trans-13-Octade...	19.161	5.0	ng/ul	223885	4	17.317	894099	20.0
(DEL) Alkane: S...	25.799	3.3	ng/ul	172505	6	24.654	1044140	20.0
(DEL) Alkane: C...	25.917	6.8	ng/ul	355279	6	24.654	1044140	20.0