

Data Path : Z:\SVOASRV\HPCHEM1\BNA G\DATA\BG081720\
 Data File : BG046325.D
 Acq On : 18 Aug 2020 13:07
 Operator : CG/JU
 Sample : L3636-04
 Misc :
 ALS Vial : 32 Sample Multiplier: 1

Instrument :
 BNA_G
 ClientSampleId :
 BFMKO

Integration Parameters: LSCINT.P

Integrator: RTE
 Smoothing : OFF Filtering: 5
 Sampling : 1 Min Area: 0.1 % of largest Peak
 Start Thrs: 0.2 Max Peaks: 100
 Stop Thrs : 0 Peak Location: TOP

If leading or trailing edge < 100 prefer < Baseline drop else tangent >
 Peak separation: 5

Method : Z:\SVOASRV\HPCHEM1\BNA_G\METHODS\SOM-EPA-BG081320PAH.M
 Title : SVOA CALIBRATION

Signal : TIC

peak #	R.T. min	first scan	max scan	last scan	PK TY	peak height	corr. area	corr. % max.	% of total
1	3.141	5	9	37	rVB	1121351	1843308	74.30%	6.224%
2	3.916	137	141	147	rBV2	20588	29191	1.18%	0.099%
3	7.106	676	684	693	rBV2	65193	115296	4.65%	0.389%
4	7.265	704	711	720	rBV	58531	101241	4.08%	0.342%
5	7.471	740	746	757	rVB	68734	121349	4.89%	0.410%
6	7.941	819	826	838	rVB	293879	485983	19.59%	1.641%
7	8.646	940	946	954	rBV2	83804	149012	6.01%	0.503%
8	9.092	1015	1022	1029	rBV	67458	122074	4.92%	0.412%
9	9.815	1138	1145	1154	rBV2	56783	101928	4.11%	0.344%
10	10.361	1230	1238	1248	rBV	89943	163595	6.59%	0.552%
11	10.738	1291	1302	1307	rBV	401483	718083	28.94%	2.425%
12	10.785	1307	1310	1316	rVB	38291	60432	2.44%	0.204%
13	10.867	1316	1324	1337	rBV2	50748	108049	4.36%	0.365%
14	12.394	1578	1584	1593	rVV	28850	47790	1.93%	0.161%
15	12.612	1611	1621	1627	rBV	25192	42294	1.70%	0.143%
16	13.893	1833	1839	1843	rVV3	27128	45022	1.81%	0.152%
17	13.969	1843	1852	1857	rVV	220494	345241	13.92%	1.166%
18	14.016	1857	1860	1867	rVV	48899	69177	2.79%	0.234%
19	14.257	1894	1901	1916	rBV2	200911	388869	15.67%	1.313%
20	14.568	1945	1954	1960	rVV2	678737	1059622	42.71%	3.578%
21	14.627	1960	1964	1971	rVV2	69990	114176	4.60%	0.386%
22	14.768	1983	1988	1999	rBV3	42563	93161	3.76%	0.315%
23	14.880	1999	2007	2012	rVV5	9375	22230	0.90%	0.075%
24	14.962	2016	2021	2030	rVV	71344	123077	4.96%	0.416%
25	15.185	2051	2059	2064	rBV3	13653	25796	1.04%	0.087%
26	15.356	2082	2088	2092	rBV6	11098	25178	1.01%	0.085%
27	15.555	2115	2122	2127	rVV	302174	469778	18.94%	1.586%
28	15.614	2127	2132	2138	rVV	107319	168254	6.78%	0.568%
29	15.673	2138	2142	2148	rVV	56874	97600	3.93%	0.330%
30	15.738	2150	2153	2156	rVV4	16286	23041	0.93%	0.078%
31	15.779	2156	2160	2166	rVV6	16667	31392	1.27%	0.106%
32	15.908	2177	2182	2190	rVB	44084	72779	2.93%	0.246%
33	16.055	2202	2207	2215	rVB	50921	103176	4.16%	0.348%
34	16.149	2215	2223	2228	rVB4	12626	28637	1.15%	0.097%

Data Path : Z:\SVOASRV\HPCHEM1\BNA G\DATA\BG081720\
 Data File : BG046325.D
 Acq On : 18 Aug 2020 13:07
 Operator : CG/JU
 Sample : L3636-04
 Misc :
 ALS Vial : 32 Sample Multiplier: 1

Instrument :
 BNA_G
 ClientSampleId :
 BFMKO

Integration Parameters: LSCINT.P

Integrator: RTE
 Smoothing : OFF
 Sampling : 1
 Start Thrs: 0.2
 Stop Thrs : 0

Filtering: 5
 Min Area: 0.1 % of largest Peak
 Max Peaks: 100
 Peak Location: TOP

If leading or trailing edge < 100 prefer < Baseline drop else tangent >
 Peak separation: 5

Method : Z:\SVOASRV\HPCHEM1\BNA_G\METHODS\SOM-EPA-BG081320PAH.M
 Title : SVOA CALIBRATION

35	16.284	2238	2246	2254	rBV7	18230	40619	1.64%	0.137%
36	16.589	2290	2298	2300	rBV3	22751	43111	1.74%	0.146%
37	16.619	2300	2303	2308	rVV2	30238	56769	2.29%	0.192%
38	16.666	2308	2311	2316	rVV4	17085	26191	1.06%	0.088%
39	16.766	2324	2328	2333	rVB3	14049	25491	1.03%	0.086%
40	16.848	2333	2342	2346	rBV4	34232	76448	3.08%	0.258%
41	16.889	2346	2349	2353	rVV	28989	42920	1.73%	0.145%
42	16.960	2356	2361	2369	rVB	87498	148916	6.00%	0.503%
43	17.042	2369	2375	2382	rBV3	34523	90061	3.63%	0.304%
44	17.130	2385	2390	2395	rVB	51364	78452	3.16%	0.265%
45	17.306	2414	2420	2424	rBV	821226	1305236	52.61%	4.407%
46	17.353	2424	2428	2433	rVV	1021320	1510012	60.87%	5.098%
47	17.406	2433	2437	2440	rVV2	326447	487386	19.65%	1.646%
48	17.441	2440	2443	2449	rVB	199234	276130	11.13%	0.932%
49	17.500	2449	2453	2459	rVB2	41055	64393	2.60%	0.217%
50	17.624	2470	2474	2478	rVB3	15865	22730	0.92%	0.077%
51	17.706	2479	2488	2493	rBV2	103942	206542	8.33%	0.697%
52	17.829	2505	2509	2512	rVV2	26412	36703	1.48%	0.124%
53	17.888	2516	2519	2524	rVB2	29850	36539	1.47%	0.123%
54	18.029	2540	2543	2551	rVB2	14754	27963	1.13%	0.094%
55	18.105	2551	2556	2560	rBV2	23291	34139	1.38%	0.115%
56	18.188	2562	2570	2573	rBV	177501	292375	11.79%	0.987%
57	18.235	2573	2578	2586	rVB	246880	403333	16.26%	1.362%
58	18.311	2586	2591	2596	rVB	78836	120099	4.84%	0.406%
59	18.381	2596	2603	2606	rBV3	203011	380957	15.36%	1.286%
60	18.417	2606	2609	2614	rVB	120523	165206	6.66%	0.558%
61	18.487	2617	2621	2624	rBV3	17636	30809	1.24%	0.104%
62	18.681	2649	2654	2657	rBV	149339	208381	8.40%	0.704%
63	18.716	2657	2660	2666	rVB	189352	262795	10.59%	0.887%
64	18.810	2672	2676	2678	rBV2	21341	30401	1.23%	0.103%
65	18.928	2693	2696	2701	rBV3	48967	65287	2.63%	0.220%
66	18.981	2701	2705	2708	rVV	41133	52769	2.13%	0.178%
67	19.016	2708	2711	2715	rVB3	47257	57365	2.31%	0.194%
68	19.098	2720	2725	2730	rBV	106942	182589	7.36%	0.617%
69	19.163	2730	2736	2739	rBV6	42455	82304	3.32%	0.278%
70	19.233	2744	2748	2757	rVB	120990	208608	8.41%	0.704%
71	19.363	2764	2770	2776	rVB	1431267	1996159	80.46%	6.740%

Data Path : Z:\SVOASRV\HPCHEM1\BNA G\DATA\BG081720\
 Data File : BG046325.D
 Acq On : 18 Aug 2020 13:07
 Operator : CG/JU
 Sample : L3636-04
 Misc :
 ALS Vial : 32 Sample Multiplier: 1

Instrument :
 BNA_G
 ClientSampleId :
 BFMKO

Integration Parameters: LSCINT.P

Integrator: RTE
 Smoothing : OFF Filtering: 5
 Sampling : 1 Min Area: 0.1 % of largest Peak
 Start Thrs: 0.2 Max Peaks: 100
 Stop Thrs : 0 Peak Location: TOP

If leading or trailing edge < 100 prefer < Baseline drop else tangent >
 Peak separation: 5

Method : Z:\SVOASRV\HPCHEM1\BNA_G\METHODS\SOM-EPA-BG081320PAH.M
 Title : SVOA CALIBRATION

72	19.427	2777	2781	2783	rBV2	27338	39943	1.61%	0.135%
73	19.457	2783	2786	2791	rVB2	48087	64372	2.59%	0.217%
74	19.510	2791	2795	2798	rBV2	47851	61057	2.46%	0.206%
75	19.551	2799	2802	2806	rVV	50280	69789	2.81%	0.236%
76	19.604	2809	2811	2814	rVB	33444	30069	1.21%	0.102%
77	19.692	2821	2826	2828	rBV2	607903	903038	36.40%	3.049%
78	19.721	2828	2831	2838	rVV	1137092	1599760	64.48%	5.402%
79	19.792	2839	2843	2850	rVB2	88682	164158	6.62%	0.554%
80	19.897	2857	2861	2867	rBV	84819	123912	4.99%	0.418%
81	19.956	2868	2871	2877	rVB	92976	135898	5.48%	0.459%
82	20.050	2879	2887	2893	rBV3	135306	391020	15.76%	1.320%
83	20.179	2905	2909	2911	rBV4	76886	123515	4.98%	0.417%
84	20.215	2912	2915	2919	rVB	181318	231954	9.35%	0.783%
85	20.315	2928	2932	2935	rBV	92408	123296	4.97%	0.416%
86	20.373	2936	2942	2946	rVV2	162245	301729	12.16%	1.019%
87	20.514	2962	2966	2969	rBV	73844	99091	3.99%	0.335%
88	20.561	2970	2974	2979	rVB4	124581	199367	8.04%	0.673%
89	20.967	3039	3043	3049	rVB	201549	292648	11.80%	0.988%
90	21.149	3067	3074	3077	rBV2	112735	273636	11.03%	0.924%
91	21.190	3077	3081	3083	rVV	120864	167211	6.74%	0.565%
92	21.225	3083	3087	3094	rVV4	211479	422767	17.04%	1.427%
93	21.290	3094	3098	3103	rVV	164513	254736	10.27%	0.860%
94	21.548	3135	3142	3148	rBV3	1065009	2480899	100.00%	8.377%
95	21.601	3148	3151	3160	rVB	591506	910901	36.72%	3.076%
96	23.681	3498	3505	3513	rBV2	366912	1156861	46.63%	3.906%
97	23.805	3522	3526	3531	rBV	75656	114697	4.62%	0.387%
98	24.374	3618	3623	3629	rBV	164414	369816	14.91%	1.249%
99	24.515	3642	3647	3655	rVB	248986	571795	23.05%	1.931%
100	24.662	3665	3672	3680	rVB2	493067	1246883	50.26%	4.210%

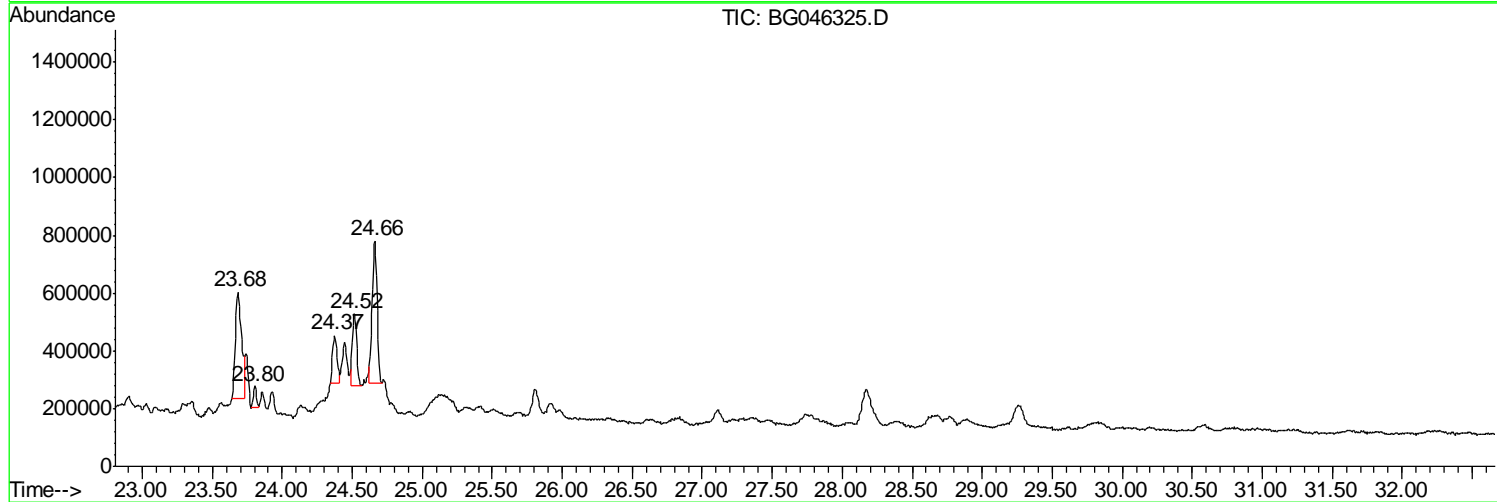
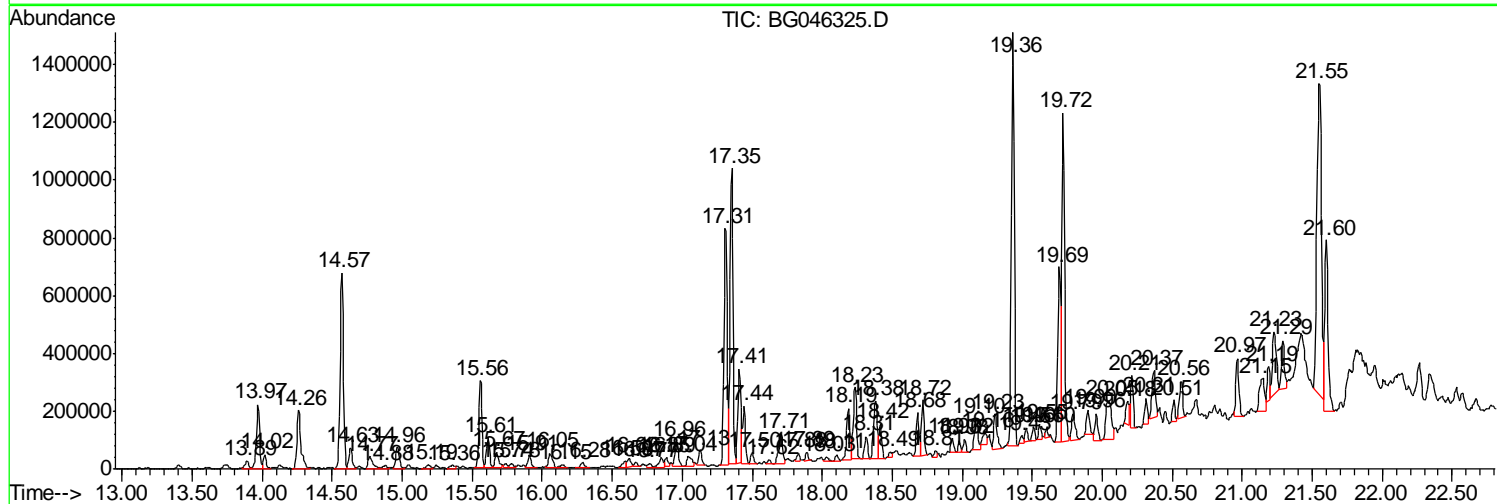
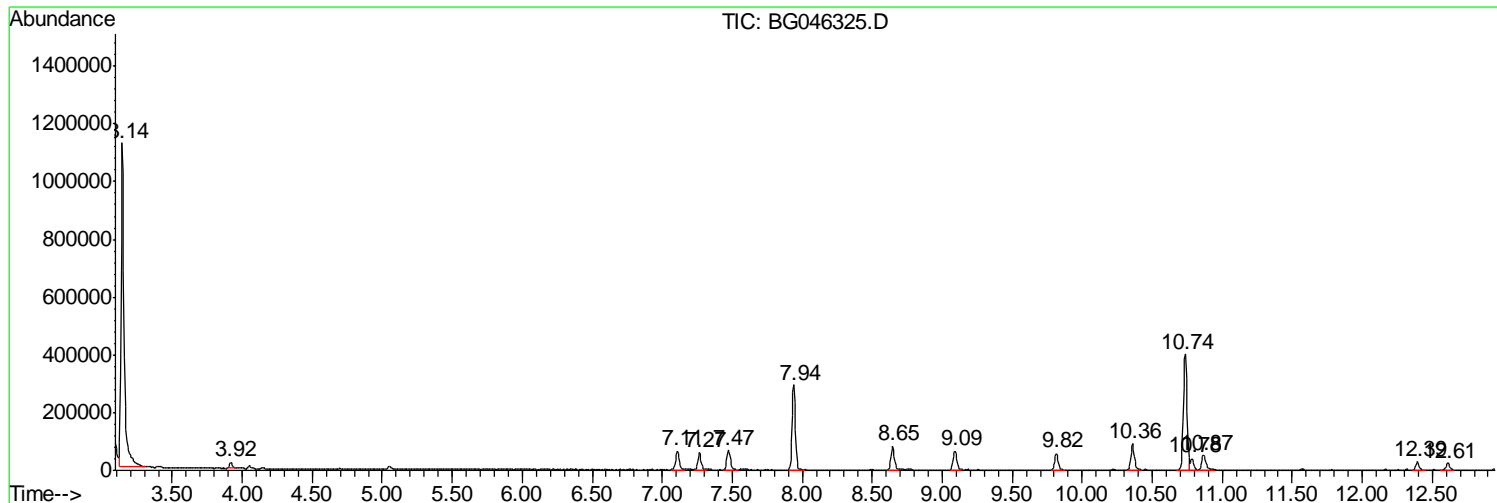
Sum of corrected areas: 29616837

Data Path : Z:\SVOASRV\HPCHEM1\BNA G\DATA\BG081720\
 Data File : BG046325.D
 Acq On : 18 Aug 2020 13:07
 Operator : CG/JU
 Sample : L3636-04
 Misc :
 ALS Vial : 32 Sample Multiplier: 1

Instrument :
 BNA_G
Client Sampled :
 BFMKO

Quant Method : Z:\SVOASRV\HPCHEM1\BNA_G\METHODS\SOM-EPA-BG081320PAH.M
 Quant Title : SVOA CALIBRATION

TIC Library : C:\DATABASE\NIST11.L
 TIC Integration Parameters: LSCINT.P



Data Path : Z:\SVOASRV\HPCHEM1\BNA G\DATA\BG081720\
 Data File : BG046325.D
 Acq On : 18 Aug 2020 13:07
 Operator : CG/JU
 Sample : L3636-04
 Misc :
 ALS Vial : 32 Sample Multiplier: 1

Instrument :
 BNA_G
 ClientSampled :
 BFMKO

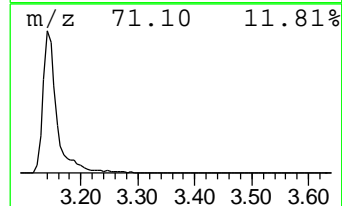
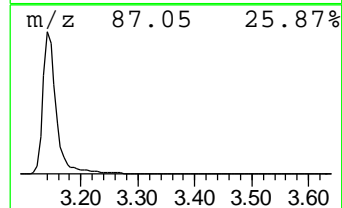
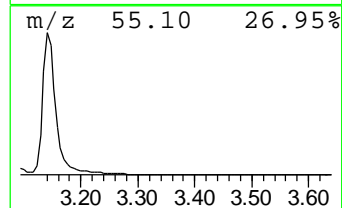
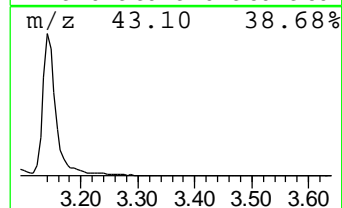
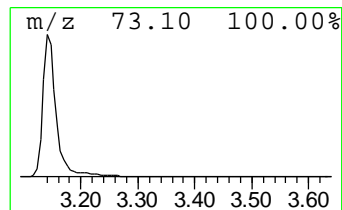
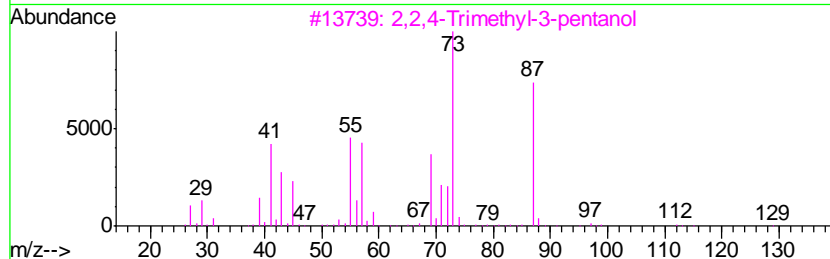
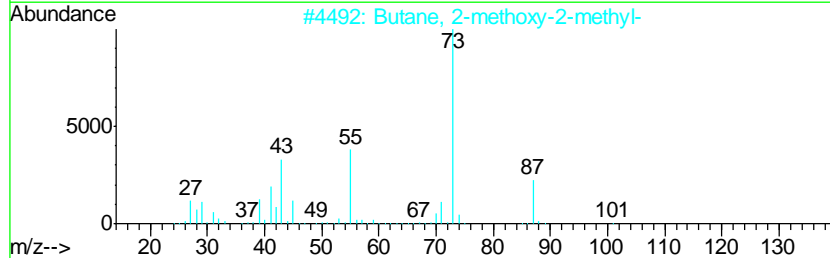
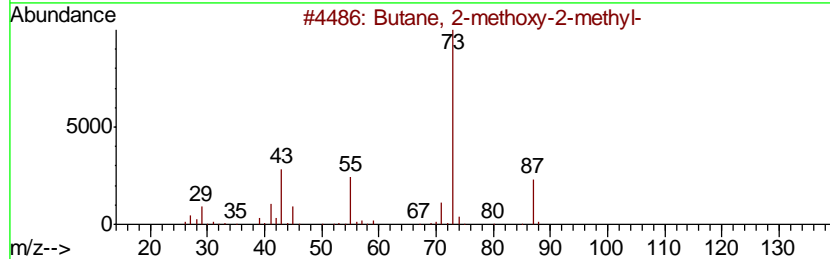
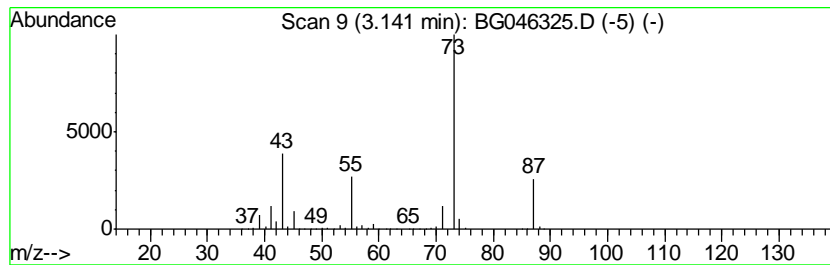
Quant Method : Z:\SVOASRV\HPCHEM1\BNA_G\METHODS\SOM-EPA-BG081320PAH.M
 Quant Title : SVOA CALIBRATION

TIC Library : C:\DATABASE\NIST11.L
 TIC Integration Parameters: LSCINT.P

 Peak Number 1 Butane, 2-methoxy-2-methyl- Concentration Rank 1

R.T.	EstConc	Area	Relative to ISTD	R.T.
3.14	75.86 ng/ul	1843310	1,4-Dichlorobenzene-d4	7.94

Hit#	of	Tentative ID	MW	MolForm	CAS#	Qual
1	5	Butane, 2-methoxy-2-methyl-	102	C6H14O	000994-05-8	83
2		Butane, 2-methoxy-2-methyl-	102	C6H14O	000994-05-8	50
3		2,2,4-Trimethyl-3-pentanol	130	C8H18O	005162-48-1	39
4		Acetamide, N-ethyl-	87	C4H9NO	000625-50-3	27
5		1,3-Dioxolane, 2-methyl-	88	C4H8O2	000497-26-7	25



Data Path : Z:\SVOASRV\HPCHEM1\BNA G\DATA\BG081720\
 Data File : BG046325.D
 Acq On : 18 Aug 2020 13:07
 Operator : CG/JU
 Sample : L3636-04
 Misc :
 ALS Vial : 32 Sample Multiplier: 1

Instrument :
 BNA_G
 ClientSampleID :
 BFMKO

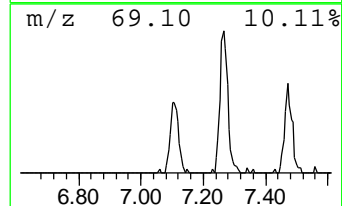
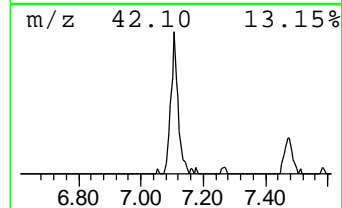
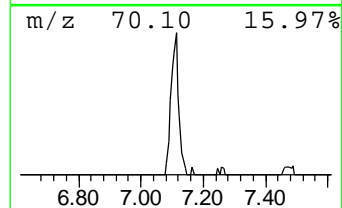
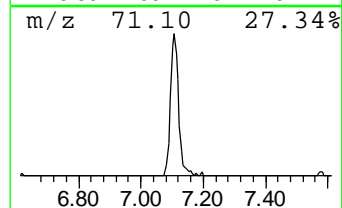
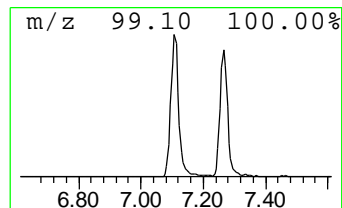
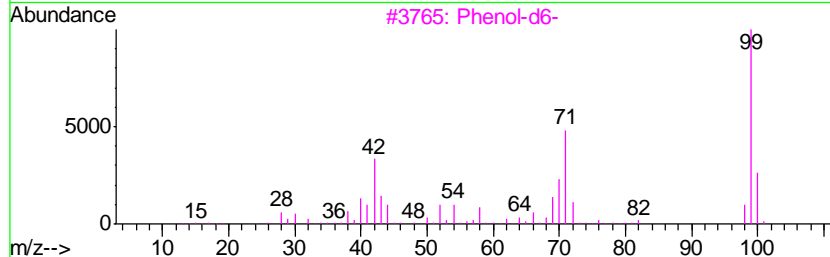
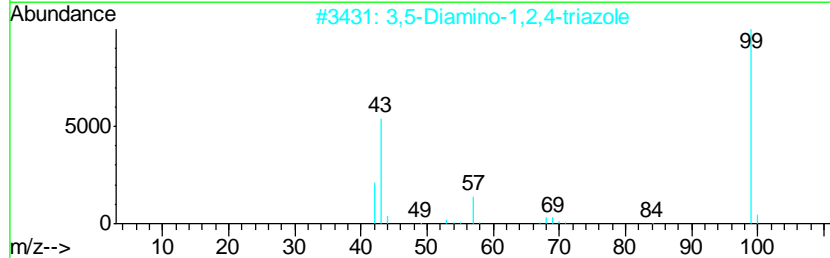
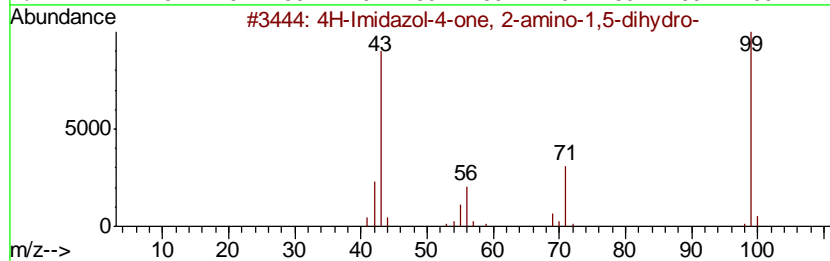
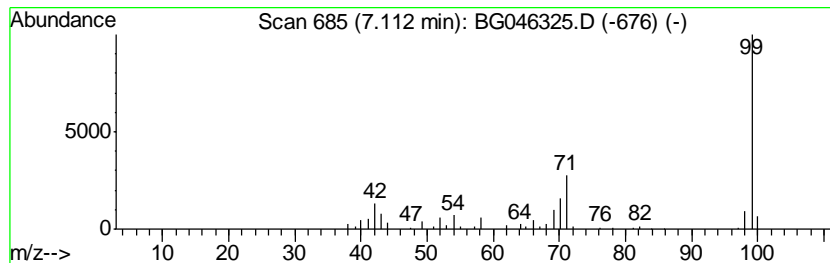
Quant Method : Z:\SVOASRV\HPCHEM1\BNA_G\METHODS\SOM-EPA-BG081320PAH.M
 Quant Title : SVOA CALIBRATION

TIC Library : C:\DATABASE\NIST11.L
 TIC Integration Parameters: LSCINT.P

 Peak Number 2 4H-Imidazol-4-one, 2-amino-... Concentration Rank 9

R.T.	EstConc	Area	Relative to ISTD	R.T.
7.11	4.74 ng/ul	115296	1,4-Dichlorobenzene-d4	7.94

Hit#	of	Tentative ID	MW	MolForm	CAS#	Qual
1	5	4H-Imidazol-4-one, 2-amino-1,5-d...	99	C3H5N3O	000503-86-6	72
2		3,5-Diamino-1,2,4-triazole	99	C2H5N5	001455-77-2	53
3		Phenol-d6-	100	C6D6O	013127-88-3	50
4		Hexanoic acid, anhydride	214	C12H22O3	002051-49-2	42
5		Hexanoic acid, anhydride	214	C12H22O3	002051-49-2	38



Data Path : Z:\SVOASRV\HPCHEM1\BNA G\DATA\BG081720\
 Data File : BG046325.D
 Acq On : 18 Aug 2020 13:07
 Operator : CG/JU
 Sample : L3636-04
 Misc :
 ALS Vial : 32 Sample Multiplier: 1

Instrument :
 BNA_G
 ClientSampled :
 BFMKO

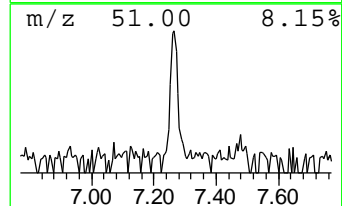
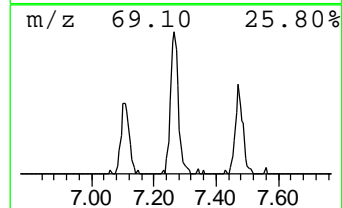
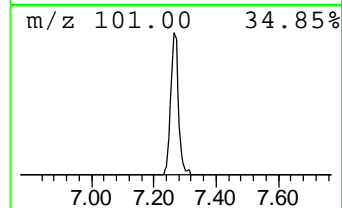
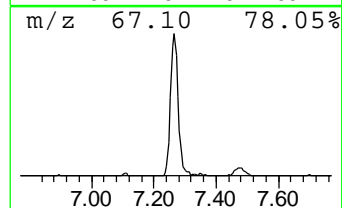
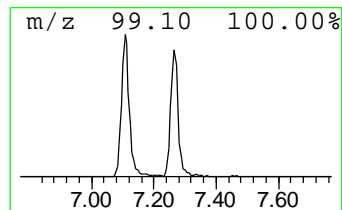
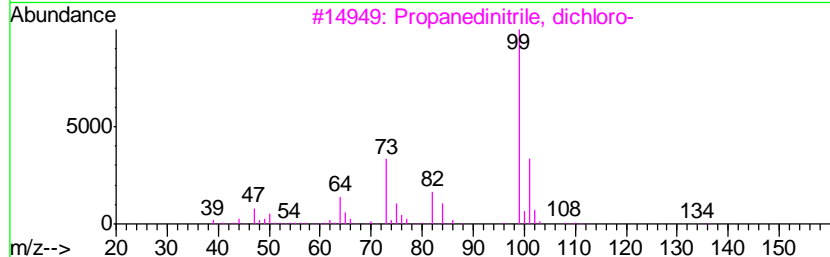
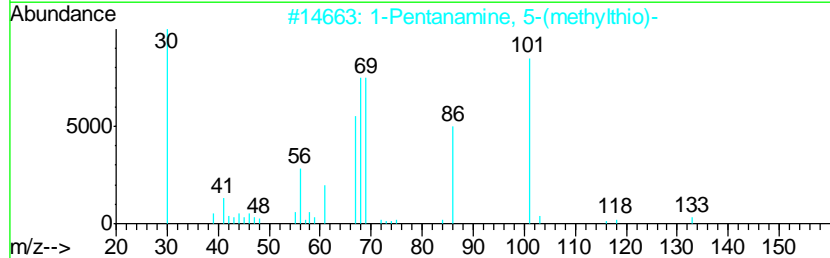
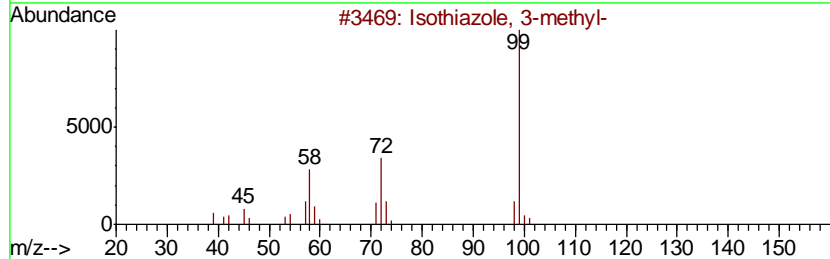
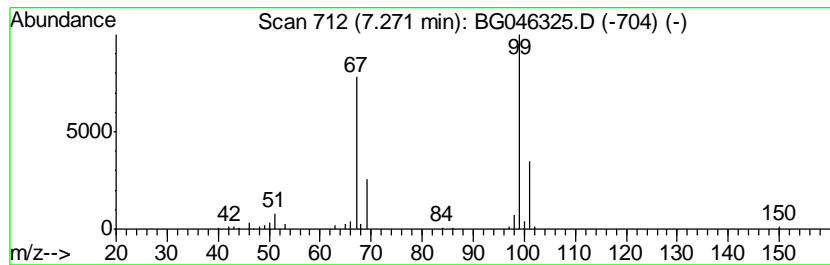
Quant Method : Z:\SVOASRV\HPCHEM1\BNA_G\METHODS\SOM-EPA-BG081320PAH.M
 Quant Title : SVOA CALIBRATION

TIC Library : C:\DATABASE\NIST11.L
 TIC Integration Parameters: LSCINT.P

 Peak Number 3 unknown-01 Concentration Rank 11

R.T.	EstConc	Area	Relative to ISTD	R.T.
7.27	4.17 ng/ul	101241	1,4-Dichlorobenzene-d4	7.94

Hit#	of	Tentative ID	MW	MolForm	CAS#	Qual
1	5	Isothiazole, 3-methyl-	99	C4H5NS	000693-92-5	9
2		1-Pentanamine, 5-(methylthio)-	133	C6H15NS	055021-78-8	9
3		Propanedinitrile, dichloro-	134	C3Cl2N2	013063-43-9	9
4		Cyclopropane, isothiocyanato-	99	C4H5NS	056601-42-4	7
5		Allyl Isothiocyanate	99	C4H5NS	000057-06-7	7



Data Path : Z:\SVOASRV\HPCHEM1\BNA G\DATA\BG081720\
 Data File : BG046325.D
 Acq On : 18 Aug 2020 13:07
 Operator : CG/JU
 Sample : L3636-04
 Misc :
 ALS Vial : 32 Sample Multiplier: 1

Instrument :
 BNA_G
 ClientSampleID :
 BFMKO

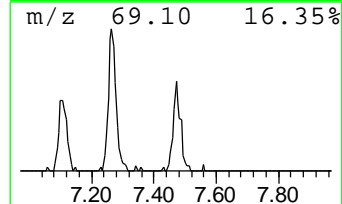
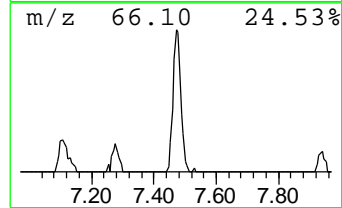
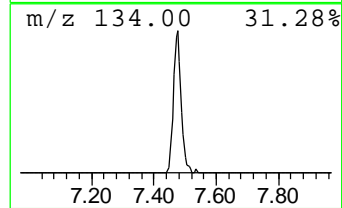
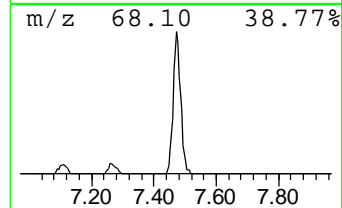
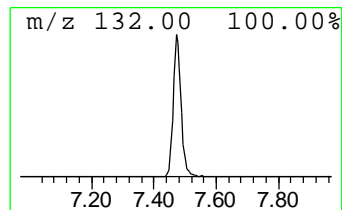
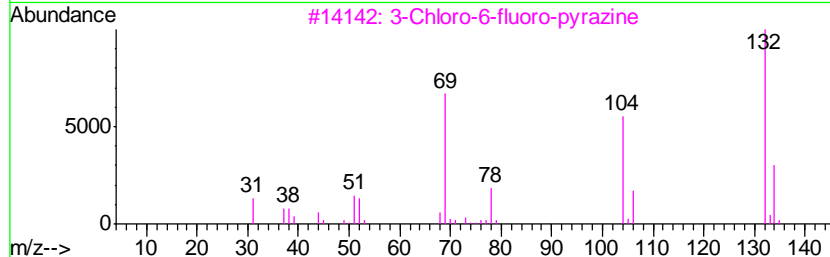
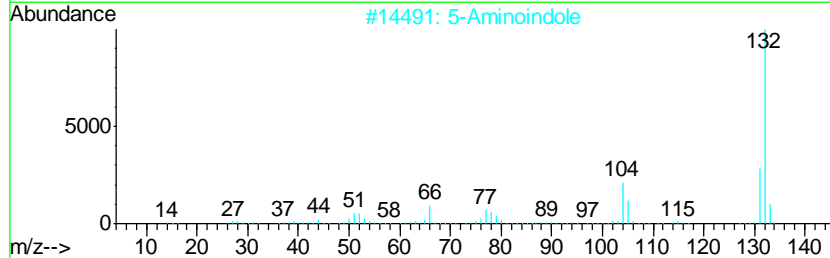
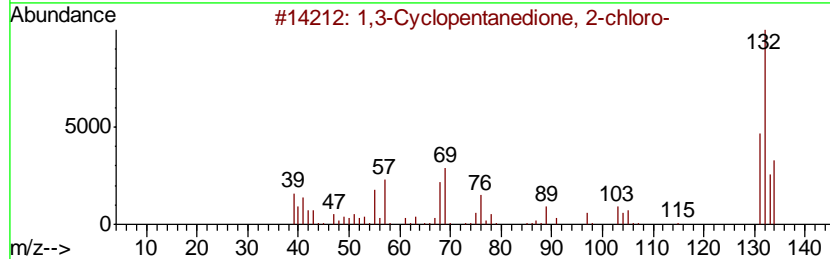
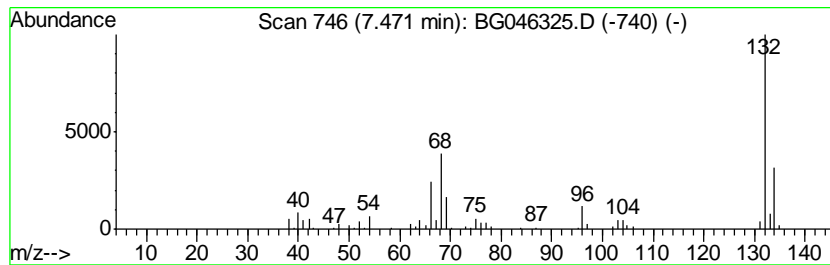
Quant Method : Z:\SVOASRV\HPCHEM1\BNA_G\METHODS\SOM-EPA-BG081320PAH.M
 Quant Title : SVOA CALIBRATION

TIC Library : C:\DATABASE\NIST11.L
 TIC Integration Parameters: LSCINT.P

 Peak Number 4 unknown-02 Concentration Rank 8

R.T.	EstConc	Area	Relative to ISTD	R.T.
7.47	4.99 ng/ul	121349	1,4-Dichlorobenzene-d4	7.94

Hit#	of	Tentative ID	MW	MolForm	CAS#	Qual
1	5	1,3-Cyclopentanedione, 2-chloro-	132	C5H5ClO2	014203-19-1	32
2		5-Aminoindole	132	C8H8N2	005192-03-0	22
3		3-Chloro-6-fluoro-pyrazine	132	C4H2ClFN2	1000146-10-7	16
4		4-Methyl-N-(1,2,3,4-tetrahydro-i...	316	C17H20N2O2S	1000274-62-9	10
5		5-Aminoindole	132	C8H8N2	005192-03-0	10



Data Path : Z:\SVOASRV\HPCHEM1\BNA G\DATA\BG081720\
 Data File : BG046325.D
 Acq On : 18 Aug 2020 13:07
 Operator : CG/JU
 Sample : L3636-04
 Misc :
 ALS Vial : 32 Sample Multiplier: 1

Instrument :
 BNA_G
 ClientSampleID :
 BFMKO

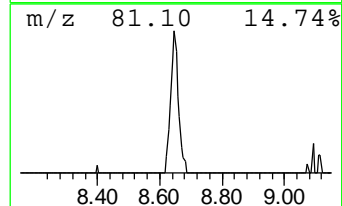
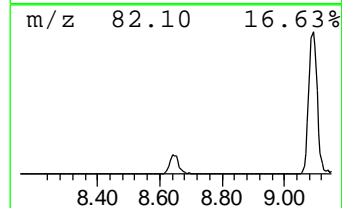
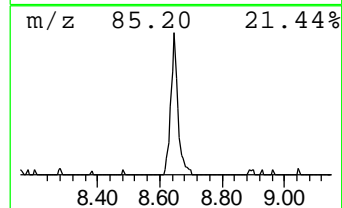
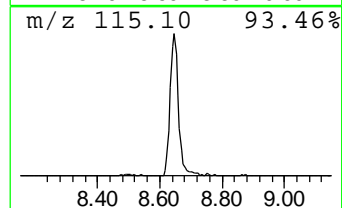
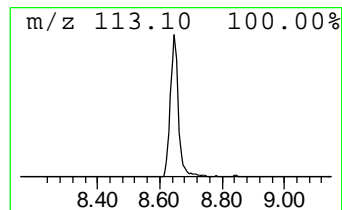
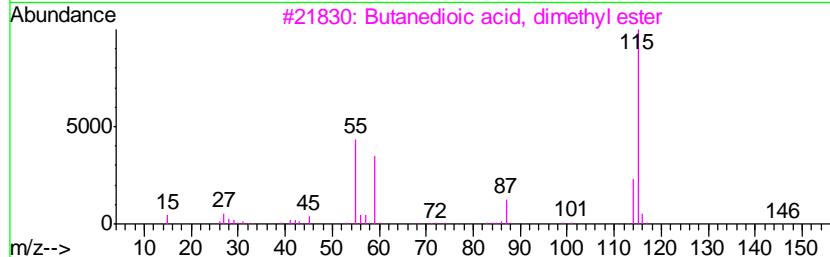
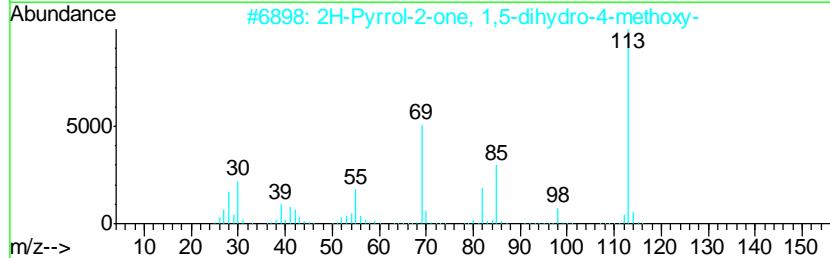
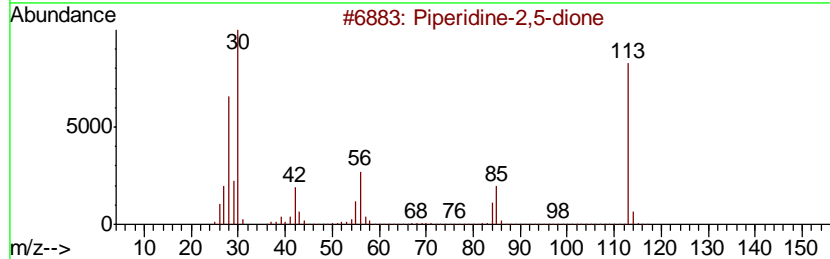
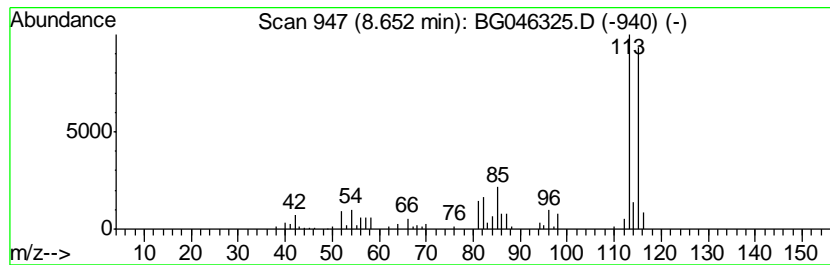
Quant Method : Z:\SVOASRV\HPCHEM1\BNA_G\METHODS\SOM-EPA-BG081320PAH.M
 Quant Title : SVOA CALIBRATION

TIC Library : C:\DATABASE\NIST11.L
 TIC Integration Parameters: LSCINT.P

 Peak Number 5 unknown-03 Concentration Rank 4

R.T.	EstConc	Area	Relative to ISTD	R.T.
8.65	6.13 ng/ul	149012	1,4-Dichlorobenzene-d4	7.94

Hit#	of	Tentative ID	MW	MolForm	CAS#	Qual
1	5	Piperidine-2,5-dione	113	C5H7NO2	052065-78-8	38
2		2H-Pyrrol-2-one, 1,5-dihydro-4-m...	113	C5H7NO2	069778-83-2	25
3		Butanedioic acid, dimethyl ester	146	C6H10O4	000106-65-0	25
4		Butanedioyl dihydrazide	146	C4H10N4O2	004146-43-4	25
5		2-Propyn-1-ol, 3-(trimethylsilyl)-	128	C6H12OSi	005272-36-6	25



Data Path : Z:\SVOASRV\HPCHEM1\BNA G\DATA\BG081720\
 Data File : BG046325.D
 Acq On : 18 Aug 2020 13:07
 Operator : CG/JU
 Sample : L3636-04
 Misc :
 ALS Vial : 32 Sample Multiplier: 1

Instrument :
 BNA_G
 ClientSampleId :
 BFMKO

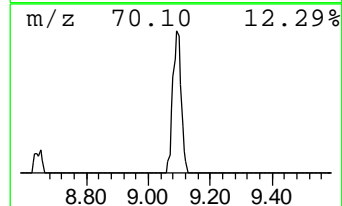
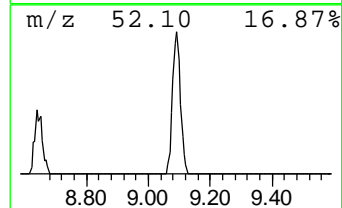
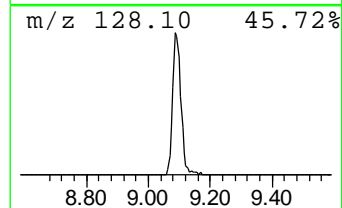
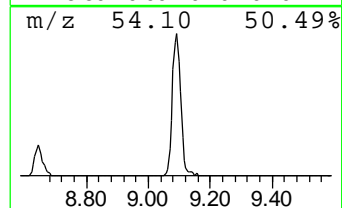
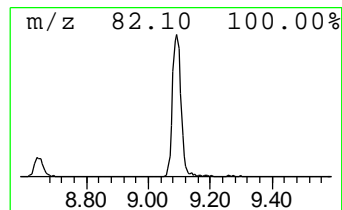
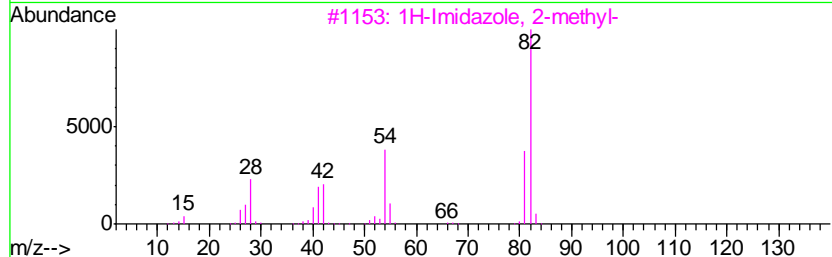
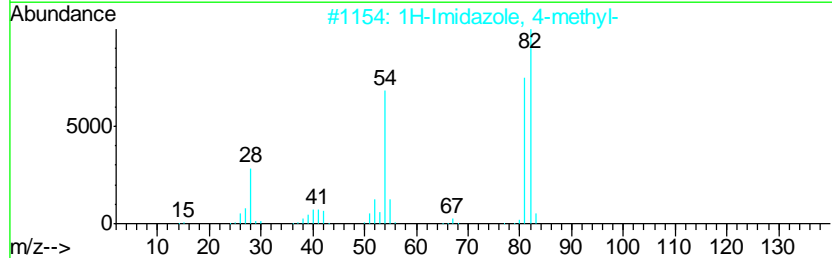
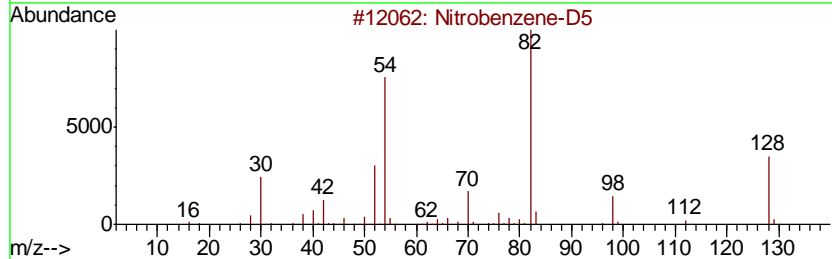
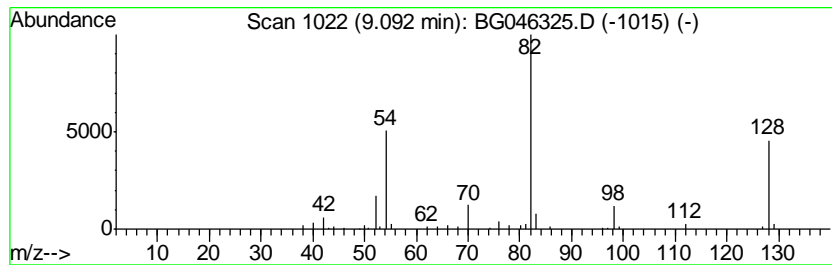
Quant Method : Z:\SVOASRV\HPCHEM1\BNA_G\METHODS\SOM-EPA-BG081320PAH.M
 Quant Title : SVOA CALIBRATION

TIC Library : C:\DATABASE\NIST11.L
 TIC Integration Parameters: LSCINT.P

 Peak Number 6 unknown-04 Concentration Rank 7

R.T.	EstConc	Area	Relative to ISTD	R.T.
9.09	5.02 ng/ul	122074	1,4-Dichlorobenzene-d4	7.94

Hit#	of	Tentative ID	MW	MolForm	CAS#	Qual
1	5	Nitrobenzene-D5	128	C6D5NO2	004165-60-0	47
2		1H-Imidazole, 4-methyl-	82	C4H6N2	000822-36-6	40
3		1H-Imidazole, 2-methyl-	82	C4H6N2	000693-98-1	38
4		1H-Imidazole, 4-methyl-	82	C4H6N2	000822-36-6	38
5		Nitrobenzene-D5	128	C6D5NO2	004165-60-0	37



Data Path : Z:\SVOASRV\HPCHEM1\BNA G\DATA\BG081720\
 Data File : BG046325.D
 Acq On : 18 Aug 2020 13:07
 Operator : CG/JU
 Sample : L3636-04
 Misc :
 ALS Vial : 32 Sample Multiplier: 1

Instrument :
 BNA_G
 ClientSampled :
 BFMKO

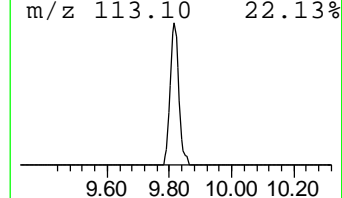
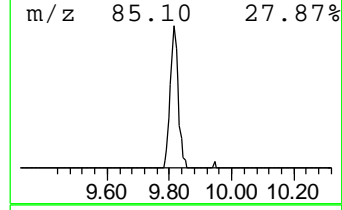
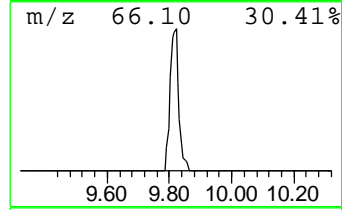
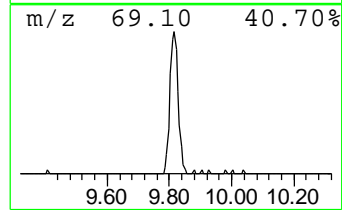
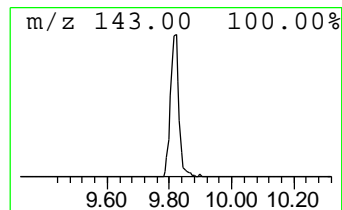
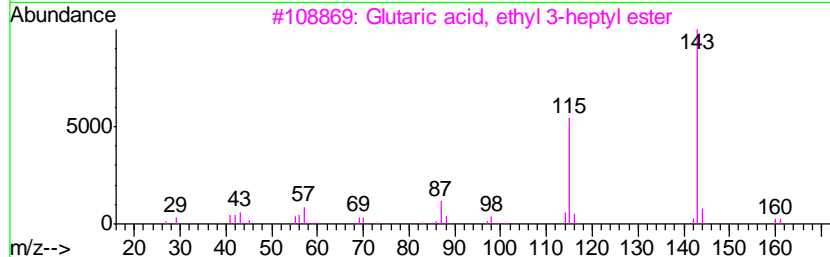
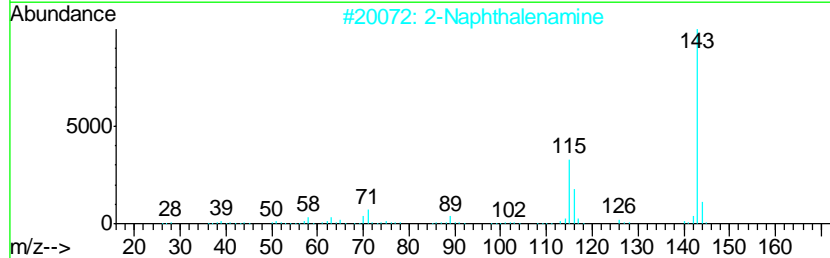
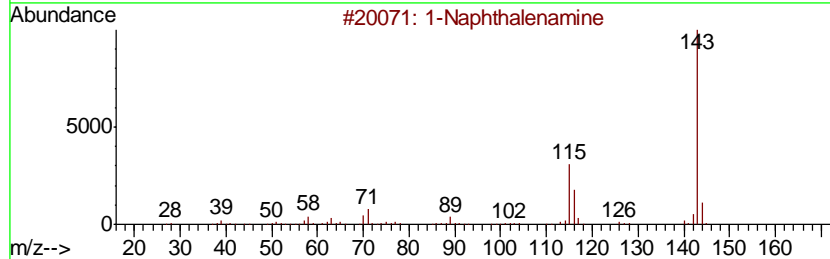
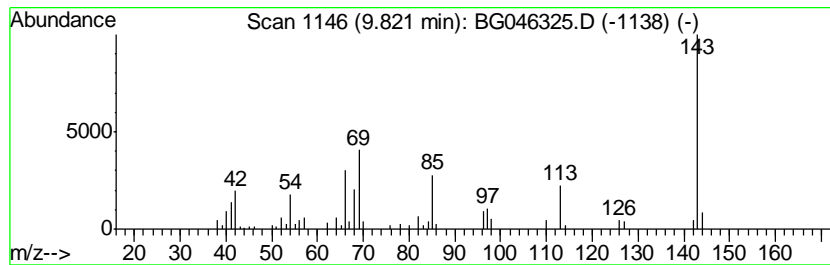
Quant Method : Z:\SVOASRV\HPCHEM1\BNA_G\METHODS\SOM-EPA-BG081320PAH.M
 Quant Title : SVOA CALIBRATION

TIC Library : C:\DATABASE\NIST11.L
 TIC Integration Parameters: LSCINT.P

 Peak Number 7 unknown-05 Concentration Rank 19

R.T.	EstConc	Area	Relative to ISTD	R.T.
9.82	2.84 ng/ul	101928	Naphthalene-d8	10.74

Hit#	of	Tentative ID	MW	MolForm	CAS#	Qual
1	5	1-Naphthalenamine	143	C10H9N	000134-32-7	22
2		2-Naphthalenamine	143	C10H9N	000091-59-8	22
3		Glutaric acid, ethyl 3-heptyl ester	258	C14H26O4	1000359-73-0	22
4		Glutaric acid, ethyl 4-heptyl ester	258	C14H26O4	1000359-45-2	16
5		1-(1-Butoxypropan-2-yloxy)propan...	274	C15H30O4	1000367-12-9	12



Data Path : Z:\SVOASRV\HPCHEM1\BNA G\DATA\BG081720\
 Data File : BG046325.D
 Acq On : 18 Aug 2020 13:07
 Operator : CG/JU
 Sample : L3636-04
 Misc :
 ALS Vial : 32 Sample Multiplier: 1

Instrument :
 BNA_G
 ClientSampleID :
 BFMKO

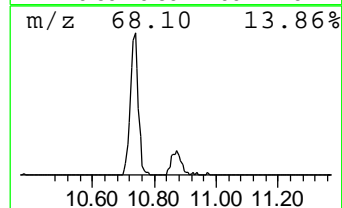
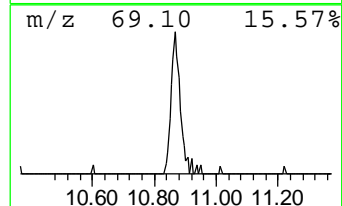
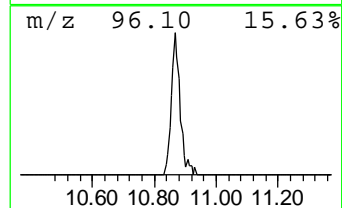
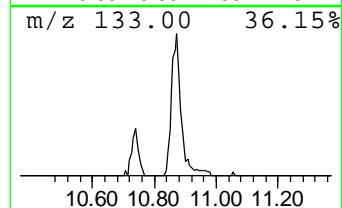
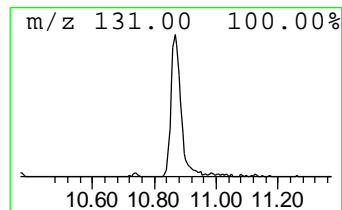
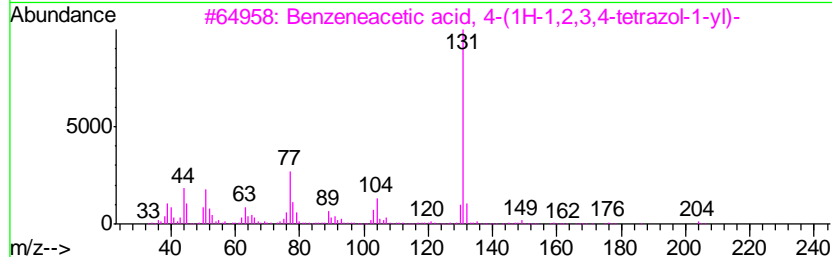
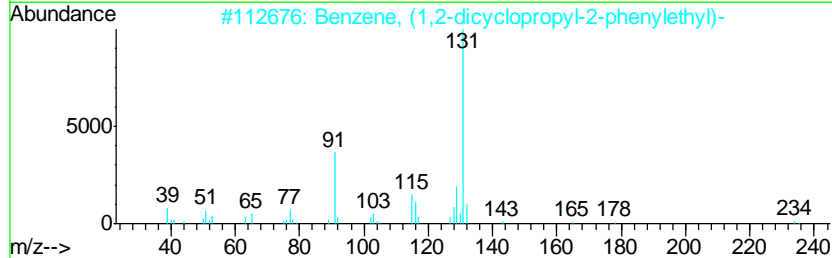
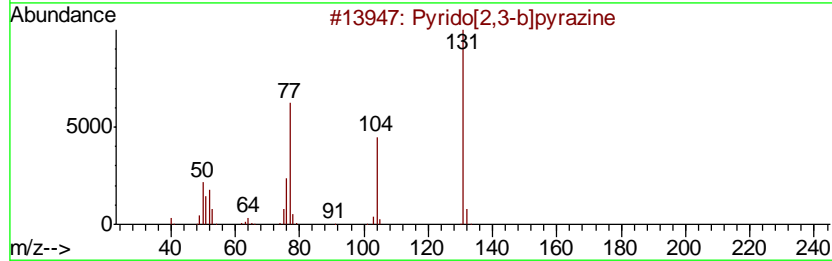
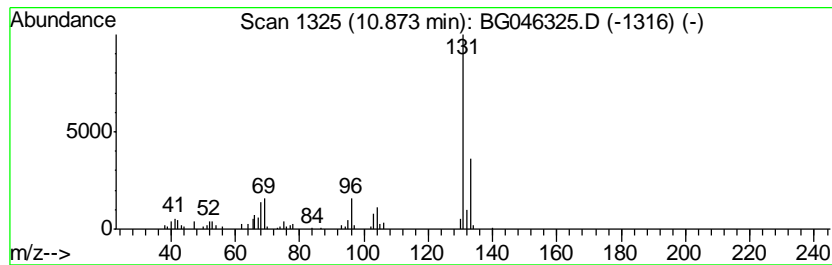
Quant Method : Z:\SVOASRV\HPCHEM1\BNA_G\METHODS\SOM-EPA-BG081320PAH.M
 Quant Title : SVOA CALIBRATION

TIC Library : C:\DATABASE\NIST11.L
 TIC Integration Parameters: LSCINT.P

 Peak Number 8 unknown-06 Concentration Rank 18

R.T.	EstConc	Area	Relative to ISTD	R.T.
10.87	3.01 ng/ul	108049	Naphthalene-d8	10.74

Hit#	of	Tentative ID	MW	MolForm	CAS#	Qual
1	5	Pyrido[2,3-b]pyrazine	131	C7H5N3	000322-46-3	38
2		Benzene, (1,2-dicyclopropyl-2-ph...	262	C20H22	110330-90-0	33
3		Benzeneacetic acid, 4-(1H-1,2,3,...	204	C9H8N4O2	1000351-56-5	33
4		Cyclopropane, 2-bromo-1-methyl-1...	210	C10H11Br	055091-64-0	28
5		1H-Indole, 1-methyl-	131	C9H9N	000603-76-9	28



Data Path : Z:\SVOASRV\HPCHEM1\BNA G\DATA\BG081720\
 Data File : BG046325.D
 Acq On : 18 Aug 2020 13:07
 Operator : CG/JU
 Sample : L3636-04
 Misc :
 ALS Vial : 32 Sample Multiplier: 1

Instrument :
 BNA_G
 ClientSampleID :
 BFMKO

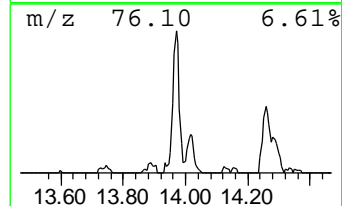
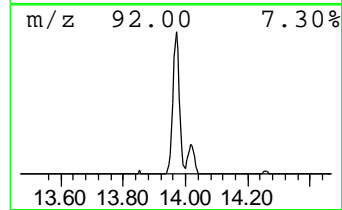
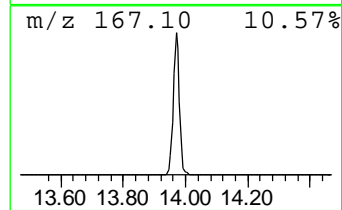
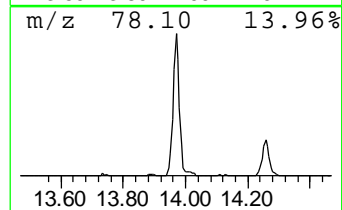
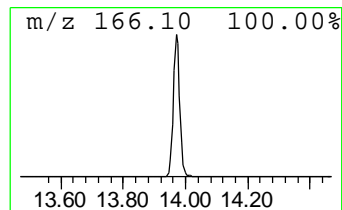
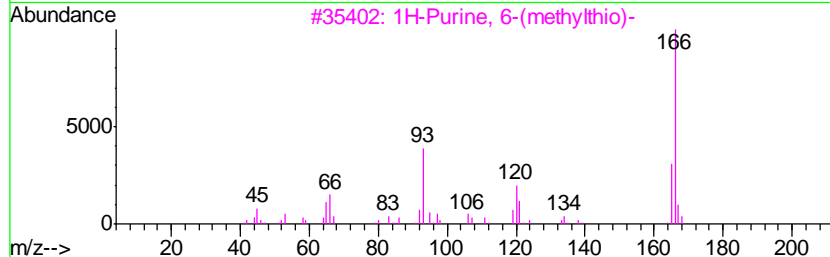
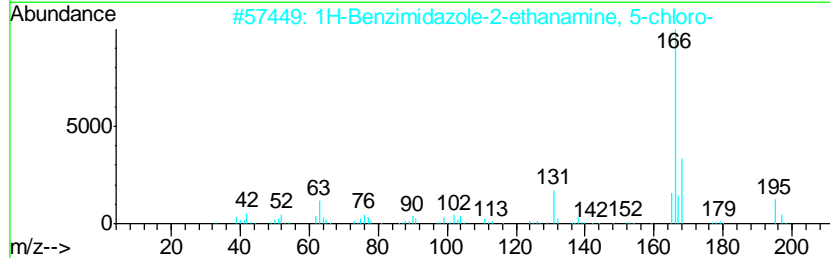
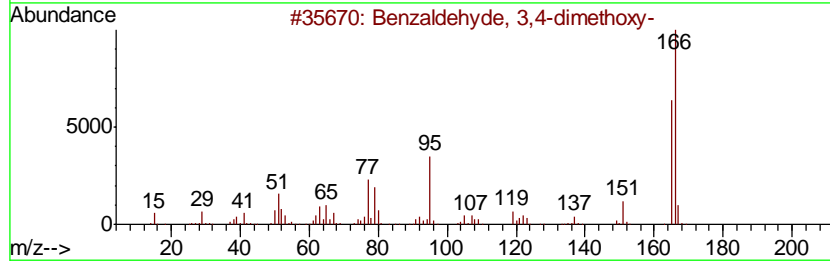
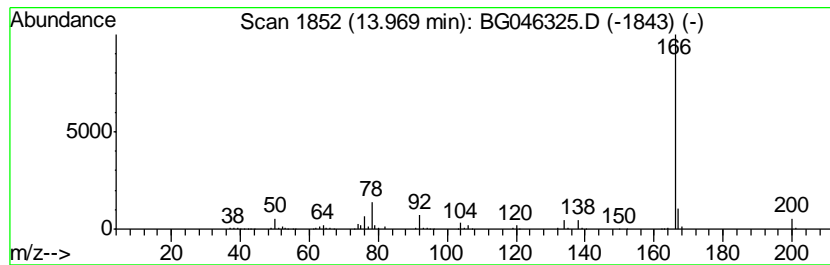
Quant Method : Z:\SVOASRV\HPCHEM1\BNA_G\METHODS\SOM-EPA-BG081320PAH.M
 Quant Title : SVOA CALIBRATION

TIC Library : C:\DATABASE\NIST11.L
 TIC Integration Parameters: LSCINT.P

 Peak Number 9 unknown-07 Concentration Rank 2

R.T.	EstConc	Area	Relative to ISTD	R.T.
13.97	6.52 ng/ul	345241	Acenaphthene-d10	14.57

Hit#	of	Tentative ID	MW	MolForm	CAS#	Qual
1	5	Benzaldehyde, 3,4-dimethoxy-	166	C9H10O3	000120-14-9	45
2		1H-Benzimidazole-2-ethanamine, 5...	195	C9H10ClN3	135875-16-0	38
3		1H-Purine, 6-(methylthio)-	166	C6H6N4S	000050-66-8	38
4		Benzenamine, N,N-dimethyl-4-nitro-	166	C8H10N2O2	000100-23-2	38
5		p-Anisamidoxime	166	C8H10N2O2	005373-87-5	9



Data Path : Z:\SVOASRV\HPCHEM1\BNA G\DATA\BG081720\
 Data File : BG046325.D
 Acq On : 18 Aug 2020 13:07
 Operator : CG/JU
 Sample : L3636-04
 Misc :
 ALS Vial : 32 Sample Multiplier: 1

Instrument :
 BNA_G
 ClientSampleID :
 BFMKO

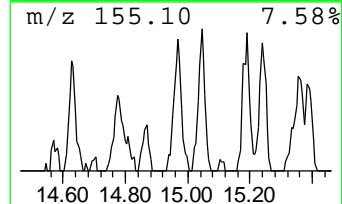
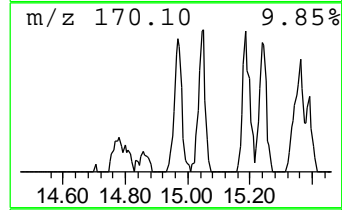
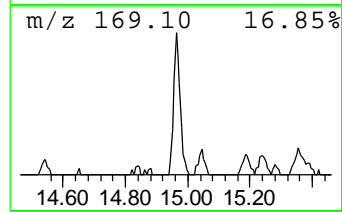
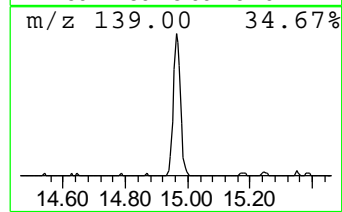
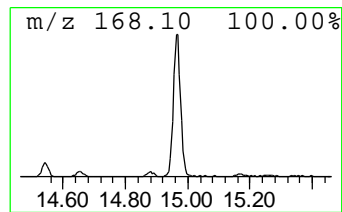
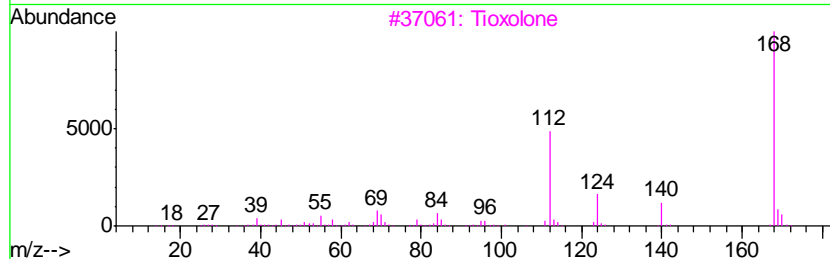
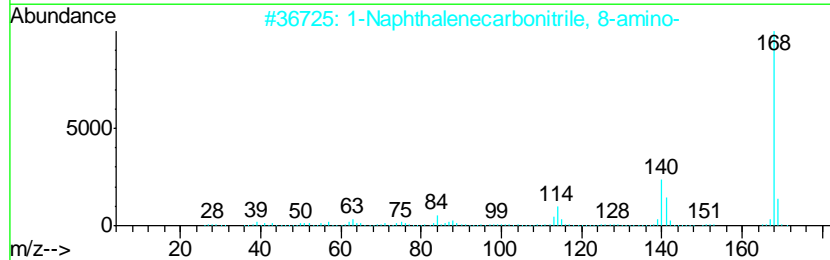
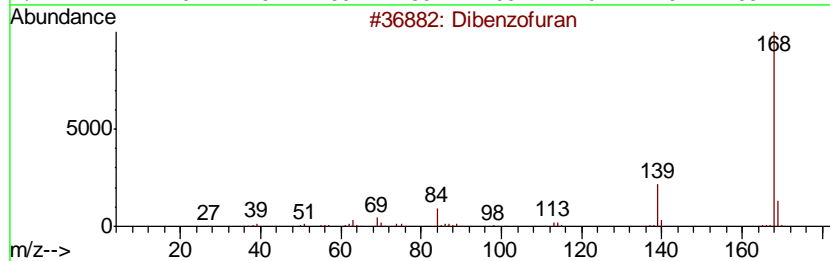
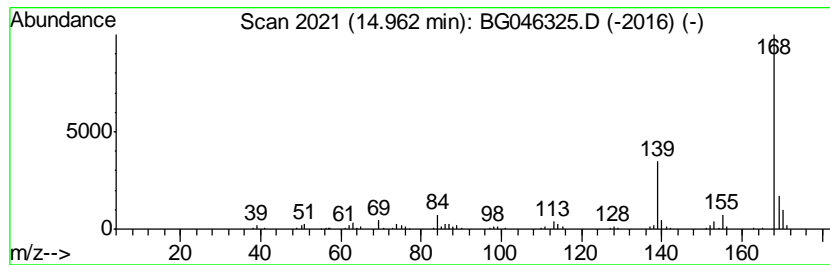
Quant Method : Z:\SVOASRV\HPCHEM1\BNA_G\METHODS\SOM-EPA-BG081320PAH.M
 Quant Title : SVOA CALIBRATION

TIC Library : C:\DATABASE\NIST11.L
 TIC Integration Parameters: LSCINT.P

 Peak Number 10 Dibenzofuran Concentration Rank 24

R.T.	EstConc	Area	Relative to ISTD	R.T.
14.96	2.32 ng/ul	123077	Acenaphthene-d10	14.57

Hit#	of	Tentative ID	MW	MolForm	CAS#	Qual
1	5	Dibenzofuran	168	C12H8O	000132-64-9	83
2		1-Naphthalenecarbonitrile, 8-amino-	168	C11H8N2	038515-13-8	50
3		Tioxolone	168	C7H4O3S	004991-65-5	45
4		6-Hydroxy-8-mercaptopurine	168	C5H4N4OS	006305-94-8	45
5		Naphtho[2,1-d]imidazole	168	C11H8N2	000233-53-4	43



Data Path : Z:\SVOASRV\HPCHEM1\BNA G\DATA\BG081720\
 Data File : BG046325.D
 Acq On : 18 Aug 2020 13:07
 Operator : CG/JU
 Sample : L3636-04
 Misc :
 ALS Vial : 32 Sample Multiplier: 1

Instrument :
 BNA_G
 ClientSampleID :
 BFMKO

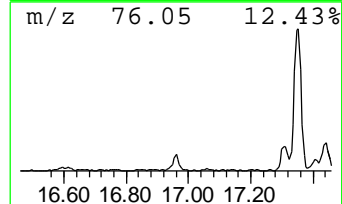
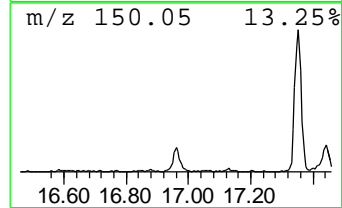
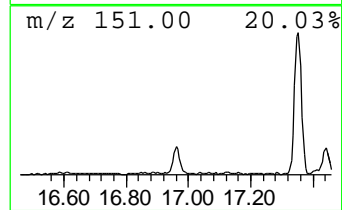
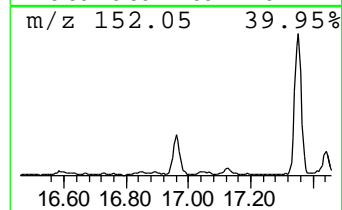
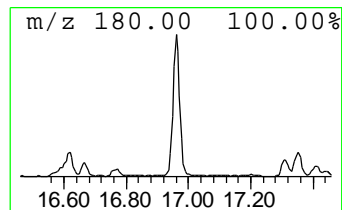
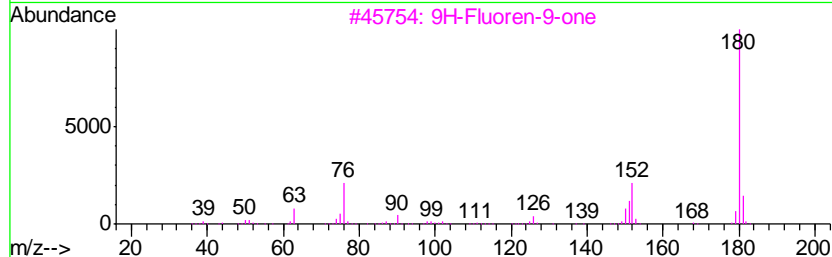
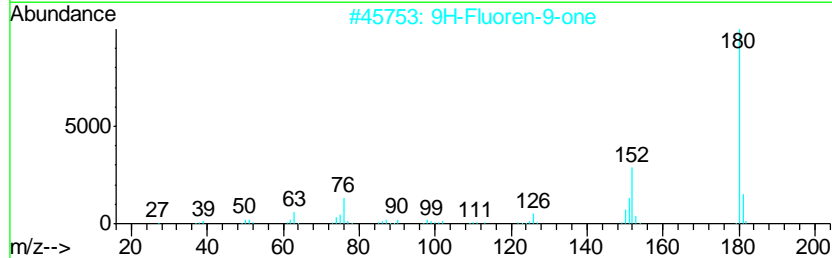
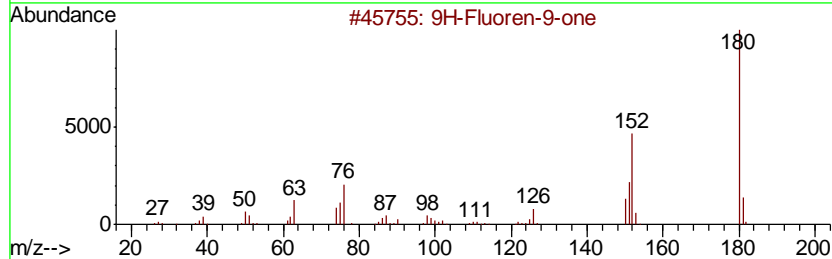
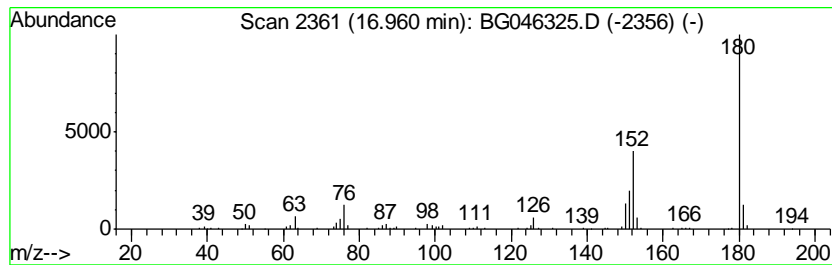
Quant Method : Z:\SVOASRV\HPCHEM1\BNA_G\METHODS\SOM-EPA-BG081320PAH.M
 Quant Title : SVOA CALIBRATION

TIC Library : C:\DATABASE\NIST11.L
 TIC Integration Parameters: LSCINT.P

 Peak Number 11 9H-Fluoren-9-one Concentration Rank 25

R.T.	EstConc	Area	Relative to ISTD	R.T.
16.96	2.28 ng/ul	148916	Phenanthrene-d10	17.31

Hit#	of	Tentative ID	MW	MolForm	CAS#	Qual
1	5	9H-Fluoren-9-one	180	C13H8O	000486-25-9	97
2		9H-Fluoren-9-one	180	C13H8O	000486-25-9	94
3		9H-Fluoren-9-one	180	C13H8O	000486-25-9	91
4		Benzo[h]cinnoline	180	C12H8N2	000230-31-9	91
5		9H-Fluoren-9-one	180	C13H8O	000486-25-9	81



Data Path : Z:\SVOASRV\HPCHEM1\BNA G\DATA\BG081720\
 Data File : BG046325.D
 Acq On : 18 Aug 2020 13:07
 Operator : CG/JU
 Sample : L3636-04
 Misc :
 ALS Vial : 32 Sample Multiplier: 1

Instrument :
 BNA_G
 ClientSampleId :
 BFMKO

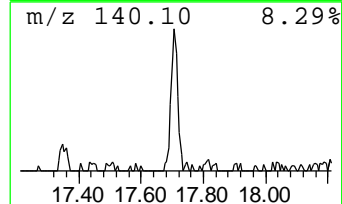
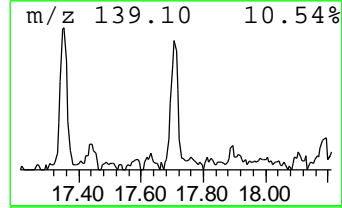
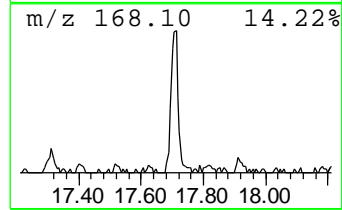
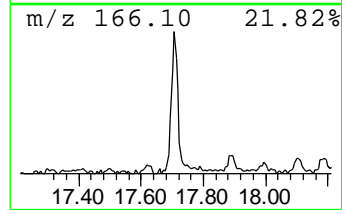
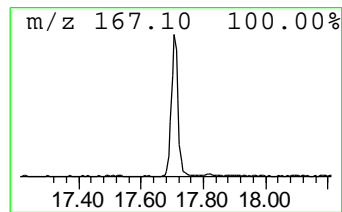
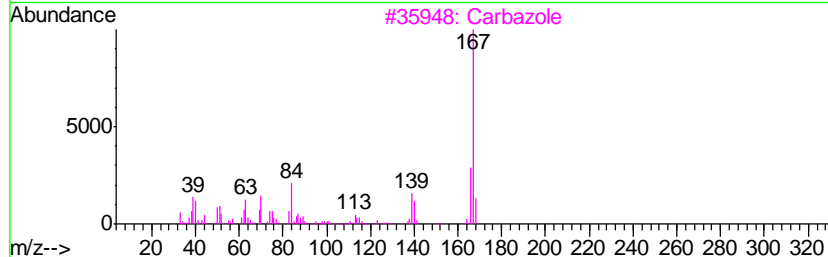
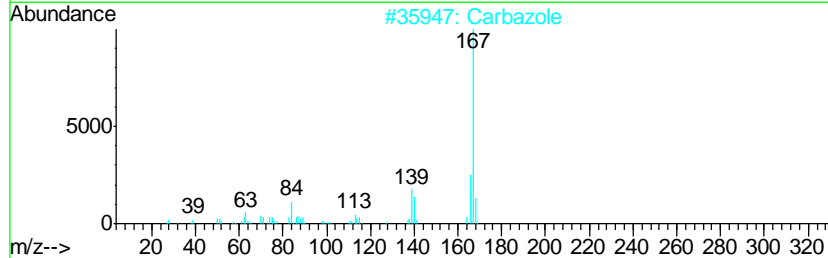
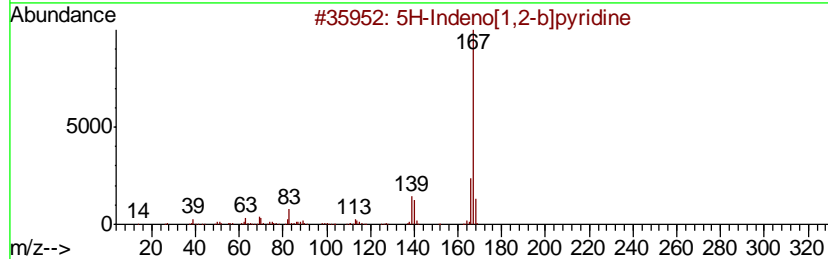
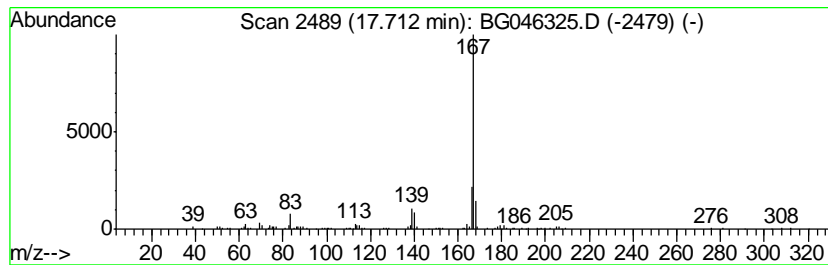
Quant Method : Z:\SVOASRV\HPCHEM1\BNA_G\METHODS\SOM-EPA-BG081320PAH.M
 Quant Title : SVOA CALIBRATION

TIC Library : C:\DATABASE\NIST11.L
 TIC Integration Parameters: LSCINT.P

 Peak Number 12 5H-Indeno[1,2-b]pyridine Concentration Rank 16

R.T.	EstConc	Area	Relative to ISTD	R.T.
17.71	3.16 ng/ul	206542	Phenanthrene-d10	17.31

Hit#	of	Tentative ID	MW	MolForm	CAS#	Qual
1	5	5H-Indeno[1,2-b]pyridine	167	C12H9N	000244-99-5	90
2		Carbazole	167	C12H9N	000086-74-8	90
3		Carbazole	167	C12H9N	000086-74-8	87
4		5H-Indeno[1,2-b]pyridine	167	C12H9N	000244-99-5	86
5		Carbazole	167	C12H9N	000086-74-8	81



Data Path : Z:\SVOASRV\HPCHEM1\BNA G\DATA\BG081720\
 Data File : BG046325.D
 Acq On : 18 Aug 2020 13:07
 Operator : CG/JU
 Sample : L3636-04
 Misc :
 ALS Vial : 32 Sample Multiplier: 1

Instrument :
 BNA_G
 ClientSampled :
 BFMKO

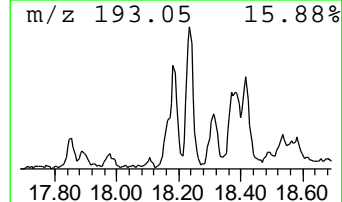
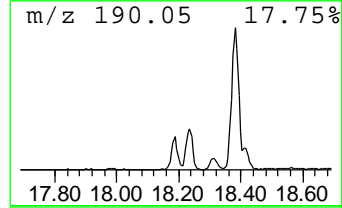
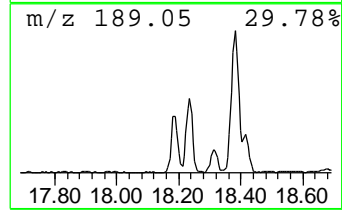
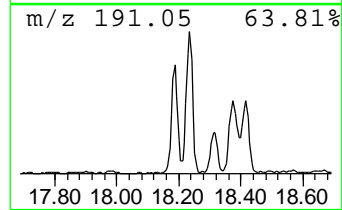
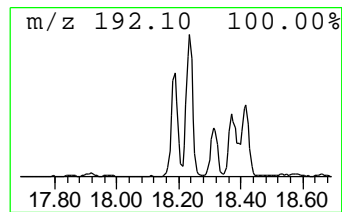
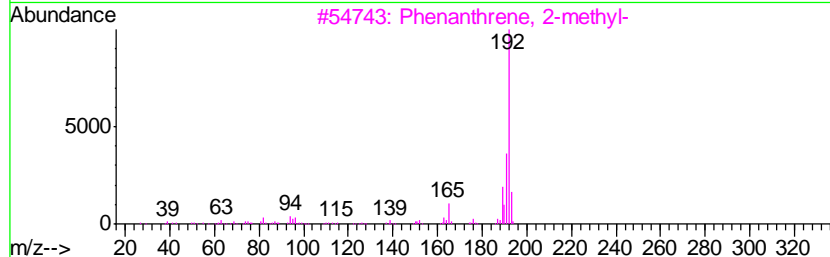
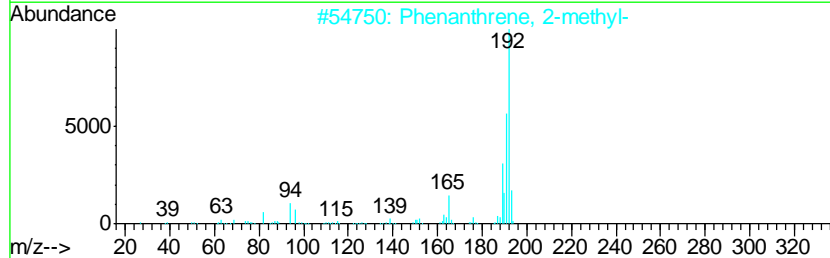
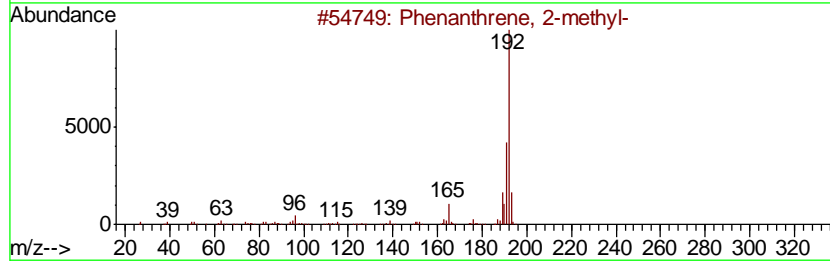
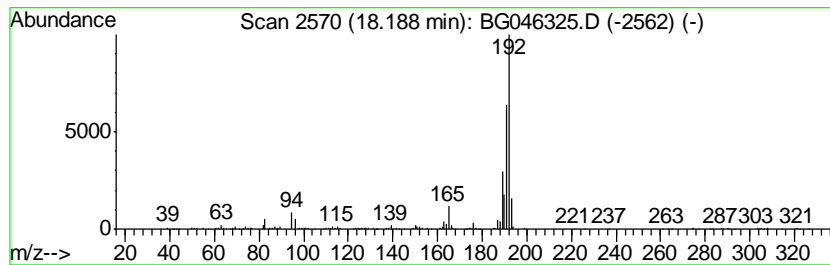
Quant Method : Z:\SVOASRV\HPCHEM1\BNA_G\METHODS\SOM-EPA-BG081320PAH.M
 Quant Title : SVOA CALIBRATION

TIC Library : C:\DATABASE\NIST11.L
 TIC Integration Parameters: LSCINT.P

 Peak Number 13 Phenanthrene, 2-methyl- Concentration Rank 10

R.T.	EstConc	Area	Relative to ISTD	R.T.
18.19	4.48 ng/ul	292375	Phenanthrene-d10	17.31

Hit#	of	Tentative ID	MW	MolForm	CAS#	Qual
1	5	Phenanthrene, 2-methyl-	192	C15H12	002531-84-2	95
2		Phenanthrene, 2-methyl-	192	C15H12	002531-84-2	95
3		Phenanthrene, 2-methyl-	192	C15H12	002531-84-2	94
4		Anthracene, 9-methyl-	192	C15H12	000779-02-2	94
5		Anthracene, 2-methyl-	192	C15H12	000613-12-7	93



Data Path : Z:\SVOASRV\HPCHEM1\BNA G\DATA\BG081720\
 Data File : BG046325.D
 Acq On : 18 Aug 2020 13:07
 Operator : CG/JU
 Sample : L3636-04
 Misc :
 ALS Vial : 32 Sample Multiplier: 1

Instrument :
 BNA_G
 ClientSampleId :
 BFMKO

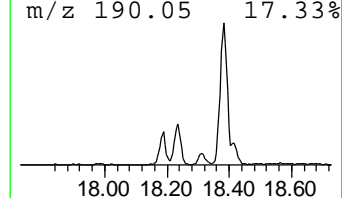
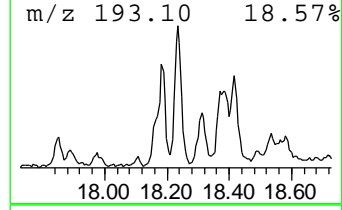
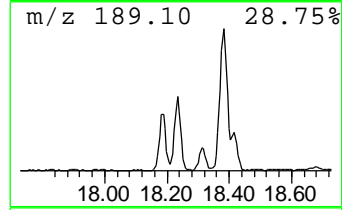
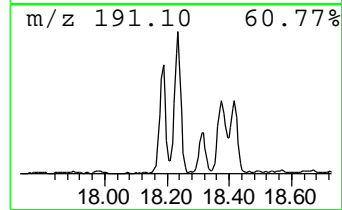
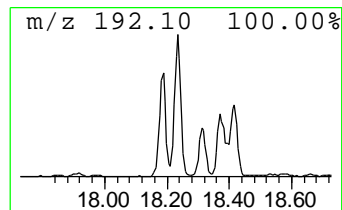
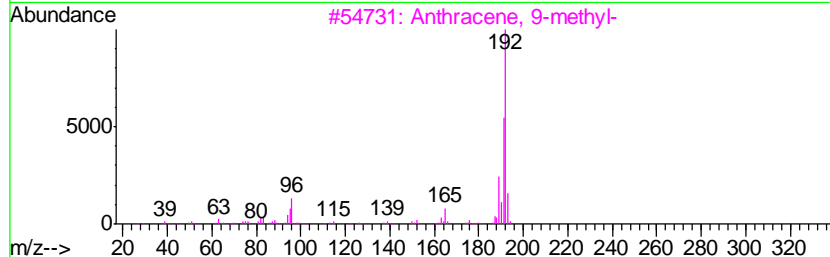
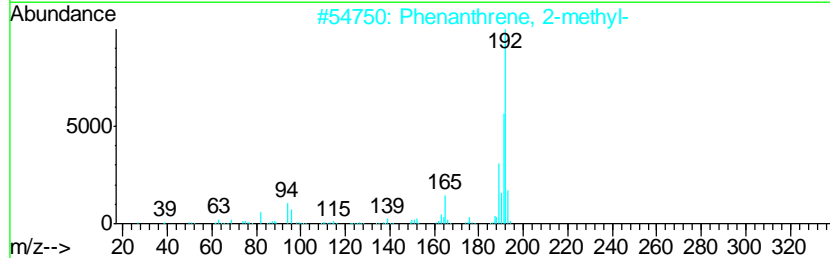
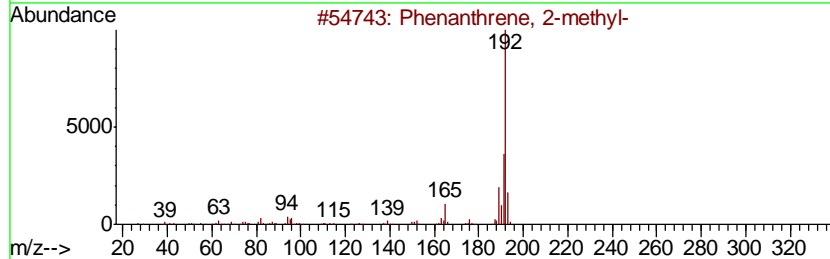
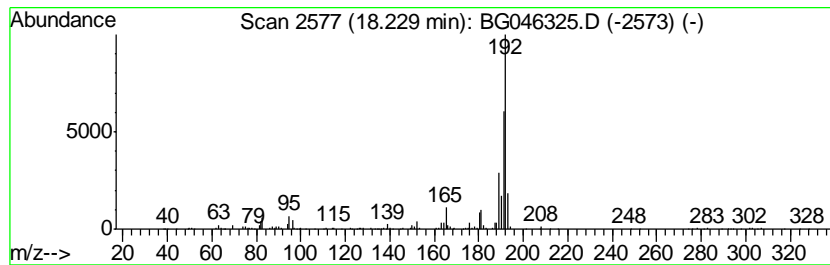
Quant Method : Z:\SVOASRV\HPCHEM1\BNA_G\METHODS\SOM-EPA-BG081320PAH.M
 Quant Title : SVOA CALIBRATION

TIC Library : C:\DATABASE\NIST11.L
 TIC Integration Parameters: LSCINT.P

 Peak Number 14 Anthracene, 9-methyl- Concentration Rank 3

R.T.	EstConc	Area	Relative to ISTD	R.T.
18.23	6.18 ng/ul	403333	Phenanthrene-d10	17.31

Hit#	of	Tentative ID	MW	MolForm	CAS#	Qual
1	5	Phenanthrene, 2-methyl-	192	C15H12	002531-84-2	95
2		Phenanthrene, 2-methyl-	192	C15H12	002531-84-2	94
3		Anthracene, 9-methyl-	192	C15H12	000779-02-2	94
4		Phenanthrene, 2-methyl-	192	C15H12	002531-84-2	93
5		Anthracene, 9-methyl-	192	C15H12	000779-02-2	93



Data Path : Z:\SVOASRV\HPCHEM1\BNA G\DATA\BG081720\
 Data File : BG046325.D
 Acq On : 18 Aug 2020 13:07
 Operator : CG/JU
 Sample : L3636-04
 Misc :
 ALS Vial : 32 Sample Multiplier: 1

Instrument :
 BNA_G
 ClientSampleID :
 BFMKO

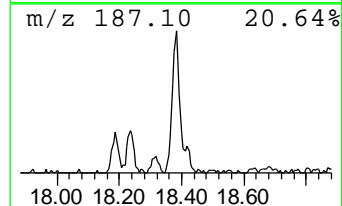
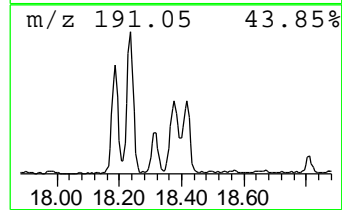
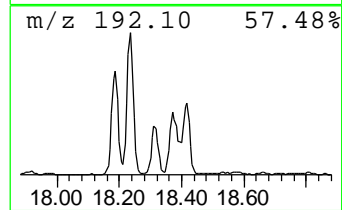
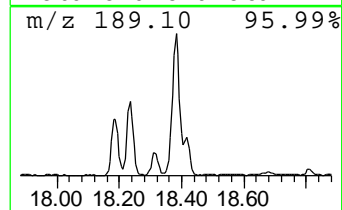
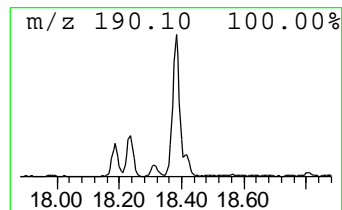
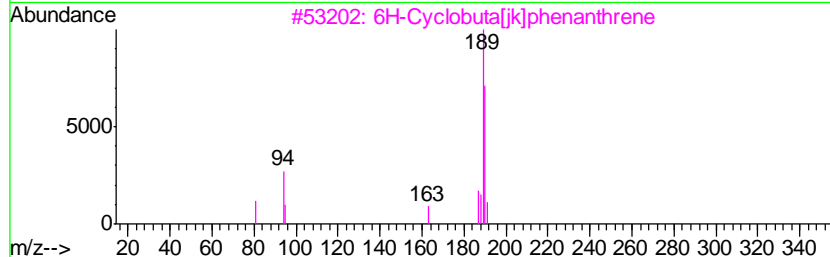
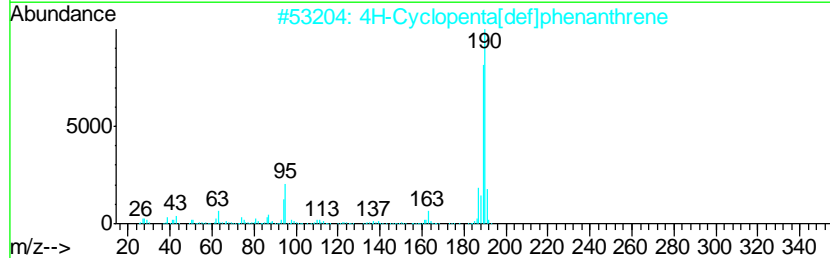
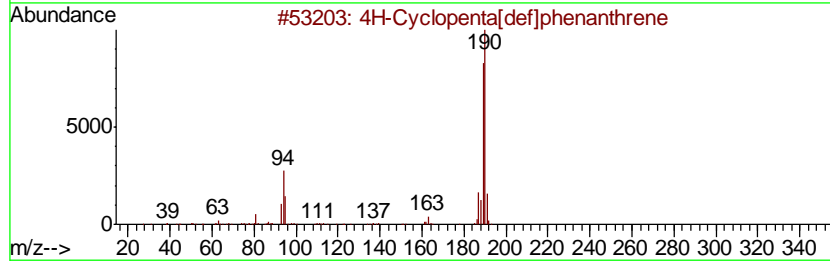
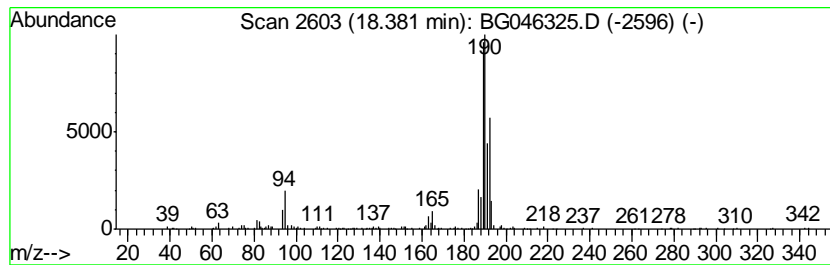
Quant Method : Z:\SVOASRV\HPCHEM1\BNA_G\METHODS\SOM-EPA-BG081320PAH.M
 Quant Title : SVOA CALIBRATION

TIC Library : C:\DATABASE\NIST11.L
 TIC Integration Parameters: LSCINT.P

 Peak Number 15 4H-Cyclopenta[def]phenanthrene Concentration Rank 6

R.T.	EstConc	Area	Relative to ISTD	R.T.
18.38	5.84 ng/ul	380957	Phenanthrene-d10	17.31

Hit#	of	Tentative ID	MW	MolForm	CAS#	Qual
1	5	4H-Cyclopenta[def]phenanthrene	190	C15H10	000203-64-5	93
2		4H-Cyclopenta[def]phenanthrene	190	C15H10	000203-64-5	60
3		6H-Cyclobuta[ik]phenanthrene	190	C15H10	083469-43-6	53
4		4H-Cyclopenta[def]phenanthrene	190	C15H10	000203-64-5	49
5		Anthracene, 1-methyl-	192	C15H12	000610-48-0	30



Data Path : Z:\SVOASRV\HPCHEM1\BNA G\DATA\BG081720\
 Data File : BG046325.D
 Acq On : 18 Aug 2020 13:07
 Operator : CG/JU
 Sample : L3636-04
 Misc :
 ALS Vial : 32 Sample Multiplier: 1

Instrument :
 BNA_G
 ClientSampleID :
 BFMKO

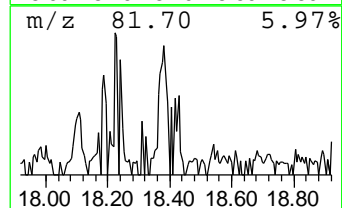
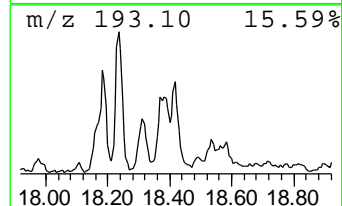
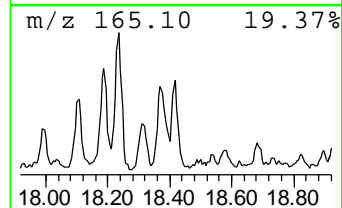
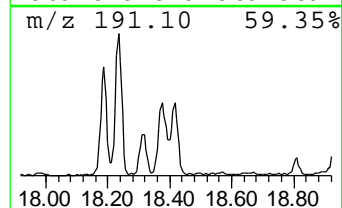
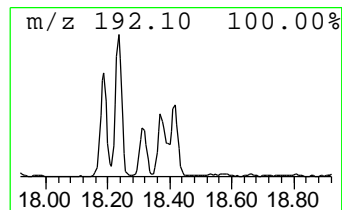
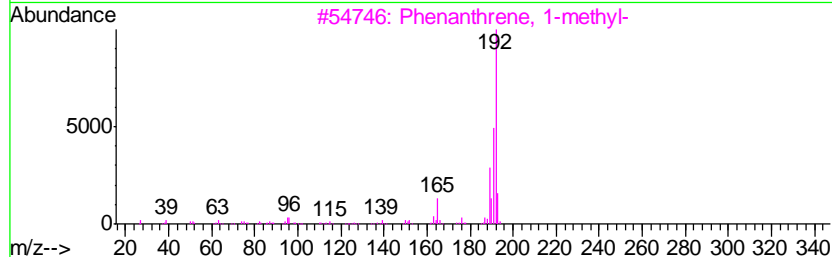
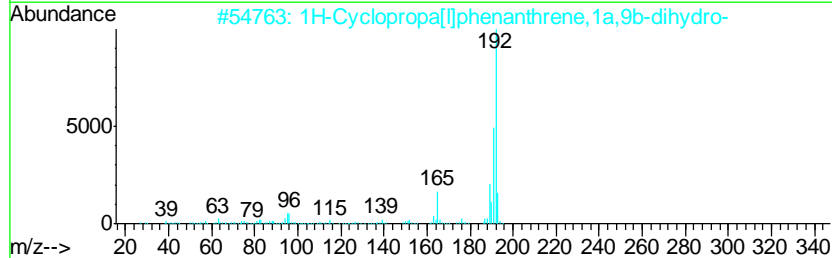
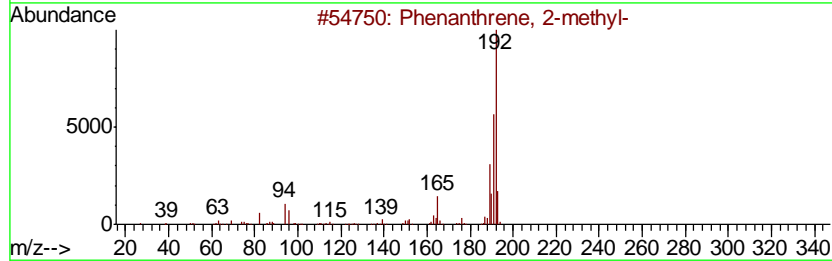
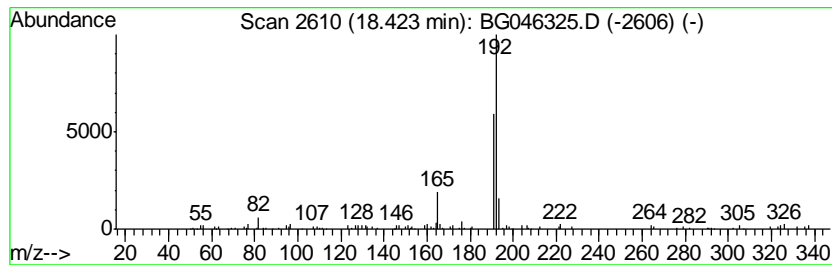
Quant Method : Z:\SVOASRV\HPCHEM1\BNA_G\METHODS\SOM-EPA-BG081320PAH.M
 Quant Title : SVOA CALIBRATION

TIC Library : C:\DATABASE\NIST11.L
 TIC Integration Parameters: LSCINT.P

 Peak Number 16 1H-Cyclopropa[l]phenanthren... Concentration Rank 21

R.T.	EstConc	Area	Relative to ISTD	R.T.
18.42	2.53 ng/ul	165206	Phenanthrene-d10	17.31

Hit#	of	Tentative ID	MW	MolForm	CAS#	Qual
1	5	Phenanthrene, 2-methyl-	192	C15H12	002531-84-2	90
2		1H-Cyclopropa[l]phenanthrene,1a,...	192	C15H12	000949-41-7	87
3		Phenanthrene, 1-methyl-	192	C15H12	000832-69-9	86
4		Anthracene, 1-methyl-	192	C15H12	000610-48-0	86
5		1H-Indene, 1-phenyl-	192	C15H12	001961-96-2	86



Data Path : Z:\SVOASRV\HPCHEM1\BNA G\DATA\BG081720\
 Data File : BG046325.D
 Acq On : 18 Aug 2020 13:07
 Operator : CG/JU
 Sample : L3636-04
 Misc :
 ALS Vial : 32 Sample Multiplier: 1

Instrument :
 BNA_G
 ClientSampleId :
 BFMKO

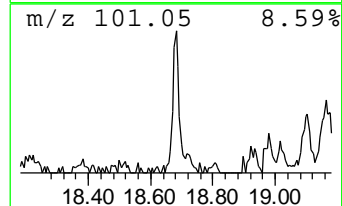
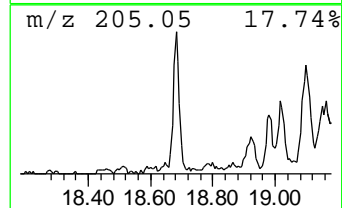
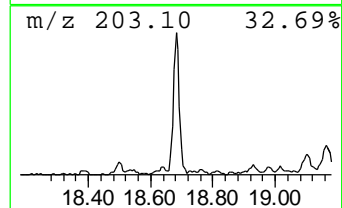
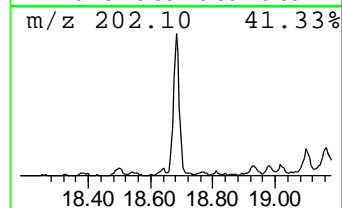
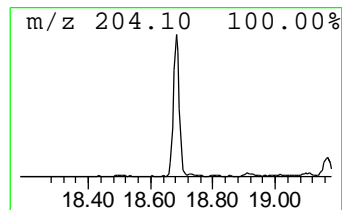
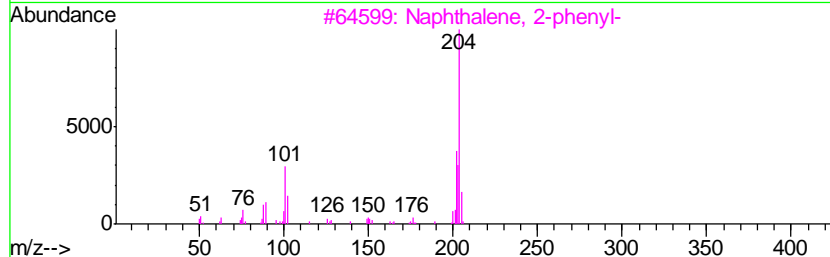
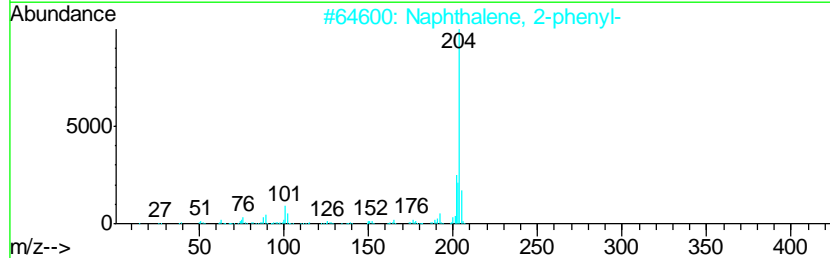
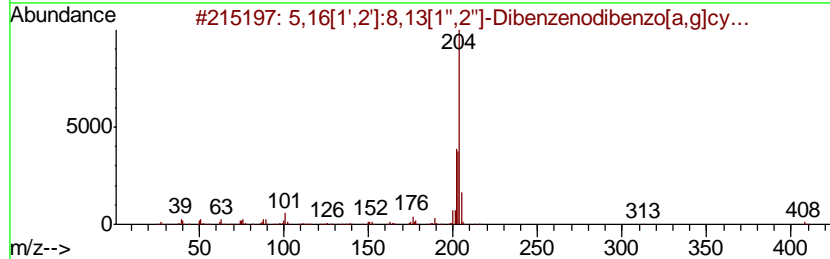
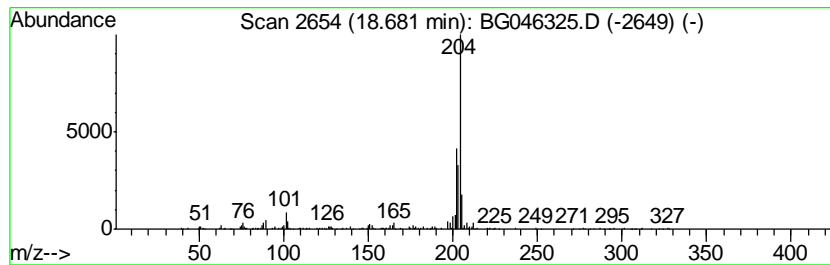
Quant Method : Z:\SVOASRV\HPCHEM1\BNA_G\METHODS\SOM-EPA-BG081320PAH.M
 Quant Title : SVOA CALIBRATION

TIC Library : C:\DATABASE\NIST11.L
 TIC Integration Parameters: LSCINT.P

 Peak Number 17 5,16[1',2']:8,13[1'',2'']-D... Concentration Rank 15

R.T.	EstConc	Area	Relative to ISTD	R.T.
18.68	3.19 ng/ul	208381	Phenanthrene-d10	17.31

Hit#	of	Tentative ID	MW	MolForm	CAS#	Qual
1	5	5,16[1',2']:8,13[1'',2'']-Dibenz...	408	C32H24	005672-97-9	90
2		Naphthalene, 2-phenyl-	204	C16H12	000612-94-2	70
3		Naphthalene, 2-phenyl-	204	C16H12	000612-94-2	64
4		Naphthalene, 2-phenyl-	204	C16H12	000612-94-2	64
5		Tricyclo[8.2.2.2(4,7)]hexadeca-2...	204	C16H12	006572-60-7	62



Data Path : Z:\SVOASRV\HPCHEM1\BNA G\DATA\BG081720\
 Data File : BG046325.D
 Acq On : 18 Aug 2020 13:07
 Operator : CG/JU
 Sample : L3636-04
 Misc :
 ALS Vial : 32 Sample Multiplier: 1

Instrument :
 BNA_G
 ClientSampleId :
 BFMKO

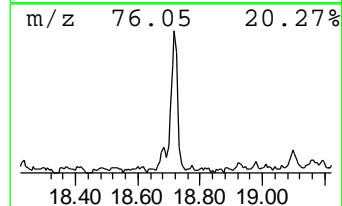
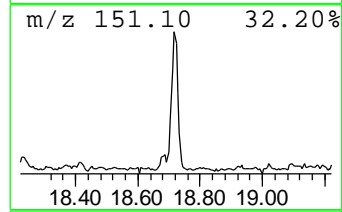
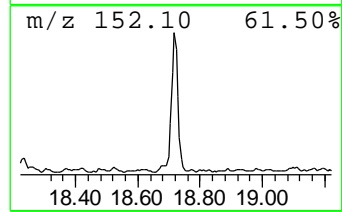
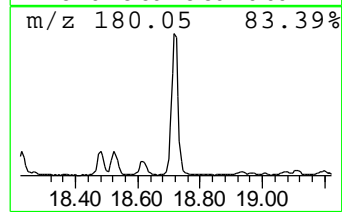
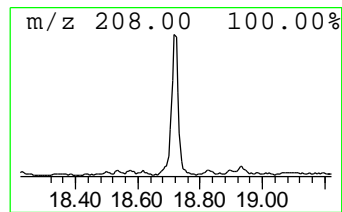
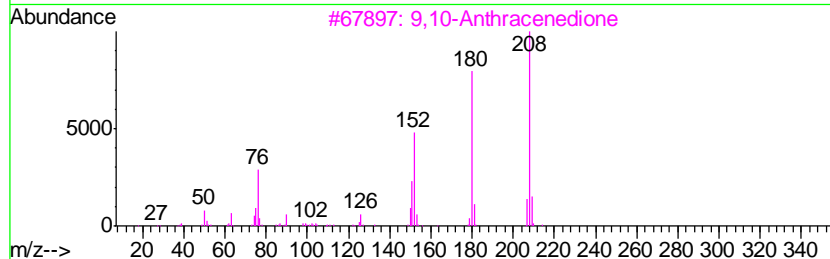
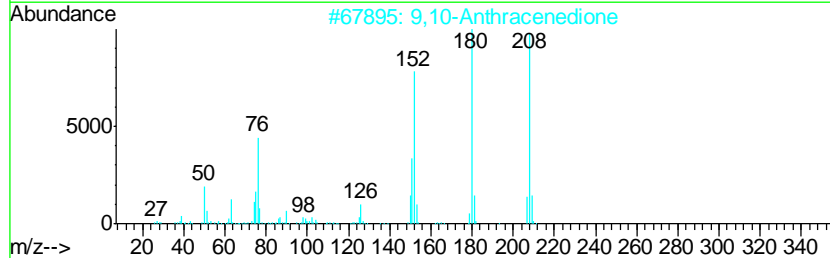
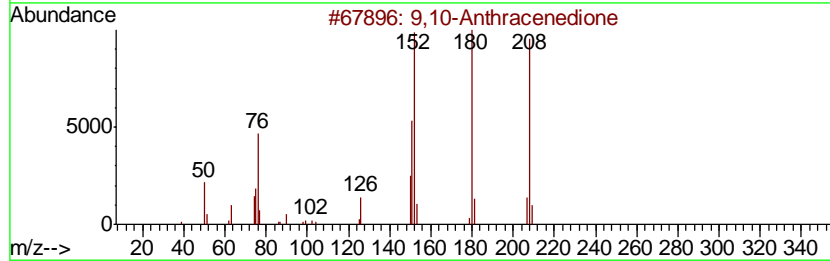
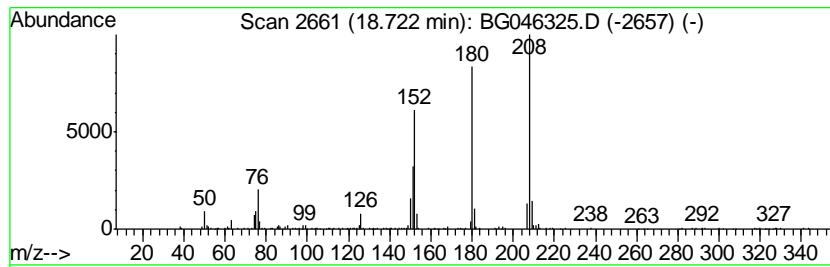
Quant Method : Z:\SVOASRV\HPCHEM1\BNA_G\METHODS\SOM-EPA-BG081320PAH.M
 Quant Title : SVOA CALIBRATION

TIC Library : C:\DATABASE\NIST11.L
 TIC Integration Parameters: LSCINT.P

 Peak Number 18 9,10-Anthracenedione Concentration Rank 12

R.T.	EstConc	Area	Relative to ISTD	R.T.
18.72	4.03 ng/ul	262795	Phenanthrene-d10	17.31

Hit#	of	Tentative ID	MW	MolForm	CAS#	Qual
1	5	9,10-Anthracenedione	208	C14H8O2	000084-65-1	96
2		9,10-Anthracenedione	208	C14H8O2	000084-65-1	96
3		9,10-Anthracenedione	208	C14H8O2	000084-65-1	94
4		Benzo[c]cinnoline	180	C12H8N2	000230-17-1	60
5		Benzo[c]cinnoline	180	C12H8N2	000230-17-1	60



Data Path : Z:\SVOASRV\HPCHEM1\BNA G\DATA\BG081720\
 Data File : BG046325.D
 Acq On : 18 Aug 2020 13:07
 Operator : CG/JU
 Sample : L3636-04
 Misc :
 ALS Vial : 32 Sample Multiplier: 1

Instrument :
 BNA_G
 ClientSampleId :
 BFMKO

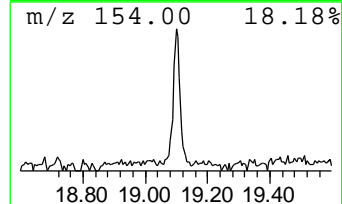
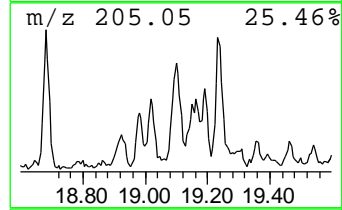
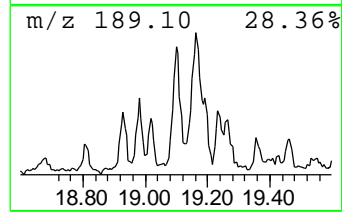
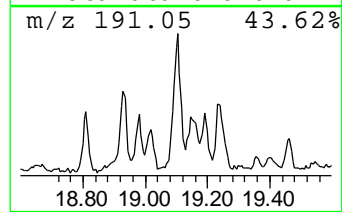
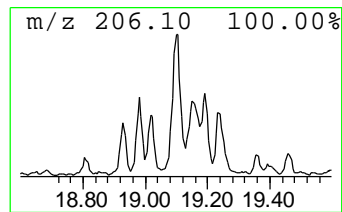
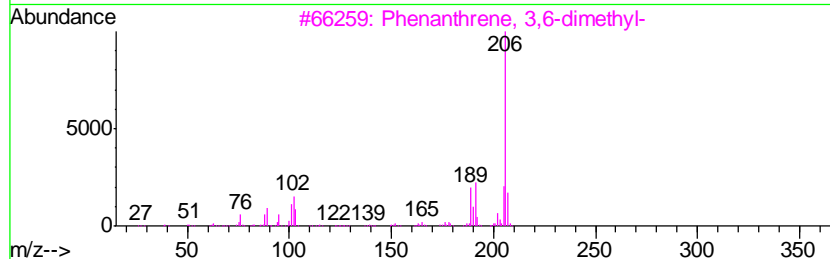
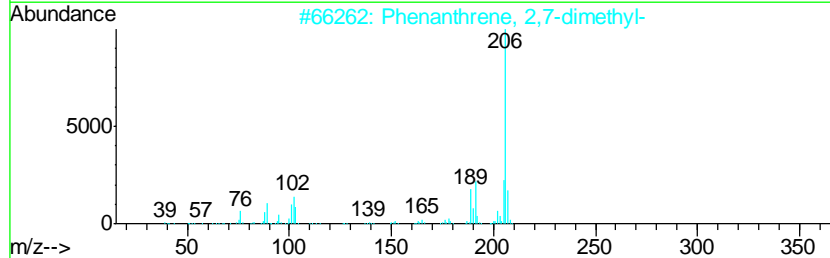
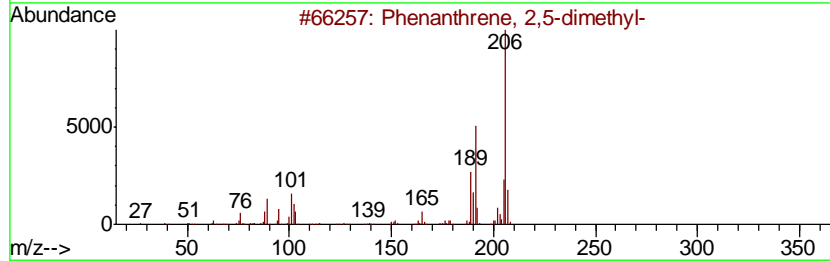
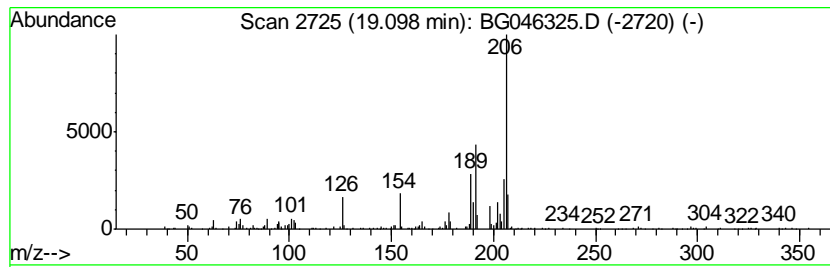
Quant Method : Z:\SVOASRV\HPCHEM1\BNA_G\METHODS\SOM-EPA-BG081320PAH.M
 Quant Title : SVOA CALIBRATION

TIC Library : C:\DATABASE\NIST11.L
 TIC Integration Parameters: LSCINT.P

 Peak Number 19 Phenanthrene, 2,5-dimethyl- Concentration Rank 20

R.T.	EstConc	Area	Relative to ISTD	R.T.
19.10	2.80 ng/ul	182589	Phenanthrene-d10	17.31

Hit#	of	Tentative ID	MW	MolForm	CAS#	Qual
1	5	Phenanthrene, 2,5-dimethyl-	206	C16H14	003674-66-6	93
2		Phenanthrene, 2,7-dimethyl-	206	C16H14	001576-69-8	87
3		Phenanthrene, 3,6-dimethyl-	206	C16H14	001576-67-6	83
4		Phenanthrene, 2,3-dimethyl-	206	C16H14	003674-65-5	81
5		Phenanthrene, 1,7-dimethyl-	206	C16H14	000483-87-4	81



Data Path : Z:\SVOASRV\HPCHEM1\BNA G\DATA\BG081720\
 Data File : BG046325.D
 Acq On : 18 Aug 2020 13:07
 Operator : CG/JU
 Sample : L3636-04
 Misc :
 ALS Vial : 32 Sample Multiplier: 1

Instrument :
 BNA_G
 ClientSampleID :
 BFMKO

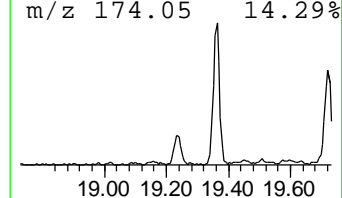
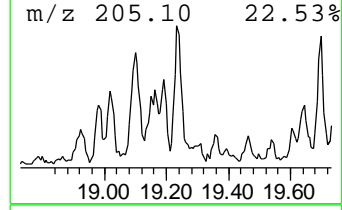
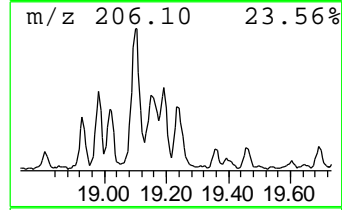
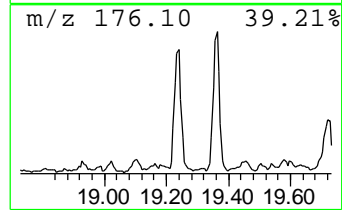
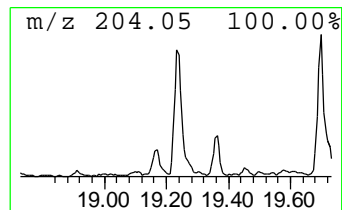
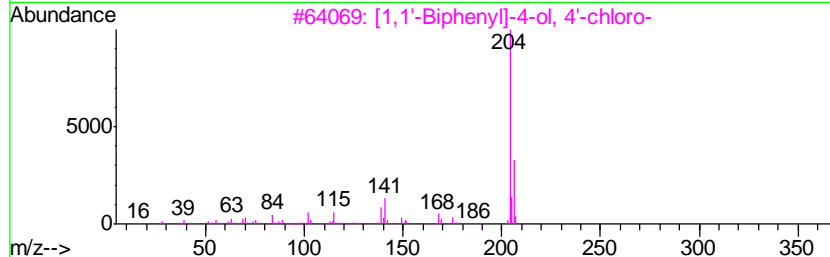
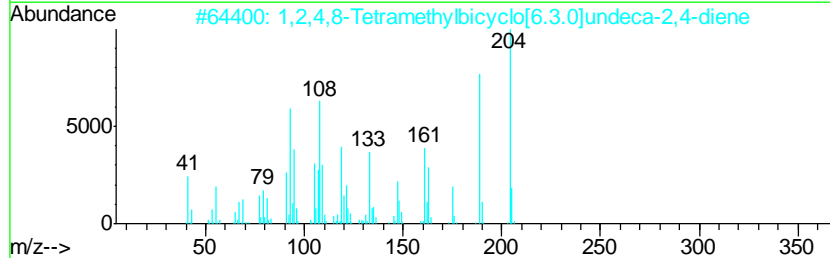
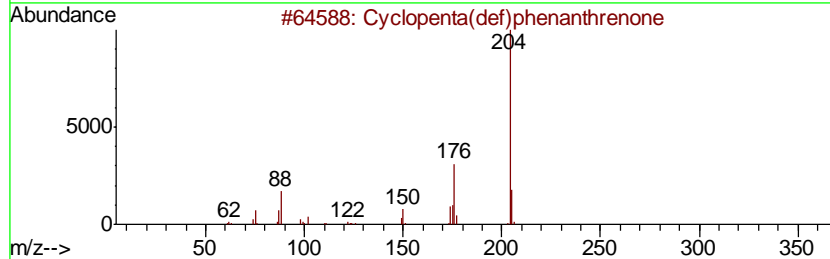
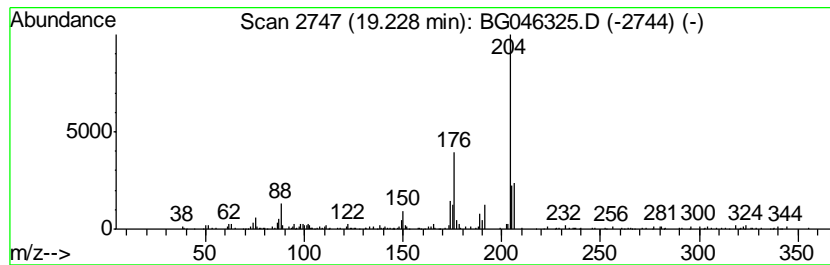
Quant Method : Z:\SVOASRV\HPCHEM1\BNA_G\METHODS\SOM-EPA-BG081320PAH.M
 Quant Title : SVOA CALIBRATION

TIC Library : C:\DATABASE\NIST11.L
 TIC Integration Parameters: LSCINT.P

 Peak Number 20 Cyclopenta(def)phenanthrenone Concentration Rank 14

R.T.	EstConc	Area	Relative to ISTD	R.T.
19.23	3.20 ng/ul	208608	Phenanthrene-d10	17.31

Hit#	of	Tentative ID	MW	MolForm	CAS#	Qual
1	5	Cyclopenta(def)phenanthrenone	204	C15H8O	005737-13-3	89
2		1,2,4,8-Tetramethylbicyclo[6.3.0...]	204	C15H24	137235-51-9	49
3		[1,1'-Biphenyl]-4-ol, 4'-chloro-	204	C12H9ClO	028034-99-3	46
4		Pyrimido[5,4-b]benzofurane, 4-ch...	204	C10H5ClN2O	039876-88-5	46
5		Benzene, 1-chloro-4-phenoxy-	204	C12H9ClO	007005-72-3	46



Data Path : Z:\SVOASRV\HPCHEM1\BNA G\DATA\BG081720\
 Data File : BG046325.D
 Acq On : 18 Aug 2020 13:07
 Operator : CG/JU
 Sample : L3636-04
 Misc :
 ALS Vial : 32 Sample Multiplier: 1

Instrument :
 BNA_G
 ClientSampleId :
 BFMKO

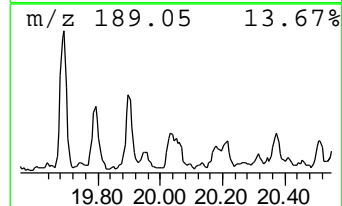
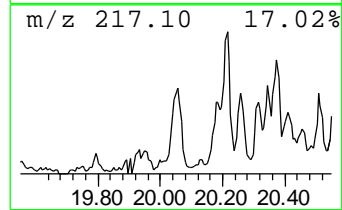
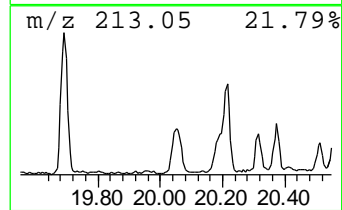
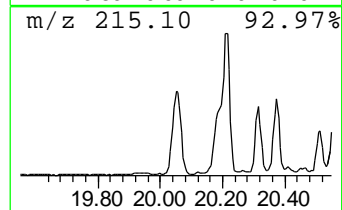
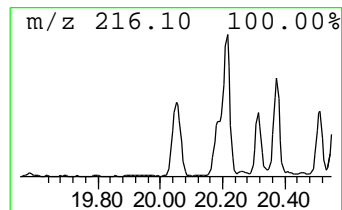
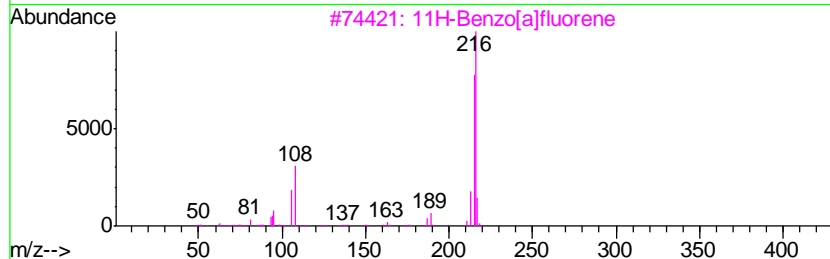
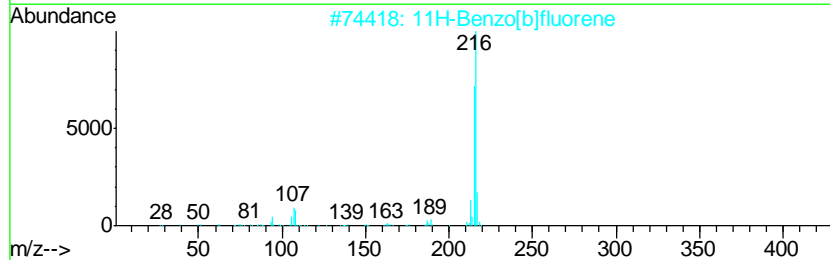
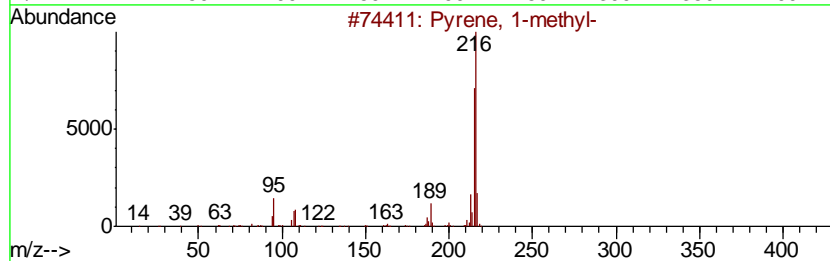
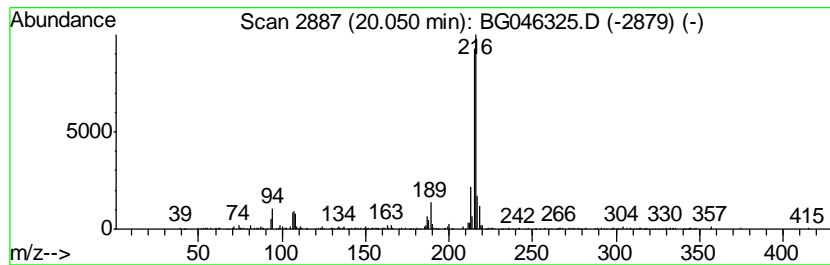
Quant Method : Z:\SVOASRV\HPCHEM1\BNA_G\METHODS\SOM-EPA-BG081320PAH.M
 Quant Title : SVOA CALIBRATION

TIC Library : C:\DATABASE\NIST11.L
 TIC Integration Parameters: LSCINT.P

 Peak Number 21 Pyrene, 1-methyl- Concentration Rank 17

R.T.	EstConc	Area	Relative to ISTD	R.T.
20.05	3.15 ng/ul	391020	Chrysene-d12	21.55

Hit#	of	Tentative ID	MW	MolForm	CAS#	Qual
1	5	Pyrene, 1-methyl-	216	C17H12	002381-21-7	96
2		11H-Benzo[b]fluorene	216	C17H12	000243-17-4	90
3		11H-Benzo[a]fluorene	216	C17H12	000238-84-6	87
4		Fluoranthene, 2-methyl-	216	C17H12	033543-31-6	87
5		11H-Benzo[b]fluorene	216	C17H12	000243-17-4	87



Data Path : Z:\SVOASRV\HPCHEM1\BNA G\DATA\BG081720\
 Data File : BG046325.D
 Acq On : 18 Aug 2020 13:07
 Operator : CG/JU
 Sample : L3636-04
 Misc :
 ALS Vial : 32 Sample Multiplier: 1

Instrument :
 BNA_G
 ClientSampleID :
 BFMKO

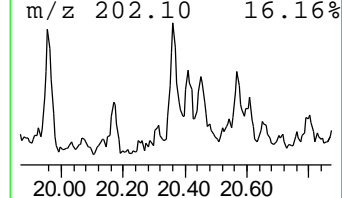
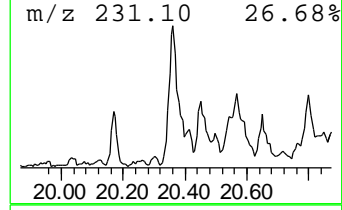
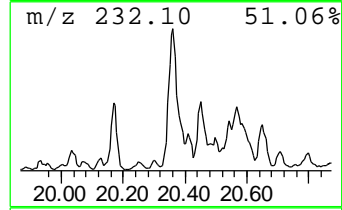
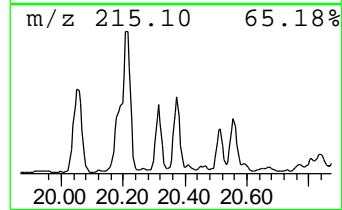
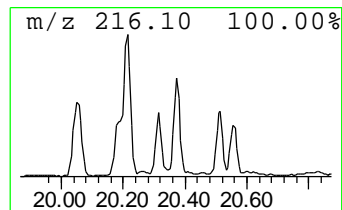
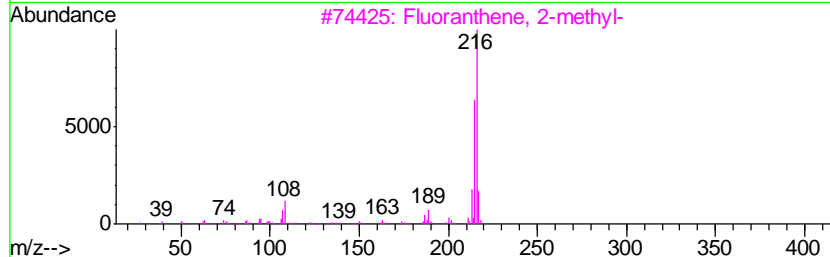
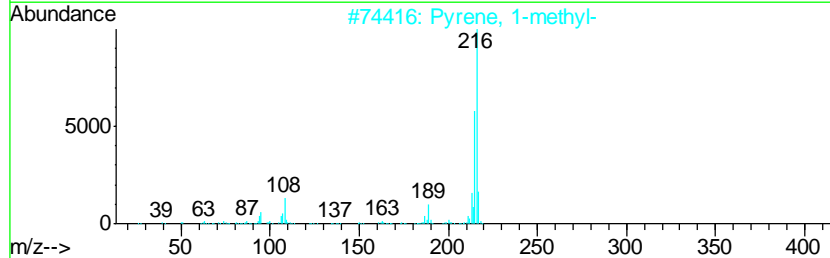
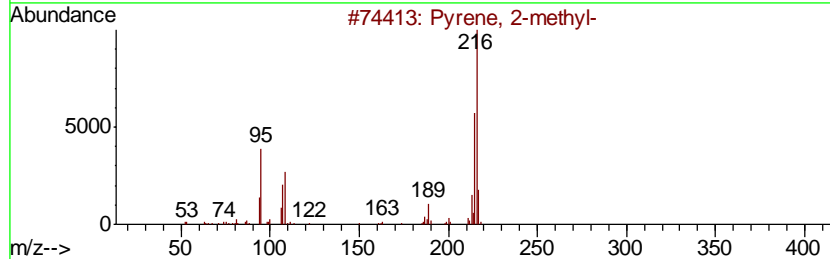
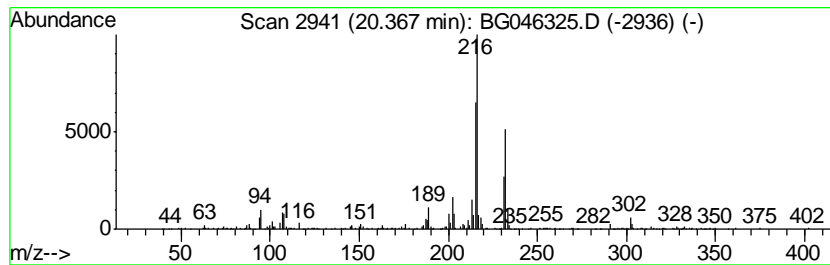
Quant Method : Z:\SVOASRV\HPCHEM1\BNA_G\METHODS\SOM-EPA-BG081320PAH.M
 Quant Title : SVOA CALIBRATION

TIC Library : C:\DATABASE\NIST11.L
 TIC Integration Parameters: LSCINT.P

 Peak Number 22 Pyrene, 2-methyl- Concentration Rank 22

R.T.	EstConc	Area	Relative to ISTD	R.T.
20.37	2.43 ng/ul	301729	Chrysene-d12	21.55

Hit#	of	Tentative ID	MW	MolForm	CAS#	Qual
1	5	Pyrene, 2-methyl-	216	C17H12	003442-78-2	89
2		Pyrene, 1-methyl-	216	C17H12	002381-21-7	86
3		Fluoranthene, 2-methyl-	216	C17H12	033543-31-6	83
4		Pyrene, 1-methyl-	216	C17H12	002381-21-7	76
5		Pyrene, 1-methyl-	216	C17H12	002381-21-7	70



Data Path : Z:\SVOASRV\HPCHEM1\BNA G\DATA\BG081720\
 Data File : BG046325.D
 Acq On : 18 Aug 2020 13:07
 Operator : CG/JU
 Sample : L3636-04
 Misc :
 ALS Vial : 32 Sample Multiplier: 1

Instrument :
 BNA_G
 ClientSampleId :
 BFMKO

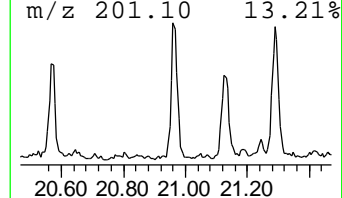
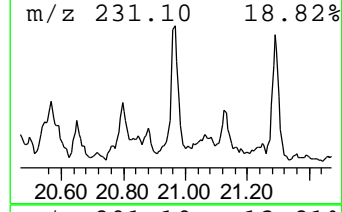
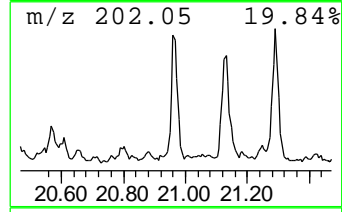
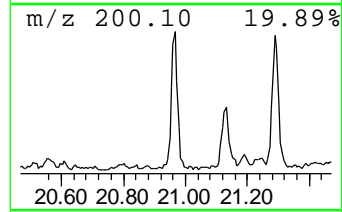
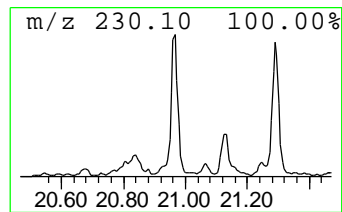
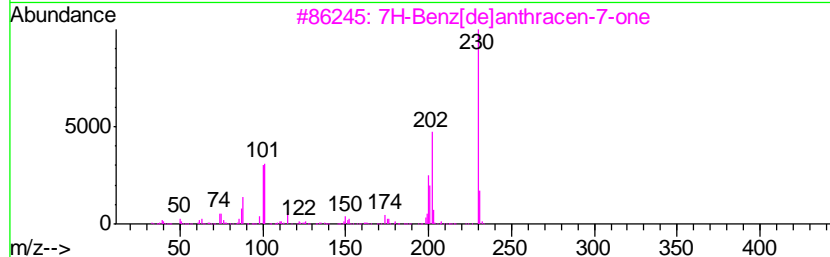
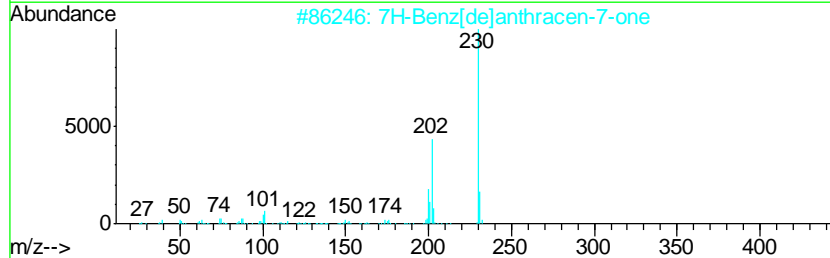
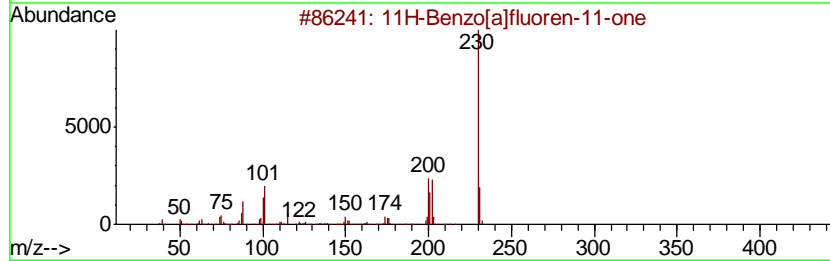
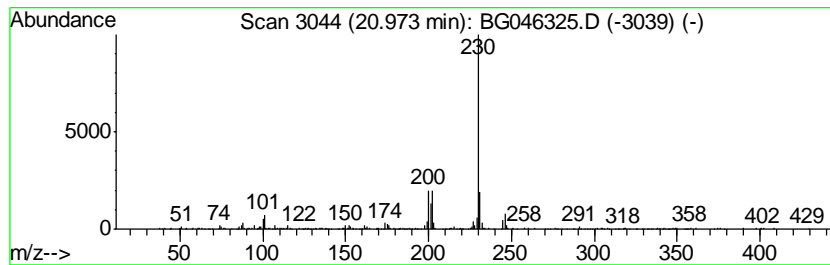
Quant Method : Z:\SVOASRV\HPCHEM1\BNA_G\METHODS\SOM-EPA-BG081320PAH.M
 Quant Title : SVOA CALIBRATION

TIC Library : C:\DATABASE\NIST11.L
 TIC Integration Parameters: LSCINT.P

 Peak Number 23 11H-Benzo[a]fluoren-11-one Concentration Rank 23

R.T.	EstConc	Area	Relative to ISTD	R.T.
20.97	2.36 ng/ul	292648	Chrysene-d12	21.55

Hit#	of	Tentative ID	MW	MolForm	CAS#	Qual
1	5	11H-Benzo[a]fluoren-11-one	230	C17H10O	000479-79-8	97
2		7H-Benz[de]anthracen-7-one	230	C17H10O	000082-05-3	90
3		7H-Benz[de]anthracen-7-one	230	C17H10O	000082-05-3	87
4		7H-Benz[de]anthracen-7-one	230	C17H10O	000082-05-3	74
5		7H-Benz[de]anthracen-7-one	230	C17H10O	000082-05-3	74



Data Path : Z:\SVOASRV\HPCHEM1\BNA G\DATA\BG081720\
 Data File : BG046325.D
 Acq On : 18 Aug 2020 13:07
 Operator : CG/JU
 Sample : L3636-04
 Misc :
 ALS Vial : 32 Sample Multiplier: 1

Instrument :
 BNA_G
 ClientSampleID :
 BFMKO

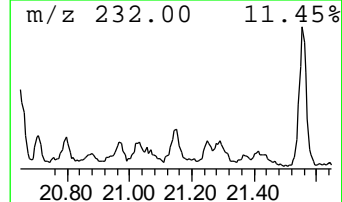
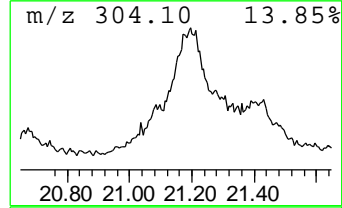
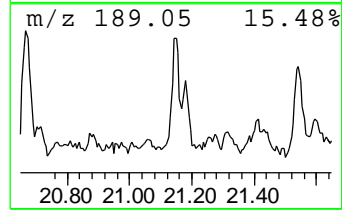
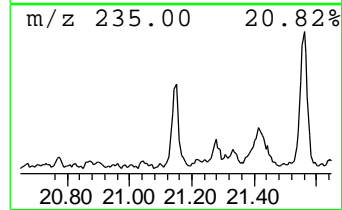
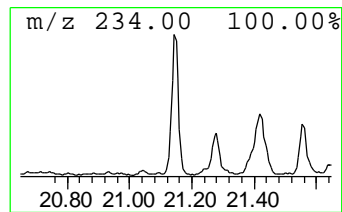
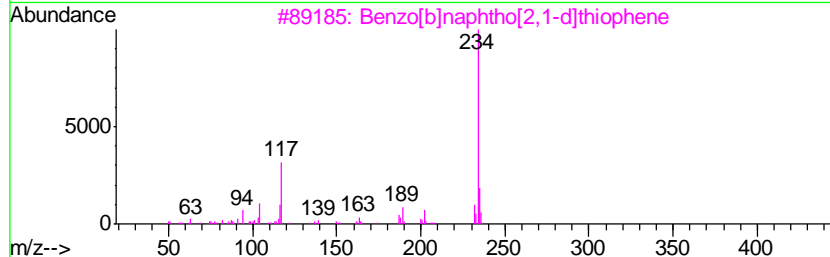
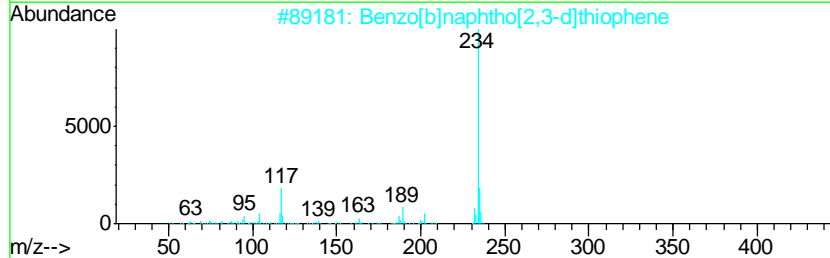
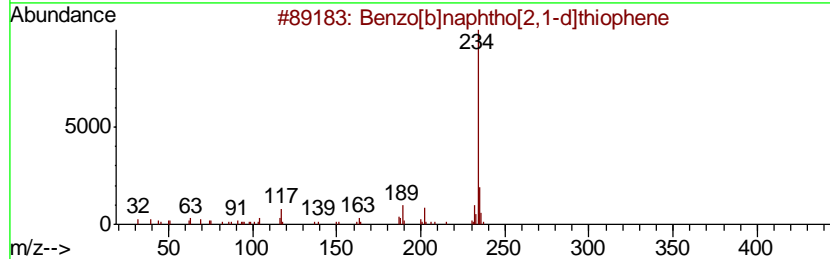
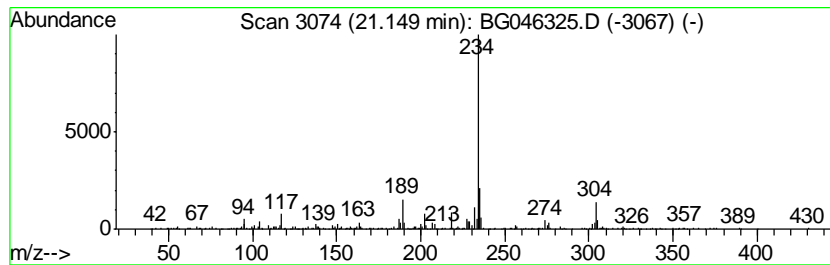
Quant Method : Z:\SVOASRV\HPCHEM1\BNA_G\METHODS\SOM-EPA-BG081320PAH.M
 Quant Title : SVOA CALIBRATION

TIC Library : C:\DATABASE\NIST11.L
 TIC Integration Parameters: LSCINT.P

 Peak Number 24 Benzo[b]naphtho[2,1-d]thiop... Concentration Rank 26

R.T.	EstConc	Area	Relative to ISTD	R.T.
21.15	2.21 ng/ul	273636	Chrysene-d12	21.55

Hit#	of	Tentative ID	MW	MolForm	CAS#	Qual
1	5	Benzo[b]naphtho[2,1-d]thiophene	234	C16H10S	000239-35-0	96
2		Benzo[b]naphtho[2,3-d]thiophene	234	C16H10S	000243-46-9	91
3		Benzo[b]naphtho[2,1-d]thiophene	234	C16H10S	000239-35-0	91
4		Benzo[b]naphtho[2,1-d]thiophene	234	C16H10S	000239-35-0	89
5		Benzo[b]naphtho[1,2-d]thiophene	234	C16H10S	000205-43-6	89



Data Path : Z:\SVOASRV\HPCHEM1\BNA G\DATA\BG081720\
 Data File : BG046325.D
 Acq On : 18 Aug 2020 13:07
 Operator : CG/JU
 Sample : L3636-04
 Misc :
 ALS Vial : 32 Sample Multiplier: 1

Instrument :
 BNA_G
 ClientSampled :
 BFMKO

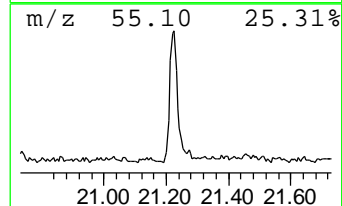
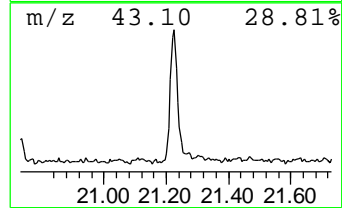
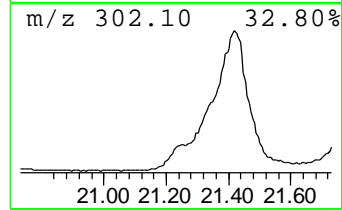
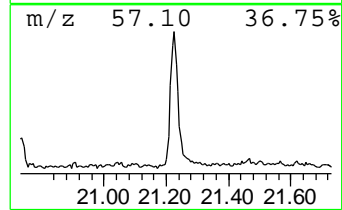
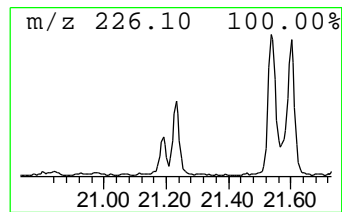
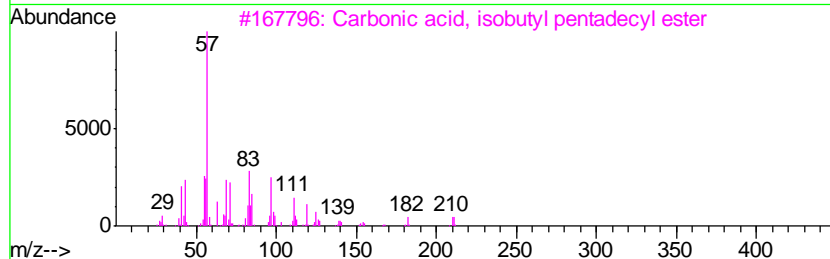
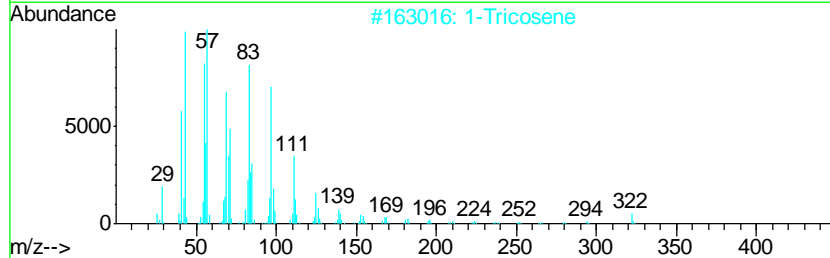
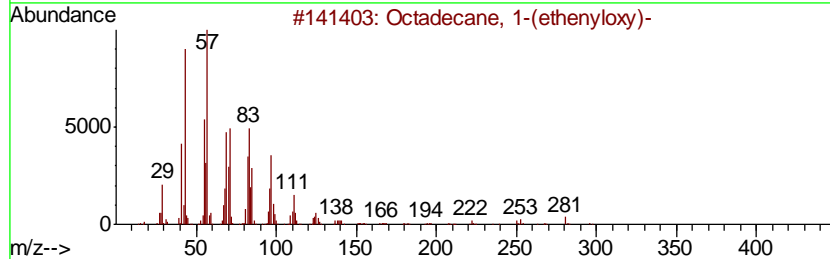
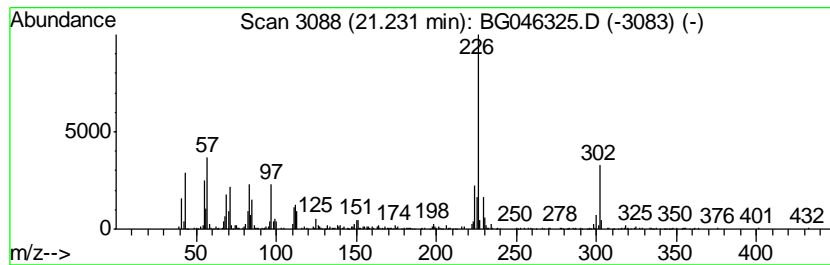
Quant Method : Z:\SVOASRV\HPCHEM1\BNA_G\METHODS\SOM-EPA-BG081320PAH.M
 Quant Title : SVOA CALIBRATION

TIC Library : C:\DATABASE\NIST11.L
 TIC Integration Parameters: LSCINT.P

 Peak Number 25 unknown-08 Concentration Rank 13

R.T.	EstConc	Area	Relative to ISTD	R.T.
21.23	3.41 ng/ul	422767	Chrysene-d12	21.55

Hit#	of	Tentative ID	MW	MolForm	CAS#	Qual
1	5	Octadecane, 1-(ethenyloxy)-	296	C20H40O	000930-02-9	41
2		1-Tricosene	322	C23H46	018835-32-0	38
3		Carbonic acid, isobutyl pentadec...	328	C20H40O3	1000314-61-2	38
4		Eicosyl pentafluoropropionate	444	C23H41F5O2	1000351-80-8	38
5		Octacosanol	410	C28H58O	000557-61-9	38



Data Path : Z:\SVOASRV\HPCHEM1\BNA G\DATA\BG081720\
 Data File : BG046325.D
 Acq On : 18 Aug 2020 13:07
 Operator : CG/JU
 Sample : L3636-04
 Misc :
 ALS Vial : 32 Sample Multiplier: 1

Instrument :
 BNA_G
 ClientSampleID :
 BFMKO

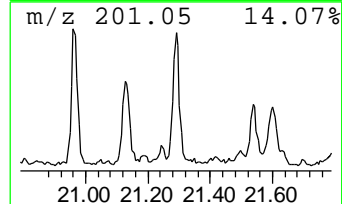
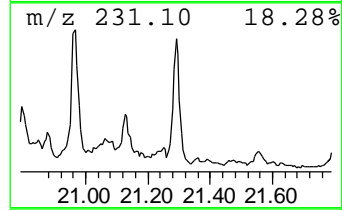
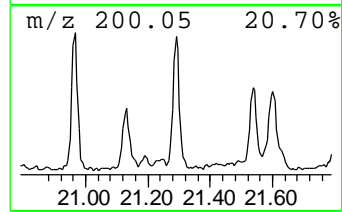
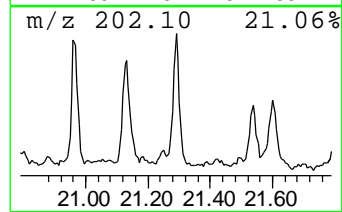
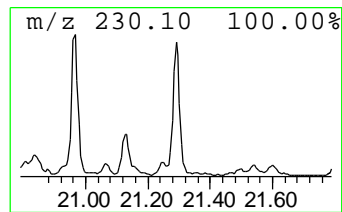
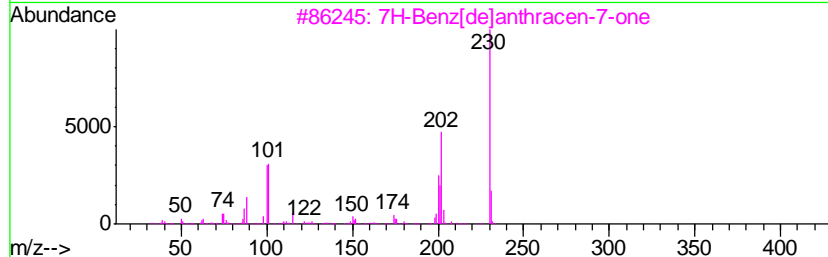
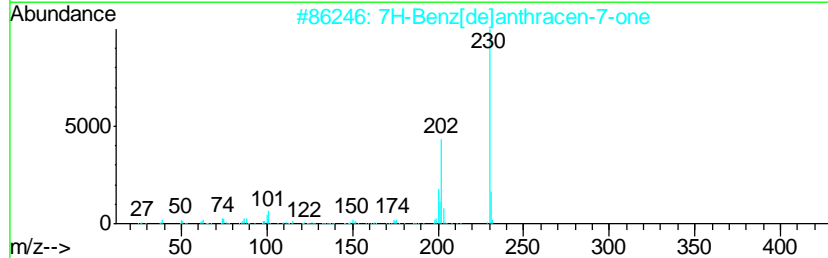
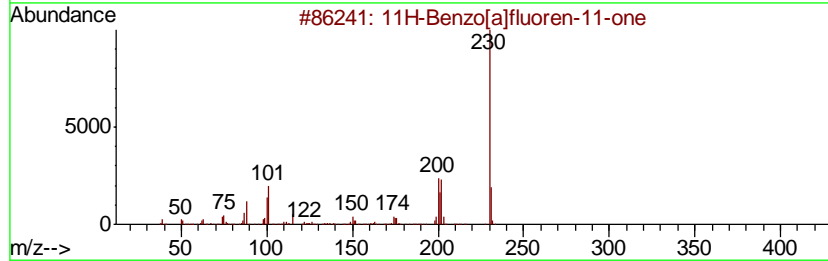
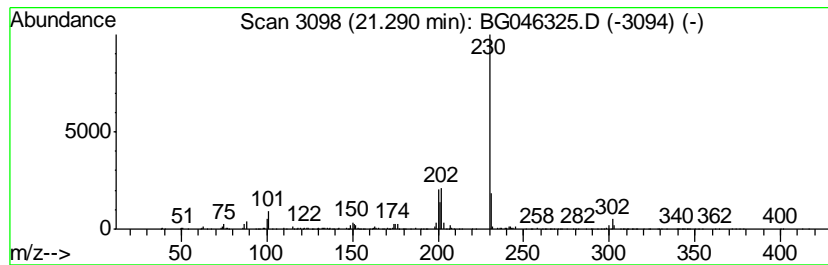
Quant Method : Z:\SVOASRV\HPCHEM1\BNA_G\METHODS\SOM-EPA-BG081320PAH.M
 Quant Title : SVOA CALIBRATION

TIC Library : C:\DATABASE\NIST11.L
 TIC Integration Parameters: LSCINT.P

 Peak Number 26 7H-Benz[de]anthracen-7-one Concentration Rank 27

R.T.	EstConc	Area	Relative to ISTD	R.T.
21.29	2.05 ng/ul	254736	Chrysene-d12	21.55

Hit#	of	Tentative ID	MW	MolForm	CAS#	Qual
1	5	11H-Benzo[a]fluoren-11-one	230	C17H10O	000479-79-8	93
2		7H-Benz[de]anthracen-7-one	230	C17H10O	000082-05-3	90
3		7H-Benz[de]anthracen-7-one	230	C17H10O	000082-05-3	83
4		7H-Benz[de]anthracen-7-one	230	C17H10O	000082-05-3	81
5		7H-Benz[de]anthracen-7-one	230	C17H10O	000082-05-3	74



Data Path : Z:\SVOASRV\HPCHEM1\BNA G\DATA\BG081720\
 Data File : BG046325.D
 Acq On : 18 Aug 2020 13:07
 Operator : CG/JU
 Sample : L3636-04
 Misc :
 ALS Vial : 32 Sample Multiplier: 1

Instrument :
 BNA_G
 ClientSampleID :
 BFMKO

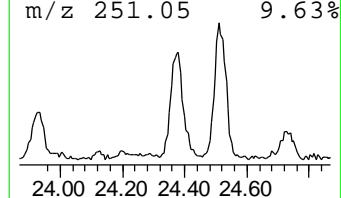
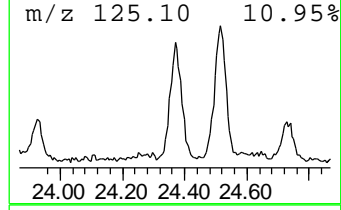
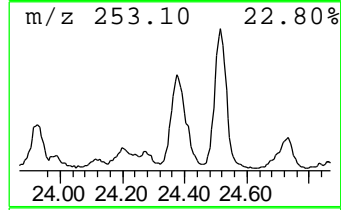
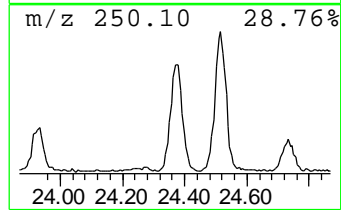
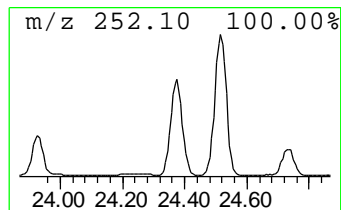
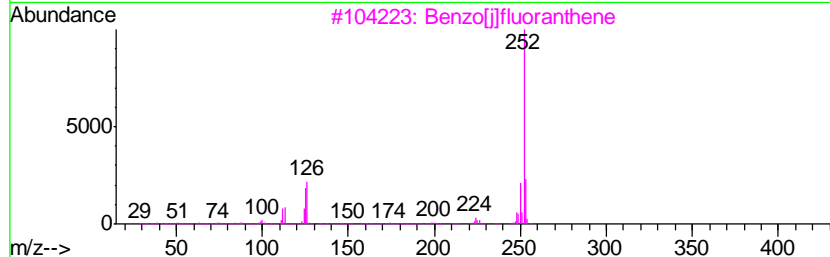
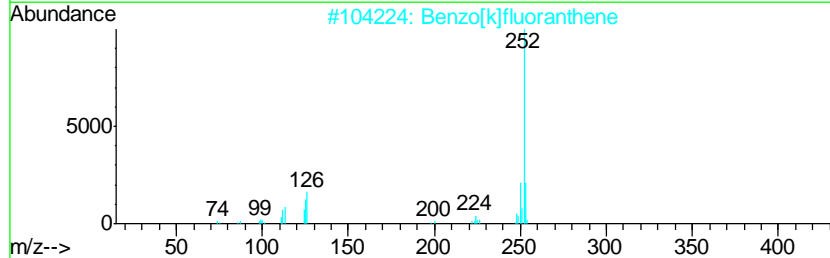
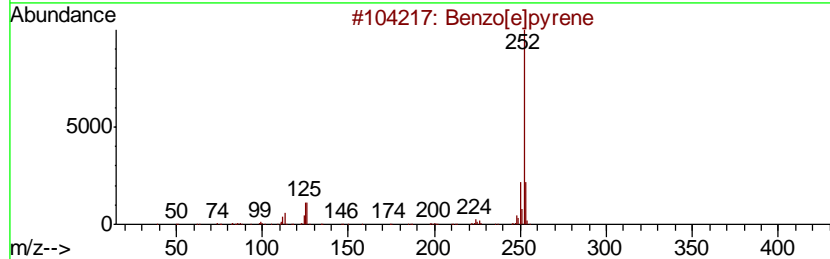
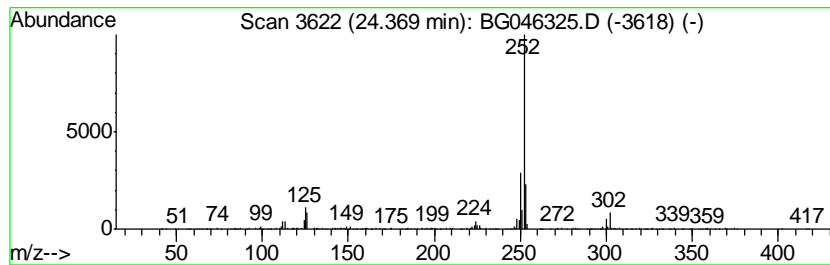
Quant Method : Z:\SVOASRV\HPCHEM1\BNA_G\METHODS\SOM-EPA-BG081320PAH.M
 Quant Title : SVOA CALIBRATION

TIC Library : C:\DATABASE\NIST11.L
 TIC Integration Parameters: LSCINT.P

 Peak Number 27 Benzo[e]pyrene Concentration Rank 5

R.T.	EstConc	Area	Relative to ISTD	R.T.
24.37	5.93 ng/ul	369816	Perylene-d12	24.66

Hit#	of	Tentative ID	MW	MolForm	CAS#	Qual
1	5	Benzo[e]pyrene	252	C20H12	000192-97-2	95
2		Benzo[k]fluoranthene	252	C20H12	000207-08-9	95
3		Benzo[i]fluoranthene	252	C20H12	000205-82-3	93
4		Benz[e]acephenanthrylene	252	C20H12	000205-99-2	93
5		Benz[e]acephenanthrylene	252	C20H12	000205-99-2	93



Data Path : Z:\SVOASRV\HPCHEM1\BNA_G\DATA\BG081720\
 Data File : BG046325.D
 Acq On : 18 Aug 2020 13:07
 Operator : CG/JU
 Sample : L3636-04
 Misc :
 ALS Vial : 32 Sample Multiplier: 1

Instrument :
 BNA_G
 ClientSampleId :
 BFMKO

Quant Method : Z:\SVOASRV\HPCHEM1\BNA_G\METHODS\SOM-EPA-BG081320PAH.M
 Quant Title : SVOA CALIBRATION

TIC Library : C:\DATABASE\NIST11.L
 TIC Integration Parameters: LSCINT.P

TIC Top Hit name	RT	EstConc	Units	Response	--Internal Standard--			
					#	RT	Resp	Conc
Butane, 2-methoxy...	3.14	75.9	ng/ul	1843310	1	7.94	485983	20.0
4H-Imidazol-4-one...	7.11	4.7	ng/ul	115296	1	7.94	485983	20.0
unknown-01	7.27	4.2	ng/ul	101241	1	7.94	485983	20.0
unknown-02	7.47	5.0	ng/ul	121349	1	7.94	485983	20.0
unknown-03	8.65	6.1	ng/ul	149012	1	7.94	485983	20.0
unknown-04	9.09	5.0	ng/ul	122074	1	7.94	485983	20.0
unknown-05	9.82	2.8	ng/ul	101928	2	10.74	718083	20.0
unknown-06	10.87	3.0	ng/ul	108049	2	10.74	718083	20.0
unknown-07	13.97	6.5	ng/ul	345241	3	14.57	1059620	20.0
Dibenzofuran	14.96	2.3	ng/ul	123077	3	14.57	1059620	20.0
9H-Fluoren-9-one	16.96	2.3	ng/ul	148916	4	17.31	1305240	20.0
5H-Indeno[1,2-b]p...	17.71	3.2	ng/ul	206542	4	17.31	1305240	20.0
Phenanthrene, 2-m...	18.19	4.5	ng/ul	292375	4	17.31	1305240	20.0
Anthracene, 9-met...	18.23	6.2	ng/ul	403333	4	17.31	1305240	20.0
4H-Cyclopenta[def...	18.38	5.8	ng/ul	380957	4	17.31	1305240	20.0
1H-Cyclopropa[l]p...	18.42	2.5	ng/ul	165206	4	17.31	1305240	20.0
5,16[1',2']:8,13[...	18.68	3.2	ng/ul	208381	4	17.31	1305240	20.0
9,10-Anthracenedione	18.72	4.0	ng/ul	262795	4	17.31	1305240	20.0
Phenanthrene, 2,5...	19.10	2.8	ng/ul	182589	4	17.31	1305240	20.0
Cyclopenta(def)ph...	19.23	3.2	ng/ul	208608	4	17.31	1305240	20.0
Pyrene, 1-methyl-	20.05	3.1	ng/ul	391020	5	21.55	2480900	20.0
Pyrene, 2-methyl-	20.37	2.4	ng/ul	301729	5	21.55	2480900	20.0
11H-Benzo[a]fluor...	20.97	2.4	ng/ul	292648	5	21.55	2480900	20.0
Benzo[b]naphtho[2...	21.15	2.2	ng/ul	273636	5	21.55	2480900	20.0
unknown-08	21.23	3.4	ng/ul	422767	5	21.55	2480900	20.0
7H-Benz[de]anthra...	21.29	2.0	ng/ul	254736	5	21.55	2480900	20.0
Benzo[e]pyrene	24.37	5.9	ng/ul	369816	6	24.66	1246880	20.0