

Data Path : Z:\svoasrv\HPCHEM1\BNA_G\Data\BG081722\
 Data File : BG054644.D
 Acq On : 17 Aug 2022 17:33
 Operator : CG/JU
 Sample : SSTD04038
 Misc :
 ALS Vial : 5 Sample Multiplier: 1

Instrument :
 BNA_G
 ClientSampleId :
 SSTD040438

Quant Time: Aug 18 02:24:23 2022
 Quant Method : Z:\svoasrv\HPCHEM1\BNA_G\Methods\SFAM-EPA-BG081722.M
 Quant Title : SVOA CALIBRATION
 QLast Update : Thu Aug 18 02:20:33 2022
 Response via : Initial Calibration

| Compound | R.T. | QIon | Response | Conc | Units | Dev(Min) |
|-------------------------------|--------|------|----------|--------|-------|----------|
| Internal Standards | | | | | | |
| 1) 1,4-Dichlorobenzene-d4 | 8.165 | 152 | 42829 | 20.000 | ng/ul | 0.00 |
| 20) Naphthalene-d8 | 10.991 | 136 | 173168 | 20.000 | ng/ul | 0.00 |
| 38) Acenaphthene-d10 | 14.799 | 164 | 109127 | 20.000 | ng/ul | 0.00 |
| 64) Phenanthrene-d10 | 17.543 | 188 | 238900 | 20.000 | ng/ul | 0.00 |
| 79) Chrysene-d12 | 21.843 | 240 | 216824 | 20.000 | ng/ul | 0.00 |
| 88) Perylene-d12 | 25.222 | 264 | 230936 | 20.000 | ng/ul | 0.00 |
| System Monitoring Compounds | | | | | | |
| 3) 1,4-Dioxane-d8 | 3.518 | 96 | 17842 | 19.821 | ng/uL | 0.00 |
| 4) Pyridine-d5 | 3.941 | 84 | 134954 | 55.121 | ng/ul | 0.00 |
| 7) Phenol-d5 | 7.302 | 99 | 150294 | 48.983 | ng/ul | 0.00 |
| 9) Bis-(2-Chloroethyl)eth... | 7.484 | 67 | 95869 | 51.796 | ng/ul | 0.00 |
| 11) 2-Chlorophenol-d4 | 7.689 | 132 | 108161 | 44.205 | ng/ul | 0.00 |
| 15) 4-Methylphenol-d8 | 8.864 | 113 | 113524 | 43.393 | ng/ul | 0.00 |
| 21) Nitrobenzene-d5 | 9.340 | 128 | 48933 | 38.070 | ng/ul | 0.00 |
| 24) 2-Nitrophenol-d4 | 10.063 | 143 | 45189 | 33.089 | ng/ul | 0.00 |
| 28) 2,4-Dichlorophenol-d3 | 10.598 | 165 | 111009 | 36.739 | ng/ul | 0.00 |
| 31) 4-Chloroaniline-d4 | 11.121 | 131 | 151128 | 39.591 | ng/ul | 0.00 |
| 46) Dimethylphthalate-d6 | 14.199 | 166 | 311961 | 36.338 | ng/ul | 0.00 |
| 49) Acenaphthylene-d8 | 14.493 | 160 | 376625 | 40.345 | ng/ul | 0.00 |
| 54) 4-Nitrophenol-d4 | 14.969 | 143 | 49939 | 42.483 | ng/ul | 0.00 |
| 60) Fluorene-d10 | 15.786 | 176 | 280907 | 36.428 | ng/ul | 0.00 |
| 65) 4,6-Dinitro-2-methylph... | 15.892 | 200 | 33375 | 25.610 | ng/ul | 0.00 |
| 73) Anthracene-d10 | 17.642 | 188 | 430757 | 39.925 | ng/ul | 0.00 |
| 81) Pyrene-d10 | 19.922 | 212 | 481320 | 42.576 | ng/ul | 0.00 |
| 92) Benzo(a)pyrene-d12 | 24.993 | 264 | 485867 | 41.680 | ng/ul | 0.00 |
| Target Compounds | | | | | | |
| 2) 1,4-Dioxane | 3.553 | 88 | 20098 | 20.461 | ng/uL | 93 |
| 5) Pyridine | 3.958 | 79 | 132793 | 52.300 | ng/ul | 99 |
| 6) Benzaldehyde | 7.296 | 77 | 79737 | 51.033 | ng/ul | 99 |
| 8) Phenol | 7.331 | 94 | 150937 | 47.145 | ng/ul | 98 |
| 10) Bis(2-Chloroethyl)ether | 7.578 | 93 | 121419 | 50.067 | ng/ul | 98 |
| 12) 2-Chlorophenol | 7.725 | 128 | 115863 | 46.379 | ng/ul | 99 |
| 13) 2-Methylphenol | 8.594 | 108 | 113752 | 45.771 | ng/ul | 100 |
| 14) 2,2'-oxybis(1-Chloropr... | 8.694 | 45 | 200487 | 55.656 | ng/ul | 98 |
| 16) Acetophenone | 8.994 | 105 | 176058 | 43.514 | ng/ul | 98 |
| 17) N-Nitroso-di-n-propyla... | 8.976 | 70 | 95917 | 46.504 | ng/ul | 98 |
| 18) 4-Methylphenol | 8.929 | 108 | 118900 | 44.723 | ng/ul | 97 |
| 19) Hexachloroethane | 9.264 | 117 | 47143 | 44.534 | ng/ul | 97 |
| 22) Nitrobenzene | 9.382 | 77 | 127078 | 41.507 | ng/ul | 95 |
| 23) Isophorone | 9.904 | 82 | 264473 | 44.555 | ng/ul | 99 |
| 25) 2-Nitrophenol | 10.092 | 139 | 53457 | 37.329 | ng/ul | 98 |
| 26) 2,4-Dimethylphenol | 10.139 | 107 | 130303 | 41.670 | ng/ul | 95 |
| 27) Bis(2-Chloroethoxy)met... | 10.386 | 93 | 158447 | 47.415 | ng/ul | 98 |
| 29) 2,4-Dichlorophenol | 10.627 | 162 | 105288 | 34.845 | ng/ul | 98 |
| 30) Naphthalene | 11.044 | 128 | 367584 | 42.791 | ng/ul | 99 |
| 32) 4-Chloroaniline | 11.144 | 127 | 153203 | 40.473 | ng/ul | 94 |
| 33) Hexachlorobutadiene | 11.320 | 225 | 77550 | 26.276 | ng/ul | 98 |
| 34) Caprolactam | 11.902 | 113 | 20613 | 22.860 | ng/ul | 97 |
| 35) 4-Chloro-3-methylphenol | 12.243 | 107 | 113645 | 39.110 | ng/ul | 100 |
| 36) 2-Methylnaphthalene | 12.637 | 142 | 250867 | 39.478 | ng/ul | 100 |

Data Path : Z:\svoasrv\HPCHEM1\BNA_G\Data\BG081722\
 Data File : BG054644.D
 Acq On : 17 Aug 2022 17:33
 Operator : CG/JU
 Sample : SSTD04038
 Misc :
 ALS Vial : 5 Sample Multiplier: 1

Instrument :
 BNA_G
 ClientSampleId :
 SSTD040438

Quant Time: Aug 18 02:24:23 2022
 Quant Method : Z:\svoasrv\HPCHEM1\BNA_G\Methods\SFAM-EPA-BG081722.M
 Quant Title : SVOA CALIBRATION
 QLast Update : Thu Aug 18 02:20:33 2022
 Response via : Initial Calibration

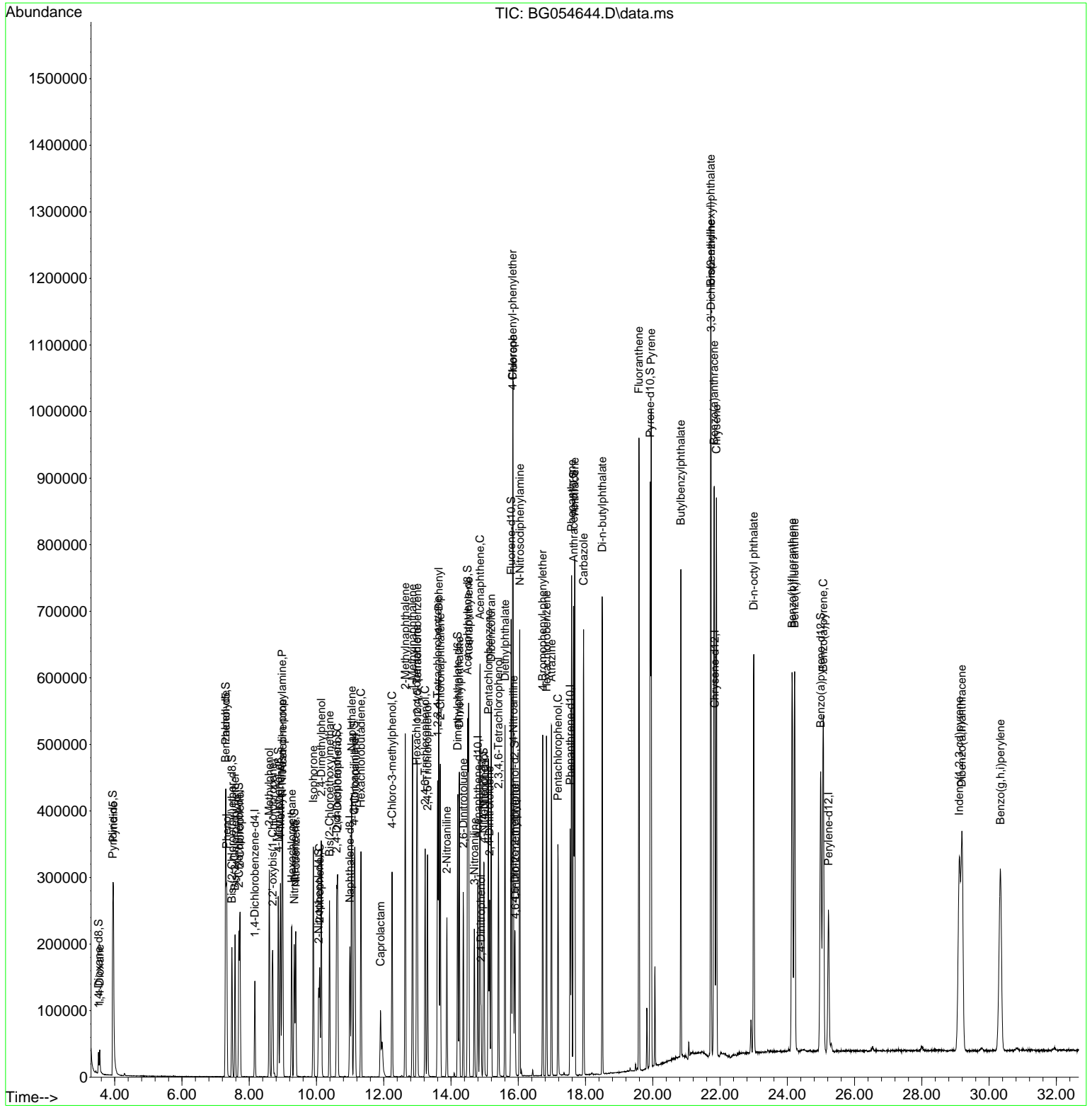
| Compound | R.T. | QIon | Response | Conc | Units | Dev(Min) |
|-------------------------------|--------|------|----------|--------|--------|----------|
| 37) 1-Methylnaphthalene | 12.854 | 142 | 249784 | 39.415 | ng/ul | 99 |
| 39) 1,2,4,5-Tetrachloroben... | 12.995 | 216 | 138931 | 31.321 | ng/ul | 98 |
| 40) Hexachlorocyclopentadiene | 12.977 | 237 | 88736 | 35.670 | ng/ul | 99 |
| 41) 2,4,6-Trichlorophenol | 13.230 | 196 | 87266 | 37.906 | ng/ul | 97 |
| 42) 2,4,5-Trichlorophenol | 13.300 | 196 | 92541 | 35.557 | ng/ul | 98 |
| 43) 1,1'-Biphenyl | 13.635 | 154 | 327104 | 43.247 | ng/ul | 100 |
| 44) 2-Chloronaphthalene | 13.682 | 162 | 246253 | 39.206 | ng/ul | 98 |
| 45) 2-Nitroaniline | 13.876 | 65 | 65656 | 41.550 | ng/ul | 97 |
| 47) Dimethylphthalate | 14.246 | 163 | 312899 | 37.921 | ng/ul | 99 |
| 48) 2,6-Dinitrotoluene | 14.364 | 165 | 55821 | 33.637 | ng/ul | 98 |
| 50) Acenaphthylene | 14.523 | 152 | 409134 | 42.684 | ng/ul | 99 |
| 51) 3-Nitroaniline | 14.693 | 138 | 54540 | 40.486 | ng/ul | 99 |
| 52) Acenaphthene | 14.863 | 153 | 272512 | 42.574 | ng/ul | 99 |
| 53) 2,4-Dinitrophenol | 14.893 | 184 | 23534 | 30.612 | ng/ul | 96 |
| 55) 4-Nitrophenol | 14.981 | 109 | 40502 | 35.149 | ng/ul | 98 |
| 56) Dibenzofuran | 15.192 | 168 | 373051 | 38.091 | ng/ul | 98 |
| 57) 2,4-Dinitrotoluene | 15.145 | 165 | 74952 | 31.136 | ng/ul | 98 |
| 58) 2,3,4,6-Tetrachlorophenol | 15.410 | 232 | 77294 | 34.177 | ng/ul | 97 |
| 59) Diethylphthalate | 15.604 | 149 | 312157 | 38.583 | ng/ul | 99 |
| 61) Fluorene | 15.845 | 166 | 300045 | 37.616 | ng/ul | 100 |
| 62) 4-Chlorophenyl-phenyle... | 15.833 | 204 | 155571 | 30.674 | ng/ul | 98 |
| 63) 4-Nitroaniline | 15.856 | 138 | 51837 | 40.017 | ng/ul | 97 |
| 66) 4,6-Dinitro-2-methylph... | 15.909 | 198 | 35949 | 28.736 | ng/ul# | 90 |
| 67) N-Nitrosodiphenylamine | 16.044 | 169 | 271934 | 46.560 | ng/ul | 98 |
| 68) 4-Bromophenyl-phenylether | 16.726 | 248 | 103995 | 35.045 | ng/ul | 97 |
| 69) Hexachlorobenzene | 16.837 | 284 | 116853 | 33.598 | ng/ul | 97 |
| 70) Atrazine | 16.990 | 200 | 103223 | 35.983 | ng/ul | 97 |
| 71) Pentachlorophenol | 17.178 | 266 | 66062 | 44.813 | ng/ul | 95 |
| 72) Phenanthrene | 17.584 | 178 | 494778 | 41.803 | ng/ul | 99 |
| 74) Anthracene | 17.678 | 178 | 492431 | 41.283 | ng/ul | 99 |
| 75) 1,2,3,4-Tetrachloroben... | 13.600 | 216 | 147473 | 36.243 | ng/uL | 98 |
| 76) Pentachlorobenzene | 15.110 | 250 | 136501 | 36.474 | ng/uL | 99 |
| 77) Carbazole | 17.942 | 167 | 446667 | 45.418 | ng/ul | 98 |
| 78) Di-n-butylphthalate | 18.494 | 149 | 536896 | 47.951 | ng/ul | 100 |
| 80) Fluoranthene | 19.587 | 202 | 606991 | 48.096 | ng/ul | 98 |
| 82) Pyrene | 19.951 | 202 | 586790 | 46.766 | ng/ul | 98 |
| 83) Butylbenzylphthalate | 20.833 | 149 | 219558 | 58.064 | ng/ul | 100 |
| 84) 3,3'-Dichlorobenzidine | 21.732 | 252 | 205990 | 45.908 | ng/ul | 95 |
| 85) Benzo(a)anthracene | 21.820 | 228 | 567718 | 42.479 | ng/ul | 98 |
| 86) Bis(2-ethylhexyl)phtha... | 21.726 | 149 | 326682 | 59.123 | ng/ul | 99 |
| 87) Chrysene | 21.890 | 228 | 546642 | 42.635 | ng/ul | 98 |
| 89) Di-n-octyl phthalate | 23.001 | 149 | 554129 | 55.871 | ng/ul | 100 |
| 90) Benzo(b)fluoranthene | 24.141 | 252 | 621683 | 43.597 | ng/ul | 98 |
| 91) Benzo(k)fluoranthene | 24.217 | 252 | 564624 | 41.352 | ng/ul | 99 |
| 93) Benzo(a)pyrene | 25.069 | 252 | 590940 | 43.020 | ng/ul | 97 |
| 94) Indeno(1,2,3-cd)pyrene | 29.111 | 276 | 691162 | 41.822 | ng/ul | 99 |
| 95) Dibenzo(a,h)anthracene | 29.188 | 278 | 586000 | 42.134 | ng/ul | 99 |
| 96) Benzo(g,h,i)perylene | 30.333 | 276 | 582119 | 41.718 | ng/ul | 99 |

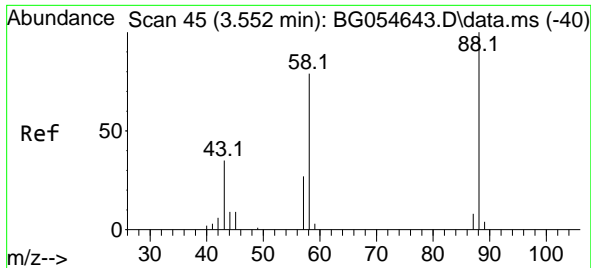
(#) = qualifier out of range (m) = manual integration (+) = signals summed

Data Path : Z:\svoasrv\HPCHEM1\BNA_G\Data\BG081722\
 Data File : BG054644.D
 Acq On : 17 Aug 2022 17:33
 Operator : CG/JU
 Sample : SST04038
 Misc :
 ALS Vial : 5 Sample Multiplier: 1

Instrument :
 BNA_G
 ClientSampleId :
 SST040438

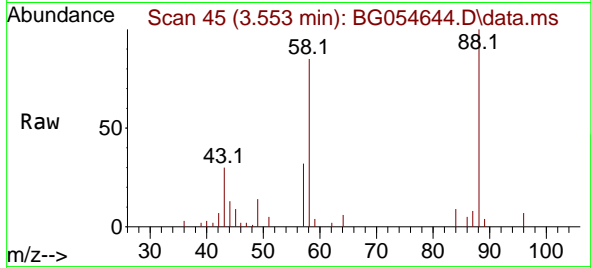
Quant Time: Aug 18 02:24:23 2022
 Quant Method : Z:\svoasrv\HPCHEM1\BNA_G\Methods\SFAM-EPA-BG081722.M
 Quant Title : SVOA CALIBRATION
 QLast Update : Thu Aug 18 02:20:33 2022
 Response via : Initial Calibration



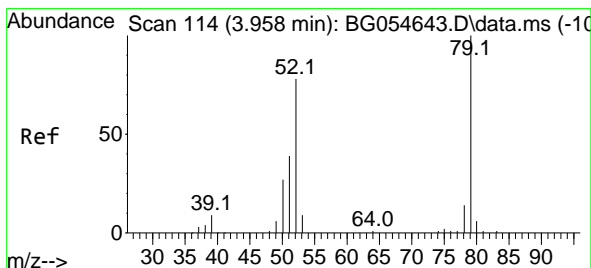
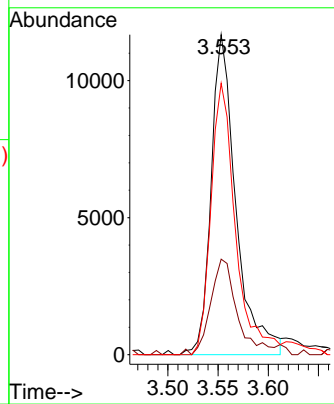
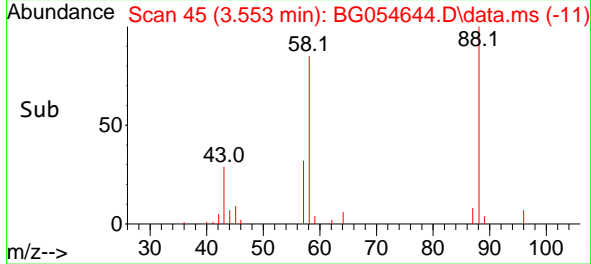


#2
 1,4-Dioxane
 Concen: 20.461 ng/uL
 RT: 3.553 min Scan# 41
 Delta R.T. 0.001 min
 Lab File: BG054644.D
 Acq: 17 Aug 2022 17:33

Instrument :
 BNA_G
 ClientSampleId :
 SSTD040438

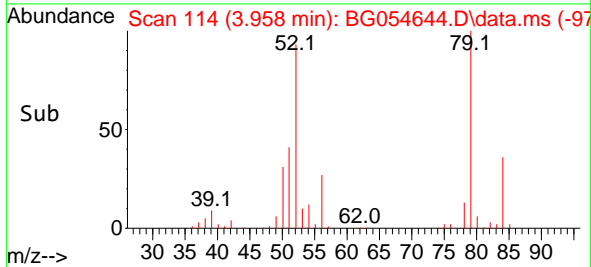
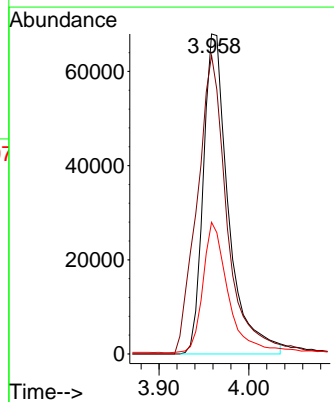
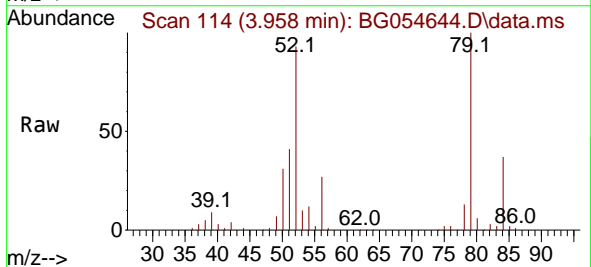


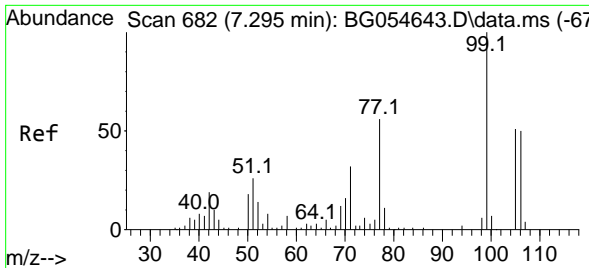
Tgt Ion: 88 Resp: 20098
 Ion Ratio Lower Upper
 88 100
 43 29.9 28.3 42.5
 58 84.8 63.4 95.2



#5
 Pyridine
 Concen: 52.300 ng/uL
 RT: 3.958 min Scan# 114
 Delta R.T. 0.001 min
 Lab File: BG054644.D
 Acq: 17 Aug 2022 17:33

Tgt Ion: 79 Resp: 132793
 Ion Ratio Lower Upper
 79 100
 52 93.3 74.2 111.2
 51 41.1 31.9 47.9



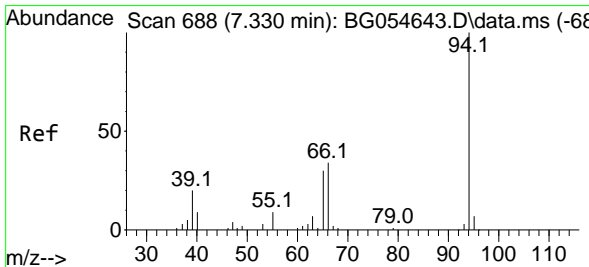
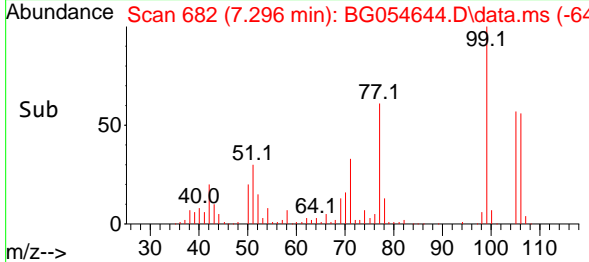
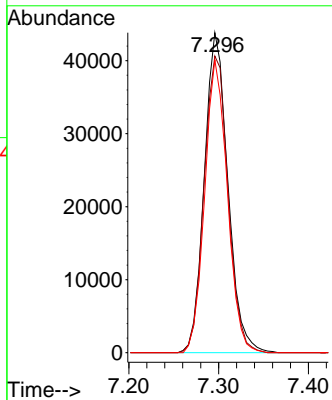
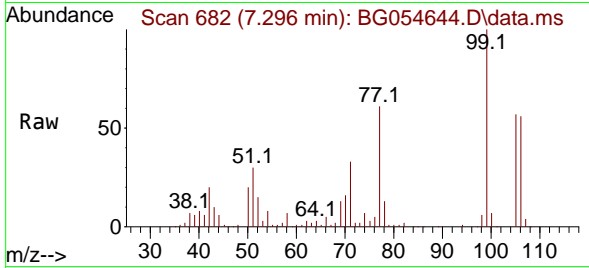


#6
Benzaldehyde
Concen: 51.033 ng/u1
RT: 7.296 min Scan# 682
Delta R.T. 0.001 min
Lab File: BG054644.D
Acq: 17 Aug 2022 17:33

Instrument : BNA_G
ClientSampleId : SSTD040438

Tgt Ion: 77 Resp: 79737

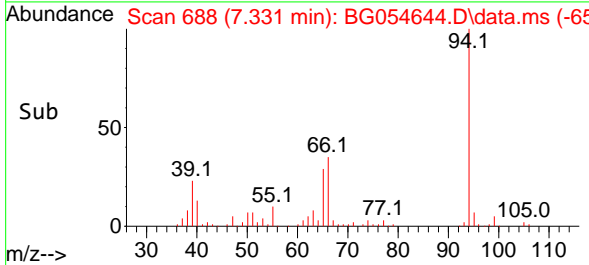
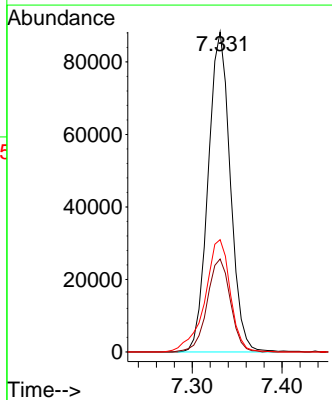
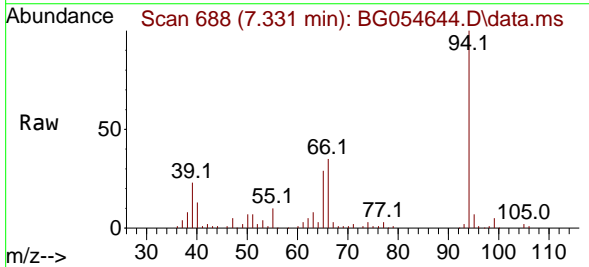
| Ion | Ratio | Lower | Upper |
|-----|-------|-------|-------|
| 77 | 100 | | |
| 105 | 92.7 | 73.6 | 110.4 |
| 106 | 91.5 | 71.5 | 107.3 |

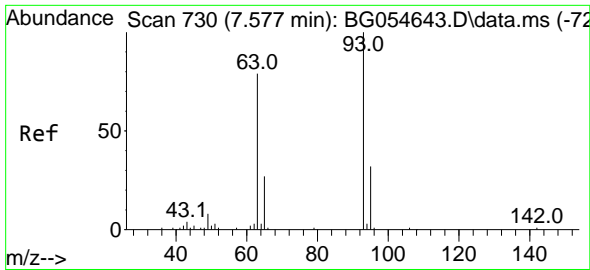


#8
Phenol
Concen: 47.145 ng/u1
RT: 7.331 min Scan# 688
Delta R.T. 0.001 min
Lab File: BG054644.D
Acq: 17 Aug 2022 17:33

Tgt Ion: 94 Resp: 150937

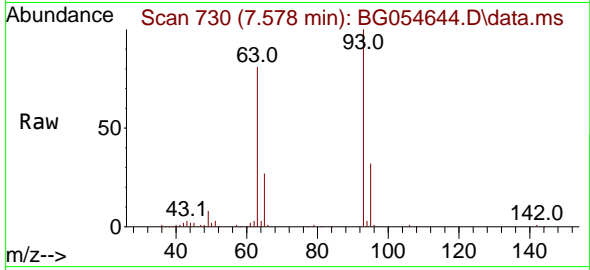
| Ion | Ratio | Lower | Upper |
|-----|-------|-------|-------|
| 94 | 100 | | |
| 65 | 29.1 | 24.0 | 36.0 |
| 66 | 35.1 | 29.0 | 43.6 |



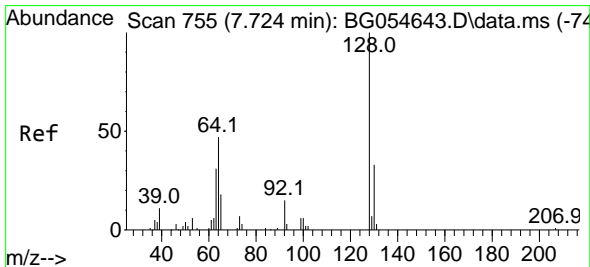
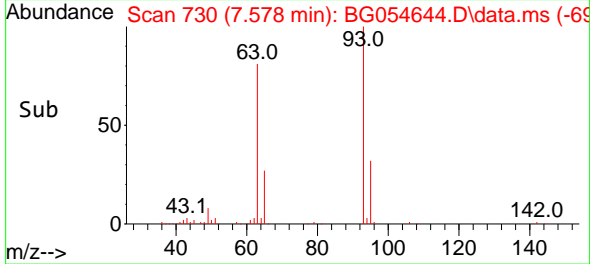
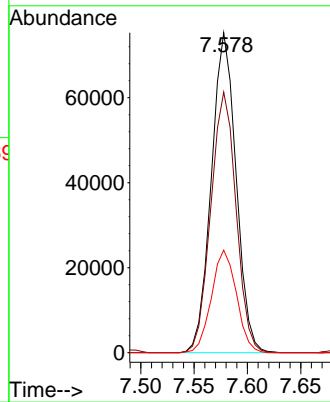


#10
 Bis(2-Chloroethyl)ether
 Concen: 50.067 ng/ul
 RT: 7.578 min Scan# 710
 Delta R.T. 0.001 min
 Lab File: BG054644.D
 Acq: 17 Aug 2022 17:33

Instrument :
 BNA_G
 ClientSampleId :
 SSTD040438

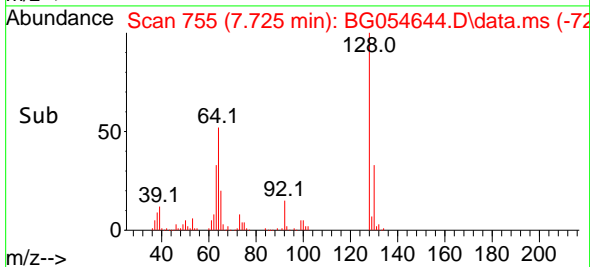
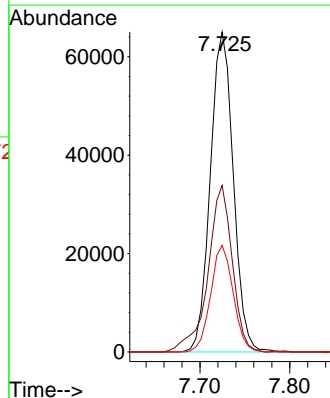
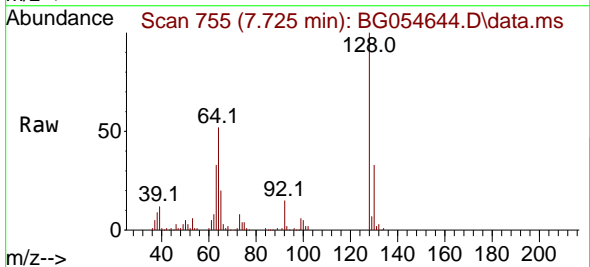


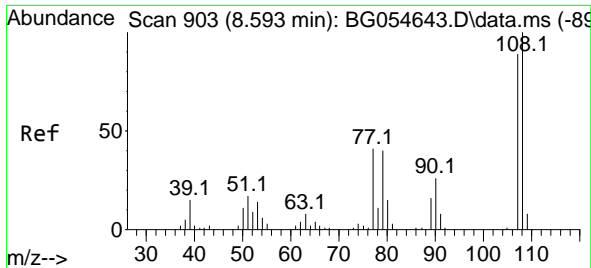
Tgt Ion: 93 Resp: 121419
 Ion Ratio Lower Upper
 93 100
 63 81.5 63.2 94.8
 95 32.1 25.5 38.3



#12
 2-Chlorophenol
 Concen: 46.379 ng/ul
 RT: 7.725 min Scan# 755
 Delta R.T. 0.001 min
 Lab File: BG054644.D
 Acq: 17 Aug 2022 17:33

Tgt Ion: 128 Resp: 115863
 Ion Ratio Lower Upper
 128 100
 64 52.0 41.4 62.0
 130 33.3 26.0 39.0

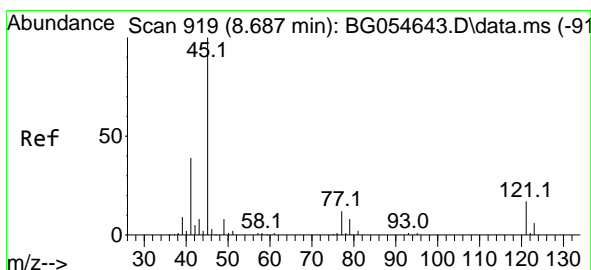
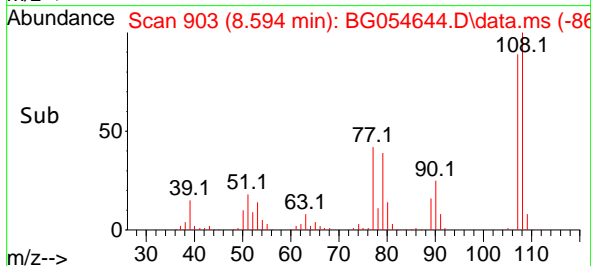
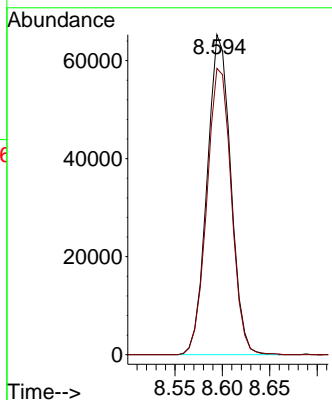
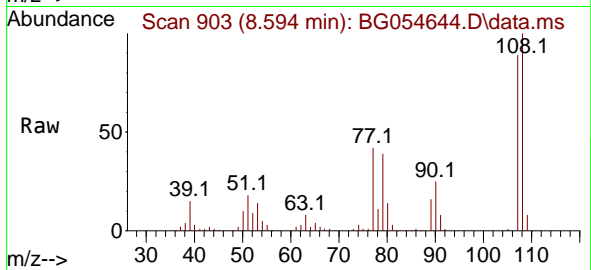




#13
 2-Methylphenol
 Concen: 45.771 ng/ul
 RT: 8.594 min Scan# 90
 Delta R.T. 0.001 min
 Lab File: BG054644.D
 Acq: 17 Aug 2022 17:33

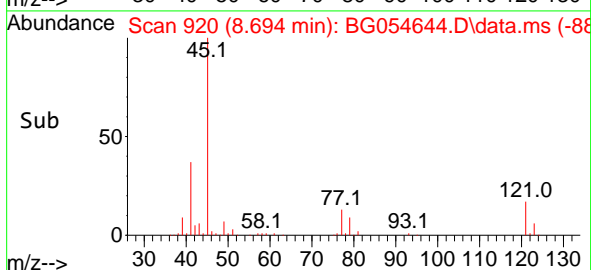
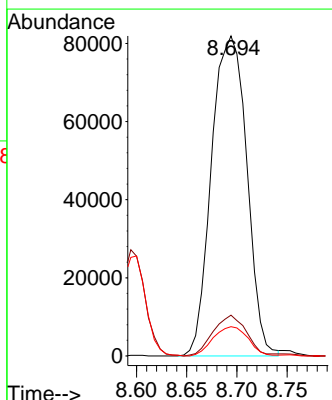
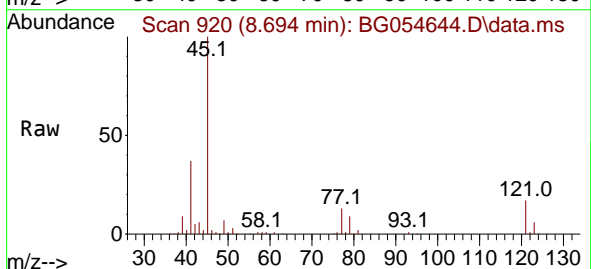
Instrument :
 BNA_G
 ClientSampleId :
 SST040438

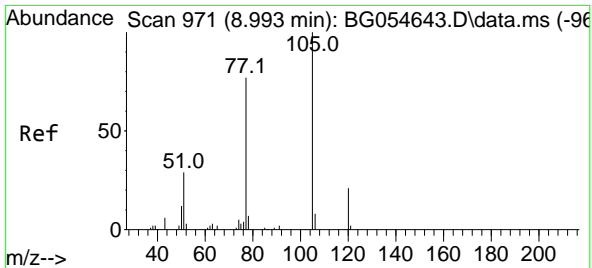
Tgt Ion:108 Resp: 113752
 Ion Ratio Lower Upper
 108 100
 107 89.4 71.4 107.2



#14
 2,2'-oxybis(1-Chloropropane)
 Concen: 55.656 ng/ul
 RT: 8.694 min Scan# 920
 Delta R.T. 0.007 min
 Lab File: BG054644.D
 Acq: 17 Aug 2022 17:33

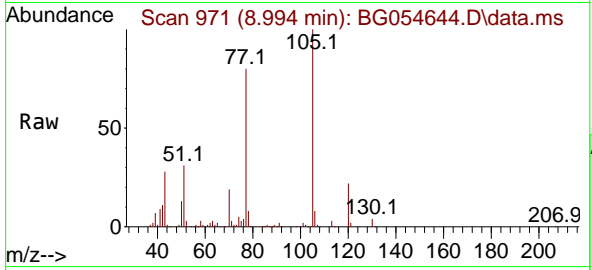
Tgt Ion: 45 Resp: 200487
 Ion Ratio Lower Upper
 45 100
 77 12.8 9.9 14.9
 79 9.2 6.6 9.8





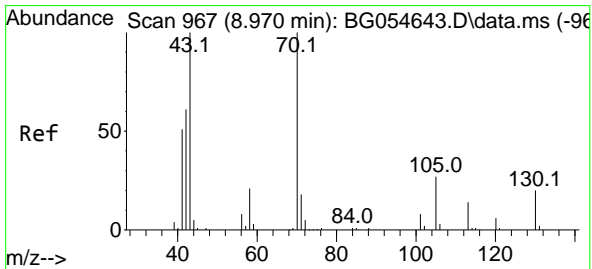
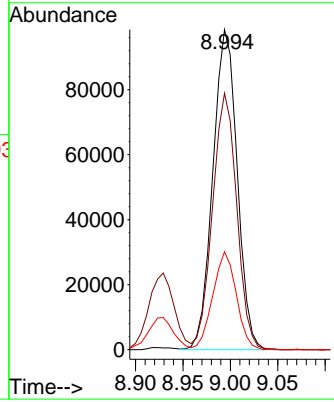
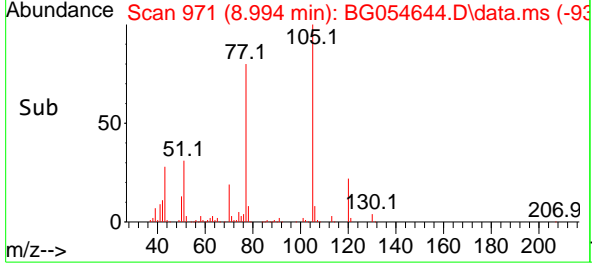
#16
 Acetophenone
 Concen: 43.514 ng/uI
 RT: 8.994 min Scan# 971
 Delta R.T. 0.001 min
 Lab File: BG054644.D
 Acq: 17 Aug 2022 17:33

Instrument : BNA_G
 ClientSampleId : SSTD040438

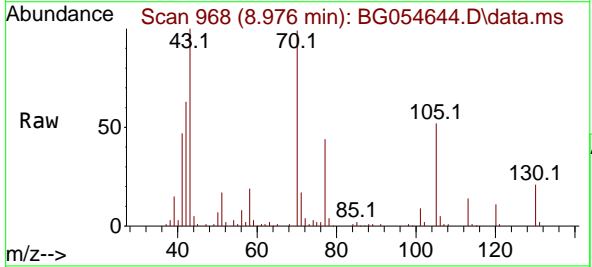


Tgt Ion: 105 Resp: 176058

| Ion | Ratio | Lower | Upper |
|-----|-------|-------|-------|
| 105 | 100 | | |
| 77 | 80.2 | 63.0 | 94.6 |
| 51 | 30.6 | 23.8 | 35.6 |

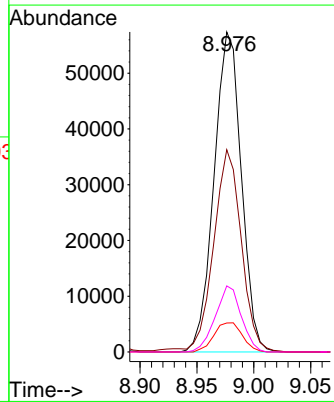
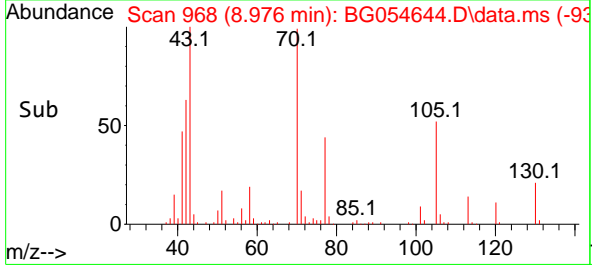


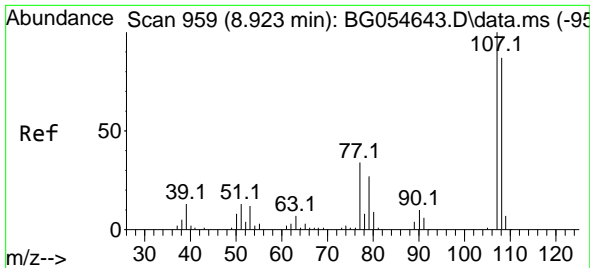
#17
 N-Nitroso-di-n-propylamine
 Concen: 46.504 ng/uI
 RT: 8.976 min Scan# 968
 Delta R.T. 0.007 min
 Lab File: BG054644.D
 Acq: 17 Aug 2022 17:33



Tgt Ion: 70 Resp: 95917

| Ion | Ratio | Lower | Upper |
|-----|-------|-------|-------|
| 70 | 100 | | |
| 42 | 63.2 | 49.6 | 74.4 |
| 101 | 9.0 | 6.6 | 10.0 |
| 130 | 20.7 | 15.7 | 23.5 |





#18
 4-Methylphenol
 Concen: 44.723 ng/ul
 RT: 8.929 min Scan# 90
 Delta R.T. 0.007 min
 Lab File: BG054644.D
 Acq: 17 Aug 2022 17:33

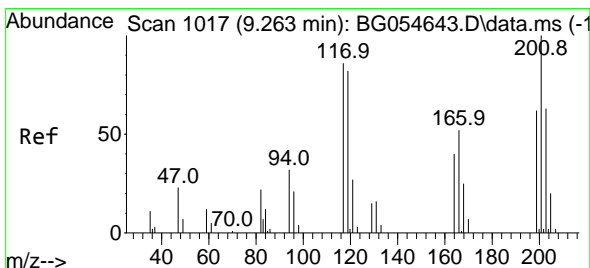
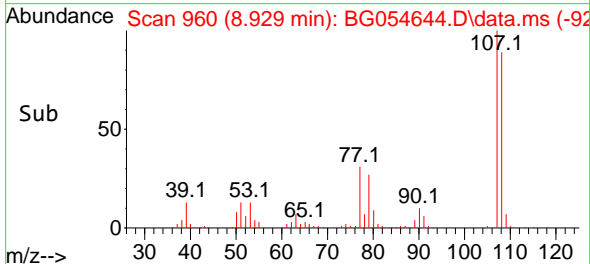
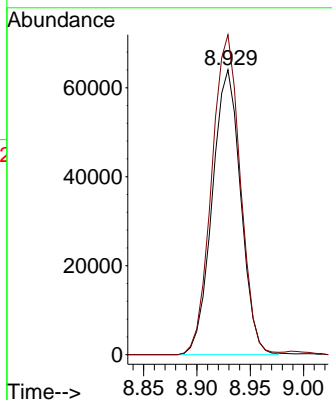
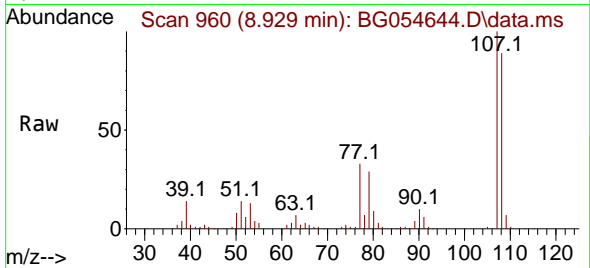
Instrument :

BNA_G

ClientSampleId :

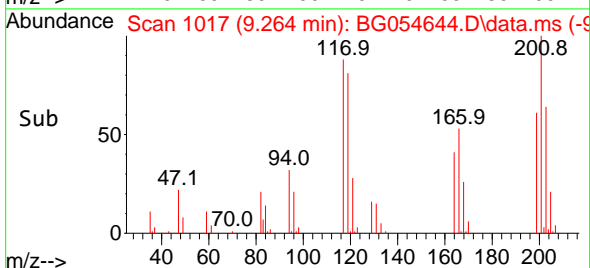
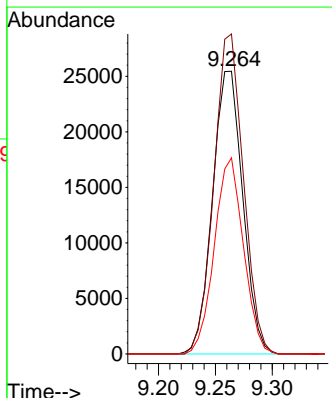
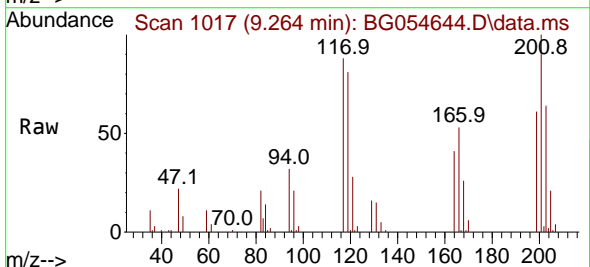
SSTD040438

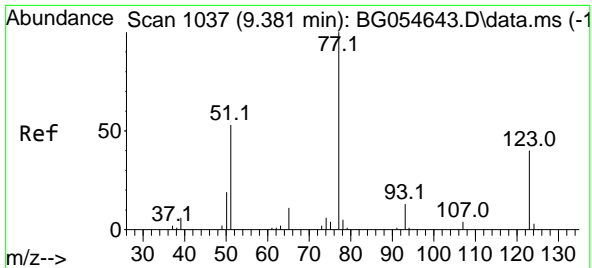
Tgt Ion:108 Resp: 118900
 Ion Ratio Lower Upper
 108 100
 107 112.3 92.5 138.7



#19
 Hexachloroethane
 Concen: 44.534 ng/ul
 RT: 9.264 min Scan# 1017
 Delta R.T. 0.001 min
 Lab File: BG054644.D
 Acq: 17 Aug 2022 17:33

Tgt Ion:117 Resp: 47143
 Ion Ratio Lower Upper
 117 100
 201 113.2 92.7 139.1
 199 69.4 57.5 86.3





#22
 Nitrobenzene
 Concen: 41.507 ng/u1
 RT: 9.382 min Scan# 1037
 Delta R.T. 0.001 min
 Lab File: BG054644.D
 Acq: 17 Aug 2022 17:33

Instrument :

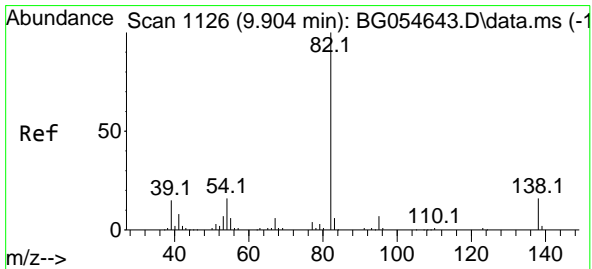
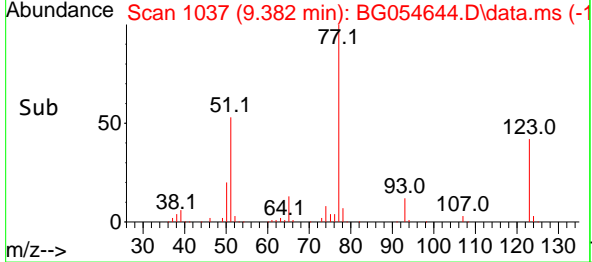
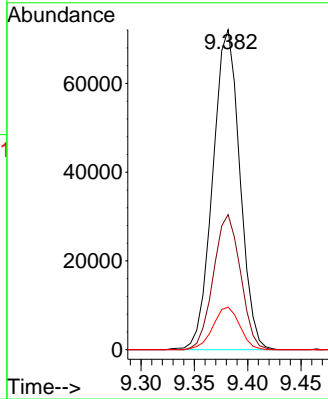
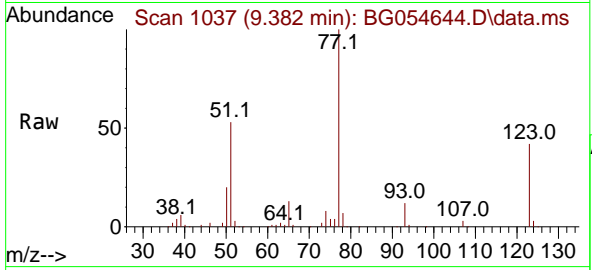
BNA_G

ClientSampleId :

SSTD040438

Tgt Ion: 77 Resp: 127078

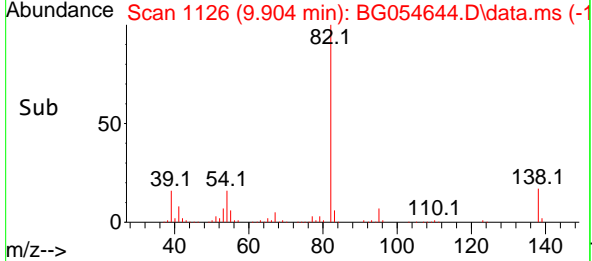
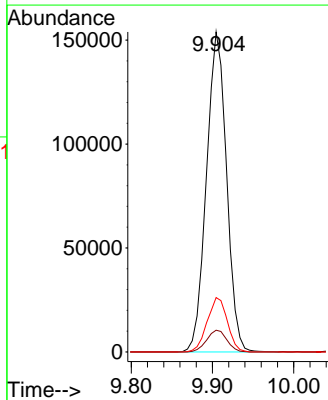
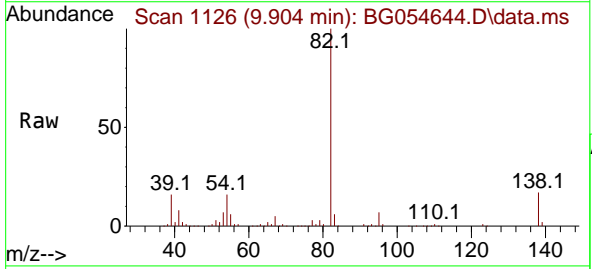
| Ion | Ratio | Lower | Upper |
|-----|-------|-------|-------|
| 77 | 100 | | |
| 123 | 42.2 | 31.6 | 47.4 |
| 65 | 13.3 | 9.0 | 13.6 |

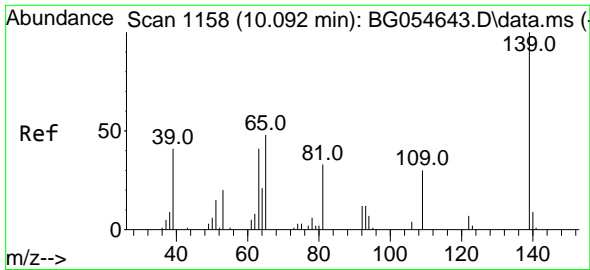


#23
 Isophorone
 Concen: 44.555 ng/u1
 RT: 9.904 min Scan# 1126
 Delta R.T. 0.001 min
 Lab File: BG054644.D
 Acq: 17 Aug 2022 17:33

Tgt Ion: 82 Resp: 264473

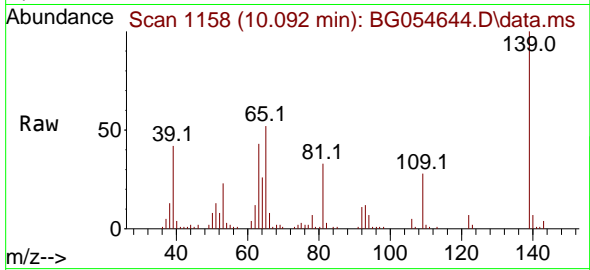
| Ion | Ratio | Lower | Upper |
|-----|-------|-------|-------|
| 82 | 100 | | |
| 95 | 6.8 | 5.4 | 8.0 |
| 138 | 17.0 | 13.2 | 19.8 |



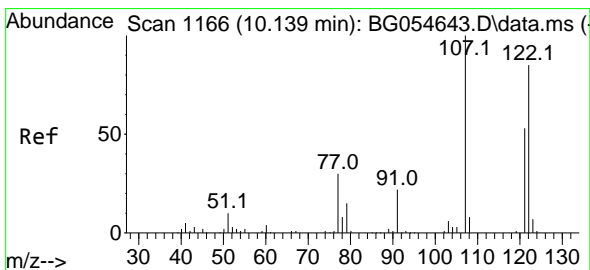
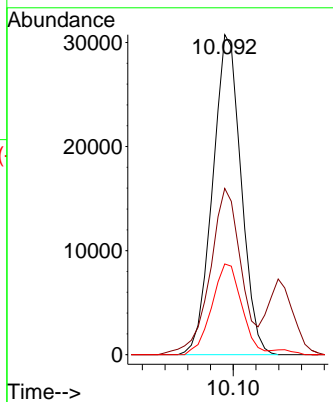
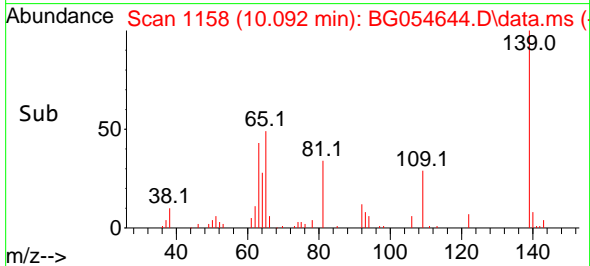


#25
 2-Nitrophenol
 Concen: 37.329 ng/uI
 RT: 10.092 min Scan# 1158
 Delta R.T. 0.001 min
 Lab File: BG054644.D
 Acq: 17 Aug 2022 17:33

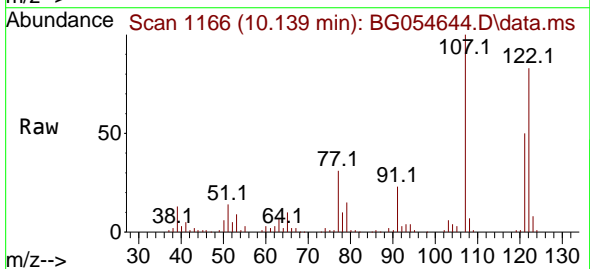
Instrument :
 BNA_G
 ClientSampleId :
 SSTD040438



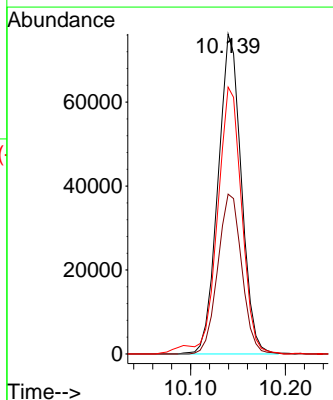
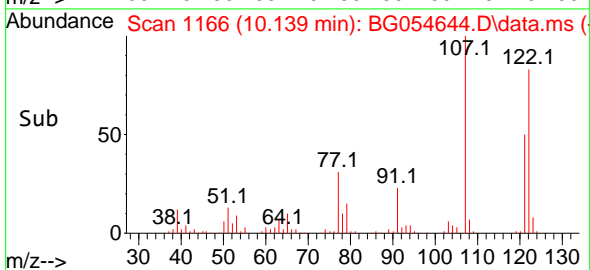
Tgt Ion:139 Resp: 53457
 Ion Ratio Lower Upper
 139 100
 65 51.9 40.8 61.2
 109 28.4 24.2 36.2

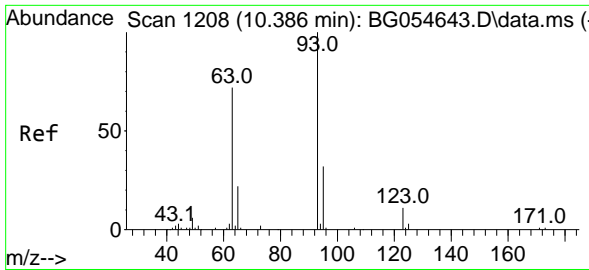


#26
 2,4-Dimethylphenol
 Concen: 41.670 ng/uI
 RT: 10.139 min Scan# 1166
 Delta R.T. 0.001 min
 Lab File: BG054644.D
 Acq: 17 Aug 2022 17:33



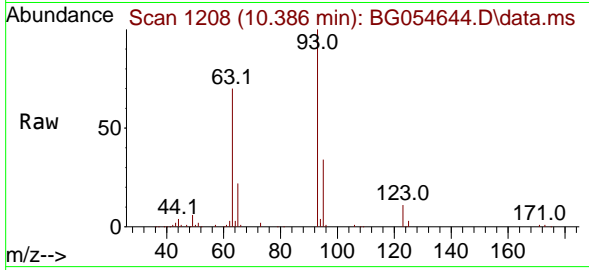
Tgt Ion:107 Resp: 130303
 Ion Ratio Lower Upper
 107 100
 121 49.9 42.1 63.1
 122 83.4 70.6 105.8





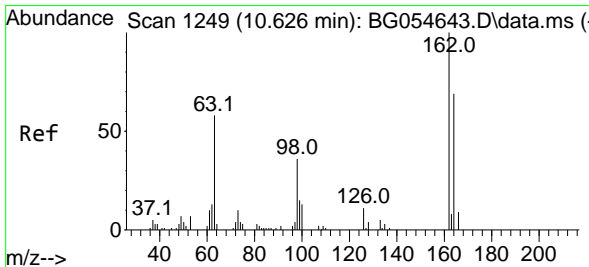
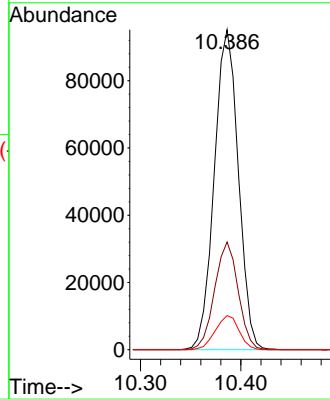
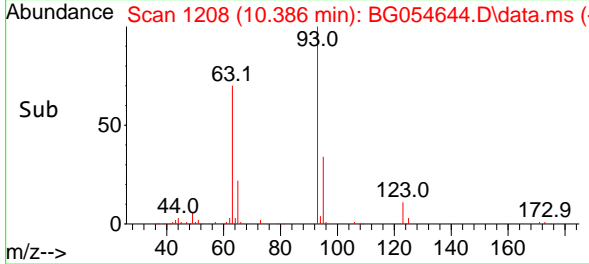
#27
 Bis(2-Chloroethoxy)methane
 Concen: 47.415 ng/ul
 RT: 10.386 min Scan# 11
 Delta R.T. 0.001 min
 Lab File: BG054644.D
 Acq: 17 Aug 2022 17:33

Instrument :
 BNA_G
 ClientSampleId :
 SSTD040438

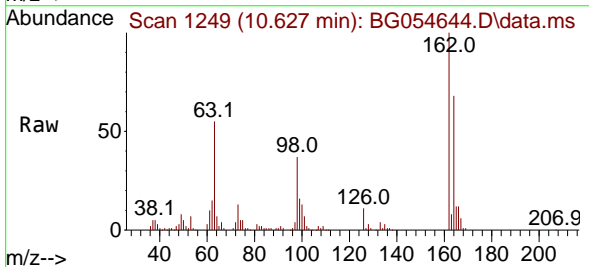


Tgt Ion: 93 Resp: 158447

| Ion | Ratio | Lower | Upper |
|-----|-------|-------|-------|
| 93 | 100 | | |
| 95 | 33.7 | 26.0 | 39.0 |
| 123 | 10.7 | 9.0 | 13.6 |

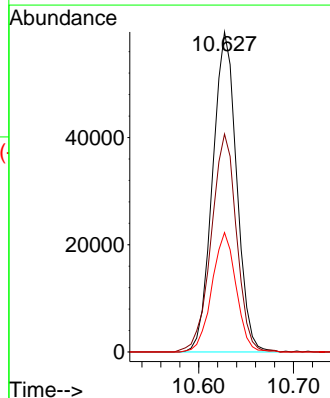
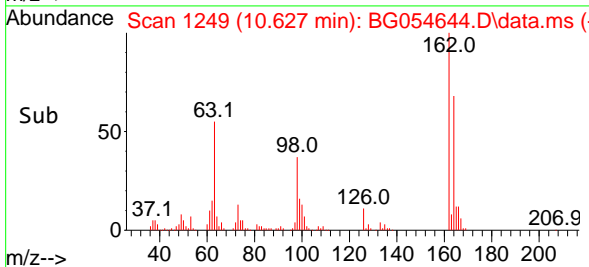


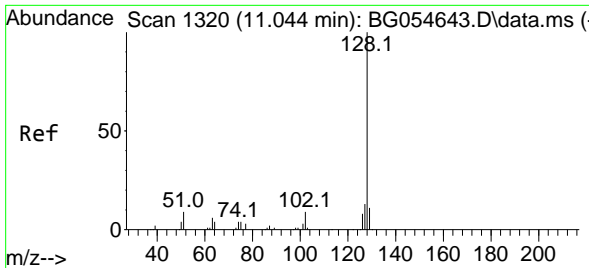
#29
 2,4-Dichlorophenol
 Concen: 34.845 ng/ul
 RT: 10.627 min Scan# 1249
 Delta R.T. 0.001 min
 Lab File: BG054644.D
 Acq: 17 Aug 2022 17:33



Tgt Ion: 162 Resp: 105288

| Ion | Ratio | Lower | Upper |
|-----|-------|-------|-------|
| 162 | 100 | | |
| 164 | 68.1 | 55.7 | 83.5 |
| 98 | 37.3 | 29.1 | 43.7 |





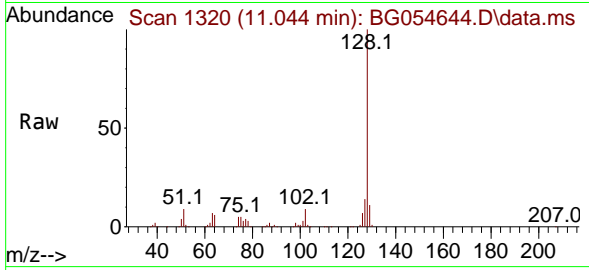
#30
 Naphthalene
 Concen: 42.791 ng/uI
 RT: 11.044 min Scan# 1111
 Delta R.T. 0.001 min
 Lab File: BG054644.D
 Acq: 17 Aug 2022 17:33

Instrument :

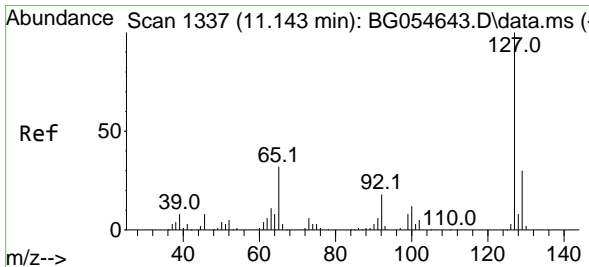
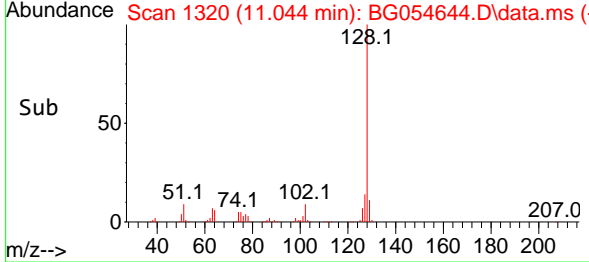
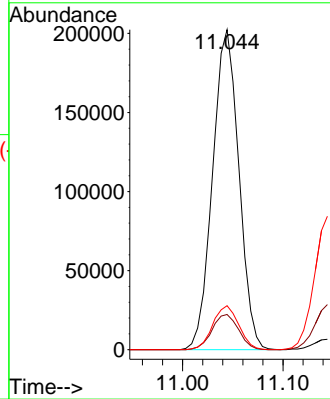
BNA_G

ClientSampleId :

SSTD040438

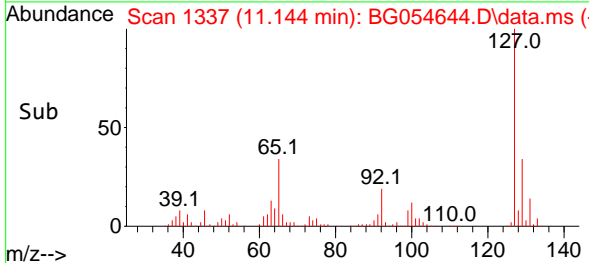
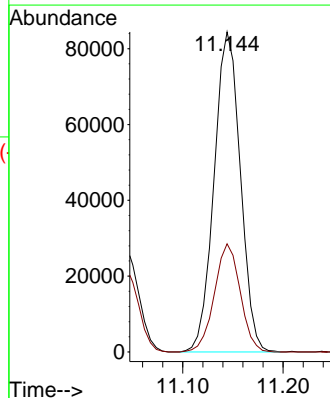
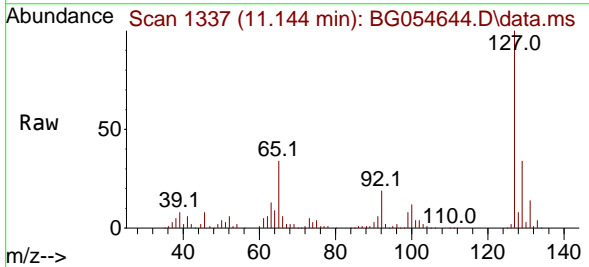


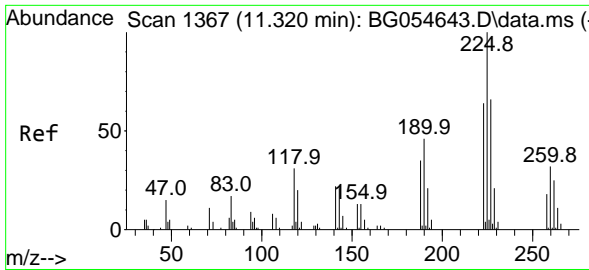
Tgt Ion:128 Resp: 367584
 Ion Ratio Lower Upper
 128 100
 129 11.0 8.9 13.3
 127 13.8 10.7 16.1



#32
 4-Chloroaniline
 Concen: 40.473 ng/uI
 RT: 11.144 min Scan# 1337
 Delta R.T. 0.001 min
 Lab File: BG054644.D
 Acq: 17 Aug 2022 17:33

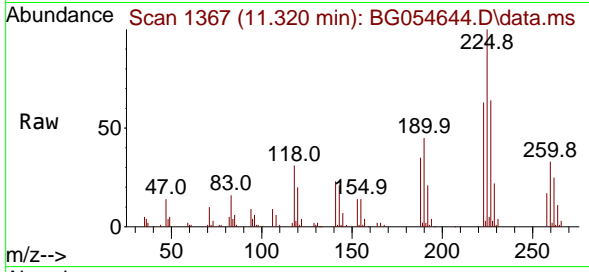
Tgt Ion:127 Resp: 153203
 Ion Ratio Lower Upper
 127 100
 129 33.8 24.4 36.6



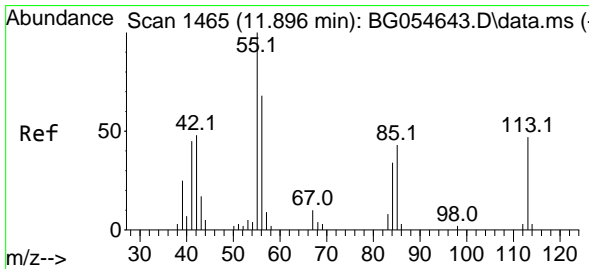
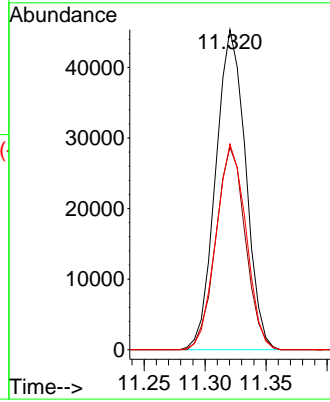
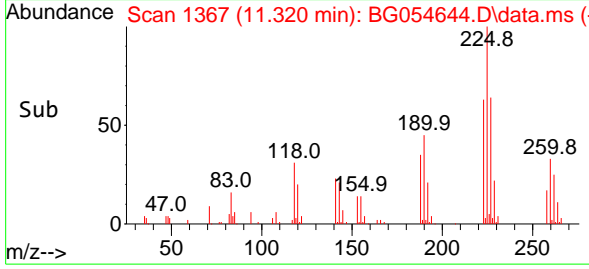


#33
 Hexachlorobutadiene
 Concen: 26.276 ng/u1
 RT: 11.320 min Scan# 11
 Delta R.T. 0.001 min
 Lab File: BG054644.D
 Acq: 17 Aug 2022 17:33

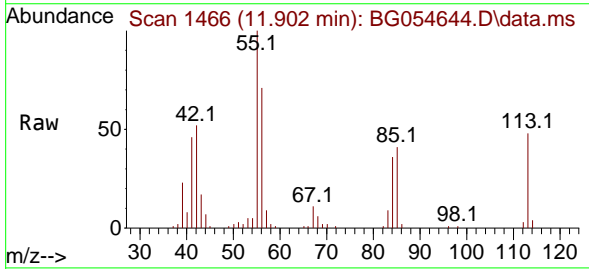
Instrument :
 BNA_G
 ClientSampleId :
 SSTD040438



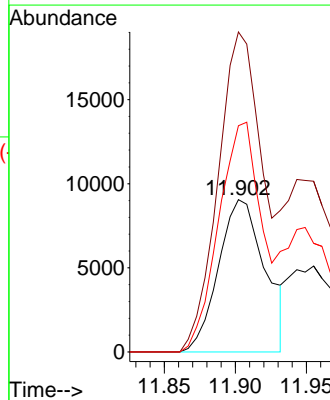
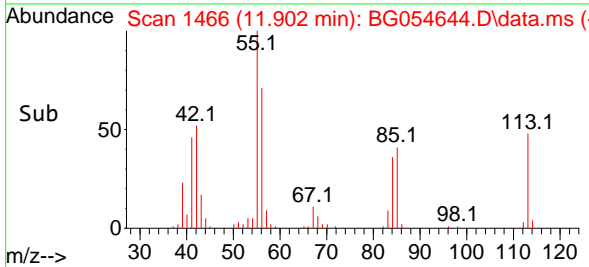
Tgt Ion:225 Resp: 77550
 Ion Ratio Lower Upper
 225 100
 223 63.3 51.5 77.3
 227 64.3 53.1 79.7

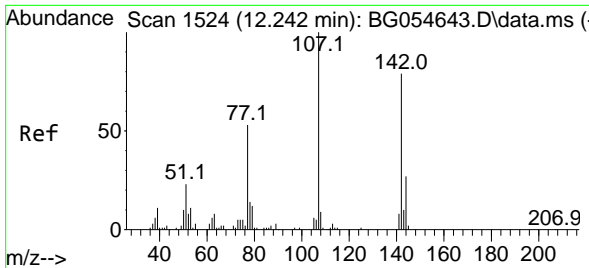


#34
 Caprolactam
 Concen: 22.860 ng/u1
 RT: 11.902 min Scan# 1466
 Delta R.T. 0.007 min
 Lab File: BG054644.D
 Acq: 17 Aug 2022 17:33



Tgt Ion:113 Resp: 20613
 Ion Ratio Lower Upper
 113 100
 55 210.1 171.4 257.0
 56 148.5 116.2 174.4





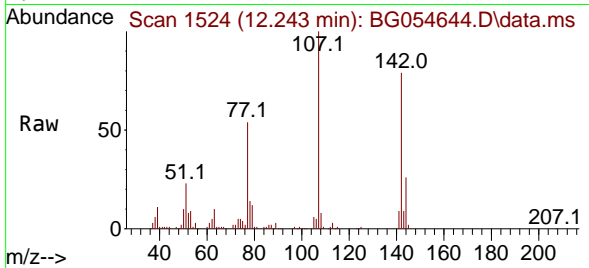
#35
 4-Chloro-3-methylphenol
 Concen: 39.110 ng/ul
 RT: 12.243 min Scan# 1524
 Delta R.T. 0.001 min
 Lab File: BG054644.D
 Acq: 17 Aug 2022 17:33

Instrument :

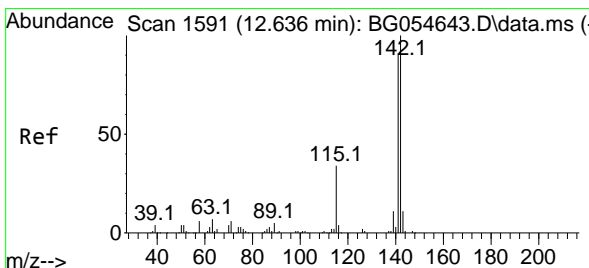
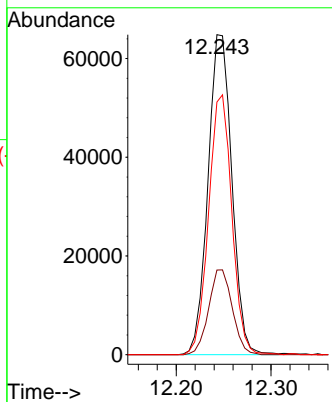
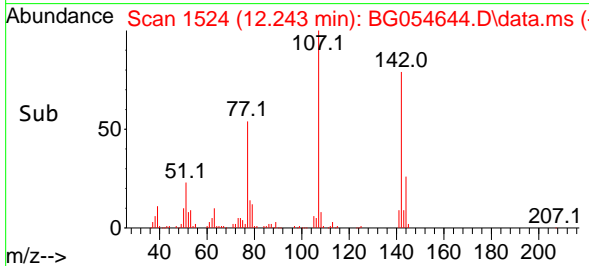
BNA_G

ClientSampleId :

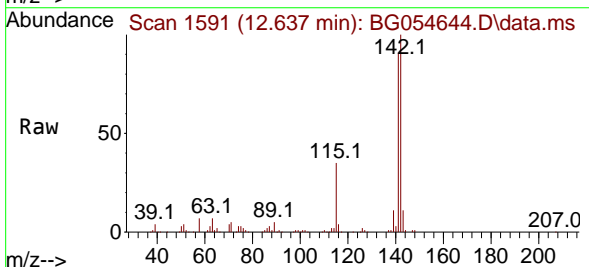
SSTD040438



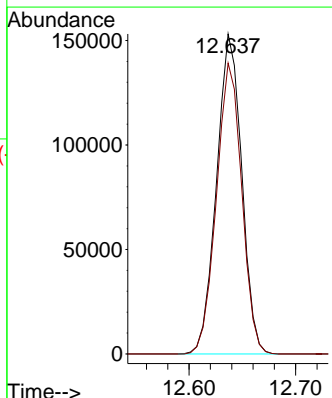
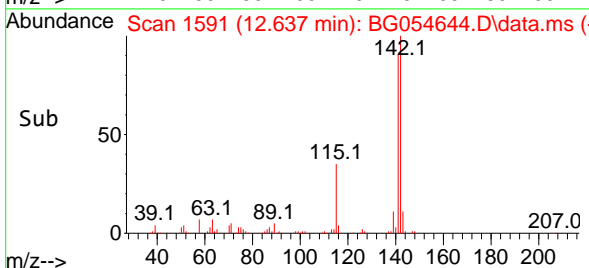
Tgt Ion:107 Resp: 113645
 Ion Ratio Lower Upper
 107 100
 144 26.5 21.2 31.8
 142 79.0 63.4 95.0

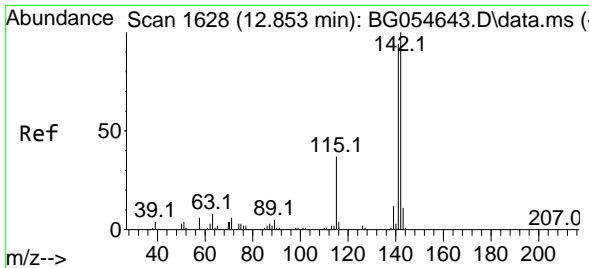


#36
 2-Methylnaphthalene
 Concen: 39.478 ng/ul
 RT: 12.637 min Scan# 1591
 Delta R.T. 0.001 min
 Lab File: BG054644.D
 Acq: 17 Aug 2022 17:33



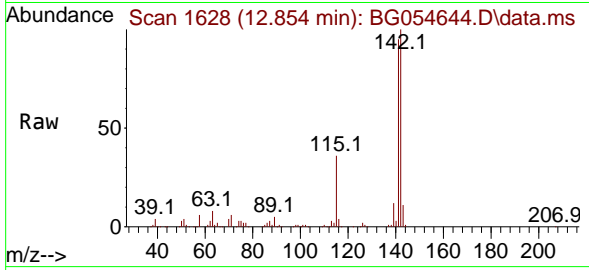
Tgt Ion:142 Resp: 250867
 Ion Ratio Lower Upper
 142 100
 141 90.9 73.0 109.6





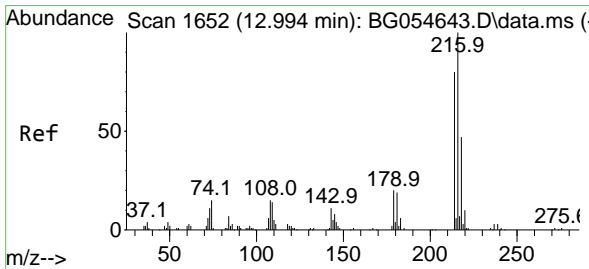
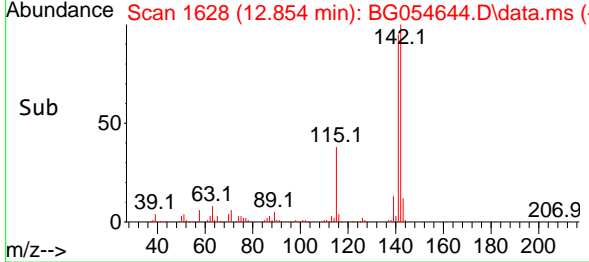
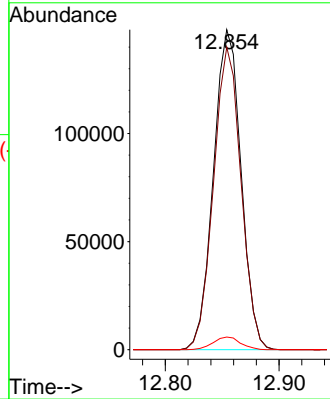
#37
 1-Methylnaphthalene
 Concen: 39.415 ng/uI
 RT: 12.854 min Scan# 1628
 Delta R.T. 0.001 min
 Lab File: BG054644.D
 Acq: 17 Aug 2022 17:33

Instrument : BNA_G
 ClientSampleId : SSTD040438

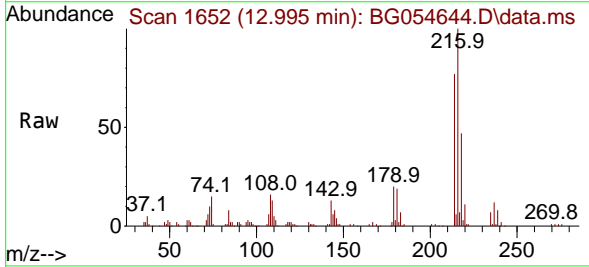


Tgt Ion:142 Resp: 249784

| Ion | Ratio | Lower | Upper |
|-----|-------|-------|-------|
| 142 | 100 | | |
| 141 | 94.6 | 75.0 | 112.4 |
| 116 | 4.0 | 3.3 | 4.9 |

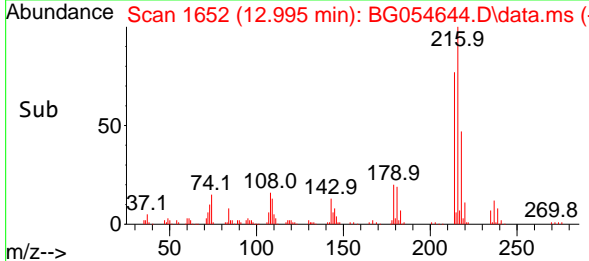
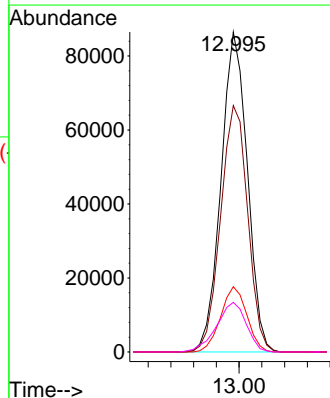


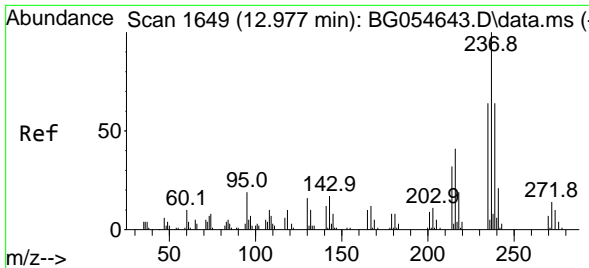
#39
 1,2,4,5-Tetrachlorobenzene
 Concen: 31.321 ng/uI
 RT: 12.995 min Scan# 1652
 Delta R.T. 0.001 min
 Lab File: BG054644.D
 Acq: 17 Aug 2022 17:33



Tgt Ion:216 Resp: 138931

| Ion | Ratio | Lower | Upper |
|-----|-------|-------|-------|
| 216 | 100 | | |
| 214 | 77.0 | 63.7 | 95.5 |
| 179 | 20.4 | 15.8 | 23.6 |
| 108 | 15.5 | 12.1 | 18.1 |





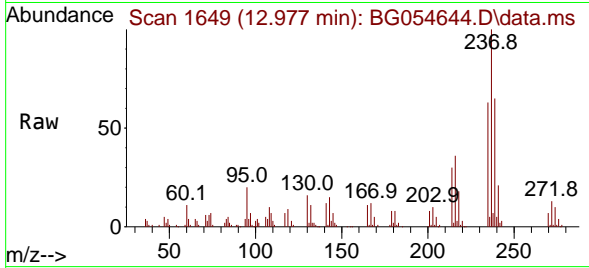
#40
 Hexachlorocyclopentadiene
 Concen: 35.670 ng/ul
 RT: 12.977 min Scan# 1649
 Delta R.T. 0.001 min
 Lab File: BG054644.D
 Acq: 17 Aug 2022 17:33

Instrument :

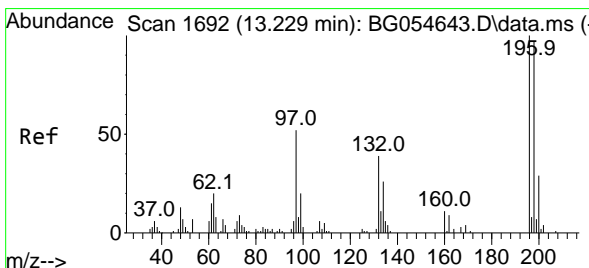
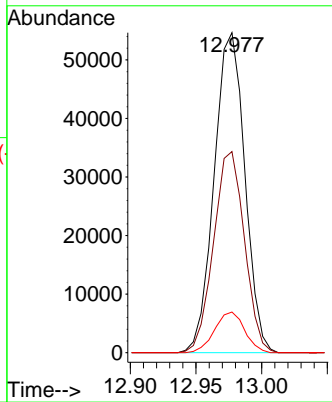
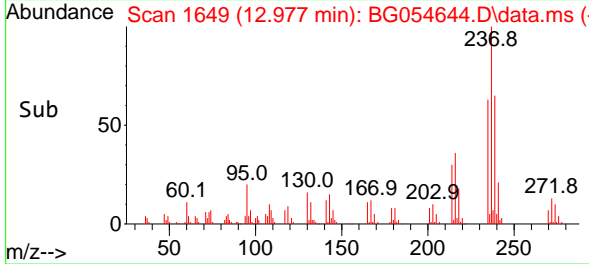
BNA_G

ClientSampleId :

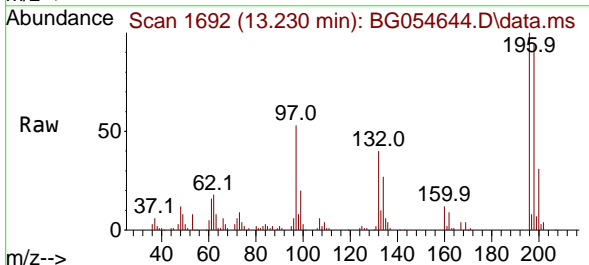
SSTD040438



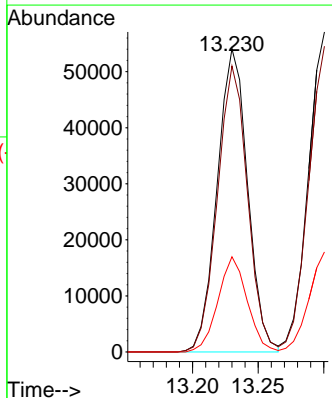
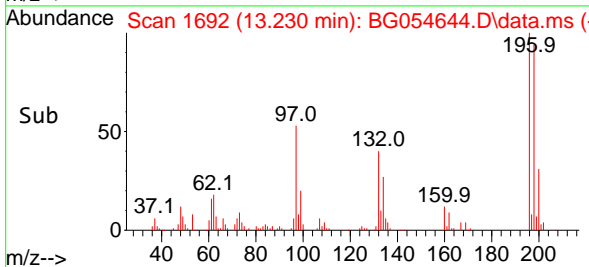
Tgt Ion:237 Resp: 88736
 Ion Ratio Lower Upper
 237 100
 235 62.8 50.9 76.3
 272 13.4 11.3 16.9

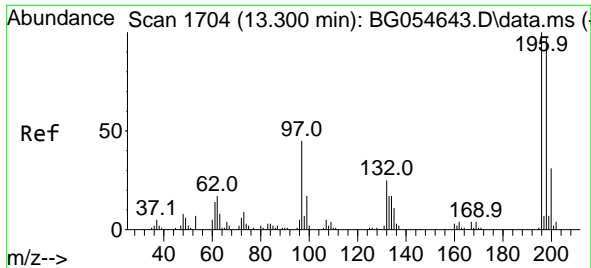


#41
 2,4,6-Trichlorophenol
 Concen: 37.906 ng/ul
 RT: 13.230 min Scan# 1692
 Delta R.T. 0.001 min
 Lab File: BG054644.D
 Acq: 17 Aug 2022 17:33



Tgt Ion:196 Resp: 87266
 Ion Ratio Lower Upper
 196 100
 198 94.3 77.5 116.3
 200 31.4 23.4 35.2





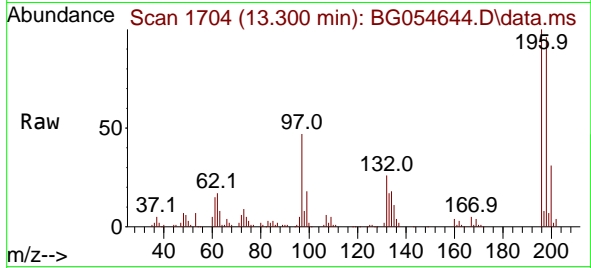
#42
 2,4,5-Trichlorophenol
 Concen: 35.557 ng/ul
 RT: 13.300 min Scan# 1704
 Delta R.T. 0.001 min
 Lab File: BG054644.D
 Acq: 17 Aug 2022 17:33

Instrument :

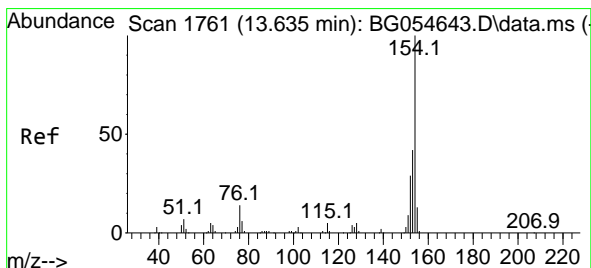
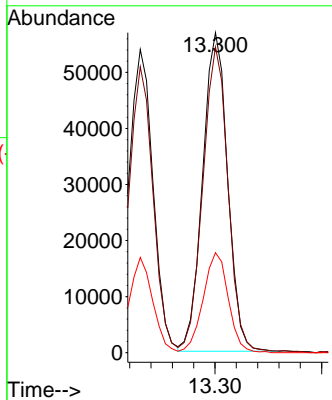
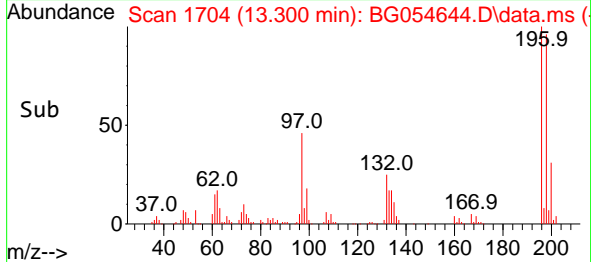
BNA_G

ClientSampleId :

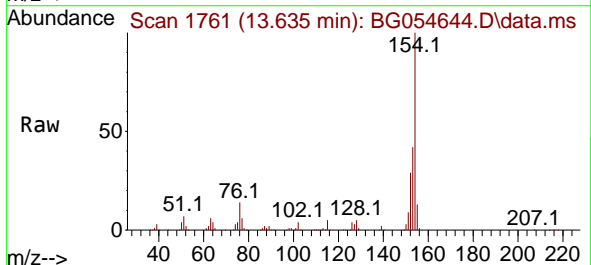
SSTD040438



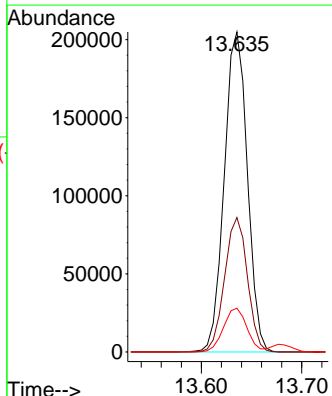
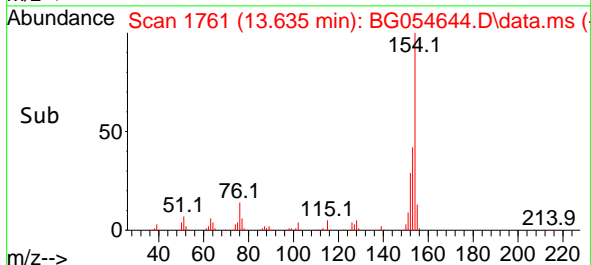
Tgt Ion:196 Resp: 92541
 Ion Ratio Lower Upper
 196 100
 198 95.6 78.2 117.2
 200 31.3 25.4 38.0

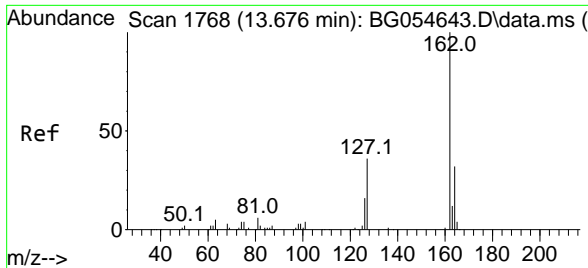


#43
 1,1'-Biphenyl
 Concen: 43.247 ng/ul
 RT: 13.635 min Scan# 1761
 Delta R.T. 0.001 min
 Lab File: BG054644.D
 Acq: 17 Aug 2022 17:33



Tgt Ion:154 Resp: 327104
 Ion Ratio Lower Upper
 154 100
 153 42.0 33.8 50.6
 76 13.7 11.0 16.6



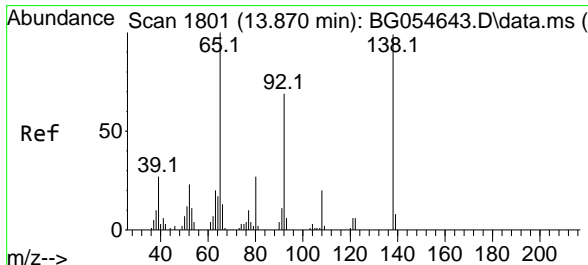
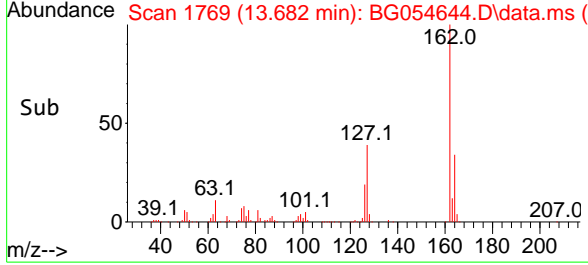
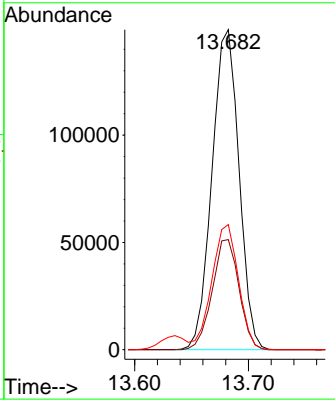
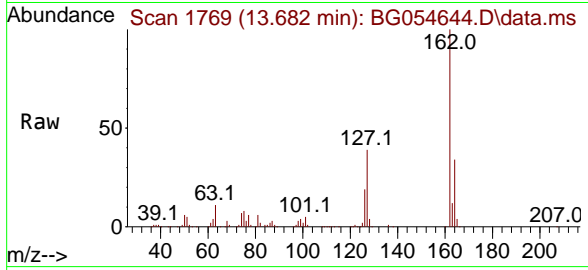


#44
 2-Chloronaphthalene
 Concen: 39.206 ng/uI
 RT: 13.682 min Scan# 1769
 Delta R.T. 0.007 min
 Lab File: BG054644.D
 Acq: 17 Aug 2022 17:33

Instrument : BNA_G
 ClientSampleId : SSTD040438

Tgt Ion:162 Resp: 246253

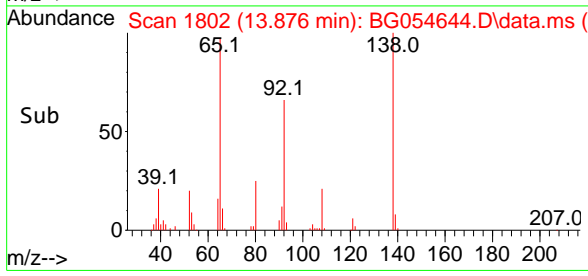
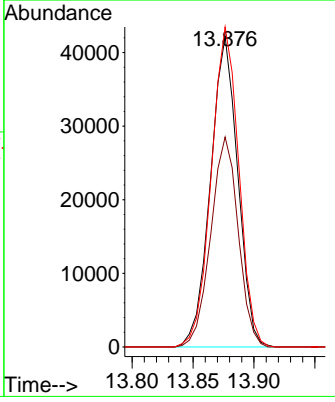
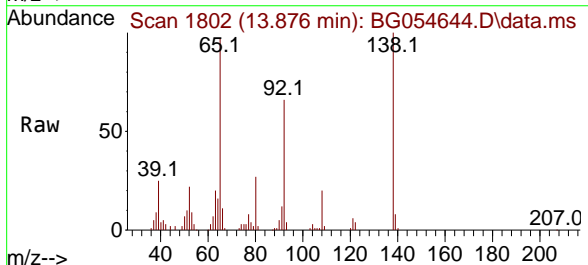
| Ion | Ratio | Lower | Upper |
|-----|-------|-------|-------|
| 162 | 100 | | |
| 164 | 34.4 | 26.0 | 39.0 |
| 127 | 39.1 | 31.4 | 47.0 |

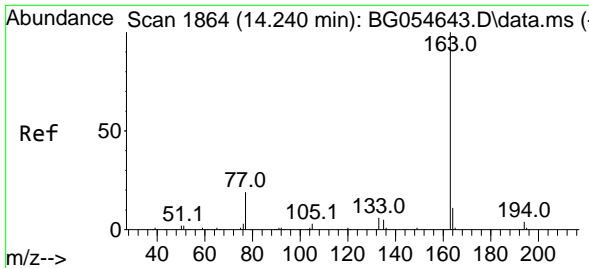


#45
 2-Nitroaniline
 Concen: 41.550 ng/uI
 RT: 13.876 min Scan# 1802
 Delta R.T. 0.007 min
 Lab File: BG054644.D
 Acq: 17 Aug 2022 17:33

Tgt Ion: 65 Resp: 65656

| Ion | Ratio | Lower | Upper |
|-----|-------|-------|-------|
| 65 | 100 | | |
| 92 | 67.7 | 55.3 | 82.9 |
| 138 | 103.1 | 78.8 | 118.2 |





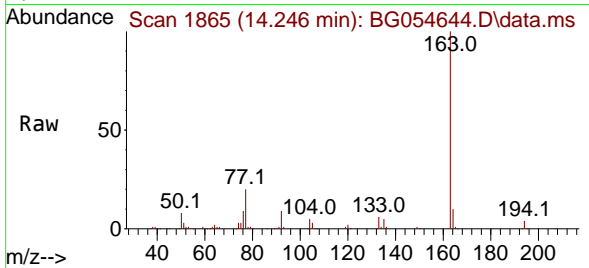
#47
 Dimethylphthalate
 Concen: 37.921 ng/ul
 RT: 14.246 min Scan# 1865
 Delta R.T. 0.007 min
 Lab File: BG054644.D
 Acq: 17 Aug 2022 17:33

Instrument :

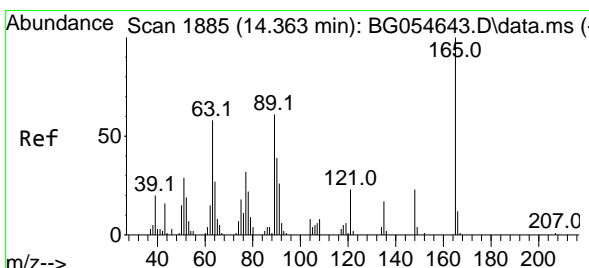
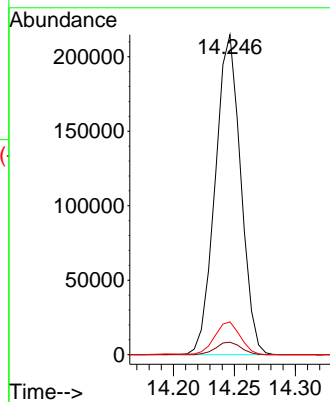
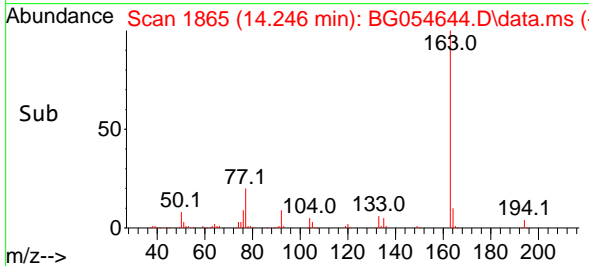
BNA_G

ClientSampleId :

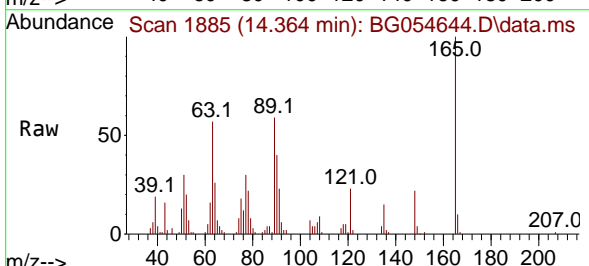
SSTD040438



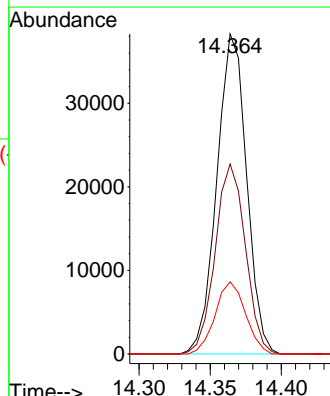
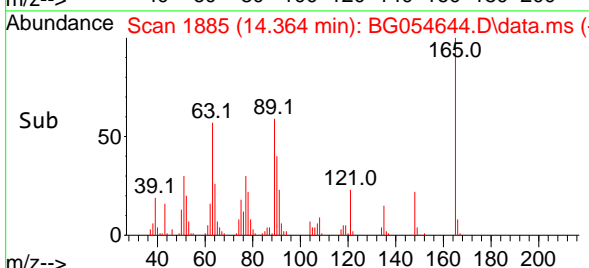
Tgt Ion:163 Resp: 312899
 Ion Ratio Lower Upper
 163 100
 194 3.9 3.0 4.6
 164 10.3 8.7 13.1

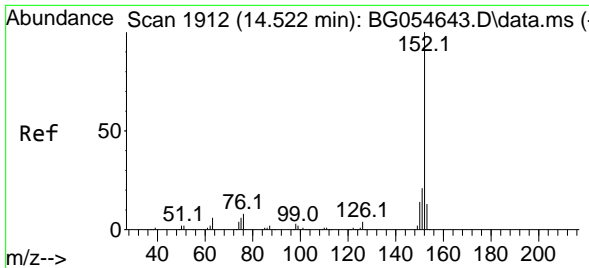


#48
 2,6-Dinitrotoluene
 Concen: 33.637 ng/ul
 RT: 14.364 min Scan# 1885
 Delta R.T. 0.001 min
 Lab File: BG054644.D
 Acq: 17 Aug 2022 17:33



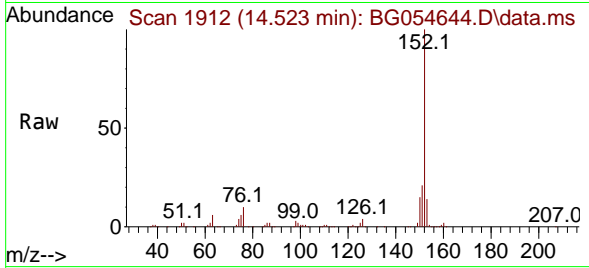
Tgt Ion:165 Resp: 55821
 Ion Ratio Lower Upper
 165 100
 89 59.4 48.7 73.1
 121 22.6 18.2 27.2



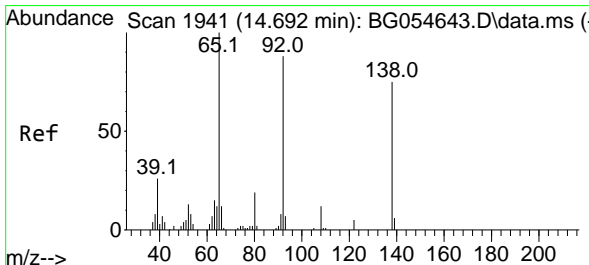
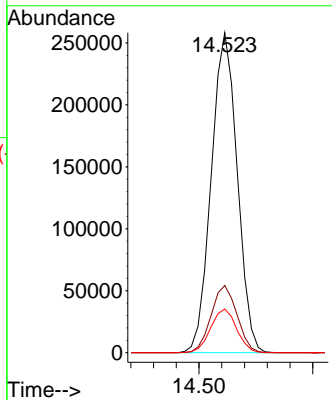
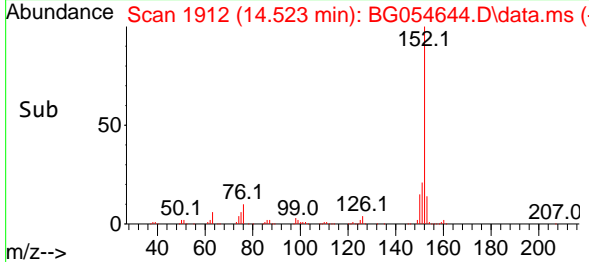


#50
 Acenaphthylene
 Concen: 42.684 ng/uI
 RT: 14.523 min Scan# 1912
 Delta R.T. 0.001 min
 Lab File: BG054644.D
 Acq: 17 Aug 2022 17:33

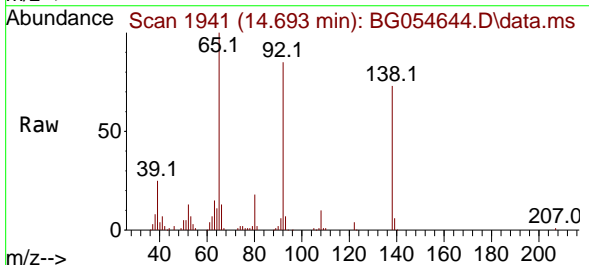
Instrument : BNA_G
 ClientSampleId : SSTD040438



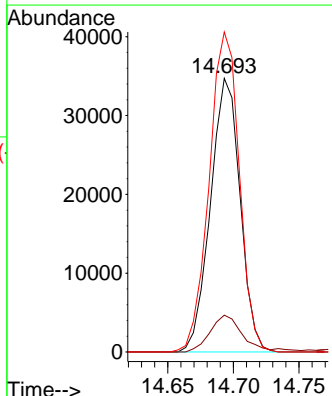
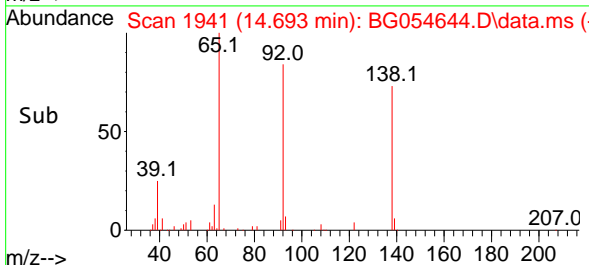
Tgt Ion:152 Resp: 409134
 Ion Ratio Lower Upper
 152 100
 151 21.0 16.9 25.3
 153 13.6 10.5 15.7

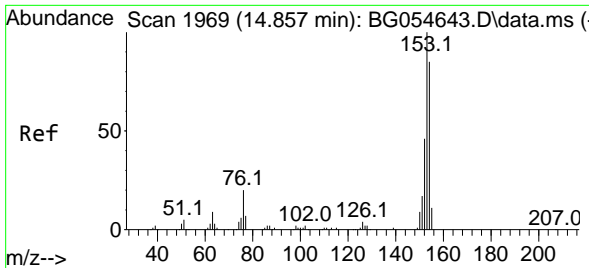


#51
 3-Nitroaniline
 Concen: 40.486 ng/uI
 RT: 14.693 min Scan# 1941
 Delta R.T. 0.001 min
 Lab File: BG054644.D
 Acq: 17 Aug 2022 17:33



Tgt Ion:138 Resp: 54540
 Ion Ratio Lower Upper
 138 100
 108 13.4 12.8 19.2
 92 116.9 93.7 140.5





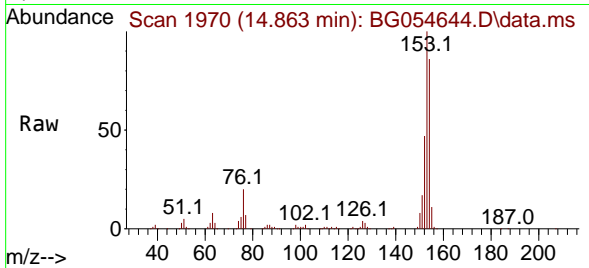
#52
 Acenaphthene
 Concen: 42.574 ng/uI
 RT: 14.863 min Scan# 1970
 Delta R.T. 0.007 min
 Lab File: BG054644.D
 Acq: 17 Aug 2022 17:33

Instrument :

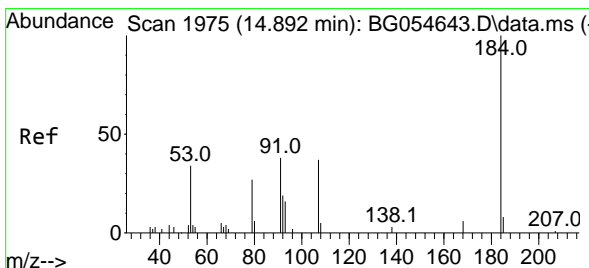
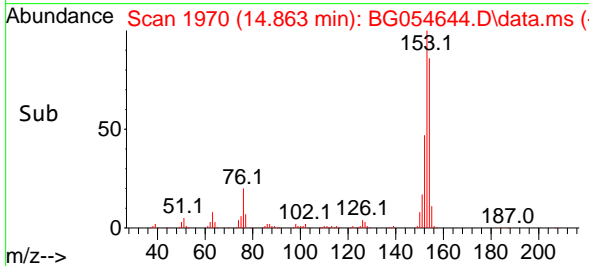
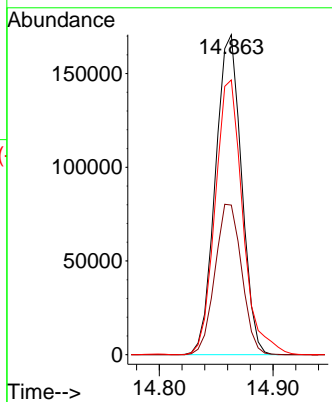
BNA_G

ClientSampleId :

SSTD040438

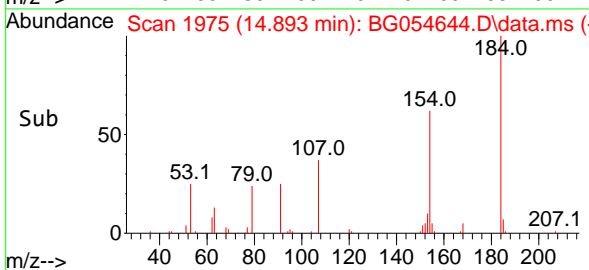
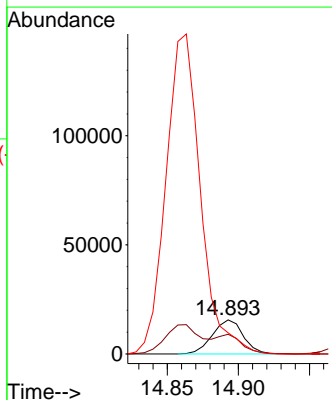
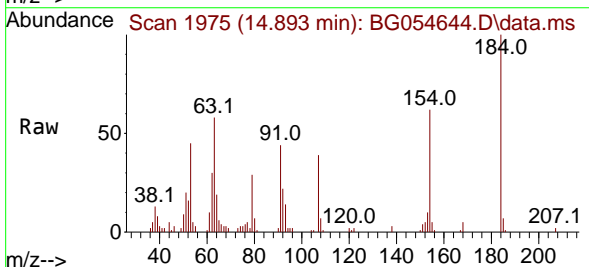


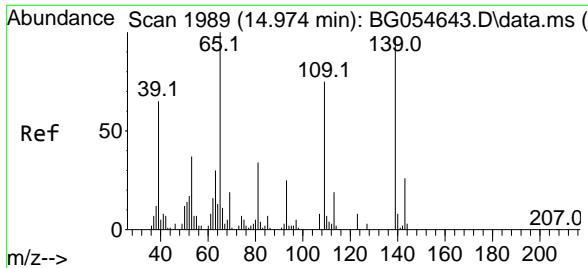
Tgt Ion:153 Resp: 272512
 Ion Ratio Lower Upper
 153 100
 152 46.8 36.9 55.3
 154 85.9 68.2 102.2



#53
 2,4-Dinitrophenol
 Concen: 30.612 ng/uI
 RT: 14.893 min Scan# 1975
 Delta R.T. 0.001 min
 Lab File: BG054644.D
 Acq: 17 Aug 2022 17:33

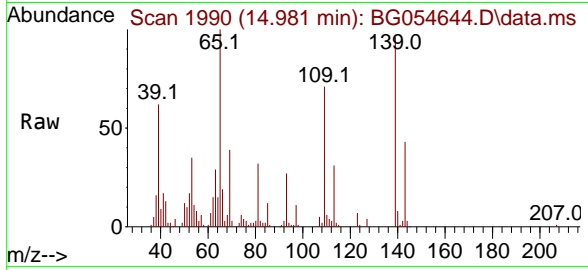
Tgt Ion:184 Resp: 23534
 Ion Ratio Lower Upper
 184 100
 63 57.6 42.0 63.0
 154 61.9 48.9 73.3



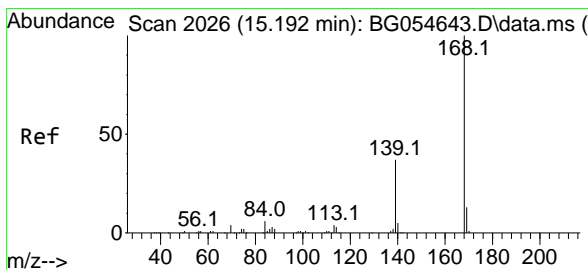
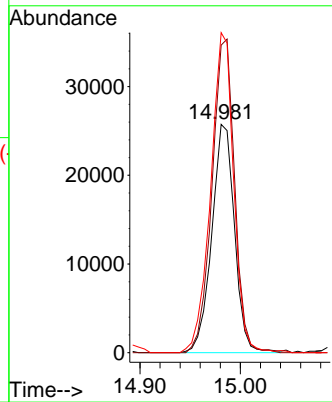
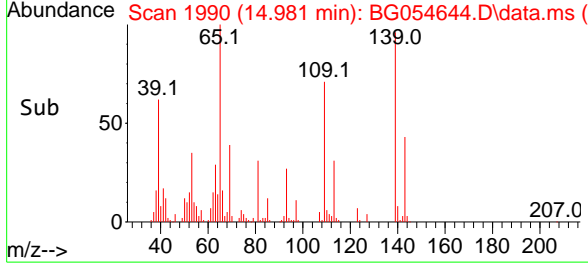


#55
 4-Nitrophenol
 Concen: 35.149 ng/u1
 RT: 14.981 min Scan# 1989
 Delta R.T. 0.007 min
 Lab File: BG054644.D
 Acq: 17 Aug 2022 17:33

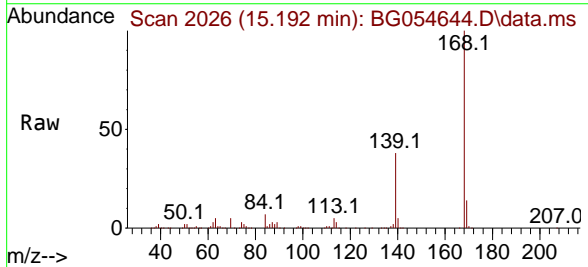
Instrument : BNA_G
 ClientSampleId : SSTD040438



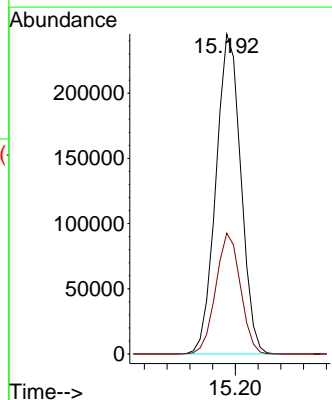
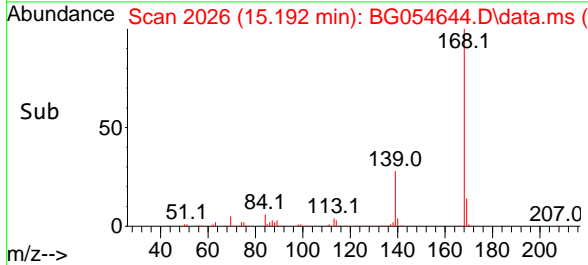
Tgt Ion:109 Resp: 40502
 Ion Ratio Lower Upper
 109 100
 139 134.6 105.4 158.0
 65 140.1 110.2 165.4

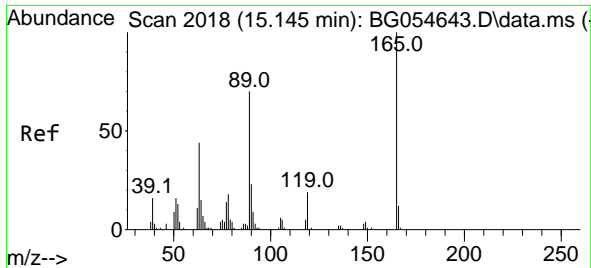


#56
 Dibenzofuran
 Concen: 38.091 ng/u1
 RT: 15.192 min Scan# 2026
 Delta R.T. 0.001 min
 Lab File: BG054644.D
 Acq: 17 Aug 2022 17:33



Tgt Ion:168 Resp: 373051
 Ion Ratio Lower Upper
 168 100
 139 37.8 29.4 44.2



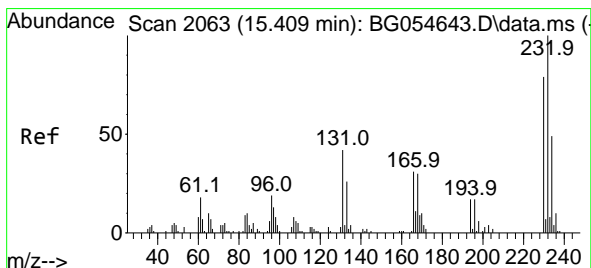
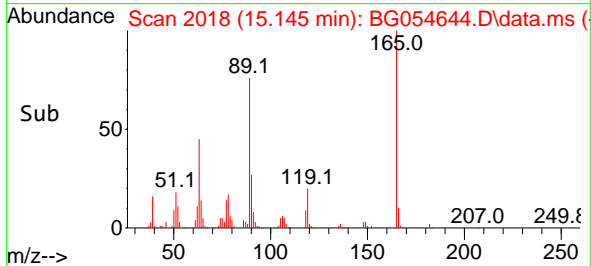
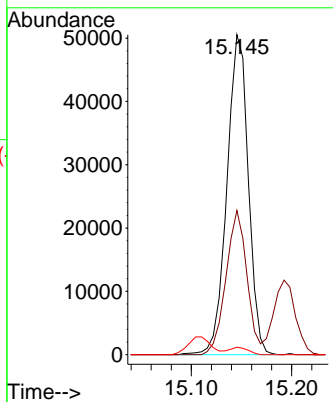
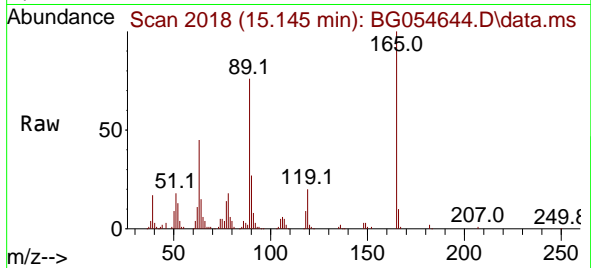


#57
 2,4-Dinitrotoluene
 Concen: 31.136 ng/ul
 RT: 15.145 min Scan# 2018
 Delta R.T. 0.001 min
 Lab File: BG054644.D
 Acq: 17 Aug 2022 17:33

Instrument : BNA_G
 ClientSampleId : SSTD040438

Tgt Ion:165 Resp: 74952

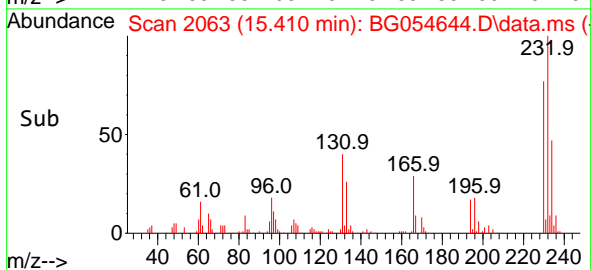
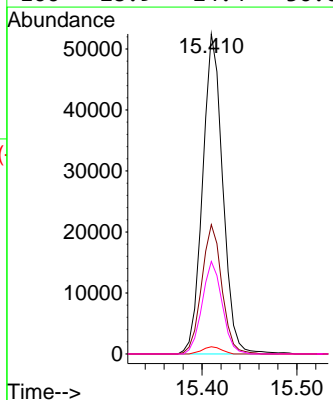
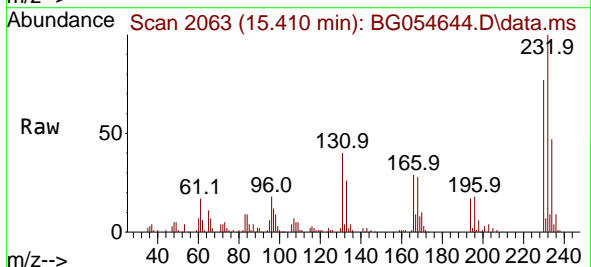
| Ion | Ratio | Lower | Upper |
|-----|-------|-------|-------|
| 165 | 100 | | |
| 63 | 45.0 | 35.0 | 52.4 |
| 182 | 2.4 | 2.1 | 3.1 |

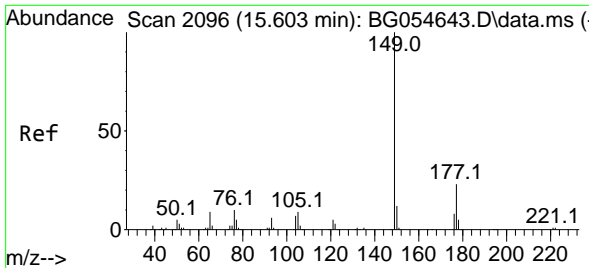


#58
 2,3,4,6-Tetrachlorophenol
 Concen: 34.177 ng/ul
 RT: 15.410 min Scan# 2063
 Delta R.T. 0.001 min
 Lab File: BG054644.D
 Acq: 17 Aug 2022 17:33

Tgt Ion:232 Resp: 77294

| Ion | Ratio | Lower | Upper |
|-----|-------|-------|-------|
| 232 | 100 | | |
| 131 | 40.4 | 33.8 | 50.8 |
| 130 | 2.3 | 2.0 | 3.0 |
| 166 | 28.9 | 24.4 | 36.6 |





#59
 Diethylphthalate
 Concen: 38.583 ng/u1
 RT: 15.604 min Scan# 2096
 Delta R.T. 0.001 min
 Lab File: BG054644.D
 Acq: 17 Aug 2022 17:33

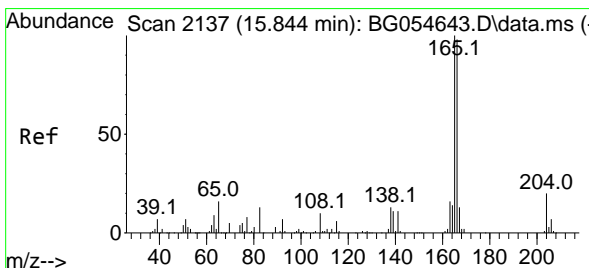
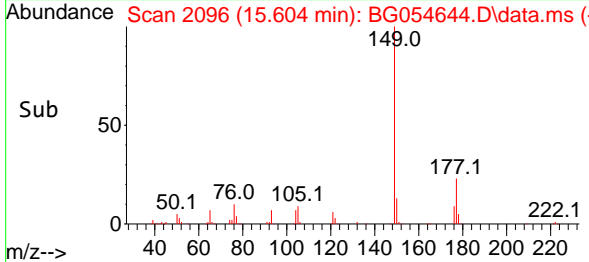
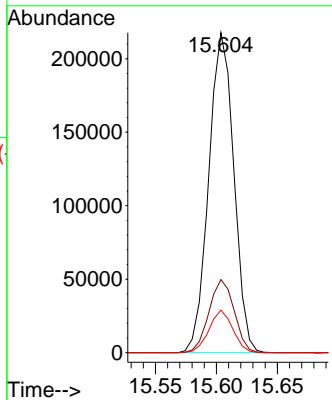
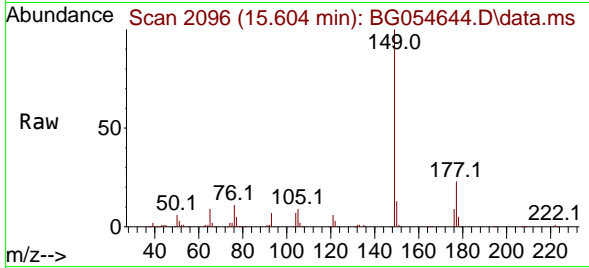
Instrument :

BNA_G

ClientSampleId :

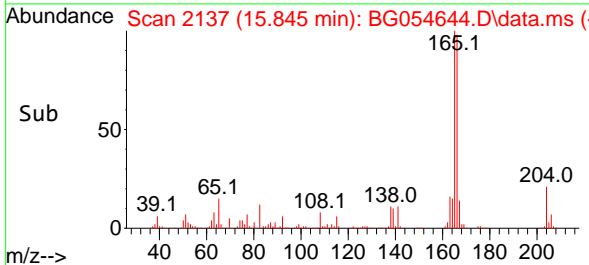
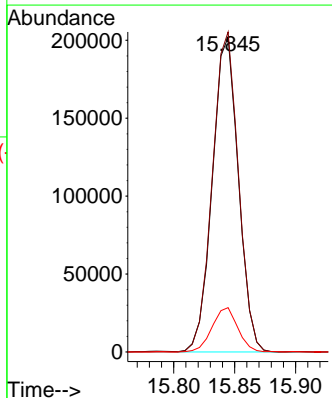
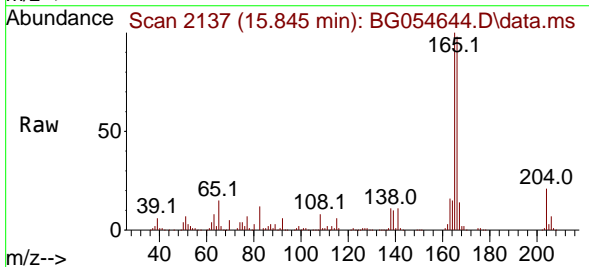
SSTD040438

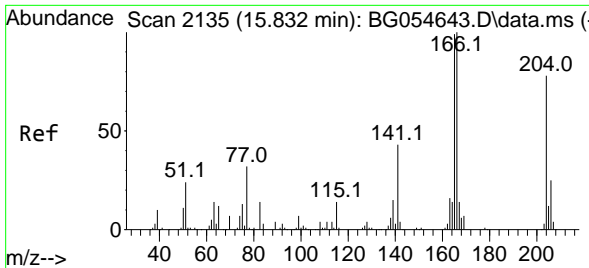
Tgt Ion:149 Resp: 312157
 Ion Ratio Lower Upper
 149 100
 177 22.8 18.4 27.6
 150 13.3 9.8 14.8



#61
 Fluorene
 Concen: 37.616 ng/u1
 RT: 15.845 min Scan# 2137
 Delta R.T. 0.001 min
 Lab File: BG054644.D
 Acq: 17 Aug 2022 17:33

Tgt Ion:166 Resp: 300045
 Ion Ratio Lower Upper
 166 100
 165 101.6 81.3 121.9
 167 14.1 11.0 16.4



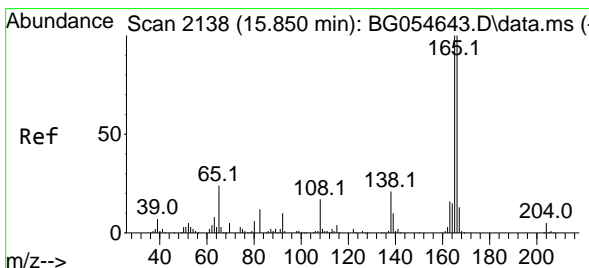
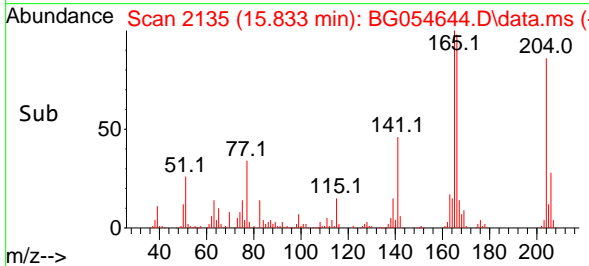
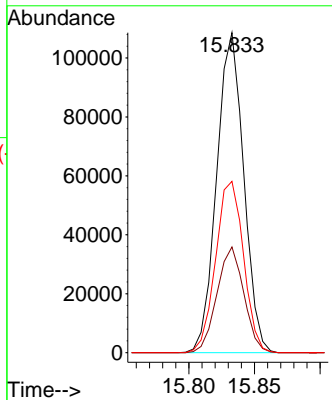
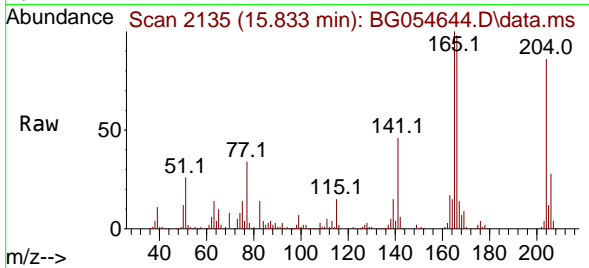


#62
 4-Chlorophenyl-phenylether
 Concen: 30.674 ng/ul
 RT: 15.833 min Scan# 2135
 Delta R.T. 0.001 min
 Lab File: BG054644.D
 Acq: 17 Aug 2022 17:33

Instrument : BNA_G
 ClientSampleId : SSTD040438

Tgt Ion: 204 Resp: 155571

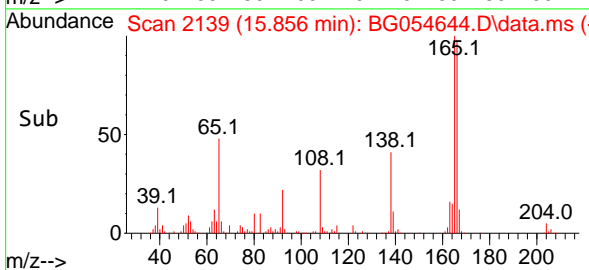
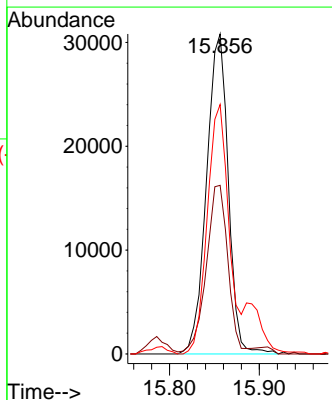
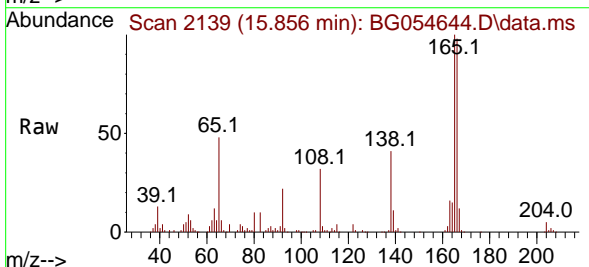
| Ion | Ratio | Lower | Upper |
|-----|-------|-------|-------|
| 204 | 100 | | |
| 206 | 33.1 | 25.7 | 38.5 |
| 141 | 53.5 | 43.9 | 65.9 |

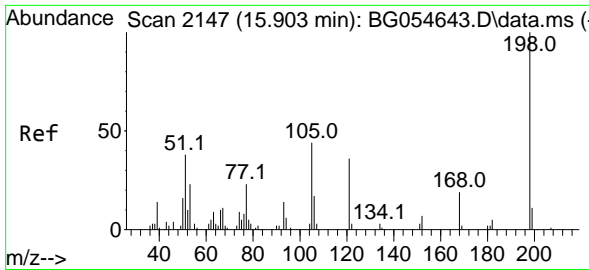


#63
 4-Nitroaniline
 Concen: 40.017 ng/ul
 RT: 15.856 min Scan# 2139
 Delta R.T. 0.007 min
 Lab File: BG054644.D
 Acq: 17 Aug 2022 17:33

Tgt Ion: 138 Resp: 51837

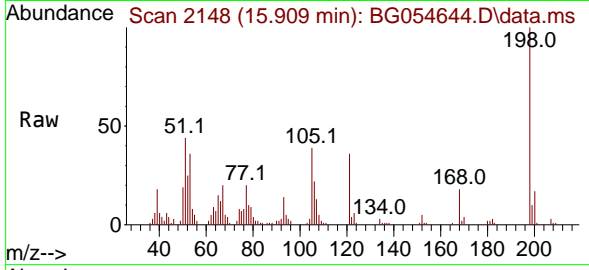
| Ion | Ratio | Lower | Upper |
|-----|-------|-------|-------|
| 138 | 100 | | |
| 92 | 52.7 | 40.5 | 60.7 |
| 108 | 77.9 | 64.5 | 96.7 |



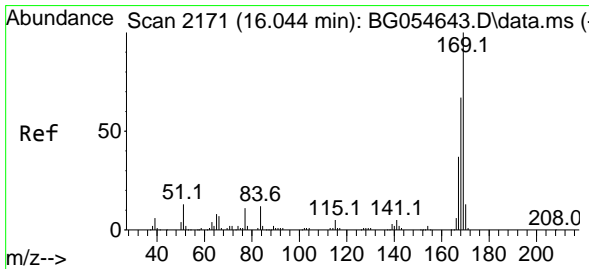
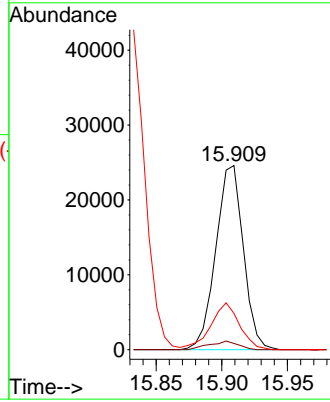
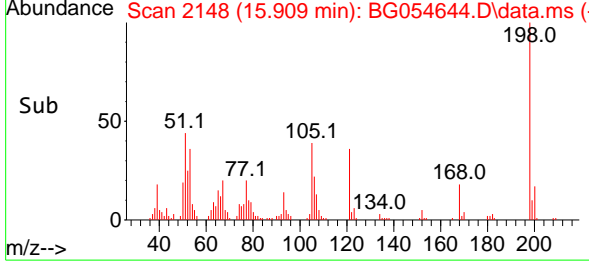


#66
 4,6-Dinitro-2-methylphenol
 Concen: 28.736 ng/ul
 RT: 15.909 min Scan# 2147
 Delta R.T. 0.007 min
 Lab File: BG054644.D
 Acq: 17 Aug 2022 17:33

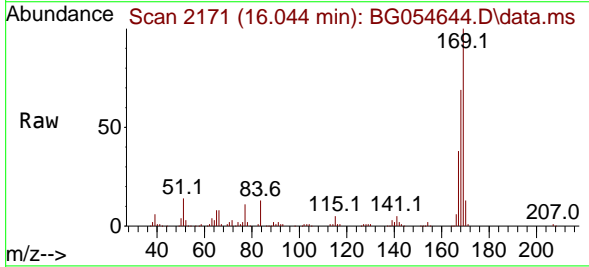
Instrument :
 BNA_G
 ClientSampleId :
 SSTD040438



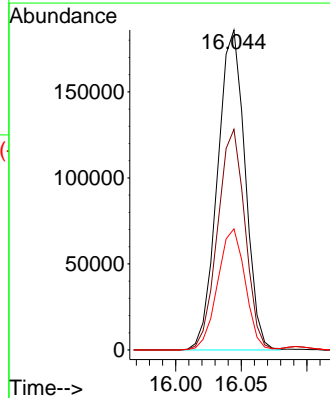
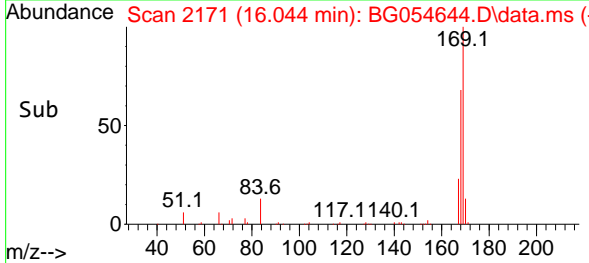
Tgt Ion:198 Resp: 35949
 Ion Ratio Lower Upper
 198 100
 182 3.4 4.0 6.0#
 77 19.7 20.2 30.2#

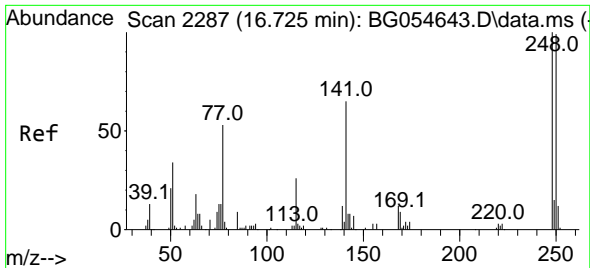


#67
 N-Nitrosodiphenylamine
 Concen: 46.560 ng/ul
 RT: 16.044 min Scan# 2171
 Delta R.T. 0.001 min
 Lab File: BG054644.D
 Acq: 17 Aug 2022 17:33



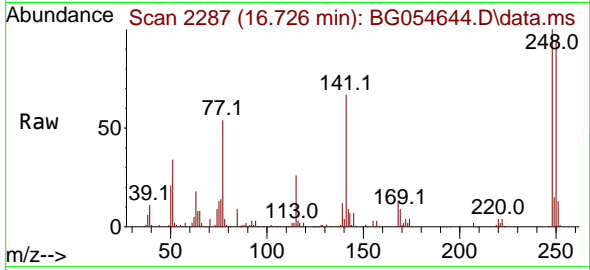
Tgt Ion:169 Resp: 271934
 Ion Ratio Lower Upper
 169 100
 168 69.0 53.8 80.8
 167 37.9 29.4 44.0



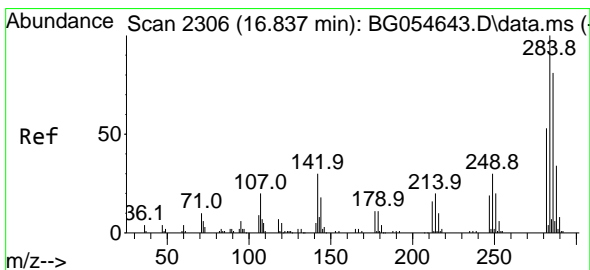
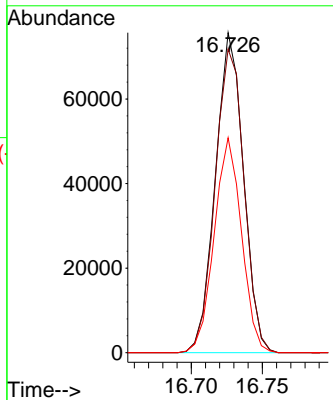
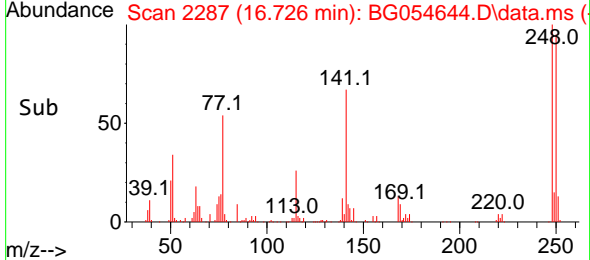


#68
 4-Bromophenyl-phenylether
 Concen: 35.045 ng/ul
 RT: 16.726 min Scan# 21
 Delta R.T. 0.001 min
 Lab File: BG054644.D
 Acq: 17 Aug 2022 17:33

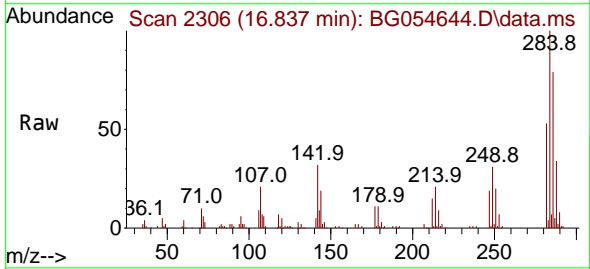
Instrument :
 BNA_G
 ClientSampleId :
 SSTD040438



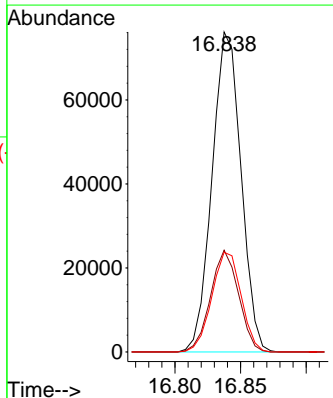
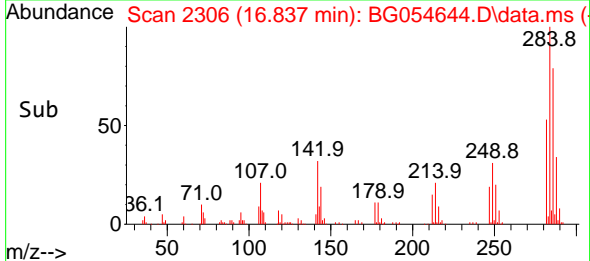
Tgt Ion:248 Resp: 103995
 Ion Ratio Lower Upper
 248 100
 250 94.9 79.1 118.7
 141 67.2 52.5 78.7

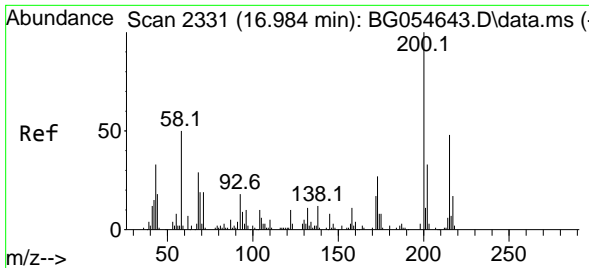


#69
 Hexachlorobenzene
 Concen: 33.598 ng/ul
 RT: 16.837 min Scan# 2306
 Delta R.T. 0.001 min
 Lab File: BG054644.D
 Acq: 17 Aug 2022 17:33



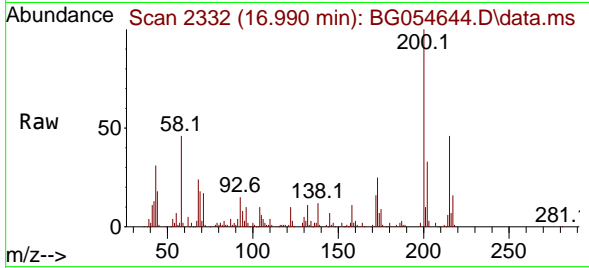
Tgt Ion:284 Resp: 116853
 Ion Ratio Lower Upper
 284 100
 142 31.8 23.7 35.5
 249 31.2 24.2 36.2



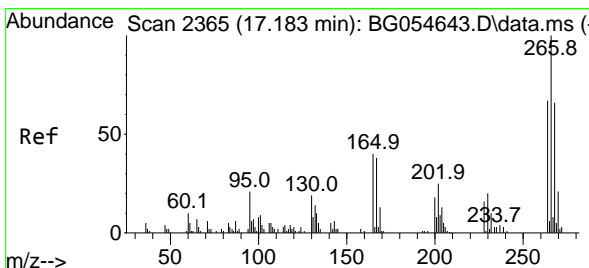
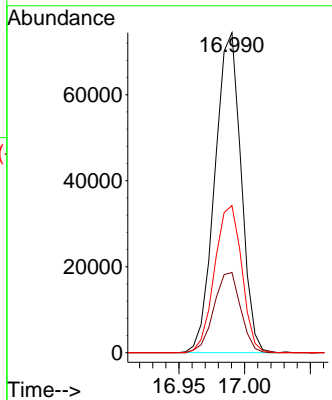
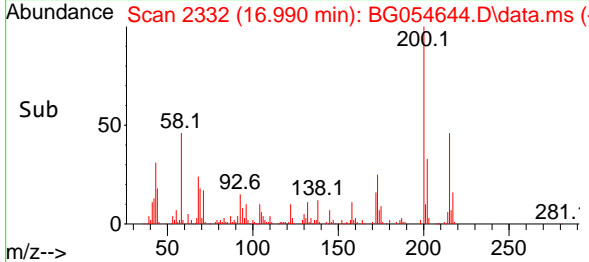


#70
 Atrazine
 Concen: 35.983 ng/uI
 RT: 16.990 min Scan# 21
 Delta R.T. 0.007 min
 Lab File: BG054644.D
 Acq: 17 Aug 2022 17:33

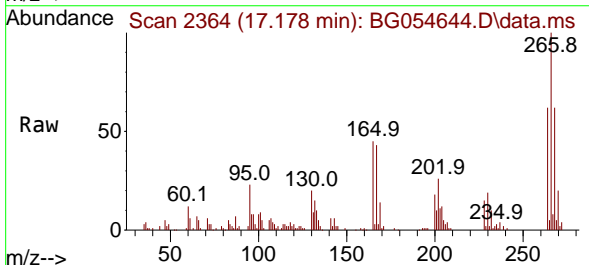
Instrument :
 BNA_G
 ClientSampleId :
 SSTD040438



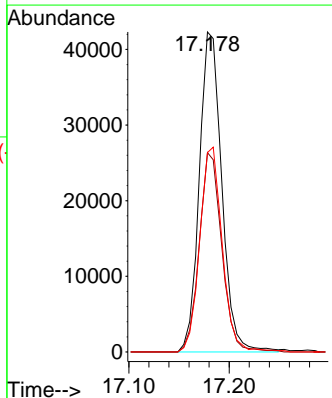
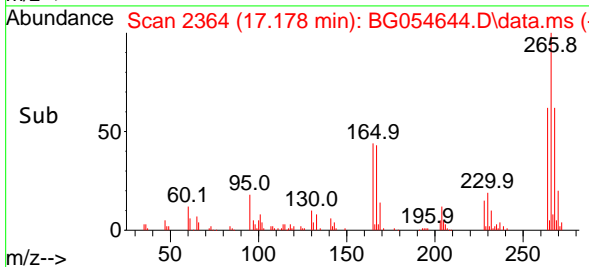
Tgt Ion:200 Resp: 103223
 Ion Ratio Lower Upper
 200 100
 173 25.0 21.3 31.9
 215 46.0 38.8 58.2

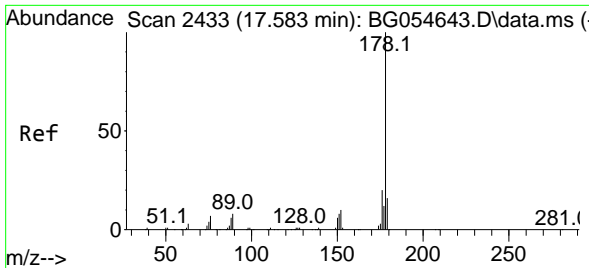


#71
 Pentachlorophenol
 Concen: 44.813 ng/uI
 RT: 17.178 min Scan# 2364
 Delta R.T. -0.005 min
 Lab File: BG054644.D
 Acq: 17 Aug 2022 17:33



Tgt Ion:266 Resp: 66062
 Ion Ratio Lower Upper
 266 100
 264 62.3 53.8 80.8
 268 62.3 52.8 79.2

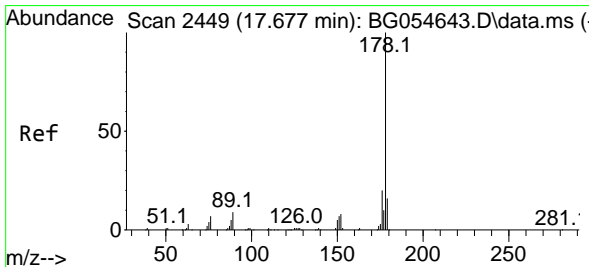
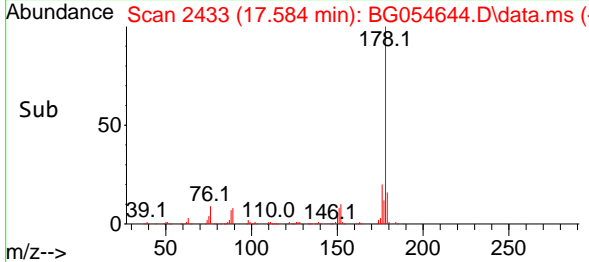
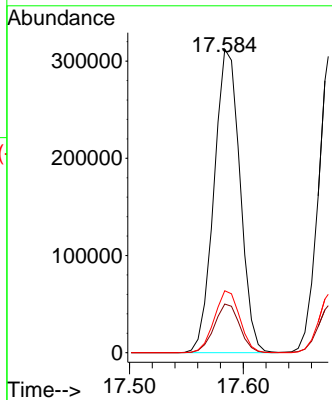
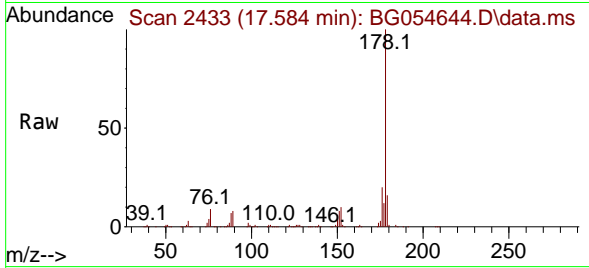




#72
 Phenanthrene
 Concen: 41.803 ng/u1
 RT: 17.584 min Scan# 2433
 Delta R.T. 0.001 min
 Lab File: BG054644.D
 Acq: 17 Aug 2022 17:33

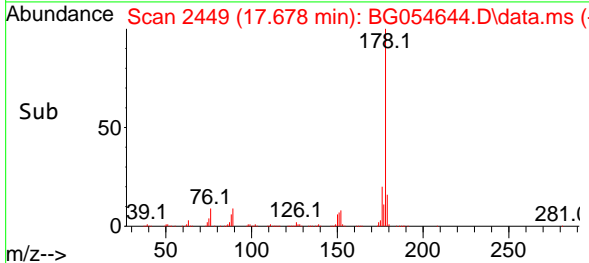
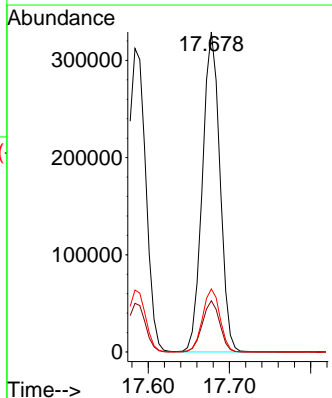
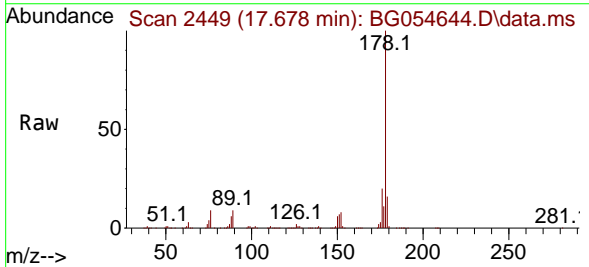
Instrument :
 BNA_G
 ClientSampleId :
 SSTD040438

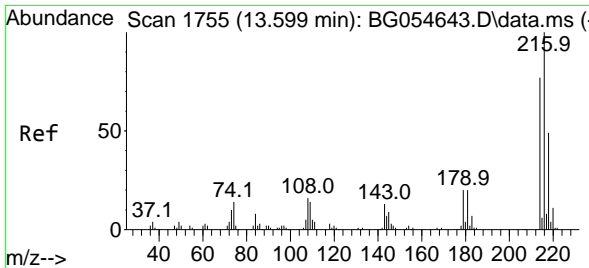
Tgt Ion:178 Resp: 494778
 Ion Ratio Lower Upper
 178 100
 179 16.0 12.8 19.2
 176 20.4 15.6 23.4



#74
 Anthracene
 Concen: 41.283 ng/u1
 RT: 17.678 min Scan# 2449
 Delta R.T. 0.001 min
 Lab File: BG054644.D
 Acq: 17 Aug 2022 17:33

Tgt Ion:178 Resp: 492431
 Ion Ratio Lower Upper
 178 100
 179 16.0 12.5 18.7
 176 19.7 15.9 23.9



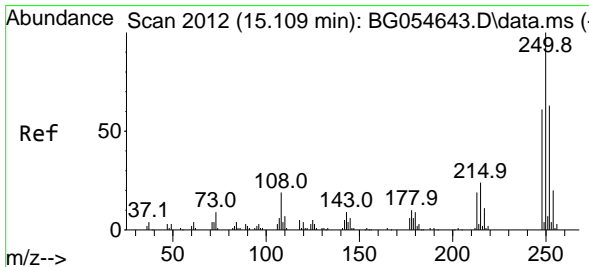
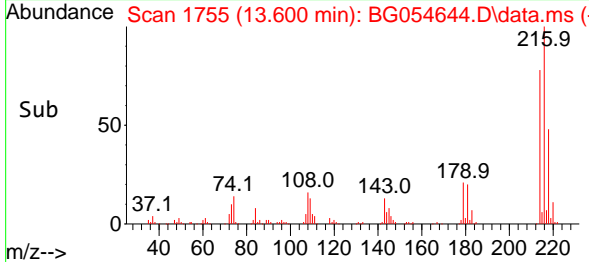
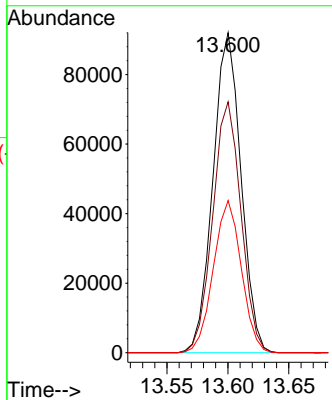
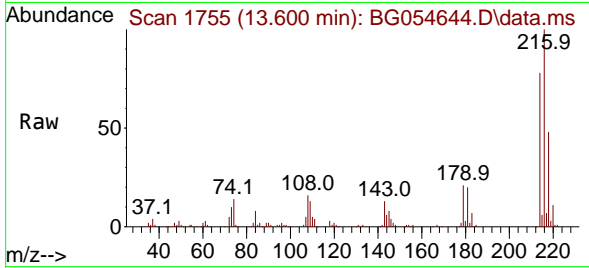


#75
 1,2,3,4-Tetrachlorobenzene
 Concen: 36.243 ng/uL
 RT: 13.600 min Scan# 11
 Delta R.T. 0.001 min
 Lab File: BG054644.D
 Acq: 17 Aug 2022 17:33

Instrument :
 BNA_G
 ClientSampleId :
 SSTD040438

Tgt Ion:216 Resp: 147473

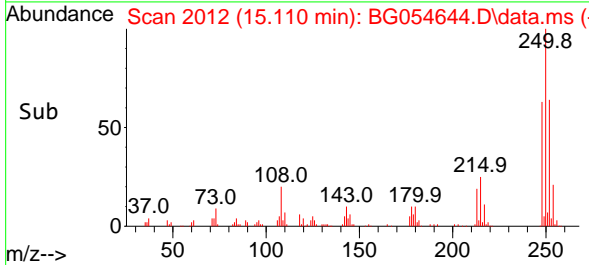
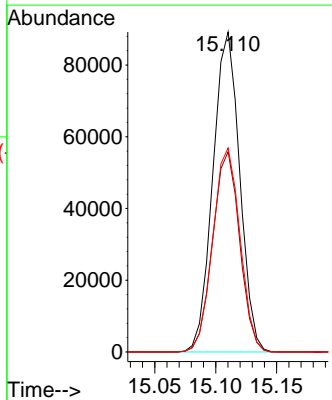
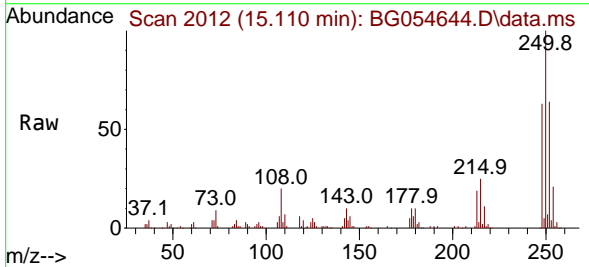
| Ion | Ratio | Lower | Upper |
|-----|-------|-------|-------|
| 216 | 100 | | |
| 214 | 78.4 | 61.9 | 92.9 |
| 218 | 47.6 | 39.5 | 59.3 |

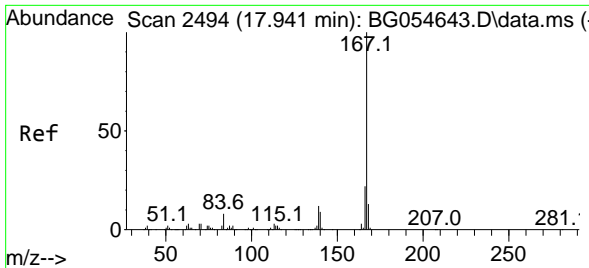


#76
 Pentachlorobenzene
 Concen: 36.474 ng/uL
 RT: 15.110 min Scan# 2012
 Delta R.T. 0.001 min
 Lab File: BG054644.D
 Acq: 17 Aug 2022 17:33

Tgt Ion:250 Resp: 136501

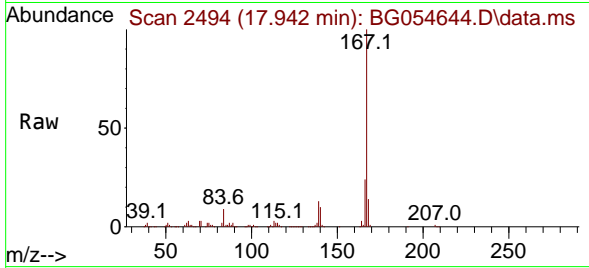
| Ion | Ratio | Lower | Upper |
|-----|-------|-------|-------|
| 250 | 100 | | |
| 248 | 62.5 | 49.1 | 73.7 |
| 252 | 63.8 | 50.6 | 76.0 |



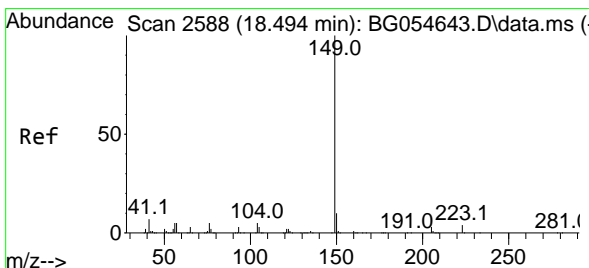
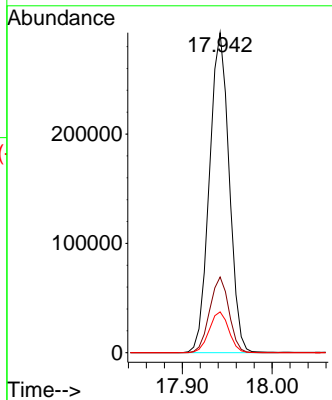
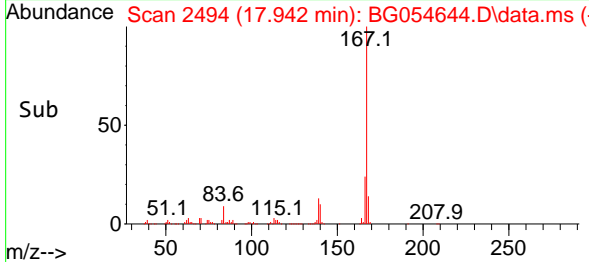


#77
 Carbazole
 Concen: 45.418 ng/u1
 RT: 17.942 min Scan# 2494
 Delta R.T. 0.001 min
 Lab File: BG054644.D
 Acq: 17 Aug 2022 17:33

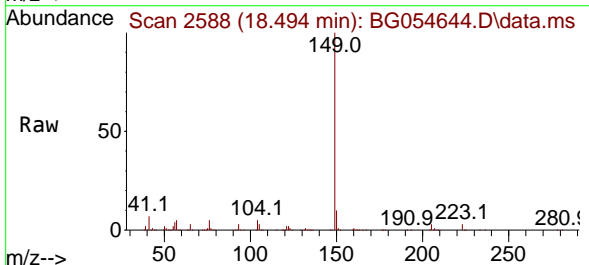
Instrument : BNA_G
 ClientSampleId : SSTD040438



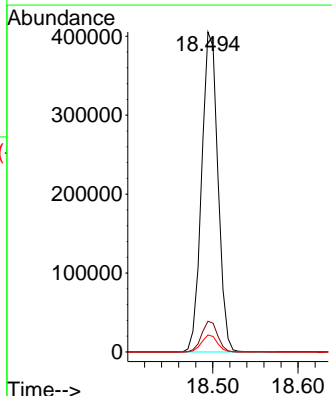
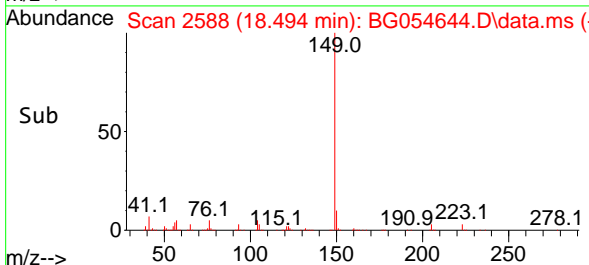
Tgt Ion:167 Resp: 446667
 Ion Ratio Lower Upper
 167 100
 166 23.7 17.8 26.6
 139 12.8 9.9 14.9

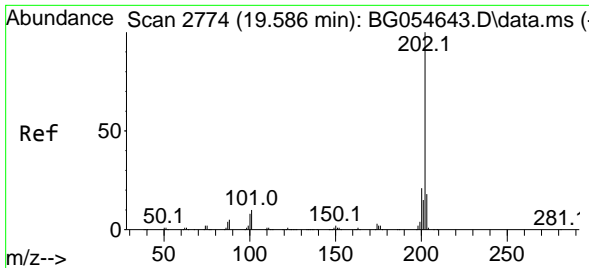


#78
 Di-n-butylphthalate
 Concen: 47.951 ng/u1
 RT: 18.494 min Scan# 2588
 Delta R.T. 0.001 min
 Lab File: BG054644.D
 Acq: 17 Aug 2022 17:33



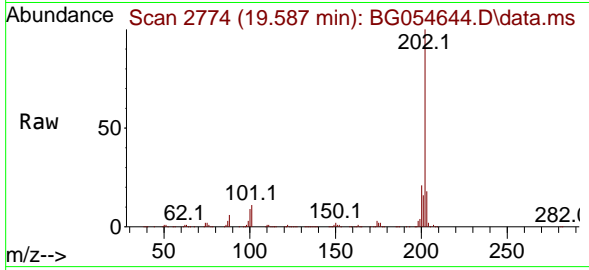
Tgt Ion:149 Resp: 536896
 Ion Ratio Lower Upper
 149 100
 150 9.6 7.7 11.5
 104 5.3 4.2 6.4



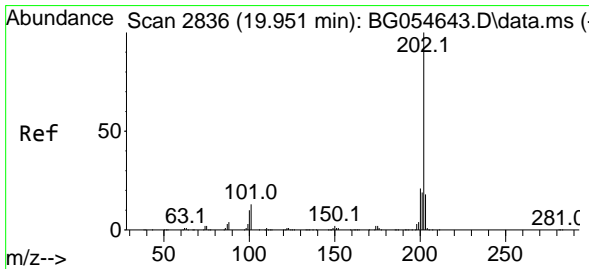
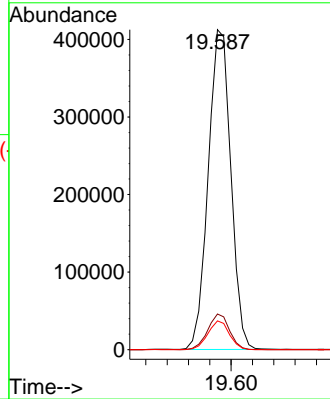
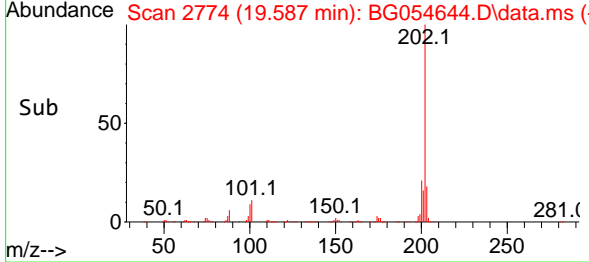


#80
 Fluoranthene
 Concen: 48.096 ng/u1
 RT: 19.587 min Scan# 2774
 Delta R.T. 0.001 min
 Lab File: BG054644.D
 Acq: 17 Aug 2022 17:33

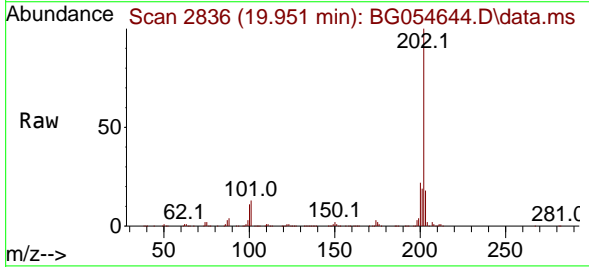
Instrument :
 BNA_G
 ClientSampleId :
 SSTD040438



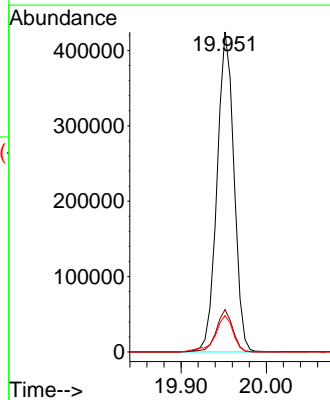
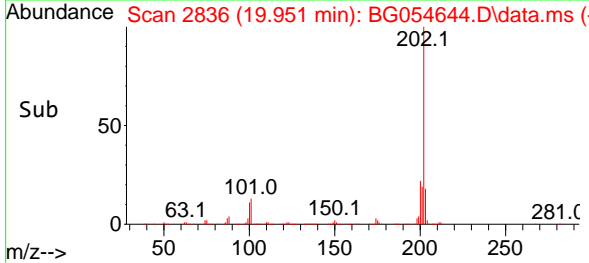
Tgt Ion:202 Resp: 606991
 Ion Ratio Lower Upper
 202 100
 101 11.2 8.0 12.0
 100 9.0 6.7 10.1

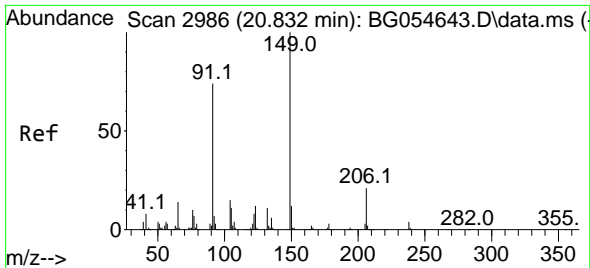


#82
 Pyrene
 Concen: 46.766 ng/u1
 RT: 19.951 min Scan# 2836
 Delta R.T. 0.001 min
 Lab File: BG054644.D
 Acq: 17 Aug 2022 17:33



Tgt Ion:202 Resp: 586790
 Ion Ratio Lower Upper
 202 100
 101 13.3 10.1 15.1
 100 11.4 8.4 12.6



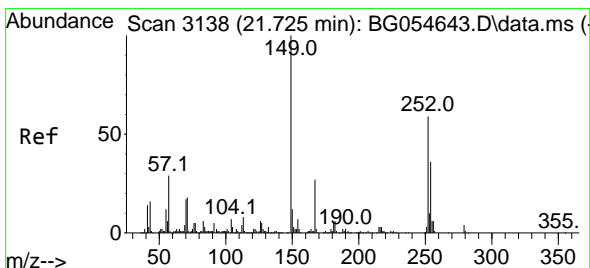
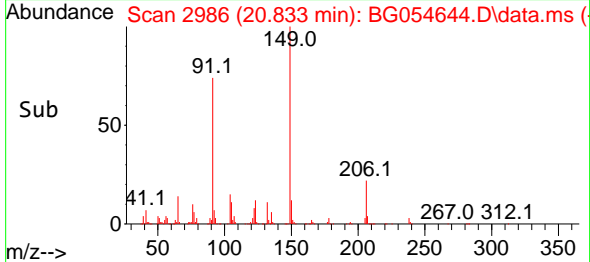
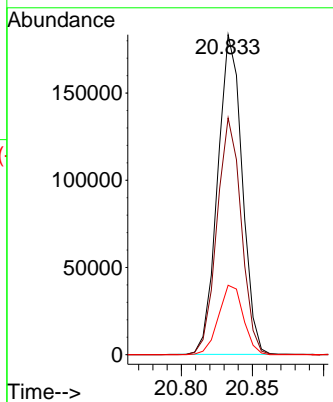
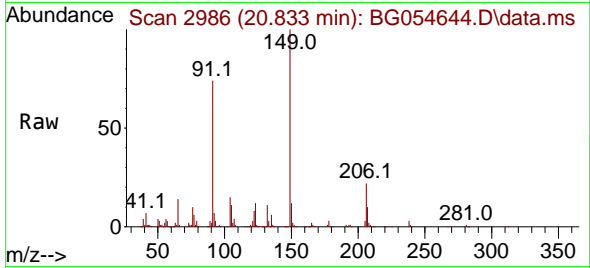


#83
 Butylbenzylphthalate
 Concen: 58.064 ng/ul
 RT: 20.833 min Scan# 2986
 Delta R.T. 0.001 min
 Lab File: BG054644.D
 Acq: 17 Aug 2022 17:33

Instrument :
 BNA_G
 ClientSampleId :
 SSTD040438

Tgt Ion:149 Resp: 219558

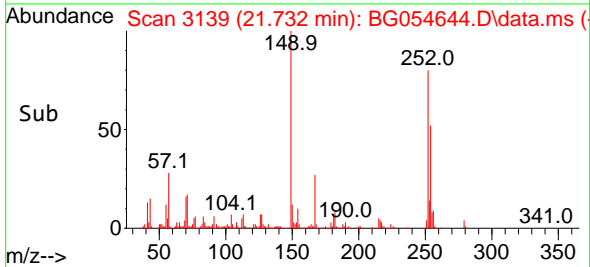
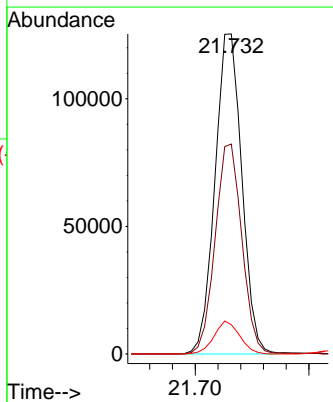
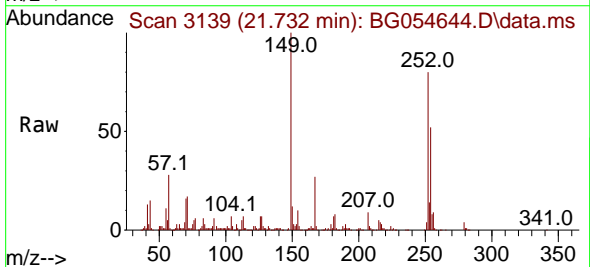
| Ion | Ratio | Lower | Upper |
|-----|-------|-------|-------|
| 149 | 100 | | |
| 91 | 74.0 | 59.1 | 88.7 |
| 206 | 21.7 | 16.8 | 25.2 |

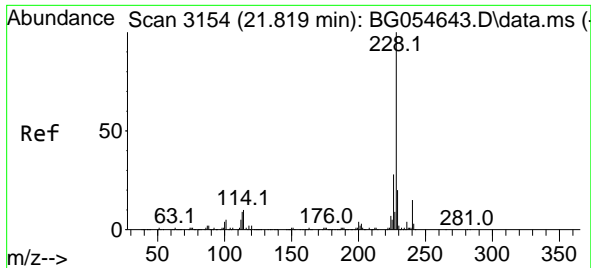


#84
 3,3'-Dichlorobenzidine
 Concen: 45.908 ng/ul
 RT: 21.732 min Scan# 3139
 Delta R.T. 0.007 min
 Lab File: BG054644.D
 Acq: 17 Aug 2022 17:33

Tgt Ion:252 Resp: 205990

| Ion | Ratio | Lower | Upper |
|-----|-------|-------|-------|
| 252 | 100 | | |
| 254 | 65.6 | 49.1 | 73.7 |
| 126 | 9.1 | 8.3 | 12.5 |



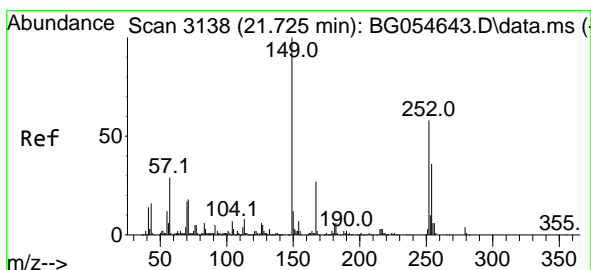
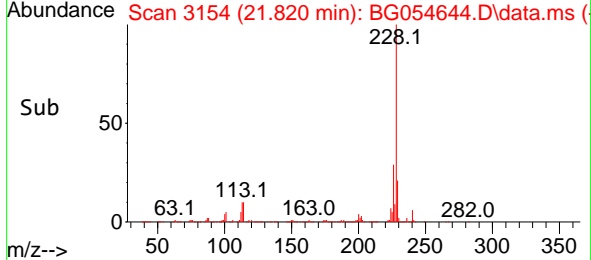
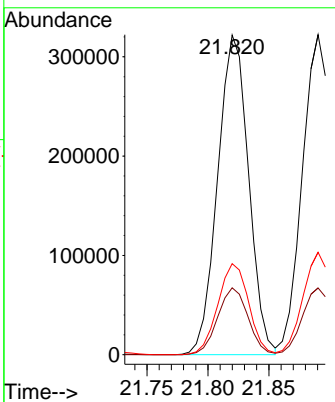
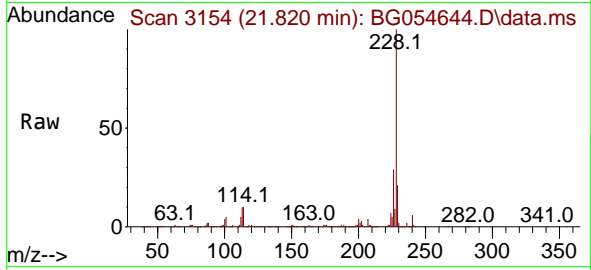


#85
 Benzo(a)anthracene
 Concen: 42.479 ng/ul
 RT: 21.820 min Scan# 3154
 Delta R.T. 0.001 min
 Lab File: BG054644.D
 Acq: 17 Aug 2022 17:33

Instrument : BNA_G
 ClientSampleId : SSTD040438

Tgt Ion:228 Resp: 567718

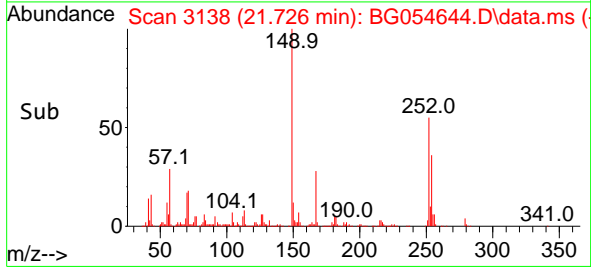
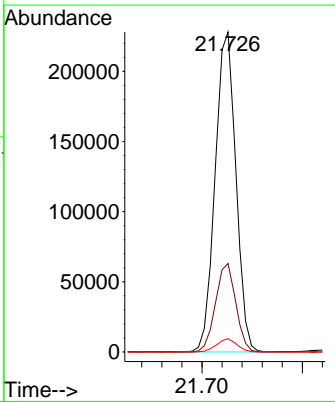
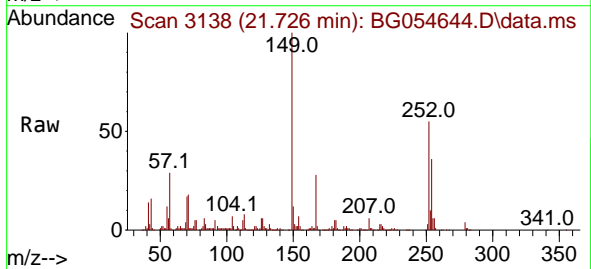
| Ion | Ratio | Lower | Upper |
|-----|-------|-------|-------|
| 228 | 100 | | |
| 229 | 20.9 | 15.8 | 23.6 |
| 226 | 28.5 | 22.2 | 33.4 |

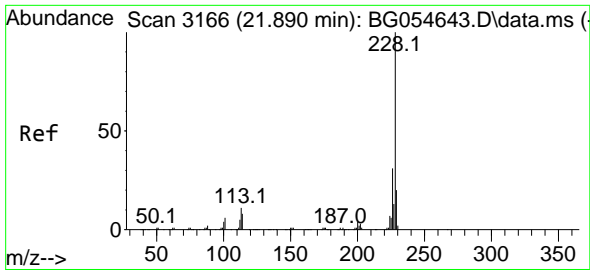


#86
 Bis(2-ethylhexyl)phthalate
 Concen: 59.123 ng/ul
 RT: 21.726 min Scan# 3138
 Delta R.T. 0.001 min
 Lab File: BG054644.D
 Acq: 17 Aug 2022 17:33

Tgt Ion:149 Resp: 326682

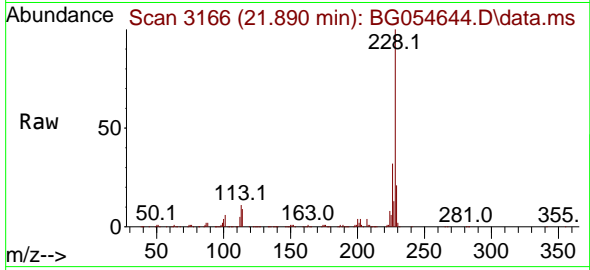
| Ion | Ratio | Lower | Upper |
|-----|-------|-------|-------|
| 149 | 100 | | |
| 167 | 27.6 | 21.5 | 32.3 |
| 279 | 4.1 | 3.4 | 5.0 |



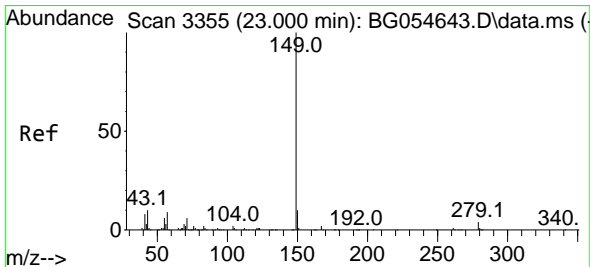
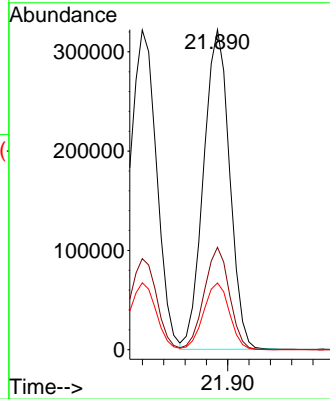
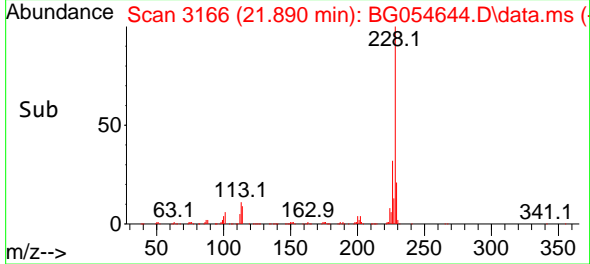


#87
 Chrysene
 Concen: 42.635 ng/u1
 RT: 21.890 min Scan# 3166
 Delta R.T. 0.001 min
 Lab File: BG054644.D
 Acq: 17 Aug 2022 17:33

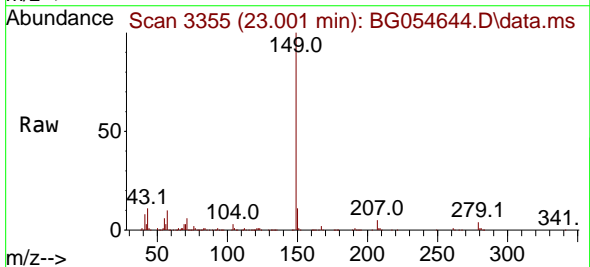
Instrument : BNA_G
 ClientSampleId : SSTD040438



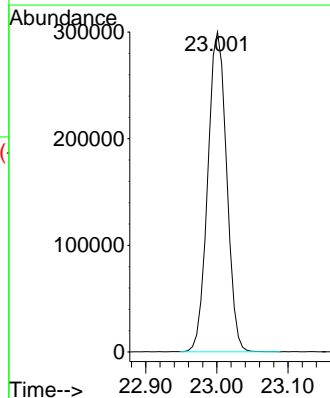
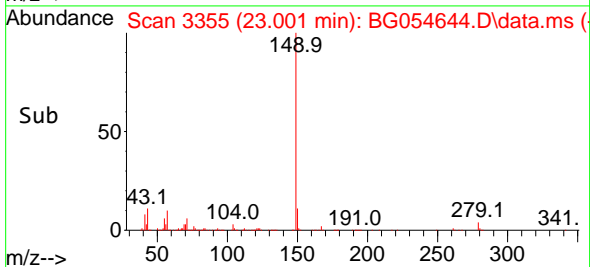
Tgt Ion:228 Resp: 546642
 Ion Ratio Lower Upper
 228 100
 226 32.0 24.6 36.8
 229 20.9 16.0 24.0

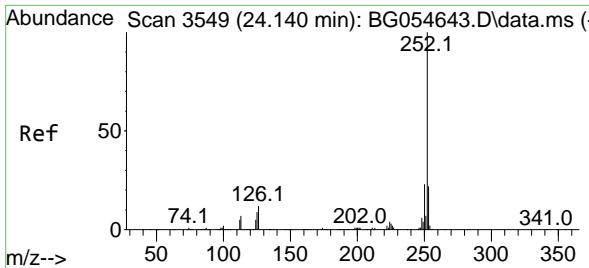


#89
 Di-n-octyl phthalate
 Concen: 55.871 ng/u1
 RT: 23.001 min Scan# 3355
 Delta R.T. 0.001 min
 Lab File: BG054644.D
 Acq: 17 Aug 2022 17:33



Tgt Ion:149 Resp: 554129



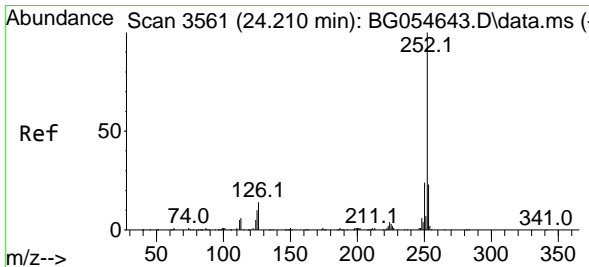
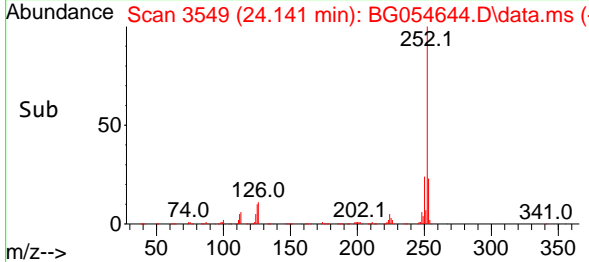
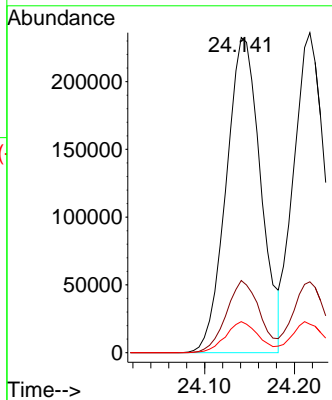
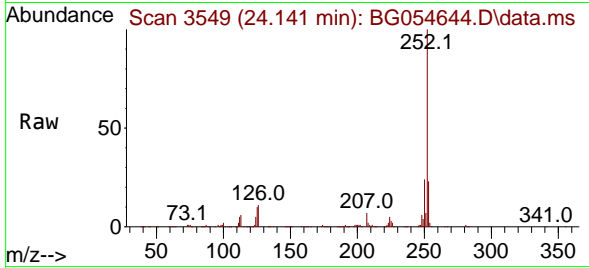


#90
 Benzo(b)fluoranthene
 Concen: 43.597 ng/u1
 RT: 24.141 min Scan# 31
 Delta R.T. 0.001 min
 Lab File: BG054644.D
 Acq: 17 Aug 2022 17:33

Instrument : BNA_G
 ClientSampleId : SSTD040438

Tgt Ion:252 Resp: 621683

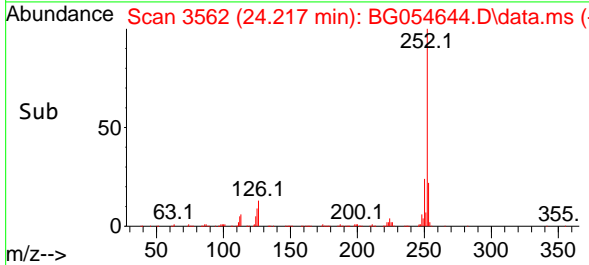
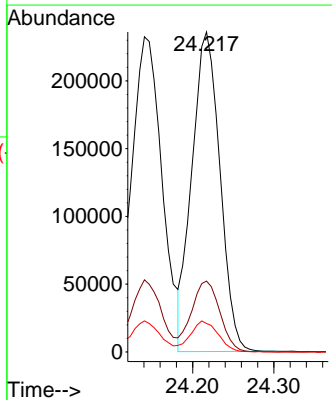
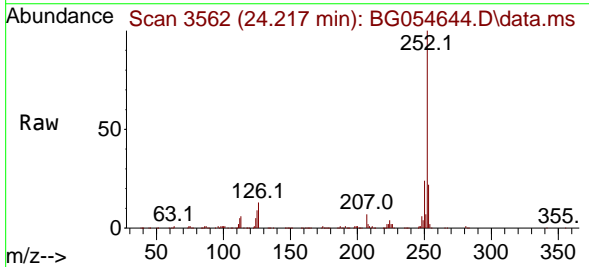
| Ion | Ratio | Lower | Upper |
|-----|-------|-------|-------|
| 252 | 100 | | |
| 253 | 22.9 | 17.7 | 26.5 |
| 125 | 9.8 | 7.4 | 11.0 |

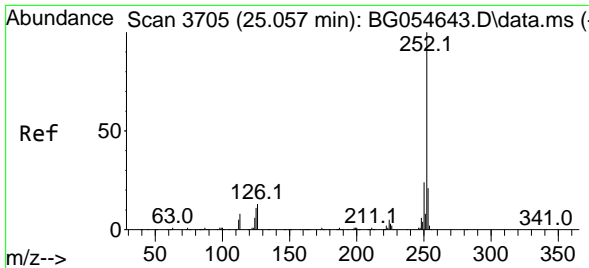


#91
 Benzo(k)fluoranthene
 Concen: 41.352 ng/u1
 RT: 24.217 min Scan# 3562
 Delta R.T. 0.007 min
 Lab File: BG054644.D
 Acq: 17 Aug 2022 17:33

Tgt Ion:252 Resp: 564624

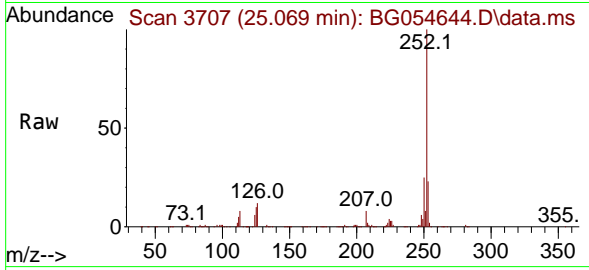
| Ion | Ratio | Lower | Upper |
|-----|-------|-------|-------|
| 252 | 100 | | |
| 253 | 22.1 | 18.1 | 27.1 |
| 125 | 8.9 | 7.6 | 11.4 |



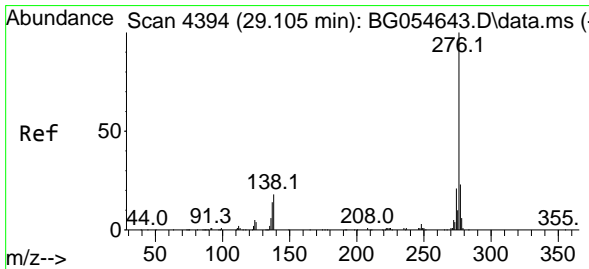
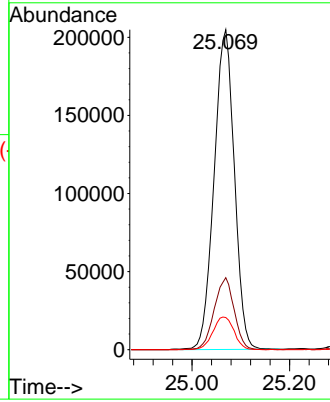
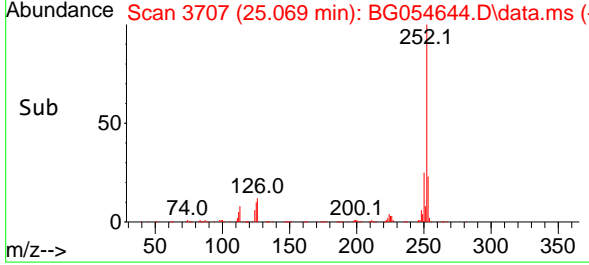


#93
 Benzo(a)pyrene
 Concen: 43.020 ng/u1
 RT: 25.069 min Scan# 31
 Delta R.T. 0.012 min
 Lab File: BG054644.D
 Acq: 17 Aug 2022 17:33

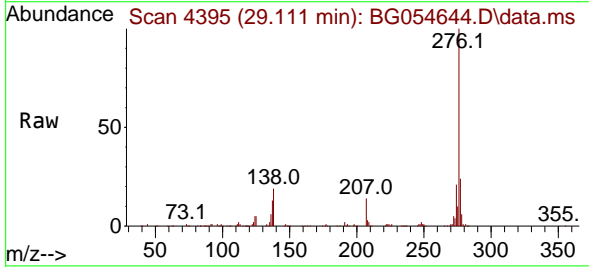
Instrument : BNA_G
 ClientSampleId : SSTD040438



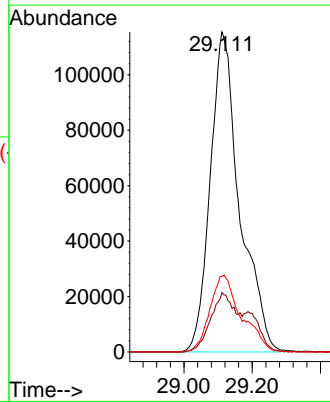
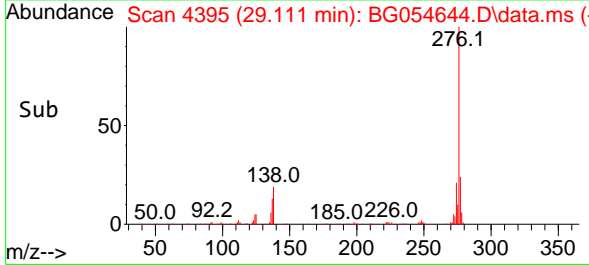
Tgt Ion:252 Resp: 590940
 Ion Ratio Lower Upper
 252 100
 253 22.5 17.0 25.4
 125 10.0 9.0 13.6

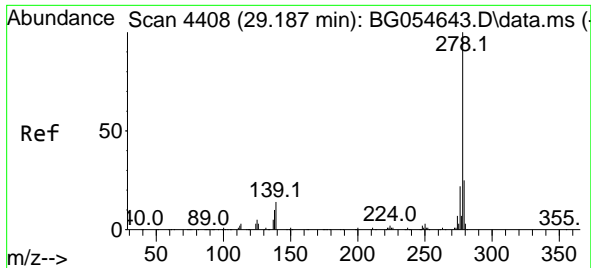


#94
 Indeno(1,2,3-cd)pyrene
 Concen: 41.822 ng/u1
 RT: 29.111 min Scan# 4395
 Delta R.T. 0.007 min
 Lab File: BG054644.D
 Acq: 17 Aug 2022 17:33



Tgt Ion:276 Resp: 691162
 Ion Ratio Lower Upper
 276 100
 138 18.6 14.5 21.7
 277 23.6 18.3 27.5





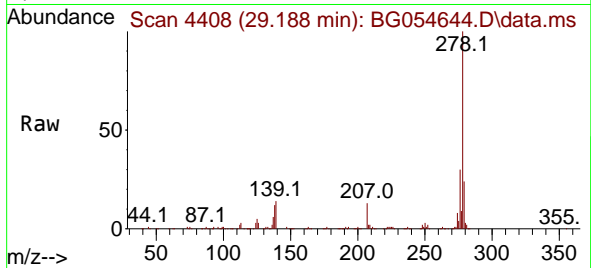
#95
 Dibenzo(a,h)anthracene
 Concen: 42.134 ng/ul
 RT: 29.188 min Scan# 4408
 Delta R.T. 0.001 min
 Lab File: BG054644.D
 Acq: 17 Aug 2022 17:33

Instrument :

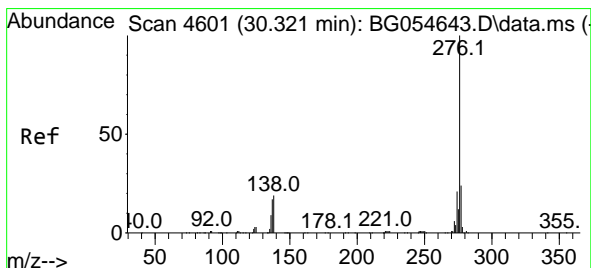
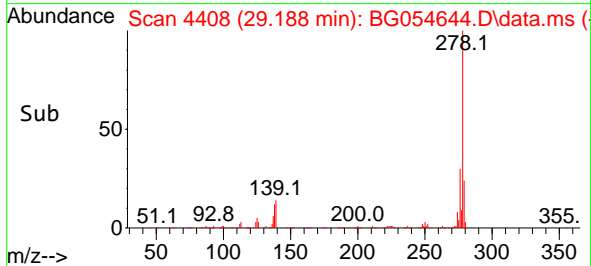
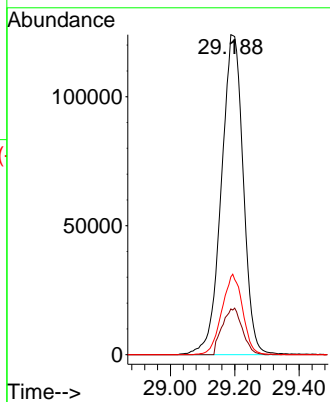
BNA_G

ClientSampleId :

SSTD040438



Tgt Ion:278 Resp: 586000
 Ion Ratio Lower Upper
 278 100
 139 14.3 11.2 16.8
 279 24.3 19.6 29.4



#96
 Benzo(g,h,i)perylene
 Concen: 41.718 ng/ul
 RT: 30.333 min Scan# 4603
 Delta R.T. 0.012 min
 Lab File: BG054644.D
 Acq: 17 Aug 2022 17:33

Tgt Ion:276 Resp: 582119
 Ion Ratio Lower Upper
 276 100
 138 19.6 15.4 23.2
 277 23.8 19.5 29.3

