

Data Path : Z:\HPCHEM1\BNA_G\DATA\BG082117\
 Data File : BG028396.D
 Acq On : 21 Aug 2017 20:02
 Operator : SJ/JU
 Sample : SSTDCCC020
 Misc :
 ALS Vial : 2 Sample Multiplier: 1

Instrument :
 BNA_G
 ClientSampleId :
 SSTD02076

Quant Time: Aug 22 13:56:55 2017
 Quant Method : Z:\HPCHEM1\BNA_G\METHODS\SOM-EPA-BG080217.M
 Quant Title : SVOA CALIBRATION
 QLast Update : Tue Aug 22 04:33:26 2017
 Response via : Initial Calibration

Internal Standards	R.T.	QIon	Response	Conc	Units	Dev(Min)
1) 1,4-Dichlorobenzene-d4	8.34	152	36247	20.00	ng/ul	0.00
18) Naphthalene-d8	11.16	136	175646	20.00	ng/ul	0.00
35) Acenaphthene-d10	14.95	164	138960	20.00	ng/ul	0.00
61) Phenanthrene-d10	17.80	188	325835	20.00	ng/ul	0.09
75) Chrysene-d12	22.03	240	389095	20.00	ng/ul	0.00
83) Perylene-d12	25.53	264	376493	20.00	ng/ul	0.00

System Monitoring Compounds

3) 1,4-Dioxane-d8	3.83	96	5235	6.73	ng/uL	0.00
5) Phenol-d5	7.49	99	72896	18.31	ng/ul	0.00
7) Bis-(2-Chloroethyl)ether-d	7.66	67	43630	17.31	ng/ul	0.00
9) 2-Chlorophenol-d4	7.87	132	49836	19.84	ng/ul	0.00
13) 4-Methylphenol-d8	9.04	113	63391	19.05	ng/ul	0.00
19) Nitrobenzene-d5	9.51	128	27138	19.76	ng/ul	0.00
22) 2-Nitrophenol-d4	10.24	143	33032	21.93	ng/ul	0.00
26) 2,4-Dichlorophenol-d3	10.78	165	63317	20.32	ng/ul	0.00
29) 4-Chloroaniline-d4	11.29	131	78947	22.76	ng/ul	0.00
43) Dimethylphthalate-d6	14.34	166	229774	18.59	ng/ul	0.00
46) Acenaphthylene-d8	14.65	160	267010	19.16	ng/ul	0.00
51) 4-Nitrophenol-d4	15.15	143	33384	16.99	ng/ul	0.00
57) Fluorene-d10	15.94	176	204603	18.45	ng/ul	0.00
62) 4,6-Dinitro-2-methylphenol	16.06	200	43591	20.59	ng/ul	0.00
70) Anthracene-d10	17.80	188	325835	20.85	ng/ul	0.00
76) Pyrene-d10	20.07	212	359939	18.04	ng/ul	0.00
87) Benzo(a)pyrene-d12	25.29	264	331041	18.78	ng/ul	0.00

Target Compounds

Target Compounds	R.T.	QIon	Response	Conc	Units	Qvalue
2) 1,4-Dioxane	3.87	88	6371	7.793	ng/uL#	80
4) Benzaldehyde	7.49	77	45940	19.969	ng/ul	98
6) Phenol	7.52	94	73778	18.648	ng/ul	91
8) Bis(2-Chloroethyl)ether	7.75	93	50095	18.588	ng/ul	92
10) 2-Chlorophenol	7.91	128	48653	19.881	ng/ul	99
11) 2-Methylphenol	8.77	108	52536	18.812	ng/ul	86
12) 2,2'-oxybis(1-Chloropropan	8.87	45	104278	15.939	ng/ul	97
14) Acetophenone	9.17	105	86083	18.141	ng/ul	88
15) N-Nitroso-di-n-propylamine	9.13	70	52604	19.506	ng/ul#	86
16) 4-Methylphenol	9.10	108	60420	19.161	ng/ul	88
17) Hexachloroethane	9.43	117	19832	19.556	ng/ul	90
20) Nitrobenzene	9.55	77	74294	18.686	ng/ul	95
21) Isophorone	10.06	82	144670	19.152	ng/ul	97
23) 2-Nitrophenol	10.27	139	30590	20.121	ng/ul	87
24) 2,4-Dimethylphenol	10.31	107	76221	20.171	ng/ul	92
25) Bis(2-Chloroethoxy)methane	10.54	93	77670	18.877	ng/ul	97
27) 2,4-Dichlorophenol	10.81	162	57629	20.318	ng/ul	94
28) Naphthalene	11.21	128	166436	19.132	ng/ul	98
30) 4-Chloroaniline	11.32	127	72441	21.548	ng/ul	92
31) Hexachlorobutadiene	11.48	225	42219	20.166	ng/ul#	84
32) Caprolactam	12.07	113	23606	20.015	ng/ul#	54
33) 4-Chloro-3-methylphenol	12.42	107	76552	21.145	ng/ul	98
34) 2-Methylnaphthalene	12.79	142	134162	19.200	ng/ul	93

Data Path : Z:\HPCHEM1\BNA_G\DATA\BG082117\
 Data File : BG028396.D
 Acq On : 21 Aug 2017 20:02
 Operator : SJ/JU
 Sample : SSTDCCC020
 Misc :
 ALS Vial : 2 Sample Multiplier: 1

Instrument :
 BNA_G
 ClientSampleID :
 SSTD02076

Quant Time: Aug 22 13:56:55 2017
 Quant Method : Z:\HPCHEM1\BNA_G\METHODS\SOM-EPA-BG080217.M
 Quant Title : SVOA CALIBRATION
 QLast Update : Tue Aug 22 04:33:26 2017
 Response via : Initial Calibration

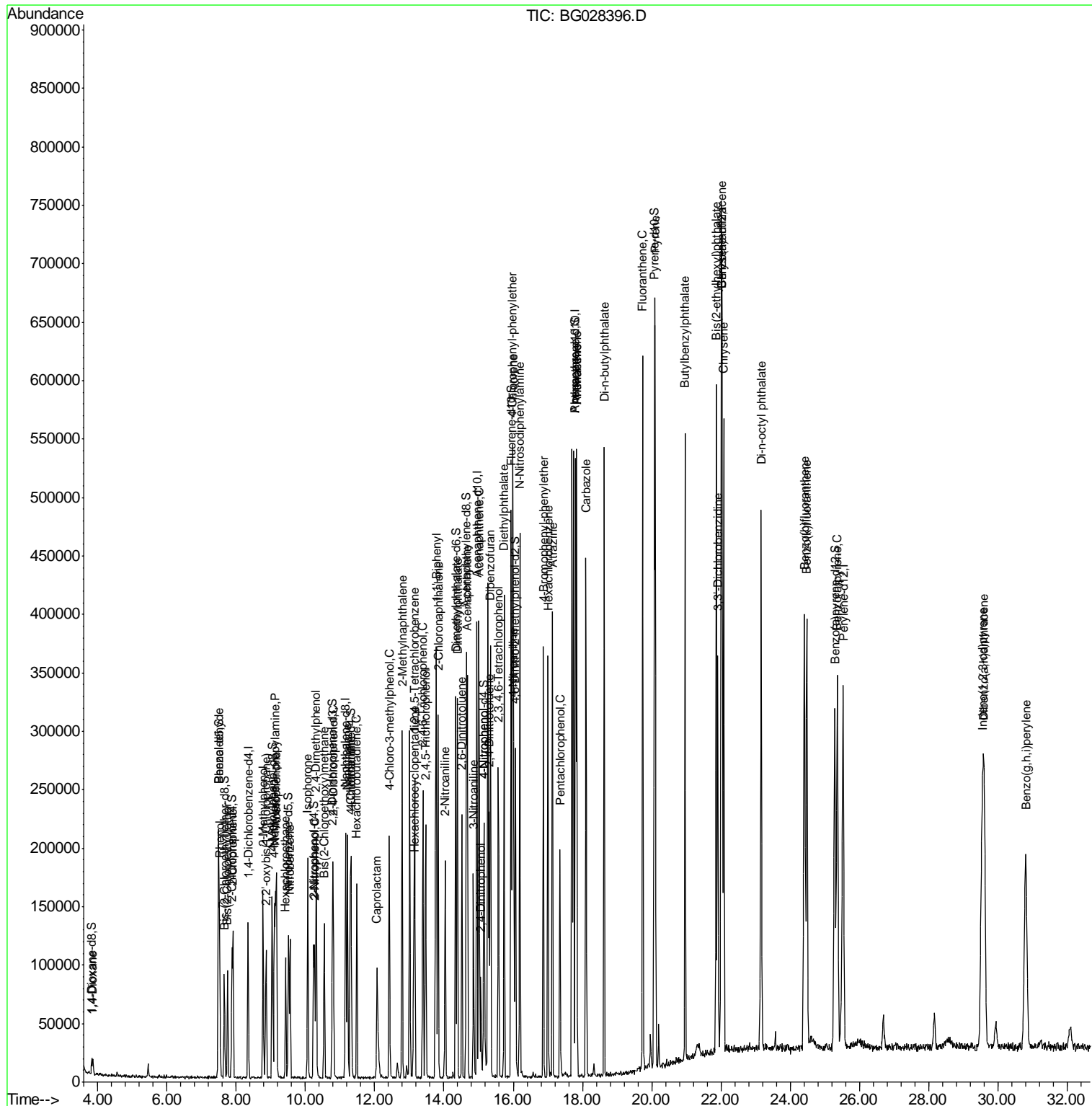
Internal Standards	R.T.	QIon	Response	Conc	Units	Dev(Min)
36) 1,2,4,5-Tetrachlorobenzene	13.16	216	86288	19.265	ng/ul	89
37) Hexachlorocyclopentadiene	13.13	237	38489	15.573	ng/ul	96
38) 2,4,6-Trichlorophenol	13.39	196	60037	21.506	ng/ul	93
39) 2,4,5-Trichlorophenol	13.47	196	65974	21.682	ng/ul	97
40) 1,1'-Biphenyl	13.78	154	187139	18.439	ng/ul	95
41) 2-Chloronaphthalene	13.83	162	148528	18.519	ng/ul	98
42) 2-Nitroaniline	14.04	65	61181	18.194	ng/ul	98
44) Dimethylphthalate	14.39	163	211462	18.582	ng/ul	97
45) 2,6-Dinitrotoluene	14.52	165	45375	19.312	ng/ul	99
47) Acenaphthylene	14.68	152	247496	18.585	ng/ul	98
48) 3-Nitroaniline	14.86	138	41439	19.586	ng/ul#	96
49) Acenaphthene	15.01	153	166593	18.541	ng/ul	95
50) 2,4-Dinitrophenol	15.06	184	21789	16.459	ng/ul#	87
52) 4-Nitrophenol	15.16	109	33577	16.490	ng/ul#	83
53) Dibenzofuran	15.35	168	242836	18.536	ng/ul	96
54) 2,4-Dinitrotoluene	15.31	165	67518	18.961	ng/ul	96
55) 2,3,4,6-Tetrachlorophenol	15.58	232	60799	21.454	ng/ul#	97
56) Diethylphthalate	15.74	149	231150	17.314	ng/ul	98
58) Fluorene	15.99	166	214808	18.521	ng/ul	98
59) 4-Chlorophenyl-phenylether	15.98	204	114976	18.477	ng/ul#	87
60) 4-Nitroaniline	16.02	138	44092	17.566	ng/ul#	78
64) N-Nitrosodiphenylamine	16.19	169	179865	20.983	ng/ul	97
65) 4-Bromophenyl-phenylether	16.87	248	77622	22.165	ng/ul	95
66) Hexachlorobenzene	17.00	284	82167	22.040	ng/ul	94
67) Atrazine	17.13	200	78102	20.898	ng/ul	98
68) Pentachlorophenol	17.35	266	38873	20.586	ng/ul	94
69) Phenanthrene	17.83	178	348757	21.269	ng/ul	95
71) Anthracene	17.83	178	348757	20.810	ng/ul	96
72) Carbazole	18.10	167	291518	20.001	ng/ul	100
73) Di-n-butylphthalate	18.63	149	361138	19.904	ng/ul	99
74) Fluoranthene	19.74	202	408071	20.477	ng/ul	99
77) Pyrene	20.10	202	425985	18.351	ng/ul	99
78) Butylbenzylphthalate	20.96	149	163740	18.828	ng/ul	93
79) 3,3'-Dichlorobenzidine	21.91	252	149052	19.855	ng/ul	99
80) Benzo(a)anthracene	22.01	228	423896	18.855	ng/ul	98
81) Bis(2-ethylhexyl)phthalate	21.86	149	230088	18.603	ng/ul	98
82) Chrysene	22.08	228	375549	18.548	ng/ul	97
84) Di-n-octyl phthalate	23.16	149	399385	17.701	ng/ul	100
85) Benzo(b)fluoranthene	24.41	252	433603	19.246	ng/ul	96
86) Benzo(k)fluoranthene	24.48	252	389010	17.677	ng/ul	98
88) Benzo(a)pyrene	25.36	252	402582	18.455	ng/ul	98
89) Indeno(1,2,3-cd)pyrene	29.55	276	477444	18.690	ng/ul#	96
90) Dibenzo(a,h)anthracene	29.60	278	400195	18.691	ng/ul	96
91) Benzo(g,h,i)perylene	30.80	276	395542	18.822	ng/ul	96

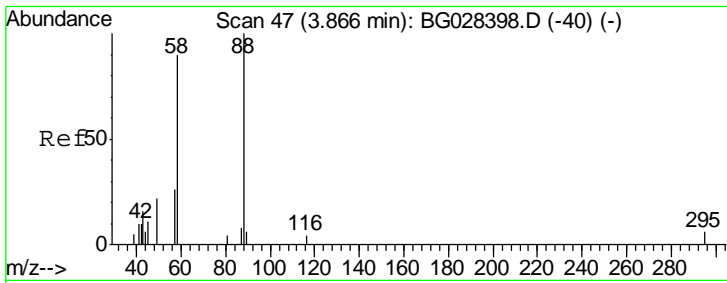
(#) = qualifier out of range (m) = manual integration (+) = signals summed

Data Path : Z:\HPCHEM1\BNA_G\DATA\BG082117\
 Data File : BG028396.D
 Acq On : 21 Aug 2017 20:02
 Operator : SJ/JU
 Sample : SSTDCCC020
 Misc :
 ALS Vial : 2 Sample Multiplier: 1

Instrument :
 BNA_G
 Client Sampled :
 SSTD02076

Quant Time: Aug 22 13:56:55 2017
 Quant Method : Z:\HPCHEM1\BNA_G\METHODS\SOM-EPA-BG080217.M
 Quant Title : SVOA CALIBRATION
 QLast Update : Tue Aug 22 04:33:26 2017
 Response via : Initial Calibration

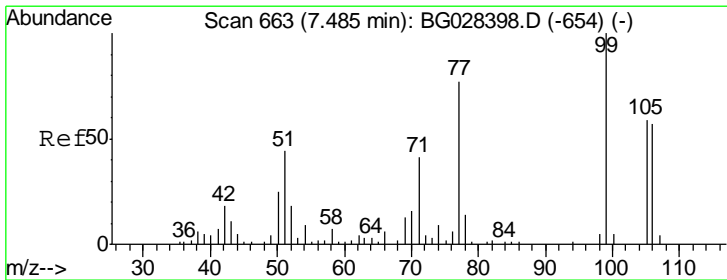
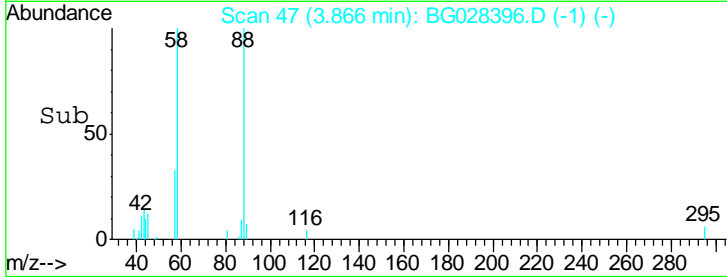
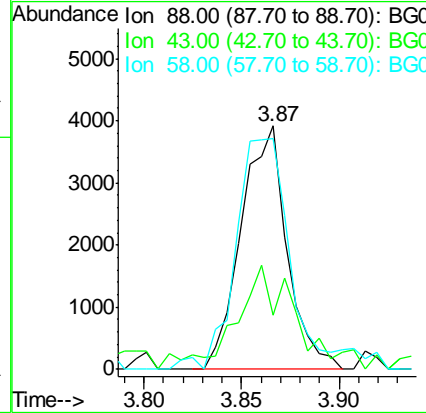
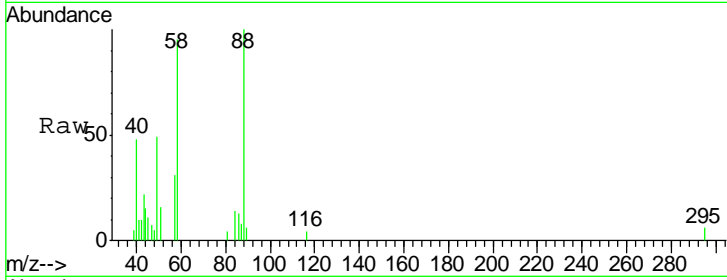




#2
 1,4-Dioxane
 Concen: 7.793 ng/uL
 RT: 3.87 min Scan# 47
 Delta R.T. 0.00 min
 Lab File: BG028396.D
 Acq: 21 Aug 2017 20:02

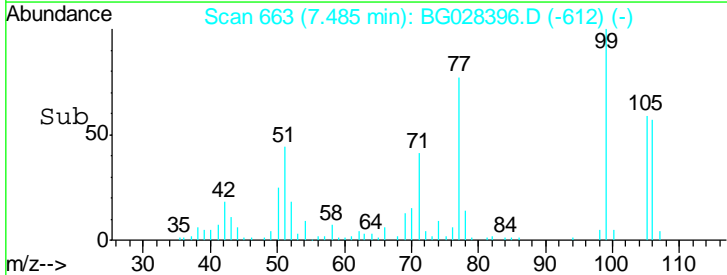
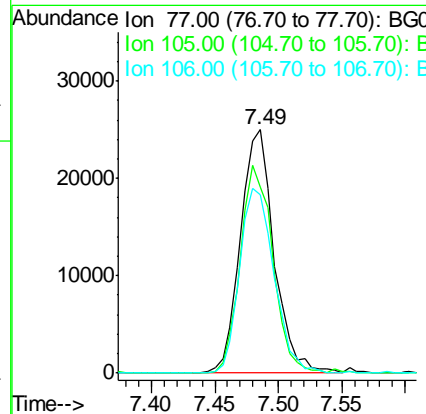
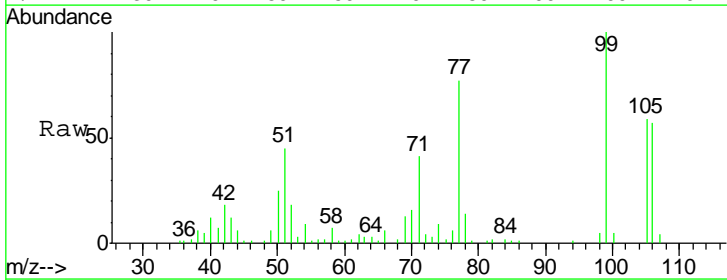
Instrument :
 BNA_G
 ClientSampleID :
 SST02076

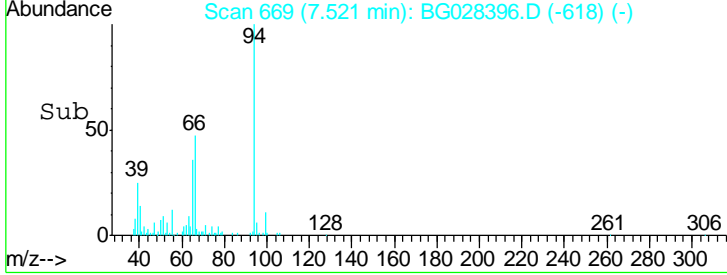
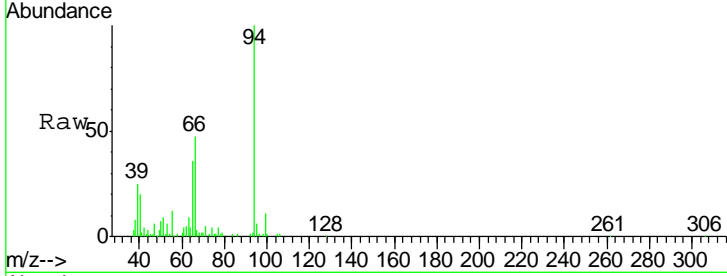
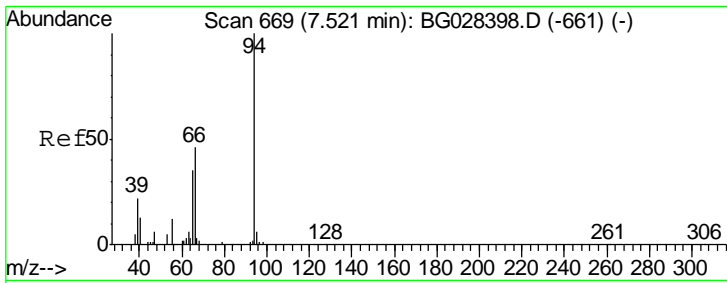
Tgt Ion	Resp	Lower	Upper
88	6371		
43	22.3	39.2	58.8#
58	94.5	69.4	104.0



#4
 Benzaldehyde
 Concen: 19.969 ng/ul
 RT: 7.49 min Scan# 663
 Delta R.T. 0.00 min
 Lab File: BG028396.D
 Acq: 21 Aug 2017 20:02

Tgt Ion	Resp	Lower	Upper
77	45940		
105	76.6	62.0	93.0
106	73.3	60.2	90.4



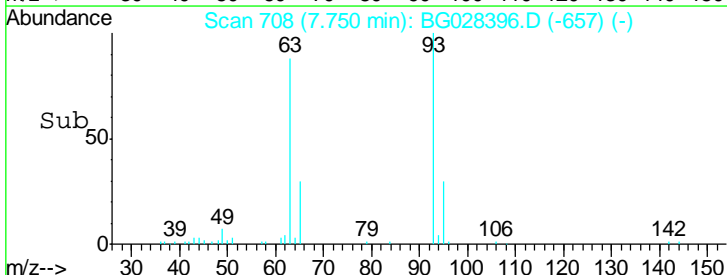
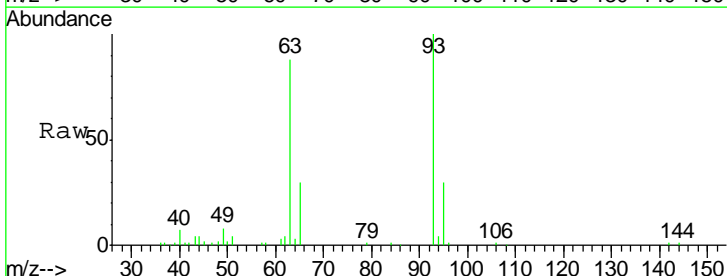
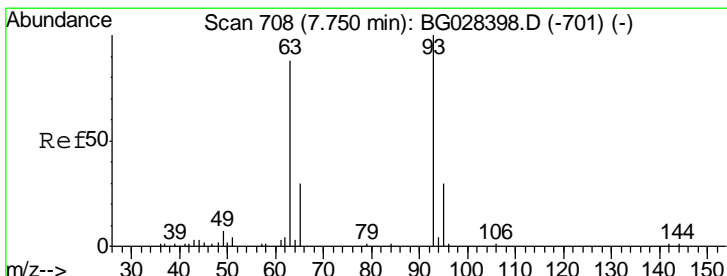
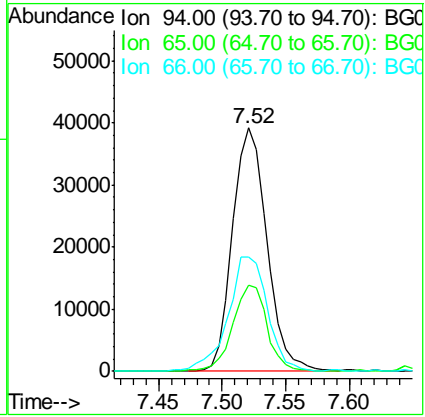


#6
 Phenol
 Concen: 18.648 ng/ul
 RT: 7.52 min Scan# 669
 Delta R.T. 0.00 min
 Lab File: BG028396.D
 Acq: 21 Aug 2017 20:02

Instrument :
 BNA_G
ClientSampled :
 SSTD02076

Tgt Ion: 94 Resp: 73778

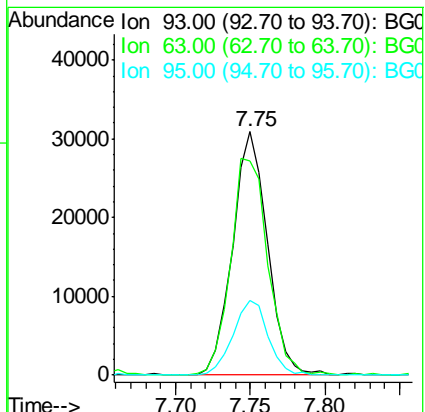
Ion	Ratio	Lower	Upper
94	100		
65	35.5	26.8	40.2
66	47.1	44.4	66.6

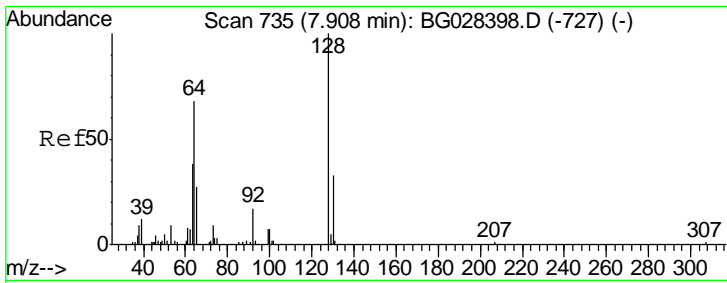


#8
 Bis(2-Chloroethyl)ether
 Concen: 18.588 ng/ul
 RT: 7.75 min Scan# 708
 Delta R.T. 0.00 min
 Lab File: BG028396.D
 Acq: 21 Aug 2017 20:02

Tgt Ion: 93 Resp: 50095

Ion	Ratio	Lower	Upper
93	100		
63	87.8	75.5	113.3
95	30.4	29.2	43.8

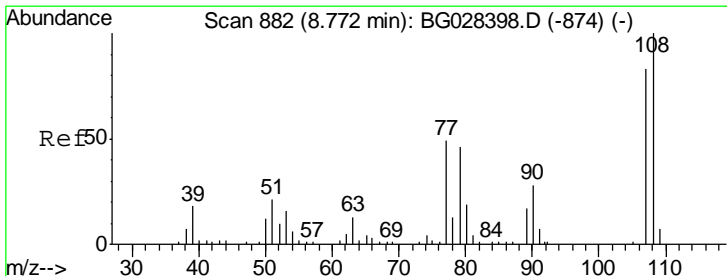
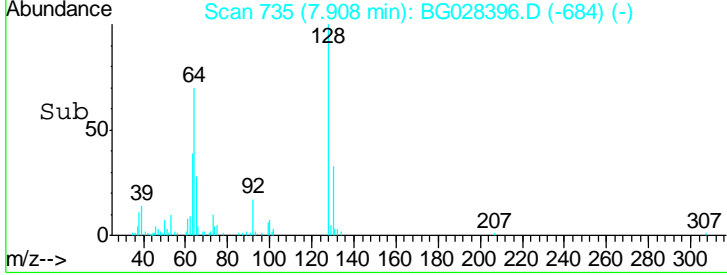
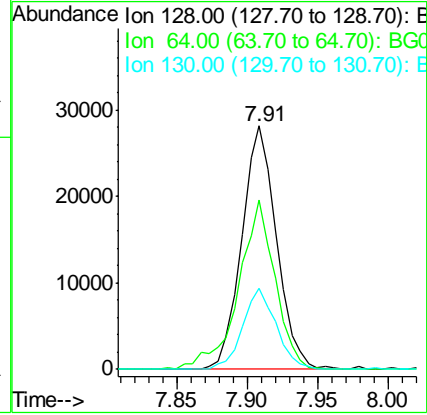
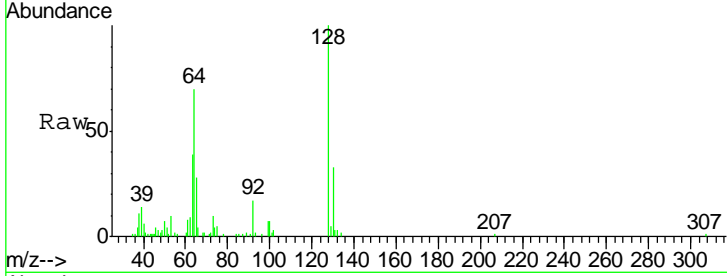




#10
 2-Chlorophenol
 Concen: 19.881 ng/ul
 RT: 7.91 min Scan# 735
 Delta R.T. 0.00 min
 Lab File: BG028396.D
 Acq: 21 Aug 2017 20:02

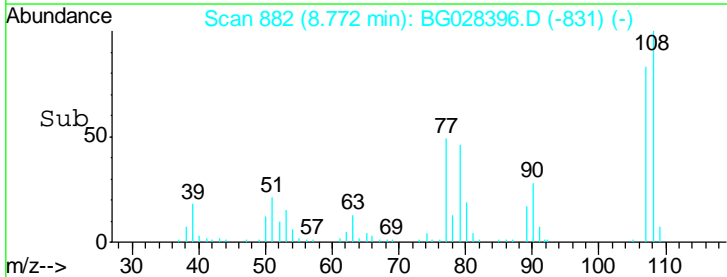
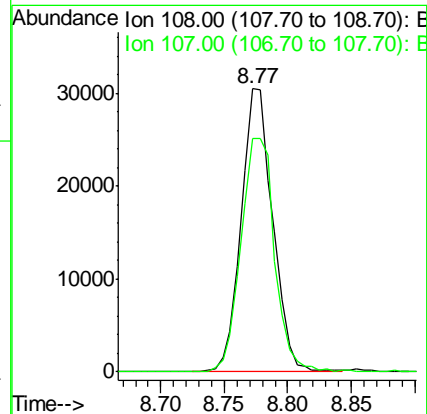
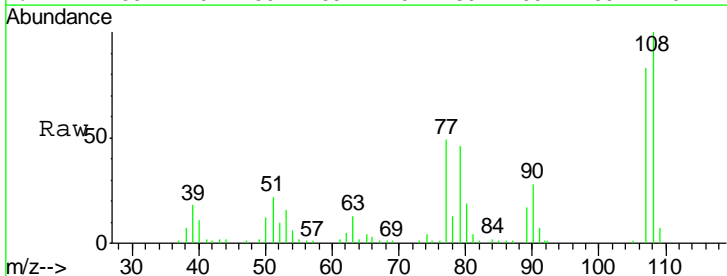
Instrument :
 BNA_G
 ClientSampled :
 SST02076

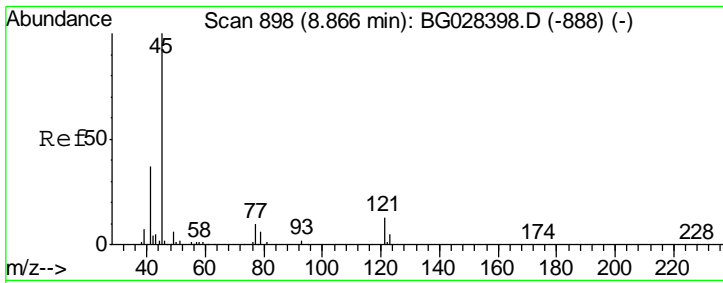
Tgt Ion	Resp	Lower	Upper
128	100		
64	69.8	56.3	84.5
130	33.4	26.7	40.1



#11
 2-Methylphenol
 Concen: 18.812 ng/ul
 RT: 8.77 min Scan# 882
 Delta R.T. 0.00 min
 Lab File: BG028396.D
 Acq: 21 Aug 2017 20:02

Tgt Ion	Resp	Lower	Upper
108	100		
107	82.6	76.7	115.1

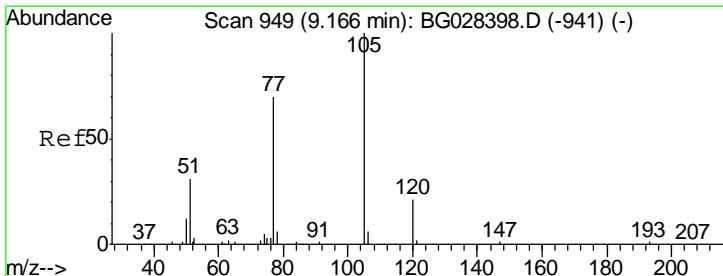
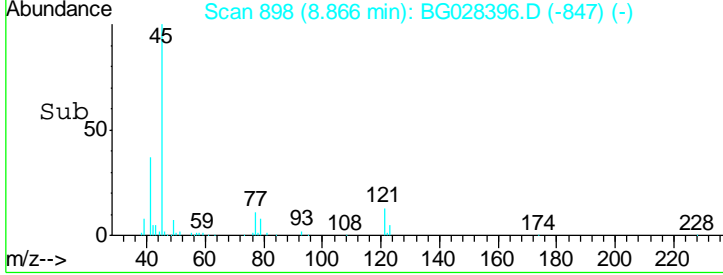
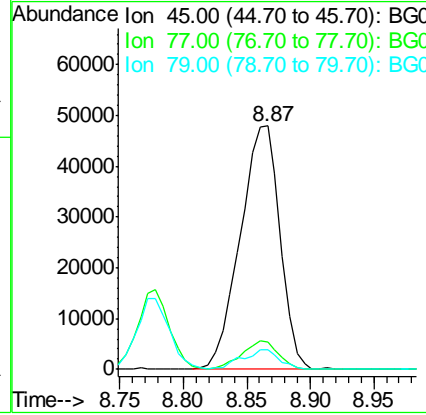
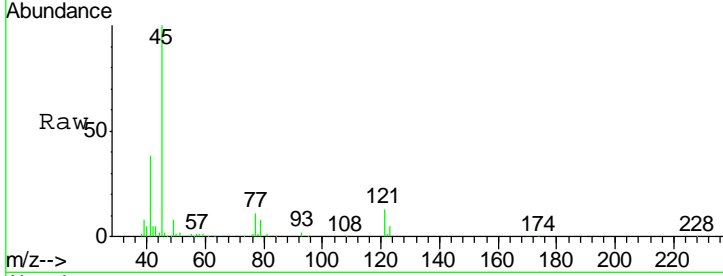




#12
 2,2'-oxybis(1-Chloropropane)
 Concen: 15.939 ng/ul
 RT: 8.87 min Scan# 898
 Delta R.T. 0.00 min
 Lab File: BG028396.D
 Acq: 21 Aug 2017 20:02

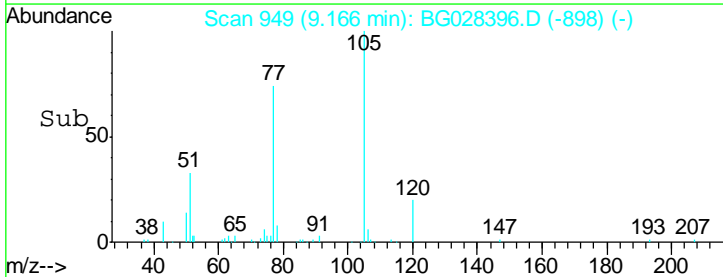
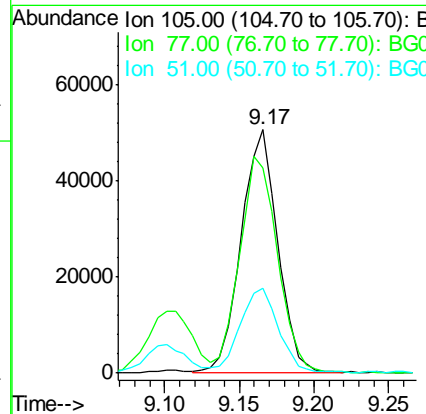
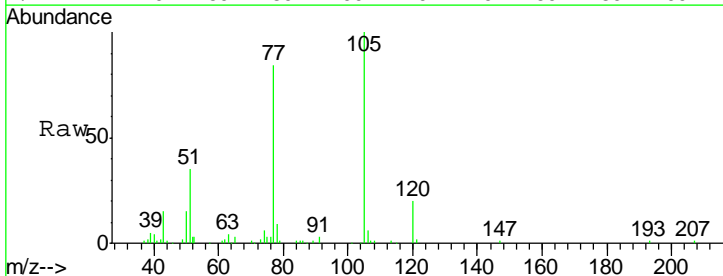
Instrument :
 BNA_G
 ClientSampled :
 SST02076

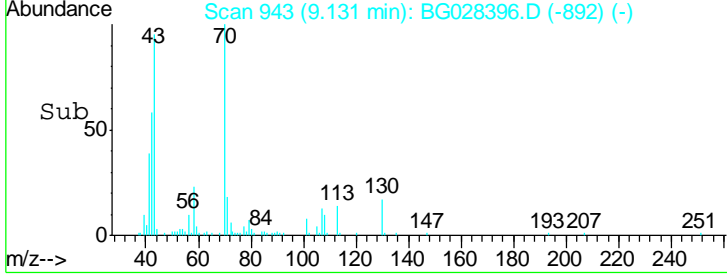
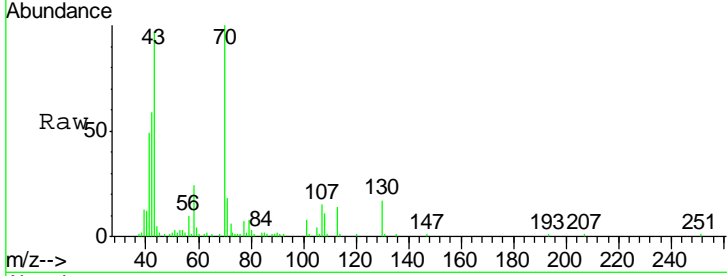
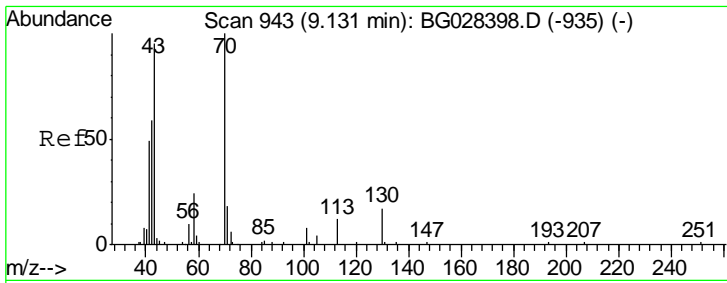
Tgt Ion	Resp	Lower	Upper
45	104278		
77	11.4	10.0	15.0
79	8.0	7.3	10.9



#14
 Acetophenone
 Concen: 18.141 ng/ul
 RT: 9.17 min Scan# 949
 Delta R.T. 0.00 min
 Lab File: BG028396.D
 Acq: 21 Aug 2017 20:02

Tgt Ion	Resp	Lower	Upper
105	86083		
77	84.4	76.0	114.0
51	34.9	34.8	52.2



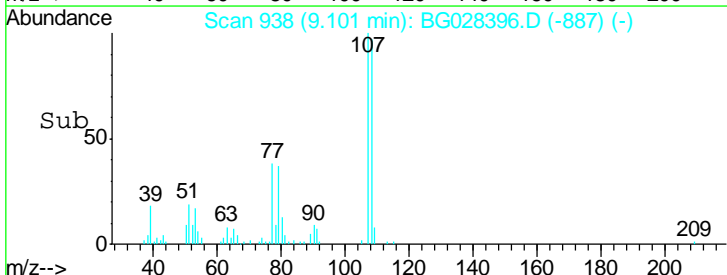
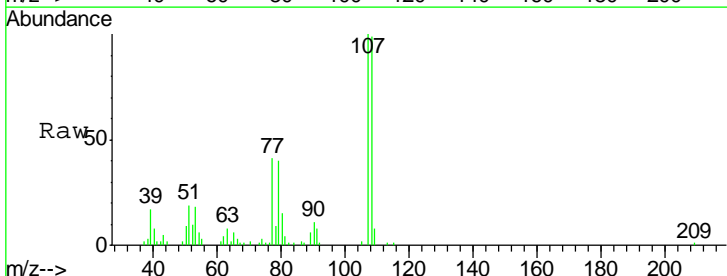
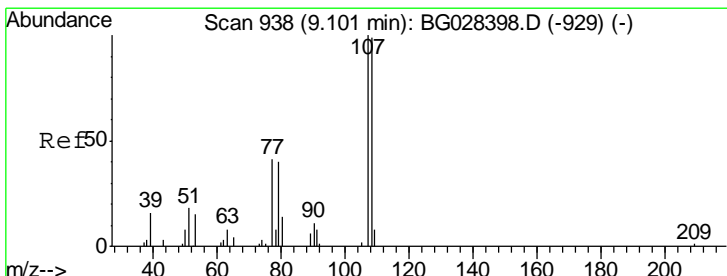
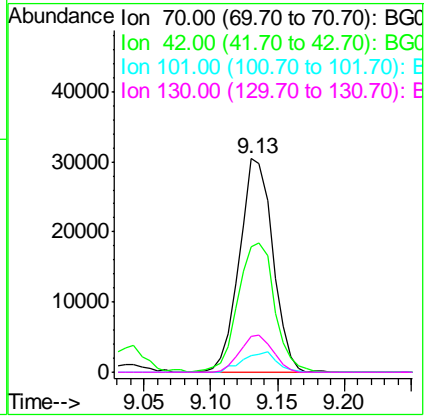


#15
 N-Nitroso-di-n-propylamine
 Concen: 19.506 ng/ul
 RT: 9.13 min Scan# 943
 Delta R.T. 0.00 min
 Lab File: BG028396.D
 Acq: 21 Aug 2017 20:02

Instrument :
 BNA_G
ClientSampleId :
 SSTD02076

Tgt Ion: 70 Resp: 52604

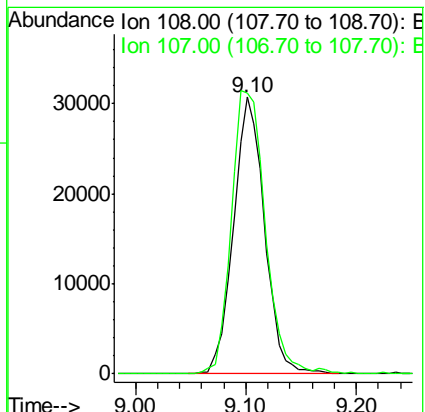
Ion	Ratio	Lower	Upper
70	100		
42	59.0	59.0	88.6#
101	7.9	6.6	9.8
130	16.5	15.6	23.4

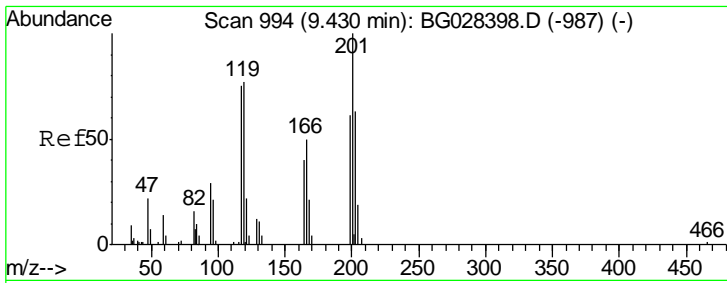


#16
 4-Methylphenol
 Concen: 19.161 ng/ul
 RT: 9.10 min Scan# 938
 Delta R.T. 0.00 min
 Lab File: BG028396.D
 Acq: 21 Aug 2017 20:02

Tgt Ion: 108 Resp: 60420

Ion	Ratio	Lower	Upper
108	100		
107	101.4	91.7	137.5

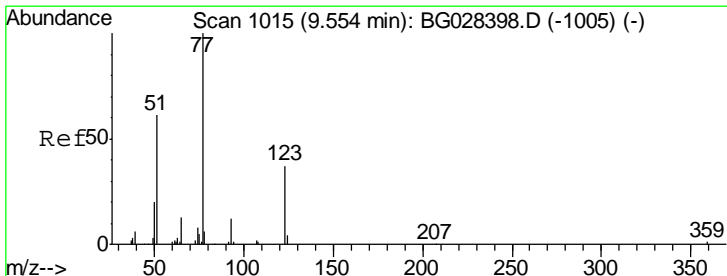
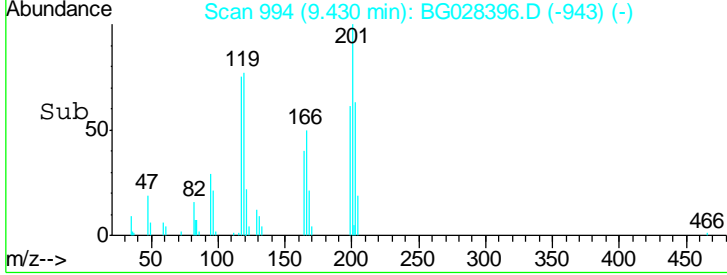
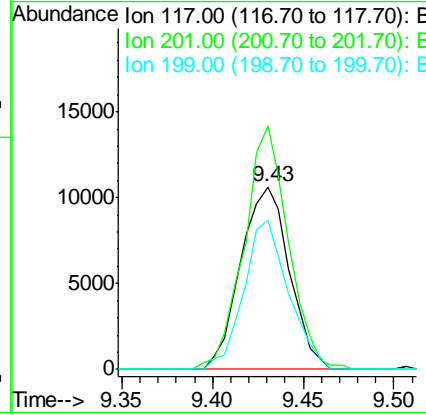
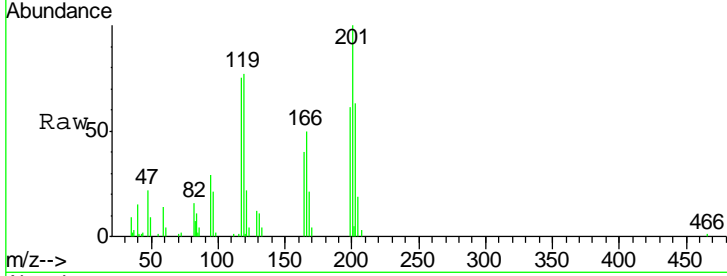




#17
 Hexachloroethane
 Concen: 19.556 ng/ul
 RT: 9.43 min Scan# 994
 Delta R.T. 0.00 min
 Lab File: BG028396.D
 Acq: 21 Aug 2017 20:02

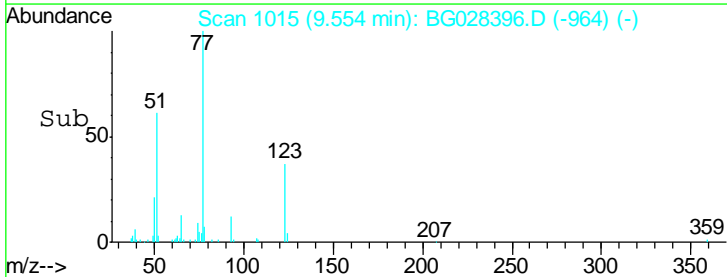
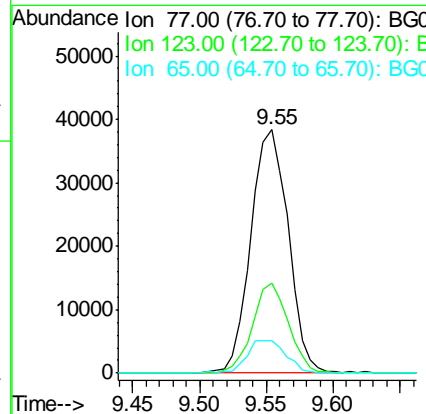
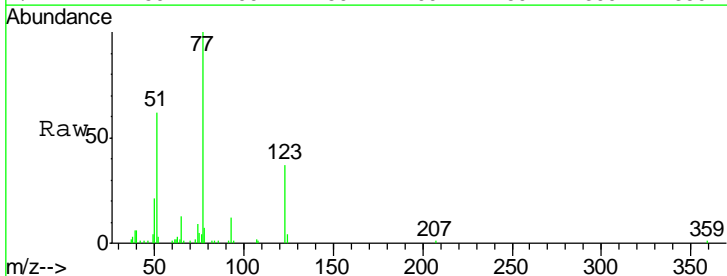
Instrument :
 BNA_G
ClientSampled :
 SSTD02076

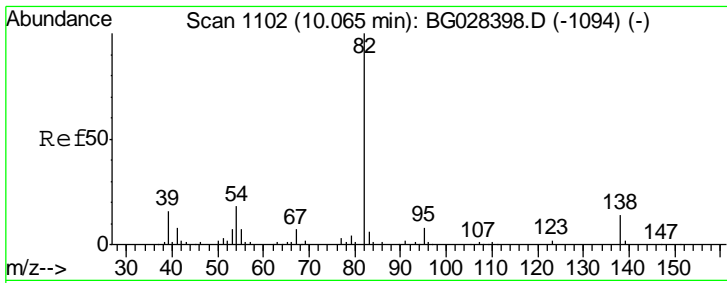
Tgt Ion	Resp	Lower	Upper
117	19832		
117	100		
201	133.4	91.9	137.9
199	81.3	64.3	96.5



#20
 Nitrobenzene
 Concen: 18.686 ng/ul
 RT: 9.55 min Scan# 1015
 Delta R.T. 0.00 min
 Lab File: BG028396.D
 Acq: 21 Aug 2017 20:02

Tgt Ion	Resp	Lower	Upper
77	74294		
77	100		
123	36.7	27.4	41.0
65	13.4	13.3	19.9

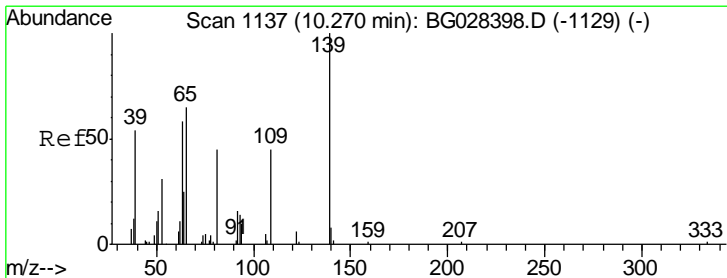
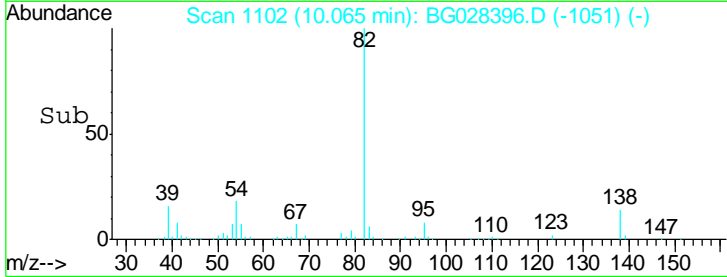
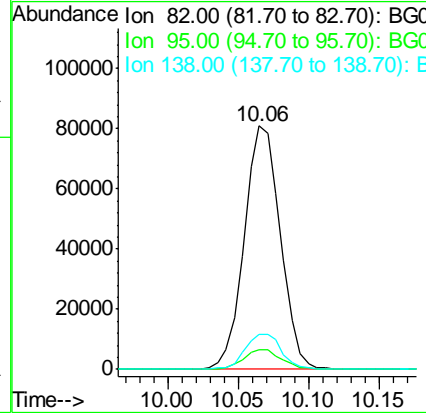
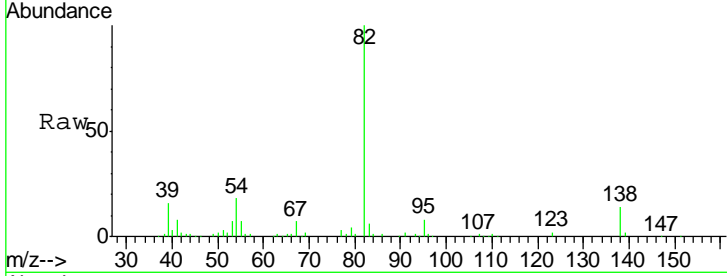




#21
 Isophorone
 Concen: 19.152 ng/ul
 RT: 10.06 min Scan# 1102
 Delta R.T. 0.00 min
 Lab File: BG028396.D
 Acq: 21 Aug 2017 20:02

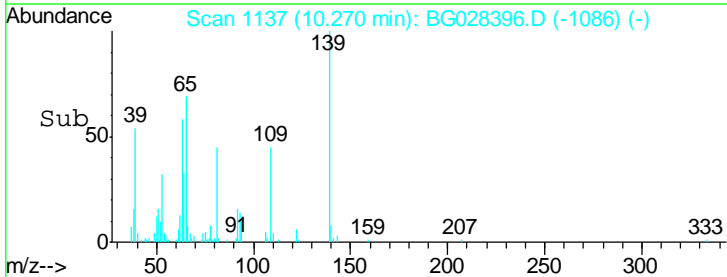
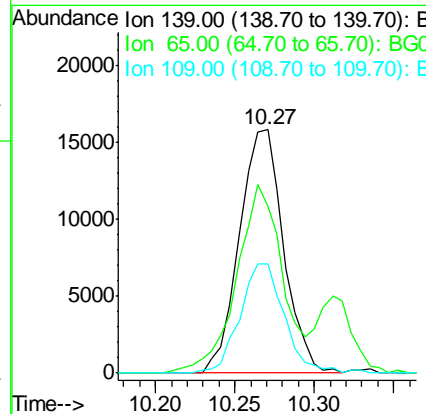
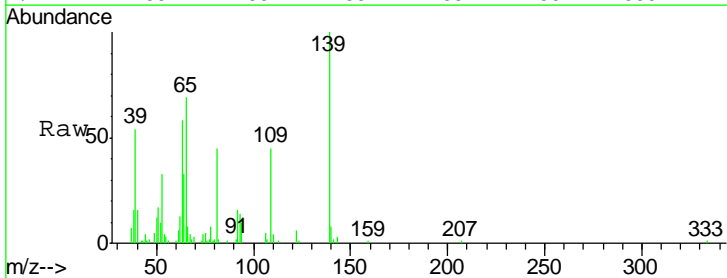
Instrument :
 BNA_G
 ClientSampled :
 SST02076

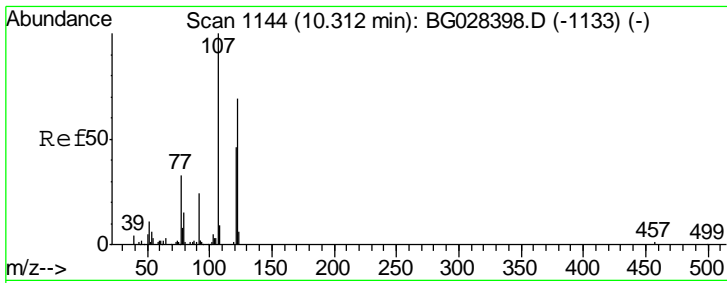
Tgt Ion	Resp	Lower	Upper
82	144670		
95	8.1	7.8	11.6
138	14.3	12.2	18.2



#23
 2-Nitrophenol
 Concen: 20.121 ng/ul
 RT: 10.27 min Scan# 1137
 Delta R.T. 0.00 min
 Lab File: BG028396.D
 Acq: 21 Aug 2017 20:02

Tgt Ion	Resp	Lower	Upper
139	30590		
65	68.5	67.0	100.6
109	44.7	39.6	59.4

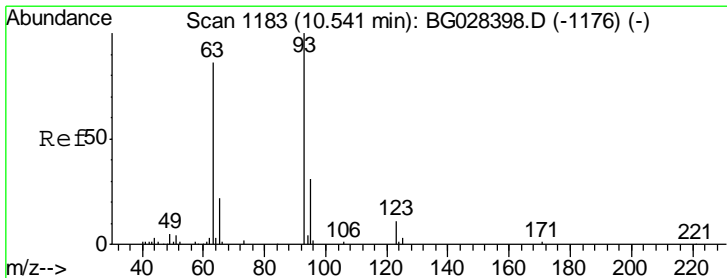
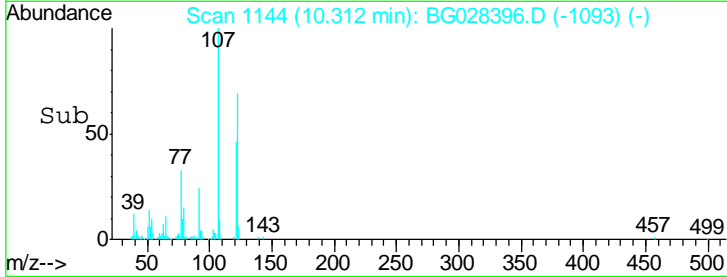
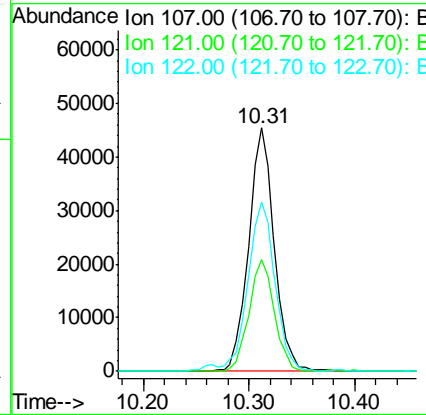
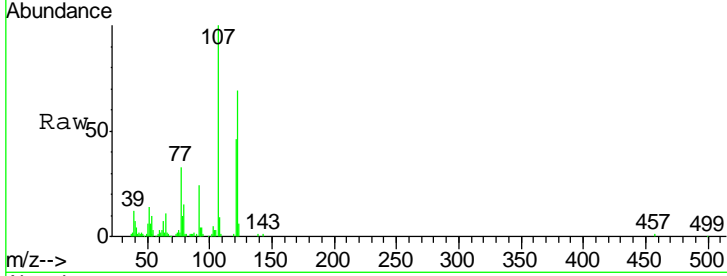




#24
 2,4-Dimethylphenol
 Concen: 20.171 ng/ul
 RT: 10.31 min Scan# 1144
 Delta R.T. 0.00 min
 Lab File: BG028396.D
 Acq: 21 Aug 2017 20:02

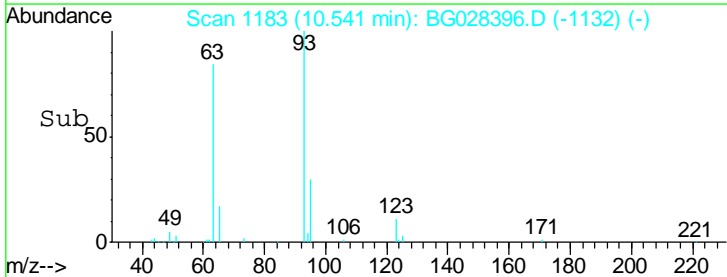
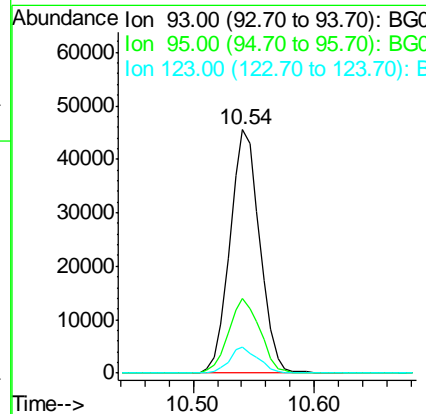
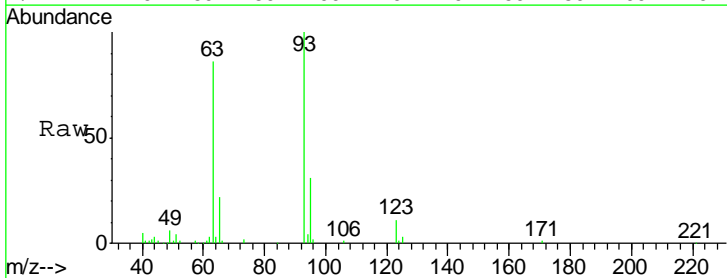
Instrument :
 BNA_G
 ClientSampleId :
 SSTD02076

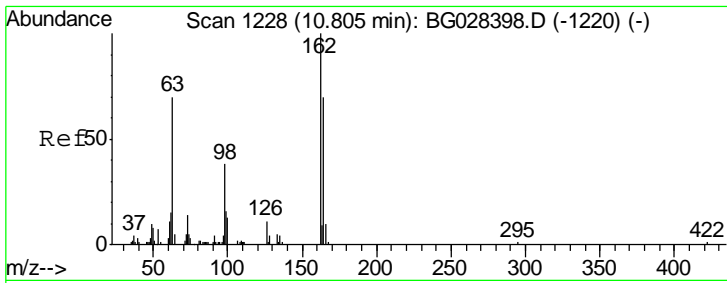
Tgt Ion	Resp	Lower	Upper
107	76221		
121	45.8	32.3	48.5
122	69.4	61.2	91.8



#25
 Bis(2-Chloroethoxy)methane
 Concen: 18.877 ng/ul
 RT: 10.54 min Scan# 1183
 Delta R.T. 0.00 min
 Lab File: BG028396.D
 Acq: 21 Aug 2017 20:02

Tgt Ion	Resp	Lower	Upper
93	77670		
95	30.7	23.4	35.0
123	10.6	7.8	11.6

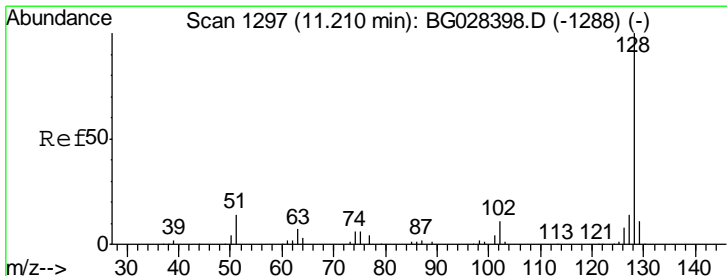
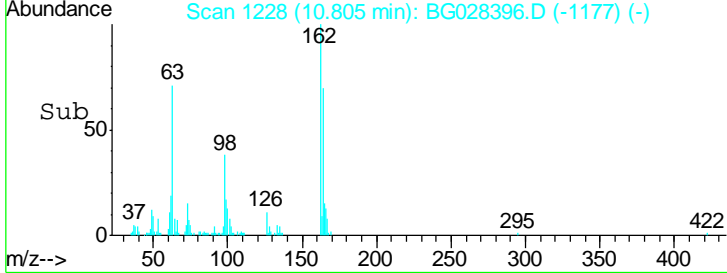
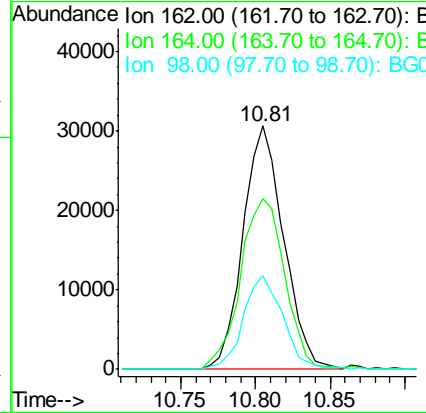
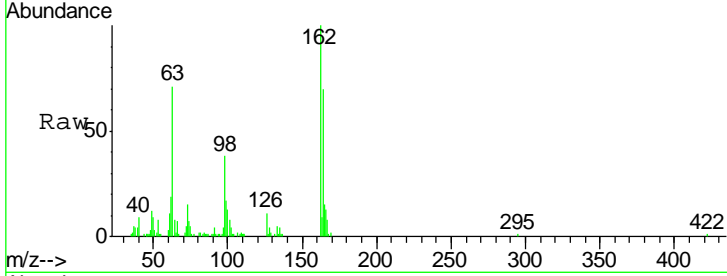




#27
 2,4-Dichlorophenol
 Concen: 20.318 ng/ul
 RT: 10.81 min Scan# 1228
 Delta R.T. 0.00 min
 Lab File: BG028396.D
 Acq: 21 Aug 2017 20:02

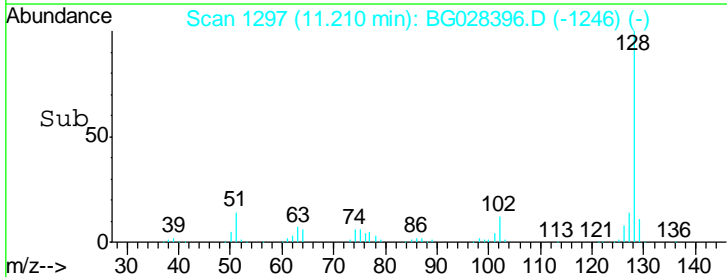
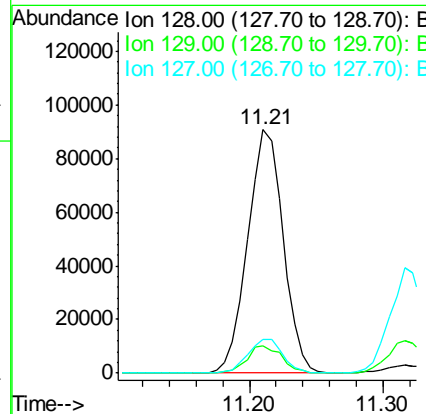
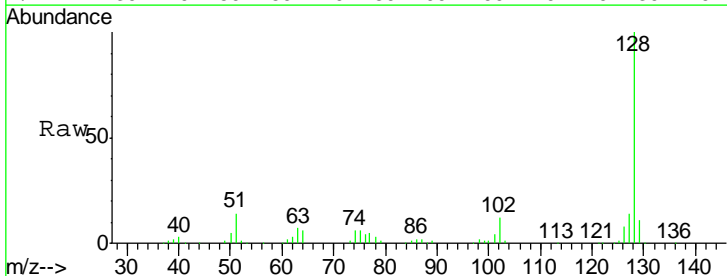
Instrument :
 BNA_G
 ClientSampled :
 SSTD02076

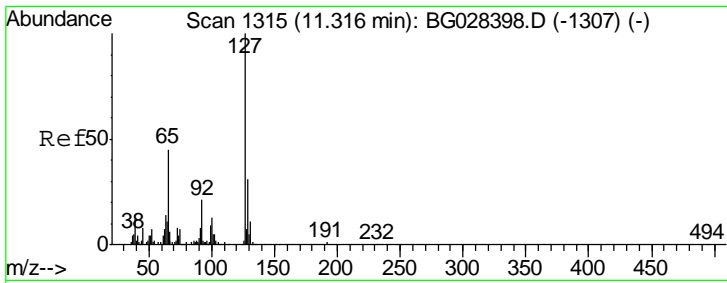
Tgt Ion	Resp	Lower	Upper
162	100		
164	70.2	50.8	76.2
98	38.4	32.1	48.1



#28
 Naphthalene
 Concen: 19.132 ng/ul
 RT: 11.21 min Scan# 1297
 Delta R.T. 0.00 min
 Lab File: BG028396.D
 Acq: 21 Aug 2017 20:02

Tgt Ion	Resp	Lower	Upper
128	100		
129	11.3	9.4	14.2
127	13.9	10.3	15.5

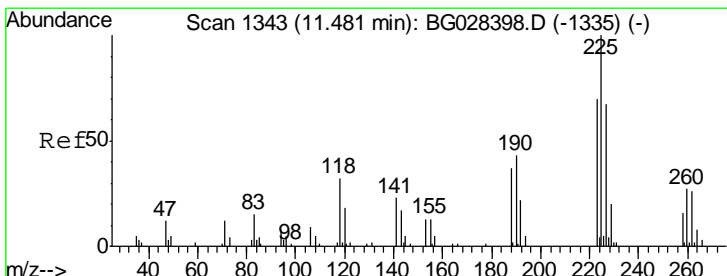
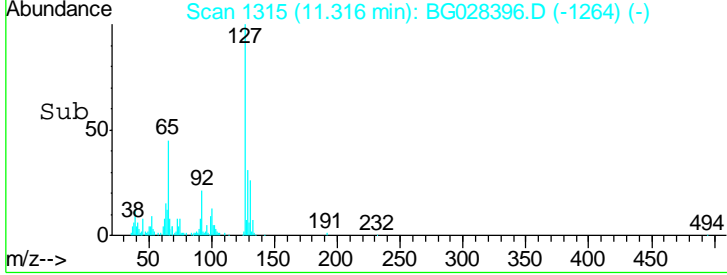
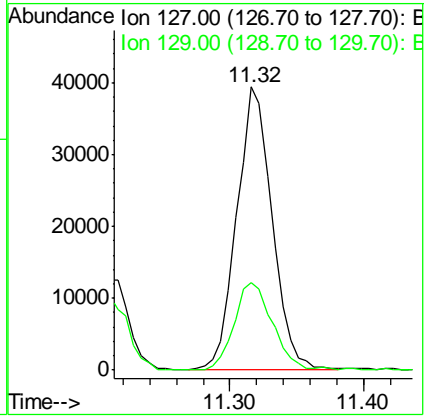
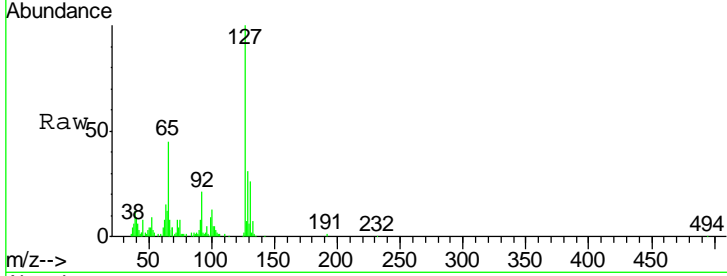




#30
 4-Chloroaniline
 Concen: 21.548 ng/ul
 RT: 11.32 min Scan# 1315
 Delta R.T. 0.00 min
 Lab File: BG028396.D
 Acq: 21 Aug 2017 20:02

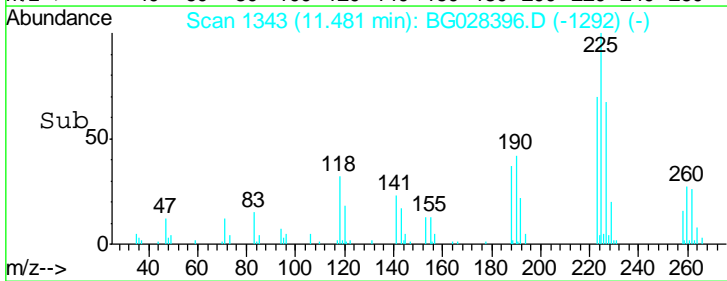
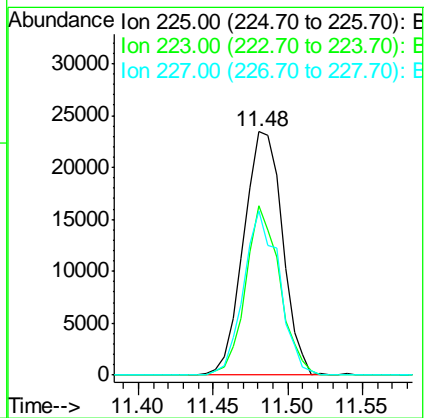
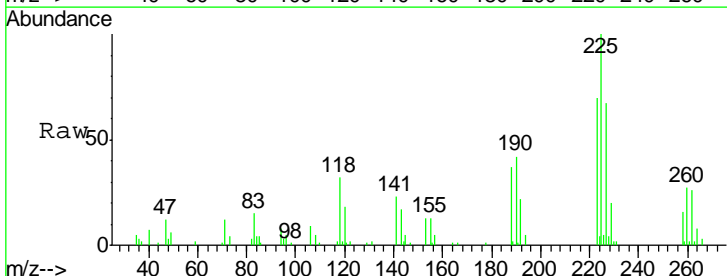
Instrument :
 BNA_G
ClientSampled :
 SST02076

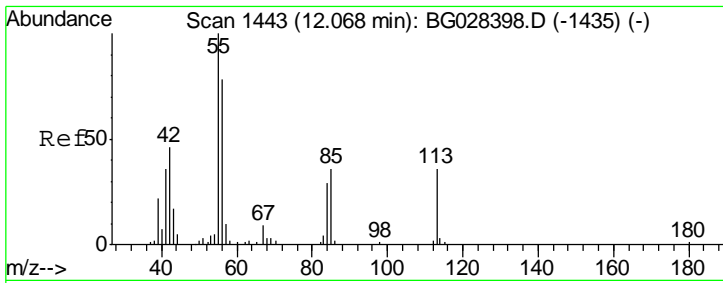
Tgt Ion	Resp	Lower	Upper
127	100		
129	31.1	28.9	43.3



#31
 Hexachlorobutadiene
 Concen: 20.166 ng/ul
 RT: 11.48 min Scan# 1343
 Delta R.T. 0.00 min
 Lab File: BG028396.D
 Acq: 21 Aug 2017 20:02

Tgt Ion	Resp	Lower	Upper
225	100		
223	69.7	45.9	68.9#
227	67.3	44.7	67.1#

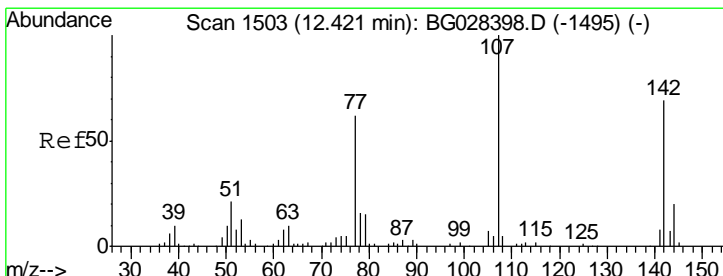
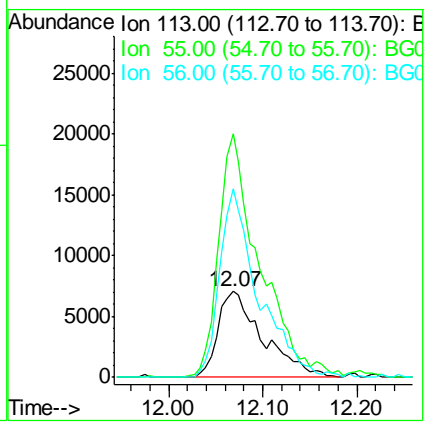
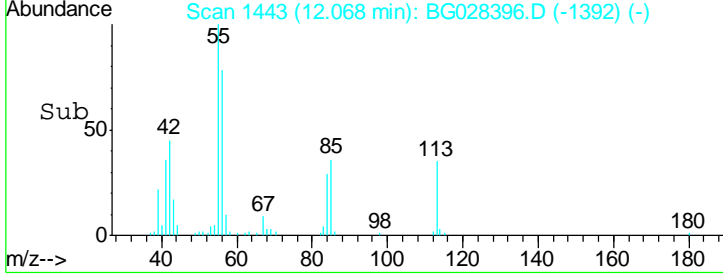
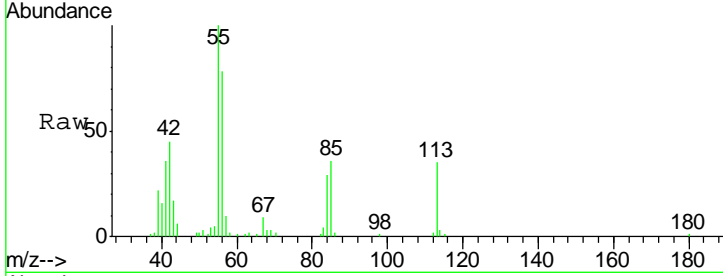




#32
 Caprolactam
 Concen: 20.015 ng/ul
 RT: 12.07 min Scan# 1443
 Delta R.T. 0.00 min
 Lab File: BG028396.D
 Acq: 21 Aug 2017 20:02

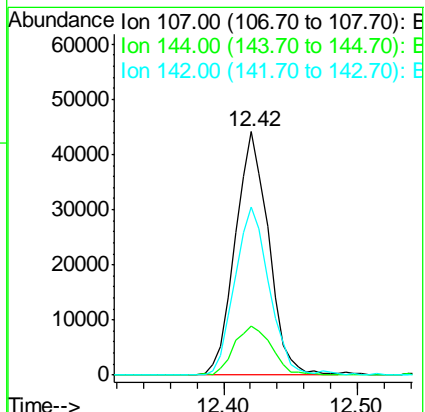
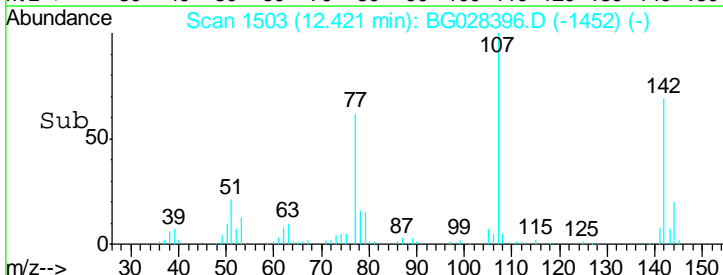
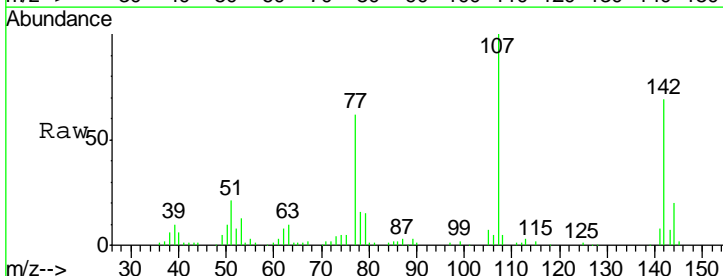
Instrument :
 BNA_G
 ClientSampled :
 SSTD02076

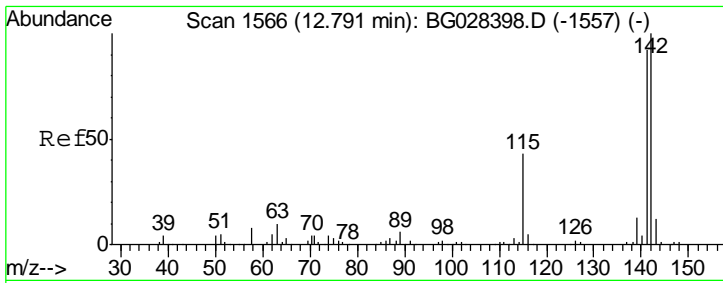
Tgt Ion	Resp	Lower	Upper
113	100		
55	284.0	168.6	252.8#
56	220.4	128.5	192.7#



#33
 4-Chloro-3-methylphenol
 Concen: 21.145 ng/ul
 RT: 12.42 min Scan# 1503
 Delta R.T. 0.00 min
 Lab File: BG028396.D
 Acq: 21 Aug 2017 20:02

Tgt Ion	Resp	Lower	Upper
107	100		
144	20.3	18.2	27.4
142	69.0	55.0	82.4

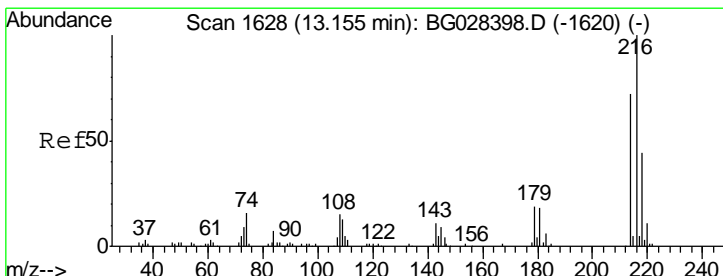
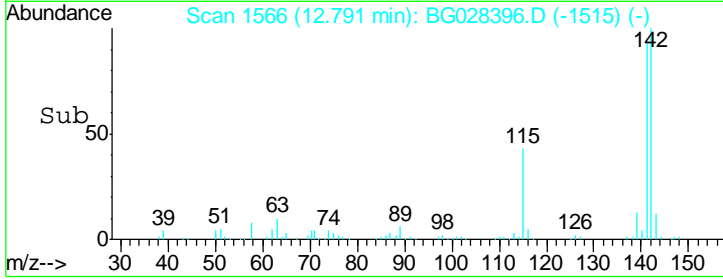
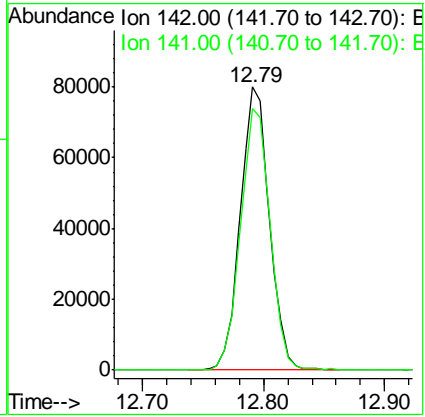
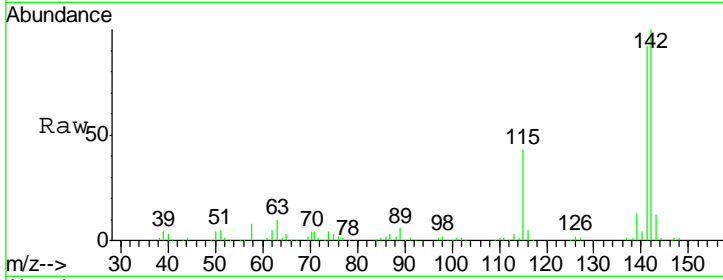




#34
 2-Methylnaphthalene
 Concen: 19.200 ng/ul
 RT: 12.79 min Scan# 1566
 Delta R.T. 0.00 min
 Lab File: BG028396.D
 Acq: 21 Aug 2017 20:02

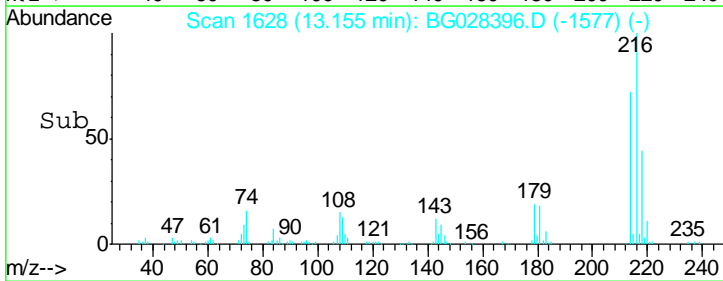
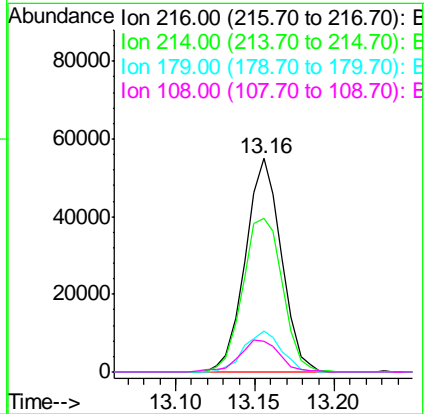
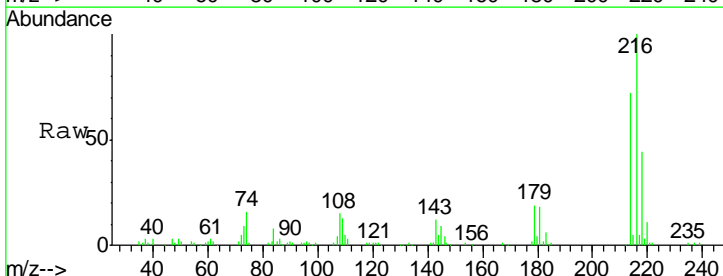
Instrument :
 BNA_G
 ClientSampled :
 SST02076

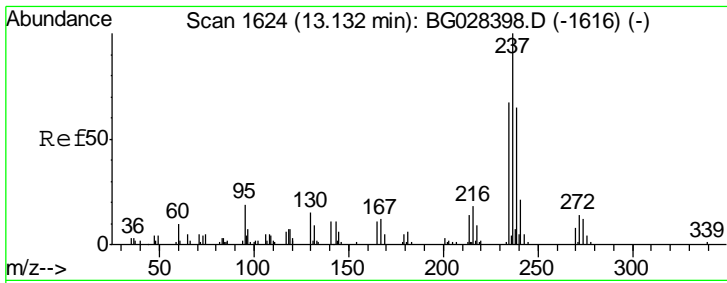
Tgt Ion:142 Resp: 134162
 Ion Ratio Lower Upper
 142 100
 141 92.4 68.6 102.8



#36
 1,2,4,5-Tetrachlorobenzene
 Concen: 19.265 ng/ul
 RT: 13.16 min Scan# 1628
 Delta R.T. 0.00 min
 Lab File: BG028396.D
 Acq: 21 Aug 2017 20:02

Tgt Ion:216 Resp: 86288
 Ion Ratio Lower Upper
 216 100
 214 72.1 67.0 100.6
 179 19.3 18.1 27.1
 108 14.6 14.1 21.1

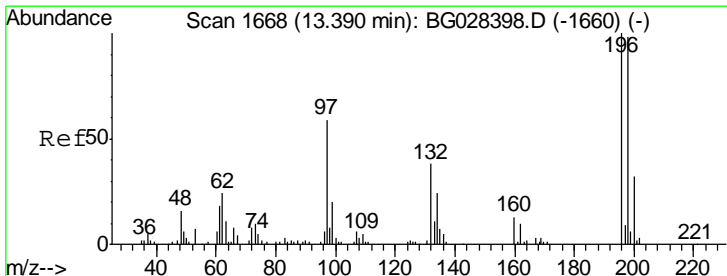
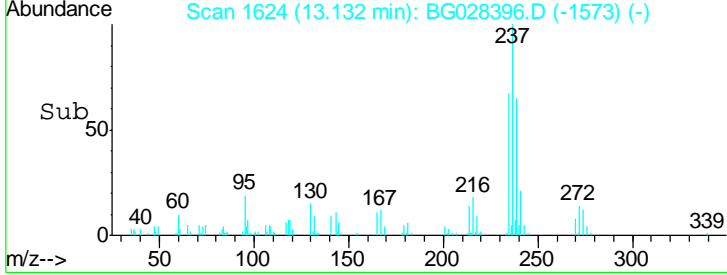
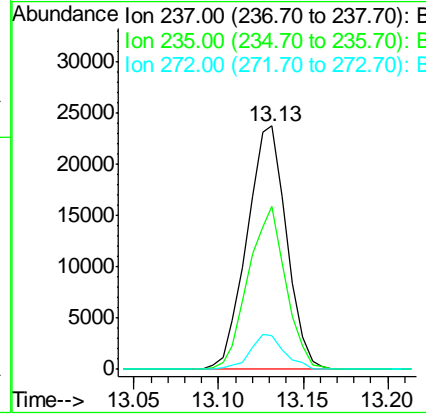
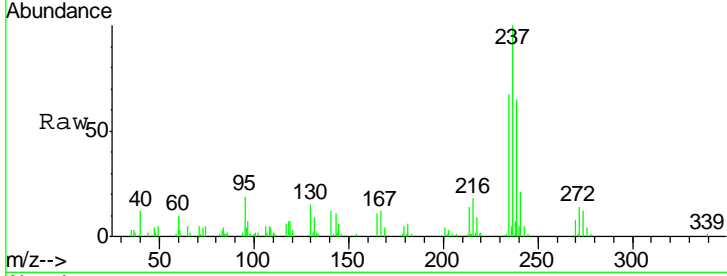




#37
 Hexachlorocyclopentadiene
 Concen: 15.573 ng/ul
 RT: 13.13 min Scan# 1624
 Delta R.T. 0.00 min
 Lab File: BG028396.D
 Acq: 21 Aug 2017 20:02

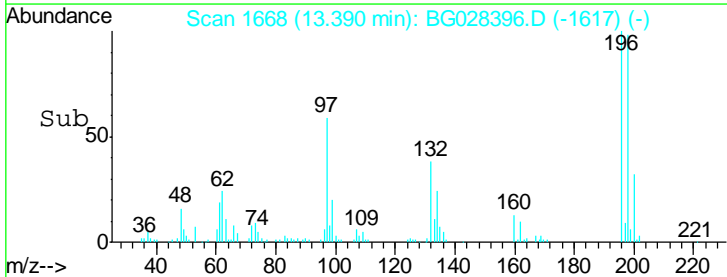
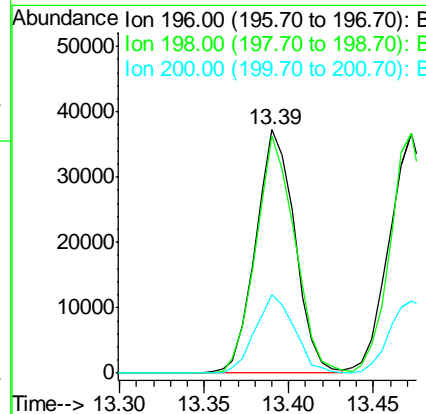
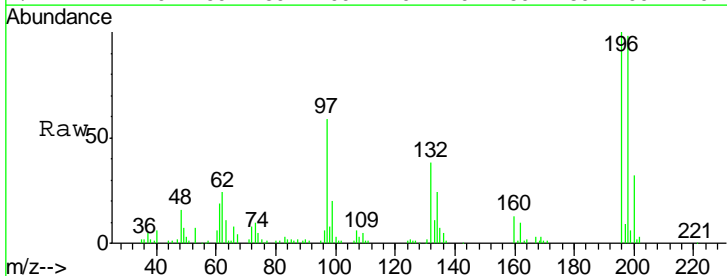
Instrument :
 BNA_G
 ClientSampled :
 SST02076

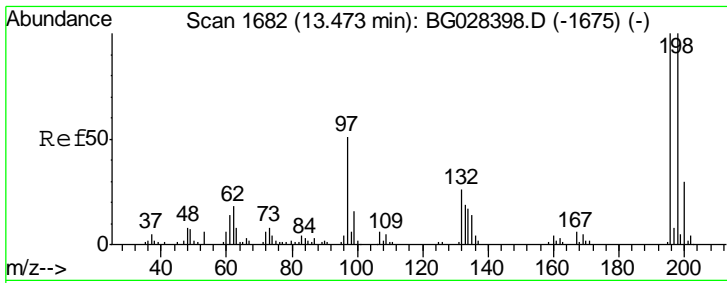
Tgt Ion	Resp	Lower	Upper
237	100		
235	66.7	50.2	75.4
272	14.0	10.6	16.0



#38
 2,4,6-Trichlorophenol
 Concen: 21.506 ng/ul
 RT: 13.39 min Scan# 1668
 Delta R.T. 0.00 min
 Lab File: BG028396.D
 Acq: 21 Aug 2017 20:02

Tgt Ion	Resp	Lower	Upper
196	100		
198	97.6	71.4	107.2
200	32.5	24.6	37.0

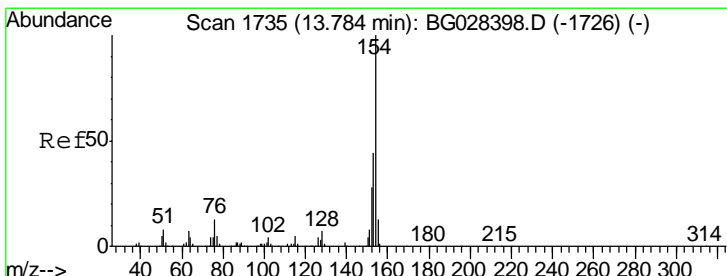
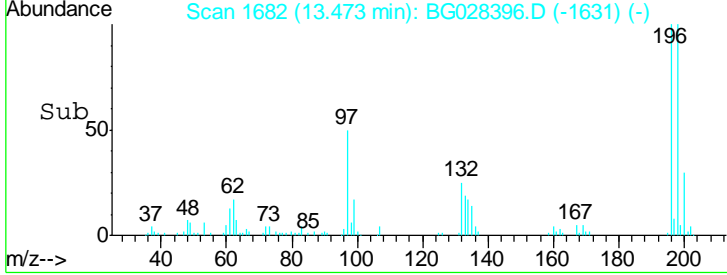
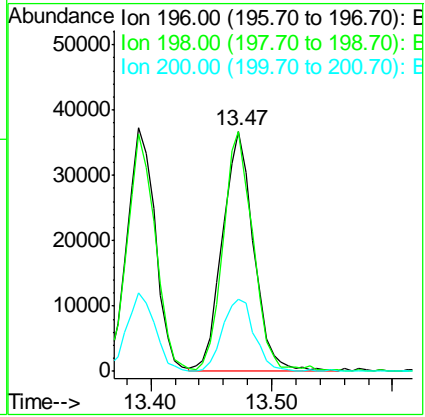
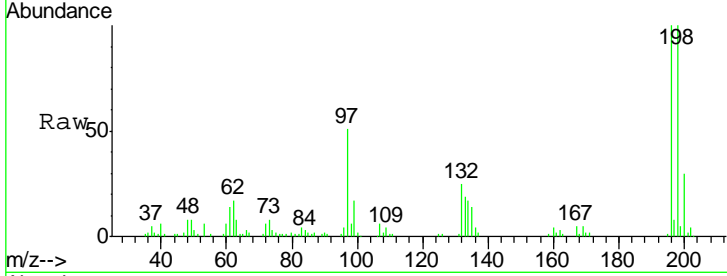




#39
 2,4,5-Trichlorophenol
 Concen: 21.682 ng/ul
 RT: 13.47 min Scan# 1682
 Delta R.T. 0.00 min
 Lab File: BG028396.D
 Acq: 21 Aug 2017 20:02

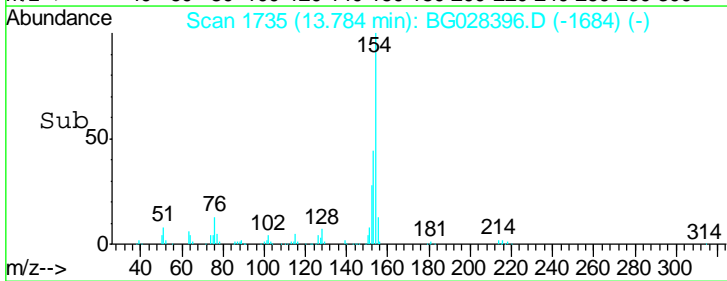
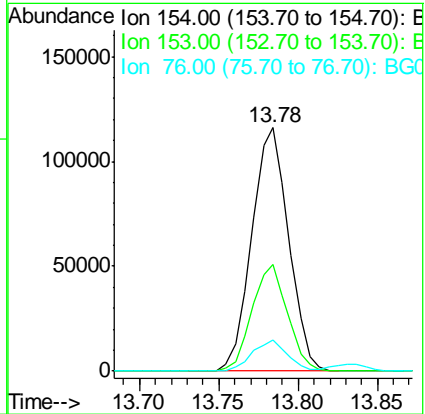
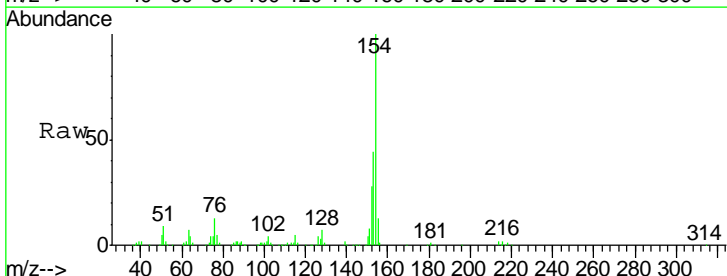
Instrument :
 BNA_G
 ClientSampled :
 SSTD02076

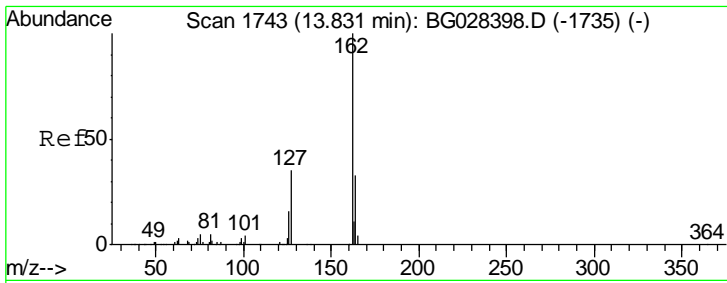
Tgt Ion	Resp	Lower	Upper
196	100		
198	99.9	78.6	118.0
200	30.0	27.3	40.9



#40
 1,1'-Biphenyl
 Concen: 18.439 ng/ul
 RT: 13.78 min Scan# 1735
 Delta R.T. 0.00 min
 Lab File: BG028396.D
 Acq: 21 Aug 2017 20:02

Tgt Ion	Resp	Lower	Upper
154	100		
153	43.9	32.2	48.2
76	12.7	9.6	14.4

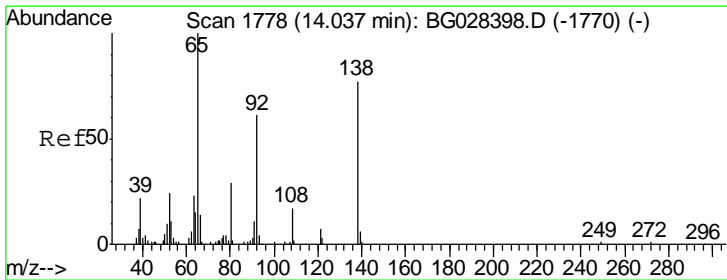
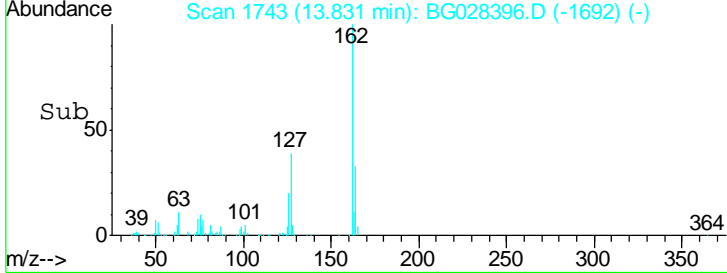
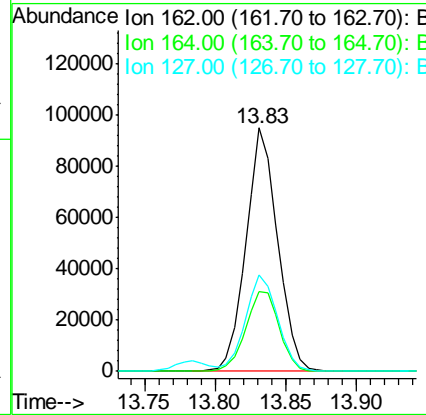
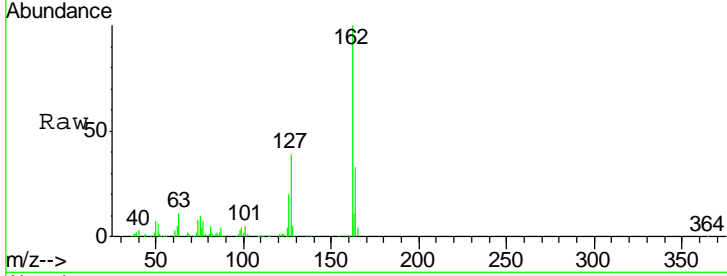




#41
 2-Chloronaphthalene
 Concen: 18.519 ng/ul
 RT: 13.83 min Scan# 1743
 Delta R.T. 0.00 min
 Lab File: BG028396.D
 Acq: 21 Aug 2017 20:02

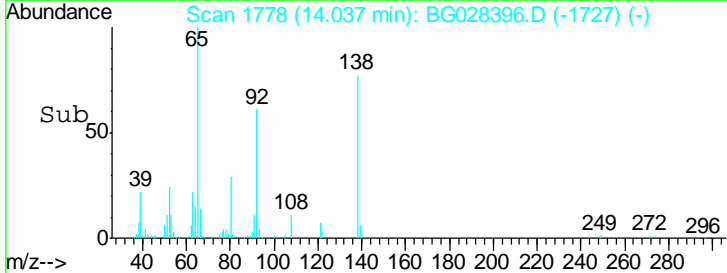
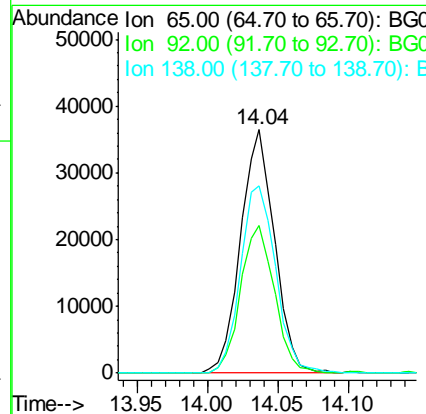
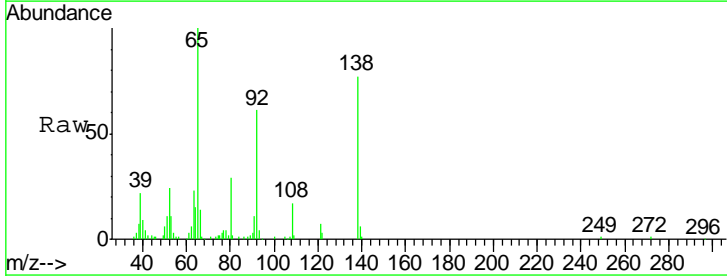
Instrument :
 BNA_G
 ClientSampled :
 SSTD02076

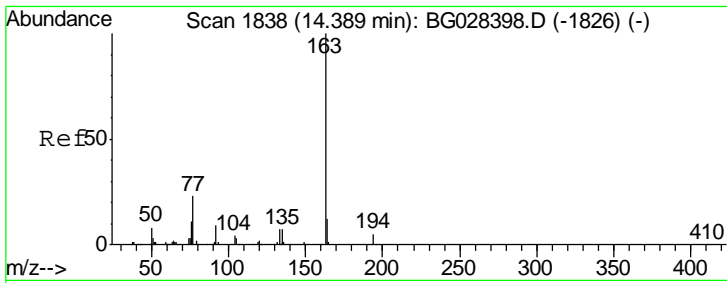
Tgt Ion	Resp	Lower	Upper
162	148528		
164	32.6	25.0	37.6
127	39.3	30.7	46.1



#42
 2-Nitroaniline
 Concen: 18.194 ng/ul
 RT: 14.04 min Scan# 1778
 Delta R.T. 0.00 min
 Lab File: BG028396.D
 Acq: 21 Aug 2017 20:02

Tgt Ion	Resp	Lower	Upper
65	61181		
92	60.7	50.9	76.3
138	76.8	61.8	92.6

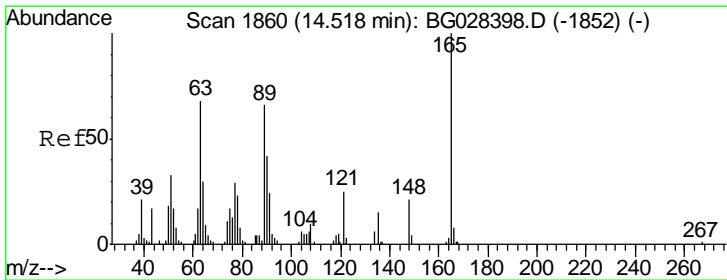
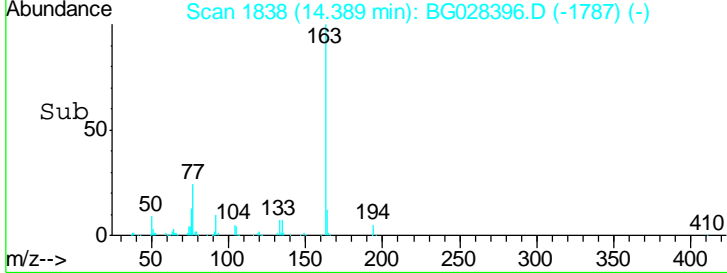
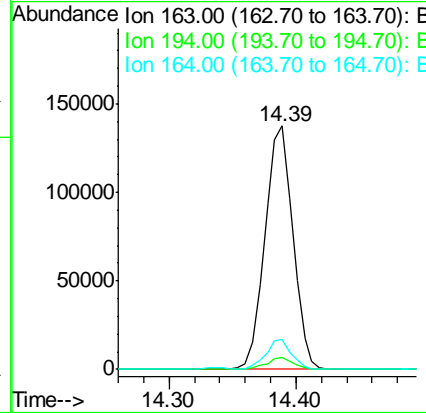
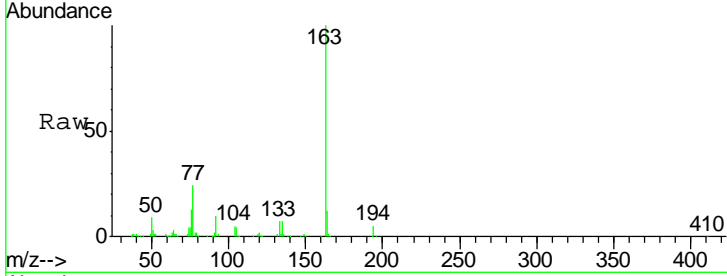




#44
 Dimethylphthalate
 Concen: 18.582 ng/ul
 RT: 14.39 min Scan# 1838
 Delta R.T. 0.00 min
 Lab File: BG028396.D
 Acq: 21 Aug 2017 20:02

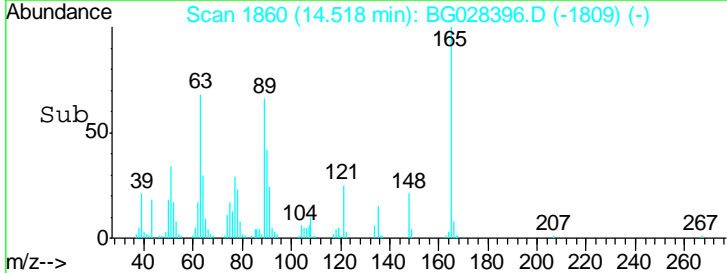
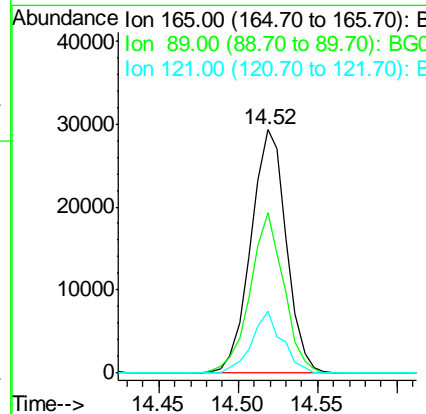
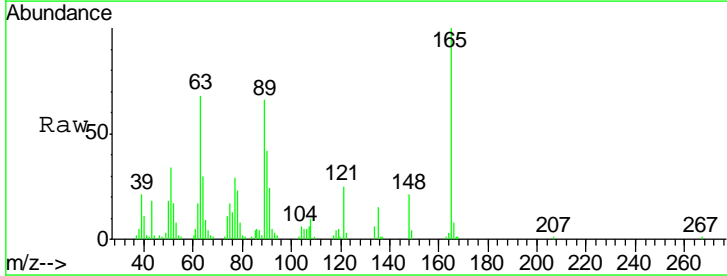
Instrument :
 BNA_G
 ClientSampled :
 SST02076

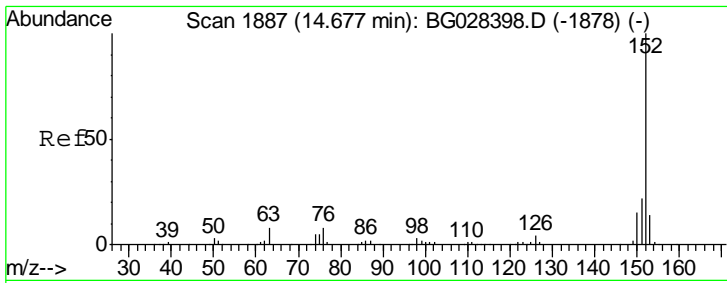
Tgt Ion	Resp	Lower	Upper
163	100		
194	4.8	3.4	5.0
164	12.5	9.0	13.4



#45
 2,6-Dinitrotoluene
 Concen: 19.312 ng/ul
 RT: 14.52 min Scan# 1860
 Delta R.T. 0.00 min
 Lab File: BG028396.D
 Acq: 21 Aug 2017 20:02

Tgt Ion	Resp	Lower	Upper
165	100		
89	66.0	52.9	79.3
121	25.5	22.2	33.4

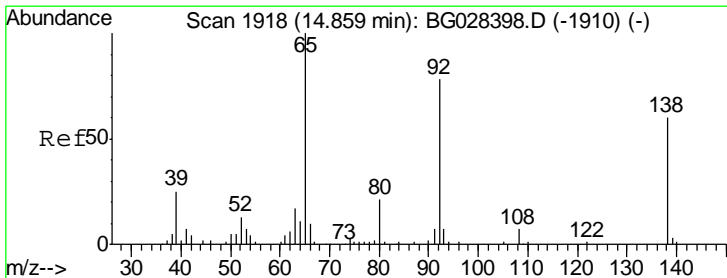
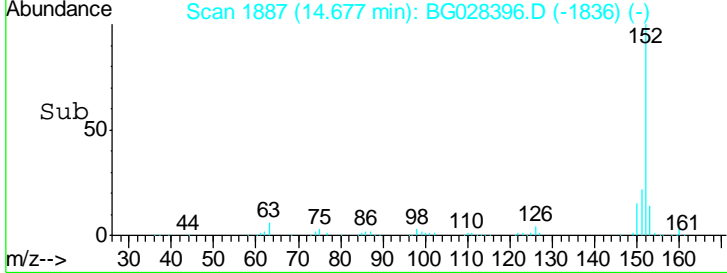
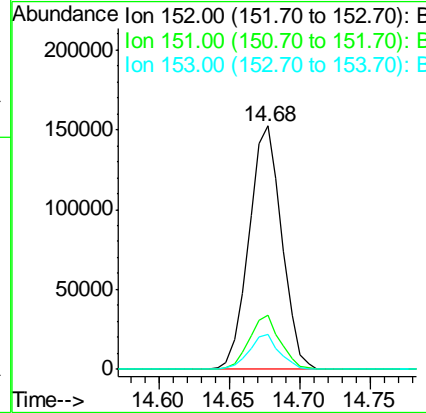
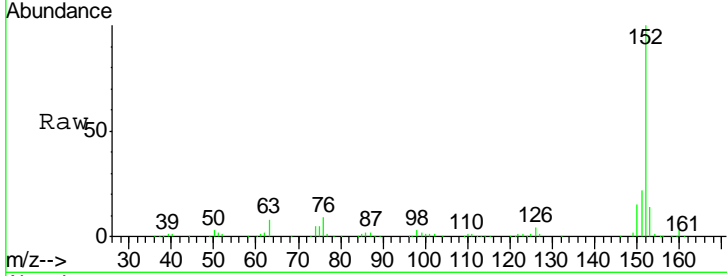




#47
 Acenaphthylene
 Concen: 18.585 ng/ul
 RT: 14.68 min Scan# 1887
 Delta R.T. 0.00 min
 Lab File: BG028396.D
 Acq: 21 Aug 2017 20:02

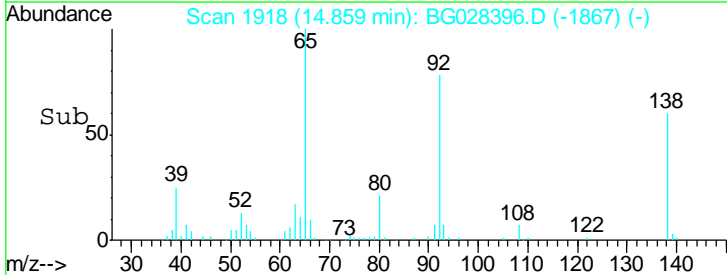
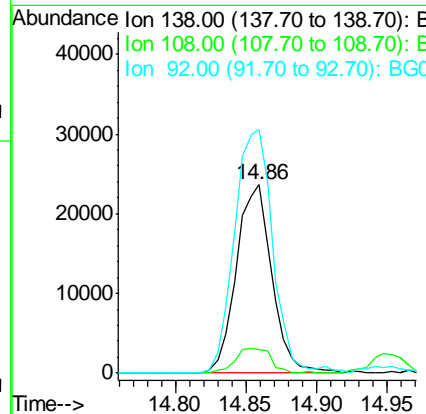
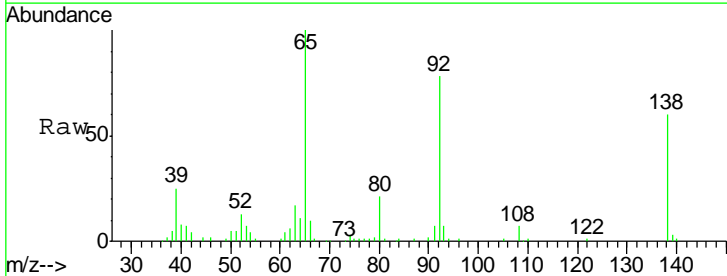
Instrument :
 BNA_G
 ClientSampleID :
 SSTD02076

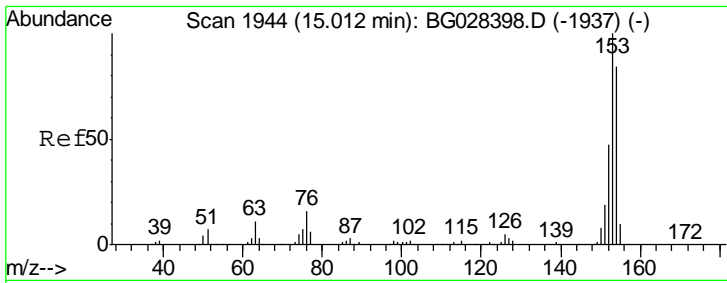
Tgt Ion	Resp	Lower	Upper
152	247496		
151	22.2	16.7	25.1
153	14.1	11.4	17.2



#48
 3-Nitroaniline
 Concen: 19.586 ng/ul
 RT: 14.86 min Scan# 1918
 Delta R.T. 0.00 min
 Lab File: BG028396.D
 Acq: 21 Aug 2017 20:02

Tgt Ion	Resp	Lower	Upper
138	41439		
108	12.2	6.3	9.5#
92	129.4	106.4	159.6

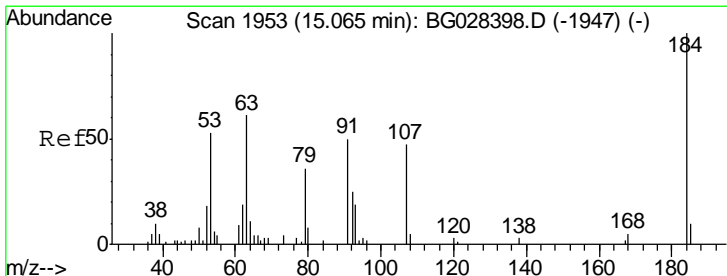
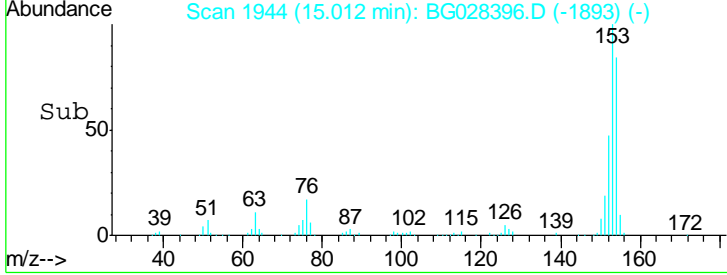
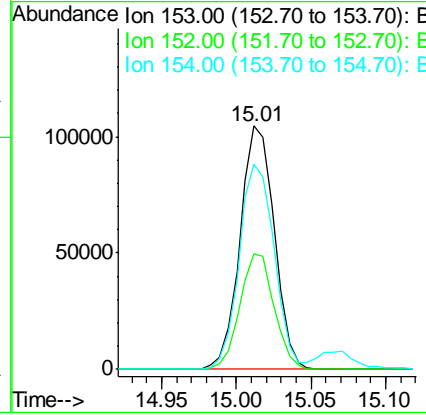
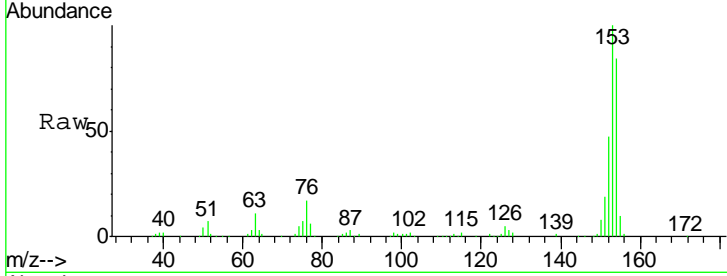




#49
 Acenaphthene
 Concen: 18.541 ng/ul
 RT: 15.01 min Scan# 1944
 Delta R.T. 0.00 min
 Lab File: BG028396.D
 Acq: 21 Aug 2017 20:02

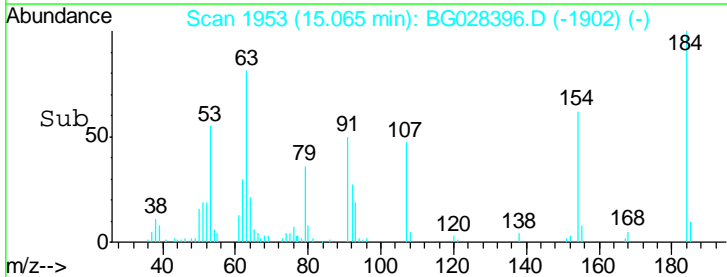
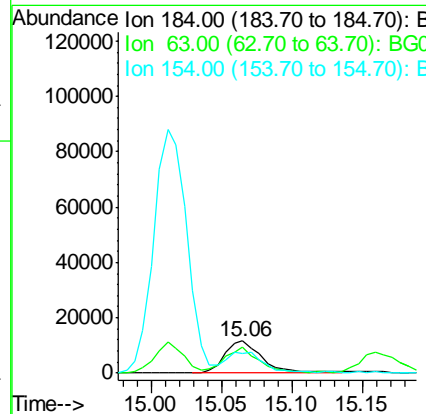
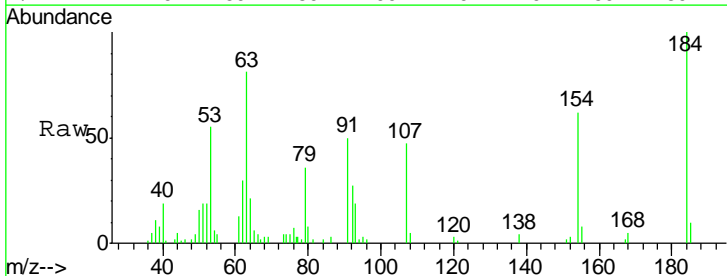
Instrument :
 BNA_G
 ClientSampled :
 SST02076

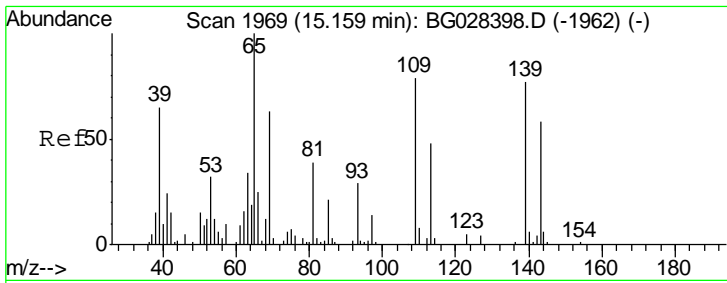
Tgt Ion	Resp	Lower	Upper
153	166593		
152	47.4	36.5	54.7
154	84.1	72.3	108.5



#50
 2,4-Dinitrophenol
 Concen: 16.459 ng/ul
 RT: 15.06 min Scan# 1953
 Delta R.T. 0.00 min
 Lab File: BG028396.D
 Acq: 21 Aug 2017 20:02

Tgt Ion	Resp	Lower	Upper
184	21789		
63	81.4	65.1	97.7
154	61.6	68.2	102.4

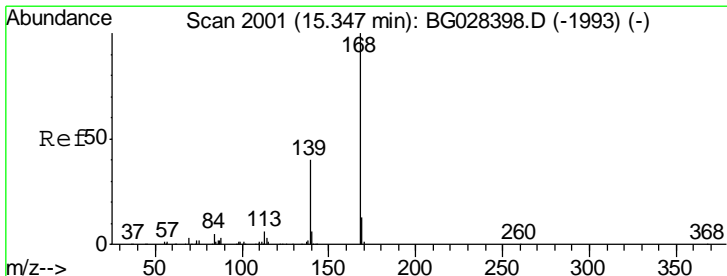
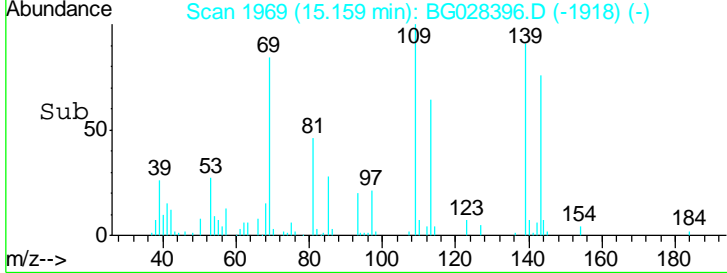
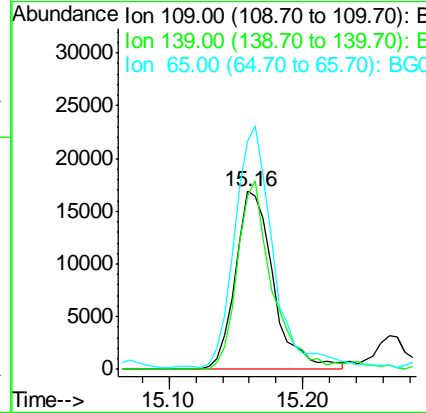
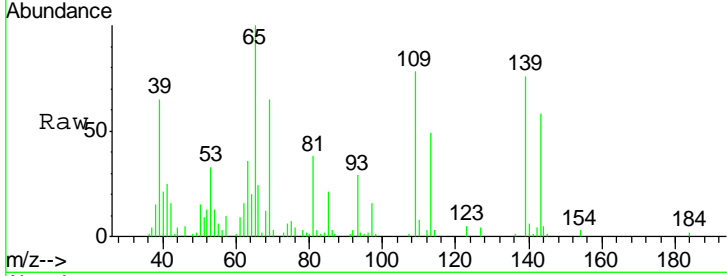




#52
 4-Nitrophenol
 Concen: 16.490 ng/ul
 RT: 15.16 min Scan# 1969
 Delta R.T. 0.00 min
 Lab File: BG028396.D
 Acq: 21 Aug 2017 20:02

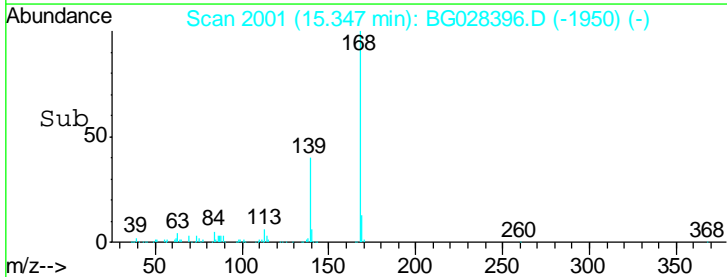
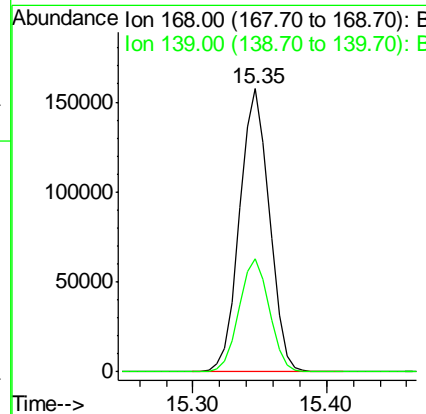
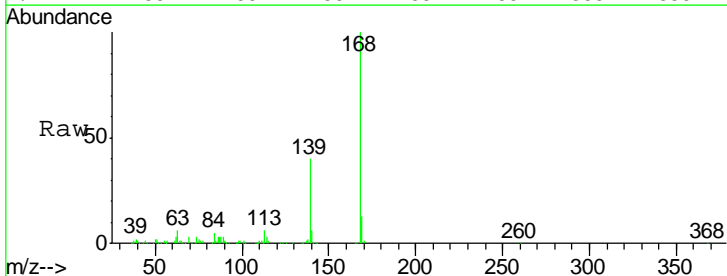
Instrument :
 BNA_G
 ClientSampleID :
 SSTD02076

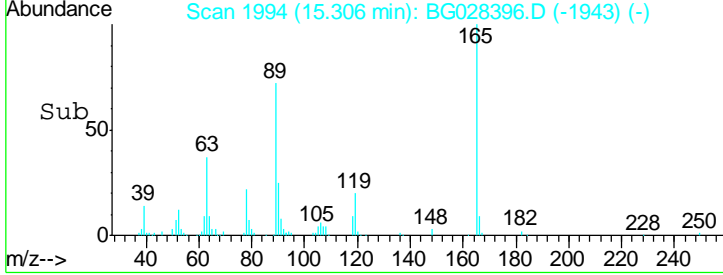
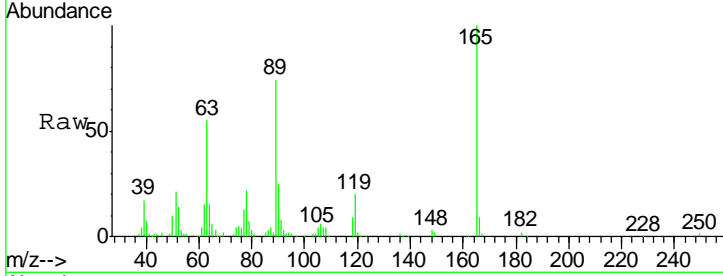
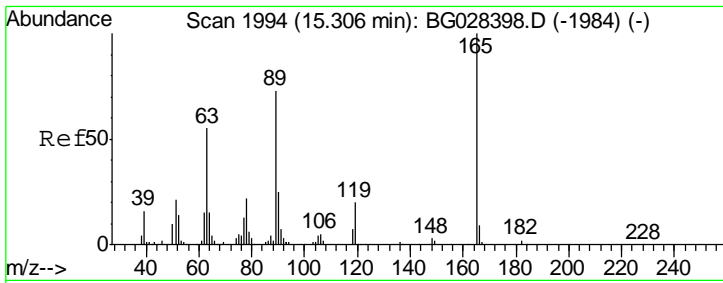
Tgt Ion	Resp	Lower	Upper
109	100		
139	97.2	62.6	93.8
65	128.1	90.4	135.6



#53
 Dibenzofuran
 Concen: 18.536 ng/ul
 RT: 15.35 min Scan# 2001
 Delta R.T. 0.00 min
 Lab File: BG028396.D
 Acq: 21 Aug 2017 20:02

Tgt Ion	Resp	Lower	Upper
168	100		
139	39.8	33.8	50.8

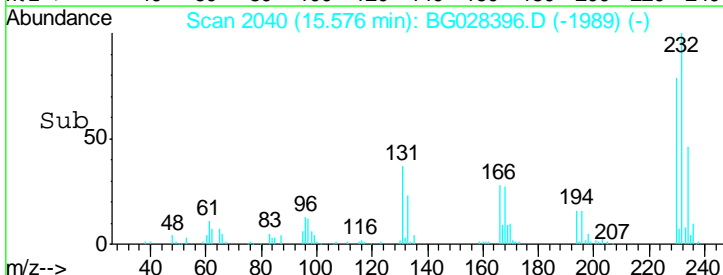
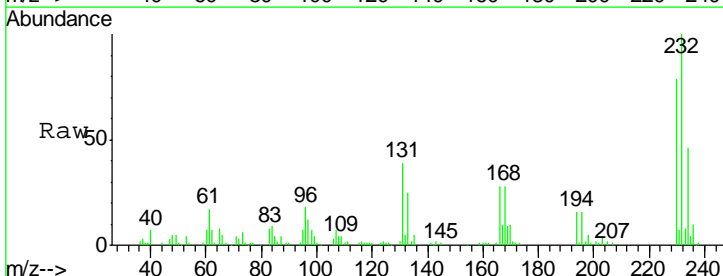
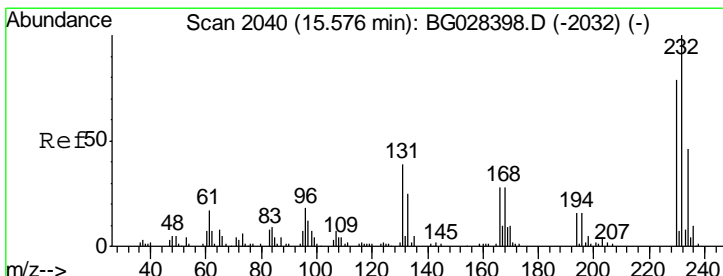
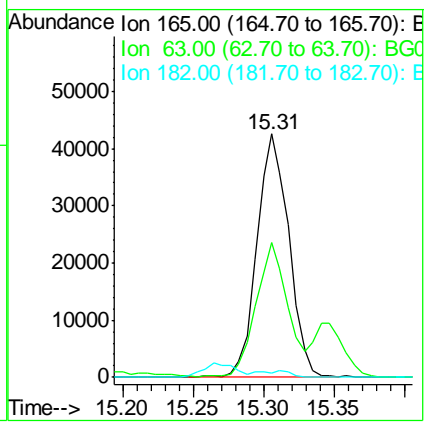




#54
 2,4-Dinitrotoluene
 Concen: 18.961 ng/ul
 RT: 15.31 min Scan# 1994
 Delta R.T. 0.00 min
 Lab File: BG028396.D
 Acq: 21 Aug 2017 20:02

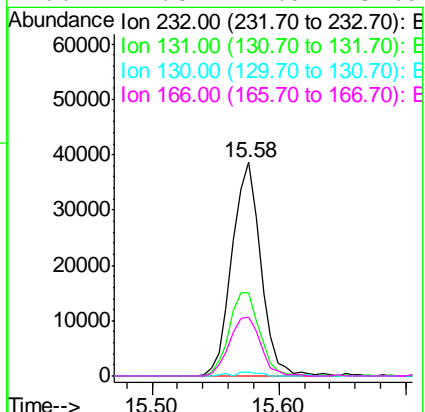
Instrument :
 BNA_G
 ClientSampled :
 SST02076

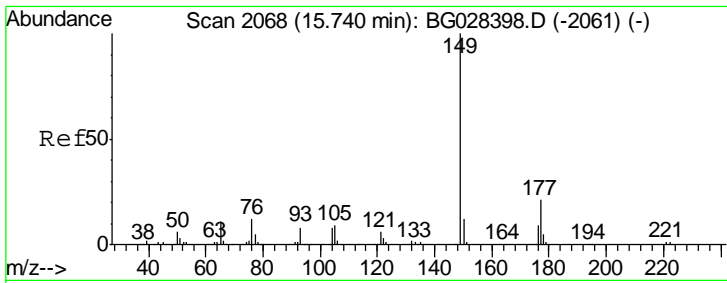
Tgt Ion	Resp	Lower	Upper
165	67518		
63	55.4	46.8	70.2
182	2.0	1.8	2.6



#55
 2,3,4,6-Tetrachlorophenol
 Concen: 21.454 ng/ul
 RT: 15.58 min Scan# 2040
 Delta R.T. 0.00 min
 Lab File: BG028396.D
 Acq: 21 Aug 2017 20:02

Tgt Ion	Resp	Lower	Upper
232	60799		
131	39.2	33.3	49.9
130	1.7	1.8	2.6#
166	27.8	21.9	32.9

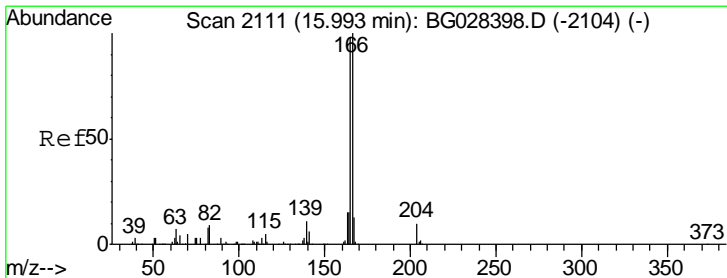
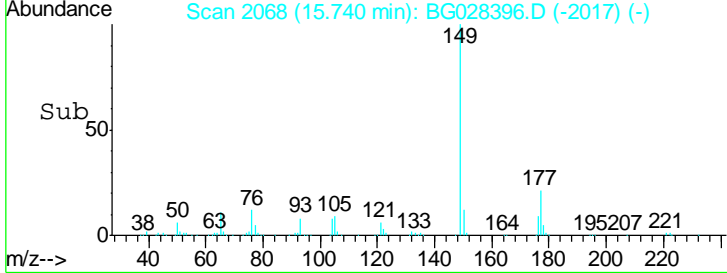
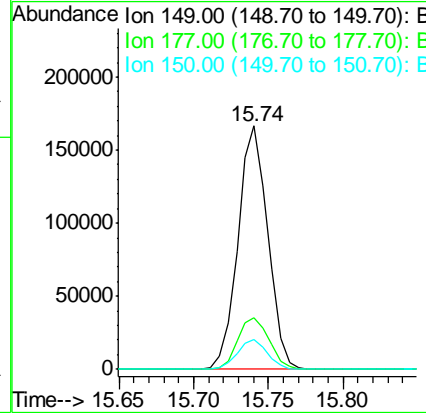
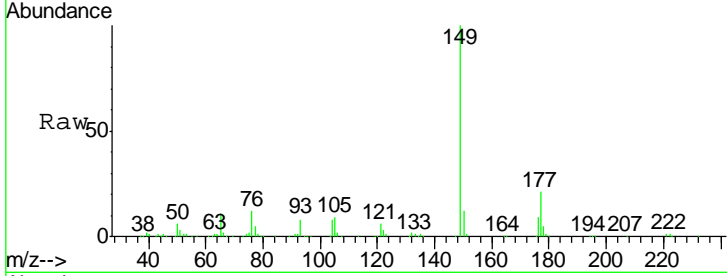




#56
 Diethylphthalate
 Concen: 17.314 ng/ul
 RT: 15.74 min Scan# 2068
 Delta R.T. 0.00 min
 Lab File: BG028396.D
 Acq: 21 Aug 2017 20:02

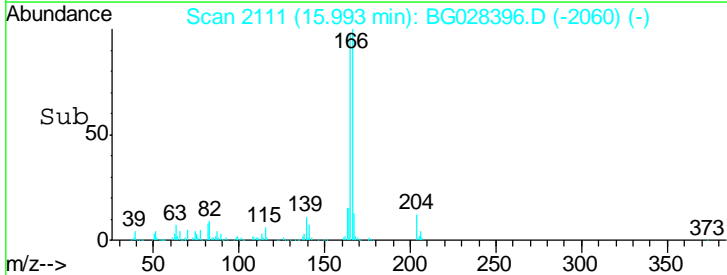
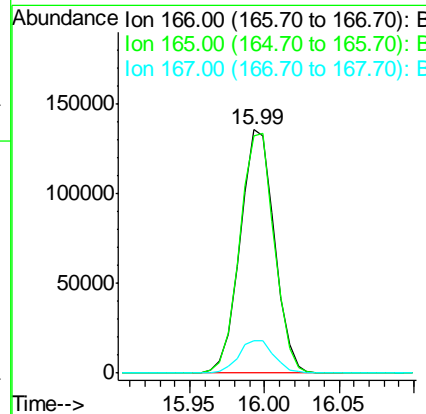
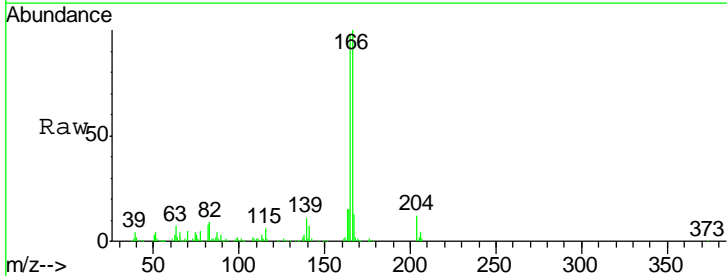
Instrument :
 BNA_G
 ClientSampled :
 SSTD02076

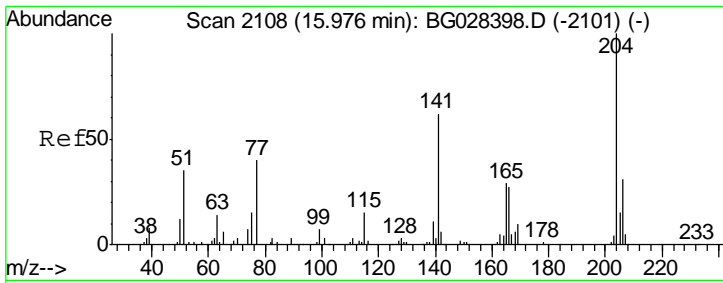
Tgt Ion	Resp	Lower	Upper
149	231150		
177	21.3	17.8	26.8
150	12.2	10.2	15.4



#58
 Fluorene
 Concen: 18.521 ng/ul
 RT: 15.99 min Scan# 2111
 Delta R.T. 0.00 min
 Lab File: BG028396.D
 Acq: 21 Aug 2017 20:02

Tgt Ion	Resp	Lower	Upper
166	214808		
165	97.6	79.7	119.5
167	13.1	11.4	17.2

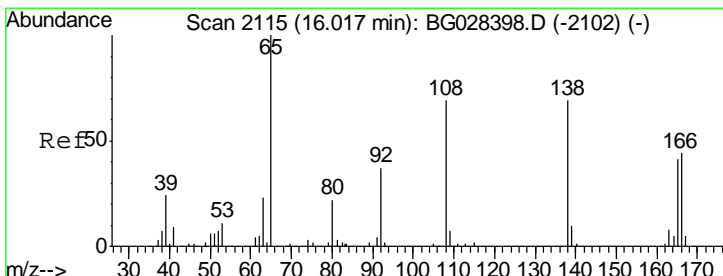
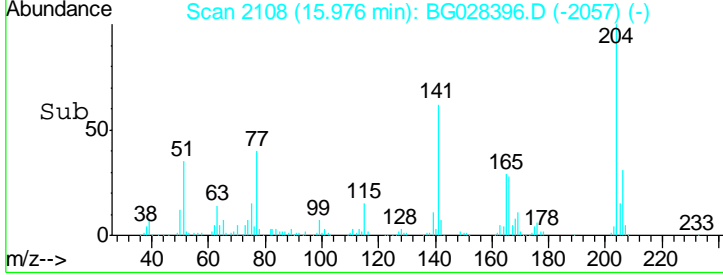
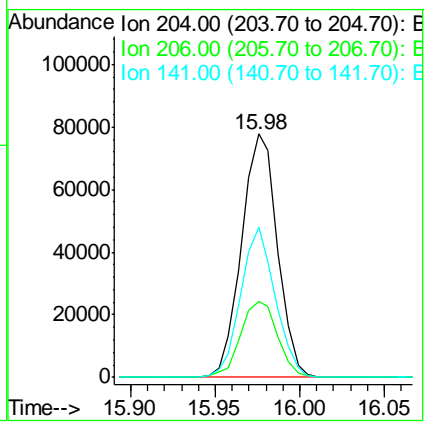
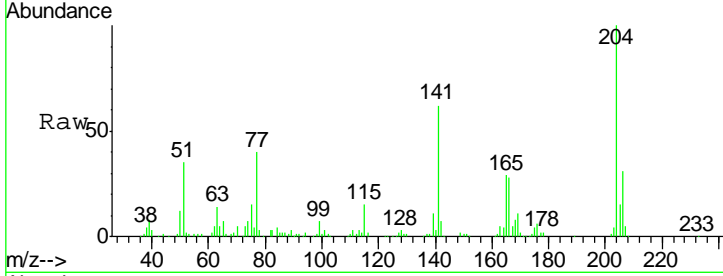




#59
 4-Chlorophenyl-phenylether
 Concen: 18.477 ng/ul
 RT: 15.98 min Scan# 2108
 Delta R.T. 0.00 min
 Lab File: BG028396.D
 Acq: 21 Aug 2017 20:02

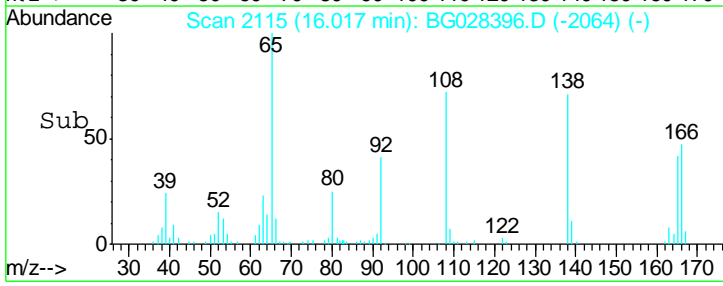
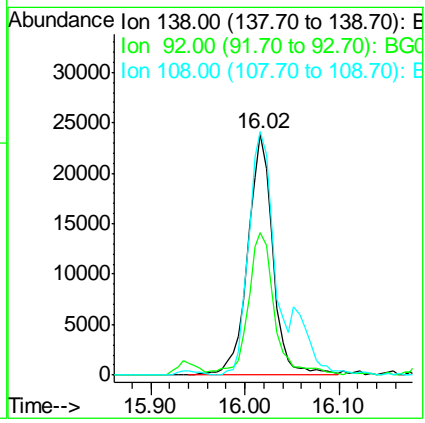
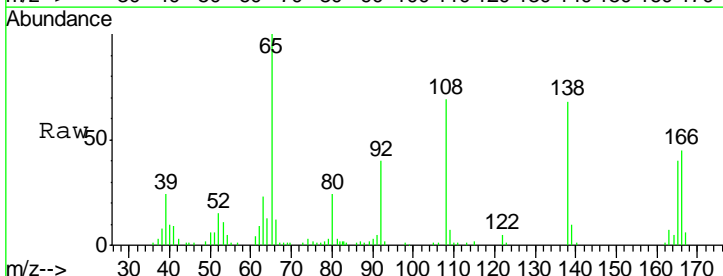
Instrument :
 BNA_G
 ClientSampled :
 SST02076

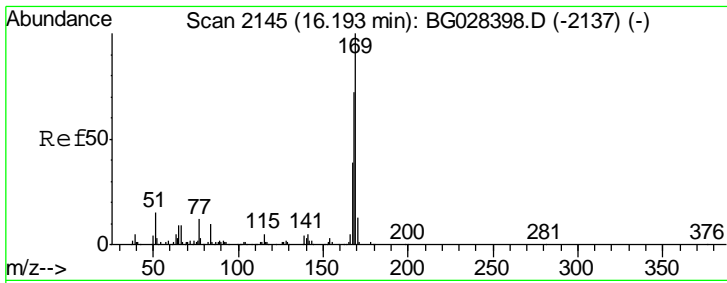
Tgt Ion	Resp	Lower	Upper
204	114976		
206	31.4	32.3	48.5#
141	61.6	57.5	86.3



#60
 4-Nitroaniline
 Concen: 17.566 ng/ul
 RT: 16.02 min Scan# 2115
 Delta R.T. 0.00 min
 Lab File: BG028396.D
 Acq: 21 Aug 2017 20:02

Tgt Ion	Resp	Lower	Upper
138	44092		
92	59.1	56.9	85.3
108	101.0	104.9	157.3#

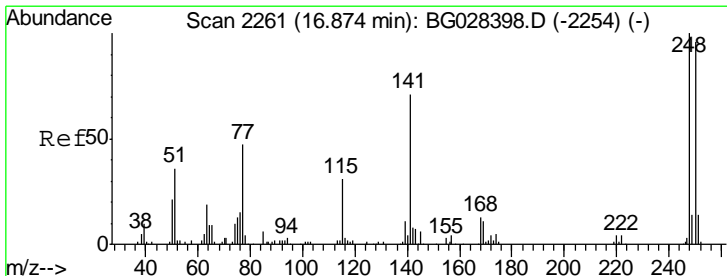
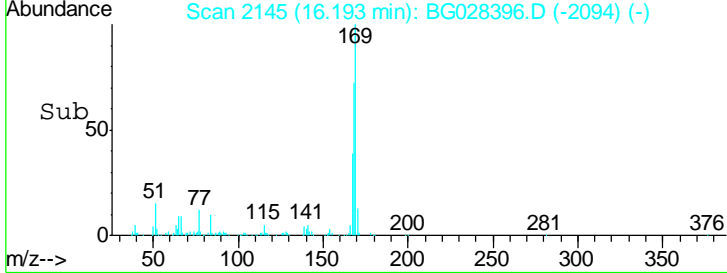
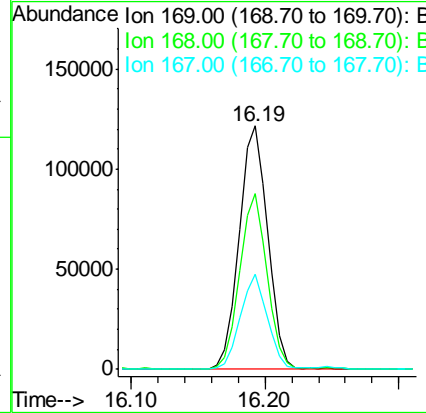
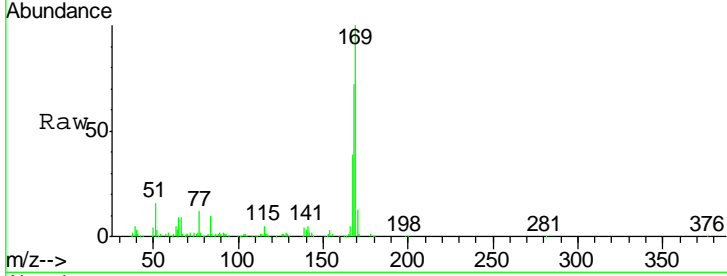




#64
 N-Nitrosodiphenylamine
 Concen: 20.983 ng/ul
 RT: 16.19 min Scan# 2145
 Delta R.T. 0.00 min
 Lab File: BG028396.D
 Acq: 21 Aug 2017 20:02

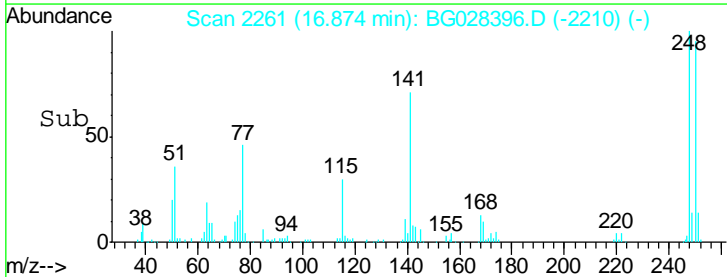
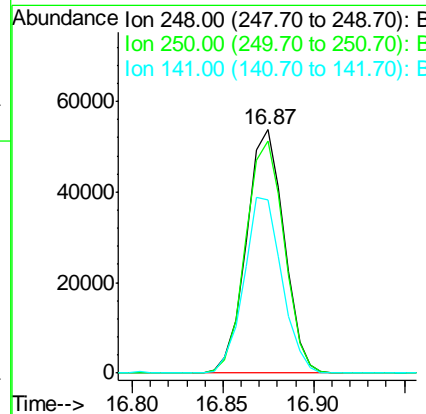
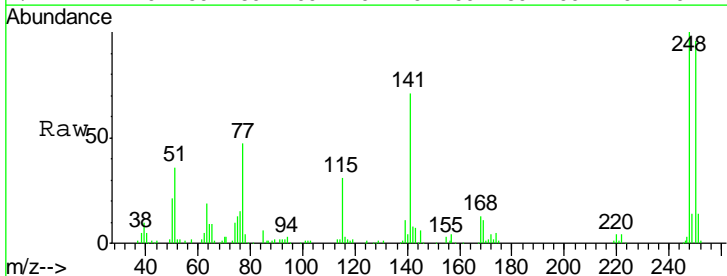
Instrument :
 BNA_G
 ClientSampled :
 SSTD02076

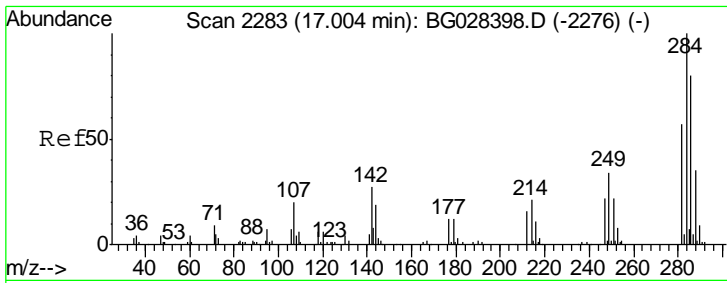
Tgt Ion	Resp	Lower	Upper
169	179865		
168	72.0	59.1	88.7
167	39.1	29.7	44.5



#65
 4-Bromophenyl-phenylether
 Concen: 22.165 ng/ul
 RT: 16.87 min Scan# 2261
 Delta R.T. 0.00 min
 Lab File: BG028396.D
 Acq: 21 Aug 2017 20:02

Tgt Ion	Resp	Lower	Upper
248	77622		
250	95.5	71.9	107.9
141	71.0	53.8	80.8

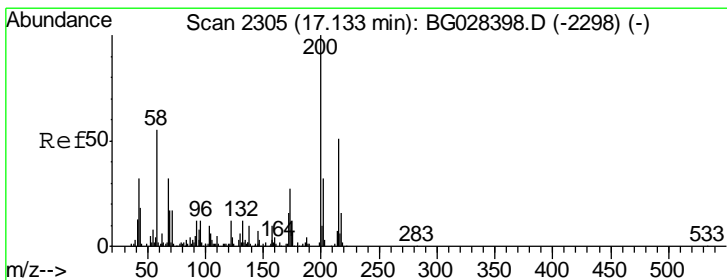
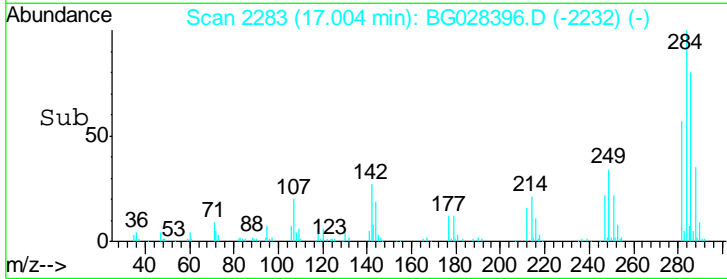
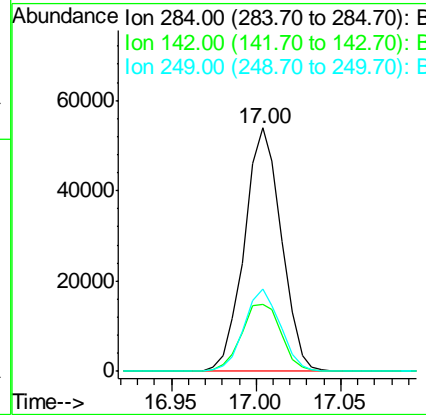
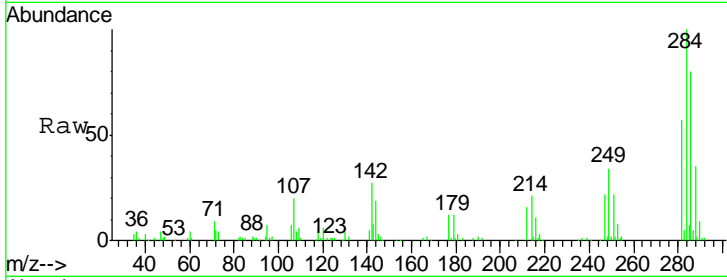




#66
 Hexachlorobenzene
 Concen: 22.040 ng/ul
 RT: 17.00 min Scan# 2283
 Delta R.T. 0.00 min
 Lab File: BG028396.D
 Acq: 21 Aug 2017 20:02

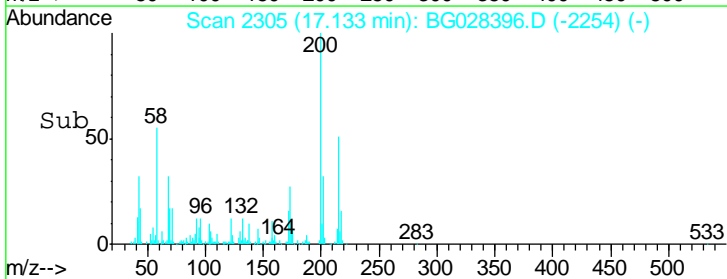
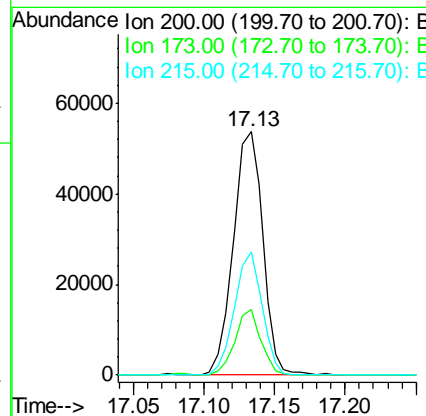
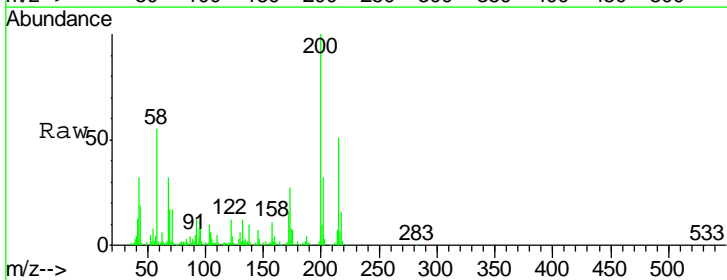
Instrument :
 BNA_G
 ClientSampleID :
 SSTD02076

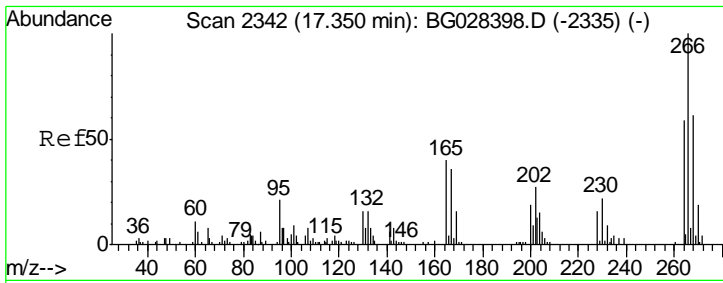
Tgt Ion	Resp	Lower	Upper
284	82167		
142	27.3	26.1	39.1
249	33.6	25.9	38.9



#67
 Atrazine
 Concen: 20.898 ng/ul
 RT: 17.13 min Scan# 2305
 Delta R.T. 0.00 min
 Lab File: BG028396.D
 Acq: 21 Aug 2017 20:02

Tgt Ion	Resp	Lower	Upper
200	78102		
173	26.8	19.2	28.8
215	50.6	40.3	60.5



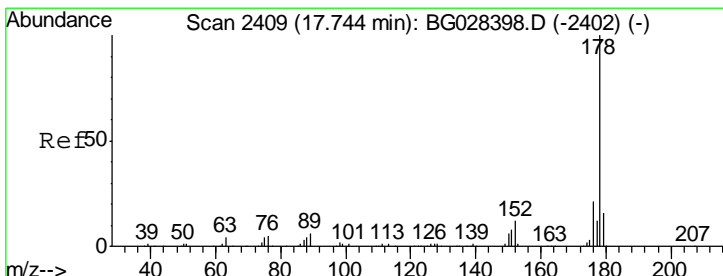
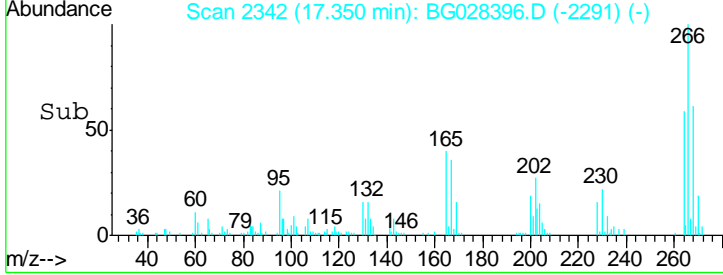
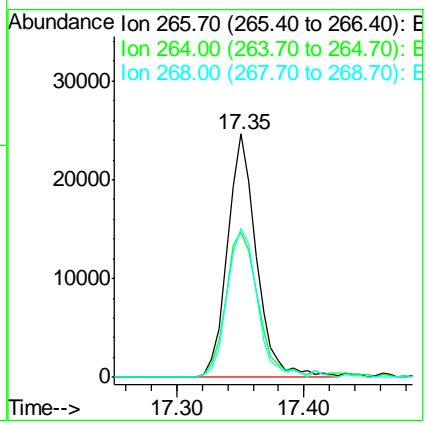
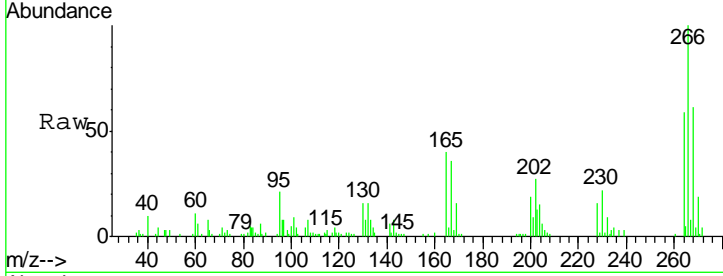


#68
 Pentachlorophenol
 Concen: 20.586 ng/ul
 RT: 17.35 min Scan# 2342
 Delta R.T. 0.00 min
 Lab File: BG028396.D
 Acq: 21 Aug 2017 20:02

Instrument :
 BNA_G
ClientSampled :
 SST02076

Tgt Ion: 266 Resp: 38873

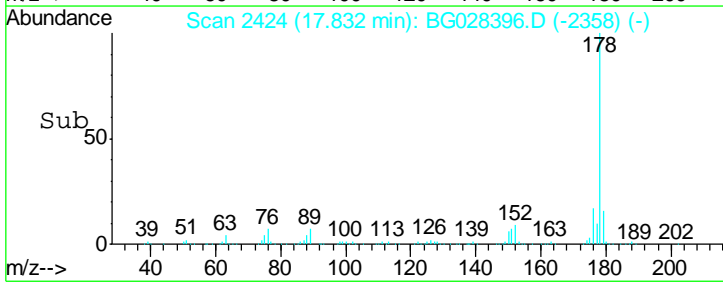
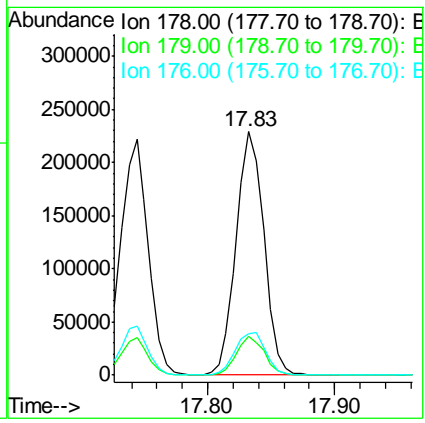
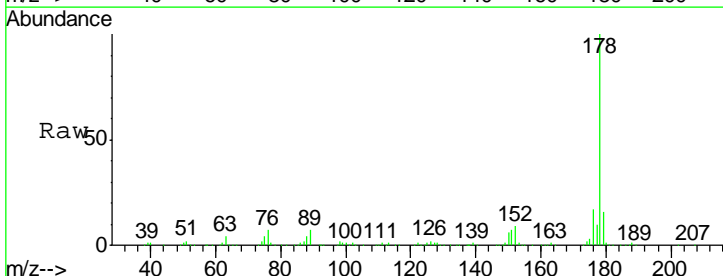
Ion	Ratio	Lower	Upper
266	100		
264	59.4	47.1	70.7
268	61.4	56.2	84.4

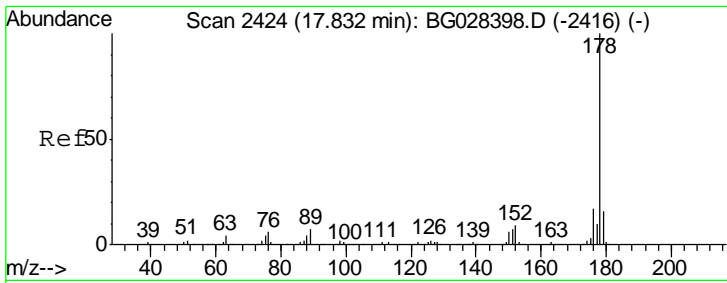


#69
 Phenanthrene
 Concen: 21.269 ng/ul
 RT: 17.83 min Scan# 2424
 Delta R.T. 0.09 min
 Lab File: BG028396.D
 Acq: 21 Aug 2017 20:02

Tgt Ion: 178 Resp: 348757

Ion	Ratio	Lower	Upper
178	100		
179	16.1	12.4	18.6
176	16.7	16.5	24.7

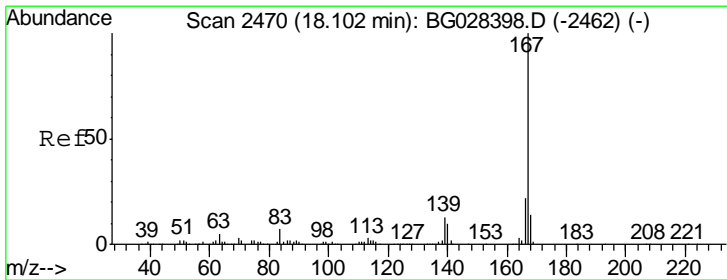
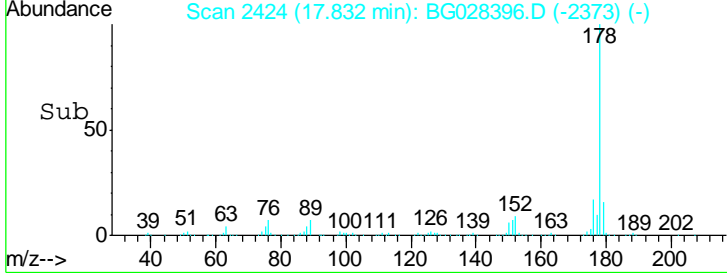
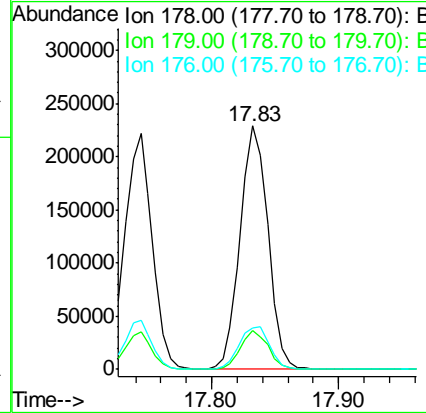
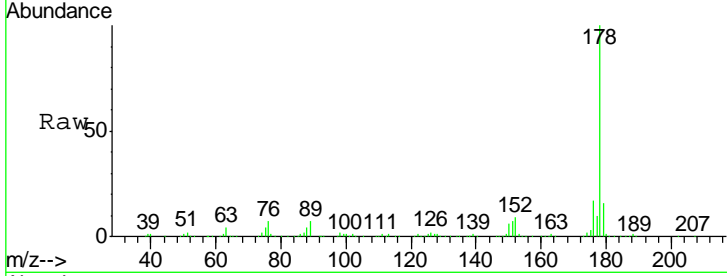




#71
 Anthracene
 Concen: 20.810 ng/ul
 RT: 17.83 min Scan# 2424
 Delta R.T. 0.00 min
 Lab File: BG028396.D
 Acq: 21 Aug 2017 20:02

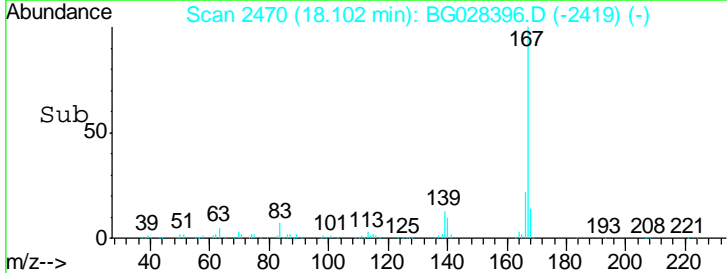
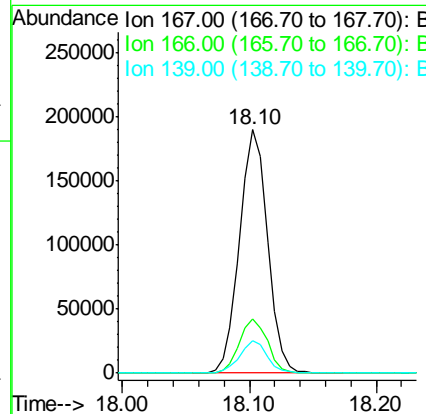
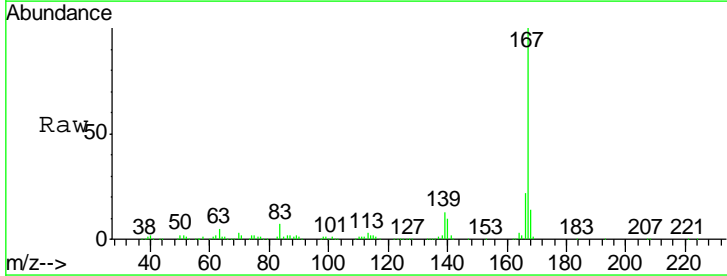
Instrument :
 BNA_G
 ClientSampleId :
 SST02076

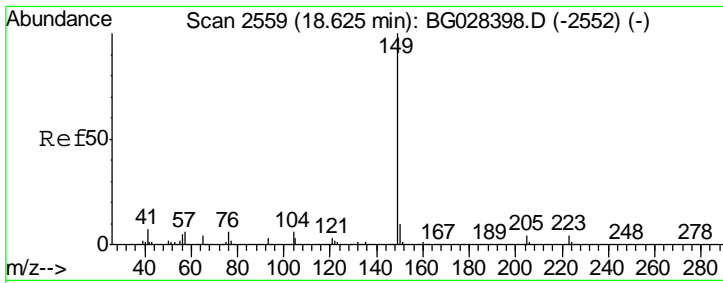
Tgt Ion	Resp	Lower	Upper
178	100		
179	16.1	12.6	19.0
176	16.7	15.9	23.9



#72
 Carbazole
 Concen: 20.001 ng/ul
 RT: 18.10 min Scan# 2470
 Delta R.T. 0.00 min
 Lab File: BG028396.D
 Acq: 21 Aug 2017 20:02

Tgt Ion	Resp	Lower	Upper
167	100		
166	22.1	17.9	26.9
139	13.3	10.5	15.7

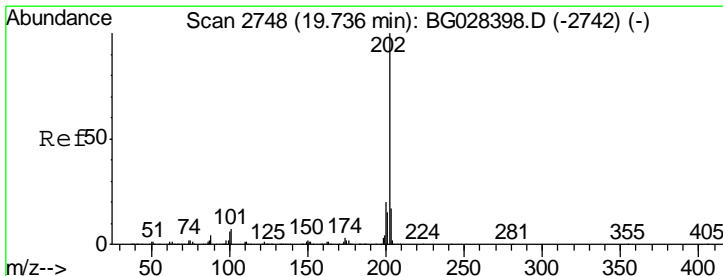
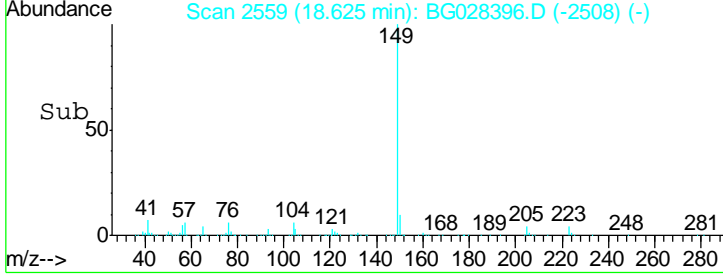
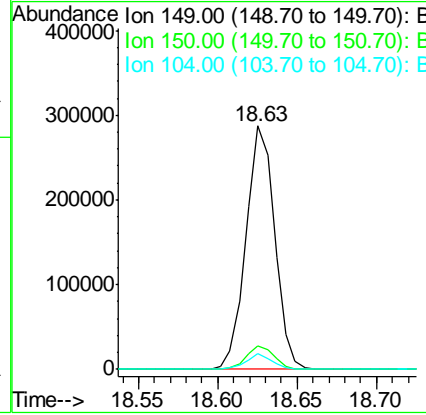
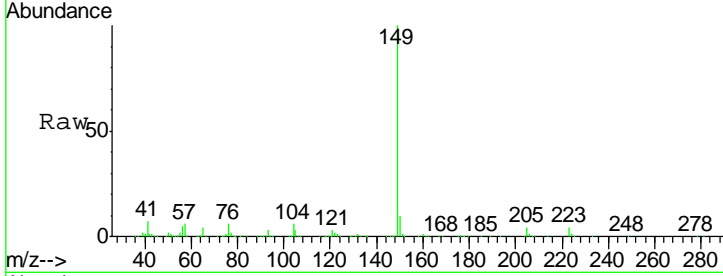




#73
 Di-n-butylphthalate
 Concen: 19.904 ng/ul
 RT: 18.63 min Scan# 2559
 Delta R.T. 0.00 min
 Lab File: BG028396.D
 Acq: 21 Aug 2017 20:02

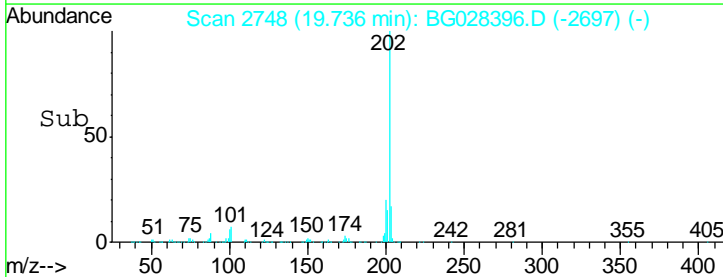
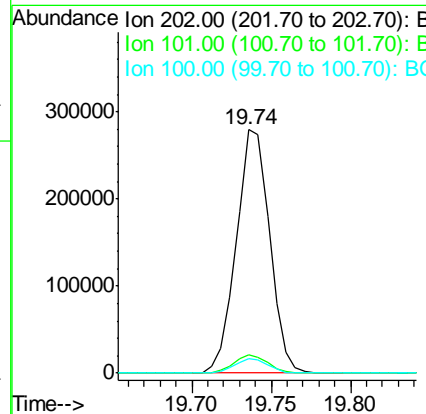
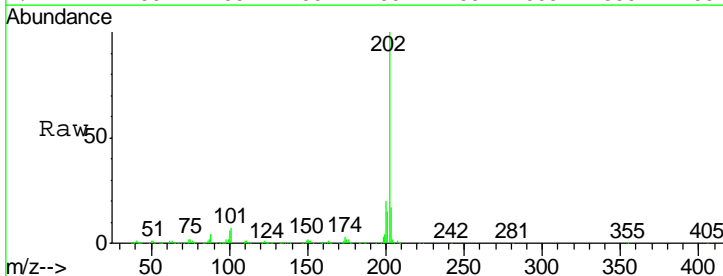
Instrument :
 BNA_G
 ClientSampleID :
 SST02076

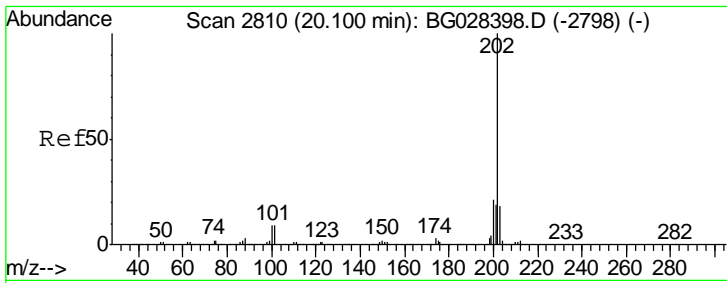
Tgt Ion	Resp	Lower	Upper
149	361138		
150	9.8	7.9	11.9
104	6.4	5.8	8.8



#74
 Fluoranthene
 Concen: 20.477 ng/ul
 RT: 19.74 min Scan# 2748
 Delta R.T. 0.00 min
 Lab File: BG028396.D
 Acq: 21 Aug 2017 20:02

Tgt Ion	Resp	Lower	Upper
202	408071		
101	7.4	6.2	9.2
100	5.9	5.2	7.8

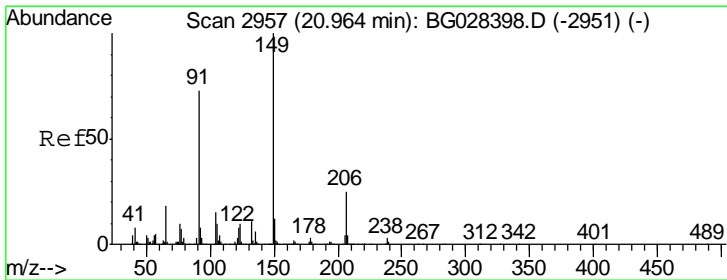
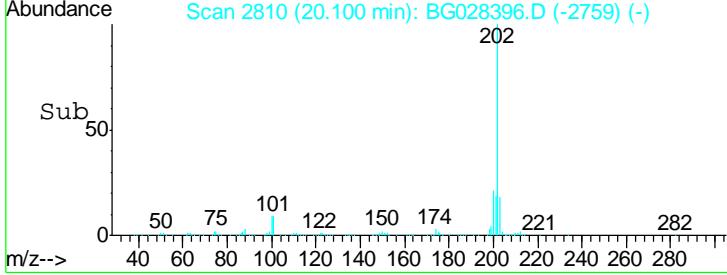
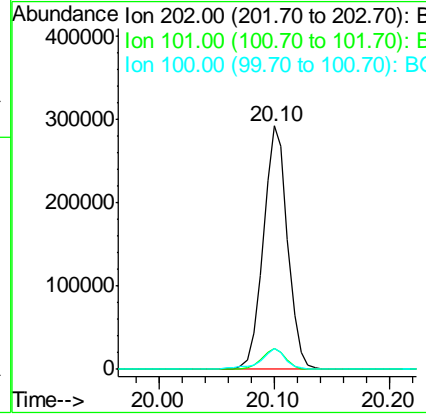
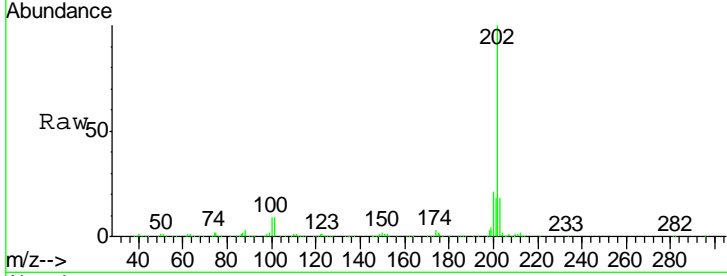




#77
 Pyrene
 Concen: 18.351 ng/ul
 RT: 20.10 min Scan# 2810
 Delta R.T. 0.00 min
 Lab File: BG028396.D
 Acq: 21 Aug 2017 20:02

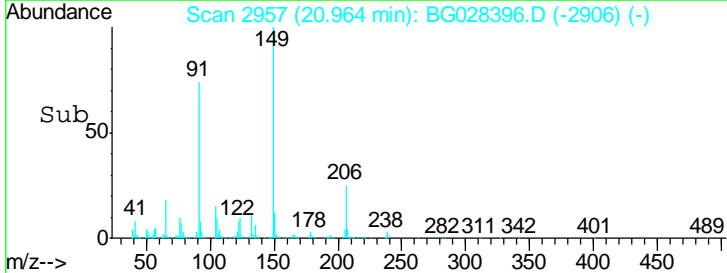
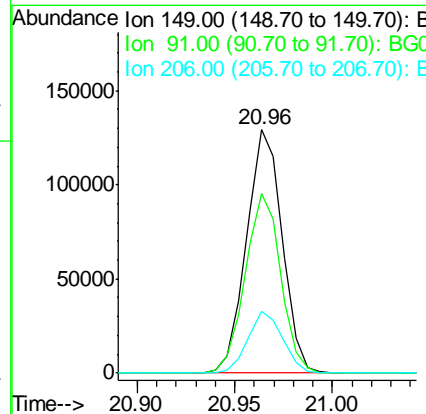
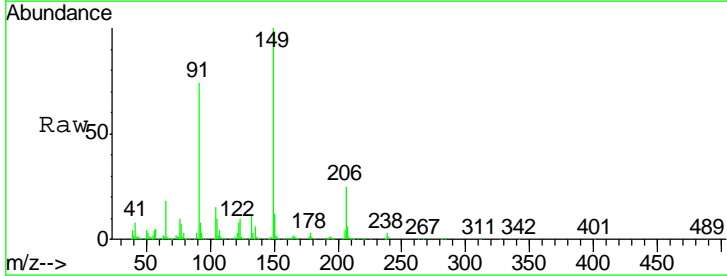
Instrument : BNA_G
 ClientSampled : SSTD02076

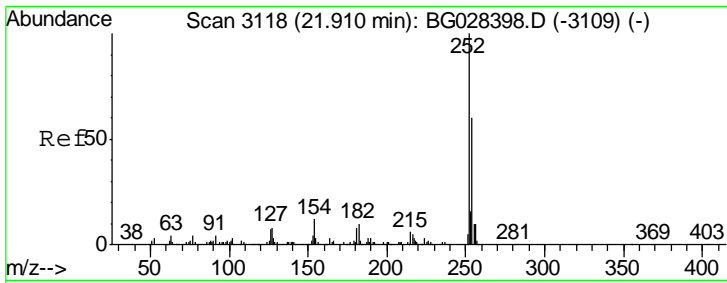
Tgt Ion	Ratio	Lower	Upper
202	100		
101	8.7	6.9	10.3
100	8.6	6.6	10.0



#78
 Butylbenzylphthalate
 Concen: 18.828 ng/ul
 RT: 20.96 min Scan# 2957
 Delta R.T. 0.00 min
 Lab File: BG028396.D
 Acq: 21 Aug 2017 20:02

Tgt Ion	Ratio	Lower	Upper
149	100		
91	73.5	65.8	98.6
206	25.3	20.1	30.1

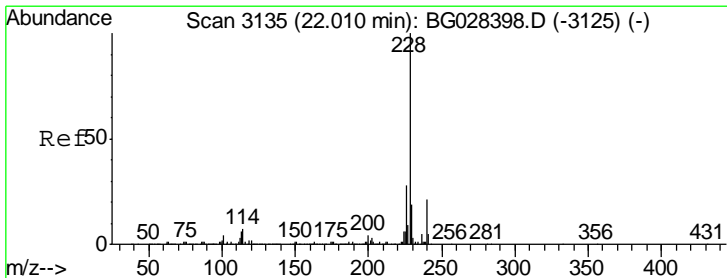
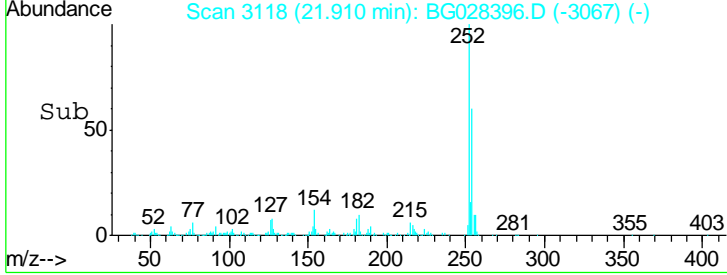
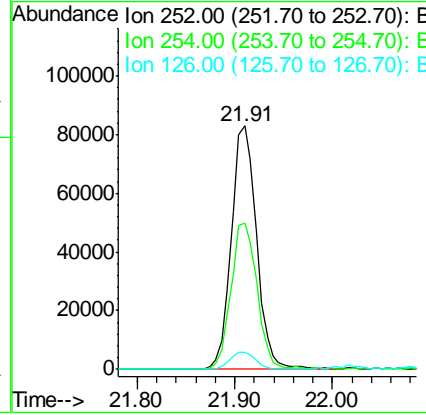
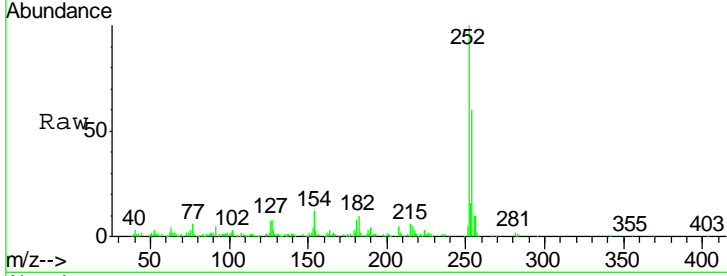




#79
 3,3'-Dichlorobenzidine
 Concen: 19.855 ng/ul
 RT: 21.91 min Scan# 3118
 Delta R.T. 0.00 min
 Lab File: BG028396.D
 Acq: 21 Aug 2017 20:02

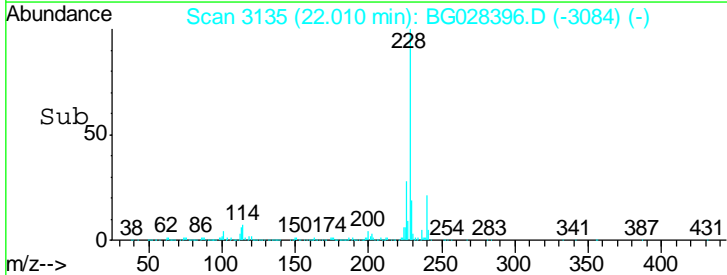
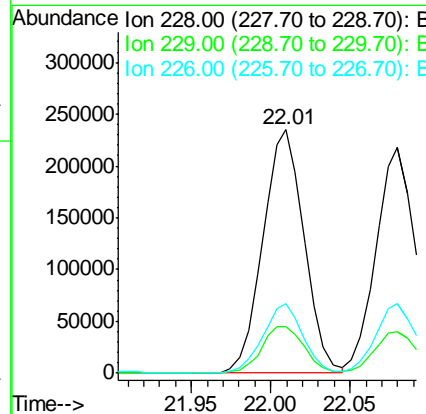
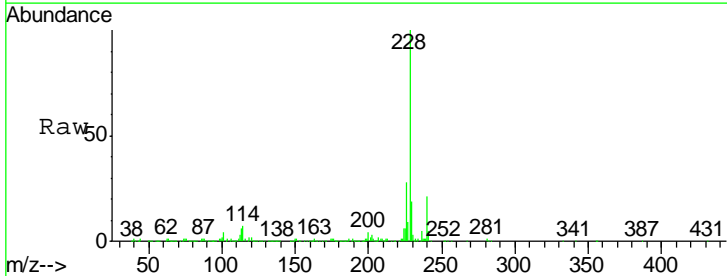
Instrument :
 BNA_G
 ClientSampled :
 SSTD02076

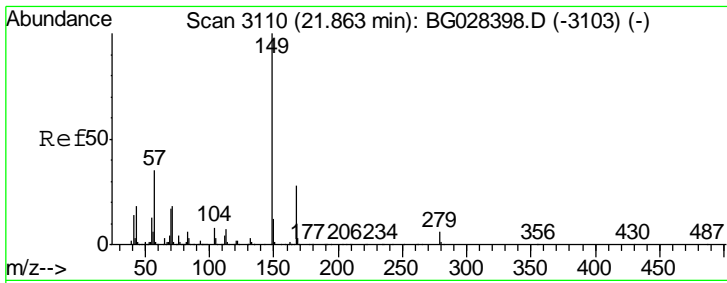
Tgt Ion	Resp	Lower	Upper
252	149052		
254	60.3	49.0	73.6
126	7.1	5.1	7.7



#80
 Benzo(a)anthracene
 Concen: 18.855 ng/ul
 RT: 22.01 min Scan# 3135
 Delta R.T. 0.00 min
 Lab File: BG028396.D
 Acq: 21 Aug 2017 20:02

Tgt Ion	Resp	Lower	Upper
228	423896		
229	19.4	16.3	24.5
226	28.4	21.9	32.9

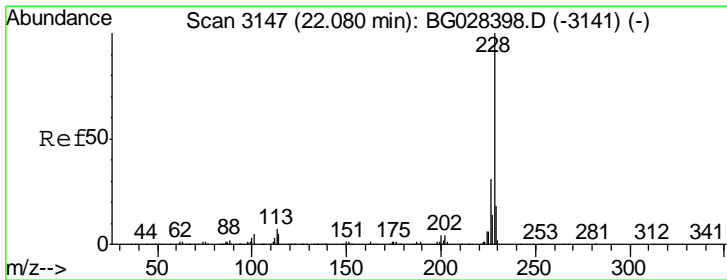
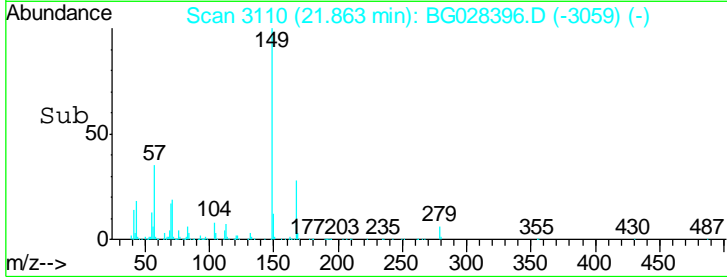
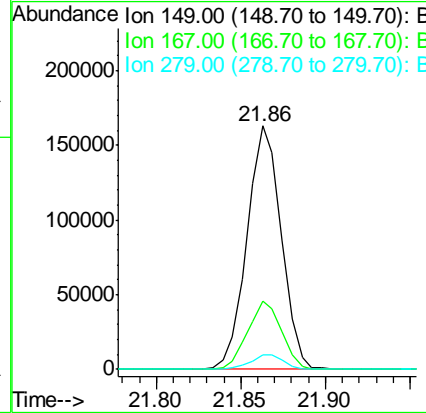
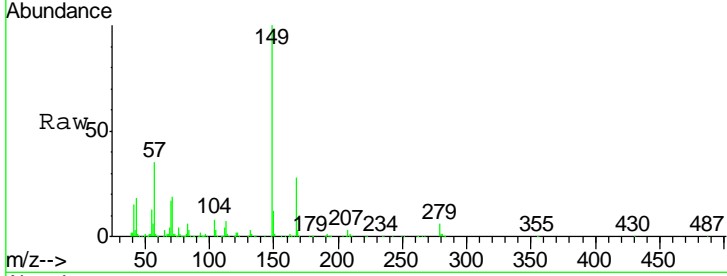




#81
 Bis(2-ethylhexyl)phthalate
 Concen: 18.603 ng/ul
 RT: 21.86 min Scan# 3110
 Delta R.T. 0.00 min
 Lab File: BG028396.D
 Acq: 21 Aug 2017 20:02

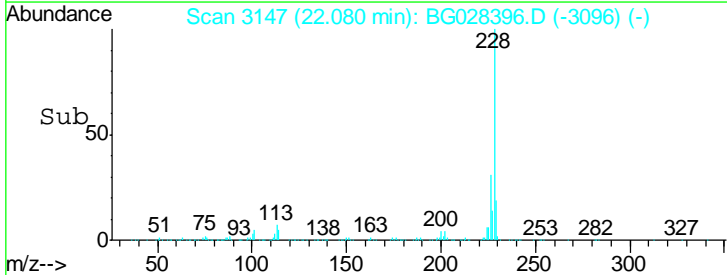
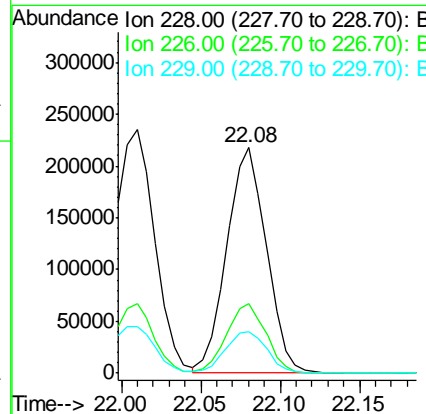
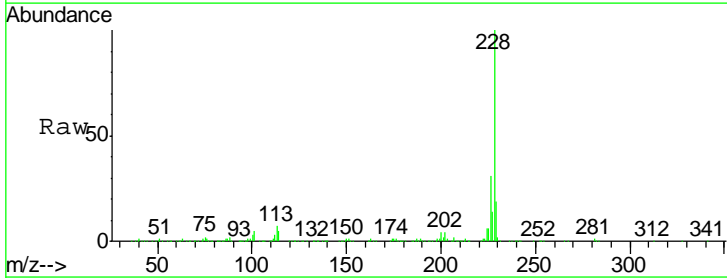
Instrument :
 BNA_G
 ClientSampled :
 SSTD02076

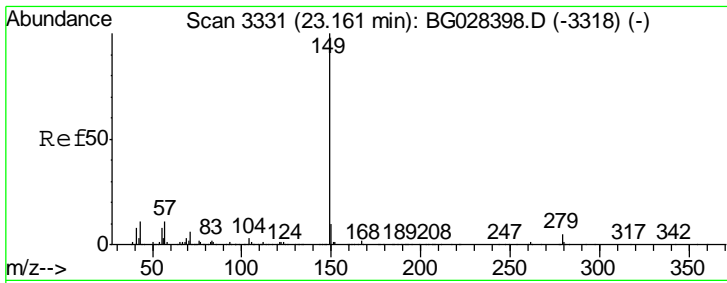
Tgt Ion	Resp	Lower	Upper
149	100		
167	28.3	21.8	32.8
279	5.9	4.5	6.7



#82
 Chrysene
 Concen: 18.548 ng/ul
 RT: 22.08 min Scan# 3147
 Delta R.T. 0.00 min
 Lab File: BG028396.D
 Acq: 21 Aug 2017 20:02

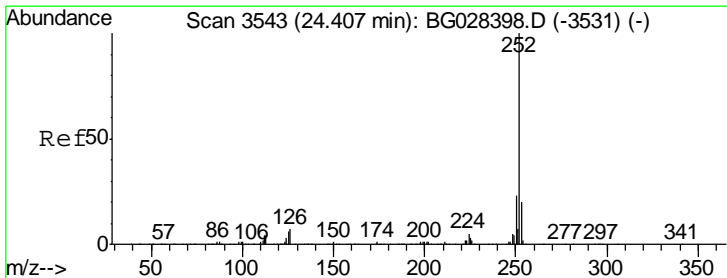
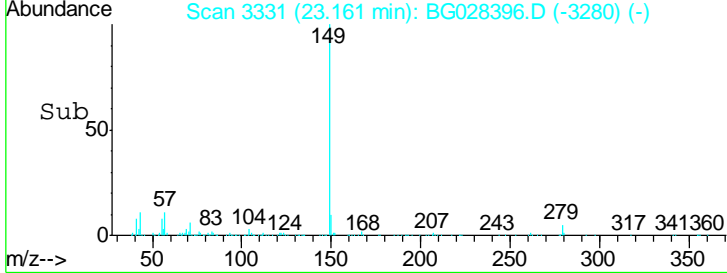
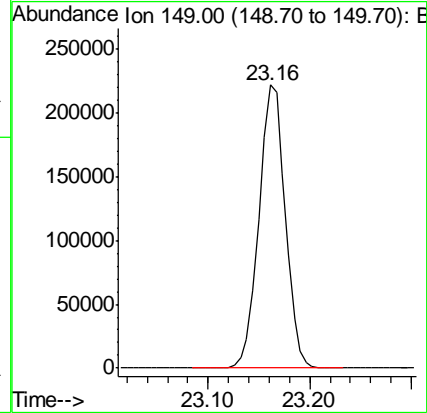
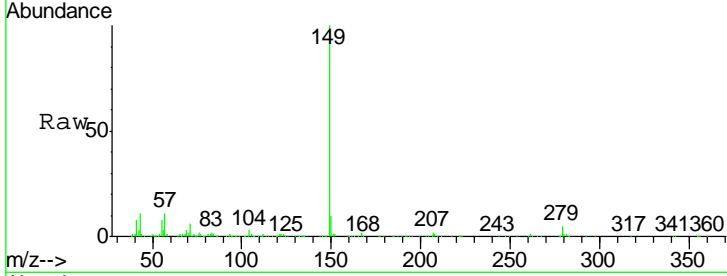
Tgt Ion	Resp	Lower	Upper
228	100		
226	31.0	24.0	36.0
229	18.6	16.9	25.3





#84
 Di-n-octyl phthalate
 Concen: 17.701 ng/ul
 RT: 23.16 min Scan# 3331
 Delta R.T. 0.00 min
 Lab File: BG028396.D
 Acq: 21 Aug 2017 20:02
 Tgt Ion:149 Resp: 399385

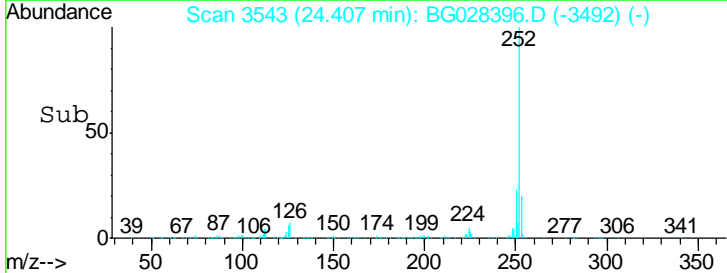
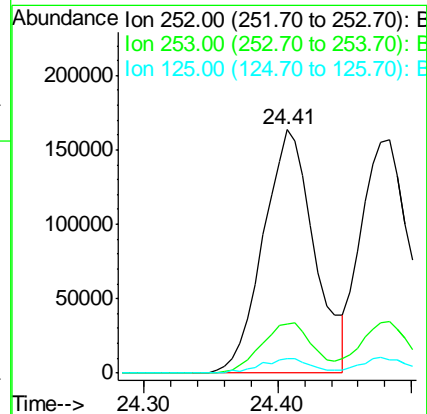
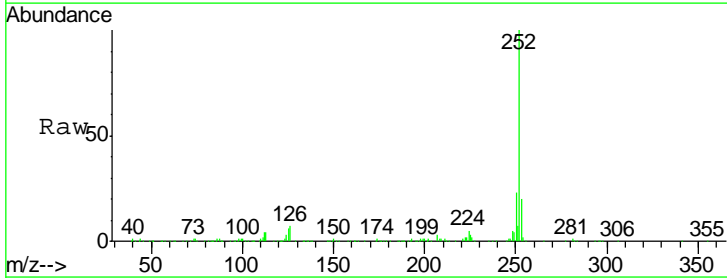
Instrument :
 BNA_G
 ClientSampleId :
 SSTD02076

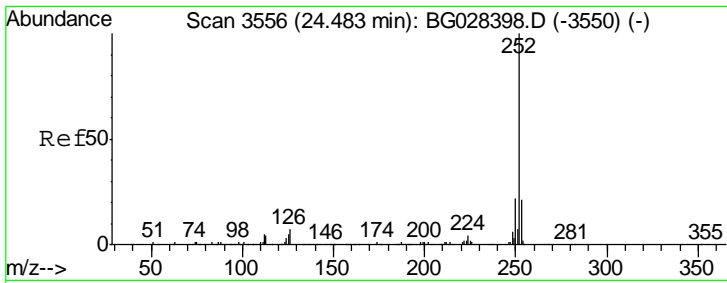


#85
 Benzo(b)fluoranthene
 Concen: 19.246 ng/ul
 RT: 24.41 min Scan# 3543
 Delta R.T. 0.00 min
 Lab File: BG028396.D
 Acq: 21 Aug 2017 20:02

Tgt Ion:252 Resp: 433603

Ion	Ratio	Lower	Upper
252	100		
253	20.2	17.7	26.5
125	5.8	4.0	6.0

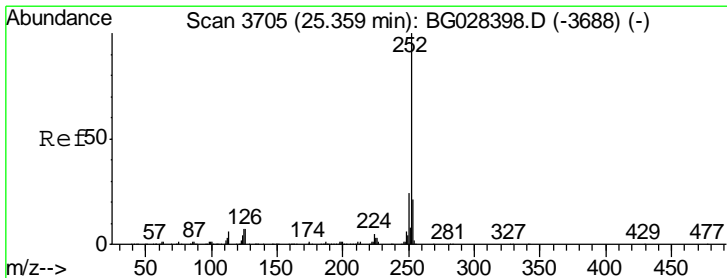
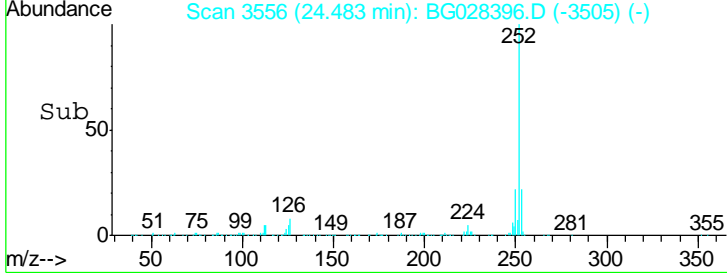
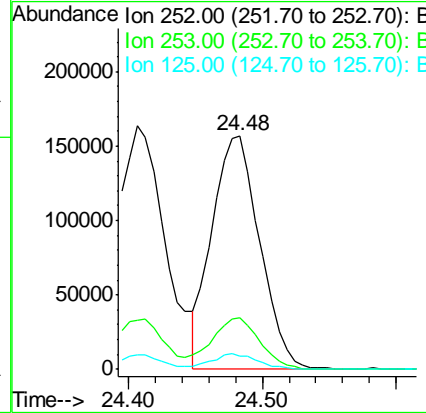
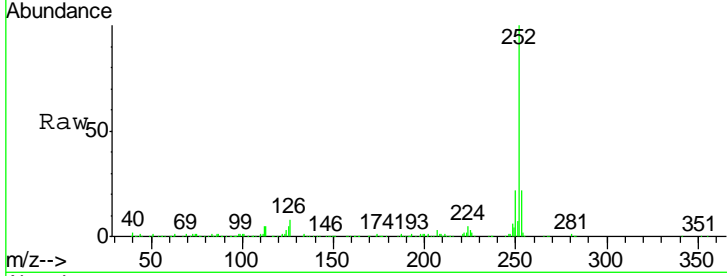




#86
 Benzo(k)fluoranthene
 Concen: 17.677 ng/ul
 RT: 24.48 min Scan# 3556
 Delta R.T. 0.00 min
 Lab File: BG028396.D
 Acq: 21 Aug 2017 20:02

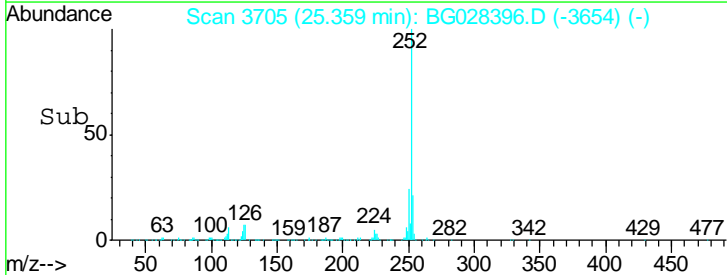
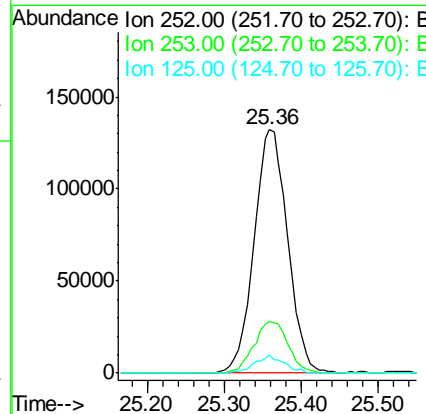
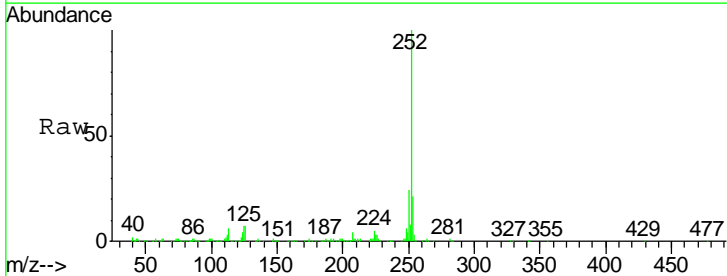
Instrument :
 BNA_G
 ClientSampled :
 SST02076

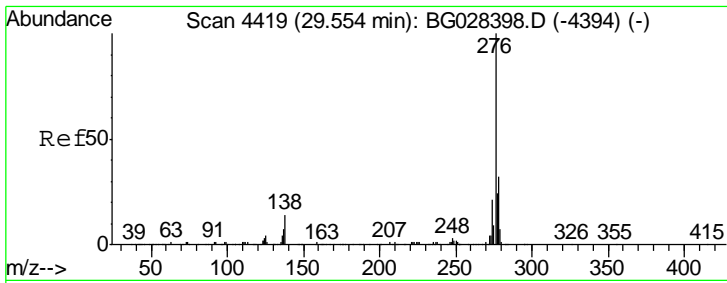
Tgt Ion	Resp	Lower	Upper
252	100		
253	22.1	18.5	27.7
125	5.4	4.1	6.1



#88
 Benzo(a)pyrene
 Concen: 18.455 ng/ul
 RT: 25.36 min Scan# 3705
 Delta R.T. 0.00 min
 Lab File: BG028396.D
 Acq: 21 Aug 2017 20:02

Tgt Ion	Resp	Lower	Upper
252	100		
253	21.2	17.8	26.6
125	7.3	5.4	8.0

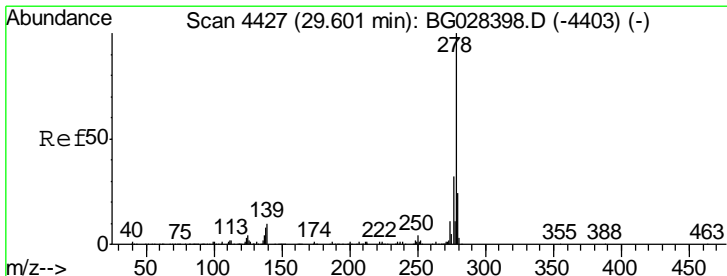
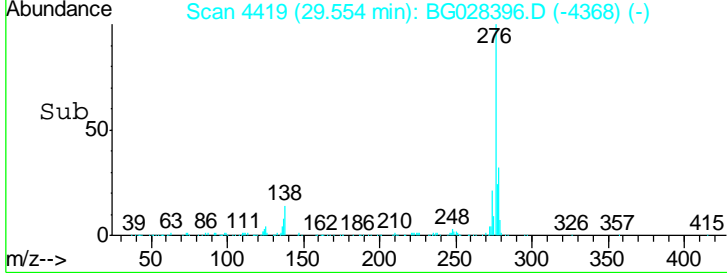
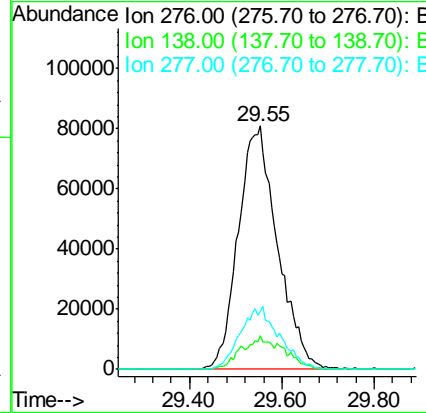
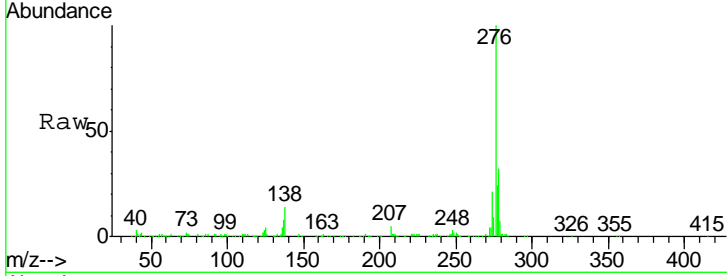




#89
 Indeno(1,2,3-cd)pyrene
 Concen: 18.690 ng/ul
 RT: 29.55 min Scan# 4419
 Delta R.T. 0.00 min
 Lab File: BG028396.D
 Acq: 21 Aug 2017 20:02

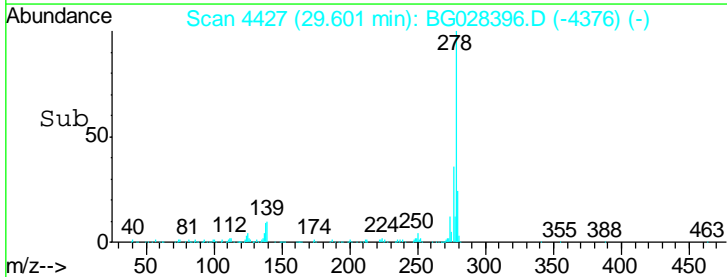
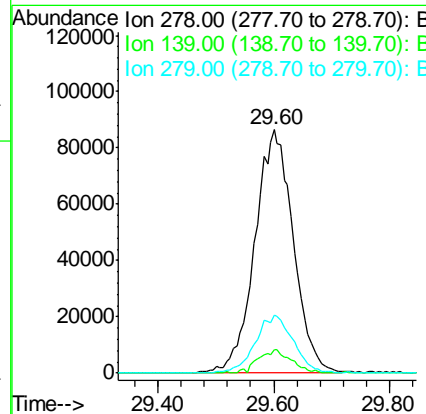
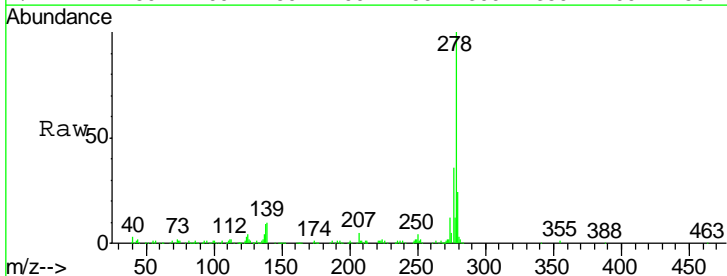
Instrument :
 BNA_G
 ClientSampled :
 SST02076

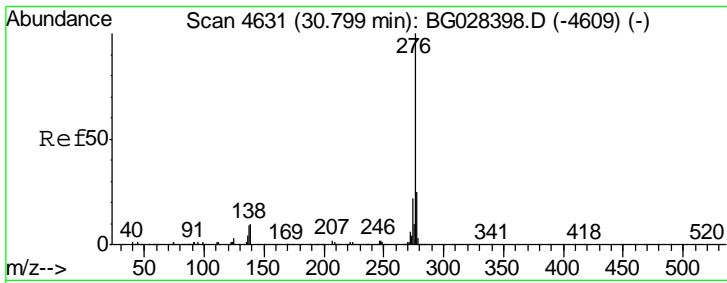
Tgt Ion	Resp	Lower	Upper
276	100		
138	13.9	8.2	12.4#
277	23.8	18.6	28.0



#90
 Dibenzo(a,h)anthracene
 Concen: 18.691 ng/ul
 RT: 29.60 min Scan# 4427
 Delta R.T. 0.00 min
 Lab File: BG028396.D
 Acq: 21 Aug 2017 20:02

Tgt Ion	Resp	Lower	Upper
278	100		
139	9.6	6.7	10.1
279	23.8	20.9	31.3





#91
 Benzo(g,h,i)perylene
 Concen: 18.822 ng/ul
 RT: 30.80 min Scan# 4631
 Delta R.T. 0.00 min
 Lab File: BG028396.D
 Acq: 21 Aug 2017 20:02

Instrument :
 BNA_G
 ClientSampled :
 SSTD02076

Tgt Ion	Resp	Lower	Upper
276	100		
138	9.8	8.6	12.8
277	24.5	17.6	26.4

