

Data Path : U:\HPCHEM1\BNA G\DATA\BG082117\  
 Data File : BG028397.D  
 Acq On : 21 Aug 2017 20:42  
 Operator : SJ/JU  
 Sample : I4713-16  
 Misc :  
 ALS Vial : 16 Sample Multiplier: 1

Instrument :  
 BNA\_G  
 ClientSampleId :  
 E7GC6

Quant Time: Aug 22 13:57:29 2017  
 Quant Method : Z:\HPCHEM1\BNA G\METHODS\SOM-EPA-BG080217.M  
 Quant Title : SVOA CALIBRATION  
 QLast Update : Tue Aug 22 04:33:26 2017  
 Response via : Initial Calibration

Internal Standards	R.T.	QIon	Response	Conc	Units	Dev(Min)
1) 1,4-Dichlorobenzene-d4	8.34	152	31914	20.00	ng/ul	0.00
18) Naphthalene-d8	11.16	136	148909	20.00	ng/ul	0.00
35) Acenaphthene-d10	14.95	164	113276	20.00	ng/ul	0.00
61) Phenanthrene-d10	17.70	188	329394	20.00	ng/ul	0.00
75) Chrysene-d12	22.03	240	371017	20.00	ng/ul	0.00
83) Perylene-d12	25.53	264	363549	20.00	ng/ul	0.00

## System Monitoring Compounds

3) 1,4-Dioxane-d8	3.83	96	2746	4.01	ng/uL	0.00
5) Phenol-d5	7.49	99	65119	18.58	ng/ul	0.00
7) Bis-(2-Chloroethyl)ether-d	7.66	67	43261	19.49	ng/ul	0.00
9) 2-Chlorophenol-d4	7.88	132	47366	21.42	ng/ul	0.00
13) 4-Methylphenol-d8	9.04	113	52416	17.89	ng/ul	0.00
19) Nitrobenzene-d5	9.51	128	24742	21.25	ng/ul	0.00
22) 2-Nitrophenol-d4	10.24	143	29973	23.48	ng/ul	0.00
26) 2,4-Dichlorophenol-d3	10.78	165	54800	20.75	ng/ul	0.00
29) 4-Chloroaniline-d4	11.29	131	67562	22.98	ng/ul	0.00
43) Dimethylphthalate-d6	14.34	166	233203	23.15	ng/ul	0.00
46) Acenaphthylene-d8	14.65	160	247918	21.83	ng/ul	0.00
51) 4-Nitrophenol-d4	15.15	143	24562	15.33	ng/ul	0.00
57) Fluorene-d10	15.94	176	200390	22.17	ng/ul	0.00
62) 4,6-Dinitro-2-methylphenol	16.06	200	32602	15.24	ng/ul	0.00
70) Anthracene-d10	17.80	188	353727	22.39	ng/ul	0.00
76) Pyrene-d10	20.07	212	443580	23.31	ng/ul	0.00
87) Benzo(a)pyrene-d12	25.29	264	399982	23.50	ng/ul	0.00

## Target Compounds

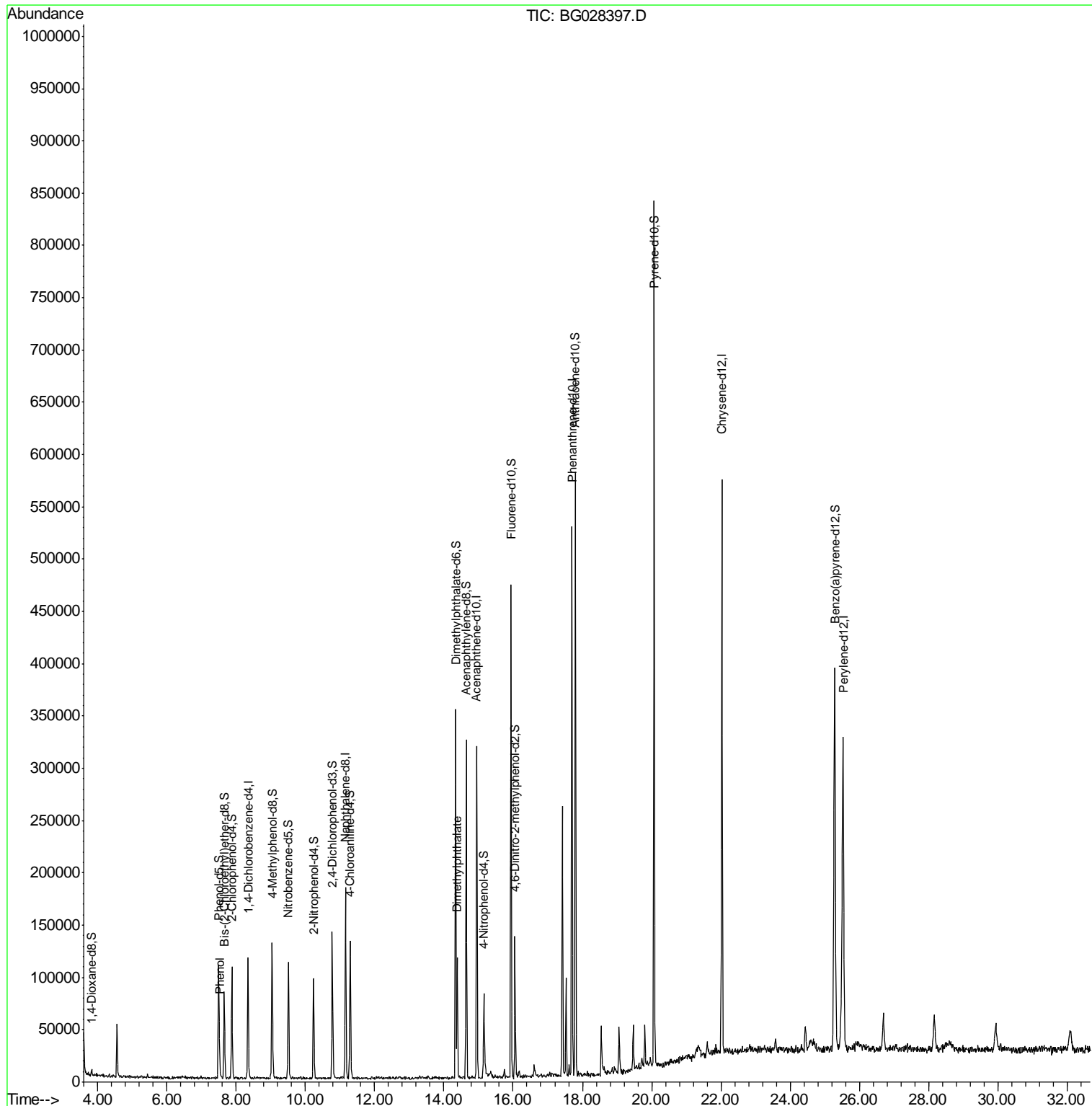
					Ovalue
6) Phenol	7.52	94	7546	2.166	ng/ul 94
44) Dimethylphthalate	14.38	163	72324	7.796	ng/ul 98

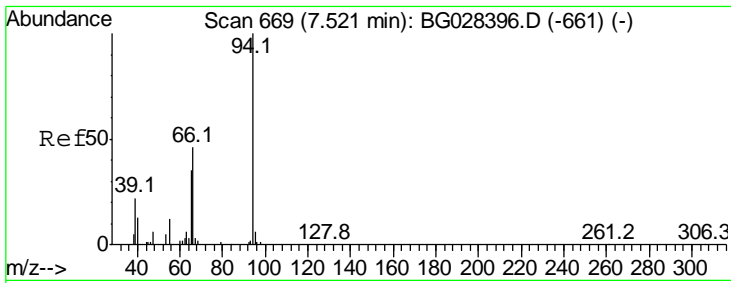
(#) = qualifier out of range (m) = manual integration (+) = signals summed

Data Path : U:\HPCHEM1\BNA G\DATA\BG082117\  
 Data File : BG028397.D  
 Acq On : 21 Aug 2017 20:42  
 Operator : SJ/JU  
 Sample : I4713-16  
 Misc :  
 ALS Vial : 16 Sample Multiplier: 1

Instrument :  
 BNA\_G  
 ClientSampled :  
 E7GC6

Quant Time: Aug 22 13:57:29 2017  
 Quant Method : Z:\HPCHEM1\BNA G\METHODS\SOM-EPA-BG080217.M  
 Quant Title : SVOA CALIBRATION  
 QLast Update : Tue Aug 22 04:33:26 2017  
 Response via : Initial Calibration

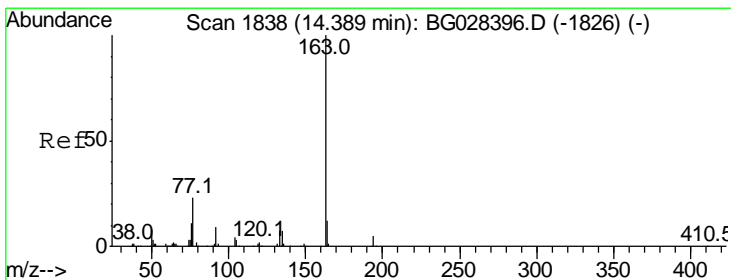
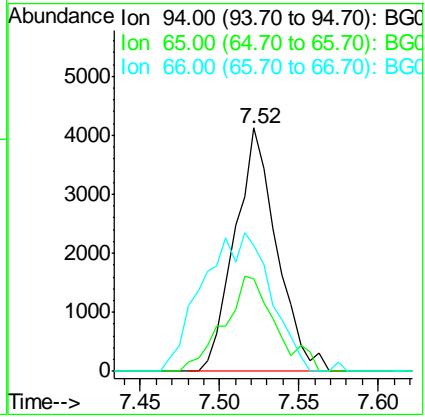
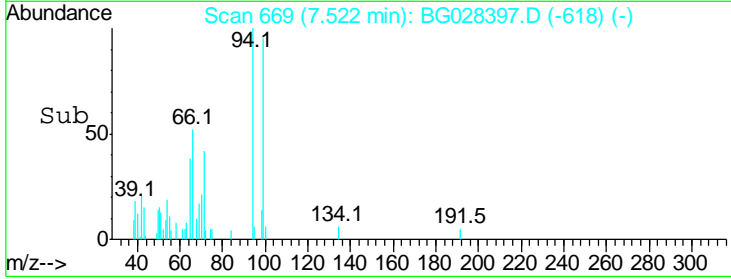
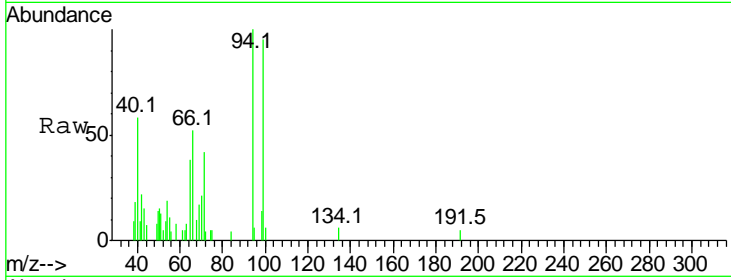




#6  
 Phenol  
 Concen: 2.166 ng/ul  
 RT: 7.52 min Scan# 669  
 Delta R.T. 0.00 min  
 Lab File: BG028397.D  
 Acq: 21 Aug 2017 20:42

**Instrument :**  
 BNA\_G  
**ClientSampled :**  
 E7GC6

Tgt Ion	Resp	Lower	Upper
94	100		
65	37.9	26.8	40.2
66	51.7	44.4	66.6



#44  
 Dimethylphthalate  
 Concen: 7.796 ng/ul  
 RT: 14.38 min Scan# 1837  
 Delta R.T. -0.00 min  
 Lab File: BG028397.D  
 Acq: 21 Aug 2017 20:42

Tgt Ion	Resp	Lower	Upper
163	100		
194	4.1	3.4	5.0
164	12.4	9.0	13.4

