

Data Path : U:\HPCHEM1\BNA G\DATA\BG082117\
 Data File : BG028398.D
 Acq On : 21 Aug 2017 21:21
 Operator : SJ/JU
 Sample : I4713-17
 Misc :
 ALS Vial : 17 Sample Multiplier: 1

Instrument :
 BNA_G
ClientSampleId :
 E7GC7

Manual Integrations
APPROVED
 Sohil
 8/22/2017 5:50:17 PM

Quant Time: Aug 22 14:16:52 2017
 Quant Method : Z:\HPCHEM1\BNA G\METHODS\SOM-EPA-BG080217.M
 Quant Title : SVOA CALIBRATION
 QLast Update : Tue Aug 22 04:33:26 2017
 Response via : Initial Calibration

Internal Standards	R.T.	QIon	Response	Conc	Units	Dev(Min)
1) 1,4-Dichlorobenzene-d4	8.34	152	35558	20.00	ng/ul	0.00
18) Naphthalene-d8	11.16	136	146427	20.00	ng/ul	0.00
35) Acenaphthene-d10	14.95	164	112196	20.00	ng/ul	0.00
61) Phenanthrene-d10	17.70	188	330871	20.00	ng/ul	0.00
75) Chrysene-d12	22.03	240	378024	20.00	ng/ul	0.00
83) Perylene-d12	25.52	264	375105	20.00	ng/ul	0.00

System Monitoring Compounds

3) 1,4-Dioxane-d8	3.83	96	1538	2.01	ng/uL	0.00
5) Phenol-d5	7.49	99	45945	11.76	ng/ul	0.00
7) Bis-(2-Chloroethyl)ether-d	7.66	67	30577	12.36	ng/ul	0.00
9) 2-Chlorophenol-d4	7.87	132	31024	12.59	ng/ul	0.00
13) 4-Methylphenol-d8	9.04	113	31692	9.71	ng/ul	0.00
19) Nitrobenzene-d5	9.51	128	18772	16.40	ng/ul	0.00
22) 2-Nitrophenol-d4	10.23	143	21717	17.30	ng/ul	0.00
26) 2,4-Dichlorophenol-d3	10.78	165	39873	15.35	ng/ul	0.00
29) 4-Chloroaniline-d4	11.30	131	41535	14.37	ng/ul	0.00
43) Dimethylphthalate-d6	14.34	166	193146	19.36	ng/ul	0.00
46) Acenaphthylene-d8	14.65	160	199278	17.71	ng/ul	0.00
51) 4-Nitrophenol-d4	15.15	143	28454	17.93	ng/ul	0.00
57) Fluorene-d10	15.94	176	166792	18.63	ng/ul	0.00
62) 4,6-Dinitro-2-methylphenol	16.06	200	35835	16.67	ng/ul	0.00
70) Anthracene-d10	17.80	188	327559m	20.65	ng/ul	0.00
76) Pyrene-d10	20.07	212	439735	22.68	ng/ul	0.00
87) Benzo(a)pyrene-d12	25.29	264	385113	21.93	ng/ul	0.00

Target Compounds

				Ovalue	
6) Phenol	7.52	94	4769	1.229	ng/ul# 83
44) Dimethylphthalate	14.38	163	51507	5.606	ng/ul# 99

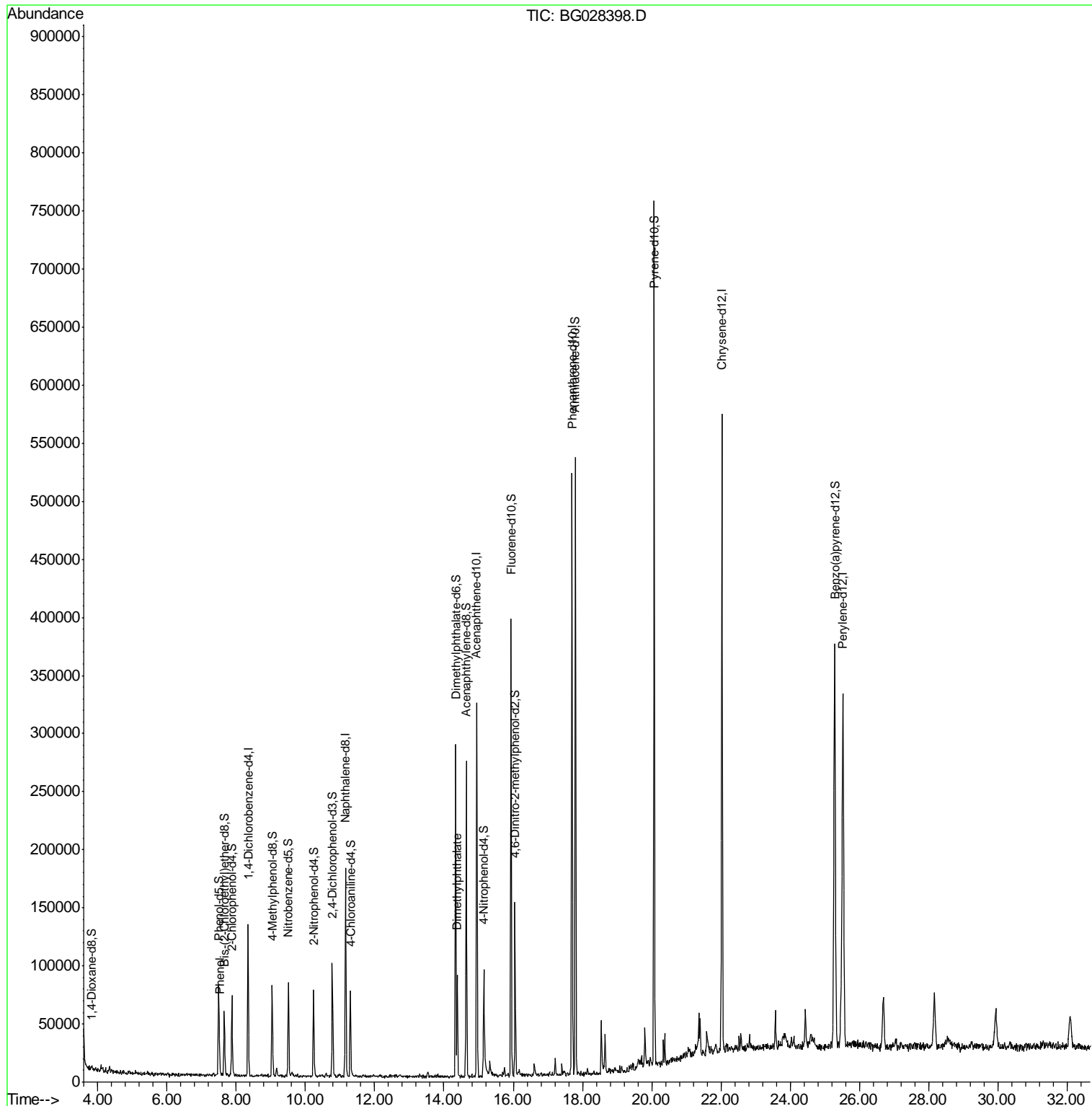
(#) = qualifier out of range (m) = manual integration (+) = signals summed

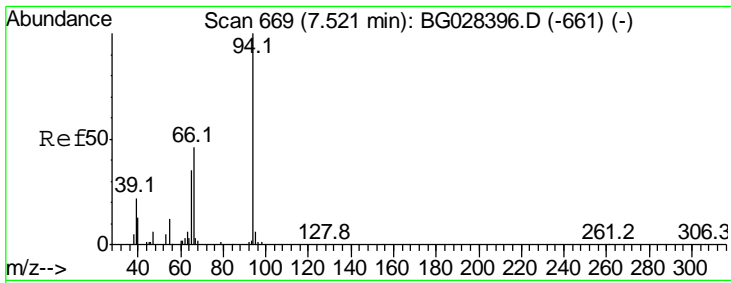
Data Path : U:\HPCHEM1\BNA G\DATA\BG082117\
 Data File : BG028398.D
 Acq On : 21 Aug 2017 21:21
 Operator : SJ/JU
 Sample : I4713-17
 Misc :
 ALS Vial : 17 Sample Multiplier: 1

Instrument :
 BNA_G
ClientSampled :
 E7GC7

Manual Integrations
APPROVED
 Sohil
 8/22/2017 5:50:17 PM

Quant Time: Aug 22 14:16:52 2017
 Quant Method : Z:\HPCHEM1\BNA G\METHODS\SOM-EPA-BG080217.M
 Quant Title : SVOA CALIBRATION
 QLast Update : Tue Aug 22 04:33:26 2017
 Response via : Initial Calibration



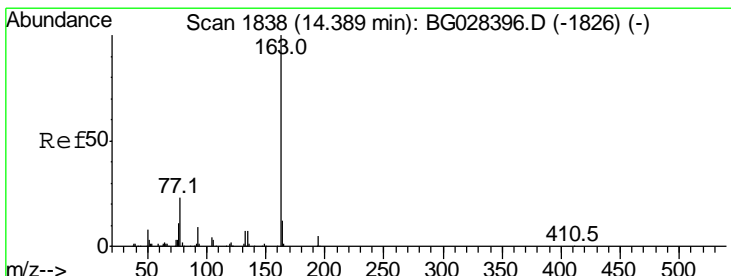
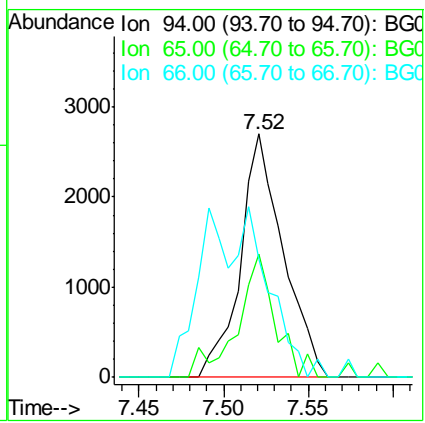
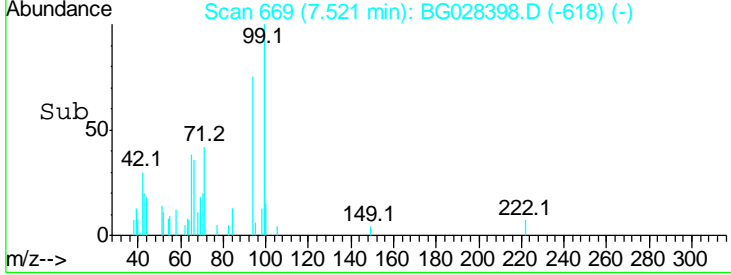
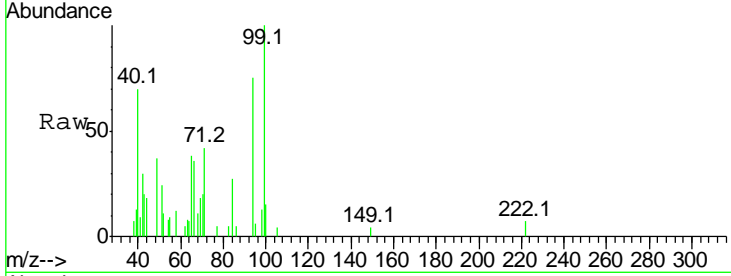


#6
 Phenol
 Concen: 1.229 ng/ul
 RT: 7.52 min Scan# 669
 Delta R.T. -0.00 min
 Lab File: BG028398.D
 Acq: 21 Aug 2017 21:21

Instrument :
 BNA_G
ClientSampled :
 E7GC7

Tgt Ion	Ratio	Lower	Upper
94	100		
65	50.4	26.8	40.2#
66	48.7	44.4	66.6

Manual Integrations
APPROVED
 Sohil
 8/22/2017 5:50:17 PM



#44
 Dimethylphthalate
 Concen: 5.606 ng/ul
 RT: 14.38 min Scan# 1837
 Delta R.T. -0.01 min
 Lab File: BG028398.D
 Acq: 21 Aug 2017 21:21

Tgt Ion	Ratio	Lower	Upper
163	100		
194	5.1	3.4	5.0#
164	10.8	9.0	13.4

