

Data Path : U:\HPCHEM1\BNA G\DATA\BG082217\
 Data File : BG028415.D
 Acq On : 22 Aug 2017 12:38
 Operator : SJ/JU
 Sample : I4713-07
 Misc :
 ALS Vial : 5 Sample Multiplier: 1

Instrument :
 BNA_G
 ClientSampleId :
 E7GB7

Quant Time: Aug 23 03:44:36 2017
 Quant Method : Z:\HPCHEM1\BNA G\METHODS\SOM-EPA-BG080217.M
 Quant Title : SVOA CALIBRATION
 QLast Update : Wed Aug 23 02:58:29 2017
 Response via : Initial Calibration

Internal Standards	R.T.	QIon	Response	Conc	Units	Dev(Min)
1) 1,4-Dichlorobenzene-d4	8.34	152	34439	20.00	ng/ul	0.00
18) Naphthalene-d8	11.16	136	163019	20.00	ng/ul	0.00
35) Acenaphthene-d10	14.95	164	120832	20.00	ng/ul	0.00
61) Phenanthrene-d10	17.80	188	542625	20.00	ng/ul	0.10
75) Chrysene-d12	22.03	240	322258	20.00	ng/ul	0.00
83) Perylene-d12	25.53	264	316759	20.00	ng/ul	0.00

System Monitoring Compounds

3) 1,4-Dioxane-d8	3.82	96	3051	4.13	ng/uL	0.00
5) Phenol-d5	7.50	99	84843	22.43	ng/ul	0.00
7) Bis-(2-Chloroethyl)ether-d	7.66	67	54473	22.74	ng/ul	0.00
9) 2-Chlorophenol-d4	7.87	132	61359	25.71	ng/ul	0.00
13) 4-Methylphenol-d8	9.04	113	80394	25.43	ng/ul	0.00
19) Nitrobenzene-d5	9.51	128	34488	27.06	ng/ul	0.00
22) 2-Nitrophenol-d4	10.23	143	44251	31.66	ng/ul	0.00
26) 2,4-Dichlorophenol-d3	10.78	165	86852	30.03	ng/ul	0.00
29) 4-Chloroaniline-d4	11.29	131	104245	32.39	ng/ul	0.00
43) Dimethylphthalate-d6	14.34	166	376741	35.05	ng/ul	0.00
46) Acenaphthylene-d8	14.65	160	412608	34.05	ng/ul	0.00
51) 4-Nitrophenol-d4	15.15	143	50559	29.59	ng/ul	0.00
57) Fluorene-d10	15.94	176	328139	34.03	ng/ul	0.00
62) 4,6-Dinitro-2-methylphenol	16.18	200	74	0.02	ng/ul	0.12
70) Anthracene-d10	17.80	188	542625	20.85	ng/ul	0.00
76) Pyrene-d10	20.08	212	618629	37.43	ng/ul	0.00
87) Benzo(a)pyrene-d12	25.29	264	565608	38.14	ng/ul	0.00

Target Compounds

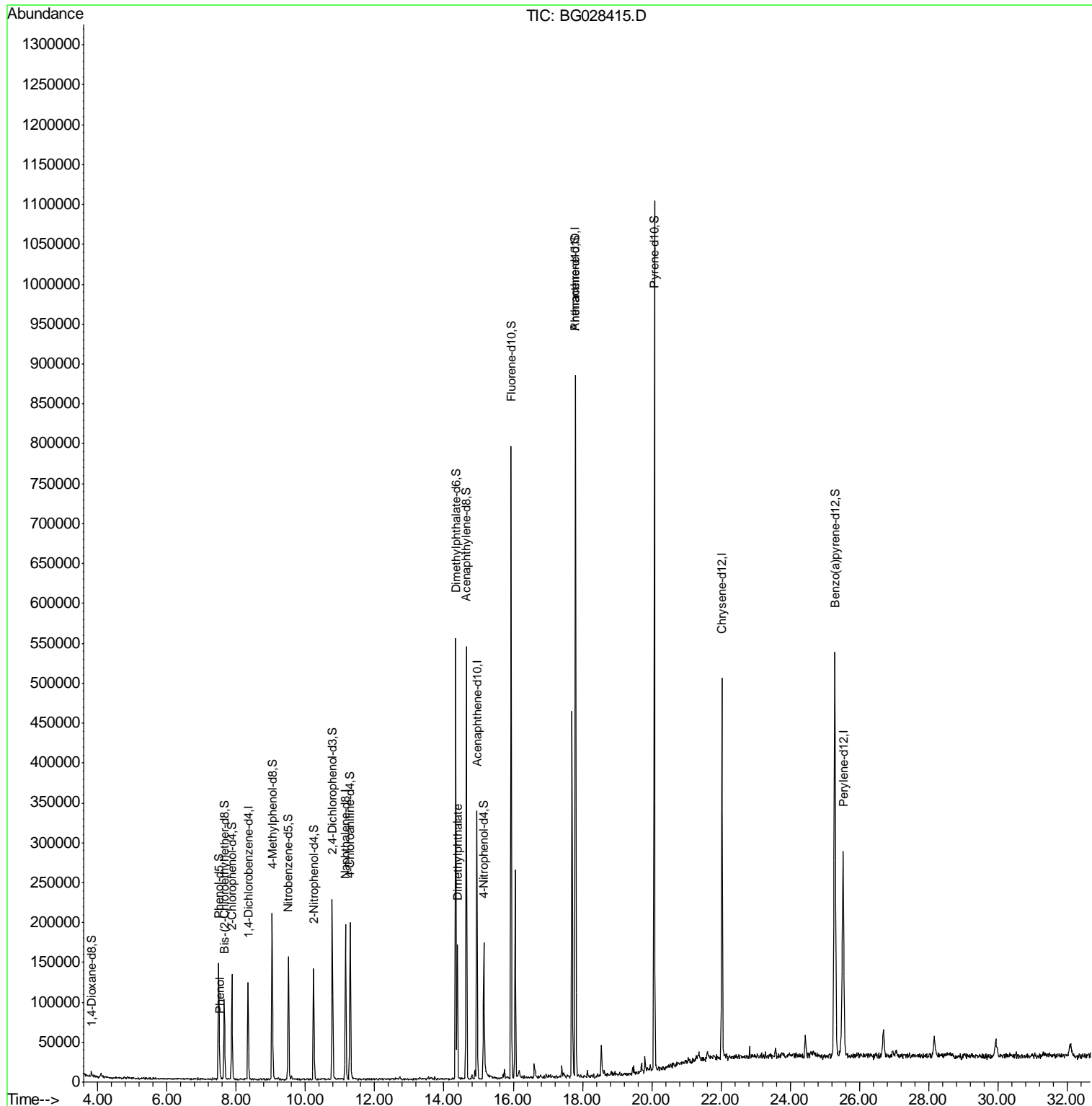
				Ovalue		
6) Phenol	7.53	94	4681	1.245	ng/ul#	88
44) Dimethylphthalate	14.39	163	108538	10.969	ng/ul	96

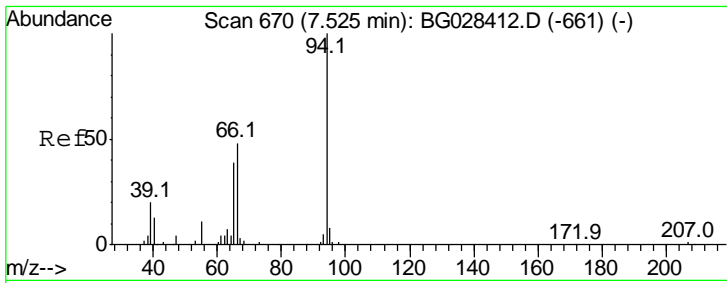
(#) = qualifier out of range (m) = manual integration (+) = signals summed

Data Path : U:\HPCHEM1\BNA G\DATA\BG082217\
 Data File : BG028415.D
 Acq On : 22 Aug 2017 12:38
 Operator : SJ/JU
 Sample : I4713-07
 Misc :
 ALS Vial : 5 Sample Multiplier: 1

Instrument :
 BNA_G
 ClientSampled :
 E7GB7

Quant Time: Aug 23 03:44:36 2017
 Quant Method : Z:\HPCHEM1\BNA G\METHODS\SOM-EPA-BG080217.M
 Quant Title : SVOA CALIBRATION
 QLast Update : Wed Aug 23 02:58:29 2017
 Response via : Initial Calibration

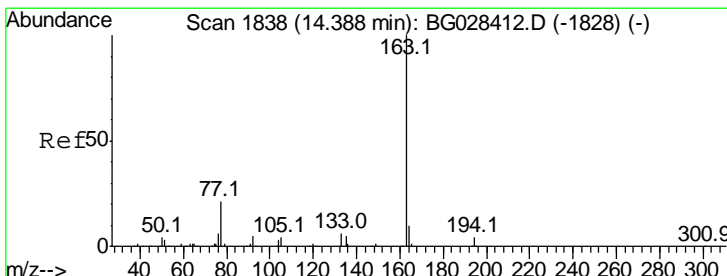
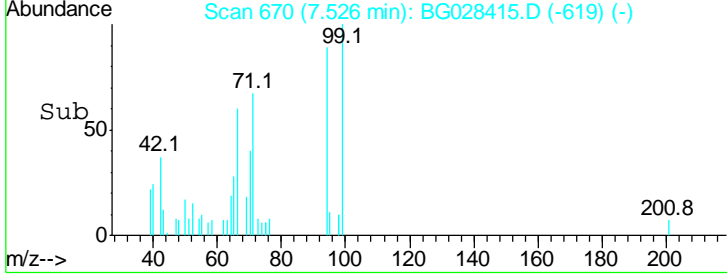
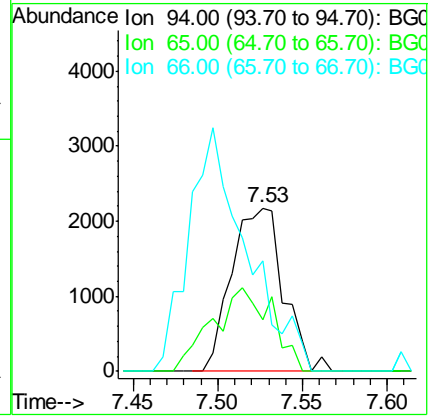
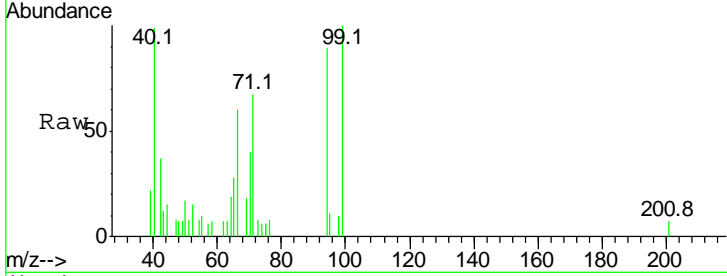




#6
 Phenol
 Concen: 1.245 ng/ul
 RT: 7.53 min Scan# 670
 Delta R.T. 0.00 min
 Lab File: BG028415.D
 Acq: 22 Aug 2017 12:38

Instrument :
 BNA_G
ClientSampled :
 E7GB7

Tgt Ion	Resp	Lower	Upper
94	100		
65	31.2	26.8	40.2
66	67.7	44.4	66.6#



#44
 Dimethylphthalate
 Concen: 10.969 ng/ul
 RT: 14.39 min Scan# 1838
 Delta R.T. 0.00 min
 Lab File: BG028415.D
 Acq: 22 Aug 2017 12:38

Tgt Ion	Resp	Lower	Upper
163	100		
194	4.4	3.4	5.0
164	9.1	9.0	13.4

