

Data Path : Z:\HPCHEM1\BNA_G\DATA\BG082316\
 Data File : BG023859.D
 Acq On : 23 Aug 2016 18:48
 Operator : UM/SJ
 Sample : H4556-05
 Misc :
 ALS Vial : 14 Sample Multiplier: 1

Instrument :
 BNA_G
 ClientSampleId :
 SB-16A(13-15)

Quant Time: Aug 24 01:20:01 2016
 Quant Method : Z:\HPCHEM1\BNA_G\Methods\8270-BG080116.M
 Quant Title : ASP BNA STANDARDS FOR 5 POINT CALIBRATION
 QLast Update : Mon Aug 01 19:22:14 2016
 Response via : Initial Calibration

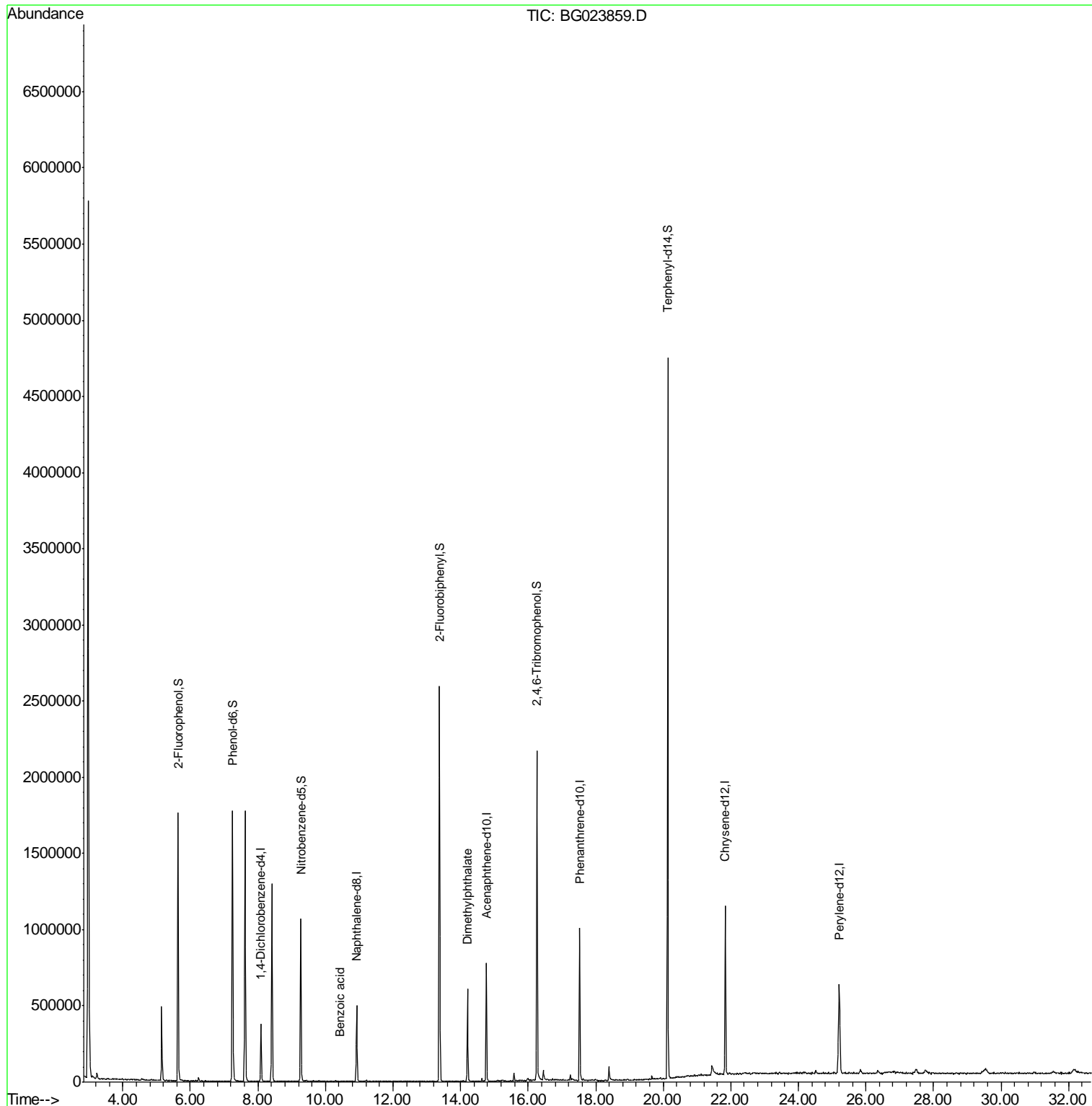
Internal Standards	R.T.	QIon	Response	Conc	Units	Dev(Min)
1) 1,4-Dichlorobenzene-d4	8.09	152	99039	20.00	ng	-0.03
21) Naphthalene-d8	10.92	136	409304	20.00	ng	-0.03
38) Acenaphthene-d10	14.76	164	253789	20.00	ng	-0.02
63) Phenanthrene-d10	17.53	188	607514	20.00	ng	-0.02
75) Chrysene-d12	21.84	240	664235	20.00	ng	-0.03
86) Perylene-d12	25.21	264	655992	20.00	ng	-0.03
System Monitoring Compounds						
5) 2-Fluorophenol	5.64	112	729119	123.92	ng	-0.02
7) Phenol-d6	7.25	99	1048020	114.36	ng	-0.03
23) Nitrobenzene-d5	9.27	82	708769	86.09	ng	-0.03
41) 2,4,6-Tribromophenol	16.26	330	399882	107.72	ng	-0.02
44) 2-Fluorobiphenyl	13.37	172	1338314	88.94	ng	-0.03
78) Terphenyl-d14	20.13	244	1922988	92.22	ng	-0.02
Target Compounds						
9) Benzaldehyde	7.25	77	2974	Below Cal	#	8
32) Benzoic acid	10.43	122	83	6.46	ng	18
49) Dimethylphthalate	14.21	163	373380	19.18	ng	99
73) Di-n-butylphthalate	18.48	149	1851	Below Cal	#	73
74) Fluoranthene	19.59	202	123	Below Cal	#	1
77) Pyrene	20.13	202	8660	Below Cal	#	74

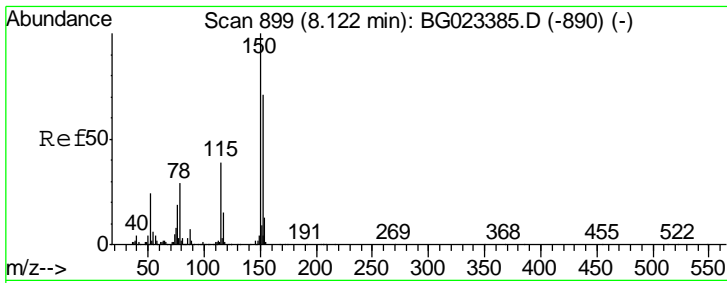
(#) = qualifier out of range (m) = manual integration (+) = signals summed

Data Path : Z:\HPCHEM1\BNA_G\DATA\BG082316\
Data File : BG023859.D
Acq On : 23 Aug 2016 18:48
Operator : UM/SJ
Sample : H4556-05
Misc :
ALS Vial : 14 Sample Multiplier: 1

Instrument :
BNA_G
ClientSampleId :
SB-16A(13-15)

Quant Time: Aug 24 01:20:01 2016
Quant Method : Z:\HPCHEM1\BNA_G\Methods\8270-BG080116.M
Quant Title : ASP BNA STANDARDS FOR 5 POINT CALIBRATION
QLast Update : Mon Aug 01 19:22:14 2016
Response via : Initial Calibration

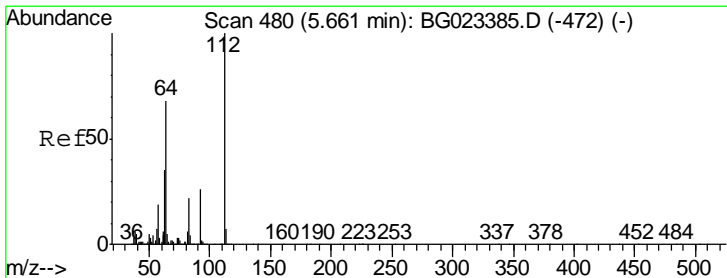
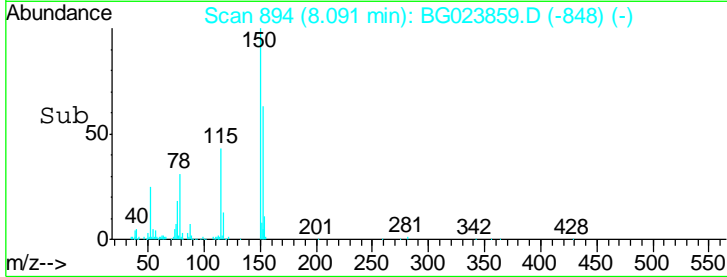
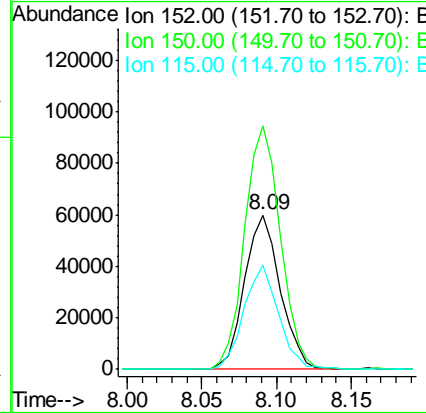
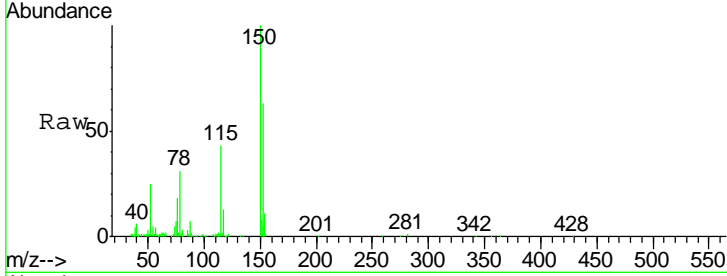




#1
 1,4-Dichlorobenzene-d4
 Concen: 20.00 ng
 RT: 8.09 min Scan# 894
 Delta R.T. -0.03 min
 Lab File: BG023859.D
 Acq: 23 Aug 2016 18:48

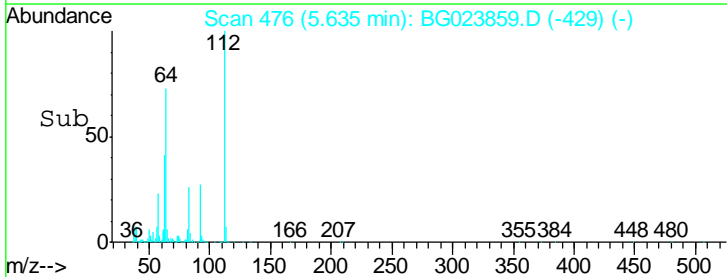
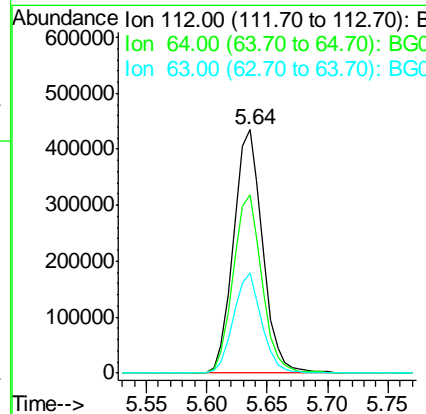
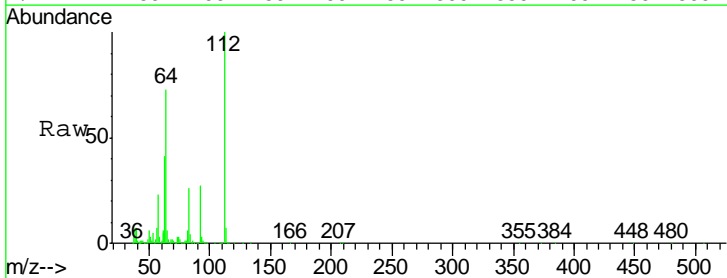
Instrument :
 BNA_G
 ClientSampleId :
 SB-16A(13-15)

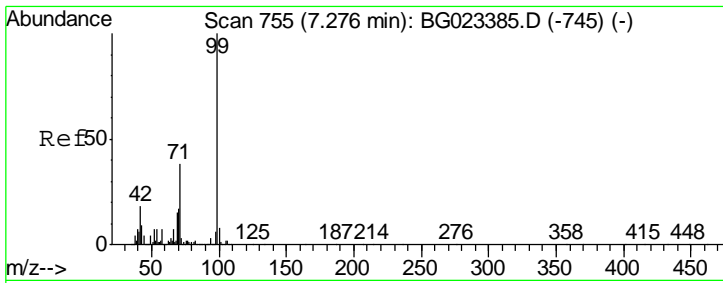
Tgt Ion	Resp	Lower	Upper
152	99039		
152	100		
150	158.1	144.7	217.1
115	67.4	64.0	96.0



#5
 2-Fluorophenol
 Concen: 123.92 ng
 RT: 5.64 min Scan# 476
 Delta R.T. -0.02 min
 Lab File: BG023859.D
 Acq: 23 Aug 2016 18:48

Tgt Ion	Resp	Lower	Upper
112	729119		
112	100		
64	73.3	59.0	88.4
63	41.4	37.8	56.8

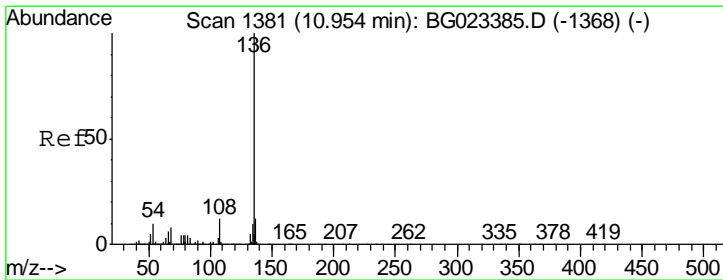
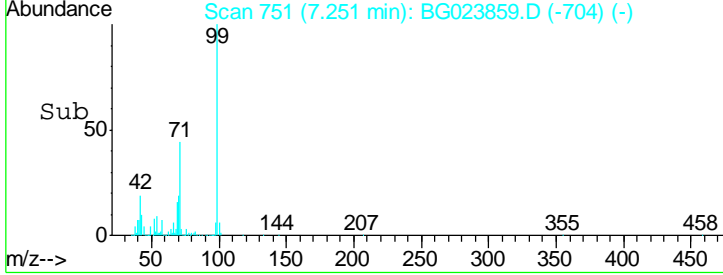
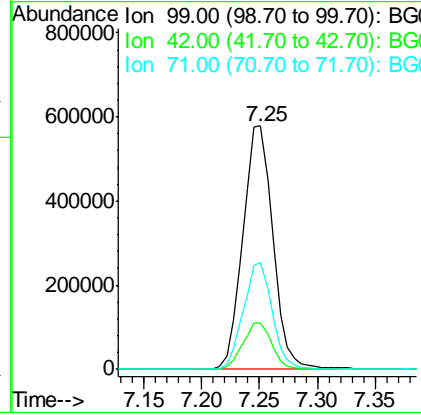
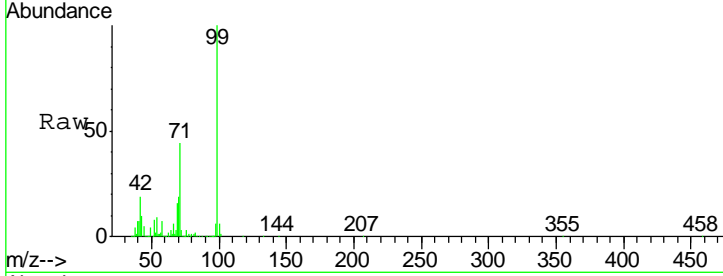




#7
 Phenol-d6
 Concen: 114.36 ng
 RT: 7.25 min Scan# 751
 Delta R.T. -0.03 min
 Lab File: BG023859.D
 Acq: 23 Aug 2016 18:48

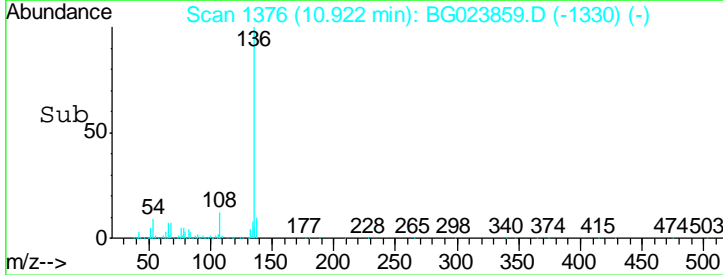
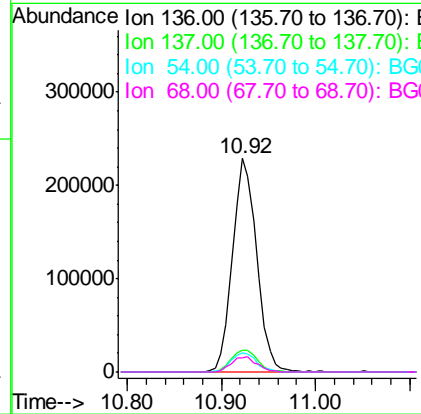
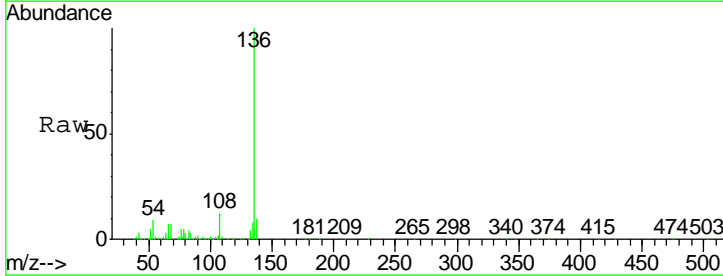
Instrument :
 BNA_G
ClientSampleId :
 SB-16A(13-15)

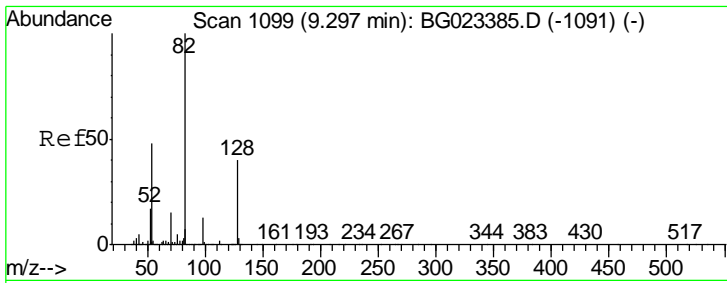
Tgt Ion	Resp	Lower	Upper
99	1048020		
42	19.0	17.8	26.6
71	43.7	41.5	62.3



#21
 Naphthalene-d8
 Concen: 20.00 ng
 RT: 10.92 min Scan# 1376
 Delta R.T. -0.03 min
 Lab File: BG023859.D
 Acq: 23 Aug 2016 18:48

Tgt Ion	Resp	Lower	Upper
136	409304		
137	10.2	9.6	14.4
54	9.3	7.3	10.9
68	6.8	5.3	7.9

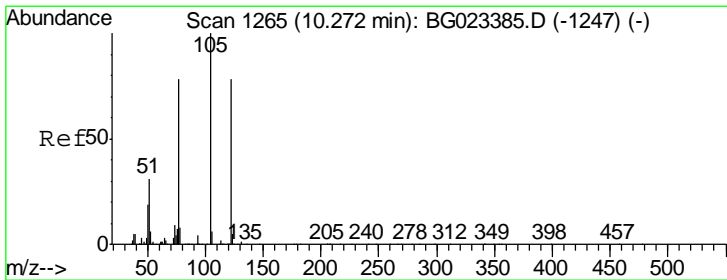
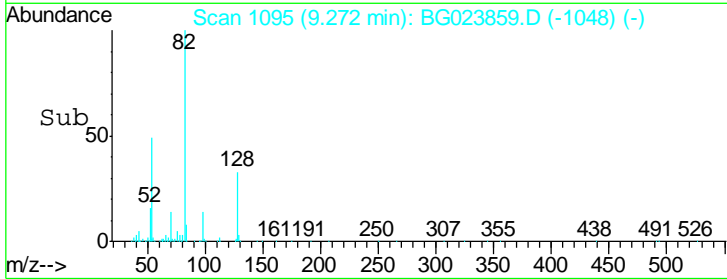
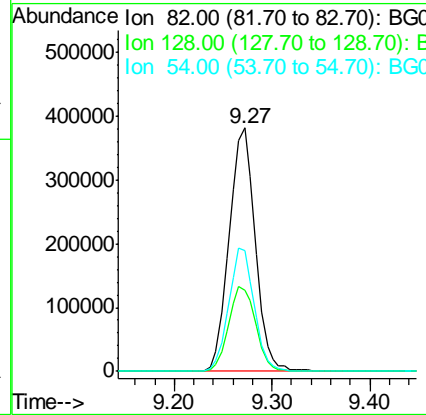
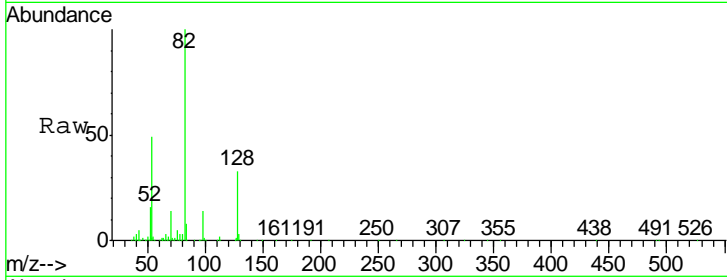




#23
 Nitrobenzene-d5
 Concen: 86.09 ng
 RT: 9.27 min Scan# 1095
 Delta R.T. -0.03 min
 Lab File: BG023859.D
 Acq: 23 Aug 2016 18:48

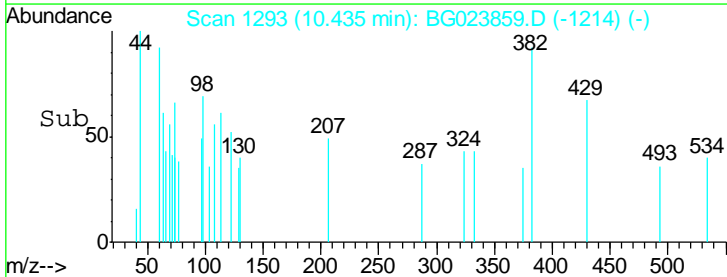
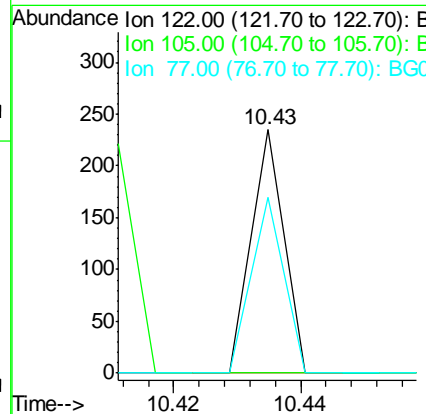
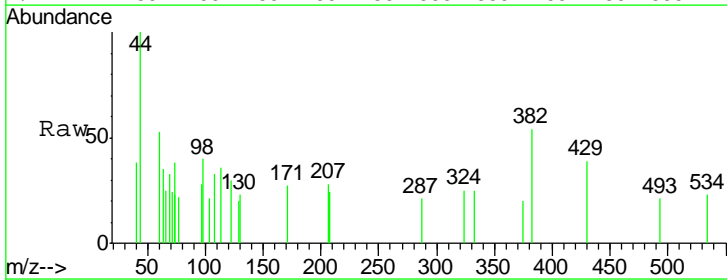
Instrument :
 BNA_G
 ClientSampled :
 SB-16A(13-15)

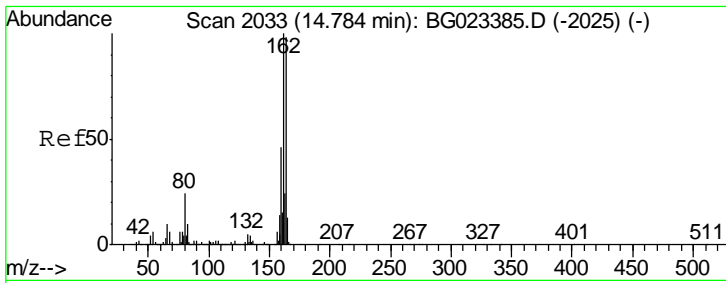
Tgt Ion	Resp	Lower	Upper
82	100		
128	33.5	24.4	36.6
54	49.5	41.4	62.0



#32
 Benzoic acid
 Concen: 6.46 ng
 RT: 10.43 min Scan# 1293
 Delta R.T. 0.16 min
 Lab File: BG023859.D
 Acq: 23 Aug 2016 18:48

Tgt Ion	Resp	Lower	Upper
122	100		
105	0.0	117.2	157.2#
77	72.3	109.2	149.2#

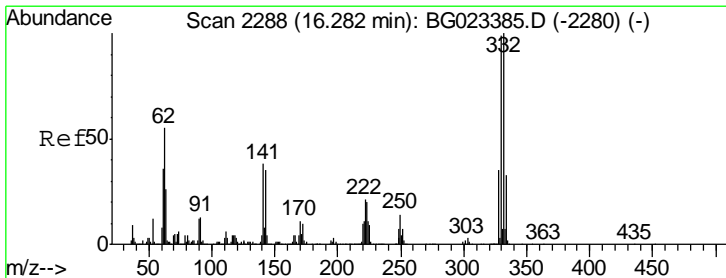
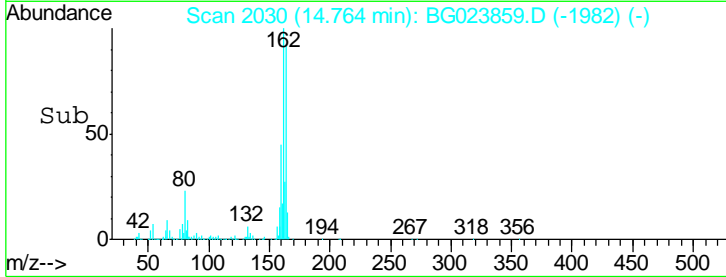
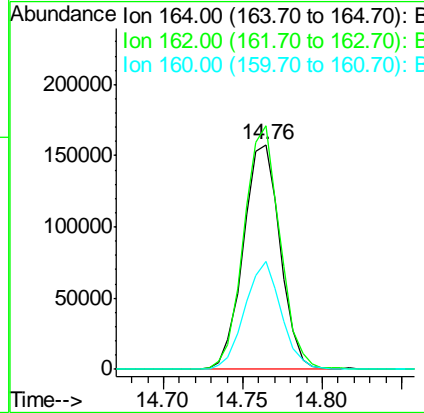
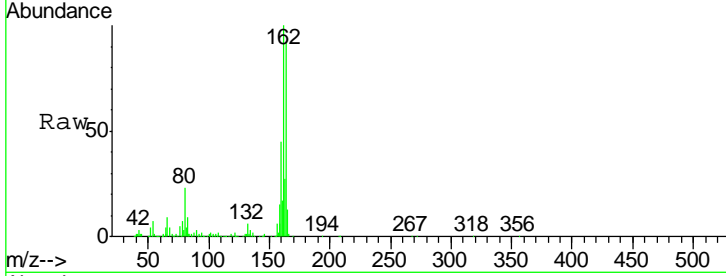




#38
 Acenaphthene-d10
 Concen: 20.00 ng
 RT: 14.76 min Scan# 2030
 Delta R.T. -0.02 min
 Lab File: BG023859.D
 Acq: 23 Aug 2016 18:48

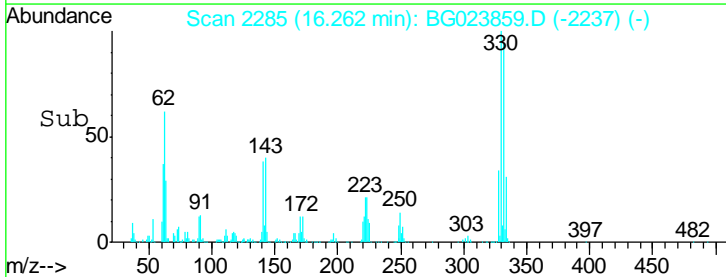
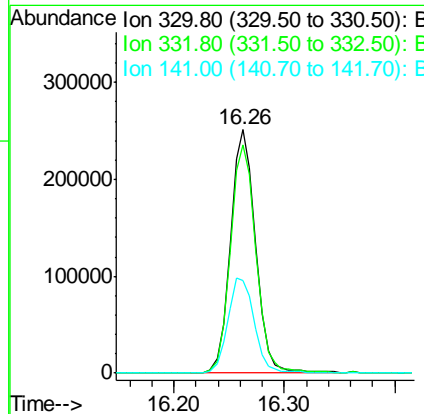
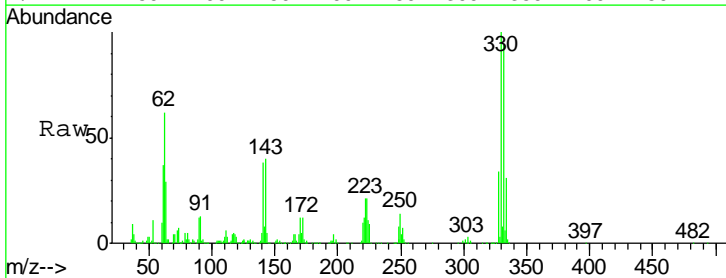
Instrument :
 BNA_G
 ClientSampled :
 SB-16A(13-15)

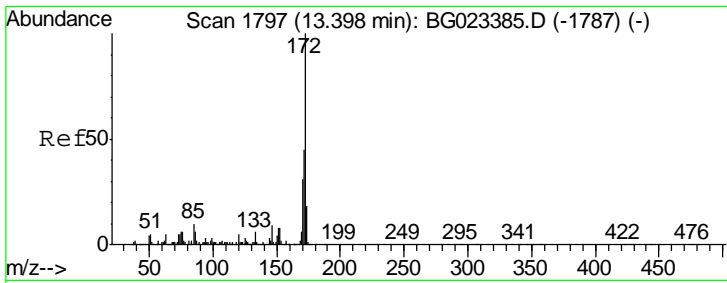
Tgt Ion	Resp	Lower	Upper
164	100		
162	108.5	87.7	131.5
160	48.3	37.2	55.8



#41
 2,4,6-Tribromophenol
 Concen: 107.72 ng
 RT: 16.26 min Scan# 2285
 Delta R.T. -0.02 min
 Lab File: BG023859.D
 Acq: 23 Aug 2016 18:48

Tgt Ion	Resp	Lower	Upper
330	100		
332	95.9	77.4	116.2
141	41.1	31.7	47.5



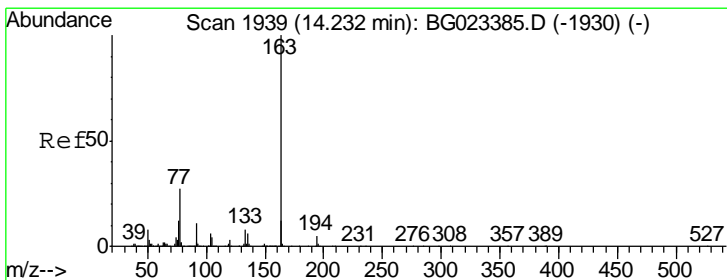
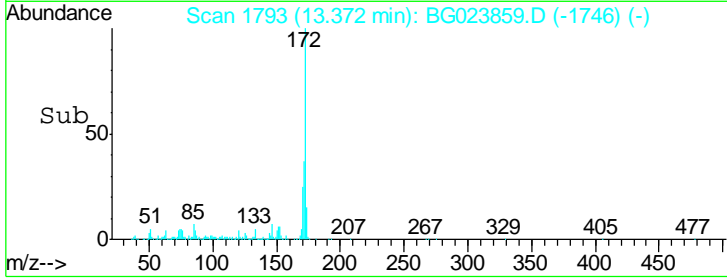
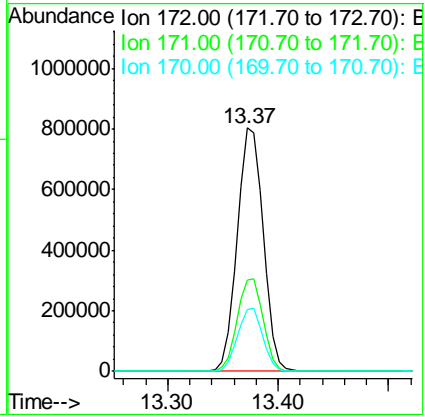
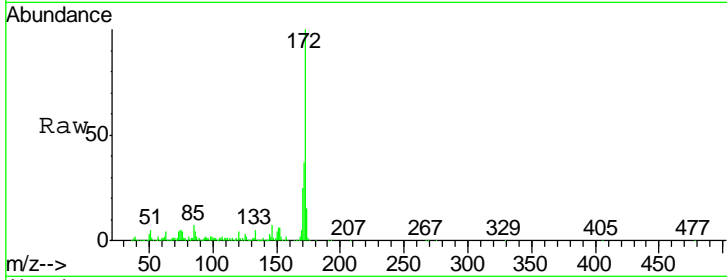


#44
 2-Fluorobiphenyl
 Concen: 88.94 ng
 RT: 13.37 min Scan# 1793
 Delta R.T. -0.03 min
 Lab File: BG023859.D
 Acq: 23 Aug 2016 18:48

Instrument :
 BNA_G
 ClientSampled :
 SB-16A(13-15)

Tgt Ion:172 Resp: 1338314

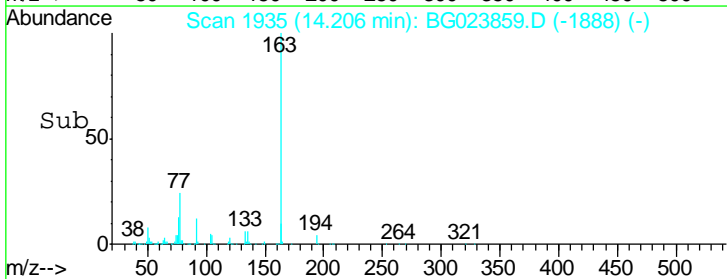
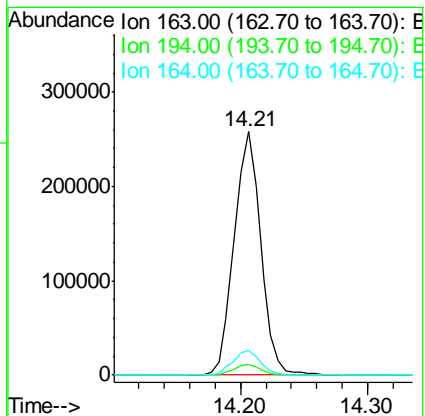
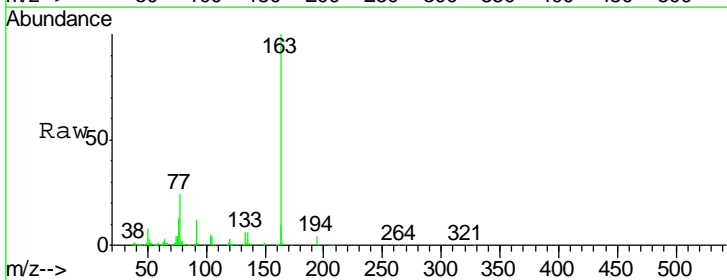
Ion	Ratio	Lower	Upper
172	100		
171	37.3	31.6	47.4
170	25.4	21.3	31.9

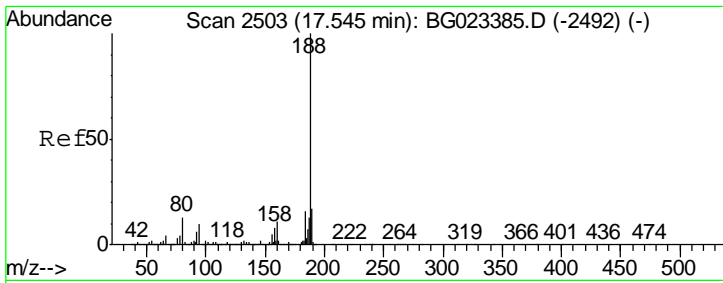


#49
 Dimethylphthalate
 Concen: 19.18 ng
 RT: 14.21 min Scan# 1935
 Delta R.T. -0.03 min
 Lab File: BG023859.D
 Acq: 23 Aug 2016 18:48

Tgt Ion:163 Resp: 373380

Ion	Ratio	Lower	Upper
163	100		
194	4.2	3.6	5.4
164	10.3	8.1	12.1

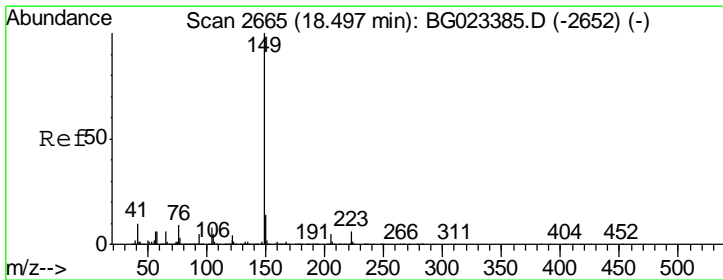
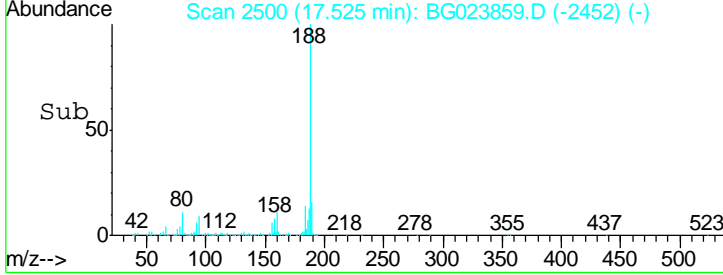
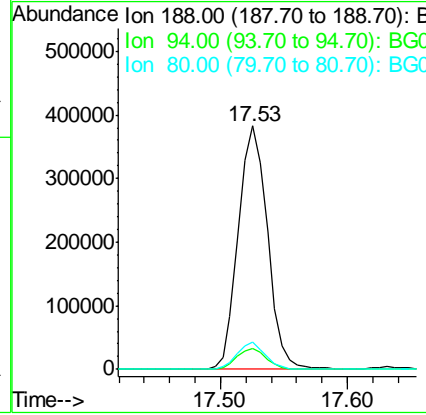
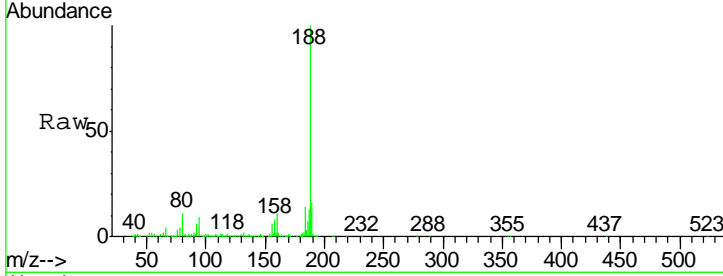




#63
 Phenanthrene-d10
 Concen: 20.00 ng
 RT: 17.53 min Scan# 2500
 Delta R.T. -0.02 min
 Lab File: BG023859.D
 Acq: 23 Aug 2016 18:48

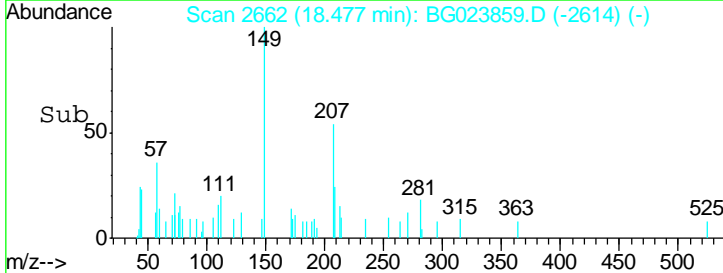
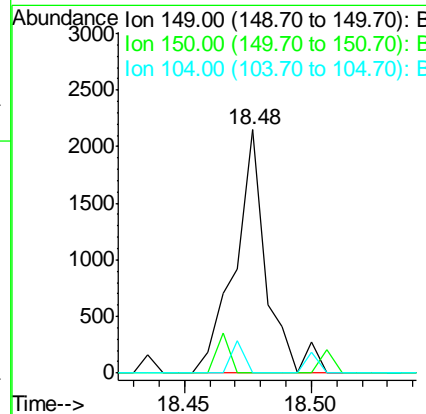
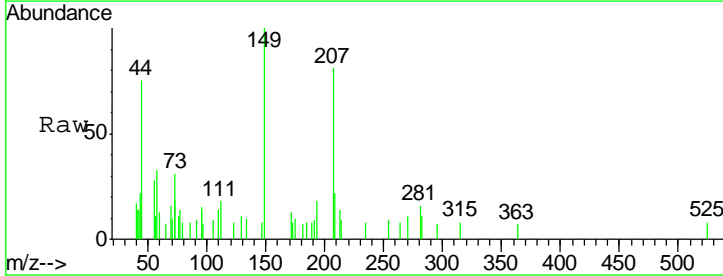
Instrument :
 BNA_G
ClientSampleId :
 SB-16A(13-15)

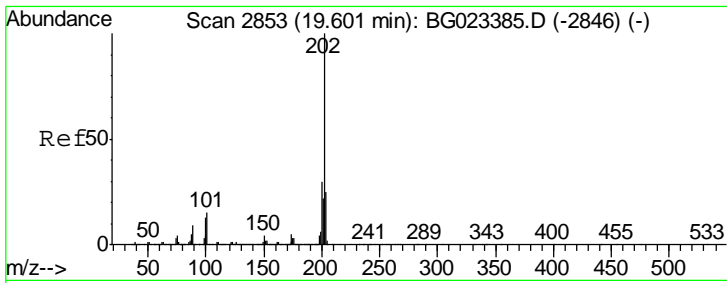
Tgt Ion	Resp	Lower	Upper
188	100		
94	8.7	5.2	7.8#
80	11.1	7.2	10.8#



#73
 Di-n-butylphthalate
 Concen: Below Cal
 RT: 18.48 min Scan# 2662
 Delta R.T. -0.02 min
 Lab File: BG023859.D
 Acq: 23 Aug 2016 18:48

Tgt Ion	Resp	Lower	Upper
149	100		
150	0.0	9.1	13.7#
104	0.0	6.9	10.3#

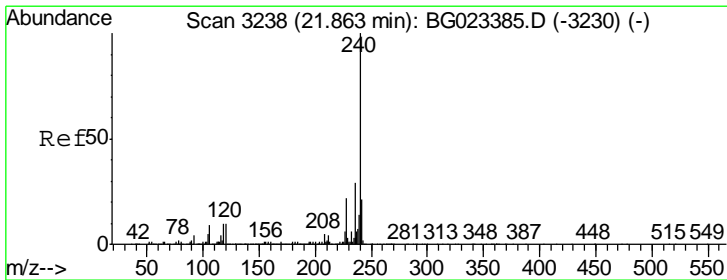
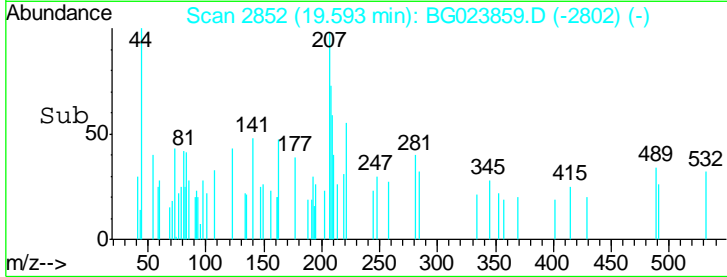
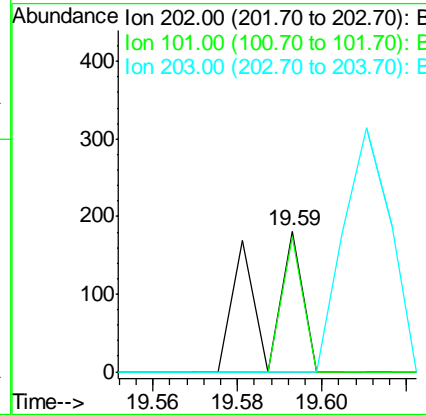
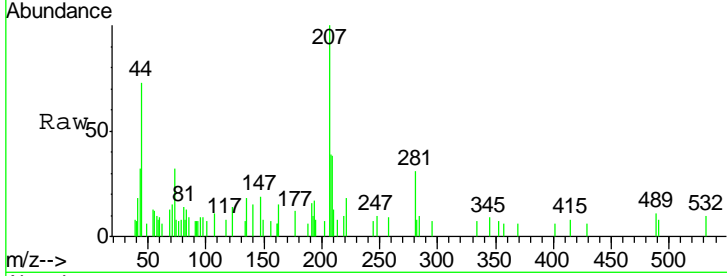




#74
 Fluoranthene
 Concen: Below Cal
 RT: 19.59 min Scan# 2852
 Delta R.T. -0.01 min
 Lab File: BG023859.D
 Acq: 23 Aug 2016 18:48

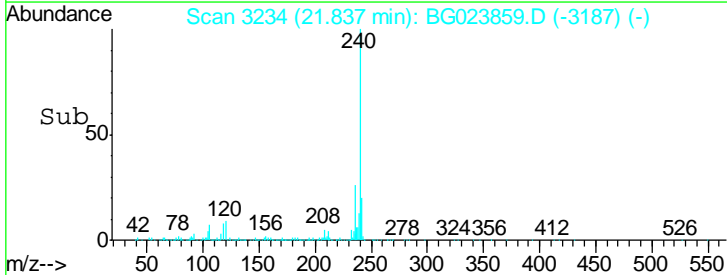
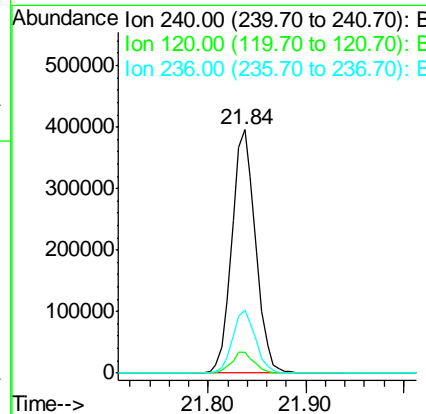
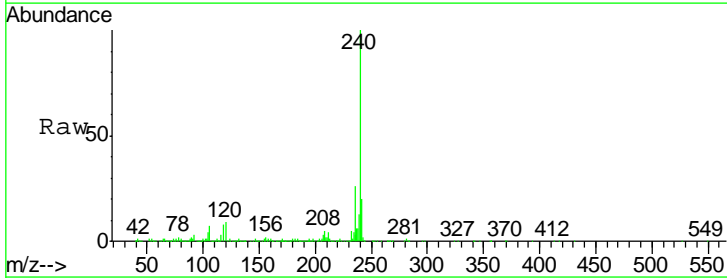
Instrument :
 BNA_G
 ClientSampled :
 SB-16A(13-15)

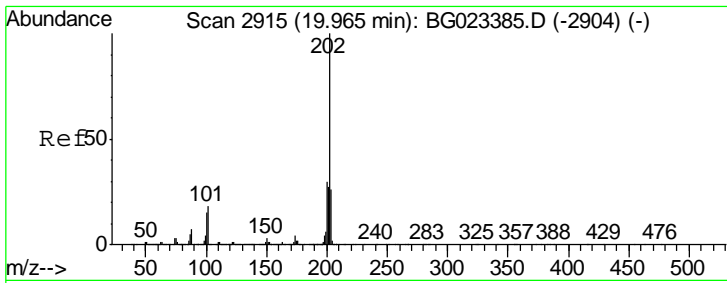
Tgt Ion	Ratio	Lower	Upper
202	100		
101	96.7	0.0	27.4#
203	0.0	1.7	41.7#



#75
 Chrysene-d12
 Concen: 20.00 ng
 RT: 21.84 min Scan# 3234
 Delta R.T. -0.03 min
 Lab File: BG023859.D
 Acq: 23 Aug 2016 18:48

Tgt Ion	Ratio	Lower	Upper
240	100		
120	8.6	4.1	6.1#
236	26.1	21.1	31.7

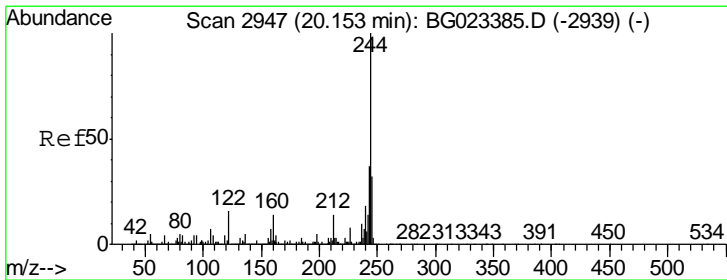
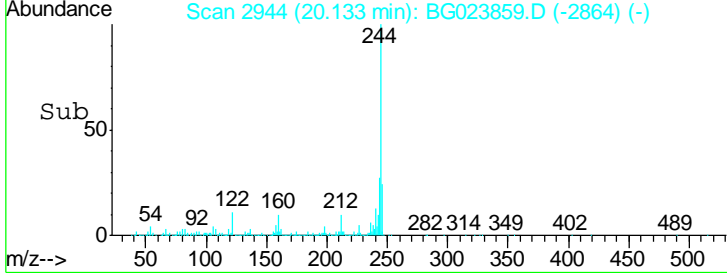
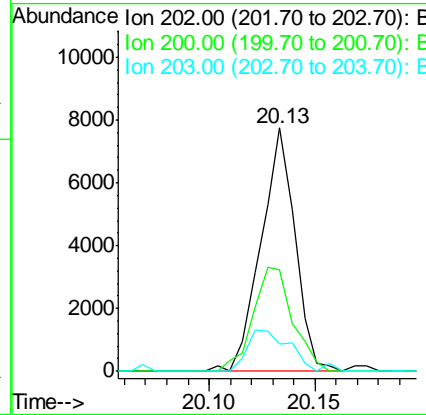
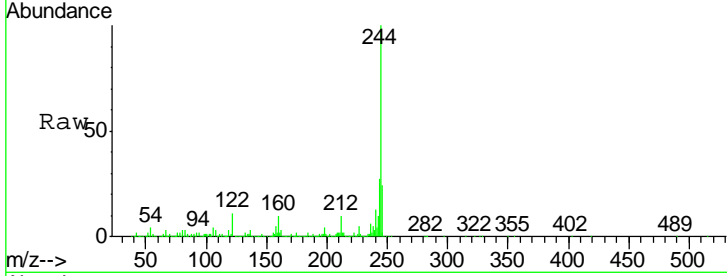




#77
 Pyrene
 Concen: Below Cal
 RT: 20.13 min Scan# 2944
 Delta R.T. 0.17 min
 Lab File: BG023859.D
 Acq: 23 Aug 2016 18:48

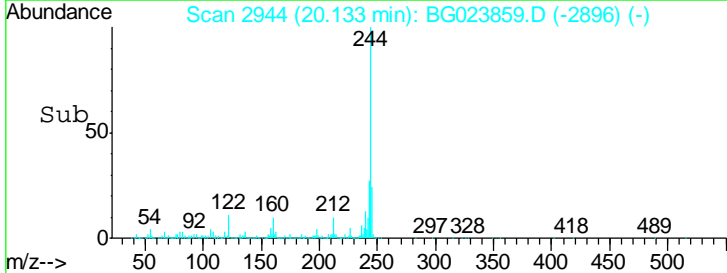
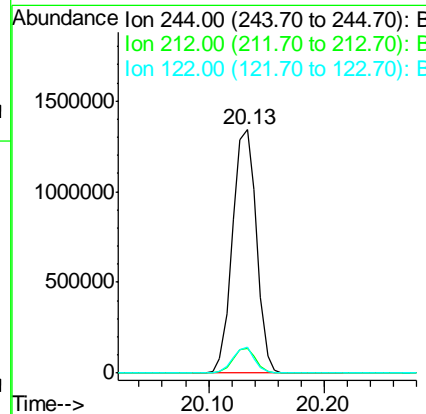
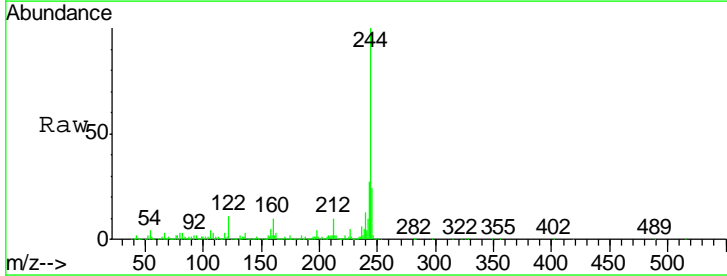
Instrument :
 BNA_G
 ClientSampleId :
 SB-16A(13-15)

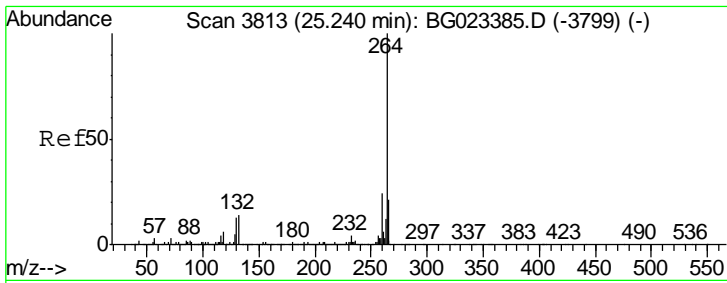
Tgt Ion	Ratio	Lower	Upper
202	100		
200	41.5	21.2	31.8#
203	11.2	16.8	25.2#



#78
 Terphenyl-d14
 Concen: 92.22 ng
 RT: 20.13 min Scan# 2944
 Delta R.T. -0.02 min
 Lab File: BG023859.D
 Acq: 23 Aug 2016 18:48

Tgt Ion	Ratio	Lower	Upper
244	100		
212	10.3	10.8	16.2#
122	10.6	8.0	12.0





#86
 Perylene-d12
 Concen: 20.00 ng
 RT: 25.21 min Scan# 3808
 Delta R.T. -0.03 min
 Lab File: BG023859.D
 Acq: 23 Aug 2016 18:48

Instrument :
 BNA_G
ClientSampleId :
 SB-16A(13-15)

Tgt Ion	Resp	Lower	Upper
264	100		
260	23.1	18.4	27.6
265	21.4	18.9	28.3

