

Data Path : Z:\HPCHEM1\BNA G\DATA\BG082316\  
 Data File : BG023873.D  
 Acq On : 24 Aug 2016 3:38  
 Operator : UM/SJ  
 Sample : H4554-01  
 Misc :  
 ALS Vial : 25 Sample Multiplier: 1

Instrument :  
 BNA\_G  
 ClientSampleId :  
 P-2

Integration Parameters: rteint.p  
 Integrator: RTE  
 Smoothing : ON Filtering: 5  
 Sampling : 1 Min Area: 3 % of largest Peak  
 Start Thrs: 0.2 Max Peaks: 100  
 Stop Thrs : 0 Peak Location: TOP

If leading or trailing edge < 100 prefer < Baseline drop else tangent >  
 Peak separation: 5

Method : Z:\HPCHEM1\BNA\_G\Methods\8270-BG080116.M  
 Title : ASP BNA STANDARDS FOR 5 POINT CALIBRATION

Signal : TIC

peak #	R.T. min	first scan	max scan	last scan	PK TY	peak height	corr. area	corr. % max.	% of total
1	2.967	17	22	42	rVB	5095129	8490049	100.00%	17.319%
2	5.152	388	394	401	rBV	578632	901240	10.62%	1.838%
3	5.634	468	476	487	rBV	1848057	3161634	37.24%	6.449%
4	7.249	743	751	763	rBV	1994236	3585468	42.23%	7.314%
5	7.619	805	814	824	rBV	1955860	3453678	40.68%	7.045%
6	8.089	887	894	903	rBV	388474	663241	7.81%	1.353%
7	8.412	941	949	959	rBV	1363136	2472089	29.12%	5.043%
8	9.270	1087	1095	1106	rBV	1225776	2260486	26.63%	4.611%
9	10.927	1368	1377	1386	rBV	506654	950345	11.19%	1.939%
10	13.376	1785	1794	1805	rBV	2767008	4431386	52.20%	9.040%
11	14.205	1928	1935	1945	rBV	787124	1200101	14.14%	2.448%
12	14.763	2023	2030	2040	rBV2	813725	1338893	15.77%	2.731%
13	15.579	2165	2169	2175	rVB	64271	85548	1.01%	0.175%
14	16.261	2278	2285	2298	rBV	2665189	4195475	49.42%	8.558%
15	16.449	2313	2317	2327	rVB2	78528	139300	1.64%	0.284%
16	17.524	2494	2500	2513	rBV2	1044415	1698962	20.01%	3.466%
17	18.393	2644	2648	2656	rBV2	90146	155147	1.83%	0.316%
18	20.132	2938	2944	2950	rBV	4453521	6024361	70.96%	12.289%
19	21.436	3162	3166	3171	rBV7	73110	134328	1.58%	0.274%
20	21.841	3228	3235	3242	rBV2	1065078	1864853	21.97%	3.804%
21	25.213	3798	3809	3820	rVB2	573690	1815765	21.39%	3.704%

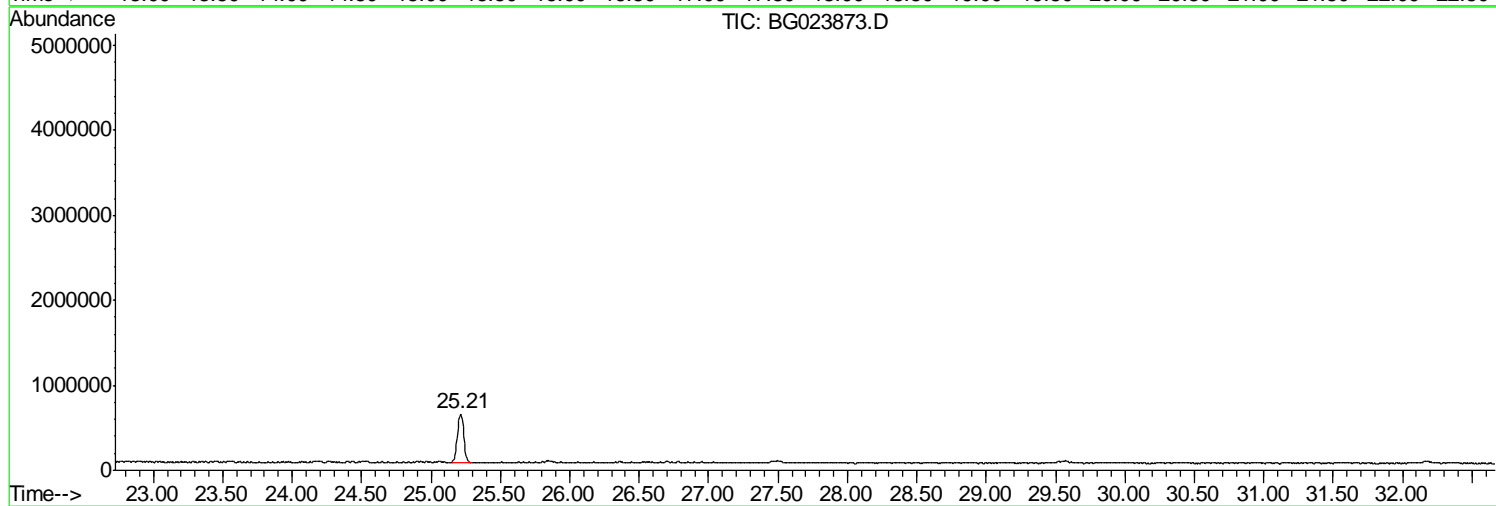
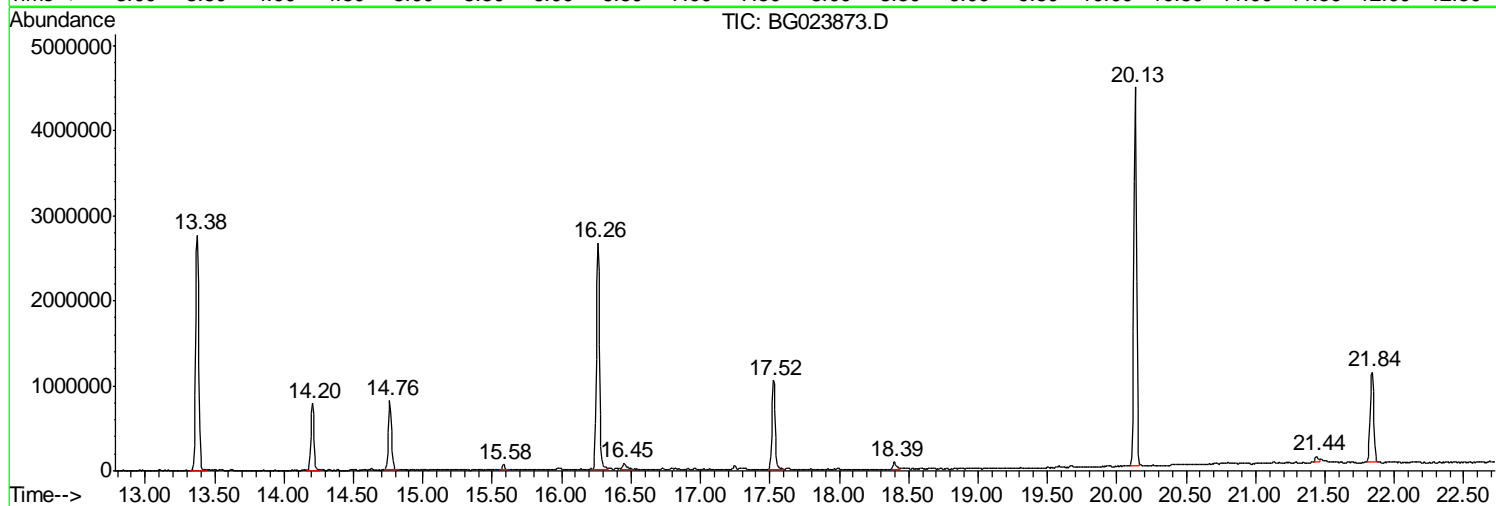
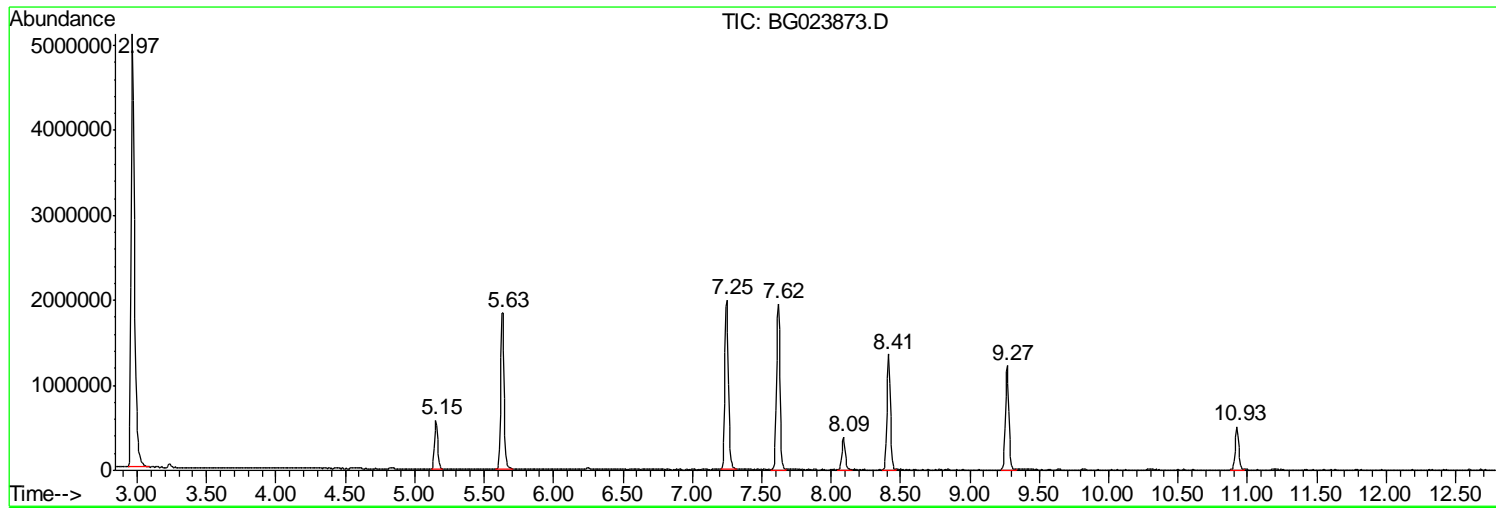
Sum of corrected areas: 49022349

Data Path : Z:\HPCHEM1\BNA G\DATA\BG082316\  
Data File : BG023873.D  
Acq On : 24 Aug 2016 3:38  
Operator : UM/SJ  
Sample : H4554-01  
Misc :  
ALS Vial : 25 Sample Multiplier: 1

Instrument :  
BNA\_G  
ClientSampleId :  
P-2

Quant Method : Z:\HPCHEM1\BNA G\Methods\8270-BG080116.M  
Quant Title : ASP BNA STANDARDS FOR 5 POINT CALIBRATION

TIC Library : C:\DATABASE\NIST11.L  
TIC Integration Parameters: LSCINT.P



Data Path : Z:\HPCHEM1\BNA G\DATA\BG082316\  
 Data File : BG023873.D  
 Acq On : 24 Aug 2016 3:38  
 Operator : UM/SJ  
 Sample : H4554-01  
 Misc :  
 ALS Vial : 25 Sample Multiplier: 1

Instrument :  
 BNA\_G  
 ClientSampled :  
 P-2

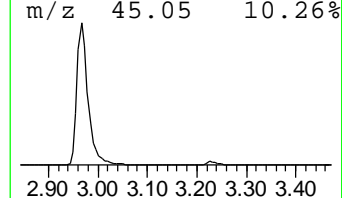
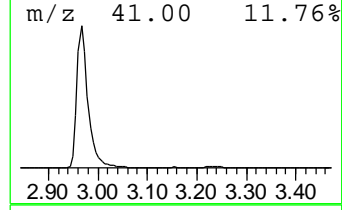
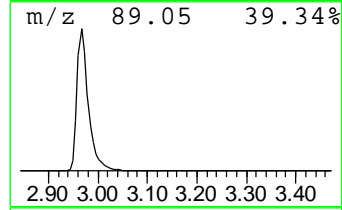
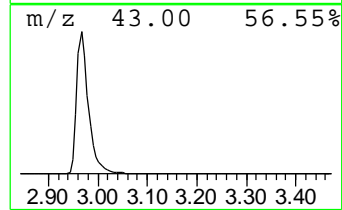
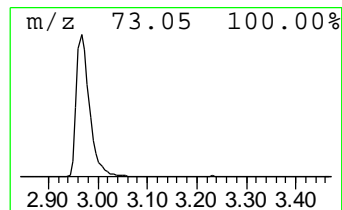
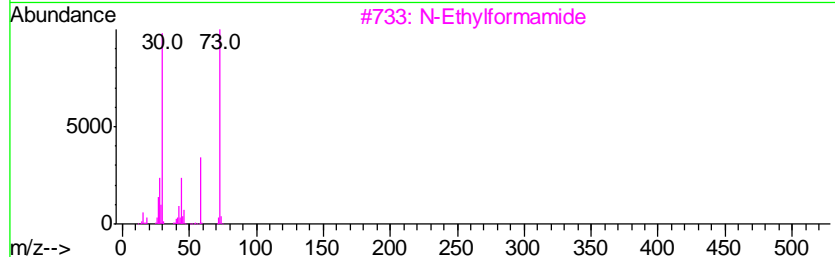
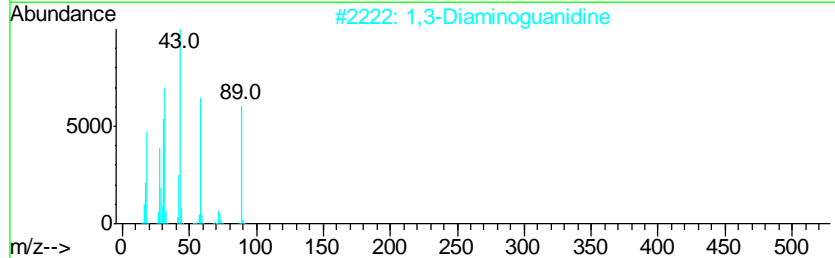
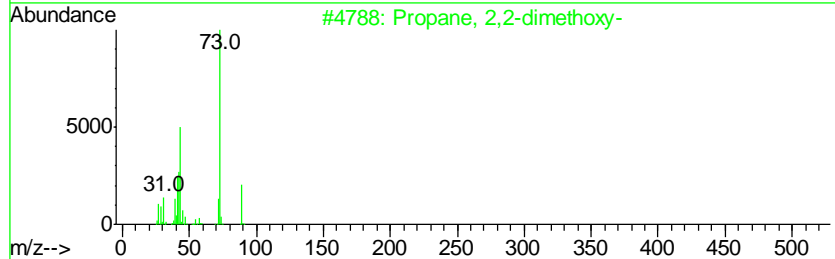
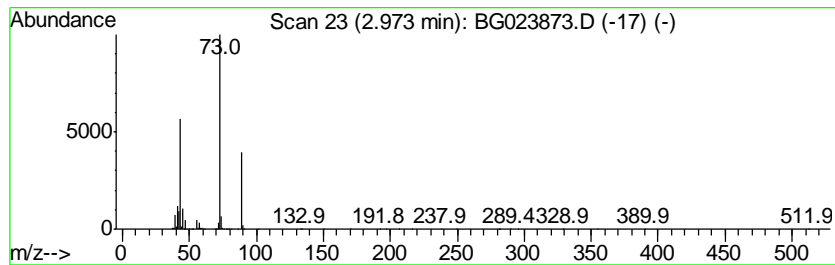
Quant Method : Z:\HPCHEM1\BNA G\Methods\8270-BG080116.M  
 Quant Title : ASP BNA STANDARDS FOR 5 POINT CALIBRATION

TIC Library : C:\DATABASE\NIST11.L  
 TIC Integration Parameters: LSCINT.P

\*\*\*\*\*  
 Peak Number 1 Propane, 2,2-dimethoxy- Concentration Rank 1

R.T.	EstConc	Area	Relative to ISTD	R.T.
2.97	256.02 ng	8490050	1,4-Dichlorobenzene-d4	8.09

Hit#	of	Tentative ID	MW	MolForm	CAS#	Qual
1	5	Propane, 2,2-dimethoxy-	104	C5H12O2	000077-76-9	50
2		1,3-Diaminoguanidine	89	CH7N5	004364-78-7	23
3		N-Ethylformamide	73	C3H7NO	000627-45-2	9
4		1-Hexen-4-ol, 1-chloro-3,5-dimet...	162	C8H15ClO	100244-09-5	9
5		1-Propanol, 2-methyl-2-nitro-	119	C4H9NO3	000076-39-1	9



Data Path : Z:\HPCHEM1\BNA G\DATA\BG082316\  
 Data File : BG023873.D  
 Acq On : 24 Aug 2016 3:38  
 Operator : UM/SJ  
 Sample : H4554-01  
 Misc :  
 ALS Vial : 25 Sample Multiplier: 1

Instrument :  
 BNA\_G  
 ClientSampled :  
 P-2

Quant Method : Z:\HPCHEM1\BNA G\Methods\8270-BG080116.M  
 Quant Title : ASP BNA STANDARDS FOR 5 POINT CALIBRATION

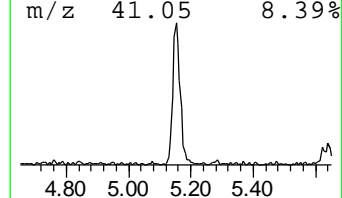
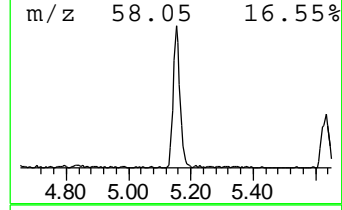
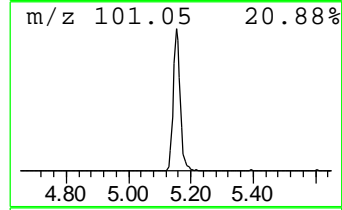
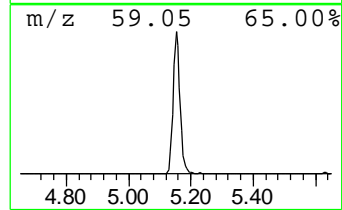
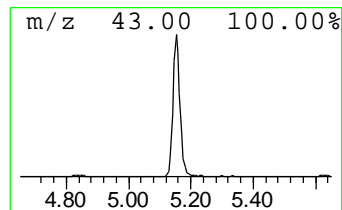
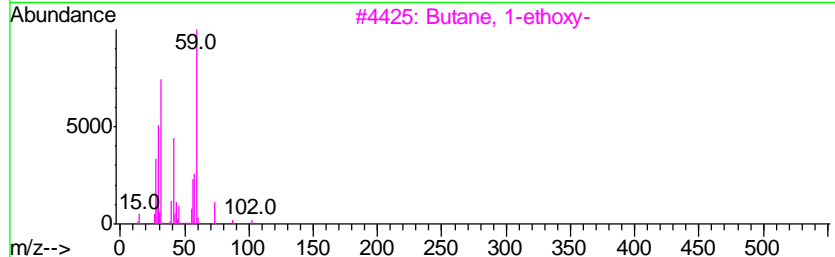
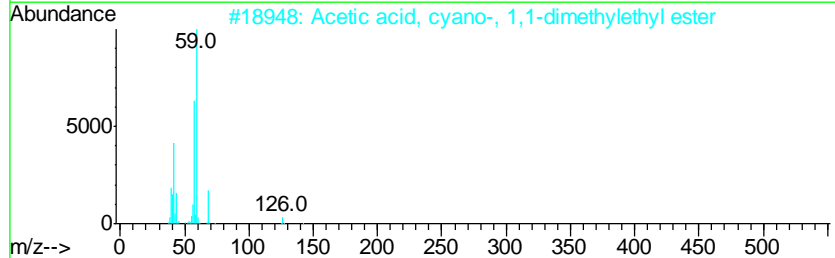
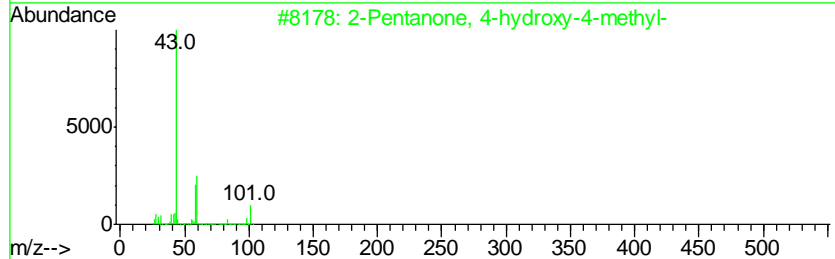
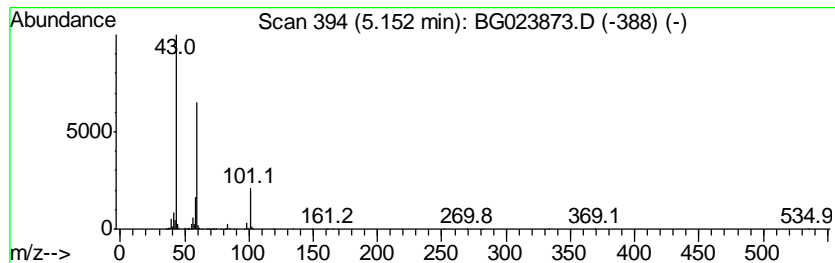
TIC Library : C:\DATABASE\NIST11.L  
 TIC Integration Parameters: LSCINT.P

\*\*\*\*\*  
 Peak Number 2 2-Pentanone, 4-hydroxy-4-me... Concentration Rank 4

R.T.	EstConc	Area	Relative to ISTD	R.T.
5.15	27.18 ng	901240	1,4-Dichlorobenzene-d4	8.09

Hit#	of	Tentative ID	MW	MolForm	CAS#	Qual
1	5	2-Pentanone, 4-hydroxy-4-methyl-	116	C6H12O2	000123-42-2	64
2		Acetic acid, cyano-, 1,1-dimethy...	141	C7H11NO2	001116-98-9	23
3		Butane, 1-ethoxy-	102	C6H14O	000628-81-9	9
4		Guanidine	59	CH5N3	000113-00-8	9
5		(+)-4-Amino-4,5-dihydro-2(3H)-f...	101	C4H7NO2	016504-58-8	9



Data Path : Z:\HPCHEM1\BNA G\DATA\BG082316\  
 Data File : BG023873.D  
 Acq On : 24 Aug 2016 3:38  
 Operator : UM/SJ  
 Sample : H4554-01  
 Misc :  
 ALS Vial : 25 Sample Multiplier: 1

Instrument :  
 BNA\_G  
 ClientSampled :  
 P-2

Quant Method : Z:\HPCHEM1\BNA G\Methods\8270-BG080116.M  
 Quant Title : ASP BNA STANDARDS FOR 5 POINT CALIBRATION

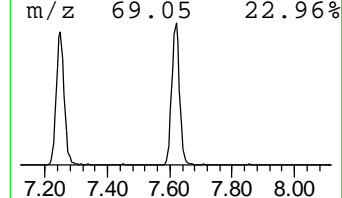
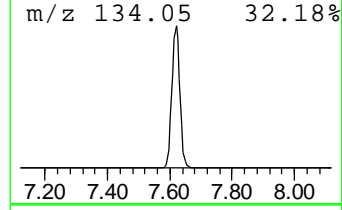
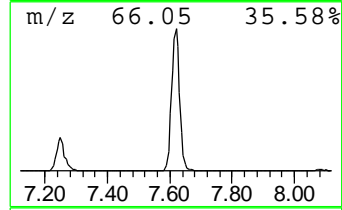
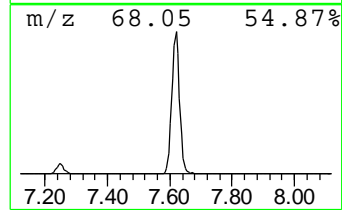
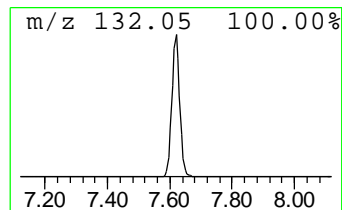
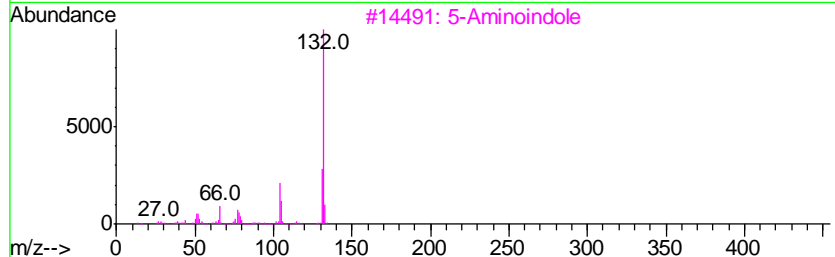
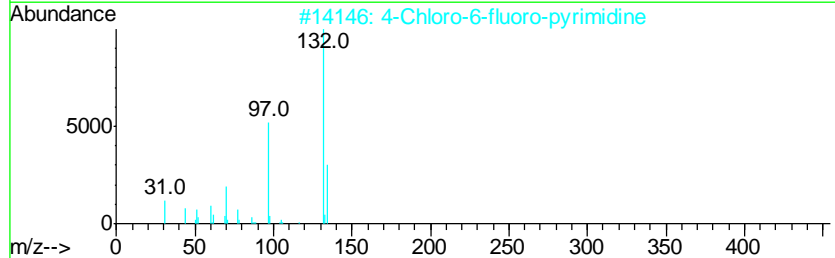
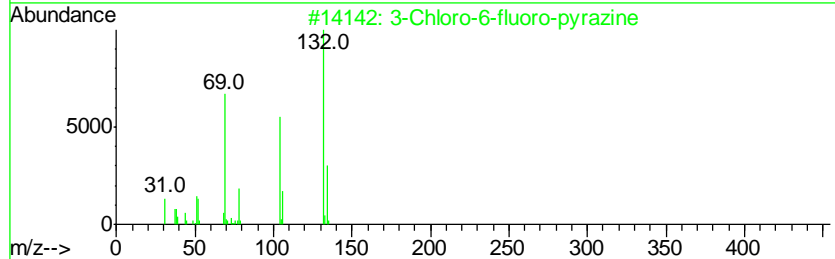
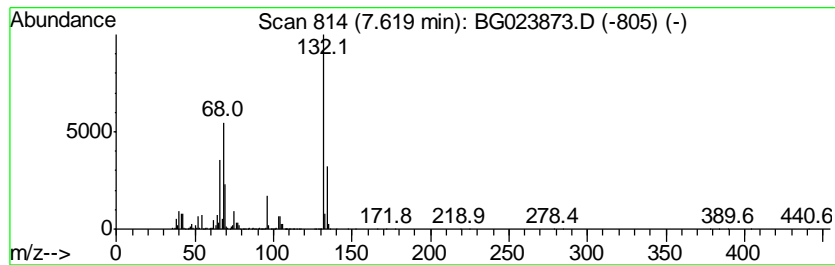
TIC Library : C:\DATABASE\NIST11.L  
 TIC Integration Parameters: LSCINT.P

\*\*\*\*\*  
 Peak Number 3 unknown7.62 Concentration Rank 2

R.T.	EstConc	Area	Relative to ISTD	R.T.
7.62	104.15 ng	3453680	1,4-Dichlorobenzene-d4	8.09

Hit#	of	Tentative ID	MW	MolForm	CAS#	Qual
1	5	3-Chloro-6-fluoro-pyrazine	132	C4H2ClFN2	1000146-10-7	27
2		4-Chloro-6-fluoro-pyrimidine	132	C4H2ClFN2	051422-01-6	27
3		5-Aminoindole	132	C8H8N2	005192-03-0	22
4		Imidazole, 4,5-dicyano-1-methyl-	132	C6H4N4	019485-35-9	22
5		5-Fluoro-2-chloropyrimidine	132	C4H2ClFN2	062802-42-0	12



Data Path : Z:\HPCHEM1\BNA\_G\DATA\BG082316\  
Data File : BG023873.D  
Acq On : 24 Aug 2016 3:38  
Operator : UM/SJ  
Sample : H4554-01  
Misc :  
ALS Vial : 25 Sample Multiplier: 1

Instrument :  
BNA\_G  
ClientSampleId :  
P-2

Quant Method : Z:\HPCHEM1\BNA\_G\Methods\8270-BG080116.M  
Quant Title : ASP BNA STANDARDS FOR 5 POINT CALIBRATION

TIC Library : C:\DATABASE\NIST11.L  
TIC Integration Parameters: LSCINT.P

TIC Top Hit name	RT	EstConc	Units	Response	--Internal Standard--			
					#	RT	Resp	Conc
Propane, 2,2-dime...	2.97	256.0	ng	8490050	1	8.09	663241	20.0
2-Pentanone, 4-hy...	5.15	27.2	ng	901240	1	8.09	663241	20.0
unknown7.62	7.62	104.2	ng	3453680	1	8.09	663241	20.0