

Data Path : Z:\SVOASRV\HPCHEM1\BNA G\DATA\BG082319\
 Data File : BG042441.D
 Acq On : 23 Aug 2019 20:04
 Operator : HP/JU
 Sample : K4418-05
 Misc :
 ALS Vial : 8 Sample Multiplier: 1

Instrument :
 BNA_G
 ClientSampleId :
 CFVP-228L

Quant Time: Aug 24 02:22:26 2019
 Quant Method : Z:\SVOASRV\HPCHEM1\BNA G\METHODS\8270-BG082219.M
 Quant Title : ASP BNA STANDARDS FOR 5 POINT CALIBRATION
 QLast Update : Thu Aug 22 14:29:15 2019
 Response via : Initial Calibration

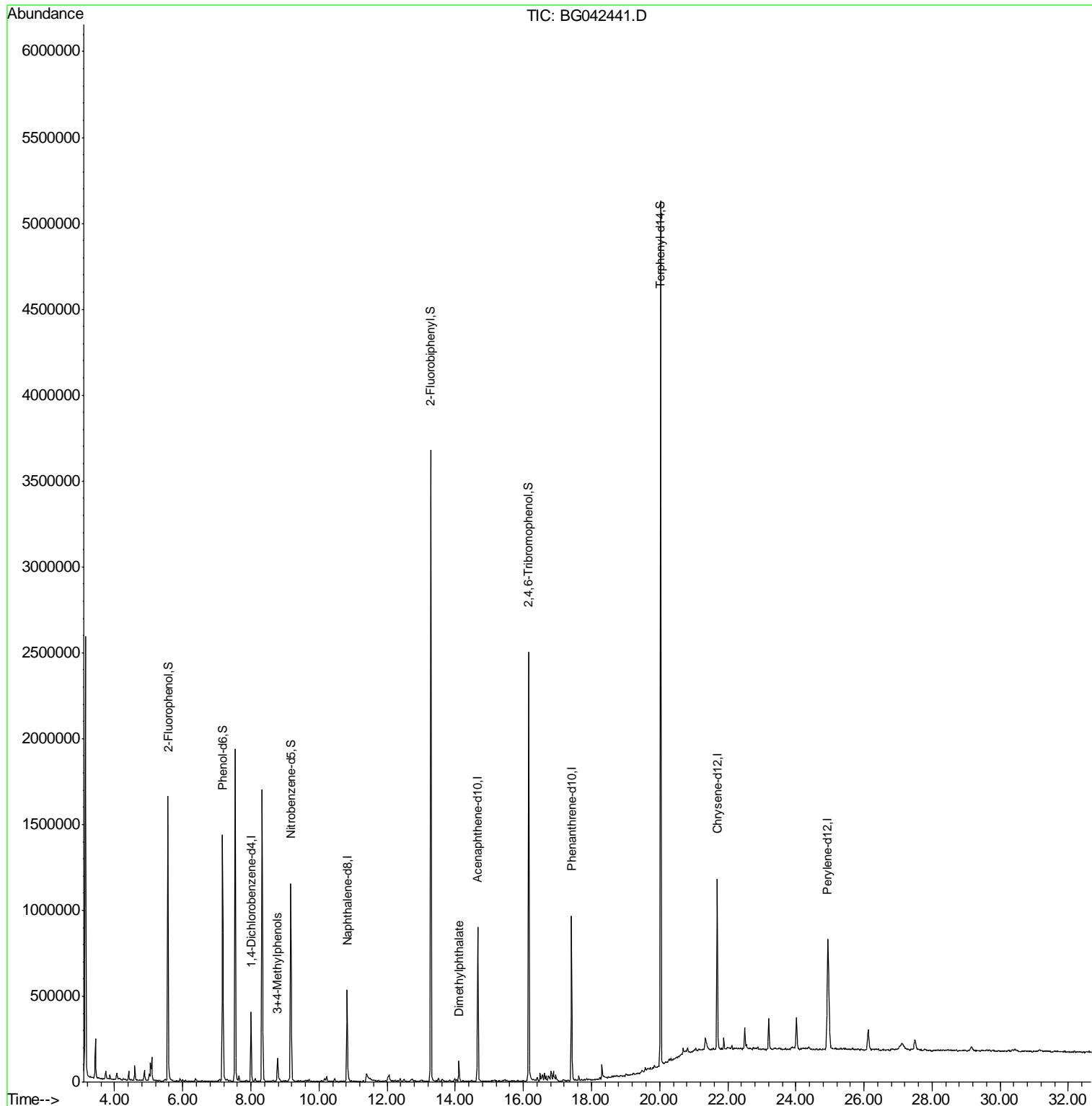
Internal Standards	R.T.	QIon	Response	Conc	Units	Dev(Min)
1) 1,4-Dichlorobenzene-d4	8.01	152	133614	20.00	ng	0.00
21) Naphthalene-d8	10.83	136	524580	20.00	ng	0.00
39) Acenaphthene-d10	14.66	164	341064	20.00	ng	0.00
64) Phenanthrene-d10	17.41	188	655097	20.00	ng	0.00
76) Chrysene-d12	21.69	240	610686	20.00	ng	0.00
87) Perylene-d12	24.94	264	721547	20.00	ng	0.00
System Monitoring Compounds						
5) 2-Fluorophenol	5.56	112	849395	128.75	ng	0.00
7) Phenol-d6	7.17	99	1024341	114.95	ng	0.00
23) Nitrobenzene-d5	9.18	82	777088	102.37	ng	0.00
42) 2,4,6-Tribromophenol	16.16	330	536326	110.64	ng	0.00
45) 2-Fluorobiphenyl	13.28	172	1967696	97.58	ng	0.00
79) Terphenyl-d14	20.03	244	2393022	84.72	ng	0.00
Target Compounds						
20) 3+4-Methylphenols	8.78	107	94712	10.256	ng	87
50) Dimethylphthalate	14.11	163	99989	4.063	ng	99

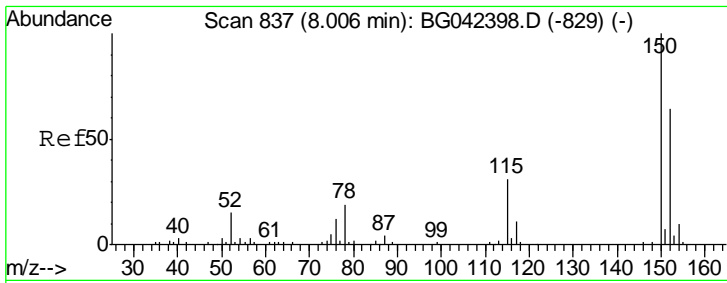
(#) = qualifier out of range (m) = manual integration (+) = signals summed

Data Path : Z:\SVOASRV\HPCHEM1\BNA G\DATA\BG082319\
Data File : BG042441.D
Acq On : 23 Aug 2019 20:04
Operator : HP/JU
Sample : K4418-05
Misc :
ALS Vial : 8 Sample Multiplier: 1

Instrument :
BNA_G
ClientSampleId :
CFVP-228L

Quant Time: Aug 24 02:22:26 2019
Quant Method : Z:\SVOASRV\HPCHEM1\BNA G\METHODS\8270-BG082219.M
Quant Title : ASP BNA STANDARDS FOR 5 POINT CALIBRATION
QLast Update : Thu Aug 22 14:29:15 2019
Response via : Initial Calibration

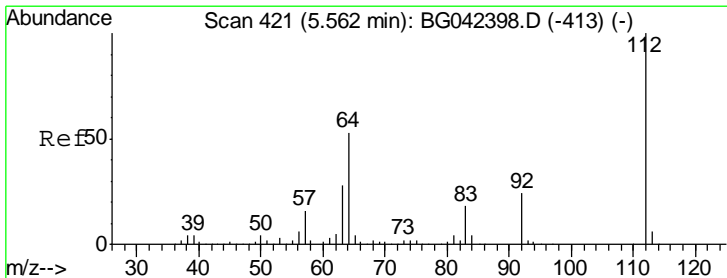
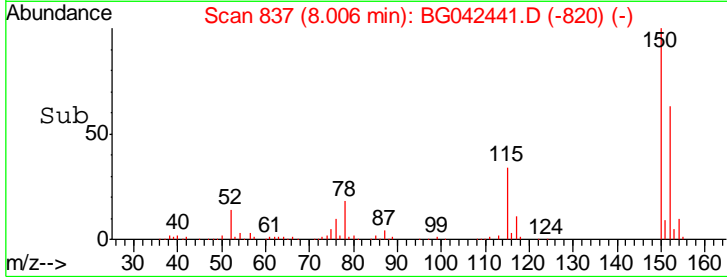
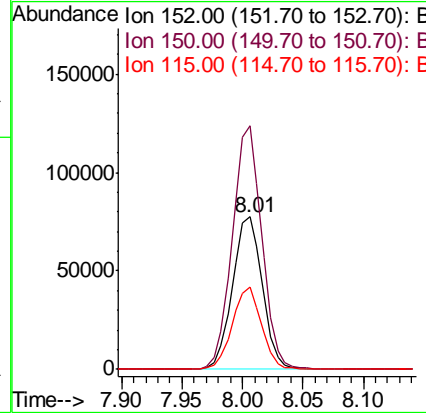
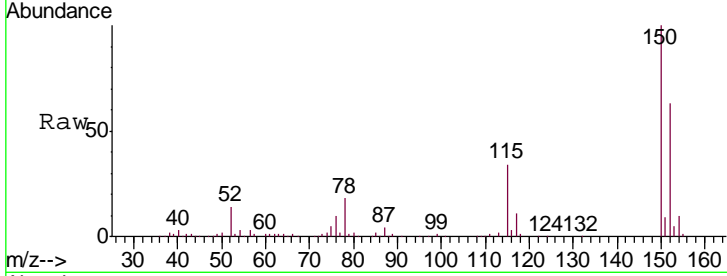




#1
 1,4-Dichlorobenzene-d4
 Concen: 20.000 ng
 RT: 8.01 min Scan# 837
 Delta R.T. -0.00 min
 Lab File: BG042441.D
 Acq: 23 Aug 2019 20:04

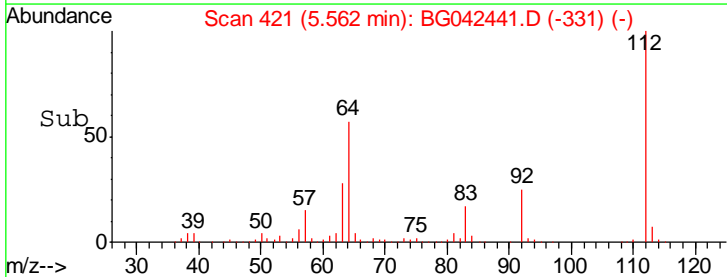
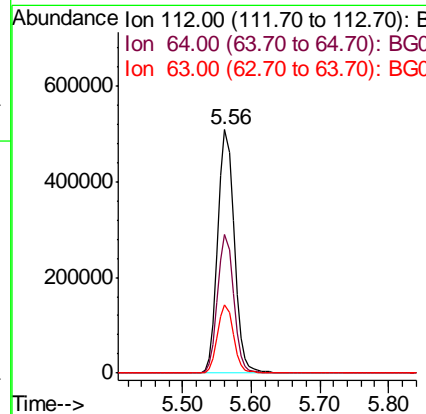
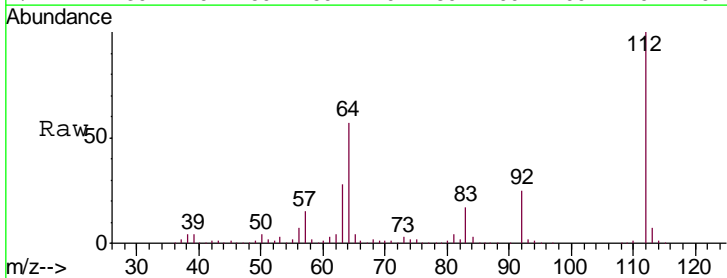
Instrument :
 BNA_G
 ClientSampleID :
 CFVP-228L

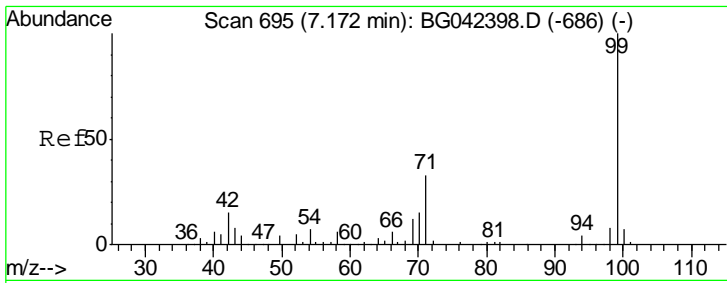
Tgt Ion	Resp	Lower	Upper
152	133614		
150	159.7	125.4	188.0
115	53.8	38.5	57.7



#5
 2-Fluorophenol
 Concen: 128.749 ng
 RT: 5.56 min Scan# 421
 Delta R.T. -0.00 min
 Lab File: BG042441.D
 Acq: 23 Aug 2019 20:04

Tgt Ion	Resp	Lower	Upper
112	849395		
64	56.7	42.8	64.2
63	28.3	22.7	34.1

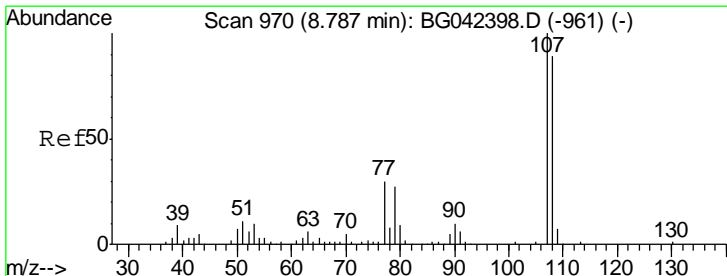
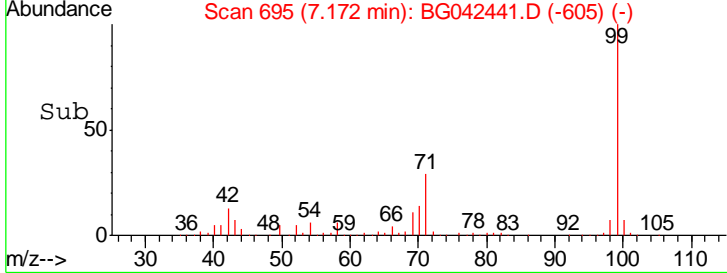
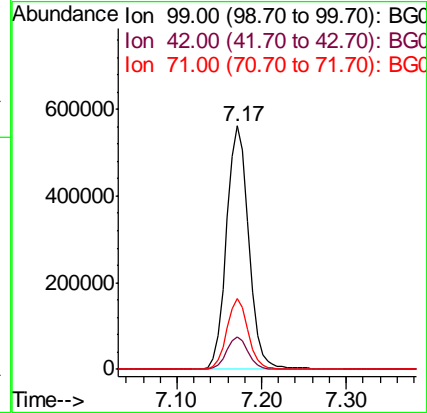
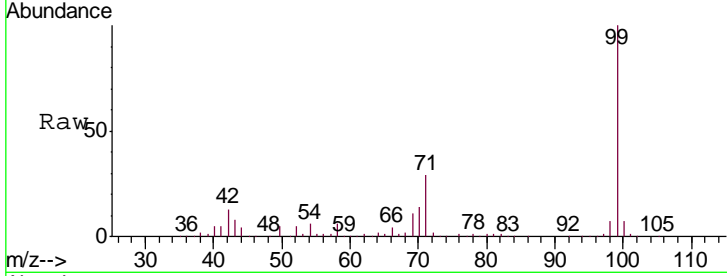




#7
 Phenol-d6
 Concen: 114.947 ng
 RT: 7.17 min Scan# 695
 Delta R.T. -0.00 min
 Lab File: BG042441.D
 Acq: 23 Aug 2019 20:04

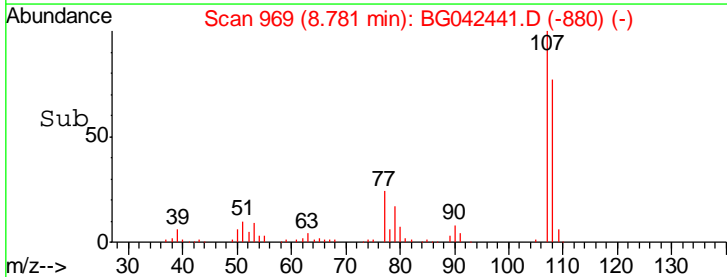
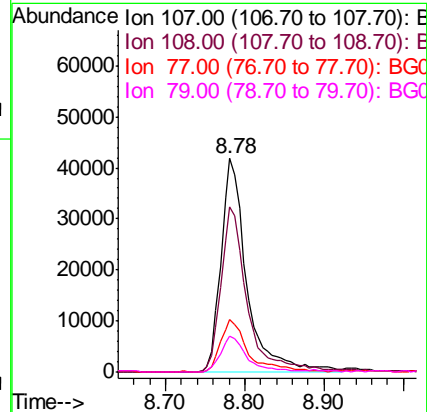
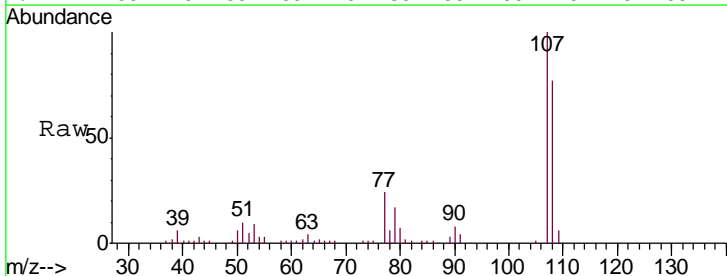
Instrument :
 BNA_G
 ClientSampled :
 CFVP-228L

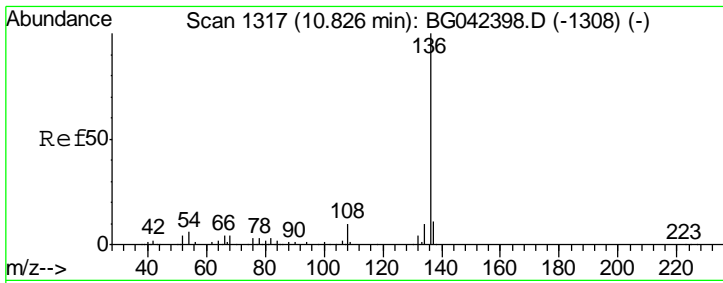
Tgt Ion	Resp	Lower	Upper
99	1024341		
42	13.3	12.0	18.0
71	28.9	26.3	39.5



#20
 3+4-Methylphenols
 Concen: 10.256 ng
 RT: 8.78 min Scan# 969
 Delta R.T. -0.01 min
 Lab File: BG042441.D
 Acq: 23 Aug 2019 20:04

Tgt Ion	Resp	Lower	Upper
107	94712		
108	77.3	68.7	108.7
77	24.4	10.2	50.2
79	17.0	6.9	46.9

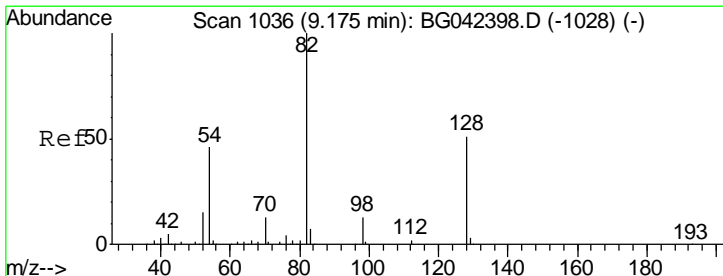
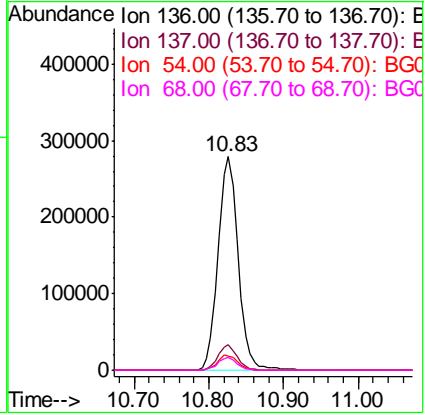
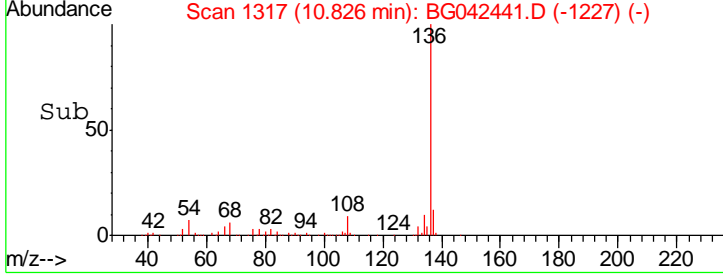
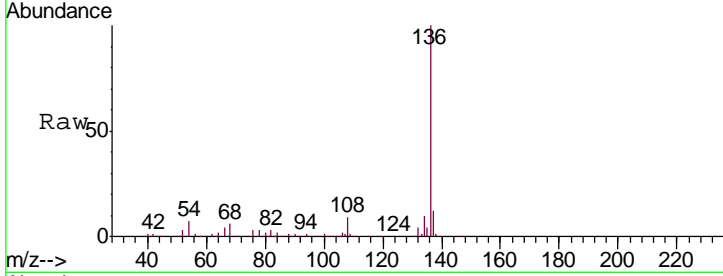




#21
 Naphthalene-d8
 Concen: 20.000 ng
 RT: 10.83 min Scan# 1317
 Delta R.T. -0.00 min
 Lab File: BG042441.D
 Acq: 23 Aug 2019 20:04

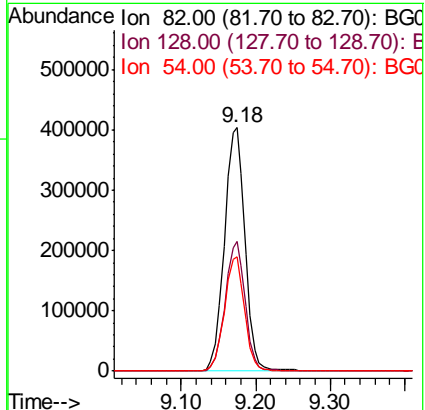
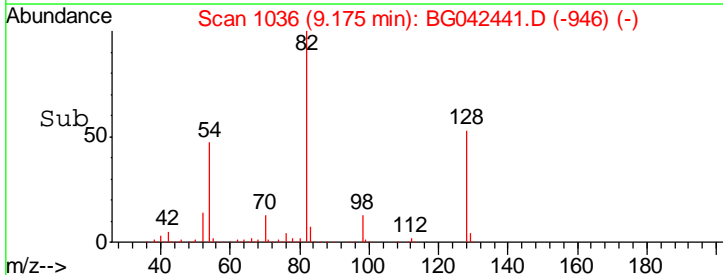
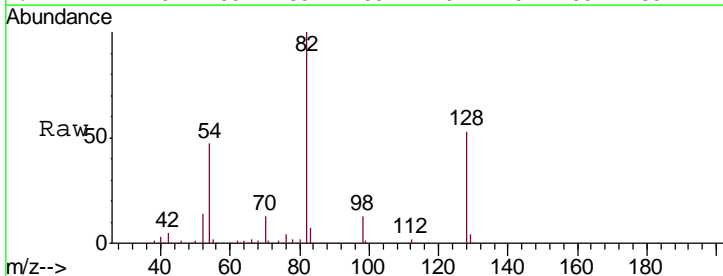
Instrument :
 BNA_G
 ClientSampled :
 CFVP-228L

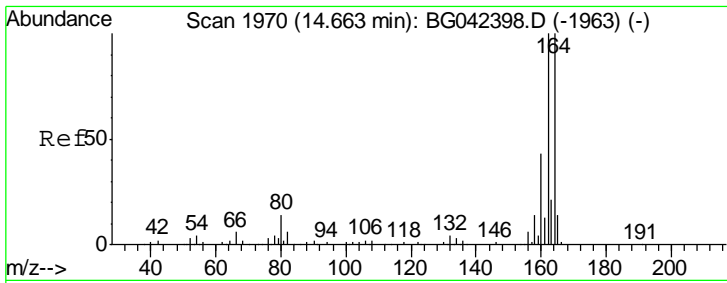
Tgt Ion	Resp	Lower	Upper
136	100		
137	11.8	8.7	13.1
54	6.9	4.9	7.3
68	6.0	3.6	5.4



#23
 Nitrobenzene-d5
 Concen: 102.367 ng
 RT: 9.18 min Scan# 1036
 Delta R.T. -0.00 min
 Lab File: BG042441.D
 Acq: 23 Aug 2019 20:04

Tgt Ion	Resp	Lower	Upper
82	100		
128	53.2	40.7	61.1
54	46.7	36.3	54.5

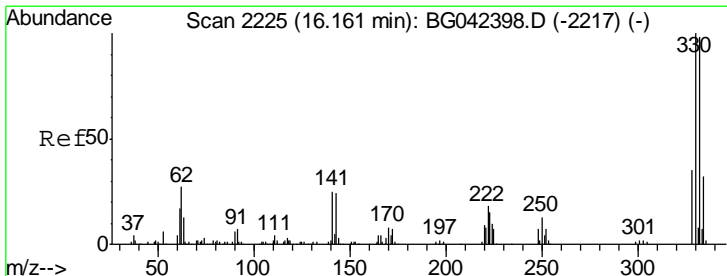
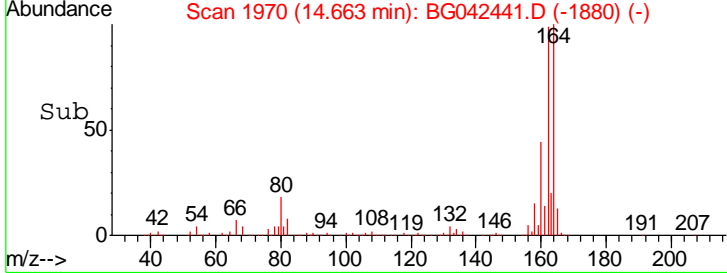
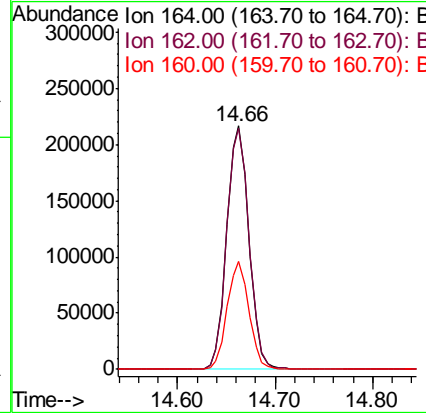
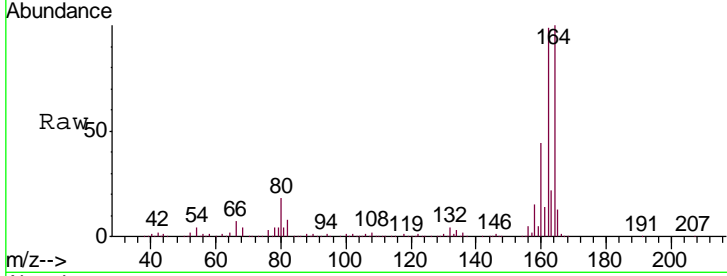




#39
 Acenaphthene-d10
 Concen: 20.000 ng
 RT: 14.66 min Scan# 1970
 Delta R.T. -0.00 min
 Lab File: BG042441.D
 Acq: 23 Aug 2019 20:04

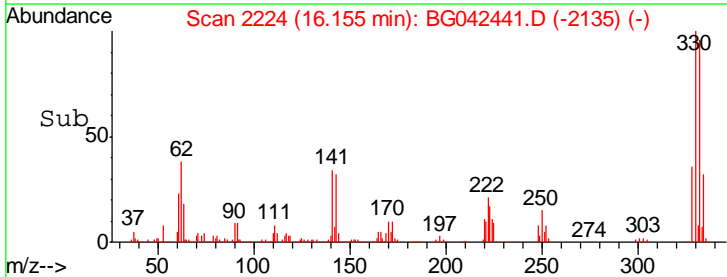
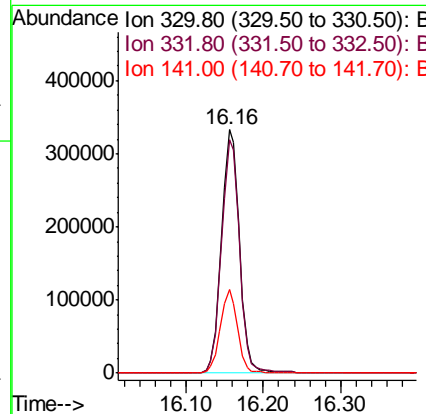
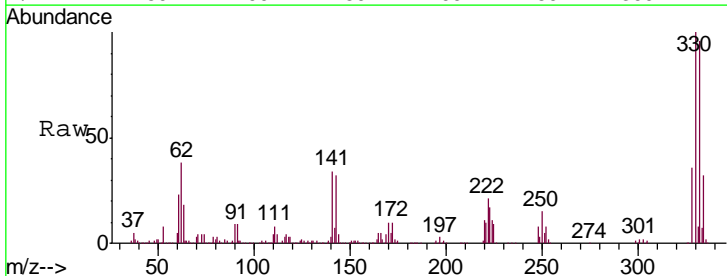
Instrument :
 BNA_G
 ClientSampled :
 CFVP-228L

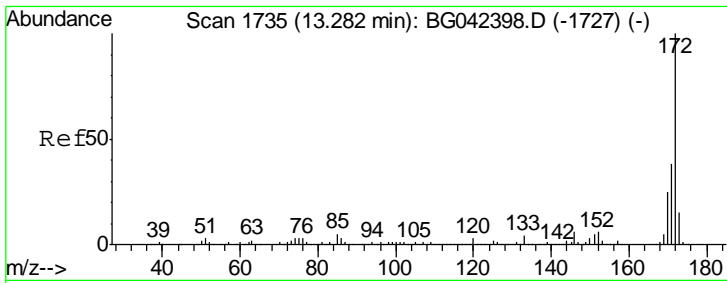
Tgt Ion	Resp	Lower	Upper
164	100		
162	98.9	79.9	119.9
160	44.3	34.3	51.5



#42
 2,4,6-Tribromophenol
 Concen: 110.636 ng
 RT: 16.16 min Scan# 2224
 Delta R.T. -0.01 min
 Lab File: BG042441.D
 Acq: 23 Aug 2019 20:04

Tgt Ion	Resp	Lower	Upper
330	100		
332	95.9	77.4	116.0
141	32.8	21.4	32.0#



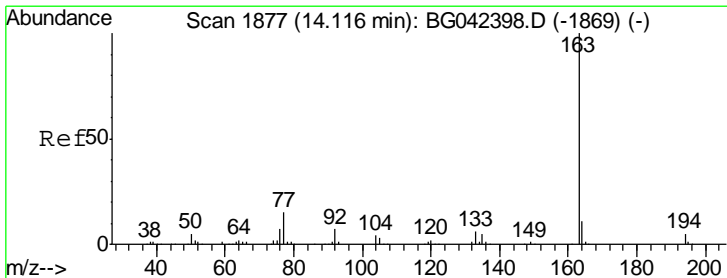
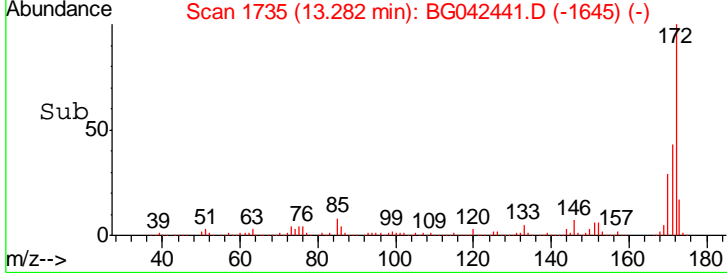
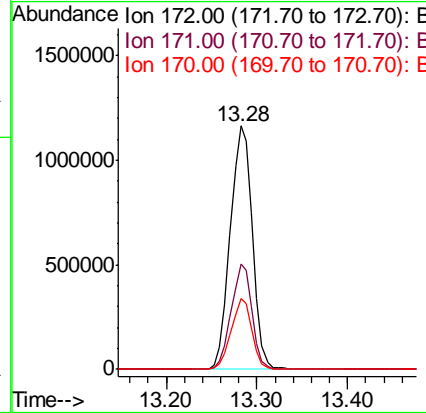
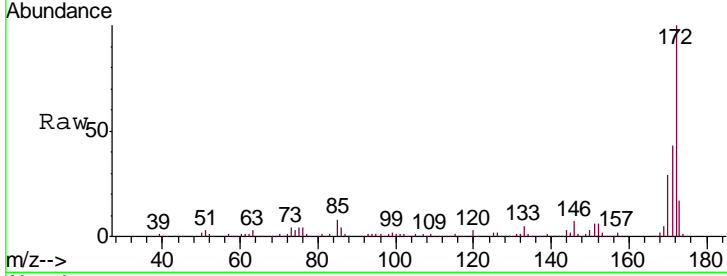


#45
 2-Fluorobiphenyl
 Concen: 97.575 ng
 RT: 13.28 min Scan# 1735
 Delta R.T. -0.00 min
 Lab File: BG042441.D
 Acq: 23 Aug 2019 20:04

Instrument :
 BNA_G
 ClientSampled :
 CFVP-228L

Tot Ion:172 Resp: 1967696

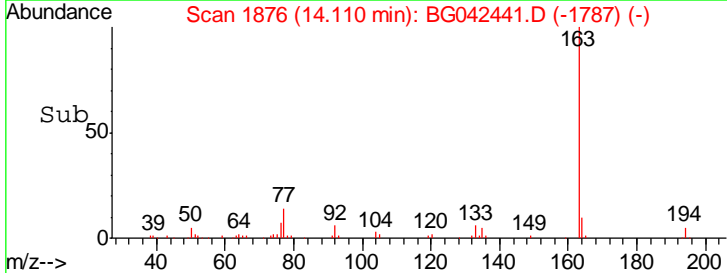
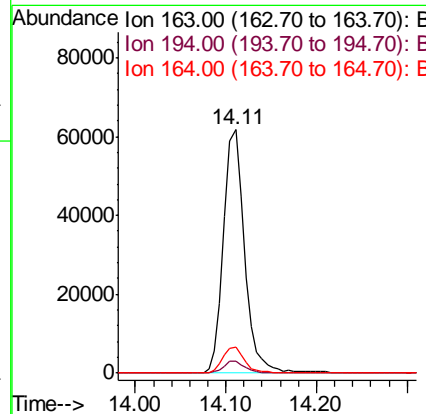
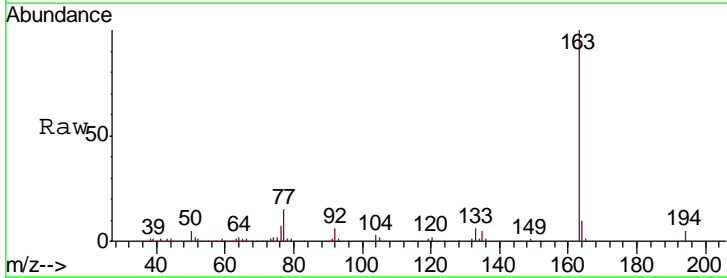
Ion	Ratio	Lower	Upper
172	100		
171	43.1	30.5	45.7
170	29.0	20.2	30.2

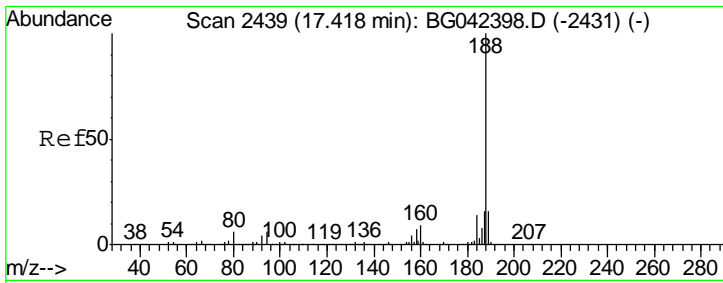


#50
 Dimethylphthalate
 Concen: 4.063 ng
 RT: 14.11 min Scan# 1876
 Delta R.T. -0.01 min
 Lab File: BG042441.D
 Acq: 23 Aug 2019 20:04

Tgt Ion:163 Resp: 99989

Ion	Ratio	Lower	Upper
163	100		
194	4.7	4.2	6.2
164	10.5	8.8	13.2

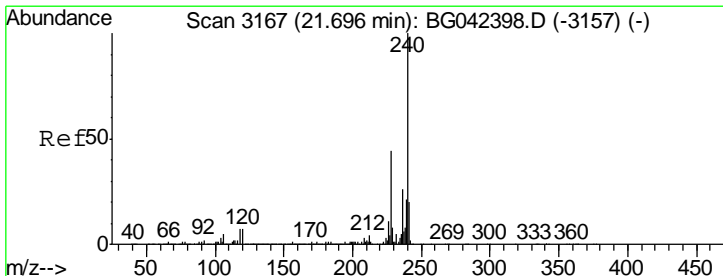
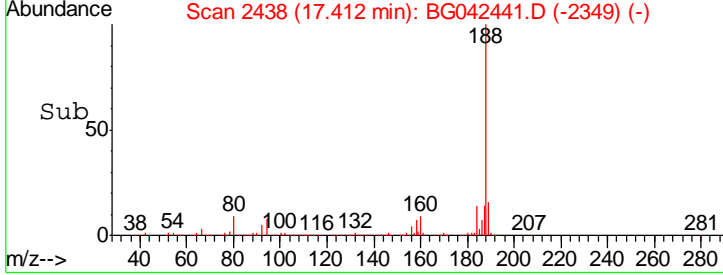
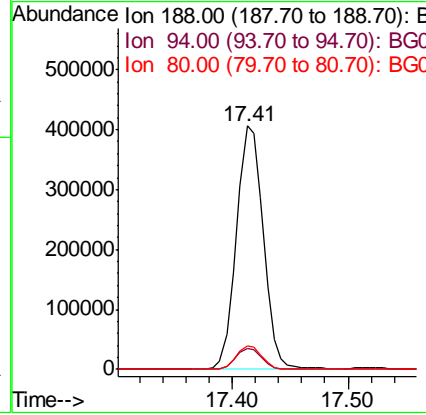
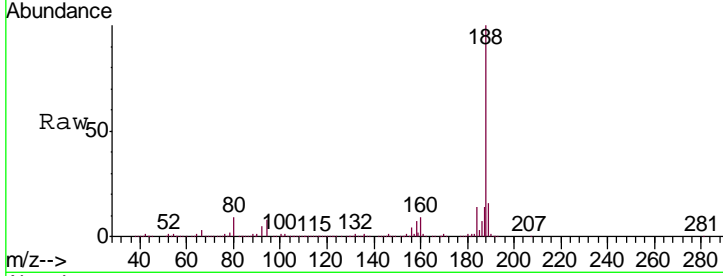




#64
 Phenanthrene-d10
 Concen: 20.000 ng
 RT: 17.41 min Scan# 2438
 Delta R.T. -0.01 min
 Lab File: BG042441.D
 Acq: 23 Aug 2019 20:04

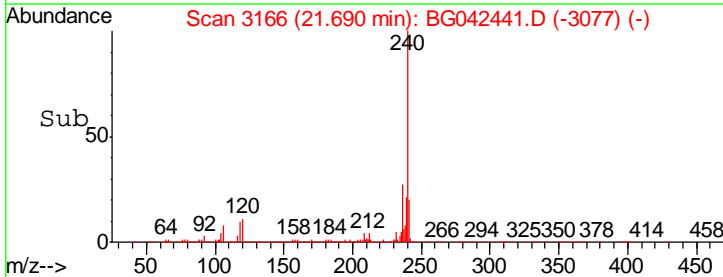
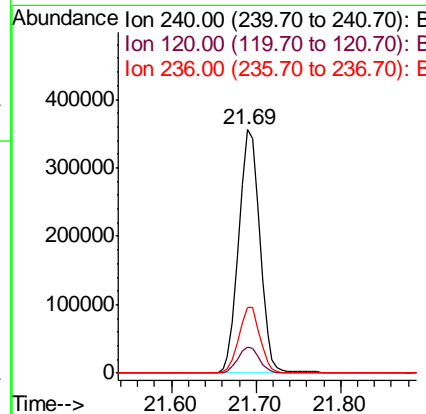
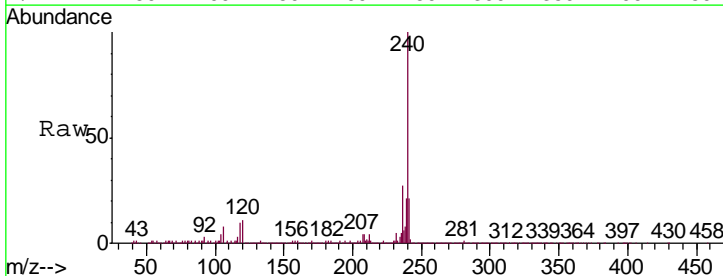
Instrument :
 BNA_G
ClientSampled :
 CFVP-228L

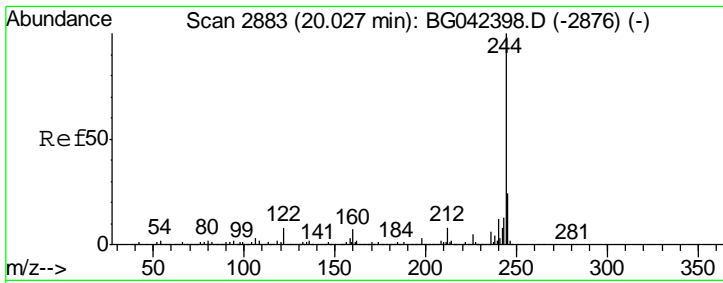
Tgt Ion	Resp	Lower	Upper
188	100		
94	8.4	4.5	6.7#
80	9.4	4.9	7.3#



#76
 Chrysene-d12
 Concen: 20.000 ng
 RT: 21.69 min Scan# 3166
 Delta R.T. -0.01 min
 Lab File: BG042441.D
 Acq: 23 Aug 2019 20:04

Tgt Ion	Resp	Lower	Upper
240	100		
120	10.8	5.7	8.5#
236	27.2	21.0	31.4



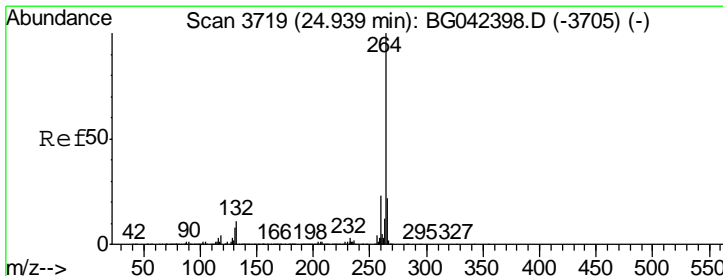
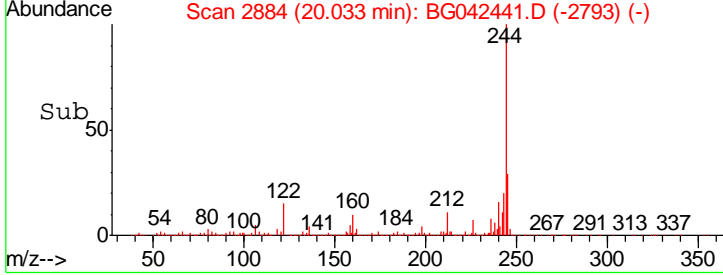
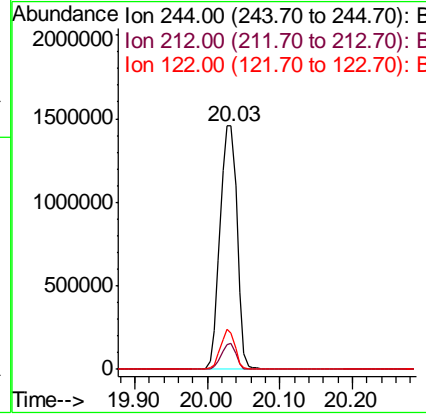
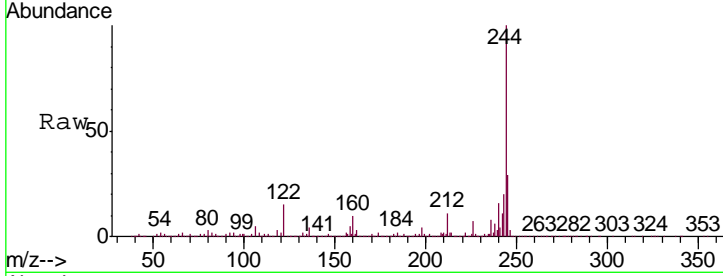


#79
 Terphenyl-d14
 Concen: 84.717 ng
 RT: 20.03 min Scan# 2884
 Delta R.T. 0.01 min
 Lab File: BG042441.D
 Acq: 23 Aug 2019 20:04

Instrument :
 BNA_G
ClientSampled :
 CFVP-228L

Tgt Ion: 244 Resp: 2393022

Ion	Ratio	Lower	Upper
244	100		
212	10.6	6.0	9.0#
122	14.9	6.7	10.1#



#87
 Perylene-d12
 Concen: 20.000 ng
 RT: 24.94 min Scan# 3719
 Delta R.T. -0.00 min
 Lab File: BG042441.D
 Acq: 23 Aug 2019 20:04

Tgt Ion: 264 Resp: 721547

Ion	Ratio	Lower	Upper
264	100		
260	23.6	18.5	27.7
265	22.6	17.6	26.4

