

Data Path : Z:\svoasrv\HPCHEM1\BNA_G\Data\BG082321\
 Data File : BG049942.D
 Acq On : 23 Aug 2021 20:56
 Operator : CG/JU
 Sample : M3398-14DL 2X
 Misc :
 ALS Vial : 13 Sample Multiplier: 1

Instrument :
 BNA_G
 ClientSampleId :
 SWCS-04-0002DL

Quant Time: Aug 24 02:28:40 2021
 Quant Method : Z:\svoasrv\HPCHEM1\BNA_G\Methods\8270-BG080321.M
 Quant Title : ASP BNA STANDARDS FOR 5 POINT CALIBRATION
 QLast Update : Mon Aug 23 16:13:24 2021
 Response via : Initial Calibration

Compound	R.T.	QIon	Response	Conc	Units	Dev(Min)

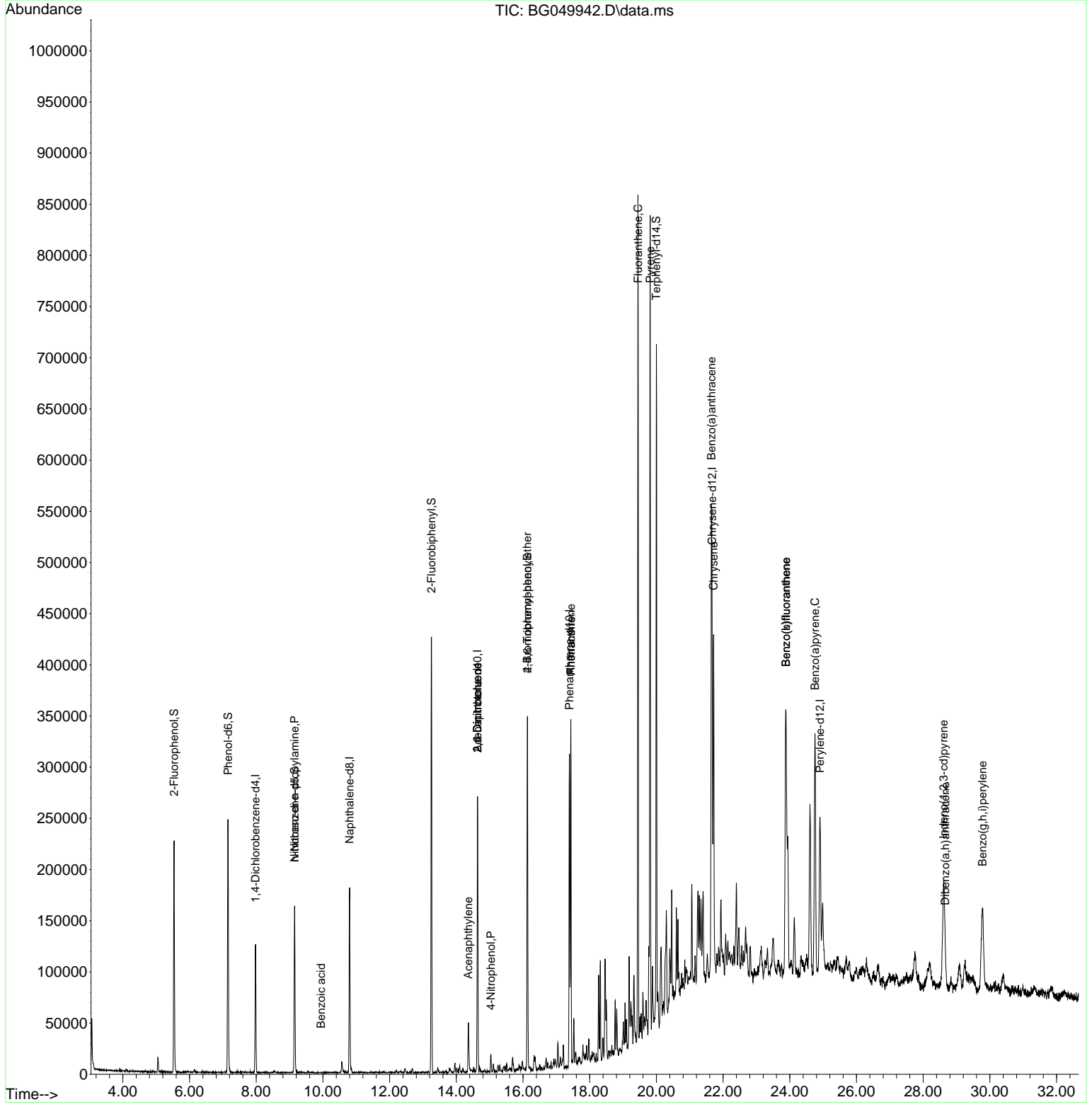
Internal Standards						
1) 1,4-Dichlorobenzene-d4	7.974	152	34473	20.000	ng	-0.01
21) Naphthalene-d8	10.800	136	147821	20.000	ng	#-0.01
39) Acenaphthene-d10	14.636	164	95601	20.000	ng	-0.01
64) Phenanthrene-d10	17.391	188	185632	20.000	ng	#-0.01
76) Chrysene-d12	21.668	240	154587	20.000	ng	-0.01
86) Perylene-d12	24.904	264	164448	20.000	ng	-0.02
System Monitoring Compounds						
5) 2-Fluorophenol	5.536	112	94775	49.283	ng	0.00
7) Phenol-d6	7.152	99	138530	47.588	ng	0.00
23) Nitrobenzene-d5	9.149	82	102570	30.705	ng	-0.01
42) 2,4,6-Tribromophenol	16.134	330	69306	49.321	ng	-0.01
45) 2-Fluorobiphenyl	13.255	172	221721	33.747	ng	0.00
79) Terphenyl-d14	19.999	244	293625	34.497	ng	-0.01
Target Compounds						
						Qvalue
19) n-Nitroso-di-n-propyla...	9.149	70	15403	7.907	ng	# 64
32) Benzoic acid	9.942	122	62	4.986	ng	# 1
49) Acenaphthylene	14.360	152	45354	5.262	ng	98
51) 2,6-Dinitrotoluene	14.636	165	13053	8.219	ng	# 10
56) 4-Nitrophenol	15.035	139	3134	2.770	ng	# 1
57) 2,4-Dinitrotoluene	14.636	165	13053	5.852	ng	# 15
67) 4-Bromophenyl-phenylether	16.128	248	4393	2.009	ng	# 1
71) Phenanthrene	17.432	178	211084	21.613	ng	95
72) Anthracene	17.432	178	211084	22.007	ng	98
75) Fluoranthene	19.447	202	504730	41.998	ng	99
78) Pyrene	19.811	202	505238	47.940	ng	98
81) Benzo(a)anthracene	21.650	228	264070	26.230	ng	98
83) Chrysene	21.715	228	249951	25.973	ng	98
87) Indeno(1,2,3-cd)pyrene	28.611	276	183431	15.467	ng	# 98
88) Benzo(b)fluoranthene	23.882	252	353585	32.784	ng	# 97
89) Benzo(k)fluoranthene	23.882	252	353585	35.147	ng	# 98
90) Benzo(a)pyrene	24.757	252	249828	25.596	ng	97
91) Dibenzo(a,h)anthracene	28.664	278	48984	4.901	ng	# 99
92) Benzo(g,h,i)perylene	29.780	276	193021	19.714	ng	# 96

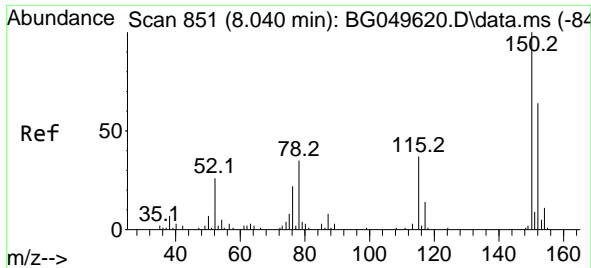
(#) = qualifier out of range (m) = manual integration (+) = signals summed

Data Path : Z:\svoasrv\HPCHEM1\BNA_G\Data\BG082321\
 Data File : BG049942.D
 Acq On : 23 Aug 2021 20:56
 Operator : CG/JU
 Sample : M3398-14DL 2X
 Misc :
 ALS Vial : 13 Sample Multiplier: 1

Instrument :
 BNA_G
ClientSampleId :
 SWCS-04-0002DL

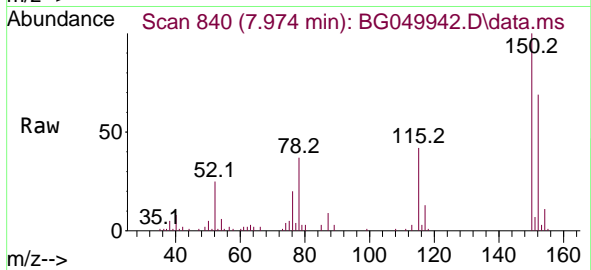
Quant Time: Aug 24 02:28:40 2021
 Quant Method : Z:\svoasrv\HPCHEM1\BNA_G\Methods\8270-BG080321.M
 Quant Title : ASP BNA STANDARDS FOR 5 POINT CALIBRATION
 QLast Update : Mon Aug 23 16:13:24 2021
 Response via : Initial Calibration



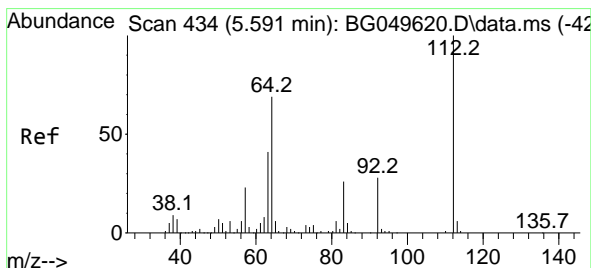
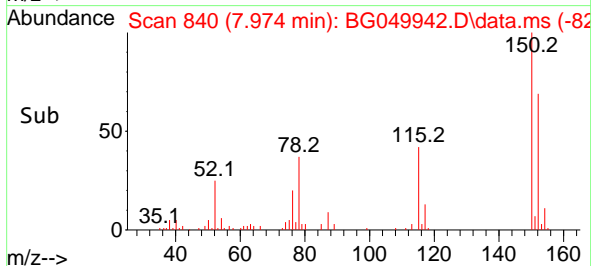
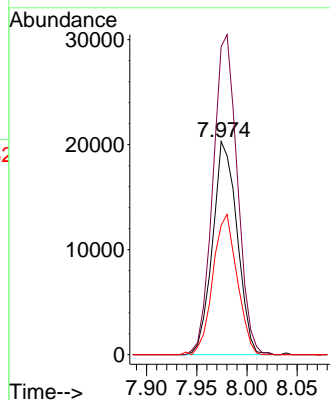


#1
 1,4-Dichlorobenzene-d4
 Concen: 20.000 ng
 RT: 7.974 min Scan# 840
 Delta R.T. -0.012 min
 Lab File: BG049942.D
 Acq: 23 Aug 2021 20:56

Instrument :
 BNA_G
 ClientSampled :
 SWCS-04-0002DL

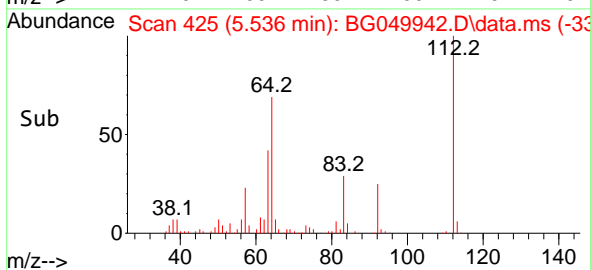
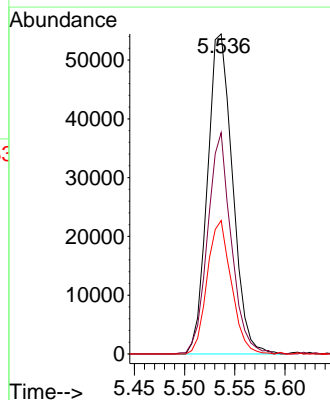
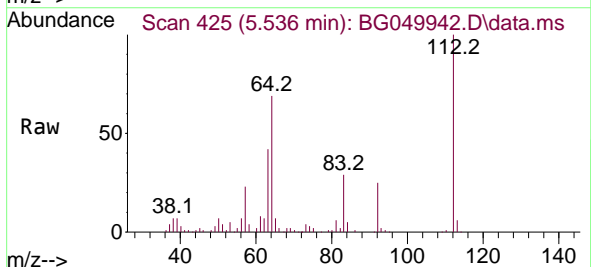


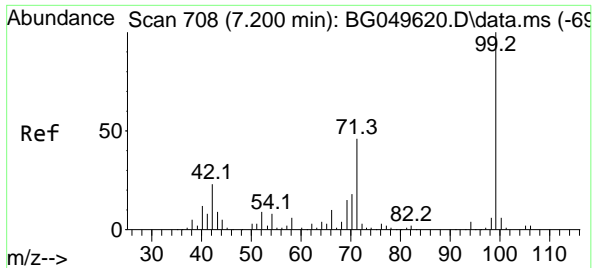
Tgt Ion:152 Resp: 34473
 Ion Ratio Lower Upper
 152 100
 150 144.6 119.4 179.0
 115 60.8 60.2 90.4



#5
 2-Fluorophenol
 Concen: 49.283 ng
 RT: 5.536 min Scan# 425
 Delta R.T. 0.000 min
 Lab File: BG049942.D
 Acq: 23 Aug 2021 20:56

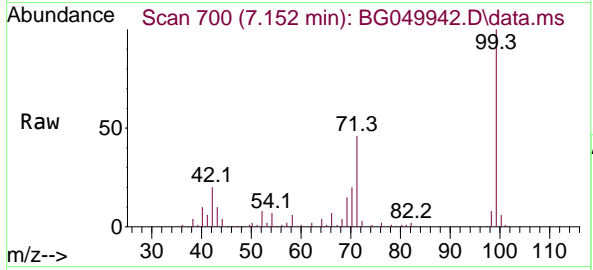
Tgt Ion:112 Resp: 94775
 Ion Ratio Lower Upper
 112 100
 64 69.1 46.7 70.1
 63 41.7 35.3 52.9





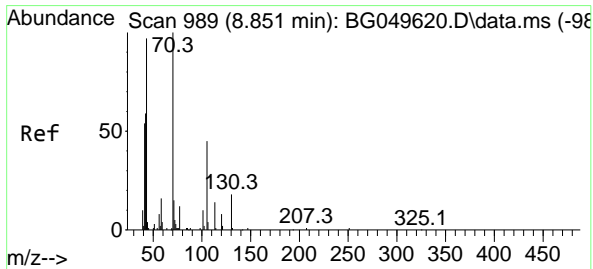
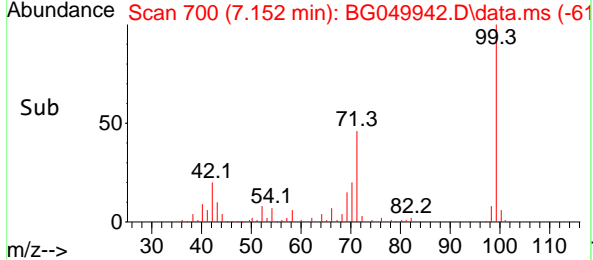
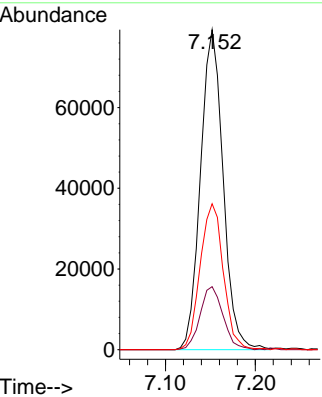
#7
Phenol-d6
Concen: 47.588 ng
RT: 7.152 min Scan# 700
Delta R.T. -0.006 min
Lab File: BG049942.D
Acq: 23 Aug 2021 20:56

Instrument :
BNA_G
ClientSampled :
SWCS-04-0002DL



Tgt Ion: 99 Resp: 138530

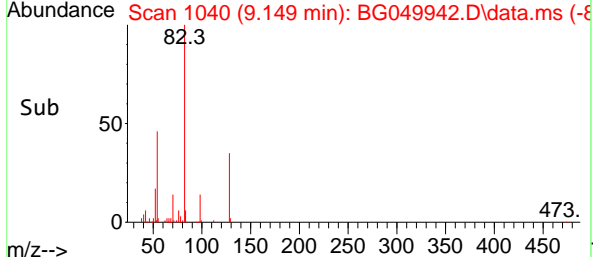
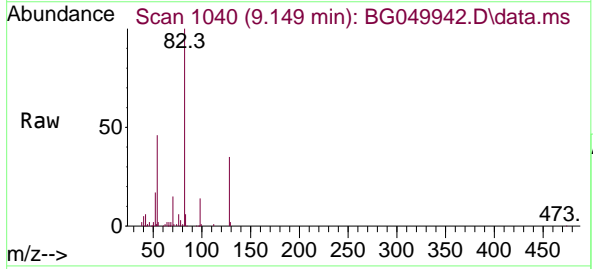
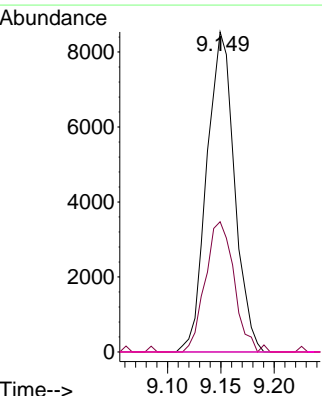
Ion	Ratio	Lower	Upper
99	100		
42	19.7	20.5	30.7#
71	45.6	41.5	62.3

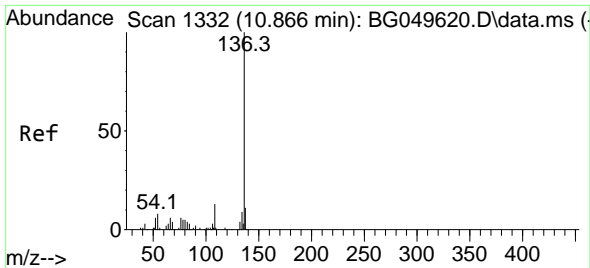


#19
n-Nitroso-di-n-propylamine
Concen: 7.907 ng
RT: 9.149 min Scan# 1040
Delta R.T. 0.353 min
Lab File: BG049942.D
Acq: 23 Aug 2021 20:56

Tgt Ion: 70 Resp: 15403

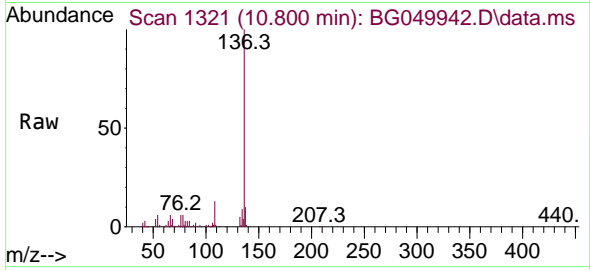
Ion	Ratio	Lower	Upper
70	100		
42	40.7	54.5	81.7#
101	0.0	9.0	13.6#
130	0.0	17.0	25.6#





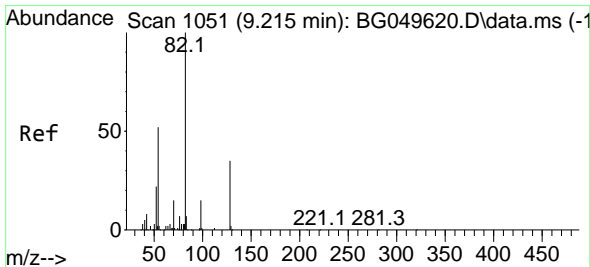
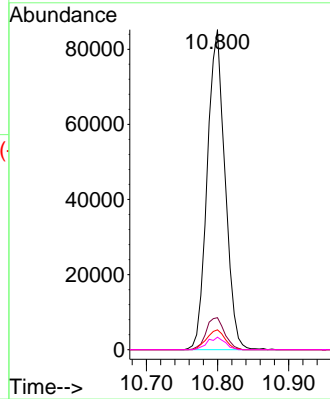
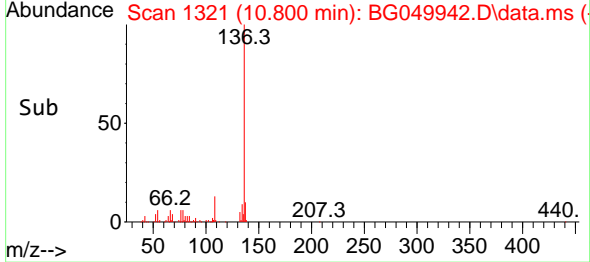
#21
 Naphthalene-d8
 Concen: 20.000 ng
 RT: 10.800 min Scan# 1321
 Delta R.T. -0.012 min
 Lab File: BG049942.D
 Acq: 23 Aug 2021 20:56

Instrument :
 BNA_G
 ClientSampled :
 SWCS-04-0002DL

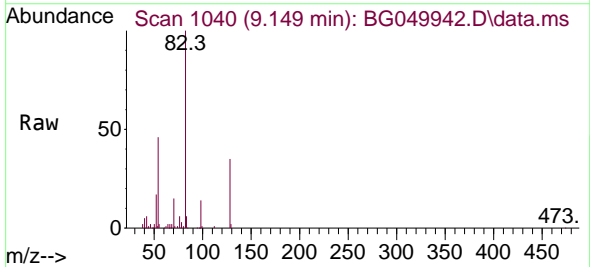


Tgt Ion:136 Resp: 147821

Ion	Ratio	Lower	Upper
136	100		
137	10.0	8.2	12.2
54	6.2	5.5	8.3
68	3.9	2.3	3.5#

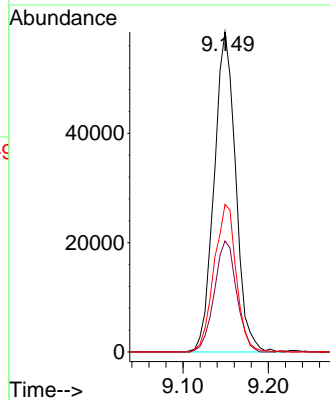
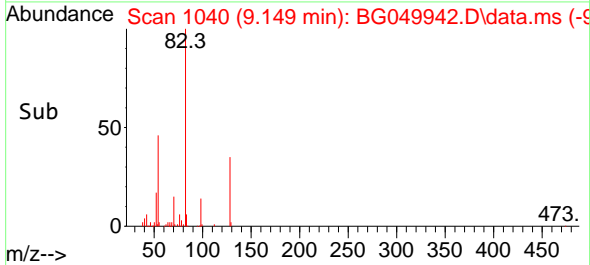


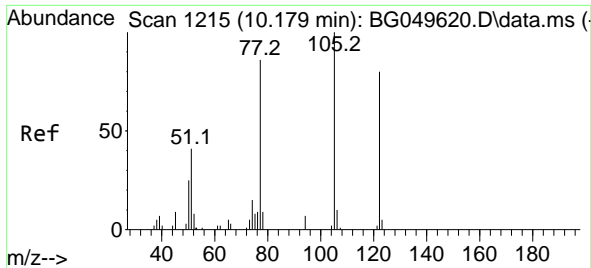
#23
 Nitrobenzene-d5
 Concen: 30.705 ng
 RT: 9.149 min Scan# 1040
 Delta R.T. -0.012 min
 Lab File: BG049942.D
 Acq: 23 Aug 2021 20:56



Tgt Ion: 82 Resp: 102570

Ion	Ratio	Lower	Upper
82	100		
128	34.7	29.8	44.6
54	46.1	45.8	68.8

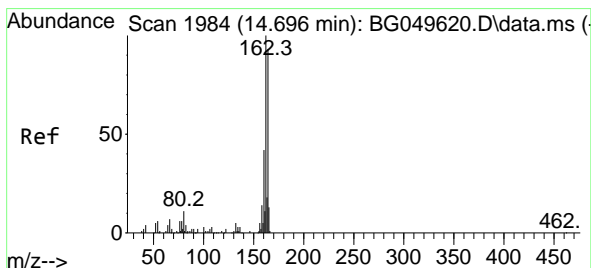
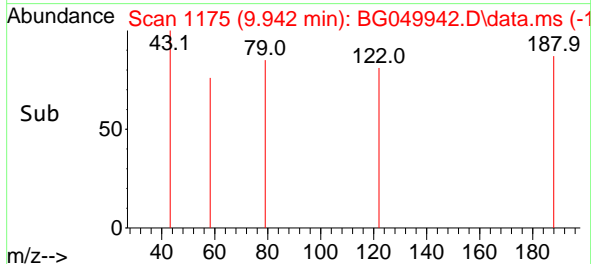
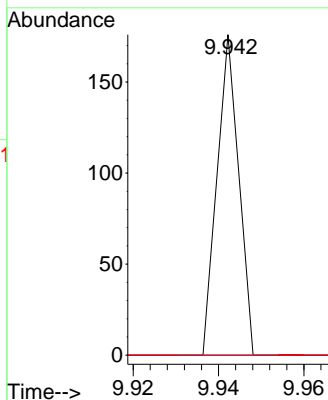
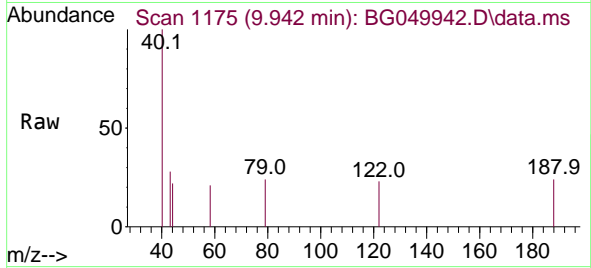




#32
 Benzoic acid
 Concen: 4.986 ng
 RT: 9.942 min Scan# 1175
 Delta R.T. -0.194 min
 Lab File: BG049942.D
 Acq: 23 Aug 2021 20:56

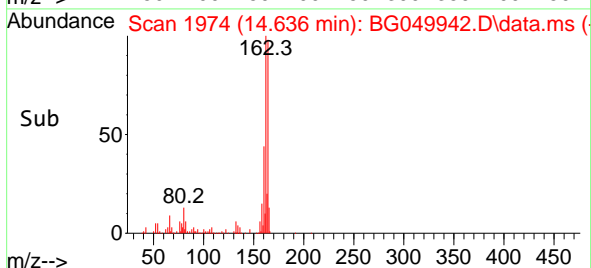
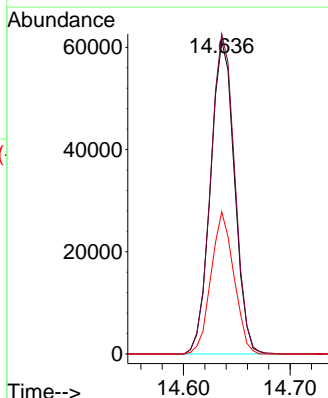
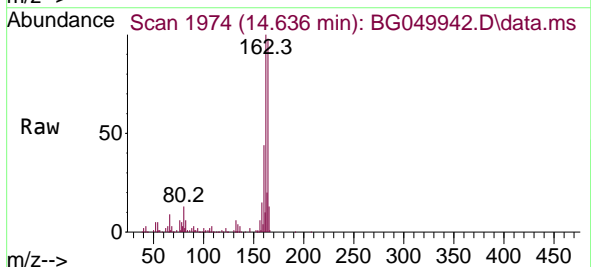
Instrument :
 BNA_G
 ClientSampled :
 SWCS-04-0002DL

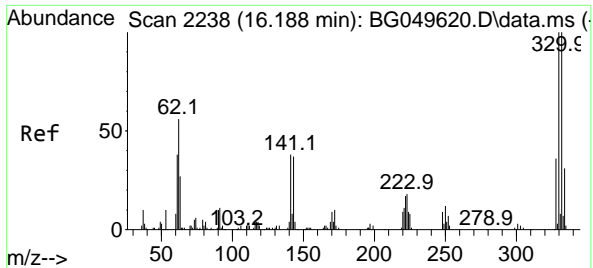
Tgt Ion:122 Resp: 62
 Ion Ratio Lower Upper
 122 100
 105 0.0 92.3 132.3#
 77 0.0 66.5 106.5#



#39
 Acenaphthene-d10
 Concen: 20.000 ng
 RT: 14.636 min Scan# 1974
 Delta R.T. -0.012 min
 Lab File: BG049942.D
 Acq: 23 Aug 2021 20:56

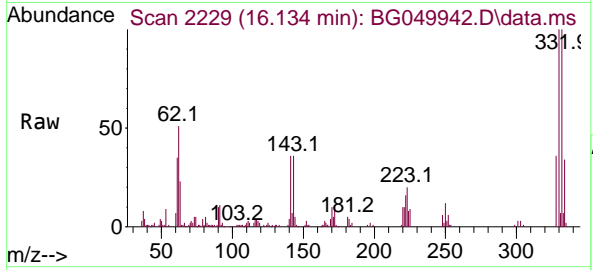
Tgt Ion:164 Resp: 95601
 Ion Ratio Lower Upper
 164 100
 162 102.2 81.4 122.0
 160 45.4 34.9 52.3



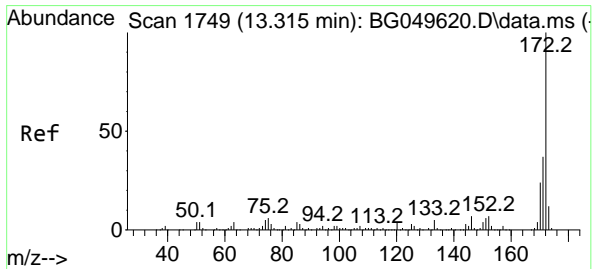
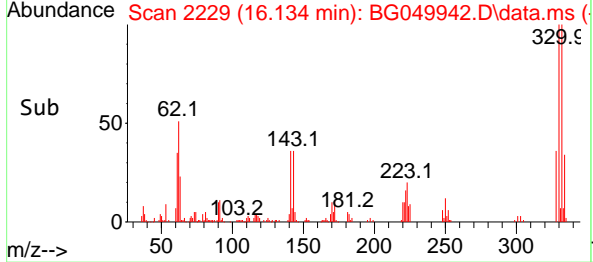
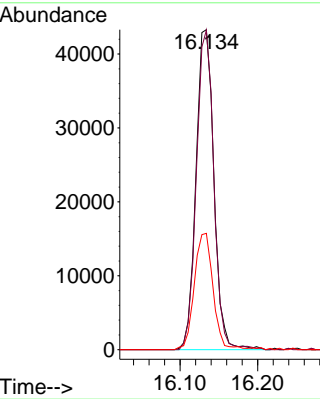


#42
 2,4,6-Tribromophenol
 Concen: 49.321 ng
 RT: 16.134 min Scan# 2229
 Delta R.T. -0.012 min
 Lab File: BG049942.D
 Acq: 23 Aug 2021 20:56

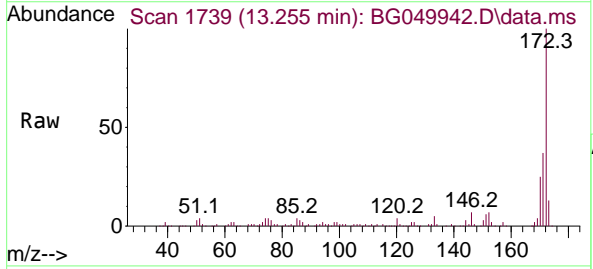
Instrument :
 BNA_G
ClientSampled :
 SWCS-04-0002DL



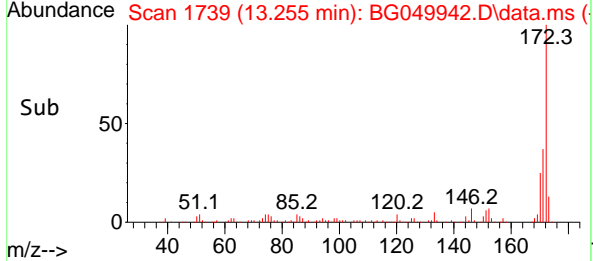
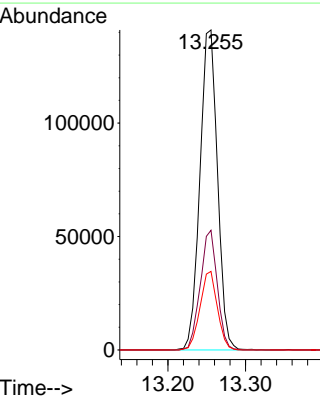
Tgt Ion:330 Resp: 69306
 Ion Ratio Lower Upper
 330 100
 332 97.1 77.3 115.9
 141 38.0 35.6 53.4

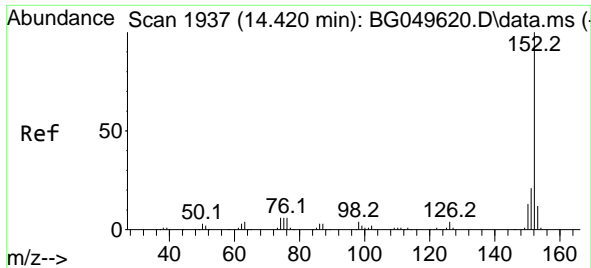


#45
 2-Fluorobiphenyl
 Concen: 33.747 ng
 RT: 13.255 min Scan# 1739
 Delta R.T. -0.006 min
 Lab File: BG049942.D
 Acq: 23 Aug 2021 20:56



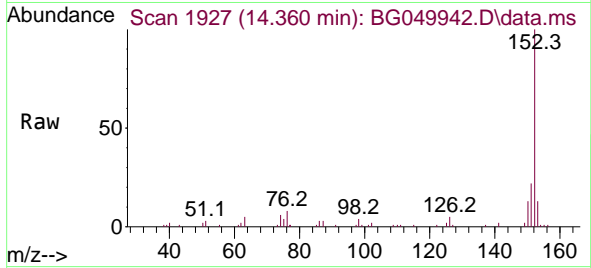
Tgt Ion:172 Resp: 221721
 Ion Ratio Lower Upper
 172 100
 171 37.4 28.6 43.0
 170 24.6 18.6 27.8



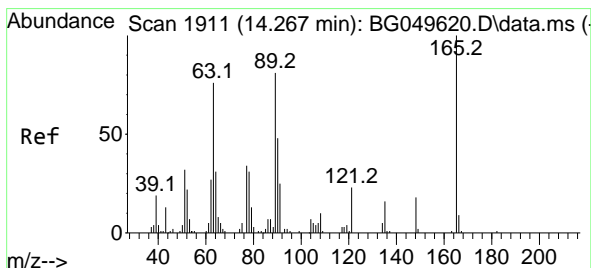
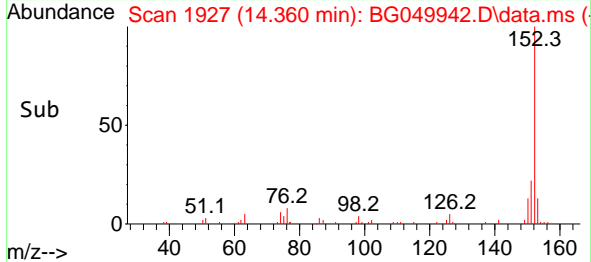
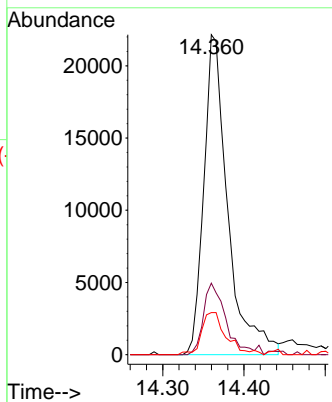


#49
 Acenaphthylene
 Concen: 5.262 ng
 RT: 14.360 min Scan# 1927
 Delta R.T. -0.012 min
 Lab File: BG049942.D
 Acq: 23 Aug 2021 20:56

Instrument :
 BNA_G
ClientSampled :
 SWCS-04-0002DL

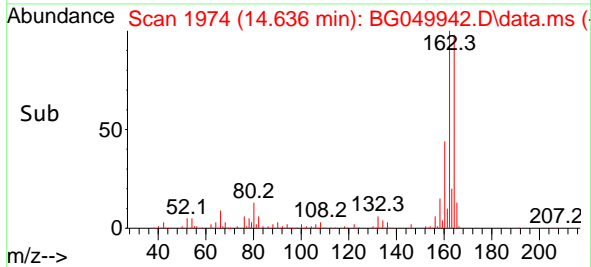
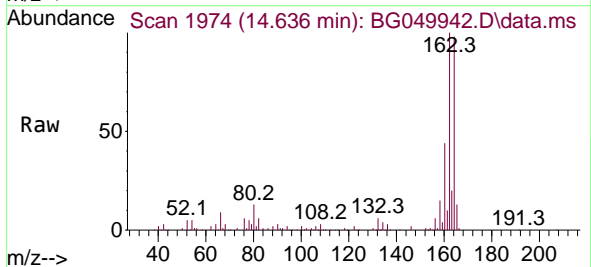
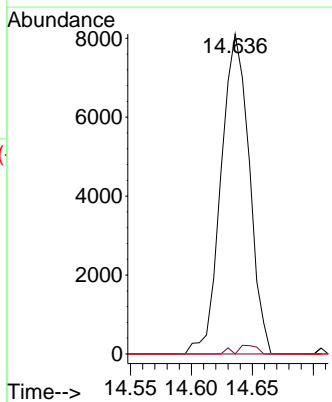


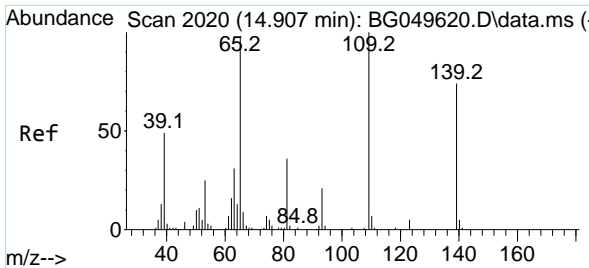
Tgt Ion:152 Resp: 45354
 Ion Ratio Lower Upper
 152 100
 151 22.4 18.2 27.4
 153 13.2 11.7 17.5



#51
 2,6-Dinitrotoluene
 Concen: 8.219 ng
 RT: 14.636 min Scan# 1974
 Delta R.T. 0.411 min
 Lab File: BG049942.D
 Acq: 23 Aug 2021 20:56

Tgt Ion:165 Resp: 13053
 Ion Ratio Lower Upper
 165 100
 63 0.0 63.3 94.9#
 89 0.0 63.4 95.0#

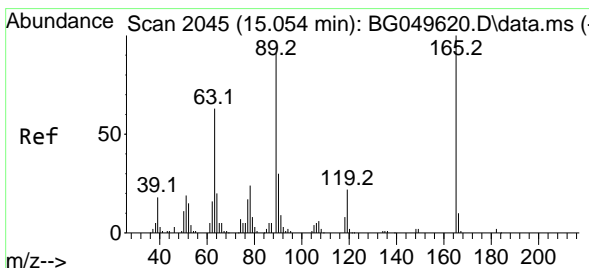
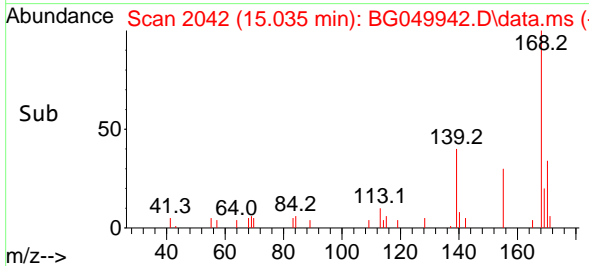
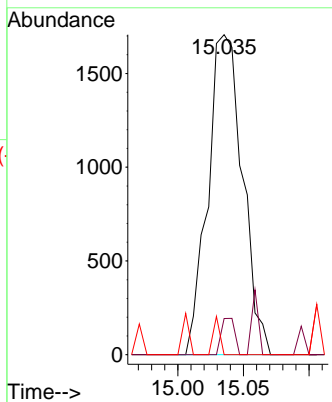
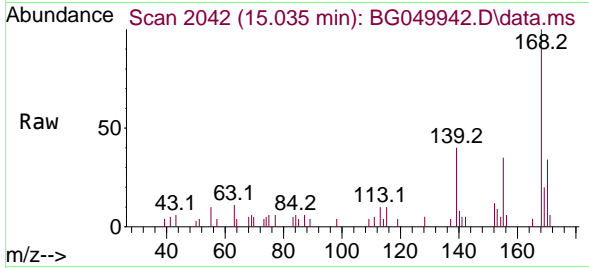




#56
 4-Nitrophenol
 Concen: 2.770 ng
 RT: 15.035 min Scan# 2042
 Delta R.T. 0.147 min
 Lab File: BG049942.D
 Acq: 23 Aug 2021 20:56

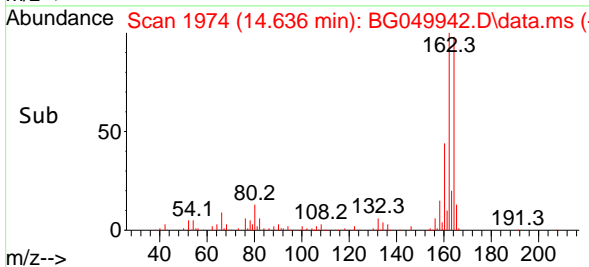
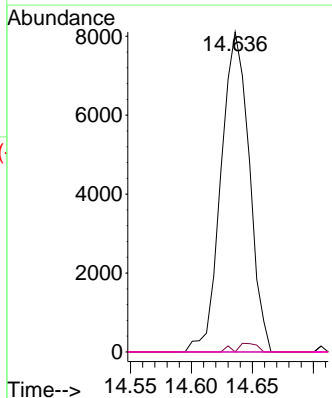
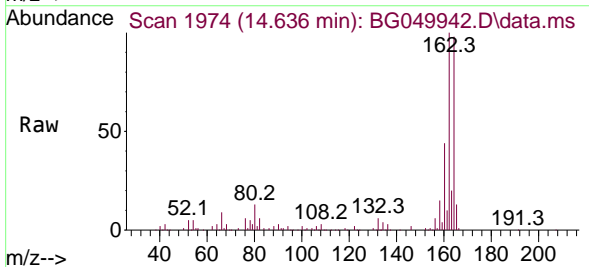
Instrument :
 BNA_G
 ClientSampled :
 SWCS-04-0002DL

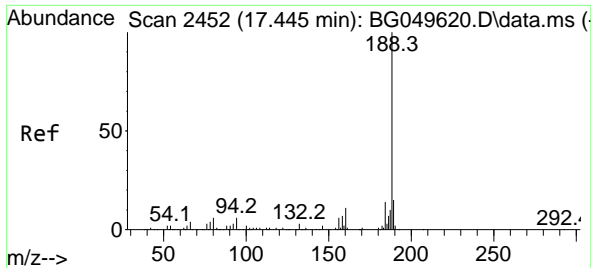
Tgt Ion	Resp	Lower	Upper
139	100		
109	11.3	116.3	156.3#
65	0.0	105.0	145.0#



#57
 2,4-Dinitrotoluene
 Concen: 5.852 ng
 RT: 14.636 min Scan# 1974
 Delta R.T. -0.382 min
 Lab File: BG049942.D
 Acq: 23 Aug 2021 20:56

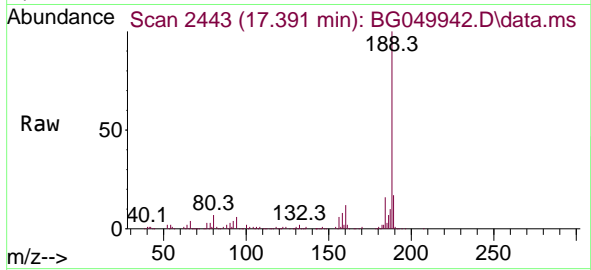
Tgt Ion	Resp	Lower	Upper
165	100		
63	0.0	48.0	72.0#
89	0.0	65.4	98.0#
182	0.0	2.0	3.0#



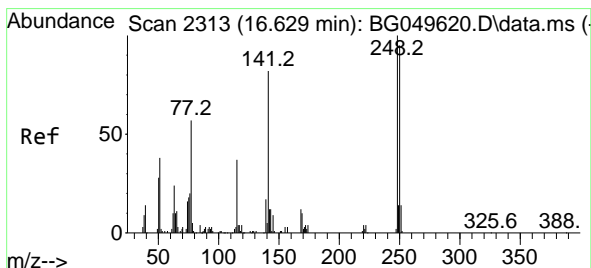
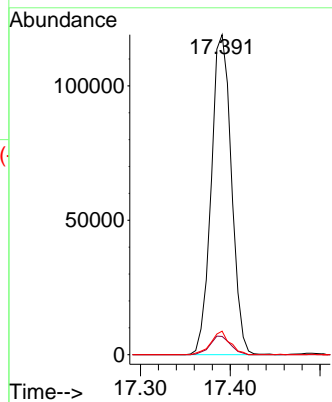
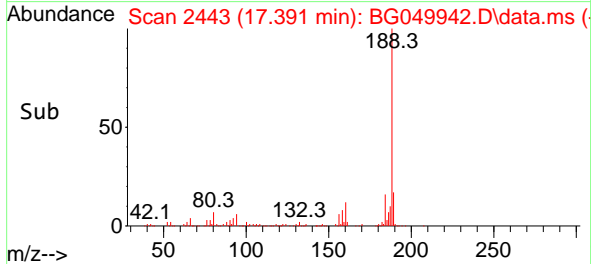


#64
 Phenanthrene-d10
 Concen: 20.000 ng
 RT: 17.391 min Scan# 2443
 Delta R.T. -0.012 min
 Lab File: BG049942.D
 Acq: 23 Aug 2021 20:56

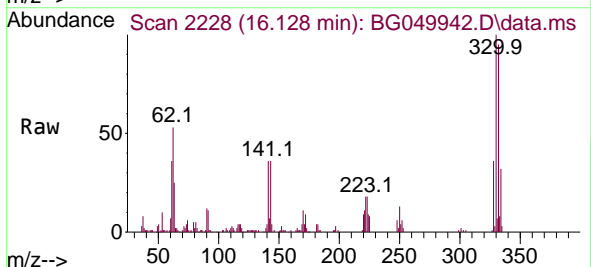
Instrument :
 BNA_G
 ClientSampled :
 SWCS-04-0002DL



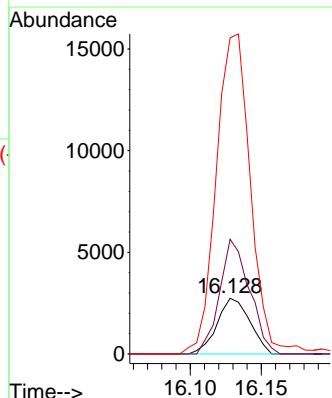
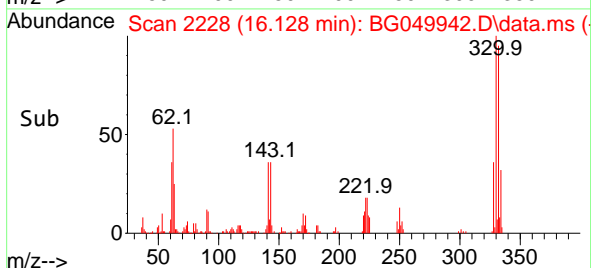
Tgt Ion:188 Resp: 185632
 Ion Ratio Lower Upper
 188 100
 94 5.7 5.4 8.0
 80 7.3 3.7 5.5#

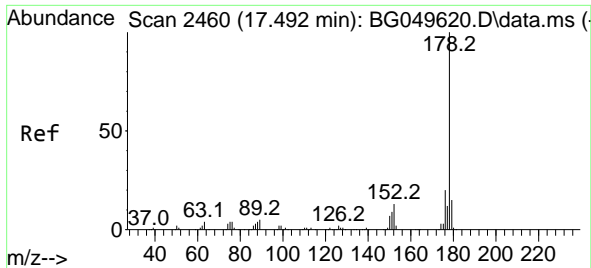


#67
 4-Bromophenyl-phenylether
 Concen: 2.009 ng
 RT: 16.128 min Scan# 2228
 Delta R.T. -0.452 min
 Lab File: BG049942.D
 Acq: 23 Aug 2021 20:56



Tgt Ion:248 Resp: 4393
 Ion Ratio Lower Upper
 248 100
 250 206.1 76.1 114.1#
 141 568.3 65.4 98.2#

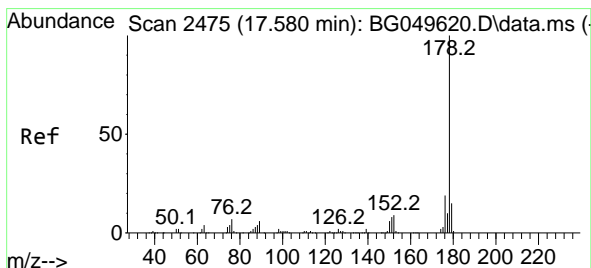
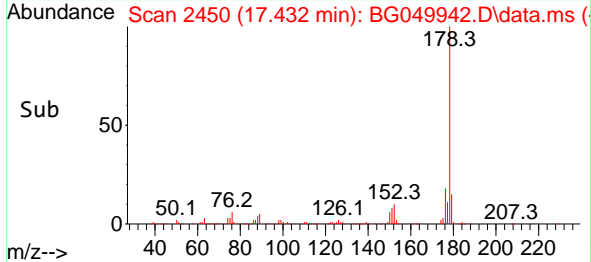
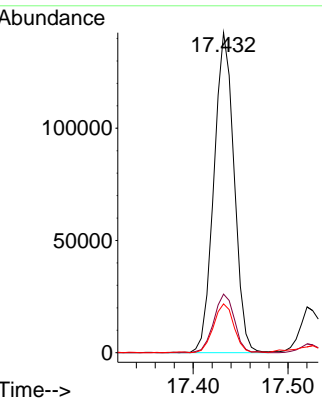
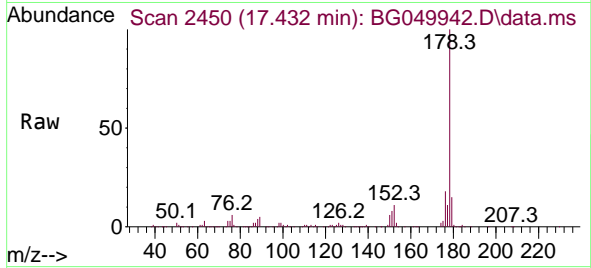




#71
 Phenanthrene
 Concen: 21.613 ng
 RT: 17.432 min Scan# 2450
 Delta R.T. -0.012 min
 Lab File: BG049942.D
 Acq: 23 Aug 2021 20:56

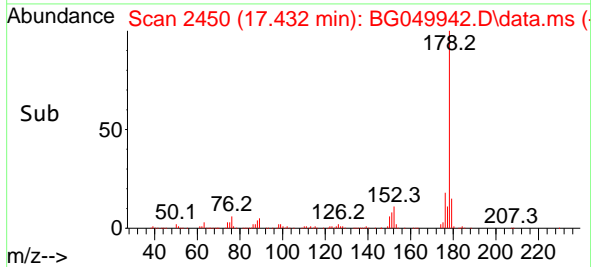
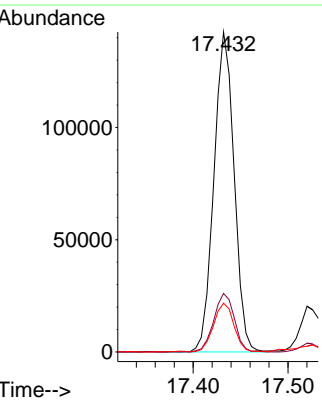
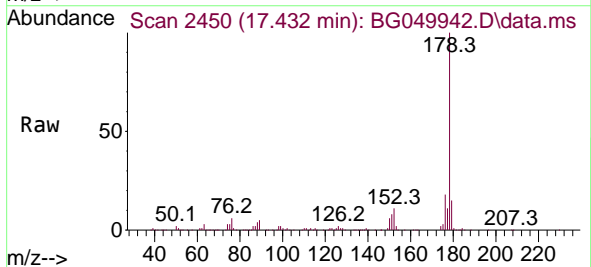
Instrument :
 BNA_G
 ClientSampled :
 SWCS-04-0002DL

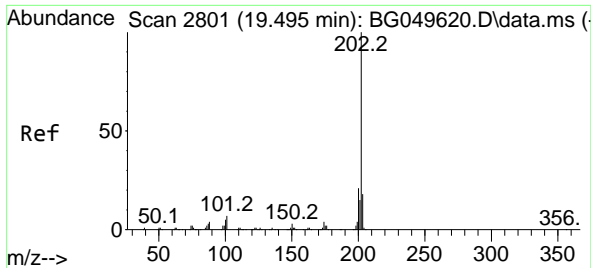
Tgt Ion	Resp	Lower	Upper
178	100		
176	18.3	16.0	24.0
179	15.2	14.2	21.4



#72
 Anthracene
 Concen: 22.007 ng
 RT: 17.432 min Scan# 2450
 Delta R.T. -0.106 min
 Lab File: BG049942.D
 Acq: 23 Aug 2021 20:56

Tgt Ion	Resp	Lower	Upper
178	100		
176	18.3	14.6	21.8
179	15.2	13.4	20.0

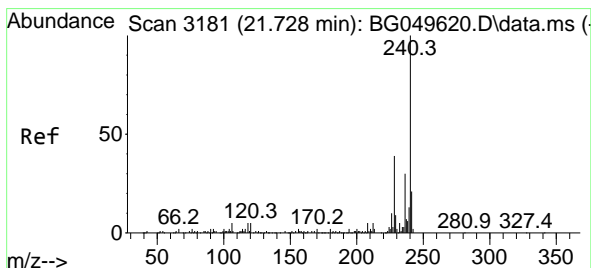
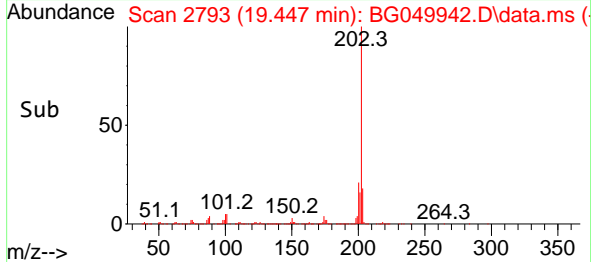
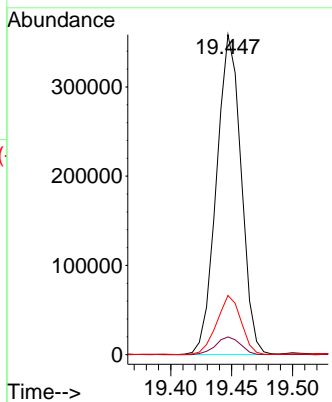
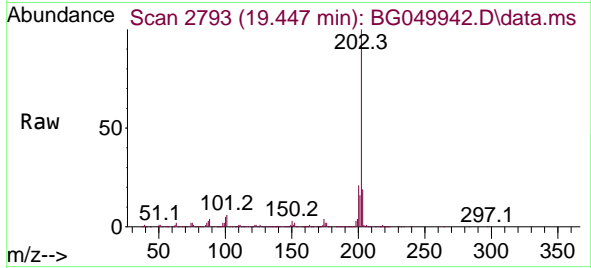




#75
 Fluoranthene
 Concen: 41.998 ng
 RT: 19.447 min Scan# 2793
 Delta R.T. -0.012 min
 Lab File: BG049942.D
 Acq: 23 Aug 2021 20:56

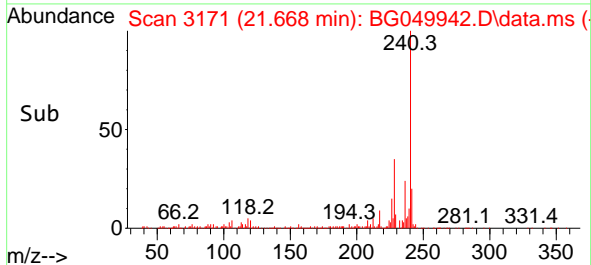
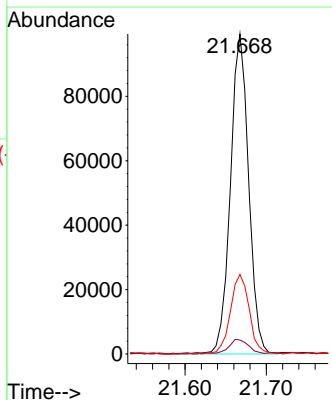
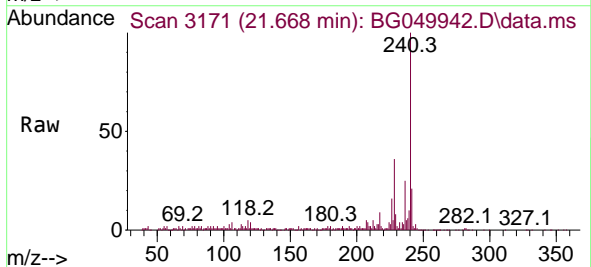
Instrument :
 BNA_G
ClientSampleId :
 SWCS-04-0002DL

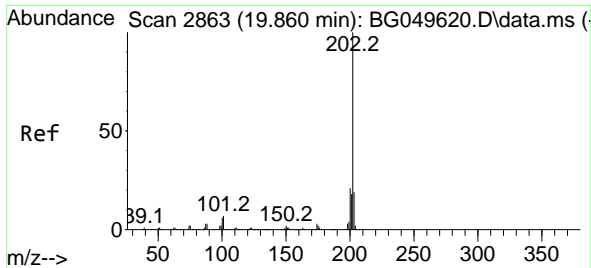
Tgt Ion	Resp	Lower	Upper
202	100		
101	5.5	0.0	24.7
203	18.5	0.0	38.5



#76
 Chrysene-d12
 Concen: 20.000 ng
 RT: 21.668 min Scan# 3171
 Delta R.T. -0.012 min
 Lab File: BG049942.D
 Acq: 23 Aug 2021 20:56

Tgt Ion	Resp	Lower	Upper
240	100		
120	4.4	4.2	6.2
236	24.8	21.8	32.6



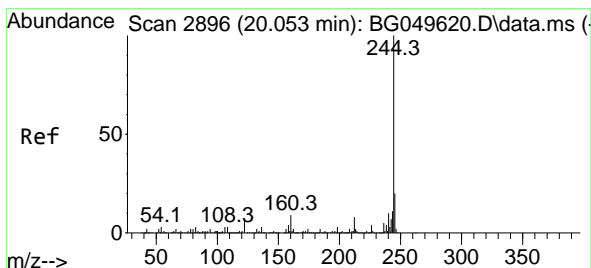
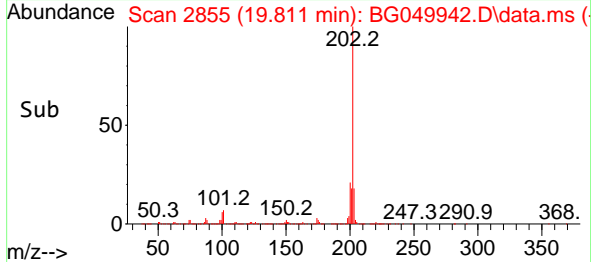
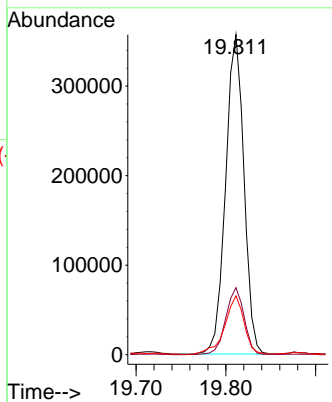
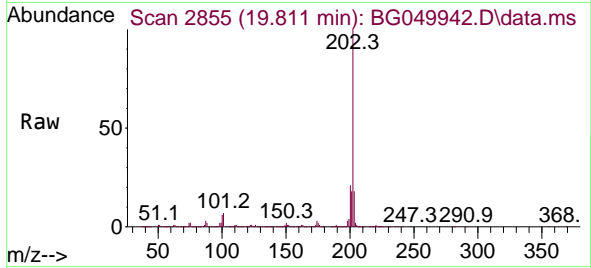


#78
 Pyrene
 Concen: 47.940 ng
 RT: 19.811 min Scan# 2855
 Delta R.T. -0.006 min
 Lab File: BG049942.D
 Acq: 23 Aug 2021 20:56

Instrument :
 BNA_G
 ClientSampleId :
 SWCS-04-0002DL

Tgt Ion:202 Resp: 505238

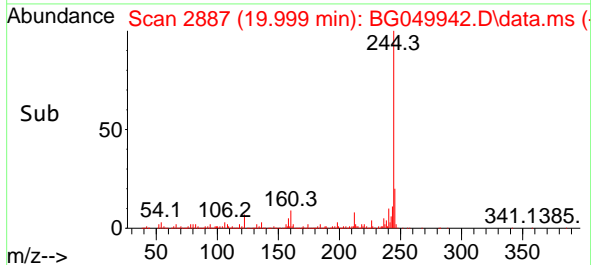
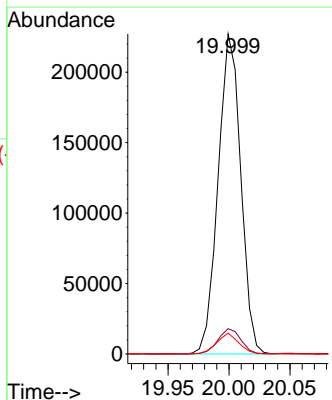
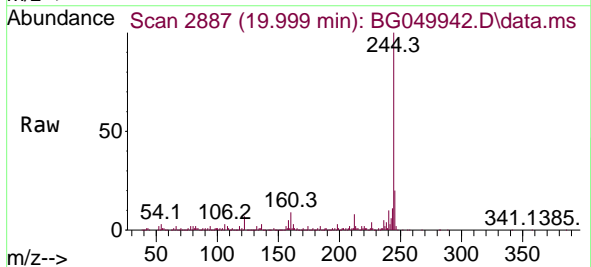
Ion	Ratio	Lower	Upper
202	100		
200	21.0	15.8	23.8
203	18.4	14.6	21.8

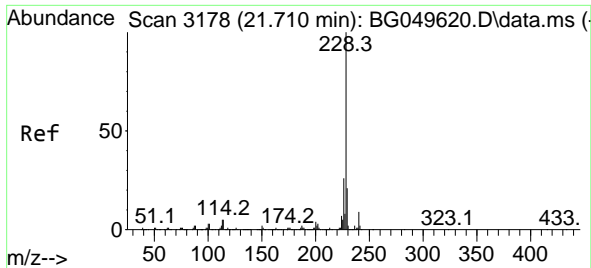


#79
 Terphenyl-d14
 Concen: 34.497 ng
 RT: 19.999 min Scan# 2887
 Delta R.T. -0.012 min
 Lab File: BG049942.D
 Acq: 23 Aug 2021 20:56

Tgt Ion:244 Resp: 293625

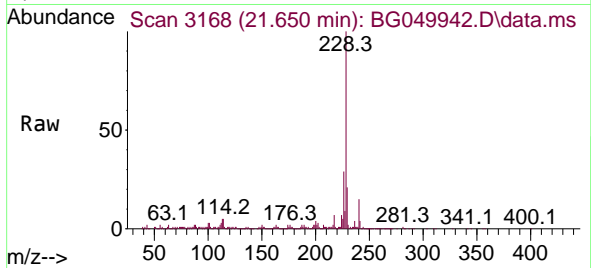
Ion	Ratio	Lower	Upper
244	100		
212	7.9	6.9	10.3
122	6.5	5.0	7.6



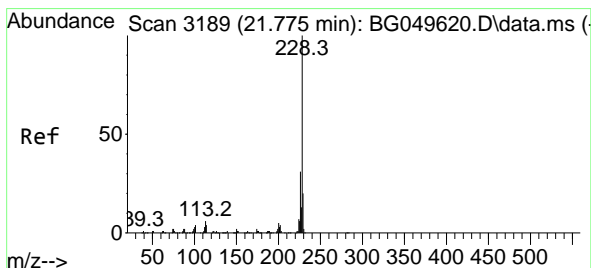
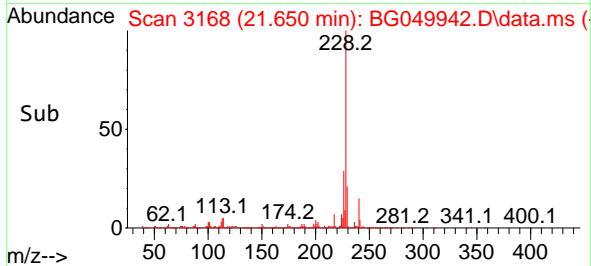
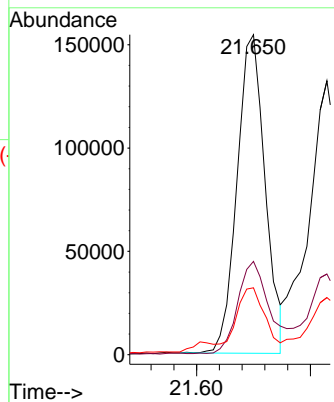


#81
 Benzo(a)anthracene
 Concen: 26.230 ng
 RT: 21.650 min Scan# 3168
 Delta R.T. -0.006 min
 Lab File: BG049942.D
 Acq: 23 Aug 2021 20:56

Instrument :
 BNA_G
 ClientSampled :
 SWCS-04-0002DL

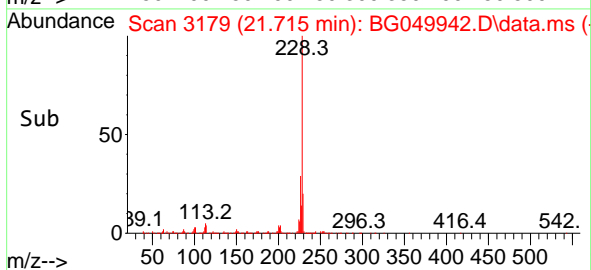
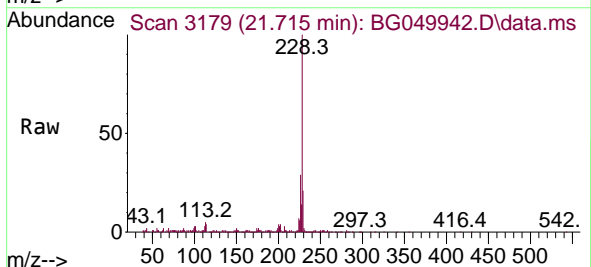
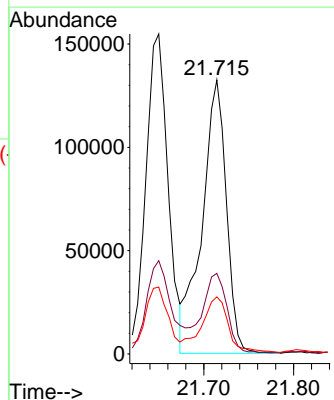


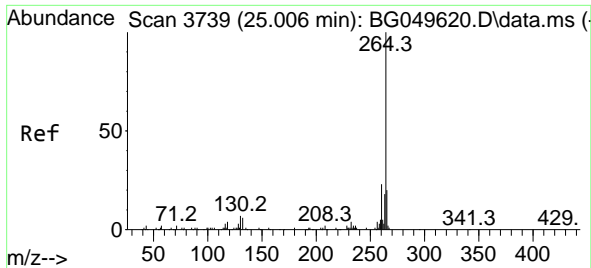
Tgt Ion:228 Resp: 264070
 Ion Ratio Lower Upper
 228 100
 226 29.1 22.7 34.1
 229 20.9 16.0 24.0



#83
 Chrysene
 Concen: 25.973 ng
 RT: 21.715 min Scan# 3179
 Delta R.T. -0.012 min
 Lab File: BG049942.D
 Acq: 23 Aug 2021 20:56

Tgt Ion:228 Resp: 249951
 Ion Ratio Lower Upper
 228 100
 226 29.4 23.1 34.7
 229 20.9 15.3 22.9



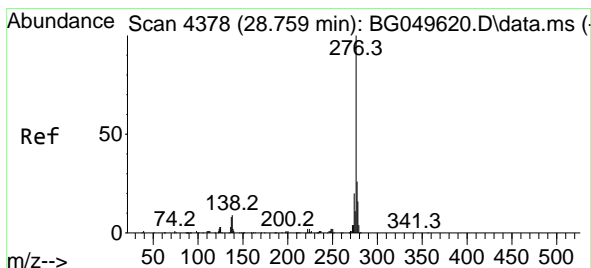
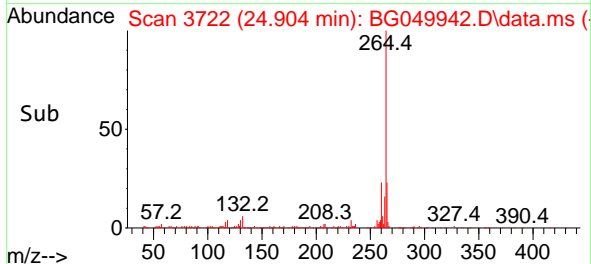
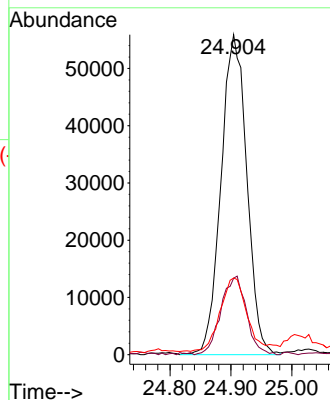
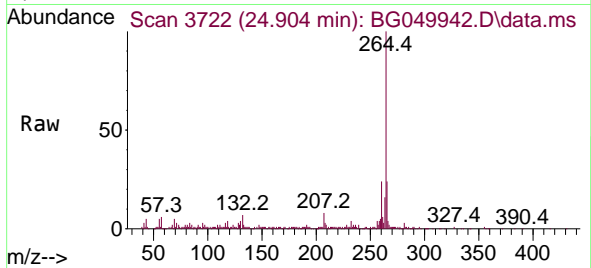


#86
 Perylene-d12
 Concen: 20.000 ng
 RT: 24.904 min Scan# 3722
 Delta R.T. -0.018 min
 Lab File: BG049942.D
 Acq: 23 Aug 2021 20:56

Instrument :
 BNA_G
 ClientSampleId :
 SWCS-04-0002DL

Tgt Ion:264 Resp: 164448

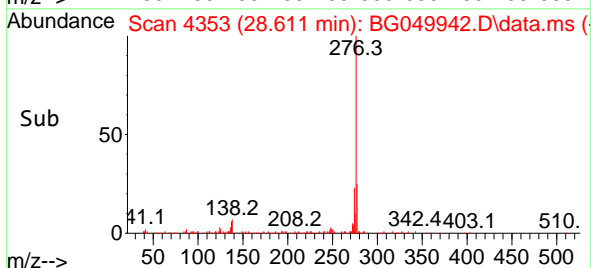
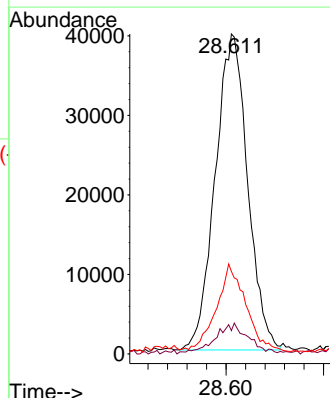
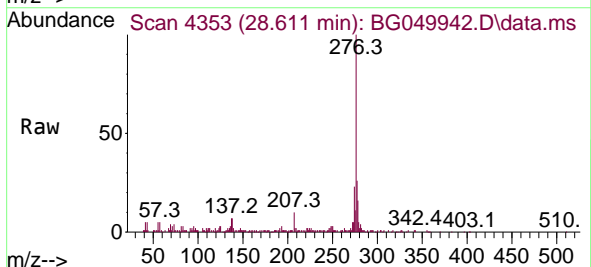
Ion	Ratio	Lower	Upper
264	100		
260	23.9	19.4	29.2
265	23.9	16.9	25.3

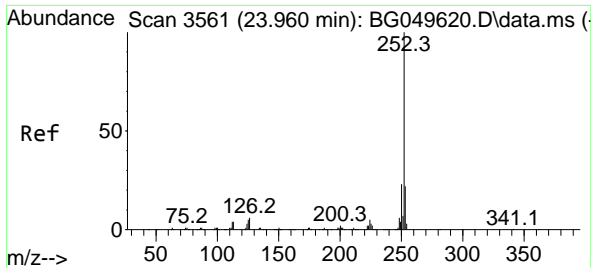


#87
 Indeno(1,2,3-cd)pyrene
 Concen: 15.467 ng
 RT: 28.611 min Scan# 4353
 Delta R.T. -0.035 min
 Lab File: BG049942.D
 Acq: 23 Aug 2021 20:56

Tgt Ion:276 Resp: 183431

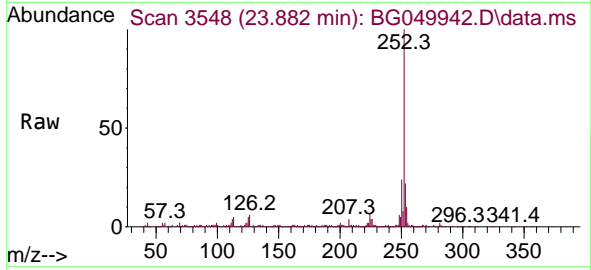
Ion	Ratio	Lower	Upper
276	100		
138	4.4	5.1	7.7#
277	25.2	19.8	29.6



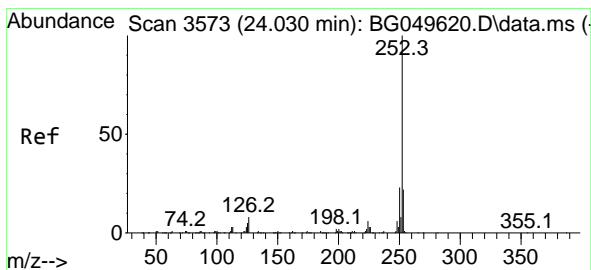
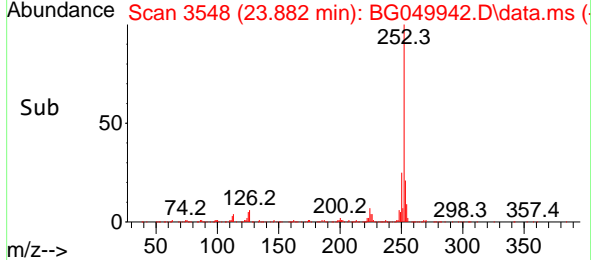
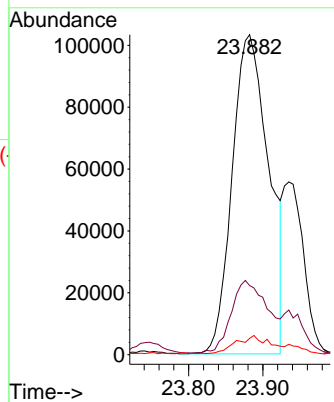


#88
 Benzo(b)fluoranthene
 Concen: 32.784 ng
 RT: 23.882 min Scan# 3548
 Delta R.T. -0.012 min
 Lab File: BG049942.D
 Acq: 23 Aug 2021 20:56

Instrument :
 BNA_G
ClientSampleId :
 SWCS-04-0002DL

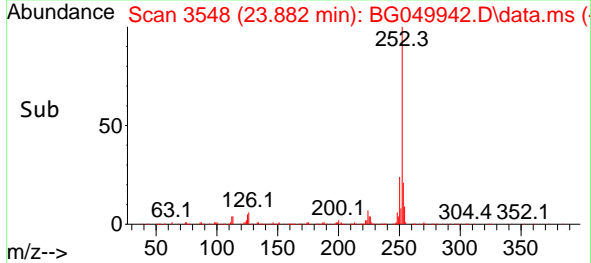
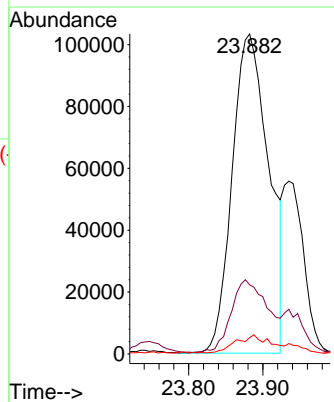
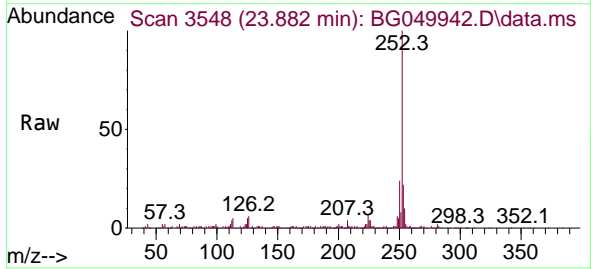


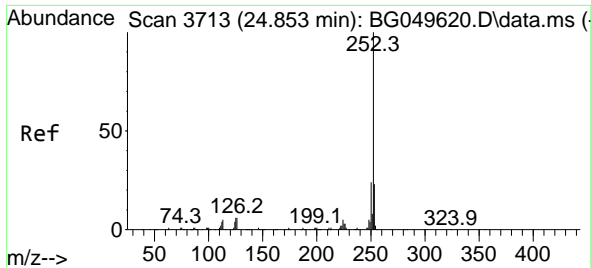
Tgt Ion:252 Resp: 353585
 Ion Ratio Lower Upper
 252 100
 253 21.6 16.2 24.4
 125 5.1 3.0 4.4#



#89
 Benzo(k)fluoranthene
 Concen: 35.147 ng
 RT: 23.882 min Scan# 3548
 Delta R.T. -0.076 min
 Lab File: BG049942.D
 Acq: 23 Aug 2021 20:56

Tgt Ion:252 Resp: 353585
 Ion Ratio Lower Upper
 252 100
 253 21.6 18.0 27.0
 125 5.1 3.1 4.7#

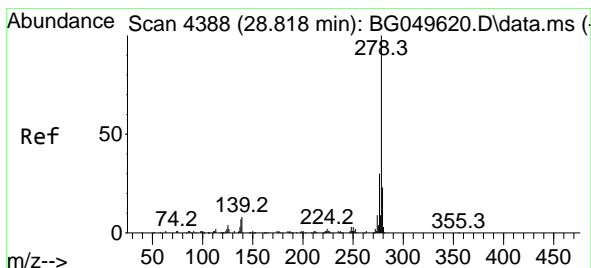
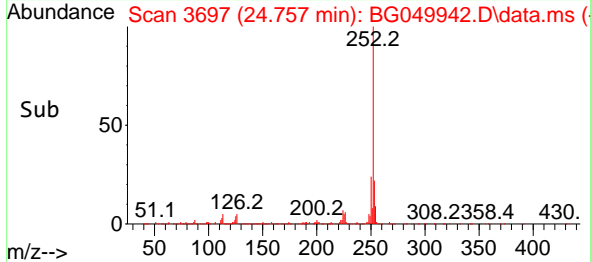
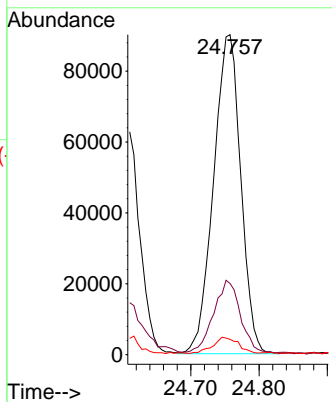
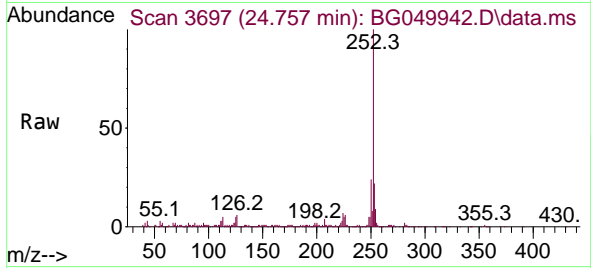




#90
 Benzo(a)pyrene
 Concen: 25.596 ng
 RT: 24.757 min Scan# 3697
 Delta R.T. -0.018 min
 Lab File: BG049942.D
 Acq: 23 Aug 2021 20:56

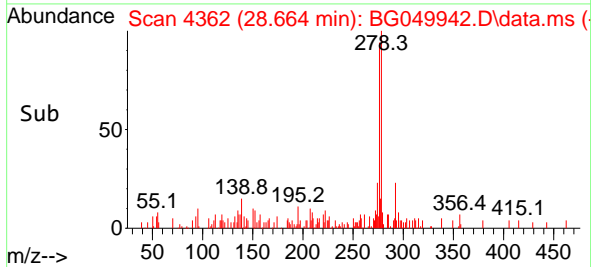
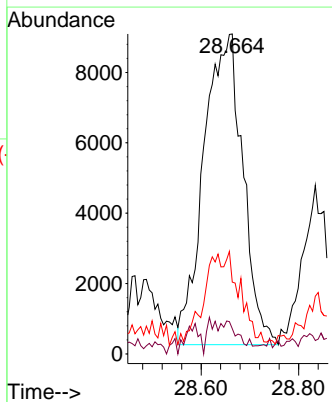
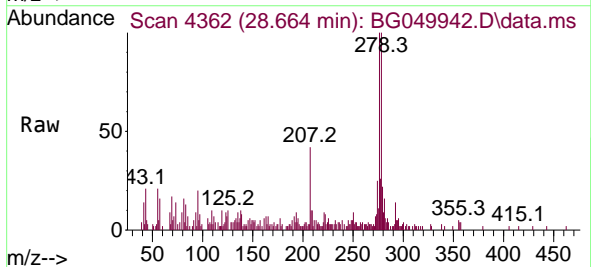
Instrument :
 BNA_G
 ClientSampled :
 SWCS-04-0002DL

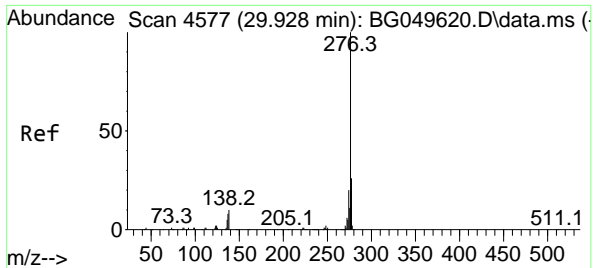
Tgt Ion	Resp	Lower	Upper
252	100		
253	22.3	16.6	25.0
125	4.8	3.5	5.3



#91
 Dibenzo(a,h)anthracene
 Concen: 4.901 ng
 RT: 28.664 min Scan# 4362
 Delta R.T. -0.035 min
 Lab File: BG049942.D
 Acq: 23 Aug 2021 20:56

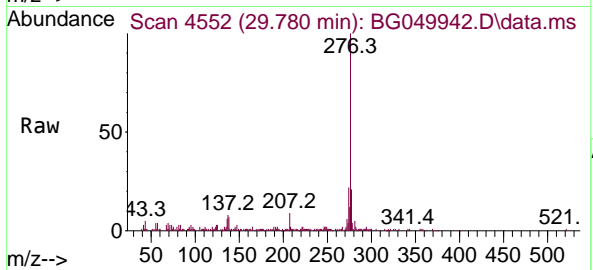
Tgt Ion	Resp	Lower	Upper
278	100		
139	7.9	4.6	6.8#
279	22.5	17.9	26.9





#92
 Benzo(g,h,i)perylene
 Concen: 19.714 ng
 RT: 29.780 min Scan# 4552
 Delta R.T. -0.035 min
 Lab File: BG049942.D
 Acq: 23 Aug 2021 20:56

Instrument :
 BNA_G
ClientSampled :
 SWCS-04-0002DL



Tgt Ion: 276 Resp: 193021

Ion	Ratio	Lower	Upper
276	100		
277	21.4	18.4	27.6
138	6.9	7.0	10.6#

