

Data Path : Z:\HPCHEM1\BNA G\DATA\BG082417\
 Data File : BG028463.D
 Acq On : 24 Aug 2017 16:48
 Operator : SJ/JU
 Sample : I4840-12
 Misc :
 ALS Vial : 10 Sample Multiplier: 1

Instrument :
 BNA_G
 ClientSampleId :
 B0AL1

Quant Time: Aug 25 01:09:16 2017
 Quant Method : Z:\HPCHEM1\BNA G\METHODS\SOM-EPA-BG080217.M
 Quant Title : SVOA CALIBRATION
 QLast Update : Fri Aug 25 01:07:54 2017
 Response via : Initial Calibration

Internal Standards	R.T.	QIon	Response	Conc	Units	Dev(Min)
1) 1,4-Dichlorobenzene-d4	8.34	152	38281	20.00	ng/ul	0.00
18) Naphthalene-d8	11.16	136	167378	20.00	ng/ul	0.00
35) Acenaphthene-d10	14.95	164	121975	20.00	ng/ul	0.00
61) Phenanthrene-d10	17.80	188	218328	20.00	ng/ul	0.10
75) Chrysene-d12	22.03	240	390787	20.00	ng/ul	0.00
83) Perylene-d12	25.53	264	388831	20.00	ng/ul	0.00

System Monitoring Compounds

3) 1,4-Dioxane-d8	3.82	96	2018	2.45	ng/uL	0.01
5) Phenol-d5	7.49	99	44337	10.55	ng/ul	0.00
7) Bis-(2-Chloroethyl)ether-d	7.65	67	26385	9.91	ng/ul	0.00
9) 2-Chlorophenol-d4	7.87	132	32793	12.36	ng/ul	0.00
13) 4-Methylphenol-d8	9.03	113	38171	10.86	ng/ul	0.00
19) Nitrobenzene-d5	9.51	128	17233	13.17	ng/ul	0.00
22) 2-Nitrophenol-d4	10.23	143	20959	14.61	ng/ul	0.00
26) 2,4-Dichlorophenol-d3	10.78	165	38506	12.97	ng/ul	0.00
29) 4-Chloroaniline-d4	11.30	131	32328	9.78	ng/ul	0.00
43) Dimethylphthalate-d6	14.34	166	147218	13.57	ng/ul	0.00
46) Acenaphthylene-d8	14.64	160	159035	13.00	ng/ul	0.00
51) 4-Nitrophenol-d4	15.15	143	18157	10.53	ng/ul	0.00
57) Fluorene-d10	15.94	176	122031	12.54	ng/ul	0.00
62) 4,6-Dinitro-2-methylphenol	16.06	200	20727	14.61	ng/ul	0.00
70) Anthracene-d10	17.80	188	218328	20.85	ng/ul	0.00
76) Pyrene-d10	20.07	212	261133	13.03	ng/ul	0.00
87) Benzo(a)pyrene-d12	25.29	264	255866	14.06	ng/ul	0.00

Target Compounds

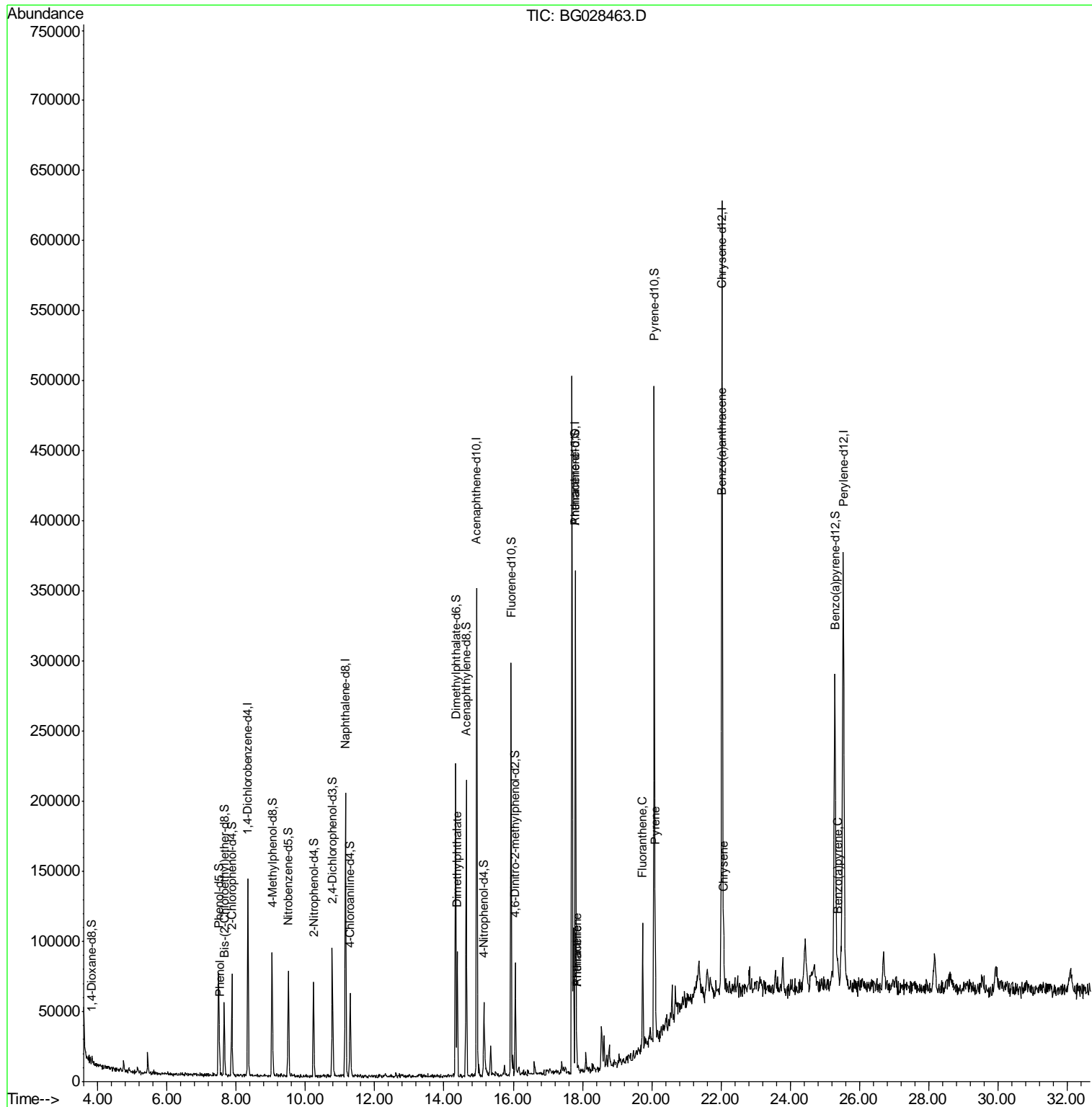
					Ovalue	
6) Phenol	7.52	94	5710	1.367	ng/ul#	95
44) Dimethylphthalate	14.38	163	55920	5.598	ng/ul	98
69) Phenanthrene	17.83	178	16883	1.537	ng/ul	98
71) Anthracene	17.83	178	16883	1.503	ng/ul	97
74) Fluoranthene	19.74	202	61648	4.617	ng/ul	97
77) Pyrene	20.10	202	50730	2.176	ng/ul	100
80) Benzo(a)anthracene	22.01	228	32302	1.431	ng/ul	97
82) Chrysene	22.08	228	29470	1.449	ng/ul	94
88) Benzo(a)pyrene	25.37	252	24714	1.097	ng/ul#	86

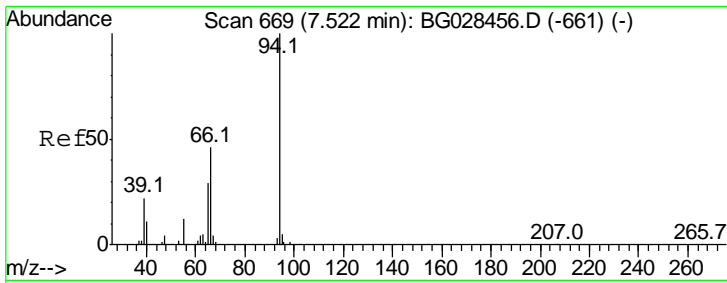
(#) = qualifier out of range (m) = manual integration (+) = signals summed

Data Path : Z:\HPCHEM1\BNA G\DATA\BG082417\
 Data File : BG028463.D
 Acq On : 24 Aug 2017 16:48
 Operator : SJ/JU
 Sample : I4840-12
 Misc :
 ALS Vial : 10 Sample Multiplier: 1

Instrument :
 BNA_G
 ClientSampled :
 B0AL1

Quant Time: Aug 25 01:09:16 2017
 Quant Method : Z:\HPCHEM1\BNA G\METHODS\SOM-EPA-BG080217.M
 Quant Title : SVOA CALIBRATION
 QLast Update : Fri Aug 25 01:07:54 2017
 Response via : Initial Calibration

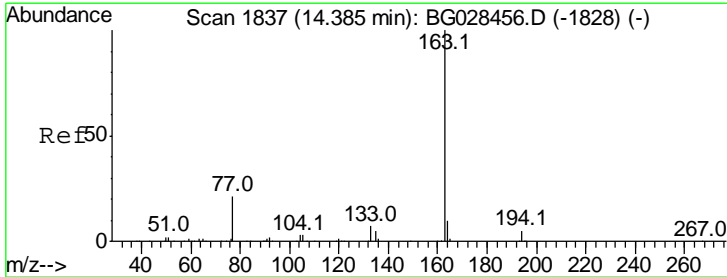
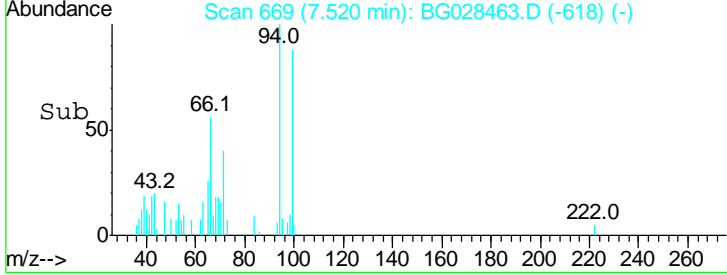
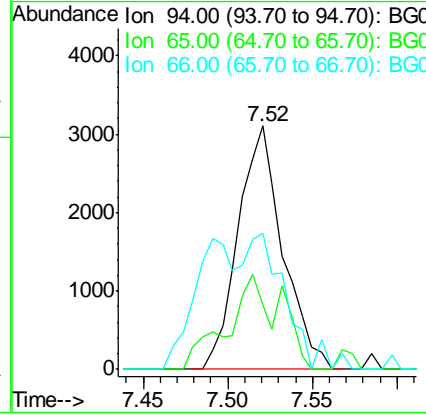
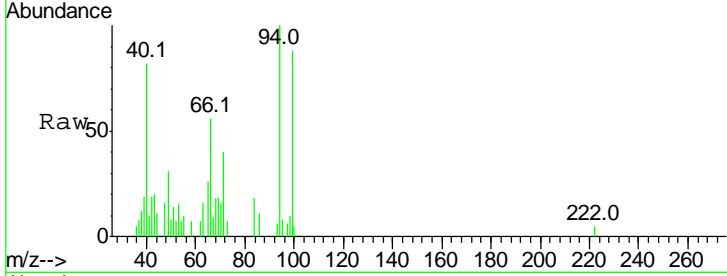




#6
 Phenol
 Concen: 1.367 ng/ul
 RT: 7.52 min Scan# 669
 Delta R.T. -0.00 min
 Lab File: BG028463.D
 Acq: 24 Aug 2017 16:48

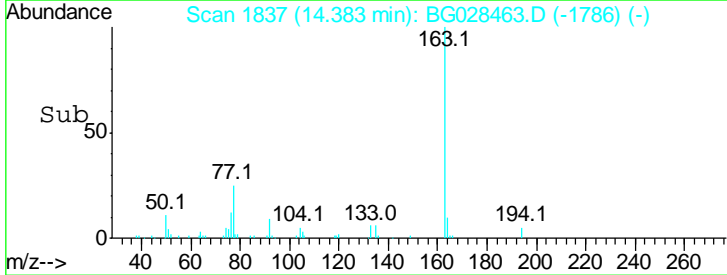
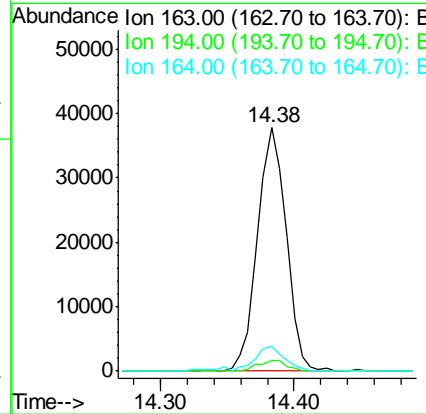
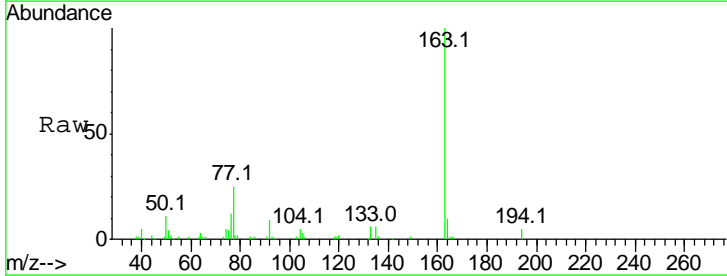
Instrument :
 BNA_G
 ClientSampled :
 B0AL1

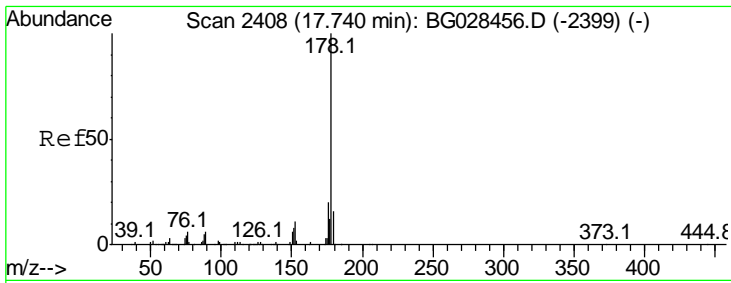
Tgt Ion	Ratio	Lower	Upper
94	100		
65	26.5	26.8	40.2#
66	55.7	44.4	66.6



#44
 Dimethylphthalate
 Concen: 5.598 ng/ul
 RT: 14.38 min Scan# 1837
 Delta R.T. -0.00 min
 Lab File: BG028463.D
 Acq: 24 Aug 2017 16:48

Tgt Ion	Ratio	Lower	Upper
163	100		
194	4.5	3.4	5.0
164	10.1	9.0	13.4

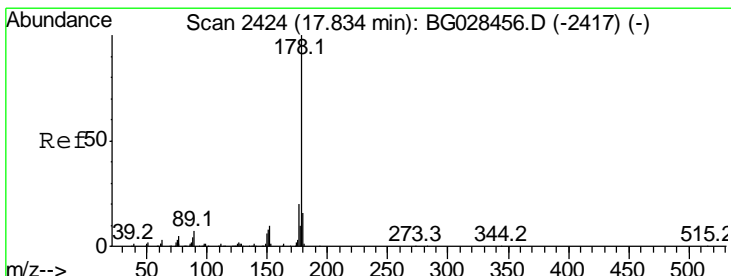
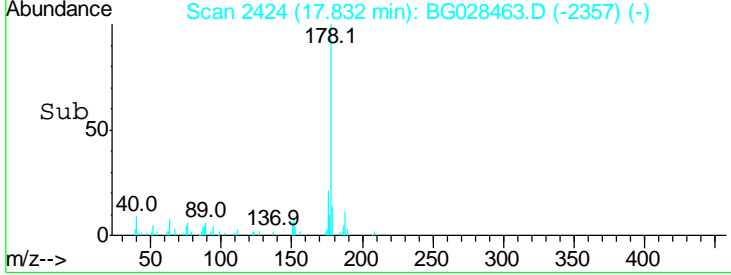
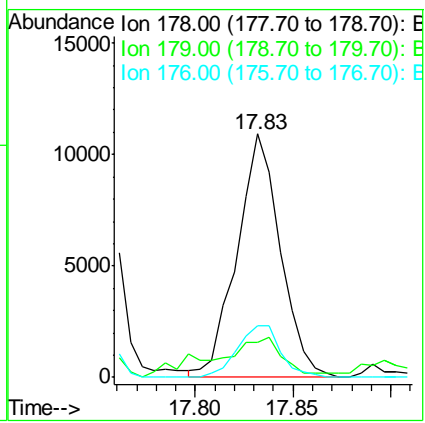
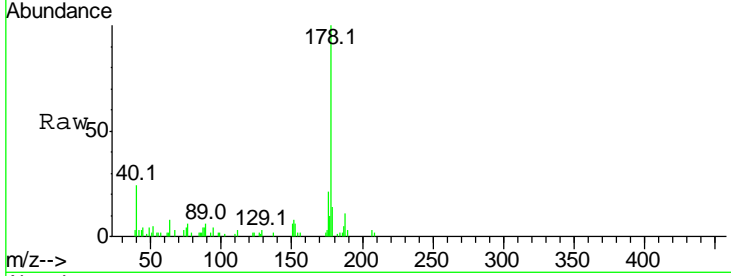




#69
 Phenanthrene
 Concen: 1.537 ng/ul
 RT: 17.83 min Scan# 2424
 Delta R.T. 0.09 min
 Lab File: BG028463.D
 Acq: 24 Aug 2017 16:48

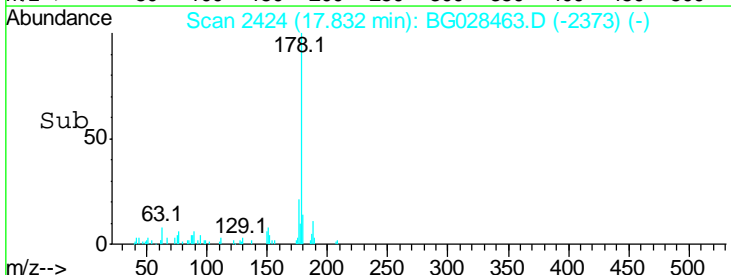
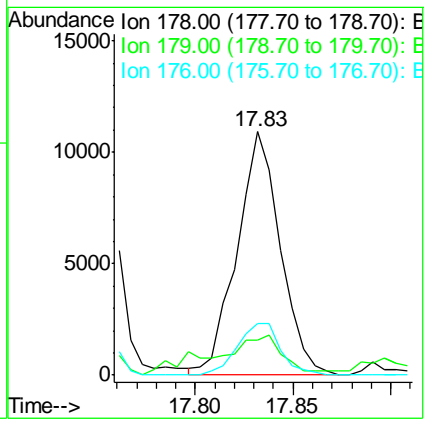
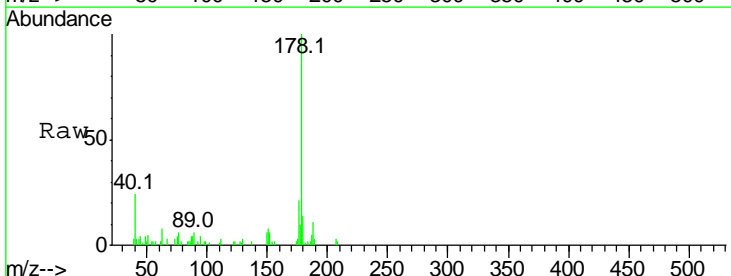
Instrument :
 BNA_G
 ClientSampled :
 B0AL1

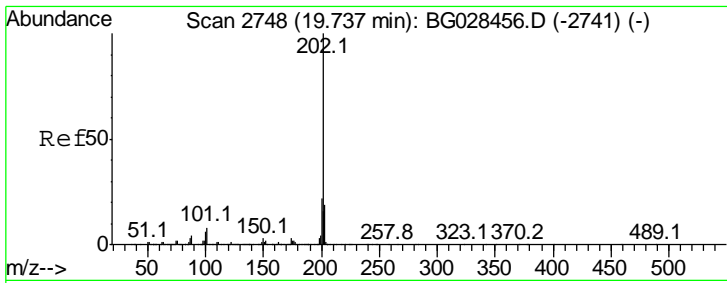
Tgt Ion	Resp	Lower	Upper
178	16883		
179	14.4	12.4	18.6
176	21.1	16.5	24.7



#71
 Anthracene
 Concen: 1.503 ng/ul
 RT: 17.83 min Scan# 2424
 Delta R.T. -0.00 min
 Lab File: BG028463.D
 Acq: 24 Aug 2017 16:48

Tgt Ion	Resp	Lower	Upper
178	16883		
179	14.4	12.6	19.0
176	21.1	15.9	23.9

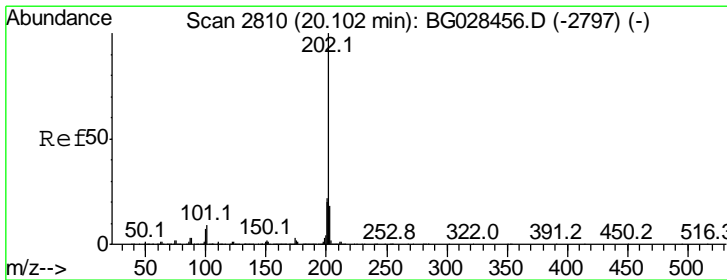
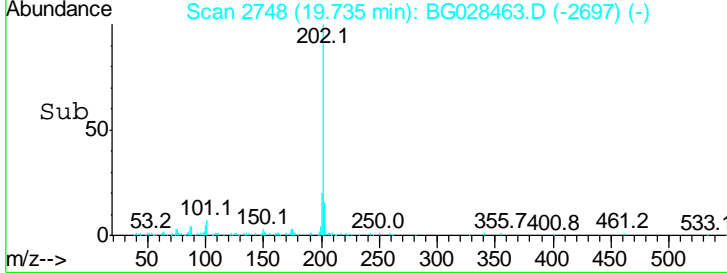
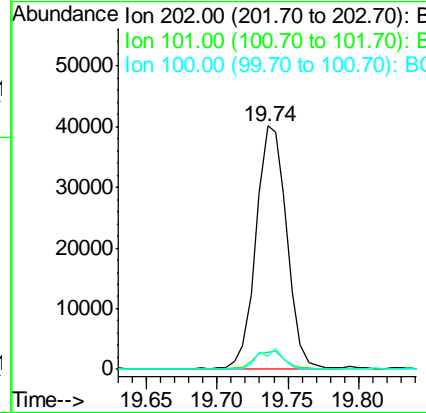
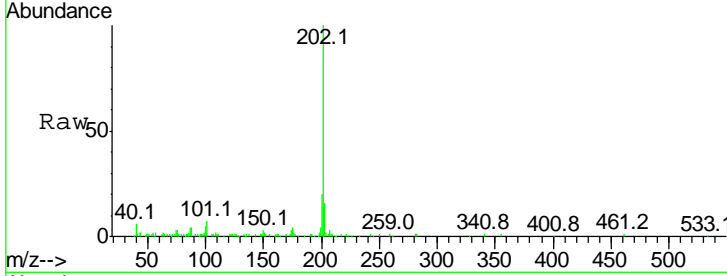




#74
 Fluoranthene
 Concen: 4.617 ng/ul
 RT: 19.74 min Scan# 2748
 Delta R.T. -0.00 min
 Lab File: BG028463.D
 Acq: 24 Aug 2017 16:48

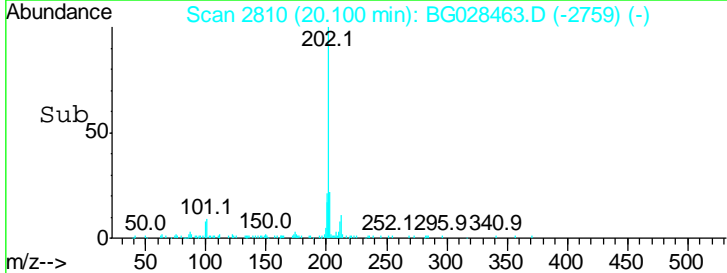
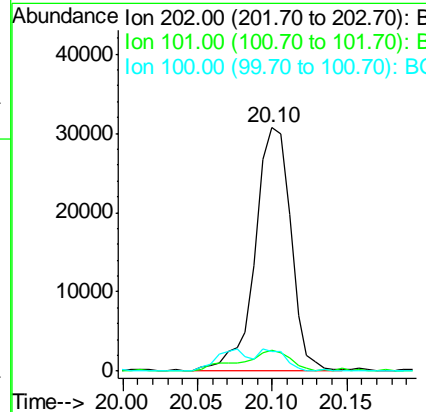
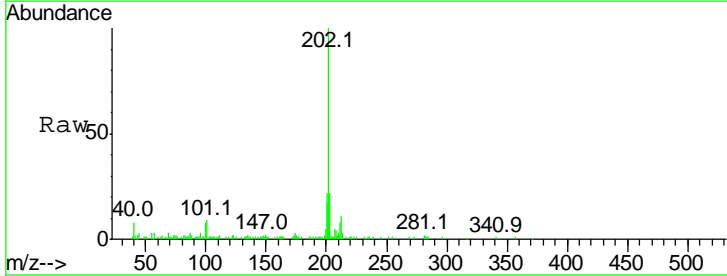
Instrument :
 BNA_G
 ClientSampled :
 B0AL1

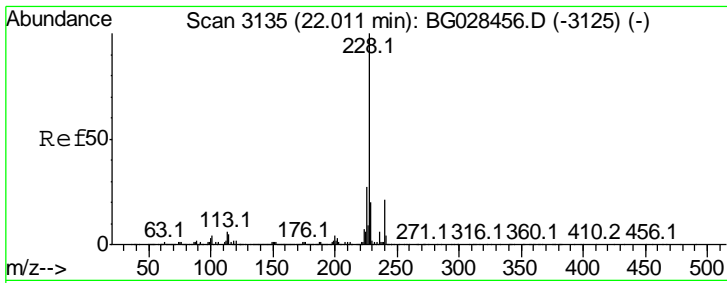
Tgt Ion	Ratio	Lower	Upper
202	100		
101	7.0	6.2	9.2
100	5.4	5.2	7.8



#77
 Pyrene
 Concen: 2.176 ng/ul
 RT: 20.10 min Scan# 2810
 Delta R.T. -0.00 min
 Lab File: BG028463.D
 Acq: 24 Aug 2017 16:48

Tgt Ion	Ratio	Lower	Upper
202	100		
101	8.6	6.9	10.3
100	8.3	6.6	10.0

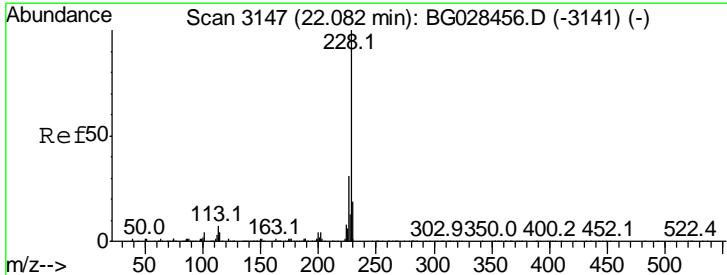
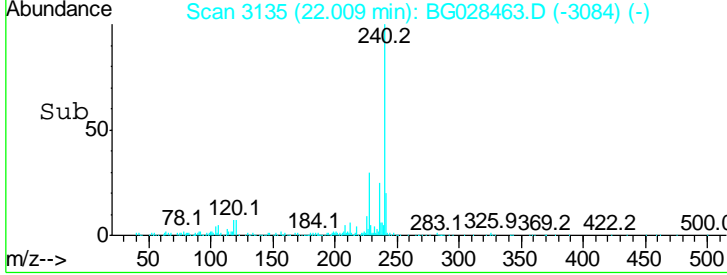
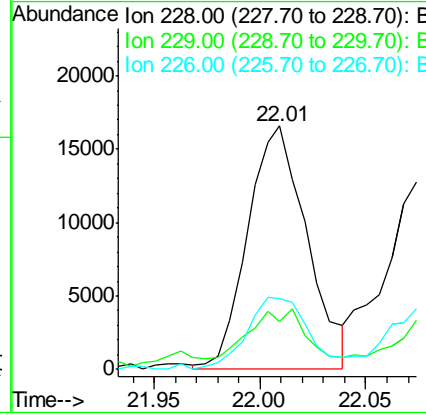
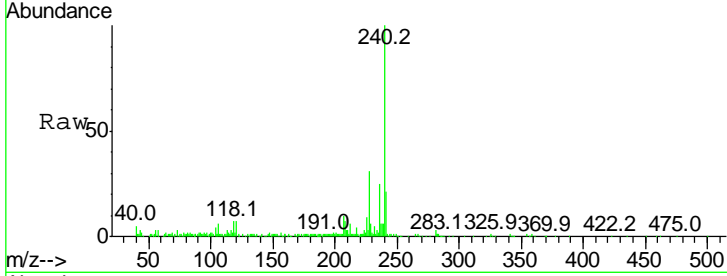




#80
 Benzo(a)anthracene
 Concen: 1.431 ng/ul
 RT: 22.01 min Scan# 3135
 Delta R.T. -0.00 min
 Lab File: BG028463.D
 Acq: 24 Aug 2017 16:48

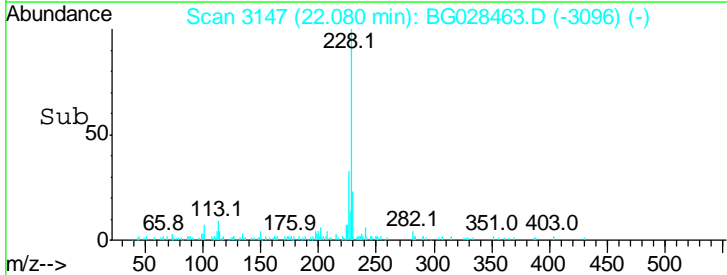
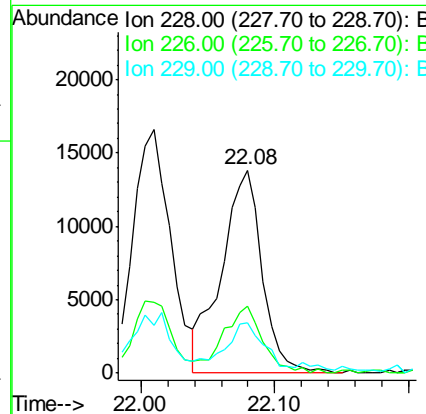
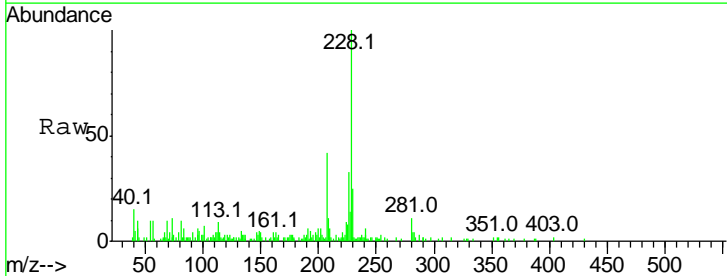
Instrument :
 BNA_G
 ClientSampleID :
 B0AL1

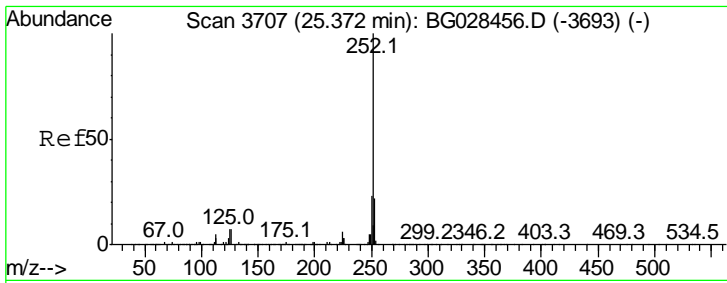
Tgt Ion	Resp	Lower	Upper
228	100		
229	19.6	16.3	24.5
226	29.3	21.9	32.9



#82
 Chrysene
 Concen: 1.449 ng/ul
 RT: 22.08 min Scan# 3147
 Delta R.T. -0.00 min
 Lab File: BG028463.D
 Acq: 24 Aug 2017 16:48

Tgt Ion	Resp	Lower	Upper
228	100		
226	32.7	24.0	36.0
229	24.8	16.9	25.3





#88
 Benzo(a)pyrene
 Concen: 1.097 ng/ul
 RT: 25.37 min Scan# 3707
 Delta R.T. -0.00 min
 Lab File: BG028463.D
 Acq: 24 Aug 2017 16:48

Instrument :
 BNA_G
 ClientSampled :
 B0AL1

Tot Ion	Ratio	Lower	Upper
252	100		
253	29.6	17.8	26.6#
125	10.4	5.4	8.0#

