

Data Path : Z:\HPCHEM1\BNA G\DATA\BG082417\
 Data File : BG028468.D
 Acq On : 24 Aug 2017 20:07
 Operator : SJ/JU
 Sample : I4840-15
 Misc :
 ALS Vial : 15 Sample Multiplier: 1

Instrument :
 BNA_G
 ClientSampleId :
 B0AM6

Quant Time: Aug 25 01:10:05 2017
 Quant Method : Z:\HPCHEM1\BNA G\METHODS\SOM-EPA-BG080217.M
 Quant Title : SVOA CALIBRATION
 QLast Update : Fri Aug 25 01:07:54 2017
 Response via : Initial Calibration

Internal Standards	R.T.	QIon	Response	Conc	Units	Dev(Min)
1) 1,4-Dichlorobenzene-d4	8.34	152	33200	20.00	ng/ul	0.00
18) Naphthalene-d8	11.16	136	142805	20.00	ng/ul	0.00
35) Acenaphthene-d10	14.95	164	103271	20.00	ng/ul	0.00
61) Phenanthrene-d10	17.80	188	547276	20.00	ng/ul	0.10
75) Chrysene-d12	22.03	240	327360	20.00	ng/ul	0.00
83) Perylene-d12	25.53	264	317192	20.00	ng/ul	0.00

System Monitoring Compounds

3) 1,4-Dioxane-d8	3.82	96	4799	6.73	ng/uL	0.00
5) Phenol-d5	7.49	99	117668	32.27	ng/ul	0.00
7) Bis-(2-Chloroethyl)ether-d	7.65	67	71209	30.84	ng/ul	0.00
9) 2-Chlorophenol-d4	7.87	132	81692	35.51	ng/ul	0.00
13) 4-Methylphenol-d8	9.04	113	101630	33.35	ng/ul	0.00
19) Nitrobenzene-d5	9.51	128	44017	39.42	ng/ul	0.00
22) 2-Nitrophenol-d4	10.23	143	53628	43.80	ng/ul	0.00
26) 2,4-Dichlorophenol-d3	10.77	165	100866	39.82	ng/ul	0.00
29) 4-Chloroaniline-d4	11.29	131	138621	49.16	ng/ul	0.00
43) Dimethylphthalate-d6	14.34	166	381433	41.53	ng/ul	0.00
46) Acenaphthylene-d8	14.64	160	414233	40.00	ng/ul	0.00
51) 4-Nitrophenol-d4	15.15	143	58464	40.03	ng/ul	0.00
57) Fluorene-d10	15.94	176	318927	38.70	ng/ul	0.00
62) 4,6-Dinitro-2-methylphenol	16.06	200	66848	18.80	ng/ul	0.00
70) Anthracene-d10	17.80	188	547276	20.85	ng/ul	0.00
76) Pyrene-d10	20.07	212	645443	38.45	ng/ul	0.00
87) Benzo(a)pyrene-d12	25.29	264	624876	42.08	ng/ul	0.00

Target Compounds

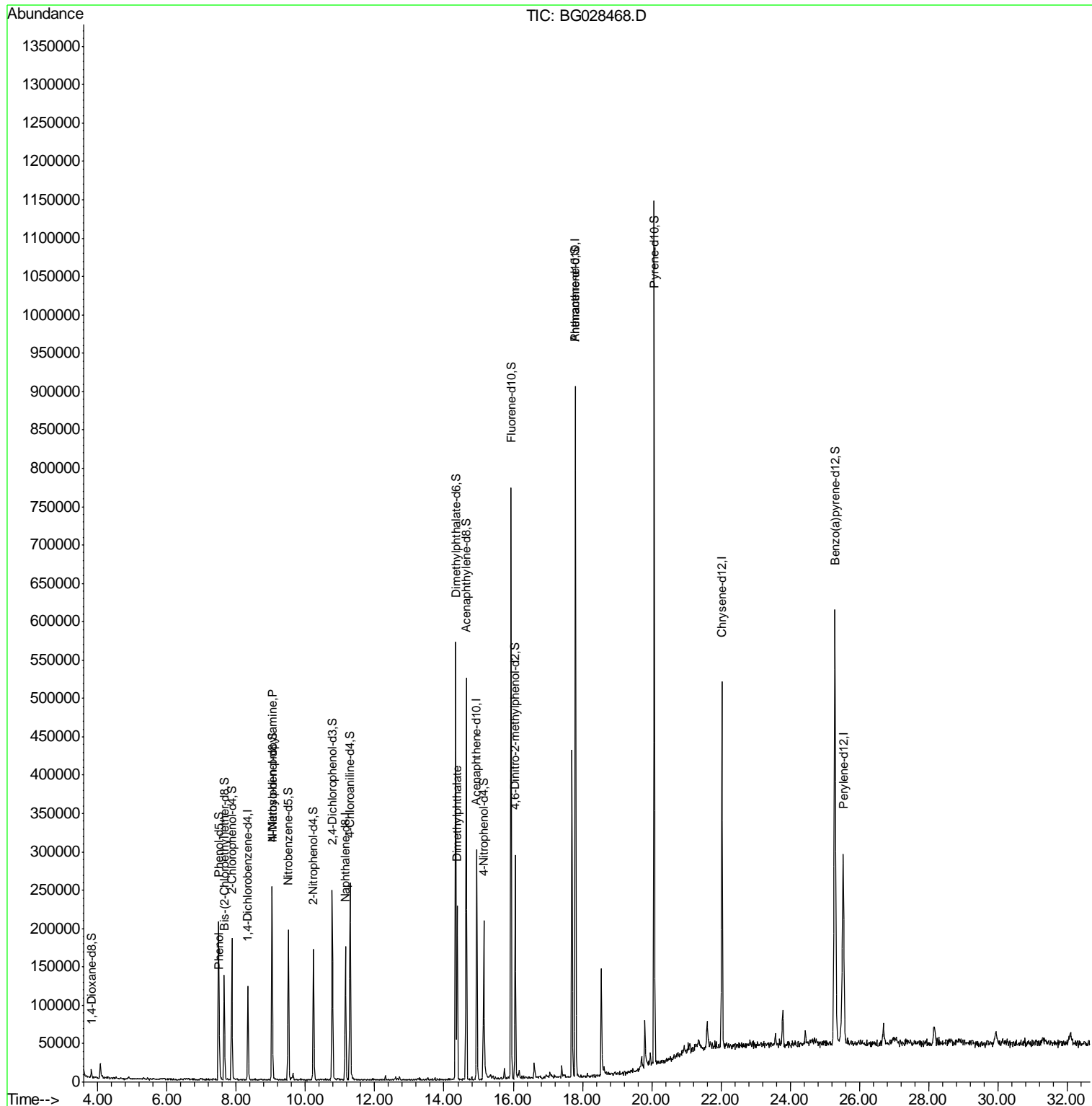
					Ovalue
6) Phenol	7.51	94	14707	4.059	ng/ul# 93
15) N-Nitroso-di-n-propylamine	9.03	70	2877	1.165	ng/ul# 1
44) Dimethylphthalate	14.38	163	138050	16.323	ng/ul 98

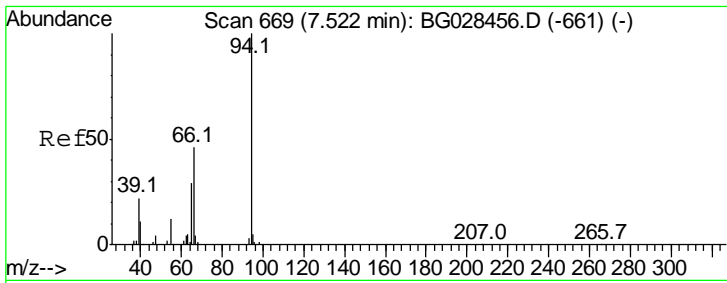
(#) = qualifier out of range (m) = manual integration (+) = signals summed

Data Path : Z:\HPCHEM1\BNA G\DATA\BG082417\
 Data File : BG028468.D
 Acq On : 24 Aug 2017 20:07
 Operator : SJ/JU
 Sample : I4840-15
 Misc :
 ALS Vial : 15 Sample Multiplier: 1

Instrument :
 BNA_G
 ClientSampleId :
 B0AM6

Quant Time: Aug 25 01:10:05 2017
 Quant Method : Z:\HPCHEM1\BNA G\METHODS\SOM-EPA-BG080217.M
 Quant Title : SVOA CALIBRATION
 QLast Update : Fri Aug 25 01:07:54 2017
 Response via : Initial Calibration

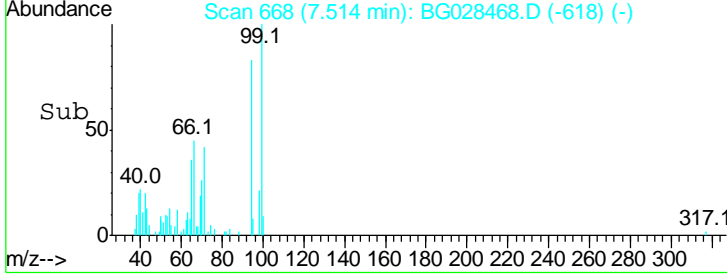
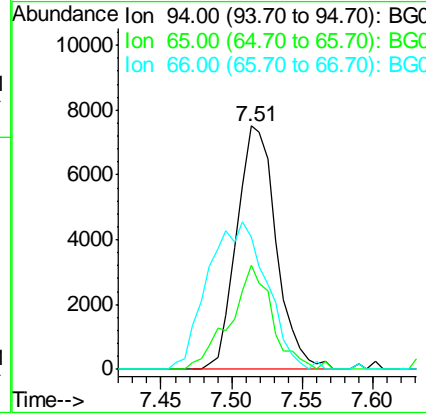
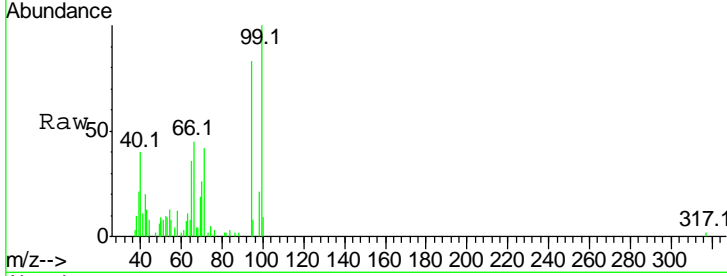




#6
 Phenol
 Concen: 4.059 ng/ul
 RT: 7.51 min Scan# 668
 Delta R.T. -0.01 min
 Lab File: BG028468.D
 Acq: 24 Aug 2017 20:07

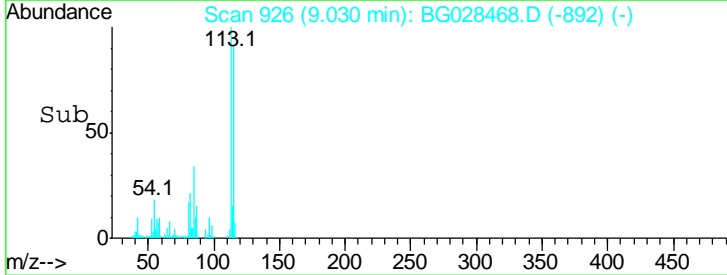
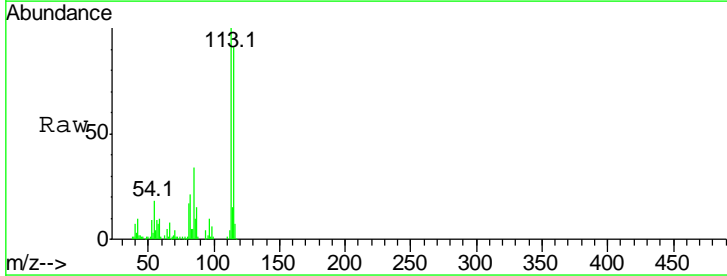
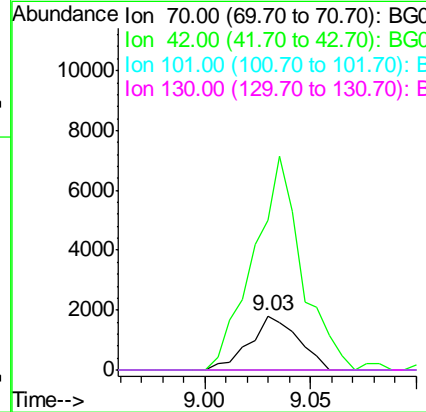
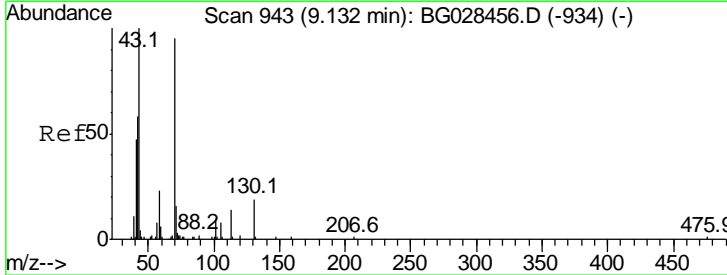
Instrument :
 BNA_G
ClientSampled :
 B0AM6

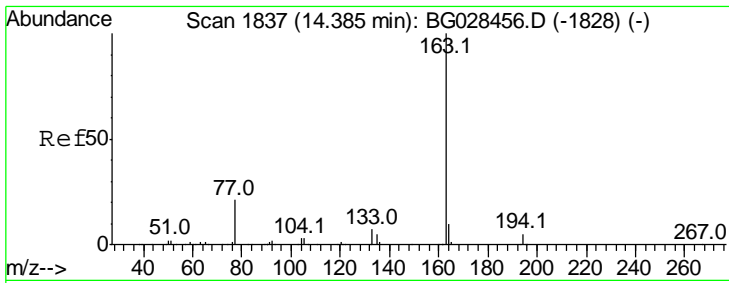
Tgt Ion	Resp	Lower	Upper
94	14707		
65	43.0	26.8	40.2#
66	54.3	44.4	66.6



#15
 N-Nitroso-di-n-propylamine
 Concen: 1.165 ng/ul
 RT: 9.03 min Scan# 926
 Delta R.T. -0.10 min
 Lab File: BG028468.D
 Acq: 24 Aug 2017 20:07

Tgt Ion	Resp	Lower	Upper
70	2877		
42	277.3	59.0	88.6#
101	0.0	6.6	9.8#
130	0.0	15.6	23.4#





#44
 Dimethylphthalate
 Concen: 16.323 ng/ul
 RT: 14.38 min Scan# 1837
 Delta R.T. -0.00 min
 Lab File: BG028468.D
 Acq: 24 Aug 2017 20:07

Instrument :
 BNA_G
 ClientSampleId :
 B0AM6

Tot Ion:163 Resp: 138050

Ion	Ratio	Lower	Upper
163	100		
194	4.2	3.4	5.0
164	12.0	9.0	13.4

