

Data Path : Z:\HPCHEM1\BNA G\DATA\BG082417\  
 Data File : BG028466.D  
 Acq On : 24 Aug 2017 18:47  
 Operator : SJ/JU  
 Sample : I4840-03  
 Misc :  
 ALS Vial : 13 Sample Multiplier: 1

Instrument :  
 BNA\_G  
 ClientSampleId :  
 B0AH7

Manual Integrations  
 APPROVED

Sohil  
 8/25/2017 5:43:42 PM

Quant Time: Aug 25 02:49:04 2017  
 Quant Method : Z:\HPCHEM1\BNA G\METHODS\SOM-EPA-BG080217.M  
 Quant Title : SVOA CALIBRATION  
 QLast Update : Fri Aug 25 01:07:54 2017  
 Response via : Initial Calibration

Internal Standards	R.T.	QIon	Response	Conc	Units	Dev(Min)
1) 1,4-Dichlorobenzene-d4	8.34	152	34080	20.00	ng/ul	0.00
18) Naphthalene-d8	11.16	136	152789	20.00	ng/ul	0.00
35) Acenaphthene-d10	14.95	164	111167	20.00	ng/ul	0.00
61) Phenanthrene-d10	17.70	188	296396m	20.00	ng/ul	0.00
75) Chrysene-d12	22.03	240	353631	20.00	ng/ul	0.00
83) Perylene-d12	25.53	264	346213	20.00	ng/ul	0.00

## System Monitoring Compounds

3) 1,4-Dioxane-d8	3.82	96	1018	1.39	ng/uL	0.00
5) Phenol-d5	7.49	99	27313	7.30	ng/ul	0.00
7) Bis-(2-Chloroethyl)ether-d	7.65	67	16495	6.96	ng/ul	0.00
9) 2-Chlorophenol-d4	7.87	132	19444	8.23	ng/ul	0.00
13) 4-Methylphenol-d8	9.03	113	23708	7.58	ng/ul	0.00
19) Nitrobenzene-d5	9.51	128	10194	8.53	ng/ul	0.00
22) 2-Nitrophenol-d4	10.23	143	12470	9.52	ng/ul	0.00
26) 2,4-Dichlorophenol-d3	10.78	165	23739	8.76	ng/ul	0.00
29) 4-Chloroaniline-d4	11.29	131	23750	7.87	ng/ul	0.00
43) Dimethylphthalate-d6	14.33	166	95310	9.64	ng/ul	0.00
46) Acenaphthylene-d8	14.65	160	101704	9.12	ng/ul	0.00
51) 4-Nitrophenol-d4	15.16	143	11066	7.04	ng/ul	0.00
57) Fluorene-d10	15.94	176	82054	9.25	ng/ul	0.00
62) 4,6-Dinitro-2-methylphenol	16.06	200	12770m	6.63	ng/ul	0.00
70) Anthracene-d10	17.79	188	142331	10.01	ng/ul	0.00
76) Pyrene-d10	20.07	212	177717	9.80	ng/ul	0.00
87) Benzo(a)pyrene-d12	25.29	264	169939	10.49	ng/ul	0.00

## Target Compounds

Target Compounds	R.T.	QIon	Response	Conc	Units	Ovalue
44) Dimethylphthalate	14.38	163	20033	2.200	ng/ul	97
69) Phenanthrene	17.74	178	15817m	1.060	ng/ul	
74) Fluoranthene	19.74	202	31202m	1.721	ng/ul	
77) Pyrene	20.10	202	29489	1.398	ng/ul	98

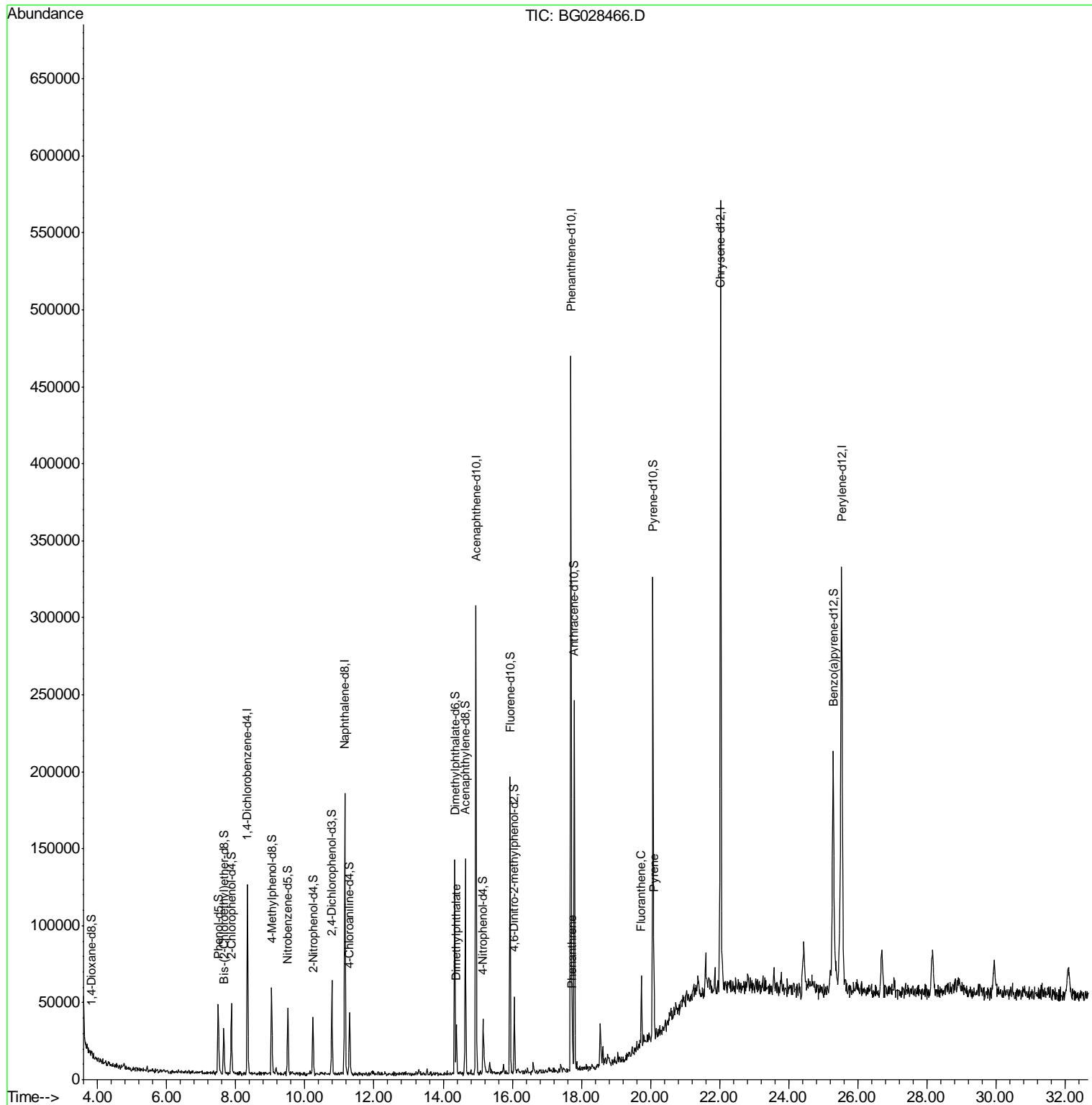
(#) = qualifier out of range (m) = manual integration (+) = signals summed

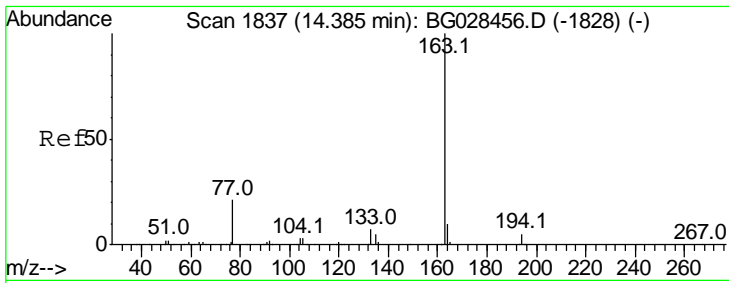
Data Path : Z:\HPCHEM1\BNA G\DATA\BG082417\  
 Data File : BG028466.D  
 Acq On : 24 Aug 2017 18:47  
 Operator : SJ/JU  
 Sample : I4840-03  
 Misc :  
 ALS Vial : 13 Sample Multiplier: 1

Instrument :  
 BNA\_G  
 ClientSampled :  
 B0AH7

Manual Integrations  
**APPROVED**  
 Sohil  
 8/25/2017 5:43:42 PM

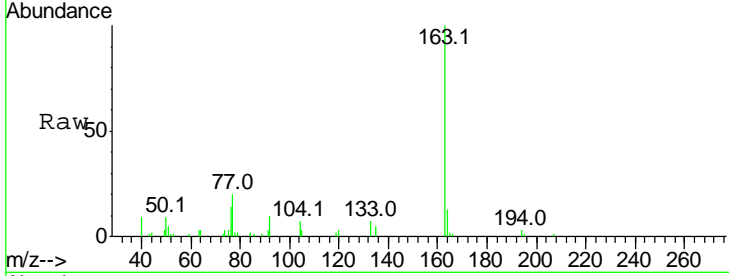
Quant Time: Aug 25 02:49:04 2017  
 Quant Method : Z:\HPCHEM1\BNA G\METHODS\SOM-EPA-BG080217.M  
 Quant Title : SVOA CALIBRATION  
 QLast Update : Fri Aug 25 01:07:54 2017  
 Response via : Initial Calibration





#44  
 Dimethylphthalate  
 Concen: 2.200 ng/ul  
 RT: 14.38 min Scan# 1837  
 Delta R.T. -0.00 min  
 Lab File: BG028466.D  
 Acq: 24 Aug 2017 18:47

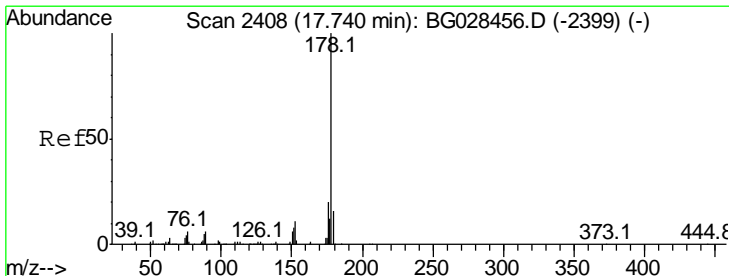
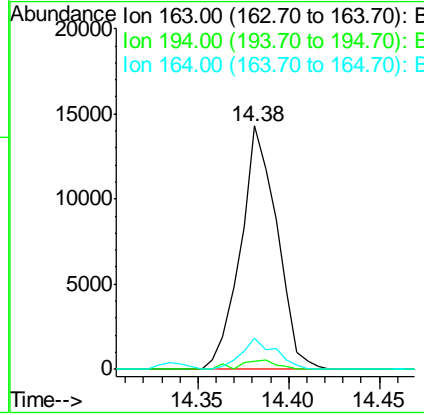
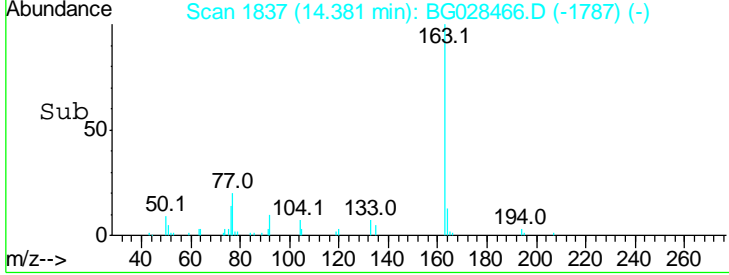
**Instrument :**  
 BNA\_G  
**ClientSampled :**  
 B0AH7



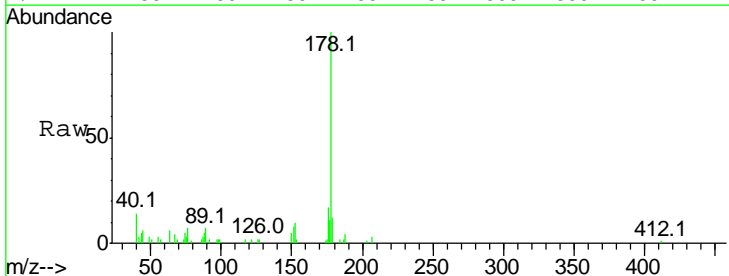
Tgt Ion: 163 Resp: 20033

Ion	Ratio	Lower	Upper
163	100		
194	3.5	3.4	5.0
164	12.6	9.0	13.4

**Manual Integrations**  
**APPROVED**  
 Sohil  
 8/25/2017 5:43:42 PM

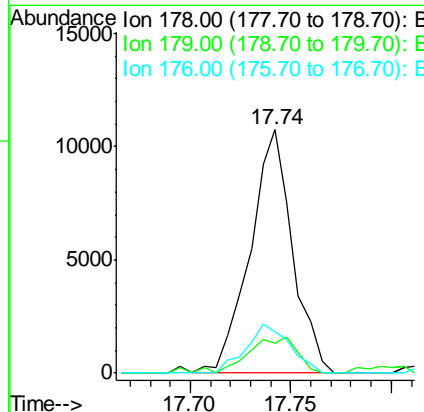
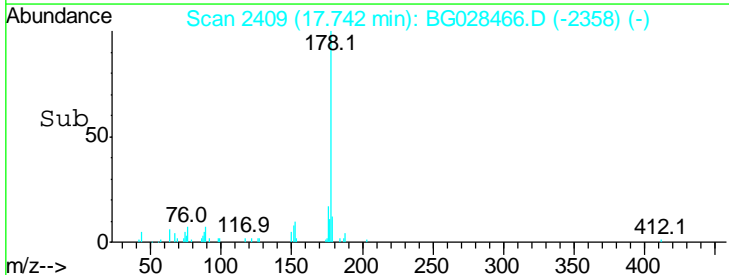


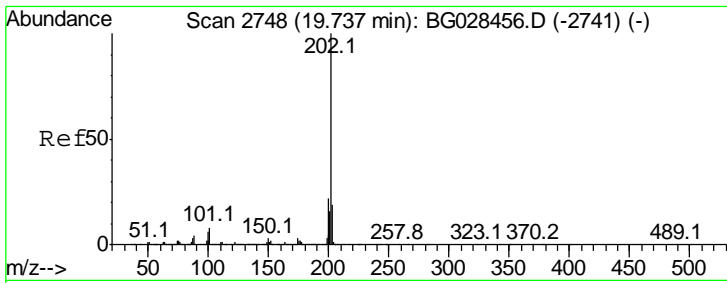
#69  
 Phenanthrene  
 Concen: 1.060 ng/ul m  
 RT: 17.74 min Scan# 2409  
 Delta R.T. 0.00 min  
 Lab File: BG028466.D  
 Acq: 24 Aug 2017 18:47



Tgt Ion: 178 Resp: 15817

Ion	Ratio	Lower	Upper
178	100		
179	12.2	12.4	18.6#
176	16.7	16.5	24.7





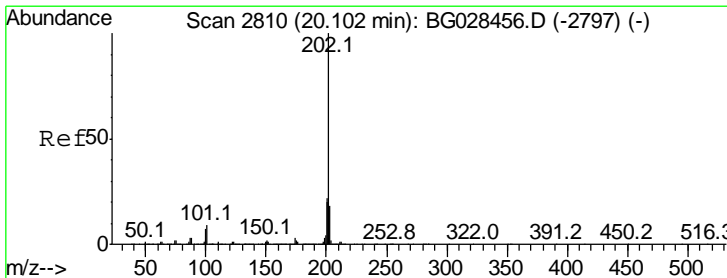
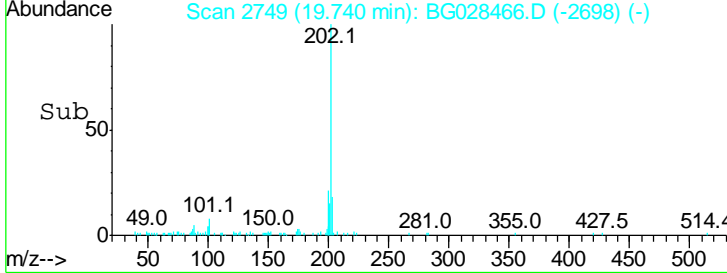
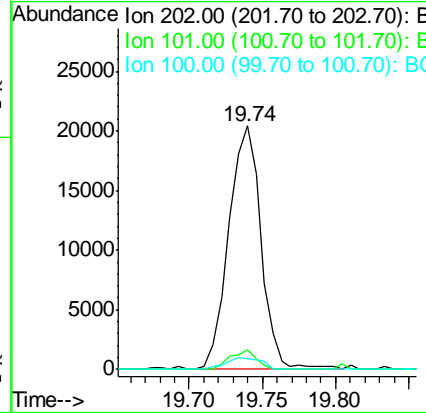
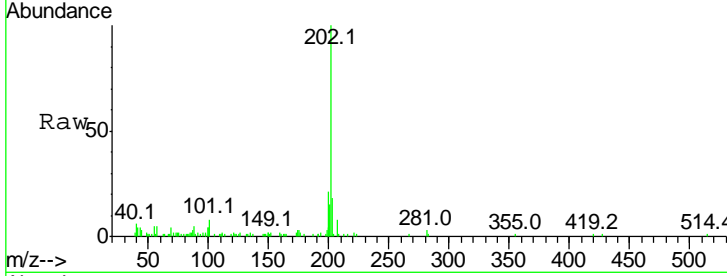
#74  
 Fluoranthene  
 Concen: 1.721 ng/ul m  
 RT: 19.74 min Scan# 2749  
 Delta R.T. 0.00 min  
 Lab File: BG028466.D  
 Acq: 24 Aug 2017 18:47

**Instrument :**  
 BNA\_G  
**ClientSampled :**  
 B0AH7

Tgt Ion	Ratio	Lower	Upper
202	100		
101	7.9	6.2	9.2
100	4.2	5.2	7.8

**Manual Integrations**  
**APPROVED**

Sohil  
 8/25/2017 5:43:42 PM



#77  
 Pyrene  
 Concen: 1.398 ng/ul  
 RT: 20.10 min Scan# 2810  
 Delta R.T. -0.00 min  
 Lab File: BG028466.D  
 Acq: 24 Aug 2017 18:47

Tgt Ion	Ratio	Lower	Upper
202	100		
101	8.1	6.9	10.3
100	9.5	6.6	10.0

