

Data Path : Z:\HPCHEM1\BNA\_G\DATA\BG082516\  
 Data File : BG023917.D  
 Acq On : 26 Aug 2016 7:37  
 Operator : UM/SJ  
 Sample : H4592-09  
 Misc :  
 ALS Vial : 23 Sample Multiplier: 1

Instrument :  
 BNA\_G  
 ClientSampleId :  
 MW-4

Quant Time: Aug 26 08:13:09 2016  
 Quant Method : Z:\HPCHEM1\BNA\_G\METHODS\8270-BG080116.M  
 Quant Title : ASP BNA STANDARDS FOR 5 POINT CALIBRATION  
 QLast Update : Wed Aug 24 17:42:04 2016  
 Response via : Initial Calibration

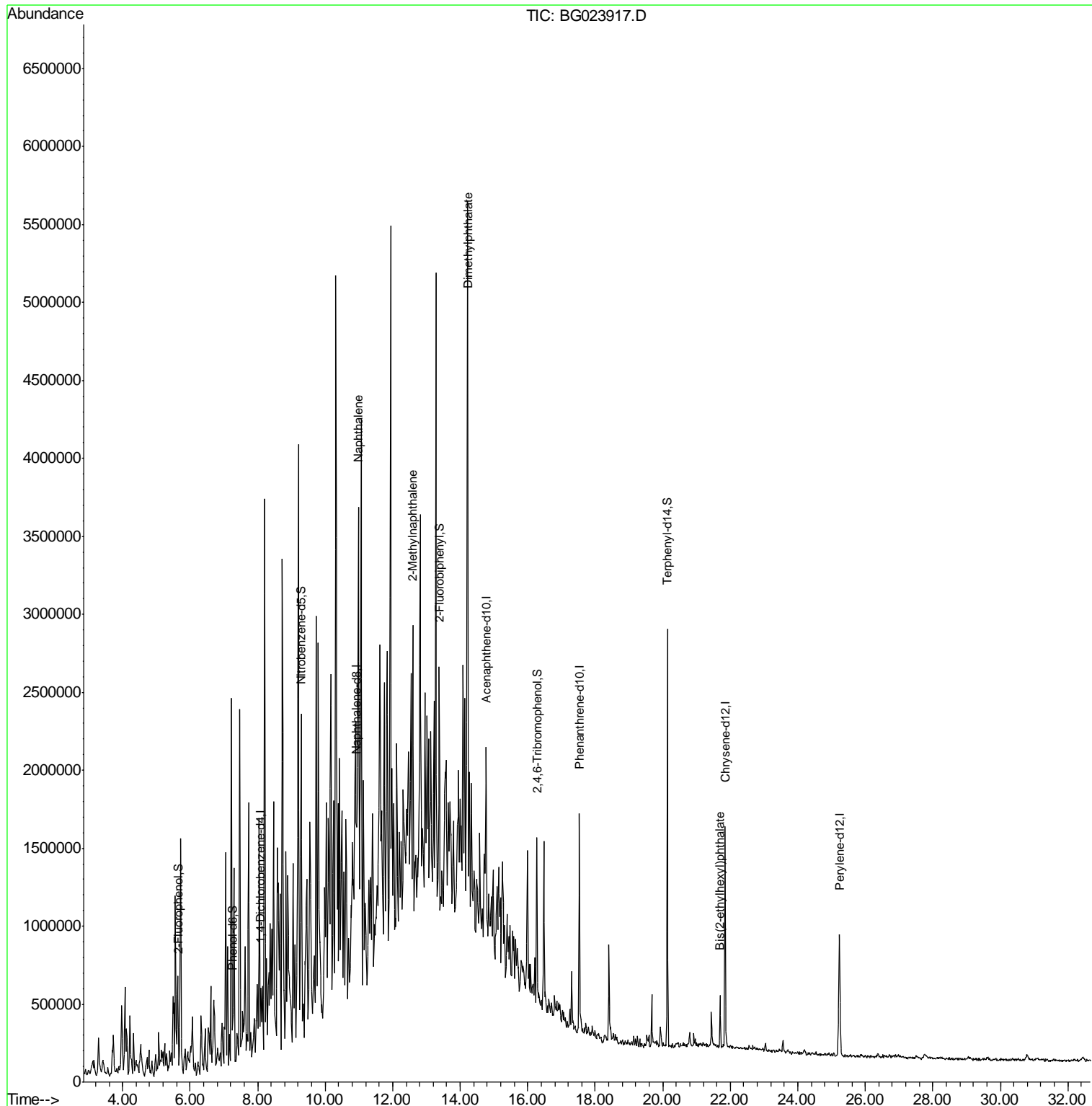
Internal Standards	R.T.	QIon	Response	Conc	Units	Dev(Min)
1) 1,4-Dichlorobenzene-d4	8.09	152	129253	20.00	ng	0.00
21) Naphthalene-d8	10.93	136	543834	20.00	ng	0.00
38) Acenaphthene-d10	14.77	164	364327	20.00	ng	0.00
63) Phenanthrene-d10	17.53	188	805843	20.00	ng	0.00
75) Chrysene-d12	21.85	240	855307	20.00	ng	0.00
86) Perylene-d12	25.23	264	866451	20.00	ng	0.00
System Monitoring Compounds						
5) 2-Fluorophenol	5.64	112	121412	15.81	ng	0.00
7) Phenol-d6	7.26	99	132538	11.08	ng	0.00
23) Nitrobenzene-d5	9.28	82	389996	35.65	ng	0.00
41) 2,4,6-Tribromophenol	16.27	330	184238	34.57	ng	0.00
44) 2-Fluorobiphenyl	13.38	172	801866	37.12	ng	0.00
78) Terphenyl-d14	20.13	244	1130028	28.66	ng	0.00
Target Compounds						
31) Naphthalene	10.98	128	1354634	48.92	ng	# 95
37) 2-Methylnaphthalene	12.59	142	865578	41.11	ng	96
49) Dimethylphthalate	14.21	163	633717	22.67	ng	# 95
83) Bis(2-ethylhexyl)phthalate	21.70	149	141658	5.02	ng	# 89

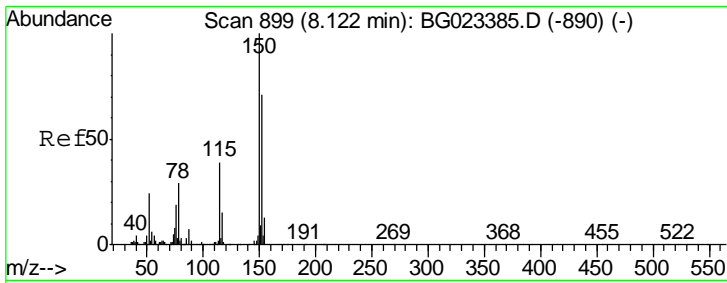
(#) = qualifier out of range (m) = manual integration (+) = signals summed

Data Path : Z:\HPCHEM1\BNA\_G\DATA\BG082516\  
 Data File : BG023917.D  
 Acq On : 26 Aug 2016 7:37  
 Operator : UM/SJ  
 Sample : H4592-09  
 Misc :  
 ALS Vial : 23 Sample Multiplier: 1

Instrument :  
 BNA\_G  
 ClientSampleId :  
 MW-4

Quant Time: Aug 26 08:13:09 2016  
 Quant Method : Z:\HPCHEM1\BNA\_G\METHODS\8270-BG080116.M  
 Quant Title : ASP BNA STANDARDS FOR 5 POINT CALIBRATION  
 QLast Update : Wed Aug 24 17:42:04 2016  
 Response via : Initial Calibration

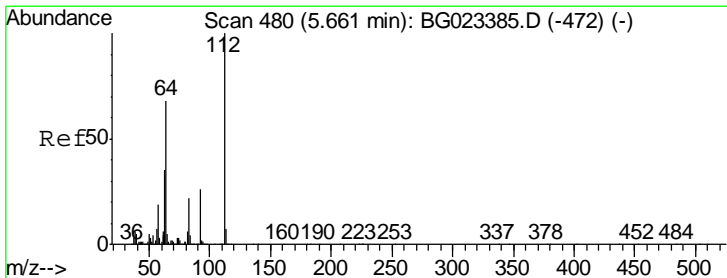
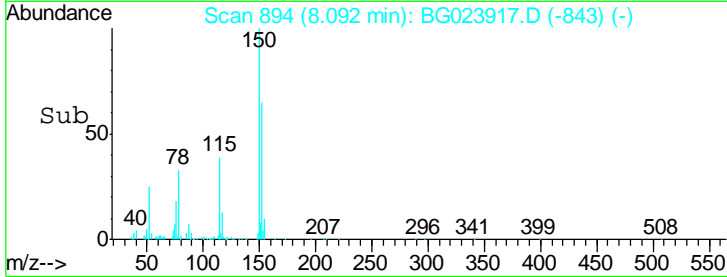
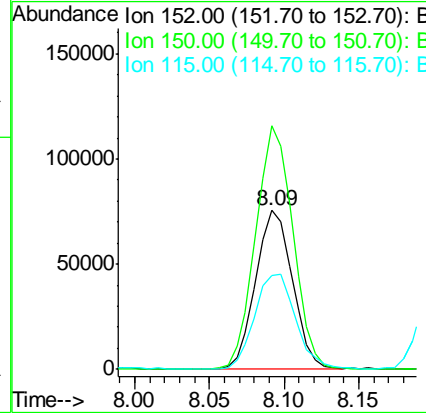
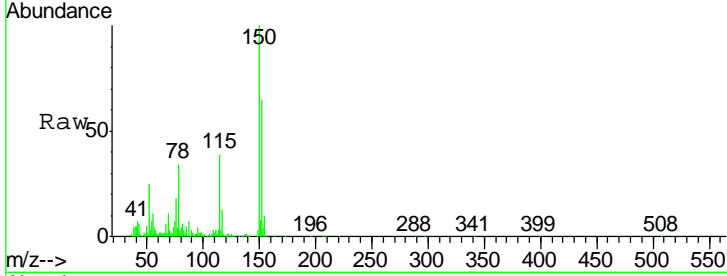




#1  
 1,4-Dichlorobenzene-d4  
 Concen: 20.00 ng  
 RT: 8.09 min Scan# 894  
 Delta R.T. -0.00 min  
 Lab File: BG023917.D  
 Acq: 26 Aug 2016 7:37

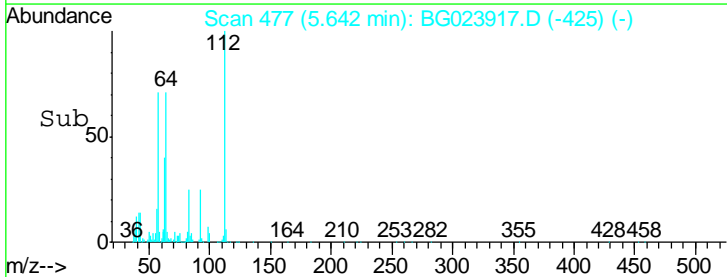
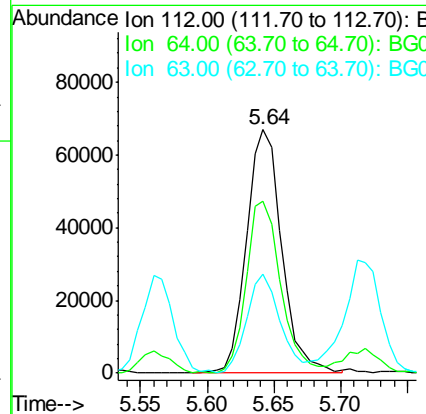
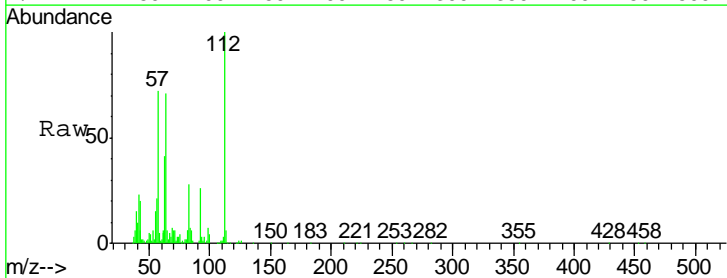
Instrument :  
 BNA\_G  
 ClientSampled :  
 MW-4

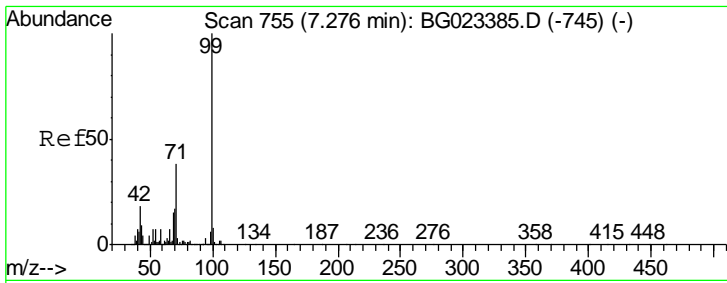
Tgt Ion	Resp	Lower	Upper
152	129253		
152	100		
150	153.5	144.7	217.1
115	59.3	64.0	96.0#



#5  
 2-Fluorophenol  
 Concen: 15.81 ng  
 RT: 5.64 min Scan# 477  
 Delta R.T. 0.00 min  
 Lab File: BG023917.D  
 Acq: 26 Aug 2016 7:37

Tgt Ion	Resp	Lower	Upper
112	121412		
112	100		
64	70.6	59.0	88.4
63	40.9	37.8	56.8

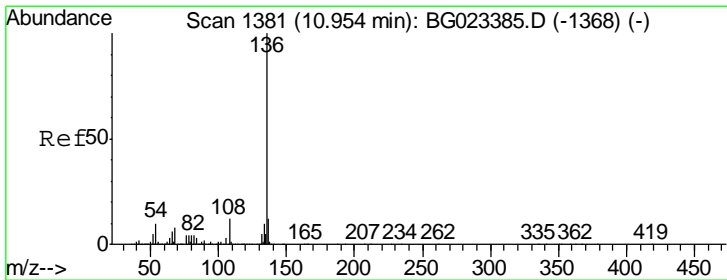
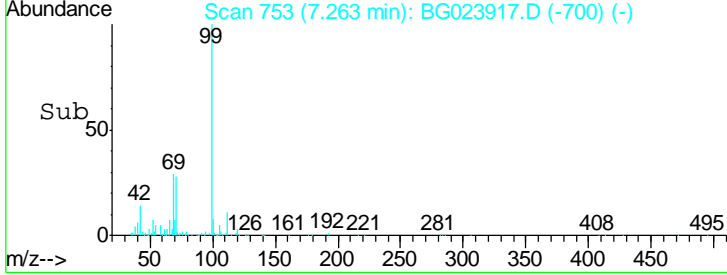
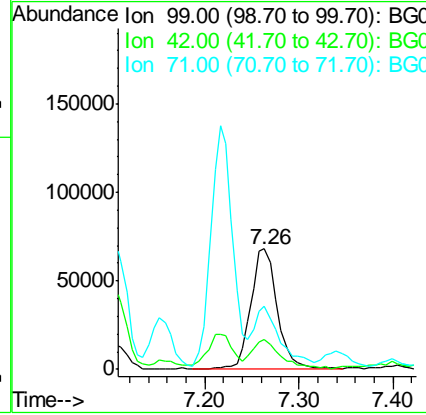
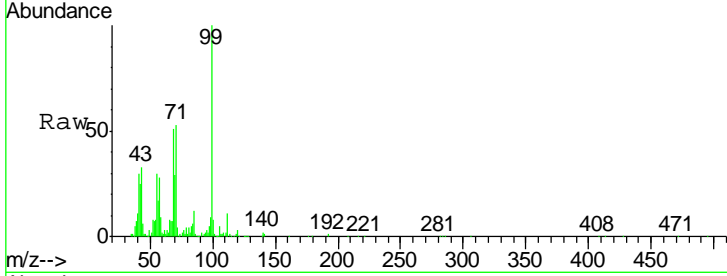




#7  
 Phenol-d6  
 Concen: 11.08 ng  
 RT: 7.26 min Scan# 753  
 Delta R.T. 0.01 min  
 Lab File: BG023917.D  
 Acq: 26 Aug 2016 7:37

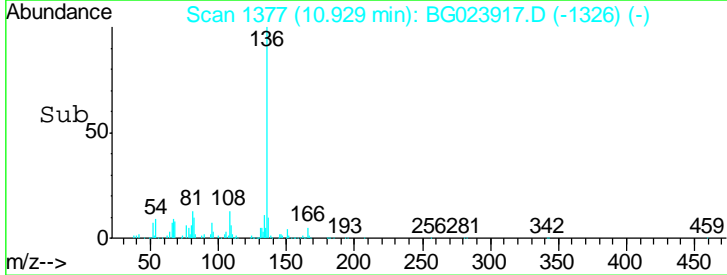
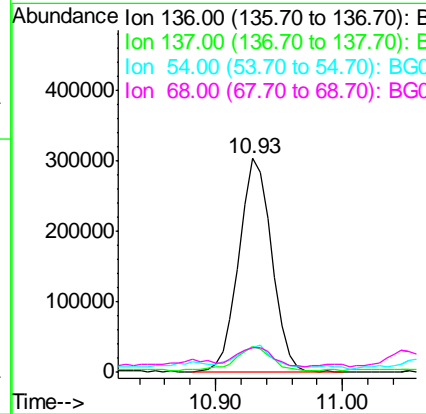
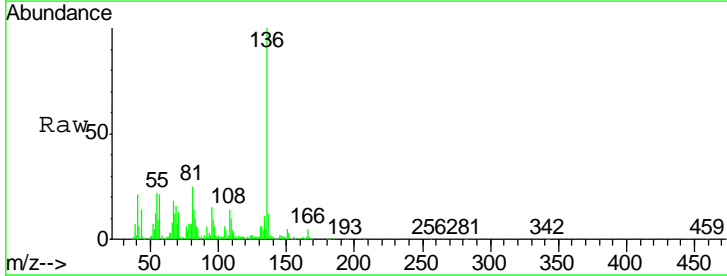
Instrument :  
 BNA\_G  
 ClientSampled :  
 MW-4

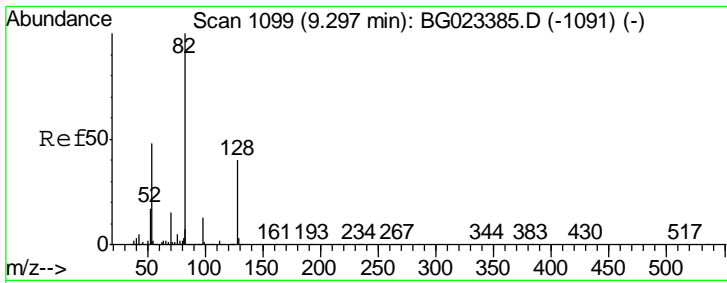
Tgt Ion	Resp	Lower	Upper
99	132538		
42	25.2	17.8	26.6
71	53.0	41.5	62.3



#21  
 Naphthalene-d8  
 Concen: 20.00 ng  
 RT: 10.93 min Scan# 1377  
 Delta R.T. -0.00 min  
 Lab File: BG023917.D  
 Acq: 26 Aug 2016 7:37

Tgt Ion	Resp	Lower	Upper
136	543834		
137	11.9	9.6	14.4
54	11.7	7.3	10.9#
68	11.6	5.3	7.9#

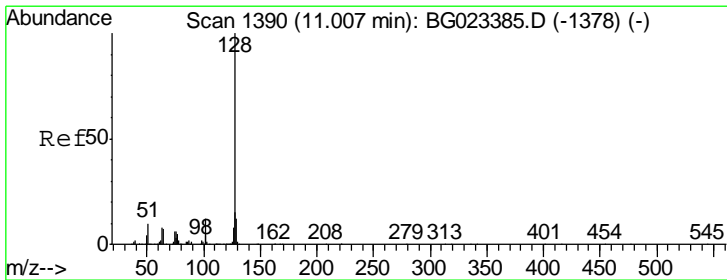
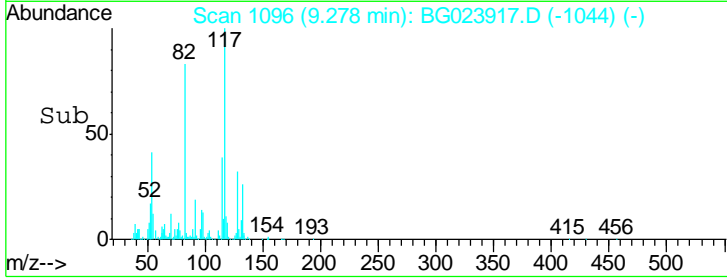
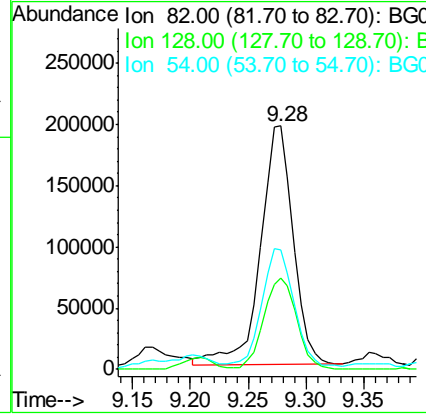
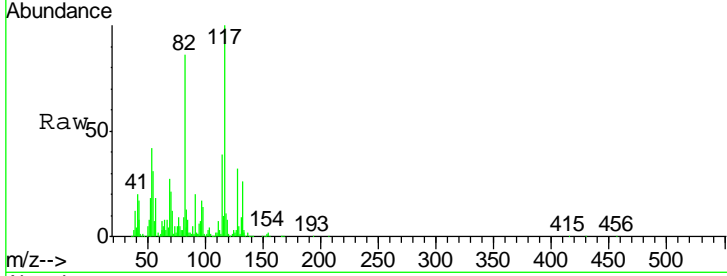




#23  
 Nitrobenzene-d5  
 Concen: 35.65 ng  
 RT: 9.28 min Scan# 1096  
 Delta R.T. 0.00 min  
 Lab File: BG023917.D  
 Acq: 26 Aug 2016 7:37

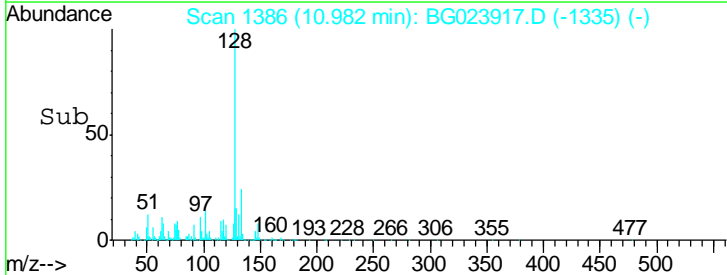
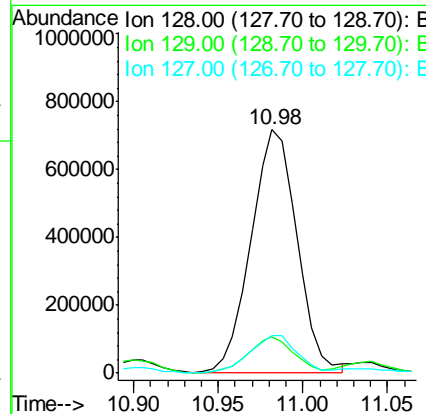
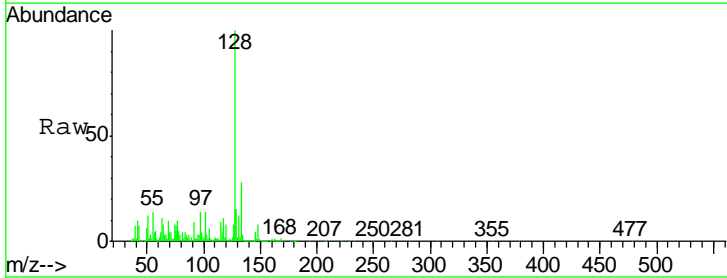
Instrument :  
 BNA\_G  
 ClientSampled :  
 MW-4

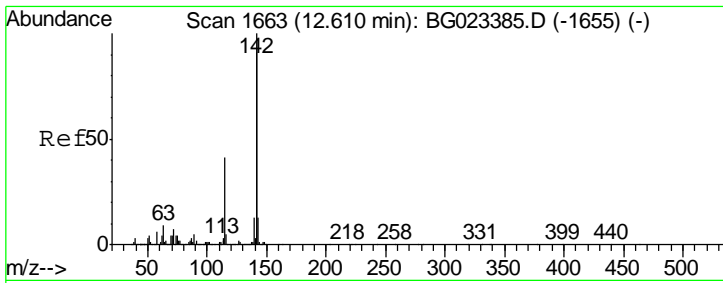
Tgt Ion	Resp	Lower	Upper
82	389996		
128	37.7	24.4	36.6#
54	48.9	41.4	62.0



#31  
 Naphthalene  
 Concen: 48.92 ng  
 RT: 10.98 min Scan# 1386  
 Delta R.T. -0.00 min  
 Lab File: BG023917.D  
 Acq: 26 Aug 2016 7:37

Tgt Ion	Resp	Lower	Upper
128	1354634		
129	14.8	9.4	14.0#
127	15.4	11.3	16.9

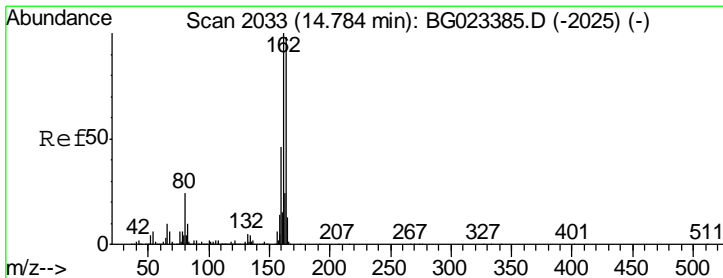
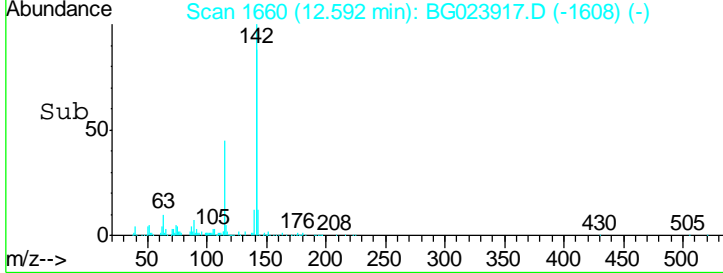
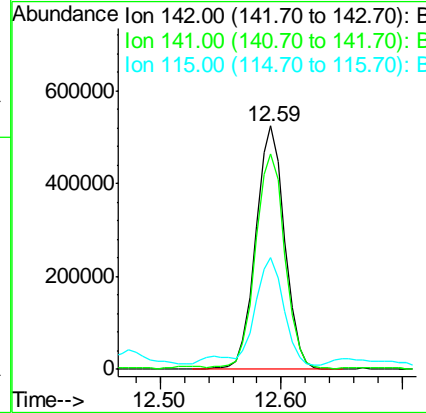
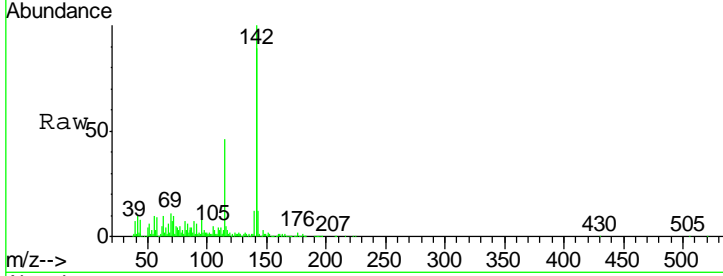




#37  
 2-Methylnaphthalene  
 Concen: 41.11 ng  
 RT: 12.59 min Scan# 1660  
 Delta R.T. 0.00 min  
 Lab File: BG023917.D  
 Acq: 26 Aug 2016 7:37

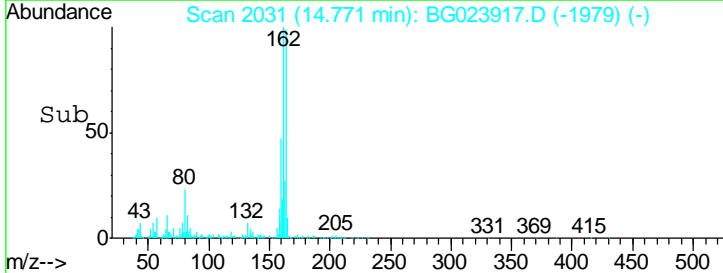
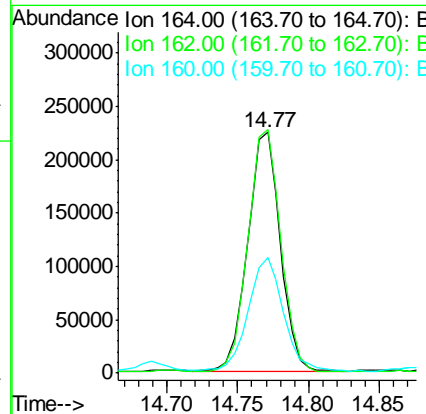
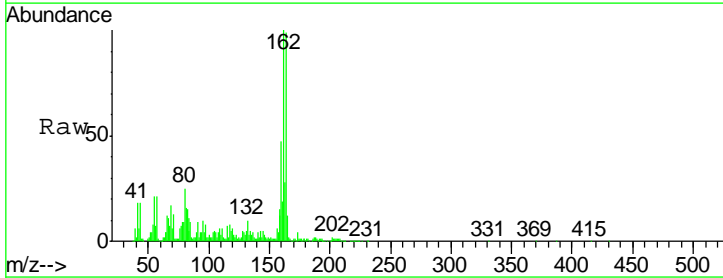
Instrument :  
 BNA\_G  
 ClientSampled :  
 MW-4

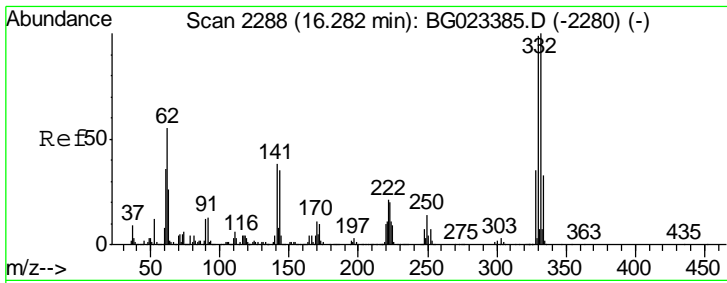
Tgt Ion	Resp	Lower	Upper
142	100		
141	88.6	70.2	105.2
115	45.8	41.7	62.5



#38  
 Acenaphthene-d10  
 Concen: 20.00 ng  
 RT: 14.77 min Scan# 2031  
 Delta R.T. 0.00 min  
 Lab File: BG023917.D  
 Acq: 26 Aug 2016 7:37

Tgt Ion	Resp	Lower	Upper
164	100		
162	101.1	87.7	131.5
160	47.9	37.2	55.8

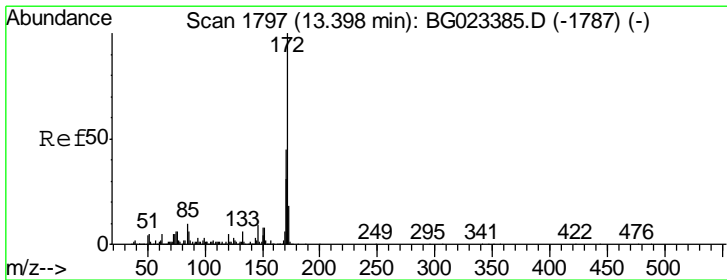
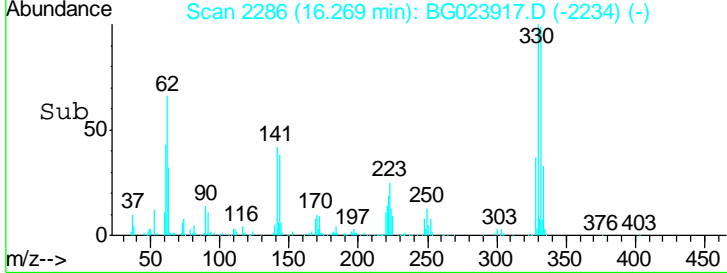
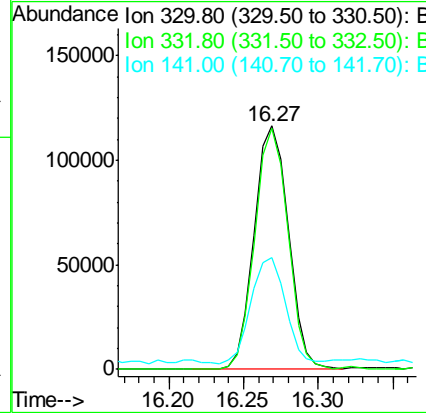
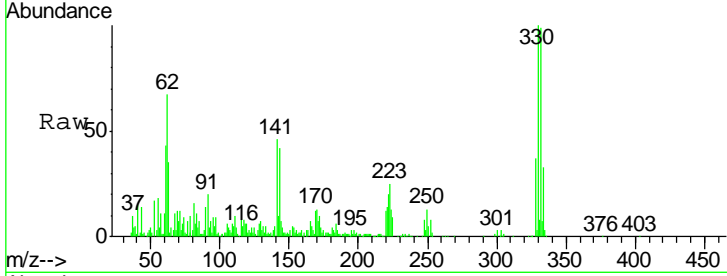




#41  
 2,4,6-Tribromophenol  
 Concen: 34.57 ng  
 RT: 16.27 min Scan# 2286  
 Delta R.T. 0.00 min  
 Lab File: BG023917.D  
 Acq: 26 Aug 2016 7:37

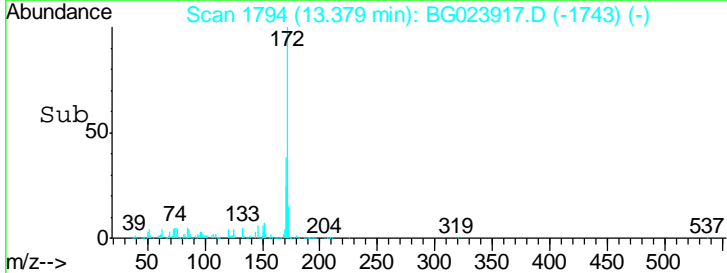
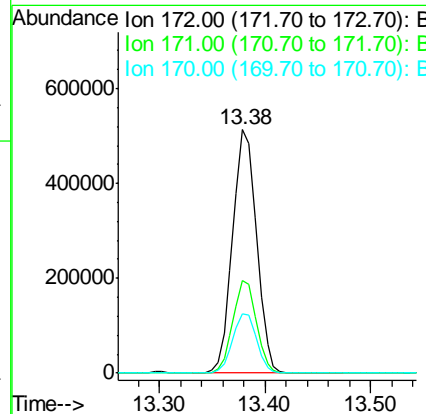
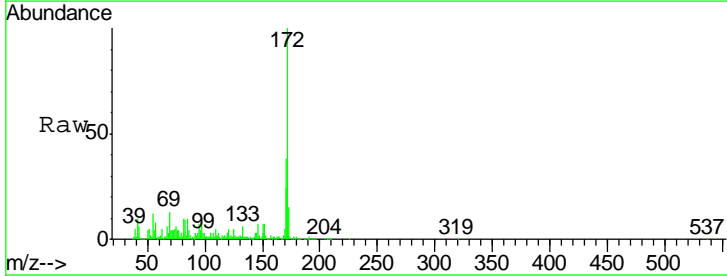
Instrument :  
 BNA\_G  
 ClientSampled :  
 MW-4

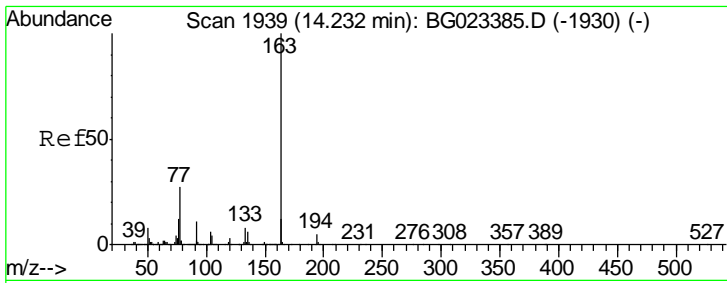
Tgt Ion	Resp	Lower	Upper
330	100		
332	95.7	77.4	116.2
141	43.6	31.7	47.5



#44  
 2-Fluorobiphenyl  
 Concen: 37.12 ng  
 RT: 13.38 min Scan# 1794  
 Delta R.T. -0.00 min  
 Lab File: BG023917.D  
 Acq: 26 Aug 2016 7:37

Tgt Ion	Resp	Lower	Upper
172	100		
171	38.1	31.6	47.4
170	24.5	21.3	31.9

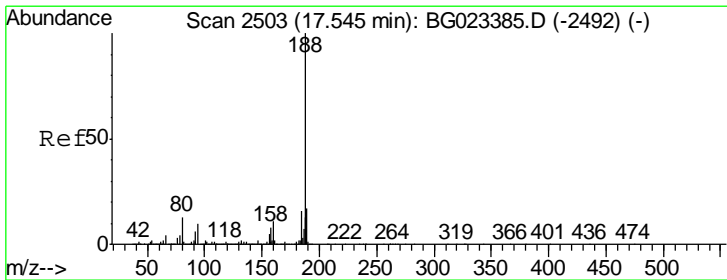
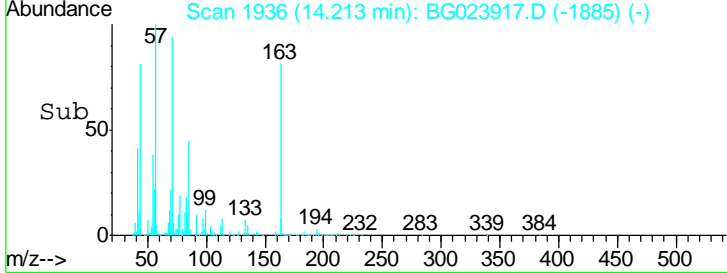
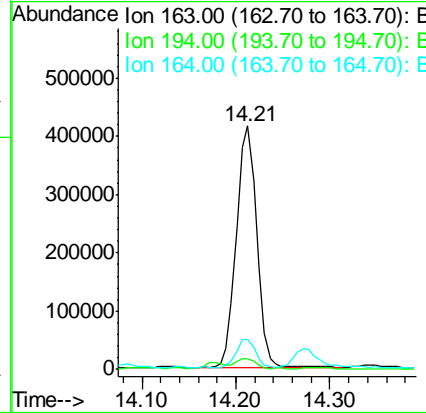
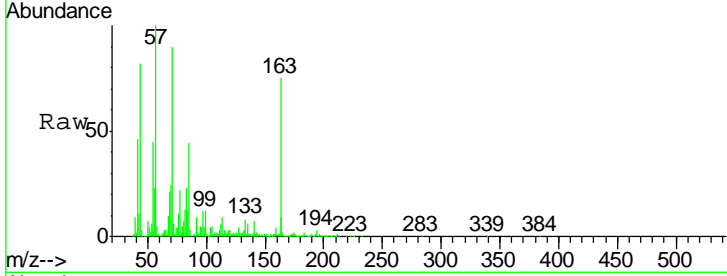




#49  
 Dimethylphthalate  
 Concen: 22.67 ng  
 RT: 14.21 min Scan# 1936  
 Delta R.T. -0.00 min  
 Lab File: BG023917.D  
 Acq: 26 Aug 2016 7:37

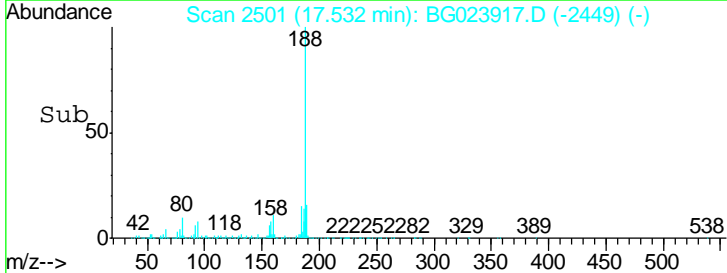
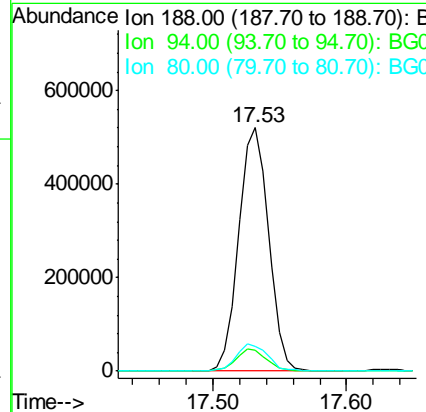
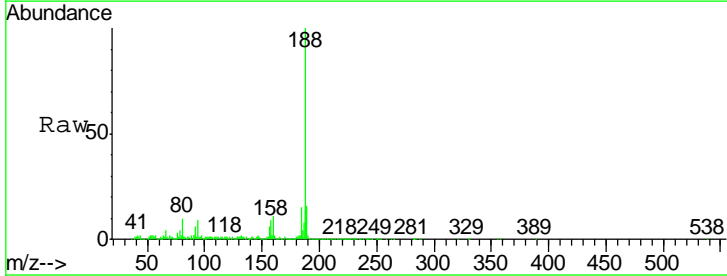
Instrument :  
 BNA\_G  
 ClientSampled :  
 MW-4

Tgt Ion	Resp	Lower	Upper
163	100		
194	4.2	3.6	5.4
164	12.4	8.1	12.1#

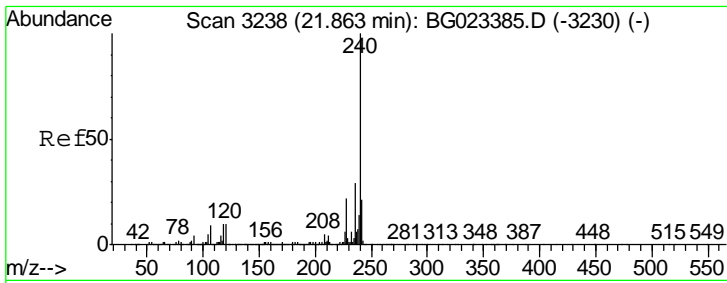


#63  
 Phenanthrene-d10  
 Concen: 20.00 ng  
 RT: 17.53 min Scan# 2501  
 Delta R.T. 0.00 min  
 Lab File: BG023917.D  
 Acq: 26 Aug 2016 7:37

Tgt Ion	Resp	Lower	Upper
188	100		
94	8.7	5.2	7.8#
80	10.2	7.2	10.8



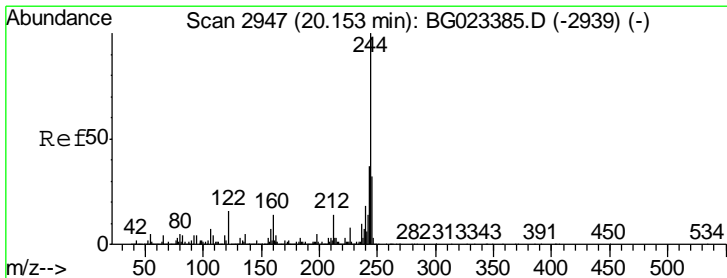
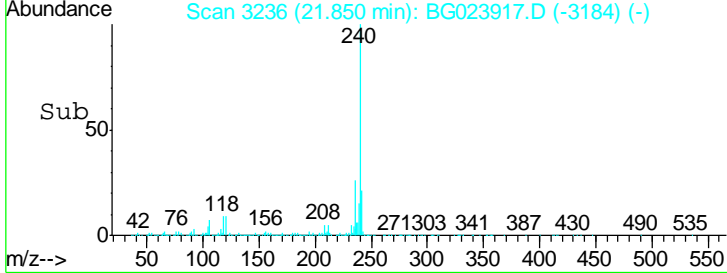
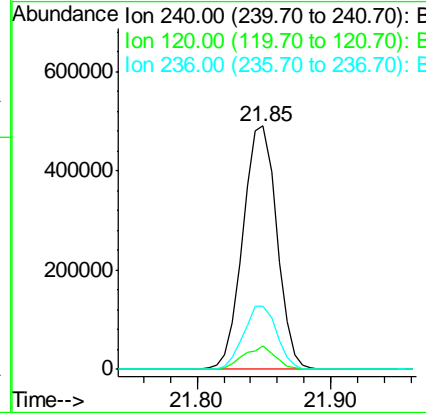
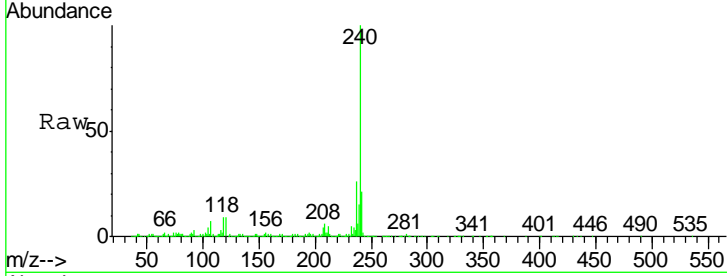




#75  
 Chrysene-d12  
 Concen: 20.00 ng  
 RT: 21.85 min Scan# 3236  
 Delta R.T. 0.00 min  
 Lab File: BG023917.D  
 Acq: 26 Aug 2016 7:37

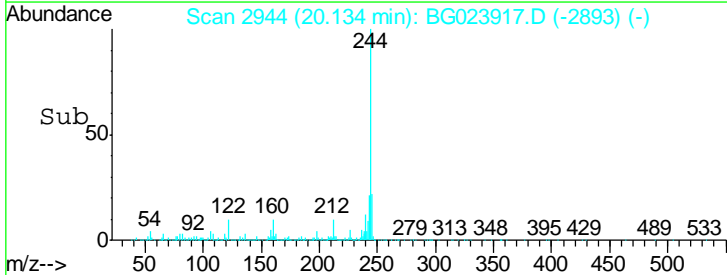
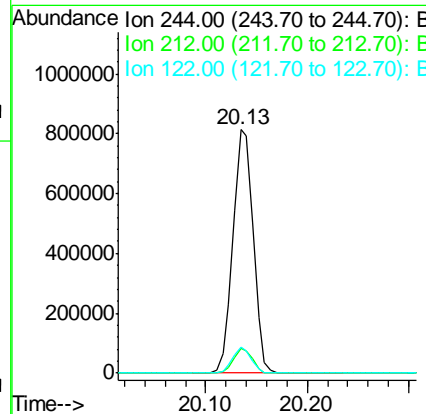
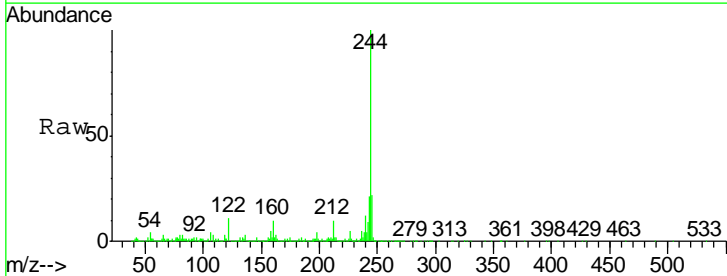
Instrument :  
 BNA\_G  
 ClientSampled :  
 MW-4

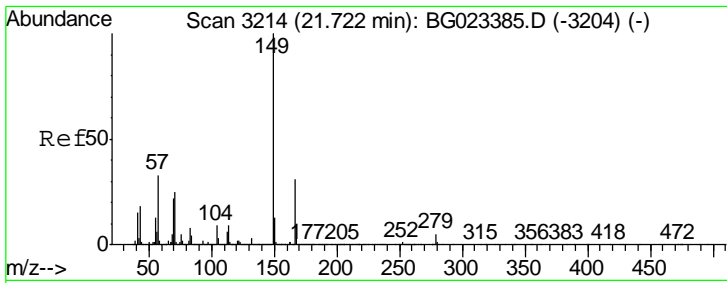
Tgt Ion	Resp	Lower	Upper
240	100		
120	9.4	4.1	6.1#
236	26.1	21.1	31.7



#78  
 Terphenyl-d14  
 Concen: 28.66 ng  
 RT: 20.13 min Scan# 2944  
 Delta R.T. -0.00 min  
 Lab File: BG023917.D  
 Acq: 26 Aug 2016 7:37

Tgt Ion	Resp	Lower	Upper
244	100		
212	9.9	10.8	16.2#
122	10.5	8.0	12.0

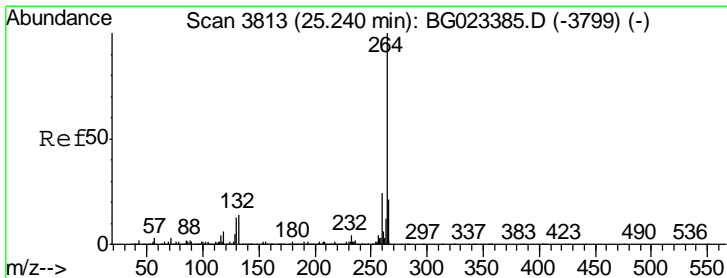
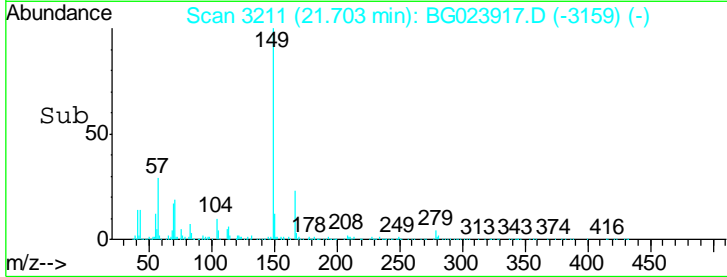
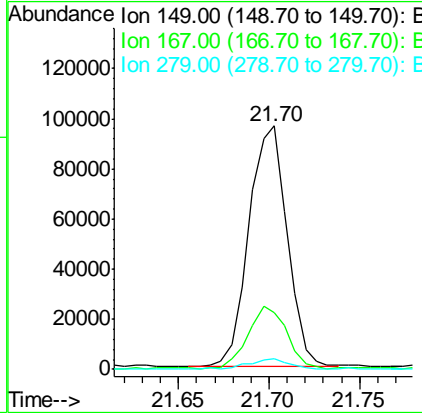
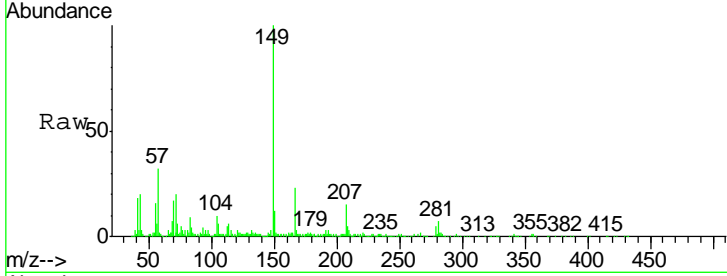




#83  
 Bis(2-ethylhexyl)phthalate  
 Concen: 5.02 ng  
 RT: 21.70 min Scan# 3211  
 Delta R.T. 0.00 min  
 Lab File: BG023917.D  
 Acq: 26 Aug 2016 7:37

Instrument :  
 BNA\_G  
 ClientSampled :  
 MW-4

Tgt Ion	Resp	Lower	Upper
149	141658		
167	23.3	24.0	36.0#
279	4.6	4.8	7.2#



#86  
 Perylene-d12  
 Concen: 20.00 ng  
 RT: 25.23 min Scan# 3812  
 Delta R.T. 0.01 min  
 Lab File: BG023917.D  
 Acq: 26 Aug 2016 7:37

Tgt Ion	Resp	Lower	Upper
264	866451		
260	24.7	18.4	27.6
265	22.3	18.9	28.3

