

Data Path : Z:\HPCHEM1\BNA G\Data\BG082517\
 Data File : BG028510.D
 Acq On : 26 Aug 2017 3:37
 Operator : SJ/JU
 Sample : I4885-12
 Misc :
 ALS Vial : 27 Sample Multiplier: 1

Instrument :
 BNA_G
 ClientSampled :
 B0AS2

Integration Parameters: LSCINT.P

Integrator: RTE
 Smoothing : ON Filtering: 5
 Sampling : 1 Min Area: 0.1 % of largest Peak
 Start Thrs: 0.1 Max Peaks: 100
 Stop Thrs : 0 Peak Location: TOP

If leading or trailing edge < 100 prefer < Baseline drop else tangent >
 Peak separation: 1

Method : Z:\HPCHEM1\BNA_G\METHODS\SOM-EPA-BG080217.M
 Title : SVOA CALIBRATION

Signal : TIC

peak #	R.T. min	first scan	max scan	last scan	PK TY	peak height	corr. area	corr. % max.	% of total
1	3.817	34	39	48	rVB3	10593	17972	0.98%	0.099%
2	4.075	79	83	93	rBV	28108	56102	3.07%	0.308%
3	4.522	154	159	161	rBV3	2560	3561	0.19%	0.020%
4	5.033	243	246	251	rVB4	1947	3435	0.19%	0.019%
5	5.097	251	257	262	rBV3	2909	5575	0.31%	0.031%
6	5.444	309	316	322	rVB4	5341	9411	0.52%	0.052%
7	5.791	365	375	381	rBV5	2675	7557	0.41%	0.041%
8	6.296	457	461	468	rVB3	2628	5491	0.30%	0.030%
9	6.355	468	471	476	rBV4	2001	3304	0.18%	0.018%
10	6.408	476	480	488	rVV3	2912	4702	0.26%	0.026%
11	6.543	502	503	510	rVB3	3125	5010	0.27%	0.027%
12	6.637	513	519	523	rBV6	2687	6098	0.33%	0.033%
13	6.884	557	561	568	rVB3	1832	3695	0.20%	0.020%
14	6.966	568	575	584	rBV5	4308	8920	0.49%	0.049%
15	7.318	627	635	644	rBV5	7815	20591	1.13%	0.113%
16	7.495	658	665	678	rBV	219377	446290	24.43%	2.449%
17	7.653	684	692	703	rBV	162940	277264	15.17%	1.521%
18	7.753	706	709	715	rVB3	2323	3948	0.22%	0.022%
19	7.871	723	729	742	rBV	206669	380985	20.85%	2.091%
20	8.235	784	791	801	rBV3	13208	30596	1.67%	0.168%
21	8.335	801	808	822	rVB	128207	237226	12.98%	1.302%
22	8.529	835	841	846	rBV3	7069	13144	0.72%	0.072%
23	8.570	846	848	854	rVV3	4461	7615	0.42%	0.042%
24	9.034	919	927	950	rVB2	283780	538633	29.48%	2.956%
25	9.269	962	967	969	rBV2	2560	4221	0.23%	0.023%
26	9.504	996	1007	1018	rBV	218758	420100	22.99%	2.305%
27	9.604	1018	1024	1036	rVB3	16380	40958	2.24%	0.225%
28	10.233	1123	1131	1143	rBV	201591	382103	20.91%	2.097%
29	10.444	1160	1167	1169	rBV4	2413	3464	0.19%	0.019%
30	10.773	1213	1223	1238	rBV	293735	572777	31.35%	3.143%
31	10.908	1238	1246	1258	rVB4	10475	29500	1.61%	0.162%
32	11.055	1268	1271	1277	rVB5	2872	4938	0.27%	0.027%
33	11.161	1277	1289	1298	rBV2	182086	352299	19.28%	1.933%
34	11.290	1302	1311	1326	rBV2	197845	392573	21.49%	2.154%

Data Path : Z:\HPCHEM1\BNA G\Data\BG082517\
 Data File : BG028510.D
 Acq On : 26 Aug 2017 3:37
 Operator : SJ/JU
 Sample : I4885-12
 Misc :
 ALS Vial : 27 Sample Multiplier: 1

Instrument :
 BNA_G
 ClientSampleId :
 B0AS2

Integration Parameters: LSCINT.P

Integrator: RTE
 Smoothing : ON
 Sampling : 1
 Start Thrs: 0.1
 Stop Thrs : 0

Filtering: 5
 Min Area: 0.1 % of largest Peak
 Max Peaks: 100
 Peak Location: TOP

If leading or trailing edge < 100 prefer < Baseline drop else tangent >
 Peak separation: 1

Method : Z:\HPCHEM1\BNA G\METHODS\SOM-EPA-BG080217.M
 Title : SVOA CALIBRATION

35	11.925	1415	1419	1422	rBV5	3338	5483	0.30%	0.030%
36	12.307	1480	1484	1490	rBV3	5229	8992	0.49%	0.049%
37	12.600	1530	1534	1538	rBV3	3673	6434	0.35%	0.035%
38	12.636	1538	1540	1547	rVV3	1981	4270	0.23%	0.023%
39	12.718	1547	1554	1561	rVB2	5830	10781	0.59%	0.059%
40	13.229	1637	1641	1646	rBV3	2556	3835	0.21%	0.021%
41	13.300	1648	1653	1658	rBV4	2446	4090	0.22%	0.022%
42	13.541	1685	1694	1698	rBV5	3887	9275	0.51%	0.051%
43	13.593	1698	1703	1711	rVV3	12782	24004	1.31%	0.132%
44	14.340	1822	1830	1834	rBV	633515	941284	51.52%	5.165%
45	14.387	1834	1838	1847	rVB	385688	562492	30.78%	3.086%
46	14.645	1874	1882	1897	rVB	640166	1044476	57.16%	5.731%
47	14.798	1903	1908	1915	rBV3	6378	10307	0.56%	0.057%
48	14.951	1925	1934	1944	rVB2	298259	500419	27.39%	2.746%
49	15.150	1959	1968	1990	rBV	209735	455892	24.95%	2.502%
50	15.344	1996	2001	2007	rVB8	5941	11706	0.64%	0.064%
51	15.415	2011	2013	2019	rVB6	2732	4978	0.27%	0.027%
52	15.497	2022	2027	2029	rBV3	2651	4132	0.23%	0.023%
53	15.550	2029	2036	2042	rVB6	2645	6806	0.37%	0.037%
54	15.632	2047	2050	2056	rVB4	2990	5914	0.32%	0.032%
55	15.709	2058	2063	2066	rBV3	9494	13506	0.74%	0.074%
56	15.750	2066	2070	2075	rVB3	18659	25228	1.38%	0.138%
57	15.938	2093	2102	2110	rBV	897514	1374269	75.21%	7.541%
58	16.061	2116	2123	2132	rBV	287635	436955	23.91%	2.398%
59	16.173	2133	2142	2149	rVB8	11426	35930	1.97%	0.197%
60	16.249	2152	2155	2159	rVB5	3684	4083	0.22%	0.022%
61	16.302	2161	2164	2167	rVB2	4454	4912	0.27%	0.027%
62	16.372	2172	2176	2180	rVB3	5048	6933	0.38%	0.038%
63	16.449	2186	2189	2195	rBV4	4065	6262	0.34%	0.034%
64	16.608	2212	2216	2228	rBV2	27156	46819	2.56%	0.257%
65	16.790	2245	2247	2256	rVB7	5065	9975	0.55%	0.055%
66	16.925	2267	2270	2273	rBV4	2347	3351	0.18%	0.018%
67	16.954	2273	2275	2279	rVB5	4323	3774	0.21%	0.021%
68	17.013	2283	2285	2289	rBV5	4835	5930	0.32%	0.033%
69	17.066	2291	2294	2300	rVV8	4847	6317	0.35%	0.035%
70	17.113	2300	2302	2307	rVB5	4722	6319	0.35%	0.035%
71	17.189	2311	2315	2317	rBV4	3460	4161	0.23%	0.023%

Data Path : Z:\HPCHEM1\BNA G\Data\BG082517\
 Data File : BG028510.D
 Acq On : 26 Aug 2017 3:37
 Operator : SJ/JU
 Sample : I4885-12
 Misc :
 ALS Vial : 27 Sample Multiplier: 1

Instrument :
 BNA_G
 ClientSampleId :
 B0AS2

Integration Parameters: LSCINT.P

Integrator: RTE
 Smoothing : ON Filtering: 5
 Sampling : 1 Min Area: 0.1 % of largest Peak
 Start Thrs: 0.1 Max Peaks: 100
 Stop Thrs : 0 Peak Location: TOP

If leading or trailing edge < 100 prefer < Baseline drop else tangent >
 Peak separation: 1

Method : Z:\HPCHEM1\BNA G\METHODS\SOM-EPA-BG080217.M
 Title : SVOA CALIBRATION

72	17.301	2330	2334	2335	rBV4	3372	4418	0.24%	0.024%
73	17.401	2345	2351	2355	rBV	21293	31573	1.73%	0.173%
74	17.454	2357	2360	2371	rVB10	7225	15180	0.83%	0.083%
75	17.700	2394	2402	2412	rBV	393868	641248	35.10%	3.519%
76	17.800	2412	2419	2428	rVV	980804	1536673	84.10%	8.432%
77	17.871	2428	2431	2438	rVB6	8952	16270	0.89%	0.089%
78	17.941	2440	2443	2449	rBV6	5463	12746	0.70%	0.070%
79	18.041	2454	2460	2472	rBV7	27972	58885	3.22%	0.323%
80	18.141	2473	2477	2482	rVB4	13026	19258	1.05%	0.106%
81	18.323	2504	2508	2515	rVB8	5975	12271	0.67%	0.067%
82	18.429	2521	2526	2530	rBV6	7105	15204	0.83%	0.083%
83	18.546	2541	2546	2556	rBV2	121264	201769	11.04%	1.107%
84	18.828	2591	2594	2598	rBV6	7101	7027	0.38%	0.039%
85	19.269	2667	2669	2674	rBV6	4065	5623	0.31%	0.031%
86	19.392	2689	2690	2696	rBV6	4358	6219	0.34%	0.034%
87	19.445	2697	2699	2704	rVB4	5610	6476	0.35%	0.036%
88	19.598	2722	2725	2726	rBV3	3891	4120	0.23%	0.023%
89	19.704	2740	2743	2746	rBV2	11046	15540	0.85%	0.085%
90	19.804	2756	2760	2767	rBV3	48268	83582	4.57%	0.459%
91	19.968	2781	2788	2794	rBV6	13034	25217	1.38%	0.138%
92	20.074	2799	2806	2817	rBV	1245070	1827169	100.00%	10.026%
93	20.644	2901	2903	2906	rBV4	6011	6084	0.33%	0.033%
94	21.596	3060	3065	3076	rBV4	46612	102874	5.63%	0.564%
95	22.031	3132	3139	3153	rVB	426233	799768	43.77%	4.388%
96	22.824	3271	3274	3279	rBV7	13191	15957	0.87%	0.088%
97	24.440	3546	3549	3559	rVB7	24070	45868	2.51%	0.252%
98	25.297	3683	3695	3713	rBV2	549291	1801520	98.60%	9.885%
99	25.538	3719	3736	3756	rVB3	222523	860553	47.10%	4.722%
100	26.696	3925	3933	3943	rVB2	40153	124880	6.83%	0.685%

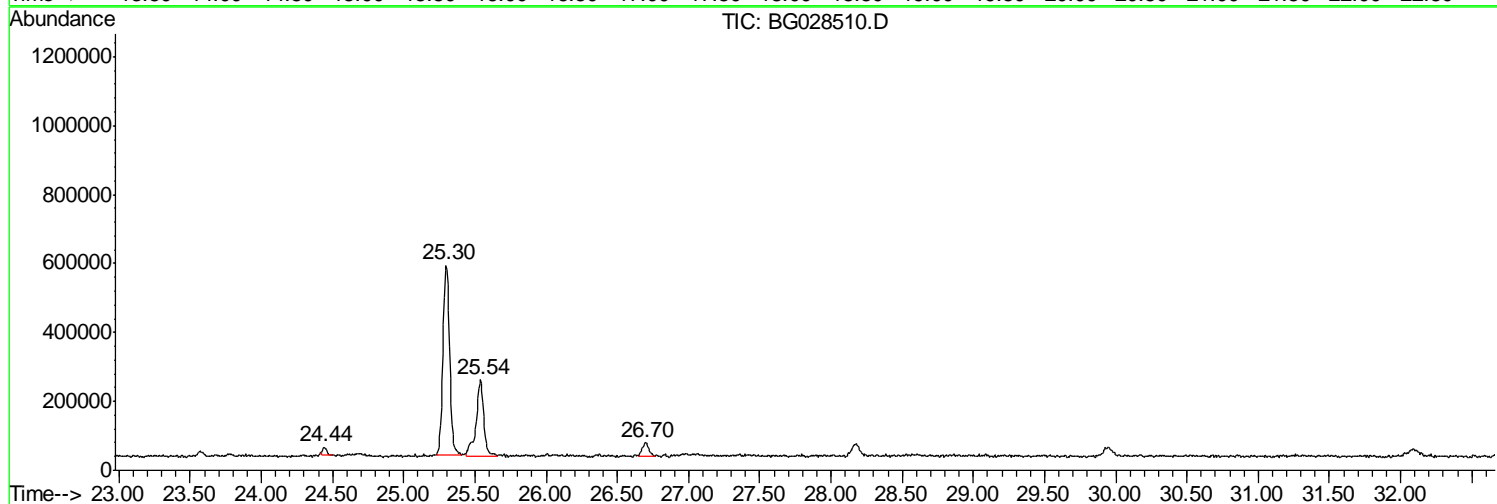
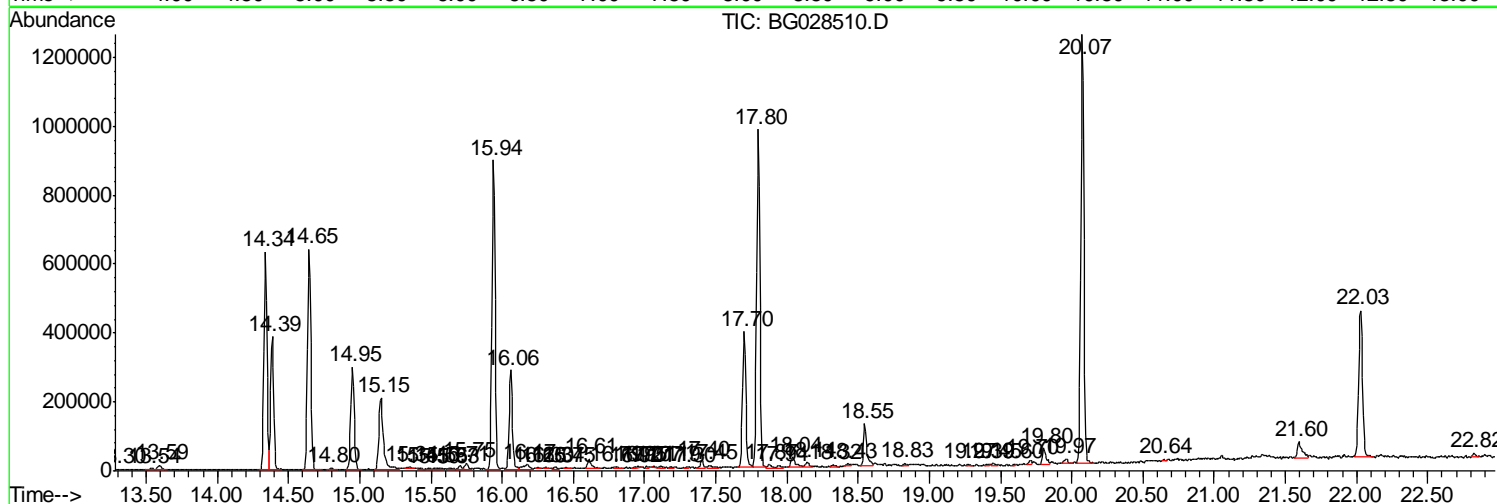
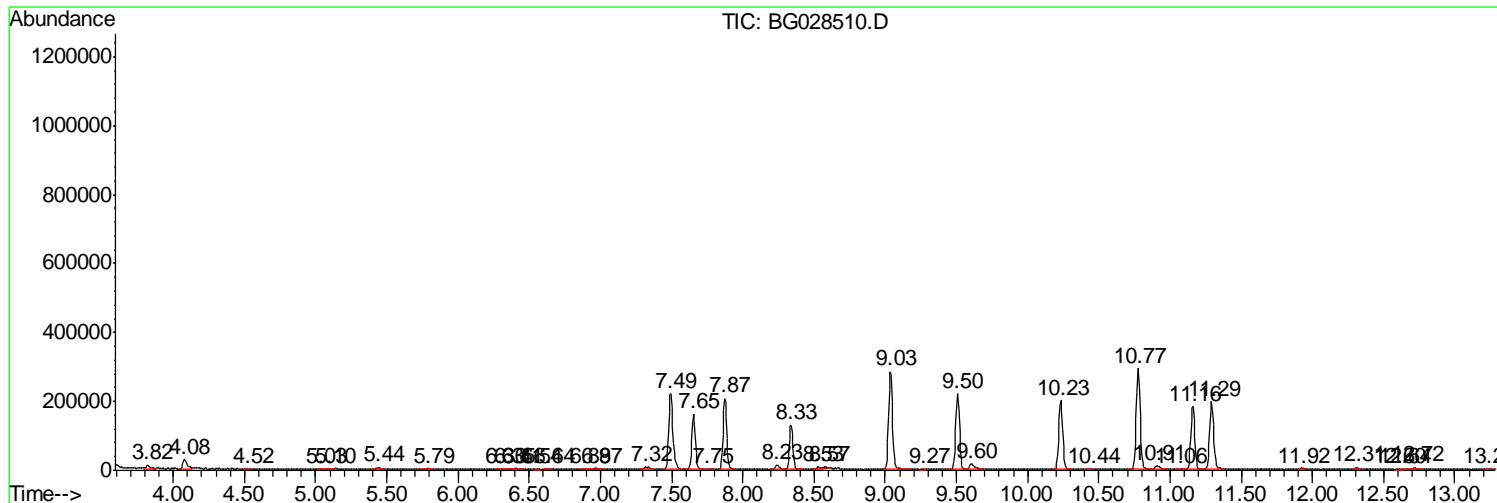
Sum of corrected areas: 18224324

Data Path : Z:\HPCHEM1\BNA G\Data\BG082517\
 Data File : BG028510.D
 Acq On : 26 Aug 2017 3:37
 Operator : SJ/JU
 Sample : I4885-12
 Misc :
 ALS Vial : 27 Sample Multiplier: 1

Instrument :
 BNA_G
 ClientSampleId :
 B0AS2

Quant Method : Z:\HPCHEM1\BNA G\METHODS\SOM-EPA-BG080217.M
 Quant Title : SVOA CALIBRATION

TIC Library : C:\DATABASE\NIST11.L
 TIC Integration Parameters: LSCINT.P



Data Path : Z:\HPCHEM1\BNA G\Data\BG082517\
 Data File : BG028510.D
 Acq On : 26 Aug 2017 3:37
 Operator : SJ/JU
 Sample : I4885-12
 Misc :
 ALS Vial : 27 Sample Multiplier: 1

Instrument :
 BNA_G
 ClientSampleId :
 B0AS2

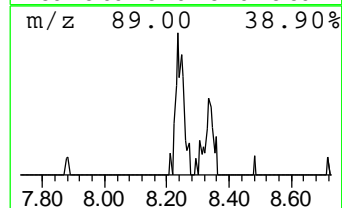
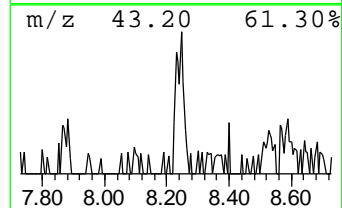
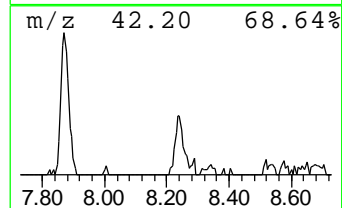
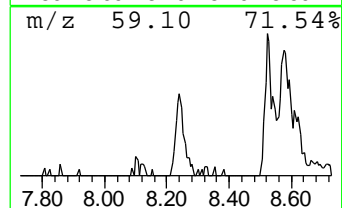
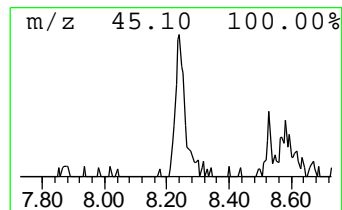
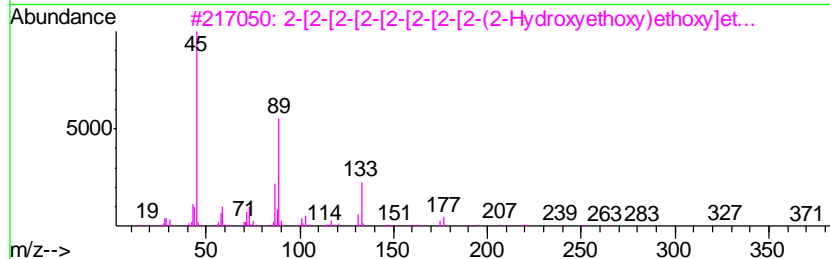
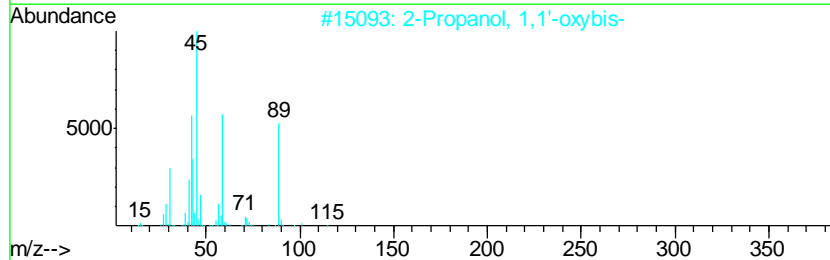
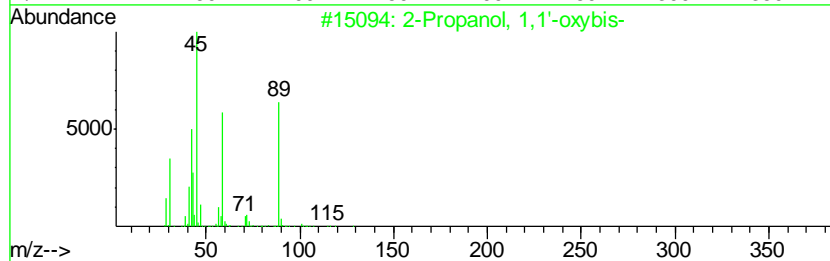
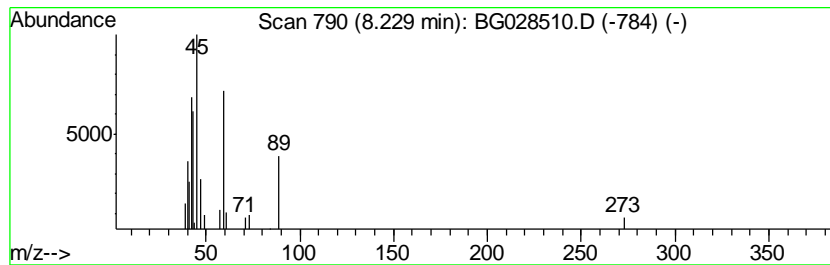
Quant Method : Z:\HPCHEM1\BNA G\METHODS\SOM-EPA-BG080217.M
 Quant Title : SVOA CALIBRATION

TIC Library : C:\DATABASE\NIST11.L
 TIC Integration Parameters: LSCINT.P

 Peak Number 2 2-Propanol, 1,1'-oxybis- Concentration Rank 6

R.T.	EstConc	Area	Relative to ISTD	R.T.
8.23	2.58 ng/ul	30596	1,4-Dichlorobenzene-d4	8.34

Hit#	of	Tentative ID	MW	MolForm	CAS#	Qual
1	5	2-Propanol, 1,1'-oxybis-	134	C6H14O3	000110-98-5	64
2		2-Propanol, 1,1'-oxybis-	134	C6H14O3	000110-98-5	56
3		2-[2-[2-[2-[2-[2-[2-(2-Hydrox...	414	C18H38O10	1000352-12-5	37
4		2-[2-[2-[2-[2-[2-[2-(2-Hydroxyet...	370	C16H34O9	005117-19-1	37
5		2,5,8,11,14-Pentaoxahexadecan-16-ol	252	C11H24O6	023778-52-1	33



Data Path : Z:\HPCHEM1\BNA G\Data\BG082517\
 Data File : BG028510.D
 Acq On : 26 Aug 2017 3:37
 Operator : SJ/JU
 Sample : I4885-12
 Misc :
 ALS Vial : 27 Sample Multiplier: 1

Instrument :
 BNA_G
 ClientSampleId :
 B0AS2

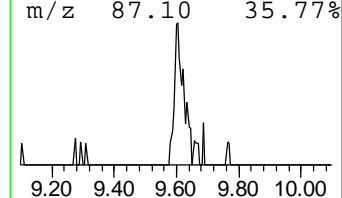
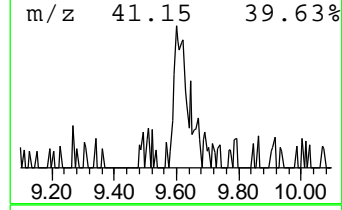
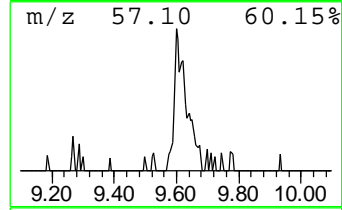
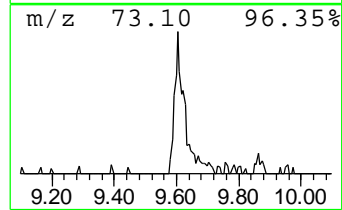
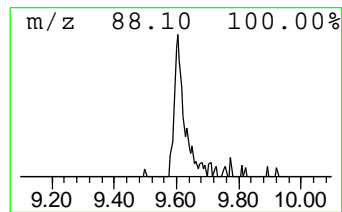
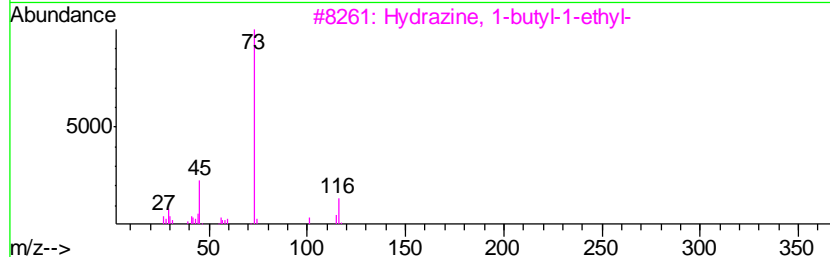
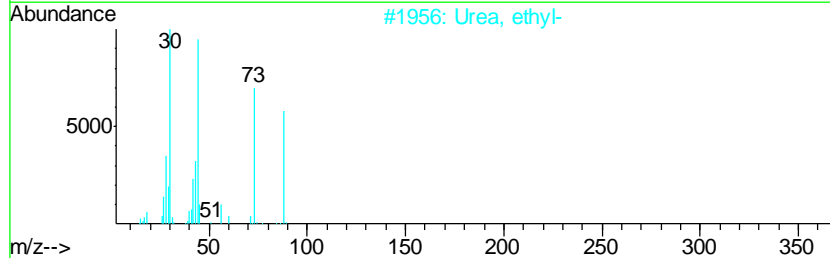
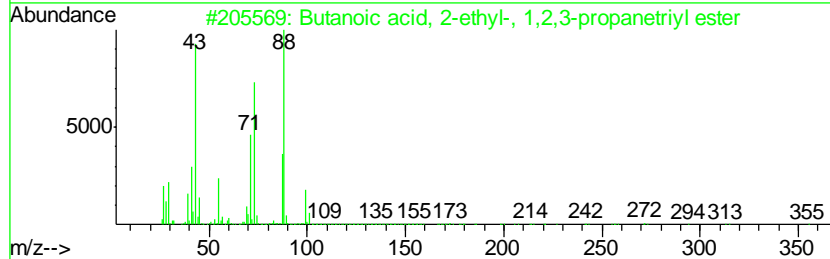
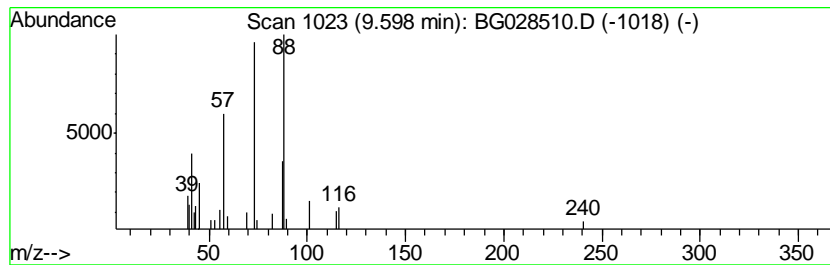
Quant Method : Z:\HPCHEM1\BNA G\METHODS\SOM-EPA-BG080217.M
 Quant Title : SVOA CALIBRATION

TIC Library : C:\DATABASE\NIST11.L
 TIC Integration Parameters: LSCINT.P

 Peak Number 3 unknown-01 Concentration Rank 3

R.T.	EstConc	Area	Relative to ISTD	R.T.
9.60	3.45 ng/ul	40958	1,4-Dichlorobenzene-d4	8.34

Hit#	of	Tentative ID	MW	MolForm	CAS#	Qual
1	5	Butanoic acid, 2-ethyl-, 1,2,3-p...	386	C21H38O6	056554-54-2	33
2		Urea, ethyl-	88	C3H8N2O	000625-52-5	25
3		Hydrazine, 1-butyl-1-ethyl-	116	C6H16N2	052728-56-0	9
4		5-(Methylamino)-1,2,3,4-thiatr...	116	C2H4N4S	052098-72-3	9
5		Methyl L-(+)-.beta.-hydroxyisob...	118	C5H10O3	080657-57-4	9



Data Path : Z:\HPCHEM1\BNA G\Data\BG082517\
 Data File : BG028510.D
 Acq On : 26 Aug 2017 3:37
 Operator : SJ/JU
 Sample : I4885-12
 Misc :
 ALS Vial : 27 Sample Multiplier: 1

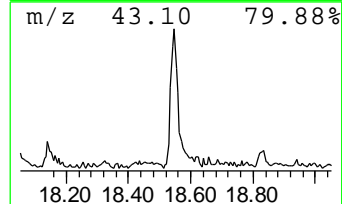
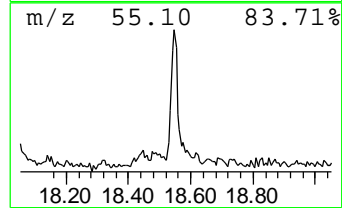
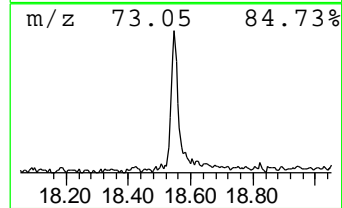
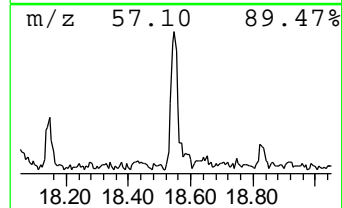
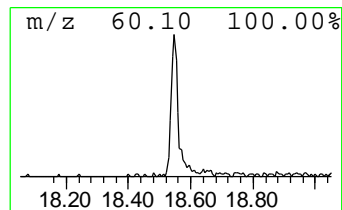
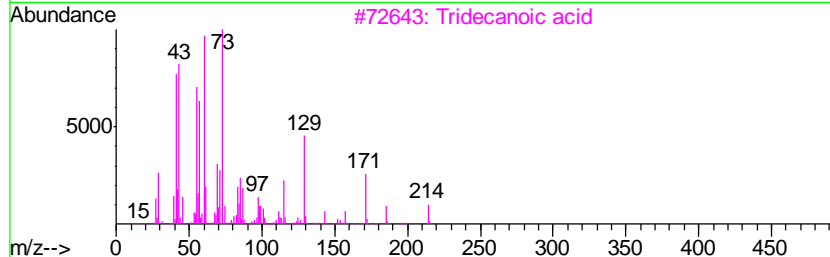
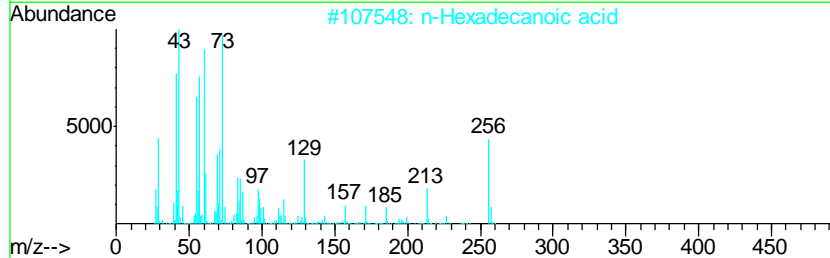
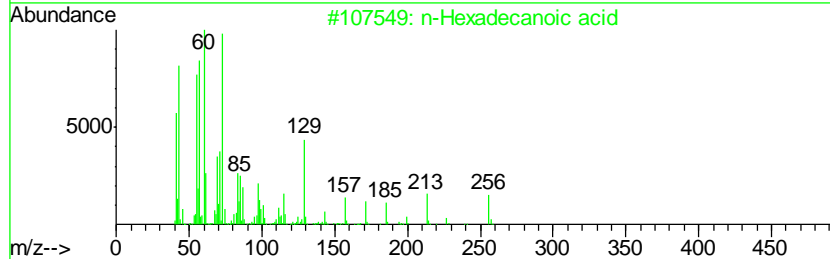
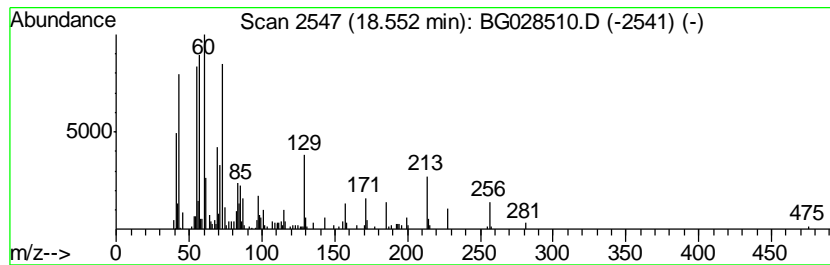
Instrument :
 BNA_G
 ClientSampleID :
 B0AS2

Quant Method : Z:\HPCHEM1\BNA G\METHODS\SOM-EPA-BG080217.M
 Quant Title : SVOA CALIBRATION

TIC Library : C:\DATABASE\NIST11.L
 TIC Integration Parameters: LSCINT.P

 Peak Number 4 n-Hexadecanoic acid Concentration Rank 1

R.T.	EstConc	Area	Relative to ISTD	R.T.		
18.55	6.29 ng/ul	201769	Phenanthrene-d10	17.70		
Hit# of	5	Tentative ID	MW	MolForm	CAS#	Qual
1		n-Hexadecanoic acid	256	C16H32O2	000057-10-3	98
2		n-Hexadecanoic acid	256	C16H32O2	000057-10-3	95
3		Tridecanoic acid	214	C13H26O2	000638-53-9	89
4		Tridecanoic acid	214	C13H26O2	000638-53-9	68
5		Pentadecanoic acid	242	C15H30O2	001002-84-2	64



Data Path : Z:\HPCHEM1\BNA G\Data\BG082517\
 Data File : BG028510.D
 Acq On : 26 Aug 2017 3:37
 Operator : SJ/JU
 Sample : I4885-12
 Misc :
 ALS Vial : 27 Sample Multiplier: 1

Instrument :
 BNA_G
 ClientSampleId :
 B0AS2

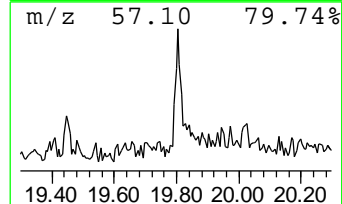
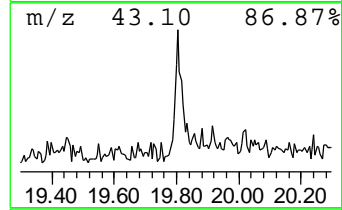
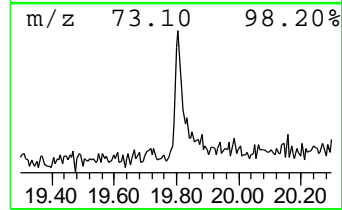
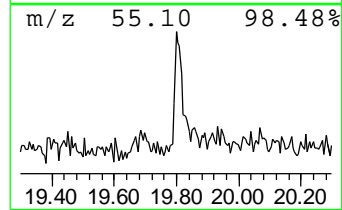
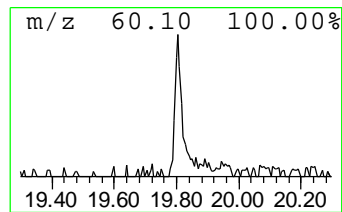
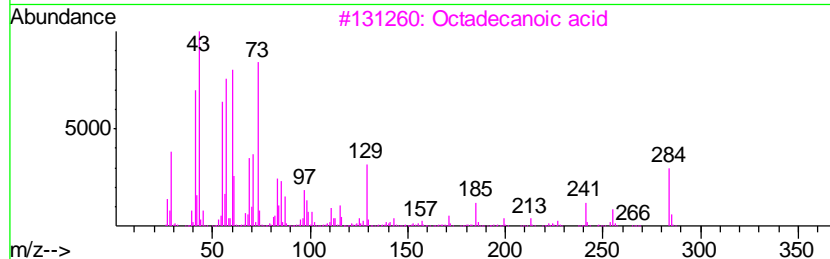
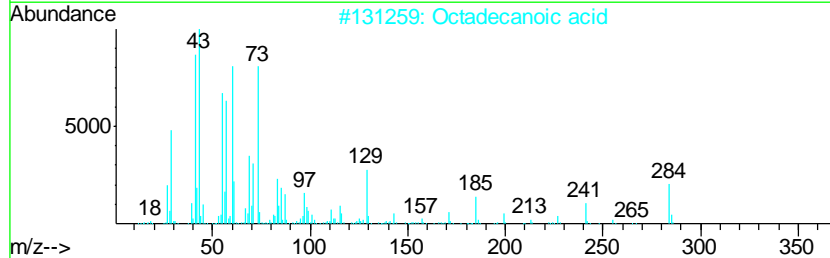
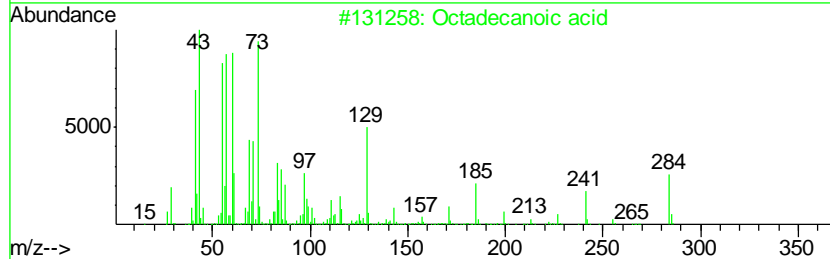
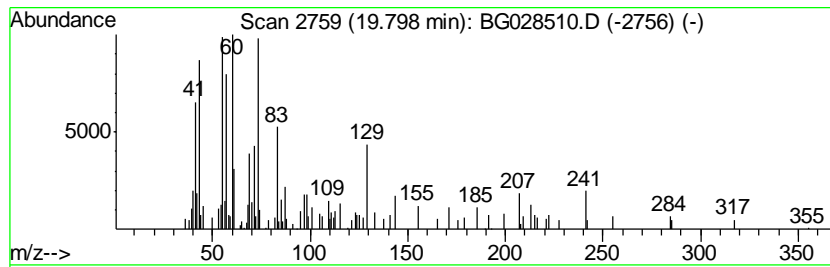
Quant Method : Z:\HPCHEM1\BNA G\METHODS\SOM-EPA-BG080217.M
 Quant Title : SVOA CALIBRATION

TIC Library : C:\DATABASE\NIST11.L
 TIC Integration Parameters: LSCINT.P

 Peak Number 5 Octadecanoic acid Concentration Rank 5

R.T.	EstConc	Area	Relative to ISTD	R.T.
19.80	2.61 ng/ul	83582	Phenanthrene-d10	17.70

Hit#	of	Tentative ID	MW	MolForm	CAS#	Qual
1	5	Octadecanoic acid	284	C18H36O2	000057-11-4	90
2		Octadecanoic acid	284	C18H36O2	000057-11-4	87
3		Octadecanoic acid	284	C18H36O2	000057-11-4	80
4		Octadecanoic acid	284	C18H36O2	000057-11-4	76
5		n-Hexadecanoic acid	256	C16H32O2	000057-10-3	74



Data Path : Z:\HPCHEM1\BNA G\Data\BG082517\
 Data File : BG028510.D
 Acq On : 26 Aug 2017 3:37
 Operator : SJ/JU
 Sample : I4885-12
 Misc :
 ALS Vial : 27 Sample Multiplier: 1

Instrument :
 BNA_G
 ClientSampleID :
 B0AS2

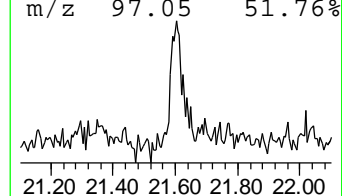
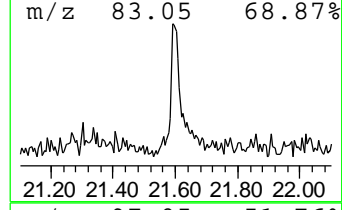
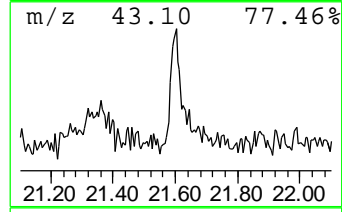
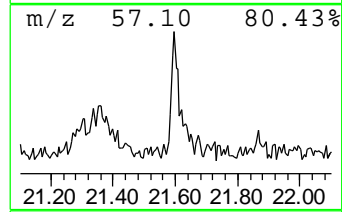
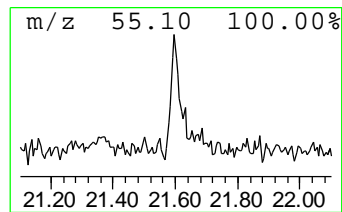
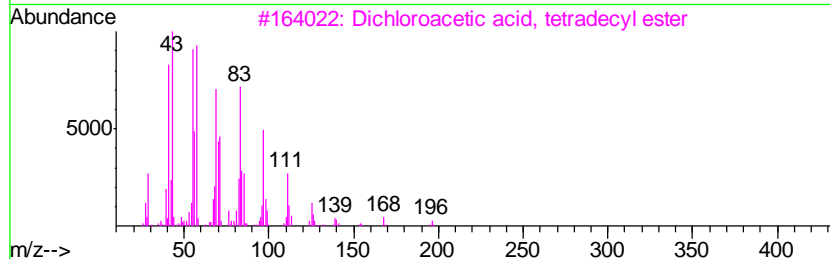
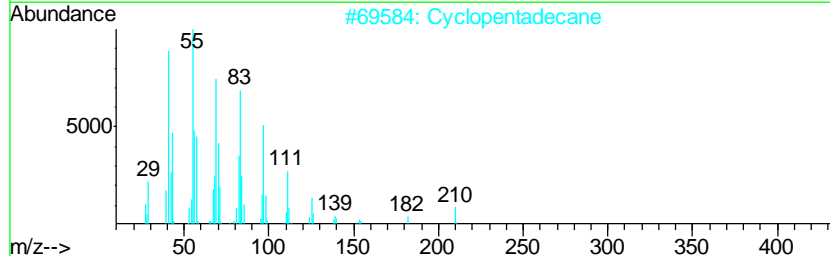
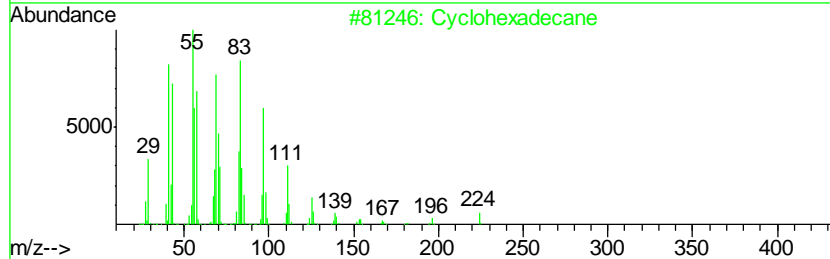
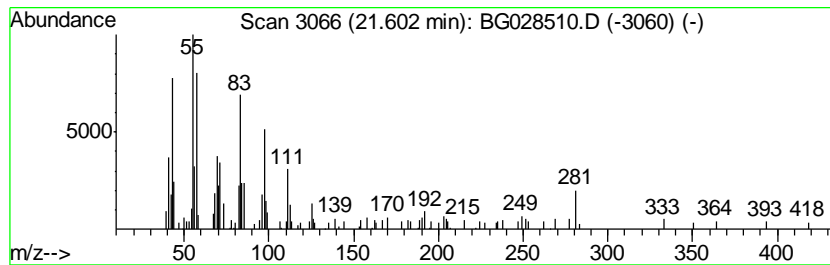
Quant Method : Z:\HPCHEM1\BNA G\METHODS\SOM-EPA-BG080217.M
 Quant Title : SVOA CALIBRATION

TIC Library : C:\DATABASE\NIST11.L
 TIC Integration Parameters: LSCINT.P

 Peak Number 6 (DEL) Alkane: Straight-Chai... Concentration Rank 7

R.T.	EstConc	Area	Relative to ISTD	R.T.
21.60	2.57 ng/ul	102874	Chrysene-d12	22.02

Hit#	of	Tentative ID	MW	MolForm	CAS#	Qual
1	5	Cyclohexadecane	224	C16H32	000295-65-8	93
2		Cyclopentadecane	210	C15H30	000295-48-7	93
3		Dichloroacetic acid, tetradecyl ...	324	C16H30Cl2O2	083005-02-1	68
4		Trifluoroacetoxy hexadecane	338	C18H33F3O2	006222-03-3	64
5		2- Bromopropionic acid, pentadec...	362	C18H35BrO2	1000292-44-2	64



Data Path : Z:\HPCHEM1\BNA G\Data\BG082517\
 Data File : BG028510.D
 Acq On : 26 Aug 2017 3:37
 Operator : SJ/JU
 Sample : I4885-12
 Misc :
 ALS Vial : 27 Sample Multiplier: 1

Instrument :
 BNA_G
 ClientSampled :
 B0AS2

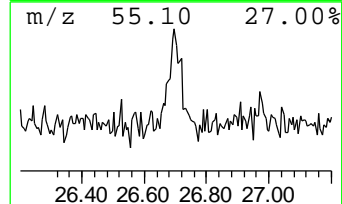
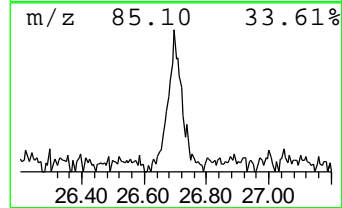
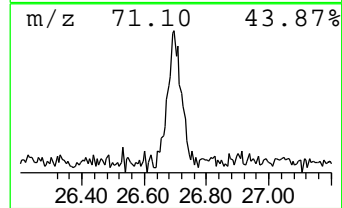
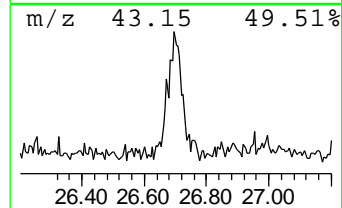
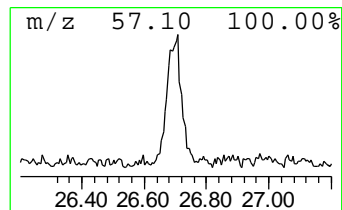
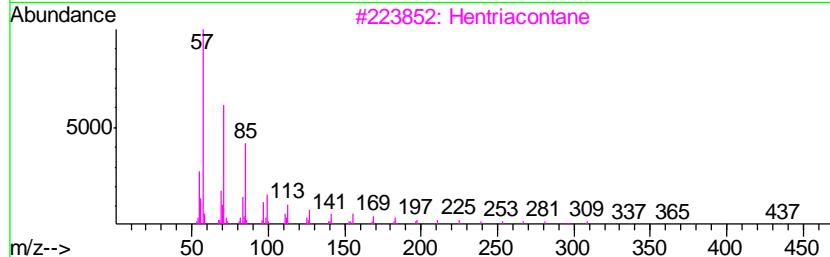
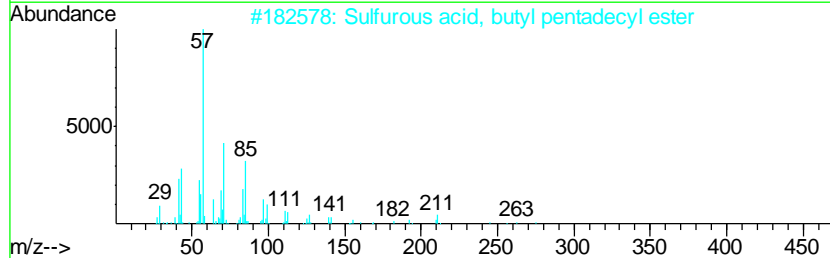
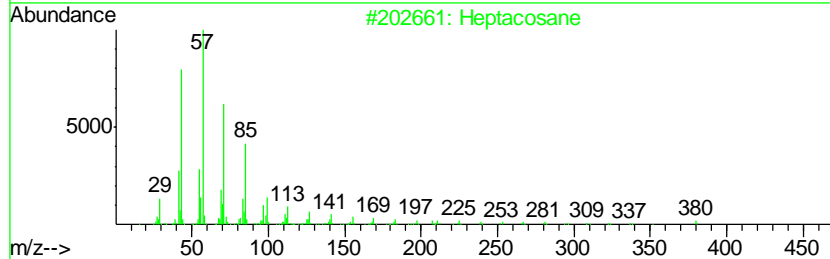
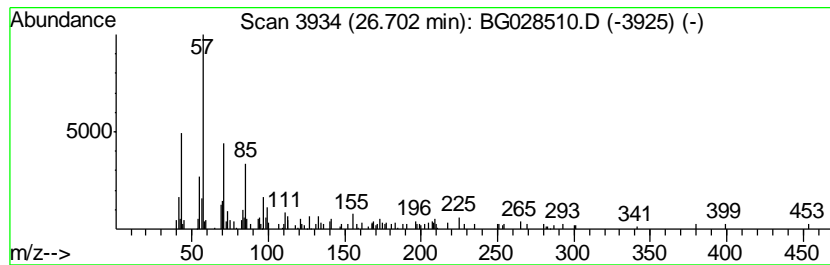
Quant Method : Z:\HPCHEM1\BNA G\METHODS\SOM-EPA-BG080217.M
 Quant Title : SVOA CALIBRATION

TIC Library : C:\DATABASE\NIST11.L
 TIC Integration Parameters: LSCINT.P

 Peak Number 7 (DEL) Alkane: Straight-Chai... Concentration Rank 4

R.T.	EstConc	Area	Relative to ISTD	R.T.
26.70	2.90 ng/ul	124880	Perylene-d12	25.54

Hit#	of	Tentative ID	MW	MolForm	CAS#	Qual
1	5	Heptacosane	380	C27H56	000593-49-7	93
2		Sulfurous acid, butyl pentadecyl...	348	C19H40O3S	1000309-18-2	80
3		Hentriacontane	437	C31H64	000630-04-6	76
4		Sulfurous acid, 2-propyl tridecyl...	306	C16H34O3S	1000309-12-4	72
5		Tetratetracontane	619	C44H90	007098-22-8	68



Data Path : Z:\HPCHEM1\BNA_G\Data\BG082517\
Data File : BG028510.D
Acq On : 26 Aug 2017 3:37
Operator : SJ/JU
Sample : I4885-12
Misc :
ALS Vial : 27 Sample Multiplier: 1

Instrument :
BNA_G
ClientSampleId :
B0AS2

Quant Method : Z:\HPCHEM1\BNA_G\METHODS\SOM-EPA-BG080217.M
Quant Title : SVOA CALIBRATION

TIC Library : C:\DATABASE\NIST11.L
TIC Integration Parameters: LSCINT.P

TIC Top Hit name	RT	EstConc	Units	Response	--Internal Standard--			
					#	RT	Resp	Conc
2-Propanol, 1,1'-...	8.23	2.6	ng/ul	30596	1	8.34	237226	20.0
unknown-01	9.60	3.5	ng/ul	40958	1	8.34	237226	20.0
n-Hexadecanoic acid	18.55	6.3	ng/ul	201769	4	17.70	641248	20.0
Octadecanoic acid	19.80	2.6	ng/ul	83582	4	17.70	641248	20.0
(DEL) Alkane: Str...	21.60	2.6	ng/ul	102874	5	22.02	799768	20.0
(DEL) Alkane: Str...	26.70	2.9	ng/ul	124880	6	25.54	860553	20.0