

Data Path : Z:\svoasrv\HPCHEM1\BNA_G\Data\BG082621\
 Data File : BG050004.D
 Acq On : 27 Aug 2021 18:49
 Operator : CG/JU
 Sample : M3395-02
 Misc :
 ALS Vial : 4 Sample Multiplier: 1

Instrument :
 BNA_G
 ClientSampled :
 X3629

Manual Integrations
 APPROVED

mohammad
 8/30/2021 10:32:45 AM

Quant Time: Aug 27 23:36:13 2021
 Quant Method : Z:\SVOASRV\HPCHEM1\BNA_G\METHODS\SFAM-EPA-BG081921.M
 Quant Title : SVOA CALIBRATION
 QLast Update : Fri Aug 27 11:22:49 2021
 Response via : Initial Calibration

Compound	R.T.	QIon	Response	Conc	Units	Dev(Min)	
Internal Standards							
1) 1,4-Dichlorobenzene-d4	7.968	152	27219	20.000	ng/ul	-0.02	
20) Naphthalene-d8	10.788	136	107458	20.000	ng/ul	-0.02	
38) Acenaphthene-d10	14.629	164	74282	20.000	ng/ul	0.00	
64) Phenanthrene-d10	17.379	188	160077	20.000	ng/ul	-0.02	
79) Chrysene-d12	21.649	240	143967	20.000	ng/ul	-0.02	
88) Perylene-d12	24.880	264	154642	20.000	ng/ul	-0.02	
System Monitoring Compounds							
3) 1,4-Dioxane-d8	3.321	96	2438m	4.619	ng/uL	-0.02	
4) Pyridine-d5	3.773	84	13618	8.565	ng/ul	0.00	
7) Phenol-d5	7.140	99	45716	19.779	ng/ul	0.00	
9) Bis-(2-Chloroethyl)eth...	7.286	67	26008	20.254	ng/ul	-0.02	
11) 2-Chlorophenol-d4	7.504	132	35762	20.678	ng/ul	0.00	
15) 4-Methylphenol-d8	8.690	113	35846	19.692	ng/ul	0.00	
21) Nitrobenzene-d5	9.137	128	16873	20.253	ng/ul	-0.02	
24) 2-Nitrophenol-d4	9.871	143	22177	22.356	ng/ul	0.00	
28) 2,4-Dichlorophenol-d3	10.417	165	42145	23.820	ng/ul	0.00	
31) 4-Chloroaniline-d4	10.929	131	42265	17.550	ng/ul	0.00	
46) Dimethylphthalate-d6	14.024	166	136903	24.082	ng/ul	-0.02	
49) Acenaphthylene-d8	14.324	160	159662	23.953	ng/ul	0.00	
54) 4-Nitrophenol-d4	14.853	143	18760m	22.809	ng/ul	0.00	
60) Fluorene-d10	15.622	176	119653	24.824	ng/ul	0.00	
65) 4,6-Dinitro-2-methylph...	15.757	200	23329	22.653	ng/ul	0.00	
73) Anthracene-d10	17.478	188	193383	26.903	ng/ul	-0.02	
81) Pyrene-d10	19.769	212	229231	29.465	ng/ul	0.00	
92) Benzo(a)pyrene-d12	24.657	264	229740	28.003	ng/ul	-0.02	
Target Compounds							
							Qvalue
6) Benzaldehyde	7.098	77	88172	66.291	ng/ul		97
12) 2-Chlorophenol	7.533	128	78779	46.098	ng/ul#		89
16) Acetophenone	8.796	105	116237	39.155	ng/ul		97
18) 4-Methylphenol	8.749	108	33749m	17.417	ng/ul		
19) Hexachloroethane	9.055	117	27601	36.905	ng/ul		89
29) 2,4-Dichlorophenol	10.447	162	91020	56.048	ng/ul		98
30) Naphthalene	10.840	128	248537	46.273	ng/ul		98
34) Caprolactam	11.704	113	11497m	20.211	ng/ul		
36) 2-Methylnaphthalene	12.450	142	192323	48.170	ng/ul		93
44) 2-Chloronaphthalene	13.502	162	221641	53.171	ng/ul		96
52) Acenaphthene	14.688	153	128354	29.044	ng/ul		95
61) Fluorene	15.675	166	167735	32.486	ng/ul		92
66) 4,6-Dinitro-2-methylph...	15.769	198	68118	72.973	ng/ul		98
70) Atrazine	16.832	200	102650	54.826	ng/ul		99
72) Phenanthrene	17.426	178	328693	41.188	ng/ul		97
77) Carbazole	17.790	167	448613	62.341	ng/ul		98
82) Pyrene	19.799	202	499305	52.486	ng/ul		99
83) Butylbenzylphthalate	20.674	149	185727	49.473	ng/ul		100
86) Bis(2-ethylhexyl)phtha...	21.526	149	238596	46.279	ng/ul		98
94) Indeno(1,2,3-cd)pyrene	28.593	276	583515	51.492	ng/ul#		92
95) Dibenzo(a,h)anthracene	28.634	278	385387	40.625	ng/ul#		99
96) Benzo(g,h,i)perylene	29.732	276	365873	38.404	ng/ul		94

Data Path : Z:\svoasrv\HPCHEM1\BNA_G\Data\BG082621\
 Data File : BG050004.D
 Acq On : 27 Aug 2021 18:49
 Operator : CG/JU
 Sample : M3395-02
 Misc :
 ALS Vial : 4 Sample Multiplier: 1

Instrument :
 BNA_G
ClientSampled :
 X3629

Manual Integrations
APPROVED
 mohammad
 8/30/2021 10:32:45 AM

Quant Time: Aug 27 23:36:13 2021
 Quant Method : Z:\SVOASRV\HPCHEM1\BNA_G\METHODS\SFAM-EPA-BG081921.M
 Quant Title : SVOA CALIBRATION
 QLast Update : Fri Aug 27 11:22:49 2021
 Response via : Initial Calibration

Compound	R.T.	QIon	Response	Conc	Units	Dev(Min)

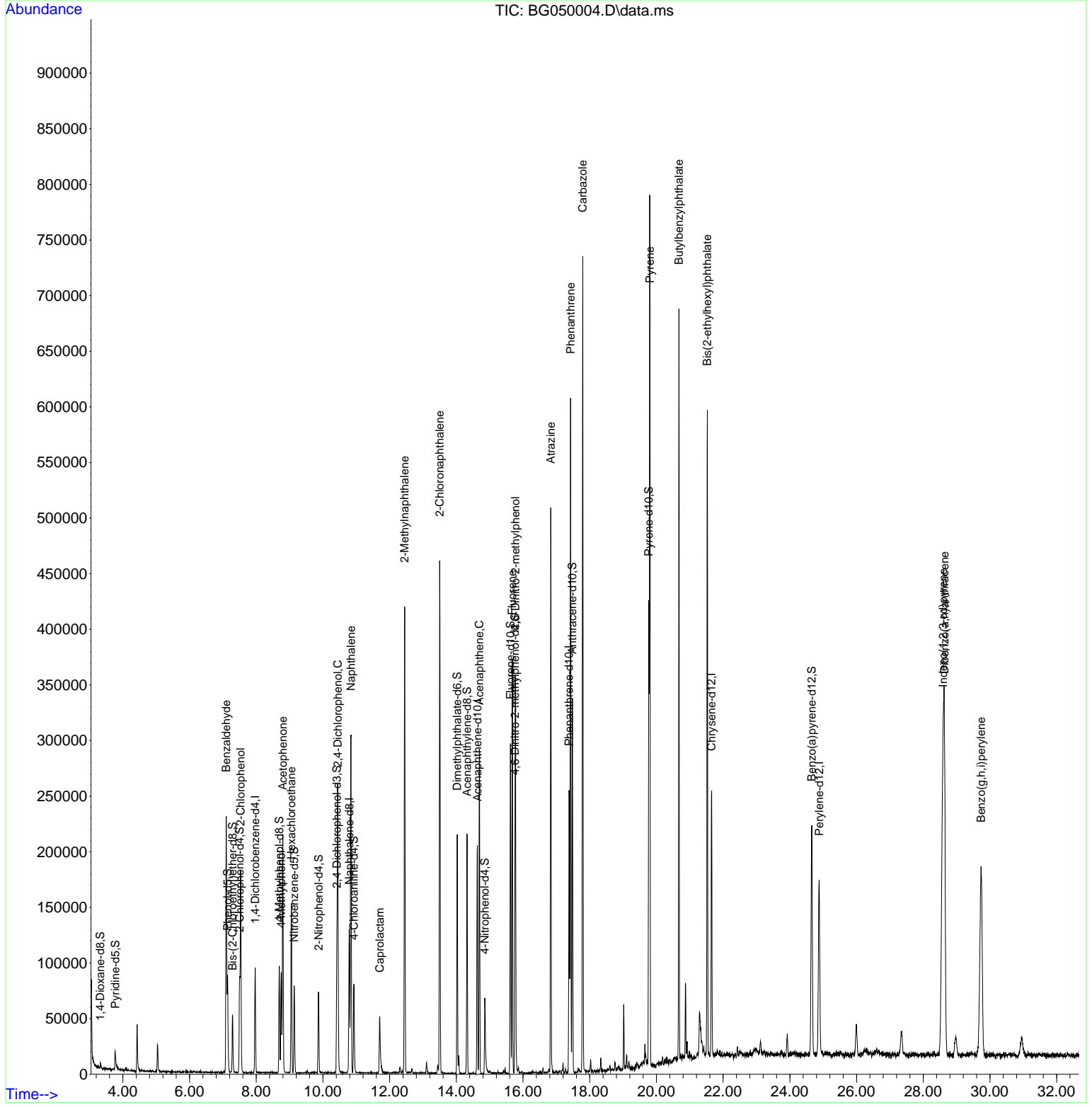
(#) = qualifier out of range (m) = manual integration (+) = signals summed						

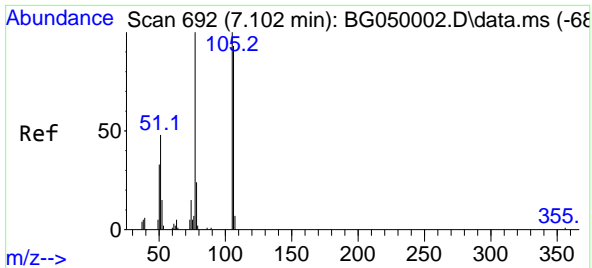
Data Path : Z:\svoasrv\HPCHEM1\BNA_G\Data\BG082621\
 Data File : BG050004.D
 Acq On : 27 Aug 2021 18:49
 Operator : CG/JU
 Sample : M3395-02
 Misc :
 ALS Vial : 4 Sample Multiplier: 1

Instrument :
 BNA_G
 Client Sampled :
 X3629

Manual Integrations
APPROVED
 mohammad
 8/30/2021 10:32:45 AM

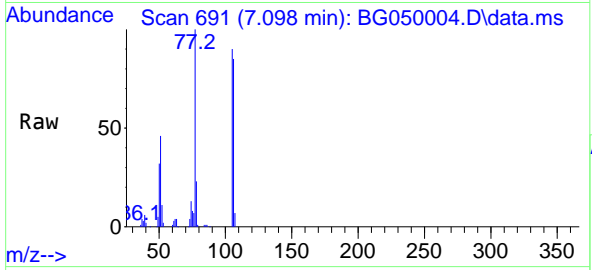
Quant Time: Aug 27 23:36:13 2021
 Quant Method : Z:\SVOASRV\HPCHEM1\BNA_G\METHODS\SFAM-EPA-BG081921.M
 Quant Title : SVOA CALIBRATION
 QLast Update : Fri Aug 27 11:22:49 2021
 Response via : Initial Calibration





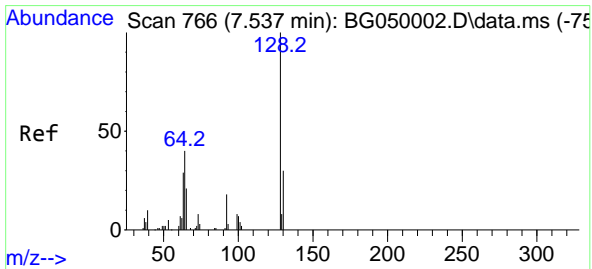
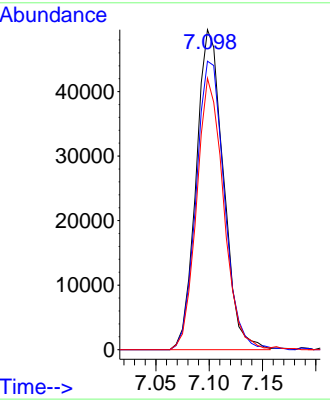
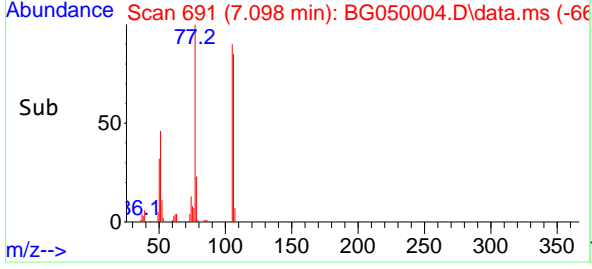
#6
Benzaldehyde
Concen: 66.291 ng/u1
RT: 7.098 min Scan# 691
Delta R.T. -0.021 min
Lab File: BG050004.D
Acq: 27 Aug 2021 18:49

Instrument :
BNA_G
ClientSampled :
X3629

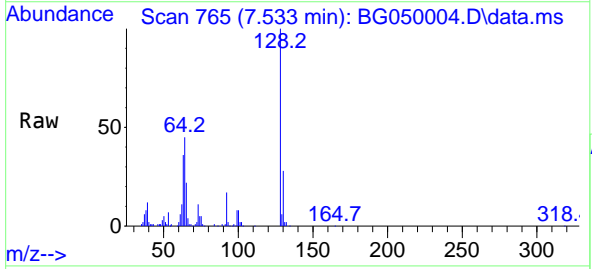


Tgt Ion: 77 Resp: 88172
Ion Ratio Lower Upper
77 100
105 90.2 72.3 108.5
106 84.8 72.3 108.5

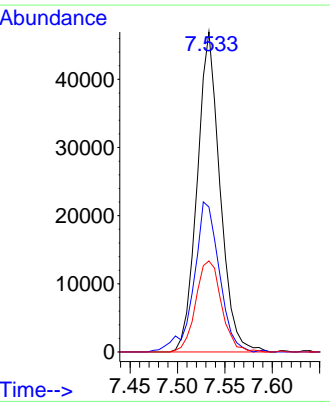
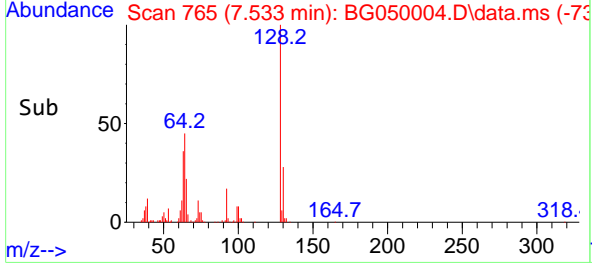
Manual Integrations
APPROVED
mohammad
8/30/2021 10:32:45 AM

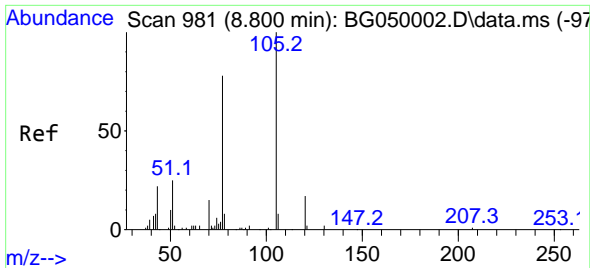


#12
2-Chlorophenol
Concen: 46.098 ng/u1
RT: 7.533 min Scan# 765
Delta R.T. -0.010 min
Lab File: BG050004.D
Acq: 27 Aug 2021 18:49



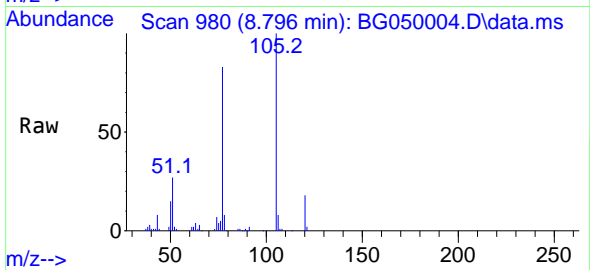
Tgt Ion:128 Resp: 78779
Ion Ratio Lower Upper
128 100
64 45.3 28.0 42.0#
130 28.4 24.4 36.6





#16
 Acetophenone
 Concen: 39.155 ng/u1
 RT: 8.796 min Scan# 980
 Delta R.T. -0.015 min
 Lab File: BG050004.D
 Acq: 27 Aug 2021 18:49

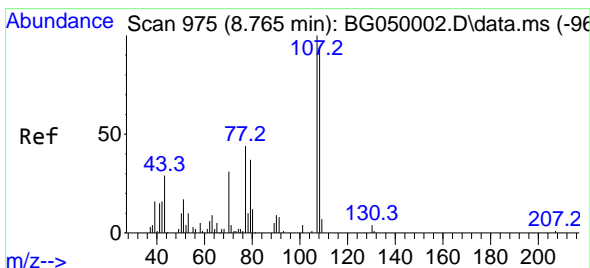
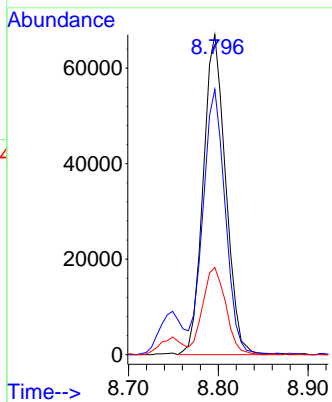
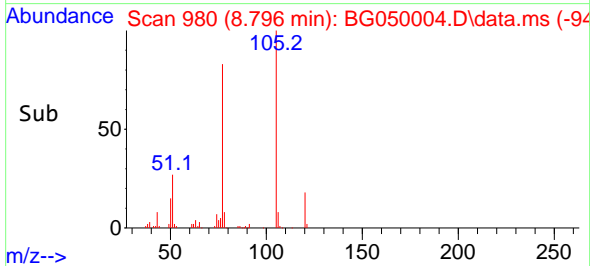
Instrument :
 BNA_G
 ClientSampled :
 X3629



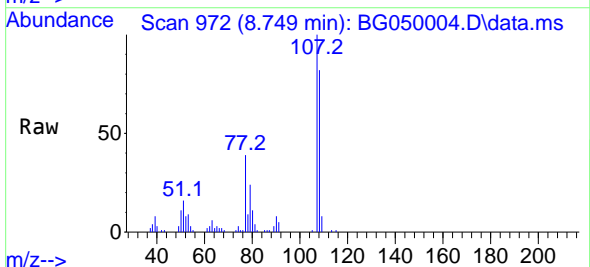
Tgt Ion:105 Resp: 116237
 Ion Ratio Lower Upper
 105 100
 77 82.9 67.7 101.5
 51 27.3 25.3 37.9

Manual Integrations
 APPROVED

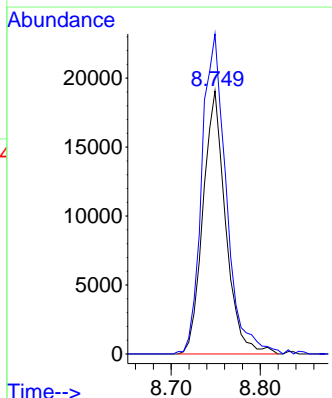
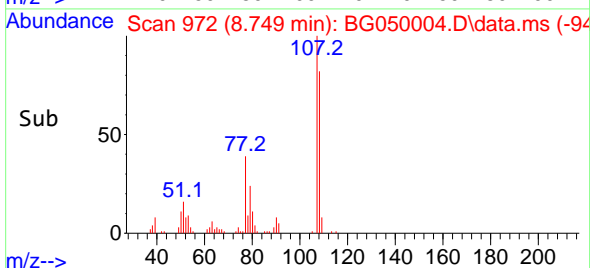
mohammad
 8/30/2021 10:32:45 AM

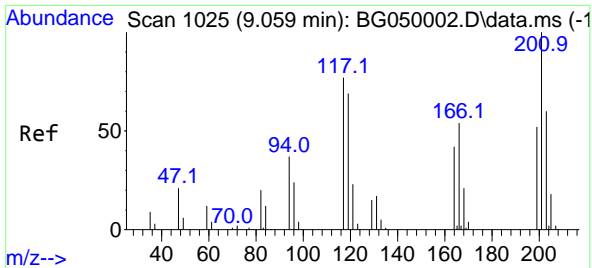


#18
 4-Methylphenol
 Concen: 17.417 ng/u1 m
 RT: 8.749 min Scan# 972
 Delta R.T. -0.015 min
 Lab File: BG050004.D
 Acq: 27 Aug 2021 18:49



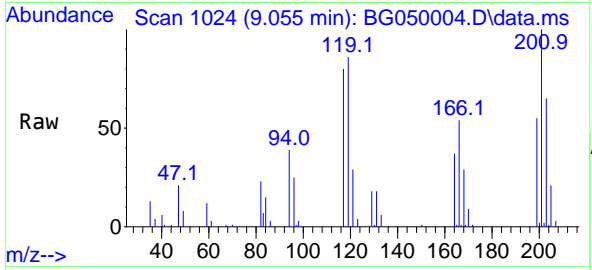
Tgt Ion:108 Resp: 33749
 Ion Ratio Lower Upper
 108 100
 107 121.6 78.3 117.5#





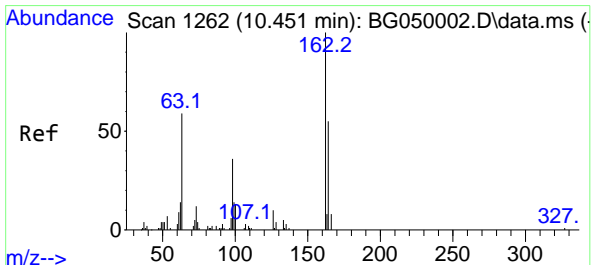
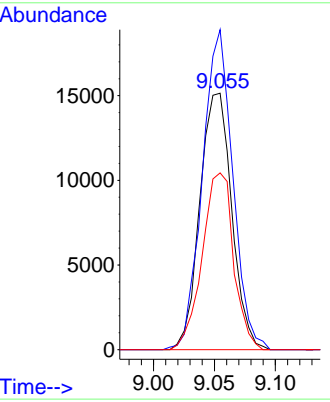
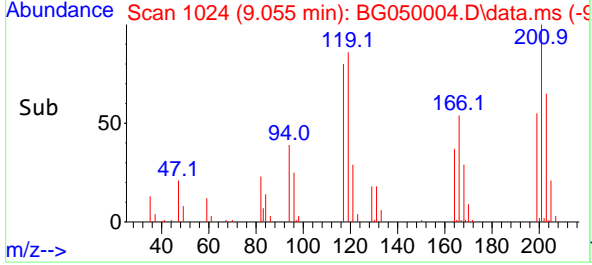
#19
 Hexachloroethane
 Concen: 36.905 ng/u1
 RT: 9.055 min Scan# 1024
 Delta R.T. -0.021 min
 Lab File: BG050004.D
 Acq: 27 Aug 2021 18:49

Instrument :
 BNA_G
ClientSampled :
 X3629

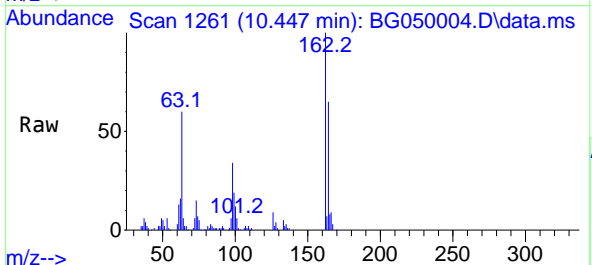


Tgt Ion:117 Resp: 27601
 Ion Ratio Lower Upper
 117 100
 201 124.8 89.3 133.9
 199 68.9 50.5 75.7

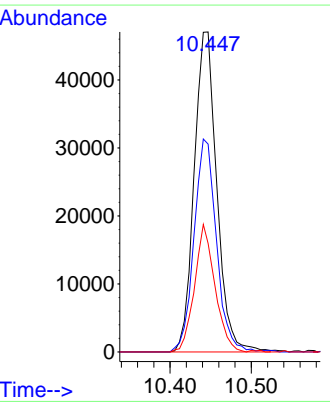
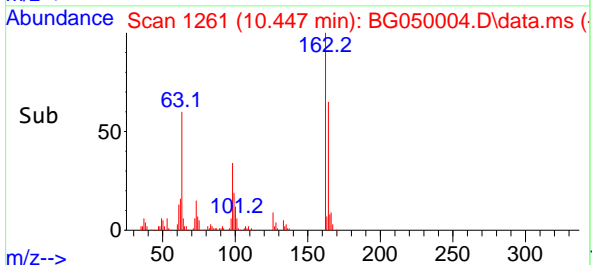
Manual Integrations
APPROVED
 mohammad
 8/30/2021 10:32:45 AM

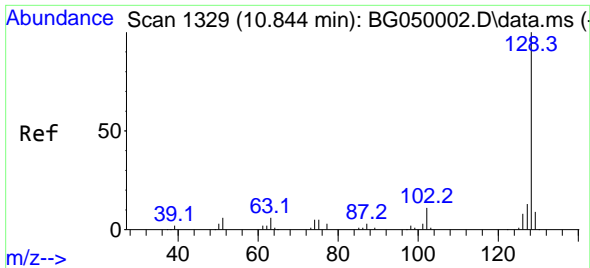


#29
 2,4-Dichlorophenol
 Concen: 56.048 ng/u1
 RT: 10.447 min Scan# 1261
 Delta R.T. -0.010 min
 Lab File: BG050004.D
 Acq: 27 Aug 2021 18:49



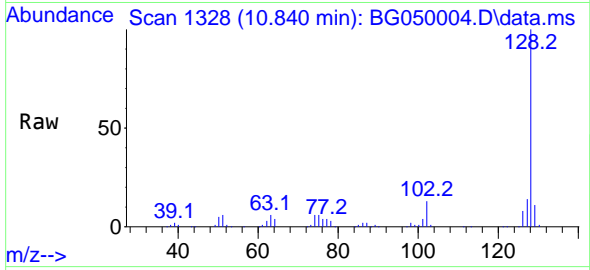
Tgt Ion:162 Resp: 91020
 Ion Ratio Lower Upper
 162 100
 164 65.0 51.0 76.6
 98 33.9 27.8 41.8





#30
 Naphthalene
 Concen: 46.273 ng/u1
 RT: 10.840 min Scan# 1328
 Delta R.T. -0.015 min
 Lab File: BG050004.D
 Acq: 27 Aug 2021 18:49

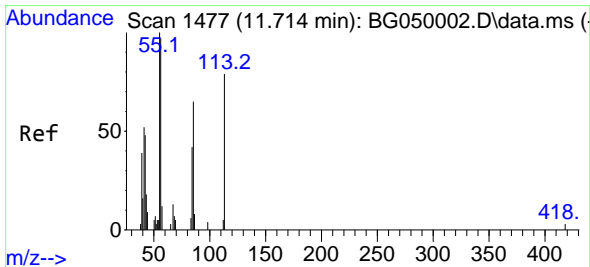
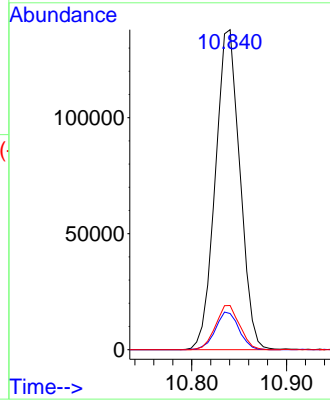
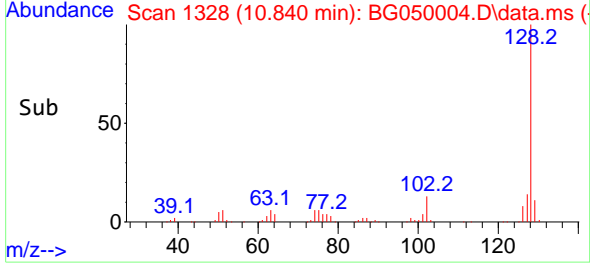
Instrument :
 BNA_G
 ClientSampled :
 X3629



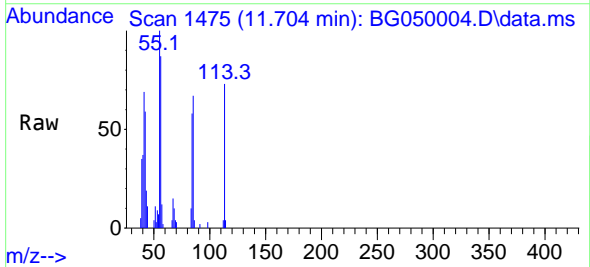
Tgt Ion:128 Resp: 248537
 Ion Ratio Lower Upper
 128 100
 129 11.3 9.3 13.9
 127 13.8 9.8 14.6

Manual Integrations
 APPROVED

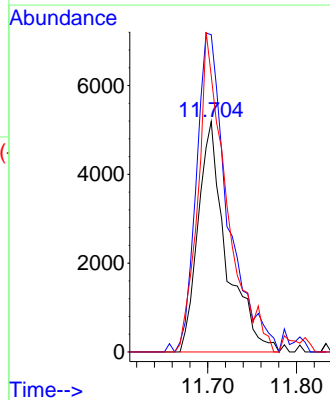
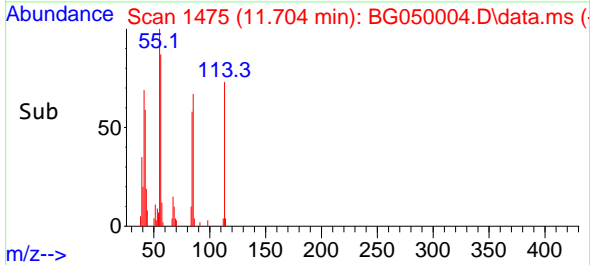
mohammad
 8/30/2021 10:32:45 AM

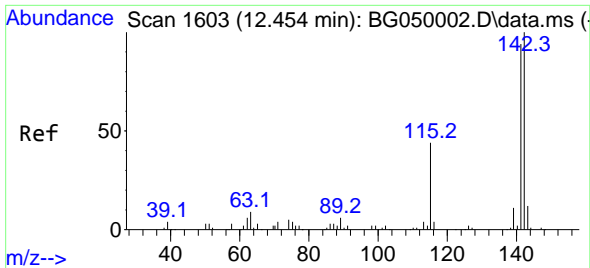


#34
 Caprolactam
 Concen: 20.211 ng/u1 m
 RT: 11.704 min Scan# 1475
 Delta R.T. -0.027 min
 Lab File: BG050004.D
 Acq: 27 Aug 2021 18:49



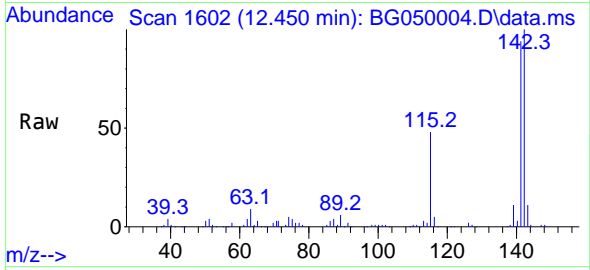
Tgt Ion:113 Resp: 11497
 Ion Ratio Lower Upper
 113 100
 55 137.7 114.0 171.0
 56 119.9 107.4 161.0





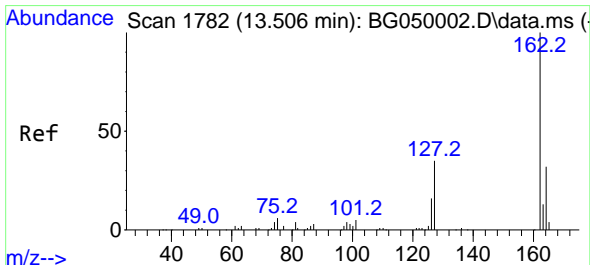
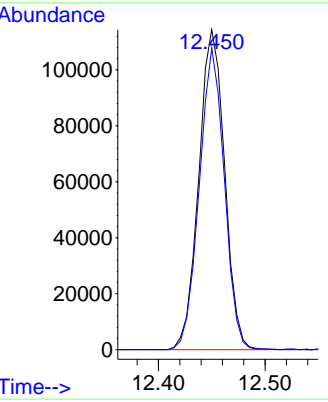
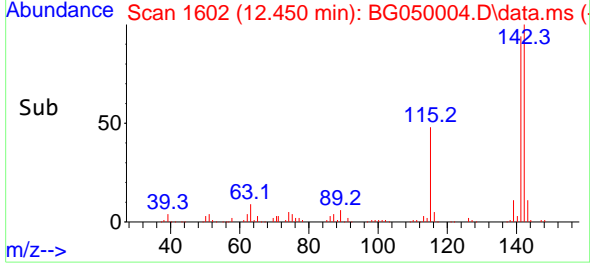
#36
 2-Methylnaphthalene
 Concen: 48.170 ng/ul
 RT: 12.450 min Scan# 1602
 Delta R.T. -0.015 min
 Lab File: BG050004.D
 Acq: 27 Aug 2021 18:49

Instrument :
 BNA_G
ClientSampled :
 X3629

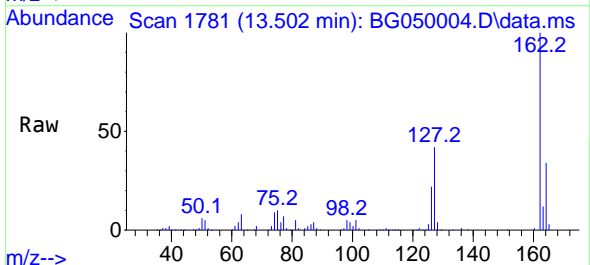


Tgt Ion:142 Resp: 192323
 Ion Ratio Lower Upper
 142 100
 141 94.3 70.5 105.7

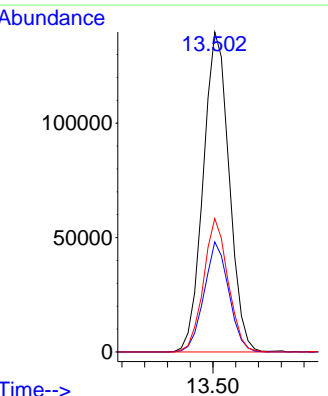
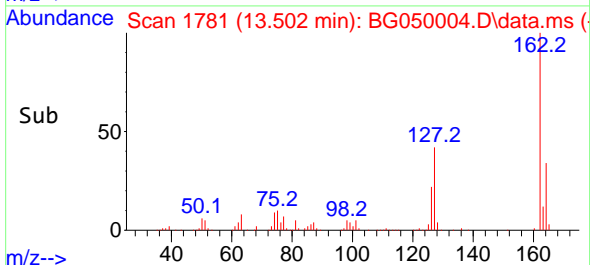
Manual Integrations
APPROVED
 mohammad
 8/30/2021 10:32:45 AM

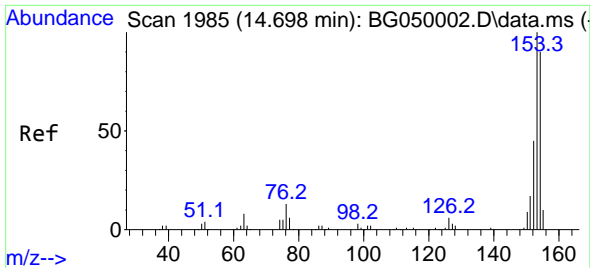


#44
 2-Chloronaphthalene
 Concen: 53.171 ng/ul
 RT: 13.502 min Scan# 1781
 Delta R.T. -0.015 min
 Lab File: BG050004.D
 Acq: 27 Aug 2021 18:49



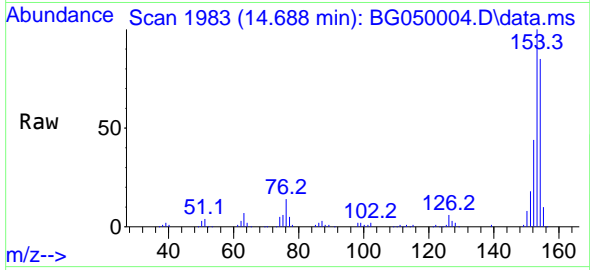
Tgt Ion:162 Resp: 221641
 Ion Ratio Lower Upper
 162 100
 164 34.4 25.2 37.8
 127 41.7 31.9 47.9





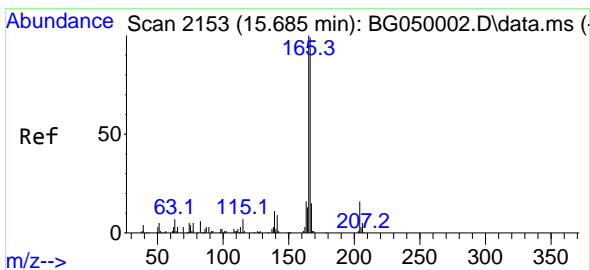
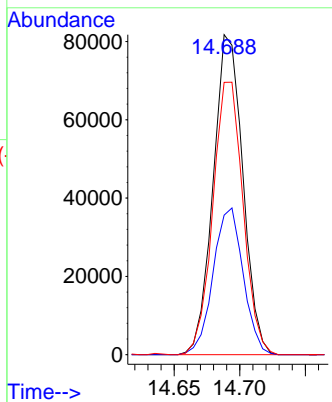
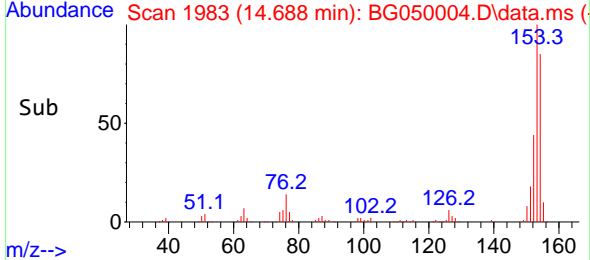
#52
 Acenaphthene
 Concen: 29.044 ng/u1
 RT: 14.688 min Scan# 1983
 Delta R.T. -0.015 min
 Lab File: BG050004.D
 Acq: 27 Aug 2021 18:49

Instrument :
 BNA_G
ClientSampled :
 X3629

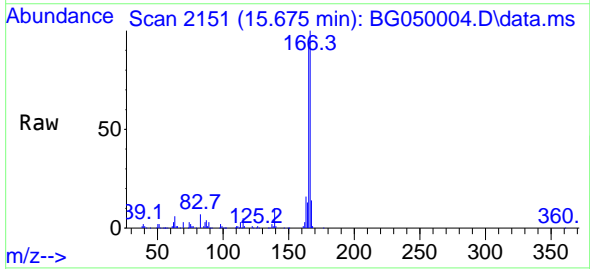


Tgt Ion:153 Resp: 128354
 Ion Ratio Lower Upper
 153 100
 152 43.6 37.4 56.2
 154 85.1 71.5 107.3

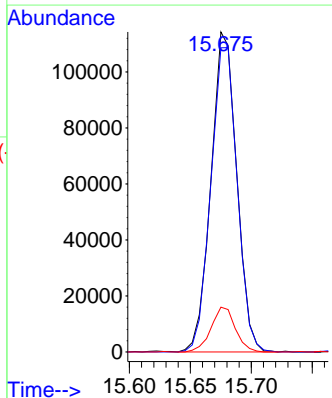
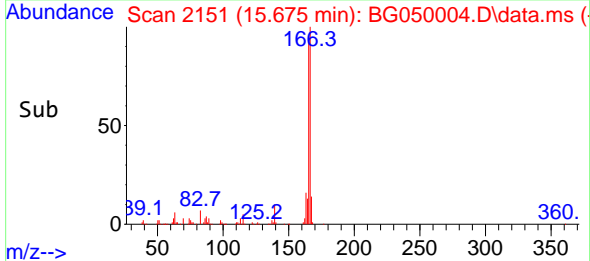
Manual Integrations
APPROVED
 mohammad
 8/30/2021 10:32:45 AM

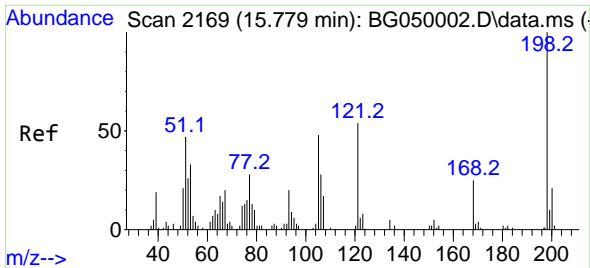


#61
 Fluorene
 Concen: 32.486 ng/u1
 RT: 15.675 min Scan# 2151
 Delta R.T. -0.015 min
 Lab File: BG050004.D
 Acq: 27 Aug 2021 18:49



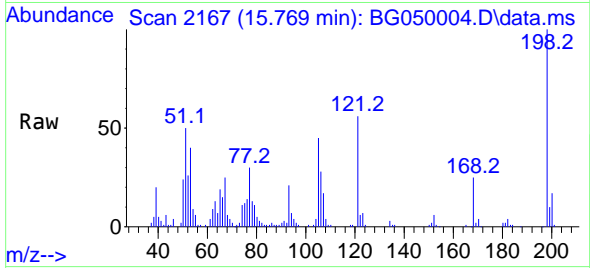
Tgt Ion:166 Resp: 167735
 Ion Ratio Lower Upper
 166 100
 165 95.1 83.3 124.9
 167 14.0 11.8 17.6





#66
 4,6-Dinitro-2-methylphenol
 Concen: 72.973 ng/ul
 RT: 15.769 min Scan# 2167
 Delta R.T. -0.010 min
 Lab File: BG050004.D
 Acq: 27 Aug 2021 18:49

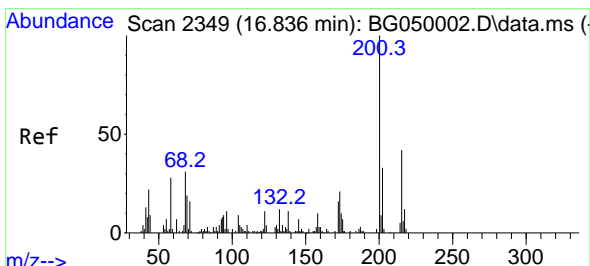
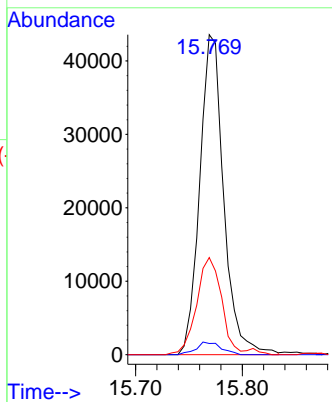
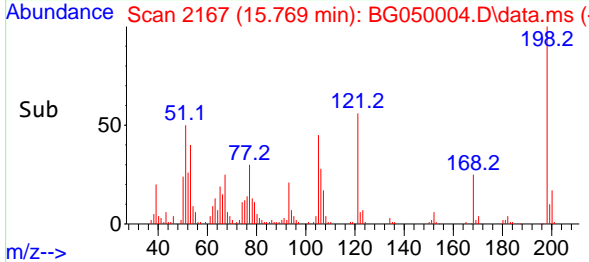
Instrument :
 BNA_G
 ClientSampled :
 X3629



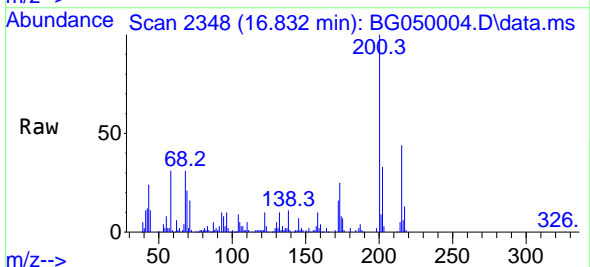
Tgt Ion:198 Resp: 68118
 Ion Ratio Lower Upper
 198 100
 182 3.5 3.0 4.6
 77 30.3 23.4 35.2

Manual Integrations
 APPROVED

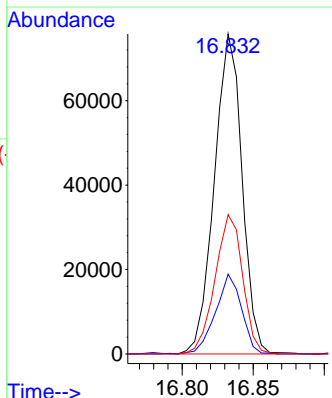
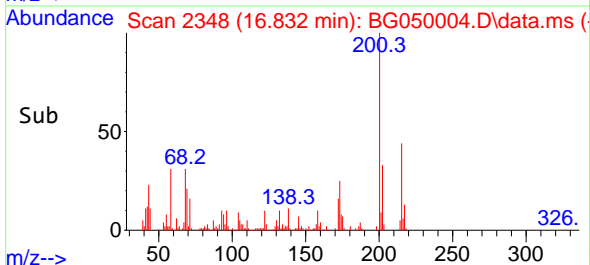
mohammad
 8/30/2021 10:32:45 AM

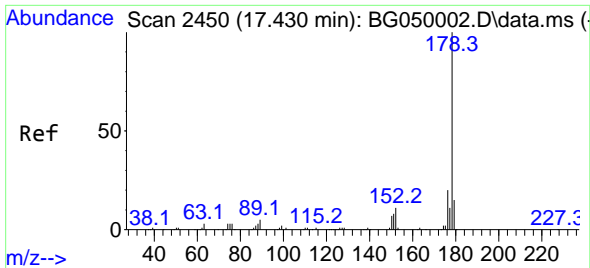


#70
 Atrazine
 Concen: 54.826 ng/ul
 RT: 16.832 min Scan# 2348
 Delta R.T. -0.010 min
 Lab File: BG050004.D
 Acq: 27 Aug 2021 18:49



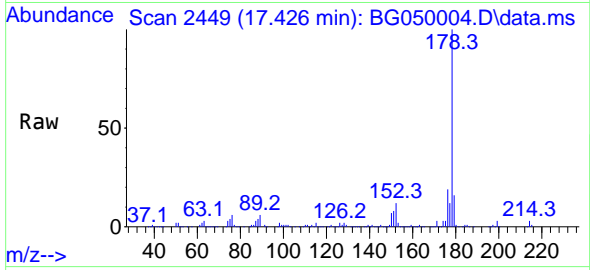
Tgt Ion:200 Resp: 102650
 Ion Ratio Lower Upper
 200 100
 173 24.9 19.3 28.9
 215 43.6 34.9 52.3





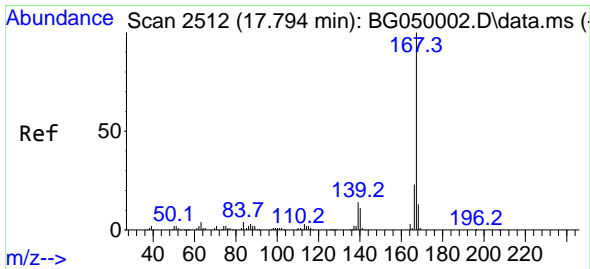
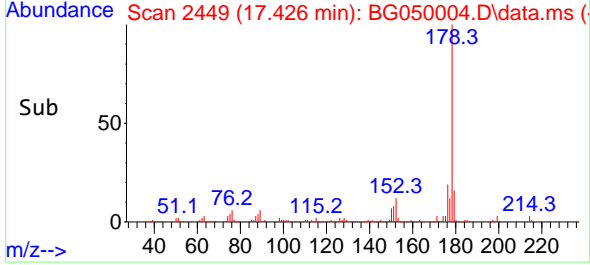
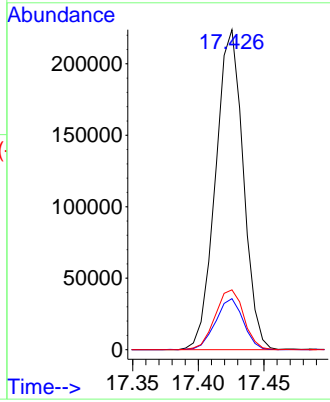
#72
 Phenanthrene
 Concen: 41.188 ng/u1
 RT: 17.426 min Scan# 2449
 Delta R.T. -0.010 min
 Lab File: BG050004.D
 Acq: 27 Aug 2021 18:49

Instrument :
 BNA_G
ClientSampled :
 X3629

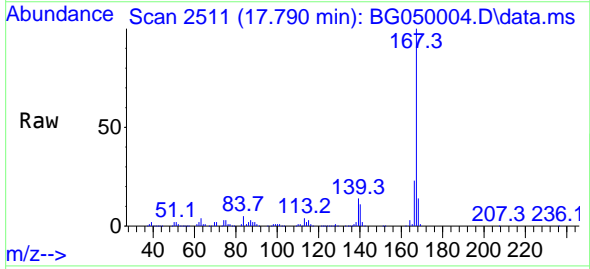


Tgt Ion:178 Resp: 328693
 Ion Ratio Lower Upper
 178 100
 179 16.0 11.7 17.5
 176 18.7 16.2 24.2

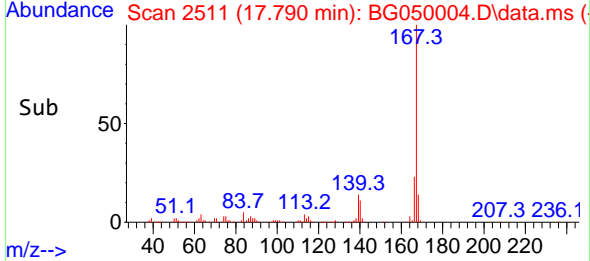
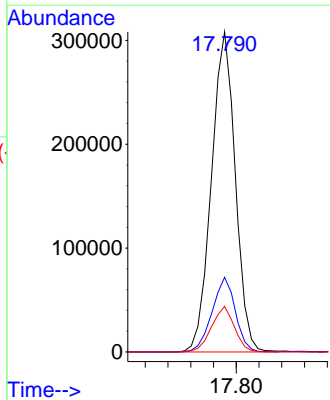
Manual Integrations
APPROVED
 mohammad
 8/30/2021 10:32:45 AM

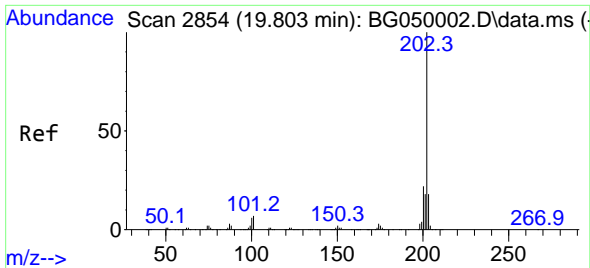


#77
 Carbazole
 Concen: 62.341 ng/u1
 RT: 17.790 min Scan# 2511
 Delta R.T. -0.010 min
 Lab File: BG050004.D
 Acq: 27 Aug 2021 18:49



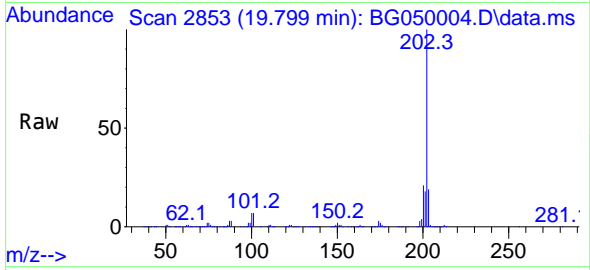
Tgt Ion:167 Resp: 448613
 Ion Ratio Lower Upper
 167 100
 166 23.4 17.8 26.8
 139 14.3 11.1 16.7





#82
 Pyrene
 Concen: 52.486 ng/u1
 RT: 19.799 min Scan# 2853
 Delta R.T. -0.010 min
 Lab File: BG050004.D
 Acq: 27 Aug 2021 18:49

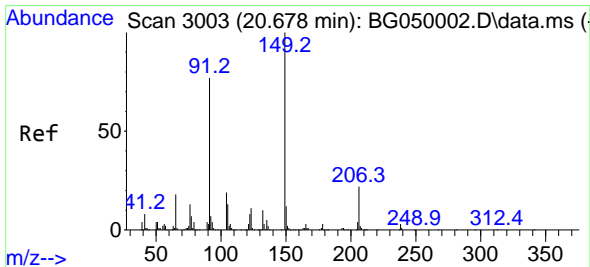
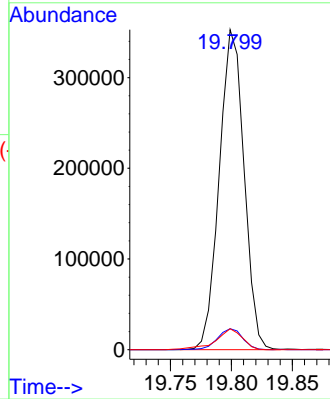
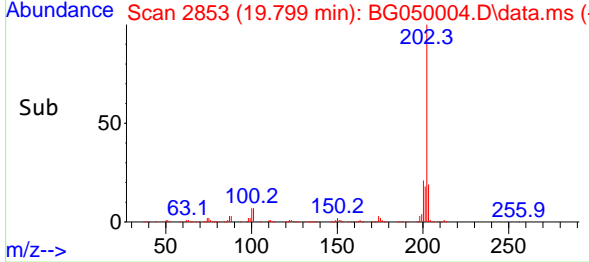
Instrument :
 BNA_G
 ClientSampled :
 X3629



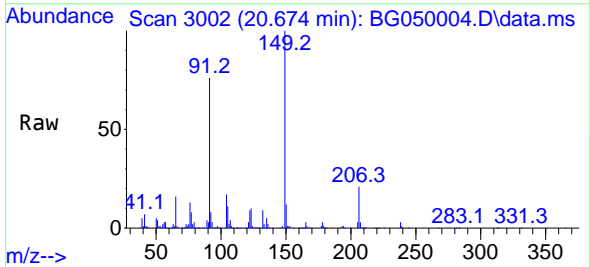
Tgt Ion:202 Resp: 499305
 Ion Ratio Lower Upper
 202 100
 101 6.5 5.4 8.0
 100 6.5 5.0 7.6

Manual Integrations
 APPROVED

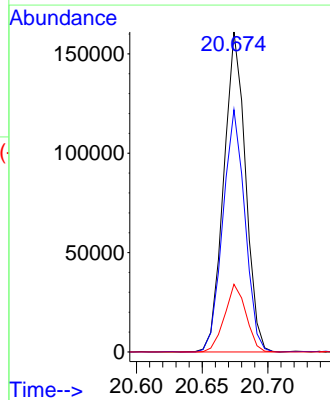
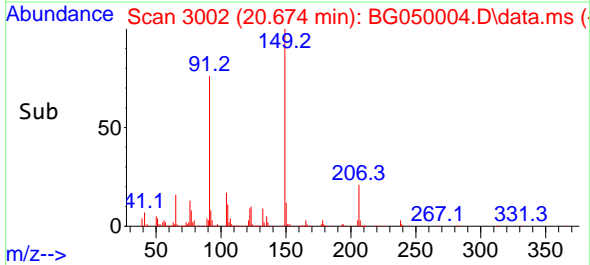
mohammad
 8/30/2021 10:32:45 AM

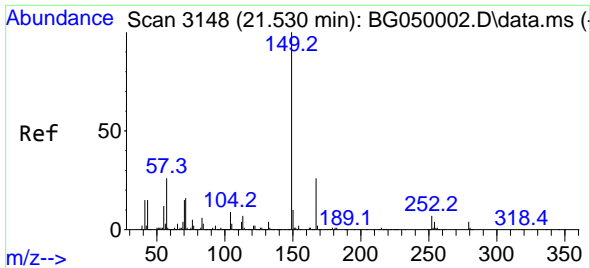


#83
 Butylbenzylphthalate
 Concen: 49.473 ng/u1
 RT: 20.674 min Scan# 3002
 Delta R.T. -0.010 min
 Lab File: BG050004.D
 Acq: 27 Aug 2021 18:49



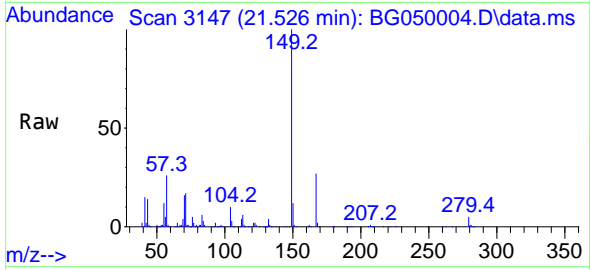
Tgt Ion:149 Resp: 185727
 Ion Ratio Lower Upper
 149 100
 91 75.7 60.6 90.8
 206 21.2 16.8 25.2





#86
 Bis(2-ethylhexyl)phthalate
 Concen: 46.279 ng/uI
 RT: 21.526 min Scan# 3147
 Delta R.T. -0.010 min
 Lab File: BG050004.D
 Acq: 27 Aug 2021 18:49

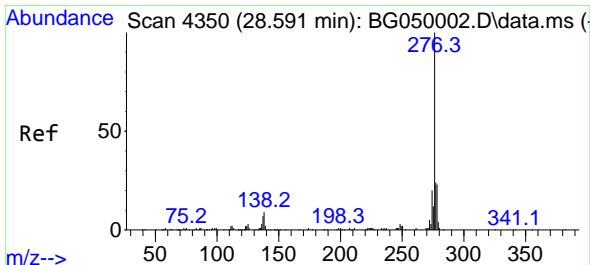
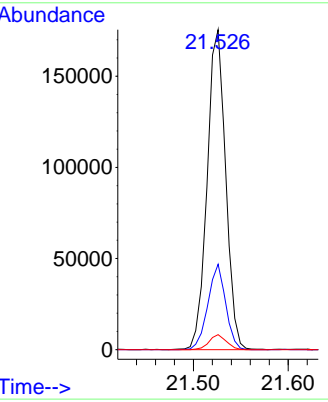
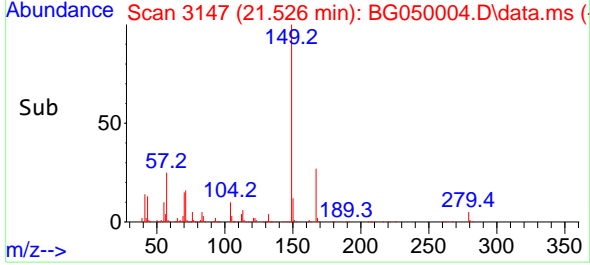
Instrument :
 BNA_G
ClientSampled :
 X3629



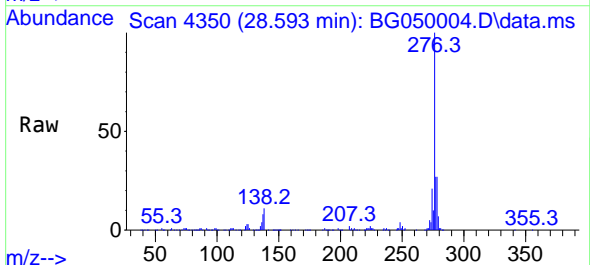
Tgt Ion:149 Resp: 238596

Ion	Ratio	Lower	Upper
149	100		
167	26.7	20.4	30.6
279	4.7	3.7	5.5

Manual Integrations
APPROVED
 mohammad
 8/30/2021 10:32:45 AM

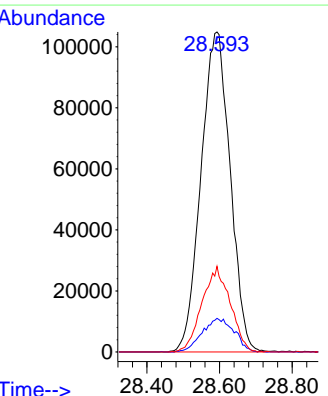
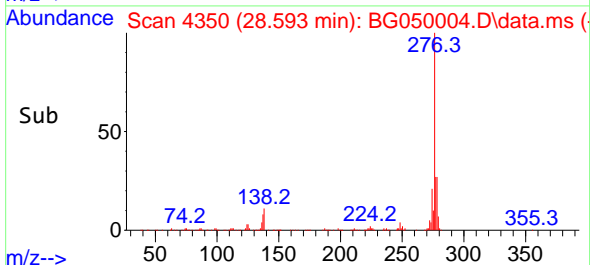


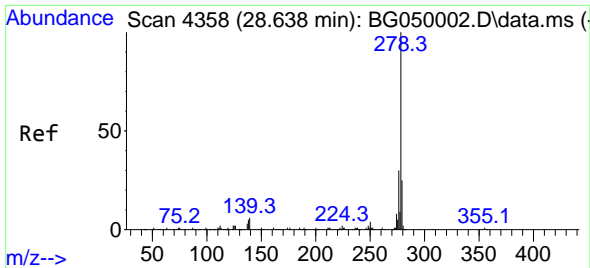
#94
 Indeno(1,2,3-cd)pyrene
 Concen: 51.492 ng/uI
 RT: 28.593 min Scan# 4350
 Delta R.T. 0.002 min
 Lab File: BG050004.D
 Acq: 27 Aug 2021 18:49



Tgt Ion:276 Resp: 583515

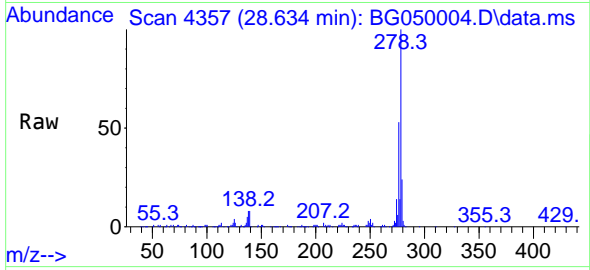
Ion	Ratio	Lower	Upper
276	100		
138	10.5	5.5	8.3#
277	26.8	18.6	27.8





#95
 Dibenzo(a,h)anthracene
 Concen: 40.625 ng/ul
 RT: 28.634 min Scan# 4357
 Delta R.T. -0.010 min
 Lab File: BG050004.D
 Acq: 27 Aug 2021 18:49

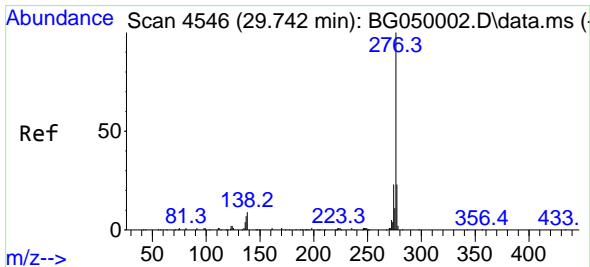
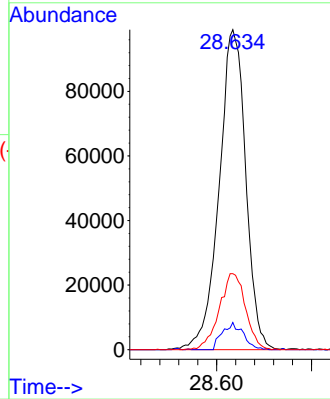
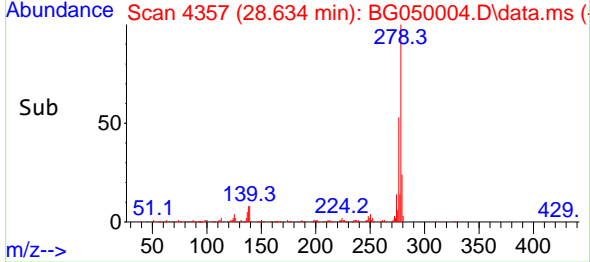
Instrument :
 BNA_G
 ClientSampled :
 X3629



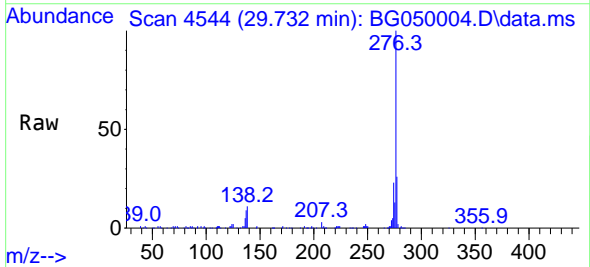
Tgt Ion:278 Resp: 385387
 Ion Ratio Lower Upper
 278 100
 139 8.5 5.2 7.8#
 279 23.8 19.0 28.4

Manual Integrations
 APPROVED

mohammad
 8/30/2021 10:32:45 AM



#96
 Benzo(g,h,i)perylene
 Concen: 38.404 ng/ul
 RT: 29.732 min Scan# 4544
 Delta R.T. -0.004 min
 Lab File: BG050004.D
 Acq: 27 Aug 2021 18:49



Tgt Ion:276 Resp: 365873
 Ion Ratio Lower Upper
 276 100
 138 10.7 8.6 13.0
 277 26.0 17.4 26.0

