

Data Path : Z:\svoasrv\HPCHEM1\BNA_G\Data\BG082621\
 Data File : BG049979.D
 Acq On : 26 Aug 2021 13:43
 Operator : CG/JU
 Sample : M3511-10
 Misc :
 ALS Vial : 5 Sample Multiplier: 1

Instrument :
 BNA_G
 ClientSampleId :
 SVOC-GPC2-BLANK

Integration Parameters: LSCINT.P

Integrator: RTE
 Smoothing : OFF Filtering: 5
 Sampling : 1 Min Area: 0.1 % of largest Peak
 Start Thrs: 0.2 Max Peaks: 100
 Stop Thrs : 0 Peak Location: TOP

If leading or trailing edge < 100 prefer < Baseline drop else tangent >
 Peak separation: 5

Method : Z:\SVOASRV\HPCHEM1\BNA_G\METHODS\SFAM-EPA-BG081921.M
 Title : SVOA CALIBRATION

Signal : TIC: BG049979.D\data.ms

peak #	R.T. min	first scan	max scan	last scan	PK TY	peak height	corr. area	corr. % max.	% of total
1	3.654	103	105	108	rVB4	1618	1163	0.24%	0.049%
2	3.684	108	110	111	rBV2	1720	1076	0.22%	0.045%
3	3.878	142	143	145	rBV2	1667	1269	0.26%	0.053%
4	4.018	165	167	168	rVB	1578	837	0.17%	0.035%
5	4.095	178	180	182	rVB3	1697	1469	0.30%	0.061%
6	4.359	222	225	227	rBV3	1952	2442	0.50%	0.102%
7	4.424	235	236	238	rBV	2172	1382	0.28%	0.058%
8	4.518	249	252	256	rVV3	872	989	0.20%	0.041%
9	4.659	272	276	277	rBV	1033	1529	0.31%	0.064%
10	4.776	293	296	298	rBV	1458	2006	0.41%	0.084%
11	5.105	349	352	356	rBV3	891	1363	0.28%	0.057%
12	5.158	360	361	363	rVB3	1307	915	0.19%	0.038%
13	5.182	363	365	367	rBV2	1332	1251	0.26%	0.052%
14	5.240	370	375	376	rBV3	1397	1535	0.31%	0.064%
15	5.575	428	432	433	rBV2	1164	1625	0.33%	0.068%
16	5.851	476	479	485	rBV2	1209	1305	0.27%	0.055%
17	5.939	492	494	497	rVB2	1447	1260	0.26%	0.053%
18	6.063	512	515	516	rVB	885	861	0.18%	0.036%
19	6.122	522	525	526	rBV	966	1033	0.21%	0.043%
20	6.151	529	530	533	rVV	1516	1193	0.24%	0.050%
21	6.192	535	537	539	rBV2	1147	1114	0.23%	0.047%
22	6.227	542	543	547	rVB	780	869	0.18%	0.036%
23	6.568	599	601	602	rBV2	1042	876	0.18%	0.037%
24	6.797	636	640	642	rBV2	904	1229	0.25%	0.051%
25	7.126	694	696	699	rVB2	1293	954	0.19%	0.040%
26	7.214	707	711	712	rBV2	1190	990	0.20%	0.041%
27	7.238	712	715	717	rBV	754	967	0.20%	0.040%
28	7.490	756	758	761	rVB	919	856	0.17%	0.036%
29	7.966	833	839	848	rBV	108157	187602	38.33%	7.841%
30	8.148	866	870	874	rVB	1021	1197	0.24%	0.050%
31	8.195	877	878	882	rBV	1061	1038	0.21%	0.043%
32	8.324	897	900	901	rBV	1048	820	0.17%	0.034%
33	8.847	987	989	992	rBV	968	933	0.19%	0.039%
34	9.112	1031	1034	1037	rBV	777	1056	0.22%	0.044%
35	9.523	1101	1104	1107	rVB	701	815	0.17%	0.034%
36	9.570	1107	1112	1113	rBV	999	1249	0.26%	0.052%

Data Path : Z:\svoasrv\HPCHEM1\BNA_G\Data\BG082621\
 Data File : BG049979.D
 Acq On : 26 Aug 2021 13:43
 Operator : CG/JU
 Sample : M3511-10
 Misc :
 ALS Vial : 5 Sample Multiplier: 1

Instrument :
 BNA_G
 ClientSampleId :
 SVOC-GPC2-BLANK

Integration Parameters: LSCINT.P

Integrator: RTE
 Smoothing : OFF Filtering: 5
 Sampling : 1 Min Area: 0.1 % of largest Peak
 Start Thrs: 0.2 Max Peaks: 100
 Stop Thrs : 0 Peak Location: TOP

If leading or trailing edge < 100 prefer < Baseline drop else tangent >
 Peak separation: 5

Method : Z:\SVOASRV\HPCHEM1\BNA_G\METHODS\SFAM-EPA-BG081921.M
 Title : SVOA CALIBRATION

37	9.717	1133	1137	1140	rBV2	1000	1513	0.31%	0.063%
38	9.893	1164	1167	1171	rBV	581	898	0.18%	0.038%
39	10.592	1284	1286	1290	rVB	783	829	0.17%	0.035%
40	10.792	1312	1320	1329	rBV	149023	264659	54.08%	11.062%
41	10.892	1335	1337	1339	rBV	841	846	0.17%	0.035%
42	11.003	1354	1356	1362	rVB2	718	1016	0.21%	0.042%
43	11.262	1399	1400	1406	rVB	974	1111	0.23%	0.046%
44	11.403	1421	1424	1427	rBV	695	1022	0.21%	0.043%
45	11.555	1448	1450	1453	rBV2	842	1214	0.25%	0.051%
46	11.596	1455	1457	1462	rVV2	1087	1588	0.32%	0.066%
47	11.643	1462	1465	1467	rVV2	774	1163	0.24%	0.049%
48	11.696	1471	1474	1477	rVV2	732	871	0.18%	0.036%
49	13.012	1696	1698	1702	rVB	1047	1425	0.29%	0.060%
50	13.153	1721	1722	1728	rBV2	562	1057	0.22%	0.044%
51	13.412	1763	1766	1768	rVV2	1040	837	0.17%	0.035%
52	13.459	1772	1774	1776	rVB	1552	916	0.19%	0.038%
53	13.876	1843	1845	1848	rBV2	605	921	0.19%	0.038%
54	14.375	1925	1930	1932	rVB2	1042	1378	0.28%	0.058%
55	14.528	1951	1956	1960	rBV	806	1174	0.24%	0.049%
56	14.634	1967	1974	1982	rBV	263287	403355	82.42%	16.859%
57	14.898	2016	2019	2022	rBV	985	1321	0.27%	0.055%
58	15.033	2040	2042	2045	rBV	792	815	0.17%	0.034%
59	15.162	2060	2064	2067	rBV2	904	1143	0.23%	0.048%
60	16.390	2270	2273	2278	rBV2	576	831	0.17%	0.035%
61	16.601	2306	2309	2312	rVB2	1254	936	0.19%	0.039%
62	16.742	2329	2333	2335	rVB	900	1074	0.22%	0.045%
63	16.795	2340	2342	2345	rBV	773	916	0.19%	0.038%
64	16.954	2367	2369	2371	rBV	870	846	0.17%	0.035%
65	17.013	2375	2379	2380	rBV	895	823	0.17%	0.034%
66	17.077	2389	2390	2394	rBV	940	1074	0.22%	0.045%
67	17.160	2403	2404	2407	rBV	1183	1173	0.24%	0.049%
68	17.389	2436	2443	2451	rVV	317230	489406	100.00%	20.456%
69	17.494	2458	2461	2466	rBV2	1074	1203	0.25%	0.050%
70	17.594	2475	2478	2481	rVB2	1253	1386	0.28%	0.058%
71	17.618	2481	2482	2484	rBV2	1305	950	0.19%	0.040%
72	17.829	2517	2518	2523	rVB	1145	1137	0.23%	0.048%
73	17.964	2538	2541	2543	rBV	745	1036	0.21%	0.043%
74	18.011	2546	2549	2550	rBV	1000	1116	0.23%	0.047%
75	18.029	2550	2552	2555	rVB	1004	966	0.20%	0.040%
76	18.058	2555	2557	2558	rBV	1102	824	0.17%	0.034%

Data Path : Z:\svoasrv\HPCHEM1\BNA_G\Data\BG082621\
 Data File : BG049979.D
 Acq On : 26 Aug 2021 13:43
 Operator : CG/JU
 Sample : M3511-10
 Misc :
 ALS Vial : 5 Sample Multiplier: 1

Instrument :
 BNA_G
 ClientSampleId :
 SVOC-GPC2-BLANK

Integration Parameters: LSCINT.P

Integrator: RTE
 Smoothing : OFF Filtering: 5
 Sampling : 1 Min Area: 0.1 % of largest Peak
 Start Thrs: 0.2 Max Peaks: 100
 Stop Thrs : 0 Peak Location: TOP

If leading or trailing edge < 100 prefer < Baseline drop else tangent >
 Peak separation: 5

Method : Z:\SVOASRV\HPCHEM1\BNA_G\METHODS\SFAM-EPA-BG081921.M
 Title : SVOA CALIBRATION

77	18.276	2592	2594	2598	rVV	1026	1234	0.25%	0.052%
78	18.317	2600	2601	2604	rVB2	1325	892	0.18%	0.037%
79	18.464	2624	2626	2629	rVB	1452	1171	0.24%	0.049%
80	18.569	2642	2644	2646	rBV	1947	1379	0.28%	0.058%
81	18.593	2646	2648	2650	rVB2	1065	907	0.19%	0.038%
82	18.716	2667	2669	2671	rBV	1235	859	0.18%	0.036%
83	18.740	2671	2673	2676	rVB2	1456	1412	0.29%	0.059%
84	18.887	2696	2698	2699	rBV	1124	983	0.20%	0.041%
85	19.010	2717	2719	2720	rBV2	1327	1023	0.21%	0.043%
86	19.033	2720	2723	2724	rVV	989	865	0.18%	0.036%
87	19.057	2726	2727	2729	rBV	1446	1235	0.25%	0.052%
88	19.204	2750	2752	2754	rVB3	1509	1350	0.28%	0.056%
89	19.251	2758	2760	2762	rBV2	1551	1692	0.35%	0.071%
90	19.268	2762	2763	2764	rVB	2518	888	0.18%	0.037%
91	19.286	2764	2766	2769	rBV2	828	918	0.19%	0.038%
92	19.339	2773	2775	2777	rVB2	2452	1300	0.27%	0.054%
93	19.421	2788	2789	2791	rVB	1651	932	0.19%	0.039%
94	19.456	2793	2795	2796	rVB2	1751	842	0.17%	0.035%
95	19.527	2801	2807	2809	rBV5	2892	5202	1.06%	0.217%
96	19.650	2826	2828	2829	rBV2	2477	1615	0.33%	0.068%
97	19.803	2853	2854	2858	rBV4	2826	1817	0.37%	0.076%
98	19.920	2872	2874	2875	rBV2	2874	1952	0.40%	0.082%
99	21.659	3164	3170	3180	rVB2	278282	453537	92.67%	18.957%
100	24.890	3711	3720	3733	rVB2	162803	482655	98.62%	20.174%

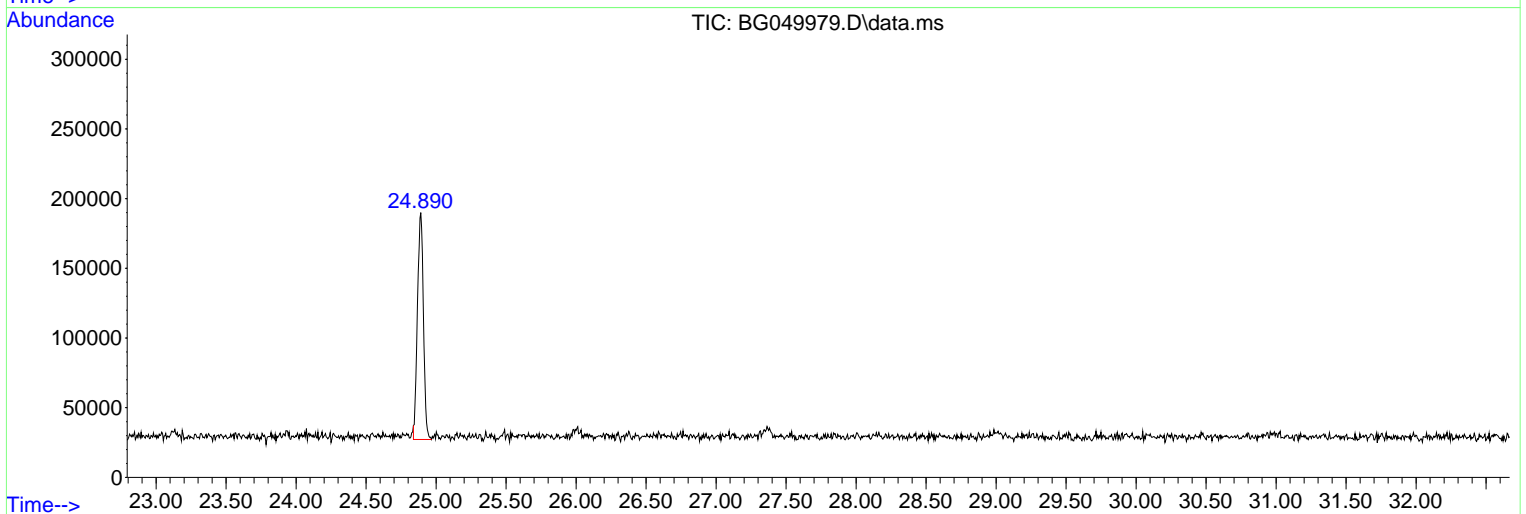
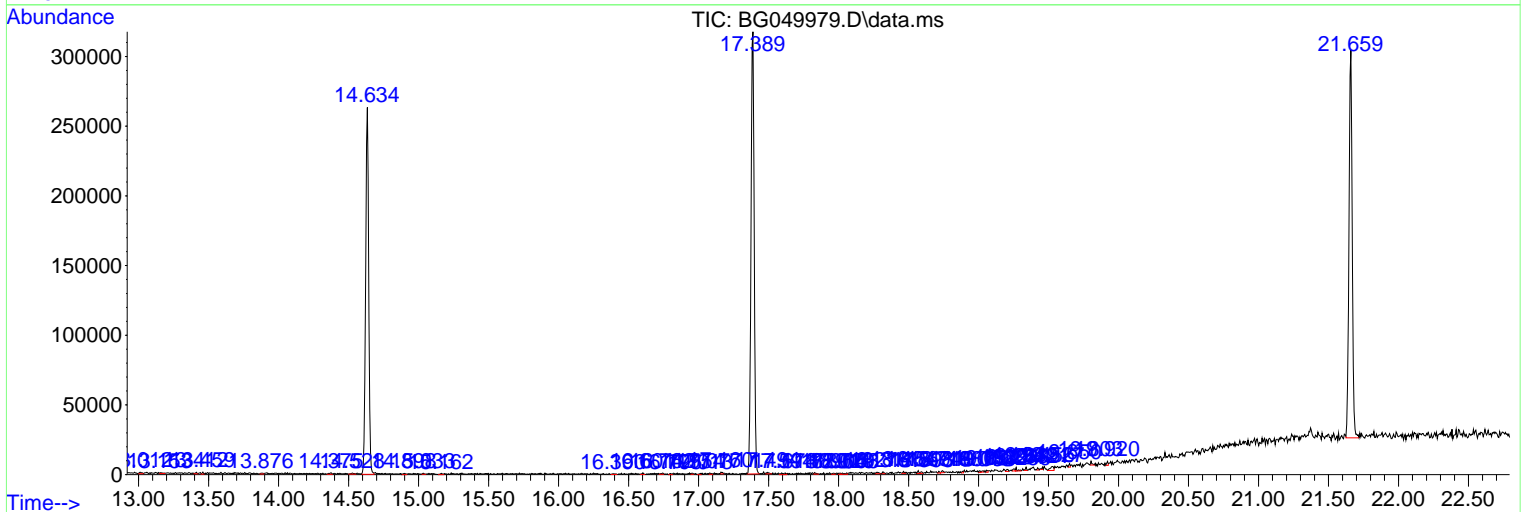
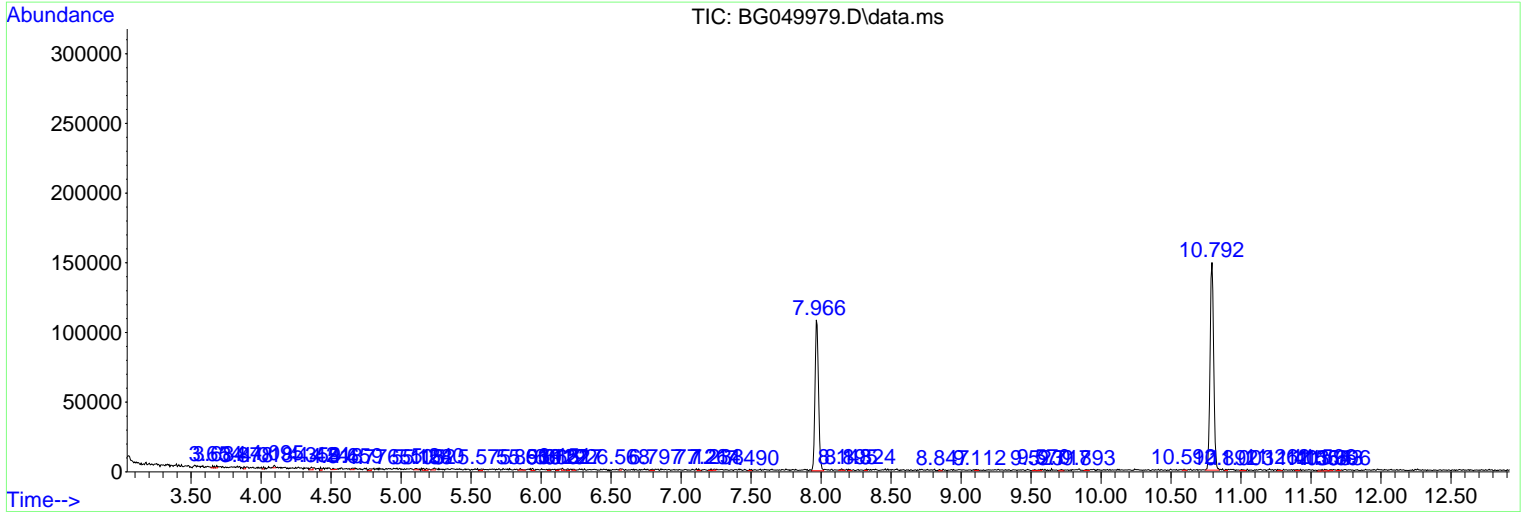
Sum of corrected areas: 2392497

Data Path : Z:\svoasrv\HPCHEM1\BNA_G\Data\BG082621\
 Data File : BG049979.D
 Acq On : 26 Aug 2021 13:43
 Operator : CG/JU
 Sample : M3511-10
 Misc :
 ALS Vial : 5 Sample Multiplier: 1

Instrument :
 BNA_G
ClientSampleId :
 SVOC-GPC2-BLANK

Quant Method : Z:\SVOASRV\HPCHEM1\BNA_G\METHODS\SFAM-EPA-BG081921.M
 Quant Title : SVOA CALIBRATION

TIC Library : C:\DATABASE\NIST20.L
 TIC Integration Parameters: LSCINT.P



Library Search Compound Report

Data Path : Z:\svoasrv\HPCHEM1\BNA_G\Data\BG082621\
Data File : BG049979.D
Acq On : 26 Aug 2021 13:43
Operator : CG/JU
Sample : M3511-10
Misc :
ALS Vial : 5 Sample Multiplier: 1

Instrument :
BNA_G
ClientSampleId :
SVOC-GPC2-BLANK

Quant Method : Z:\SVOASRV\HPCHEM1\BNA_G\METHODS\SFAM-EPA-BG081921.M
Quant Title : SVOA CALIBRATION

TIC Library : C:\DATABASE\NIST20.L
TIC Integration Parameters: LSCINT.P

No Library Search Compounds Detected

Data Path : Z:\svoasrv\HPCHEM1\BNA_G\Data\BG082621\
Data File : BG049979.D
Acq On : 26 Aug 2021 13:43
Operator : CG/JU
Sample : M3511-10
Misc :
ALS Vial : 5 Sample Multiplier: 1

Instrument :
BNA_G
ClientSampleId :
SVOC-GPC2-BLANK

Quant Method : Z:\SVOASRV\HPCHEM1\BNA_G\METHODS\SFAM-EPA-BG081921.M
Quant Title : SVOA CALIBRATION

TIC Library : C:\DATABASE\NIST20.L
TIC Integration Parameters: LSCINT.P

TIC Top Hit name	RT	EstConc	Units	Response	#	RT	Resp	Conc
------------------	----	---------	-------	----------	---	----	------	------
