

Data Path : Z:\HPCHEM1\BNA\_G\DATA\BG082815\  
 Data File : BG018529.D  
 Acq On : 29 Aug 2015 1:25  
 Operator : UM/MA  
 Sample : G3448-06  
 Misc :  
 ALS Vial : 20 Sample Multiplier: 1

**Instrument :**  
 BNA\_G  
**ClientSampled :**  
 C0AC5

**Manual Integrations**  
**APPROVED**  
 ugo  
 8/31/2015 4:58:56 PM

Quant Time: Aug 31 16:42:04 2015  
 Quant Method : Z:\HPCHEM1\BNA\_G\METHODS\SOM02.2-EPA-BG080915.M  
 Quant Title : SVOA CALIBRATION  
 QLast Update : Mon Aug 31 03:29:45 2015  
 Response via : Initial Calibration

Internal Standards	R.T.	QIon	Response	Conc	Units	Dev(Min)
1) 1,4-Dichlorobenzene-d4	8.01	152	80305	20.00	ng/ul	0.00
18) Naphthalene-d8	10.82	136	370570	20.00	ng/ul	0.00
36) Acenaphthene-d10	14.64	164	244139	20.00	ng/ul	0.00
62) Phenanthrene-d10	17.38	188	596693	20.00	ng/ul	0.00
78) Chrysene-d12	21.64	240	581308	20.00	ng/ul	0.00
86) Perylene-d12	24.84	264	577562	20.00	ng/ul	0.00

System Monitoring Compounds

3) 1,4-Dioxane-d8	3.44	96	3019	1.66	ng/uL	0.00
5) Phenol-d5	7.17	99	150319	20.62	ng/ul	0.00
7) Bis-(2-Chloroethyl)ether-d	7.33	67	94068	20.83	ng/ul	0.00
9) 2-Chlorophenol-d4	7.54	132	109704	19.65	ng/ul	0.00
13) 4-Methylphenol-d8	8.71	113	105462	17.22	ng/ul	0.00
19) Nitrobenzene-d5	9.17	128	63081	21.84	ng/ul	0.00
22) 2-Nitrophenol-d4	9.89	143	65654	22.32	ng/ul	0.00
26) 2,4-Dichlorophenol-d3	10.43	165	133233	21.34	ng/ul	0.00
29) 4-Chloroaniline-d4	10.94	131	159340	22.58	ng/ul	0.00
44) Dimethylphthalate-d6	14.04	166	426351	20.76	ng/ul	0.00
47) Acenaphthylene-d8	14.33	160	509083	19.68	ng/ul	0.00
52) 4-Nitrophenol-d4	14.82	143	76074	20.59	ng/ul	0.00
58) Fluorene-d10	15.63	176	336730	18.82	ng/ul	0.00
63) 4,6-Dinitro-2-methylphenol	15.73	200	46687	15.91	ng/ul	0.00
71) Anthracene-d10	17.48	188	545749	19.12	ng/ul	0.00
79) Pyrene-d10	19.76	212	462452	15.33	ng/ul	0.00
90) Benzo(a)pyrene-d12	24.61	264	436934	14.25	ng/ul	0.00

Target Compounds

					Qvalue
32) Caprolactam	11.72	113	5550m	2.36	ng/ul
45) Dimethylphthalate	14.08	163	208039	10.27	ng/ul 99
77) Fluoranthene	19.42	202	37282	1.08	ng/ul# 95

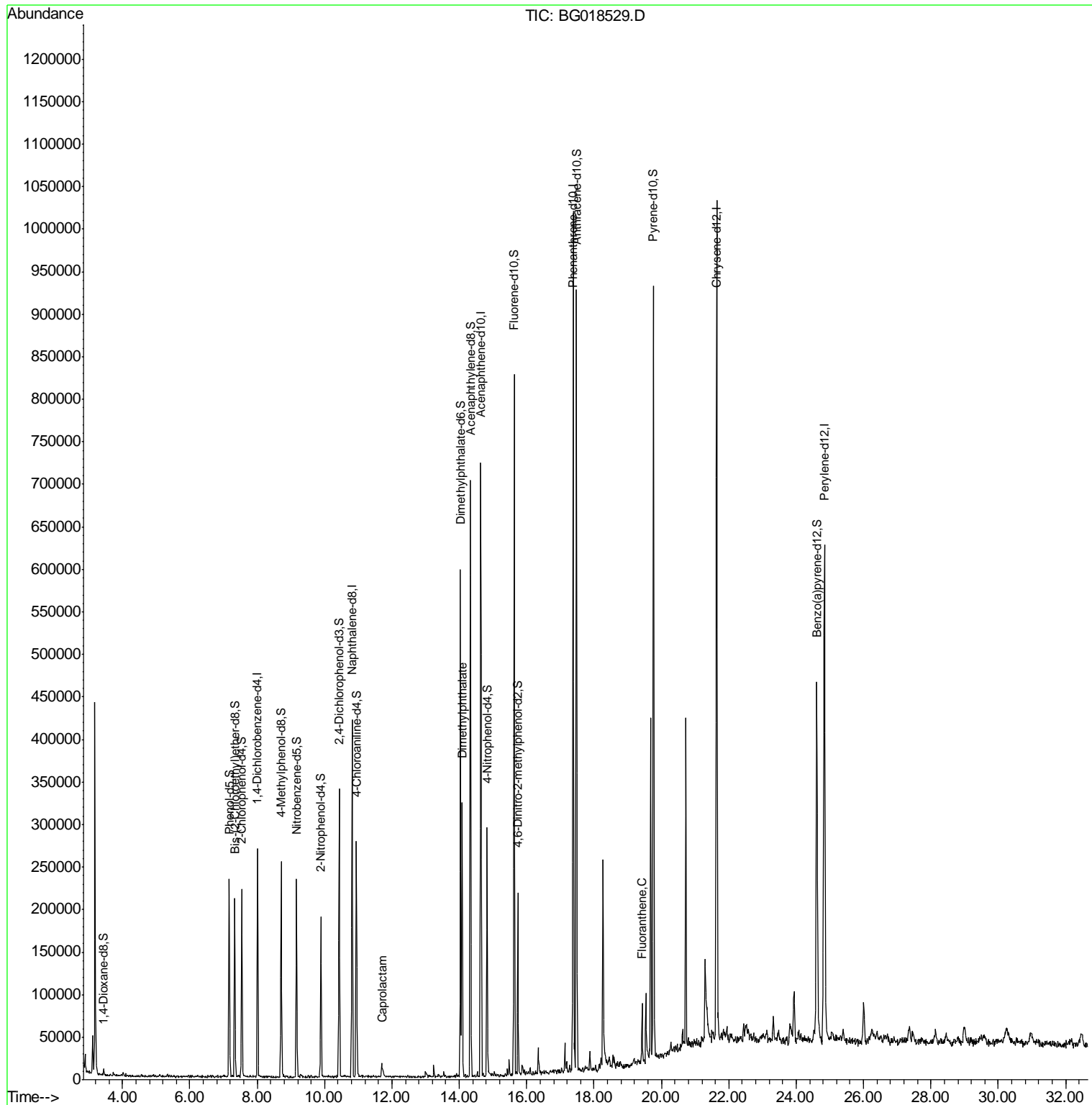
(#) = qualifier out of range (m) = manual integration (+) = signals summed

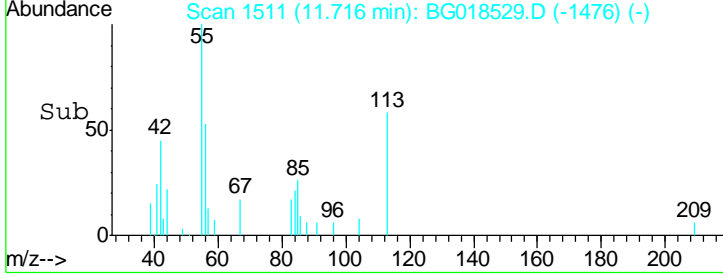
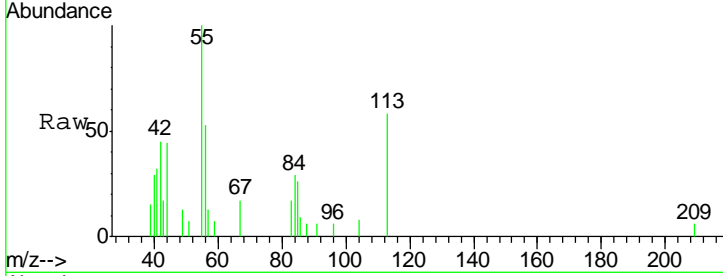
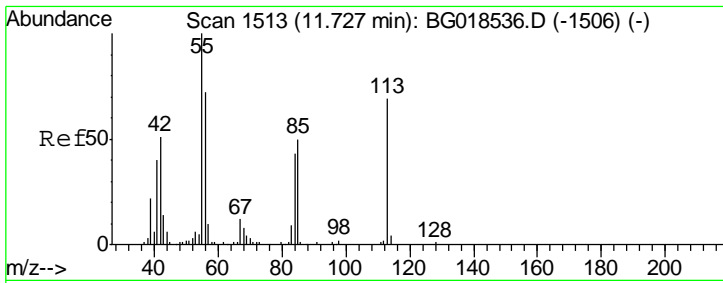
Data Path : Z:\HPCHEM1\BNA\_G\DATA\BG082815\  
 Data File : BG018529.D  
 Acq On : 29 Aug 2015 1:25  
 Operator : UM/MA  
 Sample : G3448-06  
 Misc :  
 ALS Vial : 20 Sample Multiplier: 1

Instrument :  
 BNA\_G  
 Client Sampled :  
 C0AC5

Manual Integrations  
 APPROVED  
 ugo  
 8/31/2015 4:58:56 PM

Quant Time: Aug 31 16:42:04 2015  
 Quant Method : Z:\HPCHEM1\BNA\_G\METHODS\SOM02.2-EPA-BG080915.M  
 Quant Title : SVOA CALIBRATION  
 QLast Update : Mon Aug 31 03:29:45 2015  
 Response via : Initial Calibration



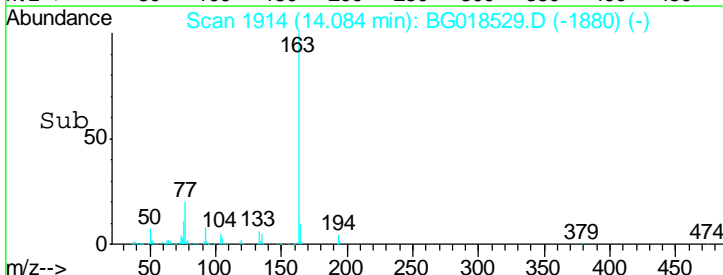
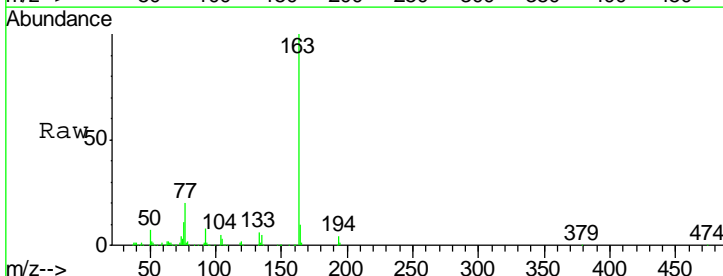
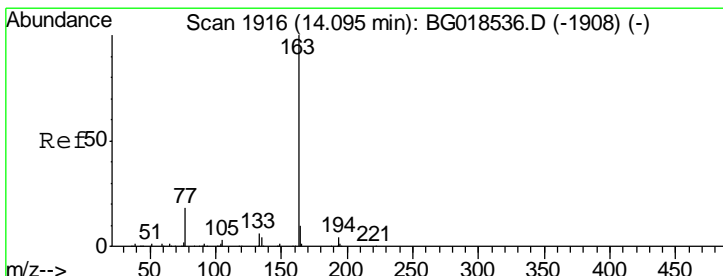
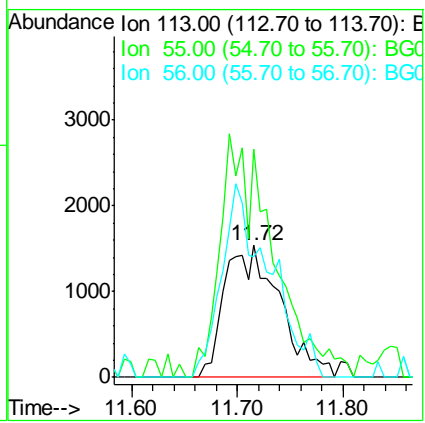


#32  
 Caprolactam  
 Concen: 2.36 ng/ul m  
 RT: 11.72 min Scan# 1511  
 Delta R.T. 0.00 min  
 Lab File: BG018529.D  
 Acq: 29 Aug 2015 1:25

Tgt Ion	Resp	Lower	Upper
113	100		
55	173.2	124.2	186.4
56	91.9	98.2	147.4#

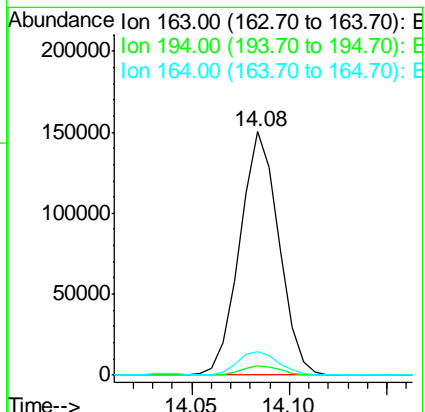
Instrument :  
 BNA\_G  
 ClientSampled :  
 C0AC5

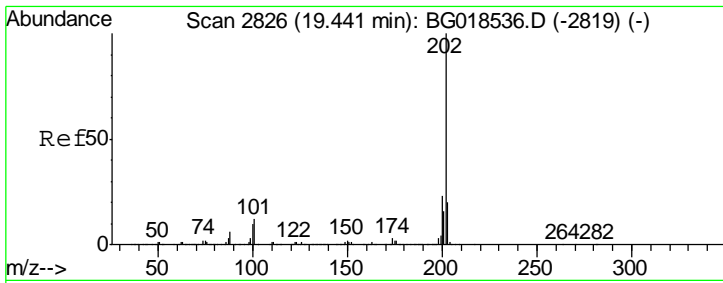
Manual Integrations  
 APPROVED  
 ugo  
 8/31/2015 4:58:56 PM



#45  
 Dimethylphthalate  
 Concen: 10.27 ng/ul  
 RT: 14.08 min Scan# 1914  
 Delta R.T. -0.00 min  
 Lab File: BG018529.D  
 Acq: 29 Aug 2015 1:25

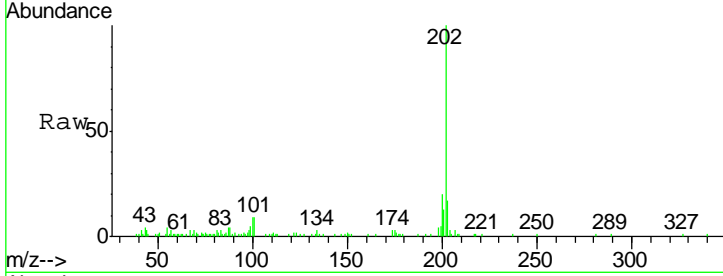
Tgt Ion	Resp	Lower	Upper
163	100		
194	3.8	2.9	4.3
164	9.9	7.7	11.5





#77  
 Fluoranthene  
 Concen: 1.08 ng/ul  
 RT: 19.42 min Scan# 2823  
 Delta R.T. -0.00 min  
 Lab File: BG018529.D  
 Acq: 29 Aug 2015 1:25

**Instrument :**  
 BNA\_G  
**ClientSampled :**  
 C0AC5



Tgt Ion: 202 Resp: 37282

Ion	Ratio	Lower	Upper
202	100		
101	9.3	9.7	14.5#
100	9.1	7.8	11.8

**Manual Integrations**  
**APPROVED**  
 ugo  
 8/31/2015 4:58:56 PM

