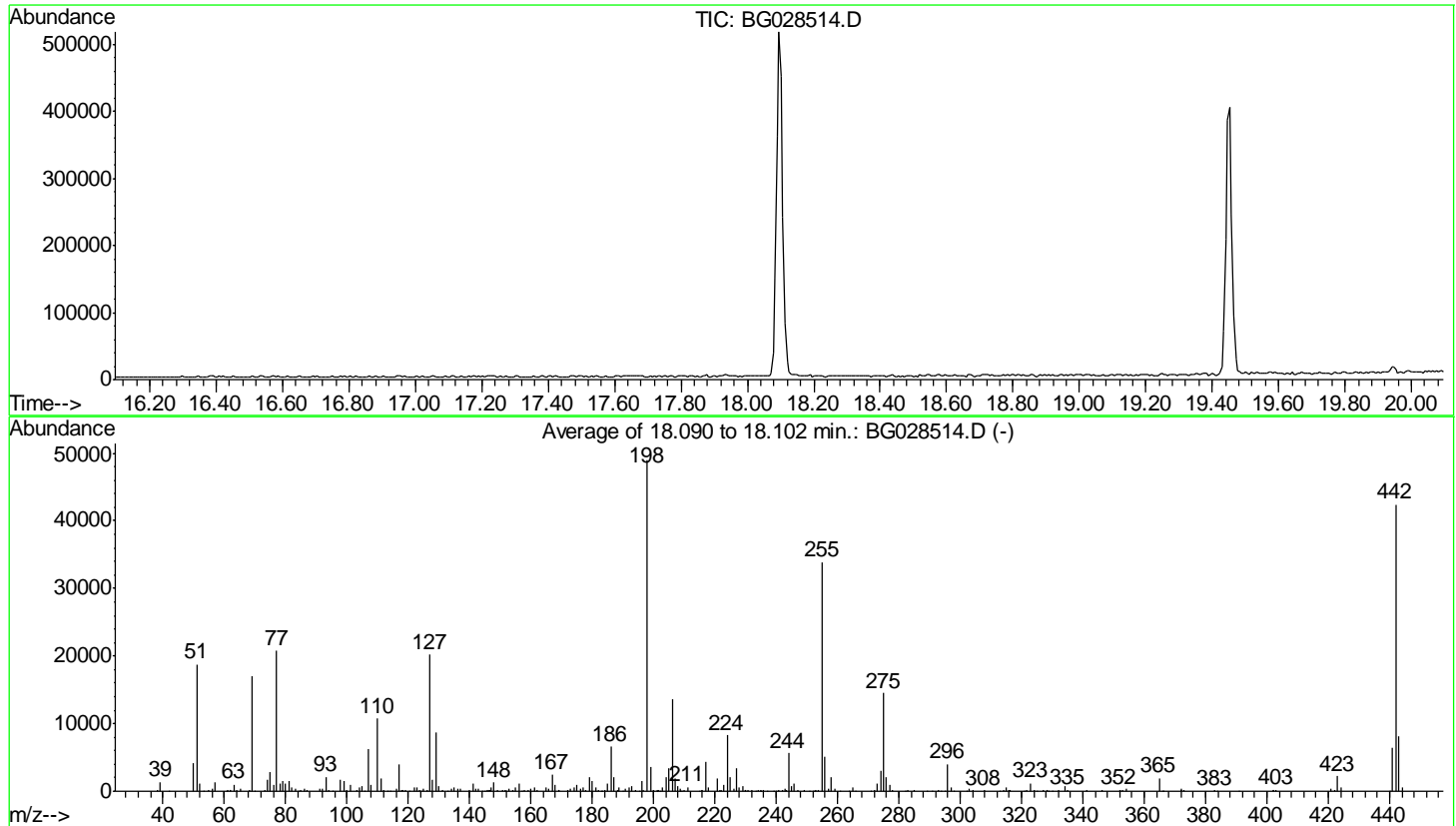


Data Path : Z:\HPCHEM1\BNA_G\Data\BG082817\
 Data File : BG028514.D
 Acq On : 28 Aug 2017 11:58
 Operator : SJ/JU
 Sample : DFTPP72
 Misc :
 ALS Vial : 1 Sample Multiplier: 1

Instrument :
 BNA_G
 ClientSampleId :
 DFTPP72

Integration File: LSCINT.P

Method : Z:\HPCHEM1\BNA_G\METHODS\SOM-EPA-BG080217.M
 Title : SVOA CALIBRATION
 Last Update : Tue Aug 29 03:57:40 2017



AutoFind: Scans 2468, 2469, 2470; Background Corrected with Scan 2462

Target Mass	Rel. to Mass	Lower Limit%	Upper Limit%	Rel. Abn%	Raw Abn	Result Pass/Fail
51	198	10	80	38.4	18797	PASS
68	69	0.00	2	1.1	179	PASS
69	198	0.00	100	34.7	17009	PASS
70	69	0.00	2	0.3	59	PASS
127	198	10	80	41.3	20210	PASS
197	198	0.00	2	0.5	228	PASS
198	198	100	100	100.0	48978	PASS
199	198	5	9	7.2	3517	PASS
275	198	10	60	29.5	14471	PASS
365	198	1	100	3.9	1897	PASS
441	442	0.01	100	15.2	6440	PASS
442	198	50	100	86.5	42376	PASS
443	442	15	24	19.4	8212	PASS

m/z	Abundance
38.10	197.0
39.10	1445.0
40.00	3169.0
41.00	190.0
42.00	214.0
44.10	709.0
49.10	221.0
50.10	4137.0
51.10	17880.0
52.10	1165.0
56.30	332.0
57.10	1731.0
60.80	187.0
62.00	329.0
63.10	759.0
65.10	271.0
69.00	15265.0
73.00	259.0
74.10	2003.0
75.00	2295.0
76.00	869.0
77.10	20488.0
78.10	1223.0
79.10	1208.0
80.00	1237.0
81.10	1129.0
82.00	445.0
83.20	373.0
83.90	269.0
85.00	294.0
86.00	394.0
87.10	222.0
91.00	211.0
92.10	316.0
93.00	1856.0
94.00	154.0
98.00	1162.0
99.00	1761.0
100.10	254.0
101.00	1046.0
103.10	181.0
104.10	656.0
105.10	784.0
107.10	4981.0
108.00	947.0
110.00	9895.0
111.00	1850.0
111.90	196.0
113.10	169.0
116.00	360.0
117.00	3175.0
118.20	490.0
123.10	644.0
123.90	304.0
125.00	489.0
127.10	17040.0
128.00	1304.0
129.00	7781.0
130.00	907.0
131.20	158.0
133.90	371.0
135.00	578.0
136.00	507.0
137.10	333.0
140.10	215.0
141.10	1024.0
142.00	465.0
143.00	311.0
147.10	630.0
148.00	1110.0
149.00	217.0
151.50	304.0
152.10	159.0
153.10	272.0
155.10	683.0
156.00	683.0
157.00	189.0
158.00	229.0
158.90	185.0
159.90	161.0
161.10	469.0
165.00	430.0
165.90	467.0
167.00	2086.0
168.10	605.0
169.00	364.0
172.00	167.0
172.90	253.0
174.00	359.0
175.00	926.0
176.00	222.0

Instrument :
BNA_G
ClientSampleId :
DFTPP72

177.00	718.0
178.90	2091.0
180.00	1456.0
181.00	731.0
182.10	238.0
185.00	943.0
186.10	4735.0
187.00	2251.0
188.20	353.0
189.00	231.0
190.80	397.0
192.00	373.0
193.00	532.0
195.20	166.0
196.00	1243.0
196.70	684.0
198.00	42256.0
199.00	3079.0
200.00	225.0
201.20	210.0
201.40	221.0
202.00	159.0
203.00	465.0
204.00	1614.0
205.00	2649.0
206.10	10661.0
207.00	1559.0
208.00	845.0
208.90	220.0
210.00	217.0
211.00	388.0
217.00	3939.0
218.00	305.0
220.90	1651.0
221.80	307.0
223.00	800.0
224.00	6215.0
225.10	1802.0
226.10	185.0
227.00	2236.0
228.00	510.0
229.10	624.0
230.00	344.0
234.90	259.0
236.90	271.0
239.00	224.0
242.00	231.0
242.90	449.0
244.00	4422.0
245.00	670.0
246.00	1074.0
249.00	207.0
255.00	26032.0
256.00	4155.0
256.90	450.0
258.00	1497.0
259.10	209.0
265.10	535.0
272.20	181.0
273.00	950.0
274.10	2282.0
275.00	11559.0
276.00	1970.0
276.90	877.0
278.00	218.0
282.90	205.0
289.10	173.0
293.00	210.0
296.00	2789.0
297.00	333.0
298.00	270.0
302.00	196.0
302.90	165.0
304.10	161.0
313.10	167.0
314.00	212.0
314.90	303.0
316.00	154.0
321.80	268.0
323.00	742.0
324.10	263.0
327.10	159.0
328.10	153.0
332.10	251.0
334.00	542.0
335.20	199.0
351.90	172.0
353.00	217.0
354.10	353.0
364.90	1076.0
371.90	671.0
402.20	316.0
421.00	205.0
421.90	182.0
423.10	1686.0

Instrument :
BNA_G
ClientSampleId :
DFTPP72

424.20	281.0
441.00	4142.0
442.00	24456.0
443.00	5619.0
444.00	298.0

Instrument :
BNA_G
ClientSampleId :
DFTPP72

m/z	Abundance
38.00	384.0
39.10	1971.0
40.00	2565.0
41.10	171.0
44.00	901.0
50.10	4696.0
51.10	21624.0
52.10	1215.0
55.20	299.0
56.10	567.0
57.10	1230.0
61.20	187.0
62.20	279.0
63.10	1118.0
64.00	330.0
65.20	466.0
68.20	539.0
69.00	20768.0
73.00	264.0
74.10	1680.0
75.00	3402.0
76.10	1203.0
77.10	22808.0
78.10	1398.0
79.00	2155.0
80.00	1131.0
81.00	1920.0
82.00	697.0
83.10	347.0
85.00	206.0
86.00	530.0
87.10	216.0
91.10	627.0
92.00	486.0
93.00	2264.0
98.00	1684.0
99.00	1477.0
101.00	1088.0
103.10	316.0
103.90	607.0
105.10	746.0
105.90	206.0
107.00	8219.0
108.10	1484.0
110.00	13557.0
111.10	2369.0
112.00	427.0
114.10	187.0
116.10	547.0
117.10	5051.0
117.90	416.0
119.10	156.0
120.20	203.0
122.00	835.0
122.90	712.0
124.10	285.0
125.10	625.0
126.00	330.0
127.00	23984.0
128.00	1970.0
129.00	10223.0
130.00	852.0
131.10	208.0
132.90	192.0
134.00	291.0
135.00	675.0
136.10	372.0
137.00	364.0
141.00	1446.0
142.00	352.0
143.10	534.0
145.00	187.0
145.80	271.0
146.10	320.0
147.00	720.0
148.00	1343.0
149.10	178.0
150.90	483.0
151.70	373.0
153.10	555.0
154.10	280.0
155.10	367.0
156.00	1361.0
159.90	429.0
160.90	652.0
162.10	212.0
165.10	719.0
165.80	267.0
167.00	2514.0
168.00	1470.0
169.20	173.0

Instrument :
BNA_G
ClientSampleId :
DFTPP72

171.90	275.0
173.00	316.0
174.00	640.0
175.10	1174.0
176.10	501.0
177.00	529.0
177.90	250.0
179.00	2116.0
180.00	1662.0
181.00	863.0
182.20	257.0
182.80	161.0
184.00	452.0
184.90	803.0
186.00	7913.0
187.10	2197.0
188.00	174.0
189.00	590.0
190.00	241.0
190.90	291.0
192.00	719.0
193.00	1067.0
194.10	381.0
196.00	2237.0
198.00	54968.0
199.00	4412.0
200.20	304.0
201.60	587.0
203.00	764.0
204.10	2281.0
205.00	4121.0
206.00	15883.0
207.00	2771.0
208.00	734.0
208.90	722.0
210.10	295.0
211.00	1011.0
214.90	222.0
215.80	342.0
217.00	4853.0
217.90	614.0
221.00	2521.0
221.80	510.0
223.00	1043.0
224.00	10194.0
225.00	1894.0
226.10	477.0
227.00	4668.0
228.00	669.0
228.90	908.0
230.20	249.0
230.90	362.0
232.00	353.0
234.00	337.0
240.00	231.0
241.00	404.0
242.10	233.0
243.10	544.0
244.00	6977.0
245.00	927.0
245.90	1004.0
247.00	422.0
249.00	230.0
251.00	223.0
252.30	152.0
253.00	332.0
255.00	41120.0
256.00	6129.0
257.00	617.0
258.00	2517.0
259.00	346.0
260.90	251.0
263.80	166.0
265.10	702.0
266.00	171.0
273.00	1213.0
274.00	3807.0
275.00	16816.0
276.00	2138.0
276.90	1198.0
281.90	158.0
283.00	189.0
285.10	351.0
293.00	368.0
293.90	160.0
296.00	4906.0
297.00	712.0
303.00	449.0
307.90	156.0
315.00	515.0
316.10	374.0
323.00	1295.0
324.00	286.0
325.20	152.0
327.10	322.0

Instrument :
BNA_G
ClientSampleId :
DFTPP72

328.20	211.0
328.90	175.0
332.10	160.0
334.00	985.0
335.10	221.0
341.10	277.0
346.00	412.0
352.10	362.0
353.00	190.0
354.10	433.0
364.90	2399.0
365.90	175.0
372.10	594.0
382.90	230.0
401.90	279.0
403.00	467.0
421.00	268.0
422.00	256.0
423.00	2490.0
424.00	570.0
439.90	163.0
441.00	7199.0
442.00	49808.0
443.10	8647.0
444.00	845.0

Instrument :
BNA_G
ClientSampleId :
DFTPP72

m/z	Abundance
39.10	842.0
40.00	3096.0
44.00	1023.0
50.10	3870.0
51.10	16888.0
52.10	1204.0
53.20	160.0
55.00	308.0
56.00	520.0
57.10	1083.0
61.20	277.0
62.10	177.0
63.10	1087.0
64.00	205.0
65.10	225.0
69.00	14995.0
70.00	179.0
73.10	317.0
74.00	1370.0
75.00	2781.0
76.00	915.0
77.10	18928.0
78.20	996.0
79.10	1400.0
80.00	1078.0
81.00	1375.0
82.10	739.0
83.00	416.0
85.00	278.0
86.00	400.0
87.10	301.0
91.00	246.0
92.00	444.0
93.10	2260.0
93.90	183.0
95.20	155.0
98.10	2271.0
99.10	1305.0
100.10	237.0
101.10	672.0
103.20	227.0
103.90	583.0
105.00	483.0
107.00	5458.0
108.10	690.0
110.00	8798.0
111.10	1409.0
112.10	154.0
116.00	291.0
117.00	3596.0
118.00	276.0
119.20	175.0
122.10	694.0
122.90	414.0
123.80	197.0
127.10	19608.0
128.00	1692.0
129.00	8136.0
130.00	580.0
134.00	243.0
135.00	559.0
137.00	281.0
140.10	292.0
141.00	986.0
142.00	474.0
143.00	465.0
143.90	168.0
145.80	302.0
146.80	440.0
147.00	438.0
148.00	1463.0
149.10	285.0
153.00	535.0
154.10	206.0
155.10	510.0
156.10	1247.0
158.00	289.0
159.00	232.0
160.00	303.0
160.90	357.0
162.10	168.0
165.00	783.0
166.00	282.0
167.00	2617.0
167.90	792.0
169.10	176.0
171.90	262.0
173.00	365.0
173.90	479.0
175.00	821.0
175.90	376.0

Instrument :
BNA_G
ClientSampleId :
DFTPP72

177.10	346.0
178.00	338.0
179.00	2159.0
180.10	1353.0
180.90	361.0
183.10	208.0
183.90	280.0
185.00	1485.0
186.10	7000.0
187.00	1794.0
188.20	316.0
188.80	761.0
190.90	258.0
192.10	533.0
193.10	804.0
194.10	238.0
196.00	1184.0
198.00	49712.0
198.90	3061.0
200.10	287.0
201.40	222.0
203.00	694.0
204.00	2090.0
205.10	3422.0
206.10	14567.0
207.00	2462.0
208.00	734.0
208.60	159.0
209.10	229.0
210.00	230.0
211.10	536.0
216.00	453.0
217.00	4002.0
218.00	597.0
221.10	1564.0
222.00	369.0
223.10	1007.0
224.00	8469.0
225.00	2386.0
225.90	338.0
227.00	3498.0
228.00	550.0
229.00	864.0
230.10	378.0
231.00	309.0
233.10	164.0
234.00	441.0
235.10	479.0
235.90	326.0
241.90	282.0
242.90	531.0
244.00	5562.0
245.10	777.0
246.00	1416.0
246.90	268.0
248.90	413.0
251.90	163.0
253.00	157.0
253.90	625.0
255.00	34400.0
256.00	5101.0
256.90	364.0
258.00	2511.0
258.90	365.0
265.00	713.0
271.00	252.0
272.20	304.0
273.00	1015.0
274.00	2931.0
275.00	15040.0
276.00	2359.0
276.90	677.0
277.90	168.0
283.00	259.0
285.10	326.0
290.90	222.0
295.00	187.0
296.00	4499.0
297.00	444.0
302.90	433.0
304.00	200.0
307.90	206.0
314.00	274.0
315.00	636.0
315.80	338.0
320.90	231.0
321.90	210.0
322.90	1377.0
324.00	276.0
327.00	206.0
328.20	237.0
329.80	214.0
332.00	216.0
334.00	1040.0
335.10	271.0

Instrument :
BNA_G
ClientSampleId :
DFTPP72

341.10	418.0
346.10	153.0
352.10	359.0
353.00	210.0
354.00	429.0
365.00	2216.0
366.10	269.0
372.00	733.0
373.00	362.0
383.00	189.0
383.90	180.0
390.90	176.0
402.00	279.0
402.90	361.0
404.10	153.0
421.00	407.0
422.10	390.0
423.00	2438.0
424.00	772.0
441.00	7981.0
442.00	52864.0
443.00	10370.0
444.10	805.0

Instrument :
BNA_G
ClientSampleId :
DFTPP72

m/z	Abundance
40.00	3357.0
41.20	186.0
44.10	1096.0
48.90	269.0
50.10	153.0
115.20	180.0
149.50	171.0
169.80	192.0
207.10	333.0
404.20	256.0
491.10	150.0

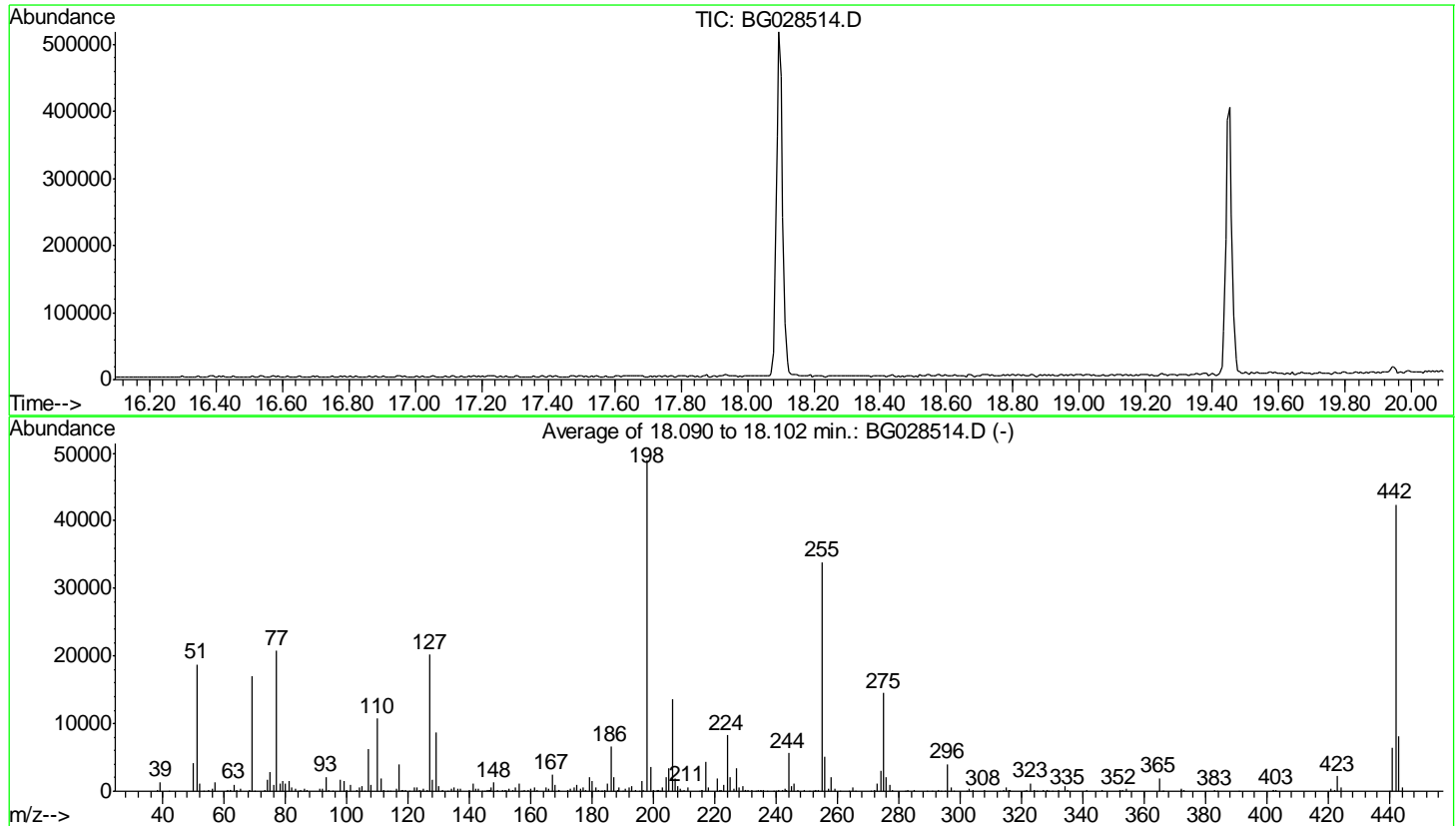
Instrument :
BNA_G
ClientSampleId :
DFTPP72

Data Path : Z:\HPCHEM1\BNA_G\Data\BG082817\
 Data File : BG028514.D
 Acq On : 28 Aug 2017 11:58
 Operator : SJ/JU
 Sample : DFTPP72
 Misc :
 ALS Vial : 1 Sample Multiplier: 1

Instrument :
 BNA_G
 ClientSampleId :
 DFTPP72

Integration File: LSCINT.P

Method : Z:\HPCHEM1\BNA_G\METHODS\SOM-EPA-BG080217.M
 Title : SVOA CALIBRATION
 Last Update : Tue Aug 29 03:57:40 2017



AutoFind: Scans 2468, 2469, 2470; Background Corrected with Scan 2462

Target Mass	Rel. to Mass	Lower Limit%	Upper Limit%	Rel. Abn%	Raw Abn	Result Pass/Fail
51	198	10	80	38.4	18797	PASS
68	69	0.00	2	1.1	179	PASS
69	198	0.00	100	34.7	17009	PASS
70	69	0.00	2	0.3	59	PASS
127	198	10	80	41.3	20210	PASS
197	198	0.00	2	0.5	228	PASS
198	198	100	100	100.0	48978	PASS
199	198	5	9	7.2	3517	PASS
275	198	10	60	29.5	14471	PASS
365	198	1	100	3.9	1897	PASS
441	442	0.01	100	15.2	6440	PASS
442	198	50	100	86.5	42376	PASS
443	442	15	24	19.4	8212	PASS