

Data Path : Z:\SVOASRV\HPCHEM1\BNA_G\DATA\BG083018\
 Data File : BG036486.D
 Acq On : 30 Aug 2018 20:08
 Operator : JU/SJ
 Sample : J4699-03
 Misc :
 ALS Vial : 6 Sample Multiplier: 1

Instrument :
 BNA_G
 ClientSampleId :
 CG-SOIL-1

Quant Time: Aug 31 01:16:11 2018
 Quant Method : Z:\SVOASRV\HPCHEM1\BNA_G\METHODS\8270-BG082318.M
 Quant Title : ASP BNA STANDARDS FOR 5 POINT CALIBRATION
 QLast Update : Thu Aug 23 12:07:02 2018
 Response via : Initial Calibration

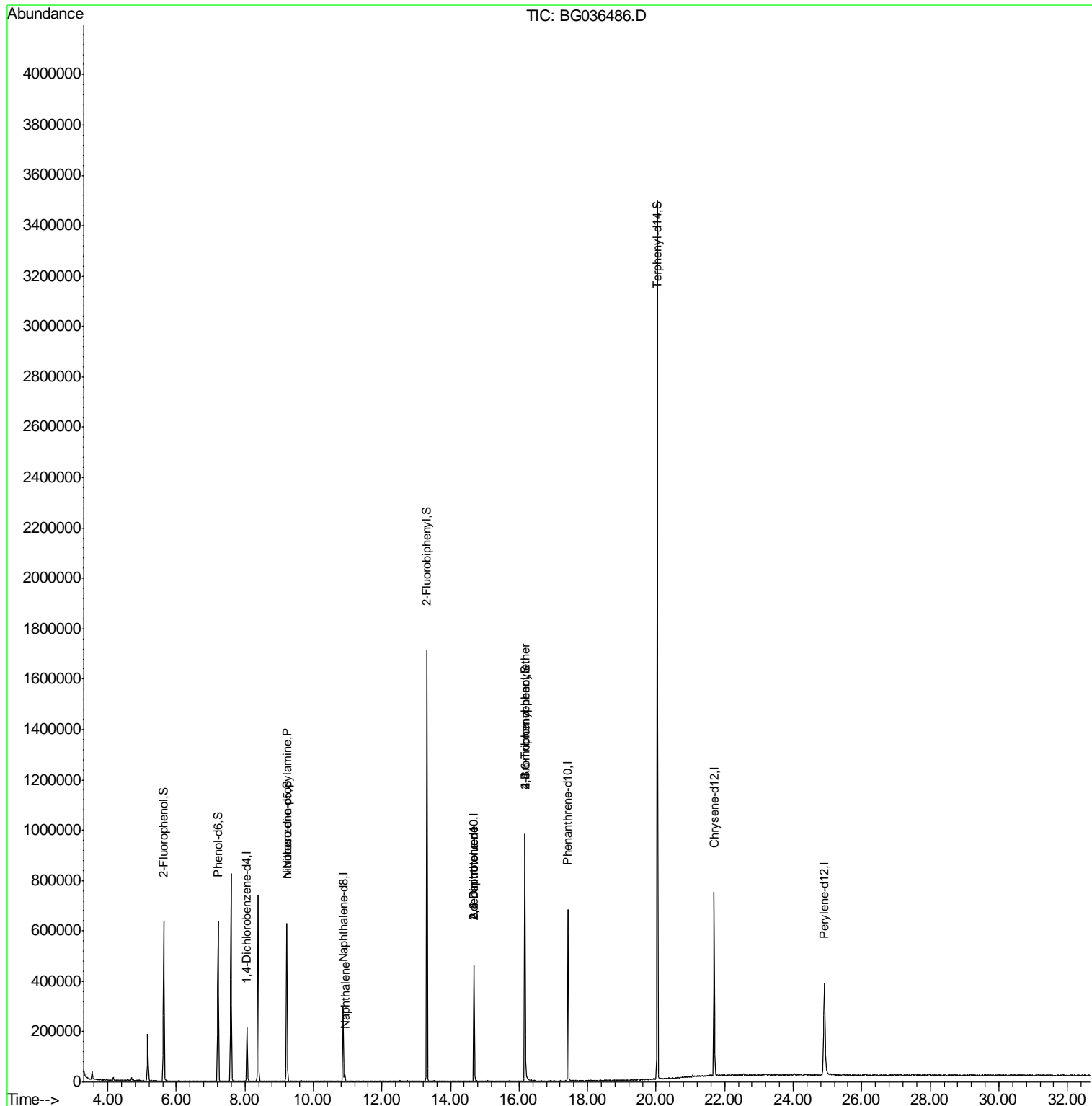
Internal Standards	R.T.	QIon	Response	Conc	Units	Dev(Min)
1) 1,4-Dichlorobenzene-d4	8.06	152	61059	20.00	ng	-0.01
21) Naphthalene-d8	10.87	136	247837	20.00	ng	-0.01
38) Acenaphthene-d10	14.68	164	162373	20.00	ng	-0.02
63) Phenanthrene-d10	17.43	188	426503	20.00	ng	-0.01
75) Chrysene-d12	21.69	240	447366	20.00	ng	-0.02
86) Perylene-d12	24.91	264	437077	20.00	ng	-0.03
System Monitoring Compounds						
5) 2-Fluorophenol	5.63	112	270570	70.29	ng	0.00
7) Phenol-d6	7.22	99	356885	64.76	ng	0.00
23) Nitrobenzene-d5	9.22	82	384201	84.11	ng	-0.01
41) 2,4,6-Tribromophenol	16.17	330	183148	94.53	ng	-0.01
44) 2-Fluorobiphenyl	13.31	172	921189	81.00	ng	-0.01
78) Terphenyl-d14	20.04	244	1574566	82.27	ng	-0.02
Target Compounds						
19) n-Nitroso-di-n-propylamine	9.22	70	51116	12.411	ng	# 66
31) Naphthalene	10.92	128	27139	2.191	ng	98
50) 2,6-Dinitrotoluene	14.68	165	21053	7.717	ng	# 23
56) 2,4-Dinitrotoluene	14.68	165	21053	5.921	ng	# 21
66) 4-Bromophenyl-phenylether	16.17	248	13610	2.726	ng	# 1

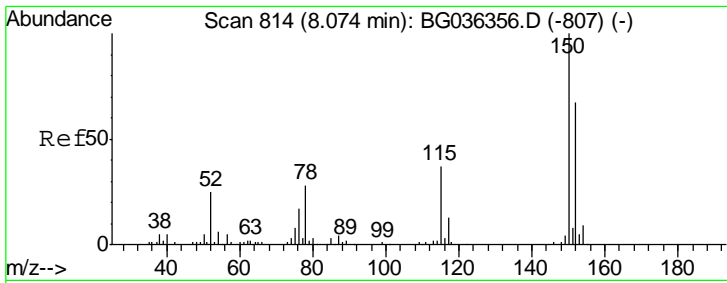
(#) = qualifier out of range (m) = manual integration (+) = signals summed

Data Path : Z:\SVOASRV\HPCHEM1\BNA_G\DATA\BG083018\
 Data File : BG036486.D
 Acq On : 30 Aug 2018 20:08
 Operator : JU/SJ
 Sample : J4699-03
 Misc :
 ALS Vial : 6 Sample Multiplier: 1

Instrument :
 BNA_G
 ClientSampled :
 CG-SOIL-1

Quant Time: Aug 31 01:16:11 2018
 Quant Method : Z:\SVOASRV\HPCHEM1\BNA_G\METHODS\8270-BG082318.M
 Quant Title : ASP BNA STANDARDS FOR 5 POINT CALIBRATION
 QLast Update : Thu Aug 23 12:07:02 2018
 Response via : Initial Calibration

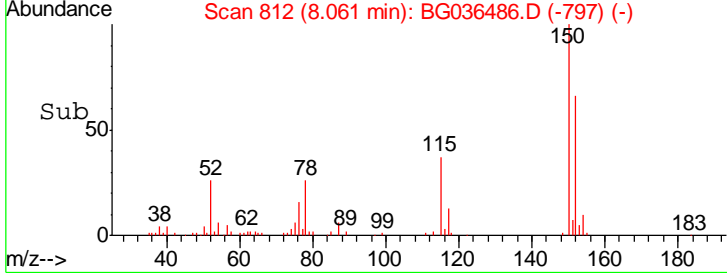
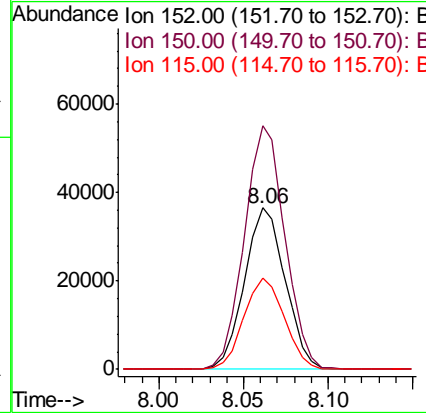
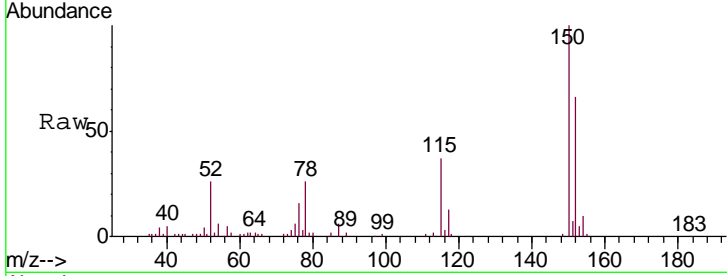




#1
 1,4-Dichlorobenzene-d4
 Concen: 20.000 ng
 RT: 8.06 min Scan# 812
 Delta R.T. -0.01 min
 Lab File: BG036486.D
 Acq: 30 Aug 2018 20:08

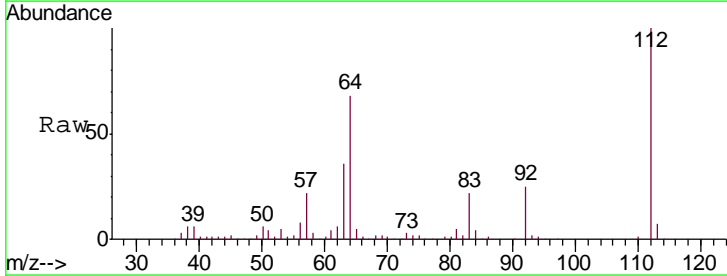
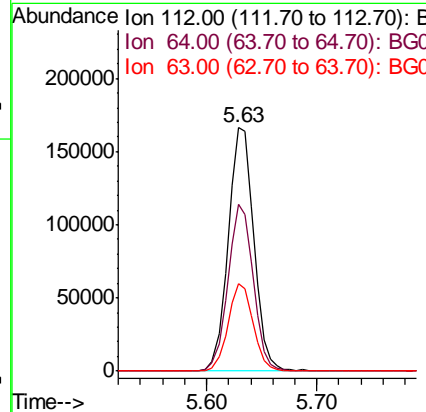
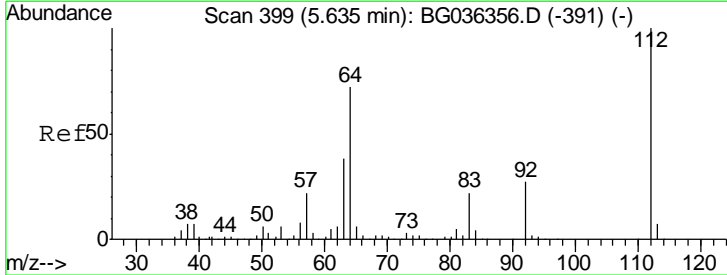
Instrument :
 BNA_G
 ClientSampled :
 CG-SOIL-1

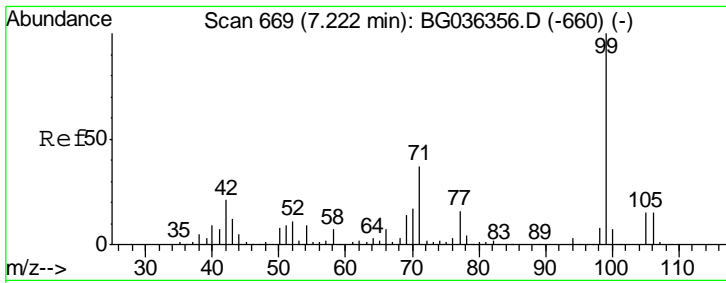
Tgt Ion	Resp	Lower	Upper
152	100		
150	150.9	119.5	179.3
115	56.4	44.5	66.7



#5
 2-Fluorophenol
 Concen: 70.293 ng
 RT: 5.63 min Scan# 398
 Delta R.T. -0.01 min
 Lab File: BG036486.D
 Acq: 30 Aug 2018 20:08

Tgt Ion	Resp	Lower	Upper
112	100		
64	68.5	57.2	85.8
63	35.7	30.8	46.2

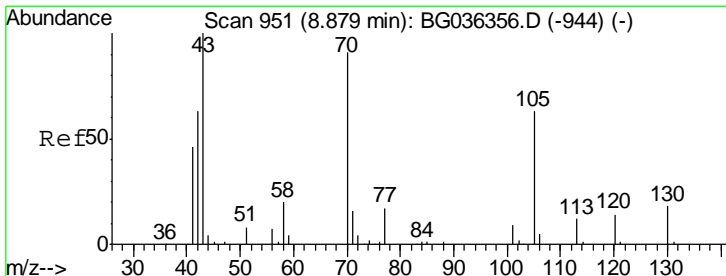
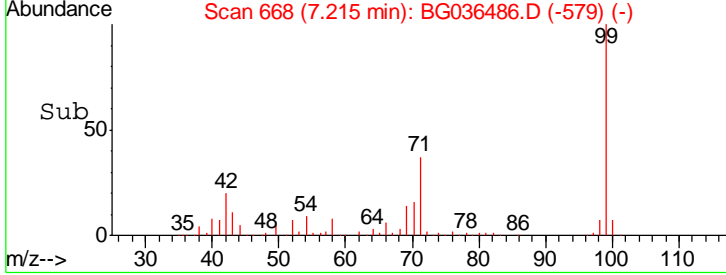
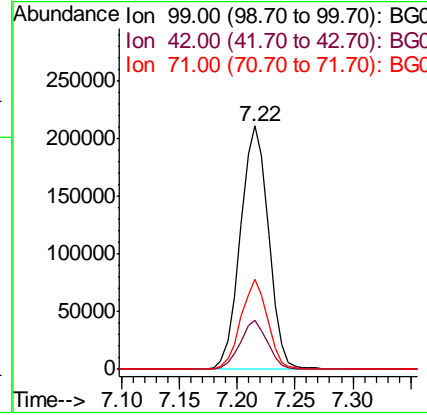
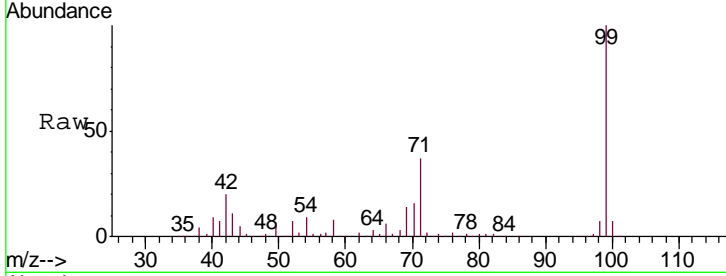




#7
 Phenol-d6
 Concen: 64.758 ng
 RT: 7.22 min Scan# 668
 Delta R.T. -0.01 min
 Lab File: BG036486.D
 Acq: 30 Aug 2018 20:08

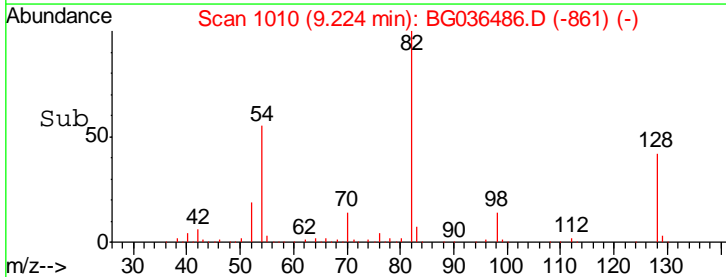
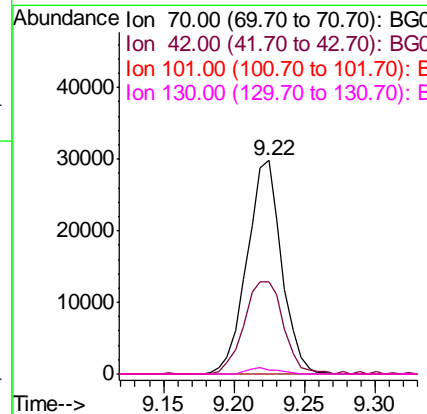
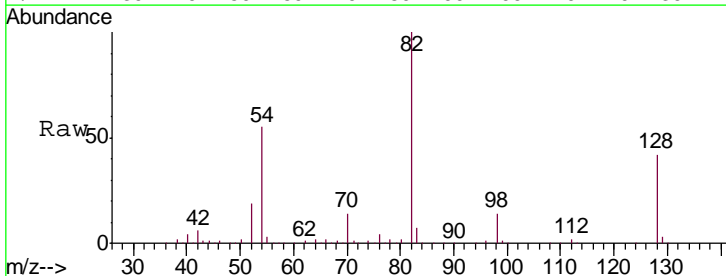
Instrument :
 BNA_G
 ClientSampled :
 CG-SOIL-1

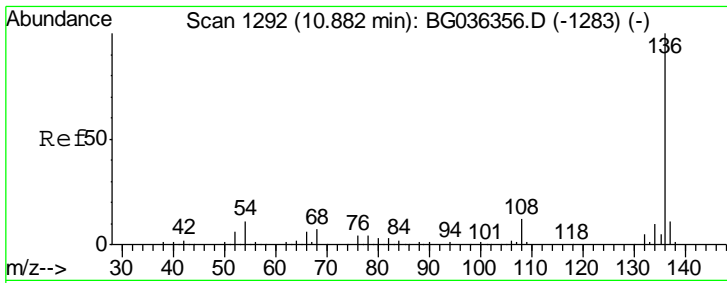
Tgt Ion	Resp	Lower	Upper
99	100		
42	20.2	16.5	24.7
71	36.7	29.4	44.2



#19
 n-Nitroso-di-n-propylamine
 Concen: 12.411 ng
 RT: 9.22 min Scan# 1010
 Delta R.T. 0.35 min
 Lab File: BG036486.D
 Acq: 30 Aug 2018 20:08

Tgt Ion	Resp	Lower	Upper
70	100		
42	43.2	56.2	84.4#
101	0.0	7.8	11.6#
130	1.9	16.2	24.2#



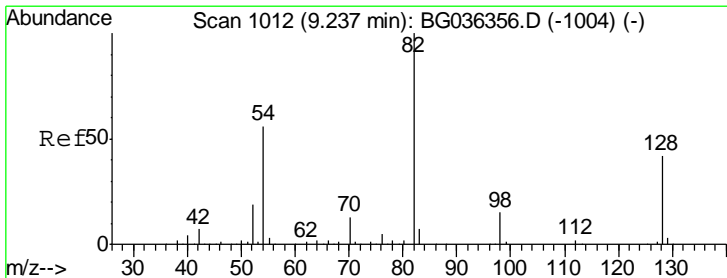
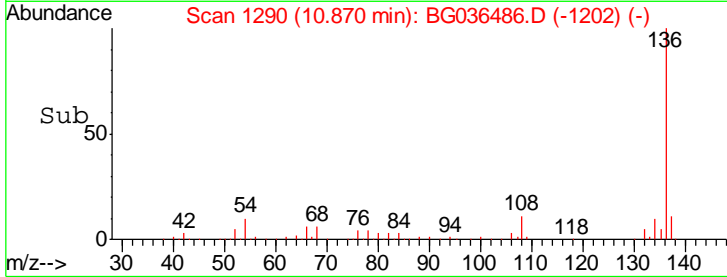
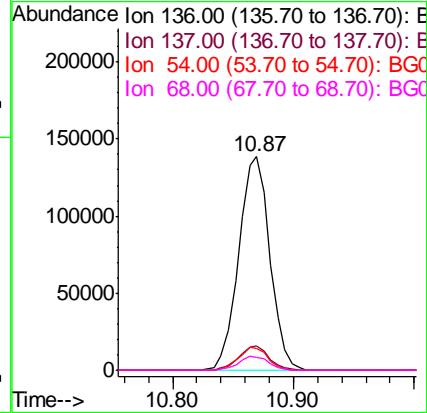
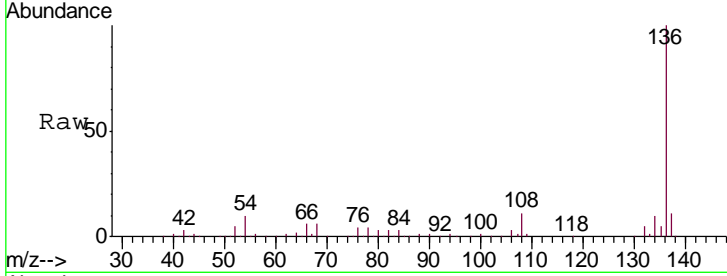


#21
 Naphthalene-d8
 Concen: 20.000 ng
 RT: 10.87 min Scan# 1290
 Delta R.T. -0.01 min
 Lab File: BG036486.D
 Acq: 30 Aug 2018 20:08

Instrument :
 BNA_G
 ClientSampled :
 CG-SOIL-1

Tgt Ion: 136 Resp: 247837

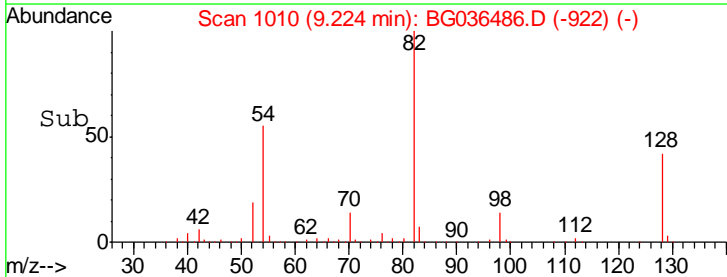
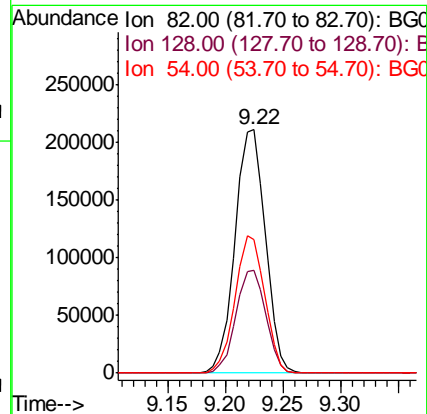
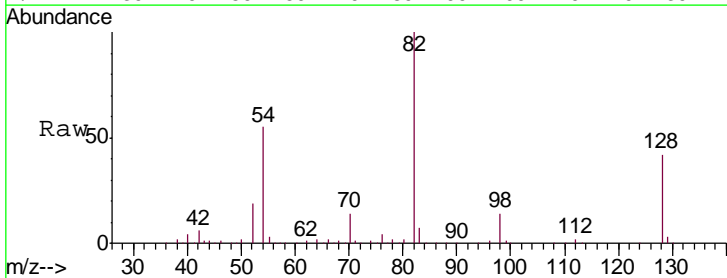
Ion	Ratio	Lower	Upper
136	100		
137	11.4	8.8	13.2
54	10.4	9.2	13.8
68	6.1	5.8	8.6

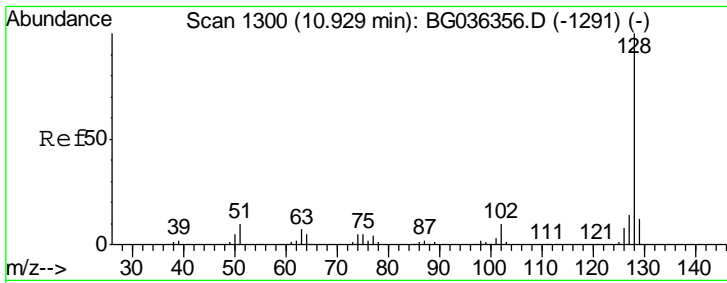


#23
 Nitrobenzene-d5
 Concen: 84.110 ng
 RT: 9.22 min Scan# 1010
 Delta R.T. -0.01 min
 Lab File: BG036486.D
 Acq: 30 Aug 2018 20:08

Tgt Ion: 82 Resp: 384201

Ion	Ratio	Lower	Upper
82	100		
128	42.1	33.3	49.9
54	54.7	45.1	67.7

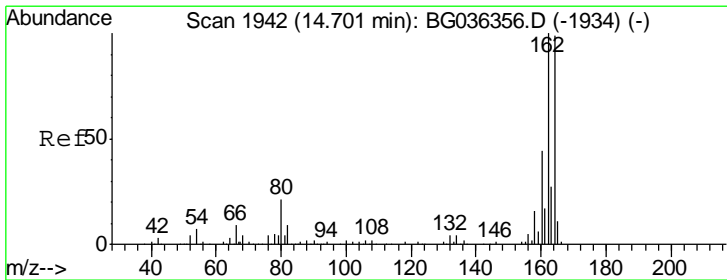
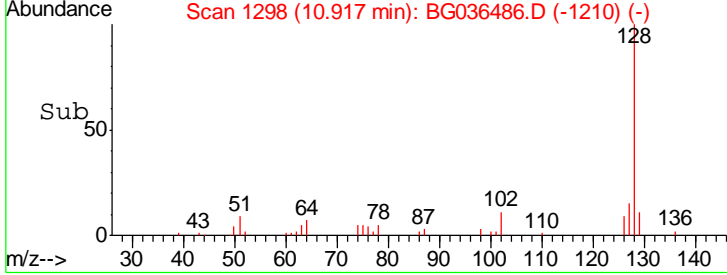
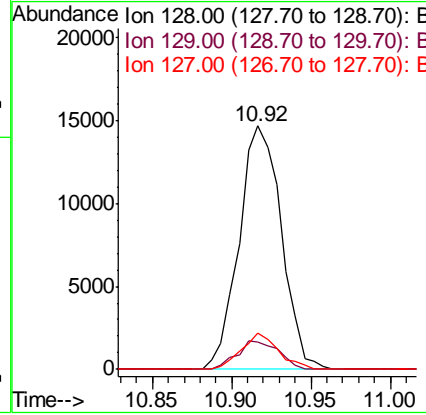
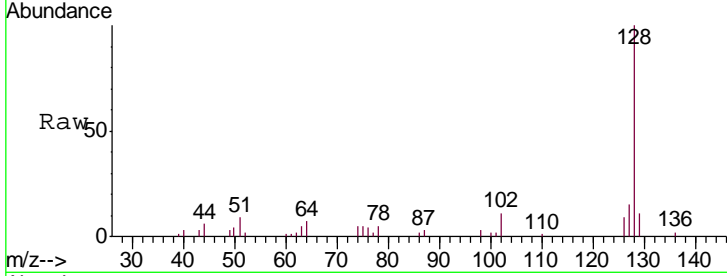




#31
 Naphthalene
 Concen: 2.191 ng
 RT: 10.92 min Scan# 1298
 Delta R.T. -0.01 min
 Lab File: BG036486.D
 Acq: 30 Aug 2018 20:08

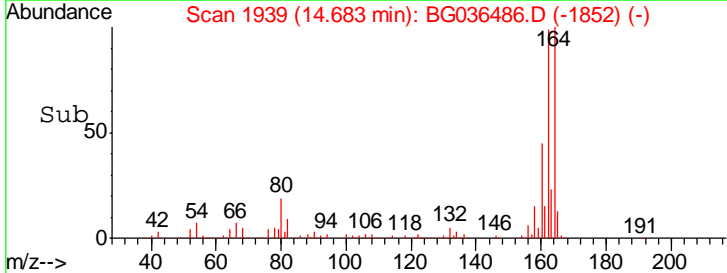
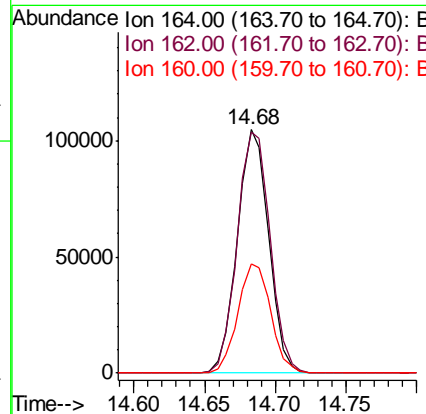
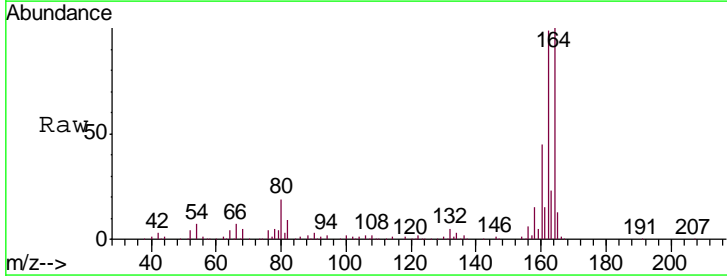
Instrument :
 BNA_G
 ClientSampled :
 CG-SOIL-1

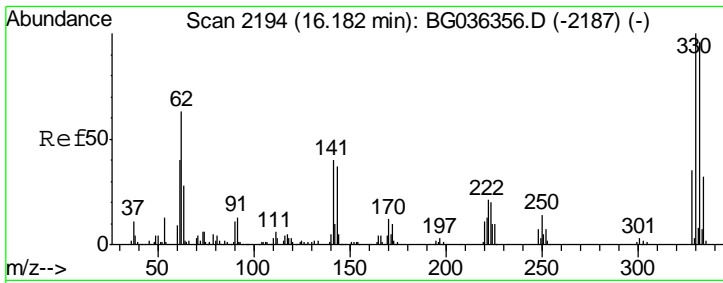
Tgt Ion	Resp	Lower	Upper
128	27139		
129	11.5	9.4	14.2
127	14.9	11.0	16.4



#38
 Acenaphthene-d10
 Concen: 20.000 ng
 RT: 14.68 min Scan# 1939
 Delta R.T. -0.02 min
 Lab File: BG036486.D
 Acq: 30 Aug 2018 20:08

Tgt Ion	Resp	Lower	Upper
164	162373		
162	99.2	80.7	121.1
160	45.1	35.3	52.9

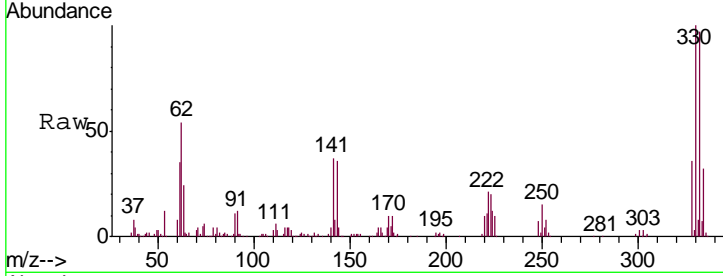




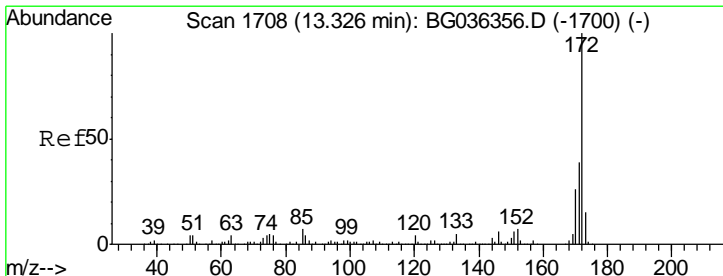
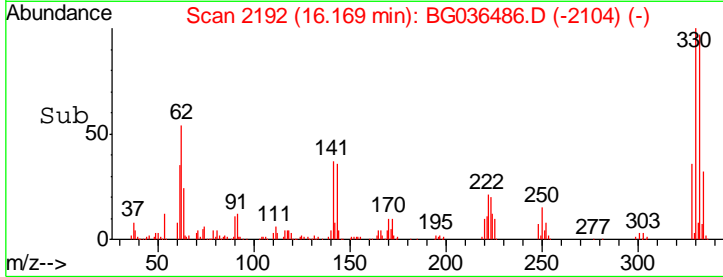
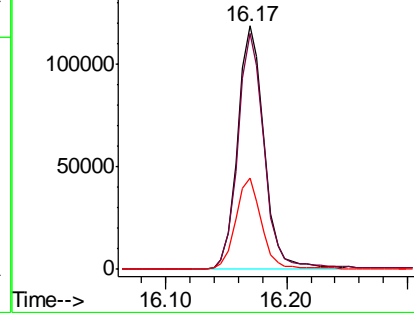
#41
 2,4,6-Tribromophenol
 Concen: 94.529 ng
 RT: 16.17 min Scan# 2192
 Delta R.T. -0.01 min
 Lab File: BG036486.D
 Acq: 30 Aug 2018 20:08

Instrument :
 BNA_G
 ClientSampled :
 CG-SOIL-1

Tgt Ion	Resp	Lower	Upper
330	183148		
332	96.7	75.4	113.2
141	36.8	30.7	46.1

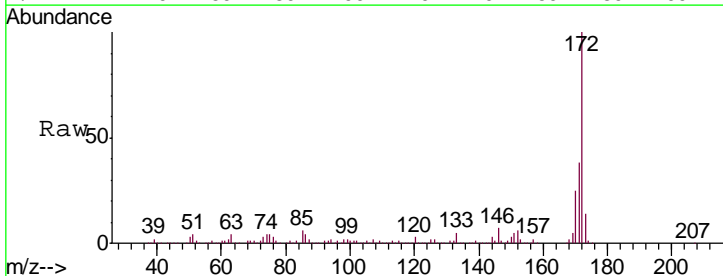


Abundance Ion 329.80 (329.50 to 330.50): E
 Ion 331.80 (331.50 to 332.50): E
 Ion 141.00 (140.70 to 141.70): E

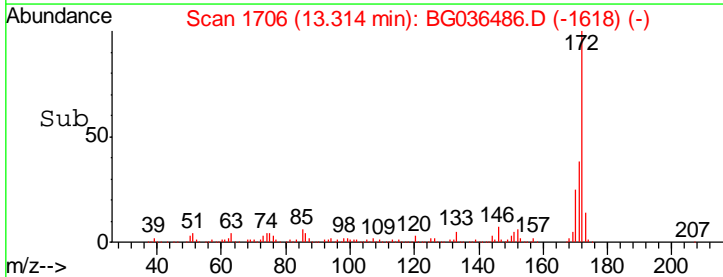
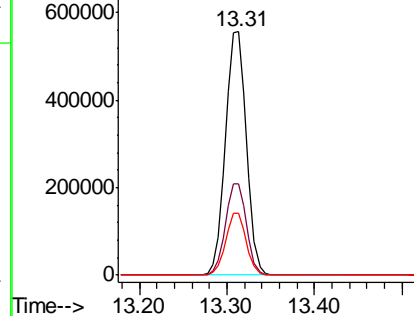


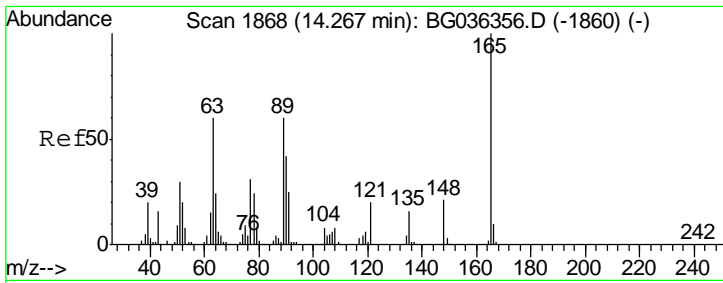
#44
 2-Fluorobiphenyl
 Concen: 81.004 ng
 RT: 13.31 min Scan# 1706
 Delta R.T. -0.01 min
 Lab File: BG036486.D
 Acq: 30 Aug 2018 20:08

Tgt Ion	Resp	Lower	Upper
172	921189		
171	37.5	31.3	46.9
170	25.2	21.0	31.6



Abundance Ion 172.00 (171.70 to 172.70): E
 Ion 171.00 (170.70 to 171.70): E
 Ion 170.00 (169.70 to 170.70): E

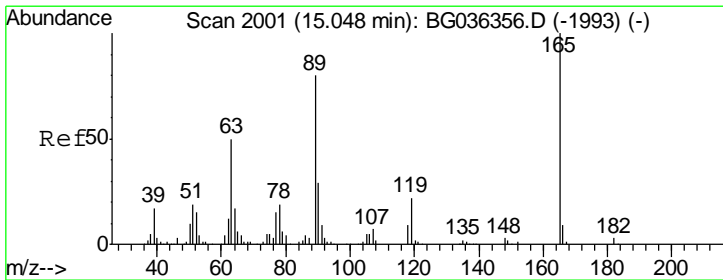
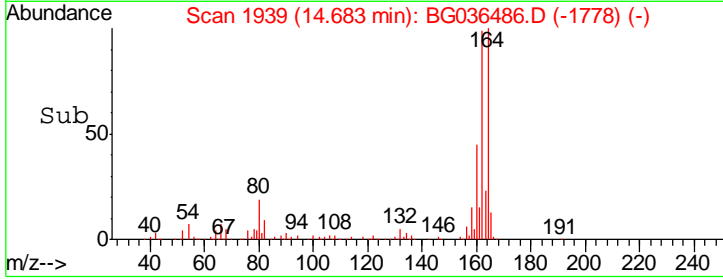
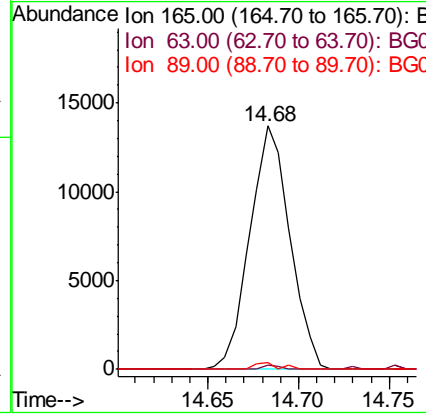
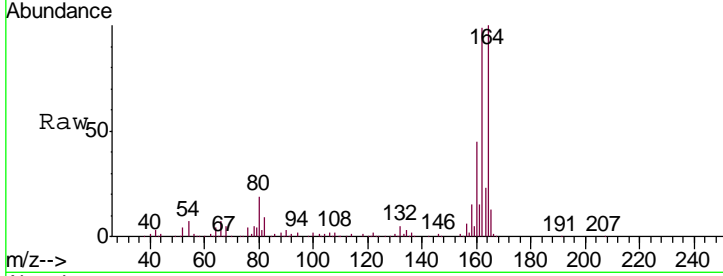




#50
 2,6-Dinitrotoluene
 Concen: 7.717 ng
 RT: 14.68 min Scan# 1939
 Delta R.T. 0.42 min
 Lab File: BG036486.D
 Acq: 30 Aug 2018 20:08

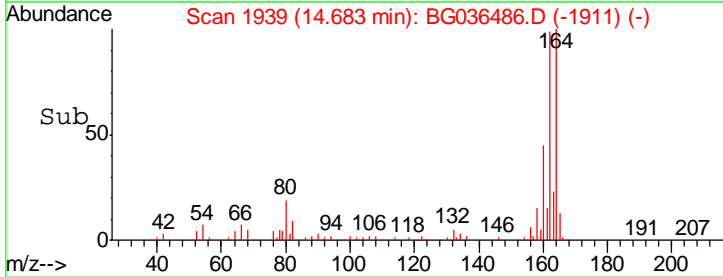
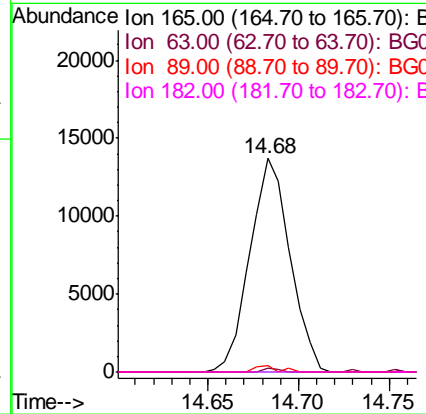
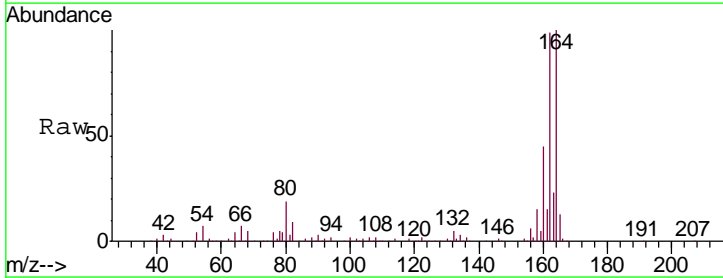
Instrument :
 BNA_G
 ClientSampled :
 CG-SOIL-1

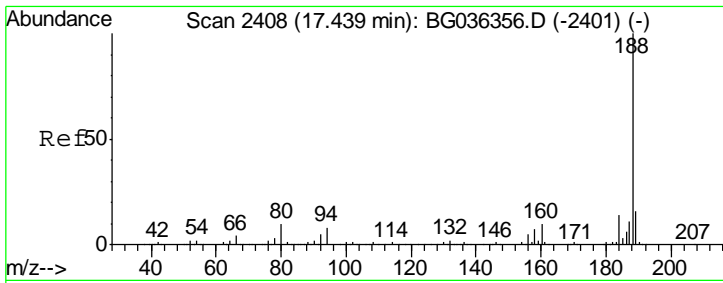
Tgt Ion	Resp	Lower	Upper
165	100		
63	1.7	50.1	75.1#
89	2.8	47.8	71.6#



#56
 2,4-Dinitrotoluene
 Concen: 5.921 ng
 RT: 14.68 min Scan# 1939
 Delta R.T. -0.36 min
 Lab File: BG036486.D
 Acq: 30 Aug 2018 20:08

Tgt Ion	Resp	Lower	Upper
165	100		
63	1.7	40.1	60.1#
89	2.8	63.7	95.5#
182	0.0	2.5	3.7#

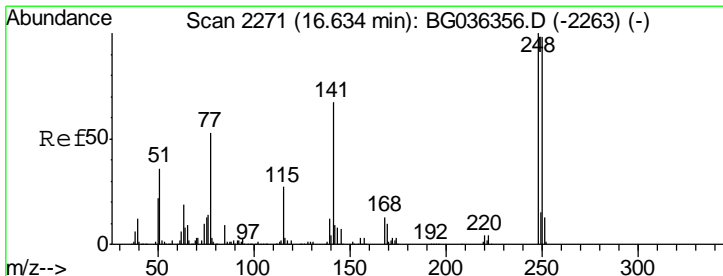
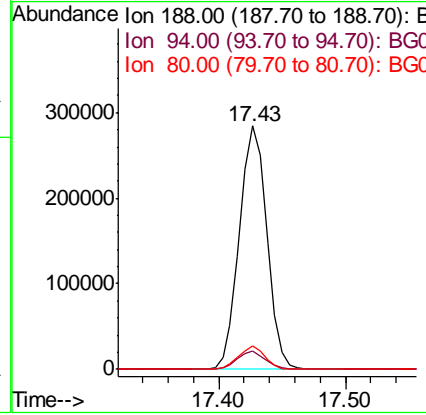
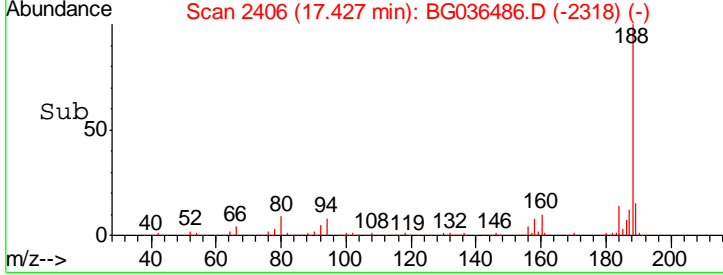
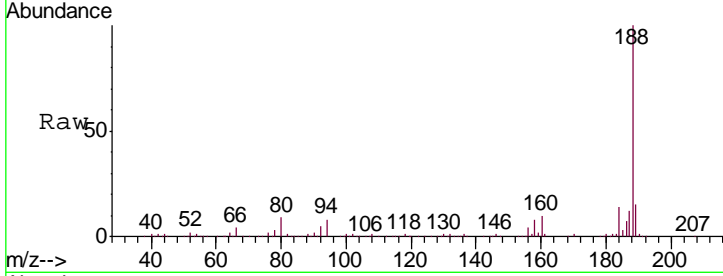




#63
 Phenanthrene-d10
 Concen: 20.000 ng
 RT: 17.43 min Scan# 2406
 Delta R.T. -0.01 min
 Lab File: BG036486.D
 Acq: 30 Aug 2018 20:08

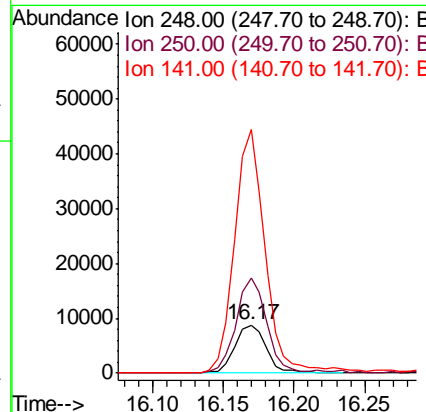
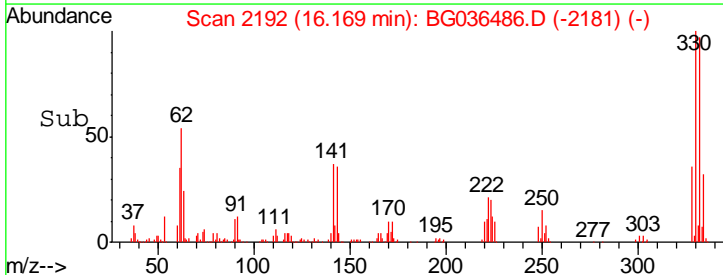
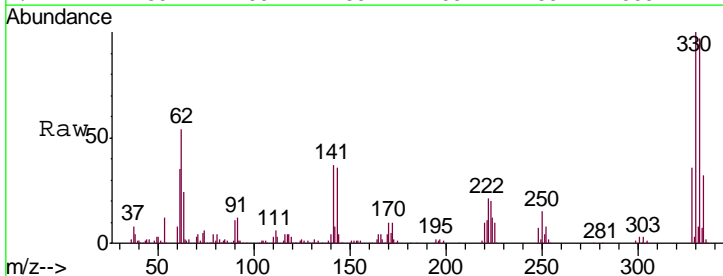
Instrument :
 BNA_G
 ClientSampled :
 CG-SOIL-1

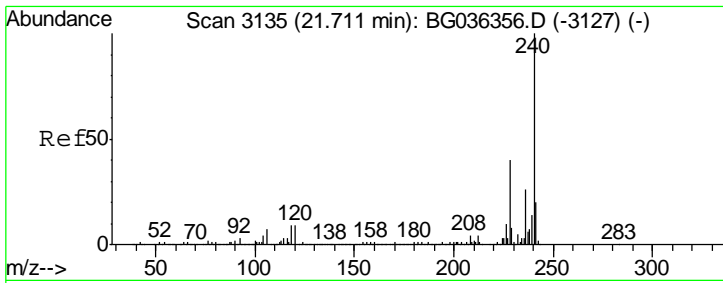
Tgt Ion	Resp	Lower	Upper
188	426503		
94	7.6	6.7	10.1
80	9.4	8.1	12.1



#66
 4-Bromophenyl-phenylether
 Concen: 2.726 ng
 RT: 16.17 min Scan# 2192
 Delta R.T. -0.47 min
 Lab File: BG036486.D
 Acq: 30 Aug 2018 20:08

Tgt Ion	Resp	Lower	Upper
248	13610		
250	199.7	78.1	117.1#
141	509.1	53.7	80.5#

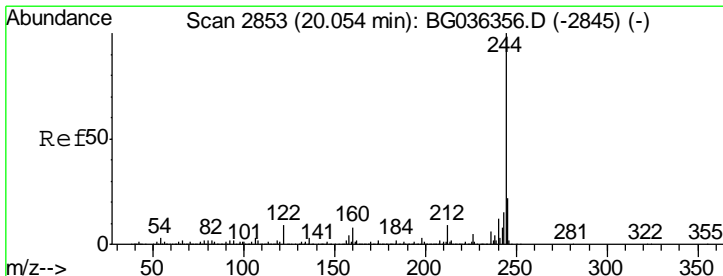
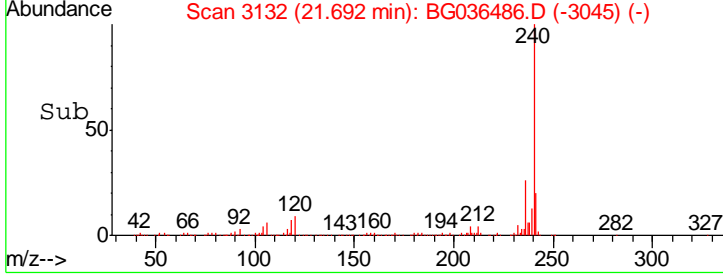
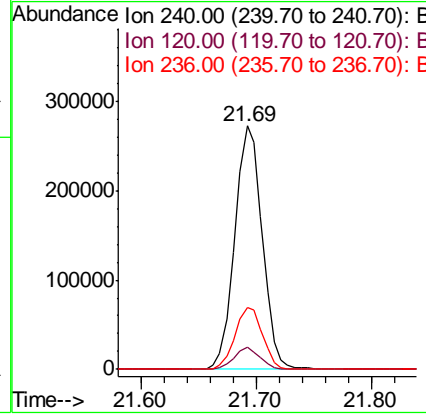
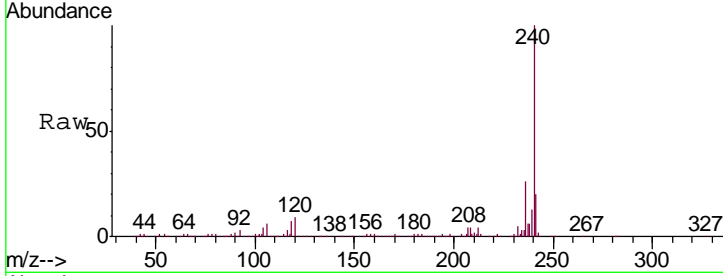




#75
 Chrysene-d12
 Concen: 20.000 ng
 RT: 21.69 min Scan# 3132
 Delta R.T. -0.02 min
 Lab File: BG036486.D
 Acq: 30 Aug 2018 20:08

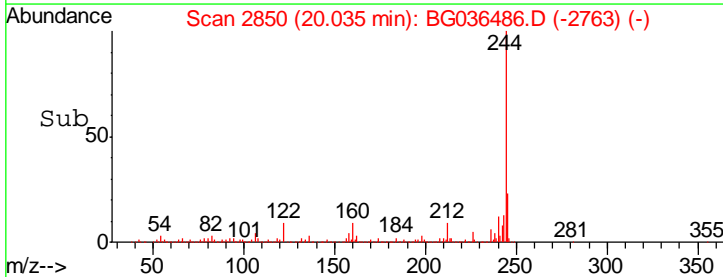
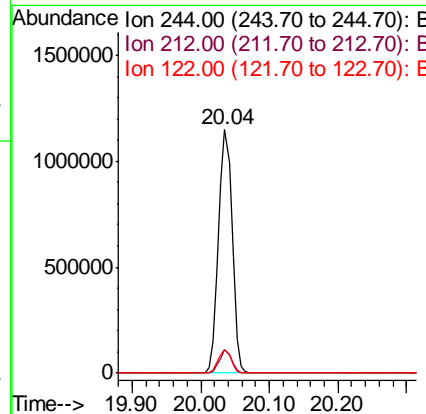
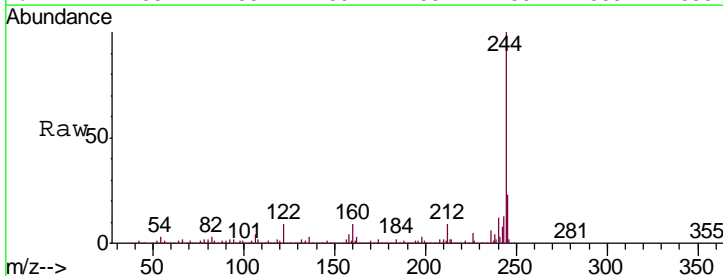
Instrument :
 BNA_G
 ClientSampled :
 CG-SOIL-1

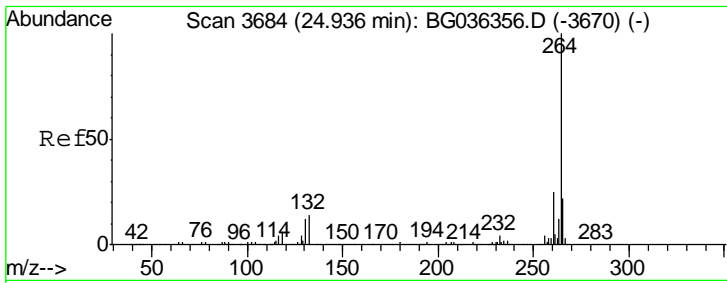
Tgt Ion	Resp	Lower	Upper
240	447366		
120	8.9	6.9	10.3
236	25.6	21.2	31.8



#78
 Terphenyl-d14
 Concen: 82.266 ng
 RT: 20.04 min Scan# 2850
 Delta R.T. -0.02 min
 Lab File: BG036486.D
 Acq: 30 Aug 2018 20:08

Tgt Ion	Resp	Lower	Upper
244	1574566		
212	9.5	7.0	10.6
122	9.5	7.1	10.7





#86
 Perylene-d12
 Concen: 20.000 ng
 RT: 24.91 min Scan# 3679
 Delta R.T. -0.03 min
 Lab File: BG036486.D
 Acq: 30 Aug 2018 20:08

Instrument :
 BNA_G
ClientSampled :
 CG-SOIL-1

Tgt Ion	Resp	Lower	Upper
264	100		
260	23.2	19.6	29.4
265	21.2	17.4	26.0

