

Data Path : Z:\svoasrv\HPCHEM1\BNA_G\Data\BG083024\
 Data File : BG062608.D
 Acq On : 30 Aug 2024 8:05
 Operator : MA/JU
 Sample : SSTDICC005
 Misc :
 ALS Vial : 3 Sample Multiplier: 1

Instrument :
 BNA_G
ClientSampleId :
 SSTDICC005

Quant Time: Aug 30 16:43:46 2024
 Quant Method : Z:\svoasrv\HPCHEM1\BNA_G\Methods\8270-BG083024.M
 Quant Title : ASP BNA STANDARDS FOR 5 POINT CALIBRATION
 QLast Update : Fri Aug 30 13:01:59 2024
 Response via : Initial Calibration

Compound	R. T.	QI on	Response	Conc	Units	Dev(Min)	
Internal Standards							
1) 1,4-Dichlorobenzene-d4	7.924	152	52348	20.000	ng	0.00	
21) Naphthalene-d8	10.714	136	229936	20.000	ng	0.00	
39) Acenaphthene-d10	14.545	164	197524	20.000	ng	0.00	
64) Phenanthrene-d10	17.289	188	546285	20.000	ng	0.00	
76) Chrysene-d12	21.531	240	555226	20.000	ng	0.00	
86) Perylene-d12	24.604	264	622021	20.000	ng	0.00	
System Monitoring Compounds							
5) 2-Fluorophenol	5.503	112	30760	10.157	ng	0.00	
7) Phenol-d6	7.083	99	42648	9.748	ng	0.00	
23) Nitrobenzene-d5	9.075	82	40270	9.432	ng	0.00	
42) 2,4,6-Tribromophenol	16.032	330	28423	10.225	ng	0.00	
45) 2-Fluorophenyl	13.165	172	129440	10.615	ng	0.00	
79) Terphenyl-d14	19.904	244	310863	11.102	ng	0.00	
Target Compounds							
2) 1,4-Dioxane	3.411	88	7643	6.146	ng		96
3) Pyridine	3.805	79	18432	5.071	ng	#	93
4) n-Nitrosodimethylamine	3.717	42	8506	4.813	ng	#	92
6) Aniline	7.248	93	20339	4.976	ng	#	88
8) 2-Chlorophenol	7.483	128	16813	5.171	ng		86
9) Benzaldehyde	7.060	77	16505	6.450	ng		93
10) Phenol	7.113	94	21411	4.834	ng		95
11) bis(2-Chloroethyl)ether	7.342	93	17745	5.233	ng		99
12) 1,3-Dichlorobenzene	7.812	146	19138	5.364	ng		99
13) 1,4-Dichlorobenzene	7.953	146	19833	5.401	ng		95
14) 1,2-Dichlorobenzene	8.276	146	19102	5.292	ng		98
15) Benzyl Alcohol	8.159	79	15052	4.650	ng		94
16) 2,2'-oxybis(1-Chloropr...	8.441	45	34202	5.306	ng		98
17) 2-Methylphenol	8.364	107	15418	4.994	ng		92
18) Hexachloroethane	8.999	117	7006	5.089	ng		90
19) n-Nitroso-dim-n-propyl a...	8.717	70	17248	5.003	ng		93
20) 3+4-Methylphenols	8.687	107	21188	4.652	ng		93
22) Acetophenone	8.740	105	31389	5.060	ng	#	97
24) Nitrobenzene	9.116	77	21369	4.707	ng		90
25) Isophorone	9.633	82	49879	5.322	ng	#	96
26) 2-Nitrophenol	9.827	139	6620	3.860	ng		92
27) 2,4-Dimethylphenol	9.886	122	11395	4.534	ng		91
28) bis(2-Chloroethoxy)met...	10.121	93	25739	5.130	ng		96
29) 2,4-Dichlorophenol	10.362	162	16952	4.824	ng		90
30) 1,2,4-Tri chlorobenzene	10.579	180	21011	5.044	ng		93
31) Naphthalene	10.761	128	59471	5.218	ng		98
32) Benzoic acid	9.945	122	6743	2.540	ng		89
33) 4-Chloroaniline	10.867	127	22907	5.107	ng		96
34) Hexachlorobutadiene	11.055	225	15614	5.367	ng		99
35) Caprolactam	11.608	113	7213	5.327	ng	#	86
36) 4-Chloro-3-methylphenol	11.989	107	21612	5.099	ng		93
37) 2-Methylnaphthalene	12.371	142	46653	5.278	ng		91
38) 1-Methylnaphthalene	12.589	142	47139	5.311	ng		98
40) 1,2,4,5-Tetrachloroben...	12.736	216	30285	5.098	ng		97
41) Hexachlorocyclopentadiene	12.718	237	5639	3.327	ng		92
43) 2,4,6-Tri chlorophenol	12.977	196	17558	4.663	ng	#	94

Data Path : Z:\svoasrv\HPCHEM1\BNA_G\Data\BG083024\
 Data File : BG062608.D
 Acq On : 30 Aug 2024 8:05
 Operator : MA/JU
 Sample : SSTDICC005
 Misc :
 ALS Vial : 3 Sample Multiplier: 1

Instrument :
 BNA_G
ClientSampleId :
 SSTDICC005

Quant Time: Aug 30 16:43:46 2024
 Quant Method : Z:\svoasrv\HPCHEM1\BNA_G\Methods\8270-BG083024.M
 Quant Title : ASP BNA STANDARDS FOR 5 POINT CALIBRATION
 QLast Update : Fri Aug 30 13:01:59 2024
 Response via : Initial Calibration

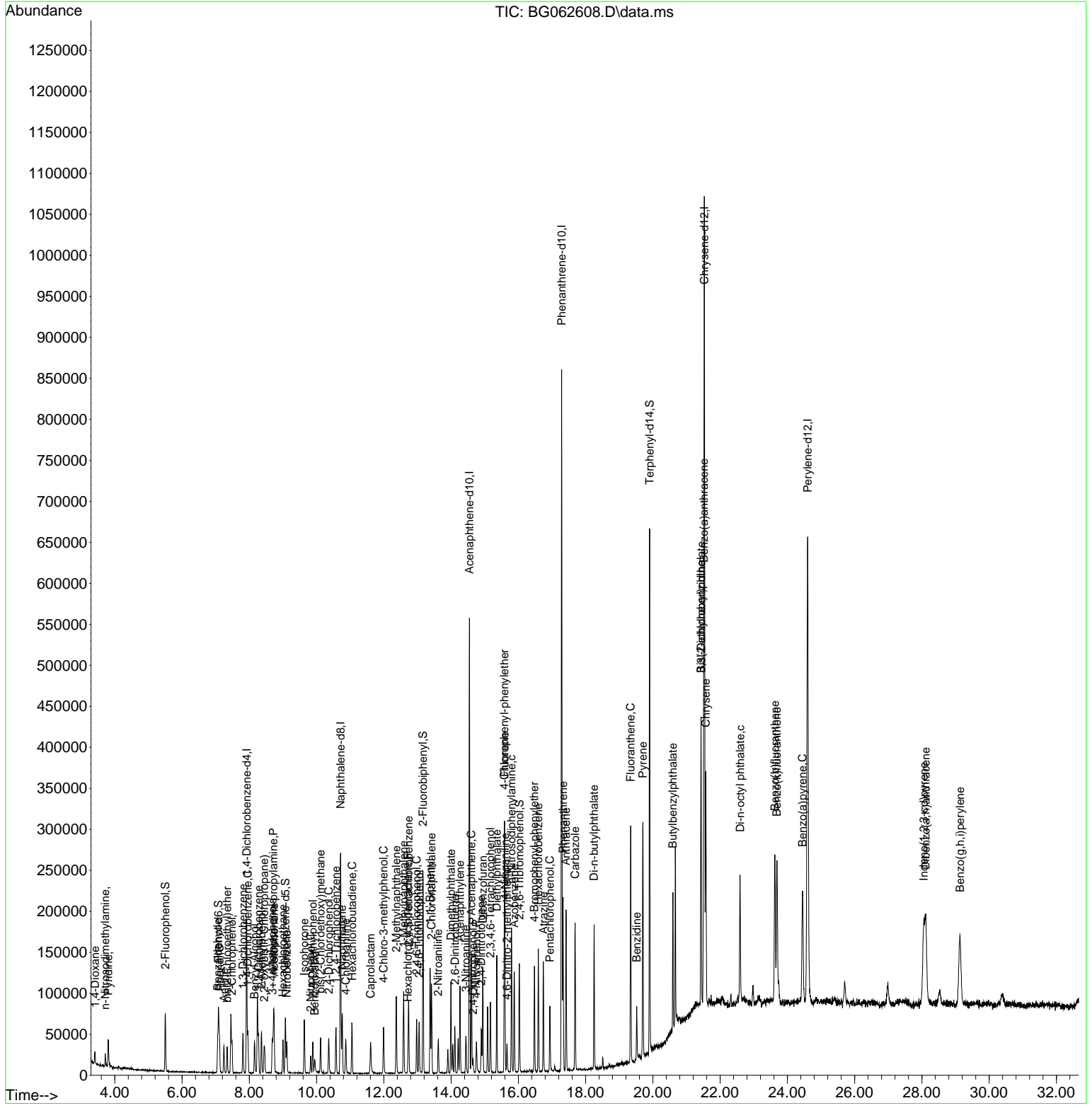
Compound	R. T.	QI on	Response	Conc	Units	Dev(Min)
44) 2, 4, 5-Tri chl orophenol	13.053	196	18958	4.445	ng	97
46) 1, 1' -Bi phenyl	13.376	154	68113	5.169	ng	97
47) 2-Chl oronaphthal ene	13.417	162	55028	5.153	ng	99
48) 2-Ni troani line	13.617	65	11702	4.166	ng	92
49) Acenaphthyl ene	14.263	152	78423	4.959	ng	96
50) Di methyl phthal ate	13.999	163	76010	5.263	ng	98
51) 2, 6-Di ni trotol uene	14.116	165	11677	4.274	ng	88
52) Acenaphthene	14.604	154	51190	5.178	ng	92
53) 3-Ni troani line	14.440	138	11654	4.409	ng #	97
54) 2, 4-Di ni trophenol	14.651	184	4233	2.761	ng #	87
55) Di benzofuran	14.945	168	89878	5.301	ng	98
56) 4-Ni trophenol	14.751	139	9673	4.318	ng	94
57) 2, 4-Di ni trotol uene	14.898	165	16236	4.356	ng #	96
58) Fluorene	15.591	166	72857	5.475	ng	95
59) 2, 3, 4, 6-Tetrachl orophenol	15.168	232	20525	5.081	ng	98
60) Di ethyl phthal ate	15.362	149	80232	5.605	ng	99
61) 4-Chl orophenyl -phenyl e...	15.585	204	42279	5.535	ng	99
62) 4-Ni troani line	15.603	138	13379	4.590	ng	92
63) Azobenzene	15.879	77	73024	5.432	ng	98
65) 4, 6-Di ni tro-2-methyl ph...	15.662	198	8833	3.623	ng	91
66) n-Ni trosodi phenyl ami ne	15.797	169	67685	5.153	ng	98
67) 4-Bromophenyl -phenyl ether	16.478	248	28063	4.977	ng	96
68) Hexachl orobenzene	16.596	284	33480	5.014	ng	96
69) Atrazi ne	16.749	200	26434	5.926	ng	95
70) Pentachl orophenol	16.937	266	16902	3.952	ng	97
71) Phenanthrene	17.330	178	134746	5.285	ng	99
72) Anthracene	17.418	178	128398	5.122	ng	98
73) Carbazol e	17.689	167	123173	5.344	ng	99
74) Di -n-butyl phthal ate	18.253	149	132333	5.091	ng	98
75) Fluoranthene	19.340	202	182389	5.656	ng	99
77) Benzi di ne	19.522	184	45641	4.561	ng	98
78) Pyrene	19.704	202	188816	5.350	ng	99
80) Butyl benzyl phthal ate	20.597	149	49850	4.809	ng	99
81) Benzo(a)anthracene	21.514	228	184978	5.282	ng	98
82) 3, 3' -Di chl orobenzi di ne	21.431	252	59326	5.200	ng	96
83) Chrysene	21.572	228	178962	5.335	ng	98
84) Bi s(2-ethyl hexyl)phtha...	21.431	149	75484	4.793	ng #	90
85) Di -n-octyl phthal ate	22.595	149	128739	4.669	ng #	98
87) Indeno(1, 2, 3-cd)pyrene	28.053	276	201008	5.040	ng #	82
88) Benzo(b)fluoranthene	23.629	252	175625	5.112	ng	98
89) Benzo(k)fluoranthene	23.688	252	176649	5.256	ng	98
90) Benzo(a)pyrene	24.451	252	156186	5.146	ng	98
91) Di benzo(a, h)anthracene	28.112	278	166390	5.064	ng	96
92) Benzo(g, h, i)peryl ene	29.134	276	164908	4.977	ng	96

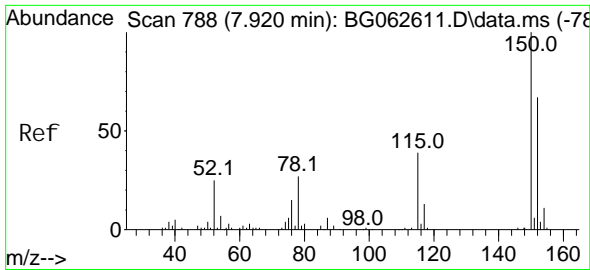
(#) = qual i fier out of range (m) = manual i ntegrati on (+) = signal s summed

Data Path : Z:\svoasrv\HPCHEM1\BNA_G\Data\BG083024\
 Data File : BG062608.D
 Acq On : 30 Aug 2024 8:05
 Operator : MA/JU
 Sample : SSTDIC005
 Misc :
 ALS Vial : 3 Sample Multiplier: 1

Instrument :
 BNA_G
ClientSampleId :
 SSTDIC005

Quant Time: Aug 30 16:43:46 2024
 Quant Method : Z:\svoasrv\HPCHEM1\BNA_G\Methods\8270-BG083024.M
 Quant Title : ASP BNA STANDARDS FOR 5 POINT CALIBRATION
 QLast Update : Fri Aug 30 13:01:59 2024
 Response via : Initial Calibration

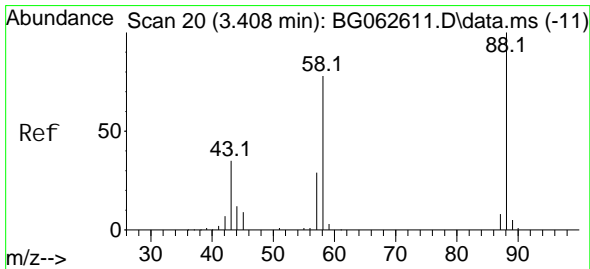
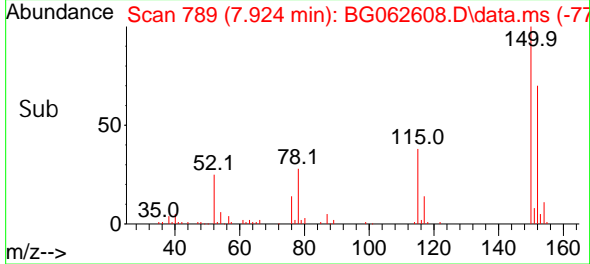
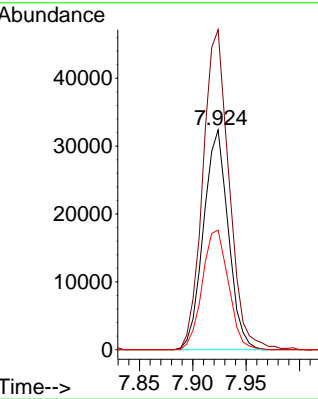
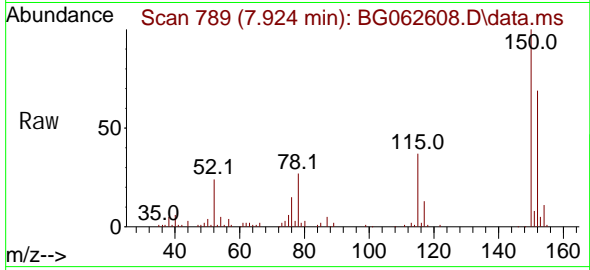




#1
 1, 4-Di chl orobenzene-d4
 Concen: 20.000 ng
 RT: 7.924 min Scan# 788
 Delta R.T. 0.004 min
 Lab File: BG062608.D
 Acq: 30 Aug 2024 8:05

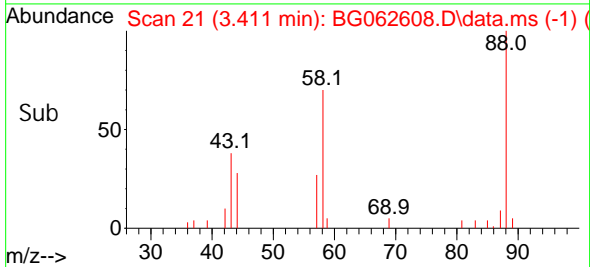
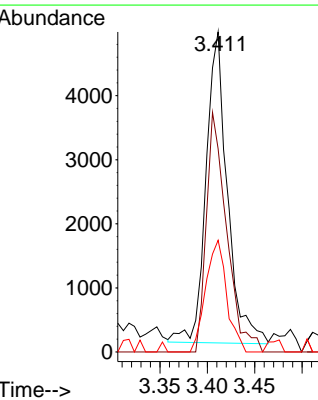
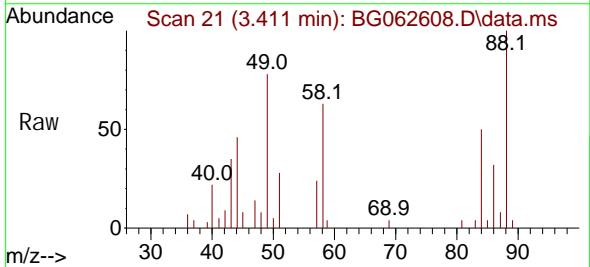
Instrument : BNA_G
 ClientSampleId : SSTDICC005

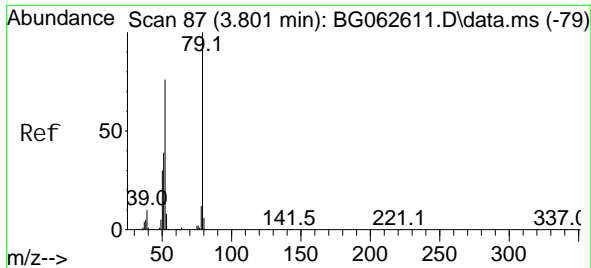
Tgt Ion: 152 Resp: 52348
 Ion Ratio Lower Upper
 152 100
 150 145.5 119.9 179.9
 115 54.4 46.6 69.8



#2
 1, 4-Di oxane
 Concen: 6.146 ng
 RT: 3.411 min Scan# 21
 Delta R.T. 0.004 min
 Lab File: BG062608.D
 Acq: 30 Aug 2024 8:05

Tgt Ion: 88 Resp: 7643
 Ion Ratio Lower Upper
 88 100
 58 72.8 62.3 93.5
 43 35.1 27.5 41.3





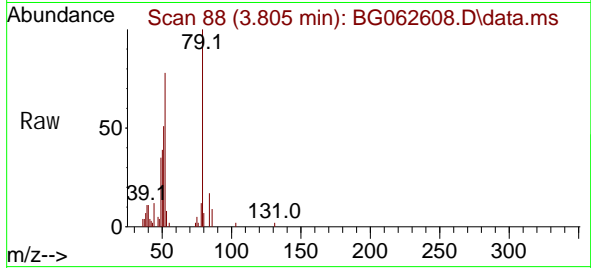
#3
 Pyridine
 Concen: 5.071 ng
 RT: 3.805 min Scan# 80
 Delta R.T. 0.004 min
 Lab File: BG062608.D
 Acq: 30 Aug 2024 8:05

Instrument :

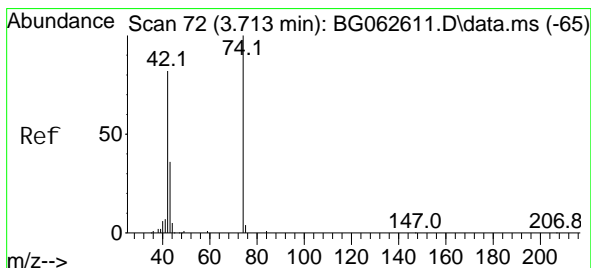
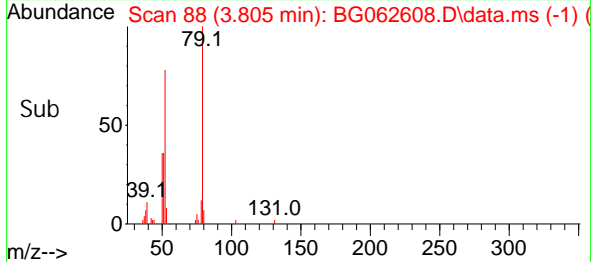
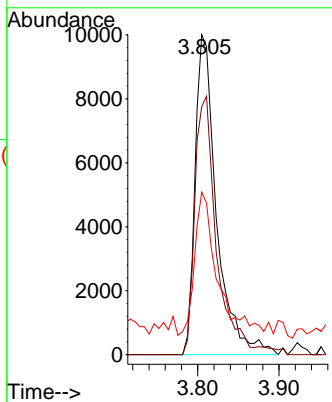
BNA_G

ClientSampleId :

SSTDICC005

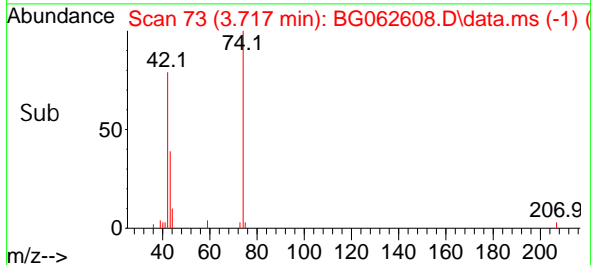
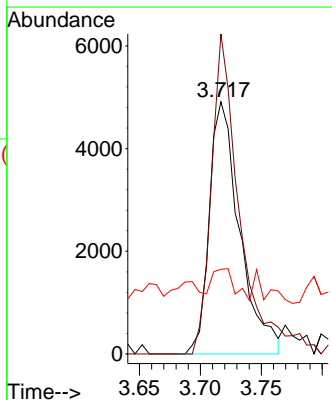
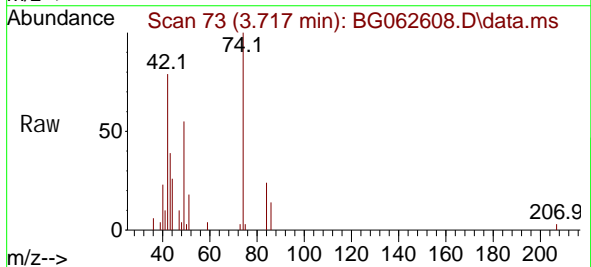


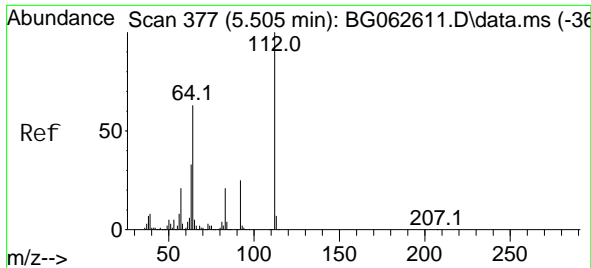
Tgt Ion: 79 Resp: 18432
 Ion Ratio Lower Upper
 79 100
 52 77.6 60.9 91.3
 51 50.7 31.5 47.3#



#4
 n-Nitrosodimethylamine
 Concen: 4.813 ng
 RT: 3.717 min Scan# 73
 Delta R.T. 0.004 min
 Lab File: BG062608.D
 Acq: 30 Aug 2024 8:05

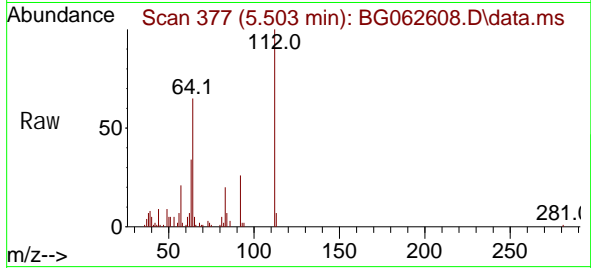
Tgt Ion: 42 Resp: 8506
 Ion Ratio Lower Upper
 42 100
 74 126.9 98.0 147.0
 44 33.6 7.4 11.2#





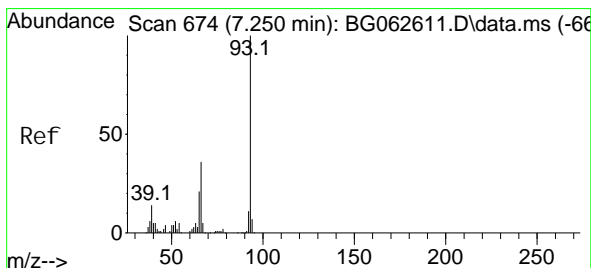
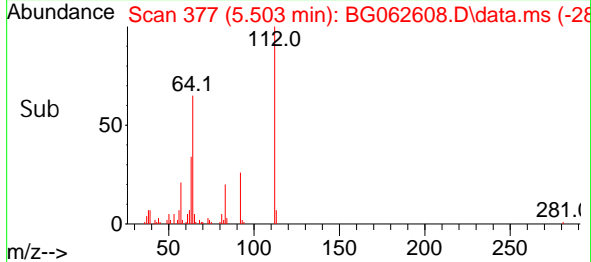
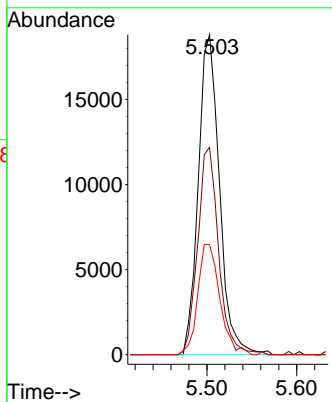
#5
 2-Fluorophenol
 Concen: 10.157 ng
 RT: 5.503 min Scan# 31
 Delta R.T. -0.002 min
 Lab File: BG062608.D
 Acq: 30 Aug 2024 8:05

Instrument :
 BNA_G
 ClientSampleId :
 SSTDICC005



Tgt Ion: 112 Resp: 30760

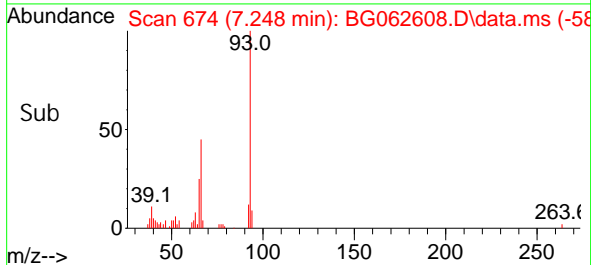
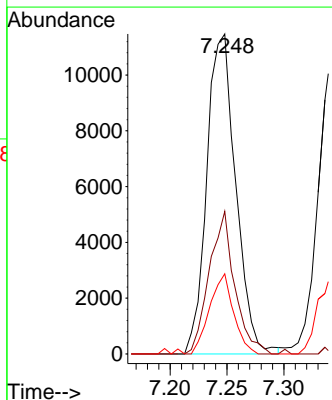
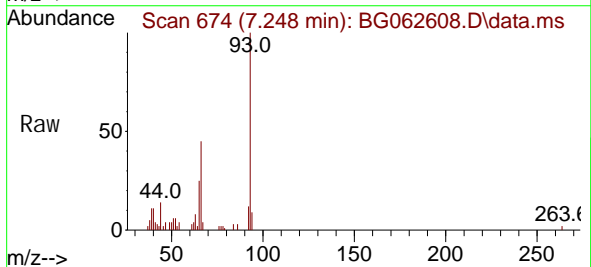
Ion	Ratio	Lower	Upper
112	100		
64	64.8	50.2	75.2
63	34.5	26.6	39.8

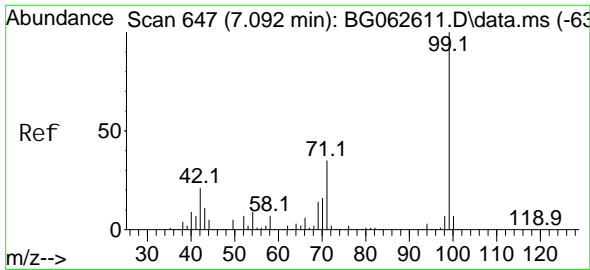


#6
 Aniline
 Concen: 4.976 ng
 RT: 7.248 min Scan# 674
 Delta R.T. -0.002 min
 Lab File: BG062608.D
 Acq: 30 Aug 2024 8:05

Tgt Ion: 93 Resp: 20339

Ion	Ratio	Lower	Upper
93	100		
66	44.5	29.1	43.7#
65	25.1	16.6	25.0#





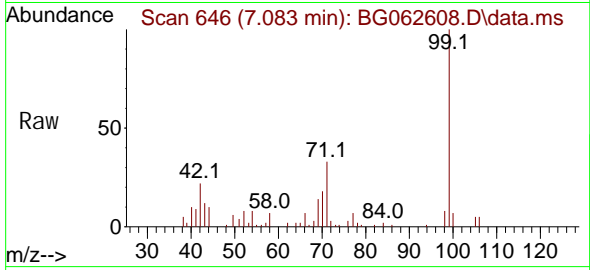
#7
 Phenol -d6
 Concen: 9.748 ng
 RT: 7.083 min Scan# 646
 Delta R.T. -0.008 min
 Lab File: BG062608.D
 Acq: 30 Aug 2024 8:05

Instrument :

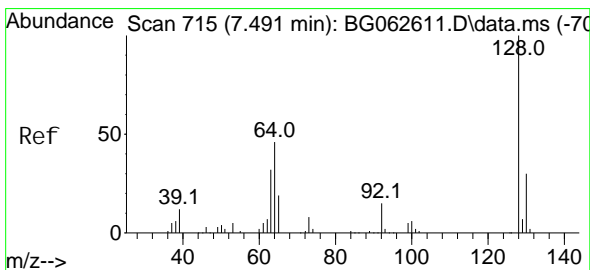
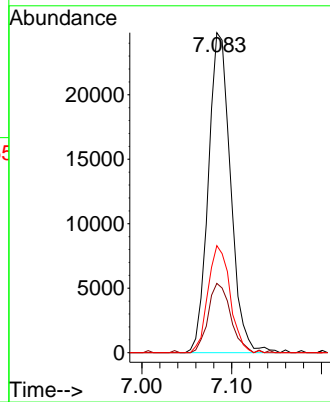
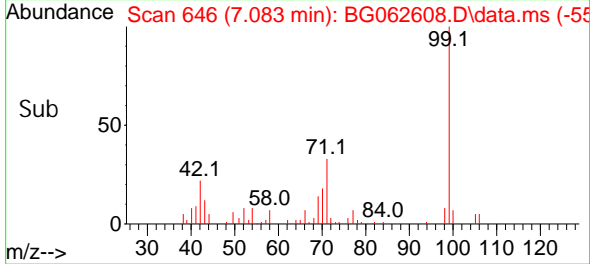
BNA_G

ClientSampleId :

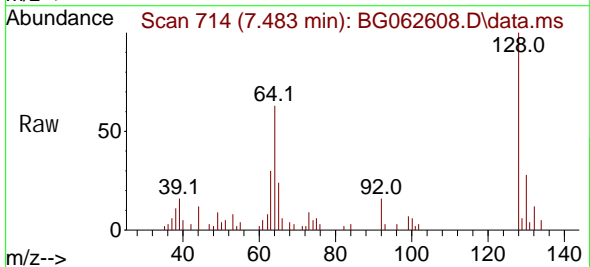
SSTDICC005



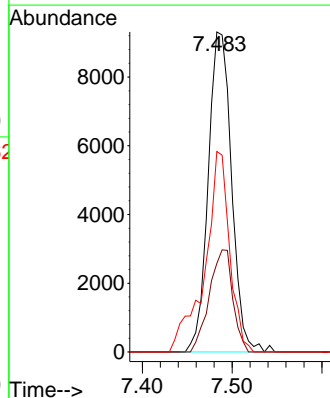
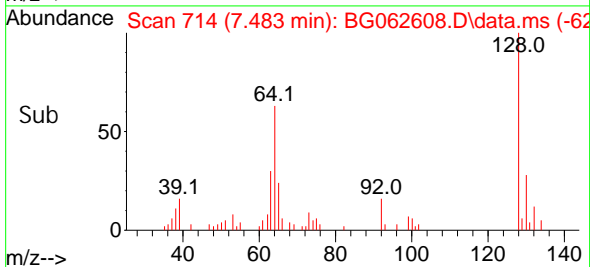
Tgt Ion: 99 Resp: 42648
 Ion Ratio Lower Upper
 99 100
 42 21.6 16.9 25.3
 71 33.5 27.9 41.9

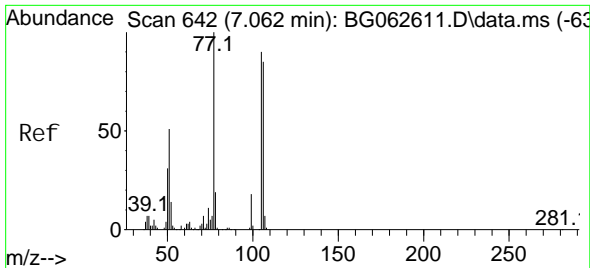


#8
 2-Chl orophenol
 Concen: 5.171 ng
 RT: 7.483 min Scan# 714
 Delta R.T. -0.008 min
 Lab File: BG062608.D
 Acq: 30 Aug 2024 8:05



Tgt Ion: 128 Resp: 16813
 Ion Ratio Lower Upper
 128 100
 130 27.7 10.0 50.0
 64 62.7 28.8 68.8

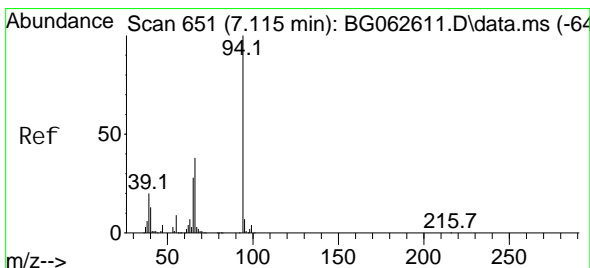
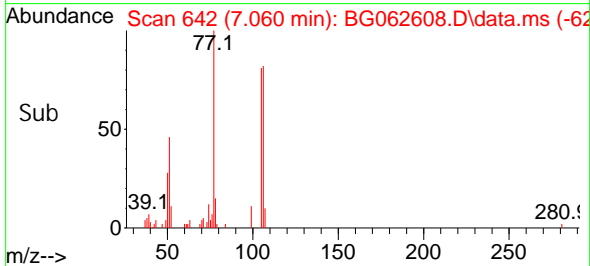
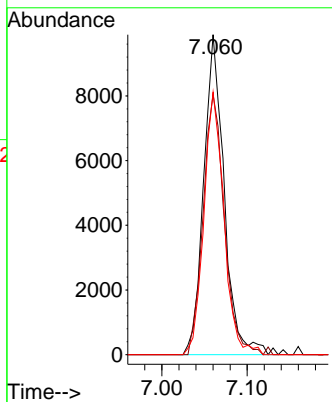
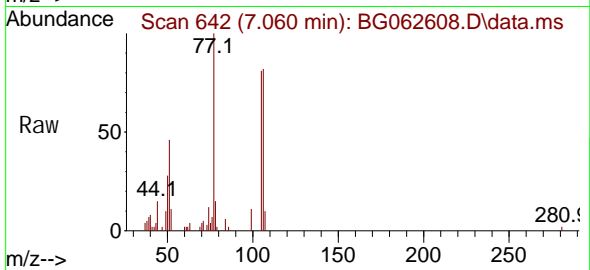




#9
Benzaldehyde
Concen: 6.450 ng
RT: 7.060 min Scan# 642
Delta R.T. -0.002 min
Lab File: BG062608.D
Acq: 30 Aug 2024 8:05

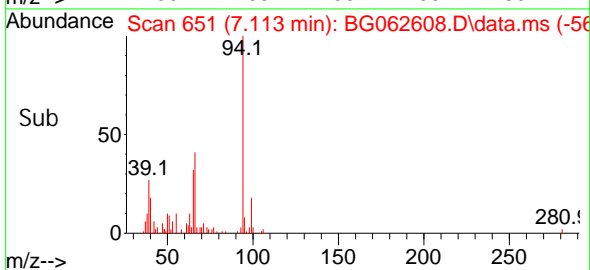
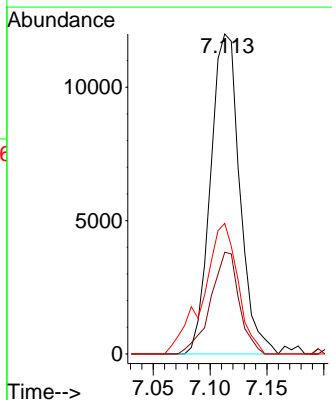
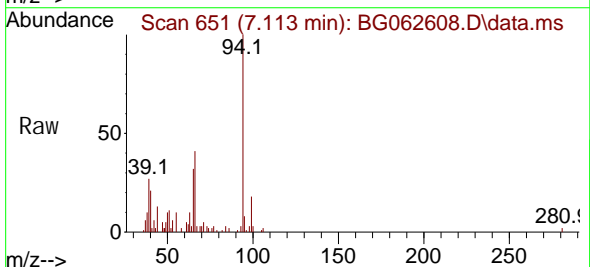
Instrument :
BNA_G
ClientSampleId :
SSTDICC005

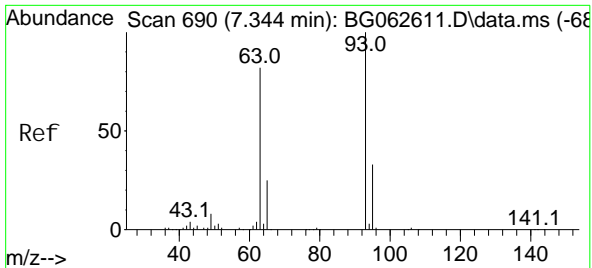
Tgt Ion: 77 Resp: 16505
Ion Ratio Lower Upper
77 100
105 81.3 70.2 110.2
106 82.0 65.4 105.4



#10
Phenol
Concen: 4.834 ng
RT: 7.113 min Scan# 651
Delta R.T. -0.002 min
Lab File: BG062608.D
Acq: 30 Aug 2024 8:05

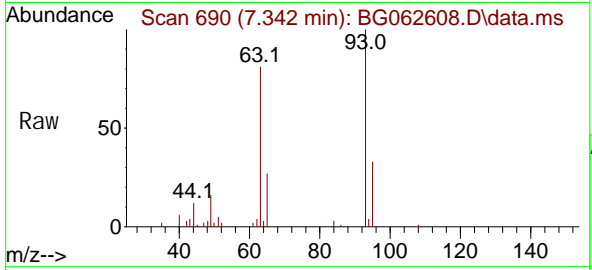
Tgt Ion: 94 Resp: 21411
Ion Ratio Lower Upper
94 100
65 31.8 8.6 48.6
66 40.8 18.2 58.2





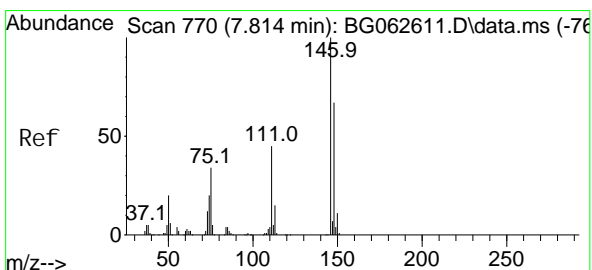
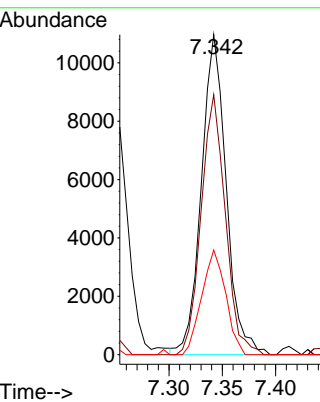
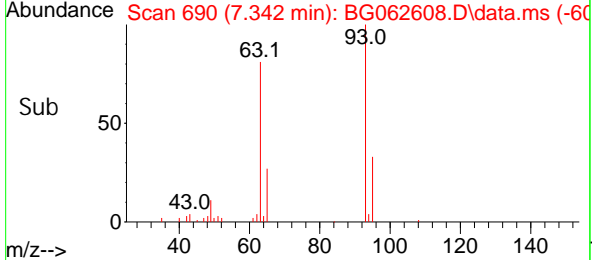
#11
 bis(2-Chloroethyl) ether
 Concen: 5.233 ng
 RT: 7.342 min Scan# 690
 Delta R.T. -0.002 min
 Lab File: BG062608.D
 Acq: 30 Aug 2024 8:05

Instrument : BNA_G
 ClientSampleId : SSTDICC005

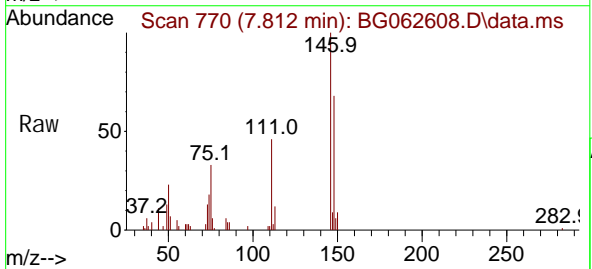


Tgt Ion: 93 Resp: 17745

Ion	Ratio	Lower	Upper
93	100		
63	81.2	61.9	101.9
95	32.7	12.9	52.9

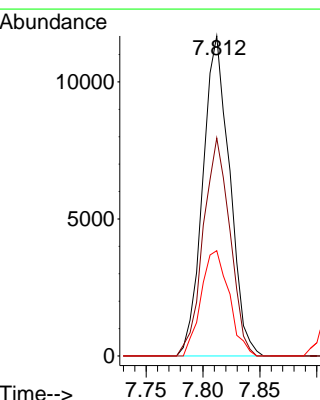
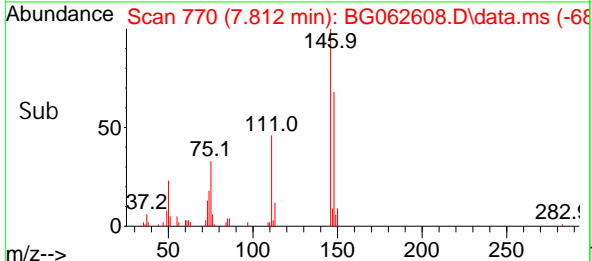


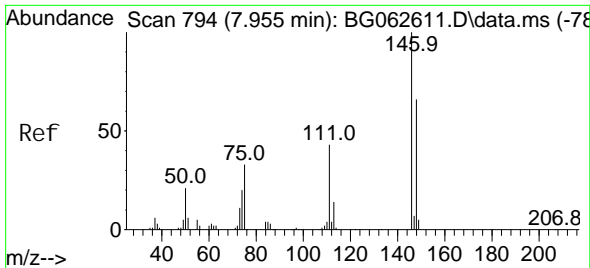
#12
 1,3-Dichlorobenzene
 Concen: 5.364 ng
 RT: 7.812 min Scan# 770
 Delta R.T. -0.002 min
 Lab File: BG062608.D
 Acq: 30 Aug 2024 8:05



Tgt Ion: 146 Resp: 19138

Ion	Ratio	Lower	Upper
146	100		
148	68.1	53.9	80.9
75	32.9	27.0	40.4





#13
 1,4-Di chl orobenzene
 Concen: 5.401 ng
 RT: 7.953 min Scan# 794
 Delta R.T. -0.002 min
 Lab File: BG062608.D
 Acq: 30 Aug 2024 8:05

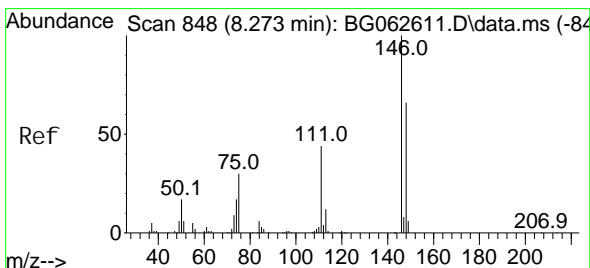
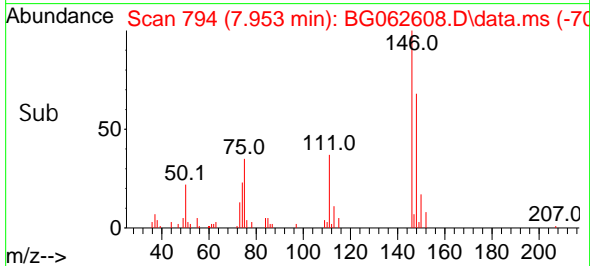
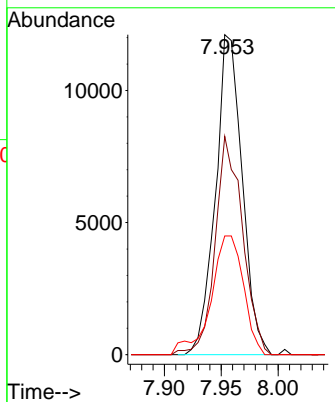
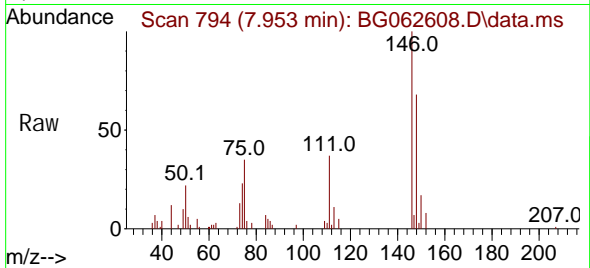
Instrument :

BNA_G

ClientSampleId :

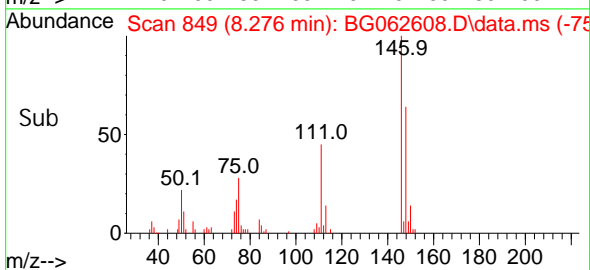
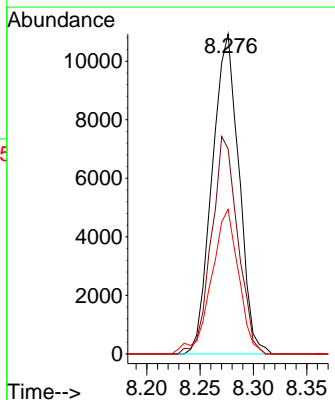
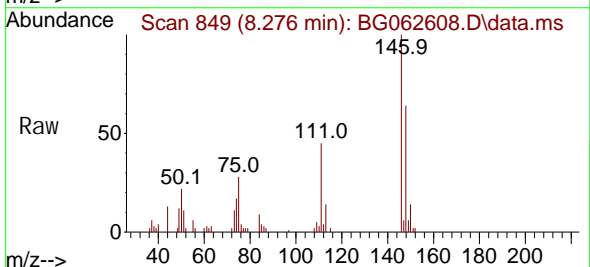
SSTDICC005

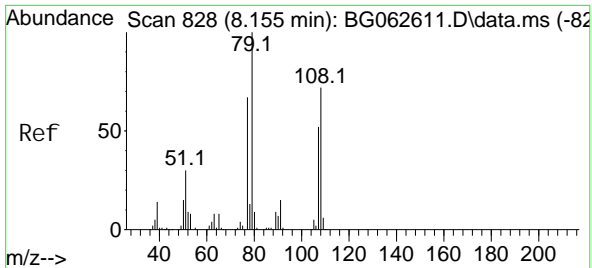
Tgt Ion	Resp	Lower	Upper
146	19833		
148	68.2	53.0	79.6
111	37.1	34.9	52.3



#14
 1,2-Di chl orobenzene
 Concen: 5.292 ng
 RT: 8.276 min Scan# 849
 Delta R.T. 0.004 min
 Lab File: BG062608.D
 Acq: 30 Aug 2024 8:05

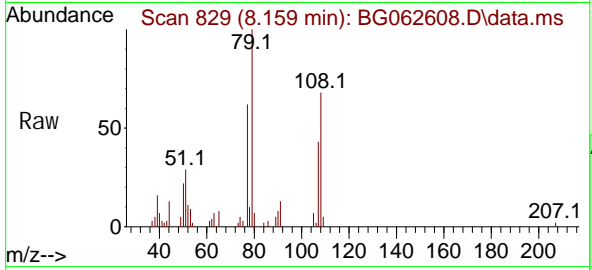
Tgt Ion	Resp	Lower	Upper
146	19102		
148	64.1	52.5	78.7
111	45.2	35.5	53.3





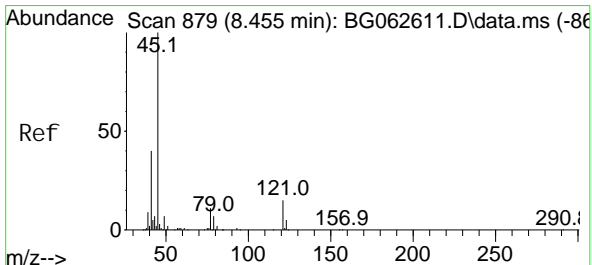
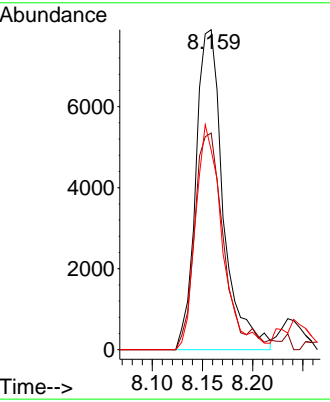
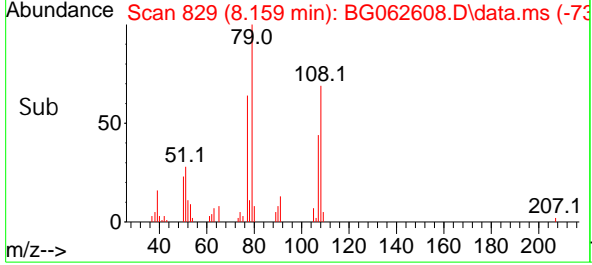
#15
 Benzyl Alcohol
 Concen: 4.650 ng
 RT: 8.159 min Scan# 81
 Delta R.T. 0.004 min
 Lab File: BG062608.D
 Acq: 30 Aug 2024 8:05

Instrument : BNA_G
 ClientSampleId : SSTDICC005

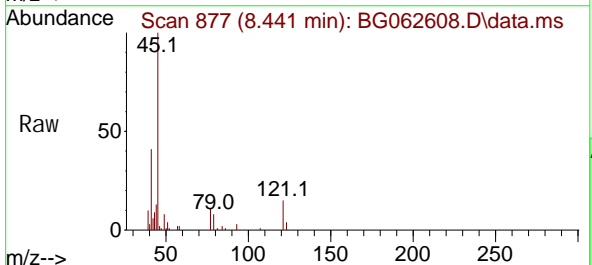


Tgt Ion: 79 Resp: 15052

Ion	Ratio	Lower	Upper
79	100		
108	67.7	57.9	86.9
77	62.3	53.4	80.2

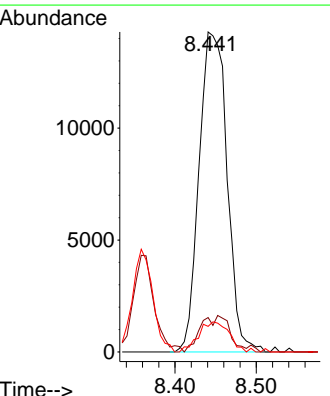
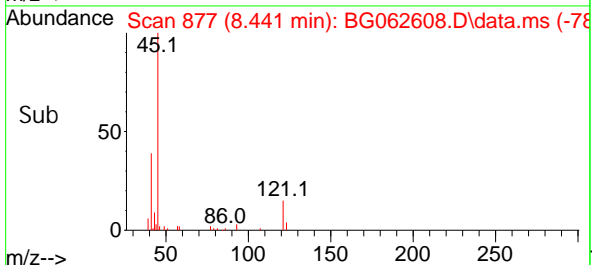


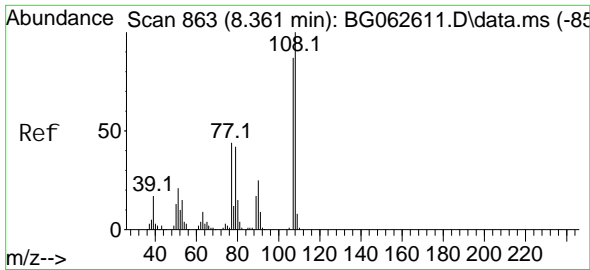
#16
 2, 2' -oxybis(1-Chloropropane)
 Concen: 5.306 ng
 RT: 8.441 min Scan# 877
 Delta R.T. -0.014 min
 Lab File: BG062608.D
 Acq: 30 Aug 2024 8:05



Tgt Ion: 45 Resp: 34202

Ion	Ratio	Lower	Upper
45	100		
77	10.8	0.0	31.7
79	8.0	0.0	28.3





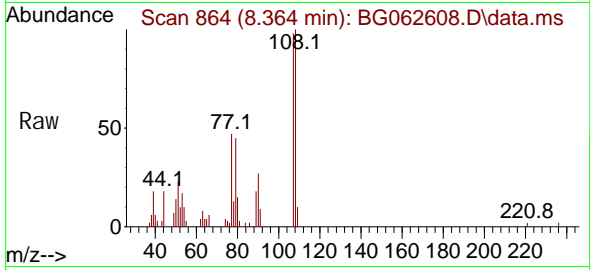
#17
 2-Methyl phenol
 Concen: 4.994 ng
 RT: 8.364 min Scan# 864
 Delta R.T. 0.004 min
 Lab File: BG062608.D
 Acq: 30 Aug 2024 8:05

Instrument :

BNA_G

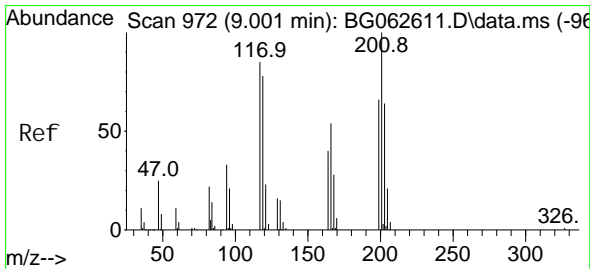
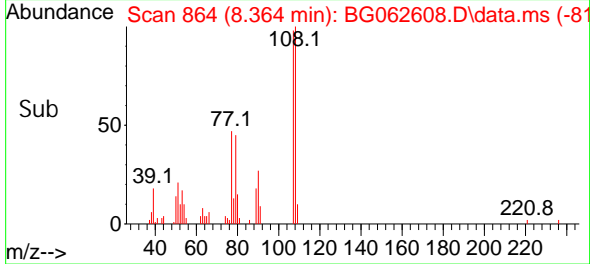
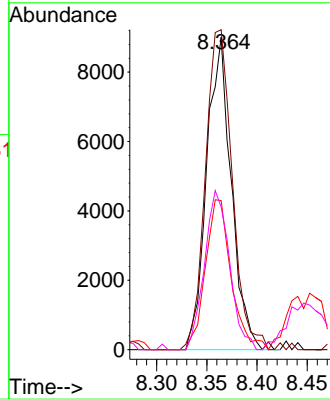
ClientSampleId :

SSTDIC005



Tgt Ion: 107 Resp: 15418

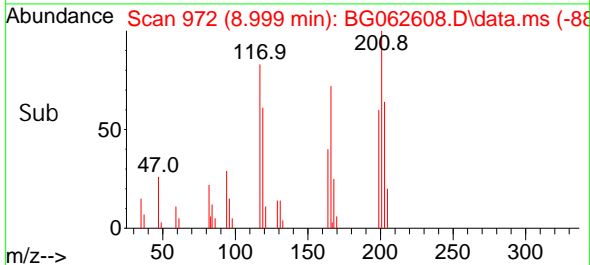
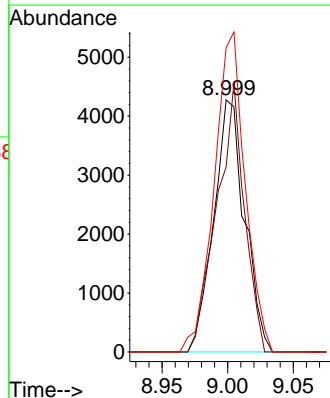
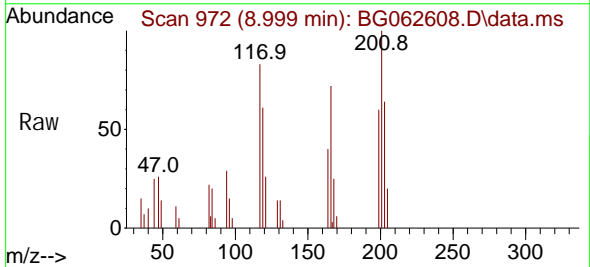
Ion	Ratio	Lower	Upper
107	100		
108	102.4	91.5	137.3
77	47.7	40.0	60.0
79	45.7	38.4	57.6

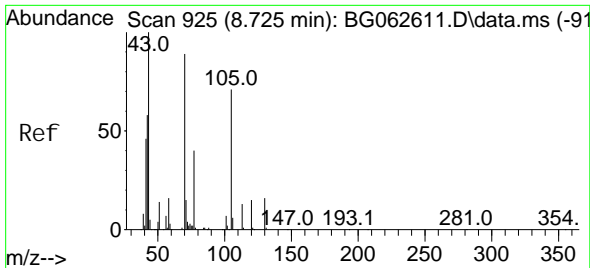


#18
 Hexachloroethane
 Concen: 5.089 ng
 RT: 8.999 min Scan# 972
 Delta R.T. -0.002 min
 Lab File: BG062608.D
 Acq: 30 Aug 2024 8:05

Tgt Ion: 117 Resp: 7006

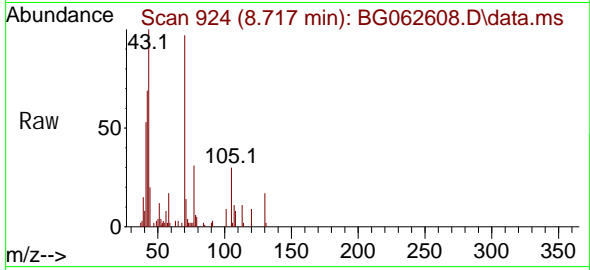
Ion	Ratio	Lower	Upper
117	100		
119	73.4	73.4	110.0
201	120.8	93.9	140.9





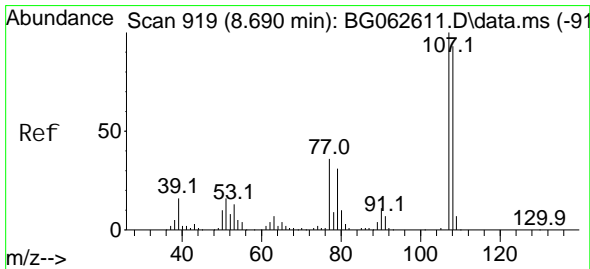
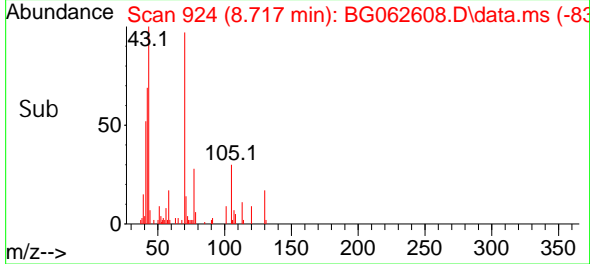
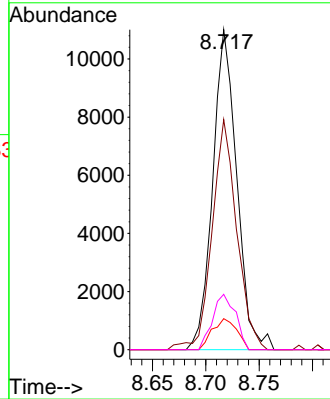
#19
 n-Nitroso-di-n-propylamine
 Concen: 5.003 ng
 RT: 8.717 min Scan# 919
 Delta R.T. -0.008 min
 Lab File: BG062608.D
 Acq: 30 Aug 2024 8:05

Instrument :
 BNA_G
 ClientSampleId :
 SSTDICC005



Tgt Ion: 70 Resp: 17248

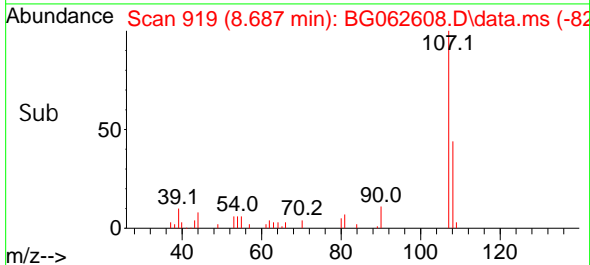
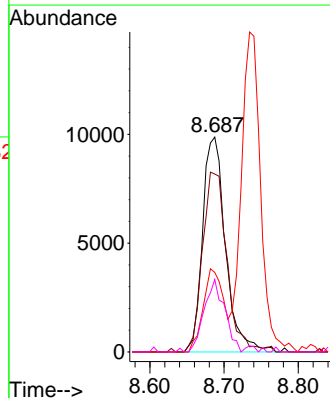
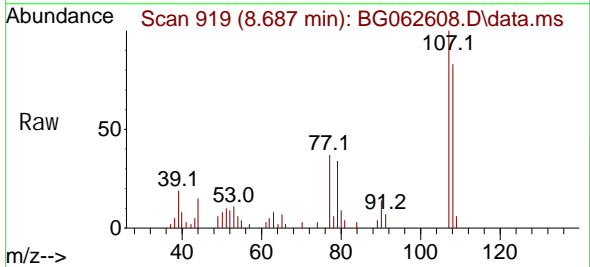
Ion	Ratio	Lower	Upper
70	100		
42	71.9	52.3	78.5
101	9.7	6.6	9.8
130	17.3	14.6	22.0

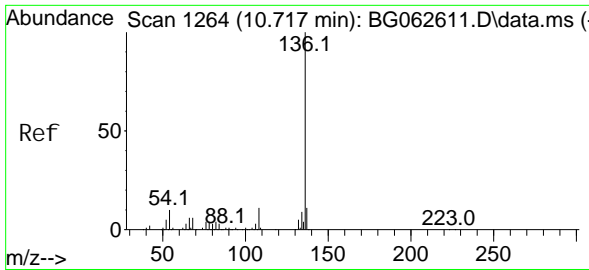


#20
 3+4-Methylphenols
 Concen: 4.652 ng
 RT: 8.687 min Scan# 919
 Delta R.T. -0.002 min
 Lab File: BG062608.D
 Acq: 30 Aug 2024 8:05

Tgt Ion: 107 Resp: 21188

Ion	Ratio	Lower	Upper
107	100		
108	82.8	72.7	112.7
77	37.0	16.5	56.5
79	33.7	10.7	50.7

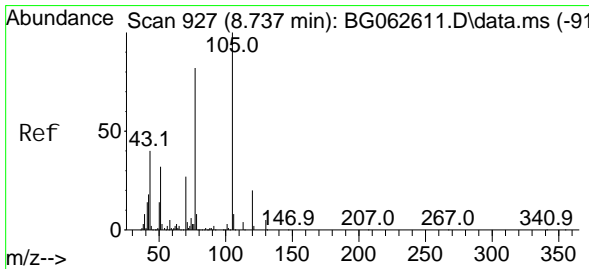
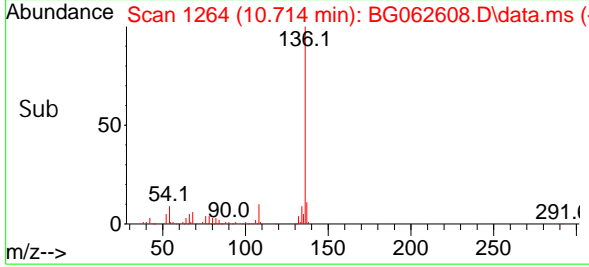
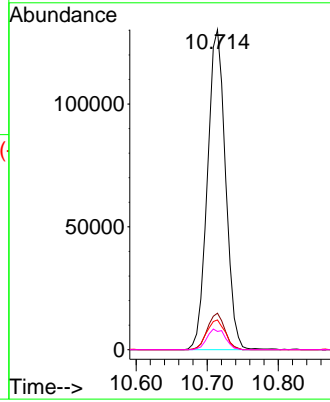
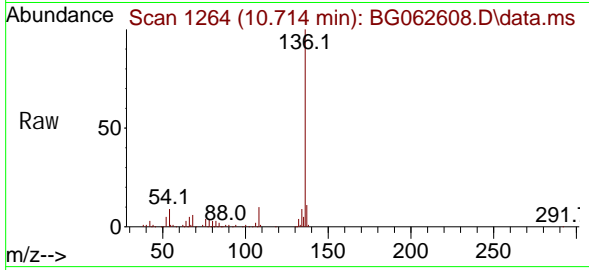




#21
Naphthalene-d8
Concen: 20.000 ng
RT: 10.714 min Scan# 111
Delta R.T. -0.002 min
Lab File: BG062608.D
Acq: 30 Aug 2024 8:05

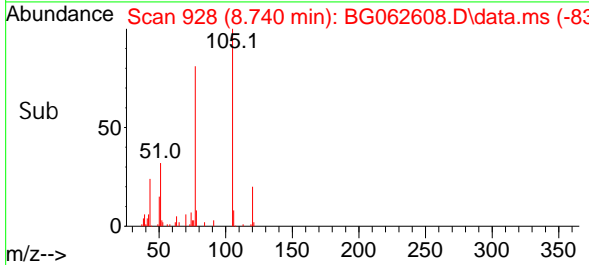
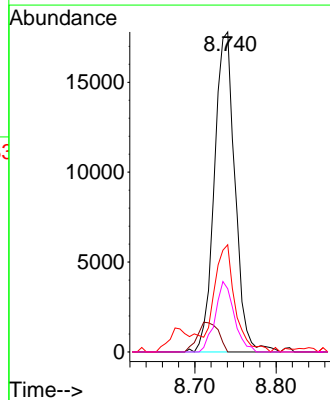
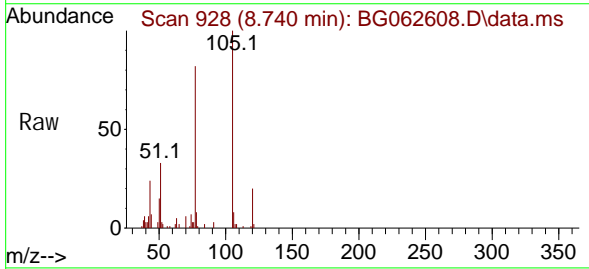
Instrument : BNA_G
ClientSampleId : SSTDICC005

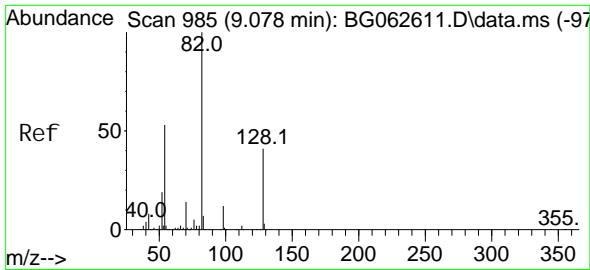
Tgt Ion	Resp	Lower	Upper
136	229936		
137	11.4	9.0	13.4
54	9.3	7.8	11.6
68	5.7	5.1	7.7



#22
Acetophenone
Concen: 5.060 ng
RT: 8.740 min Scan# 928
Delta R.T. 0.004 min
Lab File: BG062608.D
Acq: 30 Aug 2024 8:05

Tgt Ion	Resp	Lower	Upper
105	31389		
71	0.0	3.5	5.3#
51	33.5	25.7	38.5
120	19.7	15.7	23.5





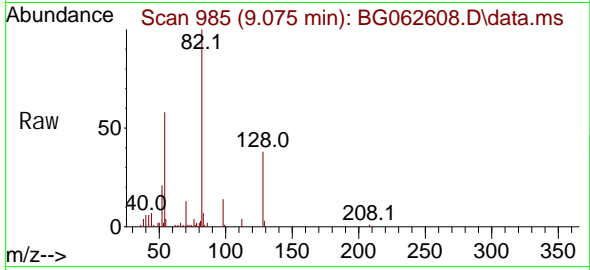
#23
 Ni trobenzene-d5
 Concen: 9.432 ng
 RT: 9.075 min Scan# 985
 Delta R.T. -0.002 min
 Lab File: BG062608.D
 Acq: 30 Aug 2024 8:05

Instrument :

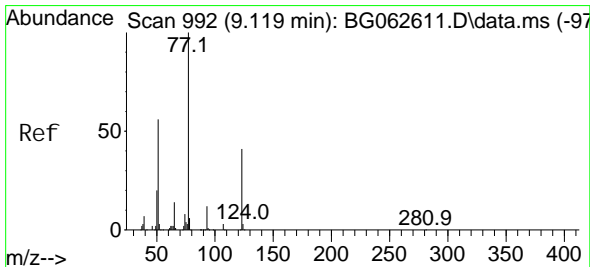
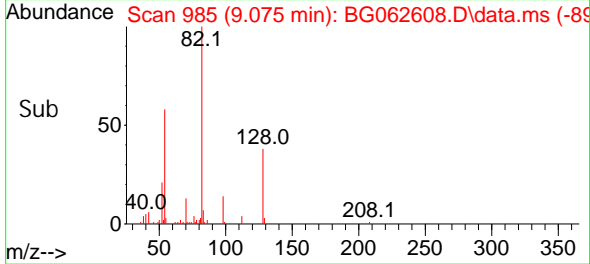
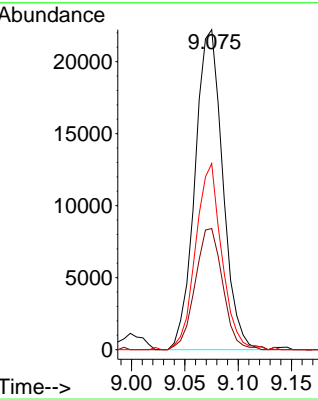
BNA_G

ClientSampleId :

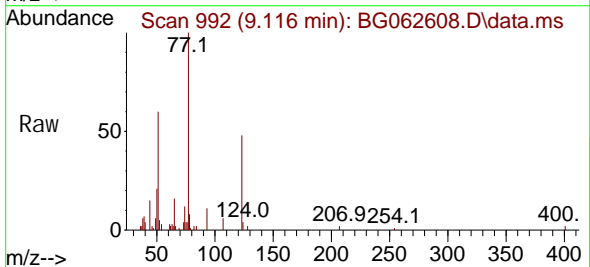
SSTDICC005



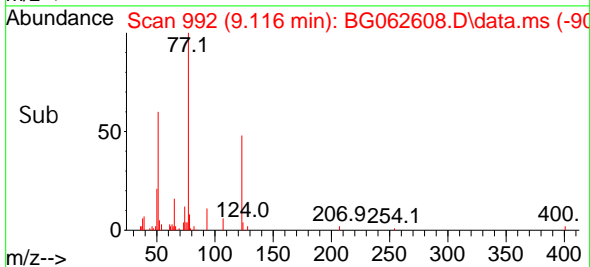
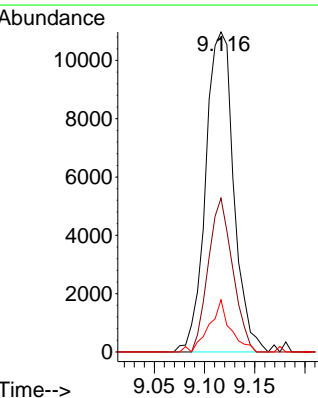
Tgt Ion: 82 Resp: 40270
 Ion Ratio Lower Upper
 82 100
 128 37.9 32.5 48.7
 54 58.2 42.5 63.7

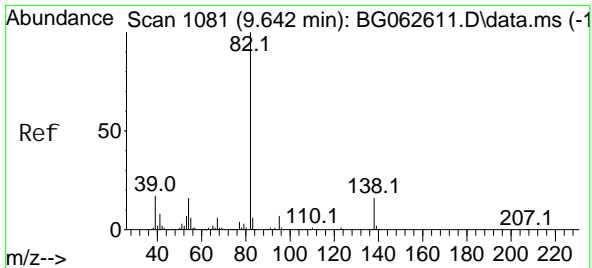


#24
 Ni trobenzene
 Concen: 4.707 ng
 RT: 9.116 min Scan# 992
 Delta R.T. -0.002 min
 Lab File: BG062608.D
 Acq: 30 Aug 2024 8:05



Tgt Ion: 77 Resp: 21369
 Ion Ratio Lower Upper
 77 100
 123 48.1 33.1 49.7
 65 16.3 11.0 16.4

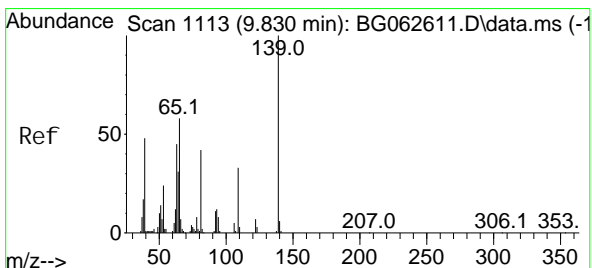
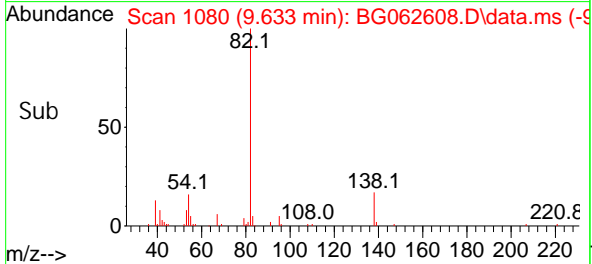
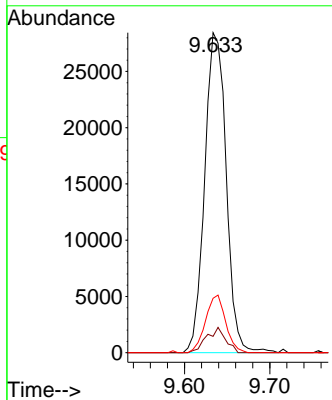
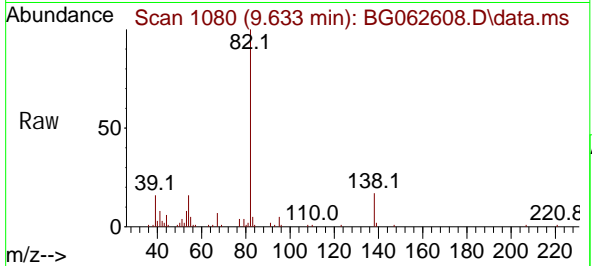




#25
 Isophorone
 Concen: 5.322 ng
 RT: 9.633 min Scan# 1080
 Delta R.T. -0.008 min
 Lab File: BG062608.D
 Acq: 30 Aug 2024 8:05

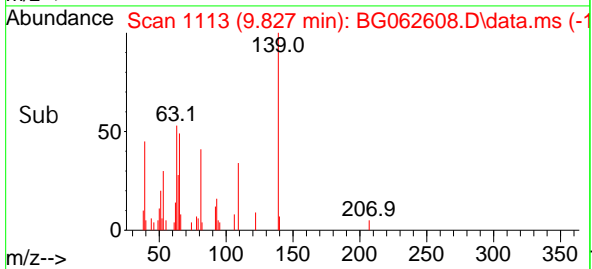
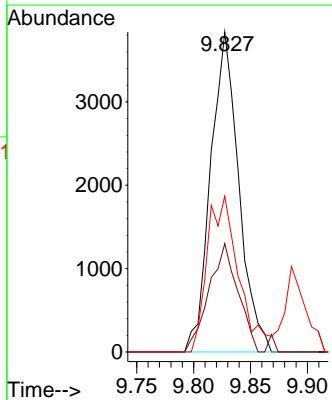
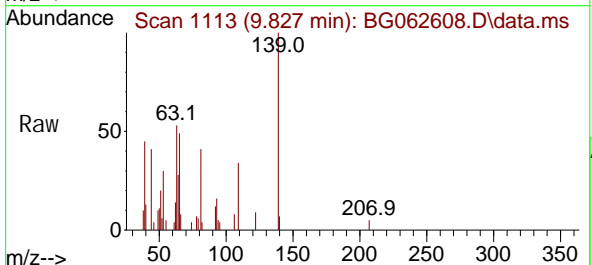
Instrument :
 BNA_G
 ClientSampleId :
 SSTDICC005

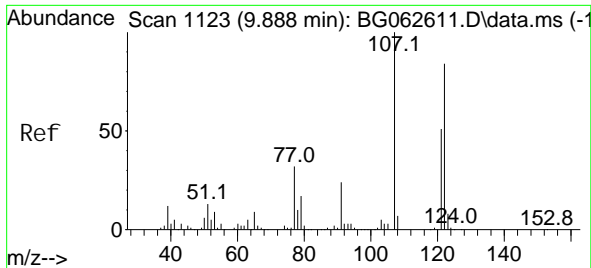
Tgt Ion: 82 Resp: 49879
 Ion Ratio Lower Upper
 82 100
 95 5.1 5.4 8.0#
 138 17.0 12.6 18.8



#26
 2-Nitrophenol
 Concen: 3.860 ng
 RT: 9.827 min Scan# 1113
 Delta R.T. -0.002 min
 Lab File: BG062608.D
 Acq: 30 Aug 2024 8:05

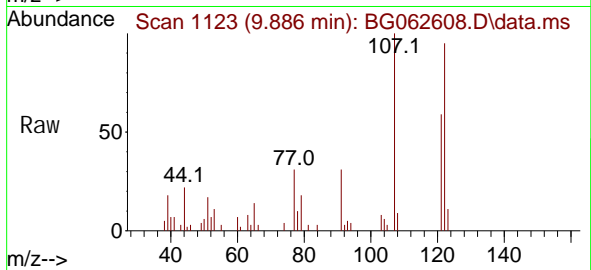
Tgt Ion: 139 Resp: 6620
 Ion Ratio Lower Upper
 139 100
 109 33.8 26.6 39.8
 65 48.7 46.5 69.7



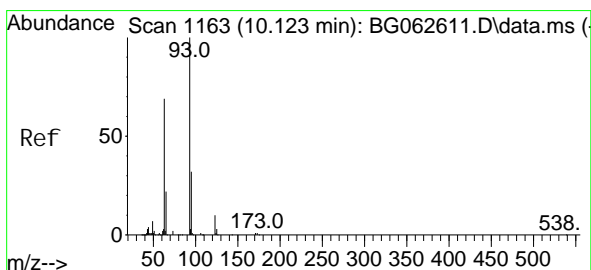
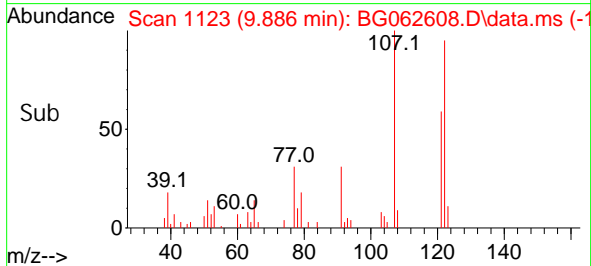
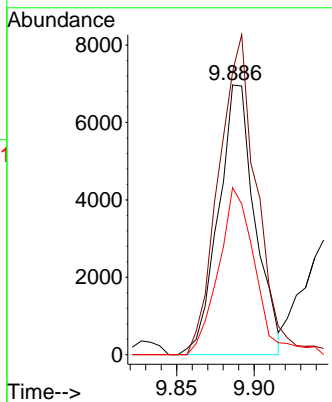


#27
 2, 4-Di methyl phenol
 Concen: 4.534 ng
 RT: 9.886 min Scan# 1112
 Delta R.T. -0.002 min
 Lab File: BG062608.D
 Acq: 30 Aug 2024 8:05

Instrument : BNA_G
 ClientSampleId : SSTDICC005

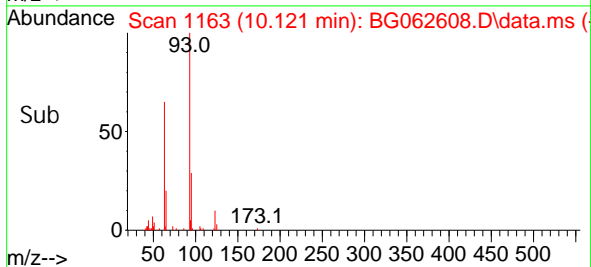
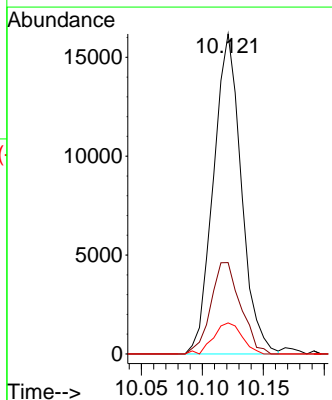
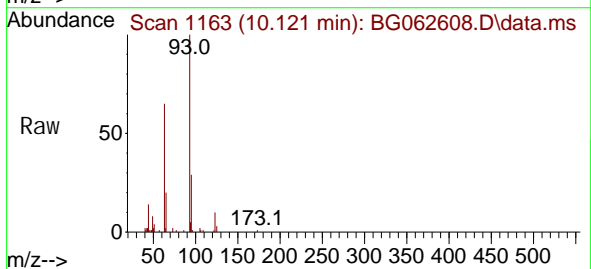


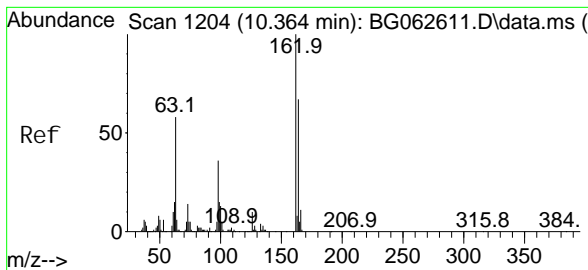
Tgt Ion: 122 Resp: 11395
 Ion Ratio Lower Upper
 122 100
 107 104.9 95.8 143.6
 121 61.9 48.6 72.8



#28
 bis(2-Chloroethoxy)methane
 Concen: 5.130 ng
 RT: 10.121 min Scan# 1163
 Delta R.T. -0.002 min
 Lab File: BG062608.D
 Acq: 30 Aug 2024 8:05

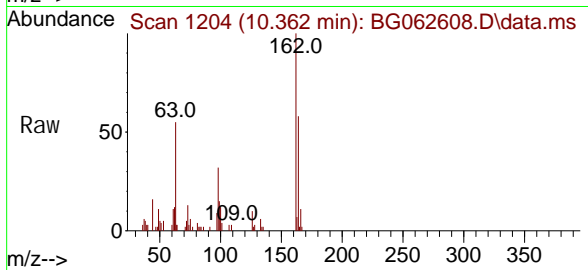
Tgt Ion: 93 Resp: 25739
 Ion Ratio Lower Upper
 93 100
 95 28.6 25.4 38.0
 123 9.7 7.9 11.9



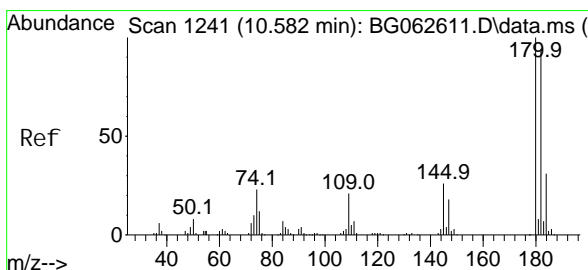
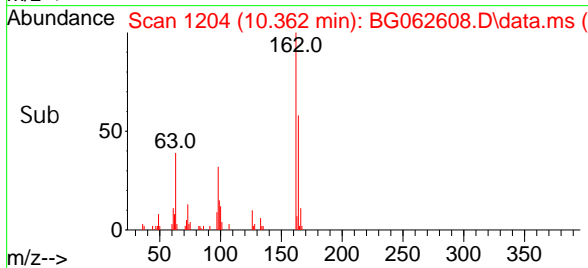
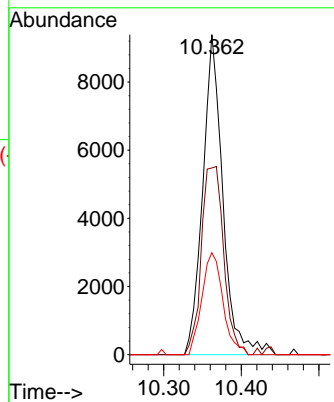


#29
 2, 4-Di chl orophenol
 Concen: 4.824 ng
 RT: 10.362 min Scan# 11
 Del ta R. T. -0.002 min
 Lab File: BG062608.D
 Acq: 30 Aug 2024 8:05

Instrument :
 BNA_G
 ClientSampleId :
 SSTDICC005

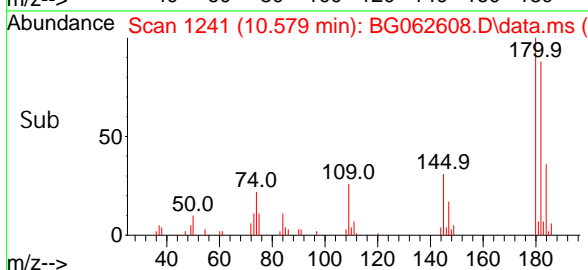
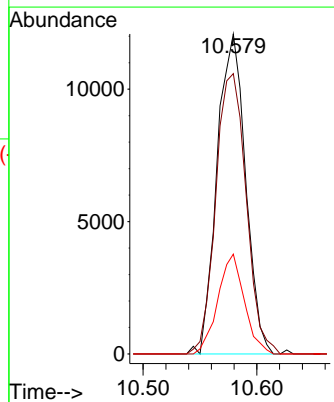
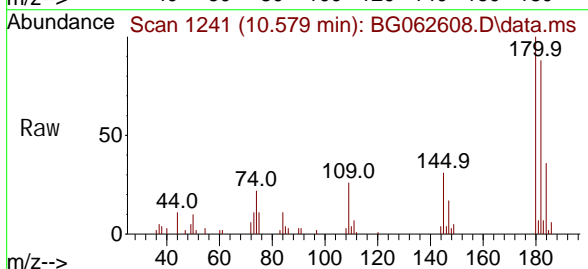


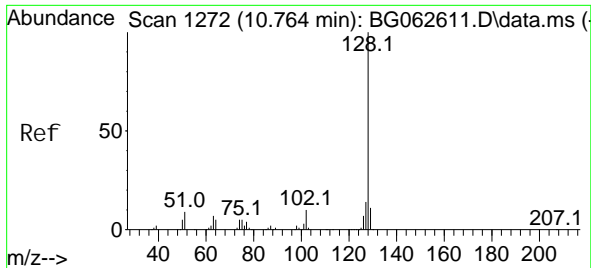
Tgt Ion: 162 Resp: 16952
 Ion Ratio Lower Upper
 162 100
 164 58.3 46.8 86.8
 98 31.9 16.4 56.4



#30
 1, 2, 4-Tri chl orobenzene
 Concen: 5.044 ng
 RT: 10.579 min Scan# 1241
 Del ta R. T. -0.002 min
 Lab File: BG062608.D
 Acq: 30 Aug 2024 8:05

Tgt Ion: 180 Resp: 21011
 Ion Ratio Lower Upper
 180 100
 182 87.6 75.1 112.7
 145 31.2 20.8 31.2





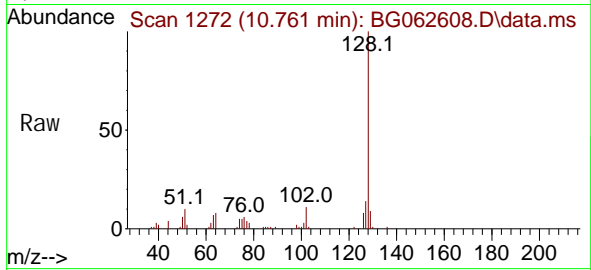
#31
 Naphthalene
 Concen: 5.218 ng
 RT: 10.761 min Scan# 1133
 Delta R.T. -0.002 min
 Lab File: BG062608.D
 Acq: 30 Aug 2024 8:05

Instrument :

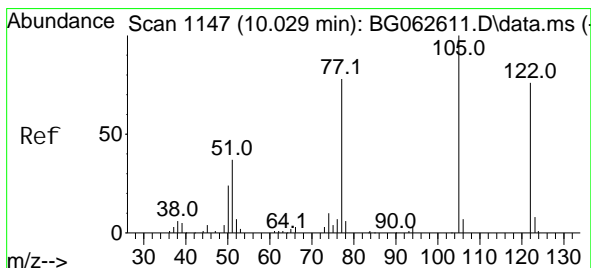
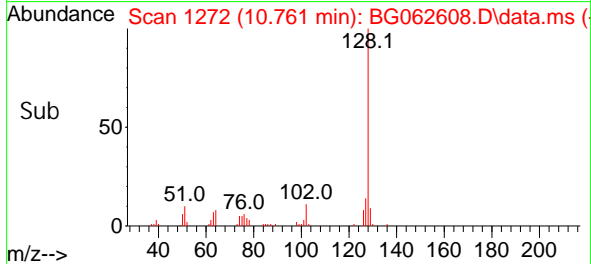
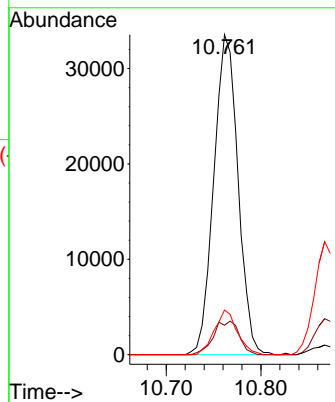
BNA_G

ClientSampleId :

SSTDIC005

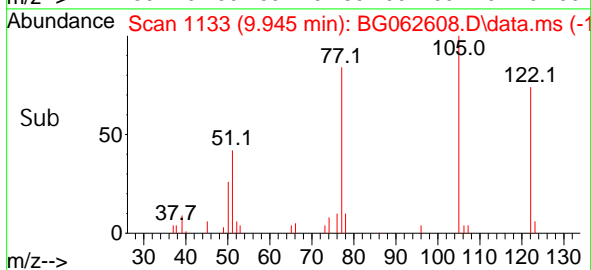
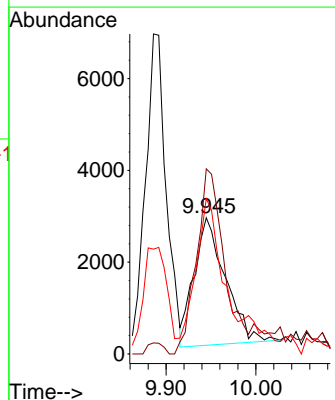
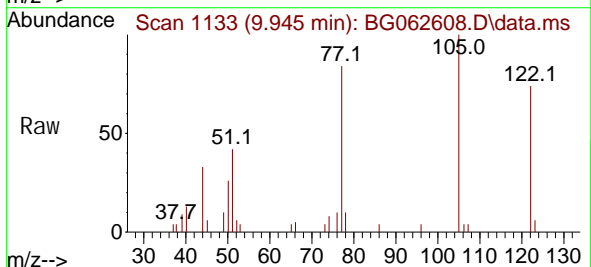


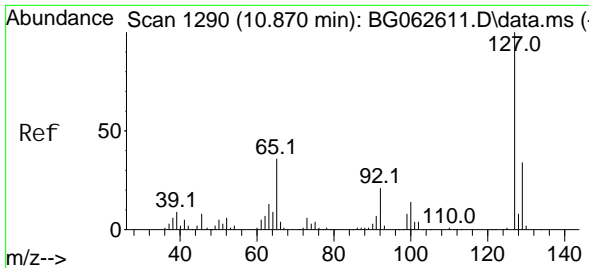
Tgt Ion: 128 Resp: 59471
 Ion Ratio Lower Upper
 128 100
 129 9.2 8.8 13.2
 127 13.9 11.3 16.9



#32
 Benzoic acid
 Concen: 2.540 ng
 RT: 9.945 min Scan# 1133
 Delta R.T. -0.084 min
 Lab File: BG062608.D
 Acq: 30 Aug 2024 8:05

Tgt Ion: 122 Resp: 6743
 Ion Ratio Lower Upper
 122 100
 105 136.0 105.7 145.7
 77 114.1 79.9 119.9





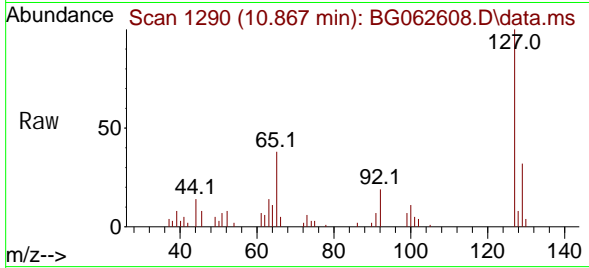
#33
 4-Chloroaniline
 Concen: 5.107 ng
 RT: 10.867 min Scan# 11
 Delta R.T. -0.002 min
 Lab File: BG062608.D
 Acq: 30 Aug 2024 8:05

Instrument :

BNA_G

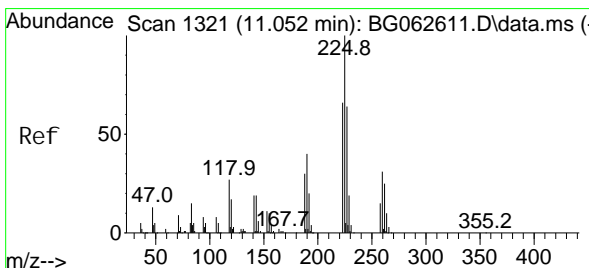
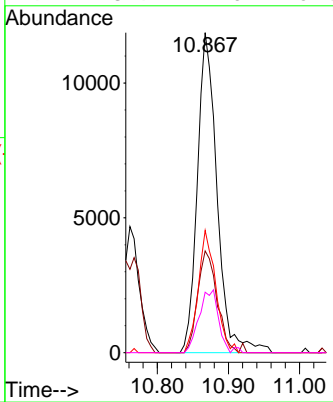
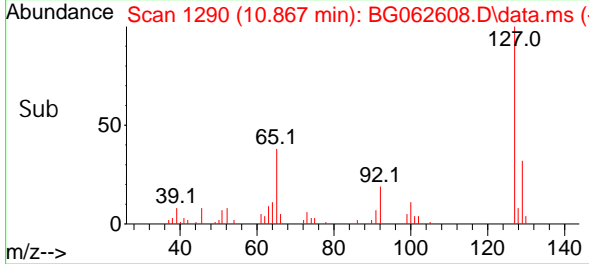
ClientSampleId :

SSTDICC005

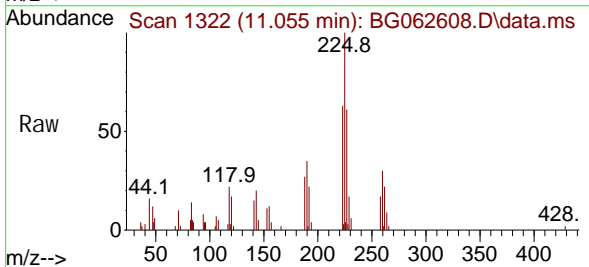


Tgt Ion: 127 Resp: 22907

Ion	Ratio	Lower	Upper
127	100		
129	31.8	27.3	40.9
65	38.2	29.0	43.4
92	18.9	17.0	25.4

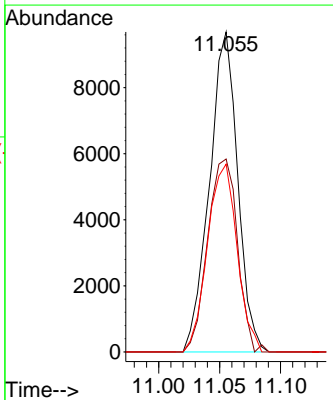
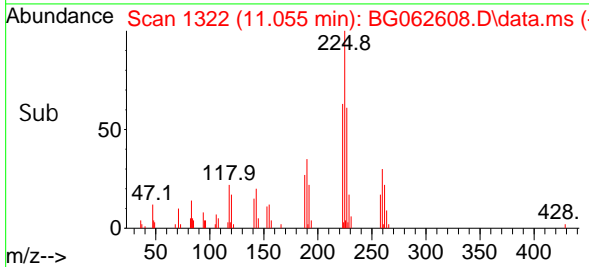


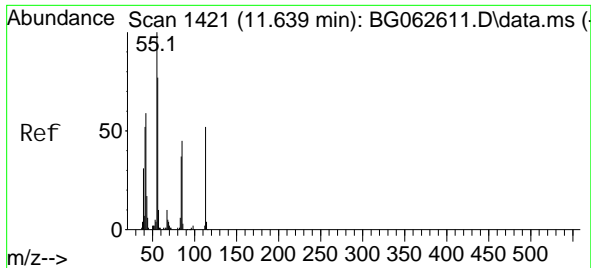
#34
 Hexachlorobutadiene
 Concen: 5.367 ng
 RT: 11.055 min Scan# 1322
 Delta R.T. 0.004 min
 Lab File: BG062608.D
 Acq: 30 Aug 2024 8:05



Tgt Ion: 225 Resp: 15614

Ion	Ratio	Lower	Upper
225	100		
223	63.6	50.1	75.1
227	61.7	48.9	73.3

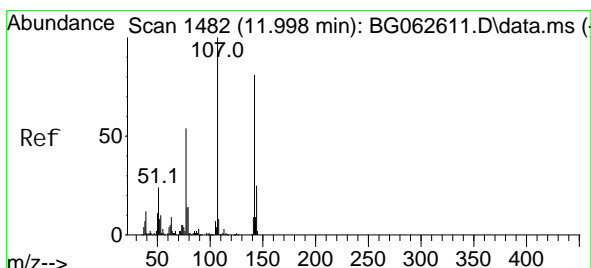
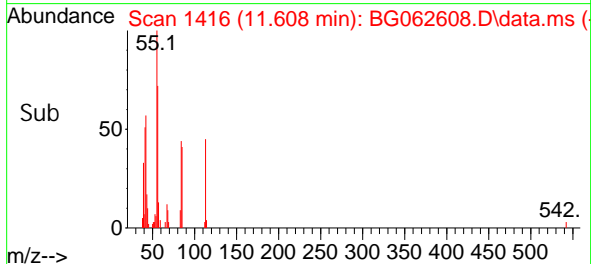
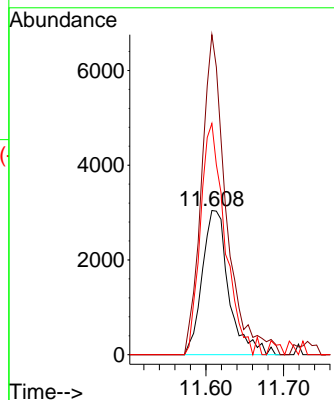
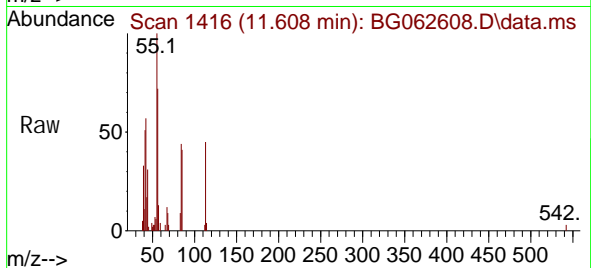




#35
 Caprolactam
 Concen: 5.327 ng
 RT: 11.608 min Scan# 1416
 Delta R.T. -0.032 min
 Lab File: BG062608.D
 Acq: 30 Aug 2024 8:05

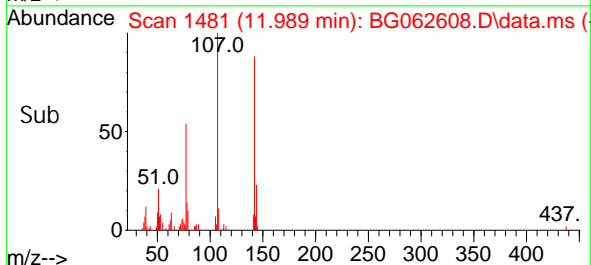
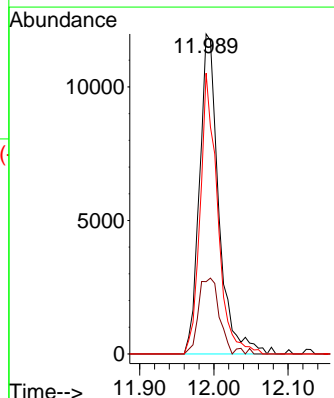
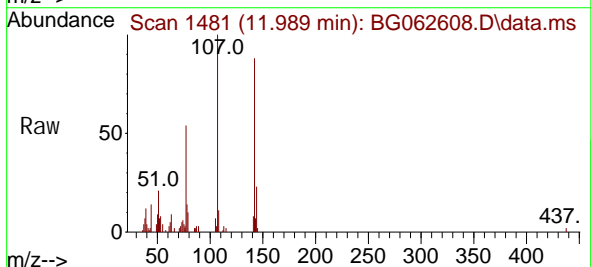
Instrument : BNA_G
 ClientSampleId : SSTDICC005

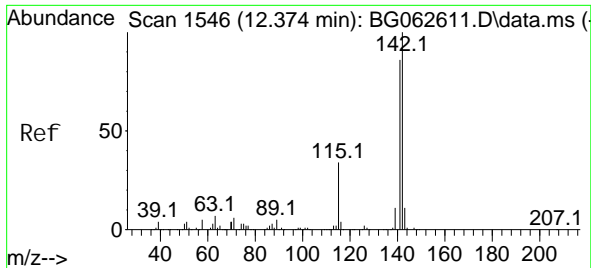
Tgt Ion: 113 Resp: 7213
 Ion Ratio Lower Upper
 113 100
 55 221.9 174.1 214.1#
 56 160.3 129.8 169.8



#36
 4-Chloro-3-methyl phenol
 Concen: 5.099 ng
 RT: 11.989 min Scan# 1481
 Delta R.T. -0.008 min
 Lab File: BG062608.D
 Acq: 30 Aug 2024 8:05

Tgt Ion: 107 Resp: 21612
 Ion Ratio Lower Upper
 107 100
 144 22.6 19.8 29.8
 142 87.8 64.7 97.1



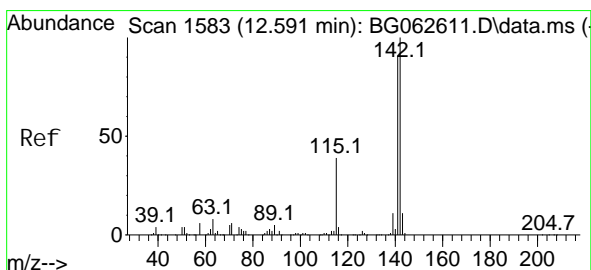
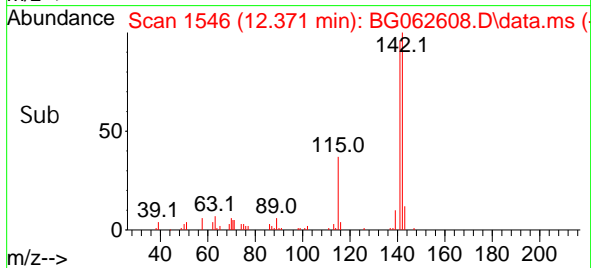
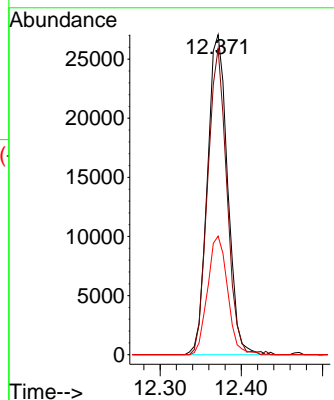
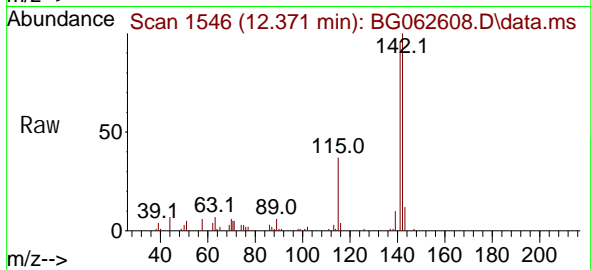


#37
 2-Methyl naphthalene
 Concen: 5.278 ng
 RT: 12.371 min Scan# 1546
 Delta R.T. -0.002 min
 Lab File: BG062608.D
 Acq: 30 Aug 2024 8:05

Instrument :
 BNA_G
 ClientSampleId :
 SSTDICC005

Tgt Ion: 142 Resp: 46653

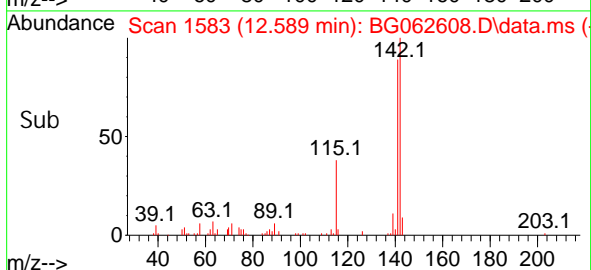
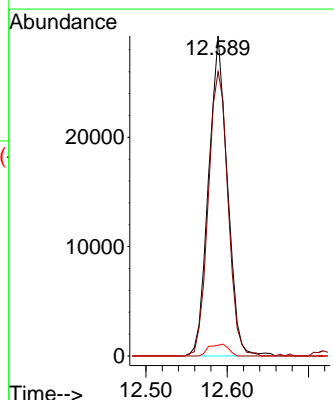
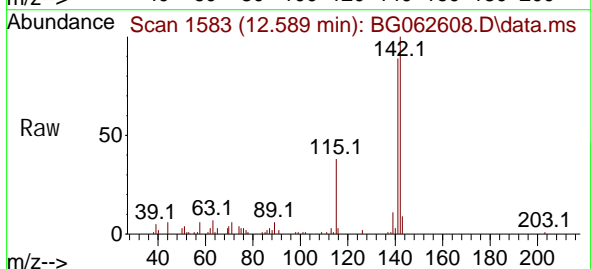
Ion	Ratio	Lower	Upper
142	100		
141	95.7	68.9	103.3
115	37.0	27.5	41.3

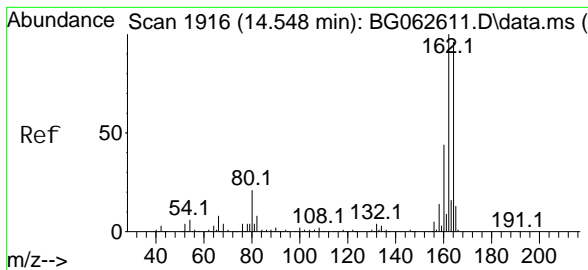


#38
 1-Methyl naphthalene
 Concen: 5.311 ng
 RT: 12.589 min Scan# 1583
 Delta R.T. -0.002 min
 Lab File: BG062608.D
 Acq: 30 Aug 2024 8:05

Tgt Ion: 142 Resp: 47139

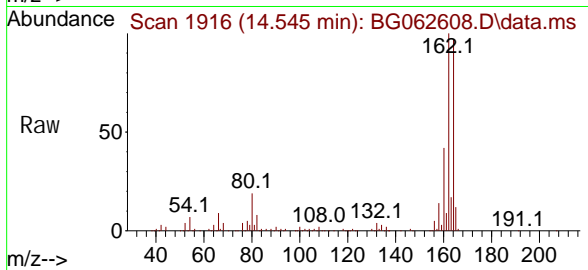
Ion	Ratio	Lower	Upper
142	100		
141	88.9	73.0	109.4
116	3.3	3.2	4.8



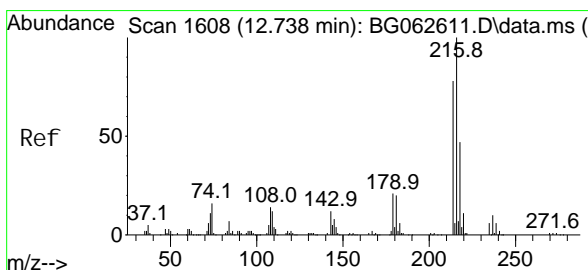
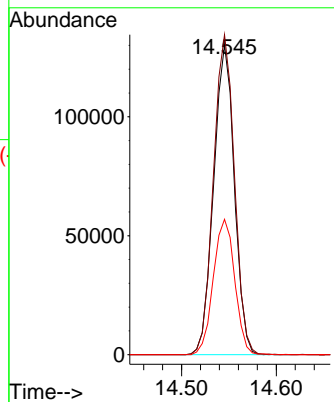
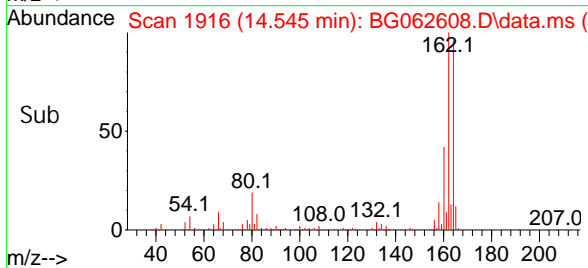


#39
 Acenaphthene-d10
 Concen: 20.000 ng
 RT: 14.545 min Scan# 1916
 Delta R.T. -0.002 min
 Lab File: BG062608.D
 Acq: 30 Aug 2024 8:05

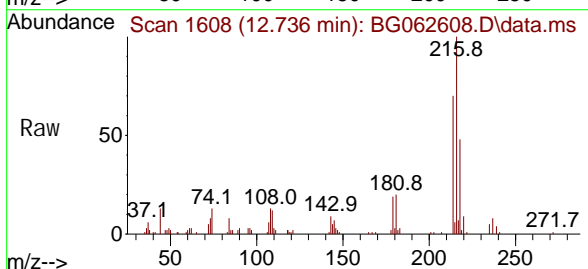
Instrument :
 BNA_G
 ClientSampleId :
 SSTDICC005



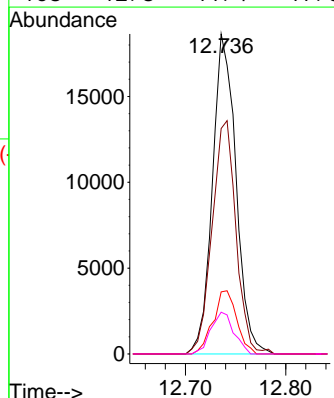
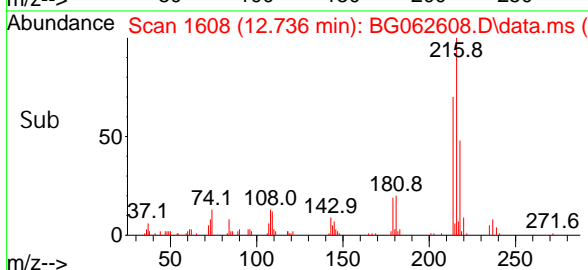
Tgt Ion: 164 Resp: 197524
 Ion Ratio Lower Upper
 164 100
 162 103.3 83.1 124.7
 160 43.7 36.2 54.4

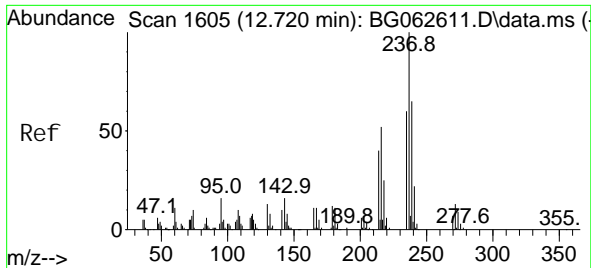


#40
 1, 2, 4, 5-Tetrachlorobenzene
 Concen: 5.098 ng
 RT: 12.736 min Scan# 1608
 Delta R.T. -0.002 min
 Lab File: BG062608.D
 Acq: 30 Aug 2024 8:05



Tgt Ion: 216 Resp: 30285
 Ion Ratio Lower Upper
 216 100
 214 74.0 61.6 92.4
 179 19.9 15.9 23.9
 108 12.8 11.4 17.0





#41
 Hexachlorocyclopentadiene
 Concen: 3.327 ng
 RT: 12.718 min Scan# 1605
 Delta R.T. -0.002 min
 Lab File: BG062608.D
 Acq: 30 Aug 2024 8:05

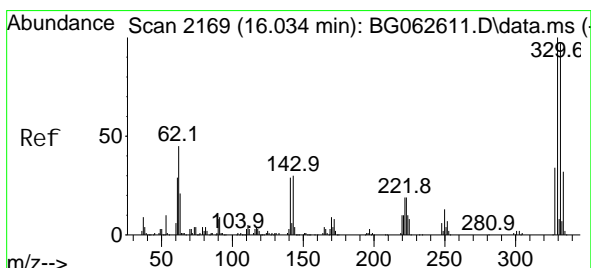
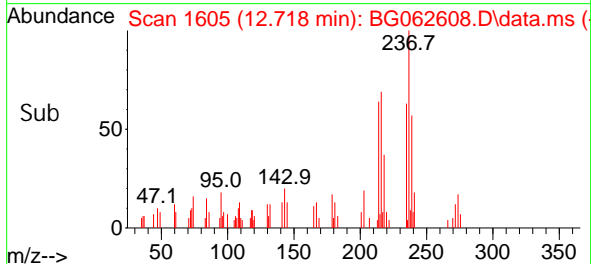
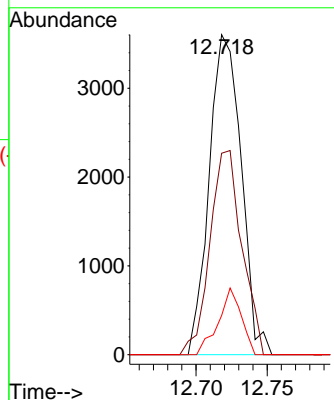
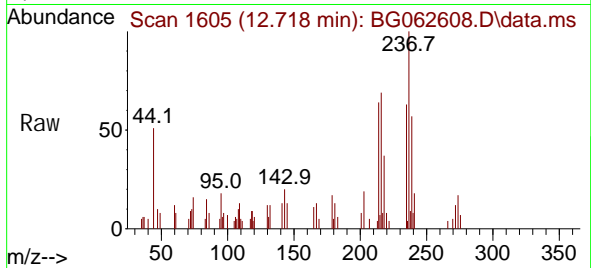
Instrument :

BNA_G

ClientSampleId :

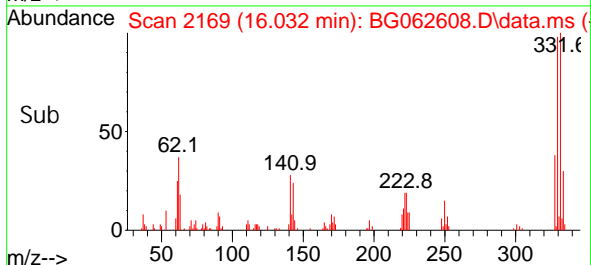
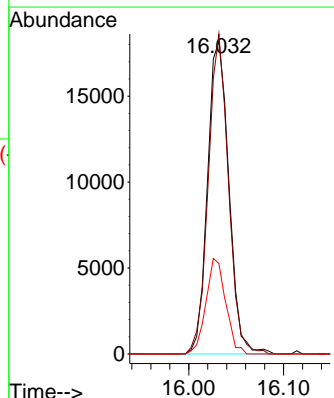
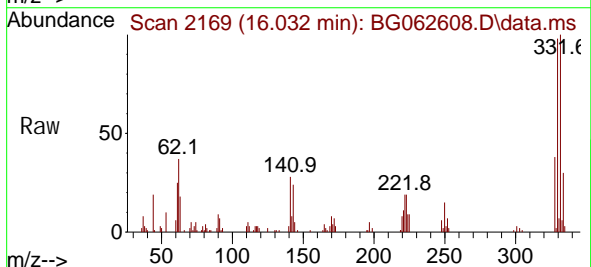
SSTDIC005

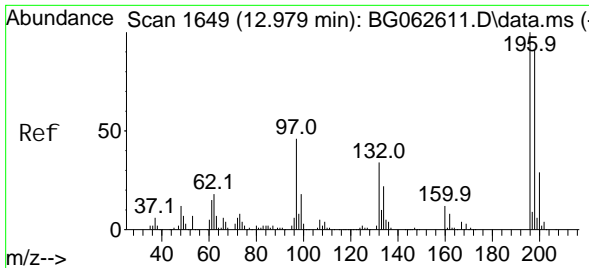
Tgt Ion: 237 Resp: 5639
 Ion Ratio Lower Upper
 237 100
 235 67.2 40.4 80.4
 272 12.3 0.0 32.7



#42
 2,4,6-Tribromophenol
 Concen: 10.225 ng
 RT: 16.032 min Scan# 2169
 Delta R.T. -0.002 min
 Lab File: BG062608.D
 Acq: 30 Aug 2024 8:05

Tgt Ion: 330 Resp: 28423
 Ion Ratio Lower Upper
 330 100
 332 96.6 77.2 115.8
 141 28.2 22.2 33.4





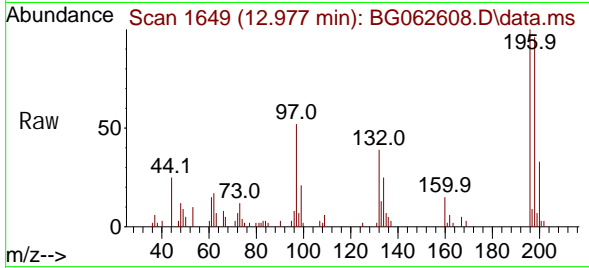
#43
 2, 4, 6-Tri chlorophenol
 Concen: 4.663 ng
 RT: 12.977 min Scan# 1649
 Delta R.T. -0.002 min
 Lab File: BG062608.D
 Acq: 30 Aug 2024 8:05

Instrument :

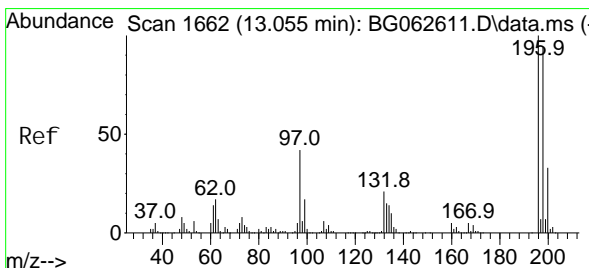
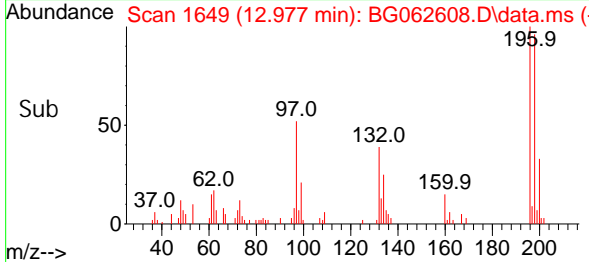
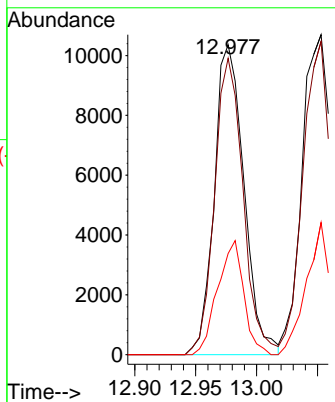
BNA_G

ClientSampleId :

SSTDIC005

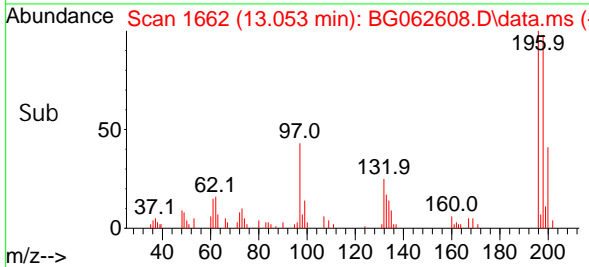
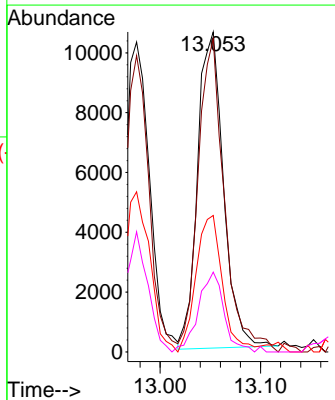
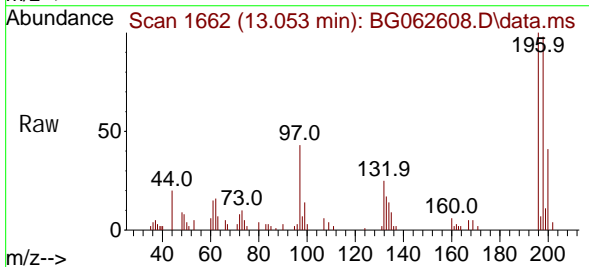


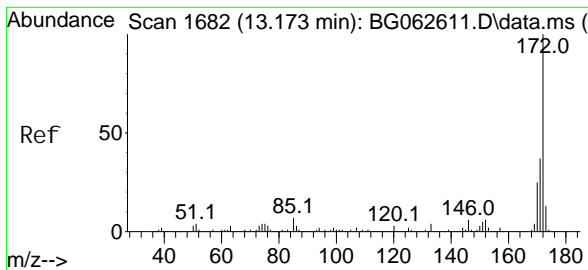
Tgt Ion: 196 Resp: 17558
 Ion Ratio Lower Upper
 196 100
 198 95.6 72.8 109.2
 200 35.4 23.5 35.3#



#44
 2, 4, 5-Tri chlorophenol
 Concen: 4.445 ng
 RT: 13.053 min Scan# 1662
 Delta R.T. -0.002 min
 Lab File: BG062608.D
 Acq: 30 Aug 2024 8:05

Tgt Ion: 196 Resp: 18958
 Ion Ratio Lower Upper
 196 100
 198 97.9 75.5 113.3
 97 42.7 34.1 51.1
 132 24.9 17.4 26.0





#45
 2-Fluorophenyl
 Concen: 10.615 ng
 RT: 13.165 min Scan# 1681
 Delta R.T. -0.008 min
 Lab File: BG062608.D
 Acq: 30 Aug 2024 8:05

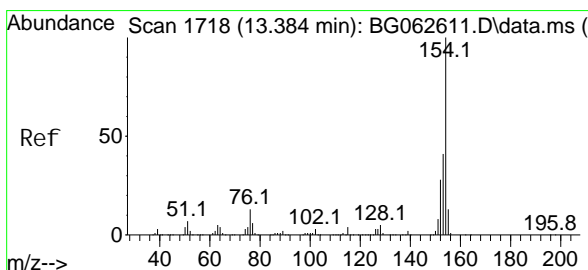
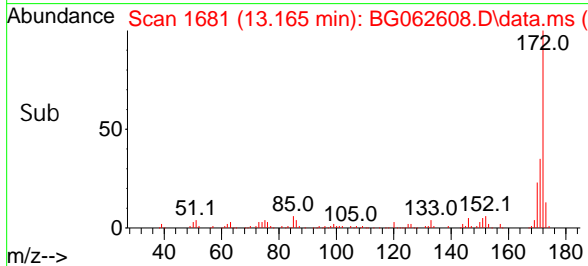
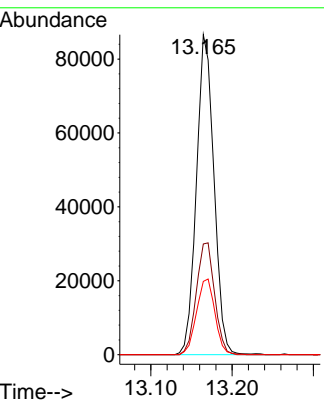
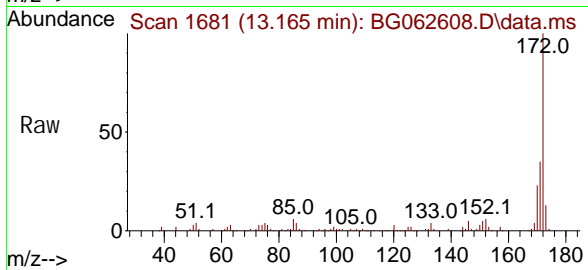
Instrument :

BNA_G

ClientSampleId :

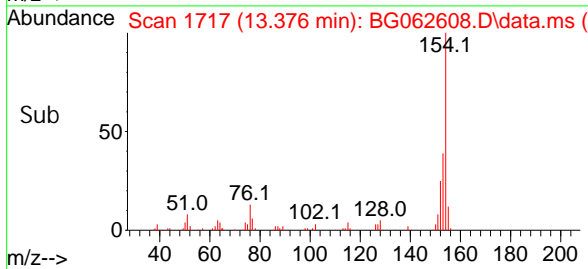
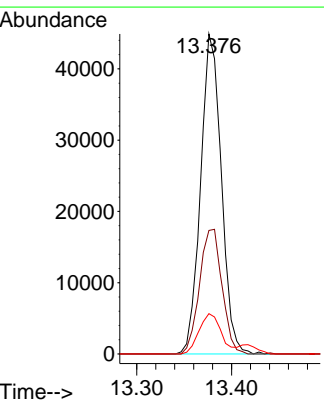
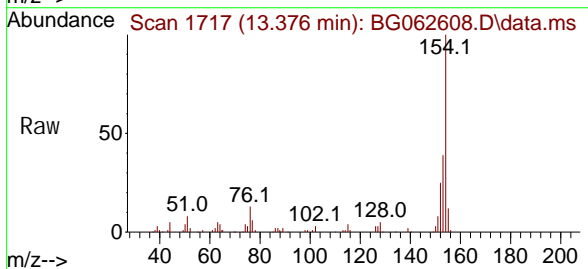
SSTDIC005

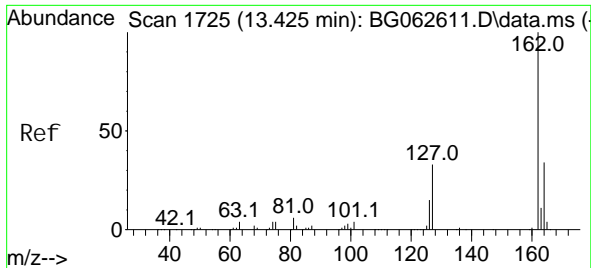
Tgt Ion: 172 Resp: 129440
 Ion Ratio Lower Upper
 172 100
 171 34.6 29.7 44.5
 170 22.9 20.0 30.0



#46
 1,1'-Bi phenyl
 Concen: 5.169 ng
 RT: 13.376 min Scan# 1717
 Delta R.T. -0.008 min
 Lab File: BG062608.D
 Acq: 30 Aug 2024 8:05

Tgt Ion: 154 Resp: 68113
 Ion Ratio Lower Upper
 154 100
 153 38.6 20.8 60.8
 76 12.6 0.0 33.4

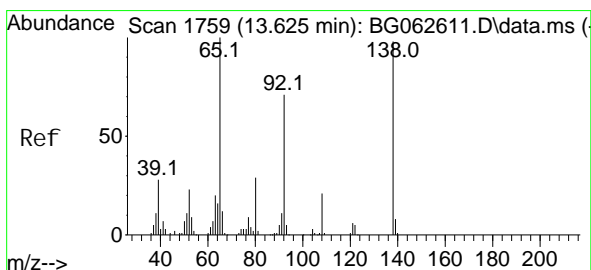
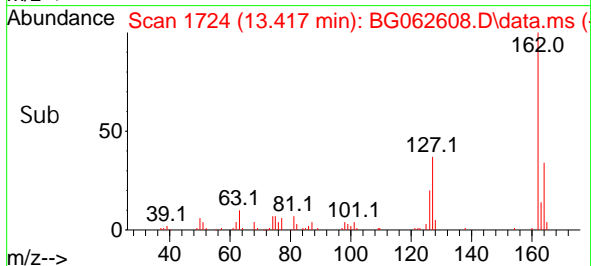
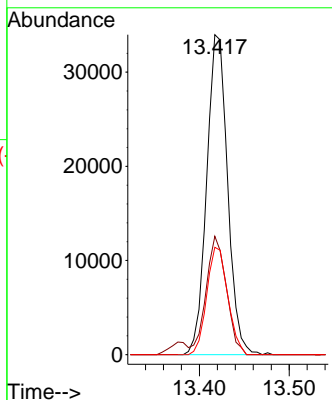
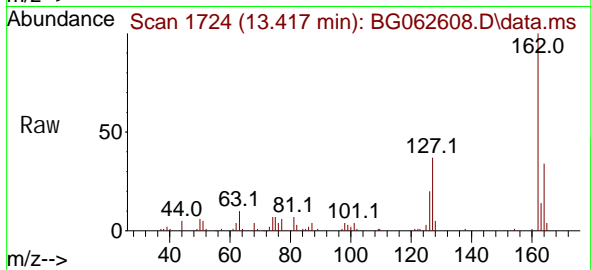




#47
 2-Chloronaphthalene
 Concen: 5.153 ng
 RT: 13.417 min Scan# 1725
 Delta R.T. -0.008 min
 Lab File: BG062608.D
 Acq: 30 Aug 2024 8:05

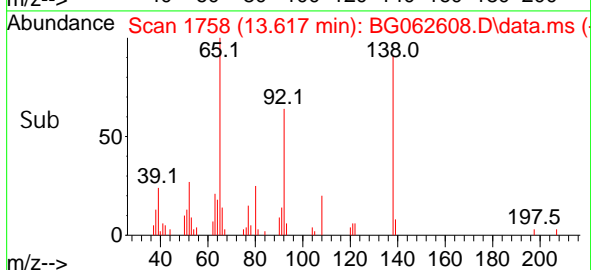
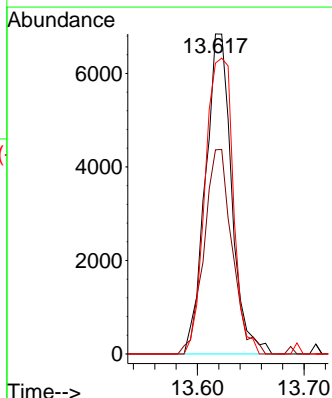
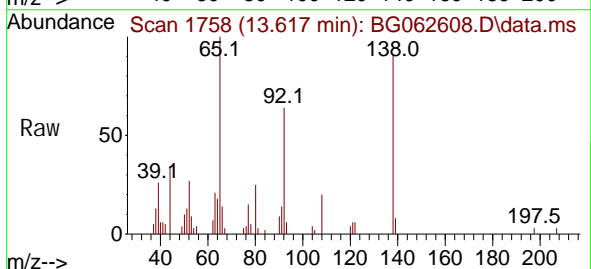
Instrument : BNA_G
 ClientSampleId : SSTDICC005

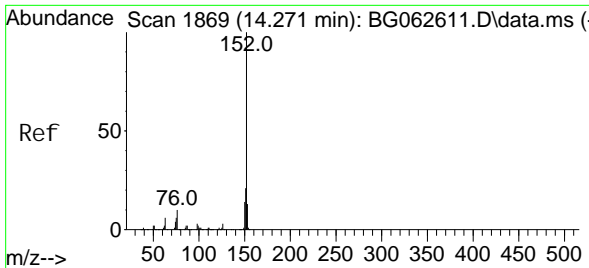
Tgt Ion: 162 Resp: 55028
 Ion Ratio Lower Upper
 162 100
 127 37.0 28.7 43.1
 164 33.5 26.9 40.3



#48
 2-Nitroaniline
 Concen: 4.166 ng
 RT: 13.617 min Scan# 1758
 Delta R.T. -0.008 min
 Lab File: BG062608.D
 Acq: 30 Aug 2024 8:05

Tgt Ion: 65 Resp: 11702
 Ion Ratio Lower Upper
 65 100
 92 63.8 56.6 84.8
 138 90.9 78.7 118.1

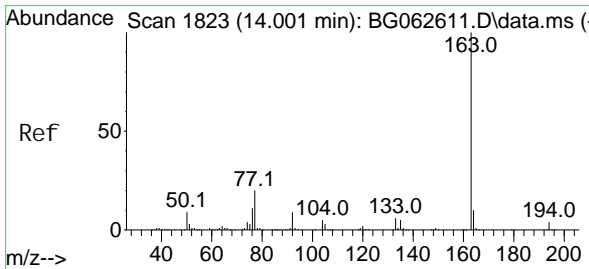
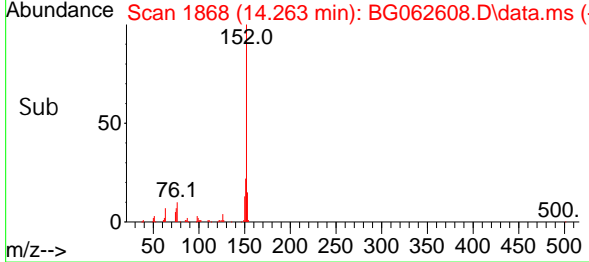
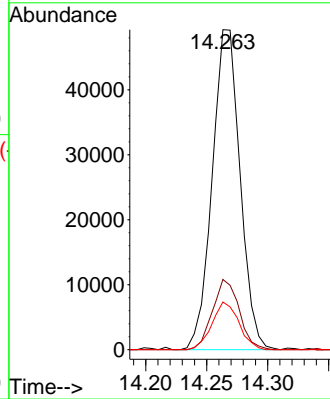
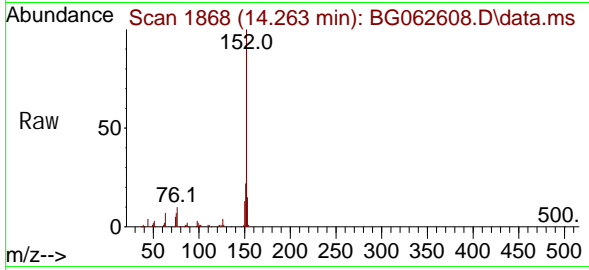




#49
 Acenaphthyl ene
 Concen: 4.959 ng
 RT: 14.263 min Scan# 1868
 Delta R.T. -0.008 min
 Lab File: BG062608.D
 Acq: 30 Aug 2024 8:05

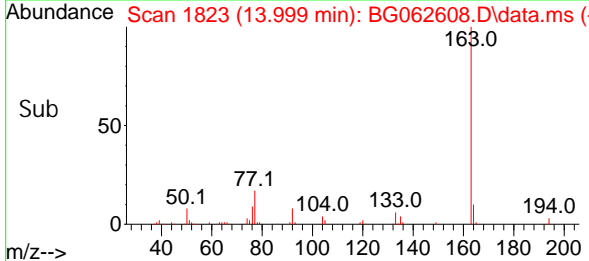
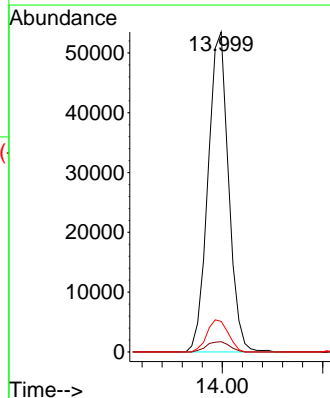
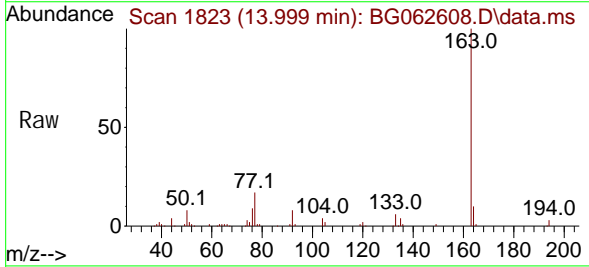
Instrument : BNA_G
 ClientSampleId : SSTDICC005

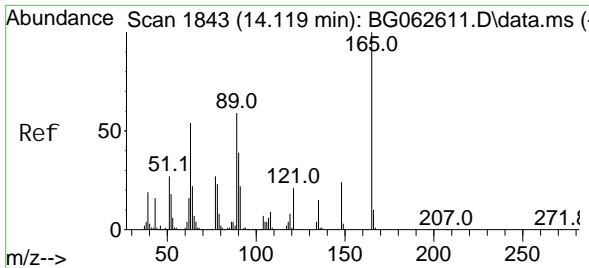
Tgt Ion	Resp	Lower	Upper
152	78423		
151	22.0	16.6	24.8
153	14.9	10.2	15.4



#50
 Dimethyl phthalate
 Concen: 5.263 ng
 RT: 13.999 min Scan# 1823
 Delta R.T. -0.002 min
 Lab File: BG062608.D
 Acq: 30 Aug 2024 8:05

Tgt Ion	Resp	Lower	Upper
163	76010		
194	3.2	2.9	4.3
164	9.6	8.3	12.5





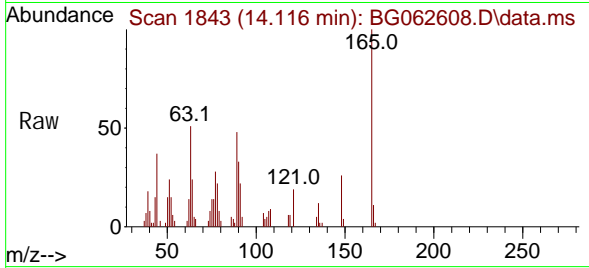
#51
 2,6-Dinitrotoluene
 Concen: 4.274 ng
 RT: 14.116 min Scan# 1843
 Delta R.T. -0.002 min
 Lab File: BG062608.D
 Acq: 30 Aug 2024 8:05

Instrument :

BNA_G

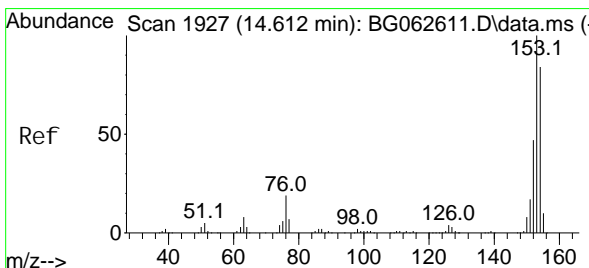
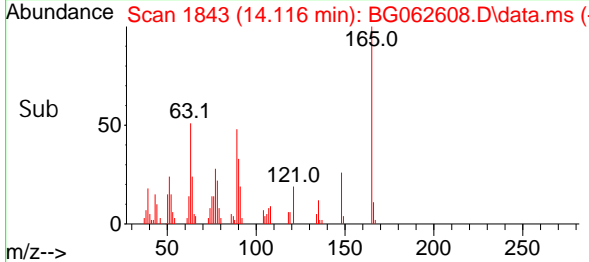
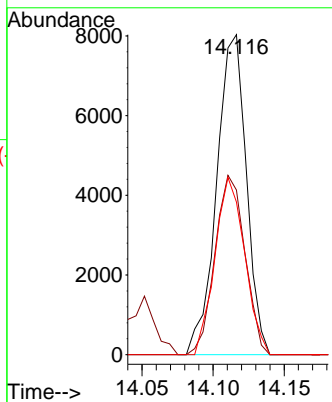
ClientSampleId :

SSTDICC005



Tgt Ion: 165 Resp: 11677

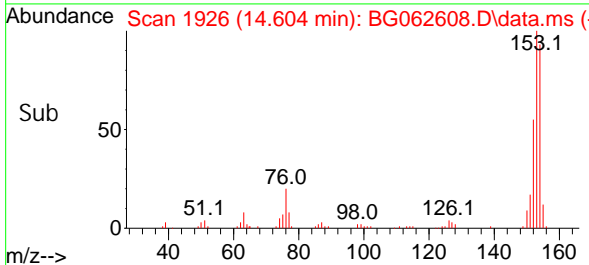
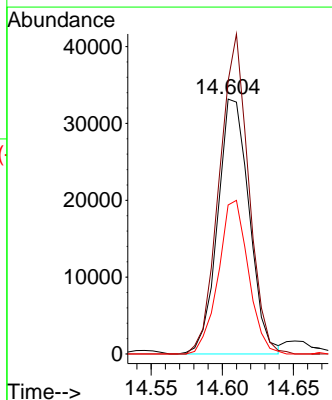
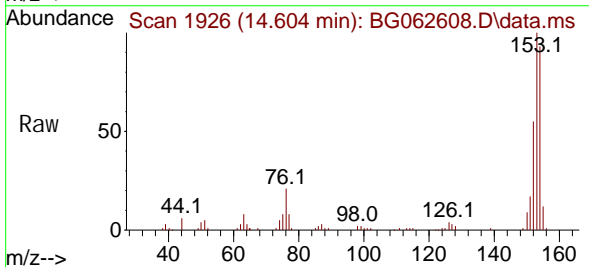
Ion	Ratio	Lower	Upper
165	100		
63	51.4	46.6	69.8
89	47.7	47.2	70.8

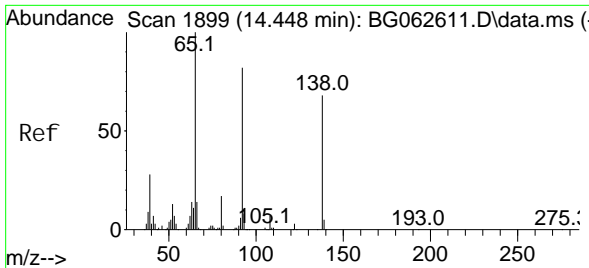


#52
 Acenaphthene
 Concen: 5.178 ng
 RT: 14.604 min Scan# 1926
 Delta R.T. -0.008 min
 Lab File: BG062608.D
 Acq: 30 Aug 2024 8:05

Tgt Ion: 154 Resp: 51190

Ion	Ratio	Lower	Upper
154	100		
153	107.1	95.0	142.4
152	58.4	45.0	67.6

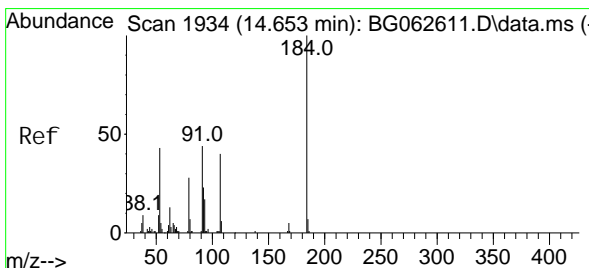
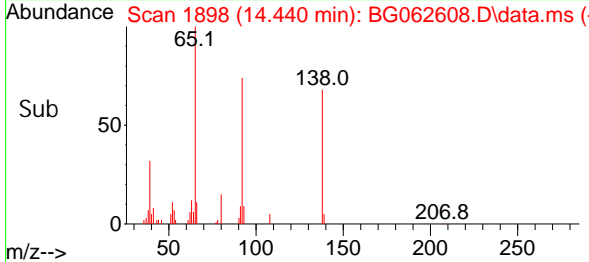
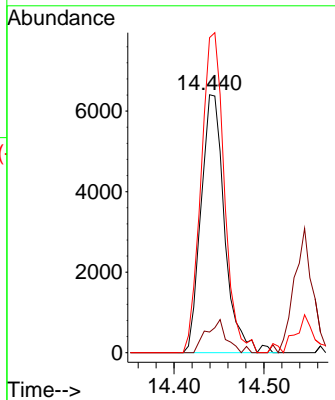
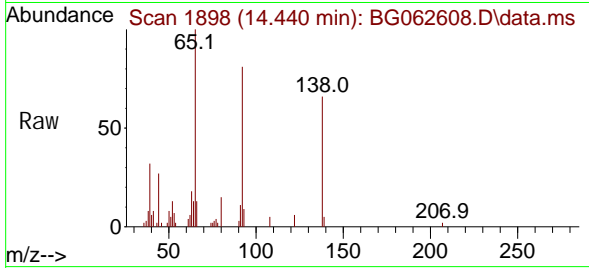




#53
 3-Nitroaniline
 Concen: 4.409 ng
 RT: 14.440 min Scan# 1898
 Delta R.T. -0.008 min
 Lab File: BG062608.D
 Acq: 30 Aug 2024 8:05

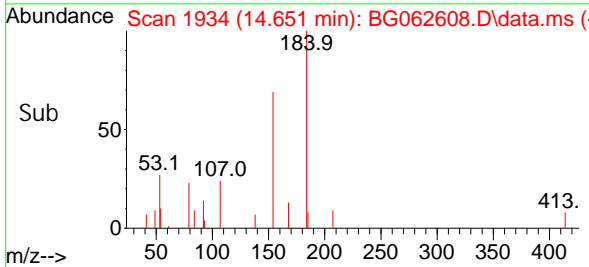
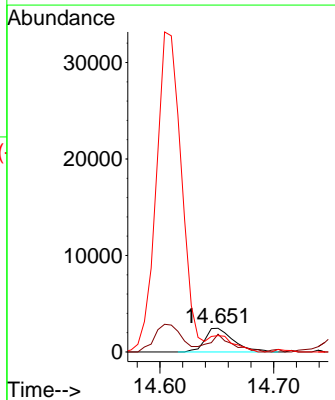
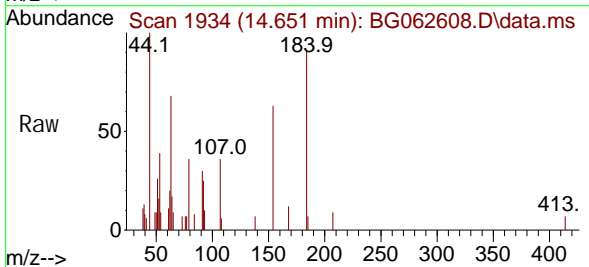
Instrument : BNA_G
 ClientSampleId : SSTDICC005

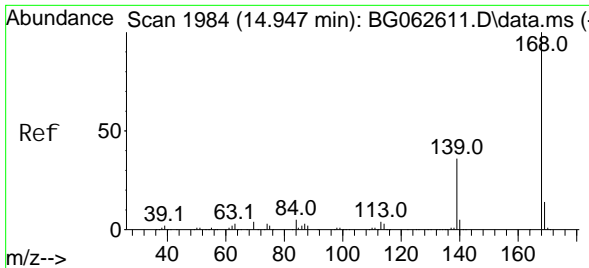
Tgt Ion	Resp	Lower	Upper
138	11654		
108	8.0	8.6	13.0#
92	122.1	95.7	143.5



#54
 2,4-Dinitrophenol
 Concen: 2.761 ng
 RT: 14.651 min Scan# 1934
 Delta R.T. -0.002 min
 Lab File: BG062608.D
 Acq: 30 Aug 2024 8:05

Tgt Ion	Resp	Lower	Upper
184	4233		
63	75.2	49.0	73.4#
154	69.3	50.5	75.7





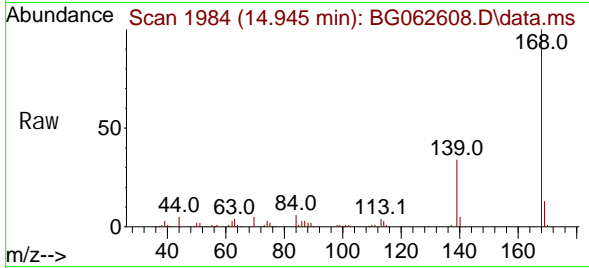
#55
 Di benzofuran
 Concen: 5.301 ng
 RT: 14.945 min Scan# 1984
 Delta R.T. -0.002 min
 Lab File: BG062608.D
 Acq: 30 Aug 2024 8:05

Instrument :

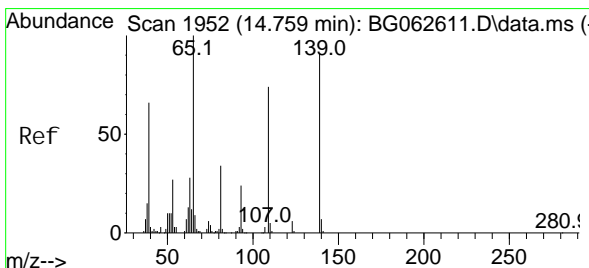
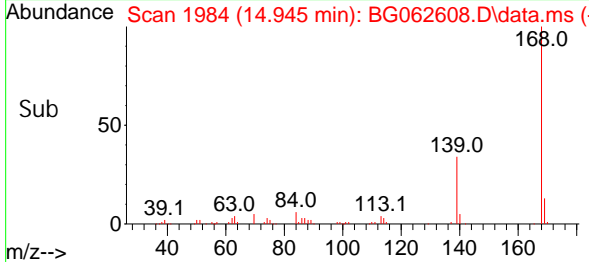
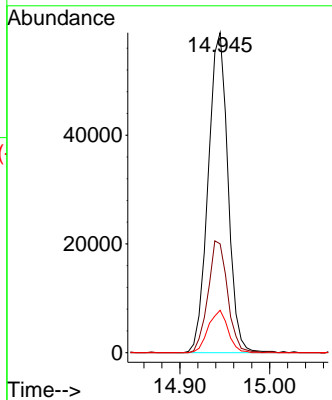
BNA_G

ClientSampleId :

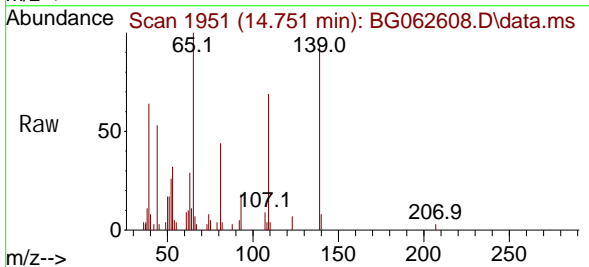
SSTDIC005



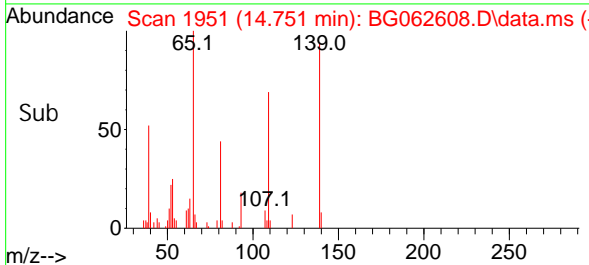
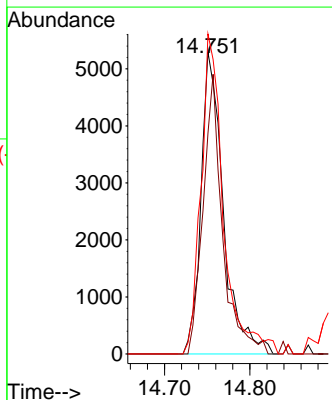
Tgt Ion: 168 Resp: 89878
 Ion Ratio Lower Upper
 168 100
 139 34.0 28.6 42.8
 169 13.2 11.0 16.6

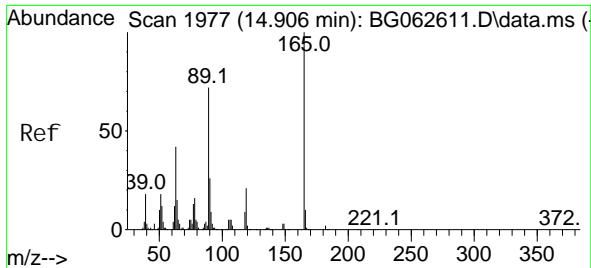


#56
 4-Nitrophenol
 Concen: 4.318 ng
 RT: 14.751 min Scan# 1951
 Delta R.T. -0.008 min
 Lab File: BG062608.D
 Acq: 30 Aug 2024 8:05



Tgt Ion: 139 Resp: 9673
 Ion Ratio Lower Upper
 139 100
 109 73.1 61.2 101.2
 65 106.0 90.2 130.2





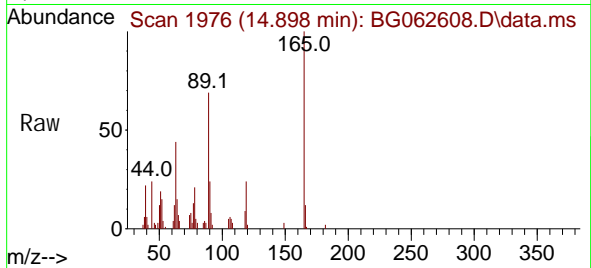
#57
 2,4-Dinitrotoluene
 Concen: 4.356 ng
 RT: 14.898 min Scan# 1976
 Delta R.T. -0.008 min
 Lab File: BG062608.D
 Acq: 30 Aug 2024 8:05

Instrument :

BNA_G

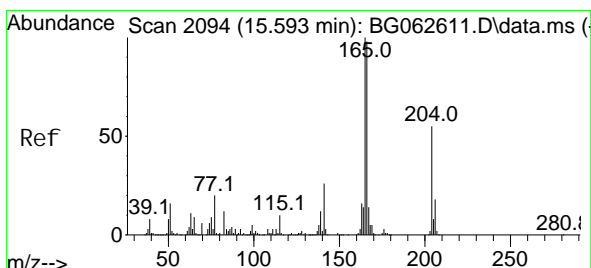
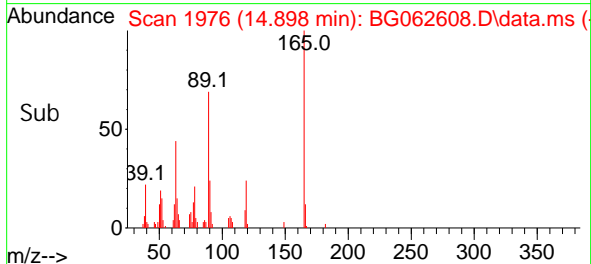
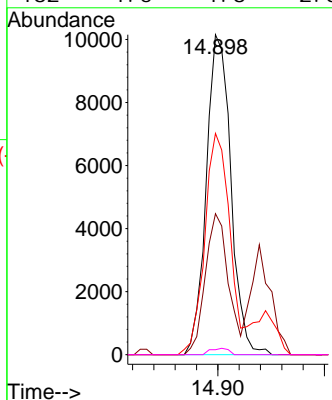
ClientSampleId :

SSTDICC005



Tgt Ion: 165 Resp: 16236

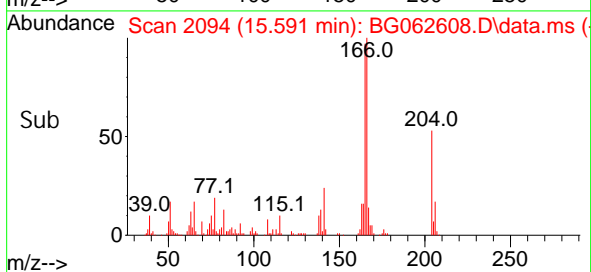
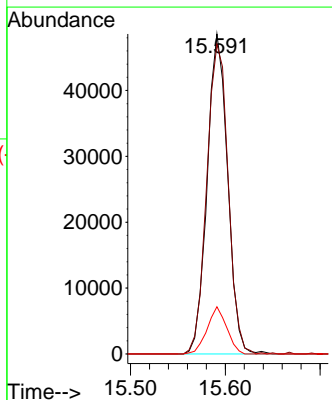
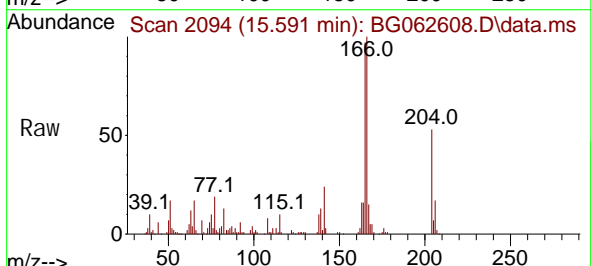
Ion	Ratio	Lower	Upper
165	100		
63	44.1	33.8	50.6
89	69.1	57.9	86.9
182	1.5	1.8	2.8

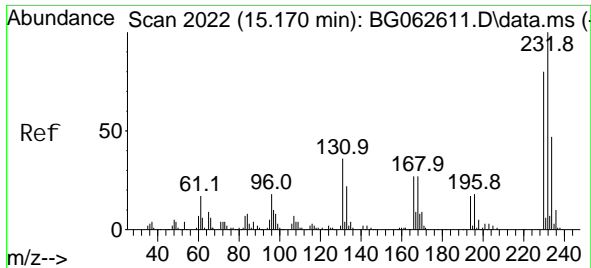


#58
 Fluorene
 Concen: 5.475 ng
 RT: 15.591 min Scan# 2094
 Delta R.T. -0.002 min
 Lab File: BG062608.D
 Acq: 30 Aug 2024 8:05

Tgt Ion: 166 Resp: 72857

Ion	Ratio	Lower	Upper
166	100		
165	96.7	82.0	123.0
167	14.8	11.3	16.9





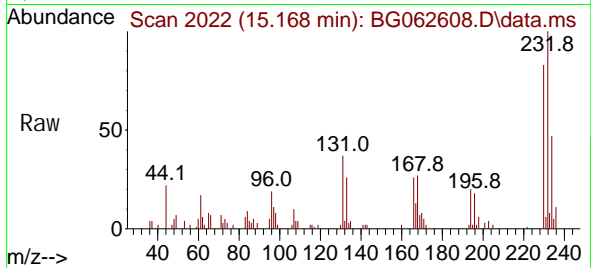
#59
 2, 3, 4, 6-Tetrachlorophenol
 Concen: 5.081 ng
 RT: 15.168 min Scan# 2022
 Delta R.T. -0.002 min
 Lab File: BG062608.D
 Acq: 30 Aug 2024 8:05

Instrument :

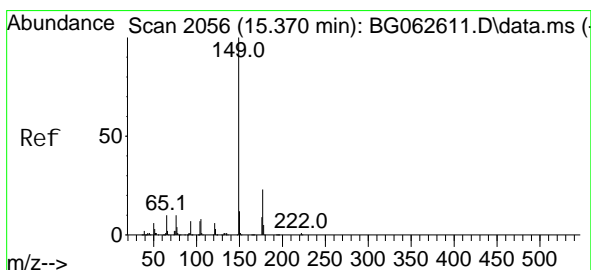
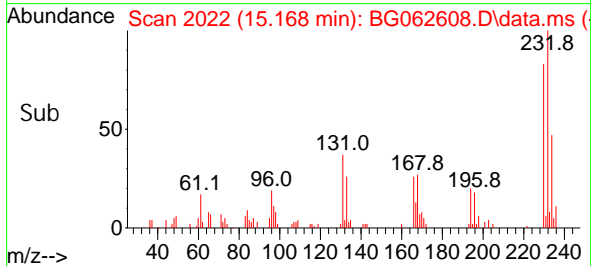
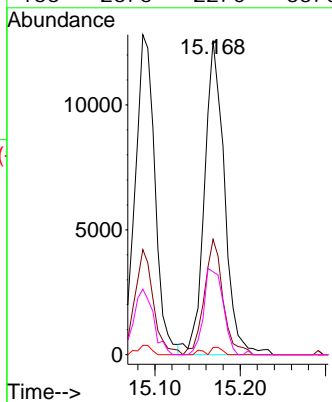
BNA_G

ClientSampleId :

SSTDIC005

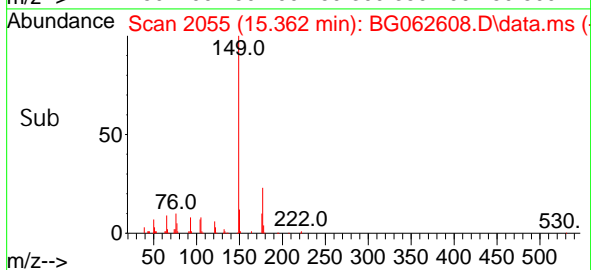
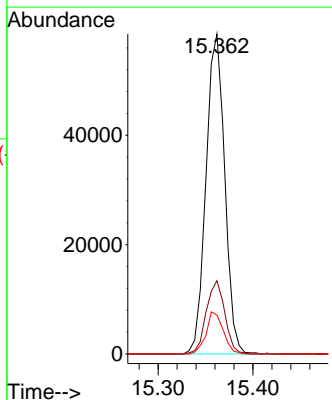
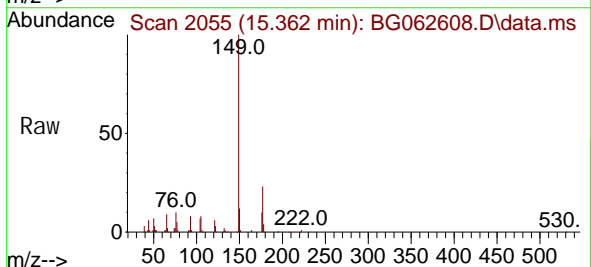


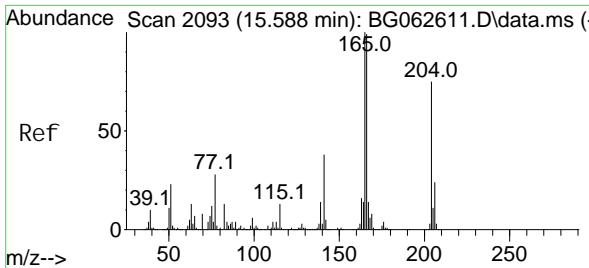
Tgt Ion: 232 Resp: 20525
 Ion Ratio Lower Upper
 232 100
 131 34.5 28.3 42.5
 130 1.9 1.7 2.5
 166 26.5 22.0 33.0



#60
 Diethyl phthalate
 Concen: 5.605 ng
 RT: 15.362 min Scan# 2055
 Delta R.T. -0.008 min
 Lab File: BG062608.D
 Acq: 30 Aug 2024 8:05

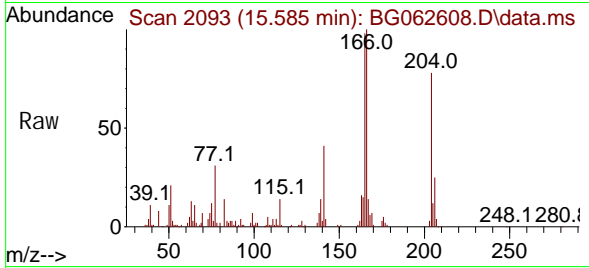
Tgt Ion: 149 Resp: 80232
 Ion Ratio Lower Upper
 149 100
 177 22.9 18.0 27.0
 150 12.2 9.8 14.8



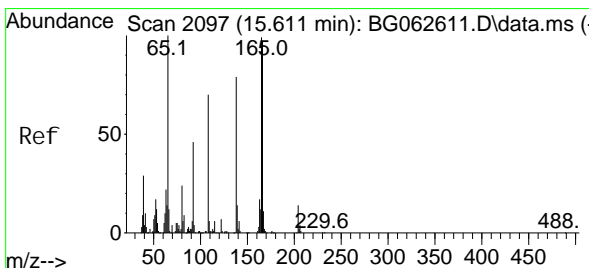
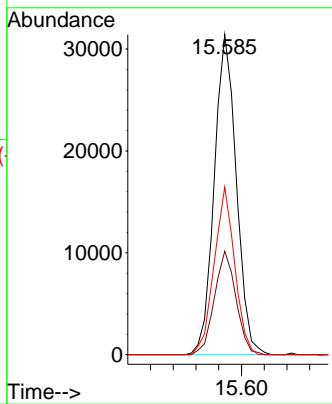
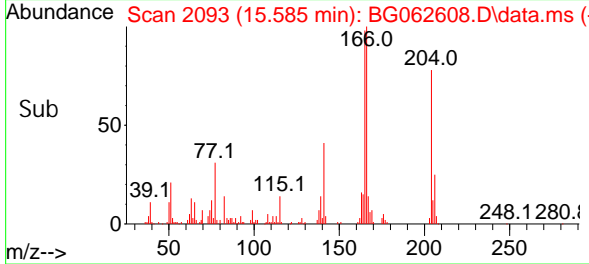


#61
 4-Chlorophenyl-phenyl ether
 Concen: 5.535 ng
 RT: 15.585 min Scan# 2093
 Delta R.T. -0.002 min
 Lab File: BG062608.D
 Acq: 30 Aug 2024 8:05

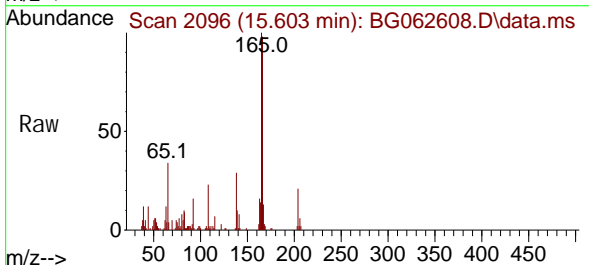
Instrument : BNA_G
 ClientSampleId : SSTDICC005



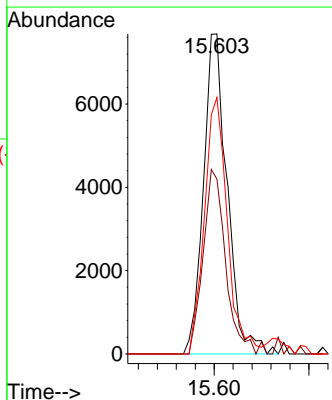
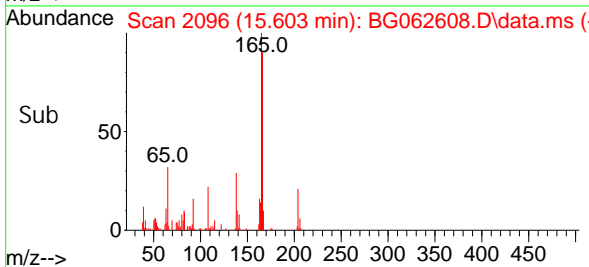
Tgt Ion: 204 Resp: 42279
 Ion Ratio Lower Upper
 204 100
 206 32.4 25.9 38.9
 141 52.4 41.0 61.6

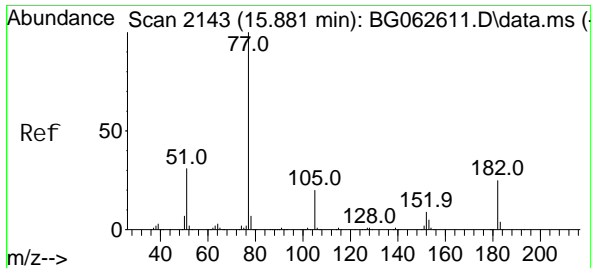


#62
 4-Nitroaniline
 Concen: 4.590 ng
 RT: 15.603 min Scan# 2096
 Delta R.T. -0.008 min
 Lab File: BG062608.D
 Acq: 30 Aug 2024 8:05



Tgt Ion: 138 Resp: 13379
 Ion Ratio Lower Upper
 138 100
 92 54.6 38.4 78.4
 108 80.2 69.0 109.0





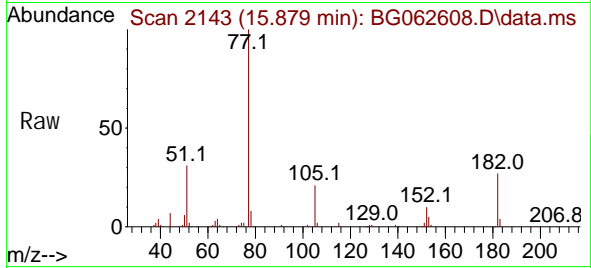
#63
 Azobenzene
 Concen: 5.432 ng
 RT: 15.879 min Scan# 2143
 Delta R.T. -0.002 min
 Lab File: BG062608.D
 Acq: 30 Aug 2024 8:05

Instrument :

BNA_G

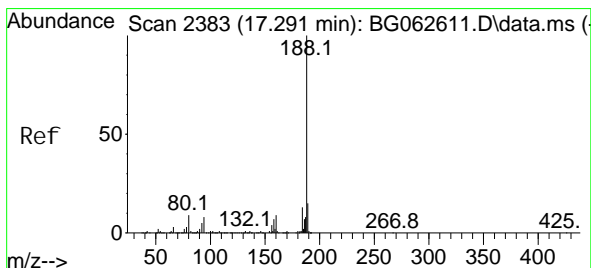
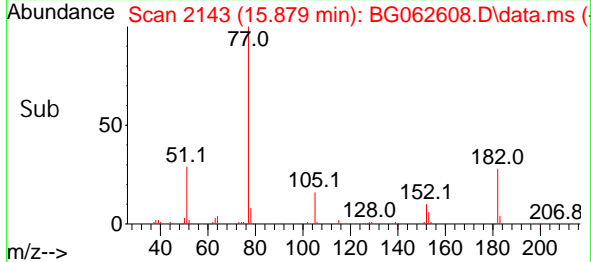
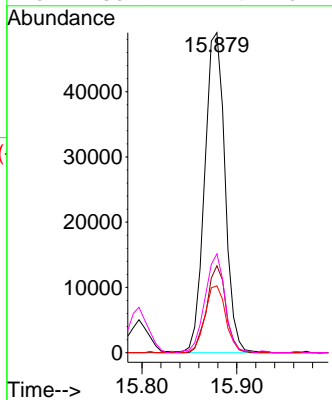
ClientSampleId :

SSTDIC005



Tgt Ion: 77 Resp: 73024

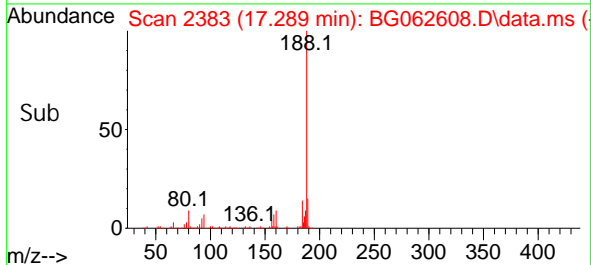
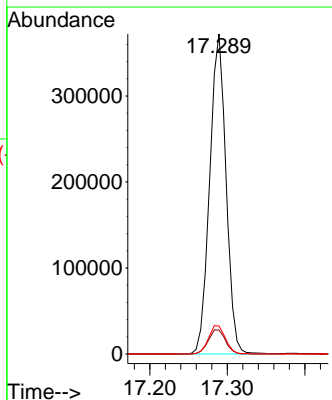
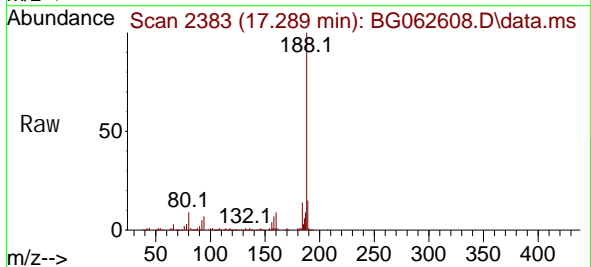
Ion	Ratio	Lower	Upper
77	100		
182	27.2	5.0	45.0
105	20.9	0.5	40.5
51	30.9	11.4	51.4

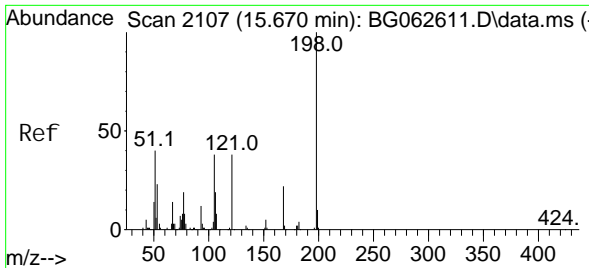


#64
 Phenanthrene-d10
 Concen: 20.000 ng
 RT: 17.289 min Scan# 2383
 Delta R.T. -0.002 min
 Lab File: BG062608.D
 Acq: 30 Aug 2024 8:05

Tgt Ion: 188 Resp: 546285

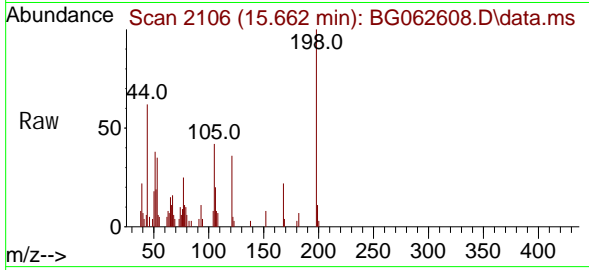
Ion	Ratio	Lower	Upper
188	100		
94	7.5	6.3	9.5
80	8.8	7.0	10.4



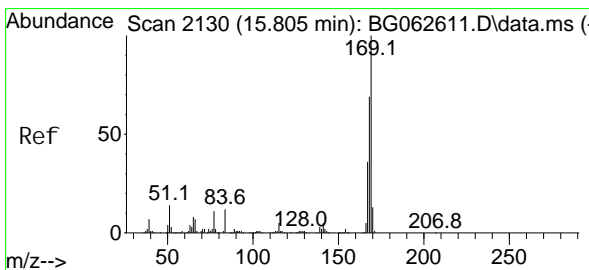
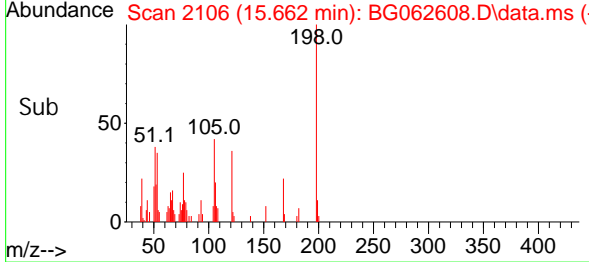
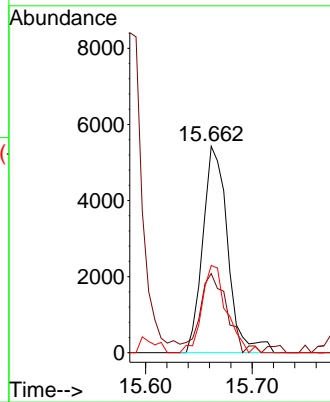


#65
 4,6-Dinitro-2-methyl phenol
 Concen: 3.623 ng
 RT: 15.662 min Scan# 2106
 Delta R.T. -0.008 min
 Lab File: BG062608.D
 Acq: 30 Aug 2024 8:05

Instrument : BNA_G
 ClientSampleId : SSTDICC005

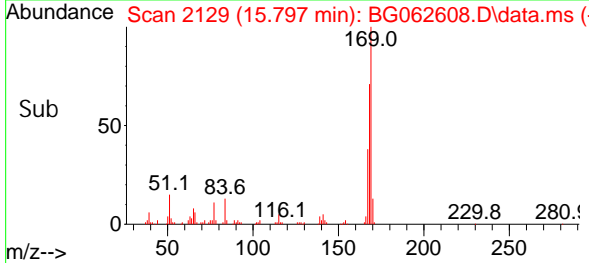
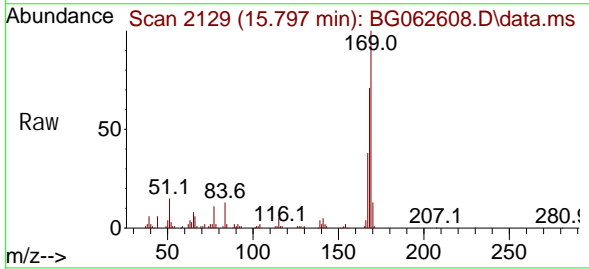
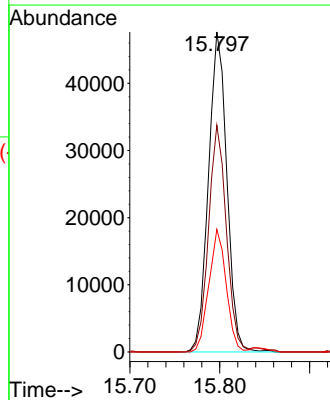


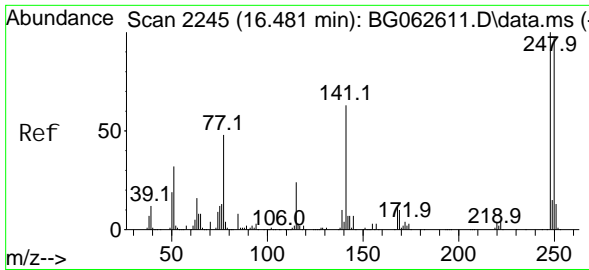
Tgt Ion: 198 Resp: 8833
 Ion Ratio Lower Upper
 198 100
 51 38.3 25.1 65.1
 105 42.2 18.3 58.3



#66
 n-Nitrosodiphenylamine
 Concen: 5.153 ng
 RT: 15.797 min Scan# 2129
 Delta R.T. -0.008 min
 Lab File: BG062608.D
 Acq: 30 Aug 2024 8:05

Tgt Ion: 169 Resp: 67685
 Ion Ratio Lower Upper
 169 100
 168 70.8 55.4 83.2
 167 38.3 29.0 43.6

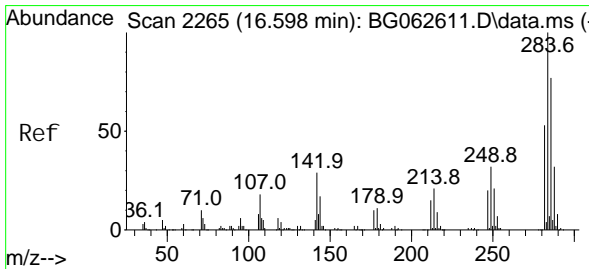
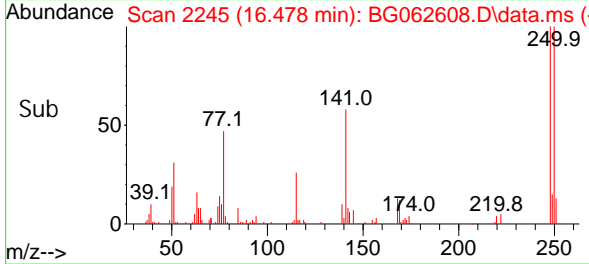
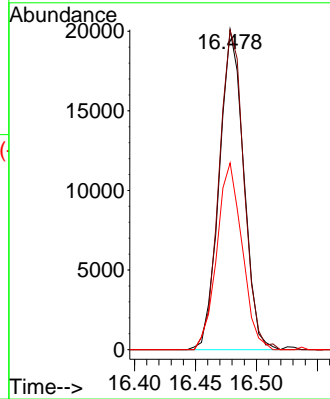
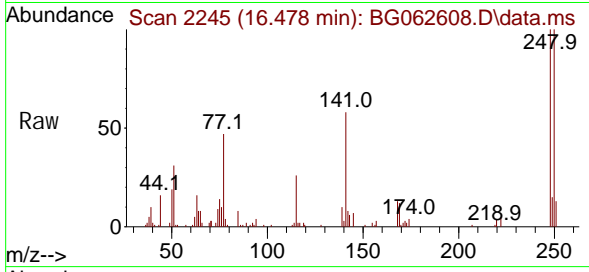




#67
 4-Bromophenyl -phenyl ether
 Concen: 4.977 ng
 RT: 16.478 min Scan# 21
 Delta R.T. -0.002 min
 Lab File: BG062608.D
 Acq: 30 Aug 2024 8:05

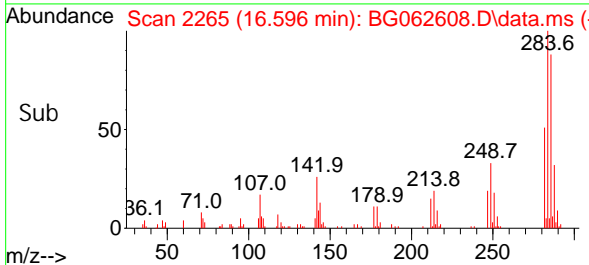
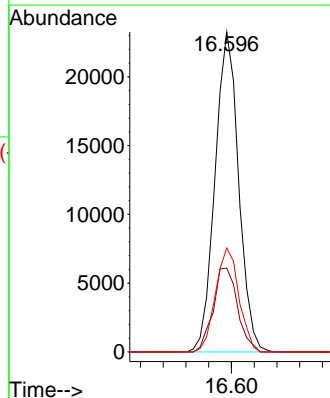
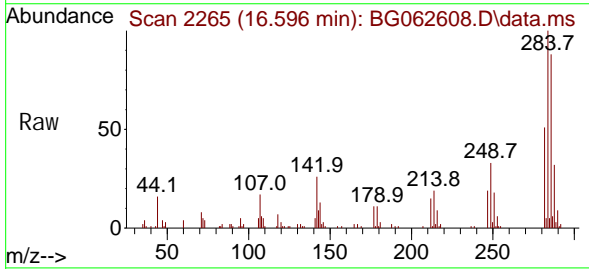
Instrument :
 BNA_G
 ClientSampleId :
 SSTDICC005

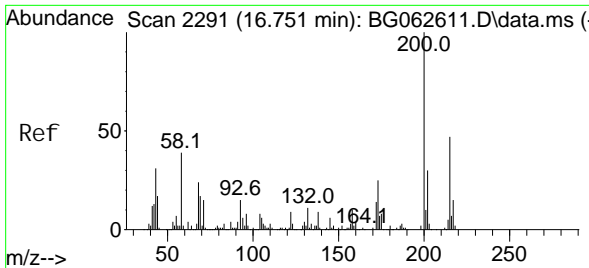
Tgt Ion	Resp	Lower	Upper
248	100		
250	99.8	77.9	116.9
141	58.4	50.2	75.2



#68
 Hexachlorobenzene
 Concen: 5.014 ng
 RT: 16.596 min Scan# 2265
 Delta R.T. -0.002 min
 Lab File: BG062608.D
 Acq: 30 Aug 2024 8:05

Tgt Ion	Resp	Lower	Upper
284	100		
142	26.2	23.5	35.3
249	32.5	25.4	38.0





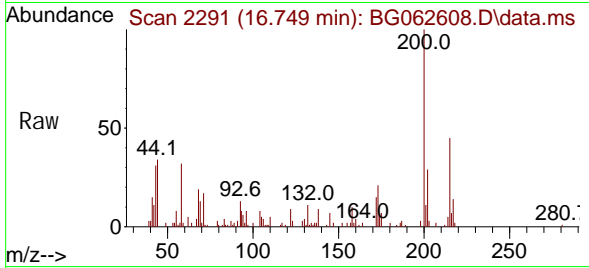
#69
 Atrazine
 Concen: 5.926 ng
 RT: 16.749 min Scan# 21
 Delta R.T. -0.002 min
 Lab File: BG062608.D
 Acq: 30 Aug 2024 8:05

Instrument :

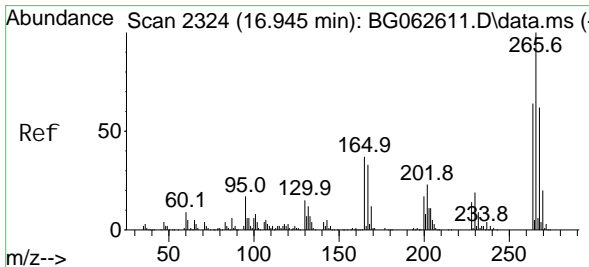
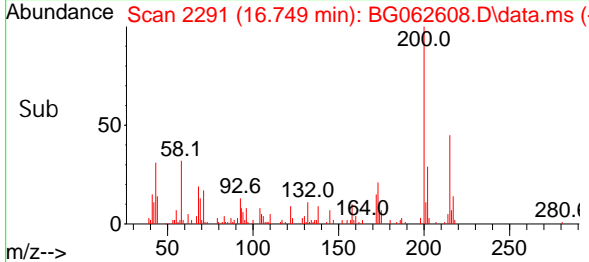
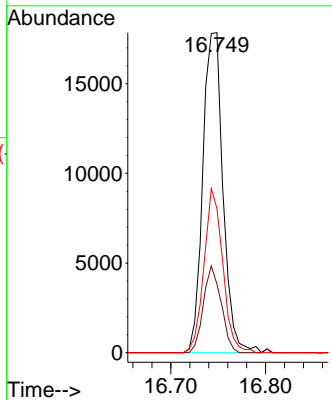
BNA_G

ClientSampleId :

SSTDIC005

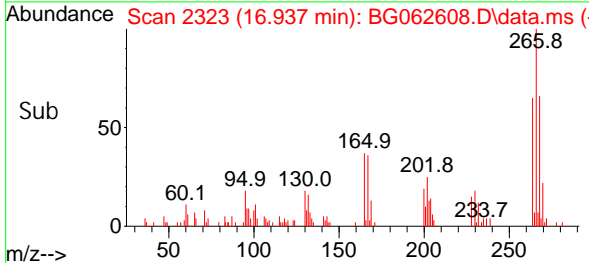
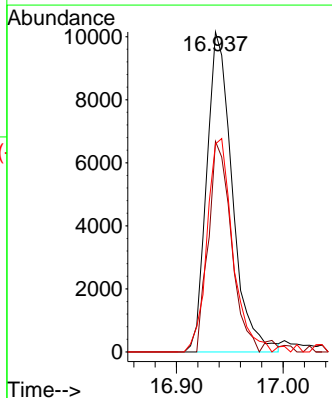
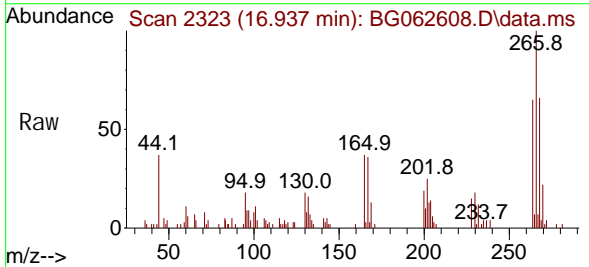


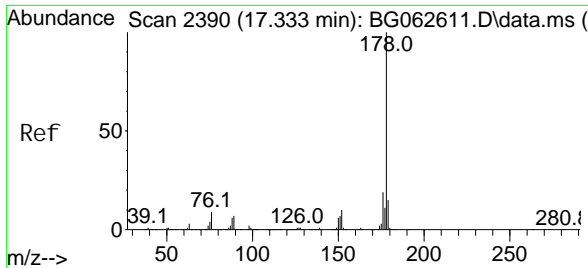
Tgt Ion: 200 Resp: 26434
 Ion Ratio Lower Upper
 200 100
 173 21.4 5.2 45.2
 215 45.0 27.3 67.3



#70
 Pentachlorophenol
 Concen: 3.952 ng
 RT: 16.937 min Scan# 2323
 Delta R.T. -0.008 min
 Lab File: BG062608.D
 Acq: 30 Aug 2024 8:05

Tgt Ion: 266 Resp: 16902
 Ion Ratio Lower Upper
 266 100
 268 70.2 52.6 79.0
 264 65.0 51.6 77.4

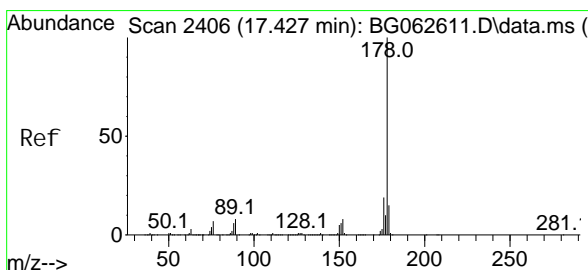
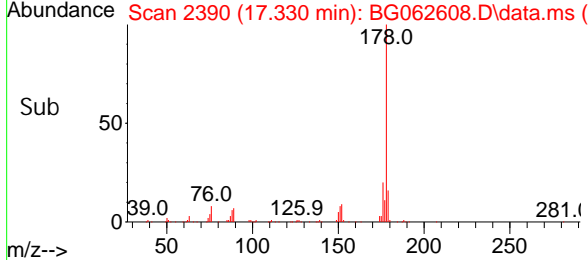
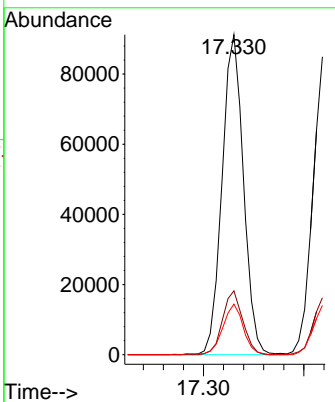
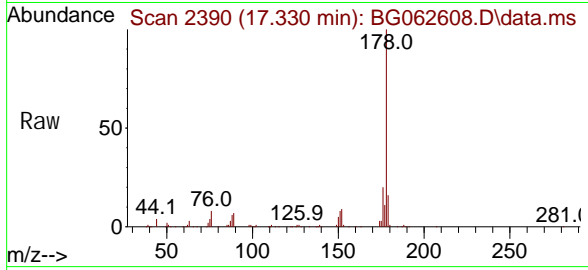




#71
 Phenanthrene
 Concen: 5.285 ng
 RT: 17.330 min Scan# 21
 Delta R.T. -0.002 min
 Lab File: BG062608.D
 Acq: 30 Aug 2024 8:05

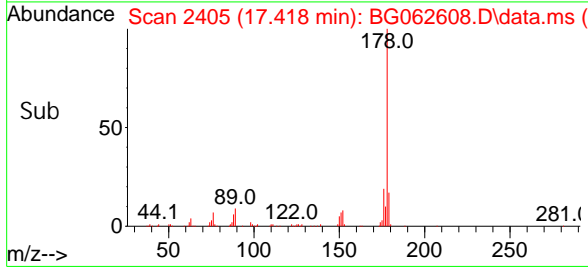
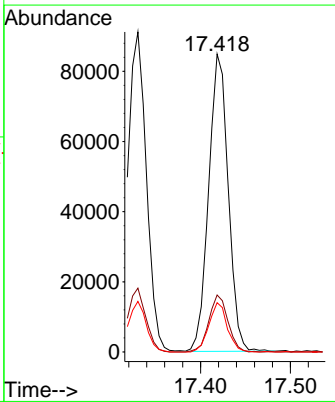
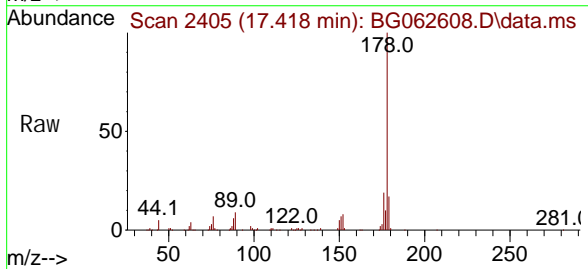
Instrument : BNA_G
 ClientSampleId : SSTDICC005

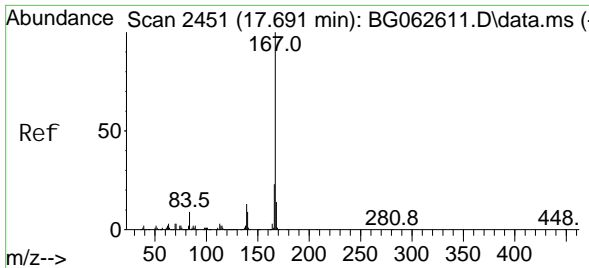
Tgt Ion	Resp	Lower	Upper
178	134746		
176	19.9	15.4	23.0
179	15.8	12.2	18.4



#72
 Anthracene
 Concen: 5.122 ng
 RT: 17.418 min Scan# 2405
 Delta R.T. -0.008 min
 Lab File: BG062608.D
 Acq: 30 Aug 2024 8:05

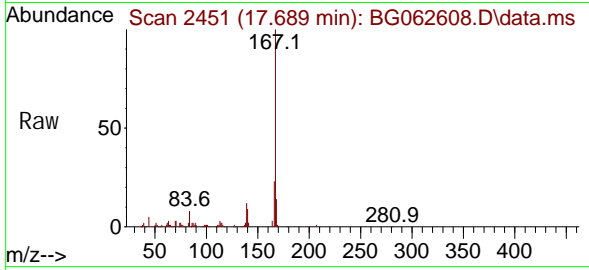
Tgt Ion	Resp	Lower	Upper
178	128398		
176	19.1	15.2	22.8
179	16.5	12.0	18.0



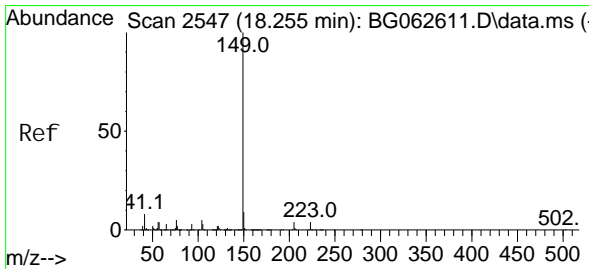
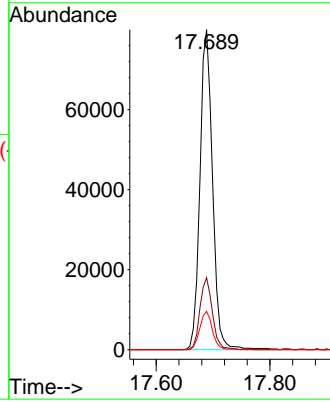
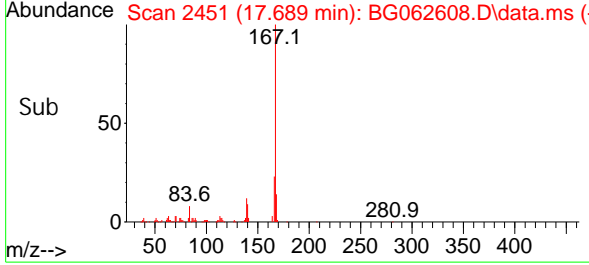


#73
 Carbazole
 Concen: 5.344 ng
 RT: 17.689 min Scan# 2451
 Delta R.T. -0.002 min
 Lab File: BG062608.D
 Acq: 30 Aug 2024 8:05

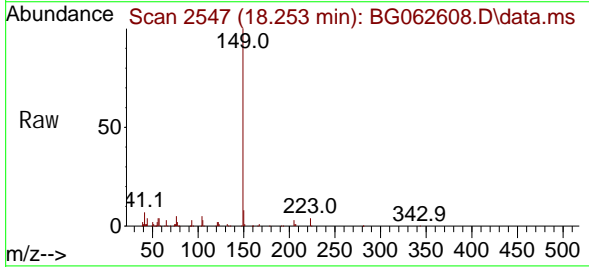
Instrument : BNA_G
 ClientSampleId : SSTDICC005



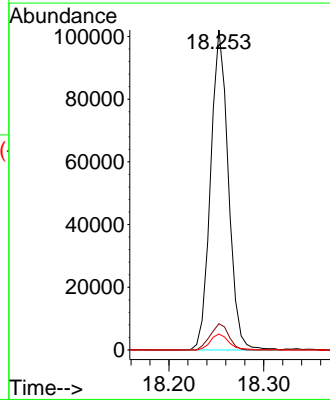
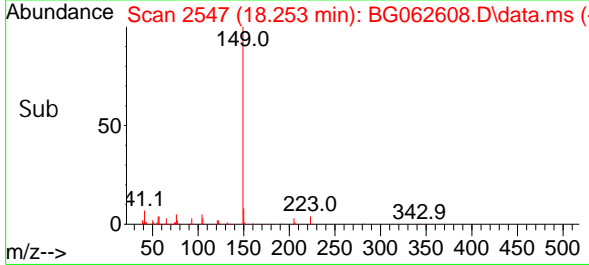
Tgt Ion: 167 Resp: 123173
 Ion Ratio Lower Upper
 167 100
 166 22.5 18.2 27.2
 139 11.9 10.1 15.1

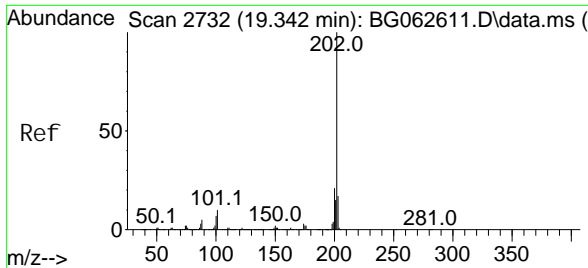


#74
 Di-n-butyl phthalate
 Concen: 5.091 ng
 RT: 18.253 min Scan# 2547
 Delta R.T. -0.002 min
 Lab File: BG062608.D
 Acq: 30 Aug 2024 8:05



Tgt Ion: 149 Resp: 132333
 Ion Ratio Lower Upper
 149 100
 150 8.2 7.3 10.9
 104 5.0 4.2 6.2

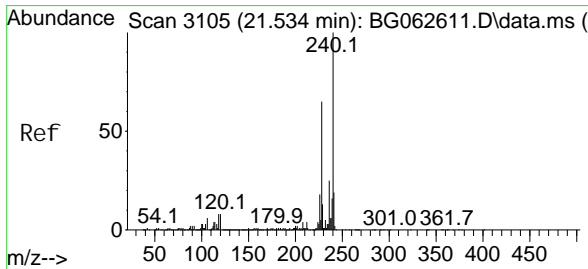
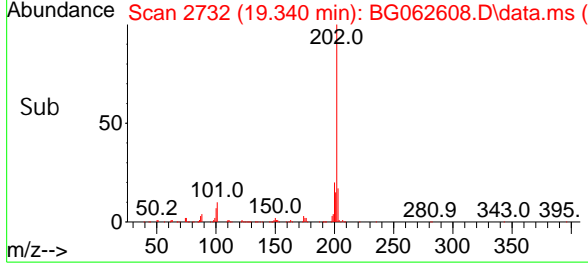
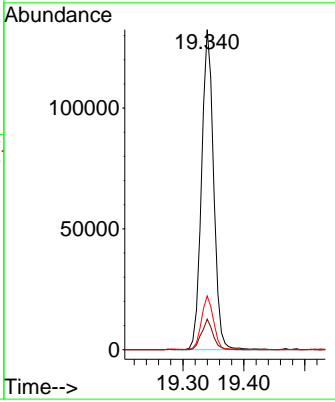
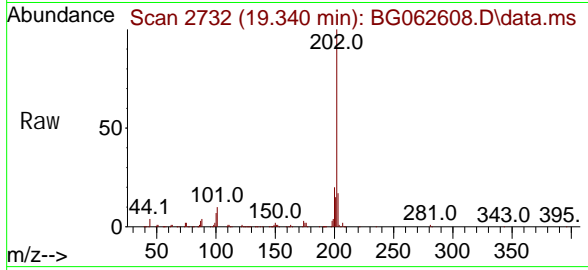




#75
 Fluoranthene
 Concen: 5.656 ng
 RT: 19.340 min Scan# 21
 Delta R.T. -0.002 min
 Lab File: BG062608.D
 Acq: 30 Aug 2024 8:05

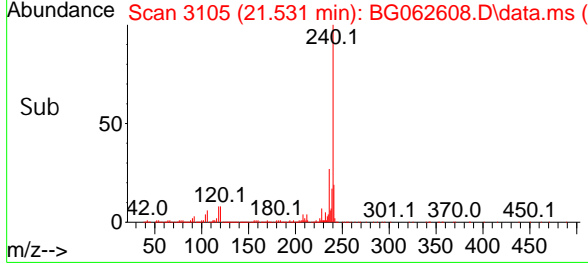
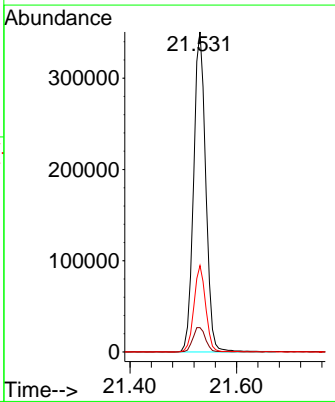
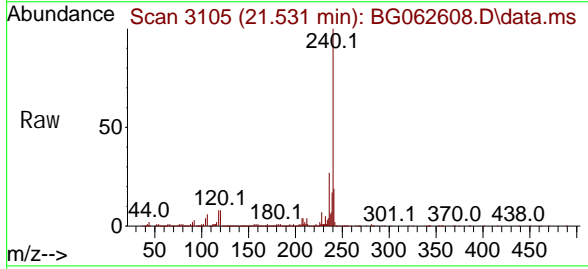
Instrument :
 BNA_G
ClientSampleId :
 SSTDICC005

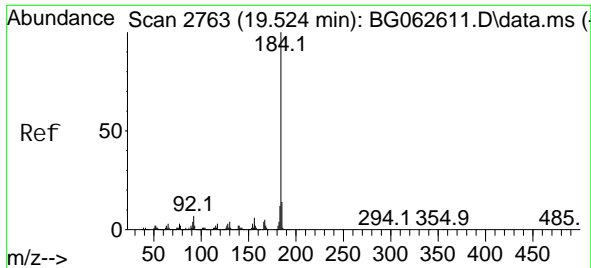
Tgt Ion	Resp	Lower	Upper
202	182389		
101	9.6	0.0	29.6
203	16.8	0.0	37.4



#76
 Chrysene-d12
 Concen: 20.000 ng
 RT: 21.531 min Scan# 3105
 Delta R.T. -0.002 min
 Lab File: BG062608.D
 Acq: 30 Aug 2024 8:05

Tgt Ion	Resp	Lower	Upper
240	555226		
120	7.6	6.6	9.8
236	27.0	20.2	30.4

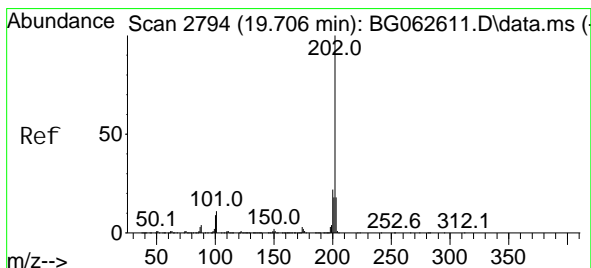
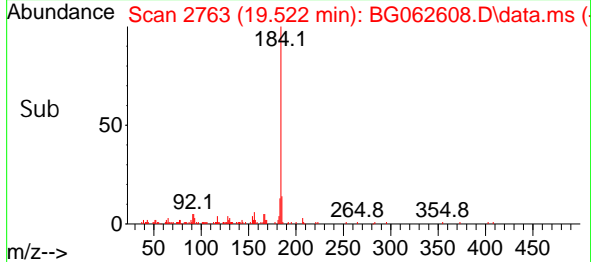
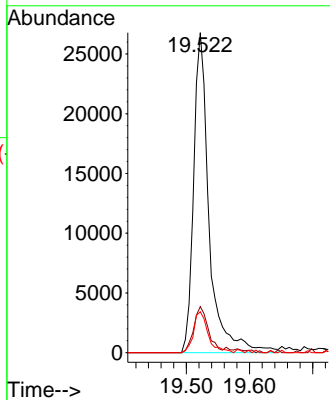
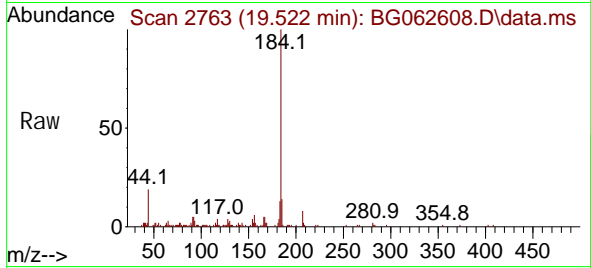




#77
 Benzi di ne
 Concen: 4.561 ng
 RT: 19.522 min Scan# 2763
 Delta R.T. -0.002 min
 Lab File: BG062608.D
 Acq: 30 Aug 2024 8:05

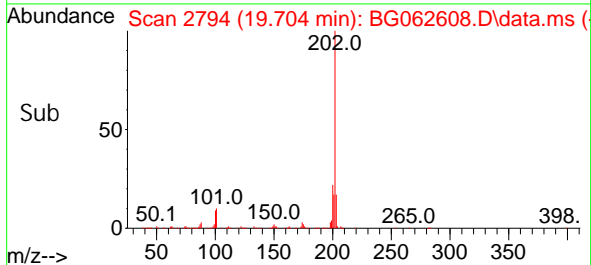
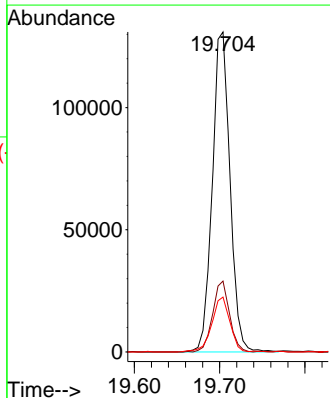
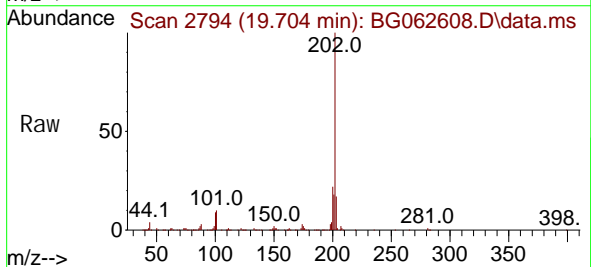
Instrument :
 BNA_G
 ClientSampleId :
 SSTDICC005

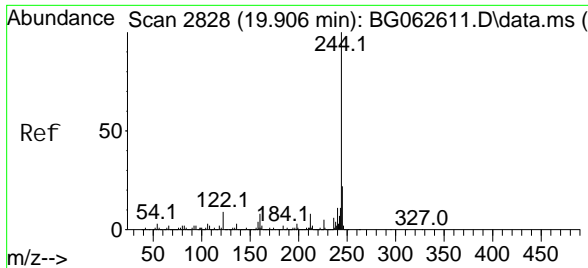
Tgt Ion: 184 Resp: 45641
 Ion Ratio Lower Upper
 184 100
 185 14.4 11.0 16.6
 183 12.8 9.7 14.5



#78
 Pyrene
 Concen: 5.350 ng
 RT: 19.704 min Scan# 2794
 Delta R.T. -0.002 min
 Lab File: BG062608.D
 Acq: 30 Aug 2024 8:05

Tgt Ion: 202 Resp: 188816
 Ion Ratio Lower Upper
 202 100
 200 22.1 17.4 26.2
 203 17.2 14.1 21.1



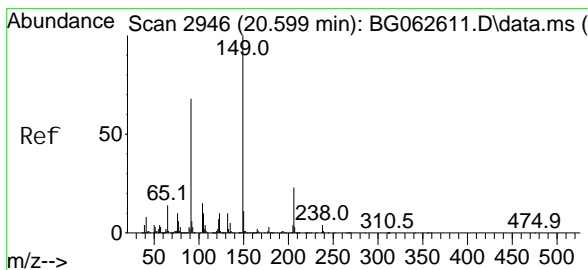
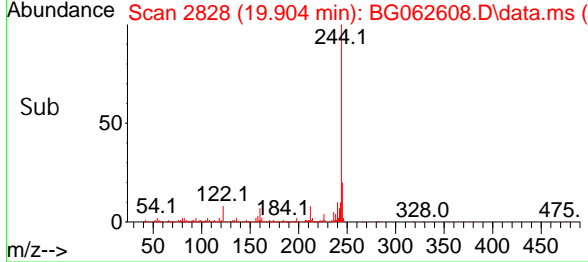
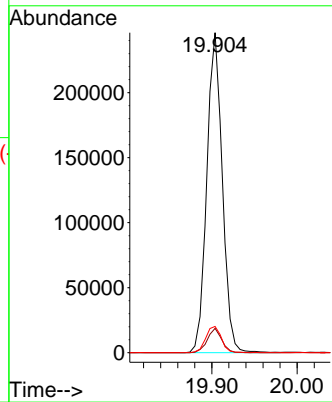
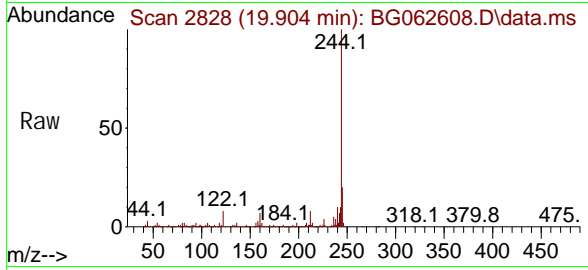


#79
 Terphenyl -d14
 Concen: 11.102 ng
 RT: 19.904 min Scan# 2828
 Delta R.T. -0.002 min
 Lab File: BG062608.D
 Acq: 30 Aug 2024 8:05

Instrument : BNA_G
 ClientSampleId : SSTDICC005

Tgt Ion: 244 Resp: 310863

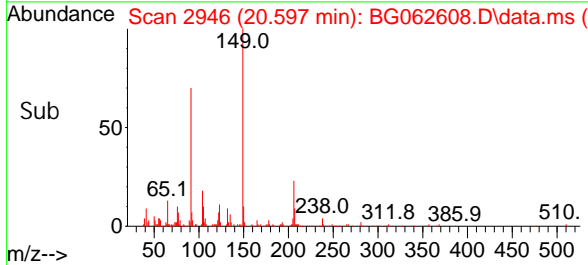
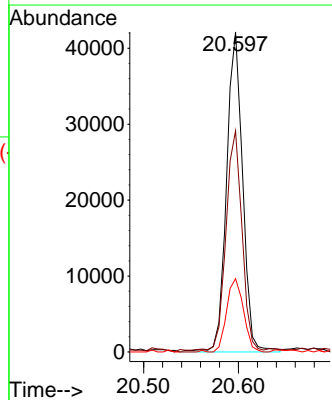
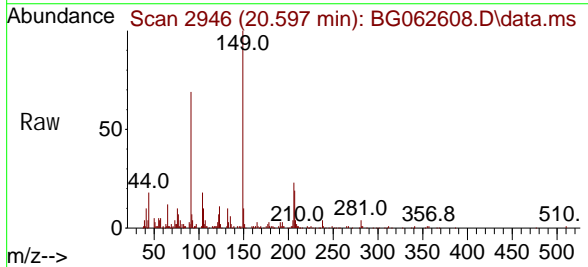
Ion	Ratio	Lower	Upper
244	100		
212	7.6	6.6	10.0
122	8.2	7.2	10.8

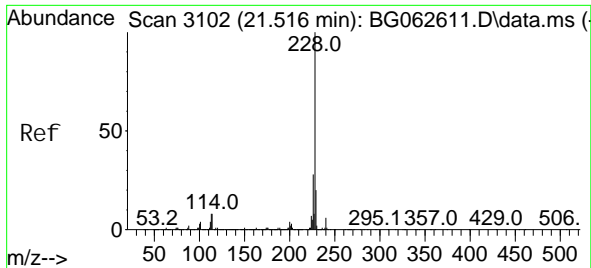


#80
 Butyl benzyl phthal ate
 Concen: 4.809 ng
 RT: 20.597 min Scan# 2946
 Delta R.T. -0.002 min
 Lab File: BG062608.D
 Acq: 30 Aug 2024 8:05

Tgt Ion: 149 Resp: 49850

Ion	Ratio	Lower	Upper
149	100		
91	69.1	54.6	81.8
206	22.9	18.4	27.6



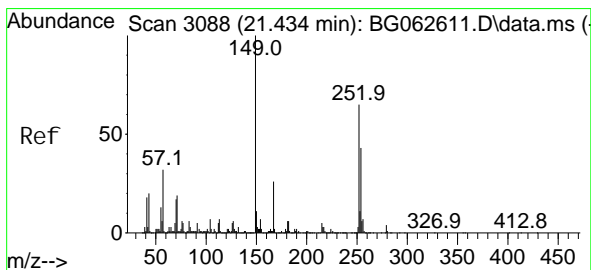
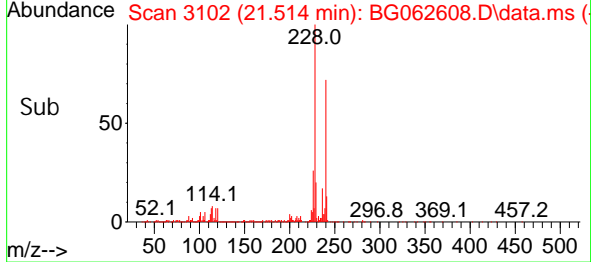
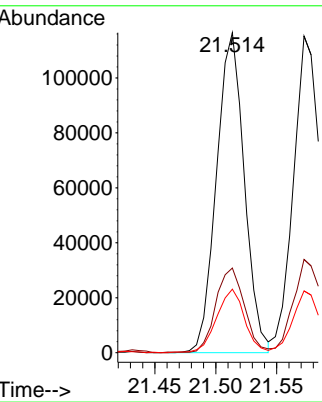
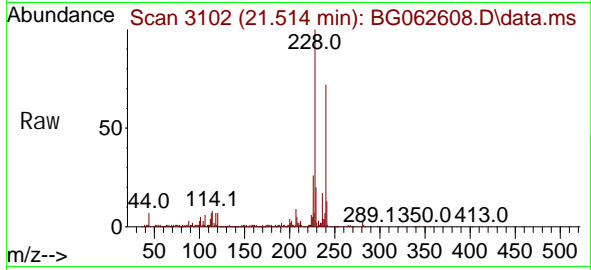


#81
 Benzo(a)anthracene
 Concen: 5.282 ng
 RT: 21.514 min Scan# 3102
 Delta R.T. -0.002 min
 Lab File: BG062608.D
 Acq: 30 Aug 2024 8:05

Instrument : BNA_G
 ClientSampleId : SSTDICC005

Tgt Ion: 228 Resp: 184978

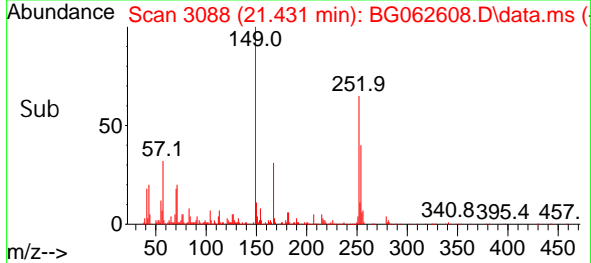
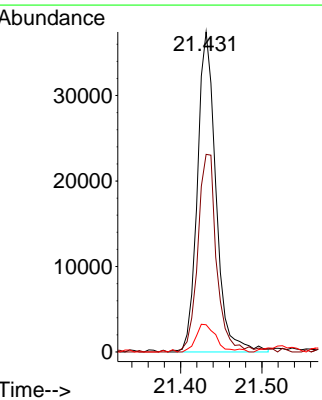
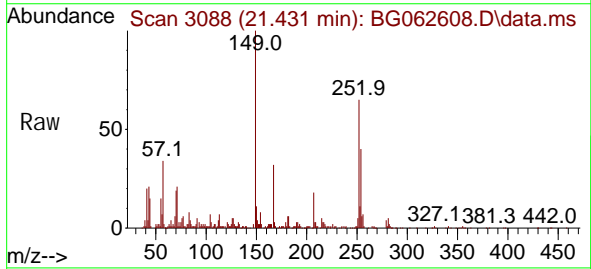
Ion	Ratio	Lower	Upper
228	100		
226	26.5	22.3	33.5
229	19.9	16.2	24.2

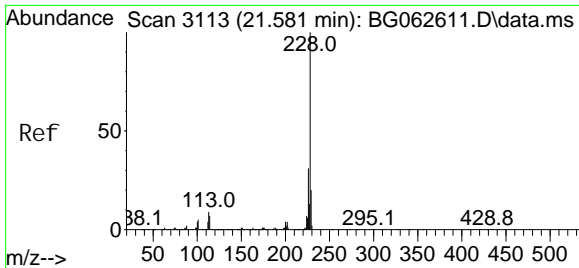


#82
 3,3'-Dichlorobenzidine
 Concen: 5.200 ng
 RT: 21.431 min Scan# 3088
 Delta R.T. -0.002 min
 Lab File: BG062608.D
 Acq: 30 Aug 2024 8:05

Tgt Ion: 252 Resp: 59326

Ion	Ratio	Lower	Upper
252	100		
254	61.8	52.2	78.2
126	8.5	6.7	10.1



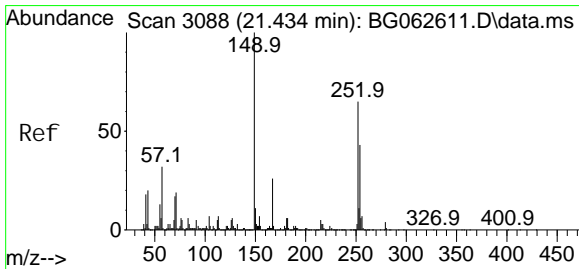
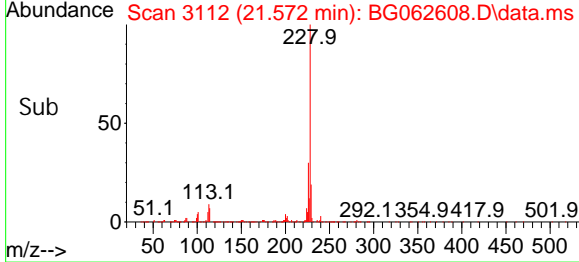
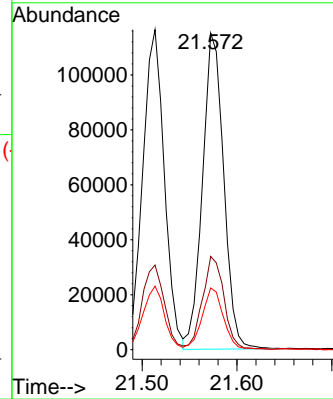
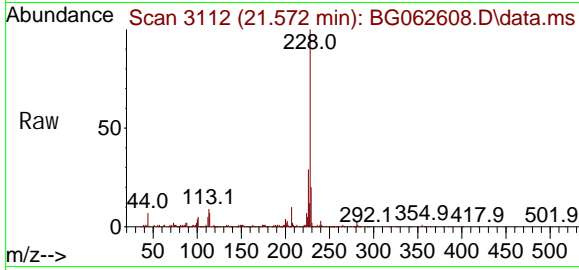


#83
 Chrysene
 Concen: 5.335 ng
 RT: 21.572 min Scan# 3112
 Delta R.T. -0.008 min
 Lab File: BG062608.D
 Acq: 30 Aug 2024 8:05

Instrument : BNA_G
 ClientSampleId : SSTDICC005

Tgt Ion: 228 Resp: 178962

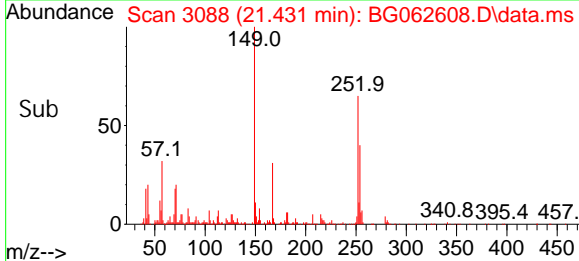
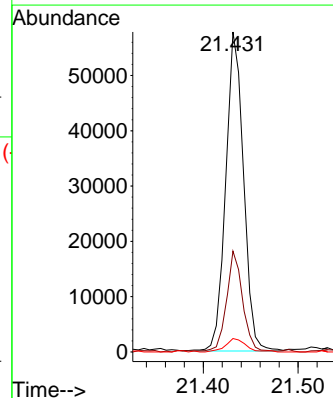
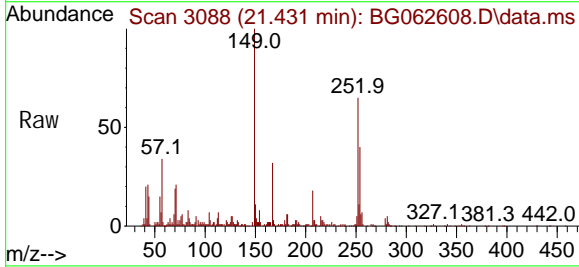
Ion	Ratio	Lower	Upper
228	100		
226	29.4	24.9	37.3
229	19.5	16.0	24.0

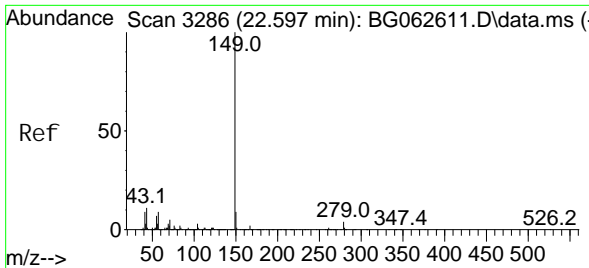


#84
 Bis(2-ethyl hexyl)phthalate
 Concen: 4.793 ng
 RT: 21.431 min Scan# 3088
 Delta R.T. -0.002 min
 Lab File: BG062608.D
 Acq: 30 Aug 2024 8:05

Tgt Ion: 149 Resp: 75484

Ion	Ratio	Lower	Upper
149	100		
167	31.5	20.5	30.7#
279	4.2	3.1	4.7





#85
 Di-n-octyl phthalate
 Concen: 4.669 ng
 RT: 22.595 min Scan# 31
 Delta R.T. -0.002 min
 Lab File: BG062608.D
 Acq: 30 Aug 2024 8:05

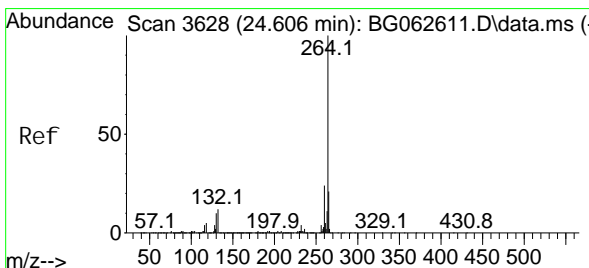
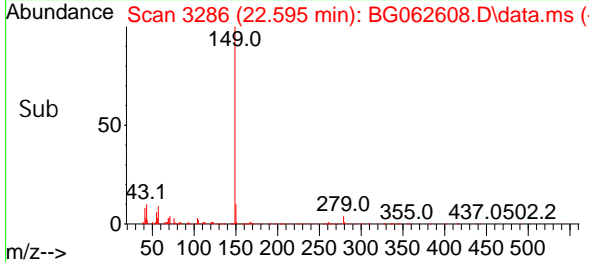
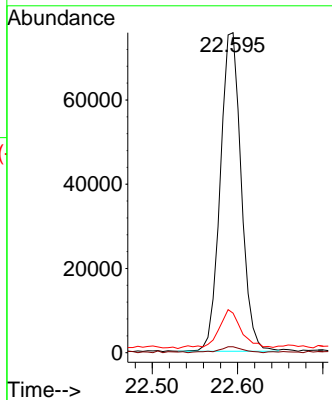
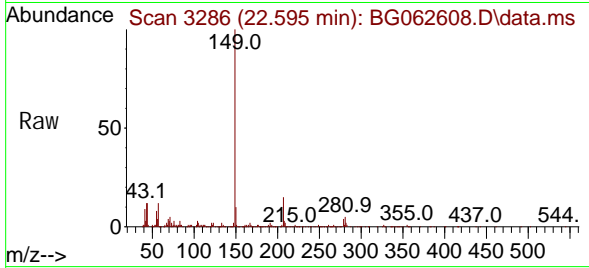
Instrument :

BNA_G

ClientSampleId :

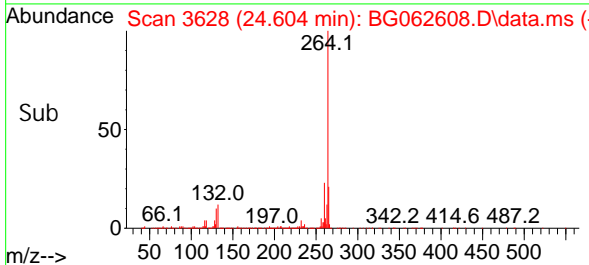
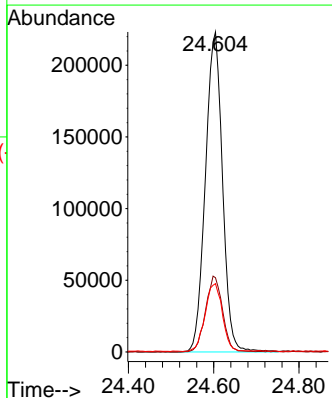
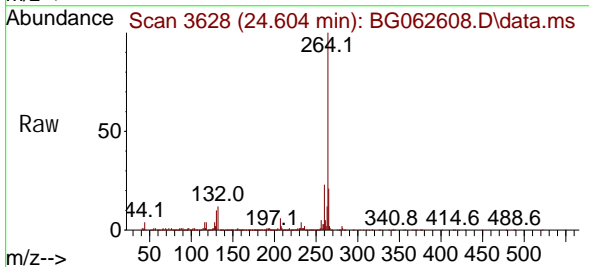
SSTDIC005

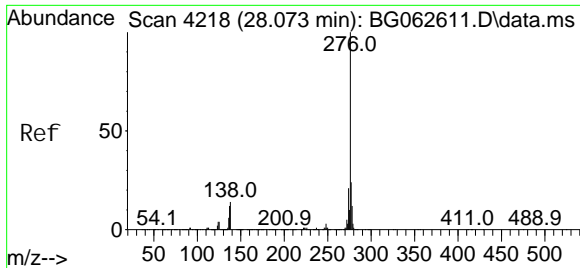
Tgt Ion: 149 Resp: 128739
 Ion Ratio Lower Upper
 149 100
 167 2.3 1.4 2.0#
 43 11.9 8.8 13.2



#86
 Perylene-d12
 Concen: 20.000 ng
 RT: 24.604 min Scan# 3628
 Delta R.T. -0.002 min
 Lab File: BG062608.D
 Acq: 30 Aug 2024 8:05

Tgt Ion: 264 Resp: 622021
 Ion Ratio Lower Upper
 264 100
 260 23.2 19.0 28.4
 265 21.4 17.3 25.9

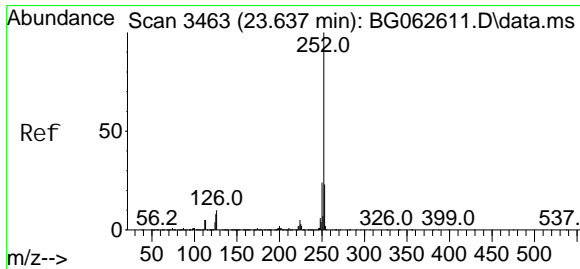
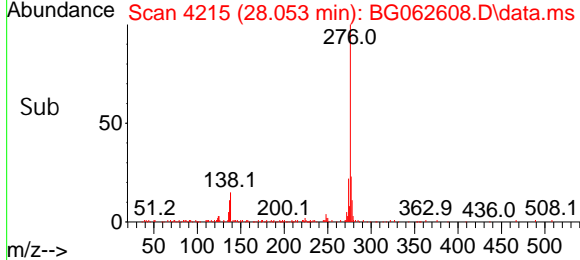
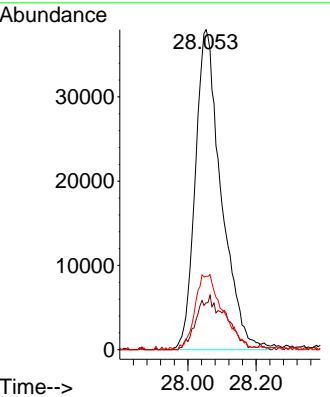
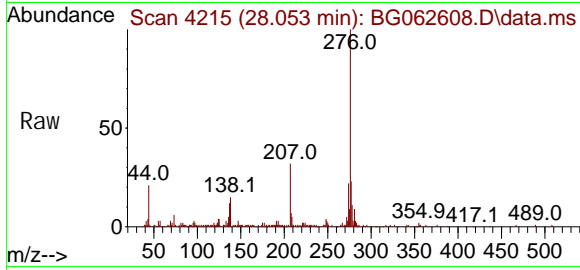




#87
 Indeno(1, 2, 3-cd)pyrene
 Concen: 5.040 ng
 RT: 28.053 min Scan# 41
 Delta R.T. -0.020 min
 Lab File: BG062608.D
 Acq: 30 Aug 2024 8:05

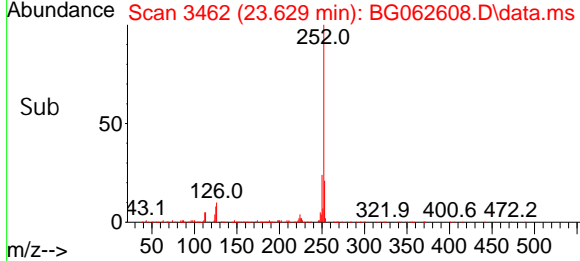
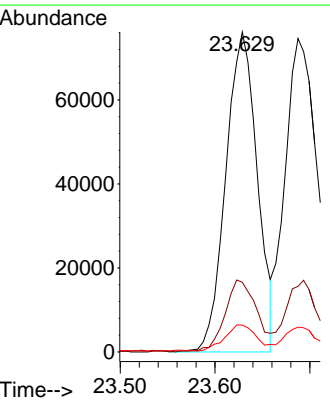
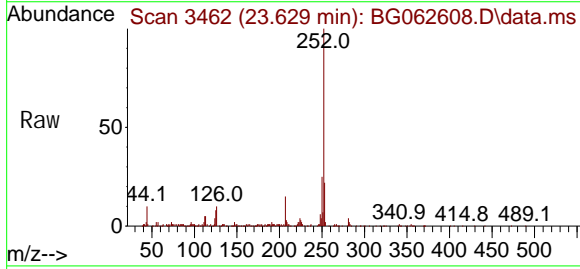
Instrument :
 BNA_G
ClientSampleId :
 SSTDICC005

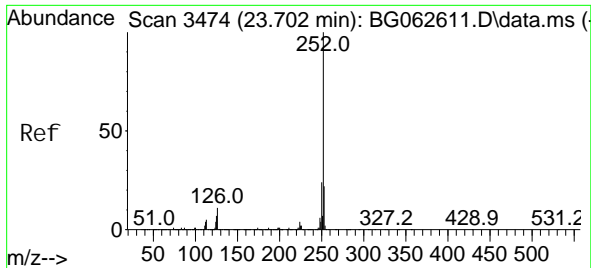
Tgt Ion	Resp	Lower	Upper
276	100		
138	0.0	14.9	22.3#
277	25.2	20.3	30.5



#88
 Benzo(b)fluoranthene
 Concen: 5.112 ng
 RT: 23.629 min Scan# 3462
 Delta R.T. -0.008 min
 Lab File: BG062608.D
 Acq: 30 Aug 2024 8:05

Tgt Ion	Resp	Lower	Upper
252	100		
253	21.7	18.2	27.2
125	8.4	6.2	9.2

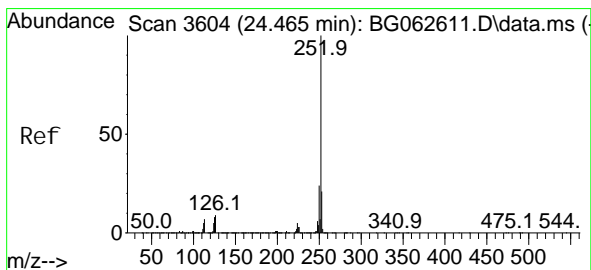
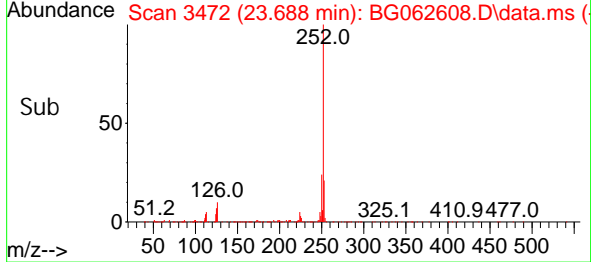
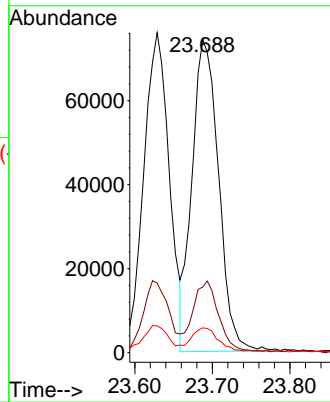
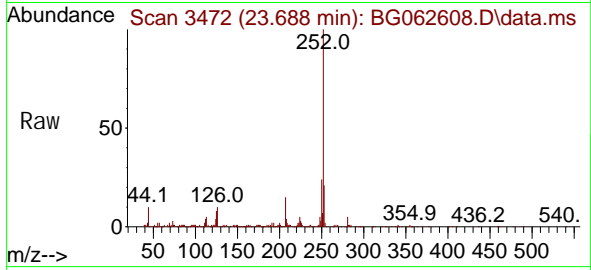




#89
 Benzo(k)fl uoranthene
 Concen: 5.256 ng
 RT: 23.688 min Scan# 34
 Delta R.T. -0.014 min
 Lab File: BG062608.D
 Acq: 30 Aug 2024 8:05

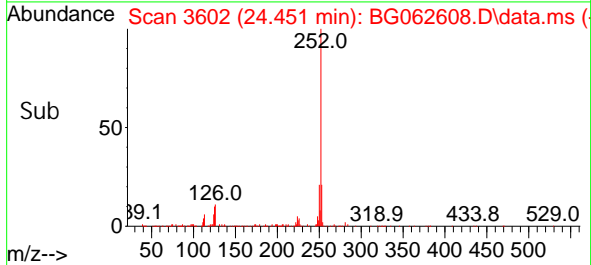
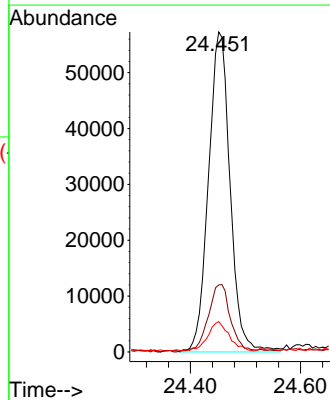
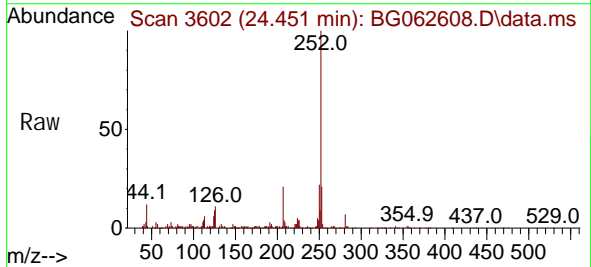
Instrument :
 BNA_G
 ClientSampleId :
 SSTDICC005

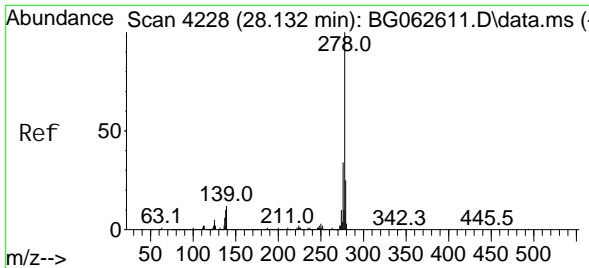
Tgt Ion: 252 Resp: 176649
 Ion Ratio Lower Upper
 252 100
 253 20.9 17.8 26.8
 125 7.9 6.1 9.1



#90
 Benzo(a)pyrene
 Concen: 5.146 ng
 RT: 24.451 min Scan# 3602
 Delta R.T. -0.014 min
 Lab File: BG062608.D
 Acq: 30 Aug 2024 8:05

Tgt Ion: 252 Resp: 156186
 Ion Ratio Lower Upper
 252 100
 253 21.0 17.1 25.7
 125 9.5 6.6 10.0



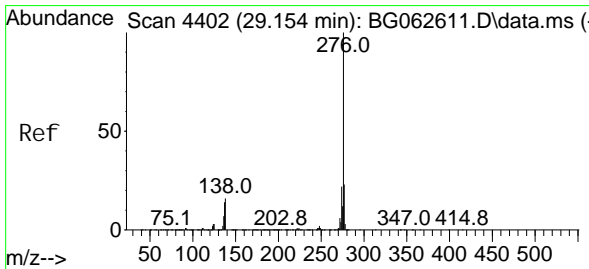
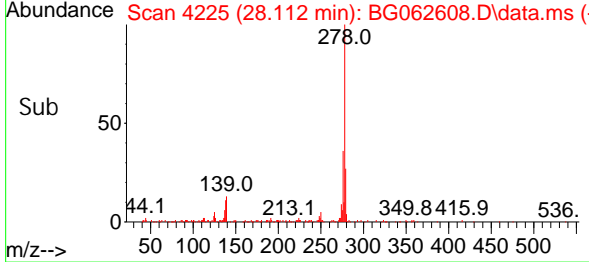
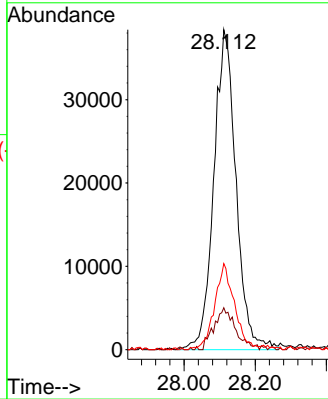
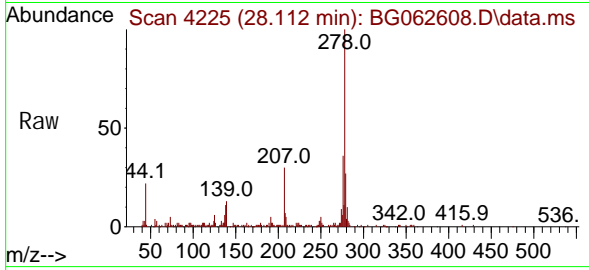


#91
 Di benzo(a, h)anthracene
 Concen: 5.064 ng
 RT: 28.112 min Scan# 41
 Delta R.T. -0.020 min
 Lab File: BG062608.D
 Acq: 30 Aug 2024 8:05

Instrument :
 BNA_G
 ClientSampleId :
 SSTDICC005

Tgt Ion: 278 Resp: 166390

Ion	Ratio	Lower	Upper
278	100		
139	13.1	9.2	13.8
279	26.9	19.7	29.5



#92
 Benzo(g, h, i)perylene
 Concen: 4.977 ng
 RT: 29.134 min Scan# 4399
 Delta R.T. -0.020 min
 Lab File: BG062608.D
 Acq: 30 Aug 2024 8:05

Tgt Ion: 276 Resp: 164908

Ion	Ratio	Lower	Upper
276	100		
277	22.3	18.8	28.2
138	18.2	12.7	19.1

