

Data Path : Z:\SVOASRV\HPCHEM1\BNA G\DATA\BG083120\  
 Data File : BG046473.D  
 Acq On : 31 Aug 2020 17:51  
 Operator : CG/JU  
 Sample : L3828-02  
 Misc :  
 ALS Vial : 5 Sample Multiplier: 1

Instrument :  
 BNA\_G  
 ClientSampleId :  
 BS-1

Quant Time: Aug 31 18:45:37 2020  
 Quant Method : Z:\SVOASRV\HPCHEM1\BNA G\METHODS\8270-BG082520.M  
 Quant Title : ASP BNA STANDARDS FOR 5 POINT CALIBRATION  
 QLast Update : Mon Aug 31 16:05:33 2020  
 Response via : Initial Calibration

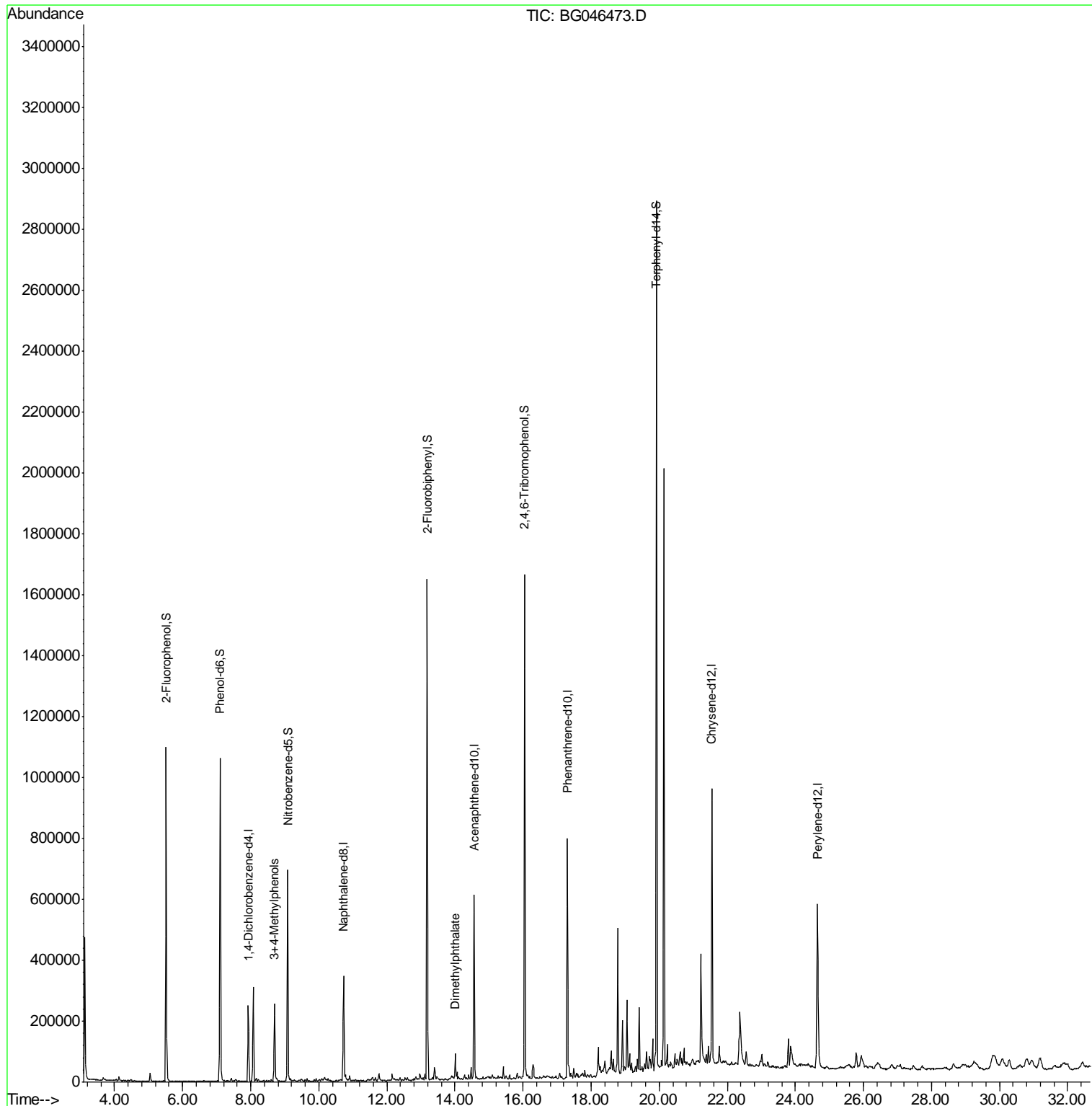
Internal Standards	R.T.	QIon	Response	Conc	Units	Dev(Min)
1) 1,4-Dichlorobenzene-d4	7.93	152	76696	20.00	ng	0.00
21) Naphthalene-d8	10.73	136	314021	20.00	ng	0.00
39) Acenaphthene-d10	14.56	164	219013	20.00	ng	0.00
64) Phenanthrene-d10	17.30	188	540973	20.00	ng	0.00
76) Chrysene-d12	21.55	240	551363	20.00	ng	0.00
86) Perylene-d12	24.65	264	578357	20.00	ng	0.00
System Monitoring Compounds						
5) 2-Fluorophenol	5.51	112	520285	120.15	ng	0.00
7) Phenol-d6	7.10	99	693260	112.94	ng	0.00
23) Nitrobenzene-d5	9.09	82	426058	77.55	ng	0.00
42) 2,4,6-Tribromophenol	16.05	330	322191	108.57	ng	0.00
45) 2-Fluorobiphenyl	13.18	172	939478	65.48	ng	0.00
79) Terphenyl-d14	19.92	244	1288397	49.73	ng	0.00
Target Compounds						
20) 3+4-Methylphenols	8.70	107	135167	24.423	ng	91
50) Dimethylphthalate	14.01	163	63039	3.720	ng	98

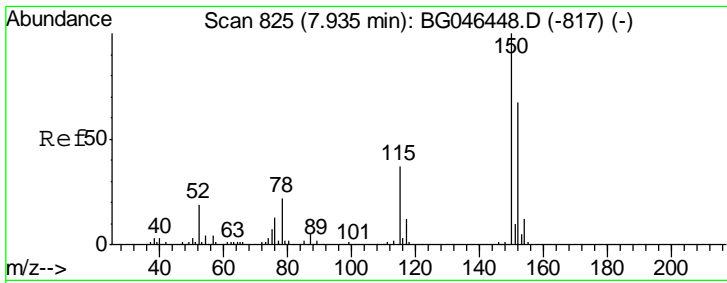
(#) = qualifier out of range (m) = manual integration (+) = signals summed

Data Path : Z:\SVOASRV\HPCHEM1\BNA G\DATA\BG083120\  
 Data File : BG046473.D  
 Acq On : 31 Aug 2020 17:51  
 Operator : CG/JU  
 Sample : L3828-02  
 Misc :  
 ALS Vial : 5 Sample Multiplier: 1

Instrument :  
 BNA\_G  
 ClientSampleId :  
 BS-1

Quant Time: Aug 31 18:45:37 2020  
 Quant Method : Z:\SVOASRV\HPCHEM1\BNA G\METHODS\8270-BG082520.M  
 Quant Title : ASP BNA STANDARDS FOR 5 POINT CALIBRATION  
 QLast Update : Mon Aug 31 16:05:33 2020  
 Response via : Initial Calibration

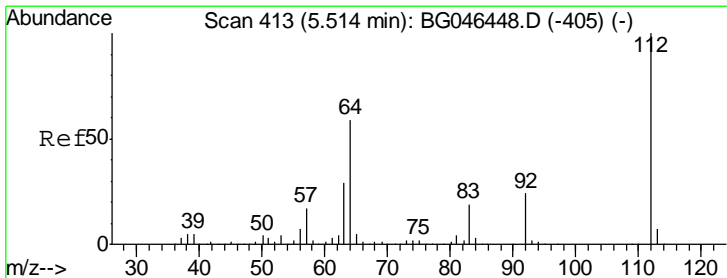
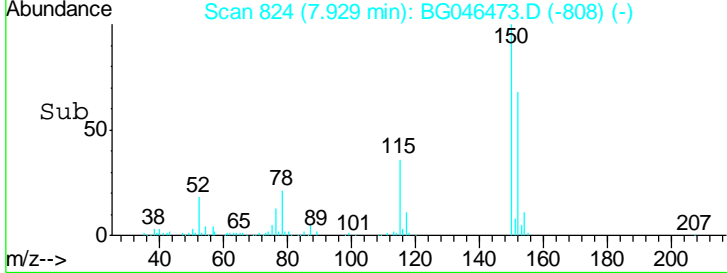
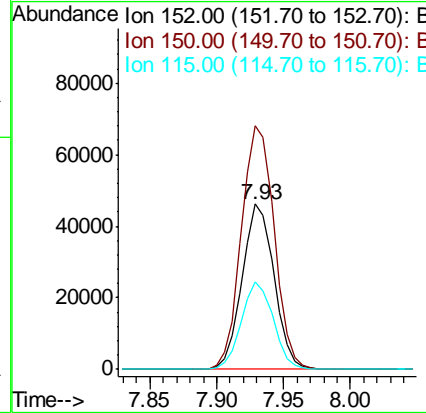
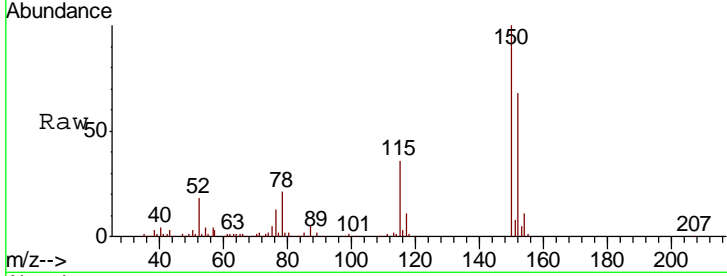




#1  
 1,4-Dichlorobenzene-d4  
 Concen: 20.000 ng  
 RT: 7.93 min Scan# 824  
 Delta R.T. -0.00 min  
 Lab File: BG046473.D  
 Acq: 31 Aug 2020 17:51

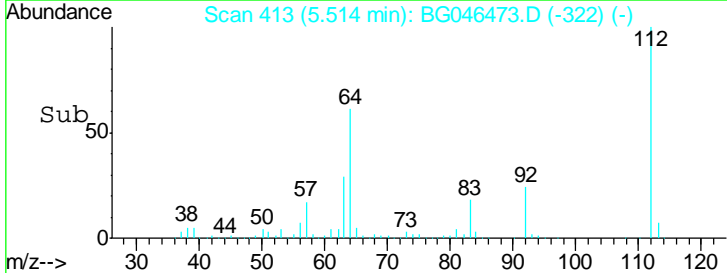
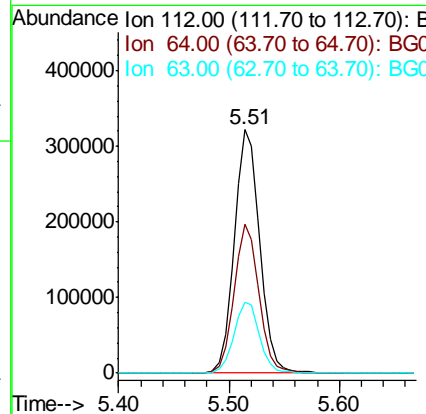
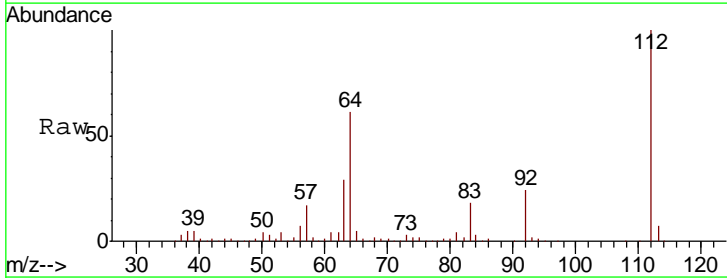
Instrument :  
 BNA\_G  
 ClientSampled :  
 BS-1

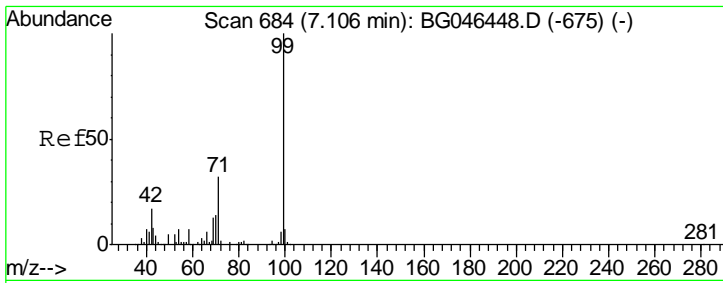
Tgt Ion	Resp	Lower	Upper
152	100		
150	147.3	119.5	179.3
115	53.2	44.3	66.5



#5  
 2-Fluorophenol  
 Concen: 120.152 ng  
 RT: 5.51 min Scan# 413  
 Delta R.T. 0.00 min  
 Lab File: BG046473.D  
 Acq: 31 Aug 2020 17:51

Tgt Ion	Resp	Lower	Upper
112	100		
64	61.0	47.0	70.6
63	28.8	23.5	35.3

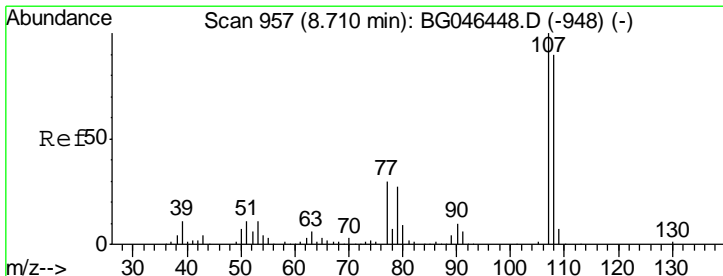
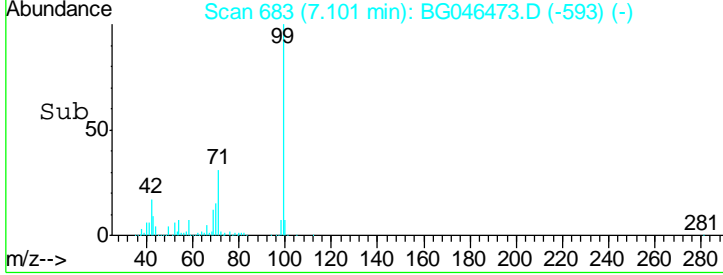
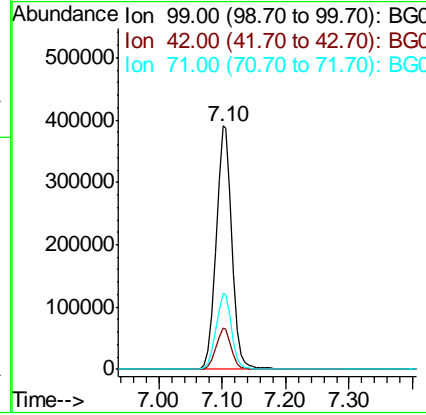
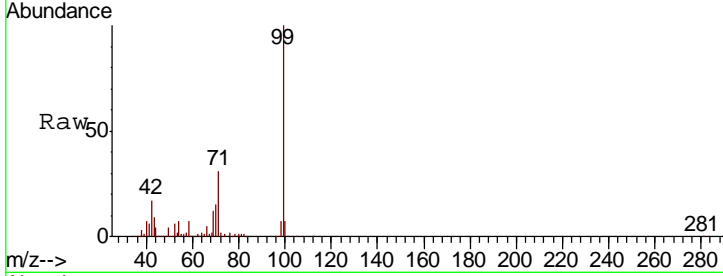




#7  
 Phenol-d6  
 Concen: 112.936 ng  
 RT: 7.10 min Scan# 683  
 Delta R.T. -0.00 min  
 Lab File: BG046473.D  
 Acq: 31 Aug 2020 17:51

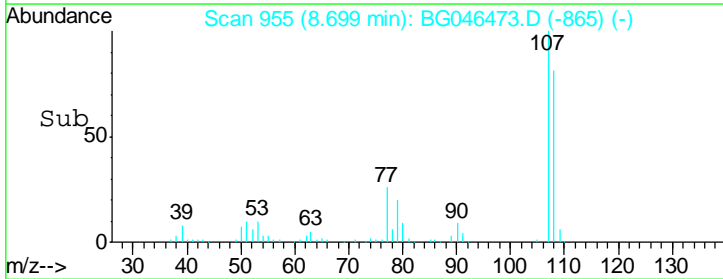
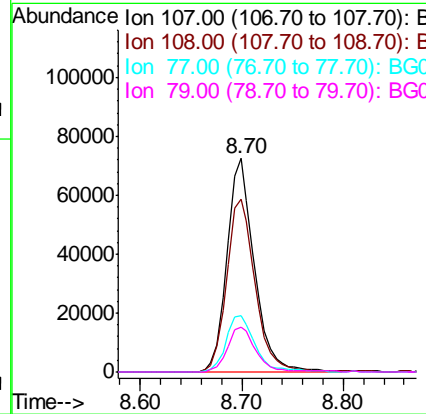
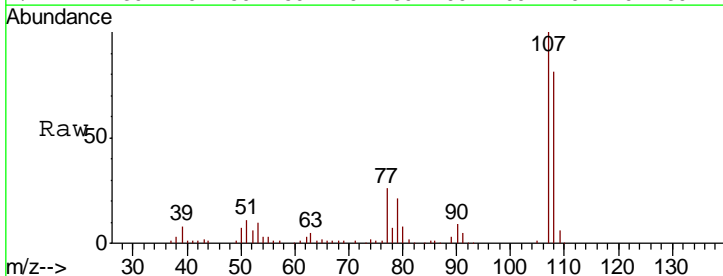
**Instrument :**  
 BNA\_G  
**ClientSampled :**  
 BS-1

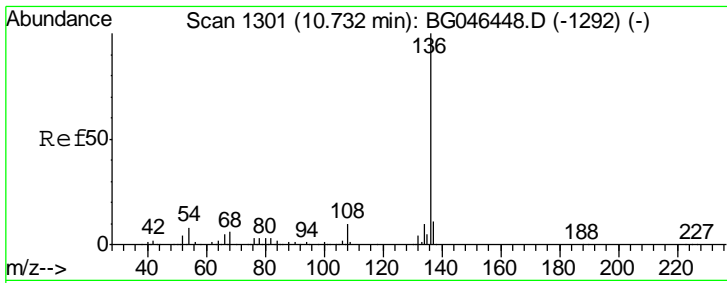
Tgt Ion	Resp	Lower	Upper
99	100		
42	16.9	13.3	19.9
71	31.3	25.3	37.9



#20  
 3+4-Methylphenols  
 Concen: 24.423 ng  
 RT: 8.70 min Scan# 955  
 Delta R.T. -0.00 min  
 Lab File: BG046473.D  
 Acq: 31 Aug 2020 17:51

Tgt Ion	Resp	Lower	Upper
107	100		
108	80.7	69.7	109.7
77	26.4	9.7	49.7
79	20.8	6.9	46.9



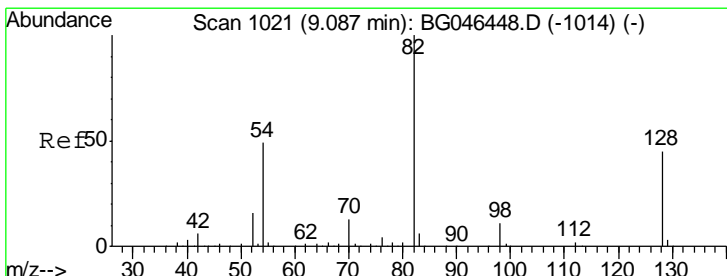
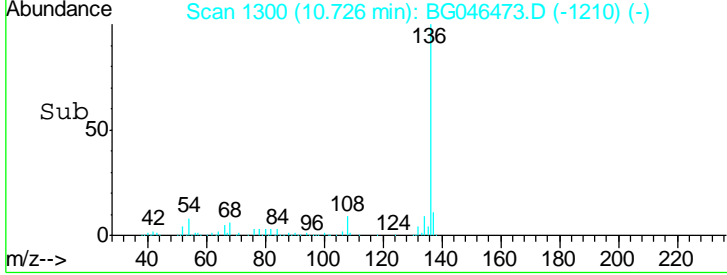
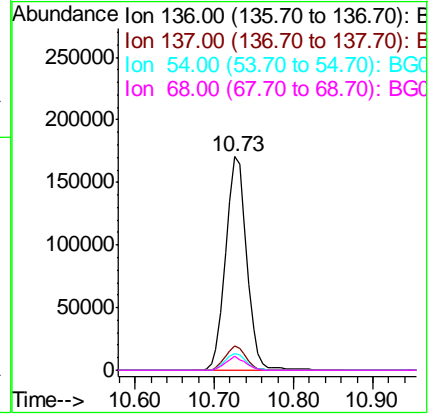
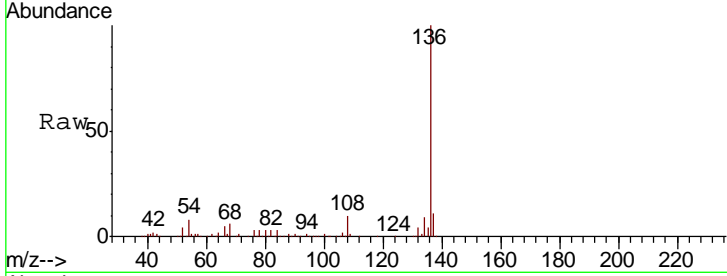


#21  
 Naphthalene-d8  
 Concen: 20.000 ng  
 RT: 10.73 min Scan# 1300  
 Delta R.T. -0.00 min  
 Lab File: BG046473.D  
 Acq: 31 Aug 2020 17:51

Instrument :  
 BNA\_G  
 ClientSampled :  
 BS-1

Tot Ion: 136 Resp: 314021

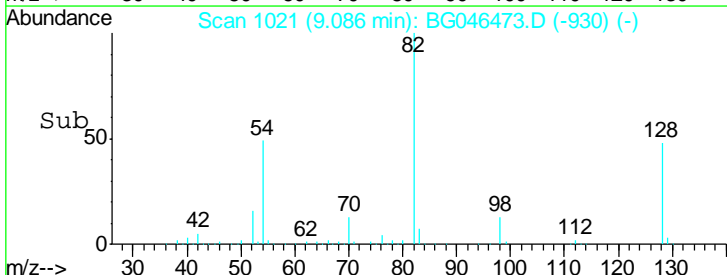
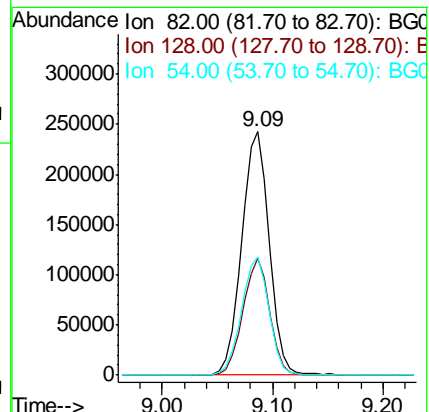
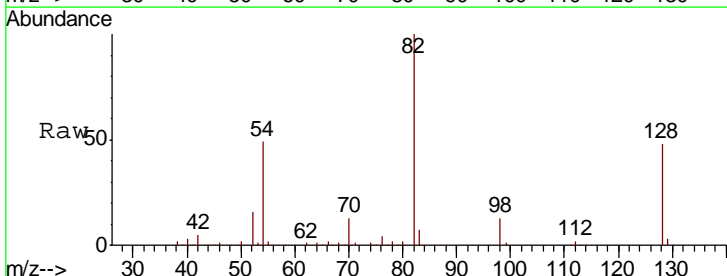
Ion	Ratio	Lower	Upper
136	100		
137	11.3	8.8	13.2
54	8.1	6.1	9.1
68	6.3	4.8	7.2

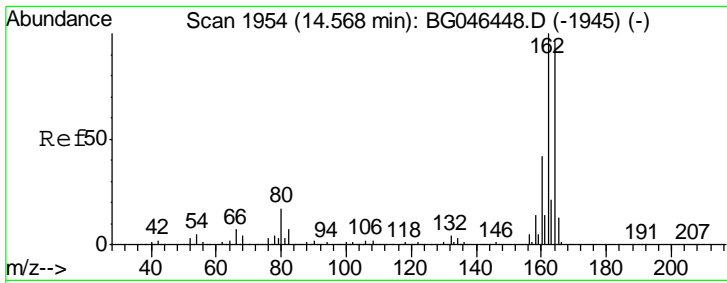


#23  
 Nitrobenzene-d5  
 Concen: 77.547 ng  
 RT: 9.09 min Scan# 1021  
 Delta R.T. 0.00 min  
 Lab File: BG046473.D  
 Acq: 31 Aug 2020 17:51

Tgt Ion: 82 Resp: 426058

Ion	Ratio	Lower	Upper
82	100		
128	47.8	35.7	53.5
54	48.5	39.4	59.0



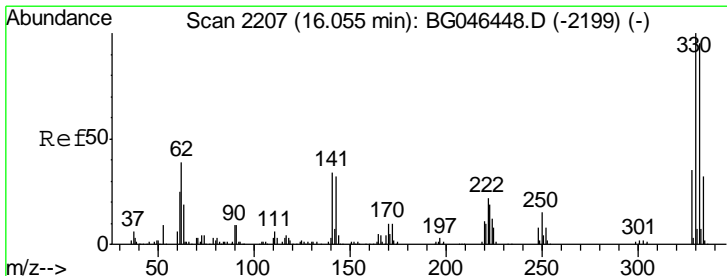
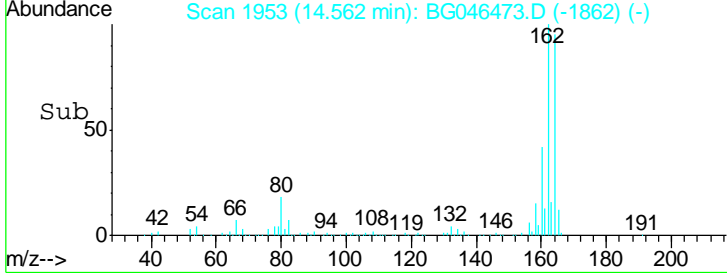
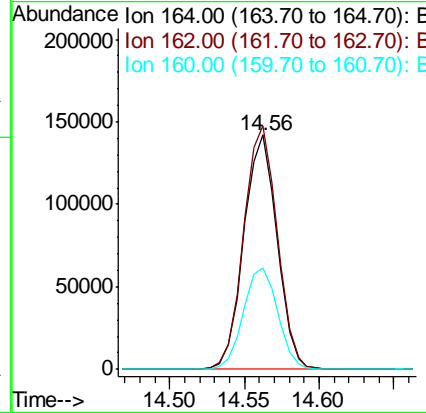
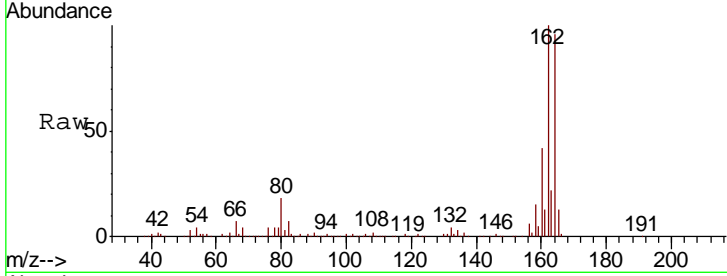


#39

Acenaphthene-d10  
 Concen: 20.000 ng  
 RT: 14.56 min Scan# 1953  
 Delta R.T. 0.00 min  
 Lab File: BG046473.D  
 Acq: 31 Aug 2020 17:51

Instrument :  
 BNA\_G  
 ClientSampled :  
 BS-1

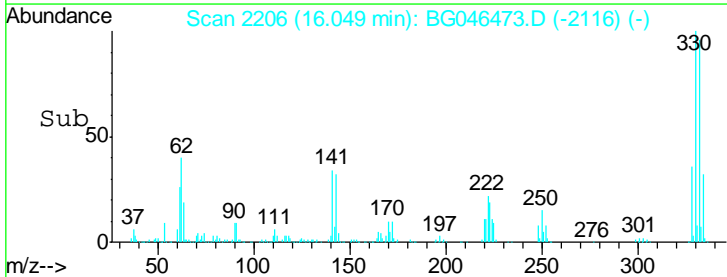
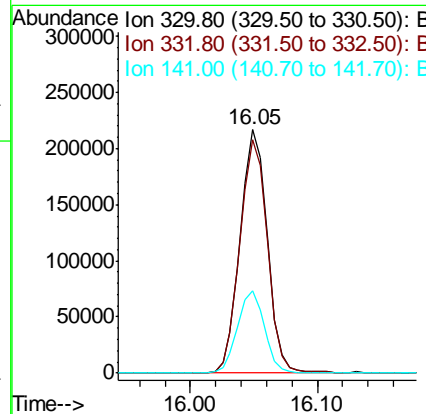
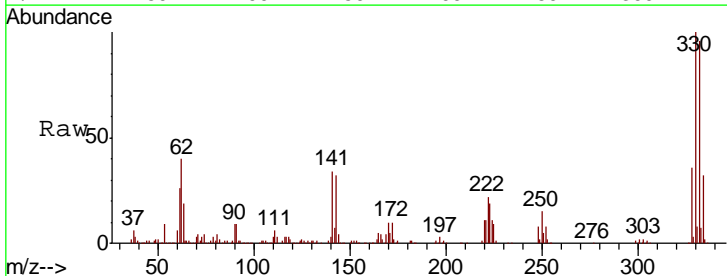
Tgt Ion	Resp	Lower	Upper
164	100		
162	104.0	83.3	124.9
160	43.3	35.0	52.6

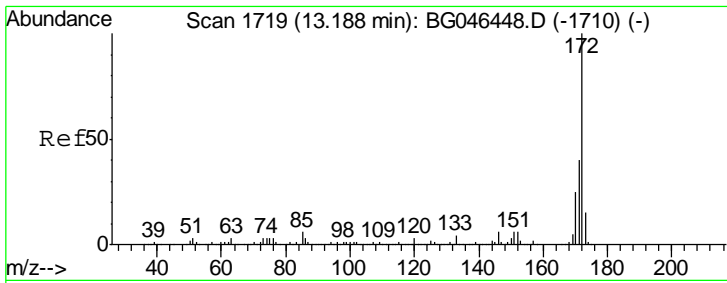


#42

2,4,6-Tribromophenol  
 Concen: 108.574 ng  
 RT: 16.05 min Scan# 2206  
 Delta R.T. -0.00 min  
 Lab File: BG046473.D  
 Acq: 31 Aug 2020 17:51

Tgt Ion	Resp	Lower	Upper
330	100		
332	97.3	76.1	114.1
141	33.7	26.1	39.1

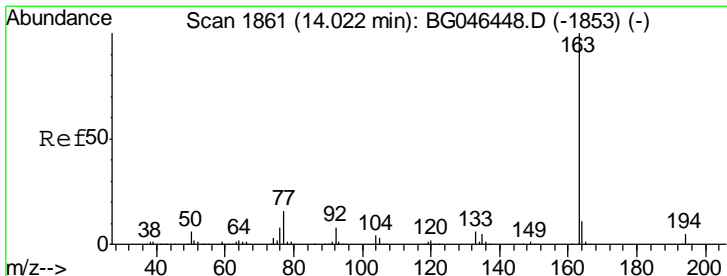
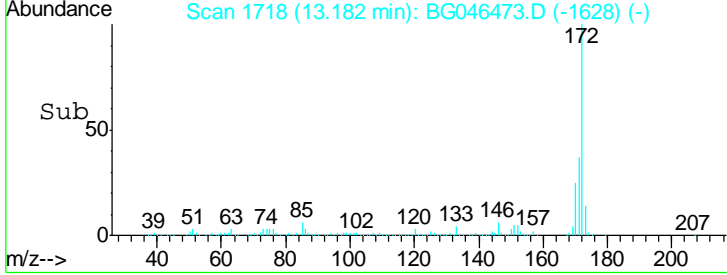
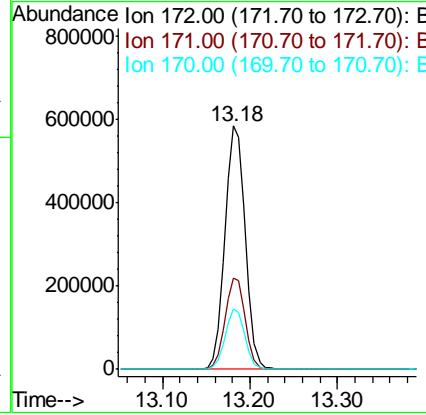
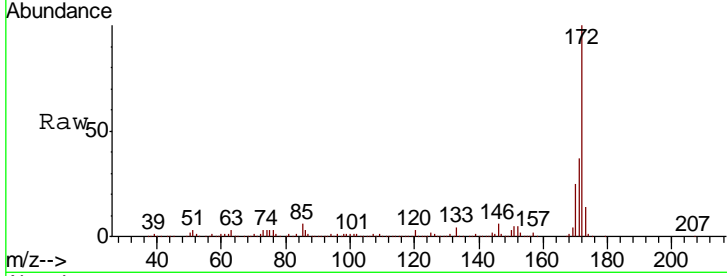




#45  
 2-Fluorobiphenyl  
 Concen: 65.483 ng  
 RT: 13.18 min Scan# 1718  
 Delta R.T. -0.00 min  
 Lab File: BG046473.D  
 Acq: 31 Aug 2020 17:51

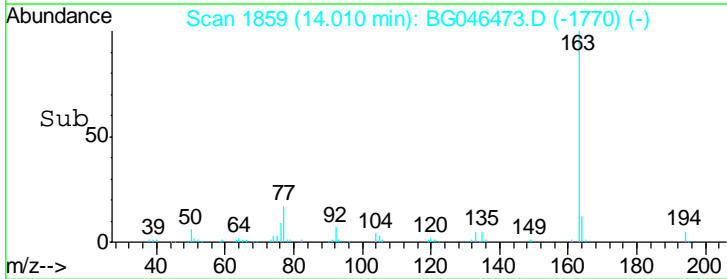
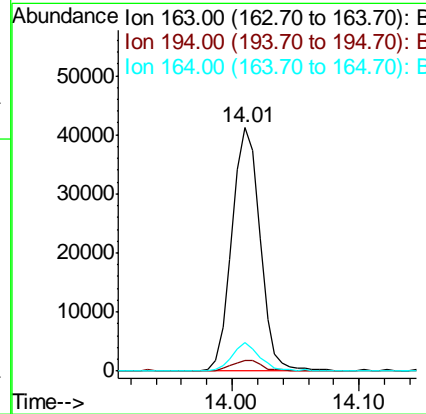
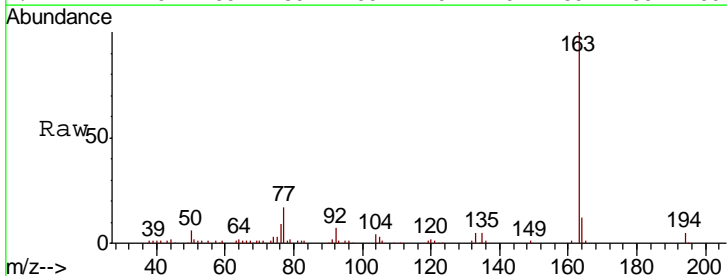
Instrument :  
 BNA\_G  
 ClientSampled :  
 BS-1

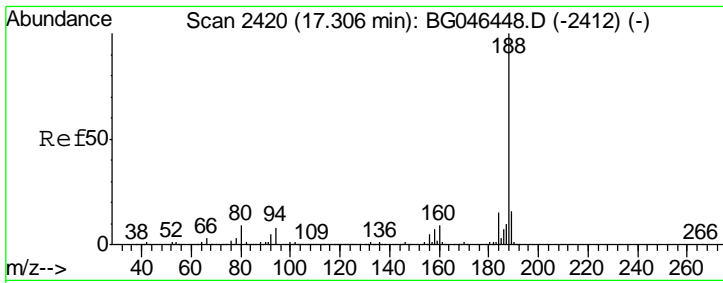
Tgt Ion	Resp	Lower	Upper
172	100		
171	37.4	31.8	47.6
170	24.8	20.3	30.5



#50  
 Dimethylphthalate  
 Concen: 3.720 ng  
 RT: 14.01 min Scan# 1859  
 Delta R.T. -0.01 min  
 Lab File: BG046473.D  
 Acq: 31 Aug 2020 17:51

Tgt Ion	Resp	Lower	Upper
163	100		
194	4.6	3.7	5.5
164	11.7	8.6	12.8

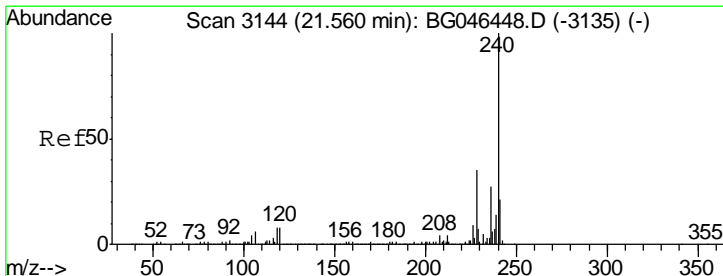
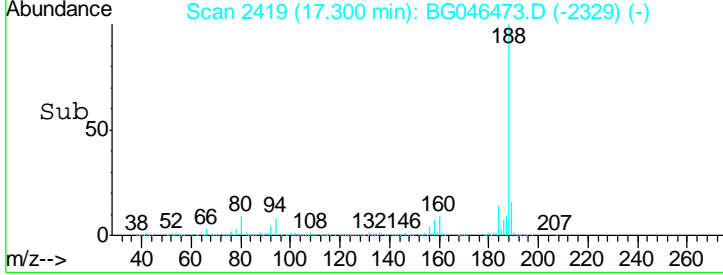
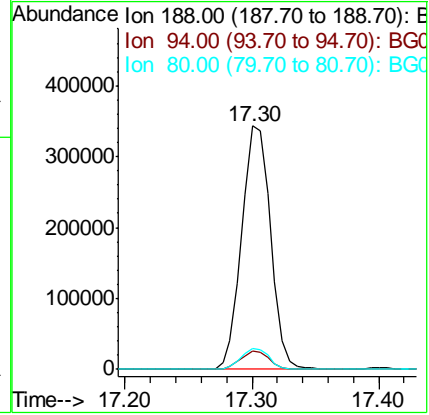
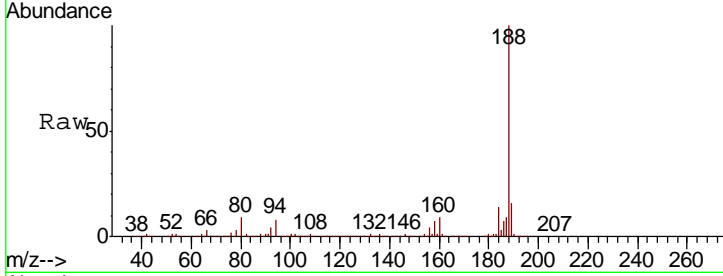




#64  
 Phenanthrene-d10  
 Concen: 20.000 ng  
 RT: 17.30 min Scan# 2419  
 Delta R.T. -0.00 min  
 Lab File: BG046473.D  
 Acq: 31 Aug 2020 17:51

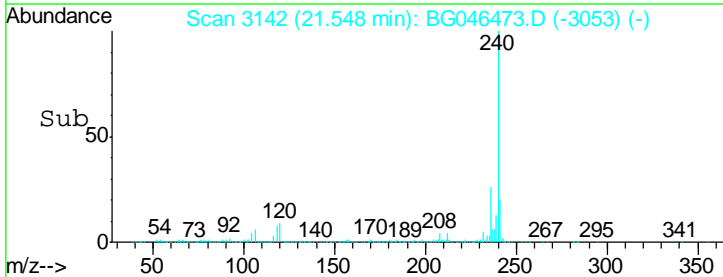
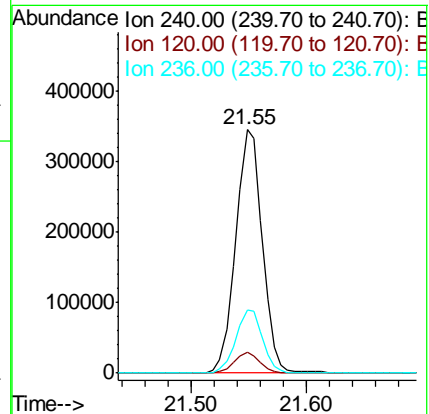
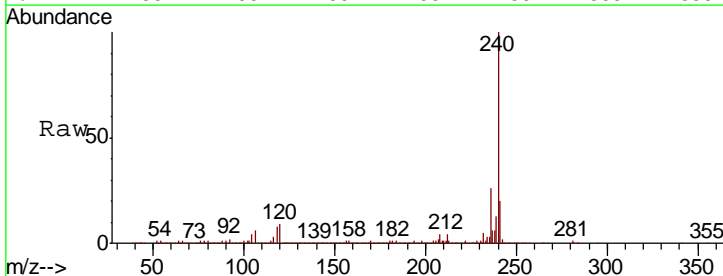
Instrument :  
 BNA\_G  
 ClientSampled :  
 BS-1

Tgt Ion	Resp	Lower	Upper
188	540973		
94	7.5	6.3	9.5
80	8.7	6.9	10.3

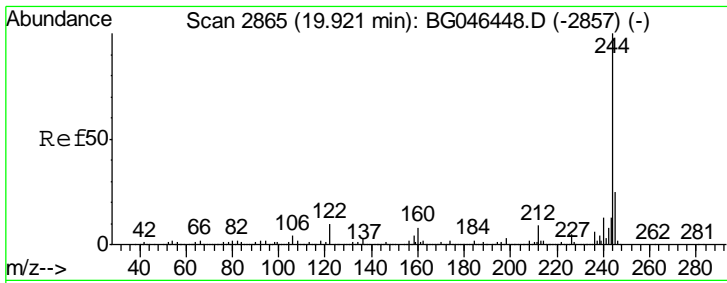


#76  
 Chrysene-d12  
 Concen: 20.000 ng  
 RT: 21.55 min Scan# 3142  
 Delta R.T. -0.01 min  
 Lab File: BG046473.D  
 Acq: 31 Aug 2020 17:51

Tgt Ion	Resp	Lower	Upper
240	551363		
120	8.6	6.6	10.0
236	26.2	21.4	32.2





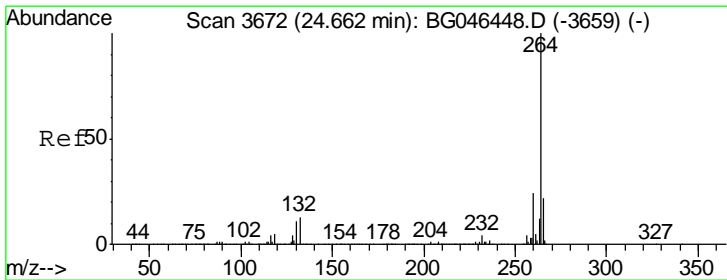
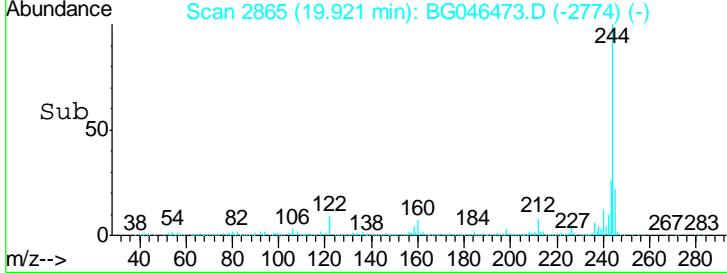
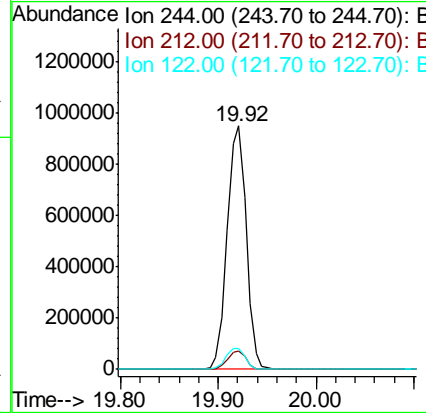
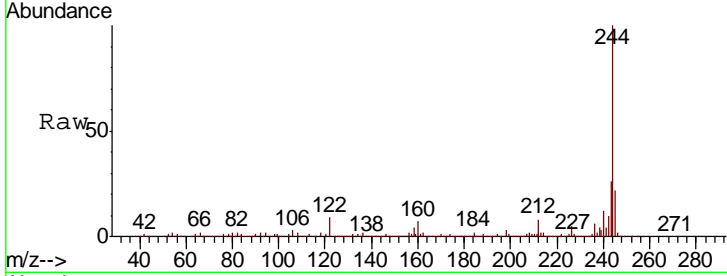


#79  
 Terphenyl-d14  
 Concen: 49.730 ng  
 RT: 19.92 min Scan# 2865  
 Delta R.T. 0.00 min  
 Lab File: BG046473.D  
 Acq: 31 Aug 2020 17:51

Instrument :  
 BNA\_G  
 ClientSampled :  
 BS-1

Tgt Ion: 244 Resp: 1288397

Ion	Ratio	Lower	Upper
244	100		
212	7.8	6.9	10.3
122	8.7	8.2	12.4



#86  
 Perylene-d12  
 Concen: 20.000 ng  
 RT: 24.65 min Scan# 3670  
 Delta R.T. -0.00 min  
 Lab File: BG046473.D  
 Acq: 31 Aug 2020 17:51

Tgt Ion: 264 Resp: 578357

Ion	Ratio	Lower	Upper
264	100		
260	23.0	19.2	28.8
265	21.9	17.9	26.9

