

Data Path : Z:\svoasrv\HPCHEM1\BNA_G\Data\BG090524\
 Data File : BG062671.D
 Acq On : 5 Sep 2024 17:53
 Operator : MA/JU
 Sample : SSTDCCC040
 Misc : MDL-WATER-8 ng
 ALS Vial : 2 Sample Multiplier: 1

Instrument :
 BNA_G
ClientSampleId :
 SSTDCCC040EC

Quant Time: Sep 05 18:35:11 2024
 Quant Method : Z:\svoasrv\HPCHEM1\BNA_G\Methods\8270-BG083024.M
 Quant Title : ASP BNA STANDARDS FOR 5 POINT CALIBRATION
 QLast Update : Sat Aug 31 02:36:01 2024
 Response via : Initial Calibration

Compound	R. T.	QI on	Response	Conc	Units	Dev(Min)	
Internal Standards							
1) 1,4-Dichlorobenzene-d4	7.923	152	58047	20.000	ng	0.00	
21) Naphthalene-d8	10.714	136	232696	20.000	ng	0.00	
39) Acenaphthene-d10	14.545	164	188598	20.000	ng	0.00	
64) Phenanthrene-d10	17.289	188	521889	20.000	ng	0.00	
76) Chrysene-d12	21.537	240	566561	20.000	ng	0.00	
86) Perylene-d12	24.604	264	657881	20.000	ng	0.00	
System Monitoring Compounds							
5) 2-Fluorophenol	5.502	112	270805	80.641	ng	0.00	
7) Phenol-d6	7.083	99	369185	76.100	ng	0.00	
23) Nitrobenzene-d5	9.075	82	342081	79.173	ng	0.00	
42) 2,4,6-Tribromophenol	16.031	330	234496	88.350	ng	0.00	
45) 2-Fluorophenyl	13.170	172	883867	75.912	ng	0.00	
79) Terphenyl-d14	19.909	244	2088753	73.102	ng	0.00	
Target Compounds							
2) 1,4-Dioxane	3.411	88	56642	40.488	ng	95	
3) Pyridine	3.798	79	157562	39.090	ng	98	
4) n-Nitrosodimethylamine	3.716	42	78704	40.163	ng	92	
6) Aniline	7.247	93	166814	36.804	ng	98	
8) 2-Chlorophenol	7.488	128	139753	38.763	ng	98	
9) Benzaldehyde	7.059	77	121681	43.119	ng	96	
10) Phenol	7.112	94	186052	37.883	ng	99	
11) bis(2-Chloroethyl)ether	7.341	93	143015	38.034	ng	98	
12) 1,3-Dichlorobenzene	7.811	146	156592	39.579	ng	98	
13) 1,4-Dichlorobenzene	7.958	146	156882	38.530	ng	96	
14) 1,2-Dichlorobenzene	8.276	146	151784	37.925	ng	97	
15) Benzyl Alcohol	8.152	79	130030	36.225	ng	97	
16) 2,2'-oxybis(1-Chloropr...	8.452	45	235453	32.855	ng	98	
17) 2-Methylphenol	8.358	107	120267	35.131	ng	97	
18) Hexachloroethane	9.004	117	54991	36.019	ng	91	
19) n-Nitroso-dim-n-propyl a...	8.722	70	124443	32.553	ng	# 98	
20) 3+4-Methylphenols	8.687	107	173003	34.254	ng	98	
22) Acetophenone	8.734	105	237975	37.909	ng	97	
24) Nitrobenzene	9.116	77	186694	40.639	ng	98	
25) Isophorone	9.639	82	323252	34.082	ng	98	
26) 2-Nitrophenol	9.827	139	72304	41.654	ng	96	
27) 2,4-Dimethylphenol	9.885	122	97072	38.166	ng	94	
28) bis(2-Chloroethoxy)met...	10.120	93	191976	37.811	ng	99	
29) 2,4-Dichlorophenol	10.361	162	146555	41.212	ng	98	
30) 1,2,4-Tri chlorobenzene	10.579	180	170202	40.374	ng	99	
31) Naphthalene	10.761	128	452463	39.230	ng	97	
32) Benzoic acid	10.015	122	91517	33.456	ng	98	
33) 4-Chloroaniline	10.867	127	170311	37.523	ng	96	
34) Hexachlorobutadiene	11.055	225	120624	40.968	ng	94	
35) Caprolactam	11.630	113	53621	39.113	ng	# 87	
36) 4-Chloro-3-methylphenol	11.989	107	156383	36.457	ng	96	
37) 2-Methylnaphthalene	12.371	142	329914	36.880	ng	96	
38) 1-Methylnaphthalene	12.588	142	333201	37.094	ng	98	
40) 1,2,4,5-Tetrachloroben...	12.735	216	225814	39.814	ng	99	
41) Hexachlorocyclopentadiene	12.723	237	68152	42.115	ng	99	
43) 2,4,6-Tri chlorophenol	12.976	196	141034	39.225	ng	98	

Data Path : Z:\svoasrv\HPCHEM1\BNA_G\Data\BG090524\
 Data File : BG062671.D
 Acq On : 5 Sep 2024 17:53
 Operator : MA/JU
 Sample : SSTDCCC040
 Misc : MDL-WATER-8 ng
 ALS Vial : 2 Sample Multiplier: 1

Instrument :
 BNA_G
ClientSampleId :
 SSTDCCC040EC

Quant Time: Sep 05 18:35:11 2024
 Quant Method : Z:\svoasrv\HPCHEM1\BNA_G\Methods\8270-BG083024.M
 Quant Title : ASP BNA STANDARDS FOR 5 POINT CALIBRATION
 QLast Update : Sat Aug 31 02:36:01 2024
 Response via : Initial Calibration

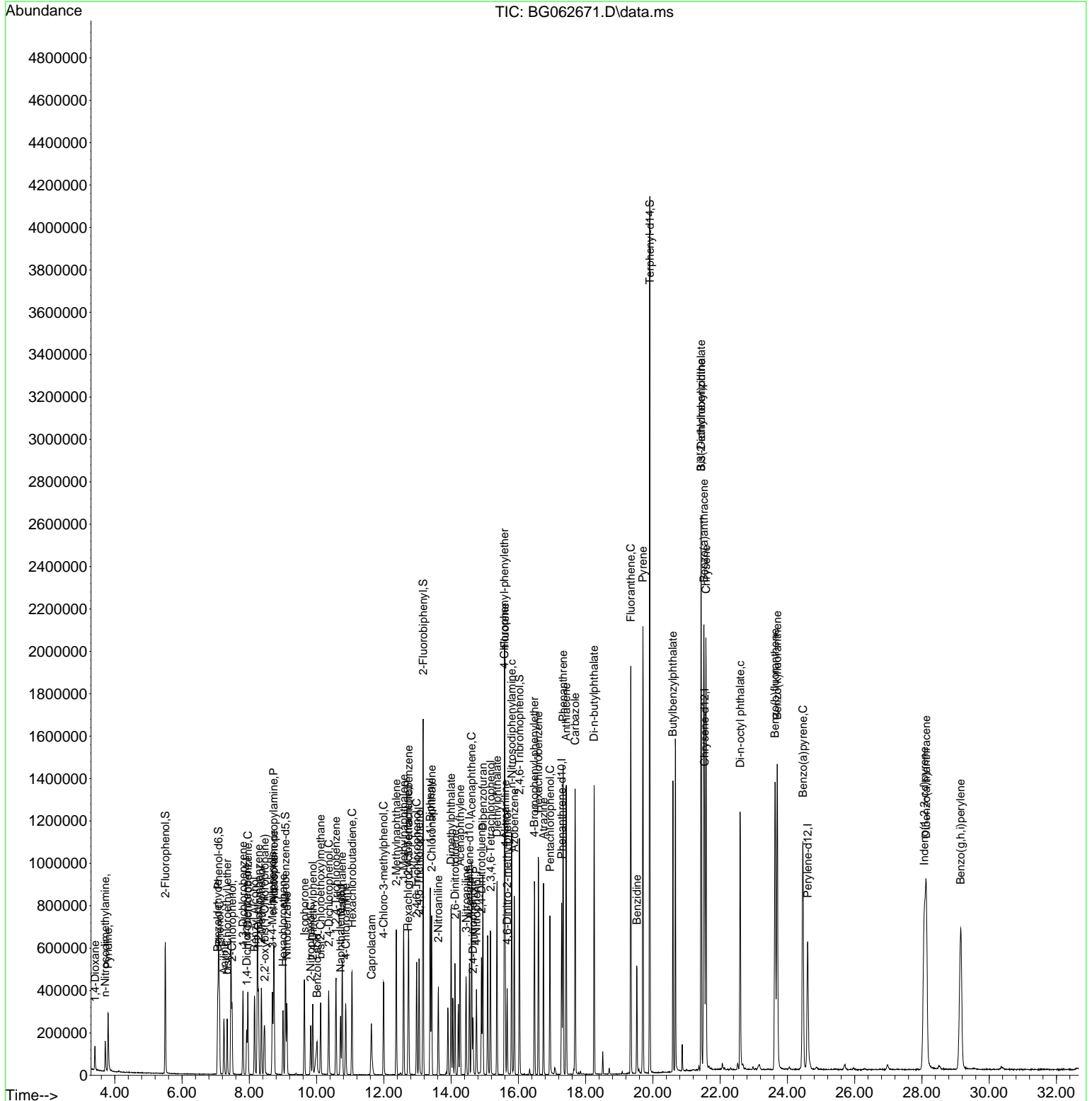
Compound	R. T.	QI on	Response	Conc	Units	Dev(Min)
44) 2, 4, 5-Tri chl orophenol	13.046	196	162774	39.975	ng	98
46) 1, 1' -Bi phenyl	13.381	154	479178	38.084	ng	99
47) 2-Chl oronaphthal ene	13.422	162	387617	38.012	ng	100
48) 2-Ni troani line	13.622	65	116944	43.603	ng	96
49) Acenaphthyl ene	14.269	152	592963	39.267	ng	97
50) Di methyl phthal ate	13.998	163	534278	38.742	ng	99
51) 2, 6-Di ni trotol uene	14.116	165	117159	44.914	ng	95
52) Acenaphthene	14.609	154	369357	39.127	ng	98
53) 3-Ni troani line	14.445	138	115196	45.640	ng	98
54) 2, 4-Di ni trophenol	14.650	184	64383	43.982	ng	95
55) Di benzofuran	14.944	168	644819	39.830	ng	96
56) 4-Ni trophenol	14.756	139	96603	45.162	ng	97
57) 2, 4-Di ni trotol uene	14.903	165	169388	47.593	ng	97
58) Fluorene	15.596	166	499479	39.313	ng	97
59) 2, 3, 4, 6-Tetrachl orophenol	15.173	232	164549	42.659	ng	95
60) Di ethyl phthal ate	15.367	149	543773	39.783	ng	99
61) 4-Chl orophenyl -phenyl e. . .	15.585	204	289679	39.715	ng	96
62) 4-Ni troani line	15.608	138	125918	45.245	ng	94
63) Azobenzene	15.878	77	487443	37.978	ng	99
65) 4, 6-Di ni tro-2-methyl ph. . .	15.667	198	103185	44.304	ng	96
66) n-Ni trosodi phenyl ami ne	15.802	169	465430	37.093	ng	99
67) 4-Bromophenyl -phenyl ether	16.478	248	208027	38.622	ng	96
68) Hexachl orobenzene	16.595	284	253742	39.779	ng	95
69) Atrazi ne	16.748	200	175467	41.172	ng	98
70) Pentachl orophenol	16.942	266	163621	40.048	ng	97
71) Phenanthrene	17.330	178	936520	38.446	ng	99
72) Anthracene	17.424	178	930650	38.857	ng	99
73) Carbazol e	17.688	167	872253	39.616	ng	99
74) Di -n-butyl phthal ate	18.252	149	1000564	40.295	ng	100
75) Fluoranthene	19.345	202	1278498	41.498	ng	99
77) Benzi di ne	19.527	184	328774	32.196	ng	99
78) Pyrene	19.703	202	1346706	37.394	ng	99
80) Butyl benzyl phthal ate	20.596	149	399780	37.792	ng	98
81) Benzo(a)anthracene	21.513	228	1370575	38.355	ng	99
82) 3, 3' -Di chl orobenzi di ne	21.437	252	452461	38.868	ng	96
83) Chrysene	21.578	228	1327195	38.775	ng	99
84) Bi s(2-ethyl hexyl)phtha. . .	21.437	149	607330	37.791	ng	# 97
85) Di -n-octyl phthal ate	22.594	149	1042096	37.035	ng	99
87) Indeno(1, 2, 3-cd)pyrene	28.070	276	1679573	39.815	ng	# 88
88) Benzo(b)fl uoranthene	23.634	252	1394353	38.372	ng	98
89) Benzo(k)fl uoranthene	23.699	252	1403376	39.481	ng	99
90) Benzo(a)pyrene	24.462	252	1239033	38.597	ng	99
91) Di benzo(a, h)anthracene	28.129	278	1400471	40.300	ng	98
92) Benzo(g, h, i)peryl ene	29.151	276	1409259	40.217	ng	97

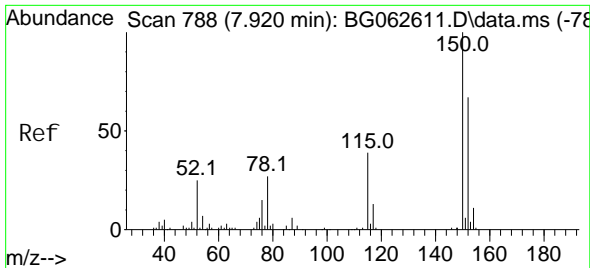
(#) = qual i fier out of range (m) = manual i ntegrati on (+) = signal s summed

Data Path : Z:\svoasrv\HPCHEM1\BNA_G\Data\BG090524\
 Data File : BG062671.D
 Acq On : 5 Sep 2024 17:53
 Operator : MA/JU
 Sample : SSTDCCC040
 Misc : MDL-WATER-8 ng
 ALS Vial : 2 Sample Multiplier: 1

Instrument :
 BNA_G
ClientSampleId :
 SSTDCCC040EC

Quant Time: Sep 05 18:35:11 2024
 Quant Method : Z:\svoasrv\HPCHEM1\BNA_G\Methods\8270-BG083024.M
 Quant Title : ASP BNA STANDARDS FOR 5 POINT CALIBRATION
 QLast Update : Sat Aug 31 02:36:01 2024
 Response via : Initial Calibration

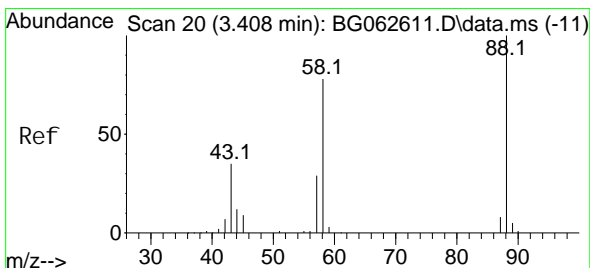
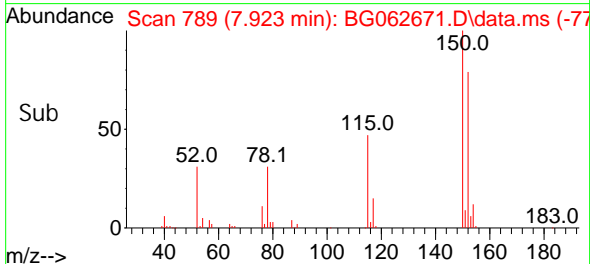
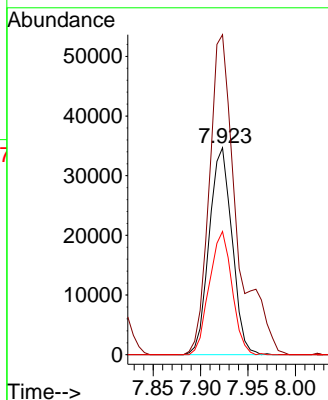
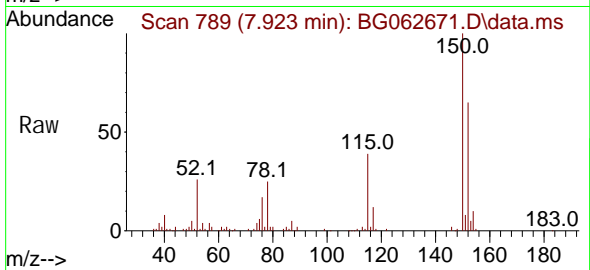




#1
 1, 4-Di chl oro benzene-d4
 Concen: 20.000 ng
 RT: 7.923 min Scan# 788
 Delta R.T. 0.003 min
 Lab File: BG062671.D
 Acq: 5 Sep 2024 17:53

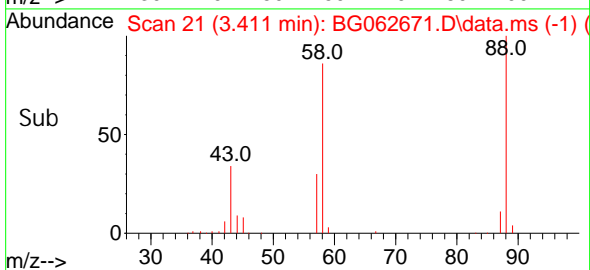
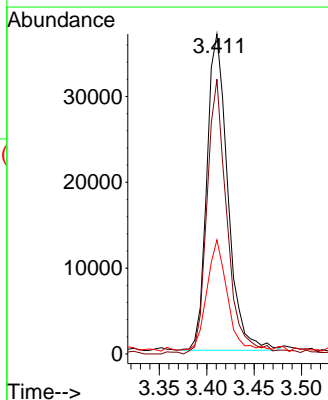
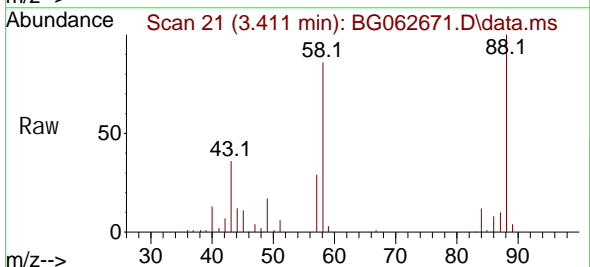
Instrument :
 BNA_G
 ClientSampleId :
 SSTDCCC040EC

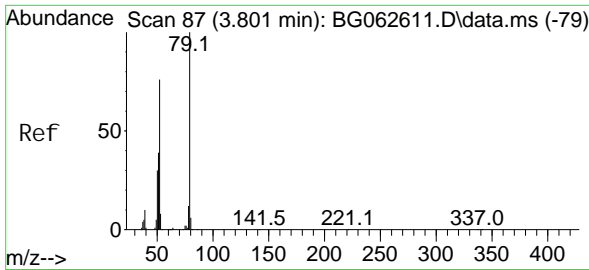
Tgt Ion: 152 Resp: 58047
 Ion Ratio Lower Upper
 152 100
 150 154.7 119.9 179.9
 115 59.6 46.6 69.8



#2
 1, 4-Di oxane
 Concen: 40.488 ng
 RT: 3.411 min Scan# 21
 Delta R.T. 0.003 min
 Lab File: BG062671.D
 Acq: 5 Sep 2024 17:53

Tgt Ion: 88 Resp: 56642
 Ion Ratio Lower Upper
 88 100
 58 83.9 62.3 93.5
 43 33.5 27.5 41.3





#3

Pyridine

Concen: 39.090 ng

RT: 3.798 min Scan# 81

Delta R.T. -0.003 min

Lab File: BG062671.D

Acq: 5 Sep 2024 17:53

Instrument :

BNA_G

ClientSampleId :

SSTDCCC040EC

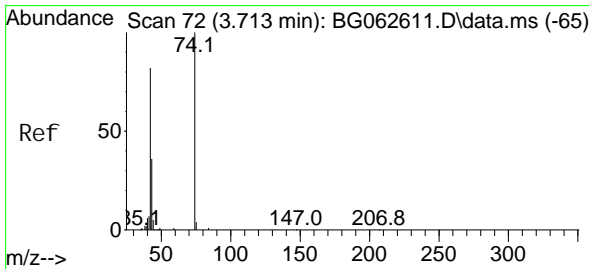
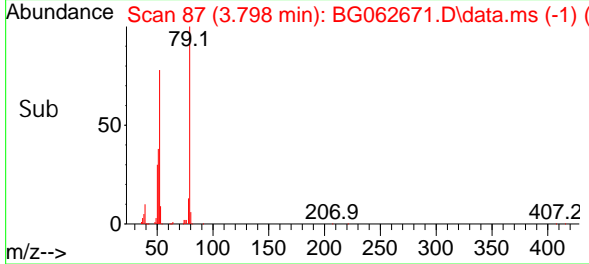
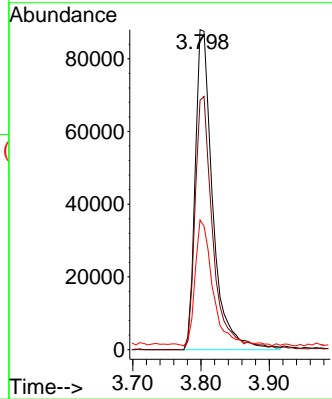
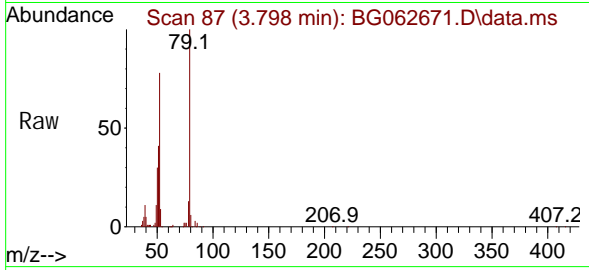
Tgt Ion: 79 Resp: 157562

Ion Ratio Lower Upper

79 100

52 78.0 60.9 91.3

51 40.5 31.5 47.3



#4

n-Nitrosodimethylamine

Concen: 40.163 ng

RT: 3.716 min Scan# 73

Delta R.T. 0.003 min

Lab File: BG062671.D

Acq: 5 Sep 2024 17:53

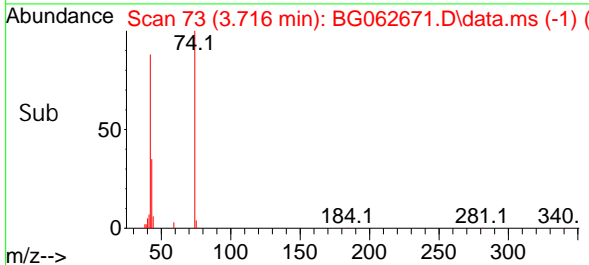
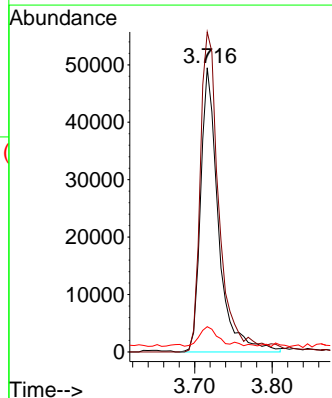
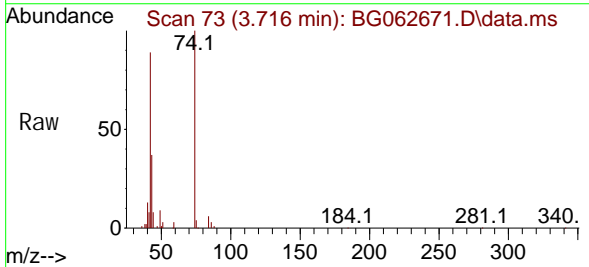
Tgt Ion: 42 Resp: 78704

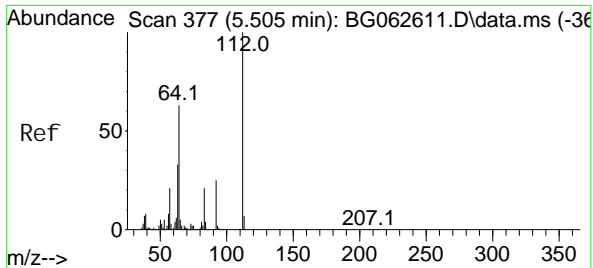
Ion Ratio Lower Upper

42 100

74 112.6 98.0 147.0

44 8.9 7.4 11.2

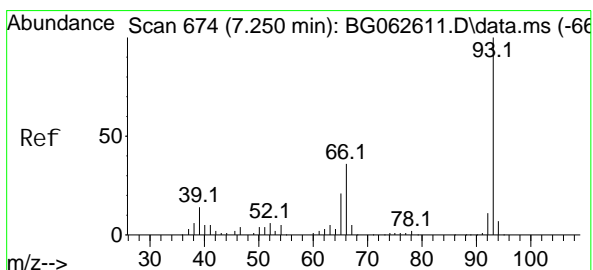
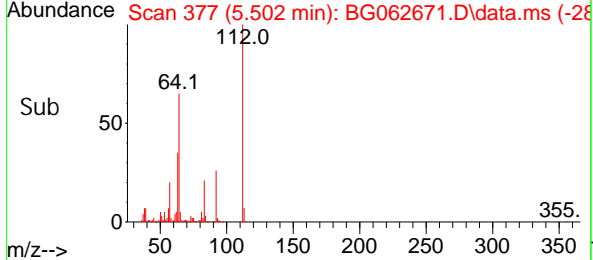
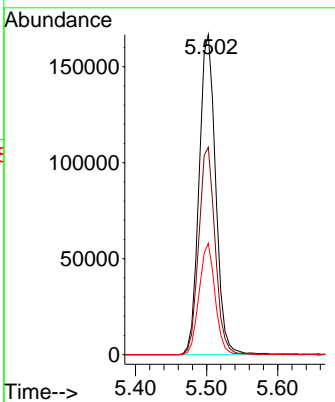
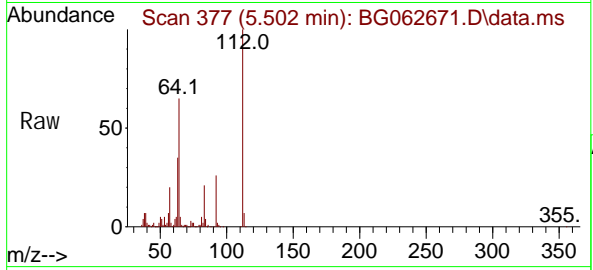




#5
 2-Fluorophenol
 Concen: 80.641 ng
 RT: 5.502 min Scan# 377
 Delta R.T. -0.003 min
 Lab File: BG062671.D
 Acq: 5 Sep 2024 17:53

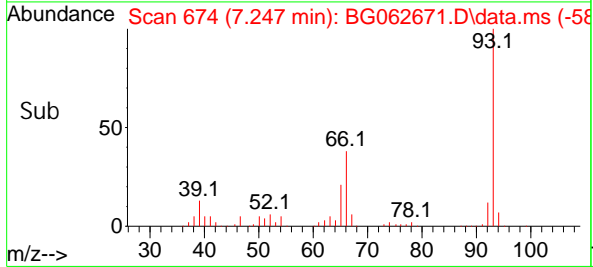
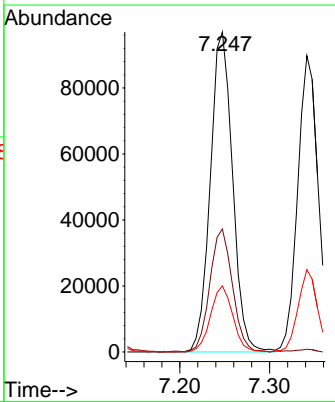
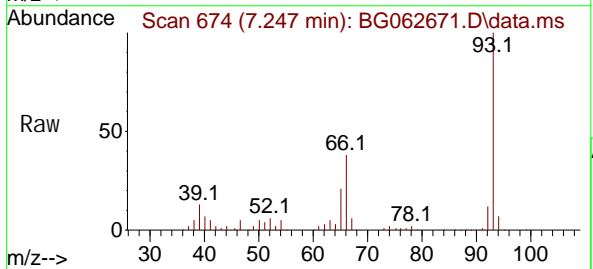
Instrument :
 BNA_G
ClientSampleId :
 SSTDCCC040EC

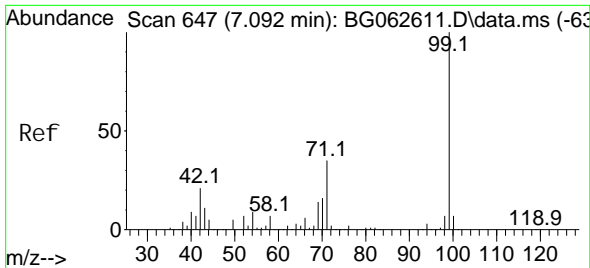
Tgt Ion	Resp	Lower	Upper
112	100		
64	64.8	50.2	75.2
63	34.8	26.6	39.8



#6
 Aniline
 Concen: 36.804 ng
 RT: 7.247 min Scan# 674
 Delta R.T. -0.003 min
 Lab File: BG062671.D
 Acq: 5 Sep 2024 17:53

Tgt Ion	Resp	Lower	Upper
93	100		
66	38.4	29.1	43.7
65	20.7	16.6	25.0

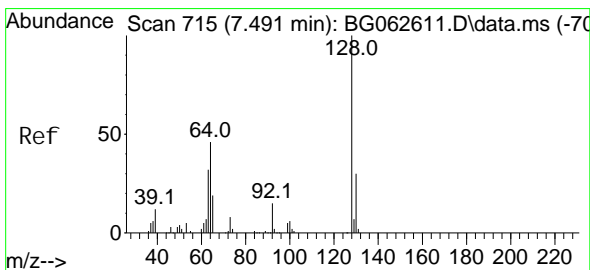
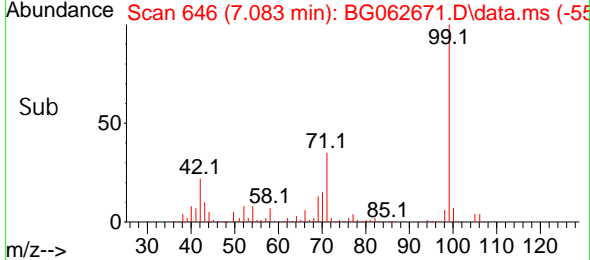
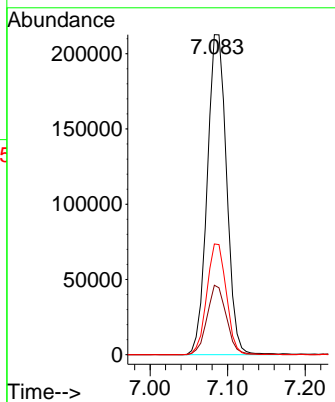
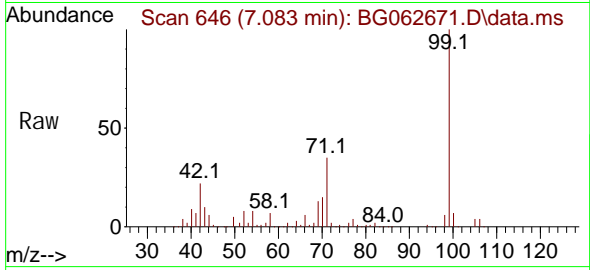




#7
 Phenol -d6
 Concen: 76.100 ng
 RT: 7.083 min Scan# 646
 Delta R.T. -0.009 min
 Lab File: BG062671.D
 Acq: 5 Sep 2024 17:53

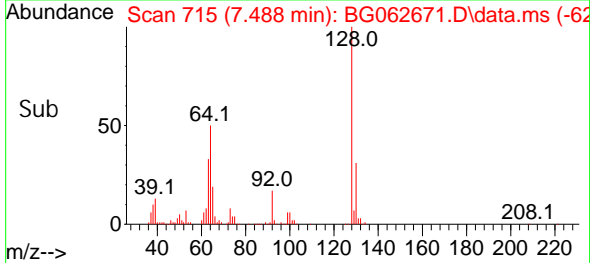
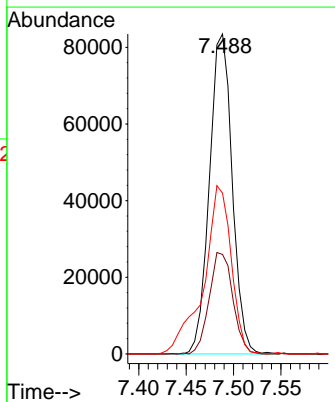
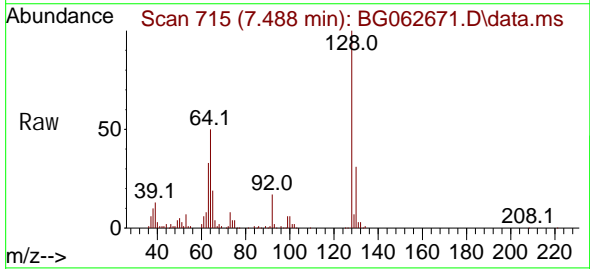
Instrument : BNA_G
 ClientSampleId : SSTDCCC040EC

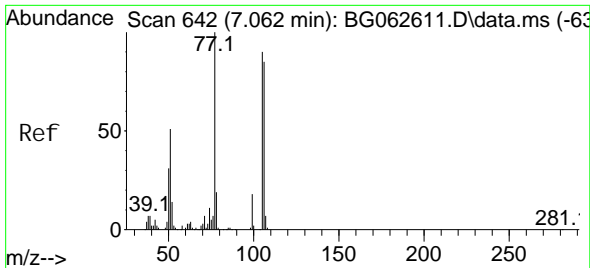
Tgt Ion	Resp	Lower	Upper
99	369185		
42	21.7	16.9	25.3
71	34.6	27.9	41.9



#8
 2-Chlorophenol
 Concen: 38.763 ng
 RT: 7.488 min Scan# 715
 Delta R.T. -0.003 min
 Lab File: BG062671.D
 Acq: 5 Sep 2024 17:53

Tgt Ion	Resp	Lower	Upper
128	139753		
130	31.1	10.0	50.0
64	50.2	28.8	68.8

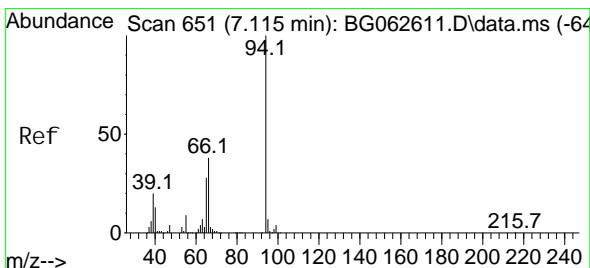
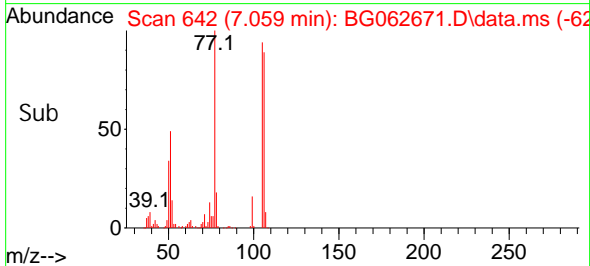
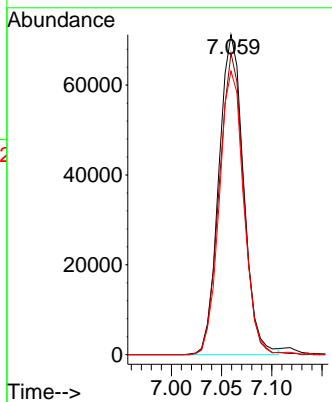
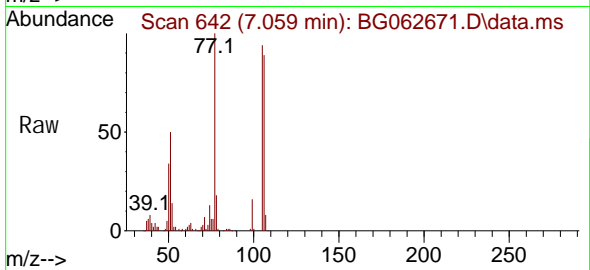




#9
Benzaldehyde
Concen: 43.119 ng
RT: 7.059 min Scan# 642
Delta R.T. -0.003 min
Lab File: BG062671.D
Acq: 5 Sep 2024 17:53

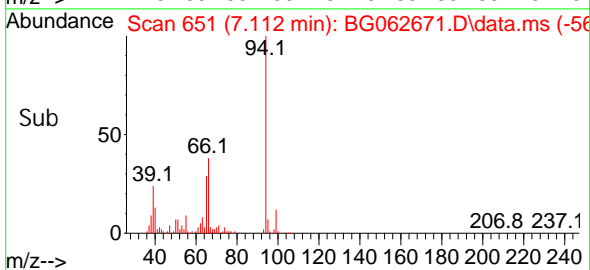
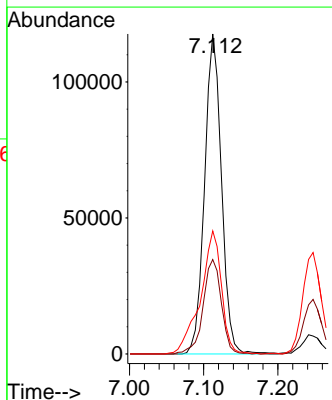
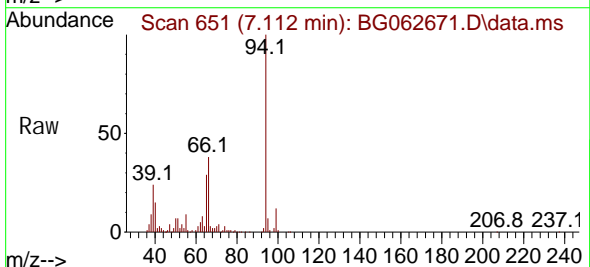
Instrument :
BNA_G
ClientSampleId :
SSTDCCC040EC

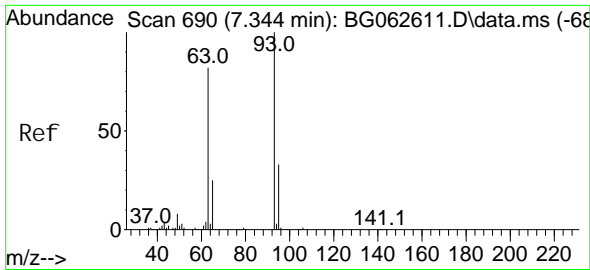
Tgt Ion: 77 Resp: 121681
Ion Ratio Lower Upper
77 100
105 94.3 70.2 110.2
106 88.6 65.4 105.4



#10
Phenol
Concen: 37.883 ng
RT: 7.112 min Scan# 651
Delta R.T. -0.003 min
Lab File: BG062671.D
Acq: 5 Sep 2024 17:53

Tgt Ion: 94 Resp: 186052
Ion Ratio Lower Upper
94 100
65 29.5 8.6 48.6
66 38.4 18.2 58.2



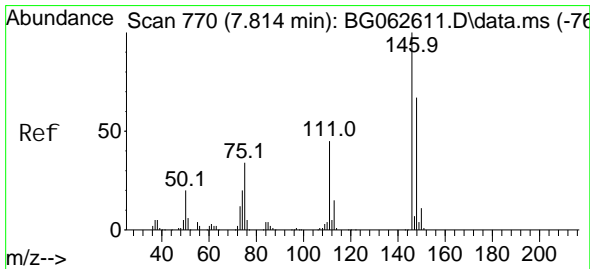
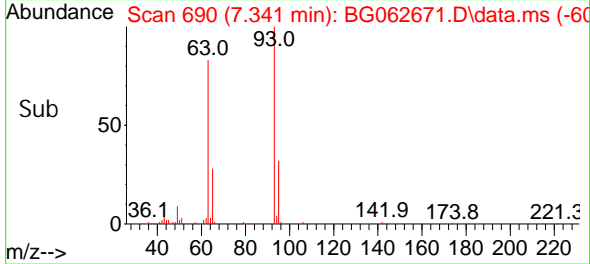
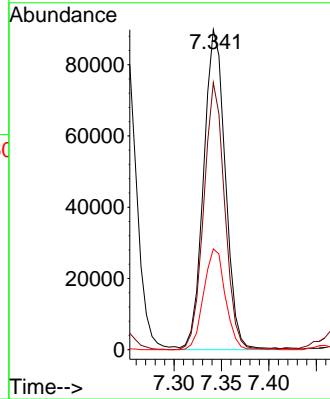
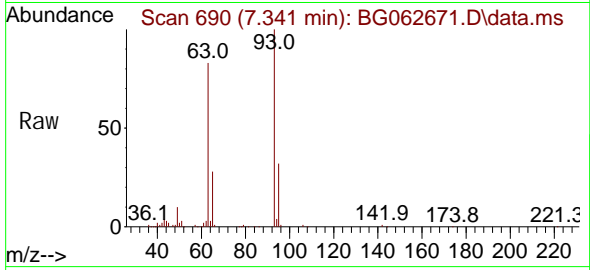


#11
 bis(2-Chloroethyl) ether
 Concen: 38.034 ng
 RT: 7.341 min Scan# 690
 Delta R.T. -0.003 min
 Lab File: BG062671.D
 Acq: 5 Sep 2024 17:53

Instrument :
 BNA_G
 ClientSampleId :
 SSTDCCC040EC

Tgt Ion: 93 Resp: 143015

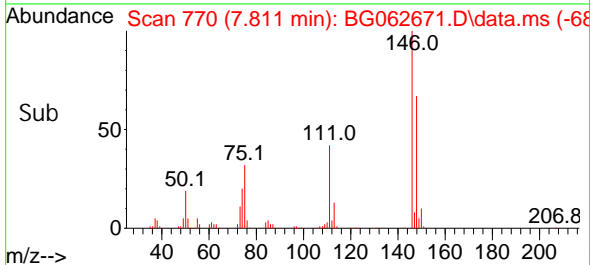
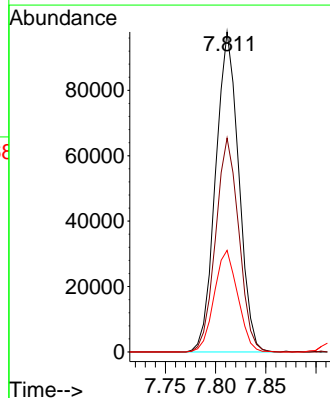
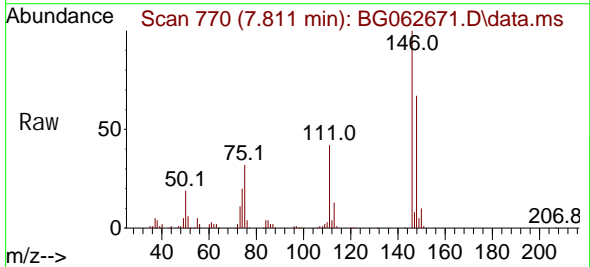
Ion	Ratio	Lower	Upper
93	100		
63	83.4	61.9	101.9
95	31.5	12.9	52.9

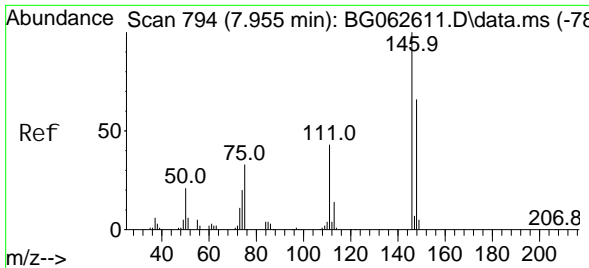


#12
 1,3-Dichlorobenzene
 Concen: 39.579 ng
 RT: 7.811 min Scan# 770
 Delta R.T. -0.003 min
 Lab File: BG062671.D
 Acq: 5 Sep 2024 17:53

Tgt Ion: 146 Resp: 156592

Ion	Ratio	Lower	Upper
146	100		
148	66.9	53.9	80.9
75	31.7	27.0	40.4

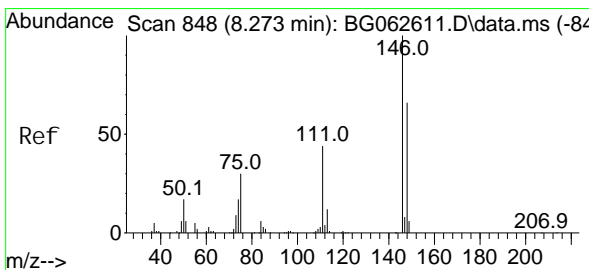
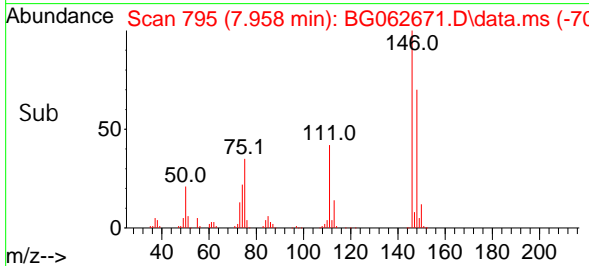
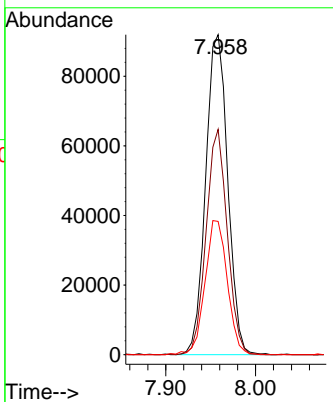
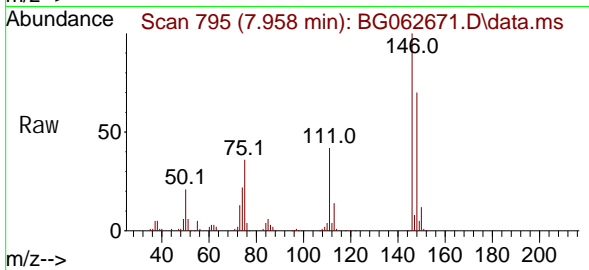




#13
 1,4-Di chl orobenzene
 Concen: 38.530 ng
 RT: 7.958 min Scan# 795
 Delta R.T. 0.003 min
 Lab File: BG062671.D
 Acq: 5 Sep 2024 17:53

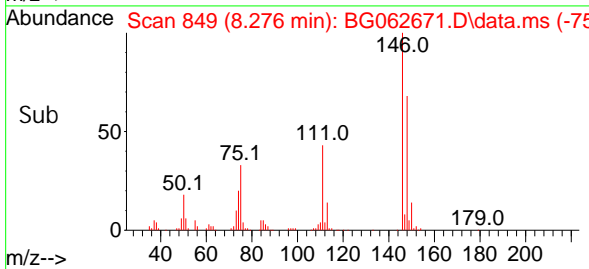
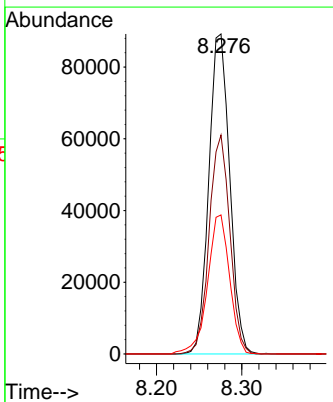
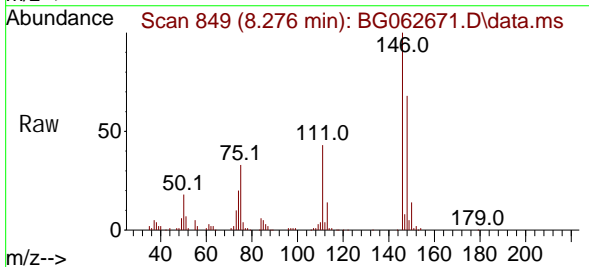
Instrument :
 BNA_G
ClientSampleId :
 SSTDCCC040EC

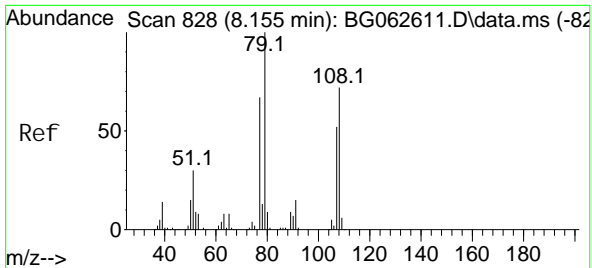
Tgt Ion	Resp	Lower	Upper
146	156882		
148	70.4	53.0	79.6
111	41.7	34.9	52.3



#14
 1,2-Di chl orobenzene
 Concen: 37.925 ng
 RT: 8.276 min Scan# 849
 Delta R.T. 0.003 min
 Lab File: BG062671.D
 Acq: 5 Sep 2024 17:53

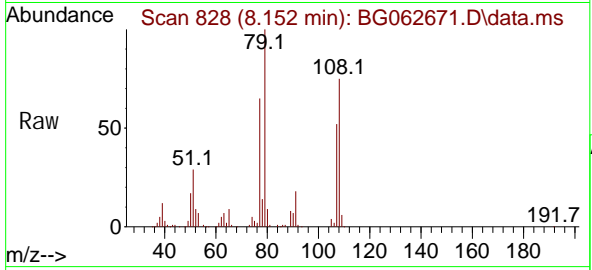
Tgt Ion	Resp	Lower	Upper
146	151784		
148	68.4	52.5	78.7
111	43.4	35.5	53.3





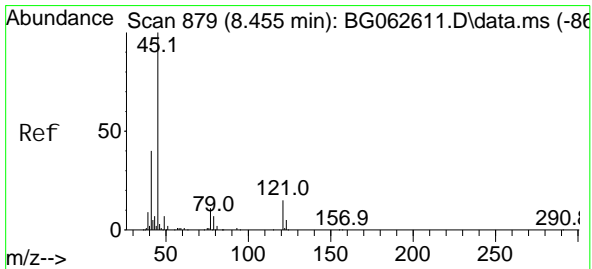
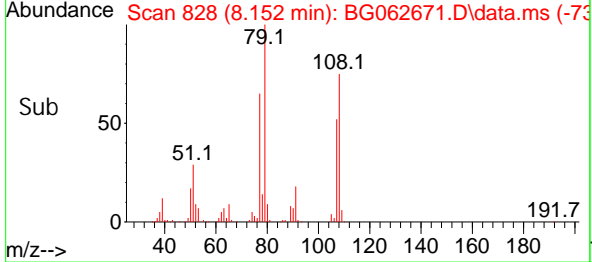
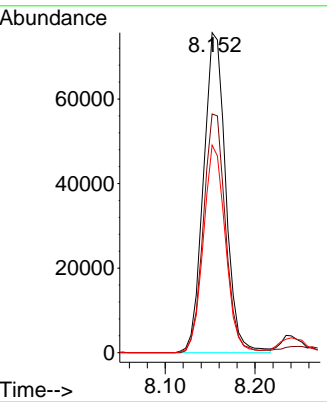
#15
 Benzyl Alcohol
 Concen: 36.225 ng
 RT: 8.152 min Scan# 815
 Delta R.T. -0.003 min
 Lab File: BG062671.D
 Acq: 5 Sep 2024 17:53

Instrument : BNA_G
 ClientSampleId : SSTDCCC040EC

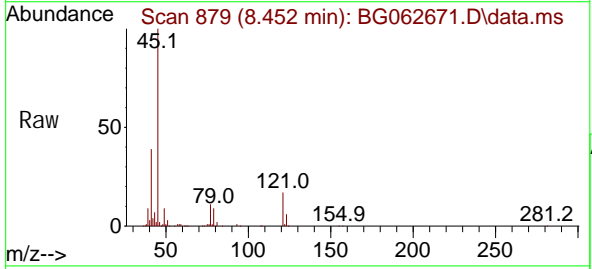


Tgt Ion: 79 Resp: 130030

Ion	Ratio	Lower	Upper
79	100		
108	74.6	57.9	86.9
77	64.8	53.4	80.2

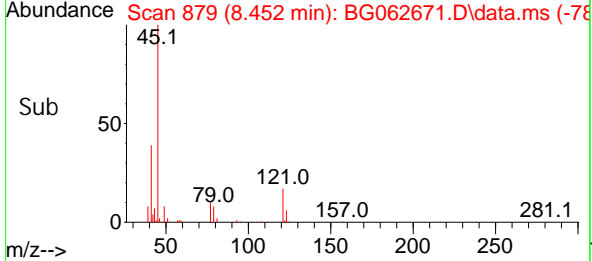
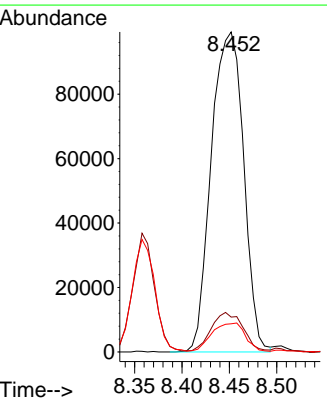


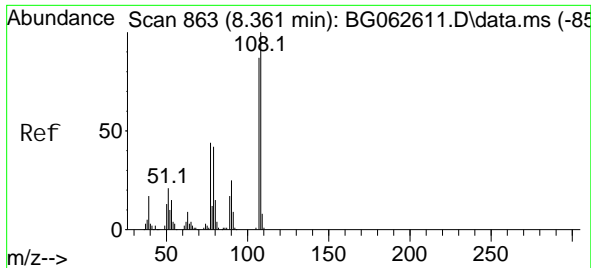
#16
 2, 2' -oxybis(1-Chloropropane)
 Concen: 32.855 ng
 RT: 8.452 min Scan# 879
 Delta R.T. -0.003 min
 Lab File: BG062671.D
 Acq: 5 Sep 2024 17:53



Tgt Ion: 45 Resp: 235453

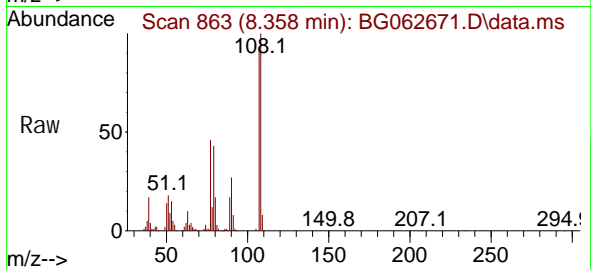
Ion	Ratio	Lower	Upper
45	100		
77	10.9	0.0	31.7
79	8.8	0.0	28.3





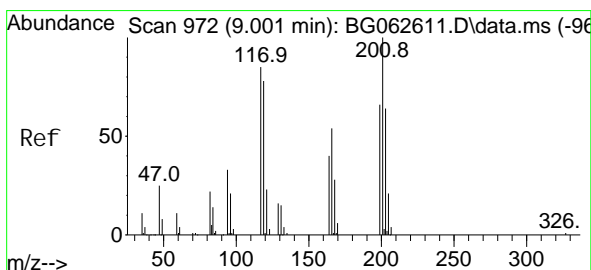
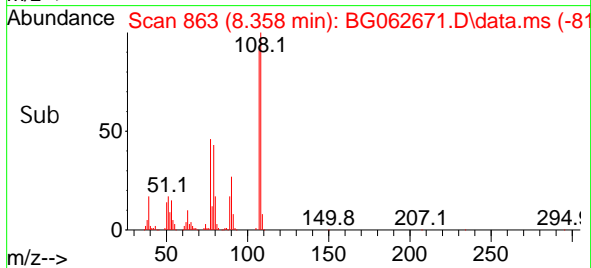
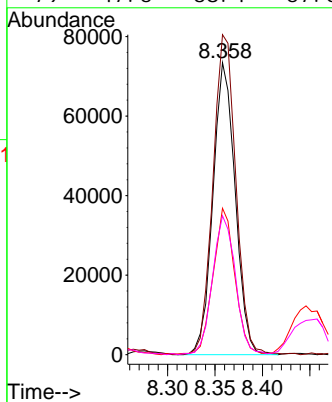
#17
 2-Methyl phenol
 Concen: 35.131 ng
 RT: 8.358 min Scan# 80
 Delta R.T. -0.003 min
 Lab File: BG062671.D
 Acq: 5 Sep 2024 17:53

Instrument :
 BNA_G
 ClientSampleId :
 SSTDCCC040EC



Tgt Ion: 107 Resp: 120267

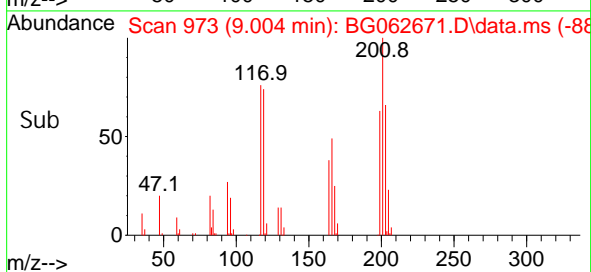
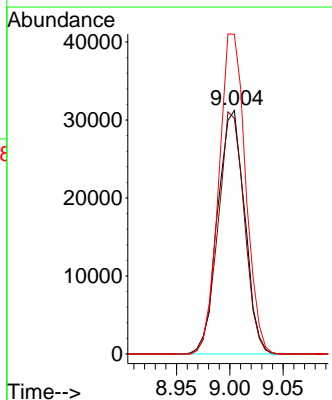
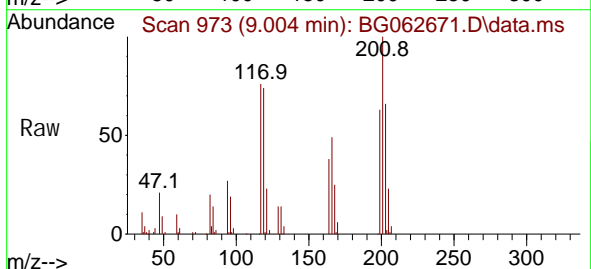
Ion	Ratio	Lower	Upper
107	100		
108	109.6	91.5	137.3
77	50.1	40.0	60.0
79	47.5	38.4	57.6

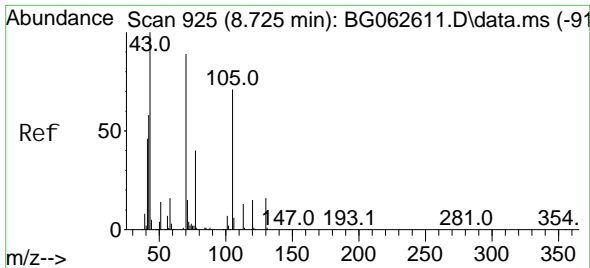


#18
 Hexachloroethane
 Concen: 36.019 ng
 RT: 9.004 min Scan# 973
 Delta R.T. 0.003 min
 Lab File: BG062671.D
 Acq: 5 Sep 2024 17:53

Tgt Ion: 117 Resp: 54991

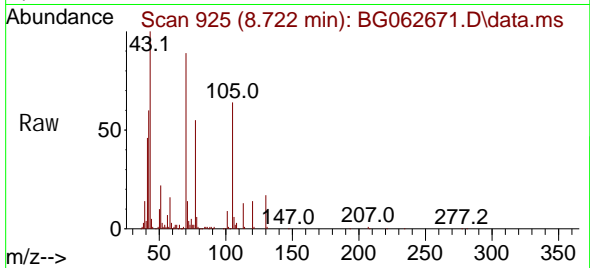
Ion	Ratio	Lower	Upper
117	100		
119	96.8	73.4	110.0
201	131.2	93.9	140.9





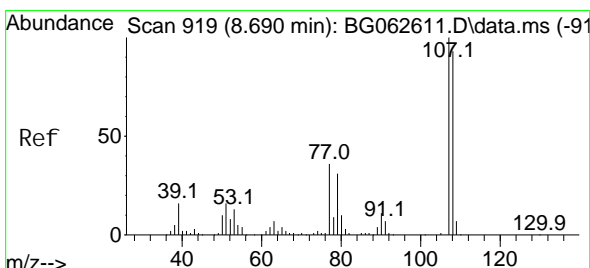
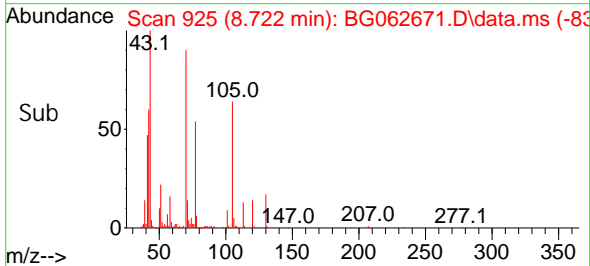
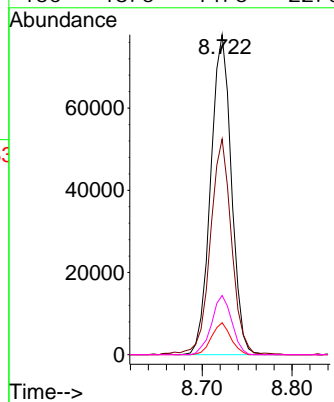
#19
 n-Nitroso-di-n-propyl amine
 Concen: 32.553 ng
 RT: 8.722 min Scan# 919
 Delta R.T. -0.003 min
 Lab File: BG062671.D
 Acq: 5 Sep 2024 17:53

Instrument :
 BNA_G
 ClientSampleId :
 SSTDCCC040EC



Tgt Ion: 70 Resp: 124443

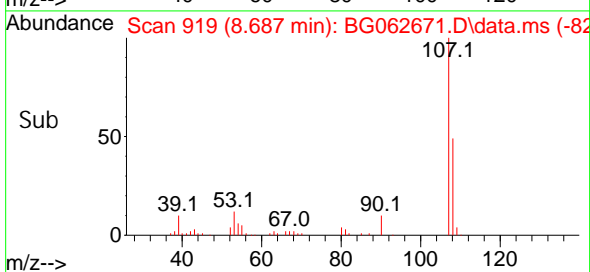
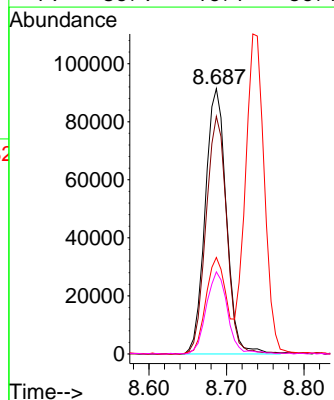
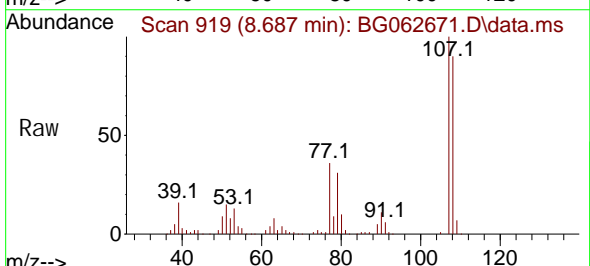
Ion	Ratio	Lower	Upper
70	100		
42	67.4	52.3	78.5
101	10.0	6.6	9.8
130	18.5	14.6	22.0

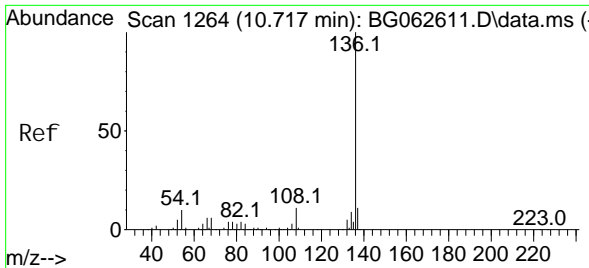


#20
 3+4-Methyl phenols
 Concen: 34.254 ng
 RT: 8.687 min Scan# 919
 Delta R.T. -0.003 min
 Lab File: BG062671.D
 Acq: 5 Sep 2024 17:53

Tgt Ion: 107 Resp: 173003

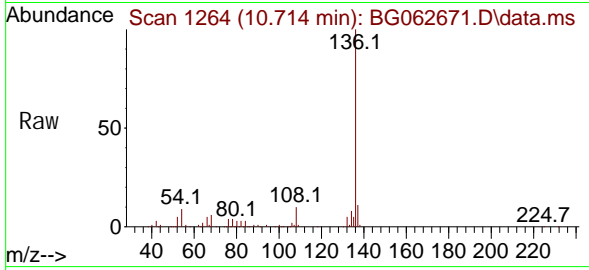
Ion	Ratio	Lower	Upper
107	100		
108	89.5	72.7	112.7
77	36.3	16.5	56.5
79	30.9	10.7	50.7





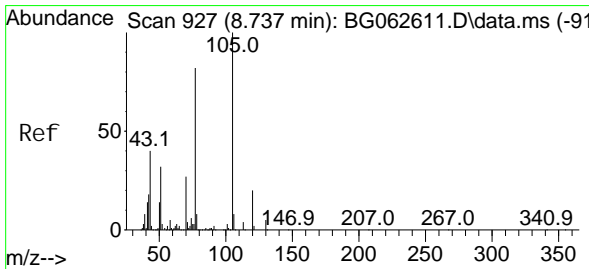
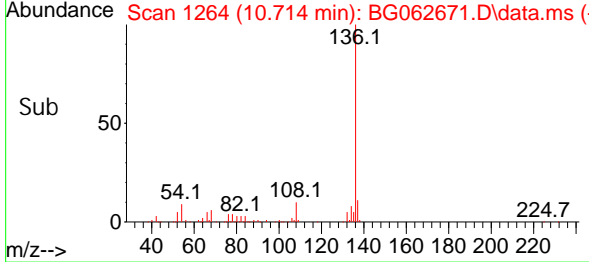
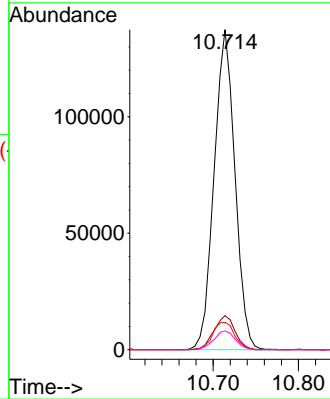
#21
 Naphthalene-d8
 Concen: 20.000 ng
 RT: 10.714 min Scan# 11
 Delta R.T. -0.003 min
 Lab File: BG062671.D
 Acq: 5 Sep 2024 17:53

Instrument :
 BNA_G
 ClientSampleId :
 SSTDCCC040EC



Tgt Ion: 136 Resp: 232696

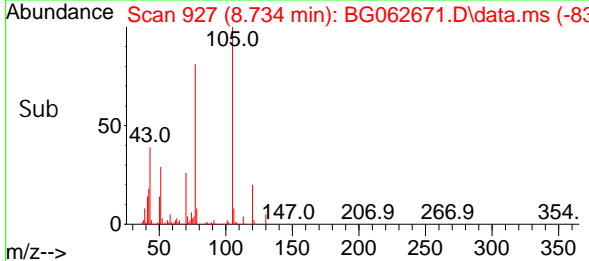
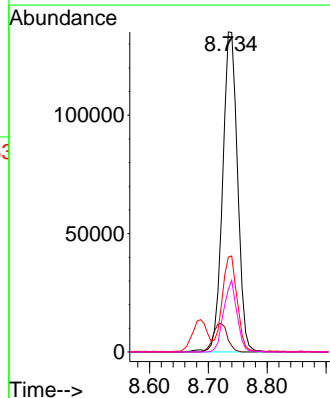
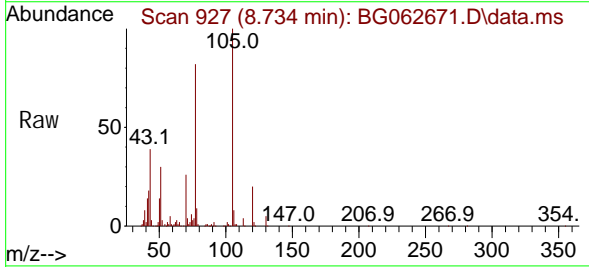
Ion	Ratio	Lower	Upper
136	100		
137	10.6	9.0	13.4
54	8.6	7.8	11.6
68	5.8	5.1	7.7

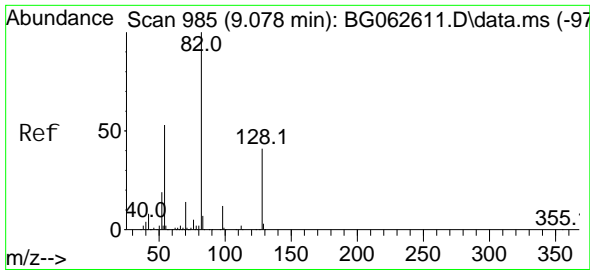


#22
 Acetophenone
 Concen: 37.909 ng
 RT: 8.734 min Scan# 927
 Delta R.T. -0.003 min
 Lab File: BG062671.D
 Acq: 5 Sep 2024 17:53

Tgt Ion: 105 Resp: 237975

Ion	Ratio	Lower	Upper
105	100		
71	3.6	3.5	5.3
51	29.7	25.7	38.5
120	19.6	15.7	23.5

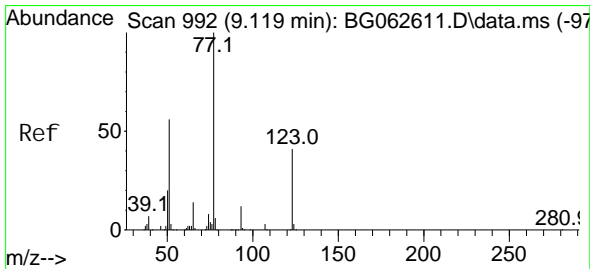
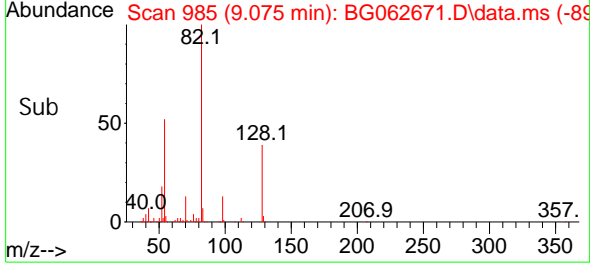
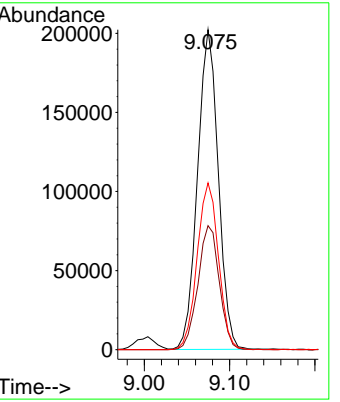
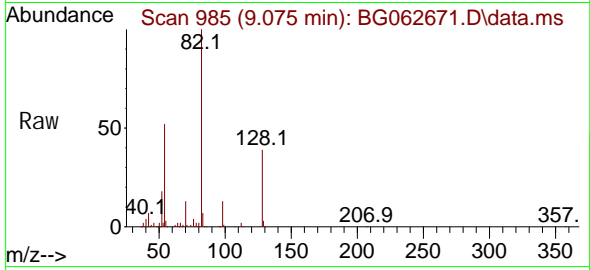




#23
 Ni trobenzene-d5
 Concen: 79.173 ng
 RT: 9.075 min Scan# 985
 Delta R.T. -0.003 min
 Lab File: BG062671.D
 Acq: 5 Sep 2024 17:53

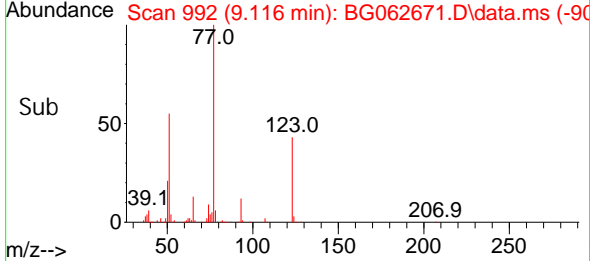
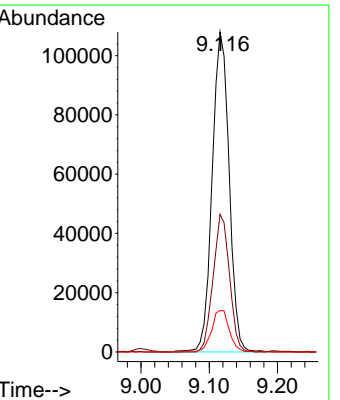
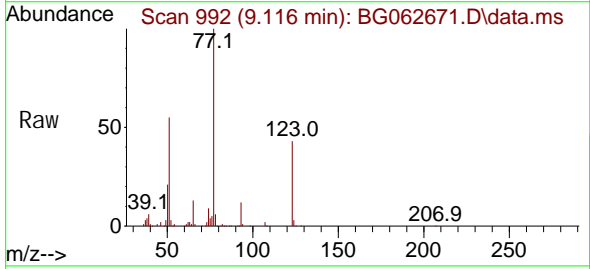
Instrument :
 BNA_G
 ClientSampleId :
 SSTDCCC040EC

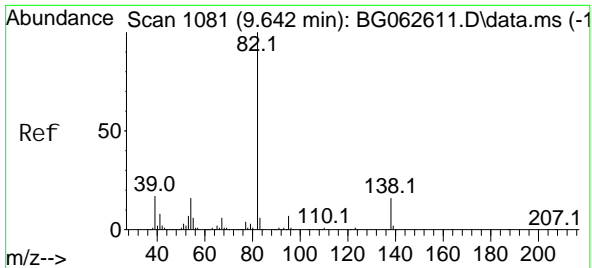
Tgt Ion	Resp	Lower	Upper
82	342081		
128	38.7	32.5	48.7
54	52.1	42.5	63.7



#24
 Ni trobenzene
 Concen: 40.639 ng
 RT: 9.116 min Scan# 992
 Delta R.T. -0.003 min
 Lab File: BG062671.D
 Acq: 5 Sep 2024 17:53

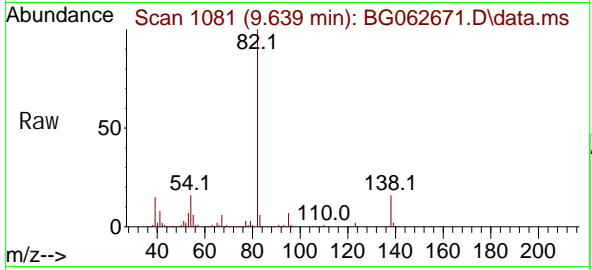
Tgt Ion	Resp	Lower	Upper
77	186694		
123	43.0	33.1	49.7
65	13.0	11.0	16.4



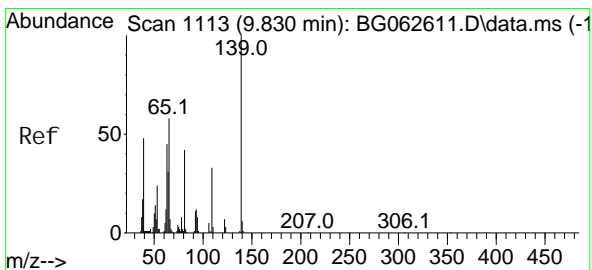
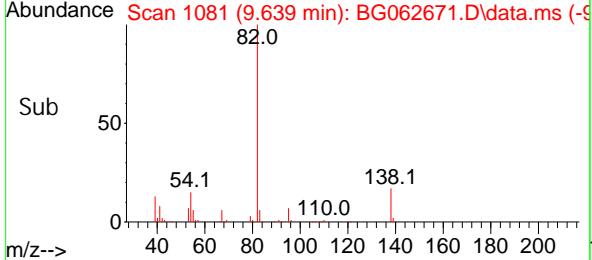
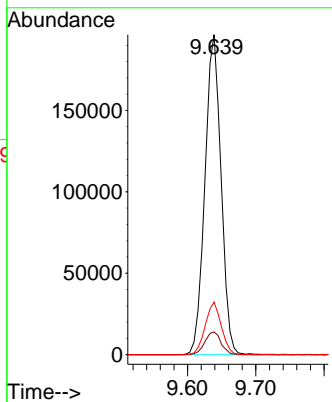


#25
 Isophorone
 Concen: 34.082 ng
 RT: 9.639 min Scan# 1081
 Delta R.T. -0.003 min
 Lab File: BG062671.D
 Acq: 5 Sep 2024 17:53

Instrument : BNA_G
 ClientSampleId : SSTDCCC040EC

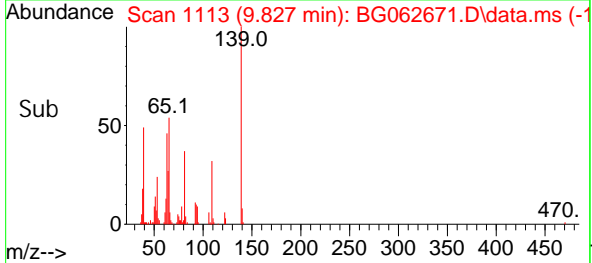
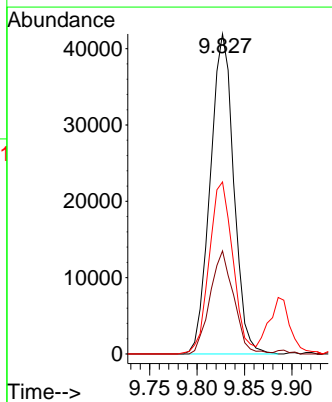
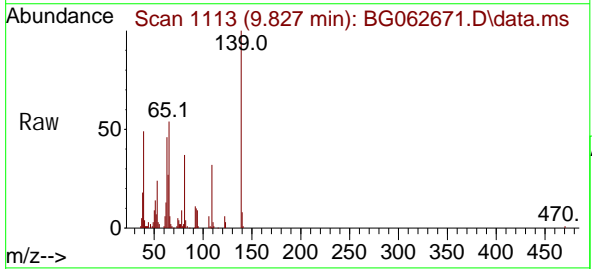


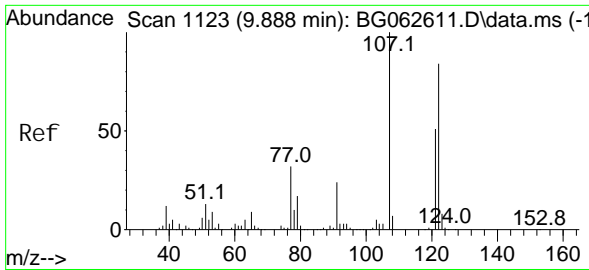
Tgt Ion: 82 Resp: 323252
 Ion Ratio Lower Upper
 82 100
 95 7.1 5.4 8.0
 138 16.5 12.6 18.8



#26
 2-Nitrophenol
 Concen: 41.654 ng
 RT: 9.827 min Scan# 1113
 Delta R.T. -0.003 min
 Lab File: BG062671.D
 Acq: 5 Sep 2024 17:53

Tgt Ion: 139 Resp: 72304
 Ion Ratio Lower Upper
 139 100
 109 32.2 26.6 39.8
 65 53.7 46.5 69.7

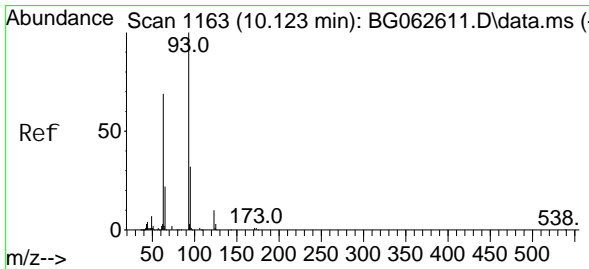
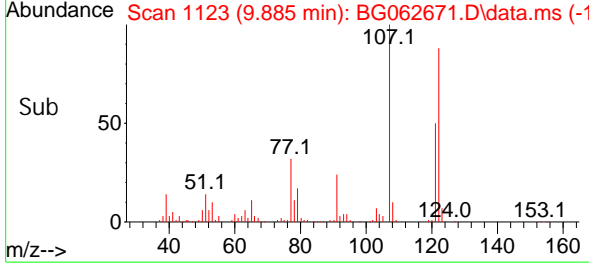
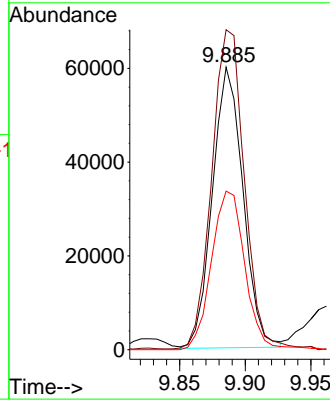
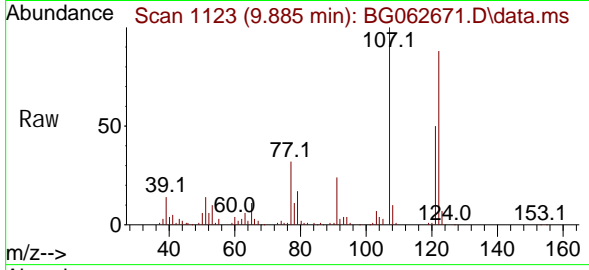




#27
 2, 4-Di methyl phenol
 Concen: 38.166 ng
 RT: 9.885 min Scan# 1112
 Delta R.T. -0.003 min
 Lab File: BG062671.D
 Acq: 5 Sep 2024 17:53

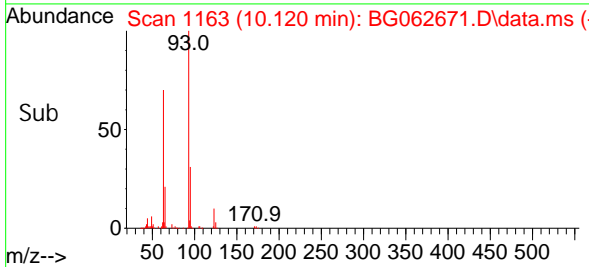
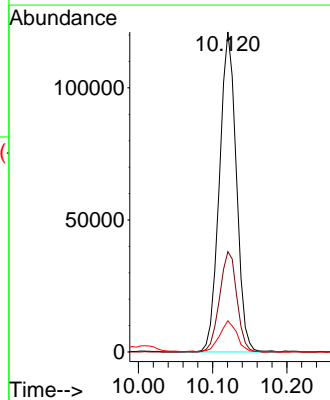
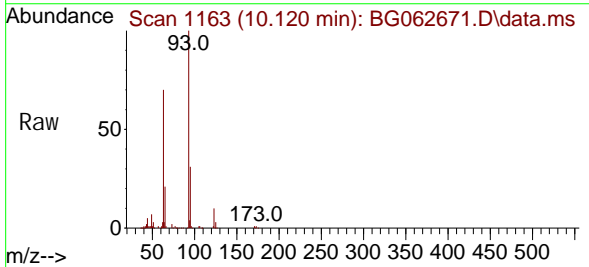
Instrument :
 BNA_G
 ClientSampleId :
 SSTDCCC040EC

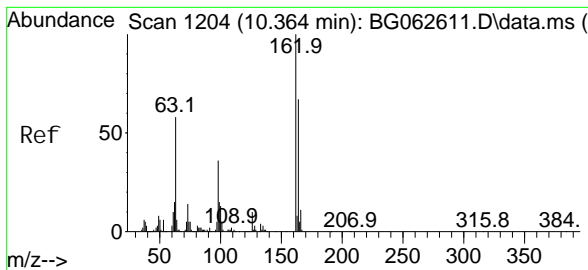
Tgt Ion	Resp	Lower	Upper
122	97072		
107	113.3	95.8	143.6
121	56.2	48.6	72.8



#28
 bis(2-Chloroethoxy)methane
 Concen: 37.811 ng
 RT: 10.120 min Scan# 1163
 Delta R.T. -0.003 min
 Lab File: BG062671.D
 Acq: 5 Sep 2024 17:53

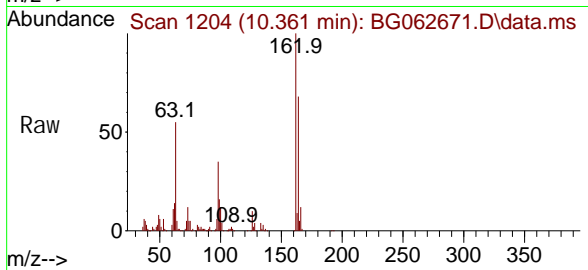
Tgt Ion	Resp	Lower	Upper
93	191976		
95	31.3	25.4	38.0
123	9.8	7.9	11.9



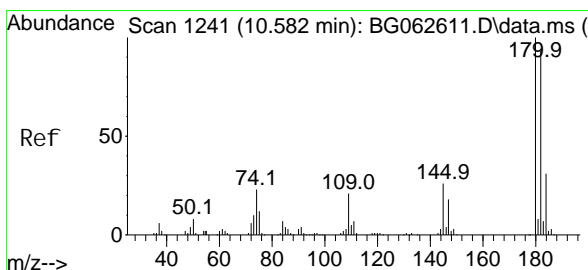
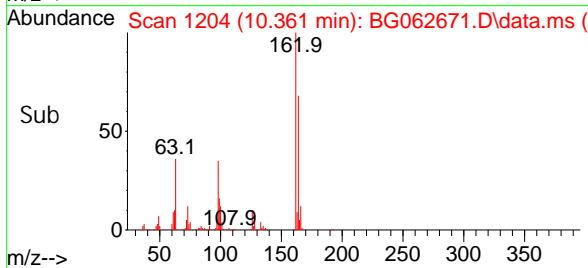
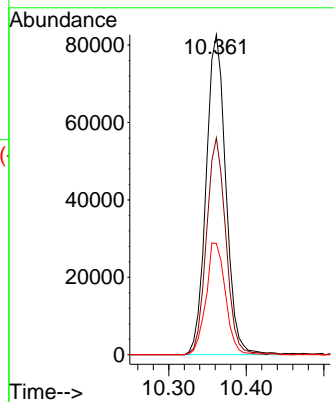


#29
 2, 4-Di chl orophenol
 Concen: 41.212 ng
 RT: 10.361 min Scan# 11
 Del ta R. T. -0.003 min
 Lab File: BG062671.D
 Acq: 5 Sep 2024 17:53

Instrument :
 BNA_G
 ClientSampleId :
 SSTDCCC040EC

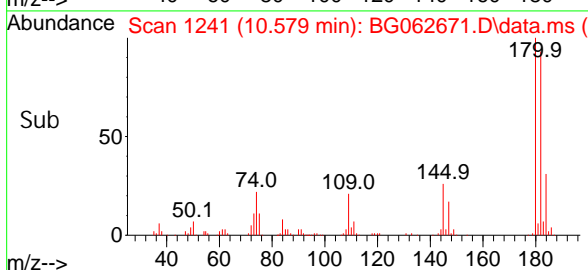
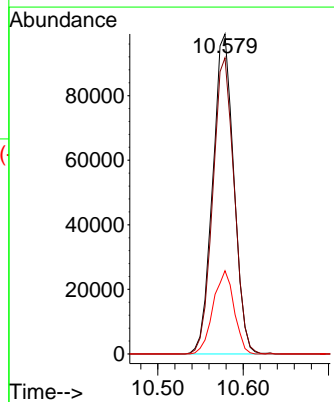
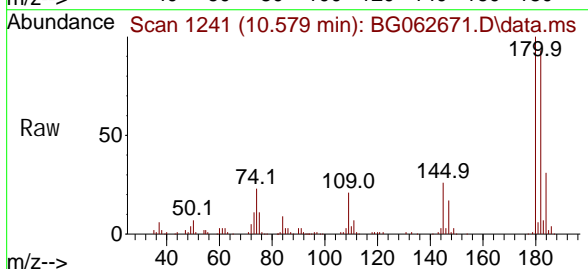


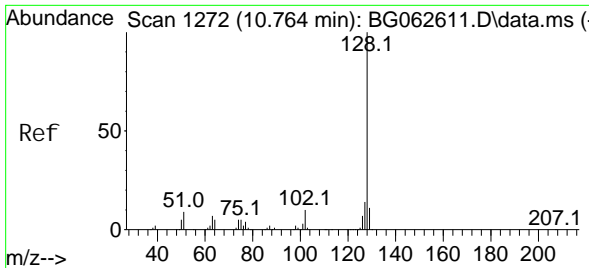
Tgt Ion: 162 Resp: 146555
 Ion Ratio Lower Upper
 162 100
 164 67.8 46.8 86.8
 98 34.8 16.4 56.4



#30
 1, 2, 4-Tri chl orobenzene
 Concen: 40.374 ng
 RT: 10.579 min Scan# 1241
 Del ta R. T. -0.003 min
 Lab File: BG062671.D
 Acq: 5 Sep 2024 17:53

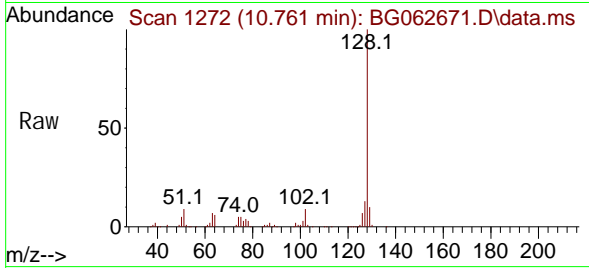
Tgt Ion: 180 Resp: 170202
 Ion Ratio Lower Upper
 180 100
 182 92.6 75.1 112.7
 145 26.0 20.8 31.2



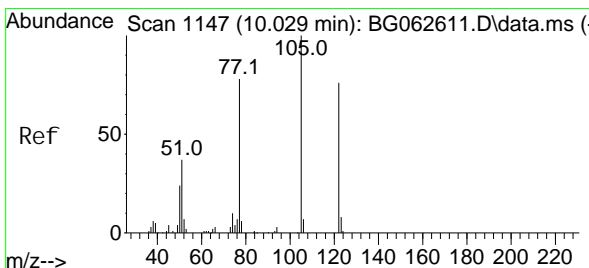
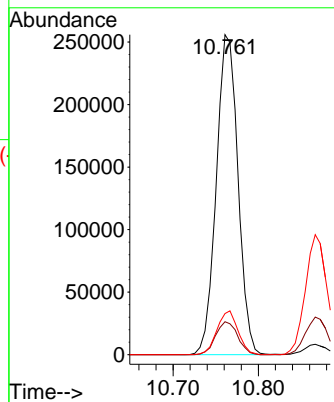
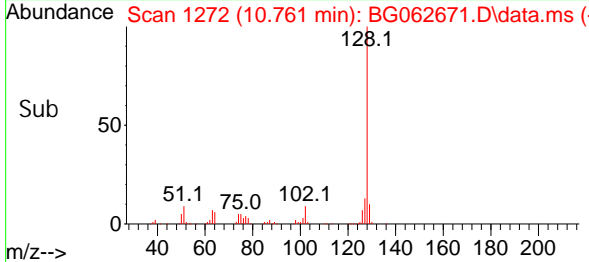


#31
 Naphthalene
 Concen: 39.230 ng
 RT: 10.761 min Scan# 1145
 Delta R.T. -0.003 min
 Lab File: BG062671.D
 Acq: 5 Sep 2024 17:53

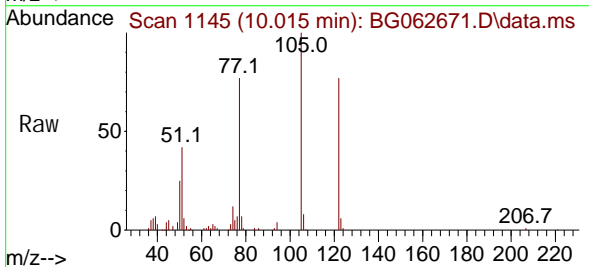
Instrument :
 BNA_G
 ClientSampleId :
 SSTDCCC040EC



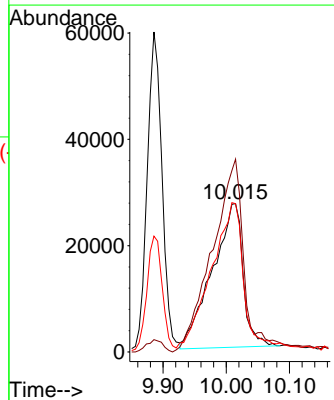
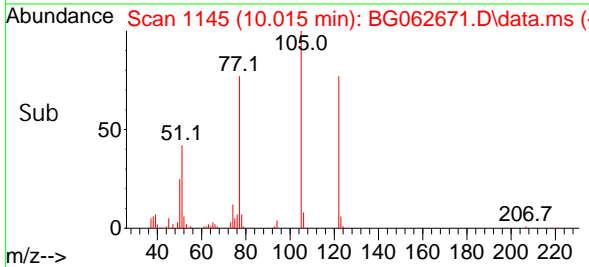
Tgt Ion: 128 Resp: 452463
 Ion Ratio Lower Upper
 128 100
 129 10.3 8.8 13.2
 127 12.9 11.3 16.9

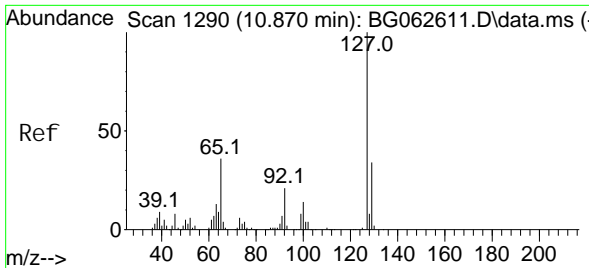


#32
 Benzoic acid
 Concen: 33.456 ng
 RT: 10.015 min Scan# 1145
 Delta R.T. -0.014 min
 Lab File: BG062671.D
 Acq: 5 Sep 2024 17:53



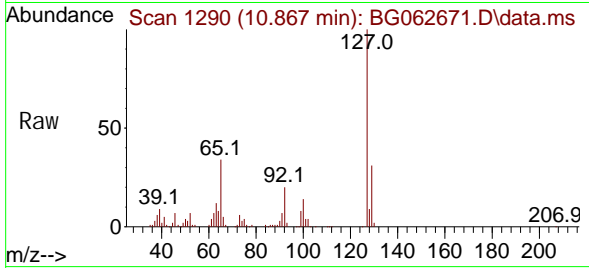
Tgt Ion: 122 Resp: 91517
 Ion Ratio Lower Upper
 122 100
 105 130.0 105.7 145.7
 77 100.0 79.9 119.9





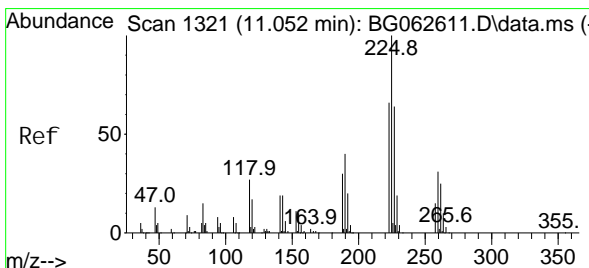
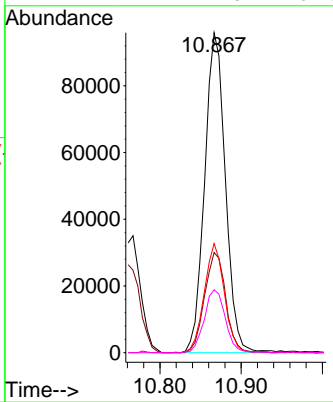
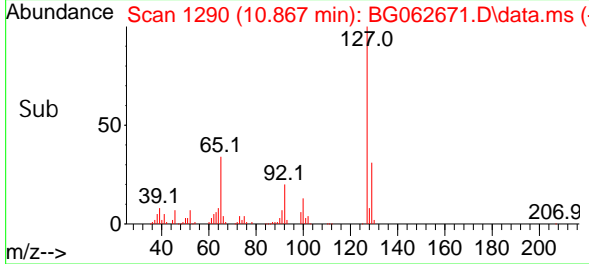
#33
 4-Chloroaniline
 Concen: 37.523 ng
 RT: 10.867 min Scan# 11
 Delta R.T. -0.003 min
 Lab File: BG062671.D
 Acq: 5 Sep 2024 17:53

Instrument :
 BNA_G
 ClientSampleId :
 SSTDCCC040EC

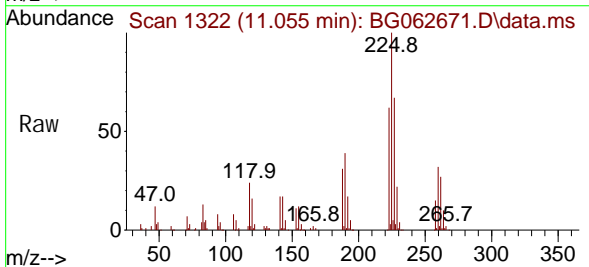


Tgt Ion: 127 Resp: 170311

Ion	Ratio	Lower	Upper
127	100		
129	31.3	27.3	40.9
65	34.1	29.0	43.4
92	19.7	17.0	25.4

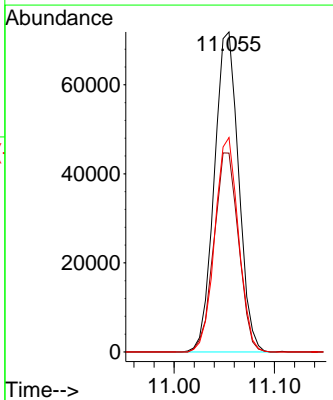
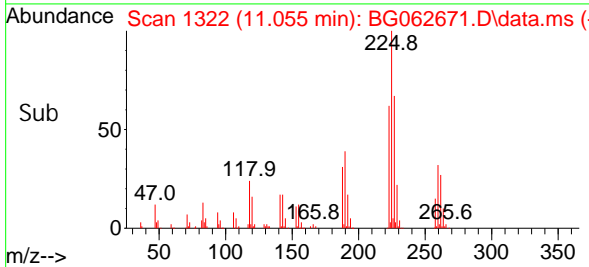


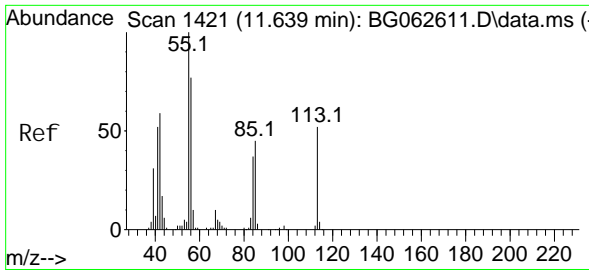
#34
 Hexachlorobutadiene
 Concen: 40.968 ng
 RT: 11.055 min Scan# 1322
 Delta R.T. 0.003 min
 Lab File: BG062671.D
 Acq: 5 Sep 2024 17:53



Tgt Ion: 225 Resp: 120624

Ion	Ratio	Lower	Upper
225	100		
223	62.2	50.1	75.1
227	70.3	48.9	73.3

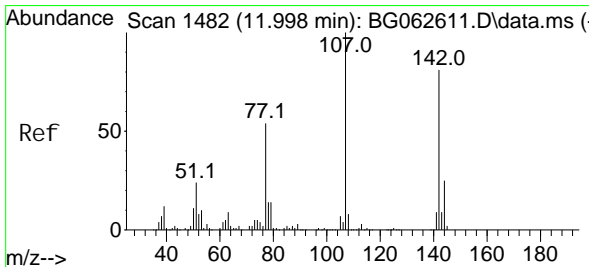
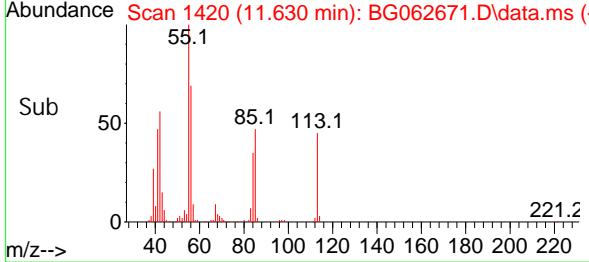
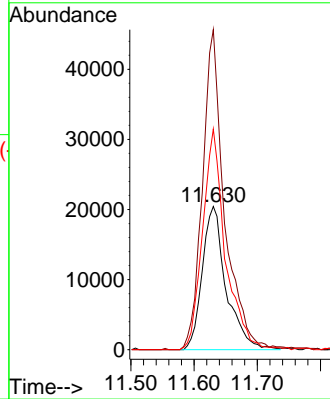
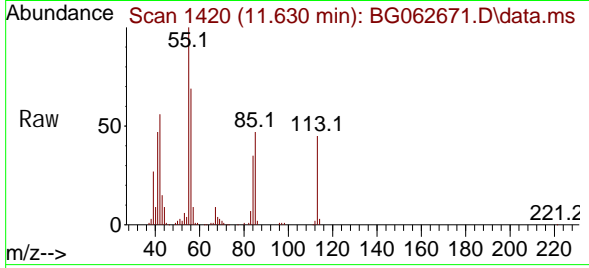




#35
 Caprolactam
 Concen: 39.113 ng
 RT: 11.630 min Scan# 1421
 Delta R.T. -0.009 min
 Lab File: BG062671.D
 Acq: 5 Sep 2024 17:53

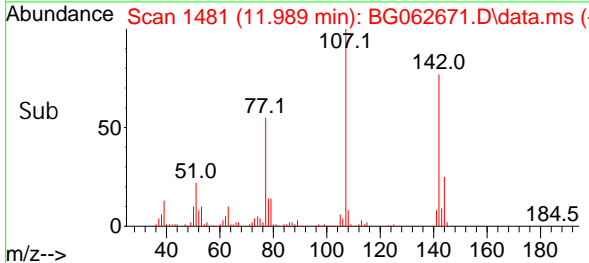
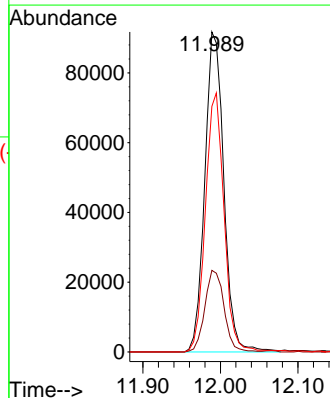
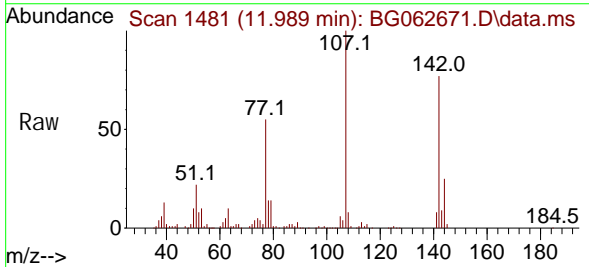
Instrument :
 BNA_G
 ClientSampleId :
 SSTDCCC040EC

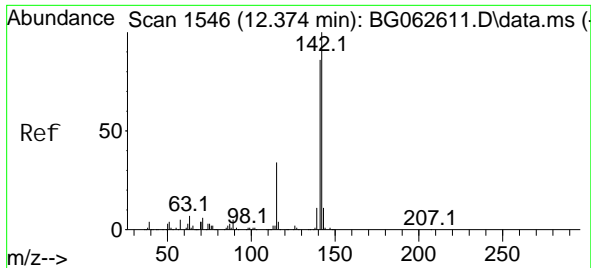
Tgt Ion: 113 Resp: 53621
 Ion Ratio Lower Upper
 113 100
 55 223.4 174.1 214.1#
 56 154.1 129.8 169.8



#36
 4-Chloro-3-methyl phenol
 Concen: 36.457 ng
 RT: 11.989 min Scan# 1481
 Delta R.T. -0.009 min
 Lab File: BG062671.D
 Acq: 5 Sep 2024 17:53

Tgt Ion: 107 Resp: 156383
 Ion Ratio Lower Upper
 107 100
 144 25.5 19.8 29.8
 142 76.8 64.7 97.1



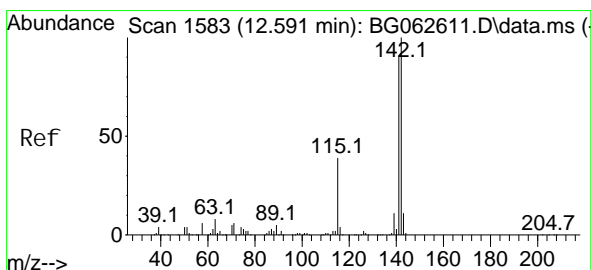
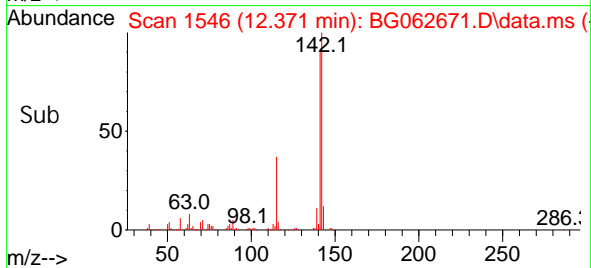
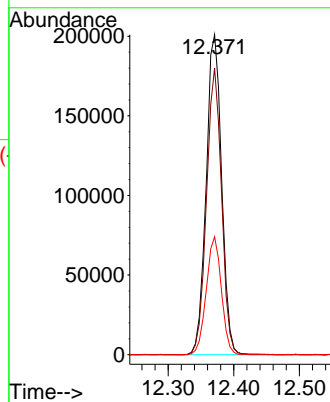
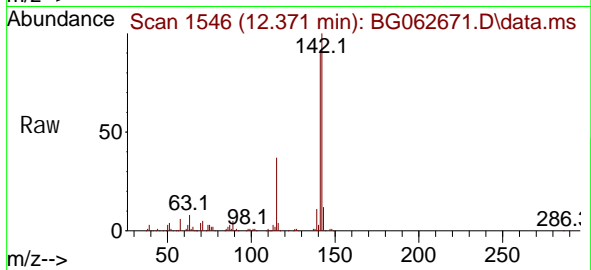


#37
 2-Methyl naphthalene
 Concen: 36.880 ng
 RT: 12.371 min Scan# 1546
 Delta R.T. -0.003 min
 Lab File: BG062671.D
 Acq: 5 Sep 2024 17:53

Instrument :
 BNA_G
 ClientSampleId :
 SSTDCCC040EC

Tgt Ion: 142 Resp: 329914

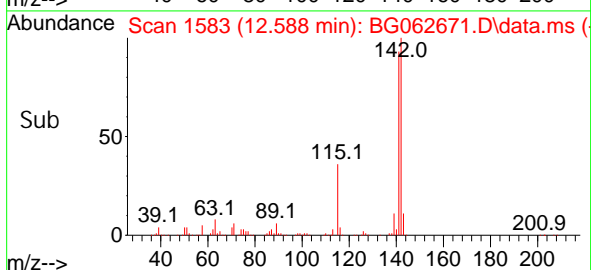
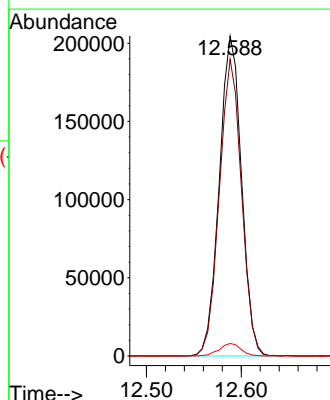
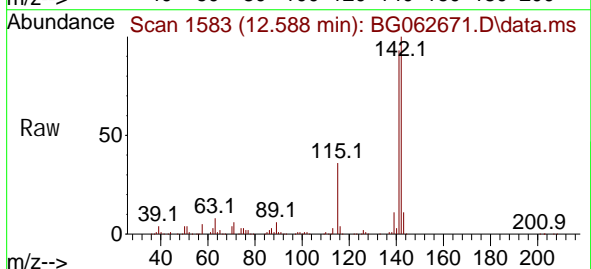
Ion	Ratio	Lower	Upper
142	100		
141	89.6	68.9	103.3
115	36.8	27.5	41.3

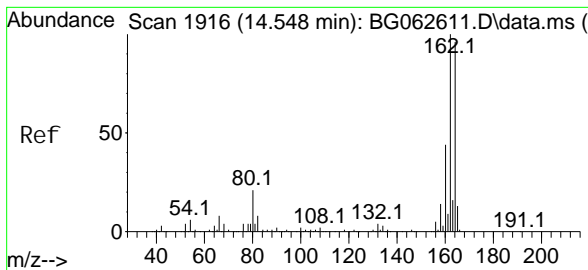


#38
 1-Methyl naphthalene
 Concen: 37.094 ng
 RT: 12.588 min Scan# 1583
 Delta R.T. -0.003 min
 Lab File: BG062671.D
 Acq: 5 Sep 2024 17:53

Tgt Ion: 142 Resp: 333201

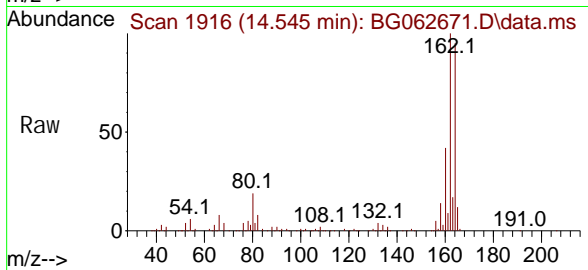
Ion	Ratio	Lower	Upper
142	100		
141	92.7	73.0	109.4
116	3.9	3.2	4.8



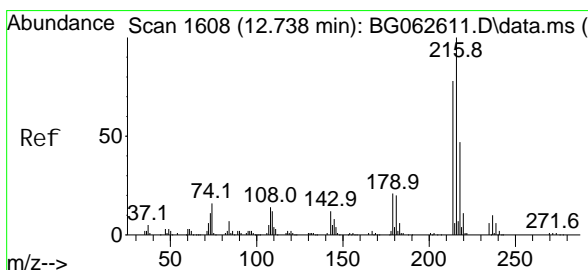
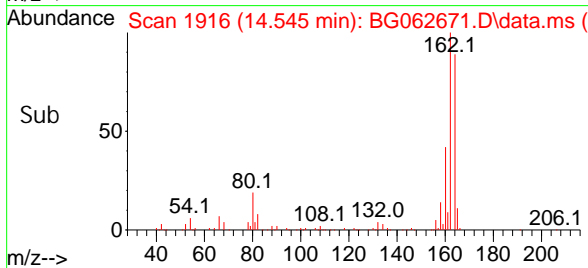
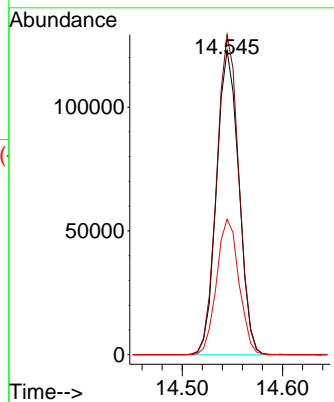


#39
 Acenaphthene-d10
 Concen: 20.000 ng
 RT: 14.545 min Scan# 1916
 Delta R.T. -0.003 min
 Lab File: BG062671.D
 Acq: 5 Sep 2024 17:53

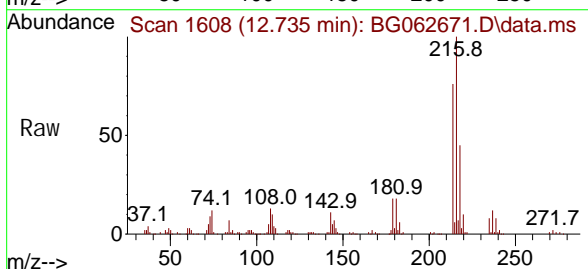
Instrument :
 BNA_G
 ClientSampleId :
 SSTDCCC040EC



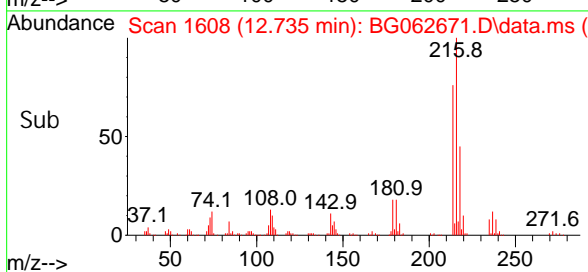
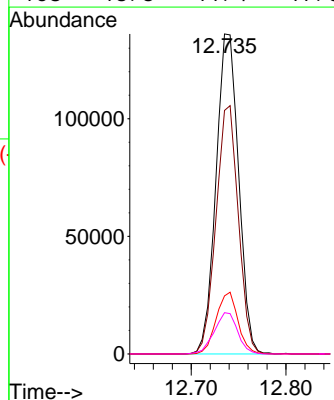
Tgt Ion: 164 Resp: 188598
 Ion Ratio Lower Upper
 164 100
 162 105.2 83.1 124.7
 160 44.5 36.2 54.4

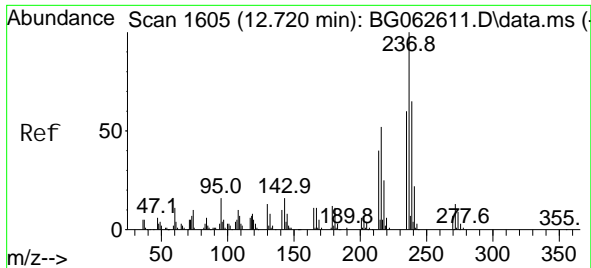


#40
 1,2,4,5-Tetrachlorobenzene
 Concen: 39.814 ng
 RT: 12.735 min Scan# 1608
 Delta R.T. -0.003 min
 Lab File: BG062671.D
 Acq: 5 Sep 2024 17:53



Tgt Ion: 216 Resp: 225814
 Ion Ratio Lower Upper
 216 100
 214 76.5 61.6 92.4
 179 18.6 15.9 23.9
 108 13.3 11.4 17.0

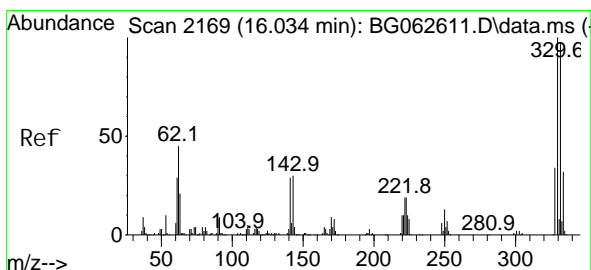
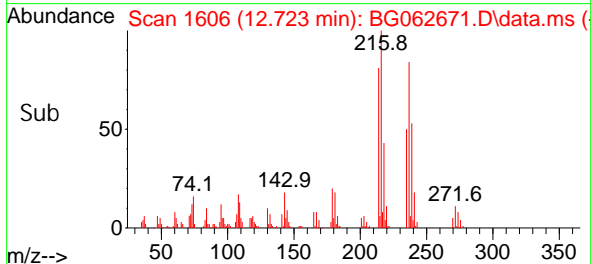
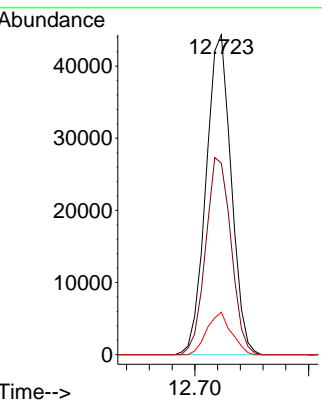
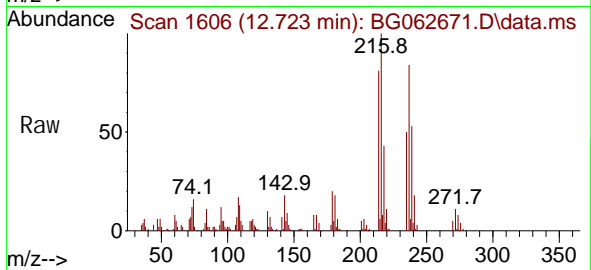




#41
 Hexachlorocyclopentadiene
 Concentration: 42.115 ng
 RT: 12.723 min Scan# 10
 Delta R.T.: 0.003 min
 Lab File: BG062671.D
 Acq: 5 Sep 2024 17:53

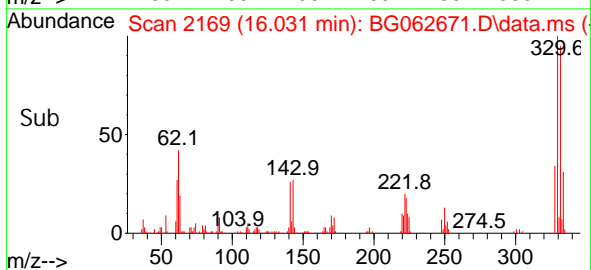
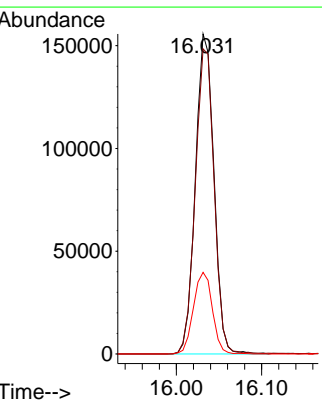
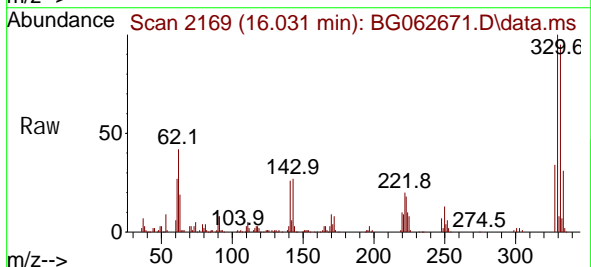
Instrument : BNA_G
 ClientSampleId : SSTDCCC040EC

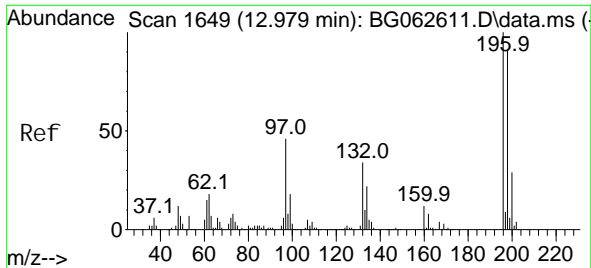
Tgt Ion	Resp	Lower	Upper
237	100		
235	59.9	40.4	80.4
272	13.3	0.0	32.7



#42
 2,4,6-Tribromophenol
 Concentration: 88.350 ng
 RT: 16.031 min Scan# 2169
 Delta R.T.: -0.003 min
 Lab File: BG062671.D
 Acq: 5 Sep 2024 17:53

Tgt Ion	Resp	Lower	Upper
330	100		
332	97.2	77.2	115.8
141	26.1	22.2	33.4

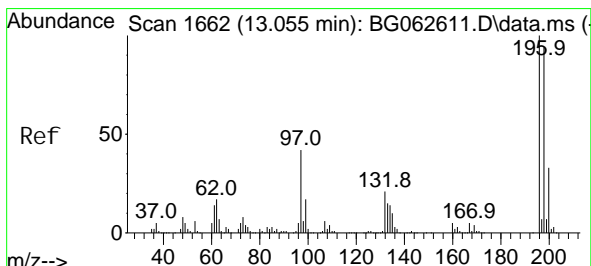
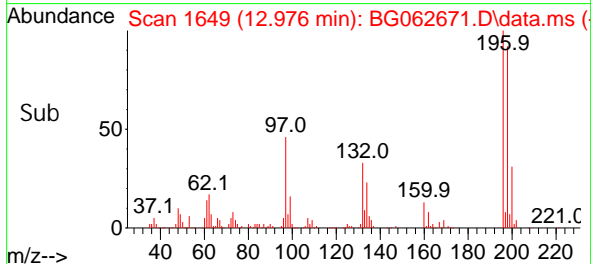
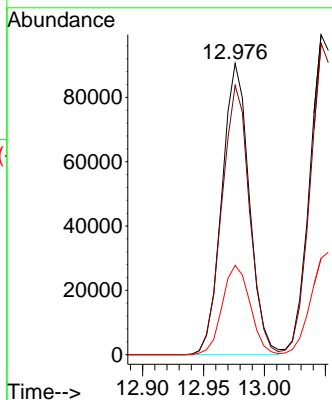
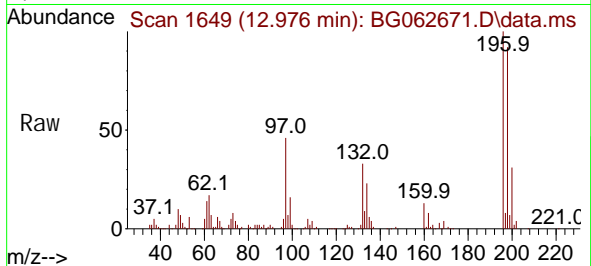




#43
 2, 4, 6-Tri chlorophenol
 Concen: 39.225 ng
 RT: 12.976 min Scan# 1649
 Delta R.T. -0.003 min
 Lab File: BG062671.D
 Acq: 5 Sep 2024 17:53

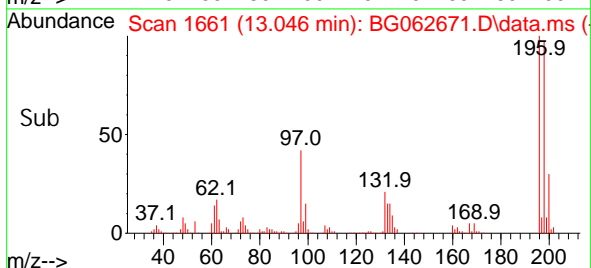
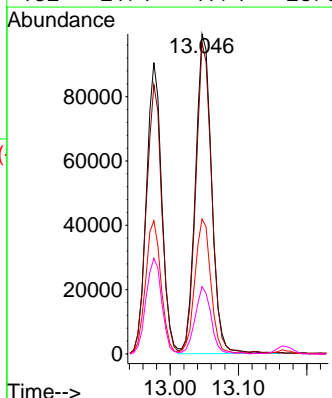
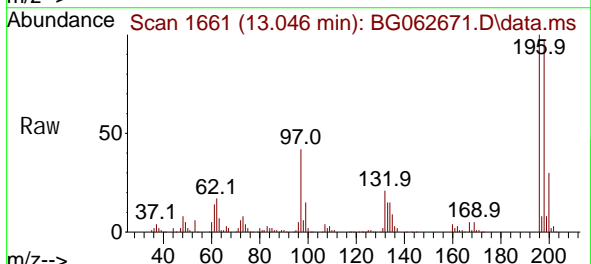
Instrument : BNA_G
 ClientSampleId : SSTDCCC040EC

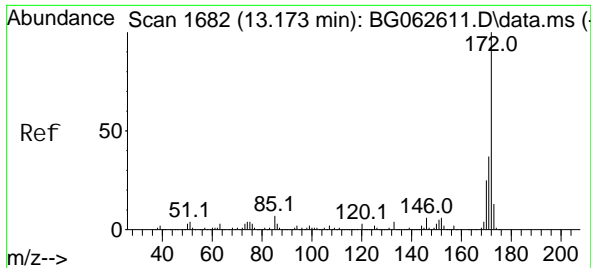
Tgt Ion	Resp	Lower	Upper
196	141034		
196	100		
198	92.4	72.8	109.2
200	30.7	23.5	35.3



#44
 2, 4, 5-Tri chlorophenol
 Concen: 39.975 ng
 RT: 13.046 min Scan# 1661
 Delta R.T. -0.009 min
 Lab File: BG062671.D
 Acq: 5 Sep 2024 17:53

Tgt Ion	Resp	Lower	Upper
196	162774		
196	100		
198	97.3	75.5	113.3
97	42.1	34.1	51.1
132	21.1	17.4	26.0

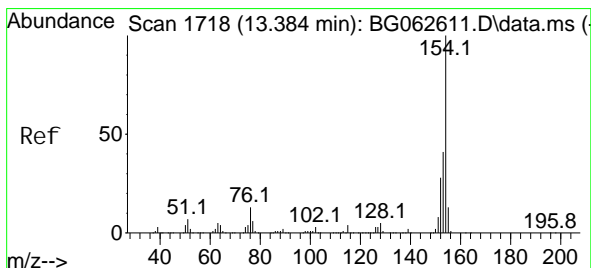
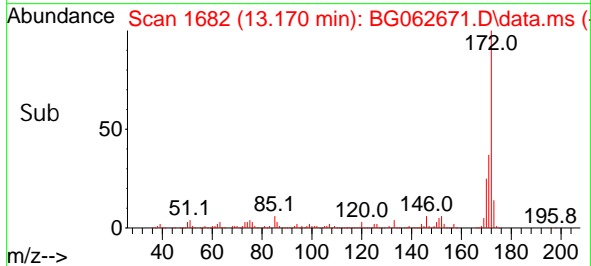
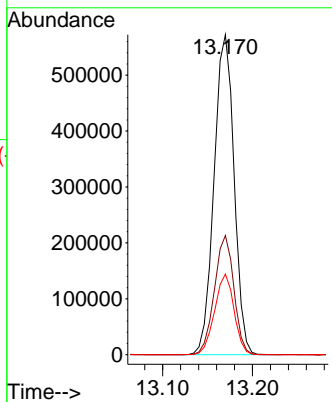
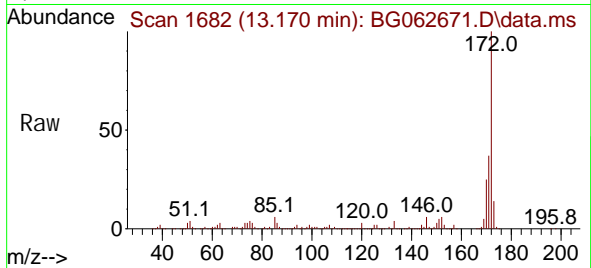




#45
 2-Fluorophenyl
 Concen: 75.912 ng
 RT: 13.170 min Scan# 1682
 Delta R.T. -0.003 min
 Lab File: BG062671.D
 Acq: 5 Sep 2024 17:53

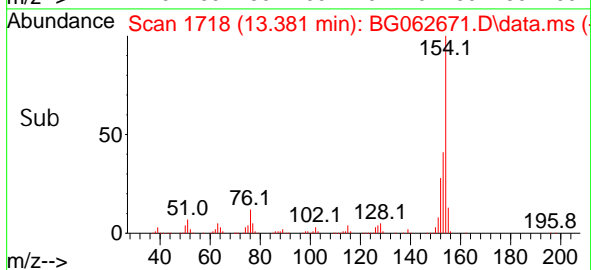
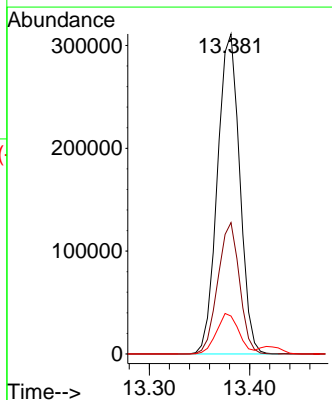
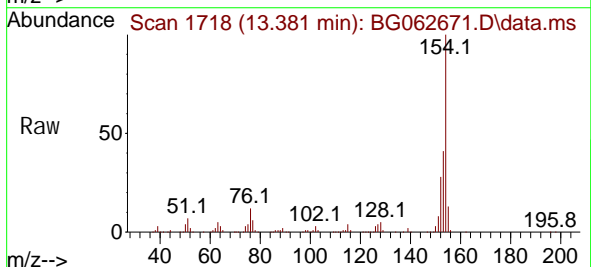
Instrument : BNA_G
 ClientSampleId : SSTDCCC040EC

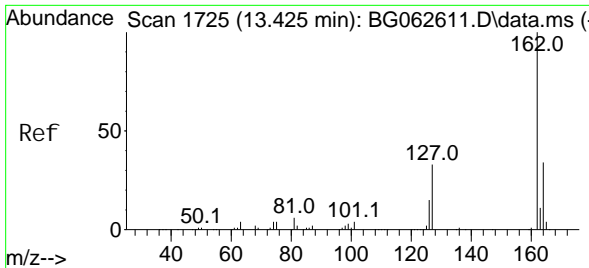
Tgt Ion	Resp	Lower	Upper
172	100		
171	37.3	29.7	44.5
170	25.2	20.0	30.0



#46
 1,1'-Bi phenyl
 Concen: 38.084 ng
 RT: 13.381 min Scan# 1718
 Delta R.T. -0.003 min
 Lab File: BG062671.D
 Acq: 5 Sep 2024 17:53

Tgt Ion	Resp	Lower	Upper
154	100		
153	41.1	20.8	60.8
76	11.9	0.0	33.4



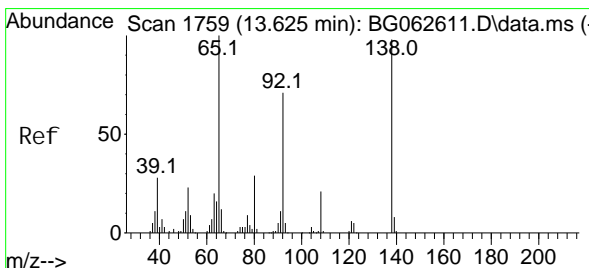
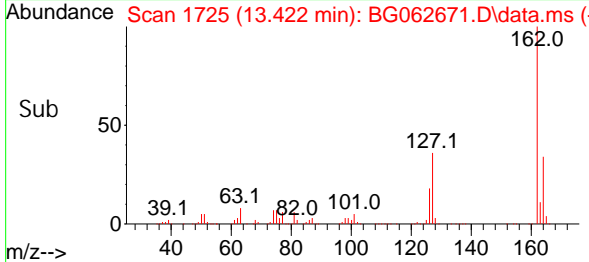
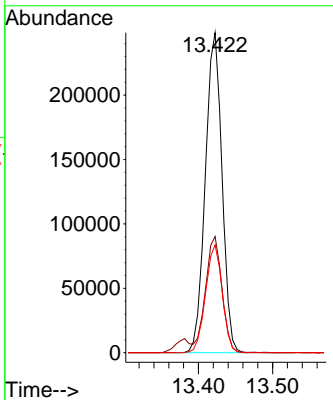
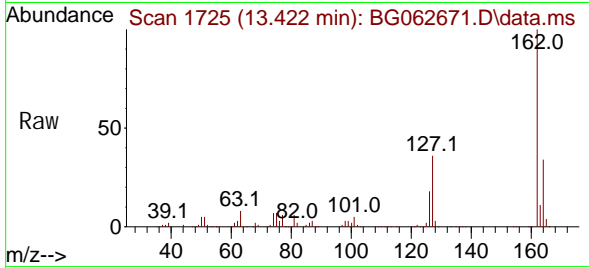


#47
 2-Chloronaphthalene
 Concen: 38.012 ng
 RT: 13.422 min Scan# 1725
 Delta R.T. -0.003 min
 Lab File: BG062671.D
 Acq: 5 Sep 2024 17:53

Instrument : BNA_G
 ClientSampleId : SSTDCCC040EC

Tgt Ion: 162 Resp: 387617

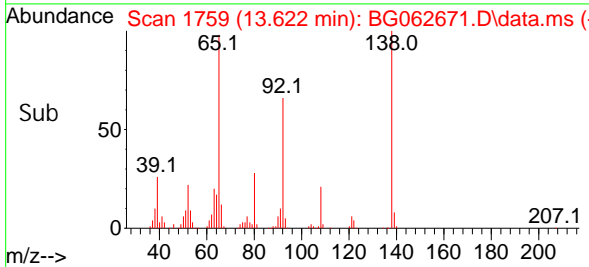
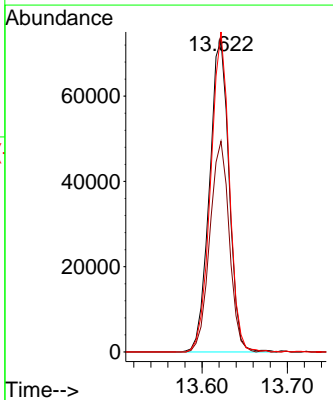
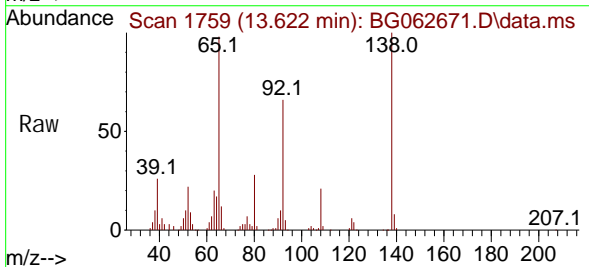
Ion	Ratio	Lower	Upper
162	100		
127	36.3	28.7	43.1
164	33.6	26.9	40.3

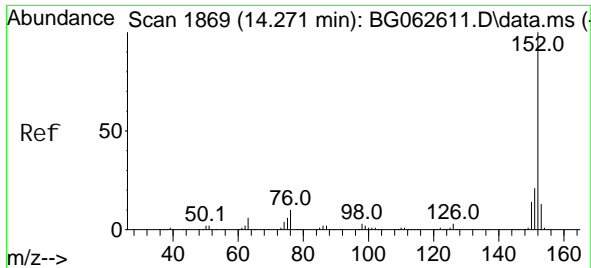


#48
 2-Nitroaniline
 Concen: 43.603 ng
 RT: 13.622 min Scan# 1759
 Delta R.T. -0.003 min
 Lab File: BG062671.D
 Acq: 5 Sep 2024 17:53

Tgt Ion: 65 Resp: 116944

Ion	Ratio	Lower	Upper
65	100		
92	67.5	56.6	84.8
138	102.6	78.7	118.1

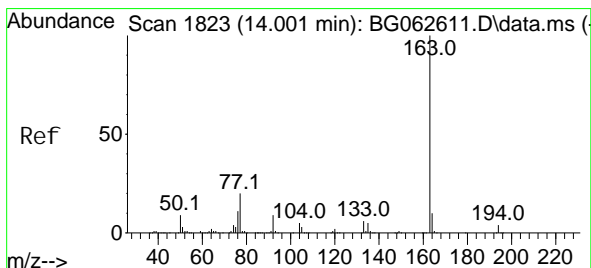
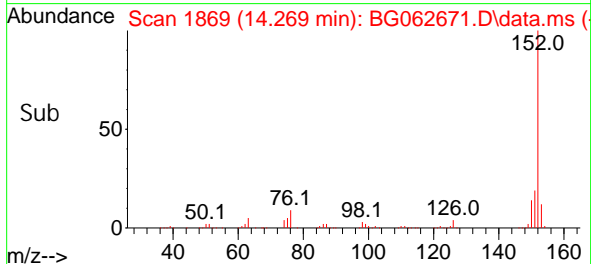
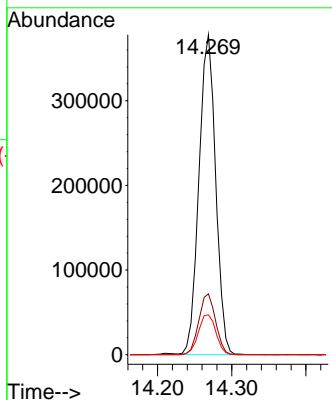
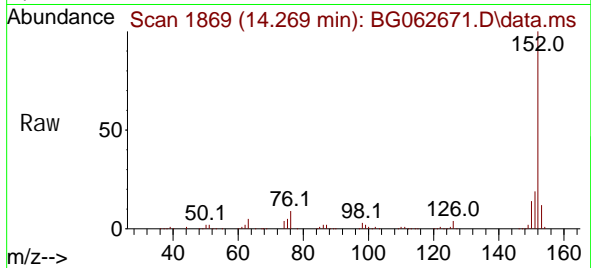




#49
 Acenaphthyl ene
 Concen: 39.267 ng
 RT: 14.269 min Scan# 1869
 Delta R.T. -0.003 min
 Lab File: BG062671.D
 Acq: 5 Sep 2024 17:53

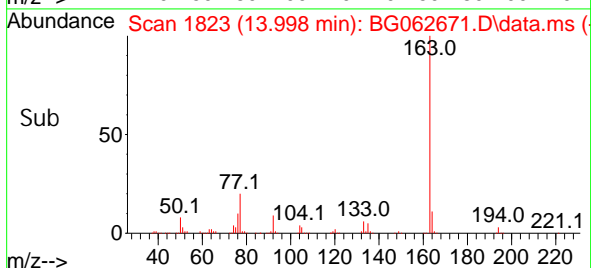
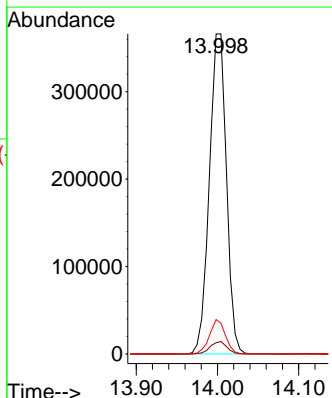
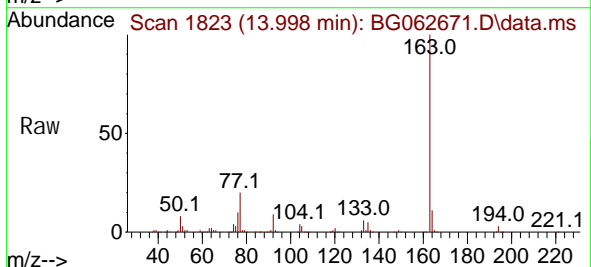
Instrument :
 BNA_G
 ClientSampleId :
 SSTDCCC040EC

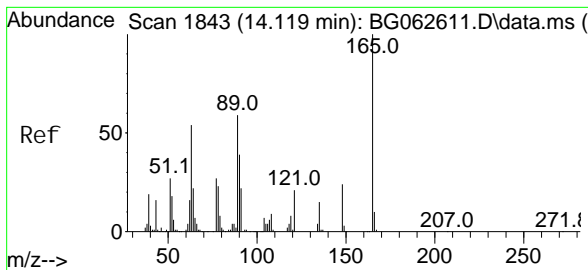
Tgt Ion	Resp	Lower	Upper
152	592963		
151	19.0	16.6	24.8
153	12.4	10.2	15.4



#50
 Dimethyl phthalate
 Concen: 38.742 ng
 RT: 13.998 min Scan# 1823
 Delta R.T. -0.003 min
 Lab File: BG062671.D
 Acq: 5 Sep 2024 17:53

Tgt Ion	Resp	Lower	Upper
163	534278		
194	3.5	2.9	4.3
164	10.7	8.3	12.5

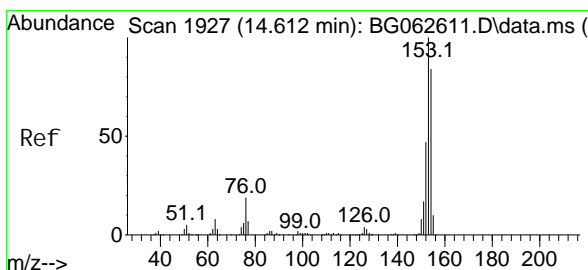
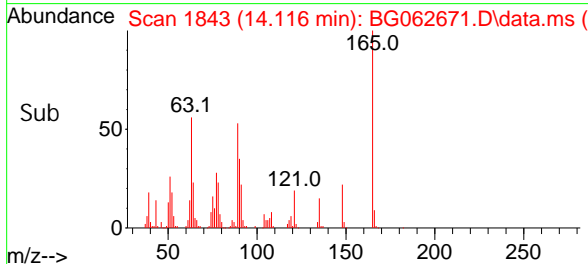
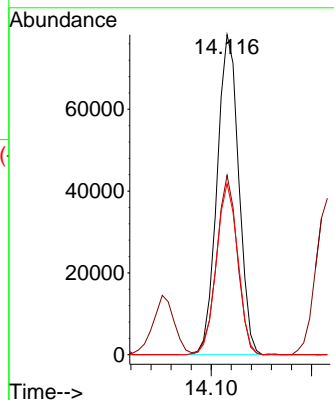
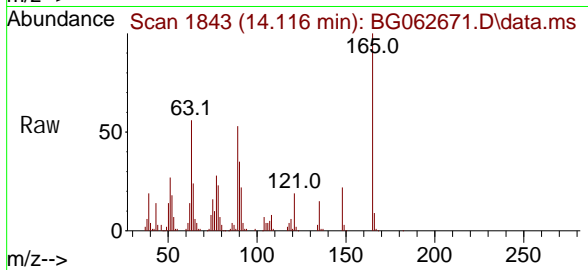




#51
 2,6-Dinitrotoluene
 Concen: 44.914 ng
 RT: 14.116 min Scan# 1843
 Delta R.T. -0.003 min
 Lab File: BG062671.D
 Acq: 5 Sep 2024 17:53

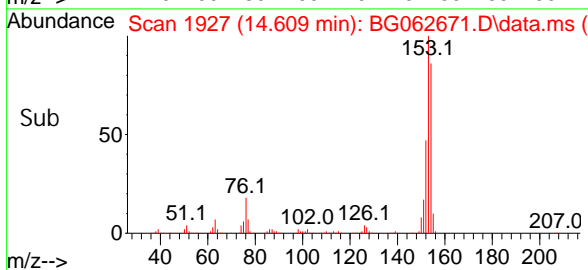
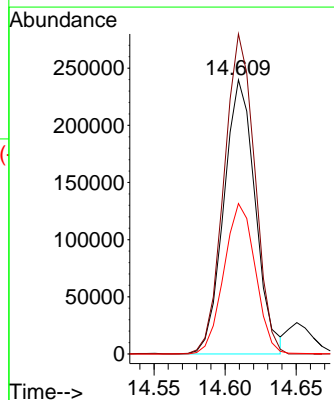
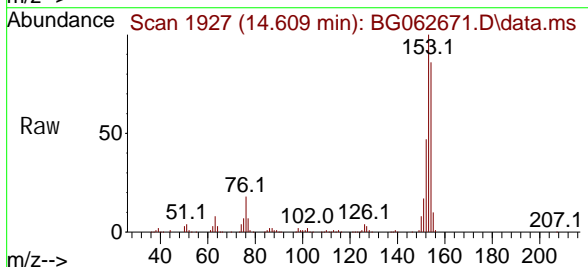
Instrument :
 BNA_G
 ClientSampleId :
 SSTDCCC040EC

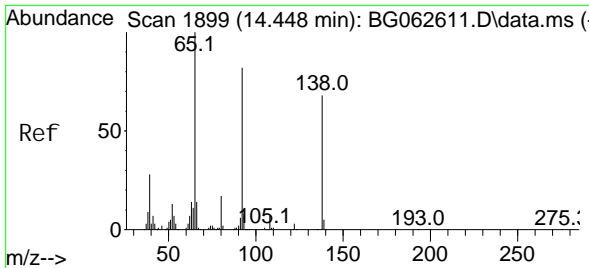
Tgt Ion	Resp	Lower	Upper
165	117159		
63	56.1	46.6	69.8
89	53.5	47.2	70.8



#52
 Acenaphthene
 Concen: 39.127 ng
 RT: 14.609 min Scan# 1927
 Delta R.T. -0.003 min
 Lab File: BG062671.D
 Acq: 5 Sep 2024 17:53

Tgt Ion	Resp	Lower	Upper
154	369357		
153	116.7	95.0	142.4
152	54.8	45.0	67.6

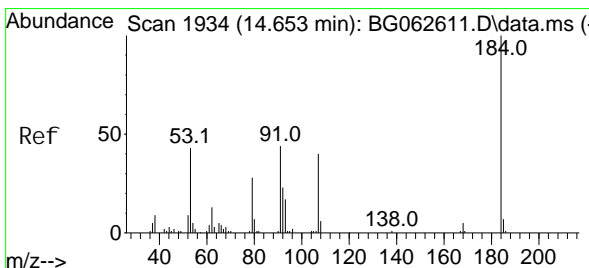
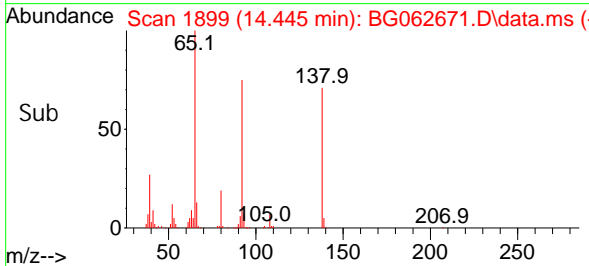
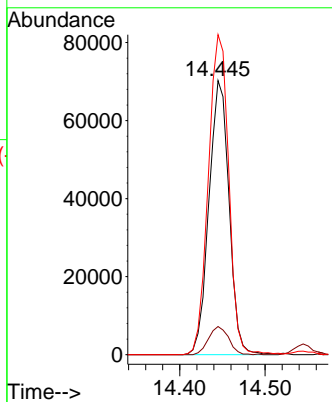
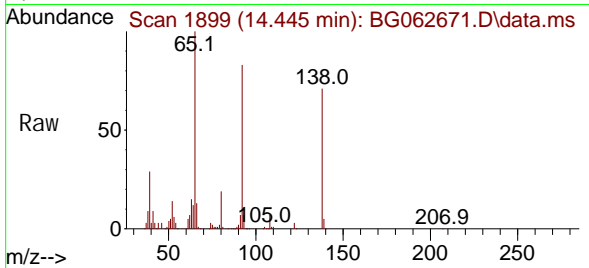




#53
 3-Nitroaniline
 Concen: 45.640 ng
 RT: 14.445 min Scan# 1899
 Delta R.T. -0.003 min
 Lab File: BG062671.D
 Acq: 5 Sep 2024 17:53

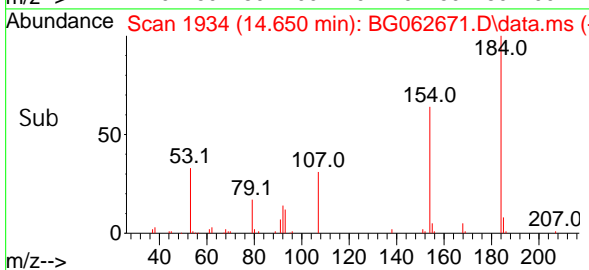
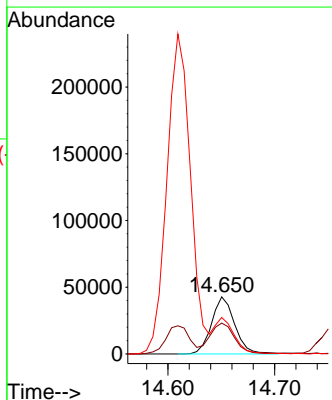
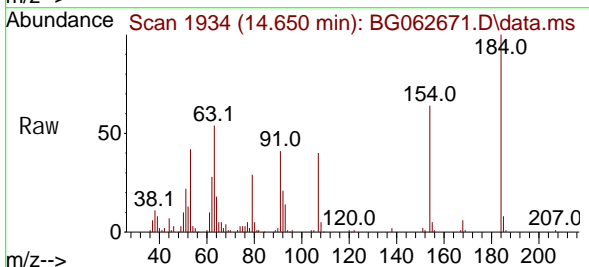
Instrument :
 BNA_G
 ClientSampleId :
 SSTDCCC040EC

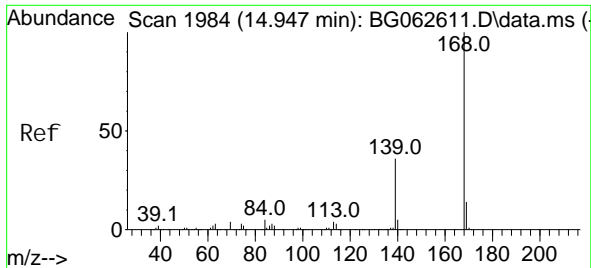
Tgt Ion	Resp	Lower	Upper
138	115196		
108	10.3	8.6	13.0
92	116.8	95.7	143.5



#54
 2,4-Dinitrophenol
 Concen: 43.982 ng
 RT: 14.650 min Scan# 1934
 Delta R.T. -0.003 min
 Lab File: BG062671.D
 Acq: 5 Sep 2024 17:53

Tgt Ion	Resp	Lower	Upper
184	64383		
63	54.0	49.0	73.4
154	64.0	50.5	75.7



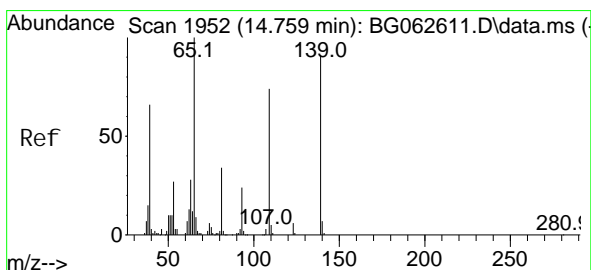
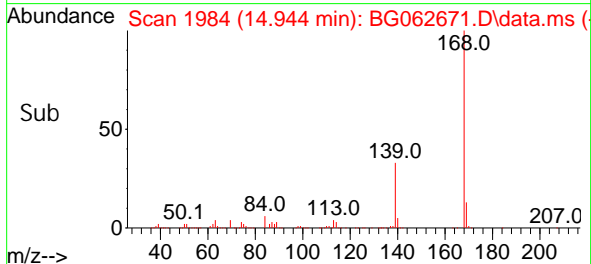
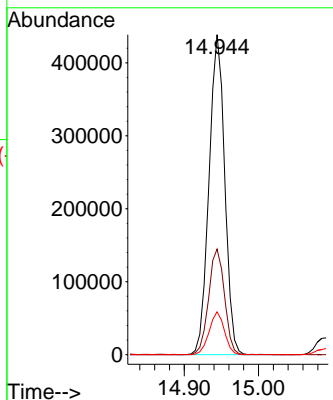
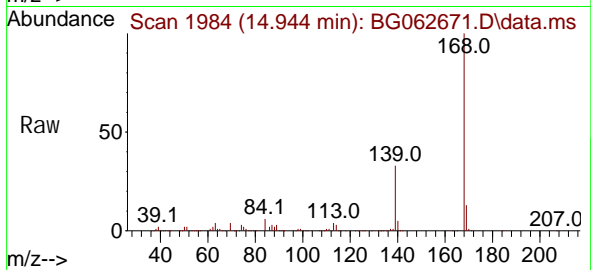


#55
 Di benzofuran
 Concen: 39.830 ng
 RT: 14.944 min Scan# 1984
 Delta R.T. -0.003 min
 Lab File: BG062671.D
 Acq: 5 Sep 2024 17:53

Instrument :
 BNA_G
 ClientSampleId :
 SSTDCCC040EC

Tgt Ion: 168 Resp: 644819

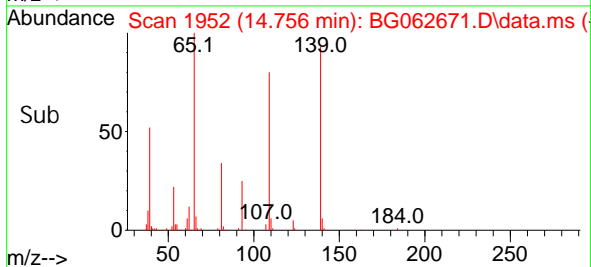
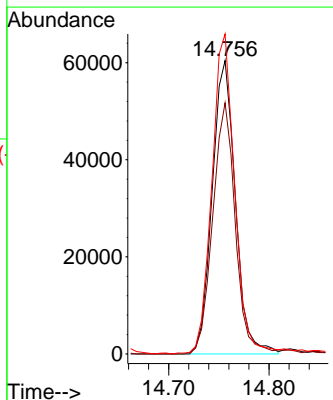
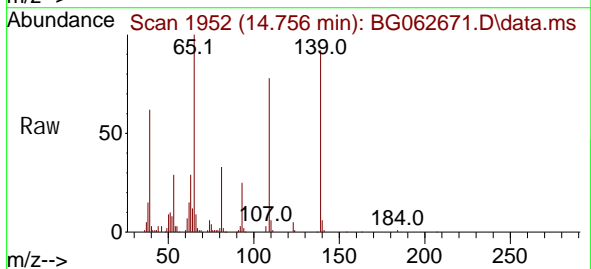
Ion	Ratio	Lower	Upper
168	100		
139	33.0	28.6	42.8
169	13.4	11.0	16.6

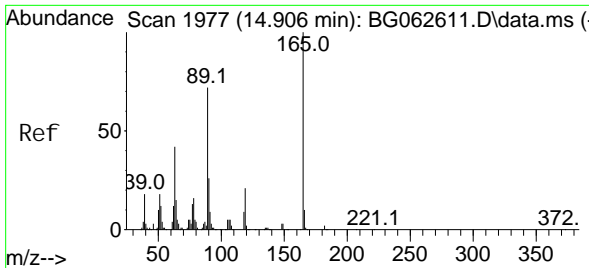


#56
 4-Nitrophenol
 Concen: 45.162 ng
 RT: 14.756 min Scan# 1952
 Delta R.T. -0.003 min
 Lab File: BG062671.D
 Acq: 5 Sep 2024 17:53

Tgt Ion: 139 Resp: 96603

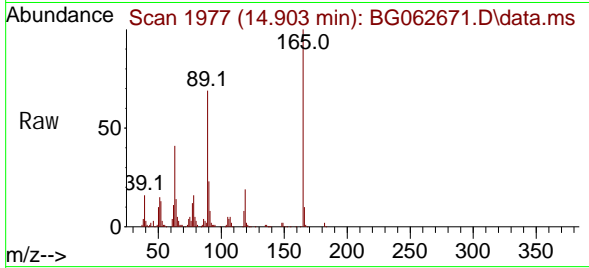
Ion	Ratio	Lower	Upper
139	100		
109	85.6	61.2	101.2
65	109.1	90.2	130.2





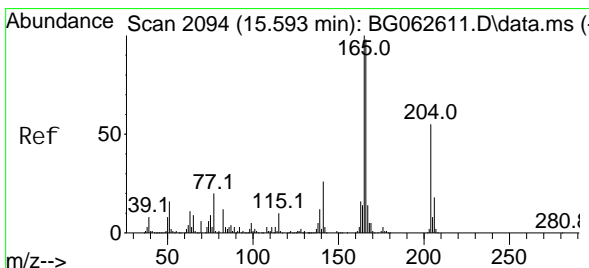
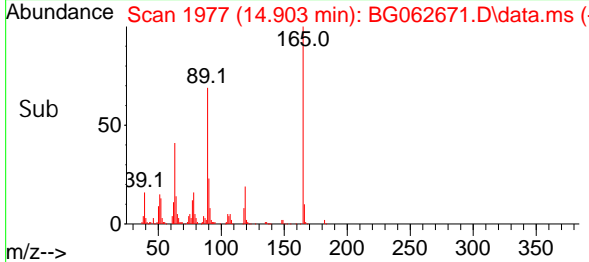
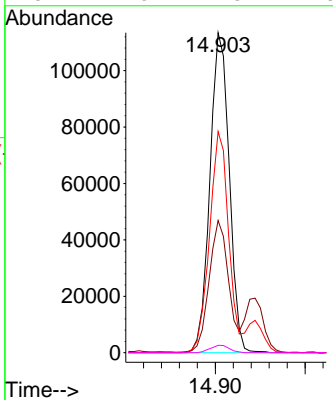
#57
 2,4-Dinitrotoluene
 Concen: 47.593 ng
 RT: 14.903 min Scan# 1977
 Delta R.T. -0.003 min
 Lab File: BG062671.D
 Acq: 5 Sep 2024 17:53

Instrument : BNA_G
 ClientSampleId : SSTDCCC040EC

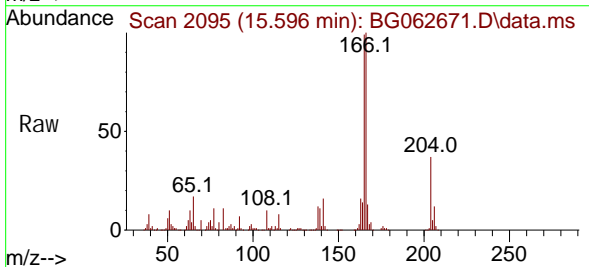


Tgt Ion: 165 Resp: 169388

Ion	Ratio	Lower	Upper
165	100		
63	41.3	33.8	50.6
89	69.1	57.9	86.9
182	2.3	1.8	2.8

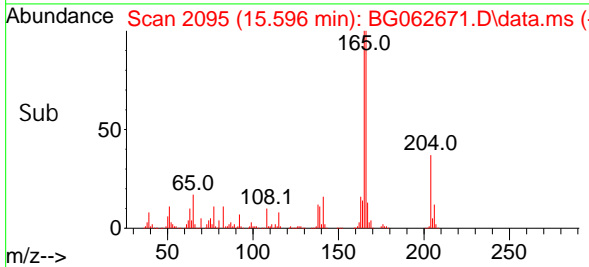
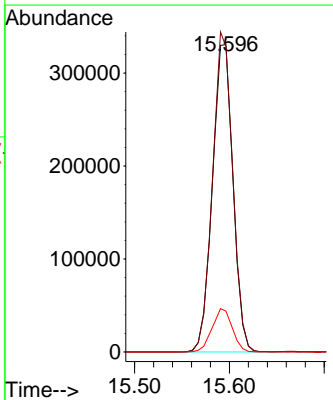


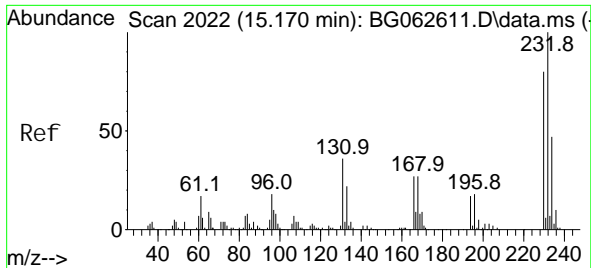
#58
 Fluorene
 Concen: 39.313 ng
 RT: 15.596 min Scan# 2095
 Delta R.T. 0.003 min
 Lab File: BG062671.D
 Acq: 5 Sep 2024 17:53



Tgt Ion: 166 Resp: 499479

Ion	Ratio	Lower	Upper
166	100		
165	99.3	82.0	123.0
167	13.3	11.3	16.9

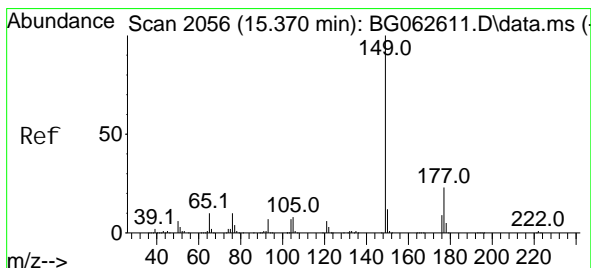
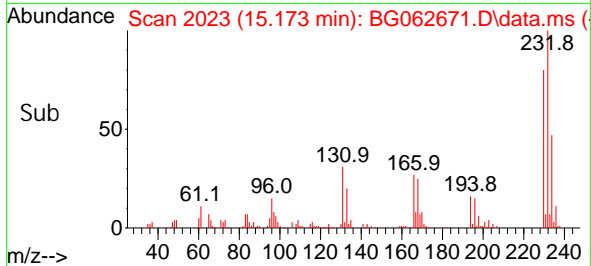
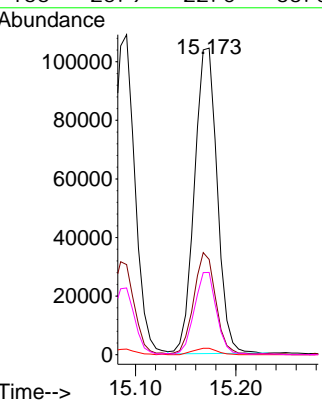
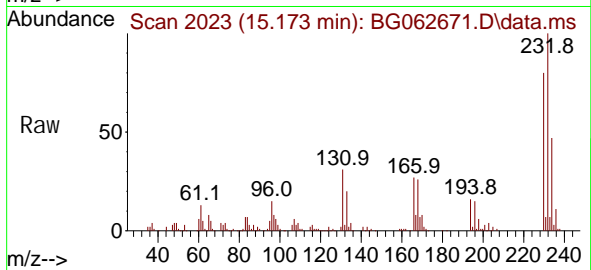




#59
 2, 3, 4, 6-Tetrachlorophenol
 Concen: 42.659 ng
 RT: 15.173 min Scan# 2022
 Delta R.T. 0.003 min
 Lab File: BG062671.D
 Acq: 5 Sep 2024 17:53

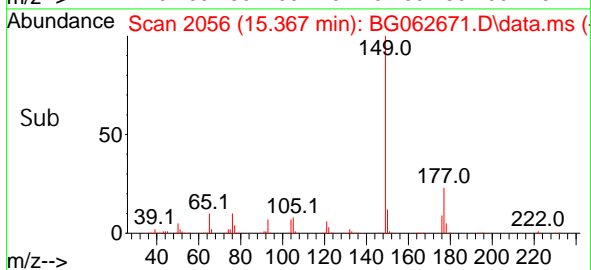
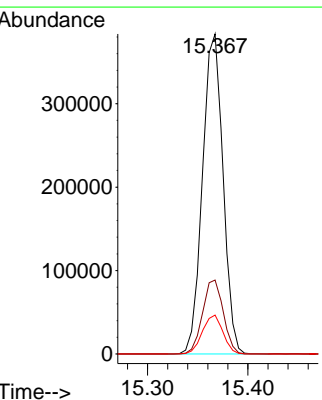
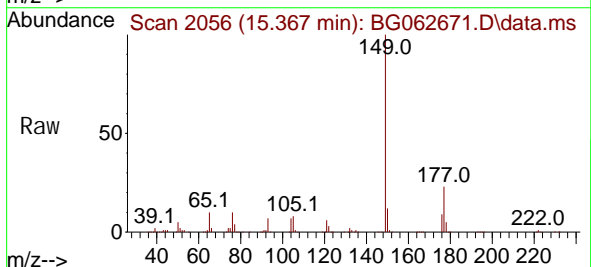
Instrument : BNA_G
 ClientSampleId : SSTDCCC040EC

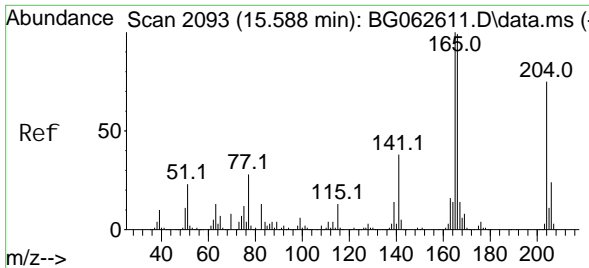
Tgt Ion	Resp	Lower	Upper
232	100		
131	31.9	28.3	42.5
130	2.2	1.7	2.5
166	25.9	22.0	33.0



#60
 Diethyl phthalate
 Concen: 39.783 ng
 RT: 15.367 min Scan# 2056
 Delta R.T. -0.003 min
 Lab File: BG062671.D
 Acq: 5 Sep 2024 17:53

Tgt Ion	Resp	Lower	Upper
149	100		
177	23.1	18.0	27.0
150	12.2	9.8	14.8



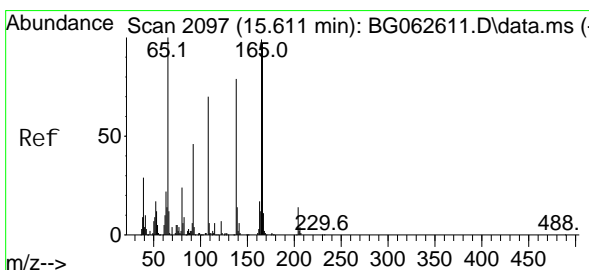
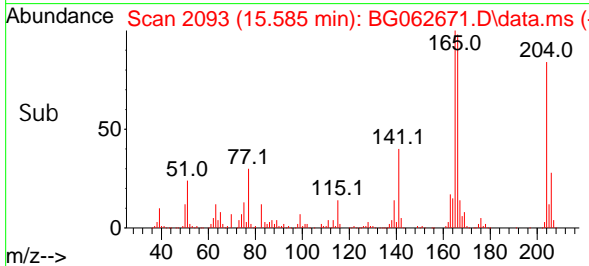
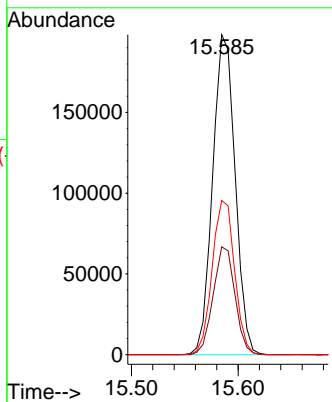
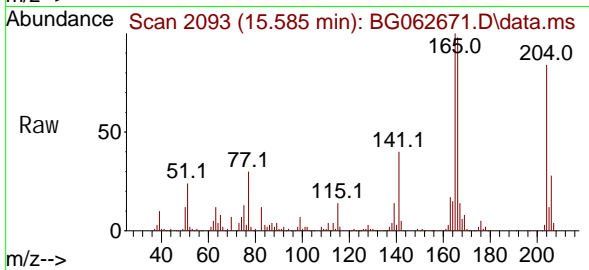


#61
 4-Chlorophenyl -phenyl ether
 Concen: 39.715 ng
 RT: 15.585 min Scan# 2093
 Delta R.T. -0.003 min
 Lab File: BG062671.D
 Acq: 5 Sep 2024 17:53

Instrument :
 BNA_G
 ClientSampleId :
 SSTDCCC040EC

Tgt Ion: 204 Resp: 289679

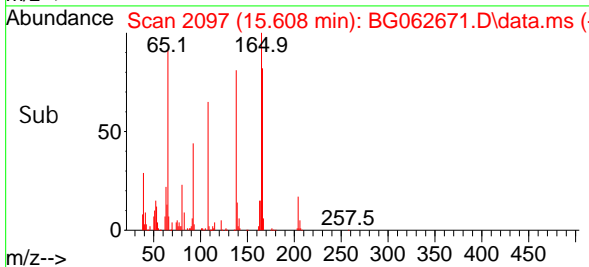
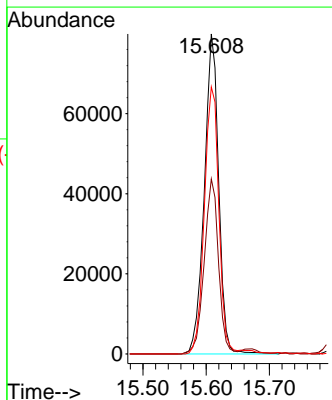
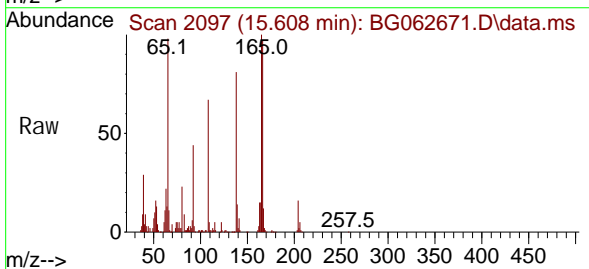
Ion	Ratio	Lower	Upper
204	100		
206	33.7	25.9	38.9
141	48.2	41.0	61.6

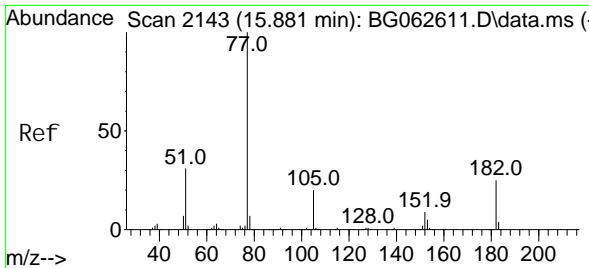


#62
 4-Nitroaniline
 Concen: 45.245 ng
 RT: 15.608 min Scan# 2097
 Delta R.T. -0.003 min
 Lab File: BG062671.D
 Acq: 5 Sep 2024 17:53

Tgt Ion: 138 Resp: 125918

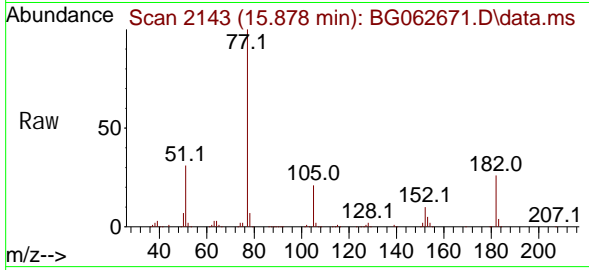
Ion	Ratio	Lower	Upper
138	100		
92	54.7	38.4	78.4
108	83.4	69.0	109.0





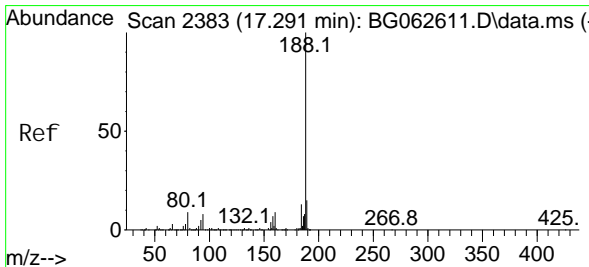
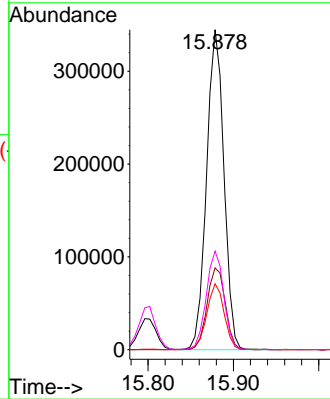
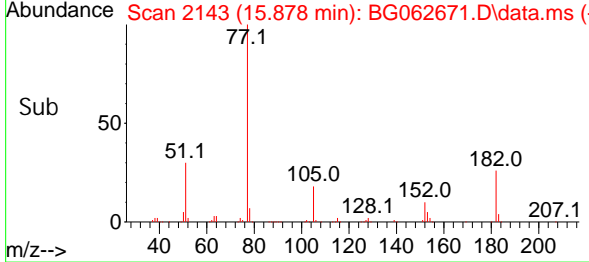
#63
 Azobenzene
 Concen: 37.978 ng
 RT: 15.878 min Scan# 2143
 Delta R.T. -0.003 min
 Lab File: BG062671.D
 Acq: 5 Sep 2024 17:53

Instrument :
 BNA_G
 ClientSampleId :
 SSTDCCC040EC

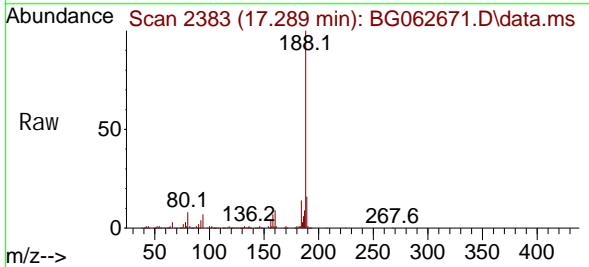


Tgt Ion: 77 Resp: 487443

Ion	Ratio	Lower	Upper
77	100		
182	25.6	5.0	45.0
105	20.6	0.5	40.5
51	30.8	11.4	51.4

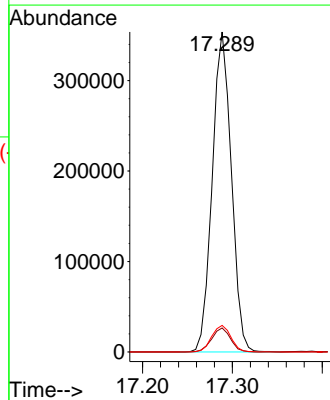
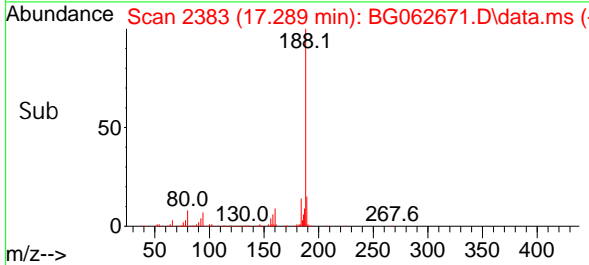


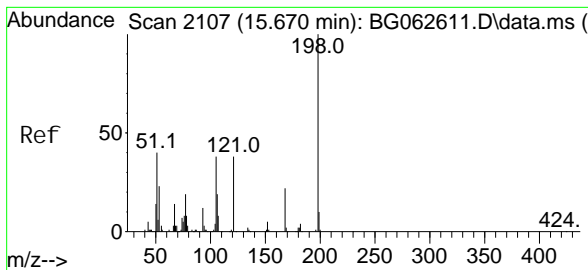
#64
 Phenanthrene-d10
 Concen: 20.000 ng
 RT: 17.289 min Scan# 2383
 Delta R.T. -0.003 min
 Lab File: BG062671.D
 Acq: 5 Sep 2024 17:53



Tgt Ion: 188 Resp: 521889

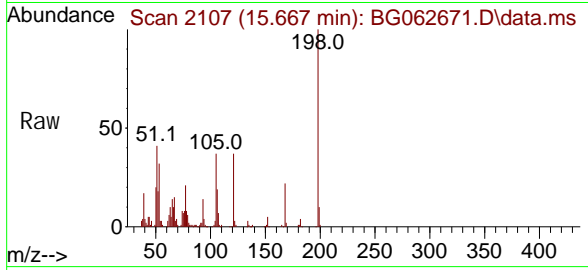
Ion	Ratio	Lower	Upper
188	100		
94	7.5	6.3	9.5
80	8.3	7.0	10.4



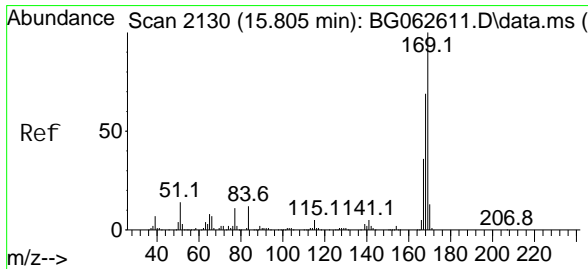
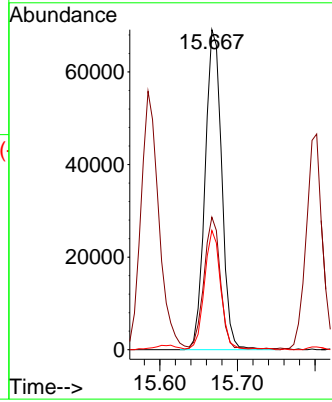
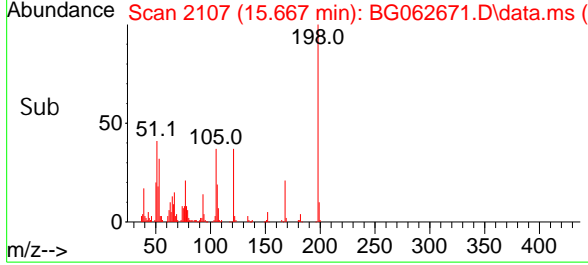


#65
 4,6-Di ni tro-2-methyl phenol
 Concen: 44.304 ng
 RT: 15.667 min Scan# 2107
 Del ta R. T. -0.003 min
 Lab File: BG062671.D
 Acq: 5 Sep 2024 17:53

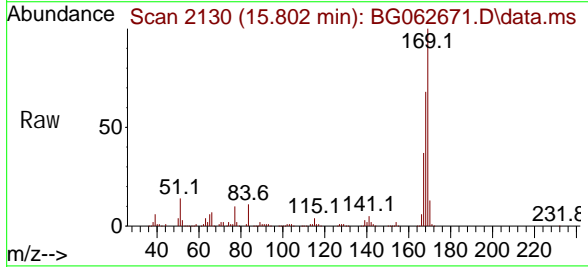
Instrument :
 BNA_G
 ClientSampleId :
 SSTDCCC040EC



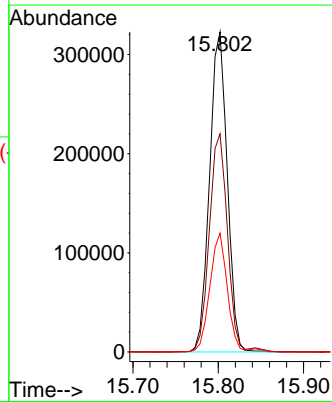
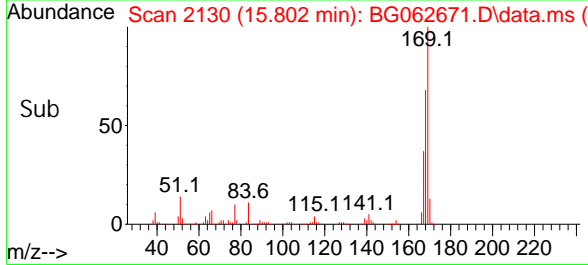
Tgt Ion: 198 Resp: 103185
 Ion Ratio Lower Upper
 198 100
 51 41.4 25.1 65.1
 105 37.2 18.3 58.3

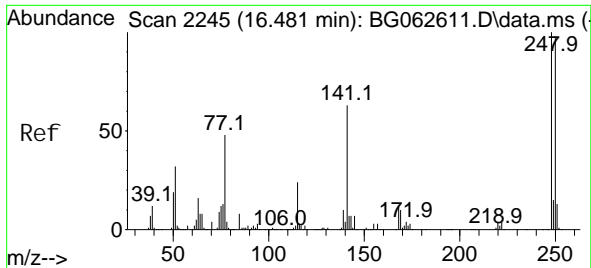


#66
 n-Ni trosodi phenyl ami ne
 Concen: 37.093 ng
 RT: 15.802 min Scan# 2130
 Del ta R. T. -0.003 min
 Lab File: BG062671.D
 Acq: 5 Sep 2024 17:53



Tgt Ion: 169 Resp: 465430
 Ion Ratio Lower Upper
 169 100
 168 68.2 55.4 83.2
 167 37.1 29.0 43.6

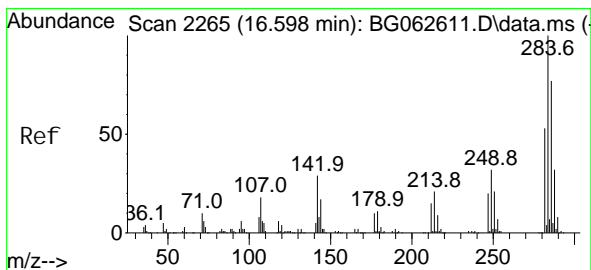
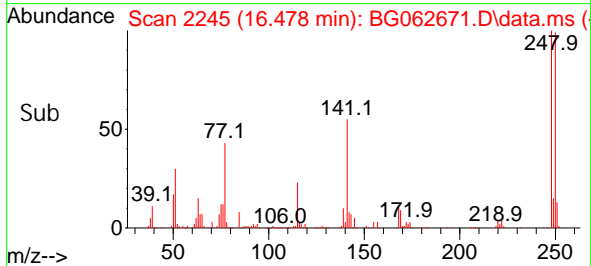
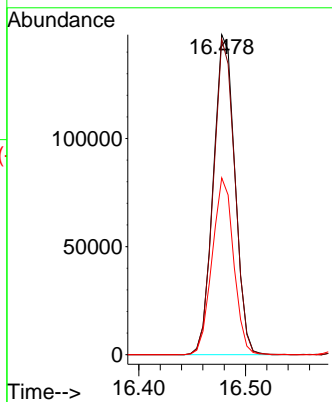
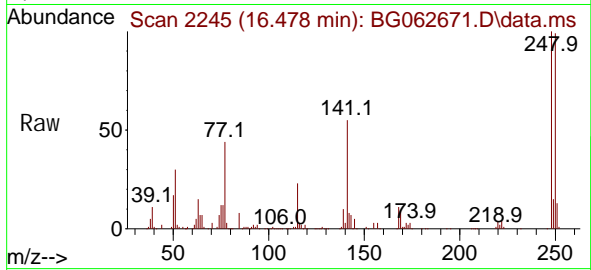




#67
 4-Bromophenyl -phenyl ether
 Concen: 38.622 ng
 RT: 16.478 min Scan# 21
 Delta R.T. -0.003 min
 Lab File: BG062671.D
 Acq: 5 Sep 2024 17:53

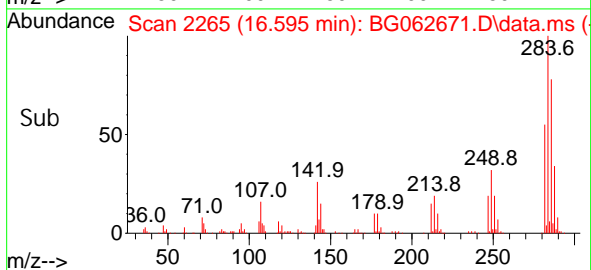
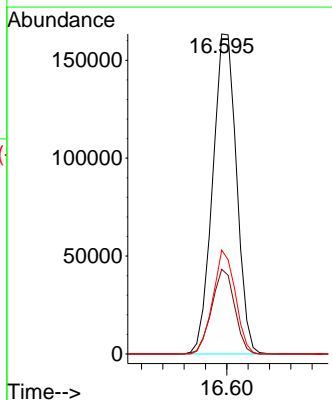
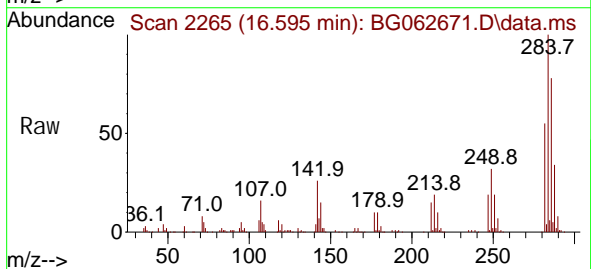
Instrument :
 BNA_G
 ClientSampleId :
 SSTDCCC040EC

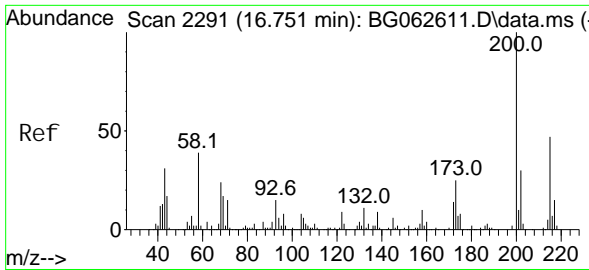
Tgt Ion: 248 Resp: 208027
 Ion Ratio Lower Upper
 248 100
 250 98.5 77.9 116.9
 141 55.2 50.2 75.2



#68
 Hexachlorobenzene
 Concen: 39.779 ng
 RT: 16.595 min Scan# 2265
 Delta R.T. -0.003 min
 Lab File: BG062671.D
 Acq: 5 Sep 2024 17:53

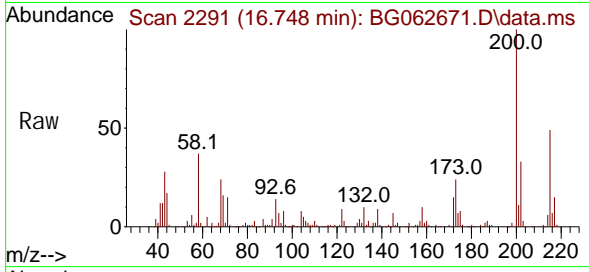
Tgt Ion: 284 Resp: 253742
 Ion Ratio Lower Upper
 284 100
 142 26.5 23.5 35.3
 249 34.4 25.4 38.0



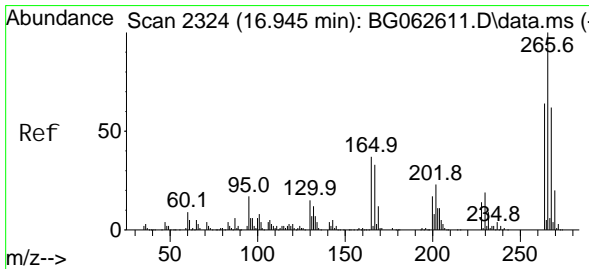
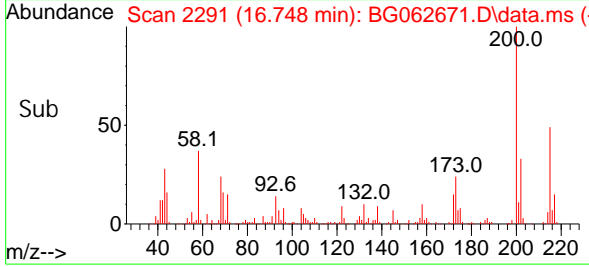
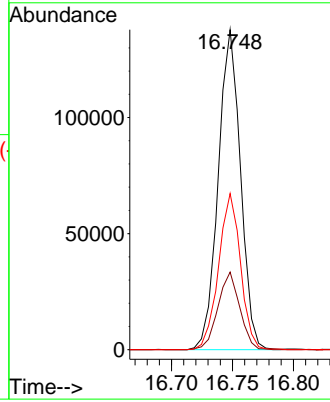


#69
 Atrazine
 Concen: 41.172 ng
 RT: 16.748 min Scan# 2291
 Delta R.T. -0.003 min
 Lab File: BG062671.D
 Acq: 5 Sep 2024 17:53

Instrument :
 BNA_G
 ClientSampleId :
 SSTDCCC040EC

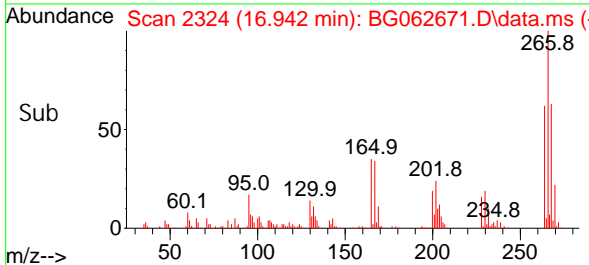
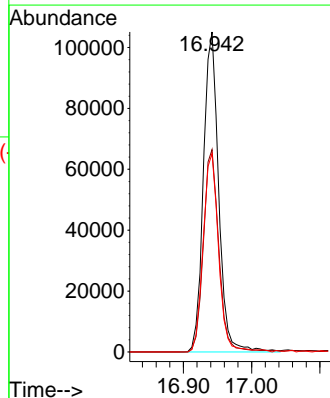
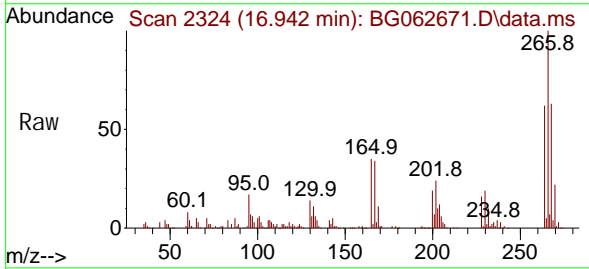


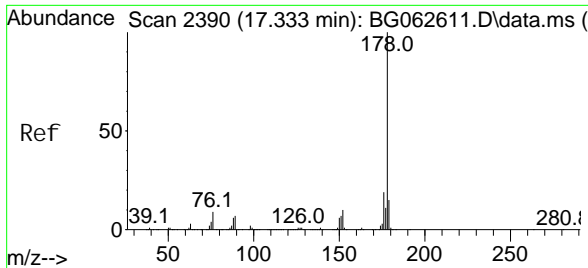
Tgt Ion: 200 Resp: 175467
 Ion Ratio Lower Upper
 200 100
 173 24.2 5.2 45.2
 215 48.8 27.3 67.3



#70
 Pentachlorophenol
 Concen: 40.048 ng
 RT: 16.942 min Scan# 2324
 Delta R.T. -0.003 min
 Lab File: BG062671.D
 Acq: 5 Sep 2024 17:53

Tgt Ion: 266 Resp: 163621
 Ion Ratio Lower Upper
 266 100
 268 67.5 52.6 79.0
 264 62.0 51.6 77.4

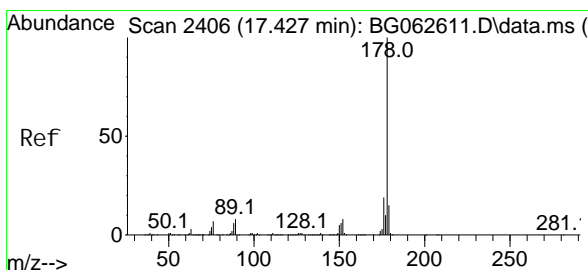
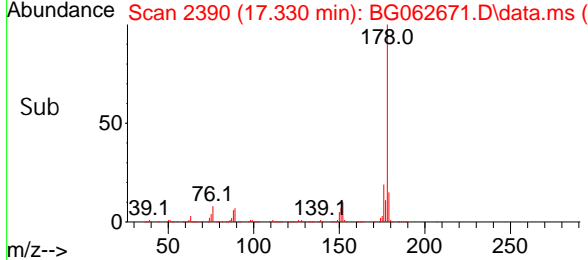
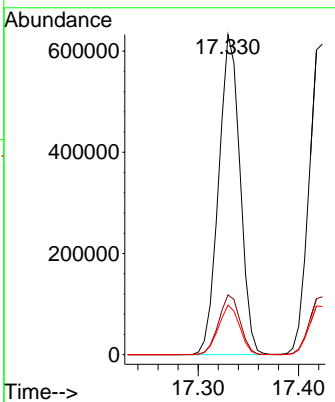
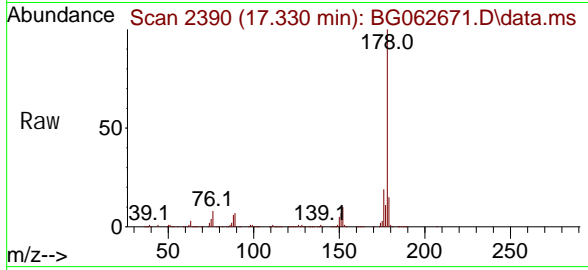




#71
 Phenanthrene
 Concen: 38.446 ng
 RT: 17.330 min Scan# 21
 Delta R.T. -0.003 min
 Lab File: BG062671.D
 Acq: 5 Sep 2024 17:53

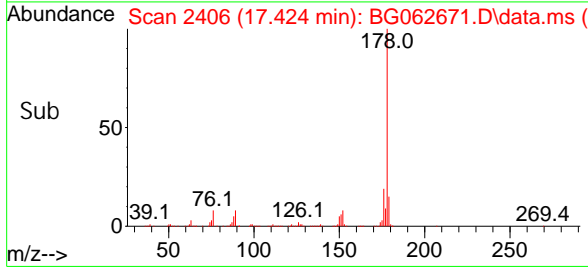
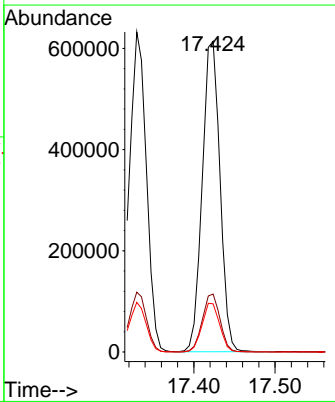
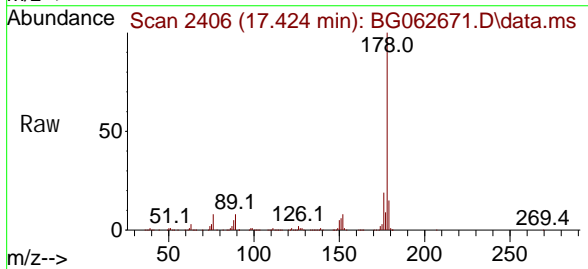
Instrument : BNA_G
 ClientSampleId : SSTDCCC040EC

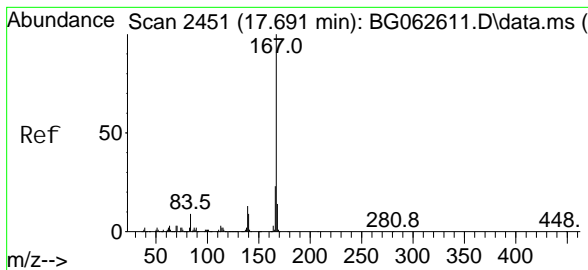
Tgt Ion	Resp	Lower	Upper
178	100		
176	18.7	15.4	23.0
179	15.5	12.2	18.4



#72
 Anthracene
 Concen: 38.857 ng
 RT: 17.424 min Scan# 2406
 Delta R.T. -0.003 min
 Lab File: BG062671.D
 Acq: 5 Sep 2024 17:53

Tgt Ion	Resp	Lower	Upper
178	100		
176	18.6	15.2	22.8
179	15.5	12.0	18.0

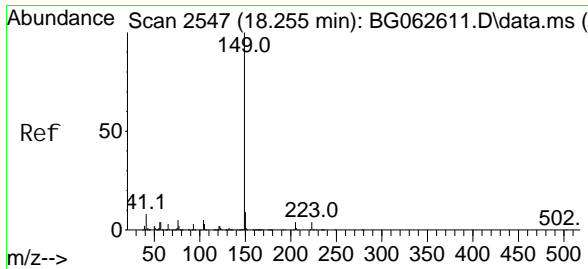
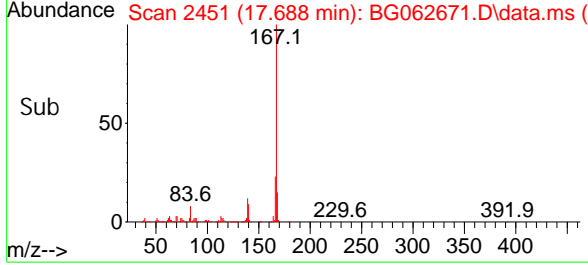
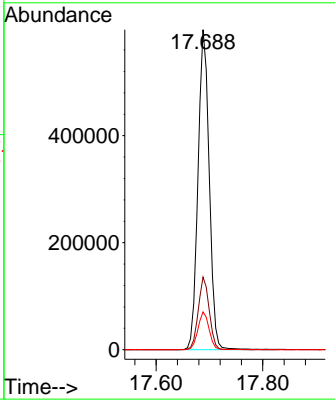
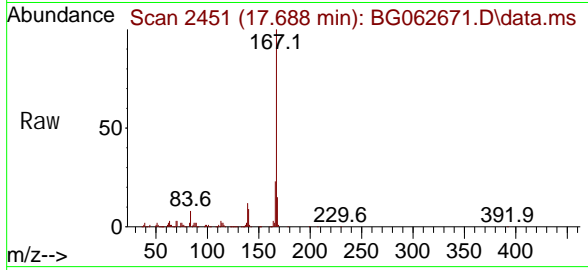




#73
 Carbazol e
 Concen: 39.616 ng
 RT: 17.688 min Scan# 2451
 Delta R.T. -0.003 min
 Lab File: BG062671.D
 Acq: 5 Sep 2024 17:53

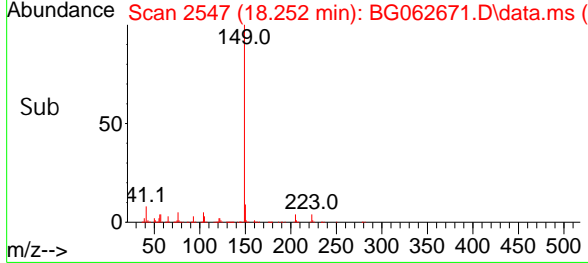
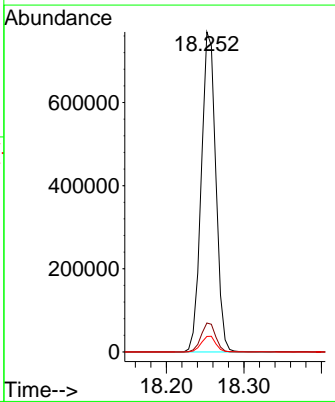
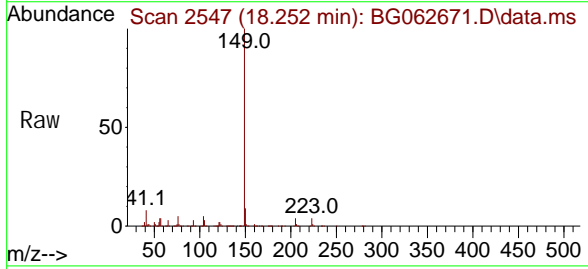
Instrument :
 BNA_G
ClientSampleId :
 SSTDCCC040EC

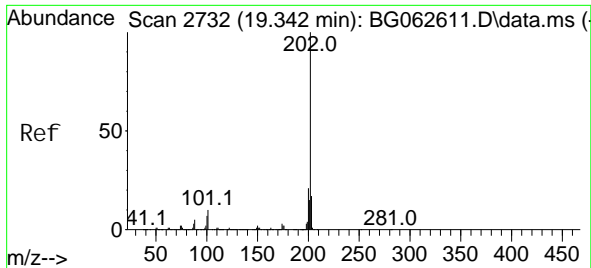
Tgt Ion: 167 Resp: 872253
 Ion Ratio Lower Upper
 167 100
 166 22.7 18.2 27.2
 139 11.8 10.1 15.1



#74
 Di -n-butyl phthal ate
 Concen: 40.295 ng
 RT: 18.252 min Scan# 2547
 Delta R.T. -0.003 min
 Lab File: BG062671.D
 Acq: 5 Sep 2024 17:53

Tgt Ion: 149 Resp: 1000564
 Ion Ratio Lower Upper
 149 100
 150 9.1 7.3 10.9
 104 4.8 4.2 6.2



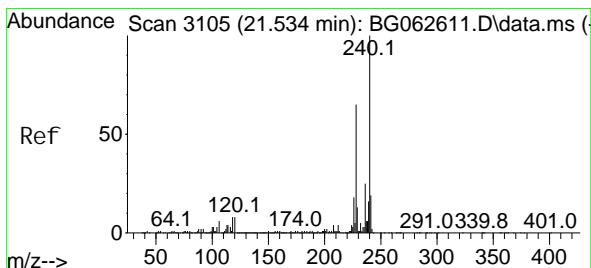
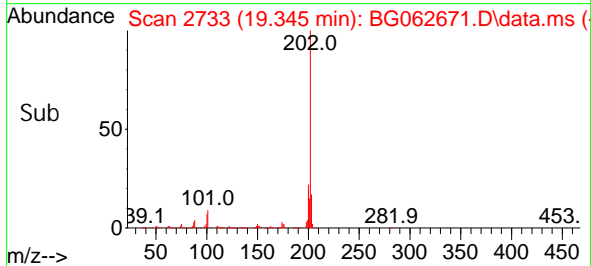
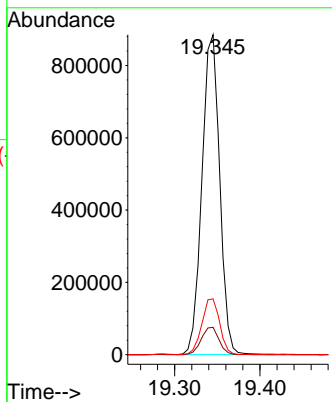
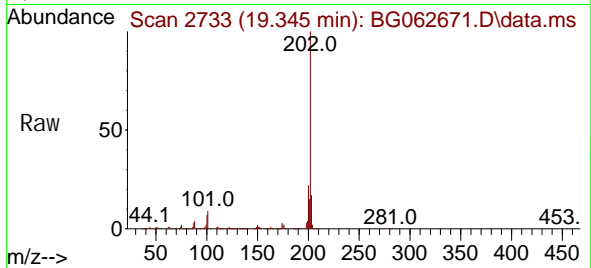


#75
 Fluoranthene
 Concen: 41.498 ng
 RT: 19.345 min Scan# 21
 Delta R.T. 0.003 min
 Lab File: BG062671.D
 Acq: 5 Sep 2024 17:53

Instrument :
 BNA_G
 ClientSampleId :
 SSTDCCC040EC

Tgt Ion: 202 Resp: 1278498

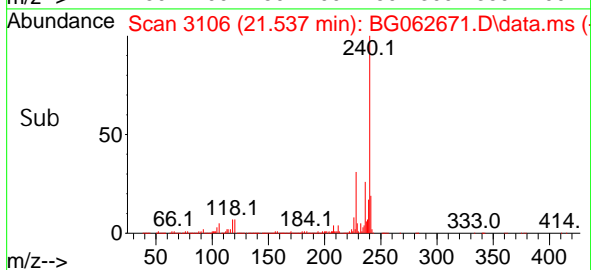
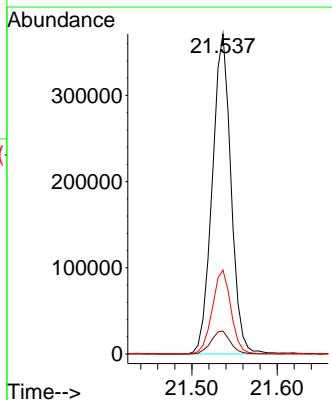
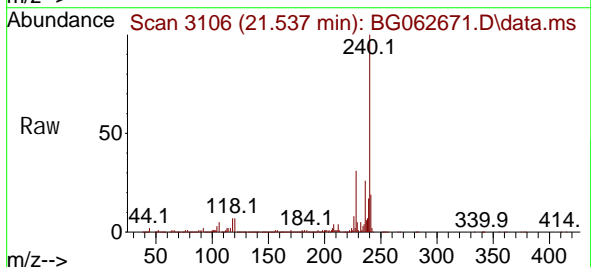
Ion	Ratio	Lower	Upper
202	100		
101	8.5	0.0	29.6
203	17.5	0.0	37.4

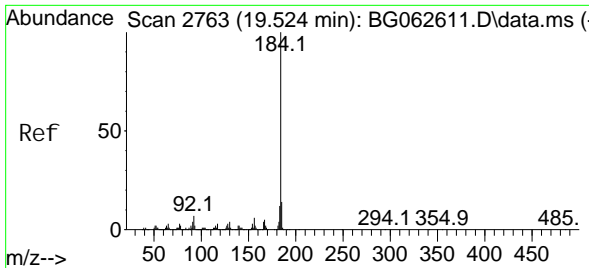


#76
 Chrysene-d12
 Concen: 20.000 ng
 RT: 21.537 min Scan# 3106
 Delta R.T. 0.003 min
 Lab File: BG062671.D
 Acq: 5 Sep 2024 17:53

Tgt Ion: 240 Resp: 566561

Ion	Ratio	Lower	Upper
240	100		
120	7.2	6.6	9.8
236	26.2	20.2	30.4



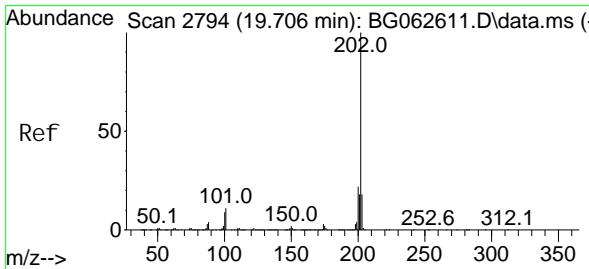
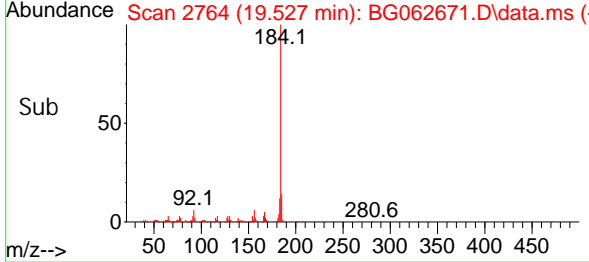
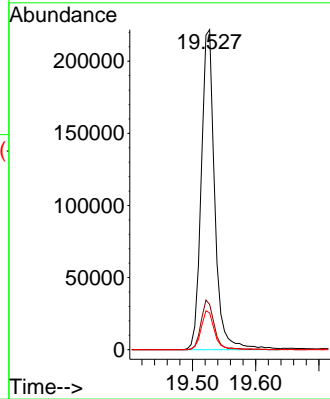
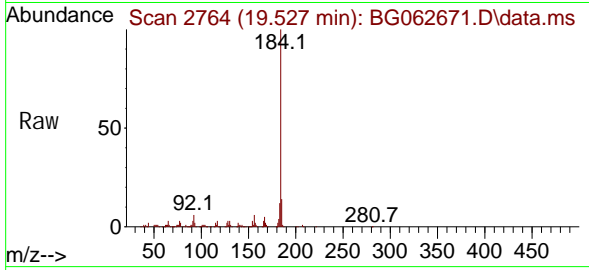


#77
 Benzi di ne
 Concen: 32.196 ng
 RT: 19.527 min Scan# 2764
 Delta R.T. 0.003 min
 Lab File: BG062671.D
 Acq: 5 Sep 2024 17:53

Instrument :
 BNA_G
 ClientSampleId :
 SSTDCCC040EC

Tgt Ion: 184 Resp: 328774

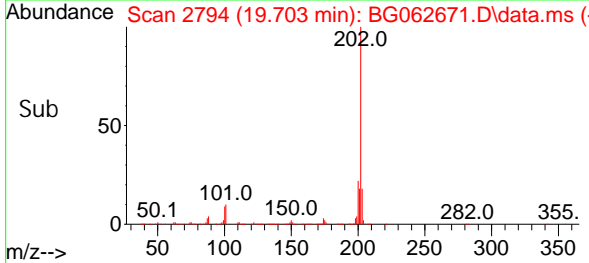
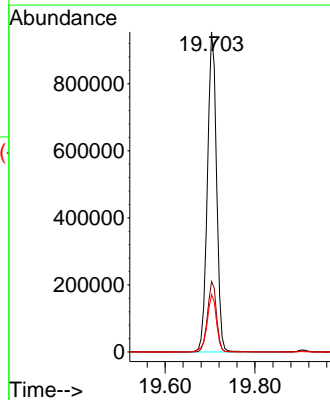
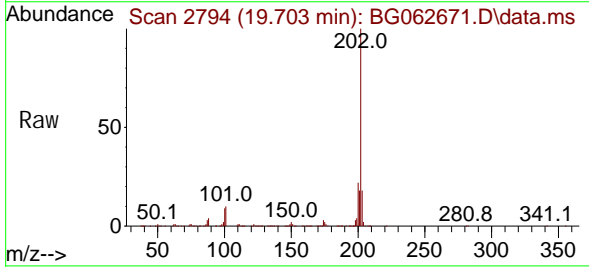
Ion	Ratio	Lower	Upper
184	100		
185	14.1	11.0	16.6
183	11.5	9.7	14.5

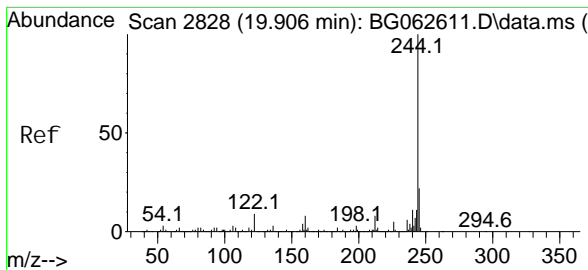


#78
 Pyrene
 Concen: 37.394 ng
 RT: 19.703 min Scan# 2794
 Delta R.T. -0.003 min
 Lab File: BG062671.D
 Acq: 5 Sep 2024 17:53

Tgt Ion: 202 Resp: 1346706

Ion	Ratio	Lower	Upper
202	100		
200	22.0	17.4	26.2
203	17.9	14.1	21.1

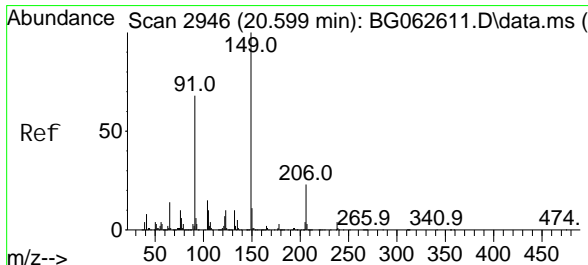
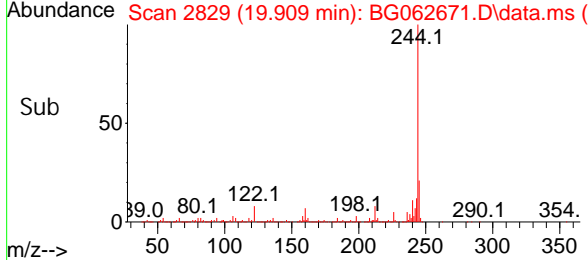
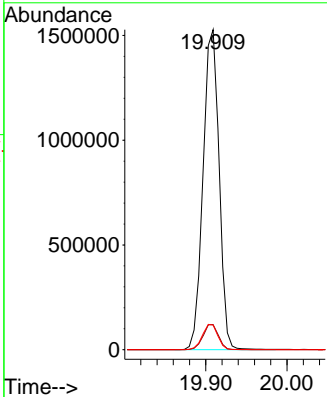
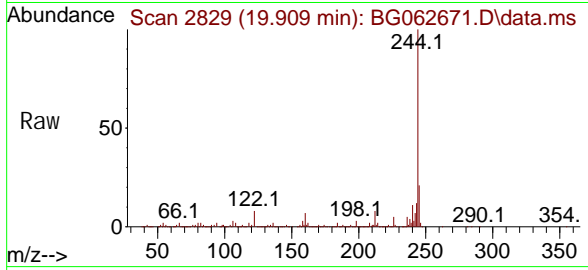




#79
 Terphenyl -d14
 Concen: 73.102 ng
 RT: 19.909 min Scan# 2829
 Delta R.T. 0.003 min
 Lab File: BG062671.D
 Acq: 5 Sep 2024 17:53

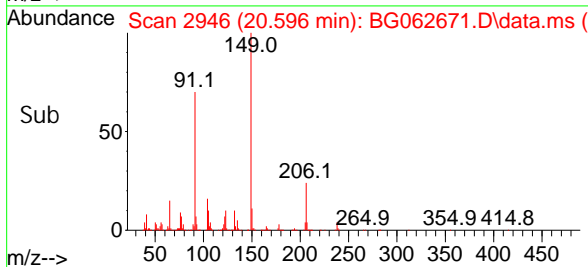
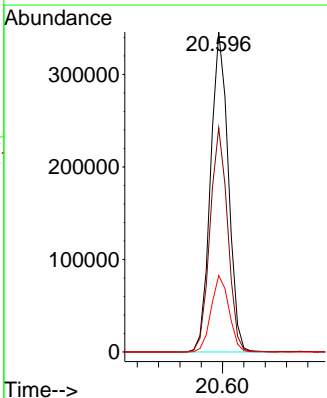
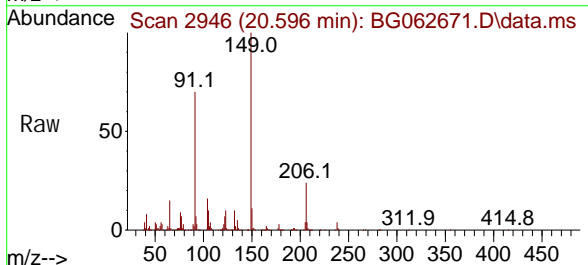
Instrument :
 BNA_G
ClientSampleId :
 SSTDCCC040EC

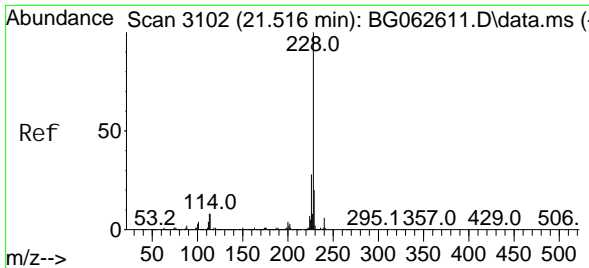
Tgt Ion: 244 Resp: 2088753
 Ion Ratio Lower Upper
 244 100
 212 7.9 6.6 10.0
 122 7.7 7.2 10.8



#80
 Butyl benzyl phthal ate
 Concen: 37.792 ng
 RT: 20.596 min Scan# 2946
 Delta R.T. -0.003 min
 Lab File: BG062671.D
 Acq: 5 Sep 2024 17:53

Tgt Ion: 149 Resp: 399780
 Ion Ratio Lower Upper
 149 100
 91 70.1 54.6 81.8
 206 23.9 18.4 27.6



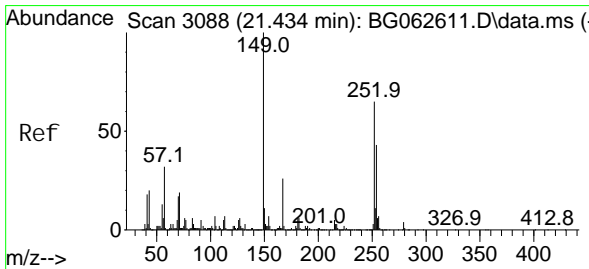
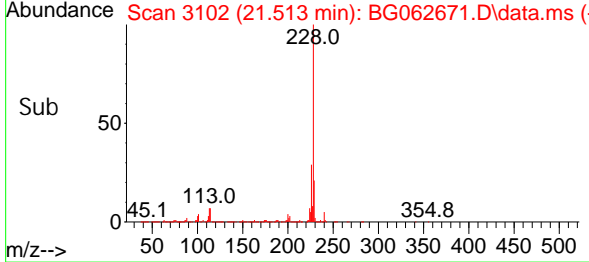
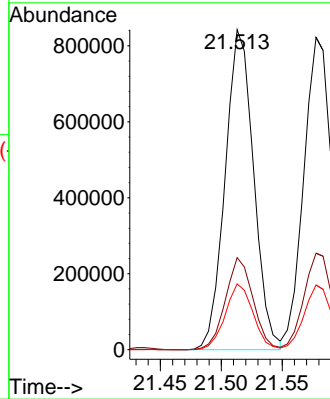
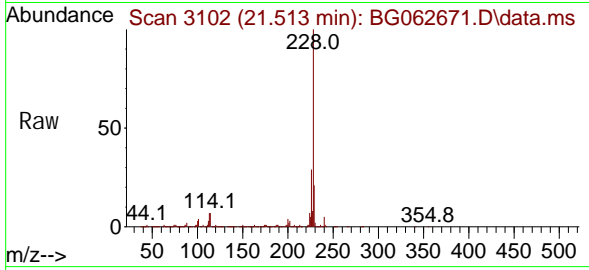


#81
 Benzo(a)anthracene
 Concen: 38.355 ng
 RT: 21.513 min Scan# 3102
 Delta R.T. -0.003 min
 Lab File: BG062671.D
 Acq: 5 Sep 2024 17:53

Instrument :
 BNA_G
 ClientSampleId :
 SSTDCCC040EC

Tgt Ion: 228 Resp: 1370575

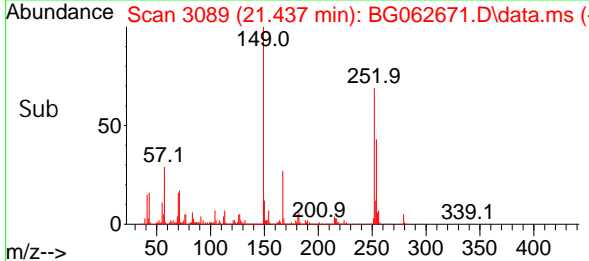
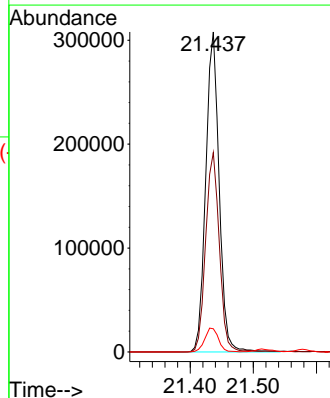
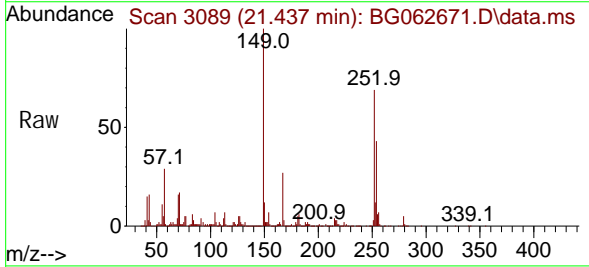
Ion	Ratio	Lower	Upper
228	100		
226	28.8	22.3	33.5
229	20.5	16.2	24.2

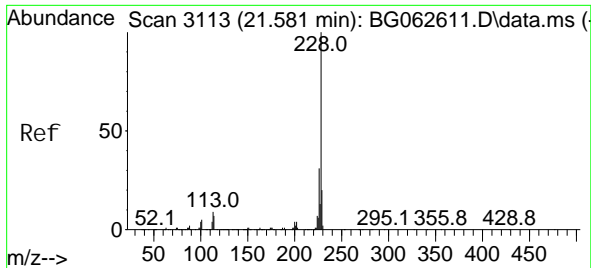


#82
 3,3'-Dichlorobenzidine
 Concen: 38.868 ng
 RT: 21.437 min Scan# 3089
 Delta R.T. 0.003 min
 Lab File: BG062671.D
 Acq: 5 Sep 2024 17:53

Tgt Ion: 252 Resp: 452461

Ion	Ratio	Lower	Upper
252	100		
254	62.3	52.2	78.2
126	7.2	6.7	10.1



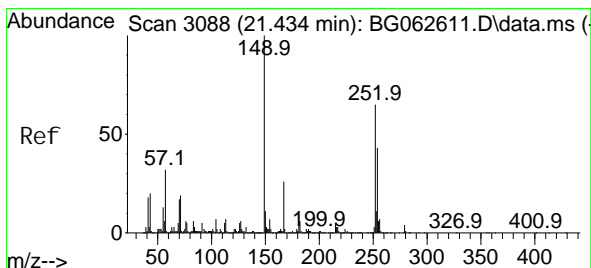
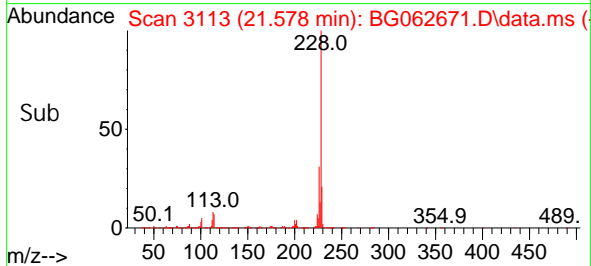
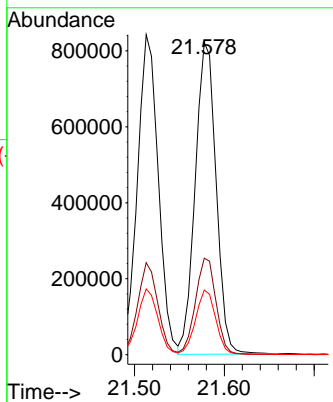
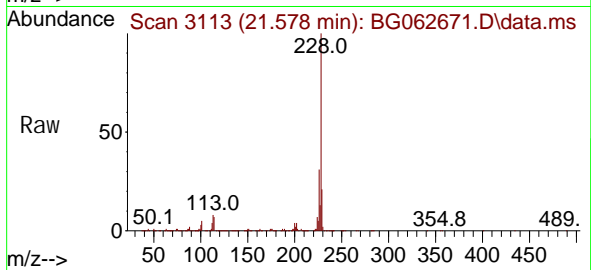


#83
 Chrysene
 Concen: 38.775 ng
 RT: 21.578 min Scan# 3113
 Delta R.T. -0.003 min
 Lab File: BG062671.D
 Acq: 5 Sep 2024 17:53

Instrument : BNA_G
 ClientSampleId : SSTDCCC040EC

Tgt Ion: 228 Resp: 1327195

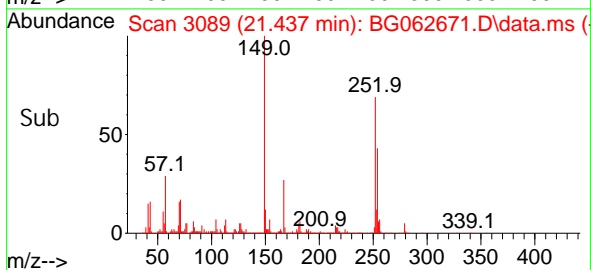
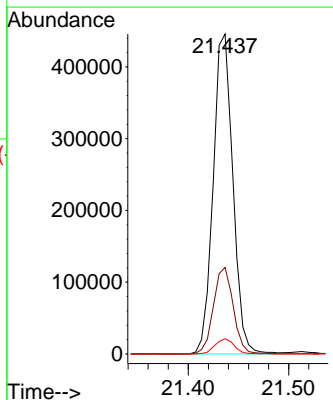
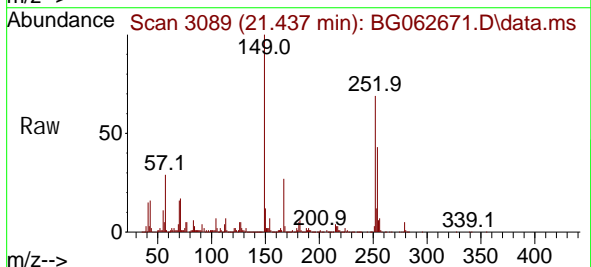
Ion	Ratio	Lower	Upper
228	100		
226	30.9	24.9	37.3
229	20.7	16.0	24.0

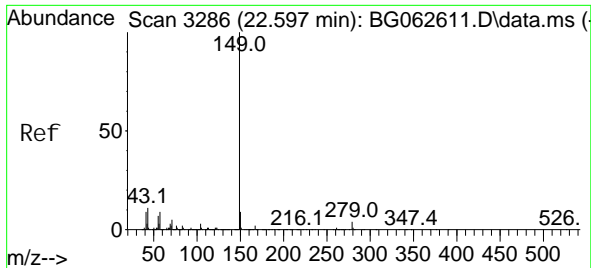


#84
 Bis(2-ethyl hexyl) phthalate
 Concen: 37.791 ng
 RT: 21.437 min Scan# 3089
 Delta R.T. 0.003 min
 Lab File: BG062671.D
 Acq: 5 Sep 2024 17:53

Tgt Ion: 149 Resp: 607330

Ion	Ratio	Lower	Upper
149	100		
167	27.1	20.5	30.7
279	4.8	3.1	4.7#



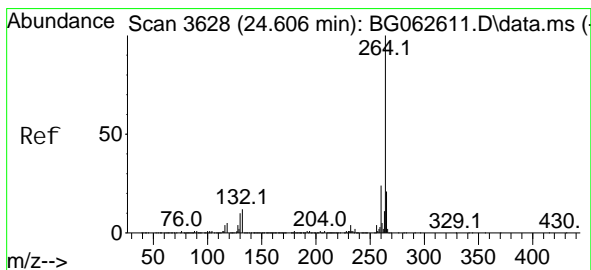
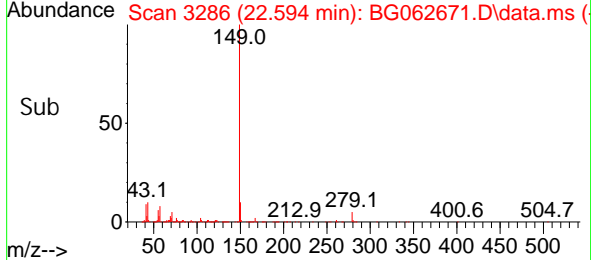
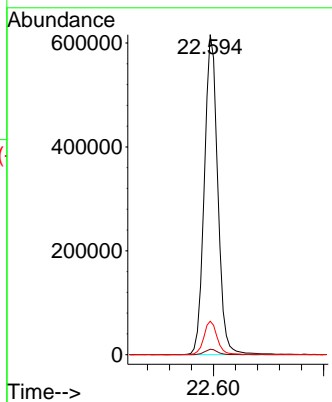
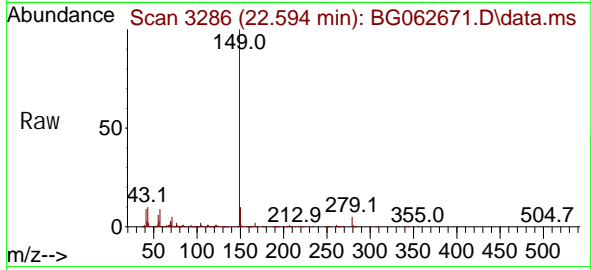


#85
 Di-n-octyl phthalate
 Concen: 37.035 ng
 RT: 22.594 min Scan# 31
 Delta R.T. -0.003 min
 Lab File: BG062671.D
 Acq: 5 Sep 2024 17:53

Instrument :
 BNA_G
 ClientSampleId :
 SSTDCCC040EC

Tgt Ion: 149 Resp: 1042096

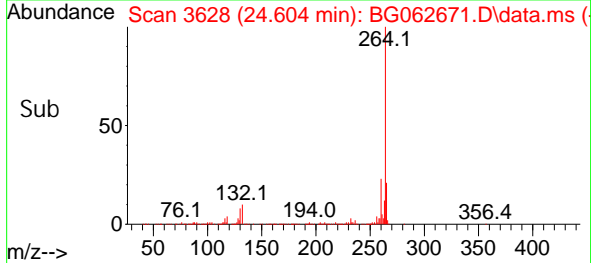
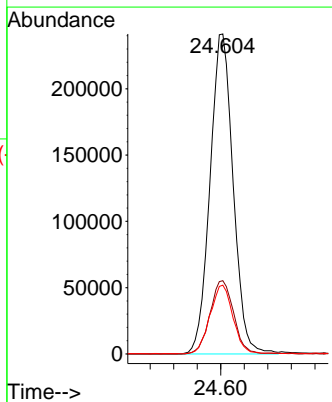
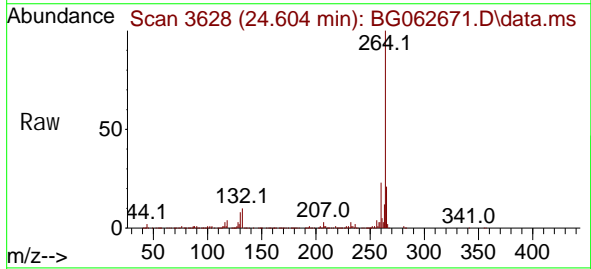
Ion	Ratio	Lower	Upper
149	100		
167	1.6	1.4	2.0
43	10.5	8.8	13.2

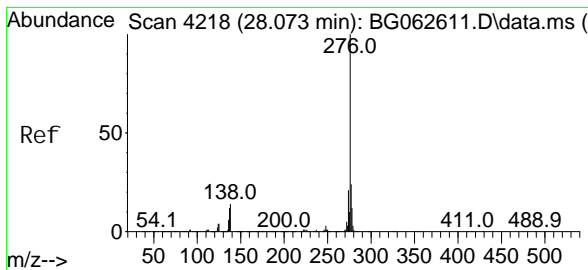


#86
 Perylene-d12
 Concen: 20.000 ng
 RT: 24.604 min Scan# 3628
 Delta R.T. -0.003 min
 Lab File: BG062671.D
 Acq: 5 Sep 2024 17:53

Tgt Ion: 264 Resp: 657881

Ion	Ratio	Lower	Upper
264	100		
260	22.9	19.0	28.4
265	21.5	17.3	25.9

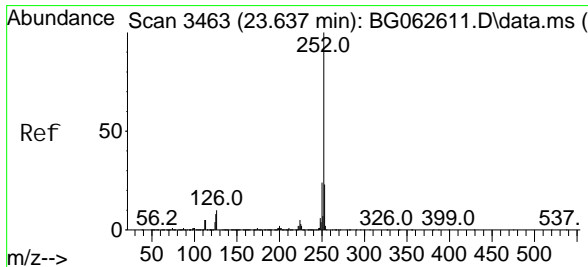
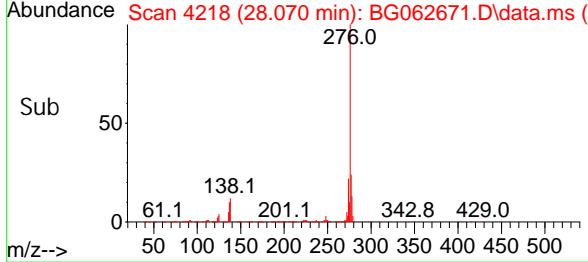
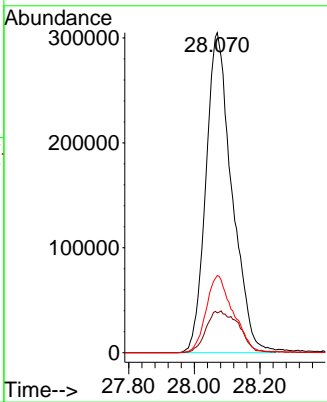
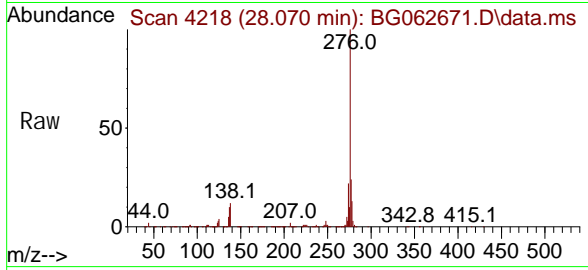




#87
 Indeno(1, 2, 3-cd)pyrene
 Concen: 39.815 ng
 RT: 28.070 min Scan# 41
 Delta R.T. -0.003 min
 Lab File: BG062671.D
 Acq: 5 Sep 2024 17:53

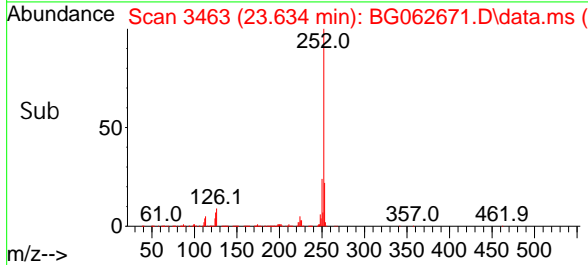
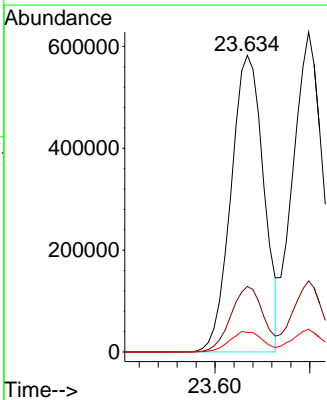
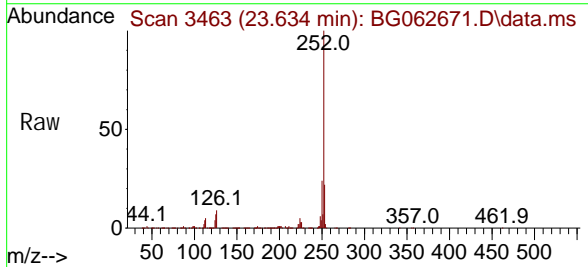
Instrument :
 BNA_G
ClientSampleId :
 SSTDCCC040EC

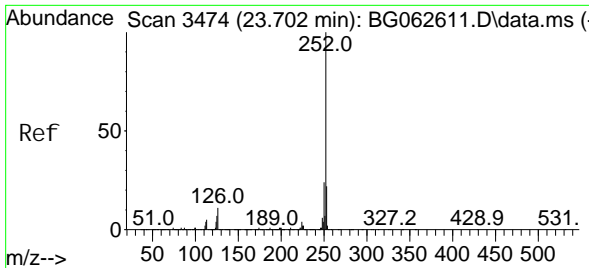
Tgt Ion: 276 Resp: 1679573
 Ion Ratio Lower Upper
 276 100
 138 6.1 14.9 22.3#
 277 25.1 20.3 30.5



#88
 Benzo(b)fluoranthene
 Concen: 38.372 ng
 RT: 23.634 min Scan# 3463
 Delta R.T. -0.003 min
 Lab File: BG062671.D
 Acq: 5 Sep 2024 17:53

Tgt Ion: 252 Resp: 1394353
 Ion Ratio Lower Upper
 252 100
 253 22.1 18.2 27.2
 125 6.6 6.2 9.2

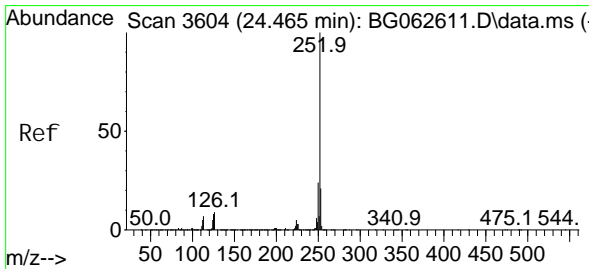
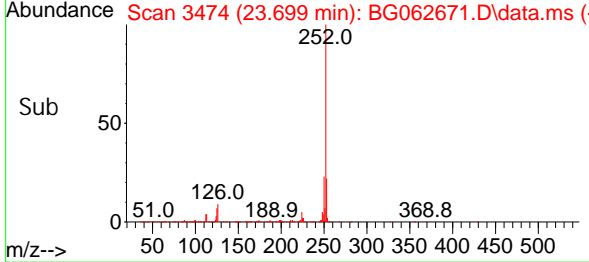
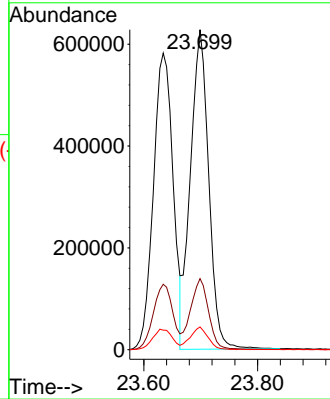
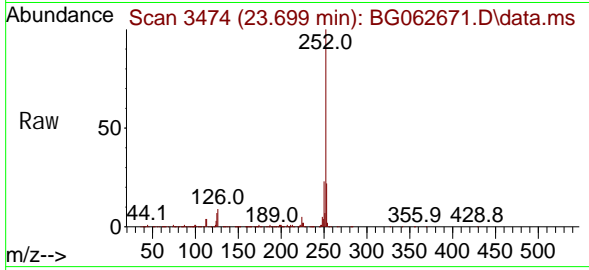




#89
 Benzo(k)fl uoranthene
 Concen: 39.481 ng
 RT: 23.699 min Scan# 34
 Delta R.T. -0.003 min
 Lab File: BG062671.D
 Acq: 5 Sep 2024 17:53

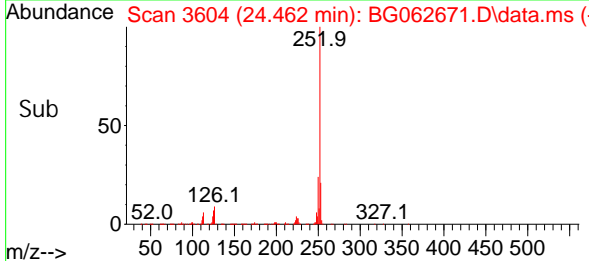
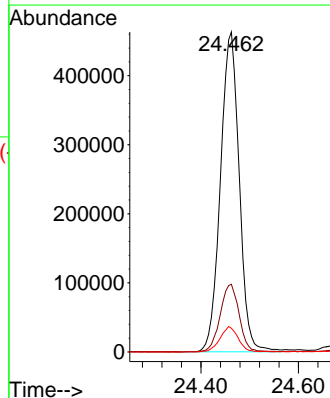
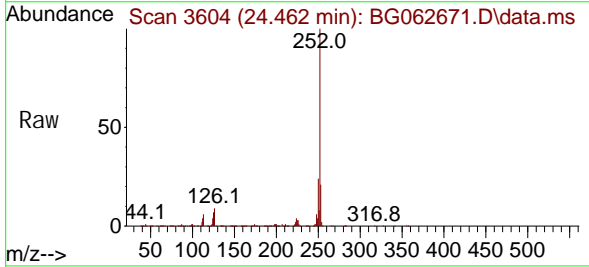
Instrument :
 BNA_G
 ClientSampleId :
 SSTDCCC040EC

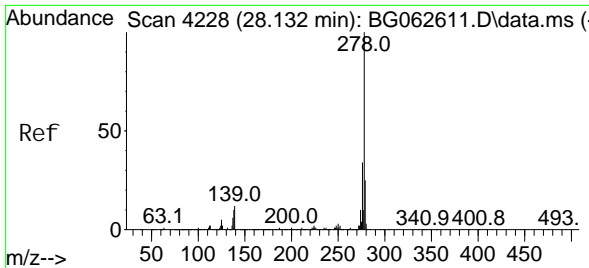
Tgt Ion: 252 Resp: 1403376
 Ion Ratio Lower Upper
 252 100
 253 22.2 17.8 26.8
 125 7.1 6.1 9.1



#90
 Benzo(a)pyrene
 Concen: 38.597 ng
 RT: 24.462 min Scan# 3604
 Delta R.T. -0.003 min
 Lab File: BG062671.D
 Acq: 5 Sep 2024 17:53

Tgt Ion: 252 Resp: 1239033
 Ion Ratio Lower Upper
 252 100
 253 21.2 17.1 25.7
 125 7.4 6.6 10.0

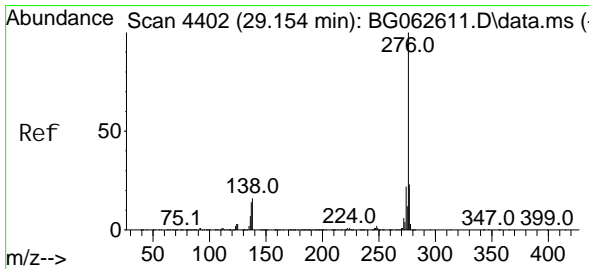
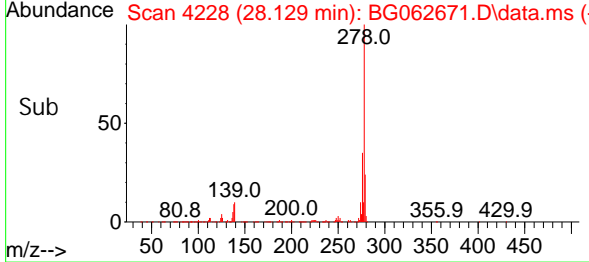
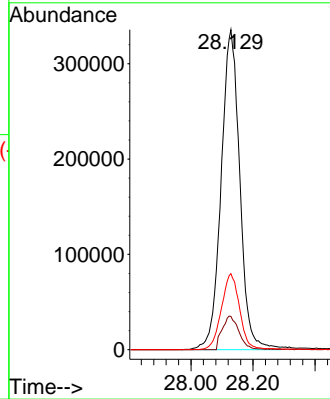
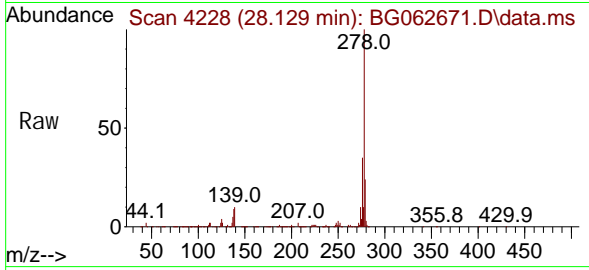




#91
 Di benzo(a, h)anthracene
 Concen: 40.300 ng
 RT: 28.129 min Scan# 41
 Delta R.T. -0.003 min
 Lab File: BG062671.D
 Acq: 5 Sep 2024 17:53

Instrument :
 BNA_G
 ClientSampleId :
 SSTDCCC040EC

Tgt Ion: 278 Resp: 1400471
 Ion Ratio Lower Upper
 278 100
 139 10.4 9.2 13.8
 279 23.8 19.7 29.5



#92
 Benzo(g, h, i)perylene
 Concen: 40.217 ng
 RT: 29.151 min Scan# 4402
 Delta R.T. -0.003 min
 Lab File: BG062671.D
 Acq: 5 Sep 2024 17:53

Tgt Ion: 276 Resp: 1409259
 Ion Ratio Lower Upper
 276 100
 277 24.5 18.8 28.2
 138 13.7 12.7 19.1

