

Data Path : Z:\HPCHEM1\BNA_G\DATA\BG090616\
 Data File : BG023954.D
 Acq On : 6 Sep 2016 19:28
 Operator : UM/SJ
 Sample : H4687-01
 Misc :
 ALS Vial : 9 Sample Multiplier: 2

Instrument :
 BNA_G
 ClientSampleId :
 GROUNDWATER

Integration Parameters: rteint.p
 Integrator: RTE
 Smoothing : ON
 Sampling : 1
 Start Thrs: 0.2
 Stop Thrs : 0

Filtering: 5
 Min Area: 3 % of largest Peak
 Max Peaks: 100
 Peak Location: TOP

If leading or trailing edge < 100 prefer < Baseline drop else tangent >
 Peak separation: 5

Method : Z:\HPCHEM1\BNA_G\METHODS\8270-BG083116.M
 Title : ASP BNA STANDARDS FOR 5 POINT CALIBRATION

Signal : TIC

peak #	R.T. min	first scan	max scan	last scan	PK TY	peak height	corr. area	corr. % max.	% of total
1	5.136	384	391	405	rVB	901651	1377065	38.35%	6.694%
2	5.618	468	473	487	rVB	156876	304954	8.49%	1.483%
3	7.239	742	749	760	rBV	119530	248347	6.92%	1.207%
4	7.598	802	810	819	rBV2	373230	678427	18.89%	3.298%
5	8.062	883	889	900	rVB	291403	497568	13.86%	2.419%
6	8.385	936	944	954	rBV	691121	1239171	34.51%	6.024%
7	9.242	1083	1090	1104	rBV	637400	1199409	33.40%	5.831%
8	10.893	1365	1371	1384	rVB	406226	767222	21.37%	3.730%
9	12.244	1595	1601	1610	rBV4	22380	44007	1.23%	0.214%
10	13.349	1781	1789	1802	rBV	1926006	2998867	83.52%	14.579%
11	13.613	1827	1834	1839	rBV4	39397	67819	1.89%	0.330%
12	14.189	1925	1932	1939	rBV	223380	344902	9.61%	1.677%
13	14.735	2019	2025	2034	rVB3	744988	1209780	33.69%	5.881%
14	15.493	2150	2154	2161	rVB3	43661	62353	1.74%	0.303%
15	16.239	2273	2281	2290	rBV	739684	1171929	32.64%	5.697%
16	16.421	2308	2312	2317	rBV4	24852	48626	1.35%	0.236%
17	17.220	2442	2448	2452	rBV6	24259	36652	1.02%	0.178%
18	17.502	2490	2496	2510	rVB2	977412	1584558	44.13%	7.703%
19	17.784	2537	2544	2554	rVB3	55170	96698	2.69%	0.470%
20	18.377	2641	2645	2651	rBV9	26030	57406	1.60%	0.279%
21	19.993	2918	2920	2924	rVB3	41723	46975	1.31%	0.228%
22	20.110	2934	2940	2946	rBV	2782831	3590662	100.00%	17.456%
23	20.921	3075	3078	3081	rVB2	38494	43092	1.20%	0.209%
24	21.814	3224	3230	3241	rVB	872060	1471120	40.97%	7.152%
25	25.168	3791	3801	3811	rBV3	437382	1382542	38.50%	6.721%

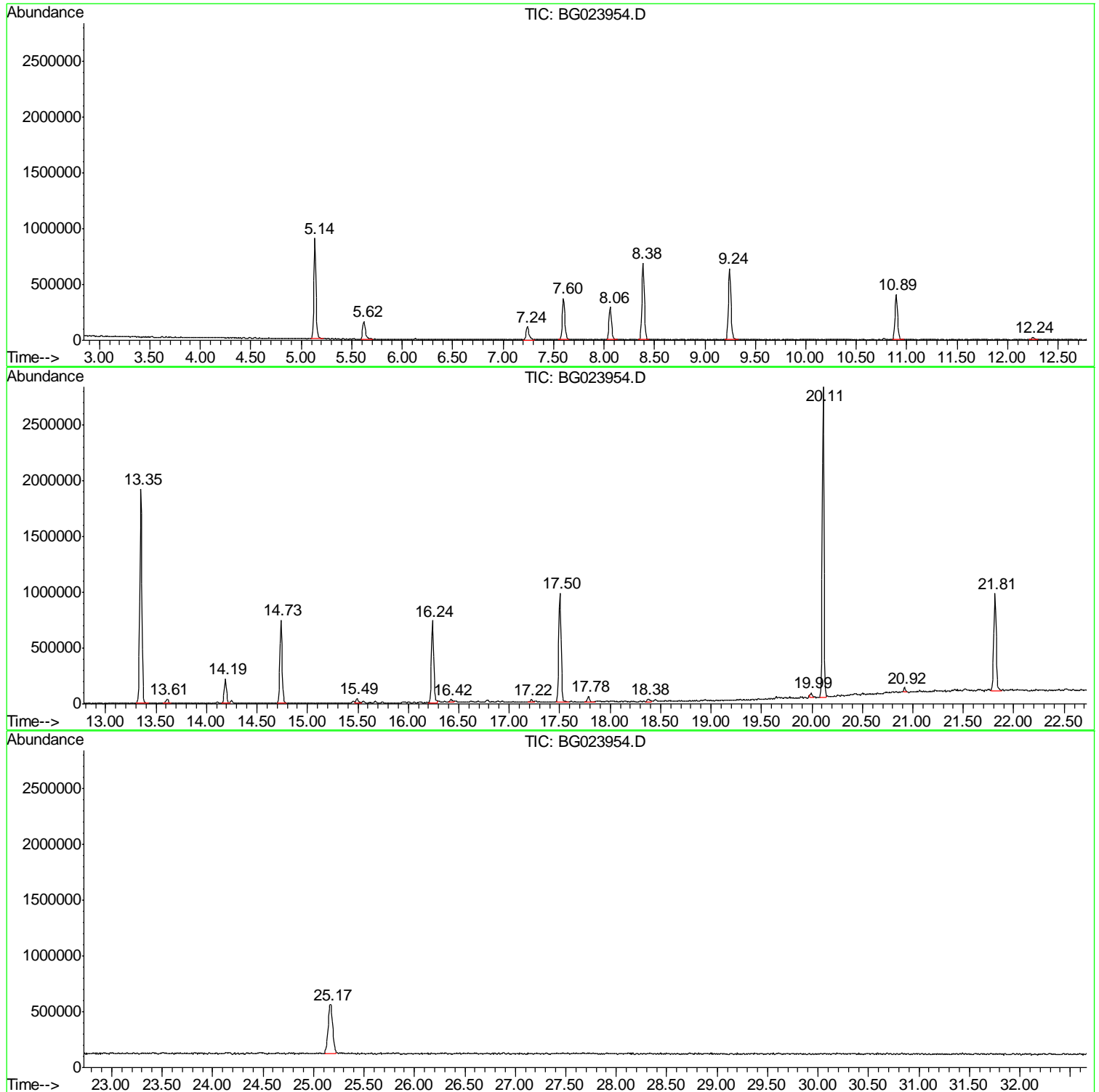
Sum of corrected areas: 20570151

Data Path : Z:\HPCHEM1\BNA_G\DATA\BG090616\
 Data File : BG023954.D
 Acq On : 6 Sep 2016 19:28
 Operator : UM/SJ
 Sample : H4687-01
 Misc :
 ALS Vial : 9 Sample Multiplier: 2

Instrument :
 BNA_G
 ClientSampleId :
 GROUNDWATER

Quant Method : Z:\HPCHEM1\BNA_G\METHODS\8270-BG083116.M
 Quant Title : ASP BNA STANDARDS FOR 5 POINT CALIBRATION

TIC Library : C:\DATABASE\NIST11.L
 TIC Integration Parameters: LSCINT.P



Data Path : Z:\HPCHEM1\BNA_G\DATA\BG090616\
 Data File : BG023954.D
 Acq On : 6 Sep 2016 19:28
 Operator : UM/SJ
 Sample : H4687-01
 Misc :
 ALS Vial : 9 Sample Multiplier: 2

Instrument :
 BNA_G
 ClientSampled :
 GROUNDWATER

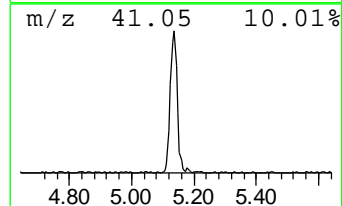
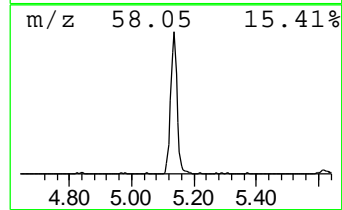
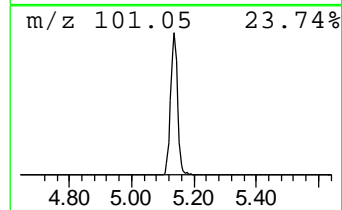
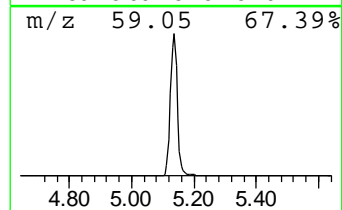
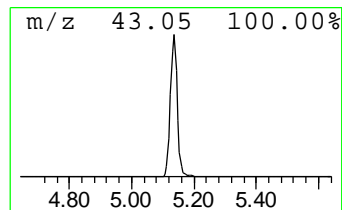
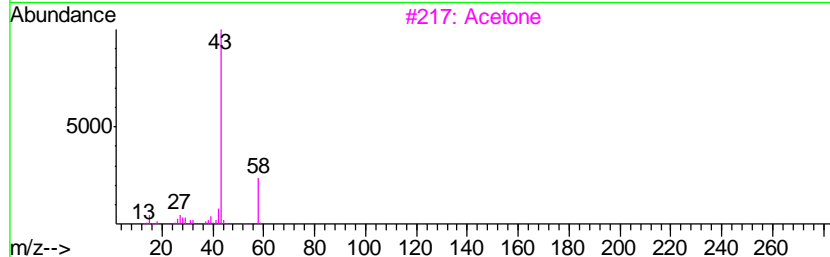
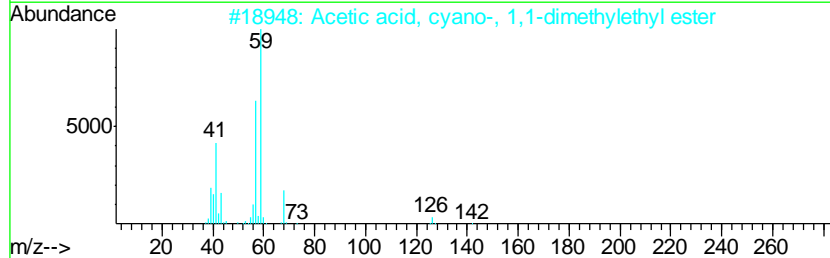
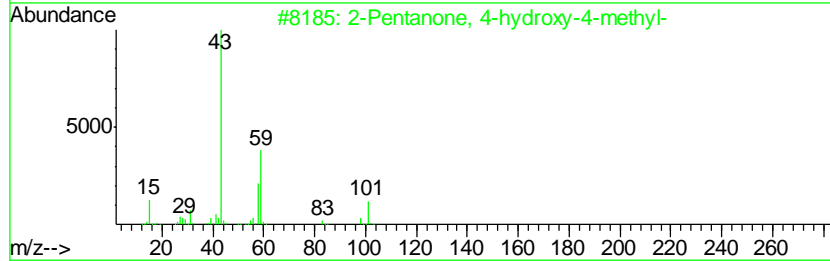
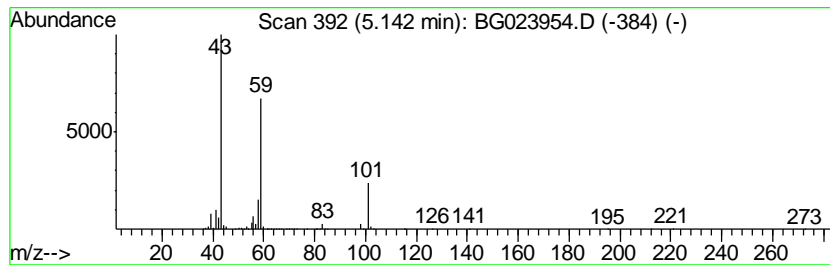
Quant Method : Z:\HPCHEM1\BNA_G\METHODS\8270-BG083116.M
 Quant Title : ASP BNA STANDARDS FOR 5 POINT CALIBRATION

TIC Library : C:\DATABASE\NIST11.L
 TIC Integration Parameters: LSCINT.P

 Peak Number 1 2-Pentanone, 4-hydroxy-4-me... Concentration Rank 1

R.T.	EstConc	Area	Relative to ISTD	R.T.
5.14	55.35 ng	1377070	1,4-Dichlorobenzene-d4	8.06

Hit#	of	Tentative ID	MW	MolForm	CAS#	Qual
1	5	2-Pentanone, 4-hydroxy-4-methyl-	116	C6H12O2	000123-42-2	72
2		Acetic acid, cyano-, 1,1-dimethy...	141	C7H11NO2	001116-98-9	23
3		Acetone	58	C3H6O	000067-64-1	9
4		Morpholine, 4-methyl-	101	C5H11NO	000109-02-4	9
5		4-Penten-2-one, 4-methyl-	98	C6H10O	003744-02-3	9



Data Path : Z:\HPCHEM1\BNA_G\DATA\BG090616\
 Data File : BG023954.D
 Acq On : 6 Sep 2016 19:28
 Operator : UM/SJ
 Sample : H4687-01
 Misc :
 ALS Vial : 9 Sample Multiplier: 2

Instrument :
 BNA_G
 ClientSampleId :
 GROUNDWATER

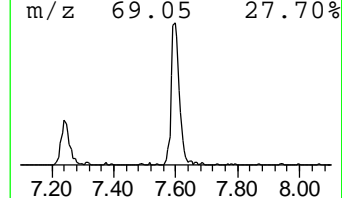
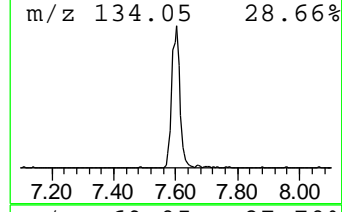
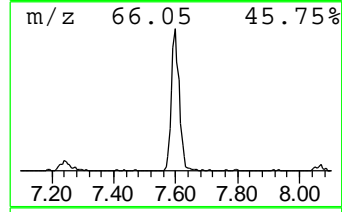
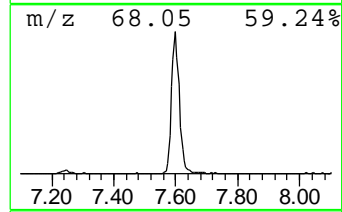
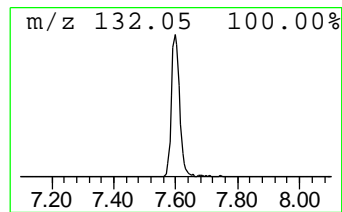
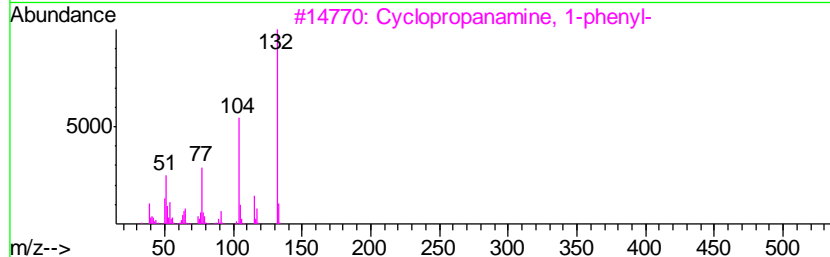
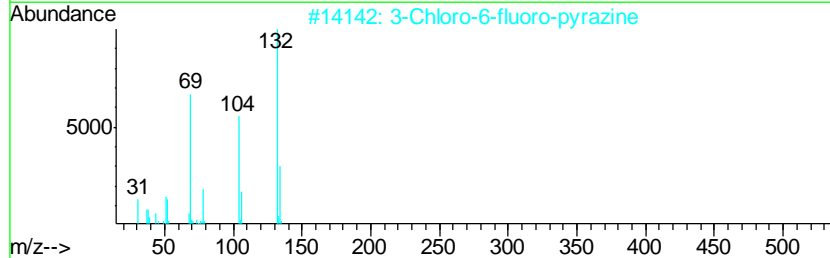
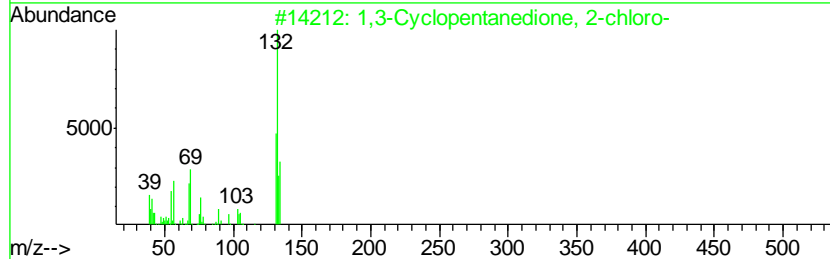
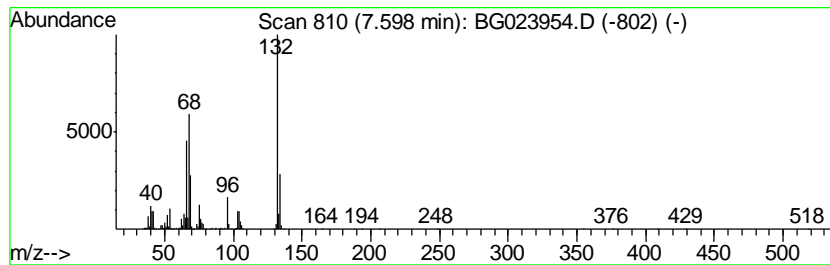
Quant Method : Z:\HPCHEM1\BNA_G\METHODS\8270-BG083116.M
 Quant Title : ASP BNA STANDARDS FOR 5 POINT CALIBRATION

TIC Library : C:\DATABASE\NIST11.L
 TIC Integration Parameters: LSCINT.P

 Peak Number 2 unknown7.60 Concentration Rank 3

R.T.	EstConc	Area	Relative to ISTD	R.T.
7.60	27.27 ng	678427	1,4-Dichlorobenzene-d4	8.06

Hit#	of	Tentative ID	MW	MolForm	CAS#	Qual
1	5	1,3-Cyclopentanedione, 2-chloro-	132	C5H5ClO2	014203-19-1	16
2		3-Chloro-6-fluoro-pyrazine	132	C4H2ClFN2	1000146-10-7	14
3		Cyclopropanamine, 1-phenyl-	133	C9H11N	1000351-26-2	10
4		Tranylcypromine-propionyl	189	C12H15NO	1000123-86-3	10
5		1H-Benzimidazole, 2-methyl-	132	C8H8N2	000615-15-6	10



Data Path : Z:\HPCHEM1\BNA_G\DATA\BG090616\
Data File : BG023954.D
Acq On : 6 Sep 2016 19:28
Operator : UM/SJ
Sample : H4687-01
Misc :
ALS Vial : 9 Sample Multiplier: 2

Instrument :
BNA_G
ClientSampleId :
GROUNDWATER

Quant Method : Z:\HPCHEM1\BNA_G\METHODS\8270-BG083116.M
Quant Title : ASP BNA STANDARDS FOR 5 POINT CALIBRATION

TIC Library : C:\DATABASE\NIST11.L
TIC Integration Parameters: LSCINT.P

TIC Top Hit name	RT	EstConc	Units	Response	--Internal Standard--			
					#	RT	Resp	Conc
2-Pentanone, 4-hy...	5.14	55.4	ng	1377070	1	8.06	497568	20.0
unknown7.60	7.60	27.3	ng	678427	1	8.06	497568	20.0