

Data Path : Z:\HPCHEM1\BNA_G\DATA\BG090716\
 Data File : BG023959.D
 Acq On : 7 Sep 2016 19:03
 Operator : UM/SJ
 Sample : H4720-05
 Misc :
 ALS Vial : 5 Sample Multiplier: 1

Instrument :
 BNA_G
 ClientSampleId :
 DI-BOTTOM

Quant Time: Sep 08 09:06:08 2016
 Quant Method : Z:\HPCHEM1\BNA_G\METHODS\8270-BG083116.M
 Quant Title : ASP BNA STANDARDS FOR 5 POINT CALIBRATION
 QLast Update : Wed Aug 31 20:05:47 2016
 Response via : Initial Calibration

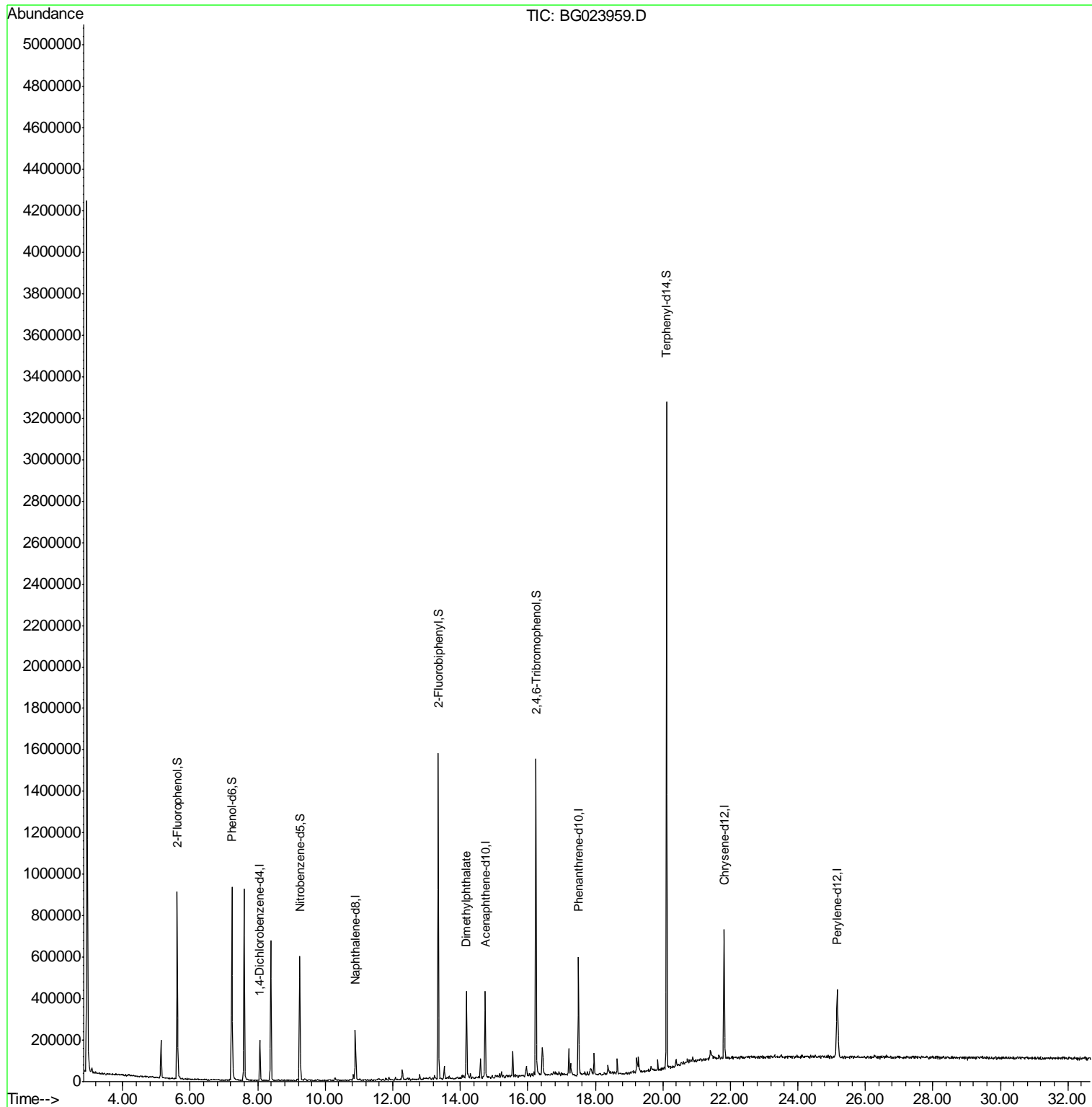
Internal Standards	R.T.	QIon	Response	Conc	Units	Dev(Min)
1) 1,4-Dichlorobenzene-d4	8.06	152	47712	20.00	ng	-0.02
21) Naphthalene-d8	10.90	136	194772	20.00	ng	-0.03
38) Acenaphthene-d10	14.74	164	137852	20.00	ng	-0.02
63) Phenanthrene-d10	17.50	188	346459	20.00	ng	-0.02
75) Chrysene-d12	21.81	240	410296	20.00	ng	-0.03
86) Perylene-d12	25.16	264	391020	20.00	ng	-0.06
System Monitoring Compounds						
5) 2-Fluorophenol	5.61	112	336637	123.87	ng	-0.03
7) Phenol-d6	7.23	99	500888	119.74	ng	-0.03
23) Nitrobenzene-d5	9.24	82	373872	85.70	ng	-0.03
41) 2,4,6-Tribromophenol	16.24	330	278334	112.07	ng	-0.02
44) 2-Fluorobiphenyl	13.35	172	755348	78.56	ng	-0.02
78) Terphenyl-d14	20.11	244	1325667	73.58	ng	-0.02
Target Compounds						Qvalue
49) Dimethylphthalate	14.18	163	216956	18.35	ng	99

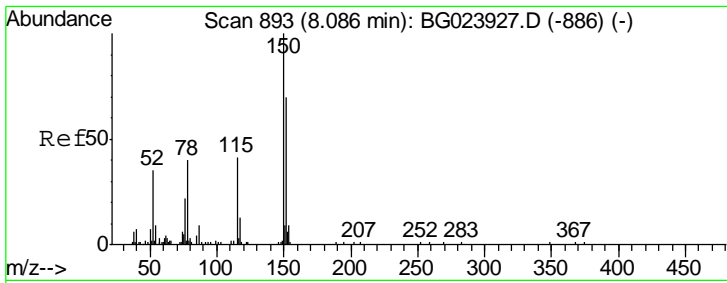
(#) = qualifier out of range (m) = manual integration (+) = signals summed

Data Path : Z:\HPCHEM1\BNA_G\DATA\BG090716\
 Data File : BG023959.D
 Acq On : 7 Sep 2016 19:03
 Operator : UM/SJ
 Sample : H4720-05
 Misc :
 ALS Vial : 5 Sample Multiplier: 1

Instrument :
 BNA_G
 ClientSampleId :
 DI-BOTTOM

Quant Time: Sep 08 09:06:08 2016
 Quant Method : Z:\HPCHEM1\BNA_G\METHODS\8270-BG083116.M
 Quant Title : ASP BNA STANDARDS FOR 5 POINT CALIBRATION
 QLast Update : Wed Aug 31 20:05:47 2016
 Response via : Initial Calibration

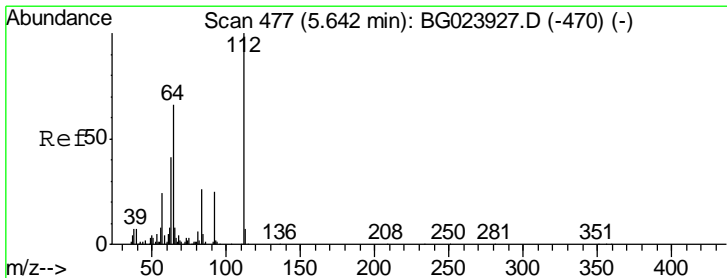
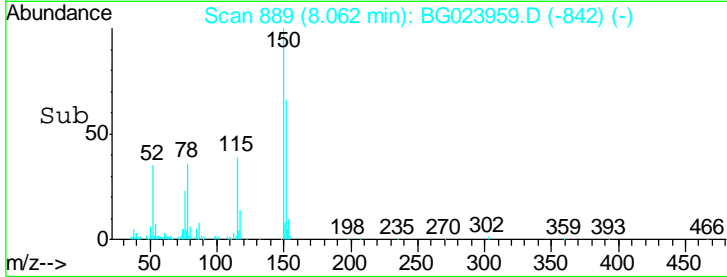
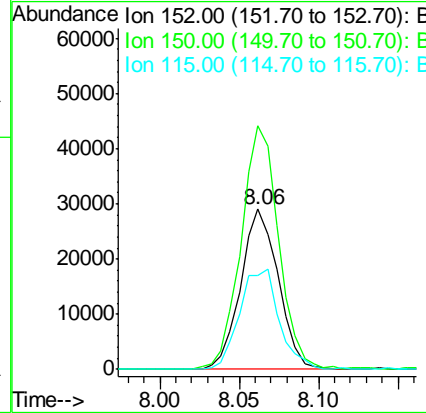
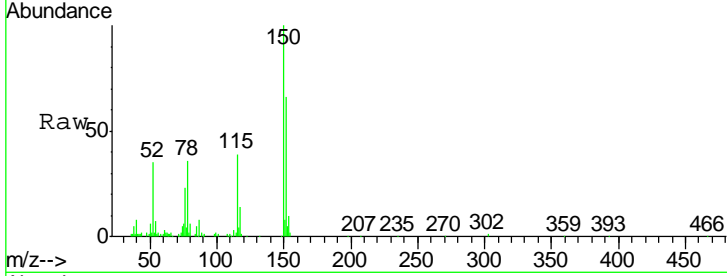




#1
 1,4-Dichlorobenzene-d4
 Concen: 20.00 ng
 RT: 8.06 min Scan# 889
 Delta R.T. -0.02 min
 Lab File: BG023959.D
 Acq: 7 Sep 2016 19:03

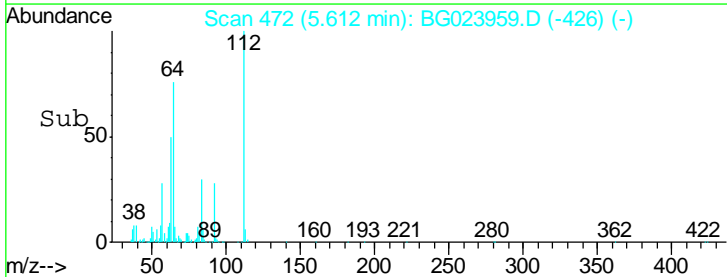
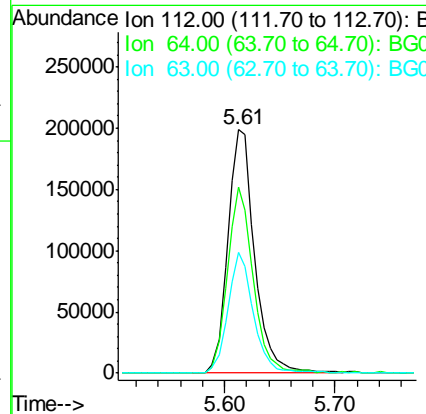
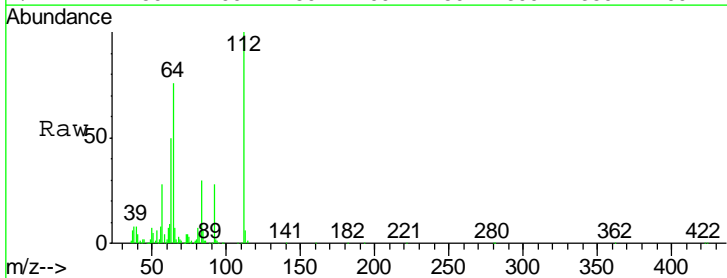
Instrument :
 BNA_G
 ClientSampleId :
 DI-BOTTOM

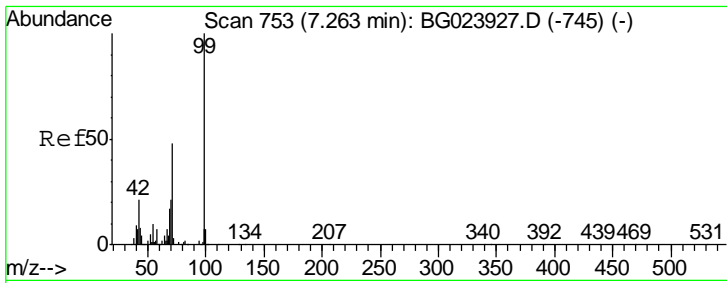
Tgt Ion	Resp	Lower	Upper
152	47712		
152	100		
150	152.1	144.7	217.1
115	58.7	64.0	96.0#



#5
 2-Fluorophenol
 Concen: 123.87 ng
 RT: 5.61 min Scan# 472
 Delta R.T. -0.03 min
 Lab File: BG023959.D
 Acq: 7 Sep 2016 19:03

Tgt Ion	Resp	Lower	Upper
112	336637		
112	100		
64	76.4	59.0	88.4
63	49.8	37.8	56.8

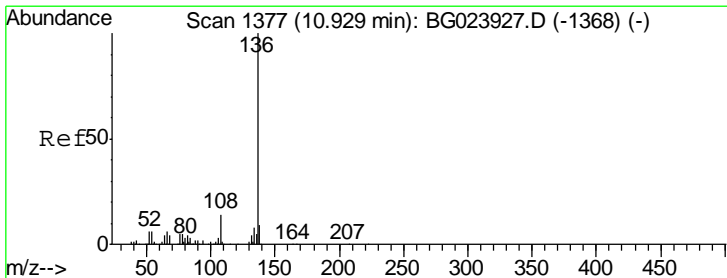
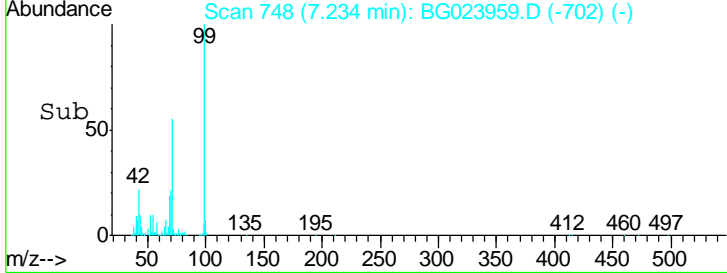
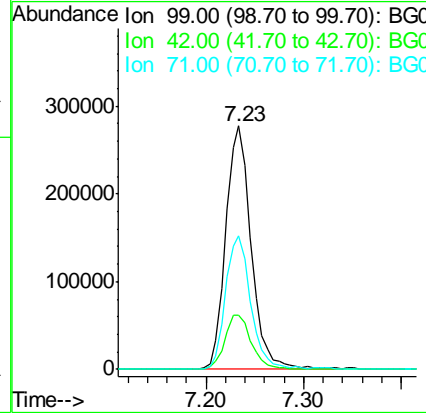
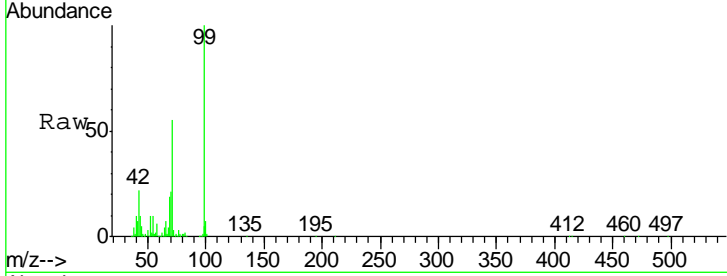




#7
 Phenol-d6
 Concen: 119.74 ng
 RT: 7.23 min Scan# 748
 Delta R.T. -0.03 min
 Lab File: BG023959.D
 Acq: 7 Sep 2016 19:03

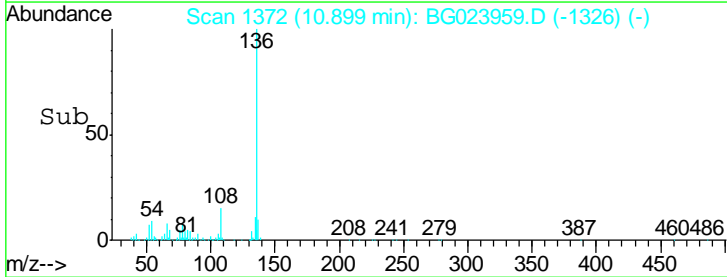
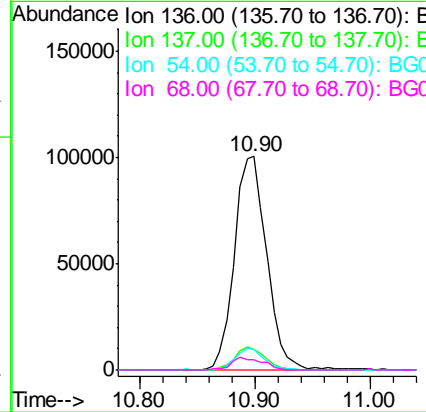
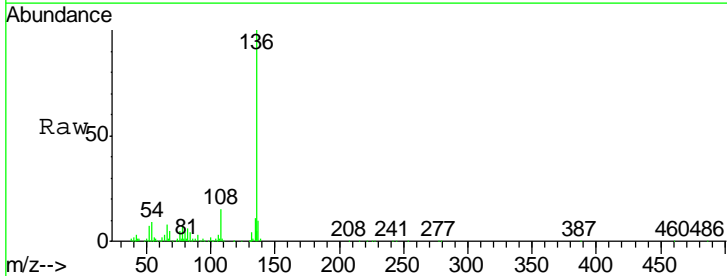
Instrument :
 BNA_G
ClientSampled :
 DI-BOTTOM

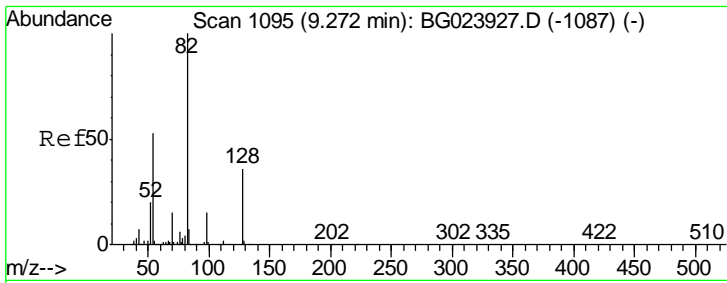
Tgt Ion	Resp	Lower	Upper
99	500888		
42	22.1	17.8	26.6
71	54.6	41.5	62.3



#21
 Naphthalene-d8
 Concen: 20.00 ng
 RT: 10.90 min Scan# 1372
 Delta R.T. -0.03 min
 Lab File: BG023959.D
 Acq: 7 Sep 2016 19:03

Tgt Ion	Resp	Lower	Upper
136	194772		
137	9.6	9.6	14.4#
54	9.3	7.3	10.9
68	4.6	5.3	7.9#

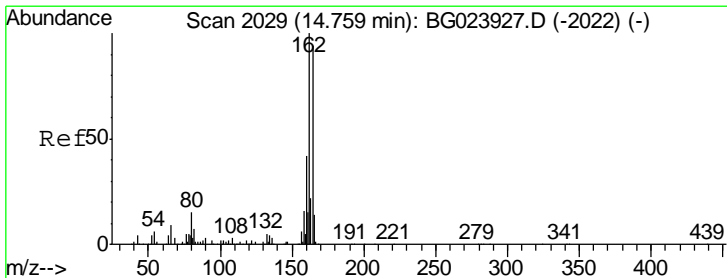
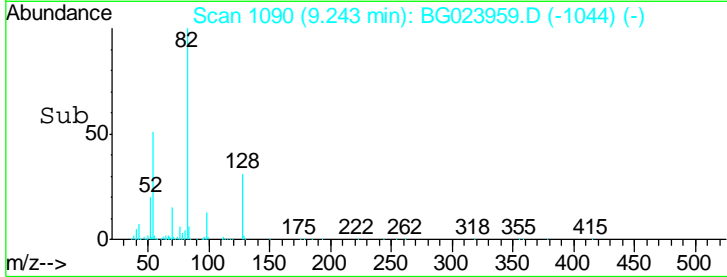
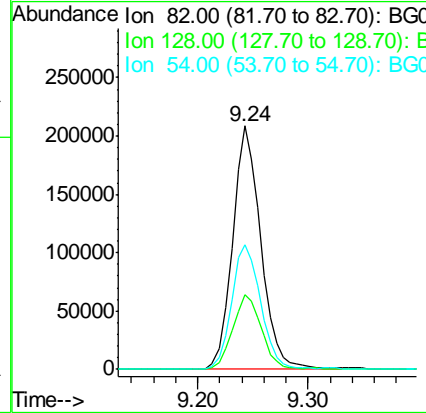
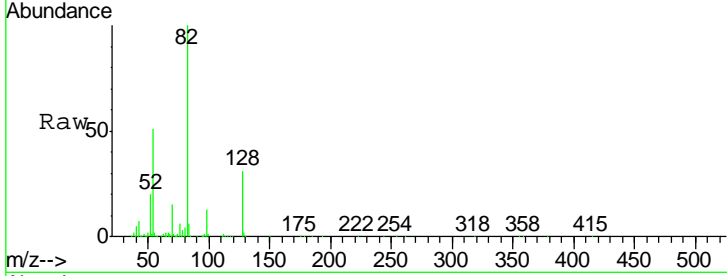




#23
 Nitrobenzene-d5
 Concen: 85.70 ng
 RT: 9.24 min Scan# 1090
 Delta R.T. -0.03 min
 Lab File: BG023959.D
 Acq: 7 Sep 2016 19:03

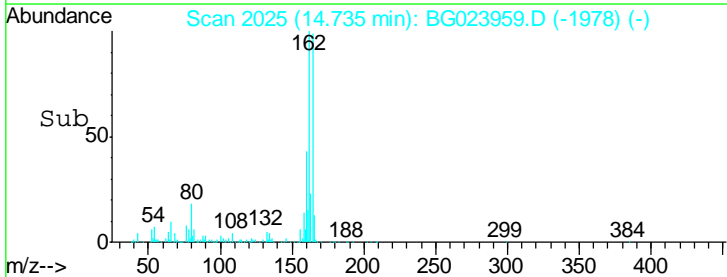
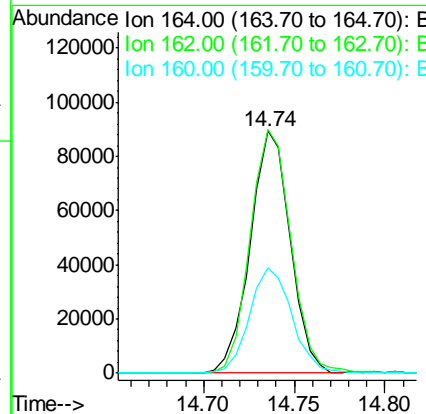
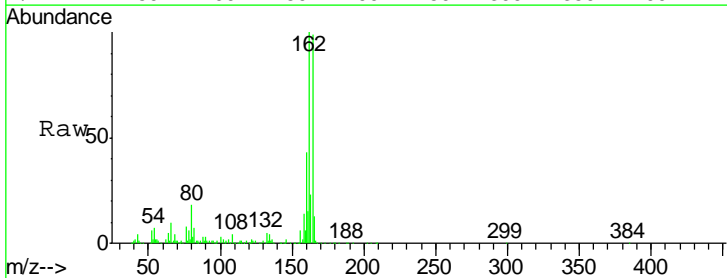
Instrument :
 BNA_G
 ClientSampled :
 DI-BOTTOM

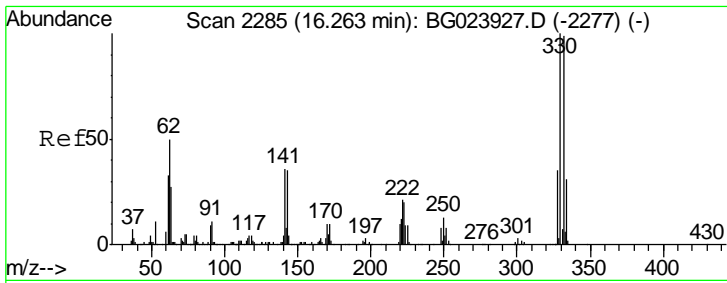
Tgt Ion	Resp	Lower	Upper
82	373872		
128	30.8	24.4	36.6
54	50.9	41.4	62.0



#38
 Acenaphthene-d10
 Concen: 20.00 ng
 RT: 14.74 min Scan# 2025
 Delta R.T. -0.02 min
 Lab File: BG023959.D
 Acq: 7 Sep 2016 19:03

Tgt Ion	Resp	Lower	Upper
164	137852		
162	100.5	87.7	131.5
160	43.4	37.2	55.8

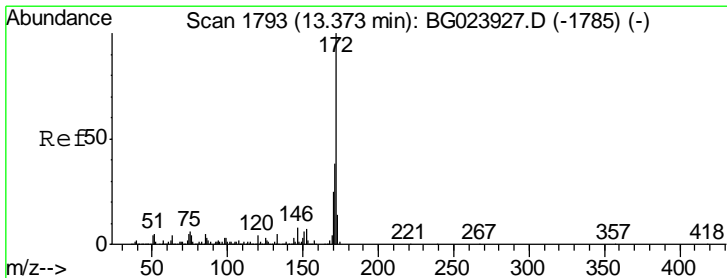
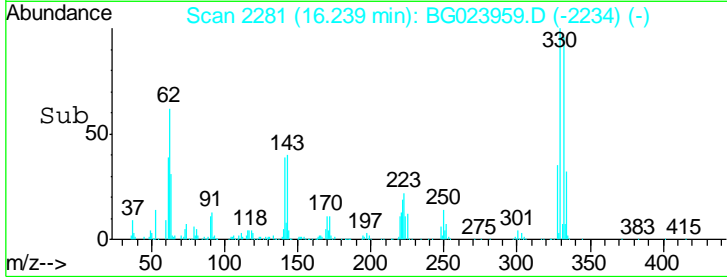
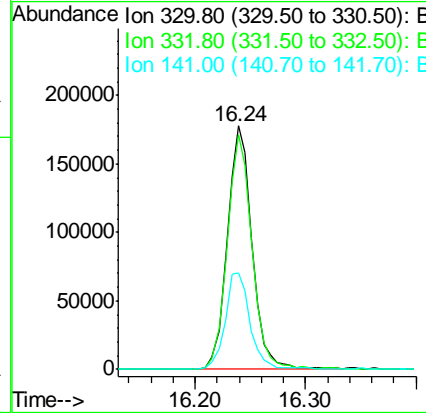
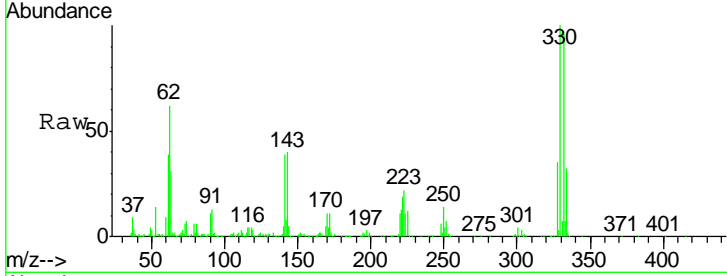




#41
 2,4,6-Tribromophenol
 Concen: 112.07 ng
 RT: 16.24 min Scan# 2281
 Delta R.T. -0.02 min
 Lab File: BG023959.D
 Acq: 7 Sep 2016 19:03

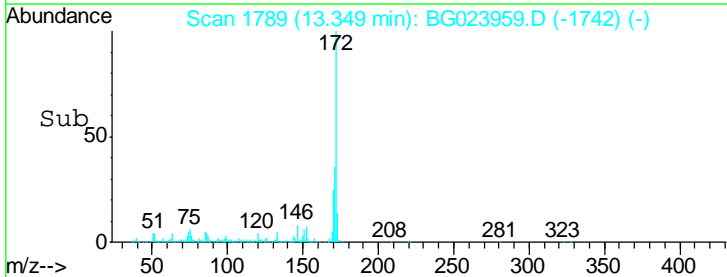
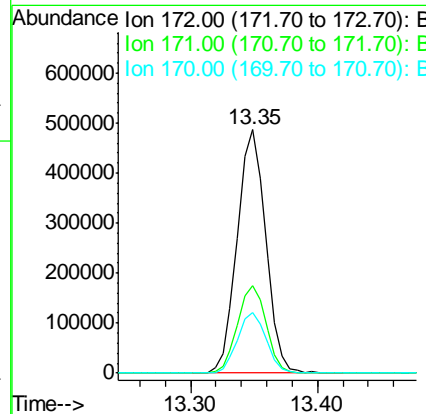
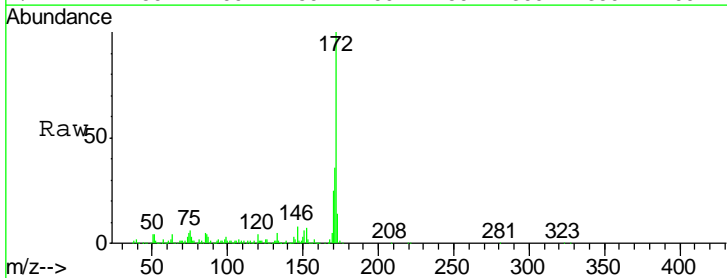
Instrument :
 BNA_G
 ClientSampled :
 DI-BOTTOM

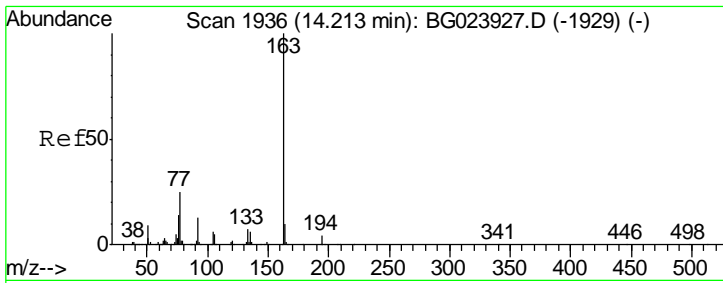
Tgt Ion	Resp	Lower	Upper
330	100		
332	96.6	77.4	116.2
141	40.1	31.7	47.5



#44
 2-Fluorobiphenyl
 Concen: 78.56 ng
 RT: 13.35 min Scan# 1789
 Delta R.T. -0.02 min
 Lab File: BG023959.D
 Acq: 7 Sep 2016 19:03

Tgt Ion	Resp	Lower	Upper
172	100		
171	36.1	31.6	47.4
170	25.0	21.3	31.9

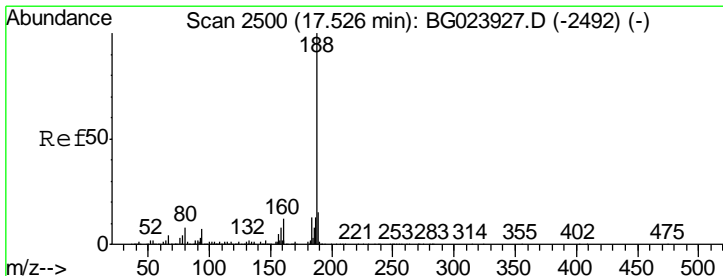
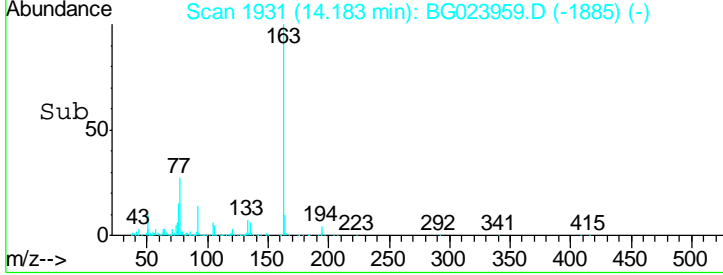
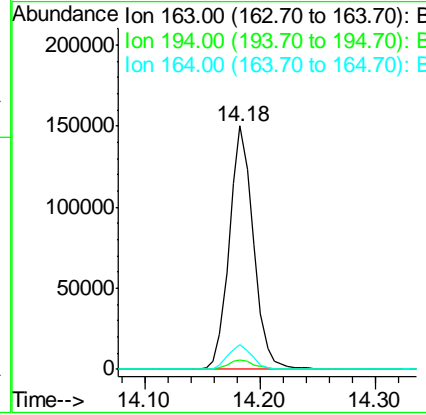
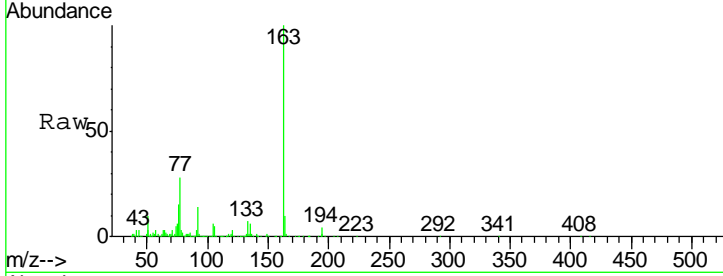




#49
 Dimethylphthalate
 Concen: 18.35 ng
 RT: 14.18 min Scan# 1931
 Delta R.T. -0.03 min
 Lab File: BG023959.D
 Acq: 7 Sep 2016 19:03

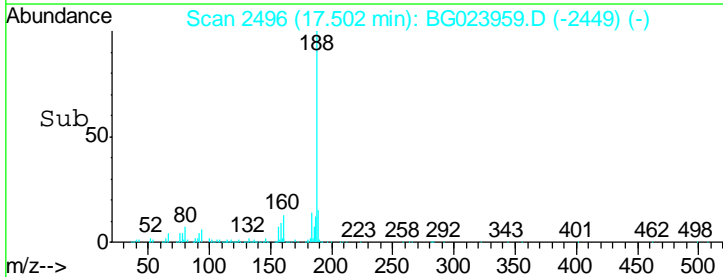
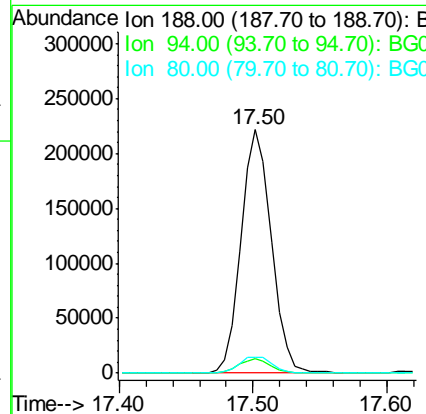
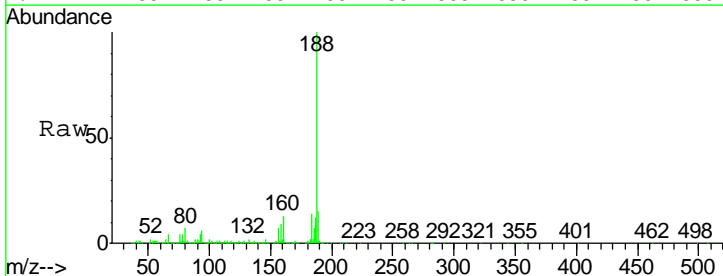
Instrument :
 BNA_G
 ClientSampleId :
 DI-BOTTOM

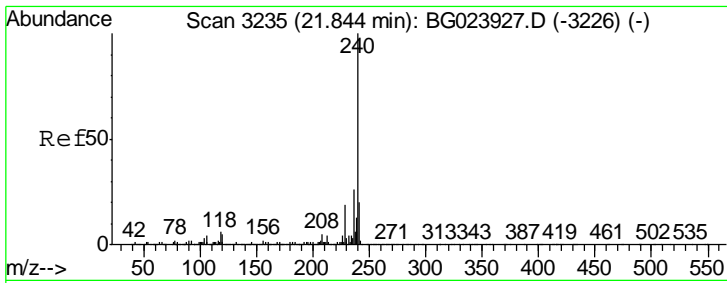
Tgt Ion	Resp	Lower	Upper
163	216956		
194	4.0	3.6	5.4
164	10.4	8.1	12.1



#63
 Phenanthrene-d10
 Concen: 20.00 ng
 RT: 17.50 min Scan# 2496
 Delta R.T. -0.02 min
 Lab File: BG023959.D
 Acq: 7 Sep 2016 19:03

Tgt Ion	Resp	Lower	Upper
188	346459		
94	5.9	5.2	7.8
80	6.6	7.2	10.8#

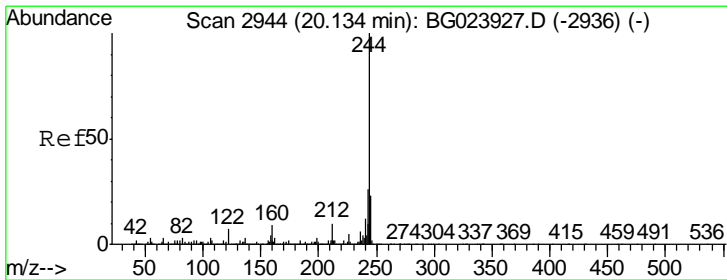
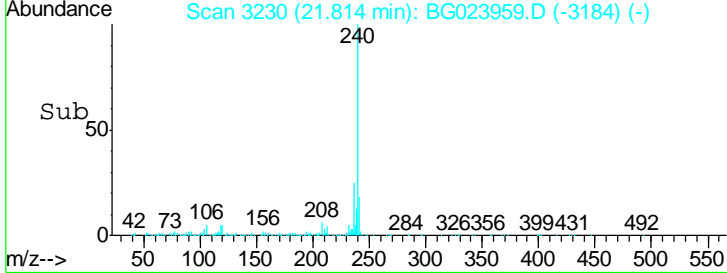
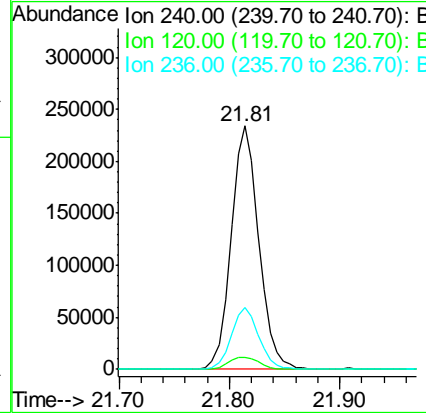
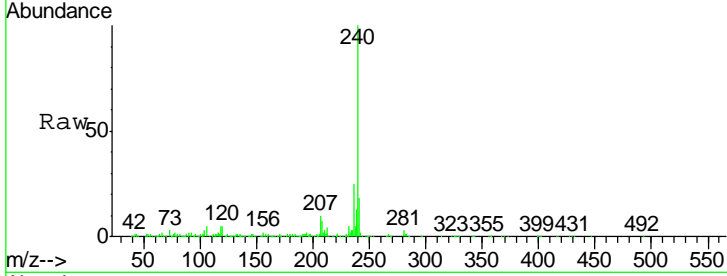




#75
 Chrysene-d12
 Concen: 20.00 ng
 RT: 21.81 min Scan# 3230
 Delta R.T. -0.03 min
 Lab File: BG023959.D
 Acq: 7 Sep 2016 19:03

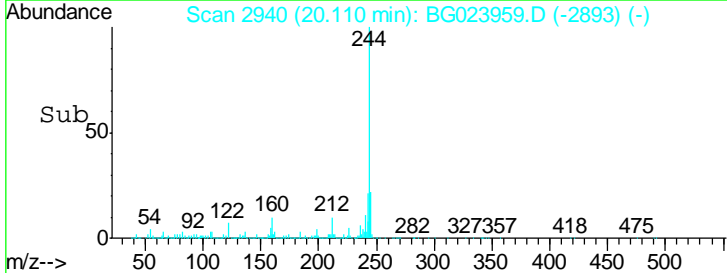
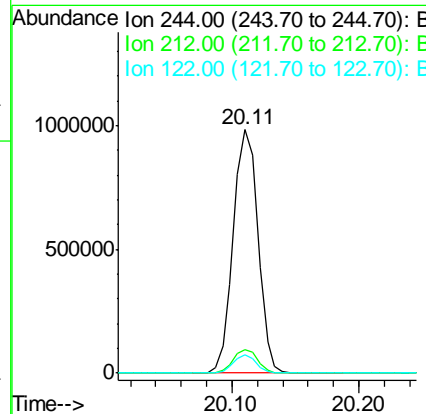
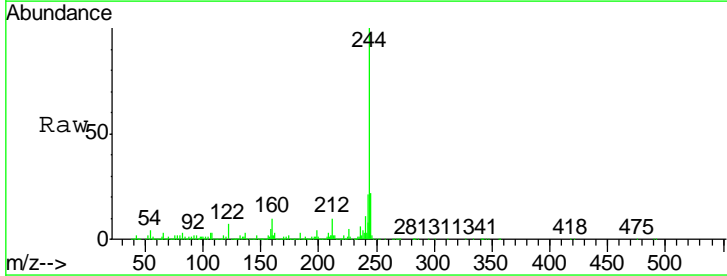
Instrument :
 BNA_G
 ClientSampleId :
 DI-BOTTOM

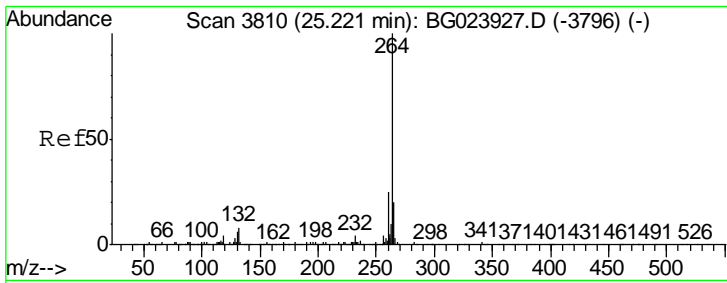
Tgt Ion	Resp	Lower	Upper
240	410296		
120	5.2	4.1	6.1
236	25.3	21.1	31.7



#78
 Terphenyl-d14
 Concen: 73.58 ng
 RT: 20.11 min Scan# 2940
 Delta R.T. -0.02 min
 Lab File: BG023959.D
 Acq: 7 Sep 2016 19:03

Tgt Ion	Resp	Lower	Upper
244	1325667		
212	9.8	10.8	16.2#
122	7.4	8.0	12.0#





#86
 Perylene-d12
 Concen: 20.00 ng
 RT: 25.16 min Scan# 3800
 Delta R.T. -0.06 min
 Lab File: BG023959.D
 Acq: 7 Sep 2016 19:03

Instrument :
 BNA_G
 ClientSampleId :
 DI-BOTTOM

Tgt Ion: 264 Resp: 391020

Ion	Ratio	Lower	Upper
264	100		
260	22.3	18.4	27.6
265	21.5	18.9	28.3

