

Data Path : Z:\HPCHEM1\BNA\_G\DATA\BG090915\  
 Data File : BG018593.D  
 Acq On : 9 Sep 2015 19:17  
 Operator : UM/IZ  
 Sample : G3571-07  
 Misc :  
 ALS Vial : 11 Sample Multiplier: 1

Instrument :  
 BNA\_G  
 ClientSampleId :  
 C0253

## Integration Parameters: LSCINT.P

Integrator: RTE  
 Smoothing : OFF Filtering: 5  
 Sampling : 1 Min Area: 0.1 % of largest Peak  
 Start Thrs: 0.2 Max Peaks: 100  
 Stop Thrs : 0 Peak Location: TOP

If leading or trailing edge < 100 prefer < Baseline drop else tangent >  
 Peak separation: 5

Method : Z:\HPCHEM1\BNA\_G\METHODS\SOM02.2-EPA-BG080915.M  
 Title : SVOA CALIBRATION

Signal : TIC

peak #	R.T. min	first scan	max scan	last scan	PK TY	peak height	corr. area	corr. % max.	% of total
1	2.893	5	9	14	rVV2	21198	30501	1.19%	0.128%
2	2.958	15	20	30	rVB	94023	151136	5.89%	0.633%
3	3.111	41	46	53	rBV	98903	176446	6.87%	0.739%
4	3.187	53	59	73	rVB	1523109	2198476	85.61%	9.208%
5	3.481	107	109	114	rVB4	8142	9194	0.36%	0.039%
6	3.933	185	186	191	rBV4	3235	3377	0.13%	0.014%
7	4.092	211	213	218	rVB6	3227	3869	0.15%	0.016%
8	6.219	569	575	576	rBV5	3801	5586	0.22%	0.023%
9	6.648	646	648	654	rVB4	1788	3423	0.13%	0.014%
10	7.006	704	709	713	rBV6	4788	8476	0.33%	0.036%
11	7.165	731	736	743	rBV	70102	118231	4.60%	0.495%
12	7.329	758	764	772	rBV	247152	387186	15.08%	1.622%
13	7.541	793	800	808	rBV	233286	394210	15.35%	1.651%
14	7.635	812	816	819	rBV4	2307	4446	0.17%	0.019%
15	7.817	840	847	849	rBV4	2161	3424	0.13%	0.014%
16	8.011	873	880	888	rVB	217148	374531	14.58%	1.569%
17	8.240	915	919	922	rBV4	2914	5048	0.20%	0.021%
18	8.704	990	998	1007	rBV	196247	352183	13.71%	1.475%
19	8.974	1040	1044	1047	rBV3	2177	3626	0.14%	0.015%
20	9.168	1068	1077	1084	rBV	269500	479086	18.66%	2.007%
21	9.885	1191	1199	1210	rVB	220291	394892	15.38%	1.654%
22	10.426	1284	1291	1302	rBV	345641	621822	24.21%	2.605%
23	10.813	1350	1357	1365	rBV	326348	574063	22.35%	2.404%
24	10.937	1372	1378	1385	rBV2	16949	32142	1.25%	0.135%
25	12.993	1723	1728	1733	rBV6	3795	7840	0.31%	0.033%
26	13.081	1738	1743	1745	rBV5	3132	4517	0.18%	0.019%
27	13.240	1766	1770	1776	rVB5	6974	9657	0.38%	0.040%
28	13.528	1815	1819	1822	rBV5	3278	4668	0.18%	0.020%
29	14.033	1898	1905	1917	rBV	783078	1115285	43.43%	4.671%
30	14.327	1946	1955	1962	rBV	864318	1350111	52.57%	5.655%
31	14.632	2001	2007	2019	rVB2	539927	882645	34.37%	3.697%
32	14.820	2033	2039	2045	rBV2	69848	124119	4.83%	0.520%
33	15.625	2169	2176	2184	rBV	1229739	1776846	69.19%	7.442%
34	15.737	2188	2195	2205	rBV	320821	483543	18.83%	2.025%

Data Path : Z:\HPCHEM1\BNA\_G\DATA\BG090915\  
 Data File : BG018593.D  
 Acq On : 9 Sep 2015 19:17  
 Operator : UM/IZ  
 Sample : G3571-07  
 Misc :  
 ALS Vial : 11 Sample Multiplier: 1

Instrument :  
 BNA\_G  
 ClientSampleId :  
 C0253

## Integration Parameters: LSCINT.P

Integrator: RTE  
 Smoothing : OFF  
 Sampling : 1  
 Start Thrs: 0.2  
 Stop Thrs : 0

Filtering: 5  
 Min Area: 0.1 % of largest Peak  
 Max Peaks: 100  
 Peak Location: TOP

If leading or trailing edge < 100 prefer < Baseline drop else tangent >  
 Peak separation: 5

Method : Z:\HPCHEM1\BNA\_G\METHODS\SOM02.2-EPA-BG080915.M  
 Title : SVOA CALIBRATION

35	15.860	2212	2216	2224	rVB3	14088	24326	0.95%	0.102%
36	16.519	2323	2328	2332	rVB4	9136	13463	0.52%	0.056%
37	16.571	2332	2337	2341	rBV7	3873	6157	0.24%	0.026%
38	17.165	2434	2438	2441	rVB2	3190	4210	0.16%	0.018%
39	17.376	2467	2474	2484	rBV2	853095	1262368	49.16%	5.287%
40	17.476	2484	2491	2498	rBV	1438542	2128407	82.88%	8.915%
41	17.647	2515	2520	2525	rBV5	5285	7316	0.28%	0.031%
42	18.046	2584	2588	2591	rVB3	3631	4034	0.16%	0.017%
43	18.334	2633	2637	2643	rBV	22993	31024	1.21%	0.130%
44	18.851	2720	2725	2729	rVB6	2345	3910	0.15%	0.016%
45	19.051	2757	2759	2762	rBV4	4382	3977	0.15%	0.017%
46	19.274	2796	2797	2801	rBV2	3514	4768	0.19%	0.020%
47	19.603	2849	2853	2854	rBV3	2990	3841	0.15%	0.016%
48	19.644	2856	2860	2865	rVV2	18181	24021	0.94%	0.101%
49	19.762	2873	2880	2887	rBV	1762499	2554809	99.48%	10.701%
50	19.979	2915	2917	2920	rBV4	3909	3724	0.15%	0.016%
51	20.285	2967	2969	2974	rBV5	4985	9005	0.35%	0.038%
52	20.455	2996	2998	3001	rBV4	4184	4372	0.17%	0.018%
53	20.484	3001	3003	3007	rBV4	3330	4418	0.17%	0.019%
54	21.101	3105	3108	3111	rBV3	12691	11278	0.44%	0.047%
55	21.524	3176	3180	3186	rVB3	16777	27851	1.08%	0.117%
56	21.571	3186	3188	3190	rBV3	5670	3834	0.15%	0.016%
57	21.636	3192	3199	3209	rVV	956767	1539571	59.95%	6.449%
58	22.758	3388	3390	3393	rBV4	5712	5440	0.21%	0.023%
59	22.858	3405	3407	3410	rBV4	6505	5317	0.21%	0.022%
60	24.609	3694	3705	3724	rVB	946627	2568037	100.00%	10.756%
61	24.832	3732	3743	3758	rVB2	527360	1506130	58.65%	6.308%
62	25.960	3933	3935	3936	rBV2	6168	5612	0.22%	0.024%
63	28.217	4317	4319	4321	rBV3	5227	3787	0.15%	0.016%
64	28.886	4431	4433	4436	rBV4	5882	5257	0.20%	0.022%

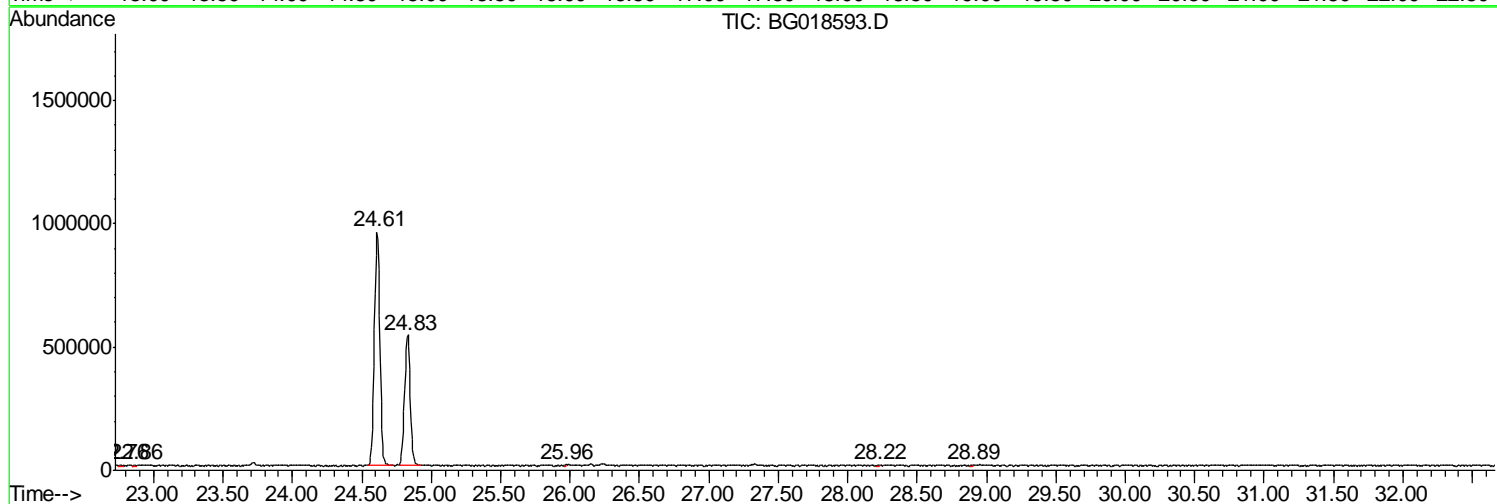
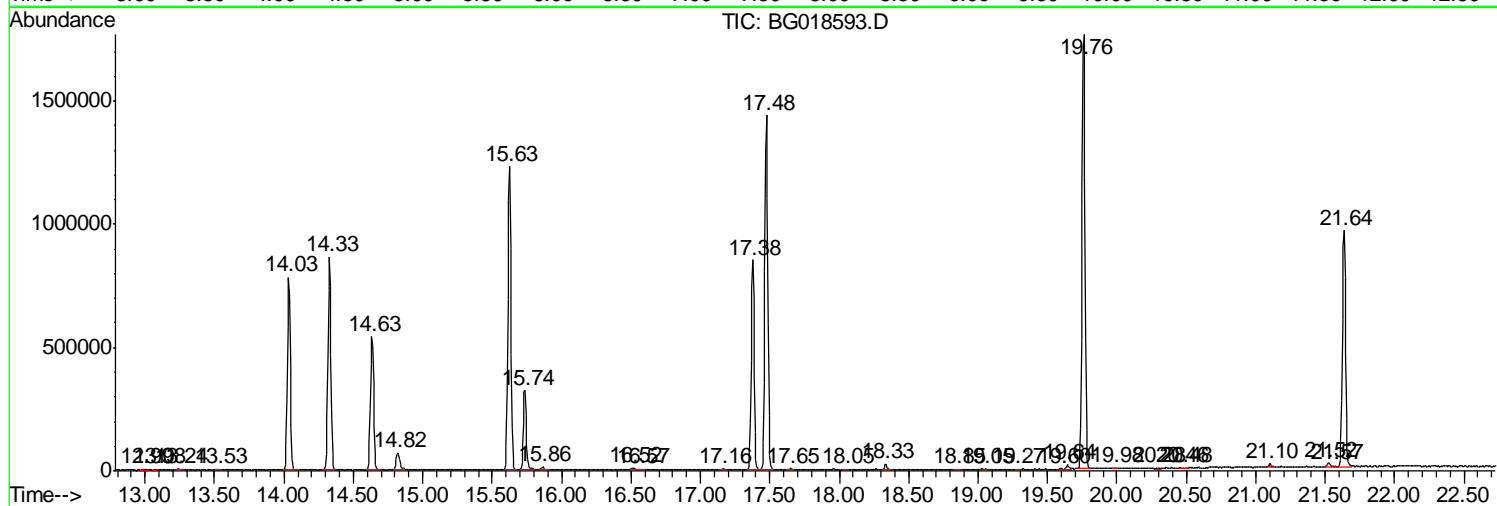
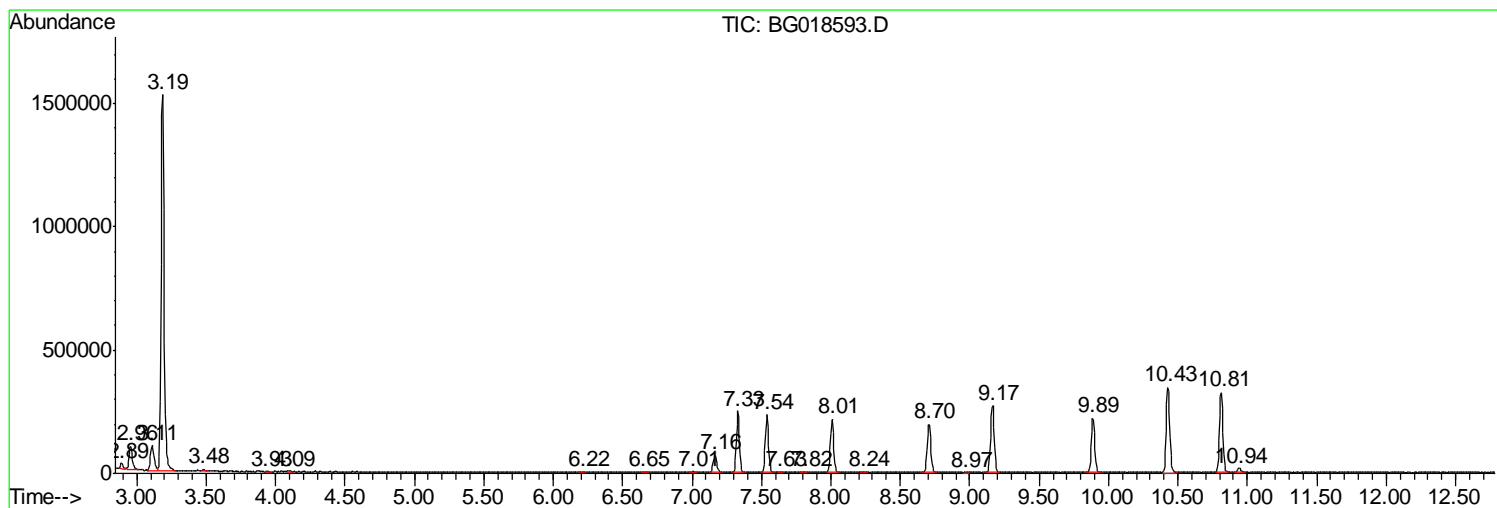
Sum of corrected areas: 23874869

Data Path : Z:\HPCHEM1\BNA\_G\DATA\BG090915\  
 Data File : BG018593.D  
 Acq On : 9 Sep 2015 19:17  
 Operator : UM/IZ  
 Sample : G3571-07  
 Misc :  
 ALS Vial : 11 Sample Multiplier: 1

Instrument :  
 BNA\_G  
 ClientSampleId :  
 C0253

Quant Method : Z:\HPCHEM1\BNA\_G\METHODS\SOM02.2-EPA-BG080915.M  
 Quant Title : SVOA CALIBRATION

TIC Library : C:\DATABASE\NIST02.L  
 TIC Integration Parameters: LSCINT.P



Data Path : Z:\HPCHEM1\BNA\_G\DATA\BG090915\  
 Data File : BG018593.D  
 Acq On : 9 Sep 2015 19:17  
 Operator : UM/IZ  
 Sample : G3571-07  
 Misc :  
 ALS Vial : 11 Sample Multiplier: 1

Instrument :  
 BNA\_G  
 ClientSampled :  
 C0253

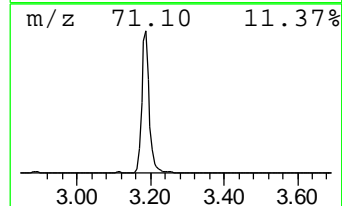
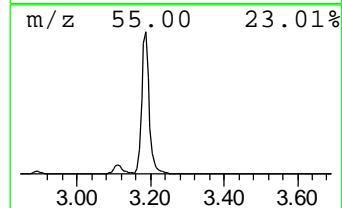
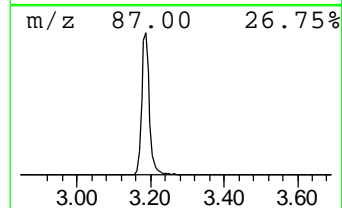
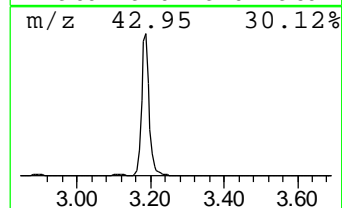
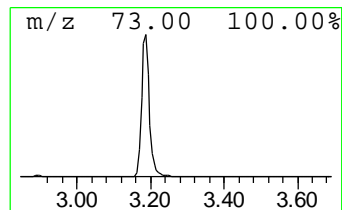
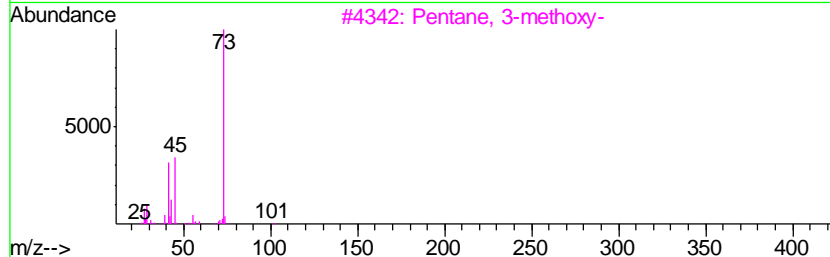
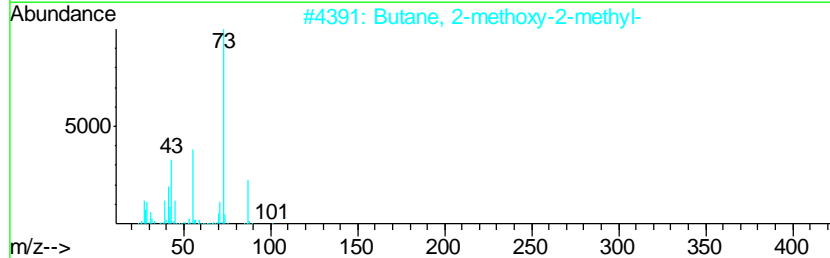
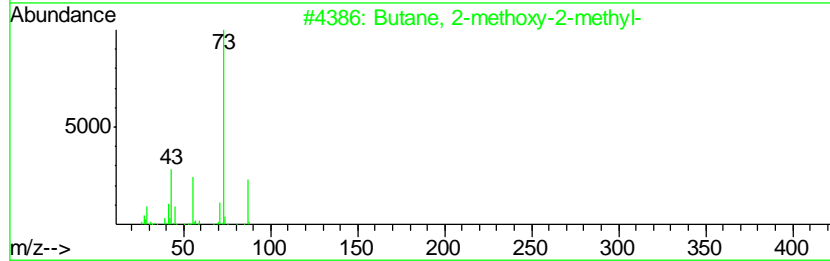
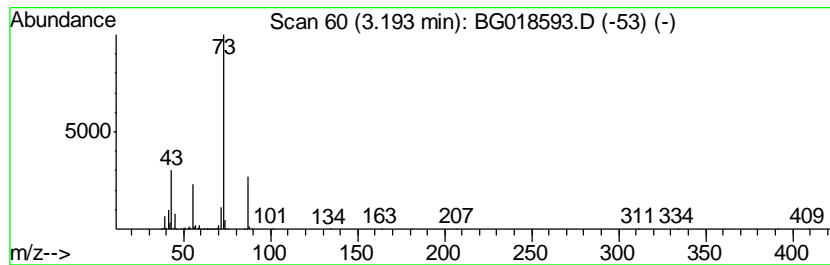
Quant Method : Z:\HPCHEM1\BNA\_G\METHODS\SOM02.2-EPA-BG080915.M  
 Quant Title : SVOA CALIBRATION

TIC Library : C:\DATABASE\NIST02.L  
 TIC Integration Parameters: LSCINT.P

\*\*\*\*\*  
 Peak Number 3 Butane, 2-methoxy-2-methyl- Concentration Rank 1

R.T.	EstConc	Area	Relative to ISTD	R.T.
3.19	117.40 ng/ul	2198480	1,4-Dichlorobenzene-d4	8.01

Hit#	of	Tentative ID	MW	MolForm	CAS#	Qual
1	5	Butane, 2-methoxy-2-methyl-	102	C6H14O	000994-05-8	90
2		Butane, 2-methoxy-2-methyl-	102	C6H14O	000994-05-8	78
3		Pentane, 3-methoxy-	102	C6H14O	036839-67-5	23
4		Acetamide, N-ethyl-	87	C4H9NO	000625-50-3	9
5		N-Ethylformamide	73	C3H7NO	000627-45-2	9



Data Path : Z:\HPCHEM1\BNA\_G\DATA\BG090915\  
Data File : BG018593.D  
Acq On : 9 Sep 2015 19:17  
Operator : UM/IZ  
Sample : G3571-07  
Misc :  
ALS Vial : 11 Sample Multiplier: 1

Instrument :  
BNA\_G  
ClientSampleId :  
C0253

Quant Method : Z:\HPCHEM1\BNA\_G\METHODS\SOM02.2-EPA-BG080915.M  
Quant Title : SVOA CALIBRATION

TIC Library : C:\DATABASE\NIST02.L  
TIC Integration Parameters: LSCINT.P

TIC Top Hit name	RT	EstConc	Units	Response	--Internal Standard--			
					#	RT	Resp	Conc
Butane, 2-methoxy...	3.19	117.4	ng/ul	2198480	1	8.01	374531	20.0