

Data Path : \\74.0.250.170\SVOASRV\HPCHEM1\BNA G\DATA\BG091017\
 Data File : BG028633.D
 Acq On : 10 Sep 2017 2:50
 Operator : SJ/JU
 Sample : I5187-11
 Misc :
 ALS Vial : 19 Sample Multiplier: 1

Instrument :
 BNA_G
 ClientSampleId :

Quant Time: Sep 11 07:19:04 2017
 Quant Method : Z:\HPCHEM1\BNA G\METHODS\8270-BG090717.M
 Quant Title : ASP BNA STANDARDS FOR 5 POINT CALIBRATION
 QLast Update : Thu Sep 07 18:39:50 2017
 Response via : Initial Calibration

Internal Standards	R.T.	QIon	Response	Conc	Units	Dev(Min)
1) 1,4-Dichlorobenzene-d4	8.33	152	34022	20.00	ng	-0.01
21) Naphthalene-d8	11.15	136	129384	20.00	ng	-0.01
38) Acenaphthene-d10	14.94	164	91567	20.00	ng	-0.01
63) Phenanthrene-d10	17.70	188	258279	20.00	ng	0.00
75) Chrysene-d12	22.03	240	299504	20.00	ng	-0.01
86) Perylene-d12	25.53	264	290464	20.00	ng	-0.02

System Monitoring Compounds

5) 2-Fluorophenol	5.91	112	129294	63.99	ng	0.00
7) Phenol-d6	7.49	99	102574	35.00	ng	0.00
23) Nitrobenzene-d5	9.51	82	262922	93.31	ng	0.00
41) 2,4,6-Tribromophenol	16.43	330	230890	165.90	ng	-0.01
44) 2-Fluorobiphenyl	13.57	172	657489	93.94	ng	0.00
78) Terphenyl-d14	20.28	244	1271456	91.46	ng	0.00

Target Compounds

Target Compounds	R.T.	QIon	Response	Conc	Units	Qvalue
2) 1,4-Dioxane	3.86	88	74	0.090	ng	# 1
3) Pyridine	4.33	79	55	0.021	ng	# 1
4) n-Nitrosodimethylamine	4.15	42	108	0.088	ng	# 7
6) Aniline	7.55	93	54	0.014	ng	# 38
8) 2-Chlorophenol	7.99	128	66	0.029	ng	# 25
9) Benzaldehyde	7.48	77	472	0.273	ng	# 10
11) bis(2-Chloroethyl)ether	7.88	93	518	0.222	ng	# 1
12) 1,3-Dichlorobenzene	8.10	146	56	0.021	ng	# 25
13) 1,4-Dichlorobenzene	8.10	146	56	0.021	ng	# 23
14) 1,2-Dichlorobenzene	8.68	146	56	0.022	ng	# 1
15) Benzyl Alcohol	8.58	79	749	0.322	ng	# 69
17) 2-Methylphenol	8.58	107	146	0.072	ng	# 31
18) Hexachloroethane	9.36	117	86	0.083	ng	# 1
20) 3+4-Methylphenols	9.06	107	61	0.022	ng	# 18
22) Acetophenone	9.16	105	1751	0.487	ng	# 73
24) Nitrobenzene	9.49	77	896	0.301	ng	# 49
25) Isophorone	10.03	82	65	0.013	ng	# 67
30) 1,2,4-Trichlorobenzene	11.01	180	118	0.044	ng	# 60
35) Caprolactam	12.14	113	54	0.065	ng	# 1
36) 4-Chloro-3-methylphenol	12.47	107	155	0.056	ng	# 25
39) 1,2,4,5-Tetrachlorobenzene	13.23	216	66	0.019	ng	# 25
45) 1,1'-Biphenyl	13.77	154	858	0.112	ng	# 41
47) 2-Nitroaniline	13.99	65	76	0.032	ng	# 16
49) Dimethylphthalate	14.39	163	231	0.031	ng	# 74
50) 2,6-Dinitrotoluene	14.55	165	57	0.034	ng	# 11
51) Acenaphthene	14.95	154	64	0.012	ng	# 6
52) 3-Nitroaniline	14.95	138	57	0.034	ng	# 1
54) Dibenzofuran	15.11	168	54	0.006	ng	# 40
56) 2,4-Dinitrotoluene	15.44	165	95	0.040	ng	# 16
59) Diethylphthalate	15.73	149	4868	0.616	ng	# 73
61) 4-Nitroaniline	16.06	138	78	0.043	ng	# 1
62) Azobenzene	16.29	77	194	0.027	ng	# 47
65) n-Nitrosodiphenylamine	16.43	169	7161	0.939	ng	# 51
68) Atrazine	17.13	200	67	0.024	ng	# 36

Data Path : \\74.0.250.170\SVOASRV\HPCHEM1\BNA G\DATA\BG091017\
 Data File : BG028633.D
 Acq On : 10 Sep 2017 2:50
 Operator : SJ/JU
 Sample : I5187-11
 Misc :
 ALS Vial : 19 Sample Multiplier: 1

Instrument :
 BNA_G
 ClientSampleId :

Quant Time: Sep 11 07:19:04 2017
 Quant Method : Z:\HPCHEM1\BNA G\METHODS\8270-BG090717.M
 Quant Title : ASP BNA STANDARDS FOR 5 POINT CALIBRATION
 QLast Update : Thu Sep 07 18:39:50 2017
 Response via : Initial Calibration

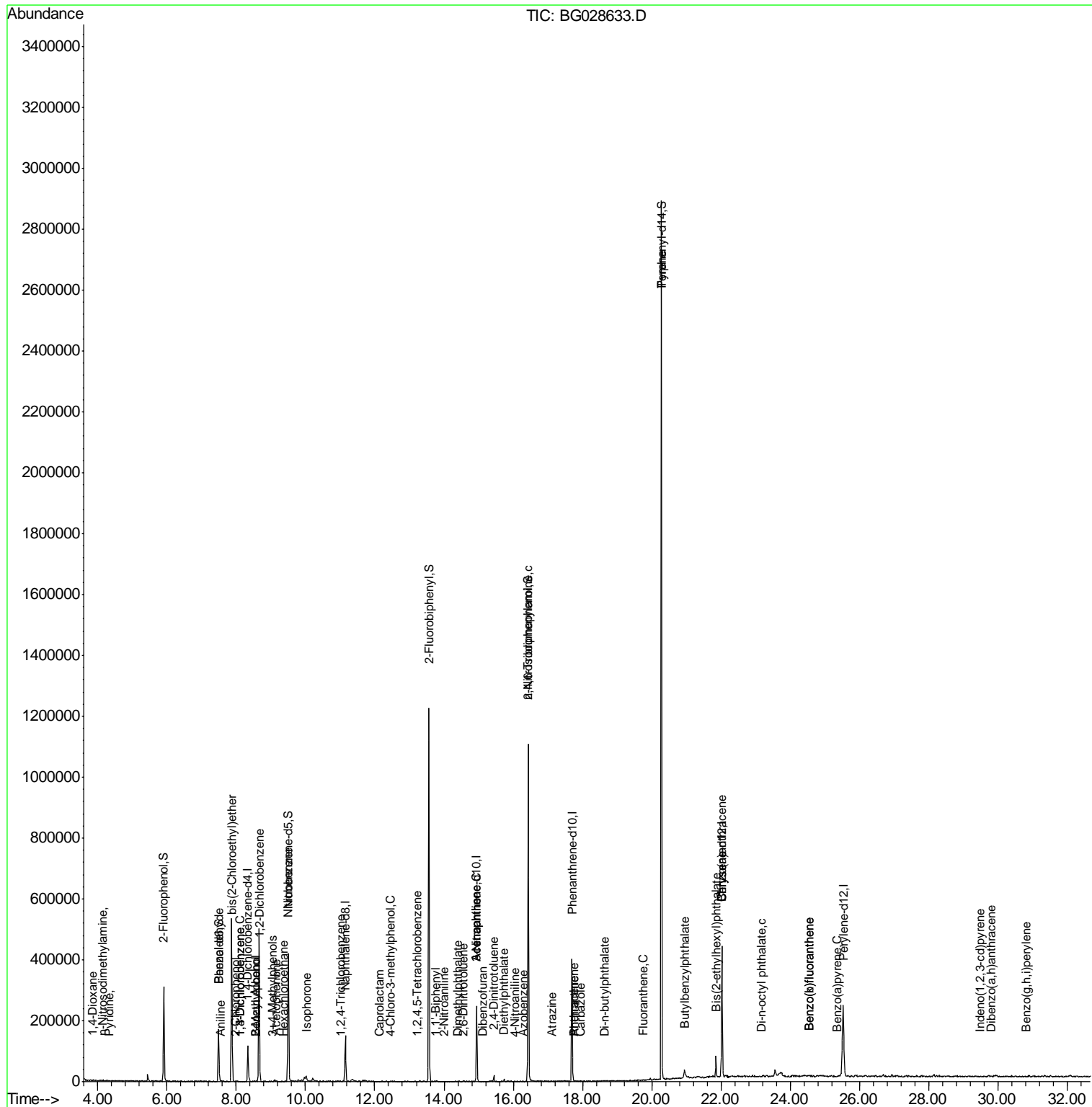
Internal Standards	R.T.	QIon	Response	Conc	Units	Dev(Min)
70) Phenanthrene	17.75	178	57	0.004	ng	# 56
71) Anthracene	17.75	178	57	0.004	ng	# 58
72) Carbazole	17.95	167	66	0.005	ng	# 55
73) Di-n-butylphthalate	18.63	149	1365	0.090	ng	# 73
74) Fluoranthene	19.75	202	74	0.004	ng	# 61
77) Pyrene	20.27	202	4204	0.237	ng	# 49
79) Butylbenzylphthalate	20.97	149	114	0.017	ng	# 19
80) Benzo(a)anthracene	22.03	228	771	0.043	ng	# 47
82) Chrysene	22.03	228	771	0.046	ng	# 46
83) Bis(2-ethylhexyl)phthalate	21.86	149	30047	3.035	ng	# 93
84) Di-n-octyl phthalate	23.15	149	97	0.006	ng	# 1
85) Indeno(1,2,3-cd)pyrene	29.48	276	64	0.003	ng	# 55
87) Benzo(b)fluoranthene	24.56	252	60	0.003	ng	# 58
88) Benzo(k)fluoranthene	24.56	252	60	0.003	ng	# 56
89) Benzo(a)pyrene	25.33	252	70	0.004	ng	# 58
90) Dibenzo(a,h)anthracene	29.82	278	56	0.003	ng	# 58
91) Benzo(g,h,i)perylene	30.82	276	146	0.008	ng	# 59

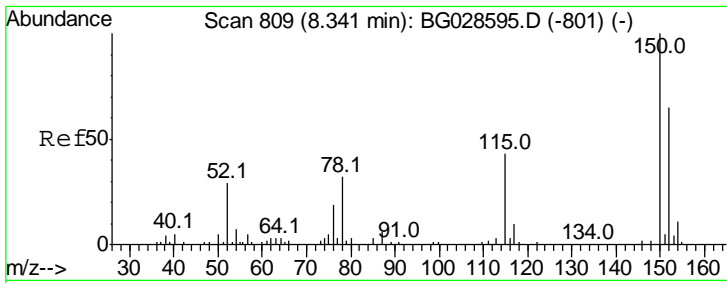
(#) = qualifier out of range (m) = manual integration (+) = signals summed

Data Path : \\74.0.250.170\SVOASRV\HPCHEM1\BNA G\DATA\BG091017\
 Data File : BG028633.D
 Acq On : 10 Sep 2017 2:50
 Operator : SJ/JU
 Sample : I5187-11
 Misc :
 ALS Vial : 19 Sample Multiplier: 1

Instrument :
 BNA_G
 Client Sampled :

Quant Time: Sep 11 07:19:04 2017
 Quant Method : Z:\HPCHEM1\BNA G\METHODS\8270-BG090717.M
 Quant Title : ASP BNA STANDARDS FOR 5 POINT CALIBRATION
 QLast Update : Thu Sep 07 18:39:50 2017
 Response via : Initial Calibration

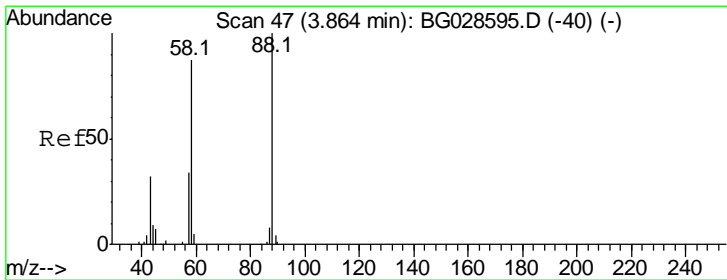
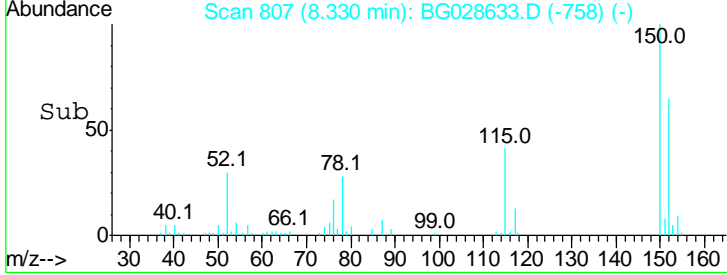
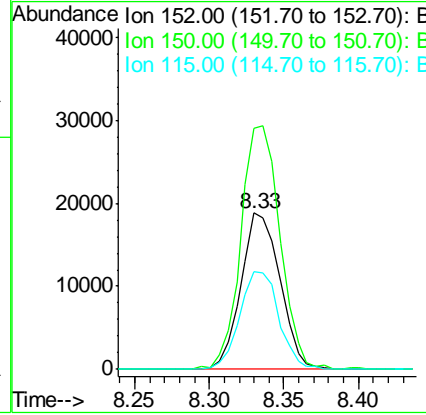
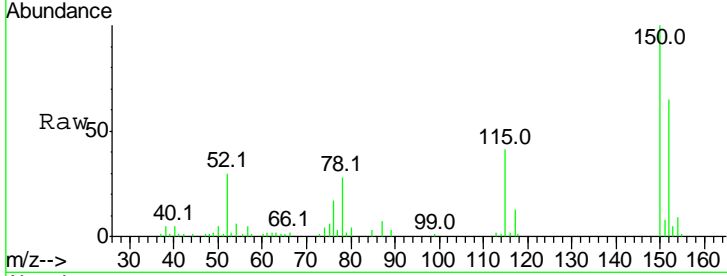




#1
 1,4-Dichlorobenzene-d4
 Concen: 20.000 ng
 RT: 8.33 min Scan# 807
 Delta R.T. -0.01 min
 Lab File: BG028633.D
 Acq: 10 Sep 2017 2:50

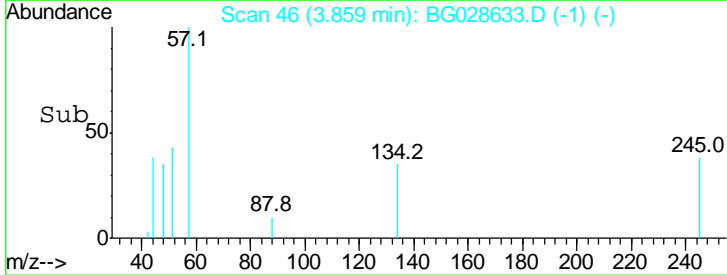
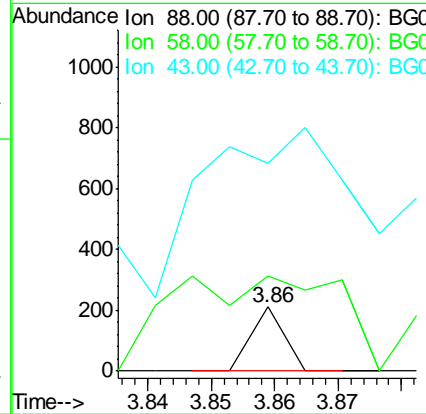
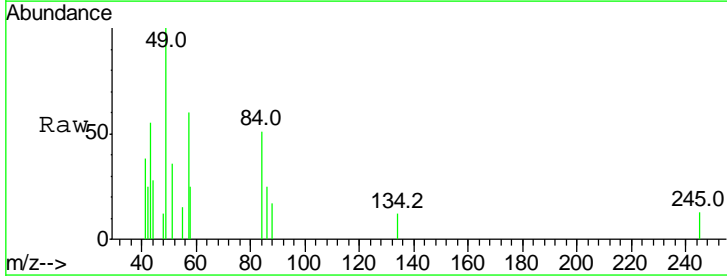
Instrument :
 BNA_G
 ClientSampled :

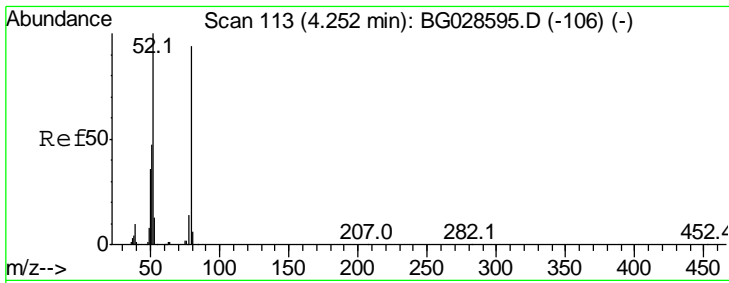
Tgt Ion	Resp	Lower	Upper
152	34022		
152	100		
150	154.9	114.0	171.0
115	63.0	48.1	72.1



#2
 1,4-Dioxane
 Concen: 0.090 ng
 RT: 3.86 min Scan# 46
 Delta R.T. -0.01 min
 Lab File: BG028633.D
 Acq: 10 Sep 2017 2:50

Tgt Ion	Resp	Lower	Upper
88	74		
88	100		
58	355.4	79.4	119.2#
43	1073.0	33.8	50.6#

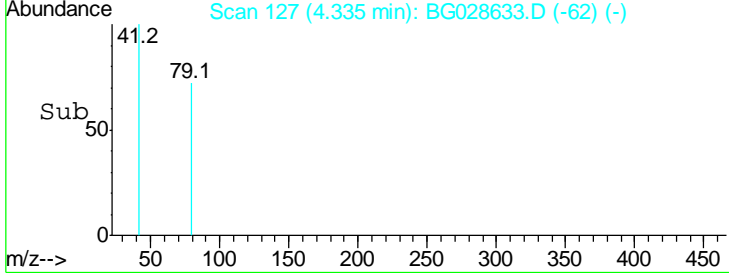
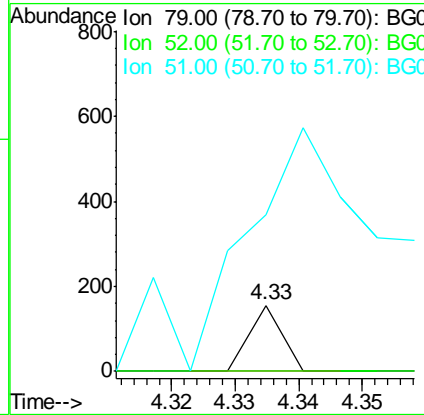
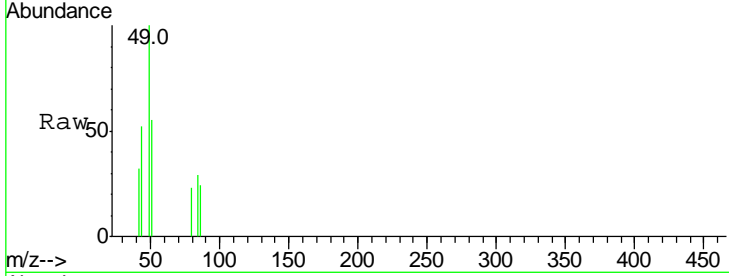




#3
 Pyridine
 Concen: 0.021 ng
 RT: 4.33 min Scan# 127
 Delta R.T. 0.08 min
 Lab File: BG028633.D
 Acq: 10 Sep 2017 2:50

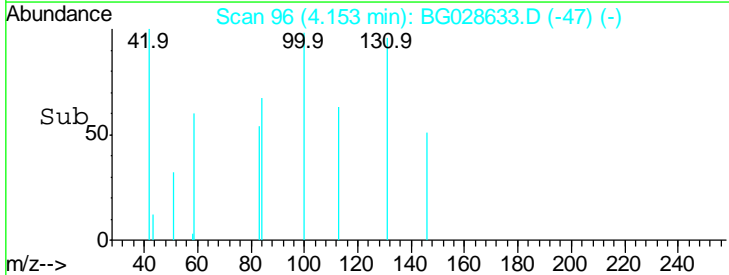
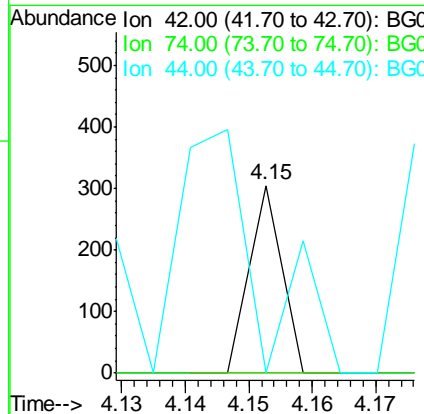
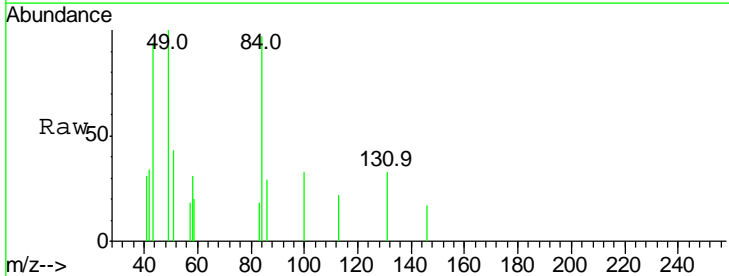
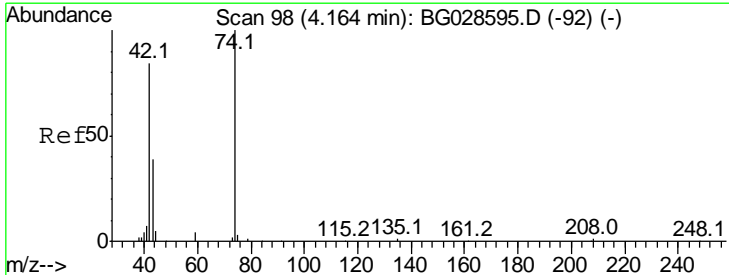
Instrument :
 BNA_G
 ClientSampled :

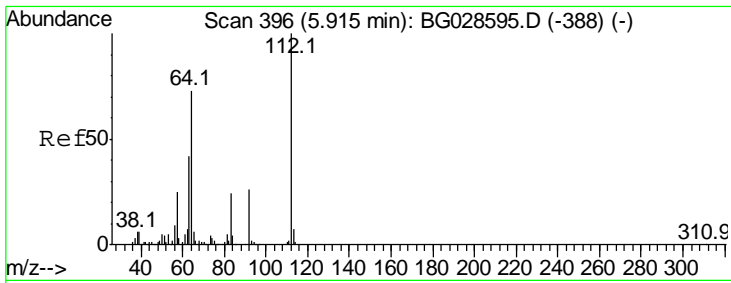
Tgt Ion	Resp	Lower	Upper
79	100		
52	0.0	77.8	116.6#
51	237.4	43.2	64.8#



#4
 n-Nitrosodimethylamine
 Concen: 0.088 ng
 RT: 4.15 min Scan# 96
 Delta R.T. -0.01 min
 Lab File: BG028633.D
 Acq: 10 Sep 2017 2:50

Tgt Ion	Resp	Lower	Upper
42	100		
74	0.0	76.7	115.1#
44	0.0	6.1	9.1#

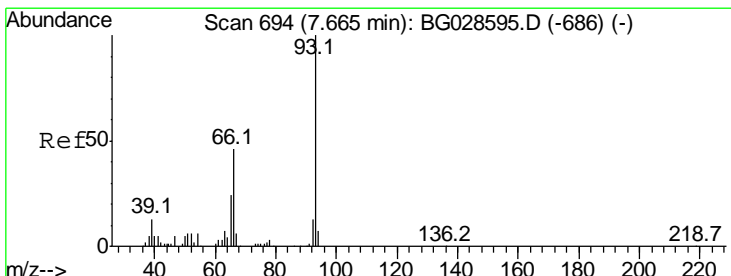
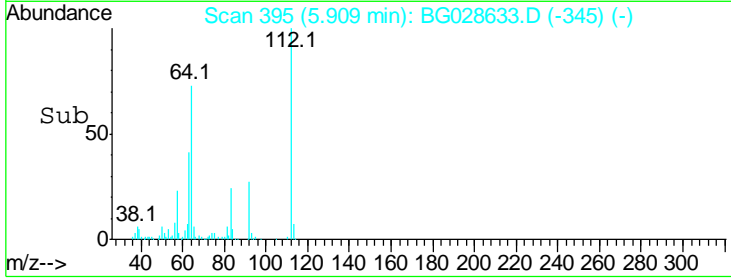
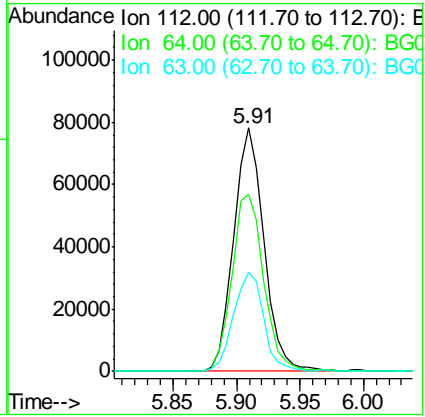
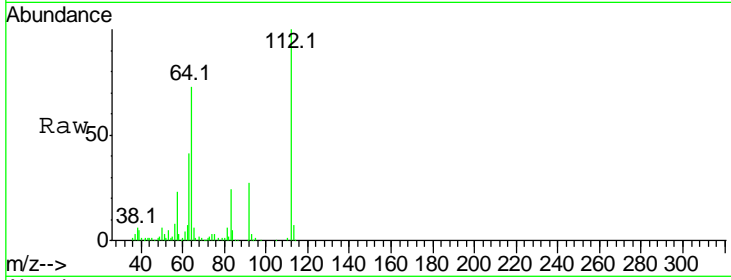




#5
 2-Fluorophenol
 Concen: 63.987 ng
 RT: 5.91 min Scan# 395
 Delta R.T. -0.00 min
 Lab File: BG028633.D
 Acq: 10 Sep 2017 2:50

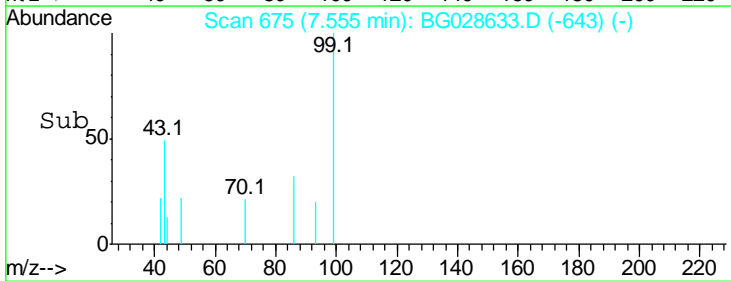
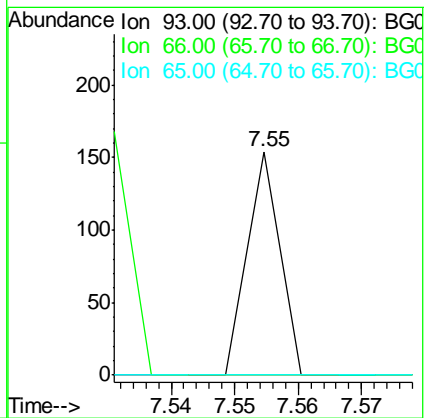
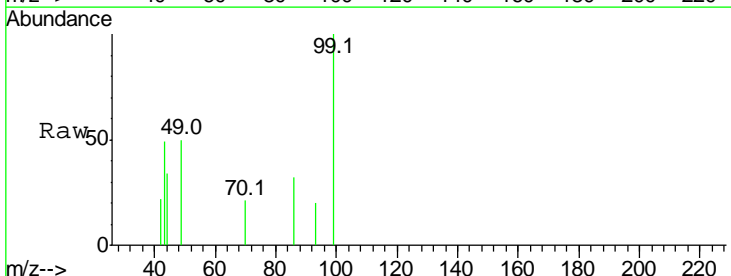
Instrument :
 BNA_G
 ClientSampled :

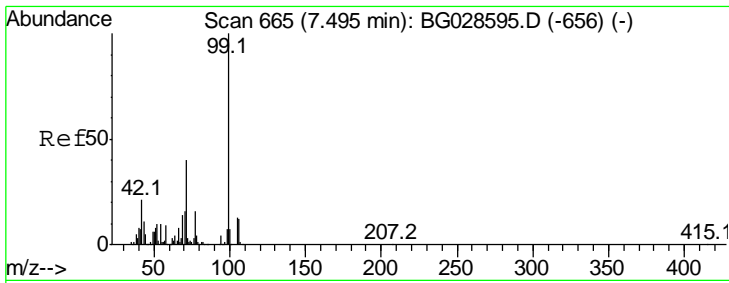
Tgt Ion	Ratio	Lower	Upper
112	100		
64	72.9	61.8	92.6
63	40.6	37.2	55.8



#6
 Aniline
 Concen: 0.014 ng
 RT: 7.55 min Scan# 675
 Delta R.T. -0.11 min
 Lab File: BG028633.D
 Acq: 10 Sep 2017 2:50

Tgt Ion	Ratio	Lower	Upper
93	100		
66	0.0	35.4	53.2#
65	0.0	21.2	31.8#

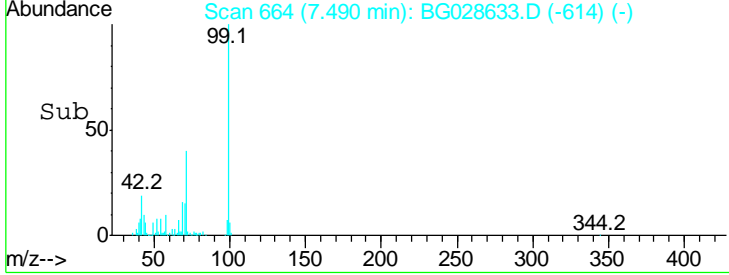
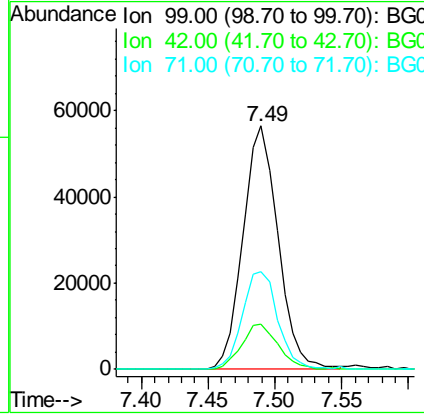
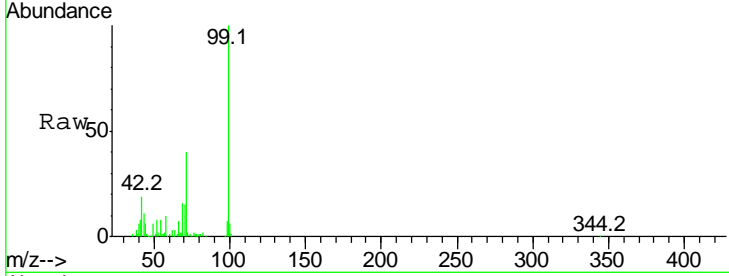




#7
 Phenol-d6
 Concen: 34.998 ng
 RT: 7.49 min Scan# 664
 Delta R.T. -0.01 min
 Lab File: BG028633.D
 Acq: 10 Sep 2017 2:50

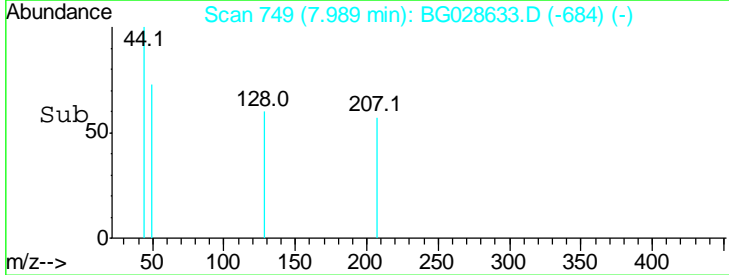
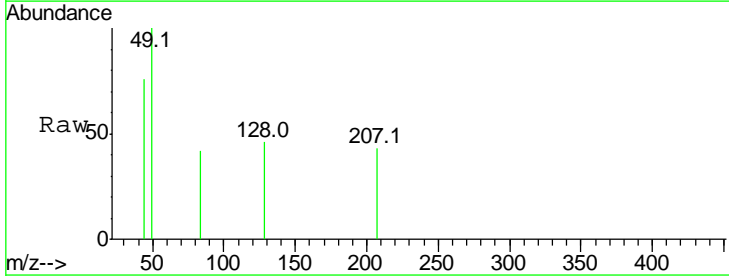
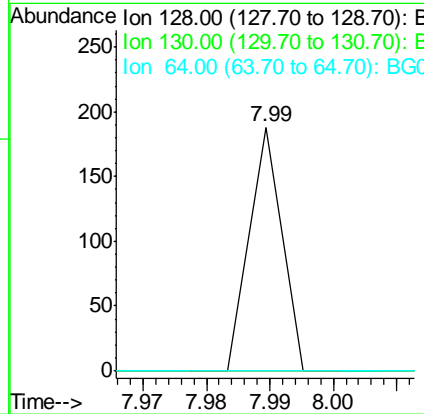
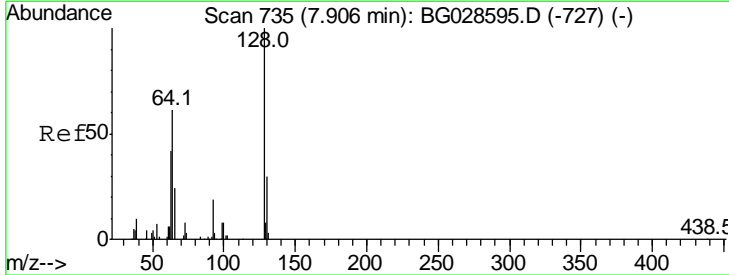
Instrument :
 BNA_G
 ClientSampled :

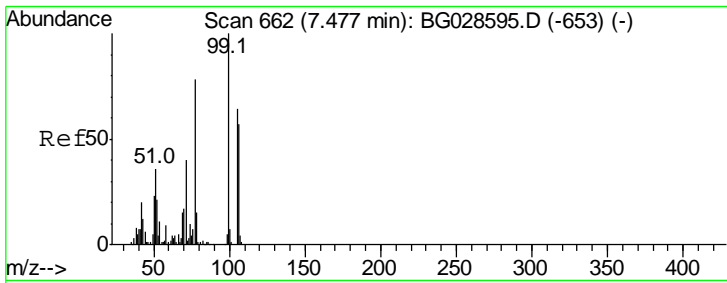
Tgt Ion	Resp	Lower	Upper
99	102574		
42	18.8	20.5	30.7#
71	39.9	37.6	56.4



#8
 2-Chlorophenol
 Concen: 0.029 ng
 RT: 7.99 min Scan# 749
 Delta R.T. 0.08 min
 Lab File: BG028633.D
 Acq: 10 Sep 2017 2:50

Tgt Ion	Resp	Lower	Upper
128	66		
130	0.0	11.4	51.4#
64	0.0	46.6	86.6#

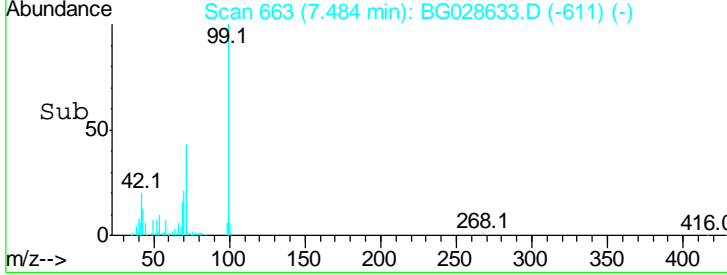
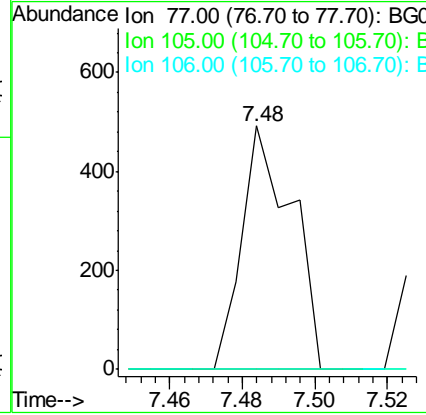
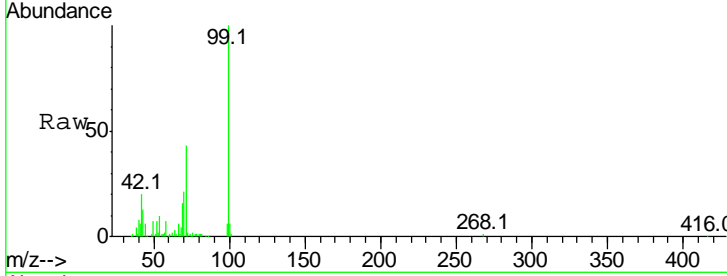




#9
Benzaldehyde
Concen: 0.273 ng
RT: 7.48 min Scan# 663
Delta R.T. 0.01 min
Lab File: BG028633.D
Acq: 10 Sep 2017 2:50

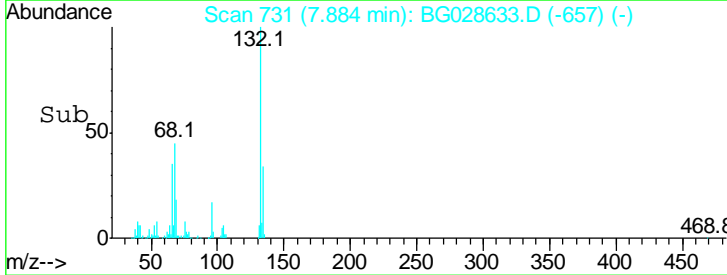
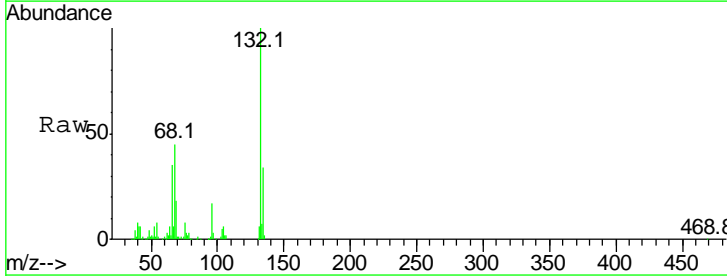
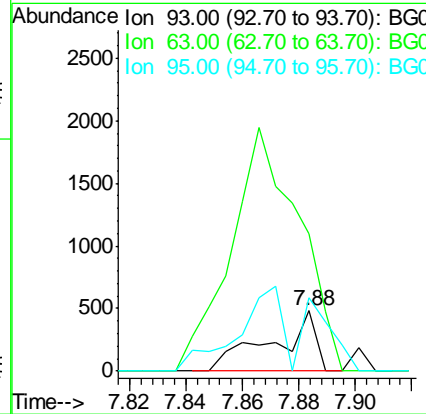
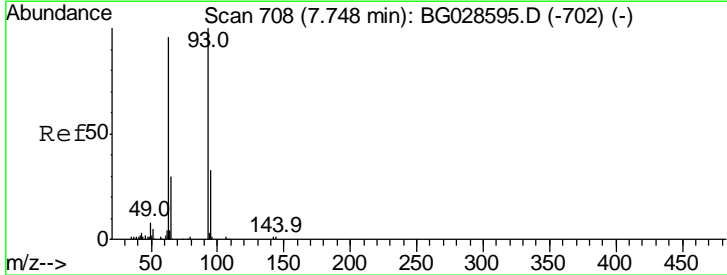
Instrument :
BNA_G
ClientSampled :

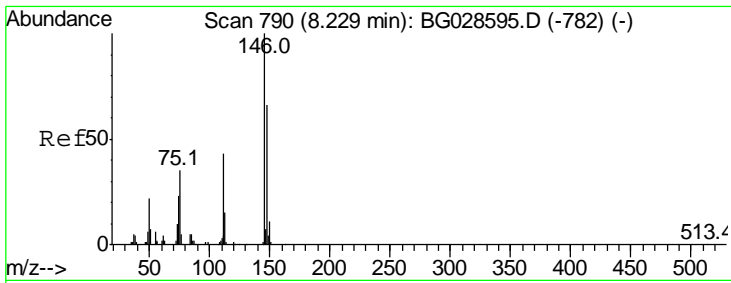
Tgt Ion	Ratio	Lower	Upper
77	100		
105	0.0	60.9	100.9#
106	0.0	55.1	95.1#



#11
bis(2-Chloroethyl)ether
Concen: 0.222 ng
RT: 7.88 min Scan# 731
Delta R.T. 0.14 min
Lab File: BG028633.D
Acq: 10 Sep 2017 2:50

Tgt Ion	Ratio	Lower	Upper
93	100		
63	228.5	78.5	118.5#
95	121.4	9.8	49.8#

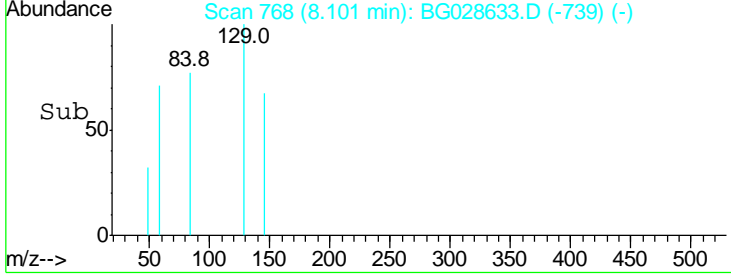
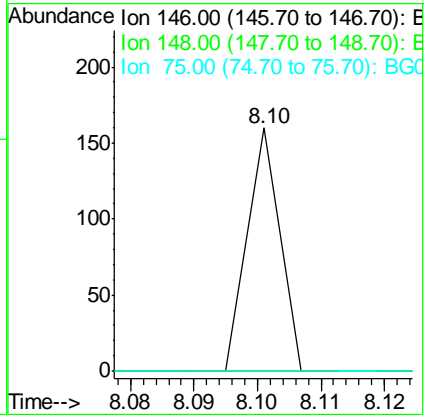
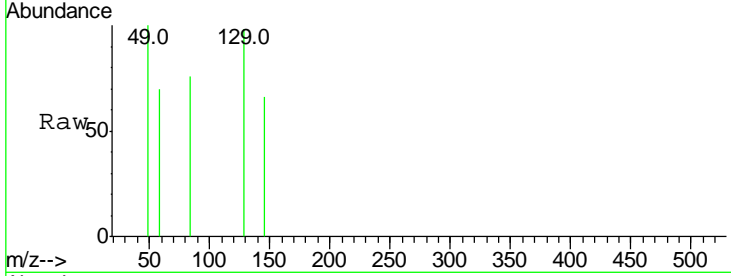




#12
 1,3-Dichlorobenzene
 Concen: 0.021 ng
 RT: 8.10 min Scan# 768
 Delta R.T. -0.13 min
 Lab File: BG028633.D
 Acq: 10 Sep 2017 2:50

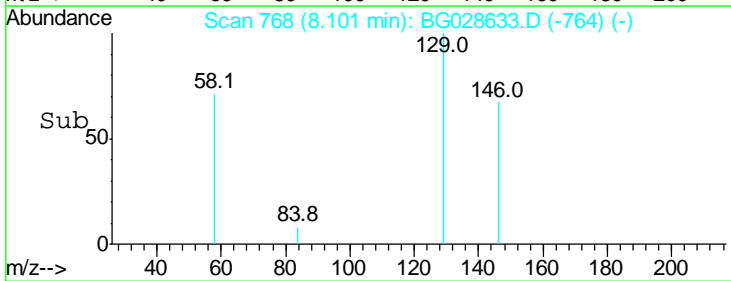
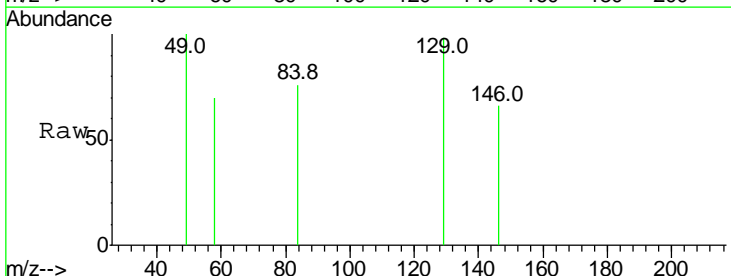
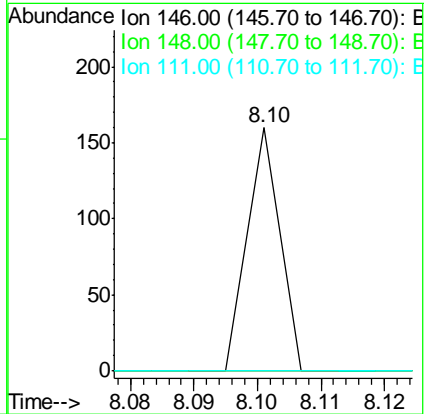
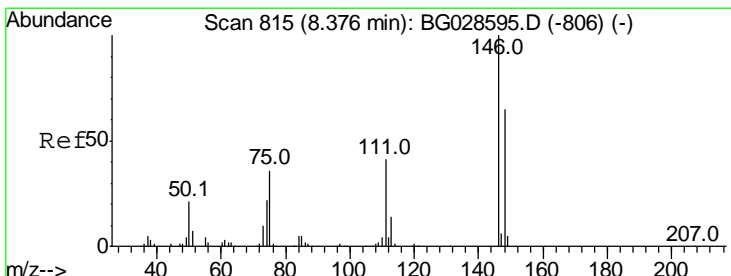
Instrument :
 BNA_G
 ClientSampled :

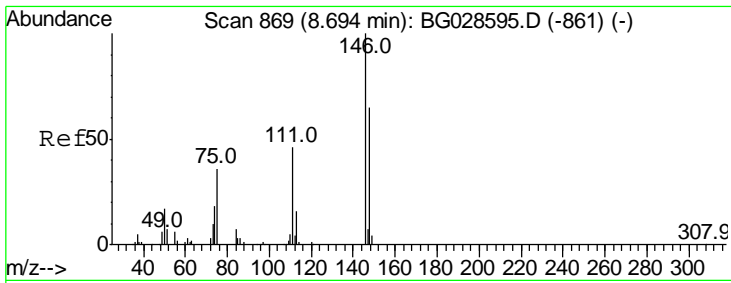
Tgt Ion	Ratio	Lower	Upper
146	100		
148	0.0	49.2	73.8#
75	0.0	33.4	50.2#



#13
 1,4-Dichlorobenzene
 Concen: 0.021 ng
 RT: 8.10 min Scan# 768
 Delta R.T. -0.28 min
 Lab File: BG028633.D
 Acq: 10 Sep 2017 2:50

Tgt Ion	Ratio	Lower	Upper
146	100		
148	0.0	52.2	78.2#
111	0.0	37.0	55.6#

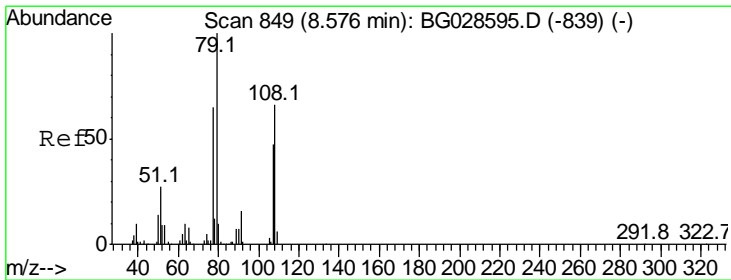
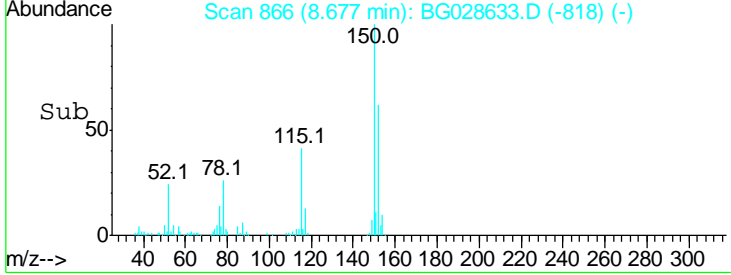
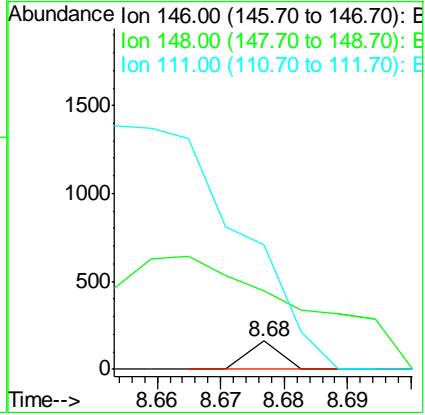
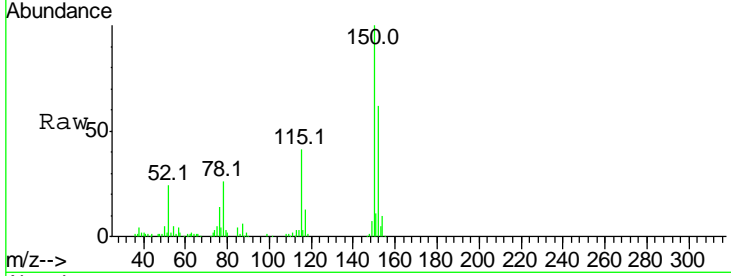




#14
 1,2-Dichlorobenzene
 Concen: 0.022 ng
 RT: 8.68 min Scan# 866
 Delta R.T. -0.02 min
 Lab File: BG028633.D
 Acq: 10 Sep 2017 2:50

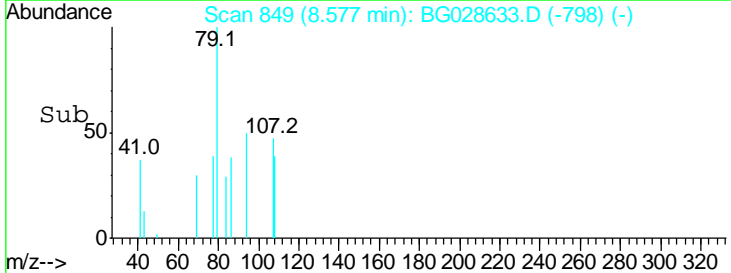
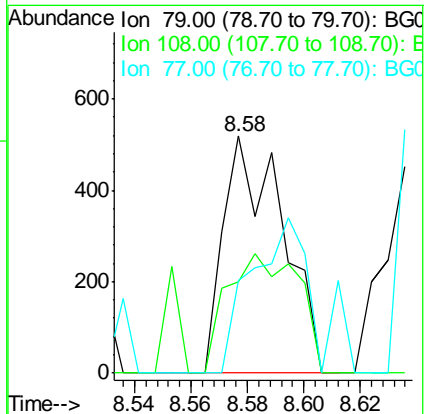
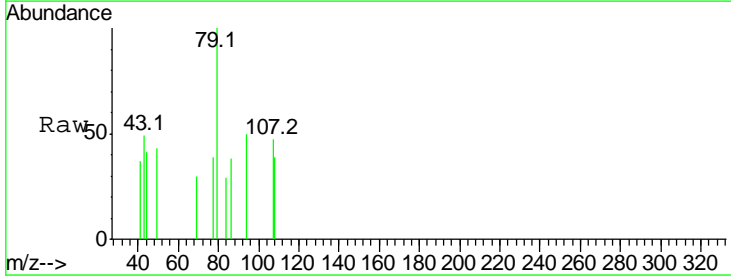
Instrument :
 BNA_G
 ClientSampled :

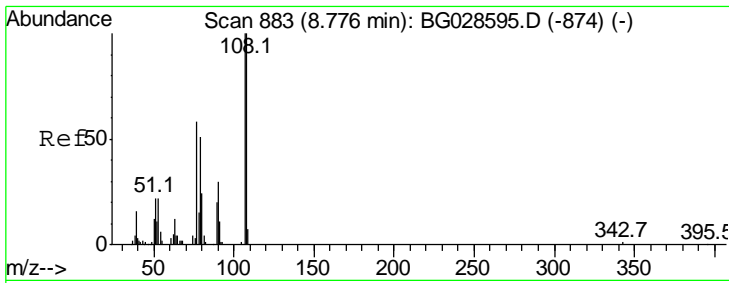
Tgt Ion	Resp	Lower	Upper
146	100		
148	279.9	54.6	81.8#
111	443.4	39.7	59.5#



#15
 Benzyl Alcohol
 Concen: 0.322 ng
 RT: 8.58 min Scan# 849
 Delta R.T. 0.00 min
 Lab File: BG028633.D
 Acq: 10 Sep 2017 2:50

Tgt Ion	Resp	Lower	Upper
79	100		
108	38.7	45.5	68.3#
77	39.1	54.3	81.5#

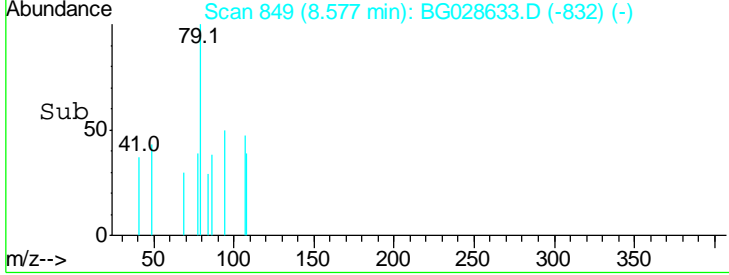
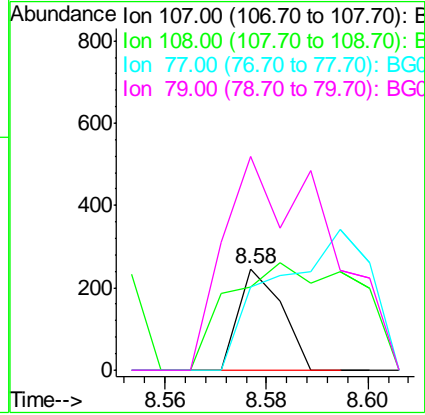
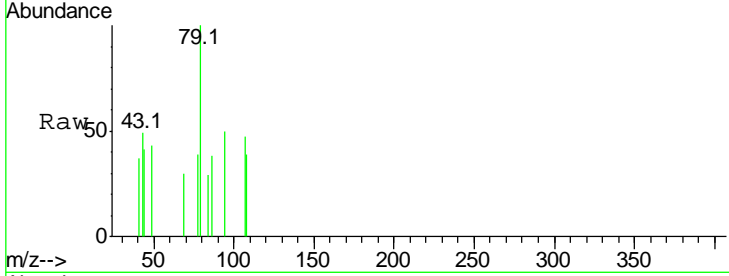




#17
 2-Methylphenol
 Concen: 0.072 ng
 RT: 8.58 min Scan# 849
 Delta R.T. -0.20 min
 Lab File: BG028633.D
 Acq: 10 Sep 2017 2:50

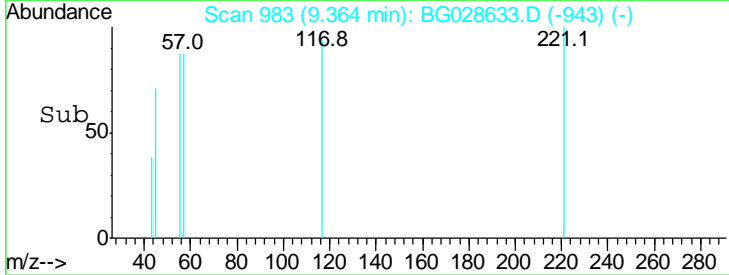
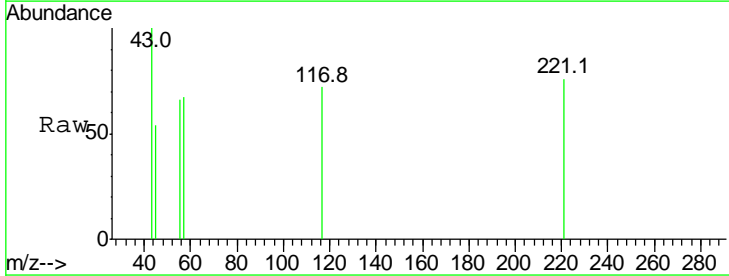
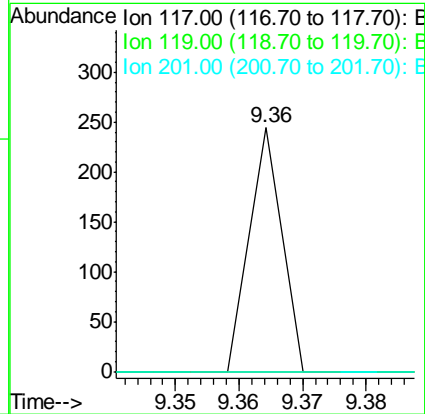
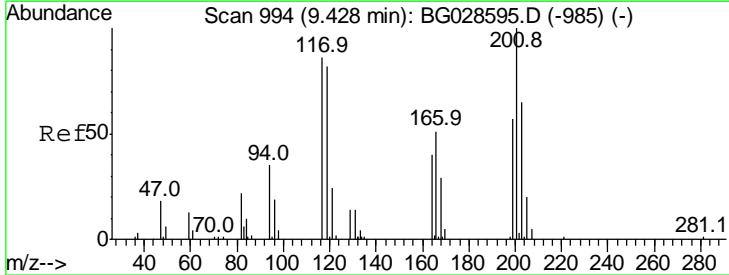
Instrument :
 BNA_G
 ClientSampled :

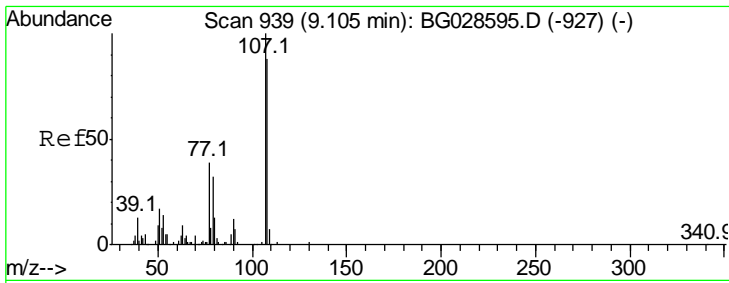
Tgt Ion	Resp	Lower	Upper
107	100		
108	81.7	85.6	128.4#
77	82.5	51.4	77.2#
79	211.0	49.2	73.8#



#18
 Hexachloroethane
 Concen: 0.083 ng
 RT: 9.36 min Scan# 983
 Delta R.T. -0.06 min
 Lab File: BG028633.D
 Acq: 10 Sep 2017 2:50

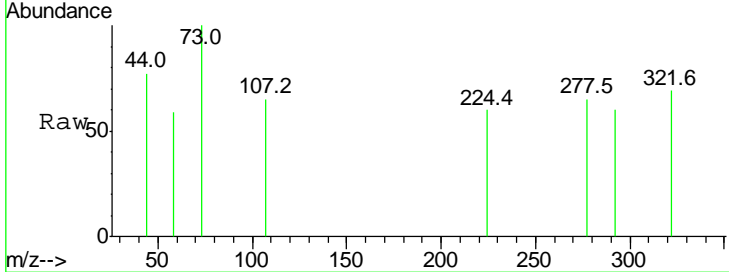
Tgt Ion	Resp	Lower	Upper
117	100		
119	0.0	69.8	104.6#
201	0.0	95.4	143.0#



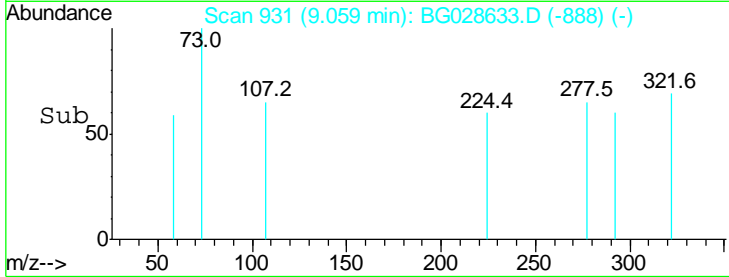
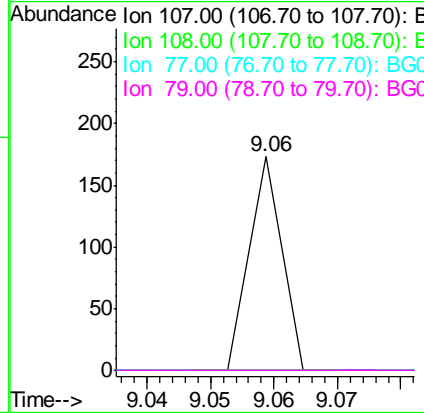


#20
 3+4-Methylphenols
 Concen: 0.022 ng
 RT: 9.06 min Scan# 931
 Delta R.T. -0.05 min
 Lab File: BG028633.D
 Acq: 10 Sep 2017 2:50

Instrument :
 BNA_G
 ClientSampled :

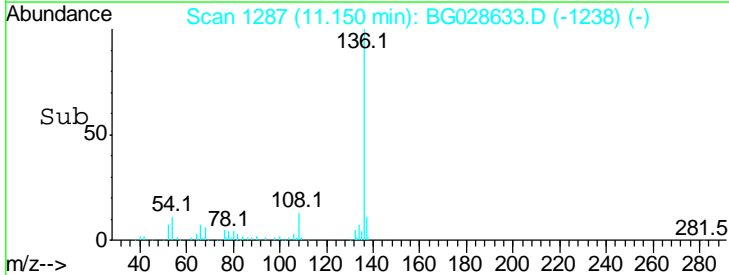
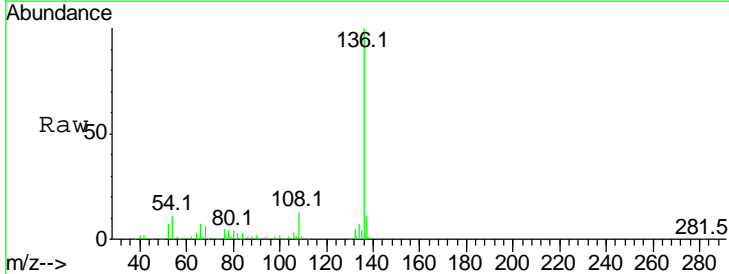
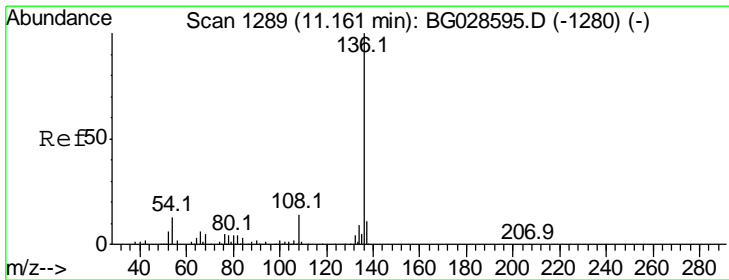
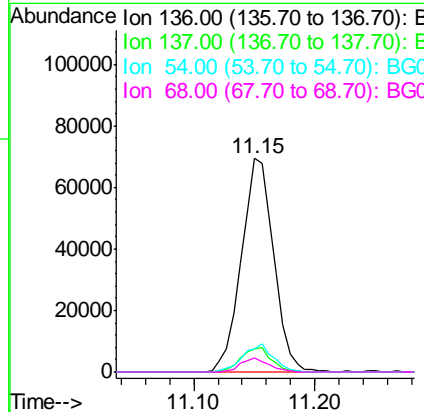


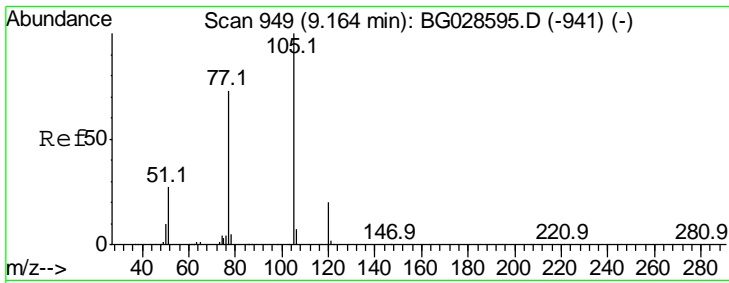
Tgt Ion	Resp	Lower	Upper
107	100		
108	0.0	70.8	110.8#
77	0.0	25.8	65.8#
79	0.0	20.1	60.1#



#21
 Naphthalene-d8
 Concen: 20.000 ng
 RT: 11.15 min Scan# 1287
 Delta R.T. -0.01 min
 Lab File: BG028633.D
 Acq: 10 Sep 2017 2:50

Tgt Ion	Resp	Lower	Upper
136	100		
137	11.0	8.9	13.3
54	10.8	9.3	13.9
68	6.4	5.1	7.7

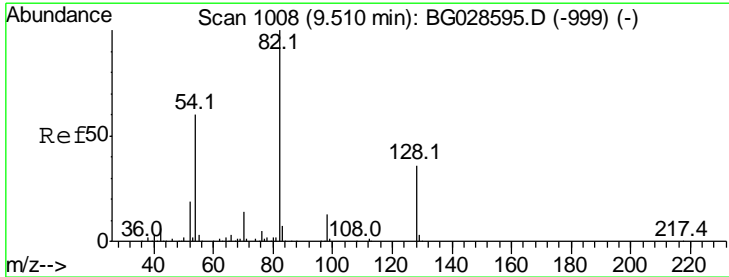
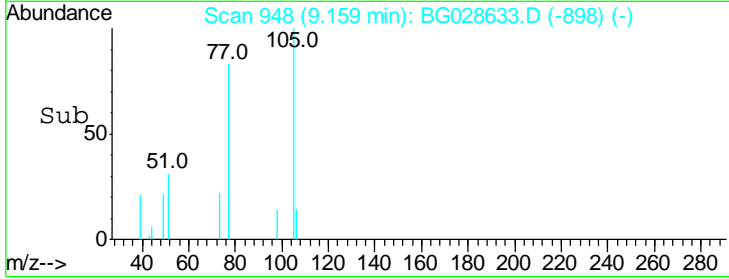
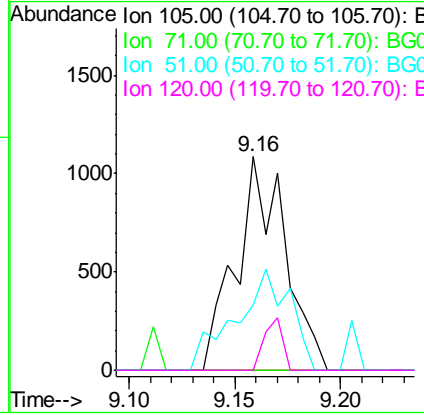
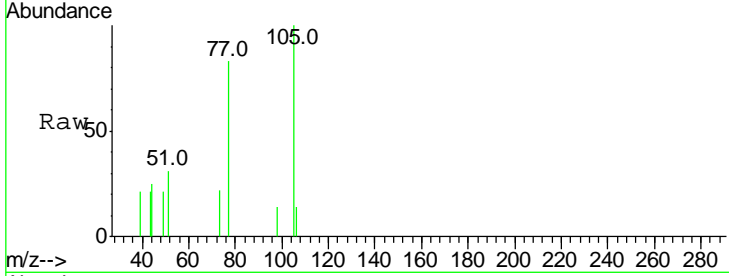




#22
 Acetophenone
 Concen: 0.487 ng
 RT: 9.16 min Scan# 948
 Delta R.T. -0.01 min
 Lab File: BG028633.D
 Acq: 10 Sep 2017 2:50

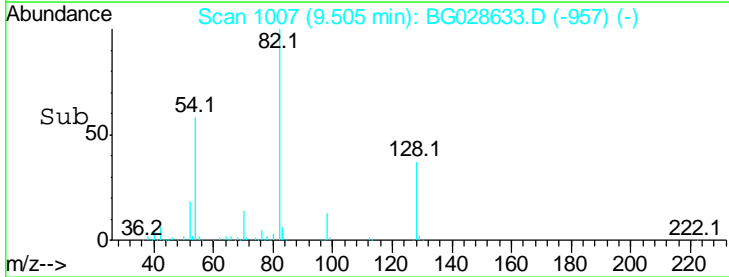
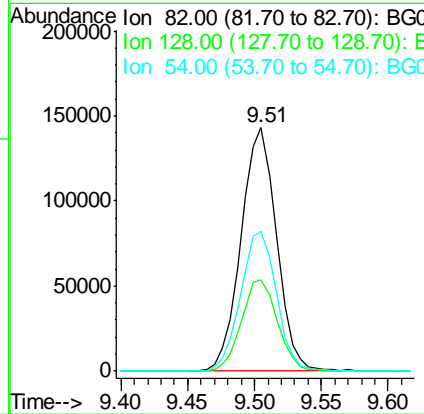
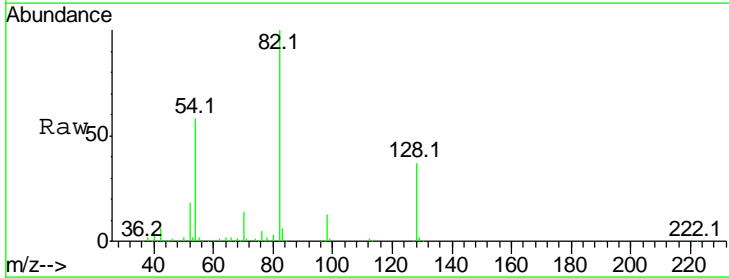
Instrument :
 BNA_G
 ClientSampled :

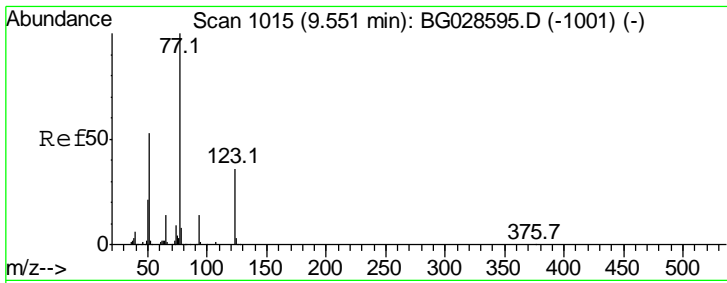
Tgt Ion	Resp	Lower	Upper
105	1751		
71	0.0	0.9	1.3#
51	30.7	34.0	51.0#
120	0.0	17.3	25.9#



#23
 Nitrobenzene-d5
 Concen: 93.310 ng
 RT: 9.51 min Scan# 1007
 Delta R.T. -0.01 min
 Lab File: BG028633.D
 Acq: 10 Sep 2017 2:50

Tgt Ion	Resp	Lower	Upper
82	262922		
128	37.2	26.4	39.6
54	57.6	49.4	74.2

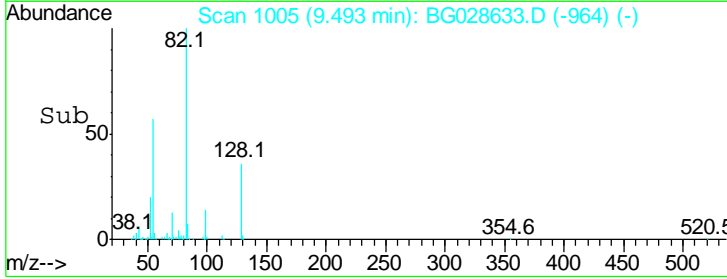
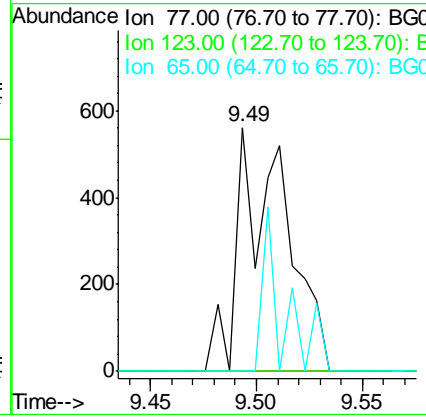
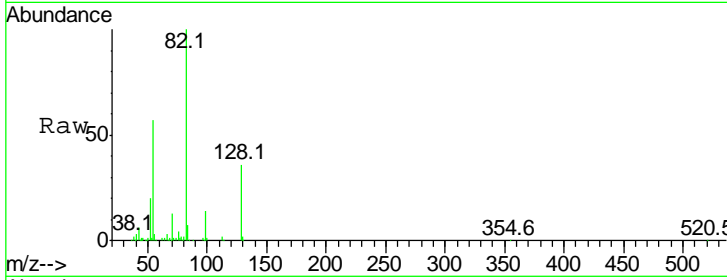




#24
 Nitrobenzene
 Concen: 0.301 ng
 RT: 9.49 min Scan# 1005
 Delta R.T. -0.06 min
 Lab File: BG028633.D
 Acq: 10 Sep 2017 2:50

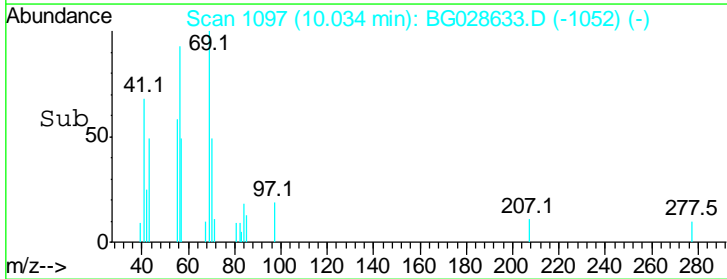
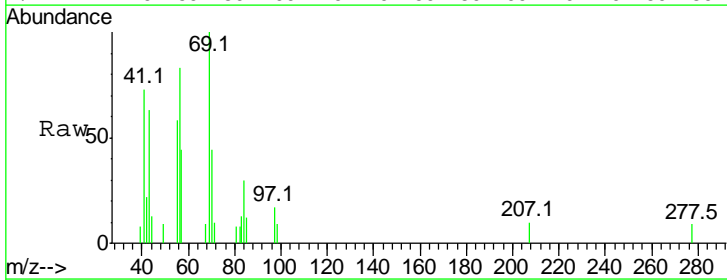
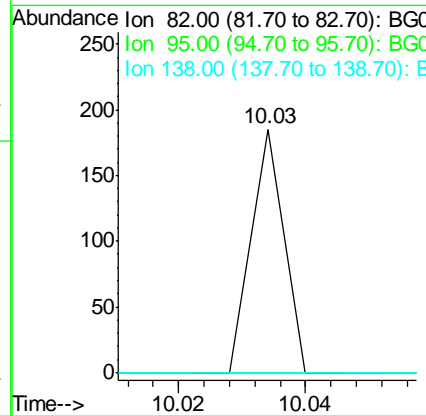
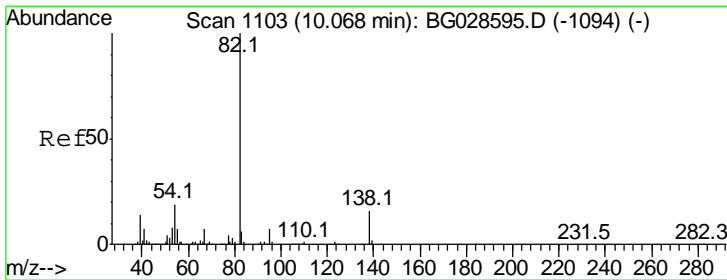
Instrument :
 BNA_G
 ClientSampled :

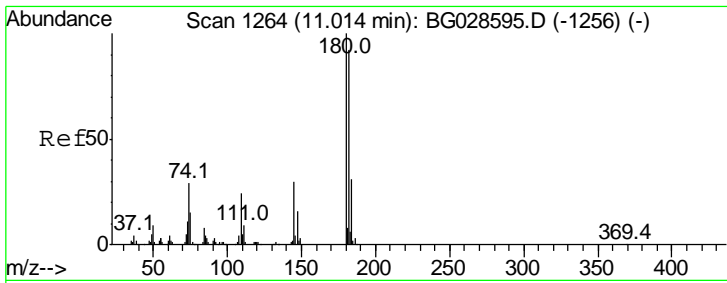
Tgt Ion	Resp	Lower	Upper
77	100		
123	0.0	26.1	39.1#
65	0.0	12.4	18.6#



#25
 Isophorone
 Concen: 0.013 ng
 RT: 10.03 min Scan# 1097
 Delta R.T. -0.03 min
 Lab File: BG028633.D
 Acq: 10 Sep 2017 2:50

Tgt Ion	Resp	Lower	Upper
82	100		
95	0.0	7.5	11.3#
138	0.0	12.3	18.5#

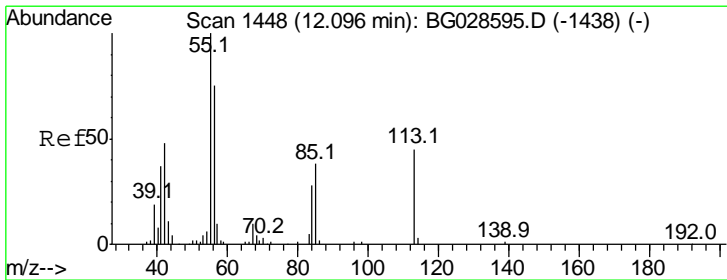
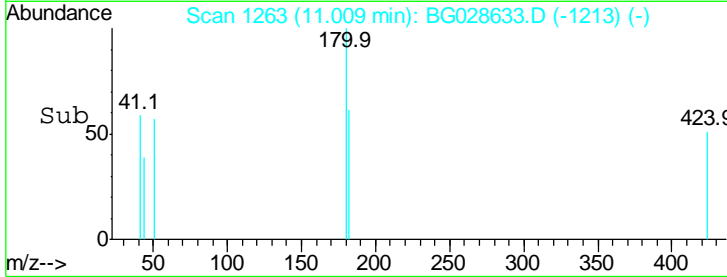
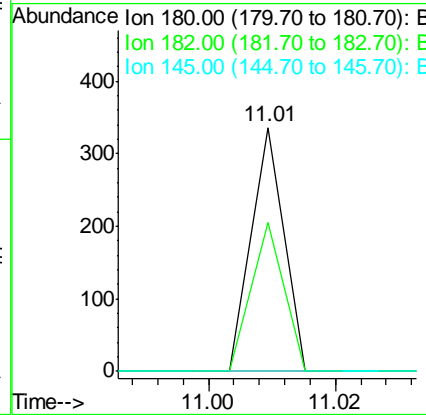
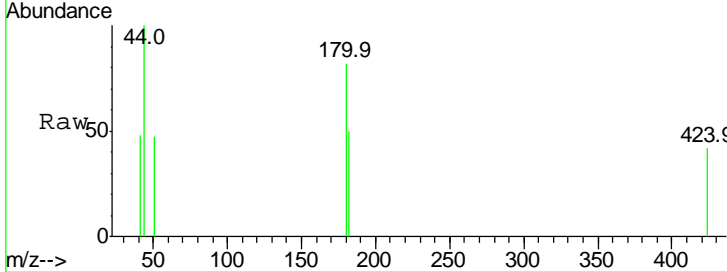




#30
 1,2,4-Trichlorobenzene
 Concen: 0.044 ng
 RT: 11.01 min Scan# 1263
 Delta R.T. -0.01 min
 Lab File: BG028633.D
 Acq: 10 Sep 2017 2:50

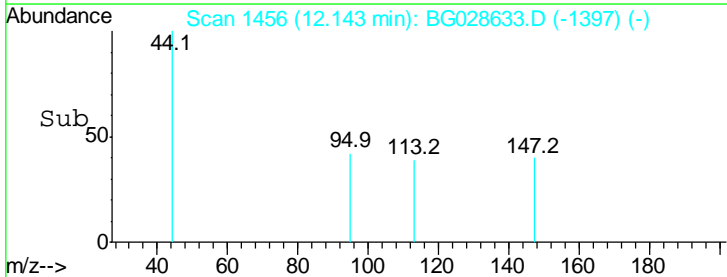
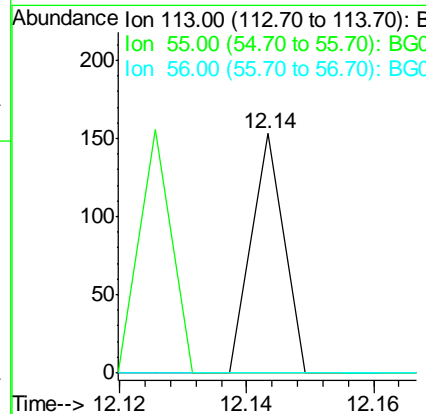
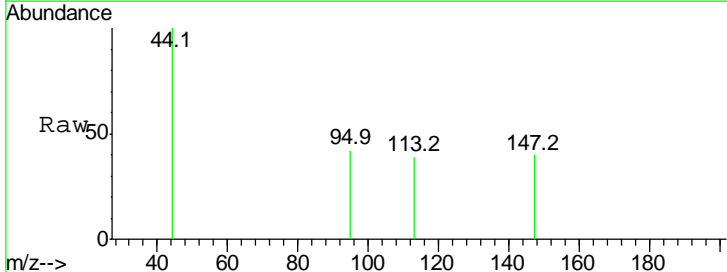
Instrument :
 BNA_G
 ClientSampled :

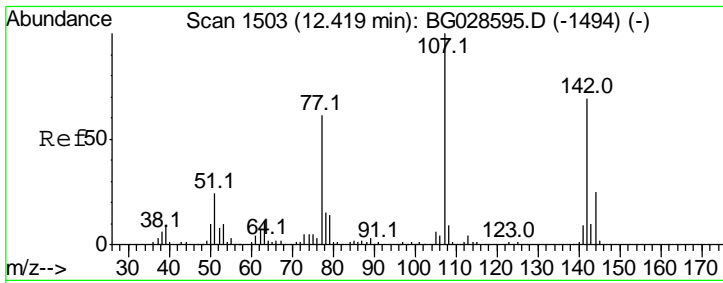
Tgt Ion	Resp	Lower	Upper
180	100		
182	61.3	77.0	115.4#
145	0.0	23.4	35.0#



#35
 Caprolactam
 Concen: 0.065 ng
 RT: 12.14 min Scan# 1456
 Delta R.T. 0.05 min
 Lab File: BG028633.D
 Acq: 10 Sep 2017 2:50

Tgt Ion	Resp	Lower	Upper
113	100		
55	0.0	198.6	238.6#
56	0.0	140.4	180.4#

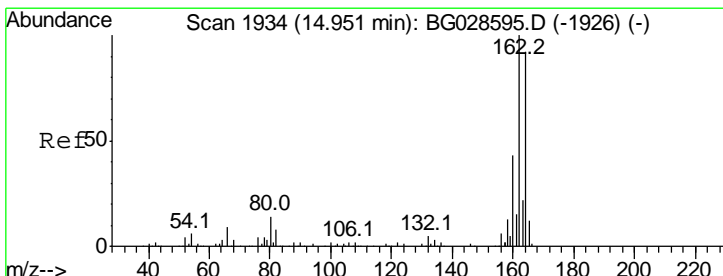
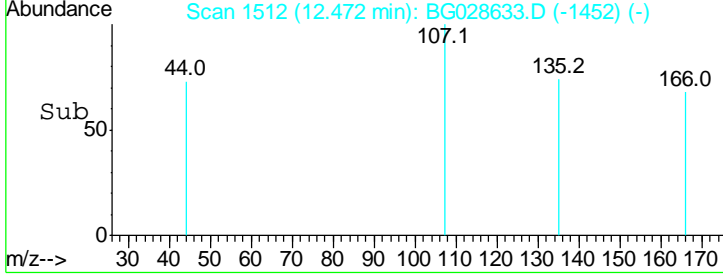
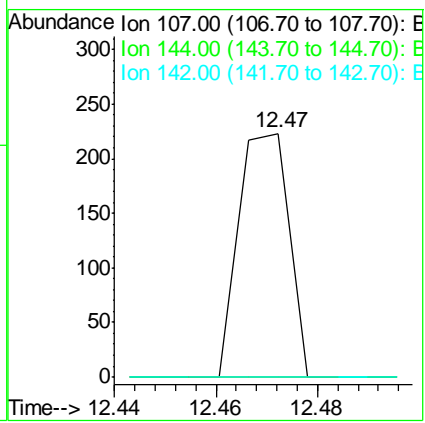
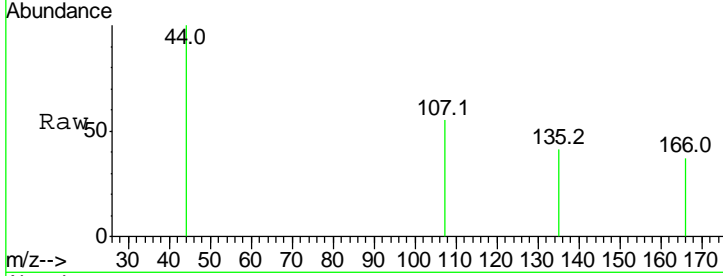




#36
 4-Chloro-3-methylphenol
 Concen: 0.056 ng
 RT: 12.47 min Scan# 1512
 Delta R.T. 0.05 min
 Lab File: BG028633.D
 Acq: 10 Sep 2017 2:50

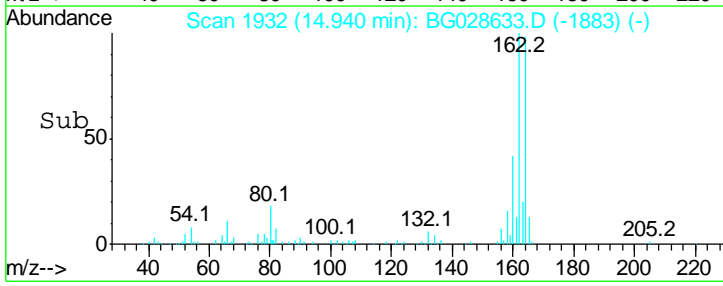
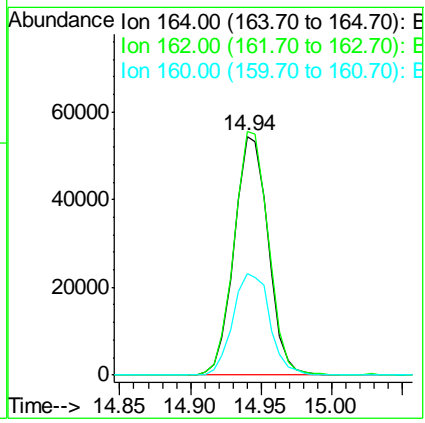
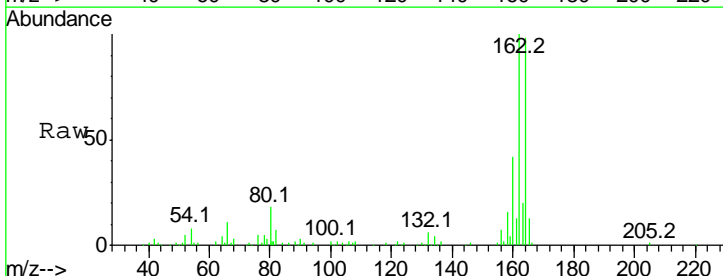
Instrument :
 BNA_G
 ClientSampled :

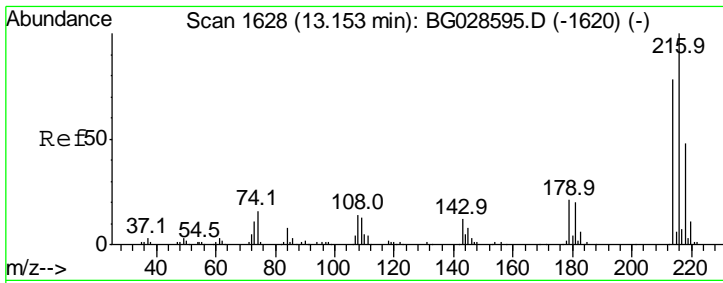
Tgt Ion	Resp	Lower	Upper
107	155		
144	0.0	17.4	26.0#
142	0.0	54.1	81.1#



#38
 Acenaphthene-d10
 Concen: 20.000 ng
 RT: 14.94 min Scan# 1932
 Delta R.T. -0.01 min
 Lab File: BG028633.D
 Acq: 10 Sep 2017 2:50

Tgt Ion	Resp	Lower	Upper
164	91567		
162	101.9	85.1	127.7
160	42.6	34.7	52.1

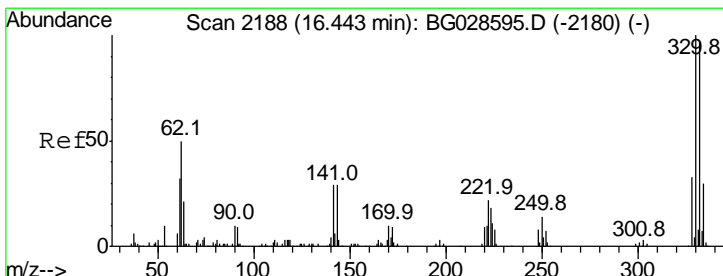
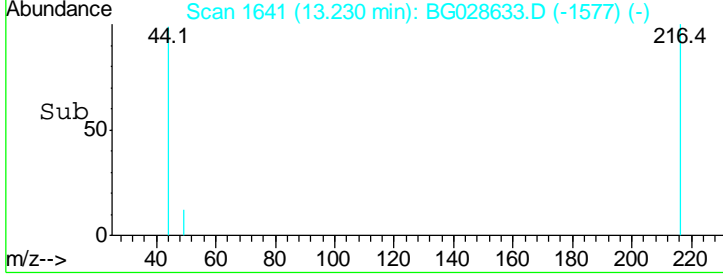
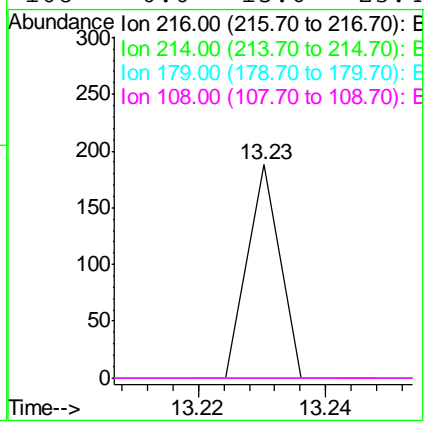
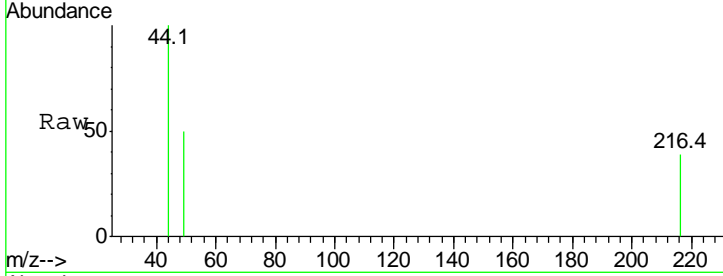




#39
 1,2,4,5-Tetrachlorobenzene
 Concen: 0.019 ng
 RT: 13.23 min Scan# 1641
 Delta R.T. 0.08 min
 Lab File: BG028633.D
 Acq: 10 Sep 2017 2:50

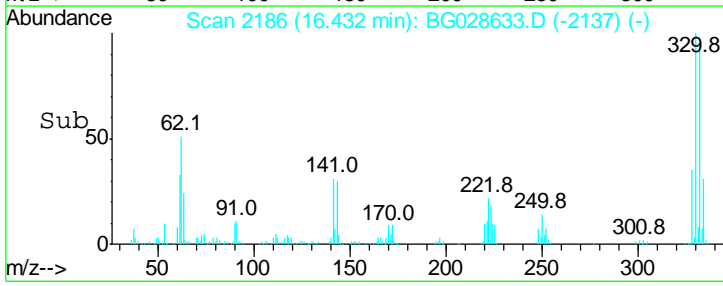
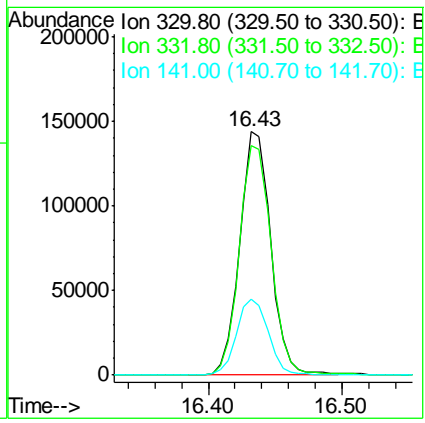
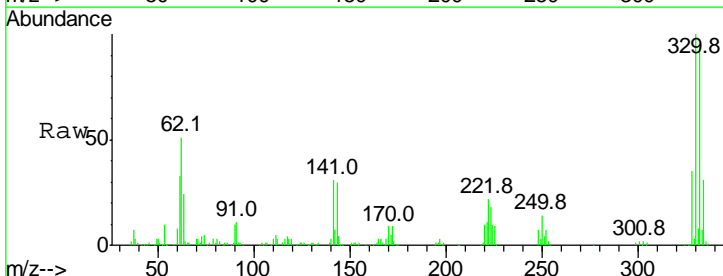
Instrument :
 BNA_G
 ClientSampled :

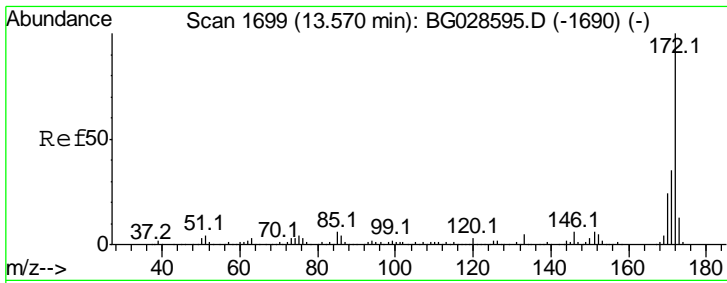
Tgt Ion	Ratio	Lower	Upper
216	100		
214	0.0	64.4	96.6#
179	0.0	17.4	26.0#
108	0.0	15.6	23.4#



#41
 2,4,6-Tribromophenol
 Concen: 165.902 ng
 RT: 16.43 min Scan# 2186
 Delta R.T. -0.01 min
 Lab File: BG028633.D
 Acq: 10 Sep 2017 2:50

Tgt Ion	Ratio	Lower	Upper
330	100		
332	97.4	77.3	115.9
141	32.2	32.1	48.1

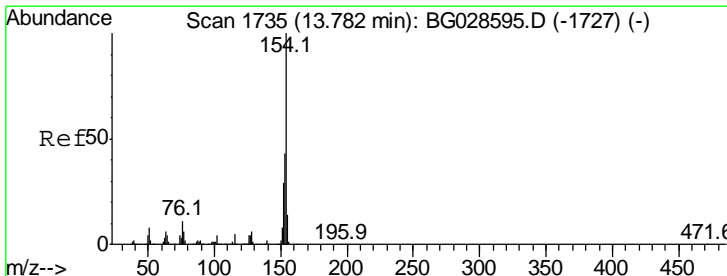
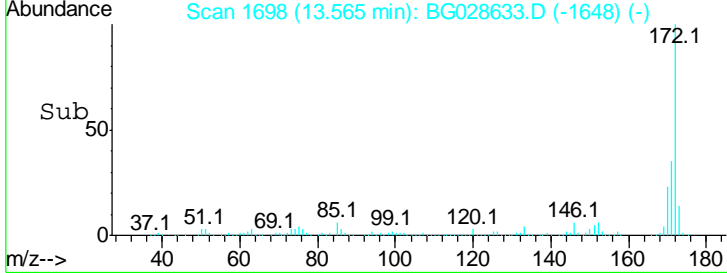
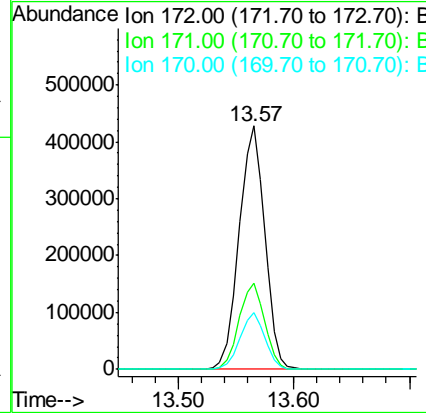
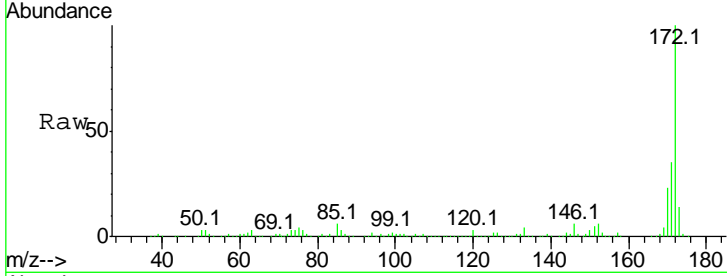




#44
 2-Fluorobiphenyl
 Concen: 93.936 ng
 RT: 13.57 min Scan# 1698
 Delta R.T. -0.01 min
 Lab File: BG028633.D
 Acq: 10 Sep 2017 2:50

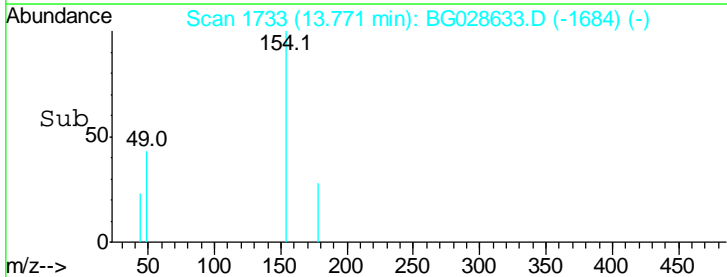
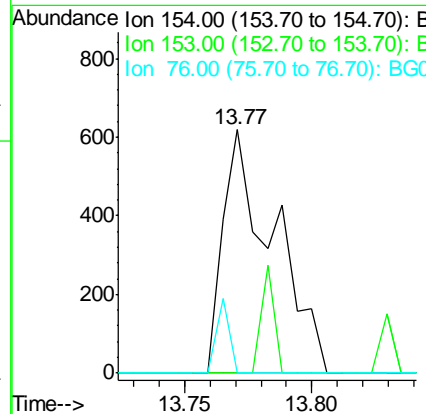
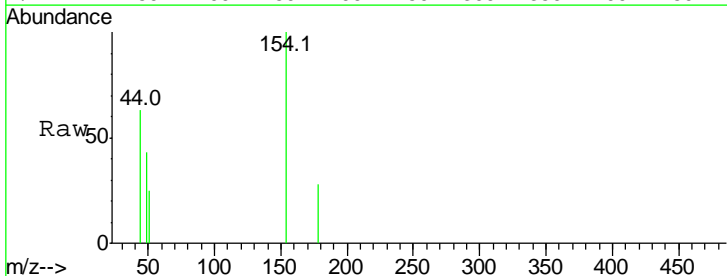
Instrument :
 BNA_G
 ClientSampled :

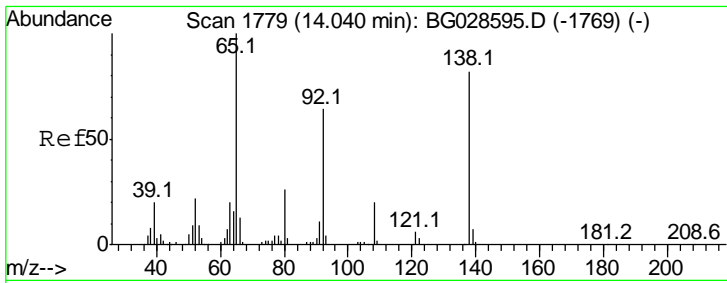
Tgt Ion	Resp	Lower	Upper
172	100		
171	35.2	32.2	48.2
170	23.3	21.8	32.6



#45
 1,1'-Biphenyl
 Concen: 0.112 ng
 RT: 13.77 min Scan# 1733
 Delta R.T. -0.01 min
 Lab File: BG028633.D
 Acq: 10 Sep 2017 2:50

Tgt Ion	Resp	Lower	Upper
154	100		
153	0.0	23.0	63.0#
76	0.0	0.0	33.5

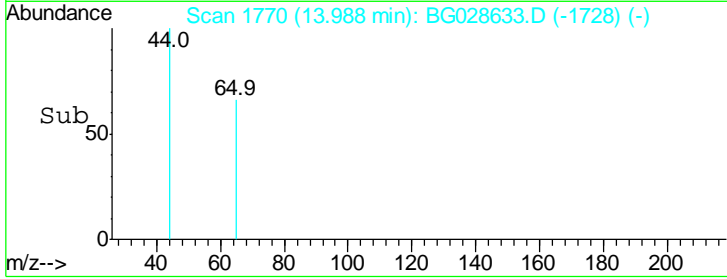
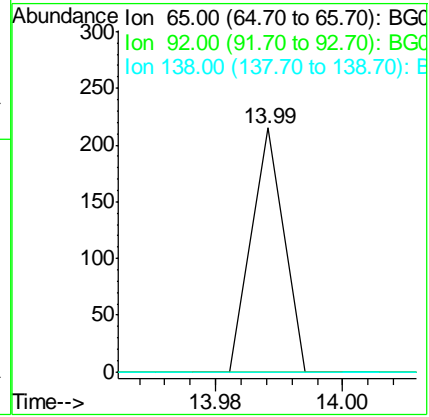
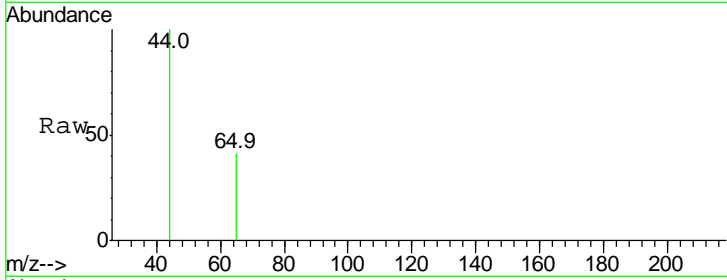




#47
 2-Nitroaniline
 Concen: 0.032 ng
 RT: 13.99 min Scan# 1770
 Delta R.T. -0.05 min
 Lab File: BG028633.D
 Acq: 10 Sep 2017 2:50

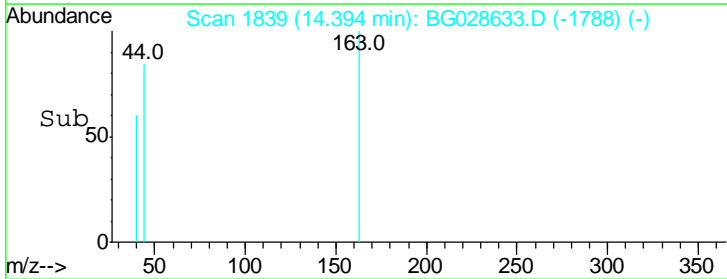
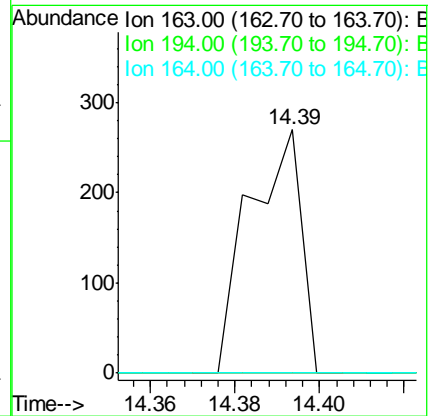
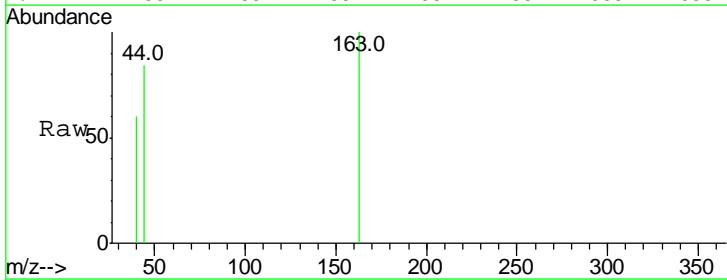
Instrument :
 BNA_G
 ClientSampled :

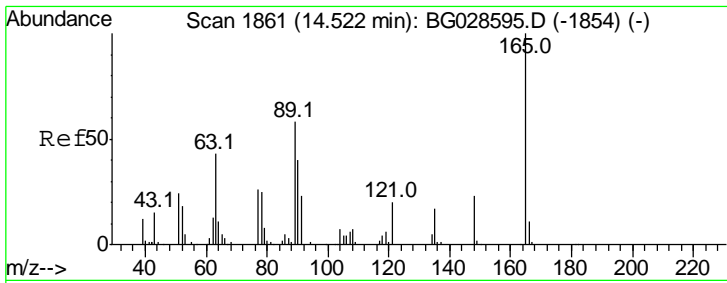
Tgt Ion	Resp	Lower	Upper
65	100		
92	0.0	49.0	73.4#
138	0.0	58.6	87.8#



#49
 Dimethylphthalate
 Concen: 0.031 ng
 RT: 14.39 min Scan# 1839
 Delta R.T. 0.00 min
 Lab File: BG028633.D
 Acq: 10 Sep 2017 2:50

Tgt Ion	Resp	Lower	Upper
163	100		
194	0.0	3.8	5.6#
164	0.0	9.3	13.9#

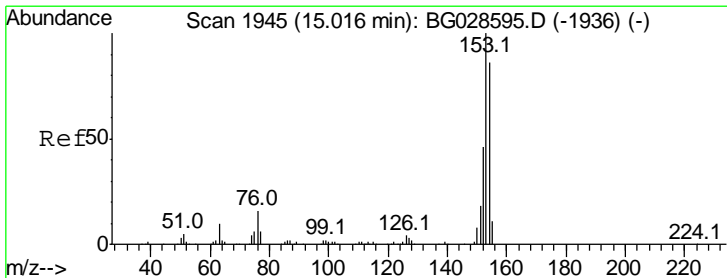
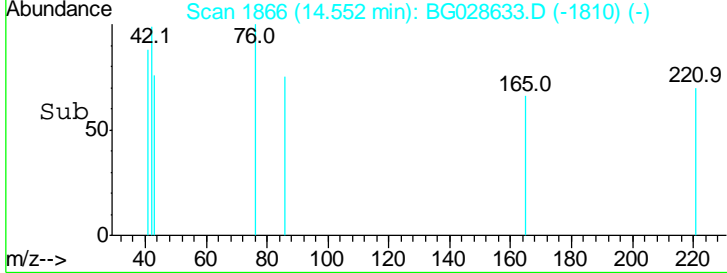
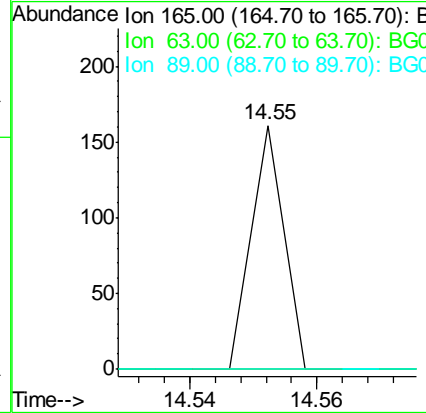
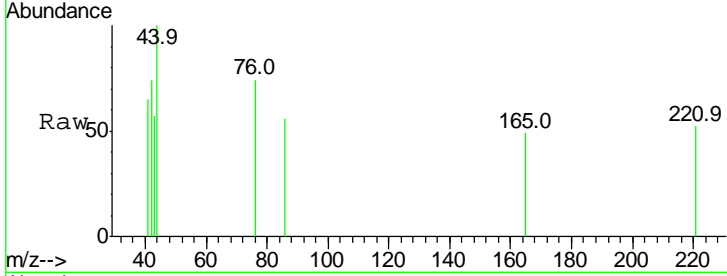




#50
 2,6-Dinitrotoluene
 Concen: 0.034 ng
 RT: 14.55 min Scan# 1866
 Delta R.T. 0.03 min
 Lab File: BG028633.D
 Acq: 10 Sep 2017 2:50

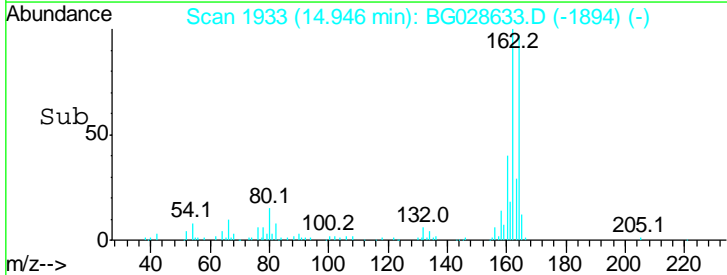
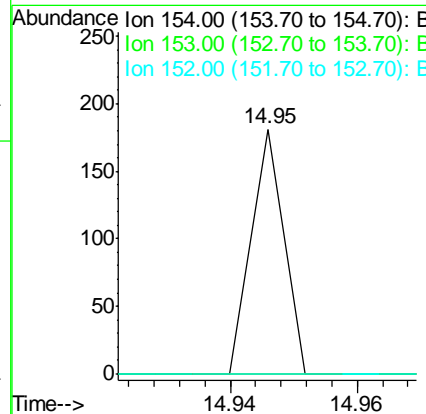
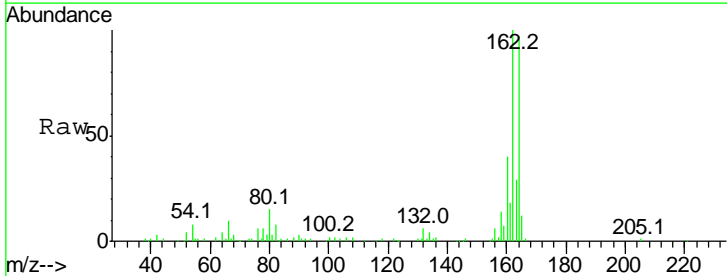
Instrument :
 BNA_G
 ClientSampled :

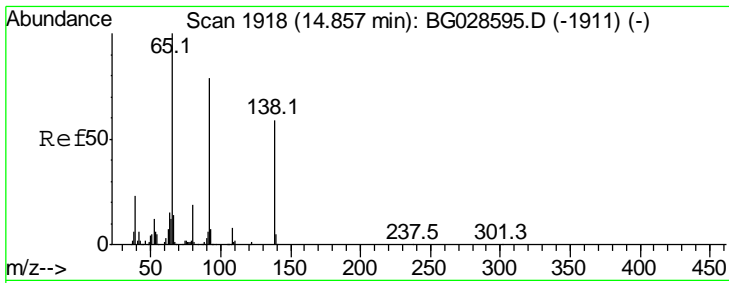
Tgt Ion	Ratio	Lower	Upper
165	100		
63	0.0	63.9	95.9#
89	0.0	58.6	88.0#



#51
 Acenaphthene
 Concen: 0.012 ng
 RT: 14.95 min Scan# 1933
 Delta R.T. -0.07 min
 Lab File: BG028633.D
 Acq: 10 Sep 2017 2:50

Tgt Ion	Ratio	Lower	Upper
154	100		
153	0.0	87.8	131.6#
152	0.0	42.2	63.4#

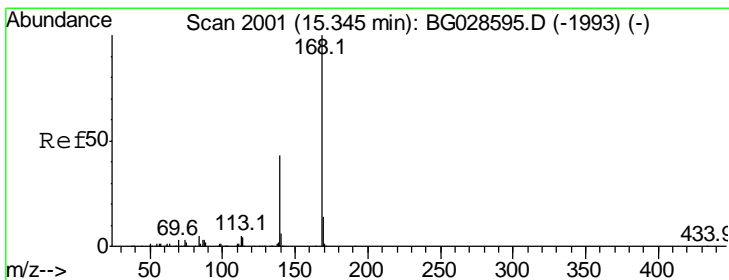
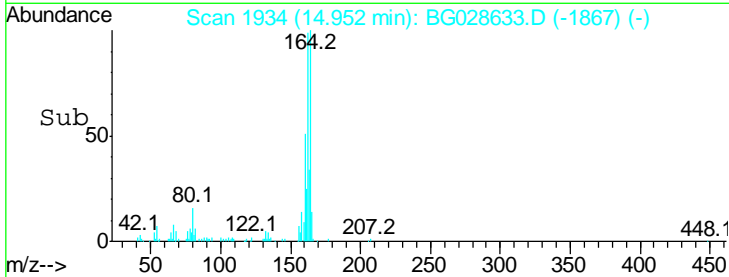
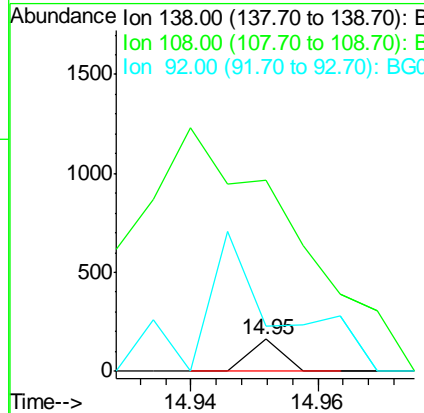
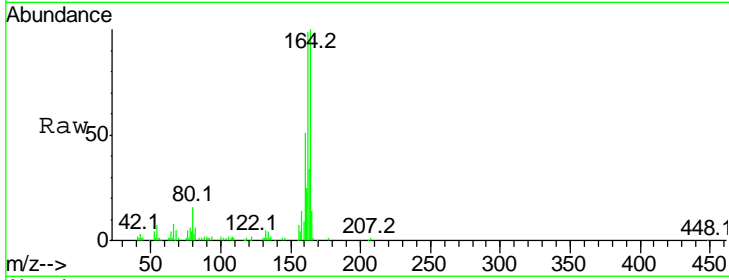




#52
 3-Nitroaniline
 Concen: 0.034 ng
 RT: 14.95 min Scan# 1934
 Delta R.T. 0.09 min
 Lab File: BG028633.D
 Acq: 10 Sep 2017 2:50

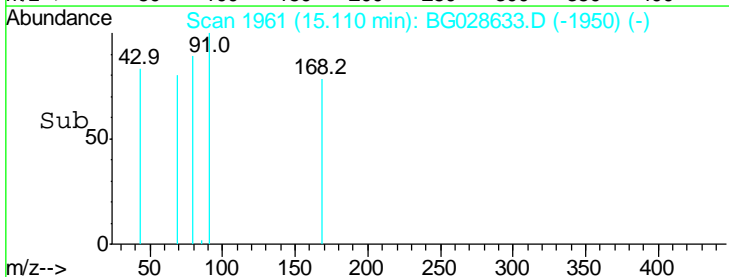
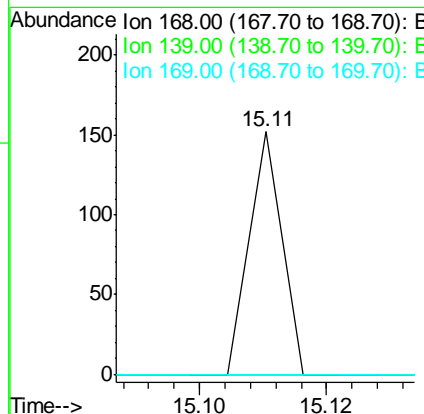
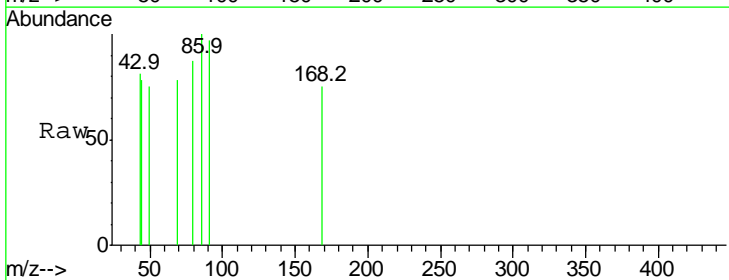
Instrument :
 BNA_G
 ClientSampled :

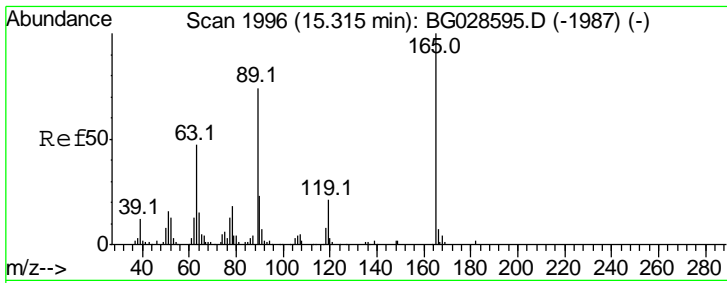
Tgt Ion	Resp	Lower	Upper
138	100		
108	595.7	10.9	16.3#
92	139.5	115.3	172.9



#54
 Dibenzofuran
 Concen: 0.006 ng
 RT: 15.11 min Scan# 1961
 Delta R.T. -0.23 min
 Lab File: BG028633.D
 Acq: 10 Sep 2017 2:50

Tgt Ion	Resp	Lower	Upper
168	100		
139	0.0	35.3	52.9#
169	0.0	11.5	17.3#

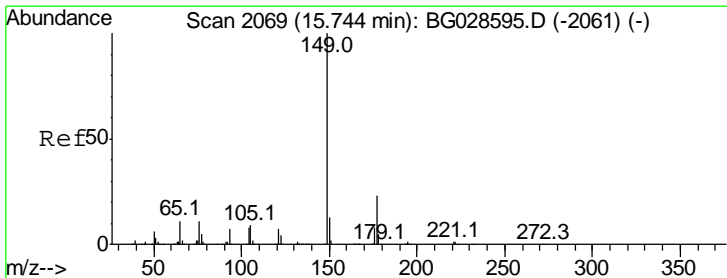
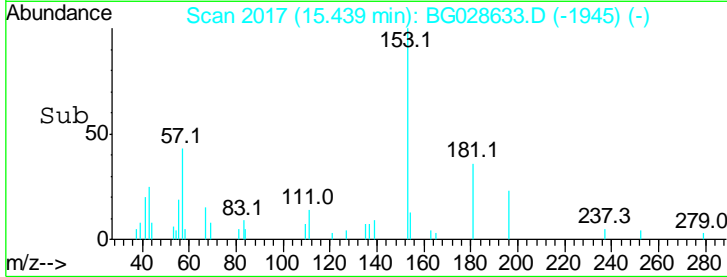
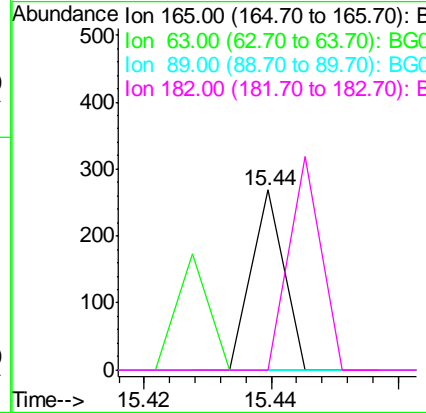
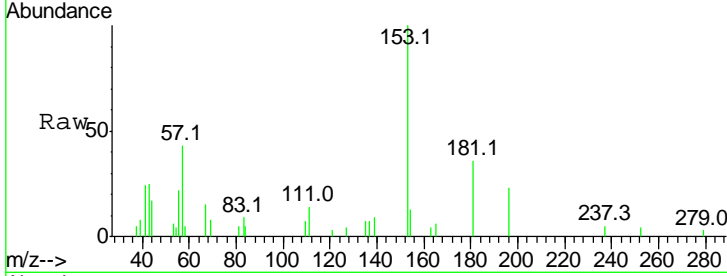




#56
 2,4-Dinitrotoluene
 Concen: 0.040 ng
 RT: 15.44 min Scan# 2017
 Delta R.T. 0.12 min
 Lab File: BG028633.D
 Acq: 10 Sep 2017 2:50

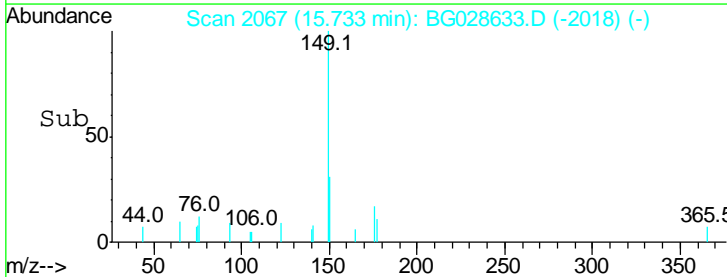
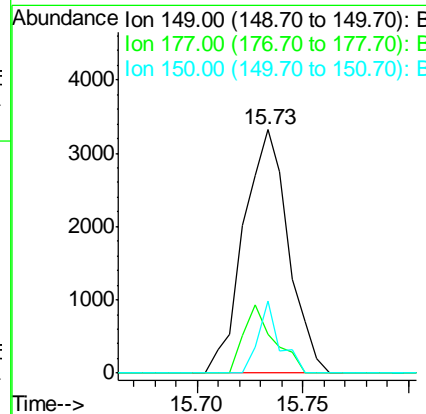
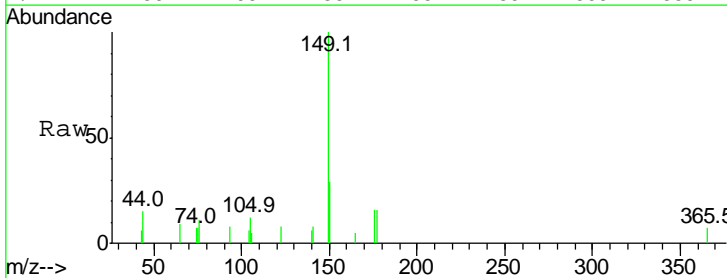
Instrument :
 BNA_G
 ClientSampled :

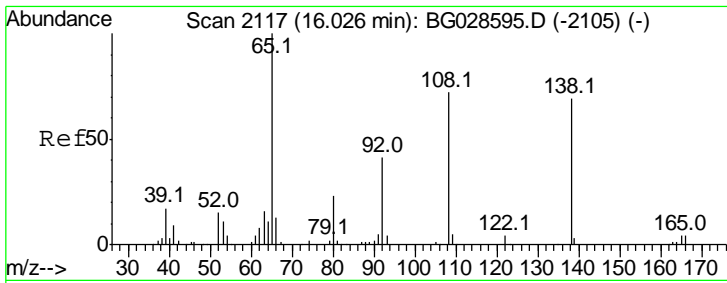
Tgt Ion	Resp	Lower	Upper
165	100		
63	0.0	44.0	66.0#
89	0.0	67.3	100.9#
182	0.0	3.8	5.6#



#59
 Diethylphthalate
 Concen: 0.616 ng
 RT: 15.73 min Scan# 2067
 Delta R.T. -0.01 min
 Lab File: BG028633.D
 Acq: 10 Sep 2017 2:50

Tgt Ion	Resp	Lower	Upper
149	100		
177	15.7	20.1	30.1#
150	29.5	10.2	15.2#

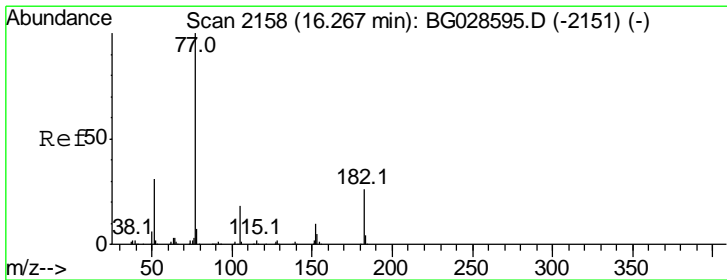
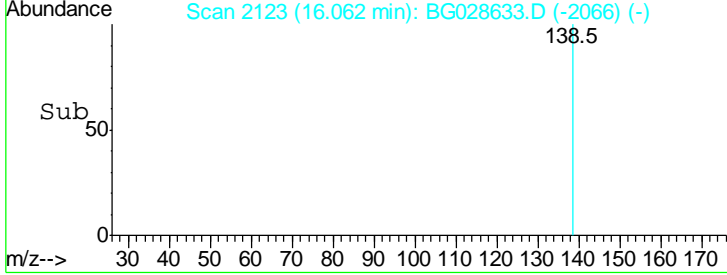
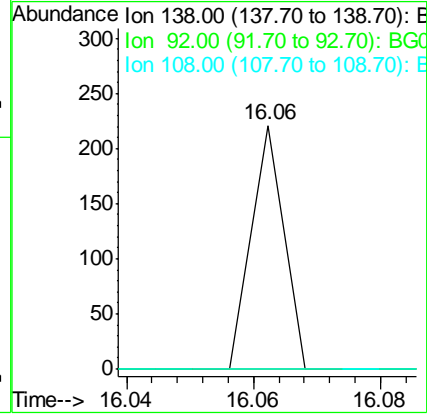
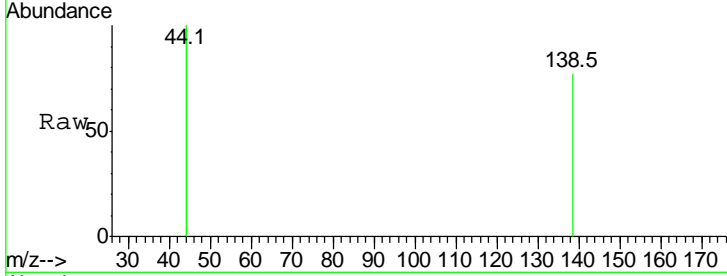




#61
 4-Nitroaniline
 Concen: 0.043 ng
 RT: 16.06 min Scan# 2123
 Delta R.T. 0.04 min
 Lab File: BG028633.D
 Acq: 10 Sep 2017 2:50

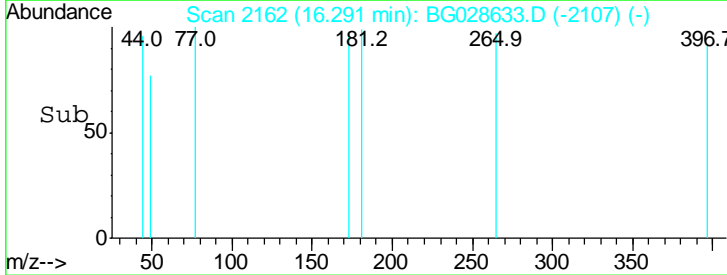
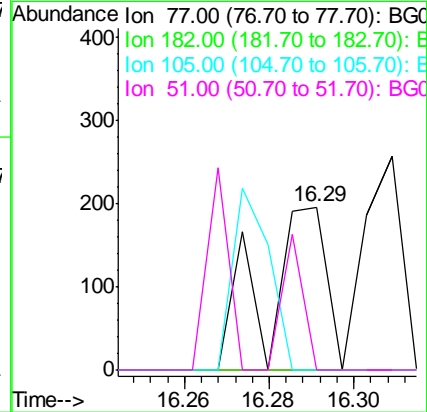
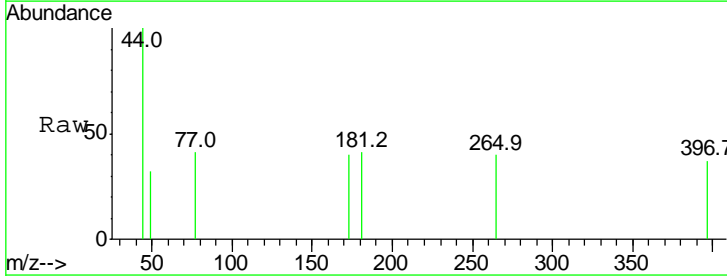
Instrument :
 BNA_G
 ClientSampleId :

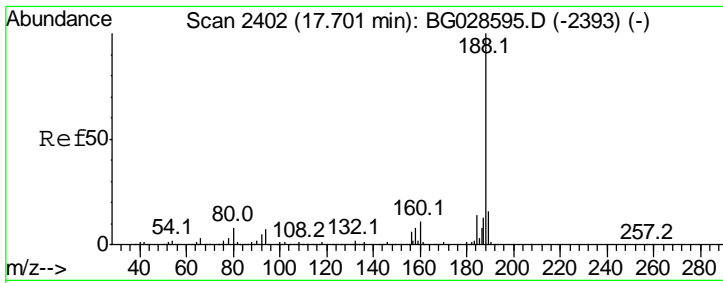
Tgt Ion	Resp	Lower	Upper
138	100		
92	0.0	44.2	84.2#
108	0.0	104.8	144.8#



#62
 Azobenzene
 Concen: 0.027 ng
 RT: 16.29 min Scan# 2162
 Delta R.T. 0.02 min
 Lab File: BG028633.D
 Acq: 10 Sep 2017 2:50

Tgt Ion	Resp	Lower	Upper
77	100		
182	0.0	4.7	44.7#
105	0.0	0.0	36.3
51	0.0	16.4	56.4#

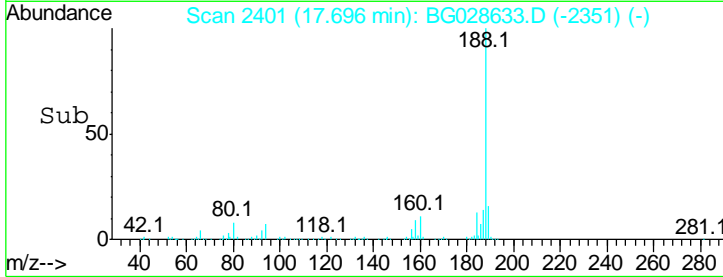
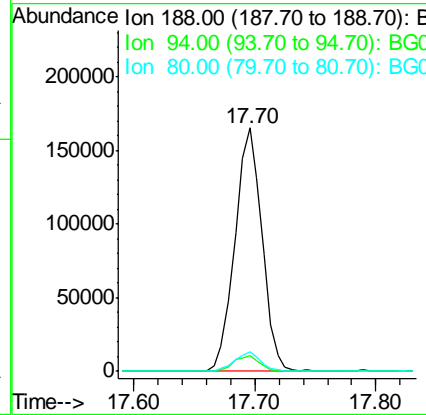
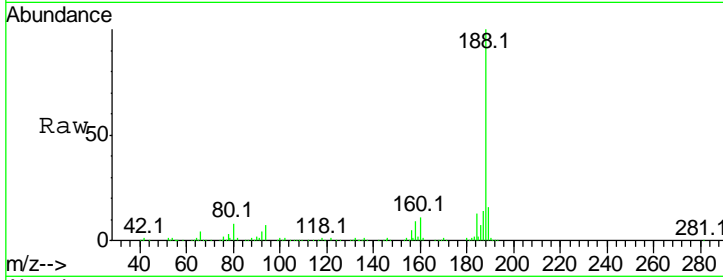




#63
 Phenanthrene-d10
 Concen: 20.000 ng
 RT: 17.70 min Scan# 2401
 Delta R.T. -0.01 min
 Lab File: BG028633.D
 Acq: 10 Sep 2017 2:50

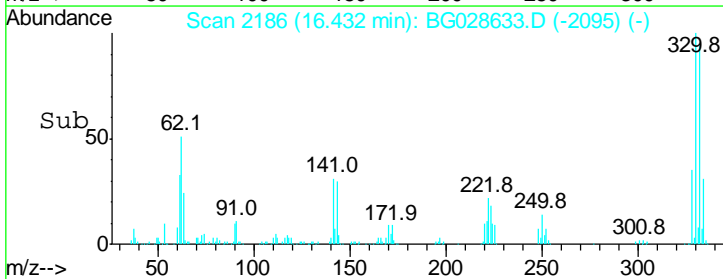
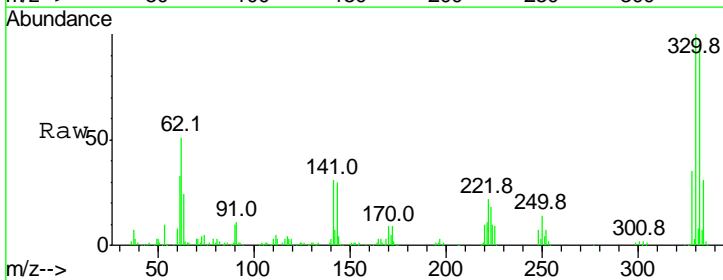
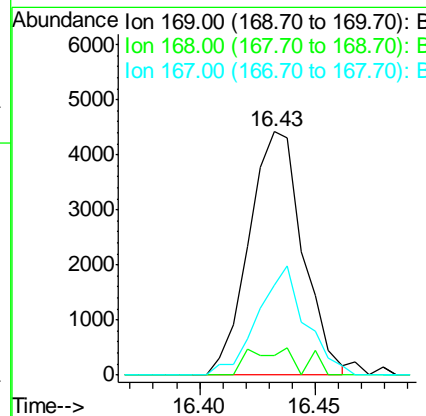
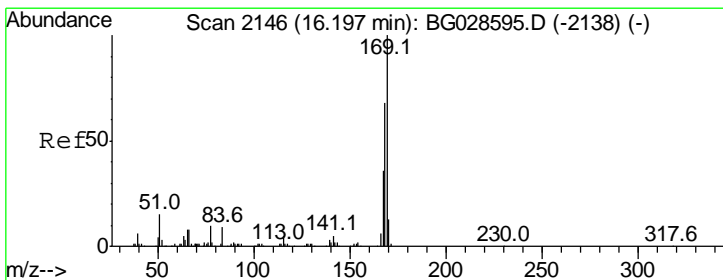
Instrument :
 BNA_G
 ClientSampled :

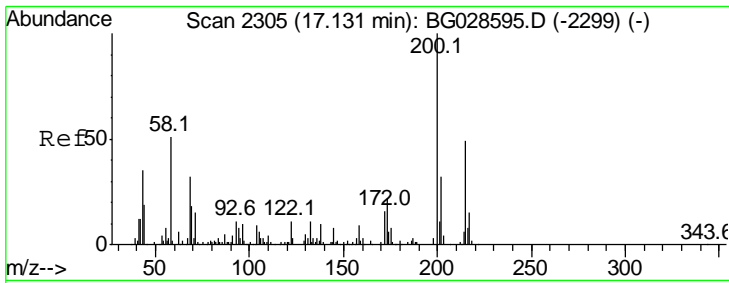
Tgt Ion	Resp	Lower	Upper
188	100		
94	6.6	5.8	8.8
80	7.8	7.5	11.3



#65
 n-Nitrosodiphenylamine
 Concen: 0.939 ng
 RT: 16.43 min Scan# 2186
 Delta R.T. 0.24 min
 Lab File: BG028633.D
 Acq: 10 Sep 2017 2:50

Tgt Ion	Resp	Lower	Upper
169	100		
168	7.8	55.7	83.5#
167	37.0	29.8	44.6

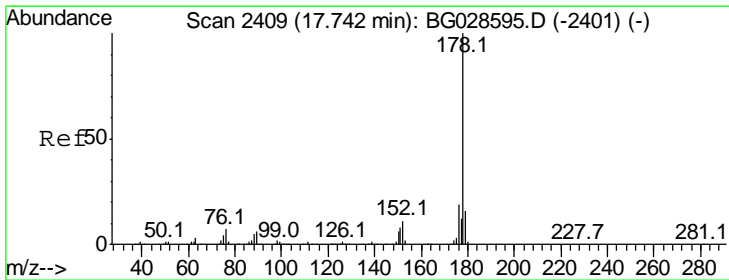
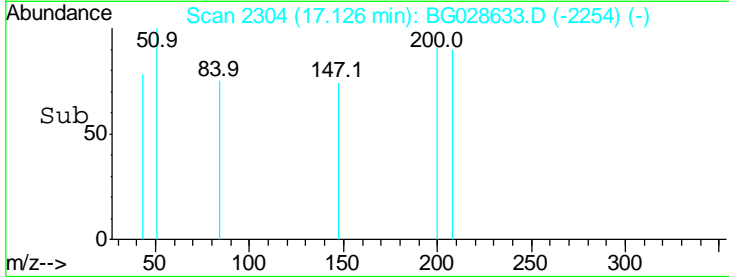
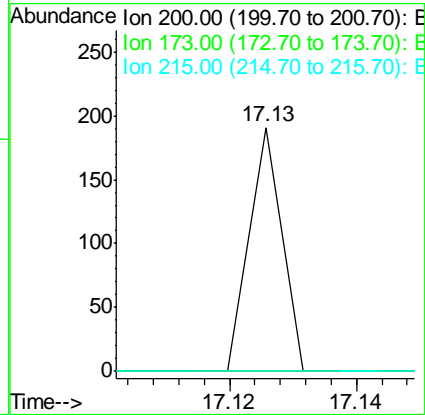
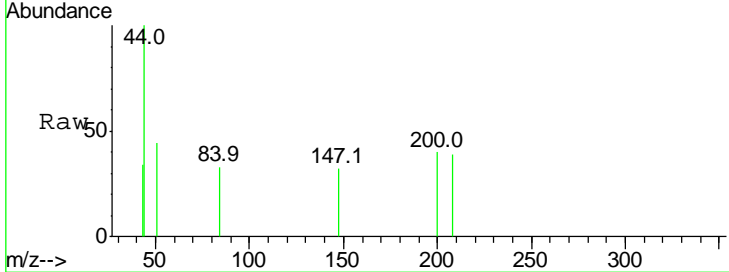




#68
 Atrazine
 Concen: 0.024 ng
 RT: 17.13 min Scan# 2304
 Delta R.T. -0.01 min
 Lab File: BG028633.D
 Acq: 10 Sep 2017 2:50

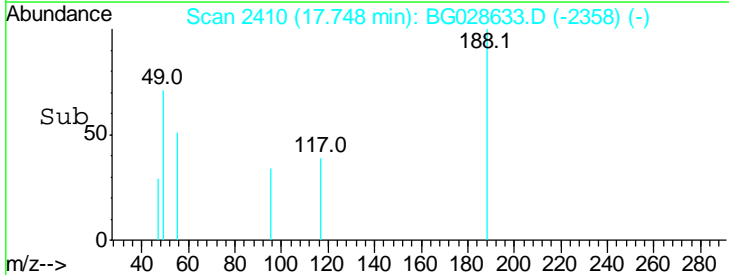
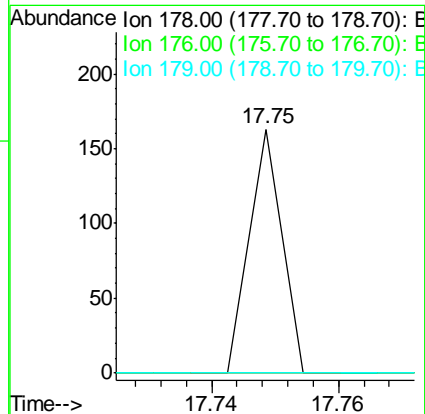
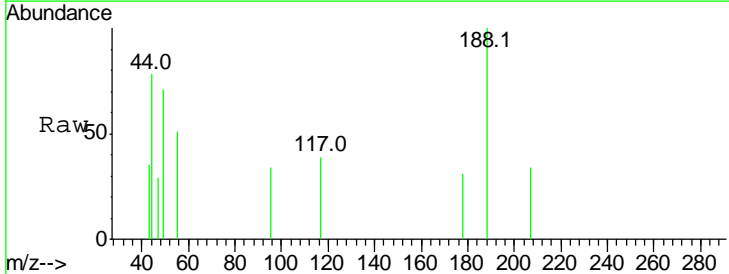
Instrument :
 BNA_G
 ClientSampled :

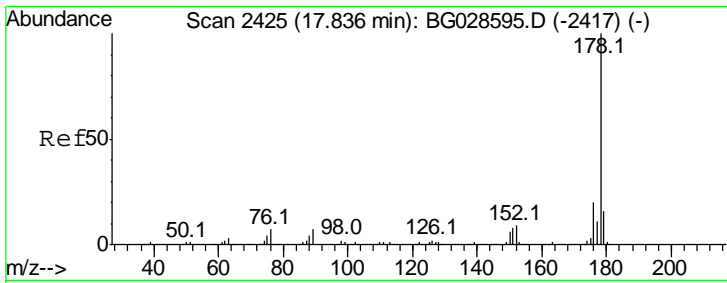
Tgt Ion	Ratio	Lower	Upper
200	100		
173	0.0	3.0	43.0#
215	0.0	28.4	68.4#



#70
 Phenanthrene
 Concen: 0.004 ng
 RT: 17.75 min Scan# 2410
 Delta R.T. 0.01 min
 Lab File: BG028633.D
 Acq: 10 Sep 2017 2:50

Tgt Ion	Ratio	Lower	Upper
178	100		
176	0.0	17.7	26.5#
179	0.0	15.0	22.6#

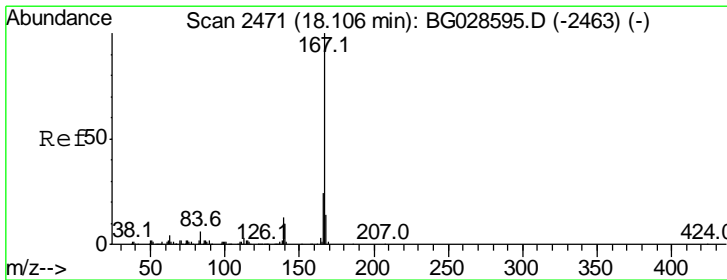
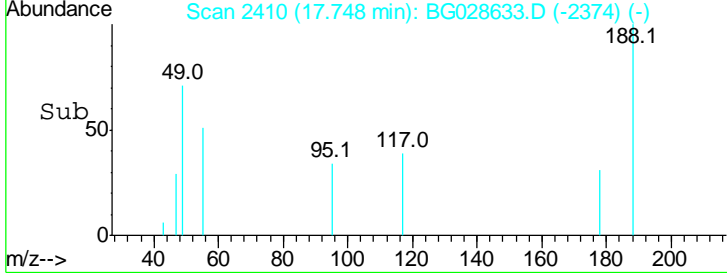
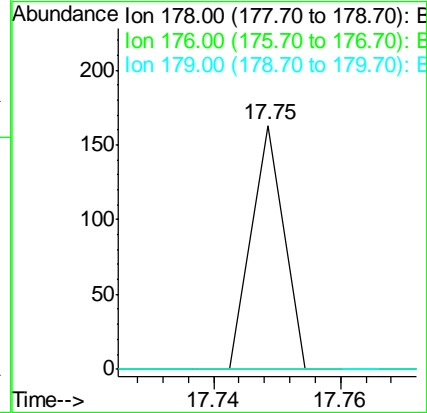
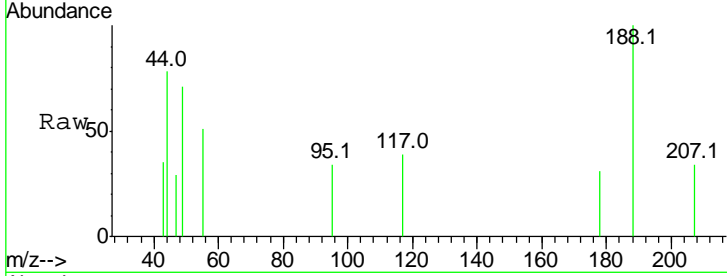




#71
 Anthracene
 Concen: 0.004 ng
 RT: 17.75 min Scan# 2410
 Delta R.T. -0.09 min
 Lab File: BG028633.D
 Acq: 10 Sep 2017 2:50

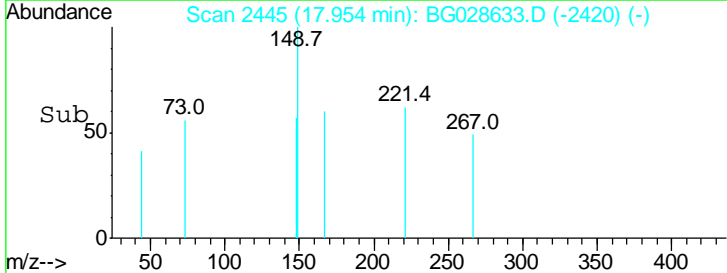
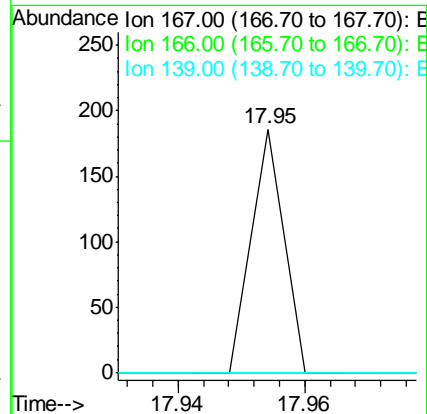
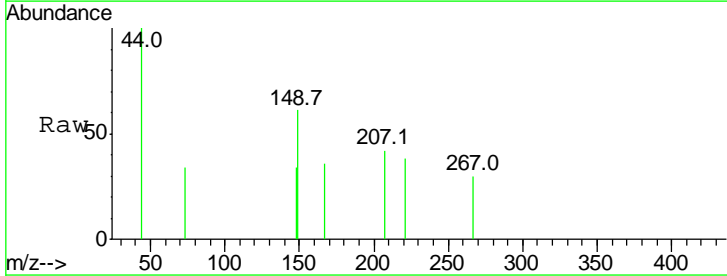
Instrument :
 BNA_G
 ClientSampled :

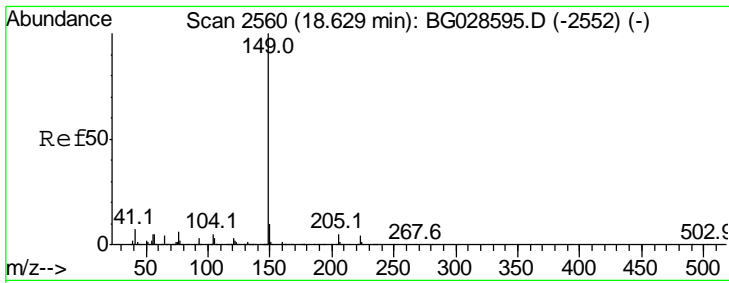
Tgt Ion	Resp	Lower	Upper
178	100		
176	0.0	16.4	24.6#
179	0.0	13.8	20.8#



#72
 Carbazole
 Concen: 0.005 ng
 RT: 17.95 min Scan# 2445
 Delta R.T. -0.15 min
 Lab File: BG028633.D
 Acq: 10 Sep 2017 2:50

Tgt Ion	Resp	Lower	Upper
167	100		
166	0.0	20.2	30.2#
139	0.0	12.8	19.2#

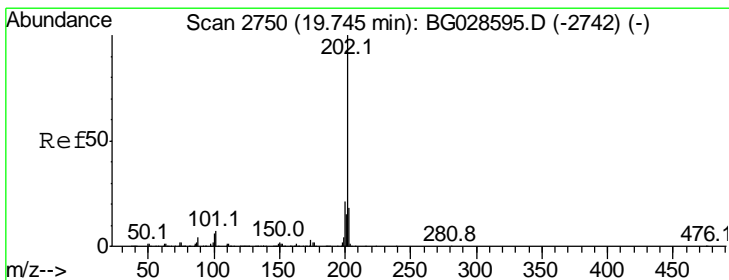
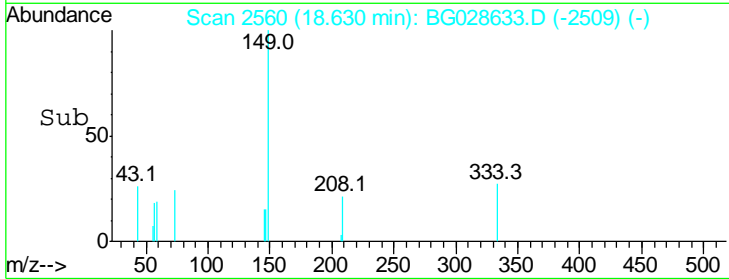
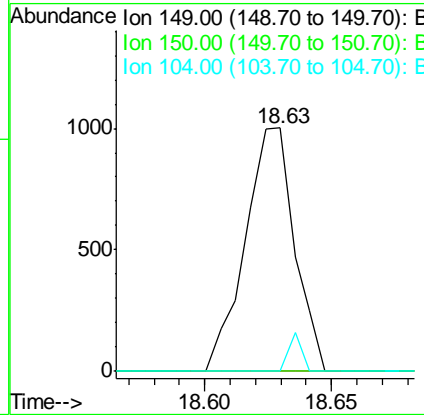
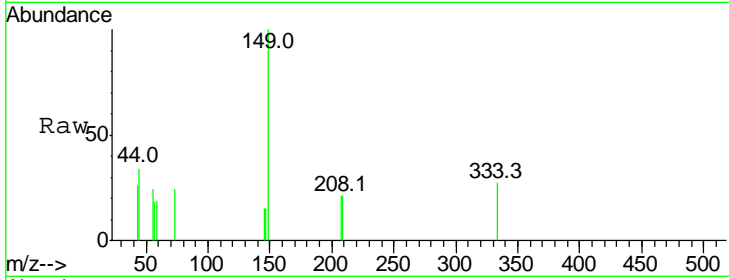




#73
 Di-n-butylphthalate
 Concen: 0.090 ng
 RT: 18.63 min Scan# 2560
 Delta R.T. 0.00 min
 Lab File: BG028633.D
 Acq: 10 Sep 2017 2:50

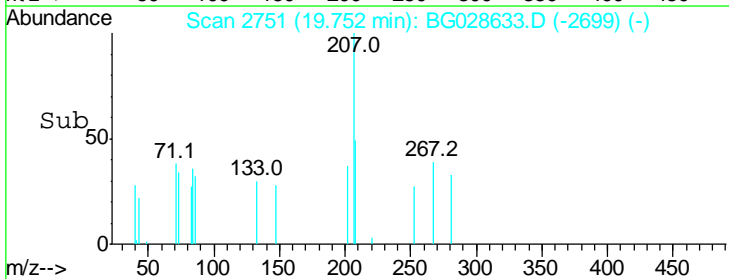
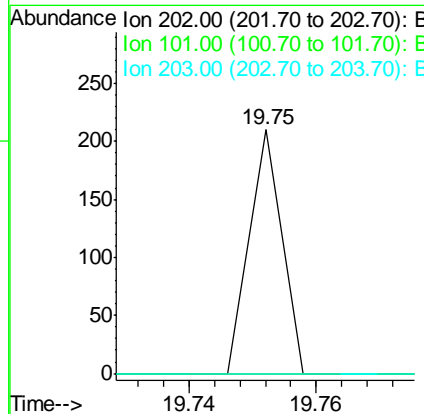
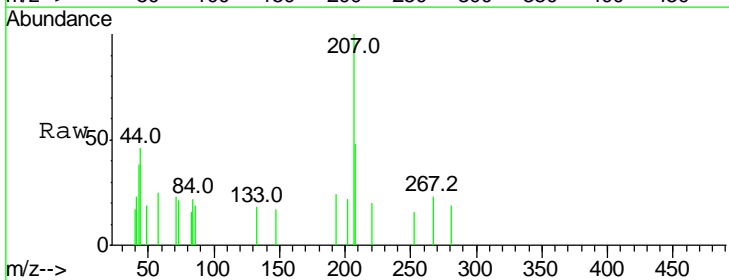
Instrument :
 BNA_G
 ClientSampled :

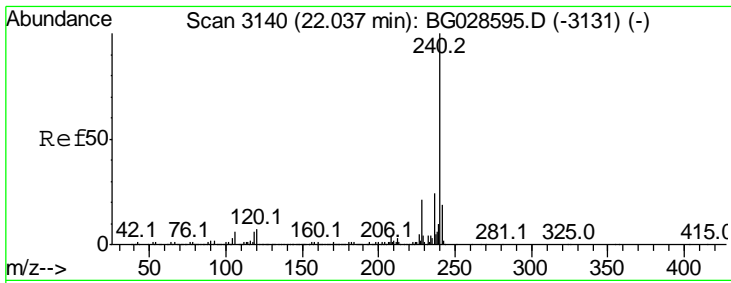
Tgt Ion	Resp	Lower	Upper
149	100		
150	0.0	9.1	13.7#
104	0.0	6.7	10.1#



#74
 Fluoranthene
 Concen: 0.004 ng
 RT: 19.75 min Scan# 2751
 Delta R.T. 0.01 min
 Lab File: BG028633.D
 Acq: 10 Sep 2017 2:50

Tgt Ion	Resp	Lower	Upper
202	100		
101	0.0	0.0	30.1
203	0.0	1.3	41.3#

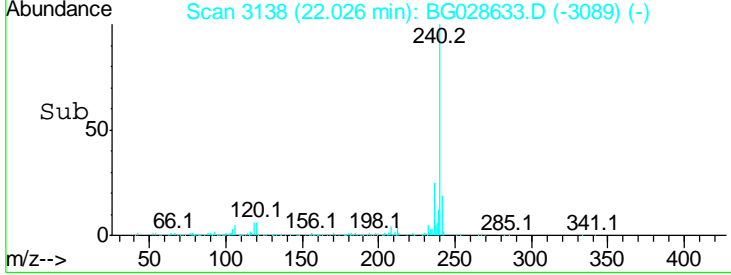
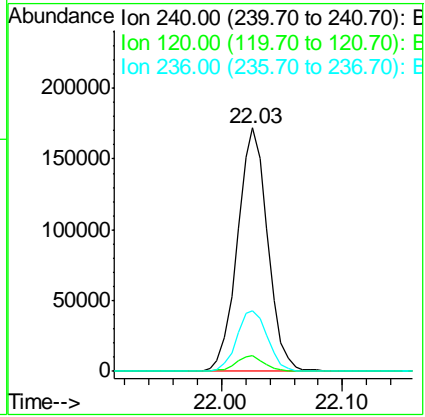
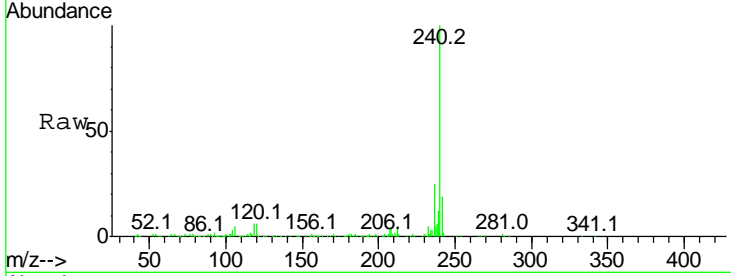




#75
 Chrysene-d12
 Concen: 20.000 ng
 RT: 22.03 min Scan# 3138
 Delta R.T. -0.01 min
 Lab File: BG028633.D
 Acq: 10 Sep 2017 2:50

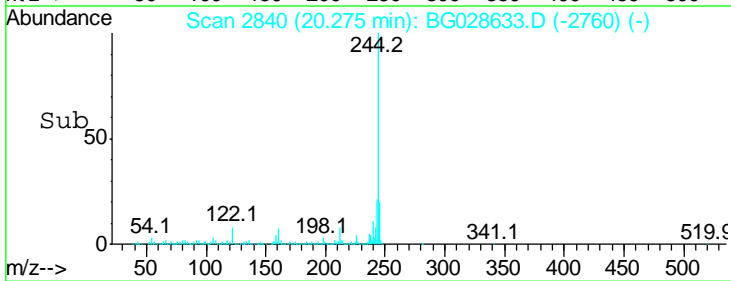
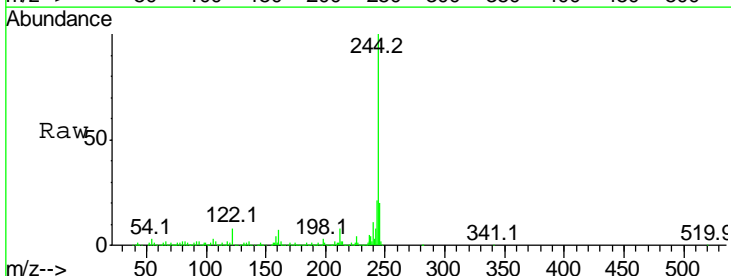
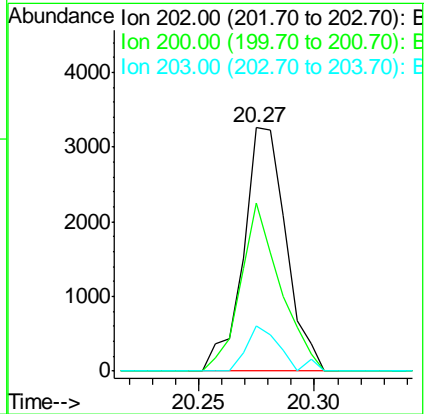
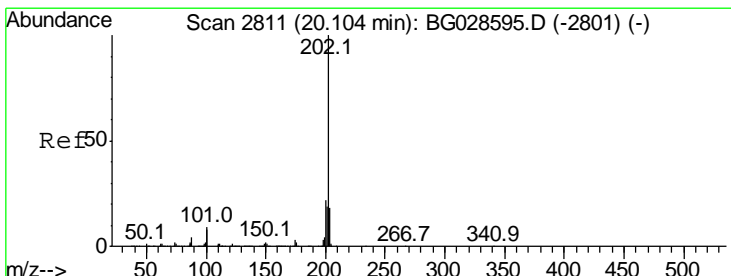
Instrument :
 BNA_G
 ClientSampled :

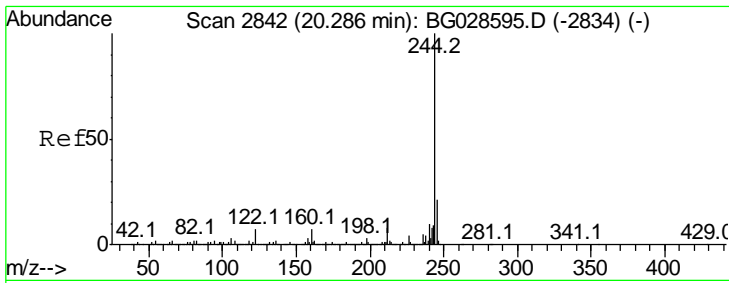
Tgt Ion	Resp	Lower	Upper
240	100		
120	6.2	5.7	8.5
236	24.7	22.2	33.4



#77
 Pyrene
 Concen: 0.237 ng
 RT: 20.27 min Scan# 2840
 Delta R.T. 0.17 min
 Lab File: BG028633.D
 Acq: 10 Sep 2017 2:50

Tgt Ion	Resp	Lower	Upper
202	100		
200	69.0	19.6	29.4#
203	18.5	15.8	23.8

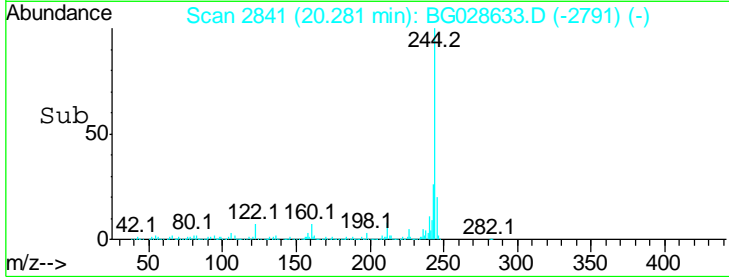
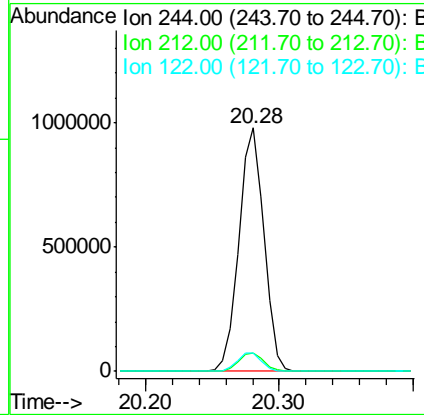
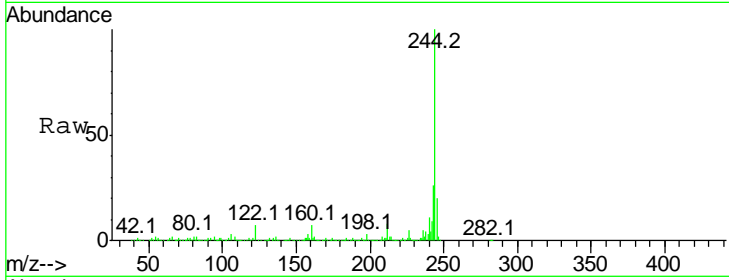




#78
 Terphenyl-d14
 Concen: 91.464 ng
 RT: 20.28 min Scan# 2841
 Delta R.T. -0.01 min
 Lab File: BG028633.D
 Acq: 10 Sep 2017 2:50

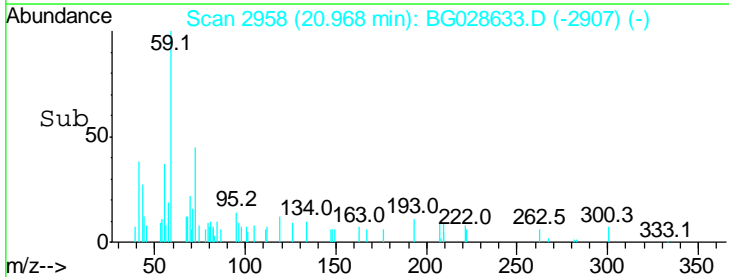
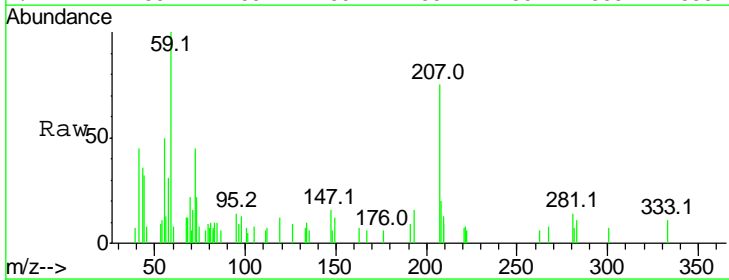
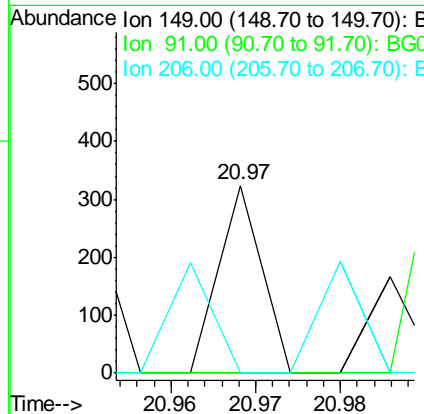
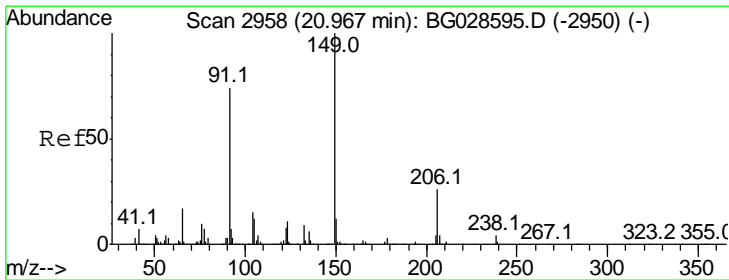
Instrument :
 BNA_G
 ClientSampled :

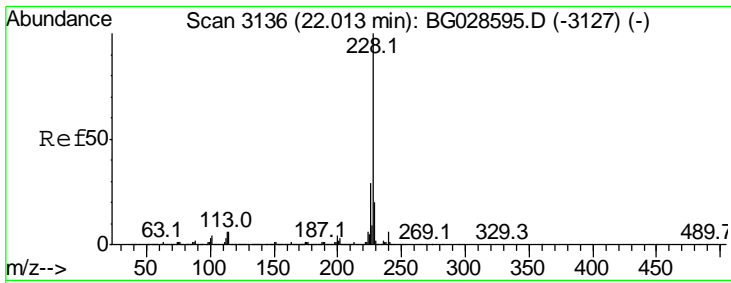
Tgt Ion	Ratio	Lower	Upper
244	100		
212	7.6	10.0	15.0#
122	7.4	8.6	12.8#



#79
 Butylbenzylphthalate
 Concen: 0.017 ng
 RT: 20.97 min Scan# 2958
 Delta R.T. 0.00 min
 Lab File: BG028633.D
 Acq: 10 Sep 2017 2:50

Tgt Ion	Ratio	Lower	Upper
149	100		
91	0.0	63.5	95.3#
206	0.0	21.0	31.6#

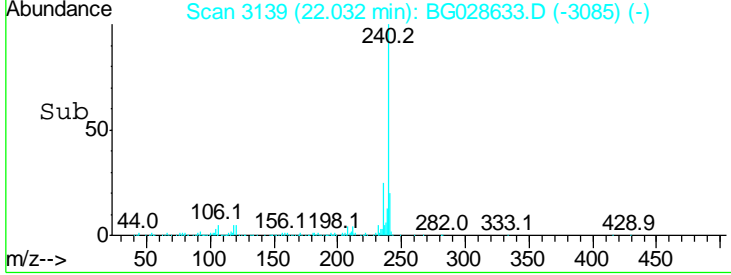
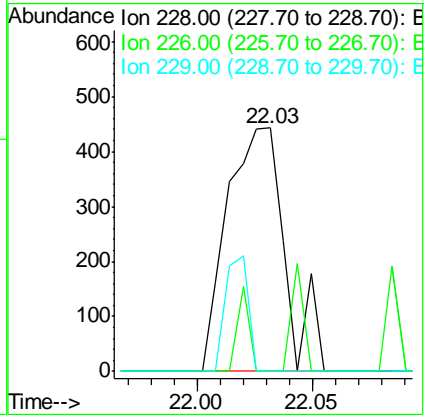
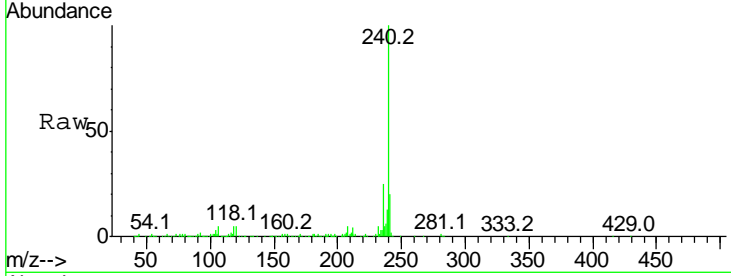




#80
 Benzo(a)anthracene
 Concen: 0.043 ng
 RT: 22.03 min Scan# 3139
 Delta R.T. 0.02 min
 Lab File: BG028633.D
 Acq: 10 Sep 2017 2:50

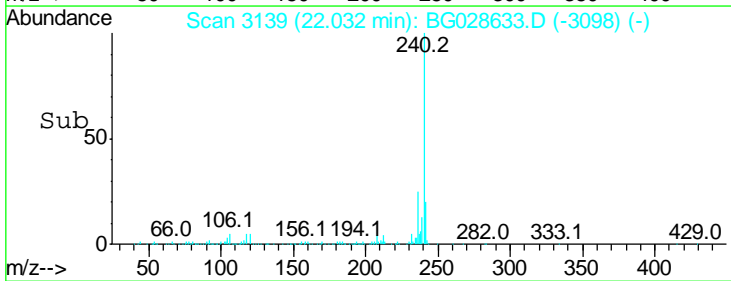
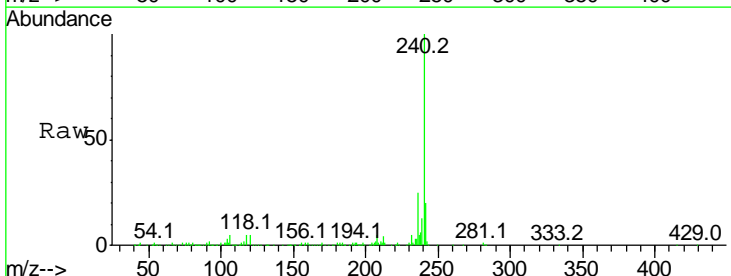
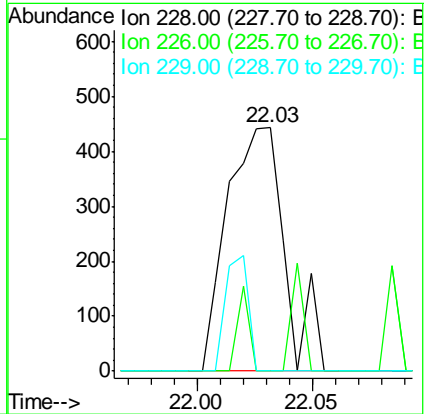
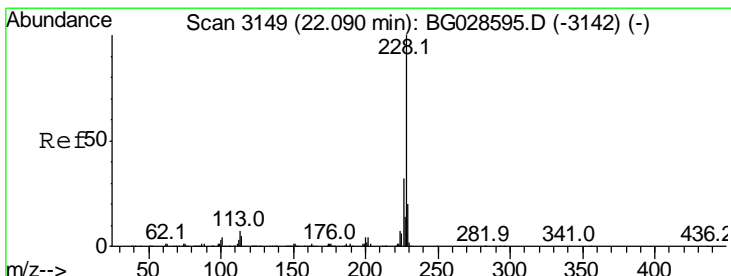
Instrument :
 BNA_G
 ClientSampled :

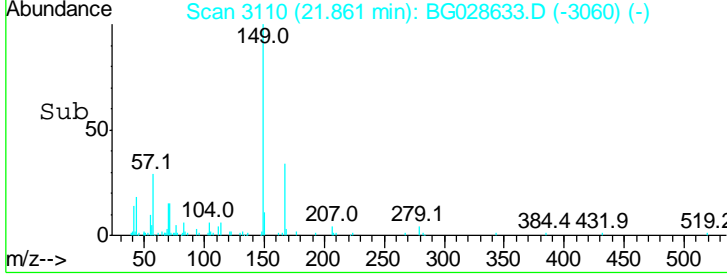
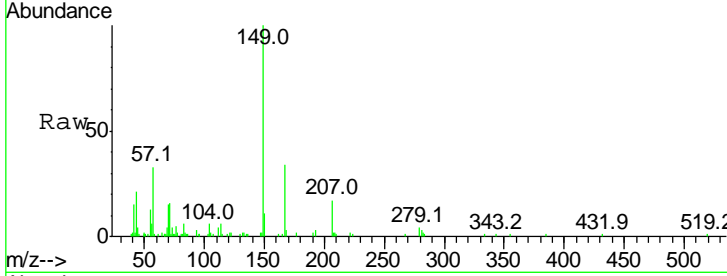
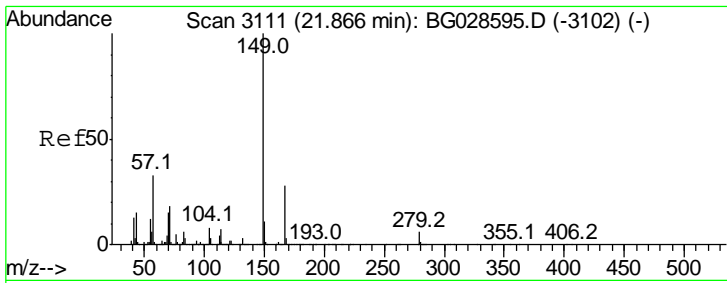
Tgt Ion	Resp	Lower	Upper
228	100		
226	0.0	24.9	37.3#
229	0.0	18.2	27.2#



#82
 Chrysene
 Concen: 0.046 ng
 RT: 22.03 min Scan# 3139
 Delta R.T. -0.06 min
 Lab File: BG028633.D
 Acq: 10 Sep 2017 2:50

Tgt Ion	Resp	Lower	Upper
228	100		
226	0.0	27.0	40.4#
229	0.0	17.8	26.6#

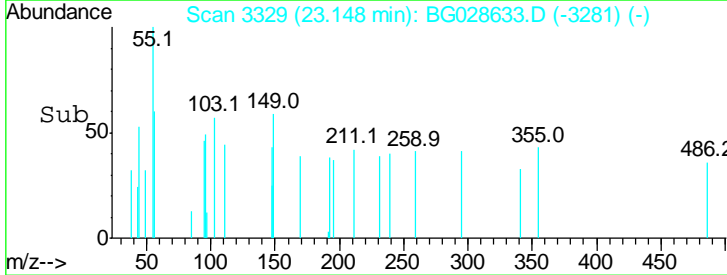
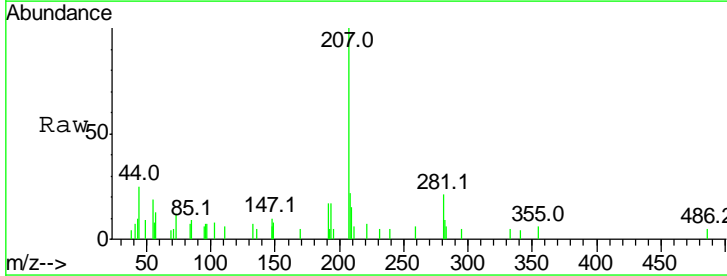
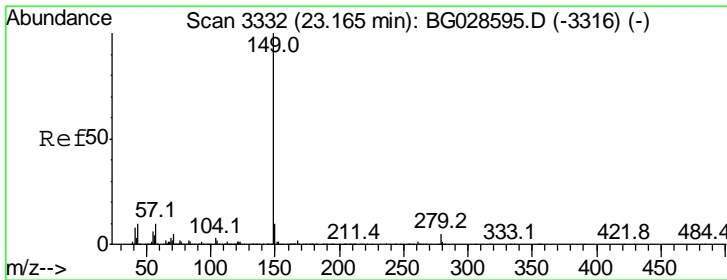
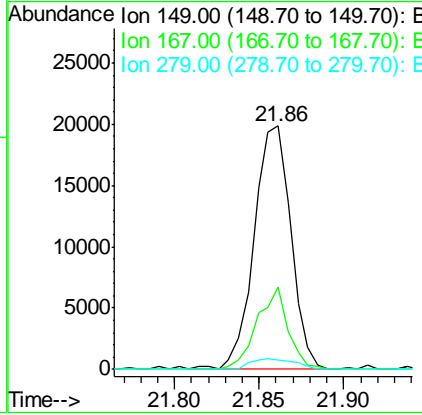




#83
 Bis(2-ethylhexyl)phthalate
 Concen: 3.035 ng
 RT: 21.86 min Scan# 3110
 Delta R.T. -0.01 min
 Lab File: BG028633.D
 Acq: 10 Sep 2017 2:50

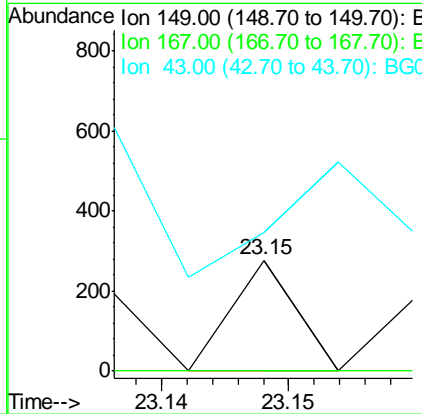
Instrument :
 BNA_G
 ClientSampled :

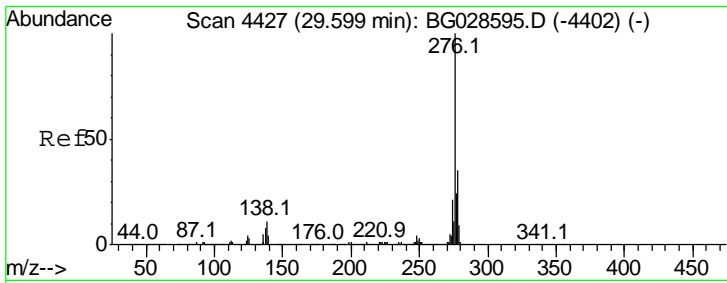
Tgt Ion	Resp	Lower	Upper
149	100		
167	33.6	23.7	35.5
279	4.1	4.6	6.8#



#84
 Di-n-octyl phthalate
 Concen: 0.006 ng
 RT: 23.15 min Scan# 3329
 Delta R.T. -0.02 min
 Lab File: BG028633.D
 Acq: 10 Sep 2017 2:50

Tgt Ion	Resp	Lower	Upper
149	100		
167	0.0	1.4	2.2#
43	285.6	11.8	17.6#

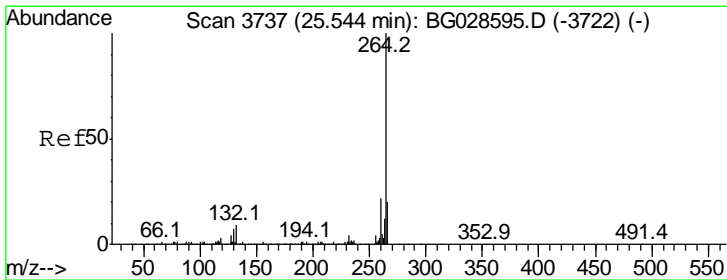
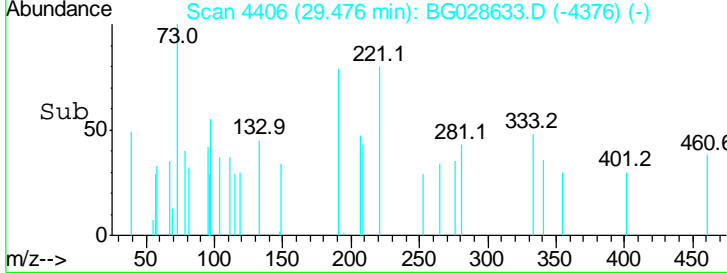
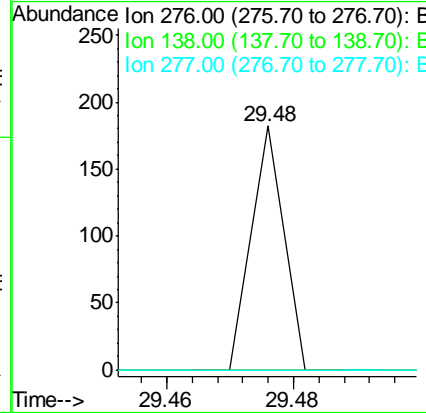
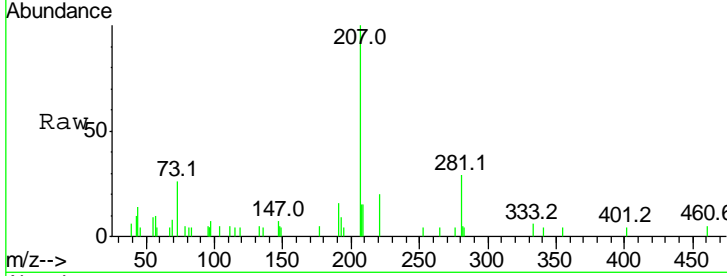




#85
 Indeno(1,2,3-cd)pyrene
 Concen: 0.003 ng
 RT: 29.48 min Scan# 4406
 Delta R.T. -0.12 min
 Lab File: BG028633.D
 Acq: 10 Sep 2017 2:50

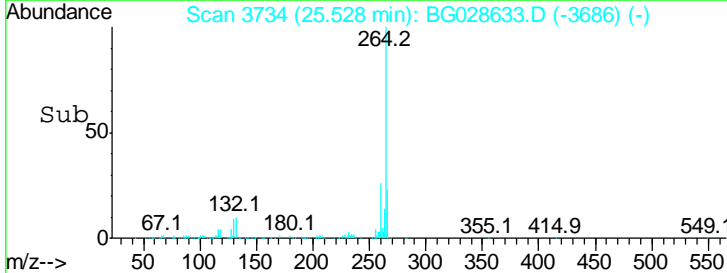
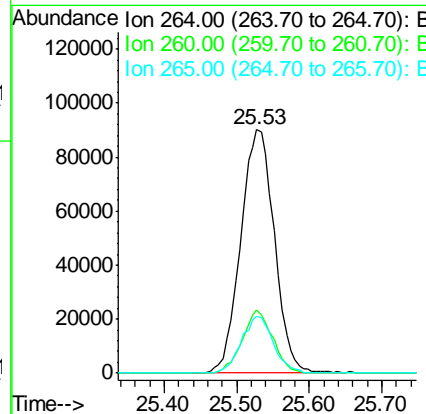
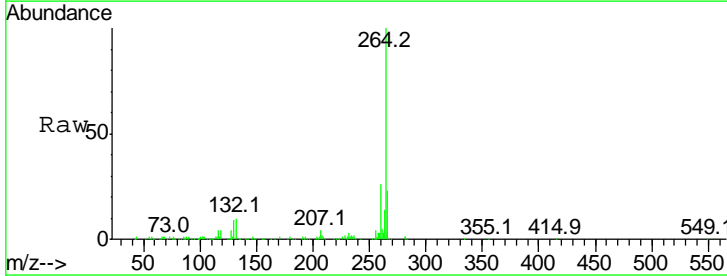
Instrument :
 BNA_G
 ClientSampled :

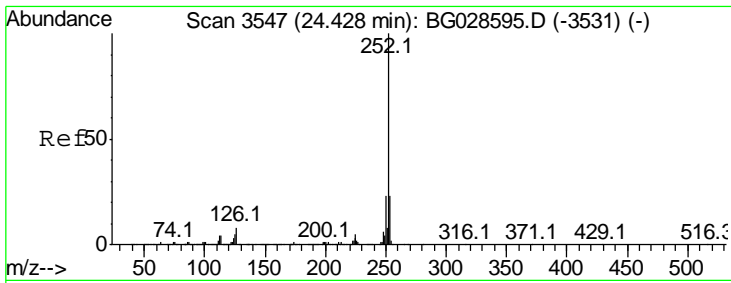
Tgt Ion	Resp	Lower	Upper
276	100		
138	0.0	4.7	7.1#
277	0.0	20.6	31.0#



#86
 Perylene-d12
 Concen: 20.000 ng
 RT: 25.53 min Scan# 3734
 Delta R.T. -0.02 min
 Lab File: BG028633.D
 Acq: 10 Sep 2017 2:50

Tgt Ion	Resp	Lower	Upper
264	100		
260	25.9	21.8	32.8
265	23.3	18.2	27.4

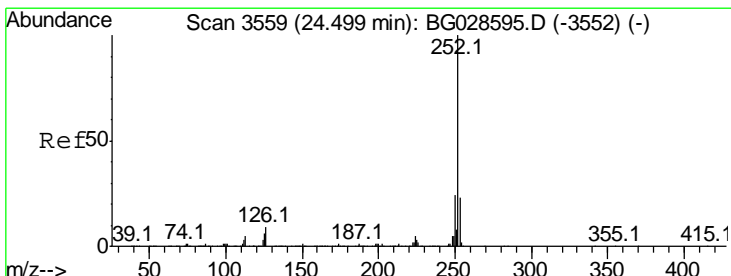
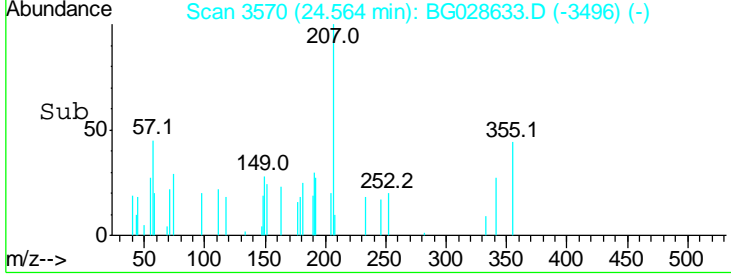
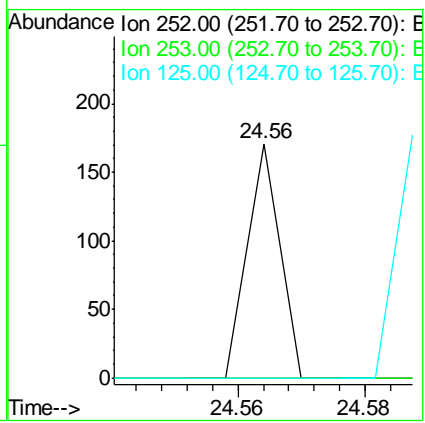
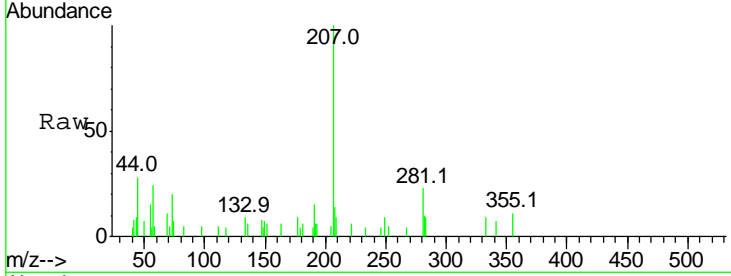




#87
 Benzo(b)fluoranthene
 Concen: 0.003 ng
 RT: 24.56 min Scan# 3570
 Delta R.T. 0.14 min
 Lab File: BG028633.D
 Acq: 10 Sep 2017 2:50

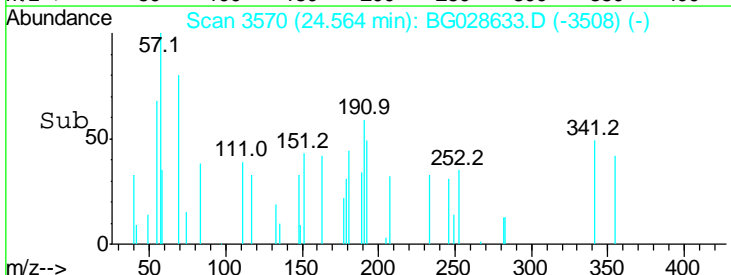
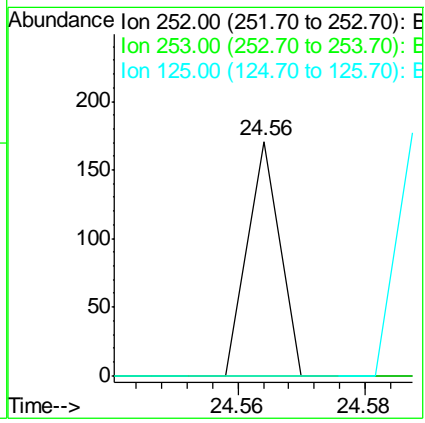
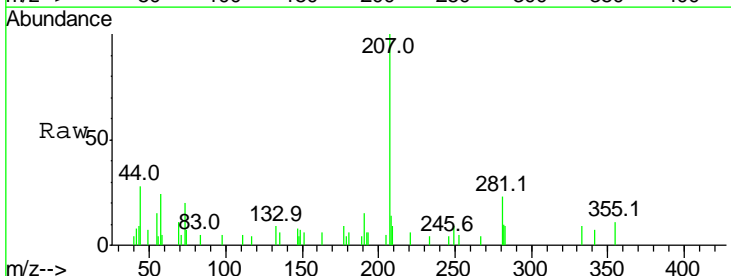
Instrument :
 BNA_G
 ClientSampled :

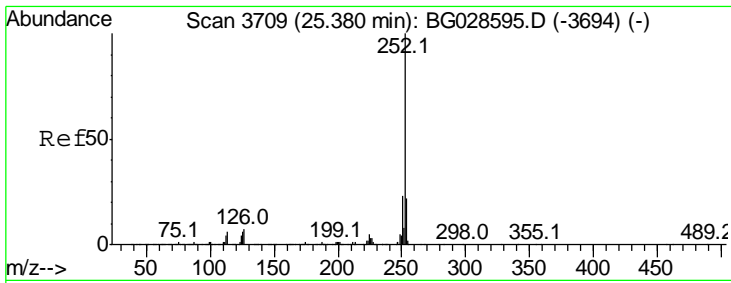
Tgt Ion	Ratio	Lower	Upper
252	100		
253	0.0	18.7	28.1#
125	0.0	5.3	7.9#



#88
 Benzo(k)fluoranthene
 Concen: 0.003 ng
 RT: 24.56 min Scan# 3570
 Delta R.T. 0.07 min
 Lab File: BG028633.D
 Acq: 10 Sep 2017 2:50

Tgt Ion	Ratio	Lower	Upper
252	100		
253	0.0	20.2	30.2#
125	0.0	5.1	7.7#

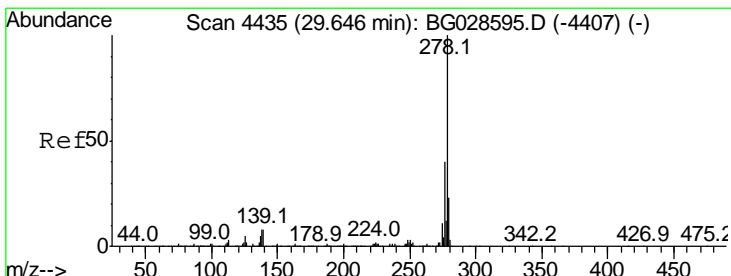
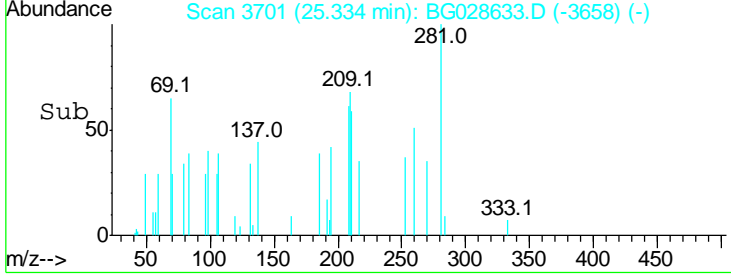
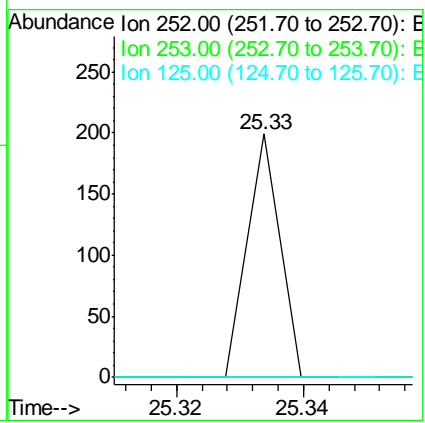
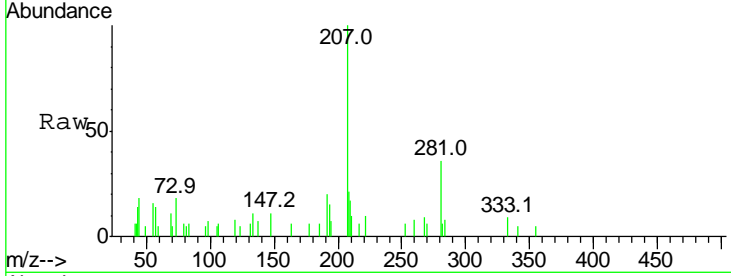




#89
 Benzo(a)pyrene
 Concen: 0.004 ng
 RT: 25.33 min Scan# 3701
 Delta R.T. -0.05 min
 Lab File: BG028633.D
 Acq: 10 Sep 2017 2:50

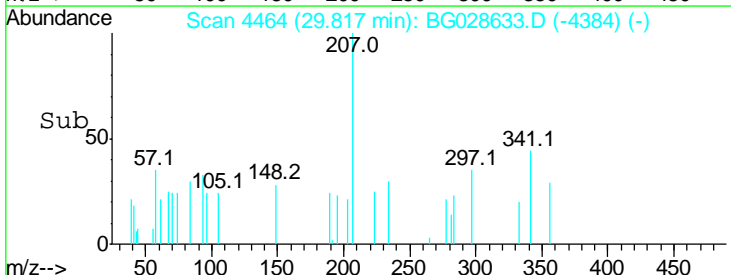
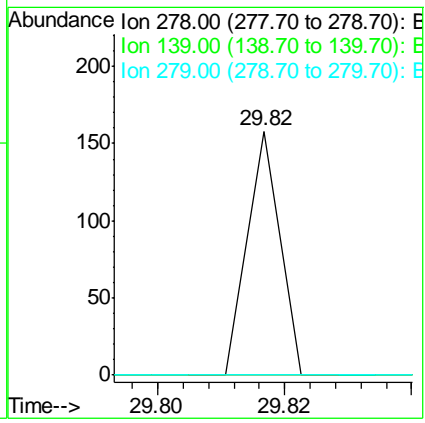
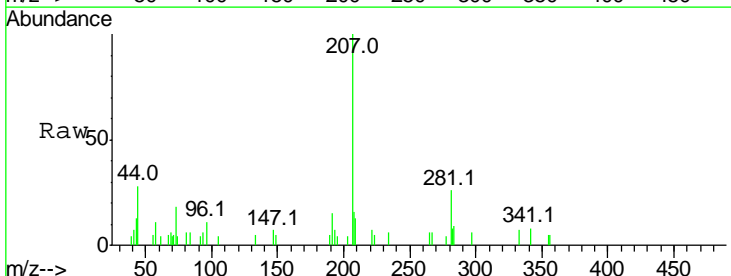
Instrument :
 BNA_G
 ClientSampled :

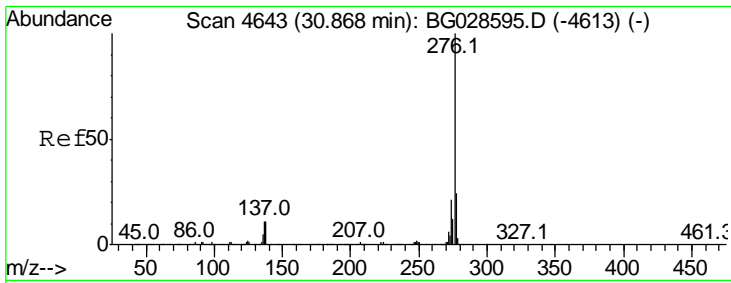
Tgt Ion	Resp	Lower	Upper
252	100		
253	0.0	19.2	28.8#
125	0.0	5.4	8.0#



#90
 Dibenzo(a,h)anthracene
 Concen: 0.003 ng
 RT: 29.82 min Scan# 4464
 Delta R.T. 0.17 min
 Lab File: BG028633.D
 Acq: 10 Sep 2017 2:50

Tgt Ion	Resp	Lower	Upper
278	100		
139	0.0	7.7	11.5#
279	0.0	19.1	28.7#





#91
 Benzo(a,h,i)perylene
 Concen: 0.008 ng
 RT: 30.82 min Scan# 4635
 Delta R.T. -0.05 min
 Lab File: BG028633.D
 Acq: 10 Sep 2017 2:50

Instrument :
 BNA_G
 ClientSampled :

Tot Ion	Ratio	Lower	Upper
276	100		
277	0.0	18.6	27.8#
138	0.0	8.1	12.1#

