

Data Path : Z:\svoasrv\HPCHEM1\BNA\_G\Data\BG091024\  
 Data File : BG062746.D  
 Acq On : 11 Sep 2024 22:17  
 Operator : JU/RC  
 Sample : PB163242BL  
 Misc :  
 ALS Vial : 54 Sample Multiplier: 1

Instrument :  
 BNA\_G  
 ClientSampleId :  
 SBLK242

Integration Parameters: LSCINT.P

Integrator: RTE  
 Smoothing : OFF Filtering: 5  
 Sampling : 1 Min Area: 0.1 % of largest Peak  
 Start Thrs: 0.2 Max Peaks: 100  
 Stop Thrs : 0 Peak Location: TOP

If leading or trailing edge < 100 prefer < Baseline drop else tangent >  
 Peak separation: 5

Method : Z:\svoasrv\HPCHEM1\BNA\_G\Methods\SFAM-EPA-BG090924.MA.M  
 Title : SVOA CALIBRATION

Signal : TIC: BG062746.D\data.ms

peak #	R.T. min	first scan	max scan	last scan	PK TY	peak height	corr. area	corr. % max.	% of total
1	3.354	42	45	51	rVB	19592	27212	0.88%	0.099%
2	3.765	110	115	130	rBV	213786	363080	11.76%	1.326%
3	4.106	170	173	177	rVB4	4315	6287	0.20%	0.023%
4	7.067	670	677	686	rBV	292345	477957	15.48%	1.745%
5	7.232	699	705	713	rBV	208282	335320	10.86%	1.224%
6	7.437	733	740	747	rBV	255977	443355	14.35%	1.619%
7	7.902	812	819	827	rBV	284551	465492	15.07%	1.700%
8	8.601	932	938	947	rBV	356078	599002	19.39%	2.187%
9	9.053	1007	1015	1023	rBV	266913	463859	15.02%	1.694%
10	9.776	1131	1138	1148	rBV	226534	389673	12.62%	1.423%
11	10.316	1220	1230	1243	rBV	361685	632499	20.48%	2.309%
12	10.692	1287	1294	1303	rBV	391167	692524	22.42%	2.529%
13	10.828	1310	1317	1330	rBV	323919	573709	18.58%	2.095%
14	12.279	1560	1564	1569	rBV2	3303	6778	0.22%	0.025%
15	13.936	1839	1846	1853	rVB	770507	1075425	34.82%	3.927%
16	14.224	1888	1895	1902	rBV	874413	1320455	42.75%	4.821%
17	14.529	1940	1947	1954	rBV	815620	1229652	39.81%	4.490%
18	14.723	1973	1980	1990	rBV	360760	597449	19.34%	2.181%
19	15.522	2109	2116	2124	rBV	1206500	1822586	59.01%	6.655%
20	15.640	2130	2136	2146	rBV	385321	570663	18.48%	2.084%
21	15.757	2152	2156	2162	rVB4	5627	9146	0.30%	0.033%
22	16.309	2246	2250	2256	rVB4	4387	5846	0.19%	0.021%
23	17.061	2377	2378	2384	rVB3	2446	3161	0.10%	0.012%
24	17.273	2407	2414	2424	rBV	1192253	1791852	58.02%	6.542%
25	17.373	2424	2431	2442	rVV2	1477114	2254653	73.00%	8.232%
26	17.943	2525	2528	2535	rVB4	1778	3263	0.11%	0.012%
27	18.660	2646	2650	2655	rBV4	1944	3495	0.11%	0.013%
28	19.229	2742	2747	2754	rBV	21587	31411	1.02%	0.115%
29	19.300	2754	2759	2764	rBV	19690	27209	0.88%	0.099%
30	19.600	2804	2810	2812	rBV3	3542	5752	0.19%	0.021%
31	19.664	2815	2821	2834	rVV	2058572	2952706	95.60%	10.781%
32	19.840	2848	2851	2854	rBV3	2465	3447	0.11%	0.013%
33	20.128	2896	2900	2902	rBV5	2844	4186	0.14%	0.015%
34	20.316	2930	2932	2935	rBV3	2603	3155	0.10%	0.012%
35	20.757	3006	3007	3010	rBV3	3048	3096	0.10%	0.011%
36	21.286	3094	3097	3100	rVB4	5577	5328	0.17%	0.019%

Data Path : Z:\svoasrv\HPCHEM1\BNA\_G\Data\BG091024\  
 Data File : BG062746.D  
 Acq On : 11 Sep 2024 22:17  
 Operator : JU/RC  
 Sample : PB163242BL  
 Misc :  
 ALS Vial : 54 Sample Multiplier: 1

Instrument :  
 BNA\_G  
 ClientSampleId :  
 SBLK242

Integration Parameters: LSCINT.P

Integrator: RTE  
 Smoothing : OFF Filtering: 5  
 Sampling : 1 Min Area: 0.1 % of largest Peak  
 Start Thrs: 0.2 Max Peaks: 100  
 Stop Thrs : 0 Peak Location: TOP

If leading or trailing edge < 100 prefer < Baseline drop else tangent >  
 Peak separation: 5

Method : Z:\svoasrv\HPCHEM1\BNA\_G\Methods\SFAM-EPA-BG090924.MA.M  
 Title : SVOA CALIBRATION

37	21.521	3130	3137	3150	rBV	1392122	2261292	73.22%	8.256%
38	21.697	3165	3167	3169	rBV3	4740	5494	0.18%	0.020%
39	22.302	3267	3270	3275	rVB6	9815	14147	0.46%	0.052%
40	22.461	3295	3297	3299	rBV2	4379	4022	0.13%	0.015%
41	22.960	3378	3382	3390	rVB5	20937	38844	1.26%	0.142%
42	23.607	3491	3492	3494	rBV2	6579	4050	0.13%	0.015%
43	23.630	3494	3496	3500	rVV5	4282	4420	0.14%	0.016%
44	23.718	3507	3511	3521	rVB3	31329	62819	2.03%	0.229%
45	24.376	3612	3623	3635	rBV2	1168852	3088537	100.00%	11.277%
46	24.588	3648	3659	3670	rBV	883275	2441007	79.03%	8.913%
47	25.669	3835	3843	3852	rBV5	37471	110825	3.59%	0.405%
48	25.816	3866	3868	3871	rBV4	4598	4471	0.14%	0.016%
49	26.615	4002	4004	4005	rBV2	4636	3662	0.12%	0.013%
50	26.950	4054	4061	4074	rVB5	36811	125572	4.07%	0.458%
51	29.253	4451	4453	4455	rBV3	4710	4422	0.14%	0.016%
52	31.069	4760	4762	4763	rBV	5932	3152	0.10%	0.012%
53	31.480	4830	4832	4834	rBV3	5471	4385	0.14%	0.016%
54	32.103	4936	4938	4941	rBV4	5875	6438	0.21%	0.024%

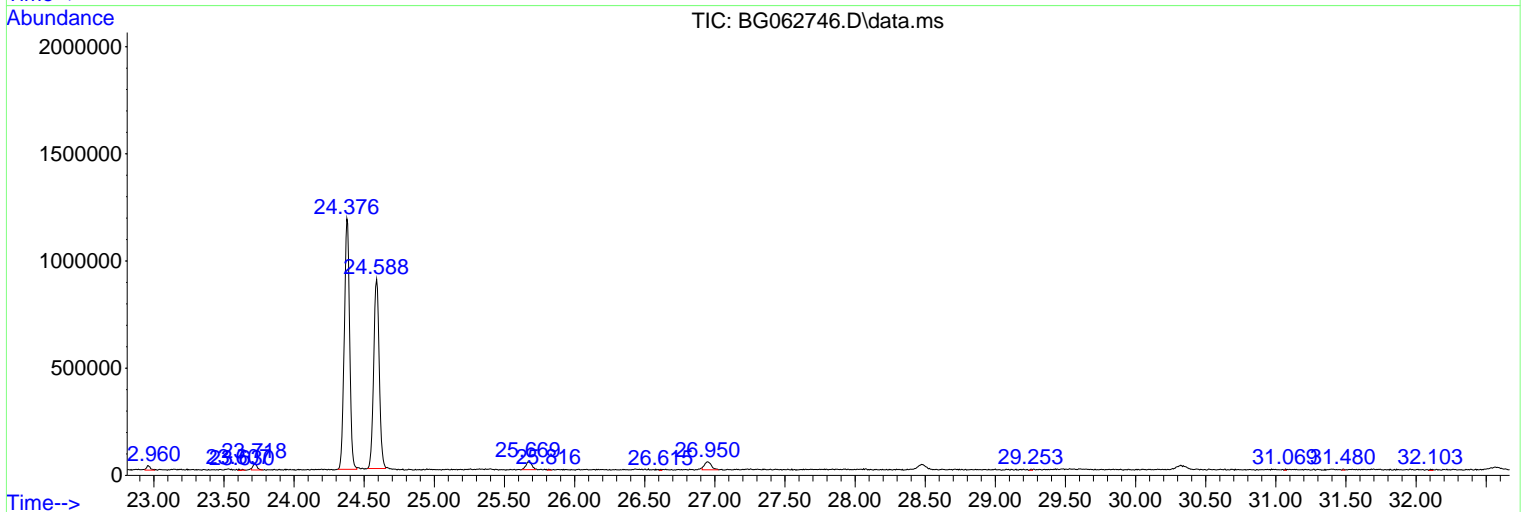
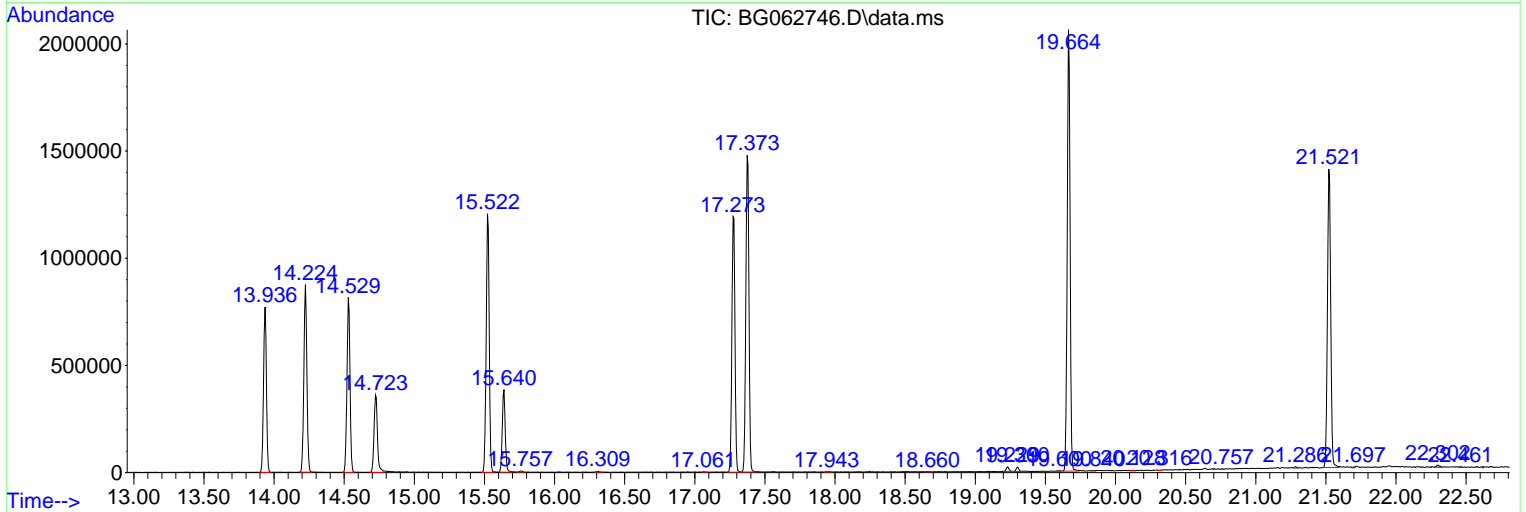
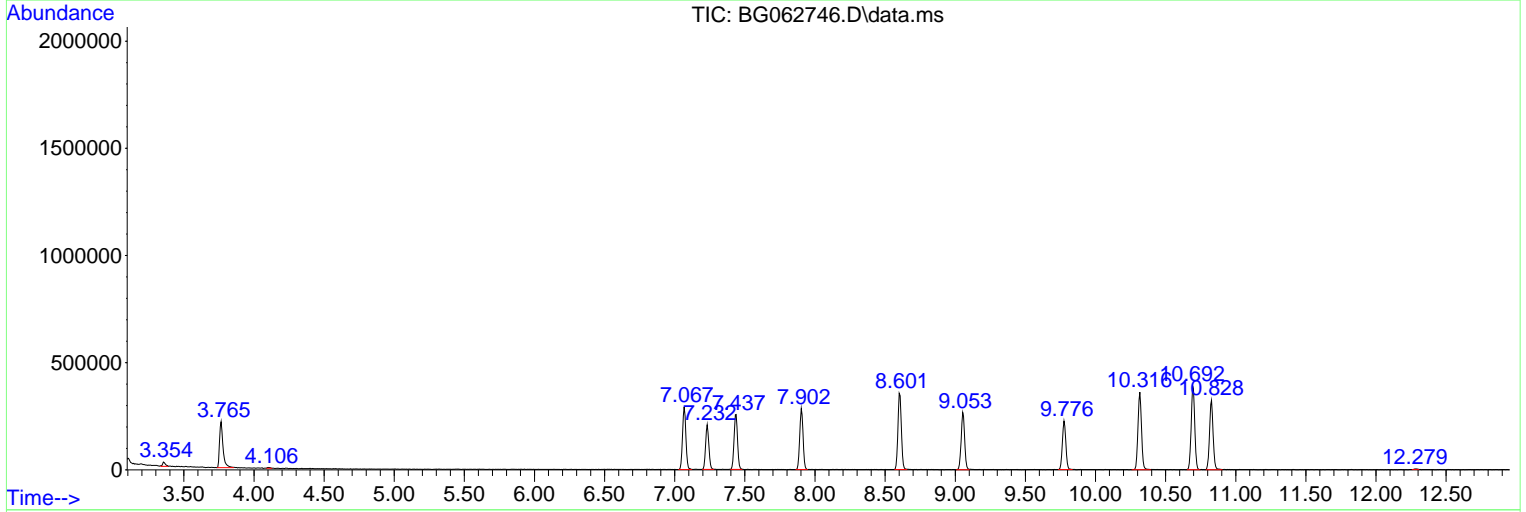
Sum of corrected areas: 27388242

Data Path : Z:\svoasrv\HPCHEM1\BNA\_G\Data\BG091024\  
 Data File : BG062746.D  
 Acq On : 11 Sep 2024 22:17  
 Operator : JU/RC  
 Sample : PB163242BL  
 Misc :  
 ALS Vial : 54 Sample Multiplier: 1

Instrument :  
 BNA\_G  
 ClientSampleId :  
 SBLK242

Quant Method : Z:\svoasrv\HPCHEM1\BNA\_G\Methods\SFAM-EPA-BG090924.MA.M  
 Quant Title : SVOA CALIBRATION

TIC Library : C:\DATABASE\NIST20.L  
 TIC Integration Parameters: LSCINT.P



Library Search Compound Report

Data Path : Z:\svoasrv\HPCHEM1\BNA\_G\Data\BG091024\  
Data File : BG062746.D  
Acq On : 11 Sep 2024 22:17  
Operator : JU/RC  
Sample : PB163242BL  
Misc :  
ALS Vial : 54 Sample Multiplier: 1

Instrument :  
BNA\_G  
ClientSampleId :  
SBLK242

Quant Method : Z:\svoasrv\HPCHEM1\BNA\_G\Methods\SFAM-EPA-BG090924.MA.M  
Quant Title : SVOA CALIBRATION

TIC Library : C:\DATABASE\NIST20.L  
TIC Integration Parameters: LSCINT.P

No Library Search Compounds Detected

\*\*\*\*\*

Data Path : Z:\svoasrv\HPCHEM1\BNA\_G\Data\BG091024\  
Data File : BG062746.D  
Acq On : 11 Sep 2024 22:17  
Operator : JU/RC  
Sample : PB163242BL  
Misc :  
ALS Vial : 54 Sample Multiplier: 1

Instrument :  
BNA\_G  
ClientSampleId :  
SBLK242

Quant Method : Z:\svoasrv\HPCHEM1\BNA\_G\Methods\SFAM-EPA-BG090924.MA.M  
Quant Title : SVOA CALIBRATION

TIC Library : C:\DATABASE\NIST0.L  
TIC Integration Parameters: LSCINT.P

TIC Top Hit name	RT	EstConc	Units	Response	--Internal Standard--			
					#	RT	Resp	Conc

---