

Data Path : \\74.0.250.170\SVOASRV\HPCHEM1\BNA G\DATA\BG091117\
 Data File : BG028655.D
 Acq On : 12 Sep 2017 00:26
 Operator : SJ/JU
 Sample : I5123-07
 Misc :
 ALS Vial : 19 Sample Multiplier: 1

Instrument :
 BNA_G
 ClientSampleId :

Quant Time: Sep 12 04:44:34 2017
 Quant Method : Z:\HPCHEM1\BNA G\METHODS\8270-BG090717.M
 Quant Title : ASP BNA STANDARDS FOR 5 POINT CALIBRATION
 QLast Update : Thu Sep 07 18:39:50 2017
 Response via : Initial Calibration

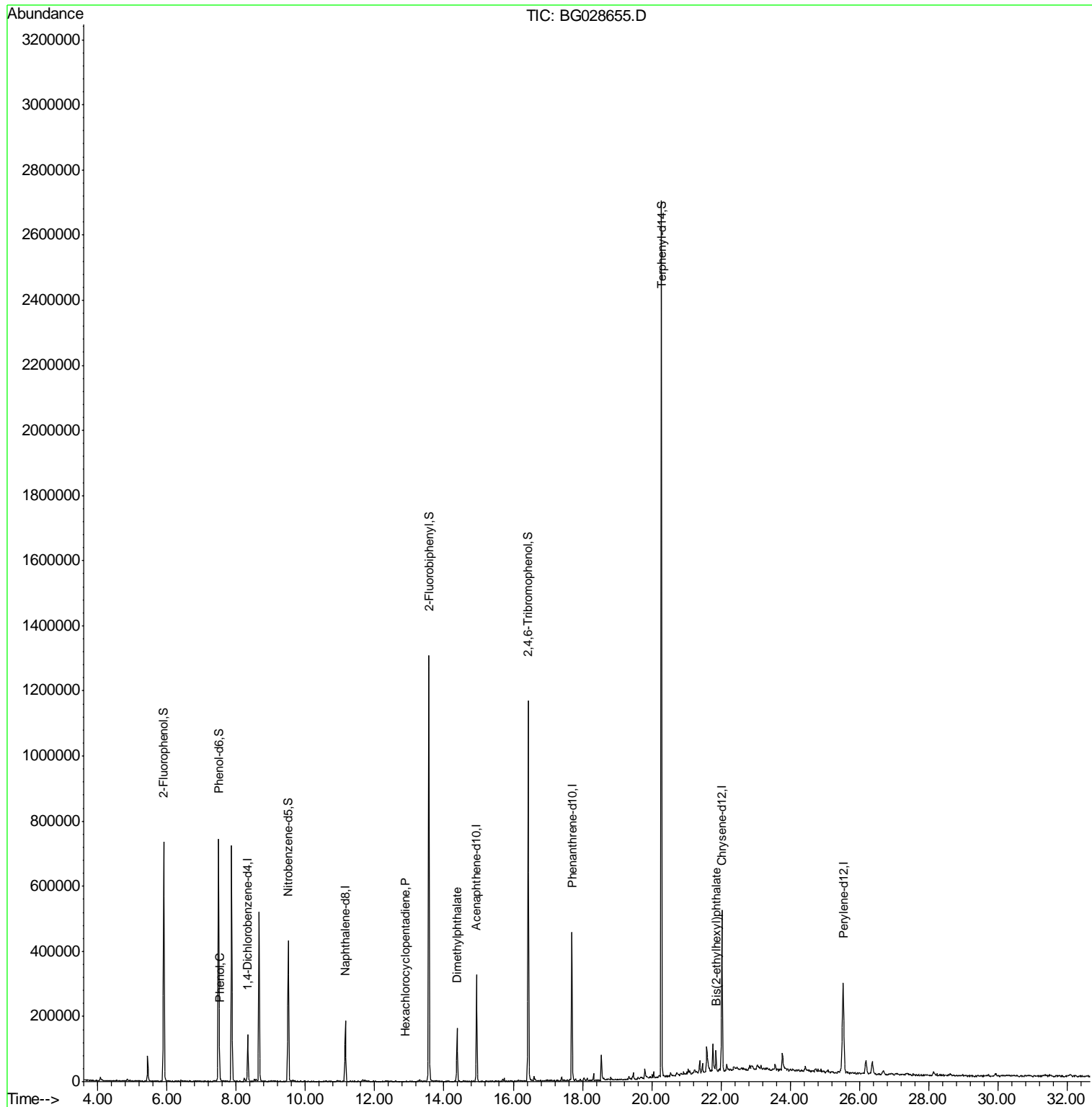
Internal Standards	R.T.	QIon	Response	Conc	Units	Dev(Min)
1) 1,4-Dichlorobenzene-d4	8.33	152	40542	20.00	ng	0.00
21) Naphthalene-d8	11.15	136	157397	20.00	ng	0.00
38) Acenaphthene-d10	14.94	164	113302	20.00	ng	0.00
63) Phenanthrene-d10	17.70	188	303450	20.00	ng	0.00
75) Chrysene-d12	22.03	240	349323	20.00	ng	0.00
86) Perylene-d12	25.53	264	349421	20.00	ng	0.00
System Monitoring Compounds						
5) 2-Fluorophenol	5.91	112	305813	127.01	ng	0.00
7) Phenol-d6	7.49	99	438012	125.41	ng	0.00
23) Nitrobenzene-d5	9.50	82	276208	80.58	ng	0.00
41) 2,4,6-Tribromophenol	16.43	330	240310	139.55	ng	0.00
44) 2-Fluorobiphenyl	13.57	172	708113	81.76	ng	0.00
78) Terphenyl-d14	20.28	244	1218471	75.15	ng	0.00
Target Compounds						
10) Phenol	7.52	94	10765	2.846	ng	96
40) Hexachlorocyclopentadiene	12.88	237	64	9.111	ng	# 29
49) Dimethylphthalate	14.38	163	109474	11.727	ng	98
83) Bis(2-ethylhexyl)phthalate	21.86	149	25568	2.214	ng	# 97

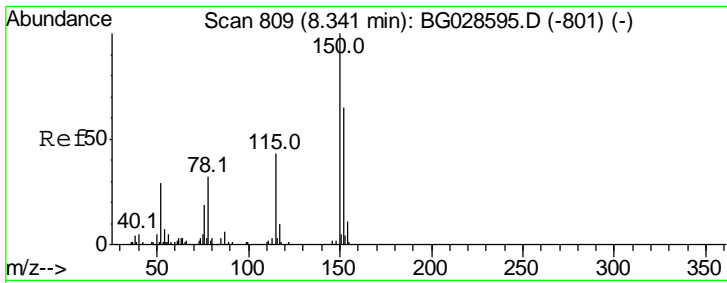
(#) = qualifier out of range (m) = manual integration (+) = signals summed

Data Path : \\74.0.250.170\SVOASRV\HPCHEM1\BNA G\DATA\BG091117\
 Data File : BG028655.D
 Acq On : 12 Sep 2017 00:26
 Operator : SJ/JU
 Sample : I5123-07
 Misc :
 ALS Vial : 19 Sample Multiplier: 1

Instrument :
 BNA_G
 ClientSampleId :

Quant Time: Sep 12 04:44:34 2017
 Quant Method : Z:\HPCHEM1\BNA G\METHODS\8270-BG090717.M
 Quant Title : ASP BNA STANDARDS FOR 5 POINT CALIBRATION
 QLast Update : Thu Sep 07 18:39:50 2017
 Response via : Initial Calibration

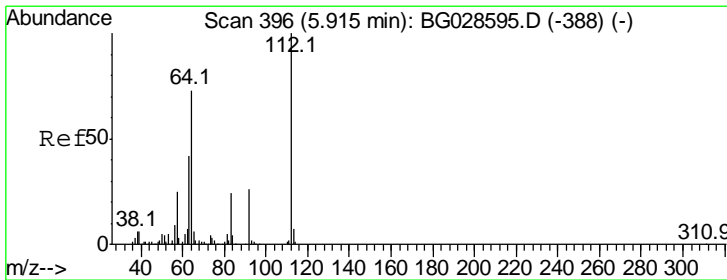
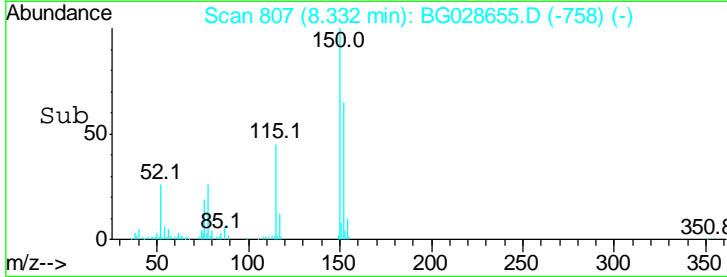
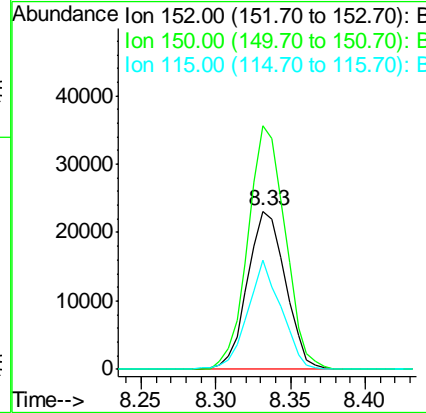
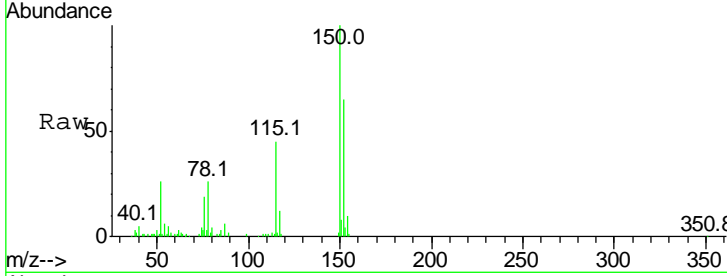




#1
 1,4-Dichlorobenzene-d4
 Concen: 20.000 ng
 RT: 8.33 min Scan# 807
 Delta R.T. -0.01 min
 Lab File: BG028655.D
 Acq: 12 Sep 2017 00:26

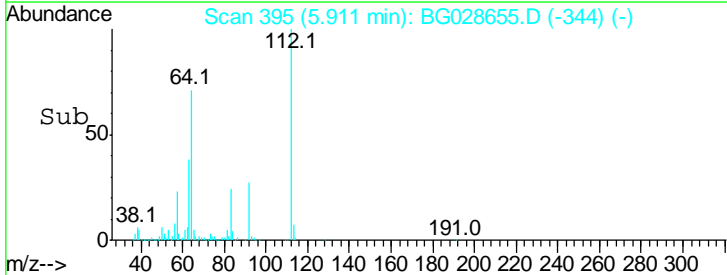
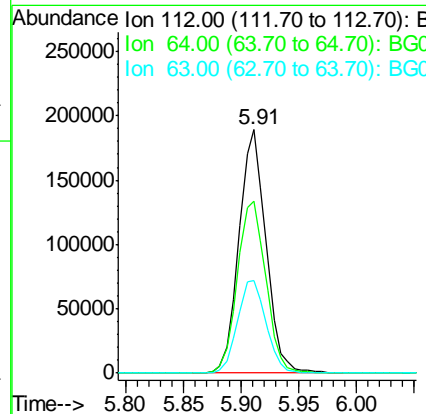
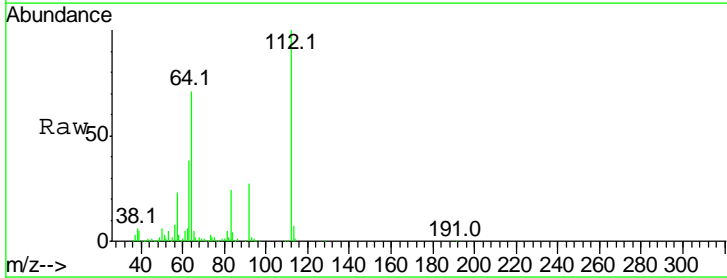
Instrument :
 BNA_G
 ClientSampled :

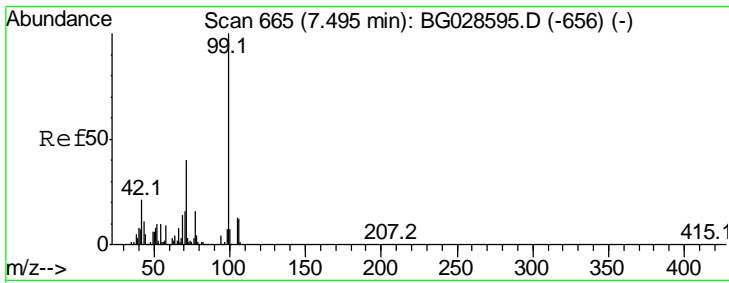
Tgt Ion	Resp	Lower	Upper
152	40542		
152	100		
150	153.9	114.0	171.0
115	69.1	48.1	72.1



#5
 2-Fluorophenol
 Concen: 127.006 ng
 RT: 5.91 min Scan# 395
 Delta R.T. -0.00 min
 Lab File: BG028655.D
 Acq: 12 Sep 2017 00:26

Tgt Ion	Resp	Lower	Upper
112	305813		
112	100		
64	70.6	61.8	92.6
63	37.9	37.2	55.8

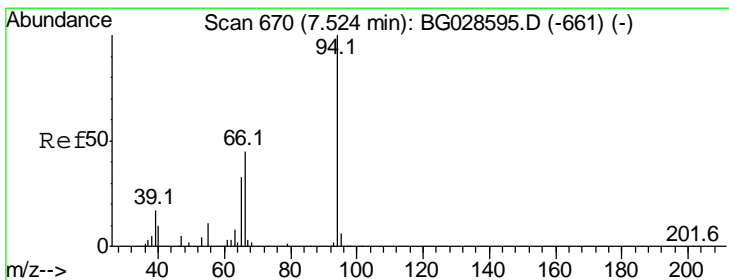
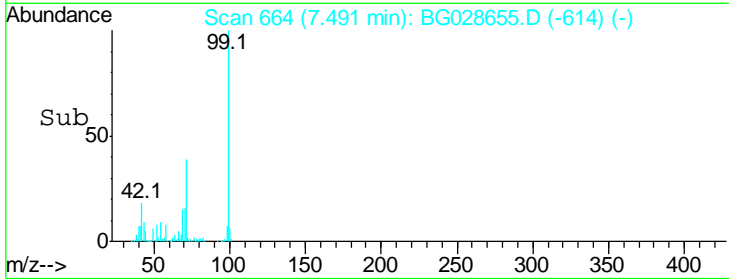
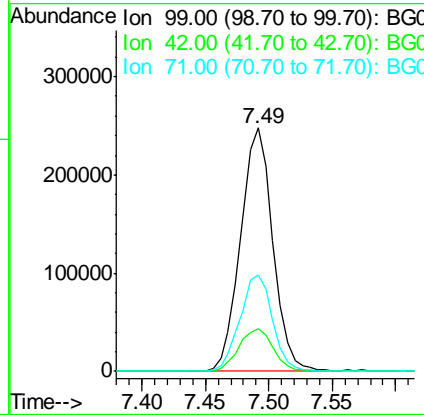
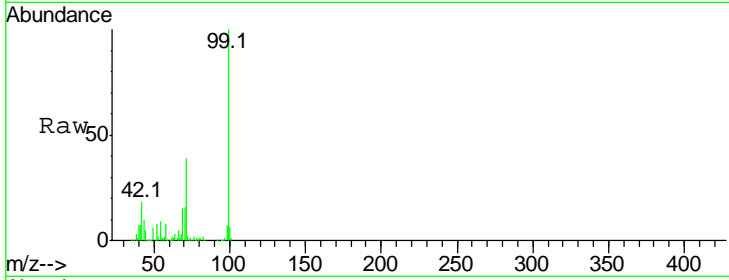




#7
 Phenol-d6
 Concen: 125.413 ng
 RT: 7.49 min Scan# 664
 Delta R.T. -0.00 min
 Lab File: BG028655.D
 Acq: 12 Sep 2017 00:26

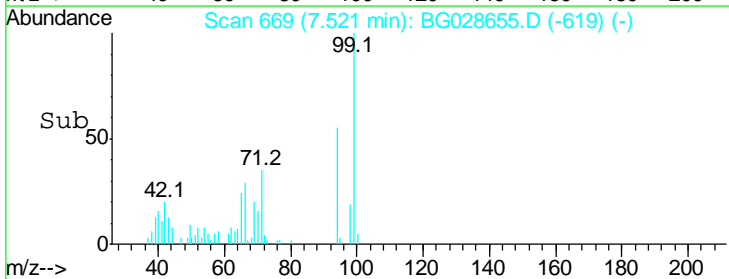
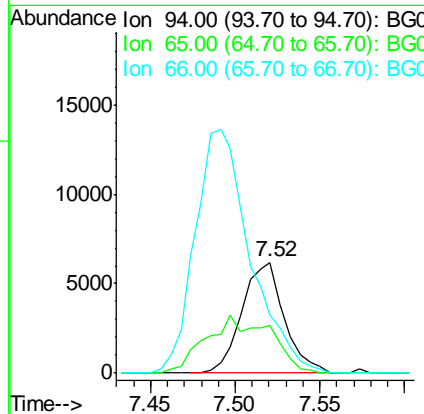
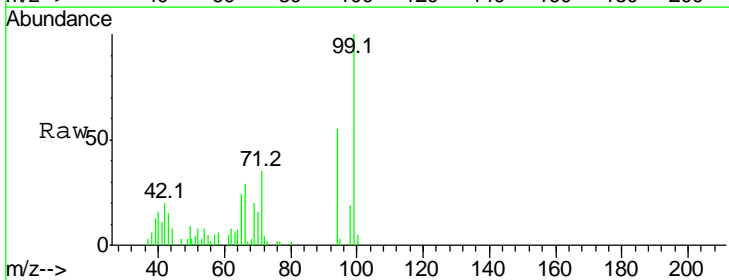
Instrument :
 BNA_G
 ClientSampled :

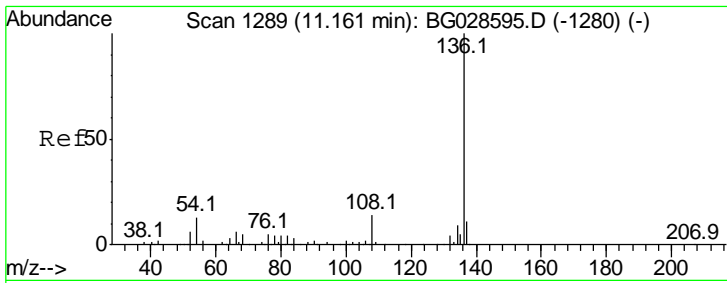
Tgt Ion	Resp	Lower	Upper
99	100		
42	17.7	20.5	30.7#
71	39.4	37.6	56.4



#10
 Phenol
 Concen: 2.846 ng
 RT: 7.52 min Scan# 669
 Delta R.T. -0.00 min
 Lab File: BG028655.D
 Acq: 12 Sep 2017 00:26

Tgt Ion	Resp	Lower	Upper
94	100		
65	42.7	20.6	60.6
66	52.7	35.5	75.5

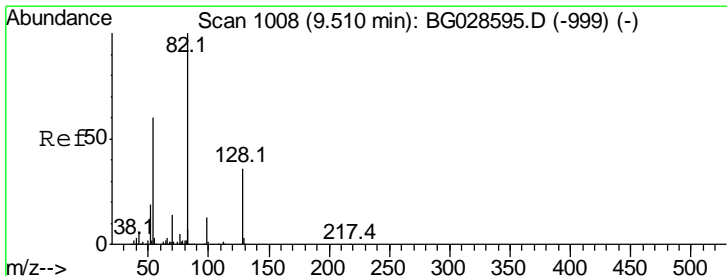
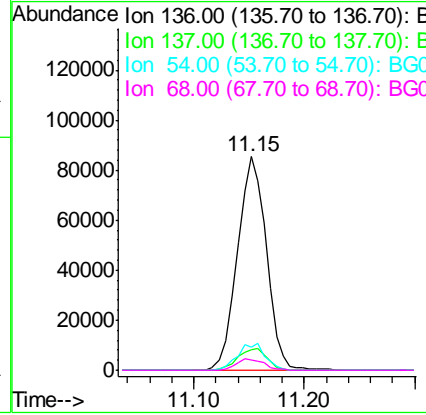
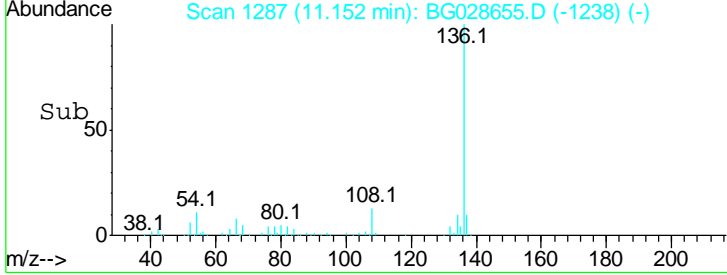
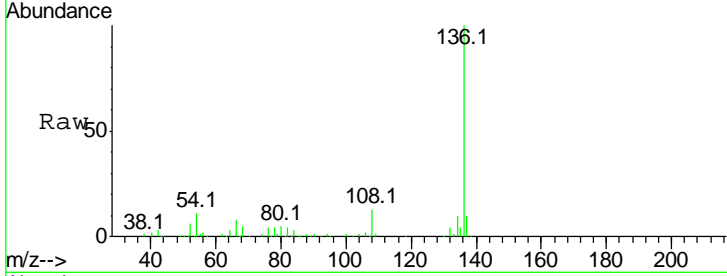




#21
 Naphthalene-d8
 Concen: 20.000 ng
 RT: 11.15 min Scan# 1287
 Delta R.T. -0.01 min
 Lab File: BG028655.D
 Acq: 12 Sep 2017 00:26

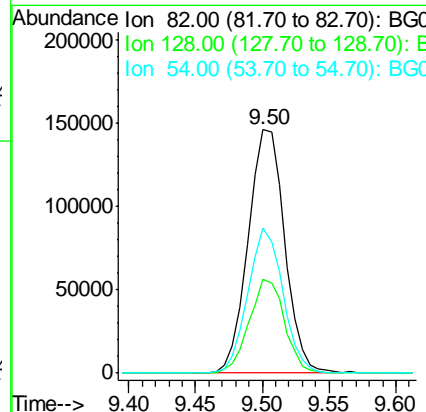
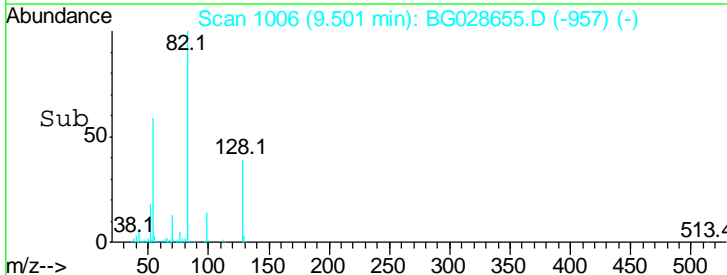
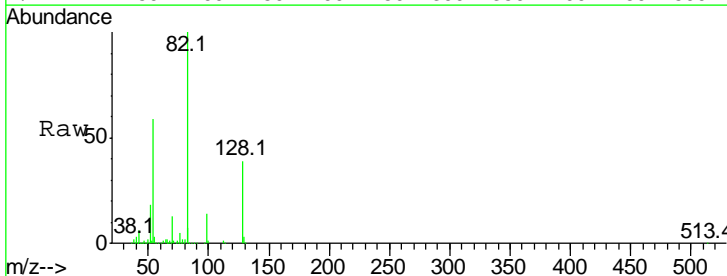
Instrument :
 BNA_G
 ClientSampled :

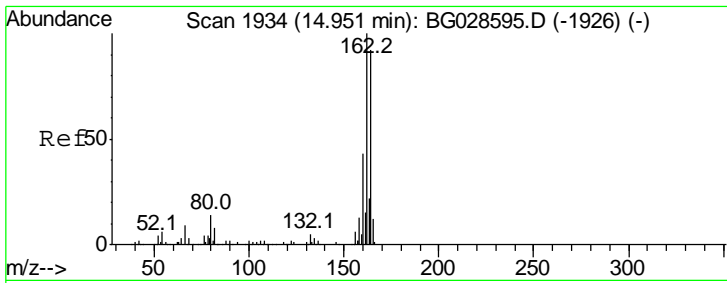
Tgt Ion	Resp	Lower	Upper
136	157397		
137	9.5	8.9	13.3
54	11.1	9.3	13.9
68	5.0	5.1	7.7#



#23
 Nitrobenzene-d5
 Concen: 80.579 ng
 RT: 9.50 min Scan# 1006
 Delta R.T. -0.01 min
 Lab File: BG028655.D
 Acq: 12 Sep 2017 00:26

Tgt Ion	Resp	Lower	Upper
82	276208		
128	38.6	26.4	39.6
54	59.4	49.4	74.2

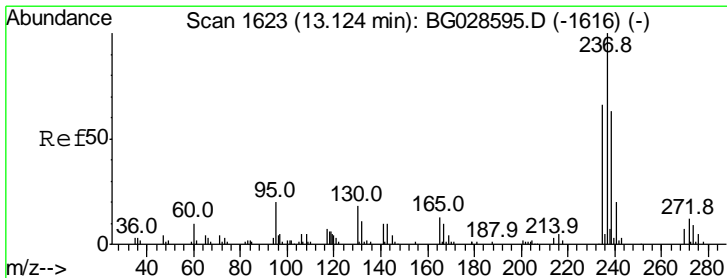
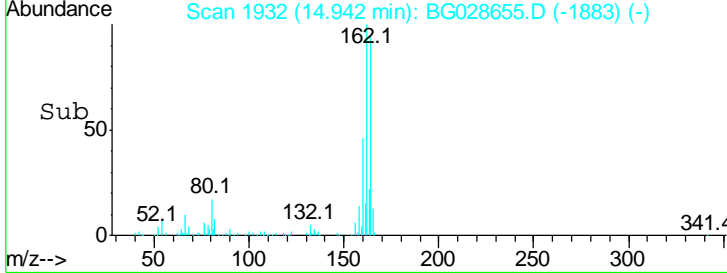
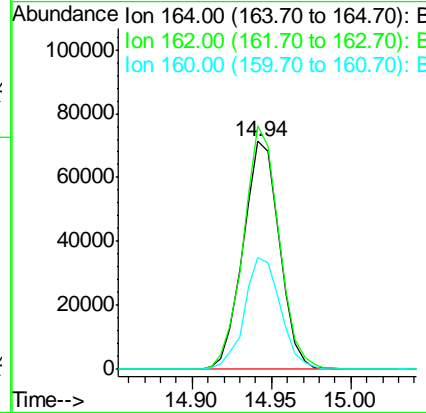
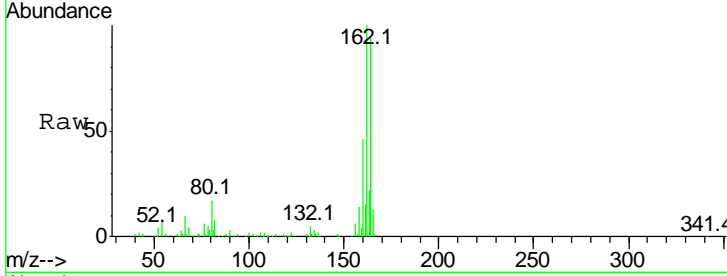




#38
 Acenaphthene-d10
 Concen: 20.000 ng
 RT: 14.94 min Scan# 1932
 Delta R.T. -0.01 min
 Lab File: BG028655.D
 Acq: 12 Sep 2017 00:26

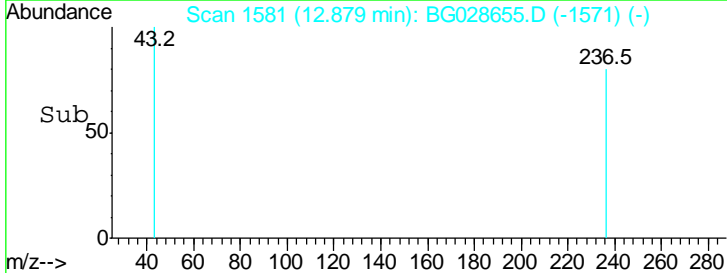
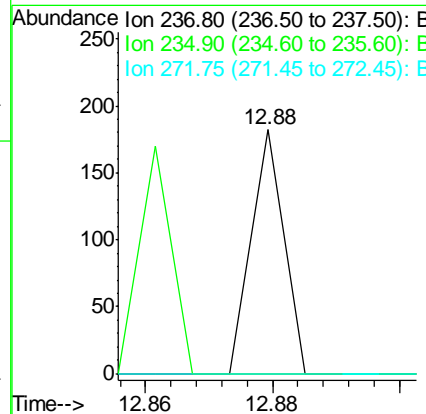
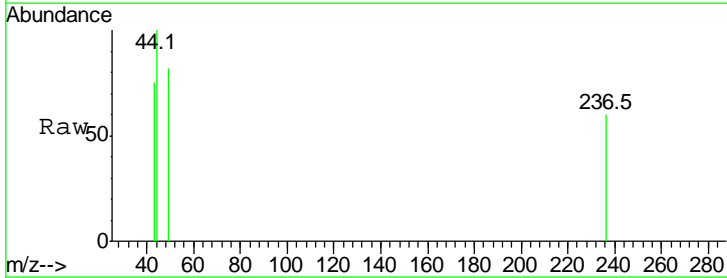
Instrument :
 BNA_G
 ClientSampled :

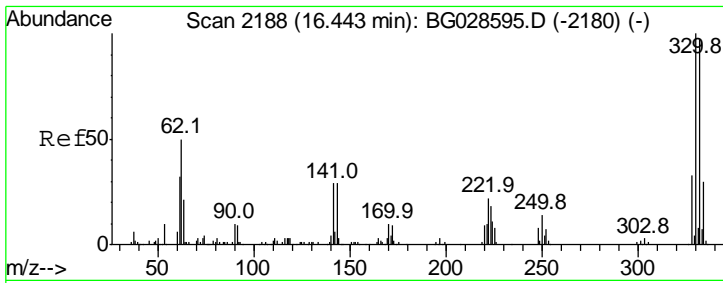
Tgt Ion	Resp	Lower	Upper
164	100		
162	106.7	85.1	127.7
160	48.9	34.7	52.1



#40
 Hexachlorocyclopentadiene
 Concen: 9.111 ng
 RT: 12.88 min Scan# 1581
 Delta R.T. -0.24 min
 Lab File: BG028655.D
 Acq: 12 Sep 2017 00:26

Tgt Ion	Resp	Lower	Upper
237	100		
235	0.0	39.4	79.4#
272	0.0	0.0	32.0

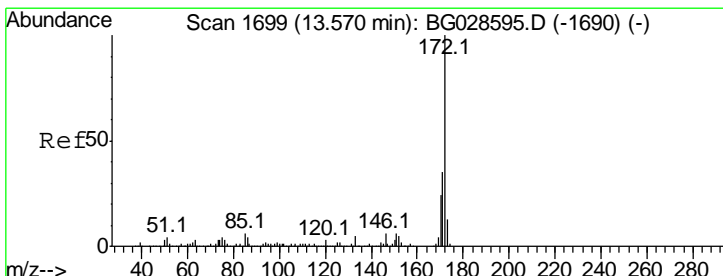
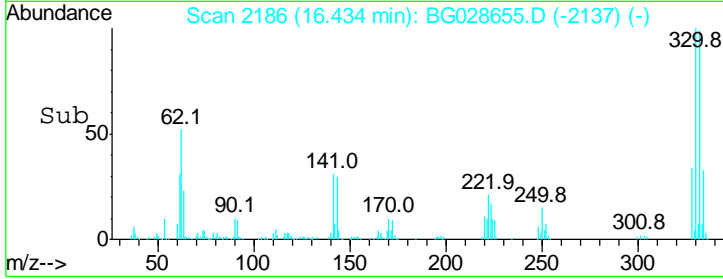
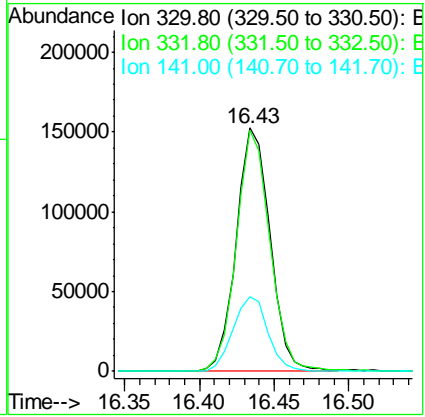
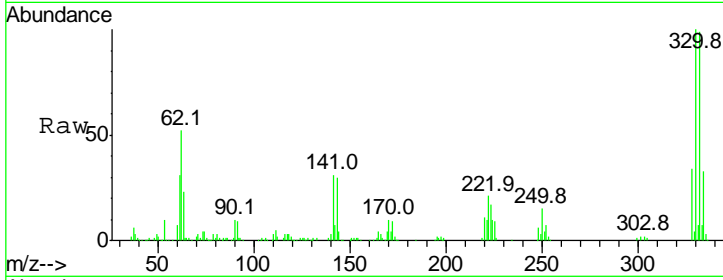




#41
 2,4,6-Tribromophenol
 Concen: 139.547 ng
 RT: 16.43 min Scan# 2186
 Delta R.T. -0.01 min
 Lab File: BG028655.D
 Acq: 12 Sep 2017 00:26

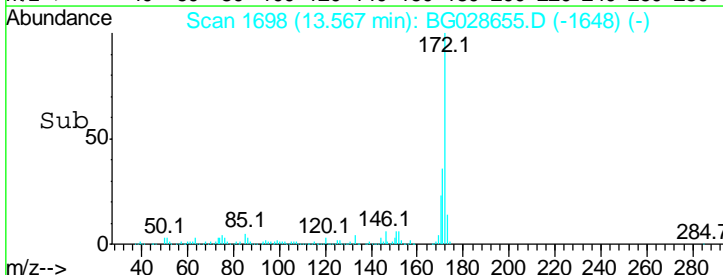
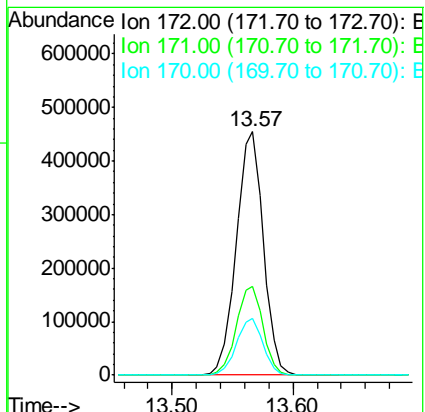
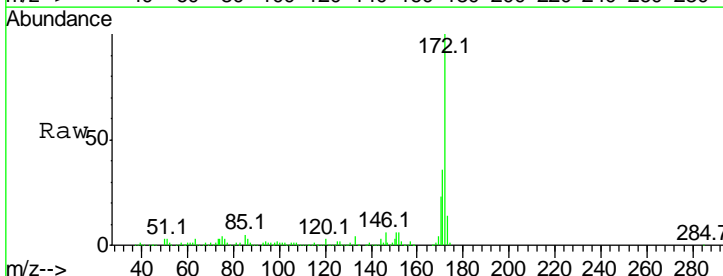
Instrument :
 BNA_G
 ClientSampled :

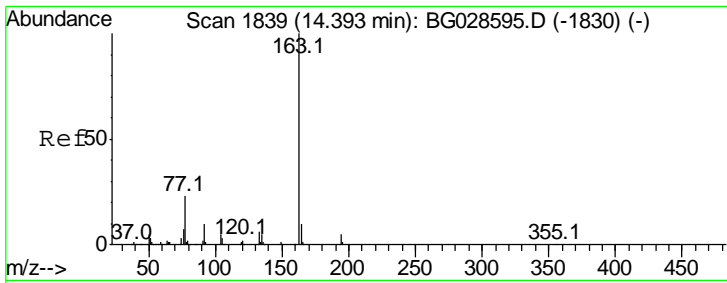
Tgt Ion	Resp	Lower	Upper
330	100		
332	98.3	77.3	115.9
141	31.6	32.1	48.1#



#44
 2-Fluorobiphenyl
 Concen: 81.761 ng
 RT: 13.57 min Scan# 1698
 Delta R.T. -0.00 min
 Lab File: BG028655.D
 Acq: 12 Sep 2017 00:26

Tgt Ion	Resp	Lower	Upper
172	100		
171	36.4	32.2	48.2
170	23.5	21.8	32.6

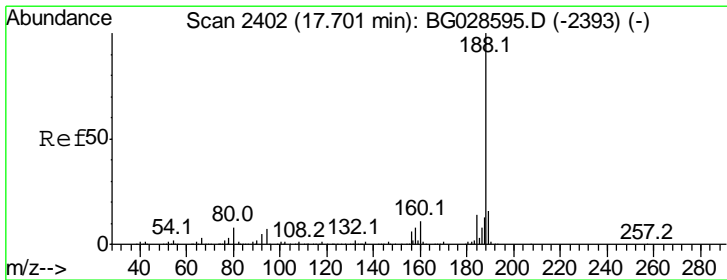
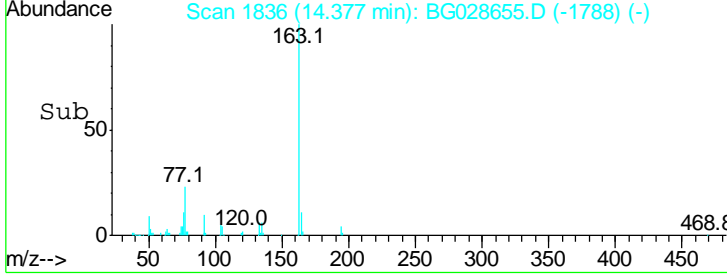
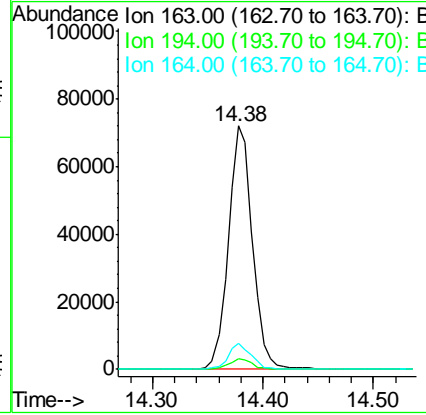
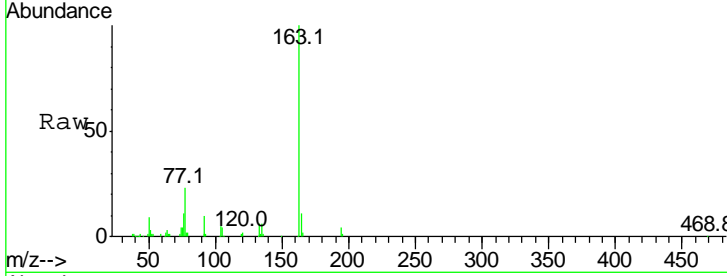




#49
 Dimethylphthalate
 Concen: 11.727 ng
 RT: 14.38 min Scan# 1836
 Delta R.T. -0.02 min
 Lab File: BG028655.D
 Acq: 12 Sep 2017 00:26

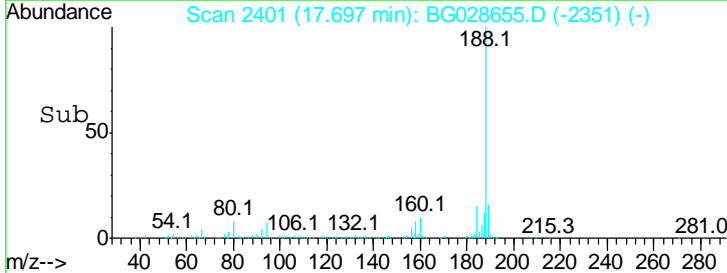
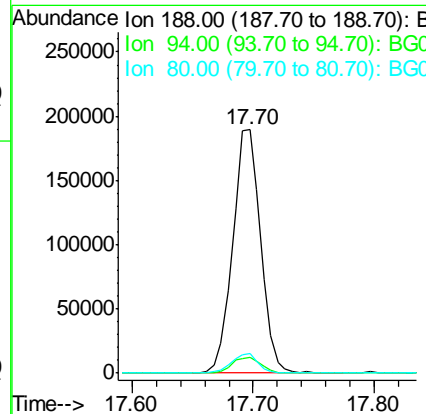
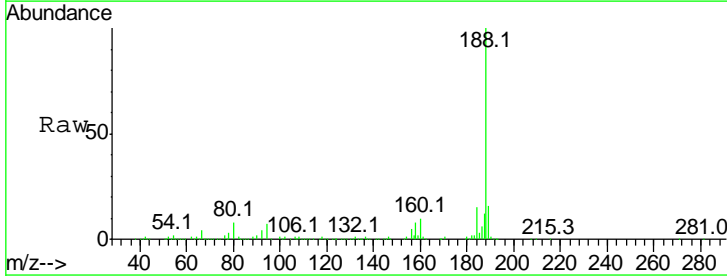
Instrument :
 BNA_G
 ClientSampled :

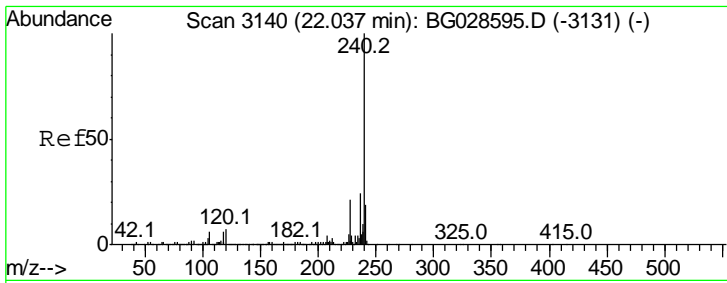
Tgt Ion	Resp	Lower	Upper
163	109474		
194	4.3	3.8	5.6
164	10.8	9.3	13.9



#63
 Phenanthrene-d10
 Concen: 20.000 ng
 RT: 17.70 min Scan# 2401
 Delta R.T. -0.00 min
 Lab File: BG028655.D
 Acq: 12 Sep 2017 00:26

Tgt Ion	Resp	Lower	Upper
188	303450		
94	6.5	5.8	8.8
80	8.1	7.5	11.3

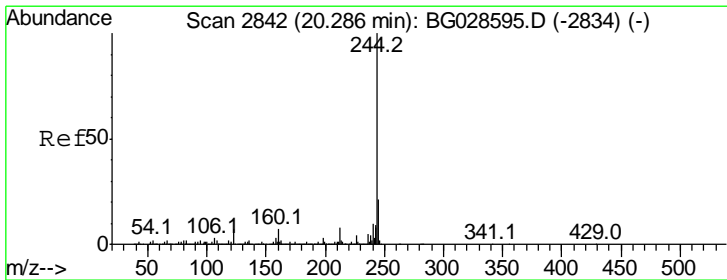
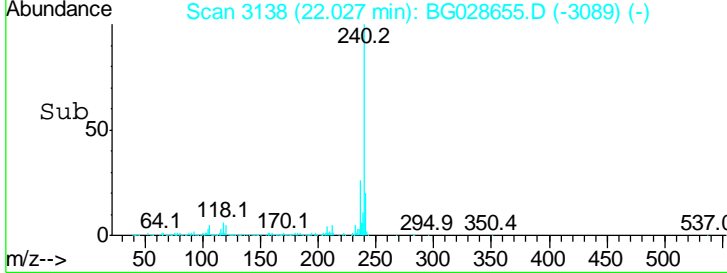
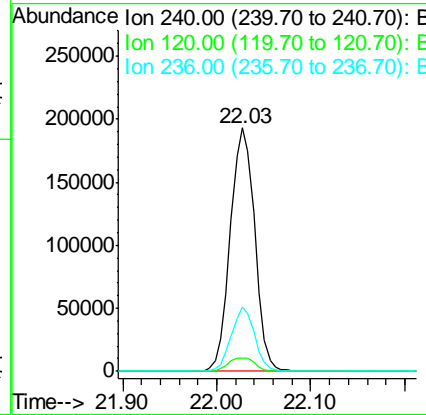
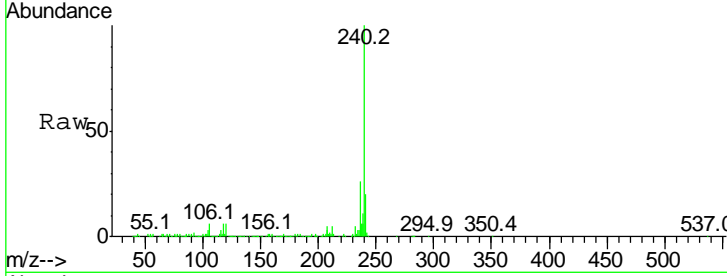




#75
 Chrysene-d12
 Concen: 20.000 ng
 RT: 22.03 min Scan# 3138
 Delta R.T. -0.01 min
 Lab File: BG028655.D
 Acq: 12 Sep 2017 00:26

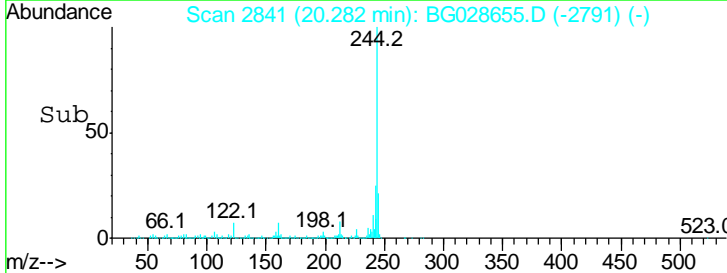
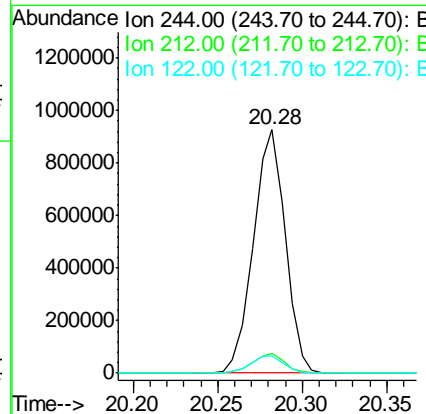
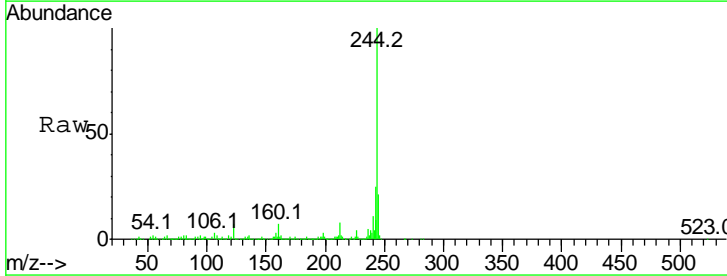
Instrument :
 BNA_G
 ClientSampled :

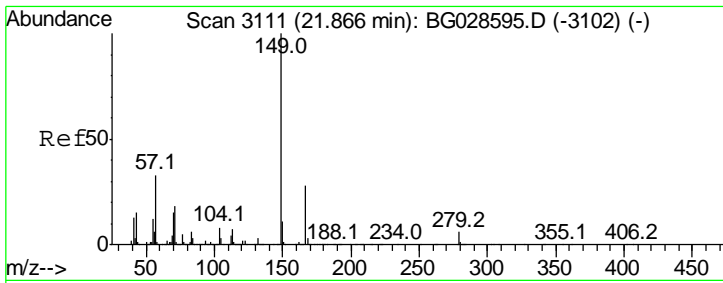
Tgt Ion	Ratio	Lower	Upper
240	100		
120	5.5	5.7	8.5#
236	26.4	22.2	33.4



#78
 Terphenyl-d14
 Concen: 75.152 ng
 RT: 20.28 min Scan# 2841
 Delta R.T. -0.00 min
 Lab File: BG028655.D
 Acq: 12 Sep 2017 00:26

Tgt Ion	Ratio	Lower	Upper
244	100		
212	7.9	10.0	15.0#
122	7.0	8.6	12.8#

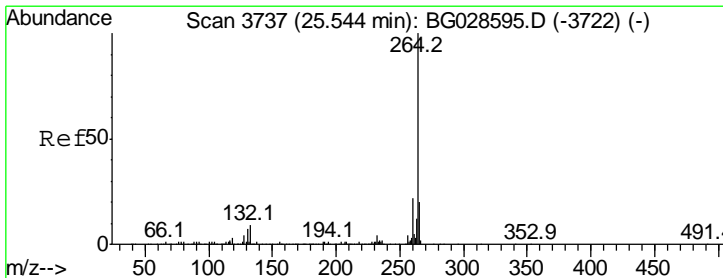
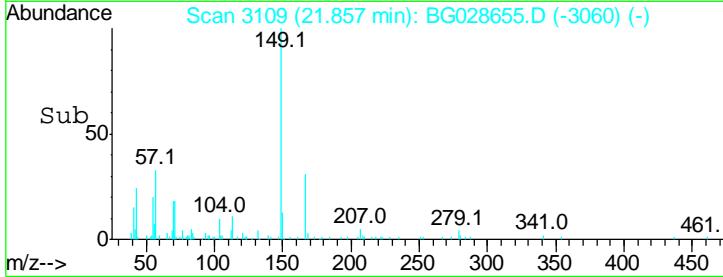
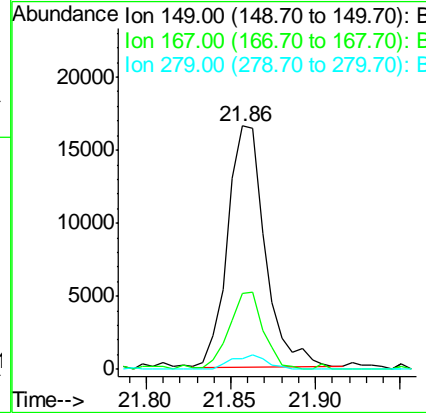
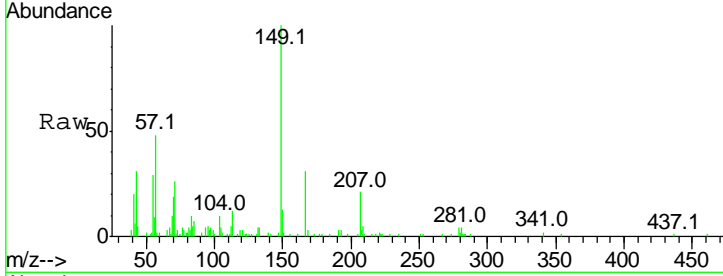




#83
 Bis(2-ethylhexyl)phthalate
 Concen: 2.214 ng
 RT: 21.86 min Scan# 3109
 Delta R.T. -0.01 min
 Lab File: BG028655.D
 Acq: 12 Sep 2017 00:26

Instrument :
 BNA_G
 ClientSampled :

Tgt Ion	Resp	Lower	Upper
149	100		
167	31.1	23.7	35.5
279	4.4	4.6	6.8#



#86
 Perylene-d12
 Concen: 20.000 ng
 RT: 25.53 min Scan# 3735
 Delta R.T. -0.01 min
 Lab File: BG028655.D
 Acq: 12 Sep 2017 00:26

Tgt Ion	Resp	Lower	Upper
264	100		
260	22.9	21.8	32.8
265	19.6	18.2	27.4

