

Data Path : \\74.0.250.170\SVOASRV\HPCHEM1\BNA G\DATA\BG091217\
 Data File : BG028685.D
 Acq On : 13 Sep 2017 1:07
 Operator : SJ/JU
 Sample : I5189-15
 Misc :
 ALS Vial : 13 Sample Multiplier: 1

Instrument :
 BNA_G
 ClientSampleID :
 CB-01-090817

Quant Time: Sep 13 04:09:02 2017
 Quant Method : Z:\HPCHEM1\BNA G\METHODS\8270-BG091217.M
 Quant Title : ASP BNA STANDARDS FOR 5 POINT CALIBRATION
 QLast Update : Tue Sep 12 16:57:11 2017
 Response via : Initial Calibration

Internal Standards	R.T.	QIon	Response	Conc	Units	Dev(Min)
1) 1,4-Dichlorobenzene-d4	8.33	152	23584	20.00	ng	0.00
21) Naphthalene-d8	11.15	136	96810	20.00	ng	0.00
38) Acenaphthene-d10	14.94	164	74721	20.00	ng	0.00
63) Phenanthrene-d10	17.69	188	234158	20.00	ng	0.00
75) Chrysene-d12	22.03	240	274216	20.00	ng	0.00
86) Perylene-d12	25.52	264	283239	20.00	ng	0.00

System Monitoring Compounds

5) 2-Fluorophenol	5.90	112	104158	72.87	ng	0.00
7) Phenol-d6	7.49	99	84116	39.09	ng	0.00
23) Nitrobenzene-d5	9.50	82	203553	100.58	ng	0.00
41) 2,4,6-Tribromophenol	16.43	330	226615	183.37	ng	0.00
44) 2-Fluorobiphenyl	13.56	172	538290	96.06	ng	0.00
78) Terphenyl-d14	20.28	244	1293195	100.57	ng	0.00

Target Compounds

Target Compounds	R.T.	QIon	Response	Conc	Units	Qvalue
2) 1,4-Dioxane	3.84	88	59	0.102	ng	# 1
3) Pyridine	4.29	79	91	0.055	ng	# 1
4) n-Nitrosodimethylamine	4.11	42	54	0.072	ng	# 1
6) Aniline	7.86	93	518	0.207	ng	# 1
9) Benzaldehyde	7.55	77	136	0.102	ng	# 10
11) bis(2-Chloroethyl)ether	7.86	93	518	0.318	ng	# 1
14) 1,2-Dichlorobenzene	8.78	146	56	0.032	ng	# 21
15) Benzyl Alcohol	8.66	79	3445	2.051	ng	# 38
16) 2,2'-oxybis(1-Chloropropan	8.63	45	118	0.040	ng	# 74
17) 2-Methylphenol	8.62	107	56	0.038	ng	# 9
20) 3+4-Methylphenols	9.33	107	54	0.026	ng	# 18
24) Nitrobenzene	9.51	77	652	0.291	ng	# 49
25) Isophorone	9.99	82	93	0.023	ng	# 67
28) bis(2-Chloroethoxy)methane	10.59	93	54	0.024	ng	# 50
31) Naphthalene	11.41	128	55	0.011	ng	# 67
37) 2-Methylnaphthalene	12.80	142	57	0.015	ng	# 14
45) 1,1'-Biphenyl	13.78	154	795	0.129	ng	# 73
47) 2-Nitroaniline	14.01	65	67	0.040	ng	# 16
50) 2,6-Dinitrotoluene	14.64	165	59	0.042	ng	# 11
51) Acenaphthene	14.94	154	216	0.049	ng	# 46
52) 3-Nitroaniline	14.71	138	80	0.065	ng	# 1
59) Diethylphthalate	15.74	149	205	0.032	ng	# 56
60) 4-Chlorophenyl-phenylether	15.84	204	62	0.017	ng	# 26
62) Azobenzene	16.26	77	83	0.015	ng	# 47
65) n-Nitrosodiphenylamine	16.43	169	6915	1.030	ng	# 38
66) 4-Bromophenyl-phenylether	16.83	248	59	0.020	ng	# 8
70) Phenanthrene	17.75	178	60	0.005	ng	# 56
71) Anthracene	17.75	178	60	0.005	ng	# 58
72) Carbazole	18.06	167	56	0.005	ng	# 55
73) Di-n-butylphthalate	18.63	149	2340	0.175	ng	# 73
74) Fluoranthene	19.74	202	57	0.004	ng	# 61
76) Benzidine	20.04	184	64	0.009	ng	# 64
77) Pvrene	20.28	202	4167	0.263	ng	# 69
79) Butylbenzylphthalate	20.96	149	115	0.018	ng	# 19

Data Path : \\74.0.250.170\SVOASRV\HPCHEM1\BNA G\DATA\BG091217\
 Data File : BG028685.D
 Acq On : 13 Sep 2017 1:07
 Operator : SJ/JU
 Sample : I5189-15
 Misc :
 ALS Vial : 13 Sample Multiplier: 1

Instrument :
 BNA_G
 ClientSampleId :
 CB-01-090817

Quant Time: Sep 13 04:09:02 2017
 Quant Method : Z:\HPCHEM1\BNA G\METHODS\8270-BG091217.M
 Quant Title : ASP BNA STANDARDS FOR 5 POINT CALIBRATION
 QLast Update : Tue Sep 12 16:57:11 2017
 Response via : Initial Calibration

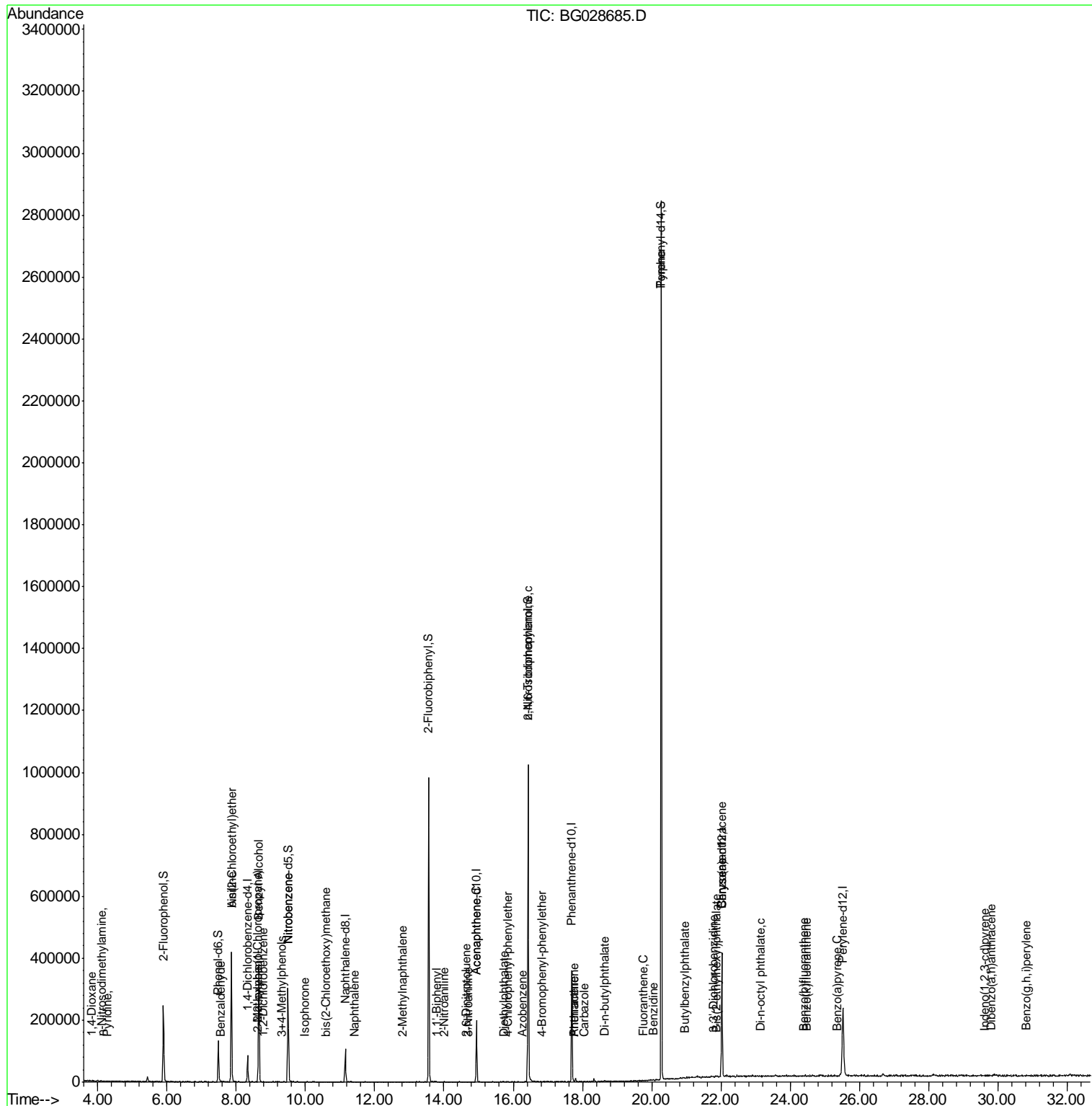
Internal Standards	R.T.	QIon	Response	Conc	Units	Dev(Min)
80) Benzo(a)anthracene	22.03	228	992	0.060	ng	# 47
81) 3,3'-Dichlorobenzidine	21.79	252	60	0.009	ng	# 24
82) Chrysene	22.03	228	992	0.063	ng	# 46
83) Bis(2-ethylhexyl)phthalate	21.87	149	1304	0.144	ng	# 51
84) Di-n-octyl phthalate	23.14	149	88	0.006	ng	# 1
85) Indeno(1,2,3-cd)pyrene	29.61	276	61	0.003	ng	# 5
87) Benzo(b)fluoranthene	24.40	252	55	0.003	ng	# 1
88) Benzo(k)fluoranthene	24.48	252	102	0.006	ng	# 56
89) Benzo(a)pyrene	25.36	252	56	0.003	ng	# 58
90) Dibenzo(a,h)anthracene	29.82	278	61	0.004	ng	# 58
91) Benzo(a,h,i)perylene	30.83	276	68	0.004	ng	# 59

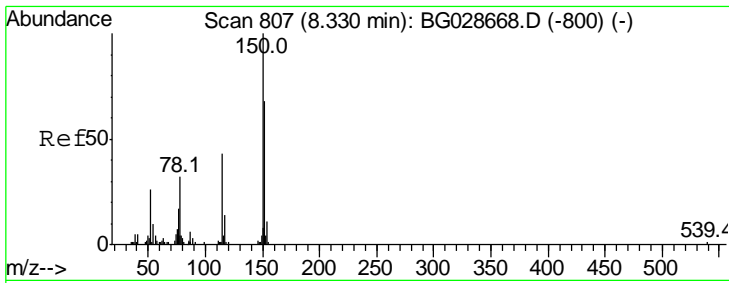
(#) = qualifier out of range (m) = manual integration (+) = signals summed

Data Path : \\74.0.250.170\SVOASRV\HPCHEM1\BNA G\DATA\BG091217\
 Data File : BG028685.D
 Acq On : 13 Sep 2017 1:07
 Operator : SJ/JU
 Sample : I5189-15
 Misc :
 ALS Vial : 13 Sample Multiplier: 1

Instrument :
 BNA_G
 Client Sample ID :
 CB-01-090817

Quant Time: Sep 13 04:09:02 2017
 Quant Method : Z:\HPCHEM1\BNA G\METHODS\8270-BG091217.M
 Quant Title : ASP BNA STANDARDS FOR 5 POINT CALIBRATION
 QLast Update : Tue Sep 12 16:57:11 2017
 Response via : Initial Calibration

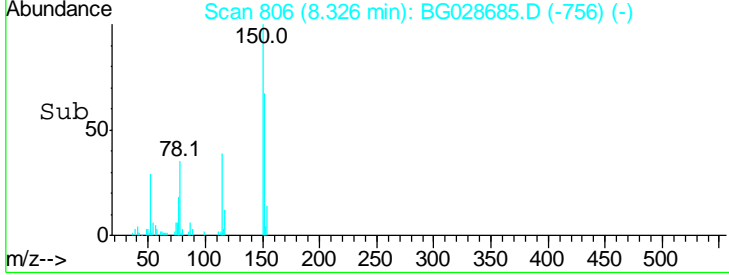
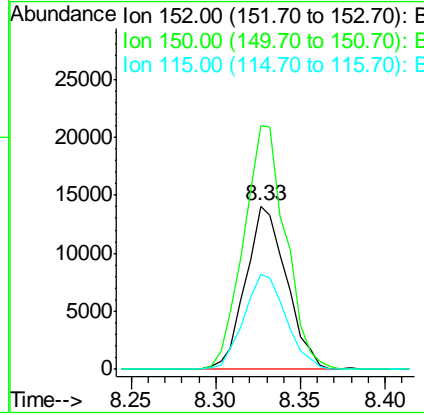
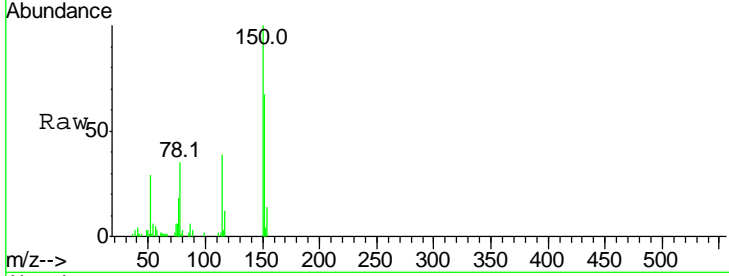




#1
 1,4-Dichlorobenzene-d4
 Concen: 20.000 ng
 RT: 8.33 min Scan# 806
 Delta R.T. -0.00 min
 Lab File: BG028685.D
 Acq: 13 Sep 2017 1:07

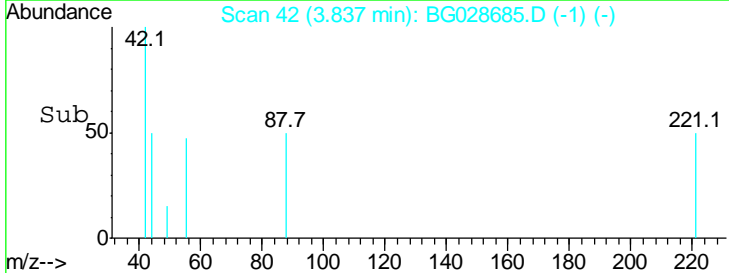
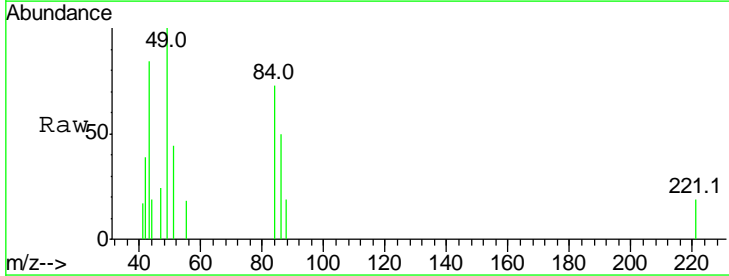
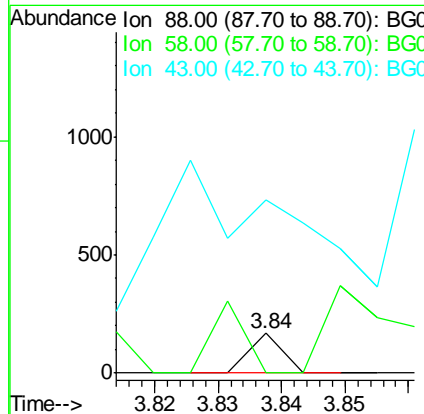
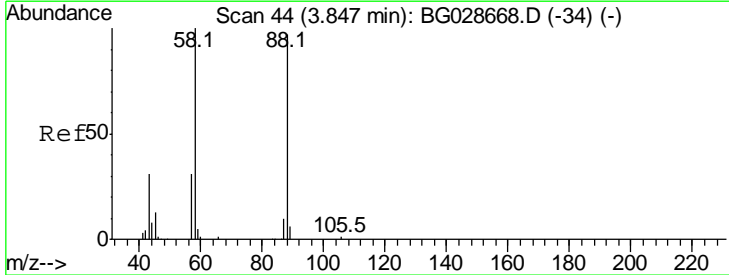
Instrument :
 BNA_G
 ClientSampled :
 CB-01-090817

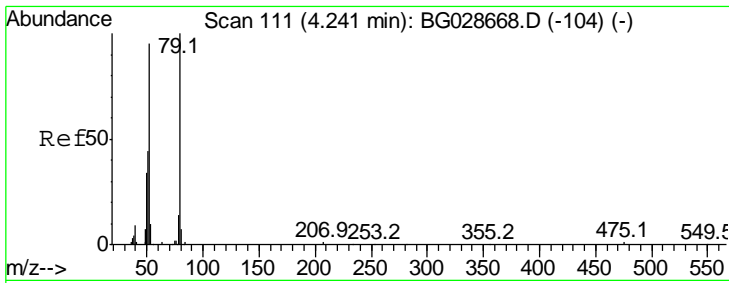
Tgt Ion	Resp	Lower	Upper
152	100		
150	149.1	114.0	171.0
115	58.6	48.1	72.1



#2
 1,4-Dioxane
 Concen: 0.102 ng
 RT: 3.84 min Scan# 42
 Delta R.T. -0.01 min
 Lab File: BG028685.D
 Acq: 13 Sep 2017 1:07

Tgt Ion	Resp	Lower	Upper
88	100		
58	183.1	79.4	119.2#
43	1535.6	33.8	50.6#

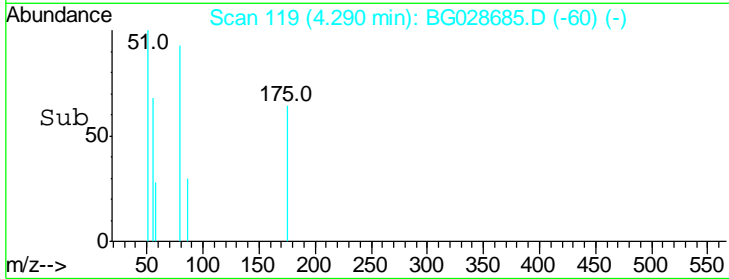
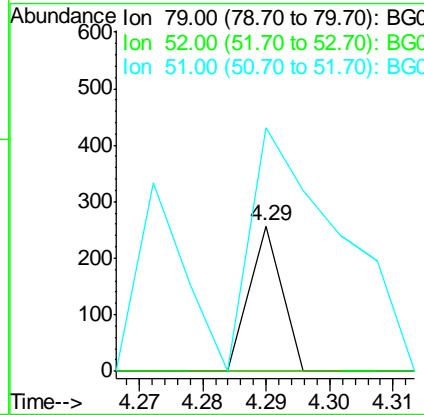
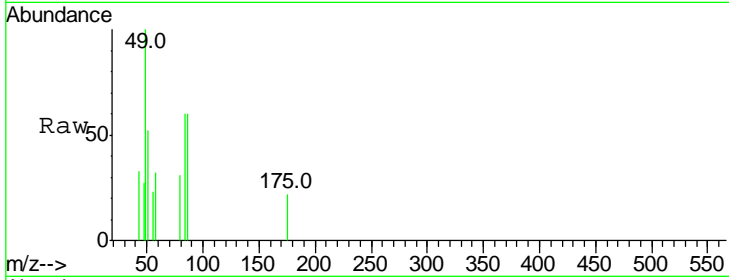




#3
 Pyridine
 Concen: 0.055 ng
 RT: 4.29 min Scan# 119
 Delta R.T. 0.05 min
 Lab File: BG028685.D
 Acq: 13 Sep 2017 1:07

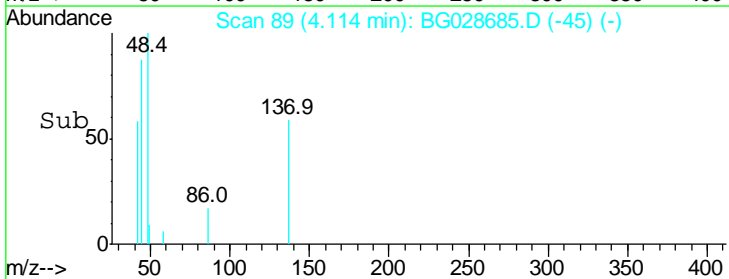
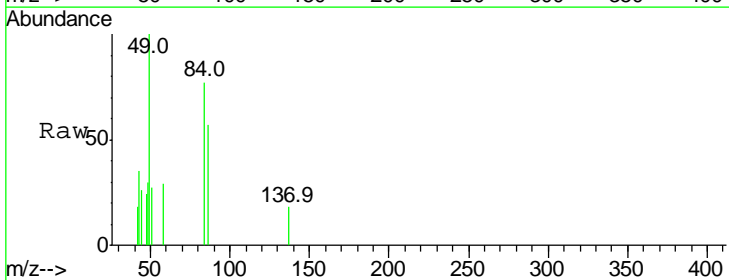
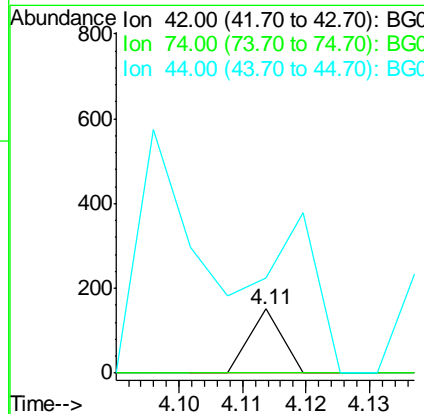
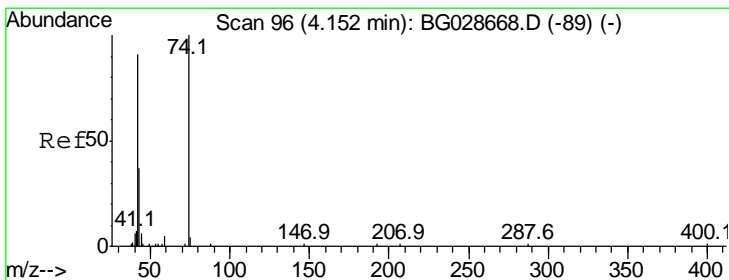
Instrument :
 BNA_G
ClientSampled :
 CB-01-090817

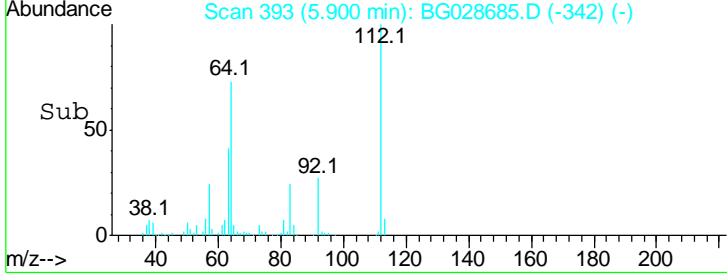
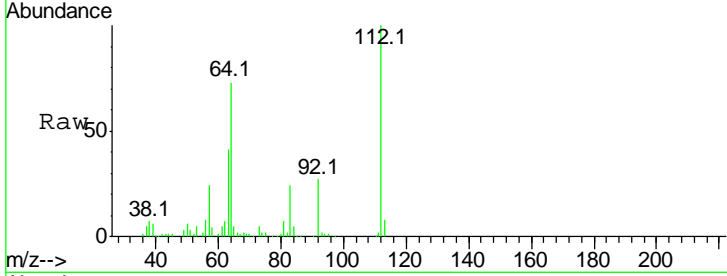
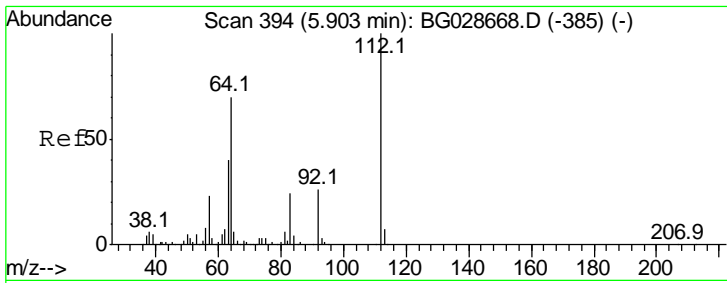
Tgt Ion	Resp	Lower	Upper
79	100		
52	0.0	77.8	116.6#
51	167.7	43.2	64.8#



#4
 n-Nitrosodimethylamine
 Concen: 0.072 ng
 RT: 4.11 min Scan# 89
 Delta R.T. -0.04 min
 Lab File: BG028685.D
 Acq: 13 Sep 2017 1:07

Tgt Ion	Resp	Lower	Upper
42	100		
74	0.0	76.7	115.1#
44	148.7	6.1	9.1#

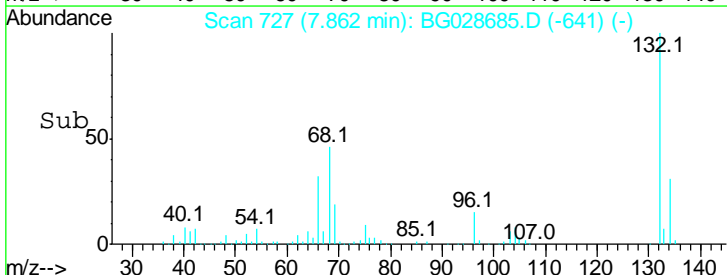
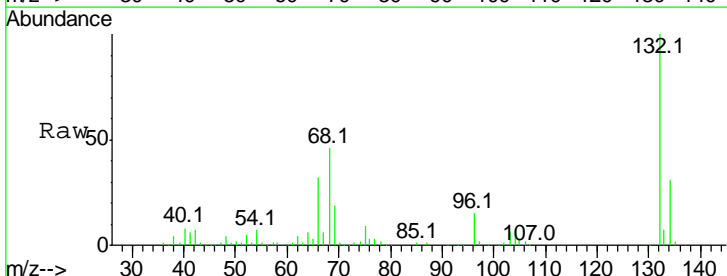
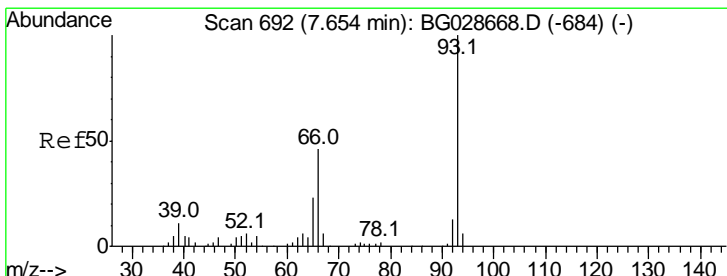
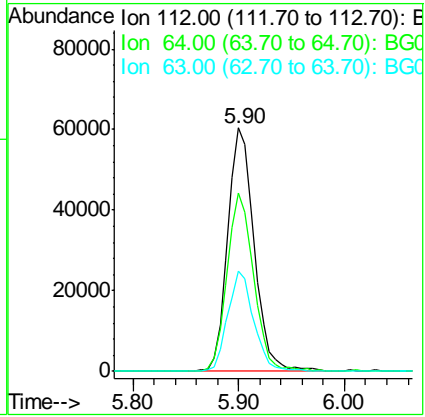




#5
 2-Fluorophenol
 Concen: 72.874 ng
 RT: 5.90 min Scan# 393
 Delta R.T. -0.00 min
 Lab File: BG028685.D
 Acq: 13 Sep 2017 1:07

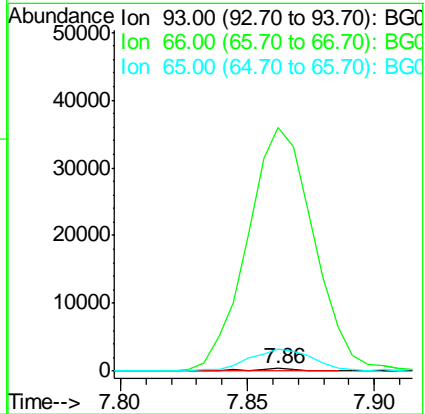
Instrument :
 BNA_G
 ClientSampleId :
 CB-01-090817

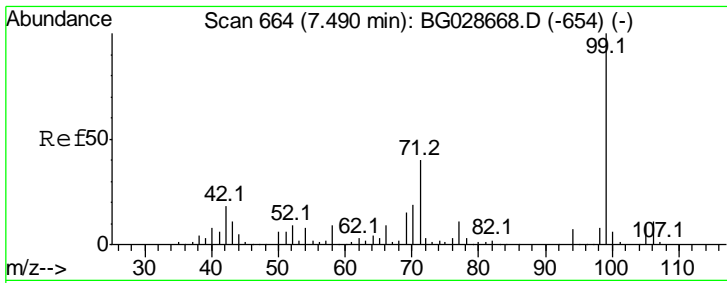
Tgt Ion	Resp	Lower	Upper
112	104158		
64	73.5	61.8	92.6
63	41.2	37.2	55.8



#6
 Aniline
 Concen: 0.207 ng
 RT: 7.86 min Scan# 727
 Delta R.T. 0.21 min
 Lab File: BG028685.D
 Acq: 13 Sep 2017 1:07

Tgt Ion	Resp	Lower	Upper
93	518		
66	9097.7	35.4	53.2#
65	835.2	21.2	31.8#

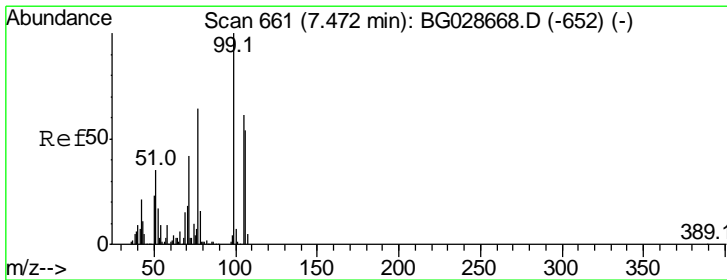
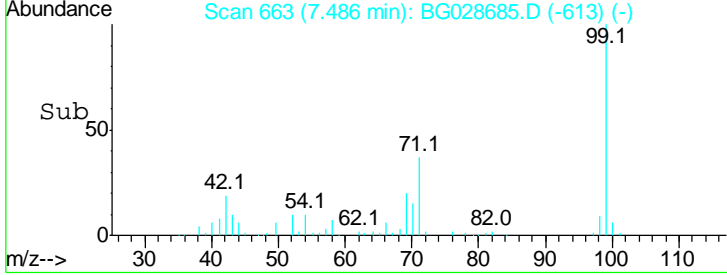
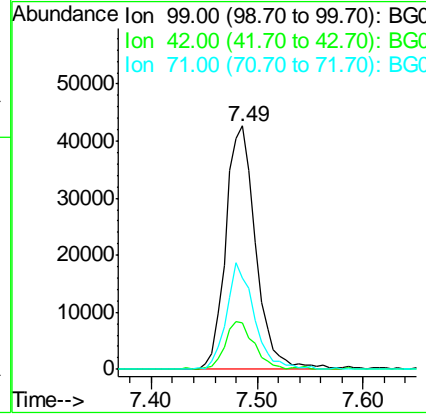
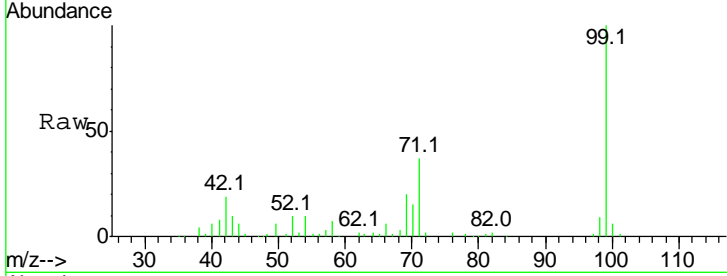




#7
 Phenol-d6
 Concen: 39.088 ng
 RT: 7.49 min Scan# 663
 Delta R.T. -0.00 min
 Lab File: BG028685.D
 Acq: 13 Sep 2017 1:07

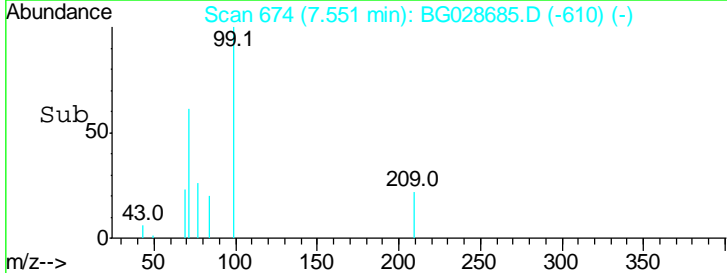
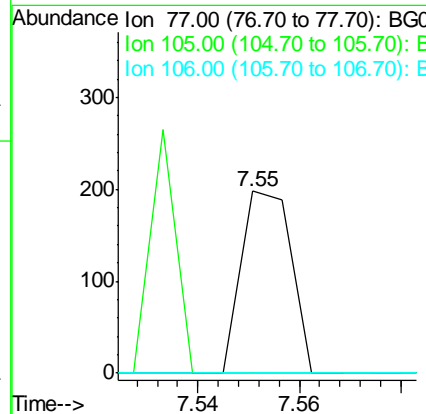
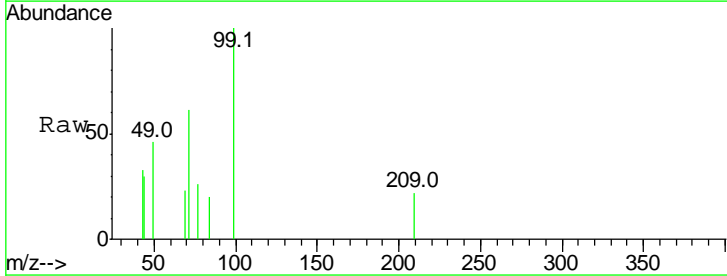
Instrument :
 BNA_G
ClientSampleId :
 CB-01-090817

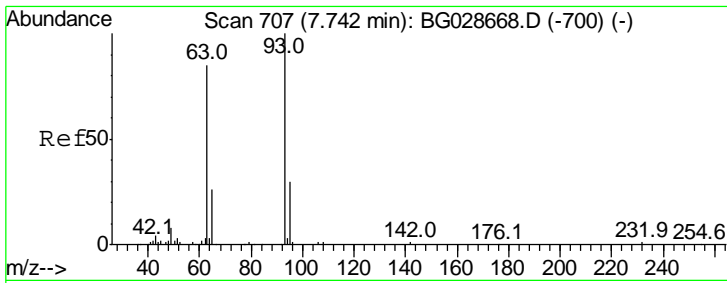
Tgt Ion	Resp	Lower	Upper
99	100		
42	19.3	20.5	30.7#
71	37.3	37.6	56.4#



#9
 Benzaldehyde
 Concen: 0.102 ng
 RT: 7.55 min Scan# 674
 Delta R.T. 0.08 min
 Lab File: BG028685.D
 Acq: 13 Sep 2017 1:07

Tgt Ion	Resp	Lower	Upper
77	100		
105	0.0	60.9	100.9#
106	0.0	55.1	95.1#

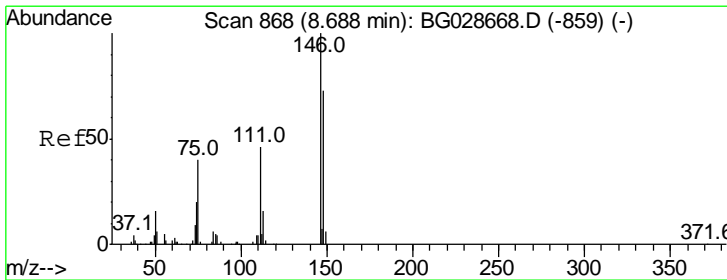
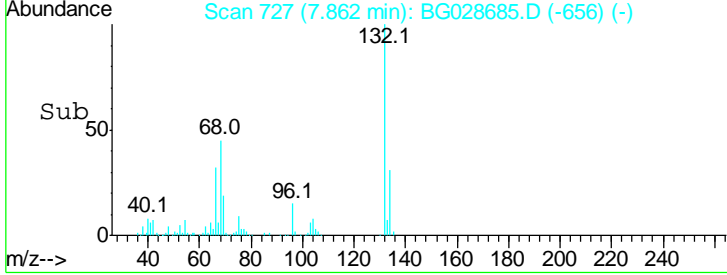
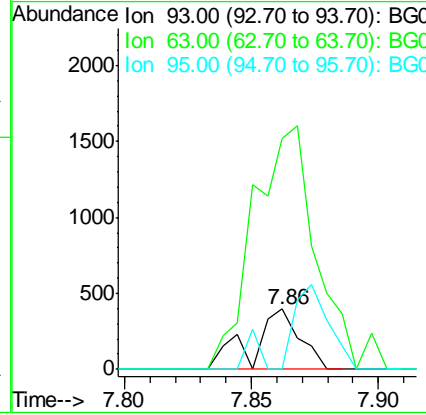
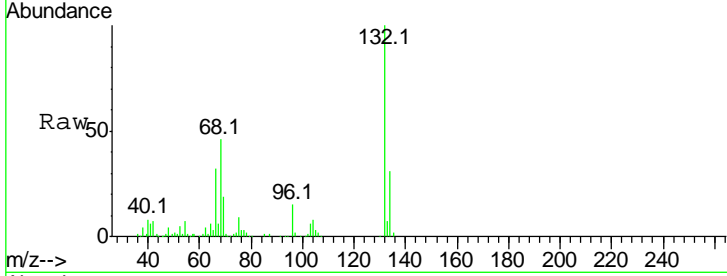




#11
 bis(2-Chloroethyl)ether
 Concen: 0.318 ng
 RT: 7.86 min Scan# 727
 Delta R.T. 0.12 min
 Lab File: BG028685.D
 Acq: 13 Sep 2017 1:07

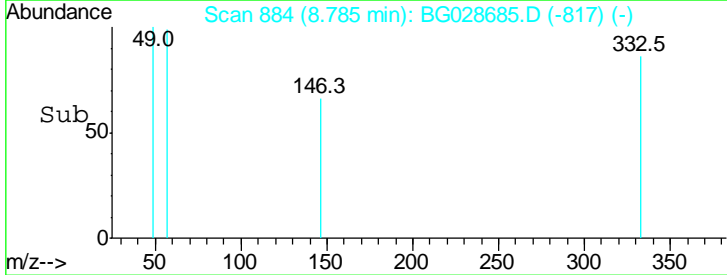
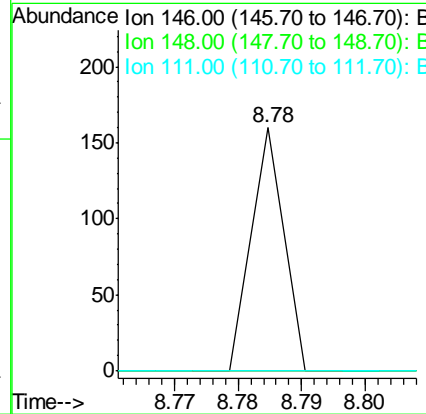
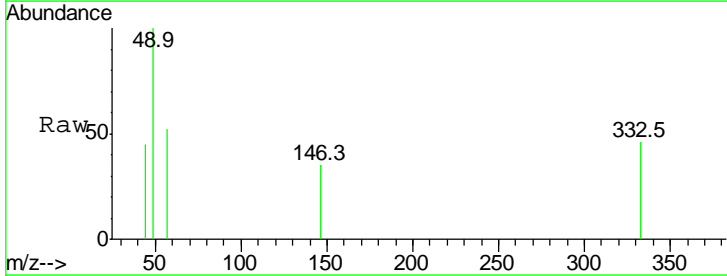
Instrument :
 BNA_G
ClientSampleId :
 CB-01-090817

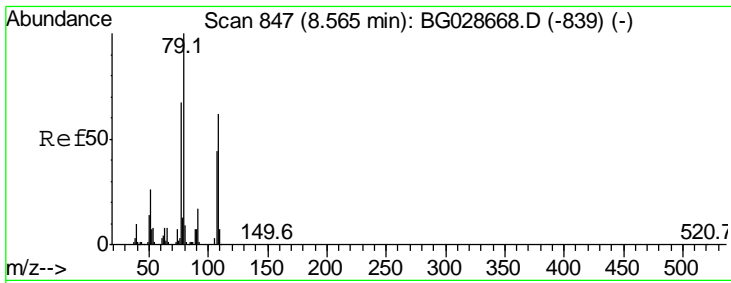
Tgt Ion	Ratio	Lower	Upper
93	100		
63	385.3	78.5	118.5#
95	0.0	9.8	49.8#



#14
 1,2-Dichlorobenzene
 Concen: 0.032 ng
 RT: 8.78 min Scan# 884
 Delta R.T. 0.10 min
 Lab File: BG028685.D
 Acq: 13 Sep 2017 1:07

Tgt Ion	Ratio	Lower	Upper
146	100		
148	0.0	54.6	81.8#
111	0.0	39.7	59.5#

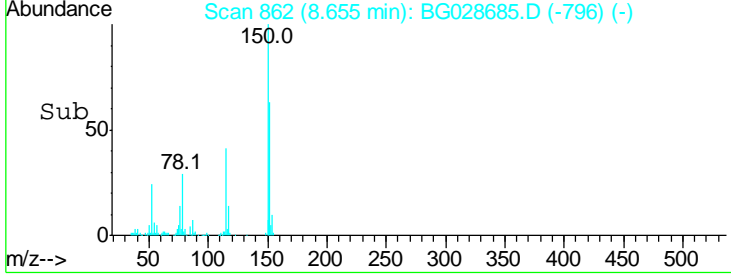
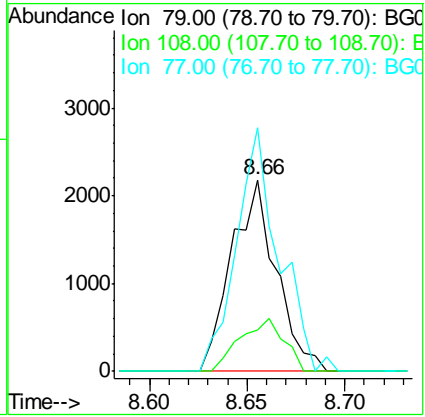
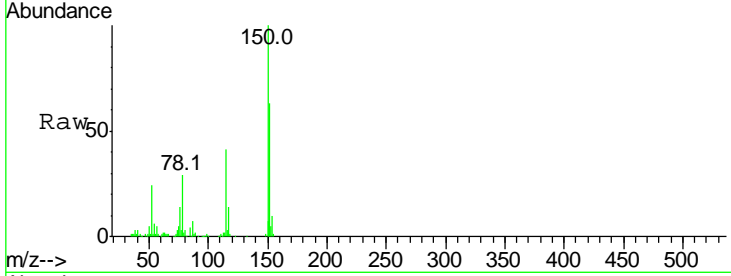




#15
 Benzyl Alcohol
 Concen: 2.051 ng
 RT: 8.66 min Scan# 862
 Delta R.T. 0.09 min
 Lab File: BG028685.D
 Acq: 13 Sep 2017 1:07

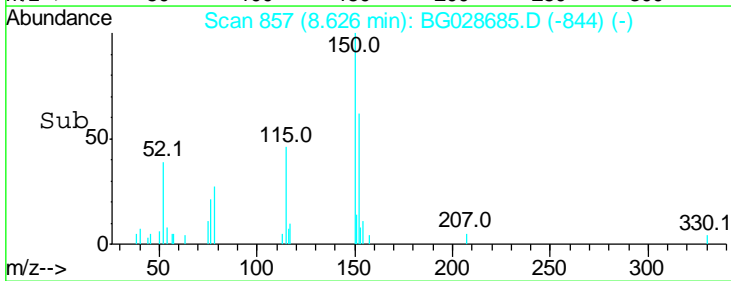
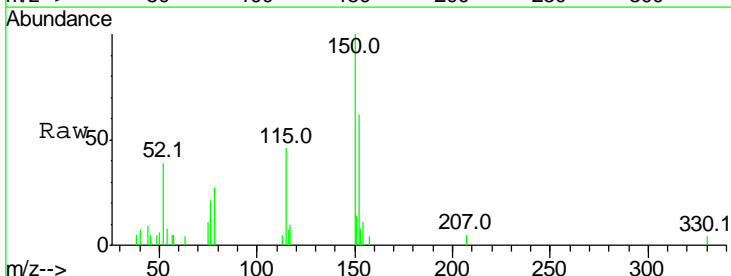
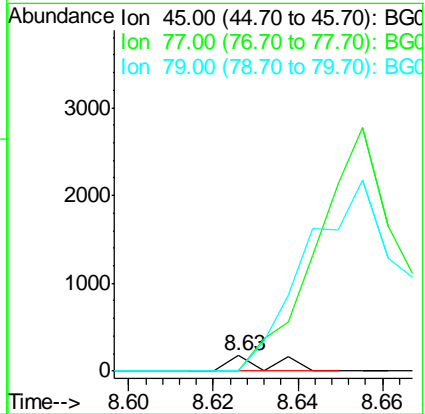
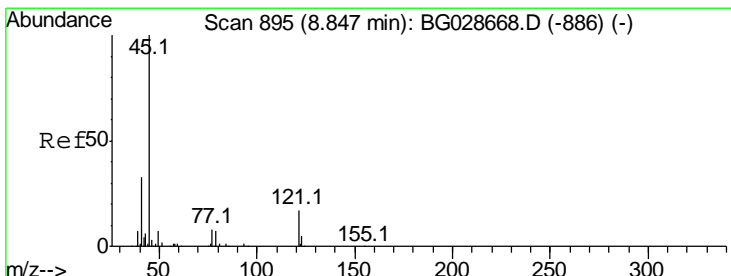
Instrument :
 BNA_G
ClientSampled :
 CB-01-090817

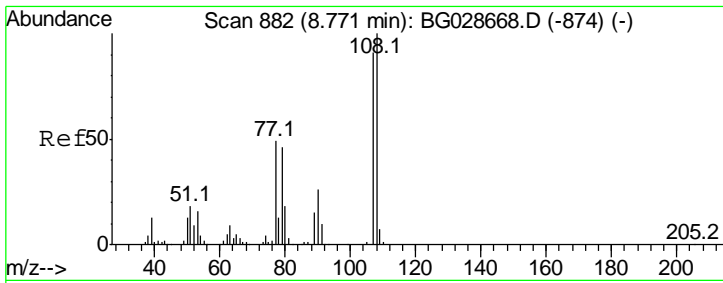
Tgt Ion	Resp	Lower	Upper
79	100		
108	21.9	45.5	68.3#
77	127.4	54.3	81.5#



#16
 2,2'-oxybis(1-Chloropropane)
 Concen: 0.040 ng
 RT: 8.63 min Scan# 857
 Delta R.T. -0.22 min
 Lab File: BG028685.D
 Acq: 13 Sep 2017 1:07

Tgt Ion	Resp	Lower	Upper
45	100		
77	0.0	0.0	30.6
79	0.0	0.0	28.5

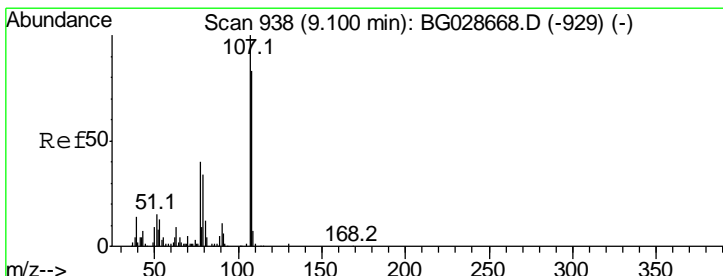
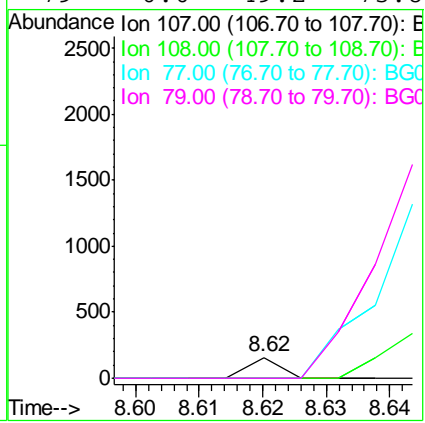
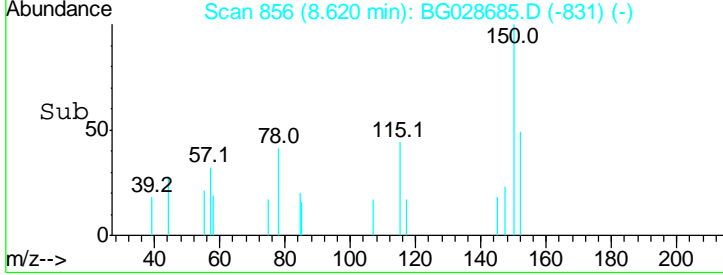
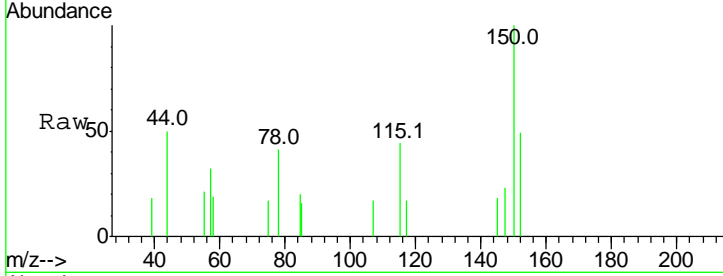




#17
 2-Methylphenol
 Concen: 0.038 ng
 RT: 8.62 min Scan# 856
 Delta R.T. -0.15 min
 Lab File: BG028685.D
 Acq: 13 Sep 2017 1:07

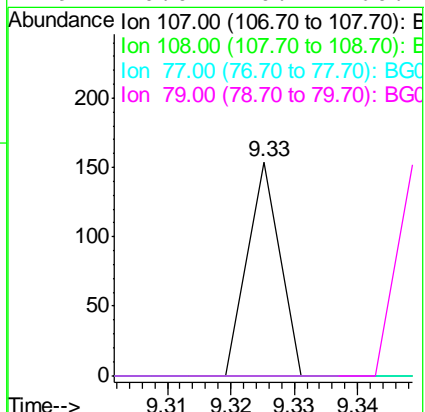
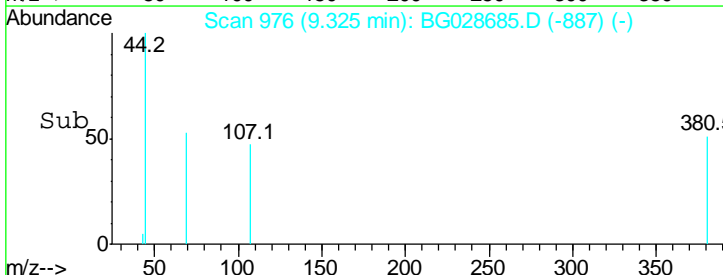
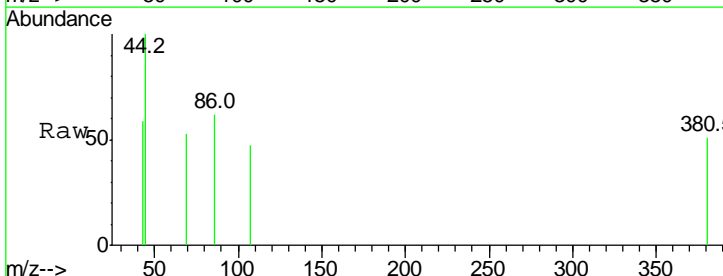
Instrument :
 BNA_G
ClientSampled :
 CB-01-090817

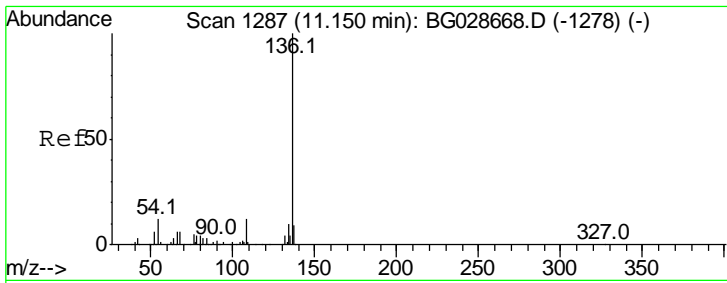
Tgt Ion	Ratio	Lower	Upper
107	100		
108	0.0	85.6	128.4#
77	0.0	51.4	77.2#
79	0.0	49.2	73.8#



#20
 3+4-Methylphenols
 Concen: 0.026 ng
 RT: 9.33 min Scan# 976
 Delta R.T. 0.23 min
 Lab File: BG028685.D
 Acq: 13 Sep 2017 1:07

Tgt Ion	Ratio	Lower	Upper
107	100		
108	0.0	70.8	110.8#
77	0.0	25.8	65.8#
79	0.0	20.1	60.1#

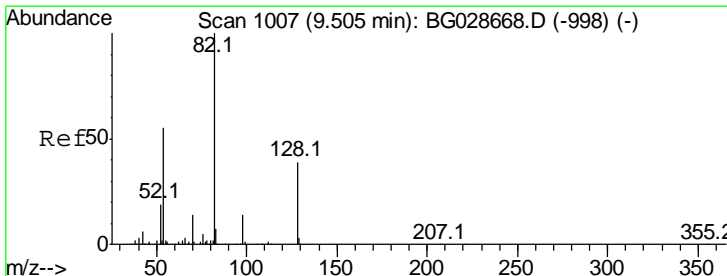
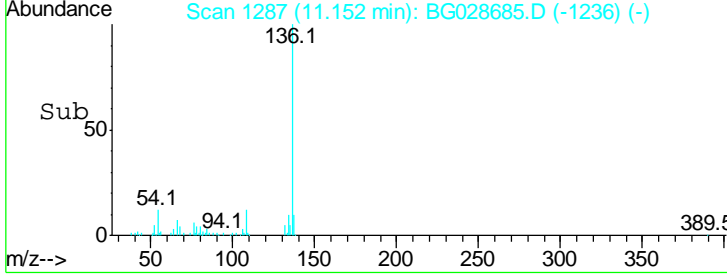
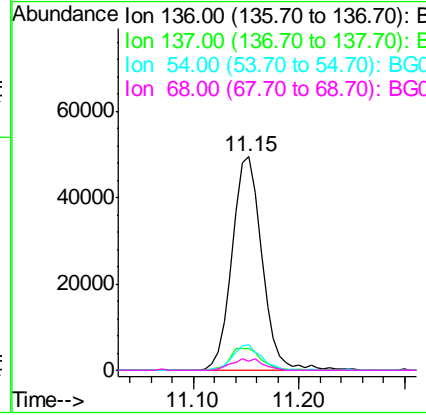
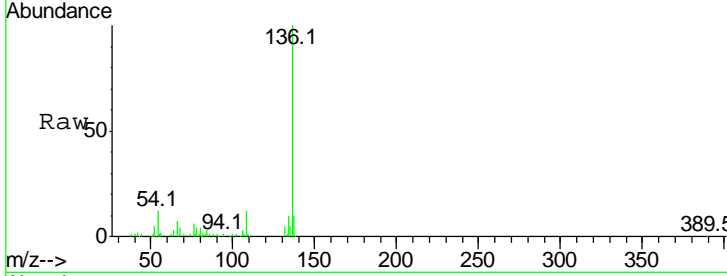




#21
 Naphthalene-d8
 Concen: 20.000 ng
 RT: 11.15 min Scan# 1287
 Delta R.T. 0.00 min
 Lab File: BG028685.D
 Acq: 13 Sep 2017 1:07

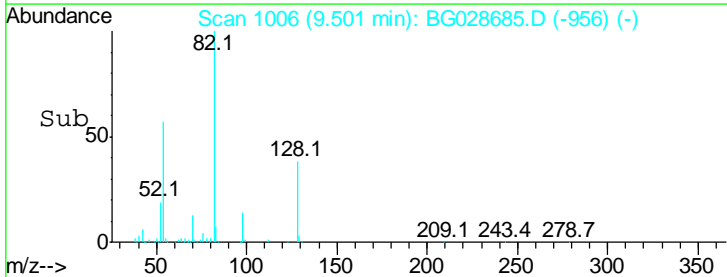
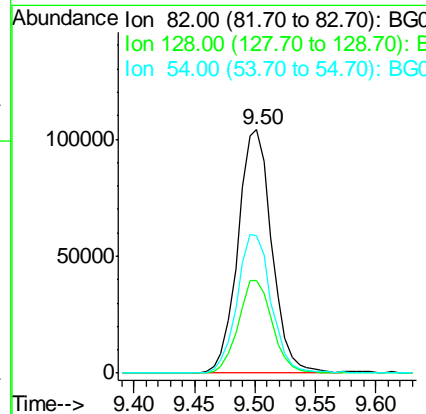
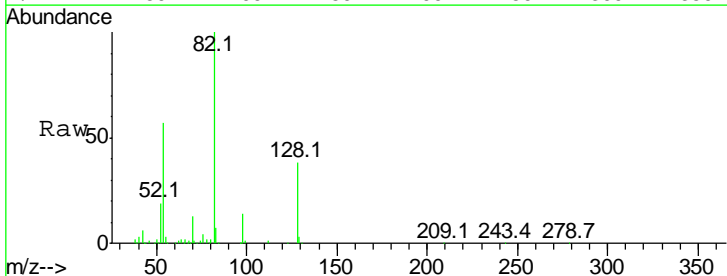
Instrument :
 BNA_G
 ClientSampleId :
 CB-01-090817

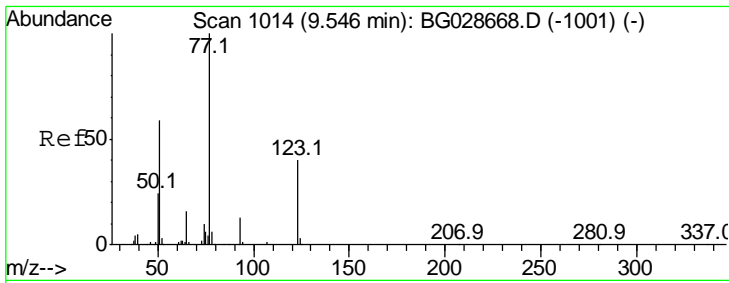
Tgt Ion	Resp	Lower	Upper
136	100		
137	10.0	8.9	13.3
54	12.1	9.3	13.9
68	4.0	5.1	7.7#



#23
 Nitrobenzene-d5
 Concen: 100.583 ng
 RT: 9.50 min Scan# 1006
 Delta R.T. -0.00 min
 Lab File: BG028685.D
 Acq: 13 Sep 2017 1:07

Tgt Ion	Resp	Lower	Upper
82	100		
128	38.0	26.4	39.6
54	56.6	49.4	74.2

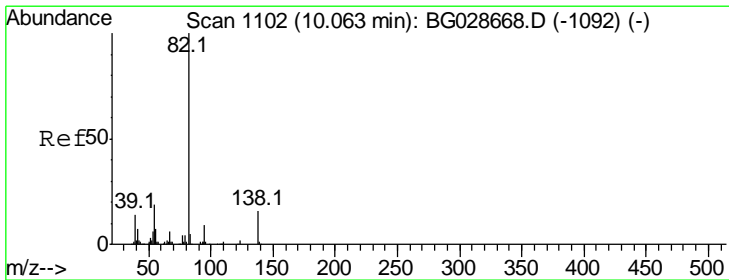
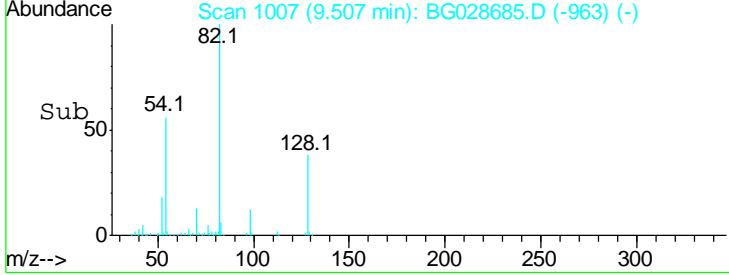
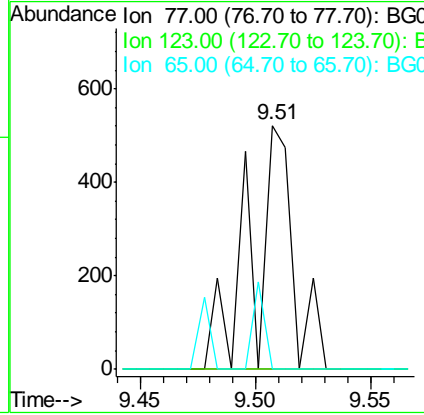
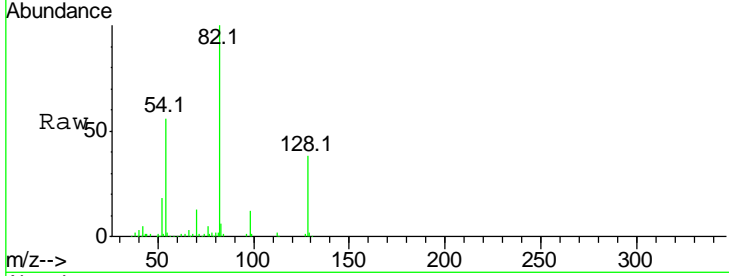




#24
 Nitrobenzene
 Concen: 0.291 ng
 RT: 9.51 min Scan# 1007
 Delta R.T. -0.04 min
 Lab File: BG028685.D
 Acq: 13 Sep 2017 1:07

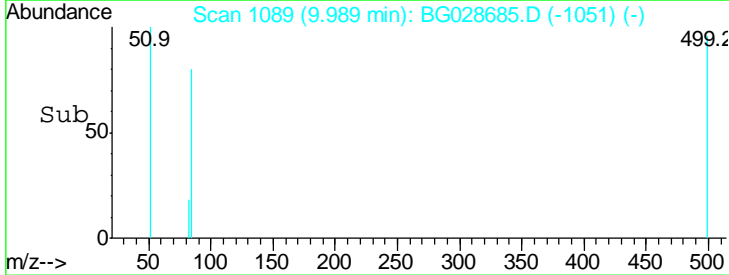
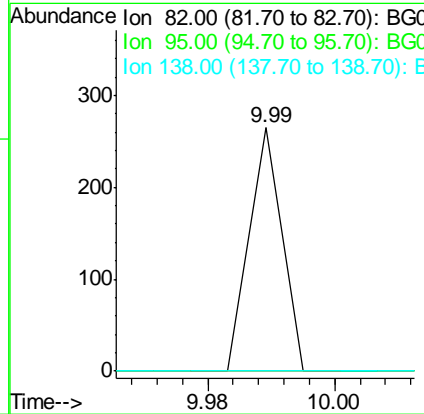
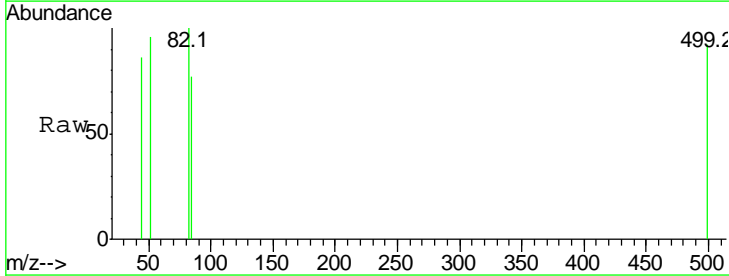
Instrument :
 BNA_G
ClientSampleId :
 CB-01-090817

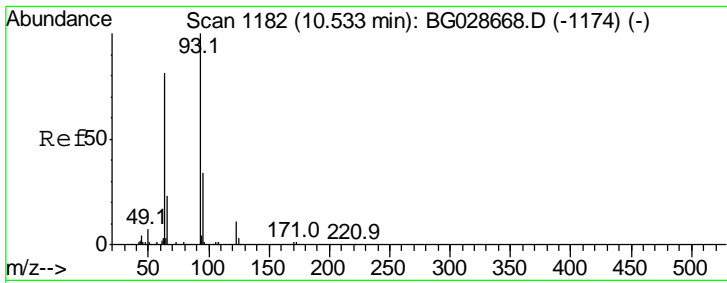
Tgt Ion	Ratio	Lower	Upper
77	100		
123	0.0	26.1	39.1#
65	0.0	12.4	18.6#



#25
 Isophorone
 Concen: 0.023 ng
 RT: 9.99 min Scan# 1089
 Delta R.T. -0.07 min
 Lab File: BG028685.D
 Acq: 13 Sep 2017 1:07

Tgt Ion	Ratio	Lower	Upper
82	100		
95	0.0	7.5	11.3#
138	0.0	12.3	18.5#

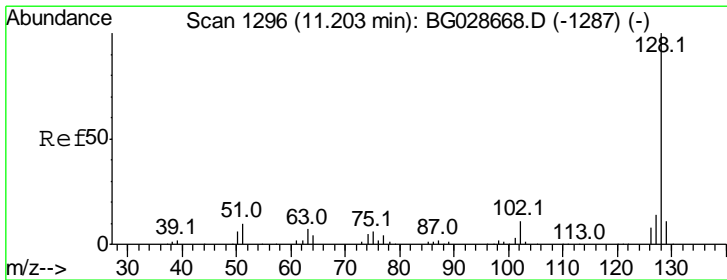
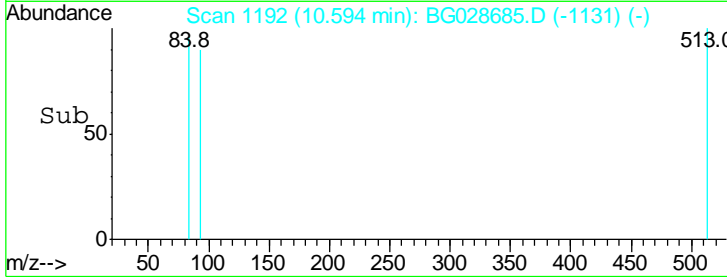
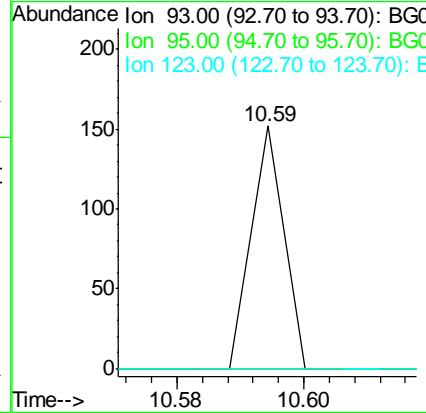
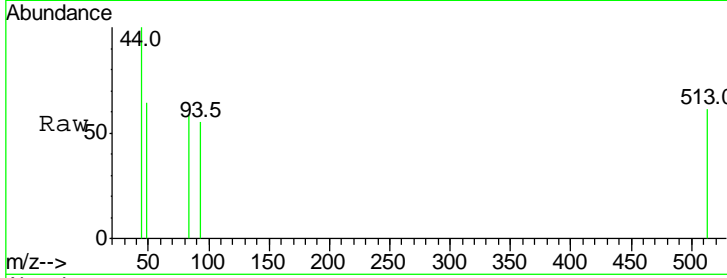




#28
 bis(2-Chloroethoxy)methane
 Concen: 0.024 ng
 RT: 10.59 min Scan# 1192
 Delta R.T. 0.06 min
 Lab File: BG028685.D
 Acq: 13 Sep 2017 1:07

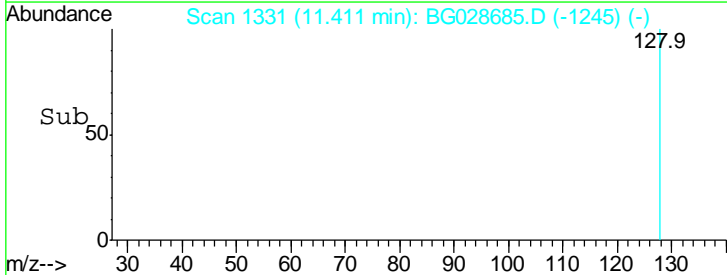
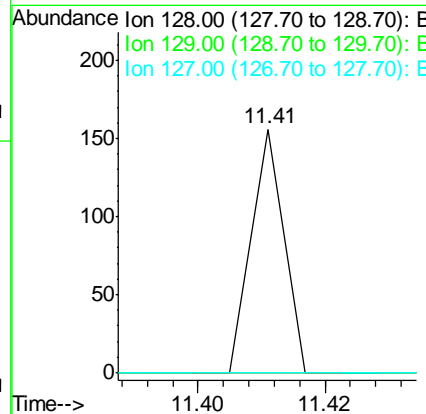
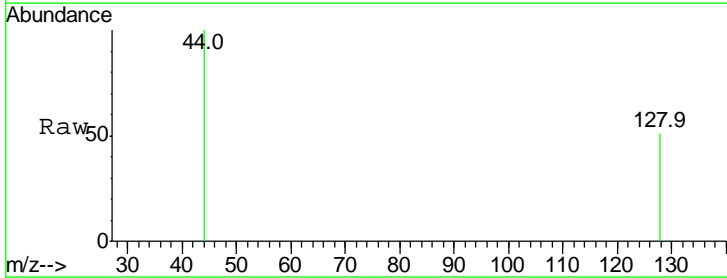
Instrument :
 BNA_G
 ClientSampleId :
 CB-01-090817

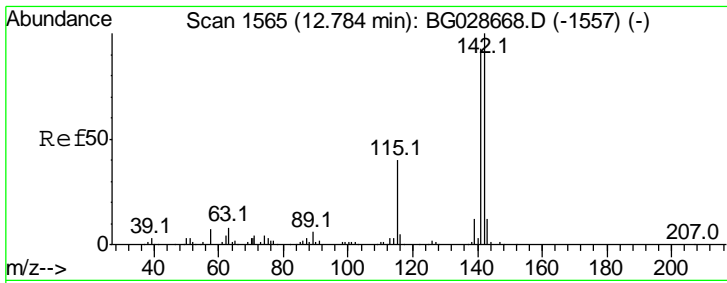
Tgt Ion	Ratio	Lower	Upper
93	100		
95	0.0	25.7	38.5#
123	0.0	8.3	12.5#



#31
 Naphthalene
 Concen: 0.011 ng
 RT: 11.41 min Scan# 1331
 Delta R.T. 0.21 min
 Lab File: BG028685.D
 Acq: 13 Sep 2017 1:07

Tgt Ion	Ratio	Lower	Upper
128	100		
129	0.0	9.3	13.9#
127	0.0	11.4	17.0#

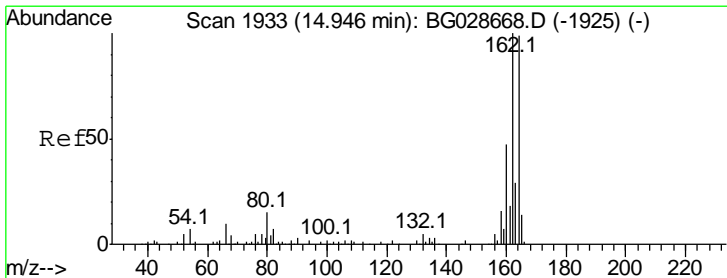
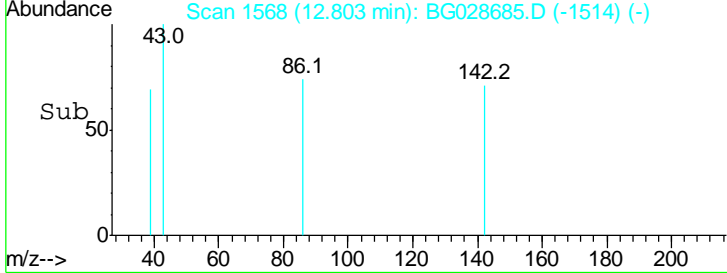
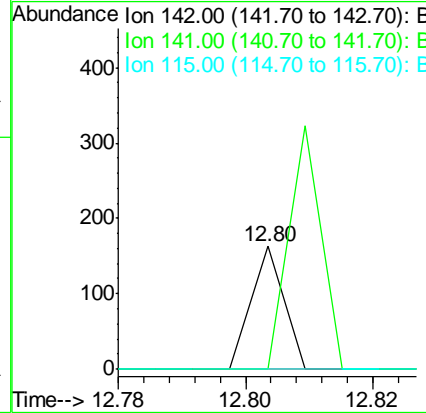
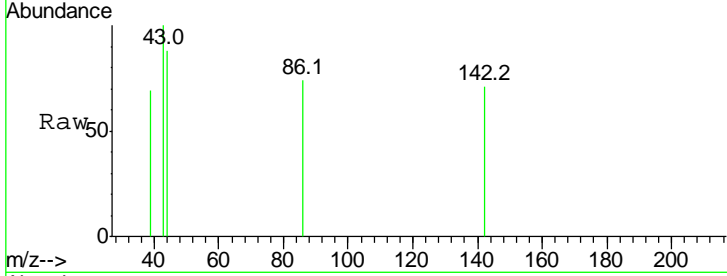




#37
 2-Methylnaphthalene
 Concen: 0.015 ng
 RT: 12.80 min Scan# 1568
 Delta R.T. 0.02 min
 Lab File: BG028685.D
 Acq: 13 Sep 2017 1:07

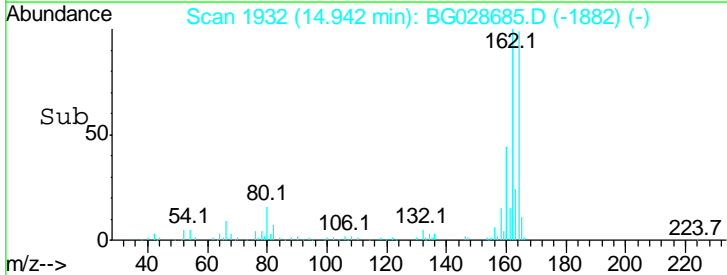
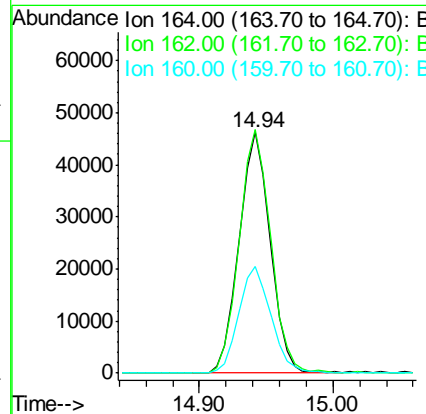
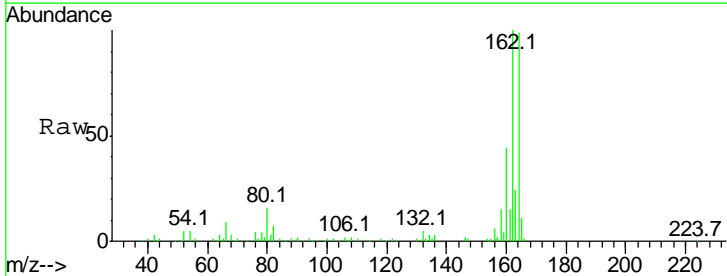
Instrument :
 BNA_G
 ClientSampled :
 CB-01-090817

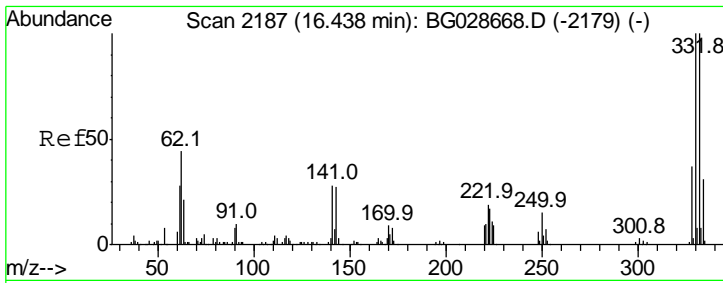
Tgt Ion	Resp	Lower	Upper
142	100		
141	0.0	70.4	105.6#
115	0.0	35.5	53.3#



#38
 Acenaphthene-d10
 Concen: 20.000 ng
 RT: 14.94 min Scan# 1932
 Delta R.T. -0.00 min
 Lab File: BG028685.D
 Acq: 13 Sep 2017 1:07

Tgt Ion	Resp	Lower	Upper
164	100		
162	101.2	85.1	127.7
160	44.5	34.7	52.1

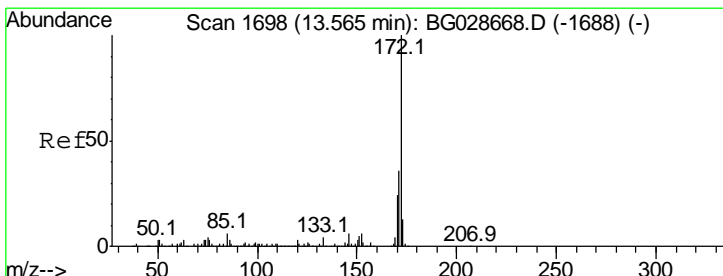
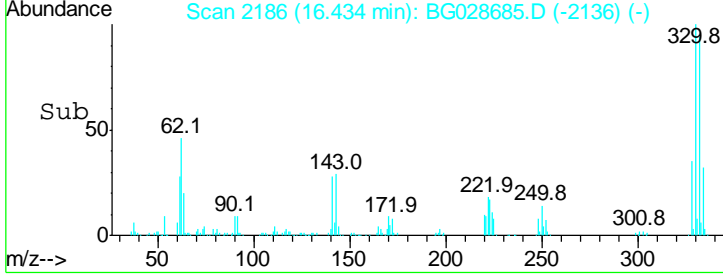
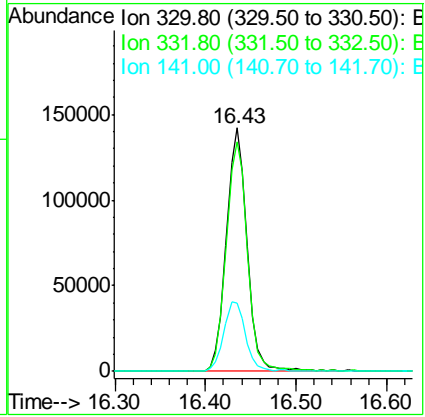
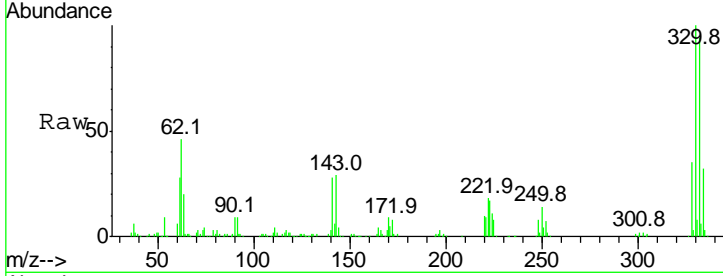




#41
 2,4,6-Tribromophenol
 Concen: 183.369 ng
 RT: 16.43 min Scan# 2186
 Delta R.T. -0.00 min
 Lab File: BG028685.D
 Acq: 13 Sep 2017 1:07

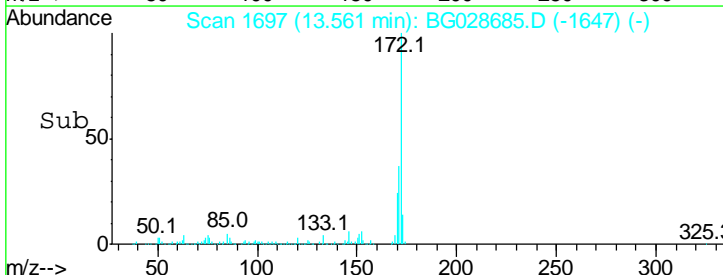
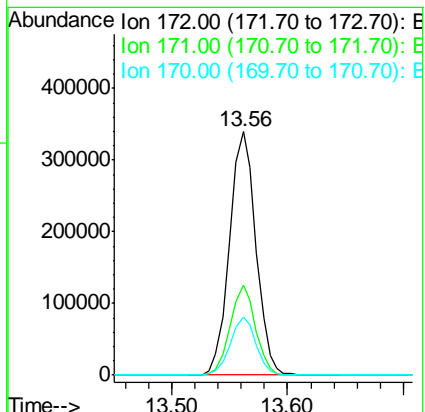
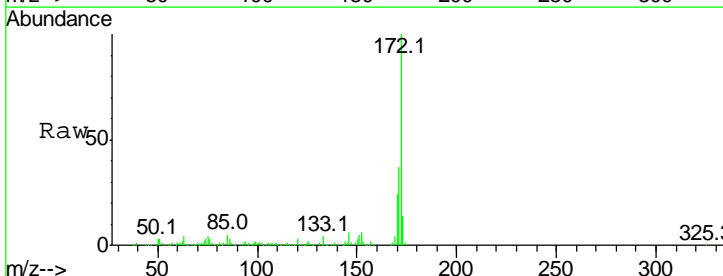
Instrument :
 BNA_G
 ClientSampled :
 CB-01-090817

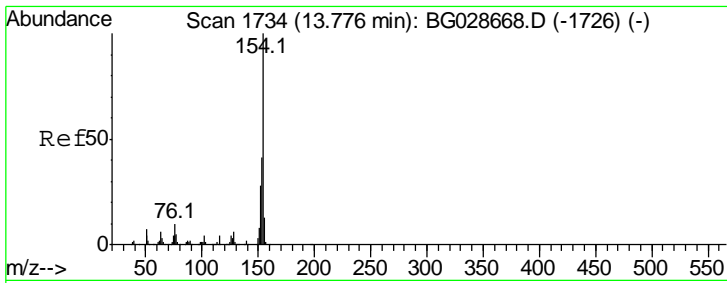
Tgt Ion	Resp	Lower	Upper
330	100		
332	96.1	77.3	115.9
141	29.9	32.1	48.1#



#44
 2-Fluorobiphenyl
 Concen: 96.060 ng
 RT: 13.56 min Scan# 1697
 Delta R.T. -0.00 min
 Lab File: BG028685.D
 Acq: 13 Sep 2017 1:07

Tgt Ion	Resp	Lower	Upper
172	100		
171	37.1	32.2	48.2
170	23.6	21.8	32.6

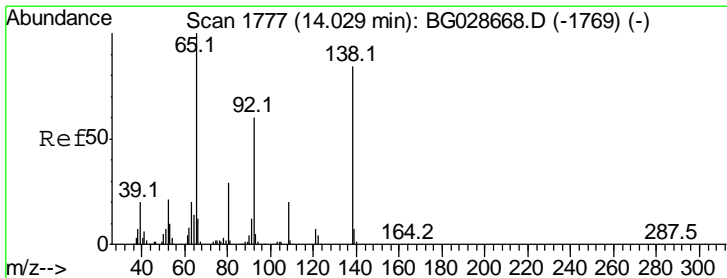
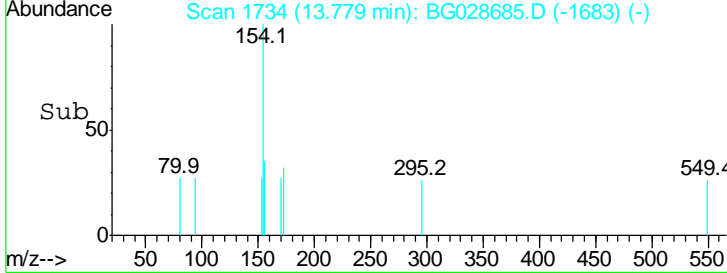
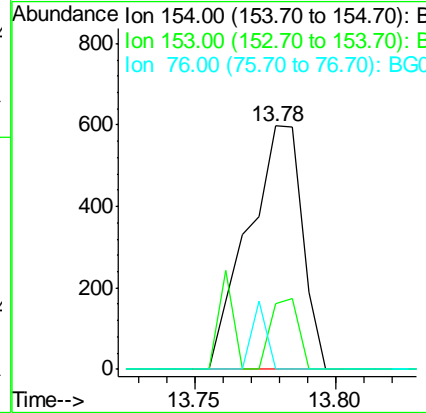
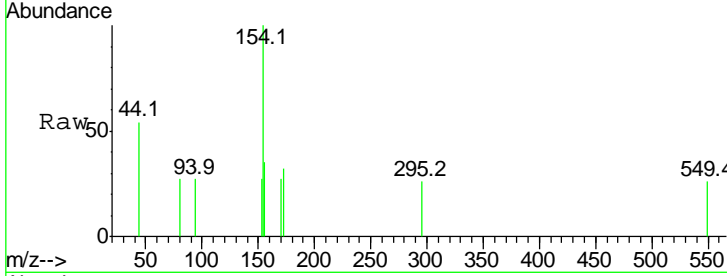




#45
 1,1'-Biphenyl
 Concen: 0.129 ng
 RT: 13.78 min Scan# 1734
 Delta R.T. 0.00 min
 Lab File: BG028685.D
 Acq: 13 Sep 2017 1:07

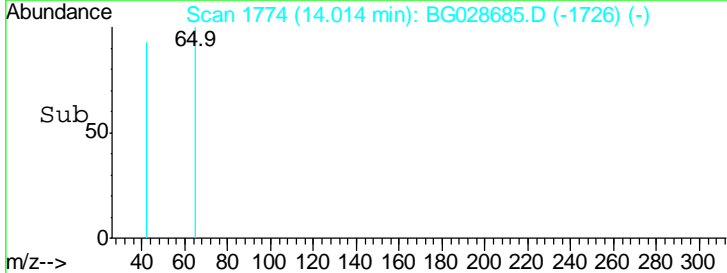
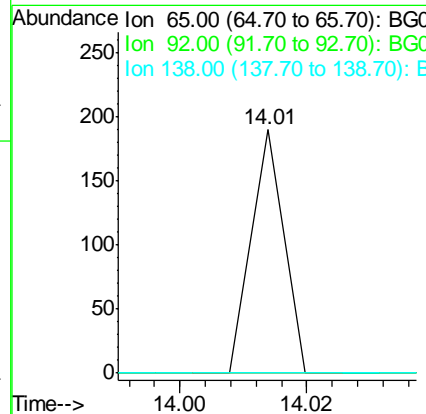
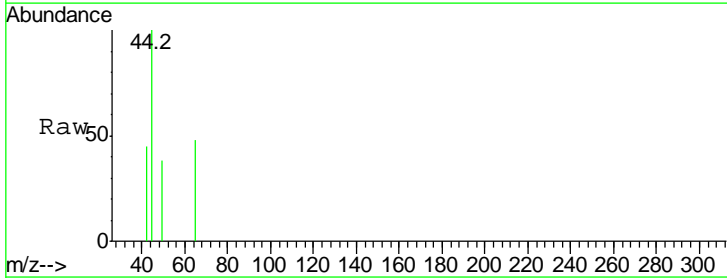
Instrument :
 BNA_G
ClientSampleId :
 CB-01-090817

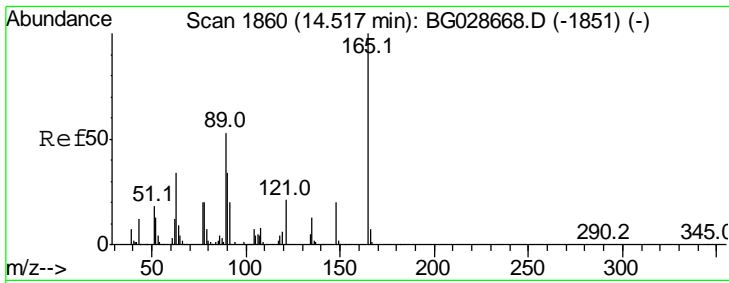
Tgt Ion	Resp	Lower	Upper
154	100		
153	26.8	23.0	63.0
76	0.0	0.0	33.5



#47
 2-Nitroaniline
 Concen: 0.040 ng
 RT: 14.01 min Scan# 1774
 Delta R.T. -0.02 min
 Lab File: BG028685.D
 Acq: 13 Sep 2017 1:07

Tgt Ion	Resp	Lower	Upper
65	100		
92	0.0	49.0	73.4#
138	0.0	58.6	87.8#

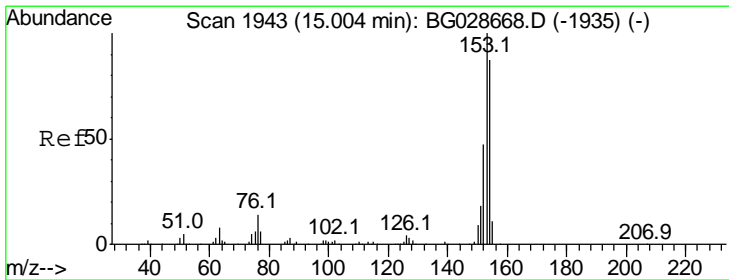
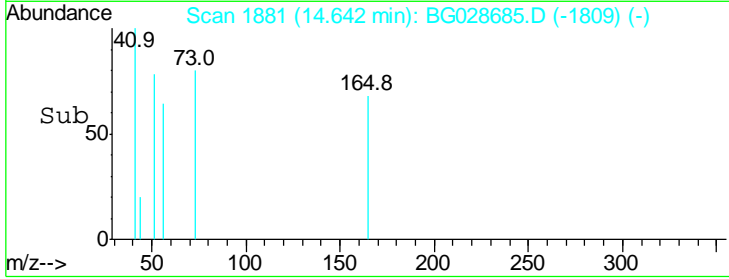
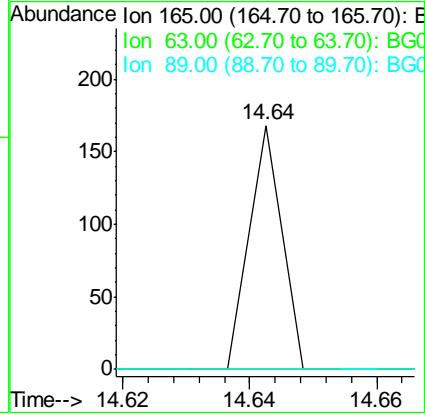
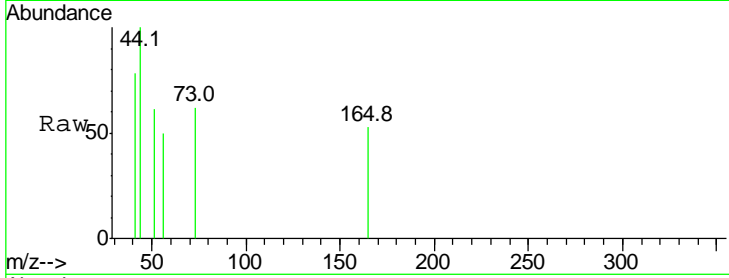




#50
 2,6-Dinitrotoluene
 Concen: 0.042 ng
 RT: 14.64 min Scan# 1881
 Delta R.T. 0.13 min
 Lab File: BG028685.D
 Acq: 13 Sep 2017 1:07

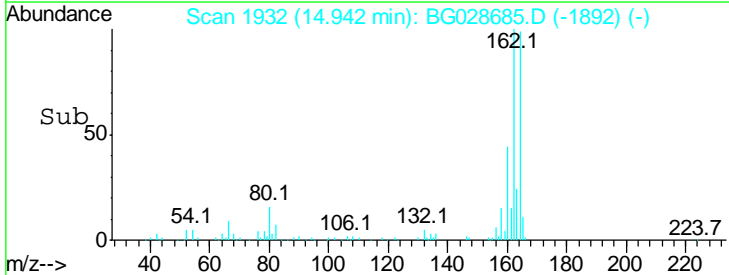
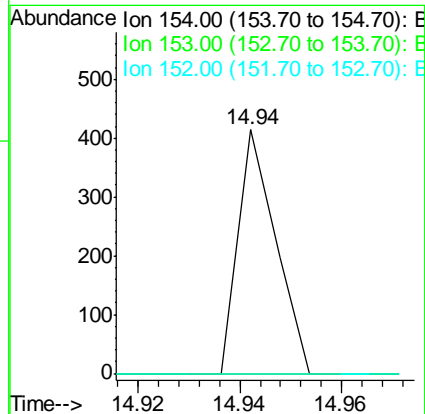
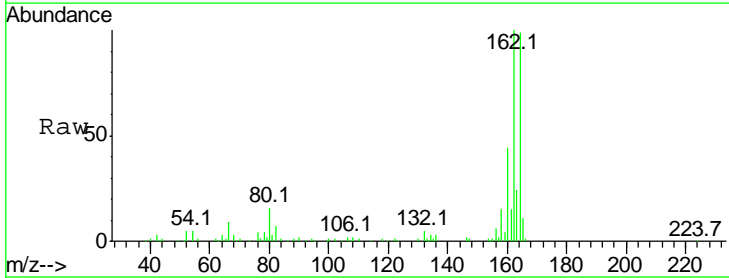
Instrument :
 BNA_G
 ClientSampleId :
 CB-01-090817

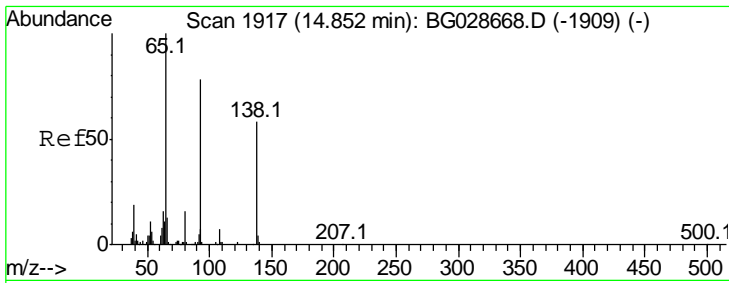
Tgt Ion	Ratio	Lower	Upper
165	100		
63	0.0	63.9	95.9#
89	0.0	58.6	88.0#



#51
 Acenaphthene
 Concen: 0.049 ng
 RT: 14.94 min Scan# 1932
 Delta R.T. -0.06 min
 Lab File: BG028685.D
 Acq: 13 Sep 2017 1:07

Tgt Ion	Ratio	Lower	Upper
154	100		
153	62.6	87.8	131.6#
152	0.0	42.2	63.4#

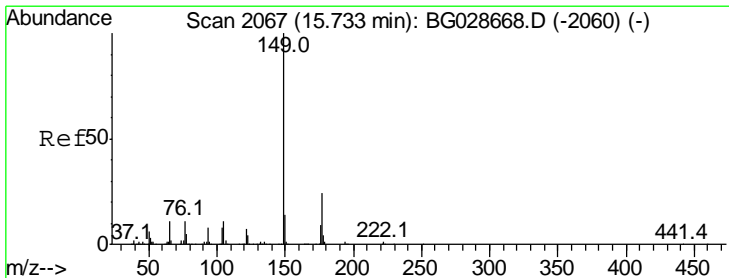
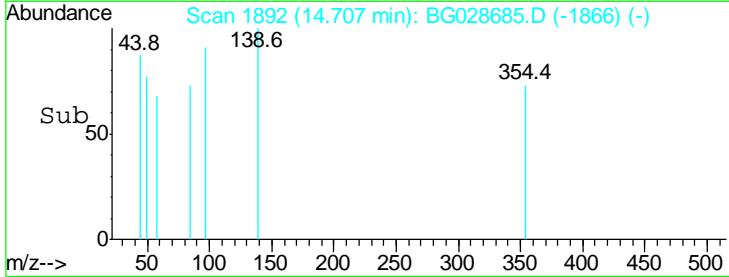
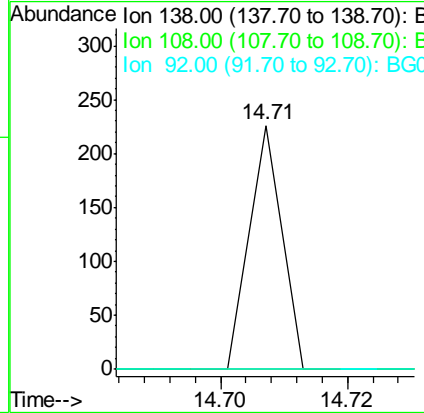
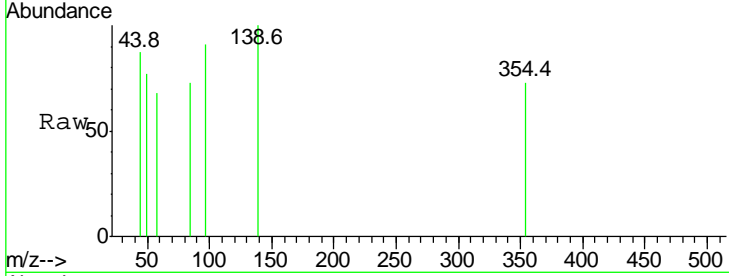




#52
 3-Nitroaniline
 Concen: 0.065 ng
 RT: 14.71 min Scan# 1892
 Delta R.T. -0.14 min
 Lab File: BG028685.D
 Acq: 13 Sep 2017 1:07

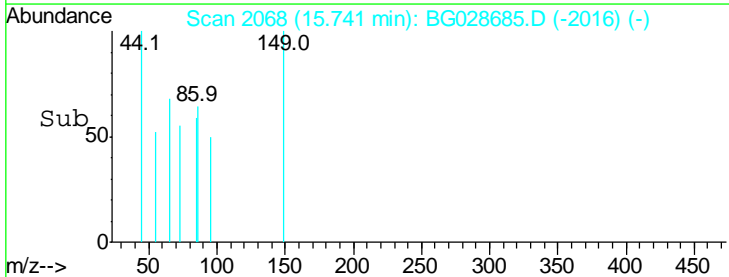
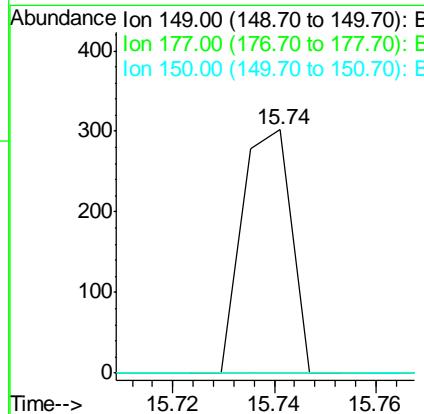
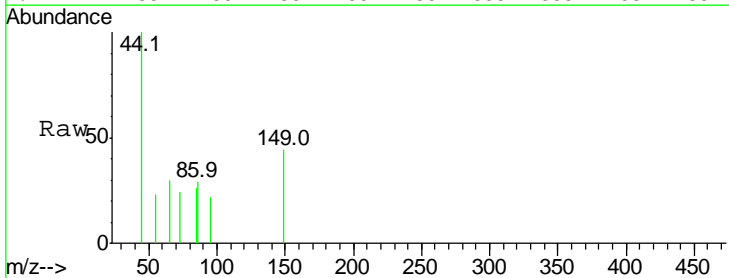
Instrument :
 BNA_G
 ClientSampled :
 CB-01-090817

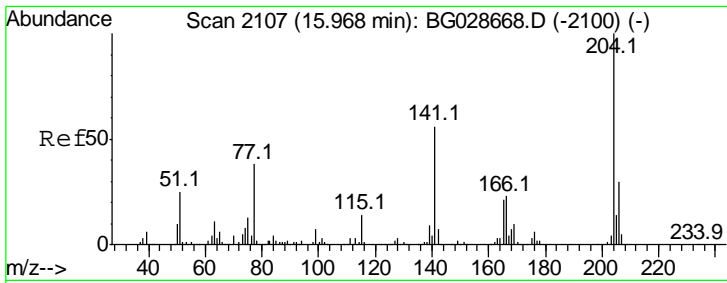
Tgt Ion	Ratio	Lower	Upper
138	100		
108	0.0	10.9	16.3#
92	0.0	115.3	172.9#



#59
 Diethylphthalate
 Concen: 0.032 ng
 RT: 15.74 min Scan# 2068
 Delta R.T. 0.01 min
 Lab File: BG028685.D
 Acq: 13 Sep 2017 1:07

Tgt Ion	Ratio	Lower	Upper
149	100		
177	0.0	20.1	30.1#
150	0.0	10.2	15.2#

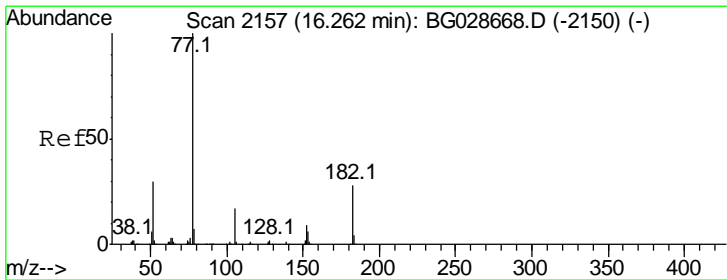
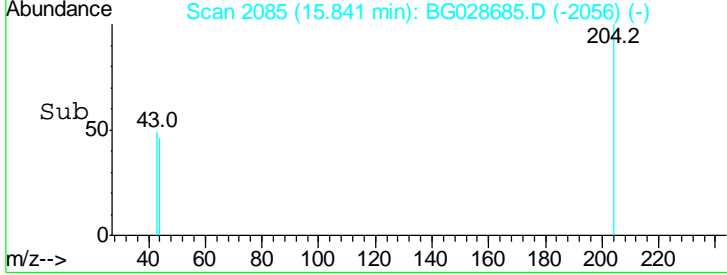
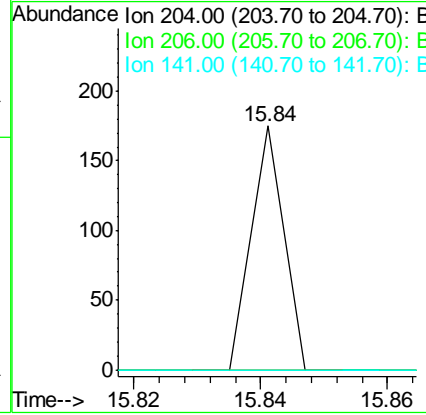
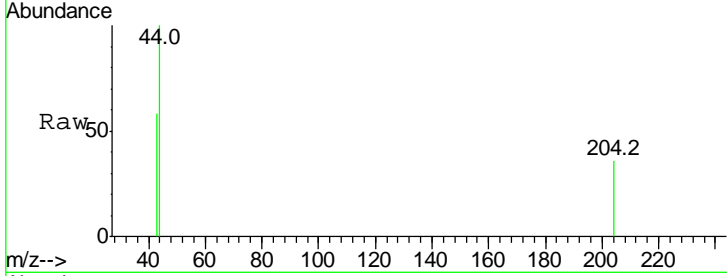




#60
 4-Chlorophenyl-phenylether
 Concen: 0.017 ng
 RT: 15.84 min Scan# 2085
 Delta R.T. -0.13 min
 Lab File: BG028685.D
 Acq: 13 Sep 2017 1:07

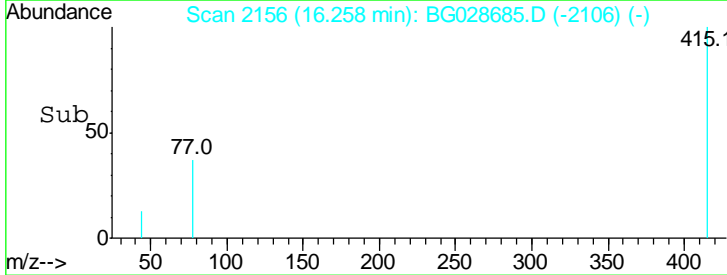
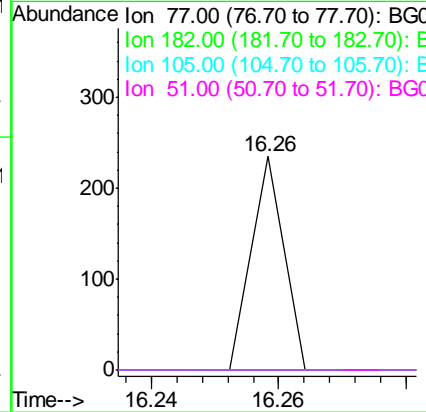
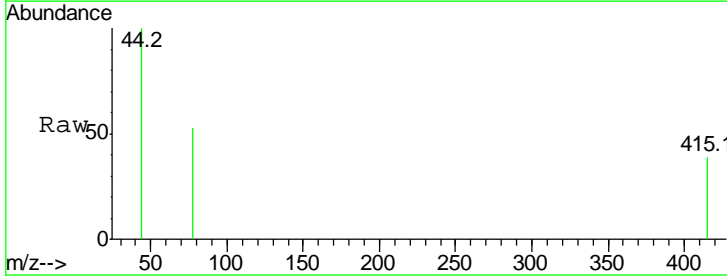
Instrument :
 BNA_G
 ClientSampleId :
 CB-01-090817

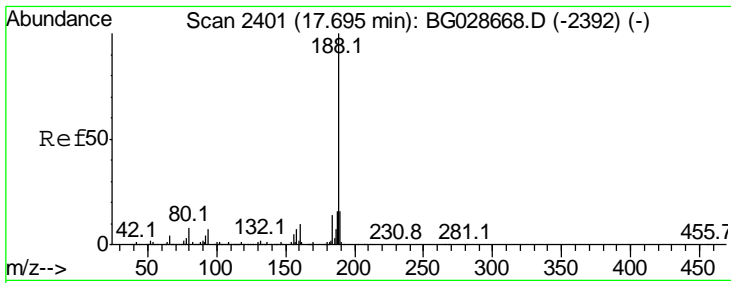
Tgt Ion	Resp	Lower	Upper
204	100		
206	0.0	30.1	45.1#
141	0.0	50.6	76.0#



#62
 Azobenzene
 Concen: 0.015 ng
 RT: 16.26 min Scan# 2156
 Delta R.T. -0.00 min
 Lab File: BG028685.D
 Acq: 13 Sep 2017 1:07

Tgt Ion	Resp	Lower	Upper
77	100		
182	0.0	4.7	44.7#
105	0.0	0.0	36.3
51	0.0	16.4	56.4#

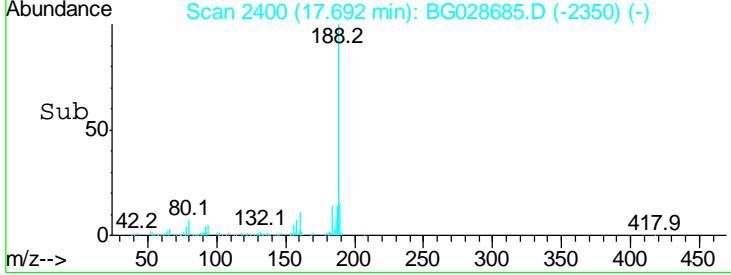
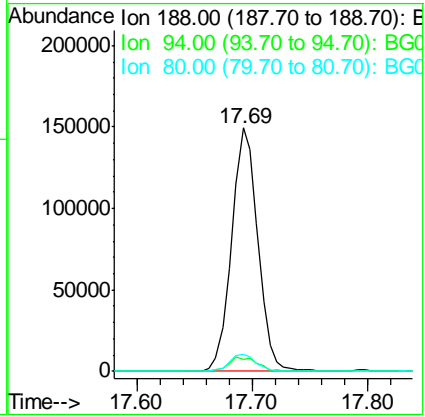
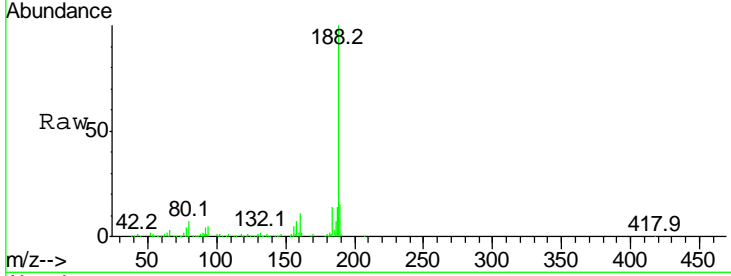




#63
 Phenanthrene-d10
 Concen: 20.000 ng
 RT: 17.69 min Scan# 2400
 Delta R.T. -0.00 min
 Lab File: BG028685.D
 Acq: 13 Sep 2017 1:07

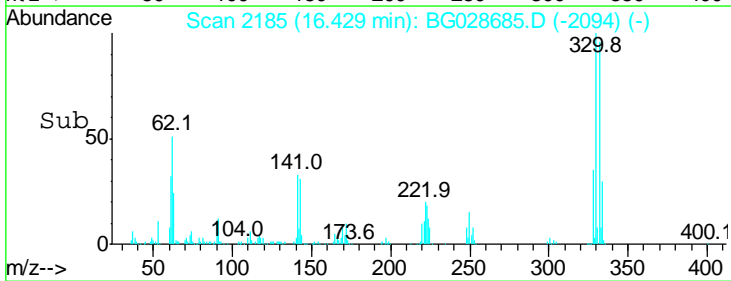
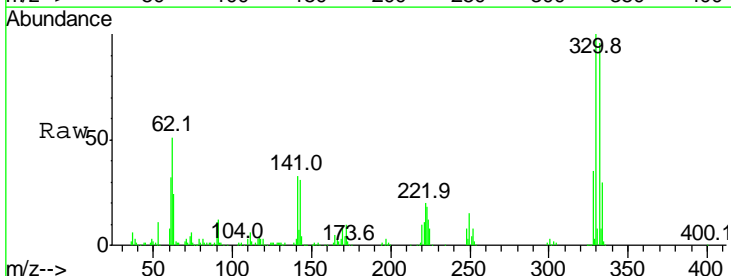
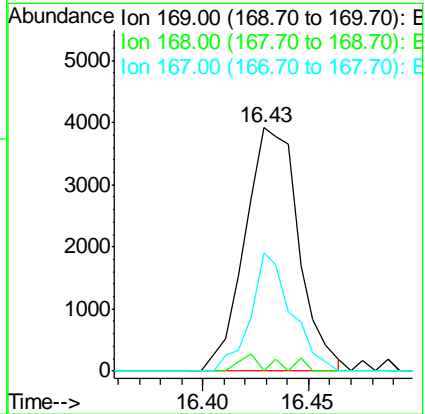
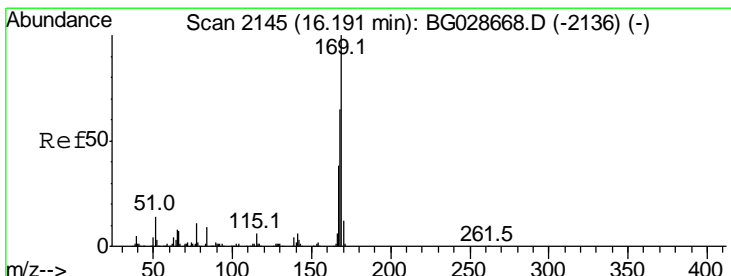
Instrument :
 BNA_G
 ClientSampled :
 CB-01-090817

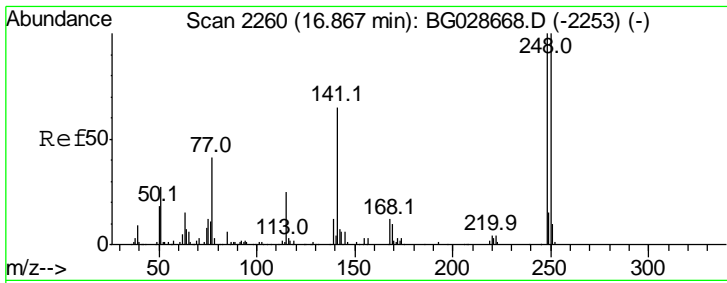
Tgt Ion	Resp	Lower	Upper
188	100		
94	5.1	5.8	8.8#
80	7.1	7.5	11.3#



#65
 n-Nitrosodiphenylamine
 Concen: 1.030 ng
 RT: 16.43 min Scan# 2185
 Delta R.T. 0.24 min
 Lab File: BG028685.D
 Acq: 13 Sep 2017 1:07

Tgt Ion	Resp	Lower	Upper
169	100		
168	0.0	55.7	83.5#
167	48.7	29.8	44.6#

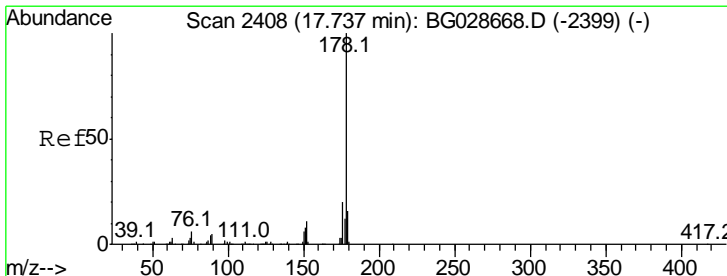
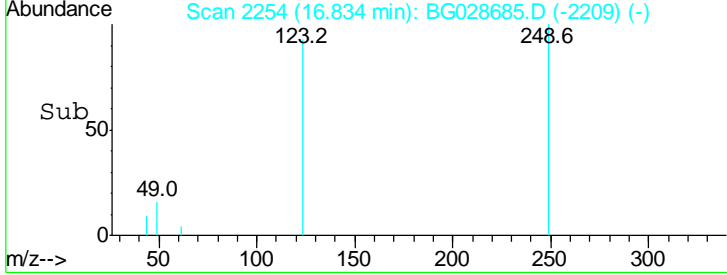
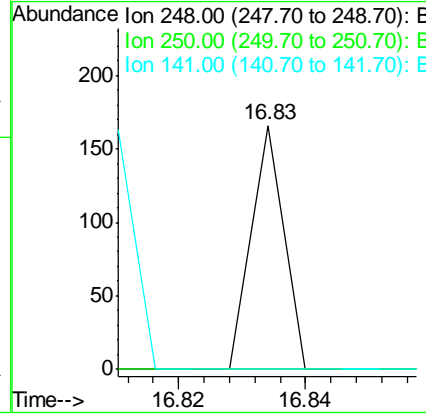
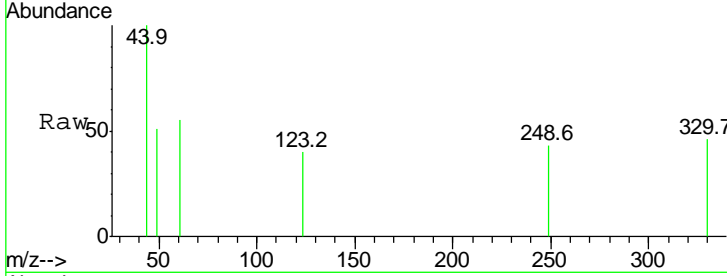




#66
 4-Bromophenyl-phenylether
 Concen: 0.020 ng
 RT: 16.83 min Scan# 2254
 Delta R.T. -0.03 min
 Lab File: BG028685.D
 Acq: 13 Sep 2017 1:07

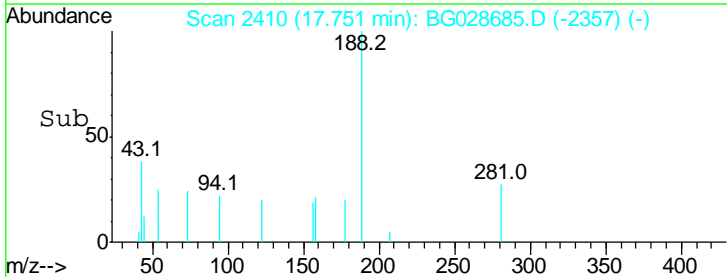
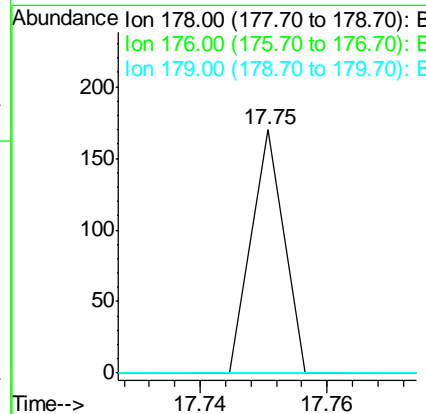
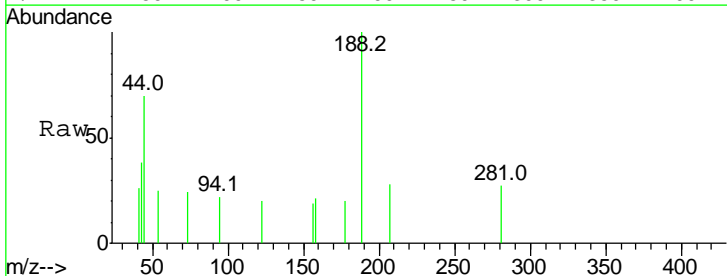
Instrument :
 BNA_G
 ClientSampled :
 CB-01-090817

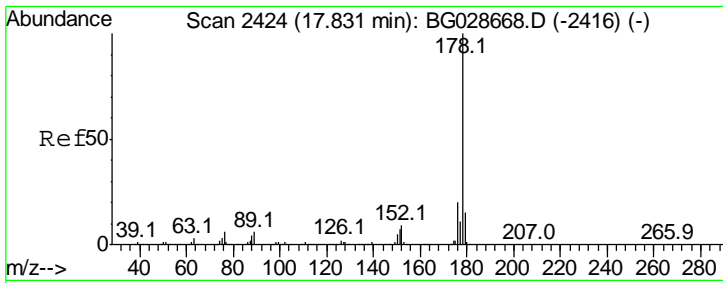
Tgt Ion	Ratio	Lower	Upper
248	100		
250	0.0	75.0	112.6#
141	0.0	55.2	82.8#



#70
 Phenanthrene
 Concen: 0.005 ng
 RT: 17.75 min Scan# 2410
 Delta R.T. 0.01 min
 Lab File: BG028685.D
 Acq: 13 Sep 2017 1:07

Tgt Ion	Ratio	Lower	Upper
178	100		
176	0.0	17.7	26.5#
179	0.0	15.0	22.6#

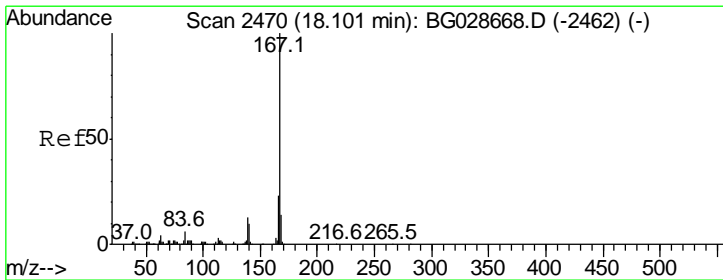
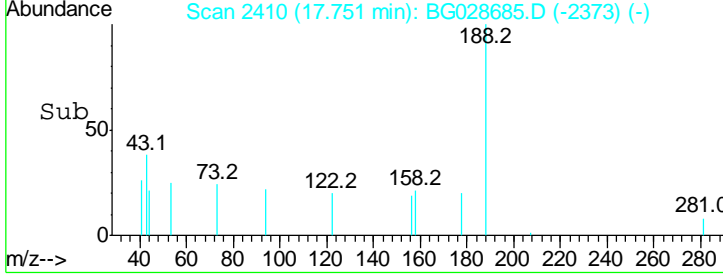
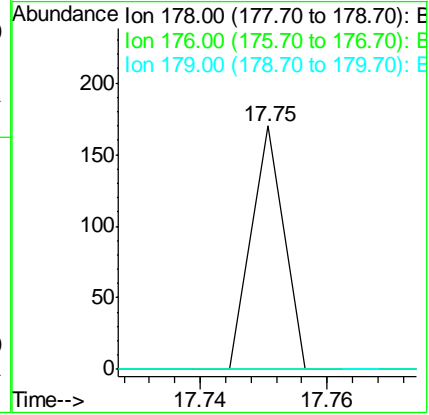
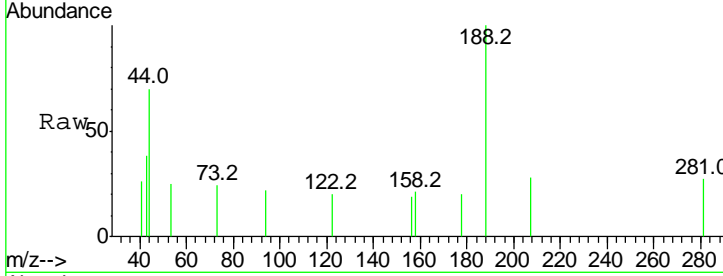




#71
 Anthracene
 Concen: 0.005 ng
 RT: 17.75 min Scan# 2410
 Delta R.T. -0.08 min
 Lab File: BG028685.D
 Acq: 13 Sep 2017 1:07

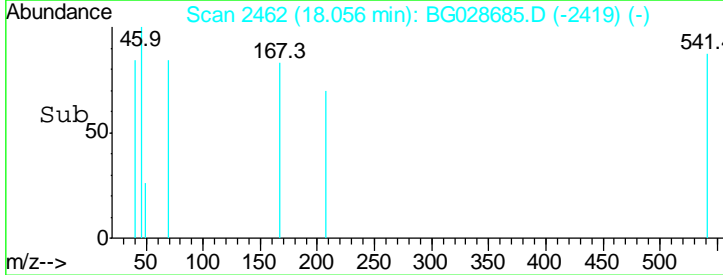
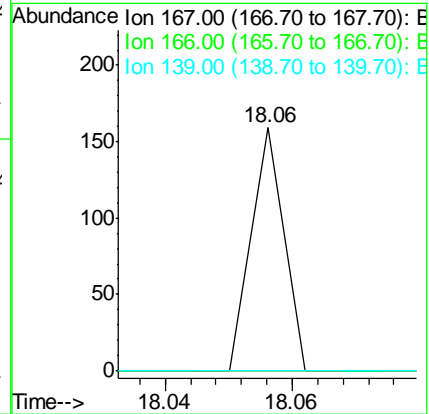
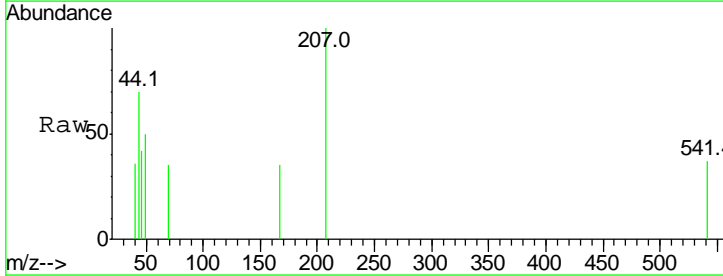
Instrument :
 BNA_G
 ClientSampleId :
 CB-01-090817

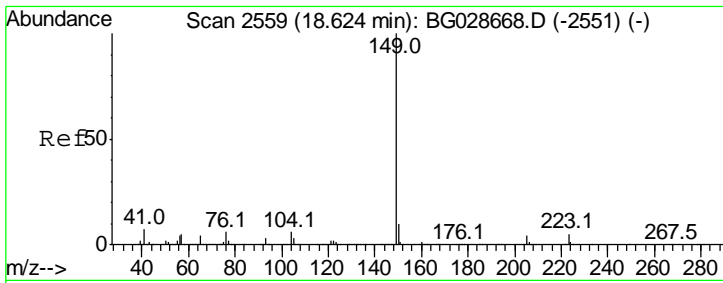
Tgt Ion	Resp	Lower	Upper
178	100		
176	0.0	16.4	24.6#
179	0.0	13.8	20.8#



#72
 Carbazole
 Concen: 0.005 ng
 RT: 18.06 min Scan# 2462
 Delta R.T. -0.04 min
 Lab File: BG028685.D
 Acq: 13 Sep 2017 1:07

Tgt Ion	Resp	Lower	Upper
167	100		
166	0.0	20.2	30.2#
139	0.0	12.8	19.2#

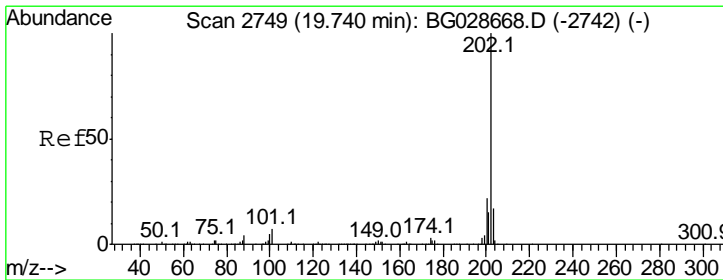
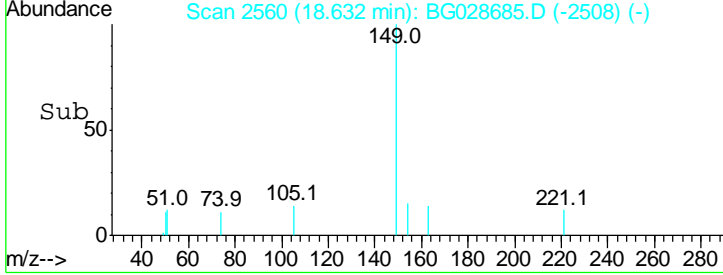
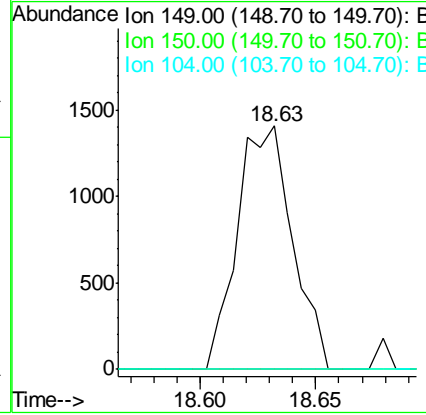
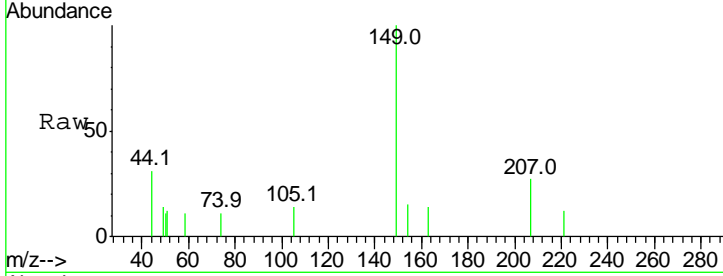




#73
 Di-n-butylphthalate
 Concen: 0.175 ng
 RT: 18.63 min Scan# 2560
 Delta R.T. 0.01 min
 Lab File: BG028685.D
 Acq: 13 Sep 2017 1:07

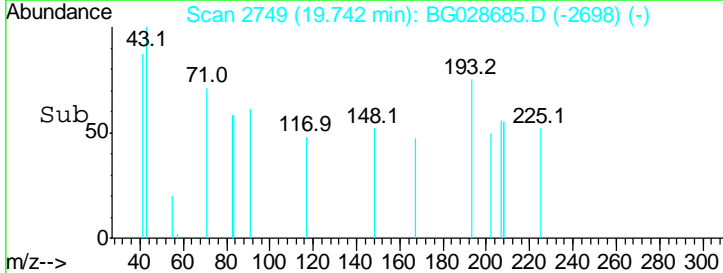
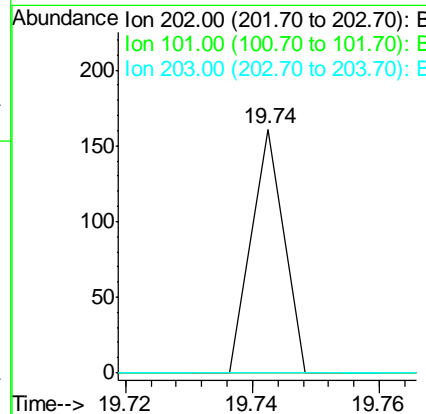
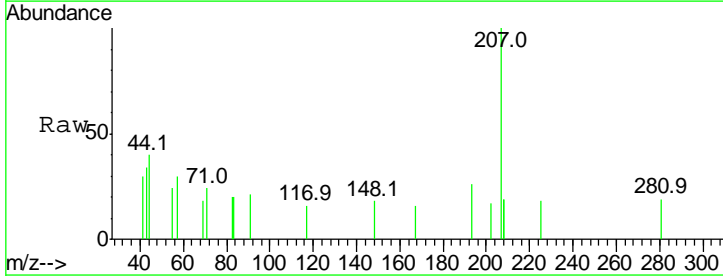
Instrument :
 BNA_G
ClientSampleId :
 CB-01-090817

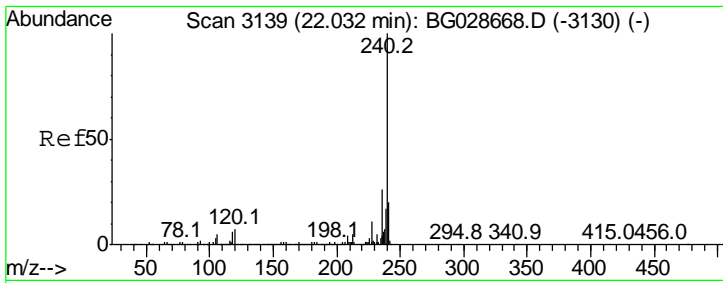
Tgt Ion	Resp	Lower	Upper
149	100		
150	0.0	9.1	13.7#
104	0.0	6.7	10.1#



#74
 Fluoranthene
 Concen: 0.004 ng
 RT: 19.74 min Scan# 2749
 Delta R.T. 0.00 min
 Lab File: BG028685.D
 Acq: 13 Sep 2017 1:07

Tgt Ion	Resp	Lower	Upper
202	100		
101	0.0	0.0	30.1
203	0.0	1.3	41.3#

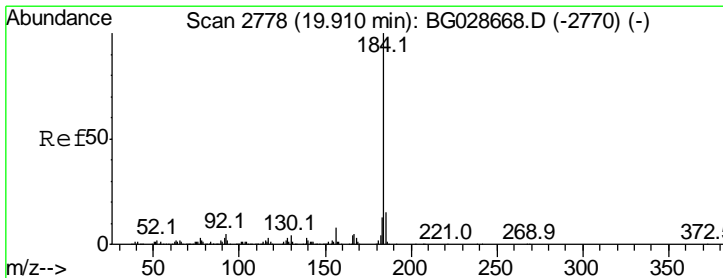
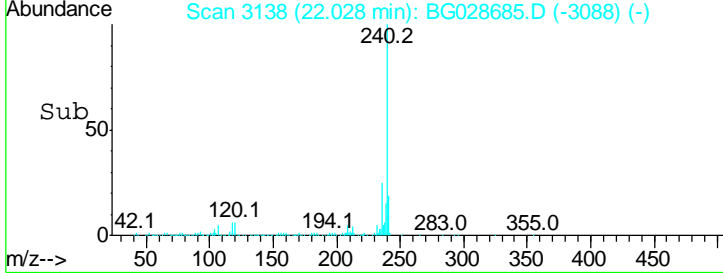
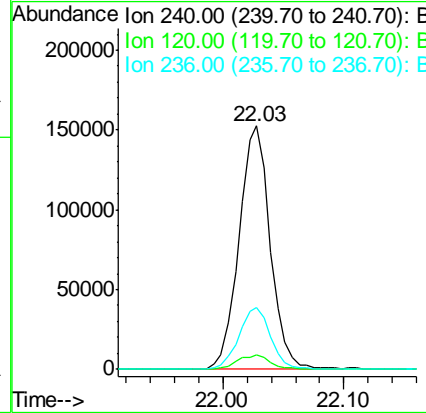
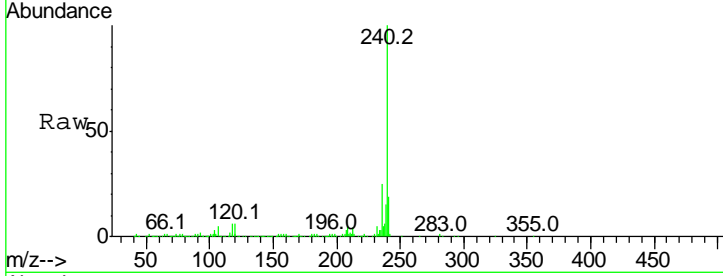




#75
 Chrysene-d12
 Concen: 20.000 ng
 RT: 22.03 min Scan# 3138
 Delta R.T. -0.00 min
 Lab File: BG028685.D
 Acq: 13 Sep 2017 1:07

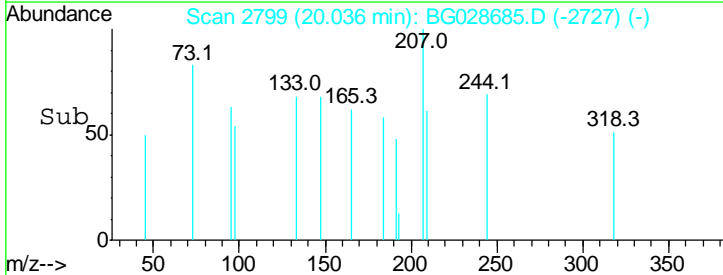
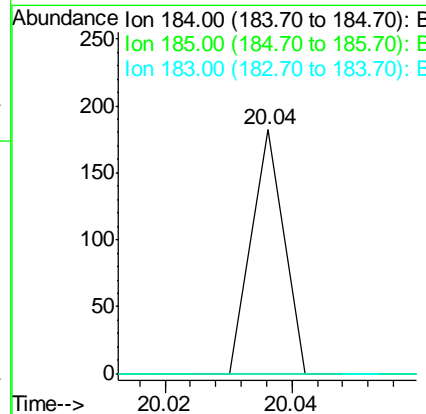
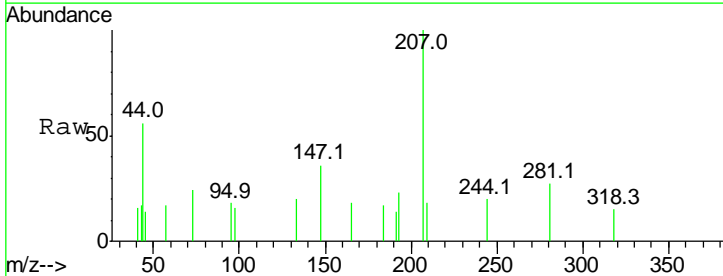
Instrument :
 BNA_G
 ClientSampled :
 CB-01-090817

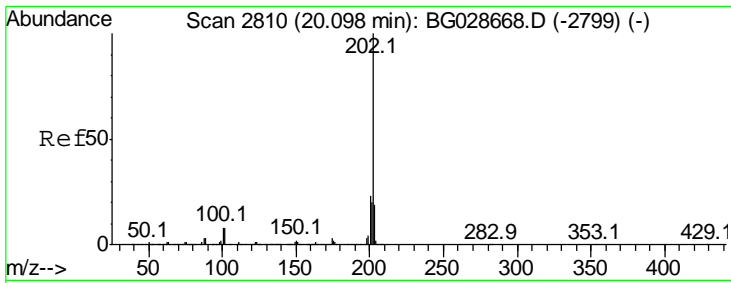
Tgt Ion	Ratio	Lower	Upper
240	100		
120	5.8	5.7	8.5
236	25.5	22.2	33.4



#76
 Benzidine
 Concen: 0.009 ng
 RT: 20.04 min Scan# 2799
 Delta R.T. 0.13 min
 Lab File: BG028685.D
 Acq: 13 Sep 2017 1:07

Tgt Ion	Ratio	Lower	Upper
184	100		
185	0.0	13.0	19.6#
183	0.0	11.0	16.6#

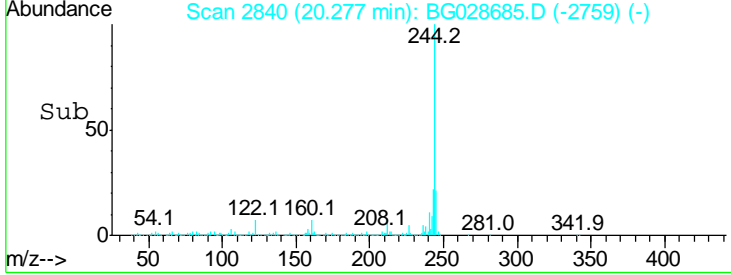
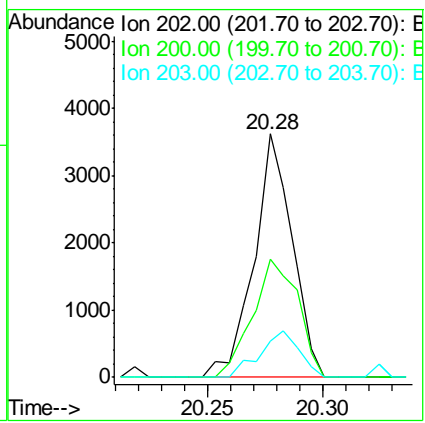
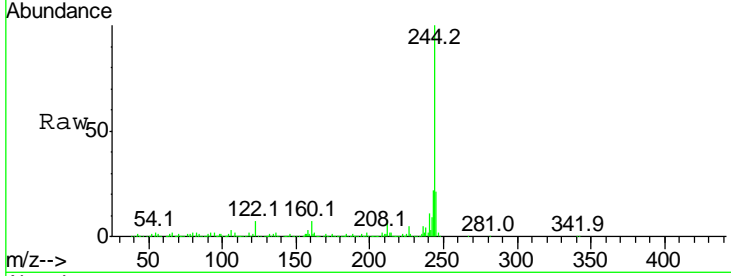




#77
 Pyrene
 Concen: 0.263 ng
 RT: 20.28 min Scan# 2840
 Delta R.T. 0.18 min
 Lab File: BG028685.D
 Acq: 13 Sep 2017 1:07

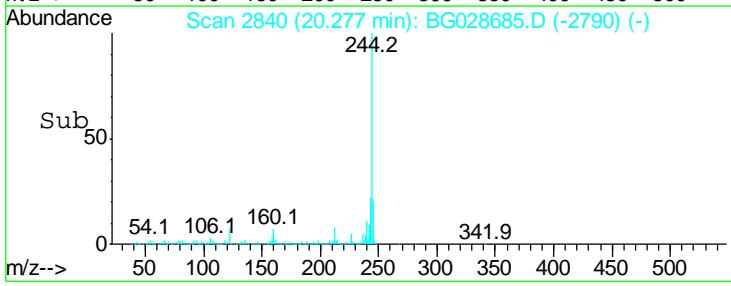
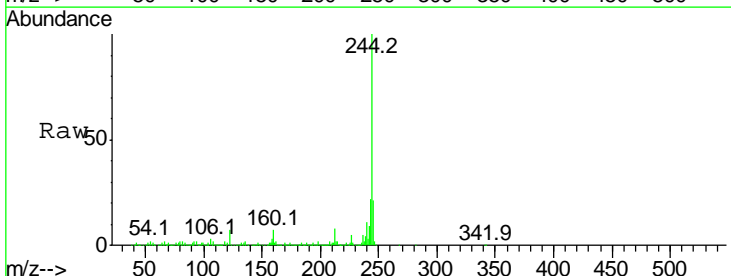
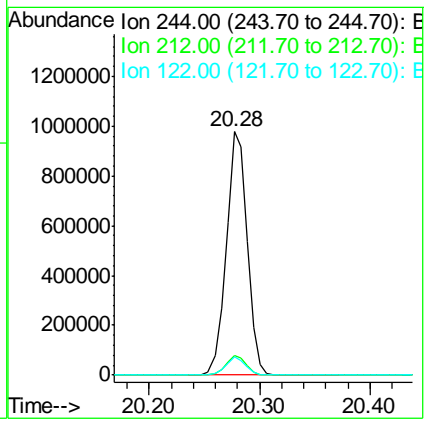
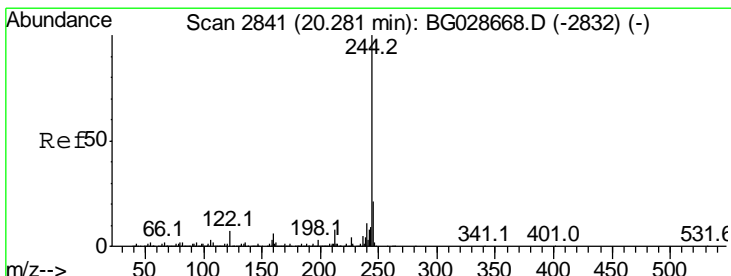
Instrument :
 BNA_G
ClientSampleId :
 CB-01-090817

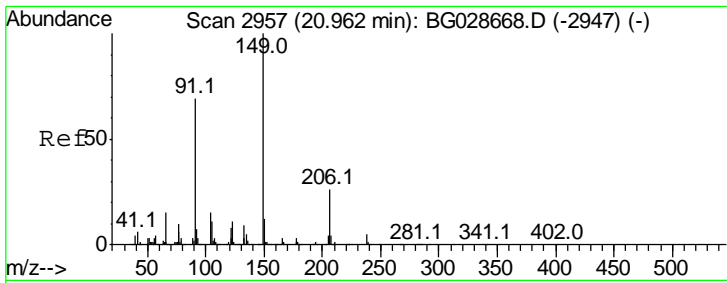
Tgt Ion	Resp	Lower	Upper
202	100		
200	48.4	19.6	29.4#
203	14.9	15.8	23.8#



#78
 Terphenyl-d14
 Concen: 100.571 ng
 RT: 20.28 min Scan# 2840
 Delta R.T. -0.00 min
 Lab File: BG028685.D
 Acq: 13 Sep 2017 1:07

Tgt Ion	Resp	Lower	Upper
244	100		
212	8.1	10.0	15.0#
122	7.4	8.6	12.8#



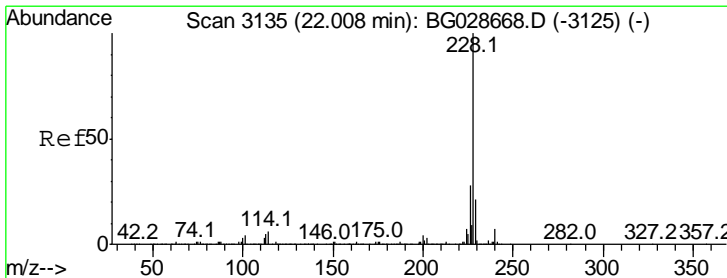
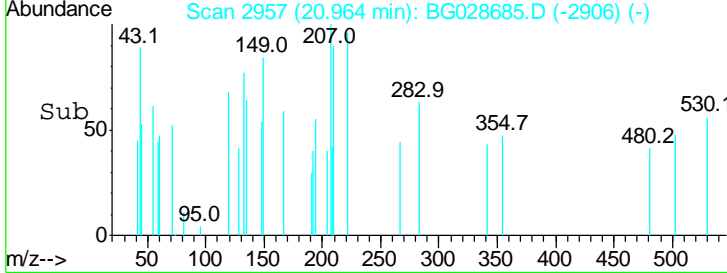
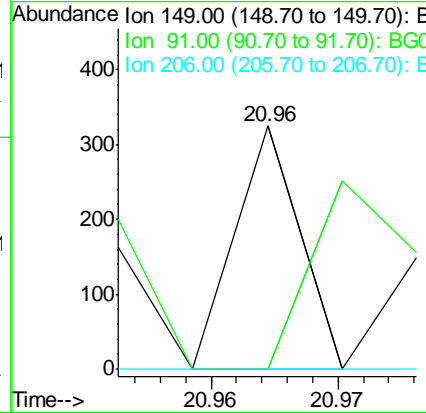
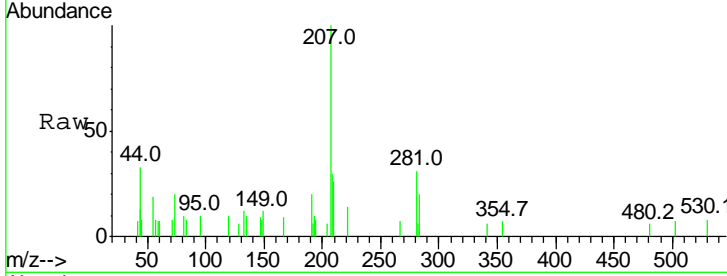


#79

Butylbenzylphthalate
 Concen: 0.018 ng
 RT: 20.96 min Scan# 2957
 Delta R.T. 0.00 min
 Lab File: BG028685.D
 Acq: 13 Sep 2017 1:07

Instrument :
 BNA_G
 ClientSampleID :
 CB-01-090817

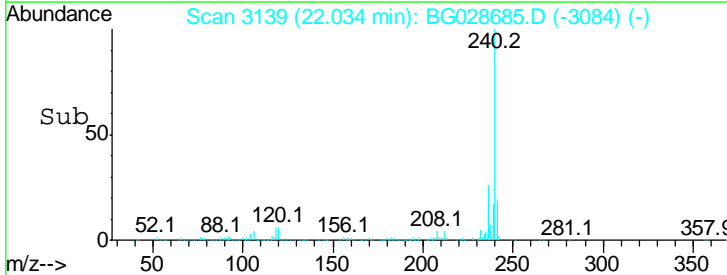
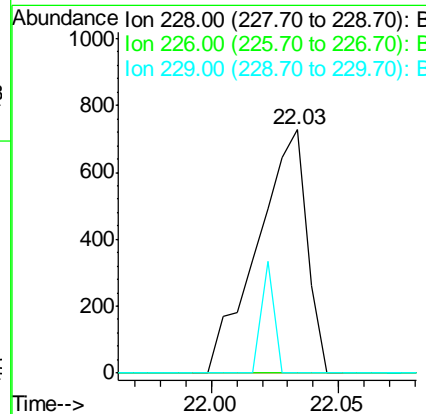
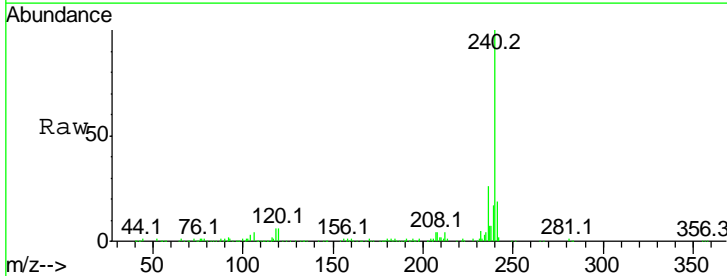
Tgt Ion	Resp	Lower	Upper
149	100		
91	0.0	63.5	95.3#
206	0.0	21.0	31.6#

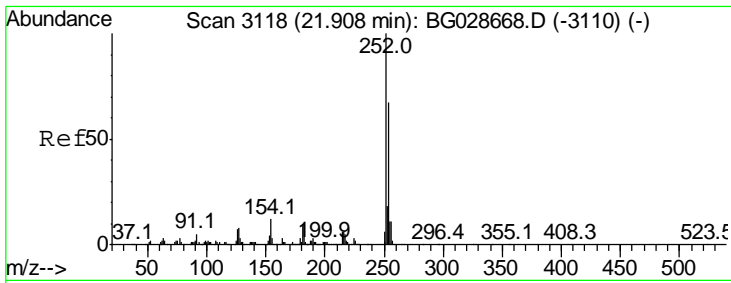


#80

Benzo(a)anthracene
 Concen: 0.060 ng
 RT: 22.03 min Scan# 3139
 Delta R.T. 0.03 min
 Lab File: BG028685.D
 Acq: 13 Sep 2017 1:07

Tgt Ion	Resp	Lower	Upper
228	100		
226	0.0	24.9	37.3#
229	0.0	18.2	27.2#

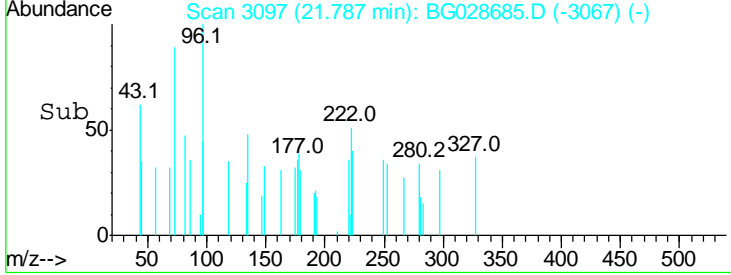
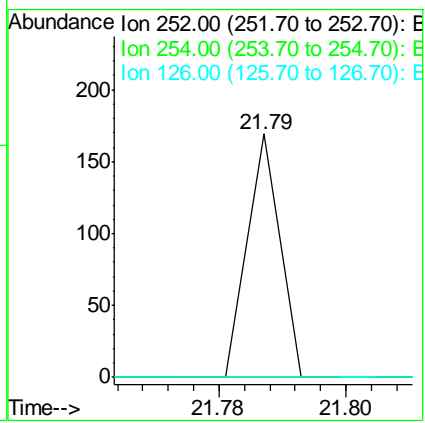
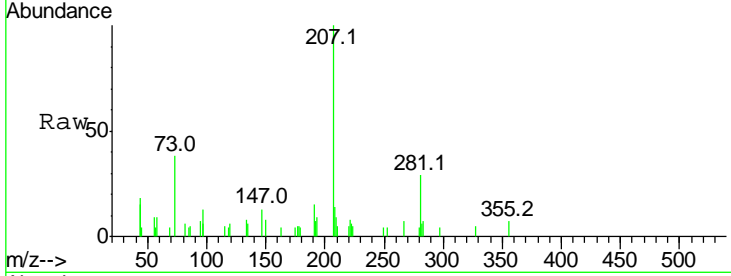




#81
 3,3'-Dichlorobenzidine
 Concen: 0.009 ng
 RT: 21.79 min Scan# 3097
 Delta R.T. -0.12 min
 Lab File: BG028685.D
 Acq: 13 Sep 2017 1:07

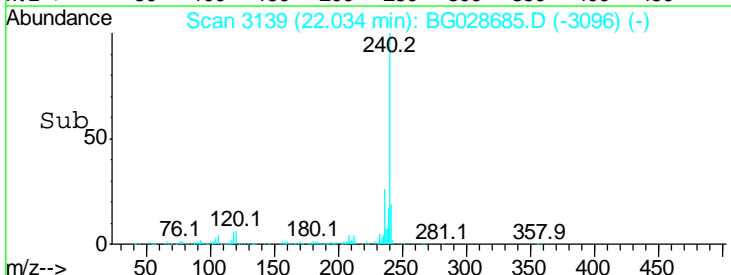
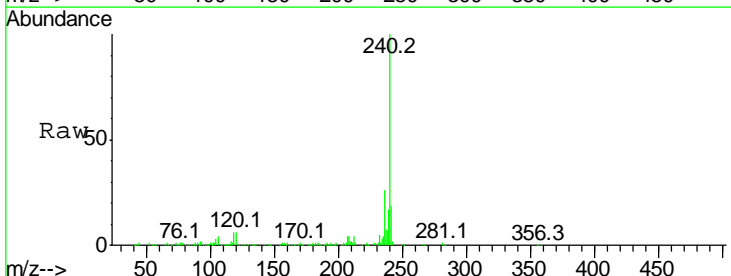
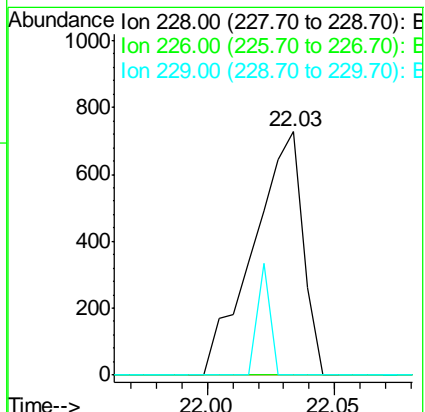
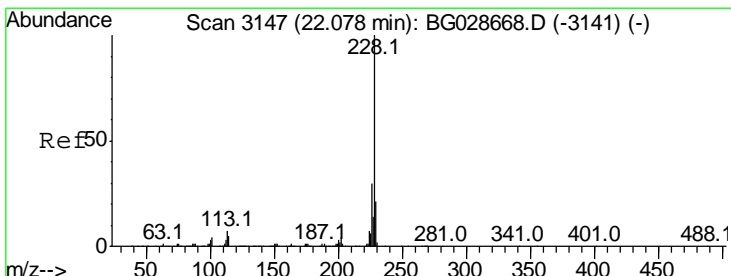
Instrument :
 BNA_G
ClientSampled :
 CB-01-090817

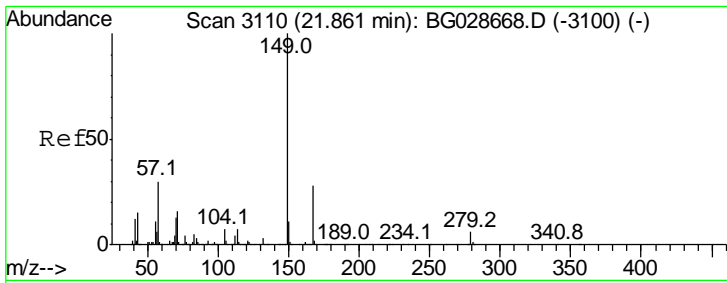
Tgt Ion	Resp	Lower	Upper
252	100		
254	0.0	53.1	79.7#
126	0.0	7.0	10.4#



#82
 Chrysene
 Concen: 0.063 ng
 RT: 22.03 min Scan# 3139
 Delta R.T. -0.04 min
 Lab File: BG028685.D
 Acq: 13 Sep 2017 1:07

Tgt Ion	Resp	Lower	Upper
228	100		
226	0.0	27.0	40.4#
229	0.0	17.8	26.6#

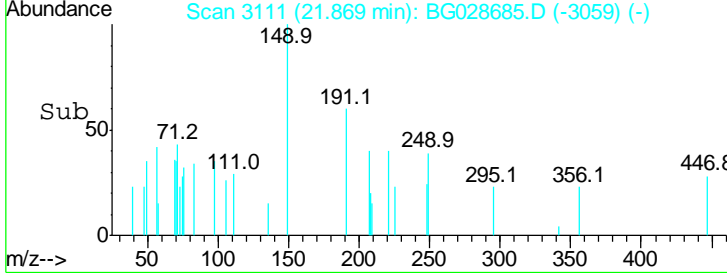
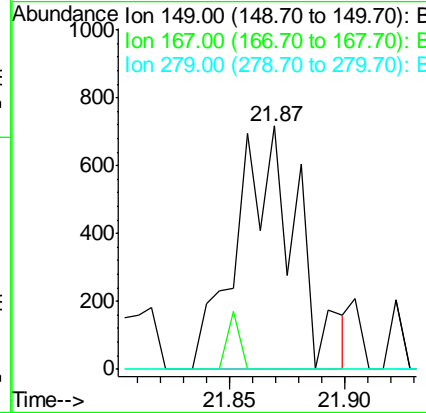
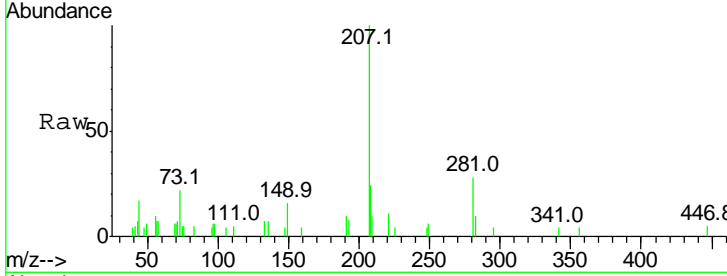




#83
 Bis(2-ethylhexyl)phthalate
 Concen: 0.144 ng
 RT: 21.87 min Scan# 3111
 Delta R.T. 0.01 min
 Lab File: BG028685.D
 Acq: 13 Sep 2017 1:07

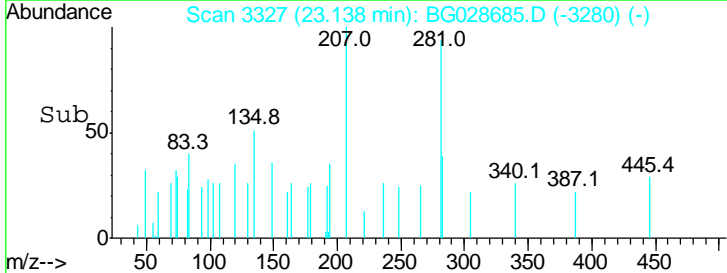
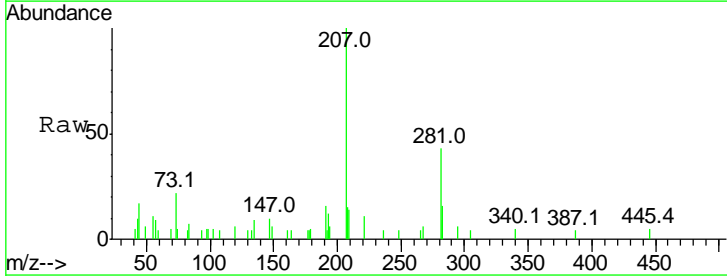
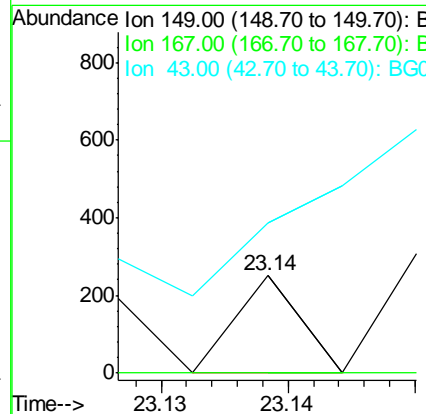
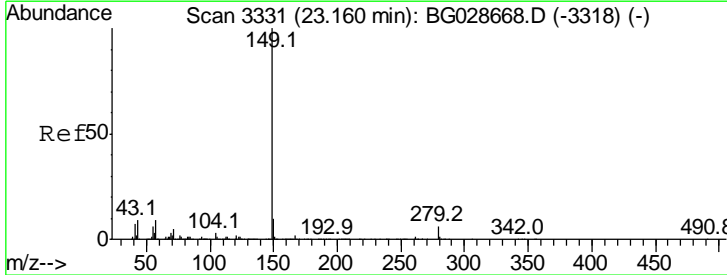
Instrument :
 BNA_G
ClientSampled :
 CB-01-090817

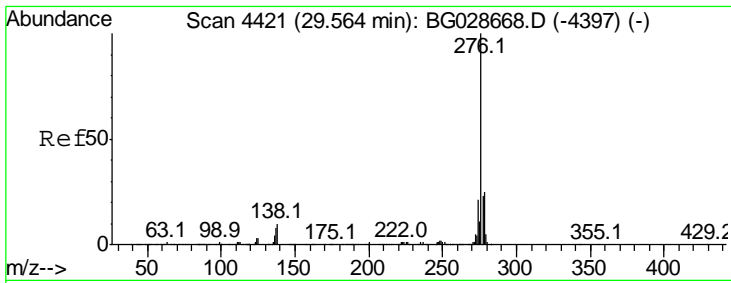
Tgt Ion	Resp	Lower	Upper
149	100		
167	0.0	23.7	35.5#
279	0.0	4.6	6.8#



#84
 Di-n-octyl phthalate
 Concen: 0.006 ng
 RT: 23.14 min Scan# 3327
 Delta R.T. -0.02 min
 Lab File: BG028685.D
 Acq: 13 Sep 2017 1:07

Tgt Ion	Resp	Lower	Upper
149	100		
167	0.0	1.4	2.2#
43	600.0	11.8	17.6#

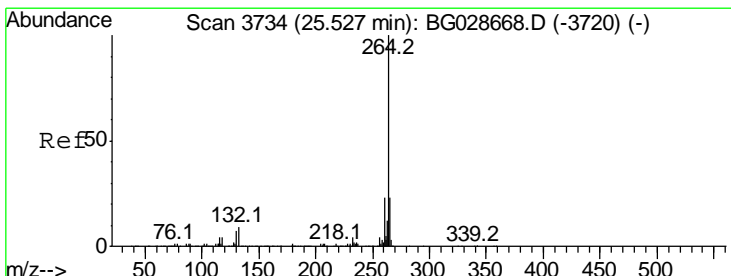
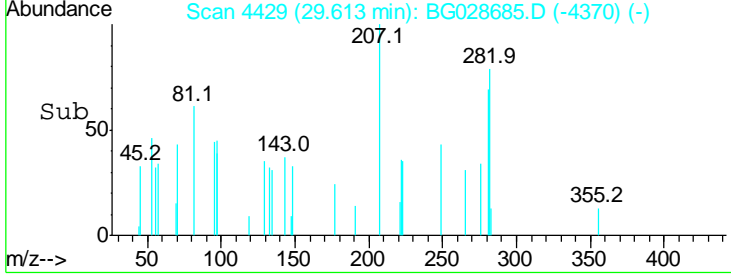
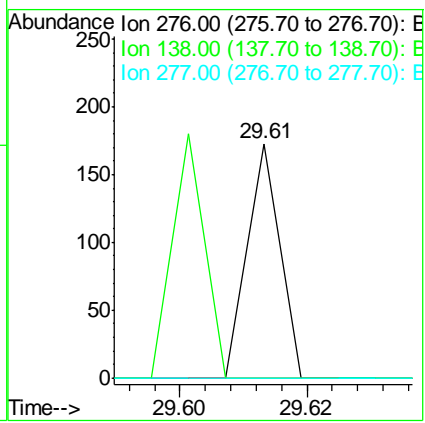
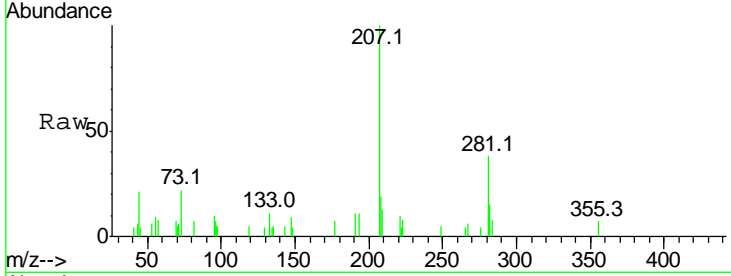




#85
 Indeno(1,2,3-cd)pyrene
 Concen: 0.003 ng
 RT: 29.61 min Scan# 4429
 Delta R.T. 0.05 min
 Lab File: BG028685.D
 Acq: 13 Sep 2017 1:07

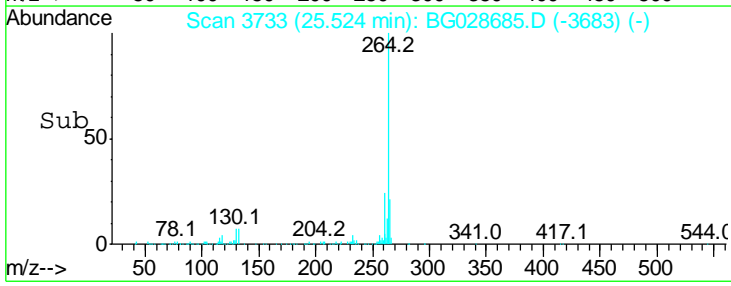
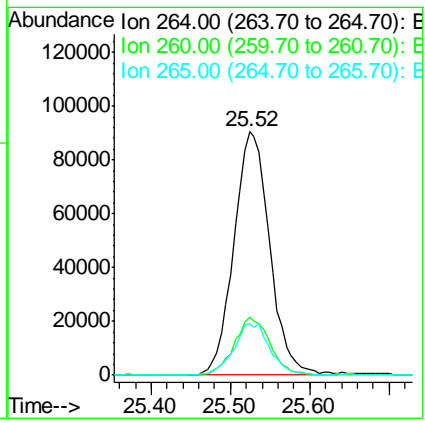
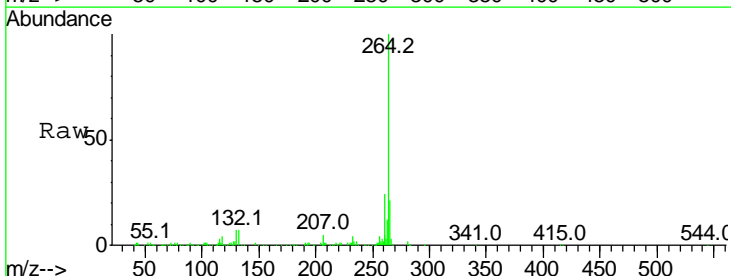
Instrument :
 BNA_G
ClientSampled :
 CB-01-090817

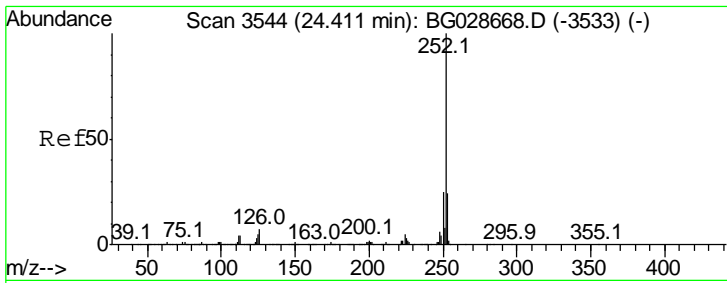
Tgt Ion	Resp	Lower	Upper
276	100		
138	103.3	4.7	7.1#
277	0.0	20.6	31.0#



#86
 Perylene-d12
 Concen: 20.000 ng
 RT: 25.52 min Scan# 3733
 Delta R.T. -0.00 min
 Lab File: BG028685.D
 Acq: 13 Sep 2017 1:07

Tgt Ion	Resp	Lower	Upper
264	100		
260	23.9	21.8	32.8
265	21.3	18.2	27.4

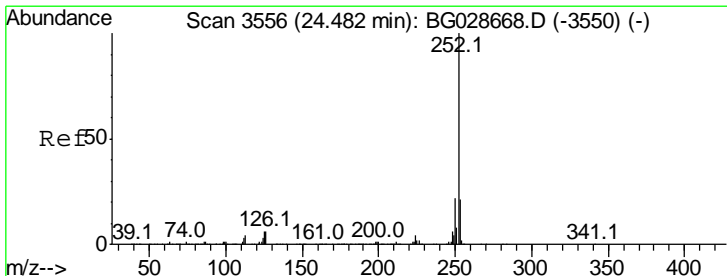
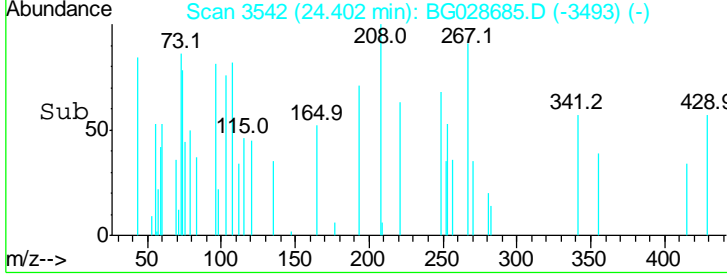
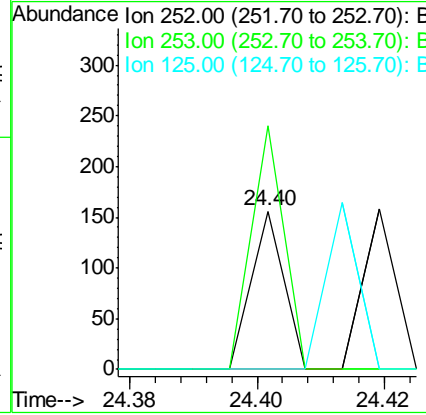
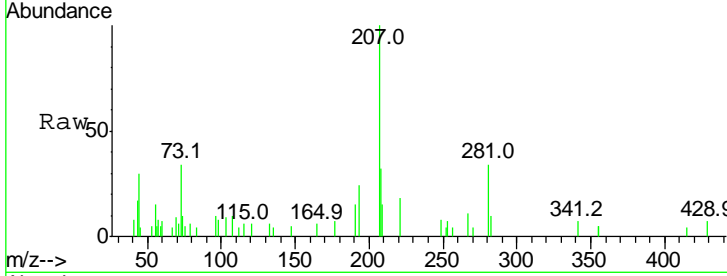




#87
 Benzo(b)fluoranthene
 Concen: 0.003 ng
 RT: 24.40 min Scan# 3542
 Delta R.T. -0.01 min
 Lab File: BG028685.D
 Acq: 13 Sep 2017 1:07

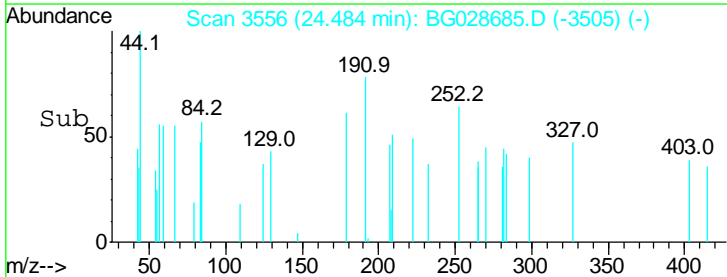
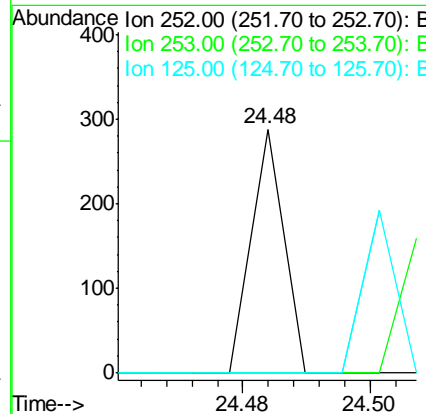
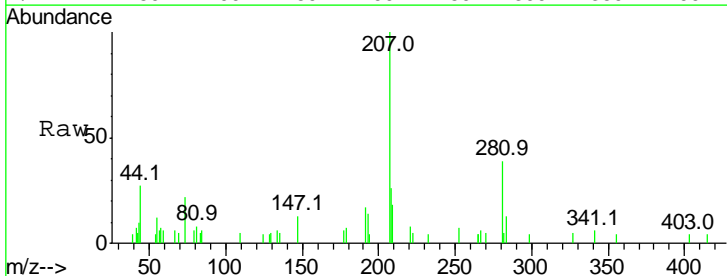
Instrument :
 BNA_G
ClientSampled :
 CB-01-090817

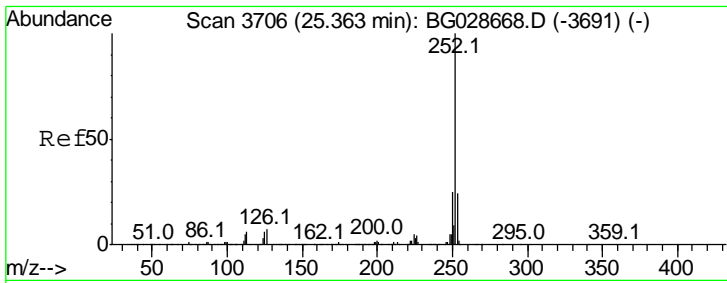
Tgt Ion	Resp	Lower	Upper
252	100		
253	153.8	18.7	28.1#
125	0.0	5.3	7.9#



#88
 Benzo(k)fluoranthene
 Concen: 0.006 ng
 RT: 24.48 min Scan# 3556
 Delta R.T. 0.00 min
 Lab File: BG028685.D
 Acq: 13 Sep 2017 1:07

Tgt Ion	Resp	Lower	Upper
252	100		
253	0.0	20.2	30.2#
125	0.0	5.1	7.7#

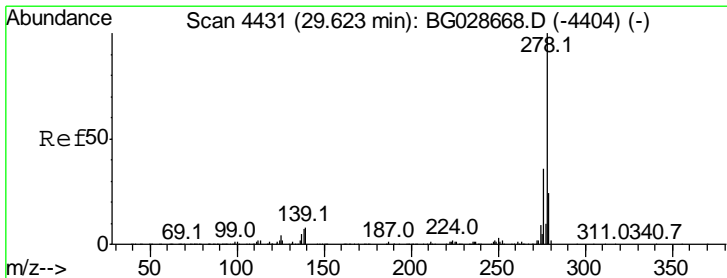
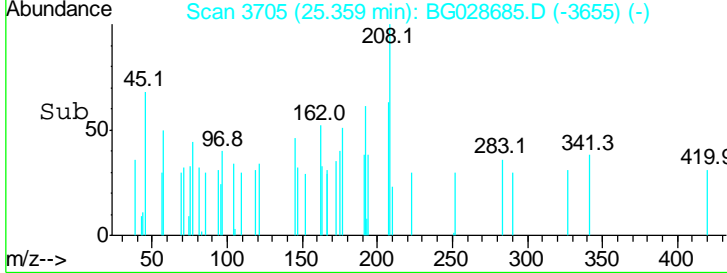
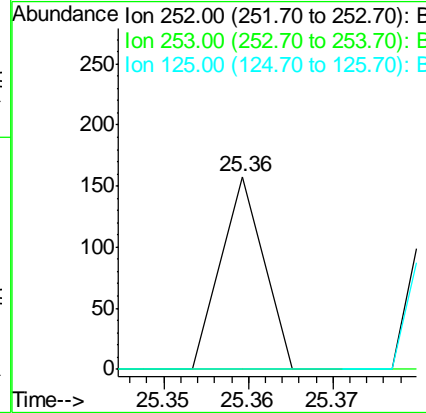
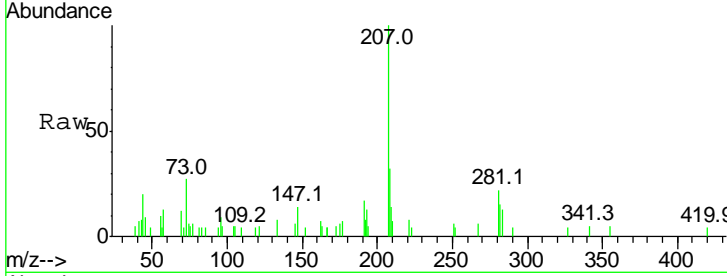




#89
 Benzo(a)pyrene
 Concen: 0.003 ng
 RT: 25.36 min Scan# 3705
 Delta R.T. -0.00 min
 Lab File: BG028685.D
 Acq: 13 Sep 2017 1:07

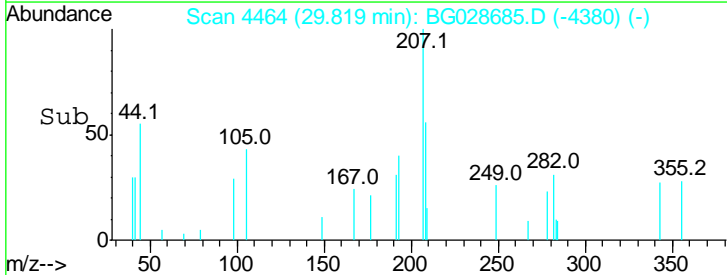
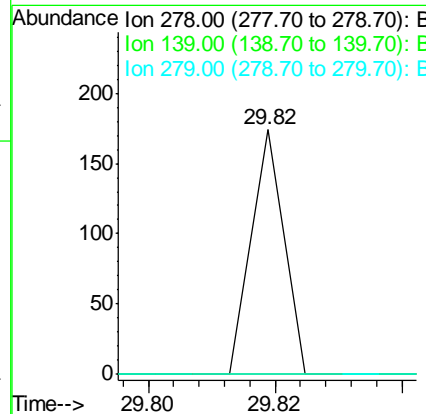
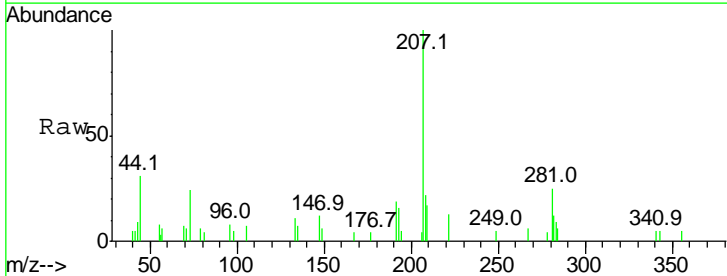
Instrument :
 BNA_G
 ClientSampleId :
 CB-01-090817

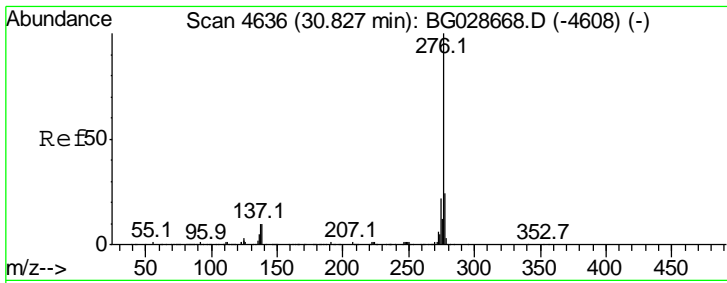
Tgt Ion	Resp	Lower	Upper
252	100		
253	0.0	19.2	28.8#
125	0.0	5.4	8.0#



#90
 Dibenzo(a,h)anthracene
 Concen: 0.004 ng
 RT: 29.82 min Scan# 4464
 Delta R.T. 0.20 min
 Lab File: BG028685.D
 Acq: 13 Sep 2017 1:07

Tgt Ion	Resp	Lower	Upper
278	100		
139	0.0	7.7	11.5#
279	0.0	19.1	28.7#

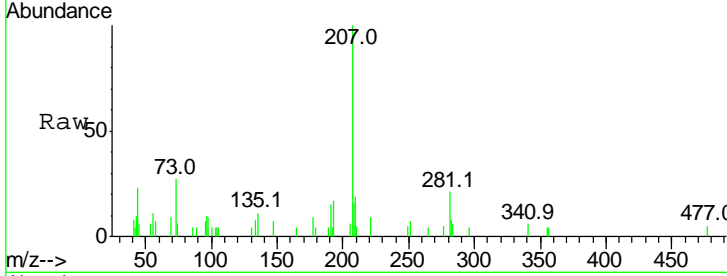




#91
 Benzo(a,h,i)perylene
 Concen: 0.004 ng
 RT: 30.83 min Scan# 4636
 Delta R.T. 0.00 min
 Lab File: BG028685.D
 Acq: 13 Sep 2017 1:07

Instrument :
 BNA_G
 ClientSampleId :
 CB-01-090817

Tot Ion	Ratio	Lower	Upper
276	100		
277	0.0	18.6	27.8#
138	0.0	8.1	12.1#



Abundance

Ion 276.00 (275.70 to 276.70): E

Ion 277.00 (276.70 to 277.70): E

Ion 138.00 (137.70 to 138.70): E

