

Data Path : \\74.0.250.170\SVOASRV\HPCHEM1\BNA G\DATA\BG091317\  
 Data File : BG028703.D  
 Acq On : 13 Sep 2017 18:05  
 Operator : SJ/JU  
 Sample : I5187-14  
 Misc :  
 ALS Vial : 13 Sample Multiplier: 1

Instrument :  
 BNA\_G  
 ClientSampleId :  
 20170585-SITEWATER

Quant Time: Sep 14 08:41:29 2017  
 Quant Method : Z:\HPCHEM1\BNA G\METHODS\8270-BG091217.M  
 Quant Title : ASP BNA STANDARDS FOR 5 POINT CALIBRATION  
 QLast Update : Tue Sep 12 16:57:11 2017  
 Response via : Initial Calibration

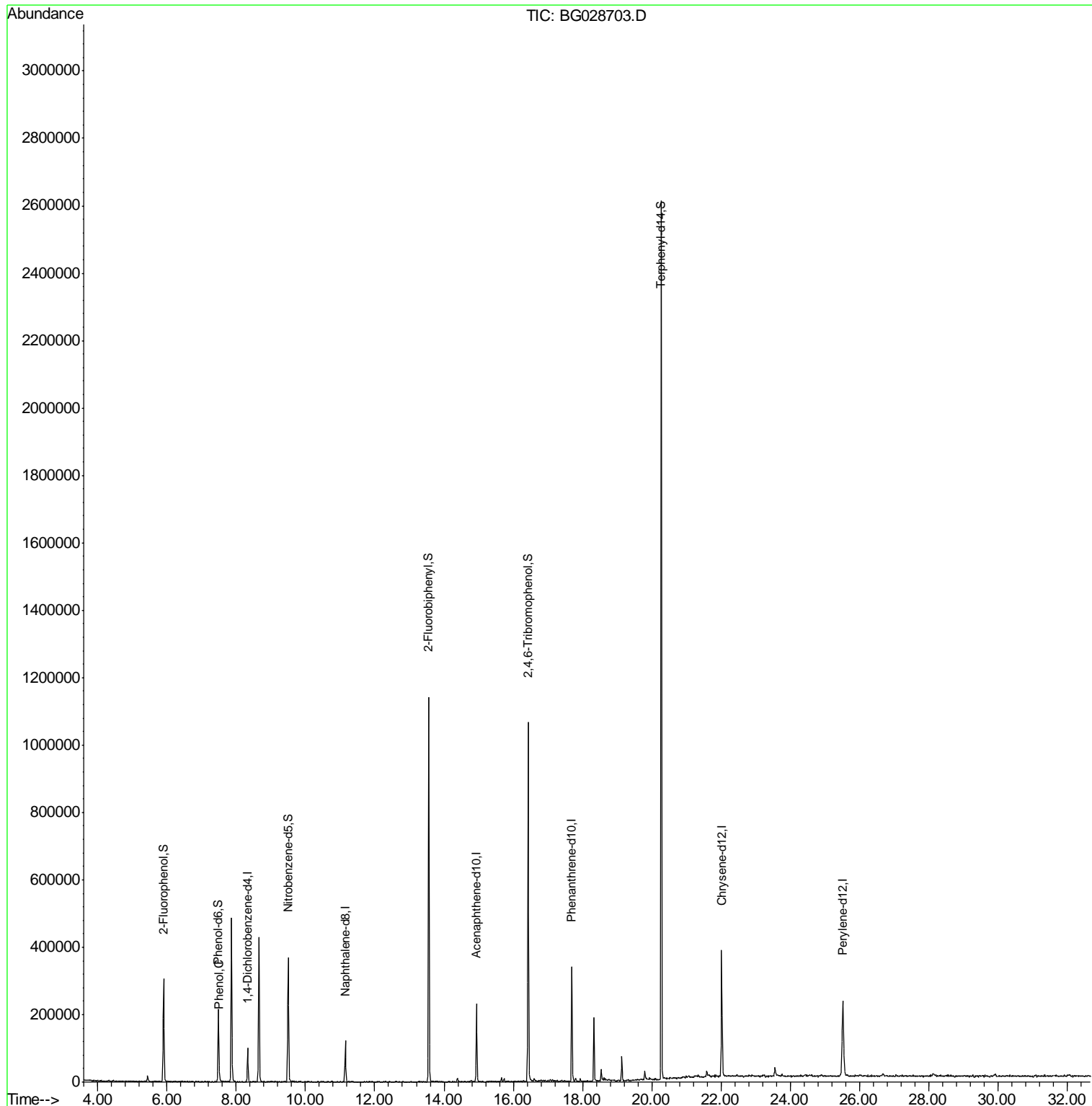
Internal Standards	R.T.	QIon	Response	Conc	Units	Dev(Min)
1) 1,4-Dichlorobenzene-d4	8.33	152	26183	20.00	ng	0.00
21) Naphthalene-d8	11.15	136	108108	20.00	ng	0.00
38) Acenaphthene-d10	14.94	164	82305	20.00	ng	0.00
63) Phenanthrene-d10	17.69	188	224104	20.00	ng	0.00
75) Chrysene-d12	22.02	240	269993	20.00	ng	-0.01
86) Perylene-d12	25.52	264	273708	20.00	ng	0.00
System Monitoring Compounds						
5) 2-Fluorophenol	5.90	112	130029	81.94	ng	0.00
7) Phenol-d6	7.48	99	130916	54.80	ng	0.00
23) Nitrobenzene-d5	9.50	82	235443	104.18	ng	0.00
41) 2,4,6-Tribromophenol	16.43	330	224968	165.26	ng	0.00
44) 2-Fluorobiphenyl	13.56	172	618914	100.27	ng	0.00
78) Terphenyl-d14	20.28	244	1246629	98.47	ng	0.00
Target Compounds						Qvalue
10) Phenol	7.51	94	7367	2.922	ng	90

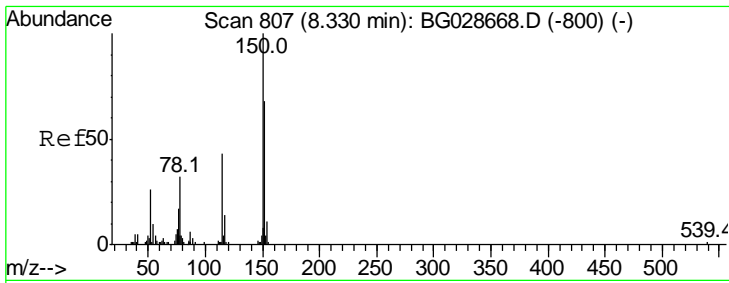
(#) = qualifier out of range (m) = manual integration (+) = signals summed

Data Path : \\74.0.250.170\SVOASRV\HPCHEM1\BNA G\DATA\BG091317\  
 Data File : BG028703.D  
 Acq On : 13 Sep 2017 18:05  
 Operator : SJ/JU  
 Sample : I5187-14  
 Misc :  
 ALS Vial : 13 Sample Multiplier: 1

**Instrument :**  
 BNA\_G  
**ClientSampleId :**  
 20170585-SITWATER

Quant Time: Sep 14 08:41:29 2017  
 Quant Method : Z:\HPCHEM1\BNA G\METHODS\8270-BG091217.M  
 Quant Title : ASP BNA STANDARDS FOR 5 POINT CALIBRATION  
 QLast Update : Tue Sep 12 16:57:11 2017  
 Response via : Initial Calibration

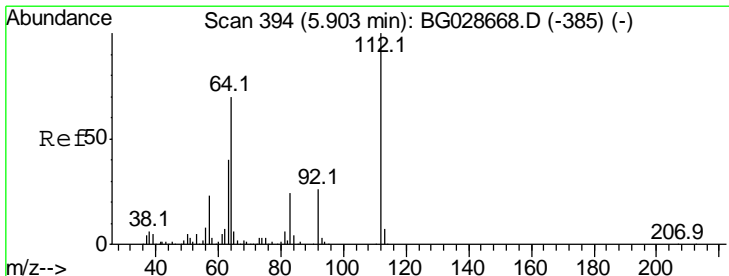
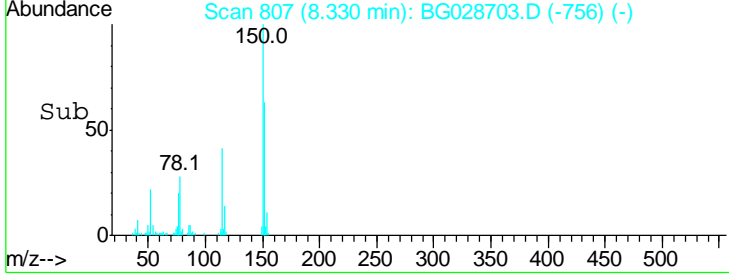
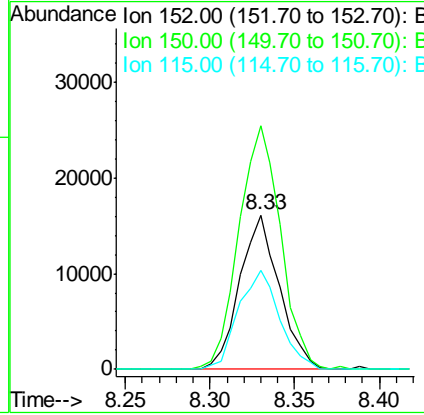
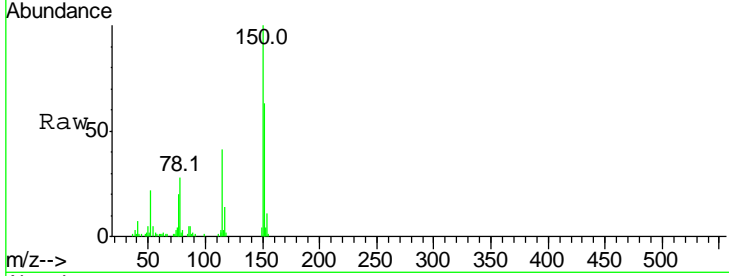




#1  
 1,4-Dichlorobenzene-d4  
 Concen: 20.000 ng  
 RT: 8.33 min Scan# 807  
 Delta R.T. -0.00 min  
 Lab File: BG028703.D  
 Acq: 13 Sep 2017 18:05

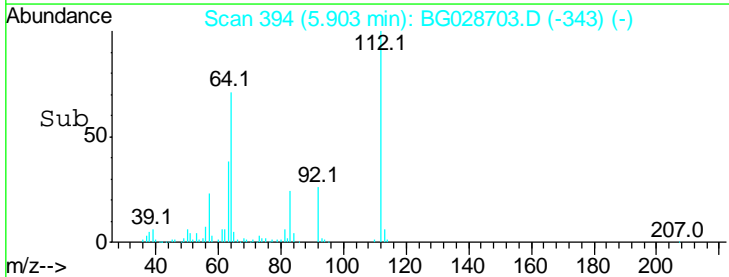
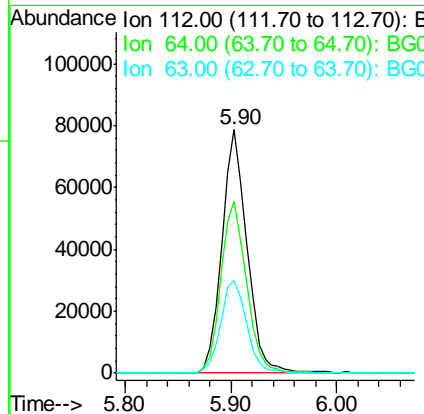
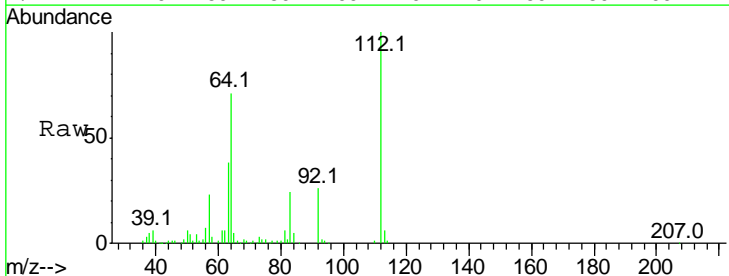
**Instrument :**  
 BNA\_G  
**ClientSampled :**  
 20170585-SITWATER

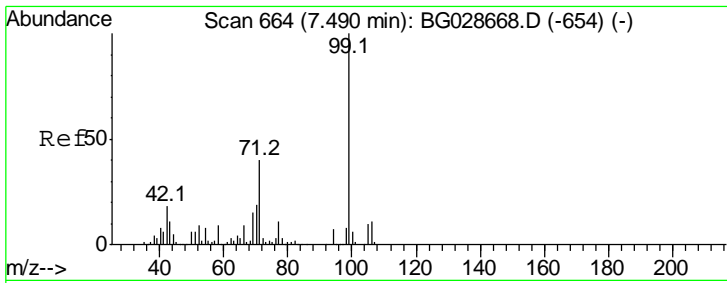
Tgt Ion	Resp	Lower	Upper
152	100		
150	158.0	114.0	171.0
115	64.1	48.1	72.1



#5  
 2-Fluorophenol  
 Concen: 81.944 ng  
 RT: 5.90 min Scan# 394  
 Delta R.T. 0.00 min  
 Lab File: BG028703.D  
 Acq: 13 Sep 2017 18:05

Tgt Ion	Resp	Lower	Upper
112	100		
64	70.9	61.8	92.6
63	38.2	37.2	55.8

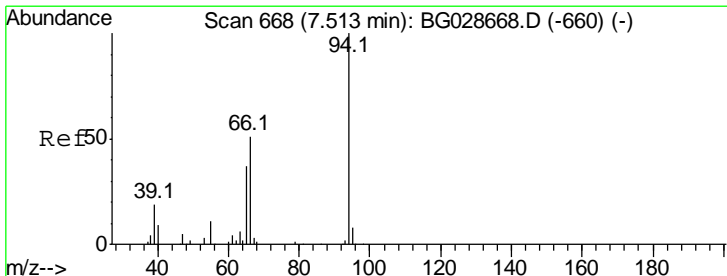
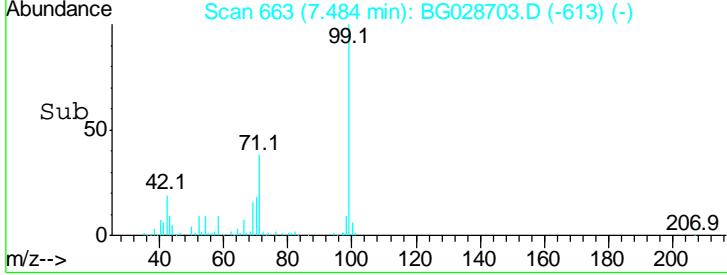
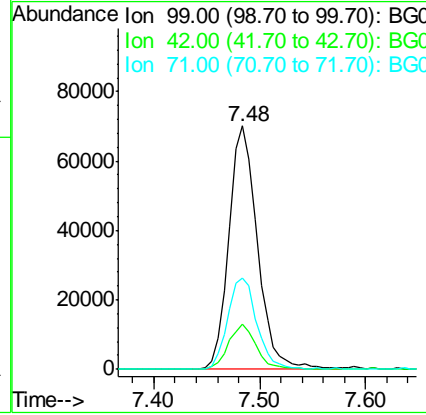
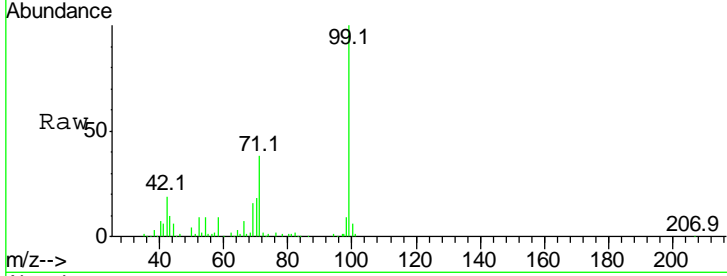




#7  
 Phenol-d6  
 Concen: 54.797 ng  
 RT: 7.48 min Scan# 663  
 Delta R.T. -0.01 min  
 Lab File: BG028703.D  
 Acq: 13 Sep 2017 18:05

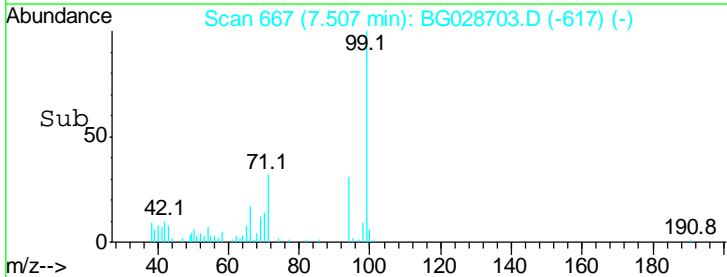
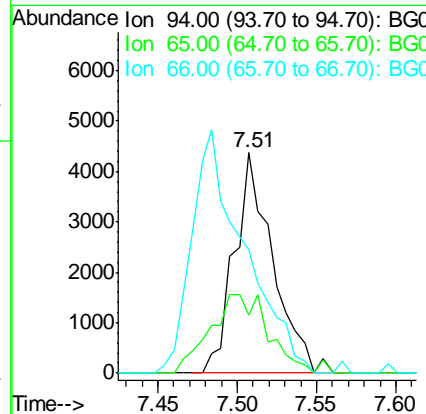
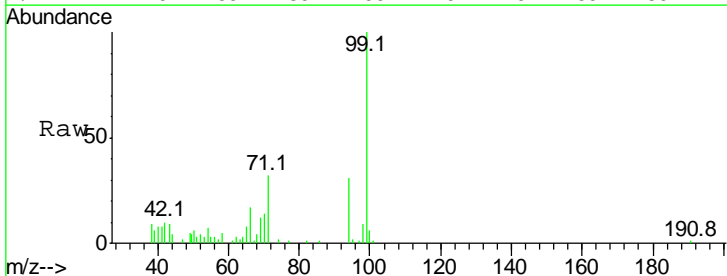
**Instrument :**  
 BNA\_G  
**ClientSampled :**  
 20170585-SITewater

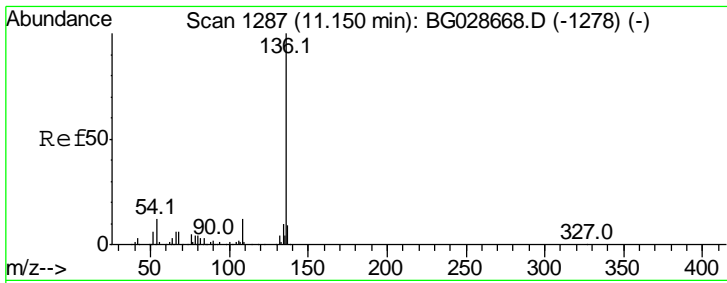
Tgt Ion	Resp	Lower	Upper
99	100		
42	18.7	20.5	30.7#
71	37.7	37.6	56.4



#10  
 Phenol  
 Concen: 2.922 ng  
 RT: 7.51 min Scan# 667  
 Delta R.T. -0.01 min  
 Lab File: BG028703.D  
 Acq: 13 Sep 2017 18:05

Tgt Ion	Resp	Lower	Upper
94	100		
65	26.5	20.6	60.6
66	55.7	35.5	75.5

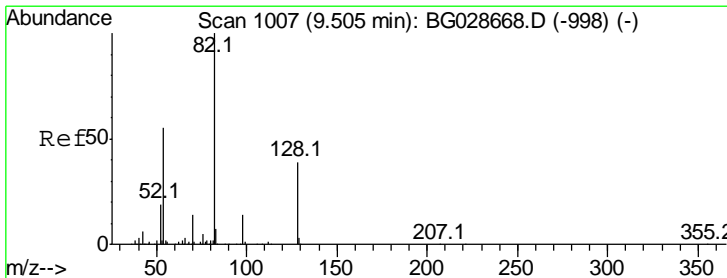
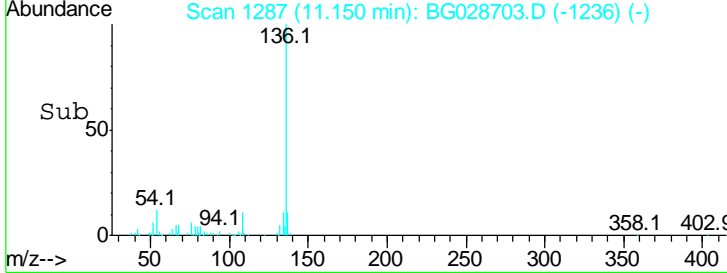
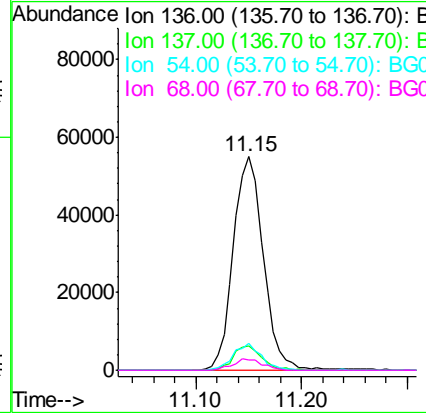
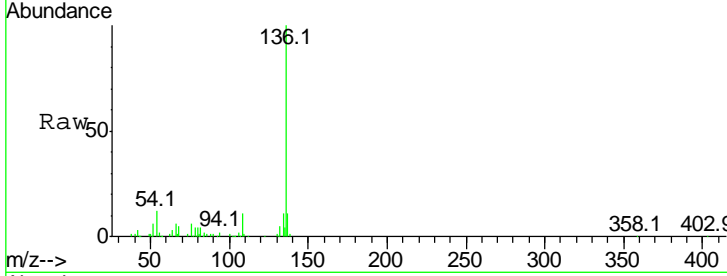




#21  
 Naphthalene-d8  
 Concen: 20.000 ng  
 RT: 11.15 min Scan# 1287  
 Delta R.T. -0.00 min  
 Lab File: BG028703.D  
 Acq: 13 Sep 2017 18:05

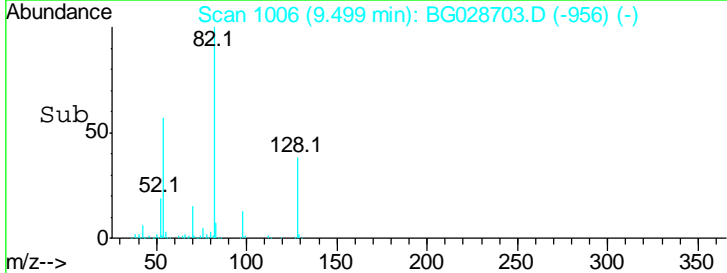
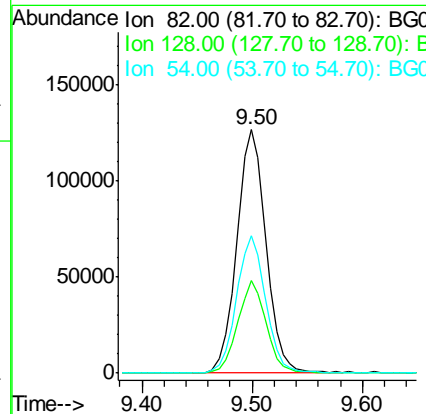
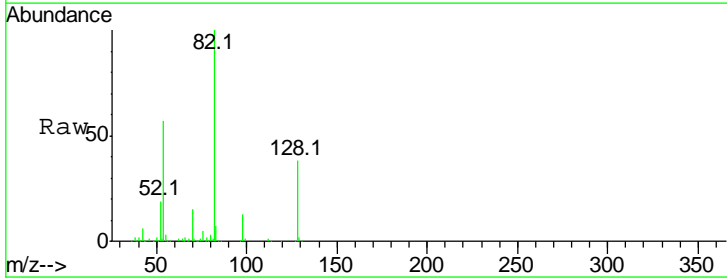
Instrument :  
 BNA\_G  
 ClientSampleId :  
 20170585-SITEWATER

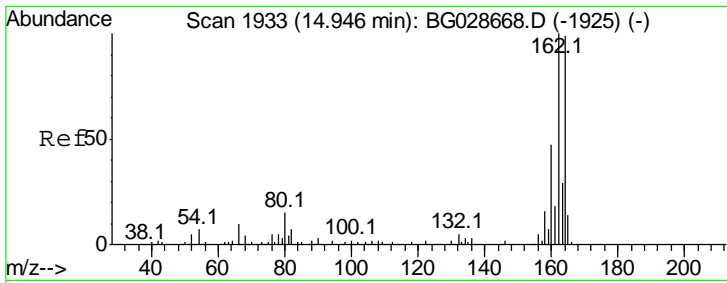
Tgt Ion	Resp	Lower	Upper
136	108108		
137	11.5	8.9	13.3
54	12.3	9.3	13.9
68	5.1	5.1	7.7#



#23  
 Nitrobenzene-d5  
 Concen: 104.183 ng  
 RT: 9.50 min Scan# 1006  
 Delta R.T. -0.01 min  
 Lab File: BG028703.D  
 Acq: 13 Sep 2017 18:05

Tgt Ion	Resp	Lower	Upper
82	235443		
128	37.9	26.4	39.6
54	56.5	49.4	74.2

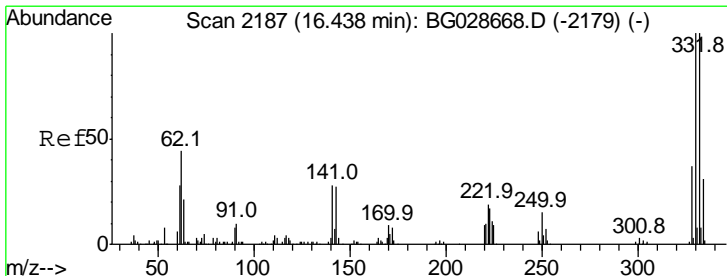
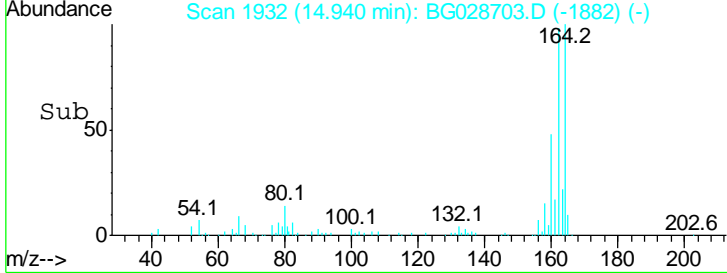
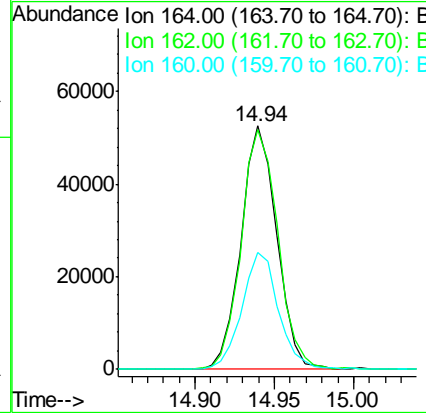
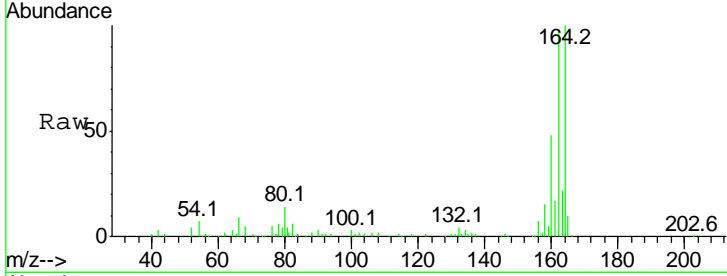




#38  
 Acenaphthene-d10  
 Concen: 20.000 ng  
 RT: 14.94 min Scan# 1932  
 Delta R.T. -0.01 min  
 Lab File: BG028703.D  
 Acq: 13 Sep 2017 18:05

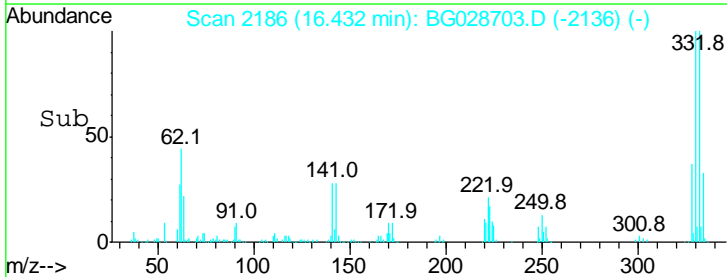
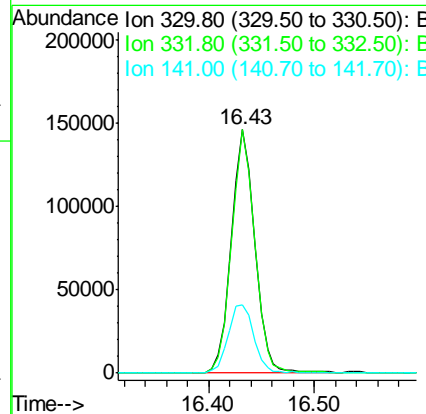
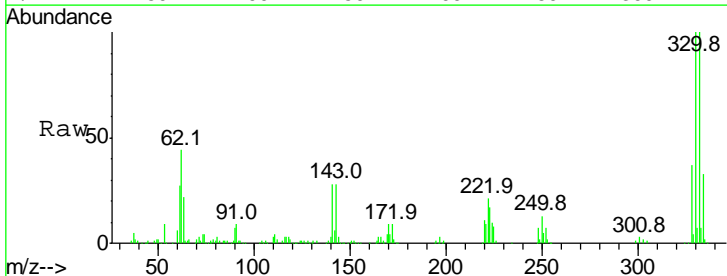
**Instrument :**  
 BNA\_G  
**ClientSampled :**  
 20170585-SITewater

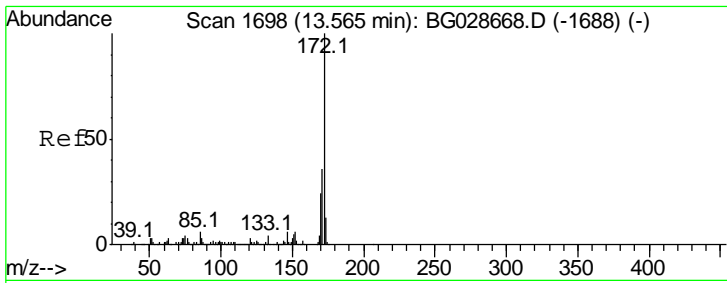
Tgt Ion	Resp	Lower	Upper
164	100		
162	98.3	85.1	127.7
160	48.2	34.7	52.1



#41  
 2,4,6-Tribromophenol  
 Concen: 165.263 ng  
 RT: 16.43 min Scan# 2186  
 Delta R.T. -0.01 min  
 Lab File: BG028703.D  
 Acq: 13 Sep 2017 18:05

Tgt Ion	Resp	Lower	Upper
330	100		
332	98.5	77.3	115.9
141	31.0	32.1	48.1#

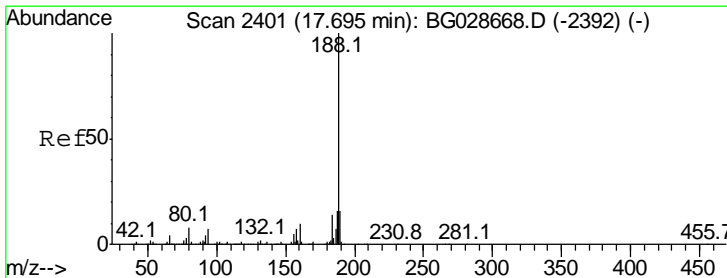
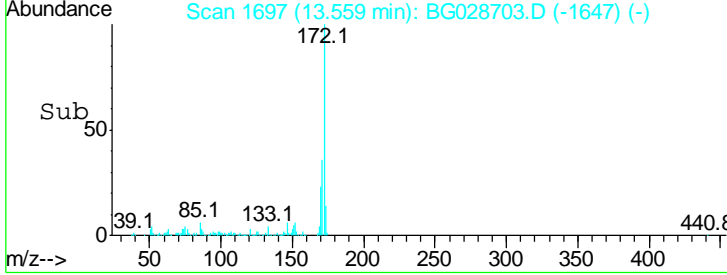
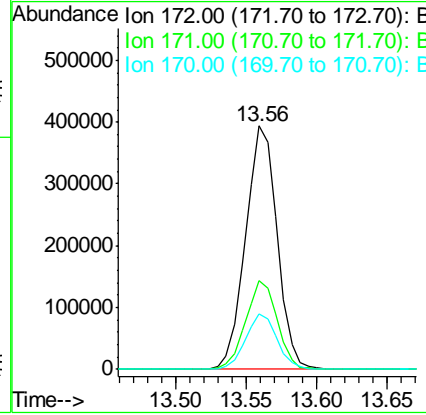
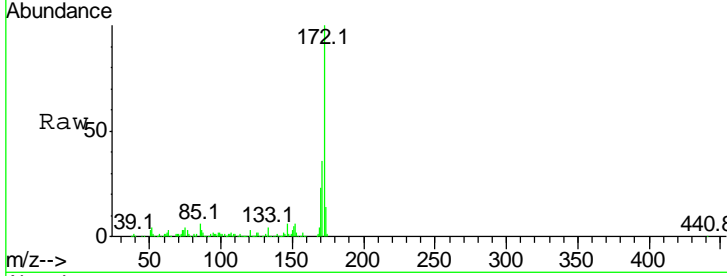




#44  
 2-Fluorobiphenyl  
 Concen: 100.270 ng  
 RT: 13.56 min Scan# 1697  
 Delta R.T. -0.01 min  
 Lab File: BG028703.D  
 Acq: 13 Sep 2017 18:05

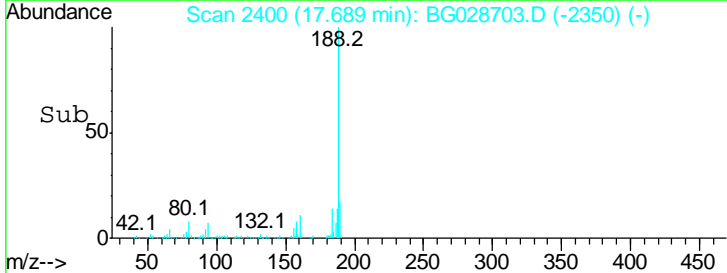
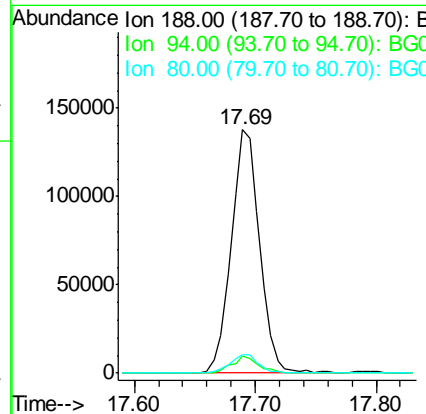
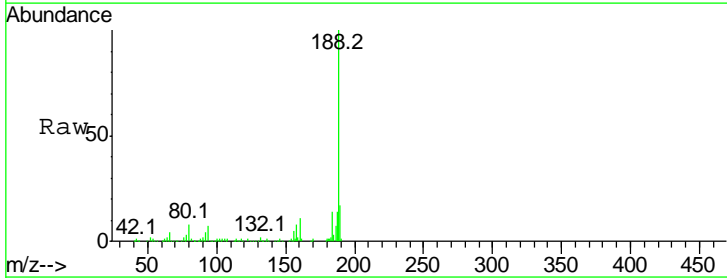
Instrument :  
 BNA\_G  
 ClientSampled :  
 20170585-SITWATER

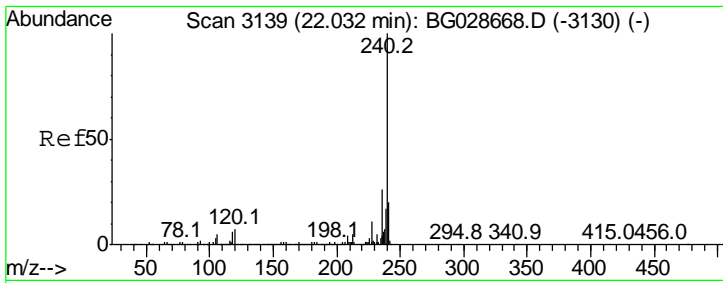
Tgt Ion	Resp	Lower	Upper
172	100		
171	36.4	32.2	48.2
170	22.9	21.8	32.6



#63  
 Phenanthrene-d10  
 Concen: 20.000 ng  
 RT: 17.69 min Scan# 2400  
 Delta R.T. -0.01 min  
 Lab File: BG028703.D  
 Acq: 13 Sep 2017 18:05

Tgt Ion	Resp	Lower	Upper
188	100		
94	6.8	5.8	8.8
80	7.6	7.5	11.3

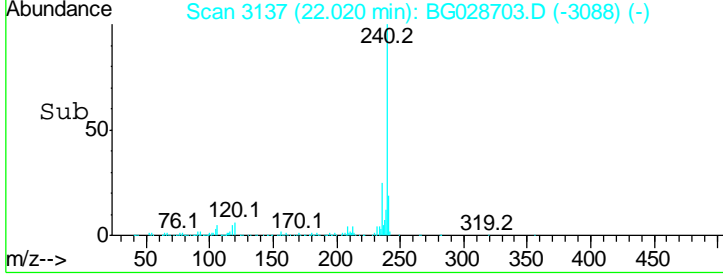
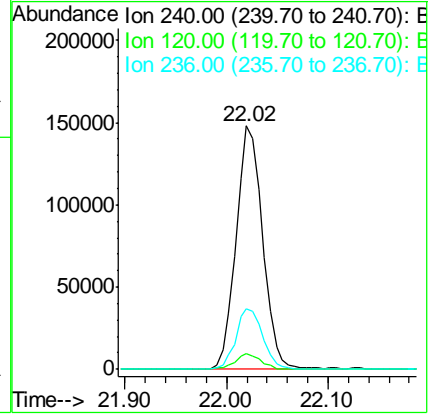
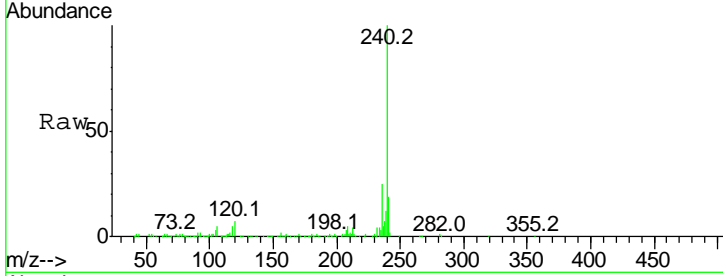




#75  
 Chrysene-d12  
 Concen: 20.000 ng  
 RT: 22.02 min Scan# 3137  
 Delta R.T. -0.01 min  
 Lab File: BG028703.D  
 Acq: 13 Sep 2017 18:05

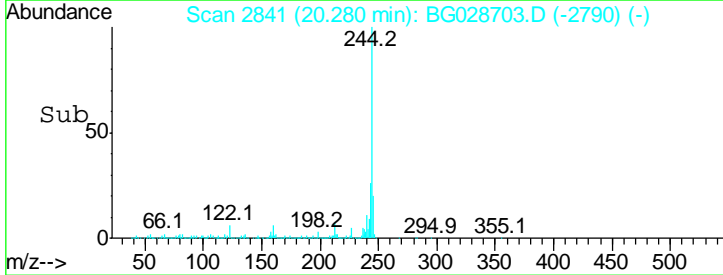
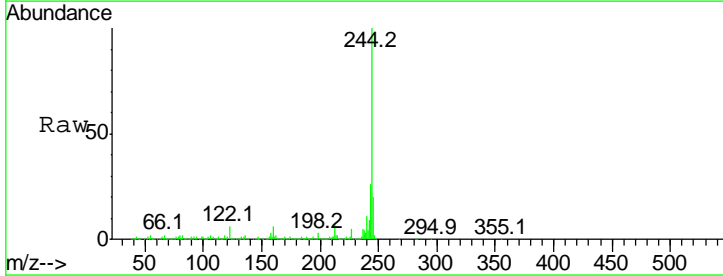
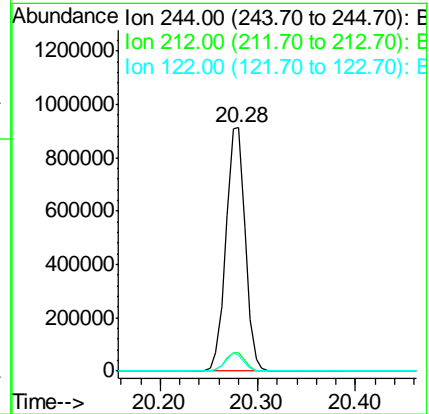
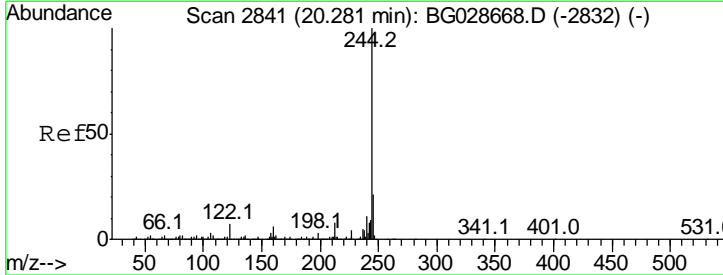
**Instrument :**  
 BNA\_G  
**ClientSampled :**  
 20170585-SITewater

Tgt Ion	Ratio	Lower	Upper
240	100		
120	6.5	5.7	8.5
236	25.0	22.2	33.4

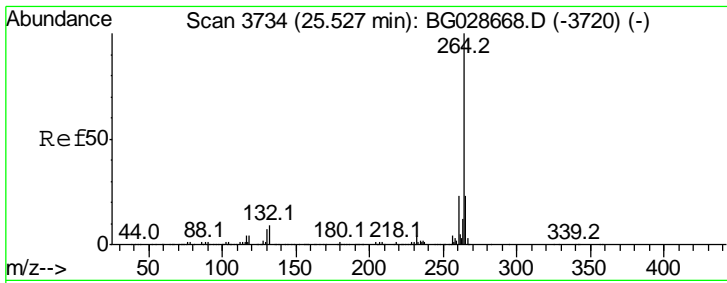


#78  
 Terphenyl-d14  
 Concen: 98.466 ng  
 RT: 20.28 min Scan# 2841  
 Delta R.T. -0.00 min  
 Lab File: BG028703.D  
 Acq: 13 Sep 2017 18:05

Tgt Ion	Ratio	Lower	Upper
244	100		
212	7.4	10.0	15.0#
122	6.4	8.6	12.8#







#86  
 Perylene-d12  
 Concen: 20.000 ng  
 RT: 25.52 min Scan# 3733  
 Delta R.T. -0.01 min  
 Lab File: BG028703.D  
 Acq: 13 Sep 2017 18:05

**Instrument :**  
 BNA\_G  
**ClientSampled :**  
 20170585-SITEWATER

Tot Ion	Ion	Ratio	Lower	Upper
273708	264	100		
	260	22.5	21.8	32.8
	265	22.0	18.2	27.4

